



# St.John's Church, Stratford, E15

## APCM 2025

(ANNUAL PAROCHIAL CHURCH MEETING)

25<sup>th</sup> May 2025



**Incorporating the  
ANNUAL REPORT OF THE PCC AND AUDITED ACCOUNTS  
For the Parish of St John with Christ Church Stratford**  
(registered charity no.1132176)

*For the year ended 31<sup>st</sup> December 2024*

## AGENDA

1. WELCOME
2. OPENING PRAYER
3. APOLOGIES FOR ABSENCE
4. APPROVAL OF THE MINUTES OF THE PREVIOUS MEETING HELD ON 28<sup>TH</sup> APRIL 2024
5. PRESENTATION & ELECTION
  - Election & Presentation of the Wardens
  - Presentation of the Church Electoral Roll
  - Presentation for Approval of Audited Accounts for the Year 2024 (attached)
  - Election & Presentation of P.C.C (Parochial Church Council) Members
  - Election & Presentation of Sidespersons
  - Election & Presentation of Deanery Synod Reps
  - Election of Auditor: Independent Examiner Mr. Peter Morley FCMA
6. REPORTS
  - Auditor's Report (attached)
  - Account Review for the year 2024 by Sandra Besson (Treasurer)
  - Wardens' Report
  - Vicar's Report (attached)
7. Q & A
8. CLOSING PRAYER

- **Everyone is warmly invited to the APCM** (Annual Parochial Church Meeting). It's a special opportunity to celebrate and give thanks for all that God has done at St John's over the past year.
- **Voting for Parish Churchwardens** is open to members of the Church Electoral Roll and to residents of the parish (if an election is required).
- **Voting on other matters** is reserved for members of the Church Electoral Roll only.
- **During the Q&A**, we may not always have immediate answers to every question. If that's the case, we will follow up with you as soon as possible.

## Vicar's Report for the APCM – Review of 2024

If there is no change, there is no growth. It's like the Dead Sea—always receiving water but never giving, with no flow, no movement, no transformation. And because of that, it becomes dead. Ministry in Christ is no different. If we cling only to our own traditions—doing things simply because we've always done them—or if we stay in the comfort of the familiar, there will be no growth. And without growth, sooner or later, it dies.

I have now been at St John's for over two and a half years. During the first year and a half, I focused on listening—to God, to the church, and to the wider community—to discern what He is calling us to be and to do. Out of that time of listening, God gave us His vision for St John's, which I shared with you at last year's APCM. Since then, we've been working to make that vision a reality. That means 2024 was a year of transition—an exciting journey, but also a challenging one.

Let me share some of the highlights and challenges of the year, which I hope will inspire us to continue seeking God's wisdom and provision together.

### Highlights

Throughout 2024, we have pursued our mission to **help everyone Encounter Jesus, Equip the saints, and Empower the community** through the good news of Jesus Christ and the power of the Holy Spirit.

#### 1. Encountering Jesus:

We recognise that many in our community are spiritually curious—asking life's big questions, even if they remain sceptical about faith. Through the Alpha Course, monthly prayer walks, daily Facebook prayers, and the outreach efforts of our Gazebo team, we've created opportunities for people to encounter Jesus. I'm especially thankful for the volunteers who helped make these ministries possible, including those who supported Alpha, led our prayer initiatives, and engaged with the community every other Saturday.

#### 2. Equipping the Saints:

We want to grow into the people God has called us to be. Our services and prayer meetings continue to offer spaces for spiritual growth through word, worship, prayer, and fellowship. A new Lifegroup was launched and has become a strong hub for

discipleship and community—huge thanks to Charles and Hannah for hosting, and to David and Caryn for resourcing the group with their gifts. Healing Café has grown both in size and depth—thank you to Sheva, Iris, and the entire team. A particular focus this year has been supporting and developing our youth ministry. Jill Duncan, our Deanery Youth Advisor, served with us for six months, offering valuable training to our YPF volunteers. Our young people even renovated their meeting room, transforming it into a warm, welcoming space.

#### 3. Empowering the Community:

Empowered by Jesus, we sought to serve our community both locally and globally. In collaboration with other Stratford churches, we relaunched the *Love Stratford* event in June, welcoming around 2,000 guests. It was a joyful day of fun and connection, offering a safe, welcoming space to the public. We also hosted the *Easter Experience* with Faith in Schools, welcoming several hundred Year 4 pupils to encounter the Easter story. Our *Christmas Civic Carol Service*, held in partnership with Transform Newham, welcomed about 300 people, including community leaders and dignitaries, celebrating the transforming love of God at work in Newham.

Globally, we remained committed to mission, tithing 10% of our income to Christian organisations doing incredible work around the world. We also pray regularly for these partners and have welcomed speakers from The Leprosy Mission, Open Doors, Amos Trust, and CMS (including Andrew and Lisa, who minister in Bolivia). These partnerships help us glimpse the wider movement of God's Kingdom beyond our parish.

### Challenges

Though we have many reasons to thank God, this year has not been without real challenges.

#### 1. Financial Pressures:

We faced a serious financial crisis in 2024, resulting in a deficit that made it unsustainable to maintain two full-time staff roles. After prayerful consultation, the staff agreed to step down in July. This impacted both myself and our administration significantly. Yet, by God's grace, a number of volunteers stepped in to help sustain our ministry. I am deeply thankful for their sacrificial service. To manage operations more efficiently, the church office is now open weekdays from 10am–12pm.

## 2. Building Repairs:

St John's Centre, now 25 years old, has begun to show signs of wear. The most urgent issue was a leaking roof. We are grateful for a £10,000 grant from the LOB fund and a generous £5,000 private donation, which enabled us to complete repairs earlier this year. Our quinquennial inspection also identified other necessary repairs, which are now being addressed by the Buildings Committee. Please continue to pray for wisdom and provision as we move forward.

## 3. Disappointment and Bitterness:

Seasons of transition inevitably bring discomfort. I know that for some, the changes I've introduced have felt unsettling or even painful. If any of my decisions or leadership have caused hurt or disappointment, I sincerely apologise. Please forgive me. This journey has been personally costly—I've lost around 6kg since I began serving at St John's. I have made every decision through prayer and discernment, striving not to please people, but to please God. My desire has always been to ask: *What would delight the Lord? Who are the weak and vulnerable He is calling us to reach?* If we begin to focus only on "me" or "us," we risk becoming a social club rather than a church. And we are called to be Christ's Church.

## Looking Ahead: 2025–2026

Recently, the PCC reviewed and reaffirmed our vision (available on our website). We've discerned the following priorities for the year ahead:

### 1. Back to Basics:

We are being called back to our foundations—prayer and the Word. Every ministry at St John's will place prayer before preparation. We've begun praying at 9:45am on Sundays before setting up. This model will extend to all areas of ministry. Our Lifegroups are vital to this effort: the evening group at Charles and Hannah's, the daytime Healing Café group, and a new online Lifegroup meeting fortnightly with one in-person session each term. Together, we are building on solid ground.

### 2. Better Communication:

We recognise gaps in communication within the church—between leaders, volunteers, and congregants. To improve this, we've begun using the ChurchSuite system, coordinated by Hannah. We remain committed to also supporting those who prefer offline methods of connection.

## 3. Every-Person Ministry:

Every Christian is called to serve. Ministry is not for the few, but for all. We will continue developing ministry teams, helping people discern their gifts, and encouraging each person to find their place in God's work—so that more than half of our congregation is active in at least one area of service.

## 4. Cultivating a Culture of Honour:

As I mentioned earlier, disappointment is a natural part of ministry. But how we handle it matters. Whispering, gossip, and resentment are spiritually toxic. They divide and destroy. I am preparing a sermon series to help us grow in this area. In the meantime, let's each ask, "What would God want me to do?" rather than seeking to blame. If you are hurting or need to speak, please know that I—and the wider leadership—are here to listen.

## Conclusion

Friends, 2024 was a year of faith and faithfulness, of pruning and planting. We have seen God at work, even in the challenges, and I believe we are being prepared for a fruitful future. As we move forward into 2025–2026, let us fix our eyes on Jesus, the author and perfecter of our faith. Let us walk in unity, serve with joy, and remain open to the Spirit's leading. Thank you for journeying together as the people of God at St John's. May we continue to grow in grace and in the mission God has given us—for His glory and the good of our world.

With love in Christ,

Revd. Young Lee

Vicar, St John's Church, Stratford

## CHURCH ATTENDANCE IN 2024

- Average Sunday morning attendance in 2024 is around 133 adults and 38 children
- The electoral roll on the day of APCM is 274 (last year, 266).

## LIFE EVENTS AT ST JOHN'S STRATFORD

- Baptism: We thank God for the gift of life through baptism. We had 2 baptisms in 2024.
- Confirmation: We had one confirmation service in November 2024. 19 candidates from St John's among others from different churches in the deanery were confirmed by the Bishop of Chelmsford.
- Wedding/ blessings: we had 2 weddings in 2024



- Funerals: we conducted 2 funerals in the church building officiated by Rev. Young Lee.

## **PAROCHIAL CHURCH COUNCIL, MINISTRY TEAM AND SIDESPERSONS IN 2024**

### **MINISTERS**

Revd Young Lee (since July 2022)  
Nick Bryzak (Associate Minister)

### **CHURCH WARDENS**

Tolu Babarinsa  
Corin Barton  
Richard Aubrey  
Bridget Richards

### **PCC MEMBERS**

Chuks Asuoha, Sylvia Beckles  
Hannah Thomas-Davies, Emmanuel Orakwue  
Justine Onu, Folu Fabikun  
Eon Wade (Evangelism Enabler)  
Jimi Peter, Lydia Quartey  
Ihinosen Jane Ovbude, Beverly Slingo  
Linda Ikenga, Sandra Besson (Treasurer)  
Ayodele Olunloyo (Deanery Synod Representative)  
Dolapo Ariyibi (Safeguarding Officer/ Deanery Synod Representative), Sandra Ballentine (Secretary)

### **The followings are invited to be attendance at PCC meetings**

Sheva Williams (Lay Reader)  
Annette Gorden (Ordinand)  
Dan Scott (Community vicar at Christchurch Three Mills)

### **STAFF TEAM**

Parish Administrator: Kay Garib (till July 2024)  
Verger: Radcliff Facey (till June 2024)

### **SIDESPERSIONS**

Alister Probert, Grace Barnwell  
Sylvia Beckles, Millie Benjamin  
John Burman, Yvonne Edwards  
Mike Ibiayo, Daniel Ogbondah  
Blessing Ogbondah, Sarah Olemoh-Soyemi  
Justine Onu, Christine, Dola Peters, Jimi Peter, Bridget Richards

## **PCC SECRETARY REPORT**

**Report Date:** 11<sup>th</sup> May 2025.

**Prepared by:** Sandra Ballentine, Parish Secretary.

### **Purpose of Report:**

To give a summary of matters discussed by PCC members January 2024 to November 2024 and ask that the Annual Parochial Church meeting note the report contents.

### **Background:**

The **Parish Church Council (PCC)** is made up of 21 church members elected annually. The PCC is responsible for the care and maintenance of the church and its contents, the conduct of the financial affairs of the church and functions in relation to church services and administration. In performing their duties PCC members must act with integrity, honesty and openness and act in the best interests of the church and ensure that the church's activities remain true to its mission and purpose.

### **1.St John's Vision Document.**

We continue to develop this document which is reviewed annually setting out our church vision and priorities. As our church grows, our vision grows.

### **Our Identity:**

**We are gospel-centred:** St John's Church is a church built on the foundation of Jesus Christ. Jesus is central in how we make decisions, what we say and the actions we take. 1 Corinthians 3:11 "For no one can lay any foundation other than the one already laid, which is Jesus Christ."

**We are a worshipping community:** We were created for a relationship with God and others. Our worship together is an expression of our relationship.

**We are a diverse, loving community:** The salvation message of John 3:16 is a reminder that the gospel of Jesus Christ is for EVERYONE. St John's Church is diverse and offers the love of God to everyone in our community.

### **Our Value:**

**A gospel-centred** church and not a political-centred church.

**Every-Person Ministry:** We grow by serving God and others. We believe everyone is called to a ministry of service.

**Growing the next generation** in Christian faith and leadership is one of our best investments.

**Diversity** is our blessing, and it strengthens the community.

**God's plan A for His mission.** We are God's plan A for the transformation and thriving of our community in Stratford.

### **Our Mission Statement**

Help **Everyone** to encounter Jesus, through weekday bible study/fellowship group. Promoting more prayers, both individual and corporate. Creating a seeker-friendly faith space.

To **Equip the saints** through growing the Children & Youth Group, developing a new Children and Youth curriculum and changing of our approach and attitude to children and young people through teaching and learning the culture of honour.

To **Empower the community** through the good news of Jesus Christ and the power of the Holy Spirit. Making use of church buildings & technology for mission. Developing a 5-year Building Project and the St John's Centre refurbishments to make the building more welcoming and user-friendly refurbishing the Crypt and upgrading the church sound and visual system.

These are just a few examples of the ongoing works to develop our mission and priorities.

## **2. Church Finances.**

2024 remained challenging for church finances which were kept tightly under review to ensure we remain financially resilient and make best use of resources. This involved a review of our needs and resources to ensure church funds were used efficiently and looking at ways to secure external funding and generate greater income such as increasing the rental charges for church rooms.

## **3. St John's Building and Church House**

The repair, maintenance and upkeep of the church building and facilities have been kept under review. External lighting was installed in the church yard to improve lighting and safety in external areas of the church building. A review of the fabric of the church building has been undertaken and essential works carried out to the extension roof. Further works of repair will be kept under review and undertaken, when necessary, funds permitting.

## **4. Courses.**

St John's hosted and facilitated during 2024 Part 1 of the Pastoral Care course and The Alpha course. These courses were designed to equip and build up the saints and were well attended by St John's members and others.

### **Conclusion.**

We have managed to keep church finances and the building and church house under review to ensure that our needs and those of the community have been met. We also continue to review our vision and priorities to serve God, each other, and our local community.

In all things we give thanks to God and seek his wisdom, knowledge and discernment.

### **REPORT ENDS.**

## **SAFEGUARDING REPORT**

The safeguarding ministry as it's name suggests is to keep everyone especially the young and vulnerable members of our congregation safe and to ensure that the processes that enable safeguarding are embedded into our processes.

### *What happened over the year?*

Volunteers were taken through the safer recruitment process which involves DBS checks, completion of application forms, training and referencing.

### *What do you want to celebrate?*

We had a successful Safeguarding Sunday service on 17-Nov-24, this raised the awareness of Safeguarding to the congregation.

### *What are the challenges?*

The main challenge is length of time it takes to complete the processes.

### *How can the church pray for your ministry?*

I would like the church to pray that Lord gives me wisdom, humility, patience and strength. Also want to pray the Lord will helps everyone understand that we all have a role to play in safeguarding.

Our Parish Safeguarding Officer is Mrs Omodolapo Peters who may be contacted at church or by email at [safeguarding@stjohnse15.org](mailto:safeguarding@stjohnse15.org). No safeguarding issues were reported during 2024.

*Reported by Dola Peters*

**MINISTRY REPORT FOR 2024****BUILDINGS COMMITTEE REPORT**

The St John's buildings group has been focusing on the resolution of the leaky roof to the St John's centre recently, which has taken a long time to make happen, but is now complete externally. Internally, some making good is required. The next mini-project will be to address issues in the church toilets, changing taps, solving the hot water issues, and unblocking plumbing.

Strategically, we still have a long way to go, and whilst a big vision is on the cards, and a Vision session will be organised with interested members of the congregation, it has been agreed to tackle some existing ministry challenges in the first instance.

The Building Committee is enormously grateful to the patient and generous volunteering of Pat Kennedy who has been particularly investing a lot of his time and professional gifts this year in helping with church buildings issues. Particularly this has focussed on improving the external presentation of the building - by resolving the external lighting that lights up the building, the general condition of the churchyard, repairing the plinth directly adjacent to the east steps and seeking to understand how the church clock can be cost effectively brought back into good order.

In the upcoming period we again need to look at making bigger investments into our building to keep it suitable and well-equipped for ministry to our community. There remain important roof and other repairs to resolve, picked up as part of our five-yearly inspection undertaken during the summer of 2024.

*Reported by Charles Thomas-Davies (Chair of the Building Committee)*

**BIBLE WITH BABY**

[Photo shared with permission]

Bible with baby continues to be a small group of parents meeting on a Wednesday to share the Bible with our children and to discuss it together. The children are building relationships together and parents find a rare opportunity for fellowship in the week whilst looking after their children. We're expecting the group to grow this year but remain a place where understanding of the Bible and relationships can deepen. This year we enjoyed

using the free tickets from the Tower of London for an outing together.



*Reported by Hannah Thomas-Davies (PCC)*

**CHILDREN AND YOUTH COMMITTEE**

The aim of the Children and Young People's Ministry at St John's is to see our children and young people grow in their Christian faith and feel safe, welcomed and valued in our church. A main part of our ministry is Sunday Club and YPF, which take place during the Sunday morning services. With groups for all ages, 0-19, we aim to provide fun activities to enable the children and young people to explore the Christian faith and grow in their walk with Jesus.

During 2024 we prepared 17 young people for baptism and confirmation, which took place in November, during a service led by the Bishop of Chelmsford. We have also seen our young people involved in increasing areas of ministry in church including, sound (PA), audio visual, instrumental music, singing, reading, speaking, leading prayer and serving refreshments. A group of our teenagers also enjoyed a Christmas trip to the Dominion Theatre to see The Shepherd's Carol.

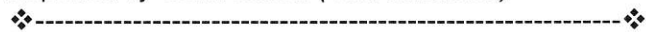
Staffing our Children and YP's Ministry has continued to be a challenge this year. During 2024 we were blessed to have Jill Duncan, a diocesan youth worker, based at our church for 6 months. Jill worked with YPF and helped them decorate and equip their own space in the crypt. She also led a training course for our ministry team which saw 7

leaders complete the Youthscape Essentials Training programme.

As we go forward into 2025, we still need more leaders and helpers for the weekly groups. We would also like to expand beyond Sunday ministry but need extra help to make this possible. Having seen Jill Duncan's impact, we are considering trying to access funding for a Children and Youth Worker who could help us to develop this vital area of our church ministry.

We would like to say a huge thank you to all the leaders and helpers of each of our groups. Special thanks to Bridget, who has had the difficult task of ensuring each group is staffed and resourced each week. Thanks also to Chuks, who has recently stood down from YPF, after many years of dedicated service to our young people. Please continue to pray for this area of ministry and hold the children and young people in your hearts.

*Reported by Corin Barton (Churchwarden)*



### **FACEBOOK LIVE EVENING PRAYER AND END OF MONTH NIGHT PRAYER**

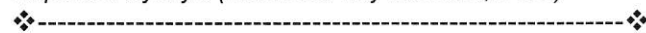
The FB Evening Prayer and End of Month Night Prayer provides a consistent, welcoming space for the church to pause for prayer and Bible reflection, thereby fostering faith and fellowship.

This year, attendance and engagement grew, with members participating more actively. The monthly night prayers were spiritual, bringing peace and clarity. New prayer themes and rotating leaders added freshness and deepened our bond. We engaged in mid-year and end of year thanksgiving which gave the opportunity to rejoice in the Lord for His goodness.

Despite facing challenges of coordination of volunteers, the team responded with better planning and communication. The team grew in confidence and spiritual sensitivity.

We are especially grateful for answered prayers, the prayer leaders, and everyone who engaged prayerfully. Looking ahead, the ministry plans to keep praying for deeper spiritual growth and boldness in prayer among participants.

*Reported by Ayo (Licensed Lay Minister, PCC)*



### **HEALING CAFÉ**

This ministry serves to help everyone who genuinely come to St. Johns on a Tuesday,

seeking God's help and guidance, or just for fellowship and friendship to combat loneliness.

God has worked wonders for us. The grant of £9,600 which we received from People Powered Places Council) was spent according to our plan.

We have had a very exciting year. We entertained over 300 people in our churchyard outreach and other events. We adhered to our diocesan good safeguarding policy. Newham Council congratulated us on our achievement as did all who took part in the events we organised. We received small donations from those we entertained which is helping towards the cost of our expenditure for this present year. Grants was not offered within category.

Our biggest challenge was keeping good account of all spending to give accurate report regularly to our church finance secretary and quarterly to People Powered Places.

More people are now attending. It is always difficult to know how many will be present for lunch as some people just drop in which is good. We provide for 15 but numbers range from 12 to 25.

Our hope for next year is to see more people come to the café to receive prayer and blessing. I also pray more retired prayer ministers will join and help with leading Bible teaching and prayer, to build us and others up in the love of Christ. Lastly to have 2 more helpers to prepare the lunch

We thank God for being so good to us and for all who have helped in many ways, physically, financially, spiritually and emotionally. I am honoured to serve in this ministry. Others have shared similar sentiments, and all who attend, or visit have expressed their appreciation.

Please pray for God's continued guidance and blessings on this ministry.

*Reported by Sheva Williams (Healing Café Leader/ Reader)*



### **LIFEGROUPS**

This year, a new small group-based ministry was started, which focusses on building depth of relationships between individuals in groups of 8-12 (ish) people.

The first group started in February, and has been meeting fortnightly on a Tuesday evening following the Alpha Course that took place last summer. The



first 6 sessions focused on Galatians, led by David and Caryn, and the next series of 6 sessions are looking at Exodus, led from a book, and delivered/facilitated by a member of the group.

The group has been meeting at Charles & Hannah's house in Maryland.

The format that has worked well to date is:

- 1900-1930: simple food (normally soup and bread) and fellowship.
- 19:30-20:30: bible-based discussion.
- 20:30-21:00: we pray for each other.

If anyone would be interested in setting up or joining a Life Group, it's very straightforward, so please see Rev Young, Charles, Hannah, David or Caryn, or complete the following

form: <https://stjohnse15.churchsuite.com/-/forms/d9iddjft>

*Reported by Charles Thomas-Davies*

### MISSION GIVING COMMITTEE (MGC)

The Mission Giving Committee has the responsibility of distributing the proportion of St John's regular giving which is directed towards the wider mission of the church. During 2024, regular beneficiaries included 12 local, national and international Christian organisations\*. These were:

Organisation	Region	Amount
Newham Faith in Schools	Local	£1000
St. Joseph's Hospice	Local	£650
Stratford Food Bank	Local	£650
Lifewords	National	£650
NAPAC	National	£650
Open Air Campaigners	National	£650
Through Faith Missions	National	£650
Amos Trust	International	£650
Christian Solidary Worldwide	International	£650
Church Missionary Society	International	£1850
Leprosy Mission	International	£650
Open Doors	International	£650
Total		£9350

\*NAPAC is not a Christian organisation but is a charity.

The MGC members establish links with the supported organisations and invite representatives

to speak at services where possible. During 2024 we welcomed several speakers including those from Amos Trust, CMS, Faith in Schools, and the Leprosy Mission. Other organisations help to resource St John's (e.g. Lifewords) while others have close mission links (such as Open Air Campaigners, Newham Faith in Schools, Through Faith Missions and Open Doors). Some help to meet pressing social or practical needs for local people (e.g. NAPAC, St Joseph's Hospice and Stratford Food Bank). The MGC take the responsibility of distributing church funds very seriously and prayerfully.

In addition to our regular giving, we were able to donate £1050 in Emergency giving to Embrace the Middle East in response to the crisis in Gaza/Israel. Underpayments from previous years were also identified in St John's accounts which allowed us to distribute a further £1992 as follows:

Organisation	Amount
CMS	£500
Newham Faith in Schools	£500
Stratford Food Bank	£500
NEWway Nightshelter (Newham)	£492
Total	£1992

We would like to say a special thanks to our outgoing Chair, Sarah Turner, who led the MGC with professionalism, dedication and enthusiasm for many years prior to moving away as part of her eventual return to Australia. If you are interested in exploring service on the MGC, please speak to Rev. Young.

*Reported by Corin Barton (Churchwarden)*

### PRAYER MINISTRY

This ministry aims to draw us deeper in the love of Christ to confidently pray with and for those who come forward for prayer and to carefully listen to them without judging. Our desire is to see them healed and restored.

This year, more people came forward for prayer as opposed to last year and some shared testimonies of God's healing. Also Revd. Young, led a moving anointing service, and more prayer ministers were needed than the usual.

We have had one refresher course attended by most prayer ministers and three others. Two just wanted the experience. Everyone enjoyed and expressed their thanks and gratitude. We also had

a training seminar three people, one from Christ church Three Mills. Five ministers joined to give support, three from Christ church nine of us in total. I happily shared this seminar with another church in the diocese as requested by their vicar. It was well attended we were all touched by the powerful move of the Holy Spirit showing the importance of this ministry. All ministers in training are informed of our good safeguarding practice.

We have now overcome the difficulty we had in hearing each other because of loud sound from the music are thankful for the folding screen which we now use, it serves to block out the sound. But it now obstructs view to see when there's a queue waiting for prayer.

My hope and prayer is for us to get a transparent screen but most important to see God's anointing on all who come to St. John's that they may receive in good measure and go into the community blessed to bless.

*Reported by Sheva Williams (Prayer Ministry Leader/ Reader)*

❖-----❖

## WOMEN'S GROUP

The Women's Group exists to encourage and equip women in their faith, fostering connection, spiritual growth, and mutual support within the church community.

This year, we hosted regular gatherings that included prayer, Bible study, quizzes, and open discussions, creating a safe space for honest sharing and encouragement.

A highlight was having to rebuild the group through prayer, which brought deep fellowship, and a renewed sense of purpose for many.

Challenges included maintaining consistent attendance and balancing busy schedules, but through this, we are learning the value of flexibility, intentional follow-up and uplifting one another in fellowship.

We are grateful for the faithful women who gave their time, energy, and hearts to this ministry—especially our small group leaders and those who supported behind the scenes. Looking ahead, we hope to expand mentorship opportunities and create more outreach events to connect with women beyond our church walls.

*Reported by Ayo (Licensed Lay Minister, PCC)*

❖-----❖

## GRIME BUSTERS

The team has been depleted from 11 to 2 persons, Arnold and myself. Iris and Constance have recently had to step back. Our main ministry is to ensure that the church building is clean for Sunday worship. We usually clean on a Saturday morning. When I am away, Arnold is left to do it all alone.

This involves dusting the pews and window ledges, removing cobwebs, vacuuming the carpets and floor. We get a lot of satisfaction on Sundays knowing that we have cleaned the church for the congregation to use.

However, we do need volunteers. Please come and join the cleaning ministry. Give your time – It is worth it. God bless you all!

*Reported by Lydia Quartey (PCC)*

❖-----❖

## MINISTRY TEAM REPORT

My part in the ministry over the past year has focussed on teaching and pastoral work. I continue to share communion with our members who can't get to church and have asked to have Holy Communion at home. Not all of them are able to stream our services.

I lead Teen Live once a month and its been really encouraging to have a large number of young people joining in every week. I also lead evening prayer on Mondays and I learn as I study the scriptures. Its good to be able to take time out to pray together and I'm encouraged by all who join in. The healing cafe also provides a place where we can study the Bible together and learn from each other. Its a place for midweek fellowship and support.

As the ministry team, I think we work together, supporting one another and planning together. Young leads the team well and faithfully.

I have really appreciated having our prayer and praise time at the beginning of our services and I believe these times help us to focus on the Lord and prepare us to learn. Many thanks to Richard and Joseph, Youjin, our choir and band.

My prayer for this coming year is that others will see the importance of regular prayer for the people of our parish and want to join in with the monthly prayer walks. We may well be the only ones praying for all these people and we know they need a Saviour. *Reported by Iris Bryzak (Lay Reader)*

❖-----❖

I pray that all believers will be established in their faith and in the love of God and that relationships will grow stronger.

I was glad that our Christmas and Easter services brought in new people and saw some previous members returning. I pray that the Lord would break down the barriers that have kept them away and help them to make a steadfast commitment to the Lord so that their lives may be transformed by the Holy Spirit. It would be good to see them re-established in their faith again.

*Reported by Nick Bryzak (Associate Minister)*

❖-----❖

Whilst attending St Johns Stratford, I have had an opportunity to experience a larger church context fellowship, this is different from what I have previously experienced.

I first wish to thank the PCC for allowing me to be doing my placement with St John's Church. I do believe that this is a good learning environment.

Whilst attending St Johns I have not been restricted with what and where I can support and serve within the church. I have been able to support Sunday clubs and YPF. I have Supported and assisted with Church events and or when the church is hosting an event. I have and continue to have the opportunity to practice leading services. I have been able to learn how to set up communion (wafers wine ect). I have had the opportunity to preach. St Johns could be described as a church with multiple fellowships operating within the church. I have been able to get involved with Alpha with the Chinese community

From my understanding, this is a complex church, which is still steeped in the past- previous ways of doing things and is still transitioning to be able to do things differently. This is a church fellowship with so much potential and opportunity. The local area is changing I believe this will impact on the church in the future. I have and look forward to the future whilst serving with this amazing fellowship.

*Reported by Annette Gordon (Ordinand)*

❖-----❖

## **FINANCIAL REVIEW**

During 2024, voluntary income from direct giving was £129,482, an increase of £13,886 over 2023 mainly due to new regular donors. Rental Income at £33,767 were 10% higher than in 2023. Expenses of Church activities at £163,056 were slightly higher than in 2023. This included redundancy payment to two employees.

Last year St John's donated a total of £12,761 to various organisations, in line with our Mission and Charity donations policy to allocate up to 10% of giving income to charitable and mission work. We earned rental income of £20,328 on the curate's residence and received £15,000 in donations towards the extension roof renovations.

The General Fund had a positive net result of £2,875 a substantial improvement on the £22,736 deficit in 2023.

## **RESERVES POLICY:**

Our policy is to maintain a balance on unrestricted funds which equates to approximately six months unrestricted payments (where possible). This policy is based on the following factors:

- Church membership is constantly changing within a community with a very transient population. Members' giving is therefore subject to fluctuation.
- Rents received for use of space in St John's church building are also subject to fluctuation because most users are community groups or Local Government departments, and are dependent on funding decisions for continued bookings.
- St. John's has significant liabilities for operational overheads, and significant roof renovations and other building repairs planned in the new year.

The PCC are encouraged by the positive result in the General Fund for 2024 and expect to continue with cost containment as we move to comply with the reserves policy.

St. John's has a designated Capital Asset Fund totalling £67,000 to meet some expected costs for building fabric and equipment replacement.

*Reported by Sandra Besson (Treasurer)*

❖-----❖

**PARISH OF STRATFORD: ST JOHN'S**  
**FINANCIAL STATEMENTS FOR THE YEAR ENDED 31 DECEMBER 2024**  
**INDEPENDENT EXAMINER STATEMENT**

Monday, 12 May 2025

I report to the Parochial Church Council (PCC) of St. John's Stratford (St. John's) on my examination of the accounts for the year ended 31 December 2024.

**Responsibilities and basis of report**

As the PCC of St. John's you are responsible for the preparation of the accounts in accordance with the requirements of the Charities Act 2011 ('the Act').

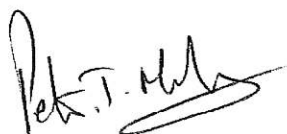
I report in respect of my examination of St John's accounts carried out under section 145 of the 2011 Act and in carrying out my examination I have followed all the applicable Directions given by the Charity Commission under section 145(5)(b) of the Act.

**Independent examiner's statement**

I have completed my examination. I confirm that no material matters have come to my attention in connection with the examination giving me cause to believe that in any material respect:

1. accounting records were not kept in respect of St. John's as required by section 130 of the Act; or
2. the accounts do not accord with those records; or
3. the accounts do not comply with the applicable requirements concerning the form and content of accounts set out in the Charities (Accounts and Reports) Regulations 2008 other than any requirement that the accounts give a 'true and fair view which is not a matter considered as part of an independent examination.

I have no concerns and have come across no other matters in connection with the examination to which attention should be drawn in this report in order to enable a proper understanding of the accounts to be reached.



Peter Morley FCMA CGMA  
51 Chalkwell Esplanade  
Westcliff-on-Sea  
Essex  
SS0 8JH



PARISH OF STRATFORD: ST JOHN'S

MANAGEMENT ACCOUNTS FOR THE YEAR ENDED 31 DECEMBER 2024

St Johns General Fund Income & Expenditure Account

	2024		2023	
<b>Income</b>	£	£	£	£
<u>Voluntary Income</u>				
Planned giving: Gift Aid donations	76,756.07		55,037.82	
Planned giving: Tax recovered	16,679.63		20,824.74	
Planned giving: Other	16,213.90		15,255.74	
Collections (open plate)	17,517.80		18,780.70	
Donations, appeals etc.	2,315.35		5,698.03	
		129,482.75		115,597.03
<u>Activities for Generating Funds</u>				
Donations for Heating	-		(320.00)	
		-		(320.00)
<u>Income from Investments</u>				
Dividends and interest including tax recoverable	4,499.96		1,263.50	
		4,499.96		1,263.50
<u>Church Activities</u>				
Contributions for use of Church & Hall	33,767.94		30,599.32	
Fees	798.56		565.40	
		34,566.50		31,164.72
<u>Other incoming resources</u>				
Other	3,023.95		2,025.23	
		3,023.95		2,025.23
<u>Transfers from other funds</u>				
Assigned from Housing Fund	4,890.47		-	
		4,890.47		-
<b>Total Income</b>		<b>176,463.63</b>		<b>149,730.48</b>

PARISH OF STRATFORD: ST JOHN'S

MANAGEMENT ACCOUNTS FOR THE YEAR ENDED 31 DECEMBER 2024

St Johns General Fund Income & Expenditure Account

	2024		2023	
<i>Expenditure</i>	£	£	£	£
<u>Costs of generating voluntary income</u>				
Giving Envelopes	128.52		116.84	
		128.52		116.84
<u>Fund-raising and trading costs</u>				
	-		-	
<u>Church Activities</u>				
Ministry - Diocesan parish share	67,541.76		66,050.88	
Ministry - Expenses	651.06		1,562.40	
Church - running expenses	28,184.58		29,542.07	
Church maintenance	6,374.44		7,430.80	
Upkeep of services	584.45		627.66	
Support Costs	3,399.00		2,158.26	
Salaries/wages/honoraria	49,527.34		46,867.69	
Printing and stationery	724.30		1,077.84	
Administration	1,471.61		1,445.84	
Equipment	290.78		880.96	
Depreciation	1,734.68		(152.42)	
Missions	927.80		-	
Sundry Expenditure	1,644.28		1,947.95	
		163,056.08		159,439.93
<u>Assigned to Other Funds</u>				
Assigned to Charities Fund [R]	10,403.68		10,300.00	
Assigned to Healing Café	-		210.00	
Assigned to Three Mills	-		2,400.00	
		10,403.68		12,910.00
<b>Total Expenditure</b>		<b>173,588.28</b>		<b>172,466.77</b>
<b>Excess of Income over Expenditure</b>		<b>2,875.35</b>		<b>(22,736.29)</b>
Opening net assets at 1 January		(1,315.37)		21,420.92
Closing net assets at 31 December		1,559.98		(1,315.37)

PARISH OF STRATFORD: ST JOHN'S

MANAGEMENT ACCOUNTS FOR THE YEAR ENDED 31 DECEMBER 2024

St Johns Capital Asset Fund Income & Expenditure Account - Designated Fund				
	2024		2023	
<i>Income</i>	£	£	£	£
Assigned from St Johns General Fund	-		-	
Donations, appeals etc.	5,000.00		10,000.00	
		5,000.00		10,000.00
<i>Expenditure</i>				
Profit / Loss on disposal	-		-	
		-		-
<b>Excess of Income over Expenditure</b>		<b>5,000.00</b>		<b>10,000.00</b>
<i>Balance with General Fund &amp; CBF</i>				
General Fund Holdings	9,481.07		6,650.82	
CBF	50,687.31		47,541.87	
		<b>60,168.38</b>		<b>54,192.69</b>
<i>Historic Costs, to be carried forward</i>				
Computer Equipment	4,541.08		4,041.09	
Kitchen	1,914.00		1,914.00	
Church (Heaters)	8,600.01		8,600.01	
Café	1,600.00		1,600.00	
Print Room	9,256.75		9,256.75	
Heater - Christchurch Room	7,018.86		7,018.86	
Television / Video	1,367.96		1,108.96	
Music Equipment	2,714.00		2,714.00	
Flat Roof	25,000.00		25,000.00	
		<b>62,012.66</b>		<b>61,253.67</b>
<i>Accumulated Depreciation, to be carried forward</i>				
Computer Equipment Depreciation	2,875.28		2,585.74	
Kitchen Depreciation	1,914.00		1,831.20	
Church (Heaters) Depreciation	8,229.66		8,137.06	
Café Depreciation	1,600.00		1,600.00	
Print Room Depreciation	5,858.86		5,009.26	
Heater - Christchurch Room Depreciation	5,941.11		5,581.87	
Television / Video Depreciation	1,048.10		987.20	
Music Equipment Depreciation	2,714.03		2,714.03	
Flat Roof Depreciation	25,000.00		25,000.00	
		<b>55,181.04</b>		<b>53,446.36</b>
Opening net assets at 1 January		62,000.00		52,000.00
Closing net assets at 31 December		67,000.00		62,000.00

PARISH OF STRATFORD: ST JOHN'S

MANAGEMENT ACCOUNTS FOR THE YEAR ENDED 31 DECEMBER 2024

---

St Johns Charities Fund Income & Expenditure Account - Restricted Fund

	2024		2023	
<i>Income</i>	£	£	£	£
Charity Income	365.25		-	
Assigned from St Johns General Fund	<u>10,403.68</u>		<u>10,300.00</u>	
		10,768.93		10,300.00
<i>Expenditure</i>				
Missionary and charitable giving	<u>12,761.25</u>		<u>10,525.00</u>	
		12,761.25		10,525.00
<b>Deficit for year</b>		<b><u>(1,992.32)</u></b>		<b><u>(225.00)</u></b>
Opening net assets at 1 January		1,992.32		2,217.32
Closing net assets at 31 December		-		1,992.32

---



PARISH OF STRATFORD: ST JOHN'S

MANAGEMENT ACCOUNTS FOR THE YEAR ENDED 31 DECEMBER 2024

---

St Johns Javelin Fund Income & Expenditure Account - Designated Fund

	2024		2023	
<i>Income</i>	£	£	£	£
Donations, appeals etc.	8,600.00		4,500.00	
		8,600.00		4,500.00
<i>Expenditure</i>				
Missions	-		-	
Sundry Expenditure	2,000.00		-	
		2,000.00		-
<u>Assigned to Other Funds</u>				
Assign to General Fund	-		-	
		-		-
<b>Excess of Income over Expenditure</b>		<b>6,600.00</b>		<b>4,500.00</b>
Opening net assets at 1 January		4,500.00		-
Closing net assets at 31 December		11,100.00		4,500.00

---

PARISH OF STRATFORD: ST JOHN'S

MANAGEMENT ACCOUNTS FOR THE YEAR ENDED 31 DECEMBER 2024

St Johns Bookstall Fund Income & Expenditure Account - Designated Fund

	2024		2023	
<i>Income</i>	£	£	£	£
Bookstall Income	129.40		200.00	
		129.40		200.00
<i>Expenditure</i>				
Bookstall Expenditure	-		124.40	
		-		124.40
<u>Assigned to Other Funds</u>				
Assign to General Fund	-		-	
		-		-
<b>Excess of Income over Expenditure</b>		<b>129.40</b>		<b>75.60</b>
Opening net assets at 1 January		1,259.10		1,183.50
Closing net assets at 31 December		1,388.50		1,259.10

Parish Housing Fund Income & Expenditure Account - Restricted Fund

	2024		2023	
<i>Income</i>	£	£	£	£
Rental Income	20,328.00		16,767.00	
Assigned from St Johns General Fund	-		-	
Assign from Housing Capital Fund [E]	-		-	
		20,328.00		16,767.00
<i>Expenditure</i>				
29 Maryland Park				
Insurance	406.18		400.01	
Water	-		68.86	
Repairs	-		-	
		406.18		868.87
<u>Assigned to Other Funds</u>				
Assign to General Fund	4,890.47		-	
		4,890.47		-
<b>Excess of Income over Expenditure</b>		<b>15,031.35</b>		<b>15,898.13</b>
Opening net assets at 1 January		15,850.13		(48.00)
Closing net assets at 31 December		30,881.48		15,850.13

PARISH OF STRATFORD: ST JOHN'S

MANAGEMENT ACCOUNTS FOR THE YEAR ENDED 31 DECEMBER 2024

---

**St Johns Building Repair Fund (formerly Fabric Fund) Income & Expenditure Account - Restricted Fund**

	2024		2023	
<i>Income</i>	£	£	£	£
Collections in Church (boxes)	2,192.62		1,656.54	
Donations, appeals etc.	-		-	
Dividends and interest including tax recover	3.73		1.07	
		2,196.35		1,657.61
<i>Expenditure</i>				
Major Repairs	-		-	
		-		-
<b>Excess of Income over Expenditure</b>		<b>2,196.35</b>		<b>1,657.61</b>
Opening net assets at 1 January		1,657.97		0.36
Closing net assets at 31 December		3,854.32		1,657.97

---

**St Johns Organ Repair Fund Income & Expenditure Account - Restricted Fund**

	2024		2023	
<i>Income</i>	£	£	£	£
Organ Recitals	-		-	
Dividends and interest including tax recover	376.44		220.24	
Donations, appeals etc.	-		-	
		376.44		220.24
<i>Expenditure</i>				
Organ tuning etc.	-		-	
Publicity	-		-	
Organist Recital Fees	-		-	
		-		-
<b>Excess of Income over Expenditure</b>		<b>376.44</b>		<b>220.24</b>
Opening net assets at 1 January		7,788.81		7,568.57
Closing net assets at 31 December		8,165.25		7,788.81

---

PARISH OF STRATFORD: ST JOHN'S

MANAGEMENT ACCOUNTS FOR THE YEAR ENDED 31 DECEMBER 2024

Three Mills Income & Expenditure Account - Restricted Fund

	2024		2023	
<i>Income</i>	£	£	£	£
<u>Voluntary Income</u>				
Planned giving: Gift Aid donations	-	-	-	-
Planned giving: Tax recovered	-	-	-	-
Planned giving: Other	-	-	-	-
Collections (open plate)	-	-	(0.00)	-
Donations, appeals etc.	-	-	0.00	-
		-		0.00
Assigned from St Johns General Fund	-	-	2,400.00	-
Grants	-	-	-	-
		-		2,400.00
<b>Total Receipts</b>		-		<b>2,400.00</b>
 <i>Payments</i>				
<u>Church Activities</u>				
Ministry - Expenses	-	-	-	-
Church - running expenses	-	-	2,400.00	-
Upkeep of services	-	-	-	-
Support Costs	-	-	-	-
Publicity	-	-	-	-
Missions	-	-	-	-
Administration	-	-	-	-
Equipment	-	-	-	-
Sundry Expenditure	-	-	0.00	-
Extraordinary Expenditure	-	-	-	-
		-		2,400.00
<u>Assigned to Other Funds</u>				
Assign to General Fund	-	-	-	-
		-		-
<b>Total Expenditure</b>		-		<b>2,400.00</b>
<b>Excess of Income over Expenditure</b>		-		-
Opening net assets at 1 January		-		-
Closing net assets at 31 December		-		-



PARISH OF STRATFORD: ST JOHN'S

MANAGEMENT ACCOUNTS FOR THE YEAR ENDED 31 DECEMBER 2024

Assistant Clergy Housing Capital - Endowment Fund

	2024		2023	
<i>Income</i>	£	£	£	£
Capital Receipts	-		-	
Dividends and interest including tax receive	7,864.12		3,723.66	
			-	
		7,864.12		3,723.66
<i>Expenditure</i>				
Capital Distribution	-		-	
Assign to Housing Fund [R]	-		-	
		-		-
<b>Excess of Income over Expenditure</b>		<b>7,864.12</b>		<b>3,723.66</b>
Opening net assets at 1 January		119,909.70		116,186.04
Closing net assets at 31 December		127,773.82		119,909.70

Men's Group - Designated Fund

	2024		2023	
<i>Income</i>	£	£	£	£
Donations, appeals etc.	100.00		60.00	
			-	
		100.00		60.00
<i>Expenditure</i>				
Sundry Expenditure	138.00		50.00	
		138.00		50.00
<b>Deficit for year</b>		<b>(38.00)</b>		<b>10.00</b>
Opening net assets at 1 January		3,223.75		3,213.75
Closing net assets at 31 December		3,185.75		3,223.75

Women's Group - Designated Fund

	2024		2023	
<i>Income</i>	£	£	£	£
Donations, appeals etc.	267.70		46.50	
			-	
		267.70		46.50
<i>Expenditure</i>				
Sundry Expenditure	-		-	
		-		-
<b>Excess of Income over Expenditure</b>		<b>267.70</b>		<b>46.50</b>
Opening net assets at 1 January		1,163.47		1,116.97
Closing net assets at 31 December		1,431.17		1,163.47

PARISH OF STRATFORD: ST JOHN'S

MANAGEMENT ACCOUNTS FOR THE YEAR ENDED 31 DECEMBER 2024

Healing Cafe Fund - Designated Fund

	2024		2023	
<i>Income</i>	£	£	£	£
Grants/Monies Received	9,600.00			
Assigned from St Johns General Fund	-		210.00	
		9,600.00		210.00
<i>Expenditure</i>				
Ministry - Expenses	-		-	
Sundry Expenditure	9,600.00		70.00	
		9,600.00		70.00
<u>Assigned to Other Funds</u>				
Assign to General Fund	-		-	
		-		-
<b>Excess of Income over Expenditure</b>		<b>-</b>		<b>140.00</b>
Opening net assets at 1 January		140.00		-
Closing net assets at 31 December		140.00		140.00

Gill Carter Fund - Designated Fund

	2024		2023	
<i>Income</i>	£	£	£	£
Donations, appeals etc.	1,498.90		-	
		1,498.90		-
<i>Expenditure</i>				
Sundry Expenditure	1,998.84		-	
		1,998.84		-
<b>Deficit for year</b>		<b>(499.94)</b>		<b>-</b>
Opening net assets at 1 January		21,821.19		21,821.19
Closing net assets at 31 December		21,321.25		21,821.19

PARISH OF STRATFORD: ST JOHN'S

MANAGEMENT ACCOUNTS FOR THE YEAR ENDED 31 DECEMBER 2024

Wither's Fund - Endowment Fund

	2024		2023	
<i>Income</i>	£	£	£	£
Dividends and interest including tax recovery	1,067.06		1,029.82	
			-	
		1,067.06		1,029.82
<i>Expenditure</i>				
Sundry Expenditure	1,290.00		-	
		1,290.00		-
<b>Deficit for year</b>		<b>(222.94)</b>		<b>1,029.82</b>
Unrealised (gain)/loss on investment		(789.46)		(2,941.04)
Opening net assets at 1 January		41,032.75		37,061.89
Closing net assets at 31 December		41,599.27		41,032.75
		-		

21



**PARISH OF STRATFORD: ST JOHN'S**  
**Statement of Financial Activities for Year Ended 31 December 2024**  
**Registered Charity No: 1132176**

	Note	Unrestricted Funds	Restricted Funds	Endowment Funds	TOTAL 2024	TOTAL 2023
		£	£	£	£	£
<b>INCOMING RESOURCES</b>						
Voluntary income	2a)	144,949.35	2,557.87	-	147,507.22	131,860.07
Activities for generating funds	2b)	129.40	-	-	129.40	200.00
Income from investments	2c)	4,499.96	380.17	8,931.18	13,811.31	6,238.29
Church activities	2d)	34,566.50	-	-	34,566.50	31,164.72
Other incoming resources	2e)	12,623.95	20,328.00	-	32,951.95	2,025.23
<b>TOTAL INCOMING RESOURCES</b>		<b>196,769.16</b>	<b>23,266.04</b>	<b>8,931.18</b>	<b>228,966.38</b>	<b>171,488.31</b>
<b>RESOURCES EXPENDED</b>						
Cost of generating voluntary income	3b)	128.52	-	-	128.52	116.84
Fund-raising trading costs	3c)	-	-	-	-	124.40
Church activities	3a)	176,792.92	13,167.43	1,290.00	191,250.35	173,353.80
Governance Costs		-	-	-	-	-
<b>TOTAL RESOURCES EXPENDED</b>		<b>176,921.44</b>	<b>13,167.43</b>	<b>1,290.00</b>	<b>191,378.87</b>	<b>173,595.04</b>
<b>NET INCOMING RESOURCES BEFORE TRANSFERS</b>		<b>19,847.72</b>	<b>10,098.61</b>	<b>7,641.18</b>	<b>37,587.51</b>	<b>(2,106.73)</b>
Gross transfers between funds		(5,513.21)	<b>5,513.21</b>	-	-	-
<b>NET INCOMING RESOURCES BEFORE OTHER RECOGNISED GAINS AND LOSSES</b>		<b>14,334.51</b>	<b>15,611.82</b>	<b>7,641.18</b>	<b>37,587.51</b>	<b>(2,106.73)</b>
Gains on investment assets: on disposal	4a	-	-	789.46	789.46	2,941.04
on revaluation	4b	-	-	-	-	-
<b>NET MOVEMENT IN FUNDS</b>		<b>14,334.51</b>	<b>15,611.82</b>	<b>8,430.64</b>	<b>38,376.97</b>	<b>834.31</b>
<b>Opening net assets at 1 January</b>		<b>92,792.14</b>	<b>27,289.23</b>	<b>160,942.45</b>	<b>281,023.82</b>	<b>263,742.51</b>
<b>Closing net assets at 31 December</b>		<b>107,126.65</b>	<b>42,901.05</b>	<b>169,373.09</b>	<b>319,400.79</b>	<b>264,576.82</b>

## PARISH OF STRATFORD: ST JOHN'S

### Balance Sheet as at 31 December 2024

Registered Charity No: 1132176

	Notes	2024	2023
FIXED ASSETS			
Tangible	4a)	6,831.62	7,807.31
Investment	4b)	-	-
		<u>6,831.62</u>	<u>7,807.31</u>
CURRENT ASSETS			
Stock		-	-
Debtors	5	13,240.08	7,580.10
Short-term deposits		-	-
Cash at bank and in hand		303,678.14	275,954.49
		<u>316,918.22</u>	<u>283,534.59</u>
CURRENT LIABILITIES			
Creditors - amounts falling due in less than one year	6	4,349.05	10,318.08
<b>CURRENT NET ASSETS/(LIABILITIES)</b>		<b><u>312,569.17</u></b>	<b><u>273,216.51</u></b>
Total assets less current liabilities		319,400.79	281,023.82
<b>TOTAL NET ASSETS</b>		<b><u>319,400.79</u></b>	<b><u>281,023.82</u></b>
PARISH FUNDS			
Unrestricted		107,126.65	92,792.14
Restricted		42,901.05	27,289.23
Endowment		169,373.09	160,942.45
Total Parish Funds		<u>319,400.79</u>	<u>281,023.82</u>

**PARISH OF STRATFORD: ST JOHN'S**  
**NOTE 1 TO THE ACCOUNTS**  
**2024**

- 1) Accounting Policies adopted
  - a) The accounts are maintained using the accruals basis, where income and expenditure are recorded when they are due not when they are paid.
  - b) The accounts are split into separate funds (described below). These are either general, designated, unrestricted, restricted or endowment in nature.
- 2) Remuneration paid to related parties
  - a) Remuneration was paid up to July 2024 to an Assistant Minister (Administration) and up to June 2024 for a Verger. Site Supervisors were paid throughout the year. One of the Site Supervisors, Beverley Slingo is a member of the PCC. She is paid only for the periods of time when she is on duty.
- 3) The cost to the PCC of employing staff
  - a) The Assistant Minister (Administration) was employed to handle the day-to-day administration of the church and hall.
  - b) The Verger was employed for taking care of the church building and hall.
  - c) The total cost (including taxes and national insurance) of employing staff during 2024 was £49,528 (2023 £46,868). This included redundancy payments totalling £19,038 (2023 Nil).
- 4) Description of any incoming resources that represent capital
  - a) The Council holds a capital fund for Assistant Clergy Housing which is for the purpose of future housing provision.
  - b) The capital in this fund was released in 2011 from the sale of 2 St. James Road, and part of the proceeds from the sale was distributed to settle the remaining balance on the Church Commissioner's shared equity mortgage for 29 Maryland Park.
  - c) The value of the property at 29 Maryland Park is not shown in these accounts. There are no immediate plans to dispose of this property.
- 5) Material movement between any restricted funds of the Council
  - a) The following amounts were assigned from the General Fund to restricted funds during 2024:
    - i) An amount of £10,404 (2023 £10,300) was assigned to the Charities Fund, in accordance with an earlier PCC resolution to give a proportion of budgeted income to charities.
    - ii) No amounts (2023 £210) were assigned to the Healing Café Fund to reflect the current balance.
    - iii) No further amounts (2023 £2,400) were assigned to Christchurch Three Mills Fund to clear the balance due to them.
  - b) The following amount was assigned to the General Fund from restricted funds during 2024:
    - i) An amount of £4,890 (2023 Nil) was assigned from the Housing Fund, to return amounts previously assigned to maintain a positive balance on the Housing Fund.
- 6) Any institution or body corporate connected with the Council
  - a) There are no institutions or bodies corporate connected with the Council.
- 7) Any guarantee given by the Council
  - a) There are no guarantees given by the Council.

**PARISH OF STRATFORD: ST JOHN'S**  
**NOTE 1 TO THE ACCOUNTS**  
**2024**

- 8) Loans outstanding
  - a) There are no loans outstanding.
- 9) Any fund in deficit
  - a) There are no funds in deficit.
- 10) Remuneration paid to the Independent Examiner
  - a) The Independent Examiner waives any remuneration for the work carried out on these accounts.
- 11) Grants made by the Council to another institution
  - a) There was no payment this year from the Building Repair Fund to the St. John's Fabric Trust as was done in earlier years up to 2017.
- 12) Ex-gratia payments made by the Council
  - a) Small gifts to a total of £221 (2023 £52) were given to people during the year.
- 13) Fixed Assets
  - a) 2003 was the first year in which the fixed assets were shown in the accounts. Their cost was estimated at their replacement cost. Subsequent assets have been added at their historic purchase cost.
  - b) The capital fund will maintain its value over time. The value charged to the general fund for depreciation each year is exchanged in equal measure for an allocation of cash from the general fund 'Balance with the General Fund'. This effectively earmarks cash to pay for the replacement of assets at the end of their lives.
  - c) Freehold Interest in land and buildings
    - i) The parish house at 29 Maryland Park is not valued in these accounts.
    - ii) The church extension is not valued in the accounts, other than the flat roof that is deemed to have a finite life of 25 years. Its replacement cost is estimated at £25,000 and its current net book value is £0 having been fully depreciated.
  - d) All remaining assets recognised are 'fixtures, fittings and equipment'. Their estimated replacement cost is approximately £37,013 with a net book value of £6,832 (2023 £7,807).
- 14) Debtors
  - a) The debtors in the accounts for 2024 are £8,610 (2023 £7,580), which constitute outstanding hall rental.
  - b) Accounts Receivable and Prepayments include deposit interest and prepaid water and subscription expenses.
- 15) Creditors
  - a) The trade creditors are £2,249 (2023 £5,818).
- 16) Contingent Liabilities
  - a) There are no recognised contingent liabilities.
- 17) Any other financial commitments
  - a) There are no other known material financial commitments over and above those shown in the accounts or the notes to the accounts.

	Unrestricted Funds £	Restricted Funds £	Endowment Funds £	TOTAL 2024 £	TOTAL 2023 £
<b>2 .INCOMING RESOURCES</b>					
2a) Voluntary income					
Planned giving: Gift Aid donations	76,756.07	-	-	76,756.07	55,037.82
Planned giving: Gross of Tax	-	-	-	-	-
Planned giving: Tax recovered	16,679.63	-	-	16,679.63	20,824.74
Planned giving: Other	16,213.90	-	-	16,213.90	15,255.74
Collections (open plate)	17,517.80	-	-	17,517.80	18,780.70
Collections in Church (boxes)	-	2,192.62	-	2,192.62	1,656.54
Donations, appeals etc.	17,781.95	-	-	17,781.95	20,304.53
Donations for Heating	-	-	-	-	-
Missions income	-	-	-	-	-
Charity Income	-	365.25	-	365.25	-
	<b>144,949.35</b>	<b>2,557.87</b>	<b>-</b>	<b>147,507.22</b>	<b>131,860.07</b>
2b) Activities for generating funds					
Bookstall Income	129.40	-	-	129.40	200.00
Organ Recitals	-	-	-	-	-
Fund-raising (coffee mornings)	-	-	-	-	-
	<b>129.40</b>	<b>-</b>	<b>-</b>	<b>129.40</b>	<b>200.00</b>
2c) Income from investments					
Dividends and interest including tax recoverable	4,499.96	380.17	8,931.18	13,811.31	6,238.29
	<b>4,499.96</b>	<b>380.17</b>	<b>8,931.18</b>	<b>13,811.31</b>	<b>6,238.29</b>
2d) Income from Church activities					
Contributions for use of Church & Hall	33,767.94	-	-	33,767.94	30,599.32
Fees	798.56	-	-	798.56	565.40
	<b>34,566.50</b>	<b>-</b>	<b>-</b>	<b>34,566.50</b>	<b>31,164.72</b>
2e) Other incoming resources					
Insurance Claim Income	-	-	-	-	-
Other	3,023.95	-	-	3,023.95	2,025.23
Rental Income	-	20,328.00	-	20,328.00	-
Grants	-	-	-	-	-
Sundry Fees	-	-	-	-	-
	<b>3,023.95</b>	<b>20,328.00</b>	<b>-</b>	<b>23,351.95</b>	<b>2,025.23</b>
<b>TOTAL INCOMING RESOURCES</b>	<b>187,169.16</b>	<b>23,266.04</b>	<b>8,931.18</b>	<b>219,366.38</b>	<b>171,488.31</b>

	Unrestricted Funds £	Restricted Funds £	Endowment Funds £	TOTAL 2024 £	TOTAL 2023 £
<b>3. RESOURCES EXPENDED</b>					
3a) Church activities					
Missionary and charitable giving	-	12,761.25	-	12,761.25	10,525.00
Ministry - Diocesan parish share	67,541.76	-	-	67,541.76	66,050.88
Ministry - Expenses	1,617.06	-	-	1,617.06	1,562.40
Church - running expenses	28,184.58	-	-	28,184.58	31,942.07
Church maintenance	6,374.44	-	-	6,374.44	7,430.80
Major Repairs	-	-	-	-	-
Upkeep of services	584.45	-	-	584.45	627.66
Support Costs	3,399.00	-	-	3,399.00	2,158.26
Publicity	-	-	-	-	-
Salaries/wages/honoraria	49,527.34	-	-	49,527.34	46,867.69
Printing and stationery	724.30	-	-	724.30	1,077.84
Administration	1,471.61	-	-	1,471.61	1,445.84
Equipment	290.78	-	-	290.78	880.96
Depreciation	1,734.68	-	-	1,734.68	(152.42)
Disposal of fixed assets	-	-	-	-	-
Insurance claim costs	-	-	-	-	-
Missions	927.80	-	-	927.80	-
Organ tuning etc.	-	-	-	-	-
Sundry Expenditure	14,415.12	-	-	15,705.12	2,067.95
Extraordinary Expenditure	-	-	-	-	-
Payment to Fabric Trust	-	-	-	-	-
Extension Costs	-	-	-	-	-
Parish Housing Expenditure	-	406.18	-	406.18	868.87
Capital Distribution	-	-	-	-	-
	<b>176,792.92</b>	<b>13,167.43</b>	<b>1,290.00</b>	<b>191,250.35</b>	<b>173,353.80</b>
3b) Generation of voluntary income					
Giving Envelopes	128.52	-	-	128.52	116.84
	<b>128.52</b>	-	-	<b>128.52</b>	<b>116.84</b>
3c) Fund-raising costs					
Bookstall Expenditure	-	-	-	-	124.40
Organist Recital Fees	-	-	-	-	-
	-	-	-	-	<b>124.40</b>
<b>TOTAL RESOURCES EXPENDED</b>	<b>176,921.44</b>	<b>13,167.43</b>	<b>1,290.00</b>	<b>191,378.87</b>	<b>173,596.04</b>
Unrealised (gain)/loss on investment	-	-	(789.46)	(789.46)	(2,941.04)



#### 4) FIXED ASSETS

(a) Tangible	(all unrestricted)	Freehold land & Church		
		buildings	Equipment	Total
		£	£	£
ACTUAL/DEEMED COST	At 31 December 2023	25,000.00	36,253.67	61,253.67
	Disposal			-
	Additions at cost	-	758.99	758.99
	At 31 December 2024	25,000.00	37,012.66	62,012.66
DEPRECIATION	At 31 December 2023	25,000.00	28,446.36	53,446.36
	Withdrawn on deposits			-
	Charge for the year	-	1,734.68	1,734.68
	At 31 December 2024	25,000.00	30,181.04	55,181.04
<b>(b) Investments</b>				
		2024	2023	
		£	£	
Market value at 31 December				
Disposal at carrying value				
Purchases at cost				
Revaluation (gain)/loss (Withers Charity)		(789.46)	(2,941.04)	

#### 5) DEBTORS (UNRESTRICTED FUNDS)

	2024	2023
	£	£
Prepayments and accrued interest		
Other debtors	13,240.08	7,580.10
	<b>13,240.08</b>	<b>7,580.10</b>

#### 6) LIABILITIES

	2024	2023
	£	£
Amounts falling due in one year ( <i>unrestricted funds</i> )		
Accruals for utility and other costs		
Other creditors	4,349.05	10,318.08
	<b>4,349.05</b>	<b>10,318.08</b>