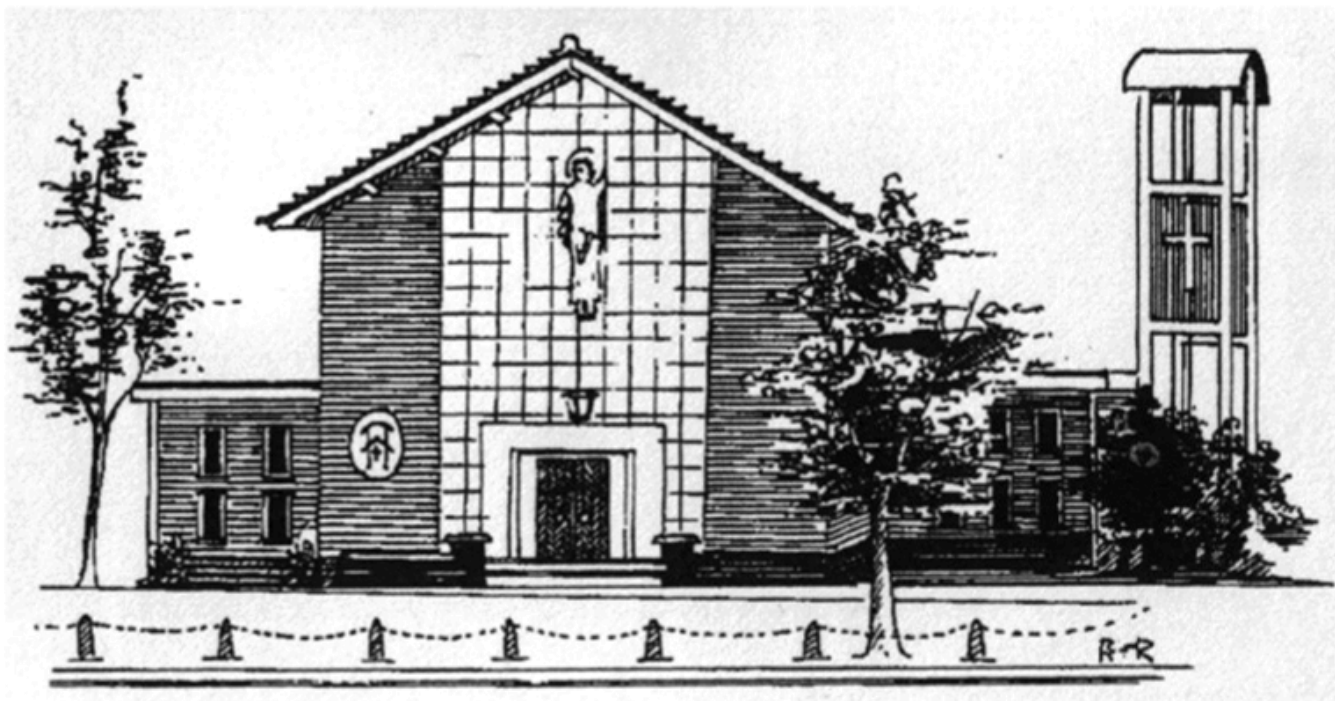


St. Andrew's Church in the Westlands,
Newcastle-under-Lyme
in the Diocese of Lichfield



www.churchinthewestlands.org.uk

**ANNUAL REPORT AND ACCOUNTS OF THE
PAROCHIAL CHURCH COUNCIL**

CHARITY COMMISSION REFERENCE 1132163

ANNUAL ACCOUNTS 2022

(Incorporating the Annual Accounts of the Lichfield
Diocesan Trust no 1439 St Andrew the Westlands)

Incumbent:

Revd Andrew Dawswell
The Vicarage
50, Kingsway West
Newcastle-under-Lyme
ST5 3PU

Bank:

National Westminster Bank plc
75, High Street,
Newcastle-under-Lyme,
Staffordshire,
ST5 1PN

Independent Examiner:

Richard Booth
117 Dartmouth Ave,
Newcastle-under-Lyme,
Staffordshire
ST5 3NR

Welcome

Welcome to the Annual Report and Accounts of St. Andrew's Church, Westlands and welcome to our Church, whether you are a regular or a newcomer just paying us a visit. Please come back soon!



A special welcome to any who have joined us for the first time this year, it is good to have new people with us as we try and grow together as part of God's Church here in the Westlands.

The Annual Report should provide you with all the legally required information, but hopefully it will also provide you with a flavour of what has taken place at St. Andrew's over the last year.

This will also be supplemented by a number of other reports to be

presented at the Annual Parochial Church Meeting (APCM) on Sunday 7th May at 6.30pm. Please feel free to join us then if you can.

If you would like to know more about our work then please ask the Vicar, Churchwardens or any other members of the Parochial Church Council (PCC).

Administrative Information

St. Andrew's is situated at the top of Pilkington Avenue in the heart of the Westlands.

St. Andrews is registered as a Charity with the Charity Commission, reference 1132163, as *The Parochial Church Council of the Ecclesiastical Parish of St. Andrew, the Westlands*. Its working name is *St. Andrew's PCC, Westlands* and further details of our registration can be found on the Charity Commission website, along with Annual Reports from previous years, which can also be found on the Church website.



The Correspondence address for the Charity is that of the Vicarage: 50, Kingsway West, Newcastle-under-Lyme, Staffordshire, ST5 3PU

Trustees

The Trustees of the Charity are the members of the PCC of St. Andrew's Church in the Westlands. Members of the PCC are either ex officio or elected by the APCM in accordance with the Church Representation Rules.

Our vicar, Andrew Dawswell serves as Chairman, along with:

Until May 2022: Margaret Hollins (churchwarden), Alan Swanborough, Helen Collins (Churchwarden), Jenny Boston, Sara Froggatt, Helen McGarry, Gillian Moss, Stuart Rushton, Steve Forrester (treasurer till March 22nd), Chris Gill (treasurer from March 22nd), Irene Hardacre, Jane Machin, Sam Jones (Secretary), Stuart Jackson, Tania Arnold, Bob Bell, Naomi Savage & Paul Honeyfield; and our deanery synod reps: Glenys Gill, Helen Swanborough & John Soto.

From May 2022: Margaret Hollins (churchwarden), Alan Swanborough, Helen Collins (Churchwarden), Sara Froggatt, Helen McGarry, Gillian Moss, Stuart Rushton, Chris Gill (treasurer), Irene Hardacre, Jane Machin, Sam Jones (Secretary), Stuart Jackson, Tania Arnold, Bob Bell, Naomi Savage, Paul Honeyfield, Naomi Savage & Marie Bateman; and our deanery synod reps: Glenys Gill & Helen Swanborough.

Structure, governance and management

The PCC is a corporate body established by the Church of England. The PCC operates under the Parochial Church Council Powers Measure (1956), as amended, and the Church Representation Rules.

As well as having oversight of the general finances of the Church, the PCC are also Managing Trustees of the Lichfield Diocesan Trust no 1439 St. Andrew the Westlands (a separate charity with registration number 203230). The capital element of this trust has for many years been invested so as to provide an income stream for the Church, the capital element being held as restricted funds and the interest or income being paid over to the main charity to be utilised by the PCC for the work of the Church generally. We envisage however that the whole of this trust is likely to be expended in the coming year as part of the financing of our major building project. The finances for this trust are incorporated within the financial statements that follow.

The PCC has ultimate responsibility for a wide range of matters affecting the Parish and endeavours to keep itself abreast of current information on such issues as Health and Safety, Disability Discrimination legislation and Child Protection either through "local" guidance or through wider Diocesan advice, or often a mixture of both.

Apart from the Standing Committee of the PCC, the Church has three significant ongoing committees to consider its important areas of work – Worship; Mission Partners; and Facilities. PCC members generally each serve on at least one committee along with others who have a keen interest in the particular area covered by the committee. These committees will bring recommendations to the PCC for consideration. Each has a delegated authority to spend up to £200. Non-routine expenditure above this sum requires two quotations and Standing Committee authorisation.

In addition, a funding committee for the new hall project has continued, also taking the lead in setting a new direction when the original scheme proved to be unaffordable

Objectives and Activities

The primary objective of the PCC is to promote the Gospel of our Lord Jesus Christ and in accordance with the Parochial Church Council Powers Measure (1956), as amended, it co-operates with the minister in promoting within the parish the whole mission of the Church, pastoral, evangelistic, social and ecumenical.

Although the Church in the Westlands local ecumenical partnership finished when St Peter's closed in 2021, we are, for now, still using the same mission statement: 'we are committed in the power of the Holy Spirit that our worship, service and witness will demonstrate to everyone the love of Jesus Christ.'

Public Benefit

The trustees of the Charity are aware of the Charity Commission's guidance on public benefit in The Advancement of Religion for the Public Benefit and have had regard to it in their administration of the Charity.

The trustees believe that, by promoting the work of the Church of England in the Ecclesiastical Parish of Saint Andrew, the Westlands, it helps to promote the whole mission of the Church (pastoral, evangelistic, social and ecumenical) more effectively, within the Ecclesiastical Parish, and that in doing so it provides a benefit to the public by:

- Providing facilities for public worship, pastoral care and spiritual, moral and intellectual development, both for its members and for anyone who wishes to benefit from what the Church offers; and
- Promoting Christian values, and service by members of the Church in and to their communities, to the benefit of individuals and society as a whole.

Volunteer Input

In all of this, we are immensely grateful for all those who willingly give of their time to contribute to the charitable activities of the PCC or in providing funds. The extensive nature of all our volunteers is such that it would be almost impossible to quantify the contribution in terms of hours or an indicative value of this contribution.

Many of those on our Electoral Roll are willing volunteers in one form or another and the work undertaken in meeting our objectives simply could not happen without the considerable contribution of many people within the Parish and beyond.

Achievements and Performance

At the start of 2022, church life was in a very different place from January 2021. Several church activities had managed to restart in late 2021, and with national vaccinations against Covid, restrictions were slowly starting to ease. We decided to restart opening the church regularly on Mondays and Thursdays. In February, it was decided to no longer require mask wearing at some services, but still offer an area of the church where mask wearing was the norm. Zoom is still used for some purposes, including monthly quizzes, one of the Home Groups, Wednesday Morning Prayer and Friday Compline, as well as fortnightly warden meetings with the Vicar.

The church's welcome pack for newcomers to the parish, was reviewed and revised, and is distributed by deliverers of Link. The PCC decided to produce 6 issues of Link per year.

The topic for the 6-week Lent course was Love Actually, with a series of videos produced in Australia. This was well attended.

We were able to hold our Annual General Meeting on 29th May, back in the Church Hall on a Sunday evening. It was very pleasing to see Chris Gill re-elected as Treasurer, following the resignation of Steve Forrester who had fulfilled the role for 4 Years – our grateful thanks to Steve for his hard work.

A “spin-off” of the All Things Bright & Beautiful project was the creation of a monthly Craft and Chat group meeting in the Parish Room to enjoy social time, a hot drink and come together with their particular favourite craft occupation.

In May, it was decided to re-start various rotas such as Bible reading, intercessions and prayer duty volunteers. A rota of duty wardens for services, with a team of welcomers, was also commenced. We are, as always, extremely thankful to everyone who volunteers for these and other church roles; it is hard to imagine how we could manage without you.

A useful Prayer Diary was produced in June – many thanks to Irene Hardacre, Helen Dodds, Tracey Holland and Michelle Bradbury for their hard work with this.

Lift to church 10.45 am services restarted in the summer. Thanks to Stuart and Sheila Rushton and those volunteer drivers who assist.

Forget-me-not café has continued monthly, first in the church hall and then in the parish room in the winter, and this continues to flourish under Irene’s leadership. A trial return to afternoon teas was very successful, and these will return on a monthly basis in 2023. Harvest Lunch and a simple midweek Christmas lunch were similarly well supported and popular. In September, Glenys Gill and Jane Machin kindly organised a highly successful Fish and Chip evening to celebrate the 60th anniversary of the consecration of St. Andrew’s, which included pictures of the construction and extracts from the recording of the consecration service.

In October, the Bereavement Team organised the Annual Memorial Service with cakes and drinks afterwards.

Pastoral visiting has recommenced, and in December, a group went carol singing around the parish.

Face to face worship; Special services and events

April saw a number of small milestones, as we were able to restart the bunching of daffodils for Mothering Sunday, and also start a slightly different approach to music in services. This followed a review meeting, when it was decided to amalgamate the previous choir and All Age singers into one group to sing at three services each month. Also in April, it was decided to change the timing of the mid-morning service to 10.45 am, therefore allowing time for the musicians and singers to practise before the service commencement on Sundays of All Age services. We are very grateful to Geoffrey, Marie, Peter, Sam and Robin, as well as our singers, for their excellent music at many services throughout the year.

As well as prayer being an important part of all of our services, and in different ways at All Age Worship, there is a particular focus on praying together at the Monthly Prayer meeting. In the week before Easter there were daily Services and Prayer meetings.

In April, the church also hosted a concert by Biddulph Male Voice choir, and in May by the Ceramic City Choir. A fundraising concert for Ukraine was held in the church hall.

Members of the congregation took part in the Churches Together prayer initiatives in May and September, and there was also a pulpit exchange in October.

We also marked the 30 years since Andrew started as a curate in the Church of England, with good wishes, gifts, and a cake. This coincided with a visit from Bishop Matthew on 25th September to celebrate the 60th anniversary of the consecration of St. Andrew’s.

In November, an Identity course was offered, and in the same month, Coffee and Choruses.

The year ended with the usual Christmas services, which were all well attended. Many thanks to all who worked hard at decorating the church and providing music.

Accessibility

There is a hearing loop, large print material available at all Services, alternative seating and wheelchair spaces in the body of the Church. In addition, the Service is relayed to Mr Noisy's sound proof room and a weekly recorded Service continues to be available on the internet and the telephone.

Homegroup Bible Studies

Many home groups started to meet again in person in February, still using masks initially, and with no refreshments at first, in the Parish Room, with one group continuing via Zoom and another group meeting at a home. The topic for the first few months was Mission. From May to July, the groups studied the parables of Jesus, and returned to this topic in September after a summer break.

Mission

The church has continued to financially support the Church Mission Society (Katia Rocks in Brazil), Tearfund, the Bible Society, Scripture Union, Open Doors and Brighter Futures. Rev Bill Humphries came to St. Andrew's in March to tell us all about Open Doors work.

We also continued to support Christian Aid week in May and the annual collection for the Children's Society, and to give donations to the local Foodbank.

The Mission Partners Committee organised two events in aid of Tearfund; the Tearfund Open Café in May and the Tearfund Big Quiz in November. The Café was the first held since 2019, and was very successful, raising over £1300, with the Big Quiz raising £316. Many thanks to all who helped and supported these events.

Harvest Gifts were distributed locally to those in need and to Glow women's refuge, with monetary donations being sent to Tearfund. Tearfund also benefitted from the proceeds of providing mulled wine and mince pies after the annual Candlelit Carol Service in December.

In October, Simon Wright co-ordinated our support of the Link to Hope Shoebox Appeal, and in November as usual we supported the British Legion poppy appeal as well as donating the Remembrance Service collection to armed forces charities.

The customary Toy service in December saw a large amount of toys, games, toiletries and cash donations given to Glow refuge in Newcastle. These were very gratefully accepted.

Children and Families Worker

Naomi has continued to do excellent work with Sunday Club throughout the year, Xcite on Mondays and Little Sparklers on Tuesdays, as well as Messy Church on several Saturdays.

Special events have included a "With Love" treasure hunt in February; a family event called Pancakes and Journeys in March, an (indoor because of the weather) Jubilee picnic on 5th June,

The August holiday club week was Going Bananas and was very well attended with over 40 children taking part, and a gallant band of volunteer helpers.

The annual Christingle service was extremely well attended, as was the traditional Christmas Eve crib service. Angel making was done by a variety of people including the Craft and Chat group and Xcite, under the leadership of Chris Gill.

Throughout the year, Naomi and some of her team have been in all the local primary schools, and St. Andrew's welcomed the carol services of Friarswood School, Seabridge School, Langdale School, the Coppice School and Westlands School in December.

Chris Gill and Naomi have regularly publicised events on our Facebook page, which reaches a good number of local people, and we are grateful for this vital work.

We thank God for Naomi and all of her band of helpers, for all the excellent activities and local engagement.

Margaret Hollins, Churchwarden

2022 Report on the fabric of the church

The Facilities Committee, consisting of 6 / 7 members, is responsible for the maintenance of the church buildings, and is led by Helen Collins. It has met six times in 2022.

Church Building:

This year, the routine PAT testing of all electrical items became due. This is an important electrical safety check that we perform every two and a half years and 184 items were tested by the PAT tester over two visits. The vast majority of items passed first time, several needed new fuses and a handful of items did not meet the current standards so were disposed of immediately.

One of the outside security lights, covering the driveway and north side of church, had failed, leaving the driveway quite dark at night times, so this has been replaced with a new light to improve safety and also incorporating a motion sensor and photo cell to improve energy efficiency.

Various light bulbs in church, as they fail, continue to be replaced with LED bulbs to reduce our energy usage.

One broken window (in Mr Noisy's room) was replaced this year, probably caused by children playing football in the grounds.

Numerous small maintenance jobs have been completed by Alan Swanborough and Bob Bell, including replacing a faulty electrical socket, making small repairs to downpipes and protecting/ strengthening a supply pipe in the boiler house. The church Maintenance Plan has been followed and various checks made on the building during the year by committee members.

The main church building was hired out twice this year, and responsibility for this has now been taken on by Chris Gill. The Parish Room has again been hired for local elections and for music exams. The charges made to external hirers had not been reviewed for several years, so the Committee looked at current heating and maintenance costs of the building and made some recommendations for an increase in hire charges to the PCC which were subsequently approved.

Church hall:

As the church is looking to replace the old hall in the very near future, maintenance work has been kept to a minimum, whilst prioritising safety.

The kitchen sink u-bends have needed to be unblocked, a loose roof tile has been re-fixed and a clean water drip in the men's urinal continues to be monitored.

The Committee reviewed the terms and conditions of the contract we ask external hirers to sign, and reviewed the charges we make.

Chris Spicer stood down after many years of diligently supervising the letting of the Hall, and was presented with a thankyou gift in church. Chris Gill has kindly agreed to take over this responsibility for the short term. We started the year with five regular hall bookings but this had decreased to three by the end of the year, however there were twenty-seven one-off bookings which is an increase on last year.

Church Grounds:

The Committee organised four gardening mornings this year to keep on top of the grounds, and we are also indebted to several people who kindly give their time to hedge-cutting, leaf clearing and maintaining areas of the planting throughout the year.

The lawns have been kept tidy and professionally cut every three weeks from spring to autumn this year.

The driveway shows signs of ageing and some large potholes had started to develop, but work at the end of the year to fill the largest ones has been very successful and should be effective for several years to come.

St. Andrew's continues to be blessed with active committee members who undertake numerous church repairs and maintenance tasks and I would like to thank Alan, Bob, Stuart Rushton and Stuart Jackson, along with Jane Machin, our Health and Safety Officer who advises the committee.

Helen Collins, Churchwarden

Health and Safety

During April and May 2022, The Health and Safety Policies were reviewed and moved to the Church Google drive for appropriate access.

Document	Version	Date
H&S Policy	11	April 2022
Food Safety Policy	2	January 2017 reviewed May 2022
Lone Working Policy	2	January 2019 reviewed April 2022
Manual Handling Policy	1	May 2022
Working at Height Policy	3	May 2022

It is planned to do a thorough review of the Food Safety Policy, hygiene training, routines and notices, when the new kitchen is set up. It was noted that the Safeguarding and Vulnerable Adults Policies have been updated and are held separately.

In April 2022 a First Aid training day, expertly led by Gary Peake, was run for 12 members of the congregation and a list of all First Aid people has been put in each of the First Aid boxes, which have been checked and located at the back of Church, in the Parish Room, the Choir Vestry and the Hall kitchen. Emergency contacts are listed on the wall notice board at the back of Church.

In June 2022 a Fire drill followed the main Morning Service. The Church building was checked and evacuated in good time, with everyone away from the building in 4 minutes.

Risk assessments are in place for all regular activities with annual reviews and are produced for special occasions. The Permit to Work form was revised and is now in use.

A check was made of cleaning materials used and stored, ensuring separate equipment for the toilets and the process for the use and disposal of cloths.

The Asbestos report was checked and referenced with relation to possible work on the Church floors. No action to be taken at the moment.

The process for clearing snow was reviewed and updated.

There are now HSE accident books available at the back of Church and in the Hall kitchen for the reporting of all accidents. In 2022 there was one accident report, caused by a hole on the car park and our thanks to the Facilities Committee for swift repairs.

The collection of candles at the Christingle Service did not go to plan and clearer instructions and more candle snuffers are required for next time. Fire blankets and buckets of water were placed at the front and back of Church.

Temporary cables, including the power cables to the Crib Scene and Christmas tree were secured with black and yellow tape which is kept at the back of Church.

No issues were reported in the book at the back of Church. Thanks to those who are so diligent in matters of health and safety.

Jane Machin, Health and Safety Officer

Faith in the Future / New Hall Project

St. Andrew's established plans for replacing our ageing hall were forced to undergo a significant change of direction mid-way through the year.

The plans:

We started 2022 with a lot more work on final details for our plans for a Hall extension on the south side of the main church building and, by summer, were ready to submit the plans for tender to a selection of carefully chosen builders. Unfortunately, the combined effects of rising inflation, the results of Covid on the UK economy and the Russian invasion of Ukraine causing havoc with the price of everything, meant that the quotations we received back in August were hugely higher than the prices we had been expecting.

Sadly, the PCC felt we had no choice but to cease working on this plan and the new Hall sub-committee started to investigate other options.

A range of possibilities was discussed, and their conclusion for the best way forward, approved by the PCC, was to retain the land of the old hall site and to look into a 'turnkey' project, (where one company organises all aspects of the construction project) to demolish the existing hall and replace it with a new, modular build.

Research by the committee found there were only a limited number of firms operating this type and scale of project, but identified two strong candidates, with a strong preference for a local company with substantial experience in similar sized builds.

By the end of 2022, discussions were on-going about methods of heating, which needs to be resolved before detailed plans can be drawn up in the near future. An extra advantage of a modular building is that, once plans are finalised, the construction time is very much shorter than a traditional project.

In the meantime, we are fortunate to have had the opportunity to take advice from a former HRMC tax expert on the important matter of the conditions by which we may get exemption from paying VAT on the work. The PCC are satisfied that this will be possible, thereby saving us from a prohibitive extra cost.

The Fundraising:

We are grateful to those who have continued to honour their pledges to contribute towards the fund over several years.

The biggest fund-raising event we have held for Faith in the Future so far was the Grand Charity Auction on May 7th. This was a big event, organised by Bob Bell, who had obtained the services of TV auctioneer, Charles Hanson. Many dozens of church members got involved in a huge array of activities including collecting items, valuing, photographing, producing the catalogue, selling tickets, organising refreshments, setting up the church and hall, marshalling attendees, registering bidders and supervising the

finances, as well as manning a Buy-it Now stall on the day. A magnificent total of around £7,000 was raised and we owe thanks to Bob and the organising team, along with the many helpers on the day.

Bob Bell also raised over £1,500 for the Hall fund by collecting old scrap metal from members of the congregation and other local people.

All Things Bright and Beautiful was the name given to the craft project run during 2022 to bring attention to our project. We thank Margaret Hollins for organising this venture, where many knitters and crafters produced large numbers of woollen or fabric flowers and animals, which were subsequently sewn onto large pieces of netting. Once finished in April, a cherry picker was hired to fix them either side of the main entrance to the church (our thanks to the team of Mark Hobbs, Bob Bell, Alan Swanborough and Mike Hollins). The result was a spectacular, colourful display and many passers-by were seen to stop and admire and take photographs. The display was in-situ for around 5 months, before being taken down in the autumn, cut into small pieces and sold off.

Other fund-raising events for the Faith in the Future project have included jam-making, wooden tealight holders and the sale of knitted items, with our grateful thanks to all involved.

We are anticipating that additional giving is likely to be needed in order to complete the project and further fundraising events are envisaged for 2023.

Helen Collins, Churchwarden

Safeguarding Report

In 2022 St. Andrew's continued to keep safeguarding at the forefront of its life as a Church. We were vigilant with our DBS checks, especially for all of the PCC, in line with diocesan updates.

However, the requirements for Children/Youth leaders safeguarding changed over this year and there is now much more emphasis on 'safer recruitment' and training, than there has been (in the past) on DBS checks. Naomi has been updating the forms required for each helper, including an application form, a declaration certificate, and then a short interview with Andrew. This will be the system for any new helpers from now on, as only main leaders can have DBS checks.

Training is also an important and essential part of our safeguarding work, and again this year some of our church volunteers completed the Basic and Foundation certificates online. The Diocese Safeguarding Team are becoming stricter in their insistence that everyone who has a leadership role is trained in this way, so we are working hard to achieve this goal.

Thanks as always goes to Kath Thorpe for her administration talents, and to Andrew and Naomi (our Safeguarding officer) for their ongoing work prioritising safeguarding and making sure that every part of our life together as a church is safe and welcoming for all.

Update on St Andrew's 2022-23 Mission Action Plan

Our Mission

For a number of years, we have seen the mission that the Lord has entrusted to us as being summarized:

- a) In our partnership mission statement: *'As the Church in the Westlands we are committed in the power of the Holy Spirit that our worship, service and witness will demonstrate to everyone the love of Jesus Christ'.*
- b) In the four major priorities of the early church as described in Acts 2:42
'And they devoted themselves to the apostles' teaching and the fellowship, to the breaking of bread and the prayers.' i.e. the aims to be: a learning church, a caring church, a worshipping church, and evangelizing church.

Our Vision

At the end of 2021 the PCC identified 3 areas of church life which we thought would particularly need to be focused on for the next couple of years

Carried over from our previous plan are the emphases on:

- **Reaching New Generations** and
- **Renewing our Buildings**

In addition, in the light of the realities of 2020 & 2021, we also prioritized:

- **Recovery from effects of Covid and lockdown**



Our 2022-2023 Plan

Progress made in 1st year

Goals for rest of 2023++

1. Reaching new generations



- **Supporting and partnering our children & families' worker to enable full re-start and further development of work with children and families.**

Key aims include:

- **Re-start of Messy church**
- **Development of leaders to work alongside worker**
- **Small group to investigate digital possibilities for St Andrew's, including social media development, video/livestreaming**
- **Review of Sunday morning worship**

Re-start accomplished

Almost all leaders re-started & a new leader recruited

Further development of Facebook outreach by Naomi / Chris Gill / Andrew

Sharing of YouTube services with St Giles

An encouraging number of 30-40's have joined us recently

Continuing Messy church etc.

More development & delegation of leadership

Ideally Naomi/Chris & Margaret Hollins to form a strategy group, though others will need to join them.

YouTube services to be further shared with Bucknall Churches

Continuing evolution of 10.45 service now envisaged

2. Renewing our buildings



- **Completing funding (including 'All things bright and beautiful' and Auction) and so enabling building work for new hub to start.**
- **Coping with a year's disruption to our site.**
- **Re-launching the availability of our new premises.**

Progress made in 1st year

Church members continued to give very generously to the project, and events planned went very well

Not yet needed

Focus on our own use of facilities led to vision for weekly Renew Wellbeing Café (launching soon)

Goals for rest of 2023++

A gift day is likely to be needed to complete the funding for our new proposal for replacing the hall. Two special events are being planned to assist

The new plan will still bring some months disruption to our grounds and car park

3. Recovery from effects of COVID and lockdown

To include



- **Re-starting and re-recruiting for Sunday worship rotas.**
- **Fuller re-launching of choir/music group/band.**

Progress made in 1st year

We are grateful for all who have played a part in our Covid recovery - we are probably close to where we would have been as a church without the pandemic.

Goals for rest of 2023++

Helping those who have joined us to find their place in the life and service of our church

Also

- **Explore feasibility of re-activating a group planning special events to invite guests to.**
- **Review of: Logo**
Mission Statement
- **Completing re-issue of prayer literature/booklet.**

No progress yet

Decided to retain current logo

No progress yet

Prayer diary issued May 2022

Ideally aim to get this kind of group re-started

Mission Statement review to begin by Autumn 2023

Interviews in main service to spell out what different church roles involve - partly to encourage prayer, sometimes as a means of encouraging others to consider joining the team

Several interviews have been conducted

More to follow...

More details of our current work can also be found on the Church website

Newcastle under-Lyme Deanery Synod

There were 3 meetings of the Newcastle Deanery Synod in 2022 and a further meeting in January 2023

The first meeting of the year was on-line - an interactive presentation by Sally Bubbers, the Bishop's Adviser for Pastoral Care, on the 17th January 2022. Sally led our consideration of local church responses to the pastoral and psychological effects of the pandemic on individuals and churches.

The second meeting of Synod was held at St. Andrew's Westlands on the 25th May 2022, when the new Archdeacon of Stoke-upon-Trent, The Ven Dr Megan Smith, spoke on reaching younger people in the current age.

The third meeting of the year was a late change to the original programme, due to the unavailability of the original speaker. Instead, Revd. Simon Foster, Mission Team Leader, and Chaplaincy and Mission Strategy Enabler for the Diocese came to speak at St. George's on the 17th October. Simon introduced the topic of "How to grow Discipleship in the Deanery", and facilitated mixed group work to give the meeting time to consider how this could potentially happen.

A further meeting was held on the 16th January at St. Thomas Kidsgrove where Revd. Zoe Hemming, the Diocesan Enabling All Advisor helped us look at "Inclusion of people who are disabled in our churches and the 'enabling all scheme'"

Chris Gill, Lay chair

AGENDA OF ANNUAL PAROCHIAL CHURCH MEETING

7th May 2023 6.30pm

Annual Vestry Meeting

- 1 Election of Wardens for the next year.

Annual Parochial Church Meeting

- 2 Minutes of the Annual Meeting of May 2022
- 3 Electoral roll report
- 4 Election of up to 3 people to serve for 3 years as deanery synod reps
Election of up to 15 people who will serve for the next year on the Parochial Church Council
- 5 Presentation of accounts for 2022 & report on the general finances of St. Andrew's
Chris Gill
- 6 Appointment of Hon Independent Examiner.
- 7 Highlights of written reports: *Helen Collins & Margaret Hollins*
- 8 Safeguarding report
- 9 Updates on Building project and renew wellbeing café launch
- 10 To consider briefly any matters of General Church interest to be referred to the newly elected Council.

Financial Review

The financial accounts for 2022 are set out in their required form in the following pages.

Certain of our income and funds have been received for a specific object, for example the employment of our Children's & Families Worker, but now more prominently the Church Hall replacement. Accordingly, these amounts are categorised as restricted funds and may only be expended on the specific object for which they were given. Any balance remaining unspent at the end of each year must be carried forward as a balance on that fund and cannot be used for the Church's general use, unless agreed to in writing by the original donors. All other income and funds are categorised as unrestricted funds and are available for general use.

The accounts for the year show that in respect of Unrestricted or General Funds the PCC's expenditure significantly exceeded income and endowments by £42,120. This deficit largely arises from one-off expenditure on design work for the Church extension amounting to £49,049. Over the last 5 years the Church's finances have been particularly influenced by one-off items of income and expenditure and the table below provides a little more clarity to the financial position.

	2018	2019	2020	2021	2022
	£	£	£	£	£
<u>General (Unrestricted) Fund</u>					
<i>Opening Balance</i>	79,135	115,732	318,531	297,814	226,112
On-going income	124,437	118,122	104,005	126,936	120,495
Diocesan Common Fund contribution	-83,785	-85,356	-86,952	-79,781	-73,068
Other On-going expenditure	-42,422	-40,221	-37,770	-33,724	-40,514
On-going surplus / (deficit)	-1,770	-7,455	-20,717	13,431	6,913
Legacies	39,702	218,999	0	5,500	1,113
Quinquennial Repairs	0	-8,745	0	-90,633	-1,097
New Building	-1,335	0	0	0	-49,049
Total In-year surplus / (deficit)	36,597	202,799	-20,717	-71,702	-42,120
<i>Closing Balance</i>	115,732	318,531	297,814	226,112	183,992

In 2021 there were signs that Income appeared to be returning to pre-covid levels, although an exercise undertaken during 2022 suggests that an element of the increase in 2021 related to one-off donations to the general unrestricted funds during that year. Income levels have, though, held up in 2022. Expenditure has also returned to pre-covid levels in 2022, with expenditure on the running costs of the church reverting to the 2018 and 2019 levels. The on-going reduction in Parish Share continues to help the overall financial situation and the on-going surplus continues to be above the level of the contribution set aside each year (£5,000) towards future quinquennial repairs, which is good news.

Before adjusting for the Gains on investment assets, restricted funds income and endowments exceeded expenditure by £69,865, which is largely the considerable level of fund raising for the Building Fund, as offset by the deficit within the Children and Families Worker Fund

Unrestricted reserves at the 31st December amount to £183,992 and restricted reserves amount to £318,342, the latter including £71,630 relating to the Trust fund, which is invested in the Church of England's Central Board of Finance Investment Fund and, therefore, still susceptible to the volatility of the Stock Market.

Looking forward, the financial position is a little more un-certain. There may well be a need to support the Children and Families Worker Fund during 2023 as the historical reserves for this fund are used up. Annual expenditure has exceeded annual income for some time and there is likely to be a need for continuing on-going support from 2024.

A basic forecast for general fund finances for 2023 and 2024, based around a number of assumptions, which may or may not materialise, is set out below.

				Forecast	Forecast
	2020	2021	2022	2023	2024
	£	£	£	£	£
<u>General (Unrestricted) Fund</u>					
<i>Opening Balance</i>	318,531	297,814	226,112	183,992	185,136
On-going income	104,005	126,936	120,495	117,234	116,234
Diocesan Common Fund contribution	-86,952	-79,781	-73,068	-66,376	-77,147
Other On-going expenditure	-37,770	-33,724	-40,514	-41,672	-45,096
Support for C&FW Fund				-8,042	-15,800
On-going surplus / (deficit)	-20,717	13,431	6,913	1,144	-21,810
Legacies	0	5,500	1,113		
Quinquennial Repairs	0	-90,633	-1,097		
New Building	0	0	-49,049		
Total In-year surplus / (deficit)	-20,717	-71,702	-42,120	1,144	-21,810
<i>Closing Balance</i>	297,814	226,112	183,992	185,136	163,326

Under this scenario, the annual on-going position becomes a surplus in 2023, but not sufficient to be able to contribute £5,000 to future quinquennial repairs, the balance having to be met from the unrestricted reserves, the level of which is shown in the table as "closing balance". Once the 2023 accounts have been produced, the PCC will need to review its reserves again as usual.

Reserves Policy

The Charity Commission requires trustees of each Charity to:

- develop a reserves policy that:
 - fully justifies and clearly explains keeping or not keeping reserves
 - identifies and plans for the maintenance of essential services for beneficiaries
 - reflects the risks of unplanned closure associated with the charity's business model, spending commitments, potential liabilities and financial forecasts
 - helps to address the risks of unplanned closure on their beneficiaries (in particular, vulnerable beneficiaries), staff and volunteers
- publish the reserves policy (even if not required to by law) and ensure it is tailored to the charity's circumstances – it should not be just a standard form of wording. It should

explain to funders, beneficiaries, the public and the commission exactly what reserves are kept (or not kept) for and when they are to be used

- make sure that their reserves policy is put in place and operated
- regularly monitor and review the effectiveness of the policy in the light of the changing funding and financial climate and other risks

The PCC briefly reviewed its unrestricted reserves policy and its application on 24th May 2022:

- The first element of Unrestricted Reserves be set aside to cover two months of day-to-day routine expenditure (£20,000) to cover any unforeseen expenditure or loss of income
- A second element of Unrestricted Reserves be set aside to provide annual contributions towards £25,000 of Quinquennial repairs every 5 years – 4 years since the last quinquennial inspection this would be £20,000
- A third element of Unrestricted Funds to provide for the impact of any annual deficit in general / unrestricted income and expenditure – however with an apparent on-going surplus in 2022 this is not required, but will need be monitored during the year
- A fourth element of Unrestricted Funds to provide for the impact of any annual deficit in the Children and Families Worker Fund, so as to enable that work to continue – however the PCC believes the on-going deficit as it currently stands can be accommodated from the on-going general fund surplus going forward

At the 31st December 2022 free unrestricted funds amount to £143,992, but the latest forecasting suggests that by 31st December 2024 this may have dropped to around £113,326. Without an increase in on-going income, or an improvement of the financial situation overall, it would not be prudent to release more than £113,300 of general fund reserves to the hall replacement works. This is shown in the table below, but doesn't yet reflect the anticipated cost of £21,600 for outstanding works from our previous quinquennial survey

		Forecast	Forecast
	2022	2023	2024
	£	£	£
<u>General (Unrestricted) Fund</u>			
<i>Closing Balance</i>	183,992	185,136	163,326
Opening Reserves	226,112	183,992	185,136
Closing Reserves	183,992	185,136	163,326
Set-aside			
2 months routine expenditure	(20,000)	(20,000)	(20,000)
Contribution to Quinquennial	(20,000)	(25,000)	(30,000)
Long term stability for on-going deficit	0	0	0
Provision for C&FW post	0	0	0
Free Reserves at 31 December	143,992	140,136	113,326

Going Concern

The PCC has considered its current financial circumstances and, with regular monitoring and by adopting a flexible approach to this Reserves Policy, believes that the Church's position can be considered as a going concern for the medium term. However, it may be at risk from changes in giving levels and the PCC will need to continue to monitor this closely.

Independent Examiner's Report to the Trustees of St Andrews Church in the Westlands Parochial Church Council

I report to the trustees on my examination of the accounts of St Andrews Church in the Westlands for the year ended 31 December 2022 which are set out on pages 19 to 28.

Responsibilities and basis of report

As Trustees of St Andrews Church in the Westlands, you are responsible for the preparation of the accounts in accordance with the requirements of the Charities Act 2011 ("the Act").

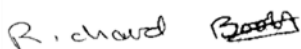
I report in respect of my examination of St Andrews Church in the Westlands accounts carried out under section 145 of the 2011 Act and in carrying out my examination, I have followed all the applicable Directions given by the Charity Commission under section 145(5)(b) of the Act.

Independent Examiner's Statement

I have completed my examination. I confirm that no material matters have come to my attention in connection with the examination which gives me cause to believe that in, any material respect:

- the accounting records were not kept in accordance with section 130 of the Charities Act; or
- the accounts did not accord with the accounting records; or
- the accounts did not comply with the applicable requirements concerning the form and content of accounts set out in the Charities (Accounts and Reports) Regulations 2008 other than any requirement that the accounts give a 'true and fair' view which is not a matter considered as part of an independent examination.

I have no concerns and have come across no other matters in connection with the examination to which attention should be drawn in this report in order to enable a proper understanding of the accounts to be reached.

 Richard Booth

Richard Booth ACA
117 Dartmouth Avenue
Westlands
Newcastle-u-Lyme
Staffordshire
ST5 3NR

8 March 2023

ST ANDREWS IN THE WESTLANDS PAROCHIAL CHURCH COUNCIL

STATEMENT OF FINANCIAL ACTIVITIES FOR THE YEAR ENDED 31 DECEMBER 2022

		Unrestricted Funds	Restricted Funds	TOTAL FUNDS	
	Note	£	£	2022	2021
				£	£
Income and Endowments					
Voluntary Income	2a	106,385	102,530	208,915	294,740
Activities for Generating Funds	2b	238	10,871	11,109	1,199
Income from Investments	2c	3,073	-	3,073	2,098
Church Activities	2d	11,912	767	12,679	7,031
Other incoming resources	2e	-	-	-	-
Total Income		<u>121,608</u>	<u>114,168</u>	<u>235,776</u>	<u>305,068</u>
Expenditure					
Church Activities	3a	163,606	43,537	207,143	236,079
Costs of generating voluntary income	3b	122	-	122	120
Fund-raising trading costs	3c	-	766	766	-
Total Expenditure		<u>163,728</u>	<u>44,303</u>	<u>208,031</u>	<u>236,199</u>
Net Income / (Expenditure)		(42,120)	69,865	27,745	68,869
Gains/(Losses) on investment assets	6b	-	(9,557)	(9,557)	25,203
Net Movement in Funds		(42,120)	60,308	18,188	94,072
Balances Brought Forward at 1 January		226,112	258,034	484,146	390,074
Balances Carried Forward at 31 December		<u>183,992</u>	<u>318,342</u>	<u>502,334</u>	<u>484,146</u>

ST ANDREWS IN THE WESTLANDS PAROCHIAL CHURCH COUNCIL

BALANCE SHEET AS AT 31 DECEMBER 2022

	Note	2022 £	2021 £
Fixed Assets			
Tangible	6a	-	-
Investments	6b	71,630	81,187
		<u>71,630</u>	<u>81,187</u>
Current Assets			
Debtors	7	5,676	8,018
Short Term Deposits		-	-
Cash at Bank and in Hand		434,842	412,096
		<u>440,518</u>	<u>420,114</u>
Liabilities			
Creditors - amounts falling due in one year	8	9,814	17,155
Net Current Assets / (Liabilities)		<u>430,704</u>	<u>402,959</u>
Total assets less current liabilities		502,334	484,146
Creditors - amounts falling due after one year		-	-
Total net assets		<u>502,334</u>	<u>484,146</u>
Parish Funds			
Unrestricted	9	183,992	226,112
Restricted	9	318,342	258,034
		<u>502,334</u>	<u>484,146</u>

Approved by the Parochial Church Council on 20th March 2023 and signed on its behalf by Revd Andrew Dawswell (PCC Chairman)



The notes on pages below form part of these accounts

ST ANDREWS IN THE WESTLANDS PAROCHIAL CHURCH COUNCIL

NOTES TO THE ACCOUNTS FOR THE YEAR ENDED 31 DECEMBER 2022

1 ACCOUNTING POLICIES

The PCC is a public benefit entity within the meaning of FRS 102. The financial statements have been prepared under the Charities Act 2011 and in accordance with the Church Accounting Regulations 2006 governing the individual accounts of PCCs, and with the Regulations' "true and fair view" provisions. They have also been prepared in accordance with the Charities SORP (FRS 102).

The financial statements have been prepared under the historical cost convention with items recognised at cost or transaction value unless otherwise stated in the relevant notes to these accounts. The financial statements include all transactions, assets and liabilities for which the PCC is responsible in law. They do not include the accounts of church groups that owe their main affiliation to another body nor those that are informal gatherings of Church members.

Cashflow Statement

The Charity has taken advantage of the exemption in FRS102 from the requirement to produce a Cash flow statement on the grounds that the income does not exceed £500,000.

Going Concern

There are no material uncertainties related to events or conditions that cast significant doubt on the charity's ability to continue as a going concern.

Accounting Estimates and Prior Year Errors

No changes to accounting estimates have occurred in the reporting period.

No material prior year errors have been identified in the reporting period.

Description of Funds

Unrestricted funds are income funds of the PCC that are available for spending on the general purposes of the PCC, including amounts designated by the PCC for fixed assets for its own use or for spending on a future project and which are therefore not included in its "free reserves" as disclosed in the trustees' annual report.

Restricted funds comprise of two elements:

- a) income from trusts or endowments which may be expended only on those restricted objects provided in the terms of the trust or bequest
- b) donations or grants received for a specific object or invited by the PCC for a specific object. The funds may only be expended on the specific object for which they were given. Any balance remaining unspent at the end of each year must be carried forward as a balance on that fund. The PCC does not usually invest separately for each fund. Where there is no separate investment, interest is apportioned to individual funds on an average balance basis.

Endowment funds are restricted funds that must be retained as trust capital either permanently or subject to a discretionary power to spend capital as income, and where the use of any income or other benefit derived from the capital may be restricted or unrestricted. Full details of all their restrictions are shown in the notes to the accounts.

Income

Planned giving, collections and donations are recognised when received. Tax refunds are recognised when the incoming resource to which they relate is received. Grants and Legacies are accounted for when the PCC is legally entitled to the amounts due and the monetary value can be measured with sufficient reliability. All other income is recognised when it is received.

ST ANDREWS IN THE WESTLANDS PAROCHIAL CHURCH COUNCIL

NOTES TO THE ACCOUNTS FOR THE YEAR ENDED 31 DECEMBER 2022

ACCOUNTING POLICIES continued

Expenditure

Grants and donations are accounted for when paid over, or when awarded, if that award creates a binding or constructive obligation on the PCC. The diocesan common fund payments are accounted for when due. Amounts received specifically for mission are dealt with as restricted funds. All other expenditure is generally recognised when it is incurred and is accounted for gross.

Fixed Assets

Consecrated and beneficed property is not included in the accounts in accordance with s.10(2)(a) & (c) of the Charities Act 2011.

Moveable church furnishings held by the Vicar and Churchwardens on special trust for the PCC, and which require a faculty for disposal, are inalienable property, listed in the Church's Inventory, which can be inspected (at any reasonable time). All inalienable property assets are not valued in the financial statements and as such expenditure on any acquisitions are written off when incurred.

Investments

Investments are valued at market value at 31 December.

Debtors

Debtors are measured on initial recognition at settlement amount. Subsequently they are measured at cash expected to be received.

Creditors and Accruals

Creditors are measured at settlement amounts less any trade discounts. Accruals are measured on best estimate of the amount required to settle the obligation at the reporting date.

ST ANDREWS IN THE WESTLANDS PAROCHIAL CHURCH COUNCIL

NOTES TO THE ACCOUNTS FOR THE YEAR ENDED 31 DECEMBER 2022

	Unrestricted Funds £	Restricted Funds £	TOTAL FUNDS 2022 £	2021 £
2 INCOME AND ENDOWMENTS				
2a Voluntary Income				
Planned giving:				
Eligible for Gift Aid	71,360	20,700	92,060	93,340
Tax recoverable	17,878	2,943	20,821	22,076
Other	6,084	5,170	11,254	21,275
Collections (open plate)	4,930	399	5,329	2,995
Grants	2,241	-	2,241	10,850
Gift Day	-	-	-	-
Tax recoverable	-	-	-	-
Other Donations, appeals etc.	2,012	60,795	62,807	111,228
Tax recoverable	767	12,523	13,290	27,476
Legacies	1,113	-	1,113	5,500
	<u>106,385</u>	<u>102,530</u>	<u>208,915</u>	<u>294,740</u>
2b Activities for Generating Funds				
Fund-raising (coffee mornings etc.)	238	10,871	11,109	1,199
	<u>238</u>	<u>10,871</u>	<u>11,109</u>	<u>1,199</u>
2c Income from Investments				
Interest from CBF Investment Account	2,130	-	2,130	2,060
Interest from Bank Accounts	943	-	943	38
	<u>3,073</u>	<u>-</u>	<u>3,073</u>	<u>2,098</u>
2d Income from Church Activities				
Church Hall Lettings	4,523	-	4,523	2,536
PCC Fees	3,463	767	4,230	3,398
Use of Church & Parish Room	1,428	-	1,428	425
Other income	2,498	-	2,498	672
	<u>11,912</u>	<u>767</u>	<u>12,679</u>	<u>7,031</u>
2e Other income	-	-	-	-
Total Income and Endowments	<u>121,608</u>	<u>114,168</u>	<u>235,776</u>	<u>305,068</u>

ST ANDREWS IN THE WESTLANDS PAROCHIAL CHURCH COUNCIL

NOTES TO THE ACCOUNTS FOR THE YEAR ENDED 31 DECEMBER 2022

		Unrestricted Funds	Restricted Funds	TOTAL FUNDS	
	Note	£	£	2022	2021
				£	£
3 EXPENDITURE					
3a Church Activities					
Missionary and charitable giving:	10				
Church overseas:					
Missionary societies		4,840	-	4,840	4,840
Relief and development agencies		820	1,860	2,680	1,360
Home missions and other Church Societies		655	112	767	880
Secular Charities		820	300	1,120	1,120
		<u>7,135</u>	<u>2,272</u>	<u>9,407</u>	<u>8,200</u>
Ministry					
Diocesan Common Fund Contributions		73,068	-	73,068	79,781
Staff Pay	4	7,239	28,793	36,032	35,579
Other Ministry Costs		952	1,672	2,624	1,977
Church Running Expenses		9,362	1,249	10,611	7,839
Church Utility Costs		8,125	-	8,125	5,219
Printing, stationery and office expenses		1,329	-	1,329	1,068
Church grounds		959	-	959	1,104
Major Repairs		1,097	-	1,097	90,633
Building Development		49,049	9,551	58,600	1,042
Training, development & nurture		1,534	-	1,534	1,209
Link		780	-	780	203
Church Hall running costs		2,977	-	2,977	2,225
		<u>163,606</u>	<u>43,537</u>	<u>207,143</u>	<u>236,079</u>
3b Generation of voluntary income					
Cost of Stewardship		122	-	122	120
		<u>122</u>	<u>-</u>	<u>122</u>	<u>120</u>
3c Fund-raising costs		-	766	766	-
Total Expenditure		<u>163,728</u>	<u>44,303</u>	<u>208,031</u>	<u>236,199</u>

ST ANDREWS IN THE WESTLANDS PAROCHIAL CHURCH COUNCIL

NOTES TO THE ACCOUNTS FOR THE YEAR ENDED 31 DECEMBER 2022

	Unrestricted Funds £	Restricted Funds £	TOTAL FUNDS 2022 £	2021 £
4 STAFF COSTS				
Gross Wages and salaries	7,078	25,776	32,854	32,522
National Insurance Costs		2,431	2,431	2,319
Pension Costs	161	586	747	738
	<u>7,239</u>	<u>28,793</u>	<u>36,032</u>	<u>35,579</u>

During the year the PCC employed a secretary and church cleaner (both part-time) and the PCC also paid the Childrens and Families Worker from a Restricted Fund.

5 PAYMENTS TO PCC MEMBERS

Apart from the Childrens and Families Worker, whose costs are shown in note 4 above, there were no payments to PCC members during 2022, other than for the reimbursement of purchases made on behalf of the Church. No other PCC member, persons closely connected to them or related parties received remuneration, benefit or reimbursement of travelling or other expenses .

	Note	Unrestricted Funds £	Restricted Funds £	TOTAL FUNDS 2022 £	2021 £
6 FIXED ASSETS					
6a Tangible		None	None	None	None
6b Investments					
Market value - 1 January		-	81,187	81,187	55,984
Disposal at carrying value		-	-	-	-
Purchases at cost		-	-	-	-
Gain / (loss) on annual revaluation		-	(9,557)	(9,557)	25,203
		<u>-</u>	<u>71,630</u>	<u>71,630</u>	<u>81,187</u>

The holding at 31 December 2022 was 3466.86 units in the Church of England's Central Board of Finance Investment Fund

ST ANDREWS IN THE WESTLANDS PAROCHIAL CHURCH COUNCIL

NOTES TO THE ACCOUNTS FOR THE YEAR ENDED 31 DECEMBER 2022

		Unrestricted Funds	Restricted Funds	TOTAL FUNDS	
	Note	£	£	2022 £	2021 £
7 DEBTORS					
Income tax recoverable		5,676	-	5,676	8,018
Owed by others		-	-	-	-
		<u>5,676</u>	<u>-</u>	<u>5,676</u>	<u>8,018</u>
8 SUNDRY CREDITORS					
Organist		5,012	1,405	6,417	3,261
Choir		-	-	-	481
Owed to Diocese Re Clergy Fees		-	-	-	1,844
Owed to Vergers		-	-	-	-
Owed to Children's & Families Worker		-	-	-	398
Owed to Missions		-	-	-	7,384
Owed to Others		3,397	-	3,397	3,787
		<u>8,409</u>	<u>1,405</u>	<u>9,814</u>	<u>17,155</u>
9 SUMMARY OF FUND MOVEMENTS					
	Opening Balance	Income	Expenditure	Transfers	Closing Balance
	£	£	£	£	£
General Unrestricted Fund	226,112	121,608	163,728		183,992
Restricted Funds					
Children & Families Worker	13,302	25,643	30,465		8,480
Missionary & Charitable Giving	62	2,210	2,272	-	-
Flower Fund	2,436	991	894	-	2,533
Organ Fund	1,066	768	355	-	1,479
The Puppet Ministry	67	-	-	-	67
Building (Planning) Fund	9,551	-	9,551	-	-
New Building Fund	150,363	84,556	766	-	234,153
Trust Fund	81,187		9,557	-	71,630
	<u>484,146</u>	<u>235,776</u>	<u>217,588</u>	<u>-</u>	<u>502,334</u>

The Trust Fund restricted fund is the capital element from the sale of a former curate's house, which can only be utilised by the PCC if permission is granted by the Diocesan Trustees. This is currently invested in the Church of England's Central Board of Finance Investment Fund and the interest income from the investment is unrestricted funds (as opposed to the gain / loss on valuation, which is shown as separately identified above) and as such is paid directly into the Church's bank account and utilised by the PCC for general purposes.

ST ANDREWS IN THE WESTLANDS PAROCHIAL CHURCH COUNCIL

NOTES TO THE ACCOUNTS FOR THE YEAR ENDED 31 DECEMBER 2022

	Unrestricted Funds	Restricted Funds	TOTAL FUNDS	
Note	£	£	2022 £	2021 £
10 MISSIONARY AND CHARITABLE GIVING				
Church Overseas - Missionary Societies				
Bible Society	820		820	820
Church Missionary Society	3,200		3,200	3,200
Open Doors	820		820	820
	<u>4,840</u>	<u>-</u>	<u>4,840</u>	<u>4,840</u>
Church Overseas - Relief and Development Agencies				
Tearfund	820	1,860	2,680	1,360
	<u>820</u>	<u>1,860</u>	<u>2,680</u>	<u>1,360</u>
Home Missions and Other Church Societies				
Childrens' Society		112	112	25
Christians Against Poverty	(300)		(300)	-
Scripture Union	820		820	820
Messy Church	100		100	-
Churches Together in Newcastle Town	35		35	35
Deanery Synod			-	-
	<u>655</u>	<u>112</u>	<u>767</u>	<u>880</u>
Secular Charities				
Brighter Futures	820		820	820
Combatt Stress		100	100	100
Poppy Fund Appeal		100	100	100
SSAFA		100	100	100
	<u>820</u>	<u>300</u>	<u>1,120</u>	<u>1,120</u>
Total Missionary and Charitable Giving	<u>7,135</u>	<u>2,272</u>	<u>9,407</u>	<u>8,200</u>

ST ANDREWS IN THE WESTLANDS PAROCHIAL CHURCH COUNCIL

STATEMENT OF FINANCIAL ACTIVITIES

For the year ending 31 December 2021

	Unrestricted Funds £	Restricted Funds £	TOTAL 2021 £
Income and Endowments			
Voluntary Income	123,672	171,068	294,740
Activities for Generating Funds	-	1,199	1,199
Income from Investments	2,098	-	2,098
Church Activities	6,666	365	7,031
Other incoming resources	-	-	-
Total Income	132,436	172,632	305,068
Expenditure			
Church Activities	204,018	32,061	236,079
Costs of generating voluntary income	120	-	120
Fund-raising trading costs	-	-	-
Total Expenditure	204,138	32,061	236,199
Net	(71,702)	140,571	68,869
Gains/(Losses) on investment assets	-	25,203	25,203
Net Movement in Funds	(71,702)	165,774	94,072
Balances Brought Forward at 1 January	297,814	92,260	390,074
Balances Carried Forward at 31 December	226,112	258,034	484,146