

Please use this copy
for charity
Commission



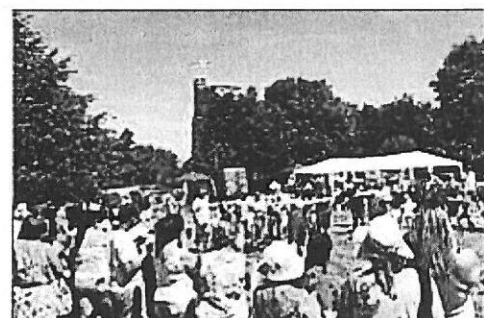
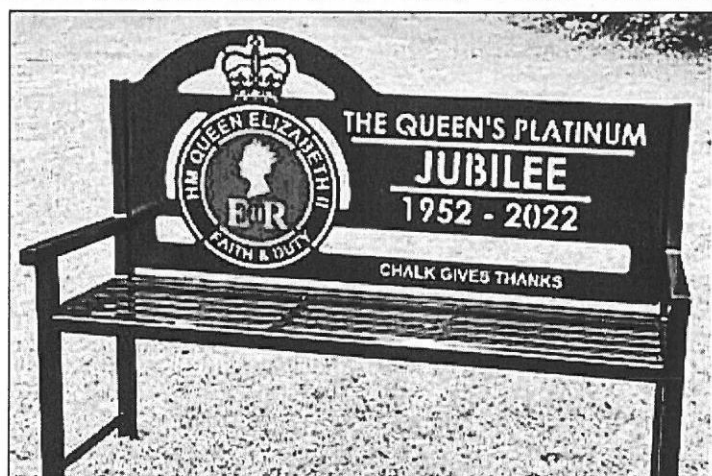
Chalk Church

(St Mary the Virgin, Chalk)

an Anglican Church
in the
Diocese of Rochester
and a

Registered Charity

Registration Number 1132081



Annual Report & Financial Statements

for the year ended 31 December 2022

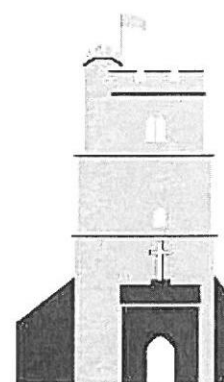


Chalk
Church

'Lifting High the Cross'

Growing,
Reaching Out
& Stronger

in Christ by



Word & Deed

Contents

Part One:	Reference and Administrative Details Vicar's Preface Introduction: Structure, Governance & Management Aims & Purposes Achievements & Performance Financial Review Reserves Policy Various Matters including Risk Assessments and the Future
Part Two:	Financial Statements (The Annual Accounts with explanatory notes and Independent Examiner's Report)

Cover Photographs – Scenes from 2022

Top:	The Funeral of Her Late Majesty Queen Elizabeth II	<i>(Photo: Shajur Ali)</i>
Middle:	Celebrating the Platinum Jubilee	
Bottom:	Dedicating the New Defibrillator in Memory of Rodney Angell The Fireworks and Bonfire Event The Fête	

St Mary the Virgin, Chalk

Annual Report & Financial Statements of the PCC for the year ended 31st December 2022

Part One

Reference and Administrative Details

Name: The Parochial Church Council of the Ecclesiastical Parish of St Mary the Virgin, Chalk
(known as PCC Chalk – a Registered Charity – registration number 1132081)

Location: The Parish Church, Barns and Woodland are located at Church Lane, Chalk, Gravesend, Kent DA12 2NL
Chalk Parish Hall is located at Pirrip Close, Chalk, Gravesend, Kent DA12 2ND

Address for Correspondence: The Vicarage, 2A Vicarage Lane, Chalk, Gravesend, Kent DA12 4TF

Members of the PCC & Charity Trustees

The following served throughout 2022 and to the date this report was approved:

The Revd Nigel Bourne	(Vicar of Chalk & PCC Chairman)
Barbara Millatt	(Churchwarden & PCC Vice-Chair)
Steve Quinton	(Churchwarden)
Martin Lake	(Treasurer)
Karl Addy	(Deanery Synod Representative)
Emily Bourne	(Deanery Synod Representative)
Christoph Bull	(Assistant Churchwarden)
Jenny Ellett	(Assistant Churchwarden)
Beverley Glanville	Mike Hammock
Duncan Garrod	Philippa Perry
Claire Youells	

In addition to the above, the following served from May 2022

Anne Wilkinson	Ram Patla
Jane Abrehart	

In addition to the above, the following served until May 2022

Mark Addy

Bank

National Westminster
30, King Street
Gravesend
Kent

Independent Examiner

Tanja Lawes
The Carley Partnership
8 Overcliffe
Gravesend
Kent

Preface by the Vicar of Chalk, Chairman of the PCC – Review of 2022 & Covid-19

2022 was the third year of the Covid-19 pandemic. The Omicron variant had affected what we felt was safe to offer in terms of services as late as December 2021, and early in 2022 reported deaths in the UK due to the virus exceeded 150,000. However, thankfully the effectiveness of vaccines and the treatments developed during the pandemic meant that national legal restrictions had mainly been reduced over time and were finally all removed in February 2022. Consequently, almost all main elements of our annual programme, including Fête, Fireworks event, (full scale) Christmas Fair and Christmas Eve Nativity were held in 2022 for the first time since 2019. February also saw the Russian invasion of Ukraine and the beginning of a period of significant international tension. Perhaps this is a new long-term 'Cold War'. There is no clear indication of how things will develop other than that more lives will be lost in the fighting in Ukraine itself, where brave resistance to Russian aggression continues. On a much more positive note in February, Her Late Majesty Queen Elizabeth II privately marked the milestone of 70 years on the throne, and then opportunities came through to the summer – an exceptionally hot and dry summer – for the nation to mark and to say thank you to God and to her for her incredible years of service. At Chalk, we held a great commemorative service and picnic, commissioned a new bench and began a remodelling of the pond area to mark the Jubilee and the longest ever reign of a British Monarch – a reign that has been marked by unswerving duty and Christian faith. Through the year Her Majesty was clearly at times very frail but, as her health permitted, she continued to perform her constitutional duties and to attend various celebrations, bringing dignity and delight in equal and great measure. As a highlight and summary of the national celebrations (a superimposed and animated) Paddington Bear put it in a wonderful encounter with Her Majesty thus, "...thank you Ma'am... for everything."

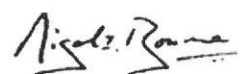
In 2022, without a General Election, we saw three Prime Ministers (and a fair amount of political crisis) but in the middle of this, the day that seemed both inevitable and impossible finally came. On 8th September Her Majesty died and a period of national mourning began. At Chalk, on 19th September, our flag flew at half-mast, half-muffled bells rang and a live video link was made to the funeral service. I was in The Mall in the front of the crowds opposite Buckingham Palace where there was a sound relay of the service and, in due course, an amazing and moving procession, with the Royal family led by our new King. Even the memory of it still moves me today. Unusually for me, I deliberately took no photographs, being there rather than recording the event seemed important to me. However, I struck up a friendship with someone standing next to me and he sent me the picture from the procession on the cover of this report. For all with a heart to recognize the moment, we were all, briefly, united in grief and wonder.

On more regular matters in Chalk, as services, events and hirings of the hall have all made significant moves towards pre-covid norms (with some minor adjustments, particularly in terms of evening services) we managed, via our lay folk working hard in all sorts of ways to meet our immediate needs. We also made plans for various practical improvements, not least using money gained via grants. Changes are not instantaneous, partly because we often need input from Diocesan authorities – rarely a simple process. However, a defibrillator was installed at the Parish Hall in memory of Rodney Angell and significant progress was made especially towards a new heating system in the church (now installed); other projects are in the pipeline. Outreach has also continued via a simplified Facebook version of the main morning service (as often as my time allows) and also via the *Loaves & Fishes* programme to families and children. Many individuals have contributed to our increased programme, and not least the Fête, Fireworks event and Christmas events already mentioned. Mike Hammock has completed a really great stint as Hall Manager and he has been followed by Andy Howe (who also masterminded the restoration work to the bridge over the pond). Alan Holt has been a great chef at our Harvest Supper. We have also been joined by Mark Morgan on placement from the Diocese who is due to become a curate here in September 2023. On behalf of the whole church here and, in many ways, the community of Chalk, I want to thank everyone for all their contributions, especially PCC members, lay ministers Janet and Michael Munson, churchwardens Barbara Millatt and Steve Quinton, and, completing another great stint as Treasurer, Martin Lake.

Teasing out some more problematic issues, while getting back to a more normal situation has had the advantage of increasing income from fundraising events, grants, hall rent and donations, the pandemic and the Ukraine war have had a negative effect on the world economy, and this has increased our costs. We have tried to limit costs in various ways. The new heating system at the church could help here but only time will tell. In the short term we could always limit 'Parish Share' payments to the Diocese as we did significantly during the worst of the pandemic, but this would not be good for our viability in the eyes of the Diocese for the longer term and it has been our policy to increase payments to the Diocese, when we can, towards pre-pandemic levels. It seems likely to me that we will have to think seriously about encouraging increased stewardship to cover all that we want to achieve. The projected costs and viability of the Barn/Tearoom project have also been adversely affected. However, the liabilities here would not be our responsibility but those of the owners of the business. Understandably, they have put the project on a temporary hold with the aim of reassessing the situation in the autumn of 2023. So, again, we have to wait for developments.

The Area Dean role takes more time and energy than is entirely helpful; the death of a local vicar continues to have an impact here. Nonetheless, worthwhile progress is being made across the Deanery, not least in relation to Church Schools and in training the laity via two courses: *Hearing God's Word* and *Speaking God's Word* – both of which have had take-up from Chalk. I am assuming this Area Dean role will continue for another two years. Individually and collectively, we could easily experience these as difficult times, but each of us has something to offer and God will not only use that offering but will help us through.

*Humble yourselves, therefore, under God's mighty hand, that he may lift you up in due time.
Cast all your anxiety on him because he cares for you. (1 Peter 5: 6-7)*



Introduction: Structure, Governance & Management

The Parochial Church Council of the Church of St Mary the Virgin, in the Ecclesiastical Parish of Chalk (generally known as *PCC Chalk* or, in context, *the PCC*) works with the Vicar of Chalk, the Revd Nigel Bourne to promote the whole mission of the church (see *Aims* etc below). This section of the report, Part One, gives an overview of our life including some information on finances etc, but focuses on our liturgical worship and the spiritual and practical aspects of our work. The main information regarding finances is given in Part Two, *Financial Statements*.

Although the PCC is a relatively recent (early 20th century) creation, it is the modern expression of a traditional rôle of the parish church with clergy and laity working together for the glory of God and the benefit of the whole community. This process has been working here in Chalk for over 1,000 years. The PCC is focussed mainly on the ecclesiastical parish of Chalk, but has a wider remit through various relationships not least through the structures of the Church of England, as well as through missionary and charitable links beyond the parish boundary.

The PCC, like the PCC of every Church of England parish has various rôles. Although it has some executive functions, as constituted by the legislation of the Church of England, our PCC is, primarily, a consultative committee charged firstly with the function of co-operation with the Vicar of Chalk who is, ex-officio, the PCC Chairman. In the context of mission and co-operation, the PCC is concerned with fund-raising and the proper safeguarding and use of the assets of our parish church as well as with our worship and other activities.

The parish church of St Mary's is virtually surrounded by fields and lies to the east of the populated area of Chalk, which is itself at the eastern edge of Gravesend in Kent. Adjacent to the church building is our car park with some church meeting rooms known as the Barns and an area known as St Mary's Woodland. At the centre of the village lies Chalk Parish Hall, a large purpose-built church and community centre which was opened in 2007. Adjacent to the Hall is a car park on which we hold a long lease.

Charitable and Legal Status

The church here in Chalk has long been recognised as a charity operating through its PCC under rules established by the Charity Commission for England & Wales. In 2009 Chalk Church through its PCC, a body corporate, became a Registered Charity (number 1132081) with PCC members continuing as charity trustees and with that role highlighted through the registration process.

Governing Documents

The legal basis on which the PCC has operated is set out both in the *Parochial Church Councils (Powers) Measure (1956)* and the *Church Representation Rules*, both as amended from time to time through General Synod.

PCC Structure

The PCC has had a template for meetings in January and alternate months following. However, use of small groups and technology including email has kept the number of main business meetings down to a minimum and these will probably reduce to about four a year. A Standing Committee has power to transact the business of the PCC between PCC meetings subject to any direction by the Council. While overall policy for the parish hall remains the responsibility of the PCC, the main running concerns of the hall are addressed by the Hall Committee, which is a committee of the PCC, with various members co-opted for their expertise regarding the hall. Similarly, groups operating for the PCC normally run both the fête and fireworks event.

PCC Membership

Members of the PCC are either ex officio, co-opted or elected by the Annual Parochial Church Meeting (APCM) in accordance with the Church of England's *Church Representation Rules*. Normally there should at any one time be 12 directly elected members (with one third elected at each APCM) each member serving for three years (or less if filling a vacancy). After three years directly elected membership, members are not eligible for direct election for a period of one year. Deanery Synod Representatives are normally elected every third year at an APCM to serve for three years (or the remainder of the three years if elected subsequently). The next such Deanery election will be in 2023. They are ex-officio members of the PCC and help link our life to the wider life of the Diocese of Rochester and the Church of England. The names of all PCC members are listed at the beginning of Part One of this report.

Other Authorised or Licensed Personnel

In addition to the clergy, some people have been specifically trained by the Diocese and authorised or licensed by the Bishop to assist in the regular teaching and pastoral ministry of the church. Each makes a unique contribution.

Pastoral Assistants: Janet Munson and Sue Scott (the latter retired in 2023).

Reader (Permission to Officiate): Michael Munson.

Aims & Purposes

The PCC works with the Vicar as a type of eldership to promote the good news or gospel of the Lord Jesus Christ. This mission has a particular focus within our parish of Chalk, but it engages with the wider church and the wider world, not least through *Churches Together in Gravesend*, the *Deanery of Gravesend*, and the *Diocese of Rochester*. Our mission is Christ-centred, spiritual, pastoral, evangelistic, social and ecumenical. We aim for the liturgical worship of the church (ie what we do in "services") to assist the wider worship of the church, ie the offering of every member's life to God in his service or mission. Worship, in both senses of the word, gives glory to God and helps the church to growth in holiness or maturity in Christ. In turn this maturity helps us see how our service or mission needs to be focussed at any one time. Thus our eldership, or rôle of spiritual leadership, is exercised with practical responsibilities, not least for the maintenance of all church buildings and property.

Vision Building Process

A vision building process built on earlier work was completed in 2017 and this should help us focus our thinking and activities as a church over the next few years. Covid-19 has caused the loss of some time and focus and so the PCC began to review the vision in 2022 in order to reframe it as necessary in 2023. The vision to which we were working in 2022, sometimes called '*Lifting High the Cross*' can be summarised as follows:

The Renewed Vision:

...we will be stronger in Christ,
and reaching out to impact the whole community,
having grown significantly as a family of all ages.

Our vision has 5 'thrusts':

- Growth
- Greater Strength in Christ
- Communications
- Resources – personnel
- Resources – buildings & finance

Expanding on each of the thrusts:

Growth – our main thrust. There will be growth in faith and a marked increase in the size of the congregation, notably in the number of children and families.

Stronger in Christ. There will be an improved use of small groups so that every church member has an opportunity to develop as a disciple of Christ, to encourage and be encouraged.

Communications. There will be an increasingly effective communications network to reach members and people in the area using a range of modern and traditional media.

Resources – Personnel. There will be training and more use of teams and individuals in various critical rôles, paid and unpaid.

Resources – Buildings and Finances. There will be a review of all our property to ensure appropriate maintenance and improvement; there will also be increased donations to cover our increased commitments and our mission priorities, to give us options for growth and allow us generosity in away giving.

The vision emerged against the background of our understanding of our purpose and values: we defined these as:

Our Purpose:

The fellowship of Chalk Church believes that:

We exist to worship God,
to grow in faith, understanding and numbers,
sharing and spreading God's love and joy by
word and deed.

Our Values:

Chalk Church is committed to:

listening to the Holy Spirit,
especially through the Bible as God's word,
to shape all our values and actions;
with God's help we try to be:

- * Inviting * Involving * Together
- * Joyful * Welcoming * Supportive
- * Creative in Proclamation

PCC Meetings and Main Matters Discussed This Year

The atmosphere at PCC meetings and via email etc is always constructive, no doubt aided by the refreshments (when 'in-person'), provided beforehand by Barbara Millatt. Although a full range of opinions are voiced, when it comes to votes, these are almost always unanimous. Matters discussed have included: safeguarding; the barns/tearoom project; our financial position including parish share offer; stewardship, *Loaves & Fishes*; Jubilee Garden; positions of Hall Manager and Treasurer; services etc especially in Covid recovery; projects for replacing the church heating system and tea station. Any correspondence or items for future consideration by the PCC should be addressed to the PCC Secretary, Anne Wilkinson.

Objectives & Activities

The PCC is committed to enabling as many people as possible to worship at our church and to become members of our church family or to work in partnership with us for the greater good. When planning the scope and detail of our activities the PCC is mindful of our need as a charity to provide a public benefit. This understanding has been shaped by the Charity Commission's guidance on public benefit including guidance to charities for the advancement of religion and helps shape our approach to our services of worship, events and activities.

We realise that in addition to what happens in our services etc, the life of the church extends into the community through the attitudes and actions of our members in their day to day lives. These attitudes and actions are often informed or shaped by their faith. The PCC has an overview of all church activities and, with the clergy, readers, pastoral assistants and individuals recruited to particular tasks, the PCC aims to facilitate and organise activities to encourage and deepen faith, notably through:

worship and prayer, including 'the occasional offices',
learning about the Bible and its gospel message,
growing the church numerically and developing belief and trust in God, Father, Son and Holy Spirit,
deepening connections with the community and supporting charitable, missionary and outreach work,
maintenance and improvement of the parish church, the parish hall and their associated facilities.

We offer a wide range of different styles of public worship, traditional and modern, and the encouragement to grow to maturity in faith, not least through public worship and private prayer. Our approach is based on understanding the Christian faith as revealed in the Scriptures of the Old and New Testament and seeking to understand how scriptural principles challenge and comfort us today. This approach helps to develop a recognition of our responsibilities towards both God and his world. It also helps to address pastoral and spiritual needs of all who come, both regular members of the congregation and those who come for particular reasons, eg to be married or when there has been a bereavement. In addition to worship with an explicit encouragement to develop a faith in Jesus Christ as Saviour and Lord, we are involved with various projects that concern the practical well-being of a wide range of people, including the provision of facilities (and sometimes activities) for the elderly, parents and toddlers, other special needs groups and the support of other charities in the UK and overseas.

Achievements & Performance

Sunday Worship

While every day is an opportunity for worship in the sense of offering our lives to God, Sunday worship is a significant part of our Christian calling. In the context of public worship, joining together with the Lord's people on the Lord's Day, our fellowship aims to encourage and deepen the faith of each person who comes and also build up an awareness of that union which we have in Christ. This happens as we sing and give praise to God, as we reflect on his word to us and as we pray. Services create a space where we can expect to encounter both the encouragement and the challenge of God's love. The 8.30am and 4.30pm services are usually more reflective than the 10.30am services, which we want to be particularly accessible to newcomers (and at which we often use a large screen onto which we project words and pictures, which many, especially visitors find helpful).

The Vicar and Reader lead and preach at our various services. The Pastoral Assistants and Churchwardens, help in various ways, eg assisting with the chalice at Holy Communion. Occasionally there are guest speakers. Not to be confused with the authorised "Readers", members of the congregation sometimes help in the reading aloud from the Bible in the services. Anyone who would be willing to organise a rota for these is asked to speak to the Vicar. The wheels of the services are of course oiled by many, including the choir, musicians, the coffee team and "sidespeople", who greet the congregation and give out books or service sheets. All these (and other) contributions are necessary for our services to work as they do; it is significant example of our teamwork. The normal pattern of services is as follows. (Services are of a contemporary format, officially "Common Worship", unless they are indicated as services from the Book of Common Prayer (1662) with abbreviation BCP):

[Pattern as emerging towards the end of 2022]

8.30am BCP Holy Communion - 2nd & 4th Sundays

10.30am Morning Service

Morning Service	- 1st Sundays
Morning Service	- 2nd Sundays
Holy Communion	- 3rd Sundays
Open House	- 4th Sundays
Songs of Praise	- 5th Sundays

Evening Service

BCP Holy Communion	- 1st Sundays - (in the parish hall starting at 4.30 pm followed by tea)
[No Service]	- 2nd Sundays
Tea with the Vicar	- 3rd Sundays (an informal event and service in the parish hall starting at 5pm)
[No Service]	- 4/5th Sundays

While in-person services have been possible, the pattern has largely centred on a simple main service each week at 10.30am (sometimes supplemented with 'said' Holy Communion services, either after the main service or at 8.30am on 2nd and 4th Sundays.) The 10.30am talk is sometimes recorded and is put on Facebook with a hymn.

- NB1. Baptisms often offered on some 1st Sunday Mornings have tended to move to the early afternoon, due to Covid.
NB2. The pattern can change especially around festivals with details in magazine, weekly notice sheet and web site.
NB3. The village Facebook sites, **Chalk People and Opinions** - <https://www.facebook.com/groups/1730024447212622/>
& **Chalk (Gravesend) - Past and Present**.

Weekday Worship and Major Festivals [Pattern as emerging towards the end of 2022]

As with Sunday, there are normally many opportunities for public worship. The main midweek service is Holy Communion (BCP) at 9.30am on Wednesdays in term time. This is celebrated in the Holloway Hall at the parish hall. We also conduct Holy Communion services on principal feast days, mostly at St Mary's. Major festivals have a series of services associated with them, again, mostly at St Mary's although we also have an informal service and event at the end of the Easter, Summer and Christmas terms in the parish hall. This service builds on our weekly *Take-a-Break* event which reaches out particularly to the elderly and unwaged. Details are given in the Calendar of Dates issued two or three times a year, in the monthly magazine, posters, service sheets etc.

The Occasional Offices: Baptisms, Weddings & Funerals

Recently baptisms have taken place after main Sunday morning services using a Common Worship pattern. Janet Munson has helped co-ordinate Baptisms. Anyone who would like to explore issues concerning the Christian faith and particularly with a view to taking a step of faith such as Baptism or Confirmation is encouraged to speak to the Vicar. Services of Marriage and Services of Prayer and Dedication are normally a feature in and around summer. All couples undergoing their services at Chalk normally receive several hours of marriage preparation arranged by the Vicar. It is our practice to preach a short sermon about marriage and give a small gift to the couple during their service. This ministry is supported by the efforts of many folk and normally includes the choir, organists and bell ringers. The Vicar hopes that we will continue to work at helping baptism families and wedding couples to take an on-going interest in the life of the Church. Funerals have been conducted by the Vicar mostly at St Mary's and the new Thames View Crematorium. We continue to see the complete cross section of tragedy, pain and bravery in the face of loss. Our hearts and prayers go out to the many bereaved families whose lives we touch. The Vicar is thankful for all those who help in this ministry, not least our Pastoral Assistants. He is grateful too for Peter Bull's ministry as vergers at weddings and funerals. The Vicar encourages everyone to pray for all those involved in these ministries as well as those to whom they minister. Marriage registration rules changed significantly in 2021 and that required some training and the cessation of the use of marriage registers in all churches.

Learning about the Bible and its Gospel Message & Developing Belief and Trust in God

Many of the activities associated with these topics normally take place during Sunday and weekday worship including the occasional offices. In addition, there are normally regular small group midweek meetings and special courses run at various times, eg during Lent which allow a focus on certain Bible books or topics in some depth in the context of discussion, fellowship and prayer. The Chalk Bible Challenge (CBC) focussing on a particular set of readings usually lasts seven to ten weeks. A printed set of notes for each week of the Challenge is published and is made available in various ways to allow for personal reflection and a development of Bible knowledge, prayerful reflection and trust. This year's CBC was in Lent and used the 'set' Sunday readings.

Growing the Church Numerically: Electoral Roll & Numbers Attending or Visiting the Church's Premises

As at the Annual Parochial Church Meeting in May 2022 there were 118 people on the Church Electoral Roll. revised annually an entirely new roll is made every six years. The next new roll is due in 2025. We estimate that normally well over 2,000 different people attend or visit the church premises annually. During the lockdowns especially, many have made use of the Facebook service. In addition to church members, there are often visitors to our services and large numbers attend the events we normally run such as *Take-a-Break*, the Fête, Fair and the Bonfire events each year.

Connections with the Community & reaching out across the age spectrum

Notable here is the weekly term time activity *Take-a-Break*. Essentially this is run by a dedicated group of church members and normally provides a weekly coffee morning open to the whole village in the parish hall. This regularly achieves attendances of approximately 80. It is clear that the event is a highlight of the week for the many, largely elderly and unwaged, folk who come. Three times a year there is normally a lunch held for the same group instead of the coffee morning. In the week following each lunch, in the lead up to Christmas, Easter and the summer break, we aim to hold an informal service of worship in the hall. These informal services attract most of the *Take-a-Break* regulars, many of whom are not church members.

The church has over the years supported various groups helping people with autism, learning difficulties and mental health needs. This has included use of facilities, including use of the woodland area, provision of refreshments and simple acts of worship. Unfortunately, the pandemic has prevented much of this recently. However, the *Loaves & Fishes For All* element of our *Loaves & Fishes* programme has continued to develop and is aimed at children and parents/carers who face some of these issues. As we emerge from the pandemic more may be possible in this area of need. We also continued to support the local foodbank.

Tea with the Vicar takes place in the parish hall on the third Sunday in a month. Starting at 5pm with a buffet tea (in a cafe style) and continues with an informal service at about 5.30-6pm. It has drawn a wide age group (c.30 people – reduced since Covid) including families with children and others who find the short late afternoon walk to and from the hall (in the centre of the village) an easier undertaking than the journey to church (beyond the edge of the main populated area of the village). In addition to the toddlers corner in church and *Young Church* (our Sunday provision for any children present in church over toddler age), we hope that the puppet ministry, *Loaves & Fishes*, led by Julie Garrod, will continue to expand in various ways (eg with puppet-making for primary-school age children and older youngsters as part of the puppeteer team), and so help to engage youngsters across a wide range of ages. *Loaves & Fishes in the Forest* has continued in 2022 on 4th Sundays for children up to about 11 during church services and regularly attracts 20+ children as well as their parents etc.

Covid-19 stopped some activities & much of the following is still under review prior to any restarting, the *Tea and Toast* was a weekly early morning event (Thursdays, 8.45am – 9.45pm) run by church members in the small room at the parish hall. This offered free refreshments and a simple snack to staff, parents, carers and children associated with the pre-school who use the back rooms at the parish hall. Appreciated by all concerned it has helped cement our relationship with the Pre-School. On the first Friday of most months a short service with hymns was held in the lounge of Mullender Court, a retirement housing complex in the parish, attended by several of the residents and usually led by the Vicar or Michael Munson. On most months approximately 50 homes were visited as part of a long-standing parish visiting scheme *You are Welcome*. This scheme's aim has been to ensure that every home in the village is visited over an approximately three-year cycle. It started in the mid-2000s and so every home has been visited several times. On these occasions a free copy of the magazine is given and an invitation made to our services and events. In conjunction with *You are Welcome* and also following up on other pastoral contacts, many letters were usually written to people throughout the year inviting them to particular events and services such as the Village Fête, and the November bonfire and firework event. The latter event alone usually has over 1,000 people attending! However, the pandemic made events like these very uncertain and so up-to-the-minute advertising (and cancelling) more recently has been done through Facebook.

The Wider Community and the Wider Church Community

We have two lay representatives as well as clergy representation on the local Gravesend Deanery Synod. The Vicar is also a member of the Diocesan Synod which covers the whole of the Rochester Diocese of about 200 parishes. These Synods and the group Churches Together in Gravesham allow for a flow of information and a degree of co-ordination of activity between the churches. The PCC makes a significant financial donation called 'Parish Share' to the Diocese every year. The Diocese uses this, in part, to pay the clergy. Through our Vicar, we also provide a chaplaincy service both for the local Sea Cadet Corps which is based in the parish and also (with other chaplains of various denominations) for Kent Police. The Vicar helped bring the national church credit union (CMCU) into being during 2014 and was for several years its Vice-President until retiring from the CMCU Board in 2019. CMCU is helping individuals and churches to save and to borrow at fair interest rates.

Charities, Missionary Work and Similar Organizations Supported

Other charities and similar organizations are being helped in various ways, eg by use of facilities and donations. The PCC commits to support local charities and the Hands of Compassion school in Zambia. Approximately £4,000 was paid or reserved for charitable causes and in addition we organise collections totalling £1,300 for the Church of England Children's Society in the UK. Envelopes for Christian Aid have been available in the pews.

Buildings and Property

To facilitate our work with its pattern and programme of activities it is extremely important that we maintain and, where possible and appropriate, improve the fabric and facilities of all church buildings and property. The buildings and property essentially comprise, the Parish Church of St Mary the Virgin, Chalk, its churchyard and the adjacent land and buildings comprising the Barns, St Mary's Woodland and the car park off Church Lane and Chalk Parish Hall in Lower Higham Road. We have a long lease on the car park adjacent to the hall. (The larger scale aspects of maintaining the Vicarage are mostly undertaken by the Diocese – a quinquennial inspection took place in 2021, supported by parish share and other common resources, although contributions are sometimes made by the PCC and Vicar.) A quinquennial (ie five-yearly) report on the fabric of the parish church was completed in 2020. This was essentially very positive about the physical structure of the building, which is very gratifying in the light of all the work to the roof and tower in 2008. The next church quinquennial inspection building is due in 2025.

Some Details of This Year's Work on the Buildings etc: At various points in 2022 a Community Payback team was able to complete various jobs around the churchyard, barns and church. The council continued to mow the churchyard, Duncan took care of the woodland, and Marion and Eric worked hard on the Garden of Remembrance and the flower bed by the church path. Fire extinguishers are checked and the lightning conductor tested on a periodic basis. We are grateful for everyone's hard work. Steve Quinton continues to apply for various grants to help improve different aspects of the properties (thanks to the small team of helpers!) and to address ongoing maintenance highlighted in the latest church quinquennial inspection. The pond/garden area of the woodland is being steadily improved, and Gary Cordice is doing much of this work. A commemorative stone for the Jubilee Garden has been ordered and is awaited.

Financial Review

This is the first year free of Covid restrictions since 2020 and many regular church services, activities and fund raising events have returned to normal. The financial results show that we have nearly recovered to 2019 pre-pandemic levels of income, mainly driven by increased lettings at the Parish Hall and the welcome return of organised events. Voluntary income was stable throughout the pandemic and is now nearly back to 2019 levels. We were successful applying for grants:- £7,000 from Kent County Council to renovate the Woodland Pond area and create the Jubilee Garden and a grant of £2,000 from Rochester Diocese to help with spiralling energy bills. The welcome return of our Summer Fete, Bonfire night and Xmas Bazaar increased income. A great result and thanks to all those that helped. A new scheme for receiving donations was introduced called the Parish Giving Scheme. This excellent scheme allows regular donations or one off contributions and administers monthly Gift Aid claims for us. Please consider joining by signing up online or calling the scheme administrators. It is our policy to maintain a level of unrestricted funds at least equal to three months' income. We measure the health of our finances using this metric and pleased to report this is being maintained. The commentary below shows a continued improvement compared to the previous year (last year's figures in brackets), but our unrestricted income has still yet to recover to pre-pandemic levels by around 10%.

Total gross receipts of unrestricted funds was £107,557 (£84,605) of which £59,283 (£60,339) was from voluntary donations, £17,791 (£3,176) from fund raising activities and £30,205 (£20,879) from church activities such as weddings, funerals and hall lettings. Overall, unrestricted income has increased by 27% compared to last year. Our Parish Hall generated income of £24,240 (£15,192) and after deducting running costs, a major floor repair, general maintenance and depreciation a loss of £9,845 was incurred. There were 8 couples married at church and with funerals fees contributed £5,965 (£5,687) to our income. Net income from fund raising events was £12,795 (£3,090).

Total unrestricted expenditure of £116,359 (£86,293) was spent to provide a Christian ministry at St. Mary's Chalk. Notable highlights are (i) Parish Hall flooring repairs £9,283 (ii) our ministry initiative called 'Loaves and Fishes' was funded with £3,483 (£4,500) from church funds. (iii) an improved contribution of £46,000 (£37,400) to Rochester Diocese towards clergy stipends, housing, training and pensions. At year-end the net movement of unrestricted funds was minus £8,803 (-£1,688).

Reserves Policy

It is PCC policy to try and maintain a balance of free reserves (net current assets) which equates to at least 3 months unrestricted payments. This is the equivalent to approx £30,000. The balance of total free reserves is £81,277 and is made up of £18,617 set aside for church and hall repairs and organ fund (designated funds), £15,442 of restricted funds and £47,218 of unrestricted funds for regular expenditure. It is our policy to invest fund balances with the Churches Mutual Credit Union and the Diocesan Central Board of Finance.

Various Matters including Risk Assessments and the Future

We are required to consider the risks we face and have policies that address the risks so as to minimize the chances of them occurring or minimize the effect if they do occur. The greatest risks to the mission of the church lie in four main areas:

- a failure to grow the church by continually renewing the membership through evangelism and mission generally;
- a failure to attract or maintain and grow appropriately gifted leaders, lay and ordained;
- a failure to renew the physical and financial resources of the church;
- a failure to prevent reputational damage from poor decisions, scandals or tragedies of various kinds.

While all of these are important and have had some attention, the renewed vision process has led to a particular focus on the first of these issues. The policies of the PCC are explicitly aimed at avoiding such difficulties by growing the church numerically and spiritually, by training (including the use of Diocesan resources), by maintaining a high level of financial support to the Diocese, by good stewardship of financial and material resources, and by use of good procedures in practical matters. To this end, for example, the PCC insures church property, incorporates and arranges regular checks of fire extinguishers etc, adopts each year the Diocesan policies for the protection of children and vulnerable adults, including the requirement for Disclosure & Barring Service (DBS) checks (formerly known as CRB) for all relevant personnel. In addition, the PCC is reviewing information held on file, eg it has produced a Health & Safety document. Formal risk assessments of the fête and the fireworks event are made each year they are held. The Vicar, Churchwardens, Treasurer, Hall Manager and PCC, as appropriate, routinely consider risks associated with our buildings and activities particularly when something new is planned or work envisaged but also when reviewing our normal operations. The general approach is to minimise risks (especially where a significant problem might result) and to put in place such mitigating factors that will reduce the impact of any adverse incident. A simple risk register is being worked on.

The Diocese, Diocesan Budget, Parish Share etc and the Future

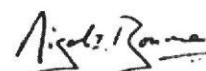
The Diocese now indicates to each parish the figure that it feels is appropriate for the parish to contribute or offer as 'Parish Share'. The formula is complicated but is essentially related to the income of a parish, although when all the parishes of the Diocese are affected by reductions of income (eg because of a long-lasting pandemic), experience has shown that the amount requested is not reduced from earlier levels. Nevertheless, the parish share remains a gift to the Diocese that each parish decides it is able to make. In that context, we have reduced our offer from pre-pandemic levels but increased it from last year. A separate payment towards stipend and associated costs is not requested. However, the element of the fees that comes into a parish for weddings and funerals (previously used to help in paying for the parish clergy in that particular parish) is now legally the property of the Diocese and so these fees are automatically passed on to the Diocese. Coupled with this, the Diocese itself remains responsible for paying the parish clergy. In order for the system to work sustainably, on average, the parishes need to pay into the Diocese in parish share etc, what the Diocese pays out in stipends etc. In reality, some poorer parishes will not be able to afford this, so other parishes are expected to pay more. While some level of subsidy will work, if the level becomes too high, that will not be sustainable, and this is, in fact, the territory that the Diocese has been in for some time, ie the amount of money being asked for from the parishes as a total sum is not being met by the sum of the actual offers. This is reflected in the situation at Chalk; ie we can normally, including the fee income, cover the cost of our Vicar, but we cannot pay the full extra amount that the Diocese wants in order to help pay the shortfall from the poorer parishes who are not covering the cost of their clergy.

Currently, the number of paid clergy (full-time equivalent) posts is falling and there is a consistent shortfall in the money requested by the Diocese of about £1m each year. The Diocese continues to balance its books by the use of reserves and the sale of freehold property (and support from the Church Commissioners), a situation that cannot continue for ever. Nevertheless, this is at least fairly transparent and there is a stated aspiration that the books must be balanced in a more sustainable transparent way. Clergy pay (technically "stipends") has been frozen or subject to below-inflation increases for some time. A new 'total return' policy will allow some reserves to be invested in more creative ways. This may prove successful, but it will take some years before we can be sure and, even so, overall decline in paid clergy numbers seems likely to continue and some form of sharing clergy resources across parishes seems inevitable.

There are various bridges that may have to be crossed when we come to them, but it has been the belief of the PCC that Chalk should, normally, continue to pay a level of parish share which (when combined with the fee income passed to the Diocese) covers at least the costs of the incumbent (as calculated by the Diocese). (NB this is a lot more than is actually paid to the clergy as it includes National Insurance, pension contributions, training and administration costs.) We did make this figure in 2022 (an increase over the previous year's contribution) but not the additional amount desired by the Diocese to cover their wider costs eg for poorer parishes and the training of ordinands.

While the Diocese of Rochester and the Deanery of Gravesend both have a part to play, the PCC feels that if this parish and the parishes generally rely too heavily on the contributions and strategies of the Deanery and Diocese, there will be failures of the church at the parish level. It is not so much about being self-sufficient (God willing we will always see that we have things to gain from, as well as contribute to, the wider church), but rather it is about developing a primary reliance on God, his Word and the talents and other resources he has given us. The PCC remains very grateful for the help received during 2017 from Bryn Hughes, a committed Christian and a skilled professional in the area of vision and strategy. This has already borne some fruit via *Loaves & Fishes* and in turn this has given us confidence to go on funding this ministry, as well as helping us to maintain a resilience to withstand some of the financial pressures to which Covid-19 is subjecting us and the rest of society. We pray that further progress will be made in the coming years.

**Approved by the PCC on 15 May 2023 by email and signed on its behalf by the Vicar of Chalk,
the Revd Nigel Bourne, Chairman of the Parochial Church Council.**



This page is deliberately blank.

St Mary the Virgin, Chalk

**Annual Report &
Financial Statements of the PCC
for the year to 31 December 2022**

Part Two

Financial Statements

INDEPENDENT EXAMINER'S REPORT TO THE TRUSTEES OF

PAROCHIAL CHURCH COUNCIL ST MARYS THE VIRGIN CHALK

I report on the annual report and financial statements of the charity for the year ended 31 December 2022, which are set out in Part One and Part Two of this document.

Respective Responsibilities of Trustees and Examiner

The charity's trustees are responsible for the preparation of the financial statements. The charity's trustees consider that an audit is not required for this year under section 144 of the Charities Act 2011 (The Act) and that an independent examination is needed.

It is my responsibility to:

- examine the financial statements under section 145 of the Act;
- to follow the procedures laid down in the General Directions given by the Charity Commission under section 145(5)(b) of the Act; and
- to state whether particular matters have come to my attention.

Basis of Independent Examiner's Report

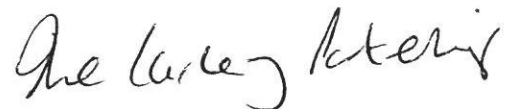
My examination was carried out in accordance with the General Directions given by the Charity Commission. An examination includes a review of the accounting records kept by the charity and a comparison of accounts presented with those records. It also includes consideration of any unusual items or disclosures in the accounts, and seeking explanations from the trustees concerning any such matters. The procedures undertaken do not provide all the evidence that would be required in an audit, and consequently no opinion is given as to whether the accounts present a "true and fair view" and the report is limited to those matters set out in the statement below.

Independent Examiner's Statement

I confirm that no material matters have come to my attention in connection with the examination giving me cause to believe that in any material respect:

1. accounting records were not kept as required by section 130 of the Act; or
2. the accounts do not accord with those records; or
3. the accounts do not comply with the accounting requirements of the Act.

In my opinion there are no other matters in connection with the examination to which attention should be drawn in this report in order to enable a proper understanding of the accounts to be reached.



T Lawes FCA
The Carley Partnership

18th May 2023.

St James's House
8 Overcliffe
Gravesend
Kent
DA11 0HJ

PAROCHIAL CHURCH COUNCIL ST MARY THE VIRGIN CHALK
STATEMENT OF FINANCIAL ACTIVITIES 31 DECEMBER 2022

	note	<u>Unrestricted funds</u>	<u>Restricted funds</u>	<u>Endowment funds</u>	<u>TOTAL 2022</u>	<u>TOTAL 2021</u>
INCOME & ENDOWMENTS:						
Donations and legacies						
Voluntary income	2a	59,281	7,950	0	67,231	78,656
Activities for generating funds	2b	17,791	0	0	17,791	3,176
Income from investments	2c	279	0	0	279	211
Church Activities	2d	30,205	4,225	0	34,430	23,459
TOTAL INCOME		<u>107,556</u>	<u>12,175</u>	<u>0</u>	<u>119,731</u>	<u>105,502</u>
EXPENDITURE:						
Church activities	3a	111,363	13,046	0	124,409	97,694
Raising Funds	3b	4,996	4,300	0	9,296	2,162
TOTAL EXPENDITURE		<u>116,359</u>	<u>17,346</u>	<u>0</u>	<u>133,705</u>	<u>99,856</u>
NET INCOMING/ (OUTGOING) RESOURCES		(8,803)	(5,171)	0	(13,974)	5,646
GAINS AND (LOSSES) ON INVESTMENTS		0	0	(827)	(827)	879
NET MOVEMENT OF FUNDS		<u>(8,803)</u>	<u>(5,171)</u>	<u>(827)</u>	<u>(14,801)</u>	<u>6,525</u>
BALANCES BROUGHT FORWARD AS AT 1 JANUARY 2022		569,419	175,158	7,025	751,602	745,077
BALANCES CARRIED FORWARD 31 DECEMBER 2022		<u>560,616</u>	<u>169,987</u>	<u>6,198</u>	<u>736,801</u>	<u>751,602</u>

PAROCHIAL CHURCH COUNCIL ST MARY THE VIRGIN CHALK**BALANCE SHEET AT 31 DECEMBER 2022**

	Note	<u>2022</u>	<u>2021</u>
FIXED ASSETS			
Tangible fixed assets	5a	649,326	660,238
Investment assets	5b	6,198	7,025
		<u>655,524</u>	<u>667,263</u>
CURRENT ASSETS			
Debtors	8	16,083	11,609
Short term deposits		12,641	19,777
Prepayments		3,132	3,132
Cash in hand		65,573	69,365
		<u>97,429</u>	<u>103,883</u>
SHORT TERM LIABILITIES:			
amounts due within 1 year	9	16,152	19,544
NET CURRENT ASSETS		<u>81,277</u>	<u>84,339</u>
LONG TERM LIABILITIES			
amounts due within more than 1 year	9a	<u>0</u>	<u>0</u>
NET ASSETS		<u>736,801</u>	<u>751,602</u>
FUNDS			
	6		
Unrestricted	10	560,616	569,419
Restricted		169,987	175,158
Endowment		6,198	7,025
TOTAL EQUITY		<u>736,801</u>	<u>751,602</u>

Approved by the Parochial Church Council on 12th May 2023 and signed on its behalf by:

The Revd Nigel Bourne (Vicar & PCC Chairman)

PAROCHIAL CHURCH COUNCIL ST MARYS THE VIRGIN CHALK
NOTES TO THE STATEMENT OF FINANCIAL STATEMENTS
YEAR TO 31 DECEMBER 2022

The PCC operates legally under the Parochial Church Council Powers Measure (1956) and the Church Representation rules (2011) as amended from time to time through General Synod. The principal address is The Vicarage, 2a Vicarage Lane, Chalk, Gravesend, Kent DA12 4TF.

1. ACCOUNTING POLICIES

The PCC is a public benefit entity within the meaning of FRS102. The financial statements have been prepared under the Charities Act 2011 and in accordance with the Church Accounting Regulations 2006 governing the individual accounts of PCC's and with the Regulations' 'true and fair view' provisions, also they have been prepared under FRS102 (2016) as the applicable accounting standards and the 2016 version of the Statement of Recommended Practice, Accounting and Reporting by Charities (SORP(FRS102)).

ASSETS

Consecrated and benefice property

In so far as consecrated and benefice property of any kind is excluded from the statutory definition of 'charity' by Section 10(2) (a) and (c) of the Charities Act 2011 such assets are not capitalised in the financial statements.

Moveable church furnishings

Movable church furnishings held by the Vicar and Churchwardens on special trust for the PCC, and which require a faculty for disposal, are accounted as inalienable property unless consecrated. They are listed in the church's inventory, which can be inspected (at any reasonable time). For inalienable property acquired prior to (2000) there is insufficient cost information available and therefore such assets are not valued in the accounts. Items acquired since 1 January 2000 have been capitalised and depreciated in the accounts over their currently anticipated useful economic life (initially over 5 years) on a straight-line basis.

Tangible fixed assets for use by the charity

These are capitalised if they can be used for more than one year and cost at least £1,000.

Investments

Investments are quoted at market value as at 31 Dec 2022.

Short term deposits

These are cash holdings on deposit with CBF Church of England funds, at the bank or with CMCU (Churches Mutual Credit Union)

Current Assets

Amounts owing to the PCC at 31 December in respect of fees, rents or other income are shown as debtors less provision for amounts that may prove uncollectable.

Current Liabilities

Goods and services received by the year end but not yet invoiced or paid for are included in the accounts as accruals. Wedding deposits received in respect of the following year are deferred.

Cont....

Incoming resources

Voluntary income and capital sources

- Collections are recognised when received by or on behalf of the PCC.
- Planned giving receivable under Gift Aid is recognised only when received.
- Income tax recoverable on Gift Aid donations is recognised when the income is recognised.
- Grants and legacies to the PCC are accounted for as soon as the PCC is notified of its legal entitlement, the amount due is quantifiable and its ultimate receipt by the PCC is reasonably certain.
- Funds raised by the fete, bazaars and similar events are accounted for gross.
- Sales of books and magazines from the church bookstall are accounted for gross.

Other income

- Rental income from the letting of the church premises is recognised when the rental is due.

Income from investments

- Dividends are accounted for when due and payable. Interest entitlements are accounted for as they accrue. Tax recoverable on such income is recognised in the same year.

Gains and losses on investments

- Realised gains or losses are recognised when investments are sold.
- Unrealised gains or losses are accounted for on revaluation of investments at 31 December.

Resources used

Grants

- Grants and donations are accounted for when paid over, or when award creates a binding obligation on the PCC.

Activities directly relating to the work of the Church

- The Parish Share contribution to Rochester Diocese made under the 'Offer' system is accounted for when paid. Any unpaid amount at 31 December is provided for in these accounts as an operational (though not legal) liability and is shown as a creditor in the Balance Sheet.

Volunteers

- The accounts do not show the monetary value of volunteers who have assisted during the year.

FUNDS

Unrestricted Funds

These represent the remaining income funds of the PCC that are available for spending on the general purposes of the PCC, including amounts designated by the PCC for fixed assets for its own use or for spending on future projects and which are therefore not included in its 'free reserves' as disclosed in the Trustees Report.

Restricted Funds

These are income funds that must be spent on restricted purposes and details of the funds held and restrictions provided are shown in the notes to the accounts.

Endowment Funds

These are restricted funds that must be retained as trust capital either permanently or subject to a discretionary power to spend capital as income, and where the use of any income or other benefit derived from the capital may be restricted or unrestricted. Full details of their restrictions are shown in the notes to the accounts.

PAROCHIAL CHURCH COUNCIL ST MARY THE VIRGIN CHALK
NOTES TO THE STATEMENT OF FINANCIAL ACTIVITIES
31 DECEMBER 2022

2	INCOME & ENDOWMENTS	<u>Unrestricted</u>	<u>Restricted</u>	<u>Endowment</u>	<u>TOTAL</u>	<u>TOTAL</u>
Note		<u>funds</u>	<u>funds</u>	<u>funds</u>	<u>2022</u>	<u>2021</u>
		<u>£</u>	<u>£</u>	<u>£</u>	<u>£</u>	<u>£</u>
	Voluntary income					
2a	Planned giving:					
	Gift Aid donations	34,109	0	0	34,109	38,206
	Tax recoverable	7,495	0	0	7,495	9,610
	Collections (open plate)	8,591	0	0	8,591	5,299
	Grants	3,783	7,500	0	11,283	6,568
	Donations, appeals, etc.	4,303	450	0	4,753	18,973
	Legacies	1,000	0	0	1,000	0
		59,281	7,950	0	67,231	78,656
2b	Activities for generating funds					
	Bookstall/Mag Adverts	709	0	0	709	370
	Summer Fete	3,442	0	0	3,442	0
	Firework Display	10,510	0	0	10,510	0
	Christmas Bazaar	1,748	0	0	1,748	0
	100 Club	1,276	0	0	1,276	1,606
	Teas/Coffees	0	0	0	0	41
	Other	106	0	0	106	1,159
		17,791	0	0	17,791	3,176
2c	Income from Investments					
	Investment income	0	0	0	0	0
	Dividends & Bank deposit interest	279	0	0	279	211
	Misc Income	0	0	0	0	0
		279	0	0	279	211
2d	Income from church activities					
12	Church hall lettings etc.	24,240	0	0	24,240	15,192
	Fees (Weddings & Funerals)	5,965	0	0	5,965	5,687
	Take-a-Break	0	4,225	0	4,225	2,580
		30,205	4,225	0	34,430	23,459
	Total Income	107,556	12,175	0	119,731	105,502

PAROCHIAL CHURCH COUNCIL ST MARY THE VIRGIN CHALK
NOTES TO THE STATEMENT OF FINANCIAL ACTIVITIES
31 DECEMBER 2022

3 EXPENDITURE	<u>Unrestricted</u>	<u>Restricted</u>	<u>Endowment</u>	<u>TOTAL</u>	<u>TOTAL</u>
Note	<u>funds</u>	<u>funds</u>	<u>funds</u>	<u>2022</u>	<u>2021</u>
3a Church Activities					
Missionary and charitable giving					
Overseas					
Overseas relief and development agencies	2,560	0	0	2,560	2,310
Home missions and other societies	1,739	0	0	1,739	2,776
Ministry			0		
Contribution to Rochester Diocese	46,000	0	0	46,000	37,400
Loaves & Fishes (puppet ministry)	3,483	1,144	0	4,627	7,687
Other costs	806	0	0	806	224
Church running costs & maintenance	16,069	70	0	16,139	14,713
Major repairs (tower & roof)	0	0	0	0	0
Expenditure on parish magazine and bookstall	0	0	0	0	0
Upkeep of other PCC property	14,114	6,955	0	21,069	6,800
Church hall running costs	14,556	0	0	14,556	10,634
Organists payments	0	0	0	0	320
Administration including professional fees	2,642	0	0	2,642	1,372
Printing and stationery	2,486	93	0	2,579	1,679
Depreciation on hall and church equipment	6,128	4,784	0	10,912	11,060
	110,583	13,046	0	123,629	96,974
Support Costs					
Independent Examiner's fee	780	0	0	780	720
	111,363	13,046	0	124,409	97,694
3b Raising funds					
Christmas Bazaar	201	0	0	201	0
Firework Display	3,662	0	0	3,662	49
Summer Fete	1,091	0	0	1,091	0
Fund Generation - Other	0	0	0	0	0
Costs of stewardship campaign	42	0	0	42	37
Take-a-Break	0	4,300	0	4,300	2,076
	4,996	4,300	0	9,296	2,162
TOTAL RESOURCES EXPENDED	116,359	17,346	0	133,705	99,856

4 STAFF & RELATED PARTY TRANSACTIONS (last year in brackets)

Vicar's stipend is paid by Rochester Diocesan Board of Finance

The PCC employs no paid staff.

Julie Garrod, a trustee, was paid consultancy fees of £3,470 (£4,440) for running the Loaves & Fishes outreach program.

Nigel Bourne, PCC Chairman and trustee was reimbursed £2,482 for 18 mths ministry expenses.

There are no related party transactions or payments to other trustees to report.

Aggregate donations by 13 Trustees is £9,052 (£8,412)

PAROCHIAL CHURCH COUNCIL ST MARY THE VIRGIN CHALK
NOTES TO THE STATEMENT OF FINANCIAL ACTIVITIES
31 DECEMBER 2022

5 FIXED ASSETS FOR USE BY THE PCC

5a Tangible fixed assets	<u>Freehold land and buildings</u>	<u>Church equipment</u>	<u>Paintings/ Statue</u>	<u>TOTAL</u>
Actual/deemed costs				
at 1 Jan 2022	799,518	38,785	1,100	839,403
additions	0	0	0	0
disposals	0	0	0	0
at 31 December 2022	799,518	38,785	1,100	839,403
Depreciation				
at 1 January 2022	146,342	32,823		179,165
charge for the year	9,211	1,701	0	10,912
Adjustment	0			0
disposals	0	0	0	0
at 31 December 2022	155,553	34,524	0	190,077
Net book value				
at 31 December 2022	643,965	4,261	1,100	649,326
at 1 January 2022	653,176	5,962	1,100	660,238

The freehold land and building comprise the land and buildings at the Parish Hall, Lower Higham Road, Chalk and the land adjacent to the Church comprising The Woodland, car park and two barns.

Depreciation is provided to write off the cost over the expected useful life of the assets, on a straight line basis, at the following annual rates.

Parish Hall	1%
Parish Hall equipment	5-10%
Church equipment	20%
Church Barns	3%
Land and paintings, etc. are not depreciated.	

5b Investment fixed assets

Movements in the year

Market value

at 1 January 2021	7,025
revaluation gain or loss	-827
at 31 December 2022	6,198

The holding at 31 December 2022 was 300 units in CBF Church of England Investment Fund for the maintenance of the chancel.

6 <u>ANALYSIS OF NET ASSETS BY FUNDS</u>	<u>unrestricted funds</u>	<u>restricted funds</u>	<u>endowment funds</u>	<u>TOTAL 2022</u>
Fixed assets for Church use	494,783	154,543		649,326
Investment fixed assets			6,198	6,198
Current assets	73,058	24,371		97,429
Current liabilities	-7,225	-8,927		-16,152
	560,616	169,987	6,198	736,801

PAROCHIAL CHURCH COUNCIL ST MARY THE VIRGIN CHALK
NOTES TO THE STATEMENT OF FINANCIAL ACTIVITIES
31 DECEMBER 2022

	<u>2022</u>	<u>2021</u>		
7 Donations in kind				
Volunteers contribute in many ways to support the church ministry. The following roles are carried out by volunteers - Church Warden, Organist, Hall Manager, Hall Secretary, Treasurer, Verger, Choir Master, Event Organisers, Church Cleaners, Bell ringers.	0	0		
8 Debtors				
Gift Aid - HMRC	14,000	8,700		
Hall rents	1,598	2,688		
Other accrued income	485	221		
	<u>16,083</u>	<u>11,609</u>		
9 Liabilities; amounts falling due within one year				
Accruals	6,110	5,459		
Creditors	5,758	6,120		
Hall deposits	60	60		
Hands of Compassion funds	4,224	7,405		
Deferred income	0	500		
	<u>16,152</u>	<u>19,544</u>		
9a Liabilities: amounts due within more than 1 year				
Hall car park is leased at £260 per annum				
10 Designated funds				
Within unrestricted funds are balances as provision for necessary repairs to the church hall and a similar repair fund for the fabric of the church. Transfers are made regularly to provide maintenance funds for the buildings.				
	31.12.21	Xfer In	Xfer Out	31.12.22
	£	£	£	£
Hall repair fund	11,544		-8,387	3,157
<i>(Saved from general giving and to be used as and when repairs are required.)</i>				
Church repair fund	8,211	1,249	0	9,460
<i>(Saved from general giving and to be used to satisfy repairs noted in quinquennial survey.)</i>				
Organ Fund				
<i>(Saved from general giving and to be used to replace electronic organ)</i>	5,000	1,000	0	6,000
Total	<u>24,755</u>	<u>2,249</u>	<u>-8,387</u>	<u>18,617</u>

PAROCHIAL CHURCH COUNCIL ST MARY THE VIRGIN CHALK
NOTES TO THE STATEMENT OF FINANCIAL ACTIVITIES
31 DECEMBER 2022

11 Fund details

Restricted funds / assets	As at 31.12.21			As at 31.12.22
Purpose and Trust Law restriction.		<u>Income</u>	<u>Expense</u>	<u>Xfer</u>
• Village Hall asset: (<i>Rear Garden</i>) Provision of play area for pre-school. KCC grant	4,365	0	-420	3,945
• Village Hall asset: (<i>Air Con equipment</i>) Climate control. Donor restriction	3,600	0	-600	3,000
• Take a Break: (<i>A club affiliated to the church</i>) Community outreach project. Self funded.	842	4,225	-4,301	766
• Church Maintenance Fund: (<i>Fabric and contents improvement</i>) Church upkeep. Legacy restriction.	0	0	0	0
• Fixed assets for Church use: (<i>Land, Barn buildings, Artworks</i>)	151,600	0	-3,000	148,600
• Roof & Tower: (<i>Flag fund + roof fund</i>) Repairs and Flag renewals: Appeal restriction.	748	500	-764	484
• Hall Car Park: (<i>maintenance</i>) Tree planting and maintenance. KCC grant restriction	157	0	0	157
• C of E Children's Society Street collection appeal. Donor restriction	0	0	0	0
• Organ Fund For replacing the organ in 2027. Appeal restriction.	105	0	0	105
• Flowers Flower displays. Donor restricted	70	0	-70	0
• Hall Lift Project Donor restricted	10,000	0	0	10,000
• Woodland. Donor restricted	1,048	0	-48	1,000
• Graveyard/Garden of Remembrance Donor restricted	150	0	0	150
• Hall Maintenance Donor restricted	1,200	0	0	1,200
• Mission & Ministry Fund Puppet ministry	1,273	0	-1,143	130
• Church Heating Fund Donor Restricted	0	450	0	450
• Jubilee Grant Donor Restricted	0	7,000	-7,000	0
Totals	175,158	12,175	-17,346	0 169,987

12 Hall Rents:

Comprise gross rents of £35,412 less subsidies of £11,172
(2021: £23,085 / £7,893)