

# Riverside Church

## Annual Report & Financial Statements

For year ended December 2023

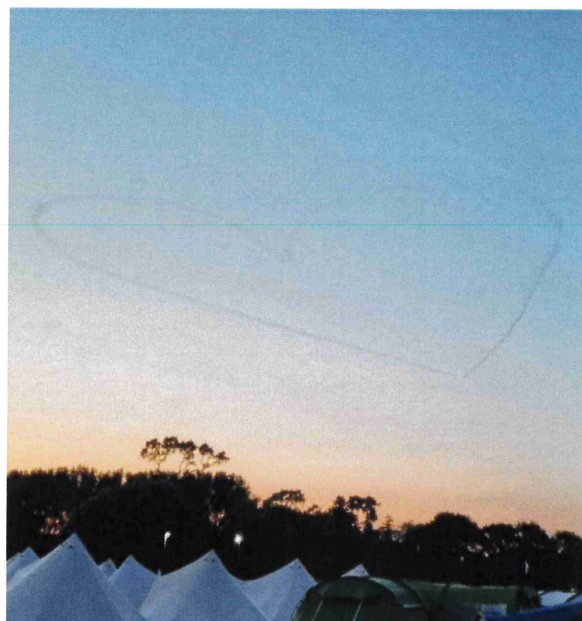
Registered charity no. 1131872

Company no. 6983393

This report covers the period 1 January 2023 to 31 December 2023



# RIVERSIDE CHURCH



Riverside Church, Thanet Way, Whitstable, Kent CT5 3JQ [www.riversideuk.org](http://www.riversideuk.org)

## Introduction

Riverside is a vibrant and growing church community of adults, children and young people meeting in Whitstable, Kent.

The church was established in 1925 and has been faithfully worshipping God and serving the local community for nearly a hundred years.

Our aim is to be a blessing to our community through sharing the love and compassion of God to those we meet.

Having our own building allows us to hire rooms to commercial and public-sector organisations during the week. This conference activity generates an income stream that supports our charitable activities.

We also have an on-site café which forms a community space right at the heart of the building. It provides a relaxed, friendly environment where everyone is welcome - old friends can come together, and new friendships can be made.

Our goal is to see the transformation of our communities through the goodness of Jesus.

We believe the goodness of Jesus is for everyone and we are passionate about helping people encounter his life-changing power.

Our broad aims continue to be the following:

- Creating spaces and opportunities for people to encounter the good news of Jesus and His transforming presence.
- Equipping and supporting people to do life well.
- Bringing practical and spiritual relief to the vulnerable and those in need.
- Doing things well.





## Review

We began 2023 by re-launching our church small groups, rebranding them 'Life Groups', focusing on creating smaller environments to help people do life together. We used a Sunday series to help communicate core values around community, growth, encouragement, vulnerability, and worship. This re-launch helped us to re-envision people in the importance of meeting in smaller settings and many newcomers to the church became integrated into existing groups Life Groups and new ones that were created.

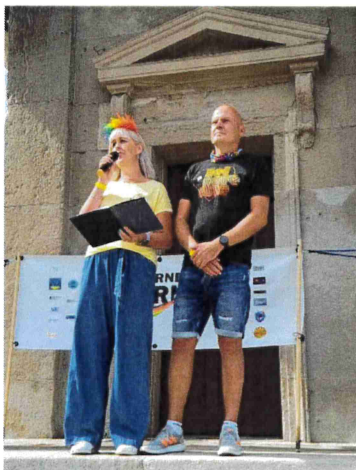
Simon & Keely Bateson were invited to speak at Herne Bay Pride in September. This was a real honour and reflected the reputation Riverside now has as an LGBTQ+ Christian ally in the community.

We spent time training our senior team around the issues associated with spiritual abuse in churches to ensure it could be recognised and prevented. We also looked at season of life with our leadership team to understand the different opportunities and challenges each stage of life brings.

In January Tina Bateson went out from Riverside to join the OM Ministry Ship the Logos Hope.

The Logos Hope is used to share knowledge, help, and hope in and around the world's port cities. Since 1970, OM's Ship Ministry has brought the world's largest floating bookfairs to nearly 500 individual ports in more than 150 countries. When the ship is in port, teams visit communities to offer practical help and the hope of the gospel alongside local churches and partner agencies. Tina has signed up to do two years on the ship and regularly connects back with the church and the Sunday children's groups who love to hear of her adventures and pray for her onward journey.

Our Vision Sunday this year focused on 'looking forward with expectation.' We want to continue to build on our excellent foundations and our growing reputation in the community. We ended 2023 with a sense of excitement looking forward to all that God was going to do through the church in 2024.





## Objective 1: **Advance the Gospel**

*Creating spaces and opportunities for people to encounter the good news of Jesus and His transforming presence...*

Our Sunday services continued to see growth through 2023 with many people enquiring about faith or reconnecting with a church community after long absences.

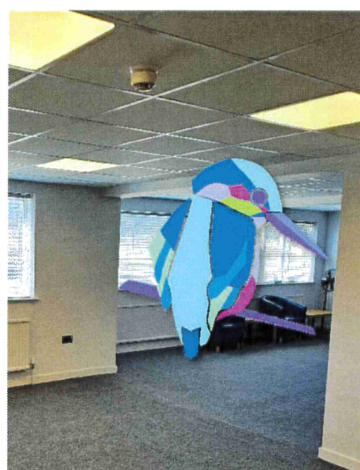
We developed a preaching training community to widen the number of speakers who would be available on a Sunday. These people were trained to communicate the good news of Jesus in contemporary ways.

We also started a new monthly evening gathering called Open Space to explore different aspects of the Christian faith and create an environment to explore, discuss, reflect, and grow together. The emphasis was not to look for the single 'right answer' but to look for greater understanding of God and each other. The first evening looked at 'How the Bible Really Works' and was a great success, providing a safe space for deeper questions and theological opinions to be explored.

We created more space for our growing Kingfishers children's group (reception age to 11s) by joining two of our rooms together. This has provided a great home for their Sunday group, making more room for activities and fun.

We continue to host events for Churches Together in Whitstable including a large service celebrating the combined ministries of the churches. We also hosted a retreat day for the church leaders to provide an opportunity for prayer, reflection, and relationship.

We finished the year with our morning Family Carols and our Evening Carol services, both being really well attended. Riverside continues to present the good news of Jesus in accessible, contemporary, and practical ways. We are excited by the number of people who testify to the warmth of welcome they receive when they come to the church. We are convinced this is the most positive and effective way to share the love of God.



## Objective 2: Improve Life

*Equipping and supporting people to do life well...*

Riverside continues to host and welcome a wide variety of people. Our Sunday morning services provide a place of connection, support, and practical teaching to equip people to do life well.

Our variety of different sized rooms provide flexible training spaces for many stakeholders, including local NHS trusts and councils.

Our café space provides a great space to meet and connect with friends. Many local community groups also use it to gather and build relationships and combat isolation and loneliness.

This year we refurbished our Lower Lounge to make it a more welcoming space and this change has been warmly received by all our guests and visitors.

We continue to hold events that help connect and support people. Our Cherish Breakfast ladies event helps to bring women together around an inspirational theme.

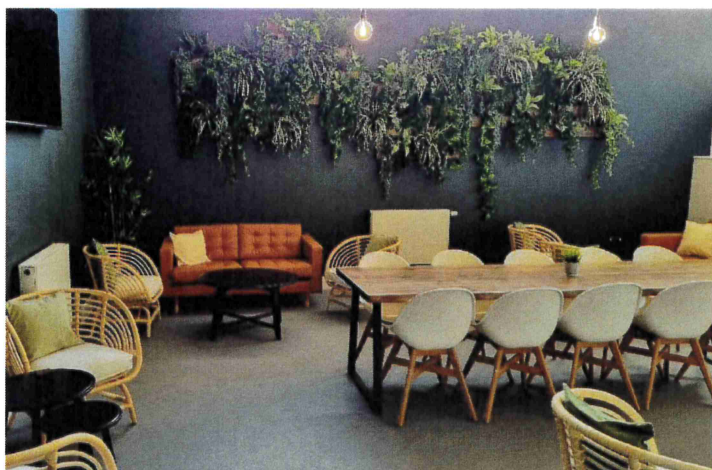
We also held a Cherish Christmas Crafts evening in December which was extremely successful.

Regular Board Game Evenings also create a great social gathering space.

Herne Bay HUB, our monthly off-site gathering at Briary Primary School is going from strength to strength. We are seeing growing number of families connect with the morning to enjoy breakfast, games, activities, and music. A team of Riverside staff and volunteers facilitate the event which runs parallel to our main Sunday service at Riverside.

This year we decided to increase our investment in young people by recruiting a full-time Youth Pastor. This role will involve supporting and empowering young people in local schools and using our soon to be completed Youth Hub.

As at the end of 2023 we are still waiting to employ the right person for this role.





## Objective 3: Bring Relief

*Bringing practical and spiritual relief to the vulnerable and those in need...*

This year we transitioned our Pantry project to a relational model working closely with Canterbury Food Bank to ensure we could provide food relief to those most in need. We focused on three principal areas:

- Providing help to those we are in direct relationship with.
- Providing emergency relief through connections with local social workers and social prescribers.
- Working with Family Liaison Officers in local schools through projects such as Holiday Hunger and All Wrapped Up.

This transition has made our Pantry project even more effective in getting the help to those who need it most.

In October we focused on the work of Christians Against Poverty (CAP) in our Sunday service. CAP provides a free debt counselling service and additional life skills training.

We continue to financially support the work of our local CAP Debt Centre.

In June we held a fundraising quiz for local charity SNAAP who support parents and carers of children with special needs. The event raised £2.5k for the charity. We also continue to support several local projects with finances and volunteers. Some examples are:

- Street Pastors – a caring night-time presence on the streets of Whitstable and Herne Bay.
- Haven – a project providing care and support for the homeless and vulnerable in the area.
- Coastal Family Hub providing mental health support to children, young people and families in Whitstable, Herne Bay and Reculver.

All Wrapped Up is a project of Riverside Church working with local schools and partners to provide Christmas presents and food hampers to families in need. This year we mobilised 110 volunteers in our auditorium 'Winter Wonderland' to provide presents for over 500 children, with 267 families receiving food vouchers to feed over 1200 people.



## Doing Things Well

*This involves everything, from the way we relate to people, to the way we manage our facility & develop our organisation...*

**Staffing:** No additional staff were added to the team this year. We have sourced a new cleaning company which is providing an excellent service.

**Site:** Our new CCTV installation was completed with additional cameras now overlooking the carpark. New batteries were installed in our car park solar lights after the theft of the previous ones.

We were the recipients of B&Q Neighbourly grant where staff from our local store came and refreshed our front borders with new planting and installed new planters by our main entrance. We are grateful to B&Q for their generous contribution.

**Events:** Our conferencing and event hire continued to grow throughout 2023 with many organisations seeing Riverside as their venue of choice. We regularly see five-star ratings for our venue and service and feedback continues to be excellent for the whole team.

This year we extended the reach of our café services by launching a new website.

**On-Site Partners:** CXK uses Riverside as a local hub for their staff as they provide career guidance and training programmes to help young people build the skills and confidence they need to find a job.

**Volunteers:** We actively encourage people to volunteer their time and get involved, serving in some capacity.

Projects like All Wrapped Up mobilise hundreds of volunteer hours from within the church and the wider community to serve families in need.

We also have a large volunteer Sunday team which facilitate our welcoming and serving culture.

Riverside could not operate at the level we do without the dedication of our volunteers in the church, and from the local community, and we are hugely appreciative of their ongoing generosity.





## Connected Charities & Partner Projects



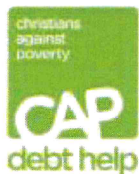
Riverside continues to be an active supporter of Churches Together in Whitstable (CTiW).



CTiW provide Street Pastors who patrol every Friday night providing a caring and reassuring presence on the streets.



is a joint church initiative to create a warm friendly place for the homeless in the area.



CTiW jointly support a local Christians Against Poverty (CAP) centre. CAP provides free debt counselling and additional life skills services.



Working in Romania to alleviate poverty, though partnership with churches.



OM's Ship Ministry is sharing knowledge, help and hope in and around the world's port cities.



Supporting charities who demonstrate their impact on the health & wellbeing of their community.



Coastal Family Hub provides mental health support to children, young people and families in Whitstable, Herne Bay and Reculver.



Inclusive Church is a network of churches, groups and individuals uniting together around a shared vision of church which celebrates and affirms every person and does not discriminate.



Riverside supports the work of Mission Aviation Fellowship which enables over 2,000 aid, development, and mission organisations to bring medical care, emergency relief, long-term development, and Christian hope to thousands of communities.



Riverside supports the work of Open Doors which is an international ministry serving persecuted Christians and churches worldwide.



CXK is a charity which supports children, young people, adults, and families and is one of our rental partners at Riverside.

# Strategic Report

## Business Review

Riverside Church is in a stable position both financially and in terms of attendance.

Our total source of income from all sources was £447,291.

Our expenditure totalled £545,731.

Our room hiring and cafe income generated income of £190,585.

Our financial statements at the rear of this report provide more information.

## Risk Management

We have systems of internal control which are designed to provide reasonable, but not absolute assurance against material misstatement or loss. They include: -

- an annual budget approved by the Trustees.
- regular consideration by the Trustees of financial reports.
- delegation of authority and segregation of duties.
- identification and management of risks.

We aim to review the main risks the church faces on a regular basis. The Trustees consider the key risks to a church like ours to be finances, safeguarding, health and safety and human resources. We employ staff with key skills in these areas. We also engage third party experts for advice when needed.

We believe that our internal financial controls conform to the guidelines issued by the Charity Commission.

## Investment Powers and Policy

Our Articles authorise us to invest our funds. Cash balances are currently held with HSBC Bank and Charity Bank. We operate a policy of keeping available funds within interest-bearing deposit accounts. We maintain a level of free reserves to mitigate against the risk that the charity experiences an unexpected event which would put us in financial difficulty.

This might include an event which would bring Riverside Church into disrepute; the premises being forced to close for an extended period of time; or a serious decline in the economic environment we operate in.



## Reserves Policy

We believe the appropriate level of unrestricted reserves should be based upon a proportion of our regular costs as follows:

- Four months of our long-term commitments, such as mortgage and utilities payments and the cost of running our Sunday services which would be a vital activity to maintain.
- Three months of medium-term commitments such as permanent staff costs and the monthly financial support we provide to partner charities.
- One month of short-term costs, including the day-to-day ministry activity of the church.

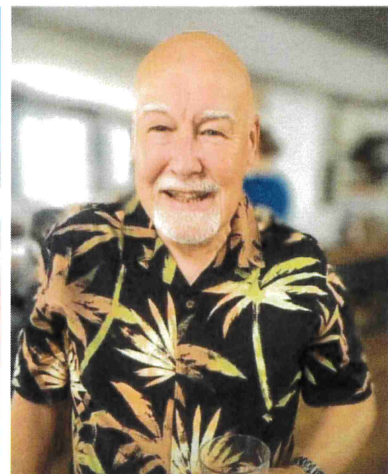
Our review has estimated this target level is £120,000. The reserves held as of 31 December 2023 are at this level. We review, on a 6-monthly basis, the level of reserves held. During the year, the Trustees conducted a full review of the reserves policy to ensure it remained up to date and relevant.

## Plans for the future

2023 was a year of expansion for Riverside building on the foundation of becoming an affirming church in 2022. We feel this new foundation has greatly increase our positive reputation in the community with many people seeking us out because of our inclusivity.

We are maturing as a caring expression of God's love into our coastland communities. Core values within the church such as trust and authenticity continue to grow, creating a safe environment for people to deepen relationships and explore faith whilst wrestling with life's questions.

We will continue to pursue our overall vision of being Good for Everyone through every aspect of our organisation. We want everyone who encounters Riverside to have a positive and encouraging experience, and we will continue to use all our resources to ensure this is the case. We believe our Youth Hub which will open in 2024 will be a huge help to the well-being of young people in our area.



## Information about Riverside Church

We believe that we comply with the Charity Commission guidance on public benefit and specifically the advancement of religion.

**Charity Number:** 1131872

**Company Number:** 6983393

**Registered Office:**

Riverside Church  
Thanet Way  
Whitstable  
CT5 3JQ

**Website:** [www.riversideuk.org](http://www.riversideuk.org)

### Governing Document & Organisational Structure:

We are a registered charity, constituted by means of our Memorandum and Articles of Association and operating as a church. We are also a company limited by guarantee, in which the company directors form the board of Trustees. The liability of each trustee in the event of winding up is limited to £10. The spiritual vision and direction of the church is set by the Senior Leadership Team who along with the Trustees form the membership of the company. The pay of the Senior Leadership Team staff is reviewed annually and benchmarked against pay levels in other churches of similar size and operation.

### Associated Professionals

#### Principal Bankers:

HSBC Bank  
9 Rose Lane  
Canterbury  
Kent  
CT1 2JP

#### Accountants:

Kreston Reeves LLP  
Chartered Accountants  
37 St. Margaret's Street  
Canterbury  
Kent  
CT1 2TU

#### Solicitors:

Parry Law Sols  
12-14 Oxford Street  
Whitstable  
CT5 1DE



## Information (continued)

### Trustees and Senior Staff

#### Trust Board (TB)

The Trustees who have served during the year and to date are as follows: -

Kirsteen Magee	Chair
Simon Bateson	Lead Pastor
Matt Haines	Facilities (Stepped down 06.03.23)
Darlene Bushell	Finance
Sean Carter	Health & Safety
Rebecca Swansbury	Safeguarding (Appointed 29.01.24)

The company secretary is Kim Wood.

#### Appointment of Trustees & SLT

New Trustees and SLT members are appointed when appropriate. Suitable candidates are generally selected from within the church and are considered based on their skills, experience, and sympathy with the aims of the church. Trustees and SLT members are appointed by the combined Trustees and Senior Leadership Team. These two teams constitute the membership of the charitable company. New Trustees have the opportunity of reviewing appropriate documents, including the management accounts, as part of their induction process.

#### Senior Leadership Team (SLT)

The day to day running of the church is delegated to the employed pastoral staff and operational staff. The staff are led by Simon & Keely Bateson (Lead Pastors) and their Senior Leadership Team which is as follows: -

Simon Bateson	Lead Pastor
Keely Bateson	Lead Pastor
Martin Franks	Assistant Pastor
Jacob Perrins	Assistant Pastor
Debbie Franks	SLT
Emma Perrins	SLT
Alan Chalkley	SLT
Alison Chalkley	SLT
Christine Gibson	SLT
Jackie Carter	SLT
Sean Carter	SLT & TB

# Information

(continued)

## Trustees' / Directors' Responsibilities Statement

The Trustees (who are also directors of Riverside Church for the purposes of company law) are responsible for preparing the Trustees' report and the financial statements in accordance with applicable law and United Kingdom Accounting Standards (United Kingdom Generally Accepted Accounting Practice).

Company law requires the Trustees to prepare financial statements for each financial year. Under company law, the Trustees must not approve the financial statements unless they are satisfied that they give a true and fair view of the state of affairs of the charitable company and of the incoming resources and application of resources, including the income and expenditure, of the charitable company for that period. In preparing these financial statements, the Trustees are required to:

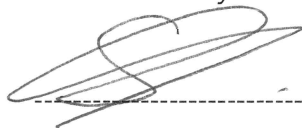
- Select suitable accounting policies and then apply them consistently;
- Observe the methods and principles in the Charities SORP;
- Make judgments and accounting estimates that are reasonable and prudent;
- State whether applicable UK Accounting Standards have been followed, subject to any material departures disclosed and explained in the financial statements;

- Prepare the financial statements on the going concern basis unless it is inappropriate to presume that the charitable company will continue in operation.

The Trustees are responsible for keeping adequate accounting records that are sufficient to show and explain the charitable company's transactions and disclose with reasonable accuracy at any time the financial position of the charitable company and enable them to ensure that the financial statements comply with the Companies Act 2006. They are also responsible for safeguarding the assets of the charitable company and hence for taking reasonable steps for the prevention and detection of fraud and other irregularities.

In preparing this report, the Trustees have taken advantage of the small companies' exemptions provided by section 415A of the Companies Act 2006.

This report was approved by the Trustees on ...01.07.24... and signed on their behalf by



Simon Bateson Trustee / Director



**Riverside Church**  
**(A company limited by guarantee)**

**Independent examiner's report**  
**For the year ended 31 December 2023**

**Independent examiner's report to the Trustees of Riverside Church ('the Charitable company')**

I report to the charity Trustees on my examination of the accounts of the Charitable company for the year ended 31 December 2023.

**Responsibilities and basis of report**

As the Trustees of the Charitable company (and its directors for the purposes of company law) you are responsible for the preparation of the accounts in accordance with the requirements of the Companies Act 2006 ('the 2006 Act').

Having satisfied myself that the accounts of the Charitable company are not required to be audited under Part 16 of the 2006 Act and are eligible for independent examination, I report in respect of my examination of the Charitable company's accounts carried out under section 145 of the Charities Act 2011 ('the 2011 Act'). In carrying out my examination I have followed the Directions given by the Charity Commission under section 145(5)(b) of the 2011 Act.

**Independent examiner's statement**

Since the Charitable company's gross income exceeded £250,000 your examiner must be a member of a body listed in section 145 of the 2011 Act. I confirm that I am qualified to undertake the examination because I am a member of the Association of Chartered Certified Accountants, which is one of the listed bodies.

I have completed my examination. I confirm that no matters have come to my attention in connection with the examination giving me cause to believe:

1. accounting records were not kept in respect of the Charitable company as required by section 386 of the 2006 Act; or
2. the accounts do not accord with those records; or
3. the accounts do not comply with the accounting requirements of section 396 of the 2006 Act other than any requirement that the accounts give a 'true and fair' view which is not a matter considered as part of an independent examination; or
4. the accounts have not been prepared in accordance with the methods and principles of the Statement of Recommended Practice for accounting and reporting by charities [applicable to charities preparing their accounts in accordance with the Financial Reporting Standard applicable in the UK and Republic of Ireland (FRS 102)].

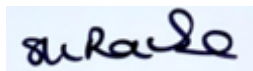
I have no concerns and have come across no other matters in connection with the examination to which attention should be drawn in this report in order to enable a proper understanding of the accounts to be reached.

**Riverside Church**  
**(A company limited by guarantee)**

**Independent examiner's report (continued)**  
**For the year ended 31 December 2023**

This report is made solely to the Charitable company's Trustees, as a body, in accordance with Part 4 of the Charities (Accounts and Reports) Regulations 2008. My work has been undertaken so that I might state to the Charitable company's Trustees those matters I am required to state to them in an Independent examiner's report and for no other purpose. To the fullest extent permitted by law, I do not accept or assume responsibility to anyone other than the Charitable company and the Charitable company's Trustees as a body, for my work or for this report.

Signed:



Dated:

**1 July 2024**

Samantha Rouse FCCA DChA

**Kreston Reeves LLP**  
Chartered Accountants  
Canterbury



**Riverside Church**  
**(A company limited by guarantee)**

**Statement of financial activities (incorporating income and expenditure account)**  
**For the year ended 31 December 2023**

	Note	Unrestricted funds 2023 £	Restricted funds 2023 £	Total funds 2023 £	Total funds 2022 £
<b>Income from:</b>					
Donations and legacies:	3				
Weekly offering		33,811	-	33,811	47,208
Donations eligible for Gift Aid		140,899	7,560	148,459	143,414
Gift Aid		40,148	-	40,148	35,875
Gifts & miscellaneous income		1,728	8,879	10,607	7,105
Deemed notional interest on loans		-	-	-	1,750
Other donations and legacies		4,242	13,181	17,423	29,002
Profit on disposal of fixed assets		-	-	-	146,382
Other trading activities	4	132,117	-	132,117	99,346
Investments	5	64,726	-	64,726	49,981
Other income	6	-	-	-	94,705
<b>Total income</b>		<b>417,671</b>	<b>29,620</b>	<b>447,291</b>	<b>654,768</b>
<b>Expenditure on:</b>					
Raising funds	7	44,922	-	44,922	32,289
Charitable activities:					
Other charitable activities		449,321	51,488	500,809	595,192
<b>Total expenditure</b>		<b>494,243</b>	<b>51,488</b>	<b>545,731</b>	<b>627,481</b>
<b>Net (expenditure)/income</b>		<b>(76,572)</b>	<b>(21,868)</b>	<b>(98,440)</b>	<b>27,287</b>
Transfers between funds	16	(20,572)	20,572	-	-
<b>Total transfers</b>		<b>(20,572)</b>	<b>20,572</b>	<b>-</b>	<b>-</b>
<b>Net movement in funds</b>		<b>(97,144)</b>	<b>(1,296)</b>	<b>(98,440)</b>	<b>27,287</b>
<b>Reconciliation of funds:</b>					
Total funds brought forward		1,328,409	3,801	1,332,210	1,304,923
Net movement in funds		(97,144)	(1,296)	(98,440)	27,287
<b>Total funds carried forward</b>		<b>1,231,265</b>	<b>2,505</b>	<b>1,233,770</b>	<b>1,332,210</b>

The Statement of financial activities includes all gains and losses recognised in the year.

The notes on pages 19 to 36 form part of these financial statements.

**Riverside Church**  
**(A company limited by guarantee)**  
**Registered number: 06983393**

**Balance sheet**  
**As at 31 December 2023**

	<b>Note</b>	<b>2023 £</b>	<b>2022 £</b>
<b>Fixed assets</b>			
Tangible assets	12	<b>1,289,969</b>	1,296,273
<b>Current assets</b>			
Debtors	13	<b>11,235</b>	9,319
Cash at bank and in hand		<b>392,275</b>	606,503
		<b>403,510</b>	615,822
Creditors: amounts falling due within one year	14	<b>(26,544)</b>	(41,755)
<b>Net current assets</b>		<b>376,966</b>	574,067
<b>Total assets less current liabilities</b>		<b>1,666,935</b>	1,870,340
Creditors: amounts falling due after more than one year	15	<b>(433,165)</b>	(538,130)
<b>Total net assets</b>		<b>1,233,770</b>	1,332,210
<b>Charity funds</b>			
Restricted funds	16	<b>2,505</b>	3,801
Unrestricted funds	16	<b>1,231,265</b>	1,328,409
<b>Total funds</b>		<b>1,233,770</b>	1,332,210

The Charitable company was entitled to exemption from audit under section 477 of the Companies Act 2006.

The members have not required the company to obtain an audit for the year in question in accordance with section 476 of Companies Act 2006.

The Trustees acknowledge their responsibilities for complying with the requirements of the Act with respect to accounting records and preparation of financial statements.

The financial statements have been prepared in accordance with the provisions applicable to entities subject to the small companies regime.

The financial statements were approved and authorised for issue by the Trustees and signed on their behalf by:

  
**Simon Bateson**  
 Trustee

Date: 01.07.24

The notes on pages 19 to 36 form part of these financial statements.



**Riverside Church**  
**(A company limited by guarantee)**

**Notes to the financial statements**  
**For the year ended 31 December 2023**

**1. General information**

Riverside Church is a charitable company limited by guarantee, incorporated in England and Wales with the company number 6983393 and the charity number 1131872.

The Charitable company's registered office is Riverside Church, Thanet Way, Whitstable, CT5 3JQ.

The financial statements have been prepared for the year ended 31 December 2023.

**2. Accounting policies**

**2.1 Basis of preparation of financial statements**

The financial statements have been prepared in accordance with the Charities SORP (FRS 102) - Accounting and Reporting by Charities: Statement of Recommended Practice applicable to charities preparing their accounts in accordance with the Financial Reporting Standard applicable in the UK and Republic of Ireland (FRS 102) (effective 1 January 2019), the Financial Reporting Standard applicable in the UK and Republic of Ireland (FRS 102) and the Companies Act 2006.

Riverside Church meets the definition of a public benefit entity under FRS 102. Assets and liabilities are initially recognised at historical cost or transaction value unless otherwise stated in the relevant accounting policy.

The Charitable company's financial statements are presented in Sterling and are rounded to the nearest Pound.

**2.2 Company status**

The charitable company is a company limited by guarantee. The members of the company are the Trustees and senior leadership team named in the Charity's information page. In event of the charitable company being wound up, the liability in respect of the guarantee is limited to £10 per member of the charitable company.

**2.3 Going concern**

The Trustees have considered the Charitable Company's level of reserves and future incoming resources and concluded that these are sufficient to enable the charity to continue its operations for the foreseeable future. Therefore the accounts have been prepared on a going concern basis.

**Riverside Church**  
**(A company limited by guarantee)**

**Notes to the financial statements**  
**For the year ended 31 December 2023**

**2. Accounting policies (continued)**

**2.4 Income**

All income is recognised once the Charitable company has entitlement to the income, it is probable that the income will be received and the amount of income receivable can be measured reliably.

The recognition of income from legacies is dependent on establishing entitlement, the probability of receipt and the ability to estimate with sufficient accuracy the amount receivable. Evidence of entitlement to a legacy exists when the Charitable company has sufficient evidence that a gift has been left to them (through knowledge of the existence of a valid will and the death of the benefactor) and the executor is satisfied that the property in question will not be required to satisfy claims in the estate. Receipt of a legacy must be recognised when it is probable that it will be received and the fair value of the amount receivable, which will generally be the expected cash amount to be distributed to the Charitable company, can be reliably measured.

Grants are included in the Statement of financial activities on a receivable basis. The balance of income received for specific purposes but not expended during the period is shown in the relevant funds on the Balance sheet. Where income is received in advance of entitlement of receipt, its recognition is deferred and included in creditors as deferred income. Where entitlement occurs before income is received, the income is accrued.

Income tax recoverable in relation to donations received under Gift Aid or deeds of covenant is recognised at the time of the donation.

Income tax recoverable in relation to investment income is recognised at the time the investment income is receivable.

Other income is recognised in the period in which it is receivable and to the extent the goods have been provided or on completion of the service.

**2.5 Expenditure**

Expenditure is recognised once there is a legal or constructive obligation to transfer economic benefit to a third party, it is probable that a transfer of economic benefits will be required in settlement and the amount of the obligation can be measured reliably.

Expenditure on raising funds includes all expenditure incurred by the Charitable company to raise funds for its charitable purposes and includes costs of all fundraising activities events and non-charitable trading.

Expenditure on charitable activities is incurred on directly undertaking the activities which further the Charitable company's objectives, as well as any associated support costs.

Grants payable are charged in the year when the offer is made except in those cases where the offer is conditional, such grants being recognised as expenditure when the conditions attaching are fulfilled. Grants offered subject to conditions which have not been met at the year end are noted as a commitment, but not accrued as expenditure.

All expenditure is inclusive of irrecoverable VAT.



**Riverside Church**  
**(A company limited by guarantee)**

**Notes to the financial statements**  
**For the year ended 31 December 2023**

**2. Accounting policies (continued)**

**2.6 Tangible fixed assets and depreciation**

A review of impairment of a fixed asset is carried out if events or changes in circumstances indicate that the carrying value of any fixed asset may not be recoverable. Shortfalls between the carrying value of any fixed assets and their recoverable amounts are recognised as impairments. Impairment losses are recognised in the Statement of Financial Activities incorporating the income and expenditure account.

Tangible fixed assets are initially recognised at cost. After recognition, under the cost model, tangible fixed assets are measured at cost less accumulated depreciation and any accumulated impairment losses. All costs incurred to bring a tangible fixed asset into its intended working condition should be included in the measurement of cost.

Depreciation is not charged on freehold land.

Depreciation is charged so as to allocate the cost of tangible fixed assets less their residual value over their estimated useful lives, .

Depreciation is provided on the following bases:

Freehold property	- Land - not depreciated, Buildings - over 20 years
Fixtures and fittings	- 5 years straight line
Computer equipment	- 3 years straight line
Other fixed assets	- Not depreciated

**2.7 Debtors**

Trade and other debtors are recognised at the settlement amount after any trade discount offered. Prepayments are valued at the amount prepaid net of any trade discounts due.

**2.8 Cash at bank and in hand**

Cash at bank and in hand includes cash and short-term highly liquid investments with a short maturity of three months or less from the date of acquisition or opening of the deposit or similar account.

**2.9 Financial instruments**

The Charitable company only has financial assets and financial liabilities of a kind that qualify as basic financial instruments. Basic financial instruments are initially recognised at transaction value and subsequently measured at their settlement value with the exception of bank loans which are subsequently measured at amortised cost using the effective interest method.

**2.10 Finance costs**

Borrowing costs associated with direct expenditure on properties undergoing major refurbishment are capitalised.

Interest is capitalised as from the commencement of the development work until the practical date of completion.

**2.11 Pensions**

The Charitable company operates a defined contribution pension scheme and the pension charge represents the amounts payable by the Charitable company to the fund in respect of the year.

**Riverside Church**  
**(A company limited by guarantee)**

**Notes to the financial statements**  
**For the year ended 31 December 2023**

**2. Accounting policies (continued)**

**2.12 Interest receivable**

Interest on funds held on deposit is included when receivable and the amount can be measured reliably by the Charitable company; this is normally upon notification of the interest paid or payable by the institution with whom the funds are deposited.

**2.13 Liabilities and provisions**

Liabilities are recognised when there is an obligation at the Balance sheet date as a result of a past event, it is probable that a transfer of economic benefit will be required in settlement, and the amount of the settlement can be estimated reliably.

Liabilities are recognised at the amount that the Charitable company anticipates it will pay to settle the debt or the amount it has received as advanced payments for the goods or services it must provide.

Provisions are measured at the best estimate of the amounts required to settle the obligation. Where the effect of the time value of money is material, the provision is based on the present value of those amounts, discounted at the pre-tax discount rate that reflects the risks specific to the liability. The unwinding of the discount is recognised in the Statement of financial activities as a finance cost.

**2.14 Taxation**

The Charitable company is considered to pass the tests set out in Paragraph 1 Schedule 6 of the Finance Act 2010 and therefore it meets the definition of a charitable company for UK corporation tax purposes. Accordingly, the Charitable company is potentially exempt from taxation in respect of income or capital gains received within categories covered by Chapter 3 Part 11 of the Corporation Tax Act 2010 or Section 256 of the Taxation of Chargeable Gains Act 1992, to the extent that such income or gains are applied exclusively to charitable purposes.

**2.15 Fund accounting**

General funds are unrestricted funds which are available for use at the discretion of the Trustees in furtherance of the general objectives of the Charitable company and which have not been designated for other purposes.

Designated funds comprise unrestricted funds that have been set aside by the Trustees for particular purposes. The aim and use of each designated fund is set out in the notes to the financial statements.

Restricted funds are funds which are to be used in accordance with specific restrictions imposed by donors or which have been raised by the Charitable company for particular purposes. The costs of raising and administering such funds are charged against the specific fund. The aim and use of each restricted fund is set out in the notes to the financial statements.

Investment income, gains and losses are allocated to the appropriate fund.

**Riverside Church**  
**(A company limited by guarantee)**

**Notes to the financial statements**  
**For the year ended 31 December 2023**

**2. Accounting policies (continued)**

**2.16 Critical accounting estimates and areas of judgement**

Estimates and judgments are continually evaluated and are based on historical experience and other factors, including expectations of future events that are believed to be reasonable under the circumstances.

*Tangible fixed assets*

The charity has recognised tangible fixed assets with a carrying value of £1,289,969 at the reporting date (see note 12). The assets are stated at their cost less provision for depreciation and impairment. The charity's accounting policy sets out the approach to calculating depreciation for immaterial assets acquired. For material assets such as land and buildings, the company determines at acquisition reliable estimates for the useful life of the asset, its residual value and decommissioning costs. These estimates are based upon such factors as the expected use of the acquired asset and market conditions. At subsequent reporting date the Trustees consider whether there are any factors such as technological advancements or changes in market conditions that indicate a need to reconsider the estimates used.

Where there are indicators that the carrying value of tangible assets may be impaired the charity undertakes tests to determine the recoverable amount of assets. These tests require estimates of the fair value of assets less cost to sell and of their value in use. Wherever possible, the estimate of the fair value of assets is based upon observable market prices less incremental cost for disposing of the asset. The value in use calculation is based upon a discounted cash flow model, based upon the charity's forecasts for the foreseeable future which do not include any restructuring activities that the charity is not yet committed to or significant future investments that will enhance the asset's performance. The recoverable amount is most sensitive to the discount rate used for the discounted cash flow model as well as expected future cash flows and the growth rate used for extrapolation purposes.



**Riverside Church**  
**(A company limited by guarantee)**

**Notes to the financial statements**  
**For the year ended 31 December 2023**

**3. Income from donations and legacies**

	<b>Unrestricted funds 2023 £</b>	<b>Restricted funds 2023 £</b>	<b>Total funds 2023 £</b>	<b>Total funds 2022 £</b>
<b>Donations</b>				
Weekly Offering	33,811	-	<b>33,811</b>	38,819
Donations eligible for Gift Aid	140,899	7,560	<b>148,459</b>	151,204
Gift Aid	40,148	-	<b>40,148</b>	36,010
Gifts & miscellaneous income	1,728	8,879	<b>10,607</b>	12,386
Deemed notional interest on loans	-	-	-	933
<b>Subtotal detailed disclosure</b>	<b>216,586</b>	<b>16,439</b>	<b>233,025</b>	<b>239,352</b>
Donations	3,242	8,181	<b>11,423</b>	1,523
Legacies	-	-	-	14,685
Grants	1,000	5,000	<b>6,000</b>	8,794
<b>Subtotal</b>	<b>4,242</b>	<b>13,181</b>	<b>17,423</b>	<b>25,002</b>
<b>Total 2023</b>	<b>220,828</b>	<b>29,620</b>	<b>250,448</b>	<b>264,354</b>
Total 2022	237,497	26,857	264,354	

**4. Income from other trading activities**

**Income from non charitable trading activities**

	<b>Unrestricted funds 2023 £</b>	<b>Total funds 2023 £</b>	<b>Total funds 2022 £</b>
Cafe income and other trading income	132,117	<b>132,117</b>	99,346
Total 2022	99,346	99,346	

**Riverside Church**  
**(A company limited by guarantee)**

**Notes to the financial statements**  
**For the year ended 31 December 2023**

**5. Investment income**

	<b>Unrestricted funds 2023 £</b>	<b>Total funds 2023 £</b>	<b>Total funds 2022 £</b>
Use of building	58,468	<b>58,468</b>	47,913
Investment income	6,258	<b>6,258</b>	2,068
<b>Total 2023</b>	<u>64,726</u>	<u><b>64,726</b></u>	<u>49,981</u>
<b>Total 2022</b>	<u>49,981</u>	<u>49,981</u>	

**6. Other incoming resources**

	<b>Unrestricted funds 2023 £</b>	<b>Total funds 2023 £</b>	<b>Total funds 2022 £</b>
Insurance income	-	-	94,705
<b>Total 2022</b>	<u>94,705</u>	<u>94,705</u>	

Insurance income relates to the proceeds received from the insurance claim, following the flooding of the premises in August 2021.

**Riverside Church**  
**(A company limited by guarantee)**

**Notes to the financial statements**  
**For the year ended 31 December 2023**

**7. Expenditure on raising funds**

**Fundraising trading expenses**

	<b>Unrestricted funds 2023 £</b>	<b>Total funds 2023 £</b>	<b>Total funds 2022 £</b>
Cafe expenses	44,922	<b>44,922</b>	32,289
	<hr/>	<hr/>	<hr/>
Total 2022	32,289	32,289	
	<hr/>	<hr/>	

**8. Analysis of grants**

	<b>Grants to Institutions 2023 £</b>	<b>Grants to Individuals 2023 £</b>	<b>Total funds 2023 £</b>	<b>Total funds 2022 £</b>
Mission support	23,057	4,354	<b>27,411</b>	21,257
	<hr/>	<hr/>	<hr/>	<hr/>
Total 2022	17,150	4,107	21,257	
	<hr/>	<hr/>	<hr/>	



**Riverside Church**  
**(A company limited by guarantee)**

**Notes to the financial statements**  
**For the year ended 31 December 2023**

**9. Analysis of expenditure by activities**

	<b>Activities undertaken directly 2023 £</b>	<b>Grant funding of activities 2023 £</b>	<b>Support costs 2023 £</b>	<b>Total funds 2023 £</b>	<b>Total funds 2022 £</b>
Charitable activities	365,882	27,411	107,516	<b>500,809</b>	595,192
Total 2022	425,983	21,257	147,952	595,192	

**Analysis of direct costs**

	<b>Total funds 2023 £</b>	<b>Total funds 2022 £</b>
Staff costs	<b>276,004</b>	247,753
Church Ministries	<b>34,155</b>	126,465
Equipment & maintenance	<b>16,295</b>	19,243
Insurance (church)	<b>4,918</b>	4,022
Utilities (church)	<b>29,006</b>	22,870
Other staff costs	<b>5,504</b>	5,630
<b>Total 2022</b>	<b>365,882</b>	425,983

**Riverside Church**  
**(A company limited by guarantee)**

**Notes to the financial statements**  
**For the year ended 31 December 2023**

**9. Analysis of expenditure by activities (continued)**

**Analysis of support costs**

	<b>Total funds 2023 £</b>	<b>Total funds 2022 £</b>
Depreciation	71,474	91,286
Photocopying/Storage/Postage	803	961
Professional fees	7,824	8,954
Catering	938	591
Music/Copyright fees/Equipment	1,552	1,490
Miscellaneous costs	(7,762)	17,736
Independent examiner's fee	2,615	1,950
Interest	30,072	24,984
<b>Total 2023</b>	<b>107,516</b>	<b>147,952</b>

**10. Staff costs**

	<b>2023 £</b>	<b>2022 £</b>
Wages and salaries	254,216	229,123
Social security costs	12,764	10,444
Contribution to defined contribution pension schemes	9,024	8,186
	<b>276,004</b>	<b>247,753</b>

The average number of persons employed by the Charitable company during the year was as follows:

	<b>2023 No.</b>	<b>2022 No.</b>
Employees	15	13

No employee received remuneration amounting to more than £60,000 in either year.

The church leadership team are considered to be key management personnel. The total compensation paid in respect of the key management personnel amounts to £106,929 (2022: £107,288).

**Riverside Church**  
**(A company limited by guarantee)**

**Notes to the financial statements**  
**For the year ended 31 December 2023**

**11. Trustees' remuneration and expenses**

Simon Bateson received remuneration in his capacity of Lead Pastor and not as a Trustee. This remuneration amounted to £54,832 (2022: £53,245).

During the year, no Trustees received any remuneration or other benefits (2022 - £NIL).

During the year ended 31 December 2023, no Trustee expenses have been incurred (2022 - £NIL).

**12. Tangible fixed assets**

	Freehold property £	Fixtures and fittings £	Computer equipment £	Other fixed assets £	Total £
<b>Cost or valuation</b>					
At 1 January 2023	1,631,455	95,983	147,452	27,954	1,902,844
Additions	-	9,557	-	55,613	65,170
At 31 December 2023	1,631,455	105,540	147,452	83,567	1,968,014
<b>Depreciation</b>					
At 1 January 2023	377,027	88,380	141,164	-	606,571
Charge for the year	64,073	2,492	4,909	-	71,474
At 31 December 2023	441,100	90,872	146,073	-	678,045
<b>Net book value</b>					
At 31 December 2023	1,190,355	14,668	1,379	83,567	1,289,969
At 31 December 2022	1,254,428	7,603	6,288	27,954	1,296,273

Freehold land of £350,000 in relation to the Riverside Campus has not been depreciated as its residual value is likely to exceed its valuation and therefore its economic useful life is likely to be infinite.

**13. Debtors**

	2023 £	2022 £
<b>Due within one year</b>		
Trade debtors	8,527	5,795
Tax recoverable	2,708	3,524
	11,235	9,319

**Riverside Church**  
**(A company limited by guarantee)**

**Notes to the financial statements**  
**For the year ended 31 December 2023**

**14. Creditors: Amounts falling due within one year**

	<b>2023</b>	<b>2022</b>
	<b>£</b>	<b>£</b>
Bank loans	<b>9,599</b>	17,364
Trade creditors	<b>3,452</b>	5,182
Other taxation and social security	<b>9,093</b>	16,104
Accruals and deferred income	<b>4,400</b>	3,105
	<b><u>26,544</u></b>	<b><u>41,755</u></b>

**15. Creditors: Amounts falling due after more than one year**

	<b>2023</b>	<b>2022</b>
	<b>£</b>	<b>£</b>
Bank loans	<b><u>433,165</u></b>	<b><u>538,130</u></b>



**Riverside Church**  
**(A company limited by guarantee)**

**Notes to the financial statements**  
**For the year ended 31 December 2023**

Included within the above are amounts falling due as follows:

	<b>2023</b>	2022
	£	£
<b>Between one and two years</b>		
Bank loans	<b>10,422</b>	18,122
	<u>          </u>	<u>          </u>
<b>Between two and five years</b>		
Bank loans	<b>36,936</b>	59,226
	<u>          </u>	<u>          </u>
<b>Over five years</b>		
Bank loans	<b>385,807</b>	460,782
	<u>          </u>	<u>          </u>

The aggregate amount of liabilities payable or repayable wholly or in part more than five years after the reporting date is:

	<b>2023</b>	2022
	£	£
Payable or repayable by instalments	<b>385,807</b>	460,782
	<u>          </u>	<u>          </u>
	<b>385,807</b>	460,782
	<u>          </u>	<u>          </u>

The amounts in bank loans relate to a re-mortgage from HSBC UK Bank PLC, and were previously used to purchase the site for the new church building. There is a guarantee in favour of HSBC UK Bank PLC over the property at Riverside Works in relation to this loan.

**Riverside Church**  
**(A company limited by guarantee)**

**Notes to the financial statements**  
**For the year ended 31 December 2023**

**16. Statement of funds**

**Statement of funds - current year**

	Balance at 1 January 2023 £	Income £	Expenditure £	Transfers in/out £	Balance at 31 December 2023 £
<b>Unrestricted funds</b>					
<b>Designated funds</b>					
General fixed reserve	100,000	-	-	20,000	120,000
Designated fixed asset fund	589,966	-	-	257,239	847,205
	<u>689,966</u>	<u>-</u>	<u>-</u>	<u>277,239</u>	<u>967,205</u>
<b>General funds</b>					
General funds	638,443	417,671	(494,243)	(297,811)	264,060
	<u>638,443</u>	<u>417,671</u>	<u>(494,243)</u>	<u>(297,811)</u>	<u>264,060</u>
<b>Total Unrestricted funds</b>	<u>1,328,409</u>	<u>417,671</u>	<u>(494,243)</u>	<u>(20,572)</u>	<u>1,231,265</u>
<b>Restricted funds</b>					
Building Development Fund	-	9,500	(30,072)	20,572	-
Herne Bay Hub Project	771	-	(771)	-	-
Defibrillator grant	31	-	-	-	31
Christmas project	2,999	20,120	(20,645)	-	2,474
	<u>3,801</u>	<u>29,620</u>	<u>(51,488)</u>	<u>20,572</u>	<u>2,505</u>
<b>Total of funds</b>	<u>1,332,210</u>	<u>447,291</u>	<u>(545,731)</u>	<u>-</u>	<u>1,233,770</u>

**Riverside Church**  
**(A company limited by guarantee)**

**Notes to the financial statements**  
**For the year ended 31 December 2023**

**16. Statement of funds (continued)**

**Transfers between funds**

Designated fixed asset fund - the transfer of £257,239 from unrestricted funds represents the decision by the Trustees to show separate the funds allocated to fixed assets less any associated liabilities.

General fixed reserve- the transfer of £20,000 received from unrestricted general funds is to reflect a decision by the Trustees to increase the level of fixed reserves to £120,000.

**Purposes of designated funds**

General Fixed Reserve - this represents funds set aside in accordance with the Charity's reserves policy.

Designated fixed asset fund - this represents the book value of the fixed assets less any associated liabilities and are deemed by the Trustees not to be freely available funds.

**Purposes of restricted funds**

Building Development fund (previously Phase 3 fund) - this represents amounts donated to the church in relation to the development of the Riverside Church site including the area known as Phase 3.

Herne Bay Hub Project - this represents amounts donated to the church in relation to the Herne Bay Hub Project.

Defibrillator grant - this represents amounts donated to the church in relation to the purchase of a defibrillator.

Christmas project fund- this represents amounts donated to the church in relation to the Christmas projects.

**Riverside Church**  
**(A company limited by guarantee)**

**Notes to the financial statements**  
**For the year ended 31 December 2023**

**16. Statement of funds (continued)**

**Statement of funds - prior year**

	Balance at 1 January 2022 £	Income £	Expenditure £	Transfers in/out £	Balance at 31 December 2022 £
<b>Unrestricted funds</b>					
<b>Designated funds</b>					
General fixed reserve	80,000	-	-	20,000	100,000
Designated fixed asset fund	810,901	-	-	(220,935)	589,966
	<u>890,901</u>	<u>-</u>	<u>-</u>	<u>(200,935)</u>	<u>689,966</u>
<b>General funds</b>					
General funds	403,944	627,911	(586,856)	193,444	638,443
	<u>403,944</u>	<u>627,911</u>	<u>(586,856)</u>	<u>193,444</u>	<u>638,443</u>
<b>Total Unrestricted funds</b>	<u>1,294,845</u>	<u>627,911</u>	<u>(586,856)</u>	<u>(7,491)</u>	<u>1,328,409</u>
<b>Restricted funds</b>					
Building Development Fund	-	10,340	(24,051)	13,711	-
Pantry Project	6,229	-	-	(6,229)	-
Herne Bay Hub Project	2,305	1,902	(3,436)	-	771
Defibrillator grant	31	-	-	-	31
Youth Fund	1,513	-	(1,522)	9	-
Christmas project	-	13,665	(10,666)	-	2,999
Hearing Fund	-	950	(950)	-	-
	<u>10,078</u>	<u>26,857</u>	<u>(40,625)</u>	<u>7,491</u>	<u>3,801</u>
<b>Total of funds</b>	<u>1,304,923</u>	<u>654,768</u>	<u>(627,481)</u>	<u>-</u>	<u>1,332,210</u>



**Riverside Church**  
**(A company limited by guarantee)**

**Notes to the financial statements**  
**For the year ended 31 December 2023**

**16. Statement of funds (continued)**

**Transfers between funds (prior year)**

Designated fixed asset fund - the transfer of £220,935 to unrestricted funds represents the decision by the Trustees to show separate the funds allocated to fixed assets less any associated liabilities.

General fixed reserve- the transfer of £20,000 received from unrestricted general funds is to reflect a decision by the Trustees to increase the level of fixed reserves to £100,000.

Pantry Project- the transfer of £6,229 to unrestricted funds represents a transfer to reflect that there is no remaining balance of restricted funds attributable to this fund, and therefore the restricted fund has ceased.

**Purposes of restricted funds (prior year)**

Pantry Project - this represents amounts donated to the church in relation to the Pantry Project.

Youth fund - this represents amounts donated to the church in relation to the Youth activities.

Hearing fund- this represents grants received in relation to helping fund hearing packs.

**17. Summary of funds**

**Summary of funds - current year**

	Balance at 1 January 2023 £	Income £	Expenditure £	Transfers in/out £	Balance at 31 December 2023 £
Designated funds	689,966	-	-	277,239	967,205
General funds	638,443	417,671	(494,243)	(297,811)	264,060
Restricted funds	3,801	29,620	(51,488)	20,572	2,505
	<u>1,332,210</u>	<u>447,291</u>	<u>(545,731)</u>	<u>-</u>	<u>1,233,770</u>

**Summary of funds - prior year**

	Balance at 1 January 2022 £	Income £	Expenditure £	Transfers in/out £	Balance at 31 December 2022 £
Designated funds	890,901	-	-	(200,935)	689,966
General funds	403,944	627,911	(586,856)	193,444	638,443
Restricted funds	10,078	26,857	(40,625)	7,491	3,801
	<u>1,304,923</u>	<u>654,768</u>	<u>(627,481)</u>	<u>-</u>	<u>1,332,210</u>

**Riverside Church**  
**(A company limited by guarantee)**

**Notes to the financial statements**  
**For the year ended 31 December 2023**

**18. Analysis of net assets between funds**

**Analysis of net assets between funds - current year**

	Unrestricted funds 2023 £	Restricted funds 2023 £	Total funds 2023 £
Tangible fixed assets	1,289,969	-	<b>1,289,969</b>
Current assets	401,005	2,505	<b>403,510</b>
Creditors due within one year	(26,544)	-	<b>(26,544)</b>
Creditors due in more than one year	(433,165)	-	<b>(433,165)</b>
<b>Total</b>	<b>1,231,265</b>	<b>2,505</b>	<b>1,233,770</b>

**Analysis of net assets between funds - prior year**

	Unrestricted funds 2022 £	Restricted funds 2022 £	Total funds 2022 £
Tangible fixed assets	1,296,273	-	1,296,273
Current assets	612,021	3,801	615,822
Creditors due within one year	(41,755)	-	(41,755)
Creditors due in more than one year	(538,130)	-	(538,130)
<b>Total</b>	<b>1,328,409</b>	<b>3,801</b>	<b>1,332,210</b>

**19. Pension commitments**

The Charity operates a defined contribution pension scheme. The assets of the scheme are held separately from those of the Charity in an independently administered fund. The pension cost charge represents contributions payable by the Charity to the fund and amounted to £9,024 (2022 - £8,186). At the balance sheet date, no contributions were due (2022: £1,300) and were included in creditors in the previous year.

**20. Related party transactions**

During the year, 5 (2022: 6) Charity Trustees have made donations to the Charity totalling £29,950 (2022: £33,483).

L Bushell, the daughter of D Bushell, a Trustee of the Charity was employed during the year. The total compensation she received was £22,931 (2022: £19,822) commensurate to this role.