

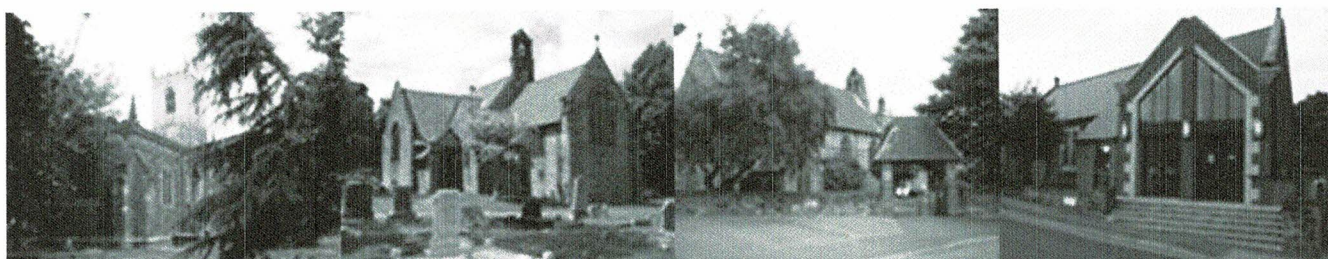
**The Parochial Church Council of the Ecclesiastical Parish of
Brinsworth St Andrew with Catcliffe St Mary, Treeton St Helen and
Tinsley St Lawrence (known as The Rivers Team)**

Charity No. 1131641



Annual Report & Accounts

Year Ended 31 December 2022



The Rivers Team

Contents

Page No.

- 1 -8 PCC report (including administrative information)
- 9 Independent Examiners Report
- 10 Statement of Financial Activities
- 11 Balance sheet
- 12 - 16 Notes to the accounts

The Rivers Team
PCC report
For the year ended 31 December 2022

Aims & Purposes

The Rivers Team PCC (known as the Team Council) has the responsibility of co-operating with the incumbent, in promoting in the ecclesiastical parish, the whole mission of the Church, pastoral, evangelistic, social and ecumenical.

The PCC is also specifically responsible for the maintenance of the Church Centre at 85 Bonet Lane, Brinsworth and St. Lawrence's Church Hall, St. Lawrence Road, Tinsley.

Objectives

In promoting in the parish the whole mission of the church, our vision and values are to be a Church that is alive and actively engaging in our communities, where people are coming to faith, growing in discipleship, worshipping Jesus, supporting each other and serving God through the gifts and power of the Holy Spirit.

- In our Fellowship we will show God's love by supporting and encouraging one another, living together in unity as the family of God, and welcoming all who come.
- In our Discipleship we will be committed in allowing the Holy Spirit to teach us how to follow Jesus in our daily lives.
- In our Ministry we will seek to serve others as Jesus did, with humility and compassion through the gifts and power of the Holy Spirit.
- In our Mission we will prayerfully seek for, and take, opportunities to share the good news of Jesus through word and deed.
- And in all that we do we will seek to be loving, passionate, excited, honest, adventurous, and inventive as we serve Christ together.

When planning our activities for the year the PCC has considered the Charity Commission guidance on public benefit and, in particular, the specific guidance on charities for the advancement of religion.

Activities

Presently the Team gathers for corporate worship at Tinsley, St Lawrence's Church each Sunday at 10.30am for 'Worship4All' and the service is live-streamed on our Facebook page. Over the last 12 months we have seen significant growth, particularly among young families, and this is a diverse and lively congregation. Our corporate worship is led by a team of musicians and worship leaders overseen by one of our Churchwardens.

In addition, there are mid-week services and missional activities in each of the 4 churches. The majority of these are staffed by lay volunteers and include:

- **'Coffee Pot'** - Tuesday mornings at St Mary's, Catcliffe is a coffee morning open to the community. This has been running for 9 years and has grown in numbers to around 40 people. This has been an important factor in strengthening links between the church and the community in Catcliffe.
- **'Drink and Think café'** – Tuesday mornings at Tinsley, St Lawrence's, is a coffee morning open to the community. This is a new venture that started about 6 months ago, to provide a place for the community to gather, talk and reflect. It is beginning to have good regular attendance.

- **'Wednesdays@St Andrews'** – weekly at St. Andrew's Brinsworth from 12.30pm to 3.30pm with a lunch followed by a short time of worship. The service is open to the community and church members, and is different each week, it is generally lay led. Up to 36 people attend regularly. This ministry particularly meets needs in the community around elderly isolation and bereavement support.
- **'Coffee Morning'** – Thursday mornings at St Helen's, Treeton, which is open to the community. Once a month this is followed by a reflective service of Holy Communion. St. Helen's is a grade 1 listed historic church, and Thursdays offer an open door for people to explore and learn about the building.
- **'Youth Group'** – Sunday evenings at St Mary's, Catcliffe. This new initiative is making good progress. It is currently largely made up of young people from families who attend church, but some of these bring along friends, and the vision is for this to be developed as an outreach ministry. Currently there are around 12 young people on role.
- **'Worship Jamming'** Once a month at St Lawrence's, Tinsley there is session where anyone who enjoys playing an instrument or singing can come along and join in.
- **'First Steps'** - Tuesday mornings at St Andrew's, Brinsworth, a pre-school group that meets during school term time, and is generally over-subscribed. Sessions include play, biblical stories, songs and provide the opportunity for parents and carers to connect and build new relationships.
- **'Charis'** – Monthly at St. Mary's, Catcliffe, an evening of informal worship, keynote teaching, sharing, prayer and ministry.

As well as our regular services and activities, we enable our community to celebrate and thank God at the milestones of the journey through life. Through baptism we thank God for the gift of life, in marriage public vows are exchanged with God's blessing and through funeral services friends and family express their grief and give thanks for the life which is now complete in this world and to commend the person into God's keeping. In 2022 across the Rivers Team we celebrated 2 weddings, 18 baptisms, and supported families through 35 funeral services and 14 services for the interment of ashes. Funerals and bereavement ministry is led by one of our Lay Readers, who is supported by a small team who assist with bereavement follow up and pastoral care.

The Team employs a Children and Families Worker through the Diocese of Sheffield Centenary Project, and has a team of volunteers who deliver our ministry to children. This includes children's ministry in church every Sunday morning at St Lawrence's, and our Children and Families Worker also leads the First Steps Group and on ministry in schools, visiting most of the primary schools across the 5 communities, especially, but not exclusively around the major festivals, supporting our schools deliver elements of the National Curriculum for Religious Education in Key Stages 1 and 2.

The Team has an administrative centre located next to St Andrew's church, which is staffed by volunteers who handle room hire, enquiries about life events and occasional offices, churchyards and other administrative tasks. As well as hosting 'Wednesdays@St.Andrew's' and 'First Steps', the Centre is used for training and by a variety of community groups and is available for hire by individuals from within our communities for parties and events.

Over the course of the year discipleship courses have been run, and The Rivers Team has planned a Parish Weekend Away at The Hayes Christian Conference Centre in May 2023.

Pastoral Care

Our Pastoral team is overseen by one of our Churchwardens and covers the pastoral care of our worshipping community, our hospitality and prayer teams, as well as identifying needs and developing pastoral ministry across the Rivers Team. This has included developing links with Rotherham Foodbank and the Mental Health charity Kintsugi Hope in order to respond to needs identified within our communities.

Deanery Synod

Three members of the PCC sit on the deanery synod. This provides the PCC with an important link between the parish and the wider structures of the church. This year the PCC has also focused its attention on the questions posed to parishes in the deanery around the Living in Love and Faith conversation around identity, sexuality, relationships and marriage.

Deanery Synod representatives are:

Linda Read
Sally Dunkley
David Vickers

Ecumenical Relationships

The Rivers Team is developing working relationships with Hope Church Rotherham (Affiliated to Assemblies of God UK) and Living Waters Christian Fellowship, Darnall (Affiliated to The Evangelical Alliance) and are identifying ways in which we can support one another in the mission and ministry of the Church. This includes support for food and clothing banks, training and equipping events and prayer.

Volunteers

We would like to thank our large team of volunteers who work so hard to make our church the lively and vibrant community it is.

Financial Review

The church has several different types of funds. The main funds are described below. The financial statements have been prepared in accordance with the accounting policies set out in notes to the accounts and comply with the charity's governing document, the Charities Act 2011 and the relevant version of the Statement of Recommended Practice applicable to charities preparing their accounts in accordance with the Financial Reporting Standard applicable in the UK and Republic of Ireland (FRS 102).

General Fund

The general fund includes the income and expenditure of the day to day operations of the church (with the exception of St Lawrence Church Hall and St. Andrew's Centre.

Overall general fund income increased by £3,688 to £86,389 (2021 - £82,701), primarily due to showing gross fees for occasional offices (2022 - £5,727).

The other main changes are:

- Giving income (planned and open plate collections excluding Gift Aid) has decreased by £3,328
- Tax recovered under the Gift Aid scheme totalled £12,550 (2021 - £11,644).
- Income from fees (excluding for occasional offices) increased by £970

Net rental income from the house at 18 St Georges Drive, which has been let on a short-term tenancy throughout 2022, produced a net rental income of £3,415 (2021 - £4,487) in the year after taking into account agents fees and other letting costs.

Part of the property was transferred at the 2021 year end to the Church Endowment Funds, to release funds for repairs and upgrade works at the property. The restricted funds associated with these endowments now receive a proportion of the rental income, which has reduced the net rental income for the General Fund. There was also a rent-free period agreed with the tenant as a goodwill gesture in respect of the disruption and inconvenience incurred during the repair and renovation works.

Expenditure increased to £95,487 (2021 - £64,384). The increase is primarily due to an increase in the contribution to the Diocesan Common Fund of £7,000 and the repairs to 18, St Georges Drive, costing the general fund £11,805. Other cost areas saw increases as well, notably utility costs and maintenance costs.

The General Fund produced an operating deficit of £9,098. Following the repair and upgrade works, the property was valued at £185,000. The General Fund's portion of this gain was an additional surplus of £35,713. The general fund made a transfer to the designated mission fund tithe of £6,347.

Excluding the one-off building costs (and property revaluation) but including the transfer to the Designated Mission Giving fund, the General Fund showed an operating deficit of £3,640.

Net transfers of monies to and from other funds, details of which can be found below, mean that general fund reserves now stand at £167,084 (2021 - £147,005), of which £20,263 is not invested in property (2021: £35,898).

Main Restricted, Designated and Endowment Funds

St Lawrence Church Hall - Designated Fund

The income and expenditure in respect of St. Lawrence's Hall are accounted for separately with any surplus transferred in full to the General Fund.

Income from lettings (2022 - £6,756, 2021 - £6,756) remained consistent to the prior year and expenditure (2022 - £859, 2021 - £1,933) decreased due to one off electrical work in the prior year.

The surplus generated of £5,897 (2021 - £4,822) was transferred to the general fund.

The Church Hall was valued at 31 December 2004 at £114,000 and is included in the balance sheet on this basis.

St. Andrew's Centre – Restricted Fund

Income from the use of the Centre totalled £7,521 (2021 - £1,484) as it started to recover from the impact of the COVID-19 pandemic. Income from the rental of the flat at 85 Bonet Lane decreased (2022 - £2,082, 2021 - £4,536) due to a hardship discount being offered on the rent. Overall, there was an increase in total receipts (2022 - £9,611, 2021 - £6,270).

The Rivers Team
PCC report
For the year ended 31 December 2022

Expenditure increased overall by £8,224 (2022 - £16,034, 2021 - £7,810) due to £6,520 of planned renovations to the flat, and increases in utility costs, resulting in a deficit of £6,423 (2021 - £1,539). This was covered by a transfer from the General Fund.

85 Bonet Lane was valued at 31 December 2004 at £125,000 and is included in the balance sheet on this basis.

The fund retained net current assets of £1,500 (2021 - £1,500).

Mission Giving (Designated fund) and Mission gift day appeals (Restricted fund)

The PCC is committed to give 10% (a tithe) of the money it received last year from giving to support various mission partners. It aims to hold gift days each year specifically for this and makes up any shortfall from General Funds. The sum of £6,347 has been set aside in a designated fund as a provision for mission giving for 2022. The PCC will review this and make a final decision on how much of this provision will be donated and will agree which mission organisations will be the beneficiaries.

£8,113 has been provided for in the restricted mission fund which remains unspent from previous years.

The PCC reviews its overall commitment to mission giving and the mission partners it supports on an annual basis. The PCC is hopeful that the commitment to mission giving in 2022 will be made in full, but all financial information and the financial health of the Church will be considered before such decisions are made.

Other Designated , Restricted, and Endowment Funds

Full details of other funds can be found in the notes to the accounts.

In order to streamline its accounting processes, the PCC is seeking to reduce the number of funds it holds. To this effect it has, with the agreement of the DCCs, adopted a policy of reducing the balances of restricted funds by calling on them first for any expenditure which legitimately meets the conditions of the fund. Where possible the PCC may look to amalgamate funds with similar objectives and conditions.

Reserves Policy

The free reserves as at 31 December 2022 were £20,263 (general funds excluding tangible assets). The PCC are going to set a formal reserves policy and target to be approved for the 2023 accounts, but consider the balance at the end of 2022 sufficient.

Investment Policy

The PCC has invested its endowment fund in property to generate rental income which is used for the purposes of the relevant restricted funds.

Surplus cash at bank is held in an interest bearing deposit account.

Structure, Governance and Management

In line with the Diocesan Strategy the Rivers Team operates on an oversight model of mission and ministry, with responsibility for various ministry areas delegated to focal ministers and ministry teams. The Incumbent is Revd. Philip Barringer (Team Rector) who serves on a House for Duty basis, and he was joined in Jan 2023 by Revd. Deborah Coyne (Team Vicar). They share in the oversight responsibility for the Rivers Team. There are 3 Churchwardens, each of whom takes responsibility for overseeing a particular aspect of the mission and ministry and leading a core team who minister across the benefice. (C. Collier – Pastoral Care, D. Smith - Worship and R.Edge – Fabric). Ministry, services and missional activities are largely led by lay volunteers.

The Team Council meets bi-monthly to discuss and make decisions on the finances, business, mission and ministry of the church. In 2022 the business of the Team Council included:

- Patterns of Services
- Mission Action Planning
- Appointment of a new Team Vicar
- The finances of the Team
- Reports from Church Wardens covering worship, pastoral care and upkeep of our buildings
- Centenary project updates
- Parish weekend 2023
- Small groups

Administrative Information

The Rivers Team is part of the Church of England, within the Diocese of Sheffield. We are one parish covering the five communities of Brinsworth, Catcliffe, Treeton, Tinsley and Waverley. The correspondence address is Rivers Team Church Office, 85 Bonet Lane, Brinsworth, Rotherham, S60 5NF.

The PCC is a body corporate (PCC Powers Measure 1956, Church representation Rules 2006) and was registered with the Charity Commission in September 2009, charity number 1131641. (Churches were previously excepted from registration).

The method of appointment of Parochial Church Council members is set out in the Church Representation Rules. The PCC is known as the Team Council and is comprised of up to twelve representatives of the laity elected by the annual parochial church meeting. These twelve elected representatives shall be up to three lay representatives from each community. In addition, ex-officio members include clergy, churchwardens and lay readers licenced to the Parish and the Team Council may co-opt up to two persons. Trustees are elected for a 3 year term.

**The Rivers Team
PCC report
For the year ended 31 December 2022**

PCC members who have served from 1st January 2022 until the date this report was approved are:

Ex-officio

Revd. Philip Barringer	Rector/Incumbent and Chair	
Revd. Deborah Coyne	Team Vicar	- From Jan 2023
Caryl Collier	Churchwarden	
Richard Edge	Churchwarden	
David Smith	Churchwarden	- Appointed May 2022
Monica Walker	Churchwarden	- Resigned Apr 2023
Edward Short	Churchwarden	- Resigned May 2022
Denise Cryer	Reader	
Denise Teal	Reader	

Co-opted members

Linda Read (DS)	Secretary
Pam Gregory	Treasurer

Elected Members

Kelly Abbott	- Elected Apr 2022	Vimbai Rashai	- Elected Apr 2023
	-Resigned June 2022	Julie Read	
Sarah Clayton		John Saxton	- Resigned May 2022
Jane Cripps	- Elected Apr 2023	Alison Shaw (DS)	- Resigned Apr 2023
Tara Cryer	- Resigned Apr 2023	Nicola Short	
Sally Dunkely (DS)		Vanessa Sibanda	- Elected Apr 2023
Iris Gahegan	- Elected Apr 2022	David Vickers	- Elected Apr 2022
Chris Norton			
Claire Peats	- Elected Apr 2022		

(Note DS indicates deanery synod representative)

Principal address

The Rivers Team Church Office
85 Bonet Lane
Brinsworth
Rotherham
South Yorkshire
S60 5NG

Independent examiner

Sarah Lightfoot FCA DChA
Seven Hills Accountants Limited
57 Burton Street
Sheffield
S6 2HH

PCC responsibilities in relation to the financial statements

The PCCs are responsible for preparing the PCC Report and financial statements in accordance with applicable law and United Kingdom Accounting Standards (United Kingdom Generally Accepted Accounting Practice).

The law applicable to charities in England and Wales requires the charity trustees to prepare financial statements for each year which give a true and fair view of the state of affairs of the charity and of the incoming resources and application of resources, of the charity for that period. In preparing the financial statements, the trustees are required to:

- Select suitable accounting policies and then apply them consistently;
- Observe the methods and principles in the applicable Charities SORP;
- Make judgements and estimates that are reasonable and prudent;
- State whether applicable accounting standards have been followed, subject to any material departures that must be disclosed and explained in the financial statements;
- Prepare the financial statements on the going concern basis unless it is inappropriate to presume that the charity will continue in business.

The trustees are responsible for keeping proper accounting records that disclose with reasonable accuracy at any time the financial position of the charity and to enable them to ensure that the financial statements comply with the Charities Act 2011, the applicable Charities (Accounts and Reports) Regulations, and the provisions of the Trust deed. They are also responsible for safeguarding the assets of the charity and taking reasonable steps for the prevention and detection of fraud and other irregularities.

The trustees are responsible for the maintenance and integrity of the charity and financial information included on the charity's website in accordance with legislation in the United Kingdom governing the preparation and dissemination of financial statements

The annual report and financial statements were approved by the PCC on 16/02/24

Signed on their behalf by



Rev P Barringer

Incumbent and PCC Chairman

Independent Examiner's report to the PCC of The Rivers Team ("the Charity")

I report to the PCC on my examination of the accounts of the Charity for the year ended 31 December 2022.

Responsibilities and basis of report

As the PCC of the Charity you are responsible for the preparation of the accounts in accordance with the requirements of the Charities Act 2011 ('the Act').

I report in respect of my examination of the Charity's accounts carried out under section 145 of the 2011 Act and in carrying out my examination I have followed all the applicable Directions given by the Charity Commission under section 145(5)(b) of the Act.

Independent examiner's statement

I have completed my examination. I confirm that no material matters have come to my attention in connection with the examination giving me cause to believe that in any material respect:

1. accounting records were not kept in respect of the Charity as required by section 130 of the Act; or
2. the accounts do not accord with those records; or
3. the accounts do not comply with the applicable requirements concerning the form and content of accounts set out in the Charities (Accounts and Reports) Regulations 2008 other than any requirement that the accounts give a 'true and fair view which is not a matter considered as part of an independent examination.

Your attention is also drawn to the fact that the charity has prepared the accounts (financial statements) in accordance with the relevant version of the Statement of Recommended Practice applicable to charities preparing their accounts in accordance with the Financial Reporting Standard applicable in the UK and Republic of Ireland (FRS 102) in preference to the Accounting and Reporting by Charities: Statement of Recommended Practice issued on 1 April 2005 which is referred to in the extant regulations but has been withdrawn. We understand that this has been done in order for the accounts to provide a true and fair view in accordance with UK Generally Accepted Accounting Practice.

I note the following matter which I do not deem to be material:

No fund comparisons have been included the movement in, or breakdown of designated, restricted or endowment funds. Similarly a breakdown by fund of the balance sheet (or balance sheet notes) has not been included. I do not think this missing information, which is technically required by the Statement of Recommended Practice, hinders the understanding of the users to the accounts.

I have no concerns and have come across no other matters in connection with the examination to which attention should be drawn in this report in order to enable a proper understanding of the accounts to be reached.

Signed: S Lightfoot
Sarah Lightfoot FCA DChA
Seven Hills Accountants Limited
57 Burton Street
Sheffield
S6 2HH

Date: 19 February 2024

The Rivers Team
Statement of financial activities
For the year ended 31 December 2022

	Notes	General funds £	Designated funds £	Restricted funds £	Endowment funds £	Total 2022 £	Total 2021 £
Income from:							
Voluntary giving							
Planned giving		38,942	-	2,299	-	41,241	47,579
Service collections		11,040	-	676	-	11,716	6,427
Other donations		966	1,200	49	-	2,215	1,981
Gift aid recovered		12,610	300	173	-	13,083	24,405
Grants		-	-	5,000	-	5,000	535
		<u>63,558</u>	<u>1,500</u>	<u>8,197</u>	<u>-</u>	<u>73,255</u>	<u>80,927</u>
Church activities							
Hall rent and room hire		500	6,756	2,784	-	10,040	8,276
Income from activities and events		873	-	4,737	-	5,610	(13)
Fees relating to weddings and funerals		18,033	-	1,178	-	19,211	11,336
		<u>19,406</u>	<u>6,756</u>	<u>8,699</u>	<u>-</u>	<u>34,861</u>	<u>19,599</u>
Investments							
Net income from rental property		3,415	-	2,972	-	6,387	9,024
Bank interest		10	-	13	-	23	1
Dividend income		-	-	-	-	-	690
		<u>3,425</u>	<u>-</u>	<u>2,985</u>	<u>-</u>	<u>6,410</u>	<u>9,715</u>
Total income		<u>86,389</u>	<u>8,256</u>	<u>19,881</u>	<u>-</u>	<u>114,526</u>	<u>110,241</u>
Expenditure on:							
Church activities							
Mission giving		-	6,347	260	-	6,607	5,240
Common fund contribution		47,000	-	-	-	47,000	40,000
Salary costs	2	-	-	11,487	-	11,487	10,794
Clergy and staff costs		983	-	635	-	1,618	1,412
Church expenses							
Worship and services		2,037	-	235	-	2,272	1,809
Mission & Ministry		178	1,050	2,167	-	3,395	109
Activities and events		153	-	783	-	936	105
Fees paid re weddings and funerals		5,895	-	-	-	5,895	-
Church running costs							
Church and hall utility costs		6,397	155	3,318	-	9,870	7,074
Church and hall insurance		7,862	604	1,322	-	9,788	9,608
Church and hall maintenance		5,575	-	691	-	6,266	3,641
Church and hall maintenance - significant costs		3,016	-	-	-	3,016	1,017
Churchyard costs		1,590	-	150	-	1,740	1,397
IT and office equipment		134	-	1,125	-	1,259	992
Other running costs		2,712	100	4,371	-	7,183	5,836
Governance costs							
Independent examination fee		150	-	-	-	150	150
Rental property costs		11,805	-	6,520	3,070	21,395	-
Total expenditure		<u>95,487</u>	<u>8,256</u>	<u>33,064</u>	<u>3,070</u>	<u>139,877</u>	<u>89,184</u>
<i>Operating surplus/deficit before gains/(losses)</i>		<i>(9,098)</i>	<i>-</i>	<i>(13,183)</i>	<i>(3,070)</i>	<i>(25,351)</i>	<i>21,057</i>
Net gains/(losses) on properties	4	35,713	-	-	9,287	45,000	-
Net gains/(losses) on investments		-	-	-	-	-	3,264
Net income/(expenditure)		<u>26,615</u>	<u>-</u>	<u>(13,183)</u>	<u>6,217</u>	<u>19,649</u>	<u>24,321</u>
Transfer of funds	7 and 8	(6,536)	450	6,086	-	-	-
Net movement in funds		<u>20,079</u>	<u>450</u>	<u>(7,097)</u>	<u>6,217</u>	<u>19,649</u>	<u>24,321</u>
Total funds brought forward		<u>147,005</u>	<u>114,000</u>	<u>197,006</u>	<u>28,891</u>	<u>486,902</u>	<u>462,581</u>
Total funds carried forward		<u>167,084</u>	<u>114,450</u>	<u>189,909</u>	<u>35,108</u>	<u>506,551</u>	<u>486,902</u>

The Rivers Team
Balance Sheet
As at 31 December 2022

	Notes	General funds £	Designated funds £	Restricted funds £	Endowment funds £	2022 £	2021 £
Fixed assets							
Tangible assets	4	146,821	114,000	125,000	38,179	424,000	379,000
Total fixed assets		<u>146,821</u>	<u>114,000</u>	<u>125,000</u>	<u>38,179</u>	<u>424,000</u>	<u>379,000</u>
Current Assets							
Balance at bank and cash		20,809	6,797	71,098	(3,071)	95,633	124,162
Debtors	5	3,254	-	2,424	-	5,678	3,348
Total current assets		<u>24,063</u>	<u>6,797</u>	<u>73,522</u>	<u>(3,071)</u>	<u>101,311</u>	<u>127,510</u>
Creditors: amounts falling due within one year	6	(3,800)	(6,347)	(8,613)	-	(18,760)	(19,608)
Net current assets		<u>20,263</u>	<u>450</u>	<u>64,909</u>	<u>(3,071)</u>	<u>82,551</u>	<u>107,902</u>
Total assets less current liabilities		167,084	114,450	189,909	35,108	506,551	486,902
Creditors: amounts falling due after more than one year		-	-	-	-	-	-
Total net assets		<u>167,084</u>	<u>114,450</u>	<u>189,909</u>	<u>35,108</u>	<u>506,551</u>	<u>486,902</u>
Represented By FUNDS							
General fund - net current assets (free reserves)		20,263	-	-	-	20,263	35,898
General fund - tangible fixed assets		146,821	-	-	-	146,821	111,107
Total general funds		<u>167,084</u>	<u>-</u>	<u>-</u>	<u>-</u>	<u>167,084</u>	<u>147,005</u>
Designated funds	7	-	114,450	-	-	114,450	114,000
Total unrestricted income funds		<u>167,084</u>	<u>114,450</u>	<u>-</u>	<u>-</u>	<u>281,534</u>	<u>261,005</u>
Restricted income funds	8	-	-	189,909	-	189,909	197,006
Endowment funds	9	-	-	-	35,108	35,108	28,891
		<u>167,084</u>	<u>114,450</u>	<u>189,909</u>	<u>35,108</u>	<u>506,551</u>	<u>486,902</u>

The financial statements were approved by the PCC on _____ and signed on their behalf by:

Rev P Barringer
Incumbent and PCC Chairman

1 Accounting Policies

a General

The financial statements have been prepared in accordance with the Statement of Recommended Practice: Accounting and Reporting by Charities preparing their accounts in accordance the Financial Reporting Standard applicable in the UK and Republic of Ireland (FRS 102) (second edition), the Financial Reporting Standard applicable in the United Kingdom and Republic of Ireland (FRS102), the Charities Act 2011 and in accordance with the Church Accounting Regulations 2006 governing the individual accounts of PCCs.

The accounts (financial statements) have been prepared to give a 'true and fair' view and have departed from the Charities (Accounts and Reports) Regulations 2008 only to the extent required to provide a 'true and fair view'. This departure has involved following the relevant version of the Statement of Recommended Practice applicable to charities preparing their accounts in accordance with the Financial Reporting Standard applicable in the UK and Republic of Ireland (FRS 102) rather than the Accounting and Reporting by Charities: Statement of Recommended Practice effective from 1 April 2005 which has since been withdrawn.

The PCC constitutes a public benefit entity as defined by FRS 102. The financial statements are prepared under the historical cost convention except for the valuation of investment assets. The financial statements are presented in sterling which is the functional currency of the charity and are rounded to the nearest £.

b Fund accounting

Unrestricted income funds comprise those funds which the PCC are free to use for any purpose in furtherance of the charitable objects. Unrestricted funds include designated funds where the trustees, at their discretion, have created a fund for a specific purpose.

Restricted funds are to be used for specific purposes as laid down by the donor.

Endowment funds have arisen as a result of gifts (originally of shares) made to the PCC, where it was primarily expected that the capital would be held to generate income, but could be spent if the trustees so determine. Details of these funds are given in note 9.

The accounts include all transactions, assets and liabilities for which the PCC can be held responsible in law. They do not include the accounts for other church groups that owe their affiliation to another body, nor those that are informal gatherings of Church members.

c Income

All income is recognised once the charity has entitlement to the income, it is probable that the income will be received and the amount of income receivable can be measured reliably.

Planned giving receivable under Gift Aid is recognised only when received. Income tax recoverable on Gift Aided donations is accrued for on the donation date. Grants and legacies to the PCC are accounted for as soon as the PCC is notified of its legal entitlement and the amount due is quantifiable and its ultimate receipt by the PCC reasonably certain.

Grants and legacies to the PCC are accounted for as soon as the PCC is notified of its legal entitlement, the amount is quantifiable and its ultimate receipt by the PCC is reasonably certain.

Rental income from the letting of church premises is recognised when the rental is due.

Bank interest is accounted for when receivable.

d Expenditure

Expenditure is recognised once there is a legal or constructive obligation to make a payment to a third party, it is probable that settlement will be required and the amount of the obligation can be measured reliably.

Liabilities are recognised as expenditure as soon as there is a legal or constructive obligation committing the charity to that expenditure, it is probable that settlement will be required and the amount of the obligation can be measured reliably. All expenditure is accounted for on an accruals basis and includes irrecoverable VAT.

The Diocesan common fund is accounted for when paid. Any amounts agreed by the PCC but unpaid at 31 December is provided for in these accounts as an operational (though not legal) liability and is shown as a creditor in the Balance Sheet.

Irrecoverable VAT is charged as a cost against the activity for which the expenditure was incurred.

1 Accounting Policies - continued

e Fixed assets

Consecrated land and buildings and movable church furnishings

Consecrated and benefice property is excluded from the accounts by s.10(2)(a) of the Charities Act 2011. Movable church furnishings held by the Vicar and Churchwardens on special trust for the PCC, and which require a faculty for disposal, are accounted as inalienable property unless consecrated. They are listed in the church's inventory which can be inspected at any reasonable time.

All expenditure incurred in the year on consecrated or beneficed buildings, individual items under (£2,500) or on the repair of movable church furnishings acquired before 1 January 2004 is written off.

Property

Property held for the church (whatever the purpose) is accounted for at the valuation as at 31 December 2004 unless significant improvement work has been done. See note 4 for more details).

f Property and investment gains and losses

All gains and losses are taken to the Statement of Financial Activities as they arise. Realised gains and losses on investments are calculated as the difference between sales proceeds and their opening carrying value or their purchase value if acquired subsequent to the first day of the financial year. Unrealised gains and losses are calculated as the difference between the fair value at the year end and their carrying value. Realised and unrealised investment gains and losses are combined in the Statement of Financial Activities.

g Financial instruments

The charity only has financial assets and financial liabilities of a kind that qualify as basic financial instruments. Basic financial instruments are initially recognised at transaction value and subsequently measured at their settlement value.

h Taxation

As a charity, the organisation is exempt from tax on income and gains falling within the available tax exemptions to the extent that these are applied to its charitable objects. No tax charges have arisen in the charity.

i Going concern

The financial statements have been prepared on a going concern basis as the PCC believe that the charity will continue to operate for 12 months from authorising these financial statements.

2 Staff costs, PCC remuneration and expenses, and the cost of key management personnel

	2022	2021
	£	£
Contribution to salary costs	<u>11,487</u>	<u>7,884</u>

The church does not directly employ any individuals. They reimburse the Diocese of Sheffield for the costs of the Centenary worker salary position.

PCC members were not paid and did not receive any other benefits in their capacity as PCC members in the year (2021: £nil) neither were they reimbursed expenses in their capacity as PCC members during the year (2021: £nil).

The key management personnel of the charity comprise the PCC members, which include the clergy and the Centenary Project worker. A common fund contribution of £47,000 was paid to the Diocese of Sheffield towards clergy remuneration (2021: £40,000). Other clergy expenses (including housing costs) and centenary worker expenses, were £1,618 (2021: £1,412).

3 Related party transactions

PCC members and (and families) donated in the region of £17,000 before Gift Aid without conditions. (Where a PCC member has only served for part of the year, donations are included for the whole of the financial year.)

Other related party transactions during the year were:

- The caretaker of St Andrews is close family of a member of the PCC. They were paid £3,457 on a self-employed basis during the year.

The church has trustees in common with the following charities, which are not deemed to be under the PCC control and are not included within these accounts:

- The Bellfield Charity, 247392, is set up to contribute to the upkeep and renewal of the church bells, and bell tower of St Helen's Church, Treeton.
- Treeton Educational Foundation, 529423, exists for the provision of grants to Treeton residents and Treeton Church of England School to assist children and young people in their education

4 Tangible assets

Valuation	Investment property £	St L: Church Hall £	St A: Centre and flat £	Total £
As at 1 January 2022	140,000	114,000	125,000	379,000
Revaluation	45,000	-	-	45,000
As at 31 December 2022	185,000	114,000	125,000	424,000

Investment property

This property is held to generate rental income. It is held by the general and endowment funds. It was revalued as at the end of the year to reflect major work done during the year and the change in market value.

St L: Church Hall

St Lawrence Church Hall is used for church activities. It is held by a designated fund. It was valued as at 31 December 2004 and is included in the accounts on this basis.

St A: Centre and flat

St Andrew's Centre and flat is a mixed use property - it is used for church activities but also includes a rental property which generates income. It is held by a restricted fund. It was valued as at 31 December 2004 and is included in the accounts on this basis.

5 Debtors

	2022 £	2021 £
Gift aid receivable	3,374	3,348
Prepayments	2,304	-
	5,678	3,348

6 Creditors: amounts falling due within one year

	2022 £	2021 £
Accruals	18,260	14,608
Deferred income	500	5,000
	18,760	19,608

7 Designated funds

	Balance at 1-Jan-22 £	Income £	Expenditure £	Transfers £	Balance at 31-Dec-22 £
Mission Giving	-	-	(6,347)	6,347	-
Training fund	-	1,500	(1,050)	-	450
St L: Hall activity	114,000	6,756	(859)	(5,897)	114,000
	114,000	8,256	(8,256)	450	114,450

Mission Giving

The PCC is committed to give 10% (a tithe) of the money it received last year from giving to support various mission partners. The sum of £6,347 has therefore been set aside from the general fund as a provision for mission giving. The PCC will review this and make a final decision on how much of this provision will be donated and will agree which mission organisations will be the beneficiaries.

Training fund

Monies given by individuals attending training courses has been set aside so the surplus can be spent on further training in the future.

St L: Hall activity

The income and expenditure in respect of St. Lawrence's Hall are accounted for separately with any surplus transferred in full to the General Fund. The surplus during the year is contributed to the general fund.

The Rivers Team

Notes to the financial statements - continued For the year ended 31 December 2022

8 Restricted funds

	Balance at 1-Jan-22 £	Income £	Expenditure £	Transfers £	Balance at 31-Dec-22 £
Centenary fund	20,101	2,047	(13,273)	-	8,875
Supporting communities grant	-	5,000	(3,367)	(337)	1,296
Specific mission giving	-	30	-	-	30
Macedonia fund	-	1,120	-	-	1,120
Parish Weekend fund	-	-	-	-	-
St A: Centre activity	126,500	9,611	(16,034)	6,423	126,500
St M: Churchyard restoration	1,163	1,178	-	-	2,341
St H: Restoration fund	45,839	-	-	415	46,254
St H: MR&H Atkinson Trust	-	198	-	(198)	-
St H: Belfield Fund	-	217	-	(217)	-
St L: Education fund	1,373	127	(260)	-	1,240
St L: fabric fund	156	169	-	-	325
St L: poor fund	1,690	184	(130)	-	1,744
St L: Eric Bower fund	184	-	-	-	184
	197,006	19,881	(33,064)	6,086	189,909

Centenary fund

The Centenary project is a Diocesan initiative for the deployment of Youth and Childrens and Families workers to churches in the Diocese of Sheffield. We currently have a ½ time Childrens and Families worker via the Centenary Project.

Supporting communities grant

A £5,000 grant from Rotherham Council (via Voluntary Action Rotherham) to assist in the recovery from the pandemic. Costs covered include computer equipment upgrade and 2 years of internet provision.

Specific mission giving

Monies raised from 2020 and 2021 gift days, with a contribution from the PCC (a tithe). A creditor of £8,113 remains unspent at the year end.

Macedonia fund

This fund is to provide financial assistance to any member of the Rivers Team congregations who finds themselves in financial difficulty and unable to meet an immediate essential bill or cost.

Parish Weekend fund

Monies given towards the costs of Team parish weekends.

St A: Centre activity

All income and expenditure relating to St Andrew's Centre is held in this restricted fund, along with the underlying asset. The deficit of £6,423 has been supported from the general fund.

St M: Churchyard restoration

This fund is for the expansion, development and improvement of the Churchyard at St. Mary's, Catcliffe. Whilst the original work was done some time ago, the fund still receives related funeral fee income so that when there is sufficient money the PCC will look to get the paths upgraded, possibly introduce some bases for memorial benches, tree works, repairs to walls and any other major maintenance works.

St H: Restoration fund

For repairs to the fabric of St Helen's Church, Treeton - either interior or exterior. This fund received the property income of the St Helen's endowment funds (see below).

The below 5 funds are connected to endowment funds - the income generated from endowment investments can be used for the following purposes:

St H: MR&H Atkinson Trust	for the maintenance of the general fabric St Helen's
St H: Belfield Fund	for the upkeep and renewal of the church bells, and bell tower of St Helen's Church, Treeton
St L: Education fund	for the resourcing of Christian teaching and education
St L: fabric fund	for maintaining the fabric of St. Lawrence Church
St L: poor fund	to provide assistance for those in Tinsley in Financial hardship
St L: Eric Bower fund	to maintain a certain grave & provide flowers in church

The Rivers Team
Notes to the financial statements - continued
For the year ended 31 December 2022

9 Endowment funds

	Balance at 1-Jan-22	Income	Expenditure	Investment revaluation	Balance at 31-Dec-22
	£	£	£	£	£
St H: MR&H Atkinson Trust	6,898	-	(733)	2,217	8,382
St H: Belfield Fund	6,433	-	(684)	2,068	7,817
St L: Education fund	4,131	-	(439)	1,328	5,020
St L: fabric fund	5,456	-	(580)	1,754	6,630
St L: poor fund	5,973	-	(634)	1,920	7,259
	28,891	-	(3,070)	9,287	35,108

The endowment funds exist primarily as the result of shares left in wills to generate income for specific purposes. The use of the income of each endowment is listed in the previous note.

During 2021 the shares were sold to enable upgrades to the investment property (which took place during 2022) - each endowment fund now holds a fixed percentage of the value of the property.