



**disability**  
**nottinghamshire**

Charity Number: 1131621

Registered in England: 6972820

Annual Report of  
Disability Nottinghamshire  
1st April 2020 to 31st March 2021

*"A hero is an ordinary individual who finds the strength to persevere and endure in spite of overwhelming obstacles." - Christopher Reeve*



# Contents

<b>The Aims and Objectives of Disability Nottinghamshire</b>	<b>3</b>
<b>Chairman's foreword</b>	<b>6</b>
<b>Social Media</b>	<b>7</b>
<b>Board Reports</b>	<b>9</b>
<b>What Our Clients Say</b>	<b>18</b>
<b>A Volunteer Journey's</b>	<b>19</b>
<b>A big thank you to our funders</b>	<b>21</b>

Please note the following are incorporated in the Trustees' Report and Financial Statements for the year ending 31 March 2021. This report can be viewed on our website or is available upon request in different formats as required.

- **Administrative Information**
- **Structure, Governance, and Management**
- **Objectives and Activities for Public Benefit**
- **Achievements and Performance**
- **Financial Review**
- **Independent Examiner's Report to the Trustees**



## The Aims and Objectives of Disability Nottinghamshire

Promotion of independence and choice for all disabled people in Nottinghamshire by the provision of free, confidential, impartial advice and advocacy on any aspect of disability to disabled people, their families, friends, carers, professionals and students. We aim to ensure that all disabled people have the same choice, freedom and control of their lives as everybody else - by providing help to access relevant services, welfare benefits and appeals, peer support, money management and disability rights. We also have developed "Our Voice" community choir, which is open to all, plus a range of social activities.

Our work aims are to improve the health and wellbeing of disabled people, their families, friends and carers. We are a User Led Organisation, managed mainly by volunteers (18 in total) who undertake a variety of tasks across the Charity, including management, supervision and service delivery. Volunteers are recruited from local communities. The direction and development of services is undertaken in consultation with the diverse community we represent.



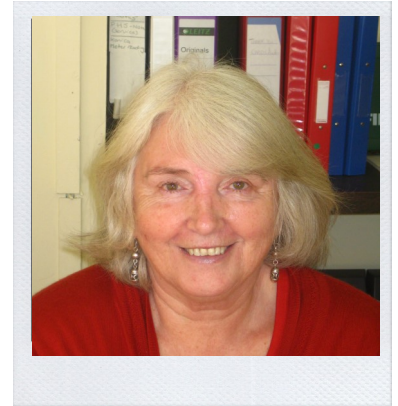
## Chairman's statement for the year ending 31 March 2021

Welcome to Disability Nottinghamshire's Annual report.

Throughout the past year the Charity have continued to remain focused on providing support to enable disabled people and all those with chronic long term illness within our area of activity to exercise choice and control within their lives by continuing to provide a range of advice and support services.

No doubt the last year has been incredibly challenging due to the global pandemic. The country has been placed in lockdown at various times resulting in changes to Government Guidance and the adoption of it.

The charities response to all of this was fleet of foot, showing agility, and ability to cope and carry-on delivering services.



I want to recognise, as a user-led charity, the work of our volunteers and small staff team.

As a team they showed great humour, patience, commitment, and flexibility to maintain services, working from home, learning new skills and increasing liaison with our colleagues across the community, voluntary and statutory services to ensure our service users could access them more easily. All services have been delivered by telephone, social media and zoom.

Internally the Charities Advice Team "WhatsApp" group ensured good internal communication, alongside staff and volunteer support zoom meetings.

Trustee Directors, who are also operational volunteers have shown incredible resilience, working together via zoom board meetings, discussions and briefing notes to ensure charity governance was not compromised.

Within the above framework, we continued consultation and feedback with our service users, we have strived to maintain and develop services. There has been an ever-increasing demand for welfare benefits and appeals advice, information services, buddying and befriending support across the community we serve.

continued



We have seen an increase in requests for;

- Help to complete forms
- Welfare Benefits/Debt Management
- Disability advice
- Requests for help with medication and referrals to food banks
- Help with Appeals
- Buddying and befriending
- Social and Peer group support activities
- Help to cope with the challenges of social isolation

In addition, the charity introduced 6 short information videos on a range of topics plus 3 chair-based exercise videos across the charity's social media accounts. Traditionally our services have always been delivered face to face. This was a new initiative for staff and volunteers, and we were very surprised and delighted with the feedback from service users. With increased visits to our web site and social media to a total of 1500 hits, thus identifying a new service development to plan.

There has also been and will continue to be an increased coordination with partner organisations to tackle our shared challenges and to meet the needs of diverse communities across Nottinghamshire.

As a charity we now find ourselves standing at a crossroads. The vaccine campaign is under way and there is a slow move to release government restrictions.

We have endeavoured to operate our organisation as effectively and efficiently as possible. The impact of the pandemic has reduced income and opportunities to fund raise. Therefore, without additional funding we could not operate and are very thankful to the financial support we receive from all our donors, fundraises and grant funders, this is not only critical to paying our rent, accommodation, utilities but vital to the community we serve in providing and developing relevant services. The Charity recognises that funding grants are short term, however, always try to work toward sustainability of them post-funding by promoting a well-trained volunteer base.

continued



We rely on the hard work and dedication of both a small staff team and the many volunteers who contribute in so many ways to the work and success of the Charity. The impact of our work goes far beyond those we help directly and includes families, friends, and carers.

### Future Plans

We have and will continue to face evolving and new issues because of the pandemic, our data has highlighted the economic impact of Coronavirus which will have significant impact on the charity and its service users in the coming year. It is clear our planning will need to reflect and evolve the rapidly changing world the disabled person now faces and is much changed from when our existing strategy was originally developed. We have a constantly changing society and its values, the now prevalent use of the Internet and the advancement of social media. We know we need to continue to expand on our previous consultation process to ensure that we fully understand the impact of the increasing restrictions on Local Authority and Health service spending within the community.

The Charity plans to continue the activities outlined above in the forthcoming financial year subject to obtaining satisfactory funding. The financial hazards, risks and challenges we have experienced and will continue to face with the Covid pandemic even following the easing of Government Restrictions and the resulting constraints on resources, will be constantly reviewed. The direct focus of our work will be to continue to support, empower the community we represent offering person centred support as well as embracing technology.

A new strategic plan (2022 to 2025) consultation has commenced in 2021. It is important that the community we represent has a voice, and services are maintained, designed, and developed with them not for them. We will also continue to seek funding to develop plans and services identified within this work, working wherever possible with other partners to support delivery of quality services. There will also be focus on volunteer and Board member recruitment from diverse communities.

Finally, we believe that equal access to our services is vital for our success and to community wellbeing. Therefore, will continue to strive to learn, adapt and break down barriers.

Lana Carter

L Carter. Chairman

Signed for and on behalf of the Board of Trustee Directors of Disability Nottinghamshire



# Social Media

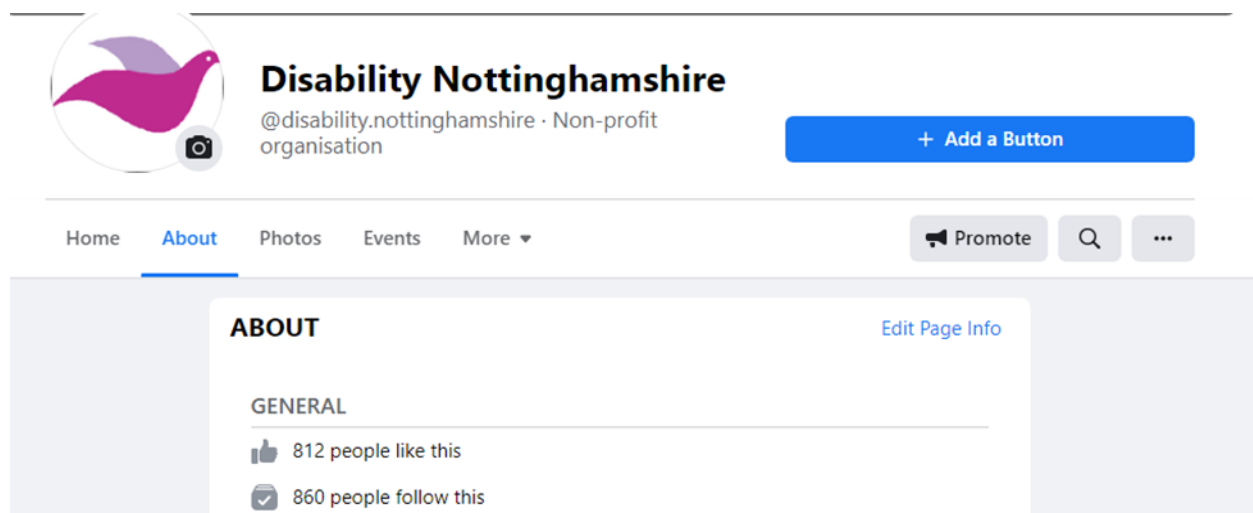
## Instagram



## Twitter



## Facebook



### DID YOU KNOW.....

Our Facebook page now has 860 people following it and has received over 1600 interactions in this reporting period. We update our Facebook weekly with useful information about us and any other relevant information about disabilities. You can find us by searching for Disability

### AND .....

On Twitter we now have 371 followers and have been using it to post out regular updates about our work. Find us on twitter @DisabilityNotts.







disabilitynottinghamshire

Edit Profile



38 posts 67 followers 67 following

Disability Nottinghamshire

Registered charity promoting the independence & choice of all persons with disabilities.

<http://www.surveymonkey.co.uk/r/7vpwccfr/>

[www.disabilitynottinghamshire.org.uk](http://www.disabilitynottinghamshire.org.uk)



Purple Tues...

POSTS

IGTV

SAVED

TAGGED



Disability Notts

282 Tweets

# disability nottinghamshire



Edit profile

**Disability Notts**

@DisabilityNotts

We provide a free, confidential and independent advice service relating to any aspect of disability.

📍 Mansfield, Nottinghamshire, UK [disabilitynottinghamshire.org.uk](http://disabilitynottinghamshire.org.uk)

📅 Joined September 2010

121 Following 371 Followers





## CORE Information and Advice

Funded and supported through Nottinghamshire County Council and The Coalfield Regeneration Trust, Disability Nottinghamshire adapted and delivered through the pandemic to support services-users with welfare benefits advice, form fill support, appeals advice, signposting plus and access to general advice.

With the pandemic we found that our services increased as a result of the lockdown and our services-users required not only practical advice but also emotional support. Many were sheltering, isolating and alone. It is not surprising that approximately 70% of service-users we spoke to declared an increase in mental health issues, particularly depression and anxiety. During monitoring and follow-up calls, one in three service-users told us they did not have access to online information or the skills. Therefore, our person centred approach has been a lifeline to many.

We have been working closely with the statutory voluntary community sector and have taken referrals from a variety of organisations, i.e. Mansfield CVS, Job CentrePlus, GP surgeries, Community Support Workers and Citizen Advice Bureau's, this tells us that Disability Nottinghamshire can offer the unique support required relating to people with disability/and or long term chronic illness. Any referrals we have made on behalf of services-users to provide them with wider access and support has been followed up to ensure they have received the right levels of support was received.

To keep in touch with our online services-users via Facebook, Instagram and our own website we have created information and advice videos, these have included:-

Welfare Benefits

Access

Exercise videos

Covid 19 information

Transport

This has been received with positivity and no negative comments. The total number of hits was 1510 views and likes. This is something our organisation will endeavour to continue to increase the reach and scope of the charity.



Ivan Smith



Michele Baird

Michele Baird  
Disability Advisor



## Service-Users Case Studies

### Case Study 1

“Mr and Mrs A” telephoned Disability

Nottinghamshire asking for help to complete their Personal Independence Payment (PIP) forms as they were migrating from Disability Living Allowance.

We helped them both to fill the forms out and they had their face-to-face assessments.

They were both successful and both awarded Enhanced Mobility Standard Daily Living.

This entitled them both to a disability premium which went on to help them claim housing benefit and council tax benefit, this generated a financial worth of over £15,000.

Disability Nottinghamshire would not be able to continue this good work without the help and support of our volunteers who play a vital role in the delivery of the service.



Michele Baird

Disability Advisor

### Case Study 2

Client A had claimed Personal Independence Payment (PIP) from 21/03/2021 and then it was disallowed following both the initial claim and the mandatory reconsideration. I advised Client A about an appeal to the Tribunal Service, which Client A did, and on 23/11/2021 following a telephone call from DWP, the DWP revised their decision without having to attend a tribunal and awarded both components (daily living and mobility) at standard rates from 21/03/2021. The outcome generated a financial worth of £7872.80 per annum.

As a result, Client A's partner could then claim Carers Allowance from 21/03/2021 until qualifying for State Pension.

Ivan



## Pandemic Emergency Funding 2020—2021

### **The National Lottery Community Fund**

When lockdown happened The National Lottery Community Fund invested to enable Disability Nottinghamshire to purchase laptops, along with moving to a Cloud based system and support which allowed members of our team to carry on delivering the service remotely.

### **NCC Emergency 2020**

Nottinghamshire County Council provided additional funding in response to COVID19, enabling Disability Nottinghamshire to provide additional cover and response to service-users during the pandemic.

### **NCF Wheatcroft Fund**

NCF Wheatcroft supported Disability Nottinghamshire with grant funding to provide the administration of volunteer support and supervision, along with funds to produce accessible information via social contact resources.

### **NCF Thomas Farr**

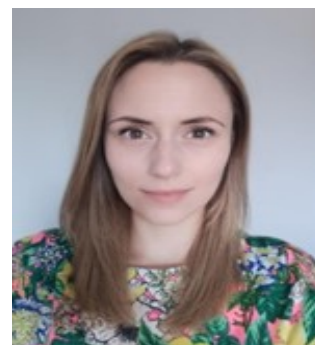
NCF Thomas Farr supported Disability Nottinghamshire with grant funding to provide administration costs to facilitate and support consultation via social media.

Thank you.



## “Our Voice” Community Choir

“Our Voice” community choir aims to unite people through music and showcase the potential of people with disabilities, raising public awareness of the skills and abilities of people with disabilities, and supporting the development of stronger social networks. The choir is inclusive regardless of singing ability and is open to anyone who has a disability or long-term health condition as well as their carers, family and friends living in Mansfield and the surrounding areas.



This year was challenging for the choir, as it was for everyone. Whilst the choir was rehearsing wartime songs in preparation for a VE Day event organised by MWCDG at Turner Hall, Covid-19 restrictions meant that the choir had to cease meeting and all future events were cancelled.

“Our Voice” choir evolved during lockdown. Some members joined a WhatsApp group to be able to keep in touch and many took part in videocalls. Members continued to embrace remote methods of engaging with each other, including taking part in a Zoom party and quiz for Christmas 2020. A playlist was created on YouTube and Spotify to encourage members to carry on singing, even though many opted out of online rehearsals due to technical limitations. The priority became supporting all members of the choir, many of them isolated, and the friendships built between members provided vital connections. Despite the challenges this year has presented, it has been inspiring to witness how a small group of individuals have supported each other.

Robyn Gargas



## #ConnectwithDN Project.

### Funded by the National Lottery Community Fund

November 2019 to November 2020

#### Overview

This was a one-year pilot project to develop and deliver a fully accessible pop-up social hub in Mansfield, initially one day a week,

The target audience being disabled people and people with existing chronic long-term health problems, their carers, families, and friends.

The project met 2 funding priorities (1) bringing people together building strong relationship in and across Mansfield district, and (2) enabling more people to fulfil their potential to address issues at the earliest time.

Initially, a part time project development worker was required, however by the project end, the intention was the Hub would continue to develop as a User Led group with volunteer support.

The hubs provided an informal, welcoming, and safe environment where people could meet and share their challenges, experiences, and solutions informally over 'tea and cake'. Acting as a 'one-stop shop' for advice and support, on a drop-in or appointment basis. All our services were available, welfare benefits advice, appeals, form fills, access advice, peer mentoring, training/workshops, volunteering opportunities, "Our Voice" Community Choir, Sign Posting Plus and Money Management.

The Project support worker and volunteers assisted with meeting an individual's immediate needs and worked with service users in other areas that they identify as impacting on their life including health and wellbeing, employment, finances, loneliness, and social networks.

In this way, the project helped people build confidence, relationships, and a sense of community with others who have similar life experiences, encouraging people to work together to tackle their problems, propose and develop solutions and achieve mutual goals.

continued



Most importantly, the learning and activities were driven and developed by its Users, who facilitated, non-prescriptive solutions and support.

The project aimed to utilise existing services and organisations, strengthen current and develop new working relationships across the voluntary and community sector, health, and social care services. It helped individuals to access local services through signposting, supporting them to make contact, and if appropriate a volunteer could initially attend services with them, until they felt confident to be independent.

Everything that Disability Nottinghamshire does and stands for as a User-Led Organisation (ULO), is led by its service users, as a ULO, we provide added value both from our local networks, and our ability to represent the voice of real service users who know what works for them.

### **The project had been designed following:**

- Use of social media
- Analysis of our service users wants, needs, and aspirations
- Weekly service user feedback contact
- Online survey monkey
- Membership consultation

Overall analysis showed good support for existing services, however a need had been expressed for a safe and comfortable environment in which to mix with others – to discuss the issues they face, to get advice and support, and to reduce loneliness – all under one roof. People will know about the service via the feedback response to the above. Disability Nottinghamshire is committed to ensuring full user involvement in service design, development, and delivery. We continued to seek and respond to regular feedback from the project's beneficiaries, through face-to-face meetings and questionnaires throughout the project.

### **April 2020 to November 2020 (end of project)**

Having had a fantastic start to the project in November 2020 and achieving all the goals set out above including providing activities and, in some cases, essential meals, plus physical hubs (meeting places) were established at Ladybrook Community Centre and the Four Seasons Shopping Centre (community hub) and a constant core of approx. 10 participants attended these sessions.

continued



With the arrival of Covid 19 everything changed, we quickly had to respond to this crisis both for DN and the people involved in the project. The decision was taken to suspend all face-to-face activities and instead switch to social media and telephone support.

We also commissioned several chair based keep fit video's available by social media and internet these were very well received.

We kept close supportive contact with the beneficiaries of the project.

During the above time we had 713 people engage with our social media outputs.

The Social media posts mostly consisted of:

Welfare benefits Information

Disability Access Issues

Exercise

Covid19

Transport

Disability Events

In conclusion the project I believe was a great success during a very difficult time however I do feel that if the Pandemic had not occurred, we would have quite possibly had several self-sustaining support groups still active

This was a worthy Project and I greatly enjoyed working on it.

Gary Baird

Community Support Worker





## The Coalfield Regeneration Trust / Digital, Culture, Media, and Sport (DCMS)

As part of the grant from The Coalfield Regeneration Trust, Disability Nottinghamshire successfully secured further funding from DCMS to adapt and support service-users during the pandemic. On a part-time basis and delivered remotely from November 2020 to March 2021, I assisted and advised 33 service users on a variety of subjects including welfare benefits, disability access and rights, blue badge, and radar key enquiries.

Social Media was important for Disability Nottinghamshire to communicate information and to have social interaction with service-users. For those without access to social media, regular telephone calls and well-being checks were made with Disability Nottinghamshire's Signposting Plus services available. We found that during lockdown we saw an increase in mental health issues amongst our service users, particularly stress and frustration.

Gary Baird  
Disability Support Worker



## Fielding The Need

During December 2020 and January 2021 on behalf of Disability Nottinghamshire I worked with Mansfield CVS on a social media project called “Fielding The Need”.

The purpose of the funding was to promote disability awareness, access, and employment. Working alongside Mansfield CVS we created, produced, and edited information videos to be posted on social media.

The promotional videos, which are available to view on YouTube include the following topics:

- The Purple Pound
- Disability awareness
- Help with access to work

This project was funded by the National lottery, due to the evolving changes of Covid 19 the project was delivered on a very tight timescale for completion and delivery.

Gary Baird  
Disability Support Worker



## WHAT OUR CLIENTS SAY ABOUT US.....

**"You continue to provide advice, information and advocacy for people who have a disability".**

**"I would love 'Our Voice Choir' to continue forever, I love it so much.**

**"I appreciated keeping in touch with choir throughout the difficult times"**

**"I love being part of the choir, it helps me to socialise"**

**Thank you  
Disability  
Nottinghamshire  
for all your  
support.**



**"You Keep  
providing up to  
date information,  
you are a listening  
ear."**

**"Your services keep us up  
to date with changes to  
benefits etc and also  
general information"**

**"You Support us in every way  
possible"**



## A Volunteers journey

Volunteering as a Trustee for Disability Nottinghamshire is not just about giving, although you give a lot, for me it's equally been about the rewards I have received from this role.

I have a bipolar disorder, a chronic mental health condition, and although I have an extensive professional and academic background, for some years I was unable to work due to my condition. I was aware that the opportunity to work is closely related to functional recovery, and although I live in a country that recognises bipolar disorder as a lifelong disability, with many legally protective rights, my professional background in adult social care, and personal experience meant I was equally aware that equal opportunities, and adjustments at work, even legally required ones, were often not available for people with a bipolar disorder, and other disabilities.

I recently read of a survey by the royal college of psychiatry found that over half of employers would not employ a person with a psychiatric diagnosis, and two thirds said they had never knowingly done so. A few years ago, I approached Disability Nottinghamshire, explained I had a bipolar condition, and was looking for voluntary opportunities to maintain and develop my professional skills. I was warmly welcomed and invited to apply for a position on their board of Trustee/Directors. I was successful in my application.

My expectations were admittedly low. I was anxious of being judged by my condition, and that because of this people might question decisions or action I made ("Oh it must be his medication"), people might question my ability to handle tasks, stress, or complex decisions differently ("but is he stable right now?"), and fear of letting people down during times I wasn't so well. Of course, there have been lots of ups and downs, successes, disappointments, but lots of kindness, understanding and fun too.

Although since this time I have also moved into paid employment, and I am in the final year of a doctoral research degree, I maintain my role with Disability Nottinghamshire. I feel so lucky to have role on the board of an incredibly understanding, accommodating, compassionate and human organisation, where everyone lives and works by our values of a user led organisation where.

continued



*“People who have a disability are the experts, and will always have the loudest voice”*

People often talk about volunteer work as “giving something back”, and it is an opportunity for that, but you get a lot back in return, sometimes life changing rewards.

I live, work and study with a bipolar disorder. This is well treated and managed through NHS support and medication, although that doesn't mean I am well all the time. However, my experience of volunteering for Disability Nottinghamshire has helped me to manage the challenges I face with supportive and understanding colleagues and staff, a sense of belonging to a community, rather than feeling removed, or different from it.

Through my involvement with Disability Nottinghamshire, I know I have received so much more than I have given, and I'm so grateful for positive the impact that Disability Nottinghamshire has had on my life, and many other people with a disability or long-term health condition.

Tim



# A big thank you to all our funders

- Nottinghamshire County Council Local Improvement Scheme.
- Nottinghamshire County Council Emergency Fund 2020
- Nottinghamshire Community Foundation—Wheatcroft
- Nottinghamshire Community Foundation-Thomas Farr
- The National Lottery Community Fund
- The Coalfields Regeneration Trust
- Digital, Culture, Media and Sport (DCMS)
- Sir John Eastwood Foundation
- Albert Hunt
- The Sir Jules Thorn Charitable Trust
- Asda (Forest Town)
- Councillor Stuart Richardson
- Mansfield CVS 2020—Fielding The Need

A special thank you to all of our Donors and those who kindly supported and contributed to  
Disability Nottinghamshire.





**Park Road Resource Centre  
53 Park Road  
Mansfield Woodhouse  
Nottinghamshire  
NG19 8ER**

**Advice Line: 01623 625 891**

**Admin/Office: 01623 658 060**





---

**DISABILITY NOTTINGHAMSHIRE**  
(a company limited by guarantee)

---

**UNAUDITED**

**TRUSTEES' REPORT AND FINANCIAL STATEMENTS**

**FOR THE YEAR ENDED 31 MARCH 2022**

---

**DISABILITY NOTTINGHAMSHIRE**  
**(a company limited by guarantee)**

---

**CONTENTS**

---

	Page
<b>Reference and administrative details of the Company, its Trustees and advisers</b>	1
<b>Chairman's statement</b>	2
<b>Trustees' report</b>	3 - 7
<b>Independent examiner's report</b>	8
<b>Statement of financial activities</b>	9
<b>Balance sheet</b>	10
<b>Notes to the financial statements</b>	11 - 22

---

**DISABILITY NOTTINGHAMSHIRE**  
(a company limited by guarantee)

---

**REFERENCE AND ADMINISTRATIVE DETAILS OF THE COMPANY, ITS TRUSTEES AND ADVISERS  
FOR THE YEAR ENDED 31 MARCH 2022**

---

**Trustees**

L Carter, Chairman  
E S Twigger  
T Holloway  
P A Kenton-Batt, Vice chairman  
C A Mitchell  
I Garratt, Treasurer  
M Evans (resigned 31 January 2022)

**Company registered number**

06972820

**Charity registered number**

1131621

**Registered office**

Room 6  
Park Road Resource Centre  
53 Park Road  
Mansfield Woodhouse  
Nottinghamshire  
NG19 8ER

**Accountant**

Jonathan Wilson  
Chartered Accountant  
Cromwell House  
68 West Gate  
Mansfield  
Nottinghamshire  
NG18 1RR

**Bankers**

Lloyds Bank PLC  
1-3 Church Street  
Mansfield  
Nottinghamshire  
NG18 1AL

---

**DISABILITY NOTTINGHAMSHIRE**  
**(a company limited by guarantee)**

---

**CHAIRMAN'S STATEMENT**  
**FOR THE YEAR ENDED 31 MARCH 2022**

---

The chairman presents her statement for the year.

There is no doubt that this reporting period was another extraordinary period overshadowed by the pandemic and continued slow recovery from it. This was challenging for everyone, service users and the wider community we represent.

Demand for our services has far outstripped what we can afford to provide, so to keep delivery ambition, we have frequently reviewed and transformed the way we do things to meet the challenging needs of service users, keep pace with the rapid technological advances and increasingly competitive funding environment.

The Trustees have worked closely with staff, volunteers and community partners and stayed within the Memorandum and Articles of Association to keep service users at the heart of all we do.

At the start of this accounting period, the Trustees, staff and volunteers reviewed the strategic business plan. This process included issues of medium and longer term spending, alongside the funding plan, identify funding and monitor progress. A new 3 year strategic business plan consultation is also under way with a view to commencing from December 2022 to December 2025.

We have endeavoured to operate our organisation as effectively and efficiently as possible. We could not operate without the financial support of all our donors, fundraisers and grant funders, this is not only critical to paying our rent, accommodation, utilities but also the vital continuation and development of services relevant to and requested by the community we serve. We always try to work toward sustainability of funding by promoting a well-trained volunteer base.

We rely on the hard work and dedication of both a small staff team and the many volunteers who contribute in so many ways to the work and success of the charity.

The impact of our work goes far beyond those we help directly and includes families, friends and carers.

As ever this has been a year of challenge, achievement and getting on with the job against the backdrop of reduced funding and resources and increasing demand for services.

We have and will continue to face evolving and new issues post pandemic lock down and recovery. Our data has highlighted the economic impact of Coronavirus, the rising cost of living, changes to Welfare Benefits which will have a significant impact on the charity and its service users in the coming year. It is clear our planning will need to reflect and evolve the rapidly changing world the disabled person now faces and is much changed from when our existing strategy was originally developed. We have a constantly changing society and its ethics, the now prevalent use of the internet and the advancement of social media. We know we need to continue to expand on our previous consultation process to ensure that we fully understand the impact of the increasing restrictions on Local Authority spending on the community.

L Carter  
Date: 15 August 2022

---

**DISABILITY NOTTINGHAMSHIRE**  
**(a company limited by guarantee)**

---

**TRUSTEES' REPORT**  
**FOR THE YEAR ENDED 31 MARCH 2022**

---

The Trustees present their annual report together with the financial statements of the Company for the year from 1 April 2021 to 31 March 2022. The annual report serves the purposes of both a Trustees' report and a directors' report under company law. The Trustees confirm that the annual report and financial statements of the charitable company comply with the current statutory requirements, the requirements of the charitable company's governing document and the provisions of the Statement of Recommended Practice (SORP) applicable to charities preparing their accounts in accordance with the Financial Reporting Standard applicable in the UK and Republic of Ireland (FRS102) (effective 1 January 2019).

Since the Company qualifies as small under section 382 of the Companies Act 2006, the strategic report required of medium and large companies under the Companies Act 2006 (Strategic Report and Directors' Report) Regulations 2013 has been omitted.

**Objectives and activities**

**a. Policies and objectives**

The purpose of the charity is to:

Promote the independence and choice of all disabled persons within the area covered by Nottinghamshire County Council by providing free, confidential and impartial information, advice and advocacy in respect of any disability to disabled people, their families, friends, carers, professionals and students.

In setting objectives and planning for activities, the Trustees have given due consideration to general guidance published by the Charity Commission relating to public benefit, including the guidance 'Public benefit: running a charity (PB2)'.

**b. Strategies for achieving objectives**

Our aim is for all disabled people to have the same choice, control and freedom as any other person. With the provision of information and advice on how to effectively access the relevant benefits, services, peer support and disability rights, we are also aiming to encourage a far greater overall level of health and well being not only for disabled people but also their carers, friends and families. We wish to reflect the purposes for which this charity was originally set up within our incorporated organisation.

**c. Activities undertaken to achieve objectives**

Activities of the Charity, have continued to remain focused on providing support to enable people within our area of activity to exercise choice and control and are all undertaken to further our charitable purposes for public benefit.

---

**DISABILITY NOTTINGHAMSHIRE**  
**(a company limited by guarantee)**

---

**TRUSTEES' REPORT (CONTINUED)**  
**FOR THE YEAR ENDED 31 MARCH 2022**

---

**Objectives and activities (continued)**

**d. Main activities undertaken to further the Company's purposes for the public benefit**

Between September 2021 and March 2022, grants from The National Lottery Awards For All fund allowed the charity to support 113 service users, 75 with benefits. Most enquiries were around PIP (Personal Independence Payment), then universal credit, employment support allowance, child disability living allowance and disabled students allowance.

The Mansfield CVS Community Champions funding has enabled Disability Nottinghamshire to resume face-to-face appointments and support 17 service users at outreach venues.

The Mansfield CVS We Are Undefeatable funding has supported 12 sessions with 73 participants attending overall.

As a result of the NCF Wheatcroft funding 1,500 service users accessed services which improved mental health, life chances, wellbeing and increased a stronger sense of belonging and togetherness within their communities.

The NCF Thomas Farr grant enabled Disability Nottinghamshire to gain an understanding of how COVID-19 affected the community by facilitating online support via Survey Monkey, Zoom, WhatsApp, Facebook and activity videos to connect with service users during lockdown and a time of isolation. A total of 94% of participants said COVID-19 and lockdown affected them moderately to drastically. 80% of participants had previously used our services and 69% said that they found our services helpful during COVID-19. They expressed feelings of being worried and feeling anxious and said it was nice to have a listening ear at the end of the telephone. 80% of service users informed us that they would be interested in online virtual support groups to meet new friends, ask questions and to receive support and advice.

The Tesco Charity Trust grant supports "Our Voice" community choir to meet weekly and continue to develop its own musical and performance range, helped by the recruitment of a volunteer choir director. The aim of the choir is to unite people through music and promote the potential of people with disabilities and their wellbeing. So far there are 11 regular members in the Choir, which is inclusive and open to all.

230 beneficiaries were able to access the Coalfields Community Investment Programme (England) which is funding Disability Nottinghamshire to employ a Disability Advisor.

---

**DISABILITY NOTTINGHAMSHIRE**  
**(a company limited by guarantee)**

---

**TRUSTEES' REPORT (CONTINUED)**  
**FOR THE YEAR ENDED 31 MARCH 2022**

---

**Achievements and performance**

**a. Main achievements of the Company**

Overall this reporting year, within our core advice services which is part funded by Nottinghamshire County Council L.I.S project grant, the total number of issues and queries dealt with for Nottinghamshire residents was 988. The majority of enquiries received now require support with complex case work. Welfare Benefit Advisors are spending at least 2 hours per service user enquiry and the average PIP claim for the period was £56,700. The range of help delivered has included disability advice, equality issues, health matters, welfare benefits, appeals, money management, housing and other services.

The Charity has continued to work across the County to encourage a user led ethos and to assist, for example, individuals, self help groups and single issue groups to feel more confident and become better informed about opportunities to influence policy, consultation or services which have previously been hard to reach or unobtainable. For example, helping to support access and built environment issues by providing advice, sign posting and referring to, the appropriate service such as, Local Authorities, plus the Equalities and Human Rights Commission.

Advice and Information Services are free, independent and confidential. The Welfare Reform system continues to impact on service users. Universal credit has had a great impact on service users with disabilities losing premiums and benefits leading to debt and deprivation across the community we serve.

Within the above framework, since the last report, we have continued to strive to maintain and develop services. There has been an ever-increasing demand for advice, information services, buddying and befriending support across the community we serve. In particular we have seen an increase in requests for;

- Help to complete forms
- Welfare Benefits/Debt Management
- Disability advice
- Requests for help with medication and referrals to food banks
- Help with Appeals
- Buddying and befriending
- Social and Peer group support activities
- Help to Cope with the challenges of social isolation

In addition to requests to continue current services, we have been asked to develop social media information, provide new opportunities for social networks in the community and to help people become more active citizens.

There has also been and will continue to be an increase in coordination with partner organisations to tackle our shared challenges and to meet the needs of diverse communities across Nottinghamshire. Disability Nottinghamshire collaboratively worked alongside Mansfield CVS to create and produce several training and information videos and postcards.



---

**DISABILITY NOTTINGHAMSHIRE**  
**(a company limited by guarantee)**

---

**TRUSTEES' REPORT (CONTINUED)**  
**FOR THE YEAR ENDED 31 MARCH 2022**

---

**Financial review**

**a. Going concern**

The Trustees are aware that the low level of unrestricted reserves may cast uncertainty over the charity's ability to continue as a going concern. Funding has been pledged for the next 3 years so we believe that the charity will have sufficient resources to continue until beyond August 2023. We continue to monitor the situation closely and continue to adopt the going concern basis in preparing the financial statements

**b. Reserves policy**

The charity needs reserves to enable it to meet both its ongoing commitments in respect of its charitable activities and to meet its future operating requirements.

The trustees recognise that the greatest single area of risk lies in the charity maintaining adequate reserves. It is the board's view that the charity should aim for reserves of three months' operating requirements plus redundancy commitments. Currently, reserves are adequate to meet this requirement. This financial information is regularly updated in board reports.

For a charity, especially one where its services are free at the point of contact, increasing reserves is a difficult task. Currently the board's policy is to maintain and build reserves.

**Structure, governance and management**

**a. Constitution**

Disability Nottinghamshire is registered as a charitable company limited by guarantee and was set up by a Memorandum of Association.

**b. Methods of appointment or election of Trustees**

The management of the Company is the responsibility of the Trustees who are elected and co-opted under the terms of the Memorandum of Association.

**c. Organisational structure and decision-making policies**

We continue to actively try to recruit new Trustee Directors, which has proved difficult during the pandemic and its aftermath. The Board meets on average every 6 weeks and are fully responsible for the forward strategy. All members of the Board have continued to give their time and expertise on a voluntary basis, receiving no benefits from the Charity. Any out of pocket expenses reclaimed are shown in note 10 to the financial statements.

Within the Board of Trustee Directors 75% of its membership consist of individuals who are disabled, or have a long-term health condition, or care for someone. Trustees are elected annually following the Annual General Meeting.

---

**DISABILITY NOTTINGHAMSHIRE**  
**(a company limited by guarantee)**

---

**TRUSTEES' REPORT (CONTINUED)**  
**FOR THE YEAR ENDED 31 MARCH 2022**

---

**Structure, governance and management (continued)**

**d. Financial risk management**

There is a revised risk management strategy and matrix in place to ensure where applicable all risks are covered. Where appropriate, policies, financial systems or procedures have been established to mitigate the internal risks the charity might face. The responsibility for monitoring this work is with the full Board of Trustee Directors.

Currently all Board members receive a weekly cash flow spreadsheet and a full range of financial and project monitoring reports received prior to Board Meetings.

In addition, all our funders require evidence based monitoring reports on a regular basis. Performance across all services delivered is assessed against key objectives as agreed with funders.

All reports and reviews go directly to Trustee Director Board Meetings for consideration. Staff attend to present their reports as required.

During the Covid-19 lockdowns the Board received written reports electronically which continued to provide a range of data and information. Trustee Directors also held Board meetings via zoom during this period.

The Trustees have assessed the major risks to which the Company is exposed, in particular those related to the operations and finances of the Company, and are satisfied that systems and procedures are in place to mitigate exposure to the major risks.

Included in the external risk assessment, the Board recognises that cuts to funding impacts on the way services are delivered and developed with most funding being restricted to fixed term and often as little as 12 months. Opportunities for volunteer fund raising this accounting year have been slow to recover. We continue to work hard to mitigate this by seeking to diversify funding sources to maintain an effective service that meets the needs of service users.

**Plans for future periods**

The Charity plans to continue the activities outlined above in the forthcoming financial year subject to obtaining satisfactory funding. Due to the financial hazards we have experienced and will continue to face, with COVID-19 even following the easing of Government Restrictions and the resulting constraints on resources, will be constantly reviewed. The direct focus of our work will be to continue to support, empower the community we represent offering person centred support as well as embracing technology.

A new strategic plan (2022 to 2025) consultation has commenced. It is important that the community we represent has a voice, and services are maintained, designed, and developed with them not for them. We will also continue to seek funding to develop plans and services identified within this work, working wherever possible with other partners to support delivery of quality services. There will also be focus on volunteer and Board member recruitment. Finally, we believe that equal access to our services is vital for our success and to community wellbeing. Therefore we will continue to strive to learn, adapt and break down barriers.

Approved by order of the members of the board of Trustees on 15 August 2022 and signed on their behalf by:

**L Carter**  
Chair of Trustees

---

**DISABILITY NOTTINGHAMSHIRE**  
**(a company limited by guarantee)**

---

**INDEPENDENT EXAMINER'S REPORT**  
**FOR THE YEAR ENDED 31 MARCH 2022**

---

**Independent examiner's report to the Trustees of Disability Nottinghamshire ('the Company')**

I report to the charity Trustees on my examination of the accounts of the Company for the year ended 31 March 2022.

**Responsibilities and basis of report**

As the Trustees of the Company (and its directors for the purposes of company law) you are responsible for the preparation of the accounts in accordance with the requirements of the Companies Act 2006 ('the 2006 Act').

Having satisfied myself that the accounts of the Company are not required to be audited under Part 16 of the 2006 Act and are eligible for independent examination, I report in respect of my examination of the Company's accounts carried out under section 145 of the Charities Act 2011 ('the 2011 Act'). In carrying out my examination I have followed the Directions given by the Charity Commission under section 145(5)(b) of the 2011 Act.

**Independent examiner's statement**

I have completed my examination. I confirm that no matters have come to my attention in connection with the examination giving me cause to believe:

1. accounting records were not kept in respect of the Company as required by section 386 of the 2006 Act; or
2. the accounts do not accord with those records; or
3. the accounts do not comply with the accounting requirements of section 396 of the 2006 Act other than any requirement that the accounts give a 'true and fair' view which is not a matter considered as part of an independent examination; or
4. the accounts have not been prepared in accordance with the methods and principles of the Statement of Recommended Practice for accounting and reporting by charities [applicable to charities preparing their accounts in accordance with the Financial Reporting Standard applicable in the UK and Republic of Ireland (FRS 102)].

I have no concerns and have come across no other matters in connection with the examination to which attention should be drawn in this report in order to enable a proper understanding of the accounts to be reached.

This report is made solely to the Company's Trustees, as a body, in accordance with Part 4 of the Charities (Accounts and Reports) Regulations 2008. My work has been undertaken so that I might state to the Company's Trustees those matters I am required to state to them in an independent examiner's report and for no other purpose. To the fullest extent permitted by law, I do not accept or assume responsibility to anyone other than the Company and the Company's Trustees as a body, for my work or for this report.

Signed:

Dated: 31 August 2022

Jonathan Wilson

FCA, CTA

Mansfield

**DISABILITY NOTTINGHAMSHIRE**  
(a company limited by guarantee)

**STATEMENT OF FINANCIAL ACTIVITIES (INCORPORATING INCOME AND EXPENDITURE ACCOUNT)  
FOR THE YEAR ENDED 31 MARCH 2022**

	<b>Note</b>	<b>Restricted funds 2022 £</b>	<b>Unrestricted funds 2022 £</b>	<b>Total funds 2022 £</b>	<b>Total funds 2021 £</b>
<b>Income from:</b>					
Donations and legacies	3	-	3,187	3,187	9,517
Charitable activities	4	19,605	13,125	32,730	47,413
Other fundraising activities	5	106	50	156	4,561
Investments	6	-	1	1	3
<b>Total income</b>		<b>19,711</b>	<b>16,363</b>	<b>36,074</b>	61,494
<b>Expenditure on:</b>					
Charitable activities	7	13,097	27,483	40,580	50,415
<b>Total expenditure</b>		<b>13,097</b>	<b>27,483</b>	<b>40,580</b>	50,415
<b>Net movement in funds</b>		<b>6,614</b>	<b>(11,120)</b>	<b>(4,506)</b>	11,079
<b>Reconciliation of funds:</b>					
Total funds brought forward		2,078	30,780	32,858	21,779
Net movement in funds		6,614	(11,120)	(4,506)	11,079
<b>Total funds carried forward</b>		<b>8,692</b>	<b>19,660</b>	<b>28,352</b>	32,858

The Statement of financial activities includes all gains and losses recognised in the year.

The notes on pages 11 to 22 form part of these financial statements.

**DISABILITY NOTTINGHAMSHIRE**  
**(a company limited by guarantee)**  
**REGISTERED NUMBER: 06972820**

**BALANCE SHEET**  
**AS AT 31 MARCH 2022**

	Note	2022 £	2021 £
<b>Current assets</b>			
Debtors	11	4,655	2,706
Cash at bank and in hand		29,368	34,279
		<u>34,023</u>	<u>36,985</u>
Creditors: amounts falling due within one year	12	(5,671)	(4,127)
<b>Net current assets</b>		<u>28,352</u>	32,858
<b>Total net assets</b>		<u><u>28,352</u></u>	<u><u>32,858</u></u>
<b>Charity funds</b>			
Restricted funds	13	8,692	2,078
Unrestricted funds	13	19,660	30,780
<b>Total funds</b>		<u><u>28,352</u></u>	<u><u>32,858</u></u>

The Company was entitled to exemption from audit under section 477 of the Companies Act 2006.

The members have not required the company to obtain an audit for the year in question in accordance with section 476 of Companies Act 2006.

The Trustees acknowledge their responsibilities for complying with the requirements of the Act with respect to accounting records and preparation of financial statements.

The financial statements have been prepared in accordance with the provisions applicable to entities subject to the small companies regime.

The financial statements were approved and authorised for issue by the Trustees and signed on their behalf by:

**L Carter**  
Chair of Trustees  
Date: 15 August 2022

The notes on pages 11 to 22 form part of these financial statements.

---

**DISABILITY NOTTINGHAMSHIRE**  
**(a company limited by guarantee)**

---

**NOTES TO THE FINANCIAL STATEMENTS**  
**FOR THE YEAR ENDED 31 MARCH 2022**

---

**1. General information**

The company is a company limited by guarantee. It is incorporated and registered in England (registration number 6972820). The registered office is Room 6, Park Road Resource Centre, 53 Park Road, Mansfield Woodhouse, Nottinghamshire, NG19 8ER.

**2. Accounting policies**

**2.1 Basis of preparation of financial statements**

The financial statements have been prepared in accordance with the Charities SORP (FRS 102) - Accounting and Reporting by Charities: Statement of Recommended Practice applicable to charities preparing their accounts in accordance with the Financial Reporting Standard applicable in the UK and Republic of Ireland (FRS 102) (effective 1 January 2019), the Financial Reporting Standard applicable in the UK and Republic of Ireland (FRS 102) and the Companies Act 2006.

Disability Nottinghamshire meets the definition of a public benefit entity under FRS 102. Assets and liabilities are initially recognised at historical cost or transaction value unless otherwise stated in the relevant accounting policy.

The company is a company limited by guarantee. The members of the company are the Trustees named on page 1. In the event of the company being wound up, the liability in respect of the guarantee is limited to £1 per member of the company.

**2.2 Going concern**

The accounts have been prepared on the going concern basis. The trustees believe that the charity can continue until beyond August 2023 as funding has been pledged for the next 3 years.

**2.3 Income**

All income is recognised once the Company has entitlement to the income, it is probable that the income will be received and the amount of income receivable can be measured reliably.

Grants are included in the statement of financial activities on a receivable basis. The balance of income received for specific purposes but not expended during the period is shown in the relevant funds on the balance sheet. Where income is received in advance of entitlement of receipt, its recognition is deferred and included in creditors as deferred income. Where entitlement occurs before income is received, the income is accrued.

Income tax recoverable in relation to investment income is recognised at the time the investment income is receivable.

---

**DISABILITY NOTTINGHAMSHIRE**  
**(a company limited by guarantee)**

---

**NOTES TO THE FINANCIAL STATEMENTS**  
**FOR THE YEAR ENDED 31 MARCH 2022**

---

**2. Accounting policies (continued)**

**2.4 Expenditure**

Expenditure is recognised once there is a legal or constructive obligation to transfer economic benefit to a third party, it is probable that a transfer of economic benefits will be required in settlement and the amount of the obligation can be measured reliably. Expenditure is classified by activity. The costs of each activity are made up of the total of direct costs and shared costs, including support costs involved in undertaking each activity. Direct costs attributable to a single activity are allocated directly to that activity. Shared costs which contribute to more than one activity and support costs which are not attributable to a single activity are apportioned between those activities on a basis consistent with the use of resources. Central staff costs are allocated on the basis of time spent, and depreciation charges allocated on the portion of the asset's use.

Expenditure on charitable activities is incurred on directly undertaking the activities which further the Company's objectives, as well as any associated support costs.

All expenditure is inclusive of irrecoverable VAT.

**2.5 Interest receivable**

Interest on funds held on deposit is included when receivable and the amount can be measured reliably by the Company; this is normally upon notification of the interest paid or payable by the institution with whom the funds are deposited.

**2.6 Debtors**

Prepayments are valued at the amount prepaid.

**2.7 Cash at bank and in hand**

Cash at bank and in hand includes cash and short-term highly liquid investments with a short maturity of three months or less from the date of acquisition or opening of the deposit or similar account.

**2.8 Liabilities and provisions**

Liabilities are recognised when there is an obligation at the balance sheet date as a result of a past event, it is probable that a transfer of economic benefit will be required in settlement, and the amount of the settlement can be estimated reliably.

Liabilities are recognised at the amount that the Company anticipates it will pay to settle the debt or the amount it has received as advanced payments for the goods or services it must provide.

**2.9 Financial instruments**

The Company only has financial assets and financial liabilities of a kind that qualify as basic financial instruments. Basic financial instruments are initially recognised at transaction value and subsequently measured at their settlement value with the exception of bank loans which are subsequently measured at amortised cost using the effective interest method.



---

**DISABILITY NOTTINGHAMSHIRE**  
**(a company limited by guarantee)**

---

**NOTES TO THE FINANCIAL STATEMENTS**  
**FOR THE YEAR ENDED 31 MARCH 2022**

---

**2. Accounting policies (continued)**

**2.10 Fund accounting**

General funds are unrestricted funds which are available for use at the discretion of the Trustees in furtherance of the general objectives of the Company and which have not been designated for other purposes.

Restricted funds are funds which are to be used in accordance with specific restrictions imposed by donors or which have been raised by the Company for particular purposes. The costs of raising and administering such funds are charged against the specific fund. The aim and use of each restricted fund is set out in the notes to the financial statements.

Investment income, gains and losses are allocated to the appropriate fund.

**3. Income from donations and legacies**

	<b>Unrestricted funds 2022 £</b>	<b>Total funds 2022 £</b>
Donations	2,202	<b>2,202</b>
Grants	949	<b>949</b>
Radar keys	36	<b>36</b>
	<hr/> 3,187 <hr/>	<hr/> <b>3,187</b> <hr/>

	<b>Unrestricted funds 2021 £</b>	<b>Total funds 2021 £</b>
Donations	2,776	2,776
Grants	6,741	6,741
	<hr/> 9,517 <hr/>	<hr/> 9,517 <hr/>

**DISABILITY NOTTINGHAMSHIRE**  
(a company limited by guarantee)

**NOTES TO THE FINANCIAL STATEMENTS  
FOR THE YEAR ENDED 31 MARCH 2022**

**4. Income from charitable activities**

	<b>Restricted funds 2022 £</b>	<b>Unrestricted funds 2022 £</b>	<b>Total funds 2022 £</b>
Grants receivable	19,605	13,125	<b>32,730</b>

	<b>Restricted funds 2021 £</b>	<b>Unrestricted funds 2021 £</b>	<b>Total funds 2021 £</b>
Grants receivable	20,055	27,358	47,413

**5. Income from other trading activities**

**Income from fundraising events**

	<b>Restricted funds 2022 £</b>	<b>Unrestricted funds 2022 £</b>	<b>Total funds 2022 £</b>
Fundraising	106	50	<b>156</b>

	<b>Unrestricted funds 2021 £</b>	<b>Total funds 2021 £</b>
Fundraising	4,561	4,561

**DISABILITY NOTTINGHAMSHIRE**  
(a company limited by guarantee)

**NOTES TO THE FINANCIAL STATEMENTS  
FOR THE YEAR ENDED 31 MARCH 2022**

**6. Investment income**

	<b>Unrestricted funds 2022 £</b>	<b>Total funds 2022 £</b>
Interest receivable	1	1
	<u>1</u>	<u>1</u>
	<b>Unrestricted funds 2021 £</b>	<b>Total funds 2021 £</b>
Interest receivable	3	3
	<u>3</u>	<u>3</u>

**7. Analysis of expenditure on charitable activities**

**Summary by fund type**

	<b>Restricted funds 2022 £</b>	<b>Unrestricted funds 2022 £</b>	<b>Total funds 2022 £</b>
Wages and salaries	8,172	11,975	<b>20,147</b>
Advice centre running costs	4,189	7,973	<b>12,162</b>
Insurance	-	2,373	<b>2,373</b>
Office expenses	39	702	<b>741</b>
Volunteers' expenses	307	-	<b>307</b>
Legal and professional fees	222	1,096	<b>1,318</b>
Sundry expenses	109	226	<b>335</b>
Telephone and computer	59	2,097	<b>2,156</b>
Advertising and publications	-	21	<b>21</b>
Independent examiner's fee	-	1,020	<b>1,020</b>
	<u>13,097</u>	<u>27,483</u>	<u><b>40,580</b></u>

**DISABILITY NOTTINGHAMSHIRE**  
(a company limited by guarantee)

**NOTES TO THE FINANCIAL STATEMENTS  
FOR THE YEAR ENDED 31 MARCH 2022**

**7. Analysis of expenditure on charitable activities (continued)**

**Summary by fund type (continued)**

	Restricted funds 2021 £	Unrestricted funds 2021 £	Total funds 2021 £
Wages and salaries	16,381	3,049	19,430
Training	600	-	600
Advice centre running costs	4,202	3,961	8,163
Insurance	740	1,551	2,291
Office expenses	-	394	394
Volunteers' expenses	144	-	144
Legal and professional fees	-	1,204	1,204
Sundry expenses	-	170	170
Telephone and computer	11,206	5,543	16,749
Advertising and publications	250	-	250
Independent examiner's fee	-	1,020	1,020
	<u>33,523</u>	<u>16,892</u>	<u>50,415</u>

**8. Independent examiner's remuneration**

	<b>2022 £</b>	2021 £
Fees payable to the Company's independent examiner for the independent examination of the Company's annual accounts	<u><b>1,020</b></u>	<u>1,020</u>

**DISABILITY NOTTINGHAMSHIRE**  
(a company limited by guarantee)

**NOTES TO THE FINANCIAL STATEMENTS  
FOR THE YEAR ENDED 31 MARCH 2022**

**9. Staff costs**

	<b>2022</b> £	2021 £
Wages and salaries	<b>20,088</b>	19,430

The average number of persons employed by the Company during the year was as follows:

	<b>2022</b> No.	2021 No.
Charitable activities	<b>2</b>	4

No employee received remuneration amounting to more than £60,000 in either year.

**10. Trustees' remuneration and expenses**

During the year, no Trustees received any remuneration or other benefits (2021 - £NIL).

During the year ended 31 March 2022, travelling expenses totalling £NIL were reimbursed or paid directly to Trustee (2021 - £144 to 1 Trustee).

**11. Debtors**

	<b>2022</b> £	2021 £
<b>Due within one year</b>		
Prepayments and accrued income	<b>4,655</b>	2,706

**12. Creditors: Amounts falling due within one year**

	<b>2022</b> £	2021 £
Trade creditors	<b>4,496</b>	2,909
Other taxation and social security	-	198
Accruals and deferred income	<b>1,175</b>	1,020
	<b>5,671</b>	4,127

**DISABILITY NOTTINGHAMSHIRE**  
(a company limited by guarantee)

**NOTES TO THE FINANCIAL STATEMENTS  
FOR THE YEAR ENDED 31 MARCH 2022**

**13. Statement of funds**

**Statement of funds - current year**

	Balance at 1 April 2021 £	Income £	Expenditure £	Balance at 31 March 2022 £
<b>Unrestricted funds</b>				
General Fund	30,780	16,363	(27,483)	19,660
<b>Restricted funds</b>				
Community champions	-	9,146	(4,559)	4,587
We are undefeatable	-	725	(597)	128
Big Lottery AFA	-	9,735	(5,926)	3,809
CRT 2020	984	-	(984)	-
NCF Wheatcroft	465	-	(465)	-
Thomas Farr	200	-	(200)	-
Tesco Charity Trust	284	105	(221)	168
Mary Potter Convent Hospital	145	-	(145)	-
	2,078	19,711	(13,097)	8,692
<b>Total of funds</b>	32,858	36,074	(40,580)	28,352

**DISABILITY NOTTINGHAMSHIRE**  
(a company limited by guarantee)

**NOTES TO THE FINANCIAL STATEMENTS  
FOR THE YEAR ENDED 31 MARCH 2022**

**13. Statement of funds (continued)**

**Statement of funds - prior year**

	Balance at 1 April 2020 £	Income £	Expenditure £	Balance at 31 March 2021 £
<b>Unrestricted funds</b>				
General Fund	6,233	41,439	(16,892)	30,780
<b>Restricted funds</b>				
Awards for All	6,589	-	(6,589)	-
CRT 2020 GB	-	3,451	(3,451)	-
Big Lottery COVID-19 IT	-	9,000	(9,000)	-
CRT 2020	8,528	-	(7,544)	984
NCF Wheatcroft	-	3,000	(2,535)	465
Mansfield CVS 2020	-	600	(600)	-
NCC Emergency 2020	-	2,004	(2,004)	-
Thomas Farr	-	2,000	(1,800)	200
Tesco Charity Trust	284	-	-	284
Mary Potter Convent Hospital	145	-	-	145
	15,546	20,055	(33,523)	2,078
<b>Total of funds</b>	21,779	61,494	(50,415)	32,858

---

**DISABILITY NOTTINGHAMSHIRE**  
**(a company limited by guarantee)**

---

**NOTES TO THE FINANCIAL STATEMENTS**  
**FOR THE YEAR ENDED 31 MARCH 2022**

---

**14. Purpose of funds**

Purpose of unrestricted funds:

**General fund**

Unrestricted funds are available for use at the discretion of the trustees in furtherance of the general objectives of the charity.

**Purpose of restricted funds:**

**Mary Potter Convent Hospital Trust**

The Mary Potter Convent Hospital Trust is enabling our volunteers to have access to volunteer training and support.

**National Lottery Awards For All**

National Lottery Awards for All is funding Disability Nottinghamshire to employ a Disability Advisor on a part time basis to alleviate poverty amongst disabled and disadvantaged people by improving access to benefits, providing a comprehensive benefits advice service via telephone, social media, and outreach surgeries.

**Tesco Charity Trust**

The Tesco Charity Trust is funding Disability Nottinghamshire's local community choir "Our Voice". The grant will support sessional workers, a pianist, a singing tutor, room hire and sheet music.

**Coalfield Community Investment Programme (England)**

The Coalfields Regeneration Trust is funding Disability Nottinghamshire to employ a Disability Advisor to alleviate poverty amongst disabled and disadvantaged people by improving access to benefits, providing a comprehensive benefits advice service via telephone, social media and outreach surgeries. CRT also provided additional funding from the DCMS fund to take on a further Disability Advisor to help support service users through the pandemic.

**National Lottery Community Fund**

When lockdown happened The National Lottery Community Fund invested to enable Disability Nottinghamshire to purchase laptops, along with moving to a Cloud based system and support which allowed members of our team to carry on delivering the service remotely.

**NCC Emergency 2020**

Nottinghamshire County Council provided additional funding in response to COVID19, enabling Disability Nottinghamshire to provide additional cover and response to service users during the pandemic.

**NCF Wheatcroft Fund**

NCF Wheatcroft supported Disability Nottinghamshire with grant funding to provide the administration of volunteer support and supervision, along with funds to produce accessible information via social contact resources.



**DISABILITY NOTTINGHAMSHIRE**  
(a company limited by guarantee)

**NOTES TO THE FINANCIAL STATEMENTS  
FOR THE YEAR ENDED 31 MARCH 2022**

**NCF Thomas Farr**

NCF Thomas Farr supported Disability Nottinghamshire with grant funding to provide administration costs to facilitate and support consultation via social media.

**Community Champions - Mansfield CVS**

Community Champions (Mansfield CVS) is supporting our User Led Organisation within Mansfield District to act as a Mansfield Community champion Anchor Organisation. Funding will support costs with additional capacity and to employ a paid worker as a Disability and Welfare Benefit Advisor to restart outreach surgeries and face to face appointments to support service users with welfare benefits and appeals advice, form fill advice, online forms, and emotional support.

**We Are Undefeatable – Mansfield CVS**

We Are Undefeatable (Mansfield CVS) is funding “Our Voice” singing group for five months with a contribution to room hire and supportive administration costs to support and mentor group members. The aim of the funding is to increase independence, health, and well-being and for members to feel more connected through social interaction, friendships groups and their community.

**15. Summary of funds**

**Summary of funds - current year**

	Balance at 1 April 2021 £	Income £	Expenditure £	Balance at 31 March 2022 £
General funds	30,780	16,363	(27,483)	19,660
Restricted funds	2,078	19,711	(13,097)	8,692
	<u>32,858</u>	<u>36,074</u>	<u>(40,580)</u>	<u>28,352</u>

**Summary of funds - prior year**

	Balance at 1 April 2020 £	Income £	Expenditure £	Balance at 31 March 2021 £
General funds	6,233	41,439	(16,892)	30,780
Restricted funds	15,546	20,055	(33,523)	2,078
	<u>21,779</u>	<u>61,494</u>	<u>(50,415)</u>	<u>32,858</u>

**DISABILITY NOTTINGHAMSHIRE**  
(a company limited by guarantee)

**NOTES TO THE FINANCIAL STATEMENTS  
FOR THE YEAR ENDED 31 MARCH 2022**

**16. Analysis of net assets between funds**

**Analysis of net assets between funds - current year**

	<b>Restricted funds 2022 £</b>	<b>Unrestricted funds 2022 £</b>	<b>Total funds 2022 £</b>
Current assets	8,692	25,331	<b>34,023</b>
Creditors due within one year	-	(5,671)	<b>(5,671)</b>
<b>Total</b>	<u>8,692</u>	<u>19,660</u>	<u><b>28,352</b></u>

**Analysis of net assets between funds - prior year**

	<b>Restricted funds 2021 £</b>	<b>Unrestricted funds 2021 £</b>	<b>Total funds 2021 £</b>
Current assets	2,078	34,907	36,985
Creditors due within one year	-	(4,127)	(4,127)
<b>Total</b>	<u>2,078</u>	<u>30,780</u>	<u>32,858</u>

**17. Operating lease commitments**

At 31 March 2022 the Company had commitments to make future minimum lease payments under non-cancellable operating leases as follows:

	<b>2022 £</b>	<b>2021 £</b>
Not later than 1 year	<u><b>483</b></u>	<u>495</u>

**18. Related party transactions**

The Company has not entered into any related party transaction during the year, nor are there any outstanding balances owing between related parties and the Company at 31 March 2022.

---

**DISABILITY NOTTINGHAMSHIRE**  
(a company limited by guarantee)

---

**UNAUDITED**

**TRUSTEES' REPORT AND FINANCIAL STATEMENTS**

**FOR THE YEAR ENDED 31 MARCH 2022**

---

**DISABILITY NOTTINGHAMSHIRE**  
**(a company limited by guarantee)**

---

**CONTENTS**

---

	Page
<b>Reference and administrative details of the Company, its Trustees and advisers</b>	1
<b>Chairman's statement</b>	2
<b>Trustees' report</b>	3 - 7
<b>Independent examiner's report</b>	8
<b>Statement of financial activities</b>	9
<b>Balance sheet</b>	10
<b>Notes to the financial statements</b>	11 - 22

---

**DISABILITY NOTTINGHAMSHIRE**  
(a company limited by guarantee)

---

**REFERENCE AND ADMINISTRATIVE DETAILS OF THE COMPANY, ITS TRUSTEES AND ADVISERS  
FOR THE YEAR ENDED 31 MARCH 2022**

---

**Trustees**

L Carter, Chairman  
E S Twigger  
T Holloway  
P A Kenton-Batt, Vice chairman  
C A Mitchell  
I Garratt, Treasurer  
M Evans (resigned 31 January 2022)

**Company registered number**

06972820

**Charity registered number**

1131621

**Registered office**

Room 6  
Park Road Resource Centre  
53 Park Road  
Mansfield Woodhouse  
Nottinghamshire  
NG19 8ER

**Accountant**

Jonathan Wilson  
Chartered Accountant  
Cromwell House  
68 West Gate  
Mansfield  
Nottinghamshire  
NG18 1RR

**Bankers**

Lloyds Bank PLC  
1-3 Church Street  
Mansfield  
Nottinghamshire  
NG18 1AL

---

**DISABILITY NOTTINGHAMSHIRE**  
**(a company limited by guarantee)**

---

**CHAIRMAN'S STATEMENT**  
**FOR THE YEAR ENDED 31 MARCH 2022**

---

The chairman presents her statement for the year.

There is no doubt that this reporting period was another extraordinary period overshadowed by the pandemic and continued slow recovery from it. This was challenging for everyone, service users and the wider community we represent.

Demand for our services has far outstripped what we can afford to provide, so to keep delivery ambition, we have frequently reviewed and transformed the way we do things to meet the challenging needs of service users, keep pace with the rapid technological advances and increasingly competitive funding environment.

The Trustees have worked closely with staff, volunteers and community partners and stayed within the Memorandum and Articles of Association to keep service users at the heart of all we do.

At the start of this accounting period, the Trustees, staff and volunteers reviewed the strategic business plan. This process included issues of medium and longer term spending, alongside the funding plan, identify funding and monitor progress. A new 3 year strategic business plan consultation is also under way with a view to commencing from December 2022 to December 2025.

We have endeavoured to operate our organisation as effectively and efficiently as possible. We could not operate without the financial support of all our donors, fundraisers and grant funders, this is not only critical to paying our rent, accommodation, utilities but also the vital continuation and development of services relevant to and requested by the community we serve. We always try to work toward sustainability of funding by promoting a well-trained volunteer base.

We rely on the hard work and dedication of both a small staff team and the many volunteers who contribute in so many ways to the work and success of the charity.

The impact of our work goes far beyond those we help directly and includes families, friends and carers.

As ever this has been a year of challenge, achievement and getting on with the job against the backdrop of reduced funding and resources and increasing demand for services.

We have and will continue to face evolving and new issues post pandemic lock down and recovery. Our data has highlighted the economic impact of Coronavirus, the rising cost of living, changes to Welfare Benefits which will have a significant impact on the charity and its service users in the coming year. It is clear our planning will need to reflect and evolve the rapidly changing world the disabled person now faces and is much changed from when our existing strategy was originally developed. We have a constantly changing society and its ethics, the now prevalent use of the internet and the advancement of social media. We know we need to continue to expand on our previous consultation process to ensure that we fully understand the impact of the increasing restrictions on Local Authority spending on the community.

L Carter  
Date: 15 August 2022

---

**DISABILITY NOTTINGHAMSHIRE**  
**(a company limited by guarantee)**

---

**TRUSTEES' REPORT**  
**FOR THE YEAR ENDED 31 MARCH 2022**

---

The Trustees present their annual report together with the financial statements of the Company for the year from 1 April 2021 to 31 March 2022. The annual report serves the purposes of both a Trustees' report and a directors' report under company law. The Trustees confirm that the annual report and financial statements of the charitable company comply with the current statutory requirements, the requirements of the charitable company's governing document and the provisions of the Statement of Recommended Practice (SORP) applicable to charities preparing their accounts in accordance with the Financial Reporting Standard applicable in the UK and Republic of Ireland (FRS102) (effective 1 January 2019).

Since the Company qualifies as small under section 382 of the Companies Act 2006, the strategic report required of medium and large companies under the Companies Act 2006 (Strategic Report and Directors' Report) Regulations 2013 has been omitted.

**Objectives and activities**

**a. Policies and objectives**

The purpose of the charity is to:

Promote the independence and choice of all disabled persons within the area covered by Nottinghamshire County Council by providing free, confidential and impartial information, advice and advocacy in respect of any disability to disabled people, their families, friends, carers, professionals and students.

In setting objectives and planning for activities, the Trustees have given due consideration to general guidance published by the Charity Commission relating to public benefit, including the guidance 'Public benefit: running a charity (PB2)'.

**b. Strategies for achieving objectives**

Our aim is for all disabled people to have the same choice, control and freedom as any other person. With the provision of information and advice on how to effectively access the relevant benefits, services, peer support and disability rights, we are also aiming to encourage a far greater overall level of health and well being not only for disabled people but also their carers, friends and families. We wish to reflect the purposes for which this charity was originally set up within our incorporated organisation.

**c. Activities undertaken to achieve objectives**

Activities of the Charity, have continued to remain focused on providing support to enable people within our area of activity to exercise choice and control and are all undertaken to further our charitable purposes for public benefit.

---

**DISABILITY NOTTINGHAMSHIRE**  
**(a company limited by guarantee)**

---

**TRUSTEES' REPORT (CONTINUED)**  
**FOR THE YEAR ENDED 31 MARCH 2022**

---

**Objectives and activities (continued)**

**d. Main activities undertaken to further the Company's purposes for the public benefit**

Between September 2021 and March 2022, grants from The National Lottery Awards For All fund allowed the charity to support 113 service users, 75 with benefits. Most enquiries were around PIP (Personal Independence Payment), then universal credit, employment support allowance, child disability living allowance and disabled students allowance.

The Mansfield CVS Community Champions funding has enabled Disability Nottinghamshire to resume face-to-face appointments and support 17 service users at outreach venues.

The Mansfield CVS We Are Undefeatable funding has supported 12 sessions with 73 participants attending overall.

As a result of the NCF Wheatcroft funding 1,500 service users accessed services which improved mental health, life chances, wellbeing and increased a stronger sense of belonging and togetherness within their communities.

The NCF Thomas Farr grant enabled Disability Nottinghamshire to gain an understanding of how COVID-19 affected the community by facilitating online support via Survey Monkey, Zoom, WhatsApp, Facebook and activity videos to connect with service users during lockdown and a time of isolation. A total of 94% of participants said COVID-19 and lockdown affected them moderately to drastically. 80% of participants had previously used our services and 69% said that they found our services helpful during COVID-19. They expressed feelings of being worried and feeling anxious and said it was nice to have a listening ear at the end of the telephone. 80% of service users informed us that they would be interested in online virtual support groups to meet new friends, ask questions and to receive support and advice.

The Tesco Charity Trust grant supports "Our Voice" community choir to meet weekly and continue to develop its own musical and performance range, helped by the recruitment of a volunteer choir director. The aim of the choir is to unite people through music and promote the potential of people with disabilities and their wellbeing. So far there are 11 regular members in the Choir, which is inclusive and open to all.

230 beneficiaries were able to access the Coalfields Community Investment Programme (England) which is funding Disability Nottinghamshire to employ a Disability Advisor.



---

**DISABILITY NOTTINGHAMSHIRE**  
**(a company limited by guarantee)**

---

**TRUSTEES' REPORT (CONTINUED)**  
**FOR THE YEAR ENDED 31 MARCH 2022**

---

**Achievements and performance**

**a. Main achievements of the Company**

Overall this reporting year, within our core advice services which is part funded by Nottinghamshire County Council L.I.S project grant, the total number of issues and queries dealt with for Nottinghamshire residents was 988. The majority of enquiries received now require support with complex case work. Welfare Benefit Advisors are spending at least 2 hours per service user enquiry and the average PIP claim for the period was £56,700. The range of help delivered has included disability advice, equality issues, health matters, welfare benefits, appeals, money management, housing and other services.

The Charity has continued to work across the County to encourage a user led ethos and to assist, for example, individuals, self help groups and single issue groups to feel more confident and become better informed about opportunities to influence policy, consultation or services which have previously been hard to reach or unobtainable. For example, helping to support access and built environment issues by providing advice, sign posting and referring to, the appropriate service such as, Local Authorities, plus the Equalities and Human Rights Commission.

Advice and Information Services are free, independent and confidential. The Welfare Reform system continues to impact on service users. Universal credit has had a great impact on service users with disabilities losing premiums and benefits leading to debt and deprivation across the community we serve.

Within the above framework, since the last report, we have continued to strive to maintain and develop services. There has been an ever-increasing demand for advice, information services, buddying and befriending support across the community we serve. In particular we have seen an increase in requests for;

- Help to complete forms
- Welfare Benefits/Debt Management
- Disability advice
- Requests for help with medication and referrals to food banks
- Help with Appeals
- Buddying and befriending
- Social and Peer group support activities
- Help to Cope with the challenges of social isolation

In addition to requests to continue current services, we have been asked to develop social media information, provide new opportunities for social networks in the community and to help people become more active citizens.

There has also been and will continue to be an increase in coordination with partner organisations to tackle our shared challenges and to meet the needs of diverse communities across Nottinghamshire. Disability Nottinghamshire collaboratively worked alongside Mansfield CVS to create and produce several training and information videos and postcards.

---

**DISABILITY NOTTINGHAMSHIRE**  
**(a company limited by guarantee)**

---

**TRUSTEES' REPORT (CONTINUED)**  
**FOR THE YEAR ENDED 31 MARCH 2022**

---

**Financial review**

**a. Going concern**

The Trustees are aware that the low level of unrestricted reserves may cast uncertainty over the charity's ability to continue as a going concern. Funding has been pledged for the next 3 years so we believe that the charity will have sufficient resources to continue until beyond August 2023. We continue to monitor the situation closely and continue to adopt the going concern basis in preparing the financial statements

**b. Reserves policy**

The charity needs reserves to enable it to meet both its ongoing commitments in respect of its charitable activities and to meet its future operating requirements.

The trustees recognise that the greatest single area of risk lies in the charity maintaining adequate reserves. It is the board's view that the charity should aim for reserves of three months' operating requirements plus redundancy commitments. Currently, reserves are adequate to meet this requirement. This financial information is regularly updated in board reports.

For a charity, especially one where its services are free at the point of contact, increasing reserves is a difficult task. Currently the board's policy is to maintain and build reserves.

**Structure, governance and management**

**a. Constitution**

Disability Nottinghamshire is registered as a charitable company limited by guarantee and was set up by a Memorandum of Association.

**b. Methods of appointment or election of Trustees**

The management of the Company is the responsibility of the Trustees who are elected and co-opted under the terms of the Memorandum of Association.

**c. Organisational structure and decision-making policies**

We continue to actively try to recruit new Trustee Directors, which has proved difficult during the pandemic and its aftermath. The Board meets on average every 6 weeks and are fully responsible for the forward strategy. All members of the Board have continued to give their time and expertise on a voluntary basis, receiving no benefits from the Charity. Any out of pocket expenses reclaimed are shown in note 10 to the financial statements.

Within the Board of Trustee Directors 75% of its membership consist of individuals who are disabled, or have a long-term health condition, or care for someone. Trustees are elected annually following the Annual General Meeting.

---

**DISABILITY NOTTINGHAMSHIRE**  
**(a company limited by guarantee)**

---

**TRUSTEES' REPORT (CONTINUED)**  
**FOR THE YEAR ENDED 31 MARCH 2022**

---

**Structure, governance and management (continued)**

**d. Financial risk management**

There is a revised risk management strategy and matrix in place to ensure where applicable all risks are covered. Where appropriate, policies, financial systems or procedures have been established to mitigate the internal risks the charity might face. The responsibility for monitoring this work is with the full Board of Trustee Directors.

Currently all Board members receive a weekly cash flow spreadsheet and a full range of financial and project monitoring reports received prior to Board Meetings.

In addition, all our funders require evidence based monitoring reports on a regular basis. Performance across all services delivered is assessed against key objectives as agreed with funders.

All reports and reviews go directly to Trustee Director Board Meetings for consideration. Staff attend to present their reports as required.

During the Covid-19 lockdowns the Board received written reports electronically which continued to provide a range of data and information. Trustee Directors also held Board meetings via zoom during this period.

The Trustees have assessed the major risks to which the Company is exposed, in particular those related to the operations and finances of the Company, and are satisfied that systems and procedures are in place to mitigate exposure to the major risks.

Included in the external risk assessment, the Board recognises that cuts to funding impacts on the way services are delivered and developed with most funding being restricted to fixed term and often as little as 12 months. Opportunities for volunteer fund raising this accounting year have been slow to recover. We continue to work hard to mitigate this by seeking to diversify funding sources to maintain an effective service that meets the needs of service users.

**Plans for future periods**

The Charity plans to continue the activities outlined above in the forthcoming financial year subject to obtaining satisfactory funding. Due to the financial hazards we have experienced and will continue to face, with COVID-19 even following the easing of Government Restrictions and the resulting constraints on resources, will be constantly reviewed. The direct focus of our work will be to continue to support, empower the community we represent offering person centred support as well as embracing technology.

A new strategic plan (2022 to 2025) consultation has commenced. It is important that the community we represent has a voice, and services are maintained, designed, and developed with them not for them. We will also continue to seek funding to develop plans and services identified within this work, working wherever possible with other partners to support delivery of quality services. There will also be focus on volunteer and Board member recruitment. Finally, we believe that equal access to our services is vital for our success and to community wellbeing. Therefore we will continue to strive to learn, adapt and break down barriers.

Approved by order of the members of the board of Trustees on 15 August 2022 and signed on their behalf by:

**L Carter**  
Chair of Trustees

---

**DISABILITY NOTTINGHAMSHIRE**  
**(a company limited by guarantee)**

---

**INDEPENDENT EXAMINER'S REPORT**  
**FOR THE YEAR ENDED 31 MARCH 2022**

---

**Independent examiner's report to the Trustees of Disability Nottinghamshire ('the Company')**

I report to the charity Trustees on my examination of the accounts of the Company for the year ended 31 March 2022.

**Responsibilities and basis of report**

As the Trustees of the Company (and its directors for the purposes of company law) you are responsible for the preparation of the accounts in accordance with the requirements of the Companies Act 2006 ('the 2006 Act').

Having satisfied myself that the accounts of the Company are not required to be audited under Part 16 of the 2006 Act and are eligible for independent examination, I report in respect of my examination of the Company's accounts carried out under section 145 of the Charities Act 2011 ('the 2011 Act'). In carrying out my examination I have followed the Directions given by the Charity Commission under section 145(5)(b) of the 2011 Act.

**Independent examiner's statement**

I have completed my examination. I confirm that no matters have come to my attention in connection with the examination giving me cause to believe:

1. accounting records were not kept in respect of the Company as required by section 386 of the 2006 Act; or
2. the accounts do not accord with those records; or
3. the accounts do not comply with the accounting requirements of section 396 of the 2006 Act other than any requirement that the accounts give a 'true and fair' view which is not a matter considered as part of an independent examination; or
4. the accounts have not been prepared in accordance with the methods and principles of the Statement of Recommended Practice for accounting and reporting by charities [applicable to charities preparing their accounts in accordance with the Financial Reporting Standard applicable in the UK and Republic of Ireland (FRS 102)].

I have no concerns and have come across no other matters in connection with the examination to which attention should be drawn in this report in order to enable a proper understanding of the accounts to be reached.

This report is made solely to the Company's Trustees, as a body, in accordance with Part 4 of the Charities (Accounts and Reports) Regulations 2008. My work has been undertaken so that I might state to the Company's Trustees those matters I am required to state to them in an independent examiner's report and for no other purpose. To the fullest extent permitted by law, I do not accept or assume responsibility to anyone other than the Company and the Company's Trustees as a body, for my work or for this report.

Signed:

Dated: 31 August 2022

Jonathan Wilson

FCA, CTA

Mansfield

**DISABILITY NOTTINGHAMSHIRE**  
(a company limited by guarantee)

**STATEMENT OF FINANCIAL ACTIVITIES (INCORPORATING INCOME AND EXPENDITURE ACCOUNT)  
FOR THE YEAR ENDED 31 MARCH 2022**

	<b>Note</b>	<b>Restricted funds 2022 £</b>	<b>Unrestricted funds 2022 £</b>	<b>Total funds 2022 £</b>	<b>Total funds 2021 £</b>
<b>Income from:</b>					
Donations and legacies	3	-	3,187	3,187	9,517
Charitable activities	4	19,605	13,125	32,730	47,413
Other fundraising activities	5	106	50	156	4,561
Investments	6	-	1	1	3
<b>Total income</b>		<b>19,711</b>	<b>16,363</b>	<b>36,074</b>	61,494
<b>Expenditure on:</b>					
Charitable activities	7	13,097	27,483	40,580	50,415
<b>Total expenditure</b>		<b>13,097</b>	<b>27,483</b>	<b>40,580</b>	50,415
<b>Net movement in funds</b>		<b>6,614</b>	<b>(11,120)</b>	<b>(4,506)</b>	11,079
<b>Reconciliation of funds:</b>					
Total funds brought forward		2,078	30,780	32,858	21,779
Net movement in funds		6,614	(11,120)	(4,506)	11,079
<b>Total funds carried forward</b>		<b>8,692</b>	<b>19,660</b>	<b>28,352</b>	32,858

The Statement of financial activities includes all gains and losses recognised in the year.

The notes on pages 11 to 22 form part of these financial statements.

**DISABILITY NOTTINGHAMSHIRE**  
**(a company limited by guarantee)**  
**REGISTERED NUMBER: 06972820**

**BALANCE SHEET**  
**AS AT 31 MARCH 2022**

	Note	2022 £	2021 £
<b>Current assets</b>			
Debtors	11	4,655	2,706
Cash at bank and in hand		29,368	34,279
		<u>34,023</u>	<u>36,985</u>
Creditors: amounts falling due within one year	12	(5,671)	(4,127)
<b>Net current assets</b>		<u>28,352</u>	<u>32,858</u>
<b>Total net assets</b>		<u><u>28,352</u></u>	<u><u>32,858</u></u>
<b>Charity funds</b>			
Restricted funds	13	8,692	2,078
Unrestricted funds	13	19,660	30,780
<b>Total funds</b>		<u><u>28,352</u></u>	<u><u>32,858</u></u>

The Company was entitled to exemption from audit under section 477 of the Companies Act 2006.

The members have not required the company to obtain an audit for the year in question in accordance with section 476 of Companies Act 2006.

The Trustees acknowledge their responsibilities for complying with the requirements of the Act with respect to accounting records and preparation of financial statements.

The financial statements have been prepared in accordance with the provisions applicable to entities subject to the small companies regime.

The financial statements were approved and authorised for issue by the Trustees and signed on their behalf by:

**L Carter**  
Chair of Trustees  
Date: 15 August 2022

The notes on pages 11 to 22 form part of these financial statements.

---

**DISABILITY NOTTINGHAMSHIRE**  
**(a company limited by guarantee)**

---

**NOTES TO THE FINANCIAL STATEMENTS**  
**FOR THE YEAR ENDED 31 MARCH 2022**

---

**1. General information**

The company is a company limited by guarantee. It is incorporated and registered in England (registration number 6972820). The registered office is Room 6, Park Road Resource Centre, 53 Park Road, Mansfield Woodhouse, Nottinghamshire, NG19 8ER.

**2. Accounting policies**

**2.1 Basis of preparation of financial statements**

The financial statements have been prepared in accordance with the Charities SORP (FRS 102) - Accounting and Reporting by Charities: Statement of Recommended Practice applicable to charities preparing their accounts in accordance with the Financial Reporting Standard applicable in the UK and Republic of Ireland (FRS 102) (effective 1 January 2019), the Financial Reporting Standard applicable in the UK and Republic of Ireland (FRS 102) and the Companies Act 2006.

Disability Nottinghamshire meets the definition of a public benefit entity under FRS 102. Assets and liabilities are initially recognised at historical cost or transaction value unless otherwise stated in the relevant accounting policy.

The company is a company limited by guarantee. The members of the company are the Trustees named on page 1. In the event of the company being wound up, the liability in respect of the guarantee is limited to £1 per member of the company.

**2.2 Going concern**

The accounts have been prepared on the going concern basis. The trustees believe that the charity can continue until beyond August 2023 as funding has been pledged for the next 3 years.

**2.3 Income**

All income is recognised once the Company has entitlement to the income, it is probable that the income will be received and the amount of income receivable can be measured reliably.

Grants are included in the statement of financial activities on a receivable basis. The balance of income received for specific purposes but not expended during the period is shown in the relevant funds on the balance sheet. Where income is received in advance of entitlement of receipt, its recognition is deferred and included in creditors as deferred income. Where entitlement occurs before income is received, the income is accrued.

Income tax recoverable in relation to investment income is recognised at the time the investment income is receivable.

---

**DISABILITY NOTTINGHAMSHIRE**  
**(a company limited by guarantee)**

---

**NOTES TO THE FINANCIAL STATEMENTS**  
**FOR THE YEAR ENDED 31 MARCH 2022**

---

**2. Accounting policies (continued)**

**2.4 Expenditure**

Expenditure is recognised once there is a legal or constructive obligation to transfer economic benefit to a third party, it is probable that a transfer of economic benefits will be required in settlement and the amount of the obligation can be measured reliably. Expenditure is classified by activity. The costs of each activity are made up of the total of direct costs and shared costs, including support costs involved in undertaking each activity. Direct costs attributable to a single activity are allocated directly to that activity. Shared costs which contribute to more than one activity and support costs which are not attributable to a single activity are apportioned between those activities on a basis consistent with the use of resources. Central staff costs are allocated on the basis of time spent, and depreciation charges allocated on the portion of the asset's use.

Expenditure on charitable activities is incurred on directly undertaking the activities which further the Company's objectives, as well as any associated support costs.

All expenditure is inclusive of irrecoverable VAT.

**2.5 Interest receivable**

Interest on funds held on deposit is included when receivable and the amount can be measured reliably by the Company; this is normally upon notification of the interest paid or payable by the institution with whom the funds are deposited.

**2.6 Debtors**

Prepayments are valued at the amount prepaid.

**2.7 Cash at bank and in hand**

Cash at bank and in hand includes cash and short-term highly liquid investments with a short maturity of three months or less from the date of acquisition or opening of the deposit or similar account.

**2.8 Liabilities and provisions**

Liabilities are recognised when there is an obligation at the balance sheet date as a result of a past event, it is probable that a transfer of economic benefit will be required in settlement, and the amount of the settlement can be estimated reliably.

Liabilities are recognised at the amount that the Company anticipates it will pay to settle the debt or the amount it has received as advanced payments for the goods or services it must provide.

**2.9 Financial instruments**

The Company only has financial assets and financial liabilities of a kind that qualify as basic financial instruments. Basic financial instruments are initially recognised at transaction value and subsequently measured at their settlement value with the exception of bank loans which are subsequently measured at amortised cost using the effective interest method.



---

**DISABILITY NOTTINGHAMSHIRE**  
**(a company limited by guarantee)**

---

**NOTES TO THE FINANCIAL STATEMENTS**  
**FOR THE YEAR ENDED 31 MARCH 2022**

---

**2. Accounting policies (continued)**

**2.10 Fund accounting**

General funds are unrestricted funds which are available for use at the discretion of the Trustees in furtherance of the general objectives of the Company and which have not been designated for other purposes.

Restricted funds are funds which are to be used in accordance with specific restrictions imposed by donors or which have been raised by the Company for particular purposes. The costs of raising and administering such funds are charged against the specific fund. The aim and use of each restricted fund is set out in the notes to the financial statements.

Investment income, gains and losses are allocated to the appropriate fund.

**3. Income from donations and legacies**

	<b>Unrestricted funds 2022 £</b>	<b>Total funds 2022 £</b>
Donations	2,202	<b>2,202</b>
Grants	949	<b>949</b>
Radar keys	36	<b>36</b>
	<hr/> 3,187 <hr/>	<hr/> <b>3,187</b> <hr/>
	<b>Unrestricted funds 2021 £</b>	<b>Total funds 2021 £</b>
Donations	2,776	2,776
Grants	6,741	6,741
	<hr/> 9,517 <hr/>	<hr/> 9,517 <hr/>

**DISABILITY NOTTINGHAMSHIRE**  
(a company limited by guarantee)

**NOTES TO THE FINANCIAL STATEMENTS  
FOR THE YEAR ENDED 31 MARCH 2022**

**4. Income from charitable activities**

	<b>Restricted funds 2022 £</b>	<b>Unrestricted funds 2022 £</b>	<b>Total funds 2022 £</b>
Grants receivable	19,605	13,125	<b>32,730</b>

	<b>Restricted funds 2021 £</b>	<b>Unrestricted funds 2021 £</b>	<b>Total funds 2021 £</b>
Grants receivable	20,055	27,358	47,413

**5. Income from other trading activities**

**Income from fundraising events**

	<b>Restricted funds 2022 £</b>	<b>Unrestricted funds 2022 £</b>	<b>Total funds 2022 £</b>
Fundraising	106	50	<b>156</b>

	<b>Unrestricted funds 2021 £</b>	<b>Total funds 2021 £</b>
Fundraising	4,561	4,561

**DISABILITY NOTTINGHAMSHIRE**  
(a company limited by guarantee)

**NOTES TO THE FINANCIAL STATEMENTS  
FOR THE YEAR ENDED 31 MARCH 2022**

**6. Investment income**

	<b>Unrestricted funds 2022 £</b>	<b>Total funds 2022 £</b>
Interest receivable	1	1
	<u>1</u>	<u>1</u>
	<b>Unrestricted funds 2021 £</b>	<b>Total funds 2021 £</b>
Interest receivable	3	3
	<u>3</u>	<u>3</u>

**7. Analysis of expenditure on charitable activities**

**Summary by fund type**

	<b>Restricted funds 2022 £</b>	<b>Unrestricted funds 2022 £</b>	<b>Total funds 2022 £</b>
Wages and salaries	8,172	11,975	<b>20,147</b>
Advice centre running costs	4,189	7,973	<b>12,162</b>
Insurance	-	2,373	<b>2,373</b>
Office expenses	39	702	<b>741</b>
Volunteers' expenses	307	-	<b>307</b>
Legal and professional fees	222	1,096	<b>1,318</b>
Sundry expenses	109	226	<b>335</b>
Telephone and computer	59	2,097	<b>2,156</b>
Advertising and publications	-	21	<b>21</b>
Independent examiner's fee	-	1,020	<b>1,020</b>
	<u>13,097</u>	<u>27,483</u>	<u><b>40,580</b></u>

**DISABILITY NOTTINGHAMSHIRE**  
(a company limited by guarantee)

**NOTES TO THE FINANCIAL STATEMENTS  
FOR THE YEAR ENDED 31 MARCH 2022**

**7. Analysis of expenditure on charitable activities (continued)**

**Summary by fund type (continued)**

	Restricted funds 2021 £	Unrestricted funds 2021 £	Total funds 2021 £
Wages and salaries	16,381	3,049	19,430
Training	600	-	600
Advice centre running costs	4,202	3,961	8,163
Insurance	740	1,551	2,291
Office expenses	-	394	394
Volunteers' expenses	144	-	144
Legal and professional fees	-	1,204	1,204
Sundry expenses	-	170	170
Telephone and computer	11,206	5,543	16,749
Advertising and publications	250	-	250
Independent examiner's fee	-	1,020	1,020
	33,523	16,892	50,415

**8. Independent examiner's remuneration**

	<b>2022 £</b>	2021 £
Fees payable to the Company's independent examiner for the independent examination of the Company's annual accounts	<b>1,020</b>	1,020

**DISABILITY NOTTINGHAMSHIRE**  
(a company limited by guarantee)

**NOTES TO THE FINANCIAL STATEMENTS  
FOR THE YEAR ENDED 31 MARCH 2022**

**9. Staff costs**

	<b>2022</b> £	2021 £
Wages and salaries	<b>20,088</b>	19,430

The average number of persons employed by the Company during the year was as follows:

	<b>2022</b> No.	2021 No.
Charitable activities	<b>2</b>	4

No employee received remuneration amounting to more than £60,000 in either year.

**10. Trustees' remuneration and expenses**

During the year, no Trustees received any remuneration or other benefits (2021 - £NIL).

During the year ended 31 March 2022, travelling expenses totalling £NIL were reimbursed or paid directly to Trustee (2021 - £144 to 1 Trustee).

**11. Debtors**

	<b>2022</b> £	2021 £
<b>Due within one year</b>		
Prepayments and accrued income	<b>4,655</b>	2,706

**12. Creditors: Amounts falling due within one year**

	<b>2022</b> £	2021 £
Trade creditors	<b>4,496</b>	2,909
Other taxation and social security	-	198
Accruals and deferred income	<b>1,175</b>	1,020
	<b>5,671</b>	4,127

**DISABILITY NOTTINGHAMSHIRE**  
(a company limited by guarantee)

**NOTES TO THE FINANCIAL STATEMENTS  
FOR THE YEAR ENDED 31 MARCH 2022**

**13. Statement of funds**

**Statement of funds - current year**

	Balance at 1 April 2021 £	Income £	Expenditure £	Balance at 31 March 2022 £
<b>Unrestricted funds</b>				
General Fund	30,780	16,363	(27,483)	19,660
<b>Restricted funds</b>				
Community champions	-	9,146	(4,559)	4,587
We are undefeatable	-	725	(597)	128
Big Lottery AFA	-	9,735	(5,926)	3,809
CRT 2020	984	-	(984)	-
NCF Wheatcroft	465	-	(465)	-
Thomas Farr	200	-	(200)	-
Tesco Charity Trust	284	105	(221)	168
Mary Potter Convent Hospital	145	-	(145)	-
	2,078	19,711	(13,097)	8,692
<b>Total of funds</b>	32,858	36,074	(40,580)	28,352

**DISABILITY NOTTINGHAMSHIRE**  
(a company limited by guarantee)

**NOTES TO THE FINANCIAL STATEMENTS  
FOR THE YEAR ENDED 31 MARCH 2022**

**13. Statement of funds (continued)**

**Statement of funds - prior year**

	Balance at 1 April 2020 £	Income £	Expenditure £	Balance at 31 March 2021 £
<b>Unrestricted funds</b>				
General Fund	6,233	41,439	(16,892)	30,780
<b>Restricted funds</b>				
Awards for All	6,589	-	(6,589)	-
CRT 2020 GB	-	3,451	(3,451)	-
Big Lottery COVID-19 IT	-	9,000	(9,000)	-
CRT 2020	8,528	-	(7,544)	984
NCF Wheatcroft	-	3,000	(2,535)	465
Mansfield CVS 2020	-	600	(600)	-
NCC Emergency 2020	-	2,004	(2,004)	-
Thomas Farr	-	2,000	(1,800)	200
Tesco Charity Trust	284	-	-	284
Mary Potter Convent Hospital	145	-	-	145
	15,546	20,055	(33,523)	2,078
<b>Total of funds</b>	21,779	61,494	(50,415)	32,858

---

**DISABILITY NOTTINGHAMSHIRE**  
**(a company limited by guarantee)**

---

**NOTES TO THE FINANCIAL STATEMENTS**  
**FOR THE YEAR ENDED 31 MARCH 2022**

---

**14. Purpose of funds**

Purpose of unrestricted funds:

**General fund**

Unrestricted funds are available for use at the discretion of the trustees in furtherance of the general objectives of the charity.

**Purpose of restricted funds:**

**Mary Potter Convent Hospital Trust**

The Mary Potter Convent Hospital Trust is enabling our volunteers to have access to volunteer training and support.

**National Lottery Awards For All**

National Lottery Awards for All is funding Disability Nottinghamshire to employ a Disability Advisor on a part time basis to alleviate poverty amongst disabled and disadvantaged people by improving access to benefits, providing a comprehensive benefits advice service via telephone, social media, and outreach surgeries.

**Tesco Charity Trust**

The Tesco Charity Trust is funding Disability Nottinghamshire's local community choir "Our Voice". The grant will support sessional workers, a pianist, a singing tutor, room hire and sheet music.

**Coalfield Community Investment Programme (England)**

The Coalfields Regeneration Trust is funding Disability Nottinghamshire to employ a Disability Advisor to alleviate poverty amongst disabled and disadvantaged people by improving access to benefits, providing a comprehensive benefits advice service via telephone, social media and outreach surgeries. CRT also provided additional funding from the DCMS fund to take on a further Disability Advisor to help support service users through the pandemic.

**National Lottery Community Fund**

When lockdown happened The National Lottery Community Fund invested to enable Disability Nottinghamshire to purchase laptops, along with moving to a Cloud based system and support which allowed members of our team to carry on delivering the service remotely.

**NCC Emergency 2020**

Nottinghamshire County Council provided additional funding in response to COVID19, enabling Disability Nottinghamshire to provide additional cover and response to service users during the pandemic.

**NCF Wheatcroft Fund**

NCF Wheatcroft supported Disability Nottinghamshire with grant funding to provide the administration of volunteer support and supervision, along with funds to produce accessible information via social contact resources.



**DISABILITY NOTTINGHAMSHIRE**  
(a company limited by guarantee)

**NOTES TO THE FINANCIAL STATEMENTS  
FOR THE YEAR ENDED 31 MARCH 2022**

**NCF Thomas Farr**

NCF Thomas Farr supported Disability Nottinghamshire with grant funding to provide administration costs to facilitate and support consultation via social media.

**Community Champions - Mansfield CVS**

Community Champions (Mansfield CVS) is supporting our User Led Organisation within Mansfield District to act as a Mansfield Community champion Anchor Organisation. Funding will support costs with additional capacity and to employ a paid worker as a Disability and Welfare Benefit Advisor to restart outreach surgeries and face to face appointments to support service users with welfare benefits and appeals advice, form fill advice, online forms, and emotional support.

**We Are Undefeatable – Mansfield CVS**

We Are Undefeatable (Mansfield CVS) is funding “Our Voice” singing group for five months with a contribution to room hire and supportive administration costs to support and mentor group members. The aim of the funding is to increase independence, health, and well-being and for members to feel more connected through social interaction, friendships groups and their community.

**15. Summary of funds**

**Summary of funds - current year**

	Balance at 1 April 2021 £	Income £	Expenditure £	Balance at 31 March 2022 £
General funds	30,780	16,363	(27,483)	19,660
Restricted funds	2,078	19,711	(13,097)	8,692
	<u>32,858</u>	<u>36,074</u>	<u>(40,580)</u>	<u>28,352</u>

**Summary of funds - prior year**

	Balance at 1 April 2020 £	Income £	Expenditure £	Balance at 31 March 2021 £
General funds	6,233	41,439	(16,892)	30,780
Restricted funds	15,546	20,055	(33,523)	2,078
	<u>21,779</u>	<u>61,494</u>	<u>(50,415)</u>	<u>32,858</u>

**DISABILITY NOTTINGHAMSHIRE**  
(a company limited by guarantee)

**NOTES TO THE FINANCIAL STATEMENTS  
FOR THE YEAR ENDED 31 MARCH 2022**

**16. Analysis of net assets between funds**

**Analysis of net assets between funds - current year**

	Restricted funds 2022 £	Unrestricted funds 2022 £	Total funds 2022 £
Current assets	8,692	25,331	<b>34,023</b>
Creditors due within one year	-	(5,671)	<b>(5,671)</b>
<b>Total</b>	<u>8,692</u>	<u>19,660</u>	<u><b>28,352</b></u>

**Analysis of net assets between funds - prior year**

	Restricted funds 2021 £	Unrestricted funds 2021 £	Total funds 2021 £
Current assets	2,078	34,907	36,985
Creditors due within one year	-	(4,127)	(4,127)
<b>Total</b>	<u>2,078</u>	<u>30,780</u>	<u>32,858</u>

**17. Operating lease commitments**

At 31 March 2022 the Company had commitments to make future minimum lease payments under non-cancellable operating leases as follows:

	2022 £	2021 £
Not later than 1 year	<u><b>483</b></u>	<u>495</u>

**18. Related party transactions**

The Company has not entered into any related party transaction during the year, nor are there any outstanding balances owing between related parties and the Company at 31 March 2022.