

**THE PAROCHIAL CHURCH COUNCIL OF THE  
ECCLESIASTICAL PARISH OF  
ST PHILIP & ST JAMES, ODD DOWN, BATH & WELLS  
Charity No: 1131533**

**TRUSTEES ANNUAL REPORT  
For the year ended 31 December 2022**



**TABLE OF CONTENTS**

Page

1	Vicar's Report: Aims & Purposes
5	Reports: Objectives & Activities
20	Structure, Governance and Management
22	Financial Review and Reserves Policy
23	Independent Examiner's Report
25	Statement of Financial Activities
26	Balance Sheet
27	Notes to the Accounts



## VICAR'S REPORT

### Aims and purposes

“To pursue God until heaven overflows through us.”

We believe that everything should flow from intimacy with our Heavenly Father, through His Son, Jesus, in the power of the Holy Spirit, who has been given to us. So we place a high value on His presence; on worship and prayer; on the Word; and on the ministry of the Holy Spirit.

Our starting point is Him, not what we do for Him. We don't pursue ministry; we pursue the presence of God. We don't minister first unto the world; we minister first unto Him. We love Him first, so that we can love the world the way He does.

He's looking for people who are filled with His Spirit and are on fire. This is the basis for all effective Kingdom ministry in the pattern of Jesus.

*Our vision is worked out with the help of three key words: **Behold, Belong and Become.***

#### **Behold.**

Our primary desire is that we would behold (*experience, become familiar with, see*) the manifest (actual, real, not theoretical) glory (*goodness and presence*) of God. We believe that God created us to enjoy a life of deep intimacy with Him. We are passionate about His presence and know that cool things happen when the atmosphere of heaven fills a room. We are focussed on making St Philip's His dwelling place.

#### **Belong.**

We are family. Beloved children of God. Adopted by our Father in heaven. Brothers and sisters in Christ. Sure of our identity. Bound together by our love for one another. Growing in fellowship. We believe that the Kingdom advances through family and that Jesus will be known and honoured by our love for one another and for our community.

#### **Become.**

We expect to be transformed by God's presence. We know that an experience of His love through the Holy Spirit is life-changing. We believe that following Jesus is an exciting and powerful life of becoming all that He created us to be and all that He commanded us to do.

### THIS YEAR

I am bound to say this, but I genuinely believe that this has been a very significant year for St Philip's in which we have seen encouraging signs of the Kingdom as the presence of God has increased in our midst. Make sure you have eyes to see – you don't want to miss it!

This has been a year of healings, faith upgrades, fresh prophetic insight, weighty Revival Prayer Meetings, new MATT22 initiatives and numerical growth.

It is impossible to cover everything in this report, but I hope the following pages give a sense of what God has been doing in and through us during this exciting year of consolidation and new moves of the Spirit.



I thank the Lord all the time for the fellowship that we all share as the family of St Philip's. I am so grateful for your partnership as we continue to grow together to be a church that gives Jesus what He wants.

**Now to him be glory in the church and in Christ Jesus throughout all generations, for ever and ever! Amen!!**

*Ephesians 3:21*

### **Achievements and performance:**

I always begin by saying that the title of this section is dictated by the Charity Commission. I measure the advance of the Kingdom through St Philip's in neither achievement nor performance! Rather, I am just deeply grateful for the kindness of God and the presence of His Spirit, who makes all things possible in Christ Jesus.

This report is for Jesus. May we posture our hearts to gratitude as it ascribes to Him all the glory.

### **Some personal highlights, for which I am thankful:**

#### The Glory increases

Over this last year, our pursuit of God has intensified through worship, prayer and the ministry of the Spirit. Since last September in particular, I believe an increase in the manifest glory is evident. This has been particularly noticeable in our Revival Prayer Meetings, Sunday evening services, greater engagement in prayer ministry on Sunday mornings, various worship nights and the testimonies that I hear from people as we have laid on hands and ministered prophetically to them in the power of the Spirit, as Jesus commanded us to do.

We are here for the presence. I am so grateful and excited that the Lord is turning His precious face towards us.

#### Food Bank

The Lord told us to partner with Genesis. It's still early days and we believe that there is more to come, but it has been such an encouraging start! At certain times in the week, St Philip's is now awash with people from the community. I believe the context is being set for a restorative ministry of the Holy Spirit through His servants here.

#### Revival Prayer

Our weekly Revival Prayer Meeting has continued to meet throughout the year to contend for revival in our church and awakening in our neighbourhood. It really is an 'hour of power' which continues to result in some of the most significant prophetic input that we experience at St Philip's. Consistently our meetings leave us deeply encouraged by the presence and voice of God. I believe we have seen the events of this year because of this prayer meeting.

#### A third year of growth

I don't consider numbers to be a measure of success, but I do see growth as a mark of life in the Spirit. The Lord builds His church; it's our job to worship Him. We finish this year with around 35% of the church having worshipped with us for 2 years or less. Hooray!



### Rising Gen.

I have loved watching what is happening with our Rising Gen. under the leadership of Matt Vaine with the support of key volunteers across all the age groups. This year has seen so much life as we seek to disciple our younger generation. The ultimate goal is a generation on fire, deeply in love with Jesus, rooted in their sonship and moving in the power of the Spirit.

### We are a family

A consistent narrative, particularly in the latter part of this year (and especially since our beloved Margaret Joyce passed away – but also many significant others of the older generation), has been that St Philip's is a family. It has been beautiful to benefit from the deep friendships of years, and also to witness the rapid way in which many of our new members have begun to feel at home.

### MATT22 – Food Bank, One2One and St Martin's Garden Pantry

I described last year as a 'quieter year' for MATT22. Not so this year! Momentum has accelerated with Liza Wortelhoff taking on an oversight role for the ministry; building surveys undertaken as part of the planned café development; a rebooted team for One2One; the establishment of the Food Bank; and new members on the St Martin's Garden Pantry team.

### **Particular thanks:**

In no specific order:

- **Tim Conroy** – prophetic, with the heart of a worshipper, Tim continues to support the ministry of St Philip's in a remarkable number of ways. He always gives more than he technically should, is generous with his time and very patient with me! Thank you, Tim, for your friendship and for being the best church administrator in the world.
- **Liza Wortelhoff** – submitted to the Lord and in love with the Holy Spirit, it's been a joy to see Liza's ministry expand and consolidate this year. We couldn't do it without her and I am so grateful for every hour she gives us.
- **Matt Vaine** – prophetic, theologically grounded and expectant for a sovereign move of Jesus by His Spirit, Matt is indispensable. He has been so gracious in everything I have asked him to do and it is a delight to serve the Lord with Matt in the team.
- **Jay Cook** – in love with the Lord, hungry for the presence and growing more and more in anointing and authority, Jay has consistently and constantly poured himself out this year to take us into deeper communion and higher worship.
- **Kids & Youth** – every one of our volunteers gives their time, love and commitment to the vision and to our young people. Your ministry is so important! Thank you so much.
- **Chris White and the 'Friends' team** – for their commitment to our precious older generation. Thank you for pastoring, discipling and loving them.
- **Kathryn, Jay and Beth** for continuing to invest in the Students & Young Adults ministry, which has seen significant growth this year in spiritual maturity, friendship and leadership within the church.
- **Andy & Suzanne Stammers** – for their support of MATT22, continued commitment to One2One, their love of those outside the church and their shared and important ministry in Combe Hay.



- **Wardens** ´ Jo, Debs, Matt, Paul and Tony for their counsel, backing, accountability, practical support, time and deeply appreciated insights and suggestions. I am so well looked after by them all!
- PCC Secretary, **Graham Pearson** ´ my handrail, constant support and friend.
- Treasurers ´ **Paul Millard and Julie Ryder** (and more recently **Richard Corrie**). Thank you for the time and counsel that you have given over this last year and for helping me work out ways to support the vision and mission of St Philip's.
- **PCC** and Standing Committee ´ for the support, unity and fun this past year.
- **Jenny Barker, Clive Hall, Louise Malkin and Hannah Parrott** ´ for helping me to establish a new safeguarding team and supporting me as we seek to be the best we can be.
- **Key volunteers**, not limited to but including:
  - Worship and Production team ´ for taking us higher
  - Home Team ´ for modelling so well our culture of welcome
  - Mark Ryder ´ for serving and blessing St Philip's in so many ways
  - Ali Mottram ´ for your time in supporting the staff team administratively
  - Finance Team ´ for your wisdom, expertise and oversight.
  - Ian Bleakley and Bran Munro ´ for giving us another beautiful carol service
  - Yvonne Conroy ´ for continuing to shepherd and nurture the Drama Group ministry







## OBJECTIVES AND ACTIVITIES

The reports that follow give a snapshot of some of the activity and focus of the ministry, mission and worshipping life of St Philip's this year. In line with our overall vision *to pursue God until Heaven overflows through us*, the reports fall under our '3 B's': **Behold, Belong, Become.**



## REPORTS: BEHOLD

These reports reflect our desire to pursue the presence of the Lord and minister first unto Him. In our pursuit of Him, and in our growing awareness of the precious manifest presence of the Holy Spirit, St Philip's is a discipleship environment. We believe that the most important thing is that God is honoured and the saints equipped through the baptism, and continuous in-filling, of the Holy Spirit - so that we can release heaven outside the walls of the church. Mission flows from intimacy with the Holy Spirit. *PF*

### Worship – Jay Cook

Worship sits firmly at the foundation of our vision. We believe that we are called to behold the manifest presence of God and to pour out our love and affection upon Him in worship.

It has been such an exciting and powerful year for worship. The team has continued to grow in freedom, depth, devotion and numbers. The Lord has also been taking us higher into encounter and deeper into communion with Him and we have seen a huge shift in our intimacy with Him in worship.

It has been exciting to see some of our new Students & Young Adults join the team and the fresh perspective they have brought, along with their God-given gifts.

A significant shift this year has been a developing posture in the team to seek His face. There has been a deeper hunger as we have seen more and more of the Lord's glory manifesting in our times of worship. The scriptures say: 'Taste and see that the LORD is good' (Psalm 34:8). As we have begun to taste and see; a deep hunger has been imparted within us for more of Him.

It's been exciting to see original songs rise out of our times of worship, some of which have become regular songs that we sing at our services. This was one of the things that was massively on our hearts as we began to dream and speak to the Lord about His heart for the team when Paul arrived 3 years ago. We felt the Lord saying that we would be a worship team that would write our own songs and resource the local church, and we have seen this begin to come to fruition throughout this past year.

Rather than these songs coming out of writing sessions, instead they have flowed prophetically during church services and secret place encounters. As we have pressed into heaven's song as a team and as a church, we have heard the songs of heaven and then released them on the earth.



In September 2022 we gathered together as team to discuss what we felt the Lord calling us into over the next year and this is what we felt like He said:

‘Here’s your goal over the next year **‘To pursue God until heaven flows through us’**. That’s it. No fancy plan. No mind-blowing strategy. Just a posture of the heart to hunger and humility with no other purpose than to spend time with the most beautiful Daddy ever.’

So that is going to be our pursuit over the next year and we are really expectant and excited for what He wants to do.

I would like to give a special acknowledgement to Andy Williams who has helped us with the installation of our new tech upgrades, including all of the wiring that is unseen. We are grateful for your work this year to help facilitate where we are going in worship.

And, of course, I would like to end by thanking every member of our brilliant team of musicians and production technicians - for your dedication, sacrifice and shared pursuit of Jesus in worship.

### **Prayer – Paul Ferguson**

Along with worship, prayer sits at St Philip’s foundations. We always want to pray in an atmosphere of worship and out of an encounter with the Holy Spirit.

We are therefore committed to creating as many opportunities as possible for the congregation to encounter the presence of God, grow in the prophetic and learn how to pray in the power of the Spirit – both in intercession and through the laying on of hands.

Highlights this year have included:

Tuesday Morning Revival Prayer meetings – since March 2021, we have prayed almost exclusively for revival at St Philip’s and awakening in Odd Down. These meetings are always the ‘hottest’ moment of the week as we worship, prophesy and contend for the Spirit to move. This year has seen a deepening of authority on the group as we have partnered with Holy Spirit to prophesy and declare in faith the sovereign will of God for our church and our neighbourhood.

Sunday morning prayer ministry – we aim to make space at almost every service for the Holy Spirit to minister through us to those who are hungry for transformation and an in-filling of the Holy Spirit through the laying on of hands. This year has seen people fall over in the power of the Spirit, be baptised in the Spirit for the first time, receive prophetic words that aimed to release people into their divine destiny and receive physical healing.

24-7 Prayer Room – the prayer room returned again this Lent with a new wave of recent attendees to church engaging with it for the first time. Resources in the room aimed to bring people into a greater knowledge of their identity, calling and power and also facilitate prayer for revival and awakening. A new Youth prayer wall provided a focus for the younger generation to interact with the prayer room and it was a delight to know that both Younger Youth and Older Youth met in the room throughout lent to journey through a brilliant 24-7 Prayer resource. Thank you to all who took the opportunity to pray. You have made a huge difference.



New Prayer Warrior Group on WhatsApp ' this new initiative, run by churchwardens Jo Bleakley and Debs Ross, has replaced the old 'Prayer Chain'. It is a beautiful expression of the mutual love and faith for prayer in the congregation.

## Preaching – Paul Ferguson

At St Philip's, we love the Spirit and we love the Word. During this past year, we have benefitted greatly from brilliant sermons that have obviously flowed straight from the secret place of personal affection for the Lord. This is exactly as we want it.

The goal of our preaching at St Philip's is not simply head knowledge, but revelation, encounter and transformation. We do not want to be satisfied merely with good theology; we are aiming to ensure that every sermon, not only opens the Word to us, but opens our hearts to an encounter with the transforming love of Jesus by the Holy Spirit. Without revelation that brings people into encounter, preaching simply provides the sort of knowledge that puffs up (1 Corinthians 8:1).

This is why our preaching always aims to move into a time of prophetic ministry, in which our leaders and preachers seek to submit to the Holy Spirit and encourage the congregation to step forward for the laying on of hands and an encounter with the power of God.

As I always say to our preaching team: 'I am not interested in your gifting; I'm interested in your anointing.' The preaching of the Word must flow from the preacher's intimacy with its author, developed in the secret place.

Some notable preaching series this year have been:

- 'Certainty in a Tricky World' ' Jan/Feb 2022
- 'Jesus is\_.' ' Feb/Mar 2022
- 'Everyday Saints' ' Jun/Jul 2022

All our preaching series are available on our website.

We have been blessed this year with some great guest speakers and one-off preachers. Notably, I remember with thanks, Paul Wakely, Jae Munro, Kathryn Todd, Jules Ferguson, Matt Orr, Alex Eldridge, David Dalley, Jay Cook and Emma Allen.

Also, thanks to those who shared their testimonies during the 'Everyday Saints' series: Graham & Chris White, Matt Vaine, Liza Wortelhock, Tom & Elizabeth Riley, Scott & Tina Joyce and Karen & Robin Noad.

And my very sincere thanks to our more regular speakers: Chris White, Matt Vaine, Liza Wortelhock, and Debs Ross. I am so grateful for the significant time dedicated to pursuing God in the secret place so that you can overflow for His glory on a Sunday morning. It's costly but fragrant. Thank you.







## REPORTS: BELONG

The following reports reflect that we are family at St Philip's. Our bond runs deeper than doctrinal agreement; it is the bond of love in the Spirit that exists between sisters and brothers in Christ, daughters and sons of our Father who loves us perfectly and completely.

Belonging is reflected in many aspects of the life of St Philip's, from activities that keep members of the congregation connected and encouraged in their faith; to initiatives that reflect our place of belonging in this neighbourhood and city.

I am particularly grateful for the many ways in which you look out for each other at St Philip's. Very often unseen, your love for each other is a great strength to our church family.  
*PF*

### Pastoral Ministry – Paul Ferguson

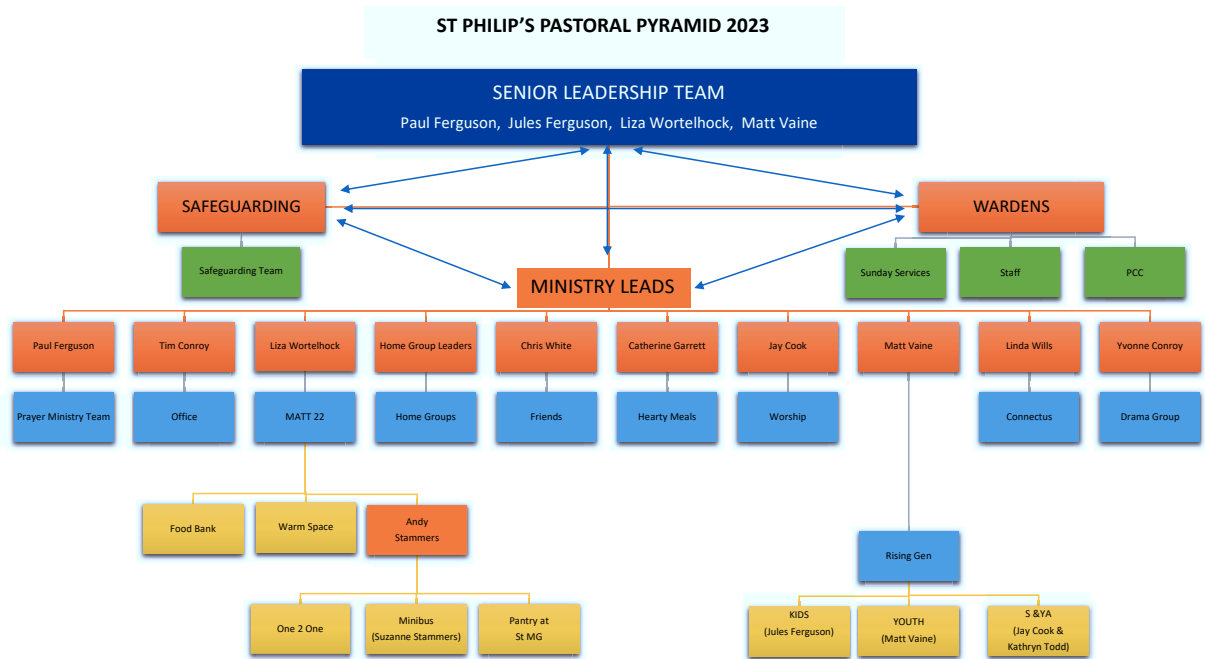
Pastoral ministry is important in any church family. It is a key context in which culture, discipleship and character are enacted as we learn to love each other, carry each other and encourage each other. Strong churches look not only to leadership but to one another when it comes to pastoral care and this is wonderfully the case at St Philip's.

This year has seen the beautiful family of St Philip's pulling together to look after those with long-term illness and acute illness, who have endured extended periods in hospital; giving practical assistance to those unable to look after themselves; cooking meals (through the 'Hearty Meals' ministry run by Catherine Garrett) for those in need of support due to any number of reasons, such as personal trauma or the arrival of a new baby; meeting for unseen times of prayer over cups of tea; delivering One2One meals to those unable to attend; and providing support through our established ministries, such as 'Friends'.

In addition, it has been encouraging to see the number of Home Groups at St Philip's continue to grow. Home Groups sit at the heart of St Philip's and provide an essential context, not just for fellowship and discipleship, but also pastoral care. I am so grateful to all our Home Group leaders for opening their homes, cooking meals and providing a context for us all to grow in intimacy with God and with each other.

An important context for supporting and equipping all those who provide pastoral leadership in the church is the Ministry Lead Lunches that happen twice a year. Last time, Helen Marton joined us from Focus Counselling – a Christian counselling organisation in Bath – to speak to us about mental health awareness in pastoral leadership. This was a useful time of training and included a Q&A.

At the last lunch, I took the opportunity to remind our leaders of the new 'St Philip's Pastoral Pyramid', which articulates responsibilities for all our ministries and clear lines of communication for pastoral and safeguarding concerns. An updated version of the Pastoral Pyramid can be seen below.



Finally, it has been wonderful to welcome Revd Johan Allen, not just to the church, but to the clergy team at St Philip's. Johan brings a wealth of experience in pastoral ministry and I am looking forward to seeing the benefits of all that he will bring to the team.

As Margaret signed off in this section last year: 'John 15:12' Love each other as I have loved you.'

### **'One2One' – Andy Stammers**

One2One is a ministry in which we provide a monthly roast lunch for those who would otherwise be eating alone. It sits under MATT22 and reaches into the community. It aims to bring the hope of Jesus to those who feel isolated.

One2One has grown this year with more volunteers joining the team. In September 2022 Sarah Moxham-Hendra joined the team as co-host – a key leadership role. In addition, a number of new volunteers have joined as cooks, servers and minibus drivers. This has been a big encouragement. We also have a group of people who kindly continue to deliver meals to a small number of local members who are unable to be present in person.

We really feel that One2One is becoming an extension of the morning service. Members of the church (all ages) are encouraged to come and serve and eat with those attending, again adding to the feeling of inclusivity and helping members to feel a sense of connection and belonging to the church. For many, this may have been their only contact with others. We are thankful to be serving our community at this time of great need.



## **St Philip's and St Martin's Garden Primary Schools – Paul Ferguson**

There are two primary schools in our Parish – St Philip's and St Martin's Garden. Both are very different contexts and we minister to them in different ways.

I am primarily involved in St Philip's Primary School under the leadership of Andy Joy, the headteacher and a committed Christian. As well as being a member of the Ethos Team, I lead collective worship every two weeks and, of course, we welcome the school three times a year into the church for their end of term services.

In addition to this, St Philip's church continues to support the staff in every way we can; provide bibles for years 2 and 6 each year; and give a gift bag to every child at Christmas and Easter - which contains chocolates; a craft; a Bible Society Book; and an invitation to St Philip's Church seasonal services and events.

The PCC continues to have a degree of input, despite the lessening of formal ties under the structure of the Palladian Academy Trust, which St Philip's School is a member of. This includes several of St Philip's congregation members holding foundation governor roles. My thanks to them for their presence on the board and their dedication to the school.

Andy Stammers ministers in St Martin's Garden School, primarily in the Food Pantry and the playground, but also by providing a link between the school and Grow for Life. As a secular environment, the approach required is very different and I am so grateful to Andy for his patient and dedicated presence as he builds relationships with the headteacher, staff and children. It has also been a pleasure to enhance our ministry at the school through a very successful Easter Trail last year and giving gift bags to the school children with chocolates and a Bible Society book.

All of this has been possible because of our volunteers at St Philip's and the Holy Spirit opening the doors for us to both schools.

## **Drama Society – Yvonne Conroy**

The Drama Group have continuously been supporting each other through another year of changes. After our reunion for the recording and performing of Rebel Summer in March, we have regularly been meeting on Monday evenings. Rehearsing and performing Rebel Summer gave our members a huge boost of confidence and a distraction from personal difficulties in life. The show brought back previous members and we welcomed some new members, creating important links and friendships to develop deeper.

Monday night meetings took on a more sociable aspect, creating opportunities for people to share their personal struggles, feel supported and also celebrate achievements. Meeting regularly between March and September, has allowed us to become a more supportive group, particularly when we are not rehearsing for a show. We have seen God move in people's personal lives, through prayer, healings and His unfailing love being shown through group members. Coming out of Covid meant some people found social situations difficult but through those months it became easier to practice social skills.

In September we started rehearsing for our pantomime, Cinderella, bringing together a cast from Bristol, Saltford, Corsham, Bradford-on-Avon and Paulton, as well as from around Bath and Odd Down. It is such a blessing to have members from other churches coming



together sharing their stories of faith and encouraging each other to become better performers and boosting confidence whilst taking on challenges in a safe place.

During rehearsals we continued to pray for members who were ill, and we witnessed some amazing speedy recoveries and healings each week. By show week we had a full cast healthy and raring to perform to a sold-out audience. After each performance we gave the audience the chance to meet the cast and have photographs taken, which was warmly received and we thoroughly enjoyed seeing them smile. The positive feedback we received from people who saw Cinderella proved that the show was the perfect event to bring the community together. The cast, crew and production team worked hard to finally pull it all together and we are thankful to be given the opportunity to use the church building as our rehearsal space and our performing venue.

The opening night's ticket sales went to local charities, The Life Project and NICU at the RUH, along with donations made during other performances. Both charities were grateful for the generous donations which enables them to carry out the much-needed care and work that they do.

The Drama Group's motto is 'Everyone is Welcome. Everyone is valued. Everyone can shine'. Over this last year it certainly has achieved that, welcoming new members, giving them a sense of value and allowing their moment to shine. We continually thank God for His love, grace and mercy enabling all our members to grow in faith and personal development.

### **Community Minibus – Suzanne Stammers**

We are grateful for the provision of the minibus, which helps St Philip's outreach and support in our local community. This year's bookings have begun to bounce back since the Covid dip; we have seen both new drivers and user groups.

The minibus aims to support groups which facilitate the gathering of individuals to reduce isolation and loneliness and to enable individuals to participate in activities they would otherwise struggle to access.

We currently have 11 church-member drivers and 6 external drivers and support 35 different group activities, ranging from youth activities to older generation groups, enabling us to engage with a diverse range of individuals.

The minibus has been maintained and serviced by local garage, Genuine Car Services, for which we are very grateful. We have secured grant funding towards the upkeep of the minibus and running of the project from West of England Combined Authority (WECA) until March 2024, which, with reduced donations this year due to the pandemic, has been received with great thanks.

### **Electoral Roll – Jenny Morrish**

We are pleased to have 151 names on the Electoral Roll presented to the Annual Church Meeting. For St Philip's Church, Odd Down, Bath, the Electoral Roll represents so much more than a number of listed names. We believe belonging to the Church in its fullest sense is a commitment to faith in Jesus Christ, to worshipping together as a multi-generational church family, and learning and growing together in faith and love as we are drawn closer to Him and to one another. We expect the outworking of our belonging to St Philip's Church to



be His love through the Holy Spirit flowing among us and into our neighbourhood, city and beyond.

The 2022 Electoral Roll showed that 27 names had been removed during the year. Three longstanding and much valued members died during that time, and while we miss them, we rejoice that they are with their Lord and thank God for the gift that they were to us. To those who moved on we give them our blessing and pray that they will know God's presence with them.

It has been a privilege and joy to welcome the 20 new members whose names had been added to the Electoral Roll. We pray that in belonging to the family of St Philip's Church they will be richly blessed as the Holy Spirit draws us all to the heart of God, and we continue growing into the people He made us to be.

### **Deanery Synod Report – John Garrett**

The Synod is made up of representatives from all the Anglican churches in Bath and surrounding areas. Synod generally meets 3 times per year, and the meetings are for worship, prayer, providing information, and discussions of issues that affect all the churches in the Deanery.

The first meeting of the year was in late January 2022 and we had talks from 3 people about the 'Green' issues facing the Church, and about the Eco-Church. The main thrust was to suggest that the Church should be at the forefront of this issue and that God has made us stewards of his creation.

Following that the main issue in 2022 was the Deanery Plan 2022-2027. This plan was presented to Synod in the middle of the year, with a request to talk about this at the following PCC meeting, with a view to obtaining agreement to the plan. The plan seeks to address the issue of diminishing resources within the Church Of England.

The document that was issued states that there are 32 parishes in the Bath Deanery with a total of 22 full-time clergy, but that under the Diocesan 5-year plan, there will be resources for only 17 full-time clergy. The issue that is to be addressed is how to reduce the number of full-time clergy without affecting the worship and life of the churches. There were many questions raised and, following PCC meetings at the various Churches, there were 17 responses to the plan, and the revised plan was discussed and then approved on 3 November 2022, with a number of people expressing reservations.

The Deanery Mission and Pastoral Group have stated that this is a working document, and that the plan will be reviewed at least annually.

The latest Synod meeting focussed on the financial position of the Diocese, showing that the Parish share just about covers the cost of the Stipendiary Ministers, but that means that all other expenditure must be covered from other income. They are selling some of the assets that are easily disposed, but that is a short-term solution. However, there is a 5-year plan in place under which the Diocese aims to have returned to the pre-Covid financial position.

Each meeting starts with worship led by the host Church, and also includes a report from the host Church and it is always encouraging to hear how the Holy Spirit is moving across our City.



## Safeguarding – Jenny Barker with Paul Ferguson

Our Safeguarding Policy continues to follow the Church of England's recommendations in the Parish Handbook and is in line with the requirements of the Church Representation Rules. We encourage all members of St Philip's to become familiar and aware of basic safeguarding practises within our church and so as to include safeguarding implications within activity planning. More information can be found on the church website and on the website for the Bath and Wells Diocese.

The Diocese has corrected the initial information given about DBS renewals. From the beginning of 2022 all DBS certificates are due for renewal every 3 years. (So, none are extended to renewal after 5 years). We continue to work to ensure that all certificates are up-to-date.

Members of the Church who have DBS certificates are required to undertake online training (renewing every three years). Please ask if you need to find out more information. We are still hopeful that we'll be able to arrange some in person training soon.

We continue to give thanks to God for enabling, guiding and leading us in our safeguarding responsibilities within our church. Also, for the willingness of the Diocesan team to advise from their experience and expertise. We look forward to continuing developments within our Safeguarding Team.

### Paul adds'

Over this last year, we have continued to review, strengthen and update our safeguarding policies and protocols at St Philip's. A significant development has been the establishment of the new Safeguarding Team (rather than having one Safeguarding Officer). The team exists to support me in ensuring that St Philip's has a vigilant and healthy safeguarding culture; our training and DBS responsibilities are up-to-date; our policies and protocols are as robust as they can be; and that I am supported and accountable in the event of any safeguarding disclosures. My sincere thanks for their time and expertise.







## REPORTS: BECOME

This section reflects our belief that we become what we behold. We expect to be transformed by God's presence. He does not leave us as orphans but has given us His Spirit that we would be transformed more and more into His likeness, authority and power.

The following reports touch on areas in which 'becoming' is reflected: from the discipleship environments of our Home Groups to our Rising Gen. ministries; from prayer ministry to the development of the fabric of the church buildings as we seek to position our physical assets for God's expanding ministry here in Odd Down.

This section also includes some highlights from MATT22. Everything about MATT22 is rooted in the Father's heart for the poor, the vulnerable and the abused. Our desire to be transformed through the presence of God overflows into our desire that those in our community, who are most in need and do not know the Lord, also experience the same transformation. We can only influence what we love, and we seek to love through MATT22.

### Home Groups – Paul Ferguson

Home Groups are at the heart of St Philip's. They are our discipleship programme. There is no better context to grow in intimacy with God and each other. We eat together, grow in the gifts of the Spirit and transform our local community.

I am delighted that we have launched three new Home Groups this year – a reflection of the growth of the congregation and the desire to go deeper in faith and friendship. Nearly 30 people have been welcomed into a group this year.

Every Home Group is different, but my hope is that they will increasingly reflect one culture: encounter. I long for our groups to be key contexts in which people open up to each other and to the Holy Spirit. Rather than social gatherings, they are there for people to grow in a knowledge of the Word and the Spirit; to practice the presence of God; to receive and grow in the spiritual gifts in a safe and loving environment; and to be envisioned, equipped and empowered to go out and do the stuff of the Kingdom in our neighbourhood and city.

A particularly encouraging development this year has been the new Student & Young Adults home group, led by Kathryn Todd and Jay Cook, in which 20 young adults regularly meet to encounter Jesus through worship and prayer ministry.

My sincere thanks to our brilliant Home Group leaders who all have grasped the vital importance of mid-week discipleship. May you be encouraged in your ministry by the power of the Spirit of love.

### Rising Gen: Kids@StPhilips – Jules Ferguson

It's been an exciting and busy year for Kids@StPhilips – we've seen an increase in the number of children attending our Starfish (ages 3-7) and Swordfish (ages 7-11) groups, new faces joining the team and a deepening of our experience of who God is and how much he loves us!



Matt Vaine officially joined us as curate part way through 2022 and took on a new role overseeing the whole of our Rising Gen. at St Philip's. Matt and Jules have been working together on the session plans for the Kids as we seek to create material that invites our children into an encounter with Jesus through his Holy Spirit. It has been so encouraging to see how the younger children, in particular, now find that hearing from God in our Encounter Times is entirely normal!

We used the autumn term to focus on our Culture Creators and Vital Values with the children. These are the simple statements that we established in 2020 which speak into the heavenly atmosphere that we want our young people to experience during their group times and articulate the core biblical truths we want to reinforce in every session. We also wrote a series on reading the Bible, Acts and Paul's letters to the early church.

During 2022, we put on two events for primary aged children and invited approx. 500 children from our local schools to come and join us. The first was an Easter Story Trail around the neighbourhood, via the Grow for Life garden space at St Martin's Garden school and leading back to St Philip's for the chance to enjoy a well-earned hot-cross bun and collect an Easter Egg prize! Around 40 families took part.

On 31<sup>st</sup> October, we also held our biggest ever Light Party in the church, offering a positive Christian alternative to Halloween. Children had the option of making different crafts and playing glow in the dark games, followed by a meal together, a video about Jesus being the light in the darkness and a disco. We had almost 80 children sign up and despite the crazy rain, it was officially 'epic'!

We loved our Christingle service which involved lots of families from the church and the Crib service where many children who are not regular members of St Philip's came and joined us to hear the true message of Christmas.

We are so thankful to God for the fun we have in our Kids work at St Philip's and for all of our children and wonderful team of volunteers.

### **Rising Gen: Youth@StPhilips – Matt Vaine**

For the youth at St. Philip's, 2022 has been a year full of God's presence and power amongst us, guiding us through high moments, various changes, and even tough times.

Starting with our youth leaders' team, we've been hugely blessed to have an influx of new leaders join us in Dan Jones, Kathy Beadle, Jazz Jones, Tony Cook and Sam Davis, our SWYM student. Together with Vicki Atkinson, Rachel Jones, Meg Tucker and myself, we have an experienced and dynamic team who serve our youth. Dave Joyce, who heads up Bath Youth for Christ, concluded his involvement on our team after several years discipling the youth at St. Philip's. We honour and thank Dave for his support! And we must acknowledge Vicki, with the difficult health scare she faced in September and continues to endure to this point; an experience that has kept her away from supporting the young people in person for a considerable period of time. We have, however, witnessed God's provision and care for Vicki in remarkable ways, such as with the urgent operation that was suddenly made available when she needed it most. We praise God for His grace in Vicki's life and continue to pray for her over the upcoming months.

With Vicki's own challenges, and the recent commencing of my curacy training, there has also been a shift in the primary leadership of the youth group. I began my curacy training at



St. Philip's in July. Part of my role is to provide oversight for the Rising Gen ministry which incorporates our children's, youth, and student's group. Towards the end of the year, my role with the youth developed by stepping into the primary leadership role that Vicki Atkinson and Rachel Jones have so faithfully undertaken for six years. They remain a key part of the team, and as a church we want to thank them so much for their nurturing presence, care, and discipleship to our young people at St. Philip's.

Concerning our young people particularly in 2022, we have seen God's power in the young people's lives weekly through our Younger and Older Youth sessions on Sunday, exploring themes such as the importance of prayer and our identity in Christ. This weekly discipleship was paired with some special times with the Lord at Movement, Wildfires and the Youth Weekend Away, which stoked passionate worship and the use of spiritual gifts. This yearning for an encounter with God is a core emphasis for us in 2023.

Part of this last year has been spent towards dreaming and planning some new initiatives with Cave and the One Faith Podcast. Cave will be a fortnightly social event and will provide opportunities for connection with God and one another. The podcast will also be a fortnightly resource for the youth to explore the church's encounter culture with interviews, Q&A, and the like. We're excited to see how the Holy Spirit will move in and through the young people in the year ahead!

### **Rising Gen: Students & Young Adults – Kathryn Todd and Jay Cook**

I write this with a thankful heart. Our Heavenly Father has poured out His anointing, and continues to do so, over our young adult's ministry. We meet consistently as a homegroup of 20 young adults, on two Tuesdays of the month, and lead a church wide 'Encounter' night on the first Tuesday of every month. We prioritise relationship and often celebrate together - birthdays, new jobs, promotions, engagements, marriages' the list goes on!

Our home group has quickly become a real sense of community, we are first and foremost friends, who enjoy doing life together and encouraging each other in our pursuit of Him. We believe that this year our Father is asking us to pursue a culture of honour and is corporately calling us into deeper intimacy with Him, to **know** His heart and to glorify Him. Our prayer is that as we continue to honour each other, we will learn to deeply honour Him. Our current series, 'Stories', is cultivating honour. It is a real privilege to listen to a friend vulnerably share about their own personal journey with Jesus' to learn about what He has done, is doing and is yet to do in each of our young adults' lives.

The focus of our home group is to encounter the Lord, so having the opportunity to lead our wider Church family during our 'Encounter' worship nights has proved to be incredibly fruitful for us a group of young adults. These nights often feel like an overflow of how we've encountered Him during our Tuesday night home group.

We are excited and expectant for what's to come for our young adult's ministry this year. We look forward to going on our first weekend away and are seeking opportunities to serve our community together. Most of all, we are excited for more of Him. To learn what it means to seek Jesus first, above all else. We say Yes and Amen to whatever your desire is for us Lord.

### **'Friends' – Chris White**

It is an honour and delight to be part of 'Friends'. This group of amazing people, who continue to meet fortnightly in our church, have led long lives of devotion and service to the Lord. Their



wealth of wisdom and life experiences has so often remained hidden, but members of the group are now sharing their stories, enriching, and blessing us all. It is our hope that in the coming year many more will do so, and that God will be glorified as we celebrate the wonderful work He has done in our lives.

We seek to love, encourage, and support one another through these times of sharing, prayer, and worship. Along with 'Friends' stories, talks by members of St Philip's congregation and staff have enabled us to feel more connected to the larger church and have inspired us in our walk with Jesus. There have also been memorable talks by people like Val Jeal, who set up a work amongst street sex workers in Bristol, and we have celebrated events such as the Queen's Jubilee. As well as enjoying meals together, there are quizzes, games, and of course, tea and homemade cake to end each afternoon!

Friends also has a bible study group (currently meeting on zoom) led by Ruth Wishart.

Sadly, we have lost some dearly valued members over the last months, but we give thanks to God for them. Meanwhile, our numbers have increased so that we have needed to move to a larger space for our fortnightly meetings. Finally, I'd like to give a special thanks for the wonderful team that continually works so hard to make 'Friends' happen.

### **MATT22 – Paul Ferguson, Liza Wortelhock and Andy Stammers**

Under the leadership of Liza Wortelhock, this year has seen significant new MATT22 initiatives which have opened the doors of the church to the community and opened our experience of ministering to those who do not yet know Jesus.

#### Food Bank

The key context for this has been the launch of the Food Bank, in partnership with Genesis Trust and located in the St James' lounge. Twice a week on Tuesdays and Thursdays, the church is now open to those in the community who are most vulnerable. Alongside volunteers from other churches, members of St Philip's stack shelves, pack bags and sit with people who would not otherwise walk through our doors. We are encouraged by the early months of this partnership and continue to watch and pray for the Kingdom to advance in power through it.

#### Warm Space

Another significant expression of MATT22 this year has been the Warm Space in the Institute 'St Philip's Winter Walk-In' where a team of St Philip's members have created a space in which people from the community can talk to members of the team, have some free tea and cake and hang out for a few hours. The engagement from the community has gradually increased and we know that people have been blessed. It has also given us an opportunity to undertake some 'market research' as we continue to plan for possible café developments.

#### MATT22 development

Progress on potential café and building developments has continued slowly but surely this year, with a completed full site and topographical survey and the beginnings of a feasibility study with a local architects practice.

MATT22 is underpinned by our conviction that we belong, not just to a kingdom of kindness, but a Kingdom of power. We believe that this is something that needs to be contended for



in prayer and intentionally pursued in practice. We want to see heaven on earth in our neighbourhood, in our time. This has resulted in a desire to establish a culture for MATT22 that reflects St Philip's vision: that in order to overflow with a power that transform lives, we must root everything we do with MATT22 first in our love of the Lord.

We are deeply thankful for the congregation's incredible support of MATT22 over the last year 'especially those who have given their time to volunteer at the Food Bank and Winter Walk-In' and are looking forward to this coming year as St Philip's continues to grow in compassion and love for the people of our neighbourhood.

### Community Pantry

January marked our second anniversary of the Food Pantry, having established it in 2020 in partnership with St Martin's Garden Primary School and 'Sporting Family Change', as part of our ministry to help those in food poverty in Odd Down.

The Pantry provides dry food, frozen, fridge, fresh provisions and household essentials to those who require support. The concept of a Pantry is very different from that of a food bank in that a Pantry stocks high quality, in-date products and aims to be a consistent and affordable option for sustained provision of food in the community. The model does not work on donations of products but seeks financial donations to purchase the products required.

Qualifying members make a £5 donation to allow them to choose 20 items (approx. £30 value), this concept provides dignity and honours members, allowing them to make their own choices, just as they would in a regular shop rather than being 'given a charity handout'. We don't want members to feel they are only worth out of date food or 'leftovers' as they themselves are priceless in the eyes of God. The Pantry both supports school families but is also open to qualifying members of the community.

As of this year, we have 29 different families registered and have supplied nearly £5,000 of food and essentials over the past two years. We are building strong relationships with our members, providing love and support. We offer to pray with members, and this has been welcomed. A few of our members have come to church events.

We are currently exploring opening a 'Community Kitchen' within the school. The project will provide a place where children can be educated on nutritional food (within school time) and out of hours local families can cook and eat together with ingredients from the Pantry and Grow For Life fresh produce.

### **Fabric Report – Paul Ferguson with Tim Conroy**

Part of our emphasis on 'becoming' includes the development of the church facilities to enhance the depth and reach of the ministry and mission of St Philip's.

Last year we rebooted our approach to facilities management, development and maintenance by creating a new team of 'Facilities Wardens' who now oversee a maintenance and development programme, meeting several times a year to progress needed works. The team is made up of Paul Schaerer (Facilities Warden), Matt Kent-Lemon (Facilities Warden), Tony Cook, Paul Ferguson and Tim Conroy. This year, the team has overseen the following works:

- works to St James' lounge to make ready for the Food Bank



- completion of work in the Family Room to allow parents of young children to remain connected to the service
- works to the climbing wall and wheelchair ramp on back lawn
- clearing of rubbish in the area behind Manna House
- a new shed installed on the back lawn to house the lawnmower
- redecoration of the disabled toilet
- new LED lighting in the office and St James' lounge
- extra power sockets fitted and PA wiring installed throughout the building
- new TV screens in the main church
- realigned gutters and roof repairs on the school side of the church

The Quinquennial survey was carried out in September and highlighted the need for the tower roof to be repaired and pointing on the tower and external walls – this will be carried out during the summer.

Plans for this coming year include establishing a more proactive approach for rolling maintenance requirements and developing the team to incorporate more from the congregation who have skills to offer and would like to serve the church in this way.

Remaining high on the agenda is the need for more space to disciple our children and youth on Sunday mornings; the development of the flat above the church and works to upgrade our buildings and facilities to align with our aspirations for MATT22.

We are so grateful to the Lord that His ministry amongst us is causing us to seek ways to expand our numerical capacity and the ability of our buildings and facilities to keep up with the pace of the Holy Spirit. Many thanks to all those who have given their time and expertise to maintaining the facilities of St Philip's.





## **Structure, Governance and Management - Graham Pearson**

Our Parochial Church Council is a corporate body established by the Church of England within the Diocese of Bath & Wells and is a registered charity (1131533). The PCC operates under the Parochial Church Council Powers Measure and complies with the Church Representation Rules 2020. Four of the twelve lay members are elected for 3 years at the APCM/AGM, which was held in 2022 on 18<sup>th</sup> May. Our Church Wardens are elected annually. All church members are encouraged to register on the electoral roll of the Church and stand for election to the PCC following the Church Representation Rules. PCC members, who are also Trustees, are responsible for making decisions on all matters of general concern and importance to the church including deciding on how the funds of the Church are to be allocated and spent.

When planning and undertaking our activities for the year, we have considered the Charity Commission's guidance on public benefit, and in particular the specific guidance on charities for the advancement of religion. This report shows how we have sought to deliver public benefit to our congregation, our community, our city and abroad in 2022 as we recovered from the impact of the Covid pandemic and planned positively for the future.

The PCC convened four times during 2022. A special PCC half-day session was held in June after our APCM meeting as a new committee to introduce new members and learn more about our roles. We considered our role as part of the Church of England, the regulations and the Governance required and expected of us including those of the Charity Commission.

Our Finance Team met every 2 months (approx.) to manage our finances as we recovered from the impact of the pandemic, and more recently rising costs. PCC activities and responsibilities are supported by special Teams, which also include other members of the church. These are the Finance Team, Matt 22 projects, Mission Support Team, Rising Generation Team, Safeguarding and Maintenance Team. Reports are also received from groups that oversee restricted funds: Community Minibus and Drama Group. A weekly newsletter was circulated by email to communicate with all church members and those joining our on-line services.

### **Administrative information**

The Church is situated on Frome Road, Odd Down, Bath, and is part of the Diocese of Bath & Wells within the Church of England. The correspondence address is 35, Frome Road, Odd Down, Bath BA2 2QF. Registered charity number 1131533.

email: [office@stphilipstjames.org](mailto:office@stphilipstjames.org)

web: [www.stphilipstjames.org](http://www.stphilipstjames.org)



## **PCC Membership during 2022**

Elections at APCM 18<sup>th</sup> May 2022.

### Clergy

Reverend Paul Ferguson  
Reverend Margaret Joyce (until November 2022)  
Reverend Liza Wortelhock  
Reverend Matt Vaine (from July 2022)

### Churchwardens

Bill Gay (until May 2022)  
Jo Bleakley – Pastoral Warden (officially elected churchwarden)  
Debs Ross – Pastoral Warden (PCC member until May 2022, co-opted from May 2022)  
Matt Kent-Lemon – Facilities Warden (officially elected churchwarden from May 2022)  
Paul Schaerer – Facilities Warden (PCC member from May 2022)

### PCC members

Elizabeth Riley (until May 2022)  
Graham Whatley (until May 2022)  
Sarah Moxham-Hendra (until May 2022)  
Paul Millard (until May 2022)  
Debs Ross (until May 2022)  
Dave Atkinson  
Graham White  
Jenny Barker (Safeguarding)  
Joe Mokebo  
Karen Noad  
Lucy Hall  
Tilly Platten  
Ali Mottram (from May 2022)  
Helena Midgley (from May 2022)  
Jasmin Jones (from May 2022)  
Kathryn Todd (from May 2022)  
Paul Schaerer (from May 2022)

### Deanery Synod

Jenny Morrish (Electoral Roll Officer)  
John Garrett  
Graham Pearson (PCC Secretary)

### Co-opted

Tim Conroy (Church Administrator) (until May 2022)  
Debs Ross (from May 2022)  
Paul Millard (Treasurer) (May to September 2022)  
Richard Corrie (Treasurer) (from December 2022)



## FINANCIAL REVIEW

In the period to the end of December 2022, St Philip's raised a total income of £207k (2021: £211k) against expenditure of £201k (2021: £253k). Unrestricted and designated funds received totalled £194k (2021: £178k).

Restricted funds received totalled £13k (2021 £33k) with a balance of £20k (2021 £22k) on restricted funds carried forward into 2023.

For the details behind these figures see the financial statements that follow this report.

## RESERVES POLICY

It is the aim of the PCC that the free reserves (unrestricted and not represented by fixed assets) held by the charity should cover 3 months of unrestricted expenditure. This equates to approximately £46k. At this level the trustees feel that they would be able to continue the current activities of the charity in the event of a significant drop in funding.

At the end of 2022, the church's free reserves (including designated) met this aim.

**Approved by the Parochial Church Council on** 24 APRIL 2023

**And signed on it's behalf by:**

**Name** 

**Date** 2 MAY 2023



## **Independent Examiner's Report to the PCC of St Philip & St James, Odd Down, Bath & Wells**

I report on the accounts for the year ended 31st December 2022 that are set out on pages 25 to 34.

### **Respective responsibilities of the PCC and Independent Examiner**

The PCC is responsible for the preparation of the accounts. They consider that an audit is not required for this year under section 144(2) of the Charities Act 2011 (the 2011 Act) and that an independent examination is needed.

Having satisfied myself that the church is not subject to audit and is eligible for independent examination it is my responsibility to:

- examine the accounts under section 145 of the 2011 Act;
- follow the procedures laid down in the General Directions given by the Charity Commissioners section 145(5)(b) of the 2011 Act; and
- state whether particular matters have come to my attention.

This report, including my statement, has been prepared for and only for the PCC as a body. My work has been undertaken so that I might state to the PCC those matters that I am required to state to them in an independent examiner's report and for no other purpose. To the fullest extent permitted by law, I do not accept or assume responsibility to any other than the church and the PCC as a body for my examination work, for this report or for the statements that I have made.

### **Basis of Independent Examiner's Statement**

My examination was carried out in accordance with the General Directions given by the Charity Commission.

An examination includes a review of the accounting records kept by the church and a comparison of the accounts presented with those records. It also includes consideration of any unusual items or disclosures in the accounts, and seeking explanations from you the trustees, concerning any such matters. The procedures undertaken do not provide all the evidence that would be required in an audit, and consequently no opinion is given as to whether the accounts present a 'true and fair' view and the report is limited to those matters set out in the statement below.

### **Independent Examiner's Statement**

In connection with my examination, no matters have come to my attention:

1. which give me reasonable cause to believe that in any material respect the requirements

- to keep accounting records in accordance with s.130 of the 2011 Act; or
- to prepare accounts which accord with these accounting records have not been met; or



2. to which, in my opinion, attention should be drawn in order to enable a proper understanding of the accounts to be reached.

Date: 2<sup>nd</sup> May 2023

Derek Rodwell FCCA

Impact The Future Ltd, Bennett Verby, 7 St Petersgate, Stockport, Cheshire, SK1 1EB

**THE PAROCHIAL CHURCH COUNCIL OF THE  
ECCLESIASTICAL PARISH OF  
ST PHILIP & ST JAMES, ODD DOWN, BATH & WELLS**

**STATEMENT OF FINANCIAL ACTIVITIES  
For the year ended 31st December 2022**

	Note	2022 Unrestricted Funds	2022 Designated Funds	2022 Restricted Funds	2022 Total	2021 Unrestricted Funds	2021 Designated Funds	2021 Restricted Funds	2021 Total
		£	£	£	£	£	£	£	£
<b>INCOME AND ENDOWMENTS FROM:</b>									
Donations and legacies	2a	130,966	19,457	7,140	<b>157,563</b>	142,562	1,059	30,799	<b>174,420</b>
Other trading activities	2b	8,467	0	5,038	<b>13,505</b>	6,069	1,908	2,407	<b>10,384</b>
Investments	2c	3,919	0	0	<b>3,919</b>	4,655	0	0	<b>4,655</b>
Charitable activities	2d	20,021	10,868	1,365	<b>32,254</b>	17,823	3,769	0	<b>21,591</b>
<b>TOTAL INCOME</b>		<b>163,373</b>	<b>30,325</b>	<b>13,543</b>	<b>207,241</b>	<b>171,108</b>	<b>6,736</b>	<b>33,206</b>	<b>211,050</b>
<b>EXPENDITURE ON:</b>									
Charitable activities	3a	172,465	12,903	12,488	<b>197,856</b>	163,447	12,431	74,662	<b>250,540</b>
Raising funds	3b	257	14	2,855	<b>3,126</b>	193	0	2,572	<b>2,766</b>
<b>TOTAL EXPENDITURE</b>		<b>172,722</b>	<b>12,917</b>	<b>15,343</b>	<b>200,982</b>	<b>163,640</b>	<b>12,431</b>	<b>77,235</b>	<b>253,306</b>
<b>NET   BEFORE TRANSFERS</b>		<b>(9,349)</b>	<b>17,408</b>	<b>(1,800)</b>	<b>6,259</b>	<b>7,468</b>	<b>(5,695)</b>	<b>(44,029)</b>	<b>(42,256)</b>
<b>TRANSFERS BETWEEN FUNDS</b>		<b>(504)</b>	<b>504</b>	<b>0</b>	<b>0</b>	<b>(1,119)</b>	<b>0</b>	<b>1,119</b>	<b>0</b>
<b>NET MOVEMENT IN FUNDS</b>		<b>(9,853)</b>	<b>17,912</b>	<b>(1,800)</b>	<b>6,259</b>	<b>6,349</b>	<b>(5,695)</b>	<b>(42,910)</b>	<b>(42,256)</b>
<b>TOTAL FUNDS BROUGHT FORWARD</b>		<b>129,664</b>	<b>17,155</b>	<b>21,895</b>	<b>168,714</b>	<b>123,315</b>	<b>22,850</b>	<b>64,805</b>	<b>210,970</b>
<b>TOTAL FUNDS CARRIED FORWARD</b>	<b>7</b>	<b>119,811</b>	<b>35,067</b>	<b>20,095</b>	<b>174,973</b>	<b>129,664</b>	<b>17,155</b>	<b>21,895</b>	<b>168,714</b>

The notes on pages 27 to 34 form part of these financial statements.




**THE PAROCHIAL CHURCH COUNCIL OF THE  
ECCLESIASTICAL PARISH OF  
ST PHILIP & ST JAMES, ODD DOWN, BATH & WELLS**

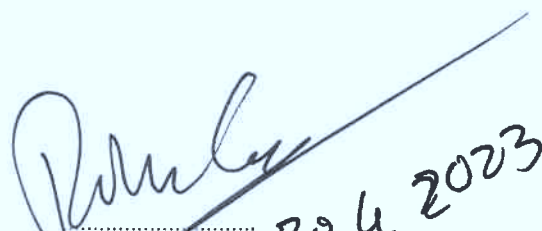
**BALANCE SHEET  
As at 31 December 2022**

	Note	Unrestricted Funds 2022	Designated Funds 2022	Restricted Funds 2022	Total 2022	Unrestricted Funds 2021	Designated Funds 2021	Restricted Funds 2021	Total 2021
		£	£	£	£	£	£	£	£
FIXED ASSETS									
Tangible	4	82,735	0	507	83,242	89,822	0	676	90,498
CURRENT ASSETS									
Debtors and prepayments	5	27,947	0	0	27,947	24,810	800	358	25,968
Cash at bank and in hand		10,901	35,067	19,588	65,555	17,081	16,355	20,861	54,297
		38,848	35,067	19,588	93,502	41,891	17,155	21,219	80,265
LIABILITIES									
Creditors - amounts falling due within one year	6	(1,772)	0	0	(1,772)	(2,049)	0	0	(2,049)
NET CURRENT ASSETS		37,076	35,067	19,588	91,730	39,841	17,155	21,219	78,216
TOTAL NET ASSETS		119,811	35,067	20,095	174,973	129,663	17,155	21,895	168,714
PARISH FUNDS									
Unrestricted Funds		119,811	0	0	119,811	129,664	0	0	129,664
Designated Funds		0	35,067	0	35,067	0	17,155	0	17,155
Restricted Funds		0	0	20,095	20,095	0	0	21,895	21,895
	7	119,811	35,067	20,095	174,973	129,664	17,155	21,895	168,714

Approved by the Parochial Church Council on 24 APRIL 2023

and signed on its behalf by:

  
.....  
Revd Paul Ferguson  
Vicar

  
.....  
Mr Richard Corrie  
Treasurer

20 4 2023

The notes on pages 27 to 34 form part of these financial statements.

**THE PAROCHIAL CHURCH COUNCIL OF THE  
ECCLESIASTICAL PARISH OF  
ST PHILIP & ST JAMES, ODD DOWN, BATH & WELLS**

**NOTES TO THE FINANCIAL STATEMENTS  
For the year ended 31st December 2022**

**1 ACCOUNTING POLICIES**

**Basis of preparation**

The PCC is a public benefit entity within the meaning of FRS102. The financial statements have been prepared under the Charities Act 2011 and in accordance with the Church Accounting Regulations 2006 governing the individual accounts of PCC's, and with the Regulations' "true and fair view" provisions, together with FRS102 (effective January 2019) as the applicable accounting standards and the 2019 version of the Statement of Recommended Practice, Accounting and Reporting by Charities (SORP (FRS102)).

Cash flow forecasts have been prepared for the period to the end of 2023 and these indicate that St Philips will be able to continue as a going concern for the next 12 months. The trustees will be reviewing these forecasts on a regular basis throughout 2023. Therefore the trustees believe that it is appropriate to prepare the accounts as a going concern.

The financial statements have been prepared under the historic cost convention.

**Recognition of Income**

These are included in the Statement of Financial Activities (SOFA) when:

- i) The PCC becomes legally entitled to the use of the resources; and
- ii) the inflow of economic benefit is probable; and
- iii) the monetary value can be measured with sufficient reliability.

Fundraising costs - funds raised from events and trading activities (e.g. fete, garden party or sales of books and magazines) are reported gross in the SOFA - i.e. before any related costs that may have been deducted from the gross proceeds.

Grants and donations - grants and donations are included in the SOFA when any pre conditions preventing their use by the PCC have been met. For collections and planned giving this is when the funds are received.

Gift Aid Tax claims on cash donations - Gift Aid and other tax claims are included in the SOFA at the same time as the cash donation to which they relate.

Gifts in kind - gifts in kind are accounted for at a reasonable estimate of their fair value at the time of the gift, if feasible, or else at the amount actually realised from their disposal. Gifts in kind for sale to fund the PCC are included in the accounts at their estimated fair value at the date of gift, if feasible - or else recognised when sold by the charity. Gifts in kind for the PCC's own use are included in the SOFA as incoming resources at their fair value when receivable, and expensed as and when consumed in use. Gifts of fixed assets, if material, are included in the balance sheet at their fair value and expenses over the asset's useful economic life.

Donated services and facilities - these are included in income (and at the same time in resources expended) at the estimated fair value to the PCC of the service or facility received.

Volunteer help - The value of any voluntary help received is not included in the accounts but is described in the trustees' annual report.

Rental income - Rental income from the letting of the Church is recognised when the rental is due.

Investment income - This is included in the accounts when receivable.

### **Expenditure and liabilities**

Liability recognition - Liabilities are recognised as soon as there is a legal or constructive obligation and settlement is probable and quantifiable.

Governance costs - include costs of the preparation and examination of statutory accounts, the costs of trustee meetings and cost of any legal advice to trustees on governance or constitutional matters.

Pensions - The PCC contributes to the Church of England Pension Builder Scheme. The assets of the scheme are held separately from the PCC in an independently administered fund. Contributions are charged to the statement of financial activities as they fall due in accordance with the scheme rules.

### **Assets**

Consecrated and benefice property - in far as consecrated and benefice property of any kind is excluded from the statutory definition of "charity" by Section 10(2)(a) and (c) of the Charities Act 2011 such assets are not capitalised in the financial statements.

Moveable Church furnishings - these are capitalised at cost and depreciated over their useful economic life other than where insufficient cost information is available. In this case the item is not capitalised, but all items are included in the Church's inventory in any case.

Tangible fixed assets for use by charity - these are capitalised if they can be used for more than one year, and cost at least £1,000. They are valued at cost or else, for gifts in kind, at reasonable estimate of their open market value on receipt.

Depreciation - is calculated to write off the capitalised cost of fixed assets less their currently anticipated residual fair value over their estimated useful lives as follows:

Buildings	25 years straight line
Motor vehicles	5 years straight line
Equipment	3 and 5 years straight line

### **Funds**

Unrestricted funds - these represent the remaining income funds of the PCC that are available for spending on the general purposes of the PCC.

Designated Funds - these are part of the unrestricted funds which the PCC has earmarked for a particular project, without restricting or committing the funds legally. The designation may be cancelled by the PCC if they later decide that the Church should not proceed or continue with the project for which the funds were designated.

Restricted funds - these are income funds that must be spent on restricted purposes and details of the funds held and restrictions provided are shown in the notes to the accounts.

**THE PAROCHIAL CHURCH COUNCIL OF THE  
ECCLESIASTICAL PARISH OF  
ST PHILIP & ST JAMES, ODD DOWN, BATH & WELLS**

**NOTES TO THE FINANCIAL STATEMENTS  
For the year ended 31st December 2022**

	2022 Unrestricted Funds	2022 Designated Funds	2022 Restricted Funds	2022 Total	2021 Unrestricted Funds	2021 Designated Funds	2021 Restricted Funds	2021 Total
	£	£	£	£	£	£	£	£
<b>2 INCOME</b>								
<b>2a Donations &amp; legacies</b>								
Planned giving								
Gift aid donations	101,176	11,907		113,083	105,214	0	0	105,214
Tax recoverable	26,783			26,783	24,221	0	358	24,579
Collections	1,166		10	1,176	842	0	0	842
Gift days and other gifts	1,841		0	1,841	10,642	0	0	10,642
Grants	0		4,225	4,225	0	0	24,363	24,363
Legacies	0	2,000		2,000				
Donations, appeals etc	0	5,550	2,905	8,455	-411	1,059	4,371	5,019
Furlough Scheme income	0			0	2,053	0	1,707	3,761
	130,966	19,457	7,140	157,563	142,562	1,059	30,799	174,420
<b>2b Other trading income</b>								
Electric feed in tariff	8,467	0		8,467	6,069	1,908	0	7,977
Minibus income	0		5,038	5,038	0	0	2,407	2,407
	8,467	0	5,038	13,504	6,069	1,908	2,407	10,384
<b>2c Income from investments</b>								
Flat rent	3,880	0	0	3,880	4,652	0	0	4,652
Interest received	39	0	0	39	3	0	0	3
	3,919	0	0	3,919	4,655	0	0	4,655
<b>2d Charitable activities</b>								
Weddings and funerals	0	1,732		1,732	0	2,050	0	2,050
Church hall lettings	17,855			17,855	15,180	0	0	15,180
Photocopying and printing	708			708	894	0	0	894
Drama group income	0	7,810		7,810	0	1,719	0	1,719
Youth Weekend	0		1,365	1,365				
One-to-one	0	1,326		1,326				
Other income	1,101			1,101	987	0	0	987
Church events	356			356	762	0	0	762
	20,021	10,868	1,365	32,255	17,823	3,769	0	21,591
<b>Total incoming resources</b>	163,373	30,325	13,543	207,241	171,108	6,736	33,206	211,050

**3 RESOURCES EXPENDED**

	2022 Unrestricted Funds	2022 Designated Funds	2022 Restricted Funds	2022 Total	2021 Unrestricted Funds	2021 Designated Funds	2021 Restricted Funds	2021 Total
	£	£	£	£	£	£	£	£
<b>3a Charitable activities</b>								
Missionary and charitable giving	7,566	275	2,365	10,205	5,276	1,723	4,151	11,150
<b>Ministry</b>								
Parish share	67,843			67,843	65,638			65,638
Clergy expenses	439			439	884			884
Lay readers and other staff costs	732			732	31	613	135	779
Weddings and funerals	0	1,670		1,670	0	1,376		1,376
Performing rights and music	982			982	1,169		439	1,608
Children and youth	577		1,310	1,887	661			661
Students	305	45	3,030	3,379				
Friends & One to One expenses	0	2,447		2,447				
Training	0			0	188			188
Services	963		43	1,006	708			708
Catering	3,312		27	3,339	1,685	817	46	2,547

**THE PAROCHIAL CHURCH COUNCIL OF THE  
ECCLESIASTICAL PARISH OF  
ST PHILIP & ST JAMES, ODD DOWN, BATH & WELLS**

**NOTES TO THE FINANCIAL STATEMENTS  
For the year ended 31st December 2022**

Church events	120			<b>120</b>	0			<b>0</b>
Gifts and hospitality	462			<b>462</b>	631	75	0	<b>706</b>
Church running expenses and upkeep								
Heat and light	3,331		1,250	<b>4,581</b>	4,242			<b>4,242</b>
Water	103			<b>103</b>	100			<b>100</b>
Cleaning	893			<b>893</b>	449			<b>449</b>
Insurance	1,056			<b>1,056</b>	997			<b>997</b>
Maintenance and equipment	9,715	2,000	250	<b>11,965</b>	10,767	345	59,592	<b>70,703</b>
Depreciation	7,087		169	<b>7,256</b>	14,087		169	<b>14,256</b>
Office costs								
Stationery, printing and other	2,125			<b>2,125</b>	2,203			<b>2,203</b>
Telephone & broadband	1,072			<b>1,072</b>	1,235			<b>1,235</b>
Accountancy fees	1,250			<b>1,250</b>	1,250			<b>1,250</b>
Other office costs	2,394			<b>2,394</b>	1,739			<b>1,739</b>
Drama Group	0	5,536		<b>5,536</b>	0	876		<b>876</b>
Salaries	60,138	930	4,043	<b>65,112</b>	49,508	6,607	10,131	<b>66,246</b>
	<b>172,465</b>	<b>12,903</b>	<b>12,488</b>	<b>197,855</b>	<b>163,447</b>	<b>12,431</b>	<b>74,662</b>	<b>250,540</b>
<b>3b Raising funds</b>								
Minibus expenses	0	14	2,855	<b>2,869</b>	0		2,572	<b>2,572</b>
Flat upkeep	257			<b>257</b>	193			<b>193</b>
	<b>257</b>	<b>14</b>	<b>2,855</b>	<b>3,126</b>	<b>193</b>	<b>0</b>	<b>2,572</b>	<b>2,766</b>
<b>Total resources expended</b>	<b>172,722</b>	<b>12,917</b>	<b>15,343</b>	<b>200,981</b>	<b>163,641</b>	<b>12,431</b>	<b>77,235</b>	<b>253,306</b>

3c	Mission giving analysis	2022 Unrestricted Funds	2022 Designated Funds	2022 Restricted Funds	2022 Total	2021 Unrestricted Funds	2021 Designated Funds	2021 Restricted Funds	2021 Total
		£	£	£	£	£	£	£	£
	Bath Tech College Chaplain	200			<b>200</b>	200			<b>200</b>
	BYFC	1,050			<b>1,050</b>	1,000			<b>1,000</b>
	Carol Bus	132			<b>132</b>	155			<b>155</b>
	Community Carol Service	199			<b>199</b>	202			<b>202</b>
	Combe Hay Church- gift for rural chaplain	1,600	0		<b>1,600</b>		1,560		<b>1,560</b>
	Easter Outreach	227			<b>227</b>				<b>0</b>
	Emma Greves Trust		275		<b>275</b>				<b>0</b>
	Genesis	504			<b>504</b>	1,000			<b>1,000</b>
	Holiday In				<b>0</b>	125			<b>125</b>
	Light Party	490			<b>490</b>				
	Matt 22			1,863	<b>1,863</b>			3,086	<b>3,086</b>
	Open Christmas Mission	200			<b>200</b>	100			<b>100</b>
	Other	66			<b>66</b>	72			<b>72</b>
	Primary School Christmas Gift Bags	549			<b>549</b>	503			<b>503</b>
	Primary School Easter Gift Bags	215			<b>215</b>	225			<b>225</b>
	Simeons Trustees	100			<b>100</b>	100			<b>100</b>
	St Martins Garden Primary School Bibles				<b>0</b>	328			<b>328</b>
	St Martins Garden Pantry	500			<b>500</b>				
	St Philips Primary School Bibles	235	0		<b>235</b>	67	163		<b>230</b>
	Street Pastors	300			<b>300</b>	200			<b>200</b>
	Tearfund	0			<b>0</b>	1,000		985	<b>1,985</b>
	The Life project				<b>0</b>			80	<b>80</b>
	Ukraine- Red Cross	1,000		502	<b>1,502</b>				<b>0</b>
		<b>7,566</b>	<b>275</b>	<b>2,365</b>	<b>10,205</b>	<b>5,276</b>	<b>1,723</b>	<b>4,151</b>	<b>11,150</b>
	<b>Giving from Drama group:</b>								
	Save The Children	750			<b>750</b>				
	Off The Record	750			<b>750</b>				
		<b>1,500</b>	<b>0</b>	<b>0</b>	<b>1,500</b>				
	<b>Total mission giving</b>	<b>9,066</b>	<b>275</b>	<b>2,365</b>	<b>11,705</b>	<b>5,276</b>	<b>1,723</b>	<b>4,151</b>	<b>11,150</b>

**THE PAROCHIAL CHURCH COUNCIL OF THE  
ECCLESIASTICAL PARISH OF  
ST PHILIP & ST JAMES, ODD DOWN, BATH & WELLS**

**NOTES TO THE FINANCIAL STATEMENTS  
For the year ended 31st December 2022**

**3d Staff Costs**

	£	£
Gross salaries	61,078	61,761
Employers national insurance contributions (net of employment allowance)	0	0
Employers pension contributions	4,034	4,485
Redundancy payments	0	0
	<u>65,112</u>	<u>66,246</u>

The average number of staff employed during the year were:

Full time	1	1
Part time	5	6
	<u>6</u>	<u>7</u>

In terms of FTE the average throughout the year was 2.3 (2021 was 2.4).

No member of staff earned more than £60,000 pa.

**3e Related party transactions**

In 2022 no members of the PCC or related parties were employed by the church or received any benefits from the church.

During 2022 no expenses incurred in performing the duties of being a PCC member were reimbursed. The only expenses repaid related to the ongoing activities of the church.

During the year gifts of £24,863 (2021 £18,555) were given by PCC members to the church.

**4 TANGIBLE FIXED ASSETS**

		Buildings £	Motor Vehicles £	Equipment £	Total £
Cost	At 1 January 2022	172,607	35,000	47,787	255,394
	Additions	0	0	0	0
	Disposals	0	0	0	0
	At 31 December 2022	<u>172,607</u>	<u>35,000</u>	<u>47,787</u>	<u>255,394</u>
Depreciation	At 1 January 2022	83,515	35,000	46,381	164,896
	Disposals	0	0	0	0
	Charge for year	6,904	0	352	7,256
	At 31 December 2022	<u>90,419</u>	<u>35,000</u>	<u>46,733</u>	<u>172,152</u>
Net book value	At 31 December 2022	<u>82,188</u>	<u>0</u>	<u>1,054</u>	<u>83,242</u>
	At 31 December 2021	<u>89,092</u>	<u>0</u>	<u>1,406</u>	<u>90,498</u>

**5 DEBTORS**

	Unrestricted Funds £	Designated Funds £	Restricted Funds £	Total 2022 £	Total 2021 £
Tax recoverable	26,783	0	0	26,783	24,930
Prepayments	0	0	0	0	0
Other debtors	1,165	0	0	1,165	1,039
	<u>27,947</u>	<u>0</u>	<u>0</u>	<u>27,947</u>	<u>25,968</u>

**6 CREDITORS: Amounts falling due within one year**

Accruals	1,250	0	0	1,250	2,049
Sundry creditors	522	0	0	522	0
	<u>1,772</u>	<u>0</u>	<u>0</u>	<u>1,772</u>	<u>2,049</u>



**THE PAROCHIAL CHURCH COUNCIL OF THE  
ECCLESIASTICAL PARISH OF  
ST PHILIP & ST JAMES, ODD DOWN, BATH & WELLS**

**NOTES TO THE FINANCIAL STATEMENTS  
For the year ended 31st December 2022**

**7a FUNDS IN 2022**

	Balance b/fwd 2022 £	Income 2022 £	Expenditure 2022 £	Transfers 2022 £	Balance c/fwd 2022 £
<b>Unrestricted funds</b>					
General fund	129,664	163,373	(172,722)	(504)	<b>119,811</b>
Total unrestricted funds	<b>129,664</b>	<b>163,373</b>	<b>(172,722)</b>	<b>(504)</b>	<b>119,811</b>
<b>Designated funds</b>					
Drama group fund	3,579	7,810	(5,536)	0	<b>5,854</b>
Church projects					
Friends (Previously Good companions)	932	0	(663)	0	<b>269</b>
Equipment reserve fund	2,000	0	(2,000)	0	<b>0</b>
Legacy Fund	0	2,000	0	0	<b>2,000</b>
Bus fund	9,053	0	0	0	<b>9,053</b>
Annual Outing	0	500	0	0	<b>500</b>
SWYM Student fund	0	4,050	(57)	0	<b>3,993</b>
Capital Development	0	11,907	0	0	<b>11,907</b>
Other designated funds	661	3,058	(3,731)	11	<b>(0)</b>
One to One Fund	0	0	0	138	<b>138</b>
Weddings & Funerals	0	0	0	60	<b>60</b>
Parents & toddlers	0	0	0	295	<b>295</b>
Solar Panel Funding towards staff role	930	0	(930)	0	<b>(0)</b>
Mission projects					
MATT22 Hardship Fund	0	1,000	0	0	<b>1,000</b>
Total designated funds	<b>17,155</b>	<b>30,326</b>	<b>(12,917)</b>	<b>504</b>	<b>35,067</b>
<b>Restricted funds</b>					
Church projects					
Minibus	10,432	5,038	(6,898)	0	<b>8,570</b>
AV updates	249	0	(249)	0	<b>0</b>
SWYM Student fund	(0)	2,975	(2,975)	0	<b>(0)</b>
Bath Quays memorial fund	2,866	0	0	0	<b>2,866</b>
Diocesan Energy grant	0	1,250	(1,250)	0	<b>0</b>
Youth evangelism	850	1,365	(1,365)	0	<b>850</b>
Mission fund					
Easter Outreach	0	70	(70)	0	<b>0</b>
MATT22	6,531	2,343	(1,864)	0	<b>7,010</b>
Ukraine Crisis	0	502	(502)	0	<b>0</b>
St Martins Pantry	290	0	0	0	<b>290</b>
	<b>21,219</b>	<b>13,543</b>	<b>(15,174)</b>	<b>0</b>	<b>19,588</b>
Restricted funds in fixed assets- sound desk	676	0	(169)	0	<b>507</b>
Total of restricted funds	<b>21,895</b>	<b>13,543</b>	<b>(15,343)</b>	<b>0</b>	<b>20,095</b>
<b>Total funds</b>	<b>168,714</b>	<b>207,241</b>	<b>(200,982)</b>	<b>0</b>	<b>174,973</b>

**Notes re funds**

**Designated funds**

Friends: A fund for the purpose of enabling a regular gathering for older members of the parish community (previously referred to as Good Companions)

Equipment Reserve: Funds set aside to replace and maintain church equipment

Legacy Fund: Funds left to the church in a will.

Bus fund: Funds set aside from the sale of a previous minibus for a future replacement

Annual Outing: Funds set aside to support those who might otherwise be unable to attend a church weekend away

SWYM Student Fund: Funds set aside to cover the costs of our SWYM student in 2022 and 2023

Capital development: Funds set aside for capital expenditure on buildings and equipment

Solar Panel funding towards staff role: Funds set aside for the employment of a team member (previously referred to as the Evangelist Fund)

MATT22 Hardship Fund: Funds designated to provide support to those in financial distress

Other designated funds: This represents the b/fwd figure, of the following three categories, which at the end of 2022 have been split out.

One to One Fund: Funds set aside for the purpose of hosting a monthly Sunday lunch for those who would otherwise be eating alone

Weddings & Funerals: Funds received and spent in relation to occasional offices

Parents & toddlers: Funds set aside for supporting those with preschool age children

**Restricted funds**

Minibus: Funds raised towards the running costs of the minibus

**THE PAROCHIAL CHURCH COUNCIL OF THE  
ECCLESIASTICAL PARISH OF  
ST PHILIP & ST JAMES, ODD DOWN, BATH & WELLS**

**NOTES TO THE FINANCIAL STATEMENTS  
For the year ended 31st December 2022**

AV Update: Funds raised for upgrading the PA system

SWYM Student Fund: Funds received specifically towards the cost of our SWYM student in 2022 and 2023

Bath Quays memorial fund: Funds raised historically to have a memorial for those who have died in the river

Diocesan Energy grant: Funds received from the diocese to contribute to increased energy costs

Youth evangelism: Funds received for youth work activities and equipment

Easter Outreach: Funds raised for our 2022 Easter Trail event

MATT22: Donations received towards our Kingdom transformation ministry started in response to the Covid pandemic.

Ukraine Crisis: Donations received to support the work of the Red Cross in Ukraine

St Martins Pantry: Funds for the development of a 'pantry' providing low cost food to local families based at St Martin's Garden School

**7b FUNDS IN 2021**

		Balance b/fwd 2021 £	Income 2021 £	Expenditure 2021 £	Transfers 2021 £	Balance c/fwd 2021 £
<b>Unrestricted funds</b>						
General fund		123,315	171,108	(163,641)	(1,119)	129,663
Total unrestricted funds		123,315	171,108	(163,641)	(1,119)	129,663
<b>Designated funds</b>						
Drama group fund		2,737	1,719	(876)	0	3,579
Church projects						
	Friends (Previously Good companions)	902	65	(35)	0	932
	Equipment reserve fund	2,000	0	0	0	2,000
	Bus fund	9,053	0	0	0	9,053
	Other designated funds	3,178	3,044	(3,116)	(2,445)	661
	Solar Panel Funding towards staff role	7,264	1,908	(8,242)	0	930
Mission projects	Mission fund- general	(2,281)	0	(163)	2,445	0
Total designated funds		22,850	6,736	(12,432)	0	17,155
<b>Restricted funds</b>						
Church projects						
	Minibus	6,977	9,977	(6,522)	0	10,432
	AV updates	587	405	(742)	0	249
	Roof Project	0	6,000	(7,119)	1,119	(0)
	Capital development	38,615	13,688	(52,304)	0	(1)
	Bath Quays memorial fund	2,866	0	0	0	2,866
	Worship & Dev leader	6,226	0	(6,226)	0	0
	Youth evangelism	850	0	0	0	850
Mission fund						0
	Genesis	391	(391)	0	0	0
	MATT22	8,000	1,618	(3,086)	0	6,531
	Life Project	0	80	(80)	0	0
	St Martins Pantry	290	0	0	0	290
	Tear Fund	(0)	985	(985)	0	(0)
		64,805	32,361	(77,064)	1,119	21,219
Restricted funds in fixed assets- sound desk		0	845	(169)	0	676
Total of restricted funds		64,805	33,206	(77,233)	1,119	21,895
<b>Total funds</b>		210,970	211,050	(253,306)	0	168,714

**THE PAROCHIAL CHURCH COUNCIL OF THE  
ECCLESIASTICAL PARISH OF  
ST PHILIP & ST JAMES, ODD DOWN, BATH & WELLS**

**NOTES TO THE FINANCIAL STATEMENTS  
For the year ended 31st December 2022**

**8 ANALYSIS OF NET ASSETS BETWEEN FUNDS**

	Unrestricted funds 2022	Designated funds 2022	Restricted funds 2022	Total funds 2022	Unrestricted funds 2021	Designated funds 2021	Restricted funds 2021	Total funds 2021
	£	£	£	£	£	£	£	£
Fixed assets	82,735	0	507	83,242	89,822	0	676	90,498
Current assets	38,848	35,067	19,588	93,503	41,891	17,155	21,219	80,265
Creditors due within one year	(1,772)	0	0	(1,772)	(2,049)	0	0	(2,049)
<b>NET ASSETS</b>	<b>119,811</b>	<b>35,067</b>	<b>20,095</b>	<b>174,973</b>	<b>129,664</b>	<b>17,155</b>	<b>21,895</b>	<b>168,714</b>

**9 INDEPENDENT EXAMINATION FEES**

Included in the above costs are the fees for the preparation and independent examination of the accounts of £1,250.