

**THE PAROCHIAL CHURCH COUNCIL OF THE
ECCLESIASTICAL PARISH OF
ST PHILIP & ST JAMES, ODD DOWN, BATH & WELLS
Charity No: 1131533**

**TRUSTEES ANNUAL REPORT
For the year ended 31 December 2021**



TABLE OF CONTENTS

Page

1	Vicar's Report: Aims & Purposes
4	Reports: Objectives & Activities
18	Structure, Governance and Management
20	Financial Review and Reserves Policy
21	Independent Examiner's Report
23	Statement of Financial Activities
24	Balance Sheet
25	Notes to the accounts



VICAR'S REPORT

Aims and purposes

‘To pursue God until heaven overflows through us.’

We sum our vision up with three key words: **Behold, Belong and Become.**

Behold.

Our primary desire is that we would behold (*experience, become familiar with*) the manifest (*actual, real, not theoretical*) glory (*goodness and presence*) of God. We believe that God created us to enjoy a life of deep intimacy with Him. We are passionate about His presence and know that cool things happen when the atmosphere of heaven fills a room. We are focussed on making St Philip's His dwelling place.

Belong.

We are family. Beloved children of God. Adopted by our Father in heaven. Brothers and sisters in Christ. Sure of our identity. Bound together by our love for one another. Growing in fellowship. We believe that the Kingdom advances through family and that Jesus will be known and honoured by our love for one another and for our community.

Become.

We expect to be transformed by God's presence. We know that an experience of His love through the Holy Spirit is life-changing. We believe that following Jesus is an exciting and powerful life of becoming all that He created us to be and all that He has commanded us to do. God has a plan for our lives, our church and our neighbourhood.

This year'

This past year began with the final few months of lockdown. It has been an absolute delight to return to live worship in the building. And we continue to offer an online option for those who are, as yet, still unsure about returning to the building. On average 10-15 people tune in each week.

There is so much to be thankful to God for as momentum has returned; old ministries have reignited; new ministries have begun; and, perhaps most encouraging, the church has seen some quite rapid growth.

It is impossible to cover everything in this report, but I hope the following pages give a sense of what God has been doing in and through us.

As always, I am so grateful for your partnership as we continue to grow together to be a church that honours the presence of God above all things and operates in the gifts and power of the Holy Spirit, as Jesus has commanded us to do.

This report is for God's glory. May it be a testimony to His goodness, His compassion, His capability and our gratitude to Him. And may His Kingdom come quickly, here in Odd Down, as it is in heaven.



Achievements and performance:

I always feel the need to begin by saying that the title of this section is dictated by the Charity Commission. I measure the advance of the Kingdom through St Philip's in neither achievement nor performance! Rather, I am just deeply grateful for the kindness of God and the presence of His Spirit, who makes all things possible in Christ Jesus, to His glory.

Some personal highlights, for which I am thankful:

Revival Prayer

A key moment in every week is the gathering of around 20 people to contend for revival at our church and awakening in our neighbourhood. This hour of power every Tuesday morning has resulted in some of the most significant prophetic input from the Lord during the last 12 months and I believe the signs of life that we are experiencing today is, in large part, due to these meetings.

A second year of growth

I don't consider numbers to be a measure of success, but I do see growth as a mark of life through the Holy Spirit. The Lord builds His church; it's our job to worship Him. Even in the closing months of this annual cycle, we have seen a remarkable increase of somewhere between 25% and 30% in our numbers each Sunday, many of whom are young adults, families and children. Hooray!

Home Groups

This year we rebooted our vision and approach to Home Groups in order to place them at the centre of discipleship at St Philip's. I am so excited at the potential that these groups have to bring people closer to the Holy Spirit and release them into Kingdom ministry. *More details below.*

Student and Young Adults

A particular joy has been the arrival of new students and young adults, who now meet every Tuesday. It is a significant sign of life when this generation chooses to make a church their home and we have been delighted to welcome them! *More details below.*

'Friends' (formerly 'Good Companions')

I have LOVED seeing the return of our older generation as Covid restrictions have eased and confidence has grown. This year, Chris White and her brilliant team have reimaged our older gen. ministry and it is wonderful to see them meeting again to grow in faith and friendship. *More details below.*

New Wardens

I am so grateful that Jo Bleakley and Debs Ross have joined Bill Gay as wardens this year, as part of a redefining of the role. All three have been absolutely outstanding, exceeding my expectations in every way, and I am thankful for their love, support and advice.



MATT22 ´ One2One, Grow for Life, St Martin´s Garden Pantry

In a quieter year for MATT22, I continue to celebrate the work that God is doing through this initiative as we continue to love our community. It has been wonderful to see how Andy Stammers has developed and invested in One2One with his excellent team, following the incredible ´Roast on the Road´ initiative which fed 45 people each month in their homes during the various lockdowns; how he has stewarded the Community Pantry at St Martin´s Garden School; how Liza Wortelhock has stepped up to lead the ministry; and how Alex Eldridge has led the Grow4Life team.

During the last 9 months, Liza and I have been refining the vision and developing a 5-year strategic plan for MATT22 going forward. I feel that this year has been a year of sowing and that soon we will start to reap!

Particular thanks

In no specific order:

- Tim Conroy ´ for his continued support, long hours and constant encouragement.
- Margaret Joyce ´ for her love and support to me and her dedication to the people of St Philip´s and Combe Hay.
- Liza Wortelhock ´ for all she has brought to St Philip´s over the last 12 months.
- Matt Vaine ´ for the way in which he has honoured my leadership and invested in the congregation, especially the youth.
- Chris White and her team ´ for their commitment to ´Friends´
- Jay, Beth, Jaz, Helena, Levi, Harry, Kathryn and Matt for establishing such a strong core in our Students & Young Adults ministry.
- Andy Stammers ´ for his love of those outside the church, support of MATT22, dedication to One2One and his ministry in Combe Hay.
- Wardens ´ Jo, Debs and Bill, for their kindness, support and accountability.
- PCC Secretary, Graham Pearson ´ for funding and project management of further roof repairs´ and for holding my hand.
- Treasurers ´ Paul Millard and Julie Ryder, who give so much time and are so gracious!
- PCC and Standing Committee ´ for their support and unity this year.
- Jenny Barker ´ for her continued oversight of safeguarding at St Philip´s.
- Key volunteers, not limited to but including:
 - Worship and Production team
 - Home Team
 - Mark Ryder ´ for looking after the grounds
 - Finance Team ´ for their diligence, stewardship and practical responses to my dreaming!



OBJECTIVES AND ACTIVITIES

The reports that follow give a snapshot of some of the activity and focus of the ministry, mission and worshipping life of St Philip's this year. In line with our overall vision *to pursue God until Heaven overflows through us*, the reports fall under our '3 B's': **Behold, Belong, Become.**



REPORTS: BEHOLD

These reports reflect our desire to pursue the presence of the Lord and minister first unto Him. In our pursuit of Him, and in our growing awareness of the precious manifest presence of the Holy Spirit, St Philip's is a discipleship environment. We believe that the most important thing is that God is honoured and the saints equipped through the baptism, and continuous in-filling, of the Holy Spirit - so that we can release heaven outside the walls of the church. *PF*

Worship – Jay Cook

Worship sits firmly at the foundation of our vision as one of the key ways that we enter into the manifest presence of God. We hold worship at a very high value. We believe that we are called to behold the manifest presence of God and to pour out our love and affection upon Him in worship.

It has been exciting to see the worship team grow in freedom, depth, devotion, and numbers this year. This also includes the addition of a few of the newly attending Students & Young Adults to the team. It has been exciting to see the fresh perspective they have brought to the team, along with their God-given gifts.

The challenges of Covid-19 were apparent leading into the beginning of the year, and continue to still be somewhat evident now. We have had a journey of developing in-person services, whilst also balancing team shortages due to illness (both covid and non-covid related). With all that said though, it has not stunted the growth of the team in any way. It has been wonderful to witness people's growth both in their technical abilities, but also (and I believe more importantly) in their relationship with God. There have been some incredibly encouraging stories this year of people on the worship team being drawn into closer relationship with the Father, and released into powerful amounts of freedom in their worship (both in personal devotional time, and in the corporate).

Part of the above-mentioned growth has come as a result of our new weekly Thursday Evening 'Growing In Worship' nights. These evenings give the worship team an opportunity to practice, seek what God is wanting to do, and pray into the soil of Sunday morning. They also give the opportunity for the wider worship team to join from 8pm for a time of worship and prophecy so that the team as whole can grow in worship together.

We have continued to undertake a number of technical upgrades to our sound and visuals system, including a brand new digital sound console, equipped with a new digital stage box; new television screens (with wheeled stands); a new drum booth to help reduce drum



volume; new wireless hand-held microphones and headset; new speakers and subs for the front of the church; new cabling; and many more essential smaller installs to help enhance our times of worship.

We have continued to develop and invest in the worship team. This has included sound desk training, visuals desk training, team equip nights and the 'Growing In Worship' evenings.

We have continued to move into more freedom and deeper worship. Tuesday Morning Revival Prayer meetings are now soaked in worship; another 'Kingdom Come' event allowed us to press into worship and prayer in the Spirit; and the new monthly Students & Young Adults 'Encounter Nights' have allowed us to unplug our instruments and turn off the song words for a freer expression of devotion.

I'd like to give particular thanks and acknowledgement to Alex Hills, who helped with all of our tech upgrades. Tony Cook (who built our new drum booth) and the St Philip's finance team who have been so generous in releasing the funds to do the upgrades that have been long needed.

I'd also like to thank the whole team from the bottom of my heart for being so gracious in change, so giving of their time, and so hungry in their pursuit of God.

Prayer – Paul Ferguson

Along with worship, prayer sits at St Philip's foundations. We always want to pray in an atmosphere of worship and out of an encounter with the Holy Spirit, who teaches us how to pray. It has been so good to return to corporate gatherings in the building this year. Getting off Zoom(!) has allowed us to press in together again.

The strategy for prayer at St Philip's is that we create as many opportunities as possible to encounter the presence, grow in intimacy with Him and learn to hear from the Holy Spirit. We are therefore focussed on equipping as many people as possible to grow in the prophetic and learn how to pray in the power of the Spirit.

Highlights this year have included:

Tuesday Morning Revival Prayer meetings ' since March 2021, we have prayed almost exclusively for revival at St Philip's and awakening in Odd Down. These meetings are often the 'hottest' moment of the week as we worship, prophesy and contend for the Spirit to move. Numbers have continued to grow at this meeting ' a very good sign. If I were to make one recommendation to the congregation of St Philip's, it would be to ditch everything and anything to get to the Revival Prayer Meeting!

Prayer Ministry Course ' interrupted last year by Lockdown 1 and again this year with me getting Covid, we were excited to run another course in April/May 2022. The material seeks to equip the saints to pray in the power of the Spirit in order that we may pray as the disciples did and in obedience to Jesus' commission to us that we heal the sick, raise the dead and proclaim freedom to captives. During the courses, we have seen multiple healings; one person receiving the gift of tongues; and, on the last course, 100% gave or received an accurate or encouraging prophetic word.



Kingdom Come ´ Kingdom Come events are evenings of unhindered worship, intercession and prophetic encounter. We aim to run them three times a year and were delighted to host another one in March 2022.

24-7 Prayer Room ´ the prayer room returned this Lent. Time slots were booked and people gathered to prayer and encounter the presence. It was a particularly poignant prayer room this year with Russia's invasion in Ukraine. Thank you to all who took the opportunity to pray. You have made a huge difference.

Preaching – Paul Ferguson

We continue to seek to establish a preaching culture in which our speakers operate, not out of gifting but anointing. Revelation is our goal, not head knowledge, and I have been encouraged by awesome sermons that so obviously flow from the secret place of personal affection for the Lord.

During the past year, I have hosted two preaching training sessions for our current group of speakers to help us make sure that every sermon at St Philip's is an invitation to grow in intimacy with God and to respond to Him in prayer ministry.

My sincere thanks to Margaret, Alex, Chris, Matt, Jules, Liza and Debs for their brilliant contributions this past year, and I look forward to new voices joining the team this coming year.





REPORTS: BELONG

The following reports reflect that we are family at St Philip's. Our bond runs deeper than doctrinal agreement; it is the bond of love in the Spirit that exists between sisters and brothers in Christ, daughters and sons of our Father who loves us perfectly and completely.

Belonging is reflected in many aspects of the life of St Philip's, from activities that keep members of the congregation connected and encouraged in their faith; to initiatives that reflect our place of belonging in this neighbourhood and city.

I am particularly grateful for the many ways in which you look out for each other at St Philip's. Very often unseen, your love for each other is a great strength to our church

Pastoral Team – Margaret Joyce with Paul Ferguson

In another unusual year, we have tried to seek God in how pastorally we care for all in our church. Thank you for all those who made phone calls and have continued to make them throughout the year - they have been so valued by all who received them.

Things have changed so much to this time last year. Gradually we have got used to having restrictions being lifted and with that has come more of us meeting together and seeing each other. The sense of isolation has changed as more people are coming back to church.

Home Groups are now meeting in person which means many more are connecting and visible life is coming back. I spoke last year about the fact of us missing that sense of touch, a cuddle or holding someone's hand. We have been able to share the peace and have that human contact.

Although Covid remains and we learn to live with it, we have been adapting to every new situation. The 3 words that come from our vision statement are Behold, Belong, Become. Because we have been able to meet more freely and often, we have been able to corporately behold God's presence, with that has come a sense of belonging. Belonging is something many have missed in the last two years, but God is leading us into a new pastoral plan which involves all of us caring for each other, helping with that sense of belonging.

We thank God for all He has done in this past year and all that He will do in the coming year. Watch this space and see what happens.

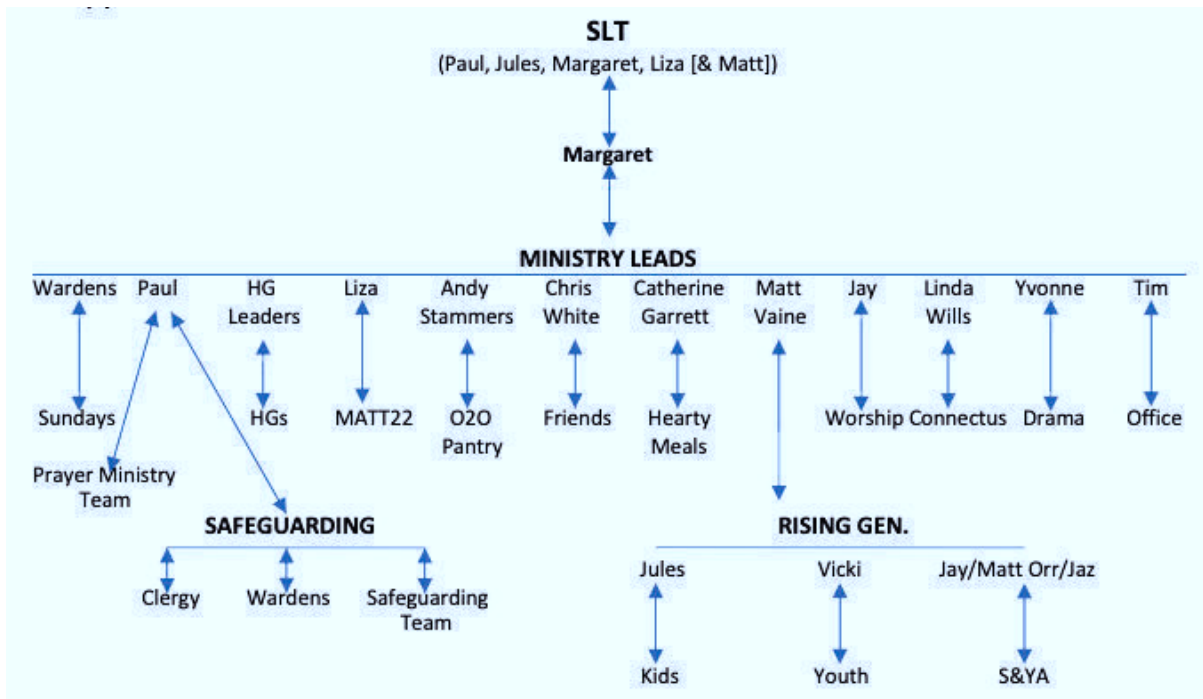
John 15:12 ' Love each other as I have loved you.

Paul adds'

We have recently 'rebooted' our pastoral ministry, initiating a new structure in which pastoral oversight for each ministry is clearly established and communication is strengthened across the team and between Ministry Leads and Senior Leadership Team (SLT). This has given us an opportunity to establish a stronger sense of 'one team' amongst all those who lead ministries and a greater awareness of responsibility and communication for both pastoral and safeguarding needs.



This new 'Pastoral Pyramid' illustrates the new structure and those who hold pastoral oversight:



'One 2 One' – Andy Stammers

In September 2021, we held our first 'in person' (with social distancing) meal at the church after some 18 months of delivering meals. It was amazing to see friendly faces back and facilitating much-needed interaction. Sadly, some members had lost a lot of confidence and chose to say at home. We made a decision to continue to provide both 'in person' meals at the church as well as food deliveries. Although this has put additional logistical challenges on the team, it is so encouraging that Covid has enabled the church to make new contacts into the community, enabling the opportunity to share God's love with more people.

Lockdown exacerbated loneliness and there has never been a better time to provide a service that successfully challenges and combats isolation; replacing fear with the hope found in Jesus.

We now run the meal with the doors open to the main church, setting tables up after the service. This has made the 'One 2 One' event feel like an extension of the morning service. Members of the church (all ages) are encouraged to come and serve and eat with those attending, again adding to the feeling of inclusivity and helping members to feel a sense of connection and belonging to the church. For many, this may have been their only contact with others. We are thankful to be serving our community at this time of great need.

St Philip's and St Martin's Garden Schools – Paul Ferguson

We have a collective heart for the schools in our parish. I want to celebrate Andy Stammers' continued presence at St Martin's Garden as school chaplain. Each week Andy spends most of Wednesday either in the pantry or in the playground 'building relationships



and supporting the school. It was a joy to supply the school with 30 new, age relevant, top quality bibles this year.

At St Philip's Primary, we continued to provide online assemblies each fortnight until relatively recently. We now share assemblies with Emmanuel Church and it has been a beautiful mark of unity serving with Ad Taylor-Weekes in this way.

The return to in-person assemblies has seen a distinct increase in connection and familiarity with the children, which was very noticeable at the recent Easter Service, held again in St Philip's Church for the first time since the pandemic began.

At Christmas, we again distributed 500 Bible Society books and a gift to every pupil at both schools. I am delighted that we were able to do this again in person this Easter.

Our relationship with both schools continues to strengthen and I give thanks to God for the opportunity to support staff, pupils and families through our ministry in Odd Down.

Drama Society – Yvonne Conroy

The drama group continued to meet every Monday evening over Zoom until the summer, when restrictions were lifted. During this time, we performed some plays written especially for Zoom, which can be viewed on our YouTube channel - SPSJC Drama Group. As a group, to celebrate Easter we all watched our performance of Misjudged from 2019 and sent an Easter card with messages from group members to be sent to group members.

In September we started rehearsals for Pantomime and had a bumpy journey to finally put on a show and perform to large audiences every night. This was a much-needed event for the group, the community and the church. Rehearsals always started with some time in prayer, which brought us closer together as we prayed for individual needs and celebrations. God blessed the group with many answers to prayers and new members joined. We have had a glowing feedback report from the Rose Bowl adjudicator who wrote 'A highly enjoyable evening at the theatre. What a special theatre company this is'. The success of our pantomime, Dick Whittington, meant that we were able to make donations to two charities, Save The Children and Off The Record, a local charity that helps improve the emotional health and wellbeing of young people.

We have just been involved in performing a concert to celebrate a musical called Rebel Summer, written in 1971, with a large orchestra filling the church with its beautiful sound.

We continue to meet every Monday in person. This is a new development for the group as up until now we have only met for rehearsals for putting on a show. To move forward in our vision within St Philip's, we plan to support each other through praying for each other and worshiping together, along with drama related workshops. We realised during lockdown, in our meetings on zoom, that we are becoming a support group alongside building and encouraging talents in the performing arts. To continue to support each other and allow more time with God, we need to meet frequently. We recently spent an evening in the prayer room together, interestingly coming full circle as the last meeting we had before lockdown was a session in the prayer room. We are excited to be moving into and exploring the 'Behold' aspect of the church vision and praise God for the generous love He pours into and through the drama group.



We have updated our logo to be blue and a slogan that represents the group and works well with the church vision. *St Philip and St James Church Drama group – Everyone is welcome, everyone is valued, everyone can shine.*

Community Minibus – Suzanne Stammers

We are grateful for the provision of the minibus, which helps St Philip's outreach and support in our local community. This year's bookings have still been affected by the pandemic; however, we have seen new drivers and user groups and the return of pre-pandemic users.

The minibus aims to support groups which facilitate the gathering of individuals to reduce isolation and loneliness and to enable individuals to participate in activities they would otherwise struggle to access.

We currently have 9 church-member drivers and 10 external drivers and support 31 different group activities, ranging from youth activities to older generation groups, enabling us to engage with a diverse range of individuals.

The minibus has been maintained and serviced by local garage, Genuine Car Services, for which we are very grateful. We have secured grant funding towards the upkeep of the minibus and running of the project from West of England Combined Authority (WECA) until March 2024, which, with reduced donations this year again due to the pandemic, has been received with great thanks.

Electoral Roll – Jenny Morrish

When individuals put their faith and trust in Jesus Christ, joining a worshipping community is an important commitment giving the opportunity to grow into the person God made each of us to be as we respond to his amazing love. Belonging to a church family in a particular place is a sign that we wish to learn and mature as children of God individually and as a body. Being named on the Electoral Roll (ER) of St Philips Church, Odd Down, Bath, is one way of confirming this commitment.

The Electoral Roll presented to the 2021 Annual Church Meeting showed that eleven names had been removed from the ER during the previous year. Of these, two longstanding and faithful members had died and two had moved away, while seven others had moved on. Each one was a unique child of God, and we are thankful for the ways in which they gave of themselves and built up the fellowship in their time with us.

We thanked God for the eight people whose names had been added to the ER and were delighted to welcome them as new members of the St. Philip's church family. We pray that we will grow together in love and service as we deepen our lives in Jesus.

There are currently 151 people on the Electoral Roll.

Deanery Synod Report – John Garrett

The Synod is made up of representatives from all the Anglican churches in Bath and surrounding areas. Synod generally meets 3 times per year, and in 2021 this was more of a challenge due to the Covid restrictions, but these were generally overcome, although we



only had 2 meetings in 2021. The meetings are for worship, prayer, providing information, and discussions of issues that affect all the churches in the Deanery.

Our first meeting of the year was on Zoom and centred on sharing in mission with the wider Church in Bath. The Leaders of Elim Church, Father's House, and Life Church were interviewed and shared their vision, and the overriding theme was for the Church in Bath to have unity. God wants to unite us as one in strategy and in mission for reaching the lost and encouraging one another, moving us forward to the glory of God.

The next meeting was held late Summer and focused on the challenges and opportunities facing the Church in the coming year. Numerous suggestions were put forward and were split into 1) what the priority is for the Deanery Synod, and 2) what the priority is for the Clergy. The main themes to come from both these were relationships and love with each other as individuals, with each other as Churches, and with Jesus Christ through the Holy Spirit.

Although we only had 2 meetings in 2021, we recently met at Bath University in late January and had talks from 3 people about the 'Green' issues facing the Church, and on the Eco-Church. The main thrust was to suggest that the Church should be at the forefront of this issue and that God has made us stewards of his creation.

Each meeting includes a report from the host church and it is always encouraging to hear how the Holy Spirit is moving across our City.

Safeguarding – Jenny Barker with Paul Ferguson

Our Safeguarding Policy continues to follow the Church of England's recommendations in the Parish Handbook and is in line with the requirements of the Church Representation Rules. We encourage all members of St Philip's to become familiar and aware of basic safeguarding practises within our church and so as to include safeguarding implications within activity planning. More information can be found on the church website and on the website for the Bath and Wells Diocese.

The Diocese has corrected the initial information given about DBS renewals. From the beginning of 2022 all DBS certificates are due for renewal every 3 years. (So, none are extended to renewal after 5 years). We continue to work to ensure that all certificates are up-to-date.

Members of the Church who have DBS certificates are required to undertake online training (renewing every three years). Please ask if you need to find out more information. We are still hopeful that we'll be able to arrange some in person training soon.

We continue to give thanks to God for enabling, guiding and leading us in our safeguarding responsibilities within our church. Also, for the willingness of the Diocesan team to advise from their experience and expertise. We look forward to continuing developments within our safeguarding team.

Paul adds'

Over the last few years, we have undertaken some work to strengthen and update safeguarding at St Philip's. This has continued during the last year as we update policies and protocols and we will soon be moving to a new model a Safeguarding Team, rather than a Safeguarding Officer. More developments to follow during the coming year.



REPORTS: BECOME

This section reflects our belief that we become what we behold. We expect to be transformed by God's presence. He does not leave us as orphans but has given us His Spirit that we would be transformed more and more into His likeness, authority and power.

The following reports touch on areas in which 'becoming' is reflected: from the discipleship environments of our Home Groups, to our Rising Gen. ministries; from prayer ministry, to the development of the fabric of the church buildings as we seek to position our physical assets for God's expanding ministry here in Odd Down.

This section also includes some highlights from MATT22. Everything about MATT22 is rooted in the Father's heart for the poor, the vulnerable and the abused. Our desire to be transformed through the presence of God overflows into our desire that those in our community, who are most in need and do not know the Lord, also experience the same transformation. We can only influence what we love, and we seek to love through MATT22.

Home Groups – Paul Ferguson

I believe that there are few better contexts to grow in intimacy with the Lord, the gifts of the Spirit and friendship with each other than Home Groups. So, I am delighted that, this year, we have been able to recast the vision for Home Groups to place them at the centre of discipleship at St Philip's.

Home Group leaders gathered in June for 3 training sessions which sought to envision, equip and encourage. These sessions aimed to align Home Groups with the new vision of St Philip's and to begin establishing a culture of encounter in our groups. The sessions included teaching on healthy leadership; effective pastoral care; models of discipleship; Home Groups as communities for service and mission; and how to lead prayer ministry.

I am excited that one group restarted after Covid, welcoming 8 new people; and two new Student & Young Adults groups were started.

My sincere thanks to our brilliant Home Group leaders who have a heart for the vital importance of mid-week discipleship.

Rising Gen: Kids@StPhilips – Jules Ferguson

We have been excited to welcome new children and new team members to the kids ministry at St Philip's during 2021. It has been such a breath of fresh air to be able to return to group work without the need for social distancing and we have been making the most of playing, worshipping and encountering Jesus together.

The family room is seeing regular use on Sunday mornings with great feedback from parents of under-3s (Minnows) about how they feel part of what is going on in the service, whilst being able to relax with their babies and toddlers.



Starfish (3-7s year olds) meet in the Institute and Swordfish (7-11s) met in the marquee over the summer months in 2021, before moving to the Prayer Room in the autumn. Everyone has adapted brilliantly, but it's a squeeze for the Swordfish and we continue to explore what a bigger permanent 'third space' for our young people might look like.

We started 2021 with kids work online, and the whole team got involved with filming talks about the nature of God called 'God is' . If you missed them ' they're still available on our YouTube channel!

When we started meeting in person in April, the groups looked at how we can encounter Jesus by exploring the stories of different people in the Bible. We followed that with a series all about the Holy Spirit. In the autumn term, we focused on our Vital Values and Culture Creators with the children. These are the simple statements that we established in 2020 which speak into the heavenly atmosphere that we want our young people to experience during their group times and articulate the core biblical truths we want to reinforce in every session.

During 2021, we were delighted to be able to hold 2 family events ' the first was a COVID-secure outdoor Easter Story Trail around the neighbourhood. The sun shone and it was a wonderful opportunity to connect after several months of lockdown. The second was a Light Party in the church on 31st October as a positive alternative to Halloween. Children had the option to do lots of different crafts and play glow in the dark games, which was followed by a meal together, a video about Jesus being the light in the darkness and a disco. No-one wanted to go home!

The Christingle service is becoming a firm family favourite and this year the children were actually able to stand together at the front as they helped to retell the nativity story.

We remain so thankful to God for all of our children and families and for our wonderful team. We're encouraged that the children are starting to step out in prayer and to receive words and pictures from the Holy Spirit as we seek to give him space to speak to them and to pour the love of their Heavenly Father into their hearts.

Our prayer for 2022 is ' more please, Lord!'

Rising Gen: Youth@StPhilips – Vicki Atkinson with Rachel Jones and Dave Joyce

We are really blessed to have a wonderful group of young people at St Philips and it's a true privilege to see them develop along our vision keystones ' Behold (worshipping together, seeing prayers answered), Belong (friendships, seeking a deeper, personal relationship with Jesus), Become (claiming their own faith and position as a child of God).

It's been a year of settling back into routines again after the Zoom sessions of the previous year, but both the new and existing youth members have adapted well. Huge thanks to parents for supporting us in this.

Younger Youth meet Sunday mornings during the service for fun, chat, discussions and prayer, while Older Youth meet at tea time on Sunday for deeper discussion and prayer. We encourage Older Youth to attend the evening services for the further opportunity to encounter God. During Lent we spent an evening in the prayer room, where we received words and pictures from God that were inspiring and encouraging.



Our wonderful youth team of volunteers has grown slightly and is in a strong position to support and lead our young people over the next year. We would like to thank Dave Joyce for his involvement over the last 4 years as he steps down from the team to pursue new ventures. As Matt Vaine starts his curacy, he will work with the team to develop our youth ministry as part of his Rising Gen role.

This year we look forward to welcoming 4-5 new members coming up from Swordfish and we are excited about a residential weekend in July at a Christian centre in Devon and would appreciate prayers for fellowship, fun and deeper encounter over the three days. Here are a couple of quotes from our team:

“Over my time at St Philip’s, I’ve really enjoyed working with such an experienced and dedicated group of youth leaders and, of course, getting to know the young people. It’s been a privilege to see how God is at work in their lives. Through the next three years of curacy, I look forward to seeing how God continues to powerfully act amongst them!” Matt Vaine, Ordinand/Curate

“The youth bring endless fun and joy to each and every Sunday session! They are an incredible group of young people, who continually surprise me with their knowledge and actions in seeking faith!” Meg Tucker, Bath YFC intern

“It has been a blessing to be part of the youth team and we have such wonderful kids. Our focus has been going deeper with God and growing in confidence with prayer and hearing God. I’m very excited about the coming weekend away and seeking encounter.” Rachel Jones, volunteer leader

Rising Gen: Students & Young Adults – Paul Ferguson

It has been an enormous encouragement to welcome a new intake of students and 20-year-olds to St Philip’s this year. As if almost out of the blue, some significant and capable leaders joined us last summer and, with Jay Cook, have established a thriving and presence-orientated ministry, that meets every Tuesday for food, worship and prayer.

On the first Tuesday, they host at church-wide evening of worship and prophetic prayer, called ‘Encounter’. This has been a great opportunity to release the core leadership into ministry at St Philip’s and for the congregation to get to know them all better.

On the second Tuesday, they break into two Home Groups, before reconvening as one group on the third Tuesday for a larger gathering in the Manna House. The fourth Tuesday is a social.

We are all grateful for their presence with us and the many ways that they inspire us to go deeper with God. My sincere thanks to the core team for your investment and dedication. Let’s go!

‘Friends’

This year, after the disruption of Covid, Chris White and her brilliant team took on the leadership of ‘Good Companions’ (our long-established ministry to the older generation), rebranding it as ‘Friends’ and re-establishing a fortnightly context to meet, celebrate together and grow closer to the Lord.



As Chris writes:

“Our aim is to love, encourage and support one another as we grow older in body and yet renewed in spirit. Our vision is to grow deeper in our walk with Jesus and in our prayer life together for each other, the church and the wider community.

We enjoy a variety of speakers who challenge us, bless us, and make us laugh. We are inspired with some wonderful worship songs and have fun afternoons with quizzes and games. We meet socially once a month with others for a home cooked meal at One2One – an absolute treat!”

In addition to the main ‘Friends’ meetings, a group meets regularly in the prayer room, and on Zoom, for bible study. Please contact Ruth Wishart for details.

We are so grateful for this beautiful expression of belonging, and for the love of the Lord that our older gen. model to us.

MATT22 – Andy Stammers and Paul Ferguson

MATT22’s next season – Paul Ferguson

Kingdom transformation is a key aspect of our vision and mission at St Philip’s. One expression of that mission was the emergence of MATT22 during Covid (inspired by Jesus’ command in Matthew chapter 22 to ‘love your neighbour’). The initial idea was to provide emergency food parcels to the most vulnerable in Odd Down.

This year, Liza Wortelhock (Associate Priest) has taken on the leadership of MATT22 and, with Paul Ferguson, has spent the last 8 months praying, discerning and writing a 5-year strategy and refreshed vision for the future of the ministry.

Central to our aspirations for the ministry is that MATT22 is underpinned by our conviction that we belong, not just to a kingdom of kindness, but a Kingdom of power. We want to see heaven on earth in our neighbourhood, in our time. This has resulted in a desire to establish a culture for MATT22 that reflects St Philip’s vision: that in order to overflow with a that transform lives, we must root everything we do with MATT22 first in our love of the Lord. We believe that we must seek first the Kingdom in order for that Kingdom to manifest.

The initial phase of the 5-year strategy will include a new partnership with Genesis Food Bank in order to locate a Food Bank Hub at St Philip’s, and a café, to be located at the church.

I am deeply thankful for the congregation’s incredible support of MATT22 over the last year and am looking forward to this next phase as, together, we grow in compassion and love for the people of our neighbourhood.

Community Pantry - Andy Stammers

In 2020, as part of our ministry to help those in food poverty in Odd Down, St Philip’s partnered with St Martin’s Garden Primary School (STMG) and ‘Sporting Family Change’ to create a Pantry, providing dry food, frozen, fridge, fresh provisions and household essentials to those who require support. The concept of a Pantry is very different from that



of a food bank in that a Pantry stocks high quality, in-date products and aims to be a consistent and affordable option for sustained provision of food in the community. The model does not work on donations of products but seeks financial donations to purchase the products required.

Qualifying members make a £5 donation to allow them to choose 20 items (approx. £30 value), this concept provides dignity and honours members, allowing them to make their own choices, just as they would in a regular shop rather than being 'given a charity handout'. We don't want members to feel they are only worth out of date food or 'leftovers' as they themselves are priceless in the eyes of God. The Pantry both supports school families but is also now open to qualifying members of the community.

We have two church member volunteers and three from the community that help run the Pantry. Our vision is to develop a community kitchen to facilitate community cooking, bringing together ingredients from the Pantry and fresh produce from the Grow for Life project who support the growing of veg in beds on the STMG property. This will aim to tackle root causes of food poverty, improve nutritional awareness and build new skills and confidence. The vision is about showing others how God values us all.

Fabric Report – Paul Ferguson with Graham Pearson

Forward by Paul Ferguson

Part of our emphasis on 'becoming' includes the development of the church facilities to enhance the depth and reach of the ministry and mission of St Philip's. After the extensive work on the church roof in 2020, this year has been lighter in terms of maintenance and building works but highlights include:

- completed works to upgrade the ventilation system in the kitchen in order to meet the latest safety standards.
- Additional repairs to other areas of the church roof ' see Graham's report below
- the near-completion of works in the old Baptistry, which is now a popular and successful family room on Sundays and a meeting room during the week.

We have taken this year to explore a number of potential projects to develop St Philip's in order to better equip it for future ministry and growth. I am so grateful to Tim Conroy, Graham Pearson, Bill Gay, Paul Millard (Treasurer) and the Finance Team for taking the time to discuss all my many ideas ' some more feasible than others!

High on the agenda is the perennial issue of not having enough space to disciple our children and youth on Sunday mornings. The temporary solution this year was to locate one of our kids groups in a marquee on the back lawn. This worked well over the summer months, but with the return of autumn and winter, we had to move them into the cramped 24-7 prayer room. We continue to explore a more permanent solution to the tricky (but welcome!) problem of growth!

We have also taken time this year to develop a rebooted approach to facilities management, development and maintenance. The result is that a new team of 'Facilities Wardens' will oversee a maintenance and development programme, which I hope will inject much-needed rigour into our stewardship and use of the amazing facilities that God has given us. I look forward to reporting on progress next year.



Roof Report ' Graham Pearson

January 2021 saw the completion of the repairs to the flat roof over the front part of the Church. Inside the Church work continued with church members repairing any damage from the previous leaks, decorating internal ceilings and walls associated with the new rooflights and those leaks.

In March a grant was successfully applied for from Enstock Inovert Trust awarding £6,000 to us, subject to successful completion, on which PCC approved a plan to ensure the rest of the church roofs were insulated and repaired to the same high standard. County Roofing returned to replace the roof lights on top of the prayer room and the Institute and fit a new roof to the Tank Room. This created better insulation and dry storage; better lit, dry prayer room; and draught free Institute that could be better used for children's groups and activities.

Over the last two and a half years these projects, totalling over £80,000, would not have taken place without the generosity of the congregation, those who gave us the grants (All Churches, Medlock, Congregational, Somerset Churches & Enovert Ibstock), volunteers helping with the internal decorations and repairs, our Church Architect and the Contractors. Thanks to everyone involved.





Structure, Governance and Management - Graham Pearson

The Parochial Church Council is a corporate body established by the Church of England within the Diocese of Bath & Wells and is a registered charity (1131533). The PCC operates under the Parochial Church Council Powers Measure, following the Church Representation Rules 2020. PCC members/Trustees are elected for 3 years at the APCM/AGM. Our APCM was held following Covid guidelines on 20th May 2021. All church members are encouraged to register on the electoral roll of the Church and stand for election to the PCC. The PCC members are responsible for making decisions on all matters of general concern and importance to the parish including deciding on how the funds of the Church are to be allocated and spent.

When planning and undertaking our activities for the year, we have considered the Charity Commission's guidance on public benefit, and in particular the specific guidance on charities for the advancement of religion. This report shows how we have sought to deliver public benefit to our congregation, our parish, our community and to our partners abroad in 2021, despite of and in response to the Covid pandemic. Those partners in turn have benefitted their communities in areas of the world where there is significant need, the consequences of poverty, insufficient education, and poor health.

The PCC met five times during the year, with the Standing Committee meeting for more urgent items in January. The Finance Team met every 2 months approx. to ensure our church monitored our finances closely during the second year of the pandemic, the various lock downs and changes in guidelines that affected use of the church buildings and income variations. PCC activities and responsibilities are supported by special Teams, which also include other members of the church. These are the Finance Team, Mission Team, Youth & Children's Team, and Maintenance Team. Reports are also received from groups that oversee restricted funds: Community Minibus and Drama Group. A weekly newsletter was circulated by email to communicate with all church members and those joining our YouTube services.

Administrative information

The Church is situated on Frome Road, Odd Down, Bath, and is part of the Diocese of Bath & Wells within the Church of England. The correspondence address is 35, Frome Road, Odd Down, Bath BA2 2QF. Registered charity number 1131533.

email: office@stphilipstjames.org

web: www.stphilipstjames.org



PCC Membership during 2021

Elections at APCM 20th May 2021

CLERGY

Revd Paul Ferguson
Revd Margaret Joyce
Revd Liza Wortelhock

CHURCHWARDENS

Bill Gay
Barry Worth (until May 2021)
Jo Bleakley (from May 2021) ' job share with Debs Ross
Debs Ross (co-opted from May 2021) ' job share with Jo Bleakley

PCC MEMBERS

Graham Whatley
Graham White
Joe Mokebo
Lucy Hall
Nikie Catchpool (until May 2021)
Paul Millard (Treasurer)
Rachel Jones (until May 2021)
Sarah Moxham-Hendra
Sue Burt (until May 2021)
Tilly Platten
Vicki Atkinson (until 2021)
Dave Atkinson (from May 2021)
Elizabeth Riley (from May 2021)
Jenny Barker (from May 2021)
Karen Noad (from May 2021)

CO-OPTED

Tim Conroy (Church Administrator)

DEANERY SYNOD

Jenny Morrish (Electoral Roll Officer)
John Garrett
Graham Pearson (PCC Secretary)



FINANCIAL REVIEW

In the period to the end of December 2021, St Philip's raised a total income of £211k (2020: £253k) against expenditure of £253k (2020: £238k). Unrestricted and designated funds received totalled £178k (2020: £178k).

Restricted funds received totalled £33k (2020 £75k) with a balance of £22k (2020 £65k) on restricted funds carried forward into 2022.

For the details behind these figures see the financial statements that follow this report.

RESERVES POLICY

It is the aim of the PCC that the free reserves (unrestricted and not represented by fixed assets) held by the charity should cover 3 months of unrestricted expenditure. This equates to approximately £44k. At this level the trustees feel that they would be able to continue the current activities of the charity in the event of a significant drop in funding.

At the end of 2021, the church's free reserves (including designated) met this aim.

This report has been approved by the PCC on the *9 MAY 2022* and signed on their behalf by:

Revd Paul Ferguson
Vicar

Mr Paul Millard
Treasurer

Independent Examiner's Report to the PCC of St Philip & St James, Odd Down, Bath & Wells

I report on the accounts for the year ended 31st December 2021 that are set out on pages 24 to 33

Respective responsibilities of the PCC and Independent Examiner

The PCC is responsible for the preparation of the accounts. They consider that an audit is not required for this year under section 144(2) of the Charities Act 2011 (the 2011 Act) and that an independent examination is needed.

Having satisfied myself that the church is not subject to audit and is eligible for independent examination it is my responsibility to:

- examine the accounts under section 145 of the 2011 Act;
- follow the procedures laid down in the General Directions given by the Charity Commissioners section 145(5)(b) of the 2011 Act; and
- state whether particular matters have come to my attention.

This report, including my statement, has been prepared for and only for the PCC as a body. My work has been undertaken so that I might state to the PCC those matters that I am required to state to them in an independent examiner's report and for no other purpose. To the fullest extent permitted by law, I do not accept or assume responsibility to any other than the church and the PCC as a body for my examination work, for this report or for the statements that I have made.

Basis of Independent Examiner's Statement

My examination was carried out in accordance with the General Directions given by the Charity Commission.

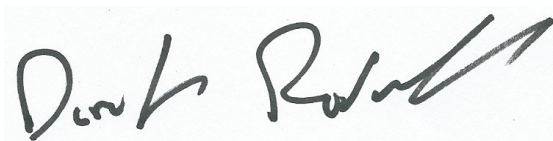
An examination includes a review of the accounting records kept by the church and a comparison of the accounts presented with those records. It also includes consideration of any unusual items or disclosures in the accounts, and seeking explanations from you the trustees, concerning any such matters. The procedures undertaken do not provide all the evidence that would be required in an audit, and consequently no opinion is given as to whether the accounts present a 'true and fair' view and the report is limited to those matters set out in the statement below.

Independent Examiner's Statement

Since the gross income for the year exceeds the amount provided in section 145(3) of the Act, I confirm that I am qualified to act as Independent Examiner under the provisions of that section of the Act being a fellow of the Chartered Association of Certified Examiners.

In connection with my examination, no matters have come to my attention:

1. which give me reasonable cause to believe that in any material respect the requirements
 - to keep accounting records in accordance with s.130 of the 2011 Act; or
 - to prepare accounts which accord with these accounting records have not been met; or
2. to which, in my opinion, attention should be drawn in order to enable a proper understanding of the accounts to be reached.

A handwritten signature in black ink, appearing to read 'Derek Rodwell', with a stylized flourish at the end.

Date: 20th June 2022

Derek Rodwell FCCA

Impact The Future Ltd, Bennett Verby, 7 St Petersgate, Stockport, Cheshire, SK1 1EB

**THE PAROCHIAL CHURCH COUNCIL OF THE
ECCLESIASTICAL PARISH OF
ST PHILIP & ST JAMES, ODD DOWN, BATH & WELLS**

**STATEMENT OF FINANCIAL ACTIVITIES
For the year ended 31st December 2021**

	Note	2021 Unrestricted Funds	2021 Designated Funds	2021 Restricted Funds	2021 Total	2020 Unrestricted Funds	2020 Designated Funds	2020 Restricted Funds	2020 Total
		£	£	£	£	£	£	£	£
INCOME AND ENDOWMENTS FROM:									
Donations and legacies	2a	142,562	1,059	30,799	174,420	138,998	2,048	72,438	213,484
Other trading activities	2b	6,069	1,908	2,407	10,384	1	8,112	2,779	10,892
Investments	2c	4,655	0	0	4,655	4,639	0	0	4,639
Charitable activities	2d	17,823	3,769	0	21,591	13,415	10,560	40	24,015
TOTAL INCOME		171,108	6,736	33,206	211,050	157,053	20,720	75,257	253,030
EXPENDITURE ON:									
Charitable activities	3a	163,447	12,431	74,662	250,540	161,387	24,091	49,439	234,917
Raising funds	3b	193	0	2,572	2,766	1,116	701	1,574	3,391
TOTAL EXPENDITURE		163,640	12,431	77,235	253,306	162,503	24,792	51,013	238,308
NET BEFORE TRANSFERS		7,468	(5,695)	(44,029)	(42,256)	(5,450)	(4,072)	24,244	14,722
TRANSFERS BETWEEN FUNDS		(1,119)	0	1,119	0	(7,913)	2,253	5,660	(0)
NET MOVEMENT IN FUNDS		6,349	(5,695)	(42,910)	(42,256)	(13,363)	(1,819)	29,904	14,722
TOTAL FUNDS BROUGHT FORWARD		123,315	22,850	64,805	210,970	136,678	24,669	34,901	196,248
TOTAL FUNDS CARRIED FORWARD	7	129,664	17,155	21,895	168,714	123,315	22,850	64,805	210,970

The notes on pages 25 to 32 form part of these financial statements.

THE PAROCHIAL CHURCH COUNCIL OF THE
ECCLESIASTICAL PARISH OF
ST PHILIP & ST JAMES, ODD DOWN, BATH & WELLS

BALANCE SHEET
As at 31 December 2021

	Note	Unrestricted Funds 2021	Designated Funds 2021	Restricted Funds 2021	Total 2021	Unrestricted Funds 2020	Designated Funds 2020	Restricted Funds 2020	Total 2020
		£	£	£	£	£	£	£	£
FIXED ASSETS									
Tangible	4	89,822	0	676	90,498	102,997	0	0	102,997
CURRENT ASSETS									
Debtors and prepayments	5	24,810	800	358	25,968	23,581	828	8,393	32,802
Cash at bank and in hand		17,081	16,355	20,861	54,297	(897)	24,888	53,546	77,537
		41,891	17,155	21,219	80,265	22,684	25,716	61,939	110,339
LIABILITIES									
Creditors - amounts falling due within one year	6	(2,049)	0	0	(2,049)	(2,366)	0	0	(2,366)
NET CURRENT ASSETS									
		39,841	17,155	21,219	78,216	20,318	25,716	61,939	107,973
TOTAL NET ASSETS									
		129,663	17,155	21,895	168,714	123,315	25,716	61,939	210,970
PARISH FUNDS									
Unrestricted Funds		129,664	0	0	129,664	123,315	0	0	123,315
Designated Funds		0	17,155	0	17,155	0	25,716	0	25,716
Restricted Funds		0	0	21,895	21,895	0	0	61,939	61,939
	7	129,664	17,155	21,895	168,714	123,315	25,716	61,939	210,970

Note re comparatives

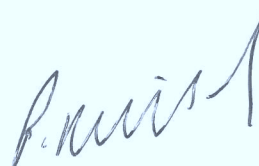
£9,053 has been switched from restricted funds to designated funds in the 2020 comparative figures. This relates to the bus fund which had incorrectly been shown previously as a restricted fund. A fund for the Bath Quay Memorial Project of £2,866 has also been taken out of designated funds and is now shown as restricted. See note 7 for details.

Approved by the Parochial Church Council on 9 MAY 2022

and signed on its behalf by:



Revd Paul Ferguson
Vicar



Mr Paul Millard
Treasurer

The notes on pages 25 to 32 form part of these financial statements.

**THE PAROCHIAL CHURCH COUNCIL OF THE
ECCLESIASTICAL PARISH OF
ST PHILIP & ST JAMES, ODD DOWN, BATH & WELLS**

**NOTES TO THE FINANCIAL STATEMENTS
For the year ended 31st December 2021**

1 ACCOUNTING POLICIES

Basis of preparation

The PCC is a public benefit entity within the meaning of FRS102. The financial statements have been prepared under the Charities Act 2011 and in accordance with the Church Accounting Regulations 2006 governing the individual accounts of PCC's, and with the Regulations' "true and fair view" provisions, together with FRS102 (effective January 2019) as the applicable accounting standards and the 2019 version of the Statement of Recommended Practice, Accounting and Reporting by Charities (SORP (FRS102)).

Cash flow forecasts have been prepared for the period to the end of 2022 and these indicate that St Philips will be able to continue as a going concern for the next 12 months. The trustees will be reviewing these forecasts on a regular basis throughout 2022. Therefore the trustees believe that it is appropriate to prepare the accounts as a going concern.

The financial statements have been prepared under the historic cost convention.

Recognition of Income

These are included in the Statement of Financial Activities (SOFA) when:

- i) The PCC becomes legally entitled to the use of the resources; and
- ii) the inflow of economic benefit is probable; and
- iii) the monetary value can be measured with sufficient reliability.

Fundraising costs - funds raised from events and trading activities (e.g. fete, garden party or sales of books and magazines) are reported gross in the SOFA - i.e. before any related costs that may have been deducted from the gross proceeds.

Grants and donations - grants and donations are included in the SOFA when any pre conditions preventing their use by the PCC have been met. For collections and planned giving this is when the funds are received.

Gift Aid Tax claims on cash donations - Gift Aid and other tax claims are included in the SOFA at the same time as the cash donation to which they relate.

Gifts in kind - gifts in kind are accounted for at a reasonable estimate of their fair value at the time of the gift, if feasible, or else at the amount actually realised from their disposal. Gifts in kind for sale to fund the PCC are included in the accounts at their estimated fair value at the date of gift, if feasible - or else recognised when sold by the charity. Gifts in kind for the PCC's own use are included in the SOFA as incoming resources at their fair value when receivable, and expensed as and when consumed in use. Gifts of fixed assets, if material, are included in the balance sheet at their fair value and expenses over the asset's useful economic life.

Donated services and facilities - these are included in income (and at the same time in resources expended) at the estimated fair value to the PCC of the service or facility received.

Volunteer help - The value of any voluntary help received is not included in the accounts but is described in the trustees' annual report.

Rental income - Rental income from the letting of the Church is recognised when the rental is due.

Investment income - This is included in the accounts when receivable.

Expenditure and liabilities

Liability recognition - Liabilities are recognised as soon as there is a legal or constructive obligation

and settlement is probable and quantifiable.

Governance costs - include costs of the preparation and examination of statutory accounts, the costs of trustee meetings and cost of any legal advice to trustees on governance or constitutional matters.

Pensions - The PCC contributes to the Church of England Pension Builder Scheme. The assets of the scheme are held separately from the PCC in an independently administered fund. Contributions are charged to the statement of financial activities as they fall due in accordance with the scheme rules.

Assets

Consecrated and benefice property - in far as consecrated and benefice property of any kind is excluded from the statutory definition of "charity" by Section 10(2)(a) and (c) of the Charities Act 2011 such assets are not capitalised in the financial statements.

Moveable Church furnishings - these are capitalised at cost and depreciated over their useful economic life other than where insufficient cost information is available. In this case the item is not capitalised, but all items are included in the Church's inventory in any case.

Tangible fixed assets for use by charity - these are capitalised if they can be used for more than one year, and cost at least £1,000. They are valued at cost or else, for gifts in kind, at reasonable estimate of their open market value on receipt.

Depreciation - is calculated to write off the capitalised cost of fixed assets less their currently anticipated residual fair value over their estimated useful lives as follows:

Buildings	25 years straight line
Motor vehicles	5 years straight line
Equipment	3 and 5 years straight line

Funds

Unrestricted funds - these represent the remaining income funds of the PCC that are available for spending on the general purposes of the PCC.

Designated Funds - these are part of the unrestricted funds which the PCC has earmarked for a particular project, without restricting or committing the funds legally. The designation may be cancelled by the PCC if they later decide that the Church should not proceed or continue with the project for which the funds were designated.

Restricted funds - these are income funds that must be spent on restricted purposes and details of the funds held and restrictions provided are shown in the notes to the accounts.

**THE PAROCHIAL CHURCH COUNCIL OF THE
ECCLESIASTICAL PARISH OF
ST PHILIP & ST JAMES, ODD DOWN, BATH & WELLS**

**NOTES TO THE FINANCIAL STATEMENTS
For the year ended 31st December 2021**

	2021 Unrestricted Funds	2021 Designated Funds	2021 Restricted Funds	2021 Total	2020 Unrestricted Funds	2020 Designated Funds	2020 Restricted Funds	2020 Total
	£	£	£	£	£	£	£	£
2 INCOME								
2a Donations & legacies								
Planned giving								
Gift aid donations	105,214	0	0	105,214	102,490	0	0	102,490
Tax recoverable	24,221	0	358	24,579	23,722	0	8,393	32,115
Collections	842	0	0	842	1,760	0	113	1,873
Gift days and other gifts	10,642	0	0	10,642	2,569	2,048	40,494	45,111
Grants	0	0	24,363	24,363	0	0	22,390	22,390
Donations, appeals etc	-411	1,059	4,371	5,019	0	0	1,048	1,048
Furlough Scheme income	2,053	0	1,707	3,761	8,457	0	0	8,457
	142,562	1,059	30,799	174,420	138,998	2,048	72,438	213,484
2b Other trading income								
Electric feed in tariff	6,069	1,908	0	7,977	0	8,112	0	8,112
Minibus income	0	0	2,407	2,407	0	0	367	367
Bazaar income	0	0	0	0	0	0	135	135
Other fundraising income	0	0	0	0	0	0	2,277	2,277
	6,069	1,908	2,407	10,384	1	8,112	2,779	10,892
2c Income from investments								
Flat rent	4,652	0	0	4,652	4,608	0	0	4,608
Interest received	3	0	0	3	31	0	0	31
	4,655	0	0	4,655	4,639	0	0	4,639
2d Charitable activities								
Weddings and funerals	0	2,050	0	2,050	0	3,810	0	3,810
Church hall lettings	15,180	0	0	15,180	11,647	0	0	11,647
Photocopying and printing	894	0	0	894	1,014	0	0	1,014
Drama group income	0	1,719	0	1,719	0	5,442	0	5,442
Other income	987	0	0	987	754	133	40	927
Church events	762	0	0	762	0	1,175		1,175
	17,823	3,769	0	21,591	13,415	10,560	40	24,015
Total incoming resources	171,108	6,736	33,206	211,050	157,053	20,720	75,257	253,030

3 RESOURCES EXPENDED

	2021 Unrestricted Funds	2021 Designated Funds	2021 Restricted Funds	2021 Total	2020 Unrestricted Funds	2020 Designated Funds	2020 Restricted Funds	2020 Total
	£	£	£	£	£	£	£	£
3a Charitable activities								
Missionary and charitable giving	5,276	1,723	4,151	11,150	(1)	3,919	9,322	13,240
Ministry								
Parish share	65,638			65,638	60,798			60,798
Clergy expenses	884			884	982			982
Lay readers and other staff costs	31	613	135	779	4	175	48	227
Weddings and funerals	0	1,376		1,376	(1)	3,258		3,258
Performing rights and music	1,169		439	1,608	949			949
Children and youth	661			661	774			774
Training	188			188	0	40		40
Services	708			708	478			478
Catering	1,685	817	46	2,547	588	557	1,265	2,410
Church events	0			0	65	1,423	2,203	3,691
Gifts and hospitality	631	75	0	706	689	261	295	1,245

**THE PAROCHIAL CHURCH COUNCIL OF THE
ECCLESIASTICAL PARISH OF
ST PHILIP & ST JAMES, ODD DOWN, BATH & WELLS**

**NOTES TO THE FINANCIAL STATEMENTS
For the year ended 31st December 2021**

Church running expenses and upkeep								
Heat and light	4,242			4,242	4,186			4,186
Water	100			100	90			90
Cleaning	449			449	764		1	765
Insurance	997			997	982		881	1,863
Maintenance and equipment	10,767	345	59,592	70,703	4,652	127	25,185	29,964
Depreciation	14,087		169	14,256	13,904			13,904
Other	0			0	0			0
Office costs								
Stationery, printing and other	2,203			2,203	2,737	63	114	2,914
Telephone	1,235			1,235	1,055			1,055
Accountancy fees	1,250			1,250	1,250			1,250
Other office costs	1,739			1,739	1,196			1,196
Drama Group	0	876		876	20	7,010		7,030
Salaries	49,508	6,607	10,131	66,246	65,226	7,258	10,125	82,609
	163,447	12,431	74,662	250,540	161,387	24,091	49,439	234,917
3b Raising funds								
Minibus expenses	0		2,572	2,572	816	701	1,574	3,091
Flat upkeep	193			193	300			300
	193	0	2,572	2,766	1,116	701	1,574	3,391
Total resources expended	163,641	12,431	77,235	253,306	162,503	24,792	51,013	238,308

3c	Mission giving analysis	2021 Unrestricted Funds	2021 Designated Funds	2021 Restricted Funds	2021 Total	2020 Unrestricted Funds	2020 Designated Funds	2020 Restricted Funds	2020 Total
		£	£	£	£	£	£	£	£
	Bath Tech College Chaplain	200			200		200		200
	BYFC	1,000			1,000			1,317	1,317
	Carol Bus	155			155				
	Community Carol Service	202			202				
	Combe Hay Church- gift for rural chaplain		1,560		1,560				
	Elsies river				0			2,667	2,667
	Emma Greves Trust				0		300		300
	Emmanuel Church				0		500		500
	Etra				0			135	135
	Genesis	1,000			1,000			4,129	4,129
	Holiday In	125			125				
	Julian House				0		500		500
	Matt 22			3,086	3,086			951	951
	One Good Friday				0		1,000		1,000
	Open Christmas Mission	100			100		100		100
	Other	72			72		163		163
	Prayer for Bath				0		100		100
	Primary School Christmas Gift Bags	503			503				
	Primary School Easter Gift Bags	225			225				
	Simeons Trustees	100			100		100		100
	St Martins Garden Primary School Bibles	328			328				0
	St Philips Primary School Bibles	67	163		230		234		234
	Street Pastors	200			200		200		200
	Tearfund	1,000		985	1,985				
	The Life project			80	80		500		500
	Zambia Link				0		22	122	144
		5,276	1,723	4,151	11,150	0	3,919	9,322	13,240

**THE PAROCHIAL CHURCH COUNCIL OF THE
ECCLESIASTICAL PARISH OF
ST PHILIP & ST JAMES, ODD DOWN, BATH & WELLS**

**NOTES TO THE FINANCIAL STATEMENTS
For the year ended 31st December 2021**

3d Staff Costs

	2021 £	2020 £
Gross salaries	61,761	67,335
Employers national insurance contributions (net of employment allowance)	0	717
Employers pension contributions	4,485	3,605
Redundancy payments	0	10,952
	66,246	82,609

The average number of staff employed during the year were:

Full time	1	1
Part time	6	6
	7	7

In terms of FTE the average throughout the year was 2.4 (2020 was 2.6).

No member of staff earned more than £60,000 pa.

The work of the church would not be possible without the help of a large team of volunteers. There are an estimated 115 volunteers who help with the ministry of the church who receive no remuneration.

3e Related party transactions

In 2021 no members of the PCC were on the staff. The related parties note in 2020 stated that Tim Conroy was both a PCC and staff member. However this was inaccurate as Tim was only co-opted onto the PCC and was not entitled to vote.

In 2021 two (2020 two) PCC members or their family were paid £243 (2020 £1,075) for services provided to the church.

During the year expenses totalling £0 (2020: £982) were reimbursed to no (2020: two) PCC members and

During the year no PCC expenses were re-imbursed to PCC members and their families (2020 £982 to 2 members).

During the year gifts of £18,555 (2020 £41,900) were given by PCC members to the church.

4 TANGIBLE FIXED ASSETS

		Buildings £	Motor Vehicles £	Equipment £	Total £
Cost	At 1 January 2021	172,607	35,000	46,029	253,636
	Additions	0	0	913	913
	Disposals	0	0	0	0
	At 31 December 2021	172,607	35,000	46,942	254,549
Depreciation	At 1 January 2021	76,610	28,000	46,029	150,639
	Disposals	0	0	0	0
	Charge for year	6,905	7,000	183	14,088
	At 31 December 2021	83,515	35,000	46,212	164,727
Net book value	At 31 December 2021	89,092	0	730	89,822
	At 31 December 2020	95,997	7,000	0	102,997

5 DEBTORS

	Unrestricted Funds £	Designated Funds £	Restricted Funds £	Total 2021 £	Total 2020 £
Tax recoverable	24,572	0	358	24,930	31,724
Prepayments	0	0	0	0	0
Other debtors	239	800	0	1,039	1,078
	24,810	800	358	25,968	32,802

6 CREDITORS: Amounts falling due within one year

Accruals	2,049	0	0	2,049	2,366
	2,049	0	0	2,049	2,366

**THE PAROCHIAL CHURCH COUNCIL OF THE
ECCLESIASTICAL PARISH OF
ST PHILIP & ST JAMES, ODD DOWN, BATH & WELLS**

**NOTES TO THE FINANCIAL STATEMENTS
For the year ended 31st December 2021**

7a FUNDS IN 2020 (AS RESTATED- SEE NOTES BELOW)

		Balance b/fwd 2020 £	Income 2020 £	Expenditure 2020 £	Transfers 2020 £	Balance c/fwd 2020 £	
Unrestricted funds							
General fund		136,678	157,053	(162,503)	(7,913)	123,315	
Total unrestricted funds		136,678	157,053	(162,503)	(7,913)	123,315	
Designated funds							
Drama group fund		4,279	5,442	(6,985)	0	2,737	
Church projects							
	Parish weekend	18	681	(717)	18	(1)	
	Friends (Previously Good companions)	1,024	133	(255)	0	902	
	Equipment reserve fund	0	2,000	0	0	2,000	
	Bus fund	9,053	0	0	0	9,053	
	Other designated funds	3,177	4,352	(3,989)	(363)	3,178	
Mission projects							
	Solar Panel Funding towards staff role	6,584	8,112	(7,433)	0	7,264	
	Mission fund- general	534	0	(5,414)	2,598	(2,281)	
Total designated funds		24,670	20,720	(24,793)	2,253	22,850	
Restricted funds							
Church projects							
	Minibus	8,160	5,057	(6,395)	155	6,977	
	PA/music	600	2,349	(2,362)	0	587	
	Branding	0	800	(880)	80	0	
	Special collections	1,089	537	(837)	(789)	0	
	Bath Quays memorial Fund	2,866	0	0	0	2,866	
	Capital development	21,125	37,786	(21,572)	1,276	38,615	
	Worship & Dev leader	0	12,500	(6,274)	0	6,226	
	Youth evangelism	931	0	(81)	0	850	
Mission fund							
	Genesis	0	2,856	(4,009)	1,544	391	24,670
	MATT22	0	12,357	(4,357)	0	8,000	57,858
	Elsies river	0	550	(2,667)	2,117	0	33,188
	St Martins Pantry	0	290	0	0	290	
	BYFC	0	40	(1,317)	1,277	(0)	
	Bazaar/Etra	0	135	(135)	0	0	
	Advent calendar	128	0	(128)	0	0	
Total restricted funds		34,900	75,257	(51,012)	5,660	64,805	
Total funds		196,248	253,030	(238,308)	(0)	210,970	

Restatement of 2020 funds.

£2,000 received as Drama Group funds in the published 2020 accounts incorrectly has now been shown as designated to the equipment reserve
The bus fund of £9,053 which resulted from the sale of a mini-bus was shown incorrectly as restricted in 2020 and is now shown in designated funds
Funds raised towards the Bath Quay Memorial Project- to have a memorial for those who have died in the river- have also been removed from designated funds and shown as a separate restricted fund.

7b FUNDS IN 2021

		Balance b/fwd 2021 £	Income 2021 £	Expenditure 2021 £	Transfers 2021 £	Balance c/fwd 2021 £
Unrestricted funds						
General fund		123,315	171,108	(163,641)	(1,119)	129,663
Total unrestricted funds		123,315	171,108	(163,641)	(1,119)	129,663

**THE PAROCHIAL CHURCH COUNCIL OF THE
ECCLESIASTICAL PARISH OF
ST PHILIP & ST JAMES, ODD DOWN, BATH & WELLS**

**NOTES TO THE FINANCIAL STATEMENTS
For the year ended 31st December 2021**

Designated funds

Drama group fund	2,737	1,719	(876)	0	3,579
Church projects					
Friends (Previously Good companions)	902	65	(35)	0	932
Equipment reserve fund	2,000	0	0	0	2,000
Bus fund	9,053	0	0	0	9,053
Other designated funds	3,178	3,044	(3,116)	(2,445)	661
Mission projects					0
Solar Panel Funding towards staff role	7,264	1,908	(8,242)	0	930
Mission fund- general	(2,281)	0	(163)	2,445	0
Total designated funds	22,850	6,736	(12,432)	0	17,155

Restricted funds

Church projects					
Minibus	6,977	9,977	(6,522)	0	10,432
AV updates	587	405	(742)	0	249
Roof Project	0	6,000	(7,119)	1,119	(0)
Capital development	38,615	13,688	(52,304)	0	(1)
Bath Quays memorial fund	2,866	0	0	0	2,866
Worship & Dev leader	6,226	0	(6,226)	0	0
Youth evangelism	850	0	0	0	850
Mission fund					0
Genesis	391	(391)	0	0	0
MATT22	8,000	1,618	(3,086)	0	6,531
Life Project	0	80	(80)	0	0
St Martins Pantry	290	0	0	0	290
Tear Fund	(0)	985	(985)	0	(0)
	64,805	32,361	(77,064)	1,119	21,219
Restricted funds in fixed assets- sound desk	0	845	(169)	0	676
Total of restricted funds	64,805	33,206	(77,233)	1,119	21,895
Total funds	210,970	211,050	(253,306)	0	168,714

Notes re funds

Designated funds

Parish weekend. Income and costs relating to the parish weekend. This weekend didn't happen in 2020.
 Friends (previously Good Companions). A fund for the purpose of serving the older members of the parish community
 Solar Panel funding towards staff role. This is funding set aside for the employment of a team member. It was previously referred to as the Evangelist Fund.

Restricted funds

Minibus - funds raised towards the running costs of the minibus
 PA/Music. Funds raised for upgrading pa system
 Branding. Funds given toward design and branding
 Bus. Funds raised towards replacement of the minibus
 Capital development. Funds raised for capital expenditure on buildings and equipment
 Worship & development leader. Funds raised for the employment of a worship and development leader
 Genesis. Funds given to a local charity for the poor and homeless
 MATT22. Kingdom Transformation ministry started in response to the Covid pandemic.
 Elsie's river. Fund given to a South African church to help with their mission
 St Martins Pantry. Funds for the development of a 'pantry' providing low cost food to local families based at St Martin's School, Odd Down
 BYFC. Funds given to a local Christian charity that works with Youth in Bath, Bath Youth for Christ
 Bazaar/Etra. Money raised at the annual church bazaar and donated to a school project in Uganda through Experience the Real Africa charity.
 Advent calendar. Christian advent calendars purchased and supplied to members of the church

**THE PAROCHIAL CHURCH COUNCIL OF THE
ECCLESIASTICAL PARISH OF
ST PHILIP & ST JAMES, ODD DOWN, BATH & WELLS**

**NOTES TO THE FINANCIAL STATEMENTS
For the year ended 31st December 2021**

8 ANALYSIS OF NET ASSETS BETWEEN FUNDS

	Unrestricted funds 2021	Designated funds 2021	Restricted funds 2021	Total funds 2021	Unrestricted funds 2020	Designated funds 2020	Restricted funds 2020	Total funds 2020
	£	£	£	£	£	£	£	£
Fixed assets	89,822	0	676	90,498	102,997	0	0	102,997
Current assets	41,891	17,155	21,219	80,265	22,684	25,716	61,939	110,339
Creditors due within one year	(2,049)	0	0	(2,049)	(2,366)	0	0	(2,366)
NET ASSETS	129,664	17,155	21,895	168,714	123,315	25,716	61,939	210,970

9 INDEPENDENT EXAMINATION FEES

Included in the above costs are the fees for the preparation and independent examination of the accounts of £1,250.