

The east to west Trust

Trustees' Annual Report and Financial Statements

31 August 2024



Bringing Hope To Young Lives

A company limited by guarantee, registered in England and Wales number 06972769

Registered charity number 1131229

Contents

	Pages
The east to west Trust	3
Contact details and social media	4
Legal and administrative information	5-6
Background Information	7
Trustees' annual report	8-23
Auditor's report	24-27
Statement of financial activities	28-29
Balance sheet	30
Statement of Cash Flow	31
Notes to the financial statements	32-41



...I wanted to let you know that results day went amazingly and I passed all subjects 🎉 I cannot believe I got 2 grade 8s in both of my English GCSEs, I was 1 mark off a grade 8 in food tech, thankfully though it is going to be remarked as well as my drama paper which was 1 mark off a grade 7, so hoping for the best. I got what I needed for college and have finally decided what I want to do ahead. So in September, I will be doing a course in science, which will open many doors, whether that be medicine, dentistry or anything of that kind, which you know I am interested in. I am so incredibly grateful to you as I would not be the person I am today, and I have absolutely no clue what I would do if I didn't have your shadow, supporting me from behind, and when I would fall, I knew I had someone I could lean on, someone who truly understood me without having to say any words. Your office was my safe space, and it always was since you picked me up for the first time in year 9 and worked your magic, you completely transformed a shy little girl who was afraid to speak up during the most difficult time of her young little life. You gave us courage and strength. You were there for us from the beginning which I will forever be thankful for, otherwise who knows what life would look like right now, and you and I both know that those grades would not have come out the way that they did today, and I owe it to you. I'm getting emotional now so I better stop there, this email could honestly go on and on. Please get back to me whenever you have the chance to, I would love to hear from you again. Thank you.

Email from a student to her RSW – August 2024

Contact details and social media



Address: Unit 4a, 80 High Street, Egham, Surrey, TW20 9HE
Telephone: 01784 438007
Website: www.easttowest.org.uk
Email: info@easttowest.org.uk
Facebook: [e2wrelationalsupport](https://www.facebook.com/e2wrelationalsupport)
X (Twitter): [@east-towest](https://twitter.com/east-towest)
Instagram: [easttowest_charity](https://www.instagram.com/easttowest_charity)
LinkedIn: [The east to west Trust](https://www.linkedin.com/company/the-east-to-west-trust)

Legal and administrative information

Company/Charity name	The east to west Trust
Registered charity number	1131229
Registered company number	06972769
Registered office	Unit 4a, 80 High Street Egham, Surrey TW20 9HE 01784 438007
Trustees/Directors	Matthew Armsby (Chair of Trustees up to 27 th April 2025) Rachel Barton (appointed 20 th October 2024) Norman Beers (appointed 20 th October 2024) Emily Cooke (nee Dodsworth) Lynda Donaldson Miriam Hanley (resigned 24 th March 2024) Louise Larham (appointed 20 th October 2024) Alison Matts (resigned 27 th April 2025) Kenneth Morgan (appointed 27 th April 2025) (Chair of Trustees from 27 th April 2025) Richard Snelling (appointed 20 th October 2024)
Secretary	Kenneth Morgan
Chief Executive	Ian Smith (retired 31 st August 2024)
Enabling Team	Clare Biggins Dan Beedell Clive Biggins

The east to west Trust

Bankers

The Co-Operative Bank plc
PO Box 101
1 Balloon Street
Manchester
M60 4EP

CAF Bank
25 Kings Hill Avenue
West Malling
Kent
ME19 4TA

Flagstone
1st Floor Clareville House
26-27 Oxendon Street
London
SW1Y 4EL

Solicitors

Moore Barlow
The Oriel, Sydenham Road
Guildford
GU1 3SR

Auditors

Xeinadin Audit Limited
5 Robin Hood Lane,
Sutton
Surrey
SM1 2SW

Background

Objectives and Activities

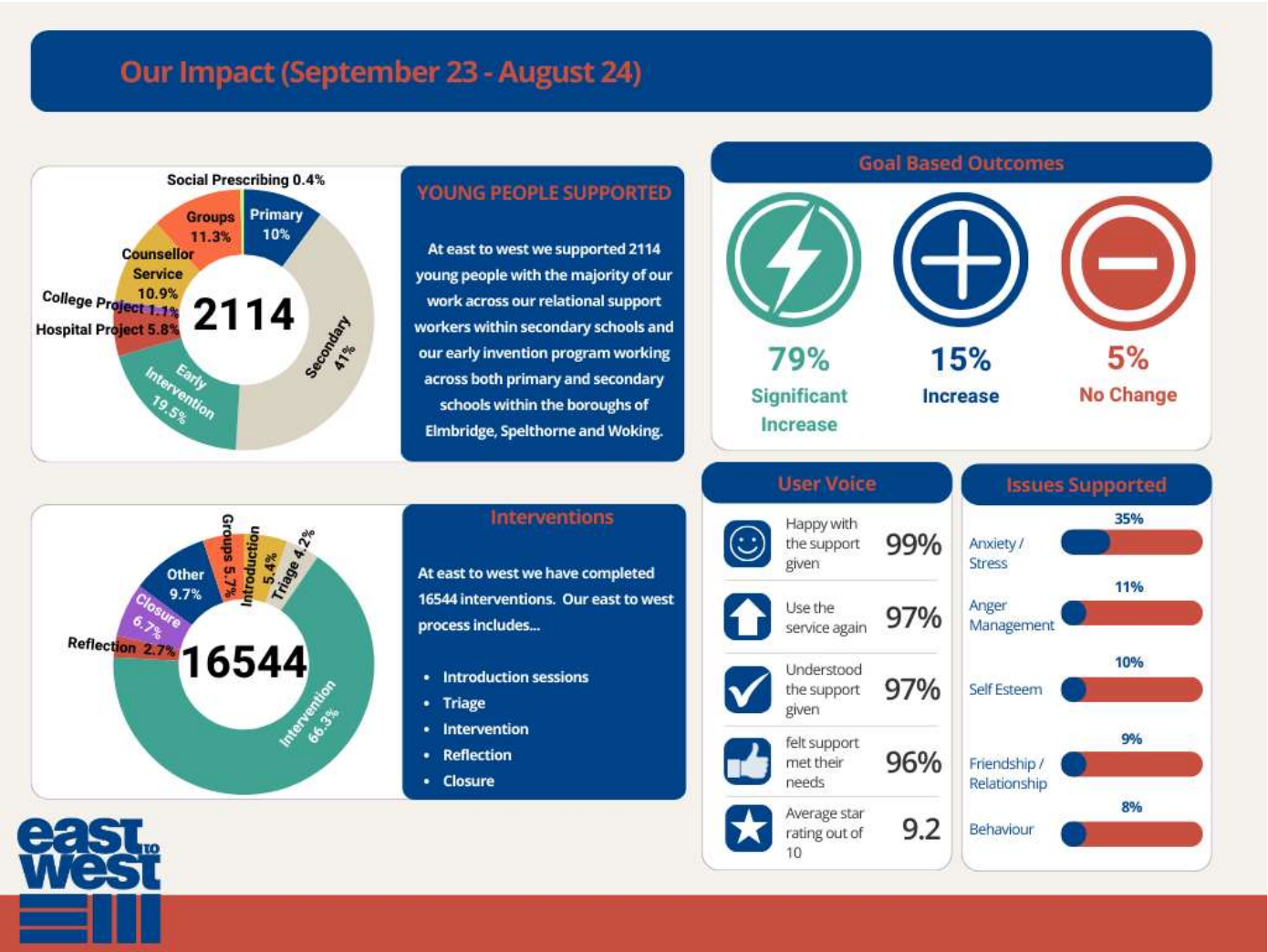
east to west is at the forefront of bringing hope to young lives. Working across Surrey, Hampshire, Berkshire, Windsor and the London Boroughs of Richmond and Hounslow for 27 years, east to west have been supporting vulnerable and at-risk children, young people and families experiencing wellbeing and mental health needs. east to west have pioneered a relational approach to support which puts those we serve at the heart of our provision and response. We are committed to working with children, young people and families for as long as they need, ensuring they receive the skills and techniques they need to better understand and manage the challenges they face.

Our vision is for children, Young People and families (the term Young People will be used as a collective noun for these groups throughout the document) to overcome the challenges (both emotional and physical) they face to becoming the very best they can be.

To enable this, building off our ethos words of Compassionate, Community, Fun, Integrity, Selfless and Devoted, we developed a pastoral response, based on valuing relationships which puts those we serve at the heart of *all* we do. We call this **Relational Support** and it is at the heart of all our work, whether short term, such as in the Hospital, or long term such as in a school setting. Working in partnership with schools and St Peter's Hospital, to date **east to west** has made a positive difference in the lives of many Children, Young People and Families across a generation.

Since September 2021, east to west has been part of the Surrey Wellbeing Partnership. This partnership has brought together 13 charities from across Surrey to work alongside the Surrey & Borders NHS Trust under the Mindworks banner to provide early support to young people who need to talk to about their mental health or signpost them to available support options.

Impact during the year



Trustees' Report and Financial Statements

Finance and Governance for the year ended 31 August 2024

The trustees present their report and the financial statements for the year to 31 August 2024.

The east to west Trust is a company limited by guarantee and a registered charity. It is governed by its Memorandum and Articles of Association. The principal office is at: Unit 4a, 80 High Street, Egham, Surrey, TW20 9HE.

Our aims

The objects of the trust set out in its Memorandum of Association are:

- To advance in life and relieve the needs of Young People through:
 - Providing support and activities which develop their skills, capacities and capabilities to enable them to participate in society as mature and responsible individuals.
 - The provision of recreational and leisure time activities provided in the interest of social welfare, designed to improve their conditions of life.
- To assist in the relief of human suffering and poverty consequent upon the effect of personal, local, national or international disaster.
- To advance the Christian faith in accordance with the trust's statement of beliefs.

To assist the achievement of these objects, the trust has adopted the purposes:

- To see Young People impacted by hope.
- To see youth workers and churches empowered and equipped to impact Young People with hope.

By "hope" we mean hope of restoration, reconciliation and transformation.

These purposes are summarised in our strapline *"bringing hope to young lives"*.

Public benefit

We have referred to the Charity Commission's general guidance on public benefit when reviewing our aims and objectives and in planning our future activities. In particular, the trustees consider how planned activities will contribute to the aims and objectives they have set.

The east to west Trust exists to 'bring hope to young lives'. Working across Surrey, Hampshire, Berkshire, Windsor and the London Boroughs of Richmond and Hounslow for 27 years, east to west have been at the forefront of supporting vulnerable and at-risk children, young people and families experiencing wellbeing and mental health needs. east to west have pioneered a relational approach to support which puts those we serve at the heart of our provision and response. We are committed to working with children, young people and families for as long as they need, ensuring they receive the skills and techniques they need to better understand and manage the challenges they face.

The east to west Trust

Much of our work is targeted at Young People aged between 4 and 18. However, through our Hospital Project we now reach young adults up to 21. The impact of east to west's work is tangible and measurable and will benefit the individuals themselves as they mature into the next generation of adults and their families and society as whole. Outcomes from our current years' work are included in the review of activities below.

We do not discriminate or treat any young person less favourably on the grounds of gender, marital status, race, colour, nationality, ethnic origin, religion, disability, age or sexual orientation. This is because we believe that everyone is made in the image of God and therefore everyone is of equal value and of unfathomable worth.

Volunteers

The trustees extend heartfelt thanks to the charity's dedicated volunteers for the on-going contribution they make. In the year 2023/2024, 20 volunteers have completed 780 hours in the Hospital Project. All our volunteers have enhanced DBS checks, and the charity provides on-going development to equip them for their roles. As a result of working with east to west, some have moved into counselling and other pastoral roles, or joined our team as a paid team member.

Review of activities

Our principal activities and those whom we seek to help are described below.

Relational Support Work

At the heart of east to west is Relational Support Work which we define as a pastoral response, based on compassionate, valuing relationships which puts those we serve at the heart of *all* we do. We have always known that this approach is hugely flexible, and this year has proved this as we have been able to express this in different contexts and in different ways within our traditional schools-based work.

Within Hoe Valley School, we were able to work with young people who were not attending, and who the school were struggling to engage with. Our RSW was able to reach them through working in their homes and developing the relationship that meant they were ready to return to mainstream education.

Since January 2024, through the Early Intervention Practitioner programme we have worked with young people in over 25 primary schools throughout Spelthorne, Elmbridge and Woking. Despite only being able to work with young people for a school term, this engagement has enabled us to reach a significant number of younger pupils that would otherwise have not had support for the issues they were facing.

In the community we are beginning to partner with a local PCN (Primary Care Network), which allows us to offer support within GP surgeries to those young people that have may need a CYPS (Children and Young People's Mental Health Service) referral and require support while they wait to be seen. This project is being outworked in partnership with the Matix Trust, which, again, is a new development for us.

Schools based Relational Support Work

Our Schools based Relational Support Workers spend time building and maintaining purposeful relationships with students and staff in schools. The non-teacher, non-student nature of the role allows a unique relationship to be formed where trust and confidence is central, and advice and support are offered. Our school-based Relational Support Workers are involved in a wide variety of activities aimed at increasing the students' emotional, physical and spiritual well-being. We have been involved in the life of secondary schools for over 27 years, implementing, developing and sustaining placements. In 2023 – 2024 we had Relational Support Workers placed in 18 secondary & 5 Primary schools:

Secondary Schools

- Bishop Wand CofE School, Sunbury-on-Thames
- Epsom & Ewell High School
- Esher CofE High School, Esher
- Everest Community Academy, Basingstoke
- Hampton High School, Hampton
- Hinchley Wood School, Hinchley Wood (ended July 2024)
- Hoe Valley School, Woking (ended June 2024)
- Jubilee High School, Addlestone
- Kings International College, Camberley
- Matthew Arnold School, Staines-upon-Thames
- Reading Girls School, Reading
- St Paul's Catholic College, Sunbury-on-Thames
- St Richard Reynolds, Twickenham
- Teddington School, Teddington
- Thamesmead School, Shepperton
- Thomas Knyvett College, Ashford
- Twickenham School
- Woking High, Woking

Primary Schools:

- Goldsworth Primary, Woking
- Sayes Court Primary School, Addlestone
- West Ewell Primary, Epsom
- Marnel Junior, Basingstoke
- Woodmansterne Primary, Banstead (ended July 2024)

Schools based Family Link Work

Our Family Link Worker spent time building relationships with children and their carers in first schools in Windsor, with the goal of providing a constant support through the pressures of family life. east to west has been involved in first schools since 2010 and this year had placements across 2 schools:

- Trinity St Stephen CofE Aided First School, Windsor
- Homer First School , Windsor

Early Intervention Coordinators

The east to west Trust has continued to play a full and active part as a partner in the Surrey Wellbeing Partnership. Consisting of twelve locally based Third Sector organisations, in Alliance with the Surrey and Borders NHS Foundation Trust, and working under the banner “Mindworks Surrey”. Our role is to provide support at an early stage to young people within secondary schools in these boroughs who are struggling with their mental health and who would potentially be referred to the Child & Young Person Services Team (CYPS). The aim is to provide effective support to them as early as possible, reducing the number of referrals for clinical interventions and therefore the number of young people who are having to wait for support. As part of the partnership we have provided Relational Support to young people in **16** Secondary Schools across the Surrey Boroughs of Woking, Elmbridge & Spelthorne reaching **217** young people.

Early Intervention Practitioners

As noted in the introduction to this report, since January 2024 we have worked across in excess of 25 schools in the Surrey boroughs of Spelthorne, Woking and Elmbridge. This work began in January 2024 and during this time we worked with 114 4–11-year-olds in a 1:1 or small group setting. This work is funded through our partnership with the SWP (Surrey Wellbeing Partnership) and continues to use our relational approach to meet the needs of the children we are called to support.

Relational Counsellors

Our Relational Counsellors are experienced, qualified counsellors who are registered members of the British Association for Counselling and Psychotherapy (“BACP”). They spend time with Young People providing a confidential space where they can express their thoughts and feelings. east to west has placed counsellors in 6 schools:

- | | |
|--|--|
| ▪ Town Farm Primary School, Stanwell | ▪ Twickenham School (<i>started November 2022</i>) |
| ▪ Sunbury Manor Secondary School, Sunbury-on-Thames | ▪ North West Surrey Short Stay School, Pyrford (<i>ended July 2024</i>) |
| ▪ Hoe Valley Secondary School, Woking (<i>ended June 2024</i>) | ▪ North East Surrey Short Stay School, Staines-upon-Thames (<i>started October 2023</i>) |
| ▪ Bishop David Brown, Woking | |

Connect & Making the Leap

The generous legacy that the trust received during 2021 meant the two projects 'Making the Leap' (support for young people transitioning to Further Education colleges) & Connect (working with young men at a local Young Offenders Institute to give them the best opportunities for success following their release) continued to operate this year, with both team members making significant impact in the lives of young people. However, with the funding coming to an end, neither agency was able to fund this work into the future and so, regrettably, the decision was made to close both projects with the team members concerned being reassigned to new roles.

Peripatetic Counsellor

The support we are able to offer through the Peripatetic Counsellor has recommenced this year. The role provides the young people our team support with short-term clinical interventions to help them overcome the challenges they face, prior to recontinuing support via Relational Support Work.

The Hospital Project

Increasingly, we are delivering more follow-up sessions in the community, within schools and growing a wider, more east to west based provision; in light of this, being able to operate fully under the wider organisational umbrella has proved incredibly beneficial.

This year we have recruited 7 new volunteers and successfully completed their induction training. Due to our wonderful growing team, we have been able to maintain a steady 6 sessions a week in the hospital. We have provided an online external training course and project-specific safeguarding and self-harm training and made online resources available on Padlet, continual induction training and shadowing sessions for our new volunteers.

Alongside this, we have strengthened our school relationships. This is done by team members contacting us if their students have attended/attending A&E so we can support them in the hospital. We launched our pilot Self-Harm Recovery program at Winston Churchill School (Woking), providing weekly sessions where we meet several students who are currently self-harming. Being in school allows us to support them with identifying emotional triggers, developing their ability to speak about their emotions and implementing coping strategies that help lead to recovery. We have also seen a reduction in the young people in these schools attending St. Peter's having self-harmed, as recognised by the hospital staff themselves.

The east to west Trust

We have been present in St Peters for 260 sessions, which equates to at least 780 hours of availability to young people and their parents. Our hospital team have supported 101 young people in crisis within St Peters delivering 240 sessions, whilst 40 young people and their families have been supported in the community over 410 sessions.

Social Prescribing

From July 2024 Partnering with ProCare Health, east to west and the Matrix Trust are providing social prescribing to six Guildford surgeries. east to west providing a Relational Support Worker within the surgeries and the Matrix Trust delivering follow on support in the community. Social Prescribing works closely with General Practitioners (GPs) linking young people with nonmedical support for issues such as low mood, anxiety/worries, relationship difficulties and self-harm behaviours which does not meet NHS Clinical Criteria for Support. Working predominantly with young people aged 11-18 east to west provide a Relational Support Worker within each GP for minimum of one day on a fortnightly basis. During this time the Relational Support Worker provides 1:1 sessions building a positive relationship whilst responding to the needs being presented. The Relational Support Worker will use a variety of approaches including mentoring, signposting and coaching to support the young person to as they think, learn and reflect on what is happening in their life. The aim is to help the young person, even in a time of need to take greater ownership of the way they respond in situations and empower them to move forward. The GP surgeries are: Austen Road Surgery Merrow Park Surgery Shere Surgery St Luke's Surgery (Guildford) The Horsley Medical Practice Villages Medical Centre (Send).

In the projects first month of delivery, we have supported 9 young people and delivered 17 interventions and the GP's are pleased with the work that has started.

Outcomes Improvement

In May 2023 we launched a new digital system, speeding up our ability to track and report to our partners and funders what has being achieved. We launched Goals Based Outcomes (GBOs), a young person led way of recording and reporting improvements across agreed issues and specific targets. These GBOs are ranked 1-10 on a sliding scale, with every young person rating themselves out of 10 for each area e.g. Anger – Learning Triggers; Responding appropriately when angry etc... As they successfully work on these targets, they move along the scale towards 10.

During the last half of the Summer Term, we supported 621 young people in a 1:1 setting delivering 2,445 sessions (across all projects). We reported 420 completed GBOs with 84 instances with a +4 improvement, 67 improved by +5, whilst 71 cases reported a +6 gain. We anticipate that over the course of a full year, we'll report on around 2,500 young people and 4000+ GBOs.

Safeguarding and Development

east to west recognises the importance of safeguarding in its work with children, Young People and adults. We have a responsibility to protect everyone entrusted to our care and we are committed to the safeguarding of children and vulnerable adults to ensure their well-being. We follow the requirements of UK legislation in relation to safeguarding children and vulnerable adults and current best practice recommendations based on the Online Safeguarding Manual created by thirtyone:eight – (<https://thirtyoneeight.org/>).

Our appointed Designated Safeguarding Leads (DSL) are:

- Ian Smith (Chief Executive Officer -retired July 2024)
- Dan Beedell (Head of Income and Communications)
- Clare Biggins (Head of Wellbeing and Development)
- Clive Biggins (Head of Impact and Quality)
- Cece Ahrens (Social Prescribing Team Lead – June 2024)

east to west is passionate about delivering positive outcomes for Young People. We continue to learn and develop all we do through a framework for monitoring and reporting the outcomes of our work. The framework enables east to west to safeguard those we work with and continuously review and improve the outcomes we are delivering. The outcomes framework asks three very simple questions: 'What did we do?', 'How well did we do it?' and 'How did we make a difference?'.

Our team constantly seeks development opportunities. Each month they have input from outside agencies to grow their knowledge and enhance their practice. Throughout the year each team member is challenged to share:

- **Accomplished:** *What has gone really well (since the last supervision or across the whole year) that we might celebrate?*
- **Breadth:** *What has been learned (by the team member and/or east to west) in the process? How do we "take stock" of where things are now compared to where we thought they might be? What changes may be needed in east to west processes/practice in light of what has been learned?*
- **Challenges:** *Any challenges you haven't overcome? How can we move forward on them? What goals did you set this term? What did you want to achieve but haven't? What happened to prevent you achieving your goals? How can I, and east to west, be of most help in enabling you to achieve your goals? What are you most excited about in this coming period? What concerns you the most? What ongoing professional development will help you to grow in your current role and for your future?*

The east to west Trust

What people say about the team:

"A young person who had many complex issues, and is currently sitting her GCSE's wrote to her Relational Support Worker saying: "I want to say thanks again for helping me this past year, you've made my last year easier to deal with by just being there to talk to. Your support has allowed me to fully address things that have happened to me, which means a lot. You're the best east to west worker I've had, thank you forever."

Young Person – Year 11

"east to west has helped me to find ways to help my anxiety, as well as help me to think positive and try not to make everything negative. They have also helped me to try and bring out the best in myself and what I do whether it's something small or huge."

Young Person – Year 6

"east to west has been fun, worthwhile and freeing. It's been helpful to talk about how I feel, having a safe space to go to. I will be more open with how I am feeling instead of keeping it all inside. I feel great, like a weight has been lifted, and I feel free! My support through east to west could not have gone any better."

Young Person – Year 7

"The young person was referred to me having attempted suicide. They were also overdosing every other week. When she spent time with me, she was very quick to say that she is finally being "heard". She has complex family dynamics, including a parental divorce where the father was being abusive, and she was being asked to visit him as part of the social services involvement. Together, we explored, not only healthy coping mechanisms but also explored boundaries, encouraging her to see other people's perspective and understanding what her role in all this can look like. Although there are many other underlying issues which are still being explored, since we began working together, she's stopped overdosing, and will come regularly to meetings and often pops in during her lunch/break"

Relational Counsellor in Secondary School

Partnerships

east to west seeks to empower and equip youth workers and churches to impact Young People with hope as one of its prime purposes. Our partnership base is the network through which we aspire to see this goal fulfilled and on which we continue to build.

In the year 2023-24 east to west partnered with:

- 11 Local churches
- 8 Trust funds / 5 funding agencies, organisations and local authorities

Church Partners

- St. John's, Egham
- Christ Church, Virginia Water
- Egham URC
- Staines Methodist
- The Hope Centre, Sunningdale
- St John's, Hampton Wick
- Dedworth Green Baptist Church, Windsor
- Ashford Congregational Church
- Equippers Church, Weybridge
- St Paul's, Addlestone
- Holy Trinity Church, Lyne & Longcross

Funders

- Elmbridge Borough Council
- St. Peter's Convent, Relief in Sickness Fund
- Spelthorne Borough Council
- The Sophie Clarke Foundation
- The Prince Philip Trust Fund
- Heathrow Community Trust
- Homelands Charitable Trust
- Edward Gostling Foundation
- TK Foundation
- Tesco

Gender pay gap

The east to west Trust continues to actively review its salary structure. east to west has 13 team members in a leadership structure. Of these, 10 are female, and 3 are male. Given the proportion of the remaining team, female leaders make up 9 out of 36 women employed. For males, the proportion is 3 out of 4.

The average hourly rate for females is £18.36, whilst for males it's £20.16. This is a difference of -9.8%. This is largely due to the proportion of males in leadership compared to women across the whole organisation. There are 5 pay bands across the organisation, (RSWs/EICs / RCs / Team Leads / HOO / CEO). All across each band are paid the same hourly rate, regardless of gender and length of service.

The east to west Trust

We have undertaken development and support to prepare new members of the team to take on the most senior levels of leadership, both within east to west and beyond.

The people who make it happen

Trustees

The trustees, who are also directors for the purposes of company law, and who served during the year and up to the date of this report, are listed on page 5.

Trustee Recruitment

Potential trustees are recruited to bring specific skills as needed on the board. These are identified through the annual board skills audit and board evaluation. After a preliminary discussion with the chair, the individual is invited to read the Core documents of the trust, and the Welcome to the Board document that outlines the characteristics, competences required and the Job Description for a trustee. Following an informal attendance at a board meeting, the existing trustees decide whether to proceed with the invitation to the individual to become a trustee. The trustee application form is then completed, and the new trustee is formally approved at the subsequent Board meeting.

Patron

Gill Morgan has played an important role throughout the year acting as facilitator, voice of wisdom and experience, confidant and advocate on behalf of east to west. We are grateful for all her input throughout the last 12 months.

Team

This year we said a fond farewell to seven team members: Ian Smith, Camille Turcot, Emma Reid, Ezra Owen, Kati Tikkanen, Philippa Watterson & Clare Sampson. We are incredibly grateful to all of them for their service to Young People while operating as part of east to west.

We employ a total of 39 paid team members (29 full time equivalents) whom we thank again for their ongoing commitment to the charity's work with Young People. This team is focussed on the delivery of our frontline programmes and is assisted by external advisers with specialist expertise in IT, communications and finance.

Plans for future periods

The above achievements illustrate something of the level, depth and breadth of our work over the past 12 months. We have grown organically with new projects being referred to us by word of mouth. As leaders within projects share with their peers how we have been able to support them in how they are responding to the issues faced by their young people we have made new contacts which have led to new projects. This approach has led to a 100% growth in the number of schools supported over the last 3 years. An example of this

The east to west Trust

approach has been the Surrey Wellbeing Partnership which has led to a 2-year project in the boroughs of Woking, Spelthorne and Elmbridge to provide early intervention support to the 75 primary schools.

We anticipate continued growth in the coming year in response to the clear evidence that demand on services such as ours is increasing rapidly.

Growth has brought both opportunities and challenges. A key objective is to ensure that we are building the necessary support structure and capacity to sustain this growth and expected growth. This has enabled us to grasp the opportunity of moving team members into key leadership roles, while it has challenged us to find the right team members for the now roles. However, having regard to the factors set out in note 2 to the financial statements, the trustees are confident of the continued need for the services of east to west and that sufficient funds will be available for these to be provided.

The board continues to seek to diversify its membership and has added four trustees in October 2024.

Financial Review

Total income for 2023-24 was £1,263,451 which was an increase of £339,412 compared with the income of 2022-23. Contributions from grant making organisations and our partners increased by £144,462 to £787,380, an increase of 22%. This included a one-off gift of £170,000 to be held as an endowment (see below). Voluntary donations from individuals and churches, whether through direct giving or through taking part in fundraising events, remains a very significant part of our total income; together with the gift aid we were able to reclaim and additional charitable activities, this total came to £108,095, an increase of £6,069 on 2022-2023. We are grateful for this support.

The Trust does not engage in fund raising activity from the general public but rather receives grants and donations from various organisations such as councils, churches, local organisations and individual supporters. Accordingly, we are not registered with any regulators or follow any code of practice. However, we do not use any external fundraisers and always take care no pressure is placed on vulnerable donors. We have not received any complaints about our fundraising activities.

The east to west Trust

Our partnership with the Surrey Wellbeing Partnership (SWP) appears in the accounts with the amount received to August 2024 being £360,374. This includes the new early intervention project in primary schools. This is a 2-year project, which runs from January 2024 to December 2025 with an annual income of £150,000.

Restricted income accounted for about 59% of the total with last year's proportion being 66%. We remain extremely grateful to all those faithful individuals, churches, businesses and other funding organisations who provide financial support for our work – without this east to west could not operate as it does today.

Compared with the previous year costs decreased from £1,016,196 to £1,000,290, a decrease of 1.57%. We have a net surplus for the year of £263,161. As a result, unrestricted funds increased by £49,002 and we are carrying forward unrestricted funds of £106,111. At the balance sheet date net assets were £392,430 but this includes restricted funds of £116,319 and endowment funds of £170,000 leaving reserves of £106,111, equivalent to unrestricted funds. These equate to just over 6 weeks expenditure based on our budget for 2024-2025. The trustees note that this is less than our policy for two months reserves. However, the restricted funds are available to support a key area of our work and it should also be noted that the Endowment from the Edward Gostling Trust of £170,000 is available to be drawn down when reserves drop below 2 months operating expenditure. Taking these monies into account total funds are £392,430 which represents 16 weeks' worth of expenditure. New sources of income from grant making organisations are continually being sought, and we are confident this will produce additional income and therefore hold the opinion it is right for these accounts to be prepared on the going concern basis.

We have reduced financial risk by using the Flagstone Platform for our money deposits. This allows us to place multiple deposits with institutions up to £85,000, protected by Government assurance.

Structure, Governance and Management

The board of trustees has responsibility for directing and controlling the affairs of the trust. The board met five times during year to:

- review the trust's activities, finances and performance,
- approve future plans and strategy and
- monitor risks and ensure that they are appropriately managed.

At the start of each year goals are agreed by the trustees with the team and progress is monitored throughout the year through individual, team and trust appraisal processes.

The trustees are supported by a sub-committee that oversees the financial operations.

Leadership team

The trustees delegate day to day management of the trust to its Chief Executive Officer who is supported by the Shared Leadership Team consisting of the Enabling Team and Team Leads.

The CEO, Ian Smith, retired at the end of the financial year on August 31st 2024. The search for a new CEO has begun and it is hoped that a new CEO will be in place in Autumn 2025. In the interim, Clare Biggins has been made Enabling Team Lead and is supported by the Trustees and the Enabling Team.

Remuneration and pay levels for the key management personnel and within the charity generally are determined by the trustees with periodic benchmarking to organisations of a similar size and nature.

Risk management

The trustees and management team assess the potential risks to the running and financing of the organisation and the safeguarding of the team and Young People on a monthly basis. east to west has a comprehensive portfolio of policies which enables the projects to operate in a professional and safe manner. The team and trustees review the policies at the end of each academic year.

<i>Principal risk area</i>	<i>Key mitigating factors</i>
Governance over the organisation and activities	<ul style="list-style-type: none"> ■ A Board of trustees with experience in a range of relevant disciplines who meet regularly together and with the trust management ■ Annual assessment of governance effectiveness ■ Assimilation of emerging issues and trends within the sector
Management of financial resources	<ul style="list-style-type: none"> ■ Monthly financial reporting and forecasting ■ Rigorous documented fiscal management processes overseen by the Board ■ Financial and fundraising matters considered at every trustee and management meeting
Safeguarding and service delivery	<ul style="list-style-type: none"> ■ Maintenance of comprehensive operations policies reviewed, updated with ongoing training to team ■ Continuous development of the organisation and its service delivery team ■ Access to external resources and benchmarking against best practice standards
People and employment	<ul style="list-style-type: none"> ■ Stringent appointment and vetting processes following Safer Recruitment best practice, including DBS checks ■ Wide ranging induction and on-the-job development ■ Well established, effective supervision and development mechanisms in place

Statement of trustees' responsibilities

The trustees are responsible for preparing the trustees' report and the financial statements in accordance with applicable law and regulations.

Company law requires the trustees to prepare financial statements for each financial year which give a true and fair view of the state of affairs of the charity and of the surplus or deficit of the charity for that year. In preparing these financial statements, the trustees are required to:

- select suitable accounting policies and then apply them consistently,
- make judgements and estimates that are reasonable and prudent; and
- prepare the financial statements on the going concern basis unless it is inappropriate to presume that the charity will continue in operation.


Information Given To Auditor

Each of the persons who is a trustee at the time when this Trustees' report is approved has confirmed that so far as that trustee is aware, there is no relevant audit information of which the charity's auditor is unaware, and that trustee has taken all the steps that ought to have been taken as a trustee in order to be aware of any information needed by the trustee's auditor in connection with preparing his report and to establish that the charity's auditor is aware of that information.

Small company provisions

This report has been prepared in accordance with the provisions applicable to companies subject to the small companies' regime.

Approved by the board and signed on its behalf by the Chair of Trustees.



Kenneth Morgan

Chair of Trustees

Date: 19-5-2025

Independent auditor's report to the members of The east to west Trust

Opinion

We have audited the financial statements of The east to west Trust (the 'charity') for the year ended 31 August 2024 which comprise the Statement of Financial Activities, the Balance Sheet, the Statement of Cash Flows and the notes to the financial statements, including a summary of significant accounting policies. The financial reporting framework that has been applied in their preparation is applicable law and United Kingdom Accounting Standards, including Financial Reporting Standard 102 *The Financial Reporting Standard applicable in the UK and Republic of Ireland* (United Kingdom Generally Accepted Accounting Practice).

In our opinion the financial statements:

- give a true and fair view of the state of the charitable company's affairs as at 31 August 2024 and of its incoming resources and application of resources for the year then ended;
- have been properly prepared in accordance with United Kingdom Generally Accepted Accounting Practice; and
- have been prepared in accordance with the requirements of the Companies Act 2006.

Basis for opinion

We conducted our audit in accordance with International Standards on Auditing (UK) (ISAs (UK)) and applicable law. Our responsibilities under those standards are further described in the Auditor's responsibilities for the audit of the financial statements section of our report. We are independent of the charitable company in accordance with the ethical requirements that are relevant to our audit of the financial statements in the UK, including the FRC's Ethical Standard, and we have fulfilled our other ethical responsibilities in accordance with these requirements. We believe that the audit evidence we have obtained is sufficient and appropriate to provide a basis for our opinion.

Conclusions relating to going concern

In auditing the financial statements, we have concluded that the trustees' use of the going concern basis of accounting in the preparation of the financial statements is appropriate.

Based on the work we have performed, we have not identified any material uncertainties relating to events or conditions that, individually or collectively, may cast significant doubt on the Charity's ability to continue as a going concern for a period of at least 12 months from when the financial statements are authorised for issue.

Our responsibilities and the responsibilities of the trustees with respect to going concern are described in the relevant sections of this report.

Other information

The other information comprises the information included in the annual report, including the trustees' report, other than the financial statements and our auditor's report thereon. The trustees

Independent auditor's report to the members of The east to west Trust continued

are responsible for the other information contained within the annual report. Our opinion on the financial statements does not cover the other information and, except to the extent otherwise explicitly stated in our report, we do not express any form of assurance conclusion thereon.

Our responsibility is to read the other information and, in doing so, consider whether the other information is materially inconsistent with the financial statements or our knowledge obtained in the course of the audit, or

otherwise appears to be materially misstated. If we identify such material inconsistencies or apparent material misstatements, we are required to determine whether this gives rise to a material misstatement in the financial statements themselves. If, based on the work we have performed, we conclude that there is a material misstatement of this other information, we are required to report that fact.

We have nothing to report in this regard.

Opinions on other matters prescribed by the Companies Act 2006

In our opinion, based on the work undertaken in the course of our audit:

- the information given in the trustees' report, which includes the directors' report prepared for the purposes of company law, for the financial year for which the financial statements are prepared is consistent with the financial statements; and
- the directors' report included within the trustees' report has been prepared in accordance with applicable legal requirements.

Matters on which we are required to report by exception

In the light of the knowledge and understanding of the charity and its environment obtained in the course of the audit, we have not identified material misstatements in the directors' report included with the trustees' report.

We have nothing to report in respect of the following matters in relation to which the Companies Act 2006 requires us to report to you if, in our opinion:

- adequate and proper accounting records have not been kept, or returns adequate for our audit have not been received from branches not visited by us; or
- the financial statements are not in agreement with the accounting records and returns; or
- certain disclosures of trustees' remuneration specified by law are not made; or
- we have not received all the information and explanations we require for our audit; or

Independent auditor's report to the members of The east to west Trust continued

- the trustees were not entitled to prepare the financial statements in accordance with the small companies regime and take advantage of the small companies exemptions in preparing the trustees' report and from the requirement to prepare a strategic report.

Responsibilities of trustees

As explained more fully in the trustees' responsibilities statement, the trustees'(who are also the directors of the charitable company for the purposes of company law) are responsible for the preparation of the financial statements and for being satisfied that they give a true and fair view, and for such internal control as the trustees determine is necessary to enable the preparation of financial statements that are free from material misstatement, whether due to fraud or error.

In preparing the financial statements, the trustees are responsible for assessing the charity's ability to continue as a going concern, disclosing, as applicable, matters related to going concern and using the going concern basis of accounting unless the trustees either intend to liquidate the company or to cease operations, or have no realistic alternative but to do so.

Auditor's responsibilities for the audit of the financial statements

Our objectives are to obtain reasonable assurance about whether the financial statements as a whole are free from material misstatement, whether due to fraud or error, and to issue an auditor's report that includes our opinion. Reasonable assurance is a high level of assurance, but is not a guarantee that an audit conducted in accordance with ISAs (UK) will always detect a material misstatement when it exists. Misstatements can arise from fraud or error and are considered material if, individually or in the aggregate, they could reasonably be expected to influence the economic decisions of users taken on the basis of these financial statements.

The extent to which our procedures are capable of detecting irregularities, including fraud is detailed below:

Based on our understanding of the charity, we identified that the principal risks of non-compliance with laws and regulations related to employment and financial reporting legislation and we considered the extent to which non-compliance might have a material effect on the financial statements. We also considered those laws and regulations that have a direct impact on the preparation of the financial statements such as the Companies Act 2006 and the Charities Act 2011. We assessed the susceptibility of the charity's financial statements to material misstatement, including obtaining an understanding of how fraud might occur, by making enquiries of management, considering the internal controls in place and discussion amongst the engagement team.

Independent auditor's report to the members of The east to west Trust continued

We determined that the principal risks were related to recognition of grant income, presentation of separately disclosed items and management override of controls. In response to the risks identified we designed procedures which included, but were not limited to reviewing grant correspondence, agreeing financial statement disclosures to underlying supporting documentation, evaluating the internal controls, reviewing trustees' minutes and identifying and testing journal entries.

There are inherent limitations in the audit procedures described above. The more removed that laws and regulations are from financial transactions, the less likely it is that we would become aware of non-compliance. Material misstatements that arise due to fraud can be harder to detect than those that arise from error as they may involve deliberate concealment or collusion. A further description of our responsibilities for the audit of the financial statements is located on the Financial Reporting Council's website at: <http://www.frc.org.uk/auditorsresponsibilities>. This description forms part of our auditor's report.

Other matter

The charity's income was below the threshold where an audit was required in the prior year, therefore the comparative figures are not audited.

Use of our report

This report is made solely to the charitable company's members, as a body, in accordance with Chapter 3 of Part 16 of the Companies Act 2006 and regulations made under that Act. Our audit work has been undertaken so that we might state to the charitable company's members those matters we are required to state to them in an auditors' report and for no other purpose. To the fullest extent permitted by law, we do not accept or assume responsibility to anyone other than the charitable company and its members as a body, for our audit work, for this report, or for the opinions we have formed.

Miriam Hickson FCA (Senior Statutory Auditor)
for and on behalf of Xeinadin Audit Limited
Statutory Auditor
Chartered Accountants



5 Robin Hood Lane
Sutton
Surrey
SM1 2SW

Dated: 22 May 2025

The east to west Trust

Statement of financial activities

(incorporating the income and expenditure account) for the year ended 31 August 2024

		Unrestricted Funds	Restricted Funds	Endowment Funds	2024 Total	2023 Total
	Notes	£	£	£	£	£
Income and endowments from:						
Donations and legacies	3a	85,057	4,150	-	89,207	94,457
Grants	3a	6,995	38,164	170,000	215,159	83,745
Charitable activities	3b	253,657	697,826	-	951,483	742,647
Investments		7,602	-	-	7,602	3,190
Total income		353,311	740,140	170,000	1,263,451	924,039
Expenditure on:						
Fundraising		4,719	337	-	5,056	2,731
Charitable activities	4	299,590	695,644	-	995,234	1,013,465
Total expenditure		304,309	695,981	-	1,000,290	1,016,196
Net income / (expenditure) for the year		49,002	44,159	170,000	263,161	(92,157)
Transfers between reserves	12/13	(30,309)	30,309	-	-	-
Net movement in funds		18,693	74,468	170,000	263,161	(92,157)
Total funds brought forward		87,418	41,851	-	129,269	221,426
Total funds carried forward		106,111	116,319	170,000	392,430	129,269

The east to west Trust

Statement of financial activities

(incorporating the income and expenditure account) for the year ended 31 August 2023

	Notes	Unrestricted Funds £	Restricted Funds £	2023 Total £
Income and endowments from:				
Donations and legacies	3a	86,922	7,535	94,457
Grants	3a	39,643	44,102	83,745
Charitable activities	3b	187,778	554,869	742,647
Investments		3,190	-	3,190
Total income		317,533	606,506	924,039
Expenditure on:				
Fundraising		2,491	240	2,731
Charitable activities	4	360,775	652,690	1,013,465
Total expenditure		363,266	652,930	1,016,196
Net income / (expenditure) for the year				
Transfers between reserves	12/13	(45,733)	(46,424)	(92,157)
		(16,335)	16,335	-
Net movement in funds		(62,068)	(30,089)	(92,157)
Total funds brought forward		149,486	71,940	221,426
Total funds carried forward		87,418	41,851	129,269

All of the activities are continuing activities.

The statement of financial activities includes all gains and losses for the year and therefore no statement of total recognised gains and losses has been prepared.


The notes on pages 32 to 41 form part of these accounts.

Balance sheet as at 31 August 2024

	Notes	2024 £	2024 £	2023 £	2023 £
Fixed assets					
Tangible assets	8		-		-
Current assets					
Debtors	9	59,276		33,061	
Cash at bank		375,452		137,558	
		<u>434,728</u>		<u>170,619</u>	
Creditors: amounts falling due within one year	10	(42,298)		(41,350)	
Net current assets			392,430		129,269
Net assets			<u>392,430</u>		<u>129,269</u>
The funds of the charity					
Endowment funds	11		170,000		-
Restricted funds	12		116,319		41,851
Unrestricted funds	13		58,972		28,211
Designated funds	13		47,139		59,207
Total funds			<u>392,430</u>		<u>129,269</u>

These accounts have been prepared in accordance with the provisions applicable to small companies subject to the small companies' regime and in accordance with the FRS102 SORP.

The financial statements were approved for issue by the board of trustees and were signed on its behalf by:



Kenneth Morgan, Chair of Trustees

Registered company number 0697276

Date 19-05-2025

The east to west Trust

Statement of Cash Flow for period ended 31 August 2024

	2024	2023
	£	£
<i>Cash flows from operating activities</i>		
Net income/(expenditure)	263,161	(92,157)
Interest received	(7,602)	(3,190)
Increase in debtors	(26,215)	(7,342)
Increase in creditors	948	15,865
<i>Cash flows from/(used in) operating activities</i>	<u>230,292</u>	<u>(86,824)</u>
<i>Cash flows from investing activities</i>		
Interest received	7,602	3,190
<i>Net increase/(decrease) in cash and cash equivalents</i>	237,894	(83,634)
Cash and cash equivalents at beginning of year	<u>137,558</u>	<u>221,192</u>
Cash and cash equivalents at end of year	<u>375,452</u>	<u>137,558</u>

Analysis of changes in net debt:-

	At 1 September 2023	Cash flows	At 31 August 2024
	£	£	£
Cash at bank and in hand	<u>137,558</u>	<u>237,894</u>	<u>375,452</u>

Notes to the financial statements

for the year ended 31 August 2024

1 Accounting policies

The charity, which constitutes a public benefit entity as defined by FRS 102, is a private company limited by guarantee, registered in England and Wales and a registered charity. It operates from the registered office address shown on page 5 and its objects, aims and activities are set out in the Trustees' Report. The principal accounting policies are summarised below and have been applied consistently throughout the year.

Basis of accounting

These accounts have been prepared under the historical cost convention with items recognised at cost or transaction value unless otherwise stated in the relevant note(s) to these accounts and in accordance with Accounting and Reporting by Charities: Statement of Recommended Practice applicable to charities preparing their accounts in accordance with the Financial Reporting Standards applicable in the UK and Republic of Ireland (FRS 102) (effective 1 January 2019) – Charities SORP (FRS 102)), the Financial Reporting Standard applicable in the UK and Republic of Ireland (FRS 102) and the Companies Act 2006. The accounts are prepared in pounds sterling rounded to the nearest pound.

Fund accounting

Unrestricted funds can be used in accordance with the charitable objects of the company at the discretion of the trustees. Restricted funds can only be used for particular, limited, purposes within the objects of the charity. Restrictions arise when specified by the donor or when funds are raised for particular, restricted, purposes. Designated funds are unrestricted funds set aside for use in projects to be specified by the Trustees. Endowment funds are funds which have been given to the company to be invested to provide an income to support the activities of the company.

Income

Incoming resources are recognised in the Statement of Financial Activities (SoFA) when the charity becomes unconditionally entitled to the income and the amount can be quantified with reasonable accuracy and where it is certain that it will be received.

Performance related income is only included in the SoFA once the related services have been provided.

Deferred income

Grants and donations received in advance and specified by the donor as relating to specific future periods or subject to conditions which are still to be met, are deferred to the period to which they relate.

Tax reclaims on donations

Gift aid tax reclaims on donations are included in the SoFA in the same period as the donations to which they relate.

Notes to the financial statements for the year ended 31 August 2024

continued

Volunteer services

The value of volunteer services received is not included in the accounts but is described in the trustees' report.

Investment income

Income from investments is included in the accounts in the period it is receivable.

Operating leases

Operating lease rentals are expensed on a straight-line basis over the period of the lease.

Tangible fixed assets

Tangible fixed assets are assets with a cost of more than £500 and an expected useful life of more than one year are recorded at cost or, if gifted, at the market value to the charity on receipt.

Cash at bank and in hand

Cash at bank and in hand includes cash and short term highly liquid investments with a short maturity of three months or less from the date of the opening of the deposit.

Liability recognition

Liabilities are recognised as soon as there is a legal or constructive obligation committing the charity to pay out resources.

2 Going concern

These accounts show unrestricted funds of £106,111 and net assets of £392,430 (2023: £129,269) at the balance sheet date. A budget and cash flow forecast for the next twelve months has been prepared showing a projected deficit of £145,000. As last year, the trust is actively seeking grants and other funding, and management have a confident expectation this will produce additional income of at least £50,000 which will reduce the deficit to below £100,000. It should also be noted that the Endowment from the Edward Gostling Trust of £170,000 is to be drawn down when reserves, less tangible fixed assets, drop below 2 months operating expenditure. As net current assets on the balance sheet were £392,430, the trustees hold the view that these are realistic grounds to believe there will be sufficient resources available for the trust to settle all liabilities as they fall due during the 12 months following the approval of these accounts and the accounts are accordingly prepared on the going concern basis.

Notes to the financial statements for the year ended 31 August 2024

continued

3a Income from Donations & legacies

	Unrestricted Funds £	Restricted Funds £	Endowment Funds £	2024 Total £	2023 Total £
Donations	76,462	4,150	-	80,612	85,372
Gift aid tax reclaims	8,595	-	-	8,595	9,085
Grants	6,995	38,164	170,000	215,159	83,745
Total Income	92,052	42,314	170,000	304,366	178,202

3b Income from charitable activities

	Unrestricted Funds £	Restricted Funds £	Endowment Funds £	2024 Total £	2023 Total £
Partner Contributions	134,094	438,127	-	572,221	559,174
Surrey Wellbeing Partnership	100,675	259,699	-	360,374	175,904
Fund Generation	18,888	-	-	18,888	7,569
Total Income	253,657	697,826	-	951,483	742,647

All income in the year was unrestricted except for £740,140 (2023: £606,506) which was given by funders to pay for the work of a Relational Support Worker within a school, for the Hospital project, and for the Peripatetic Counsellor.

The east to west Trust

Notes to the financial statements for the year ended 31 August 2024

continued

4 Expenditure on charitable activities

	Note	Unrestricted Funds £	Restricted Funds £	2024 Total £	2023 Total £
Staff costs	6	206,843	680,547	887,390	905,938
Training and travel		11,212	475	11,687	7,955
Office facilities		19,784	1,093	20,877	18,873
IT and communications		15,036	13,529	28,565	35,607
Fees and external assistance		39,783	-	39,783	38,124
Printing (Equipment Hire), postage and stationery		5,526	-	5,526	5,260
Other costs (books, subs, charges & transfers)		1,406	-	1,406	1,708
		<u>299,590</u>	<u>695,644</u>	<u>995,234</u>	<u>1,013,465</u>
2023		<u>360,775</u>	<u>652,690</u>	<u>1,013,465</u>	

	Direct costs £	Support costs £	2024 Total £	2023 Total £
Schools work	497,101	214,084	711,185	764,627
Hospital project (Emerge)	49,916	21,497	71,413	82,689
Peripatetic counsellor	5,037	2,169	7,206	10,189
Early intervention - Secondary Schools	90,342	38,907	129,249	149,751
Early intervention - Primary Schools	49,002	21,104	70,106	6,209
Social prescribing	4,246	1,829	6,075	-
Total	<u>695,644</u>	<u>299,590</u>	<u>995,234</u>	<u>1,013,465</u>
2023	<u>652,930</u>	<u>360,535</u>	<u>1,013,465</u>	

Notes to the financial statements for the year ended 31 August 2024

continued

5 Net income/(expenditure)

	2024	2023
	£	£
Net income is stated after charging:		
Auditors' remuneration: audit fees	7,000	-
Operating lease rentals (Photocopier)	3,290	3,290
Operating lease rentals (Property)	7,883	7,300
Digital File Storage	1,556	3,846

No other professional services were provided by the auditors during the year.

6 Staff costs

Staff costs	2024	2023
	£	£
Salaries	807,233	818,859
Social security costs	56,152	61,913
Defined Benefit Pension Contributions	16,640	17,492
Supervision	<u>7,365</u>	<u>7,674</u>
	887,390	905,938

The remuneration of key management personnel was £167,560 (2023 £140,502). No employees received remuneration of £60,000 or more.

Number of staff

The average number of staff throughout the year was 44 (2023 39) individuals.

The average number of staff employed during the period, calculated in full-time equivalents (FTE), was as follows:

	2024	2023
	No.	No.
Engaged in direct charitable activities	25	26
Other staff	3	3
	<u>28</u>	<u>29</u>

Trustees

None of the trustees received any remuneration or expenses during the year.

Notes to the financial statements for the year ended 31 August 2024

continued

7 Taxation

The charity's activities fall within the exemptions afforded by the provisions of the Income and Corporation Taxes Act 1988. Accordingly, there is no taxation charge or liability in these accounts.

8 Tangible fixed assets

The Trust had no assets to capitalise under its capitalisation policy.

9 Debtors

	2024	2023
	£	£
Surrey Wellbeing Partnership	37,500	22,257
Gift Aid refund	1,487	1,751
Other debtors	17,934	1,538
Prepayments and accrued income	2,355	7,515
	<hr/>	<hr/>
	59,276	33,061
	<hr/>	<hr/>

10 Creditors: amounts falling due within one year

	2024	2023
	£	£
Trade creditors	3,848	1,268
Other taxation, social security	14,855	15,948
Other creditors	-	3,907
Accruals and deferred income	23,595	20,227
	<hr/>	<hr/>
	42,298	41,350
	<hr/>	<hr/>

Notes to the financial statements for the year ended 31 August 2024

continued

11 Endowment Funds

	At 1 September 2023	Income	Expenditure	Transfers between Reserves	At 31 August 2024
	£	£	£		£
Edward Gostling Trust	-	170,000	=	-	170,000
	<u>-</u>	<u>170,000</u>	<u>-</u>	<u>-</u>	<u>170,000</u>
	-	170,000	-	-	170,000
	<u>-</u>	<u>170,000</u>	<u>-</u>	<u>-</u>	<u>170,000</u>

The Edward Gostling Trust grant of £170,000 has been given to be held as an Expendable Endowment for up to five years but is available to be drawn down when reserves drop below 2 months operating expenditure.

There were no endowment funds in the previous year.

12 Restricted funds

	At 1 September 2023	Income	Expenditure	Transfers between Reserves	At 31 August 2024
	£	£	£		£
Schools Work	-	466,791	(497,100)	30,309	-
Hospital Project	22,551	54,348	(50,253)	-	26,646
Peripatetic Counsellor	19,300	-	(5,037)	-	14,263
Surrey Wellbeing Partnership					
Early Intervention Secondary Schools	-	97,989	(90,342)	-	7,647
Early Intervention Primary Schools	-	114,889	(49,002)	-	65,887
Social Prescribing	-	6,123	(4,247)	-	1,876
	<u>41,851</u>	<u>740,140</u>	<u>(695,981)</u>	<u>30,309</u>	<u>116,319</u>
	<u>41,851</u>	<u>740,140</u>	<u>(695,981)</u>	<u>30,309</u>	<u>116,319</u>

Notes to the financial statements for the year ended 31 August 2024

continued

12 Restricted funds (continued)

Restricted Funds table of movements 2022/2023 (for comparative purposes)

	<i>At 1st September 2022</i>	<i>Income</i>	<i>Expenditure</i>	<i>Transfers Between Reserves</i>	<i>At 31st August 2023</i>
	£	£	£		£
<i>Schools Work</i>	3,276	439,201	(461,907)	19,430	-
<i>Making the Leap</i>	4,000	-	(4,000)	-	-
<i>Hospital Project</i>	33,251	42,573	(53,273)	-	22,551
<i>Peripatetic Counsellor</i>	25,864	-	(6,564)	-	19,300
<i>Surrey Wellbeing Partnership</i>	5,549	124,732	(127,186)	(3,095)	-
	<u>71,940</u>	<u>606,506</u>	<u>(652,930)</u>	<u>16,335</u>	<u>41,851</u>

- i. The Schools Work funds are restricted to providing Relational Support Work in an educational establishment setting. Transfers from the general fund have been made to cover the deficit.
- ii. The Hospital Project funds are restricted to providing support for Young People in Ashford St Peter's NHS Foundation Trust.
- iii. The Peripatetic Counsellor funds are restricted to providing ongoing support to Young People identified by the Relational Support Worker as needing a specific therapeutic intervention followed up by Relational Support in the school.
- iv. The Trust continues to be a member of the Surrey Wellbeing Partnership, and the funds are restricted to activities connected with the Emotional Wellbeing and Mental Health support being offered to Young People in Crisis and those requiring early support to enable them to work through the issues they are facing.

Notes to the financial statements for the year ended 31 August 2024

continued

13 Unrestricted funds

	At 1 September 2023	Income	Expenditure	Transfers between funds	At 31 August 2024
	£	£	£		£
General Fund	28,211	353,311	(292,241)	(30,309)	58,972
Designated Funds					
Future Projects	59,207	-	(12,068)	-	47,139
	<u>87,418</u>	<u>353,311</u>	<u>(304,309)</u>	<u>(30,309)</u>	<u>106,111</u>

Unrestricted Funds table of movements 2022/2023 (for comparative purposes)

	At 1 September 2022	Income	Expenditure	Transfers between funds	At 31 August 2023
	£	£	£		£
General Fund	59,607	317,533	(332,594)	(16,335)	28,211
Designated Funds					
Future Projects	89,879	-	(30,672)	-	59,207
	<u>149,486</u>	<u>317,533</u>	<u>(362,266)</u>	<u>(16,335)</u>	<u>87,418</u>

The unrestricted funds of the charity include the General funds, which can be used to support all aspects of relational support projects undertaken by the trust and directly funding these if there is not sufficient specific (restricted) funding available.

The Designated Funds arise from a legacy received in the year to 31st August 2021, which the Board of Trustees had decided should be used for future project opportunities. It has however been decided since the year end that the remaining balance on this fund should be transferred to General Funds as the purposes for which this fund was being used have ceased.

Notes to the financial statements for the year ended 31 August 2024

continued

14 Operating lease commitments

	2024	2023
	£	£
Operating lease commitments are as follows:		
Payable within 1 year	15,544	10,638
Payable within 2 to 5 years	14,300	1,253
	<hr/>	<hr/>
	29,844	11,891
	<hr/>	<hr/>

15 Related parties

One of the trustees, Mr Matthew Armsby, is a partner in BC Technologies who provide IT support services for this trust. During the year they were paid £1,319 for this work (2023: £1,319).

Aggregate donations from related parties amounted to £7,450 (2023: £13,060).

There are no other transactions requiring disclosure in this or the previous year.