



we are music

A Company Limited by Guarantee

Annual Report and Financial Statements

Year ending 31 May 2024

Charity Number: 1130937

Company Number: 6916641



COMMUNITY Grass Roots Music



Funded by
UK Government



Supported using public funding by
**ARTS COUNCIL
ENGLAND**

funded
through



Funded by
UK Government

POWERED BY
**LEVELLING
UP**

Tendring
District Council



Essex County Council

**YOUTH
MUSIC**



Supported using public funding by
**ARTS COUNCIL
ENGLAND**



**Explore
Essex**

Part of Essex County Council



Supported using public funding by
**ARTS COUNCIL
ENGLAND**



Essex Music
Education Hub



**Essex
Community
Foundation**



**Community
Initiatives
Fund**

Administrative Details

Charity Number: 1130937

Company Number: 6916641

Registered Address: 12, Queen Street, Great Oakley, Essex
CO12 5AS

Location: Building 4, Off Highfield Avenue, Dovercourt, Essex

Directors and Trustees

The directors of the charitable company are its trustees for the purposes of charity tax. The trustee and officers serving during the year and since the year end were as follows:-

Chris Scott Chairman Trustee - 1 March 2024

Peter Browne Trustee - Resigned 17 August 2024

Joseph McCann Trustee - 29 July 2020

Amber Scott Trustee - 1 March 2022

Ross Kemp Trustee- 17 August 2024

Other names used by the Charity

Get Known, Rock School Club, Rock the Tower were names previously used by We are Music describing programmes operated by the charity. We have now rebranded using WAM Harwich and WAM Jaywick to replace Rock School Club and Rock the Tower.

Governing Document

We are Music is a company limited by guarantee governed by its Memorandum and Articles of Association dated 1 February 2014. It is registered as a charity with the Charity Commission. Anyone over the age of 16 can become a member. Children from 9 to 16 will be members through their parent or guardian.

Appointment of Trustees

As set out in the Articles of Association at the Annual General Meeting one third of the trustees retire in rotation and can be re-elected at the meeting. If another party wishes to seek appointment, they must give not less than fourteen days' notice nor more than thirty-five days before the date of the meeting to the Charity.



The purposes of the charity are, to help young people through:

- (a) The provision of recreational and leisure time activities provided in the interest of social welfare, designed to improve their conditions of life
- (b) Providing support and activities which develop their skills, capacities, and capabilities to enable them to participate in society as mature and responsible individuals

Our Operational Area

Tendring is ranked as the most deprived of all Essex districts. Essex County Council figures show Tendring is “falling further and further behind” The ECC Organisational Intelligence report states “Tendring shows a challenging environment facing young people in the area.”

- Secondary pupils score the lowest in wellbeing in Essex.
- Seven areas in Tendring are in the most deprived 10% in England.
- There are low family incomes in the area.
- 15 wards across Tendring have child poverty in the 20-50% range with significant high pockets (30%+) in Harwich, and Clacton. Jaywick is the most deprived area in England.
- Tendring has the highest number of NEETs, and children in care in Essex.
- There are very few activities available for young people in the area, a high degree of vandalism, early drugs use and because of the coastal locations a low police presence.

In planning our activities, the trustees have considered the Charity Commissions guidance on public benefit, including the guidance on public benefit and fee charging. We are Music relies on grants with minimal other income. All services are, due to the support of grant funding, free to participants.

WE ARE MUSIC – breaking records!

An amazing year of growth! We delivered 744 hours of regular sessions to 278 young people and a taster session to a further 290 primary school children.

The Youth Council has been a great success including developing taster sessions in the Harwich facility, and outreach sessions across Tendring. They also raised funds by getting Ed Sheeran to support our operation, and sign a guitar which we auctioned.

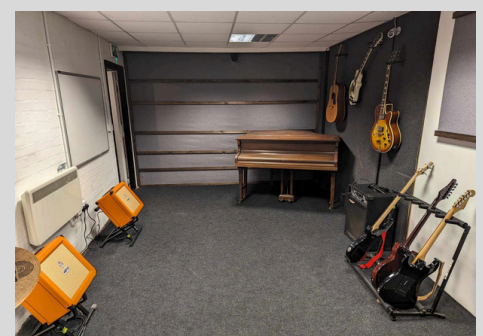
Currently 80 young people a week access Harwich and Jaywick with major improvements in well being and increased friendships. A third rehearsal space has been set up at Harwich.

Primary School sessions in our Harwich facility have been a major success. Seven primary schools are involved in the project that supplies six one hour sessions for all Year Six children at our Harwich centre including transport to and from the school.

In addition we are operating outreach after school club sessions in five primary schools focused around rural and low income areas. This has engaged 220 children and included performances to the whole schools and parents for some schools.

Our regular sessions at the Jaywick Martello Tower and our Harwich facilities are expanding as a result of our activities with primary schools. Providing sessions for complete year groups broadens the inclusiveness of our operation attracting more girls and children with learning difficulties.

To meet this increased demand we have created a third rehearsal room in the Harwich centre and open more hours.



Our work helping young people move their music on is growing.

We are running a project that will provide a better deal for young artists to fund their recordings, release tracks and work with Industry Professionals. We have also provided studio training to professional standards with the Help of Hamford and Decoy Studios. This trail blazing concept is funded by Youth Music.



Government Grassroots Music Support. We have secured two year funding, to be delivered through Hamford Studio, to provide a range of skill development and industry services to feed talented young people into the industry. These include songwriting workshops, studio engineering master classes in conjunction with Decoy Studios and live performance videos.



Performance Opportunities Two major events occurred during the year a summer showcase at Hamford View and a Christmas event in Harwich. In addition we supported local community events with a variety of bands and artists. Two bands attended the Music for Youth Regional Festival in Norwich and one is playing the National Festival in Birmingham.

This is 15 years of WAM and we are staging an event in a circus big top to celebrate. Young people who have been supported by us in the past are reforming bands especially for the day.

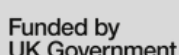
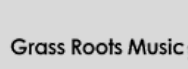


Financial Review

Our turnover £110,536 shows an increase on last year (last year £95,916) and we returned an excess of £20,616.

Various grants provide restricted funding, and we are holding balances totalling £55,939 at the year-end for these funds. These are supported by £80,460 cash at the bank. During the year we have funding from the Essex Community Foundation, the People's Health Trust, the National Lottery Community Fund. In addition we received funding, from the Essex Music Hub, to support our primary school sessions. Our WAM Jaywick centre received funding from the Tendring Community Fund with follow on funding from the Arts Council. Youth Music is supporting our work assist emerging artists. Going forward we have Grassroots Music Funding to work with Hamford Studio and Shared Prosperity Funding to support the WAM15 Festival. We end the year with secure forward income.

The financial statements have been prepared in accordance with the accounting policies set out in notes to the accounts and comply with the charity's governing document, the Charities Act 2011 and Accounting and Reporting by Charities: Statement of Recommended Practice applicable to charities preparing their accounts in accordance with the Financial Reporting Standard for Smaller Entities published on 16 July 2014.



WE ARE MUSIC
Statement of Financial Activities to year end 31 May 2024

	Unrestricted funds £	Restricted income funds £	Total funds £	Prior year funds £
Incoming resources				
Income from:				
Donations	6,859		6,859	6853
Charitable activities		103,677	103,677	89,063
Other	-	-	-	-
Total	6,859	103,677	110,536	95,916
Expenditure on:				
Raising funds		-		
Charitable activities		85,310	85,310	79,429
Other	4,610		4,610	1,523
Total	4,610	85,310	89,920	80,952
Net income/(expenditure) before investment gains/(losses)	2,249	18,367	20,616	14,964
Net gains/(losses) on investments	-	-	-	-
Net income/(expenditure)	2,249	18,367	20,616	14,964
Extraordinary items	-	-	-	-
Transfers between funds	-	-	-	-
Other recognised gains/(losses):				
Gains and losses on revaluation of fixed assets for the charity's own use	-	-	-	-
Other gains/(losses)	-	-	-	-
Net movement in funds	2,249	18,367	20,616	14,964
Reconciliation of funds:				
Total funds brought forward			60,815	45,851
Total funds carried forward	2,249	18,367	81,431	60,815


Note
3

4

WE ARE MUSIC
Balance sheet as at year end 31 May 2024

	Unrestricted funds £	Restricted income funds £	Total this year £	Total last year £
Fixed assets				
Tangible assets (Note 7)	23,355	-	23,355	22,384
Intangible assets				
Total fixed assets	23,355	-	23,355	22,384
Current assets				
Debtors (Note 8)	100		100	680
Cash at bank and in hand (Note 10)	24,519	55,950	80,469	60,815
Total current assets	24,619	55,950	80,569	61,495
Creditors: amounts falling due within one year (Note 9)	1,710	55,950	57,660	37,277
Net current assets/(liabilities)	22,909		22,909	24,218
Total assets less current liabilities	46,264		46,264	46,602
Creditors: amounts falling due after one year (Note 9)				
Provisions for liabilities				
Total net assets or liabilities	46,264		46,264	46,602
Funds of the Charity				
Restricted income funds (Note 12)		55,950	55,950	34,975
Unrestricted funds	24,519		24,519	25,840
Revaluation reserve			-	
Total funds	24,519	55,950	80,569	60,815

Signed by two trustees on behalf of all the trustees

Signature		
	Chris Scott	21/06/2024
	Peter Browne	21/06/2024

We are Music is a charitable company limited by guarantee. Registered in England 6916641 Registered Charity No. 1130937

Reg. address: 12 Queen Street, Great Oakley, CO12 5AS We are located at Building 4, Main Road, Dovercourt, CO12 4DN

Tel: 07907414611 email: chrisscott@we-are-music.org.uk

Notes to the accounts.

Note 1 - Basis of preparation

These accounts have been prepared under the historical cost convention with items recognised at cost or transaction value unless otherwise stated in the relevant note(s) to these accounts.

The accounts have been prepared in accordance with the Statement of Recommended Practice: Accounting and Reporting by Charities preparing their accounts in accordance with the financial reporting Standard applicable in the UK and Republic of Ireland (FRS102) issued on 16 July 2014, and with the Charities Act 2011.

The charity constitutes public benefit entity as defined by FRS 102. The charity is a going concern whose operation will continue through the next financial year. The accounts present a true and fair view of the charity's performance.

The company was entitled to exemption under section 477 of the Companies Act 2006 relating to small companies. The members have not required the company to obtain an audit in accordance with section 476 of the Companies Act 2006.

Note 2 - Accounting policies

Recognition of Income

These are included in the Statement of Financial Activities (SoFA) when

- the charity becomes entitled to the resources
- it is more likely than not that the trustees will receive the resources; and
- the monetary value can be measured with sufficient reliability.

Offsetting

There has been no offsetting of assets and liabilities, or income and expenses, unless required or permitted by the FRS 102 SORP or FRS 102.

Grants and Donations

These are only included in the SoFA when the general income recognition criteria are met (5.10 to 5.12 FRS 102 SORP).

In the case of performance related grants, income must only be recognised to the extent that the charity has provided the specified goods or services as entitlement to the grant only occurs when the performance related conditions are met (5.16 FRS 102 SORP).

Tax reclaims on donations and gifts

Gift Aid receivable is included in income when there is a valid declaration from the donor. Any Gift Aid amount recovered on a donation is considered to be part of that gift and is treated as an addition to the same fund as the initial donation unless the donor or the terms of the appeal have specified otherwise.

Donated Goods

These are measured at fair value (the amount for which the asset could be exchanged) unless impractical to do so. Goods donated for on-going use by the charity are recognised as tangible fixed assets and included in the SoFA as incoming resources when receivable.

Income from membership subscriptions

Membership subscriptions received in the nature of a gift are recognised in Donations and Legacies.

Settlement of insurance claims

Insurance claims are only included in the SoFA when the general income recognition criteria are met (5.10

to 5.12FRS 102 SORP) and are included as an item of other income in the S0FA.

Liability recognition

Liabilities are recognised where it is more likely than not that there is a legal or constructive obligation committing the charity to pay out resources and the amount of the obligation can be measured with reasonable certainty.

Deferred income

No material item of deferred income has been included in the accounts.

Creditors

The charity has creditors which are measured at settlement amounts less any trade discounts.

Provisions for liabilities

A liability is measured on recognition at its historical cost and then subsequently measured at the best estimate of the amount required to settle the obligation at the reporting date.

Basic Financial instruments

The charity accounts for basic financial instruments on initial recognition as per paragraph 10.7 FRS 102 SORP. Subsequent measurement is as per paragraphs 11.17 to 11.19, FRS 102 SORP.

Tangible fixed assets for use by the charity

These are capitalised if they can be used for more than one year and cost at least £100.

They are valued at cost and depreciation rates and methods used are disclosed in note 7.

Intangible fixed assets.

The charity has no intangible fixed assets.

Heritage assets

The charity has no heritage assets

Investments

The charity has no investments

Stocks and work in progress

The charity has no stocks or work in progress

Debtors

Debtors (including trade debtors and loans receivable) are measured on initial recognition at settlement amount after any trade discounts or amount advanced by the charity. Subsequently, they are measured at the cash or other consideration expected to be received.

Current asset investments

Cash on deposit are only held to meet short term cash commitments as they fall due. The charity does not hold current asset investments.

Note 3 – Analysis of Income

		Unrestricted funds	Restricted income funds	Total funds £	Prior year £
Donations and legacies:	Analysis				
	Donations and gifts	5,671		5,671	596
	Gift Aid		-		1,737
	Legacies	-	-	-	-
	General grants provided by government/other charities				-
	Membership subscriptions and sponsorships which are in substance donations	1,188	-	1,188	4,520
	Other		-		
	Total	6,859	-	6,859	6,853

Charitable activities:	Essex Culture & Arts Fund				19,500
	Tendring Shared Prosperity Fund		5,000		
	EALC		5,000		
	Arts Council – Friends of Jaywick Martello Tower		9,787		
	Grassroots Music Arts Council		25,470		
	Essex Community Foundation		4,770		1,000
	Essex Music Hub -23		1,603		6,804
	National Lottery Community Fund		26,329		24,054
	Peoples Health Trust East		10,639		13,856
	Tendring Community Fund		4,000		10,000
	Youth Music -LBTM		11,079		13,849
	Total	6,859	103,677	110,536	95,916

Note 4 – Analysis of expenditure

	Unrestricted funds	Restricted income funds	Total funds £	Prior year £
Analysis				
Expenditure on raising funds:				
Incurring seeking grants	-	-	-	-
Total expenditure on raising funds		-		
Expenditure on charitable activities				
Essex Culture & Arts Fund	-			18,298
Essex Community Foundation	-	1,471		11,000
Youth Music Fund B Music Connects Us	-			17,079
EALC	-	2,084		
Essex music Hub- 23		6,676		1,956
Operating sessions / concert	1,659			145
National Lottery Community Fund		27,234		15,845
Peoples Health Trust East		13,072		11,804
Tendring Community Fund		8,463		1,570
Youth Music – Lets Break the Mould		15,812		1,733
Arts Council -Friends of Jaywick Martello Tower		1,807		
Grassroots Music – Arts Council		595		
Tendring Shared Prosperity Fund		4,551		
TCF 23		1,885		
Total expenditure on charitable activities	1,659	83,651	85,310	79,430
Other				
Rent & Rates				78
Heat Light				38
Repairs works	2,384			
Depreciation	1,229			1,162
Insurance				
Accountancy Fees				225
General /travel schools	997			20
Total other expenditure	4,610		4,160	1,523
TOTAL EXPENDITURE			89,470	80,953

We are Music is a charitable company limited by guarantee. Registered in England 6916641 Registered Charity No. 1130937

Reg. address: 12 Queen Street, Great Oakley, CO12 5AS We are located at Building 4, Main Road, Dovercourt, CO12 4DN

Tel: 07907414611 email: chrisscott@we-are-music.org.uk

Note 5 – Fees for examination of the accounts

Independent examiner's fees

This year £	Last year £
0	0

Note 6 – Paid employees

All projects and operational support are supported by part-time freelance workers.

Note 7 – Tangible fixed assets

Cost or valuation

	Freehold land & buildings £	Other land & buildings £	Plant, machinery £	Fixtures, fittings and equipment £	Total £
At the beginning of the year	-	-	44,202	-	41,942
Additions	-	-	2,499	-	2,260
Revaluations	-	-	-	-	-
Disposals	-	-	-	-	-
Transfers	-	-	-	-	-
At end of the year	-	-	46,701	-	44,202

Depreciation

Basis	Reducing Balance	Reducing Balance	Reducing Balance	Reducing Balance	Reducing Balance
Rate			5%		5%

At beginning of the year	-	-	22,118	-	20,956
Disposals	-	-	-	-	-
Depreciation			1,229		1,162
Impairment	-	-	-	-	-
Transfers	-	-	-	-	-
At end of the year	-	-	23,347	-	22,118

Net book value

Net book value at the beginning of the year

Net book value at the end of the year

-	-	22,383	-	22,084
-	-	23,355	-	22,383

Note 8 - Debtors & prepayments

Analysis of debtors

Trade debtors

Prepayments and accrued income

Other debtors

Total

This year	Last year
£	£
100	680
-	-
-	-
100	680

There are no debtors recoverable in more than 1 year (included in debtors above)

Note 9 – Creditors & accruals

Analysis of creditors

Accruals for grants payable

Bank loans and overdrafts

Trade creditors

Payments received on account for contracts or performance-related grants

Accruals and deferred income

Taxation and social security

Other creditors

Total

Amounts falling due within one year		Amounts falling due after more than one year	
This year	Last year	This year	Last year
£	£	£	£
-	-	-	-
-	-	-	-
1,710	2,291	-	-
-	-	-	-
-	-	-	-
-	-	-	-
-	-	-	-
1,710	2,291	-	-

Note 10 – Cash at bank and on hand

Cash at bank and in hand

Cash at bank and on hand

Total

This year	Last year
£	£
80,469	60,815
80,469	60,815

We are Music is a charitable company limited by guarantee. Registered in England 6916641 Registered Charity No. 1130937

Reg. address: 12 Queen Street, Great Oakley, CO12 5AS We are located at Building 4, Main Road, Dovercourt, CO12 4DN

Tel: 07907414611 email: chrisscott@we-are-music.org.uk

Note 11 – Fair value of assets and liabilities.

The charity has no investments and only cash at bank which is used to pay operational and restricted project costs. We can reduce the scale of the operation to ensure we continue to operate.

Most assets were purchased second hand at below market value. We maintain them by regular repairs and servicing provided by volunteer helpers.

Note 12 – Charity Funds

* Key: R - restricted income funds of the charity; and U - unrestricted funds

Fund names		Purpose and Restrictions	Fund balances brought forward	Income	Pre period spend	Spend	Fund balances carried forward
			£	£	£	£	£
Essex Music Education Hub	R	Primary school -outreach	4,168	1,603		6,676	0
Essex Community Foundation	R	Primary school WAM sessions		4,770		1,472	3,298
National Lottery Community Fund	R	Support to WAM Harwich	8,209	26,329		27,235	7,303
Peoples Health Trust East	R	Saturday Open House	2,052	10,639		13,072	-381
Tendring Community Fund	R	Get Known sessions		4,000		1,885	2,115
Youth Music – Let's Break the Mould	R	Support to 16-25 talented	12,116	11,079		15,812	7,383
TDC Community Fund		WAM Jaywick sessions	8,430			8,462	0
Arts Council -Friends of Jaywick Martello Tower	R	WAM Jaywick sessions		9,787		1,807	7,980
EALC	R	Outreach primary schools		5,000		2,084	2,916
Grassroots Music – Arts Council	R	Assisting artists into the industry		25,470		595	24,875
Tendring Shared Prosperity Fund	R	WAM15 Festival		5,000		4,551	449
Total Funds			34,975	103,677		83,651	55,950

Note 13- Transactions with trustees and related parties

None of the trustees have been paid any remuneration or received any other benefits from an employment with the charity or a related entity.

Type of expenses reimbursed	This year	Last year
	£	£
Travel & materials		

One of the trustees (Chris Scott) is related to the Project Leader any work authorised and paid by the Charity to Toby Scott is approved by one of the unrelated trustees.



Section A

Independent Examiner's Report

Report to the trustees/
members of

WE ARE MUSIC LTD

On accounts for the year
ended

31 MAY 2024

Charity no
(if any)

1130937

Set out on pages

1-13

I report to the trustees on my examination of the accounts of the above charity ("the Trust") for the year ended 31/05/2024.

Responsibilities and
basis of report

As the charity trustees of the Trust, you are responsible for the preparation of the accounts in accordance with the requirements of the Charities Act 2011 ("the Act").

I report in respect of my examination of the Trust's accounts carried out under section 145 of the 2011 Act and in carrying out my examination, I have followed the applicable Directions given by the Charity Commission under section 145(5)(b) of the Act.

Independent
examiner's statement

I have completed my examination. I confirm that no material matters have come to my attention (other than that disclosed below *) in connection with the examination which gives me cause to believe that in, any material respect:

- accounting records were not kept in accordance with section 130 of the Act or
- the accounts do not accord with the accounting records

I have no concerns and have come across no other matters in connection with the examination to which attention should be drawn in order to enable a proper understanding of the accounts to be reached.

** Please delete the words in the brackets if they do not apply.*

Signed:

Date:

30/06/2024

Name:

Matthew John Scott

Relevant professional
qualification(s) or body
(if any):

AAT Intermediate

Address:

18 Vaughan Street,
Ipswich, IP2 8DG

Only complete if the examiner needs to highlight matters of concern (see CC32, Independent examination of charity accounts: directions and guidance for examiners).

Give here brief details of any items that the examiner wishes to disclose.

NONE.....