

WE ARE MUSIC LTD

England & Wales · Charity number 1130937

Details

Other names ROCK SCHOOL CLUB HARWICH

Status Registered

Legal form Charitable company

Company number 06916641

Registered 2009-08-03

Register [View on the Charity Commission register](#)

Contact

Address 12 Queen Street
Great Oakley
Harwich
CO12 5AS

Phone 07907414611

Email scottassociates@hotmail.co.uk

Website www.wearemusic.org

Activities

Objects: TO ADVANCE IN LIFE AND HELP YOUNG PEOPLE THROUGH -A THE PROVISION OF RECREATIONAL AND LEISURE TIME ACTIVITIES PROVIDED IN THE INTEREST OF SOCIAL WELFARE, DESIGNED TO IMPROVE THEIR CONDITIONS OF LIFE PROVIDING SUPPORT AND ACTIVITIES WHICH DEVELOP THEIR SKILLS, CAPACITIES AND CAPABILITIES TO ENABLE THEM TO PARTICIPATE IN SOCIETY AS MATURE AND RESPONSIBLE INDIVIDUALS

Activities: We provide engagement in popular music for young people across Tendring and Essex in what are primarily deprived areas. We also operate other programmes helping emerging artists understand routes into the music industry, work placements and internships. We also work with young people in live sound and events.

Classification

- **How:** Provides Services
- **What:** Education/training, Arts/culture/heritage/science
- **Who:** Children/young People, People With Disabilities, The General Public/mankind

Geography

- **Area of benefit:** UNDEFINED. IN PRACTICE, LOCAL.
- Essex
- Suffolk

Finances

Period end	Income	Expenditure	Assets	Employees
2025-05-31	£124,695	£105,918	-	-
2024-05-31	£110,536	£89,920	-	-
2023-05-31	£95,916	£80,952	-	-
2022-05-31	£52,105	£55,070	-	-
2021-05-31	£62,001	£64,436	-	-

Trustees

Name	Role	Appointed
CHRISTOPHER SCOTT	Chair	2024-03-01
Amber Scott		2021-12-08
Joseph Patrick McCann		2020-07-29
Ross Kemp		2024-08-08
Vincenzo Capellini Townshend		2026-05-07

WE ARE MUSIC LTD

England & Wales - Charity number 1130937

Accounts



we are **music**



A Company Limited by Guarantee
Annual Report and Financial Statements
Year ending 31 May 2025

Charity Number: 1130937
Company Number: 6916641



Grass Roots Music

Funded by UK Government



Supported using public funding by
ARTS COUNCIL ENGLAND

YOUTH MUSIC



Supported using public funding by
ARTS COUNCIL ENGLAND



Funded by UK Government



Tendring District Council



Essex County Council



Supported using public funding by
ARTS COUNCIL ENGLAND



Essex Community Foundation



Community Initiatives Fund

Administrative Details

Charity Number: 1130937

Company Number: 6916641

Registered Address: 12, Queen Street, Great Oakley, Essex CO12 5AS

Location: Building 4, Off Highfield Avenue, Dovercourt, CO12 4DH

Directors and Trustees

The directors of the charitable company are its trustees for the purposes of charity tax. The trustee and officers serving during the year and since the year end were as follows:-

Chris Scott Chairman Trustee - 1 March 2024

Joseph McCann Trustee - 29 July 2025

Amber Scott Trustee - 1 March 2022

Ross Kemp Trustee- 17 August 2024

Other names used by the Charity

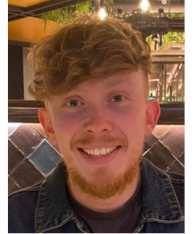
Get Known, Rock School Club, Rock the Tower were names previously used by We are Music describing programmes operated by the charity. We have now rebranded using WAM Harwich and WAM Jaywick to replace Rock School Club and Rock the Tower.

Governing Document

We are Music is a company limited by guarantee governed by its Memorandum and Articles of Association dated 1 February 2014. It is registered as a charity with the Charity Commission. Anyone over the age of 16 can become a member. Children from 9 to 16 will be members through their parent or guardian.

Appointment of Trustees

As set out in the Articles of Association at the Annual General Meeting one third of the trustees retire in rotation and can be re-elected at the meeting. If another party wishes to seek appointment, they must give not less than fourteen days' notice nor more than thirty-five days before the date of the meeting to the Charity.



The purposes of the charity are, to help young people through:

- (a) The provision of recreational and leisure time activities provided in the interest of social welfare, designed to improve their conditions of life
- (b) Providing support and activities which develop their skills, capacities, and capabilities to enable them to participate in society as mature and responsible individuals

Our Operational Area

Tendring is ranked as the most deprived of all Essex districts. Essex County Council figures show Tendring is “falling further and further behind” The ECC Organisational Intelligence report states “Tendring shows a challenging environment facing young people in the area.”

- Secondary pupils score the lowest in wellbeing in Essex.
- Seven areas in Tendring are in the most deprived 10% in England.
- There are low family incomes in the area.
- 15 wards across Tendring have child poverty in the 20-50% range with significant high pockets (30%+) in Harwich, and Clacton. Jaywick is the most deprived area in England.
- There are very few activities available for young people in the area, a high degree of vandalism, early drugs use and because of the coastal locations a low police presence.

In planning our activities, the trustees have considered the Charity Commissions guidance on public benefit, including the guidance on public benefit and fee charging. We are Music relies on grants with minimal other income. All services are, due to the support of grant funding, free to participants.

WE ARE MUSIC - breaking records!

In the period June to end December we delivered 434 hours of regular sessions to 162 young people. With increased funding from The Arts Council and Youth Music, since January we have delivered a further 572 hours to 274 young people. This makes the total for this accounting year 1,006 hours to 436 young people.

The Youth Council has been a great success including developing taster sessions in the Harwich facility, and outreach sessions across Tendring. They have also secured more signed guitars, one donated and signed by Seasick Steve and another signed by Lola Young, Maisie Peters, Joe Rubel, Holly Humberstone, Nectar Woode, New Dads, and Tom Misch to auction and support our operation.



Primary School sessions in our Harwich facility have been a major success. Twelve primary school are involved in the project that supplies six one hour session for all Year Six children at our Harwich centre including transport to and from the school.

In addition we are operating out reach after school club sessions in five primary schools focused around rural and low income areas. This has included performances to the whole schools and parents for some schools.



Secondary School Support

With support from the Essex Music Hub we have started regular afterschool sessions at Tendring Technical College and now through alternative funders we are extending the the work at TTC, operating at Clacton County High School and Market Field College SEND funded by Youth Music.



Our regular sessions at the Jaywick Martello Tower and our Harwich facilities are expanding as a result of our activities with primary schools. Providing sessions for complete year groups broadens the inclusiveness of our operation attracting more girls and children with learning difficulties and there are spins offs from the secondary school sessions to our Saturday Harwich sessions.



Government Grassroots Music Support. We have funding, to be delivered through Hamford Studio, to provide a range of skill development and industry services to feed talented young people into the industry. These include songwriting workshops, studio engineering master classes in conjunction with Decoy Studios and live performance videos. The project is evolving and completes in March 2026. We hope to continue the work through Hamford Studio



Performance Opportunities Two major events occurred during the year a summer showcase at Hamford View and a Christmas event in Harwich. In addition we supported local community events with a variety of bands and artists.

This is 15 years of WAM and we staged an event in a circus big top to celebrate. Young people who have been supported by us in the past reformed bands especially for the day.



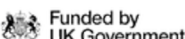
Financial Review

Our turnover £124,695 shows an increase on last year (last year £110,536) and we returned an excess of £18,777.

Various grants provide restricted funding, and we are holding balances totaling £77,473 at the year-end for these funds. These are supported by £96,806 cash at the bank. During the year we have funding from the Essex Community Foundation, the People’s Health Trust, the National Lottery Community Fund, the Essex Music Hub, The Arts Council, and Youth Music.

Going forward we have Grassroots Music Funding to work with Hamford Studio and Shared Prosperity Funding to support the WAM15 Festival in August 2025. We end the year with secure forward income with grants from the Arts Council, Youth Music and the National Lottery Community Fund.

The financial statements have been prepared in accordance with the accounting policies set out in notes to the accounts and comply with the charity’s governing document, the Charities Act 2022 and the Charities SORP (FRS102) second edition 2019.



WE ARE MUSIC
Statement of Financial Activities to year end 31 May 2025


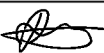

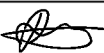

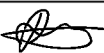
	Unrestricted funds £	Restricted income funds £	Total funds £	Prior year funds £
Incoming resources				
Income from:				
Donations	5,339		5,339	6859
Charitable activities		119,356	119,356	103,677
Other				
Total	5,339	119,356	124,695	110,536
Expenditure on:				
Raising funds				
Charitable activities	5,201	98,482	103,683	85,310
Other	2,235		2,235	4,610
Total	7,436	98,482	105,918	89,920
Net income/(expenditure) before investment gains/(losses)	(2,097)	20,874	18,777	20,616
Net gains/(losses) on investments				
Net income/(expenditure)	(2,097)	20,097	18,777	20,616
Extraordinary items				
Transfers between funds				
Other recognised gains/(losses):				
Gains and losses on revaluation of fixed assets for the charity's own use				
Other gains/(losses)				
Net movement in funds	(2,097)	20,097	18,777	20,616
Reconciliation of funds:				
Total funds brought forward			81,431	60,815
Total funds carried forward			100,208	81,431

Note

3

4

WE ARE MUSIC
Balance sheet as at year end 31 May 2025

	Unrestricted funds £	Restricted income funds £	Total this year £	Total last year £									
Fixed assets													
Tangible assets (Note 7)			23,788	23,355									
Intangible assets													
Total fixed assets	23,788		23,788	23,355									
Current assets													
Debtors (Note 8)		1,087	1,087	100									
Cash at bank and in hand (Note 10)	19,333	77,473	96,806	80,469									
Total current assets	19,333	78,560	97,893	80,569									
Creditors: amounts falling due within one year (Note 9)	702	77,473	78,175	57,660									
Net current assets/(liabilities)	18,631	1,087	19,718	22,909									
Total assets less current liabilities	42,419	1,087	43,507	46,264									
Creditors: amounts falling due after one year (Note 9)													
Provisions for liabilities													
Total net assets or liabilities	42,419	1,087	43,507	46,264									
Funds of the Charity													
Restricted income funds (Note 12)				55,950									
Unrestricted funds				24,519									
Revaluation reserve													
Total funds	19,333	78,560	97,893	80,569									
Signed by two trustees on behalf of all the trustees	<table border="1" style="width: 100%; border-collapse: collapse;"> <tr> <td style="width: 50%; text-align: center;">Signature</td> <td style="width: 25%;"></td> <td style="width: 25%;"></td> </tr> <tr> <td style="text-align: center;"></td> <td style="text-align: center;">Chris Scott</td> <td style="text-align: center;">31/07/2025</td> </tr> <tr> <td style="text-align: center;"></td> <td style="text-align: center;">Ross Kemp</td> <td style="text-align: center;">31/07/2025</td> </tr> </table>				Signature				Chris Scott	31/07/2025		Ross Kemp	31/07/2025
Signature													
	Chris Scott	31/07/2025											
	Ross Kemp	31/07/2025											

Notes to the accounts.

We are Music is a charitable company limited by guarantee. Registered in England 6916641 Registered Charity No. 1130937

Reg. address: 12 Queen Street, Great Oakley, CO12 5AS We are located at Building 4, Main Road, Dovercourt, CO12 4DN

Tel: 07907414611 email: chris@wearemusic.org

Note 1 - Basis of preparation

These accounts have been prepared under the historical cost convention with items recognised at cost or transaction value unless otherwise stated in the relevant note(s) to these accounts.

The accounts have been prepared in accordance with the Statement of Recommended Practice: Accounting and Reporting by Charities preparing their accounts in accordance with the financial reporting Standard applicable in the UK and Republic of Ireland (FRS102) issued on 1 January 2019, and with the Charities Act 2024.

The charity constitutes public benefit entity as defined by FRS 102. The charity is a going concern whose operation will continue through the next financial year. The accounts present a true and fair view of the charity's performance.

The company was entitled to exemption under section 477 of the Companies Act 2006 relating to small companies. The members have not required the company to obtain an audit in accordance with section 476 of the Companies Act 2006.

Note 2 - Accounting policies

Recognition of Income

These are included in the Statement of Financial Activities (SoFA) when

- the charity becomes entitled to the resources
- it is more likely than not that the trustees will receive the resources; and
- the monetary value can be measured with sufficient reliability.

Offsetting

There has been no offsetting of assets and liabilities, or income and expenses, unless required or permitted by the FRS 102 SORP or FRS 102.

Grants and Donations

These are only included in the SoFA when the general income recognition criteria are met (FRS 102 SORP).

In the case of performance related grants, income must only be recognised to the extent that the charity has provided the specified goods or services as entitlement to the grant only occurs when the performance related conditions are met (FRS 102 SORP).

Tax reclaims on donations and gifts

Gift Aid receivable is included in income when there is a valid declaration from the donor. Any Gift Aid amount recovered on a donation is considered to be part of that gift and is treated as an addition to the same fund as the initial donation unless the donor or the terms of the appeal have specified otherwise.

Donated Goods

These are measured at fair value (the amount for which the asset could be exchanged) unless impractical to do so. Goods donated for on-going use by the charity are recognised as tangible fixed assets and included in the SoFA as incoming resources when receivable.

Income from membership subscriptions

Membership subscriptions received in the nature of a gift are recognised in Donations and Legacies.

Settlement of insurance claims

Insurance claims are only included in the SoFA when the general income recognition criteria are met (FRS 102 SORP) and are included as an item of other income in the SoFA.

Liability recognition

Liabilities are recognised where it is more likely than not that there is a legal or constructive obligation committing the charity to pay out resources and the amount of the obligation can be measured with reasonable certainty.

Deferred income

No material item of deferred income has been included in the accounts.

Creditors

The charity has creditors which are measured at settlement amounts less any trade discounts.

Provisions for liabilities

A liability is measured on recognition at its historical cost and then subsequently measured at the best estimate of the amount required to settle the obligation at the reporting date.

Basic Financial instruments

The charity accounts for basic financial instruments on initial recognition FRS 102 SORP.

Tangible fixed assets for use by the charity

These are capitalised if they can be used for more than one year and cost at least £100.

They are valued at cost and depreciation rates and methods used are disclosed in note 7.

Intangible fixed assets.

The charity has no intangible fixed assets.

Heritage assets

The charity has no heritage assets

Investments

The charity has no investments

Stocks and work in progress

The charity has no stocks or work in progress

Debtors

Debtors (including trade debtors and loans receivable) are measured on initial recognition at settlement amount after any trade discounts or amount advanced by the charity. Subsequently, they are measured at the cash or other consideration expected to be received.

Current asset investments

Cash on deposit are only held to meet short term cash commitments as they fall due. The charity does not hold current asset investments.

Note 3 – Analysis of Income

	Unrestricted funds	Restricted income funds	Total funds £	Prior year £
Analysis				
Donations and legacies:	Donations and gifts		1,826	5,671
	Gift Aid		1,096	
	Legacies			
	General grants provided by government/other charities			
	Membership subscriptions and sponsorships which are in substance donations		2,417	1,188
	Other			
	Total			5,339

Charitable activities:	Arts Council Discover Music		35,233	
	Tendring Shared Prosperity Fund			5,000
	EALC		5,448	5,000
	Arts Council – Friends of Jaywick Martello Tower		1,087	9,787
	Grassroots Music Arts Council			25,470
	Essex Community Foundation			4,770
	Essex Music Hub		6,810	1,603
	National Lottery Community Fund		34,588	26,329
	Peoples Health Trust East		2,000	10,639
	Tendring Community Fund			4,000
	Youth Music -LBTM		2,770	11,079
	Simple Things -Awards for All		7,000	
	Youth Music -Discover Music		24,420	
Total			119,356	110,536

We are Music is a charitable company limited by guarantee. Registered in England 6916641 Registered Charity No. 1130937

Reg. address: 12 Queen Street, Great Oakley, CO12 5AS We are located at Building 4, Main Road, Dovercourt, CO12 4DN

Tel: 07907414611 email: chris@wearemusic.org

Note 4 – Analysis of expenditure

	Unrestricted funds	Restricted income funds	Total funds £	Prior year £
Analysis				
Total expenditure on raising funds				
Expenditure on charitable activities				
Arts Council Discover Music			10,815	
Essex Community Foundation			3,294	1,471
Simple Things Awards for All			2,458	
EALC			2,931	2,084
Essex music Hub- ttc			4,814	6,676
Operating sessions / concert			5,201	1,659
National Lottery Community Fund			32,542	27,234
Peoples Health Trust East			1,700	13,072
Tendring Community Fund				8,463
Youth Music – Lets Break the Mould			10,153	15,812
Arts Council -Friends of Jaywick Martello Tower			9,069	1,807
Grassroots Music – Arts Council			10,109	595
Tendring Shared Prosperity Fund			956	4,551
TCF 23			2,155	1,885
Youth Music Discover Music			7,486	
Total expenditure on charitable activities			103,683	85,310
Other				
Rent & Rates				
Heat Light				
Repairs works			983	2,384
Depreciation			1,252	1,229
Insurance				
Accountancy Fees				
General /travel schools				997
Total other expenditure			2,235	4,610
Total Expenditure			105,918	89,920

We are Music is a charitable company limited by guarantee. Registered in England 6916641 Registered Charity No. 1130937

Reg. address: 12 Queen Street, Great Oakley, CO12 5AS We are located at Building 4, Main Road, Dovercourt, CO12 4DN

Tel: 07907414611 email: chris@wearemusic.org

Note 5 – Fees for examination of the accounts

Independent examiner's fees

This year £	Last year £
0	0

Note 6 – Paid employees

All projects and operational support are supported by part-time freelance workers.

Note 7 – Tangible fixed assets

Cost or valuation

	Freehold land & buildings £	Other land & buildings £	Plant, machinery £	Fixtures, fittings and equipment £	Total £
At the beginning of the year				46,701	44,202
Additions				1,685	2,499
Revaluations					
Disposals					
Transfers					
At end of the year				48,386	46,701

Depreciation

Basis	Reducing Balance	Reducing Balance	Reducing Balance	Reducing Balance	Reducing Balance
Rate			5%	5%	5%

At beginning of the year				23,347	22,118
Disposals					
Depreciation				1,252	1,229
At end of the year				24,599	23,347

Note 8 - Debtors & prepayments

We are Music is a charitable company limited by guarantee. Registered in England 6916641 Registered Charity No. 1130937

Reg. address: 12 Queen Street, Great Oakley, CO12 5AS We are located at Building 4, Main Road, Dovercourt, CO12 4DN

Tel: 07907414611 email: chris@wearemusic.org

Analysis of debtors	This year	Last year
	£	£
Trade debtors	1,087	100
Prepayments and accrued income		
Other debtors		
Total	1,087	100

There are no debtors recoverable in more than 1 year (included in debtors above)

Note 9 – Creditors & accruals

Analysis of creditors	Amounts falling due within one year		Amounts falling due after more than one year	
	This year	Last year	This year	Last year
	£	£	£	£
Accruals for grants payable				
Bank loans and overdrafts				
Trade creditors	702			
Payments received on account for contracts or performance-related grants				
Accruals and deferred income				
Taxation and social security				
Other creditors				
Total	702			

Note 10 – Cash at bank and on hand

Cash at bank and in hand	This year	Last year
	£	£
Cash at bank and on hand	96,807	80,469
Total	96,807	80,469

Note 11 – Fair value of assets and liabilities.

The charity has no investments and only cash at bank which is used to pay operational and restricted project costs. Most assets were purchased second hand at below market value. We maintain them by regular repairs and servicing provided by volunteer helpers.

Note 12 – Charity Funds

* Key: R - restricted income funds of the charity; and U - unrestricted funds

Fund names		Purpose and Restrictions	Fund balances brought forward £	Income £	Spend £	Fund balances carried forward £
Essex Music hub	R	TTC secondary		6,810	4813	1,997
Essex Community Foundation	R	Primary school WAM sessions	3,299		3,294	
National Lottery Community Fund	R	Support to WAM Harwich	7,303	34,588	32542	9,242
Arts Council Discover Music	R	Primary & Secondary outreach		35,233	10815	24,409
Tendring Community Fund	R	Get Known sessions	2,115		2,115	
Youth Music – Let's Break the Mould	R	Support to 16-25 talented	7,383	2,770	10153	
People Health Trust	R		-381	2,000	1699	
Arts Council -Friends of Jaywick Martello Tower	R	WAM Jaywick sessions	7,980	1,087	9,069	
EALC	R	Outreach primary schools	2,916	5,448	2,931	5,448
Grassroots Music – Arts Council	R	Assisting artists into the industry	24,875		10109	14,766
Tendring Shared Prosperity Fund	R	WAM15 Festival	449		337	
Simple Things Awards for All	R	Simple Things Festival		7,000	2458	4,542
Youth Music	R	Discover Music outreach		24,420	7486	17,069
Total Funds			55,938	119,356	97,821	77,473

Note 13- Transactions with trustees and related parties

None of the trustees have been paid any remuneration or received any other benefits from an employment with the charity or a related entity.

Type of expenses reimbursed	This year	Last year
	£	£
Travel & materials		

One of the trustees (Chris Scott) is related to the Project Leader any work authorised and paid by the Charity to Toby Scott is approved by one of the unrelated trustees.



Section A

Independent Examiner's Report

**Report to the trustees/
members of** WE ARE MUSIC LTD

**On accounts for the year
ended** 31 MAY 2025 **Charity no
(if any)** 1130937

Set out on pages 1-13

I report to the trustees on my examination of the accounts of the above charity ("the Trust") for the year ended 31/05/2024.

**Responsibilities and
basis of report** As the charity trustees of the Trust, you are responsible for the preparation of the accounts in accordance with the requirements of the Charities Act 2011 ("the Act").

I report in respect of my examination of the Trust's accounts carried out under section 145 of the 2011 Act and in carrying out my examination, I have followed the applicable Directions given by the Charity Commission under section 145(5)(b) of the Act.

**Independent
examiner's statement**

I have completed my examination. I confirm that no material matters have come to my attention (other than that disclosed below *) in connection with the examination which gives me cause to believe that in, any material respect:

- accounting records were not kept in accordance with section 130 of the Act or
- the accounts do not accord with the accounting records

I have no concerns and have come across no other matters in connection with the examination to which attention should be drawn in order to enable a proper understanding of the accounts to be reached.

** Please delete the words in the brackets if they do not apply.*

Signed:  **Date:** 02/08/2025

Name: Matthew John Scott

**Relevant professional
qualification(s) or body
(if any):** AAT Intermediate

Address: 18 Vaughan Street,
Ipswich, IP2 8DG

Only complete if the examiner needs to highlight matters of concern (see CC32, Independent examination of charity accounts: directions and guidance for examiners).

Give here brief details of any items that the examiner wishes to disclose.

NONE.....

WE ARE MUSIC LTD

England & Wales - Charity number 1130937

Accounts



we are music

A Company Limited by Guarantee

Annual Report and Financial Statements

Year ending 31 May 2024

Charity Number: 1130937

Company Number: 6916641



COMMUNITY Grass Roots Music



Funded by UK Government



Supported using public funding by
ARTS COUNCIL ENGLAND

funded through



Funded by UK Government

POWERED BY
LEVELLING UP

Tendring
District Council



Essex County Council

YOUTH MUSIC



Supported using public funding by
ARTS COUNCIL ENGLAND



Explore Essex

Part of Essex County Council



Supported using public funding by
ARTS COUNCIL ENGLAND



Essex Music
Education Hub



Essex
Community
Foundation



Community
Initiatives
Fund

Administrative Details

Charity Number: 1130937

Company Number: 6916641

Registered Address: 12, Queen Street, Great Oakley, Essex
CO12 5AS

Location: Building 4, Off Highfield Avenue, Dovercourt, Essex

Directors and Trustees

The directors of the charitable company are its trustees for the purposes of charity tax. The trustee and officers serving during the year and since the year end were as follows:-

Chris Scott Chairman Trustee - 1 March 2024

Peter Browne Trustee - Resigned 17 August 2024

Joseph McCann Trustee - 29 July 2020

Amber Scott Trustee - 1 March 2022

Ross Kemp Trustee- 17 August 2024

Other names used by the Charity

Get Known, Rock School Club, Rock the Tower were names previously used by We are Music describing programmes operated by the charity. We have now rebranded using WAM Harwich and WAM Jaywick to replace Rock School Club and Rock the Tower.

Governing Document

We are Music is a company limited by guarantee governed by its Memorandum and Articles of Association dated 1 February 2014. It is registered as a charity with the Charity Commission. Anyone over the age of 16 can become a member. Children from 9 to 16 will be members through their parent or guardian.

Appointment of Trustees

As set out in the Articles of Association at the Annual General Meeting one third of the trustees retire in rotation and can be re-elected at the meeting. If another party wishes to seek appointment, they must give not less than fourteen days' notice nor more than thirty-five days before the date of the meeting to the Charity.



The purposes of the charity are, to help young people through:

- (a) The provision of recreational and leisure time activities provided in the interest of social welfare, designed to improve their conditions of life
- (b) Providing support and activities which develop their skills, capacities, and capabilities to enable them to participate in society as mature and responsible individuals

Our Operational Area

Tendring is ranked as the most deprived of all Essex districts. Essex County Council figures show Tendring is “falling further and further behind” The ECC Organisational Intelligence report states “Tendring shows a challenging environment facing young people in the area.”

- Secondary pupils score the lowest in wellbeing in Essex.
- Seven areas in Tendring are in the most deprived 10% in England.
- There are low family incomes in the area.
- 15 wards across Tendring have child poverty in the 20-50% range with significant high pockets (30%+) in Harwich, and Clacton. Jaywick is the most deprived area in England.
- Tendring has the highest number of NEETs, and children in care in Essex.
- There are very few activities available for young people in the area, a high degree of vandalism, early drugs use and because of the coastal locations a low police presence.

In planning our activities, the trustees have considered the Charity Commissions guidance on public benefit, including the guidance on public benefit and fee charging. We are Music relies on grants with minimal other income. All services are, due to the support of grant funding, free to participants.

WE ARE MUSIC - breaking records!

An amazing year of growth! We delivered 744 hours of regular sessions to 278 young people and a taster session to a further 290 primary school children.

The Youth Council has been a great success including developing taster sessions in the Harwich facility, and outreach sessions across Tendring. They also raised funds by getting Ed Sheeran to support our operation, and sign a guitar which we auctioned.

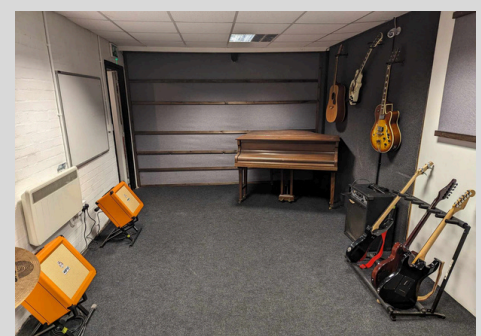
Currently 80 young people a week access Harwich and Jaywick with major improvements in well being and increased friendships. A third rehearsal space has been set up at Harwich.

Primary School sessions in our Harwich facility have been a major success. Seven primary schools are involved in the project that supplies six one hour sessions for all Year Six children at our Harwich centre including transport to and from the school.

In addition we are operating outreach after school club sessions in five primary schools focused around rural and low income areas. This has engaged 220 children and included performances to the whole schools and parents for some schools.

Our regular sessions at the Jaywick Martello Tower and our Harwich facilities are expanding as a result of our activities with primary schools. Providing sessions for complete year groups broadens the inclusiveness of our operation attracting more girls and children with learning difficulties.

To meet this increased demand we have created a third rehearsal room in the Harwich centre and open more hours.



Our work helping young people move their music on is growing.

We are running a project that will provide a better deal for young artists to fund their recordings, release tracks and work with Industry Professionals. We have also provided studio training to professional standards with the Help of Hamford and Decoy Studios. This trail blazing concept is funded by Youth Music.



Government Grassroots Music Support. We have secured two year funding, to be delivered through Hamford Studio, to provide a range of skill development and industry services to feed talented young people into the industry. These include songwriting workshops, studio engineering master classes in conjunction with Decoy Studios and live performance videos.



Performance Opportunities Two major events occurred during the year a summer showcase at Hamford View and a Christmas event in Harwich. In addition we supported local community events with a variety of bands and artists. Two bands attended the Music for Youth Regional Festival in Norwich and one is playing the National Festival in Birmingham.



This is 15 years of WAM and we are staging an event in a circus big top to celebrate. Young people who have been supported by us in the past are reforming bands especially for the day.

Financial Review

Our turnover £110,536 shows an increase on last year (last year £95,916) and we returned an excess of £20,616.

Various grants provide restricted funding, and we are holding balances totalling £55,939 at the year-end for these funds. These are supported by £80,460 cash at the bank. During the year we have funding from the Essex Community Foundation, the People's Health Trust, the National Lottery Community Fund. In addition we received funding, from the Essex Music Hub, to support our primary school sessions. Our WAM Jaywick centre received funding from the Tendring Community Fund with follow on funding from the Arts Council. Youth Music is supporting our work assist emerging artists. Going forward we have Grassroots Music Funding to work with Hamford Studio and Shared Prosperity Funding to support the WAM15 Festival. We end the year with secure forward income.

The financial statements have been prepared in accordance with the accounting policies set out in notes to the accounts and comply with the charity's governing document, the Charities Act 2011 and Accounting and Reporting by Charities: Statement of Recommended Practice applicable to charities preparing their accounts in accordance with the Financial Reporting Standard for Smaller Entities published on 16 July 2014.




WE ARE MUSIC
Statement of Financial Activities to year end 31 May 2024

	Unrestricted funds £	Restricted income funds £	Total funds £	Prior year funds £
Incoming resources				
Income from:				
Donations	6,859		6,859	6853
Charitable activities		103,677	103,677	89,063
Other	-	-	-	-
Total	6,859	103,677	110,536	95,916
Expenditure on:				
Raising funds		-		
Charitable activities		85,310	85,310	79,429
Other	4,610		4,610	1,523
Total	4,610	85,310	89,920	80,952
Net income/(expenditure) before investment gains/(losses)	2,249	18,367	20,616	14,964
Net gains/(losses) on investments	-	-	-	-
Net income/(expenditure)	2,249	18,367	20,616	14,964
Extraordinary items	-	-	-	
Transfers between funds	-	-	-	-
Other recognised gains/(losses):				
Gains and losses on revaluation of fixed assets for the charity's own use	-	-	-	-
Other gains/(losses)	-	-	-	-
Net movement in funds	2,249	18,367	20,616	14,964
Reconciliation of funds:				
Total funds brought forward			60,815	45,851
Total funds carried forward	2,249	18,367	81,431	60,815

Note
3

4

WE ARE MUSIC
Balance sheet as at year end 31 May 2024

	Unrestricted funds £	Restricted income funds £	Total this year £	Total last year £
Fixed assets				
Tangible assets (Note 7)	23,355	-	23,355	22,384
Intangible assets				
Total fixed assets	23,355	-	23,355	22,384
Current assets				
Debtors (Note 8)	100		100	680
Cash at bank and in hand (Note 10)	24,519	55,950	80,469	60,815
Total current assets	24,619	55,950	80,569	61,495
Creditors: amounts falling due within one year (Note 9)	1,710	55,950	57,660	37,277
Net current assets/(liabilities)	22,909		22,909	24,218
Total assets less current liabilities	46,264		46,264	46,602
Creditors: amounts falling due after one year (Note 9)				
Provisions for liabilities				
Total net assets or liabilities	46,264		46,264	46,602
Funds of the Charity				
Restricted income funds (Note 12)		55,950	55,950	34,975
Unrestricted funds	24,519		24,519	25,840
Revaluation reserve			-	
Total funds	24,519	55,950	80,569	60,815
Signed by two trustees on behalf of all the trustees	Signature			
			Chris Scott	21/06/2024
			Peter Browne	21/06/2024

We are Music is a charitable company limited by guarantee. Registered in England 6916641 Registered Charity No. 1130937

Reg. address: 12 Queen Street, Great Oakley, CO12 5AS We are located at Building 4, Main Road, Dovercourt, CO12 4DN

Tel: 07907414611 email: chrisscott@we-are-music.org.uk

Notes to the accounts.

Note 1 - Basis of preparation

These accounts have been prepared under the historical cost convention with items recognised at cost or transaction value unless otherwise stated in the relevant note(s) to these accounts.

The accounts have been prepared in accordance with the Statement of Recommended Practice: Accounting and Reporting by Charities preparing their accounts in accordance with the financial reporting Standard applicable in the UK and Republic of Ireland (FRS102) issued on 16 July 2014, and with the Charities Act 2011.

The charity constitutes public benefit entity as defined by FRS 102. The charity is a going concern whose operation will continue through the next financial year. The accounts present a true and fair view of the charity's performance.

The company was entitled to exemption under section 477 of the Companies Act 2006 relating to small companies. The members have not required the company to obtain an audit in accordance with section 476 of the Companies Act 2006.

Note 2 - Accounting policies

Recognition of Income

These are included in the Statement of Financial Activities (SoFA) when

- the charity becomes entitled to the resources
- it is more likely than not that the trustees will receive the resources; and
- the monetary value can be measured with sufficient reliability.

Offsetting

There has been no offsetting of assets and liabilities, or income and expenses, unless required or permitted by the FRS 102 SORP or FRS 102.

Grants and Donations

These are only included in the SoFA when the general income recognition criteria are met (5.10 to 5.12 FRS 102 SORP).

In the case of performance related grants, income must only be recognised to the extent that the charity has provided the specified goods or services as entitlement to the grant only occurs when the performance related conditions are met (5.16 FRS 102 SORP).

Tax reclaims on donations and gifts

Gift Aid receivable is included in income when there is a valid declaration from the donor. Any Gift Aid amount recovered on a donation is considered to be part of that gift and is treated as an addition to the same fund as the initial donation unless the donor or the terms of the appeal have specified otherwise.

Donated Goods

These are measured at fair value (the amount for which the asset could be exchanged) unless impractical to do so. Goods donated for on-going use by the charity are recognised as tangible fixed assets and included in the SoFA as incoming resources when receivable.

Income from membership subscriptions

Membership subscriptions received in the nature of a gift are recognised in Donations and Legacies.

Settlement of insurance claims

Insurance claims are only included in the SoFA when the general income recognition criteria are met (5.10

to 5.12FRS 102 SORP) and are included as an item of other income in the SOFA.

Liability recognition

Liabilities are recognised where it is more likely than not that there is a legal or constructive obligation committing the charity to pay out resources and the amount of the obligation can be measured with reasonable certainty.

Deferred income

No material item of deferred income has been included in the accounts.

Creditors

The charity has creditors which are measured at settlement amounts less any trade discounts.

Provisions for liabilities

A liability is measured on recognition at its historical cost and then subsequently measured at the best estimate of the amount required to settle the obligation at the reporting date.

Basic Financial instruments

The charity accounts for basic financial instruments on initial recognition as per paragraph 10.7 FRS 102 SORP. Subsequent measurement is as per paragraphs 11.17 to 11.19, FRS 102 SORP.

Tangible fixed assets for use by the charity

These are capitalised if they can be used for more than one year and cost at least £100.

They are valued at cost and depreciation rates and methods used are disclosed in note 7.

Intangible fixed assets.

The charity has no intangible fixed assets.

Heritage assets

The charity has no heritage assets

Investments

The charity has no investments

Stocks and work in progress

The charity has no stocks or work in progress

Debtors

Debtors (including trade debtors and loans receivable) are measured on initial recognition at settlement amount after any trade discounts or amount advanced by the charity. Subsequently, they are measured at the cash or other consideration expected to be received.

Current asset investments

Cash on deposit are only held to meet short term cash commitments as they fall due. The charity does not hold current asset investments.

Note 3 – Analysis of Income

		Unrestricted funds	Restricted income funds	Total funds £	Prior year £
Donations and legacies:	Analysis				
	Donations and gifts	5,671		5,671	596
	Gift Aid		-		1,737
	Legacies	-	-	-	-
	General grants provided by government/other charities				-
	Membership subscriptions and sponsorships which are in substance donations	1,188	-	1,188	4,520
	Other		-		
	Total	6,859	-	6,859	6,853

Charitable activities:	Essex Culture & Arts Fund				19,500
	Tendring Shared Prosperity Fund		5,000		
	EALC		5,000		
	Arts Council – Friends of Jaywick Martello Tower		9,787		
	Grassroots Music Arts Council		25,470		
	Essex Community Foundation		4,770		1,000
	Essex Music Hub -23		1,603		6,804
	National Lottery Community Fund		26,329		24,054
	Peoples Health Trust East		10,639		13,856
	Tendring Community Fund		4,000		10,000
	Youth Music -LBTM		11,079		13,849
		Total	6,859	103,677	110,536

Note 4 – Analysis of expenditure

	Unrestricted funds	Restricted income funds	Total funds £	Prior year £
Analysis				
Expenditure on raising funds:				
Incurring seeking grants	-	-	-	-
Total expenditure on raising funds		-		
Expenditure on charitable activities				
Essex Culture & Arts Fund	-			18,298
Essex Community Foundation	-	1,471		11,000
Youth Music Fund B Music Connects Us	-			17,079
EALC	-	2,084		
Essex music Hub- 23		6,676		1,956
Operating sessions / concert	1,659			145
National Lottery Community Fund		27,234		15,845
Peoples Health Trust East		13,072		11,804
Tendring Community Fund		8,463		1,570
Youth Music – Lets Break the Mould		15,812		1,733
Arts Council -Friends of Jaywick Martello Tower		1,807		
Grassroots Music – Arts Council		595		
Tendring Shared Prosperity Fund		4,551		
TCF 23		1,885		
Total expenditure on charitable activities	1,659	83,651	85,310	79,430
Other				
Rent & Rates				78
Heat Light				38
Repairs works	2,384			
Depreciation	1,229			1,162
Insurance				
Accountancy Fees				225
General /travel schools	997			20
Total other expenditure	4,610		4,160	1,523
TOTAL EXPENDITURE			89,470	80,953

We are Music is a charitable company limited by guarantee. Registered in England 6916641 Registered Charity No. 1130937

Reg. address: 12 Queen Street, Great Oakley, CO12 5AS We are located at Building 4, Main Road, Dovercourt, CO12 4DN

Tel: 07907414611 email: chrisscott@we-are-music.org.uk

Note 5 – Fees for examination of the accounts

Independent examiner's fees

This year £	Last year £
0	0

Note 6 – Paid employees

All projects and operational support are supported by part-time freelance workers.

Note 7 – Tangible fixed assets

Cost or valuation

	Freehold land & buildings £	Other land & buildings £	Plant, machinery £	Fixtures, fittings and equipment £	Total £
At the beginning of the year	-	-	44,202	-	41,942
Additions	-	-	2,499	-	2,260
Revaluations	-	-	-	-	-
Disposals	-	-	-	-	-
Transfers	-	-	-	-	-
At end of the year	-	-	46,701	-	44,202

Depreciation

Basis	Reducing Balance	Reducing Balance	Reducing Balance	Reducing Balance	Reducing Balance
Rate			5%		5%

At beginning of the year	-	-	22,118	-	20,956
Disposals	-	-	-	-	-
Depreciation			1,229		1,162
Impairment	-	-	-	-	-
Transfers	-	-	-	-	-
At end of the year	-	-	23,347	-	22,118

Net book value

Net book value at the beginning of the year	-	-	22,383	-	22,084
Net book value at the end of the year	-	-	23,355	-	22,383

Note 8 - Debtors & prepayments

	This year	Last year
	£	£
Analysis of debtors		
Trade debtors	100	680
Prepayments and accrued income	-	-
Other debtors	-	-
Total	100	680

There are no debtors recoverable in more than 1 year (included in debtors above)

Note 9 – Creditors & accruals

Analysis of creditors	Amounts falling due within one year		Amounts falling due after more than one year	
	This year	Last year	This year	Last year
	£	£	£	£
Accruals for grants payable	-	-	-	-
Bank loans and overdrafts	-	-	-	-
Trade creditors	1,710	2,291	-	-
Payments received on account for contracts or performance-related grants	-	-	-	-
Accruals and deferred income	-	-	-	-
Taxation and social security	-	-	-	-
Other creditors	-	-	-	-
Total	1,710	2,291	-	-

Note 10 – Cash at bank and on hand

	This year	Last year
	£	£
Cash at bank and in hand		
Cash at bank and on hand	80,469	60,815
Total	80,469	60,815

We are Music is a charitable company limited by guarantee. Registered in England 6916641 Registered Charity No. 1130937

Reg. address: 12 Queen Street, Great Oakley, CO12 5AS We are located at Building 4, Main Road, Dovercourt, CO12 4DN

Tel: 07907414611 email: chrisscott@we-are-music.org.uk

Note 11 – Fair value of assets and liabilities.

The charity has no investments and only cash at bank which is used to pay operational and restricted project costs. We can reduce the scale of the operation to ensure we continue to operate. Most assets were purchased second hand at below market value. We maintain them by regular repairs and servicing provided by volunteer helpers.

Note 12 – Charity Funds

* Key: R - restricted income funds of the charity; and U - unrestricted funds

Fund names		Purpose and Restrictions	Fund balances brought forward	Income	Pre period spend	Spend	Fund balances carried forward
			£	£	£	£	£
Essex Music Education Hub	R	Primary school -outreach	4,168	1,603		6,676	0
Essex Community Foundation	R	Primary school WAM sessions		4,770		1,472	3,298
National Lottery Community Fund	R	Support to WAM Harwich	8,209	26,329		27,235	7,303
Peoples Health Trust East	R	Saturday Open House	2,052	10,639		13,072	-381
Tendring Community Fund	R	Get Known sessions		4,000		1,885	2,115
Youth Music – Let’s Break the Mould	R	Support to 16-25 talented	12,116	11,079		15,812	7,383
TDC Community Fund		WAM Jaywick sessions	8,430			8,462	0
Arts Council -Friends of Jaywick Martello Tower	R	WAM Jaywick sessions		9,787		1,807	7,980
EALC	R	Outreach primary schools		5,000		2,084	2,916
Grassroots Music – Arts Council	R	Assisting artists into the industry		25,470		595	24,875
Tendring Shared Prosperity Fund	R	WAM15 Festival		5,000		4,551	449
Total Funds			34,975	103,677		83,651	55,950

Note 13- Transactions with trustees and related parties

None of the trustees have been paid any remuneration or received any other benefits from an employment with the charity or a related entity.

Type of expenses reimbursed	This year	Last year
	£	£
Travel & materials		

One of the trustees (Chris Scott) is related to the Project Leader any work authorised and paid by the Charity to Toby Scott is approved by one of the unrelated trustees.



Section A Independent Examiner's Report

**Report to the trustees/
members of** WE ARE MUSIC LTD

**On accounts for the year
ended** 31 MAY 2024 **Charity no
(if any)** 1130937

Set out on pages 1-13

I report to the trustees on my examination of the accounts of the above charity ("the Trust") for the year ended 31/05/2024.

**Responsibilities and
basis of report** As the charity trustees of the Trust, you are responsible for the preparation of the accounts in accordance with the requirements of the Charities Act 2011 ("the Act").

I report in respect of my examination of the Trust's accounts carried out under section 145 of the 2011 Act and in carrying out my examination, I have followed the applicable Directions given by the Charity Commission under section 145(5)(b) of the Act.

**Independent
examiner's statement** I have completed my examination. I confirm that no material matters have come to my attention (other than that disclosed below *) in connection with the examination which gives me cause to believe that in, any material respect:

- accounting records were not kept in accordance with section 130 of the Act or
- the accounts do not accord with the accounting records

I have no concerns and have come across no other matters in connection with the examination to which attention should be drawn in order to enable a proper understanding of the accounts to be reached.

** Please delete the words in the brackets if they do not apply.*

Signed:  **Date:** 30/06/2024

Name: Matthew John Scott

**Relevant professional
qualification(s) or body
(if any):** AAT Intermediate

Address: 18 Vaughan Street,
Ipswich, IP2 8DG

Only complete if the examiner needs to highlight matters of concern (see CC32, Independent examination of charity accounts: directions and guidance for examiners).

Give here brief details of any items that the examiner wishes to disclose.

NONE.....

WE ARE MUSIC LTD

England & Wales - Charity number 1130937

Accounts



WE ARE MUSIC
(A Company Limited by Guarantee)

Annual Report and Financial Statements

Year ending 31 May 2023

Charity Number: 1130937
Company Number: 6916641

REFERENCE AND ADMINISTRATIVE DETAILS

Charity Number: 1130937

Company Number: 6916641

Registered Address: 12, Queen Street, Great Oakley, Essex CO12 5AS

Located at: Building 4, Off Highfield Avenue, Dovercourt, Essex

Directors and Trustees

The directors of the charitable company are its trustees for the purposes of charity tax. The trustee and officers serving during the year and since the year end were as follows:-

Chris Scott	Chairman Trustee
Peter Browne	Trustee – 12 May 2023
Joseph McCann	Trustee – 29 July 2020
Amber Scott	Trustee – 1 March 2022

Other names used by the Charity

Get Known, Rock School Club, Rock the Tower are names previously used by We are Music describing programmes operated by the charity. We have now rebranded using WAM Harwich and WAM Jaywick to replace Rock School Club and Rock the Tower.

STRUCTURE GOVERNANCE AND MANAGEMENT

Governing Document

We are Music is a company limited by guarantee governed by its Memorandum and Articles of Association dated 1 February 2014. It is registered as a charity with the Charity Commission. Anyone over the age of 16 can become a member. Children from 9 to 16 will be members through their parent or guardian.

Appointment of Trustees

As set out in the Articles of Association at the Annual General Meeting one third of the trustees retire in rotation and can be re-elected at the meeting. If another party wishes to seek appointment, they must give not less than fourteen days' notice nor more than thirty-five days before the date of the meeting to the Charity.

OBJECTIVES AND ACTIVITIES

The purposes of the charity are, to help young people through:

- (a) The provision of recreational and leisure time activities provided in the interest of social welfare, designed to improve their conditions of life
- (b) Providing support and activities which develop their skills, capacities, and capabilities to enable them to participate in society as mature and responsible individuals

There are two components of our work: -

WAM Harwich & WAM Jaywick

- We provide regular sessions for young people between nine and sixteen where they mix together in bands, develop skills and make friends. Most of the young people stay for several years and for many it becomes the focus of their interest and friendships and important to their well being. Band sessions are led by Music Leaders, during term times in our Harwich facility and Jaywick Martello Tower.

We are Music is a charitable company limited by guarantee. Registered in England 6916641 Registered Charity No. 1130937

Reg. address: 12 Queen Street, Great Oakley, CO12 5AS We are located at Building 4, Main Road, Dovercourt, CO12 4DN

Tel: 07907414611 email: chrisscott@we-are-music.org.uk

- **We are Music –Let's Break the Mould**

We strive to provide for the advancement of young people, between sixteen and twenty five, through music into the music industry, and education. We are excited to be running a project, Let's Break the Mould with the support of our Youth Council, Decoy Studios and Colour Sound with funding support from Youth Music.

The geographic area in which we operate has high levels of unemployed and low family incomes. Tendring is ranked as the most deprived of all Essex districts. Essex County Council figures show Tendring is "falling further and further behind" and the situation worsened since COVID.

The Essex County Council Organisational Intelligence report on the profile of people living in Tendring shows a challenging environment facing young people in the area.

- Secondary pupils score the lowest in wellbeing in Essex.
- Seven areas in Tendring are in the most deprived 10% in England.
- There are low family incomes in the area.
- 15 wards across Tendring have child poverty in the 20-50% range with significant high pockets (30%+) in Harwich, Clacton and Walton on the Naze.
- Jaywick is the most deprived area in England
- Tendring has the highest number of NEETs, and children in care in Essex.
- There are very few activities available for young people in the area, a high degree of vandalism, early drugs use and because of the coastal locations a low police presence.

In planning our activities, the trustees have considered the Charity Commissions guidance on public benefit, including the guidance on public benefit and fee charging. We are Music relies on grants with minimal other income. All services are, due to the support of grant funding, free to participants.

WE ARE MUSIC - MOVING FORWARD

At the beginning of the financial year we were starting to recover from the effects of COVID and securing funding to stabilise the charities future. Youth Music had assisted us with reallocating their funding to improve our fundraising and ensure that our operation become structurally sound and resilient to change. At the end of the year we have secured funding to protect our forward programmes into 2025.

Youth Voice

We are a youth led organisation at the core of which is the WAM Youth group who are involved in every step forward. This group comprises young people from the Harwich and Jaywick centres along with the operational WAM team. Regular meeting discuss the way forward.

Saturday "open house" Sessions.

The youth group have developed and operate the Saturday "open house" sessions. It provides a space at WAM Harwich for social gathering, jamming and rehearsal spaces open to current and former members from both Harwich and Jaywick. This programme is funded until July 2024 by the People's Health trust. An unexpected outcome from this project was that it fired up the young team who have used these meetings to develop new ideas.

WAM Harwich

Numbers have been steadily building and we have received support from the National Lottery Community Fund through to June 2025. This has catalysed other activities. We have run programmes with local primary schools providing six lesson courses at our WAM Harwich facility. To date we have worked with over 140 children and three primary schools. This has attracted further funding from the Essex Music Hub.

In addition we are running a series of summer taster sessions with the Essex Music Hub.

WAM Jaywick

This has restarted and is building steadily initial funding was provided by the Essex Arts & Culture Fund and is now funded through to December 2023 by the Tendring Community Fund.

Lets Break the Mould.

Following on from our Get Known programmes this project has received grant funding from Youth Music. It will provide a better deal for young artists to fund their recordings, release tracks and work with Industry Professionals. The support of Colour Sound provides a mechanism to share income from the artists streaming income with potential fans and those wishing to help young emerging artists. Artists will be selected by a team of industry professionals, then recorded at Decoy Studios and released on all streaming platforms.

FINANCIAL REVIEW

Our turnover £95,916 shows an increase on last year (last year £52,105) and we returned an excess of £14,964.

Various grants provide restricted funding, and we are holding balances totalling £34,975 at the year-end for these funds. These are supported by £60,815 cash at the bank. At the start of the year we had secured funding from the Essex Community Foundation, and during the year we obtained support from the People's Health Trust, Essex Arts & Community Fund, and the National Lottery Community. In addition we received funding, from the Essex Music Hub, to support our primary school sessions. Our WAM Jaywick centre received funding from the Tendring Community Fund and Youth Music has supported our Let's Break the Mould programme to assist emerging artists. We end the year with secure forward income.

The financial statements have been prepared in accordance with the accounting policies set out in notes to the accounts and comply with the charity's governing document, the Charities Act 2011 and Accounting and Reporting by Charities: Statement of Recommended Practice applicable to charities preparing their accounts in accordance with the Financial Reporting Standard for Smaller Entities published on 16 July 2014.

WE ARE MUSIC
Statement of Financial Activities to year end 31 May 2023

	Unrestricted funds £	Restricted income funds £	Total funds £	Prior year funds £
Incoming resources				
Income from:				
Donations	6,853		6,853	2,555
Charitable activities		89,063	89,063	49,550
Other	-	-	-	-
Total	6,853	89,063	95,916	52,105
Expenditure on:				
Raising funds		-		
Charitable activities	145	79,284	79,429	49,260
Other	1,523		1,523	5,810
Total	1,668	79,284	80,952	55,070
Net income/(expenditure) before investment gains/(losses)	5,185	9,779	14,964	(2,965)
Net gains/(losses) on investments	-	-	-	-
Net income/(expenditure)	5,185	9,779	14,964	(2,965)
Extraordinary items	-	-	-	-
Transfers between funds	-	-	-	-
Other recognised gains/(losses):				
Gains and losses on revaluation of fixed assets for the charity's own use	-	-	-	-
Other gains/(losses)	-	-	-	-
Net movement in funds	5,185	9,779	14,964	(2,965)
Reconciliation of funds:				
Total funds brought forward	14,509	41,958	56,467	59,432
Total funds carried forward	19,694	51,737	71,431	56,467

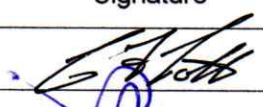

Note
3

4

WE ARE MUSIC
Balance sheet as at year end 31 May 2023

	Unrestricted funds £	Restricted income funds £	Total this year £	Total last year £
Fixed assets				
Tangible assets (Note 7)	22,384	-	22,384	20,986
Intangible assets				
Total fixed assets	22,384	-	22,384	20,986
Current assets				
Debtors (Note 8)		680	680	8,040
Cash at bank and in hand (Note 10)	25,840	34,975	60,815	38,528
Total current assets	25,840	35,655	61,495	46,568
Creditors: amounts falling due within one year (Note 9)		37,277	37,277	37,161
Net current assets/(liabilities)	25,840	-1,622	24,218	9,407
Total assets less current liabilities	48,224	-1,622	46,602	30,393
Creditors: amounts falling due after one year (Note 9)				
Provisions for liabilities				
Total net assets or liabilities	48,224	-1,622	46,602	30,393
Funds of the Charity				
Restricted income funds (Note 12)		34,975	34,975	27,844
Unrestricted funds	11,627		11,627	2,549
Revaluation reserve			-	
Total funds	11,627	34,975	46,602	30,393

Signed by two trustees on behalf of all the trustees

Signature		
	Chris Scott	21/06/2023
	Peter Browne	21/06/2023

We are Music is a charitable company limited by guarantee. Registered in England 6916641 Registered Charity No. 1130937

Reg. address: 12 Queen Street, Great Oakley, CO12 5AS We are located at Building 4, Main Road, Dovercourt, CO12 4DN

Tel: 07907414611 email: chrisscott@we-are-music.org.uk

Notes to the accounts.

Note 1 - Basis of preparation

These accounts have been prepared under the historical cost convention with items recognised at cost or transaction value unless otherwise stated in the relevant note(s) to these accounts.

The accounts have been prepared in accordance with the Statement of Recommended Practice: Accounting and Reporting by Charities preparing their accounts in accordance with the financial reporting Standard applicable in the UK and Republic of Ireland (FRS102) issued on 16 July 2014, and with the Charities Act 2011.

The charity constitutes public benefit entity as defined by FRS 102. The charity is a going concern whose operation will continue through the next financial year. The accounts present a true and fair view of the charity's performance.

The company was entitled to exemption under section 477 of the Companies Act 2006 relating to small companies. The members have not required the company to obtain an audit in accordance with section 476 of the Companies Act 2006.

Note 2 - Accounting policies

Recognition of Income

These are included in the Statement of Financial Activities (SoFA) when

- the charity becomes entitled to the resources
- it is more likely than not that the trustees will receive the resources; and
- the monetary value can be measured with sufficient reliability.

Offsetting

There has been no offsetting of assets and liabilities, or income and expenses, unless required or permitted by the FRS 102 SORP or FRS 102.

Grants and Donations

These are only included in the SoFA when the general income recognition criteria are met (5.10 to 5.12 FRS 102 SORP).

In the case of performance related grants, income must only be recognised to the extent that the charity has provided the specified goods or services as entitlement to the grant only occurs when the performance related conditions are met (5.16 FRS 102 SORP).

Tax reclaims on donations and gifts

Gift Aid receivable is included in income when there is a valid declaration from the donor. Any Gift Aid amount recovered on a donation is considered to be part of that gift and is treated as an addition to the same fund as the initial donation unless the donor or the terms of the appeal have specified otherwise.

Donated Goods

These are measured at fair value (the amount for which the asset could be exchanged) unless impractical to do so. Goods donated for on-going use by the charity are recognised as tangible fixed assets and included in the SoFA as incoming resources when receivable.

Volunteer Help

The value of any voluntary help received is not included in the accounts but is described in the trustee's annual report.

Income from membership subscriptions

Membership subscriptions received in the nature of a gift are recognised in Donations and Legacies.

Settlement of insurance claims

Insurance claims are only included in the SoFA when the general income recognition criteria are met (5.10 to 5.12FRS 102 SORP) and are included as an item of other income in the SoFA.

Liability recognition

Liabilities are recognised where it is more likely than not that there is a legal or constructive obligation committing the charity to pay out resources and the amount of the obligation can be measured with reasonable certainty.

Redundancy cost

The charity made no redundancy payments during the reporting period.

Deferred income

No material item of deferred income has been included in the accounts.

Creditors

The charity has creditors which are measured at settlement amounts less any trade discounts.

Provisions for liabilities

A liability is measured on recognition at its historical cost and then subsequently measured at the best estimate of the amount required to settle the obligation at the reporting date.

Basic financial instruments

The charity accounts for basic financial instruments on initial recognition as per paragraph 10.7 FRS 102 SORP. Subsequent measurement is as per paragraphs 11.17 to 11.19, FRS 102 SORP.

Tangible fixed assets for use by the charity

These are capitalised if they can be used for more than one year and cost at least £100.

They are valued at cost and depreciation rates and methods used are disclosed in note 7.

Intangible fixed assets.

The charity has no intangible fixed assets.

Heritage assets

The charity has no heritage assets

Investments

The charity has no investments

Stocks and work in progress

The charity has no stocks or work in progress

Debtors

Debtors (including trade debtors and loans receivable) are measured on initial recognition at settlement amount after any trade discounts or amount advanced by the charity. Subsequently, they are measured at the cash or other consideration expected to be received.

Current asset investments

Cash on deposit are only held to meet short term cash commitments as they fall due. The charity does not hold current asset investments.

Note 3 – Analysis of Income

		Unrestricted funds	Restricted income funds	Total funds £	Prior year £
Analysis					
Donations and legacies:	Donations and gifts	596		596	1,678
	Gift Aid	1,737	-	1,737	
	Legacies	-	-	-	-
	General grants provided by government/other charities				-
	Membership subscriptions and sponsorships which are in substance donations	4,520	-	4,520	876
	Other		-		
Total		6,853	-	6,853	2,554

Charitable activities:	Essex Culture & Arts Fund		19,500		
	Youth Music Fund B -Music Connects Us				39,550
	Essex Community Foundation		1,000		10,000
	Essex Music Hub -23		6,804		
	National Lottery Community Fund		24,054		
	Peoples Health Trust East		13,856		
	Tendring Community Fund		10,000		
	Youth Music -LBTM		13,849		
Total		6,853	89,063	95,916	52,104

Note 4 – Analysis of expenditure

		Unrestricted funds	Restricted income funds	Total funds £	Prior year £
Analysis					
Expenditure on raising funds:	Incurring seeking grants	-	-	-	-
	Total expenditure on raising funds		-		

We are Music is a charitable company limited by guarantee. Registered in England 6916641 Registered Charity No. 1130937

Reg. address: 12 Queen Street, Great Oakley, CO12 5AS We are located at Building 4, Main Road, Dovercourt, CO12 4DN

Tel: 07907414611 email: chrisscott@we-are-music.org.uk

Expenditure on charitable activities

Essex Culture & Arts Fund	-	18,298		1,202
Essex Community Foundation	-	11,000		
Youth Music Fund B Music Connects Us	-	17,079		42,840
Essex Music Education Hub -22	-			1,034
Essex music Hub- 23		1,956		
Operating sessions / concert	145			4,183
National Lottery Community Fund		15,845		
Peoples Health Trust East		11,804		
Tendring Community Fund		1,570		
Youth Music – Lets Break the Mould		1,733		
Total expenditure on charitable activities	145	79,285	79,430	49,259

Other

Rent & Rates	78			
Heat Light	38			693
Repairs works				847
Depreciation	1,162			1,105
Insurance				421
Accountancy Fees	225			
General	20			2,744
Total other expenditure	1,523		1,523	5,180

TOTAL EXPENDITURE

1,668	79,285	80,953	54,439
-------	--------	--------	--------

Note 5 – Fees for examination of the accounts

Independent examiner's fees

Assurance services other than audit or independent examination

Other fees (for example: financial advice, consultancy, accountancy services) paid to the independent examiner

This year £	Last year £
0	0
0	0
0	0

Note 6 – Paid employees

	This year £	Last year £
Salaries and wages	0	0
Social security costs	0	0
Pension costs (defined contribution scheme)	0	0
Other employee benefits	0	0
Total staff costs	0	0

All projects and operational support are supported by part-time freelance workers.

Average head count in the year	This year Number	Last year Number
Charitable Activities		
Total		

Note 7 – Tangible fixed assets

Cost or valuation

	Freehold land & buildings	Other land & buildings	Plant, machinery	Fixtures, fittings and equipment	Total
	£	£	£	£	£
At the beginning of the year	-	-	41,942	-	41,464
Additions	-	-	2,260	-	478
Revaluations	-	-	-	-	-
Disposals	-	-	-	-	-
Transfers	-	-	-	-	-
At end of the year	-	-	44,202	-	41,942

Depreciation

Basis	Reducing Balance	Reducing Balance	Reducing Balance	Reducing Balance	Reducing Balance
Rate			5%		5%

At beginning of the year	-	-	20,956	-	19,851
Disposals	-	-	-	-	-
Depreciation			1,162		1,105
Impairment	-	-	-	-	-
Transfers	-	-	-	-	-
At end of the year	-	-	22,118	-	20,956

Net book value

Net book value at the beginning of the year	-	-	22,084	-	19,830
Net book value at the end of the year	-	-	20,986	-	21,614

Note 8 - Debtors & prepayments

Analysis of debtors	This year	Last year
	£	£
Trade debtors	680	8,040
Prepayments and accrued income	-	-
Other debtors	-	-
Total	680	8,040

There are no debtors recoverable in more than 1 year (included in debtors above)

Note 9 – Creditors & accruals

Analysis of creditors	Amounts falling due within one year		Amounts falling due after more than one year	
	This year	Last year	This year	Last year
	£	£	£	£
Accruals for grants payable	-	-	-	-
Bank loans and overdrafts	-	-	-	-
Trade creditors	2,291	1,266	-	-
Payments received on account for contracts or performance-related grants	-	-	-	-
Accruals and deferred income	-	-	-	-
Taxation and social security	-	-	-	-
Other creditors	-	-	-	-
Total	2,291	1,266	-	-

Note 10 – Cash at bank and on hand

Cash at bank and in hand	This year	Last year
	£	£
Short term cash investments (less than 3 months maturity date)	-	-
Short term deposits	-	-
Cash at bank and on hand	60,815	38,520
Other	-	-
Total	60,815	38,520

Note 11 – Fair value of assets and liabilities.

The charity has no investments and only cash at bank which is used to pay operational and restricted project costs. We can reduce the scale of the operation to ensure we continue to operate.

Most assets were purchased second hand at below market value. We maintain them by regular repairs and servicing provided by volunteer helpers.

Note 12 – Charity Funds

* Key: R - restricted income funds of the charity; and U - unrestricted funds

Fund names		Purpose and Restrictions	Fund balances brought forward	Incom e	Pre period spend	Spend	Fund balances carried forward
			£	£	£	£	£
Essex Music Education Hub-23	R	Primary school -outreach		6,804	680	1,956	4,168
Essex Community Foundation	R	Operational Support	10,000	1,000		11,000	0
National Lottery Community Fund	R	Support to WAM Harwich		24,054		15,845	8,209
Peoples Health Trust East	R	Saturday Open House		13,856		11,804	2,052
Tendring Community Fund	R	Support to WAM Jaywick		10,000		1,570	8,430
Youth Music – Let's Break the Mould	R	Support to 16-25 talented		13,849		1,733	12,116
Essex Arts & Culture	r	Simple Things/Jaywick		19,500		19,500	0
Youth Music Fund B	R	Music Connects Us	17,041			17,041	0
Total Funds			27,041	89,063	680	80,449	34,975

Note 13- Transactions with trustees and related parties

None of the trustees have been paid any remuneration or received any other benefits from an employment with the charity or a related entity.

Type of expenses reimbursed	This year	Last year
	£	£
Travel & materials		

One of the trustees (Chris Scott) is related to the Project Leader any work authorised and paid by the Charity to Toby Scott is approved by one of the unrelated trustees.



Section A

Independent Examiner's Report

Report to the trustees

WE ARE MUSIC LIMITED

On accounts for the year ended

31 MAY 2023

**Charity no
(if any)**

1130937

Set out on pages

1 to 14

(remember to include the page numbers of additional sheets)

I report to the trustees on my examination of the accounts of the above charity ("the Trust") for the year ended 31/05/2023.

Responsibilities and basis of report

As the charity's trustees, you are responsible for the preparation of the accounts in accordance with the requirements of the Charities Act 2011 ("the Act").

I report in respect of my examination of the Trust's accounts carried out under section 145 of the 2011 Act and in carrying out my examination, I have followed all the applicable Directions given by the Charity Commission under section 145(5)(b) of the Act.

Independent examiner's statement

I have completed my examination. I confirm that no material matters have come to my attention in connection with the examination which gives me cause to believe that in, any material respect:

- the accounting records were not kept in accordance with section 130 of the Charities Act; or
- the accounts did not accord with the accounting records; or
- the accounts did not comply with the applicable requirements concerning the form and content of accounts set out in the Charities (Accounts and Reports) Regulations 2008 other than any requirement that the accounts give a 'true and fair' view which is not a matter considered as part of an independent examination.

I have no concerns and have come across no other matters in connection with the examination to which attention should be drawn in this report in order to enable a proper understanding of the accounts to be reached.

Signed:

Date:

28 June 2023

Name:

Matthew John Scott

Relevant professional qualification(s) or body (if any):

AAT Intermediate

Address:

18 Vaughan Street,
Ipswich, IP2 8DG

Section B

Disclosure

Only complete if the examiner needs to highlight material matters of concern (see CC32, Independent examination of charity accounts: directions and guidance for examiners).

Give here brief details of any items that the examiner wishes to disclose.

NONE.....

WE ARE MUSIC LTD

England & Wales - Charity number 1130937

Accounts



WE ARE MUSIC
(A Company Limited by Guarantee)

Annual Report and Financial Statements

Year ending 31 May 2022

Charity Number: 1130937
Company Number: 6916641

We are Music is a charitable company limited by guarantee. Registered in England 6916641 Registered Charity No. 1130937

Reg. address: 12 Queen Street, Great Oakley, CO12 5AS We are located at Building 4, Main Road, Dovercourt, CO12 4DN

GET KNOWN and ROCK SCHOOL CLUB are programmes operated by We are Music Ltd. Tel: 07907414611 email: chrisscott@we-are-music.org.uk

REFERENCE AND ADMINISTRATIVE DETAILS

Charity Number: 1130937

Company Number: 6916641

Registered Address: 12, Queen Street, Great Oakley, Essex CO12 5AS

Located at: Building 4, Off Highfield Avenue, Dovercourt, Essex

Directors and Trustees

The directors of the charitable company are its trustees for the purposes of charity tax. The trustee and officers serving during the year and since the year end were as follows:-

Chris Scott	Chairman Trustee
Peter Browne	Trustee
Joseph McCann	Trustee – 29 July 2020
Amber Scott	Trustee – 1 March 2022

Other names used by the Charity

Get Known, Rock School Club, Rock the Tower are names used by We are Music describing programmes operated by the charity. We have now rebranded using WAM Harwich and WAM Jaywick to replace Rock School Club and Rock the Tower.

STRUCTURE GOVERNANCE AND MANAGEMENT

Governing Document

We are Music is a company limited by guarantee governed by its Memorandum and Articles of Association dated 1 February 2014. It is registered as a charity with the Charity Commission. Anyone over the age of 16 can become a member. Children from 9 to 16 will be members through their parent or guardian.

Appointment of Trustees

As set out in the Articles of Association at the Annual General Meeting one third of the trustees retire in rotation and can be re-elected at the meeting. If another party wishes to seek appointment, they must give not less than fourteen days' notice nor more than thirty-five days before the date of the meeting to the Charity.

OBJECTIVES AND ACTIVITIES

The purposes of the charity are, to help young people through:

- (a) The provision of recreational and leisure time activities provided in the interest of social welfare, designed to improve their conditions of life
- (b) Providing support and activities which develop their skills, capacities, and capabilities to enable them to participate in society as mature and responsible individuals

There are two components of our work: -

WAM Harwich & WAM Jaywick (formerly Rock School & Rock the Tower) –

- We support young people from nine to eighteen providing regular band sessions, led by Music Leaders, during term times in our Harwich facility and Jaywick Martello Tower. As a result of COVID we did not operate at the Jaywick Martello Tower in this financial year and have integrated participants into our Harwich based operation. The WAM Jaywick operation restarts on 6 June 2022 funded by the Essex Cultural & Arts Fund.

We are Music is a charitable company limited by guarantee. Registered in England 6916641 Registered Charity No. 1130937

Reg. address: 12 Queen Street, Great Oakley, CO12 5AS We are located at Building 4, Main Road, Dovercourt, CO12 4DN

GET KNOWN and ROCK SCHOOL CLUB are programmes operated by We are Music Ltd. Tel: 07907414611 email: chrisscott@we-are-music.org.uk

We are Music –Get Known

We strive to provide for the advancement of young people through music into the music industry, and education. For young people between sixteen and twenty-five we provide: -

- Live performance videos to showcase the artist to aid them to progress their career in music.
- Hamford Studio -Studio space to work, develop material extend their skills and record tracks.
- Support providing live gigs for young artists to perform.
- Development support for young artists providing them with useful information through Industry contacts.

The geographic area in which we operate has high levels of unemployed and low family incomes. Tendring is ranked as the most deprived of all Essex districts. Essex County Council 2019 figures show Tendring is "falling further and further behind" and the situation has worsened since COVID.

The Essex County Council Organisational Intelligence report on the profile of people living in Tendring shows a challenging environment facing young people in the area.

- Secondary pupils score the lowest in wellbeing in Essex.
- Seven areas in Tendring are in the most deprived 10% in England.
- There are low family incomes in the area.
- 15 wards across Tendring have child poverty in the 20-50% range with significant high pockets (30%+) in Harwich, Clacton and Walton on the Naze.
- Jaywick is the most deprived area in England
- Tendring has the highest number of NEETs, and children in care in Essex.
- There are very few activities available for young people in the area, a high degree of vandalism, early drugs use and because of the coastal locations a low police presence.

In planning our activities, the trustees have considered the Charity Commissions guidance on public benefit, including the guidance on public benefit and fee charging. We are Music relies on grants and the income from fees to cover its operating costs. We charged £4.00 per week to participants for one-hour tuition and unlimited access to the facilities in 2021/2022. The trustees also have discretionary powers to enable people to attend for free and have used these powers during the COVID crisis.

ACHIEVEMENTS AND PERFORMANCE

IMPACT OF COVID 19

COVID continues to have a devastating effect on our operation and the wellbeing of our staff and the young people we work with. Restrictions were still in place regarding live performances until mid-July 2021. WAM Harwich started recovering in September 2021.

Impact in this financial year:-

- COVID continued to have significant impact on our operation and the wellbeing of the participants. Numbers of participants reduced to below 50% of pre COVID numbers and many young people dropped out and suffered badly with depression and mental health.
- The only support funding for the year was a Youth Music grant which ran from August 2020 until August 2022.

We are Music is a charitable company limited by guarantee. Registered in England 6916641 Registered Charity No. 1130937

Reg. address: 12 Queen Street, Great Oakley, CO12 5AS We are located at Building 4, Main Road, Dovercourt, CO12 4DN

GET KNOWN and ROCK SCHOOL CLUB are programmes operated by We are Music Ltd. Tel: 07907414611 email: chrisscott@we-are-music.org.uk

- By January 2022 we were running on our reserves and the future looked very uncertain. Obtaining grant support was difficult, and after many failures, by the end of May 2022 we secured significant future funding from Essex Community Foundation, Essex Cultural & Arts Fund, and the People's Health Trust.
- No Primary school afterschool sessions were delivered.
- We ran no recruitment taster sessions
- We did not provide sessions at Jaywick Martello Tower. (Planned restart on 6 June 2022)
- We ran two events, a summer outdoor show in July operated within COVID restrictions and a Christmas show in December 2021. The last performance before this was December 2019. The show in December 2021 showed a return to high performance standards.

THE WAY FORWARD FOR WE ARE MUSIC

Youth Music assisted us with reallocating some of their funding to improve our fundraising and ensure that our operation becomes structurally sound and resilient to change. Strength on the board with varied skills is important. We have recently recruited a trustee with an EDI background and are seeking other trustees with PR and fundraising experience.

Youth Voice

We are working towards being a youth led organisation at the core of which is the WAM Youth group who are helping us re-build the charity community work. This group comprises young people from the Harwich and Jaywick centres along with the operational WAM team. Regular meeting discuss the way forward.

Saturday "open house" Sessions.

The youth group have developed the Saturday "open house" sessions recognising it is important to re-motivate and improve well-being after the isolation of COVID. We will provide an "open house" at WAM Harwich for social gathering, jamming and rehearsal spaces open to current and former members from both Harwich and Jaywick. Central to this is the inclusion of Jaywick members and former WAM members many of which, as they got older, disengaged with WAM as its "Rock School" image was considered childish. Previously after leaving WAM they played in bands but with COVID many bands broke up and left individuals socially stranded. We believe our "open house" sessions will provide a catalyst to generate their broader community involvement.

Get Known

The only highlight to note is that we continued this project with the Youth Music funding. Get known was hard hit by COVID, we thought bands and artists would take the opportunity to write and record new material, but with no gigs, where they could play to an audience, they became despondent and depressed. Many bands broke up and left young people socially isolated. We continued in this year to provide mainly live performance videos and some single recordings.

Two internships were delivered both are now supporting teaching sessions and one has developed skills in sound engineering.

We are Music is a charitable company limited by guarantee. Registered in England 6916641 Registered Charity No. 1130937

Reg. address: 12 Queen Street, Great Oakley, CO12 5AS We are located at Building 4, Main Road, Dovercourt, CO12 4DN

GET KNOWN and ROCK SCHOOL CLUB are programmes operated by We are Music Ltd. Tel: 07907414611 email: chrisscott@we-are-music.org.uk

A considerable part of the Youth Music funding was for live events and could not be delivered. Apart from small gigs only one event of any size is planned for July 2nd 2022 The Simple Things Festival.

WAM Harwich

Regular sessions ran when possible on Mondays and Wednesdays. Due to reduced numbers, and to save costs, in March, we have consolidated on one day teaching. Since the New Year we have been working hard to increase numbers.

WAM Jaywick

The facility in the Jaywick Martello Tower has been shut for the year. In April 2021, we incorporated some of the participants into sessions at the Harwich Facility. The centre re-opened on 7th June 2022.

FINANCIAL REVIEW

Our turnover £52,105 shows a decrease on last year (last year £62,001) and we returned a deficit of £2,965. However, we were able to operate with funds carried forward from last year to deliver projects in this financial year and through to August 2022.

Various grants provide restricted funding, and we are holding balances totalling £35,884 at the year-end for these funds. These are supported by £38,528 cash at the bank and £8,040 debtors. At the start of the year the only forward grant was Youth Music with no support for community music projects. By year end we had secured funding from Essex Community Foundation (shown in accounts) and we have offers from the Essex Cultural & Arts Fund and the Peoples Health Trust.

The financial statements have been prepared in accordance with the accounting policies set out in notes to the accounts and comply with the charity's governing document, the Charities Act 2011 and Accounting and Reporting by Charities: Statement of Recommended Practice applicable to charities preparing their accounts in accordance with the Financial Reporting Standard for Smaller Entities published on 16 July 2014.

WE ARE MUSIC
Statement of Financial Activities to year end 31 May 2022

	Unrestricted funds £	Restricted income funds £	Total funds £	Prior year funds £
Incoming resources				
Income from:				
Donations	2,555		2,555	21,151
Charitable activities		49,550	49,550	40,850
Other	-	-	-	-
Total	2,555	49,550	52,105	62,001
Expenditure on:				
Raising funds		-		
Charitable activities	3,947	45,313	49,260	51,564
Other	5,810		5,810	12,872
Total	9,757	45,313	55,070	64,436
Net income/(expenditure) before investment gains/(losses)	(7,202)	4,237	(2,965)	(2,435)
Net gains/(losses) on investments	-	-	-	-
Net income/(expenditure)	(7,202)	4,237	(2,965)	(2,435)
Extraordinary items	-	-	-	
Transfers between funds	-	-	-	-
Other recognised gains/(losses):				
Gains and losses on revaluation of fixed assets for the charity's own use	-	-	-	-
Other gains/(losses)	-	-	-	-
Net movement in funds	(7,202)	4,237	(2,965)	(2,435)
Reconciliation of funds:				
Total funds brought forward	21,711	37,721	59,432	61,867
Total funds carried forward	14,509	41,958	56,467	59,432

Note

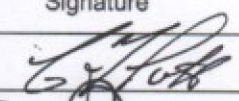

3

4

WE ARE MUSIC
Balance sheet as at year end 31 May 2022

	Unrestricted funds £	Restricted income funds £	Total this year £	Total last year £
Fixed assets				
Tangible assets (Note 7)	20,986	-	20,986	21,614
Intangible assets				
Total fixed assets	20,986	-	20,986	21,614
Current assets				
Debtors (Note 8)		8,040	8,040	
Cash at bank and in hand (Note 10)	10,684	27,844	38,528	50,305
Total current assets	10,684	35,884	46,568	50,305
Creditors: amounts falling due within one year (Note 9)	1,277	35,884	37,161	24,822
Net current assets/(liabilities)	9,407	0	9,407	25,483
Total assets less current liabilities	30,393	0	30,393	47,097
Creditors: amounts falling due after one year (Note 9)				
Provisions for liabilities				
Total net assets or liabilities	30,393	0	30,393	47,097
Funds of the Charity				
Restricted income funds (Note 12)		27,844	27,844	22,471
Unrestricted funds	2,549		2,549	24,626
Revaluation reserve			-	
Total funds	2,549	27,844	30,393	47,097

Signed by two trustees on behalf of all the trustees

Signature		
	Chris Scott	21/06/2022
	Peter Browne	21/06/2022

We are Music is a charitable company limited by guarantee. Registered in England 6916641 Registered Charity No. 1130937

Reg. address: 12 Queen Street, Great Oakley, CO12 5AS We are located at Building 4, Main Road, Dovercourt, CO12 4DN

GET KNOWN and ROCK SCHOOL CLUB are programmes operated by We are Music Ltd. Tel: 07907414611 email: chrisscott@we-are-music.org.uk

Notes to the accounts.

Note 1 - Basis of preparation

These accounts have been prepared under the historical cost convention with items recognised at cost or transaction value unless otherwise stated in the relevant note(s) to these accounts.

The accounts have been prepared in accordance with the Statement of Recommended Practice: Accounting and Reporting by Charities preparing their accounts in accordance with the financial reporting Standard applicable in the UK and Republic of Ireland (FRS102) issued on 16 July 2014, and with the Charities Act 2011.

The charity constitutes public benefit entity as defined by FRS 102. The charity is a going concern whose operation will continue through the next financial year.

The accounts present a true and fair view of the charity's performance.

The company was entitled to exemption under section 477 of the Companies Act 2006 relating to small companies. The members have not required the company to obtain an audit in accordance with section 476 of the Companies Act 2006.

Note 2 - Accounting policies

Recognition of Income

These are included in the Statement of Financial Activities (SoFA) when

- the charity becomes entitled to the resources
- it is more likely than not that the trustees will receive the resources; and
- the monetary value can be measured with sufficient reliability.

Offsetting

There has been no offsetting of assets and liabilities, or income and expenses, unless required or permitted by the FRS 102 SORP or FRS 102.

Grants and Donations

These are only included in the SoFA when the general income recognition criteria are met (5.10 to 5.12 FRS 102 SORP).

In the case of performance related grants, income must only be recognised to the extent that the charity has provided the specified goods or services as entitlement to the grant only occurs when the performance related conditions are met (5.16 FRS 102 SORP).

Tax reclaims on donations and gifts

Gift Aid receivable is included in income when there is a valid declaration from the donor.

Any Gift Aid amount recovered on a donation is considered to be part of that gift and is treated as an addition to the same fund as the initial donation unless the donor or the terms of the appeal have specified otherwise.

Donated Goods

These are measured at fair value (the amount for which the asset could be exchanged) unless impractical to do so.

Goods donated for on-going use by the charity are recognised as tangible fixed assets and included in the SoFA as incoming resources when receivable.

Gifts in kind for use by the charity are included in the SoFA as income from donations when receivable.

Volunteer Help

The value of any voluntary help received is not included in the accounts but is described in the trustee's annual report.

Income from membership subscriptions

Membership subscriptions received in the nature of a gift are recognised in Donations and Legacies.

Settlement of insurance claims

Insurance claims are only included in the SoFA when the general income recognition criteria are met (5.10 to 5.12FRS 102 SORP) and are included as an item of other income in the SoFA.

Liability recognition

Liabilities are recognised where it is more likely than not that there is a legal or constructive obligation committing the charity to pay out resources and the amount of the obligation can be measured with reasonable certainty.

Redundancy cost

The charity made no redundancy payments during the reporting period.

Deferred income

No material item of deferred income has been included in the accounts.

Creditors

The charity has creditors which are measured at settlement amounts less any trade discounts.

Provisions for liabilities

A liability is measured on recognition at its historical cost and then subsequently measured at the best estimate of the amount required to settle the obligation at the reporting date.

Basic Financial instruments

The charity accounts for basic financial instruments on initial recognition as per paragraph 10.7 FRS 102 SORP. Subsequent measurement is as per paragraphs 11.17 to 11.19, FRS 102 SORP.

Tangible fixed assets for use by the charity

These are capitalised if they can be used for more than one year and cost at least £100.

They are valued at cost and depreciation rates and methods used are disclosed in note 7.

Intangible fixed assets.

The charity has no intangible fixed assets.

Heritage assets

The charity has no heritage assets

Investments

The charity has no investments

Stocks and work in progress

The charity has no stocks or work in progress

Debtors

Debtors (including trade debtors and loans receivable) are measured on initial recognition at settlement amount after any trade discounts or amount advanced by the charity. Subsequently, they are measured at

We are Music is a charitable company limited by guarantee. Registered in England 6916641 Registered Charity No. 1130937

Reg. address: 12 Queen Street, Great Oakley, CO12 5AS We are located at Building 4, Main Road, Dovercourt, CO12 4DN

GET KNOWN and ROCK SCHOOL CLUB are programmes operated by We are Music Ltd. Tel: 07907414611 email: chrisscott@we-are-music.org.uk

the cash or other consideration expected to be received.

Current asset investments

Cash on deposit are only held to meet short term cash commitments as they fall due. The charity does not hold current asset investments.

Note 3 – Analysis of Income

		Unrestricted funds	Restricted income funds	Total funds £	Prior year £
Analysis					
Donations and legacies:	Donations and gifts	1,678		1,678	372
	Gift Aid		-	-	690
	Legacies	-	-	-	-
	General grants provided by government/other charities				-
	Membership subscriptions and sponsorships which are in substance donations	876	-	876	197
	Donated goods **, facilities and services		-		-
	Other		-		
	Total	2,554	-	2,554	1,259

Charitable activities:	COVID 19 Small Business grant				19,892
	Youth Music Fund B -Music Connects Us		39,550	39,550	40,850
	Essex Community Foundation		10,000	10,000	
	Total	2,554	49,550	52,104	62,001

Note 4 – Analysis of expenditure

	Unrestricted funds	Restricted income funds	Total funds £	Prior year £
Analysis				
Expenditure on raising funds:				
Incurring seeking donations	-	-	-	-
Incurring seeking grants				
Staging fundraising events	.			-
Database development costs	-	-	-	-
Total expenditure on raising funds		-		

Expenditure on charitable activities				
Get Known Youth Music Fund B Give them a chance	-			10,469
Landslide Festival Youth Music Fund A	-			14,160
Youth Music Fund B Music Connects Us	-	42,840	42,840	20,519
Essex Music Education Hub	-	1,034	1,034	551
Simple Things Festival		1,202	1,202	
Operating sessions / concert	4,183		4,183	3,150
Essex Music Hub- YM fund B				790
Harwich Haven Authority Fund				1,925
Total expenditure on charitable activities	4,183	45,076	49,259	51,564

Other				
Rent & Rates			0	
Heat Light	693		693	301
Repairs works	847		847	8,421
Depreciation	1,105		1,105	1,138
Insurance	421		421	417
Telephone				102
General	2,744		2,744	2,492
Total other expenditure	5,180		5,180	12,871

TOTAL EXPENDITURE	9,363	45,076	54,439	64,435
--------------------------	-------	--------	--------	--------

We are Music is a charitable company limited by guarantee. Registered in England 6916641 Registered Charity No. 1130937

Reg. address: 12 Queen Street, Great Oakley, CO12 5AS We are located at Building 4, Main Road, Dovercourt, CO12 4DN

GET KNOWN and ROCK SCHOOL CLUB are programmes operated by We are Music Ltd. Tel: 07907414611 email: chrisscott@we-are-music.org.uk

Note 5 – Fees for examination of the accounts

Independent examiner's fees

Assurance services other than audit or independent examination

Other fees (for example: financial advice, consultancy, accountancy services) paid to the independent examiner

This year £	Last year £
0	0
0	0
0	0

Note 6 – Paid employees

Salaries and wages

Social security costs

Pension costs (defined contribution scheme)

Other employee benefits

Total staff costs

This year £	Last year £
0	0
0	0
0	0
0	0
0	0
0	0

All projects and operational support are supported by part-time freelance workers.

Average head count in the year

The parts of the charity in which the employees work

	This year Number	Last year Number
Fundraising		
Charitable Activities		
Governance		
Other		
Total		

Note 7 – Tangible fixed assets

Cost or valuation

	Freehold land & buildings	Other land & buildings	Plant, machinery	Fixtures, fittings and equipment	Total
	£	£	£	£	£
At the beginning of the year	-	-	41,464	-	37,492
Additions	-	-	478	-	1,195
Revaluations	-	-	-	-	-
Disposals	-	-	-	-	-
Transfers	-	-	-	-	-
At end of the year	-	-	41,942	-	41,464

Depreciation and impairments

Basis	Reducing Balance	Reducing Balance	Reducing Balance	Reducing Balance	Reducing Balance
Rate			5%		
At beginning of the year	-	-	19,851	-	18,713
Disposals	-	-	-	-	-
Depreciation			1,105		1,138
Impairment	-	-	-	-	-
Transfers	-	-	-	-	-
At end of the year	-	-	20,956	-	19,851

Net book value

Net book value at the beginning of the year	-	-	21,614	-	19,830
Net book value at the end of the year	-	-	20,986	-	21,614

Note 8 - Debtors & prepayments

Analysis of debtors	This year	Last year
	£	£
Trade debtors	8,040	
Prepayments and accrued income	-	-
Other debtors	-	-
Total	8,040	

There are no debtors recoverable in more than 1 year (included in debtors above)

Note 9 – Creditors & accruals

Analysis of creditors	Amounts falling due within one year		Amounts falling due after more than one year	
	This year £	Last year £	This year £	Last year £
Accruals for grants payable	-	-	-	-
Bank loans and overdrafts	-	-	-	-
Trade creditors	1,266	2,340	-	-
Payments received on account for contracts or performance-related grants	-	-	-	-
Accruals and deferred income	-	-	-	-
Taxation and social security	-	-	-	-
Other creditors	-	-	-	-
Total	1,266	2,340	-	-

Note 10 – Cash at bank and on hand

Cash at bank and in hand	This year	Last year
	£	£
Short term cash investments (less than 3 months maturity date)	-	-
Short term deposits	-	-
Cash at bank and on hand	38,528	50,305
Other	-	-
Total	38,528	50,305

Note 11 – Fair value of assets and liabilities.

The charity has no investments and only cash at bank which is used to pay operational and restricted project costs. We can reduce the scale of the operation to ensure we continue to operate.

Most assets were purchased second hand at below market value. We maintain them by regular repairs and servicing provided by volunteer helpers.

Note 12 – Charity Funds

* Key: D Designated Funds; PE - permanent endowment funds; EE - expendable endowment funds; R - restricted income funds, including special trusts, of the charity; and U - unrestricted funds

Fund names		Purpose and Restrictions	Fund balances brought forward £	Income £	Pre period spend £	Spend £	Fund balances carried forward £
Essex Music Education Hub	R	Rock the Tower - Jaywick	2,140			2,140	0
Essex Community Foundation	R	Operational Support		10,000			10,000
Designated Fund	D	COVID restart		8,843			8,843
Youth Music Fund B	R	Music Connects Us	20,331	39,550		42,840	17,041
Total Funds			22,471	58,393		44,980	35,884

Note 13- Transactions with trustees and related parties

None of the trustees have been paid any remuneration or received any other benefits from an employment with the charity or a related entity.

Type of expenses reimbursed	This year	Last year
	£	£
Travel & materials		

One of the trustees (Chris Scott) is related to one of the freelance Project Leader any work authorised and paid by the Charity to Toby Scott is approved by one of the unrelated trustees.

One of the trustees (Peter Browne) is related to one of the freelance sound engineers and any work authorised and paid by the Charity to the sound engineer is approved by one of the other trustees.

WE ARE MUSIC LTD

England & Wales - Charity number 1130937

Accounts



we are **music**

WE ARE MUSIC
(A Company Limited by Guarantee)

Annual Report and Financial Statements

Year ending 31 May 2021

Charity Number: 1130937
Company Number: 6916641

We are Music is a charitable company limited by guarantee. Registered in England 6916641 Registered Charity No. 1130937

Reg. address: 12 Queen Street, Great Oakley, CO12 5AS We are located at Building 4, Main Road, Dovercourt, CO12 4DN

GET KNOWN and ROCK SCHOOL CLUB are programmes operated by We are Music Ltd. Tel: 07907414611 email: chrisscott@we-are-music.org.uk

REFERENCE AND ADMINISTRATIVE DETAILS

Charity Number: 1130937

Company Number: 6916641

Registered Address: 12, Queen Street, Great Oakley, Essex CO12 5AS

Located at: Building 4, Off Highfield Avenue, Dovercourt, Essex

Directors and Trustees

The directors of the charitable company are its trustees for the purposes of charity tax. The trustee and officers serving during the year and since the year end were as follows:-

Chris Scott	Chairman Trustee
Peter Browne	Trustee
Stefan Graham	Trustee
Joseph McCann	Trustee – 29 July 2020

Other names used by the Charity

Get Known, Rock School Club, Rock the Tower are names used by We are Music describing programmes operated by the charity.

STRUCTURE GOVERNANCE AND MANAGEMENT

Governing Document

We are Music is a company limited by guarantee governed by its Memorandum and Articles of Association dated 1 February 2014. It is registered as a charity with the Charity Commission. Anyone over the age of 16 can become a member. Children from 9 to 16 will be members through their parent or guardian.

Appointment of Trustees

As set out in the Articles of Association at the Annual General Meeting one third of the trustees retire in rotation and can be re-elected at the meeting. If another party wishes to seek appointment, they must give not less than fourteen days' notice nor more than thirty-five days before the date of the meeting to the Charity.

OBJECTIVES AND ACTIVITIES

The purposes of the charity are, to help young people through:

- (a) The provision of recreational and leisure time activities provided in the interest of social welfare, designed to improve their conditions of life
- (b) Providing support and activities which develop their skills, capacities, and capabilities to enable them to participate in society as mature and responsible individuals

There are two components of our work: -

We are Music – We strive to provide for the advancement of young people through music into the music industry, and education. For young people between sixteen and twenty-five we provide fully funded: -

- Get Known -Live performance videos to showcase the artist to aid them to progress their career in music
- Hamford Studio -Studio space to work, develop material extend their skills and record digital singles.
- Support as an Event promoter- providing live gigs for young artists to perform.

We are Music is a charitable company limited by guarantee. Registered in England 6916641 Registered Charity No. 1130937

Reg. address: 12 Queen Street, Great Oakley, CO12 5AS We are located at Building 4, Main Road, Dovercourt, CO12 4DN

GET KNOWN and ROCK SCHOOL CLUB are programmes operated by We are Music Ltd. Tel: 07907414611 email: chrisscott@we-are-music.org.uk

- Development support for young artists providing them with useful information through industry contacts.

Rock School –

- We support young people from nine to eighteen providing regular band sessions, led by Music Leaders, three days per week, during term times in our Harwich facility. As a result of COVID we no longer operate at the Jaywick Martello Tower and have integrated participants into our Harwich based operation.

The geographic area in which we operate has high levels of unemployed and low family incomes. In planning our activities, the trustees have considered the Charity Commissions guidance on public benefit, including the guidance on public benefit and fee charging. We are Music relies on grants and the income from fees to cover its operating costs. We charged £4.00 per week to participants for one-hour tuition and unlimited access to the facilities in 2020/2021. The trustees also have discretionary powers to enable people to attend for free and have used these powers during the COVID crisis.

ACHIEVEMENTS AND PERFORMANCE

IMPACT OF COVID 19 ON CURRENT & FUTURE OPERATION

COVID has had a devastating effect on our operation. Although we provided some online services from June to September 2020 these were poorly supported by our participants. We were able to open our facilities from September 2020, with a slow pick up from participants, and then closed in Lockdown from December 2020 to mid-April 2021. Since March 2020 we have not delivered any primary school sessions.

The emphasis of our projects has always centred on getting young people out of their homes and into activities that motivate them, leading to live performances, so it has had a disastrous effect on our operation. During Lockdown we delivered online artist livestream performances and training for our Music leaders.

Long Term Impact-

We will not be providing Primary school afterschool sessions for the foreseeable future.

We will not be providing sessions at Jaywick Martello Tower.

We do not anticipate live performances before July 2021.

We will continue to operate COVID secure facilities.

Below is a summary of the year's achievements and performance more details are available on our website. www.we-are-music.org.uk

Get Known

The only highlight to note is that we have secured future funding through to August 2022 from Youth Music to expand and continue our work. Get known was hard hit by COVID, we thought bands and artists would take the opportunity to write and record new material, but they were upset with the fact that there were no gigs where they could play to an audience. Our live performance programmes have not existed since March 2020.

Also studio space was too small to provide for COVID isolation and we moved the Get Known operation to a new studio space at Hamford View. This opened at the end of November 2020 and shut in December 2020. Although we could have worked in the space, several of our staff contracted COVID and with levels high in the Tendring area we remained shut until March 2021.

Since opening the programme has taken off and most weekends, we have one or two bands working on

We are Music is a charitable company limited by guarantee. Registered in England 6916641 Registered Charity No. 1130937

Reg. address: 12 Queen Street, Great Oakley, CO12 5AS We are located at Building 4, Main Road, Dovercourt, CO12 4DN

GET KNOWN and ROCK SCHOOL CLUB are programmes operated by We are Music Ltd. Tel: 07907414611 email: chrisscott@we-are-music.org.uk

material producing singles and live performance videos. For our staff we have operated training courses in recording techniques including Pro tools and Video production courses. There are exciting opportunities ahead for many of the bands we have been working with and we are hopeful that we will be able to Help them into the music industry.

Rock School Club Programme.

Regular sessions ran until March 2020 with 35 players, then we closed with no sessions or live performances.

In September 2020 we re-opened with 16 players and no players from Jaywick. Setting us back to a lower level than in our first weeks 12 years ago. Given our summer 2019 show attracted an audience of over 300 people drawn from across Tendring and our sell out Christmas 2019 event since then no live performances have been run to date.

We shut again with Lockdown in December 2020 and re-opened in April 2021 with 12 players. Since then we have worked hard to rebuild the programme and at the end of May have 27 players with 8 from Jaywick. Still a long way to go but have a show on 18 July which hopefully will fire enthusiasm again.

Rock the Tower – Jaywick Project.

We ran regular sessions one night per week at Jaywick Martello Tower with around 20 players. funded by the Essex Music Education Hub and ECC, though to March 2020 when COVID shut the facility. In April 2021, we have incorporated some of the participants into sessions at the Harwich Facility.

FINANCIAL REVIEW

Our turnover £62,001 shows an increase on last year (last year £45,421) and we returned a deficit of £2,435. However, we were able to operate with funds carried forward from last year to deliver projects in this financial year and through to August 2022.

Various grants provide restricted funding, and we are holding balances totalling £22,471 at the year-end for these funds. These are supported by £50,305 cash at the bank. Youth Music funding has been extended from September 2020 through to August 2022 with a second stage payment in August 2021.

The financial statements have been prepared in accordance with the accounting policies set out in notes to the accounts and comply with the charity's governing document, the Charities Act 2011 and Accounting and Reporting by Charities: Statement of Recommended Practice applicable to charities preparing their accounts in accordance with the Financial Reporting Standard for Smaller Entities published on 16 July 2014.

We are Music is a charitable company limited by guarantee. Registered in England 6916641 Registered Charity No. 1130937

Reg. address: 12 Queen Street, Great Oakley, CO12 5A5 We are located at Building 4, Main Road, Dovercourt, CO12 4DN

GET KNOWN and ROCK SCHOOL CLUB are programmes operated by We are Music Ltd. Tel: 07907414611 email: chrisscott@we-are-music.org.uk

WE ARE MUSIC
Statement of Financial Activities to year end 31 May 2021

	Unrestricted funds £	Restricted income funds £	Total funds £	Prior year funds £
Incoming resources				
Income from:				
Donations	21,151		21,151	16,344
Charitable activities		40,850	40,850	29,077
Other	-	-	-	-
Total	21,151	40,850	62,001	45,421
Expenditure on:				
Raising funds		-		
Charitable activities	3,149	48,415	51,564	48,118
Other	12,872		12,872	5,732
Total	16,021	48,415	64,436	53,850
Net income/(expenditure) before investment gains/(losses)	5,130	(7,565)	(2,435)	(8,429)
Net gains/(losses) on investments	-	-	-	-
Net income/(expenditure)	5,130	(7,565)	(2,435)	(8,429)
Extraordinary items	-	-	-	-
Transfers between funds	-	-	-	-
Other recognised gains/(losses):				
Gains and losses on revaluation of fixed assets for the charity's own use	-	-	-	-
Other gains/(losses)	-	-	-	-
Net movement in funds	5,130	(7,565)	(2,435)	(8,429)
Reconciliation of funds:				
Total funds brought forward	16,581	45,286	61,867	70,296
Total funds carried forward	21,711	37,721	59,432	61,867

We are Music is a charitable company limited by guarantee. Registered in England 6916641 Registered Charity No. 1130937

Reg. address: 12 Queen Street, Great Oakley, CO12 5AS We are located at Building 4, Main Road, Dovercourt, CO12 4DN



GET KNOWN and ROCK SCHOOL CLUB are programmes operated by We are Music Ltd. Tel: 07907414611 email: chrisscott@we-are-music.org.uk

WE ARE MUSIC
Balance sheet as at year end 31 May 2021

	Unrestricted funds £	Restricted income funds £	Total this year £	Total last year £
Fixed assets				
Tangible assets (Note 7)	21,614	-	21,614	20,324
Intangible assets				
Total fixed assets	21,614	-	21,614	20,324
Current assets				
Debtors (Note 8)				8,257
Cash at bank and in hand (Note 10)	27,834	22,471	50,305	44,856
Total current assets	27,834	22,471	50,305	53,113
Creditors: amounts falling due within one year (Note 9)	2,351	22,471	24,822	32,180
Net current assets/(liabilities)	25,483	0	25,483	20,933
Total assets less current liabilities	47,097	0	47,097	41,257
Creditors: amounts falling due after one year (Note 9)				
Provisions for liabilities				
Total net assets or liabilities	47,097	0	47,097	41,257
Funds of the Charity				
Restricted income funds (Note 12)		22,471	22,471	30,673
Unrestricted funds	24,626		24,626	10,584
Revaluation reserve			-	
Total funds	24,626	22,471	47,097	41,257

Signed by two trustees on behalf of all the trustees

x''''

Signature		
	Chris Scott	21/07/2021
	Peter Browne	21/07/2021

We are Music is a charitable company limited by guarantee. Registered in England 6916641 Registered Charity No. 1130937

Reg. address: 12 Queen Street, Great Oakley, CO12 5AS We are located at Building 4, Main Road, Dovercourt, CO12 4DN

GET KNOWN and ROCK SCHOOL CLUB are programmes operated by We are Music Ltd. Tel: 07907414611 email: chrisscott@we-are-music.org.uk

Notes to the accounts.

Note 1 - Basis of preparation

These accounts have been prepared under the historical cost convention with items recognised at cost or transaction value unless otherwise stated in the relevant note(s) to these accounts.

The accounts have been prepared in accordance with the Statement of Recommended Practice: Accounting and Reporting by Charities preparing their accounts in accordance with the financial reporting Standard applicable in the UK and Republic of Ireland (FRS102) issued on 16 July 2014, and with the Charities Act 2011.

The charity constitutes public benefit entity as defined by FRS 102. The charity is a going concern whose operation will continue through the next financial year.

The accounts present a true and fair view of the charity's performance.

The company was entitled to exemption under section 477 of the Companies Act 2006 relating to small companies. The members have not required the company to obtain an audit in accordance with section 476 of the Companies Act 2006.

Note 2 - Accounting policies

Recognition of Income

These are included in the Statement of Financial Activities (SoFA) when

- the charity becomes entitled to the resources
- it is more likely than not that the trustees will receive the resources; and
- the monetary value can be measured with sufficient reliability.

Offsetting

There has been no offsetting of assets and liabilities, or income and expenses, unless required or permitted by the FRS 102 SORP or FRS 102.

Grants and Donations

These are only included in the SoFA when the general income recognition criteria are met (5.10 to 5.12 FRS 102 SORP).

In the case of performance related grants, income must only be recognised to the extent that the charity has provided the specified goods or services as entitlement to the grant only occurs when the performance related conditions are met (5.16 FRS 102 SORP).

Tax reclaims on donations and gifts

Gift Aid receivable is included in income when there is a valid declaration from the donor.

Any Gift Aid amount recovered on a donation is considered to be part of that gift and is treated as an addition to the same fund as the initial donation unless the donor or the terms of the appeal have specified otherwise.

Donated Goods

These are measured at fair value (the amount for which the asset could be exchanged) unless impractical to do so.

Goods donated for on-going use by the charity are recognised as tangible fixed assets and included in the SoFA as incoming resources when receivable.

We are Music is a charitable company limited by guarantee. Registered in England 6916641 Registered Charity No. 1130937

Reg. address: 12 Queen Street, Great Oakley, CO12 5AS We are located at Building 4, Main Road, Dovercourt, CO12 4DN

GET KNOWN and ROCK SCHOOL CLUB are programmes operated by We are Music Ltd. Tel: 07907414611 email: chrisscott@we-are-music.org.uk

Gifts in kind for use by the charity are included in the SoFA as income from donations when receivable.

Volunteer Help

The value of any voluntary help received is not included in the accounts but is described in the trustee's annual report.

Income from membership subscriptions

Membership subscriptions received in the nature of a gift are recognised in Donations and Legacies.

Settlement of insurance claims

Insurance claims are only included in the SoFA when the general income recognition criteria are met (5.10 to 5.12FRS 102 SORP) and are included as an item of other income in the SoFA.

Liability recognition

Liabilities are recognised where it is more likely than not that there is a legal or constructive obligation committing the charity to pay out resources and the amount of the obligation can be measured with reasonable certainty.

Redundancy cost

The charity made no redundancy payments during the reporting period.

Deferred income

No material item of deferred income has been included in the accounts.

Creditors

The charity has creditors which are measured at settlement amounts less any trade discounts.

Provisions for liabilities

A liability is measured on recognition at its historical cost and then subsequently measured at the best estimate of the amount required to settle the obligation at the reporting date.

Basic Financial Instruments

The charity accounts for basic financial instruments on initial recognition as per paragraph 10.7 FRS 102 SORP. Subsequent measurement is as per paragraphs 11.17 to 11.19, FRS 102 SORP.

Tangible fixed assets for use by the charity

These are capitalised if they can be used for more than one year and cost at least £100.

They are valued at cost and depreciation rates and methods used are disclosed in note 7.

Intangible fixed assets.

The charity has no intangible fixed assets.

Heritage assets

The charity has no heritage assets

Investments

The charity has no investments.

Stocks and work in progress

The charity has no stocks or work in progress

We are Music is a charitable company limited by guarantee. Registered in England 6916641 Registered Charity No. 1130937

Reg. address: 12 Queen Street, Great Oakley, CO12 5AS We are located at Building 4, Main Road, Dovercourt, CO12 4DN

GET KNOWN and ROCK SCHOOL CLUB are programmes operated by We are Music Ltd. Tel: 07907414611 email: chrisscott@we-are-music.org.uk

Debtors

Debtors (including trade debtors and loans receivable) are measured on initial recognition at settlement amount after any trade discounts or amount advanced by the charity. Subsequently, they are measured at the cash or other consideration expected to be received.

Current asset investments

Cash on deposit are only held to meet short term cash commitments as they fall due. The charity does not hold current asset investments.

Note 3 – Analysis of Income

Analysis		Unrestricted funds	Restricted income funds	Total funds £	Prior year £
Donations and legacies:	Donations and gifts	372		372	2073
	Gift Aid	690	-	690	1,769
	Legacies	-	-	-	-
	General grants provided by government/other charities				-
	Membership subscriptions and sponsorships which are in substance donations	197	-	197	2347
	Donated goods **, facilities and services		-		-
	Other		-		154
	Total	1,259	-	1,259	6,343

Charitable activities:	COVID 19 Small Business grant	19,892		19,892	10,000
	Youth Music Fund B -Music Connects Us		40,850	40,850	
	Essex Music Education Hub	-			7090
	Youth Music Fund B -give them a chance	-			20,387
	Essex Music Ed. Hub -give them a chance	-			1,600
	Total	19,892	40,850	60,742	39,077

We are Music is a charitable company limited by guarantee. Registered in England 6916641 Registered Charity No. 1130937

Reg. address: 12 Queen Street, Great Oakley, CO12 5A5 We are located at Building 4, Main Road, Dovercourt, CO12 4DN

GET KNOWN and ROCK SCHOOL CLUB are programmes operated by We are Music Ltd. Tel: 07907414611 email: chrisscott@we-are-music.org.uk

TOTAL INCOME
Note 4 – Analysis of expenditure

21,151	40,850	62,001	45,420
--------	--------	--------	--------

		Unrestricted funds	Restricted income funds	Total funds £	Prior year £
Analysis					
Expenditure on raising funds:	Incurring seeking donations	-	-	-	-
	Incurring seeking legacies	-	-	-	-
	Incurring seeking grants				
	Operating membership schemes and social lotteries				
	Staging fundraising events				-
	Fundraising agents				
	Operating charity shops				
	Operating a trading company undertaking non-charitable trading activity				
	Advertising, marketing, direct mail and publicity		-		-
	Start up costs incurred in generating new source of future income	-	-	-	-
	Database development costs	-	-	-	-
	Other trading activities				
	Investment management costs:	-	-	-	
	Portfolio management costs	-	-	-	-
	Cost of obtaining investment advice	-	-	-	-
	Investment administration costs	-	-	-	-
	Intellectual property licencing costs	-	-	-	-
	Rent collection, property repairs and maintenance charges	-	-	-	-
		-	-	-	-
	Total expenditure on raising funds		-		

We are Music is a charitable company limited by guarantee. Registered in England 6916641 Registered Charity No. 1130937

Reg. address: 12 Queen Street, Great Oakley, CO12 5AS We are located at Building 4, Main Road, Dovercourt, CO12 4DN

GET KNOWN and ROCK SCHOOL CLUB are programmes operated by We are Music Ltd. Tel: 07907414611 email: chrisscott@we-are-music.org.uk

Expenditure on charitable activities	Get Known Youth Music Fund B Give them a chance	-	10,469		26,057
	Landslide Festival Youth Music Fund A	-	14,160		10,200
	Youth Music Fund B Music Connects Us	-	20,519		
	Essex Music Education Hub	-	551		3,268
	ECF- #IWill				2,020
	Operating sessions	3,150			2,376
	Essex Music Hub- YM fund B support		790		1,350
	Foyle Foundation				1,772
	Harwich Haven Authority Fund		1,925		1,075
	Galloper Wind Farms Fund				
	Total expenditure on charitable activities	3,150	48,415	51,564	48,118

Separate material item of expense

	-	-	-	-
	-	-	-	-
	-	-	-	-
	-	-	-	-
Total	-	-	-	-

Other

Rent & Rates			0	1,318
Heat Light			301	895
Repairs works			8,421	823
Depreciation			1,138	1,051
Insurance			417	399
Telephone			102	117
General			2,492	1,129
Total other expenditure			12,871	5,732

TOTAL EXPENDITURE

3,150	48,415	64,435	48,984
--------------	---------------	---------------	---------------

We are Music is a charitable company limited by guarantee. Registered in England 6916641 Registered Charity No. 1130937

Reg. address: 12 Queen Street, Great Oakley, CO12 5AS We are located at Building 4, Main Road, Doverncourt, CO12 4DN

GET KNOWN and ROCK SCHOOL CLUB are programmes operated by We are Music Ltd. Tel: 07907414611 email: chrisscott@we-are-music.org.uk

Note 5 – Fees for examination of the accounts

	This year £	Last year £
Independent examiner's fees	0	0
Assurance services other than audit or independent examination	0	0
Tax advisory fees	0	0
Other fees (for example: financial advice, consultancy, accountancy services) paid to the independent examiner	0	0

Note 6 – Paid employees

	This year £	Last year £
Salaries and wages	0	0
Social security costs	0	0
Pension costs (defined contribution scheme)	0	0
Other employee benefits	0	0
Total staff costs	0	0

All projects and operational support are supported by part-time freelance workers.

Average head count in the year	This year Number	Last year Number
The parts of the charity in which the employees work		
Fundraising		
Charitable Activities		
Governance		
Other		
Total		

We are Music is a charitable company limited by guarantee. Registered in England 6916641 Registered Charity No. 1130937

Reg. address: 12 Queen Street, Great Oakley, CO12 5AS We are located at Building 4, Main Road, Dovercourt, CO12 4DN

GET KNOWN and ROCK SCHOOL CLUB are programmes operated by We are Music Ltd. Tel: 07907414611 email: chrisscott@we-are-music.org.uk

Note 7 – Tangible fixed assets

Cost or valuation

	Freehold land & buildings	Other land & buildings	Plant, machinery and motor vehicles	Fixtures, fittings and equipment	Total
	£	£	£	£	£
At the beginning of the year	-	-	38,687	-	37,492
Additions	-	-	2,777	-	1,195
Revaluations	-	-	-	-	-
Disposals	-	-	-	-	-
Transfers	-	-	-	-	-
At end of the year	-	-	41,464	-	38,687

Depreciation and impairments

Basis	Reducing Balance	Reducing Balance	Reducing Balance	Reducing Balance	Reducing Balance
Rate			5%		
At beginning of the year	-	-	18,713	-	17,662
Disposals	-	-	-	-	-
Depreciation			1,138		1,051
Impairment	-	-	-	-	-
Transfers	-	-	-	-	-
At end of the year	-	-	19,851	-	18,713

Net book value

Net book value at the beginning of the year	-	-	19,974	-	19,830
Net book value at the end of the year	-	-	21,614	-	19,974

We are Music is a charitable company limited by guarantee. Registered in England 6916641 Registered Charity No. 1130937

Reg. address: 12 Queen Street, Great Oakley, CO12 5AS We are located at Building 4, Main Road, Dovercourt, CO12 4DN

GET KNOWN and ROCK SCHOOL CLUB are programmes operated by We are Music Ltd. Tel: 07907414611 email: chrisscott@we-are-music.org.uk

Note 8 - Debtors & prepayments

Analysis of debtors

Trade debtors

Prepayments and accrued income

Other debtors

Total

This year	Last year
£	£
	8,257
-	-
-	-
8,257	8,257

There are no debtors recoverable in more than 1 year (included in debtors above)

Note 9 – Creditors & accruals

Analysis of creditors

Accruals for grants payable

Bank loans and overdrafts

Trade creditors

Payments received on account for contracts or performance-related grants

Accruals and deferred income

Taxation and social security

Other creditors

Total

Amounts falling due within one year		Amounts falling due after more than one year	
This year	Last year	This year	Last year
£	£	£	£
-	-	-	-
-	-	-	-
2,340	-	-	-
-	-	-	-
-	-	-	-
-	-	-	-
-	-	-	-
2,340		-	-

Note 10 – Cash at bank and on hand

Cash at bank and in hand

Short term cash investments (less than 3 months maturity date)

Short term deposits

Cash at bank and on hand

Other

Total

This year	Last year
£	£
-	-
-	-
50,305	44,856
-	-
50,305	44,856

We are Music is a charitable company limited by guarantee. Registered in England 6916641 Registered Charity No. 1130937

Reg. address: 12 Queen Street, Great Oakley, CO12 5AS We are located at Building 4, Main Road, Dovercourt, CO12 4DN

GET KNOWN and ROCK SCHOOL CLUB are programmes operated by We are Music Ltd. Tel: 07907414611 email: chrisscott@we-are-music.org.uk

Note 11 – Fair value of assets and liabilities.

The charity has no investments and only cash at bank which is used to pay operational and restricted project costs. We can reduce the scale of the operation to ensure we continue to operate.

Most assets were purchased second hand at below market value. We maintain them by regular repairs and servicing provided by volunteer helpers.

Note 12 – Charity Funds

* Key: PE - permanent endowment funds; EE - expendable endowment funds; R - restricted income funds, including special trusts, of the charity; and U - unrestricted funds

Fund names		Purpose and Restrictions	Fund balance s brought forward	Income	Pre period spend	Spend	Fund balances carried forward
			£		£	£	£
Essex Music Education Hub	R	Rock the Tower - Jaywick	2,691			551	2,140
Essex Music Education Hub	R	Give Them a Chance	790			790	
Youth Music Fund B	R	Give Them a Chance	10,439			10,439	
Youth Music Fund A	R	Landslide Festival	14,128			14,128	
Youth Music Fund B	R	Music Connects Us		40,850		20,519	20,331
Total Funds			28,048	40,850		46,427	22,471

Note 13- Transactions with trustees and related parties

None of the trustees have been paid any remuneration or received any other benefits from an employment with the charity or a related entity.

Expenses were paid to one of the trustees (Chris Scott) to cover travel costs and material expenses.

Type of expenses reimbursed	This year	Last year
	£	£
Travel & materials		315

One of the trustees (Chris Scott) is related to two of the freelance music mentors any work authorised and paid by the Charity to these musicians is approved by the other two trustees.

One of the trustees (Peter Browne) is related to one of the freelance sound engineers and any work authorised and paid by the Charity to the sound engineer is approved by the other two trustees.

(if any):

Address:

Section B

Disclosure

Only complete if the examiner needs to highlight material matters of concern (see CC32, Independent examination of charity accounts: directions and guidance for examiners).

Give here brief details of any items that the examiner wishes to disclose.

← NONE →