

THE PAROCHIAL CHURCH COUNCIL OF THE ECCLESIASTICAL PARISH OF ST JOHN, POLEGATE. DIOCESE OF CHICHESTER.

England & Wales - Charity number 1130861

Details

Other names ST JOHN'S PCC, POLEGATE

Status Registered

Legal form Previously excepted

Registered 2009-07-30

Register [View on the Charity Commission register](#)

Contact

Address St. Johns Church
Church Road
Polegate
BN26 5BX

Phone 01323483259

Email stjohns@polegate.org.uk

Website www.polegate.org.uk

Activities

Objects: Promoting in the ecclesiastical parish the whole mission of the Church.

Activities: Making Disciples of Jesus Christ by the promotion of the gospel. Enabling as many people as possible to worship in the church and be part of the wider parish community.

Classification

- **How:** Makes Grants To Organisations, Provides Buildings/facilities/open Space, Provides Services
- **What:** Religious Activities
- **Who:** The General Public/mankind

Geography

- **Area of benefit:** UNDEFINED. IN PRACTICE, LOCAL
- East Sussex

Finances

Period end	Income	Expenditure	Assets	Employees
2024-12-31	£218,891	£204,356	-	-
2023-12-31	£249,381	£206,190	-	-
2022-12-31	£187,917	£172,225	-	-
2021-12-31	£172,369	£211,874	-	-
2020-12-31	£201,246	£204,474	-	-

Trustees

Name	Role	Appointed
ALAN KEITH PACKARD		
HUGH JOHN LOWRIES		
KATRINA JOY BURTON		
MARK ANTHONY PYBUS		
MAUREEN HAZEL PEMBERTON		
MR BEN PRATT		
Mary Freda White		2023-05-21
PAMELA ANNE SHARPE		2017-04-09
PHILIP ANDREW KYTE		2013-07-03
Robin Andrew Eldridge		2023-05-21

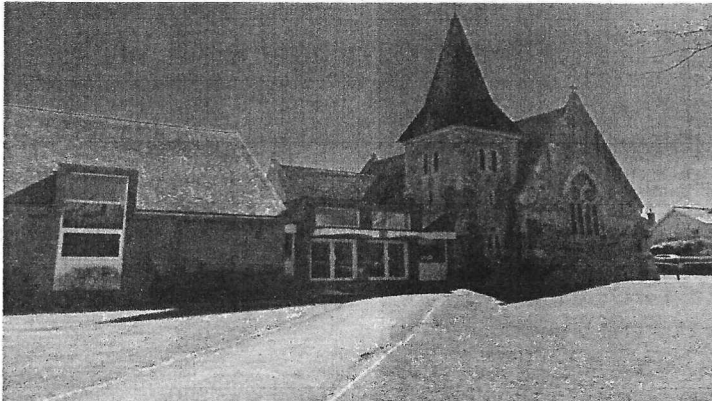
Accounts

Trustees' Annual Report and Financial Statements of the Parish of St John's Church, Polegate, including:

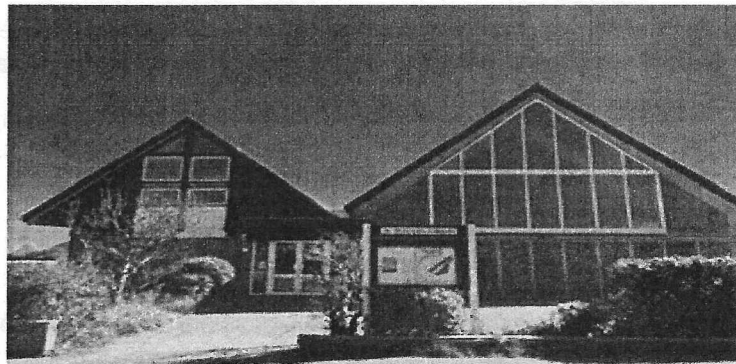
The Conventional District of St Wilfrid's Church, Lower Willingdon

For the year ended 31st December 2024

Registered Charity no. 1130861



St John's



St Wilfrid's

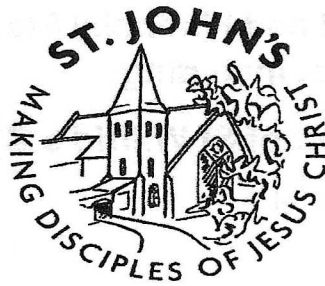
CONTENTS	Pages
Trustees' annual report, St John's	2 to 5
Trustees' annual report, St Wilfrid's	6 to 9
Statement of financial activities	11
Balance sheet	12
Notes to the financial report	13 to 21
Report of the independent examiner	22

Website: www.polegate.org.uk

Incumbent: The Revd Chris Spinks, c/o The Church Office, Church Road, Polegate, BN26 5BX

Independent examiner: Watson Associates, 30-34 North Street, Hailsham, BN27 1DW

Bankers: Barclays Leicester, LE87 2BB and CBF Church of England deposit fund.



Trustees' Annual Report 2024 for St John's, Polegate

Our aims and purposes as a charity

The Parochial Church Council (the PCC/Trustees) has the responsibility of co-operating with the incumbent, the Reverend Chris Spinks, in:

- The promotion of the gospel of the Lord Jesus Christ according to the doctrines and practices of the Church of England.
- Promoting the whole mission of the church: pastoral, social, evangelistic and ecumenical.
- To know Jesus better and make Him better known.
- Practical support and care for all people in the parish.
- Providing financial support to those in need and, to other organisations with similar objectives.

What we planned to do at St. John's to achieve our charitable objectives

In its planning, our incumbent and the PCC have considered the Charity Commission's guidance on public benefit and the specific guidance on 'charities for the advancement of religion'.

The PCC has complied with its duty under Section 5 of the Safeguarding and Clergy Discipline Measure 2016, fully recognising its duty to have regard to House of Bishops' guidance on safeguarding children and vulnerable adults.

For 2024 we planned the following objectives and activities to reflect our aim of 'Making disciples of Jesus Christ' by:

- Enabling as many people as possible to worship at our church.
- Enabling as many people as possible to become part of our church family.
- Teaching, baptising and nurturing new and existing believers.
- Maintaining an overview of worship throughout the parish.
- Considering how services can involve the many groups that live within the parish.
- Putting faith into practice, through prayer and scripture, music and worship.
- Offering worship and prayer, learning about the Gospel, in small group situations.
- Assisting people from all walks of life to develop their knowledge of, and trust in, Jesus.
- Provision of pastoral care for people living in the parish.
- Giving grants to missionary organisations.
- Maintaining the fabric of the church building as a centre and spiritual focus of life in the town.

What we achieved at St. John's and how we affected beneficiaries' lives

It is our great pleasure to welcome people from all walks of life, both from within and outside the parish boundary to take part in the life of St John's church; to come to know and worship the Lord Jesus Christ and to better understand the truths contained in holy scripture. The PCC considers it a significant public benefit for people to be able to worship locally and regularly at St John's.

In 2024 there were 103 people on the electoral roll, including 11 who live outside the parish. We continue to enable as many people as possible to worship at our church, primarily by way of a weekly Sunday service at 10.30am and a Prayer Meeting at 7.30 pm. Our average attendance on Sunday mornings in 2024 was 70 and 14 at the evening prayer meetings. For special celebrations such as Easter and Christmas, attendance increased significantly, similarly at the annual Service of Remembrance, when

a range of community and civic groups also attended. For those with difficulties in getting to church on Sundays, a transport service is offered.

Children in the church family and wider parish can attend 'Sunday Club' which runs in parallel to the 10.30 services and provides an opportunity for them to learn more about Jesus and the bible in an age appropriate way. During 2024, the number of children attending has averaged between 1 and 6 each week and it is an aspect of church life which we pray will develop in the future.

In addition, much valued fellowship and scriptural teaching continues to be offered at 'house groups' and in other ways too such as Christianity Explored, an evangelistic course which was run for the first time at St John's and is designed to support, guide and nurture those who are either in the early stages of their journey of faith, or who wish to deepen their understanding of the central truths of the bible.

St John's offers 'Pop-In' sessions twice a month on Wednesday mornings as a valuable service to the community where guests can be assured of a warm welcome, light refreshments and an opportunity to enjoy puzzles, board games, craft activities and good company. In the winter months, the opening time was extended to enable people to remain in the warmth of the hall. Pop-In has been particularly successful in attracting visitors who are not regulars on Sundays, especially from local nursing homes; attendance at each session has averaged 34, including a loyal band of regular helpers.

As is our tradition now, preparations for Easter started with a day of prayer on Ash Wednesday which included 12 hours of continuous prayer and involved at least one member of the church family undertaking to pray for 30-minute slots in turn. During Lent many took up the offer to study an appropriately themed book, carefully selected by the Vicar and this collective experience was much enjoyed by those who participated.

During June we had the pleasure of separate visits from three of our mission partners, Riste and Tea from Serbia and Alice Cooper from Tower Hamlets who updated the church family on progress with their work and how the support they receive from St John's – particularly through our ongoing prayers for them as well as our financial provision – is benefitting and sustaining them in their ministry.

Other activities which brought the church family and wider community together included several lunches at key points in the year such as Harvest and Christmas, providing opportunities for fellowship and service to others, notably on Christmas Day when the meal was open to the wider community to enjoy. We also hosted visits by many primary age children from Polegate School, both as part of their curricular activity to visit a place of worship and as part of the Christmas celebrations.

The St John's branch of Mothers' Union continued to provide opportunities for monthly meetings offering fellowship and activities; including in July playing host for a picnic held for the Bexhill District of the Chichester Diocesan area. In December, Trish Clarke, for many years the Branch Leader was presented with a much-deserved long service certificate.

The church family continues to make regular donations of food, household goods and money to Family Support Work, which functions in partnership with the Chichester Diocese in providing vital services to vulnerable families throughout Sussex.

As part of our outreach activity there were also leaflet drops to the newer estates across the town at Easter and Christmas encouraging more local folk to join us in worship at St John's.

Baptisms, weddings, and funerals continue to be facilitated as required.

Maintaining the fabric of St John's as a presence to the benefit to the community

The PCC continues to give thanks for God's gracious provision to meet the challenging costs which arise in maintaining a church which was built in 1875 and a church hall which is 50 years old in 2025.

These challenges are exemplified by maintenance costs between 2017 and 2022 for the church and hall of £236,875. Despite this, God's gracious support was evidenced through several generous legacies over the same period totalling nearly £172,000.

In 2024 the long running issues relating to the church vestry roof, which had been leaking since 2022 were hopefully resolved. Although the work was expected to cost up to £20,000, thankfully the final total was £12,954. Other routine costs totalled £636.

With the failure of the commercial gas cooker in the church hall kitchen, a direct replacement was found to be uneconomic because of new ventilation regulations and therefore a decision was made to purchase an electric model suitable to the needs. The cost of £6,240 was met in 2023 and the installation in 2024 (including the establishment of a 3-phase supply) cost £1,282. More generally, the kitchen would benefit from overall refurbishment as funds permit.

Essential work on the hall heaters cost £648.

The very old carpet in the small hall was replaced with a more durable flooring type at a cost of £2,053.

5 St John's Road, which is let to tenants (providing valuable rental income), was badly in need of work in 2023 which cost £4,200. Last year's report identified the need for re-pointing and this work was completed in 2024 at a cost of £8,924.

Giving grants to missionary organisations

The Trustees have historically given away 10% of the church charitable income, primarily focussing on missionary work. In 2024, we continued to support Chris & Lotta Strajnic, who work under the direction of Crosslinks in Sweden; Riste and Tea Micev, also under Crosslinks, in Serbia and Alice Cooper, working with the London City Mission in Tower Hamlets. By the end of 2024, the PCC, with the backing of the wider church family, were able to give each one £3,000.

Other charitable giving by St John's (see also the Financial Report Note 4).

Financial Review for the whole Parish of St John's and St Wilfrid's

The total Parish receipts of General Unrestricted funds received were £196,321 (£246,669 in 2023) and are detailed in the Financial Report (page 12) and include no legacies in 2024 (£50,592 in 2023).

Sharing the whole-parish Ministry Costs of the Diocese of Chichester

Each Autumn, the Diocese assesses anticipated costs for the parish for the following year in respect of housing, stipends and clergy pensions, and a standard sum for Diocesan central costs, clergy training and a contribution to national church funds. In turn, the local Deanery then asks each church for their offer to meet these overheads.

In the 11 years up to 2021, the full Parish Ministry costs have been met even when expenditure exceeded income, but since then both churches have been paying less than the deanery calculation.

In 2023 St John's paid £49,142 towards Parish Ministry costs, and St Wilfrid's £41,004. Both figures are less than the full cost of Parish Ministry Costs but were the most we could afford to pay given the financial situation at the time.

In 2024 St John's paid £51,408 towards Parish Ministry costs, and St Wilfrid's paid £42,276. Both figures are less than the full cost of Parish Ministry Costs but were the most we could afford to pay in our current financial situation.

Staff costs

St John's PCC in 2024 employed a Parish Administrator, who is also a PCC member and Trustee, who received £ 9,519 *before* tax for her duties during the year. The cleaning of the church and church hall continues to be loyally undertaken by volunteers, work for which the Trustees are so grateful. St Wilfrid's DCC in 2024 employed a church cleaner. Further details are provided in the notes to the accounts.

Trustee payments and expenses

St. John's PCC supported its incumbent by paying the Vicarage water and environmental charges plus Council Tax £3,003 (£2,807 in 2023) plus other annual costs towards travel, hospitality, telephone,

postage and broadband amounting to £2,203 (£1,740 in 2023). The repair costs of the Vicarage paid by the PCC were £626.

St Wilfrid's House costs, paid in support of the Minister, were Council Tax, water rates and insurance totalling £4,179 (£3,940 in 2023).

St John's PCC members (Trustees) were re-imbursed with sums for expenditure on behalf of the church as detailed in Note 5(b) in the financial report.

In 2024, two payments were made to 'Bright & Beautiful Gardens', a firm owned by Phil Kyte, churchwarden and Trustee: £472 for clearance work on the vestry roof; fencing and repairs to the notice boards and £2090 for essential repairs at 5 St John's Road: door lock, exterior repairs and painting.

Repairs to the fabric of St John's buildings - see above *Maintaining the fabric of St Johns*.

Repairs to the fabric of St Wilfrid's buildings - of a total of £8,224, some £2,912 were for fencing.

Why we hold some money in reserve – St John's

See *Maintaining the fabric* on the previous page which describes the 2023 and 2024 maintenance needs for the St John's buildings, and, because of the size and uncertainty of these costs, we hold a significant balance of a generous legacy in anticipation of meeting these.

Structure, governance and management of the charity during 2024

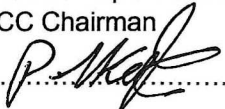
The PCC is registered with the Charity Commission as required by the Charities Act 2011. Its governing document is the Parochial Church Councils (Powers) Measure 1956.

During the year the following served as members of the PCC:

Ex Officio members

Incumbent:	The Reverend Chris Spinks - Chair
Readers:	Alan Packard Ben Pratt Hugh Lowries, also Deanery Synod member
Wardens:	Phil Kyte, also PCC Vice Chair and Deanery Synod member Robin Eldridge, also Parish Safeguarding Officer
Elected Members:	Katrina Burton Maureen Pemberton - Treasurer Mark Pybus, also Deanery Synod member Pam Sharpe Mary White – PCC Secretary

This Trustees' Annual Report was **approved** by the PCC and signed on their behalf by the Reverend Chris Spinks, PCC Chairman

P. P. 
.....

Date: 7th May 2025

Trustees' Annual Report 2024 for St Wilfrid's, Lower Willingdon

Making disciples of Jesus Christ

Structure, governance and management of St Wilfrid's

The District Church Council (DCC) is not an official PCC (though we refer to ourselves informally as the PCC), but for purposes of returns and other legal considerations, such as this document, we will refer to ourselves as the DCC working under the PCC of the Parish of St John's Polegate.

This district is under the supervision of the 'Curate-in-Charge', Reverend Christopher James Styles. He is also Chair of the DCC.

Membership of the DCC is determined under the Church Representation Rules.

During the year the following people served as members of the District Church Council:

Ex-officio members

Curate-in-charge:	The Rev C J Styles	Chairman
NSM (now PTO):	The Rev Richard Herkes	
Warden:	Mr Chris Mason	
Warden/safeguarding officer:	Mrs Sheila Reeve	
	Mrs Yvonne Pressdee	
	Mrs Barbara Minall	
Treasurer	Mr John Cheesman	
	Mr Shaun Waters	
	Mrs Maureen Goodwin	
Secretary (non-member):	Mrs Sue Read	

Our aims and purposes as a charity

The DCC of St Wilfrid's, Lower Willingdon, has the responsibility of co-operating with the curate-in-charge, the Revd C J Styles, in his work within the Conventional District of St Wilfrid's. Part of their charge is to assist him in:

- The promotion of the gospel of our Lord Jesus Christ according to the doctrines and practices of the Church of England.
- Helping to promote in the parish the whole mission of the church, pastoral, social, evangelistic and ecumenical.
- Spreading the fame and glory of Jesus Christ, the King of kings, and Lord of lords.
- Practically supporting and caring for people in the parish, from the youngest to the eldest.

What we achieved during 2024

Attendance at worship

We recognise that our numbers include those whom we consider 'vulnerable' and we acknowledge that their safety requires a righteous vigilance on our part. We have not dropped our safeguarding values and have appointed a new safeguarding officer this past year.

There are 92 names on the church electoral roll, approximately half of which do not reside within the 'district' of 'the parish'. But we have seen new people come in this year. I would estimate about a dozen. Not all of those wish to go on the electoral roll, but we are right now busy updating the roll for 2025.

About 35 people belong to weekly home-groups, which are intended to encourage growth in faith and to encourage obedience to the Lord, Jesus Christ. This obedience is part of what we call 'discipleship to Jesus Christ' and is what we understand by our strap line: Making disciples of Jesus Christ.

Over this year, the minister has personally sought to encourage prayer, which he sees as vital if the Church is to regain its life and vigour and to escape the current politically motivated woke culture that even many of our bishops have now adopted.

St Wilfrid's has two prayer meetings that are open to all Christians in this locality, and not exclusively to the worshipping community of St Wilfrid's. One meets each Friday, at 7.30pm; the other assembles at 6.15am of a Tuesday morning.

Both prayer times encourage praise and thanksgiving, interspersed with intercession for the blessing of our community and nation and for the outpouring of the Holy Spirit. We pray among other things, that God will raise up workers for his harvest, which most definitely means the UK as well as foreign missions. And we are looking for a great harvest of men, women, boys, and girls responding to the gospel of Jesus. We are looking too for the existing Church of God to be inspired with a new confidence in the gospel, and in its power to save.

In January 2024 we added a weekly afternoon meeting called Sunday@4. We had for four years prior to this been running this event monthly and largely as a family service. We have averaged 30 in attendance and sometimes we have more than 40 with us – at least 50% do not attend the morning service which averages somewhere between 60 and 70 attendees.

Teaching, baptising and nurturing new and existing believers

We did not baptize anyone during 2024, though we saw a number of people with a church background returning to the faith.

As for nurturing, we presently have a group dedicated to nurturing ladies who are near to the Kingdom or who have recently come into the experience of new life in Christ. The minister's wife leads this group and is aided by other ladies in the church who have been in the faith some time.

Early in the year we ran an evangelistic course at which a number of non-church people were in attendance. We are pleased to say we were able to put 2 people who attended but were not local, in touch with local churches in their respective areas.

Provision of the building for users, guests, and the worshipping community

Users of the building generally

We continue to hire out our hall for children's parties, and there are also a number of groups who hire the building out regularly. These latter include: a line dancing group, a local choir, and a keep-fit club. We also accommodate a piano teacher in the smaller, upstairs hall, who works closely with the school across the road from us.

For some years we have rented an upstairs office, at low-cost to 'Spinnaker'. Spinnaker work in schools and take assemblies and various classes. It is also one of the 4 Missions/charities we support financially.

More recently 'educators' have been booking our various rooms for their activities. These presently comprise two groups: 'Classical Conversation', a group seeking to network with home schoolers and provide some of their tuition requirements. The other group is a newly formed organisation called 'Christ the Rock', a solidly Christian network which, like the previous group, meets one day a week on our premises. Both groups we helped to get established by cutting our rental charges (as we did for other groups such as Weight Watchers and the piano tutor referred to above). 'Christ the Rock' we support by fixing their rental at half-rate.

This year Christ the Rock asked me to come and speak at their community time (these are a bit like school assemblies). I'm now going in at least once a term.

Supporting local schools

Over 2024 we hosted the local primary school supplying two carol services for the upper two years and their parents. And though my own part was simply to welcome parents, staff and children (and to plug some of our Christmas services) it was good to see some of these families turn up to Christmas events.

We also take assemblies in the primary school as well as our traditional visit from the Reception class to see what we do in a church.

We've also managed to link up again with the secondary school (opposite our building). Year 7s are, as I write, in the process of visiting in their classes to hear how a church works. I speak about the layout of the church and how it pictures our approach to God: entering the building, baptism, joining God at table etc. And we've just been allowed back into the school (after a gap of 7 years) to answer questions from year 8s – any question they have. This has been tremendously exciting. Is change in the air?

Supporting local government

The hall continues to act as a voting station during local and regional elections. Our hall is of an ideal size for a voting station also providing a small amount of parking out front.

The worshipping community's intentional 'guest services' and 'guest' directed activities

We have continued to run a 'warm space' event aimed at those who are fearful of turning on their gas and electric appliances; mostly older people who gather to play board games, read papers, and chat over coffee. This is a weekly, seasonal activity to accommodate those who are cold or lonely.

The worshipping community has also developed a specific service for those in the community who have been bereaved. We call this service 'In Loving Memory', and after piloting it in 2022, we have now made it a yearly autumn fixture. It has been well attended.

Messy Church and a toddler group called Mini Wilfs, are provisions that include younger families and their children. Along with these belong our efforts at Christmas and Easter. This year we added a second service to our well-attended carol service called 'Family Christmas', this new service was partially run by members of our new youth club which started in July of 2024.

At present the youth club is a small affair: about 12 to 15 children usually turning up. It is only being run on the last Friday of the month at present. As with Sunday@4 we are starting small before making the jump to what we hope will be a weekly commitment.

Spatial reordering of the church building and future projects

We added a smart screen to our main hall, two years ago, which has been a great asset helping us to deliver activities where song words or other visual displays are required. Our new afternoon service is run in the main hall, as does our 'Friendship group' on the first Monday of the month. The latter is especially well supported by locals who are not part of our worshipping community.

The kitchen, which has hatches opening on to the hall, make this a great venue for services deliberately looking to develop a less formal culture, and where refreshments are required. Each of the events above along with Youth Club, Warm Space, Messy Church and Mini-Wilfs make use of the hall and kitchen.

Lack of finance has prevented me from bringing in a number of structural changes. I would like to turn one of our break-out rooms into an office for an administrator (and, actually employ an administrator!); I would like to develop the stairway to the top rooms so that it is no longer open to the elements, by sealing off the stairway with a glass finish; to develop the landing and even install a toilet (this would create a suite that could be used for future youth-work and be rented out) it would make an ideal suite for min-conferences, having as it does provision for washing up and storing food and drinks.

There are many other things that could make this church a very welcoming environment and increase income, but we need to invest in infrastructure and staff in order to develop.

I wonder in all honesty, if we will ever pay 100% parish share without such investment. I appreciate this is looking at things from a purely materialistic point of view. But we have always sought to have our feet on the ground while our eyes were on heaven.

Like all churches, maintenance takes up much of our finances. We have just replaced a large window at the front of our church which cost twenty-two thousand pounds. But we are grateful to God that more than two-thirds of the cost were covered by gifts from church members. However, the sanctuary roof is

near the end of its life and while our quinquennial did not insist on work being done urgently on the roof (as was the case with the window), it is only a matter of time before patching up will no longer suffice.

Provision of pastoral care for people living in the parish

Provision of low-level needs are delegated through the organisational skills of a very capable team, and I am called in when needed, and also informed when a visit might be helpful.

Aside from the worshipping community, there is the provision of pastoral care of the bereaved, and the happier task of helping those who seek to get married. Sadly, no marriages this year (our modern building just doesn't attract couples); but several funerals were used by God to get to know non-church people including a lady who is home-bound. She is one of the people I try to visit (and my wife too).

I tend to get more calls for help from people who have no church connections and have no intention of getting involved in the church, than I do from people in the church. I'm presently visiting a gentleman dying of cancer who was a churchgoer in the Heathfield area more than twenty years ago. And I've aided several couples with marriage problems, and some have had positive outcomes.

Provision of tangible support to the poor and needy

We continue to work with Food Bank and Family Support. A number of people in the congregation are now also working under the auspices of 'Hope in Action' to provide furniture and support for Hope's housing for the homeless projects, one of which is local to St Wilfrid's.

The DCC also contributes from its income to several charities, including Beachy Head Chaplaincy, which seeks to counsel those contemplating suicide; Spinnaker, a charity involved in supporting local schools; and two charities with projects based overseas.

It also gives a percentage of funds raised from its two fayres to local charities deemed worthy of help. We have a Christmas and summer fayre.

Other Local Involvement

At Easter, Harvest, and Christmas we've continued to see high attendance, with people coming in from the community. We also do a yearly service at the District General Hospital, for DGH Eastbourne's hospital radio. One of our members volunteers for Hospital Radio, and individuals are involved in many other activities, some of which are local.

Several members do an after-school club in the secondary school across the road. This is on a Wednesday after school hours. Members play chess and other games with the children and are available to chat while providing toasted sandwiches.

While there are plans to engage in street evangelism in the near future, direct, yet low-key, evangelism outside our four walls, is achieved largely through our ecumenical connections with Churches Together. In particular, the book table in Polegate's shopping centre is a focus. Several of us support this for an hour or more per week, standing with the people officially on duty, speaking with passers-by. I call this 'low-key' because it is less confrontational than much of the evangelism done over the years.

There is also a book-table in the Triangle and is led by three members of St Wilfrid's. The Triangle is something of a hub in our district with a few shops and a small piece of common ground.

Churches Together also run the singing in the square which happens at Easter and Christmas, and which I've been privileged to lead the last couple of years.

The Revd. C J Styles, DCC Chair on behalf of the DCC of St Wilfrid's, Lower Willingdon

.....

February 4th, 2025

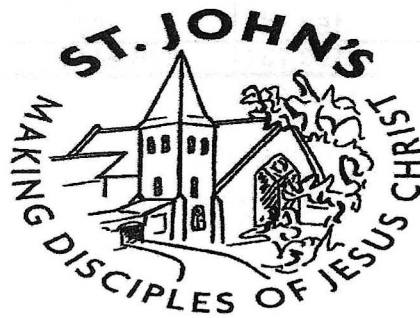
Annual Financial Report for 2024

**The Parochial Church Council of
St John's Church, Polegate
with
the Conventional District of St Wilfrid's Church, Lower Willingdon**

**in the combined parish of St John's with
St Wilfrid's Churches**

Registered Charity no. 1130861

for the year ended 31 December 2024



Statement of financial activities


	Unrestricted Funds £	Restricted Funds £	Endowed Funds £	Total Funds 2,024 £	Total Funds 2,023 £	Notes
Income and endowments from:						
Donations & legacies	172,191	£9,360	0	181,551	224,948	
Charitable activities	419	£0	0	419	448	
Other trading activities	22,998	£13,211	0	36,209	23,415	
Investments	713	£0	0	713	571	
Other receipts	0	£0	0	0	0	
Total income	196,321	£22,571	0	218,891	249,381	2
Expenditure on:						
Raising funds	114	£0	0	114	134	
Charitable activities	184,995	£1,730	0	186,725	188,631	
Other trading activities	17,516	£0	0	17,516	17,424	
Total expenditure	202,626	£1,730	0	204,356	206,190	3
Net gains (or losses) on investments						
Net income or (net expenditure)	-6,305	£20,841	0	14,535	43,192	
Transfers between funds	-100	£100	0	0	0	7
	-6,405	£20,941	0	14,535	43,192	
Other recognised gains/(losses):						
Gains/(losses) on revaluation of fixed assets						
Other gains/(losses)						
Net movement in funds	-6,405	£20,941	0	14,535	43,192	
Reconciliation of funds:						
Total funds brought forward	160,136	£0	0	160,136	116,945	
Total funds carried forward	153,731	£20,941	0	174,672	160,136	

Balance Sheet (also known as Statement of Financial Position)

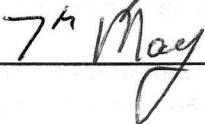
	Total Funds 2,024	Total Funds 2,023	Notes
	£	£	
Intangible assets	0	0	
Tangible assets	65,001	65,001	
Heritage assets	0	0	
Endowed investments	0	0	
Total fixed assets	65,001	65,001	8
Stocks	0	0	
Debtors	3,953	1,138	
Investments	0	0	
Cash at bank and in hand	114,933	101,200	14
Total Current assets	118,887	102,337	
Creditors: Amounts falling due within one year	9,216	7,202	11
Net current assets or (liabilities)	109,671	95,135	
Total assets less current liabilities	174,672	160,136	
Creditors: Amounts falling due after more than one year	0	0	12
Provisions for liabilities	0	0	
Total net assets or (liabilities)	174,672	160,136	
The funds of the charity:			
Endowment funds	0	0	
Restricted income funds	20,941	0	
Unrestricted funds	153,731	160,136	
Revaluation reserve	0	0	
Total unrestricted funds	153,731	160,136	
Total charity funds	174,672	160,136	

This Annual Financial Report, for the year ended 31st December 2024 including the notes following, was **approved** by the PCC and signed on it's behalf by

OFFICER



Date:


_____ 2025

Notes to the financial report

NOTE 1. Accounting policies

A - Accounting convention

The financial statements have been prepared under the Church Accounting Regulation 2006 in accordance with applicable accounting standards and the current (2015) Statement of Recommended Practice, Accounting and Reporting by Charities SORP (FRS102).

The financial statements have been prepared under the historical cost convention as modified by the inclusion of investments at market value. The financial statements include all transactions, assets and liabilities for which the PCC is responsible in law.

They do not include the accounts of church groups that owe their affiliation to another body, nor those which are informal gatherings of church members.

B - Funds accounting

Funds held by the PCC are:

Unrestricted funds - general funds which can be used for PCC ordinary purposes

Designated funds - monies set aside by the PCC out of unrestricted funds for specific future purposes or projects.

Restricted funds - a) income from trusts or endowments which may be expended only on those restricted objects provided in the terms of the trust or bequest; b) donations or grants received for a specific object or invited by the PCC for a specific object. The funds may only be expended on the specific object for which they were given. Any balance remaining unspent at the end of the year is carried forward as a balance on that fund.

Endowment funds - funds the capital of which must be maintained; only income arising from the investment of the endowment may be used, either as restricted or unrestricted funds, depending on the purpose set out in the terms of the original endowment.

C - Income and endowments

All income and endowments are accounted for without deduction for any costs or receivability, are recognised when there is evidence of entitlement, receipt is probable, and the amount can be measured reliably.

Donations and legacies

Collections are recognised when received.

Planned giving receivable is recognised when there is evidence of entitlement, receipt is probable, and the amount accords with the Gift Aid declaration or other record of the intention to donate.

Gift Aid recovered is recognised when the income to which it is attached is recognised.

Grants & legacies are recognised when the formal offer in writing of the funding, is received by the PCC.

Charitable activities

Sales of magazines and study notes are recognised when received.

Rents from property are recognised in accordance with the rental agreements, when receipt is probable.

Other trading activities

Trading activities are where income is receivable in return for selling goods or providing services.

Income from trading is recognised either; a) when received, or b) in the case of concerts: for the year in question, irrespective of date of receipt. Advance bookings are included in creditors until the concert has taken place.

Investment income; dividends are accounted for when due and payable. Interest entitlements are accounted for as they accrue.

Notes to the financial report (continued)

All other income

All other income is recognised in accordance with the above overall policy.

Gains and losses on investments

Realised gains are recognised when the investments are sold.

Unrealised gains and losses are accounted for on revaluation at 31 December.

D - Resources used

Resources expended are accounted for on an accruals basis and are accounted for gross.

Grants

Grants and donations are accounted for when paid over, or when awarded where the award creates a binding obligation on the PCC.

Church Activities

The diocesan parish contribution is accounted for on an annual basis, reflecting the allocation set by our Deanery. Any parish contribution unpaid as 31 December is provided for in these accounts as an operational (though not legal) liability and is shown as a creditor in the balance sheet.

E - Fixed Assets

Tangible fixed assets

Consecrated and beneficed property of any kind is excluded from the accounts by s.10(2) of the Charities Act 2011. Moveable church furnishing held by the Vicar and Churchwardens on special trust for the PCC and which require a faculty for disposal, are accounted as inalienable property unless consecrated; they are listed in the church's inventory which can be inspected but are not included in the financial statements. For other property acquired prior to 2000 there is insufficient cost information available and therefore the cost of such assets is not stated in the financial statements.

All expenditure on consecrated or beneficed buildings and individual items costing under £2,000 are written off in the year they were incurred.

Depreciation

Depreciation is calculated to write down the cost of tangible fixed assets, excluding freehold properties, over their expected useful lives. The rates generally applicable are:

Fixtures and fittings	0
Audio visual equipment	0
Office equipment	0

No depreciation is provided on freehold property as it is the P.C.C.'s policy to maintain these assets in a continual state of sound repair. The useful economic life of these assets is so long and residual values so high that any depreciation would not be material. These assets will be subject to annual impairment reviews. Provision will be made if there has been any permanent diminution in value.

Investments

Investments are stated at market value at the balance sheet date.

F - Current Assets

Amounts owing to the PCC at 31 December in respect of fees, rents or other income are shown as debtors less provision for amounts that may not prove collectable.

Short-term deposits include cash held on deposit either with the CBF Church of England Funds, or at the bank.

Notes to the financial report (continued)

Note 2. Analysis of income and endowmer	Unrestricted Funds £	Restricted Funds £	Endowed Funds £	Total Funds 2,024 £	Total Funds 2,023 £	Notes
Planned Gift-aided giving (excl. tax refu	86,310	£720	0	87,030	86,084	
Planned giving (no tax refunds)	8,056	£0	0	8,056	7,580	
Loose cash collections,sundry donation	49,807	£490	0	50,297	51,965	
Fetes, fund-raising event income	0	£0	0	0	0	
Special appeals, Gift Days	650	£3,632	0	4,282	520	
Gift Aid recovered	27,369	£1,518	0	28,886	28,207	
Legacies	0	£0	0	0	50,592	
Grants	0	£3,000	0	3,000	0	
Donations & legacies	172,191	£9,360	0	181,551	224,948	
Fees for weddings & funerals	419	£0	0	419	448	
Charitable activities	419	£0	0	419	448	
Rent from letting properties	12,326	£0	0	12,326	12,261	
Church hall and room lettings	9,956	£0	0	9,956	8,074	
Fund-raising events	716	£13,211	0	13,927	3,079	
Other trading activities	22,998	£13,211	0	36,209	23,415	
Bank and CBF deposit interest	713	£0	0	713	571	
Investment fund dividends	0	£0	0	0	0	
Investments	713	£0	0	713	571	
Other receipts	0	£0	0	0	0	
Total received on all funds	196,321	£22,571	0	218,891	249,381	

Notes to the financial report (continued)

Note 3. Analysis of expenditure on:	Unrestricted Funds	Restricted Funds	Endowed Funds	Total Funds 2,024	Total Funds 2,023	Notes
	£	£	£	£	£	
Special appeal costs (e.g. adverts, leaflets)	0	£0	0	0	0	
Fund-raising event costs	0	£0	0	0	0	
Stewardship costs (e.g. printing giving envelope)	85	£0	0	85	112	
Grants costs (e.g. Grant application fees)	0	£0	0	0	0	
Investment management costs	0	£0	0	0	0	
Other fundraising (non-trading) costs	29	£0	0	29	23	
Cost of Raising funds	114	£0	0	114	134	
Missionary and charitable giving (see note 4)	13,358	£1,730	0	15,088	16,434	4
Ministry:						
<i>diocesan parish contribution</i>	93,684	£0	0	93,684	90,144	
<i>other clergy costs</i>	10,446	£0	0	10,446	9,035	
Staff (see next page)	11,155	£0	0	11,155	10,497	5
Church running costs	34,598	£0	0	34,598	31,351	
Church maintenance and repair	16,376	£0	0	16,376	11,842	
Miscellaneous	2,755	£0	0	2,755	16,676	
Bank charges	254	£0	0	254	283	
Depreciation	0	£0	0	0	0	
Governance costs (Accountants etc)	2,370	£0	0	2,370	2,370	6
Charitable activities	184,995	£1,730	0	186,725	188,631	
Church hall running costs and repair	4,098	£0	0	4,098	11,633	
Other trading costs (letting property etc.)	13,418	£0	0	13,418	5,791	
Bookstall costs	0	£0	0	0	0	
Cost of other trading activities	17,516	£0	0	17,516	17,424	
Total expended on all funds	202,626	£1,730	0	204,356	206,190	

Notes to the financial report (continued)

NOTE 4. Missionary and charitable giving:	Unrestricted Funds £	Restricted Funds £	Endowed Funds £	Total Funds 2,024 £	Total Funds 2,023 £	Notes
Overseas:-						
Serbia	0	£0	0	0	0	
Crosslinks	6,000	£0	0	6,000	7,200	
CMS (Church Mission)	1,000	£0	0	1,000	1,000	
Interserve	0	£0	0	0	0	
Sundry grants overseas	0	£1,730	0	1,730	650	
Quicken Trust	0	£0	0	0	0	
Home:-						
Sundry giving grants	358	£0	0	358	887	
Diocese Family Support Work	0	£0	0	0	5	
St Wilfrid's Hospice	0	£0	0	0	42	
Spinnaker, Schools outreach	1,000	£0	0	1,000	1,000	
Sussex Gospel Partnership	1,000	£0	0	1,000	1,000	
BHCT	1,000	£0	0	1,000	1,000	
London City Mission	3,000	£0	0	3,000	3,650	
	13,358	£1,730	0	15,088	16,434	

NOTE 5. Staff costs:	Unrestricted Funds £	Restricted Funds £	Endowed Funds £	Total Funds 2,024 £	Total Funds 2,023 £	Notes
a) Remuneration						
Wages and salaries	11,155	£0	0	11,155	10,497	
Social security costs	0	£0	0	0	0	
Employer pension costs	0	£0	0	0	0	
	11,155	£0	0	11,155	10,497	

During the year the PCC of St John's employed one part-time person as Parish clerk who is also a member of the PCC whose remuneration was £9,519. She was also reimbursed £245 for church purchases

St Wilfrid's DCC employed one cleaner whose remuneration was £1,636

Ben Pratt was reimbursed £19 for a conference fee and book allowance

Alan Packard was reimbursed £274 for church purchases

Pam Sharpe was reimbursed £32 for church purchases

NOTE 6. Governance	Unrestricted Funds £	Restricted Funds £	Endowed Funds £	Total Funds 2,024 £	Total Funds 2,023 £	Notes
Independent examination	2,370	£0	0	2,370	2,370	
Accounts production	0	£0	0	0	0	
Book keeping	0	£0	0	0	0	
Total of Governance costs	2,370	£0	0	2,370	2,370	

Notes to the financial report (continued)

NOTE 7. Analysis of transfers between funds	Unrestricted Funds £	Restricted Funds £	Endowed Funds £	Total Funds 2,024 £	Total Funds 2,023 £	Notes
	0	£0	0	0	0	13
from General to Charity Fund	-100	£100	0	0	0	13
Total of transfers between Funds	-100	£100	0	0	0	

NOTE 8. Fixed assets	Unrestricted 2024 Funds £	Restricted 2024 Funds £	Endowed 2024 Funds £	Total Funds 2,024 £
(a) Investments				
Market value 01 January 2023	£0	0	0	0
Disposals at carrying value	£0	0	0	0
Purchases at cost	£0	0	0	0
Net gains and revaluation	£0	0	0	0
Market value 31 December 2023	£0	0	0	0
	Freehold land and buildings £	Audio visual equipment £	Office equipment £	Total fixed assets £
b) Tangible fixed assets				
Cost or valuation				
As at 01 January 2024 (nominal value two proper	£65,001	0	0	65,001
Additions	£0	0	0	0
Disposals	£0	0	0	0
Revaluation	£0	0	0	0
At 31 December 2024 (nominal value two properties)	£65,001	0	0	65,001
Charge for impairment				
As at 01 January 2024	£0	0	0	0
Additions	£0	0	0	0
Disposals	£0	0	0	0
Revaluation	£0	0	0	0
At 31 December 2024	£0	0	0	0
Net book amounts				
At 31 December 2024 (nominal value two proper	£65,001	0	0	65,001
At 31 December 2023 (nominal value previous ye	£65,001	0	0	65,001

Tangible fixed assets consist of two properties :-

- (1) 5 St John's Road was purchased in 1990 out of the O'Hara Legacy. It was used for staff accommodation, first for a Church Army Officer, then for the Church Pastoral assistant. After her redundancy in August 2012 it was let in May 2013 unfurnished on a short-term rental and is relied on to supplement the church income. For accounting purposes, the property was revalued in 1996, but there is no legal requirement to re-value it again until it is disposed of. The nominal house value is the Fund balance £65,000 now.
- (2) St Wilfrid's House was built in 1964 at a cost to the parish congregation raised by gift and loan. It is not owned by the diocese. By accounting oversight, it was never previously been included in the Parish accounts until 2016 although it is a parish asset. There is no legal requirement to include it at its current value, and so is entered here at a nominal figure of £1.

Notes to the financial report (continued)

NOTE 9. Analysis of net assets by fu	Unrestricted Fund/s £	Restricted Fund/s £	Endowed Fund/s £	Total Funds 2024 Funds £	Total Funds 2,023 £	Notes
Fixed assets for church use	65,001	£0	0	65,001	65,001	
Investment fixed assets	0	£0	0	0	0	
Current assets (except cash)	0	£0	0	0	1,138	
Cash at bank and on deposit	114,933	£0	0	114,933	101,200	
Current liabilities	9,216	£0	0	9,216	7,202	
Long term liabilities	0	£0	0	0	0	
	189,150	£0	0	189,150	160,136	

NOTE 10. Debtors	Unrestricted Fund/s £	Restricted Fund/s £	Endowed Fund/s £	Total Funds 2024 Funds £	Total Funds 2,023 £	Notes
Gift Aid recoverable	3,021	£0	0	3,021	1,138	
Prepayments and accrued income	6	£0	0	6	0	
Other debtors	926	£0	0	926	0	
	3,953	£0	0	3,953	1,138	

NOTE 11. Creditors: amounts falling due within one year	Unrestricted Fund/s £	Restricted Fund/s £	Endowed Fund/s £	Total Funds 2,024 £	Total Funds 2,023 £	Notes
Deferred income	0	£0	0	0	0	
Accruals for utilities and other costs	1,434	£0	0	1,434	3,268	
Loans	0	£0	0	0	0	
Other creditors	7,782	£0	0	7,782	3,934	
	9,216	£0	0	9,216	7,202	

NOTE 12. Creditors: amounts falling due after more than one year	Unrestricted Fund/s £	Restricted Fund/s £	Endowed Fund/s £	Total Funds 2024 Funds £	Total Funds 2,023 £	Notes
Deferred income	0	£0	0	0	0	
Accruals for utilities and other costs	0	£0	0	0	0	
Loans	0	£0	0	0	0	
Other creditors	0	£0	0	0	0	
	0	£0	0	0	0	

Notes to the financial report (continued)

NOTE 13. Statement of funds	Balances b/fwd 1 Jan 24 £	Income £	Expenditure £	Transfers, other gains and losses £	Total Funds 31 Dec. 2,024 £	Notes
Endowed funds						
None	0	£0	0	0	0	
Total of Endowed funds	0	£0	0	0	0	
Restricted funds						
"Building" St Wilfrid's	0	£20,941	0	0	20,941	I
Charity fund, St John's	0	£1,630	1,730	100	0	ii
Charity fund, St Wilfrid's	0	£0	0	0	0	iii
Total of Restricted funds	0	£22,571	1,730	100	20,941	
Unrestricted funds						
General fund St John's	75,481	£124,936	133,020	1,064	68,460	
General fund St Wilfrid's	6,824	£71,385	70,770	0	7,439	
Designated O'Hara Legacy fund, St John's	65,000	£0	0	0	65,000	iv
Designated St. Wilfrid's Kitchen fund,	3,544	£0	0	0	3,544	vi
Designated St. Wilfrid's Re-order	9,288	£0	0	0	9,288	vi
Designated St. John's Kitchen Fund	0	£0	-1,164	-1,164	0	
Total of Unrestricted funds	160,136	£196,321	202,626	-100	153,731	
Total of All funds	160,136	£218,891	204,356	0	174,672	

NOTE (I) The St Wilfrid's Building Fund holds money for large window repair

NOTES (ii) and (iii) The Charity funds are funds that might hold over funds about to be paid out.

NOTE (iv) O'Hara legacy in 1990 was unrestricted. For the past details see Note 8 (1).

NOTE (v) St Wilfrid's Kitch fund awaits plans to use.

NOTE (vi) Reordering fund, held pending a building plan at St Wilfrid's.

NOTE 14. Analysis of cash and cash equivalents	Total Funds 2,024 £	Total Funds 2,023 £
Cash in hand	40	63
Notice deposits (less than 3 months), bank	114,893	101,136
Overdraft facility repayable on demand	0	0
Total cash and cash equivalents	114,933	101,200

NOTE 15. Related parties and transactions

There are none to disclose.

This page is for information only and does not legally form part of the Financial Statements

Individual INCOME and EXPENDITURE ACCOUNTS

	ST JOHN's CHURCH 2,024 £	ST JOHN's CHURCH £2,023 £	ST WILFRID's CHURCH 2024 £	ST WILFRID's CHURCH 2,023 £
INCOME				
Tax efficient giving	48,733	£49,652	38,297	36,432
Tax refunds	17,294	£18,238	11,592	9,969
Other giving	5,016	£4,340	3,040	3,240
Collections	6,874	£5,670	5,629	7,583
Special collections and Gift Day giving	1,130	£520	3,152	0
Sundry donations & Grants	34,844	£32,633	5,950	6,079
Legacies	0	£50,592	0	0
Parochial Fees	294	£399	125	49
Church hall, rooms & property lettings	12,326	£12,261	9,956	8,074
Fund-raising	0	£0	13,927	3,079
Dividends and interest	54	£59	659	512
Insurance claims	0	£0	0	0
TOTALS	126,565	£174,365	92,327	75,016
LESS: EXPENDITURE	£	£	£	£
Grants given away	11,730	£12,552	3,358	3,882
Parish Ministry costs	51,408	£49,140	42,276	41,004
All clergy expenses	2,418	£1,986	0	0
Clergy housing expenses	3,629	£3,109	4,179	3,940
Rented property costs	13,418	£5,791	0	0
Salaries and wages	9,519	£8,980	1,636	1,517
Church running expenses	19,142	£23,956	6,407	7,395
Church repairs and maintenance	13,915	£3,618	2,680	8,224
Hall running costs	2,094	£2,698	0	0
Hall repairs and maintenance	2,005	£8,935	0	0
Training	0	£300	0	0
Outreach, meetings and mission	230	£318	0	0
Other Direct Expenses	0	£0	7,160	9,504
Youth work	93	£23	0	0
Information Technology maintenance	1,568	£1,666	0	0
Fund-raising and publicity costs	114	£134	0	0
Postage, stationery and copying	864	£3,397	0	0
Sundry administration expenses	0	£0	1,889	1,468
Bank charges	254	£283	0	0
Independent Examiner's fee	1,185	£1,185	1,185	1,185
TOTALS	133,586	£128,071	70,770	78,119
EXCESS OF INCOME/EXPENSES	-7,021	£46,295	21,557	-3,103

The Parochial Church Council of St John's, Polegate with the District Convention Council of St Wilfrid's, Lower Willingdon

Registered Charity Number 1130861

Independent examiners's report to the trustees of The Parochial Church Council of St John's, Polegate with the District Convention Council of St Wilfrid's, Lower Willingdon

I report on the accounts of the Charity for the year ended 31 December 2024, which are set out on pages 11 to 21.

Respective responsibilities of trustees and examiner

The charity's trustees are responsible for the preparation of the accounts. The charity's trustees consider that an audit is not required for this year under section 144 of the Charities Act 2011 (the Charities Act) and that an independent examination is needed.

It is my responsibility to:

- examine the accounts under section 145 of the Charities Act;
- to follow the procedures laid down in the general Directions given by the Charity Commission under section 145(5)(b) of the Charities Act; and
- to state whether particular matters have come to my attention

Basis of independent examiner's statement

My examination was carried out in accordance with the general Directions given by the Charity Commission. An examination includes a review of the accounting records kept by the charity and a comparison of the accounts presented with those records. It also includes consideration of any unusual items or disclosures in the accounts, and seeking explanations from you as trustees concerning any such matters. The procedures undertaken do not provide all the evidence that would be required in an audit and consequently no opinion is given as to whether the accounts present a 'true and fair' view and the report is limited to those matters set out in the statement below.

Independent examiner's statement

In connection with my examination, no matter has come to my attention:

- (1) which gives me reasonable cause to believe that in any material respect the requirements:
- to keep accounting records in accordance with section 130 of the Charities Act; and
 - to prepare accounts which accord with the accounting records and comply with the accounting requirements of the Charities Act have not been met; or
- (2) to which, in my opinion, attention should be drawn in order to enable a proper understanding of the accounts to be reached

Signed by Mark R Sellings FCCA (Independent Examiner)



30 - 34 North Street
Hailsham
East Sussex BN27 1DW

Date: 8-MAY-25

Accounts

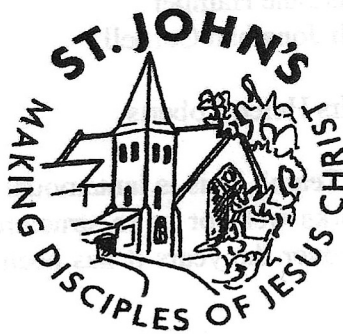
Annual Financial Report for 2023

**The Parochial Church Council of
St John's Church, Polegate
with
the Conventional District of St Wilfrid's Church, Lower Willingdon**

**in the combined parish of St John's with
St Wilfrid's Churches**

Registered Charity no. 1130861

for the year ended 31 December 2023



Statement of financial activities

	Unrestricted Funds	Restricted Funds	Endowed Funds	Total Funds 2023	Total Funds 2022	Notes
	£	£	£	£	£	
Income and endowments from:						
Donations & legacies	224,251	697	0	224,948	163,903	
Charitable activities	448	0	0	448	780	
Other trading activities	21,899	1,515	0	23,415	19,579	
Investments	571	0	0	571	245	
Other receipts	0	0	0	0	3,410	
Total income	247,169	2,212	0	249,381	187,917	2
Expenditure on:						
Raising funds	134	0	0	134	651	
Charitable activities	186,414	2,217	0	188,631	167,308	
Other trading activities	17,424	0	0	17,424	4,266	
Total expenditure	203,972	2,217	0	206,190	172,225	3
Net gains (or losses) on investments						
Net income or (net expenditure)	43,197	-5	0	43,192	15,692	
Transfers between funds	0	0	0	0	0	7
	43,197	-5	0	43,192	15,692	
Other recognised gains/(losses):						
Gains/(losses) on revaluation of fixed assets						
Other gains/(losses)						
Net movement in funds	43,197	-5	0	43,192	15,692	
Reconciliation of funds:						
Total funds brought forward	116,940	5	0	116,945	101,252	
Total funds carried forward	160,136	0	0	160,136	116,945	

Balance Sheet (also known as Statement of Financial Position)

	Total Funds 2023	Total Funds 2022	Notes
	£	£	
Intangible assets	0	0	
Tangible assets	65,001	65,001	
Heritage assets	0	0	
Endowed investments	0	0	
Total fixed assets	65,001	65,001	8
Stocks	0	0	
Debtors	1,138	824	
Investments	0	0	
Cash at bank and in hand	101,200	54,766	14
Total Current assets	102,337	55,590	
Creditors: Amounts falling due within one year	7,202	3,646	11
Net current assets or (liabilities)	95,135	51,944	
Total assets less current liabilities	160,136	116,945	
Creditors: Amounts falling due after more than one year	0	0	12
Provisions for liabilities	0	0	
Total net assets or (liabilities)	160,136	116,945	
The funds of the charity:			
Endowment funds	0	0	
Restricted income funds	0	5	
<i>Unrestricted funds</i>	160,136	116,940	
<i>Revaluation reserve</i>	0	0	
Total unrestricted funds	160,136	116,940	
Total charity funds	160,136	116,945	

This Annual Financial Report, for the year ended 31st December 2023 including the notes following, was **approved** by the PCC and signed on it's behalf by

The Revd Chris Spinks

Chris G. Spinks

Date:

Notes to the financial report

NOTE 1. Accounting policies

A - Accounting convention

The financial statements have been prepared under the Church Accounting Regulation 2006 in accordance with applicable accounting standards and the current (2015) Statement of Recommended Practice, Accounting and Reporting by Charities SORP (FRS102).

The financial statements have been prepared under the historical cost convention as modified by the inclusion of investments at market value. The financial statements include all transactions, assets and liabilities for which the PCC is responsible in law. They do not include the accounts of church groups that owe their affiliation to another body, nor those which are informal gatherings of church members.

B - Funds accounting

Funds held by the PCC are:

Unrestricted funds - general funds which can be used for PCC ordinary purposes

Designated funds - monies set aside by the PCC out of unrestricted funds for
specific future purposes or projects.

Restricted funds - a) income from trusts or endowments which may be expended only on those restricted objects provided in the terms of the trust or bequest; b) donations or grants received for a specific object or invited by the PCC for a specific object. The funds may only be expended on the specific object for which they were given. Any balance remaining unspent at the end of the year is carried forward as a balance on that fund.

Endowment funds - funds the capital of which must be maintained; only income arising from the investment of the endowment may be used, either as restricted or unrestricted funds, depending on the purpose set out in the terms of the original endowment.

C - Income and endowments

All income and endowments are accounted for without deduction for any costs or receivability, are recognised when there is evidence of entitlement, receipt is probable, and the amount can be measured reliably.

Donations and legacies

Collections are recognised when received.

Planned giving receivable is recognised when there is evidence of entitlement, receipt is probable, and the amount accords with the Gift Aid declaration or other record of the intention to donate.

Gift Aid recovered is recognised when the income to which it is attached is recognised.

Grants and legacies are recognised when the formal offer in writing of the funding, is received by the PCC.

Charitable activities

Sales of magazines and study notes are recognised when received.

Rents from property are recognised in accordance with the rental agreements, when receipt is probable.

Other trading activities

Trading activities are where income is receivable in return for selling goods or providing services.

Income from trading is recognised either; a) when received, or b) in the case of concerts: for the year in question, irrespective of date of receipt. Advance bookings are included in creditors until the concert has taken place.

Investment income; dividends are accounted for when due and payable. Interest entitlements are accounted

for as they accrue.

Notes to the financial report (continued)

All other income

All other income is recognised in accordance with the above overall policy.

Gains and losses on investments

Realised gains are recognised when the investments are sold.

Unrealised gains and losses are accounted for on revaluation at 31 December.

D - Resources used

Resources expended are accounted for on an accruals basis and are accounted for gross.

Grants

Grants and donations are accounted for when paid over, or when awarded where the award creates a binding obligation on the PCC.

Church Activities

The diocesan parish contribution is accounted for on an annual basis, reflecting the allocation set by our Deanery. Any parish contribution unpaid as 31 December is provided for in these accounts as an operational (though not legal) liability and is shown as a creditor in the balance sheet.

E - Fixed Assets

Tangible fixed assets

Consecrated and beneficed property of any kind is excluded from the accounts by s.10(2) of the Charities Act 2011. Moveable church furnishing held by the Vicar and Churchwardens on special trust for the PCC and which require a faculty for disposal, are accounted as inalienable property unless consecrated. they are listed in the church's inventory which can be inspected but are not included in the financial statements. For other property acquired prior to 2000 there is insufficient cost information available and therefore the cost of such assets is not stated in the financial statements.

All expenditure on consecrated or beneficed buildings and individual items costing under £2,000 are written off in the year they were incurred.

Depreciation

Depreciation is calculated to write down the cost of tangible fixed assets, excluding freehold properties, over their expected useful lives. The rates generally applicable are:

Fixtures and fittings	20%
Audio visual equipment	33%
Office equipment	25%

No depreciation is provided on freehold property as it is the P.C.C.'s policy to maintain these assets in a continual state of sound repair. The useful economic life of these assets is so long and residual values so high that any depreciation would not be material. These assets will be subject to annual impairment reviews. Provision will be made if there has been any permanent diminution in value.

Investments

Investments are stated at market value at the balance sheet date.

F - Current Assets

Amounts owing to the PCC at 31 December in respect of fees, rents or other income are shown as debtors less provision for amounts that may not prove collectable.

Short-term deposits include cash held on deposit either with the CBF Church of England Funds, or at the bank.

Notes to the financial report (continued)

Note 2. Analysis of income and endowments	Unrestricted	Restricted	Endowed	Total Funds	Total Funds	Notes
	Funds	Funds	Funds	2023	2022	
	£	£	£	£	£	
Planned Gift-aided giving (excl. tax refunds)	86,084	0	0	86,084	81,385	
Planned giving (no tax refunds)	7,580	0	0	7,580	7,683	
Loose cash collections, sundry donations	51,918	47	0	51,965	45,326	
Fetes, fund-raising event income	0	0	0	0	1,908	
Special appeals, Gift Days	0	520	0	520	1,440	
Gift Aid recovered	28,077	130	0	28,207	23,482	
Legacies	50,592	0	0	50,592	2,679	
Grants	0	0	0	0	0	
Donations & legacies	224,251	697	0	224,948	163,903	
Fees for weddings & funerals	448	0	0	448	780	
Charitable activities	448	0	0	448	780	
Rent from letting properties	12,261	0	0	12,261	12,326	
Church hall and room lettings	8,074	0	0	8,074	4,826	
Fund-raising events	1,564	1,515	0	3,079	2,427	
Other trading activities	21,899	1,515	0	23,415	19,579	
Bank and CBF deposit interest	571	0	0	571	245	
Investment fund dividends	0	0	0	0	0	
Investments	571	0	0	571	245	
Other receipts	0	0	0	0	3,410	
Total received on all funds	247,169	2,212	0	249,381	187,917	

Notes to the financial report (continued)

Note 3. Analysis of expenditure on:	Unrestricted	Restricted	Endowed	Total Funds	Total Funds	Notes
	Funds	Funds	Funds	2023	2022	
	£	£	£	£	£	
Special appeal costs (e.g. adverts, leaflets)	0	0	0	0	0	
Fund-raising event costs	0	0	0	0	565	
Stewardship costs (e.g. printing giving envelopes)	112	0	0	112	86	
Grants costs (e.g. Grant application fees)	0	0	0	0	0	
Investment management costs	0	0	0	0	0	
Other fundraising (non-trading) costs	23	0	0	23	0	
Cost of Raising funds	134	0	0	134	651	
Missionary and charitable giving (see next page)	15,732	702	0	16,434	13,600	4
Ministry:						
<i>diocesan parish contribution</i>	90,144	0	0	90,144	93,576	
<i>other clergy costs</i>	9,035	0	0	9,035	8,476	
Staff (see next page)	10,497	0	0	10,497	9,524	5
Church running costs	26,114	0	0	26,114	17,788	
Church maintenance and repair	17,812	1,515	0	19,327	10,781	
Miscellaneous	14,428	0	0	14,428	10,934	
Bank charges	283	0	0	283	259	
Depreciation	0	0	0	0	0	
Governance costs (Accountants etc)	2,370	0	0	2,370	2,370	6
Charitable activities	186,414	2,217	0	188,631	167,308	
Church hall running costs and repair	11,633	0	0	11,633	2,940	
Other trading costs (letting property etc.)	5,791	0	0	5,791	1,326	
Bookstall costs	0	0	0	0	0	
Cost of other trading activities	17,424	0	0	17,424	4,266	
Total expended on all funds	203,972	2,217	0	206,190	172,225	

Notes to the financial report (continued)

NOTE 4. Missionary and charitable giving:	Unrestricted Funds	Restricted Funds	Endowed Funds	Total Funds 2023	Total Funds 2022	Notes
	£	£	£	£	£	
Overseas:-						
Serbia	0	0	0	0	1,100	
Crosslinks	7,200	0	0	7,200	5,600	
CMS (Church Mission)	1,000	0	0	1,000	1,000	
Interserve	0	0	0	0	0	
London City Mission	3,650	0	0	3,650	0	
Sundry grants overseas	0	650	0	650	0	
Quicken Trust	0	0	0	0	100	
Home:-						
Sundry giving grants	882	5	0	887	0	
Diocese Family Support Work	0	5	0	5	0	
St Wilfrid's Hospice	0	42	0	42	0	
Spinnaker, Schools outreach	1,000	0	0	1,000	1,000	
Sussex Gospel Partnership	1,000	0	0	1,000	2,750	
University Christian Fellowship (UCCF)	0	0	0	0	1,050	
BHCT	1,000	0	0	1,000	1,000	
	15,732	702	0	16,434	13,600	

NOTE 5. Staff costs:	Unrestricted Funds	Restricted Funds	Endowed Funds	Total Funds 2023	Total Funds 2022	Notes
	£	£	£	£	£	
a) Remuneration						
Wages and salaries	10,497	0	0	10,497	9,524	
Social security costs	0	0	0	0	0	
Employer pension costs	0	0	0	0	0	
	10,497	0	0	10,497	9,524	

During the year the PCC of St John's employed one part-time person as Parish clerk who is also a member of the PCC whose remuneration was £8,980.

St Wilfrid's DCC employed one cleaner whose remuneration was £1,516.

PCC Members were reimbursed for church expenses as follows -

Alan Packard £187; Bruce Margrett, £105; Katrina Burton £200; Pam Sharpe, £149; Phil Kyte £390.

The above were in respect of Internet fees, call-out for the tenants, copy paper, I-sing fee, hospitality, and a new cooker for 5, St John's Road, Polegate, the tenanted property.

NOTE 6. Governance	Unrestricted Funds	Restricted Funds	Endowed Funds	Total Funds 2023	Total Funds 2022	Notes
	£	£	£	£	£	
Independent examination	2,370	0	0	2,370	2,370	
Accounts production	0	0	0	0	0	
Book keeping	0	0	0	0	0	
Total of Governance costs	2,370	0	0	2,370	2,370	

Notes to the financial report (continued)

NOTE 7. Analysis of transfers between funds	Unrestricted	Restricted	Endowed	Total Funds	Total Funds	Notes
	Funds	Funds	Funds	2023	2022	
	£	£	£	£	£	
closing redundant funds St John's	0	0	0	0	0	13
to the benefit of General fund St John's	0	0	0	0	0	13
Total of transfers between Funds	0	0	0	0	0	

NOTE 8. Fixed assets	Unrestricted	Restricted	Endowed	Total Funds
	2023 Funds	2023 Funds	2023 Funds	2022
	£	£	£	£
(a) Investments				
Market value 01 January 2023	0	0	0	0
Disposals at carrying value	0	0	0	0
Purchases at cost	0	0	0	0
Net gains and revaluation	0	0	0	0
Market value 31 December 2023	0	0	0	0

b) Tangible fixed assets	Freehold land	Audio visual	Office	Total fixed
	and buildings	equipment	equipment	assets
	£	£	£	£
Cost or valuation				
As at 01 January 2023 (<i>nominal value two properties</i>)	65,001	0	0	65,001
Additions	0	0	0	0
Disposals	0	0	0	0
Revaluation	0	0	0	0
At 31 December 2023 (<i>nominal value two properties</i>)	65,001	0	0	65,001
Charge for impairment				
As at 01 January 2023	0	0	0	0
Additions	0	0	0	0
Disposals	0	0	0	0
Revaluation	0	0	0	0
At 31 December 2023	0	0	0	0
Net book amounts				
At 31 December 2023 (<i>nominal value two properties</i>)	65,001	0	0	65,001
At 31 December 2022 (<i>nominal value previous year</i>)	65,001	0	0	65,001

Tangible fixed assets consist of two properties -

(1) 5, St John's Road was purchased in 1990 out of the O'Hara Legacy. It was used for staff accommodation, first for a Church Army Officer, then for the Church Pastoral assistant. After her redundancy in August 2012 it was let in May 2013 unfurnished on a short-term rental and is relied on to supplement the church income.

For accounting purposes, the property was revalued in 1996, but there is no legal requirement to re-value it again until it is disposed of. The nominal house value is the Fund balance £65,000 now.

(2) St Wilfrid's House was built in 1964 at a cost to the parish congregation raised by gift and loan.

It is not owned by the diocese. By accounting oversight, it was never previously been included in the Parish accounts until 2016 although it is a parish asset. There is no legal requirement to include it at its current value, and so is entered here at a nominal figure of £1.

Notes to the financial report (continued)

NOTE 9. Analysis of net assets by fund

	Unrestricted	Restricted	Endowed	Total Funds	Total Funds	Notes
	Fund/s	Fund/s	Fund/s	2023	2022	
	£	£	£	£	£	
Fixed assets for church use	65,001	0	0	65,001	65,001	
Investment fixed assets	0	0	0	0	0	
Current assets (except cash)	1,138	0	0	1,138	824	
Cash at bank and on deposit	101,200	0	0	101,200	54,766	
Current liabilities	7,202	0	0	7,202	3,646	
Long term liabilities	0	0	0	0	0	
	160,136	0	0	160,136	116,945	

NOTE 10. Debtors

	Unrestricted	Restricted	Endowed	Total Funds	Total Funds	Notes
	Fund/s	Fund/s	Fund/s	2023	2022	
	£	£	£	£	£	
Gift Aid recoverable	1,138	0	0	1,138	824	
Prepayments and accrued income	0	0	0	0	0	
Other debtors	0	0	0	0	0	
	1,138	0	0	1,138	824	

NOTE 11. Creditors: amounts falling due within one year

	Unrestricted	Restricted	Endowed	Total Funds	Total Funds	Notes
	Fund/s	Fund/s	Fund/s	2023	2022	
	£	£	£	£	£	
Deferred income	0	0	0	0	2,192	
Accruals for utilities and other costs	3,268	0	0	3,268	0	
Loans	0	0	0	0	0	
Other creditors	3,934	0	0	3,934	1,454	
	7,202	0	0	7,202	3,646	

NOTE 12. Creditors: amounts falling due after more than one year

	Unrestricted	Restricted	Endowed	Total Funds	Total Funds	Notes
	Fund/s	Fund/s	Fund/s	2023	2022	
	£	£	£	£	£	
Deferred income	0	0	0	0	0	
Accruals for utilities and other costs	0	0	0	0	0	
Loans	0	0	0	0	0	
Other creditors	0	0	0	0	0	
	0	0	0	0	0	

Notes to the financial report (continued)

NOTE 13. Statement of funds

	Balances b/fwd 1 Jan 23	Income	Expenditure	Transfers, other gains and losses	Total Funds 31 Dec. 2023	Notes
	£	£	£	£	£	
Endowed funds						
none	0	0	0	0	0	
Total of Endowed funds	0	0	0	0	0	
Restricted funds						
"Building" St Wilfrid's	0	1,515	1,515	0	0	i
Charity fund, St John's	5	697	702	0	0	ii
Charity fund, St Wilfrid's	0	0	0	0	0	iii
Total of Restricted funds	5	2,212	2,217	0	0	
Unrestricted funds						
General fund St John's	29,181	165,294	118,994	0	75,481	
General fund St Wilfrid's	10,427	73,001	76,604	0	6,824	
Designated O'Hara Legacy fund, St John's	65,000	0	0	0	65,000	iv
Designated St. Wilfrid's Kitchen fund,	3,544	0	0	0	3,544	vi
Designated St. Wilfrid's Re-order	8,788	500	0	0	9,288	vi
Designated St. John's Kitchen fund,	0	8,375	8,375	0	0	
Total of Unrestricted funds	116,940	247,169	203,972	0	160,136	
Total of All funds	116,945	249,381	206,190	0	160,136	

NOTE (I) The St Wilfrid's Building Fund has served its purpose

NOTES (ii) and (iii) The Charity funds are funds that might hold over funds about to be paid out.

NOTE (iv) O'Hara legacy in 1990 was unrestricted. For the past details see Note 8 (1).

NOTE (v) St Wilfrid's Kitch fund awaits plans to use.

NOTE (vi) Reordering fund, held pending a building plan at St Wilfrid's.

NOTE 14. Analysis of cash and cash equivalents

	Total Funds 2023	Total Funds 2022
	£	£
Cash in hand	63	62
Notice deposits (less than 3 months), bank	101,136	54,704
Overdraft facility repayable on demand	0	0
Total cash and cash equivalents	101,200	54,766

NOTE 15. Related parties and transactions

There are none to disclose.

The Parochial Church Council of St John's, Polegate with the District Convention Council of St Wilfrid's, Lower Willingdon

Registered Charity Number 1130861

Independent examiners's report to the trustees of The Parochial Church Council of St John's, Polegate with the District Convention Council of St Wilfrid's, Lower Willingdon

I report on the accounts of the Charity for the year ended 31 December 2023, which are set out on pages 15 to 24.

Respective responsibilities of trustees and examiner

The charity's trustees are responsible for the preparation of the accounts. The charity's trustees consider that an audit is not required for this year under section 144 of the Charities Act 2011 (the Charities Act) and that an independent examination is needed.

It is my responsibility to:

- examine the accounts under section 145 of the Charities Act;
- to follow the procedures laid down in the general Directions given by the Charity Commission under section 145(5)(b) of the Charities Act; and
- to state whether particular matters have come to my attention

Basis of independent examiner's statement

My examination was carried out in accordance with the general Directions given by the Charity Commission. An examination includes a review of the accounting records kept by the charity and a comparison of the accounts presented with those records. It also includes consideration of any unusual items or disclosures in the accounts, and seeking explanations from you as trustees concerning any such matters. The procedures undertaken do not provide all the evidence that would be required in an audit and consequently no opinion is given as to whether the accounts present a 'true and fair' view and the report is limited to those matters set out in the statement below.

Independent examiner's statement

In connection with my examination, no matter has come to my attention:

- (1) which gives me reasonable cause to believe that in any material respect the requirements:
- to keep accounting records in accordance with section 130 of the Charities Act; and
 - to prepare accounts which accord with the accounting records and comply with the accounting requirements of the Charities Act have not been met; or
- (2) to which, in my opinion, attention should be drawn in order to enable a proper understanding of the accounts to be reached

Signed by Mark R Sellings FCCA (Independent Examiner)



30 - 34 North Street
Hailsham
East Sussex BN27 1DW

Date: 20 - MAR - 24

This page is for information only and does not legally form part of the Financial Statements
Individual INCOME and EXPENDITURE ACCOUNTS

	ST JOHN'S CHURCH 2023 £	ST JOHN'S CHURCH 2022 £	ST WILFRID'S CHURCH 2023 £	ST WILFRID'S CHURCH 2022 £
INCOME				
Tax efficient giving	49,652	48,047	36,432	33,338
Tax refunds	18,238	14,248	9,969	9,234
Other giving	4,340	4,268	3,240	6,050
Collections	5,670	4,958	7,583	8,424
Special collections and Gift Day giving	520	1,220	0	0
Sundry donations & Grants	32,633	26,484	6,079	2,824
Legacies	50,592	2,679	0	0
Parochial Fees	399	780	49	47
Church hall, rooms & property lettings	12,261	12,326	8,074	4,826
Fund-raising	0	1,028	3,079	2,380
Dividends and interest	59	38	512	207
Insurance claims	0	3,410	0	
	174,365	119,487	75,016	67,330
LESS: EXPENDITURE	£	£	£	£
Grants given away	12,552	9,400	3,882	3,100
Parish Ministry costs	49,140	55,176	41,004	38,400
All clergy expenses	1,986	1,559	0	0
Clergy housing expenses	3,109	3,276	3,940	3,641
Rented property costs	5,791	1,326	0	0
Salaries and wages	8,980	8,164	1,517	1,360
Church running expenses	23,956	13,720	2,158	4,069
Church repairs and maintenance	3,618	4,849	15,709	5,932
Hall running costs	2,698	1,308	0	0
Hall repairs and maintenance	8,935	1,632	0	0
Training	300	0	0	0
Outreach, meetings and mission	318	575	0	0
Other Direct Expenses	0	0	7,256	7,451
Youth work	23	50	0	0
Information Technology maintenance	1,666	773	0	0
Fund-raising and publicity costs	134	651	0	0
Postage, stationery and copying	3,397	627	0	0
Sundry administration expenses	0	0	1,468	1,457
Bank charges	283	259	0	0
Independent Examiner's fee	1,185	1,185	1,185	1,185
	128,071	104,530	78,119	66,594
EXCESS OF INCOME/EXPENSES	46,295	14,957	-3,103	736

This page is for information only and does not legally form part of the Financial Statements

The Parochial Church Council of St John's, Polegate with the District Convention Council of St Wilfrid's, Lower Willingdon

Registered Charity Number 1130861

Independent examiners's report to the trustees of The Parochial Church Council of St John's, Polegate with the District Convention Council of St Wilfrid's, Lower Willingdon

I report on the accounts of the Charity for the year ended 31 December 2023, which are set out on pages 15 to 24.

Respective responsibilities of trustees and examiner

The charity's trustees are responsible for the preparation of the accounts. The charity's trustees consider that an audit is not required for this year under section 144 of the Charities Act 2011 (the Charities Act) and that an independent examination is needed.

It is my responsibility to:

- examine the accounts under section 145 of the Charities Act;
- to follow the procedures laid down in the general Directions given by the Charity Commission under section 145(5)(b) of the Charities Act; and
- to state whether particular matters have come to my attention

Basis of independent examiner's statement

My examination was carried out in accordance with the general Directions given by the Charity Commission. An examination includes a review of the accounting records kept by the charity and a comparison of the accounts presented with those records. It also includes consideration of any unusual items or disclosures in the accounts, and seeking explanations from you as trustees concerning any such matters. The procedures undertaken do not provide all the evidence that would be required in an audit and consequently no opinion is given as to whether the accounts present a 'true and fair' view and the report is limited to those matters set out in the statement below.

Independent examiner's statement

In connection with my examination, no matter has come to my attention:

- (1) which gives me reasonable cause to believe that in any material respect the requirements:
- to keep accounting records in accordance with section 130 of the Charities Act; and
 - to prepare accounts which accord with the accounting records and comply with the accounting requirements of the Charities Act have not been met; or
- (2) to which, in my opinion, attention should be drawn in order to enable a proper understanding of the accounts to be reached

Signed by Mark R Sellings FCCA (Independent Examiner)



30 - 34 North Street
Hailsham
East Sussex BN27 1DW

Date: 20 - MAR - 24

Trustees Annual Report and Financial Report of



**The Parish of
St John's Church,
Church Road,
Polegate,
BN26 5BX**

**including the
Conventional
District of
St Wilfrid's Church,
Broad Road,
Lower Willingdon,
Eastbourne, BN20 9RA**



Registered Charity no. 1130861

For the year ended 31 December 2023

CONTENTS	Pages
Trustees annual report, St Johns'	2 to 6
Trustees annual report, St Wilfrids'	7 to 13
Statement of financial activities.....	15
Balance sheet	16
Notes to the accounts.....	17 to 24
Report of the independent examiner	25

Website: www.polegate.org.uk

Incumbent: The Revd Chris Spinks, c/o The Church Office, Church Road, Polegate, BN26 5BX

Independent examiner: Watson Associates, 30-34 North Street, Hailsham, BN27 1DW

Bankers: Barclays Leicester, LE87 2BB and CBF Church of England deposit fund.

Trustees Annual Report for 2023 for St John's, Polegate



Our aims and purposes as a charity

The Parochial Church Council (the PCC) has the responsibility of co-operating with the incumbent, the Rev'd Chris Spinks, in:

- The promotion of the gospel of the Lord Jesus Christ according to the doctrines and practices of the Church of England
- Promoting in the parish the whole mission of the church, pastoral, social, evangelistic and, ecumenical
- Knowing Jesus better and make Him better known
- Practical support and care for people in the parish, from the youngest to the eldest, irrespective of level of need or, ability to pay
- Providing financial support to those in need and, to other organisations with similar objectives.

What we planned to do in St. John's, to achieve our charitable objectives

When planning our activities for the year, our incumbent and the PCC have considered the Charity Commission's guidance on public benefit and, in particular, the specific guidance on 'charities for the advancement of religion'.

The PCC has complied with its duty under Section 5 of the Safeguarding and Clergy Discipline Measure 2016, fully recognising its duty to have regard to House of Bishops' guidance on safeguarding children and vulnerable adults. During 2023 we planned the following objectives and activities to fulfil our aims:

- Enabling as many people as possible to worship at our church
- Enabling as many people as possible to become part of our church family
- Teaching, baptising and nurturing new and existing believers
- Maintaining an overview of worship throughout the parish
- Considering how services can involve the many groups that live within the parish
- Putting faith into practice, through prayer and scripture, music and worship
- Offering worship, prayer and learning about the Gospel, in small group situations
- Assisting people from all walks of life to develop their knowledge of, and trust in, Jesus
- Provision of pastoral care for people living in the parish
- Giving grants to missionary organisations
- Maintaining the fabric of the church building as a centre and spiritual focus of life in the town.

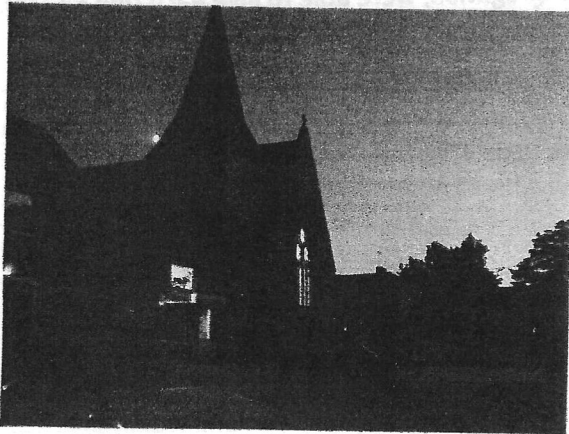
What we achieved in St. John's and how we affected beneficiaries' lives.

Born in Ireland, Joseph Scriven wrote a favourite hymn of many people, the first verse of which is:-

*"What a friend we have in Jesus,
All our sins and griefs to bear!
What a privilege to carry
Everything to God in prayer!
O what peace we often forfeit,
O what needless pain we bear,
All because we do not carry
Everything to God in prayer!"*

The Trustees of St John's Church echo this certainty that prayer should have a central part of our daily lives, and the blessing and benefit of the comfort that this brings, is what they would share with anyone becoming part of the church family. Indeed, the very first sermon preached in the church in 1876 was entitled 'My House shall be called the House of Prayer.' And our prayers must be centered on Jesus Christ, our Saviour

To that end, not only are prayers a significant part of the Morning Service but there is a special time of



prayer held in the church hall on Sunday evenings at 7.30 pm.

In addition, friendly meetings in homes, also open to new joiners called 'Housegroups', do that as well as studying scripture and sharing friendship. And on Ash Wednesday, 12 hours of continuous prayer were sustained by very many of the church family taking a turn to undertake one of the 30-minute sessions encouraged by a list of prayer requests.

The Trustees believe that they meet the needs of those wishing to live a life of prayer as evidenced by 88 on the electoral roll of whom 14 live outside the parish. During 2023, the average number of

people attending weekly services was 72 adults (64 in 2022) and 5 children, but at seasonal times (e.g. Christmas) that number was up to 193.

For the second year, a notice board put outside most Tuesday afternoons, invited anyone who chose, to enter for a time of prayer or quiet contemplation.

The inside of the church continues to be enhanced by a change of banners, often featuring prayerful words and chosen for the time of year, selected from the 71 expertly-made 'library' by the Banner Team over the years, lifting hearts with a message or a thought for the day.

A Celebratory Parish Tea was begun with prayer, and enjoyed to mark the King's Coronation in June.

The church family has also been offering open-to-all gatherings called 'Pop-in'. They are held twice-a-month on Wednesday mornings as a service to the community, particularly the lonely and isolated members of our town. At these gatherings we provide jig-saw puzzles, board games, craft activities, light refreshments, space and warmth to facilitate conversation and company for any who would welcome it. The opening time was extended in colder weather to give a respite from cost-of-living pressures, thinking particularly of the cost of heating in winter times.

Offering the benefit of easier public access to records, two indexes have been added to the church website about the Garden of Remembrance interments, allowing sight by those searching for details about a person whose ashes are interred in a plot. Also added has been a history of the church to freely view and search.

In Advent and before Easter, leaflets were delivered to the dwellings on the Bluebell and Mill estates to share a single message of the moment plus times and dates of the services to be held during those seasons of the spiritual year.

For those with difficulties in getting to church on a Sunday, transport by car has been offered, provided and used and continues to be available to any who would seek help in their difficulty of attending a service in church.

One innovation in December was the provision of a Christmas Day lunch and fellowship for those who preferred not to be on their own that day. A dozen were able to enjoy that unexpected time together.

Maintaining the fabric of the St John's as a presence to the benefit to the community.

Prayer has been a comfort and has sustained the Trustees in carrying their responsibilities in maintaining a church of 1873, extended in 1957, plus a church hall built in 1975. By way of example of the challenge of maintaining ageing buildings, in the six years of 2017 to 2022 inclusive, £167,014 has been spent on maintaining the church and £69,861 on the church hall. An impossible task except for God's gracious support and several generous legacies over the same period totalling nearly £172,000

The church vestry roof has been leaking since 2022 and in 2023, investigations revealed that at some date there has been added a 4 inch-deep insulation held in place by 280 or 300 concrete slabs. Various plans to return the roof to a weatherproof condition have been drawn up and may cost in 2024 up to £20,000. This and other necessary works may be possible thanks to the legacy received in 2023 of £50,000, a great generosity by the late Margaret Maynard.

Early in the year, we paid some £2,100 to service the overhead projector, maintain the church lighting and loop system. The fence on the boundary between the church and the 'old' vicarage' on the South border had collapsed and was replaced costing just over £2,000. A yew tree on the Northwest boundary which was imperilling pedestrians was made safe at a cost of £580. A new photocopier for the vestry cost £2,640 in the Autumn

The house let to tenants, 5 St John's Road, was badly in need of the work carried out in the bathroom costing some £4,200. Repointing work on the tenanted property costing £8,000 or more is urgently due in 2024. The church hall gas cooker was

condemned in 2023 and generous gifts of about £7,000 will support the cost and installation of an electric model (capable of catering to greater numbers than domestic) with the 3-phase power supply to be arranged in 2024. The church hall kitchen needs refurbishment.

Giving grants to missionary organisations.

The Trustees have historically given away some 10% of the church charitable income targeting in the main, missionary work.

Firstly, support has been given to Chris & Lotta Strajnic who work under the direction of Crosslinks in their home country of Sweden. They plant churches and train others with church leadership. Secondly, supported was Riste and Tea Micev, also under Crosslinks, who were themselves trained by Chris and Lotta, taking over the Strajnic's work of ministry in Serbia, training pastors in Biblical preaching, publishing Christian books and planting churches. Thirdly, support has equally been given to Alice Cooper under the London City Mission in Tower Hamlets.

By the end of 2023, the Trustees with the backing of the congregation, were able to give each one £3,600.

Other charitable giving by St John's

(See also the Financial Report Note 4) The church family has supported other causes



The vestry roof after partial removal of slabs and cladding, looking for water ingress.

Financial Review for the whole Parish of St John's and St Wilfrid's

The total Parish receipts of General Unrestricted funds received were £246,669 (£186,817 in 2022) and are detailed in the Financial Report (page 12) and include legacies of £50,592 (£2,679 in 2022).

Our total Parish voluntary income including tax recovered (but excluding legacies) was £174,356 (£161,224 in 2022). Both churches in the parish take advantage of the Diocesan system called the Parish Giving Scheme streamlining money handling and tax recovery for the church. St John's was given a contact-card reader as an additional means for people to give to this church in place of cash.

Sharing the whole-parish Ministry Costs of the Diocese of Chichester Each Autumn, the Diocese assesses the coming year for the parish costs of housing, stipends and pension costs of clergy, and a standard sum for diocesan central costs, clergy training and a contribution to national church funds. This annually increased assessment is communicated through the local Deanery to each church asking for their offer to meet these overheads.

In the eleven years up to and including 2021, the full cost has been met even when expenditure was found to exceed income. But the projection of budgets in the Winter of 2021 looked sufficiently threatening that for 2022 St John's offered and paid £55,176 (71.7%) of the assessment of £76,967; St Wilfrid's paid £38,400 towards £61,166 (62.8%).

As figures were projected in the Winter of 2022, St John's (before any hint of the legacy gratefully received from the estate of Margaret Maynard £50,000), offered for 2023 £49,142 (84.3%) towards the Deanery requested £58,308 and the Diocese full calculation of the cost of £78,795.

At the same time, for 2023 St Wilfrid's were asked by the Deanery, and agreed to meet £41,004 (65.8%) of the full assessed cost £52,367.

Therefore, the largest actual 2023 expenditure for the whole Parish was the sum of £90,144 (£93,576 in 2022), some 68% of the full cost of responsibility.

Staff costs St John's PCC in 2023 employed a Parish Clerk, who is also a PCC member and

therefore a trustee, received £ 8,980 before tax for her duties during the year. The cleaning of the church and church hall, which was previously paid employment, has been loyally undertaken by volunteers in 2023. Work for which the Trustees are so grateful. St Wilfrid's DCC in 2023 employed a church cleaner. Further details are provided in the notes to the accounts.

Trustee payments and expenses. St. John's PCC supported its incumbent by paying the Vicarage water and environmental charges plus Council Tax £2,807 plus other annual costs towards travel, hospitality, telephone, postage and broadband amounting to £1,740. The repair costs of the Vicarage paid by the PCC were £301.

St Wilfrid's House costs, paid in support of the Minister, were Council Tax, Water rates and insurance totalling £3,940. There were no costs for repairs on St Wilfrid's House.

St John's PCC members (Trustees) were re-imbursed with sums for expenditure on behalf of the church as detailed in Note 5(b) in the Financial report.

In 2023, payment of £2,088 was made to 'Bright & Beautiful Gardens', a firm owned by Phil Kyte, churchwarden & therefore one of the trustees, replacing the church boundary fence beside the 'Old' Vicarage.

Repairs to the fabric of St John's buildings - see the paragraph (above) "Maintaining the fabric" of St Johns.

Repairs to the fabric of St Wilfrid's Church buildings Of a total of £8,224, some £2,912 were for fencing.

Why we hold some money in reserve – St John's.

See "Maintaining the fabric" paragraph on the previous page which describes the 2023 and 2024 maintenance needs for St John's buildings, and, because of the size and uncertainty of these costs, we hold a significant balance of the generous legacy in anticipation of meeting these.

It remains the PCC policy to invest temporarily surplus general funds with the CBF Church of England deposit fund, but with the significantly low current interest rates, little can be earned by moving money about

swiftly.

Structure, governance and management of the charity during 2023

The Parochial Church Council (PCC) is registered with the Charity Commission as required by the Charities Act 2011. Its governing document is the Parochial Church Councils (Powers) Measure 1956.

During the year the following served as members of the Parochial Church Council:

Ex Officio members

Incumbent:	The Rev'd Chris Spinks	Chairman
Readers:	Mr Alan Packard	
	Mr Ben Pratt	Secretary
	Mr Hugh Lowries	also Deanery Synod member
Wardens:	Mr Bruce Margrett	also Vice Chair
	Mr Phil Kyte	also Deanery Synod member
	Mr Robin Eldridge	Deputy Churchwarden also Safeguarding Officer

Elected Members:

Katrina Burton	
Maureen Pemberton	Treasurer
Mark Pybus	Deanery Synod member
Pam Sharpe	

This Trustees' Annual Report was approved by the PCC and signed on their behalf by The Revd. Chris Spinks, PCC Chairman

Chris G. Spinks

Date.....

St John's received a very kind gift from the family and in memory of the late Barbara May seen here in October just after treating it in the Remembrance Garden with preservative.



St Wilfrid's Church, Lower Willingdon

Trustees Annual Report for 2023

Making disciples of Jesus Christ

Our aims and purposes as a charity

The DCC of St Wilfrid's, Lower Willingdon, has the responsibility of co-operating with the curate-in-charge, the Revd C J Styles, in his work within the Conventional District of St Wilfrid's. Part of their charge is to assist him in:

- the promotion of the gospel of our Lord Jesus Christ according to the doctrines and practices of the Reformed Church of England;
- helping to promote in the parish the whole mission of the church, pastoral, social, evangelistic and, ecumenical;
- spreading the fame and glory of Jesus Christ, the King of kings, and Lord of lords;
- practically supporting and caring for people in the parish, from the youngest to the eldest, irrespective of level of need or, ability to pay;
- Providing financial support for those in need, especially their spiritual needs, and to other organisations with similar objectives.

What we planned to do to achieve our charitable objectives

When planning our activities for the year, our Curate-in-charge along with the DCC have discussed and planned the following objectives and activities to fulfil our aims:

- Enabling as many people as possible to worship at our church in a safe environment in which the presence of God is made known;
- Teaching, baptising and nurturing new and existing believers;
- Provision of the building for users, guests, and the worshipping community;
- Considering how services and events can involve the many groups that live within the parish;
- Putting faith into practice, through the use of prayer and scripture, preaching, music and sacrament;
- Learning the will of Christ, which is revealed in the Holy Bible, in small group situations, and larger groups, with the objectives of knowing God better and obeying his precious word given as a wonderful gift to us;
- Assisting people from all walks of life to develop their knowledge of, and trust in, Jesus, and to obey all things he has taught, and through the prophets he inspired and through his appointed Apostles, which he sent to us and had written in the sacred scriptures, entrusted to his Church;
- Provision of pastoral care for people living in the parish district;
- Providing assistance to the poor and needy of the parish district;
- Reaching out to those with no faith or struggling to come to terms with faith in Christ, through social engagement and the building of meaningful relationships;
- Challenging ourselves as we come together as the worshipping community to love each other, and to encourage one another to do works which honour Jesus and reveal his light and beauty and holiness;
- Encouraging a culture that is not ashamed to tell others what Jesus has done in our lives, and that he can do this and more in theirs too;
- Maintaining the fabric of the church building, and the various rooms that make up the entire church complex, to appeal to users and create a safe space which reflects community involvement.

What we achieved and how we affected beneficiaries' lives

Attendance at worship

The church family welcomes visitors from within as well as outside the parish boundary. Visitors attend by personal choice and, it is our great pleasure to welcome anyone, and from all walks of life to take part in the life of the church.

We recognise that this number includes those whom we consider 'vulnerable' and we acknowledge that their safety requires a righteous vigilance on our part. And that same righteous concern ought to embolden us to stand up to all bullies.

We further contend that voluntary attendance to worship the Lord Jesus Christ, is in itself a major demonstration of the public benefit of our activities. But its knock-on effects promote hope and expose those who pretend freedom when really they wish to enslave people with their false ideologies and Antichrist systems. As such, the Church is a light to the world. And this is of incalculable worth. The Church is not only light it is 'salt and light' to this world.

There are 92 parishioners on the church electoral roll, approximately half of which do not reside within the 'district' of 'the parish'.

About 40 people belong to weekly home-groups which are intended to encourage growth in faith and to encourage obedience to the Lord, Jesus Christ. This obedience is part of what we call 'discipleship to Jesus Christ'. It is what we understand by our strap line: Making disciples of Jesus Christ.

Over this year, the minister has personally sought to encourage prayer, which he sees as vital if the Church is to regain its life and vigour and to escape the current politically motivated woke culture that even many of our bishops have now adopted. Moreover, it is essential if we are to actually be salt and light rather than just say we are. The minister sees this adoption of woke ideas as just one of many signs that a declension in the spirituality of the people of God as well as their leaders, has set in. He feels that the greatest defence against it, and reversal of such a deadly trend, is to pray for God's blessing.

He believes in the perpetual truth of what is laid out in the 2nd Book of Chronicles, the 7th chapter and the 14th verse, which says: **"If my people, who are called by my name, will humble themselves and pray and seek my face and turn from their wicked ways, then I will hear from heaven, and I will forgive their sin and will heal their land."**

As with all sections of the Church of Christ, and particularly the Anglican community, the minister finds this encouragement to being a prayerful people an uphill struggle. But St Wilfrid's has two prayer meetings that are open to all Christians in this locality, and not exclusively to the worshipping community of St Wilfrid's. One meets each Friday, at 7.30pm; the other assembles at 6.15am of a Tuesday morning.

Both prayer times encourage praise and thanksgiving, interspersed with intercession for the blessing of our community and nation and for the outpouring of the Holy Spirit. We pray among other things, that God will raise up workers for his harvest, which most definitely means the UK as well as foreign missions. And we are looking for a great harvest of men, women, boys, and girls responding to the gospel of Jesus. We are looking too for the existing Church of God to be inspired with a new confidence in the gospel, and in its power to save.

If the charitable status of this church were based on nothing less than the prayers put up for this community and nation, the price would be beyond value. But this is considered by many as a sheer waste of time. But the day will yet declare what has been a waste of time and what has been of incredibly great value.

Teaching, baptising and nurturing new and existing believers

We baptized only one person during 2023, and at this young man's request this was a public event which took place in the sea at Eastbourne.

As for nurturing, we presently have a group dedicated to nurturing ladies who are near to the Kingdom or who have recently come into the experience of new life in Christ. The minister's wife leads this group, and is aided by other ladies in the church who have been in the faith some time. While baptisms have been low, and conversions even lower, we have seen a number of people over the past couple of years, returning from a backslidden state, or a discouraged and low spiritual level, into something of a renewed spiritual state. This has been encouraging to see and the minister puts this down to the spirit of prayer that has been manifest here since 2020. But it is only the first drops of rain on a dry ground.

Provision of the building for users, guests, and the worshipping community

1. Users of the building generally

We continue to hire out our hall for children's parties, and there are also a number of groups who hire the building out regularly. These latter include: a line dancing group, a local choir, and a keep-fit club. We also accommodate a piano teacher in the smaller, upstairs hall who works closely with the school across the road from us.

For some years we have rented an upstairs office, at a generous low-cost, to a charity called 'Spinnaker'. Spinnaker work in schools and take assemblies and various classes. It is also one of the 4 Missions/charities we support financially.

More recently educators have been booking our various rooms for their activities. These presently comprise two groups: 'Classical Conversation', which is a group seeking to network with home-schoolers and provide some of their tuition requirements. The other group, is a newly formed organisation called 'Christ the Rock'. This latter group is a solidly Christian network which, like the previous group, meets one day a week on our premises. Both of these groups we helped to get established by cutting our rental charges (as we did for other groups such as Weight Watchers and the piano tutor referred to above). 'Christ the Rock' we support by fixing their rental at half-rate.

But we don't only rent out rooms. We also have the privilege of welcoming children from the local primary school into our church. We have until recently allowed them to use the church for carol services. And we were putting on carol services for the secondary school too, until Lockdown. We are always happy to do this, though currently the only visits they seem to want are the yearly one from the primary school. On these visits the minister explains what we do here and why we do it. This is part of their curriculum for understanding the different institutions in the community.

The hall also acts as a voting station during local and regional elections.

2. *The worshipping community's intentional 'guest services' and 'guest' directed activities*

This February we set up a 'warm space' event aimed at those who were fearful of turning on their gas and electric appliances. Those using this space are mostly older people who gather to play board games, read papers, and chat over coffee. This is a weekly, seasonal activity to accommodate those who are cold or lonely.

The worshipping community has also developed a specific service for those in the community who have been bereaved. We call this service 'In Loving Memory', and after piloting it in 2022, we have now made it a yearly autumn fixture. It has been well attended.

Messy Church and a toddler group called Mini Wilfs, are provisions that include younger families and their children. Along with these, and our efforts at Christmas and Easter, the monthly Sunday@4 family event which takes place at 4pm in the afternoon, also seeks to include younger families.

As of January 2024, a regular afternoon worship service will come under the umbrella of 'Fresh Expressions'. This will be deliberately missional and, it is hoped, will complement the Sunday@4 event. It is aimed at those with no Christian background, and those who do but have not found a place where they can be free to worship and grow in grace. And so, since this service is not aimed at the worshipping community who meet regularly of a morning, we believe it should be classified as a guest service. It is, unashamedly, aimed at eventually creating a second worshipping community out of these 'guests'!

The minister has found that the morning service, though admirable in many ways, is not suitable for families and children. The aging congregation of about 70 adults (60% being above 60), doesn't help in this regard. So, after much prayer and experimentation, the minister felt that a second service was needed. This simpler service, it was felt, would be suitable for younger families, if we:

- promoted a culture that was child friendly (and by that we don't mean that we particularly seek to do things in the service directed at the children, but that we put up with a certain amount of background noise, and make it clear that the children are welcome and not non-persons.)
- pitched it at a time (4pm) that didn't interfere with weekend sporting activities and the preparation for school next morning;
- have about half-an-hour (or more) of praise worship including mostly contemporary Christian music, but where people were free to express praise and thanksgiving extemporarily.
- have a word-element that aimed at being simple and un-churchy, without being dumbed down. And we would aim for about 15 minutes duration;
- that we tried to encourage parents to keep their children in the service, which would only be about an hour long.

At time of writing (February 2024) we have now had five of these events. All have included prayer for needs at the end, and we expect prayer ministry to increase as the culture kicks in. We are encouraged by these early 'experiments' and have had about 30 gathering each week. What's more, we've been able to keep the children in with us, which means adults don't have to miss out; and it means that we are seeing our vision realised of having children growing up in an environment of praise, prayer, and the living word of God preached in the atmosphere of God.

[I appreciate that it is outside the scope of this document to talk about such things, but I want to go on record as saying that the team presently helping to get all the 4pm services running, are in the main (90%) those who have been praying with me since 2020. I further wish to testify that I think these ventures have come out of prayer, as has much that has been good at St Wilfrid's.]

Spatial reordering of the church building and future projects

We added a smart screen to our main hall, last year, which we have already discovered to be a great help in delivering activities where song words or visual displays are required. Our new afternoon service (along with the already existing Sunday@4) take place in the main hall. And our kitchen, which has hatches opening on the hall, make this the best venue for a service deliberately looking to develop a less formal culture.

Lack of finance, has prevented me from bringing in a number of spatial changes. I would like to turn one of our break-out rooms into an office for an administrator (and, actually have an administrator!); I would like to develop the stairway to the top rooms so that it is no longer open to the elements by sealing off the stairway with a glass finish; to develop the landing and even install a toilet (this would create a suite that could be used for future youth-work and be rented out)it would make an ideal suite for min-conferences, having a sink and adequate provision for refreshments).

There are many other things that could make this church a very welcoming environment and be the source of income, but that requires a loyal team of people with the necessary know-how to get things done, and money. And, frankly, my priority is to see souls saved, and for the people of God to grow in their faith.

Provision of pastoral care for people living in the parish

We appointed a pastoral-coordinator in 2022 to work with me. So, provision for low-level needs are delegated through the organisational skills of this very capable woman, and I am called in when needed, and also informed when a visit might be helpful.

Aside from the worshipping community, there is the provision of pastoral care of the bereaved, and the happier task of helping those who seek to get married – which for me also includes directing them to cheaper ways of doing this.

In fact, I get more calls for help from people who have no church connections and have no intention of getting involved, than I do from people in the church.

Provision of tangible support to the poor and needy

We continue to work with Food Bank and Family Support. A number of people in the congregation are now also working under the auspices of 'Hope in Action' to provide furniture and support for Hope's housing for the homeless projects, one of which is local to St Wilfrid's.

Our monthly 'Friendship Group' has also brought in a number of people who find the atmosphere of this group a great help. This is particularly so for those who are older and lonely.

The DCC also contributes from its income to several charities, including: Beachy Head Chaplaincy, which seeks to counsel those contemplating suicide; Spinnaker, a charity involved in supporting local schools; and two charities with projects based overseas. It also gives a percentage of funds raised from its two fayres to local charities deemed worthy of help.

Other Local Involvement

At Easter, Harvest, and Christmas we've continued to see high attendance, with people coming in from the community. We also take part in the local council's led Remembrance Day service in the Triangle (Lower Willingdon), and take assemblies in local schools. We also do services in care homes, and we do a yearly service at the District General Hospital, for DGH Eastbourne's hospital radio. One of our members volunteers for Hospital Radio, and individuals are involved in many other activities, some of which are local.

Our Christmas and Summer fayres are also a direct link to the community. And several members do an after-school club in the secondary school across the road.

While there are plans to engage in street evangelism in the near future, direct, yet Low-key, evangelism outside our four walls, is achieved largely through our ecumenical connections with Churches Together. In particular, the book table in Polegate's shopping centre is a focus. A number of us support this for an hour or more per week, by standing with the people officially on duty, and we speak with passers-by. I call this 'low-key' because it is less confrontational than much of the evangelism that has been done over the years.

However, I feel we should not be ashamed to approach people more directly as long as we are polite. Churches Together also run the singing in the square which happens at Easter and Christmas, and which I've been privileged to lead the last couple of years.

Structure, governance and management of St Wilfrid's

Before we proceed, it is to be noted that the flexibility we enjoy at St Wilfrid's is only possible because the church membership sees that we as a Conventional District only exist independently by the grace of the incumbent of the parish of St John's and its PCC.

The District Church Council (DCC), is not an official PCC (though we refer to ourselves informally as the PCC), but for purposes of returns and other legal considerations, such as this document, we refer to ourselves as DCC under the PCC of the Parish of St John's Polegate (of which our District forms only one part).

This district is under the supervision of the 'Curate-in-Charge', Reverend Christopher James Styles. He is also Chair of the DCC.

Membership of the DCC is determined under the Church Representation Rules (though see the measures we've adopted below, which were duly adopted by voting at the APCM) and consists of certain *ex-officio* members (the curate-in-charge, and Wardens), and elected members.

At our APCM (ADCM, but we refer to it as the APCM) two years ago, and at previous APCM meetings, we voted to find ways of eventually:

- **Lowering the number of PCC (DCC) members.** At one time we had 16 on PCC; 17 with the secretary. This number seemed too big, and we wanted a smaller, more friendly number. Part of how we achieved this was by voting not to allow the *ex officio* status of the three Synod representatives we were allocated. And it also worked by limiting the amount of people voted on to PCC to just 2 per year – both serving for just 1 year. (This now means we have 10 members in attendance – 11 including our secretary.)

- **Keeping persons with certain key roles continually on PCC.** This is why we have a mysterious 'virtual *ex-officio*' membership category (see below). This measure is helpful because it means, for instance, our Treasurer (by agreement) can remain on PCC and not find himself voted off. We agreed by vote that all 'Management Team' members could be considered as *ex officio*. We also added an option for the safeguarding officer to attend if he/she so wished.
- **Allowing for people who have not served on PCC to serve for a short term.** We voted to limit PCC membership by changing membership from a three-year term of service, to just one. A person could only remain on PCC if nobody else wanted to serve. This ensures two 'fresh faces' each year, and prevents someone from staying on PCC indefinitely.

However, this does not prevent us from co-opting someone who both wants to come on DCC and for whom we feel it would benefit the church.

During the year the following served as members of the District Church Council:

Ex-officio members

Curate-in-charge:	The Revd C J Styles	Chairman
NSM (now PTO):	The Revd Richard Herkes	(& Management Team)
Warden:	Mr Chris Mason	(& Management Team)
Warden:	Mrs Sheila Reeve	(& Management Team)

Virtual ex-officio members

Pastoral-co-ordinator	Mrs Yvonne Pressdee	(& Management Team)
	Mrs Barbara Minall	(& Management Team)
Treasurer	Mr John Cheesman	(& Management Team)
Safeguarding officer	Mr Gary Smith	

Elected Members

	Ms Jane Hamper
Deanery/Diocesan Synod	Mr Jonathan Cornell

Secretary (non-member): Mrs Helen Roberts

A note about the 'Management Team'. This is tantamount to a Standing Committee. It forms the core of the DCC, and it works well for us to structure things in this way. Although the minister has tweaked this team over the years it has been more-or-less in existence through much of the church's history.

The Revd. C J Styles, DCC Chair

On behalf of the DCC of St Wilfrid's, Lower Willingdon

February 24th 2024

Accounts

Trustees Annual Report and Financial Report of



**The Parish of
St John's Church,
Church Road,
Polegate,
BN26 5BX**

**including the Conventional
District of
St Wilfrid's Church,
Broad Road,
Lower Willingdon,
Eastbourne, BN20 9RA**



Registered Charity no. 1130861

For the year ended 31 December 2022

CONTENTS	Pages
Trustees annual report, St Johns'	2 to 6
Trustees annual report, St Wilfrids'	7 to 10
Statement of financial activities.....	12
Balance sheet	13
Notes to the accounts.....	14 to 21
Report of the independent examiner	22

Website: www.polegate.org.uk

Incumbent: The Revd Chris Spinks, c/o The Church Office, Church Road, Polegate, BN26 5BX

Independent examiner: Watson Associates, 30-34 North Street, Hailsham, BN27 1DW

Trustees Annual Report for 2022 for St John's, Polegate



Our aims and purposes as a charity

The Parochial Church Council (the PCC) has the responsibility of co-operating with the incumbent, the Rev'd Chris Spinks, in:

- The promotion of the gospel of the Lord Jesus Christ according to the doctrines and practices of the Church of England
- Promoting in the parish the whole mission of the church, pastoral, social, evangelistic and, ecumenical
- Knowing Jesus better and make Him better known
- Practical support and care for people in the parish, from the youngest to the eldest, irrespective of level of need or, ability to pay
- Providing financial support to those in need and, to other organisations with similar objectives.

What we planned to do in St. John's, to achieve our charitable objectives

When planning our activities for the year, our incumbent and the PCC have considered the Charity Commission's guidance on public benefit and, in particular, the specific guidance on 'charities for the advancement of religion'.

The PCC has complied with its duty under Section 5 of the Safeguarding and Clergy Discipline Measure 2016, fully recognising its duty to have regard to House of Bishops' guidance on safeguarding children and vulnerable adults. During 2022 with the reduction of Pandemic restrictions, we planned the following objectives and activities to fulfil our aims:

- Enabling as many people as possible to worship at our church
- Enabling as many people as possible to become part of our church family
- Teaching, baptising and nurturing new and existing believers
- Maintaining an overview of worship throughout the parish
- Considering how services can involve the many groups that live within the parish
- Putting faith into practice, through prayer and scripture, music and worship
- Offering worship, prayer and learning about the Gospel, in small group situations
- Assisting people from all walks of life to develop their knowledge of, and trust in, Jesus
- Provision of pastoral care for people living in the parish
- Giving grants to missionary organisations
- Maintaining the fabric of the church building as a centre and spiritual focus of life in the town.

What we achieved in St. John's and how we affected beneficiaries' lives.

Paul the Apostle wrote, "And I pray that you, being rooted and established in love, may have power, together with all the Lord's holy people, to grasp how wide and long and high and deep is the love of Christ, and to know this love that surpasses knowledge..." (The letter to the Ephesians 3:17-19) This prayer is also the intent of the Trustees of St John's in our daily lives and outreach to our community.

As with many church families, the year has been one in which we have been able to come together again, unrestricted, standing firm with the scriptures, and reviewing the past to plan the future.

The ending of COVID restrictions allowed the removal of social distancing signs.



The Vicar and the church family have maintained the open Sunday service each week at 10.30am and seen an increasing return of people coming from isolation to worship together. Continuing suspended is the 8 am. Communion Service, and the Evensong service has become a prayer meeting to bring before God the needs of the times. By this the Trustees maintain that they continue to enable as many people as possible to worship at our church. Also this year, has been the continuing offer of scriptural teaching, baptisms, weddings and funerals.

The church has continued to serve the needs of corporate worship evidenced by 93 on the electoral roll of whom 14 live outside the parish. During

2022, the average number of people attending weekly services was 64 adults and 56 children, but at seasonal time (e.g. Christmas) that number was up to 141.

A Day of Prayer was held on Ash Wednesday, during which 12 hours of continuous prayer was obtained by one or several persons undertaking to pray for each hour in turn. Many came to the church building, many prayed at home or elsewhere using a list of matters on which our heavenly pleadings focused.

The lifting of COVID restrictions at Easter allowed the Churches Together March of Witness to be once again held on Good Friday, followed by an open Communion Service in St John's for any who wished to take part after their march from Polegate Community Centre.

There was a very full church when St John's held the Town Remembrance Sunday Service on 13th November and were joined by members of the Town Council and many from Polegate Scout Pack.

Many attended the open-to-all social gathering to celebrate Harvest Festival with the enjoyment together of a cooked lunch in the church hall at the beginning of October.



The Trustees have been pleased that the removal of Social Isolation requirements have allowed the Sunday Club to take place once again and thus benefit children aged 3 to 11 during the Morning Service

The Trustees have encouraged attendance at small groups in homes where they can discover and learn to enjoy the peace and daily support of the living God. These groups are known as "Housegroups".

Fellowship with others when sharing the study of scripture and prayer is of great value.

In four weeks of Lent leading up to Easter, weekly overhead screenings in church were offered to all comers on Wednesday afternoons and evenings. The occasions provided teaching on the Book of Proverbs by the Australian preacher, David Cook. This was a great benefit in offering spiritual insight into what might seem to many a jumble of sayings. At the same time in Lent, many took up the offer to study the book 'Truth on Fire' by Adam Ramsey. Lent prepares disciples once again to meet the wonder of the death of Jesus on Good Friday and the offer of redemption and forgiveness of sins to those who will believe in Him.

Celebrated at the end of November was the benefit to the community of fifty years of faithful preaching the Word of God by Alan Packard, Associate Minister, as he delivered the Sunday sermon.

In December, leaflets giving times and dates of Christmas services and a Christmas message, were delivered to homes on the Bluebell and The Mill estates in Polegate to keep in touch with the 'newer' part of the town community.

Maintaining the fabric of the St John's as a presence to the benefit to the community.

To many people, even those who live elsewhere, the Garden of Remembrance containing the ashes of some 900 souls, is a family link to St John's and therefore is maintained to the best of our ability. Likewise the perimeter hedges and lawns are kept in good order by a well-respected professional.

During 2022, there have been two major challenges.

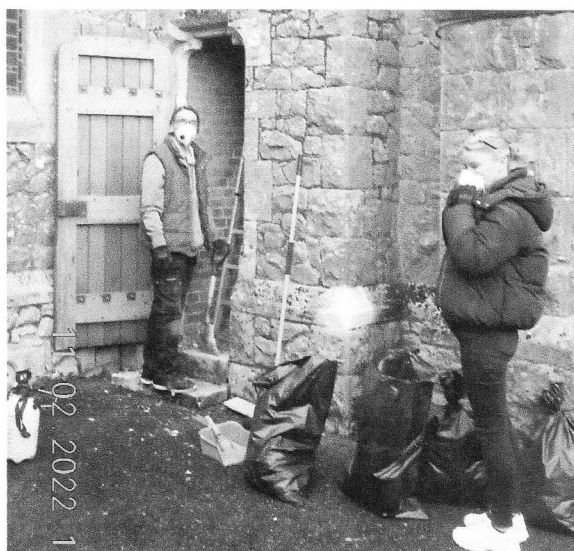


The first began at the end of 2021, when the inside of the church suffered an infestation of flies over many weeks. By February, a professional team had established that pigeons were entering the tower and failing to escape. They undertook the clearance of dead bodies and replaced wire mesh over the vents in the tower, subsequently fumigating both the church and tower.

In 2021, the church had suffered vandalism causing damages in seven places to the West Window which took until February 2022 for the repaired section to be returned. Then in July 2022, the three windows on the South Wall suffered an attack by youths. Whilst the damage was again covered by £3,410 of Ecclesiastical insurance, the excess of £250 fell to the church.

It has to be noted that in 2022, there was a great need for care in spending because the level of expenses have been more than income, and therefore repairs and maintenance work have been limited.

Giving grants to missionary organisations. The Trustees have the agreement of the church family in exercising their responsibility to promote the gospel outside the parish. Historically the parish has given some 10% of its charitable income to various charitable beneficiaries, targeting in the main, missionary work. St John's has continued to provide the benefit of financial support to Chris and Lotta Strajnic in Sweden (planting churches), and to Riste and Tea Micev in Serbia (training in church leadership); both are under the direction of Crosslinks. For about



six months of 2022, the final one third of the 2022 charitable giving was to UCCF (Universities and Colleges Christian Fellowship) ending as the tour of duty of Oli Butler finished.

Other charitable giving by St John's (See also the Financial Report Note 4) The church family has supported other causes including the Diocese Family Social Work, the Winter Night Shelter and the Sussex Gospel Partnership.

Financial Review for the whole Parish of St John's and St Wilfrid's

The total Parish receipts on General Unrestricted funds received were £186,817 (£172,114 in 2021) and are detailed in the Financial Report (page 12) and include legacies £2,679 (£6,000 in 2021).

Our total Parish voluntary income including tax recovered (but excluding legacies) was £160,124 (£144,855 in 2021). Both churches in the parish take advantage of the Diocesan system called the Parish Giving Scheme streamlining money handling and tax recovery for the church. St John's has been given a contact-card reader as an additional means for people to give to this church.

Sharing the whole-parish Ministry Costs of the Diocese of Chichester The largest 2022 expenditure for the whole Parish was the sum of £93,576 (£117,096 in 2021, calculated as £74,304 for St John's and £42,792 for St. Wilfrid's.) due to the Diocese for Parish Ministry Costs. The Diocese assesses the coming year for parish costs of housing, stipends and pension costs of clergy, and a standard sum for diocesan central costs, clergy training and a contribution to national church funds. This assessment is offered through the Deanery to each church asking for their offer to meet these overheads.

In the year of 2011 and up to and including 2021, St John's had met 100% of the Parish Ministry costs. For 2022, concerns were expressed in the Autumn of 2021 when a 2022 budget suggested a £40,000 excess of expenditure over income, and with a January 2022 expected balance of only some £14,000 the Trustees of St John's felt that the church could not meet the full Parish Ministry Costs of £76,968. Offered and paid in 2022, has been £55,172 (71.7%). Likewise, St Wilfrid's in 2022 have paid £38,400 (63%) of £61,164.

In 2023, St John's continues to feel unable to meet the full Diocese-assessed Parish Ministry Costs,

offering £49,132 (62% of £78,795).

Staff costs St John's PCC has employed a Parish Clerk, who is also a PCC member. The cleaning of the church and church hall, which was previously paid employment, has been loyally undertaken by volunteers in 2022. St Wilfrid's DCC employs a church cleaner. Further details are provided in the notes to the accounts.

Trustee payments and expenses. St. John's PCC supported its incumbent by paying the Vicarage water and environmental charges plus Council Tax £2,678 plus other annual costs towards travel, hospitality, telephone, postage and broadband amounting to £1559. The repair costs of the Vicarage paid by the PCC were £598.

St Wilfrid's House costs, paid in support of the Minister, were Council Tax, Water rates and insurance totalling £3,641. There were no costs for repairs on St Wilfrid's House.

Two of St John's PCC members were re-imbursed small sums for expenditure on behalf of the church as detailed in Note 5(b) in the Financial report. There were no payments to other persons related to or connected to, other trustees.

The part-time Parish Clerk, who is also a trustee, received £ 8,164 before tax for her duties during the year

Repairs to the fabric of St John's buildings - see the paragraph (above) "Maintaining the fabric" of St Johns.

Repairs to the fabric of St Wilfrid's buildings During 2022 there were expenses of £5,932.

Why we hold some money in reserve – St John's.

The last six years (2015 to 2021) have seen necessary major repairs to the church building costing just over £75,500 , and major repairs to the church hall costing some £73,700. Partly as a consequence, over the same period, regular expenses have exceeded regular income by a total of some £154,400 funded by legacies and reserves. With the working balance now cut very low, the Trustees nevertheless consider that God will provide to provide for the financial needs of St Johns.

It remains the PCC policy to invest temporarily surplus general funds with the CBF Church of England deposit fund, but with the significantly low current interest rates, little can be earned by moving money about swiftly.

Structure, governance and management of the charity during 2022

The Parochial Church Council (PCC) is registered with the Charity Commission as required by the Charities Act 2011. Its governing document is the Parochial Church Councils (Powers) Measure 1956.

During the year the following served as members of the Parochial Church Council:

Ex Officio members

Incumbent:	The Rev'd Chris Spinks	Chairman
Readers:	Mr Alan Packard	
	Mr Ben Pratt	Secretary
	Mr Hugh Lowries	also Deanery Synod member
Wardens:	Mr Bruce Margrett	also Vice Chair/Deanery Synod
	Mr Phil Kyte	also Deanery Synod member

Elected Members:

Katrina Burton	
Maureen Pemberton	Treasurer
Mark Pybus	Deanery Synod member
Pam Sharpe	

This Trustees' Annual Report was **approved** by the PCC and signed on their behalf by The Revd. Chris Spinks, PCC Chairman

.....
Chris G. Spinks

Date...6/3/23



West Window
from a 2010
door-drop
contact card

Trustees Annual Report

of

The District Church Council of the Ecclesiastical District of

St Wilfrid's Church, Lower Willingdon

St Wilfrid's Church, Broad Road, Lower Willingdon BN20 9RA

Registered Charity no. 1130861

For the year ended 31 December 2022

Website: www.stwilfs.org

Incumbent: The Revd C J Styles, St Wilfrid's House, 90 Broad Road, Lower Willingdon BN20 9RA

If my people, who are called by my name, will humble themselves and pray and seek my face and turn from their wicked ways, then I will hear from heaven, and I will forgive their sin and will heal their land.

2 Chronicles 7:14



Continues on next page.....

St Wilfrid's, Lower Willingdon

Trustees Annual Report for 2022

Our aims and purposes as a charity

The DCC has the responsibility of co-operating with the incumbent, the Revd C J Styles, in:

The promotion of the gospel of the Lord Jesus Christ according to the doctrines and practices of the Church of England;

Promoting in the parish the whole mission of the church, pastoral, social, evangelistic and, ecumenical.

To know Jesus better and make Him better known;

Practical support and care for people in the parish, from the youngest to the eldest, irrespective of level of need or, ability to pay;

Providing financial support for those in need and, to other organisations with similar objectives.

The DCC also contributes from its income to several charities including: Beachy Head Chaplaincy, which seeks to counsel those contemplating suicide; Spinnaker, a charity involved in supporting local schools; and several charities with projects based overseas.

What we planned to do to achieve our charitable objectives

When planning our activities for the year, our incumbent and the DCC have discussed and planned the following objectives and activities to fulfil our aims:

Enabling as many people as possible to worship at our church;

Teaching, baptising and nurturing new and existing believers;

Provision of the building for users, guests, and the worshipping community;

Considering how services can involve the many groups that live within the parish;

Putting faith into practice, through prayer and scripture, music and sacrament;

Offering worship and prayer, learning about the Gospel, in small group situations;

Assisting people from all walks of life to develop their knowledge of, and trust in, Jesus;

Provision of pastoral care for people living in the parish;

Providing assistance to the poor and needy of the parish, including the provision of a 'warm space' to be realised during January and February of 2023

Reaching out to the unchurched through provision of Barbecues, Fayres, Jumble sales etc.;

Maintaining the fabric of the church building and the rooms that make up the entire complex to appeal to users and create a safe space which reflects community involvement.

What we achieved and how we affected beneficiaries' lives at St Wilfrid's

Attendance at worship

The church family welcomes visitors from within as well as outside the parish boundary. Visitors attend by personal choice and, it is our great pleasure to welcome anyone from all walks of life to take part in the life of the church.

An example of this was to bless a young infant of a couple where the mother thought she was a man and the man thought he was homosexual. Presumably, though I didn't ask, he must have felt that his wife was a man, and thus felt homosexual desires for him? Either way, unlike the present position of the Church of England, I considered them as confused as everyone else out in the world, and both I and the church sought to encourage them to experience the love of Christ.

We contend that voluntary attendance to worship the Lord Jesus Christ, is a major demonstration of the public benefit of our activities.

There are 91 parishioners on the church electoral roll, about half of whom are not resident within the parish.

Teaching, baptising and nurturing new and existing believers

We baptized no-one during 2022, but have one candidate waiting in the wings. One other, was baptized at a Free-Church, having been convinced that she needed to be immersed. But, because this lady had been baptized as a baby I said I could not in good conscience conduct the baptism (we do baptize adults by immersion when they request that); but I and many from the congregation supported her by attending the afternoon service where she was baptized.

Provision of the building for users, guests, and the worshipping community

Numbers are now higher, if anything, than before lockdown. There is also a warm-space to be set up in January, and we expect numbers to be quite high for that too.

Spatial reordering of the church building and future projects

We added a smart screen to our main hall, which we have already discovered to be a great help in delivering activities where song words or visual displays are required.

Provision of pastoral care for people living in the parish

Pastoral care has returned to pre-covid levels. We have appointed a pastoral-co-ordinator to work with me. Provision for low-level needs are delegated through the organisational skills of this particular woman and I am called in when needed, and informed when a visit might be helpful.

Provision of tangible support to the poor and needy

We continue with Food Bank connections and Family Support links. We were able to identify needs over the lock-down period and since, and have helped where we can. But we have also been at pains to make known what is going on both nationally and locally, and to be more aware of needs. Food Bank articles have increased greatly since we gave this greater emphasis.

Other Local Involvement

Both at Easter, Harvest, and Christmas we've continued to see high attendance. Also, throughout the summer of 2022 we continued to meet outside for some of our services. But support for these has been far less now that the reason for having them has been taken away (namely lockdown). (However, if we had proper 'grounds' here that were substantially more than a gravel-car-park I would want to hold more of these out-door worship events since I believe they are a great witness.)

The Queen's 70th year and our own 60th anniversary (within a month of each other) were also well attended, though many were church-going people from other local churches. Both events were however, well-advertised, and some non-church goers did attend.

Structure, governance and management of St Wilfrid's

The District Church Council (DCC), is not an official PCC (though we refer to it informally as the PCC), but for purposes of returns and other legal considerations, we are often regarded as under the Parish of St John's Polegate (of which our District forms a part). Although the Minister is 'Curate-in-Charge', and St Wilfrid's DCC functions as a PCC this fact needs to be acknowledged for this report.

During the year the following served as members of the District Church Council:

Ex-officio members

Curate-in-charge:	The Revd C J Styles	Chairman
NSM:	The Revd Richard Herkes	(& Management Team)
Wardens:	Mr Chris Mason	(& Management Team)
	Mrs Sheila Reeve	(& Management Team)

Virtual ex-officio members

	Mrs Yvonne Pressdee	(& Management Team)
	Mrs Barbara Minall	(& Management Team)
Treasurer	Mr John Cheesman	(& Management Team)
Safeguarding officer	Mr Gary Smith	

Elected Members

Mrs Margaret McRay	
Mrs Sue Read	
Mrs Lis Lawrence	
Mr John Horne	Schools Liaison
Mrs Lindsay Smith	Deanery Synod

Secretary (non-member): Mrs Helen Roberts

Membership of the DCC is determined under the Church Representation Rules and consists of certain ex-officio members (the curate-in-charge, NSM, and Wardens) Until now we have elected at least 7 members to stand for 3 years on the DCC (ADCM, but we refer to it as the APCM). Members are encouraged to stand for election to the DCC and we try to ensure a balance of skills and experience where possible.

As of April 2023, only two members will be elected and each will stand for a single year. Anyone wanting to serve on DCC will do so for one year, unless his or her position is challenged, in which case there will be a vote. But new comers take precedence over those who have just served. This should increase the likelihood of fresh faces coming onto DCC to get the value of serving in this manner.

All Management Team members are treated as virtual *ex-officio* members. This is because their skills are required on DCC as well as Management Team. This and other measures have been agreed at subsequent ADCM meetings. We also feel that a DCC of about 10, or less, is better than what we had when the minister first arrived – 15 to 16, not including the secretary. With the secretary we will in future have no more than 11 on DCC. However, this does not prevent us from co-opting someone who both wants to come on DCC and for whom we feel it would benefit the church.

A note about the 'Management Team'. This is tantamount to a Standing Committee. It is the core of the DCC, and it works well to structure things this way. Although the minister has tweaked this body over the years it was more-or-less in existence through much of the church's history.

The flexibility with which these two bodies are organised reflects two underlying principles: the first is that strictly speaking as a conventional district we should be run by the Parish church St John's having representatives sitting on their PCC (at the sufferance of the minister and PCC); but also the fact that we wish things to be done (as much as possible) decently and in order and thus reflect in the main what is allowable on any PCC.

The Revd. C J Styles, DCC Ch

Annual Financial Report for 2022

**The Parochial Church Council of
St John's Church, Polegate
with
the Conventional District of St Wilfrid's Church, Lower Willingdon
in the combined parish of St John's with
St Wilfrid's Churches**

Registered Charity no. 1130861

for the year ended 31 December 2022



Statement of financial activities

	Unrestricted Funds	Restricted Funds	Endowed Funds	Total Funds 2022	Total Funds 2021	Notes
	£	£	£	£	£	
Donations & legacies	162,803	1,100	0	163,903	151,110	
Charitable activities	780	0	0	780	1,340	
Other trading activities	19,579	0	0	19,579	15,384	
Investments	245	0	0	245	43	
Other receipts	3,410	0	0	3,410	4,492	
Total income	186,817	1,100	0	187,917	172,369	2
Expenditure on:						
Raising funds	651	0	0	651	146	
Charitable activities	166,208	1,100	0	167,308	207,415	
Other trading activities	4,266	0	0	4,266	4,313	
Total expenditure	171,125	1,100	0	172,225	211,874	3
Net gains (or losses) on investments						
Net income or (net expenditure)	15,692	0	0	15,692	-39,505	
Transfers between funds	0	0	0	0	0	7
	15,692	0	0	15,692	-39,505	
Other recognised gains/(losses):						
Gains/(losses) on revaluation of fixed assets						
Other gains/(losses)						
Net movement in funds	15,692	0	0	15,692	-39,505	
Reconciliation of funds:						
Total funds brought forward	101,247	5	0	101,252	140,757	
Total funds carried forward	116,940	5	0	116,945	101,252	

Balance Sheet (also known as Statement of Financial Position)

	Total Funds	Total Funds	Notes
	2022	2021	
	£	£	
Intangible assets	0	0	
Tangible assets	65,001	65,001	
Heritage assets	0	0	
Endowed investments	0	0	
Total fixed assets	65,001	65,001	8
Stocks	0	0	
Debtors	824	1,220	
Investments	0	0	
Cash at bank and in hand	54,766	45,439	14
Total Current assets	55,590	46,659	
Creditors: Amounts falling due within one year	3,646	10,407	11
Net current assets or (liabilities)	51,944	36,251	
Total assets less current liabilities	116,945	101,252	
Creditors: Amounts falling due after more than one year	0	0	12
Provisions for liabilities	0	0	
Total net assets or (liabilities)	116,945	101,252	
The funds of the charity:			
Endowment funds	0	0	
Restricted income funds	5	5	
<i>Unrestricted funds</i>	116,940	101,247	
<i>Revaluation reserve</i>	0	0	
Total unrestricted funds	116,940	101,247	
Total charity funds	116,945	101,252	

This Annual Financial Report, for the year ended 31st December 2022 including the notes following, was **approved** by the PCC and signed on it's behalf by

The Revd Chris Spinks

Chris G. Spinks

Date:

6th March, 2023

Notes to the financial report

NOTE 1. Accounting policies

A - Accounting convention

The financial statements have been prepared under the Church Accounting Regulation 2006 in accordance with applicable accounting standards and the current (2015) Statement of Recommended Practice, Accounting and Reporting by Charities SORP (FRS102).

The financial statements have been prepared under the historical cost convention as modified by the inclusion of investments at market value. The financial statements include all transactions, assets and liabilities for which the PCC is responsible in law. They do not include the accounts of church groups that owe their affiliation to another body, nor those which are informal gatherings of church members.

B - Funds accounting

Funds held by the PCC are:

Unrestricted funds - general funds which can be used for PCC ordinary purposes

Designated funds - monies set aside by the PCC out of unrestricted funds for
specific future purposes or projects.

Restricted funds - a) income from trusts or endowments which may be expended only on those restricted objects provided in the terms of the trust or bequest; b) donations or grants received for a specific object or invited by the PCC for a specific object. The funds may only be expended on the specific object for which they were given. Any balance remaining unspent at the end of the year is carried forward as a balance on that fund.

Endowment funds - funds the capital of which must be maintained; only income arising from the investment of the endowment may be used, either as restricted or unrestricted funds, depending on the purpose set out in the terms of the original endowment.

C - Income and endowments

All income and endowments are accounted for without deduction for any costs or receivability, are recognised when there is evidence of entitlement, receipt is probable, and the amount can be measured reliably.

Donations and legacies

Collections are recognised when received.

Planned giving receivable is recognised when there is evidence of entitlement, receipt is probable, and the amount accords with the Gift Aid declaration or other record of the intention to donate.

Gift Aid recovered is recognised when the income to which it is attached is recognised.

Grants and legacies are recognised when the formal offer in writing of the funding, is received by the PCC.

Charitable activities

Sales of magazines and study notes are recognised when received.

Rents from property are recognised in accordance with the rental agreements, when receipt is probable.

Other trading activities

Trading activities are where income is receivable in return for selling goods or providing services.

Income from trading is recognised either; a) when received, or b) in the case of concerts: for the year in question, irrespective of date of receipt. Advance bookings are included in creditors until the concert has taken place.

Investment income; dividends are accounted for when due and payable. Interest entitlements are accounted

for as they accrue.

Notes to the financial report (continued)

All other income

All other income is recognised in accordance with the above overall policy.

Gains and losses on investments

Realised gains are recognised when the investments are sold.

Unrealised gains and losses are accounted for on revaluation at 31 December.

D - Resources used

Resources expended are accounted for on an accruals basis and are accounted for gross.

Grants

Grants and donations are accounted for when paid over, or when awarded where the award creates a binding obligation on the PCC.

Church Activities

The diocesan parish contribution is accounted for on an annual basis, reflecting the allocation set by our Deanery. Any parish contribution unpaid as 31 December is provided for in these accounts as an operational (though not legal) liability and is shown as a creditor in the balance sheet.

E - Fixed Assets

Tangible fixed assets

Consecrated and beneficed property of any kind is excluded from the accounts by s.10(2) of the Charities Act 2011. Moveable church furnishing held by the Vicar and Churchwardens on special trust for the PCC and which require a faculty for disposal, are accounted as inalienable property unless consecrated. they are listed in the church's inventory which can be inspected but are not included in the financial statements. For other property acquired prior to 2000 there is insufficient cost information available and therefore the cost of such assets is not stated in the financial statements.

All expenditure on consecrated or beneficed buildings and individual items costing under £2,000 are written off in the year they were incurred.

Depreciation

Depreciation is calculated to write down the cost of tangible fixed assets, excluding freehold properties, over their expected useful lives. The rates generally applicable are:

Fixtures and fittings	20%
Audio visual equipment	33%
Office equipment	25%

No depreciation is provided on freehold property as it is the P.C.C.'s policy to maintain these assets in a continual state of sound repair. The useful economic life of these assets is so long and residual values so high that any depreciation would not be material. These assets will be subject to annual impairment reviews. Provision will be made if there has been any permanent diminution in value.

Investments

Investments are stated at market value at the balance sheet date.

F - Current Assets

Amounts owing to the PCC at 31 December in respect of fees, rents or other income are shown as debtors less provision for amounts that may not prove collectable.

Short-term deposits include cash held on deposit either with the CBF Church of England Funds, or at the bank.

Notes to the financial report (continued)

Note 2. Analysis of income and endowments	Unrestricted	Restricted	Endowed	Total Funds	<i>Total Funds</i>	Notes
	Funds	Funds	Funds	2022	<i>2021</i>	
	£	£	£	£	£	
Planned Gift-aided giving (excl. tax refunds)	81,385	0	0	81,385	87,060	
Planned giving (no tax refunds)	7,683	0	0	7,683	8,455	
Loose cash collections, sundry donations	45,326	0	0	45,326	20,624	
Fetes, fund-raising event income	1,028	880	0	1,908	0	
Special appeals, Gift Days	1,220	220	0	1,440	1,300	
Gift Aid recovered	23,482	0	0	23,482	23,659	
Legacies	2,679	0	0	2,679	6,000	
Grants (<i>incl. Furlough receipts</i>)	0	0	0	0	4,012	
Donations & legacies	162,803	1,100	0	163,903	151,110	
Fees for weddings & funerals	780	0	0	780	1,340	
Charitable activities	780	0	0	780	1,340	
Rent from letting properties	12,326	0	0	12,326	12,326	
Church hall and room lettings	4,826	0	0	4,826	2,810	
Fund-raising events	2,427	0	0	2,427	247	
Other trading activities	19,579	0	0	19,579	15,384	
Bank and CBF deposit interest	245	0	0	245	43	
Investment fund dividends	0	0	0	0	0	
Investments	245	0	0	245	43	
Other receipts	3,410	0	0	3,410	4,492	
Total received on all funds	186,817	1,100	0	187,917	172,369	

Notes to the financial report (continued)

Note 3. Analysis of expenditure on:	Unrestricted	Restricted	Endowed	Total Funds	Total Funds	Notes
	Funds	Funds	Funds	2022	2021	
	£	£	£	£	£	
Special appeal costs (e.g. adverts, leaflets)	0	0	0	0	0	
Fund-raising event costs	565	0	0	565	0	
Stewardship costs (e.g. printing giving envelopes)	86	0	0	86	85	
Grants costs (e.g. Grant application fees)	0	0	0	0	0	
Investment management costs	0	0	0	0	0	
Other fundraising (non-trading) costs	0	0	0	0	61	
Raising funds	651	0	0	651	146	
Missionary and charitable giving	12,500	1,100	0	13,600	11,150	4
Ministry:						
<i>diocesan parish contribution</i>	93,576	0	0	93,576	117,096	
<i>other clergy costs</i>	8,476	0	0	8,476	7,839	
Staff	9,524	0	0	9,524	9,323	5
Church running	17,788	0	0	17,788	21,561	
Church maintenance and repair	10,781	0	0	10,781	32,167	
Miscellaneous	10,934	0	0	10,934	5,691	
Bank charges	259	0	0	259	217	
Depreciation	0	0	0	0	0	
Governance costs	2,370	0	0	2,370	2,370	6
Charitable activities	166,208	1,100	0	167,308	207,415	
Church hall running costs and repair	2,940	0	0	2,940	1,302	
Other trading costs (letting property etc.)	1,326	0	0	1,326	3,011	
Bookstall costs	0	0	0	0	0	
Other trading activities	4,266	0	0	4,266	4,313	
Total expended on all funds	171,125	1,100	0	172,225	211,874	

Notes to the financial report (continued)

NOTE 4. Missionary and charitable giving:	Unrestricted Funds	Restricted Funds	Endowed Funds	Total Funds 2022	<i>Total Funds 2021</i>	Notes
Overseas:-	£	£	£	£	£	
Proclamation Zambia	0	1,100	0	1,100	0	
Crosslinks	5,600	0	0	5,600	5,400	
CMS (Church Mission)	1,000	0	0	1,000	500	
Interserve	0	0	0	0	0	
Barnabas Fund	0	0	0	0	0	
Tear Fund	0	0	0	0	0	
Ednan-Laperouse	100	0	0	100	0	
Home:-						
Dugmores	0	0	0	0	250	
Diocese Family Support Work	0	0	0	0	250	
Broad Road Fire	0	0	0	0	50	
Spinnaker, Schools outreach	1,000	0	0	1,000	500	
Sussex Gospel Partnership	2,750	0	0	2,750	1,000	
University Christian Fellowship (UCCF)	1,050	0	0	1,050	2,700	
BHCT	1,000	0	0	1,000	500	
	12,500	1,100	0	13,600	11,150	

NOTE 5. Staff costs:	Unrestricted Funds	Restricted Funds	Endowed Funds	Total Funds 2022	<i>Total Funds 2021</i>	Notes
a) Remuneration	£	£	£	£	£	
Wages and salaries	9,524	0	0	9,524	9,323	
Social security costs	0	0	0	0	0	
	9,524	0	0	9,524	9,323	

During the year the PCC & DCC employed two part-time staff;- one cleaner at St Wilfrid's, and one parish clerk at St John's, which church had cleaning in 2022 undertaken by volunteers.

b) Payments to PCC members

The part-time parish clerk, who is a member of the PCC was paid £8,164 during 2022.

Bruce Margrett was reimbursed £48 for church purchases

Ben Pratt was reimbursed £16 against his Lay-reader book allowance

Phil Kyte, with an interest in Bright and Beautiful Gardens Ltd. which was awarded 2 works £460

NOTE 6. Governance	Unrestricted Funds	Restricted Funds	Endowed Funds	Total Funds 2022	<i>Total Funds 2021</i>	Notes
	£	£	£	£	£	
Independent examination	2,370	0	0	2,370	2,370	
Accounts production	0	0	0	0	0	
Book keeping	0	0	0	0	0	
Total of Governance costs	2,370	0	0	2,370	2,370	

Notes to the financial report (continued)

NOTE 7. Analysis of transfers between funds	Unrestricted Funds	Restricted Funds	Endowed Funds	Total Funds 2022	Total Funds 2021	Notes
	£	£	£	£	£	
closing redundant funds St John's	0	0	0	0	-19,824	13
to the benefit of General fund St John's	0	0	0	0	19,824	13
Total of transfers between Funds	0	0	0	0	0	

NOTE 8. Fixed assets	Unrestricted 2022 Funds	Restricted 2022 Funds	Endowed 2022 Funds	Total Funds 2021
(a) Investments	£	£	£	£
Market value 01 January 2022	0	0	0	0
Disposals at carrying value	0	0	0	0
Purchases at cost	0	0	0	0
Net gains and revaluation	0	0	0	0
Market value 31 December 2022	0	0	0	0

b) Tangible fixed assets	Freehold land and buildings	Audio visual equipment	Office equipment	Total fixed assets
	£	£	£	£
Cost or valuation				
As at 01 January 2022 (two properties)	65,001	0	0	65,001
Additions	0	0	0	0
Disposals	0	0	0	0
Revaluation	0	0	0	0
At 31 December 2022 (two properties)	65,001	0	0	65,001
Charge for impairment				
As at 01 January 2022 (two properties)	0	0	0	0
Additions	0	0	0	0
Disposals	0	0	0	0
Revaluation	0	0	0	0
At 31 December 2022 (two properties)	0	0	0	0
Net book amounts				
At 31 December 2022 (two properties)	65,001	0	0	65,001
At 31 December 2021 (previous year)	65,001	0	0	65,001

Tangible fixed assets consist of two properties -

(1) 5, St John's Road was purchased in 1990 out of the O'Hara Legacy. It was used for staff accommodation, first for a Church Army Officer, then for the Church Pastoral assistant. After her redundancy in August 2012 it was let in May 2013 unfurnished on a short-term rental and is relied on to supplement the church income. For accounting purposes, the property was revalued in 1996, but there is no legal requirement to re-value it again until it is disposed of. The nominal house value is the Fund balance now.

(2) St Wilfrid's House was built in 1964 at a cost to the parish congregation raised by gift and loan. It is not owned by the diocese. By accounting oversight, it was never previously been included in the Parish accounts until 2016 although it is a parish asset. There is no legal requirement to include it at its current value, and so is entered here at a nominal figure of £1.

Notes to the financial report (continued)

NOTE 9. Analysis of net assets by fund

	Unrestricted Fund/s	Restricted Fund/s	Endowed Fund/s	Total Funds 2022 Funds	Total Funds 2021	Notes
	£	£	£	£	£	
Fixed assets for church use	65,001	0	0	65,001	65,001	
Investment fixed assets	0	0	0	0	0	
Current assets	55,585	5	0	55,590	46,659	
Current liabilities	3,646	0	0	3,646	0	
Long term liabilities	0	0	0	0	0	
	116,940	5	0	116,945	111,660	

NOTE 10. Debtors

	Unrestricted Fund/s	Restricted Fund/s	Endowed Fund/s	Total Funds 2022 Funds	Total Funds 2021	Notes
	£	£	£	£	£	
Gift Aid recoverable	824	0	0	824	1,220	
Prepayments and accrued income	0	0	0	0	0	
Other debtors	0	0	0	0	0	
	824	0	0	824	1,220	

NOTE 11. Creditors: amounts falling due within one year

	Unrestricted Fund/s	Restricted Fund/s	Endowed Fund/s	Total Funds 2022 Funds	Total Funds 2021	Notes
	£	£	£	£	£	
Deferred costs	2,192	0	0	2,192	0	
Accruals for utilities and other costs	0	0	0	0	8,980	
Loans	0	0	0	0	0	
Other creditors	1,454	0	0	1,454	1,427	
	3,646	0	0	3,646	10,407	

NOTE 12. Creditors: amounts falling due after more than one year

	Unrestricted Fund/s	Restricted Fund/s	Endowed Fund/s	Total Funds 2022 Funds	Total Funds 2021	Notes
	£	£	£	£	£	
Deferred income	0	0	0	0	0	
Accruals for utilities and other costs	0	0	0	0	0	
Loans	0	0	0	0	0	
	0	0	0	0	0	

Notes to the financial report (continued)

NOTE 13. Statement of funds	Balances b/fwd 1 Jan 22	Income	Expenditure	Transfers, other gains and losses	Total Funds 31 Dec. 2022	Notes
	£	£	£	£	£	
Endowed funds						
none	0	0	0	0	0	
Total of Endowed funds	0	0	0	0	0	
Restricted funds						
Charity fund, St John's	5	1100	1100	0	5	(i)
Charity fund, St Wilfrid's	0	0	0	0	0	(ii)
Total of Restricted funds	5	1100	1100	0	5	
Unrestricted funds						
General fund St John's	14224	119487	104530	0	29181	
General fund St Wilfrid's	9691	67330	66594	0	10427	
Designated O'Hara Legacy fund, St John's	65000	0	0	0	65000	(iii)
Designated St. Wilfrid's Kitchen fund,	3544	0	0	0	3544	
Designated St. Wilfrid's Church Re-order	8788	0	0	0	8788	(iv)
Designated "Friends" St Wilfrid's social fund	0	0	0	0	0	(v)
Total of Unrestricted funds	101247	186817	171125	0	116940	
Total of All funds	101252	187917	172225	0	116945	

NOTES (i) and (ii) The Charity funds are funds given for a specific charity, about to be paid over.

NOTE (iii) O'Hara legacy in 1990 was unrestricted. For the past details see Note 8 (1).

NOTE (iv) Reordering fund, held pending a building plan at St Wilfrid's.

NOTE (v) Friends fund, is to receive and pay for social activity at St Wilfrid's.

NOTE 14. Analysis of cash and cash equivalents	Total Funds 2022	Total Funds 2021
	£	£
Cash in hand	62	60
Notice deposits (less than 3 months)	54,704	45,379
Overdraft facility repayable on demand	0	0
Total cash and cash equivalents	54,766	45,439

NOTE 15. Related parties and transactions

There are none to disclose.

The Parochial Church Council of St John's, Polegate with the District Convention Council of St Wilfrid's, Lower Willingdon

Registered Charity Number 1130861

Independent examiners's report to the trustees of The Parochial Church Council of St John's, Polegate with the District Convention Council of St Wilfrid's, Lower Willingdon

I report on the accounts of the Charity for the year ended 31 December 2022, which are set out on pages 12 to 21.

Respective responsibilities of trustees and examiner

The charity's trustees are responsible for the preparation of the accounts. The charity's trustees consider that an audit is not required for this year under section 144 of the Charities Act 2011 (the Charities Act) and that an independent examination is needed.

It is my responsibility to:

- examine the accounts under section 145 of the Charities Act;
- to follow the procedures laid down in the general Directions given by the Charity Commission under section 145(5)(b) of the Charities Act; and
- to state whether particular matters have come to my attention

Basis of independent examiner's statement

My examination was carried out in accordance with the general Directions given by the Charity Commission. An examination includes a review of the accounting records kept by the charity and a comparison of the accounts presented with those records. It also includes consideration of any unusual items or disclosures in the accounts, and seeking explanations from you as trustees concerning any such matters. The procedures undertaken do not provide all the evidence that would be required in an audit and consequently no opinion is given as to whether the accounts present a 'true and fair' view and the report is limited to those matters set out in the statement below.

Independent examiner's statement

In connection with my examination, no matter has come to my attention:

- (1) which gives me reasonable cause to believe that in any material respect the requirements:
- to keep accounting records in accordance with section 130 of the Charities Act; and
 - to prepare accounts which accord with the accounting records and comply with the accounting requirements of the Charities Act have not been met; or
- (2) to which, in my opinion, attention should be drawn in order to enable a proper understanding of the accounts to be reached

Signed by Mark R Sellings FCCA (Independent Examiner)



30 - 34 North Street
Hailsham
East Sussex BN27 1DW

Date: 14-MAR-23

This page is for information only and does not legally form part of the Financial Statements

Individual INCOME and EXPENDITURE ACCOUNTS

	ST JOHN's CHURCH 2022 £	ST JOHN's CHURCH 2021 £	ST WILFRID's CHURCH 2022 £	ST WILFRID's CHURCH 2021 £
INCOME				
Tax efficient giving	48,047	53,090	33,338	33,970
Tax refunds	14,248	16,493	9,234	7,166
Other giving	4,268	4,910	6,050	3,545
Collections	4,958	2,859	8,424	4,899
Special collections and Gift Day giving	1,220	90	0	1,210
Sundry donations & Grants	26,484	15,376	2,824	1,549
Legacies	2,679	5,000	0	1,000
Parochial Fees	780	1,058	47	282
Church hall, rooms & property lettings	12,326	12,326	4,826	2,810
Fund-raising	1,028	201	2,380	0
Dividends and interest	38	33	207	11
Insurance claims	3,410	4,492	0	0
	119,487	115,928	67,330	56,441
LESS: EXPENDITURE	£	£	£	£
Grants given away	9,400	9,350	3,100	1,800
Parish Ministry costs	55,176	74,304	38,400	42,792
All clergy expenses	1,559	1,332	0	0
Clergy housing expenses	3,276	2,986	3,641	3,521
Rented property costs	1,326	3,011	0	0
Salaries and wages	8,164	8,279	1,360	1,044
Church running expenses	13,720	11,888	4,069	3,456
Church repairs and maintenance	4,849	21,686	5,932	10,481
Hall running costs	1,308	609	0	0
Hall repairs and maintenance	1,632	693	0	0
Training	0	0	0	0
Outreach, meetings and mission	575	144	0	0
Other Direct Expenses	0	0	7,451	4,875
Youth work	50	0	0	0
Information Technology maintenance	773	4,558	0	0
Fund-raising and publicity costs	651	146	0	0
Postage, stationery and copying	627	970	0	0
Sundry administration expenses	0	0	1,457	1,579
Bank charges	259	0	0	0
Independent Examiner's fee	1,185	1,185	1,185	1,185
	104,530	141,141	66,594	70,733
EXCESS OF INCOME/EXPENSES	14,957	-25,213	736	-14,292

This page is for information only and does not legally form part of the Financial Statements

Accounts

Trustees Annual Report and Financial Report of



**The Parish of St John's
Church,
Church Road, Polegate, BN26 5BX**

**including the Conventional District of
St Wilfrid's Church,
Broad Road,
Lower Willingdon,
Eastbourne, BN20 9RA**

Registered Charity no. 1130861

For the year ended 31 December 2021



CONTENTS

	<i>Pages</i>
Trustees annual report, St Johns'	2 to 6
Trustees annual report, St Wilfrids'	7 to 10
Statement of financial activities.....	12
Balance sheet	13
Notes to the accounts.....	14 to 21
Report of the independent examiner	22

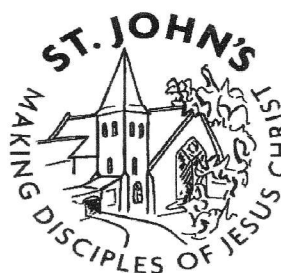
Website: www.polegate.org.uk

Incumbent: The Revd Chris Spinks, c/o The Church Office, Church Road, Polegate, BN26 5BX

Independent examiner: Watson Associates, 30-34 North Street, Hailsham, BN27 1DW

Bankers: Barclays Leicester, LE87 2BB and CBF Church of England deposit fund.

Trustees Annual Report for 2021 for St John's, Polegate



Our aims and purposes as a charity

The Parochial Church Council (the PCC) has the responsibility of co-operating with the incumbent, the Rev'd Chris Spinks, in:

- The promotion of the gospel of the Lord Jesus Christ according to the doctrines and practices of the Church of England
- Promoting in the parish the whole mission of the church, pastoral, social, evangelistic and, ecumenical
- To know Jesus better and make Him better known
- Practical support and care for people in the parish, from the youngest to the eldest, irrespective of level of need or, ability to pay
- Providing financial support to those in need and, to other organisations with similar objectives.

What we planned to do in St. John's, to achieve our charitable objectives

When planning our activities for the year, our incumbent and the PCC have considered the Charity Commission's guidance on public benefit and, in particular, the specific guidance on 'charities for the advancement of religion'.

The PCC has complied with its duty under Section 5 of the Safeguarding and Clergy Discipline Measure 2016, fully recognising its duty to have regard to House of Bishops' guidance on safeguarding children and vulnerable adults. During 2021 as far as the Pandemic allowed, we planned the following objectives and activities to fulfil our aims:

- Enabling as many people as possible to worship at our church
- Enabling as many people as possible to become part of our church family
- Teaching, baptising and nurturing new and existing believers
- Maintaining an overview of worship throughout the parish
- Considering how services can involve the many groups that live within the parish
- Putting faith into practice, through prayer and scripture, music and worship
- Offering worship and prayer, learning about the Gospel, in small group situations
- Assisting people from all walks of life to develop their knowledge of, and trust in, Jesus
- Provision of pastoral care for people living in the parish
- Giving grants to missionary organisations
- Maintaining the fabric of the church building as a centre and spiritual focus of life in the town.

What we achieved in St. John's and how we affected beneficiaries' lives.

Regular, open services of worship with a welcome to anyone who comes, is one of the ways in which the Trustees meet their Objectives which are set out on the second page. The year began with one Sunday of socially distanced services, ending 17th January as the District and County Council requested all churches to close because of high infection rates. As in 2020, an audio service was recorded each Sunday, available any day, any time, to anyone who chose to call the chosen telephone number using any telephone device. But from the end of February, the benefit of attended services was restored, with masks, with singing not allowed, and with social distancing. As a consequence of social distancing in the church, and because of the fixed seating in the wooden pews, just 18 people could be accommodated at a time. By making enquiries, all those who wished to attend a service personally were accommodated at one of three services each Sunday from 28th February; 10am, 4pm, and 7.30pm. During the year, at times communion was forbidden, and when restored in October it was of one element, the bread. These arrangements continued, accommodating casual attendees as seats fell unoccupied, until August, when all restrictions were removed. From then, all those at worship were given the blessing of being able to sing to complete their worship. With the reduction of restrictions, the church-team-made new pew cushions were restored giving the benefit of greater sitting comfort.



The church has continued to serve the needs of corporate worship with 105 on the electoral roll of whom 13 live outside the parish. During 2021, the average number of people attending weekly

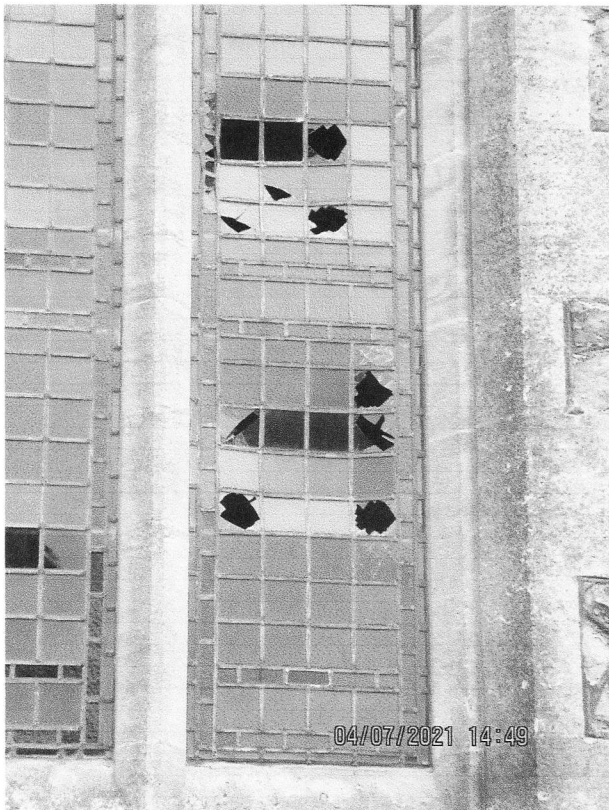


services was 56 adults and 2 children, but at seasonal time (e.g. Christmas) that number was 101.

Providing children's events is one of the ways that the Trustees fulfil the Objectives detailed at the beginning of this report, but these activities have been severely restricted by all the Covid-19 restrictions. However, the importance of that activity might be demonstrated from part of one of the Gospels: - "People were bringing little children to Jesus to have him touch them, but the disciples rebuked them. When Jesus saw this, he was indignant. He said to them, "Let the little children come to me, and do not hinder them, for the kingdom of God belongs to such as these. I tell you the truth, anyone who will not receive the kingdom of God like a little child will never enter it." National 'lockdown' from the beginning of the year prevented the weekly meetings of "Tea and Tots" and "Kidzone" and various circumstances have prevented those from re-starting during 2021. However, from the beginning of September, the Trustees were pleased that the benefit of the Sunday Club resumed for children aged 3 to 11 during the Morning Service

Over a number of weeks in the Summer, seven areas of damage were discovered in the large West Window nearest the High Street. By a fortunate chance, a neighbour one Sunday afternoon saw and photographed a 12-year old boy kicking a football against the church wall, and, on occasion, the window. A report was made to the police who identified him. He caused £5,492 of damage; some of the parts of the windows had to be taken away and it was not until February 2022 that the repairs were complete. Whilst

most of the cost was covered by Ecclesiastical Insurance claims, the excess cost to the church was £1,000.



In 2021, the Media have reported greater levels of anxiety in society compounded by the pandemic. The Trustees are confident that the benefit of becoming one of the numbers gathering at the church also offers two major benefits, as well as many minor ones; the first is to discover and enjoy the peace and daily support of the living God, and secondly, the enjoyment of the fellowship of others when jointly worshipping Jesus Christ. During the year, a great number of the regular members of the church, were encouraged by the Trustees to keep in contact with those who remained cautious about returning to social gatherings whilst restrictions before August remained. Subsequently, when numbers were unrestricted, those who still kept isolated were not forgotten. Indeed, all contacts with the church to the vicar and the church office, were responded to and not lost or ignored. All during the year the Trustees met, often by zoom, to agree the optimum working arrangements for services and church management, always remembering those to whom the church ministers.

Maintaining St John's as an historic centre in the village. The church grounds, as a significant part of

the town's High Street, have been maintained in good order by a professional contractor, by regular cutting of the lawns, and two cuttings to the perimeter hedges, after nesting time. The project to grub-out and re-plant the Church Road hedge, infested by brambles, has been in abeyance again. Otherwise the Garden of Remembrance has been maintained by weeding, cleaning, and paving repair as well as the 413 tablets were individually scrubbed).



Maintaining the fabric of the St John's building as a benefit to the community. Whereas the lockdowns of 2020 caused little work to be undertaken on the church buildings and grounds,

there was a pressure to get on with the work during 2021. To meet the obligations of our church insurers, Ecclesiastical, a £312 lightning conductor test showed that the earthing was insufficient against modern standards. This was put right in April at a cost of some £684. Early in the previous year our architect found that the lead covering to the "Old Vestry" roof was cracked, and this was replaced during the Summer costing £2,478. Then, the church central heating boiler of 2002, repaired in February (costing £1,653), failed in July, and was replaced thanks to a generous donation exceeding £7,400. Difficulties were then experienced with the new boiler vent through the ceiling and as a result the vestry carpet was kindly replaced by the contractor after flooding; at the same time the office and passageway carpets were replaced at a cost of £525. The unsightly metal ducting in the vestry ceiling, installed to vent the 2002 boiler became redundant, and was removed at a cost of £1,464. It was an expensive year, at a time of concern about income to meet the maintenance of these structures. In the garden of the tenanted house owned by the church, a shed was of a

dangerous condition and happily was replaced at a cost of some £2,478. In the same property, the glass in the front door was found to be of insufficient toughness and was replaced at a cost of £200.

Giving grants to missionary organisations. The Trustees have the agreement of the church family in exercising their responsibility to promoting the gospel outside the parish. Historically the parish has given some 10% of its charitable income to various charitable beneficiaries, targeting in the main, missionary work. St John's has continued to provide the benefit of financial support to Chris and Lotta Strajnic in Sweden (planting churches), and to Riste and Tea Micev in Serbia (training in church leadership); both are under the direction of Crosslinks. The final one third of the 2020 charitable giving was to UCCF (Universities and Colleges Christian Fellowship). This was for the second year of support.

Other charitable giving by St John's (See also the Financial Report Note 4) The church family has supported other causes including the Diocese Family Social Work, the Winter Night Shelter and the Sussex Gospel Partnership.

Financial Review for the whole Parish of St John's and St Wilfrid's

The total Parish receipts on General Unrestricted funds received were £172,114 (£200,679 in 2020) and are detailed in the Financial Report and include legacies £6,000 (£53,599 in 2020).

Our total Parish voluntary income including tax recovered (but excluding legacies) was £144,855 (£131,250 in 2020). Both churches in the parish take advantage of the Diocesan system called the Parish Giving Scheme which by the use of direct debits offers an action-free method of giving in place of standing orders and cash-in-the-plate. This streamlines money handling and tax recovery for the church and can save the giver the need to review their level of giving if they choose.

Sharing the ministry costs of the Diocese of Chichester

The largest 2021 expenditure of the Parish was the sum of £117,096 (£135,756 in 2020) paid to the diocese for Parish Ministry Costs. This assessment by the Diocese covers the housing, stipend and pension costs of clergy, church insurance and, also a standard sum for diocesan central costs, clergy training and a contribution to national church funds. In 2021 the contribution of just St John's was £74,304, (100% of the full Diocese-considered cost) and St Wilfrid's

contributed £42,792 (69.8% of their cost). It is important to note that approximately 80% of the Diocese-considered total paid relates directly to the clergy costs of this parish, the remainder being the shared costs of the Christian family throughout the whole Church of England, including assistance towards the upkeep of churches less able to manage than ourselves.

However, the Diocese considers St. John's with St Wilfrid's to be one benefice/parish. Until 2003 the Diocese charged one parish cost of training, support, diocese charges. But after 2003, when St Wilfrid's became a Conventional District, the diocese charged each of St John's and St Wilfrid's the full costs of a single parish whilst still stating it to be one parish. This has been held out to them as an anomaly but the injustice of this is not yet admitted by the Diocese.

Staff costs St John's PCC has employed (~~except during furloughs~~) a Parish Clerk, who is also a PCC member. The cleaning of the church and church hall, which was previously paid employment, has been loyally undertaken by volunteers in 2021. St Wilfrid's DCC employs a church cleaner. Further details are provided in the notes to the accounts.

Trustee payments and expenses. St. John's PCC supported its incumbent by paying the Vicarage water and environmental charges plus Council Tax £2,707 plus other annual costs towards travel, hospitality, telephone, postage and broadband amounting to £1,277. The repair costs of the Vicarage paid by the PCC were £278.

St Wilfrid's House costs, paid in support of the Minister, were Council Tax, Water rates and insurance totalling £3,521. There were no costs for repairs on St Wilfrid's House

Two of St John's PCC members were re-imbursed small sums for expenditure on behalf of the church as detailed in Note 5(b) in the Financial report. There were no payments to other persons related to or connected to, other trustees.

The part-time Parish Clerk, who is also a trustee, received £8,327 before tax for her duties during the year

Repairs to the fabric of St John's buildings - see the paragraph (above) "Maintaining the fabric" of St Johns.

Repairs to the fabric of St Wilfrid's buildings During 2021 there were expenses of £9,858.

Why we hold some money in reserve – St John's.

The last six years (2015 to 2021) have seen necessary major repairs to the church building costing just over £75,500, and major repairs to the church hall costing some £73,700. In addition, over the same period regular

by a total of some £154,400 funded by legacies and reserves. With the working balance now cut very low, the Trustees nevertheless consider that God will provide to provide for the financial needs of St Johns.

It remains the PCC policy to invest temporarily surplus general funds with the CBF Church of England deposit fund, but with the significantly low current interest rates, little can be earned by moving money about swiftly.

Structure, governance and management of the charity during 2021

The Parochial Church Council (PCC) is registered with the Charity Commission as required by the Charities Act 2011. Its governing document is the Parochial Church Councils (Powers) Measure 1956.

During the year the following served as members of the Parochial Church Council:

Ex Officio members

Incumbent:	The Rev'd Chris Spinks	Chairman
Readers:	Mr Alan Packard	
	Mr Ben Pratt	Secretary
	Mr Hugh Lowries	also Deanery Synod member
Wardens:	Mr Bruce Margrett	also Vice Chair/Deanery Synod
	Mr Phil Kyte	also Deanery Synod member

Elected Members:

Katrina Burton	
Val Clewett	
Maureen Pemberton	Treasurer
Mark Pybus	Deanery Synod member
Pam Sharpe	

This Trustees' Annual Report was **approved** by the PCC and signed on their behalf by The Revd. Chris Spinks, PCC Chairman

Chris G. Spinks

Date..... 07 MAR 2022

Postcard from
about 1905



Trustees Annual Report

of

The District Church Council of the Ecclesiastical District of

St Wilfrid's Church, Lower Willingdon

St Wilfrid's Church, Broad Road, Lower Willingdon BN20 9RA

Registered Charity no. 1130861

For the year ended 31 December 2021

Website: www.stwilfs.org

Incumbent: The Revd C J Styles, St Wilfrid's House, 90 Broad Road, Lower Willingdon BN20 9RA

If my people, who are called by my name, will humble themselves and pray and seek my face and turn from their wicked ways, then I will hear from heaven, and I will forgive their sin and will heal their land.
2 Chronicles 7:14

Continues on next page.....

St Wilfrid's, Lower Willingdon

Trustees Annual Report for 2021

Our aims and purposes as a charity

The DCC has the responsibility of co-operating with the incumbent, the Revd C J Styles, in:

- The promotion of the gospel of the Lord Jesus Christ according to the doctrines and practices of the Church of England;
- Promoting in the parish the whole mission of the church, pastoral, social, evangelistic and, ecumenical.
- To know Jesus better and make Him better known;
- Practical support and care for people in the parish, from the youngest to the eldest, irrespective of level of need or, ability to pay;
- Providing financial support for those in need and, to other organisations with similar objectives.

The DCC also contributes from its income to several charities including: Beachy Head Chaplaincy, which seeks to council those contemplating suicide; Spinnaker, a charity involved in supporting local schools; and several charities with projects based overseas.

What we planned to do to achieve our charitable objectives

When planning our activities for the year, our incumbent and the DCC have discussed and planned the following objectives and activities to fulfil our aims:

- Enabling as many people as possible to worship at our church;
- Teaching, baptising and nurturing new and existing believers;
- Provision of the building for users, guests, and the worshipping community;
- Considering how services can involve the many groups that live within the parish;
- Putting faith into practice, through prayer and scripture, music and sacrament;
- Offering worship and prayer, learning about the Gospel, in small group situations;
- Assisting people from all walks of life to develop their knowledge of, and trust in, Jesus;
- Provision of pastoral care for people living in the parish;
- Providing assistance to the poor and needy of the parish;
- Reaching out to the unchurched through provision of barbecues, fayres, jumble sales etc.;
- Maintaining the fabric of the church building and the rooms that make up the entire complex to appeal to users and create a safe space which reflects community involvement.

What we achieved and how we affected beneficiaries' lives at St Wilfrid's

Attendance at worship

The church family welcomes visitors from within as well as outside the parish boundary. Visitors attend by personal choice and, it is our great pleasure to welcome anyone from all walks of life to take part in the life of the church. We contend that voluntary attendance to worship the Lord Jesus Christ, is a major demonstration of the public benefit of our activities.

There are 91 parishioners on the church electoral roll, about half of whom are not resident within the parish. The average regular weekly attendance at our Sunday morning service, for 2021, was 50 but this low amount was largely due to Covid 19 disruptions.

Teaching, baptising and nurturing new and existing believers

This was severely restricted due to Lockdown. But we have two candidates waiting for better times.

Provision of the building for users, guests, and the worshipping community

The use of the hall was severely restricted due to lockdown but numbers are gaining and most of our activities have started up again.

Spatial reordering of the church building and future projects

We have done no new reordering due to lockdown. However, we are in the middle of a management audit and have also decided to add a projector and laptop link to our hall to enable better delivery of our Sunday afternoon family event.

Provision of pastoral care for people living in the parish

Pastoral care has been limited to myself and several others in the church keeping contact by phone. Some serious pastoral help has had to be given using this medium. We have just appointed a Pastoral co-ordinator to help me keep tabs on people's needs.

Provision of tangible support to the poor and needy

We are helping a young man with Tesco vouchers to supplement his voluntary maintenance work on our behalf.

Other Local Involvement

Both at Easter and Christmas these past two years we've had open-air services that were well attended. Also, throughout the summer of 2021 we were outside and our numbers were quite good (in the 70s) during those months. We had quite a number of locals join us although few have remained with us

Structure, governance and management of St Wilfrid's

The District Church Council (DCC), is not an official PCC (though we refer to it informally as the PCC), but for purposes of returns and other legal considerations, we are often regarded as under the Parish of St John's Polegate (of which our District forms a part). Although the Minister is 'Curate-in-Charge', and St Wilfrid's DCC functions as a PCC this fact needs to be acknowledged for this report.

During the year the following served as members of the District Church Council:

Ex Officio members

Curate-in-charge:	The Revd C J Styles	Chairman
NSM:	The Revd Richard Herkes	
Wardens:	Mr Gary Smith	Safeguarding officer
	Ms Jane Hamper	

Elected Members

Mrs Barbara Minall	
Mr John Cheesman	Treasurer
Mrs Marilyn Neville	
Mr Chris Mason	
Mrs Margaret McRay	
Mrs Sue Read	
Mrs Lis Lawrence	
Mr John Horne	Schools Liaison

Deanery Synod

Mrs Lindsay Smith

Secretary (non-member):

Mrs Helen Roberts Secretary

Membership of the DCC is determined under the Church Representation Rules and consists of certain ex-officio members (the incumbent/priest-in-charge, curate, lay readers licensed to officiate in the church), the churchwardens and members of the Deanery, Diocesan or General Synods and members of the church who are elected at the Annual District Church Meeting (ADCM but we refer to it as the APCM). Members are encouraged to stand for election to the PCC and we try to ensure a balance of skills and experience where possible.

The Revd. C J Styles, DCC Chairman

Date: 03rd February 2022



Annual Financial Report for 2021

**The Parochial Church Council of
St John's Church, Polegate
with
the Conventional District of St Wilfrid's Church, Lower Willingdon**

**in the combined parish of St John's with
St Wilfrid's Churches**

Registered Charity no. 1130861

for the year ended 31 December 2021



Statement of financial activities

	Unrestricted Funds	Restricted Funds	Endowed Funds	Total Funds 2021	Total Funds 2020	Notes
	£	£	£	£	£	
Income and endowments from:						
Donations & legacies	150,855	255	0	151,110	184,849	
Charitable activities	1,340	0	0	1,340	799	
Other trading activities	15,384	0	0	15,384	15,281	
Investments	43	0	0	43	317	
Other receipts	4,492	0	0	4,492	0	
Total income	172,114	255	0	172,369	201,246	2
Expenditure on:						
Raising funds	146	0	0	146	287	
Charitable activities	207,165	250	0	207,415	200,028	
Other trading activities	4,313	0	0	4,313	4,159	
Total expenditure	211,624	250	0	211,874	204,474	3
Net gains (or losses) on investments						
Net income or (net expenditure)	-39,510	5	0	-39,505	-3,229	
Transfers between funds	3,318	-3,318	0	0		7
	-36,192	-3,313	0	-39,505	-3,229	
Other recognised gains/(losses):						
Gains/(losses) on revaluation of fixed assets						
Other gains/(losses)						
Net movement in funds	-36,192	-3,313	0	-39,505	-3,229	
Reconciliation of funds:						
Total funds brought forward	137,439	3,318	0	140,757	143,985	
Total funds carried forward	101,247	5	0	101,252	140,757	

Balance Sheet (also known as Statement of Financial Position)

	Total Funds	Total Funds	Notes
	2021	2020	
	£	£	
Intangible assets	0	0	
Tangible assets	65,001	65,001	
Heritage assets	0	0	
Endowed investments	0	0	
Total fixed assets	65,001	65,001	8
Stocks	0	0	
Debtors	1,220	1,888	
Investments	0	0	
Cash at bank and in hand	45,439	80,916	14
Total Current assets	46,659	82,803	
Creditors: Amounts falling due within one year	10,407	7,048	11
Net current assets or (liabilities)	36,251	75,756	
Total assets less current liabilities	101,252	140,757	
Creditors: Amounts falling due after more than one year	0	0	12
Provisions for liabilities	0	0	
Total net assets or (liabilities)	101,252	140,757	
The funds of the charity:			
Endowment funds	0	0	
Restricted income funds	5	3,318	
<i>Unrestricted funds</i>	101,247	137,439	
<i>Revaluation reserve</i>	0	0	
Total unrestricted funds	101,247	137,439	
Total charity funds	101,252	140,757	

This Annual Financial Report, for the year ended 31st December 2020 including the notes following, was **approved** by the PCC and signed on it's behalf by

The Revd Chris Spinks

Chris G. Spinks

Date: 07 MAR 2022

Notes to the financial report

NOTE 1. Accounting policies

A - Accounting convention

The financial statements have been prepared under the Church Accounting Regulation 2006 in accordance with applicable accounting standards and the current (2015) Statement of Recommended Practice, Accounting and Reporting by Charities SORP (FRS102).

The financial statements have been prepared under the historical cost convention as modified by the inclusion of investments at market value. The financial statements include all transactions, assets and liabilities for which the PCC is responsible in law. They do not include the accounts of church groups that owe their affiliation to another body, nor those which are informal gatherings of church members.

B - Funds accounting

Funds held by the PCC are:

Unrestricted funds - general funds which can be used for PCC ordinary purposes

Designated funds - monies set aside by the PCC out of unrestricted funds for
specific future purposes or projects.

Restricted funds - a) income from trusts or endowments which may be expended only on those restricted objects provided in the terms of the trust or bequest; b) donations or grants received for a specific object or invited by the PCC for a specific object. The funds may only be expended on the specific object for which they were given. Any balance remaining unspent at the end of the year is carried forward as a balance on that fund.

Endowment funds - funds the capital of which must be maintained; only income arising from the investment of the endowment may be used, either as restricted or unrestricted funds, depending on the purpose set out in the terms of the original endowment.

C - Income and endowments

All income and endowments are accounted for without deduction for any costs or receivability, are recognised when there is evidence of entitlement, receipt is probable, and the amount can be measured reliably.

Donations and legacies

Collections are recognised when received.

Planned giving receivable is recognised when there is evidence of entitlement, receipt is probable, and the amount accords with the Gift Aid declaration or other record of the intention to donate.

Gift Aid recovered is recognised when the income to which it is attached is recognised.

Grants and legacies are recognised when the formal offer in writing of the funding, is received by the PCC.

Charitable activities

Sales of magazines and study notes are recognised when received.

Rents from property are recognised in accordance with the rental agreements, when receipt is probable.

Other trading activities

Trading activities are where income is receivable in return for selling goods or providing services.

Income from trading is recognised either; a) when received, or b) in the case of concerts: for the year in question, irrespective of date of receipt. Advance bookings are included in creditors until the concert has taken place.

Investment income; dividends are accounted for when due and payable. Interest entitlements are accounted

for as they accrue.

Notes to the financial report (continued)

All other income

All other income is recognised in accordance with the above overall policy.

Gains and losses on investments

Realised gains are recognised when the investments are sold.

Unrealised gains and losses are accounted for on revaluation at 31 December.

D - Resources used

Resources expended are accounted for on an accruals basis and are accounted for gross.

Grants

Grants and donations are accounted for when paid over, or when awarded where the award creates a binding obligation on the PCC.

Church Activities

The diocesan parish contribution is accounted for on an annual basis, reflecting the allocation set by our Deanery. Any parish contribution unpaid as 31 December is provided for in these accounts as an operational (though not legal) liability and is shown as a creditor in the balance sheet.

E - Fixed Assets

Tangible fixed assets

Consecrated and beneficed property of any kind is excluded from the accounts by s.10(2) of the Charities Act 2011. Moveable church furnishing held by the Vicar and Churchwardens on special trust for the PCC and which require a faculty for disposal, are accounted as inalienable property unless consecrated. they are listed in the church's inventory which can be inspected but are not included in the financial statements. For other property acquired prior to 2000 there is insufficient cost information available and therefore the cost of such assets is not stated in the financial statements.

All expenditure on consecrated or beneficed buildings and individual items costing under £2,000 are written off in the year they were incurred.

Depreciation

Depreciation is calculated to write down the cost of tangible fixed assets, excluding freehold properties, over their expected useful lives. The rates generally applicable are:

Fixtures and fittings	20%
Audio visual equipment	33%
Office equipment	25%

No depreciation is provided on freehold property as it is the P.C.C.'s policy to maintain these assets in a continual state of sound repair. The useful economic life of these assets is so long and residual values so high that any depreciation would not be material. These assets will be subject to annual impairment reviews. Provision will be made if there has been any permanent diminution in value.

Investments

Investments are stated at market value at the balance sheet date.

F - Current Assets

Amounts owing to the PCC at 31 December in respect of fees, rents or other income are shown as debtors less provision for amounts that may not prove collectable.

Short-term deposits include cash held on deposit either with the CBF Church of England Funds, or at the bank.

Notes to the financial report (continued)

Note 2. Analysis of income and endowments	Unrestricted Funds	Restricted Funds	Endowed Funds	Total Funds 2021	<i>Total Funds 2020</i>	Notes
	£	£	£	£	£	
Planned Gift-aided giving (excl. tax refunds)	87,060	0	0	87,060	81,217	
Planned giving (no tax refunds)	8,455	0	0	8,455	9,904	
Loose cash collections, sundry donations	20,509	115	0	20,624	11,589	
Fetes, fund-raising event income	0	0	0	0	2,059	
Special appeals, Gift Days	1,210	90	0	1,300	200	
Gift Aid recovered	23,609	50	0	23,659	21,632	
Legacies	6,000	0	0	6,000	53,599	
Grants (<i>incl. Furlough receipts</i>)	4,012	0	0	4,012	4,649	
Donations & legacies	150,855	255	0	151,110	184,849	
Fees for weddings & funerals	1,340	0	0	1,340	799	
Charitable activities	1,340	0	0	1,340	799	
Rent from letting properties	12,326	0	0	12,326	12,010	
Church hall and room lettings	2,810	0	0	2,810	3,271	
Fund-raising events	247	0	0	247	0	
Other trading activities	15,384	0	0	15,384	15,281	
Bank and CBF deposit interest	43	0	0	43	317	
Investment fund dividends	0	0	0	0	0	
Investments	43	0	0	43	317	
Other receipts	4,492	0	0	4,492	0	
Total received on all funds	172,114	255	0	172,369	201,246	

Notes to the financial report (continued)

Note 3. Analysis of expenditure on:	Unrestricted Funds	Restricted Funds	Endowed Funds	Total Funds 2021	<i>Total Funds 2020</i>	Notes
	£	£	£	£	£	
Special appeal costs (e.g. adverts, leaflets)	0	0	0	0	0	
Fund-raising event costs	0	0	0	0	0	
Stewardship costs (e.g. printing giving envelopes)	85	0	0	85	131	
Grants costs (e.g. Grant application fees)	0	0	0	0	0	
Investment management costs	0	0	0	0	0	
Other fundraising (non-trading) costs	61	0	0	61	155	
Raising funds	146	0	0	146	287	
Missionary and charitable giving	10,900	250	0	11,150	14,935	4
Ministry:						
<i>diocesan parish contribution</i>	117,096	0	0	117,096	135,756	
<i>other clergy costs</i>	7,839	0	0	7,839	10,641	
Staff	9,323	0	0	9,323	11,474	5
Church running	21,561	0	0	21,561	16,455	
Church maintenance and repair	32,167	0	0	32,167	1,450	
Miscellaneous	5,691	0	0	5,691	6,642	
Bank charges	217	0	0	217	305	
Depreciation	0	0	0	0	0	
Governance costs	2,370	0	0	2,370	2,370	6
Charitable activities	207,165	250	0	207,415	200,028	
Church hall running costs and repair	1,302	0	0	1,302	1,606	
Other trading costs (letting property etc.)	3,011	0	0	3,011	2,554	
Bookstall costs	0	0	0	0	0	
Other trading activities	4,313	0	0	4,313	4,159	
Total expended on all funds	211,624	250	0	211,874	204,474	

Notes to the financial report (continued)

NOTE 4. Missionary and charitable giving:	Unrestricted Funds	Restricted Funds	Endowed Funds	Total Funds 2021	<i>Total Funds 2020</i>	Notes
Overseas:-	£	£	£	£	£	
Proclamation Zambia	0	0	0	0	0	
Crosslinks	5,400	0	0	5,400	5,600	
CMS (Church Mission)	500	0	0	500	1,600	
Interserve	0	0	0	0	0	
Barnabas Fund	0	0	0	0	0	
Tear Fund	0	0	0	0	0	
Quicken Trust	0	0	0	0	0	
Home:-						
Dugmores	250	0	0	250	0	
Diocese Family Support Work	0	250	0	250	475	
Broad Road Fire	50	0	0	50	0	
Spinnaker, Schools outreach	500	0	0	500	1,600	
Sussex Gospel Partnership	1,000	0	0	1,000	1,000	
University Christian Fellowship (UCCF)	2,700	0	0	2,700	2,800	
BHCT	500	0	0	500	1,860	
	10,900	250	0	11,150	14,935	

NOTE 5. Staff costs:	Unrestricted Funds	Restricted Funds	Endowed Funds	Total Funds 2021	<i>Total Funds 2020</i>	Notes
a) Remuneration	£	£	£	£	£	
Wages and salaries	9,323	0	0	9,323	11,474	
Social security costs	0	0	0	0	0	
	9,323	0	0	9,323	11,474	

During the year the Parish employed two part-time staff - 1 church cleaner, & one parish clerk.
All other cleaning duties were undertaken (with a million thanks) by volunteers.

b) Payments to PCC members

The part-time parish clerk, who is a member of the PCC was paid £8,327 during the year.
Two members of the PCC were reimbursed for church purchases - £23 and £114 respectively

NOTE 6. Governance	Unrestricted Funds	Restricted Funds	Endowed Funds	Total Funds 2021	<i>Total Funds 2020</i>	Notes
	£	£	£	£	£	
Independent examination	2,370	0	0	2,370	2,370	
Accounts production	0	0	0	0	0	
Book keeping	0	0	0	0	0	
Total of Governance costs	2,370	0	0	2,370	2,370	

Notes to the financial report (continued)

NOTE 7. Analysis of transfers between funds	Unrestricted	Restricted	Endowed	Total Funds	Total Funds	Notes
	Funds	Funds	Funds	2021	2020	
	£	£	£	£	£	
closing redundant funds St John's	-16,507	-3,318	0	-19,824	0	13
to the benefit of General fund St John's	19,824	0	0	19,824	0	13
Total of transfers between Funds	3,318	-3,318	0	0	0	

NOTE 8. Fixed assets	Unrestricted	Restricted	Endowed	Total Funds
	2021 Funds	2021 Funds	2021 Funds	2020
	£	£	£	£
(a) Investments				
Market value 01 January 2021	0	0	0	0
Disposals at carrying value	0	0	0	0
Purchases at cost	0	0	0	0
Net gains and revaluation	0	0	0	0
Market value 31 December 2021	0	0	0	0

b) Tangible fixed assets	Freehold land	Audio visual	Office	Total fixed
	and buildings	equipment	equipment	assets
	£	£	£	£
Cost or valuation				
As at 01 January 2021 <i>(two properties)</i>	65,001	0	0	65,001
Additions	0	0	0	0
Disposals	0	0	0	0
Revaluation	0	0	0	0
At 31 December 2021 <i>(two properties)</i>	65,001	0	0	65,001
Charge for impairment				
As at 01 January 2021 <i>(two properties)</i>	0	0	0	0
Additions	0	0	0	0
Disposals	0	0	0	0
Revaluation	0	0	0	0
At 31 December 2021 <i>(two properties)</i>	0	0	0	0
Net book amounts				
At 31 December 2021 <i>(two properties)</i>	65,001	0	0	65,001
At 31 December 2020 <i>(previous year)</i>	65,001	0	0	65,001

Tangible fixed assets consist of two properties -

(1) 5, St John's Road was purchased in 1990 out of the O'Hara Legacy. It was used for staff accommodation, first for a Church Army Officer, then for the Church Pastoral assistant. After her redundancy in August 2012 it was let in May 2013 unfurnished on a short-term rental and is relied on to supplement the church income. For accounting purposes, the property was revalued in 1996, but there is no legal requirement to re-value it again until it is disposed of. The nominal house value is the Fund balance now.

(2) St Wilfrid's House was built in 1964 at a cost to the parish congregation raised by gift and loan.

It is not owned by the diocese. By accounting oversight, it was never previously been included in the Parish accounts until 2016 although it is a parish asset. There is no legal requirement to include it at it's current value, and so is entered here at a nominal figure of £1.

Notes to the financial report (continued)

NOTE 9. Analysis of net assets by fund	Unrestricted Fund/s	Restricted Fund/s	Endowed Fund/s	Total Funds 2021 Funds	Total Funds 2020	Notes
	£	£	£	£	£	
Fixed assets for church use	65,001	0	0	65,001	65,001	
Investment fixed assets	0	0	0	0	0	
Current assets	46,654	5	0	46,659	0	
Current liabilities	10,407	0	0	10,407	0	
Long term liabilities	0	0	0	0	0	
	101,247	5	0	101,252	65,001	

	Unrestricted Fund/s	Restricted Fund/s	Endowed Fund/s	Total Funds 2021 Funds	Total Funds 2020	Notes
	£	£	£	£	£	
NOTE 10. Debtors						
Gift Aid recoverable	1,220	0	0	1,220	1,840	
Prepayments and accrued income	0	0	0	0	0	
Other debtors	0	0	0	0	47	
	1,220	0	0	1,220	1,888	

	Unrestricted Fund/s	Restricted Fund/s	Endowed Fund/s	Total Funds 2021 Funds	Total Funds 2020	Notes
	£	£	£	£	£	
NOTE 11. Creditors: amounts falling due within one year						
Deferred costs	0	0	0	0	0	
Accruals for utilities and other costs	8,980	0	0	8,980	0	
Loans	0	0	0	0	0	
Other creditors	1,427	0	0	1,427	7,048	
	10,407	0	0	10,407	7,048	

	Unrestricted Fund/s	Restricted Fund/s	Endowed Fund/s	Total Funds 2021 Funds	Total Funds 2020	Notes
	£	£	£	£	£	
NOTE 12. Creditors: amounts falling due after more than one year						
Deferred income	0	0	0	0	0	
Accruals for utilities and other costs	0	0	0	0	0	
Loans	0	0	0	0	0	
	0	0	0	0	0	
	0	0	0	0	0	

Notes to the financial report (continued)

NOTE 13. Statement of funds	Balances b/fwd 1 Jan 21	Income	Expenditure	Transfers, other gains and losses	Total Funds 31 Dec. 2021	Notes
	£	£	£	£	£	
Endowed funds						
none	0	0	0	0	0	
Total of Endowed funds	0	0	0	0	0	
Restricted funds						
Hall Development fund, St John's	2,457	0		-2,457	0	I
Charity fund, St John's	0	255	250	0	5	ii
Organ Fund, St John's	861	0	0	-861	0	
Charity fund, St Wilfrid's	0	0	0	0	0	iii
Total of Restricted funds	3,318	255	250	-3,318	5	
Unrestricted funds						
General fund St John's	19,618	115,673	140,891	19,824	14,224	
General fund St Wilfrid's	23,305	56,441	70,055	0	9,691	
Designated O'Hara Legacy fund, St John's	81,507	0	0	-16,507	65,000	iv
Designated House Repairs fund, St Wilfrid's	0	0	0	0	0	v
Designated St. Wilfrid's Kitchen fund,	4,222	0	678	0	3,544	
Designated St. Wilfrid's Re-order	8,788	0	0	0	8,788	vi
Designated "Friends" St Wilfrid's social fund	0	0	0	0	0	vii
Total of Unrestricted funds	137,439	172,114	211,624	3,318	101,247	
Total of All funds	140,757	172,369	211,874	0	101,252	

NOTE (I) The St John's Development (2007 hall) fund has now been fully used.

NOTES (ii) and (iii) The Charity funds are funds given for a specific charity, about to be paid over.

NOTE (iv) O'Hara legacy in 1990 was unrestricted. For the past details see Note 8 (1).

NOTE (v) House Repairs fund was set aside from 2013 to maintain St Wilfrid's House.

NOTE (vi) Reordering fund, held pending a building plan at St Wilfrid's.

NOTE (vii) Friends fund, is to receive and pay for social activity at St Wilfrid's.

NOTE 14. Analysis of cash and cash equivalents	Total Funds 2021	Total Funds 2020
	£	£
Cash in hand	60	59
Notice deposits (less than 3 months)	45,379	80,857
Overdraft facility repayable on demand	0	0
Total cash and cash equivalents	45,439	80,916

NOTE 15. Related parties and transactions

There are none to disclose.

The Parochial Church Council of St John's, Polegate with the District Convention Council of St Wilfrid's, Lower Willingdon

Registered Charity Number 1130861

Independent examiners's report to the trustees of The Parochial Church Council of St John's, Polegate with the District Convention Council of St Wilfrid's, Lower Willingdon

I report on the accounts of the Charity for the year ended 31 December 2021, which are set out on pages 12 to 21.

Respective responsibilities of trustees and examiner

The charity's trustees are responsible for the preparation of the accounts. The charity's trustees consider that an audit is not required for this year under section 144 of the Charities Act 2011 (the Charities Act) and that an independent examination is needed.

It is my responsibility to:

- examine the accounts under section 145 of the Charities Act;
- to follow the procedures laid down in the general Directions given by the Charity Commission under section 145(5)(b) of the Charities Act; and
- to state whether particular matters have come to my attention

Basis of independent examiner's statement

My examination was carried out in accordance with the general Directions given by the Charity Commission. An examination includes a review of the accounting records kept by the charity and a comparison of the accounts presented with those records. It also includes consideration of any unusual items or disclosures in the accounts, and seeking explanations from you as trustees concerning any such matters. The procedures undertaken do not provide all the evidence that would be required in an audit and consequently no opinion is given as to whether the accounts present a 'true and fair' view and the report is limited to those matters set out in the statement below.

Independent examiner's statement

In connection with my examination, no matter has come to my attention:

- (1) which gives me reasonable cause to believe that in any material respect the requirements:
- to keep accounting records in accordance with section 130 of the Charities Act; and
 - to prepare accounts which accord with the accounting records and comply with the accounting requirements of the Charities Act have not been met; or
- (2) to which, in my opinion, attention should be drawn in order to enable a proper understanding of the accounts to be reached

Signed by Mark R Sellings FCCA (Independent Examiner)



30 - 34 North Street
Hailsham
East Sussex BN27 1DW

Date: 23-MAR-22

This page is for information only and does not legally form part of the Financial Statements

Individual INCOME and EXPENDITURE ACCOUNTS

	ST JOHN'S CHURCH 2021 £	ST JOHN'S CHURCH 2020 £	ST WILFRID'S CHURCH 2021 £	ST WILFRID'S CHURCH 2020 £
INCOME				
Tax efficient giving	53,090	50,876	33,970	30,341
Tax refunds	16,493	13,572	7,166	8,059
Other giving	4,910	5,885	3,545	4,019
Collections	2,859	2,243	4,899	6,610
Special collections and Gift Day giving	90	200	1,210	0
Sundry donations & Grants	15,376	5,889	1,549	2,942
Legacies	5,000	2,200	1,000	51,399
Parochial Fees	1,058	595	282	0
Church hall, rooms & property lettings	12,326	12,818	2,810	2,463
Fund-raising	201	614	0	204
Dividends and interest	33	197	11	120
Insurance claims	4,492	0	0	0
	115,928	95,088	56,441	106,158
LESS: EXPENDITURE				
Grants given away	9,350	10,135	1,800	4,800
Parish Ministry costs	74,304	74,040	42,792	61,716
All clergy expenses	1,332	2,531	0	0
Clergy housing expenses	2,986	3,242	3,521	3,745
Rented property costs	3,011	2,554	0	0
Salaries and wages	8,279	10,234	1,044	1,240
Church running expenses	11,888	12,925	3,456	3,530
Church repairs and maintenance	21,686	691	10,481	1,882
Hall running costs	609	849	0	0
Hall repairs and maintenance	693	756	0	0
Training	0	0	0	0
Outreach, meetings and mission	144	0	0	0
Other Direct Expenses	0	154	4,875	3,495
Youth work	0	42	0	0
Information Technology maintenance	4,558	924	0	0
Fund-raising and publicity costs	146	155	0	0
Postage, stationery and copying	753	766	0	0
Sundry administration expenses	0	131	1,579	1,260
Bank charges	217	305	0	0
Independent Examiner's fee	1,185	1,185	1,185	1,185
	141,141	121,621	70,733	82,853
EXCESS OF INCOME/EXPENSES	-25,213	-26,533	-14,292	23,305

This page is for information only and does not legally form part of the Financial Statements

Accounts

Trustees Annual Report and Financial Report of The Parish of St John's Church, Church Road, Polegate, BN26 5BX



including the Conventional District of
St Wilfrid's Church,
Broad Road,
Lower Willingdon,
Eastbourne, BN20 9RA

Registered Charity no. 1130861

For the year ended 31 December 2020



CONTENTS

	<i>Pages</i>
Trustees annual report, St Johns'.....	2 to 6
Trustees annual report, St Wilfrids'.....	7 to 10
Statement of financial activities.....	12
Balance sheet	13
Notes to the accounts.....	14 to 21
Report of the independent examiner	22

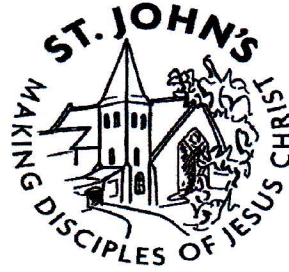
Website: www.polegate.org.uk

Incumbent: The Revd Chris Spinks, c/o The Church Office, Church Road, Polegate, BN26 5BX

Independent examiner: Watson Associates, 30-34 North Street, Hailsham, BN27 1DW

Bankers: Barclays Leicester, LE87 2BB and CBF Church of England deposit fund.

Trustees Annual Report for 2020 for St John's, Polegate



Our aims and purposes as a charity

The Parochial Church Council (the PCC) has the responsibility of co-operating with the incumbent, the Rev'd Chris Spinks, in:

- The promotion of the gospel of the Lord Jesus Christ according to the doctrines and practices of the Church of England
- Promoting in the parish the whole mission of the church, pastoral, social, evangelistic and, ecumenical
- To know Jesus better and make Him better known
- Practical support and care for people in the parish, from the youngest to the eldest, irrespective of level of need or, ability to pay
- Providing financial support to those in need and, to other organisations with similar objectives.

What we planned to do in St. John's, to achieve our charitable objectives

When planning our activities for the year, our incumbent and the PCC have considered the Charity Commission's guidance on public benefit and, in particular, the specific guidance on 'charities for the advancement of religion'.

The PCC has complied with its duty under Section 5 of the Safeguarding and Clergy Discipline Measure 2016, fully recognising its' duty to have regard to House of Bishops' guidance on safeguarding children and vulnerable adults. For 2020 as far as the Pandemic allowed, we planned the following objectives and activities to fulfil our aims:

- Enabling as many people as possible to worship at our church
- Enabling as many people as possible to become part of our church family
- Teaching, baptising and nurturing new and existing believers
- Maintaining an overview of worship throughout the parish
- Considering how services can involve the many groups that live within the parish
- Putting faith into practice, through prayer and scripture, music and worship
- Offering worship and prayer, learning about the Gospel, in small group situations
- Assisting people from all walks of life to develop their knowledge of, and trust in, Jesus
- Provision of pastoral care for people living in the parish
- Giving grants to missionary organisations
- Maintaining the fabric of the church building as a centre and spiritual focus of life in the town.

What we achieved in St. John's and how we affected beneficiaries' lives.

The Trustees of St. John's Church consider that the priceless gift offered by becoming a disciple of Jesus, is well described by Paul in his letter to the Ephesians which says that a person becomes an adopted child of God, redeemed by the death of Jesus for them, and that they stand as a forgiven sinner, not by anything they can do, but by the gracious gift of God.

The objectives and aims on the previous page are ways of assisting people to develop their knowledge of, and trust in, Jesus. In these troubled times, becoming part of the numbers gathering at the church also provides two major benefits, as well as many minor ones; the first is to discover and enjoy the peace and daily support of the living God, and secondly, the enjoyment of the fellowship of others when jointly worshipping Jesus Christ. One of the families this year said "We are mostly just very thankful for the prayer support and care that we have received from our lovely St John's family during this difficult time, and can't wait to get back to church, Sunday Club and Home Group."

The 2020 church electoral roll recorded 105 parishioners, 12 of whom have a home outside the parish.

From the beginning of 2020, up to and including Mothering Sunday on the 22nd March, the Trustees were glad to see, as usual, the church family openly able to

welcome parish-resident visitors as well as those living outside the parish who might seek the blessing of following the Lord Jesus Christ, and until that date, were able to offer the benefits of spiritual church services in previously established ways, with prayer and singing, and most of all with the exploration and exposition of the Scriptures.



The Trustees maintain that the benefit of following Jesus is possible by studying God's word in the Bible.

Prayer, the ability to talk directly to our loving God, is also a very significant part of our worship at St John's and this is not only significant in services but on other occasions. A normal event has been a gathering, on a Wednesday evening, open to all, to join in prayer. The benefit of prayer life gives a growing relationship with the living God, and on Ash Wednesday a Day of Prayer was held, committing to God's purposes the spiritual service of St John's to the community and youth. During the times when Sunday services are held, the Sunday Club meets, catering for younger ages.

St John's, like every other Church of England parish church, was prevented at times by the authorities directives under the Pandemic from keeping open its' doors. But despite the Bishops' orders to close the doors of the church buildings, (even to the Vicar at times) the Vicar remained a key contact for those who might be moved to seek the Living God through the benefit of discipleship of Jesus Christ. No letters, or answerphone messages were lost or ignored by the church office during the times of public isolation in March, April, May and November.

In July and August, the parish was allowed to offer to an individual person access to the inside of the church for private prayer by appointment subject to the appropriate measures. The Pandemic did



not deny St John's from continuing certain benefits; as in the interment of ashes for an existing remembrance plot owner.

In September, services were allowed to recommence, but with the conditions of social distancing, the wearing of face masks and with singing forbidden. Because of the position of the fixed wooden pews, the narrow aisle, and other factors, the number of people able to be accommodated at each service was limited to just 18 therefore requiring prior booking. The times of the three services on a Sunday were changed, to allow for cleaning. All of those who felt able to return to corporate worship when it was permitted were allocated seats in services, but social and spiritual concern was felt for those who wanted to continue to isolate.

The Trustees were encouraged that during the times of social isolation, there formed groups which were self-supporting with networks of communication, by telephone, zoom, e-mail or correspondence etc to maintain a ministry of care. One of those isolating said "I have been very blessed during the lockdown in the way people have helped me and kept in touch for which I thank you". The Vicar's personal ministry by telephone formed a binding

presence between known members of the church family. Because a significant percentage of the church family during 'the lockdowns' were without the ability to use the internet to join in 'virtual' worship, a procedure called "twilio" was



found whereby the 10 am. service was audio-recorded and by mid-day on a Sunday available to be listened to using any form of telephone handset on a designated local number. The audio-service is available to any number of callers at any time of day, and any day of the week. As a consequence one comment was "Whatever the world throws at us , God is always with us."

Maintaining the church as an historic centre in the village. The public restrictions imposed by the Pandemic prevented much of the voluntary work on the building and grounds that has been of such benefit

in the past, bringing about uninhibited weed growth before August. Instead of the usual work by a team of church members, a professional contractor undertook the huge task of cutting the perime-



ter hedges after bird-nesting time with a second light cut in the Autumn to maintain the orderly appearance of such a significant part of Polegate High Street. He also maintained the lawns very well. And, by the Summer a considerable growth of weeds needed clearing as the church reopened.

Maintaining the fabric of the church building as a benefit to the community. It is the C of E practice to commission an architect every five years to report on the church structure. During the year, a full and professional review of the church was conducted by Tim Wells of John D Clarke, Eastbourne. Some work on what used to be the vestry adjacent to the chancel on the south of the church has had to be contracted for 2021. Other works listed by the Architect have various priorities over the next four years. Underlying all this is the management of necessary works against available finance.



Giving grants to missionary organisations. The Trustees have the agreement of the church family in exercising their responsibility to promoting the gospel outside the parish. Historically the parish has given some 10% of its charitable income to various charitable beneficiaries, targeting in the main missionary work. St John's has continued to provide the benefit of financial support to Chris and Lotta Strajnic in Sweden (planting churches), and to Riste and Tea Micev in Serbia (training in church leadership); both are under the direction of Crosslinks. The final one third of the 2020 charitable giving was to UCCF (Universities and Colleges Christian Fellowship). This third part of the annual giving will be for "one-off" support to Word-based gospel organisations.

Other charitable giving by St John's The church family has supported other causes including the Diocese Family Social Work, the Winter Night Shelter and the Sussex Gospel Partnership.

Financial Review for the whole Parish of St John's and St Wilfrid's

The total Parish receipts on General Unrestricted funds received were £200,679 (£187,996 in 2019) and are detailed in the Financial Report and include legacies £53,599 (£28,970 in 2019).

Our total Parish voluntary income including tax recovered (but excluding legacies) was £131,250 (£138,189 in 2019). Both churches in the parish take advantage of the Diocesan system called the Parish Giving Scheme which by the use of direct debits offers an action-free method of giving in place of standing orders and cash-in-the-plate. This streamlines money handling and tax recovery for the church and can save the giver the need to review their level of giving if they choose.

Sharing the ministry costs of the Diocese of Chichester
The largest expenditure of the Parish was the sum of £135,756 (£131,928 in 2019) paid to the diocese for the Parish Ministry Costs. This amount covers the housing, stipend and pension costs of clergy, church insurance and, also a standard sum for diocesan central costs, clergy training and a contribution to national church funds. In 2020 the contribution of just St John's was £74,040, and St Wilfrid's contributed £61,716. That year both churches in the Parish paid 100% of the Diocese-considered cost. It is important to note that approximately 80% of the Diocese-considered total paid relates directly to the clergy costs of this parish, the remainder being the shared costs of the Christian family throughout the whole

Church of England, including assistance towards the upkeep of churches less able to manage than ourselves.

However, the Diocese considers St. John's with St Wilfrid's to be one benefice/parish. Until 2003 the Diocese charged one parish cost of training, support, diocese charges. But after 2003, when St Wilfrid's became a Conventional District, the diocese charged each of St John's and St Wilfrid's the full costs of a single parish whilst still stating it to be one parish. This has been held out to them as an anomaly but the injustice of this is not yet admitted by the Diocese.

Staff costs St John's PCC has employed (except during furloughs) three part-time staff; a cleaner for the church hall (a new recruit will be needed when the use of the hall becomes an option after lockdowns), a hall bookings officer (who has retired, needing those bookings to be dealt with in future) and a Parish Clerk, who is also a PCC member. St Wilfrid's DCC employs a church cleaner. Further details are provided in the notes to the accounts.

Trustee payments and expenses. St John's PCC supported its incumbent by paying the Vicarage water and environmental charges plus Council Tax which totalled £2,663 plus other annual costs towards travel, hospitality, telephone, postage and broadband amounting to a little over £2,465. The repair costs of the Vicarage paid by the PCC were £578.

St Wilfrid's House costs, paid in support of the Minister, were Council Tax, Water rates and insurance totalling £3,745. Some £1,123 was spent on repairs and maintenance for St Wilfrid's House

Two of St John's Trustees (who are also lay-preachers) drew against their book allowances totalling £66 as detailed in the accounts.

The part-time Parish Clerk, who is also a trustee, received £ 9,622 before tax for her duties during the year. Churchwarden, Bruce Mrgrett was reimbursed £143 for sundry repairs. There were no payments to persons related to or connected to, other trustees.

Repairs to the fabric of St John's buildings (see the paragraph above "Maintaining the fabric" of St Johns.)

Repairs to the fabric of St Wilfrid's buildings During 2020 there were sundry expenses costing £759.

Why we hold some money in reserve – St John's.

The last six years (2015 to 2020) have seen necessary major repairs to the church building costing nearly £63,000, and major repairs to the church hall costing some £73,000. Consequently, funds had been built up

a significant deficit (averaging some £12,200 per annum over the last six years) and resort is having to be made on those reserves to keep a running balance.

It remains the PCC policy to invest temporarily surplus general funds with the CBF Church of England deposit fund, but with the significantly low current interest rates, little can be earned by moving money about swiftly.

Structure, governance and management of the charity during 2020

The Parochial Church Council (PCC) is registered with the Charity Commission as required by the Charities Act 2011. Its governing document is the Parochial Church Councils (Powers) Measure 1956.

During the year the following served as members of the Parochial Church Council:

Ex Officio members

Incumbent:	The Rev'd Chris Spinks	Chairman
Readers:	Mr Alan Packard	
	Mr Ben Pratt	also Secretary
	Mr Hugh Lowries	also Deanery Synod
Wardens:	Mr Bruce Margrett	also Vice Chair/Deanery Synod
	Mr Phil Kyte	also Deanery Synod

Elected Members:

Katrina Burton	
Val Clewett	
Margaret Ford	
Maureen Remberton	Treasurer
Mark Pybus	Deanery Synod member
Pam Sharpe	

This Trustees' Annual Report was **approved** by the PCC and signed on their behalf by The Revd. Chris Spinks, PCC Chairman

..... Chris G. Spinks

Date..... 22/3/21



Trustees Annual Report

of

The District Church Council of the Ecclesiastical District of

St Wilfrid's Church, Lower Willingdon

St Wilfrid's Church, Broad Road, Lower Willingdon BN20 9RA

Registered Charity no. 1130861

For the year ended 31 December 2020

Website: www.stwilfs.org

Incumbent: The Revd C J Styles, St Wilfrid's House, 90 Broad Road, Lower Willingdon BN20 9RA

If my people, who are called by my name, will humble themselves and pray and seek my face and turn from their wicked ways, then I will hear from heaven, and I will forgive their sin and will heal their land.

2 Chronicles 7:14



Continues on next page.....

St Wilfrid's, Lower Willingdon

Trustees Annual Report for 2020

Our aims and purposes as a charity

The PCC has the responsibility of co-operating with the incumbent, the Revd C J Styles, in:

- The promotion of the gospel of the Lord Jesus Christ according to the doctrines and practices of the Church of England;
- Promoting in the parish the whole mission of the church, pastoral, social, evangelistic and, ecumenical.
- To know Jesus better and make Him better known;
- Practical support and care for people in the parish, from the youngest to the eldest, irrespective of level of need or, ability to pay;
- Providing financial support for those in need and, to other organisations with similar objectives.

The PCC also contributes 10% of its net income to several charities including: Beachy Head Chaplaincy, which seeks to counsel those contemplating suicide; Spinnaker, a charity involved in supporting local schools; and several charities with projects based overseas.

What we planned to do to achieve our charitable objectives

When planning our activities for the year, our incumbent and the PCC have discussed and planned the following objectives and activities to fulfil our aims:

- Enabling as many people as possible to worship at our church;
- Teaching, baptising and nurturing new and existing believers;
- Provision of the building for users, guests, and the worshipping community;
- Considering how services can involve the many groups that live within the parish;
- Putting faith into practice, through prayer and scripture, music and sacrament;
- Offering worship and prayer, learning about the Gospel, in small group situations;
- Assisting people from all walks of life to develop their knowledge of, and trust in, Jesus;
- Provision of pastoral care for people living in the parish;
- Providing assistance to the poor and needy of the parish;
- Reaching out to the unchurched through provision of barbecues, fayres, jumble sales etc.;
- Maintaining the fabric of the church building and the rooms that make up the entire complex to appeal to users and create a safe space which reflects community involvement.

Continues on next page.....

Trustees Annual Report for 2020 for St Wilfrid's Church, Lower Willingdon, continued -

Trustees Annual Report for 2020 for St Wilfrid's Church, Lower Willingdon, continued -

What we achieved and how we affected beneficiaries' lives

Attendance at worship

The church family welcomes visitors from within as well as outside the parish boundary. Visitors attend by personal choice and, it is our great pleasure to welcome anyone from all walks of life to take part in the life of the church. We contend that voluntary attendance to worship the Lord Jesus Christ, is a major demonstration of the public benefit of our activities.

There are 89 parishioners on the church electoral roll, about half of whom are not resident within the parish. The average regular weekly attendance at our Sunday morning service, for 2019, was 66 but for 2020 the number cannot be calculated due to Corona-virus lockdown restrictions.

Teaching, baptising and nurturing new and existing believers

This was severely restricted due to Lockdown.

Provision of the building for users, guests, and the worshipping community

The use of the hall was severely restricted due to lockdown

Spatial reordering of the church building and future projects

We have done no new reordering due to lockdown.

Provision of pastoral care for people living in the parish

Pastoral care has been limited to myself and several others in the church keeping contact by phone. Some serious pastoral help has had to be given using this medium.

Provision of tangible support to the poor and needy

I've liaised with Revd David King in order to help a young family in need. David has been organising a Church of England fund to help supply monies or tokens. Little much else has been done this year due to lockdown – other than occasional hand-outs I've given from my discretionary fund.

Other Local Involvement

Very little. Early on we sent out a letter to every member with cards they could put in neighbours' homes asking if any help was required. I personally had very little take up from that.

Trustees Annual Report for 2020 for St Wilfrid's Church, Lower Willingdon, continued -

Trustees Annual Report for 2020 for St Wilfrid's Church, Lower Willingdon, continued -

Structure, governance and management of the charity

The District Church Council (DCC), is not an official PCC (though we refer to it informally as the PCC), but for purposes of returns and other legal considerations, we are often regarded as under the Parish of St John's Polegate (of which our District forms a part). Although the Minister is 'Curate-in-Charge', and St Wilfrid's DCC functions as a PCC this fact needs to be acknowledged for this report.

During the year the following served as members of the District Church Council:

Ex Officio members

Curate-in-charge:	The Revd C J Styles	Chairman
NSM:	The Revd Richard Herkes	
Wardens:	Mr Chris Mason	

Elected Members

Mrs Barbara Minall	Deputy Warden
Mr John Cheesman	Treasurer
Mrs Marilyn Neville	
Mrs Sue Potter	Lay Champion
Mr John Horne	Schools Liaison
Mr Alan Hooker	
Mr Gary Smith	Safeguarding Officer

Deanery Synod

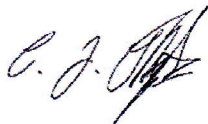
Mr Jonathan Cornell
Mrs Margaret Read

Secretary (non-member):

Mrs Helen Roberts	Secretary
-------------------	-----------

Membership of the DCC is determined under the Church Representation Rules and consists of certain ex-officio members (the incumbent/priest-in-charge, curate, lay readers licensed to officiate in the church), the churchwardens and members of the Deanery, Diocesan or General Synods and members of the church who are elected at the Annual District Church Meeting (ADCM but we refer to it as the APCM). Members are encouraged to stand for election to the PCC and we try to ensure a balance of skills and experience where possible.

The Revd. C J Styles, DCC Chairman



Date: 02nd February 2021

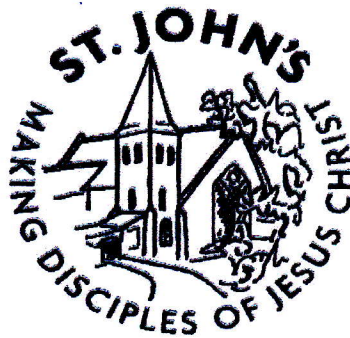
Annual Financial Report for 2020

**The Parochial Church Council of
St John's Church, Polegate
with
the Conventional District of St Wilfrid's Church, Lower Willingdon**

**in the combined parish of St John's with
St Wilfrid's Churches**

Registered Charity no. 1130861

for the year ended 31 December 2020



Statement of financial activities

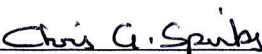
	Unrestricted Funds	Restricted Funds	Endowed Funds	Total Funds 2020	Total Funds 2019	Notes
	£	£	£	£	£	
Income and endowments from:						
Donations & legacies	184,283	566	0	184,849	167,160	
Charitable activities	799	0	0	799	2,108	
Other trading activities	15,281	0	0	15,281	22,841	
Investments	317	0	0	317	474	
Other receipts	0	0	0	0	0	
Total income	200,680	566	0	201,246	192,584	2
Expenditure on:						
Raising funds	287	0	0	287	214	
Charitable activities	199,293	735	0	200,028	236,559	
Other trading activities	4,159	0	0	4,159	22,355	
Total expenditure	203,739	735	0	204,474	259,129	3
Net gains (or losses) on investments						
Net income or (net expenditure)	-3,060	-169	0	-3,229	-66,545	
Transfers between funds	0	0	0	0		7
	-3,060	-169	0	-3,229	-66,545	
Other recognised gains/(losses):						
Gains/(losses) on revaluation of fixed assets						
Other gains/(losses)						
Net movement in funds	-3060	-169	0	-3229	-66545	
Reconciliation of funds:						
Total funds brought forward	140499	3486	0	143985	210531	
Total funds carried forward	137439	3318	0	140757	143985	

Balance Sheet (also known as Statement of Financial Position)

	Total Funds	Total Funds	Notes
	2020	2019	
	£	£	
Intangible assets	0	0	
Tangible assets	65,001	65,001	
Heritage assets	0	0	
Endowed investments	0	0	
Total fixed assets	65,001	65,001	8
Stocks	0	0	
Debtors	1,888	1,709	
Investments	0	0	
Cash at bank and in hand	80,916	78,459	14
Total Current assets	82,803	80,168	
Creditors: Amounts falling due within one year	7,048	1,183	11
Net current assets or (liabilities)	75,756	81,351	
Total assets less current liabilities	140,757	143,985	
Creditors: Amounts falling due after more than one year	0	0	12
Provisions for liabilities	0	0	
Total net assets or (liabilities)	140,757	143,985	
The funds of the charity:			
Endowment funds	0	0	
Restricted income funds	3,318	3,486	
<i>Unrestricted funds</i>	137,439	140,499	
<i>Revaluation reserve</i>	0	0	
Total unrestricted funds	137,439	140,499	
Total charity funds	140,757	143,985	

This Annual Financial Report, for the year ended 31st December 2020 including the notes following, was approved by the PCC and signed on it's behalf by

The Revd Chris Spinks



Date: 22/3/2021

Notes to the financial report

NOTE 1. Accounting policies

A - Accounting convention

The financial statements have been prepared under the Church Accounting Regulation 2006 in accordance with applicable accounting standards and the current (2015) Statement of Recommended Practice, Accounting and Reporting by Charities SORP (FRS102).

The financial statements have been prepared under the historical cost convention as modified by the inclusion of investments at market value. The financial statements include all transactions, assets and liabilities for which the PCC is responsible in law. They do not include the accounts of church groups that owe their affiliation to another body, nor those which are informal gatherings of church members.

B - Funds accounting

Funds held by the PCC are:

Unrestricted funds - general funds which can be used for PCC ordinary purposes

Designated funds - monies set aside by the PCC out of unrestricted funds for
specific future purposes or projects.

Restricted funds - a) income from trusts or endowments which may be expended only on those restricted objects provided in the terms of the trust or bequest; b) donations or grants received for a specific object or invited by the PCC for a specific object. The funds may only be expended on the specific object for which they were given. Any balance remaining unspent at the end of the year is carried forward as a balance on that fund.

Endowment funds - funds the capital of which must be maintained; only income arising from the investment of the endowment may be used, either as restricted or unrestricted funds, depending on the purpose set out in the terms of the original endowment.

C - Income and endowments

All income and endowments are accounted for without deduction for any costs or receivability, are recognised when there is evidence of entitlement, receipt is probable, and the amount can be measured reliably.

Donations and legacies

Collections are recognised when received.

Planned giving receivable is recognised when there is evidence of entitlement, receipt is probable, and the amount accords with the Gift Aid declaration or other record of the intention to donate.

Gift Aid recovered is recognised when the income to which it is attached is recognised.

Grants and legacies are recognised when the formal offer in writing of the funding, is received by the PCC.

Charitable activities

Sales of magazines and study notes are recognised when received.

Rents from property are recognised in accordance with the rental agreements, when receipt is probable.

Other trading activities

Trading activities are where income is receivable in return for selling goods or providing services.

Income from trading is recognised either; a) when received, or b) in the case of concerts: for the year in question, irrespective of date of receipt. Advance bookings are included in creditors until the concert has taken place.

Investment income; dividends are accounted for when due and payable. Interest entitlements are accounted for as they accrue.

Notes to the financial report (continued)

All other income

All other income is recognised in accordance with the above overall policy.

Gains and losses on investments

Realised gains are recognised when the investments are sold.

Unrealised gains and losses are accounted for on revaluation at 31 December.

D - Resources used

Resources expended are accounted for on an accruals basis and are accounted for gross.

Grants

Grants and donations are accounted for when paid over, or when awarded where the award creates a binding obligation on the PCC.

Church Activities

The diocesan parish contribution is accounted for on an annual basis, reflecting the allocation set by our Deanery. Any parish contribution unpaid as 31 December is provided for in these accounts as an operational (though not legal) liability and is shown as a creditor in the balance sheet.

E - Fixed Assets

Tangible fixed assets

Consecrated and beneficed property of any kind is excluded from the accounts by s.10(2) of the Charities Act 2011. Moveable church furnishing held by the Vicar and Churchwardens on special trust for the PCC and which require a faculty for disposal, are accounted as inalienable property unless consecrated. they are listed in the church's inventory which can be inspected but are not included in the financial statements. For other property acquired prior to 2000 there is insufficient cost information available and therefore the cost of such assets is not stated in the financial statements.

All expenditure on consecrated or beneficed buildings and individual items costing under £2,000 are written off in the year they were incurred.

Depreciation

Depreciation is calculated to write down the cost of tangible fixed assets, excluding freehold properties, over their expected useful lives. The rates generally applicable are:

Fixtures and fittings	20%
Audio visual equipment	33%
Office equipment	25%

No depreciation is provided on freehold property as it is the P.C.C.'s policy to maintain these assets in a continual state of sound repair. The useful economic life of these assets is so long and residual values so high that any depreciation would not be material. These assets will be subject to annual impairment reviews. Provision will be made if there has been any permanent diminution in value.

Investments

Investments are stated at market value at the balance sheet date.

F - Current Assets

Amounts owing to the PCC at 31 December in respect of fees, rents or other income are shown as debtors less provision for amounts that may not prove collectable.

Short-term deposits include cash held on deposit either with the CBF Church of England Funds, or at the bank.

Notes to the financial report (continued)

Note 2. Analysis of income and endowments	Unrestricted	Restricted	Endowed	Total Funds	Total Funds	Notes
	Funds	Funds	Funds	2020	2019	
	£	£	£	£	£	
Planned giving (excl. tax refunds)	81,217	0	0	81,217	80,881	
Planned giving (no tax refunds)	9,904	0	0	9,904	13,005	
Loose cash collections, sundry donations	11,369	220	0	11,589	16,839	
Fetes, fund-raising event income	2,059	0	0	2,059	3,744	
Special appeals, Gift Days	0	200	0	200	392	
Gift Aid recovered	21,485	146	0	21,632	23,328	
Legacies	53,599	0	0	53,599	28,971	
Grants (incl. Furlough receipts)	4,649	0	0	4,649	0	
Donations & legacies	184,283	566	0	184,849	167,160	
Fees for weddings & funerals	799	0	0	799	2,108	
Charitable activities	799	0	0	799	2,108	
Rent from letting properties	12,010	0	0	12,010	8,246	
Church hall and room lettings	3,271	0	0	3,271	12,586	
Fund-raising events	0	0	0	0	2,010	
Other trading activities	15,281	0	0	15,281	22,841	
Bank and CBF deposit interest	317	0	0	317	474	
Investment fund dividends	0	0	0	0	0	
Investments	317	0	0	317	474	
Other receipts	0	0	0	0	0	
Total received on all funds	200,680	566	0	201,246	192,584	

Notes to the financial report (continued)

Note 3. Analysis of expenditure on:	Unrestricted	Restricted	Endowed	Total Funds	Total Funds	Notes
	Funds	Funds	Funds	2020	2019	
	£	£	£	£	£	
Special appeal costs (e.g. adverts, leaflets)	0	0	0	0	0	
Fund-raising event costs	0	0	0	0	0	
Stewardship costs (e.g. printing giving envelopes)	131	0	0	131	214	
Grants costs (e.g. Grant application fees)	0	0	0	0	0	
Investment management costs	0	0	0	0	0	
Other fundraising (non-trading) costs	155	0	0	155	0	
Raising funds	287	0	0	287	214	
Missionary and charitable giving	14,200	735	0	14,935	12,092	4
Ministry:						
<i>diocesan parish contribution</i>	135,756	0	0	135,756	131,928	
<i>other clergy costs</i>	10,641	0	0	10,641	9,115	
Staff	11,474	0	0	11,474	14,056	5
Upkeep of services	0	0	0	0	1,021	
Church running	16,455	0	0	16,455	24,965	
Church maintenance and repair	1,450	0	0	1,450	37,332	
Miscellaneous	6,642	0	0	6,642	3,186	
Bank charges	305	0	0	305	494	
Depreciation	0	0	0	0	0	
Governance costs	2,370	0	0	2,370	2,370	6
Charitable activities	199,293	735	0	200,028	236,559	
Church hall running costs and repair	1,606	0	0	1,606	11,808	
Other trading costs (letting property etc.)	2,554	0	0	2,554	10,548	
Bookstall costs	0	0	0	0	0	
Other trading activities	4,159	0	0	4,159	22,355	
Total expended on all funds	203,739	735	0	204,474	259,129	

Notes to the financial report (continued)

NOTE 4. Missionary and charitable giving:	Unrestricted Funds	Restricted Funds	Endowed Funds	Total Funds 2020	Total Funds 2019	Notes
	£	£	£	£	£	
Overseas:-						
Proclamation Zambia	0	0	0	0	2,600	
Crosslinks	5,600	0	0	5,600	6,500	
CMS (Church Mission)	1,600	0	0	1,600	572	
Interserve	0	0	0	0	0	
Barnabas Fund	0	0	0	0	0	
Tear Fund	0	0	0	0	0	
Quicken Trust	0	0	0	0	0	
Home:-						
Beachy Head Chaplaincy	0	0	0	0	500	
Diocese Family Support Work	0	475	0	475	300	
St Wilfrid's Hospice	0	0	0	0	98	
Spinnaker, Schools outreach	1,600	0	0	1,600	500	
Sussex Gospel Partnership	1,000	0	0	1,000	750	
University Christian Fellowship (UCCF)	2,800	0	0	2,800	0	
BHCT (in 2020)	1,600	260	0	1,860	272	
	14,200	735	0	14,935	12,092	

NOTE 5. Staff costs:	Unrestricted Funds	Restricted Funds	Endowed Funds	Total Funds 2020	Total Funds 2019	Notes
	£	£	£	£	£	
a) Remuneration						
Wages and salaries	11,474	0	0	11,474	14,056	
Social security costs	0	0	0	0	0	
	11,474	0	0	11,474	14,056	

During the year the PCC & DCC employed five part-time staff;- 2 church cleaners, one church hall cleaner, one parish clerk, and one hall bookings officer.

b) Payments to PCC members

The part-time parish clerk, who is a member of the PCC was paid £9,622 during the year.

Lay Preachers, drew from their book allowance. Alan packard £40, Ben Pratt £26

NOTE 6. Governance	Unrestricted Funds	Restricted Funds	Endowed Funds	Total Funds 2020	Total Funds 2019	Notes
	£	£	£	£	£	
Independent examination	2,370	0	0	2,370	2,370	
Accounts production	0	0	0	0	0	
Book keeping	0	0	0	0	0	
Total of Governance costs	2,370	0	0	2,370	2,370	

Notes to the financial report (continued)

NOTE 7. Analysis of transfers between funds	Unrestricted	Restricted	Endowed	Total Funds	Total Funds	Notes
	Funds	Funds	Funds	2020	2019	
	£	£	£	£	£	
none	0	0	0	0	0	13
	0	0	0	0	0	13
Total of transfers between Funds	0	0	0	0	0	

NOTE 8. Fixed assets	Unrestricted	Restricted	Endowed	Total Funds
	Funds	Funds	Funds	2019
	£	£	£	£
(a) Investments				
Market value 01 January 2020	0	0	0	0
Disposals at carrying value	0	0	0	0
Purchases at cost	0	0	0	0
Net gains and revaluation	0	0	0	0
Market value 31 December 2020	0	0	0	0

	Freehold land and buildings	Audio visual equipment	Office equipment	Total fixed assets
	£	£	£	£
b) Tangible fixed assets				
Cost or valuation				
As at 01 January 2020 <i>(two properties)</i>	65,001	0	0	65,001
Additions	0	0	0	0
Disposals	0	0	0	0
Revaluation	0	0	0	0
At 31 December 2020 <i>(two properties)</i>	65,001	0	0	65,001
Charge for impairment				
As at 01 January 2020	0	0	0	0
Additions	0	0	0	0
Disposals	0	0	0	0
Revaluation	0	0	0	0
At 31 December 2020	0	0	0	0
Net book amounts				
At 31 December 2020	65001	0	0	65001
At 31 December 2019 (previous year)	65001	0	0	65001

Tangible fixed assets consist of two properties -

(1) 5, St John's Road was purchased in 1990 out of the O'Hara Legacy. It was used for staff accommodation, first for a Church Army Officer, then for the Church Pastoral assistant. After her redundancy in August 2012 it was let in May 2013 unfurnished on a short-term rental and is relied on to supplement the church income. For accounting purposes, the property was revalued in 1996, but there is no legal requirement to re-value it again until it is disposed of.

(2) St Wilfrid's House was built in 1964 at a cost to the parish congregation raised by gift and loan. It is not owned by the diocese. By accounting oversight, it was never previously been included in the Parish accounts until 2016 although it is a parish asset. There is no legal requirement to include it at it's current value, and so is entered here at a nominal figure of £1.

Notes to the financial report (continued)

NOTE 9. Analysis of net assets by fund	Unrestricted Fund/s	Restricted Fund/s	Endowed Fund/s	Total Funds 2020	Total Funds 2019	Notes
	£	£	£	£	£	
Fixed assets for church use	65,001	0	0	65,001	65,001	
Investment fixed assets	0	0	0	0	0	
Current assets	80,916	0	0	80,916	78,459	
Current liabilities	7,048	0	0	7,048	1,183	
Long term liabilities	0	0	0	0	0	
	138,869	0	0	138,869	142,277	

NOTE 10. Debtors	Unrestricted Fund/s	Restricted Fund/s	Endowed Fund/s	Total Funds 2020	Total Funds 2019	Notes
	£	£	£	£	£	
Gift Aid recoverable	1,840	0	0	1,840	1,299	
Prepayments and accrued income	0	0	0	0	0	
Other debtors	47	0	0	47	410	
	1,888	0	0	1,888	1,709	

NOTE 11. Creditors: amounts falling due within one year	Unrestricted Fund/s	Restricted Fund/s	Endowed Fund/s	Total Funds 2020	Total Funds 2019	Notes
	£	£	£	£	£	
Deferred costs	0	0	0	0	0	
Accruals for utilities and other costs	0	0	0	0	196	
Loans	0	0	0	0	0	
Other creditors	7,048	0	0	7,048	987	
	7,048	0	0	7,048	1,183	

NOTE 12. Creditors: amounts falling due after more than one year	Unrestricted Fund/s	Restricted Fund/s	Endowed Fund/s	Total Funds 2020	Total Funds 2019	Notes
	£	£	£	£	£	
Deferred income	0	0	0	0	0	
Accruals for utilities and other costs	0	0	0	0	0	
Loans	0	0	0	0	0	
	0	0	0	0	0	

Notes to the financial report (continued)

NOTE 13. Statement of funds	Balances b/fwd 1 Jan 20	Income	Expenditure	Transfers, other gains and losses	Total Funds 2020	Notes
	£	£	£	£	£	
Endowed funds						
none	0	0	0	0	0	
Total of Endowed funds	0	0	0	0	0	
Restricted funds						
Hall Development fund, St John's	2457	0	0	0	2457	I
Charity fund, St John's	169	566	735	0	0	ii
Organ Fund, St John's	861	0	0	0	861	
Charity fund, St Wilfrid's	0	0	0	0	0	iii
Total of Restricted funds	3486	566	735	0	3318	
Unrestricted funds						
General fund St John's	45982	94522	120886	0	19618	
General fund St Wilfrid's	0	106158	82853	0	23305	
Designated O'Hara Legacy fund, St John's	81507	0	0	0	81507	iv
Designated House Repairs fund, St Wilfrid's	0	0	0	0	0	v
Designated St. Wilfrid's Kitchen fund,	0	0	0	0	4222	
Designated St. Wilfrid's Improvement,	0	0	0	0	8788	vi
Designated "Friends" St Wilfrid's social fund	0	0	0	0	0	vii
Total of Unrestricted funds	127489	200680	203739	0	137439	
Total of All funds	130976	201246	204474	0	140757	

NOTE (I) The St John's Development (2007 hall) fund some remaining for kitchen improvements.

NOTES (ii) and (iii) The Charity funds are funds given for a specific charity, about to be paid over.

NOTE (iv) O'Hara legacy in 1990 was unrestricted. Until December 2003 it paid to purchase a house and pay for the salary of a Church Army officer in the parish. Part of this fund is represented by the house at 1996 value £65,000 (see note 7.1 above) the balance being held for future work.

NOTE (v) House Repairs fund was set aside from 2013 to maintain St Wilfrid's House.

NOTE (vi) Improvement fund, held pending a building plan at St Wilfrid's.

NOTE (vii) Friends fund, is to receive and pay for social activity at St Wilfrid's.

NOTE 14. Analysis of cash and cash equivalents	Total Funds 2020	Total Funds 2019
	£	£
Cash in hand	59	59
Notice deposits (less than 3 months)	80,857	78,400
Overdraft facility repayable on demand	0	0
Total cash and cash equivalents	80,916	78,459

NOTE 15. Related parties and transactions

There are none to disclose.

The Parochial Church Council of St John's, Polegate with the District Convention Council of St Wilfrid's, Lower Willingdon

Registered Charity Number 1130861

Independent examiners's report to the trustees of The Parochial Church Council of St John's, Polegate with the District Convention Council of St Wilfrid's, Lower Willingdon

I report on the accounts of the Charity for the year ended 31 December 2020, which are set out on pages 12 to 21.

Respective responsibilities of trustees and examiner

The charity's trustees are responsible for the preparation of the accounts. The charity's trustees consider that an audit is not required for this year under section 144 of the Charities Act 2011 (the Charities Act) and that an independent examination is needed.

It is my responsibility to:

- examine the accounts under section 145 of the Charities Act;
- to follow the procedures laid down in the general Directions given by the Charity Commission under section 145(5)(b) of the Charities Act; and
- to state whether particular matters have come to my attention

Basis of independent examiner's statement

My examination was carried out in accordance with the general Directions given by the Charity Commission. An examination includes a review of the accounting records kept by the charity and a comparison of the accounts presented with those records. It also includes consideration of any unusual items or disclosures in the accounts, and seeking explanations from you as trustees concerning any such matters. The procedures undertaken do not provide all the evidence that would be required in an audit and consequently no opinion is given as to whether the accounts present a 'true and fair' view and the report is limited to those matters set out in the statement below.

Independent examiner's statement

In connection with my examination, no matter has come to my attention:

- (1) which gives me reasonable cause to believe that in any material respect the requirements:
- to keep accounting records in accordance with section 130 of the Charities Act; and
 - to prepare accounts which accord with the accounting records and comply with the accounting requirements of the Charities Act have not been met; or
- (2) to which, in my opinion, attention should be drawn in order to enable a proper understanding of the accounts to be reached

Signed by Mark R Sellings FCCA (Independent Examiner)



30 - 34 North Street
Hailsham
East Sussex BN27 1DW

Date: 25-MAR-21

This page is for information only and does not legally form part of the Financial Statements

Individual INCOME and EXPENDITURE ACCOUNTS

	ST JOHN's CHURCH 2020 £	ST JOHN's CHURCH 2019 £	ST WILFRID's CHURCH 2020 £	ST WILFRID's CHURCH 2019 £
INCOME				
Tax efficient giving	50876	51005	30341	29876
Tax refunds	13572	14396	8059	8932
Other giving	5885	7953	4019	5052
Collections	2243	6630	6610	5440
Special collections and Gift Day giving	200	392	0	0
Sundry donations & Grants	5889	2986	2942	2525
Legacies	2200	28971	51399	0
Parochial Fees	595	1975	0	133
Church hall, rooms & property lettings	12818	12041	2463	8791
Fund-raising	614	2010	204	3001
Dividends and interest	197	362	120	112
	95088	128722	106158	63862
LESS: EXPENDITURE	£	£	£	£
Grants given away	10135	10520	4800	1572
Parish Ministry costs	74040	71880	61716	60048
All clergy expenses	2531	2730	0	0
Clergy housing expenses	3242	2822	3745	3564
Rented property costs	2554	9798	0	0
Salaries and wages	10234	12298	1240	1757
Church running expenses	12925	13675	3530	4734
Church repairs and maintenance	691	34000	1882	3332
Hall running costs	849	1491	0	0
Hall repairs and maintenance	756	10317	0	0
Training	0	0	0	0
Outreach, meetings and mission	0	681	0	0
Other Direct Expenses	154	214	3495	5536
Youth work	42	30	0	0
Information Technology maintenance	924	1021	0	0
Fund-raising and publicity costs	155	750	0	0
Postage, stationery and copying	766	705	0	0
Sundry administration expenses	131	0	1260	2790
Bank charges	305	494	0	0
Independent Examiner's fee	1185	1185	1185	1185
St Wilfrid's House Driveway (2018)	0	0	0	0
	121621	174611	82853	84517
EXCESS OF INCOME/EXPENSES	-26533	-45889	23305	-20656
	overspent	overspent	surplus	overspent

This page is for information only and does not legally form part of the Financial Statements