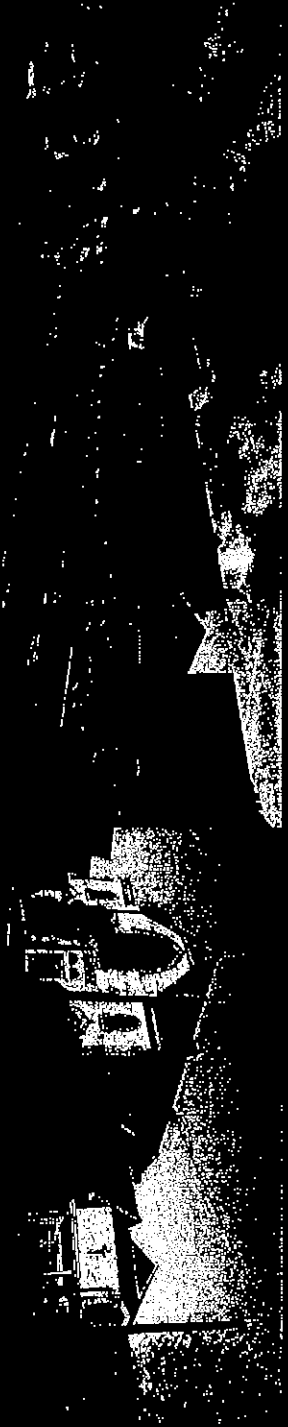


BRAMHALL METHODIST CHURCH

Annual Report 2023-24



Bramhall
Methodist Church

Living out the love of Jesus

	Page		Page
Message from the Minister	4	Mission	11
Faith	5	Community	13
People	8	Resources	22

We are a church that seeks to live out the love of Jesus

faith	people	mission	community
Where all can encounter God and grow in faith	Where all can belong, and be encouraged and supported	Where we long to see God's kingdom grow and flourish	Where God's love in action is seen in our village and beyond

Services

Worship services in our main building are held weekly on Sundays and Thursdays. These are often live-streamed and services in church can also be heard by phone. Worship takes a variety of traditional and contemporary forms, with Connect, our more informal service, taking place in Centrepoint. A relaxed and informal evening service is held on the first Sunday of the month in the Welcome Area. Messy Church is a very different format designed for families and takes place monthly. There have been some joint Sunday morning services with Connect, alternating between Church and Centrepoint. Holy Communion is celebrated monthly in both buildings and on Easter Sunday jointly on the Forecourt. Membership services have been held in both Sunday morning services. Wedding and Baptism services are held as required.

Service times

Sunday

- 10.00am : Traditional worship in Church
Providing the opportunity to reflect on scripture, pray and worship together.
- 10.00am : Contemporary worship in Connect
A more informal service, seeking God's vision and purpose for our world and ourselves as we worship.

Thursday

- 10.00am : A mid-week oasis of song, prayer, reflection and worship.

Monthly Sunday worship

- 1st Sunday** : Monthly evening worship takes place at 6.30pm in the Welcome Area.
- 3rd Sunday at 3** : A new short informal service is held in the Welcome Area on the 3rd Sunday of the month at 3pm, followed by refreshments and fellowship.

- 4th Sunday** : Messy Church from 4pm

Flower Ministry

Our work with Church flowers this year seems to have been greatly appreciated and we are managing despite finding fewer people who are able to help with the arranging due to illness and other pressures at home. However, extra volunteers do come forward for our special Church festivals and this is a great help.

Harvest Festival, Christmas and Easter especially inspire us to do justice to our lovely church and our contribution with flowers enhances God's House. After services, flowers are also taken to those who are ill or celebrating a special occasion – which is much appreciated.

Please let us know if you would like to join the team – all help is very welcome!

Lent Discussion Groups

This year the Lent groups met in the Fellowship room to discuss the 'Justice-seeking church'.



Indoor Bowls

This has been a successful year, regarding the membership of the club. We held a club lunch in January for members. The new season will recommence at the beginning of October and run through to the following March. All are welcome to come and enjoy a couple of hours of good fun. No experience necessary.

Badminton

We meet for mixed doubles on Mondays 8-10pm and Ladies doubles every Wednesday 1.30-3pm in the Community Hub. We have a good number of players, often 6 or 7 in a session, with a wide range of ages. We have recently welcomed some new faces to the club. For more information, please contact Ann Durnford.

Art and Craft Group

The BMC Art and Craft Group meets every Monday in the Community Hub from 2.00-4.00 pm. We share the large room and join together for refreshments during the afternoon.

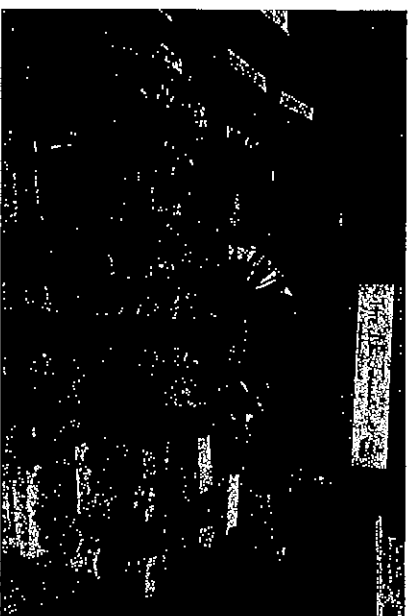
We have about ten members in each group and would welcome anyone who is interested in joining us for either Art or Craft. Please contact either Margaret Burgess for craft or Ann Bonner for the art group.

Members choose their own activity and although we have no direct instruction - members help and encourage one another with good advice! We look forward to welcoming you to either group.

Messy Church

Messy Church is a vibrant group that takes place on the fourth Sunday of each month from 4pm, bringing together around 15 to 20 children with their parents, grandparents or carers. The emphasis is on fun and creativity whilst hearing more about the Bible.

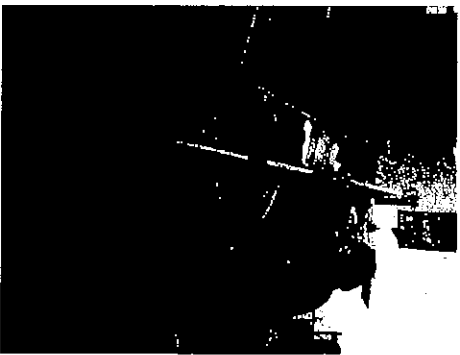
Each Messy Church includes fun crafts, and a short time of celebration, followed by tea, which is an opportunity for socialising and building connections among the children, volunteers, and parents who attend.



The success of Messy Church is down to the dedicated group of volunteers who generously contribute their time and effort. Their enthusiasm and commitment create a positive and welcoming environment, ensuring that each session runs smoothly, and participants feel valued.

Christingle and Light Up Bramhall

The Christmas period provides many opportunities for inviting people to hear of the good news of Jesus and experience Christian fellowship. We took part in 'Light up Bramhall' with lantern making and a bouncy castle in the Community Hub which was very popular. Christingle on Christmas Eve is a lovely start to the Christmas festivities, with many from our local community coming together to hear the Christmas story and make Christingles. Cathy, our Children and Families worker was turned into a giant Christingle!



Baby Chat

Baby Chat, which re-commenced in February 2023 post Covid on Friday mornings, provides a warm and welcoming space, and has successfully created a supportive community for new mothers, enabling them to connect on a personal level. The platform has become a valuable space for mums to discuss their parenting journeys, seek advice and share the joys & challenges of motherhood. Since inception, Baby Chat has played a crucial role in building a sense of camaraderie and contributing to a stronger support network within the community.

Seedlings

In October 2023, the Seedlings program was introduced as an extension of Baby Chat, catering specifically to pre-school children. Seedlings offers a lively and engaging environment where children can play, participate in craft activities and enjoy storytelling sessions. The inclusive nature of Seedlings is evident, with parents, grandparents and caregivers actively participating.

A heartfelt expression of gratitude goes to the dedicated volunteers who have been instrumental in the success of both Baby Chat and Seedlings.



BABY CHAT



SEEDLINGS

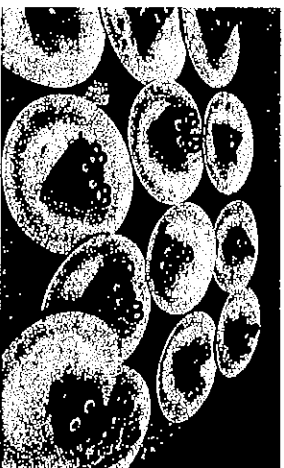
11th Bramhall Brownies

We had a full Brownie unit with 24 girls last year, and whilst we have recently seen eight Brownies move up to Guides we will be full again soon as new Brownies join us after Easter. We meet in Centrepoint on Wednesday evenings.

In February and March we did our Power Girl award. One of our Dads works for Electricity NW and we had great fun with a thermal camera in Centrepoint working out where the hot spots were. In March we had fun at Chill Factor® on the snow slides, downhill donuts and sledge racing. It was lovely to see the confidence growing as the evening progressed. In June we went to Magic and Mayhem at Waddow Hall in Lancashire and slept in a big top. The weather was very warm and there were lots of great activities including circus skills, craft, toasting marshmallows and inflatables.

In the autumn term we attended the Bramhall Remembrance Parade, and in the previous meeting we had decorated glass tea light holders to help us remember someone.

We had a cake sale for Children in Need and raised £230 and all enjoyed making and eating cakes. In December we went to see the latest Disney film, Wish. This is a national event where Girlguiding takes over whole cinemas across the country.



Pre School

Wow, what a fantastic year it's been at preschool! We're thrilled to have 65 energetic little learners on board, supported by our incredible team of 13 dedicated staff members. The passion and energy of our team shines through every day, and we're proud to say it's been recognised in our recent Ofsted report.

We've been busy sprucing up our outdoor play area, and let me tell you, it looks absolutely fabulous! The kids are loving it, and it's definitely extended the fun factor out there by quite a bit. Our Class Reps meetings are also a hit every week! The reps come armed with their badges and clipboards, ready to discuss the "very important matters" with Mrs. Lomax. Trust me, they always have something interesting to say!

Our magic story box continues to spark imagination each week, and our visits to Hillbrook Grange are now a regular highlight. And who can forget the 8by8 football sessions? They're a firm favourite. We even had Ivy's daddy bring his fire engine one day!

One of our best-loved activities has been our Mystery Readers. Picture this: clues are read out, and the children have to guess which parent, grandparent, or family member is stepping in to read for the day. It's always a blast!

We're big on keeping parents in the loop too. From parents' evenings to stay and play mornings, we love giving families a sneak peek into the magic that happens at our pre-school. And let's not forget the epic discos organised by our parent rep Maryona each term.



Thrift Shop

The Thrift Shop continues to flourish with a steady flow of incoming goods which are sorted and sold by our faithful volunteers.

Since the AGM 2023 the Thrift Shop has been able to donate £25,500 to various charities, locally and much further afield, including the Red Cross Ukraine Appeal. All the charities are nominated by the Thrift Shop volunteers.

From March 2024 the Thrift Shop will be supporting the Bitesize Church project by donating £6,000 annually for a period of three years.

We are thankful to be able to continue each year with our Christian outreach to those in need.

Monthly Communion Collections

The Communion Collections group (or Charitable Giving Group) meets twice a year and is responsible for deciding which charities BMC raises money for.

Charities supported in this way over the last twelve months include The Message Trust, Methodist World Mission, Christian Aid, Methodist Homes for the Aged, Action for Children, The Leprosy Mission, Foodbanks, Wellspring, St Ann's Hospice, Wythenshawe Warm Fund, All We Can, Mind, The Fund for Human Need, Bite Size Church.

Excluding Foodbanks, Wythenshawe Warm Fund and Action for Children (covered elsewhere in this report), over £5,000 has been raised via the Communion Collections. Thank you to everyone for your generosity.

Please do let Sarah or one of the Stewards know if you would like to nominate any charities - local, national or international - to be included in the monthly collections.

Bramhall Repair Café

As part of the Bramhall Green Network, since April 2023 we have been pleased to host the Bramhall Repair Café on the first Saturday of each month, 10am till 12 noon.

At the Repair Café volunteers try to repair household items, and pass some repair skills on to the people who bring items in. We repair small electricals like hair straighteners, lamps, food mixers, vacuum cleaners. We mend clothes that have holes or seams and hems coming apart. An upholsterer is keen to put new life back into small furniture. General repairers will fix things like punctures in bike and pram tyres and try to put back together broken objects. All this is done in a friendly environment with tea and cake!

By repairing we save items going to landfill, save the carbon emissions of remanufacturing and earth's precious finite resources, it helps raise the idea of fixing things into all our consciousness again and gives people an opportunity to go somewhere to get help to fix things. By providing this example we hope it will show policy makers the need to put laws in place which ensure manufacturers make items that can be fixed, so we can all live more sustainably in our shared world.



On the expense side utility costs & cleaning, proved challenging. In January we renewed our gas & electricity contracts to 31st December 2025 on favourable but increased rates. Cleaning costs increased again partly due to increases in the Living Wage feeding through. Overall, our property income is sufficient to cover day-to-day maintenance of the church buildings and utility costs.

Our thanks go Mike Calow who looks after our heating needs, Rachel Pennells who organises day to day maintenance & liaises with hirers, and Claire Lee who arranges to pay the property related invoices.

Looking ahead we have plans to extend our solar generation subject of course to raising sufficient funds. The radiators in Centrepont are struggling with our heating requirements so we will look to upgrade those at some point.

Thanks for your continued support.

Church Gardens

The last year has been challenging. There are just three of us attending to the gardens. Elaine Bates mows the lawns, weeds, prunes and clears the pathway by the side of Centrepont. Gill Day is on a mission to eradicate weeds from the front of church. Lynne Ormiston weeds, prunes and tries to keep the flower beds in front of the main doors looking presentable. We have introduced new planting to these beds which has filled them up.

The side bed by the minister's parking space has also benefitted from some TLC. The drive has been widened by cutting back the laurel hedge. The saplings donated by The Woodland Trust for the Queens canopy are doing well.

Elaine is stepping down for a while so it would be great if more people could help out. Or just come down when you have a minute or two and weed or cut back what you think is over growing. We have no agenda.

BRAMHALL METHODIST CHURCH

FINANCIAL REPORT

YEAR ENDED 31st AUGUST 2023

BRAMHALL METHODIST CHURCH

FINANCIAL REPORT and ACCOUNTS

YEAR ENDED 31st AUGUST 2023

INDEX

	Page
1 Trustees Report	2
2 Independent Examiner's Report	8
3 Summary SOFA and Income and Expenditure Account	10
4 Income Account	14
5 Expenditure Account	15
6 Balance Sheet	16
7 Accounting policies	17
8 Notes to the Accounts	19
9 Thrift and Coffee Shop Accounts	21
10 Pre-School Accounts	22

Bramhall Methodist Church

Trustees Report

Achievements and Performance

Bramhall Methodist Church is a welcoming church of around 300 members that reaches out to the Bramhall Village Community with a wide range of opportunities to nurture faith and to share fellowship.

It is a registered charity, part of the The Methodist Church in Britain, one of twelve churches that make up the Bramhall and Wythenshawe Methodist Circuit, and a member of the eight-strong inter-denominational Churches Together in Bramhall and Woodford network that promotes unity among Christian Churches.

The church is also connected to the Messy Church movement that fosters informal, family-friendly worship for those who might shy away from more traditional church services.

The numerous charitable and socially responsible causes it embraces include:

- Christian Aid- that fights to bring an end to poverty around the world;
- Fair Trade- which aims to secure better prices, decent working conditions and fairer terms of trade for farmers and workers in the developing world;
- Action for Children- a charity actively supported by the Methodist Church that strives to make life better for the UK's most vulnerable children and young people.
- Eco-Church: A Rocha UK's award scheme for Churches-we hold the silver award, recognising the importance we place on caring for God's world.

We seek to be a people who love God each other and the World.

We aim to be a church that lives out the love of Jesus, where everyone can: belong and feel at home; discover and grow in faith; receive support for daily life; contribute and get involved in church life.

We assess our performance under 4 domains (as set out in the Income and Expenditure account): Worship Prayer and Christianity Explored; Children and Young people; Fellowship and Supporting Life's Journey and World Neighbourhood and Community.

The annual report which is filed with these Financial statements sets out in detail the activities of the Church and we set out in this report the key highlights.

The Church has a large suite of buildings, the Church itself, the Church Centre and the Centrepont building and is located in the Centre of the Village of Bramhall. Our aim is to be a community hub: key activities are regular worship; service to the Community through the running of a Pre-school (in the Church centre) and a Coffee shop and Thrift shop (in the Centrepont building); and hiring out our facilities for community activities.

Worship Prayer and Christianity explored

We currently have around 300 members, having had around 400 members for many years.

Worship services in our main building are held weekly on Sundays and Thursdays. These are often live-streamed and services in church can also be heard by phone. Worship takes a variety of traditional and contemporary forms, with Connect, our more informal service, taking place in

Centrepont. A relaxed and informal evening service is held on the first Sunday of the month in the Welcome Area. Messy Church is a very different format designed for families and takes place monthly. A new short informal service is held in the Welcome Area on the 3rd Sunday in the month at 3pm, followed by refreshments and fellowship. There have been some joint Sunday morning services with Connect, alternating between Church and Centrepont. Holy Communion is celebrated monthly in both buildings and on Easter Sunday jointly on the Forecourt. Membership services have been held in both Sunday morning services. Wedding, Funeral and Baptism services are held as required.

We regularly meet in small groups to explore our faith with over 100 members attending Life and House Groups regularly.

Worship night provides a monthly time and space for informal worship, reflecting on a particular passage of scripture and has been meeting every four weeks.

Prayer is a vital aspect of church life.

- The Church Prayer diary remembers a church member each day and offers other ideas for personal prayer.
- Opportunity for personal prayer at each Connect service
- A zoom prayer meeting each Tuesday at 9.30am
- The BMC email prayer network has people ready to respond to prayer requests. There are a number of Connect4 WhatsApp prayer groups.

We also run other special classes; notable events in the year were the Ultimate Book Club, which completed during the year and our Lent lectures, which this year considered the 'Justice Seeking Church' report approved by The Methodist Conference in the year.

Children and Young People

As well as our regular Sunday morning Sunday school we run a monthly Messy Church service attended by over 15-20 children and their parents. We employ a part time youth and family worker who is re-invigorating our work with children. In February 2023 we re-commenced Baby Chat which provides a warm and welcoming space, and has successfully created a supportive community for new mothers, enabling them to connect on a personal level. In addition in October 2023 we launched Seedlings. This is for Pre-school children and offers a lively and engaging environment where children can play, participate in craft activities and enjoy storytelling sessions. The Church is also linked to: the 1st Woodford scout group; 12 Bramhall Rainbows; 11th and 12th Bramhall Brownies; and 11th Bramhall Guides.

In addition, the Church runs its own Pre-School, rated 'Good' at its last Ofsted inspection. This has been open throughout the year.

Fellowship and Supporting Life's Journey

The annual report sets out the many activities of groups that meet to give fellowship to one another. These range from choirs to rambling and everything in between.

Our Pastoral care visitors continue to provide a hugely valued service to individuals across the church family.

World Neighbourhood and Community and Mission

Bitesize Church was launched in September 2023. Following an extended period of planning, preparation and prayer, on Sunday 10th September 2023 Bitesize Church met for the first time. Bitesize Church is a new form of church established at the heart of the community of the Coleshaw Farm estate near Handforth. Bitesize meets on the second Sunday of each month from 10.00am.

The Coffee shop provides a service to the local community where people can meet and chat. It continues to welcome customers from 10-15am-12.30pm six days a week. It serves a variety of bean-to-cup Coffee. Tea, Hot Chocolate, freshly baked scones, toasted tea cakes etc. by willing volunteers in a friendly atmosphere.

The Thrift shop provides an opportunity for re-cycling goods as well as being a point of social contact. As a charity shop it sells goods at reasonable prices and supports other charities with specific goods, e.g. Manchester mission with warm men's clothing. After a donation to the Church, for use of the premises, money raised by the Thrift shop is distributed to local, national and international charities. The Thrift shop was fully operational during 2023 and the accounts contain a record of the giving to charity.

Communion Collections are held monthly to support a wide range of Charitable and other good causes. In particular, the Church supported two local foodbanks raising over £7,050 and at Christmas we raised £2,200 through donations to the 'Warm Fund' to help families in the Brownley Green area of Wythenshawe to top up their gas and electricity meters.

Moss Hey Primary School continues to support our foodbank project through donations every half-term as well as their annual Harvest Festival. In total we have taken approximately 400 bags of food to the two foodbanks over the past 12 months- this includes more than 50 bags of food donated at the Moss Hey Primary School Harvest Festival as well as 20 bags every two months from the school.

Other activities include the Thursday Club for older people and the hosting of the Bramhall Repair Café.

Financial Review

The Charity recorded net outgoing resources of £10,883 (2022 incoming £640) on the General and Property unrestricted reserve and in total, including designated and restricted funds, a net incoming of £5,805 (2022 incoming £8,012).

Financially, we have seen income from hiring out our Property increase, with the opening up of our premises and our strategy to be a community hub. However, our Congregational giving has reduced as our congregational numbers have declined.

Unrestricted funds have reduced to £80,304(2021 £85,324). Of these funds £0 (2021 £750) is reserved for future maintenance, repair and improvement to our suite of buildings.

The reduction occurred primarily because of the completion of the refurbishment of the back hall to make it a Community hub and the deficit of income over expenditure on the General Account of £6,147.

Building developments

Spending was limited to the completion of the Community Hub in the year and normal repairs and maintenance spend. The later was inflated by significant spend on the electronic doors to the entry to the church.

Restricted funds:

The Pre-School is treated as a restricted fund and holds a reserve of £111,769 (2021 £102,852) an increase of £8,917 (2022 decrease £6,388) compared to the previous year.

Income specifically raised for Bitesize church and expenditure on Bitesize Church has been shown in a new Restricted fund.

Policy on reserves

The Church council approves a detailed reserve policy each year for each of the unrestricted and restricted funds.

In summary the General and Property reserve is set at a level to absorb the occasional year where this account is in deficit.

Other designated reserves for the Thrift shop and Coffee shop are set to provide working capital for those operations and a hedge against the risk of equipment failure or the crystallisation of other risks

The Trustees are conscious of the significant suite of buildings that they are responsible for maintaining. In 2020 and 2021 and to a lesser extent in 2022 significant spending has taken place from this reserve and the Trustees consider that this reserve needs strengthening to make sure that the buildings can be maintained to their current high standards.

Principal funding sources

Donations from the congregation, donations from Pre-school, Coffee shop and Thrift shop to reflect premises use and room hire fees from outside organisations.

Investment policy and Objectives

The Charity invests surplus funds with either the Trustees for Methodist Church purposes (TMCP) or the Central Finance Board of the Methodist Church. All investments are cash based.

Plans for the future

People

Sarah Parkin remains our Minister.

Our Lay pastor in the period was Matt Hill but he left us in July 2023. In January 2024 we appointed Jo Smith as our part-time Pastoral worker.

Catherine Armstrong is our Children and Family worker and Rachael Pennells our office administrator.

Structure, governance and management

The Methodist Church is constituted under the Methodist Church Act 1976. The local Church is part of the national Methodist Church (the Connexion). The local church's property is held on Model Trusts by the Custodian Trustee, The Trustees for Methodist Church Purposes. Management of that property, and responsibility for the local church's spiritual and financial affairs, is delegated to the local Church Council to act as Managing Trustee.

Bramhall Methodist Church is a registered Charity number 1130747.

Recruitment and appointment of trustees

Some members are appointed to Church Council by virtue of the office they hold within the life of the church. The Church Council is responsible for making such appointments. The Church Stewards and representatives of the congregation are appointed at the Church General Meeting held in early summer each year.

Induction and Training of Trustees

Trustees are periodically reminded of their legal obligation under Charity law.

Organisational Structure

The Managing Trustees administer the charity. They meet at least twice a year. There is a Resources Committee that has delegated powers to deal with finance and property matters, plus other sub-committees that meet regularly. A proportion of the Trustees are appointed each year by those attending the Church General meeting, held usually in April, and which all members are entitled to attend and vote. According to the rules and regulations of the Methodist Church such trustees normally serve for a maximum period of 6 years.

Major Risks and management of those risks

The Church Council has a range of policies, which are updated regularly, covering the following areas.

Safeguarding, working with children and vulnerable adults

Health and Safety

Financial and office systems

Hazards – fire etc.

The Trustees in particular take their responsibilities for Safeguarding young people and vulnerable adults very seriously and have a Safeguarding officer in place who attends the Resources Committee meetings and Church Council meetings.

The Trustees retain a full suite of insurance policies with a specialist Church Insurer – Methodist Insurance Ltd.

More longer-term risks are the increased age of the congregation and potential for large repair and maintenance cost to the buildings.

In respect of the former the Church continues to work to spread the gospel and in respect of the latter formal independent inspections are done every 5 years.

Public Benefit

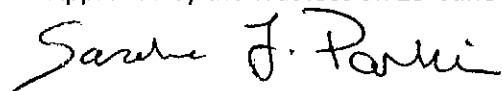
The Trustees confirm that they have complied with section 4 of the Charities Act 2011 to have due regard to the guidance published by the Charity Commission for England and Wales.

Trustees

The trustees who served during the year are as follows:

Catherine Armstrong	Matt Hill till 30/7/23	Anna -Louise Power
John Benvie	Claire Lee	John Sandford
Ian Castledine	Carole Lomax from 13/7/22	John Theakston till 30/4/23
Angela Clowes	Kenneth Low	Alison Thornley
Gillian Day from 18/1/23	Roo Lumb	John Thornley
Nigel Day from 20/4/23	Wesley McKee till 30/4/23	Eleanor Wright till 30/4/23
Philippa Fitzpatrick from	June Nightingale	
Sue Graham from 30/4/23	Lynne Ormiston	
Christine Hall	Sarah Parkin	

Approved by the Trustees on 23rd June 2024 and signed on their behalf by;



Reverend Sarah Parkin - Trustee

Independent examiner's report to the trustees of Bramhall Methodist Church

I report to the trustees on my examination of the accounts of Bramhall Methodist Church for the year ended 31 August 2023.

Responsibilities and basis of report

As the charity trustees of Bramhall Methodist Church you are responsible for the preparation of the accounts in accordance with the requirements of the Charities Act 2011 ('the Act')

I report in respect of my examination of Bramhall Methodist Church accounts carried out under section 145 of the 2011 Act and in carrying out my examination I have followed all the applicable Directions given by the Charity Commission under section 145(5)(b) of the Act.


Independent examiner's statement

Since Bramhall Methodist Church gross income exceeded £250,000 your examiner must be a member of a body listed in section 145 of the 2011 Act. I confirm that I am qualified to undertake the examination because I am a member of ICAEW, which is one of the listed bodies.

I have completed my examination. I confirm that no material matters have come to my attention in connection with the examination giving me cause to believe that in any material respect:

1. accounting records were not kept in respect of Bramhall Methodist Church as required by section 130 of the Act; or
2. the accounts do not accord with those records; or
3. the accounts do not comply with the accounting requirements concerning the form and content of accounts set out in the Charities (Accounts and Reports) Regulations 2008 other than any requirement that the accounts give a 'true and fair view' which is not a matter considered as part of an independent examination.

I have no concerns and have come across no other matters in connection with the examination to which attention should be drawn in this report in order to enable a proper understanding of the accounts to be reached.


.....

J. P. Roper FCA
Independent examiner
11 Riverview
The Embankment Business Park
Vale Road
Heaton Mersey
Stockport
SK4 3GN

26 June 2024

BRAMHALL METHODIST CHURCH

Statement of Financial Activities

SUMMARY

31st August 2023

Incoming Resources

Income from donations and legacies
Income from charitable activities
Investment Income

TOTAL INCOMING RESOURCES

TOTAL RESOURCES EXPENDED- Charitable Activities

Net Incoming/(outgoing) resources before transfers

Gross transfers between funds

Net Incoming/outgoing resources before other recognised gains and losses

Other recognised gains/losses

Net movement of funds

RECONCILIATION OF FUNDS

FUND BALANCE 1st September 2022

FUND BALANCE carried forward 31st AUGUST 2023

Actual 12 months 31.8.2023 Unrestricted	Actual 12 Months 31.8.2023 Restricted	Actual 12 months 31.8.2023 Total
147,678	3,200	150,878
106,990	239,635	346,625
826		826
255,494	242,835	498,329
283,515	209,009	492,524
-28,021	33,826	5,805
23,001	-23,001	0
-5,020	10,825	5,805
0	0	0
-5,020	10,825	5,805
85,324	102,852	188,176
80,304	113,677	193,981

31st August 2022

Incoming Resources

Income from donations and legacies
Income from charitable activities
Investment Income

TOTAL INCOMING RESOURCES

TOTAL RESOURCES EXPENDED- Charitable activities

Net Incoming/(outgoing) resources before transfers

Gross transfers between funds

Net Incoming/outgoing resources before other recognised gains and losses

Other recognised gains/losses

Net movement of funds

RECONCILIATION OF FUNDS

FUND BALANCE 1st September 2021

FUND BALANCE carried forward 31st AUGUST 2022

Actual 12 months 31.8.2022 Unrestricted	Actual 12 Months 31.8.2022 Restricted	Actual 12 months 31.8.2022 Total
156,066		156,066
128,643	212,909	341,552
134	37	171
284,843	212,946	497,789
270,443	219,334	489,777
14,400	-6,388	8,012
0	0	0
14,400	-6,388	8,012
0	0	0
14,400	-6,388	8,012
70,924	109,240	180,164
85,324	102,852	188,176

BRAMHALL METHODIST CHURCH
Statement of Financial Activities
UNRESTRICTED FUNDS SUMMARY
31st August 2023

	Actual 12 months 31.8.2023 Unrestricted Gen& Prop	Actual 12 Months 31.8.2023 Designated Thrift	Actual 12 Months 31.8.2023 Designated Special Pro	Actual 12 Months 31.8.2023 Designated Coffee	Actual 12 Months 31.8.2023 Designated Prop Ren	Actual 12 months 31.8.2023 Total
TOTAL INCOMING RESOURCES	184,718	40,742		28,934	1,100	255,494
TOTAL RESOURCES EXPENDED	230,666	29,628		16,735	8,586	283,515
Net Incoming/(outgoing) resources before transfers	-45,948	11,214	0	12,199	-5,488	-28,021
Gross transfers between funds	35,065	-9,300		-7,500	4,736	23,001
Net Incoming/outgoing resources before other recognised gains and losses	-10,883	1,914	0	4,699	-750	-5,020
Other recognised gains/losses	0	0	0	0	0	0
Net movement of funds	-10,883	1,914	0	4,699	-750	-5,020
RECONCILIATION OF FUNDS						
FUND BALANCE 1st September 2022	37,344	17,205	9,550	20,475	750	85,324
FUND BALANCE carried forward 31st AUGUST 2023	26,461	19,119	9,550	25,174	0	80,304

31st August 2022

	Actual 12 months 31.8.2022 Unrestricted Gen& Prop	Actual 12 Months 31.8.2022 Designated Thrift	Actual 12 Months 31.8.2022 Designated Special Pro	Actual 12 Months 31.8.2022 Designated Coffee	Actual 12 Months 31.8.2022 Designated Prop Ren	Actual 12 months 31.8.2022 Total
TOTAL INCOMING RESOURCES	226,939	36,396		21,508		284,843
TOTAL RESOURCES EXPENDED	219,299	24,284		16,329	10,631	270,443
Net Incoming/(outgoing) resources before transfers	7,640	12,112	0	5,179	-10,631	14,400
Gross transfers between funds	-7,000				7,000	0
Net Incoming/outgoing resources before other recognised gains and losses	640	12,112	0	5,179	-3,531	14,400
Other recognised gains/losses	0			0	0	0
Net movement of funds	640	12,112	0	5,179	-3,531	14,400
RECONCILIATION OF FUNDS						
FUND BALANCE 1st September 2021	36,704	5,093	9,550	15,296	4,281	70,924
FUND BALANCE carried forward 31st AUGUST 2022	37,344	17,205	9,550	20,475	750	85,324

BRAMHALL METHODIST CHURCH

Statement of Financial Activities

RESTRICTED FUNDS SUMMARY 2023

31st August 2023

	Actual 12 Months 31.8.2023 Restricted Pre- School	Actual 12 Months 31.8.2023 Restricted Bitesize Church	Actual 12 Months 31.8.2023 Restricted Total
TOTAL INCOMING RESOURCES	239,635	3,200	242,835
TOTAL RESOURCES EXPENDED	207,717	1,292	209,009
Net Incoming/(outgoing) resources before transfers	31,918	1,908	33,826
Gross transfers between funds	-23,001	0	-23,001
Net Incoming/outgoing resources before other recognised gains and losses	8,917	1,908	10,825
Other recognised gains/losses	0	0	0
Net movement of funds	8,917	1,908	10,825
RECONCILIATION OF FUNDS			
FUND BALANCE 1st September 2022	102,852	0	102,852
FUND BALANCE carried forward 31st AUGUST 2023	111,769	1,908	113,677

31st August 2022

	Actual 12 Months 31.8.2022 Restricted Pre- School
TOTAL INCOMING RESOURCES	212,946
TOTAL RESOURCES EXPENDED	219,334
Net Incoming/(outgoing) resources before transfers	-6,388
Gross transfers between funds	0
Net Incoming/outgoing resources before other recognised gains and losses	-6,388
Other recognised gains/losses	0
Net movement of funds	-6,388
RECONCILIATION OF FUNDS	
FUND BALANCE 1st September 2021	109,240
FUND BALANCE carried forward 31st AUGUST 2022	102,852

BRAMHALL METHODIST CHURCH

INCOME AND EXPENDITURE ACCOUNT

Summary of General and Property Account

	Actual 12 months 31.8.2023	Actual 12 months 31.8.2022
Total Income per detailed Income and Expenditure Account	224,519	226,939
Total Expenditure per detailed Income and Expenditure account	<u>230,666</u>	<u>219,299</u>
Surplus/Deficit for the year	-6,147	7,640
	<u>-6,147</u>	<u>7,640</u>
Net Surplus/Deficit for the year	-6,147	7,640
	<u>-6,147</u>	<u>7,640</u>
	<u>-6,147</u>	<u>7,640</u>
FUND BALANCE 1st September 2022	37,344	36,704
Transfer to Property Renovation Reserve	<u>-4,736</u>	<u>-7,000</u>
FUND BALANCE carried forward 31st August 2023	<u>26,461</u>	<u>37,344</u>

BRAMHALL METHODIST CHURCH

INCOME AND EXPENDITURE ACCOUNT

	General and Property Account			
	Notes	Actual	Actual	Actual
		12 months	12 months	12 months
		31/08/2023	31/08/2023	31/08/2022
INCOME				
<i>Worship, Prayer and Exploring Christianity</i>				
Donations and legacies		4,074		4,014
Total Other			4,074	4,014
<i>Children and Young People</i>				
Fun Club		2,000		
Total Other			2,000	0
<i>Fellowship and Supporting Life's Journey</i>				
Halle Concerts				
Other				180
Total Course and Events			0	180
<i>World Neighbourhood and Community</i>				
Eco Festival				2,439
Praying for our planet			0	2,439
Resources				
Planned Giving		111,646		122,612
Loose Cash		3,366		2,683
Income Tax Refund		27,492		26,757
Total Offering and Tax Reclaim			142,504	152,052
Contributions from Church organisations - Church Centre		25,595		25,316
Contributions from Church organisations - Centrepont		17,700		16,800
Room Hire external Church Centre		3,835		406
Room Hire external Centrepont		25,221		24,493
Fees		378		
Ground Rent and Sundry		2,386		1,105
Total Property Income			75,115	68,120
Bank Interest		826		134
Total Interest and Investment Income			826	134
Other				
TOTAL INCOME			224,519	226,939

BRAMHALL METHODIST CHURCH

INCOME AND EXPENDITURE ACCOUNT

	General and Property Account Notes	Actual 12 months 31/08/2023	Actual 12 months 31/08/2023	Actual 12 months 31/08/2022	Actual 12 months 31/08/2022
EXPENDITURE					
<i>Worship, Prayer, Christianity Explored</i>					
Copyright Licences		1,436		1,385	
Alpha		285		158	
Catering and Coffee		41		120	
Piano, Microphones, Projector		502			
Christmas Decorations					
Palm Crosses					
Prayer handbooks and other books		55		368	
Flowers and Plants		361		348	
Sundry		1,101		392	
Total Other			3,781		2,769
<i>Children and Young People</i>					
Junior Church		583			
Fun Club		64		125	
Messy Church		199		72	
Youth Events					
Total Other			846		197
<i>Fellowship and Supporting Life's Journey</i>					
Living Life to the full					
Lent Lectures				140	
Methodism in Bramhall book				1,387	
Jubilee				1,100	
Halle					
Ultimate Book Club				100	
Other		435		170	
Total Course and Events			435		2,897
Pastoral Assistance				2,512	
Total Other			0		2,512
<i>World Neighbourhood and Community</i>					
Eco Festival				1,034	
Praying for our planet				3,255	
Other	1	919		500	
Total Grants and Donations			919	228	5,017
Outreach					
Royal British Legion Poppy Appeal					
Total Other			0		0
<i>Resources</i>					
Circuit Assessment, Pastor and Family Worker and administrator			149,564		137,475
Heat, Light and Power		9,113		8,861	
Water		1,670		1,887	
Cleaning		24,052		24,560	
Insurance		8,283		8,499	
Servicing		3,911		4,671	
Chief Rent and Security				5	
Maintenance and Repairs		19,997		12,453	
Total Property Costs			67,026		60,935
Church Administrator					
Printing and Stationery		2,063		1,785	
Publicity		127		99	
Telephone and Internet		3,021		2,655	
Audit and accountancy		1,402		1,336	
Education and Training		253			
Bank Charges and Payroll Fees		933		1,009	
Minister Expenses		182			
Streaming and other computer				563	
Other Sundries		114		50	
Total Running Costs			8,095		7,497
TOTAL EXPENDITURE			£230,666		£219,299

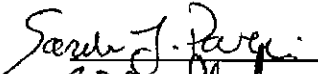
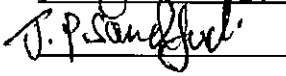
BRAMHALL METHODIST CHURCH

BALANCE SHEET 31st AUGUST 2023

	As At 31 August 2023	As At 31 August 2023	Notes	As At 31 August 2022	As At 31 August 2022
CURRENT ASSETS					
<i>Investments</i>					
<u>Trust Funds</u>		2,727	6		2,649
<i>Cash</i>					
Deposit (CFB General)	15,329			19,678	
Deposit (CFB Property)	2,831			2,736	
Deposit (CFB Centrepont Legacy)	69			67	
Thrift Shop and Coffee Shop	44,294			37,681	
Pre-School	113,285			108,461	
General and Property	12,480			12,126	
Cash in hand				100	
		188,288			180,849
Debtors					
General	10,885		4	17,086	
Pre-School	4,393			881	
		15,278			17,967
TOTAL CURRENT ASSETS		206,293			201,465
CURRENT LIABILITIES					
CREDITORS					
General	6,503		3	6,799	
Pre-School	5,909	12,412		6,490	13,289
NET ASSETS		<u>£193,881</u>			<u>£188,176</u>

REPRESENTED BY:

General and Property Account	26,461	5	37,344
Property Renovation Reserve	0	7	750
Thrift Shop	19,119	10	17,205
Special Projects Reserve	9,550	9	9,550
Coffee Shop	25,174	10	20,475
Bitesize Fund	1,908	8	0
Pre-School	111,769	11	102,852

	<u>£193,981</u>		<u>£188,176</u>
Signed on behalf of Church Council	 Sarah Parkin	Minister	
Dated 24 June 2024	 John Sandford	Finance Co-ordinator	

Bramhall Methodist Church

Accounting policies

1 Basis of Accounting

These accounts have been prepared on the basis of historic cost (except that investments are shown at market value) in accordance with Statement of Recommended Practice (SORP 2005) and the Charities Act 1993. There have been no changes in accounting policies in the year.

2 Fund Accounting

General funds are Unrestricted funds which are available for use at the discretion of Church Council in furtherance of the general objectives of the charity and which have not been designated for other purposes

Designated funds comprise Unrestricted funds that have been set aside by Church Council for particular purposes. The aim and use of each designated fund is set out below.

Restricted funds are funds that are to be used in accordance with specific restrictions imposed by donors or which have been raised by the Charity for particular purposes. The aim and uses of each Restricted fund is set out below.

Endowment Funds are restricted funds representing gifts where the Capital is normally unavailable for spending and the income from which is either Restricted or Unrestricted.

Designated Funds

Thrift Shop

The Thrift shop fund shows the activity of the Charity shop run by the Church. The surpluses, after payment of a contribution for the upkeep of the premises and charitable donations made by the Thrift shop Committee, have been designated by Church Council for use in special projects and not for the normal running costs of the Church. Such special projects should have widespread support amongst the membership of the Church and currently include supporting youth work in the village of Bramhall as well as donations to local and international charities as from time to time determined by Church Council

Coffee Shop

The Coffee Shop fund shows the activity of the Coffee shop run by the Church, and staffed by Volunteers from most of the Churches in Bramhall. The surpluses after a contribution towards the premises cost and money for the development and equipment of the shop have been designated by Church Council to be given to support Christian projects preferably but not exclusively in Bramhall and the wider Stockport and Manchester area.

Property renovation

The Property Renovation fund represents funds set aside from previous surpluses and designated by Church Council for major repairs to the suite of Church buildings

Restricted Funds

Pre-School

The Pre-School fund shows the activity of the Pre-School run by the Church. Any surpluses after payment of staff and other costs including a contribution towards premises costs are to be used to support the Pre-School.

Memorial Fund

The Memorial fund was set up from donations for the purpose of providing memorials to Church Members

Accounting policies continued

3 Incoming Resources

All Incoming resources are included in the Statement of Financial Activities when the charity is legally entitled to receive the income and the amount can be quantified with reasonable accuracy.

Incoming resources are received in cash from donations, church activities, grants and property income.

Grants receivable are accounted for in the period in which they are awarded and are allocated to the fund to which they relate.

Cash donations, Thrift shop, Coffee shop and Pre-School income are included in full in the Statement of Financial Activities on a receivable basis.

Contributions towards premises costs by Thrift shop, Coffee shop, Pre-School and other Church organisations are treated as income and expenditure in the income and expenditure accounts and as a transfer in the Fund accounts.

Incoming Resources are allocated to the activity to which they relate, as set out in the Church Vision document. Incoming resources from general congregational giving and from Premises Income are allocated to the Resources activity.

4 Resources Expended

All expenditure is accounted for on an accruals basis and has been included under expense categories that aggregate to the activity to which they relate, as set out in the Church Vision document. Costs that underpin all the various activities such as Ministry and Premises costs are shown in the Resources activity.

Grants payable are charged in the year that the offer is made except in those cases where the offer is conditional, such grants being recognised as expenditure when the conditions attaching are fulfilled. Grants offered subject to conditions which have not been met at the year end are noted as a commitment, but not accrued as expenditure.

5 Investments

Investments are stated at market value at the balance sheet date. The Statement of Financial Activities includes the net gains and losses arising on revaluations and disposals throughout the year.

6 Tangible Fixed Assets

The Church and associated building are legally owned by the Methodist Connexion.

The local church charity does therefore not own the buildings nor are they entitled to any proceeds on sale.

Therefore these charity accounts do not include any value for the Church and associated premises.

All expenditure on the Church Buildings is therefore considered as maintenance and charged to the appropriate fund account in the year it is incurred.

Expenditure on office equipment and other capital items over £3,000 (previously £2,000) is capitalised and written off over its estimated useful life.

7 Communion/Special collections

Special Collections are taken regularly for other organisations and Charities. Such collection money does not form part of the Resources of the Church as any money held is due to be paid over to the organisations collected for.

Note 2 gives a memorandum record of the collections during the year.

8 Gifts in Kind/Volunteers

Gifts in kind, particularly gifts to the Thrift Shop, and Volunteer time are not valued in these accounts because of the difficulty of identifying and valuing them.

BRAMHALL METHODIST CHURCH

YEAR ENDED 31st AUGUST 2023

NOTES TO THE ACCOUNTS

	Actual 2023	Actual 2022
1 Grants World Neighbourhood and Community		
Food4hungry	228	228
	<u>228</u>	<u>228</u>
2 Special Collections		
Wellspring	60	
Action For Children	1,487	681
Barnabus		321
Christian Aid	828	1,291
CAP	180	
Foodbanks	6,521	5,748
Ukraine appeal		1,456
World Mission	279	684
Maggies Centre		707
Methodist Mission in Britain	301	393
Dogs for Good		416
Walthew House	528	
Self Help Africa		359
The Rowley projects		570
All We Can	548	154
Dec Turkey/Syria	856	
Seashell Trust	845	
Methodist Homes	525	1,568
Alzheimers	759	
National Literacy	537	
Message Trust	815	
Leprosy	271	
Compassion UK	50	
Sri Lanka	155	
St Anns Hospice		674
Toy service/Shoebox	554	155
Wilmslow Youth		616
Richards Leaving Present		720
	<u>16,089</u>	<u>16,491</u>
3 Creditors		
Property Accruals	1,672	3,299
Other Accruals	4,831	3,500
Pre-school	5,909	6,490
PAYE/NI		0
	<u>12,412</u>	<u>13,289</u>
4 Debtors		
Gift aid receivable	10,635	9,723
Property and General	250	7,363
Pre School	4,393	881
	<u>15,278</u>	<u>17,967</u>
5 General		
At start of year	37,344	36,704
Surplus/(Deficit) from General Account	- 6,147	7,640
Transfer To Property Renovation Reserve	-4738	-7,000
At end of year	<u>26,461</u>	<u>37,344</u>
6 Trust Funds		

There are no separate restricted trust Funds.

All legacies which are held by TMCP are for general use and therefore have been taken through the general account.

BRAMHALL METHODIST CHURCH

YEAR ENDED 31st AUGUST 2023

NOTES TO THE ACCOUNTS

	2023	2022
7 Property Renovation Reserve		
At start of year	750	4,281
Grants and donations	1,100	
Expenditure on the back hall	-6,588	-10,531
Transfer from General account	4,736	7000
At end of year	<u>0</u>	<u>750</u>
8 Bitsize Church		
Grants and Donations	3,200	
Less Expenditure		
Publicity and promotion	-1,092	
Children and Junior Church	-248	
Sundry	-24	
At end of year	<u>1,836</u>	<u>0</u>
9 Special projects reserve		
At start of year	9,550	9,550
Transfer from Thrift Shop		
The Mill (Millennium Youth Coffee Bar)		
Hotshots		
At end of year	<u>9,550</u>	<u>9,550</u>

BRAMHALL METHODIST CHURCH

THRIFT SHOP AND COFFEE SHOP ACCOUNTS

YEAR ENDED 31st AUGUST 2023

Note 10

	THRIFT SHOP		COFFEE SHOP	
	Actual 2023	Actual 2022	Actual 2023	Actual 2022
INCOME				
Sales	39,922	35,514	28,934	21,308
Donation	820	400		200
Miscellaneous income		482		
TOTAL INCOME	40,742	36,396	28,934	21,508
EXPENDITURE				
Occupation Charges	9,300	9,300	7,500	7,500
Coffee Shop Supplies			6,269	4,132
Churches Together Bramhall and Woodford			3,500	3,500
Strawberry Tea	58	24		
Equipment for Premises	150	477	6,966	1,197
Miscellaneous Expenditure	820	483		
Contribution to Coffee shop works				
TOTAL EXPENDITURE	10,328	10,284	24,235	16,329
Surplus/Deficit for the year	30,414	26,112	4,699	5,179
Community Grants and Donations	28,500	14,000	0	0
	1,914	12,112	4,699	5,179
Transfer				
Transfer Special Projects Reserve			0	0
Balance for year	1,914	12,112	4,699	5,179
Balance 1.9.2022	17,205	5,093	20,475	15,296
BALANCE 31.8.2023	19,119	17,205	25,174	20,475

DONATIONS	£		£
Dec Paklstan Floods appeal	2,000	Brought Forward	16,000
Manchester City Mission	1,000	Solving Kids Cancer UK	1,000
Abaseen Foundation	1,000	Alzheimer's Society	1,000
Blood Cancer UK	1,000	Versus Arthritis UK	1,000
Epilepsy Action	1,000	Stockport Canal Boat Trust	1,000
The Wheelyboats Trust	1,000	Gtr Man Royal British Legion	500
Maggies Manchester	1,000	Emmelines's Pantry	500
Farm Africa	1,000	Macclesfield Meth Church	500
Royal Free Charity Fund 24	1,000	DEC Ukraine Appeal	2,000
Dec Turkish Syria Earthquake Appeal	3,000	BMC Bitesize Church	2,000
UK Med	1,000	The Rowley Projects	1,000
Barnabus Aid	1,000	The Mill Youth Centre	2,000
Swan UK	1,000		
carry forward	16,000	TOTAL	28,500

BRAMHALL METHODIST CHURCH PRE-SCHOOL

STATEMENT OF ACCOUNTS FOR THE YEAR ENDED 31 AUGUST 2023

Note 11

INCOME	2023 £	2022 £
SMBC Grants:-		
Total Applicable for year	148,109	135,375
Fees Including deposits	89,120	75,577
JRS Grant		
Outings and Events	835	390
Christmas Fair/Fundraising	416	896
Children's uniforms	435	671
Sundry		
Bank Interest	720	37
* Net of Floats & expenses		
	239,635	212,946
Surplus on ordinary activities	11,640	1,497
	11,640	1,497

EXPENDITURE	2023 £	2022 £
Employment costs	185,459	164,922
BMC re Room Usage	23,001	22,000
Education Resources	1,188	8,678
Stationery & Sundries	5,526	5,341
Children's Materials	1,209	1,213
Equipment & Resources	2,609	2,593
Refunds of Deposits & Fees	224	150
Staff Training	866	1,562
Outings . Events, Gifts	1,020	588
Staff & Children's uniforms	550	360
Accountant's Fees - Payroll	1,743	1,455
I.T. Materials & Support	3,546	881
Ofsted and safeguarding fees	334	310
Fish tank	720	612
Petty Cash - sundries		1004
	227,995	211,449
(Deficit)/Surplus on ordinary activities	11,640	1,497
	239,635	212,946
Capital Items & Renovations	2,723	7,885
Net surplus for year	8,917	-6,388
	11,640	1,497

FUND	Actual 2023	Actual 2022
Balance 1st.September 2022	102,852	109,240
(Deficit)/Surplus for year	8,917	-6,388
Balance 31st.August 2023	111,769	102,852
Bank balance	113,285	108,461
Debtors	4,393	881
Creditors	-5,909	-6,490
	111,769	102,852

Related Party Transactions

The Pre School bought £4,316 of supplies from Lomax Supplies a firm connected to a member of the staff team on normal commercial terms