

BRAMHALL METHODIST CHURCH ANNUAL REPORT 2020-21



GROWING LOVING SERVING

Bramhall Methodist Church is an inclusive congregation of around 360 members that reaches out to the Bramhall village community with a wide range of social and religious services.

It is a registered charity, part of The Methodist Church in Britain, one of twelve churches that make up the Bramhall and Wythenshawe Methodist Circuit, and a member of the eight-strong inter-denominational Churches Together in Bramhall and Woodford network that promotes unity among Christian churches.

The church is also connected to the Messy Church movement that fosters informal, family-friendly worship for those who might shy away from more traditional church services.

The numerous charitable and socially responsible causes it embraces include:

- **Christian Aid** - that fights to bring an end to poverty around the world;
- **Fair Trade** - which aims to secure better prices, decent working conditions and fairer terms of trade for farmers and workers in the developing world;
- **Action for Children** - a charity actively supported by the Methodist Church that strives to make life better for the UK's most vulnerable children and young people; and
- **International Justice Mission** - supporting the Office in Bangalore, India, in their campaign to challenge slavery and human trafficking.

The **Methodist Church** 





Contents

Message from the Ministry Team	4	Supporting Life's Journey	12
Worship and Prayer	5	Supporting Life in the Village	13
Exploring and Growing in Faith	7	Being Part of Something Bigger	15
Children and Families	8	Resources	17
Making Friends	11	The Year in Pictures	19

We seek to be
a people who:

Love God,
each other,
and the World

We aim to be a church that puts Jesus at
the heart of life, where everyone can:

belong and feel at home
discover and grow in faith
receive support for daily life
contribute and get involved in church life

Message from the Ministry Team

Dear Friends

It almost goes without saying that 2020-2021 was an unusual year, not only for Bramhall Methodist Church, but for the whole world as we endeavoured to come to terms with the impacts of a global pandemic.

For certain periods of time it has been necessary for the Church buildings to be closed, or largely out of use, but this has not meant that the Church has closed – its life has very much continued, as you will read about elsewhere in this report.

We have been blessed to be able to embrace the opportunities offered by technology. I suspect there are very few of us who had heard of Zoom and yet for many of us it is now an almost integral part of life.

There are many things we have learned, and other things which we have come to appreciate in new ways, which will stay with us in the months and years ahead.

As we look to the future, "May the God of hope fill you with all joy and peace in believing, so that you may abound in hope by the power of the Holy Spirit." (*Romans 15:13*)

Sarah and Richard





Worship & Prayer

Worship

Our Sunday and Thursday morning services have continued uninterrupted since the start of the first lockdown in March 2020, initially delivered via YouTube from people's homes. In September, 'in person' church services began with the welcome for our new minister, Rev Sarah Parkin. These services are streamed live to be available on YouTube and by telephone which enabled their continuation during subsequent lockdowns.



The church decorated for Christmas

Connect

Connect with God; Connect with each other; Connect with our community. Connect launched in July, and is a new act of worship replacing Praise @ the Point, and with a particular focus on growing the Kingdom of God. Initially blending in-person worship in Centrepunkt (as we are able), with worship online using Zoom, we seek to establish new ways of joining together and putting our faith into action.



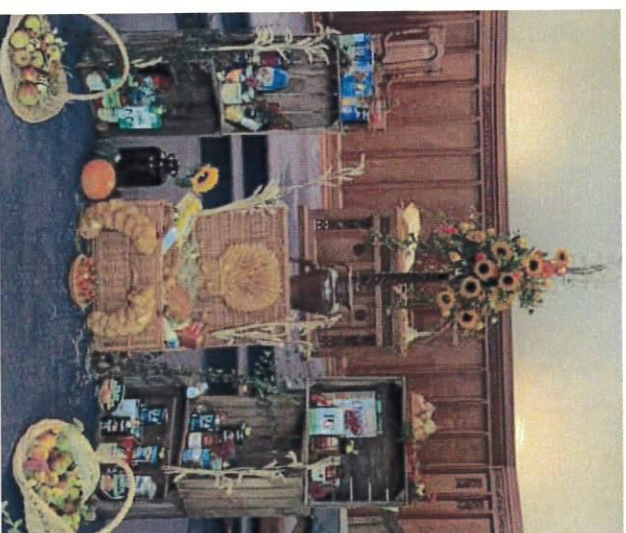
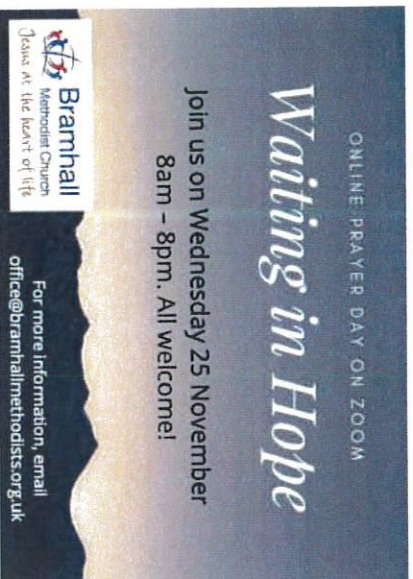
Connect

Worship Night

Worship Night provides a monthly time and space for informal worship, reflecting on a particular passage of scripture. It moved successfully on to Zoom and has been meeting every four weeks.

Prayer Ministry

Church Open for Prayer returned in the summer until stay-at-home restrictions forced its closure. Communal prayer continues through Zoom with Prayer Time on a Tuesday morning. We held a 12-hour Prayer Day in November where up to 60 people took part. Specific prayer requests can be sent at any time on the BMC website or the prayer email chain.



Harvest display, September 2020

Flower Ministry

It was possible to offer flower ministry in the Church sanctuary for Harvest and Christmas during 2020. Three very talented BMC members created beautiful and uplifting displays which were greatly appreciated by those physically attending Church services and also by those watching online.



Exploring and Growing in Faith

Our faith is challenged in such difficult times as the pandemic, but as people of faith, we respond by drawing closer to our Creator and seeking to live out our calling as Christ would have us do.

Life Groups

During this time a number of our Life Groups have met, albeit virtually. These have continued to help people to grow in faith but have also been an invaluable source of mutual support and contact for people. They are ready to bounce back strongly when restrictions are lifted.

The Ultimate Book Club

The Ultimate Book Club has also proved its resilience by going online and continuing its successful mission. The opportunity to delve in detail into specific books guided by a knowledgeable leader is greatly appreciated by the faithful following.



A fresh look at the Bible
with Bramhall Methodist Church



A Life Group on Zoom

The Lent Lectures

Lent Lectures have also been online this year and have been a great success. The series has taken up the challenge of raising awareness and engagement in the critical issue of climate change. Excellent material prepared by Richard and Sarah has really helped bring this issue firmly onto the radar of our church community.



Children & Young People

The dedication of all group leaders is much appreciated during a year that was particularly difficult for young people to meet together safely.

Junior Church

Trailblazers met occasionally on Zoom for a bible story and games related to the theme. The Christmas party was enjoyed by all.

Tribe met on Sundays after the morning service via Zoom with six to eight young people taking part. They have used activities from BMC's Energize Urban Saints subscription to stimulate discussion. Recently they have engaged with the BMC Climate Year programme, including discussions led by guest speaker Mollie, a CoP-26 youth representative and campaign worker.



Little Fishes

Little Fishes met on YouTube, singing playing games and crafts, including making shakers for NHS "clap for carers" doorstep events.



Nativity

The 2020 Junior Church Nativity was a blockbuster movie filmed in the individual actors' homes. The angels had all come down with a strange virus that clipped their wings and caused the cancellation of the Holy-lympics. But they were still able to get their message to shepherds and three very wise men (including the Chief Star Advisor), who were led to discover amazing events in Bethlehem.

Girl Guiding Units

Rainbows met in the summer for outdoor games.

11th & 12th Brownies Zoomed regularly, adapting their badge work and games using craft items delivered to them. Promise ceremonies were held for new Brownies. Bronze and silver awards have been achieved. Lava lamps and bracelets for Mother's Day were made and scavenger hunts held.

Guides have also met over Zoom, working on their badges.



Brownie badges



Thanks to all group leaders for their ingenuity in adapting activities over the last 12 months.

Scouting Units

Beavers' Zoom meetings meant online fun with treasure hunts, building spaghetti and marshmallow towers, making bird feeders and baking cakes in a mug. Speakers from St John's Ambulance Service and the Fire Service helped towards the First Aid badge and developing home fire escape plans. Parents have enjoyed the activities alongside their children.

Cubs have met on Zoom, working for digital badges, by programming computers and using software. The Great Indoors badge work has included craft work and making dens. Games have been played over Zoom and a particular highlight was a Torchlight Walk around Bramhall Park.

Cub spaghetti towers Scout's Bake-Off cakes



Scouts have been Zooming, with First Aid classes, a Bake-Off, garden camping overnight, quizzes, Battleships, and other games. Theory classes on cycling and axe use have also been held. New Scouts have joined, and route maps prepared for a hike once restrictions are lifted.

Pre-School

It's been quite a year. We've learned new words such as "bubbles" and "furlough". Covid has brought many challenges, with an enormous number of documents to read and implement. The Pre-School Management Team has been of great support in navigating these times. Once ensconced in our Pre-School bubble, we have had a fab time. We've had children in, absent, and home-schooled. We had "Pre-School @ home" when we couldn't meet. The staff have been invaluable, their dedication and commitment ensuring the children continue to be educated, nurtured and supported.

The 8by8 football team come in weekly, delivering KickStarters Super-Heroes football. Emma from Speech Leap continues her work screening and supporting our intervention work. Three new staff members joined, their passion and drive enhancing an already vibrant team. Graduation last summer was a great success despite being held remotely, as was our Nativity at Christmas.

Registration for 2021/22 academic year is looking really good so hopefully the madness and fun will continue! Manager Kathryn and Deputy Helen are happy for people to come and visit once restrictions allow.



*Harvest display
created by Pre-School*





Making friends

Ramblers and Strollers have had occasional walks in couples or small groups, guidelines permitting. Art and Crafters have been working on various projects individually, including making laundry bags for nurses and personal effects bags to return personal possessions in. All groups plan to meet once restrictions are lifted, and we look forward to that.

Goodbye

In July we said farewell to Rev Philip Berry and his wife Joanna as they retired after six years at BMC. We were able to hold a socially distanced service in Centrepont with Church and Circuit representatives present which was streamed live. Philip was presented with a book of greetings from the congregation along with a cheque.

We also said farewell to Alan Makin and Margaret McKee who retired as Church Administrators, and we thank them for their long and cheerful service.

We said goodbye to Clare O'Keefe as well. Clare's time as Children & Family Worker was much appreciated, and she took on the role of Covid Officer which enabled BMC to open for services (and briefly for other groups) for which we thank her.



Goodbye to Philip

and Hello to Sarah



Hello

In September our first service held in the newly decorated church was to welcome Rev Sarah Parkin as our minister. Church, Circuit and District representatives welcomed Sarah, with Superintendent Philip Peacock leading the service and Chair of the District Andrew Lunn preaching.



Supporting Life's Journey

Group leaders have worked hard to keep in contact with their members while groups have not been able to meet. In time, with God's help, we hope to be able to meet people face to face again and resume activities.

Pastoral Care

Pastoral care of our congregation has been of utmost importance during the year, with many members being extremely vulnerable and others living on their own without the regular social contact that brightens their lives. The Pastoral Visitors have worked tirelessly to keep in contact with those in their care. Zoom chat groups have been set up, meeting after the Connect service and on Wednesday mornings, and telephone conversations between members are encouraged following each Sunday's service.

Volunteers have delivered the Contact magazine to those without the internet and Sarah's regular letters sent with the weekly information sheet have been warmly welcomed. A few groups of socially distanced carol singers visited some household and elderly members of the congregation to spread a little Christmas cheer.

Virtual Choirs

With great help from our technical folk, singers were encouraged to join in and record music for Philip's farewell service, Sarah's welcome service and the Christmas carol service in 2020. A similar invitation is offered to record music for Easter 2021.



Christmas Scratch Choir



Supporting Life in the Village

It has been a very difficult year for life in the village as the pandemic has laid waste to many of our activities. Some have been able to continue, but in a different format, some have had to close to comply with government guidelines and to keep people safe. Reacting to the initial lockdown, then some easing of restrictions followed by moves into Tier 3, Tier 4 and a further lockdown have proved particularly challenging.

We look forward in faith and hope to the day when the pandemic is brought under control, normality is restored, all our support activities can commence again, and we can continue to build God's Kingdom in this place.

Coffee Shop

The Coffee Shop closed down during the first lockdown. During this period, all necessary work was undertaken to make it Covid secure. Perspex screens were installed, as was a card machine to allow contactless payment and the necessary protocols were developed to ensure staff and customers would be safe. Unfortunately, despite these efforts, the Coffee Shop has not been able to open again; it is however ready and able for when restrictions are eased.

Living Advent Calendar

Over 20 shops and businesses in Bramhall Village created a Living Advent Calendar. Starting and ending at BMC, each day of Advent revealed a festive scene in a window showing what Christmas means for them, with a QR code which linked to a favourite carol. Locations of the windows were posted on the church website and followed on our social media channels. This spread a little cheer and promoted local businesses during these uncertain times.

Join us as we light up the
village
this December...



...one window at a time.

BRAMHALL LIVING
ADVENT CALENDAR 2020



Being Part of Something Bigger



World & Neighbourhood Team

The meetings have been held on the ever-helpful Zoom platform and the team reviews the activities of the many service projects BMC supports locally, nationally and worldwide.

Communion Collections

We supported international, national and local charities during the year. Over £5,800 has been distributed plus over £8,500 to local foodbanks. We never cease to be amazed by the prayerful generosity shown by BMC members particularly in these extraordinary times.

Christian Aid

There was no envelope collection this year but Bramhall & Woodford Churches Together raised donations of £3,339. There are now volunteer teams across Bramhall and Woodford churches working with other local Christian Aid groups.

Thrft Shop

Challenging as this year has been for everyone, the Thrift Shop did manage to open for seven weeks between October and December, albeit with limited staff and adhering to strict guidelines. Our regular customers were impressed by the new spacious layout of the shop and expressed how delighted they were to be back.

In May 2020, being conscious of the desperate situation of all charities, the shop focused on donating £5,000 to local and national charities. However, due to the Covid-19 lockdown the shop was financially unable to send any charity donations in October and by April 2021 the shop finances will be greatly depleted. So it is good news that, adhering to strict guidelines, the Thrift Shop hopes to re-open in mid-April.



Climate Year at BMC

The CoP-26 meeting of world leaders in Glasgow in November 2021 may be our last chance as a world community to avert climate catastrophe. God requires us to take care of the planet and we are failing to do so.

At the Steward's Meeting in November 2020 it was agreed that the church would adopt Climate Consciousness as a theme for 2021. This involves several projects running in parallel and a series of services bringing these together on key dates throughout the year.

Climate change is particularly concerning for young people (who will have to live through it for longer than many of the rest of us). We believe there should be a key focus of engaging with young people within and beyond our congregation. "Young" people here should be taken as those of school and college age but also those in their twenties and early thirties.

Study groups and support jointly with other churches across the country will help individuals and groups to express their concerns to local councillors and MPs.

Touching the Earth Lightly

A festival celebrating the wonder and beauty of our planet and raising awareness of its destruction and what we can do about it will be held at BMC from 14th - 17th October, culminating in our Harvest Festival on Sunday 17th October. Please save the date now!

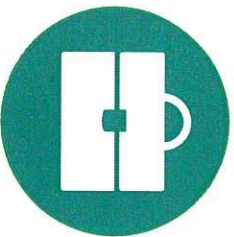


Eco Church Award

Eco Church is A Rocha UK's award scheme for churches in England and Wales who want to demonstrate that the gospel is good news for God's earth.

It provides a framework to equip congregations to express our care for God's world throughout worship and teaching; in how we look after our buildings and land; in how we engage with our local community and in global campaigns, and in the personal lifestyles of our congregation. We have been awarded the Bronze level and will look at achieving higher levels during 2021.

Resources



Finance

The financial position of the Church remains strong. However, our overall reserves have moved from £284,000 at 31st August 2019 to a forecast position of £197,000 at 31st August 2020. This reduction has been the result of deliberate decisions by Church Council to spend some of our reserves to invest in our facilities.

In the autumn of 2019, some £65,000 was spent on the Centrepont development scheme and during the closure of the Church buildings in summer 2020 we took the opportunity to re-paint the Church at a cost of around £27,000. We received around £12,000 from a congregational appeal, with the remainder coming from our reserves. In doing this work we identified that extensive repairs were required to the plaster and we completed this at a cost of £15,500 wholly from our reserves. Of our remaining reserves at 31st August

2020, some £100,000 relate to Pre-School. These reserves are restricted reserves that can only be used for purposes that relate to the Pre-School.

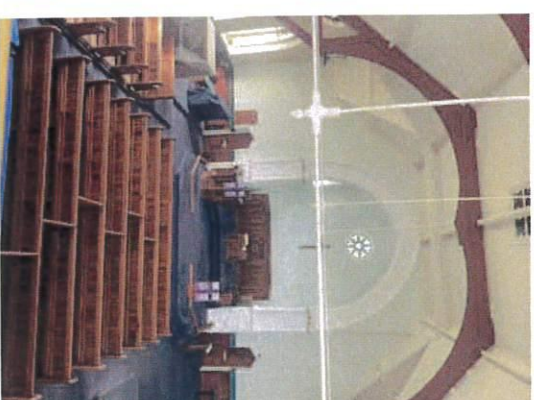
The pandemic has had a significant impact on the Property and General Account during 2020. Our property was closed for substantial period of time, including the Coffee Shop and the Thrift Shop. The reduction in outside property income was generally covered by reduced property expenditure. Our congregation responded magnificently and continued to give to the Church via direct bank transfers and standing orders and our income from giving held up well.

The forecast position is an overall break-even position for the Property and General Account for the year to 31st August 2020, but this does include 'rent donations' from the Thrift Shop and Coffee Shop leading to reductions in their overall reserves as they had little income after March 2020.

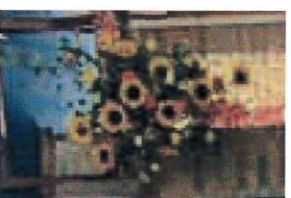
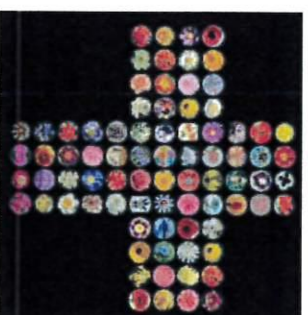
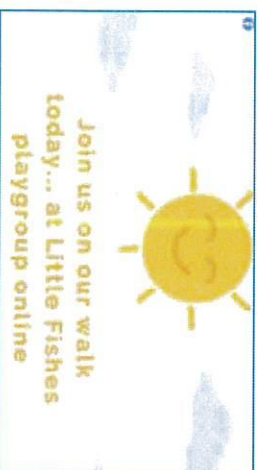
Overall financially we have survived the pandemic and managed to invest in our property so that it is in a good state to resume worship and other activities.

Property Investment

During the first lockdown, Church Council agreed to undertake overdue repairs and redecoration of the church sanctuary. Scaffolding was erected and defective plasterwork was replaced using a traditional lime-based breathable plaster and breathable paint. The new colour scheme picked out the colours of the stained-glass windows giving a bright, fresh look to the church. The organ clean and refurbishment was carried out following the redecoration and the results are stunning.



The church buildings may have been closed, but the Church is very much alive!



Bramhall Methodist Church
23 Bramhall Lane South, Bramhall, Stockport, SK7 1AL
web: www.bramhallmethodists.org.uk
email: office@bramhallmethodists.org.uk
phone: 0161 439 1204


Bramhall
Methodist Church
Jesus at the heart of life

BRAMHALL METHODIST CHURCH

FINANCIAL REPORT

YEAR ENDED 31st AUGUST 2020

BRAMHALL METHODIST CHURCH

FINANCIAL REPORT and ACCOUNTS

YEAR ENDED 31st AUGUST 2020

INDEX

	Page
1 Trustees Report	2
2 Independent Examiner's Report	7
3 Summary SOFA and Income and Expenditure Account	9
4 Income Account	13
5 Expenditure Account	14
6 Balance Sheet	15
7 Accounting policies	16
8 Notes to the Accounts	18
9 Thrift and Coffee Shop Accounts	20
10 Pre-School Accounts	21

Bramhall Methodist Church

Trustees Report

Achievements and Performance

We seek to be a people who love God each other and the World.

We aim to be a church that puts Jesus at the heart of life, where everyone can: belong and feel at home; discover and grow in faith; receive support for daily life; contribute and get involved in church life.

We assess our performance under 4 domains (as set out in the Income and Expenditure account):

Worship Prayer and Christianity Explored; Children and Young people; Fellowship and Supporting Life's Journey and World Neighbourhood and Community.

The annual report which is filed with these Financial statements sets out in detail the activities of the Church and we set out in this report the key highlights.

The Church has a large suite of buildings, the Church itself, the Church Centre and the Centrepont building and is located in the Centre of the Village of Bramhall. Key activities are regular worship and service to the Community through the running of a Pre-school (in the Church centre) and a coffee shop and Thrift shop (in the Centrepont building).

During the latter half of 2020 the global pandemic significantly curtailed the use of our building and facilities, however as can be seen from the rest of this report we managed to maintain the life of the Church on-line

Worship Prayer and Christianity explored

We currently have around 360 members, having had around 400 members for many years. We run four regular weekly services, Thursday morning, 10.00 Sunday both at Church and a more contemporary worship at Centrepont (Praise at the Point/ Connect) and over the course of the year had more than 220 Church services.

Our Sunday and Thursday morning services have continued uninterrupted since the start of the first lockdown in March 2020, initially delivered via YouTube from people's homes. Early investment in streaming technology has meant that when in-person church services began again these services could be streamed live to be available on YouTube and by telephone which enabled their continuation during subsequent lockdowns.

Connect with God; Connect with each other; Connect with our community. Connect launched in July and is a new act of worship replacing Praise@the point, and with a particular focus on growing the Kingdom of God. Initially blending in-person worship in Centrepont (as we are able) and worship online using Zoom, we seek to establish new ways of joining together and putting our faith into action.

We regularly meet in small groups to explore our faith with over 100 members attending Life and House Groups regularly, these groups have continued for the most part meeting virtually.

Worship night provides a monthly time and space for informal worship, reflecting on a particular passage of scripture. It moved successfully on to zoom and has been meeting every four weeks.

The Church open for prayer returned in the summer until stay at home restrictions forced its closure. Communal prayer continues through Zoom with prayer time on a Tuesday morning.

We also run other special classes, notable events in the year were the continuation of the Ultimate Book Club and 152 people attended at least one 'Science and the Language of Prayer' lectures and over 40 people attended each of our Lent lectures, which took up the challenge of raising awareness and engagement in the critical issue of climate change.

Children and Young People

As well as our regular Sunday morning Sunday school we run a monthly Messy Church service attended by over 20 children and their parents an annual 'Fun Club' in the summer holidays attended by 83 children during August 2019. We also have 10 dads who bring their children to monthly 'Who let the Dads out'. Many activities moved on line during 2020 and some such as the fun club did not take place in 2020.

In addition, the Church runs its own Pre-School, rated Outstanding at its last Ofsted inspection.

Apart from the first lockdown this has been open throughout the year.

The Church also supports the youth work in the village by giving £10,500 per annum (2019 £12,000) to the Mill, a youth Club project run by Churches together in Bramhall. The money is some of the money raised through the Thrift shop. Given the lack of face to face meeting and that the Thrift shop was not open from March onwards we have had to scale back our support for this venture during 2020.

Fellowship and Supporting Life's Journey

The annual report sets out the many activities of groups that meet to give fellowship to one another. These range from Choirs to rambling and everything in between.

The Church regularly played host to members of the Halle Orchestra who play a series of concerts at the Church.

World Neighbourhood and Community

The Coffee shop provides a service to the local community where people can meet and chat. In autumn 2019 the Coffee shop was re-furnished and new furniture bought. In addition the toilets and Centrepont hall were refurbished.

However it was closed from March onwards as the pandemic took hold.

The Thrift shop provides an opportunity for re-cycling goods as well as being a point of social contact. As a charity shop it sells goods at reasonable prices and supports other charities with specific goods, e.g. Manchester mission with warm men's clothing. After a donation to the Church, for use of the premises, money raised by the Thrift shop is distributed to local, national and international charities. The Thrift shop was closed for the period from March to September and in subsequent lockdowns.

Communion Collections are held monthly to support a wide range of Charitable and other good causes. In particular giving continued during the pandemic and in particular the Church supported two local foodbanks raising over £3,500.

Financial Review

The Charity recorded net incoming resources of £2,390 (2019 £8,423) on the General and Property unrestricted reserve and in total, including designated and unrestricted funds, a net outgoing £93,273 (2019 Incoming £8,423).

Financially while we have lost income from hiring out our Property our Congregational giving has been maintained and increased and some of our running costs reduced. This has meant that our normal income has been maintained in line with our Expenditure.

Unrestricted funds have reduced to £101,882 (2019 £195,155). Of these funds £23,050 (2019 £101,554) is reserved for future maintenance, repair and improvement to our suite of buildings.

The significant reduction occurred because of building work to re-furbish Centrepont and re-decorating the Church during its closure in summer 2020, as set out below.

Building developments

The Church Council had, during the year 2018/19, approved work on Centrepont which incorporated re-configured toilets including a compliant disabled toilet, new blinds, new ceiling and lighting to the coffee shop, new entrance door, a fire alarm system and redecoration throughout. This was completed in September 2019 within the agreed budget of £55,000 plus VAT. The money for this was taken from the Property Renovation reserve. It is anticipated that this will enhance the Coffee shop in its mission and service and the building more generally, improving it both for use in Sunday service but also enhancing its attractiveness to outside hirers.

The Trustees have taken the opportunity in summer 2020 to re-decorate the Church, repair damage plaster and refurbish the organ. The total of these works was £42,693 plus Vat and although there was an appeal for these works which raised £10,745. Of this some £26,257 was incurred to the 31st August 2020 and is reflected in these accounts with the balance being spent in the Autumn of 2020. These works together with the works on Centrepont referred to above will extinguish our Property Renovation reserve.

Restricted funds:

The Pre-School is treated as a restricted fund and holds a reserve of £96,814 (2019 £89,906) an increase of £7,718 (2019 £467) compared to the previous year.

Policy on reserves

The Church council approves a detailed reserve policy each year for each of the unrestricted and restricted funds.

In summary the General and Property reserve is set at a level to absorb the occasional year where this account is in deficit.

Other designated reserves for the Thrift shop and Coffee shop are set to provide working capital for those operations.

The Trustees are conscious of the significant suite of buildings that they are responsible for maintaining. In 2020 significant spending took place from this reserve, with further to come in 2021 and the Trustees consider that this reserve needs strengthening to make sure that the buildings can be maintained to their current high standards.

Principal funding sources

Donations from the congregation, donations from Pre-school, coffee shop and thrift shop to reflect premises use and room hire fees from outside organisations.

Investment policy and Objectives

The Charity invests surplus funds with either the Trustees for Methodist Church purposes (TMCP) or the Central Finance Board of the Methodist Church. All investments are cash based.

Plans for the future

People changes

Our minister Philip Berry retired in August 2020. The Rev Sarah Parkin started as our new minister on 1st September 2020.

Our children and family worker Hannah Howard left us in July 2019 and we were pleased to welcomed Clare O'Keefe to that role. On the retirement of Alan Makin and Margaret McKee as church secretaries during April to June 2020 and with the pandemic curtailing the activities of a children and family worker, Clare took over the role of administration manager.

Much thought is also being given to how we do 'Church 'differently as we emerge from the Pandemic.

Structure, governance and management

The Methodist Church is constituted under the Methodist Church Act 1976. The local Church is part of the national Methodist Church (the Connexion). The local church's property is held on Model Trusts by the Custodian Trustee, The Trustees for Methodist Church Purposes. Management of that property, and responsibility for the local church's spiritual and financial affairs, is delegated to the local Church Council to act as Managing Trustee.

Bramhall Methodist Church is a registered Charity number 1130747.

Recruitment and appointment of trustees

Some members are appointed to Church Council by virtue of the office they hold within the life of the church. The Church Council is responsible for making such appointments. The Church Stewards and representatives of the congregation are appointed at the Church General Meeting held in early summer each year.

Induction and Training of Trustees

Trustees are periodically reminded of their legal obligation under Charity law.

Organisational Structure

The Managing Trustees administer the charity. They meet at least twice a year. There is a Resources Committee that has delegated powers to deal with finance and property matters, plus other sub-committees that meet regularly. A proportion of the Trustees are appointed each year by those

attending the Church General meeting, held usually in April, and which all members are entitled to attend and vote. According to the rules and regulations of the Methodist Church such trustees normally serve for a maximum period of 6 years.

In the period March 2020 to October 2020 a Management Committee was formed that had delegated powers from Church Council to respond to the emerging issues arising from the pandemic in a timely fashion. The Management Committee initially met weekly and then fortnightly. In October 2020 the normal governance arrangements of the Church resumed.

Major Risks and management of those risks

The Church Council has a range of policies, which are updated regularly, covering the following areas.

Safeguarding, working with children and vulnerable adults

Health and Safety

Financial and office systems

Hazards – fire etc.

The Trustees in particular take their responsibilities for Safeguarding young people and vulnerable adults very seriously and have a Safeguarding officer in place who attends the Resources Committee meetings and Church Council meetings.

The Trustees retain a full suite of insurance policies with a specialist Church Insurer – Methodist Insurance Ltd.

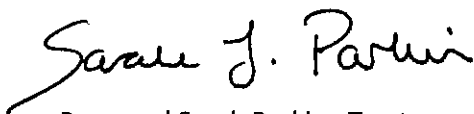
More longer-term risks are the increased age of the congregation and potential for large repair and maintenance cost to the buildings.

In respect of the former the Church continues to work to spread the gospel and in respect of the latter formal independent inspections are done every 5 years. The next inspection is due in 2021 and all items from the last inspection have been dealt with.

Public Benefit

The Trustees confirm that they have complied with section 4 of the Charities Act 2011 to have due regard to the guidance published by the Charity Commission for England and Wales.

Approved by the Trustees on 21st June 2021 and signed on their behalf by;



Reverend Sarah Parkin - Trustee

Independent examiner's report to the trustees of Bramhall Methodist Church

I report on the accounts of the charity for the year ended 31 August 2020, which are set out on pages 9 to 21 .

Respective responsibilities of trustees and examiner

The charity's trustees are responsible for the preparation of the accounts in accordance with the requirements of the Charities Act 2011 (the 2011 Act). The charity's trustees consider that an audit is not required for this year under section 144(2) of the Charities Act 2011 and that an independent examination is needed.

It is my responsibility to:

- examine the accounts under section 145 of the 2011 Act
- to follow the procedures laid down in the general Directions given by the Charity Commission under section 145(5)(b) of the 2011 Act
- to state whether particular matters have come to my attention

Basis of independent examiner's report

My examination was carried out in accordance with the general Directions given by the Charity Commission. An examination includes a review of the accounting records kept by the charity and a comparison of the accounts presented with those records. It also includes consideration of any unusual items or disclosures in the accounts, and seeking explanations from you as trustees concerning any such matters. The procedures undertaken do not provide all the evidence that would be required in an audit and consequently no opinion is given as to whether the accounts present a 'true and fair view' and the report is limited to those matters set out in the statement below.

Independent examiner's statement

In connection with my examination, no matter has come to my attention:

(1) which gives me reasonable cause to believe that in any material respect the requirements:

- to keep accounting records in accordance with section 130 of the 2011 Act
- to prepare accounts which accord with the accounting records and comply with the accounting requirements concerning the form and content of accounts set out in the Charities (Accounts and Reports) Regulations 2008.

have not been met; or

(2) to which, in my opinion, attention should be drawn in order to enable a proper understanding of the accounts to be reached.



J. P. Roper FCA
Independent examiner
11 Riverview
The Embankment Business Park
Vale Road
Heaton Mersey
Stockport
SK4 3GN

21 June 2021

BRAMHALL METHODIST CHURCH

Statement of Financial Activities

SUMMARY

31st August 2019

Incoming Resources

Income from donations and legacies
Income from charitable activities
Investment Income

TOTAL INCOMING RESOURCES

TOTAL RESOURCES EXPENDED- Charitable Activities

Net Incoming/(outgoing) resources before transfers

Gross transfers between funds

Net Incoming/outgoing resources before other recognised gains and losses

Other recognised gains/losses

Net movement of funds

RECONCILIATION OF FUNDS

FUND BALANCE 1st September 2018

FUND BALANCE carried forward 31st AUGUST 2019

Actual 12 months 31.8.2019 Unrestricted	Actual 12 Months 31.8.2019 Restricted	Actual 12 months 31.8.2019 Total
183,285		183,285
145,347	209,926	355,273
478		478
329,110	209,926	539,036
320,687	209,459	530,146
8,423	467	8,890
0	0	0
8,423	467	8,890
0	0	0
8,423	467	8,890
186,732	88,629	275,361
195,155	89,096	284,251

31st August 2020

Incoming Resources

Income from donations and legacies
Income from charitable activities
Investment Income

TOTAL INCOMING RESOURCES

TOTAL RESOURCES EXPENDED- Charitable activities

Net Incoming/(outgoing) resources before transfers

Gross transfers between funds

Net Incoming/outgoing resources before other recognised gains and losses

Other recognised gains/losses

Net movement of funds

RECONCILIATION OF FUNDS

FUND BALANCE 1st September 2019

FUND BALANCE carried forward 31st AUGUST 2020

Actual 12 months 31.8.2020 Unrestricted	Actual 12 Months 31.8.2020 Restricted	Actual 12 months 31.8.2020 Total
169,723		169,723
108,418	201,192	309,610
489		489
278,630	201,192	479,822
371,903	193,474	565,377
-93,273	7,718	-85,555
0	0	0
-93,273	7,718	-85,555
0	0	0
-93,273	7,718	-85,555
195,155	89,096	284,251
101,882	96,814	198,696

BRAMHALL METHODIST CHURCH

Statement of Financial Activities

UNRESTRICTED FUNDS SUMMARY

31st August 2019

Incoming Resources

Income from donations and legacies
Income from Charitable activities
Investment Income

TOTAL INCOMING RESOURCES

TOTAL RESOURCES EXPENDED- Charitable Activities

Net Incoming/(outgoing) resources before transfers

Gross transfers between funds

Net Incoming/outgoing resources before other recognised gains and losses

Other recognised gains/losses

Net movement of funds

RECONCILIATION OF FUNDS

FUND BALANCE 1st September 2018

FUND BALANCE carried forward 31st AUGUST 2019

Actual 12 months 31.8.2019 Unrestricted Gen& Prop	Actual 12 Months 31.8.2019 Designated Thrft	Actual 12 Months 31.8.2019 Designated Special Pro	Actual 12 Months 31.8.2019 Designated Coffee	Actual 12 Months 31.8.2019 Designated Prop Ren	Actual 12 months 31.8.2019 Total
183,285					183,285
78,745	39,551		27,051		145,347
478					478
262,508	39,551	0	27,051	0	329,110
254,900	20,871	15,300	29,816	0	320,887
7,608	18,680	-15,300	-2,585	0	8,423
0	-12,000	12,000	0	0	0
7,608	6,680	-3,300	-2,585	0	8,423
0	0	0	0	0	0
7,608	6,680	-3,300	-2,585	0	8,423
29,610	13,067	10,360	32,151	101,554	186,732
37,218	19,747	7,050	29,586	101,554	195,155

31st August 2020

Incoming Resources

Income from donations and legacies
Income from Charitable activities
Investment Income

TOTAL INCOMING RESOURCES

TOTAL RESOURCES EXPENDED- Charitable Activities

Net Incoming/(outgoing) resources before transfers

Gross transfers between funds

Net Incoming/outgoing resources before other recognised gains and losses

Other recognised gains/losses

Net movement of funds

RECONCILIATION OF FUNDS

FUND BALANCE 1st September 2019

FUND BALANCE carried forward 31st AUGUST 2020

Actual 12 months 31.8.2020 Unrestricted Gen& Prop	Actual 12 Months 31.8.2020 Designated Thrft	Actual 12 Months 31.8.2020 Designated Special Pro	Actual 12 Months 31.8.2020 Designated Coffee	Actual 12 Months 31.8.2020 Designated Prop Ren	Actual 12 months 31.8.2020 Total
169,723					169,723
82,216	20,677		13,781	11,745	108,418
489					489
232,427	20,677	0	13,781	11,745	278,630
230,037	23,332	8,000	15,285	95,249	371,903
2,390	-2,855	-8,000	-1,504	-83,504	-93,273
	-10,500	10,500	-5,000	5,000	0
2,390	-13,155	2,500	-6,504	-78,504	-93,273
0			0	0	0
2,390	-13,155	2,500	-6,504	-78,504	-93,273
37,218	19,747	7,050	29,586	101,554	195,155
39,608	6,692	9,550	23,082	23,050	101,882

BRAMHALL METHODIST CHURCH**Statement of Financial Activities****RESTRICTED FUNDS SUMMARY 2019****31st August 2020**

	Actual 12 Months 31.8.2019 Restricted Pre- School
TOTAL INCOMING RESOURCES- Charitable Activities	209,926
TOTAL RESOURCES EXPENDED- Charitable Activities	209,459
Net Incoming/(outgoing) resources before transfers	467
Gross transfers between funds	0
Net Incoming/outgoing resources before other recognised gains and losses	467
Other recognised gains/losses	0
Net movement of funds	467
RECONCILIATION OF FUNDS	
FUND BALANCE 1st September 2018	88,629
FUND BALANCE carried forward 31st AUGUST 2019	89,096

31st August 2018

	Actual 12 Months 31.8.2020 Restricted Pre- School
TOTAL INCOMING RESOURCES- Charitable Activities	201,192
TOTAL RESOURCES EXPENDED-Charitable Activities	193,474
Net Incoming/(outgoing) resources before transfers	7,718
Gross transfers between funds	0
Net Incoming/outgoing resources before other recognised gains and losses	7,718
Other recognised gains/losses	0
Net movement of funds	7,718
RECONCILIATION OF FUNDS	
FUND BALANCE 1st September 2019	89,096
FUND BALANCE carried forward 31st AUGUST 2020	96,814

BRAMHALL METHODIST CHURCH**INCOME AND EXPENDITURE ACCOUNT****Summary of General and Property Account**

	Actual 12 months 31.8.2019	Actual 12 months 31.8.2020
Total Income per detailed Income and Expenditure Account	262,508	232,427
Total Expenditure per detailed Income and Expenditure account	<u>254,900</u>	<u>230,037</u>
Surplus/Deficit for the year	7,608	2,390
	<u>7,608</u>	<u>2,390</u>
Net Surplus/Deficit for the year	7,608	2,390
	<u>7,608</u>	<u>2,390</u>
	<u>7,608</u>	<u>2,390</u>
FUND BALANCE 1st September 2019	29,610	37,218
Transfer to Property Renovation Reserve	0	
FUND BALANCE carried forward 31st August 2020	<u>37,218</u>	<u>39,608</u>

BRAMHALL METHODIST CHURCH

INCOME AND EXPENDITURE ACCOUNT

	General and Property Account			
	Notes	Actual	Actual	Actual
		12 months	12 months	12 months
		31/08/2019	31/08/2019	31/08/2020
INCOME				
<i>Worship, Prayer and Exploring Christianity</i>		71		
Donations and legacies		<u>14,604</u>		<u>6,241</u>
<i>Total Other</i>			14,675	6,241
 <i>Children and Young People</i>		643		36
Fun Club		<u>1,251</u>		<u>802</u>
<i>Total Other</i>			1,894	838
 <i>Fellowship and Supporting Life's Journey</i>				
Halle Concerts		5,882		2,592
Other		43		64
 Living Life to the full course				515
Science course grant and other				<u>3,952</u>
<i>Total Course and Events</i>			5,925	7,123
 <i>World Neighbourhood and Community</i>				
Other				
			0	0
 <i>Resources</i>				
Planned Giving		130,617		123,962
Loose Cash		8,190		9,679
Income Tax Refund		<u>29,803</u>		<u>29,841</u>
<i>Total Offering and Tax Reclaim</i>			168,610	163,482
 Contributions from Church organisations - Church Centre		26,379		22,850
Contributions from Church organisations - Centrepont		16,800		16,800
Room Hire external Church Centre		2,498		1,580
Room Hire external Centrepont		21,074		11,715
Fees		1,570		213
Ground Rent and Sundry		<u>2,606</u>		<u>1,096</u>
<i>Total Property Income</i>			70,926	54,254
Bank Interest		478		489
 <i>Total Interest and Investment Income</i>			478	489
<i>Other</i>				
 TOTAL INCOME			<u>262,508</u>	<u>232,427</u>
 Analysis for SOFA				
Income from donations and legacies			183,285	169,723
Income from charitable activities			78,745	62,215
Investment Income			478	489
			<u>262,508</u>	<u>232,427</u>

BRAMHALL METHODIST CHURCH

INCOME AND EXPENDITURE ACCOUNT

INCOME AND EXPENDITURE ACCOUNT	General and Property Account				
	Notes	Actual 12 months 31/08/2019	Actual 12 months 31/08/2019	Actual 12 months 31/08/2020	Actual 12 months 31/08/2020
EXPENDITURE					
<i>Worship, Prayer, Christianity Explored</i>		344		518	
Copyright Licences		860		1,046	
Alpha				313	
Catering and Coffee		263		289	
Piano, Microphones, Projector					
Christmas Decorations		397			
Palm Crosses		63			
Prayer handbooks and other books		1,255		72	
Flowers and Plants		1,228		208	
Sundry				167	
<i>Total Other</i>			4,410		2,613
<i>Children and Young People</i>		44		65	
Junior Church		170		33	
Fun Club		421			
Messy Church		269		193	
Youth Events		-50			
<i>Total Other</i>			854		291
<i>Fellowship and Supporting Life's Journey</i>				136	
Churches Together		100			
Lent Lectures					
Science Course				2,766	
Harvest Fest		97			
Halls		4,004		1,844	
Life Group material					
Flyers etc for various events		377		226	
<i>Total Course and Events</i>			4,578		4,972
Pastoral Assistance		2,318			
<i>Total Other</i>			2,318		0
<i>World Neighbourhood and Community</i>					
Connexional Funds					
Other Grants	1	228		228	
<i>Total Grants and Donations</i>			228		228
Outreach		178			
Royal British Legion Poppy Appeal					
<i>Total Other</i>			178		0
<i>Resources</i>					
<i>Circuit Assessment, Pastor and Family Worker</i>			143,141		150,107
Heat, Light and Power		8,596		9,671	
Water		2,026		1,307	
Cleaning		21,065		16,662	
Insurance		7,807		8,171	
Servicing		2,547		1,213	
Chief Rent and Security		5			
Maintenance and Repairs		36,866		16,605	
<i>Total Property Costs</i>			78,912		53,629
Church Secretaries		9,789		7,156	
Printing and Stationery		3,983		3,006	
Publicity		297		360	
Telephone and Internet		1,747		1,916	
Audit and accountancy		2,011		1,200	
Education and Training		600			
Bank Charges and Payroll Fees		1,279		1,234	
Minister Expenses		520			
Streaming and other computer				3,227	
Other Sundries		55		98	
<i>Total Running Costs</i>			20,281		18,197
TOTAL EXPENDITURE			£254,000		£230,037

All expenditure is in relation to charitable activities

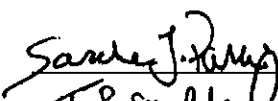
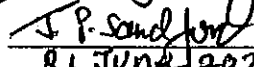
BRAMHALL METHODIST CHURCH

BALANCE SHEET 31st AUGUST 2020

	As At 31 August 2019	As At 31 August 2019	Notes	As At 31 August 2020	As At 31 August 2020
CURRENT ASSETS					
<i>Investments</i>					
<u>Trust Funds</u>		24,742	6		10,647
<i>Cash</i>					
Deposit (CFB General)	30,311			30,528	
Deposit (CFB Property)	57,583			12,713	
Deposit (CFB Centrepoin Legacy)	66			67	
Thrift Shop and Coffee Shop	49,334			29,674	
Pre-School	125,985			99,972	
General and Property	32,318			16,329	
Cash in hand	<u>100</u>			<u>100</u>	
		295,697			189,383
Debtors					
General	10,705		4	12,833	
Pre-School	<u>238</u>			<u>304</u>	
		10,943			13,137
TOTAL CURRENT ASSETS		331,382			213,167
CURRENT LIABILITIES					
CREDITORS					
General	10,004		3	11,009	
Pre-School	<u>37,127</u>	47,131		<u>3,482</u>	14,471
NET ASSETS		<u>£284,251</u>			<u>£198,696</u>

REPRESENTED BY:

General and Property Account	37,218	5	39,608
Property Renovation Reserve	101,554	7	23,050
Thrift Shop	19,747	10	6,592
Special Projects Reserve	7,050	9	9,550
Coffee Shop	29,586	10	23,082
Memorial Fund		8	
Pre-School	89,096	11	96,814

	<u>£284,251</u>		<u>£198,696</u>
Signed on behalf of Church Council	 Sarah Parkin	Minister	
Dated	 John Sandford	Acting CFO	
	<u>21 June 2021</u>		

Bramhall Methodist Church Accounting policies

1 Basis of Accounting

These accounts have been prepared on the basis of historic cost (except that investments are shown at market value) in accordance with Statement of Recommended Practice (SORP 2005) and the Charities Act 1993. There have been no changes in accounting policies in the year.

2 Fund Accounting

General funds are Unrestricted funds which are available for use at the discretion of Church Council in furtherance of the general objectives of the charity and which have not been designated for other purposes

Designated funds comprise Unrestricted funds that have been set aside by Church Council for particular purposes. The aim and use of each designated fund is set out below.

Restricted funds are funds that are to be used in accordance with specific restrictions imposed by donors or which have been raised by the Charity for particular purposes. The aim and uses of each Restricted fund is set out below.

Endowment Funds are restricted funds representing gifts where the Capital is normally unavailable for spending and the income from which is either Restricted or Unrestricted.

Designated Funds

Thrift Shop

The Thrift shop fund shows the activity of the Charity shop run by the Church. The surpluses, after payment of a contribution for the upkeep of the premises and charitable donations made by the Thrift shop Committee, have been designated by Church Council for use in special projects and not for the normal running costs of the Church. Such special projects should have widespread support amongst the membership of the Church and currently include supporting youth work in the village of Bramhall as well as donations to local and international charities as from time to time determined by Church Council

Coffee Shop

The Coffee Shop fund shows the activity of the Coffee shop run by the Church, and staffed by Volunteers from all the Churches in Bramhall. As this is an ecumenical project the majority of surpluses have been designated by Church Council to be given to 'Churches Together in Bramhall and Woodford'

Property renovation

The Property Renovation fund represents funds set aside from previous surpluses and designated by Church Council for major repairs to the suite of Church buildings

Restricted Funds

Pre-School

The Pre-School fund shows the activity of the Pre-School run by the Church. Any surpluses after payment of staff and other costs including a contribution towards premises costs are to be used to support the Pre-School.

Memorial Fund

The Memorial fund was set up from donations for the purpose of providing memorials to Church Members

Accounting policies continued

3 Incoming Resources

All Incoming resources are Included in the Statement of Financial Activities when the charity is legally entitled to receive the income and the amount can be quantified with reasonable accuracy.

Incoming resources are received in cash from donations, church activities, grants and property income.

Grants receivable are accounted for in the period in which they are awarded and are allocated to the fund to which they relate.

Cash donations, Thrift shop, Coffee shop and Pre-School income are included in full in the Statement of Financial Activities on a receivable basis.

Contributions towards premises costs by Thrift shop, Coffee shop, Pre-School and other Church organisations are treated as income in the General account and expenditure in the relevant fund or organisation account.

Incoming Resources are allocated to the activity to which they relate, as set out in the Church Vision document. Incoming resources from general congregational giving and from Premises Income are allocated to the Resources activity.

4 Resources Expended

All expenditure is accounted for on an accruals basis and has been included under expense categories that aggregate to the activity to which they relate, as set out in the Church Vision document. Costs that underpin all the various activities such as Ministry and Premises costs are shown in the Resources activity.

Grants payable are charged in the year that the offer is made except in those cases where the offer is conditional, such grants being recognised as expenditure when the conditions attaching are fulfilled. Grants offered subject to conditions which have not been met at the year end are noted as a commitment, but not accrued as expenditure.

5 Investments

Investments are stated at market value at the balance sheet date. The Statement of Financial Activities includes the net gains and losses arising on revaluations and disposals throughout the year.

6 Tangible Fixed Assets

The Church and associated building are legally owned by the Methodist Connexion. The local church charity does therefore not own the buildings nor are they entitled to any proceeds on sale. Therefore these charity accounts do not include any value for the Church and associated premises. All expenditure on the Church Buildings is therefore considered as maintenance and charged to the appropriate fund account in the year it is incurred.

Expenditure on office equipment and other capital items over £2,000 is capitalised and written off over its estimated useful life.

7 Communion/Special collections

Special Collections are taken regularly for other organisations and Charities. Such collection money does not form part of the Resources of the Church as any money held is due to be paid over to the organisations collected for.

Note 2 gives a memorandum record of the collections during the year.

BRAMHALL METHODIST CHURCH

YEAR ENDED 31st AUGUST 2020

NOTES TO THE ACCOUNTS

	Actual 2019	Actual 2020
1 Grants World Neighbourhood and Community		
Food4hungry	228	228
	<u>228</u>	<u>228</u>
2 Special Collections		
Wellspring		374
Action For Children		1,833
Boaz Trust		651
Christian Aid		1,210
CAP		755
Foodbanks		3,570
IJM		1,740
MA Fellowship mission		699
Macmillan		324
Methodist Mission In Britain		559
Narrowgate		804
Open Arms		590
Playlist Life		672
SNAG		632
Philip Berry retirement gift		3,145
	<u>15,144</u>	<u>17,358</u>
3 Creditors		
Property Accruals	994	3,864
Other Accruals	8,847	7,145
Pre-school	37,127	3,462
PAYE/NI	163	0
	<u>47,131</u>	<u>14,471</u>
4 Debtors		
Gift aid receivable	10,327	12,606
Property	378	227
Pre School	238	304
Prepayments		
	<u>10,943</u>	<u>13,137</u>
5 General		
At start of year	29,610	37,218
Surplus/(Deficit) from General Account	7,608	2,390
Transfer To Property Renovation Reserve		
At end of year	<u>37,218</u>	<u>39,608</u>

During the year the Church bought around £5,000 of monitors, TV's and streaming and other audio visual equipment. No single item was over £2,000 so the equipment has been expensed and not capitalised.

6 Trust Funds

There are no separate restricted trust Funds.

All legacies which are held by TMCP are for general use and therefore have been taken through the general account.

During the year a legacy for £5,000 was received from the estate of Stella Broom

This was added to the balance of the funds held at TMCP.

£5000 was removed for use to help fund the Centrepont project, £3600 for the installation of video live streaming equipment and £10,000 towards the cost of the Church redecoration.

BRAMHALL METHODIST CHURCH

YEAR ENDED 31st AUGUST 2020

NOTES TO THE ACCOUNTS

	Actual 2019	Actual 2020
7 Property Renovation Reserve		
At start of year	101,554	101,554
Donation for Centrepont Project- restricted to that project		1,000
Cost of Centrepont project		- 88,992
Appeal for Church re-decoration- restricted to that project		10,745
Cost of Church re-decoration		- 26,257
Transfer from Coffee shop towards centre point Project		5,000
At end of year	<u>101,554</u>	<u>23,050</u>
8 Memorial Fund		
At start of year		
Funds utilised		
At end of year	<u>0</u>	<u>0</u>
9 Special Projects Reserve		
At start of year	10,350	7,050
Transfer from Thrift Shop	12,000	10,500
The Mill (Millennium Youth Coffee Bar)	-15,000	- 7,500
Hotshots	-300	- 500
At end of year	<u>7,050</u>	<u>9,550</u>

BRAMHALL METHODIST CHURCH

THRIFT SHOP AND COFFEE SHOP ACCOUNTS

YEAR ENDED 31st AUGUST 2020

Note 10

	THRIFT SHOP		COFFEE SHOP	
	Actual 2019	Actual 2020	Actual 2019	Actual 2020
INCOME				
Sales	38,027	19,644	27,051	13,781
Miscellaneous income	1,524	1,033		
TOTAL INCOME	<u>39,551</u>	<u>20,677</u>	<u>27,051</u>	<u>13,781</u>
EXPENDITURE				
Occupation Charges	9,300	9,300	7,500	7,500
Coffee Shop Supplies			7,244	3,728
Churches Together Bramhall and Woodford			3,000	3,500
Strawberry Tea	22			
Equipment for Premises	25		11,872	557
Miscellaneous Expenditure	1,524	1,032		
Contribution to Coffee shop works				5,000
TOTAL EXPENDITURE	<u>10,871</u>	<u>10,332</u>	<u>29,616</u>	<u>20,285</u>
Surplus/Deficit for the year	28,680	10,345	-2,565	-6,504
Community Grants and Donations	10,000	13,000	0	0
	<u>18,680</u>	<u>-2,655</u>	<u>-2,565</u>	<u>-6,504</u>
Transfer Special Projects Reserve	<u>12,000</u>	<u>10,500</u>	<u>0</u>	<u>0</u>
Balance for year	6,680	-13,155	-2,565	-6,504
Balance 1.9.2019	13,067	19,747	32,151	29,586
BALANCE 31.8.2020	<u>19,747</u>	<u>6,592</u>	<u>29,586</u>	<u>23,082</u>

DONATIONS	£		£
UNICEF Uk	1,000	Brought Forward	8,000
All We Can	1,000	St Ann's Hospice	1,000
Royal Osteoporosis Society	500	Stockport Salvation army	1,000
Beacon Counselling	500	Age Uk Stockport	500
Orchid	500	Stockport Without Abuse	500
St Johns Ambulance	500	Hope Central Foodbank	1,000
Stockport Sharks swimming Club	500	Wythenshawe Oasis F/bank	1,000
Wythenshawe Oasis	500		
Mission Aviation Fellowship	1,000		
Wellspring Stockport	1,000		
Nat. Emergencies Trust Coronavirus	1,000		
carry forward	<u>8,000</u>	TOTAL	<u>13,000</u>

Equipment for Premises This is for a new coffee machine and new furniture 2019

Contribution to Thrift Shop works This is a contribution to the cost of re-configuring /re-furbishing the toilets

All income and expenditure is in relation to charitable activities

BRAMHALL METHODIST CHURCH PRE-SCHOOL

STATEMENT OF ACCOUNTS FOR THE YEAR ENDED 31 AUGUST 2020

Note 11

INCOME	2019 £	2020 £
SMBC Grants:-		
Total Applicable for year	137,089	130,819
Fees including deposits	69,160	61,386
JRS Grant		6,264
Outings and Events	1,220	0
Christmas Fair/Fundraising	2,096	1,788
Children's uniforms	134	520
Donations	50	
Sundry		294
Bank Interest	177	121
* Net of Floats & expenses		
	209,926	201,192
Surplus on ordinary activities	467	8,378
	467	8,378

EXPENDITURE	2019 £	2020 £
Employment costs	158,206	148,109
BMC re Room Usage	20,000	20,400
Education Resources	8,509	8,212
Stationery & Sundries	5,690	6,761
Children's Materials	1,151	476
Equipment & Resources	2,123	1,078
Refunds of Deposits & Fees	1,552	338
Staff Training	1,999	1,121
Outings . Events, Gifts	3,420	1,031
Staff & Children's uniforms	1,202	523
Accountant's Fees - Payroll	1,834	1,844
Autopay expenses	43	
I.T. Materials & Support		440
Ofsted and safeguarding fees	220	330
Fish tank	576	576
Petty Cash - sundries	2934	1575
	209,459	192,814
(Deficit)/Surplus on ordinary activities	467	8,378
	209,926	201,192
Capital Items & Renovations		660
Net surplus for year	467	7,718
	467	8,378

FUND

	Actual 2019	Actual 2020
Balance 1st.September 2019	88,629	89,096
(Deficit)/Surplus for year	467	7,718
Balance 31st.August 2020	89,096	96,814
Bank balance	125,985	99,972
Debtors	238	304
Creditors	-37,127	-3,462
	89,096	96,814

Note

The Pre-School buys some stationery and other supplies from Lomax Supplies, a company owned by the husband of Kathryn Lomax the Pre-School leader. All such purchases are at open market value and disclosed and approved by the Pre-school Management Committee.

All Income and expenditure is in relation to charitable activities

Independent examiner's report to the trustees of Bramhall Methodist Church

I report on the accounts of the charity for the year ended 31 August 2020, which are set out on pages 9 to 21 .

Respective responsibilities of trustees and examiner

The charity's trustees are responsible for the preparation of the accounts in accordance with the requirements of the Charities Act 2011 (the 2011 Act). The charity's trustees consider that an audit is not required for this year under section 144(2) of the Charities Act 2011 and that an independent examination is needed.

It is my responsibility to:

- examine the accounts under section 145 of the 2011 Act
- to follow the procedures laid down in the general Directions given by the Charity Commission under section 145(5)(b) of the 2011 Act
- to state whether particular matters have come to my attention

Basis of independent examiner's report

My examination was carried out in accordance with the general Directions given by the Charity Commission. An examination includes a review of the accounting records kept by the charity and a comparison of the accounts presented with those records. It also includes consideration of any unusual items or disclosures in the accounts, and seeking explanations from you as trustees concerning any such matters. The procedures undertaken do not provide all the evidence that would be required in an audit and consequently no opinion is given as to whether the accounts present a 'true and fair view' and the report is limited to those matters set out in the statement below.

Independent examiner's statement

In connection with my examination, no matter has come to my attention:

(1) which gives me reasonable cause to believe that in any material respect the requirements:

- to keep accounting records in accordance with section 130 of the 2011 Act
- to prepare accounts which accord with the accounting records and comply with the accounting requirements concerning the form and content of accounts set out in the Charities (Accounts and Reports) Regulations 2008.

have not been met; or

(2) to which, in my opinion, attention should be drawn in order to enable a proper understanding of the accounts to be reached.



J. P. Roper FCA
Independent examiner
11 Riverview
The Embankment Business Park
Vale Road
Heaton Mersey
Stockport
SK4 3GN

21 June 2021