



PARISH OF BARNSBURY ANNUAL REPORT, JAN-DEC 2024

PREPARED FOR THE 2025 APCM



CONTENTS

Introduction	3
Report from the Parochial Church Council	4
St Andrew's Church	5
Church on the Corner	8
Electoral Roll Report	11
Finance Report	12
Fabric Report	14
St Andrew's Church	14
Church on the Corner	14
Safeguarding Report	15
Children's Work	16
Roots Youth Group	19
St Andrew's Church of England Primary School, Barnsbury	20
Arts on the Corner	21
Cosy Corner	23
Copenhagen Street Food Bank	24
Estates and Low Income Communities Programme	25
Open Church	27
St Andrew's Church Gardens	28
Eco Church	29
Deanery Synod	30

INTRODUCTION

I am delighted to introduce this report on the year 2024 (January to December). It has been an encouraging period for the parish with new worshippers coming to our churches and growth in our missional work, pastoral ministries and community engagement. Examples of all these things are to be found as you read through this report. It has been a year when significant building works have been carried out successfully at both churches. 2024 has also been a year of winning awards. Both churches were awarded Eco Church bronze awards and our volunteer gardening group at St Andrew's gained a silver award. During the year we had a number of major events, all of which went very well, and are recounted in these pages.

I have been very grateful for the support and encouragement of our Churchwardens, Assistant Churchwardens, Parochial Church Council members, clergy colleagues, staff, professional advisers and volunteers who have worked tirelessly over the past year. I would also like to thank Bishop Joanne (Bishop of Stepney), Archdeacon Peter (Archdeacon of Hackney), Area Dean Tamsin (Area Dean of Islington) and Preb. Andy Rider (Dean of Mission for the Stepney Area) and staff in the Diocese of London's Property Department for their continued support. To all those who contribute to God's mission in Barnsbury by your presence, your prayers, your time and energy, and your thoughtfulness, a heartfelt thank you.

The Revd Caroline Titley
Rector

REPORT FROM THE PAROCHIAL CHURCH COUNCIL

The Parochial Church Council (PCC) oversees the work of the parish. Following the successful implementation of an interim Mission Action Plan, the PCC embarked on a process of putting in place a new vision, values, aims and mission action plan for the parish, which was created in its present form (with two churches, St Andrew's Thornhill Square and Church on the Corner) in 2023. This work is nearing completion and will be launched at the APCM in 2025. We are grateful to Andy Rider (Dean of Mission for the Stepney Area of the Diocese of London) for facilitating this process and for helping us to chart the way forward.

The PCC is a Trustee body and, as such, has to give attention not only to the church as 'the people of God', responsible for mission, but also to the church as an organisation with legal and compliance responsibilities. The PCC has finance, safeguarding, data protection and health and safety as standing items on its agenda. We are very grateful for the work of our Treasurer, Andrew Wood, and to our Finance Officer, Tina Okoro, for providing us with timely and well prepared financial information. Our finances are now more complex to run and there is greater external accountability because of our success in being awarded grants from a number of different bodies for building repairs, professional fees, heritage, estates ministry and recycling projects. Despite the repair problems with our church buildings (particularly St Andrew's, which has very serious structural problems and is on the Heritage At Risk Register - condition 'very bad (Priority A)'), the PCC is pleased to have been able to increase its Common Fund contribution to the Diocese.

The PCC has had a number of discussions about safeguarding culture, using worksheets produced by the national church. We are very grateful to our two Parish Safeguarding Officers for the work they do in appraising the PCC about safeguarding issues and monitoring our progress via the safeguarding dashboard. The PCC gives high priority to the detailed monitoring of safeguarding policies, practices and training. At the time of writing this report, the safeguarding dashboard showed St Andrew's as having made '100% progress' and Church on the Corner '95% progress'.

The PCC is very conscious of its health and safety responsibilities and as part of its approach appointed Art Architects to undertake contract management responsibilities on its behalf for the major works that were carried out to the north vestry and tower and spire areas of St Andrew's church building in the fourth quarter of 2024. The PCC carried out its annual review of the parish's health and safety policy and made a number of amendments to reflect changing circumstances.

During the year we said goodbye to our Parish Administrator, Rachel Walker. The PCC is grateful to Rachel for her dedication and all the improvements she made to our administrative systems.

The Revd Caroline Titley
Rector

ST ANDREW'S CHURCH

2024 was a positive and lively year at St Andrew's. During the year, we welcomed new worshippers, grew in numbers, and opened up the church to more people and events. Our major services at the high points of the Christian year were particularly well supported. We are grateful to all those who have contributed to the leading of services and to preaching including Rev Idina Dunmore, Canon Robert Titley, our Children's Worker Heather Parker, and to Richard Parker. We also made considerable strides with the repairs to our church building.

Before Christmas was a very busy period with all the usual Advent and Christmas services and events, along with two wonderful weddings and three major building contracts: stonework repairs to the north vestry gable, significant but temporary repairs to the tower and spire, and essential electrical repairs. Looking back on that period, it is pretty amazing that everything happened successfully; but all that we did was needed. It was great to have a topping out service and ceremony to mark the completion of the first long-term repairs to the building. The architect, representative from the contractor and I all went to the top of the scaffolding around the north vestry and others gathered below.



A big thank you is due to our contractors, architects, staff and volunteers for supporting St Andrew's through this period.

2024 was the year when we set up our Pastoral Group in order to develop our support for congregation members, particularly those who are unwell or facing difficulties. Through this group, we aim to have a better knowledge of our people and any who might want our prayers, a home communion or a visit. With 115 people on our Electoral Roll plus children, and others worshipping with us but not eligible to be on the Roll, a team approach has been the right way forward. I am sure that the Pastoral Group's work will develop further over the coming year.

Open Church on Saturdays is attracting growing numbers of people, some of whom also attend our worship on Sundays. We are grateful for the support of the North London Waste Authority for the provision of

much better equipment for our clothes, books and toys recycling. It is an important part of our outreach to the local community. We are grateful for the support of our local Councillors in this and other endeavours.

During 2024, we combined with Islington Council to put on a community fair. It was very enjoyable and offered a number of different activities, some of which had an environmental theme. In the afternoon, we enjoyed music hall songs. For some the tunes were familiar, and they brought back old memories, for others it was a whole new experience. We shall be working again with the Council on a similar fair this year.

We participated once again in the Cally Fest, an important annual celebration in the life of the people who live in the area, and were able, at very short notice, to rescue the Barnard Park carols from a storm and offer our church as an alternative venue. We participated again in Open House weekend; this helps to bring the church to the attention of people in the local area and beyond.



Our events included a high profile book launch with Andrew O'Hagan, author of 'Caledonian Road'. The event was so popular that tickets ran out. Andrew was interviewed by our own Wendy Jones and gave a very interesting account of his researches for the book and his approach to writing it. The launch at St Andrew's was just one in a series that took Andrew across the world in order to draw attention to the street that runs through our parish! There may be a TV series and film to come.

We also had a number of concerts at St Andrew's during the year, some featuring home grown musical talent and others showcasing other artists. We are particularly grateful to Chalamie for putting on a number of concerts featuring mediaeval and renaissance music, played on instruments used at the time (or replicas). It has been quite a musical education as well as a delightful experience. The proceeds from the Chalamie concerts have gone to the St Andrew's Building Fund. We are very grateful to them.

For the first time since the covid pandemic, the parish arranged an outing to the seaside, to Southend. A really enjoyable time was had by all. The weather kept fine for us and many chose to have fish and chips with a view of the sea. It was a nice opportunity to get to know some of our newer members better. We are looking forward to our Parish Weekend in 2025.

During the year, four people were baptised at St Andrew's, there were two weddings, and the funeral of Iris O'Meally, one of our highly respected elderly members, took place at the church. I also conducted the funeral of Phil Harvey, much loved son of Lolita Harvey and known to many as one of the members of 'Soul to Soul'. We have many new enquiries for baptisms, which is encouraging.

The St Andrew's Montessori School continues to be based in our church building and we value our longstanding partnership with them. We look forward to working with the new owners in 2025. We have other bookings which bring in valuable, additional income.

The Building Development Committee continues to drive the restoration and renewal project. The parish was awarded £95k in resilience funding from the National Lottery Heritage Fund in order to make us 'project ready'. This funding has provided the parish with a project manager, architects and other technical

consultants, a business planning consultant, fundraiser, community engagement practitioner and creative practitioner.



During 2024 we were able to deliver local history workshops as part of a heritage project and work started on the business planning and technical facets of the work.

By July 2025, we will have a completed and evaluated local heritage project, and be in possession of a revised business plan, based on outline costings for a major restoration and renewal project. We believe that this should put us in a positive position for applying for further NLHF support in 2025.

The Revd Caroline Titley
Rector



CHURCH ON THE CORNER

This year at Church on the Corner focussed on strengthening our foundations, both to build-up the congregation and to support missional praxis and outreach.

This has looked like:

Sunday evening sermon series:

Spring Term – Ephesians

Summer Term – Miracles of Jesus

Autumn Term – COTC vision values as set out in the Harvest Plan – we had several visiting speakers who gave their perspective on each topic.

Homegroup Central has continued throughout the year on Wednesday evenings, with bring-and-share food followed by Bible or book studies and prayer. Last Summer we went through the Sanctuary Course together, which was a highlight of the year as we reflected on God's perspective on mental health - our own and those around us.

A recurring theme in our Autumn sermon-series was prayer, so responding to the Holy Spirit prompting we started a monthly Silent Space for reflective prayer on Wednesday evenings, and an online prayer meeting on Zoom 8-8.20am weekly on Friday mornings.

In December Rev Idina curated this year's Advent Project, which focussed on a book and art by Scott Erickson called Honest Advent: awakening to the wonder of God-with-us then, here and now. With thanks to all who contributed to the thoughtful reflections posted online.

We also had joyful Christmas celebrations – beer & carols in The Crown pub, a wonderfully inclusive bring-and-share Christmas meal, wreath-making at Arts on the Corner, carol-singing on Bemerton Estate, and a lovely Carol Service.

Arts on the Corner has continued monthly, beautifully led by Emily, and creating a positive, supportive community, as well as amazing art projects.

In November we held our annual November 5th celebration, with sausages and sparklers around a brazier in the front-garden.

Our Warm Space - Cosy Corner has continued every Monday from 11am-2pm. This has thrived, with many people from the local community, as well as church-members (and some from Southall) dropping-in. We serve hot drinks, snacks and home-made soup or other food made by willing church-volunteers, and provide simple activities: colouring, games, puzzles, quizzes and bingo!

We added an English Conversation Class on Mondays 2.30-3.30pm, which has had small numbers at times, but is a wonderfully supportive space for those new to the UK.

The biggest highlight of our year was COTC's 30th Anniversary Celebrations on 15th September. We had a party in the afternoon where we invited past and present COTC members, with speeches recalling the birth

and development of COTC, and God's faithfulness over so many years. Bishop Joanne unveiled our Bronze Eco-Award, and we had a special thanksgiving service, where Jon Kuhrt of Hope into Action spoke in the evening. It was a brilliant day, with so many thanks to Cat Seaton for organising the catering, Hector Hinojosa for decorating with hundreds of photos, and to everyone who helped out in so many ways. Happy birthday to us!!



Our building:

Externally we were able to do major works to fix our roof and install solar panels, thanks to bidding successfully for a sustainability grant from Cloudesley. However, we were unsuccessful in obtaining grant-funding for external decorating and repair for the front of the building, which we hope to obtain in 2025.

Internally, we scoped out the office space on the first floor for co-working and had several people using the space on an ad-hoc basis during the year.

Sanctuary Mental Health Ministries used a desk 4-days per week, and in September we welcomed Islington Centre for Refugees and Migrants 2-days per week, both for office space and running a weekly English Class in the main space. We are grateful for this collaboration.

We continue to have 3 tenants living in the second-floor flat.



At the end of 2024, I am grateful that God has blessed us with stable congregation numbers at COTC: a very committed core, some new members, and a regular number of encouraging visitors. In the Harvest Plan, COTC stated a desire to be a church more rooted in its community, and this is steadily developing: through our community-focussed groups, partnerships, and the ELIC programme based out of our building.

I would like to thank the Church Organizational Group (COG) for their support and input, especially Hector Hinojosa - Church Warden, Susie Procter – Safeguarding Officer, and Sue Latham - PCC member. We continue to welcome the friendship, support and partnership with St Andrew's Church, and especially with Revd Robert and Revd Caroline, our Rector.

Rev Idina Dunmore, Associate Minister with responsibility for Church on the Corner

Electoral Roll Report

Every six years, the Church of England requires parishes to create a new Electoral Roll. This means that everyone who is on the existing Roll needs to fill in a new application form to be included in the new version. Others who may be eligible, but who are not already on the Roll, are encouraged to consider being on the nearest thing that the Church of England has to a membership list.

The previous Roll was instituted pre covid (2019) and the subsequent years included a long interregnum. Unsurprisingly church attendance in this parish (and in many others) suffered during that period but since then, there has been a re-building process. In 2019, the combined figure for the Electoral Rolls at St Andrew's (107) and Church on the Corner (23) was 130. We are pleased that the overall number on the Parish Electoral Roll increased to 140 in 2025 (115 at St Andrew's and 25 at Church on the Corner). Some people attend both churches but can only be counted once, so the division is not exact. The revision process has been a useful one for us both in re-connecting with some of the people who were on the previous Roll and in encouraging significant numbers of new worshippers to join.

Stephanie O'Donnell
Electoral Roll Officer

FINANCE REPORT

Following the parish re-organisation in 2023, St Andrew's and Church on the Corner have now had their first full financial year operating as a two-church parish.

I am grateful to Tina Okoro, our book-keeper, and Leigh Engeham, our parish administrator during the latter part of 2024, for handling day-to-day financial work. Tina has additionally prepared regular management accounting reports and worked with our Examiner to provide our end-of-year accounts.

Financial Review – St Andrew's

Unrestricted income for St Andrew's (the income which we can spend on general church operations) rose from £183k in 2023 to £189k in 2024. Rental income fell slightly but was more than compensated for by an increase of £9k in giving. We were successful in keeping expenditure to £162k so there was a net surplus of £26k before inter-church transfers.

Restricted income reached £269k, (£40k last year) which includes £26k of donations specifically to the building fund. Expenditure on projects reached £219k.

Financial highlights of the year include:

- A successful appeal for donations to the Building Fund. We request grant income for the major capital works in the church, but still have to meet some of the cost of building work. Raising money from our own resources not only pays for the gap between grants and expenditure, but also sends a positive message to funders.
- Successful events (concerts, book launch) which raised money for the building fund
- Successful grant applications
 - We had a surplus in the building fund at end of year, allowing us to start work in 2025 on the West End repairs.

We face challenges over the next few years. We pay a reduced amount for Common Fund to the Diocese, and they have asked us to pay the full rate by 2030. We have to continue to be successful in winning grants for repairs and redevelopment, and we will be expected to make contributions to this by the grant-giving bodies.

Andrew Wood
Parish Treasurer

Financial Review -Church on the Corner

In 2024 COTC saw non-grant income rise by just under £15,000. The increase was driven by a combination of more donations from the congregation and higher levels of room hire during the year.

Our expenses increased by around £52,000, reflecting a significant increase in our contribution to Common Fund, up £35,000. This planned increase is part of the COTC Harvest Plan and was therefore a planned expense. We also had to carry out extensive roof repairs, and this explains the overwhelming majority of our increased expenses. We did get a grant of £42,000 towards the roof repairs, but the grant did not cover all of the costs.

We are now well into the Harvest Plan, we still need to increase our income by £2,500 per month to cover our full running costs, but we have reserves in place to cover this shortfall for the period covered by the Harvest Plan.

I would like to thank all of those who contribute so much to the running costs of Church on the Corner, and my prayer is that both our congregation and our income would increase in the year ahead.

Anthony Codling
Church on the Corner

FABRIC REPORT

St Andrew's Church

St Andrew's church building is on the national Heritage at Risk Register, condition Very Bad, priority A. The building is affected by severe structural problems and needs major investment.

We were successful during 2024 in keeping the building open and safe for our users. We also completed significant repair works and advanced our plans for the future restoration and renewal of this much loved building.

In order to keep the building safe, and to help diagnose the repairs needed in the future, regular monitoring of the condition of the tower and spire, chancel arch, north transept and aisle took place. We are very grateful to local charity, Cloudesley, for funding these checks.

Significant repairs took place during the year. These comprised the first long-term stonework repairs to the building for many years (to the north vestry gable), significant but temporary repairs to the tower and spire and vital electrical works following an EICR (Electrical Installation Condition Report). These were all completed successfully. The East Window was stabilised, pending major repairs at a future date. Again we are grateful to Cloudesley, and also to the National Churches Trust for funding these repairs.

Minor repairs were undertaken to the south aisle roof and urgent drainage repairs were undertaken following a specialist report. Fire alarm points were installed, which improves fire safety within the building. The usual annual safety checks and maintenance requirements, such as boiler servicing, fire extinguisher checks, piano and organ tuning, and pest control were all carried out successfully.

The Quinquennial Report was to take place in 2024, but was moved to the beginning of 2025. We are grateful for the support of our professional advisers, Alex Veal and Toshiya Kogawa (ARTArchitects) and Isaac Hudson (Michael Alexander Consulting Engineers) who have continued to support us during 2024.

The Building Development Group continues to drive the restoration and renewal project. The parish was awarded £95k in resilience funding from the National Lottery Heritage Fund in order to make us 'project ready'. This funding has provided the parish with a project manager, architects and other technical consultants, a business planning consultant, fundraiser, community engagement practitioner and creative practitioner. During 2024 we were able to deliver local history workshops as part of a heritage project and work started on the business planning and technical facets of the work. By July 2025, we will have a completed and evaluated local heritage project, and be in possession of a revised business plan, based on outline costings for a major restoration and renewal project. We believe that this should put us in a positive position for applying for further NLHF support in 2025.

Church on the Corner

Following on from grants received from Cloudesley in 2023, Church on the Corner was able to install solar panels and finance the repairing of the roof. Electric cable installation was carried out to enable the fitting of a new electric cooker in the kitchen, which is enhancing hiring opportunities and church events.

Routine maintenance to fire alarms, extinguishers, plumbing and lighting was also carried out successfully throughout the year.

Liz Case

Premises Manager

SAFEGUARDING REPORT

We want to make sure that our parish is a safe place for children and vulnerable adults to live and worship so safeguarding must be a priority for us all. The PCC reviews our safeguarding policy every year, having due regard to the House of Bishops guidance on safeguarding children and vulnerable adults, and have adopted the House of Bishops safeguarding policy “Promoting a Safer Church”.

This year each PCC meeting has started with a discussion around a different aspect of safeguarding, using worksheets designed by the National Safeguarding Team. Topics covered have included how to promote a safe compassionate and healthy culture within the church and how to respond well to victims and survivors of abuse.

We have continued to ensure that all members of the PCC have completed their mandatory training modules, and made clear on the new nomination form that any new members of the PCC will need to complete both a DBS check and training in order to serve. The coming year we will encourage more members of our congregations to complete basic safeguarding training, especially our welcomers and those that are involved in groups where vulnerable adults may attend, such as Cosy Corner and English classes.

We have continued to work through the updated safeguarding dashboard for each church. St Andrew’s have now completed 100% of the mandatory requirements remaining at level 3. Church on the Corner are also at Level 3 having completed 95% of the requirements.

Both safeguarding officers recently met with Revs Caroline and Idina to discuss various aspects of safeguarding in the parish, and are working on developing a social media policy.

St Andrew’s Church

Safeguarding Officer – Karen Summerfield

Children’s Champion – Heather Wood

Vulnerable Adult’s Champion- Chanel Georgio

PCC Safeguarding Policy statement is displayed on the notice board in the Welcome Area.

Church on the Corner

Safeguarding Officer – Suzanne Procter

Children’s Champion – Stavroulla Andreou

PCC Safeguarding Policy statement is displayed on the main hall notice board.

CHILDREN'S WORK

Our vision and aim

Starchasers is a group for our children across Barnsbury Parish. It aims to evangelise (tell the children about God, his love for them and how they need Jesus) and to encourage (to grow and mature the faith of those who are Christians).

The children

The group was originally for 5–11 year olds (primary school age). Due to changes (people moving away, kids moving up to the youth group) we decided to open this up to all under-11s the previous year. It has been great to be able to provide more for the under-5s and have fun and worship together. We decided on a little change in the past few months, where children under three would have another adult supervising their group, and providing a good session to all.

Attendance over the past year has been varied, but we have seen a larger increase since the summer, with new families joining the church. We have a few more children we are in contact with who come ad hoc to (for example) Easter events. Some children have linked in from coming to toddler group and local schools and Messy Church.

The leaders

I would like to thank our wonderful volunteers and parent helpers for all their hard work and dedication. There have been lots of changes and I couldn't have managed without them. Special thanks to Heather Wood for her wonderful support and teaching with the group, and for her great ideas!

Sharing with church family

In the notice section of the 10.30am service, we share things the group has been up to. We also have an activity table for any children attending the 9am service.

All age services

We have really enjoyed building on our all age services. It has been great to encourage more children to attend, and numbers have been growing. We continue to think of new ideas to engage everyone in worship together. Special thanks to Rev Idina and Revd Caroline for working with me on this. We have been able to find even more ways over the past year to include children in these e.g. drama and readings and interviews.

Spring term

This term we looked at the Armour of God and also some Easter activities towards the end of term.

Summer term

This term we looked at the Parables of Jesus.

Autumn term

This term we started by looking at creationtide, and other environmental related sessions. After half term we focused more on Advent and Christmas lessons.

Praise God for...

The kids – New kids joining and feeling welcome

The leaders – Wonderful skills and knowledge

Please pray for...

The kids – New kids feel welcome. For them to grow a stronger faith.

This year – Great relationship building, and for everyone to grow in faith.

Leaders – Developing new skills to help the children.

Community outreach

Cally Fest

We had a brilliant time engaging with the locals. As well as the usual refreshments stand, we had a table of kids' crafts.

Messy Church

Pancake party - We held a pancake party alongside the open Church.

Easter - On Holy Saturday we had Messy Easter, alongside Open Church. It was wonderful to welcome many new families into Church. We had lots of fun activities and crafts.

We also had another fun Easter egg hunt on Easter Sunday after the service. We were able to advertise locally, and had a few new people come and join in.

Summer - We have started to build up on more sessions and held a summer Messy Church, which included more activities outside, and a picnic at the end.

Autumn - We held an autumn Messy Church with the theme of 'God is light in the darkness'.

Christmas - We had a fun time making things, playing games and learning about the meaning of Christmas.

Christingle service – Christmas Eve

We were able to have our usual Christingle service. We saw some new families and enjoyed worshipping together, and had a great increase in numbers from last year.

Schools work

Rev Ted Fell, of All Saints' Caledonian Road Parish, and I continued our work delivering collective worship to St Andrew's Primary School. Rev Idina and Revd Caroline join us in leading our usual School services. We also do assemblies for Thornhill School, and have been building on our relationships there.

St Andrew's Primary School assemblies

Spring 2024:

- The theme of 'Names of Jesus'. In the Scriptures, a person's name had great significance. It reflected that person's character, telling a story about that person. That's why the names given to Jesus were

so important. Knowing Him better is essential so we can reflect His character to the world around us.

Summer 2024:

- This term we have the theme of parables. Jesus used parables to help people visualize and understand a lesson He taught, so we could learn from it. We will also look at Ascension Day and Pentecost.

Autumn 2024:

- 1 - This half term we have the theme of 'Creation' and will link it into many topics for Collective Worship in school. We will also think about certain awareness days, and how we can help others around the world.
- 2 - This half term we have the theme of national days and Advent/Christmas. We will link it into many topics for CW in school.

St Andrew's Primary School services

For key events, the whole school comes to St. Andrew's Church for a service. These include St Andrew's Day, Christmas/Christingle, Ash Wednesday, Easter, Pentecost, and Year 6 Leavers. It's always a pleasure to support the school and to see the pupils, staff and parents attend the services. A few pupils from school help us each time.

Assemblies at Thornhill School

This is such an amazing opportunity to share about the Christian faith with a few hundred pupils. We have been in occasionally to deliver assemblies. We hope to build on this and do more in the future.

Prayers

Please pray for both schools...

- The staff/pupils – may they have a great year, and that we can continue to support.
- Opportunities to be able to support the other primary schools in the parish.
- Thank God for all the staff/volunteers at school that work hard to provide a fun and safe environment for the children.

Heather Parker

Barnsbury Parish Children's Worker

ROOTS YOUTH GROUP

Over the last year we finished studying Revelation (which took 18 months to get through).

We have started on Matthew and are enjoying studying the gospel which was favoured by the early church and has so much to teach us.

Roots organised our third Easter Egg hunt which attracted around 25 adults and 25 children. We've also had sessions purely dedicated to having fun and have played board games. The young people enjoy the fellowship they have together. We welcomed some new young people during the year, as well as seeing our students return from vacations.

Lamar Henry
Roots Group Leader

ST ANDREW'S CHURCH OF ENGLAND PRIMARY SCHOOL, BARNSBURY

'Realising Potential through Faith, Hope and Love'

Reading through last year's report on our wonderful church primary school, it's clear that there have been dramatic and unexpected changes in 2024-2025.

Our headteacher, the inspirational Felicity Djerehe who transformed the school, has moved on this year to another headship, in a well-known Church of England school in another borough. Mrs Djerehe had a very moving leaving service in church on 4th April 2025, attended by the Mayor, and Councillor Rowena Champion, where 180 children said goodbye and presented her with their cards and examples of their work. The church was packed with parents, children, governors and staff. We thank her for her amazing work at St Andrew's and wish her well.

We now have a new executive headteacher, Mrs Tonnie Reid. Mrs Reid has four schools to manage, ably supported by a Head of School in each one, and Mr Richard Smith, who has been Deputy Head of at St Andrew's for over a decade, has become Head of our school, which is great news.

As you will have seen in the local press, two primary schools just a stone's throw away from us, are facing closure. But St Andrew's future is secure. The school is in the Islington Barnsbury Planning Area 4 which means it is in the part of the borough which is the second most affected by the lower birth rate, and by families moving out of the district for larger and cheaper housing. 66% of our pupils are now on pupil premium (which supports low-income families) and this puts us in the top 20% of such schools in the country. This has increased by about 30% since the pandemic. In addition, 25% of pupils (35) have Special Educational Needs or Disabilities (SENDs) which means they need extra resources, and it's notable that half of these children are also from low-income backgrounds. Despite this, the school has achieved significantly higher than average success academically with particularly excellent results in writing. The school will be visited by Ofsted this summer and will have a SIAMS (Statutory Inspection of Anglican and Methodist Schools) in the coming year. We look forward confidently to these inspections.

Looking ahead, the Board of governors have every confidence that our new Executive Head Mrs Reid (a local from the Copenhagen Street area) with the respected and much-loved Mr Smith will take us forward from strength to strength. St Andrew's Church of England Primary School pupils go on to a wide range of secondary schools in the area, with increased aspirations, strong skill sets and remarkable academic attainments.

Of course, this report should look beyond statistics. You cannot quantify the excellent atmosphere in this school, where the Christian ethos is prevalent but not excluding. Everyone of any faith or no faith is welcome. But having said that, the school assemblies ('collective worship') are an absolute joy, and I think that if everyone in Barnsbury went to one school assembly a term, happiness would increase. To see every child included, talking about the core values of Faith, Hope and Love, is to have your spirits instantly uplifted and your own faith strengthened.

Please keep the school in your prayers.

Lis Howell, Co-vice chair, Board of Governors, St Andrew's Primary School

ARTS ON THE CORNER

This year has been another hopeful, varied and abundant year for Arts on the Corner.

I have increasingly been trying to involve members of art club in the leading of sessions, so we've had collage with Lorraine, drawing objects with emotional resonance with Ting and Jonas and our first live modelling session with Flint the dog, and Patricia, who has taught at the Royal School of Art! This has created more variety and hopefully more of a sense of ownership and inclusion for those who attend. We have also made connections with others beyond the art club community, hosting Morphe (a network of Christian artists) for a launch event, and enjoying interpreting the music of Jess McNulty (a flautist who trained at the Guildhall) through expressive painting. We have also benefitted from the parish's generosity, through the most abundant Christmas wreath making ever, courtesy of the gorgeous floral leftovers from a St Andrews wedding!

We've continued to enjoy art in outdoor spaces - painting in Thornhill Gardens and heading on a trip to Hampstead Heath in the summer. Church on the Corner's new plot at Culpeper has opened up lots of other possibilities here - we've used our keyholders' privileges with spring nature journalling, and it's also created synergies with art club members becoming central players in the Culpeper gardening sessions.



Increasingly the trust and relationships built have meant that there has been overlap with other areas of church life, with members joining for the St Paul's advent carol service, Silent Space, Neil Philimore's gig, the Church on the Corner 30th birthday celebrations and the Christmas carol service.

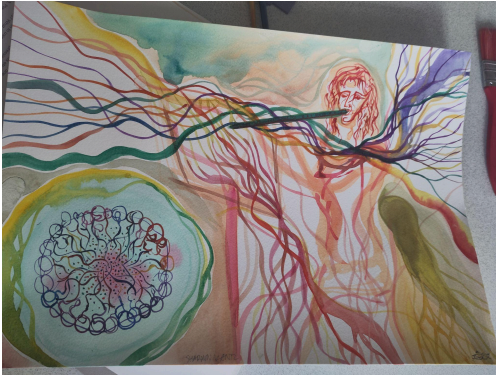


We have also experimented with Arts on the Corner 'lates' as crossover spaces between the art club community and the church midweek group with more of an explicit emphasis on faith, starting with a shared meal, time of silence, and meditation on a theme (such as "rooted and grounded in love" in autumn), before leading into a freeflow space for painting and drawing, and wrapping up with silence and a prayer. There have also been gentle conversations about faith, with art club members asking questions and sharing their experiences.

We have continued to have a solid core of regulars alongside more occasional attendees and are also attracting new enthusiastic, committed members. There continues to be an amazing diversity of age, race, class, neurodiversity, nationality and level of artistic experience which creates a really rich, joyful and nourishing experience of community.

A couple of specific snapshots of ways God has been working at Arts on the Corner this year:

- a pair of Sudanese asylum seekers joined us for the portraiture session - one had been at art school before having to flee, and drew such a beautiful portrait of the other, expressing and conferring great dignity. One of them has become a regular member of art club, while battling with depression having fled war torn Sudan, and waiting for a decision from the home office.
- at an Art Late, a member of Church on the Corner was able to give incredibly significant pastoral support to a young art club member dealing with feelings of dislocation and guilt.
- a new member joined a few days after experiencing a shocking grief and expressed it was just what she needed.



We continue to be very grateful for the community's prayers and support, and would ask for more prayer in the months to come!

Emily Hockley, Arts on the Corner Leader

COSY CORNER AND ENGLISH CONVERSATION CLASSES REPORT

We started Cosy Corner as a Warm Space at Church on the Corner at the beginning of November 2023. We continue to meet every Monday 11am – 2pm, offering a warm welcome, a hot soup and bread lunch, and a social space with games, puzzles, quizzes, bingo and mindful activities. We have also taken trips during the year to Kew Gardens and joined in with Parish trips to Southend and Woodberry Wetlands.

We were inspired by the Warm Welcome Campaign, which exists to turn poverty and isolation into warmth and welcome through the power of local spaces made by and for the community. They have a vision to create a fairer and friendlier society, built by local communities, so everyone can thrive and knows where to turn to for warmth, welcome, friendship and support.



Numbers have gradually risen during the year, and we now have about 20 regulars, some local and some from West London. They are very positive about our group, and have called it 'peaceful', 'a safe space', and 'something to look forward to on a Monday'. During Lent we added in a simple reflection and prayer time at the end of each session, which we have continued throughout the year for those who want to stay. Having been comfortable in the group, several people have come along to our church worship services and other events, and some now attend regularly.

We added English Conversation Classes every Monday 2.30-3.30pm from April 2024, run by Sue Latham. This has attracted a wide variety of nationalities, including Chinese, Eritrean, Afghan and Bengali.



A big thank you to everyone who has volunteered to make these groups happen: especially Stavroulla, Robert, Val, Avril and Sue, everyone from COTC and St Andrew's who have made delicious soups or other food, and many people who've helped in other ways, from putting out tables to donating puzzles.

We will be continuing the group throughout 2025, and hope to add in an easy exercise class during each session. If you'd like to come along or to volunteer, do get in touch with Rev Idina.

Rev Idina Dunmore, Associate Minister with responsibility for Church on the Corner

COPENHAGEN STREET FOOD BANK

We continue to support the food bank which is open every Thursday at the Catholic church in Copenhagen Street. Three years ago we were serving 80 customers a week: now it's about 200, providing food for about 650 local people. The main helpers from St Andrew's are Tania Levett, Avril Riddell, Sharon Alexander, Rev Idina and Richard Parker.

We are grateful to all those who bring Sunday donations to church. More, please! We need non-perishable food: tinned meat, fish, soup, vegetables and fruit, plus pasta, rice, tea bags, instant coffee and toiletries. The collection box is by the office door. Items can also be left at collection points in Caledonian Road, in the Co-op and Iceland. (The Sunflour Bakery in Caledonian Road generously gives us a lot of their excellent bread every week.)

The organisers are also able to respond to what people need by buying stuff in bulk. This is made possible by local supporters who make regular financial contributions, typically £5 or £10 a month, by standing order. If you would like to help in this way, or make a single donation, please see Richard.

And of course we could always use more help on Thursdays, setting up and packing bags in the morning and/or serving customers in the afternoon.

Richard Parker

ESTATES AND LOW INCOME COMMUNITIES PROGRAMME

Background

In June 2024, the Diocese of London was awarded a £9.4 million grant from the Church of England's 'Diocesan Investment Programme' (DIP) to catalyse church mission in Hackney and Islington over six years. Both Deaneries have young populations (33% under the age of 19) and are deprived with the highest number of socially rented households in the UK (125,000). This context makes reaching young people and mission on estates a strategic priority.

Across the churches, the overarching ambition is to:

- Grow in number, depth and impact
- Cultivate collaboration, including working across traditions
- Reach estates and low-income communities
- See more young people part of church life
- See greater diversity in the church

There are 4 workstreams

1. Planting and Partnerships: Eight New Worshipping Communities will be created through ten church plants/partnerships
2. Youth: Five Youth Minsters will be established (serving 21 parishes between them), creating four New Worshipping Communities
3. Estates: Five Estates Missioners deployed (serving five parishes between them), creating five New Worshipping Communities
4. Catholic Renewal: Two Catholic clusters (serving eight parishes between them) and a Mission Covenant established, supported by a Catholic Mission Enabler, creating nine New Worshipping Communities

In September 2024 Barnsbury Parish was awarded funding for the Estates workstream to work in the Estates and Low-income Communities (ELIC) in our area.

The five-year programme will aim to create real engagement with Estates and Low-Income Communities, with people from these areas playing an active part in the church community, and in the leadership teams and structures of the church. Our metrics require us to start at least one new worshipping community with an Estates focus.

Progress:

In September 2024, Rev Idina started a Congregational Development Programme with the Centre for Theology and Community. This teaches a Community Organising approach, focussing initially on one-to-one meetings, and then drawing like-minded people together to take action to improve their community. If you have any thoughts or ideas about this, do speak with Rev Idina.

In December 2024 we recruited an Operational Support Administrator. Sarah Dodd is based at Church on the Corner 2 days per week and is assisting with organising events and collecting required metrics, as well as some general administration.

We have begun building links with the Jean Stokes Centre on the Bemerton Estate, and we are making enquiries about other opportunities. We're considering the following collaborative projects during 2025:

- Prayer-walking
- Inter-faith meals
- Summer fun-day
- Green-focussed activities
- Additional Warm-Space

A community missioner will be employed by Autumn 2025 to lead on these initiatives, under guidance from Rev Idina.

Sarah Dodd
Operational Support Administrator



OPEN CHURCH

Open Church has grown even more in the past year.

We were asked by Islington Council to collaborate with them on a project called 'The Barnsbury Community Fair', which meant Bridgeman Road and the surrounding roads were closed off for this event. The street was filled with all of our clothes, books and toys from Open Church, as well as Islington Council having information and advice stalls; and a few food stalls. At St Andrew's, we also had other activity stalls and games for the children. The event was very well attended with numbers reaching well over 200 adults and children from our local community and further.

Through our connection with Islington Council, who could see the work we were doing within our community and were impressed with it, we were informed that we could apply for a grant from the North London Waste Authority (NLWA) to support the needs of our clothes, books and toys recycling project. We were successful with our application and were notified of this in April 2024. This enabled us to purchase a lot of equipment for Open Church, making it look more authentic and making us a more productive team along with our volunteers. We get a huge amount of donations which are sorted weekly in preparation for Saturdays. I am constantly mentioning the growth of Open Church: from the amount of donations we do actually receive within our community and our weekly attendance of adults and children, it is clear to see our popularity and the need for this in our community. When we get so much, we can also distribute it to other charities. We have close links with:

Manna Project (Men's clothing)

Smart works

Choices (0/5years)

Women's Refuge

Traid

During Open Church, there is also a quiet space for 'Quiet Reflection' for prayers and the public can light candles if they wish. They can also see Revd Caroline or another minister.

I would lastly like to add that we have been asked again by Islington Council to hold another Barnsbury Community Fair again this spring.

We also have events at Open Church where we provide a light lunch and light entertainment (dressing up from different years).

Chanel Georgio

Assistant Churchwarden

Resource Manager @ Open Church.

ST ANDREW'S CHURCH GARDENS

Thanks to the generosity of one of the friends of the Gardening Group we have been selling her hand made children's cardigans and jumpers at Stay and Play and Open Church to raise money to buy plants, bulbs and gardening tools. We have also received donations from other supporters of the Group as we do not receive any funding from either the church or Islington Council to support our activities.



In May 2024 we reclaimed one of the flower beds that had been completely overgrown with weeds and ivy. After the morning service on 26th May we had "the big dig" when members of the congregation were invited to dig in and help clear the bed. We also had help from Islington Council during the week to help prepare the bed for the Barnsbury Family Fair on Saturday 1st June when we invited the children to come along and plant

petunias, lobelia and strawberries.

In mid-June we entered the gardens into the Islington in Bloom competition under the Community Gardens category. It was the first time we had entered the competition and were encouraged to do so by our friends from Barnard Park and Arundel Square.

In July we were advised that we could no longer access the south side of the church (Bridgman Road) due to structural concerns with the tower. Unfortunately the building works have resulted in the beds in this area being damaged and we have lost a number of plants and roses. As this is a very visible area we hope to be able to tidy it up in time for the 2025 competition but access is still restricted.



In late September we were delighted to be notified that we had received a Silver Award from the Islington in Bloom competition. We also received a voucher for £8.99 to buy compost from the Camden Garden Centre who support the annual event. In October 2025 we will be marking our fifth anniversary since setting up the Gardening Group. Once again we will be entering the Islington in Bloom competition and of course we will be going for Gold!



Islington Council has been very supportive of our efforts and we thank them for their donation of compost and mulch to enhance the soil and help to keep down the weeds. The Council have also informed us that they will have a team to work on clearing the shrubs around the perimeter which will make a huge difference to the look of the gardens.

Our grateful thanks go to Cllr Rowena Champion and Fiona Mackenzie-Cardy (Community Ranger, London Borough of Islington) in particular.

The Gardening Group meets on the second Saturday in the month from 11am to 1pm. Helpers are always welcome.

Avril Gardner, on behalf of the St Andrew's Gardening Group

ECO CHURCH

Climate change, and human damage to the created world, are some of the biggest problems of our time. They threaten the homes, health and livelihoods of some of our poorest brothers and sisters. And they can cause immense suffering to God's creatures. We believe that, as followers of Jesus, we are called to care for creation and to work to reverse climate injustice. Or, as described in the Church of England's Five Marks of Mission, we are called to 'strive to safeguard the integrity of creation and sustain and renew the life of the earth'. The Parish of Barnsbury is committed to the shared aim of achieving net zero by 2030: a challenging goal.

In our parish, our creation care work is led and coordinated by a small Eco Group which includes members of both churches. We meet about once a quarter, but the work continues between meetings. For example, in 2024 we visited two local nature reserves. In order to help us on our creation care journey, we have signed up to the Eco Church award scheme of A Rocha, the Christian environmental charity. 2024 was an important year for us. Both churches achieved a Bronze award, the first step towards Gold. In order to do this, we had to meet standards in five areas: worship and teaching, buildings, land, lifestyle, and community and global engagement.

The Eco Group does not claim credit for these achievements. The engagement of the wider church community has been a key factor. We welcome and cherish initiatives such as the clothing and toy swaps on Saturdays, the ongoing transformation of the garden at St Andrew's, and the Barnsbury Family Fair (organised jointly with Islington Council), which has sustainability as a key theme. Thanks are due to everyone who contributes to these initiatives. Thanks too to successive church administrators who have taken on the mundane but important task of making sure that our consumables are environmentally friendly. Throughout all these processes Rev Caroline and Rev Idina and visiting preachers have inspired and supported us.

The task of the eco group is now entering a more difficult phase. We have conquered the foothills, and ahead of us is a sizeable mountain. In order to achieve Net Zero by 2030, or even to win Silver awards in the Eco Church scheme, we will need to make our buildings more sustainable. We were delighted that Church on the Corner was able to install solar panels. But there is much more to do: both churches will need to reduce our reliance on fossil fuels and to reduce our energy footprint. We do not underestimate the difficulties ahead.

There are also challenges for each of us as individuals. We each need to question ourselves over the food we eat, the clothes we wear, our travel choices, and how we use our money. You can expect to hear more from the Eco Group in 2025. But these things are too important to be left to us. We look to you all as members of the church to help us to make progress.

Heather Wood, on behalf of the Parish Eco Church Group

DEANERY SYNOD

Deanery Synod is convened three times a year; and lasts up to two hours. This forum includes representatives from each church in Islington Deanery. Each meeting is attended by 20-30 people, and is usually at a different local church each time, most recently at St Mary Upper Street. Apart from formal business, such as electing its vice-chairman and school governors, which takes little time, the main item in each meeting is a presentation of something which may be of interest, most recently presentations regarding parish involvement in schools. The Synod in February 2024, at St Luke West Holloway, included presentations by members of that church regarding its artwork inspired by the Gospels, then some break-out round-table discussions and a short tour of the church and the art exhibited there. Regrettably I was unable to attend the two later synods in 2024 owing to commitments elsewhere. Barnsbury Parish is currently entitled to nominate two representatives (the quota depends on the number on our electoral roll, currently under review, so this is variable) and I would welcome a colleague being a representative along with me, especially helpful if I am unable to attend a meeting myself.

Roland Jones, Deanery Synod Rep

Annual Report and Financial Statements
for the Year Ended 31 December 2024

The Parochial Church Council of the
Ecclesiastical Parish of the Barnsbury Team
Ministry

Charity registration number: 1130552

Independent Examiners Ltd
2 Broadbridge Business Centre
Delling Lane
Bosham
Chichester
West Sussex
PO18 8NF

**THE PAROCHIAL CHURCH COUNCIL OF THE ECCLESIASTICAL
PARISH OF THE BARNSBURY TEAM MINISTRY**

CONTENTS

Reference and Administrative Details	1 to 2
Trustees' Report	3 to 7
Independent Examiner's Report	8
Statement of Financial Activities	9
Balance Sheet	10
Cash Flow Statement	11
Notes to the Financial Statements	12 to 24
The following pages do not form part of the statutory financial statements:	25 to 30
St Andrew's Church: Income and Expenditure	25
St Andrew's Church: Balance Sheet and Funds	26
Church on the Corner: Income and Expenditure	27
Church on the Corner: Balance Sheet and Funds	28
Parish: Income and Expenditure	29
Parish: Balance Sheet and Funds	30

THE PAROCHIAL CHURCH COUNCIL OF THE ECCLESIASTICAL PARISH OF THE BARNSBURY TEAM MINISTRY

REFERENCE AND ADMINISTRATIVE DETAILS

Trustees

Helen Codling (resigned 12 May 2024)
Roland Jones
Anthony Codling (resigned 12 May 2024)
Stephanie O'Donnell
Richard Parker
Simona Valeriani
Revd S. Caroline Titley
Revd Idina Dunmore
Heather Wood
James Dunnett
Suzanne Procter
Hector Hinojosa
Chanel Giorgio
Lis Howell
Philip Rutnam
Sue Latham (appointed 3 June 2024)
Maxim Cardew (appointed 3 June 2024 and resigned 4
November 2024)
Wendy Jones (appointed 12 May 2024)
Tracy Brade (appointed 12 May 2024)
Andrew Wood (appointed 12 May 2024)

Charity Registration Number

1130552

Principal Office

St Andrew's Church
Thornhill Square
LONDON
N1 1BQ

**THE PAROCHIAL CHURCH COUNCIL OF THE ECCLESIASTICAL
PARISH OF THE BARNSBURY TEAM MINISTRY**

REFERENCE AND ADMINISTRATIVE DETAILS (CONTINUED)

Independent Examiner

G W Schulz FCMA
Independent Examiners Ltd
2 Broadbridge Business Centre
Delling Lane
Bosham
Chichester
West Sussex
PO18 8NF

Bankers

Barclays Bank plc
1 Churchill Place
London
E14 5HP

CAF Bank Limited
25 Kings Hill Avenue
Kings Hill
West Malling
Kent
ME19 4JQ

THE PAROCHIAL CHURCH COUNCIL OF THE ECCLESIASTICAL PARISH OF THE BARNSBURY TEAM MINISTRY

TRUSTEES' REPORT

The trustees present the annual report together with the financial statements of the charity for the year ended 31 December 2024.

Structure, governance and management

Nature of governing document

The Parochial Church Council (PCC) is registered with the Charity Commission as required by the Charities Act 2011. Its governing document is the Parochial Church Councils (Powers) Measure 1956.

Risk management

The trustees have assessed the major risks to which the Charity is exposed, in particular those related to the operations and finances of the Charity, and are satisfied that systems and procedures are in place to mitigate exposure to the major risks.

Objectives and activities

Objects and aims

The primary object of Barnsbury Team PCC is promotion of the gospel of Our Lord Jesus Christ according to the doctrines and practices of the Church of England.

The PCC has the responsibility of cooperating with The Revd S Caroline Titley (Rector of the Parish of Barnsbury) and other clergy in the parish, notably Rev Idina Dunmore (who has particular responsibility for Church on the Corner).

Together they promote as a whole in the ecclesiastical parish the mission of the church in terms of pastoral work, evangelistic outreach, social and ecumenical work.

Public benefit

The trustees confirm that they have complied with the requirements of section 17 of the Charities Act 2011 to have due regard to the public benefit guidance published by the Charity Commission for England and Wales.

Achievements and performance

During the year, the parish welcomed new worshippers and completed the implementation of an Interim Mission Action Plan. Work commenced on a new vision and mission for the parish with the guidance of the Dean of Mission for the Stepney Area of the Diocese of London. During the year, we were very pleased to be allocated funds by the Diocese of London for work on our estates and with low income communities. Through the work of our clergy and lay people, we have extended our pastoral care and community engagement.

THE PAROCHIAL CHURCH COUNCIL OF THE ECCLESIASTICAL PARISH OF THE BARNSBURY TEAM MINISTRY

TRUSTEES' REPORT (CONTINUED)

Great strides have been made with opening up our church buildings during the year St Andrew's is open on Saturday mornings for refreshments and for clothes, book and toy swaps. This is part of a wider re-cycling project at the church, which is supported financially by the North London Waste Authority. Church on the Corner has established 'Cosy Corner' as an important part of its mission and community engagement. Free English classes are held at the church and the space within the building is being hired to a much greater extent for community purposes.

The Building Development Committee has overseen the use of the resilience grant from the National Lottery Heritage Fund in connection with the St Andrew's Church building, which is on the Heritage at Risk Register (condition very bad, Priority A). Architects have been appointed, a revised business plan is being prepared and a local history project has been initiated, which will complete in the summer of 2025. It will culminate in an exhibition of artwork by local school children, based on the stories of local residents.

The PCC takes its compliance responsibilities very seriously and always has the subjects of safeguarding, health and safety and data protection on its agenda.

Financial review

Financial structure

The Charity includes three organisational units: the Church of St Andrew's, the Church on the Corner, and the PCC account, which pertains to functions within the area, but not tied to a particular church. Each of these units has its own budget, sources of income and maintains its own bank accounts. Income received for each church is for the operations of that specific church. The funds in the PCC account are used at the discretion of the PCC, and currently assigned to children's and youth work in the parish.

This document provides the statutory information for the Charity, with the majority of the document focussed on the accounts for the Charity as a whole. The balance sheets and income/expenditure for each church and the PCC account are shown at the end of the document.

PCC

Looking ahead to 2025 our most pressing financial goals for both churches would be to increase our giving and to improve our lettings strategy so that we are able to cover our full running costs.

Our costs will increase in 2025, and we have a three-to-five-year transition plan in place to ensure that the PCC reaches the full Common Fund contribution. Common Fund covers central church costs including vicar's salary, pension, housing and training, and the full cost is currently around £84,000 per year. The Diocese requires us to cover the full cost by 2030.

THE PAROCHIAL CHURCH COUNCIL OF THE ECCLESIASTICAL PARISH OF THE BARNSBURY TEAM MINISTRY

TRUSTEES' REPORT (CONTINUED)

Church On The Corner

In 2024 donation income increased by just under £10,000 to £60,908.

COTC income for 2024 includes grant income from Cloudesley totaling £42,882 for emergency repair works and various repair works including roof repairs and solar panel installation. COTC also received a £750 grant from Islington Council to support Cosy Corner and other local initiatives. COTC is extremely grateful to its funders for the grants received in 2024.

Property rental income through rent and hires combined increased by about £12,800 in 2024 to £64,865.

COTC's total expenditure increased by about £100,000. This was partly due to the recommencing of Common Fund contributions of £35,000. COTC also paid £35,400 for the roof repairs and solar panel installation, which cost £74,862.

In spite of the challenges in the year, COTC had a surplus on unrestricted balances at the end of 2024 of £28,581.

St Andrew's Church

In 2024 donation income increased by around £35,800 to £86,576. This consisted partly of significant one-off donations.

Property rental income through hires was maintained but decreased from 2023 in absolute terms due to a one-off back-payment in 2023 of £9,520.

St Andrew's Church income in 2024 includes grant income from Cloudesley totaling £143,937 for various repair work and projects. This included receiving grants to undertake repair works to the Spire and North Vestry Gable, which were both completed in 2024.

We have also secured Cloudesley funding worth £65,000 and internal funding of £41,000 for the West Elevation works which will start in 2025.

We commenced the National Lottery Heritage Fund project in 2024, and initial funding of £47,267 was received in 2024. It is expected to be concluded in 2025. This project is expected to open the way for a larger funding project to restore St Andrew's Church.

We also received a £5,000 Community Grant from the North London Waste Authority for a community recycling project which was well publicised locally.

St Andrew's total expenditures, excluding grant-funded activity, reduced by about £26,000. Although there was an increase in the Common Fund contribution of £15,000 in 2024, the extra cost was compensated for by a reduction in planned donations to other organisations and a reduction in unbudgeted repairs together totaling £41,600.

St Andrew's Church is extremely grateful to its funders for the grants received in 2024.

**THE PAROCHIAL CHURCH COUNCIL OF THE ECCLESIASTICAL
PARISH OF THE BARNSBURY TEAM MINISTRY**

TRUSTEES' REPORT (CONTINUED)

In spite of the challenges in the year, St Andrew's Church had a surplus on unrestricted balances at the end of 2024 of £31,462, before taking into account any committed funds. Although surpluses have been achieved in 2024, this should be weighed against significant works that will be undertaken in 2025. These works will be partly financed by grants and partly from internal funds raised.

Policy on reserves

Our policy is to see reserves as a resource for the present which have been accumulated in the past. Decisions as to what reserves may be used for are taken by the PCC in respect of PCC funds. We have not retained a specific reserve in respect of running expenses.

Going concern

After making appropriate enquiries, the trustees have a reasonable expectation that the charity has adequate resources to continue in operational existence for the foreseeable future. For this reason they continue to adopt the going concern basis in preparing the financial statements.

THE PAROCHIAL CHURCH COUNCIL OF THE ECCLESIASTICAL PARISH OF THE BARNSBURY TEAM MINISTRY

TRUSTEES' REPORT (CONTINUED)

Statement of Responsibilities

The trustees are responsible for preparing the trustees' report and the financial statements in accordance with the United Kingdom Accounting Standards (United Kingdom Generally Accepted Accounting Practice) and applicable law and regulations.

The law applicable to charities requires the trustees to prepare financial statements for each financial year which give a true and fair view of the state of affairs of the charity and of the incoming resources and application of resources of the charity for that period. In preparing these financial statements, the trustees are required to:

- select suitable accounting policies and then apply them consistently;
- observe the methods and principles in the Charities SORP;
- make judgements and estimates that are reasonable and prudent;
- state whether applicable accounting standards have been followed, subject to any material departures disclosed and explained in the financial statements; and
- prepare the financial statements on the going concern basis unless it is inappropriate to presume that the charity will continue in business.

The trustees are responsible for keeping proper accounting records that disclose with reasonable accuracy at any time the financial position of the charity and enable them to ensure that the financial statements comply with the Charities Act 2011, the Charities (Accounts and Reports) Regulations 2008, and the provisions of the constitution. The trustees are also responsible for safeguarding the assets of the charity and hence for taking reasonable steps for the prevention and detection of fraud and other irregularities.

The annual report was approved by the trustees of the charity on 10 March 2025 and signed on its behalf by:

Revd Sarah Caroline Titley

.....
Revd S. Caroline Titley
Trustee

THE PAROCHIAL CHURCH COUNCIL OF THE ECCLESIASTICAL PARISH OF THE BARNSBURY TEAM MINISTRY

INDEPENDENT EXAMINER'S REPORT

I report to the trustees on my examination of the accounts of The Parochial Church Council of the Ecclesiastical Parish of the Barnsbury Team Ministry for the year ended 31 December 2024.

Responsibilities and basis of report

As the charity trustees of The Parochial Church Council of the Ecclesiastical Parish of the Barnsbury Team Ministry you are responsible for the preparation of the accounts in accordance with the requirements of the Charities Act 2011 ('the Act').

I report in respect of my examination of the The Parochial Church Council of the Ecclesiastical Parish of the Barnsbury Team Ministry's accounts carried out under section 145 of the 2011 Act and in carrying out my examination I have followed all the applicable Directions given by the Charity Commission under section 145(5)(b) of the Act.

Independent examiner's statement

Since The Parochial Church Council of the Ecclesiastical Parish of the Barnsbury Team Ministry's gross income exceeded £250,000 your examiner must be a member of a body listed in section 145 of the 2011 Act. I confirm that I am qualified to undertake the examination because I am a member of the Chartered Institute of Management Accountants, which is one of the listed bodies.

I have completed my examination. I confirm that no material matters have come to my attention in connection with the examination giving me cause to believe that in any material respect:

1. accounting records were not kept in respect of The Parochial Church Council of the Ecclesiastical Parish of the Barnsbury Team Ministry as required by section 130 of the Act; or
2. the accounts do not accord with those records; or
3. the accounts do not comply with the accounting requirements concerning the form and content of accounts set out in the Charities (Accounts and Reports) Regulations 2008 other than any requirement that the accounts give a 'true and fair view' which is not a matter considered as part of an independent examination.

I have no concerns and have come across no other matters in connection with the examination to which attention should be drawn in this report in order to enable a proper understanding of the accounts to be reached.



.....
G W Schulz FCMA
Independent Examiners Ltd

10 March 2025

**THE PAROCHIAL CHURCH COUNCIL OF THE ECCLESIASTICAL
PARISH OF THE BARNSBURY TEAM MINISTRY**

**STATEMENT OF FINANCIAL ACTIVITIES
FOR THE YEAR ENDED 31 DECEMBER 2024**

	Note	Unrestricted funds £	Restricted funds £	Total 2024 £	Total 2023 £
Income and Endowments from:					
Donations and legacies	2	148,637	278,136	426,773	181,491
Other trading activities	3	187,590	-	187,590	193,651
Investment income	4	2,738	-	2,738	2,048
Other income	5	21,553	32,627	54,180	21,387
Total income		<u>360,518</u>	<u>310,763</u>	<u>671,281</u>	<u>398,577</u>
Expenditure on:					
Charitable activities	6	<u>281,867</u>	<u>262,126</u>	<u>543,993</u>	<u>314,725</u>
Total expenditure		<u>281,867</u>	<u>262,126</u>	<u>543,993</u>	<u>314,725</u>
Net income		78,651	48,637	127,288	83,852
Gross transfers between funds		<u>(5,104)</u>	<u>5,104</u>	<u>-</u>	<u>(19,758)</u>
Net movement in funds		73,547	53,741	127,288	64,094
Reconciliation of funds					
Total funds brought forward		<u>494,344</u>	<u>14,942</u>	<u>509,286</u>	<u>445,192</u>
Total funds carried forward	14	<u><u>567,891</u></u>	<u><u>68,683</u></u>	<u><u>636,574</u></u>	<u><u>509,286</u></u>

The notes on pages 12 to 24 form an integral part of these financial statements.

**THE PAROCHIAL CHURCH COUNCIL OF THE ECCLESIASTICAL
PARISH OF THE BARNSBURY TEAM MINISTRY**

**BALANCE SHEET
AS AT 31 DECEMBER 2024**

	Note	2024 £	2023 £
Current assets			
Debtors	10	20,708	24,276
Cash at bank and in hand		<u>656,573</u>	<u>534,725</u>
		677,281	559,001
Creditors: Amounts falling due within one year	11	<u>(39,421)</u>	<u>(48,495)</u>
Total assets less current liabilities		637,860	510,506
Creditors: Amounts falling due after more than one year	12	<u>(1,286)</u>	<u>(1,220)</u>
Net assets		<u>636,574</u>	<u>509,286</u>
Funds of the charity:			
Restricted income funds			
Restricted funds		68,683	14,942
Unrestricted income funds			
Unrestricted funds		<u>567,891</u>	<u>494,344</u>
Total funds	14	<u>636,574</u>	<u>509,286</u>

The financial statements on pages 9 to 24 were approved by the trustees, and authorised for issue on 10 March 2025 and signed on their behalf by:

Revd Sarah Caroline Titley

 Revd S. Caroline Titley
 Trustee

**THE PAROCHIAL CHURCH COUNCIL OF THE ECCLESIASTICAL
PARISH OF THE BARNSBURY TEAM MINISTRY**

**CASH FLOW STATEMENT
FOR THE YEAR ENDED 31 DECEMBER 2024**

	Note	2024 £	2023 £
Cash flows from operating activities			
Net cash income		127,288	64,094
Adjustments to cash flows from non-cash items			
Investment income	4	<u>(2,738)</u>	<u>(2,048)</u>
		124,550	62,046
Working capital adjustments			
Decrease/(increase) in debtors	10	3,568	(824)
(Decrease)/increase in creditors	11	(5,233)	18,388
(Decrease)/increase in deferred income	12	<u>(3,775)</u>	<u>7,555</u>
Net cash flows from operating activities		119,110	87,165
Cash flows from investing activities			
Interest receivable and similar income	4	<u>2,738</u>	<u>2,048</u>
Net increase in cash and cash equivalents		121,848	89,213
Cash and cash equivalents at 1 January		<u>534,725</u>	<u>445,512</u>
Cash and cash equivalents at 31 December		<u><u>656,573</u></u>	<u><u>534,725</u></u>

All of the cash flows are derived from continuing operations during the above two periods.

The notes on pages 12 to 24 form an integral part of these financial statements.

THE PAROCHIAL CHURCH COUNCIL OF THE ECCLESIASTICAL PARISH OF THE BARNSBURY TEAM MINISTRY

NOTES TO THE FINANCIAL STATEMENTS FOR THE YEAR ENDED 31 DECEMBER 2024

1 Accounting policies

Statement of compliance

The financial statements have been prepared in accordance with the second edition of the Charities Statement of Recommended Practice issued in October 2019, the Financial Reporting Standard applicable in the United Kingdom and Republic of Ireland (FRS 102) and the Charities Act 2011.

Basis of preparation

The Parochial Church Council of the Ecclesiastical Parish of the Barnsbury Team Ministry meets the definition of a public benefit entity under FRS 102. The accounts (financial statements) have been prepared under the historical cost convention with items recognised at cost or transaction value unless otherwise stated in the relevant note(s) to these accounts.

Going concern

The trustees consider that there are no material uncertainties about the charity's ability to continue as a going concern.

Income and endowments

Voluntary income including donations, gifts, legacies and grants that provide core funding or are of a general nature is recognised when the charity has entitlement to the income, it is probable that the income will be received and the amount can be measured with sufficient reliability.

Donations and legacies

Donations and legacies are recognised on a receivable basis when receipt is probable and the amount can be reliably measured.

Grants receivable

Grants are recognised when the charity has an entitlement to the funds and any conditions linked to the grants have been met. Where performance conditions are attached to the grant and are yet to be met, the income is recognised as a liability and included on the balance sheet as deferred income to be released.

Gift aid

Income tax recoverable in relation to donations received under Gift Aid or deeds of covenant is recognised at the time of the donation.

Other trading activities

Rental income from the letting of church premises is recognised when the rental is due.

THE PAROCHIAL CHURCH COUNCIL OF THE ECCLESIASTICAL PARISH OF THE BARNSBURY TEAM MINISTRY

NOTES TO THE FINANCIAL STATEMENTS FOR THE YEAR ENDED 31 DECEMBER 2024 (CONTINUED)

Interest receivable

Interest on funds held on deposit is included when receivable and the amount can be measured reliably by the charity; this is normally upon notification of the interest paid or payable by the institution with whom the funds are deposited.

Expenditure

All expenditure is recognised once there is a legal or constructive obligation to that expenditure, it is probable settlement is required and the amount can be measured reliably. All costs are allocated to the applicable expenditure heading that aggregate similar costs to that category.

Charitable activities

Charitable expenditure comprises those costs incurred by the charity in the delivery of its activities and services for its beneficiaries. It includes both costs that can be allocated directly to such activities and those costs of an indirect nature necessary to support them.

Grant provisions

Provisions for grants are made when the intention to make a grant has been communicated to the recipient but there is uncertainty about either the timing of the grant or the amount of grant payable.

Taxation

The charity is considered to pass the tests set out in Paragraph 1 Schedule 6 of the Finance Act 2010 and therefore it meets the definition of a charitable company for UK corporation tax purposes. Accordingly, the charity is potentially exempt from taxation in respect of income or capital gains received within categories covered by Chapter 3 Part 11 of the Corporation Tax Act 2010 or Section 256 of the Taxation of Chargeable Gains Act 1992, to the extent that such income or gains are applied exclusively to charitable purposes.

Tangible fixed assets

Individual fixed assets costing £1,000 or more are initially recorded at cost, less any subsequent accumulated depreciation and subsequent accumulated impairment losses.

Consecrated and Beneficed property is excluded from the accounts by section 10(2) of the Charities Act 2011.

No value is placed on movable church furnishings held by the church wardens on special trust for the PCC and which require a faculty for disposal since the PCC considers this to be inalienable property. All expenditure incurred during the year on consecrated or benefice buildings and movable church furnishings, whether maintenance or improvement, is written off as expenditure in the SOFA and separately disclosed.

**THE PAROCHIAL CHURCH COUNCIL OF THE ECCLESIASTICAL
PARISH OF THE BARNSBURY TEAM MINISTRY**

**NOTES TO THE FINANCIAL STATEMENTS
FOR THE YEAR ENDED 31 DECEMBER 2024 (CONTINUED)**

Depreciation and amortisation

Depreciation is provided on tangible fixed assets so as to write off the cost or valuation, less any estimated residual value, over their expected useful economic life as follows:

Asset class	Depreciation method and rate
Furniture and equipment	25% on cost

Debtors

Trade and other debtors are recognised at the settlement amount after any trade discount offered. Prepayments are valued at the amount prepaid net of any trade discounts due.

Cash and cash equivalents

Cash and cash equivalents comprise cash on hand and call deposits, and other short-term highly liquid investments that are readily convertible to a known amount of cash and are subject to an insignificant risk of change in value.

Liabilities

Liabilities are recognised when there is an obligation at the Balance Sheet date as a result of a past event, it is probable that a transfer of economic benefit will be required in settlement, and the amount of the settlement can be estimated reliably.

Liabilities are recognised at the amount that the charity anticipates it will pay to settle the debt or the amount it has received as advanced payments for the goods or services it must provide.

Fund structure

Unrestricted income funds are general funds that are available for use at the trustees discretion in furtherance of the objectives of the charity.

Designated funds are unrestricted funds set aside for specific purposes at the discretion of the trustees.

Restricted income funds are those donated for use in a particular area or for specific purposes, the use of which is restricted to that area or purpose.

**THE PAROCHIAL CHURCH COUNCIL OF THE ECCLESIASTICAL
PARISH OF THE BARNSBURY TEAM MINISTRY**

**NOTES TO THE FINANCIAL STATEMENTS
FOR THE YEAR ENDED 31 DECEMBER 2024 (CONTINUED)**

Pensions and other post retirement obligations

The charity operates a defined contribution pension scheme which is a pension plan under which fixed contributions are paid into a pension fund and the charity has no legal or constructive obligation to pay further contributions even if the fund does not hold sufficient assets to pay all employees the benefits relating to employee service in the current and prior periods.

Contributions to defined contribution plans are recognised in the Statement of Financial Activities when they are due. If contribution payments exceed the contribution due for service, the excess is recognised as a prepayment.

2 Income from donations and legacies

	Unrestricted funds General £	Restricted funds £	Total 2024 £	Total 2023 £
Donations and legacies;				
Donations	123,719	26,267	149,986	104,192
Gift aid reclaimed	24,918	6,263	31,181	34,658
Grants, including capital grants;				
Grants	-	245,606	245,606	41,516
Other income from donations and legacies	-	-	-	1,125
	<u>148,637</u>	<u>278,136</u>	<u>426,773</u>	<u>181,491</u>

3 Income from other trading activities

	Unrestricted funds General £	Restricted funds £	Total 2024 £	Total 2023 £
Events income;				
Conferences and similar events	40	-	40	3,444
Other events income	10,000	-	10,000	3,260
Property rental income	<u>177,550</u>	-	<u>177,550</u>	<u>186,947</u>
	<u>187,590</u>	<u>-</u>	<u>187,590</u>	<u>193,651</u>

**THE PAROCHIAL CHURCH COUNCIL OF THE ECCLESIASTICAL
PARISH OF THE BARNSBURY TEAM MINISTRY**

**NOTES TO THE FINANCIAL STATEMENTS
FOR THE YEAR ENDED 31 DECEMBER 2024 (CONTINUED)**

4 Investment income

	Unrestricted funds General £	Restricted funds £	Total 2024 £	Total 2023 £
Interest receivable and similar income;				
Interest receivable on bank deposits	<u>2,738</u>	<u>-</u>	<u>2,738</u>	<u>2,048</u>

5 Other income

	Unrestricted funds General £	Restricted funds £	Total 2024 £	Total 2023 £
Refunds	19,901	32,627	52,528	19,610
Fees and supplies	<u>1,652</u>	<u>-</u>	<u>1,652</u>	<u>1,777</u>
	<u>21,553</u>	<u>32,627</u>	<u>54,180</u>	<u>21,387</u>

**THE PAROCHIAL CHURCH COUNCIL OF THE ECCLESIASTICAL
PARISH OF THE BARNSBURY TEAM MINISTRY**

**NOTES TO THE FINANCIAL STATEMENTS
FOR THE YEAR ENDED 31 DECEMBER 2024 (CONTINUED)**

6 Expenditure on charitable activities

		Unrestricted funds General	Restricted funds	Total 2024	Total 2023
	Note	£	£	£	£
Parish contribution		90,000	-	90,000	40,000
Ministry and clergy expenses		5,386	-	5,386	10,579
Church hall and property		53,067	180,477	233,544	68,975
Building projects		-	42,882	42,882	30,402
Projects		-	38,721	38,721	-
Utilities and insurance		27,479	-	27,479	28,217
Upkeep of services		7,157	-	7,157	6,421
Telephone		1,689	-	1,689	1,905
Printing, post and stationery		5,374	-	5,374	4,531
Computer and software		3,016	-	3,016	1,103
Legal and professional fees		4,144	46	4,190	16,225
Bad debts		-	-	-	3,500
Bank charges		515	-	515	664
Sundry		1,617	-	1,617	3,087
Independent examination		3,000	-	3,000	3,000
Charitable giving	7	12,396	-	12,396	33,920
Staff costs	9	67,027	-	67,027	62,196
		<u>281,867</u>	<u>262,126</u>	<u>543,993</u>	<u>314,725</u>

**THE PAROCHIAL CHURCH COUNCIL OF THE ECCLESIASTICAL
PARISH OF THE BARNSBURY TEAM MINISTRY**

**NOTES TO THE FINANCIAL STATEMENTS
FOR THE YEAR ENDED 31 DECEMBER 2024 (CONTINUED)**

7 Charitable giving

Analysis of grants

	Grants to institutions	
	2024	2023
	£	£
Charitable giving	<u>12,396</u>	<u>33,920</u>

8 Trustees remuneration and expenses

No trustees, nor any persons connected with them, have received any remuneration from the charity during the year (2023: one trustee £749).

Two trustees have received reimbursed expenses from the charity totalling £1,788 (2023: two trustees £1,061).

Donations made by the PCC members and related parties without any conditions attached totalled £73,161 for the year (2023 - £44,775).

9 Staff costs

The aggregate payroll costs were as follows:

	2024	2023
	£	£
Staff costs during the year were:		
Wages and salaries	58,383	55,004
Pension costs	2,610	2,210
Self employed	<u>6,034</u>	<u>4,982</u>
	<u>67,027</u>	<u>62,196</u>

The monthly average number of persons (including senior management / leadership team) employed by the charity during the year expressed as full time equivalents was as follows:

	2024	2023
	No	No
Staff	<u>2</u>	<u>2</u>

No employee received emoluments of more than £60,000 during the year

**THE PAROCHIAL CHURCH COUNCIL OF THE ECCLESIASTICAL
PARISH OF THE BARNSBURY TEAM MINISTRY**

**NOTES TO THE FINANCIAL STATEMENTS
FOR THE YEAR ENDED 31 DECEMBER 2024 (CONTINUED)**

10 Debtors

	2024	2023
	£	£
Trade debtors	970	14,350
Prepayments	1,000	-
Accrued income	46	46
Other debtors	18,692	9,880
	<u>20,708</u>	<u>24,276</u>

11 Creditors: amounts falling due within one year

	2024	2023
	£	£
Other creditors	6,944	390
Accruals	28,697	40,550
Deferred income	3,780	7,555
	<u>39,421</u>	<u>48,495</u>

12 Creditors: amounts falling due after one year

	2024	2023
	£	£
Other creditors	<u>1,286</u>	<u>1,220</u>

13 Pension and other schemes

The charity participates in the Pension Builder Scheme section of CWPF for lay staff. CWPF is administered by the Church of England Pensions Board, which holds the CWPF assets separately from those of the Employer and other participating employers.

CWPF has two sections:

1. the Defined Benefits Scheme
2. the Pension Builder Scheme, which has two subsections;
 - a. a deferred annuity section known as Pension Builder Classic, and,
 - b. a cash balance section known as Pension Builder 2014.

Pension Builder Scheme

Both sections of the Pension Builder Scheme are classed as defined benefit schemes.

Pension Builder Classic provides a pension, accumulated from contributions paid and converted into a deferred annuity during employment based on terms set and reviewed by the Church of England Pensions Board from time to time. Discretionary increases may also be added, depending on investment returns and other factors.

**THE PAROCHIAL CHURCH COUNCIL OF THE ECCLESIASTICAL
PARISH OF THE BARNSBURY TEAM MINISTRY**

**NOTES TO THE FINANCIAL STATEMENTS
FOR THE YEAR ENDED 31 DECEMBER 2024 (CONTINUED)**

Pension Builder 2014 is a cash balance scheme that provides a lump sum which members use to provide benefits at retirement. Pension contributions are recorded in an account for each member. Discretionary bonuses may be added before retirement, depending on investment returns and other factors. The account, plus any bonuses declared is payable, unreduced, from age 65.

There is no sub-division of assets between employers in each section of the Pension Builder Scheme.

The scheme is considered to be a multi-employer scheme as described in Section 28 of FRS 102. This is because it is not possible to attribute the Pension Builder Scheme's assets and liabilities to specific employers and means that contributions are accounted for as if the Scheme were a defined contribution scheme. The pension cost charge for the year represents contributions payable by the charity to the scheme and amounted to £2,610 (2023 - £2,210).

A valuation of the Pension Builder Scheme is carried out once every three years. The most recent valuation was carried out as at 31 December 2019.

For the Pension Builder Classic section, the valuation revealed a surplus of £34.8m on the ongoing assumptions used. At the most recent annual review effective 1 January 2025, the Board chose to grant a discretionary bonus of 6.7% to both pensions not yet in payment and pensions in payment in respect of service prior to April 1997; and a bonus on pensions in payment in respect of post April 2006 service so that the pension increase was 2.7% (where usually it would be calculated based on inflation up to 2.5%). This followed improvements in the funding position over 2024. There is no requirement for deficit payments at the current time.

The next valuation is due as at 31 December 2025.

For the Pension Builder 2014 section, the valuation revealed a surplus of £8.5m on the ongoing assumptions used. There is no requirement for deficit payments at the current time.

The legal structure of the scheme is such that if another employer fails, The Parochial Church Council of the Ecclesiastical Parish of the Barnsbury Team Ministry could become responsible for paying a share of the failed employer's pension liabilities.

**THE PAROCHIAL CHURCH COUNCIL OF THE ECCLESIASTICAL
PARISH OF THE BARNSBURY TEAM MINISTRY**

**NOTES TO THE FINANCIAL STATEMENTS
FOR THE YEAR ENDED 31 DECEMBER 2024 (CONTINUED)**

14 Funds

	Balance at 1 January 2024 £	Incoming resources £	Resources expended £	Transfers £	Balance at 31 December 2024 £
Current year					
Unrestricted funds					
General					
General Funds	492,216	360,518	(281,867)	(15,104)	555,763
Designated					
Stonework project	2,128	-	-	-	2,128
Bemerton estate	-	-	-	10,000	10,000
	<u>2,128</u>	<u>-</u>	<u>-</u>	<u>10,000</u>	<u>12,128</u>
Total unrestricted funds	<u>494,344</u>	<u>360,518</u>	<u>(281,867)</u>	<u>(5,104)</u>	<u>567,891</u>
Restricted funds					
Cloudesley Trust	1,450	213,091	(214,544)	3	-
LIF project	-	750	(162)	-	588
National Lottery Heritage Fund (St Andrews Church)	-	47,568	(34,840)	4,975	17,703
Night shelter	508	-	-	-	508
Building fund (St Andrews Church)	5,803	35,665	(46)	-	41,422
Rectory (St Andrews Church)	4,781	-	-	-	4,781
Organ fund (St Andrews Church)	2,400	-	-	-	2,400
North London Community Fund (St Andrews Church)	-	5,000	(3,719)	-	1,281
Diocese of London (St Andrews Church)	-	2,664	(2,664)	-	-
National Churches Trust (St Andrews Church)	-	6,025	(6,151)	126	-
Total restricted funds	<u>14,942</u>	<u>310,763</u>	<u>(262,126)</u>	<u>5,104</u>	<u>68,683</u>

**THE PAROCHIAL CHURCH COUNCIL OF THE ECCLESIASTICAL
PARISH OF THE BARNSBURY TEAM MINISTRY**

**NOTES TO THE FINANCIAL STATEMENTS
FOR THE YEAR ENDED 31 DECEMBER 2024 (CONTINUED)**

	Balance at 1 January 2024 £	Incoming resources £	Resources expended £	Transfers £	Balance at 31 December 2024 £
<i>Current year</i>					
Total funds	<u>509,286</u>	<u>671,281</u>	<u>(543,993)</u>	<u>-</u>	<u>636,574</u>

Cloudesley Trust (formerly Building Fund) - Each April and October, churches in the former parish of Islington can apply for grants to maintain the fabric of the building according to the terms of the Richard Cloudesley Charity which was set up in the 16th century. Level of grants varies. As pressure on the Church Grants programme is considerable, the charity will not always fund 100% of a project/works. Analysis of how grants provided this year were spent is detailed in the table.

Night Shelter - Provides funds for the homeless.

Building Fund (formerly Youth, Welfare and General Donation) - The Building Fund is a fund set up by the PCC to receive private donations to support major repair work to St Andrew's church building.

National Lottery Heritage Fund - A grant has been received from the National Lottery Heritage Fund for a project named "St. Andrew's Church - MyBarnsbury: Past, Present, Future" for the creation of an online heritage resource and exhibition.

Rectory Fund - this is the accumulation of funds put aside each year to maintain the commitment that PCC/DCC's redecorate one room a year in the rectory to keep it up to standard.

Organ Fund - to provide funds for the upkeep of the Church Organ.

North London Community Fund - The North London Community Fund granted £5,000 to St Andrew's Church to serve as a suitable clothes hub recycling and swapping centre. It was expanded to include the recycling of toys.

**THE PAROCHIAL CHURCH COUNCIL OF THE ECCLESIASTICAL
PARISH OF THE BARNSBURY TEAM MINISTRY**

**NOTES TO THE FINANCIAL STATEMENTS
FOR THE YEAR ENDED 31 DECEMBER 2024 (CONTINUED)**

<i>Prior year</i>	Balance at 1 January 2023 £	Incoming resources £	Resources expended £	Transfers £	Balance at 31 December 2023 £
Unrestricted funds					
General					
General Funds	418,958	353,712	(262,413)	(18,041)	492,216
Designated					
Stonework project	<u>2,128</u>	<u>-</u>	<u>-</u>	<u>-</u>	<u>2,128</u>
Total unrestricted funds	<u>421,086</u>	<u>353,712</u>	<u>(262,413)</u>	<u>(18,041)</u>	<u>494,344</u>
Restricted funds					
Cloudesley Trust	4,693	4,900	(8,143)	-	1,450
Night shelter	508	-	-	-	508
Building fund (St Andrews Church)	3,780	38,162	(41,942)	-	-
Rectory (St Andrews Church)	4,781	-	-	-	4,781
Organ fund (St Andrews Church)	3,302	-	(902)	-	2,400
Building fund (All Saints' Church)	1,717	-	-	(1,717)	-
Building fund	<u>5,325</u>	<u>1,803</u>	<u>(1,325)</u>	<u>-</u>	<u>5,803</u>
	<u>24,106</u>	<u>44,865</u>	<u>(52,312)</u>	<u>(1,717)</u>	<u>14,942</u>
Total funds	<u>445,192</u>	<u>398,577</u>	<u>(314,725)</u>	<u>(19,758)</u>	<u>509,286</u>

**THE PAROCHIAL CHURCH COUNCIL OF THE ECCLESIASTICAL
PARISH OF THE BARNSBURY TEAM MINISTRY**

**NOTES TO THE FINANCIAL STATEMENTS
FOR THE YEAR ENDED 31 DECEMBER 2024 (CONTINUED)**

15 Analysis of net assets between funds

	Unrestricted funds		Restricted funds	Total funds at 31 December 2024
	General	Designated		
	£	£	£	£
Current assets	596,470	12,128	68,683	677,281
Current liabilities	(39,421)	-	-	(39,421)
Creditors over 1 year	<u>(1,286)</u>	<u>-</u>	<u>-</u>	<u>(1,286)</u>
Total net assets	<u>555,763</u>	<u>12,128</u>	<u>68,683</u>	<u>636,574</u>
				Total funds at 31 December 2023
	General	Designated	Restricted funds	
	£	£	£	£
Current assets	541,931	2,128	14,942	559,001
Current liabilities	(48,495)	-	-	(48,495)
Creditors over 1 year	<u>(1,220)</u>	<u>-</u>	<u>-</u>	<u>(1,220)</u>
Total net assets	<u>492,216</u>	<u>2,128</u>	<u>14,942</u>	<u>509,286</u>

**THE PAROCHIAL CHURCH COUNCIL OF THE ECCLESIASTICAL
PARISH OF THE BARNSBURY TEAM MINISTRY**

**ST ANDREW'S BARNSBURY DISTRICT CHURCH
INCOME AND EXPENDITURE FOR THE YEAR ENDED 31 DECEMBER 2024**

	General Funds £	Restricted Funds £	Total 2024 £	Total 2023 £
INCOMING RESOURCES				
Donations and legacies				
Donations	60,309	26,268	86,576	50,740
Gift aid reclaimed	13,692	6,263	19,954	13,738
Grants	-	203,424	203,424	36,016
	74,001	235,954	309,955	100,494
Other trading activities				
Events income	-	-	-	-
Property rental income	92,725	-	92,725	101,432
	92,725	-	92,725	101,432
Investment Income				
Bank interest	328	-	328	250
	328	-	328	250
Other income				
Refunds	19,901	32,628	52,528	19,611
Fees and supplies	1,652	-	1,652	1,649
	21,553	32,628	54,180	21,260
Total incoming resources	188,606	268,582	457,188	223,436
RESOURCES EXPENDED				
Expenditure on charitable activities				
Parish contribution	55,000	-	55,000	40,000
Ministry and clergy expenses	975	-	975	2,492
Church hall and property	13,765	180,477	194,241	80,027
Projects	-	38,559	38,559	-
Utilities and insurance	20,817	-	20,817	18,541
Upkeep of services	7,090	-	7,090	5,521
Telephone	1,128	-	1,128	1,225
Printing, post and stationery	4,849	-	4,849	4,439
Computer and software	2,367	-	2,367	476
Legal and professional fees	3,390	46	3,436	11,860
Bank charges	347	-	347	447
Sundry	1,617	-	1,617	2,227
Independent examination	1,000	-	1,000	1,000
Charitable giving	96	-	96	16,100
Staff costs	49,931	-	49,931	46,019
Total resources expended	162,374	219,081	381,455	230,372
Net income/(deficit)	26,232	49,501	75,732	(6,936)
Transfer to PCC	-	-	-	-
Transfers from COTC	5,230	-	5,230	1,287
Net movement in funds for the year	31,462	49,501	80,962	(5,649)

**THE PAROCHIAL CHURCH COUNCIL OF THE ECCLESIASTICAL
PARISH OF THE BARNSBURY TEAM MINISTRY**

**ST ANDREW'S BARNSBURY DISTRICT CHURCH
BALANCE SHEET AS AT 31 DECEMBER 2024**

	2024 £	2023 £
Fixed assets		
Equipment	-	-
	-	-
Current assets		
Gift aid receivable	-	-
VAT receivable	-	-
Other debtors	16,778	9,200
Cash at bank and in hand	145,744	85,626
	162,522	94,825
Creditors: Amounts falling due within one year		
Accruals	(13,010)	(24,858)
Deferred income	(3,780)	(6,105)
Other taxation and social security	(296)	(300)
Other creditor	(911)	-
Loan from Diocese and PCC	(25,000)	(25,000)
	(42,998)	(56,263)
Net current assets	119,524	38,562
Creditors: Amounts falling due after more than one year		
Other creditors	-	-
Net assets	119,524	38,562
Funds		
Unrestricted funds	51,937	25,578
Restricted funds	67,587	12,984
	119,524	38,562

FUNDS

	Balance at 1 January 2024 £	Incoming resources £	Resources expended £	Transfers £	Balance at 31 December 2024 £
Unrestricted funds					
General					
General Funds	23,450	188,606	(162,374)	127	49,809
Designated					
Stonework project	2,128	-	-		2,128
Total unrestricted funds	25,578	188,606	(162,374)	127	51,937
Restricted funds					
Cloudesley trust	-	171,658	(171,661)	3	-
Building fund	5,803	35,665	(46)	-	41,422
Rectory	4,781	-	-	-	4,781
Organ fund	2,400	-	-		2,400
NLHF Project	-	47,568	(34,840)	4,975	17,703
Community Fund	-	5,000	(3,719)	-	1,281
Diocese of London	-	2,664	(2,664)	-	-
National Churches Trust	-	6,025	(6,151)	126	-
Total restricted funds	12,984	268,580	(219,081)	5,104	67,587
Total funds	38,562	457,186	(381,455)	5,231	119,524

**THE PAROCHIAL CHURCH COUNCIL OF THE ECCLESIASTICAL
PARISH OF THE BARNSBURY TEAM MINISTRY**

**CHURCH ON THE CORNER
INCOME AND EXPENDITURE FOR THE YEAR ENDED 31 DECEMBER 2024**

	General Funds £	Restricted Funds £	Total 2024 £	Total 2023 £
INCOMING RESOURCES				
Donations and legacies				
Donations	60,908	-	60,908	49,710
Gift aid reclaimed	11,043	-	11,043	20,361
Grants	-	42,182	42,182	4,900
	71,951	42,182	114,133	74,971
Other trading activities				
Events income	10,040	-	10,040	6,704
Property rental income	54,825	-	54,825	45,296
	64,865	-	64,865	52,000
Investment Income				
Bank interest	651	-	651	521
	651	-	651	521
Other income				
Refunds	-	-	-	-
Fees and supplies	-	-	-	180
	-	-	-	180
Total incoming resources	137,467	42,182	179,649	127,671
RESOURCES EXPENDED				
Expenditure on charitable activities				
Parish contribution	35,000	-	35,000	-
Ministry and clergy expenses	3,427	-	3,427	5,188
Church hall and property	39,302	-	39,302	8,202
Building projects	-	42,882	42,882	8,143
Projects	-	162	162	-
Utilities and insurance	6,662	-	6,662	6,895
Upkeep of services	67	-	67	-
Telephone	562	-	562	681
Printing, post and stationery	525	-	525	-
Computer and software	648	-	648	185
Legal and professional fees	607	-	607	482
Bank charges	58	-	58	77
Sundry	-	-	-	452
Independent examination	1,000	-	1,000	1,000
Charitable giving	12,300	-	12,300	17,650
Staff costs	2,637	-	2,637	2,016
Total resources expended	102,794	43,044	145,838	50,970
Net income/(deficit)	34,673	(862)	33,811	76,701
Transfer to PCC	-	-	-	-
Transfers to St Andrew's	(5,230)	-	(5,230)	(1,118)
Net movement in funds for the year	29,443	(862)	28,581	75,583

**THE PAROCHIAL CHURCH COUNCIL OF THE ECCLESIASTICAL
PARISH OF THE BARNSBURY TEAM MINISTRY**

**CHURCH ON THE CORNER
BALANCE SHEET AS AT 31 DECEMBER 2024**

	2024 £	2023 £
Fixed assets		
Equipment	-	-
	-	-
Current assets		
Gift aid receivable	-	-
Prepayments	1,000	-
Other debtors	1,914	680
Cash at bank and in hand	383,274	353,030
	386,189	353,710
Creditors: Amounts falling due within one year		
Accruals	(14,189)	(14,530)
Deferred income	-	(1,450)
Other creditors	(5,623)	-
Funds held by Parish	(50,000)	(50,000)
	(69,812)	(67,200)
Net current assets	316,376	286,510
Creditors: Amounts falling due after more than one year		
Flat deposit	(1,285)	(1,220)
Net assets	315,091	286,510
Funds		
Unrestricted funds	313,995	284,552
Restricted funds	1,096	1,958
	315,091	286,510

FUNDS

	Balance at 1 January 2024 £	Incoming resources £	Resources expended £	Transfers £	Balance at 31 December 2024 £
Unrestricted funds					
General					
General Funds	284,552	137,467	(102,794)	(5,230)	313,995
Designated	-	-	-	-	-
Total unrestricted funds	284,552	137,467	(102,794)	(5,230)	313,995
Restricted funds					
Cloudesley trust	1,450	41,432	(42,882)	-	-
LIF project	-	750	(162)	-	588
Night Shelter	508	-	-	-	508
Total restricted funds	1,958	42,182	(43,044)	-	1,096
Total funds	286,510	179,649	(145,838)	(5,230)	315,091

**THE PAROCHIAL CHURCH COUNCIL OF THE ECCLESIASTICAL
PARISH OF THE BARNSBURY TEAM MINISTRY**

**PARISH
INCOME AND EXPENDITURE FOR THE YEAR ENDED 31 DECEMBER 2024**

	General Funds £	Restricted Funds £	Total 2024 £	Total 2023 £
INCOMING RESOURCES				
Donations and legacies				
Donations	2,502	-	2,502	1,867
Gift aid reclaimed	183	-	183	560
Other income	-	-	-	1,125
	2,685	-	2,685	3,552
Other trading activities				
Events income	-	-	-	-
Property rental income	30,000	-	30,000	30,000
	30,000	-	30,000	30,000
Investment Income				
Bank interest	1,759	-	1,759	1,277
	1,759	-	1,759	1,277
Other income				
Refunds	-	-	-	-
Fees and supplies	-	-	-	-
	-	-	-	-
Total incoming resources	34,444	-	34,444	34,829
RESOURCES EXPENDED				
Expenditure on charitable activities				
Parish contribution	-	-	-	-
Ministry and clergy expenses	984	-	984	1,505
Church hall and property	-	-	-	-
Building projects	-	-	-	-
Utilities and insurance	-	-	-	-
Upkeep of services	-	-	-	-
Telephone	-	-	-	-
Printing, post and stationery	-	-	-	-
Computer and software	-	-	-	-
Legal and professional fees	147	-	147	3,819
Bank charges	110	-	110	126
Bad debts provision	-	-	-	3,500
Independent examination	1,000	-	1,000	650
Charitable giving	-	-	-	-
Staff costs	14,459	-	14,459	13,217
Total resources expended	16,700	-	16,700	22,817
Net income/(deficit)	12,150	-	17,744	12,012
Transfers	-	-	-	-
Net movement in funds for the year	14,490	-	17,744	12,012

**THE PAROCHIAL CHURCH COUNCIL OF THE ECCLESIASTICAL
PARISH OF THE BARNSBURY TEAM MINISTRY**

**PARISH
BALANCE SHEET AS AT 31 DECEMBER 2024**

	2024 £	2023 £
Fixed assets		
Equipment	-	-
	-	-
Current assets		
Gift aid receivable	46	46
Other debtors	970	14,350
Loan to St Andrew's & COTC	75,000	75,000
Cash at bank and in hand	127,555	96,069
	203,571	185,465
Creditors: Amounts falling due within one year		
Accruals	(1,498)	(1,161)
Other creditors	(113)	(88)
	(1,612)	(1,249)
Net current assets	201,959	184,216
Creditors: Amounts falling due after more than one year		
Other creditors	-	-
Net assets	201,959	184,216
Funds		
Unrestricted funds	201,959	184,216
Restricted funds	-	-
	201,959	184,216

FUNDS

	Balance at 1 January 2024 £	Incoming resources £	Resources expended £	Transfers £	Balance at 31 December 2024 £
Unrestricted funds					
General					
General Funds	184,215	34,444	(16,700)	(10,000)	191,959
Designated					
Bemerton estate	-	-	-	10,000	10,000
Total unrestricted funds	184,215	34,444	(16,700)	-	201,959
Restricted funds					
	-	-	-		-
Total restricted funds	-	-	-	-	-
Total funds	184,215	34,444	(16,700)	-	201,959



PARISH OF BARNSBURY ANNUAL REPORT, JAN-DEC 2024

PREPARED FOR THE 2025 APCM



CONTENTS

Introduction	3
Report from the Parochial Church Council	4
St Andrew's Church	5
Church on the Corner	8
Electoral Roll Report	11
Finance Report	12
Fabric Report	14
St Andrew's Church	14
Church on the Corner	14
Safeguarding Report	15
Children's Work	16
Roots Youth Group	19
St Andrew's Church of England Primary School, Barnsbury	20
Arts on the Corner	21
Cosy Corner	23
Copenhagen Street Food Bank	24
Estates and Low Income Communities Programme	25
Open Church	27
St Andrew's Church Gardens	28
Eco Church	29
Deanery Synod	30

INTRODUCTION

I am delighted to introduce this report on the year 2024 (January to December). It has been an encouraging period for the parish with new worshippers coming to our churches and growth in our missional work, pastoral ministries and community engagement. Examples of all these things are to be found as you read through this report. It has been a year when significant building works have been carried out successfully at both churches. 2024 has also been a year of winning awards. Both churches were awarded Eco Church bronze awards and our volunteer gardening group at St Andrew's gained a silver award. During the year we had a number of major events, all of which went very well, and are recounted in these pages.

I have been very grateful for the support and encouragement of our Churchwardens, Assistant Churchwardens, Parochial Church Council members, clergy colleagues, staff, professional advisers and volunteers who have worked tirelessly over the past year. I would also like to thank Bishop Joanne (Bishop of Stepney), Archdeacon Peter (Archdeacon of Hackney), Area Dean Tamsin (Area Dean of Islington) and Preb. Andy Rider (Dean of Mission for the Stepney Area) and staff in the Diocese of London's Property Department for their continued support. To all those who contribute to God's mission in Barnsbury by your presence, your prayers, your time and energy, and your thoughtfulness, a heartfelt thank you.

The Revd Caroline Titley
Rector

REPORT FROM THE PAROCHIAL CHURCH COUNCIL

The Parochial Church Council (PCC) oversees the work of the parish. Following the successful implementation of an interim Mission Action Plan, the PCC embarked on a process of putting in place a new vision, values, aims and mission action plan for the parish, which was created in its present form (with two churches, St Andrew's Thornhill Square and Church on the Corner) in 2023. This work is nearing completion and will be launched at the APCM in 2025. We are grateful to Andy Rider (Dean of Mission for the Stepney Area of the Diocese of London) for facilitating this process and for helping us to chart the way forward.

The PCC is a Trustee body and, as such, has to give attention not only to the church as 'the people of God', responsible for mission, but also to the church as an organisation with legal and compliance responsibilities. The PCC has finance, safeguarding, data protection and health and safety as standing items on its agenda. We are very grateful for the work of our Treasurer, Andrew Wood, and to our Finance Officer, Tina Okoro, for providing us with timely and well prepared financial information. Our finances are now more complex to run and there is greater external accountability because of our success in being awarded grants from a number of different bodies for building repairs, professional fees, heritage, estates ministry and recycling projects. Despite the repair problems with our church buildings (particularly St Andrew's, which has very serious structural problems and is on the Heritage At Risk Register - condition 'very bad (Priority A)'), the PCC is pleased to have been able to increase its Common Fund contribution to the Diocese.

The PCC has had a number of discussions about safeguarding culture, using worksheets produced by the national church. We are very grateful to our two Parish Safeguarding Officers for the work they do in appraising the PCC about safeguarding issues and monitoring our progress via the safeguarding dashboard. The PCC gives high priority to the detailed monitoring of safeguarding policies, practices and training. At the time of writing this report, the safeguarding dashboard showed St Andrew's as having made '100% progress' and Church on the Corner '95% progress'.

The PCC is very conscious of its health and safety responsibilities and as part of its approach appointed Art Architects to undertake contract management responsibilities on its behalf for the major works that were carried out to the north vestry and tower and spire areas of St Andrew's church building in the fourth quarter of 2024. The PCC carried out its annual review of the parish's health and safety policy and made a number of amendments to reflect changing circumstances.

During the year we said goodbye to our Parish Administrator, Rachel Walker. The PCC is grateful to Rachel for her dedication and all the improvements she made to our administrative systems.

The Revd Caroline Titley
Rector

ST ANDREW'S CHURCH

2024 was a positive and lively year at St Andrew's. During the year, we welcomed new worshippers, grew in numbers, and opened up the church to more people and events. Our major services at the high points of the Christian year were particularly well supported. We are grateful to all those who have contributed to the leading of services and to preaching including Rev Idina Dunmore, Canon Robert Titley, our Children's Worker Heather Parker, and to Richard Parker. We also made considerable strides with the repairs to our church building.

Before Christmas was a very busy period with all the usual Advent and Christmas services and events, along with two wonderful weddings and three major building contracts: stonework repairs to the north vestry gable, significant but temporary repairs to the tower and spire, and essential electrical repairs. Looking back on that period, it is pretty amazing that everything happened successfully; but all that we did was needed. It was great to have a topping out service and ceremony to mark the completion of the first long-term repairs to the building. The architect, representative from the contractor and I all went to the top of the scaffolding around the north vestry and others gathered below.



A big thank you is due to our contractors, architects, staff and volunteers for supporting St Andrew's through this period.

2024 was the year when we set up our Pastoral Group in order to develop our support for congregation members, particularly those who are unwell or facing difficulties. Through this group, we aim to have a better knowledge of our people and any who might want our prayers, a home communion or a visit. With 115 people on our Electoral Roll plus children, and others worshipping with us but not eligible to be on the Roll, a team approach has been the right way forward. I am sure that the Pastoral Group's work will develop further over the coming year.

Open Church on Saturdays is attracting growing numbers of people, some of whom also attend our worship on Sundays. We are grateful for the support of the North London Waste Authority for the provision of

much better equipment for our clothes, books and toys recycling. It is an important part of our outreach to the local community. We are grateful for the support of our local Councillors in this and other endeavours.

During 2024, we combined with Islington Council to put on a community fair. It was very enjoyable and offered a number of different activities, some of which had an environmental theme. In the afternoon, we enjoyed music hall songs. For some the tunes were familiar, and they brought back old memories, for others it was a whole new experience. We shall be working again with the Council on a similar fair this year.

We participated once again in the Cally Fest, an important annual celebration in the life of the people who live in the area, and were able, at very short notice, to rescue the Barnard Park carols from a storm and offer our church as an alternative venue. We participated again in Open House weekend; this helps to bring the church to the attention of people in the local area and beyond.



Our events included a high profile book launch with Andrew O'Hagan, author of 'Caledonian Road'. The event was so popular that tickets ran out. Andrew was interviewed by our own Wendy Jones and gave a very interesting account of his researches for the book and his approach to writing it. The launch at St Andrew's was just one in a series that took Andrew across the world in order to draw attention to the street that runs through our parish! There may be a TV series and film to come.

We also had a number of concerts at St Andrew's during the year, some featuring home grown musical talent and others showcasing other artists. We are particularly grateful to Chalamie for putting on a number of concerts featuring mediaeval and renaissance music, played on instruments used at the time (or replicas). It has been quite a musical education as well as a delightful experience. The proceeds from the Chalamie concerts have gone to the St Andrew's Building Fund. We are very grateful to them.

For the first time since the covid pandemic, the parish arranged an outing to the seaside, to Southend. A really enjoyable time was had by all. The weather kept fine for us and many chose to have fish and chips with a view of the sea. It was a nice opportunity to get to know some of our newer members better. We are looking forward to our Parish Weekend in 2025.

During the year, four people were baptised at St Andrew's, there were two weddings, and the funeral of Iris O'Meally, one of our highly respected elderly members, took place at the church. I also conducted the funeral of Phil Harvey, much loved son of Lolita Harvey and known to many as one of the members of 'Soul to Soul'. We have many new enquiries for baptisms, which is encouraging.

The St Andrew's Montessori School continues to be based in our church building and we value our longstanding partnership with them. We look forward to working with the new owners in 2025. We have other bookings which bring in valuable, additional income.

The Building Development Committee continues to drive the restoration and renewal project. The parish was awarded £95k in resilience funding from the National Lottery Heritage Fund in order to make us 'project ready'. This funding has provided the parish with a project manager, architects and other technical

consultants, a business planning consultant, fundraiser, community engagement practitioner and creative practitioner.



During 2024 we were able to deliver local history workshops as part of a heritage project and work started on the business planning and technical facets of the work.

By July 2025, we will have a completed and evaluated local heritage project, and be in possession of a revised business plan, based on outline costings for a major restoration and renewal project. We believe that this should put us in a positive position for applying for further NLHF support in 2025.

The Revd Caroline Titley
Rector



CHURCH ON THE CORNER

This year at Church on the Corner focussed on strengthening our foundations, both to build-up the congregation and to support missional praxis and outreach.

This has looked like:

Sunday evening sermon series:

Spring Term – Ephesians

Summer Term – Miracles of Jesus

Autumn Term – COTC vision values as set out in the Harvest Plan – we had several visiting speakers who gave their perspective on each topic.

Homegroup Central has continued throughout the year on Wednesday evenings, with bring-and-share food followed by Bible or book studies and prayer. Last Summer we went through the Sanctuary Course together, which was a highlight of the year as we reflected on God's perspective on mental health - our own and those around us.

A recurring theme in our Autumn sermon-series was prayer, so responding to the Holy Spirit prompting we started a monthly Silent Space for reflective prayer on Wednesday evenings, and an online prayer meeting on Zoom 8-8.20am weekly on Friday mornings.

In December Rev Idina curated this year's Advent Project, which focussed on a book and art by Scott Erickson called Honest Advent: awakening to the wonder of God-with-us then, here and now. With thanks to all who contributed to the thoughtful reflections posted online.

We also had joyful Christmas celebrations – beer & carols in The Crown pub, a wonderfully inclusive bring-and-share Christmas meal, wreath-making at Arts on the Corner, carol-singing on Bemerton Estate, and a lovely Carol Service.

Arts on the Corner has continued monthly, beautifully led by Emily, and creating a positive, supportive community, as well as amazing art projects.

In November we held our annual November 5th celebration, with sausages and sparklers around a brazier in the front-garden.

Our Warm Space - Cosy Corner has continued every Monday from 11am-2pm. This has thrived, with many people from the local community, as well as church-members (and some from Southall) dropping-in. We serve hot drinks, snacks and home-made soup or other food made by willing church-volunteers, and provide simple activities: colouring, games, puzzles, quizzes and bingo!

We added an English Conversation Class on Mondays 2.30-3.30pm, which has had small numbers at times, but is a wonderfully supportive space for those new to the UK.

The biggest highlight of our year was COTC's 30th Anniversary Celebrations on 15th September. We had a party in the afternoon where we invited past and present COTC members, with speeches recalling the birth

and development of COTC, and God's faithfulness over so many years. Bishop Joanne unveiled our Bronze Eco-Award, and we had a special thanksgiving service, where Jon Kuhrt of Hope into Action spoke in the evening. It was a brilliant day, with so many thanks to Cat Seaton for organising the catering, Hector Hinojosa for decorating with hundreds of photos, and to everyone who helped out in so many ways. Happy birthday to us!!



Our building:

Externally we were able to do major works to fix our roof and install solar panels, thanks to bidding successfully for a sustainability grant from Cloudesley. However, we were unsuccessful in obtaining grant-funding for external decorating and repair for the front of the building, which we hope to obtain in 2025.

Internally, we scoped out the office space on the first floor for co-working and had several people using the space on an ad-hoc basis during the year.

Sanctuary Mental Health Ministries used a desk 4-days per week, and in September we welcomed Islington Centre for Refugees and Migrants 2-days per week, both for office space and running a weekly English Class in the main space. We are grateful for this collaboration.

We continue to have 3 tenants living in the second-floor flat.



At the end of 2024, I am grateful that God has blessed us with stable congregation numbers at COTC: a very committed core, some new members, and a regular number of encouraging visitors. In the Harvest Plan, COTC stated a desire to be a church more rooted in its community, and this is steadily developing: through our community-focussed groups, partnerships, and the ELIC programme based out of our building.

I would like to thank the Church Organizational Group (COG) for their support and input, especially Hector Hinojosa - Church Warden, Susie Procter – Safeguarding Officer, and Sue Latham - PCC member. We continue to welcome the friendship, support and partnership with St Andrew's Church, and especially with Revd Robert and Revd Caroline, our Rector.

Rev Idina Dunmore, Associate Minister with responsibility for Church on the Corner

Electoral Roll Report

Every six years, the Church of England requires parishes to create a new Electoral Roll. This means that everyone who is on the existing Roll needs to fill in a new application form to be included in the new version. Others who may be eligible, but who are not already on the Roll, are encouraged to consider being on the nearest thing that the Church of England has to a membership list.

The previous Roll was instituted pre covid (2019) and the subsequent years included a long interregnum. Unsurprisingly church attendance in this parish (and in many others) suffered during that period but since then, there has been a re-building process. In 2019, the combined figure for the Electoral Rolls at St Andrew's (107) and Church on the Corner (23) was 130. We are pleased that the overall number on the Parish Electoral Roll increased to 140 in 2025 (115 at St Andrew's and 25 at Church on the Corner). Some people attend both churches but can only be counted once, so the division is not exact. The revision process has been a useful one for us both in re-connecting with some of the people who were on the previous Roll and in encouraging significant numbers of new worshippers to join.

Stephanie O'Donnell
Electoral Roll Officer

FINANCE REPORT

Following the parish re-organisation in 2023, St Andrew's and Church on the Corner have now had their first full financial year operating as a two-church parish.

I am grateful to Tina Okoro, our book-keeper, and Leigh Engeham, our parish administrator during the latter part of 2024, for handling day-to-day financial work. Tina has additionally prepared regular management accounting reports and worked with our Examiner to provide our end-of-year accounts.

Financial Review – St Andrew's

Unrestricted income for St Andrew's (the income which we can spend on general church operations) rose from £183k in 2023 to £189k in 2024. Rental income fell slightly but was more than compensated for by an increase of £9k in giving. We were successful in keeping expenditure to £162k so there was a net surplus of £26k before inter-church transfers.

Restricted income reached £269k, (£40k last year) which includes £26k of donations specifically to the building fund. Expenditure on projects reached £219k.

Financial highlights of the year include:

- A successful appeal for donations to the Building Fund. We request grant income for the major capital works in the church, but still have to meet some of the cost of building work. Raising money from our own resources not only pays for the gap between grants and expenditure, but also sends a positive message to funders.
- Successful events (concerts, book launch) which raised money for the building fund
- Successful grant applications
 - We had a surplus in the building fund at end of year, allowing us to start work in 2025 on the West End repairs.

We face challenges over the next few years. We pay a reduced amount for Common Fund to the Diocese, and they have asked us to pay the full rate by 2030. We have to continue to be successful in winning grants for repairs and redevelopment, and we will be expected to make contributions to this by the grant-giving bodies.

Andrew Wood
Parish Treasurer

Financial Review -Church on the Corner

In 2024 COTC saw non-grant income rise by just under £15,000. The increase was driven by a combination of more donations from the congregation and higher levels of room hire during the year.

Our expenses increased by around £52,000, reflecting a significant increase in our contribution to Common Fund, up £35,000. This planned increase is part of the COTC Harvest Plan and was therefore a planned expense. We also had to carry out extensive roof repairs, and this explains the overwhelming majority of our increased expenses. We did get a grant of £42,000 towards the roof repairs, but the grant did not cover all of the costs.

We are now well into the Harvest Plan, we still need to increase our income by £2,500 per month to cover our full running costs, but we have reserves in place to cover this shortfall for the period covered by the Harvest Plan.

I would like to thank all of those who contribute so much to the running costs of Church on the Corner, and my prayer is that both our congregation and our income would increase in the year ahead.

Anthony Codling
Church on the Corner

FABRIC REPORT

St Andrew's Church

St Andrew's church building is on the national Heritage at Risk Register, condition Very Bad, priority A. The building is affected by severe structural problems and needs major investment.

We were successful during 2024 in keeping the building open and safe for our users. We also completed significant repair works and advanced our plans for the future restoration and renewal of this much loved building.

In order to keep the building safe, and to help diagnose the repairs needed in the future, regular monitoring of the condition of the tower and spire, chancel arch, north transept and aisle took place. We are very grateful to local charity, Cloudesley, for funding these checks.

Significant repairs took place during the year. These comprised the first long-term stonework repairs to the building for many years (to the north vestry gable), significant but temporary repairs to the tower and spire and vital electrical works following an EICR (Electrical Installation Condition Report). These were all completed successfully. The East Window was stabilised, pending major repairs at a future date. Again we are grateful to Cloudesley, and also to the National Churches Trust for funding these repairs.

Minor repairs were undertaken to the south aisle roof and urgent drainage repairs were undertaken following a specialist report. Fire alarm points were installed, which improves fire safety within the building. The usual annual safety checks and maintenance requirements, such as boiler servicing, fire extinguisher checks, piano and organ tuning, and pest control were all carried out successfully.

The Quinquennial Report was to take place in 2024, but was moved to the beginning of 2025. We are grateful for the support of our professional advisers, Alex Veal and Toshiya Kogawa (ARTArchitects) and Isaac Hudson (Michael Alexander Consulting Engineers) who have continued to support us during 2024.

The Building Development Group continues to drive the restoration and renewal project. The parish was awarded £95k in resilience funding from the National Lottery Heritage Fund in order to make us 'project ready'. This funding has provided the parish with a project manager, architects and other technical consultants, a business planning consultant, fundraiser, community engagement practitioner and creative practitioner. During 2024 we were able to deliver local history workshops as part of a heritage project and work started on the business planning and technical facets of the work. By July 2025, we will have a completed and evaluated local heritage project, and be in possession of a revised business plan, based on outline costings for a major restoration and renewal project. We believe that this should put us in a positive position for applying for further NLHF support in 2025.

Church on the Corner

Following on from grants received from Cloudesley in 2023, Church on the Corner was able to install solar panels and finance the repairing of the roof. Electric cable installation was carried out to enable the fitting of a new electric cooker in the kitchen, which is enhancing hiring opportunities and church events.

Routine maintenance to fire alarms, extinguishers, plumbing and lighting was also carried out successfully throughout the year.

Liz Case

Premises Manager

SAFEGUARDING REPORT

We want to make sure that our parish is a safe place for children and vulnerable adults to live and worship so safeguarding must be a priority for us all. The PCC reviews our safeguarding policy every year, having due regard to the House of Bishops guidance on safeguarding children and vulnerable adults, and have adopted the House of Bishops safeguarding policy “Promoting a Safer Church”.

This year each PCC meeting has started with a discussion around a different aspect of safeguarding, using worksheets designed by the National Safeguarding Team. Topics covered have included how to promote a safe compassionate and healthy culture within the church and how to respond well to victims and survivors of abuse.

We have continued to ensure that all members of the PCC have completed their mandatory training modules, and made clear on the new nomination form that any new members of the PCC will need to complete both a DBS check and training in order to serve. The coming year we will encourage more members of our congregations to complete basic safeguarding training, especially our welcomers and those that are involved in groups where vulnerable adults may attend, such as Cosy Corner and English classes.

We have continued to work through the updated safeguarding dashboard for each church. St Andrew’s have now completed 100% of the mandatory requirements remaining at level 3. Church on the Corner are also at Level 3 having completed 95% of the requirements.

Both safeguarding officers recently met with Revs Caroline and Idina to discuss various aspects of safeguarding in the parish, and are working on developing a social media policy.

St Andrew’s Church

Safeguarding Officer – Karen Summerfield

Children’s Champion – Heather Wood

Vulnerable Adult’s Champion- Chanel Georgio

PCC Safeguarding Policy statement is displayed on the notice board in the Welcome Area.

Church on the Corner

Safeguarding Officer – Suzanne Procter

Children’s Champion – Stavroulla Andreou

PCC Safeguarding Policy statement is displayed on the main hall notice board.

CHILDREN'S WORK

Our vision and aim

Starchasers is a group for our children across Barnsbury Parish. It aims to evangelise (tell the children about God, his love for them and how they need Jesus) and to encourage (to grow and mature the faith of those who are Christians).

The children

The group was originally for 5–11 year olds (primary school age). Due to changes (people moving away, kids moving up to the youth group) we decided to open this up to all under-11s the previous year. It has been great to be able to provide more for the under-5s and have fun and worship together. We decided on a little change in the past few months, where children under three would have another adult supervising their group, and providing a good session to all.

Attendance over the past year has been varied, but we have seen a larger increase since the summer, with new families joining the church. We have a few more children we are in contact with who come ad hoc to (for example) Easter events. Some children have linked in from coming to toddler group and local schools and Messy Church.

The leaders

I would like to thank our wonderful volunteers and parent helpers for all their hard work and dedication. There have been lots of changes and I couldn't have managed without them. Special thanks to Heather Wood for her wonderful support and teaching with the group, and for her great ideas!

Sharing with church family

In the notice section of the 10.30am service, we share things the group has been up to. We also have an activity table for any children attending the 9am service.

All age services

We have really enjoyed building on our all age services. It has been great to encourage more children to attend, and numbers have been growing. We continue to think of new ideas to engage everyone in worship together. Special thanks to Rev Idina and Revd Caroline for working with me on this. We have been able to find even more ways over the past year to include children in these e.g. drama and readings and interviews.

Spring term

This term we looked at the Armour of God and also some Easter activities towards the end of term.

Summer term

This term we looked at the Parables of Jesus.

Autumn term

This term we started by looking at creationtide, and other environmental related sessions. After half term we focused more on Advent and Christmas lessons.

Praise God for...

The kids – New kids joining and feeling welcome

The leaders – Wonderful skills and knowledge

Please pray for...

The kids – New kids feel welcome. For them to grow a stronger faith.

This year – Great relationship building, and for everyone to grow in faith.

Leaders – Developing new skills to help the children.

Community outreach

Cally Fest

We had a brilliant time engaging with the locals. As well as the usual refreshments stand, we had a table of kids' crafts.

Messy Church

Pancake party - We held a pancake party alongside the open Church.

Easter - On Holy Saturday we had Messy Easter, alongside Open Church. It was wonderful to welcome many new families into Church. We had lots of fun activities and crafts.

We also had another fun Easter egg hunt on Easter Sunday after the service. We were able to advertise locally, and had a few new people come and join in.

Summer - We have started to build up on more sessions and held a summer Messy Church, which included more activities outside, and a picnic at the end.

Autumn - We held an autumn Messy Church with the theme of 'God is light in the darkness'.

Christmas - We had a fun time making things, playing games and learning about the meaning of Christmas.

Christingle service – Christmas Eve

We were able to have our usual Christingle service. We saw some new families and enjoyed worshipping together, and had a great increase in numbers from last year.

Schools work

Rev Ted Fell, of All Saints' Caledonian Road Parish, and I continued our work delivering collective worship to St Andrew's Primary School. Rev Idina and Revd Caroline join us in leading our usual School services. We also do assemblies for Thornhill School, and have been building on our relationships there.

St Andrew's Primary School assemblies

Spring 2024:

- The theme of 'Names of Jesus'. In the Scriptures, a person's name had great significance. It reflected that person's character, telling a story about that person. That's why the names given to Jesus were

so important. Knowing Him better is essential so we can reflect His character to the world around us.

Summer 2024:

- This term we have the theme of parables. Jesus used parables to help people visualize and understand a lesson He taught, so we could learn from it. We will also look at Ascension Day and Pentecost.

Autumn 2024:

- 1 - This half term we have the theme of 'Creation' and will link it into many topics for Collective Worship in school. We will also think about certain awareness days, and how we can help others around the world.
- 2 - This half term we have the theme of national days and Advent/Christmas. We will link it into many topics for CW in school.

St Andrew's Primary School services

For key events, the whole school comes to St. Andrew's Church for a service. These include St Andrew's Day, Christmas/Christingle, Ash Wednesday, Easter, Pentecost, and Year 6 Leavers. It's always a pleasure to support the school and to see the pupils, staff and parents attend the services. A few pupils from school help us each time.

Assemblies at Thornhill School

This is such an amazing opportunity to share about the Christian faith with a few hundred pupils. We have been in occasionally to deliver assemblies. We hope to build on this and do more in the future.

Prayers

Please pray for both schools...

- The staff/pupils – may they have a great year, and that we can continue to support.
- Opportunities to be able to support the other primary schools in the parish.
- Thank God for all the staff/volunteers at school that work hard to provide a fun and safe environment for the children.

Heather Parker

Barnsbury Parish Children's Worker

ROOTS YOUTH GROUP

Over the last year we finished studying Revelation (which took 18 months to get through).

We have started on Matthew and are enjoying studying the gospel which was favoured by the early church and has so much to teach us.

Roots organised our third Easter Egg hunt which attracted around 25 adults and 25 children. We've also had sessions purely dedicated to having fun and have played board games. The young people enjoy the fellowship they have together. We welcomed some new young people during the year, as well as seeing our students return from vacations.

Lamar Henry
Roots Group Leader

ST ANDREW'S CHURCH OF ENGLAND PRIMARY SCHOOL, BARNSBURY

'Realising Potential through Faith, Hope and Love'

Reading through last year's report on our wonderful church primary school, it's clear that there have been dramatic and unexpected changes in 2024-2025.

Our headteacher, the inspirational Felicity Djerehe who transformed the school, has moved on this year to another headship, in a well-known Church of England school in another borough. Mrs Djerehe had a very moving leaving service in church on 4th April 2025, attended by the Mayor, and Councillor Rowena Champion, where 180 children said goodbye and presented her with their cards and examples of their work. The church was packed with parents, children, governors and staff. We thank her for her amazing work at St Andrew's and wish her well.

We now have a new executive headteacher, Mrs Tonnie Reid. Mrs Reid has four schools to manage, ably supported by a Head of School in each one, and Mr Richard Smith, who has been Deputy Head of at St Andrew's for over a decade, has become Head of our school, which is great news.

As you will have seen in the local press, two primary schools just a stone's throw away from us, are facing closure. But St Andrew's future is secure. The school is in the Islington Barnsbury Planning Area 4 which means it is in the part of the borough which is the second most affected by the lower birth rate, and by families moving out of the district for larger and cheaper housing. 66% of our pupils are now on pupil premium (which supports low-income families) and this puts us in the top 20% of such schools in the country. This has increased by about 30% since the pandemic. In addition, 25% of pupils (35) have Special Educational Needs or Disabilities (SENDs) which means they need extra resources, and it's notable that half of these children are also from low-income backgrounds. Despite this, the school has achieved significantly higher than average success academically with particularly excellent results in writing. The school will be visited by Ofsted this summer and will have a SIAMS (Statutory Inspection of Anglican and Methodist Schools) in the coming year. We look forward confidently to these inspections.

Looking ahead, the Board of governors have every confidence that our new Executive Head Mrs Reid (a local from the Copenhagen Street area) with the respected and much-loved Mr Smith will take us forward from strength to strength. St Andrew's Church of England Primary School pupils go on to a wide range of secondary schools in the area, with increased aspirations, strong skill sets and remarkable academic attainments.

Of course, this report should look beyond statistics. You cannot quantify the excellent atmosphere in this school, where the Christian ethos is prevalent but not excluding. Everyone of any faith or no faith is welcome. But having said that, the school assemblies ('collective worship') are an absolute joy, and I think that if everyone in Barnsbury went to one school assembly a term, happiness would increase. To see every child included, talking about the core values of Faith, Hope and Love, is to have your spirits instantly uplifted and your own faith strengthened.

Please keep the school in your prayers.

Lis Howell, Co-vice chair, Board of Governors, St Andrew's Primary School

ARTS ON THE CORNER

This year has been another hopeful, varied and abundant year for Arts on the Corner.

I have increasingly been trying to involve members of art club in the leading of sessions, so we've had collage with Lorraine, drawing objects with emotional resonance with Ting and Jonas and our first live modelling session with Flint the dog, and Patricia, who has taught at the Royal School of Art! This has created more variety and hopefully more of a sense of ownership and inclusion for those who attend. We have also made connections with others beyond the art club community, hosting Morphe (a network of Christian artists) for a launch event, and enjoying interpreting the music of Jess McNulty (a flautist who trained at the Guildhall) through expressive painting. We have also benefitted from the parish's generosity, through the most abundant Christmas wreath making ever, courtesy of the gorgeous floral leftovers from a St Andrews wedding!

We've continued to enjoy art in outdoor spaces - painting in Thornhill Gardens and heading on a trip to Hampstead Heath in the summer. Church on the Corner's new plot at Culpeper has opened up lots of other possibilities here - we've used our keyholders' privileges with spring nature journalling, and it's also created synergies with art club members becoming central players in the Culpeper gardening sessions.



Increasingly the trust and relationships built have meant that there has been overlap with other areas of church life, with members joining for the St Paul's advent carol service, Silent Space, Neil Philimore's gig, the Church on the Corner 30th birthday celebrations and the Christmas carol service.



We have also experimented with Arts on the Corner 'lates' as crossover spaces between the art club community and the church midweek group with more of an explicit emphasis on faith, starting with a shared meal, time of silence, and meditation on a theme (such as "rooted and grounded in love" in autumn), before leading into a freeflow space for painting and drawing, and wrapping up with silence and a prayer. There have also been gentle conversations about faith, with art club members asking questions and sharing their experiences.

We have continued to have a solid core of regulars alongside more occasional attendees and are also attracting new enthusiastic, committed members. There continues to be an amazing diversity of age, race, class, neurodiversity, nationality and level of artistic experience which creates a really rich, joyful and nourishing experience of community.

A couple of specific snapshots of ways God has been working at Arts on the Corner this year:

- a pair of Sudanese asylum seekers joined us for the portraiture session - one had been at art school before having to flee, and drew such a beautiful portrait of the other, expressing and conferring great dignity. One of them has become a regular member of art club, while battling with depression having fled war torn Sudan, and waiting for a decision from the home office.
- at an Art Late, a member of Church on the Corner was able to give incredibly significant pastoral support to a young art club member dealing with feelings of dislocation and guilt.
- a new member joined a few days after experiencing a shocking grief and expressed it was just what she needed.



We continue to be very grateful for the community's prayers and support, and would ask for more prayer in the months to come!

Emily Hockley, Arts on the Corner Leader

COSY CORNER AND ENGLISH CONVERSATION CLASSES REPORT

We started Cosy Corner as a Warm Space at Church on the Corner at the beginning of November 2023. We continue to meet every Monday 11am – 2pm, offering a warm welcome, a hot soup and bread lunch, and a social space with games, puzzles, quizzes, bingo and mindful activities. We have also taken trips during the year to Kew Gardens and joined in with Parish trips to Southend and Woodberry Wetlands.

We were inspired by the Warm Welcome Campaign, which exists to turn poverty and isolation into warmth and welcome through the power of local spaces made by and for the community. They have a vision to create a fairer and friendlier society, built by local communities, so everyone can thrive and knows where to turn to for warmth, welcome, friendship and support.



Numbers have gradually risen during the year, and we now have about 20 regulars, some local and some from West London. They are very positive about our group, and have called it 'peaceful', 'a safe space', and 'something to look forward to on a Monday'. During Lent we added in a simple reflection and prayer time at the end of each session, which we have continued throughout the year for those who want to stay. Having been comfortable in the group, several people have come along to our church worship services and other events, and some now attend regularly.

We added English Conversation Classes every Monday 2.30-3.30pm from April 2024, run by Sue Latham. This has attracted a wide variety of nationalities, including Chinese, Eritrean, Afghan and Bengali.



A big thank you to everyone who has volunteered to make these groups happen: especially Stavroulla, Robert, Val, Avril and Sue, everyone from COTC and St Andrew's who have made delicious soups or other food, and many people who've helped in other ways, from putting out tables to donating puzzles.

We will be continuing the group throughout 2025, and hope to add in an easy exercise class during each session. If you'd like to come along or to volunteer, do get in touch with Rev Idina.

Rev Idina Dunmore, Associate Minister with responsibility for Church on the Corner

COPENHAGEN STREET FOOD BANK

We continue to support the food bank which is open every Thursday at the Catholic church in Copenhagen Street. Three years ago we were serving 80 customers a week: now it's about 200, providing food for about 650 local people. The main helpers from St Andrew's are Tania Levett, Avril Riddell, Sharon Alexander, Rev Idina and Richard Parker.

We are grateful to all those who bring Sunday donations to church. More, please! We need non-perishable food: tinned meat, fish, soup, vegetables and fruit, plus pasta, rice, tea bags, instant coffee and toiletries. The collection box is by the office door. Items can also be left at collection points in Caledonian Road, in the Co-op and Iceland. (The Sunflour Bakery in Caledonian Road generously gives us a lot of their excellent bread every week.)

The organisers are also able to respond to what people need by buying stuff in bulk. This is made possible by local supporters who make regular financial contributions, typically £5 or £10 a month, by standing order. If you would like to help in this way, or make a single donation, please see Richard.

And of course we could always use more help on Thursdays, setting up and packing bags in the morning and/or serving customers in the afternoon.

Richard Parker

ESTATES AND LOW INCOME COMMUNITIES PROGRAMME

Background

In June 2024, the Diocese of London was awarded a £9.4 million grant from the Church of England's 'Diocesan Investment Programme' (DIP) to catalyse church mission in Hackney and Islington over six years. Both Deaneries have young populations (33% under the age of 19) and are deprived with the highest number of socially rented households in the UK (125,000). This context makes reaching young people and mission on estates a strategic priority.

Across the churches, the overarching ambition is to:

- Grow in number, depth and impact
- Cultivate collaboration, including working across traditions
- Reach estates and low-income communities
- See more young people part of church life
- See greater diversity in the church

There are 4 workstreams

1. Planting and Partnerships: Eight New Worshipping Communities will be created through ten church plants/partnerships
2. Youth: Five Youth Minsters will be established (serving 21 parishes between them), creating four New Worshipping Communities
3. Estates: Five Estates Missioners deployed (serving five parishes between them), creating five New Worshipping Communities
4. Catholic Renewal: Two Catholic clusters (serving eight parishes between them) and a Mission Covenant established, supported by a Catholic Mission Enabler, creating nine New Worshipping Communities

In September 2024 Barnsbury Parish was awarded funding for the Estates workstream to work in the Estates and Low-income Communities (ELIC) in our area.

The five-year programme will aim to create real engagement with Estates and Low-Income Communities, with people from these areas playing an active part in the church community, and in the leadership teams and structures of the church. Our metrics require us to start at least one new worshipping community with an Estates focus.

Progress:

In September 2024, Rev Idina started a Congregational Development Programme with the Centre for Theology and Community. This teaches a Community Organising approach, focussing initially on one-to-one meetings, and then drawing like-minded people together to take action to improve their community. If you have any thoughts or ideas about this, do speak with Rev Idina.

In December 2024 we recruited an Operational Support Administrator. Sarah Dodd is based at Church on the Corner 2 days per week and is assisting with organising events and collecting required metrics, as well as some general administration.

We have begun building links with the Jean Stokes Centre on the Bemerton Estate, and we are making enquiries about other opportunities. We're considering the following collaborative projects during 2025:

- Prayer-walking
- Inter-faith meals
- Summer fun-day
- Green-focussed activities
- Additional Warm-Space

A community missioner will be employed by Autumn 2025 to lead on these initiatives, under guidance from Rev Idina.

Sarah Dodd
Operational Support Administrator



OPEN CHURCH

Open Church has grown even more in the past year.

We were asked by Islington Council to collaborate with them on a project called 'The Barnsbury Community Fair', which meant Bridgeman Road and the surrounding roads were closed off for this event. The street was filled with all of our clothes, books and toys from Open Church, as well as Islington Council having information and advice stalls; and a few food stalls. At St Andrew's, we also had other activity stalls and games for the children. The event was very well attended with numbers reaching well over 200 adults and children from our local community and further.

Through our connection with Islington Council, who could see the work we were doing within our community and were impressed with it, we were informed that we could apply for a grant from the North London Waste Authority (NLWA) to support the needs of our clothes, books and toys recycling project. We were successful with our application and were notified of this in April 2024. This enabled us to purchase a lot of equipment for Open Church, making it look more authentic and making us a more productive team along with our volunteers. We get a huge amount of donations which are sorted weekly in preparation for Saturdays. I am constantly mentioning the growth of Open Church: from the amount of donations we do actually receive within our community and our weekly attendance of adults and children, it is clear to see our popularity and the need for this in our community. When we get so much, we can also distribute it to other charities. We have close links with:

Manna Project (Men's clothing)

Smart works

Choices (0/5years)

Women's Refuge

Traid

During Open Church, there is also a quiet space for 'Quiet Reflection' for prayers and the public can light candles if they wish. They can also see Revd Caroline or another minister.

I would lastly like to add that we have been asked again by Islington Council to hold another Barnsbury Community Fair again this spring.

We also have events at Open Church where we provide a light lunch and light entertainment (dressing up from different years).

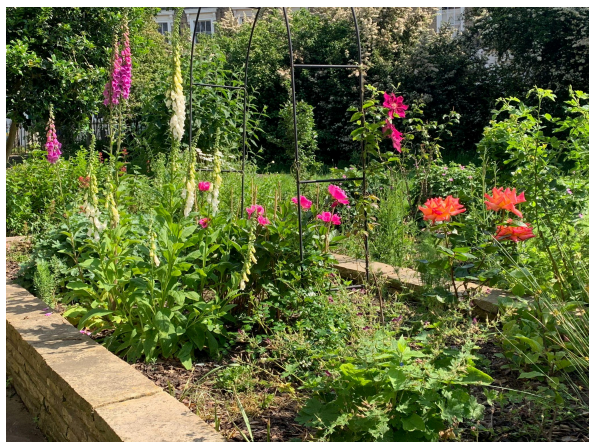
Chanel Georgio

Assistant Churchwarden

Resource Manager @ Open Church.

ST ANDREW'S CHURCH GARDENS

Thanks to the generosity of one of the friends of the Gardening Group we have been selling her hand made children's cardigans and jumpers at Stay and Play and Open Church to raise money to buy plants, bulbs and gardening tools. We have also received donations from other supporters of the Group as we do not receive any funding from either the church or Islington Council to support our activities.



In May 2024 we reclaimed one of the flower beds that had been completely overgrown with weeds and ivy. After the morning service on 26th May we had "the big dig" when members of the congregation were invited to dig in and help clear the bed. We also had help from Islington Council during the week to help prepare the bed for the Barnsbury Family Fair on Saturday 1st June when we invited the children to come along and plant

petunias, lobelia and strawberries.

In mid-June we entered the gardens into the Islington in Bloom competition under the Community Gardens category. It was the first time we had entered the competition and were encouraged to do so by our friends from Barnard Park and Arundel Square.

In July we were advised that we could no longer access the south side of the church (Bridgman Road) due to structural concerns with the tower. Unfortunately the building works have resulted in the beds in this area being damaged and we have lost a number of plants and roses. As this is a very visible area we hope to be able to tidy it up in time for the 2025 competition but access is still restricted.



In late September we were delighted to be notified that we had received a Silver Award from the Islington in Bloom competition. We also received a voucher for £8.99 to buy compost from the Camden Garden Centre who support the annual event. In October 2025 we will be marking our fifth anniversary since setting up the Gardening Group. Once again we will be entering the Islington in Bloom competition and of course we will be going for Gold!



Islington Council has been very supportive of our efforts and we thank them for their donation of compost and mulch to enhance the soil and help to keep down the weeds. The Council have also informed us that they will have a team to work on clearing the shrubs around the perimeter which will make a huge difference to the look of the gardens.

Our grateful thanks go to Cllr Rowena Champion and Fiona Mackenzie-Cardy (Community Ranger, London Borough of Islington) in particular.

The Gardening Group meets on the second Saturday in the month from 11am to 1pm. Helpers are always welcome.

Avril Gardner, on behalf of the St Andrew's Gardening Group

ECO CHURCH

Climate change, and human damage to the created world, are some of the biggest problems of our time. They threaten the homes, health and livelihoods of some of our poorest brothers and sisters. And they can cause immense suffering to God's creatures. We believe that, as followers of Jesus, we are called to care for creation and to work to reverse climate injustice. Or, as described in the Church of England's Five Marks of Mission, we are called to 'strive to safeguard the integrity of creation and sustain and renew the life of the earth'. The Parish of Barnsbury is committed to the shared aim of achieving net zero by 2030: a challenging goal.

In our parish, our creation care work is led and coordinated by a small Eco Group which includes members of both churches. We meet about once a quarter, but the work continues between meetings. For example, in 2024 we visited two local nature reserves. In order to help us on our creation care journey, we have signed up to the Eco Church award scheme of A Rocha, the Christian environmental charity. 2024 was an important year for us. Both churches achieved a Bronze award, the first step towards Gold. In order to do this, we had to meet standards in five areas: worship and teaching, buildings, land, lifestyle, and community and global engagement.

The Eco Group does not claim credit for these achievements. The engagement of the wider church community has been a key factor. We welcome and cherish initiatives such as the clothing and toy swaps on Saturdays, the ongoing transformation of the garden at St Andrew's, and the Barnsbury Family Fair (organised jointly with Islington Council), which has sustainability as a key theme. Thanks are due to everyone who contributes to these initiatives. Thanks too to successive church administrators who have taken on the mundane but important task of making sure that our consumables are environmentally friendly. Throughout all these processes Rev Caroline and Rev Idina and visiting preachers have inspired and supported us.

The task of the eco group is now entering a more difficult phase. We have conquered the foothills, and ahead of us is a sizeable mountain. In order to achieve Net Zero by 2030, or even to win Silver awards in the Eco Church scheme, we will need to make our buildings more sustainable. We were delighted that Church on the Corner was able to install solar panels. But there is much more to do: both churches will need to reduce our reliance on fossil fuels and to reduce our energy footprint. We do not underestimate the difficulties ahead.

There are also challenges for each of us as individuals. We each need to question ourselves over the food we eat, the clothes we wear, our travel choices, and how we use our money. You can expect to hear more from the Eco Group in 2025. But these things are too important to be left to us. We look to you all as members of the church to help us to make progress.

Heather Wood, on behalf of the Parish Eco Church Group

DEANERY SYNOD

Deanery Synod is convened three times a year; and lasts up to two hours. This forum includes representatives from each church in Islington Deanery. Each meeting is attended by 20-30 people, and is usually at a different local church each time, most recently at St Mary Upper Street. Apart from formal business, such as electing its vice-chairman and school governors, which takes little time, the main item in each meeting is a presentation of something which may be of interest, most recently presentations regarding parish involvement in schools. The Synod in February 2024, at St Luke West Holloway, included presentations by members of that church regarding its artwork inspired by the Gospels, then some break-out round-table discussions and a short tour of the church and the art exhibited there. Regrettably I was unable to attend the two later synods in 2024 owing to commitments elsewhere. Barnsbury Parish is currently entitled to nominate two representatives (the quota depends on the number on our electoral roll, currently under review, so this is variable) and I would welcome a colleague being a representative along with me, especially helpful if I am unable to attend a meeting myself.

Roland Jones, Deanery Synod Rep