



Nine Elms School 100%

A FAMILY OF NEIGHBOURHOOD CHURCHES  
MAKING AN IMPACT ON THE CITY

THE PARISH OF BATTERSEA FIELDS

2023  
ANNUAL REPORT

# 2023 Report and Accounts for the Parish of Battersea Fields

## Contents

.....	1
.....	1
Welcome.....	3
Battersea Fields Parish in 2022.....	4
St Saviour .....	6
All Saints .....	6
St George - church .....	7
St George – school .....	7
Practical Details.....	8
Governance .....	9
Parish Accounts.....	11
Independent Examiner’s Report .....	13
General administration.....	25

## Parish Churches

Churches in the Parish of Battersea Fields are at the following locations:

### All Saints

Prince of Wales Drive, London, SW11 4BD

### St George

11 Patmore Street, London, SW8 4JD

### St Saviour

351 Battersea Park Road, London, SW11 4LH

**Registered charity number 1130423**

## Contact Details

### Parish Office

Parish of Battersea Fields

Parish Office,

St Saviour Battersea Park Church

351 Battersea park Road, London SW11 4LH

**t:** 020 7720 9076

**e:** [office@batterseafields.org](mailto:office@batterseafields.org)

### Vicar

Revd Leighton Carr

**e:** [leighton@batterseafields.org](mailto:leighton@batterseafields.org)

### Associate Vicar

Very Revd Anand Asir

**e:** [anandjessie@yahoo.co.uk](mailto:anandjessie@yahoo.co.uk)



## Welcome

Dear reader,

The big news this year was the news that the parish school St George's Church of England Primary School was successful in its bid to become the occupier of the new two form primary school being built in Nine Elms on the South Bank.

After a competitive bid in which the school team of head teacher, chair of governors and myself as vicar of the parish set out a compelling vision for a 'village school for Nine Elms', the Local Authority decided in favour of St George's School as its partner in creating the new £55m education and community hub at the heart of Nine Elms.

Alongside this the three churches in the parish all explored new initiatives in outreach and developed closer ties with partners, as well as maintaining a pastoral approach to wellbeing and spiritual growth.

It remains our vision to create ***A Family of Neighbourhood Churches*** across the parish where traditional and new congregations can joyfully celebrate their unique identity while sharing resources and values of worship, fellowship, service and mission.

The report below only gives a flavour of the work of the parish. If you would like to find out more please do not hesitate to contact me through the parish office.

With best wishes



Revd Leighton Carr

*Vicar Battersea Fields &  
Nine Elms on the South Bank*

## Battersea Fields Parish in 2022

Battersea Fields Parish is host to the largest part of the Nine Elms on the South Bank redevelopment. The parish now includes a new shopping centre at Battersea Power Station to add to the new US Embassy opened several years ago. New Covent Garden Market is being fully redeveloped, and numerous other development sites for housing, retail, leisure and commerce are coming to completion especially around the Nine Elms Linear Park which runs through the parish and connects Vauxhall with Battersea along an elegant natural walkway. The parish also continues to grow as a large international community, bring even more diversity to an area that was already mixed culturally.

As well as these regenerated areas the parish has eight large traditional estates, two of which have been historically among the least well off in the borough. Across these areas too there has been a move towards creating a greater sense of community partly funded by the new Nine Elms development to the north, but also as a result of changing demographics in current estates.

It is in this context that the three churches in the parish – All Saints, St Saviour and St George - continued to look for new ways of connecting with local people while growing in worship and fellowship in a variety of traditions across the parish. All Saints was strengthened by closer ties with the Filipino Chaplaincy which started several years ago and continued to develop its rich catholic tradition. St Saviour worships in a central evangelical tradition and started to focus on improving its presence in the area through improving some outdated aspects of its buildings and developing closer ties with the local community centre. St George continued to focus on being a well connected community church by deepening its links with the parish school and through its work on the traditional estates and the new Nine Elms communities.

The work of the parish office continued to develop alongside the work of the churches. New projects were started to reach out to new residents in the area. During the year the parish office prepared a new strategy for staffing to develop further the platform on which new discipleship communities can begin and flourish. The restructured finances and systems continued to be streamlined to provide avenues for funding and support and connection.

Overall, with the work done by each of the churches and by the parish office it was a busy year. The effects of COVID continue to be felt in lower numbers and a different mix of people attending church, but the work has continued at a good pace and with a confident view of continued ministry in the future.



**Achievement and Performance  
through the local church**

# Your local churches

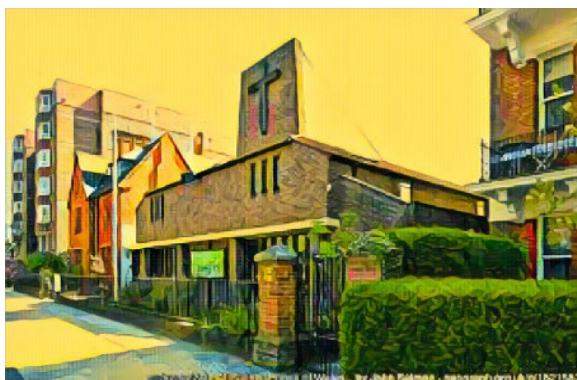
## St Saviour



St Saviour saw a continued focus on improving the buildings in order to become a more accessible community hub. Relationships with the local shopping and community centre in the Doddington and Rollo estate were developed further through some good partnerships and church members help run the roof garden and the community hub in Doddington.

St Saviour's aspirations to grow are underpinned by values of welcome and nurture, and in 2023 they want everyone to grow spiritually, emotionally, intellectually, and with a sense of physical wellbeing. The highlight of the year was the Parish Carol Service held in St Saviour's with a varied musical offering including a classical trio and a young people's Djembe Choir

## All Saints



Worship at All Saints is in the liberal catholic tradition. It includes participation and lay involvement in services and All Saints offers many ways to explore spirituality ranging from prayers led on zoom, to retreat days and seasonal celebrations.

All Saints also hosts the Battersea Befriending Network which supports people in the community suffering isolation and the Filipino Community in All Saints are fully integrated into the life of All Saints. There continues to be bi-weekly Taglog worship.

All Saints continues to give away half of its offering funds and in 2023 over 30 charities were supported in the UK and abroad.



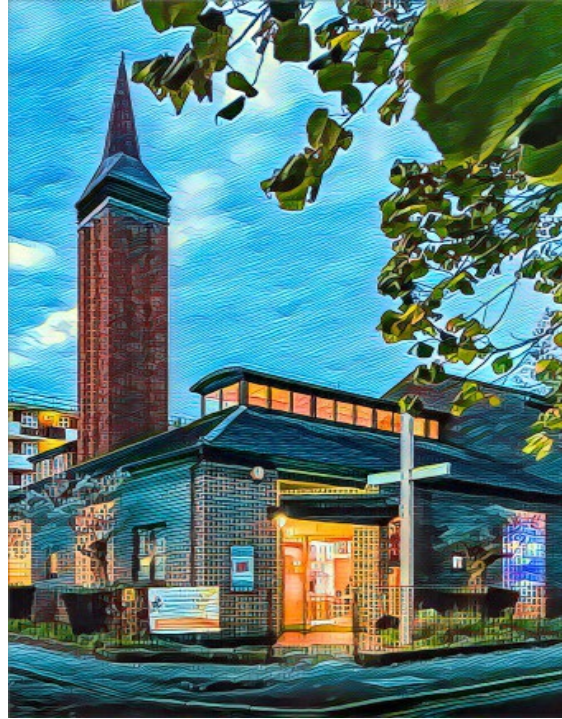
# Practical areas

## St George - church

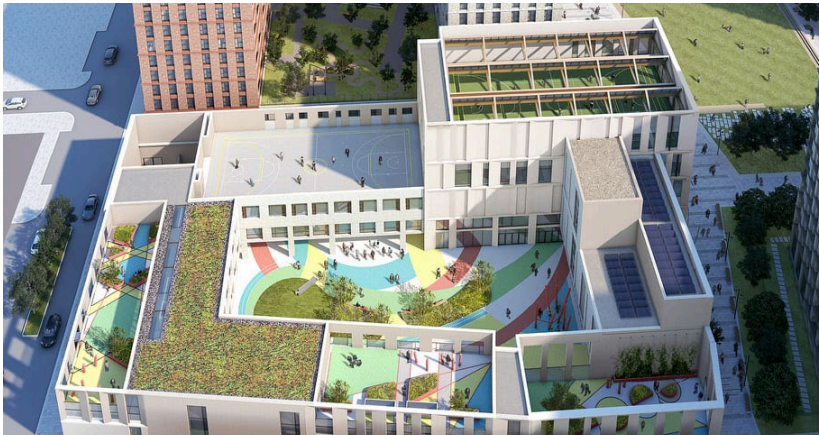
In 2023 St George continued to work closely with children and parents, and especially in the parish school of the same name.

St George's family's worker ran after school clubs and mentored children during the day, and the church's music and worship coordinator ran a Djembe Choir and taught piano in school.

During the year more community events were done including community lunches and the Happy Streets Festival in the summer and new members were welcomed into the church.



## St George – school



The new primary school in Nine Elms will be run by St George's C of E Primary School which currently occupies the site leased to the school in 1826. The new site is the former Royal Mail site, and the opening date is due to be September 2026. The intention is to make the new school a place for education, community and a centre for faith and worship.

# Practical areas

## Practical Details

### Membership

The official membership of the parish was 210 adults at the end of 2022 but many more visitors came to church in 2022.

The largest single event held in 2022 was the visit of the whole of the parish school to St George's at Christmas, bringing 230 children and staff to church.

### Staffing

At the end of 2022 two people were working part time on behalf of the parish. Angela helped part time with administration. Sosy worked on bookkeeping and accounts. The parish has two clergy posts of the Vicar and Associate Vicar.

### Financial Statement

St Saviour and All Saints have sets of accounts which are independently examined because their turnover exceeds the threshold set by Charities Commission. St George and the Parish accounts fall under that threshold and so will be independently checked by the external examiner for the parish when he prepares an aggregate statement of accounts for the Charities Commission.

### Giving

Churches fund their mission and ministry through the giving of church members and regular monthly giving helps the leadership team to plan throughout the year. Every member of each church needs to think this through if we are to become sustainable worshipping communities for the long term.

### Wardens

The wardens for the current year are Richard Trout and Vasantha Gnanadoss (All Saints), Patricia Trusty (St Saviour) and Lorna Ashley (St George). Deanery Synod Reps are Ken Obi and Stanley Annan(All Saints) and Clara Manly-Spain and Steve Clarke (St Saviour)

### Safeguarding

There were no critical incidents in 2022 and the PCC has complied with the duty under section 5 of the Safeguarding and Clergy Discipline Measure 2016 (duty to have regard to House of Bishops' guidance on safeguarding children and vulnerable adults)



# Practical areas

## Governance

### Aims and Purposes

The Parochial Church Council is a corporate body established by the Church of England. The PCC operates under the Parochial Church Council Powers Measure.

The Battersea Fields Parochial Church Council (PCC) has the responsibility of cooperating with the incumbent, the Reverend Leighton Carr, in promoting in the ecclesiastical parish the whole mission of the Church - pastoral, evangelistic, social and ecumenical.

The PCC is responsible for making decisions on areas of general concern and importance to the parish. There are no sub-committees and each church has a Local Church Council which makes decisions about the day-to-day running of the church, including how to raise and spend funds.

### Parish Church Council membership

The following trustees served on the PCC between 1<sup>st</sup> January to 31<sup>st</sup> December 2023

### Clergy

- |                  |                 |
|------------------|-----------------|
| 1. Leighton Carr | Vicar           |
| 2. Anand Asir    | Associate Vicar |

### Wardens

- |                        |  |
|------------------------|--|
| 3. Vasantha Gnanadross | Elected Churchwarden (also Diocesan Synod) |
| 4. Richard Trout       | Elected Churchwarden                       |
| 5. Patricia Trusty     | Elected Churchwarden                       |
| 6. Lorna Ashley        | Elected Churchwarden                       |

### Synod Representatives

- |                       |                          |
|-----------------------|--------------------------|
| 7. Clara Manley-Spain | Ex officio Deanery Synod |
| 1. Steven Clarke      | Elected Churchwarden     |
| 2. Kenneth Obi        | Ex officio Deanery Synod |
| 3. Helen Buluson      | Ex officio Deanery Synod |

### Church Representatives

- |                     |  |
|---------------------|--|
| 4. Helen Lewis      | Elected PCC Representative St Saviour (resigned) |
| 5. Judith Clarke    | Elected PCC Representative St Saviour            |
| 6. Johanna Clarke   | Elected PCC Representative St Saviour            |
| 7. Caroline Fadipe  | Elected PCC Representative St Saviour            |
| 8. Patsy Brown      | Elected PCC Representative All Saints (resigned) |
| 9. Wendy Orr        | Elected PCC Representative All Saints (resigned) |
| 10. Stanley Annan   | Elected PCC Representative All Saints (resigned) |
| 11. Helen Trout     | Elected PCC Representative All Saints            |
| 12. Henry Vethamony | Elected PCC Representative All Saints            |
| 13. Andrea Martinez | Elected PCC Representative All Saints            |
| 14. Sharon Hunt     | Elected PCC Representative St George (resigned)  |
| 15. 18. Marho Gere  | Elected PCC Representative St George (resigned)  |
| 16. Steve Macklin   | Elected PCC Representative St George             |

# Practical areas

## Church Membership

In 2019 a full revision of membership of the churches was required by the Church of England. In 2021 more members were added to the electoral roll.

The rules for joining the electoral roll are set out in the Church Representation Rules. To join the electoral roll a person must either live in the parish or have attended worship in the church regularly for six months. The Electoral Roll officer at each church is responsible for supervising the process of compiling the new roll each year and ensuring each church follows current Church of England regulations. The electoral roll of the parish of Battersea Fields is one roll with three parts, one part for each church.

The changes made to the electoral roll are as follows:

	<i>Roll in 2018</i>	<i>Members Leaving Roll in 2019</i>	<i>New Roll in 2019</i>	<i>Roll in 2020</i>	<i>Roll in 2021</i>	<i>Roll in 2022</i>
<i>St Saviour</i>	103	41	70	70	70	75
<i>St George</i>	74	43	44	43	43	45
<i>All Saints</i>	77	33	82	102	105	109
<b>TOTAL ON ELECTORAL ROLL</b>	256	117	196	215	218	229

## Safeguarding

Our Parish Safeguarding Officers are Lorna Ashley, Revd Jessie Anand and Angela Wright. Safeguarding is overseen in accordance with all current legislation and guidance and no safeguarding issues have been reported in 2021.

## Finance Structures

The parish has diversified its finance structure to allow for greater clarity in funding new projects. A central parish bank account was opened in 2018, and new accounts to serve mission purposes are used for work in Nine Elms.

## Buildings

The buildings were generally in good condition with the exception of St Saviour's which requires a major new roof repair following storms.

# Parish Accounts

---

## Parish Accounts

### 2023 Annual Report and Accounts

There was an overall deficit on unrestricted funds across the parish of £89,038 in 2023 (2022: deficit £7,617).

Income fell by £31,217 compared with 2022, to £164,683. Giving was £4,900 lower and most of the remainder of the drop was due to reduced income from lettings. Expenditure rose by £50,204 to £253,721, the main contributors to the increase being maintenance (£16,775 higher), utilities (£12,294), family and children's work (£14,605), lay staff (£9,590) and improvements to the kindergarten at St Saviour's (£6,438). IT and communication costs, which were high in 2022 due to the installation of new systems and equipment at All Saints, were £10,444 lower in 2023.

There was a surplus of £5,875 on unrestricted funds before gains on investments of £16,200 and a deficit of £323 on designated funds before gains on investments of £9,342.

Before transfers and gains, and a small amount of centrally incurred costs, St Saviour's had a deficit of £26,659, All Saints' deficit was £30,752 and St George's showed a deficit of £22,434. All deficits were met by transferring funds from reserves.

### Funding sources

In addition to gifts and donations from members St Saviour benefits from renting first floor space to the Kindergarten Nursery, and All Saints benefits from the Bluebell day nursery during the term time weekdays, from other lettings of the building, and from rent taken from a house let for private rent in Cupar Road. St George benefited from taking interest on its investments.

### Mission giving

All churches gave charitable gifts in some proportion to income. At All Saints gives half the weekly offertory from Sunday collections to a range of charities based in the UK and abroad. St Saviour and St George both continued to support international mission by donating 10% of their income to Tearfund.



# Parish Accounts

---

## THE PARISH OF BATTERSEA FIELDS TRUSTEES' RESPONSIBILITIES STATEMENT

The trustees are responsible for preparing the trustees' report and the financial statements in accordance with applicable law and United Kingdom Accounting Standards (United Kingdom Generally Accepted Accounting Practice).

The law applicable to charities in England and Wales requires the charity trustees to prepare financial statements for each year which give a true and fair view of the state of affairs of the charity and of the incoming resources and application of resources, of the charity for that period.

In preparing these financial statements, the trustees are required to:

- select suitable accounting policies and then apply them consistently;
- observe the methods and principles in the applicable Charities SORP;
- make judgments and accounting estimates that are reasonable and prudent;
- state whether applicable UK Accounting Standards have been followed, subject to any material departures disclosed and explained in the financial statements;
- prepare the financial statements on the going concern basis unless it is inappropriate to presume that the charity will continue in business.

The trustees are responsible for keeping adequate accounting records that are sufficient to show and explain the charity's transactions and disclose with reasonable accuracy at any time the financial position of the charity and enable them to ensure that the financial statements comply with the Charities Act 2011, the applicable Charities (Accounts and Reports) Regulations, and the provisions of the Trust Deed. They are also responsible for safeguarding the assets of the charity and hence for taking reasonable steps for the prevention and detection of fraud and other irregularities.

The trustees' annual report was approved on 31<sup>st</sup> October 2024 and signed on behalf of the trustees of the Parish by:



Revd Leighton Carr  
Vicar of Battersea Fields

# Parish Accounts

---

## **Independent Examiner's Report**

### **to the Parochial Church Council of the Parish of Battersea Fields**

I report on the accounts of the PCC for the year ended 31<sup>st</sup> December 2022, which are set out on pages 17 to 27. In doing so I have relied on the separate independent examinations of the accounts of All Saints' Church carried out by Mrs Chandra Nimalanandan and of the accounts of St Saviour's carried out by S Ahmed ACA FCCA of LPS Livingstone Chartered Accountants.

### **Respective responsibilities of trustees and examiner**

The charity's trustees are responsible for the preparation of the accounts. The charity's trustees consider that an audit is not required for this year (under section 43(2) of the Charities Act 1993 (the Act) as amended by s.28 of the Charities Act 2006) and that an independent examination is needed.

It is my responsibility:

- To examine the accounts (under section 43 of the Act, as amended);
- To follow the procedures laid down in the General Directions given by the Charity Commission (under Section 43(7)(b) of the Act, as amended); and
- To state whether particular matters have come to my attention.

### **Basis of independent examiner's report**

My examination was carried out in accordance with the General Directions given by the Charity Commission. An examination includes a review of the accounting records kept by the charity and a comparison of the accounts presented with those records. It also includes consideration of any unusual items or disclosures in the accounts, and seeking explanations from the trustees concerning any such matters. The procedures undertaken do not provide all the evidence that would be required in an audit, and consequently I do not express an audit opinion on the accounts.

### **Independent examiner's statement**

In the course of my examination, no matter has come to my attention;

1. which gives me reasonable cause to believe that, in any material respect, the trustees have not met the requirements to ensure that:
  - proper accounting records are kept (in accordance with Section 41 of the Act); and
  - accounts are prepared which agree with the accounting records and comply with the accounting requirements of the Act
2. to which, in my opinion, attention should be drawn in order to enable a proper understanding of the accounts to be reached.

Richard Holman

11 Genoa Avenue, Putney, London SW15 6DY

Date: 31<sup>st</sup> October 2023

Chartered Accountant

**THE PARISH OF BATTERSEA FIELDS**  
**STATEMENT OF FINANCIAL ACTIVITIES**  
**31 DECEMBER 2023**

**31 DECEMBER 2023**

		<b>2023</b>			<b>2022</b>
		Unrestricted funds	Restricted funds	Designated funds	Total funds
	Note	£	£	£	£
<b>Income and endowments</b>					
Donations and legacies	4	60,213	690	-	60,903
Charitable activities	5	22,773	-	-	22,773
Other trading activities	6	64,627	-	-	64,627
Investment income		13,714	6,501	564	20,779
Fundraising		2,330	-	-	2,330
Other income		1,026	267	-	1,293
<b>Total income</b>		<u>164,683</u>	<u>7,458</u>	<u>564</u>	<u>172,705</u>
<b>Expenditure</b>					
Expenditure on charitable activities:	7				
Mission		58,068	1,583	-	59,651
Staffing		83,334	-	-	83,334
Administration		13,868	-	-	13,868
Property maintenance and upkeep		80,780	-	887	81,667
Communications and IT		11,978	-	-	11,978
Other expenses		5,693	-	-	5,693
<b>Total expenditure</b>		<u>253,721</u>	<u>1,583</u>	<u>887</u>	<u>256,191</u>
Unrealised net gains/(losses) on investments	8	-	16,200	9,342	25,542
<b>Net incoming/(outgoing) resources</b>		<u>(89,038)</u>	<u>22,075</u>	<u>9,019</u>	<u>(57,944)</u>
Transfers between funds		41,135	(18,135)	(23,000)	-
<b>Other recognised gains and losses</b>					
Other recognised gains/(losses)	15	(14,392)	-	-	(14,392)
<b>Net movement in funds</b>		<u>(62,295)</u>	<u>3,940</u>	<u>(13,981)</u>	<u>(72,336)</u>
<b>Reconciliation of funds</b>					
Total funds brought forward		1,609,604	217,219	226,696	2,053,519
<b>Total funds carried forward</b>		<u>1,547,309</u>	<u>221,159</u>	<u>212,715</u>	<u>2,053,519</u>

The statement of financial activities includes all gains and losses recognised in the year.  
All income and expenditure derive from continuing activities.

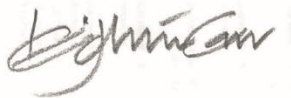
**The notes on pages 16 to 24 form part of these financial statements.**



**THE PARISH OF BATTERSEA FIELDS**  
**BALANCE SHEET**  
**31 DECEMBER 2023**

		2023	2022
		£	£
<b>FIXED ASSETS</b>			
Tangible fixed assets	11	1,550,000	1,550,000
Investments	12	295,256	302,364
		<u>1,845,256</u>	<u>1,852,364</u>
<b>CURRENT ASSETS</b>			
Cash on short term deposit		87,830	61,881
Cash at bank and in hand		50,233	139,274
Debtors		4,527	-
		<u>142,590</u>	<u>201,155</u>
<b>CREDITORS: amounts falling due within one year</b>	13	<u>(6,663)</u>	<u>(-)</u>
<b>NET CURRENT ASSETS</b>		135,927	201,155
<b>TOTAL ASSETS LESS CURRENT LIABILITIES</b>		<u>1,981,183</u>	<u>2,053,519</u>
<b>FUNDS OF THE CHARITY</b>			
Restricted funds	16	221,159	217,219
Designated funds	15	212,715	226,696
Unrestricted funds	15	1,547,309	1,609,604
<b>Total charity funds</b>		<u>1,981,183</u>	<u>2,053,519</u>

These financial statements are a consolidation of the separate accounts of the churches within the Parish of Battersea Fields, which have been approved by the relevant governance bodies. They are authorised for issue on 31<sup>st</sup> October 2024 and are signed on behalf of the Parish by:



REVD LEIGHTON CARR  
Vicar



PATRICIA TRUSTY  
Parish Treasurer

**THE PARISH OF BATTERSEA FIELDS**  
**NOTES TO THE FINANCIAL STATEMENTS**  
**TO THE YEAR END 31 DECEMBER 2023**

**1. GENERAL INFORMATION**

The charity is registered charity in England and Wales (no: 1130423) and is unincorporated. The address of the principal office is Parish of Battersea Fields, 11 Patmore Street, London SW8 4JD.

**2. STATEMENT OF COMPLIANCE**

These financial statements have been prepared in compliance with FRS 102, 'The Financial Reporting Standard applicable in the UK and the Republic of Ireland', the Statement of Recommended Practice applicable to charities preparing their accounts in accordance with the Financial Reporting Standard applicable in the UK and Republic of Ireland (FRS 102) (Charities SORP (FRS 102)) and the Charities Act 2011.

**3. ACCOUNTING POLICIES**

**Basis of preparation**

The financial statements have been prepared on the historical cost basis, as modified by the revaluation of certain financial assets and a property measured at market value at the end of the accounting period. Rounding differences of £1 may occur in the notes to the accounts.

**Going concern**

There are no material uncertainties about the charity's ability to continue as a going concern.

**Fund accounting**

Restricted Fund:

A restricted fund is a fund subject to specific trusts (e.g. by a letter from the donor at the time of gift). It may be a capital fund, which cannot be spent but must be retained for the benefit of the church, or it may be an income fund, which must be spent on the specified purpose within a reasonable time.

Unrestricted funds:

All funds held for general purposes are known as unrestricted funds to distinguish them from restricted funds. The church's unrestricted funds are therefore those which are held for spending at the PCC's discretion. These include any further funds which the PCC has designated for particular purposes.

Designated fund:

If the PCC sets aside part of its unrestricted funds for a particular project it may place these in a separate unrestricted fund called a designated fund. All unrestricted funds comprise income funds which the PCC must spend within a reasonable time.

**Incoming resources**

Voluntary income:

Collections are recognised when received by or on behalf of the PCC. Tax recoverable under Gift Aid is recognised when the income is recognised. Other, non-specific donations are recognised when received. Funds raised by fetes, quiz nights and similar events are accounted for gross.

Other income:

Rental income from the letting of property is recognised in the period to which the rental relates. Dividend income is accounted for when due and payable. Bank interest is recognised and recorded in the financial statements as the income is received. Realised gains and losses on investments are recognised when the investments are sold. Unrealised gains or losses are accounted for on revaluation of investments at 31 December 2023.

**THE PARISH OF BATTERSEA FIELDS**  
**NOTES TO THE FINANCIAL STATEMENTS**  
**TO THE YEAR END 31 DECEMBER 2023**

**3. ACCOUNTING POLICIES (continued)**

**Resources expended**

Expenditure Generally

Expenditure is included on an accruals basis and is recognised when there is a legal or constructive obligation to pay for expenditure.

Grants

Grants and donations are accounted for when paid over, or when awarded, if that award creates a binding obligation on the PCC.

Activities directly relating to the work of the Church

The Diocesan Parish share is accounted for in the year to which it relates. Any Parish share unpaid at 31 December is provided for as an operational liability, and is shown as a creditor in the balance sheet.

**Tangible assets**

Consecrated property and moveable church furnishings

Consecrated and beneficed property of any kind is excluded from the accounts by section 10 (2)(c) of the Charities Act 2011. This comprises All Saints' Church, Prince of Wales Drive, St George's Church, Patmore Street and St Saviour's Church, Battersea Park Road and their land.

Moveable church furnishings held by the Vicar and Church wardens on special trust for the PCC, and which require a faculty for disposal, are accounted as inalienable property unless consecrated. For inalienable property acquired prior to 2000 there is insufficient cost information available and therefore such assets are not valued in the accounts.

Improvements to consecrated or beneficed buildings are included in the resources expended in the year in which they are incurred. All maintenance and repairs are also included in the resources expended in the SOFA for the year in which the expenditure arises.

Assets with shorter useful lives, such as church office equipment, including computers, and furniture used within the Church premises, are capitalised or included as revenue expenditure in the SOFA at the discretion of the PCC. Any items that are capitalised are depreciated on a straight line basis over their expected life.

**Freehold Property**

The house owned by the Parish is shown at estimated market value at 31st December 2021. The estimate has been arrived at by the trustees on the basis of online price information.

**Investments**

Investments are revalued to market value at 31 December 2023.

**Current assets**

Amounts, if any, owing to the PCC at the year end in respect of fees, rents, or other income are shown as debtors, less provision for any amounts that may prove uncollectible.

Short term deposits include cash held on deposit with the CBF Church of England Funds and with CCLA and the Post Office.



**THE PARISH OF BATTERSEA FIELDS**  
**NOTES TO THE FINANCIAL STATEMENTS**  
**TO THE YEAR END 31 DECEMBER 2023**

**3. ACCOUNTING POLICIES (continued)**

**Financial instruments**

A financial asset or a financial liability is recognised only when the charity becomes a party to the contractual provisions of the instrument.

Basic financial instruments are initially recognised at the amount receivable or payable including any related transaction costs.

Current assets and current liabilities are subsequently measured at the cash or other consideration expected to be paid or received and not discounted.

Where investments in shares are publicly traded or their fair value can otherwise be measured reliably, the investment is subsequently measured at fair value with changes in fair value recognised in income and expenditure. All other such investments are subsequently measured at cost less impairment (if any).

Other financial instruments are subsequently measured at fair value, with any changes recognised in the statement of financial activities.

Financial assets that are measured at cost or amortised cost are reviewed for objective evidence of impairment at the end of each reporting date. If there is objective evidence of impairment, an impairment loss is recognised under the appropriate heading in the statement of financial activities in which the initial gain was recognised.

For all equity instruments regardless of significance, and other financial assets that are individually significant, these are assessed individually for impairment. Other financial assets are either assessed individually or grouped on the basis of similar credit risk characteristics.

Any reversals of impairment are recognised immediately, to the extent that the reversal does not result in a carrying amount of the financial asset that exceeds what the carrying amount would have been had the impairment not previously been recognised.

**4. DONATIONS & LEGACIES**

	Unrestricted Funds	Restricted Funds	Designated Funds	Total Funds 2023
	£	£	£	£
Donations	46,829	690	-	47,519
Gift Aid tax recovery	13,384	-	-	13,384
Legacies	-	-	-	-
	<u>60,213</u>	<u>690</u>	<u>-</u>	<u>60,903</u>

	Unrestricted Funds	Restricted Funds	Designated Funds	Total Funds 2022
	£	£	£	£
Donations	47,870	-	-	47,870
Gift Aid tax recovery	17,933	-	-	17,933
Legacies	-	-	-	-
	<u>65,803</u>	<u>-</u>	<u>-</u>	<u>65,803</u>

**THE PARISH OF BATTERSEA FIELDS**  
**NOTES TO THE FINANCIAL STATEMENTS**  
**TO THE YEAR END 31 DECEMBER 2023**

**5. INCOME FROM CHARITABLE ACTIVITIES**

	Unrestricted Funds £	<b>Total Funds 2023 £</b>	Unrestricted Funds £	Total Funds 2022 £
Church Lettings	21,500	21,500	35,300	35,300
Wedding/Funeral Fees	1,273	1,273	682	682
	<u>22,773</u>	<u>22,773</u>	<u>35,982</u>	<u>35,982</u>

**6. INCOME FROM OTHER TRADING ACTIVITIES**

	Unrestricted Funds £	<b>Total Funds 2023 £</b>
Lettings - Fundraising	8,582	8,582
Rent from land or buildings	56,045	56,045
	<u>64,627</u>	<u>64,627</u>

	Unrestricted Funds £	Total Funds 2022 £
Lettings - Fundraising	23,721	23,721
Rent from land or buildings	47,590	47,590
	<u>71,311</u>	<u>71,311</u>

**THE PARISH OF BATTERSEA FIELDS**  
**NOTES TO THE FINANCIAL STATEMENTS**  
**TO THE YEAR END 31 DECEMBER 2023**

**7. EXPENDITURE ON CHARITABLE ACTIVITIES**

	Unrestricted Funds £	Restricted Funds £	Designated Funds £	Total Funds 2023 £
Missionary and Charitable Giving	23,092	1,583	-	24,675
Other mission costs	9,510	-	-	9,510
Clergy expenses	4,919	-	-	4,919
Family work	14,605	-	-	14,605
Hospitality	5,942	-	-	5,942
Parish Support Fund	65,953	-	-	65,953
Salaries - Lay staff	17,381	-	-	17,381
Office and administration	13,868	-	-	13,868
Light, Heat & Water	23,375	-	-	23,375
Insurance	6,642	-	887	7,529
Maintenance - Buildings and Grounds	36,496	-	-	36,496
Kindergarten improvements	6,438	-	-	6,438
Cleaning and Waste Disposal	7,829	-	-	7,829
Other church expenses	2,910	-	-	2,910
Communications and IT	11,978	-	-	11,978
Professional fees	908	-	-	908
Fundraising costs	1,350	-	-	1,350
Other expenses	525	-	-	525
	<u>253,721</u>	<u>1,583</u>	<u>887</u>	<u>256,191</u>

	Unrestricted Funds £	Restricted Funds £	Designated Funds £	Total Funds 2022 £
Missionary and Charitable Giving	19,059	-	-	19,059
Other mission costs	13,723	-	-	13,723
Clergy expenses	3,664	-	-	3,664
Homework Club	4,641	-	-	4,641
Parish Support Fund	66,552	-	-	66,552
Salaries - Lay staff	7,192	-	-	7,192
Office and administration	9,666	-	-	9,666
Light, Heat & Water	11,081	-	-	11,081
Insurance	8,641	-	849	9,490
Maintenance - Buildings and Grounds	19,522	-	-	19,522
Cleaning and Waste Disposal	6,714	-	-	6,714
Other church expenses	5,981	-	-	5,981
Website	443	-	-	443
Communications and IT	22,419	-	-	22,419
Professional fees	2,456	-	-	2,456
Other expenses	1,533	-	-	1,533
	<u>203,287</u>	<u>-</u>	<u>849</u>	<u>204,136</u>

**THE PARISH OF BATTERSEA FIELDS**  
**NOTES TO THE FINANCIAL STATEMENTS**  
**TO THE YEAR END 31 DECEMBER 2023**

**8. NET GAINS/(LOSSES) ON INVESTMENTS**

	Unrestricted Funds £	Restricted Funds £	Designated Funds £	<b>Total Funds 2023 £</b>
Gains/(losses) on listed investments	-	16,200	9,342	25,542
	Unrestricted Funds £	Restricted Funds £	Designated Funds £	<b>Total Funds 2022 £</b>
Gains/(losses) on listed investments	-	(22,530)	(8,492)	(31,022)

**9. STAFF COSTS**

The total staff costs and employee benefits for the reporting period are analysed as follows:

	<b>2023</b>	<b>2022</b>
	<b>£</b>	<b>£</b>
Wages and salaries	17,381	7,192
Parish Support Fund	65,953	66,552
	<u>83,334</u>	<u>73,744</u>

The average head count of employees during the year was 3 (2022: 1). The average number of employees during the year is analysed as follows:

	<b>2023</b>	<b>2022</b>
	<b>No.</b>	<b>No.</b>
Number of administrative staff	2	1
Number of music staff	1	-

The clergy are not direct employees of the Parish. The Parish contributes to their stipends and pension funds through the Diocesan Parish Support Fund.

**10. TRUSTEE REMUNERATION AND EXPENSES**

During the year no member of the PCC, other than clergy, received any reimbursement of expenses or remuneration. Parish clergy are employed by the Church Commissioners and are therefore not regarded as employees of the PCC.

**11. FIXED ASSETS**

The Parish owns a residential property in Battersea, income from which is accumulated for special project or major maintenance.



**THE PARISH OF BATTERSEA FIELDS**  
**NOTES TO THE FINANCIAL STATEMENTS**  
**TO THE YEAR END 31 DECEMBER 2023**

**12. INVESTMENTS**

	Listed investments £
<b>Cost or valuation</b>	
At 1 January 2023	302,364
Movements during the year (net)	(32,650)
Unrealised gains on revaluation	25,542
<b>At 31 December 2023</b>	<u>295,256</u>

Investments are shown at market value at 31<sup>st</sup> December 2023.

**13. CREDITORS: amounts falling due within one year**

	2023 £	2022 £
Trade creditors and accrued expenses	6,663	-
	<u>6,663</u>	<u>-</u>

**14. PENSIONS AND OTHER POST RETIREMENT BENEFITS**

The Parish has no lay staff earning at a level of pay that requires the setting up of pension arrangements. Clergy pensions are managed by the central organisation of the Church of England.

**15. ANALYSIS OF CHARITABLE FUNDS**

**Unrestricted funds**

	At 1 January 2023 £	Income £	Expenditure £	Transfers £	Gains and losses £	At 31 December 2023 £
General funds:						
St Saviour's	14,551	77,444	(104,103)	23,000	-	10,892
St George's	2,223	11,230	(30,664)	19,028	(3,000)	(1,183)
All Saints'	16,557	73,320	(108,072)	(893)	-	(19,088)
Parish	1,552,488	105	(1,474)	-	-	1,551,119
Nine Elms Community Development Fund	9,393	2,584	(9,408)	-	3,000	5,569
	<u>1,595,212</u>	<u>164,683</u>	<u>(253,721)</u>	<u>41,135</u>	<u>-</u>	<u>1,547,309</u>

The 1<sup>st</sup> January 2023 balance for St George's Church has been restated to recognise the over-statement of assets by £14,392 in the 2022 accounts.

**THE PARISH OF BATTERSEA FIELDS**  
**NOTES TO THE FINANCIAL STATEMENTS**  
**TO THE YEAR END 31 DECEMBER 2023**

**Designated Funds**

	At 1 January 2023	Income	Expenditure	Transfers	Gains and losses	At 31 December 2023
St Saviour's - maintenance	80,183	564	-	(23,000)	-	57,747
All Saints':						
Cupar Road	105,891	-	(887)	-	9,342	114,346
Bluebell Nursery	20,993	-	-	-	-	20,993
Maintenance	19,389	-	-	-	-	19,389
All Saints Discretionary fund	240	-	-	-	-	240
	<u>226,696</u>	<u>564</u>	<u>(887)</u>	<u>(23,000)</u>	<u>9,342</u>	<u>212,715</u>

**16. RESTRICTED FUNDS**

	At 1 January 2023 £	Income £	Expenditure £	Transfers £	Gains and losses £	At 31 December 2023 £
<i>St Saviour's:</i>						
Special Donations	17,884	138	-	-	-	18,022
Orkney Street hall	29,443	891	-	-	2,834	33,168
Church hall	7,013	322	-	-	-	7,335
<i>St George's:</i>						
St George's Hall	51,383	1,597	-	(1,592)	4,867	56,254
St James's Hall	15,673	472	-	(465)	1,473	17,153
Miss Graham Fund	3,262	98	-	(98)	310	3,572
Burial Grounds	92,561	3,251	-	(16,873)	6,716	85,655
All Saints' Charity account	-	690	(1,583)	893	-	-
	<u>217,219</u>	<u>7,458</u>	<u>(1,583)</u>	<u>(18,135)</u>	<u>16,200</u>	<u>221,159</u>

Special Donations – this is money that has been given for a specific purpose such as Youth Work.

Orkney Street Hall - This fund was for the up-keep of Orkney Street Hall, originally a school for the poor built in 1866. The hall was acquired by compulsory purchase in the 1940's. Income is available for use by the Parish and capital is accumulated for capital projects.

Church Hall - In September 1980, the Parish decided to redevelop St. Saviour's Church site by selling the Church Hall and remodelling, repairing the Church as a dual purpose site. A 99 year lease was granted to Threshold Housing Association and completed in March 1983 for a premium of £62,500. A Charity Commissioner's Scheme dated 10th March 1983 allowed the premium to be used towards defraying the cost of improving, converting and extending the Parish Church.

St George's Hall - By a Charity Commission Scheme sealed 14th April 1959, it was agreed that the St. George's Mission Hall, comprised in a conveyance dated 17th April 1866, could be sold and the capital applied in or towards defraying the cost of providing a new hall or enlarging or

**THE PARISH OF BATTERSEA FIELDS**  
**NOTES TO THE FINANCIAL STATEMENTS**  
**TO THE YEAR END 31 DECEMBER 2023**

adapting any existing church hall in the parish. Income can be expended on any ecclesiastical purpose. The hall was sold in March 1969 for a net sum of £15,260.

St James's Hall - This hall was sold around Sept 1958 for £4,000. Capital can only be spent on approved capital items Income is available to the Parish for any ecclesiastical purpose. The bulk of the fund was placed into CBF Investment units with income mandated to the Parish.

Miss Graham Fund - A Charity Commission Scheme of 14th April 1959 amalgamated £300 2.5% Consols from the Miss Elizabeth Maria Graham (left for the purposes of upkeep of the Mission Hall in 1875 ) and amalgamated this with the St. George's Mission Hall Charity comprised in a conveyance dated 17th April 1866. Income can be spent on any ecclesiastical purpose, capital only on the provision of or extension of the Hall.

Burial Grounds - Under the provisions of the Covent Garden Market Act 1966 the disused burial ground of St. George's Battersea was disposed of for a total of £15,500. The proceeds, less costs, were to be held by Rochester & Southwark Diocesan Church Trust to be applied for such ecclesiastical purposes within the Benefice of St. George with St. Andrew, Battersea or elsewhere within the Diocese of Southwark as may be charitable. Income is mandated to the Parish.

**18. ANALYSIS OF NET ASSETS BETWEEN FUNDS**

	Unrestricted Funds £	Restricted Funds £	Designated Funds	<b>Total Funds 2023 £</b>
Tangible fixed assets	1,550,000	-	-	1,550,000
Investments	-	187,361	107,895	295,256
Net Current assets	(2,691)	33,798	104,820	135,927
<b>Net assets</b>	<u>1,547,309</u>	<u>221,159</u>	<u>212,715</u>	<u>1,981,183</u>

**19. RELATED PARTIES**

There are no other charities that are controlled by the PCC or by the Vicar and Wardens.

## General administration

### Legal and other advisers to the PCC

#### Independent examiners

*For St Saviour*

Ronnie Jacob, LPS Accountants

*For All Saints*

Chandra Nirmalanandan

*For the Parish*

Richard Holman, Chartered Accountant

#### Names and addresses of Banks

*St Saviour – NatWest Bank, 66-68 St John's Road, London, SW11 1PB*

*St George – Barclays Bank, St Johns Hill, London, SW11 1XB*

*– NatWest Bank, 66 - 68 St John's Rd, London SW11 1PB*

*All Saints – NatWest Bank, 66 - 68 St John's Rd, London SW11 1PB*

*Battersea Fields Parish – CAF Bank, 25 Kings Hill Ave, Kings Hill, West Malling ME19 4JQ*

#### Person to whom day-to-day management is delegated

Reverend Leighton Carr

*Vicar of Battersea Fields*





**Parish Office**

Parish of Battersea Fields

St Saviour Battersea Park 351 Battersea Park Road  
London SW11 4LH

t: 020 7720 9076 e: [office@batterseafields.org](mailto:office@batterseafields.org)

THE PARISH OF BATTERSEA FIELDS

**2023**  
**ANNUAL REPORT**