

Charity Registration Number: 1130001

PARISH OF ST MICHAEL THE ARCHANGEL, ALDERSHOT

FINANCIAL STATEMENTS

FOR THE YEAR ENDED 31ST DECEMBER 2021

**INDEX TO THE FINANCIAL STATEMENTS
FOR THE YEAR ENDED 31ST DECEMBER 2021**

PCC Information	Page 1
Council Members Report	Pages 2 to 10
Independent Examiners Report	Page 11
Statement of Financial Activities	Page 12
Balance Sheet	Page 13
Notes to the Financial Statements	Pages 14 to 19

PCC INFORMATION

Principal Address

The Vicarage
120 Church Lane East
Aldershot
Hampshire
GU11 3SS

Parochial Church Council Members

Members of the PCC are either ex officio or elected by the Annual Parochial Church Meeting (APCM) in accordance with the Church Representation Rules. As from April 2008 the membership structure was reorganised to form a PCC with each church having representation as freely elected by the members with no defined number of representatives from each church up to a maximum of 12 elected members.

During the year the following served as members of the PCC:

Vicar	The Reverend Alwyn Pereira	
Churchwardens	Richard Fawn	Resigned July 2021
	Michael Clist	Resigned July 2021
	Christine Liddle	Appointed September 2021
	Ursula Sutherland	Appointed September 2021
Representatives on the Deanery Synod	Clem Beevis	
	Alan Hilliar	
Parish Clerk	Val Renton	
Representatives	Angela Horton	
	Michael Clist (Treasurer)	Resigned July 2021
	Ian Powditch	
	Claire Allan	
	Alexandra Davidson (Secretary)	
	Linda Humphreys	
	Sarah Warren-Smith	Appointed May 2021
	Jessica McCauley	Appointed May 2021
LLM	Urs Johnston	Appointed July 2021
Parish Secretary	Sophie Watkins	Appointed October 2021
Bankers	Central Board of Finance of the Church of England	NatWest Bank Plc.
	St Alphage House 2 Fore Street London EC2Y 5AQ	30 Wellington Street Aldershot Hampshire GU11 1YJ
Independent Examiner	Wise & Co. Chartered Accountants & Statutory Auditors Wey Court West Union Road Farnham Surrey GU9 7PT	

**PARISH OF ST MICHAEL THE ARCHANGEL, ALDERSHOT
COUNCIL MEMBERS REPORT
FOR THE YEAR ENDED 31ST DECEMBER 2021**

1. Legal Status

The PCC is formed under the Church of England Assembly (Powers) Act 1919 and Parochial Church Council (Powers) Measure 1921 and currently regulated by Church Representation Rules Schedule 3 of the Synodical Government Measure 1969. The PCC is registered with the Charity Commission, charity number 1130001.

2. Objects of the PCC

The PCC is responsible for co-operating with the Incumbent in promoting, in the ecclesiastical parish, the whole mission of the Church, pastoral, evangelistic, social, and ecumenical. It also has maintenance responsibilities Measure 1969.

3. Committees

Standing Committee: This is the only Committee required by law. It has power to transact the business of the PCC between its meetings of that Body, subject to any directions given by the Council. Other Committees are formed as and when required.

4. Achievements and Performance

The PCC met 5 times since the last APCM

As of 31st December 2021, there were 139 people (2020 - 126) on the Parish Electoral Roll.

The average weekly attendance, based on an average week in October, was 65 (2020 - 85, 2019 -106) in non Covid affected weeks. The COVID-19 pandemic coupled with a failure (and subsequent decommissioning of the boilers) of the heating system caused huge disruption to church attendance. The Trustees have paid due regard to the requirements for public benefit and believe that the Charity provides opportunities for all. In doing so we have been intentional about practicing a culture of invitation and hospitality, and relationship building based on values of being God's loving community here in Aldershot, in all our activities:

WORSHIP—a deep, lavish and abundant experience of God that is reflected in the care for people in Aldershot

WHOLENESS—making sure we build safe communities of unity and solidarity while celebrating our differences

WELLBEING—meeting the physical, mental and spiritual needs of all our community so that the whole community flourishes

We have done this through the provision of

117 Services (excluding zoom)

13 Baptisms

9 Funerals and 2 Internment of Ashes

6 Weddings

1 Renewal of Vows

Total Attendance: Adults 3711 Children (under 16) 711 excl. schools, and Play café, viz., these are the total number of visitors to our Services held in the church building.

There were three objectives set in the previous year: dealing with fabric improvements (mainly involving the Ascension); building our Pastoral Care Capacity and our Organisational Capacity

FABRIC IMPROVEMENTS: We received the Church Buildings Council Report regarding the Ascension which rather than instigating church closure processes recommended the location and suggested finding a more missional approach to solve the use of the building. A group was set up to explore possible initiatives.

PASTORAL CARE CAPACITY – We welcomed Urs Johnston (LLM) to the leadership team. Urs focussed on building up our Pastoral Care team.

ORGANISATIONAL CAPACITY – We increased our numbers of volunteers with a new Youth Ministry, recruitment for children and creche ministry, and recruited a leader for Play Café.

PARISH OF ST MICHAEL THE ARCHANGEL, ALDERSHOT COUNCIL MEMBERS REPORT FOR THE YEAR ENDED 31ST DECEMBER 2021

However, it became clear, as we opened up after Lockdown that there were pressing needs to help people explore, encounter and reconnect with God in worship; to create safe spaces to re-connect with each other and build community (especially re-socialising the children); to tackle mental health and wellbeing issues and overcome isolation.

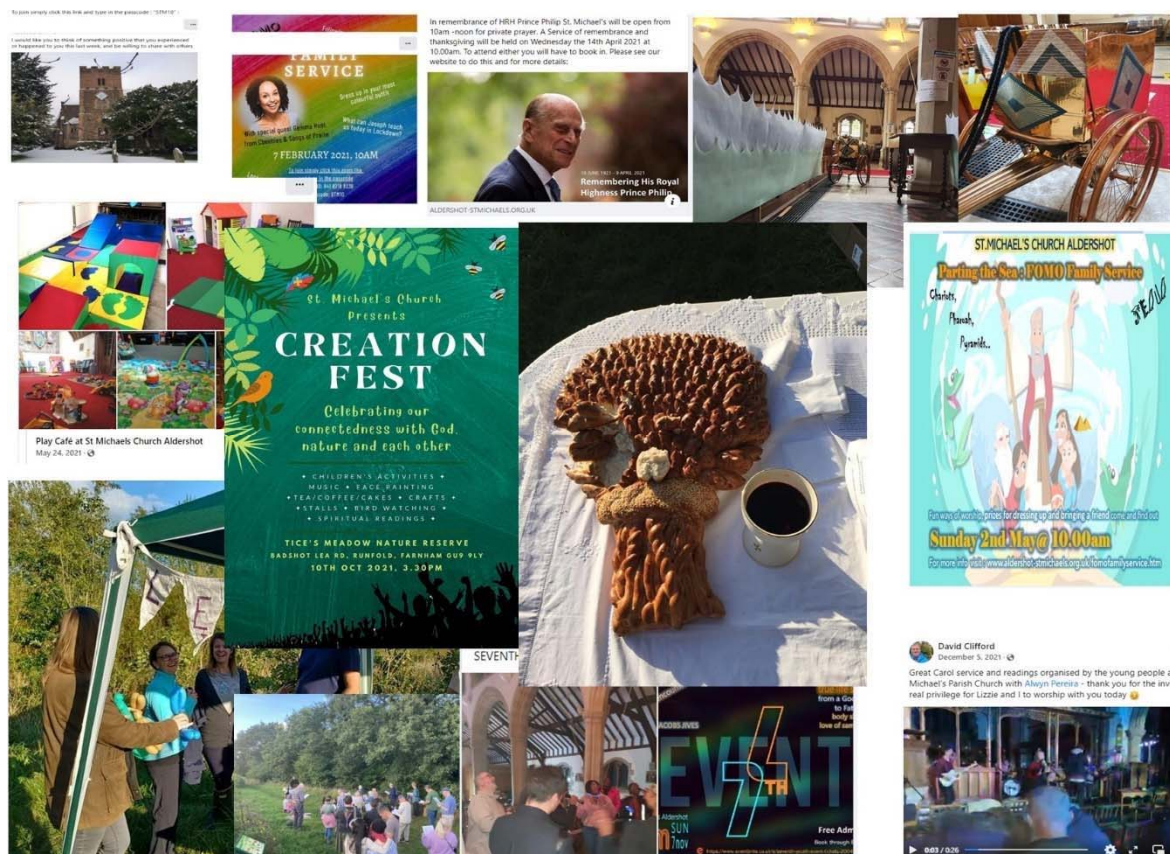


Fig: 1 Ways we have created community and helped in facilitating encounters with God throughout the year

Fig.1 shows photographs of our various attempts and includes our zoom services during Lockdown (Filmed by Hannah Pereira)

- Sharing in the grief of HM and the Royal Family and our community with the loss of HRH the Duke of Edinburgh in April
- Our innovative intergenerational Services (FOMO)
- Play Café (run by volunteers led by Jess McCauley)
- Creation Fest (Harvest Eucharist) in Tice's Meadow (Oct)
- Launch of the "7th" monthly youth Service in Nov.

**PARISH OF ST MICHAEL THE ARCHANGEL, ALDERSHOT
COUNCIL MEMBERS REPORT
FOR THE YEAR ENDED 31ST DECEMBER 2021**

We were also involved in ministry in our 2 Schools with over 738 children, leading in collective acts of worship, teaching and being a resource for the Religious Education and discipleship of the children.

We innovated new ways of engaging the children using Escape Room workbooks and videos (filmed by Hannah Pereira). We established a new digital resource to aid collective worship and Sunday School – Marzipan Films on youtube.

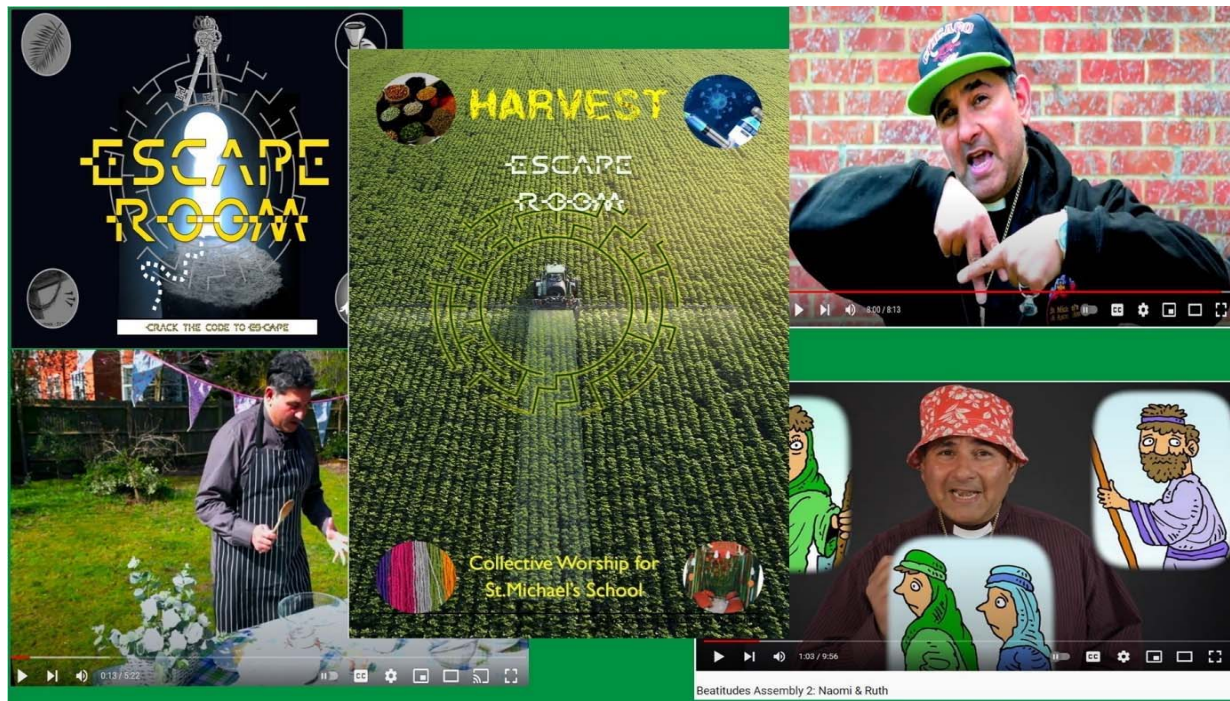


Fig. 2 Screen shots of resources for Collective Worship at our schools.

**PARISH OF ST MICHAEL THE ARCHANGEL, ALDERSHOT
COUNCIL MEMBERS REPORT
FOR THE YEAR ENDED 31ST DECEMBER 2021**

Welcome to the Harvest -ESCAPE ROOM Collective Worship

The children are on a journey of discovery to find out more about the role of Faith in dealing with the Environmental crisis, in particular, food wastage, which is a problem in our Borough. It is hoped that the children will explore the "why" questions : 'why we need to respect each other and the natural world', 'why is there hope and resilience'. This is to engage the children in critical reflection, e.g., in being able to contrast the scientific and more mechanistic questions of "how..?", like 'how does nature work'. A new addition is the harvest of technology which looks at technological advances in food wastage.

CHALLENGE 4

"God delights in concealing things; scientists delight in discovering things.

³ Like the horizons for breadth and the ocean for depth, the understanding of a good leader is broad and deep. Proverbs 25: 2-3

Technology is the invention of useful things to solve problems. Technology can include the creation of things that make life easier. Technology is the application of knowledge to create useful things to solve problems or make life easier.



SOME PEOPLE SAY " 'CREATION' WAS THE APPLICATION OF THE TECHNOLOGY OF LOVE BY GOD", WHAT DO YOU THINK?

Fig.3 Some of the challenges presented to the children through the Escape Room resources

Below a letter of thanks from our Teachers explaining the impact we are having:

**PARISH OF ST MICHAEL THE ARCHANGEL, ALDERSHOT
COUNCIL MEMBERS REPORT
FOR THE YEAR ENDED 31ST DECEMBER 2021**



St. Michael's CE Junior School
Church Lane East
Aldershot
GU11 3SS
01252 322933



St. Michael's CE Infant School
Park Road
Aldershot
GU11 3PU
01252 324300

St Michael's Parish Church

St. Michael's Parish Church plays a significant part within our local Community. A church has been situated on that site for nearly a thousand years and when other churches have closed, St. Michael's has remained open. Weddings, funerals, baptisms and services both on Sundays and during the week are so important to our local community, most particularly at a time when people have been feeling troubled and lost.

Children at St. Michael's CE Infant school look forward to their visits to the church at Christmas and Easter, and also participate in family services on the first Sunday of the month. Some of our ex pupils have gone on to lead services at the church. This is wonderful for their self-confidence and it will help prepare them to be leaders in the future.

Children at St Michael's Junior School have benefitted both pastorally and spiritually from being included not only in Christmas and Easter Services but, for example, being able to participate within patronal festivals, and being able to decorate the Church for Remembrance Weeks – something so important and fundamental for our Aldershot community. The location of the church means that it is accessible to families who otherwise simply would not engage. In addition, St Michael's Church has hosted Harvest and Christmas experiences where the children have been able to walk to the Church to learn about what such celebrations mean to us in our lives today. These have been so well received by the children and have really enhanced the spiritual learning within the curriculum.

In these difficult times the church has become even more important to those in the local area, and our families have looked to Alwyn and his team for support. Good mental health is currently high on the agenda for everyone. Attending church services gives many the spiritual support that they need to keep positive and calm.

Mrs S Tyler
Headteacher

Mrs L Mathias
Headteacher

**PARISH OF ST MICHAEL THE ARCHANGEL, ALDERSHOT
COUNCIL MEMBERS REPORT
FOR THE YEAR ENDED 31ST DECEMBER 2021**

Additionally, we have supported and cared for many families who experienced the death of loved ones. Many people affirmed Dick Fawn's gifts in Funeral ministry, commending his care and sensitivity at those times of loss. In addition to the Vicar, this area of ministry was also supported by Revd. Haydon Wilcox and Rodney Court.

Although Home visits and visits to Nursing Homes remained tightly regulated and controlled, Homes like Ticehurst expressed their thanks and gratitude for the ministry of Barbara Fletcher and Clem Beevis.

We also had a dedicated group who prayed for God's power through Healing – Healing Group; we are very grateful for John Evers' leadership in this area, along with Angela Horton.

For a church in a community with a substantially high proportion of traditionally hard-to-reach demographic. Coming out of Covid there has been a 'bounce back'. There are some key areas of growth and discipleship formation to give thanks to God:

- In recent history (going back over 20 years) St. Michael's has not had a vibrant youth group or a youth service – it has one now, with young people being prepared for Confirmation and Baptism; one of the young people, Thomas Clive, was even selected as an Ambassador, representing the Diocese at National Youth Leadership events;
- The work with schools and children has been very productive and liked by the Schools, to the extent that the Headteachers have taken the trouble to write and tell us; moreover, the links with the church resulted in a 'Good' SIAMS Report for St. Michael's Infants;
- We have up to around 15 new young families worshipping with us.

The ultimate questions must be "Are we fulfilling mission?" and "how effective is our giving in enabling us to pursue the mission?" Our mission statement states:

"We want to be a people journeying together to become a strong loving, mature Christian community that enables everyone to flourish in Aldershot"

The report would indicate that for every £1 given towards God's work here:

- You are enabling a significant number of people (4422 people) to engage in acts of worship;
- Hard-to-reach people are being reached with the Gospel and being integrated into the church community;
- More young families, children and young people are journeying together with our seniors, improving their wellbeing and resilience modelling a truly intergenerational church;
- An inward focussed culture is being changed to one that is more welcoming, invitational and hospitable;
- This church is vibrantly alive and at the centre of this Community ensuring that many people flourish.

We know this because external agencies like the Schools and the Council and local people are telling us so. We want to do more.

5. Financial Review

Like the previous year, the Covid 19 crisis had an enormous impact on the Parish. Much of the first quarter was under lockdown, with many parishioners shielding. This was further compounded by the heating system being out of use throughout the Autumn and Winter, and having to undertake emergency remedial repairs of the roof of St. Michael's. Giving by standing order increased by almost £3k (+10%) following a drive to move people onto planned giving, via standing orders, rather than the weekly envelopes or collections systems and by increased giving and new givers. Giving by the weekly envelope system was down by £5.8k (-47%) from 2020, however, this was only partially offset by the increase in planned giving. Collections were slightly up (<5%). Since the furlough income of £3k has been reclassified, this has changed to: Recovery from Gift aid was down by £4.5k (-18%). However, the 2020 figure was inflated by gift aid recovery from a large, one-off donation, which was not repeated in 2021. Despite the challenges, overall giving (especially planned giving) was up; it represents an incredible achievement showing that the average giving by people rose in 2021. There is a commitment to the direction of vision and trajectory. To off-set this loss of income, expenses have been well controlled.

**PARISH OF ST MICHAEL THE ARCHANGEL, ALDERSHOT
COUNCIL MEMBERS REPORT
FOR THE YEAR ENDED 31ST DECEMBER 2021**

The PCC was able to meet its voluntary contributions to Guildford Diocese (GDBF) and has paid the Parish Share of £77,587. Earlier years (2015-2018) payments of £32,535 (2015-2017) of £29,993 (2018) and £5,547 accrual (2021) have still not been finalised and a creditor of £67,243 is included in the Balance Sheet to cover this.

6. Plans for Future Periods

Our Missional plans (as outlined in our Vision Document) will focus on the post-Covid recovery of our Parish. This will involve capacity building and development work on our buildings so that they can be inspiring spaces of welcome, wellness and worship. We want our buildings to be safe, environmentally-friendly, accessible spaces where people can gather and have their physical, mental and spiritual needs met. Please see 'Fabric improvements' below for more on the latter.

In terms of capacity building we will need to build on:

- I. Prayer :- increasing the number of corporate opportunities with different styles and to have a Prayer Ministry Team;
- II. Children and family work: – particularly the development of the intergenerational Services and Children's church and creche provision
- III. Youth work:- prepare for confirmation
- IV. School's work :- assemblies and collective worship
- V. Pastoral care: supporting the PAs and recruiting more people; Marriage Preparation and evaluating the Baptism families;
- VI. Discipleship:- teaching, home groups;
- VII. Building Community :- developing Play café, a café, events like community BBQs, lunches, building our networks and contacts, community garden

We will need to employ more volunteers and staff.

7. Fabric Improvements

The following repairs and improvements are being considered at St Michael':

The re-ordering of the church including the essential improvements to the heating system. The existing heating system failed and is now obsolete. Faculties have been obtained an eco-friendly green system as replacement. Following the removal of the old organ the area is being considered as part of the reordering plans. We also seek to replace the chairs with similarly aesthetically pleasing chairs which are more stackable as the removal and refitting of chairs increased the health risks with back and joint problems. Faculties will be needed to buy new chairs, but not to sell the old ones.

- The roof in St. Michael's developed a major leak and Marshall's were engaged to complete the remedial work.
- A faculty has been applied for to instal a Dumb bell for training purposes in the belfry

The majority of the works identified in the quinquennial review of 2018 have now been completed during the financial year.

Due to health and safety reasons and the very poor state of repair at the Church of Ascension the Parochial Church Council agreed, after consultation with the Archdeacon of Surrey, to commence the Church Closure Process through the Church Commissioners. The building will remain closed and only essential heating and repairs to protect the building will be carried out, whilst the future of the existing site is considered.

The Ascension House have new tenants at a reduced rate, due to expected disruption from redevelopment at the Church and Hall, which provides a steady income stream to the Parish

**PARISH OF ST MICHAEL THE ARCHANGEL, ALDERSHOT
COUNCIL MEMBERS REPORT
FOR THE YEAR ENDED 31ST DECEMBER 2021**

8. Investments

The only Restricted Funds' Investments are a legacy from the Giles Estate, in the form of an investment of £78.87, the interest being solely for use by the Sunday school, and the Chancel Repair Fund. Unrestricted Funds are general funds which can be used by the PCC for general purposes, some of which have been designated by the PCC.

9. Reserves Policy

It is PCC policy to endeavour to maintain a balance on unrestricted reserve to meet six month's unrestricted payments. The current balance overall on unrestricted funds is positive and the PCC will be reviewing the split of funds between general and designated over the next year to be able to take the general fund out of deficit. However, with the loss of income from Covid lockdown and unprecedented serious roof leaks and loss of heating, the policy will have to be reviewed. The PCC will maintain tight controls over income and costs.

10. Risks

The major risks to which the PCC is exposed, as identified by PCC members, have been reviewed and systems have been established to mitigate those risks. The greatest risk is the Parish Share due from previous years, which occurred during the inter-regnum, but as mentioned above this has not been finalised and we are now hoping that this may be written off.

11. General

The financial statements comply with current statutory requirements, the requirements of the Statement of Recommended Practice and the Charity's governing document.

12. Members Appointments and New Members Proceedings

Members of the Parochial Church Council are elected each year at the Annual Parochial Church Meeting. Each member is normally elected for a period of three years, on a rotative basis, to ensure continuity over a three year cycle. New Members are appointed for shorter periods to cover vacancies when they occur. All new members must personally satisfy and be proposed and seconded in line with the Church Representation Rules, to be able to serve on the Council. Ex-officio members of the PCC include the Deanery Synod Representatives, the Churchwardens, and the Parish Clergy.

**PARISH OF ST MICHAEL THE ARCHANGEL, ALDERSHOT
COUNCIL MEMBERS REPORT
FOR THE YEAR ENDED 31ST DECEMBER 2021**

13. Council Members Responsibilities

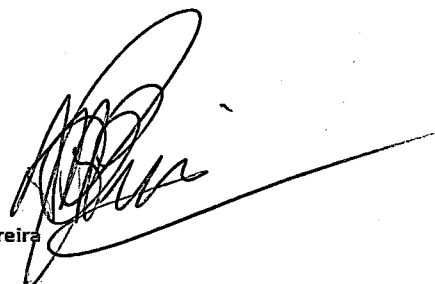
The Council Members are required to prepare, for each financial year, financial statements which give a true and fair view of the state of affairs of the PCC and of the results for the period. In preparing the financial statement the council members are required to:

- select suitable accounting policies and apply them consistently.
- make judgements and estimates that are reasonable and prudent.
- prepare the financial statements in accordance with the methods and principles set out in the Statement of Recommended Practice Accounting and Reporting by Charities and to state whether the accounts have been prepared in accordance with that statement and applicable accounting standards and
- prepare the financial statements on the going concern basis unless it is inappropriate to presume that the church will continue in operation.

The Council Members are responsible for ensuring proper accounting records are kept which disclose, with reasonable accuracy at any time, the financial position of the PCC. They are also responsible for safeguarding the assets of the PCC and hence for taking reasonable steps for the prevention and detection of fraud and other irregularities.

Signed

The Reverend Alwyn Pereira



Dated

27/05/22

REPORT OF THE INDEPENDENT EXAMINERS TO THE COUNCIL MEMBERS OF
FOR THE YEAR ENDED 31ST DECEMBER 2021

Independent examiner's report to the PCC of St Michael, Aldershot

I report to the members of the PCC on the accounts of the charity for the year ended 31 December 2021.

The financial statements have been prepared in accordance with Accounting and Reporting by Charities preparing their accounts in accordance with the Financial Reporting Standards applicable in the UK and Republic of Ireland (FRS 102) in preference to the Accounting and Reporting by Charities: Statement of Recommended Practice issued on 1 April 2005 which is referred to in the extant regulations but has been withdrawn.

This has been done in order for the accounts to provide a true and fair view in accordance with the Generally Accepted Accounting Practice effective for reporting periods beginning on or after 1 January 2015.

Respective responsibilities of the PCC and the examiner

The members of the PCC are responsible for the preparation of the accounts. The members consider that an audit is not required for this year under section 144(2) of the Charities Act 2011 (the 2011 Act) and that an independent examination is needed. The PCC's gross income exceeded £250,000 and I am qualified to undertake the examination by being a qualified member of the Institute of Chartered Accountants in England and Wales (ICAEW).

It is my responsibility to:

- examine the accounts under section 145 of the 2011 Act;
- to follow the procedures laid down in the General Directions given by the Charity Commissioner under section 145(5)(b) of the 2011 Act; and
- to state whether particular matters have come to my attention.

Basis of independent examiner's report

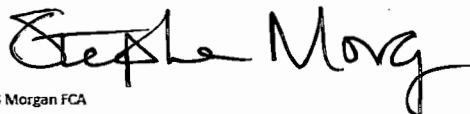
My examination was carried out in accordance with the General Directions given by the Charity Commissioner. An examination includes a review of the accounting records kept by the charity and a comparison of the accounts presented with those records. It also includes consideration of any unusual items or disclosures in the accounts, and the seeking of explanations from you as members concerning any such matters. The procedures undertaken do not provide all the evidence that would be required in an audit and, consequently no opinion is given as to whether the accounts present a 'true and fair view' and the report is limited to those matters set out in the statement below.

Independent examiner's statement

I have completed my examination. I confirm that no matters have come to my attention in connection with the examination giving me cause to believe that in any material respect:

1. accounting records were not kept in respect of the charity as required by section 130 of the 2011 Act; or
2. the accounts do not accord with those records; or
3. the accounts do not comply with the applicable requirements concerning the form and content of

I have no concerns and have come across no other matters in connection with the examination to which attention should be drawn in this report in order to enable a proper understanding of the accounts to be reached.



S G Morgan FCA
Wise & Co
Chartered Accountants & Statutory Auditors
Wey Court West
Union Road
Farnham
Surrey, GU9 7PT

Dated:

28 July 2022

**STATEMENT OF FINANCIAL ACTIVITIES
FOR THE YEAR ENDED 31ST DECEMBER 2021**

	Notes	2021 Restricted Funds £	2021 Unrestricted Funds £	2021 Total Funds £	2020 Total Funds £
INCOME FROM:					
Donations and Legacies	2	17,001	79,561	96,562	80,255
Charitable Activities	3	-	13,541	13,541	18,428
Other Trading Activities	4	-	-	-	5,607
Investment Income	5	-	191	191	661
Other Income	6	-	422	422	745
TOTAL INCOME		17,001	93,715	110,716	105,696
EXPENDITURE ON:					
Expenditure on Raising Funds	7	-	2,764	2,764	9,418
Expenditure on Charitable Activities	8	2,081	141,047	143,128	125,784
TOTAL EXPENDITURE		2,081	143,811	145,892	135,202
NET INCOME/(EXPENDITURE) BEFORE OTHER RECOGNISED GAINS OR LOSSES		14,920	(50,096)	(35,176)	(29,506)
Unrealised Gains/(Losses) on Investments		-	-	-	-
NET INCOME/(EXPENDITURE)		14,920	(50,096)	(35,176)	(29,506)
TRANSFERS BETWEEN FUNDS		-	-	-	-
NET MOVEMENT IN FUNDS		14,920	(50,096)	(35,176)	(29,506)
FUNDS AT 1ST JANUARY 2021		39,298	101,201	140,499	170,005
FUNDS AT 31ST DECEMBER 2021		54,218	51,105	105,323	140,499

The statement of financial activities includes all gains and losses recognised in the year.

All income and expenditure derives from continuing activities.

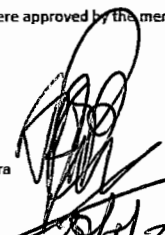
The notes on pages 8 to 12 form part of these accounts.

BALANCE SHEET
FOR THE YEAR ENDED 31ST DECEMBER 2021


	Notes	£	2021	£	£	2020	£
Fixed Assets							
Tangible fixed assets	15			-			
Investments	16			431			431
Total Fixed Assets				<u>431</u>			<u>431</u>
Current Assets							
Debtors	17		891			953	
Short term investments			150,527			180,337	
Cash at Bank and in Hand			<u>26,900</u>			<u>28,026</u>	
Total Current Assets			<u>178,318</u>			<u>209,316</u>	
Current Liabilities							
Parish Share			69,656			67,248	
Other Creditors			-			305	
Accruals	18		<u>3,770</u>			<u>1,700</u>	
			73,426			69,248	
Net Current Assets				104,892			140,068
Net Assets	21			<u>105,323</u>			<u>140,499</u>
Funds							
Restricted Funds	20			54,218			39,298
Unrestricted Funds	20						
Designated Funds			50,113			132,613	
Other unrestricted Funds			<u>992</u>			<u>(31,412)</u>	
Total Unrestricted Funds				51,105			101,201
Total Funds				<u>105,323</u>			<u>140,499</u>

The financial statements were approved by the members and signed on their behalf by:

Signed:
The Reverend Alwyn Pereira
Dated:


27/12/22

Signed:
U Sutherland
Dated:


27-05-2022

The notes on pages 8 to 12 form part of these accounts.

**NOTES TO THE FINANCIAL STATEMENTS
FOR THE YEAR ENDED 31ST DECEMBER 2021**

1 Accounting Policies**a) Basis of Accounting**

The financial statements have been prepared under the historical cost convention of accounting except for the valuation of investment assets, which are shown at market value at the balance sheet date.

The financial statements have been prepared to give a 'true and fair' view and have departed from the Charities (Accounts and Reports) Regulations 2008 only to the extent required to provide a 'true and fair' view. This departure has involved following the Charities SORP (FRS 102) published on 16 July 2014 rather than the Accounting and Reporting by Charities: Statement of Recommended Practice effective from 1 April 2005 which has since been withdrawn.

The financial statements have been prepared in accordance with the Church Accounting Regulations 2006 together with applicable accounting standards (FRS 102) and the Charities Statement of Recommended Practice (SORP) 2015.

The PCC constitutes a public benefit entity as defined by FRS 102.

The accounts are presented in GBP to the nearest £1.

The principal accounting policies and estimations techniques are as follows:

b) Funds

General funds represent the funds of the PCC that are not subject to any restrictions regarding their use and are available for application on the general purposes of the PCC. These include funds designated for a particular purpose by the PCC.

Details of the nature and purpose of restricted funds are shown in note 20 to the accounts.

c) Income

All income is included in the Statement of Financial Activities (SOFA) when the PCC is legally entitled to them as income or capital respectively, ultimate receipt is probable and the amount to be recognised can be quantified with reasonable accuracy.

Donations, Legacies and Similar Resources

- i) Collections and Donations are included in the financial statements when received by or on behalf of the PCC.
- ii) Planned giving receivable under covenant is included in the financial statements only when received by the PCC.
- iii) Income tax recoverable on covenanted and gift aid donations are accrued to November each year and claimed every four months.
- iv) Legacy income is accounted for when receivable.
- v) Grant income is accounted for when receivable.

Income from investments, including interest received, is accounted for when due.

Funds raised by the fete, bazaars and similar events are accounted for gross.

Rental income from letting the church premises is recognised when the rental is due.

d) Expenditure

Costs of generating funds and governance costs are accounted for when payable and include irrecoverable VAT.

e) Fixed Assets

Consecrated and benefice property is not included in these financial statements.

f) Investments

Investments are valued at their closing market value at the Balance Sheet date. Any gain or loss on revaluation is taken to the Statement of Financial Activities.

g) Taxation

As a qualifying charity, the PCC is not liable to UK taxation.

g) Cash flow

As a non-large charity, the PCC is permitted to exclude a cashflow note.

h) Operating leases - the PCC as lessee

Rentals paid under operating leases are charged to the Statement of Financial Activities on a straight line basis over the lease term.

**NOTES TO THE FINANCIAL STATEMENTS
FOR THE YEAR ENDED 31ST DECEMBER 2021**

2 Income from Donations and Legacies

	Unrestricted funds £	Restricted funds £	TOTAL 2021 £	TOTAL 2020 £
Donations				
Donations - giving by bankers order	33,245	-	33,245	30,338
Income tax recoverable via Gift Aid	10,596	-	10,596	15,077
Donations - giving by envelope	6,458	-	6,458	12,267
Collections at all services	3,570	-	3,570	3,406
Donations and appeals	7,642	17,001	24,643	12,285
	61,511	17,001	78,512	73,373

In 2020 there were restricted donations of £12,000

Grants received

	Unrestricted funds £	Restricted funds £	TOTAL 2021 £	TOTAL 2020 £
Parish Clerk Endowment Fund	3,000	-	3,000	3,000
Rushmoor Borough Council	1,001	-	1,001	-
Furlough government grant	3,034	-	3,034	3,882
	7,035	-	7,035	6,882

In 2020 there were no restricted grants.

Legacies and Trusts

	Unrestricted funds £	Restricted funds £	TOTAL 2021 £	TOTAL 2020 £
Legacies	11,015	-	11,015	-

In 2020 there were no restricted legacies.

Total Income from Donations and Legacies

	79,561	17,001	96,562	80,255
--	---------------	---------------	---------------	---------------

3 Income from Charitable Activities

	Unrestricted funds £	Restricted funds £	TOTAL 2021 £	TOTAL 2020 £
Magazines	-	-	-	26
Church lettings (inc. Concerts)	-	-	-	177
Property rental (Ascension House)	9,578	-	9,578	16,800
Church Hall lettings	3,963	-	3,963	1,425
	13,541	-	13,541	18,428

In 2020 there were no restricted lettings.

4 Income from Other Trading Activities

	Unrestricted funds £	Restricted funds £	TOTAL 2021 £	TOTAL 2020 £
Fetes, bazaars, etc	-	-	-	153
Fees	-	-	-	5,454
	-	-	-	5,607

In 2020 there was no restricted income.

5 Investment income

	Unrestricted funds £	Restricted funds £	TOTAL 2021 £	TOTAL 2020 £
Investment Income	191	-	191	661

In 2020 there was no restricted income.

**NOTES TO THE FINANCIAL STATEMENTS
FOR THE YEAR ENDED 31ST DECEMBER 2021**

6 Other Income

	Unrestricted funds £	Restricted funds £	TOTAL 2021 £	TOTAL 2020 £
Printing	-	-	-	88
Sundry income	422	-	422	657
	<u>422</u>	<u>-</u>	<u>422</u>	<u>745</u>

In 2020 there was no restricted income.

7 Expenditure on raising funds

	Unrestricted funds £	Restricted funds £	TOTAL 2021 £	TOTAL 2020 £
Property Costs	-	-	-	6,413
Hall Costs	2,764	-	2,764	3,005
	<u>2,764</u>	<u>-</u>	<u>2,764</u>	<u>9,418</u>

In 2020 there was no restricted expenditure.

8 Expenditure on Charitable Activities

	Unrestricted funds £	Restricted funds £	TOTAL 2021 £	TOTAL 2020 £
Missionary and charitable giving (see Note 9)	315	-	315	370
Ministry costs (see Note 10)	79,587	900	80,487	70,989
Sunday school/junior church	-	-	-	722
Refurbishment and repairs (see Note 12)	23,810	-	23,810	19,121
Church running expenses	17,878	1,181	19,059	11,093
Organist	402	-	402	197
Governance Costs (see Note 13)	19,055	-	19,055	23,292
	<u>141,047</u>	<u>2,081</u>	<u>143,128</u>	<u>125,784</u>

In 2020 there was no restricted expenditure on charitable activities.

9 Missionary and Charitable Giving

	Unrestricted funds £	Restricted funds £	TOTAL 2021 £	TOTAL 2020 £
Salvation Army	-	-	-	370
Guild Bell Ringers	150	-	150	-
Christian Aid	165	-	165	-
	<u>315</u>	<u>-</u>	<u>315</u>	<u>370</u>

In 2020 there was no restricted expenditure on missionary and charitable giving

10 Ministry costs

	Unrestricted funds £	Restricted funds £	TOTAL 2021 £	TOTAL 2020 £
Diocesan Parish Share	77,587	-	77,587	70,570
Curates Salary and Oncoasts	-	-	-	417
Other ministry costs	2,000	900	2,900	2
	<u>79,587</u>	<u>900</u>	<u>80,487</u>	<u>70,989</u>

In 2020 there was no restricted expenditure on ministry costs.

11 PCC Representatives' Remuneration

During the year, no remuneration was paid to the PCC Representatives (Enil - 2020)

**NOTES TO THE FINANCIAL STATEMENTS
FOR THE YEAR ENDED 31ST DECEMBER 2021**

12 Refurbishment and repairs (Improvements)

	Unrestricted funds £	Restricted funds £	TOTAL 2021 £	TOTAL 2020 £
Church maintenance	19,736	-	19,736	17,190
Churchyard	4,074	-	4,074	1,931
	23,810	-	23,810	19,121

In 2020 there were no restricted refurbishment and repair costs.

13 Governance Costs

	Unrestricted funds £	Restricted funds £	TOTAL 2021 £	TOTAL 2020 £
Administrator	8,316	-	8,316	11,425
Printing and stationery	2,145	-	2,145	1,977
Accountancy	1,546	-	1,546	970
IT costs	311	-	311	4,669
Other fees	4,997	-	4,997	2,551
Independent examiner's fees	1,740	-	1,740	1,700
	19,055	-	19,055	23,292

In 2020 there were no restricted governance costs.

14 Staff costs

	TOTAL 2021 £	TOTAL 2020 £
Wages and salaries	8,316	11,425

The average number of staff in the year was 3 (2020: 3); the full time equivalent number of staff was 2 (2020: 1)

There were no employees receiving remuneration in excess of £60,000 per annum

Staff costs are unrestricted.

15 Tangible Fixed Assets

	Freehold Property £	Total £
Cost at 1 January 2021 and 31 December 2021	-	-

The freehold property at Ayling Hill, Aldershot was valued at £375,000 at 31 December 2005 by Bridges Estate Agents Limited. The house has previously been used to house the curate, the house is owned by St Michael's and the Ascension PCC, but is in Trust with the Guildford Diocese. Permission has been given by the Diocese to rent the property on a temporary basis. The property has been rented out to a family who have been in long term lay ministry.

16 Fixed Asset Investments

	2021 £
<u>Market Value</u>	
As at 1st January 2021	431
Additions	-
Disposals	-
	431
Change in Market Value	-
As at 31st December 2021	431

Historic cost information relating to the Fixed Asset Investments is not available at the date of agreement of the Financial Statements

A summary of investments held by fund is as follows:

	Market Value 2021 £
3.5% War Loan	79
Lloyds TSB shares	352
	431

**NOTES TO THE FINANCIAL STATEMENTS
FOR THE YEAR ENDED 31ST DECEMBER 2021**

17 Debtors	2021	2020
	£	£
Income Tax recoverable	891	953
Fees	-	-
	<u>891</u>	<u>953</u>

The income tax recoverable has been estimated based on gift aid donations received in the year where the tax has not yet been claimed.

18 Accruals	2021	2020
	£	£
Independent Examiner's Fees	1,770	1,700
Other accruals	2,000	-
	<u>3,770</u>	<u>1,700</u>

19 Commitments under operating leases

At 31 December 2021 the PCC had future minimum lease payments under non-cancellable operating leases as follows:

	2021	2020
	£	£
Not later than 1 year	1,056	1,440
Later than 1 year and not later than 5 years	1,848	360
	<u>2,904</u>	<u>1,800</u>

20 Funds Analysis

	As at 1 January 2021	Receipts	Payments	Transfers	As at 31 December 2021
Restricted funds					
Giles Legacy Fund	79	-	-	-	79
Specific Donations - memorial wall & glass doors	22,507	-	-	-	22,507
Specific Donations - youth work	10,000	-	(2,081)	-	7,919
Specific Donations - communications	2,000	-	-	-	2,000
Specific Donations - heating repairs	-	17,001	-	-	17,001
Chancel Repair Funds	4,712	-	-	-	4,712
	<u>39,298</u>	<u>17,001</u>	<u>(2,081)</u>	<u>-</u>	<u>54,218</u>
Unrestricted funds					
General Fund	(31,412)	93,715	(143,811)	82,500	992
Designated funds					
Special Appeals	7,613	-	-	-	7,613
Capital Reserve	125,000	-	-	(82,500)	42,500
	<u>101,201</u>	<u>93,715</u>	<u>(143,811)</u>	<u>-</u>	<u>51,105</u>
	<u>140,499</u>	<u>110,716</u>	<u>(145,892)</u>	<u>-</u>	<u>105,323</u>

- a) **Giles Legacy Fund**
The Giles Legacy Fund, is an investment of £78.87 left by the Giles Estate, the interest on which is solely for the use of the Sunday School.
- b) **Specific Donations**
Specific donations have been donated for projects as described above.
- c) **Chancel Repair Fund**
This fund, which can only be used for repairs to the chancel area of the church building was formerly held as an investment with the Guildford Diocesan Board of Finance and realised during 2015

21 Analysis of net assets between funds

	Restricted Funds £	Designated Funds £	General Funds £	Total 2021 £	Total 2020 £
Fund balances as at 31 December 2021 are represented by:					
Investments	79	-	352	431	431
Current assets	54,139	53,613	70,566	178,318	209,316
Current liabilities	-	-	(73,426)	(73,426)	(69,248)
	<u>54,218</u>	<u>53,613</u>	<u>(2,568)</u>	<u>105,323</u>	<u>140,499</u>

NOTES TO THE FINANCIAL STATEMENTS
FOR THE YEAR ENDED 31ST DECEMBER 2021

22

Post balance sheet events

Owing to health and safety reasons and the very poor state of repair at the Church of Ascension the Parochial Church Council agreed to keep the building closed and to only carry out essential heating and repairs to protect the building. The PCC will be conducting various feasibility studies into the development and renovation of the building.

After the year end a claim of £3,144 was made to reimburse the charity for VAT incurred on roof works for St Michael's Church. This claim was made via the listed places of worship grant relief for VAT scheme.