

MOVING ON WITH LIFE & LEARNING LTD

England & Wales · Charity number 1129772

Details

Other names MOWLL

Status Registered

Legal form Charitable company

Company number [06883640](#)

Registered 2009-05-21

Register [View on the Charity Commission register](#)

Contact

Address Room G05
School of Law and Social Justice
University of Liverpool
Chatham Street
L69 7ZR

Phone 01517943020

Email h.kenworthy@liverpool.ac.uk

Website www.mowlltd.org

Activities

Objects: 1.1 The Objects of the Charity are:1.1.1 For the advancement of the education of the public by (but without prejudice to the generality of the foregoing) the provision of training, education and other services to people with learning disabilities and/or mental health issues, which encourage personal and professional growth.1.1.2 To promote social inclusion for the public benefit by preventing people from becoming socially excluded, relieving the needs of those people who are socially excluded and assisting them to integrate into society, in particular by (but without prejudice to the generality of the foregoing) the provision of an advocacy service.1.1.3 For the purpose of this clause 'socially excluded' means being excluded from society, or part of society, as a result of, but not limited to, one or more of the following factors; ill health (physical or mental); youth or old age; other long term social care needs; crime (either as a victim of crime or as an offender rehabilitating into society).1.1.4 For the advancement and protection of the physical and mental health of the public in particular those with, but not limited to; learning disabilities; mental health challenges; dementia; acquired brain injury and/or other long term social care needs by the provision of facilities for work, education and recreation.

Activities: We support adults with learning disabilities, mental health challenges and older people with dementia through inclusive and person-centred practices. We provide meaningful activities and respectful support so that individuals feel able to enjoy life and embrace community presence.

Classification

- **How:** Provides Services, Provides Advocacy/advice/information, Acts As An Umbrella Or Resource Body
- **What:** Education/training, Disability, Arts/culture/heritage/science, Recreation, Other Charitable Purposes
- **Who:** Elderly/old People, People With Disabilities

Geography

- **Area of benefit:** UNDEFINED. IN PRACTICE, LOCAL
- Liverpool City
- Sefton
- St Helens
- Wirral

Finances

Period end	Income	Expenditure	Assets	Employees
2024-12-31	£381,000	£389,000	-	-
2023-12-31	£409,323	£373,124	-	-
2022-12-31	£329,346	£337,703	-	-
2021-12-31	£288,000	£296,000	-	-
2020-12-31	£254,000	£285,000	-	-

Trustees

Name	Role	Appointed
IAN PIERCE-HAYES	Chair	2014-01-16
Gerard Martin Sugrue		2019-10-30
PAUL DURRANCE		2011-12-20

MOVING ON WITH LIFE & LEARNING LTD

England & Wales - Charity number 1129772

Accounts

Charity registration number 1129772

MOVING ON WITH LIFE & LEARNING LTD
ANNUAL REPORT AND UNAUDITED FINANCIAL STATEMENTS
FOR THE YEAR ENDED 31 DECEMBER 2024

MOVING ON WITH LIFE & LEARNING LTD

LEGAL AND ADMINISTRATIVE INFORMATION

Trustees	P Durrance I Pierce -Hayes A O'Leary G Sugrue H Kenworthy
Charity number	1129772
Company number	6883640
Registered office	Room G05, School of Law and Social Justice University of Liverpool Chatham Street Liverpool Merseyside L69 7ZR
Independent examiner	Alexander Myerson & Co Limited Chartered Accountants Alexander House 61 Rodney Street Liverpool L1 9ER
Bankers	HSBC Bank Plc Liverpool University 7 Oxford Street Liverpool L7 7BJ

MOVING ON WITH LIFE & LEARNING LTD

CONTENTS

	Page
Trustees' report	1 - 8
Independent examiner's report	10
Statement of financial activities	11
Balance sheet	12
Statement of cash flows	13
Notes to the financial statements	14 - 24

MOVING ON WITH LIFE & LEARNING LTD

TRUSTEES' REPORT

FOR THE YEAR ENDED 31 DECEMBER 2024

The trustees present their annual report and financial statements for the year ended 31 December 2024.

The financial statements have been prepared in accordance with the accounting policies set out in note 1 to the financial statements and comply with the charity's memorandum, the Charities Act 2011 and "Accounting and Reporting by Charities: Statement of Recommended Practice applicable to charities preparing their accounts in accordance with the Financial Reporting Standard applicable in the UK and Republic of Ireland (FRS 102)" (effective 1 January 2019).

Objectives and activities

SEEK INVEST ACHIEVE CELEBRATE

MOWLL is a small Liverpool grown organisation dedicated to the rights and social inclusion of people with disabilities, enduring mental health challenges and dementia. Our mission is to provide the best person focussed service to ensure individuals develop socially, personally and professionally.

Public benefit

The trustees have paid due regard to guidance issued by the Charity Commission in deciding what activities the charity should undertake.

MOVING ON WITH LIFE & LEARNING LTD

TRUSTEES' REPORT (CONTINUED)

FOR THE YEAR ENDED 31 DECEMBER 2024

Achievements and performance

1. Services MOWLL provided in 2024:

We provide support services for adults who have a diverse range of needs including different learning abilities, mental health conditions, mobility challenges and dementia.

- **Day Opportunities**

Our programmes have included photography, exploring Liverpool, creative crafts, healthy eating & planning, walking for health, yoga & meditation, boxing, coffee mornings, writing CV's and volunteer applications.

We have reached out to local community organisations and businesses to help create the social inclusion and acceptance that we all deserve. The relationships we have developed over the past few years has enabled us to further enhance our programme delivery:

Mount Carmel Paris Centre open its doors each week for our groups to participate in their Wednesday afternoon bingo! We have been included in their bi-monthly socials to Wales and evening socials. Mount Carmel have also donated £100 to assist with our group activities.

Park Road Leisure Centre have provided us with personal trainers and private use of their gym.

The Belvedere Community Centre provide MOWLL with free boxing lessons with professional boxer Courtney. Courtney works with the group to also help them focus on fitness, timing and partnership working.

Mr Smith's community hub is a relatively new relationship, and they shined throughout this reporting year by providing us with free space for our day and evening socials. Mr Smith's provided some of our beneficiaries with food and bar work experience.

Merseyside Police Training Academy invited some of our group to their Mather Avenue site to have a "look behind the scenes" of their station and training grounds. We have a well-established relationship with Merseyside Police and we are working together to identify possible volunteering opportunities for some of our beneficiaries.

Arena and Convention Centre Liverpool invited one of our groups to attend as VIP guests to their Van Gogh Experience in the summer. We are truly grateful to them for this unique opportunity, as participants thoroughly enjoyed the wonderful and widely popular experience.

We have also partnered with local organisations to deliver bespoke sessions including:

Knowsley Disability Concern (KDC) who delivered money management & budgeting, life skills and future goals. The sessions ran for twelve weeks, and all participants received a certificate of completion.

SOLA Arts have worked with MOWLL for several years now. Their current creative & digital arts project began in the autumn and will continue through to spring 2025. This inclusive, creative project is always very well received by all who attend.

Deafness Resource Centre provided a two-day basic sign language training session including a certificate on completion. The group has been inspired to continue practicing amongst themselves with a view to learning on a more formal basis in the near future.

School of Music offered a degree student to work with MOWLL for a four-month placement. During her time, Abby helped build beneficiaries' confidence and independence through using a range of musical instruments to express emotions. The group formed a choir and wrote a song together which they performed in Toxteth Town Hall. We hope a similar placement will be offered in 2025.

Growing Sudley was a wonderful opportunity to work with Lucy and her amazing team who invited us to participate in their twelve-week horticulture therapy at Sudley House in Mossley Hill. The group engaged in flower and plant identification, tree cutting, planting, harvesting and creative garden crafts.

MOVING ON WITH LIFE & LEARNING LTD

TRUSTEES' REPORT (CONTINUED)

FOR THE YEAR ENDED 31 DECEMBER 2024

Case Studies

All beneficiaries move on with their own life and learning during the time they access our services. This may involve making new friends, learning a new skill, feeling more independent or simply being supported to receive the right benefits. Two case studies highlight with the right support anything desired can be achieved.

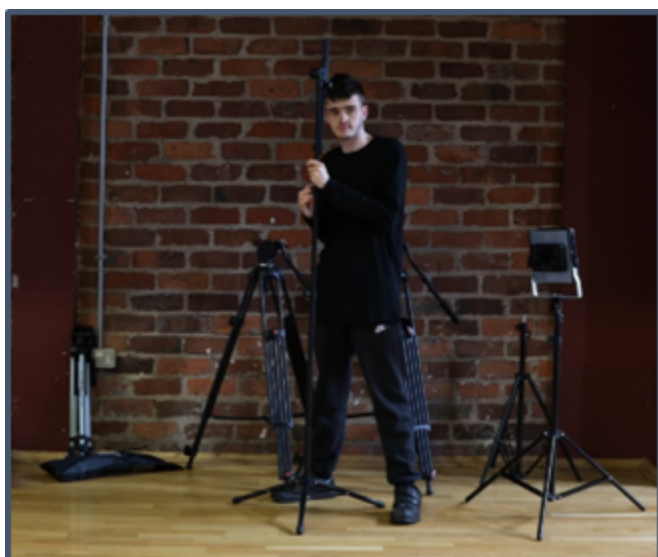
Moving On With Life.....

K and B are both former MOWLL beneficiaries and have participated in several of our projects over the past few years. In January this year they joined our volunteers' team as they wanted to give something back. After successfully completing online training and development sessions with team mentors, they now help us deliver disability awareness sessions to university students. In the summer, K and B made a major life changing decision to move out of their family home and now celebrate their independence living in a buzzing part of Liverpool.



Moving On With Learning....

D currently attends MOWLL and with the support team around him, he has achieved many milestones. He now has a bus pass and with some travel training intervention, D uses public transport independently. With support to set up a bank account, he is learning to budget and manage his personal finances. With support to access autism assessment services, he now has the confidence to socialise and make friends. D is now learning new skills to feed his interests in media, writing and animal welfare.



MOVING ON WITH LIFE & LEARNING LTD

TRUSTEES' REPORT (CONTINUED)

FOR THE YEAR ENDED 31 DECEMBER 2024

- **Community Support**

We have seen an increase in the need for individuals requiring one to one support to access the community. We provided a range of services including shopping; arranging and supporting to attend medical appointments; finding alternative accommodation and assisting with moving property; assisting with reading and sorting mail and benefits form filling; accompanying on trips and community activities that boost confidence and community connection. We supported over sixty beneficiaries to access their local community in this reporting year.

- **Bespoke Projects**

We teamed with Nici Konigs of ZEST Events Management, The Black-E, Liverpool Film Initiative and Sound City to work with a small number of beneficiaries interested in all aspects of filming and editing. Filming took place across the city and surrounding areas, honing beneficiaries' new media skills in multiple areas of the film industry, including filming live events, planning film shoots, teaching workshops and working alongside some of the city's well-known employers. Working in these settings has developed their knowledge on film set etiquette, how to operate the camera and record sound at a professional level, how to manipulate lighting, how to film in live event settings, interview skills and work with inner city youth.

The REACHE Project was officially launched to the public and getting recognition in education, healthcare, and mental health sectors. It is hosted on the University of Liverpool's website and has been promoted on their social media platforms. The interest and positive feedback we gained from this project has inspired us to look into more ways of using new media and the power of filming to help with further collaboration with underrepresented talent.

- **Evening Socials and Fundraising**

We launched our very own Open Mic night with the host "Antitorystateofmind" aka Codie McBride. This inclusive free event offers opportunities for people who feel they do not have a voice in society to be heard in a safe environment. The event, held in Love and Rockets, Lark Lane was very well attended by over fifty people in the audience. More than fifteen of them got up on stage to recite personal poetry, sing favourite songs or play guitar. The venue proved to be too small so we will be teaming up with the university's Guild of Students to identify a more suitable venue throughout 2025.

Icon Fitness & Lifestyle identified MOWLL as their chosen charity to fundraise money for us to support some of our women to socialise and make new friends in safe and friendly environments. Icon's chosen venue was Neon Jamon, Smithdown Road, where welcome drinks were provided to guests on arrival and amazing canapes served throughout the evening! The owner of Icon, Antonia Sotiropoulou Mensah, also organised raffle prizes and arranged live entertainment, through the amazing "Songbird and the Pianoman". We are truly grateful to Antonia and guests for raising over £1,000 towards our women's socials.



soul and jazz singer Songbird

MOVING ON WITH LIFE & LEARNING LTD

TRUSTEES' REPORT (CONTINUED)

FOR THE YEAR ENDED 31 DECEMBER 2024

2. Partnerships with Higher Education

We worked with the University of Liverpool and the University of Chester to collaborate with the following student opportunities:

- **Disability and Hate Crime Awareness**

We delivered face to face disability and hate crime awareness to over a hundred occupational therapy and nursing students. The main presenters were five of our beneficiaries who shared their experiences of living with a disability and being a hate crime target. Their personal delivery had a huge impact and some of the attendees would like to apply to do their non-clinical placement with us next year.

- **Placement Provider**

Six student nurses from University of Liverpool and two students from University of Chester chose MOWLL as their community spoke or elective placement. They engaged in all group activities and shadowed staff supporting individuals in the community. Their feedback of the placement has been encouraging and very positive.

Liverpool's School of Music provided a unique opportunity for MOWLL to team with their student Abby who offered some of our beneficiaries the opportunities to learn songwriting, singing and poetry.

- **Student Volunteer**

We were very fortunate to welcome Marcus to the team during his seven-month volunteering with MOWLL. Marcus was a student disability advisor with the university of Liverpool and his placement with us provided opportunities to work with beneficiaries and to support the delivery of disability awareness training. We are delighted to hear that Marcus has been successful with a full-time post with the university's Student Services.

- **Interchange**

Interchange is a registered charity based within the university of Liverpool. Their aim is to connect Voluntary and Community Organisations (VCO's) who have research project ideas, work-based learning research project needs or would benefit from a social policy review and students in Higher Education who are looking for social research or social policy review project opportunities.

We were successful with a proposal to Interchange for a social policy student to be placed with us. Our project: **Person Centred Opportunities post Special School** which will be completed by May 2025. The student will; conduct research and provide an evaluation report into what services are currently offered in Liverpool to adults aged between 18 and 25 years leaving special school. They will also contribute to creating a resource pack of available accessible services.

- **Research Collaboration**

Throughout this reporting year MOWLL partnered with the School of Health Sciences on the Research Engagement And Collaborative Health Enquiry (REACHE project) aimed at facilitating the role of patients with a learning disability in the School's health care research strategy through Patient and Public Involvement. Although this collaboration began in 2023 we continued with the projects' evaluation until March this reporting year.

3. Funding

Rathbone (formerly Investec) have kindly supported MOWLL by donating £7,000 (for three years) towards our project activities. The first instalment of £7,000 will go towards two initial activities: equipment for our Podcast project and Hi-Viz jackets and grabbers for our Litter Picking programme. Both projects will start early 2025!

Merseyside Police Community Cashback, through Community Foundation for Merseyside Office has kindly funded £4,806 towards our hate crime awareness project.

Park Road Tesco, with the ongoing support of Shelly their Community Ambassador and her team, we have raised over £600 to help towards resources for our community group sessions.

MOVING ON WITH LIFE & LEARNING LTD

TRUSTEES' REPORT (CONTINUED)

FOR THE YEAR ENDED 31 DECEMBER 2024

4. Living Wage Employer



The real Living Wage is the only UK wage rate based on the cost of living. It is voluntarily paid by UK businesses who believe their staff deserve a wage which meets everyday needs. MOWLL signed up to become a living wage employer in October 2023 and we are committed to continue.

5. Thank You to our Staff Team and Volunteers!

A huge thank you to our staff team who have worked tirelessly throughout this reporting year. You have supported our most vulnerable and we are truly grateful for your sharing our values, compassion, professionalism and determination!

Alex Mowinsky	Alison Lawrence	Annie Cogan-Thomas
Anthony Royle	Dillon O'Connor	Eness Nagi
Helen Robinson-Little	JP Lowles	Kai Jolley
Kayleigh Powe	Kevin McLoughlin	Linda Murray
Leah Wellings	Mark Henry	Marcus Holdsworth
Mark Lawrence	Rebecca Powe	Ryan McGuinness
Sherae Buckley	Sky Glover	Terry Kelly
Tyler Williams	Zeta Woods	

6. Trustees

We would also like to thank our Board of Trustees who have supported the charity through its challenges and celebrations this reporting year. Like all other charities, we appreciate that their time, support and expertise is given freely.

7. Our Patron

We would like to take this opportunity to thank our patron Tom Murphy, Liverpool Sculptor for his continued encouragement and support.

MOVING ON WITH LIFE & LEARNING LTD

TRUSTEES' REPORT (CONTINUED)

FOR THE YEAR ENDED 31 DECEMBER 2024

8. Supporters and Sponsors

MOWLL is extremely grateful for the financial support we receive from our supporters, donors and funders.

We would also like to express our sincere gratitude to Liverpool City Council for their continued support and their acknowledgement of the bespoke services we are able to offer.

We remain forever grateful to The University of Liverpool for their continued philanthropic support.

We would like to thank everyone who has supported MOWLL throughout this wonderfully busy year and wish you all the very best!



Financial review

Total income for the year amounted to £404,295 (2023: £409,323). Total expenditure amounted to £407,367 (2023: £373,124). Overall, this has resulted in a deficit for the year of £3,072 (2023: Surplus £36,199). This resulted in unrestricted funds of £299,700 (2023: £306,164) and restricted funds of £47,301 (2023: £43,909) at the year end.

MOVING ON WITH LIFE & LEARNING LTD

TRUSTEES' REPORT (CONTINUED)

FOR THE YEAR ENDED 31 DECEMBER 2024

Reserves policy

It is the policy of the charity that unrestricted funds which have not been designated for a specific use should be maintained at a level equivalent to between three and six month's expenditure. The trustees consider that reserves at this level will ensure that, in the event of a significant drop in funding, they will be able to continue the charity's current activities while consideration is given to ways in which additional funds may be raised. This level of reserves has been maintained throughout the year.

Structure, governance and management

The charity is a registered charity and company limited by guarantee and has no share capital. The Charitable company is governed by its Memorandum and Articles of Association. The charity number 1129772 has been registered since 21 May 2009.

The trustees who served during the year and up to the date of signature of the financial statements were:

P Durrance

I Pierce -Hayes

A O'Leary

G Sugrue

H Kenworthy

R Donovan

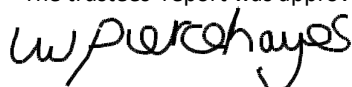
(Resigned 21 November 2024)

Recruitment and appointment of trustees

Trustees' recruitment is done through business networks and advertising where the charity seeks to fulfil with the relevant skills and expertise that benefits and help to achieve the aims of the charity.

None of the trustees has any beneficial interest in the company. All of the trustees are members of the company and guarantee to contribute £1 in the event of a winding up.

The trustees' report was approved by the Board of Trustees.



I Pierce -Hayes

Trustee

23 September 2025

MOVING ON WITH LIFE & LEARNING LTD

STATEMENT OF TRUSTEES' RESPONSIBILITIES

FOR THE YEAR ENDED 31 DECEMBER 2024

The trustees are responsible for preparing the Trustees' Report and the financial statements in accordance with applicable law and United Kingdom Accounting Standards (United Kingdom Generally Accepted Accounting Practice).

The law applicable to charities in England and Wales requires the trustees to prepare financial statements for each financial year which give a true and fair view of the state of affairs of the charity and of the incoming resources and application of resources of the charity for that year.

In preparing these financial statements, the trustees are required to:

- select suitable accounting policies and then apply them consistently;
- observe the methods and principles in the Charities SORP;
- make judgements and estimates that are reasonable and prudent;
- state whether applicable accounting standards have been followed, subject to any material departures disclosed and explained in the financial statements; and
- prepare the financial statements on the going concern basis unless it is inappropriate to presume that the charity will continue in operation.

The trustees are responsible for keeping sufficient accounting records that disclose with reasonable accuracy at any time the financial position of the charity and enable them to ensure that the financial statements comply with the Charities Act 2011, the Charity (Accounts and Reports) Regulations 2008 and the provisions of the trust deed. They are also responsible for safeguarding the assets of the charity and hence for taking reasonable steps for the prevention and detection of fraud and other irregularities.

MOVING ON WITH LIFE & LEARNING LTD

INDEPENDENT EXAMINER'S REPORT

TO THE TRUSTEES OF MOVING ON WITH LIFE & LEARNING LTD

I report to the trustees on my examination of the financial statements of Moving on with Life & Learning Ltd (the charity) for the year ended 31 December 2024.

Responsibilities and basis of report

As the trustees of the charity you are responsible for the preparation of the financial statements in accordance with the requirements of the Charities Act 2011 (the 2011 Act).

I report in respect of my examination of the charity's financial statements carried out under section 145 of the 2011 Act. In carrying out my examination I have followed all the applicable Directions given by the Charity Commission under section 145(5)(b) of the 2011 Act.

Independent examiner's statement

Since the charity's gross income exceeded £250,000 your examiner must be a member of a body listed in section 145 of the 2011 Act. I confirm that I am qualified to undertake the examination because I am a member of the Institute of Chartered Accountants in England and Wales, which is one of the listed bodies.

Your attention is drawn to the fact that the charity has prepared financial statements in accordance with Accounting and Reporting by Charities preparing their accounts in accordance with the Financial Reporting Standard applicable in the UK and Republic of Ireland (FRS 102) in preference to the Accounting and Reporting by Charities: Statement of Recommended Practice issued on 1 April 2005 which is referred to in the extant regulations but has now been withdrawn.

I understand that this has been done in order for financial statements to provide a true and fair view in accordance with Generally Accepted Accounting Practice effective for reporting periods beginning on or after 1 January 2015.

I have completed my examination. I confirm that no matters have come to my attention in connection with the examination giving me cause to believe that in any material respect:

- 1 accounting records were not kept in respect of the charity as required by section 130 of the 2011 Act; or
- 2 the financial statements do not accord with those records; or
- 3 the financial statements do not comply with the applicable requirements concerning the form and content of accounts set out in the Charities (Accounts and Reports) Regulations 2008 other than any requirement that the accounts give a true and fair view which is not a matter considered as part of an independent examination.

I have no concerns and have come across no other matters in connection with the examination to which attention should be drawn in this report in order to enable a proper understanding of the financial statements to be reached.

P R Burns

Paul Burns BSc BFP FCA
Alexander Myerson & Co Limited
Chartered Accountants
Alexander House
61 Rodney Street
Liverpool
L1 9ER

Dated: 23 September 2025

MOVING ON WITH LIFE & LEARNING LTD

STATEMENT OF FINANCIAL ACTIVITIES INCLUDING INCOME AND EXPENDITURE ACCOUNT

FOR THE YEAR ENDED 31 DECEMBER 2024

		Unrestricted funds 2024 £	Restricted funds 2024 £	Total 2024 £	Unrestricted funds 2023 £	Restricted funds 2023 £	Total 2023 £
	Notes						
Income from:							
Donations and legacies	2	3,644	-	3,644	1,250	3,030	4,280
Charitable activities	3	375,871	22,984	398,855	388,853	14,783	403,636
Investments	4	1,796	-	1,796	1,407	-	1,407
Total income		381,311	22,984	404,295	391,510	17,813	409,323
Expenditure on:							
Charitable activities	5	389,267	18,100	407,367	356,777	16,347	373,124
Total expenditure		389,267	18,100	407,367	356,777	16,347	373,124
Net income/(expenditure)		(7,956)	4,884	(3,072)	34,733	1,466	36,199
Transfers between funds		1,492	(1,492)	-	-	-	-
Net movement in funds	7	(6,464)	3,392	(3,072)	34,733	1,466	36,199
Reconciliation of funds:							
Fund balances at 1 January 2024		306,164	43,909	350,073	271,431	42,443	313,874
Fund balances at 31 December 2024		299,700	47,301	347,001	306,164	43,909	350,073

The statement of financial activities includes all gains and losses recognised in the year. All income and expenditure derive from continuing activities.

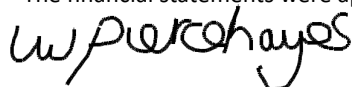
MOVING ON WITH LIFE & LEARNING LTD

BALANCE SHEET

AS AT 31 DECEMBER 2024

	Notes	2024 £	£	2023 £	£
Fixed assets					
Tangible assets	11		1,711		1,407
Current assets					
Cash at bank and in hand		357,358		379,941	
Creditors: amounts falling due within one year	12	(12,068)		(31,275)	
Net current assets			345,290		348,666
Total assets less current liabilities			347,001		350,073
The funds of the charity					
Restricted income funds	15		47,301		43,909
Unrestricted funds	16		299,700		306,164
			347,001		350,073

The financial statements were approved by the trustees on 23 September 2025



I Pierce -Hayes
Trustee

MOVING ON WITH LIFE & LEARNING LTD

STATEMENT OF CASH FLOWS

FOR THE YEAR ENDED 31 DECEMBER 2024

	Notes	2024 £	£	2023 £	£
Cash flows from operating activities					
Cash (absorbed by)/generated from operations	19		(23,559)		53,963
Investing activities					
Purchase of tangible fixed assets		(820)		(1,571)	
Investment income received		1,796		1,407	
Net cash generated from/(used in) investing activities					
			976		(164)
Net cash used in financing activities					
			-		-
Net (decrease)/increase in cash and cash equivalents					
			(22,583)		53,799
Cash and cash equivalents at beginning of year			379,941		326,142
Cash and cash equivalents at end of year			<u>357,358</u>		<u>379,941</u>

MOVING ON WITH LIFE & LEARNING LTD

NOTES TO THE FINANCIAL STATEMENTS

FOR THE YEAR ENDED 31 DECEMBER 2024

1 Accounting policies

Charity information

Moving on with Life & Learning Ltd is a company limited by guarantee and a registered charity in England and Wales. In the event of the charity being wound up, the liability in respect of the guarantee is limited to £1 per member of the charity. The address of the registered office is given in the charity information on the contents page of these financial statements. The nature of the charity's operations and principal activities are set out in the Trustees' Report on page 1.

1.1 Accounting convention

The financial statements have been prepared in accordance with the charity's [governing document], the Charities Act 2011, FRS 102 "The Financial Reporting Standard applicable in the UK and Republic of Ireland" ("FRS 102") and the Charities SORP "Accounting and Reporting by Charities: Statement of Recommended Practice applicable to charities preparing their accounts in accordance with the Financial Reporting Standard applicable in the UK and Republic of Ireland (FRS 102)" (effective 1 January 2019). The charity is a Public Benefit Entity as defined by FRS 102.

The financial statements are prepared in sterling, which is the functional currency of the charity. Monetary amounts in these financial statements are rounded to the nearest £.

The financial statements have been prepared under the historical cost convention. The principal accounting policies adopted are set out below.

1.2 Going concern

At the time of approving the financial statements, the trustees have a reasonable expectation that the charity has adequate resources to continue in operational existence for the foreseeable future. Thus the trustees continue to adopt the going concern basis of accounting in preparing the financial statements.

1.3 Charitable funds

Unrestricted funds are available for use at the discretion of the trustees in furtherance of their charitable objectives.

Restricted funds are subject to specific conditions by donors or grantors as to how they may be used. The purposes and uses of the restricted funds are set out in the notes to the financial statements.

Endowment funds are subject to specific conditions by donors that the capital must be maintained by the charity.

1.4 Income

Income is recognised when the charity is legally entitled to it after any performance conditions have been met, the amounts can be measured reliably, and it is probable that income will be received.

Cash donations are recognised on receipt. Other donations are recognised once the charity has been notified of the donation, unless performance conditions require deferral of the amount. Income tax recoverable in relation to donations received under Gift Aid or deeds of covenant is recognised at the time of the donation.

MOVING ON WITH LIFE & LEARNING LTD

NOTES TO THE FINANCIAL STATEMENTS (CONTINUED)

FOR THE YEAR ENDED 31 DECEMBER 2024

1 Accounting policies

(Continued)

1.5 Expenditure

Expenditure is recognised once there is a legal or constructive obligation to transfer economic benefit to a third party, it is probable that a transfer of economic benefits will be required in settlement, and the amount of the obligation can be measured reliably. It is categorised under the following headings:

- * Cost of raising funds
- * Expenditure on charitable activities
- * Other expenditure represents those items not falling into the categories above.

Support costs are those that assist the work of the charity but do not directly represent charitable activities and include office costs, governance costs and administrative payroll costs. They are incurred directly in support of expenditure on the objects of the charity and include project management carried out at the charity's registered office. Where support costs cannot be directly attributed to particular headings they have been allocated to cost of raising funds and expenditure on charitable activities on a basis consistent with use of the resources. Premises costs and overheads have been allocated on the basis of staff numbers.

Fund-raising costs are those incurred in seeking voluntary contributions and do not include the costs of disseminating information in support of the charitable activities.

The analysis of these costs is included in note 6.

1.6 Tangible fixed assets

Tangible fixed assets are initially measured at cost and subsequently measured at cost or valuation, net of depreciation and any impairment losses.

Depreciation is recognised so as to write off the cost or valuation of assets less their residual values over their useful lives on the following bases:

Fixtures and fittings	25% per annum
-----------------------	---------------

The gain or loss arising on the disposal of an asset is determined as the difference between the sale proceeds and the carrying value of the asset, and is recognised in the statement of financial activities.

1.7 Impairment of fixed assets

At each reporting end date, the charity reviews the carrying amounts of its tangible assets to determine whether there is any indication that those assets have suffered an impairment loss. If any such indication exists, the recoverable amount of the asset is estimated in order to determine the extent of the impairment loss (if any).

1.8 Cash and cash equivalents

Cash and cash equivalents include cash in hand, deposits held at call with banks, other short-term liquid investments with original maturities of three months or less, and bank overdrafts. Bank overdrafts are shown within borrowings in current liabilities.

Basic financial assets

Basic financial assets, which include debtors and cash and bank balances, are initially measured at transaction price including transaction costs and are subsequently carried at amortised cost using the effective interest method unless the arrangement constitutes a financing transaction, where the transaction is measured at the present value of the future receipts discounted at a market rate of interest. Financial assets classified as receivable within one year are not amortised.

MOVING ON WITH LIFE & LEARNING LTD

NOTES TO THE FINANCIAL STATEMENTS (CONTINUED)

FOR THE YEAR ENDED 31 DECEMBER 2024

1 Accounting policies

(Continued)

Basic financial liabilities

Basic financial liabilities, including creditors and bank loans are initially recognised at transaction price unless the arrangement constitutes a financing transaction, where the debt instrument is measured at the present value of the future payments discounted at a market rate of interest. Financial liabilities classified as payable within one year are not amortised.

Debt instruments are subsequently carried at amortised cost, using the effective interest rate method.

Trade creditors are obligations to pay for goods or services that have been acquired in the ordinary course of operations from suppliers. Amounts payable are classified as current liabilities if payment is due within one year or less. If not, they are presented as non-current liabilities. Trade creditors are recognised initially at transaction price and subsequently measured at amortised cost using the effective interest method.

Derecognition of financial liabilities

Financial liabilities are derecognised when the charity's contractual obligations expire or are discharged or cancelled.

1.9 Retirement benefits

Payments to defined contribution retirement benefit schemes are charged as an expense as they fall due.

2 Income from donations and legacies

	Unrestricted funds 2024 £	Restricted funds 2024 £	Total 2024 £	Unrestricted funds 2023 £	Restricted funds 2023 £	Total 2023 £
Donations and gifts	3,644	-	3,644	1,250	3,030	4,280

3 Income from charitable activities

	Unrestricted funds 2024 £	Restricted funds 2024 £	Total 2024 £	Unrestricted funds 2023 £	Restricted funds 2023 £	Total 2023 £
Charitable activities						
Liverpool City Council	375,727	-	375,727	387,650	-	387,650
R Lamont COP	-	13,210	13,210	-	6,174	6,174
Liverpool City Council COP	-	8,362	8,362	-	6,904	6,904
Other income	144	1,412	1,556	1,203	1,705	2,908
	375,871	22,984	398,855	388,853	14,783	403,636

MOVING ON WITH LIFE & LEARNING LTD

NOTES TO THE FINANCIAL STATEMENTS (CONTINUED)

FOR THE YEAR ENDED 31 DECEMBER 2024

4 Income from investments

	Unrestricted funds 2024 £	Unrestricted funds 2023 £
Interest receivable	1,796	1,407

5 Expenditure on charitable activities

	Support costs 2024 £	Support costs 2023 £
Direct costs		
Staff costs	339,061	301,723
Staff expenses	20,990	20,348
Staff training	1,194	400
Printing and stationery	177	552
Facilitator	79	3,118
Advertising and marketing	286	685
Repairs and maintenance	91	370
Telephone and internet	11	488
Room hire	11,502	7,689
Rates	3,393	-
Travel	11,824	16,861
General & running costs	4,930	5,213
Bank charges	106	88
Depreciation	516	164
	<u>394,160</u>	<u>357,699</u>
Share of support and governance costs (see note 6)		
Support	6,805	8,745
Governance	6,402	6,680
	<u>407,367</u>	<u>373,124</u>
Analysis by fund		
Unrestricted funds	389,267	356,777
Restricted funds	18,100	16,347
	<u>407,367</u>	<u>373,124</u>

MOVING ON WITH LIFE & LEARNING LTD

NOTES TO THE FINANCIAL STATEMENTS (CONTINUED)

FOR THE YEAR ENDED 31 DECEMBER 2024

6 Support costs allocated to activities

	2024	2023
	£	£
Information and technology	838	274
Insurance	3,051	2,690
Legal and professional	1,548	4,737
Payroll	1,368	1,044
Governance costs	6,402	6,680
	<u>13,207</u>	<u>15,425</u>
Analysed between:		
Support costs	<u>13,207</u>	<u>15,425</u>

7 Net movement in funds

	2024	2023
	£	£
The net movement in funds is stated after charging/(crediting):		
Fees payable for the independent examination of the charity's financial statements	930	890
Depreciation of owned tangible fixed assets	<u>516</u>	<u>164</u>

8 Trustees

The chief executive who is a trustee received remuneration during the year of £45,902 (2023: £48,501).
One trustee was reimbursed travel expenses of £258 (2023: £146)

9 Employees

The average monthly number of employees during the year was:

	2024	2023
	Number	Number
	<u>15</u>	<u>11</u>
Employment costs	2024	2023
	£	£
Wages and salaries	329,307	295,417
Social security costs	7,865	5,035
Other pension costs	1,889	1,271
	<u>339,061</u>	<u>301,723</u>

There were no employees whose annual remuneration was more than £60,000.

MOVING ON WITH LIFE & LEARNING LTD

NOTES TO THE FINANCIAL STATEMENTS (CONTINUED)

FOR THE YEAR ENDED 31 DECEMBER 2024

9 Employees (Continued)

Remuneration of key management personnel

The remuneration of key management personnel was as follows:

	2024	2023
	£	£
Aggregate compensation	91,804	97,002

10 Taxation

The charity is exempt from taxation on its activities because all its income is applied for charitable purposes.

11 Tangible fixed assets

	Fixtures and fittings £
Cost	
At 1 January 2024	4,970
Additions	820
At 31 December 2024	5,790
Depreciation and impairment	
At 1 January 2024	3,563
Depreciation charged in the year	516
At 31 December 2024	4,079
Carrying amount	
At 31 December 2024	1,711
At 31 December 2023	1,407

12 Creditors: amounts falling due within one year

	2024	2023
	£	£
Other taxation and social security	2,630	-
Deferred income	7,000	-
Accruals	2,438	31,275
	12,068	31,275

MOVING ON WITH LIFE & LEARNING LTD

NOTES TO THE FINANCIAL STATEMENTS (CONTINUED)

FOR THE YEAR ENDED 31 DECEMBER 2024

13 Government grants

Deferred income is included in the financial statements as follows:

	2024	2023
	£	£
Deferred income is included within:		
Current liabilities	7,000	-
	<u> </u>	<u> </u>
Movements in the year:		
Deferred income at 1 January 2024	-	-
Resources deferred in the year	7,000	-
	<u> </u>	<u> </u>
Deferred income at 31 December 2024	7,000	-
	<u> </u>	<u> </u>

Deferred income is in relation to a grant received from Rathbones in December 2024 but its podcast project will be developed during 2025.

14 Retirement benefit schemes

	2024	2023
	£	£
Defined contribution schemes		
Charge to profit or loss in respect of defined contribution schemes	1,889	1,271
	<u> </u>	<u> </u>

The charity operates a defined contribution pension scheme for all qualifying employees. The assets of the scheme are held separately from those of the charity in an independently administered fund.

MOVING ON WITH LIFE & LEARNING LTD

NOTES TO THE FINANCIAL STATEMENTS (CONTINUED)

FOR THE YEAR ENDED 31 DECEMBER 2024

15 Restricted funds

The restricted funds of the charity comprise the unexpended balances of donations and grants held on trust subject to specific conditions by donors as to how they may be used.

	At 1 January 2024	Incoming resources	Resources expended	Transfers At 31 December 2024	
	£	£	£	£	£
Health Education NHS England	17,484	-	-	-	17,484
School of Medicine	4,215	-	-	-	4,215
CCG Engagement	8,476	-	-	-	8,476
LCVS	1,296	-	-	(1,296)	-
Tesco	1,657	-	-	-	1,657
HM LCC COP	660	-	-	-	660
VO LCC COP	4,126	8,362	(3,619)	-	8,869
NHS Wirral CCG	196	-	-	(196)	-
LCVS - Employable You	2,000	-	(150)	-	1,850
Investec Bank	3,034	-	-	-	3,034
RL LCC COP	83	13,210	(12,919)	-	374
Secured Limited	682	-	-	-	682
Other	-	1,412	(1,412)	-	-
	<u>43,909</u>	<u>22,984</u>	<u>(18,100)</u>	<u>(1,492)</u>	<u>47,301</u>

Previous year:	At 1 January 2023	Incoming resources	Resources expended	Transfers At 31 December 2023	
	£	£	£	£	£
Health Education NHS England	17,484	-	-	-	17,484
School of Medicine	4,215	-	-	-	4,215
CCG Engagement	8,476	-	-	-	8,476
LCVS	1,296	-	-	-	1,296
Tesco	1,657	-	-	-	1,657
HM LCC COP	660	-	-	-	660
VO LCC COP	3,780	6,904	(6,558)	-	4,126
NHS Wirral CCG	196	-	-	-	196
Employable You	2,000	-	-	-	2,000
Investec Bank	2,679	2,030	(1,675)	-	3,034
RL LCC COP	-	6,174	(6,091)	-	83
Secured Limited	-	1,000	(318)	-	682
Other	-	1,705	(1,705)	-	-
	<u>42,443</u>	<u>17,813</u>	<u>(16,347)</u>	<u>-</u>	<u>43,909</u>

MOVING ON WITH LIFE & LEARNING LTD

NOTES TO THE FINANCIAL STATEMENTS (CONTINUED)

FOR THE YEAR ENDED 31 DECEMBER 2024

15 Restricted funds

(Continued)

Health Education NHS England

This fund is allocated as fees received for students on placement at MOWLL. We welcome students from John Moores, Edge Hill and Liverpool Universities on their spoke or elective placements.

School Of Medicine

Thanks to funding the placement fees. MOWLL were able to purchase updated accessible technology to use within different projects.

CCG Engagement

This funding provided opportunities to measure beneficiaries' health and wellbeing, set targets and provide opportunities for individuals to get involved in sport related and wellbeing activities. Information and data was collected for CCG research.

LCVS

Funding to enhance kitchen space and install a commercial cooker at John Archer Hall and for the Employable You Project.

Tesco

Funding for generic projects at MOWLL including sport and exercise sessions.

HM LCC COP

This is Court of Protection funding allocated to MOWLL for one of the beneficiaries we support.

VO LCC COP

This is Court of Protection funding allocated to MOWLL for one of the beneficiaries we support.

NHS Wirral CCG

The Cheshire and Merseyside Transforming Care Partnership is a collaborative proposal to deliver additional community support in Liverpool. MOWLL was awarded funding to deliver a year long series of accessible, culturally appropriate and inclusive events for adults with learning disabilities and mental health concerns, thereby providing individuals with opportunities to reconnect to the larger community after COVID.

Investec Wealth and Management

Investec have been long term corporate sponsors of MOWLL. This funding gave us the opportunity to purchase equipment for our group activities.

R Lamont COP

This is Court of Protection funding allocated to MOWLL for one of the beneficiaries we support, who is at risk of financial abuse.

Secured Limited

Secured Limited provided a donation to fund monthly evening social activities.

MOVING ON WITH LIFE & LEARNING LTD

NOTES TO THE FINANCIAL STATEMENTS (CONTINUED)

FOR THE YEAR ENDED 31 DECEMBER 2024

16 Unrestricted funds

The unrestricted funds of the charity comprise the unexpended balances of donations and grants which are not subject to specific conditions by donors and grantors as to how they may be used. These include designated funds which have been set aside out of unrestricted funds by the trustees for specific purposes.

	At 1 January 2024	Incoming resources	Resources expended	Transfers At 31 December 2024	
	£	£	£	£	£
General funds	306,164	381,311	(389,267)	1,492	299,700
	<u>306,164</u>	<u>381,311</u>	<u>(389,267)</u>	<u>1,492</u>	<u>299,700</u>
Previous year:	At 1 January 2023	Incoming resources	Resources expended	Transfers At 31 December 2023	
	£	£	£	£	£
General funds	271,431	391,510	(356,777)	-	306,164
	<u>271,431</u>	<u>391,510</u>	<u>(356,777)</u>	<u>-</u>	<u>306,164</u>

17 Analysis of net assets between funds

	Unrestricted funds 2024	Restricted funds 2024	Total 2024
	£	£	£
At 31 December 2024:			
Tangible assets	1,711	-	1,711
Current assets/(liabilities)	297,989	47,301	345,290
	<u>299,700</u>	<u>47,301</u>	<u>347,001</u>
	<u>299,700</u>	<u>47,301</u>	<u>347,001</u>
	Unrestricted funds 2023	Restricted funds 2023	Total 2023
	£	£	£
At 31 December 2023:			
Tangible assets	1,407	-	1,407
Current assets/(liabilities)	304,757	43,909	348,666
	<u>306,164</u>	<u>43,909</u>	<u>350,073</u>
	<u>306,164</u>	<u>43,909</u>	<u>350,073</u>

18 Related party transactions

There were no disclosable related party transactions during the year (2023 - none).

MOVING ON WITH LIFE & LEARNING LTD

NOTES TO THE FINANCIAL STATEMENTS (CONTINUED)

FOR THE YEAR ENDED 31 DECEMBER 2024

19 Cash generated from operations	2024	2023
	£	£
(Deficit)/surplus for the year	(3,072)	36,199
Adjustments for:		
Investment income recognised in statement of financial activities	(1,796)	(1,407)
Depreciation and impairment of tangible fixed assets	516	164
Movements in working capital:		
(Decrease)/increase in creditors	(26,207)	19,007
Increase in deferred income	7,000	-
	<u> </u>	<u> </u>
Cash (absorbed by)/generated from operations	(23,559)	53,963
	<u> </u>	<u> </u>

MOVING ON WITH LIFE & LEARNING LTD

England & Wales - Charity number 1129772

Accounts

MOVING ON WITH LIFE & LEARNING LTD

(A COMPANY LIMITED BY GUARANTEE)

ANNUAL REPORT AND FINANCIAL STATEMENTS

for the year ended

31 December 2023

REGISTERED NUMBER: 6883640

CHARITY NUMBER: 1129772

MOVING ON WITH LIFE & LEARNING LTD

Annual Report and Financial Statements For the year ended 31 December 2023

Contents	Page
Company Information	1
Report of the Trustees	2
Independent Examiners Report	11
Statement of Financial Activities	12
Comparative Statement of Financial Activities	13
Balance Sheet	14
Notes to the Financial Statements	15

MOVING ON WITH LIFE & LEARNING LTD

Company Information 31 December 2023

Company number:	6883640
Charity number:	1129772
Trustees:	P Durrance I Pierce-Hayes A O'Leary G Sugrue H I Kenworthy E Coulson (Resigned 19 April 2023) E M McGough (Resigned 19 April 2023)
Chief Executive:	H I Kenworthy
Registered office:	Room G05 School of Law and Social Justice University of Liverpool Chatham Street L69 7ZR
Bankers:	HSBC Bank plc Liverpool University 7 Oxford Street Liverpool L7 7BJ
Independent Examiners:	Alexander Myerson & Co Limited Chartered Accountants Alexander House 61 Rodney Street Liverpool L1 9ER

MOVING ON WITH LIFE & LEARNING LTD

Report of the Trustees For the year ended 31 December 2023

SEEK INVEST ACHIEVE CELEBRATE

MOWLL is a small Liverpool grown organisation dedicated to the rights and social inclusion of people with disabilities, enduring mental health challenges and dementia. Our mission is to provide the best person focussed service to ensure individuals develop socially, personally and professionally.

Principal Office of the Charity

Room G05
The School of Law and Social Justice Building
University of Liverpool
Chatham Street
Liverpool
L69 7ZR

www.mowlliverpool.com

1. Celebrating 20 Years!

This year marked a significant milestone of our relationship with the University of Liverpool and in particular the School of Law and Social Justice. Below are some of the highlights, facts and achievements of our 20 years...



From small beginnings as a University of Liverpool's Widening Participation project in the Victoria Building (1998-2003) we have contributed to academic learning, research and teaching with beneficiaries on local, national and international platforms (Social Work Conference, New York 2005 and international Inclusion Conference, Mexico 2006).

In 2003 we moved to the Eleanor Rathbone Building to support teaching on the social work and sociology degree programmes. Teaching with beneficiaries sharing their personal life experiences of education, health and social care services led us to collaborate with other Schools and Universities (Liverpool; John Moores; Hope; Glyndwr and Edge Hill)

From working with small groups in the university our provision has continued to expand across Liverpool through our fundraising efforts and achievements. Funders have included Barrow Cadbury Trust (2003- 2015) Big Lottery (2010-2018) Liverpool Clinical Commissioning Group (2011 -2017) European Social Fund (2003 -2019)

We continue to be a preferred provider for Liverpool City Council Adult Social Care. Since 2008 we have offered day opportunities and community support to individuals referred through social services.

Our political campaigning work includes collaboration with Merseyside Police, Crown Prosecution Service, Social Landlords, Office of the Police Crime Commission, Probation Service and other social care providers through our FACE FactS project. Our Disability Hate Crime campaign was a response to the murder of our beneficiary Gary Skelly in 2010. MOWLL helped Merseyside Police launch the one punch campaign.

Since 2003; we have engaged with supported over 2000 beneficiaries and their families. Over that time we have delivered over 280 creative projects including JIGSAW; KEYS 4?...ART FROM THE HEART; UKE'N'CHILL; HIDDEN TALENTS; IF YOU NOTICE; SOULFILLERS to name just a few.

We have provided disability awareness sessions to over 4000 university students undertaking social work; sociology, social policy & criminology; nursing; medicine; dentistry; civic design; occupational therapy and police cadets. We have also delivered conference presentations locally, national and internationally to over 16000 participants. We have placed over 450 nursing and 250 medical students who have chosen MOWLL as their elective and non-clinical placements.

To help us celebrate our milestone we owe enormous gratitude to the School of Law's events and marketing team who supported us to push the boat out in style. They designed our anniversary logo (above); provided a free events space for our photographic and art exhibition; provided and dressed the window space to promote our joint work with Liverpool sculptor Tom Murphy; created the guest list, order of weekly events and provided a canapes and drinks reception for the invite only One Big Thank You event reception held on Thursday 2 November.

MOVING ON WITH LIFE & LEARNING LTD

Report of the Trustees For the year ended 31 December 2023 [Continued]

We are so grateful to Capoeira for All and the Choir with No Name who both gave the most powerful performances to help us launch our celebration week.

Capoeira is an African-Brazilian martial art and game that includes elements of dance, acrobatics, music and spirituality. Capoeira for All is a local, Merseyside based organisation ran by highly qualified staff with extensive experience in the arts and education and over fifteen years of Capoeira practice. We are grateful to the team who coached one of our groups over a six-week period in order to help with our launch – their joint performance was nothing less than outstanding.

The Choir with No Name runs choirs and builds joyful singing communities with homeless and marginalised people. Choir members have experienced homelessness, or are going through a difficult time in their lives. Being part of the choir helps build confidence, skills, lasting friendships and improves chance to tackle tough challenges.

We are so grateful to the Choir with No Name for their flawless renditions of popular songs, they captured the attention and emotions of our packed-out audience.



The Choir with No Name performing

Rehearsal with Capoeira



MOVING ON WITH LIFE & LEARNING LTD

Report of the Trustees

For the year ended 31 December 2023 [Continued]

Kim Johnson MP views our exhibition



Emily Spurrell, Police Crime Commissioner speaking with Heidi Kenworthy, CEO of MOWLL



We are grateful to Kim for her support and guidance over many years and for taking the time to support our celebration event.

We are also grateful to Emily who has supported MOWLL over the years through the Police Crime Commission's funding grants, particularly during our disability hate crime campaigns.

Emily congratulated us on becoming a real Living Wage Employer, particularly during this period of cost of living crisis.

MOVING ON WITH LIFE & LEARNING LTD

Report of the Trustees

For the year ended 31 December 2023 [Continued]

Professor Barry Goldson talks about our relationship with the university over 20 years



Helen Marshall talks about our research with Health Sciences



Barry has been a friend of MOWLL for twenty years and in 2015 Barry submitted a successful application with the International Criminological Research Unit for MOWLL to partner a Merseyside-wide conference – Challenging Hate Crime: Research, Policy and Practice held in the Maritime Museum.

We have worked with Helen for six years and in 2023 we collaborated with Health Sciences on a Patient and Public Involvement research project. The aim of the research was to facilitate the involvement of patients with learning disabilities in the School's healthcare research.

MOVING ON WITH LIFE & LEARNING LTD

Report of the Trustees For the year ended 31 December 2023 [Continued]

2. Services we provided in 2023:

We provide support services for adults who have a diverse range of needs including learning disabilities, mental health conditions and dementia.

Day Opportunities

We delivered programmes from local community hubs including; Toxteth Town Hall, Ullet Road Unitarian Church, St Clements Church, Mount Carmel Social Club, Liverpool Lighthouse, The Philharmonic Music Rooms, Park Road Lifestyles and The Belvedere Centre.

Our programmes include: - learning ukulele, gardening, cooking, creative art, crystal healing, drama, local history, photography. Our health and wellbeing sessions included dance and drums choreography, yoga, meditation, walking and boxing.

Partners included Michael and Akil from Capoeira for All; Anne from Roots Holistics; Courtney and Claire from The Belve boxing club; Liverpool artist Nikki Blaze; Matt and Jeff from Liverpool Lighthouse.

To meet the needs of our ever-expanding groups we moved into a much bigger space in Toxteth Town Hall in this reporting year. The space has enabled us to create a chillout zone, creative space, cooking area and a sit and chat zone. We have resourced the room with a gazebo, sensory lighting, beanbags, small portable ovens and creative storage. A massive Thank You! to Investec Wealth Management for their support to buy these resources.



Beneficiaries ticked off sculptures on the Tom Murphy trail –
“Ken Dodd and Bessy Braddock”, Lime Street Station

MOVING ON WITH LIFE & LEARNING LTD

Report of the Trustees

For the year ended 31 December 2023 [Continued]

Community Support

We have seen an increase in the need for individuals requiring one to one support to access the community. We provided a range of services including shopping; arranging and supporting to attend medical appointments; finding alternative accommodation and assisting with moving property; assisting with reading and sorting mail and benefits form filling; accompanying on trips and community activities that boost confidence and community connection.

We supported over forty beneficiaries to access their local community in this reporting year.

One of the many highlights included...with support, physical training and sheer determination, one of our beneficiaries with support from Community Link Worker JP, completed the 5K Santa Dash on 3 December in an amazing 27 minutes...a serious achievement!

JP with Mark after the 5K



Evening Socials

We have provided monthly evening socials throughout the year and encouraged beneficiaries to experience local nightlife in friendly and safe environments. A huge thank you to members of Mount Carmel Social Club for some amazing nights of bingo, quizzes, music, dancing and laughter. Another huge thank you to Mr Smiths; The Rocking Horse, The Flute for awesome nights of karaoke, great food and great fun! You all have helped so many people we support to come out of their shell and make new friends.

We would also like to pay a special tribute and thank you to the Egan and Mohammed families, who between them have donated £1,900 to ensure the evening socials run smoothly and are fully resourced – we so appreciate your generosity.

MOVING ON WITH LIFE & LEARNING LTD

Report of the Trustees

For the year ended 31 December 2023 [Continued]

3. Partnerships with Higher Education

We worked with the University of Liverpool, Edge Hill and John Moores university and collaborated with the following student opportunities:

- Disability and Hate Crime Awareness

We delivered face to face disability and hate crime awareness to sixty-seven student nurses attending University of Liverpool. The main presenters were four of our beneficiaries who shared their experiences of living with a disability and being a hate crime target. Their personal delivery had a huge impact and many of the attendees would like to apply to do their placement with us.

- Placement Provider

Nineteen student nurses from University of Liverpool chose MOWLL as their community spoke placement for two weeks. They engaged in all group activities and shadowed staff supporting individuals in the community. Their feedback of the placement has been encouraging and very positive. By providing placement opportunities we receive £3,553 which helps us with renting community hubs for activities.

- Research Collaboration

Throughout this reporting year MOWLL partnered with the School of Health Sciences on the Research Engagement And Collaborative Health Enquiry (REACHE project) aimed at facilitating the role of patients with a learning disability in the School's health care research strategy through Patient and Public Involvement.

4. Living Wage Employer



The real Living Wage is the only UK wage rate based on the cost of living. It is voluntarily paid by over 14,000 UK businesses who believe their staff deserve a wage which meets every day needs. In October MOWLL signed up to become a living wage employer and we are committed to continue this.

5. Thank You to our Staff Team and Volunteers!

A huge thank you to our staff team who have worked tirelessly throughout this reporting year. You have supported our most vulnerable and we are truly grateful for your sharing our values, compassion, professionalism and determination!

Sherae Buckley
Sky Glover
Alison Lawrence
Helen Little
Linda Murray
Leah Wellings

Stephen Cartin
Sue Harrison
Mark Lawrence
JP Lowles
Becky Power
Chloe Weston

Annie Cogan-Thomas
Kai Jolley-Graham
Jack Lewis
Ryan McGuinness
Kayleigh Power
Tyler Williams

MOVING ON WITH LIFE & LEARNING LTD

Report of the Trustees

For the year ended 31 December 2023 [Continued]

6. Trustees

We would like to thank in particular, our Board of Trustees who have supported the charity through its many challenges and celebrations this reporting year. Like all other charities, we appreciate that their time, support and expertise is given freely.

Roy Donovan (parent); Paul Durrance (Treasurer); Tony O’Leary; Ian Pierce-Hayes (Chair) and Ged Sugrue

7. Our Patron

We would like to take this opportunity to thank our patron Tom Murphy, Liverpool Sculptor for his continued encouragement and support.

Tom with some of the group creating “I am Earth”



Tom is an award-winning sculptor and painter with over 45 monumental bronze sculptures, many of them in Liverpool and the Northwest. His sculptures and memorials are familiar to people all across the world, they include: The Hillsborough Memorial, Billy Fury, Bill Shankly, Dixie Dean, The Liverpool Blitz and John Lennon to name but a few.

Tom has been recognised and revered in the city of Liverpool with several awards and honours: in 2017 he was awarded Liverpool’s highest tribute when he was named a Citizen of Honour in recognition of his world famous and iconic works. He was awarded an Honorary Doctorate from the University of Liverpool and is an Honorary Fellow of Liverpool John Moores University. He became Patron of MOWLL in 2019.

MOVING ON WITH LIFE & LEARNING LTD

Report of the Trustees

For the year ended 31 December 2023 [Continued]

8. Supporters and Sponsors

MOWLL is extremely grateful for the financial support we receive from our supporters, donors and funders.

We would also like to express our sincere gratitude to Liverpool City Council for their continued support and their acknowledgement of the bespoke services we are able to offer.

We remain forever grateful to The University of Liverpool for their philanthropic support and in particular their contribution towards our 20 years celebrations, especially The Admin Team at the School of Law and Social Justice.

We would like to thank everyone who has supported MOWLL throughout this wonderfully busy year and wish you all the very best!



MOVING ON WITH LIFE & LEARNING LTD

INDEPENDENT EXAMINER'S REPORT

TO THE TRUSTEES OF MOVING ON WITH LIFE & LEARNING LTD.

I report to the charity trustees on my examination of the financial statements of Moving On With Life & Learning Ltd. (the charitable company) for the year ended 31 December 2023 which are set out on pages 12 to 24.

Responsibilities and basis of report

As the trustees of the charitable company (and also its directors for the purposes of company law) you are responsible for the preparation of the financial statements in accordance with the requirements of the Companies Act 2006 ('the 2006 Act').

Having satisfied myself that the financial statements of the charitable company are not required to be audited under Part 16 of the 2006 Act and are eligible for independent examination, I report in respect of my examination of your charitable company's financial statements as carried out under section 145 of the Charities Act 2011 ('the 2011 Act'). In carrying out my examination I have followed the Directions given by the Charity Commission under section 145(5)(b) of the 2011 Act.

Independent examiner's statement

Since the charitable company's gross income exceeded £250,000 your examiner must be a member of a body listed in section 145 of the 2011 Act. I confirm that I am qualified to undertake the examination because I am a member of The Institute of Chartered Accountants in England and Wales, which is one of the listed bodies.

I have completed my examination. I confirm that no matters have come to my attention in connection with the examination giving me cause to believe that in any material respect:

1. accounting records were not kept in respect of the charitable company as required by section 386 of the 2006 Act; or.
2. the financial statements do not accord with those records; or
3. the financial statements do not comply with the accounting requirements of section 396 of the 2006 Act other than any requirement that the accounts give a 'true and fair view' which is not a matter considered as part of an independent examination; or
4. the financial statements have not been prepared in accordance with the methods and principles of the Statement of Recommended Practice for accounting and reporting by charities applicable to charities preparing their accounts in accordance with the Financial Reporting Standard applicable in the UK and Republic of Ireland (FRS 102).

I have no concerns and have come across no other matters in connection with the examination to which attention should be drawn in this report in order to enable a proper understanding of the financial statements to be reached.

P R Burns

Paul Burns BSc BFP FCA
Alexander Myerson & Co Limited
Chartered Accountants
Alexander House
61 Rodney Street
Liverpool L1 9ER

Dated 02/09/2024

MOVING ON WITH LIFE & LEARNING LTD

Statement of Financial Activities For the year ended 31 December 2023

Summary Income and Expenditure Account

	Notes	Unrestricted £	Restricted £	Total 2023 £	Total 2022 £
Income from:					
Donations and legacies	2	1,250	3,030	4,280	4,079
Charitable activities	3	388,853	14,783	403,636	325,267
Investments	4	1,407	-	1,407	-
Total income		<u>391,510</u>	<u>17,813</u>	<u>409,323</u>	<u>329,346</u>
Expenditure on:					
Charitable activities	5	<u>356,777</u>	<u>16,347</u>	<u>373,124</u>	<u>337,703</u>
Total expenditure		<u>356,777</u>	<u>16,347</u>	<u>373,124</u>	<u>337,703</u>
Net income/(expenditure)		34,733	1,466	36,199	(8,357)
Total funds brought forward		<u>271,431</u>	<u>42,443</u>	<u>313,874</u>	<u>322,231</u>
Total funds carried forward		<u><u>306,164</u></u>	<u><u>43,909</u></u>	<u><u>350,073</u></u>	<u><u>313,874</u></u>

The charity has no recognised gains or losses other than the results for the year as set out above. All activities of the charity are classed as continuing.

The notes on pages 15 to 24 form part of these financial statements.

MOVING ON WITH LIFE & LEARNING LTD

Statement of Financial Activities For the year ended 31 December 2023

Comparative information for the year ended 31 December 2022

Summary Income and Expenditure Account

	Notes	Unrestricted £	Restricted £	Total 2022 £
Income from:				
Donations and legacies	2	-	4,079	4,079
Charitable activities	3	308,102	17,165	325,267
Total income		308,102	21,244	329,346
Expenditure on:				
Charitable activities	5	302,685	35,018	337,703
Total expenditure		302,685	35,018	337,703
Net income/(expenditure)		5,417	(13,774)	(8,357)
Total funds brought forward		266,014	56,217	322,231
Total funds carried forward		271,431	42,443	313,874

The charity has no recognised gains or losses other than the results for the year as set out above. All activities of the charity are classed as continuing.

The notes on pages 15 to 24 form part of these financial statements.

MOVING ON WITH LIFE & LEARNING LTD

Balance Sheet 31 December 2023

	Notes	2023	2022
		£	£
Fixed assets			
Tangible assets	12	1,407	-
Current assets			
Cash at bank and in hand		379,941	326,142
		379,941	326,142
Creditors			
Amounts falling due within one year	13	31,275	12,268
Net current assets		348,666	313,874
Total assets less current liabilities		350,073	313,874
Unrestricted funds	15	306,164	271,431
Restricted funds	16	43,909	42,443
Total funds		350,073	313,874

The company is entitled to the exemption from the audit requirement contained in section 477 of the Companies Act 2006, for the year ended 31 December 2023.

The directors acknowledge their responsibilities for complying with the requirements of the Companies Act 2006 with respect to accounting records and the preparation of financial statements.

The members have not required the company to obtain an audit of its financial statements for the year in question in accordance with section 476.

These financial statements have been prepared in accordance with the provisions applicable to companies subject to the small companies regime.

The accounts on pages 12 to 24 were approved by the Trustees and authorised for issue on 29 August 2024 and signed on their behalf by:-



I Pierce-Hayes
Trustee

Company Registration Number: 6883640

The notes on pages 15 to 24 form part of these financial statements.

MOVING ON WITH LIFE & LEARNING LTD

Notes to the Financial Statements

Year ended 31 December 2023

1. Summary of accounting policies

(a) General information and basis of preparation

Moving On With Life & Learning Ltd. is a company limited by guarantee and a registered charity in England and Wales. In the event of the charity being wound up, the liability in respect of the guarantee is limited to £1 per member of the charity. The address of the registered office is given in the charity information on page 1 of these financial statements. The nature of the charity's operations and principal activities are set out in the Trustees' Report on page 2.

The charity constitutes a public benefit entity as defined by FRS 102. The financial statements have been prepared in accordance with Accounting and Reporting by Charities: Statement of Recommended Practice applicable to charities preparing their accounts in accordance with the Financial Reporting Standard applicable in the UK and Republic of Ireland issued in October 2019, the Financial Reporting Standard applicable in the United Kingdom and Republic of Ireland (FRS 102), the Companies Act 2006 and UK Generally Accepted Accounting Practice.

The financial statements are prepared on a going concern basis under the historical cost convention. The financial statements are prepared in sterling which is the functional currency of the charity and rounded to the nearest £1.

The significant accounting policies applied in the preparation of these financial statements are set out below. These policies have been consistently applied to all years presented unless otherwise stated.

(b) Funds

Unrestricted funds are available for use at the discretion of the trustees in furtherance of the general objectives of the charity and which have not been designated for other purposes.

Restricted funds are funds which are to be used in accordance with specific restrictions imposed by donors or which have been raised by the charity for particular purposes. The cost of raising and administering such funds is charged against the specific fund. The aim and use of each restricted fund is set out in the notes to the financial statements.

(c) Income recognition

All incoming resources are included in the Statement of Financial Activities (SoFA) when the charity is legally entitled to the income after any performance conditions have been met, the amount can be measured reliably and it is probable that the income will be received.

For donations to be recognised the charity will have been notified of the amounts and the settlement date in writing. If there are conditions attached to the donation and this requires a level of performance before entitlement can be obtained then income is deferred until those conditions are fully met or the fulfilment of those conditions is within the control of the charity and it is probable that they will be fulfilled.

Income from charitable activities includes income received under contract or where entitlement to grant funding is subject to special performance conditions and is recognised as earned as the related services are provided. Grant income included in this category provides funding to support performance activities and is recognised when there is entitlement, certainty of receipt and the amounts can be measured with sufficient reliability.

MOVING ON WITH LIFE & LEARNING LTD

Notes to the Financial Statements Year ended 31 December 2023

1. Accounting policies (continued)

(d) Expenditure recognition

All expenditure is accounted for on an accruals basis and has been classified under headings that aggregate all costs related to the category. Expenditure is recognised where there is a legal or constructive obligation to make payments to third parties, it is probable that the settlement will be required and the amount of the obligation can be measured reliably. It is categorised under the following headings:

- Costs of raising funds.
- Expenditure on charitable activities.
- Other expenditure represents those items not falling into the categories above.

(e) Support costs allocation

Support costs are those that assist the work of the charity but do not directly represent charitable activities and include office costs, governance costs and administrative payroll costs. They are incurred directly in support of expenditure on the objects of the charity and include project management carried out at the charity's registered office. Where support costs cannot be directly attributed to particular headings they have been allocated to cost of raising funds and expenditure on charitable activities on a basis consistent with use of the resources. Premises costs and overheads have been allocated on the basis of staff numbers.

Fund-raising costs are those incurred in seeking voluntary contributions and do not include the costs of disseminating information in support of the charitable activities.

The analysis of these costs is included in note 6.

(f) Tangible fixed assets

Tangible fixed assets are stated at cost (or deemed cost) or valuation less accumulated depreciation and accumulated impairment losses. Cost includes costs directly attributable to making the asset capable of operating as intended.

Depreciation is provided on all tangible fixed assets, at rates calculated to write off the cost, less estimated residual value, of each asset on a systematic basis over its expected useful life as follows:

IT equipment - 25% per annum

(g) Debtors and creditors receivable / payable within one year

Debtors and creditors with no stated interest rate and receivable or payable within one year are recorded at transaction price. Any losses arising from impairment are recognised in expenditure.

(h) Provisions

Provisions are recognised when the charity has an obligation at the balance sheet date as a result of a past event, it is probable that an outflow of economic benefits will be required in settlement and the amount can be reliably estimated.

MOVING ON WITH LIFE & LEARNING LTD

Notes to the Financial Statements Year ended 31 December 2023

1. Accounting policies (continued)

(i) Operating leases

Rentals payable and receivable under operating leases are charged to the SoFA on a straight line basis over the period of the lease.

(j) Employee benefits

When employees have rendered service to the charity, short-term employee benefits to which the employees are entitled are recognised at the undiscounted amount expected to be paid in exchange for that service.

The charity operates a defined contribution plan for the benefit of its employees. Contributions are expensed as they become payable.

(k) Tax

The charity is an exempt charity within the meaning of schedule 3 of the Charities Act 2011 and is considered to pass the tests set out in Paragraph 1 Schedule 6 of the Finance Act 2010 and therefore it meets the definition of a charitable company for UK corporation tax purposes.

(l) Going concern

The financial statements have been prepared on a going concern basis as the trustees believe that no material uncertainties exist. The trustees have considered the level of funds held and the expected level of income and expenditure for 12 months from authorising these financial statements. The budgeted income and expenditure is sufficient with the level of reserves for the charity to be able to continue as a going concern.

(j) The charity has applied the exemptions available under the SORP and does not include a Statement of Cash Flows on the grounds that it is applying FRS 102 Section 1A.

2. Income from donations and legacies

	Unrestricted £	Restricted £	Total 2023 £	Total 2022 £
Donations	1,250	3,030	4,280	4,079

All of the above income in 2022 was attributable to unrestricted funds.

MOVING ON WITH LIFE & LEARNING LTD

Notes to the Financial Statements Year ended 31 December 2023

3. Income from charitable activities	Unrestricted £	Restricted £	Total 2023 £	Total 2022 £
Liverpool City Council	387,650	-	387,650	307,532
Other	1,203	1,705	2,908	4,743
R Lamont COP	-	6,174	6,174	4,022
Liverpool City Council COP	-	6,904	6,904	5,160
Health Education England	-	-	-	3,627
NHS Wirral CCG	-	-	-	183
	<u>388,853</u>	<u>14,783</u>	<u>403,636</u>	<u>325,267</u>

£17,165 of the above income in 2022 was attributable to restricted funds and £308,102 of the above income in 2022 was attributable to unrestricted funds.

4. Income from investments	Total 2023 £	Total 2022 £
Bank interest	1,407	-
	<u>1,407</u>	<u>-</u>

Income from investments was £1,407 (2022: £Nil) attributable to unrestricted funds.

5. Analysis of expenditure on charitable activities	Total 2023 £	Total 2022 £
Direct costs	357,699	330,209
Support costs (see note 6)	15,425	7,494
	<u>373,124</u>	<u>337,703</u>

£16,347 of the above expenditure was attributable to restricted funds (2022: £35,018) and £356,777 was attributable to unrestricted funds (2022: £302,685).

6. Allocation of support costs	Total 2023 £	Total 2022 £
Governance (see note 7)	6,680	2,811
Legal and professional	4,737	-
Information technology	274	316
Insurance	2,690	2,782
Other	1,044	1,585
	<u>15,425</u>	<u>7,494</u>

MOVING ON WITH LIFE & LEARNING LTD

Notes to the Financial Statements Year ended 31 December 2023

7. Governance costs	2023	2022
	£	£
Independent examiners	890	850
Accountancy	5,790	1,961
	<u>6,680</u>	<u>2,811</u>
8. Net income/(expenditure) for the year	Total	Total
	2023	2022
This is stated after charging:	£	£
Independent examination fees	890	850
	<u>890</u>	<u>850</u>
9. Staff costs and numbers	Total	Total
	2023	2022
	£	£
Salaries and wages	295,417	258,094
Social security costs	5,035	5,966
Pension costs	1,271	570
	<u>301,723</u>	<u>264,630</u>
The average number of employees (based on full time equivalents) during the year was as follows:	2023	2022
	Number	Number
Total	11	12
	<u>11</u>	<u>12</u>

No employees received remuneration in excess of £60,000 per annum.

10. Trustees' and key management personnel remuneration and expenses

The chief executive who is a trustee received remuneration during the year of £48,501 (2022: £48,718). One trustee was reimbursed travel expenses of £146 (2022: £Nil).

11. Taxation

The company is exempt from corporation tax on its charitable activities.

MOVING ON WITH LIFE & LEARNING LTD

Notes to the Financial Statements Year ended 31 December 2023

12. Tangible fixed assets	Fixtures and fittings	Total
Cost	£	£
At 1 January 2023	3,399	3,399
Additions	1,571	1,571
At 31 December 2023	4,970	4,970
Depreciation		
At 1 January 2023	3,399	3,399
Charge for the year	164	164
At 31 December 2023	3,563	3,563
Net book value		
At 31 December 2023	1,407	1,407
At 31 December 2022	-	-
13. Creditors: Amounts falling due within one year	2023	2022
	£	£
Accruals and deferred income	31,275	12,487
Net wages	-	390
Social security and other taxes	-	(661)
Pension	-	52
	31,275	12,268

14. Members liability

The company is limited by guarantee and has no share capital. Every member of the charity undertakes to contribute to the assets of the charity, in the event of it being wound up while he or she is a member or within one year of ceasing to be a member for debts and liabilities of the charity contracted before he or she ceases to be a member, such amount as may be required not exceeding £1.

15. Unrestricted funds	As at 1 January 2023 £	Income £	Expenditure £	As at 31 December 2023 £
General fund	181,431	391,510	(356,777)	216,164
Designated fund	90,000	-	-	90,000
	271,431	391,510	(356,777)	306,164

MOVING ON WITH LIFE & LEARNING LTD

Notes to the Financial Statements Year ended 31 December 2023

15. Unrestricted funds (continued)

Comparative information in respect of the preceding period is as follows:

	As at 1 January 2022 £	Income £	Expenditure £	As at 31 December 2022 £
General fund	176,014	308,102	(302,685)	181,431
Designated fund	90,000	-	-	90,000
	<u>266,014</u>	<u>308,102</u>	<u>(302,685)</u>	<u>271,431</u>

16. Restricted funds

	As at 1 January 2023 £	Income £	Expenditure £	As at 31 December 2023 £
Health Education NHS England	17,484	-	-	17,484
School Of Medicine	4,215	-	-	4,215
CCG Engagement	8,476	-	-	8,476
LCVS	1,296	-	-	1,296
Tesco	1,657	-	-	1,657
HM LCC COP	660	-	-	660
VO LCC COP	3,780	6,904	(6,558)	4,126
NHS Wirral CCG	196	-	-	196
Employable You	2,000	-	-	2,000
Investec Bank	2,679	2,030	(1,675)	3,034
RL LCC COP	-	6,174	(6,091)	83
Other	-	1,705	(1,705)	-
Secured Limited	-	1,000	(318)	682
	<u>42,443</u>	<u>17,813</u>	<u>(16,347)</u>	<u>43,909</u>

MOVING ON WITH LIFE & LEARNING LTD

Notes to the Financial Statements Year ended 31 December 2023

16. Restricted funds (continued)

Comparative information in respect of the preceding period is as follows:

	As at 1 January 2022 £	Income £	Expenditure £	As at 31 December 2022 £
Fresh/Santander	1,264	-	(1,264)	-
Health Education NHS England	13,857	3,627	-	17,484
HOPCC hate Crime Ambassadors	454	-	(454)	-
First Utility Volunteer project	408	-	(408)	-
School Of Medicine	4,215	-	-	4,215
PH Holt Hidden Talents	38	-	(38)	-
CCG Engagement	8,476	-	-	8,476
Project no 2013 ESF Art in Motion	444	-	(444)	-
Adult Learning Fund	210	-	(210)	-
LCVS	1,296	-	-	1,296
Tesco	1,657	-	-	1,657
Awards For All I to I	47	-	(47)	-
HM LCC COP	660	-	-	660
VO LCC COP	2,583	5,160	(3,963)	3,780
Business grant relief LCC	1,738	-	(1,738)	-
NHS Wirral CCG	18,870	183	(18,857)	196
RL LCC COP	-	4,022	(4,022)	-
Employable You	-	2,000	-	2,000
DWF	-	1,400	(1,400)	-
Investec Bank	-	2,679	-	2,679
Other	-	2,173	(2,173)	-
	<u>56,217</u>	<u>21,244</u>	<u>(35,018)</u>	<u>42,443</u>

Fresh/Santander

Funding from the fresh event has been used to purchase equipment and volunteers for the catering/cooking workshops at MOWLL.

Health Education NHS England

This fund is allocated for nursing student placements at MOWLL for 1st and 2nd year nursing students from University of Liverpool, Edge Hill and John Moores University. Students spend between 2-5 weeks on placement and receive volunteer expenses for food and travel whilst on placement.

HOPCC hate Crime Ambassadors

This funding provided opportunities for MOWLL to work with young people to raise awareness of hate crime and how to report incidents.

MOVING ON WITH LIFE & LEARNING LTD

Notes to the Financial Statements Year ended 31 December 2023

16. Restricted funds (continued)

First Utility Volunteer project

This funding provided opportunities to train Volunteer Community Champions to develop their volunteer and other skills to lead toward voluntary and paid work.

School Of Medicine

Thanks to funding the placement fees. MOWLL were able to purchase updated accessible technology to use within different projects.

PH Holt Hidden Talents

Funding towards the delivery costs and resources for an arts project.

CCG Engagement

This funding provided opportunities to measure beneficiaries' health and wellbeing, set targets and provide opportunities for individuals to get involved in sport related and wellbeing activities. Information and data was collected for CCG research.

Project no 2013 ESF Art in Motion

Funding for workshops to improve employability and digital skills in arts and craft.

Adult Learning Fund

Funding to deliver cooking and gardening sessions at John Archer Hall.

LCVS

Funding to enhance kitchen space and install a commercial cooker at John Archer Hall.

Tesco

Funding for generic projects at MOWLL including sport and exercise sessions.

Awards For All I to I

Grant awarded for personal coaching sessions to improve people's confidence and employability.

HM LCC COP

This is Court of Protection funding allocated to MOWLL for one of the beneficiaries we support.

VO LCC COP

This is Court of Protection funding allocated to MOWLL for one of the beneficiaries we support.

Business grant relief LCC

This fund was granted to MOWLL during the pandemic.

R Lamont COP

This is Court of Protection funding allocated to MOWLL for one of the beneficiaries we support, who is at risk of financial abuse.

NHS Wirral CCG

The Cheshire and Merseyside Transforming Care Partnership is a collaborative proposal to deliver additional community support in Liverpool. MOWLL was awarded funding to deliver a year long series of accessible, culturally appropriate and inclusive events for adults with learning disabilities and mental health concerns, thereby providing individuals with opportunities to reconnect to the larger community after COVID.

Secured Limited

Secured Limited provided a donation to fund monthly evening social activities.

MOVING ON WITH LIFE & LEARNING LTD

Notes to the Financial Statements Year ended 31 December 2023

17. Analysis of net assets between funds

	Restricted funds £	Unrestricted funds £	Unrestricted designated funds £	Total £
Fixed assets	1,407	-	-	1,407
Current assets	42,502	247,439	90,000	379,941
Current liabilities	-	(31,275)	-	(31,275)
Net assets at 31 December 2023	43,909	216,164	90,000	350,073

Comparative information in respect of the preceding period is as follows:

	Restricted funds £	Unrestricted funds £	Unrestricted designated funds £	Total £
Current assets	42,443	193,699	90,000	326,142
Current liabilities	-	(12,268)	-	(12,268)
Net assets at 31 December 2022	42,443	181,431	90,000	313,874

MOVING ON WITH LIFE & LEARNING LTD

England & Wales - Charity number 1129772

Accounts

MOVING ON WITH LIFE & LEARNING LTD

(A COMPANY LIMITED BY GUARANTEE)

ANNUAL REPORT AND FINANCIAL STATEMENTS

for the year ended

31 December 2022

REGISTERED NUMBER: 6883640

CHARITY NUMBER: 1129772

MOVING ON WITH LIFE & LEARNING LTD

Annual Report and Financial Statements For the year ended 31 December 2022

Contents	Page
Company Information	1
Report of the Trustees	2
Independent Examiners Report	7
Statement of Financial Activities	8
Comparative Statement of Financial Activities	9
Balance Sheet	10
Notes to the Financial Statements	11

MOVING ON WITH LIFE & LEARNING LTD

Company Information 31 December 2022

Company number: 6883640

Charity number: 1129772

Trustees: P Durrance
I Pierce-Hayes
R Donovan
A O'Leary
G Sugrue
H I Kenworthy
E Coulson
E M McGough

Chief Executive: H I Kenworthy

Registered office: Room G05
School of Law and Social Justice
University of Liverpool
Chatham Street
L69 7ZR

Bankers: HSBC Bank plc
Liverpool University
7 Oxford Street
Liverpool
L7 7BJ

Independent Examiners: Alexander Myerson & Co Limited
Chartered Accountants
Alexander House
61 Rodney Street
Liverpool
L1 9ER

MOVING ON WITH LIFE & LEARNING LTD

Report of the Trustees For the year ended 31 December 2022

We continued to deliver our services and packages of community support during Covid 19 restrictions. We followed the guidelines set by Liverpool City Council, the University of Liverpool and all the community hubs we use to deliver our activities.

2022 was an exceptionally creative year and we are grateful to our funders who supported our project ideas

1. Funding

With funding from NHS England Transforming Care Partnership we delivered “Seasons”, a project to support participants to get a good life, with emphasis on access to activities, employment, exercise, meeting people and social opportunities.

Funding of £18,870 paid for a Coordinator, facilitators, support staff, training, venue hire, equipment, catering, resources, volunteer expenses, entertainment and promotion.

We also received £3,600 for our student nurse allocation placements.

With support from Investec Wealth Management to buy equipment we launched our Podcast programme. Investec agreed to fund the following items; a laptop with webcam, a mirrorless camera and four microphones for round table podcast.

With support from DWF Foundation we launched “ThisAbility”, a programme that works with a group of beneficiaries to receive personal and professional training, guidance and support to deliver creative and inclusive disability awareness sessions across sectors within Merseyside. Funding of £1,400 paid for facilitated support and resources.

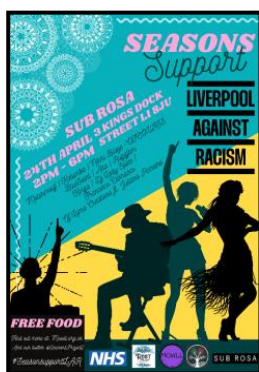
A successful application to the Community Impact Fund helped us launch in the autumn of this reporting year, “Employable You”, a year-long project which will support participants to gain new practical skills. They will have the opportunity to ‘taste’ the world of work through placements and we launched our first one through Strawberry Fields’ café. We hope to identify more catering opportunities next year. Funding of £2,000 will pay for a Digital Facilitator, resources and materials.

We are extremely grateful to the University of Liverpool who fund is in kind through providing us with seminar space, two offices, payroll management and resources.

2. SEASONS

In order to deliver the project successfully, we teamed up with ZEST Event Management, a Liverpool company who provide planning, management, delivering, monitoring and evaluation and training. ZEST led a small team of four women who attend MOWLL to train them to deliver four SEASONS events throughout 2022. Our team of volunteers all had varied reasons for becoming involved:

- Individuals who would like to improve their employability and key skills in teamwork/IT/marketing/event planning and delivery / peer support and social media skills
- Individuals who have experienced isolation and have ideas of reconnecting with networks and the community



Our Spring Event! <https://youtu.be/Ox5nHQrmg>

With the training and support of ZEST Event Management we joined forces to support ‘Liverpool Against Racism’, a new festival launched by Mayor Joanne Anderson to celebrate diversity and the deep cultural heritage of our city. With thanks to Subrosa, who provided us with their amazing venue - a “wild hideout” based on Kings Dock Street we were able to attract some amazing performers to our event. We are grateful to; Katumba, a Liverpool based project who foster mental and physical wellbeing through high quality music, movement and cultural activities. They launched our event with drums and dance throughout Subrosa and they were so well received! The following acts gave amazing performances throughout our festival and we have immense, heartfelt gratitude!

MOVING ON WITH LIFE & LEARNING LTD

Report of the Trustees

For the year ended 31 December 2022

- Motormouf, Hip Hop artist and DJ who compered the afternoon and introduced all of the acts.
- Nikki Blaze, Co-Founder of Liverpool Hip Hop Festival who delivered awesome spoken word poetry.
- Therealmanifest, a powerhouse with artistic and Street Credibility making him one of the East Coast raps most distinctive talent.
- Blue Saint is a Congolese and British rapper, singer-songwriter, spoken word poet, actor, producer and designer.
- Rugzfam, Liverpool grime artist, writer and producer
- Kinga Malec is an accomplished performer of Polish folk and Indian dance
- Lady Spice, a spoken word activist, Liverpool's only reggae and dancehall DJ and is the Founder of the Empress Uprising reggae festival – female only DJ's
- Alia, Liverpool spoken word activist who performs to exclusive audiences
- Francisco Carrasco, Founder and Creative Director of Luma Creations is an international artist, composer, writer and musician performed with Juliana Penheiro, percussionist, dancer and Co-Founder of Katumba.

Our Summer Event!

Our events team with support and guidance from Niki Konigs, Founder of ZEST, teamed up with the local council to provide a family-friendly & inclusive party in Wavertree's Mystery park. We are truly grateful to OSB Events who sponsored our carnival. We provided food and entertainment including photo booth, face painting and fruit bug workshops throughout the afternoon and we attracted over a hundred people who gave us amazing positive feedback

We are also truly grateful to the following performers who made our Summer Carnival a great success!

- Anders Flanderz, street musician also known as 'One Man Band' gave an outstanding expressive and witty performance.
- Ged Sugrue, Liverpool musician and teacher, tirelessly led ukulele sessions for all ages and levels.
- 'Bring The Fire' Project entertained festival goers with both an exceptional performance of circus skills early on in the afternoon but a breath-taking finale of fire dance and light show.



Our Autumn Event!

This was the first time that our Trainee Events Team got to work without support from their mentor Niki Konigs. They were challenged to create a Halloween party for our beneficiaries, our partners and community friends. It was amazing and the events team created a wonderful evening of activities, food and a ghost walk through St Clements Church!

Our Winter Event

The Christmas party held at Mount Carmel social club was the final project of the year for the Trainee Events Team. They worked extremely hard on creating an inclusive space which attracted 100+ guests including beneficiaries, staff, friends of MOWLL, community partners and family. The team organised food, live music and entertainment which everybody thoroughly enjoyed. No doubt we will continue to build further links with the social club in 2023



MOVING ON WITH LIFE & LEARNING LTD

Report of the Trustees For the year ended 31 December 2022

SEASONS Weekly Socials

We wanted to create this regular weekly gathering in order to help reduce loneliness for those who felt particularly isolated during the evenings. We also wanted to create opportunities for people to build relationships and friendships that had been lost due to Covid-19 and the long periods of lockdown. We planned events and activities between 5pm-9pm each Thursday. We are delighted to report that throughout 2022 we provided forty-seven socials. We are grateful to some of our MOWLL friends who provided their services free of charge. Activities included:

- Ukulele with Ged; Yoga with Star; Mindfulness with Anne; Salsa with Dance Syndrome
- Pub quizzes, pool and darts at the Flute pub; live music in Mr Smiths; Bingo at Mount Carmel
- Mindfulness with Anne; Cooking with Sky
- Cinema nights and meals out
- Yoga with Star



3. MOWLL Group Activities



- We have this year expanded the activities we offer and connected to more community groups which included 'Cycling for All'.

Participants cycled with accessible bikes provided by Greenbank Sports Academy. The first few weeks participants got used to the bikes inside their sports hall before venturing outside around Sefton Park.

This has helped increase confidence, road sense and teamwork.

- Cooking Around The World - we made a connection with St Clements Church where they have a good sized kitchen space and dining area. The session became a very popular weekly programme and gave participants the opportunity to learn to cook a wide range of dishes and to learn about different cultures.
- For those who were unable to attend the cultural cooking sessions, we offered another session each Thursday where participants learned to create their favourite dishes using healthier ingredients.
- Mount Carmel bingo and days out!
What started out as a community support session for one of our beneficiaries soon became popular with other beneficiaries and a wonderful relationship with Mount Carmel developed! Little did we know that our participation was actually helping keep the parish open but they were providing us with a beautiful inclusive space. Throughout the year Mount Carmel bingo club organise day trips to Wales and have included our group completely free of charge.
- Mindfulness with Anne was very well received this year and we hope to continue in 2023.
- Creative art in our beautiful space at Toxteth Town Hall, we have produced some amazing creative work. We Decorated our room with designs from the heart, created products to sell and empowered employability through the arts.
- Walking – the group explored our wonderful city and its surrounding areas and were tasked with finding accessible and friendly spaces and venues.



MOVING ON WITH LIFE & LEARNING LTD

Report of the Trustees

For the year ended 31 December 2022

- Dancing - we teamed up with Hope Street's Merseyside Dance Initiative (MDI) studios who provided inclusive dance classes for our beneficiaries and for the seasons socials participants. This progressed to us hiring the dance space and MOWLL friend, Liz Tant and her salsa partner provided movement classes. Sadly, MDI had to close due to rising costs so we took the dance sessions to Toxteth Town Hall.
- Digi-Drama and IT Skills - we have created a social media presence through our website and our Digi-Drama course. This resulted in us promoting what we do and for our beneficiaries to have control over what the content is. We will work on building this up through 2023 with creating a PODCAST that is run by a team who attend the digi-drama course.

4. Community Support

We have seen an increase in the need for individuals requiring one to one support to access the community. We provided a range of services including shopping, arranging and supporting medical appointments, finding alternative accommodation and assisting with moving property, assisting with mail and form filling, accompanying on trips and community activities that boost confidence and community connection.

5. Awareness Training

We delivered face to face disability and hate crime awareness to seventy student nurses attending University of Liverpool. The main presenters were three of our beneficiaries who shared their experiences of living with a disability and being a hate crime target. Their personal delivery had a huge impact and many of the attendees would like to apply to do their placement with us.

6. Student Placements

Nine student nurses from University of Liverpool chose MOWLL as their community spoke placement for two weeks. They engaged in all group activities and shadowed staff supporting individuals in the community. Their feedback of the placement has been very positive and some have returned on their days off to support our Seasons project!



7. Thank You to our Team!

A huge thank you to our staff team who have worked tirelessly throughout this reporting year. You have supported our most vulnerable and we are truly grateful for your sharing our values, compassion, professionalism and determination!

Alison Ashton

Anne Burrows

Sherae Buckley

Stephen Cartin

Sean Colebourne

Mike Digby

Rebecca Durkin

Sky Glover

Jeff Harper

Kai Jolley

Mark Lawrence

Jack Lewis

Helen Little

JP Lowles

Ryan McGuinness

Chelsea Mclauchlan

Linda Murray

Suzanne Ritchie

Leah Wellings

Chloe Weston

Robert Woodward

MOVING ON WITH LIFE & LEARNING LTD

Report of the Trustees For the year ended 31 December 2022

8. Tribute to Darryl

How blessed we are that Darryl was a member of our team! He started working with us 2018 and we must thank Chris, his former colleague who recommended that Darryl would be a 'great fit' in our organisation. It soon became apparent that Darryl was not only a great fit but a huge positive influence on how we wanted MOWLL's values recognised and celebrated. He brought an immense wealth of knowledge and experience; integrity, compassion and kindness. For him every MOWLL day was always positive, sometimes challenging and he rose to those challenges with a clear mind and an open heart. Nothing we asked of him presented a problem, undermined his professional role or risked his ego. He simply made it his mission to provide the best support to ensure all beneficiaries were at the heart of his working day. He embraced his responsibility of Training and Support Coordinator as he did life with focus, compassion and respect. His positive, loving spirit will be forever remembered. It is with his spirit in mind I quote the lyrics of The Waterboys...as we all know he was a true muso! Darryl, we thank you.

Spirit
Man gets Tired
Spirit Don't
Man Surrenders
Spirit Wont
Man Crawls
Spirit Flies
Spirit lives when Man dies
Man Seems
Spirit Is
Man Dreams
Spirit Lives
Man is Tethered
Spirit is Free
What Spirit is...Man can be

9. Trustees

We would like to thank in particular, our Board of Trustees who have supported the charity through its many challenges and celebrations this reporting year. Like all other charities, we appreciate that their time, support and expertise is given freely - Estelle Coulson; Roy Donovan; Paul Durrance (Treasurer); Elizabeth McGough; Tony O'Leary; Ian Pierce-Hayes (Chair) and Ged Sugrue.

10. Our Patron

We would like to take this opportunity to thank our patron Tom Murphy, Liverpool Sculptor for his continued encouragement and support.

11. Supporters and Sponsors

MOWLL is extremely grateful for the financial support we receive from our supporters, donors and funders.

We would also like to express our sincere gratitude to Liverpool City Council for their continued support and their acknowledgement of the bespoke services we are able to offer. We remain forever grateful to The University of Liverpool for their philanthropic support and in particular their consistent communication during the pandemic lockdown months, especially the Admin Team at the School of Law and Social Justice. We would like to thank everyone who has supported MOWLL throughout this wonderfully busy year and wish you all the very best!



MOVING ON WITH LIFE & LEARNING LTD

INDEPENDENT EXAMINER'S REPORT

TO THE TRUSTEES OF MOVING ON WITH LIFE & LEARNING LTD.

I report to the charity trustees on my examination of the financial statements of Moving On With Life & Learning Ltd. (the charitable company) for the year ended 31 December 2022 which are set out on pages 8 to 20.

Responsibilities and basis of report

As the trustees of the charitable company (and also its directors for the purposes of company law) you are responsible for the preparation of the financial statement in accordance with the requirements of the Companies Act 2006 ('the 2006 Act').

Having satisfied myself that the financial statements of the charitable company are not required to be audited under Part 16 of the 2006 Act and are eligible for independent examination, I report in respect of my examination of your charitable company's financial statements as carried out under section 145 of the Charities Act 2011 ('the 2011 Act'). In carrying out my examination I have followed the Directions given by the Charity Commission under section 145(5)(b) of the 2011 Act.

Independent examiner's statement

Since the charitable company's gross income exceeded £250,000 your examiner must be a member of a body listed in section 145 of the 2011 Act. I confirm that I am qualified to undertake the examination because I am a member of The Institute of Chartered Accountants in England and Wales, which is one of the listed bodies.

I have completed my examination. I confirm that no matters have come to my attention in connection with the examination giving me cause to believe that in any material respect:

1. accounting records were not kept in respect of the charitable company as required by section 386 of the 2006 Act; or
2. the financial statements do not accord with those records; or
3. the financial statements do not comply with the accounting requirements of section 396 of the 2006 Act other than any requirement that the accounts give a 'true and fair view' which is not a matter considered as part of an independent examination; or
4. the financial statements have not been prepared in accordance with the methods and principles of the Statement of Recommended Practice for accounting and reporting by charities applicable to charities preparing their accounts in accordance with the Financial Reporting Standard applicable in the UK and Republic of Ireland (FRS 102).

I have no concerns and have come across no other matters in connection with the examination to which attention should be drawn in this report in order to enable a proper understanding of the financial statements to be reached.

P R Burns

Paul Burns BSc BFP FCA
Alexander Myerson & Co Limited
Chartered Accountants
Alexander House
61 Rodney Street
Liverpool L1 9ER

Dated 28 September 2023

MOVING ON WITH LIFE & LEARNING LTD

Statement of Financial Activities For the year ended 31 December 2022

Summary Income and Expenditure Account

	Notes	Unrestricted £	Restricted £	Total 2022 £	Total 2021 £
Income from:					
Donations and legacies	2	-	4,079	4,079	250
Charitable activities	3	308,102	17,165	325,267	287,395
Total income		308,102	21,244	329,346	287,645
Expenditure on:					
Charitable activities	4	302,685	35,018	337,703	296,387
Total expenditure	4	302,685	35,018	337,703	296,387
Net income/(expenditure)		5,417	(13,774)	(8,357)	(8,742)
Total funds brought forward		266,014	56,217	322,231	330,973
Total funds carried forward		271,431	42,443	313,874	322,231

The charity has no recognised gains or losses other than the results for the year as set out above. All activities of the charity are classed as continuing.

The notes on pages 11 to 20 form part of these financial statements.

MOVING ON WITH LIFE & LEARNING LTD

Statement of Financial Activities For the year ended 31 December 2022

Comparative information for the year ended 31 December 2021

Summary Income and Expenditure Account

	Notes	Unrestricted £	Restricted £	Total 2021 £
Income from:				
Donations and legacies	2	250	-	250
Charitable activities	3	259,322	28,073	287,395
Total income		259,572	28,073	287,645
Expenditure on:				
Charitable activities	4	276,143	20,244	296,387
Total expenditure	4	276,143	20,244	296,387
Net income/(expenditure)		(16,571)	7,829	(8,742)
Total funds brought forward		282,585	48,388	330,973
Total funds carried forward		266,014	56,217	322,231

The charity has no recognised gains or losses other than the results for the year as set out above. All activities of the charity are classed as continuing.

The notes on pages 11 to 20 form part of these financial statements.

MOVING ON WITH LIFE & LEARNING LTD

Balance Sheet 31 December 2022

	Notes	2022	2021
		£	£
Fixed assets			
Tangible assets	11	-	-
Current assets			
Cash at bank and in hand		<u>326,142</u>	<u>338,314</u>
		326,142	338,314
Creditors			
Amounts falling due within one year	12	<u>12,268</u>	<u>16,083</u>
Net current assets		<u>313,874</u>	<u>322,231</u>
Total assets less current liabilities		<u>313,874</u>	<u>322,231</u>
Unrestricted funds			
General funds	14	271,431	266,014
Restricted funds			
General funds	15	<u>42,443</u>	<u>56,217</u>
Total funds		<u>313,874</u>	<u>322,231</u>

The company is entitled to the exemption from the audit requirement contained in section 477 of the Companies Act 2006, for the year ended 31 December 2022.

The directors acknowledge their responsibilities for complying with the requirements of the Companies Act 2006 with respect to accounting records and the preparation of financial statements.

The members have not required the company to obtain an audit of its financial statements for the year in question in accordance with section 476.

These financial statements have been prepared in accordance with the provisions applicable to companies subject to the small companies regime.

The accounts on pages 8 to 20 were approved by the Trustees and authorised for issue on 28 September 2023 and signed on their behalf by:-



I Pierce-Hayes
Trustee

Company Registration Number: 6883640

The notes on pages 11 to 20 form part of these financial statements.

MOVING ON WITH LIFE & LEARNING LTD

Notes to the Financial Statements

Year ended 31 December 2022

1. Summary of accounting policies

(a) General information and basis of preparation

Moving On With Life & Learning Ltd. is a company limited by guarantee and a registered charity in England and Wales. In the event of the charity being wound up, the liability in respect of the guarantee is limited to £1 per member of the charity. The address of the registered office is given in the charity information on page 1 of these financial statements. The nature of the charity's operations and principal activities are set out in the Trustees' Report on page 2.

The charity constitutes a public benefit entity as defined by FRS 102. The financial statements have been prepared in accordance with Accounting and Reporting by Charities: Statement of Recommended Practice applicable to charities preparing their accounts in accordance with the Financial Reporting Standard applicable in the UK and Republic of Ireland issued in October 2019, the Financial Reporting Standard applicable in the United Kingdom and Republic of Ireland (FRS 102), the Companies Act 2006 and UK Generally Accepted Accounting Practice.

The financial statements are prepared on a going concern basis under the historical cost convention. The financial statements are prepared in sterling which is the functional currency of the charity and rounded to the nearest £1.

The significant accounting policies applied in the preparation of these financial statements are set out below. These policies have been consistently applied to all years presented unless otherwise stated.

(b) Funds

Unrestricted funds are available for use at the discretion of the trustees in furtherance of the general objectives of the charity and which have not been designated for other purposes.

Restricted funds are funds which are to be used in accordance with specific restrictions imposed by donors or which have been raised by the charity for particular purposes. The cost of raising and administering such funds are charged against the specific fund. The aim and use of each restricted fund is set out in the notes to the financial statements.

(c) Income recognition

All incoming resources are included in the Statement of Financial Activities (SoFA) when the charity is legally entitled to the income after any performance conditions have been met, the amount can be measured reliably and it is probable that the income will be received.

For donations to be recognised the charity will have been notified of the amounts and the settlement date in writing. If there are conditions attached to the donation and this requires a level of performance before entitlement can be obtained then income is deferred until those conditions are fully met or the fulfilment of those conditions is within the control of the charity and it is probable that they will be fulfilled.

Income from charitable activities includes income received under contract or where entitlement to grant funding is subject to special performance conditions and is recognised as earned as the related services are provided. Grant income included in this category provides funding to support performance activities and is recognised when there is entitlement, certainty of receipt and the amounts can be measured with sufficient reliability.

MOVING ON WITH LIFE & LEARNING LTD

Notes to the Financial Statements Year ended 31 December 2022

1. Accounting policies (continued)

(d) Expenditure recognition

All expenditure is accounted for on an accruals basis and has been classified under headings that aggregate all costs related to the category. Expenditure is recognised where there is a legal or constructive obligation to make payments to third parties, it is probable that the settlement will be required and the amount of the obligation can be measured reliably. It is categorised under the following headings:

- Costs of raising funds.
- Expenditure on charitable activities.
- Other expenditure represents those items not falling into the categories above.

(e) Support costs allocation

Support costs are those that assist the work of the charity but do not directly represent charitable activities and include office costs, governance costs and administrative payroll costs. They are incurred directly in support of expenditure on the objects of the charity and include project management carried out at the charity's registered office. Where support costs cannot be directly attributed to particular headings they have been allocated to cost of raising funds and expenditure on charitable activities on a basis consistent with use of the resources. Premises costs and overheads have been allocated on the basis of staff numbers.

Fund-raising costs are those incurred in seeking voluntary contributions and do not include the costs of disseminating information in support of the charitable activities.

The analysis of these costs is included in note 5.

(f) Tangible fixed assets

Tangible fixed assets are stated at cost (or deemed cost) or valuation less accumulated depreciation and accumulated impairment losses. Cost includes costs directly attributable to making the asset capable of operating as intended.

Depreciation is provided on all tangible fixed assets, at rates calculated to write off the cost, less estimated residual value, of each asset on a systematic basis over its expected useful life as follows:

IT equipment - 25% per annum

(g) Debtors and creditors receivable / payable within one year

Debtors and creditors with no stated interest rate and receivable or payable within one year are recorded at transaction price. Any losses arising from impairment are recognised in expenditure.

(h) Provisions

Provisions are recognised when the charity has an obligation at the balance sheet date as a result of a past event, it is probable that an outflow of economic benefits will be required in settlement and the amount can be reliably estimated.

MOVING ON WITH LIFE & LEARNING LTD

Notes to the Financial Statements Year ended 31 December 2022

1. Accounting policies (continued)

(i) Operating leases

Rentals payable and receivable under operating leases are charged to the SoFA on a straight line basis over the period of the lease.

(j) Employee benefits

When employees have rendered service to the charity, short-term employee benefits to which the employees are entitled are recognised at the undiscounted amount expected to be paid in exchange for that service.

The charity operates a defined contribution plan for the benefit of its employees. Contributions are expensed as they become payable.

(k) Tax

The charity is an exempt charity within the meaning of schedule 3 of the Charities Act 2011 and is considered to pass the tests set out in Paragraph 1 Schedule 6 of the Finance Act 2010 and therefore it meets the definition of a charitable company for UK corporation tax purposes.

(l) Going concern

The financial statements have been prepared on a going concern basis as the trustees believe that no material uncertainties, including those arising from COVID-19, exist. The trustees have considered the level of funds held and the expected level of income and expenditure for 12 months from authorising these financial statements. The budgeted income and expenditure is sufficient with the level of reserves for the charity to be able to continue as a going concern.

(j) The charity has applied the exemptions available under the SORP and does not include a Statement of Cash Flows on the grounds that it is applying FRS 102 Section 1A.

2. Income from donations and legacies

	Unrestricted £	Restricted £	Total 2022 £	Total 2021 £
Donations	-	4,079	4,079	250
	<u> </u>	<u> </u>	<u> </u>	<u> </u>

All of the above income in 2021 was attributable to unrestricted funds.

MOVING ON WITH LIFE & LEARNING LTD

Notes to the Financial Statements Year ended 31 December 2022

3. Income from charitable activities	Unrestricted £	Restricted £	Total 2022 £	Total 2021 £
Liverpool City Council	307,532	-	307,532	253,303
Health Education England	-	3,627	3,627	-
Other	570	4,173	4,743	2,642
R Lamont COP	-	4,022	4,022	-
ESF/WEA Art in Motion	-	-	-	1,332
HMRC Job Retention Scheme grant	-	-	-	3,377
Liverpool City Council COP	-	5,160	5,160	7,871
NHS Wirral CCG	-	183	183	18,870
	<u>308,102</u>	<u>17,165</u>	<u>325,267</u>	<u>287,395</u>

£28,073 of the above income in 2021 was attributable to restricted funds and £259,322 of the above income in 2021 was attributable to unrestricted funds.

4. Analysis of expenditure on charitable activities	Total 2022 £	Total 2021 £
Direct costs	330,209	287,685
Support costs (see note 5)	<u>7,494</u>	<u>8,702</u>
	<u>337,703</u>	<u>296,387</u>

£35,018 of the above expenditure was attributable to restricted funds (2021: £20,244) and £302,685 was attributable to unrestricted funds (2021: £276,143).

5. Allocation of support costs	Total 2022 £	Total 2021 £
Governance (see note 6)	2,811	2,293
Legal and professional	-	1,254
Information technology	316	847
Insurance	2,782	2,534
Other	<u>1,585</u>	<u>1,774</u>
	<u>7,494</u>	<u>8,702</u>

MOVING ON WITH LIFE & LEARNING LTD

Notes to the Financial Statements Year ended 31 December 2022

6. Governance costs	2022	2021
	£	£
Independent examiners	850	810
Accountancy	1,961	1,483
	<u>2,811</u>	<u>2,293</u>
7. Net income/(expenditure) for the year	Total	Total
	2022	2021
This is stated after charging:	£	£
Independent examination fees	850	810
	<u>850</u>	<u>810</u>
8. Staff costs and numbers	Total	Total
	2022	2021
	£	£
Salaries and wages	258,094	231,975
Social security costs	5,966	3,266
Pension costs	570	129
	<u>264,630</u>	<u>235,370</u>
The average number of employees (based on full time equivalents) during the year was as follows:	2022	2021
	Number	Number
Total	12	9
	<u>12</u>	<u>9</u>

No employees received remuneration in excess of £60,000 per annum.

9. Trustees' and key management personnel remuneration and expenses

The chief executive who is a trustee received remuneration during the year of £48,718 (2021: £48,158). No trustee was reimbursed any expenses (2021: £Nil).

10. Taxation

The company is exempt from corporation tax on its charitable activities.

MOVING ON WITH LIFE & LEARNING LTD

Notes to the Financial Statements Year ended 31 December 2022

11. Tangible fixed assets	Fixtures and fittings	Total
Cost	£	£
At 1 January 2022 & 31 December 2022	3,399	3,399
Depreciation		
At 1 January 2022 & 31 December 2022	3,399	3,399
Net book value		
At 31 December 2022	-	-
At 31 December 2021	-	-
12. Creditors: Amounts falling due within one year	2022	2021
	£	£
Accruals and deferred income	12,486	16,083
Net wages	390	-
Social security and other taxes	(661)	-
Pension	52	-
	12,267	16,083

13. Members liability

The company is limited by guarantee and has no share capital. Every member of the charity undertakes to contribute to the assets of the charity, in the event of it being wound up while he or she is a member or within one year of ceasing to be a member for debts and liabilities of the charity contracted before he or she ceases to be a member, such amount as may be required not exceeding £1.

14. Unrestricted funds	As at 1 January 2022 £	Income £	Expenditure £	As at 31 December 2022 £
General fund	176,014	308,102	(302,685)	181,431
Designated fund	90,000	-	-	90,000
	266,014	308,102	(302,685)	271,431

MOVING ON WITH LIFE & LEARNING LTD

Notes to the Financial Statements Year ended 31 December 2022

14. Unrestricted funds (continued)

Comparative information in respect of the preceding period is as follows:

	As at 1 January 2021 £	Income £	Expenditure £	As at 31 December 2021 £
General fund	192,585	259,572	(276,143)	176,014
Designated fund	90,000	-	-	90,000
	<u>282,585</u>	<u>259,572</u>	<u>(276,143)</u>	<u>266,014</u>

15. Restricted funds

	As at 1 January 2022 £	Income £	Expenditure £	Transfer £	As at 31 December 2022 £
Fresh/Santander	1,264	-	(1,264)	-	-
Health Education NHS England	13,857	3,627	-	-	17,484
HOPCC hate Crime Ambassadors	454	-	(454)	-	-
First Utility Volunteer project	408	-	(408)	-	-
School Of Medicine	4,215	-	-	-	4,215
PH Holt Hidden Talents	38	-	(38)	-	-
CCG Engagement	8,476	-	-	-	8,476
Project no 2013 ESF Art in Motion	444	-	(444)	-	-
Adult Learning Fund	210	-	(210)	-	-
LCVS	1,296	-	-	-	1,296
Tesco	1,657	-	-	-	1,657
Awards For All I to I	47	-	(47)	-	-
HM LCC COP	660	-	-	-	660
VO LCC COP	2,583	5,160	(3,963)	-	3,780
Business grant relief LCC	1,738	-	(1,738)	-	-
RL LCC COP	-	4,022	(4,022)	-	-
NHS Wirral CCG	18,870	183	(18,857)	-	196
Employable You	-	2,000	-	-	2,000
DWF	-	1,400	(1,400)	-	-
Investec Bank	-	2,679	-	-	2,679
Other	-	2,173	(2,173)	-	-
	<u>56,217</u>	<u>21,244</u>	<u>(35,018)</u>	<u>-</u>	<u>42,443</u>

MOVING ON WITH LIFE & LEARNING LTD

Notes to the Financial Statements Year ended 31 December 2022

15. Restricted funds (continued)

Comparative information in respect of the preceding period is as follows:

	As at 1 January 2021 £	Income £	Expenditure £	Transfer £	As at 31 December 2021 £
Fresh/Santander	1,264	-	-	-	1,264
Health Education NHS England	13,857	-	-	-	13,857
HOPCC hate Crime					
Ambassadors	454	-	-	-	454
First Utility Volunteer project	408	-	-	-	408
School Of Medicine	5,014	-	(799)	-	4,215
PH Holt Hidden Talents	38	-	-	-	38
CCG Engagement	8,505	-	(29)	-	8,476
Project no 2013 ESF Art in					
Motion	4,176	1,332	(5,064)	-	444
Adult Learning Fund	210	-	-	-	210
LCVS	1,610	-	(314)	-	1,296
Tesco	1,657	-	-	-	1,657
Awards For All I to I	47	-	-	-	47
HM LCC COP	660	-	-	-	660
VO LCC COP	1,670	4,924	(4,011)	-	2,583
Business grant relief LCC	8,818	-	(7,080)	-	1,738
R Lamont COP	-	2,947	(2,947)	-	-
NHS Wirral CCG	-	18,870	-	-	18,870
	<u>48,388</u>	<u>28,073</u>	<u>(20,244)</u>	<u>-</u>	<u>56,217</u>

CCG

Funds received to deliver Keys4Health Programme.

LCVS Jo Cox

With this grant MOWLL was able to employ an experienced gardener facilitator and resources to develop a dilapidated garden space. **Growing Togeth** promoted social integration and growing/gardening skills.

Fresh/Santander

Funding from the fresh event has been used to purchase equipment and volunteers for the catering/cooking workshops at MOWLL.

Health Education NHS England

This fund is allocated for nursing student placements at MOWLL for 1st and 2nd year nursing students from University of Liverpool, Edge Hill and John Moores University. Students spend between 2-5 weeks on placement and receive volunteer expenses for food and travel whilst on placement.

HOPCC hate Crime Ambassadors

This funding provided opportunities for MOWLL to work with young people to raise awareness of hate crime and how to report incidents.

MOVING ON WITH LIFE & LEARNING LTD

Notes to the Financial Statements Year ended 31 December 2022

15. Restricted funds (continued)

First Utility Volunteer project

This funding provided opportunities to train Volunteer Community Champions to develop their volunteer and other skills to lead toward voluntary and paid work.

School Of Medicine

Thanks to funding the placement fees. MOWLL were able to purchase updated accessible technology to use within different projects.

Mayoral Fund

Funding for exercise and sports activities to improve health and wellbeing.

PH Holt Hidden Talents

Funding towards the delivery costs and resources for an arts project.

CCG Engagement

This funding provided opportunities to measure beneficiaries' health and wellbeing, set targets and provide opportunities for individuals to get involved in sport related and wellbeing activities. Information and data was collected for CCG research.

Project no 2013 ESF Art in Motion

Funding for workshops to improve employability and digital skills in arts and craft.

Adult Learning Fund

Funding to deliver cooking and gardening sessions at John Archer Hall.

LCVS

Funding to enhance kitchen space and install a commercial cooker at John Archer Hall.

Tesco

Funding for generic projects at MOWLL including sport and exercise sessions.

Awards For All I to I

Grant awarded for personal coaching sessions to improve people's confidence and employability.

LCVS/Duncan Norman/Community Impact

Additional funding to enhance kitchen space and install a commercial cooker at John Archer Hall.

Apprenticeship Grant

This grant was allocated for an apprentice over a 2 year period at MOWLL.

HM LCC COP

This is Court of Protection funding allocated to MOWLL for one of the beneficiaries we support.

VO LCC COP

This is Court of Protection funding allocated to MOWLL for one of the beneficiaries we support.

City Fund

City funds grant was allocated to pay for the development of a kitchen space in a community hub that we used, John Archer Hall.

Business grant relief LCC

This fund was granted to MOWLL during the pandemic.

MOVING ON WITH LIFE & LEARNING LTD

Notes to the Financial Statements Year ended 31 December 2022

15. Restricted funds (continued)

L Stokes shopping

This was money allocated to MOWLL by the Stokes Family to support shopping and other expenses for this individual.

R Lamont COP

This is Court of Protection funding allocated to MOWLL for one of the beneficiaries we support, who is at risk of financial abuse.

NHS Wirral CCG

The Cheshire and Merseyside Transforming Care Partnership is a collaborative proposal to deliver additional community support in Liverpool. MOWLL was awarded funding to deliver a year long series of accessible, culturally appropriate and inclusive events for adults with learning disabilities and mental health concerns, thereby providing individuals with opportunities to reconnect to the larger community after COVID.

16. Analysis of net assets between funds

	Restricted funds £	Unrestricted funds £	Unrestricted designated funds £	Total £
Current assets	42,443	193,699	90,000	326,142
Current liabilities	-	12,268	-	12,268
Net assets at 31 December 2022	42,443	181,431	90,000	313,874

Comparative information in respect of the preceding period is as follows:

	Restricted funds £	Unrestricted funds £	Unrestricted designated funds £	Total £
Current assets	56,217	192,097	90,000	338,314
Current liabilities	-	(16,083)	-	(16,083)
Net assets at 31 December 2021	56,217	176,014	90,000	322,231

MOVING ON WITH LIFE & LEARNING LTD

England & Wales - Charity number 1129772

Accounts

MOVING ON WITH LIFE & LEARNING LTD

(A COMPANY LIMITED BY GUARANTEE)

ANNUAL REPORT AND FINANCIAL STATEMENTS

for the year ended

31 December 2021

REGISTERED NUMBER: 6883640

CHARITY NUMBER: 1129772

MOVING ON WITH LIFE & LEARNING LTD

Annual Report and Financial Statements For the year ended 31 December 2021

Contents	Page
Company Information	1
Report of the Trustees	2
Independent Examiners Report	6
Statement of Financial Activities	7
Comparative Statement of Financial Activities	8
Balance Sheet	9
Notes to the Financial Statements	10

MOVING ON WITH LIFE & LEARNING LTD

Company Information

31 December 2021

Company number: 6883640

Charity number: 1129772

Trustees: P Durrance
I Pierce-Hayes
R Donovan
A O'Leary
G Sugrue
H I Kenworthy
E Coulson – appointed 23 November 2021
E M McGough – appointed 23 November 2021

Chief Executive: H I Kenworthy

Registered office: Room G05
School of Law and Social Justice
University of Liverpool
Chatham Street
L69 7ZR

Bankers: HSBC Bank plc
Liverpool University
7 Oxford Street
Liverpool
L7 7BJ

Independent Examiners: Alexander Myerson & Co Limited
Chartered Accountants
Alexander House
61 Rodney Street
Liverpool
L1 9ER

MOVING ON WITH LIFE & LEARNING LTD

Report of the Trustees For the year ended 31 December 2021

The Trustees present their report and the unaudited financial statements of the charity for the year ended 31 December 2021. The trustees have adopted the provisions of the Statement of Recommended Practice (SORP) "Accounting and Reporting by Charities" in preparing the annual report and financial statements of the charity.

The financial statements have been prepared in accordance with the accounting policies set out in notes to the accounts and comply with the charity's governing document, the Companies Act 2006 and Accounting and Reporting by Charities: Statement of Recommended Practice applicable to charities preparing their accounts in accordance with the Financial Reporting Standard applicable in the UK and Republic of Ireland published in October 2019.

Introduction

We are a company limited by guarantee, number 6883640 (registered in England and Wales). The principal governing document is the Company Memorandum and Articles of Association.

Objects of the charity

The main aims and objectives of the charity are as follows:-

1. The advancement of education of people with learning disabilities and/or mental health issues, their families and carers in particular by the provision of training, education and other services.
2. To promote any other charitable purpose for people with learning disabilities and/or mental health issues in particular by the provision of an advocacy service.

Investment powers and restrictions

In accordance with the Memorandum and Articles of Association, the Executive Committee has the power to invest monies in investments, securities, property and such other lawful things as are necessary for the achievements of the objectives as may be thought fit.

Executive committee

Members are elected by Annual General Meetings of the Moving On With Life & Learning Ltd, with vacancies being filled, as required, by the Executive Committee in accordance with Moving On With Life & Learning Ltd's Memorandum and Articles of Association.

Reserves policy

The charity has reserves of £322,231 as at 31 December 2021, which is split between restricted reserves of £56,217 and unrestricted reserves of £266,014. A designated fund has been set up for any emergency costs that may rise. The trustees propose to maintain the charity's reserves at a level which is equivalent of 12 months operational expenditure and have done so having regards to its manner of operation of likely funding streams. As at the year end, free reserves (excluding the designated fund) amounted to £176,014.

The trustees

The trustees who served the charity during the period were as follows:-

P Durrance
I Pierce-Hayes
R Donovan
T O'Leary
G Sugrue

Trustees are recruited through current members or family carers. Also, a volunteering website is used that connects people interested in volunteering their time to charitable organisations.

MOVING ON WITH LIFE & LEARNING LTD

Report of the Trustees
For the year ended 31 December 2021

Public benefit

In setting our objectives and planning our activities our trustees have given careful consideration to the Charity Commission's general guidance on public benefit. The charity works with adults with learning disabilities and/or mental health issues in a respect-based, person centred environment. It supports them to identify their goals and help them find ways to achieve their ambitions, whether this be independent living and travel, self-esteem, building meaningful relationships or finding a job.

Moving On With Life & Learning (MOWLL) is a Liverpool-grown organisation that is underpinned by social inclusion objectives, committed to equality of opportunity and determined to promote and facilitate accessibility and active participation through all of our services. We support people who ensure systematic exclusion and marginalisation mainly those with learning disabilities and mental health issues.

Review and Performance

SEEK INVEST ACHIEVE CELEBRATE

MOWLL is a small Liverpool grown organisation dedicated to the rights and social inclusion of people with disabilities, enduring mental health challenges and dementia. Our mission is to provide the best person focussed service to ensure individuals develop socially, personally and professionally.

Principal Office of the Charity

Room G05
The School of Law and Social Justice Building
University of Liverpool
Chatham Street
Liverpool
L69 7ZR

E-Mail: www.mowll.org.uk

1. COVID 19 Statement

The pandemic continued to challenge us all, personally, professionally and financially throughout 2021. The uncertainties impacted on our service delivery, staffing and funding opportunities. As an organisation we have had to respond and adapt in order to fulfil our commitments and statutory obligations to our beneficiaries, colleagues, funders and sponsors.

This report will address how MOWLL as a frontline organisation has responded to the pandemic in order to continue delivering our services and activities.

2. The Big Move!

We are extremely grateful to the University of Liverpool's School of Law and Social Justice who included MOWLL in the move from our former base, the Eleanor Rathbone Building to the former Cyprus Building. Throughout 2019 and 2020 work was carried out to renovate and extend the existing building to what is now known as the School of Law and Social Justice. MOWLL is acknowledged for the work we do as a charitable organisation; for the contribution we make in relation to providing placement opportunities for students and for the disability awareness sessions we deliver to students undertaking nursing, dentistry and medicine.

MOVING ON WITH LIFE & LEARNING LTD

Report of the Trustees
For the year ended 31 December 2021

3. Funding Opportunities

We were successful with our funding application to NHS England Transforming Care Partnership to deliver Seasons, a new project supporting people to get a good life, with emphasis on access to activities, employment, exercise, meeting people and social opportunities. The Transforming Care Partnership welcomed bids from organisations wishing to support people with learning disabilities and/or autism to successfully transition from lockdown back into everyday life.

The pandemic exacerbated people's inclusion and participation within the wider community and impacted on many individual's mental health and wellbeing. Seasons aims to bridge this need and create a weekly series of events in the early evenings, offering a menu of activities that will encourage people to CONNECT, BE ACTIVE, TAKE NOTICE, LEARN and GIVE.

In order to do this, a Seasons Events Management Team of volunteers will be formed. All have varied reasons for becoming involved:-

Individuals who would like to improve their employability and key skills in team work/IT/ marketing/event planning and delivery /peer support and social media skills

Individuals who have experienced isolation and have ideas of reconnecting with networks and the community

We designed a logo for the project and we now look forward to January for the evening events to start. Activities already requested are board games, bingo, yoga, zumba, learning ukulele and baking.

Access to free citywide festivals and for those wanting to learn about events management will also be available. These may include Liverpool Against Racism, a brand new festival that will celebrate diversity and the deep cultural heritage of Liverpool. With a focus on community cohesion, it will be a place in which people and organisations from across the city can respond creatively to the challenges, hate and discrimination which some people in Liverpool still experience.

Africa Oye is the UK's largest free celebration of African music and culture held in Sefton Park.

Liverpool International Music Festival is one of the city's most popular music event. Whatever the event there will be something to learn about how it is all pulled together, who is involved, how plans are communicated and how the public get to find out about what is on offer.

4. ESF Project – European Social Fund

ESF appreciated that due to the pandemic, organisations who were successful with funding (2019-2020) could not spend all of the grant in 2020 and therefore consented to projects being delivered in early 2021. Our final project was Digi-Drama, a ten-week session schedule which provided opportunities for participants to increase their skills in camera composition; social media and online advertising; interviewing and filming skills; documenting events; social media and short film production.

Participants

- gained skills in capturing film, photography and sound via camera and sound recording equipment
- know how to use a social media platform to communicate via video, photo, and text
- have developed interviewing and meeting skills
- planned and created a short film from pre-production to postproduction

MOVING ON WITH LIFE & LEARNING LTD

Report of the Trustees
For the year ended 31 December 2021

5. Group Activities

Throughout the pandemic we offered a range of group activities whilst ensuring health and safety measures and procedures were in place. Activities took place in our community hub Toxteth Town Hall and included keep fit, mosaics and crafts, painting, mindfulness and yoga. Close to Toxteth Town Hall is Mount Carmel social club where each Wednesday afternoon they host bingo. Our beneficiaries have been welcomed with open arms and this has now become a very popular weekly session. Cooking is also popular and whilst we are unable to offer this from Toxteth Town Hall we identified St Clement church as a great venue to rent out as it boasts a fully equipped kitchen space. Throughout this reporting year 26 beneficiaries attended our group activities.



Gathering produce from our planters



Making fresh fruit kebabs



painting craft boxes



mosaics

MOVING ON WITH LIFE & LEARNING LTD

Report of the Trustees
For the year ended 31 December 2021

6. One to One Community Support

One to One community support was provided consistently throughout the pandemic uncertainties of 2021. Our key workers as in 2020 travelled on public transport, drove or walked the length and breadth of the city to ensure life-line support was provided to our beneficiaries. We are forever thankful to all our link workers who, despite their own fears of the pandemic, continued with professionalism and empathy. The support we provided included sitting and chatting; supermarket shopping; preparing light meals; assisting with mail and paperwork; arranging and attending medical consultations, either face-face or via telephone; prescription collection; communications with utility providers and the Department of work and pensions. Throughout this reporting year 37 people were reported in their home or in the community.

7. Disability Awareness Training

Despite the pandemic we delivered via zoom four disability awareness and hate crime sessions to University of Liverpool medical students. Thirty two students in total heard personal recollections of discrimination, social exclusion and hate crimes from our life experts. Although we were unable to deliver our presentations face to face, the student feedback we received from the zoom sessions was overwhelmingly positive and “thought provoking”.

In October we were able to deliver a similar session but face to face to University of Liverpool student nurses. Sixty students in total watched our hate crime film FACE FACTS, dedicated to our beneficiary and friend Gary Skelly, who was a victim of hate crime and murdered near his home in 2010. The students listened and engaged with our life experts and participated in the planned group activities. The session was again very powerful and extremely well received.

We have over the years welcomed student nurses on their community placements. Due to the pandemic we have not been in a position to place students this year but we do hope 2022 will be very different.

8. Thank You to our Team!

A huge thank you to our staff team who have worked tirelessly throughout this reporting year. You have supported our most vulnerable under the most challenging of circumstances and we are truly grateful for your compassion, professionalism and determination!

Alison Ashton
Sherae Buckley
Anne Burrows
Sean Colebourne
Joel Fitzgerald
Sky Glover
Jeff Harper
Kai Jolley
Darryl Joseph

Jack Lewis
Jonpaul Lowles
Ryan McGuinness
Chelsea Mclauchlan
Linda Murray
Suzanne Ritchie
Owen Fennel Ritherford
Leah Wellings

9. Trustees

We would like to thank in particular, our Board of Trustees who have supported the charity through its many challenges and celebrations this reporting year. Like all other charities, we appreciate that their time, support and expertise is given freely.

Estelle Coulson
Roy Donovan
Paul Durrance (Treasurer)
Elizabeth McGough

Tony O’Leary
Ged Sugrue
Ian Pierce-Hayes (Chair)

MOVING ON WITH LIFE & LEARNING LTD

Report of the Trustees
For the year ended 31 December 2021

10. Our Patron

We would like to take this opportunity to thank our patron, Liverpool Sculptor Tom Murphy for his continued encouragement and support.

11. Supporters and Sponsors

MOWLL is extremely grateful for the financial support we receive from our supporters, donors and funders.

We would also like to express our sincere gratitude to Liverpool City Council for their continued support, effective communication throughout the pandemic and their acknowledgement of the bespoke services we are able to offer.

We remain forever grateful to The University of Liverpool for their philanthropic support and in particular their consistent communication during the pandemic lockdown months, especially The Admin Team at the School of Law and Social Justice.

We would like to thank everyone who has supported MOWLL throughout this difficult year and wish you all the very best

By Order of the Trustees



I Pierce-Hayes
Trustee

26 September 2022

MOVING ON WITH LIFE & LEARNING LTD

INDEPENDENT EXAMINER'S REPORT TO THE TRUSTEES OF MOVING ON WITH LIFE & LEARNING LTD.

I report to the charity trustees on my examination of the financial statements of Moving On With Life & Learning Ltd. (the charitable company) for the year ended 31 December 2021 which are set out on pages 9 to 21.

Responsibilities and basis of report

As the trustees of the charitable company (and also its directors for the purposes of company law) you are responsible for the preparation of the financial statement in accordance with the requirements of the Companies Act 2006 ('the 2006 Act').

Having satisfied myself that the financial statements of the charitable company are not required to be audited under Part 16 of the 2006 Act and are eligible for independent examination, I report in respect of my examination of your charitable company's financial statements as carried out under section 145 of the Charities Act 2011 ('the 2011 Act'). In carrying out my examination I have followed the Directions given by the Charity Commission under section 145(5)(b) of the 2011 Act.

Independent examiner's statement

Since the charitable company's gross income exceeded £250,000 your examiner must be a member of a body listed in section 145 of the 2011 Act. I confirm that I am qualified to undertake the examination because I am a member of The Institute of Chartered Accountants in England and Wales, which is one of the listed bodies.

I have completed my examination. I confirm that no matters have come to my attention in connection with the examination giving me cause to believe that in any material respect:

1. accounting records were not kept in respect of the charitable company as required by section 386 of the 2006 Act; or
2. the financial statements do not accord with those records; or
3. the financial statements do not comply with the accounting requirements of section 396 of the 2006 Act other than any requirement that the accounts give a 'true and fair view' which is not a matter considered as part of an independent examination; or
4. the financial statements have not been prepared in accordance with the methods and principles of the Statement of Recommended Practice for accounting and reporting by charities applicable to charities preparing their accounts in accordance with the Financial Reporting Standard applicable in the UK and Republic of Ireland (FRS 102).

I have no concerns and have come across no other matters in connection with the examination to which attention should be drawn in this report in order to enable a proper understanding of the financial statements to be reached.

P R Burns

Paul Burns BSc BFP FCA
Alexander Myerson & Co Limited
Chartered Accountants
Alexander House
61 Rodney Street
Liverpool L1 9ER

26 September 2022

MOVING ON WITH LIFE & LEARNING LTD

Statement of Financial Activities For the year ended 31 December 2021

Summary Income and Expenditure Account

	Notes	Unrestricted £	Restricted £	Total 2021 £	Total 2020 £
Income from:					
Donations and legacies	2	250	-	250	20
Charitable activities	3	259,322	28,073	287,395	253,901
Total income		259,572	28,073	287,645	253,921
Expenditure on:					
Charitable activities	4	276,143	20,244	296,387	285,327
Total expenditure	4	276,143	20,244	296,387	285,327
Net income/(expenditure)		(16,571)	7,829	(8,742)	(31,406)
Total funds brought forward		282,585	48,388	330,973	362,379
Total funds carried forward		266,014	56,217	322,231	330,973

The charity has no recognised gains or losses other than the results for the year as set out above. All activities of the charity are classed as continuing.

The notes on pages 12 to 21 form part of these financial statements.

MOVING ON WITH LIFE & LEARNING LTD

Statement of Financial Activities For the year ended 31 December 2021

Comparative information for the year ended 31 December 2020

Summary Income and Expenditure Account

	Notes	Unrestricted £	Restricted £	Total 2020 £
Income from:				
Donations and legacies	2	20	-	20
Charitable activities	3	213,476	40,425	253,901
Total income		213,496	40,425	253,921
Expenditure on:				
Charitable activities	4	246,894	38,433	285,327
Total expenditure		246,894	38,433	285,327
Net expenditure		(33,398)	1,992	(31,406)
Transfer of funds		(1,712)	1,712	-
Total funds brought forward		317,695	44,684	362,379
Total funds carried forward		282,585	48,388	330,973

The charity has no recognised gains or losses other than the results for the year as set out above. All activities of the charity are classed as continuing.

The notes on pages 12 to 21 form part of these financial statements.

MOVING ON WITH LIFE & LEARNING LTD

Balance Sheet 31 December 2021

	Notes	2021	2020
		£	£
Fixed assets			
Tangible assets	11	-	-
Current assets			
Cash at bank and in hand		<u>338,314</u>	<u>364,227</u>
		338,314	364,227
Creditors			
Amounts falling due within one year	12	<u>16,083</u>	<u>33,254</u>
Net current assets		<u>322,231</u>	<u>330,973</u>
Total assets less current liabilities		<u>322,231</u>	<u>330,973</u>
Unrestricted funds			
General funds	14	266,014	282,585
Restricted funds			
General funds	15	<u>56,217</u>	<u>48,388</u>
Total funds		<u>322,231</u>	<u>330,973</u>

The company is entitled to the exemption from the audit requirement contained in section 477 of the Companies Act 2006, for the year ended 31 December 2021.

The directors acknowledge their responsibilities for complying with the requirements of the Companies Act 2006 with respect to accounting records and the preparation of financial statements.

The members have not required the company to obtain an audit of its financial statements for the year in question in accordance with section 476.

These financial statements have been prepared in accordance with the provisions applicable to companies subject to the small companies regime.

The accounts on pages 9 to 21 were approved by the Trustees and authorised for issue on 26 September 2022 and signed on their behalf by:-



I Pierce-Hayes
Trustee

Company Registration Number: 6883640

The notes on pages 12 to 21 form part of these financial statements.

MOVING ON WITH LIFE & LEARNING LTD

Notes to the Financial Statements

Year ended 31 December 2021

1. Summary of accounting policies

(a) General information and basis of preparation

Moving On With Life & Learning Ltd. is a company limited by guarantee and a registered charity in England and Wales. In the event of the charity being wound up, the liability in respect of the guarantee is limited to £1 per member of the charity. The address of the registered office is given in the charity information on page 1 of these financial statements. The nature of the charity's operations and principal activities are set out in the Trustees' Report on page 2.

The charity constitutes a public benefit entity as defined by FRS 102. The financial statements have been prepared in accordance with Accounting and Reporting by Charities: Statement of Recommended Practice applicable to charities preparing their accounts in accordance with the Financial Reporting Standard applicable in the UK and Republic of Ireland issued in October 2019, the Financial Reporting Standard applicable in the United Kingdom and Republic of Ireland (FRS 102), the Companies Act 2006 and UK Generally Accepted Accounting Practice.

The financial statements are prepared on a going concern basis under the historical cost convention. The financial statements are prepared in sterling which is the functional currency of the charity and rounded to the nearest £1.

The significant accounting policies applied in the preparation of these financial statements are set out below. These policies have been consistently applied to all years presented unless otherwise stated.

(b) Funds

Unrestricted funds are available for use at the discretion of the trustees in furtherance of the general objectives of the charity and which have not been designated for other purposes.

Restricted funds are funds which are to be used in accordance with specific restrictions imposed by donors or which have been raised by the charity for particular purposes. The cost of raising and administering such funds are charged against the specific fund. The aim and use of each restricted fund is set out in the notes to the financial statements.

(c) Income recognition

All incoming resources are included in the Statement of Financial Activities (SoFA) when the charity is legally entitled to the income after any performance conditions have been met, the amount can be measured reliably and it is probable that the income will be received.

For donations to be recognised the charity will have been notified of the amounts and the settlement date in writing. If there are conditions attached to the donation and this requires a level of performance before entitlement can be obtained then income is deferred until those conditions are fully met or the fulfilment of those conditions is within the control of the charity and it is probable that they will be fulfilled.

Income from charitable activities includes income received under contract or where entitlement to grant funding is subject to special performance conditions and is recognised as earned as the related services are provided. Grant income included in this category provides funding to support performance activities and is recognised when there is entitlement, certainty of receipt and the amounts can be measured with sufficient reliability.

MOVING ON WITH LIFE & LEARNING LTD

Notes to the Financial Statements Year ended 31 December 2021

1. Accounting policies (continued)

(d) Expenditure recognition

All expenditure is accounted for on an accruals basis and has been classified under headings that aggregate all costs related to the category. Expenditure is recognised where there is a legal or constructive obligation to make payments to third parties, it is probable that the settlement will be required and the amount of the obligation can be measured reliably. It is categorised under the following headings:

- Costs of raising funds.
- Expenditure on charitable activities.
- Other expenditure represents those items not falling into the categories above.

(e) Support costs allocation

Support costs are those that assist the work of the charity but do not directly represent charitable activities and include office costs, governance costs and administrative payroll costs. They are incurred directly in support of expenditure on the objects of the charity and include project management carried out at the charity's registered office. Where support costs cannot be directly attributed to particular headings they have been allocated to cost of raising funds and expenditure on charitable activities on a basis consistent with use of the resources. Premises costs and overheads have been allocated on the basis of staff numbers.

Fund-raising costs are those incurred in seeking voluntary contributions and do not include the costs of disseminating information in support of the charitable activities.

The analysis of these costs is included in note 5.

(f) Tangible fixed assets

Tangible fixed assets are stated at cost (or deemed cost) or valuation less accumulated depreciation and accumulated impairment losses. Cost includes costs directly attributable to making the asset capable of operating as intended.

Depreciation is provided on all tangible fixed assets, at rates calculated to write off the cost, less estimated residual value, of each asset on a systematic basis over its expected useful life as follows:

IT equipment - 25% per annum

(g) Debtors and creditors receivable / payable within one year

Debtors and creditors with no stated interest rate and receivable or payable within one year are recorded at transaction price. Any losses arising from impairment are recognised in expenditure.

(h) Provisions

Provisions are recognised when the charity has an obligation at the balance sheet date as a result of a past event, it is probable that an outflow of economic benefits will be required in settlement and the amount can be reliably estimated.

MOVING ON WITH LIFE & LEARNING LTD

Notes to the Financial Statements Year ended 31 December 2021

1. Accounting policies (continued)

(i) Operating leases

Rentals payable and receivable under operating leases are charged to the SoFA on a straight line basis over the period of the lease.

(j) Employee benefits

When employees have rendered service to the charity, short-term employee benefits to which the employees are entitled are recognised at the undiscounted amount expected to be paid in exchange for that service.

The charity operates a defined contribution plan for the benefit of its employees. Contributions are expensed as they become payable.

(k) Tax

The charity is an exempt charity within the meaning of schedule 3 of the Charities Act 2011 and is considered to pass the tests set out in Paragraph 1 Schedule 6 of the Finance Act 2010 and therefore it meets the definition of a charitable company for UK corporation tax purposes.

(l) Going concern

The financial statements have been prepared on a going concern basis as the trustees believe that no material uncertainties, including those arising from COVID-19, exist. The trustees have considered the level of funds held and the expected level of income and expenditure for 12 months from authorising these financial statements. The budgeted income and expenditure is sufficient with the level of reserves for the charity to be able to continue as a going concern.

(j) The charity has applied the exemptions available under the SORP and does not include a Statement of Cash Flows on the grounds that it is applying FRS 102 Section 1A.

2. Income from donations and legacies

	Unrestricted	Restricted	Total	Total
	£	£	2021	2020
			£	£
Donations	250	-	250	20
	<u>250</u>	<u>-</u>	<u>250</u>	<u>20</u>

All of the above income in 2020 was attributable to unrestricted funds.

MOVING ON WITH LIFE & LEARNING LTD

Notes to the Financial Statements Year ended 31 December 2021

3. Income from charitable activities	Unrestricted £	Restricted £	Total 2021 £	Total 2020 £
Liverpool City Council	253,303	-	253,303	233,218
Health Education England	-	-	-	5,807
L Stokes	-	-	-	749
School of Medicine	-	-	-	50
Other	2,642	-	2,642	418
Mayoral Fund	-	-	-	7,000
ESF/WEA Art in Motion	-	1,332	1,332	6,659
HMRC Job Retention Scheme grant	3,377	-	3,377	-
Liverpool City Council COP	-	7,871	7,871	-
NHS Wirral CCG	-	18,870	18,870	-
	<u>259,322</u>	<u>28,073</u>	<u>287,395</u>	<u>253,901</u>

£40,425 of the above income in 2020 was attributable to restricted funds and £213,476 of the above income in 2020 was attributable to unrestricted funds.

4. Analysis of expenditure on charitable activities	Total 2021 £	Total 2020 £
Direct costs	287,685	277,244
Support costs (see note 5)	<u>8,702</u>	<u>8,083</u>
	<u>296,387</u>	<u>285,327</u>

£20,244 of the above expenditure was attributable to restricted funds (2020: £38,433) and £276,143 was attributable to unrestricted funds (2020: £246,894).

5. Allocation of support costs	Total 2021 £	Total 2020 £
Governance (see note 6)	2,293	3,391
Legal and professional	1,254	228
Information technology	847	305
Insurance	2,534	2,486
Other	<u>1,774</u>	<u>1,673</u>
	<u>8,702</u>	<u>8,083</u>

MOVING ON WITH LIFE & LEARNING LTD

Notes to the Financial Statements Year ended 31 December 2021

6. Governance costs	2021	2020
	£	£
Independent examiners	810	600
Accountancy	1,483	2,791
	<u>2,293</u>	<u>3,391</u>
7. Net income/(expenditure) for the year	Total	Total
	2021	2020
This is stated after charging:	£	£
Independent examination fees	810	600
	<u>810</u>	<u>600</u>
8. Staff costs and numbers	Total	Total
	2021	2020
	£	£
Salaries and wages	231,975	197,458
Social security costs	3,266	11,693
Pension costs	129	16,823
	<u>235,370</u>	<u>225,974</u>
The average number of employees (based on full time equivalents) during the year was as follows:	2021	2020
	Number	Number
Total	9	7

No employees received remuneration in excess of £60,000 per annum.

9. Trustees' and key management personnel remuneration and expenses

The chief executive who is a trustee received remuneration during the year of £48,158 (2020: £44,879). No trustee was reimbursed any expenses (2020: £Nil).

10. Taxation

The company is exempt from corporation tax on its charitable activities.

MOVING ON WITH LIFE & LEARNING LTD

Notes to the Financial Statements Year ended 31 December 2021

11. Tangible fixed assets	Fixtures and fittings	Total
Cost	£	£
At 1 January 2021 & 31 December 2021	3,399	3,399
Depreciation		
At 1 January 2021 & 31 December 2021	3,399	3,399
Net book value		
At 31 December 2021	-	-
At 31 December 2020	-	-

12. Creditors: Amounts falling due within one year	2021	2020
	£	£
Accruals and deferred income	16,083	33,254
	16,083	33,254

13. Members liability

The company is limited by guarantee and has no share capital. Every member of the charity undertakes to contribute to the assets of the charity, in the event of it being wound up while he or she is a member or within one year of ceasing to be a member for debts and liabilities of the charity contracted before he or she ceases to be a member, such amount as may be required not exceeding £1.

14. Unrestricted funds	As at 1 January 2021 £	Income £	Expenditure £	As at 31 December 2021 £
General fund	192,585	259,572	(276,143)	176,014
Designated fund	90,000	-	-	90,000
	282,585	259,572	(276,143)	266,014

MOVING ON WITH LIFE & LEARNING LTD

Notes to the Financial Statements Year ended 31 December 2021

14. Unrestricted funds (continued)

Comparative information in respect of the preceding period is as follows:

	As at 1 January 2020 £	Income £	Expenditure £	Transfer £	As at 31 December 2020 £
General fund	227,695	213,496	(246,894)	(1,712)	192,585
Designated fund	90,000	-	-	-	90,000
	<u>317,695</u>	<u>213,496</u>	<u>(246,894)</u>	<u>(1,712)</u>	<u>282,585</u>

15. Restricted funds

	As at 1 January 2021 £	Income £	Expenditure £	Transfer £	As at 31 December 2021 £
Fresh/Santander	1,264	-	-	-	1,264
Health Education NHS England	13,857	-	-	-	13,857
HOPCC hate Crime Ambassadors	454	-	-	-	454
First Utility Volunteer project	408	-	-	-	408
School Of Medicine	5,014	-	(799)	-	4,215
PH Holt Hidden Talents	38	-	-	-	38
CCG Engagement	8,505	-	(29)	-	8,476
Project no 2013 ESF Art in Motion	4,176	1,332	(5,064)	-	444
Adult Learning Fund	210	-	-	-	210
LCVS	1,610	-	(314)	-	1,296
Tesco	1,657	-	-	-	1,657
Awards For All I to I	47	-	-	-	47
HM LCC COP	660	-	-	-	660
VO LCC COP	1,670	4,924	(4,011)	-	2,583
Business grant relief LCC	8,818	-	(7,080)	-	1,738
R Lamont COP	-	2,947	(2,947)	-	-
NHS Wirral CCG	-	18,870	-	-	18,870
	<u>48,388</u>	<u>28,073</u>	<u>(20,244)</u>	<u>-</u>	<u>56,217</u>

MOVING ON WITH LIFE & LEARNING LTD

Notes to the Financial Statements Year ended 31 December 2021

15. Restricted funds (continued)

Comparative information in respect of the preceding period is as follows:

Restricted funds	As at	Income	Expenditure	Transfer	As at
	1 January				31 December
	2020				2020
	£	£	£	£	£
CCG 2018	-	-	(1,341)	1,341	-
LCVS Jo Cox	-	-	(360)	360	-
Fresh/Santander	4,465	-	(3,201)	-	1,264
Health Education NHS England	8,050	5,807	-	-	13,857
HOPCC hate Crime Ambassadors	454	-	-	-	454
First Utility Volunteer project	408	-	-	-	408
School Of Medicine	4,976	50	(12)	-	5,014
Mayoral Fund	-	7,000	(7,000)	-	-
PH Holt Hidden Talents	38	-	-	-	38
CCG Engagement	8,505	-	-	-	8,505
Project no 2013 ESF Art in Motion	3,808	6,659	(6,293)	-	4,176
Adult Learning Fund	1,560	-	(1,350)	-	210
LCVS	1,610	-	-	-	1,610
Tesco	2,000	-	(343)	-	1,657
Awards For All I to I	3,310	-	(3,261)	-	47
LCVS/Duncan	-	-	-	-	-
Norman/Community Impact	5,000	-	(5,000)	-	-
Apprenticeship Grant	500	-	(500)	-	-
HM LCC COP	-	1,040	(380)	-	660
VO LCC COP	-	4,120	(2,450)	-	1,670
City Fund	-	5,000	(5,000)	-	-
Business grant relief LCC	-	10,000	(1,182)	-	8,818
L Stokes shopping	-	749	(760)	11	-
	<u>44,684</u>	<u>40,425</u>	<u>(38,433)</u>	<u>1,712</u>	<u>48,388</u>

CCG

Funds received to deliver Keys4Health Programme.

LCVS Jo Cox

With this grant MOWLL was able to employ an experienced gardener facilitator and resources to develop a dilapidated garden space. **Growing Toxteth** promoted social integration and growing/gardening skills.

Fresh/Santander

Funding from the fresh event has been used to purchase equipment and volunteers for the catering/cooking workshops at MOWLL.

Health Education NHS England

This fund is allocated for nursing student placements at MOWLL for 1st and 2nd year nursing students from University of Liverpool, Edge Hill and John Moores University. Students spend between 2-5 weeks on placement and receive volunteer expenses for food and travel whilst on placement.

MOVING ON WITH LIFE & LEARNING LTD

Notes to the Financial Statements Year ended 31 December 2021

15. Restricted funds (continued)

HOPCC hate Crime Ambassadors

This funding provided opportunities for MOWLL to work with young people to raise awareness of hate crime and how to report incidents.

First Utility Volunteer project

This funding provided opportunities to train Volunteer Community Champions to develop their volunteer and other skills to lead toward voluntary and paid work.

School Of Medicine

Thanks to funding the placement fees. MOWLL were able to purchase updated accessible technology to use within different projects.

Mayoral Fund

Funding for exercise and sports activities to improve health and wellbeing.

PH Holt Hidden Talents

Funding towards the delivery costs and resources for an arts project.

CCG Engagement

This funding provided opportunities to measure beneficiaries' health and wellbeing, set targets and provide opportunities for individuals to get involved in sport related and wellbeing activities. Information and data was collected for CCG research.

Project no 2013 ESF Art in Motion

Funding for workshops to improve employability and digital skills in arts and craft.

Adult Learning Fund

Funding to deliver cooking and gardening sessions at John Archer Hall.

LCVS

Funding to enhance kitchen space and install a commercial cooker at John Archer Hall.

Tesco

Funding for generic projects at MOWLL including sport and exercise sessions.

Awards For All I to I

Grant awarded for personal coaching sessions to improve people's confidence and employability.

LCVS/Duncan Norman/Community Impact

Additional funding to enhance kitchen space and install a commercial cooker at John Archer Hall.

Apprenticeship Grant

This grant was allocated for an apprentice over a 2 year period at MOWLL.

HM LCC COP

This is Court of Protection funding allocated to MOWLL for one of the beneficiaries we support.

VO LCC COP

This is Court of Protection funding allocated to MOWLL for one of the beneficiaries we support.

MOVING ON WITH LIFE & LEARNING LTD

Notes to the Financial Statements Year ended 31 December 2021

15. Restricted funds (continued)

City Fund

City funds grant was allocated to pay for the development of a kitchen space in a community hub that we used, John Archer Hall.

Business grant relief LCC

This fund was granted to MOWLL during the pandemic.

L Stokes shopping

This was money allocated to MOWLL by the Stokes Family to support shopping and other expenses for this individual.

R Lamont COP

This is Court of Protection funding allocated to MOWLL for one of the beneficiaries we support, who is at risk of financial abuse.

NHS Wirral CCG

The Cheshire and Merseyside Transforming Care Partnership is a collaborative proposal to deliver additional community support in Liverpool. MOWLL was awarded funding to deliver a year long series of accessible, culturally appropriate and inclusive events for adults with learning disabilities and mental health concerns, thereby providing individuals with opportunities to reconnect to the larger community after COVID.

16. Analysis of net assets between funds

	Restricted funds £	Unrestricted funds £	Unrestricted designated funds £	Total £
Current assets	56,217	192,097	90,000	338,314
Current liabilities	-	(16,083)	-	(16,083)
Net assets at 31 December 2021	56,217	176,014	90,000	322,231

Comparative information in respect of the preceding period is as follows:

	Restricted funds £	Unrestricted funds £	Unrestricted designated funds £	Total £
Current assets	48,388	225,839	90,000	364,227
Current liabilities	-	(33,254)	-	(33,254)
Net assets at 31 December 2020	48,388	192,585	90,000	330,973

MOVING ON WITH LIFE & LEARNING LTD

England & Wales - Charity number 1129772

Accounts

MOVING ON WITH LIFE & LEARNING LTD

(A COMPANY LIMITED BY GUARANTEE)

ANNUAL REPORT AND ACCOUNTS

for the year ended

31 December 2020

REGISTERED NUMBER: 6883640

CHARITY NUMBER: 1129772

MOVING ON WITH LIFE & LEARNING LTD

Annual Report and Accounts
For the year ended 31 December 2020

Contents	Page
Company Information	1
Report of the Trustees	2
Independent Examiners Report	6
Statement of Financial Activities	7
Comparative Statement of Financial Activities	8
Balance Sheet	9
Notes to the Accounts	10

MOVING ON WITH LIFE & LEARNING LTD

Company Information

31 December 2020

Company number:	6883640
Charity number:	1129772
Trustees:	P Durrance I Pierce-Hayes R Donovan A O'Leary G Sugrue H I Kenworthy
Chief Executive:	H I Kenworthy
Registered office:	Room G05 School of Law and Social Justice University of Liverpool Chatham Street L69 7ZR
Bankers:	HSBC Bank plc Liverpool University 7 Oxford Street Liverpool L7 7BJ
Independent Examiners:	Alexander Myerson & Co Limited Chartered Accountants Alexander House 61 Rodney Street Liverpool L1 9ER

MOVING ON WITH LIFE & LEARNING LTD

Report of the Trustees For the year ended 31 December 2020

The Trustees present their report and the unaudited financial statements of the charity for the year ended 31 December 2020. The trustees have adopted the provisions of the Statement of Recommended Practice (SORP) "Accounting and Reporting by Charities" in preparing the annual report and financial statements of the charity.

The financial statements have been prepared in accordance with the accounting policies set out in notes to the accounts and comply with the charity's governing document, the Companies Act 2006 and Accounting and Reporting by Charities: Statement of Recommended Practice applicable to charities preparing their accounts in accordance with the Financial Reporting Standard applicable in the UK and Republic of Ireland published in October 2019.

Introduction

We are a company limited by guarantee, number 6883640 (registered in England and Wales). The principal governing document is the Company Memorandum and Articles of Association.

Objects of the charity

The main aims and objectives of the charity are as follows:-

1. The advancement of education of people with learning disabilities and/or mental health issues, their families and carers in particular by the provision of training, education and other services.
2. To promote any other charitable purpose for people with learning disabilities and/or mental health issues in particular by the provision of an advocacy service.

Investment powers and restrictions

In accordance with the Memorandum and Articles of Association, the Executive Committee has the power to invest monies in investments, securities, property and such other lawful things as are necessary for the achievements of the objectives as may be thought fit.

Executive committee

Members are elected by Annual General Meetings of the Moving On With Life & Learning Ltd, with vacancies being filled, as required, by the Executive Committee in accordance with Moving On With Life & Learning Ltd's Memorandum and Articles of Association.

Reserves policy

The charity has reserves of £330,973 as at 31 December 2020, which is split between restricted reserves of £48,388 and unrestricted reserves of £282,585. A designated fund has been set up for any emergency costs that may rise. The trustees propose to maintain the charity's reserves at a level which is equivalent of 12 months operational expenditure and have done so having regards to its manner of operation of likely funding streams. As at the year end, free reserves (excluding the designated fund) amounted to £192,585.

The trustees

The trustees who served the charity during the period were as follows:-

P Durrance
I Pierce-Hayes
R Donovan
T O'Leary
G Sugrue

Trustees are recruited through current members or family carers. Also, a volunteering website is used that connects people interested in volunteering their time to charitable organisations.

MOVING ON WITH LIFE & LEARNING LTD

Report of the Trustees
For the year ended 31 December 2020

Public benefit

In setting our objectives and planning our activities our trustees have given careful consideration to the Charity Commission's general guidance on public benefit. The charity works with adults with learning disabilities and/or mental health issues in a respect-based, person centred environment. It supports them to identify their goals and help them find ways to achieve their ambitions, whether this be independent living and travel, self-esteem, building meaningful relationships or finding a job.

Moving On With Life & Learning (MOWLL) is a Liverpool-grown organisation that is underpinned by social inclusion objectives, committed to equality of opportunity and determined to promote and facilitate accessibility and active participation through all of our services. We support people who ensure systematic exclusion and marginalisation mainly those with learning disabilities and mental health issues.

Review and Performance

SEEK INVEST ACHIEVE CELEBRATE

MOWLL is a small Liverpool grown organisation dedicated to the rights and social inclusion of people with disabilities, enduring mental health challenges and dementia. Our mission is to provide the best person focussed service to ensure individuals develop socially, personally and professionally.

Principal Office of the Charity

Room G05
The School of Law and Social Justice Building
University of Liverpool
Chatham Street
Liverpool
L69 7ZR

E-Mail: www.mowll.org.uk

1. European Social Fund (ESF) Community Grant/ WEA Liverpool City Region

Art in Motion Project (September 2019-September 2021)

Art in motion was a 48-week project aimed at improving creative skills, health and wellbeing and enhancing knowledge in digital technology and social media. This project was extended by ESF due to COVID 19. Workshops included:

Paintpour

Using the medium of wood and paint, participants created art to sell through online shopping or local craft fairs.

Mosaics in Merseyside

Using the medium of mosaics, participants learnt about the history of mosaics and created art using recycled and used items.

Chocolart

Participants learned the fascinating history of chocolate before creating tasty art products. The workshops provided opportunities for participants to develop good hygiene practice and catering skills. This then enabled them to develop chocolate products from creative ideas through to retail. To consolidate their learning, participants digitally documented their experiences.

Digidrama

This also included sharing their personal experiences of living with a disability. As a result, skills in film and camera composition, social media and online advertising improved.

MOVING ON WITH LIFE & LEARNING LTD

Report of the Trustees
For the year ended 31 December 2020

2. Group Activities during COVID 19

Following national guidance group activities were suspended and our community bases were closed. We did however continue to deliver some of our activities via House Party, Zoom and WhatsApp. This allowed us to provide regular welfare checks with the people we support and enable them to feel included and supported. Activities included twice weekly group chats through House Party and physical maintenance of the garden space outside one of our community bases.

For those beneficiaries who would usually attend group activities and were not digitally included, staff members provided door step or window welfare checks; shopping; prescription collection, dog walking and regular telephone calls.

3. One to One Support during Covid 19

One to One community support was provided consistently throughout the pandemic journey of 2020. Our key workers travelled on public transport, drove or walked the length and breadth of the city to ensure life-line support was provided to our beneficiaries. We are forever thankful to all our key workers, past and present who, despite their own fears of the pandemic, continued with professionalism and empathy.

A VERY BIG THANKYOU TO

Alison Ashton
Sean Colebourne
Joel Fitzgerald
Sky Glover
Kai Jolley
Darryl Joseph
Hollie Kirlew
Jack Lewis
Jonpaul Lowles
Faye Lynch
Codie McBride
Ryan McGuinness
Chelsea Mclauchlan
Linda Murray
Suzanne Ritchie
Owen Fennel Rutherford
Leah Wellings

4. Disability Awareness Training during COVID

Placements for student nurses and doctors were suspended over the course of the pandemic in 2020. Students nurses in their final year were redirected to support in hospital settings and care homes to support the COVID emergency response.

Disability Awareness presentations to School of Nursing, Medicine and Dentistry were either cancelled or continued to be conducted over zoom.

MOVING ON WITH LIFE & LEARNING LTD

Report of the Trustees
For the year ended 31 December 2020

Other

The Covid pandemic has seen 2020 a challenge for us all, personally, professionally and financially. These unforeseen circumstances have impacted on our service delivery, staffing levels and funding opportunities. As an organisation we have had to respond and adapt in order to fulfil our commitments and statutory obligations to our beneficiaries, colleagues, funders and sponsors.

This report will address how MOWLL as a frontline organisation has responded to the pandemic in order to continue delivering our services and activities.

We have continued to diversify our services during this time which could not have been achieved without the commitment and professionalism of our team, supporters and volunteers.

MOWLL is extremely grateful for the financial support we receive from our supporters, donors and funders.

We remain thankful to The University Of Liverpool for their philanthropic and consistent communication during the pandemic lockdown months, especially The Admin Team at the School of Law and Social Justice.

We would like to thank everyone who has supported MOWLL throughout this difficult year and wish you all the very best.

Heidi and Loretta

By Order of the Trustees



I Pierce-Hayes
Trustee

29 October 2021

MOVING ON WITH LIFE & LEARNING LTD

INDEPENDENT EXAMINER'S REPORT TO THE TRUSTEES OF MOVING ON WITH LIFE & LEARNING LTD.

I report to the trustees on my examination of the financial statements of Moving On With Life & Learning Ltd. (the charity) for the year ended 31 December 2020.

Responsibilities and basis of report

As the trustees of the charity (and also its directors for the purposes of company law) you are responsible for the preparation of the financial statement in accordance with the requirements of the Companies Act 2006 (the 2006 Act).

Having satisfied myself that the financial statements of the charity are not required to be audited under Part 16 of the 2006 Act and are eligible for independent examination. I report in respect of my examination of the charity's financial statements carried out under section 145 of the Charities Act 2011 (the 2011 Act). In carrying out my examination I have followed all the applicable Directions given by the Charity Commission under section 145(5)(b) of the 2011 Act.

Independent examiner's statement

I have completed my examination. I confirm that no matters have come to my attention in connection with the examination giving me cause to believe that in any material respect:

1. accounting records were not kept in respect of the charity as required by section 386 of the 2006 Act; or
2. the financial statements do not accord with those records; or
3. the financial statements do not comply with the accounting requirements of section 396 of the 2006 Act other than any requirement that the accounts give a true and fair view which is not a matter considered as part of an independent examination; or
4. the financial statements have not been prepared in accordance with the methods and principles of the Statement of Recommended Practice for accounting and reporting by charities applicable to charities preparing their accounts in accordance with the Financial Reporting Standard applicable in the UK and Republic of Ireland (FRS 102).

I have no concerns and have come across no other matters in connection with the examination of which attention should be drawn in this report in order to enable a proper understanding of the financial statements to be reached.

P R Burns

Paul Burns BSc BFP FCA
Alexander Myerson & Co Limited
Chartered Accountants
Alexander House
61 Rodney Street
Liverpool L1 9ER

Date 29 October 2021

MOVING ON WITH LIFE & LEARNING LTD

Statement of Financial Activities For the year ended 31 December 2020

Summary Income and Expenditure Account

	Notes	Unrestricted £	Restricted £	Total 2020 £	Total 2019 £
Income from:					
Donations and legacies	2	20	-	20	925
Charitable activities	3	213,476	40,425	253,901	244,256
Other trading activities					
Investment income		-	-	-	180
Total income		<u>213,496</u>	<u>40,425</u>	<u>253,921</u>	<u>245,361</u>
Expenditure on:					
Charitable activities	4	<u>246,894</u>	<u>38,433</u>	<u>285,327</u>	<u>287,841</u>
Total expenditure	4	<u>246,894</u>	<u>38,433</u>	<u>285,327</u>	<u>287,841</u>
Net expenditure		(33,398)	1,992	(31,406)	(42,480)
Transfer of funds		(1,712)	1,712	-	-
Total funds brought forward		<u>317,695</u>	<u>44,684</u>	<u>362,379</u>	<u>404,859</u>
Total funds carried forward		<u><u>282,585</u></u>	<u><u>48,388</u></u>	<u><u>330,973</u></u>	<u><u>362,379</u></u>

The charity has no recognised gains or losses other than the results for the year as set out above. All activities of the charity are classed as continuing.

The notes on pages 10 to 19 form part of these accounts.

MOVING ON WITH LIFE & LEARNING LTD

Statement of Financial Activities For the year ended 31 December 2020

Comparative information for the year ended 31 December 2019

Summary Income and Expenditure Account

	Notes	Unrestricted £	Restricted £	Total 2019 £
Income from:				
Donations and legacies	2	925	-	925
Charitable activities	3	212,513	31,743	244,256
Other trading activities		180	-	180
Total income		<u>213,618</u>	<u>31,743</u>	<u>245,361</u>
Expenditure on:				
Charitable activities	4	266,902	20,939	287,841
Total expenditure		<u>266,902</u>	<u>20,939</u>	<u>287,841</u>
Net income/(expenditure)		(53,284)	10,804	(42,480)
Transfer of funds		1,670	(1,670)	-
Total funds brought forward		<u>369,309</u>	<u>35,550</u>	<u>404,859</u>
Total funds carried forward		<u>317,695</u>	<u>44,684</u>	<u>362,379</u>

The charity has no recognised gains or losses other than the results for the year as set out above. All activities of the charity are classed as continuing.

The notes on pages 10 to 19 form part of these accounts.

MOVING ON WITH LIFE & LEARNING LTD

Balance Sheet 31 December 2020

	Notes	2020		2019	
		£	£	£	£
Fixed assets					
Tangible assets	11		-		-
Current assets					
Debtors		-		-	
Cash at bank and in hand		364,227		363,783	
		364,227		363,783	
Creditors					
Amounts falling due within one year	12	33,254		1,404	
Net current assets			330,973		362,379
Total assets less current liabilities			330,973		362,379
Unrestricted funds					
General funds	14		282,585		317,695
Restricted funds					
General funds	15		48,388		44,684
Total funds			330,973		362,379

The company is entitled to the exemption from the audit requirement contained in section 477 of the Companies Act 2006, for the year ended 31 December 2020.

The directors acknowledge their responsibilities for complying with the requirements of the Companies Act 2006 with respect to accounting records and the preparation of financial statements.

The members have not required the company to obtain an audit of its financial statements for the year in question in accordance with section 476.

These financial statements have been prepared in accordance with the provisions applicable to companies subject to the small companies regime.

The accounts on pages 7 to 19 were approved by the Trustees and authorised for issue on 29 October 2021 and signed on their behalf by:-



I Pierce-Hayes
Trustee

Company Registration Number: 6883640

The notes on pages 10 to 19 form part of these accounts.

MOVING ON WITH LIFE & LEARNING LTD

Notes to the Accounts

Year ended 31 December 2020

1. Summary of accounting policies

(a) General information and basis of preparation

Moving On With Life & Learning Ltd. is a company limited by guarantee and a registered charity in England and Wales. In the event of the charity being wound up, the liability in respect of the guarantee is limited to £1 per member of the charity. The address of the registered office is given in the charity information on page 1 of these financial statements. The nature of the charity's operations and principal activities are set out in the Trustees' Report on page 2.

The charity constitutes a public benefit entity as defined by FRS 102. The financial statements have been prepared in accordance with Accounting and Reporting by Charities: Statement of Recommended Practice applicable to charities preparing their accounts in accordance with the Financial Reporting Standard applicable in the UK and Republic of Ireland issued in October 2019, the Financial Reporting Standard applicable in the United Kingdom and Republic of Ireland (FRS 102), the Companies Act 2006 and UK Generally Accepted Accounting Practice.

The financial statements are prepared on a going concern basis under the historical cost convention. The financial statements are prepared in sterling which is the functional currency of the charity and rounded to the nearest £1.

The significant accounting policies applied in the preparation of these financial statements are set out below. These policies have been consistently applied to all years presented unless otherwise stated.

(b) Funds

Unrestricted funds are available for use at the discretion of the trustees in furtherance of the general objectives of the charity and which have not been designated for other purposes.

Restricted funds are funds which are to be used in accordance with specific restrictions imposed by donors or which have been raised by the charity for particular purposes. The cost of raising and administering such funds are charged against the specific fund. The aim and use of each restricted fund is set out in the notes to the financial statements.

(c) Income recognition

All incoming resources are included in the Statement of Financial Activities (SoFA) when the charity is legally entitled to the income after any performance conditions have been met, the amount can be measured reliably and it is probable that the income will be received.

For donations to be recognised the charity will have been notified of the amounts and the settlement date in writing. If there are conditions attached to the donation and this requires a level of performance before entitlement can be obtained then income is deferred until those conditions are fully met or the fulfilment of those conditions is within the control of the charity and it is probable that they will be fulfilled.

Income from charitable activities includes income received under contract or where entitlement to grant funding is subject to special performance conditions and is recognised as earned as the related services are provided. Grant income included in this category provides funding to support performance activities and is recognised when there is entitlement, certainty of receipt and the amounts can be measured with sufficient reliability.

MOVING ON WITH LIFE & LEARNING LTD

Notes to the Accounts

Year ended 31 December 2020

1. Accounting policies (continued)

(d) Expenditure recognition

All expenditure is accounted for on an accruals basis and has been classified under headings that aggregate all costs related to the category. Expenditure is recognised where there is a legal or constructive obligation to make payments to third parties, it is probable that the settlement will be required and the amount of the obligation can be measured reliably. It is categorised under the following headings:

- Costs of raising funds.
- Expenditure on charitable activities.
- Other expenditure represents those items not falling into the categories above.

(e) Support costs allocation

Support costs are those that assist the work of the charity but do not directly represent charitable activities and include office costs, governance costs and administrative payroll costs. They are incurred directly in support of expenditure on the objects of the charity and include project management carried out at the charity's registered office. Where support costs cannot be directly attributed to particular headings they have been allocated to cost of raising funds and expenditure on charitable activities on a basis consistent with use of the resources. Premises and overheads have been allocated on the basis of staff numbers.

Fund-raising costs are those incurred in seeking voluntary contributions and do not include the costs of disseminating information in support of the charitable activities.

The analysis of these costs is included in note 5.

(f) Tangible fixed assets

Tangible fixed assets are stated at cost (or deemed cost) or valuation less accumulated depreciation and accumulated impairment losses. Cost includes costs directly attributable to making the asset capable of operating as intended.

Depreciation is provided on all tangible fixed assets, at rates calculated to write off the cost, less estimated residual value, of each asset on a systematic basis over its expected useful life as follows:

IT equipment - 25% per annum

(g) Debtors and creditors receivable / payable within one year

Debtors and creditors with no stated interest rate and receivable or payable within one year are recorded at transaction price. Any losses arising from impairment are recognised in expenditure.

(h) Provisions

Provisions are recognised when the charity has an obligation at the balance sheet date as a result of a past event, it is probable that an outflow of economic benefits will be required in settlement and the amount can be reliably estimated.

MOVING ON WITH LIFE & LEARNING LTD

Notes to the Accounts

Year ended 31 December 2020

1. Accounting policies (continued)

(i) Operating leases

Rentals payable and receivable under operating leases are charged to the SoFA on a straight line basis over the period of the lease.

(j) Employee benefits

When employees have rendered service to the charity, short-term employee benefits to which the employees are entitled are recognised at the undiscounted amount expected to be paid in exchange for that service.

The charity operates a defined contribution plan for the benefit of its employees. Contributions are expensed as they become payable.

(k) Tax

The charity is an exempt charity within the meaning of schedule 3 of the Charities Act 2011 and is considered to pass the tests set out in Paragraph 1 Schedule 6 of the Finance Act 2010 and therefore it meets the definition of a charitable company for UK corporation tax purposes.

(l) Going concern

The financial statements have been prepared on a going concern basis as the trustees believe that no material uncertainties, including those arising from COVID-19, exist. The trustees have considered the level of funds held and the expected level of income and expenditure for 12 months from authorising these financial statements. The budgeted income and expenditure is sufficient with the level of reserves for the charity to be able to continue as a going concern.

(j) The charity has applied the exemptions available under the SORP and does not include a Statement of Cash Flows on the grounds that it is applying FRS 102 Section 1A.

2. Income from donations and legacies

	Unrestricted	Restricted	Total	Total
	£	£	2020	2019
			£	£
Donations	20	-	20	925
	<hr/>	<hr/>	<hr/>	<hr/>

£925 of the above income in 2019 was attributable to unrestricted funds.

MOVING ON WITH LIFE & LEARNING LTD

Notes to the Accounts

Year ended 31 December 2020

3. Income from charitable activities	Unrestricted £	Restricted £	Total 2020 £	Total 2019 £
Liverpool City Council	213,058	20,160	233,218	203,645
Health Education England	-	5,807	5,807	5,851
Investec	-	-	-	6,991
L Stokes	-	749	749	-
School of Medicine	-	50	50	290
Include me Café	-	-	-	540
Growing Toxeth	-	-	-	100
Other	418	-	418	-
Mayoral Fund	-	7,000	7,000	-
PH Holt Hidden Talents	-	-	-	-
ESF/WEA Art in Montion	-	6,659	6,659	4,757
GTD T Adult Learning	-	-	-	1,740
LCVS community Impact	-	-	-	2,000
Tesco - groundwork grant	-	-	-	2,000
Liverpool Guild of students	-	-	-	1,237
Awards for All I to	-	-	-	9,605
LCVS impact 2019	-	-	-	5,000
Apprentiship additional	-	-	-	500
	<u>213,476</u>	<u>40,425</u>	<u>253,901</u>	<u>244,256</u>

£31,743 of the above income in 2019 was attributable to restricted funds and £212,513 of the above income in 2019 was attributable to unrestricted funds.

4. Analysis of expenditure on charitable activities	Total 2020 £	Total 2019 £
Direct costs	277,244	283,179
Support costs (see note 5)	8,083	4,662
	<u>285,327</u>	<u>287,841</u>

5. Allocation of support costs	Total 2020 £	Total 2019 £
Governance (see note 6)	3,391	1,840
Advertising	-	334
Legal and professional	228	-
Information technology	305	-
Insurance	2,486	1,058
Other	1,673	1,430
	<u>8,083</u>	<u>4,662</u>

MOVING ON WITH LIFE & LEARNING LTD

Notes to the Accounts

Year ended 31 December 2020

6. Governance costs	2020	2019
	£	£
Independent examiners	600	1,500
Accountancy	2,791	340
	<u>3,391</u>	<u>1,840</u>
7. Net income/(expenditure) for the year	Total	Total
	2020	2019
This is stated after charging:	£	£
Depreciation of tangible fixed assets	-	-
Surplus of disposal of tangible fixed assets	-	-
Independent examination fees	600	1,500
Operating lease rentals	-	-
	<u>-</u>	<u>-</u>
8. Staff costs and numbers	Total	Total
	2020	2019
	£	£
Salaries and wages	197,458	151,286
Social security costs	11,693	13,212
Pension costs	16,823	7,644
	<u>225,974</u>	<u>172,142</u>
The average number of employees (based on full time equivalents) during the year was as follows:	2020	2019
	Number	Number
Total	7	7
	<u>7</u>	<u>7</u>

No employees received remuneration in excess of £60,000 per annum.

9. Trustees' and key management personnel remuneration and expenses

The chief executive who is a trustee received a remuneration during the year of £44,879 (2019: £Nil). No trustee was reimbursed any expenses (2019: £Nil).

10. Taxation

The company is exempt from corporation tax on its charitable activities.

MOVING ON WITH LIFE & LEARNING LTD

Notes to the Accounts Year ended 31 December 2020

11. Tangible fixed assets	Fixtures and fittings £	Total £
Cost		
At 1 January 2020 & 31 December 2020	3,399	3,399
Depreciation		
At 1 January 2020 & 31 December 2020	3,399	3,399
Net book value		
At 31 December 2020	-	-
At 31 December 2019	-	-

12. Creditors: Amounts falling due within one year	2020 £	2019 £
Accruals and deferred income	33,254	1,404
	33,254	1,404

13. Members liability

The company is limited by guarantee and has no share capital. Every member of the charity undertakes to contribute to the assets of the charity, in the event of being wound up while he or she is a member or within one year of ceasing to be a member for debts and liabilities of the charity contracted before he or she ceases to be a member, such amount as may be required not exceeding £1.

14. Unrestricted funds	As at 1 January 2020 £	Income £	Expenditure £	Transfer £	As at 31 December 2020 £
General fund	227,695	213,496	(246,894)	(1,712)	192,585
Designated fund	90,000	-	-	-	90,000
	317,695	213,496	(246,894)	(1,712)	282,585

MOVING ON WITH LIFE & LEARNING LTD

Notes to the Accounts Year ended 31 December 2020

14. Unrestricted funds (continued)

Comparative information in respect of the preceding period is as follows:

	As at 1 January 2019 £	Income £	Expenditure £	Transfer £	As at 31 December 2019 £
General fund	279,309	213,618	(266,902)	1,670	227,695
Designated fund	90,000	-	-	-	90,000
	<u>369,309</u>	<u>213,618</u>	<u>(266,902)</u>	<u>1,670</u>	<u>317,695</u>

15. Restricted funds

	As at 1 January 2020 £	Income £	Expenditure £	Transfer £	As at 31 December 2020 £
CCG 2018	-	-	(1,341)	1,341	-
LCVS Jo Cox	-	-	(360)	360	-
Fresh/Santander	4,465	-	(3,201)	-	1,264
Health Education NHS England	8,050	5,807	-	-	13,857
HOPCC hate Crime Ambassadors	454	-	-	-	454
First Utility Volunteer project	408	-	-	-	408
School Of Medicine	4,976	50	(12)	-	5,014
Mayoral Fund	-	7,000	(7,000)	-	-
PH Holt Hidden Talents	38	-	-	-	38
CCG Engagement	8,505	-	-	-	8,505
Project no 2013 ESF Art in Motion	3,808	6,659	(6,293)	-	4,176
Adult Learning Fund	1,560	-	(1,350)	-	210
LCVS	1,610	-	-	-	1,610
Tesco	2,000	-	(343)	-	1,657
Awards For All I to I	3,310	-	(3,261)	-	47
LCVS/Duncan	-	-	-	-	-
Norman/Community Impact	5,000	-	(5,000)	-	-
Apprenticeship Grant	500	-	(500)	-	-
HM LCC COP	-	1,040	(380)	-	660
VO LCC COP	-	4,120	(2,450)	-	1,670
City Fund	-	5,000	(5,000)	-	-
Business grant relief LCC	-	10,000	(1,182)	-	8,818
L Stokes shopping	-	749	(760)	11	-
	<u>44,684</u>	<u>40,425</u>	<u>(38,433)</u>	<u>1,712</u>	<u>48,388</u>

MOVING ON WITH LIFE & LEARNING LTD

Notes to the Accounts

Year ended 31 December 2020

15. Restricted funds (continued)

Comparative information in respect of the preceding period is as follows:

Restricted funds	As at 1	Income	Expenditure	Transfer	As at
	January 2019				31 December
	£	£	£	£	2019
					£
CCG 2018	1,397	-	-	(1,397)	-
LCVS Jo Cox	3,170	5,851	(971)	-	8,050
Postcode lottery Ukench	3,096	-	(3,153)	57	-
HOPCC hate Crime Ambassadors	454	-	-	-	454
First Utility Volunteer project	408	-	-	-	408
CCG engagement	8,505	-	-	-	8,505
School Of Medicine	4,686	290	-	-	4,976
Ellie Baker	271	-	(268)	(3)	-
Fresh event	5,581	-	(1,116)	-	4,465
LCVS Jo Cox Fund	327	-	-	(327)	-
Skelton Bounty	2,175	-	(2,175)	-	-
Mayoral fund	480	-	(480)	-	-
PH Holt Hidden Talents	5,000	-	(4,962)	-	38
ESF/WEA Art in Motion	-	4,757	(947)	-	3,810
GTDT Adult learning	-	1,740	(180)	-	1,560
LCVS Community Impact	-	2,000	(390)	-	1,610
Tesco - groundwork grant	-	2,000	-	-	2,000
Awards for All I to	-	9,605	(6,297)	-	3,308
LVCS impact 2019	-	5,000	-	-	5,000
Apprenticeship additional	-	500	-	-	500
	<u>35,550</u>	<u>31,743</u>	<u>(20,939)</u>	<u>(1,670)</u>	<u>44,684</u>

CCG

Funds received to deliver Keys4Health Programme.

LCVS Jo Cox

With this grant MOWLL was able to employ an experienced gardener facilitator and resources to develop a dilapidated garden space. **Growing Toxteth** promoted social integration and growing/gardening skills.

Fresh/Santander

Funding from the fresh event has been used to purchase equipment and volunteers for the catering/cooking workshops at MOWLL.

Health Education NHS England

This fund is allocated for nursing student placements at MOWLL for 1st and 2nd year nursing students from University of Liverpool, Edge Hill and John Moores University. Students spend between 2-5 weeks on placement and receive volunteer expenses for food and travel whilst on placement.

HOPCC hate Crime Ambassadors

This funding provided opportunities for MOWLL to work with young people to raise awareness of hate crime and how to report incidents.

MOVING ON WITH LIFE & LEARNING LTD

Notes to the Accounts

Year ended 31 December 2020

15. Restricted funds (continued)

First Utility Volunteer project

This funding provided opportunities to train Volunteer Community Champions to develop their volunteer and other skills to lead toward voluntary and paid work.

School Of Medicine

Thanks to funding the placement fees. MOWLL were able to purchase updated accessible technology to use within different projects.

Mayoral Fund

Funding for exercise and sports activities to improve health and wellbeing.

PH Holt Hidden Talents

Funding towards the delivery costs and resources for an arts project.

CCG Engagement

This funding provided opportunities to measure beneficiaries health and wellbeing, set targets and provide opportunities for individuals to get involved in sport related and wellbeing activities. Information and data was collected for CCG research.

Project no 2013 ESF Art in Motion

Funding for workshops to improve employability and digital skills in arts and craft.

Adult Learning Fund

Funding to deliver cooking and gardening sessions at John Archer Hall.

LCVS

Funding to enhance kitchen space and install a commercial cooker at John Archer Hall.

Tesco

Funding for generic projects at MOWLL including sport and exercise sessions.

Awards For All I to I

Grant awarded for personal coaching sessions to improve people's confidence and employability.

LCVS/Duncan Norman/Community Impact

Additional funding to enhance kitchen space and install a commercial cooker at John Archer Hall.

Apprenticeship Grant

This grant was allocated for an apprentice over a 2 year period at MOWLL.

HM LCC COP

This is Court of Protection funding allocated to MOWLL for one of the beneficiaries we support.

VO LCC COP

This is Court of Protection funding allocated to MOWLL for one of the beneficiaries we support.

City Fund

City funds grant was allocated to pay for the development of a kitchen space in a community hub that we used, John Archer Hall.

Business grant relief LCC

This fund was granted to MOWLL during the pandemic.

L Stokes shopping

This was money allocated to MOWLL by the Stokes Family to support shopping and other expenses for this individual.

MOVING ON WITH LIFE & LEARNING LTD

Notes to the Accounts

Year ended 31 December 2020

16. Analysis of net assets between funds

	Restricted funds £	Unrestricted funds £	Unrestricted designated funds £	Total £
Tangible assets	-	-	-	-
Current assets	48,388	225,839	90,000	364,227
Current liabilities	-	(33,254)	-	(33,254)
Net assets at 31 December 2020	48,388	192,585	90,000	330,973

Comparative information in respect of the preceding period is as follows:

	Restricted funds £	Unrestricted funds £	Unrestricted designated funds £	Total £
Current assets	44,684	229,099	90,000	363,783
Current liabilities	-	(1,404)	-	(1,404)
Net assets at 31 December 2019	44,684	227,695	90,000	362,379