



Deaf Active

Report of the Trustees and Financial Statements for the
Financial Year ended 31st March 2023

Charity Registration Number 1129601

**DEAF ACTIVE
CONTENTS OF THE FINANCIAL STATEMENTS
FOR THE YEAR ENDED 31 MARCH 2023**

CONTENTS	Page
Contents	2
Charity Information	3
Report of the Trustees	4 - 17
Report of the Independent Examiner	18
Statement of Financial Activities	19
Balance Sheet	20
Notes to the Financial Statements	21 - 27

REFERENCE AND ADMINISTRATION DETAILS

Charity Name

Deaf Active

Registered Charity Number

1129601

Registered Office

The Joseph Lappin Centre
Mill Lane
Old Swan
Liverpool
L13 5TF

Trustees

Stacey Robinson (Chair)
Hayley Thornton
Anthony Rice

Senior Management Team

Thomas Maher (Joint Chief Executive)
Katie Godfrey (Joint Chief Executive)

Bankers

NatWest
Old Swan Branch
509 Prescott Road
Liverpool
L13 3BZ

Independent Examiner

Counting for Communities Ltd
16 Holmwood Drive
Liverpool
L37 1PQ

**DEAF ACTIVE
TRUSTEES' ANNUAL REPORT
FOR THE YEAR ENDED 31 MARCH 2023**

The trustees present their report and the accounts for the year ended 31 March 2023.

The accounts have been prepared in accordance with the accounting policies set out in note 1 to the accounts and comply with The Charities Act 2011 and the 'Accounting and Reporting by Charities: Statement of Recommended Practice applicable to charities preparing their accounts in accordance with the Financial Reporting Standard applicable in the UK and Republic of Ireland (FRS 102) (effective 1 January 2019)'.

STRUCTURE, GOVERNANCE AND MANAGEMENT

Governing Document

Deaf Active is a non-profit association and is controlled by its governing document, a written constitution adopted on 1 April 2008 as amended on 21 September 2012.

Organisational Structure

Deaf Active is a registered charity with The Charity Commission, Charity Number 1129601. It is managed by a Committee of trustees who regularly meet.

Risk Management

The Trustees have a duty to identify and review the risks to which the Charity is exposed and to ensure appropriate controls are in place to provide reasonable assurance against fraud and error. The Trustees are aware of the need to strengthen the committee and are looking to appoint new trustees.

PUBLIC BENEFIT

When planning and programming activities for the local residents the Trustees of Deaf Active are mindful of the Charity Commission's guidelines on Public Benefit.

OBJECTIVES AND ACTIVITIES

The Objects of the charity are to advance in life and relieve the needs of deaf children, young people, children of deaf adults, hearing family members, friends and peers.

These objects are met through the provision of the following activities:

- (a) The provision of recreational and leisure time activities provided in the interest of social welfare, designed to improve their conditions of life;
- (b) Providing support and activities which develop their skills, capabilities that they may grow to full maturity as individuals and members of society.
- (c) To help children and young people, especially but not exclusively through leisure time activities, so as to develop their capabilities that they may grow to full maturity as individuals and members of society.
- (d) To act as a resource for children and young people up to the age of 19 living in Merseyside by providing advice and assistance and organising programmes of physical, educational and other activities.
- (e) Advancing in life and helping children and young people by developing their skills, capacities and capabilities to enable them to participate in society in independent, mature and responsible individuals.
- (f) Advancing education;
- (g) Relieving unemployment;
- (h) Providing recreational and leisure time activity in the interests of social welfare for people living in the area of benefit who have need by reason of their youth, age, infirmity or disability, poverty or social and economic circumstances with a view to improving the conditions of life of such persons.

ACHIEVEMENT AND PERFORMANCE

We helped

People through
our service

We worked with

32 Volunteers

Volunteers who donated

2592 hours

To help us deliver our services

527

Children & Young People

Accessed to youth and play services

Taught sign language
to over

1800

In primary school

We provided work
placements for

10 Students

Which contributed just over

2736 hours

1127

Accessed Deaf Awareness training, sign language courses.

10,800

Accessed our online resources including social media, and
website.

Reaching **78,000!!!**

24,000 downloaded the Apps



Our Mission

We are here to make a positive difference to the people we support, promote and advance the lives of Deaf and Hearing people by providing innovative services that empower people to control their own lives.

Our specialist service areas include Play & Youth Service, Volunteering, British Sign Language Training and Coaching, Residential Activities, Language Coaching, Sports Coaching, Personal Training and Providing Health and Wellbeing activities. Our work is funded through fees from local authority contracts, grants, individual funders and fundraising activities.

Review of Activities

The objectives of the charity as set out in the Constitution are to Support, Promote and Enhance the Lives of Deaf and Hearing people.

The Trustees of and those therein employed with Deaf Active aim to reduce social and cultural isolation faced by deaf people and are committed to delivering high levels of participation by way of reversed integration and provide fully inclusive service provision throughout all its activities. Deaf Active and its beneficiaries suffered greatly with regards to the COVID-19 pandemic in terms of being able to deliver face-to-face activities. The social and cultural isolation that Deaf people feel throughout their day to day life was further compounded by the rapid spread of the pandemic and the barriers to everyday living increased along with negative impacts upon mental and physical health and well-being.

Over the past year, with all restrictions now lifted we have concentrated on delivering our services face to face but continuing to move forward with our strategy and vision of our digital platform.

**DEAF ACTIVE
TRUSTEES' ANNUAL REPORT - CONTINUED
FOR THE YEAR ENDED 31 MARCH 2023**

These included;

- Continuing to deliver our great services and meeting the needs of the community, listening to what they want, holding steering groups and giving them the access and encourage them to have their say.
- Deaf Active placed applications for The Talent Fund, John Moore's Foundation, Four Acre Trust and Awards for All. These funds will support our play and youth service and allowing us to provide experiential trips and residential. Having additional funding for engaging activities allows us to provide activities that they would otherwise be unable to afford.
- Building a business arm to help generate income to sustain our services so we are not solely reliable on funding.
- Offer ongoing training to our staff to ensure our service users receive consistently high-quality support.
- Identifying new partnerships and relationships that allow us to seek new contract work and new modes of working, in collaboration with other third sector organisations
- Investment in our primary coaching package in the education environment
- Investment in our website and other digital platforms used.
- Generating more income enabling us to sustain the employment of the team of staff.
- Raising our profile
- Raising Deaf Awareness. Liaising with organisations to ensure they have an understanding of Deafness and how to ensure their services and organisation is accessible.
- Fitness and wellbeing sessions are delivered throughout the week to support the community and give them access to fitness coaches and personal trainers for guidance.
- This year has seen a huge success with our partnership with MSDP to provide Fitness sessions, assessments and support for Deaf peoples Health and Wellbeing. Although this was a 1 year funding we will continue to work in partnership with MSDP and provide this support through our community sessions and digital platform.
- We continue to deliver our HANDS project, teaching sign language in schools, and we teach over 1200 primary aged children British Sign Language, and we remain overwhelmed with the amount of interest and demand this project attracts. These sessions have now returned to delivery at the schools and continues to be extremely successful.
- Employability and Training project is making such a positive impact on Deaf young people's lives. Being able to access Deaf Active to train and improve their skill set is proven to be a huge success. These beneficiaries support the charities growth and opportunity to support more young people within the community. The young people from the Stepping Stones project are inspirational and fantastic role models for the younger generation.

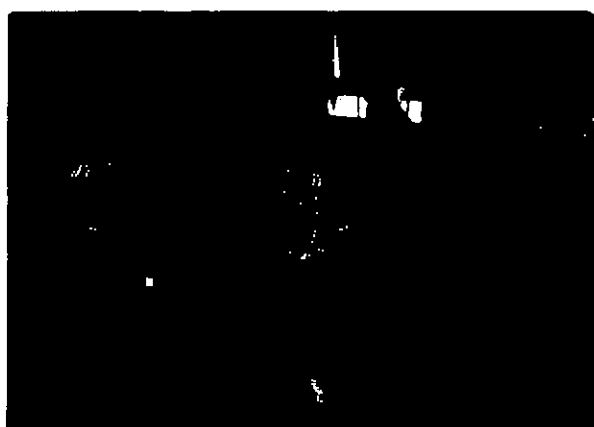
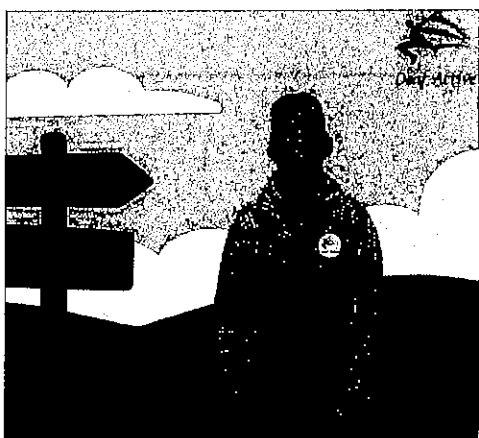
Deaf Active have continued to provide formal adult education by way of accredited Sign Language with Signature this year. The team are now providing Levels 1,2 and 3 and working with many organisations to provide tailor made courses and Deaf Awareness Workshops

During Deaf Awareness week we worked in partnership with Bluecoat to have a Drop In based in their building in Liverpool City Centre for anyone who wanted to learn sign language, gain awareness, and speak with any of the charity members for support. This was a huge success and they have asked us to deliver the same service next year.

We arranged a Family Roller Disco, this gave children, young people and families the opportunity to come along and meet others. There are so many families who feel isolated and are not aware of the community they have. These events help us support those families.

Pride of Deaf Active: We hosted our first event at the Devonshire Hotel and had over 180 people attended. This event was through the Henry Smith Project and an opportunity to invite 30 organisations who will offer advice and guidance. This event was also the chance to celebrate the success of the young people and the distance they had travelled, the skills they have gained and highlight all their achievements.

The Hub: Our online content continues to develop and the team from Stepping Stones create fantastic resources for those wanting to learn sign language and interact with fun activities and games.



Our website continues to improve, and we have invested this year to change the platform in which it is set up on and this will give us more scope and enable us to be more accessible and look more professional. We have worked closely with MADM getting the best advice and support along our journey. Social media helps us advertise and raise the profile of our charity and share the ongoing successes. The online hub is a big success through social media and has over 2000 visitors to the page. Deaf Active continue to grow and develop our iPhone and Android App BSL Hands one, and have successfully launched Hands Two, and BSL Level One - Part 1, 2 and 3, giving children, young people and adults the chance to learn anytime anywhere. Having Monday.com and improving the website has enabled us to be more organised and efficient using this technology ensures booking systems for courses, play and youth bookings are run much better.

Progress Report

This year is no different from any other and we have seen growth and progression due to the team's hard work and determination. The team are thriving and as the pandemic began to be a distant memory the team were able to focus on all service returning to its original set up but also with the digital platforms we had created. This was in our future plans but having the pandemic this happened sooner.

Through delivery of our services, we have once again been able to far exceed our targets relating to our projected outcomes. The team continue to work hard to improve delivery, operationally and structurally. Although we constantly review, monitor and evaluate to help us improve our outcomes and goals we are extremely pleased in the direction we are heading. The team have unique skill set and passion that allows us to grow and develop continuously.

Sign Language

This element of the project is delivered in a fun, unique, and interactive way and includes awareness raising for hearing people as to how to best communicate in a culturally appropriate way with Deaf people. Participants are being introduced to a particular skill set that sets them on a steady path to their goal in becoming bi-lingual, which in turn supports the project's/charity's efforts to reduce cultural barriers locally.

Sign Language is taught in different ways to meet the needs of the target audience and we have many different programmes so we can deliver this service to all.

During the past 12 months we have taught in over 60 schools allowing 1200 children and young people to develop a new skill set. In addition to this projected outcome Deaf Active delivered Deaf Awareness workshops which saw 410 adults from various professions/organisations (retail, local council, community groups, training professions and other organisations) to come together to participate, engage, understand, and meet the needs of the Deaf community leading to reduced isolation.

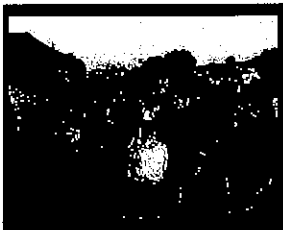
Feedback from a number of events was nothing but positive with organisations wanting us to engage more often with them in order to improve inclusive service practice and become Deaf Aware. This positive feedback has provided us with the confidence, drive and connections to move forward with additional partners with our goal to deliver workshops and training on a grander scale.

Our new digital skills allowed Deaf Active and its now tech savvy team to launch ideas such as Deaf Active TV, Sign Time, teaching a whole network of new people sign language through song. The views and comments on social media show how much they enjoy the content and are in full support of our charity.

Following on from popularity of our Hub and social media we set up the sign and play sessions for families. This has been a great success and we regularly have minimum of 10 babies attend weekly. We have also visited a variety of stay and play organisations to deliver sign language to their centre.

Youth & Play Service & Activities

Our youth club setting provides Deaf and Hearing Children and Young People with access to a variety of activities and projects. We offer Boxing, Football Coaching, Zumba, Sign Language, arts and crafts, cooking, film club, homework support, project specific activities, sports camp and downtime. Now restrictions had lifted we were able to get back into centre based delivery, however many still wanted to have this access from home. The team continue to deliver this through the digital platform once a week. This allows Deaf and hearing young people connect with others not just in Merseyside or as local as Old Swan, they can meet others via Zoom and learn peoples different cultures and backgrounds. With the additional funding we are then able to arrange residential and trips to meet up with the groups. The young people have embarked on camping trips this year and for many this being their first time. They planned everything, from budgeting, purchasing equipment, booking accomadation, cooking and assembling of tents. This project was a huge success and also included a visit from Fuzzy Duck productions who filmed the day and this is now used at the Eureka! Museum.



We have built a great partnership with Venus and regularly hire their minibus so we can collect the Deaf children and young people from Knotty Ash primary school where they have a DRB. Having access to the minibus has also gave us the opportunity to plan experiential activities as well as connecting with other Deaf Youth Centres.

The young people organisaed a family event at the Invisible Wind Factory and were keen to hold a Roller Disco for families. They wanted the event to encourage families to come along and try something new, have fun, meet new friends and hold a comfortable place for the Deaf community and those who are new to the community where they can seek support and advice.

Having this service enables young people to develop their social and emotional needs and allows our experienced team to work with them to facilitate their personal, social and educational development. Confidence and independence continue to grow and develop due to having access to such a diverse group of activities, with focus on reducing isolation and encouraging social interaction.

Deaf Active remains resolute in using the method of reversed integration within every aspect of its service provision and it is to this end that sign language is being promoted and learnt as a developing skill set with it being showcased and promoted at events and social gatherings.

Other projects children and young people have participated in include; 20 stories High Theatre Research and Development, Sign Time, The Hub, Supporting the Homeless, Take the Lead Programme, Stepping Stones, Roller Disco Family Event, Christmas and Halloween Party and many more.

Having funding from additional funders has also gave us the opportunity book workshops whereby the young people get to experience sessions they may not necessarily have taken part in. This included; Hairdressing, Facepaints, balloon artist, Graffiti, Breakdance and many more.



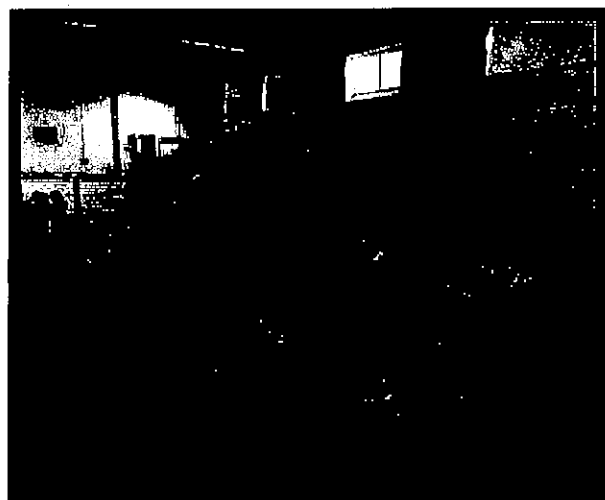
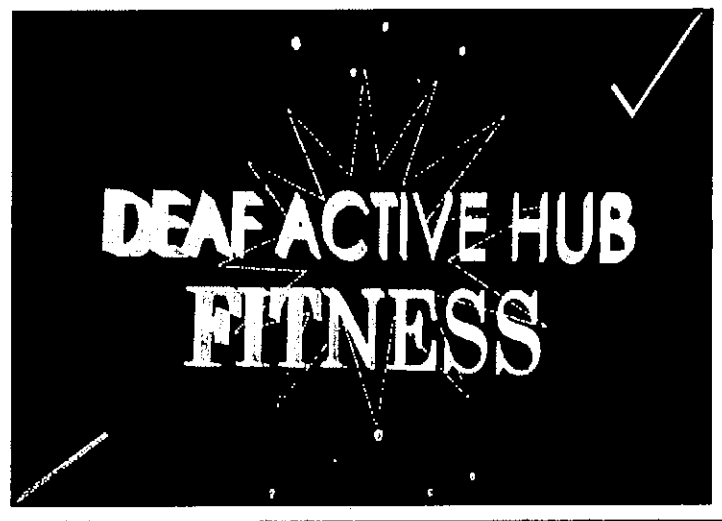
Active Fitness

Following the partnership developed last year with SEA and delivering fitness sessions for their clients and carer staff, this opportunity has developed and we partnered with MSDP to apply for funds to deliver this for a full year to support the Deaf community post Covid and encourage physical activity within their home, workplace and social setting. Continuing with creating online content as the digital interactive experience played an extremely important role in the day to day connectedness of the Deaf community, and also allowing access for those at home and unable to visit fitness sessions.

We have built fantastic relationships with the parents/carers of the children and young people and enjoy positive feedback on an almost daily basis. We ensure there is clear, open and honest communication with parents/carers ensuring they can be as equally honest and open with us when sharing any concerns or comments about our services, offering feedback in several ways to help support this: feedback form, comments box, face to face. Having invested in Monday.com allows us as a team to record the data and use this in a more effective way to analyse the impact of the services. Funding from Life Rooms also gave us the opportunity to network with many organisations and discuss potential partnership opportunities with others.

Active Fitness were also able to provide 5 fitness sessions per week and also continue with the digital fitness sessions, and return to offering personal trainer sessions throughout the week.

These types of sessions were important to enable people young and old who did not have any contact with other members of the family; were unable to understand to seek out classes on social media without communication barriers, or who wanted to meet with their community and had no other platform to do so.



Events

We were shortlisted for the Signature Hall of Fame and a great celebration of the night allowed us to celebrate our successes and once again come together and reflect on the hard work that has taken place.



Christmas festivities allowed us to reflect upon our practices and once again respond to a request for Santa clause to bring a signed message to Deaf children and young people. We were able to use are newly acquired skills to provide a digital message in sign language with heart felt feedback coming from families of this unique offer.

Pride of Deaf active

Our first event was a proud moment for Deaf Active and a fantastic opportunity to not only celebrate the success of our young people, showcase their skills and development over the year but also the chance for the staff to proudly present the amazing work they have achieved and the lives they have changed. This event was also the perfect opportunity for families and the community to gain access to organisations, ask questions, learn something new and network.

We hosted our first event at the Devonshire Hotel and had over 180 people attended. This event was through the Henry Smith Project and an opportunity to invite 30 organisations who will offer advice an guidance. This event was also the chance to celebrate the success of the young people and the distance they had travelled, the skills they have gained and highlight all their achievements.



Organisations and Stakeholders

Over this past year we have grown from strength to strength focusing on building our profile, networking and building relationships with organisations and stakeholders. We continue to hold a great reputation with the schools across Merseyside and are extremely proud of the achievements and outcomes derived from the project. Additional projects that have developed through our partnership work with Liverpool Council, Priority Youth, Merseyside Expanding Horizons, MSDP are helping us expand our service delivery.



Training

We want to make sure the team have continued professional development and we have had organisation come along and deliver workshops to ensure staff are up to date and relevant. Training Workshops include; First Aid, Challenging Behaviour, Children's Rights, Cyber Safety, Safeguarding, Mental Health and Wellbeing, Loan Shark, Domestic Violence, Choose Life, Workshop Facilitation.

Over the last year our team and those around us have been lucky enough to have received a whole series of vocational based training including, some of our team training as Personal Trainers, Class-based Fitness Instructors, PAT testing and Qualified Sign Language Tutors in order to work toward a degree of sustainability. We will be drawing upon these newly acquired skills and the skill set of our current team to charge for activities outside of this project that will provide us with a more conceptual approach to becoming self-sustainable.

Volunteers

Our Stepping Stones program gives us the opportunity to have 10 Deaf young people each year join our team and we are pleased to have been able to support them and provide them with either new skill-set and have that skill-set support us in progressing through a number of projects. We have seen some young volunteers who have wanted to come along as part of their Duke of Edinburgh Award and continued to want to support the charity and our delivery, parents of the children and young people have been particularly keen on helping, others who are extremely keen on becoming part of the team, bringing lots of enthusiasm and energy. 2 particular volunteers who have continued to dedicate time to deliver fitness and wellbeing classes and Personal Training help us to promote and sustain classes encouraging parents/carers to use the service and access more of the services we have available to the family unit as a whole. As previously reported, we have been able to support a significant amount of parent/carer/adults as a direct result of the volunteering opportunities offered by our funded lottery project.

ESF

Following on from last years ESF funding that allowed us to support NEET (Not in Education, Employment or Training) young people to participate in the project to learn Level 1 and 2 in BSL. Five of the group have continued to volunteer with the project and continue shadowing staff and are keen to remain with Deaf Active and went onto complete their Level 3. These young people have since gone onto to secure employment as Communication Support Worker and continue to support the charity.

Future Plans

The Deaf Active team have discussed, at length, ways in which we are able to promote and enhance services already being provided and how to derive an income from those services. The following services will generate an income:

HANDS – the very popular Hands project is embedded into the curriculum of a substantial amount of schools throughout Merseyside. In preparation for funding coming to an end for a service that has been delivered for free for many years, a consultation went ahead in order to identify which schools would be willing to pay for the service and at what price. Schools settled on a fee of £300 for 10 half hour sessions. This has the potential of generating £13,500per annum.

Active Fitness – Active Fitness is another extremely popular service that is able to generate an income. There are 5 classes per week which will be charged at £3 per session and Personal Training sessions that will be charged at £10 per half hour session. This has the potential to generate an income of £18,000 per annum and early signs suggest that this is a conservative figure. Post Covid we have continued with our online sessions as this was a popular demand by the community and also for our Deaf community who may be at home or are unable to attend the centre based sessions.

British Sign Language Level 1 & 2 - Great inroads have been made in terms of generating an income through teaching accredited sign language. The training of 2 other team members will allow this income to flourish and grow in future years with potential income of £22,500 per annum. Improved links with other 3rd Sector and Statutory organisations has made demand for these accredited courses high. At the beginning of 2023 we introduced a Level 3 class and which had great interest. The tutors are enrolled onto training to ensure they are equipped with the correct skill set to teach this course.

**DEAF ACTIVE
TRUSTEES' ANNUAL REPORT - CONTINUED
FOR THE YEAR ENDED 31 MARCH 2023**

Grants – Funding applications are submitted on a regular basis for new and existing projects. We are in the middle of all our funding projects and is a great time to look at what we have, what works well, and where we would like to go.

Funding will be submitted as and when the local/regional grant making officers allow us to. Other smaller applications are submitted to support the existing services and/or generate new services. This past year we were successful in achieving smaller grants which will has helped us improve the play and youth service and be able to offer experiential activities. We have also been successful in being awarded funds for a minibus which is a great help with regular pick ups of the Deaf young people who attend Knotty Ash Primary School.

DEI (Deaf Education Instructors) – this unique service allows those Deaf children and young people who are struggling in educational establishment to have additional support from a native sign language user who have lived experience and who can provide the types of support that interpreters and teachers are unable to. We have been in partnership with St Vincents School and Bank View to support Deaf young people with their educational needs.

It is with massive thanks to the following grant that Deaf Active have been able to continue their services and supporting vulnerable Deaf children and young people:

Steve Morgan Foundation, The Big Lottery, Children In Need, Sport England, Liverpool City Council, Priority Youth Project. Tudor Trust, The Henry Smith Foundation, The Four Acre Trust, The Talent Fund, ASDA.

FINANCIAL REVIEW

Reserves Policy

The Charity holds unrestricted funds for the purpose of supporting its charitable objectives and activities.

Where grant income and other incoming resources are received and designated for a specific project, restricted funds are created with incoming resources and resources expended in respect of that project being allocated to the fund.

STATEMENT OF TRUSTEES' RESPONSIBILITIES

The trustees are responsible for preparing the accounts in accordance with applicable law and United Kingdom Generally Accepted Accounting Practice.

Law applicable to charities in England and Wales requires the trustees to prepare accounts for each financial year which give true and fair view of the fund's financial activities during the year and of its financial position at the end of the year.

In preparing accounts giving a true and fair view, the trustees should follow best practice and:

- select suitable accounting policies and then apply them consistently;
- make judgements and estimates that are reasonable and prudent;
- state whether applicable accounting standards and statements of recommended practice have been followed subject to any departures disclosed and explained in the accounts;
- prepare the accounts on the going concern basis unless it is inappropriate to presume that the fund will continue in operation

The trustees are responsible for keeping proper accounting records which disclose with reasonable accuracy at any time the financial position of the fund and enable them to ensure that the accounts comply with the applicable law. They are also responsible for safeguarding the assets of the fund and hence for taking reasonable steps for the prevention and detection of fraud and other irregularities.

On behalf of the trustees:



.....
Stacey Robinson – Trustee

31/01/24

.....
Date

DEAF ACTIVE

REPORT OF THE INDEPENDENT EXAMINER TO THE TRUSTEES OF DEAF ACTIVE

I report on the accounts for the year ended 31 March 2023 which are set out on pages 19 to 27.

Respective responsibilities of trustees and examiner

The charity's trustees are responsible for the preparation of the accounts. The charity's trustees consider that an audit is not required for this year under section 144(2) of the Charities Act 2011 (the Charities Act) and that an independent examination is required.

It is my responsibility to:

- examine the accounts under section 145 of the Charities Act,
- to follow the procedures laid down in the General Directions given by the Charity Commission under section 145(5)(b) of the Charities Act, and
- to state whether particular matters have come to my attention.


Basis of the Independent examiner's report

My examination was carried out in accordance with the General Directions given by the Charity Commission. An examination includes a review of the accounting records kept by the charity and a comparison of the accounts presented with those records. It also includes consideration of any unusual items or disclosures in the accounts, and seeking explanations from the trustees concerning any such matters. The procedures undertaken do not provide all the evidence that would be required in an audit, and consequently no opinion is given as to whether the accounts present a 'true and fair view' and the report is limited to those matters set out in the statement below.

Independent examiner's statement

In connection with my examination, no matter has come to my attention:

1. which gives me reasonable cause to believe that, in any material respect, the requirements:
 - a. to keep accounting records in accordance with section 130 of the Charities Act; and
 - b. to prepare accounts which accord with the accounting records and comply with the accounting requirements of the Charities Acthave not been met; or
2. to which, in my opinion, attention should be drawn in order to enable a proper understanding of the accounts to be reached.

Signed: 

Date: ...31/01/24.....

Name: Stephen Leonard
Professional qualification: BA, FCCA
Counting for Communities Ltd
16 Holmwood Drive
Liverpool
L37 1PQ

**DEAF ACTIVE
STATEMENT OF FINANCIAL ACTIVITIES
FOR THE YEAR ENDED 31 MARCH 2023**

		2023 Unrestricted Funds £	2023 Restricted Funds £	2023 Total Funds £	2022 Total Funds £
	Note				
INCOMING RESOURCES					
Incoming & endowments from:					
Donations and legacies	2	21,557	-	21,557	6,989
Charitable activities	3	-	257,556	257,556	254,951
Other trading activities	4	32,051	93,546	125,597	69,520
Investments	5	-	-	-	-
Total Income		53,608	351,102	404,710	331,460
RESOURCES EXPENDED					
Raising funds		-	-	-	-
Charitable activities	6	3,548	364,204	367,752	276,851
Total expenditure		3,548	364,204	367,752	276,851
Net incoming / (outgoing) resources before transfers		50,060	(13,102)	36,958	54,609
Transfer between funds	13	-	-	-	-
Net incoming / (outgoing) resources for the year		50,060	(13,102)	36,958	54,609
RECONCILIATION OF FUNDS					
Total funds brought forward		102,014	88,396	190,410	135,801
TOTAL FUNDS CARRIED FORWARD		152,074	75,294	227,368	190,410

**DEAF ACTIVE
BALANCE SHEET
FOR THE YEAR ENDED 31 MARCH 2023
Charity Number: 1129601**

	Note	2023 Unrestricted Funds £	2023 Restricted Funds £	2023 Total Funds £	2022 Total Funds £
FIXED ASSETS					
Tangible assets	9	5,688	1,899	7,587	10,760
CURRENT ASSETS					
Debtors	10	-	-	-	-
Cash at bank and in hand	11	146,386	79,494	225,880	186,107
		<u>146,386</u>	<u>79,494</u>	<u>225,880</u>	<u>186,107</u>
CREDITORS					
Amounts falling due within one year	12	-	(6,099)	(6,099)	(6,457)
NET CURRENT ASSETS		<u>146,386</u>	<u>73,395</u>	<u>219,781</u>	<u>179,650</u>
TOTAL ASSETS LESS CURRENT LIABILITIES		<u>152,074</u>	<u>75,294</u>	<u>227,368</u>	<u>190,410</u>
FUNDS					
Unrestricted funds	13			152,074	102,014
Restricted funds				75,294	88,396
TOTAL FUNDS				<u>227,368</u>	<u>190,410</u>

Approved by the Trustees and signed on their behalf:

.....
Stacey Robinson – Trustee

31.1.24
.....
Date

1. ACCOUNTING POLICIES

Accounting Convention

The financial statements have been prepared under the historical cost convention and in accordance with the Charities Act 2011 and

'Accounting and Reporting by Charities: Statement of Recommended Practice for Charities' applicable to charities preparing their accounts in accordance with the Financial Reporting Standard applicable in the UK and Republic of Ireland (FRS 102) (effective 1 January 2019).

The accounts are prepared in sterling, which is the functional currency of the charity and monetary amounts in these financial statements are rounded to the nearest £.

Going Concern

At the time of approving the accounts, the trustees have reasonable expectation that the charity has adequate resources to continue in operational existence for the foreseeable future. Thus the trustees continue to adopt the going concern basis of accounting in preparing the accounts.

Income

Incoming recognition

All incoming resources are included on the Statement of Financial Activities (SoFA) when the charity is legally entitled to the income and the amount can be quantified with reasonable accuracy

Incoming Resources with Related Expenditure

Where incoming resources have related expenditure (as with fundraising or contract income) the incoming resources and related expenditure are reported gross in the SoFA

Grants and Donations

Grants and donations are only included in the SoFA when the Charity has unconditional entitlement to the resource.

Contractual Income and Performance Related Grants

This is only included in the SoFA once the related goods or services have been delivered.

Volunteer Help

The value of any voluntary help received is not included in the accounts.

Investment Income

This is included in the accounts when receivable.

Expenditure and Liabilities

Liability Recognition

Liabilities are recognised as soon as there is a legal or constructive obligation committing the charity to that expenditure.

Governance Costs

These include costs of the preparation and examination of statutory accounts, the costs of trustee meetings and cost of any legal advice to trustees on governance or constitutional matters.

Grants and Performance Conditions

Where the charity gives a grant with conditions for its payment being a specific level of service output to be provided, such grants are only recognised in the SoFA once the recipient of the grant has provided the specific service or output.

Grants payable without Performance Conditions

These are only recognised in the accounts when a commitment has been made and there are no conditions to be met relating to the grant which remain in the control of the charity

Tangible fixed assets

All IT equipment, plant & machinery and fixtures & fittings with an original cost of less than £1,000 are written off in the year in which the expenditure was incurred.

Depreciation is provided at the following annual rates in order to write off each asset over its estimated useful life:

Plant and machinery	- 15.0% on reducing balance
IT Equipment	- 33.3% on straight line

Financial Instruments

The charity only has financial assets and financial liabilities of a kind that qualify as basic financial instruments. Basic financial instruments are initially recognised at transaction value and subsequently measured at their settlement value with the exception of bank loans which are subsequently measured at amortised cost using the effective interest method.

Fund accounting

Unrestricted funds - can be used in accordance with the charitable objectives at the discretion of the trustees.

Restricted funds - can only be used for particular restricted purposes within the objects of the charity. Restrictions arise when specified by the donor or when funds are raised for particular restricted purposes

Taxation

The charity is exempt from corporation tax on its charitable activities and is not registered for VAT.

DEAF ACTIVE
NOTES TO THE FINANCIAL STATEMENTS - CONTINUED
FOR THE YEAR ENDED 31 MARCH 2023

Note	2023 Unrestricted £	2023 Restricted £	2023 Total £	2022 Total £
2 Donations and legacies				
Donations	21,557	-	21,557	6,989
	<u>21,557</u>	<u>-</u>	<u>21,557</u>	<u>6,989</u>
	2023 Unrestricted £	2023 Restricted £	2023 Total £	2022 Total £
3 Charitable activities				
Liverpool Council	-	10,000	10,000	27,157
Priority Youth	-	10,500	10,500	3,500
Big Lottery	-	68,382	68,382	66,740
BBC Children in Need	-	45,034	45,034	46,655
Henry Smith	-	41,100	41,100	40,000
Tudor Trust	-	35,000	35,000	35,000
Postcode Neighbourhood	-	-	-	18,480
Awards for All	-	-	-	10,000
Workers Education	-	-	-	7,419
MSDP Life Rooms	-	25,673	25,673	-
Four Acre Trust	-	5,000	5,000	-
UK Deaf Sports	-	2,596	2,596	-
John Moores Found	-	5,000	5,000	-
Police Community Fund	-	1,491	1,491	-
Deaf Sports DA	-	2,780	2,780	-
St James Place	-	5,000	5,000	-
	<u>-</u>	<u>257,556</u>	<u>257,556</u>	<u>254,951</u>
	2023 Unrestricted £	2023 Restricted £	2023 Total £	2022 Total £
4 Activities for generating funds				
Class & Sign Language fees	32,051	-	32,051	30,405
Support Service	-	93,546	93,546	39,115
	<u>32,051</u>	<u>93,546</u>	<u>125,597</u>	<u>69,520</u>
	2023 Unrestricted £	2023 Restricted £	2023 Total £	2022 Total £
5 Investments				
Bank interest receivable	-	-	-	-
	<u>-</u>	<u>-</u>	<u>-</u>	<u>-</u>

DEAF ACTIVE
NOTES TO THE FINANCIAL STATEMENTS - CONTINUED
FOR THE YEAR ENDED 31 MARCH 2023

Note	2023	2023	2023	2022
	Unrestricted	Restricted	Total	Total
	£	£	£	£
6 Resources Expended				
Charitable activities				
Staffing Costs	-	255,081	255,081	198,785
Consultancy	-	980	980	-
Depreciation	2,838	335	3,173	3,160
Insurance	643	-	643	564
Office Expenses & Equipment	-	6,009	6,009	6,427
Payroll Fees	-	662	662	662
Pension Fees	-	576	576	576
Rent & Rates	-	29,710	29,710	22,625
Repairs & Maintenance	-	424	424	278
Sign Language Fees	-	10,793	10,793	8,278
Sports Equipment expenses	-	2,539	2,539	597
Staff Training	-	3,431	3,431	6,147
Sessional Workers	-	33,671	33,671	9,428
Telephone & Internet	-	726	726	1,186
Trips & Activities	-	6,544	6,544	2,869
Uniforms	-	387	387	1,008
Volunteer Expenses	-	7,510	7,510	8,806
Other	67	3,576	3,643	4,355
Governance Costs (see note 7)	-	1,250	1,250	1,100
	<u>3,548</u>	<u>364,204</u>	<u>367,752</u>	<u>276,851</u>
			2023	2022
			£	£
7 Included In Governance costs				
Independent examiner's fee			<u>1,250</u>	<u>1,100</u>
			<u>1,250</u>	<u>1,100</u>
			£	£
8 Staff Costs and Employees				
Wages and salaries			234,891	186,209
Social security costs			15,542	9,268
Pension			<u>4,648</u>	<u>3,308</u>
			<u>255,081</u>	<u>198,785</u>
No employee earned £60,000 or more during the year			2023	2022
The average number of employees during the year was :			11	10

DEAF ACTIVE
NOTES TO THE FINANCIAL STATEMENTS - CONTINUED
FOR THE YEAR ENDED 31 MARCH 2023

Note

9 Fixed Assets

	Plant & Machinery		IT equipment	
	Unrestricted	Restricted	Unrestricted	Total
	£	£	£	£
Cost				
At 1 April 2022	16,917	8,171	6,256	31,344
Disposals	-	-	-	-
Additions	-	-	-	-
At 31 March 2023	<u>16,917</u>	<u>8,171</u>	<u>6,256</u>	<u>31,344</u>
Depreciation				
At 1 April 2022	11,901	5,937	2,746	20,584
On Disposals	-	-	-	-
Charge for year	753	335	2,085	3,173
At 31 March 2023	<u>12,654</u>	<u>6,272</u>	<u>4,831</u>	<u>23,757</u>
Net Book Value				
At 31 March 2023	4,263	1,899	1,425	7,587
At 31 March 2022	5,016	2,234	3,510	10,760

10 Debtors

	2023	2022
	£	£
Debtors	-	-
Prepayments	-	-
	<u>-</u>	<u>-</u>

11 Cash at bank and in hand

	2023	2022
	£	£
Current Account	225,880	186,107
Cash in hand	-	-
	<u>225,880</u>	<u>186,107</u>

12 Creditors : amounts falling due within one year

	2023	2022
	£	£
Trade creditors	-	-
HMRC	4,849	4,425
Accruals	1,250	2,032
	<u>6,099</u>	<u>6,457</u>

DEAF ACTIVE
NOTES TO THE FINANCIAL STATEMENTS - CONTINUED
FOR THE YEAR ENDED 31 MARCH 2023

Note	Balance at	Incoming	Resources	Transfers	Balance at
13 Movement In Funds	31 March	Resources	Expended	In / (Out)	31 March
	2022				2023
	£	£	£	£	£
Unrestricted Funds					
General Fund	102,014	53,608	(3,548)	-	152,074
Restricted Funds					
Inspired Facilities	2,234	-	(335)	-	1,899
Postcode Neighbourhood	13,860	-	(13,860)	-	-
Awards for All	7,500	-	(7,500)	-	-
MSDP Life Rooms	-	25,673	(25,673)	-	-
Four Acre Trust	-	5,000	(4,167)	-	833
UK Deaf Sports	-	2,596	(2,596)	-	-
John Moores Found	-	5,000	(3,750)	-	1,250
Police Community Fund	-	1,491	(1,491)	-	-
Deaf Sports DA	-	2,780	(2,780)	-	-
St James Place	-	5,000	(5,000)	-	-
Liverpool Council	-	10,000	(10,000)	-	-
Big Lottery	12,743	68,382	(66,616)	-	14,509
Priority Youth	-	10,500	(7,000)	-	3,500
Henry Smith Foundation	5,000	41,100	(35,825)	-	10,275
Tudor Trust	8,750	35,000	(35,000)	-	8,750
Children In Need	6,349	45,034	(41,938)	-	9,445
Support Service	31,960	93,546	(100,673)	-	24,833
	88,396	351,102	(364,204)	-	75,294
Total Funds	190,410	404,710	(367,752)	-	227,368

Note

14 Trustees' Remuneration and Benefits

There were no trustees' remuneration or other benefits for the year ended 31 March 2023 nor for the year ended 31 March 2022

15 Trustees' Expenses

There were no trustees' expenses paid for the year ended 31 March 2023 nor for the year ended 31 March 2022

16 Capital Commitments

The company had no capital commitments at 31 March 2023 (2022: None) either contracted for or authorised by the directors but not contracted for.