



Deaf Active

Report of the Trustees and Financial Statements for the
Financial Year ended 31st March 2021

Charity Registration Number 1129601

**DEAF ACTIVE
CONTENTS OF THE FINANCIAL STATEMENTS
FOR THE YEAR ENDED 31 MARCH 2021**

CONTENTS	Page
Contents	2
Charity Information	3
Report of the Trustees	4 -15
Report of the Independent Examiner	16
Statement of Financial Activities	17
Balance Sheet	18
Notes to the Financial Statements	19 - 24

REFERENCE AND ADMINISTRATION DETAILS

Charity Name

Deaf Active

Registered Charity Number

1129601

Registered Office

The Joseph Lappin Centre
Mill Lane
Old Swan
Liverpool
L13 5TF

Trustees

Stacey Robinson (Chair)
Victoria Lyon (Treasurer)
Sarah Hannett
Hayley Thornton
Susan Williams
Anthony Rice

Senior Management Team

Thomas Maher (Joint Chief Executive)
Katie Godfrey (Joint Chief Executive)

Bankers

NatWest
Old Swan Branch
509 Prescott Road
Liverpool
L13 3BZ

Independent Examiner

Counting for Communities Ltd
16 Holmwood Drive
Liverpool
L37 1PQ

**DEAF ACTIVE
TRUSTEES' ANNUAL REPORT
For the year ended 31 March 2021**

The trustees present their report and the accounts for the year ended 31 March 2021.

The accounts have been prepared in accordance with the accounting policies set out in note 1 to the accounts and comply with the fund's trust deed, the Charities Act 2011 and the 'Accounting and Reporting by Charities: Statement of Recommended Practice applicable to charities preparing their accounts in accordance with the Financial Reporting Standard applicable in the UK and Republic of Ireland (FRS 102) (effective 1 January 2019)'.

STRUCTURE, GOVERNANCE AND MANAGEMENT

Governing Document

Deaf Active is a non-profit association and is controlled by its governing document, a written constitution adopted on 1 April 2008 as amended on 21 September 2012.

Organisational Structure

Deaf Active is a registered charity with The Charity Commission, Charity Number 1129601. It is managed by a Committee of trustees who regularly meet.

Risk Management

The Trustees have a duty to identify and review the risks to which the Charity is exposed and to ensure appropriate controls are in place to provide reasonable assurance against fraud and error. The Trustees are aware of the need to strengthen the committee and are looking to appoint new trustees.

PUBLIC BENEFIT

When planning and programming activities for the local residents the Trustees of Deaf Active are mindful of the Charity Commission's guidelines on Public Benefit.

OBJECTIVES AND ACTIVITIES

The Objects of the charity are to advance in life and relieve the needs of deaf children, young people, children of deaf adults, hearing family members, friends and peers.

These objects are met through the provision of the following activities:

- (a) The provision of recreational and leisure time activities provided in the interest of social welfare, designed to improve their conditions of life;
- (b) Providing support and activities which develop their skills, capabilities that they may grow to full maturity as individuals and members of society.
- (c) To help children and young people, especially but not exclusively through leisure time activities, so as to develop their capabilities that they may grow to full maturity as individuals and members of society.
- (d) To act as a resource for children and young people up to the age of 19 living in Merseyside by providing advice and assistance and organising programmes of physical, educational and other activities.
- (e) Advancing in life and helping children and young people by developing their skills, capacities and capabilities to enable them to participate in society in independent, mature and responsible individuals.
- (f) Advancing education;
- (g) Relieving unemployment;
- (h) Providing recreational and leisure time activity in the interests of social welfare for people living in the area of benefit who have need by reason of their youth, age, infirmity or disability, poverty or social and economic circumstances with a view to improving the conditions of life of such persons.

ACHIEVEMENT AND PERFORMANCE

We helped

6800

People through
our service

We worked with

23 Volunteers

Volunteers who donated

560 hours

To help us deliver our services

1200

Children & Young People

Accessed to youth and play services

Taught sign language
to over

2500

In primary school

We provided work
placements for

8 Students

Which contributed just over

900 hours



Our Mission

We are here to make a positive difference to the people we support, promote and advance the lives of Deaf and Hearing people by providing innovative services that empower people to control their own lives.

Our specialist service areas include Play & Youth Service, Volunteering, British Sign Language Training and Coaching, Residential Activities, Language Coaching, Sports Coaching, Personal Training and Providing Health and Wellbeing activities. Our work is funded through fees from local authority contracts, grants, individual funders and fundraising activities.

Review of Activities

The objectives of the charity as set out in the Constitution are to Support, Promote and Enhance the Lives of Deaf and Hearing people.

The Trustees of and those therein employed with Deaf Active aim to reduce social and cultural isolation faced by deaf people and are committed to delivering high levels of participation by way of reversed integration and provide fully inclusive service provision throughout all its activities. Deaf Active and its beneficiaries suffered greatly with regards to the COVID-19 pandemic in terms of being able to deliver face-to-face activities. The social and cultural isolation that Deaf people feel throughout their day to day life was further compounded by the rapid spread of the pandemic and the barriers to everyday living increased along with negative impacts upon mental and physical health and well-being.

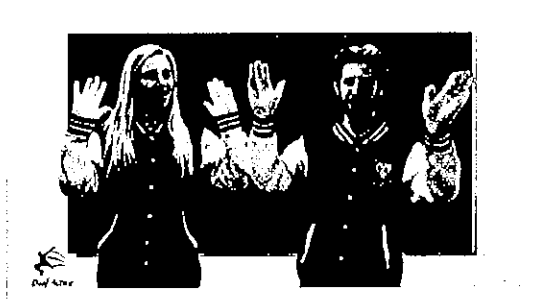
Over the past year, we have concentrated had to move forward with our strategy and vision, albeit on a digital platform.

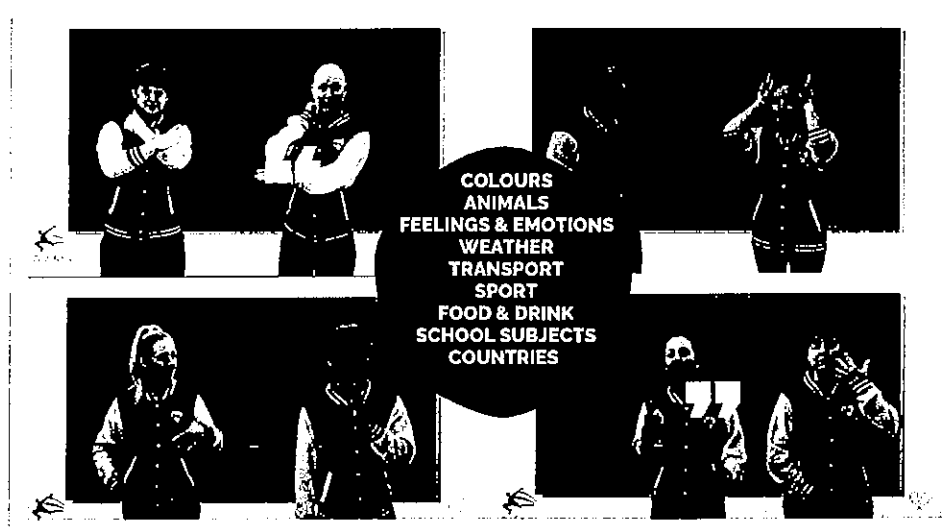
These included;

- Continuing our great services and meeting the needs of the community, listening to what they want, holding steering groups and giving them the access and encourage them to have their say.
- Deaf Active placed an application for continuation of the Lottery's Reaching Communities grant and have been asked to submit an in-depth Stage 2 application.
- Building a business arm to help generate income to sustain our services so we are not solely reliable on funding.
- Offer ongoing training to our staff to ensure our service users receive consistently high-quality support.
- Identifying new partnerships and relationships that allow us to seek new contract work and new modes of working, in collaboration with other third sector organisations
- Investment in our primary coaching package in the education environment
- Generating more income enabling us to sustain the employment of the team of staff.
- Raising our profile

We continue to deliver our HANDS project, teaching sign language in schools, and we teach over 2000 primary aged children British Sign Language, and we remain overwhelmed with the amount of interest and demand this project attracts.

The one thing that our organisation benefited from was having trained staff who were able to navigate digital technology and service in order to provide children and young people with continuous access to the Hands Project. All school had sessions delivered through the ZOOM digital media platform and with the expertise of some of our resident staff members we were able to provide uninterrupted sessions that played well to our visual language and strengths as performers.





Deaf Active have continued to provide formal adult education by way of accredited Sign Language with Signature this year. This came in the much-adapted form of Digital, no contact ZOOM sessions. Staff and learners adapted well to the environment and welcomed each session with enthusiasm.

Deaf Awareness week enabled us to reach further afield and network with partners outside of Merseyside (Glasgow, Cardiff, Middlesbrough, Leeds & Manchester). These partnerships lasted and we have maintained regular contact with Deaf youth setting around the country. Additional funding from the Steve Morgan Foundation and CAF enabled us to provide children and young people who could not attend the setting due to the outbreak, with hard copies of entertainment packs. These entertainment packs did not require any digital usage and packs for families ran out within a couple of days not only showing the success of the project but how were able to meet the need without expensive technology.



Essential booster funding from a Children In Need and the Big Lottery's Reaching Communities provided us the tools, resources and core costs to set up and provide the Deaf community with a 'Digital Hub'.

This piece of work allowed us to train in the use of software at the necessary pace, set up a filming studio and deliver a plethora of activities to Deaf children and young people every day of the week, morning, noon and night.

**DEAF ACTIVE
TRUSTEES' ANNUAL REPORT - CONTINUED
For the year ended 31 March 2021**

Deaf Active continue to grow and develop our iPhone and Android App BSL Hands one, and have successfully launched Hands Two, and BSL Level One - Part 1, 2 and 3, giving children, young people and adults the chance to learn anytime anywhere. Our website continues to improve and the platform social media provides to help us advertise and raise the profile of our charity and share the ongoing successes. We are extremely proud of this development and now have 5 Apps available for download.

Deaf Active continue to grow and develop our iPhone and Android App BSL Hands one, and have successfully launched Hands Two, and BSL Level One - Part 1, 2 and 3, giving children, young people and adults the chance to learn anytime anywhere. Our website continues to improve and the platform social media provides to help us advertise and raise the profile of our charity and share the ongoing successes. We are extremely proud of this development and now have 5 Apps available for download.

Progress Report

This year has shown a tremendous amount of growth and progress due to the amount of resilience of the team around Deaf Active but also with regards to the service users and beneficiaries showing the confidence and determination not to give up.

The pandemic may have had negative effects on the mental health and well-being of the Deaf community, but this did not stop them from wanting more from their service providers. We were in a fortunate enough position to be able to meet their needs and provide a whole host of activities that allowed both Deaf and Hearing people to enjoy and achieve together. Although this year was the exception to what was normal, we continued to grow from strength to strength, but just in different ways.

Through delivery of our services we have once again been able to far exceed our targets relating to our projected outcomes. The team continue to work hard to improve delivery, operationally and structurally. Although we constantly review, monitor and evaluate to help us improve our outcomes and goals we are extremely pleased in the direction we are heading.

Sign Language

This element of the project is delivered in a fun, unique, and interactive way and includes awareness raising for hearing people as to how to best communicate in a culturally appropriate way with Deaf people. Participants are being introduced to a particular skill set that sets them on a steady path to their goal in becoming bi-lingual, which in turn supports the project's/charity's efforts to reduce cultural barriers locally. During the past 12 months we have taught in over 60 schools allowing 2000 children and young people to develop a new skill set. In addition to this projected outcome Deaf Active delivered Deaf Awareness workshops which saw 62 adults from various professions/organisations (retail, local council, community groups, training professions and other organisations) to come together to participate, engage, understand and meet the needs of the Deaf community leading to reduced isolation.

Feedback from a number of events was nothing but positive with organisations wanting us to engage more often with them in order to improve inclusive service practice and become Deaf Aware. This positive feedback has provided us with the confidence, drive and connections to move forward with additional partners with our goal to deliver workshops and training on a grander scale.

Our new digital skills allowed Deaf Active and it's now tech savvy team to launch ideas such as a Flash Mob – teaching a whole network of new people sign language through song. Participants

thoroughly enjoyed these performances and took to social media to show how proud they were and in full support of our charity continued this support via throughout the year.

DEAF ACTIVE TRUSTEES' ANNUAL REPORT - CONTINUED For the year ended 31 March 2021

Following on from the popularity of the flash mob, we were asked to set up a family sign language group. This was a regular group with families attending from all over Merseyside and beyond. It was a pleasure to have delivered tailor made sign language to families and watch them grow in confidence and develop their language within the home.

Youth & Play Service & Activities

Our youth club setting provides Deaf and Hearing Children and Young People with access to a variety of activities and projects. Although we were unable to offer the traditional activities such as Kick Jitsu, Football Coaching, Zumba, sign language, arts and crafts, cooking, film club, homework club, project specific activities and free time. A lot of these were reproduced and repackaged in a digital platform.

Having this service enables young people to develop their social and emotional needs and allows our experienced team to work with them to facilitate their personal, social and educational development. Confidence and independence continue to grow and develop due to having access to such a diverse group of activities, with focus on reducing isolation and encouraging social interaction.

Deaf Active remains resolute in using the method of reversed integration within every aspect of its service provision and it is to this end that sign language is being promoted and learnt as a developing skill set with it being showcased and promoted at events and social gatherings.

Other projects children and young people have participated in include; BSL Calendar, BSL Dictionary, themed events; Halloween, Bonfire, Christmas, Mothers/Fathers/Carers Day, Easter, St Patricks Day, St David's Day, St Georges Day, Life Skills and Take the Lead but to name a few. These are just a few of the themed days and projects C&YP have been supported to engage and participate in.

Active Fitness

Deaf Active partnered up with SEA a regional care organisation working with Deaf children and adults to facilitate fitness and wellbeing classes throughout the period of lock down. Once again this digital interactive experience played an extremely important role in the day to day connectedness of the Deaf community and allowed for an element of normality in the day to day experiences, providing respite from shielding.

We have built fantastic relationships with the parents/carers of the children and young people and enjoy positive feedback on an almost daily basis. We ensure there is clear, open and honest communication with parents/carers ensuring they can be as equally honest and open with us when sharing any concerns or comments about our services, offering feedback in several ways to help support this: feedback form, comments box, face to face.

Active Fitness were also able to provide 12 digital fitness sessions per week and with some success we were even able to provide some Personal Training sessions. These types of sessions were important to enable people young and old who did not have any contact with other members of the family; were unable to understand to seek out classes on social media without communication barriers, or who wanted to meet with their community and had no other platform to do so.



Active Fitness • Facebook Page - ActiveFitnessLiverpool •



Active Fitness Liverpool • Instagram - ActiveFitness_Liv

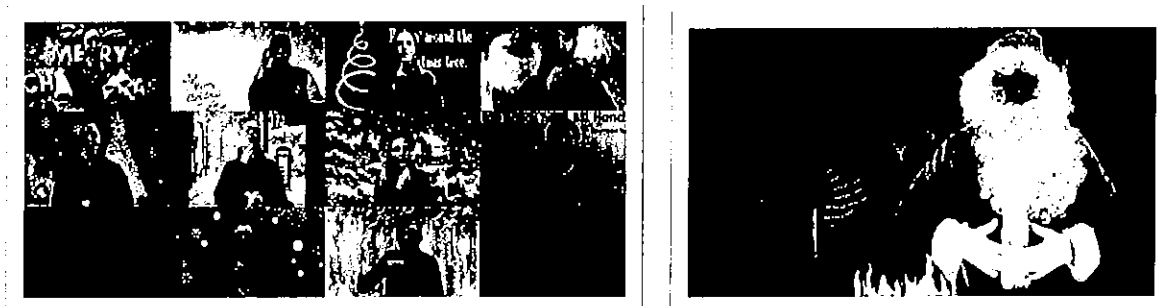
Events

We afforded the opportunity on more than one occasion to participate in a variety of local and national media campaigns, one of those being the Children In Need campaign. This saw us bring to light their chosen song into sign language, which was featured on the national television launch.

Christmas festivities allowed us to reflect upon our practices and once again respond to a request for Santa clause to bring a signed message to Deaf children and young people. We were able to use are newly acquired skills to provide a digital message in sign language with heart felt feedback coming from families of this unique offer.

We were once again short-listed for the prestigious Charity Film Awards and a great celebration of the night allowed us to celebrate our successes and once again come together and reflect on the hard work that has taken place over this turbulent period.





Organisations and Stakeholders

Over this past year we have grown from strength to strength focusing on building our profile, networking and building relationships with organisations and stakeholders. We continue to hold a great reputation with the schools across Merseyside and are extremely proud of the achievements and outcomes derived from the project. Additional projects that have developed through our partnership work with Liverpool Council, Priority Youth, Merseyside Sports Partnership, Merseyside Expanding Horizons, Alt Valley Training are helping us expand our service delivery.



Training

The use of digital safety was high on the agenda this year given the fact that every ounce of time was being poured into technology and its daily use by children and young people. We wanted to ensure that children and young people were safe online and to acknowledge the importance of our team being trained appropriately in the response of any disclosure. The whole team took to a digital training session in Children Health and Safety online and this is something that we will use and build upon moving forward. Over the last year our team and those around us have been lucky enough to have received a whole series of vocational based training including, some of our team training as Personal Trainers, Class-based Fitness Instructors and Qualified Sign Language Tutors in order to work toward a degree of sustainability. We will be drawing upon these newly acquired skills and the skill set of our current team to charge for activities outside of this project that will provide us with a more conceptual approach to becoming self-sustainable.

Volunteers

We have had a wide variety of volunteers this year and are pleased to have been able to support 14 new volunteers and have provided several opportunities within our charity to provide them with either new skill-set and have that skill-set support us in progressing through a number of projects. We have seen some young volunteers who have wanted to come along as part of their Duke of Edinburgh Award and continued to want to support the charity and our delivery, parents of the children and young people have been particularly keen on helping, others who are extremely keen on becoming part of the team, bringing lots of enthusiasm and energy. 2 particular volunteers who have continued to dedicate time to deliver fitness and wellbeing classes and Personal Training help us to promote and sustain classes encouraging parents/carers to use the service and access more of the services we have available to the family unit as a whole. As previously reported, we have been able to support a significant amount of parent/carer/adults as a direct result of the volunteering opportunities offered by our funded lottery project.

ESF

Securing funding from the European Social Fund WEA has allowed Deaf Active to once again run the 'Stepping Stones' project. This project allowed 24 NEET (Not in Education, Employment or Training) young people to participate in a project that allow them to learn British Sign Language Level 1 and Level 2 whilst undertaking some practical in-house training within one of the many services we offer, once again bolstering the services being provided to our beneficiaries and participants and enhancing the skill set of our already established multi-disciplinary team.

Future Plans

The Deaf Active team have discussed, at length, ways in which we are able to promote and enhance services already being provided and how to derive an income from those services. The following services will generate an income:

HANDS – the very popular Hands project is embedded into the curriculum of a substantial amount of schools throughout Merseyside. In preparation for funding coming to an end for a service that has been delivered for free for many years, a consultation went ahead in order to identify which schools would be willing to pay for the service and at what price. Schools settled on a fee of £300 for 10 half hour sessions. This has the potential of generating 20-40K per annum.

Active Fitness – Active Fitness is another extremely popular service that is able to generate an income. There are 9 classes per week which will be charged at £3 per session and Personal Training sessions that will be charged at £10 per half hour session. This has the potential to generate an income of £25,000 per annum and early signs suggest that this is a conservative figure.

British Sign Language Level 1 & 2 - Great inroads have been made in terms of generating an income through teaching accredited sign language. The training of 2 other team members will allow this income to flourish and grow in future years with potential income of £22,500 per annum. Improved links with other 3rd Sector and Statutory organisations has made demand for these accredited courses high.

Grants – Funding applications are submitted on a regular basis for new and existing projects. This is the final year of funding for 2 of the largest grants we hold and application for continuation funding will be submitted as and when the local/regional grant making officers allow us to. Other smaller applications are submitted to support the existing services and/or generate new services.

DEI (Deaf Education Instructors) – this unique service allows those Deaf children and young people who are struggling in educational establishment to have additional support from a native sign language user who have lived experience and who can provide the types of support that interpreters and teachers are unable to.

It is with massive thanks to the following grant that Deaf Active have been able to continue their services and supporting vulnerable Deaf children and young people:

PH Holt, Steve Morgan Foundation, The Big Lottery, Children In Need, CAF, Sport England, Liverpool City Council, Priority Youth Project.

FINANCIAL REVIEW

Reserves Policy

The Charity holds unrestricted funds for the purpose of supporting its charitable objectives and activities.

Where grant income and other incoming resources are received and designated for a specific project, restricted funds are created with incoming resources and resources expended in respect of that project being allocated to the fund.

STATEMENT OF TRUSTEES' RESPONSIBILITIES

The trustees are responsible for preparing the accounts in accordance with applicable law and United Kingdom Generally Accepted Accounting Practice.

Law applicable to charities in England and Wales requires the trustees to prepare accounts for each financial year which give true and fair view of the fund's financial activities during the year and of its financial position at the end of the year.

In preparing accounts giving a true and fair view, the trustees should follow best practice and:

- select suitable accounting policies and then apply them consistently;
- make judgements and estimates that are reasonable and prudent;
- state whether applicable accounting standards and statements of recommended practice have been followed subject to any departures disclosed and explained in the accounts;
- prepare the accounts on the going concern basis unless it is inappropriate to presume that the fund will continue in operation

The trustees are responsible for keeping proper accounting records which disclose with reasonable accuracy at any time the financial position of the fund and enable them to ensure that the accounts comply with the applicable law. They are also responsible for safeguarding the assets of the fund and hence for taking reasonable steps for the prevention and detection of fraud and other irregularities.

On behalf of the trustees:


.....
Stacey Robinson – Trustee

6/6/2022
.....
Date

DEAF ACTIVE
REPORT OF THE INDEPENDENT EXAMINER TO THE TRUSTEES OF DEAF ACTIVE

I report on the accounts for the year ended 31 March 2021 which are set out on pages 17 to 24.

Respective responsibilities of trustees and examiner

The charity's trustees are responsible for the preparation of the accounts. The charity's trustees consider that an audit is not required for this year under section 144(2) of the Charities Act 2011 (the Charities Act) and that an independent examination is required.

It is my responsibility to:

- examine the accounts under section 145 of the Charities Act,
- to follow the procedures laid down in the General Directions given by the Charity Commission under section 145(5)(b) of the Charities Act, and
- to state whether particular matters have come to my attention.


Basis of the independent examiner's report

My examination was carried out in accordance with the General Directions given by the Charity Commission. An examination includes a review of the accounting records kept by the charity and a comparison of the accounts presented with those records. It also includes consideration of any unusual items or disclosures in the accounts, and seeking explanations from the trustees concerning any such matters. The procedures undertaken do not provide all the evidence that would be required in an audit, and consequently no opinion is given as to whether the accounts present a 'true and fair view' and the report is limited to those matters set out in the statement below.

Independent examiner's statement

In connection with my examination, no matter has come to my attention:

1. which gives me reasonable cause to believe that, in any material respect, the requirements:
 - a. to keep accounting records in accordance with section 130 of the Charities Act; and
 - b. to prepare accounts which accord with the accounting records and comply with the accounting requirements of the Charities Acthave not been met; or
2. to which, in my opinion, attention should be drawn in order to enable a proper understanding of the accounts to be reached.

Signed: 

Date: 10-1-22

Name: Stephen Leonard
Professional qualification: BA, FCCA
Counting for Communities Ltd
16 Holmwood Drive

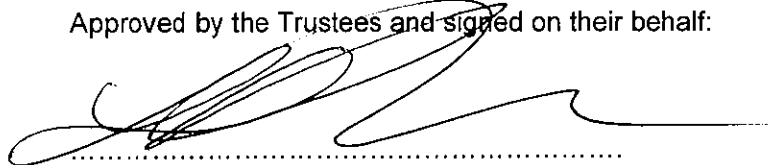
DEAF ACTIVE
STATEMENT OF FINANCIAL ACTIVITIES
For the Year Ended 31 March 2021

	Note	2021 Unrestricted Funds £	2021 Restricted Funds £	2021 Total Funds £	2020 Total Funds £
INCOMING RESOURCES					
Incoming & endowments from:					
Donations and legacies	2	42,836	-	42,836	3,594
Charitable activities	3	-	211,874	211,874	146,180
Other trading activities	4	19,043	-	19,043	21,518
Investments	5	-	-	-	-
Total income		61,879	211,874	273,753	171,292
RESOURCES EXPENDED					
Raising funds		-	-	-	-
Charitable activities	6	3,163	176,487	179,650	178,303
Total expenditure		3,163	176,487	179,650	178,303
Net incoming / (outgoing) resources before transfers		58,716	35,387	94,103	(7,011)
Transfer between funds	13	-	-	-	-
Net incoming / (outgoing) resources for the year		58,716	35,387	94,103	(7,011)
RECONCILIATION OF FUNDS					
Total funds brought forward		23,878	17,820	41,698	48,709
TOTAL FUNDS CARRIED FORWARD		82,594	53,207	135,801	41,698

**DEAF ACTIVE
BALANCE SHEET
For the Year Ended 31 March 2021
Charity Number: 1129601**

	Note	2021 Unrestricted Funds £	2021 Restricted Funds £	2021 Total Funds £	2020 Total Funds £
FIXED ASSETS					
Tangible assets	9	8,832	2,628	11,460	10,036
CURRENT ASSETS					
Debtors	10	-	-	-	-
Cash at bank and in hand	11	73,762	54,568	128,330	37,632
		<u>73,762</u>	<u>54,568</u>	<u>128,330</u>	<u>37,632</u>
CREDITORS					
Amounts falling due within one year	12	-	(3,989)	(3,989)	(5,970)
NET CURRENT ASSETS		<u>73,762</u>	<u>50,579</u>	<u>124,341</u>	<u>31,662</u>
TOTAL ASSETS LESS CURRENT LIABILITIES		<u>82,594</u>	<u>53,207</u>	<u>135,801</u>	<u>41,698</u>
FUNDS					
	13				
Unrestricted funds				82,594	23,878
Restricted funds				<u>53,207</u>	<u>17,820</u>
TOTAL FUNDS				<u>135,801</u>	<u>41,698</u>

Approved by the Trustees and signed on their behalf:



Stacey Robinson – Trustee

6/01/2022.

1. ACCOUNTING POLICIES

Accounting Convention

The financial statements have been prepared under the historical cost convention, modified by the inclusion of investments at market value, and in accordance with the Charities Act 2011 and 'Accounting and Reporting by Charities: Statement of Recommended Practice for Charities' applicable to charities preparing their accounts in accordance with the Financial Reporting Standard applicable in the UK and Republic of Ireland (FRS 102) (effective 1 January 2019).

The accounts are prepared in sterling, which is the functional currency of the charity and monetary amounts in these financial statements are rounded to the nearest £.

Going Concern

At the time of approving the accounts, the trustees have reasonable expectation that the charity has adequate resources to continue in operational existence for the foreseeable future. Thus the trustees continue to adopt the going concern basis of accounting in preparing the accounts.

Income

Incoming recognition

All incoming resources are included on the Statement of Financial Activities (SoFA) when the charity is legally entitled to the income and the amount can be quantified with reasonable accuracy

Incoming Resources with Related Expenditure

Where incoming resources have related expenditure (as with fundraising or contract income) the incoming resources and related expenditure are reported gross in the SoFA

Grants and Donations

Grants and donations are only included in the SoFA when the Charity has unconditional entitlement to the resource.

Contractual Income and Performance Related Grants

This is only included in the SoFA once the related goods or services have been delivered.

Volunteer Help

The value of any voluntary help received is not included in the accounts.

Investment Income

This is included in the accounts when receivable.

Expenditure and Liabilities

Liability Recognition

Liabilities are recognised as soon as there is a legal or constructive obligation committing the charity to that expenditure.

Governance Costs

These include costs of the preparation and examination of statutory accounts, the costs of trustee meetings and cost of any legal advice to trustees on governance or constitutional matters.

DEAF ACTIVE
NOTES TO THE FINANCIAL STATEMENTS - CONTINUED
For the Year Ended 31 March 2021

Grants and Performance Conditions

Where the charity gives a grant with conditions for its payment being a specific level of service output to be provided, such grants are only recognised in the SoFA once the recipient of the grant has provided the specific service or output.

Grants payable without Performance Conditions

These are only recognised in the accounts when a commitment has been made and there are no conditions to be met relating to the grant which remain in the control of the charity

Tangible fixed assets

All IT equipment, plant & machinery and fixtures & fittings with an original cost of less than £500 are written off in the year in which the expenditure was incurred.

Depreciation is provided at the following annual rates in order to write off each asset over its estimated useful life:

Plant and machinery - 15.0% on reducing balance
IT Equipment - 33.3% on straight line

Financial instruments

The charity only has financial assets and financial liabilities of a kind that qualify as basic financial instruments. Basic financial instruments are initially recognised at transaction value and subsequently measured at their settlement value with the exception of bank loans which are subsequently measured at amortised cost using the effective interest method.

Fund accounting

Unrestricted funds - can be used in accordance with the charitable objectives at the discretion of the trustees.

Restricted funds - can only be used for particular restricted purposes within the objects of the charity. Restrictions arise when specified by the donor or when funds are raised for particular restricted purposes

Taxation

The charity is exempt from corporation tax on its charitable activities and is not registered for VAT.

DEAF ACTIVE
NOTES TO THE FINANCIAL STATEMENTS - CONTINUED
For the Year Ended 31 March 2021

Note	2021 Unrestricted £	2021 Restricted £	2021 Total £	2020 Total £
2 Donations and legacies				
Donations	42,836	-	42,836	3,594
	<u>42,836</u>	<u>-</u>	<u>42,836</u>	<u>3,594</u>
	2021 Unrestricted £	2021 Restricted £	2021 Total £	2020 Total £
3 Charitable activities				
Big Lottery	-	97,546	97,546	105,317
Other Lottery funding	-	5,530	5,530	-
Priority Youth	-	12,250	12,250	1,750
Workers Education	-	-	-	4,637
Alder Hey	-	-	-	2,065
CAF	-	41,605	41,605	-
Children in Need	-	20,663	20,663	17,630
ESF	-	6,492	6,492	-
Liverpool Council	-	11,275	11,275	14,781
Liverpool Council Covid Grant	-	10,000	10,000	-
Steve Morgan Foundation	-	4,013	4,013	-
PH Holt	-	2,500	2,500	-
	<u>-</u>	<u>211,874</u>	<u>211,874</u>	<u>146,180</u>
	2021 Unrestricted £	2021 Restricted £	2021 Total £	2020 Total £
4 Activities for generating funds				
Class Fees	19,043	-	19,043	21,518
Other	-	-	-	-
	<u>19,043</u>	<u>-</u>	<u>19,043</u>	<u>21,518</u>
	2021 Unrestricted £	2021 Restricted £	2021 Total £	2020 Total £
5 Investments				
Bank interest receivable	-	-	-	-
	<u>-</u>	<u>-</u>	<u>-</u>	<u>-</u>

DEAF ACTIVE
NOTES TO THE FINANCIAL STATEMENTS - CONTINUED
For the Year Ended 31 March 2021

Note	2021	2021	2021	2020
	Unrestricted	Restricted	Total	Total
	£	£	£	£
6 Resources Expended				
Charitable activities				
Staffing Costs	-	152,538	152,538	145,292
Advertising & Marketing	-	47	47	-
Consultancy	-	-	-	1,500
Depreciation	1,908	464	2,372	1,772
Insurance	-	432	432	410
Office Equipment	205	1,757	1,962	2,359
Payroll Fees	-	662	662	713
Pension Fees	-	576	576	744
Rent & Rates	-	11,200	11,200	12,300
Repairs & Maintenance	-	807	807	851
Sign Language Fees	-	2,677	2,677	4,582
Staff Training	-	1,524	1,524	1,692
Telephone & Internet	-	1,356	1,356	939
Trips	-	447	447	667
Uniforms	-	617	617	310
Other	-	1,383	1,383	3,122
Governance Costs (see note 7)	1,050	-	1,050	1,050
	<u>3,163</u>	<u>176,487</u>	<u>179,650</u>	<u>178,303</u>
			2021	2020
			£	£
7 Included In Governance costs				
Independent examiner's fee			<u>1,050</u>	<u>1,050</u>
			<u>1,050</u>	<u>1,050</u>
8 Staff Costs and Employees			£	£
Wages and salaries			145,560	138,729
Social security costs			4,644	4,468
Pension			<u>2,334</u>	<u>2,095</u>
			<u>152,538</u>	<u>145,292</u>
No employee earned £60,000 or more during the year			2021	2020
The average number of employees during the year was :			11	12

DEAF ACTIVE
NOTES TO THE FINANCIAL STATEMENTS - CONTINUED
For the Year Ended 31 March 2021

Note

9 Fixed Assets	Plant & Machinery		IT equipment	Total
	Unrestricted	Restricted	Unrestricted	
	£	£	£	£
Cost				
At 1 April 2020	16,917	8,171	-	25,088
Disposals	-	-	-	-
Additions	-	-	3,796	3,796
At 31 March 2021	<u>16,917</u>	<u>8,171</u>	<u>3,796</u>	<u>28,884</u>
Depreciation				
At 1 April 2020	9,973	5,079	-	15,052
On Disposals	-	-	-	-
Charge for year	1,042	464	866	2,372
At 31 March 2021	<u>11,015</u>	<u>5,543</u>	<u>866</u>	<u>17,424</u>
Net Book Value				
At 31 March 2021	5,902	2,628	2,930	11,460
At 31 March 2020	6,944	3,092	-	10,036
			2021	2020
			£	£
10 Debtors				
Debtors			-	-
Prepayments			-	-
			<u>-</u>	<u>-</u>
			2021	2020
			£	£
11 Cash at bank and in hand				
Current Account			128,330	37,632
Cash in hand			-	-
			<u>128,330</u>	<u>37,632</u>
			2021	2020
			£	£
12 Creditors : amounts falling due within one year				
Trade creditors			-	-
HMRC			2,773	4,754
Accruals			1,216	1,216
			<u>3,989</u>	<u>5,970</u>

DEAF ACTIVE
NOTES TO THE FINANCIAL STATEMENTS - CONTINUED
For the Year Ended 31 March 2021

Note	Balance at				Balance at
13 Movement in Funds	31 March	Incoming	Resources	Transfers	31 March
	2020	Resources	Expended	In / (Out)	2021
	£	£	£	£	£
Unrestricted Funds					
General Fund	23,878	61,879	(3,163)	-	82,594
Restricted Funds					
Inspired Facilities	3,092	-	(464)	-	2,628
Children in Need	5,877	20,663	(26,540)	-	-
Liverpool Council	-	11,275	(10,340)	-	935
Liverpool Council Covid	-	10,000	(10,000)	-	-
Big Lottery	8,851	97,546	(95,342)	-	11,055
Other Lottery funding	-	5,530	(5,530)	-	-
CAF	-	41,605	(6,516)	-	35,089
ESF	-	6,492	(6,492)	-	-
Steve Morgan Foundation	-	4,013	(4,013)	-	-
PH Holt	-	2,500	(2,500)	-	-
Priority Youth	-	12,250	(8,750)	-	3,500
	17,820	211,874	(176,487)	-	53,207
Total Funds	41,698	273,753	(179,650)	-	135,801

14 Trustees' Remuneration and Benefits

There were no trustees' remuneration or other benefits for the year ended 31 March 2021 nor for the year ended 31 March 2020

15 Trustees' Expenses

There were no trustees' expenses paid for the year ended 31 March 2021 nor for the year ended 31 March 2020

16 Capital Commitments

The company had no capital commitments at 31 March 2021 (2020: None) either contracted for or authorised by the directors but not contracted for.