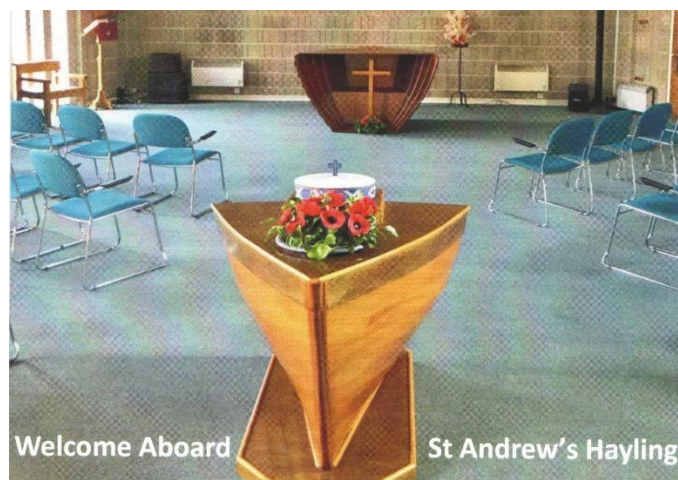


# Hayling Anglicans Joint Part of Annual Report for 2021

## Presented May 2022



## **CONTENTS**

APCM Agenda	p.3
Joint Hayling Anglicans Reports:	p.4
Reports specific to St Mary's:	p.15

**Meeting of Parishioners (also known as the Vestry Meeting)**

**St. Andrew's Church on Wednesday 18<sup>th</sup> May, 3pm**

**St Mary's Church on Monday 30<sup>th</sup> May, 7pm**

**St Peter's Church on Sunday 22<sup>nd</sup> May, 11am**

*All people resident in the parish and whose names are entered on the Register of Local Government Electors and all those on the Church electoral roll are entitled to nominate and to vote.*

**AGENDA**

**1. Election of Churchwardens**

**Followed by The Annual Parochial Church Meeting to be held in the church immediately after the Vestry meeting.**

*Only those whose names are entered on the Church Electoral roll are entitled to vote; to stand for election they must also be an actual communicant, 16 or over for PCC, 18 for Deanery Synod. If a paper vote is required, electors are required by the Church Representation Rules, to sign their names on the back of the voting slips or they will be deemed invalid and will not be counted.*

**AGENDA**

1. Apologies for absence
2. Minutes of the APCM in 2021
3. The reports including:
  - (i) The electoral roll
  - (ii) Annual report – what the PCC has done in the last 12 months
  - (iii) Financial report
  - (iv) Fabric report
  - (v) Deanery Synod report
4. The elections and appointments (Nominations must be in advance of the meeting, and consent forms and declarations signed):
  - (i) Election of representatives to Deanery Synod
  - (ii) Election of PCC members
  - (iii) Appointment of independent examiner
5. Matters for consideration by the PCC over the next year.

**Closing prayers**

## **Priest in Charge's Report**

In 2021 safety was our paramount concern.

The year began in lockdown. The churches were open during this time, but with severe restrictions including social distancing and booking systems in place. As restrictions began to ease in the second quarter of the year we dropped the booking system for services and slowly reintroduced refreshments and social time. We returned the pews to St Peter's once the 2m rule ended. Christmas saw another surge in the virus, and we responded by limiting our activities and reintroducing the booking system for Crib Services.

The lived experience of this time was of day by day, sometimes hour by hour decisions about the minutia of ministry in relation to covid risks. How many people could safely be accommodated? How were we to manage movement through the churches? When and how should we serve refreshments? At what point should we cancel services or resume the booking system? Risk assessments were continuous but necessary. Although individual parishioners had covid, our safety measures ensured that our churches were safe places to worship. I am immensely grateful to everyone who played their part in this. I am especially grateful to the churchwardens, to the ministers and in particular to Revd Deborah for walking this journey with me with wisdom, commitment and kindness.

Despite the challenges of restrictions some lovely events in addition to worship took place, notably "Ruth's Plant Sale" and the Christmas Craft Sale at St Peter's. The Tree of Light was also a wonderful success, as was "Carols and Tea" at St Andrew's despite the vicar's piano playing!

Throughout this time as clergy and as a church we maintained our strong relationship with the wider community – our friendships with the local schools continued, Revd Deborah and son Huw raised money for NHS charities and the church through their Powerlifting; Revd Jenny continued to drive tractors with the lifeboat crew, and Revd Deborah made her debut on BBC Radio Solent.

## **Worship**

After Christmas 2020 the risk levels were high so we opted to close for worship in the early part of the year. During this time we had a large cross made from St Mary's and St Peter's Christmas trees, which expressed the particular sorrow and hope of that season. Through Lent the names of those known to us who'd died during the pandemic were hung on the cross in St Mary's Chancel.

Restrictions eased shortly before Easter but we made the decision to stay closed for worship until the following Sunday in order to manage numbers as risk levels were still quite high. Prior to reopening we continued to hold services on Zoom, including a Pet Service led by Reader-in-training Vicky Evans and a Candlemas Service. Regular online services continued, including

Sunday Morning Prayer, Friday story time and Compline on a Tuesday evening: thanks to Revd Deborah, Sue Moss and Michael Cayley for their leadership with this. Jenny Salisbury and Sue Moss led online Lent Bible Study groups, and Angela Teesdale delivered over 50 “Lent in a bag” packs in support of this.

We opened for silent prayer in Holy Week. On Easter Sunday our Christmas Tree cross, complete with the names of those who’d died, was adorned with flowers and placed in the St Mary’s Chancel for people to visit and pray.

The return to regular worship (albeit with varying degrees of restrictions) presented us with an opportunity to revisit our pattern of services. At St Andrew’s we opted to continue the mid-week Holy Communion service on a Wednesday afternoon. St Mary’s returned to its 10.30am Sunday Holy Communion service, and St Peter’s to its 9.15am Sunday Service with a monthly 8am. At St Andrew’s on Sundays we introduced a pattern of Bread Church on the First Sunday, Services of the Word on the Second and Fourth, a Eucharist on the Third and a Healing Service on the Fifth Sunday. This pattern meant that for the first time the clergy were able to stop and enjoy social time at St Peter’s after worship rather than racing across the Island for the 11am at St Andrew’s. We’re hugely grateful to our Lay Readers for leading Services of the Word so effectively and making this possible. Throughout this time communion continued to be received in one kind, and we continued to share the peace using British Sign Language.

When singing in church was permitted we opted for a reduced amount of singing in order to stay safe and also because singing with masks on isn’t easy. It was a relief to many of us to be able to sing Christmas carols this year and to return to this cherished aspect of our worship. We are grateful to all our musicians for their flexibility and willingness to adapt. Important annual events including the Remembrance Parade and All Souls were able to happen this year. We launched Bread Church successfully at St Andrew’s, and the smell of freshly baking bread wafting from the church once a month was a welcome pleasure.

### **Bread Church**

With thanks to Jenny Salisbury and the bread church team for embracing this new style of worship and communion. We started to explore the idea of bread church during the early part of 2021 and how it could be developed even within Covid restrictions. I am grateful to ‘Somewhere Else’, a bread church in Liverpool who encouraged and guided us. Our first bread church worship was on the first Sunday of September and we were very much led as a team to explore timings and, of course, different bread recipes. After a few months of learning from each other we offered bread church to start with baking at 10am, worship led by Jenny Salisbury and with music by Hannah Buchanan at 10.30am, followed by a feast of bread accompanied by pickles, jams and cheese. Bread church has welcomed in new people to St Andrew’s either visiting the Island or searching for a new way of worship. We featured in the Hailing Herald and the diocese have advertised bread church as a fresh expression.

### **Administration and Oversight**

This year, owing to the diocesan emphasis on joint working, conversations about the future oversight of the three Hayling Anglican Churches came to the fore. There was some suggestion at Deanery level that we might join administratively with Emsworth, Warblington, Rowland's Castle and Idsworth. The clergy from across these parishes met for an initial conversation. However as conversations progressed it became clear that this was not the right step for the time being. The immediate practical conversation needed to be about the Hayling churches potentially becoming one parish with one PCC. This was recognised as a continuity of work we had already been doing over the last six years to cut down on duplications and unnecessary bureaucracy. Currently all the "front of house" tasks, such as ministers' rotas, administration, pastoral ministry including weddings, funerals and baptisms, safeguarding and communications, happen jointly so would be unaffected by further changes. There was no suggestion that we might see a further drop in clergy allocation having already gone from 2 full time clergy to 1.5 posts some years ago. The conversation, which began in 2021 and continues in 2022, relates to the best way to oversee this joint enterprise – whether that is through three legally separate PCCs, or whether a joint ministry is better served by one overarching PCC with sub committees working locally wherever there is a need. This is a conversation that all will be invited to share in.

In the absence of an Administrator throughout 2021, Revd Deborah and Revd Jenny largely managed the administrative tasks of the parishes with help from Canon Michael Tristram who did the invoicing for funerals and graveyard fees. Our administrative requirements will be fully reviewed as the "new normal" takes shape. Certainly there is room for improvement in the administration associated with St Mary's Hall currently undertaken largely by Revd Jenny. Thanks to Revd Deborah the Hayling Anglicans website was developed and updated, and was visited by 250 to 300 people every day.

In terms of the practicalities of meetings, we stayed on Zoom for much of the year including for our Annual Meetings. Indoor mask wearing made this the easiest way to communicate, and with the continual possibility of some of us needing to self-isolate it was also the most reliable way to ensure attendance.

## **Churchyards**

Thanks are due to all the volunteers who gave so freely of their time and kept the two churchyards in such good order during 2021. Particular thanks are due to Mike Butcher and Colin Pim at St Peter's, and to Mick Vicars and Bill Taylor at St Mary's.

## **Children and Young People**

### **St Peter's Sunday School**

Due to Covid, the Sunday Club was unable to meet as scheduled. In an attempt to keep our young people engaged and know we hadn't forgotten them, we held a zoom Children's Service

half way through the year which had good attendance and we were all very excited to see each other again!

The Sunday Club resumed when the Covid restrictions were lifted and it feels like we have picked up where we left off, which is lovely. Recently we have had some new children join us and we hope they will continue to come. We currently have 2 adults supporting Sunday club but we would like a third person so that we can run it more easily.

## **Girls' Brigade**

In 2021 Girls' Brigade continued to be led by Jo Evans, assisted by Emma Thomas and Fiona Blackwell. We had added and most welcome support from "Rev Deb" and our two Young Leaders (YLS). Weekly GB sessions recommenced in January over zoom. Each session had up to 8 girls and 3 leaders taking part. The girls had fun doing all sorts of remote activities while doing badge work on "Living Well", "Being Creative" and "My Environment". We had fun sessions doing craft and dancing and cooking (when we came live from our kitchens). Our themes of health & well-being, creativity and the environment were also developed by a range of guest speakers introducing us to hidden disabilities, being a vet, Portsmouth Water, Hampshire & IOW Wildlife Trust, and making balloon animals! Rev Deborah led us on de-stressing and relaxation and our YLS challenged us with games and quizzes. Each session ended with the ever-popular "letter game" followed by a prayer chosen and read by the girls.

In addition to our regular sessions, GB also helped with the zoom pet service organised by Vicky Evans.

In July we finally met up in person for the first time since lockdowns began and had an very enjoyable evening in the park playing games and eating ice-cream, with each girl being presented with a balloon animal and other small donated items, before GB broke up for the summer holidays.

In September term re-started and now we were comfortable to meet in person at St Andrew's. Several girls didn't want to continue with GB after the summer break, but we were soon joined by a new member and had 5 girls as regulars for the rest of the year. The three leaders were again joined by Rev Deborah in taking turns in leading sessions, along with support from the YLS. We continued with badge work now including "Leisure" and had evenings of craft, games, challenges and discussions. We had a visit from a local boxing coach who kept us on our toes for the evening and taught the girls (and leaders!) some new skills. For the end of term in December The Balloon Man was invited to demonstrate his skills in person and to show us some of his amazing creations and we each attempted making a balloon dog.

In December 2021 Girls' Brigade took part in St Mary's "recycled Christmas tree" competition and were delighted to win first prize for the young people's category and second overall.



Unfortunately, due to rapidly increasing covid risks, we had to cancel our planned pre-Christmas sleepover and ended the term a week early, but with hopes to resume face to face sessions as soon as possible in January 2022.

Jo Evans, Emma Thomas & Fiona Blackwell

### **First Steps**

It was a joy to start up First Steps again from 0930 on Friday morning at St Mary's Church Hall in September of 2021. We were not sure how many would turn up. Covid has brought with it so many worries and concerns and with new Mums who have had children during this time it has been a particularly worrying time for them all. However, our fears were lifted as the stream of Mums and carers came in and joined us. What we found to our amazement is that they all wanted to go over to the church at 10:00 to 'ring the bell' and join in our small informal worship. Edward bear had been very lonely all by himself and had missed the children desperately. So, we found him a new jumper and a pair of shorts and with his nice green bow tie he was a lot happier. We also found that the children, who haven't been playing with others for so long, if at all, were suddenly playing with each other so well. There were no scraps only friendship. The new Mums too have started up new friendships where they can talk about their worries for their children openly.

We celebrated Christmas with a party and Father Christmas came with presents much to the delight of the children and carers. The children also joined in making lots of cut out handprints for our Eco Christmas tree for the competition at our Advent Fayre. The numbers have astounded us and we want to grow on that. We are hoping to celebrate Edward Bears birthday in the Summer with a teddy bear picnic in the churchyard, and perhaps do other events where we can reach out and be a face for the community.

I couldn't have done this on my own though and I would like to thank my wonderful team of Tracy Jacobs, Samantha Griffiths and Laura Fenlon. Tracy, being dairy intolerant, has been offering alternatives for milk in tea and coffee and it is surprising that there are quite a few Mums who have really appreciated this as this is something they don't get offered anywhere else. Our tea and coffee are all Fair Trade and has been enjoyed by all who share in our fellowship along with the biscuits, which I think the children in particular enjoy most. We make sure that we have a selection of gluten free biscuits as we are aware there are children as well as adults who are gluten free. Sam very kindly wrote up a safety report before we opened and we adhered to all the covid restrictions of the time. Laura found a fantastic disinfectant spray which we used on all the toys every time we put them out and when we put them away. Along with all the fun and the worship we do we also have quiet time. Near the end of our time together Tracy gets the children to sing songs and then we all help to clear away.



It has been a wonderful and humbling experience to be with these amazing parents and carers and their children. The world we now live in shows us that every day is God's Day and this we have recognised on a Friday morning at First Steps. The children have been enjoying the stories of Jesus and one child who missed the story of Candlemas came the following week and to her horror the crib was gone. Rev. Deborah was there that week and this small child asked her 'What have you done with baby Jesus, where is he?' They all understood the meaning of Lent and some children told me of the good deeds they had done each week from helping Mummy make their bed to just being kind which I think is very important to teach children. Flynn, decided to give up meat for the duration of Lent which astounded me so much I had to support him and do the same. It seems he enjoyed it (although I didn't as I did have a roast

dinner on a Sunday) and has decided to be a vegetarian. Not sure if that is what should happen as a penance. However, we mustn't forget that this has all been made possible by the work Angela Teesdale put in initially and we are just carrying her mantle and hope and pray that we can keep on doing as good a job as she did.

## **Older People**

Most of our activities with older people had to be put on hold in 2021 due to Covid. However at St Andrew's Scrabble restarted in the latter part of the year with all the necessary covid protocols in place. We also hosted "Carols and Tea" with restricted numbers, which was a very joyful occasion.

## **Eco Church**

### **St Peter's**

Last summer it was decided to develop an area of the north border of the church car park.

Plans were made to install an insect hotel and lay an area of wildflower turf to provide a rich environment for a range of wildlife. Underneath the turf many bulbs were planted, and it was apparent as time went on that the local squirrel population discovered a rich source of food!

'Team Hosepipe' made twice daily visits in the early days to ensure that the turf was kept well-watered, and we are very grateful for all their efforts which ensured the turf became well established.

This spring we have been able to enjoy a colourful welcome to church with a range of flowers including chionodoxa, daffodils and snake's head fritillary. As the year progresses we look forward to seeing a range of wild flowers and grasses providing a rich diet for the insects which we hope will be moving in to our very special hotel! – Rona Doyle

## **St Mary's**

Eco church is still very much in its infancy but we have had three sessions to date. We are meeting once a month in the churchyard and looking at ways we can encourage and help the wildlife that lives there. The first time we met we walked through the churchyard taking notes of what we found. It seems there are a lot of spiders and their webs are so beautiful that it made us discuss how do spiders have the ability and knowledge to make something so wonderful. Surely God must be in that. The RSPB had their annual bird watch and we joined in and got together on a rather sunny but very windy day for a picnic in the churchyard and to count the birds we saw there. We counted 11 magpies, who were all together, a spotted woodpecker, four crows a blackbird and a couple of blue tits. We couldn't count all the flock of Brent geese which flew overhead but they were a beautiful site to see. I was kindly given a few packs of bird houses by my neighbour which I used for the children to make and decorate. It was a good job the parents joined in as making them seemed to work out more difficult than originally thought. Rev Jenny came to lend a hand but the fun came when the paints came out and the children could decorate them. They all did something different. Flynn decided to camouflage his and stuck bits of wood and bark over it. Harrys was a lovely combination of rustic colours of orange and green and Curtis painted a blue sky with white clouds and grass and flowers over his. They have been put up in the trees in the church yard where the children are hoping the birds will nest in them. I wonder if you can find them. Our next project will be to make a bug hotel. Rev Jenny has got lots of wood which we can use and although so far, we haven't had a large call of children joining in, I am hopeful that we can encourage more and to let the local primary schools know so we can bring this together. The adults among us have been planting wild flowers, with thanks to Nigel Chilcott, who provided the plants, Jenny Owens and myself we set to work to plant them and are hoping that they take and make a good place for bees and other pollinators to thrive. With the threat of more development on green belt land on our Island it is even more imperative that we take care of what we all have and what I have learned in the past few months is that our churchyard is a hive for wildlife of every description and we will need to look after it and help it if the environment that it belongs to is destroyed by development.

## **Social and Fundraising**

Despite the restrictions some social and fundraising activities did take place in 2021. Avril Stouse led a wonderful online quiz evening, Sue Cooke-Priest hosted an online coffee morning. Northney Tea Rooms kindly held "Ruth's Plant Sale" in aid of St Peter's, which was in memory of the late Ruth Genge. Rona Doyle and the team held a highly successful Craft Fair at St Peter's and Pauline Curtis and the team organised an equally successful Advent Fair at St Mary's. Revd Deborah and Revd Jenny continued to develop the online shop, selling hand made candles and Hayling Anglicans greetings cards.

## Safeguarding

Our Safeguarding Officers from October 2021 were Jo Hawley for St Peter's and Debbie Newbound for St Mary's and St Andrew's. Members of the PCCs have had DBS checks and the majority have undertaken the required online Safeguarding training, with a small number still outstanding. The relevant Safeguarding notices are in church and on the website. Safeguarding was an item on all PCC agendas.

## Baptisms, weddings and funerals

In accordance with the national fees table, all crematorium funeral fees go to the diocese, with church funeral fees split according to set amounts between the diocese and the church in which they take place. For this reason our statistics do not enable us to divide the crematorium fees into individual parishes. Numbers for 2021 were as follows:

	St Andrew's	St Mary's	St Peter's
Baptisms	2	8	5
Weddings	0	4	3
Marriage blessings	0	2	0
Church funerals	0	20	8
Graveside services	NA	3	2
Crematorium funerals	TOTAL OF 44 for all three parishes		
Gradys Chapel Services	TOTAL OF 4 for all three parishes		
Memorial services	0	1	2
Burials of ashes	NA	21	6

## Traidcraft Report – Jenny Owens

This year my sales have risen surprisingly well! In spite of Covid and the lack of monthly stalls in our churches for much of the year, they actually rose from £1,910.53 to £2,803.47. This is because a number of very faithful customers continued to buy from me regularly during the lockdown months, which kept things ticking over. On behalf of all the smallholder farmers who depend on Traidcraft orders for their livelihoods, many thanks

St Mary's sales went up from £775.09 to £1,375.92

St Peter's fell from £167.25 to £40.75

St Andrew's rose from £197.63 to £286.75

Fortunately, a friend who worships at St John's, Rowlands Castle (one of our linked "cluster" of churches in Havant deanery) told me she would like to start a monthly stall there if I could provide her with stock. She started her stall in September, 2021, and so far has taken £519.50, which has improved the sales total very nicely. My stall at St Mary's started again in October, and St Andrew's began again in November: sadly, after many years of running the stall at St Peter's, Kate Pim has retired – and so far no successor has been found. My grateful thanks to Kate and Colin for all they did over so many years. I am hoping that St Peter's will come up with another volunteer, or team of volunteers, who will take up the challenge! I will happily arrange to deliver the stock and take away the unsold goods, but unfortunately I cannot actually run another regular monthly stall.

The increasing problems caused by Climate Change make it even more important that the farmers who produce the foods we buy should have the extra income that fair trade gives them.  
Jenny Owens

## **Deanery Synod Report – Reps: Jane Marshall, Nigel Chilcott, Jenny Owens, Sue Moss**

(Note: Minutes of the Havant Deanery Synod meetings can be obtained from your representatives)

There have been three main meetings of the Havant Deanery Synod since the last APCM Report in 2021. The first meeting in June was by zoom. The main focus of the meeting was on the discussion and approval of the proposals relating to the Havant Deanery Mission Action Plan to present to Bishop's Council later in the month. The action plan has four streams: mission and growth, leadership, working together, parish structures- clusters/teams. These were mentioned in last year's APCM report. The meeting was attended by members of the diocesan team, Archdeacon Jenny Rowley, Jenny Hollingsworth, and Simon Whitbread who answered the many questions raised. It was clear that Synod members and PCCs have many questions regarding the way forward.

A formal vote was due to be taken on the two proposals for clusters/teams within the Deanery in response to the Diocesan Strategy for growth.

Proposal one

That as parishes across Havant Deanery, we commit ourselves to work more closely together across existing Parishes in specific clusters in order to seek to grow in depth, impact, and number. Hayling Island to be in a cluster with Idsworth, Rowlands Castle, Warblington and Emswoth.

The outcome of this vote was a large majority in favour of the proposal with considerable willingness to work together.

#### Proposal two

That as Parishes across the Havant Deanery we support the Diocesan proposal to achieve this stronger partnership by creating newly formed legal Team Ministries for each of these clusters.

This proposal was not voted on as many present felt they needed more information and detail on how teams would work and evidence supporting how they would lead to growth. It was also questioned if other models were being excluded in favour of teams.

The September meeting was held at St Nicholas' Church Bedhampton. It was the first meeting in person since the start of the pandemic.

The meeting commenced with an opening prayer and an introduction by the Rev Max Cross from the host parish. Max spoke about some of the reorganisation in the parish around changing times of services. Some of the congregation were unhappy with this, however in the end, people were prepared to sacrifice their preferences for the good of the church.

There followed an update on the Havant Deanery Mission Action Plan. Concerns about the rapid speed of the process have been listened to and it is agreed that there is a need to slow down and give everyone more time to reflect. Maybe not every cluster needs to be a team ministry and clusters should work in their own way to bring about change. However, it is clear that there must be change as we cannot afford all stipendiary posts. Autumn should be a time for prayer and reflection to enable us to make progress. It will be necessary for clusters to talk together to see how we can work together. The PCC, churchwardens, clergy, and the congregation need to be involved.

There was a brief report from the leads of the four implementation groups. The groups were set up after the plan identified that in order to grow in depth, impact, and number it was necessary to look at the following areas: Growth, Leadership, and Working Together, the latter being divided into Sharing Resources and Parish Structures.

The group then broke into smaller teams to help form bonds and discuss good news stories from our churches. It was brought to our attention that there was to be a Deanery Consultation with the Diocese at St Alban's West Leigh in October. This meeting was attended by the HDS representatives, and members of the congregation of the three Hayling churches. The outcomes were inconclusive and lapsed without a Deanery Secretary to combine them and were then included at the next Synod meeting in November, reported below.

The meeting in November was held at Hart Plain church Cowplain

The opening prayer was followed by the singing of hymns accompanied by the newly formed Deanery Band. An invitation was offered by Deb Henning -Vears (Deanery Lay Chair) to join the band to all congregations of attending churches.

The election took place of the Deanery Synod secretary and Charley Williams was unanimously elected. She has replaced Anne Grove who recently retired.

There followed a presentation by Richard Hutchins on Affirming Lay Leadership in Havant Deanery and Portsmouth Diocese.

Deanery Synod recognised that an Increase in lay involvement and leadership is going to be required in future years if the diocese continues its long-term plan to reduce the number of ordained clergy. Havant Deanery Synod has put forward a detailed proposal to affirm lay leadership with a new framework of licensing, commissioning, and authorising of lay leadership in support of the remaining ordained clergy. The plan will be taken into consideration at the next Diocesan Synod in March 2022.

Now that the Deanery Synod proposals have been forwarded to the Diocesan Synod, we must await reaction from there and from our new Bishop. We are not aware of any moves towards implementing the working together or cluster proposals and we await on the House of Clergy to take the initiative.

There followed a presentation from Angela Herring, IDWAL representative for Havant Deanery on her recent trip to Ghana and the diocese with which we are partnered. During her visit they were celebrating their 40<sup>th</sup> anniversary and we saw many pictures of the celebrations which went on. Havant Deanery voted in 2004 to support Koforidua diocese on three issues, Clergy Stipends, Palm oil plantation, Diocesan Offices. The main purpose of the church to church (and school to school) links now are not primarily about us sending money to them! The links are about the creation of friendships, exchange of cultures, prayer for each other and moral support but at times there is a real need for financial help at both parish and diocesan levels. By supporting the deanery Ghana funds (to which most churches contribute £50 or more each year) a sizeable account is created over time, which is accessible quickly This was particularly needed during the pandemic when congregations were reduced and money from the plate was not available to pay the clergy.

The meeting in March was overtaken by the visit of Bishop Jonathan to the Havant Deanery at St James Church in Emsworth.

The next meeting is scheduled for June 2022 but much is dependent upon any choices the Bishop may make on the future of the Deanery proposals.

### General Synod Elections

As Deanery Synod representatives we were invited to vote for candidates in

the elections for the new General Synod, the top-level elected body of the Church of England. This took place in the Autumn. These from our Diocese were elected: -

House of Clergy

The Rev Dr Paul Chamberlain

The Rev Andrew Hargreaves

Canon Bob White

House of Laity:

Canon Lucy Docherty

Mrs Rebecca Hunt

Dr Ian Johnston

A number of candidates are members of an organisation called *Save the Parish* who were particularly insistent. It appears that this movement is supported in the new Synod by Dr Ian Johnston. More details about them can be obtained from your HDS representatives

## **Annual Report of the St Mary's Parochial Church Council**

### **Structure and Governance**

The Parochial Church Council is a corporate body established by the Church of England and registered with the Charity Commission with Registration number 1128975. The PCC operates under the Parochial Church Council Powers Measure.

The method of appointment of PCC members is set out in the Church Representation Rules. All who attend church are encouraged to register on the Electoral Roll and stand for election to the PCC.

The Revd Dr Jenny Gaffin is the appointed priest in charge of St Mary's Church (from May 2016) with Revd Deborah Curram as Associate Priest (from July 2019). Sue Moss was appointed as a Lay Minister in 2020.

St Mary's PCC has the responsibility of co-operating with the incumbent, in the ecclesiastical parish, and with the whole mission of the Church for pastoral, evangelistic, social and ecumenical care.

Its other responsibilities are for St Mary's Church Hall.

### **Achievements and Performance**



## Church attendance

There are 81 parishioners on the Church Electoral Roll.

The PCC met 4 times in 2022 with minor business conducted by email and recorded at the next PCC meeting.

### Administrative Information

*Full name of the PCC:* The Parochial Church Council of the Priory Church of St Mary the Virgin, South Hayling

*Address:* 34 Church Road  
Hayling Island  
Hampshire

*Correspondence Address:* The Parish Office  
c/o The Vicarage  
34 Church Road  
Hayling Island  
Hampshire PO11 0NT

*E-mail:* admin@haylinganglicans.onmicrosoft.com

*Website:* [www.haylinganglicans.co.uk](http://www.haylinganglicans.co.uk)

PCC members for the year 1<sup>st</sup> January 2021 until the date this report was approved are:

<i>Incumbent:</i>	Revd. Dr Jenny Gaffin	Chairman	<i>from May 2016</i>
	Revd. Deborah Curram	Associate Vicar	<i>from July 2019</i>

### *Church Warden:*

Mrs Pauline Curtis *from October 2020*

### *Deanery Synod Representatives:*

Mrs Sue Moss (Lay Minister) *from October 2020*

Mrs Jenny Owens *from October 2020*

### *Elected Representatives:*

Mr Alan Hoad	Hon. Secretary	<i>from October 2020</i>
Captain Stewart Burrows	Treasurer	<i>co-opted from May 2015</i>
Mrs Silvia Hayward		<i>co-opted from April 2017</i>
Mrs Tracy Jacobs		<i>from April 2018 re-elected 2021</i>
Mr Eric Shore		<i>from April 2019</i>
Mr Roy Davies		<i>from April 2019</i>
Mrs Jill Davies		<i>from April 2019</i>
Mrs Lucy Furlong		<i>from April 2019</i>

Mrs Samantha Griffiths

*from April 2019*

*Independent Examiner:* C J Driscoll  
The Old Surgery  
19 Mengham Lane  
Hayling Island  
Hampshire PO11 9JT

## **PCC activities specific to St Mary's**

### **St Mary's Choir Report**

There has been a choir in St Mary's Church since the 1880s and it was with much thankfulness that the choir was back in July 2021 after the two year lockdown. Choir numbers are much reduced but we are still able to support the 10.30am Communion Service, lead Evensong, sing at funeral and memorial services and the Ash Wednesday service at St Andrew's.

The choir continues to support fundraising events with the cake stall and jewellery table.

Lockdown saw many changes in choir membership – much grief and sadness was experienced by so many. We mourn the deaths of Annette Toy, David and Margaret Evan-Hughes, Noel and Daphne Grover, Paul Clothier and Jennifer Baggett and we give thanks for their many years of service to St Mary's Church.

The choir and congregation say a big thank you to Debbie Brett for playing the organ and piano.

It has not been an easy time for choir members or Hand Bell ringers; both groups continue to meet weekly and new members will be warmly welcomed.

My prayer is that the music tradition started over 140 years ago can continue to flourish. Thank you choir and organist. Pauline Clothier, Musical Director.

### **Churchwarden / Fabric Report – Pauline Curtis**

My second year as Churchwarden has seen St Mary's slowly returning to normal after the pandemic. Our funds have been depleted but we still have many repairs to address.

We now have a small Fabric Committee that met for the first time on the 22<sup>nd</sup> February, it is good to have their support.

Work has been completed on the link roof between the church and the vestry, by Julson Construction, this involved replacing the lead, refurbishing the rainwater pipes and replacing lost tiles on the vestry roof.

Storm Eunice also caused the church a few problems, we lost tiles from the chancel roof and a large number of shingles from the spire, we have obtained a quote from a steeplejack and this is with the church insurers who quite recently have agreed our quote and we await the start of work by Tarrant Steeple Jacks.

Max Grealy continues to maintain our heating boiler, all was well this year.

The lightning conductor was inspected in October and all was well also all fire extinguishers tested.. All portable electrical goods in the church and Lantern have been checked by Aaron Wheeler.

St Mary's Quinquennial inspection has taken place and we await the report.

The missing safety barriers at the bottom of the North Path are in the process of being replaced by Havant Borough Council. The design has been approved.

The north path through the churchyard has been resurfaced by Colas contractors for HBC. Colas kindly offered to make a path across the Garden of Peace in the same materials as the north path completely free of charge, we are extremely thankful to Colas for their kind works.

The South Churchyard is now being strimmer by Acorn gardening as this area has proved to much for the churchyard working party to cope with, Acorn will keep the South Churchyard tidy during the growing season.

We have had many successful Churchyard working parties. These once a month events provide backup support for Bill Taylor who works so tirelessly . Bill rebuilt the flower Ladies shed after it was demolished by Storm Eunice, and continues to maintain the churchyard throughout the year, St Mary's owe him a debt of gratitude. Recently we said goodbye to Mick Vicars who has for many years cut the grass in the Garden of Peace. We were able to give him a small token of our gratitude. Mick has been replaced by Gary Ruddock we are extremely thankful to Gary for taking this on. A vote of thanks also to Idwal Davies who insures we have sufficient fuel for all our mowers and strimmers and of course mows and strim as well. .St Mary's is very grateful to all volunteers who help in our churchyard many of whom are not part of our Church family, we are most fortunate that they give their time so freely.

We were pleased to be able to loan our shredder to St Peter's recently, it is good to see it being used across the churches.

The Log book is complete.

Church Hall briefing for APCM

May 2022

1. Hall management – there is currently no Church Hall Management who would enter bookings in calendar (currently undertaken by Vicar Jenny as a stop-gap), make decisions on major expenditure, control expenditure of the Hall and advertise the empty office? A vote of thanks to Stewart Burrows who has been overseeing the running of the Hall for many years and dealing with the letting agency for the hiring of the offices.

2. Surrounding land – the weeds, bushes and grass grow uncontrollably as it is understood that the gardener has left. Without the maintenance of the grounds, fences falling down (owned by neighbour), the Hall looks unkept.
3. Shed at rear – there is no access to the shed with the keys having been lost. The contents are unknown.
4. Dumping waste – over the past few weeks large items have been dumped in the waste bin which the collector has removed. There is a carpet, 2 mattresses and 20 plus lighting tubes to be removed. I am currently investigating the cost of the Council removing these items.
5. Fences – the fences at the front of the Hall has suffered from vandalism in the past. Repairs have been made for the fences to be vandalised a 2<sup>nd</sup> time. Subsequent repairs have held. Further repairs are required and will hopefully be completed this year. Costs to replace/repair are being investigated.
6. Car park – the car park is regularly being used by unofficial cars which are served with a polite notice. In the event of them being ignored the police kindly help and knock on doors to advise owners of their actions. There has been a request for a disabled parking place to be set aside.
7. Boiler – a new boiler has been fitted and is working well. It was investigated if the boiler could be used to supply radiators in the main area; regrettably cost of work and access conspired against this proposal.
8. Kitchen – the dishwasher has not been used in the last 2 years. An investigation will be undertaken to see if it is still working.
9. Mid office – the large photocopying machine that was fitted in this mid office has now been moved to the admin office in the Vicarage. This office currently has no function other than storage of paper. It could be put to better and possibly profitable use?
10. Male toilet cistern lid is broken and a temporary blue one has been obtained. There have been a number of leaks above the male urinals that I have managed to repair.
11. Stage – the stage has become a dumping ground for gear and is untidy. The toys that were stored below the floor are now left on the stage. There is an old electric organ that has not been used in years since the reordering of the church (Over 10 years). It could be sold for income. This is a management decision.
12. Portable Appliance Testing (PAT) for electrical items and fire extinguisher checks are up to date.
13. Heaters – one nearest stage works intermittently and is difficult to light. Both gas heaters are old and one or both need replacing. Cost of replacement for the one near the stage is being investigated. As mentioned earlier in this brief, the radiator option is a non starter.
14. Strip lights – these are also old and continue to fail regularly, whether it is the starter or the tube. Recommend replace with LED tubes. Reduces the cost of power and will be more reliable.
15. All issues raised in this briefing are to be raised at the PCC on completion of the APCM.

Paul Curtis

Maintenance Manager (internal only)



*THE PRIORY CHURCH OF ST MARY THE VIRGIN  
SOUTH HAYLING*

*The Parochial Church Council*

**Vestry Meeting held on Monday 24th May 2021 at 6pm**

Held via Zoom; hosted by Rev Jenny Gaffin

Action

**1 WELCOME & OPENING PRAYER**

Jenny Gaffin opened the meeting at 6.05 pm with a welcome and invited Rev Deborah to say a Prayer. The meeting was attended by 10 parishioners. Jenny thanked all for attending.

**ELECTION OF CHURCH-WARDENS FOR THE YEAR 2021/22**

Pauline Curtis has been nominated for the post of Churchwarden. All were very happy to support Pauline's nomination. One other post is unfilled and a willing volunteer would be welcomed. Meanwhile support will be provided by members of the clergy and PCC. Jenny recorded her thanks for all that Pauline had done to support the clergy and the parish in the past period.

.

**APCM held on 24th May 2021**

**1 APOLOGIES FOR ABSENCE**

Stewart Burrows.

**2 CONFIRMATION OF MINUTES OF THE APCM ON 12/10/2020**

It was agreed that the minutes were an accurate record of the 2019/20 APCM.

**3 REPORTS**

Electoral Roll

Jenny Gaffin confirmed that there were 86 people on the electoral roll.

Annual Report

The report of PCC activities was accepted.

### **Financial Report for 2020**

The financial accounts had been circulated prior to the meeting. The treasurer had reported that the general fund was in a parlous state. This was not unexpected because of the lockdown curtailing activities but fund raising must be a priority in the future. Jenny Gaffin reported that Hall bookings were beginning again with the easing of lockdown. We now need to look at how we can raise money from here on in. A question was raised later in the meeting about whether we were still being required to pay Parish Share to the Diocese. Jenny Gaffin explained that parishes had been allowed to cease or reduce payments. The diocese were now seeking information about whether parishes could start making payments again but we will only do that when we feel able to do it.

### **Fabric Report**

The Link roof with the old vestry urgently needs replacing – this is a flat lead roof approx. 6 x 4ft. The cost from estimates obtained would be around £3.5k. This led to a discussion on fund raising activities arising out of the reduction in COVID constraint measures. Suggestions included sales events, concerts by schools and other events in the church grounds.

Pauline reported that there is a problem with the old yew which she will be discussing with Andrew Skeet.

### **Deanery Synod Report**

Jenny Gaffin reported that the effects of COVID on the C of E organization and its future had been discussed at all levels. At Deanery level it had resulted in proposals for parishes to work together in clusters. After some debate we have been placed in a cluster with Emsworth, Warblington and Rowlands Castle. The cluster clergy met recently. Jenny felt that parishes in the cluster had similar approaches to ministry and community outreach and presented some interesting and helpful opportunities.

## **4 ELECTIONS AND APPOINTMENTS**

Election of Deanery Synod Representatives There are no posts up for election this year.

Election of Members to the PCC – Tracy Jacobs has served her three year period but is standing for election again The APCM approved her re-election. There are two other vacant posts and we can appoint that number to the PCC for this year if we know of any suitable persons.

Independent Examiner – proposal from the chair to adopt CJ Driscolls as an Independent Examiner was agreed by the APCM

## **5 MATTERS FOR CONSIDERATION**

Eco Church will be at the forefront this year and particularly Biodiversity. Jenny Owens, who is our Eco Church representative, and Jenny Gaffin explained that they had walked round the church grounds with a Biodiversity expert and it had been very enlightening. There was potential to let areas grow naturally provided they were

properly roped off and there was potential for abundant wild life. We do have some elms affected by disease.

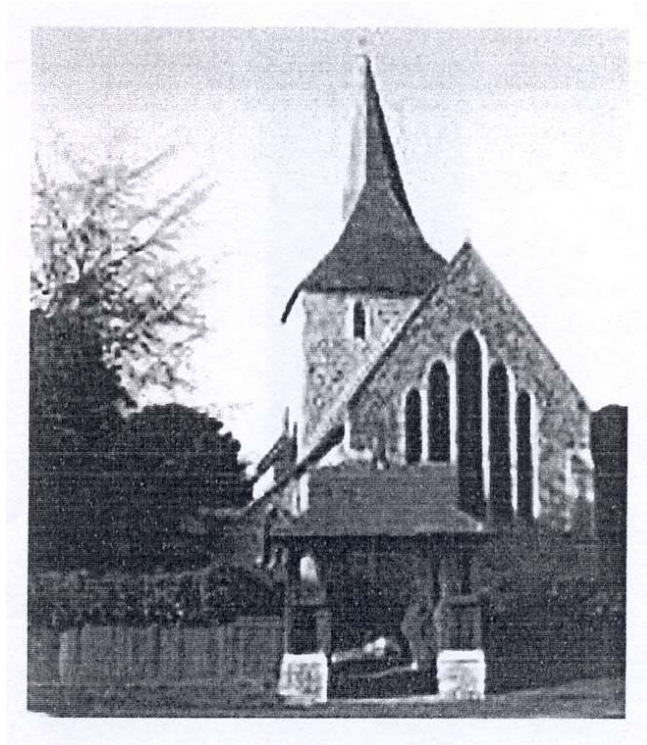
Jenny Gaffin would like to introduce singing in the churchyard as it is not allowed in enclosed spaces yet.

As recorded in the finance report above, Fund Raising and payment of Parish Share will be key issues.

**CLOSING PRAYERS** The meeting closed with a prayer from Deborah at 6.40 pm.



# **THE PRIORY CHURCH OF ST MARY THE VIRGIN SOUTH HAYLING**



**Consolidated accounts**

**For the Year Ended**

**31<sup>st</sup> December 2021**

**Registered Charity No: 1128975**

## **Index**

<b>Report of the Parochial Parish Council</b>	<b>2</b>
<b>Report of the Independent Examiner</b>	<b>4</b>
<b>Statement of Financial Activities</b>	<b>5</b>
<b>Balance Sheet</b>	<b>6</b>
<b>Notes to the accounts</b>	<b>7 -14</b>

**The Priory Church of St Mary the Virgin South Hayling**  
**Consolidated accounts for the year ending 31<sup>st</sup> December 2021**

**Annual Report of the Parochial Church Council**

**Administrative Information**

*Full name of the PCC:* The Parochial Church Council of the Priory Church of St Mary The Virgin, South Hayling

*Address:* Church Road  
Hayling Island  
Hampshire

*Correspondence address:*  
The Parish Office  
c/o The Vicarage  
34 Church Road  
Hayling Island  
Hampshire  
PO11 0NT

*E-mail address:* admin@haylinganglicans.onmicrosoft.com

*Web site:* www.haylinganglicans.co.uk/stmary

PCC members who have served from 1<sup>st</sup> January 2021 until the date this report was approved are:

*Incumbent:*

Revd. Dr Jenny Gaffin	Chairman
Revd. Deborah Curram	Associate Priest

*Church Wardens:*

Mrs Pauline Curtis

*Deanery Synod Representatives:*

Mrs Sue Moss  
Mrs Jenny Owens

*Elected Representatives:*

Mrs Pauline Curtis	Vice Chairman	
Mr Alan Hoad	Honorary Secretary	
Captain Stewart Burrows	Treasurer	co-opted from May 2015
Mrs Silvia Hayward	Treasurer	co-opted from April 2017
Mrs Tracey Jacobs		
Mr Eric Shore		
Mr Roy Davies		
Mrs Jill Davies		
Mrs Lucy Furlong		
Mrs Samantha Griffiths		

*Independent Examiner:*

C J Driscoll Chartered Accountants  
The Old Surgery  
19 Mengham Lane  
Hayling Island  
PO11 9JT

**The Priory Church of St Mary the Virgin South Hayling**  
**Consolidated accounts for the year ending 31<sup>st</sup> December 2021**

**Annual Report of the Parochial Church Council (Continued)**

**Structure and Governance**

The Parochial Church Council is a corporate body established by the Church of England and registered with the Charity Commission with Registration number 1128975. The PCC operates under the Parochial Church Council Powers Measure.

The method of appointment of PCC members is set out in the Church Representation Rules. All who attend church are encouraged to register on the Electoral Roll and stand for election to the PCC.

The Revd Dr Jenny Gaffin is the appointed Priest in Charge of St Mary's Church (from May 2016) with Revd Deborah Curram as Associated Priest (from July 2019). Sue Moss was appointed a lay minister in 2020.

**Objectives and Activities**

St Mary's PCC has the responsibility of co-operating with the incumbent, in the ecclesiastical parish, and with the whole mission of the Church for pastoral, evangelistic, social and ecumenical care.

Its other responsibilities are for St Mary's Church Hall.

**Achievements and Performance**

Church attendance

There are 81 parishioners on the Church Electoral Roll.

PCC activities

Four PCC meetings were held, and were well attended. Revd Dr Jenny Gaffin has chaired the PCC meetings in 2021.

In addition to the statutory Standing Committee other committees were established as in past years entitled Church Hall, Hospitality Committee, Fund Raising and Finance.

Reports submitted to the PCC by those committees and by Mr Alan Hoad, the project manager for the Development Project, are discussed and, if necessary, decisions are taken on their recommendations.

Approved by the Parochial Church Council and signed on it's behalf by:

Revd Dr Jenny Gaffin (Chairman)

Mrs Silvia Hayward (Treasurer)

Date 11 October 2022

**The Priory Church of St Mary the Virgin South Hayling**  
**Consolidated accounts for the year ending 31<sup>st</sup> December 2021**

## **Report of the Independent Examiner**

This Report on the financial statements of the PCC for the year ended 31<sup>st</sup> December 2021 which are set out on page 4 and 5, is in respect of an examination carried out in accordance with s.144 of the Charities Act 2011 ("the Act").

### **Respective Responsibilities of the PCC and the Examiner**

As members of the PCC you are responsible for the preparation of the financial statements. The PCC consider that the audit requirement of the Regulations and section 144(2) of the act do not apply and that an independent examination is needed.

It is my responsibility to:

- examine the accounts (under section 145 of the act);
- follow the procedures laid down in the General Directives given by the charities commission (under section 145(5)(b) of the act); and
- to state whether particular matters have come to my attention.

### **Basis of this report**

My examination was carried out in Accordance with the General Directions given by the Charity Commission. An examination includes a review of the accounting records kept by the PCC and a comparison of the accounts presented with those records. It also includes consideration of any unusual items or disclosures in the accounts, and seeking explanations from you as the PCC concerning any such matters. The procedures undertaken do not provide all the evidence that would be required in an audit, and consequently I do not express an audit opinion on the view given by the accounts.

### **Independent examiner's statement**

In connection with my examination, no matter has come to my attention:

(1) which gives me reasonable cause to believe that in any material respect the requirements

- to keep accounting records in accordance with section 130 of the act; and
- to prepare accounts which are in accord with the accounting records and comply with the accounting requirements of the act, has not been met with.

(2) to which in my opinion attention should be drawn in order to enable a proper understanding of the accounts to be reached.

P G Barker  
C J Driscoll Chartered Accountants  
The Old Surgery  
19 Mengham Lane  
Hayling Island  
Hampshire  
PO11 9JT  
11 October 2022

**The Priory Church of St Mary the Virgin South Hayling**  
**Consolidated accounts for the year ending 31<sup>st</sup> December 2021**

**Statement of Financial Activities**

		Unrestricted Funds 2021	Restricted Funds 2021	Endowment Funds 2021	Total 2021	Total 2020
	Note					
<b>Income and Expenditure</b>						
<b>Incoming Resources</b>						
Voluntary Income	2	42,943.81	4,088.75		47,032.56	43,141.20
Activities for Generating Funds	3	148.98			148.98	7,041.92
Investment Income	4	92.07			92.07	420.81
Incoming Resources from Charitable Activities	5	17,197.50	75.00		17,272.50	15,603.37
Other Incoming Resources	6	7,837.36			7,837.36	10,902.54
<b>Total Incoming Resources</b>		68,219.72	4,163.75		72,383.47	77,109.84
<b>Resources Used</b>						
Cost of Generating Voluntary Income	7					
Fundraising trading: Cost of Goods Sold and Other Costs	8	12,795.93			12,795.93	12,980.74
Investment and Management Costs	9					
Charitable Activities	10	42,736.92	9,878.29		52,615.21	81,869.62
Governance Costs	11	2,173.58			2,173.58	2,090.58
Other Resources Used						
<b>Total Resources Used</b>		57,706.43	9,878.29		67,584.72	96,940.94
<b>Net Incoming / (Outgoing) Resources</b>		10,513.29	(5,714.54)		4,798.75	(19,831.10)
<b>Gains and Losses</b>						
- gains and losses on investment income	12					661.25
<b>Gross Transfers</b>		(1.84)	1.84			
<b>Net Movement in Funds</b>		10,511.45	(5,712.70)		4,798.75	(19,169.85)

**The Priory Church of St Mary the Virgin South Hayling**  
**Consolidated accounts for the year ending 31<sup>st</sup> December 2021**

**Balance Sheet**

	Notes	2021 £	2020 £
<b>Fixed Assets</b>			
Tangible Assets	13	160,000.00	160,000.00
Investment	14	17,404.57	17,404.57
		<hr/>	<hr/>
<b>Total Fixed Assets</b>		177,404.57	177,404.57
<b>Current Assets</b>			
Debtors		1,129.60	1,129.60
Deposits with Central Board of Finance		10,732.38	10,647.69
Other Banks		11,076.53	11,337.47
Other Current Assets		2,319.43	
		<hr/>	<hr/>
		25,257.94	23,114.76
<b>Creditors Falling Due Within One Year</b>	15	27,480.00	30,135.57
		<hr/>	<hr/>
<b>Net Current Assets</b>		- 2,222.06	- 7,020.81
<b>Net Assets</b>		175,182.51	170,383.76
		<hr/> <hr/>	<hr/> <hr/>
<b>Represented by:</b>			
Endowment Fund	16	6,383.54	6,383.54
Restricted Income Fund	16	186,045.16	183,694.79
Restricted income funds (in deficit)	16	(79,861.19)	(71,798.12)
Unrestricted Income Fund		62,615.00	52,103.55
		<hr/>	<hr/>
		175,182.51	170,383.76
		<hr/> <hr/>	<hr/> <hr/>

The Financial statement were approved by the PCC on 11 October 2022.

Rev Dr Jenny Gaffin



**The Priory Church of St Mary the Virgin South Hayling**  
**Consolidated accounts for the year ending 31<sup>st</sup> December 2021**

**Notes to the financial statements**

**1) Accounting Policies**

The financial statements have been prepared under the historic cost convention and in accordance with applicable accounting standards and the Statement of Recommended Practice (FRS102).

**Tangible fixed assets**

Land and buildings are represented by the Church hall, which is shown at original cost. No depreciation is provided on Freehold buildings as required by the provisions of FRS15 as the PCC are of an opinion that these provisions are inapplicable due to the level of repair and maintenance work undertaken, which is at a level that the expected life of the building is extended by at least one year.

**Investments**

Investments appear on the balance sheet at market value with any gains or losses being recognised in the statement of financial activities.

**Incoming resources**

Planned giving, collections, donations and Tax refunds from gift aid are recognised when they are received. Grants legacies and bequests are accounted for when the PCC is entitled to the funds.

**Resources expended**

Grants and donations given are accounted for when the funds are paid out. The diocesan parish share is accounted for when it is due.

**Funds**

Endowment funds are funds where the capital level must be maintained, but the funds arising from the investment may be used as either restricted or unrestricted funds.

Restricted funds are to be used for a specific purpose laid down by the donor, and any unspent balance is carried forward to future years. The PCC has traditionally invested separately for each fund.

Unrestricted funds are donations or income that is usable for the general purpose of the charity.

**The Priory Church of St Mary the Virgin South Hayling**  
**Consolidated accounts for the year ending 31<sup>st</sup> December 2021**

**Notes to the financial statements (Continued)**

**2) Voluntary Income**

	<b>Unrestricted Funds 2021</b>	<b>Restricted Funds 2021</b>	<b>Endowment Funds 2021</b>	<b>Total 2021</b>	<b>Total 2020</b>
Gift Aid Donations	24,031.59	480.00		24,511.59	25,214.49
Tax Rebate	6,672.30	593.75		7,266.05	8,352.33
Non Gift Aid Donations	10,957.10	3,000.00		13,957.10	8,632.33
Magazines, BRF	1,282.82	15.00		1,297.82	942.05
	<hr/>	<hr/>	<hr/>	<hr/>	<hr/>
	42,943.81	4,088.75	0.00	47,032.56	43,141.20
	<hr/>	<hr/>	<hr/>	<hr/>	<hr/>

**3) Activities for generating funds**

	<b>Unrestricted Funds 2021</b>	<b>Restricted Funds 2021</b>	<b>Endowment Funds 2021</b>	<b>Total 2021</b>	<b>Total 2020</b>
Fund Raising Events	52.33			52.33	903.50
100 Club	0.00			0.00	600.00
Photocopying	96.65			96.65	2,666.39
	<hr/>	<hr/>	<hr/>	<hr/>	<hr/>
	148.98	0.00	0.00	148.98	4,169.89
	<hr/>	<hr/>	<hr/>	<hr/>	<hr/>

**4) Investment Income**

	<b>Unrestricted Funds 2021</b>	<b>Restricted Funds 2021</b>	<b>Endowment Funds 2021</b>	<b>Total 2021</b>	<b>Total 2020</b>
Interest	92.07		0.00	92.07	406.54
Hall interest	0.00			0.00	14.27
	<hr/>	<hr/>	<hr/>	<hr/>	<hr/>
	92.07	0.00	0.00	92.07	420.81
	<hr/>	<hr/>	<hr/>	<hr/>	<hr/>

**The Priory Church of St Mary the Virgin South Hayling**  
**Consolidated accounts for the year ending 31<sup>st</sup> December 2021**

**Notes to the financial statements (Continued)**

**5) Incoming resources from charitable activities**

	<b>Unrestricted Funds 2021</b>	<b>Restricted Funds 2021</b>	<b>Endowment Funds 2021</b>	<b>Total 2021</b>	<b>Total 2020</b>
Hall Lettings	2,224.00			2,224.00	2,961.00
Hall refreshment income	0.00			0.00	0.00
First steps / Lanterns	96.00			96.00	245.37
Funerals, weddings, baptisms	14,877.50	75.00		14,952.50	12,397.00
	17,197.50	75.00	0.00	17,272.50	15,603.37

**6) Other Incoming Resources**

	<b>Unrestricted Funds 2021</b>	<b>Restricted Funds 2021</b>	<b>Endowment Funds 2021</b>	<b>Total 2021</b>	<b>Total 2020</b>
Mission and Outreach	0.00			0.00	
Guidebooks	9.00			9.00	9.70
Hall Office letting	7,500.00			7,500.00	8,041.40
Hayling churches group contributions	178.36			178.36	2,651.44
				0.00	0.00
Services of Verger	150.00			150.00	200.00
	7,837.36	0.00	0.00	7,837.36	10,902.54

**7) Cost of Generating Voluntary Income**

	<b>Unrestricted Funds 2021</b>	<b>Restricted Funds 2021</b>	<b>Endowment Funds 2021</b>	<b>Total 2021</b>	<b>Total 2020</b>
Bank Charges	0.00	0.00	0.00	0.00	0.00

**The Priory Church of St Mary the Virgin South Hayling**  
**Consolidated accounts for the year ending 31<sup>st</sup> December 2021**

**Notes to the financial statements (Continued)**

**8) Fundraising Trading: cost of goods sold and other costs**

	<b>Unrestricted Funds 2021</b>	<b>Restricted Funds 2021</b>	<b>Endowment Funds 2021</b>	<b>Total 2021</b>	<b>Total 2020</b>
Hall Running Costs	8,494.91			8,494.91	7,028.19
Gardening and Maintenance Costs	2,498.60			2,498.60	3,676.26
Cleaning	1,802.42			1,802.42	2,268.99
Refreshment Costs	0.00			0.00	7.30
	<hr/>				
	12,795.93	0.00	0.00	12,795.93	12,980.74
	<hr/>				

**9) Investment and management costs**

	<b>Unrestricted Funds 2021</b>	<b>Restricted Funds 2021</b>	<b>Endowment Funds 2021</b>	<b>Total 2021</b>	<b>Total 2020</b>
Hall furniture and equipment	0.00			0.00	0.00
	<hr/>				
	0.00	0.00	0.00	0.00	0.00
	<hr/>				

**The Priory Church of St Mary the Virgin South Hayling**  
**Consolidated accounts for the year ending 31<sup>st</sup> December 2021**

**Notes to the financial statements (Continued)**

**10) Charitable Activities**

	<b>Unrestricted</b>	<b>Restricted</b>	<b>Endowment</b>		
	<b>Funds</b>	<b>Funds</b>	<b>Funds</b>	<b>Total</b>	<b>Total</b>
	<b>2021</b>	<b>2021</b>	<b>2021</b>	<b>2021</b>	<b>2020</b>
Books, Readings	25.00			25.00	386.50
Diocesan Quota and Deanery	10,500.00			10,500.00	42,066.70
Capitation				0.00	0.00
Team Expenses and Training	205.37			205.37	700.03
Mission and Outreach	1,500.00			1,500.00	0.00
Church and Churchyard	12,386.19	1,714.29		14,100.48	17,287.69
Repairs and Maintenance					
Development costs	0.00	8,164.00		8,164.00	9,984.82
Funerals and Weddings	5,671.63			5,671.63	1,268.10
Organ and Music	0.00			0.00	600.00
Hayling Churches Group Fete	597.00			597.00	254.45
Parish Office and General	11,851.73			11,851.73	9,321.33
Admin					
	42,736.92	9,878.29	0.00	52,615.21	81,869.62

**11) Governance Costs**

	<b>Unrestricted</b>	<b>Restricted</b>	<b>Endowment</b>		
	<b>Funds</b>	<b>Funds</b>	<b>Funds</b>	<b>Total</b>	<b>Total</b>
	<b>2021</b>	<b>2021</b>	<b>2021</b>	<b>2021</b>	<b>2020</b>
Subs and Registration Fees	973.58			973.58	890.58
Accountancy	1,200.00			1,200.00	1,200.00
	2,173.58	0.00	0.00	2,173.58	2,090.58

**The Priory Church of St Mary the Virgin South Hayling**  
**Consolidated accounts for the year ending 31<sup>st</sup> December 2021**

**Notes to the financial statements (Continued)**

**12) Net Investment Gain/(Loss)**

	<b>2021</b>	<b>2020</b>
	<b>£</b>	<b>£</b>
Market Value at 1st January	17,404.57	17,031.86
	<hr/>	<hr/>
Market Value at 31st December	17,404.57	17,404.57
	<hr/>	<hr/>
		372.71
		<hr/>

**13) Fixed Assets**

	<b>Land and Building</b>	<b>Totals</b>
	<b>£</b>	<b>£</b>
<b>Cost</b>		
At 1st January 2021	160,000.00	160,000.00
	<hr/>	<hr/>
At 31st December 2021	160,000.00	160,000.00
	<hr/>	<hr/>
<b>Net book Value</b>		
At 31st December 2021	160,000.00	160,000.00
	<hr/>	<hr/>
At 31st December 2021	160,000.00	160,000.00
	<hr/>	<hr/>

**14) Investments**

	<b>2021</b>	<b>2020</b>
	<b>£</b>	<b>£</b>
CBF fixed interest securities fund - income shares	11,020.12	11,020.12
CBF deposit fund held by diocesan board of finance	6,329.68	6,329.68
Gann Grave Trust - 3½% War Stock (£99.47)	54.77	54.77
	<hr/>	<hr/>
	17,404.57	17,404.57
	<hr/>	<hr/>

**The Priory Church of St Mary the Virgin South Hayling**  
**Consolidated accounts for the year ending 31<sup>st</sup> December 2021**

**Notes to the financial statements (Continued)**

**15) Creditors amount falling due within one year**

	<b>2021</b>	<b>2020</b>
	<b>£</b>	<b>£</b>
Hall Costs		
Other Creditors	480.00	480.00
Loans to PCC	27,000.00	27,000.00
Agency Collections		2,655.57
	<hr/>	<hr/>
	27,480.00	30,135.57
	<hr/>	<hr/>



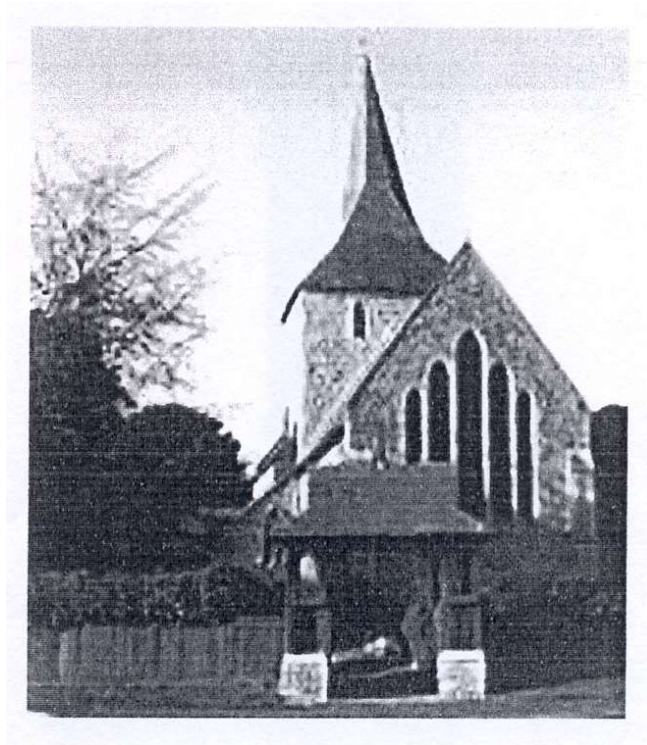
**The Priory Church of St Mary the Virgin South Hayling**  
**Consolidated accounts for the year ending 31<sup>st</sup> December 2021**

**Notes to the financial statements (Continued)**

**16) Reserves**

	Balance Brought Forward £	Income £	Expenses £	Transfers £	Investment Gains & Losses £	Balance Carried Forward £
<b>Unrestricted</b>						
General Fund-church	3,038.42	54,064.04	(42,573.03)	(1.24)		14,528.19
General Fund-Hall	1,727.99	9,816.00	(9,624.57)			1,919.42
General reserves	1,500.00					1,500.00
Choir Stalls	5,810.23			(0.50)		5,809.73
FirstSteps - First Steps	158.15	96.00				254.15
Flowers	223.21		(72.00)	(0.39)		150.82
Furniture	190.23					190.23
Graves2	22,779.95	3,615.50	(5,136.83)	0.88		21,259.50
Memorial Plaques & Chairs	7,670.80					7,670.80
Mission & Outreach Fund	284.03	9.00		0.11		293.14
Shop	221.00	244.18	(300.00)			165.18
Organ & Music Fund	8,499.54	375.00		(0.70)		8,873.84
	52,103.55	68,219.72	(57,706.43)	(1.84)	0.00	62,615.00
<b>Restricted</b>						
Art Group	141.00					141.00
Church Fabric Trust	11,020.47					11,020.47
Churchyard Footpath	1,000.00					1,000.00
Community Appeal fund	(27,822.98)			0.93		(27,822.05)
Fabric Fund	228.38	3,000.00	(1,714.29)	0.45		1,514.54
Friends of St Marys	11,304.94	988.75		0.46		12,294.15
Hall Building Valuation	160,000.00					160,000.00
Graves - Churchyard	0.00					0.00
Developmnt - Development	(43,975.14)	100.00	(8,164.00)			(52,039.14)
Organ and Music Fund	0.00	75.00				75.00
	111,896.67	4,163.75	(9,878.29)	1.84	0.00	106,183.97
<b>Endowment</b>						
Gann Grave Fund	54.77					54.77
Land Sale Trust	6,328.77					6,328.77
	6,383.54	0.00	0.00	0.00	0.00	6,383.54
<b>Total Reserves</b>	170,383.76	72,383.47	(67,584.72)	0.00	0.00	175,182.51

# **THE PRIORY CHURCH OF ST MARY THE VIRGIN SOUTH HAYLING**



**Consolidated accounts**

**For the Year Ended**

**31<sup>st</sup> December 2021**

**Registered Charity No: 1128975**

## **Index**

<b>Report of the Parochial Parish Council</b>	<b>2</b>
<b>Report of the Independent Examiner</b>	<b>4</b>
<b>Statement of Financial Activities</b>	<b>5</b>
<b>Balance Sheet</b>	<b>6</b>
<b>Notes to the accounts</b>	<b>7 -14</b>

**The Priory Church of St Mary the Virgin South Hayling**  
**Consolidated accounts for the year ending 31<sup>st</sup> December 2021**

**Annual Report of the Parochial Church Council**

**Administrative Information**

*Full name of the PCC:* The Parochial Church Council of the Priory Church of St Mary The Virgin, South Hayling

*Address:* Church Road  
Hayling Island  
Hampshire

*Correspondence address:*  
The Parish Office  
c/o The Vicarage  
34 Church Road  
Hayling Island  
Hampshire  
PO11 0NT

*E-mail address:* admin@haylinganglicans.onmicrosoft.com

*Web site:* www.haylinganglicans.co.uk/stmary

PCC members who have served from 1<sup>st</sup> January 2021 until the date this report was approved are:

*Incumbent:*

Revd. Dr Jenny Gaffin	Chairman
Revd. Deborah Curram	Associate Priest

*Church Wardens:*

Mrs Pauline Curtis

*Deanery Synod Representatives:*

Mrs Sue Moss  
Mrs Jenny Owens

*Elected Representatives:*

Mrs Pauline Curtis	Vice Chairman	
Mr Alan Hoad	Honorary Secretary	
Captain Stewart Burrows	Treasurer	co-opted from May 2015
Mrs Silvia Hayward	Treasurer	co-opted from April 2017
Mrs Tracey Jacobs		
Mr Eric Shore		
Mr Roy Davies		
Mrs Jill Davies		
Mrs Lucy Furlong		
Mrs Samantha Griffiths		

*Independent Examiner:*

C J Driscoll Chartered Accountants  
The Old Surgery  
19 Mengham Lane  
Hayling Island  
PO11 9JT

**The Priory Church of St Mary the Virgin South Hayling**  
**Consolidated accounts for the year ending 31<sup>st</sup> December 2021**

**Annual Report of the Parochial Church Council (Continued)**

**Structure and Governance**

The Parochial Church Council is a corporate body established by the Church of England and registered with the Charity Commission with Registration number 1128975. The PCC operates under the Parochial Church Council Powers Measure.

The method of appointment of PCC members is set out in the Church Representation Rules. All who attend church are encouraged to register on the Electoral Roll and stand for election to the PCC.

The Revd Dr Jenny Gaffin is the appointed Priest in Charge of St Mary's Church (from May 2016) with Revd Deborah Curram as Associated Priest (from July 2019). Sue Moss was appointed a lay minister in 2020.

**Objectives and Activities**

St Mary's PCC has the responsibility of co-operating with the incumbent, in the ecclesiastical parish, and with the whole mission of the Church for pastoral, evangelistic, social and ecumenical care.

Its other responsibilities are for St Mary's Church Hall.

**Achievements and Performance**

Church attendance

There are 81 parishioners on the Church Electoral Roll.

PCC activities

Four PCC meetings were held, and were well attended. Revd Dr Jenny Gaffin has chaired the PCC meetings in 2021.

In addition to the statutory Standing Committee other committees were established as in past years entitled Church Hall, Hospitality Committee, Fund Raising and Finance.

Reports submitted to the PCC by those committees and by Mr Alan Hoad, the project manager for the Development Project, are discussed and, if necessary, decisions are taken on their recommendations.

Approved by the Parochial Church Council and signed on it's behalf by:

Revd Dr Jenny Gaffin (Chairman)

Mrs Silvia Hayward (Treasurer)

Date 11 October 2022

**The Priory Church of St Mary the Virgin South Hayling**  
**Consolidated accounts for the year ending 31<sup>st</sup> December 2021**

## **Report of the Independent Examiner**

This Report on the financial statements of the PCC for the year ended 31<sup>st</sup> December 2021 which are set out on page 4 and 5, is in respect of an examination carried out in accordance with s.144 of the Charities Act 2011 ("the Act").

### **Respective Responsibilities of the PCC and the Examiner**

As members of the PCC you are responsible for the preparation of the financial statements. The PCC consider that the audit requirement of the Regulations and section 144(2) of the act do not apply and that an independent examination is needed.

It is my responsibility to:

- examine the accounts (under section 145 of the act);
- follow the procedures laid down in the General Directives given by the charities commission (under section 145(5)(b) of the act); and
- to state whether particular matters have come to my attention.

### **Basis of this report**

My examination was carried out in Accordance with the General Directions given by the Charity Commission. An examination includes a review of the accounting records kept by the PCC and a comparison of the accounts presented with those records. It also includes consideration of any unusual items or disclosures in the accounts, and seeking explanations from you as the PCC concerning any such matters. The procedures undertaken do not provide all the evidence that would be required in an audit, and consequently I do not express an audit opinion on the view given by the accounts.

### **Independent examiner's statement**

In connection with my examination, no matter has come to my attention:

(1) which gives me reasonable cause to believe that in any material respect the requirements

- to keep accounting records in accordance with section 130 of the act; and
- to prepare accounts which are in accord with the accounting records and comply with the accounting requirements of the act, has not been met with.

(2) to which in my opinion attention should be drawn in order to enable a proper understanding of the accounts to be reached.

P G Barker  
C J Driscoll Chartered Accountants  
The Old Surgery  
19 Mengham Lane  
Hayling Island  
Hampshire  
PO11 9JT  
11 October 2022

**The Priory Church of St Mary the Virgin South Hayling**  
**Consolidated accounts for the year ending 31<sup>st</sup> December 2021**

**Statement of Financial Activities**

		Unrestricted Funds 2021	Restricted Funds 2021	Endowment Funds 2021	Total 2021	Total 2020
	Note					
<b>Income and Expenditure</b>						
<b>Incoming Resources</b>						
Voluntary Income	2	42,943.81	4,088.75		47,032.56	43,141.20
Activities for Generating Funds	3	148.98			148.98	7,041.92
Investment Income	4	92.07			92.07	420.81
Incoming Resources from Charitable Activities	5	17,197.50	75.00		17,272.50	15,603.37
Other Incoming Resources	6	7,837.36			7,837.36	10,902.54
<b>Total Incoming Resources</b>		68,219.72	4,163.75		72,383.47	77,109.84
<b>Resources Used</b>						
Cost of Generating Voluntary Income	7					
Fundraising trading: Cost of Goods Sold and Other Costs	8	12,795.93			12,795.93	12,980.74
Investment and Management Costs	9					
Charitable Activities	10	42,736.92	9,878.29		52,615.21	81,869.62
Governance Costs	11	2,173.58			2,173.58	2,090.58
Other Resources Used						
<b>Total Resources Used</b>		57,706.43	9,878.29		67,584.72	96,940.94
<b>Net Incoming / (Outgoing) Resources</b>		10,513.29	(5,714.54)		4,798.75	(19,831.10)
<b>Gains and Losses</b>						
- gains and losses on investment income	12					661.25
<b>Gross Transfers</b>		(1.84)	1.84			
<b>Net Movement in Funds</b>		10,511.45	(5,712.70)		4,798.75	(19,169.85)

**The Priory Church of St Mary the Virgin South Hayling**  
**Consolidated accounts for the year ending 31<sup>st</sup> December 2021**

**Balance Sheet**

	Notes	2021 £	2020 £
<b>Fixed Assets</b>			
Tangible Assets	13	160,000.00	160,000.00
Investment	14	17,404.57	17,404.57
		<hr/>	<hr/>
<b>Total Fixed Assets</b>		177,404.57	177,404.57
<b>Current Assets</b>			
Debtors		1,129.60	1,129.60
Deposits with Central Board of Finance		10,732.38	10,647.69
Other Banks		11,076.53	11,337.47
Other Current Assets		2,319.43	
		<hr/>	<hr/>
		25,257.94	23,114.76
<b>Creditors Falling Due Within One Year</b>	15	27,480.00	30,135.57
		<hr/>	<hr/>
<b>Net Current Assets</b>		- 2,222.06	- 7,020.81
<b>Net Assets</b>		175,182.51	170,383.76
		<hr/> <hr/>	<hr/> <hr/>
<b>Represented by:</b>			
Endowment Fund	16	6,383.54	6,383.54
Restricted Income Fund	16	186,045.16	183,694.79
Restricted income funds (in deficit)	16	(79,861.19)	(71,798.12)
Unrestricted Income Fund		62,615.00	52,103.55
		<hr/>	<hr/>
		175,182.51	170,383.76
		<hr/> <hr/>	<hr/> <hr/>

The Financial statement were approved by the PCC on 11 October 2022.

Rev Dr Jenny Gaffin



**The Priory Church of St Mary the Virgin South Hayling**  
**Consolidated accounts for the year ending 31<sup>st</sup> December 2021**

**Notes to the financial statements**

**1) Accounting Policies**

The financial statements have been prepared under the historic cost convention and in accordance with applicable accounting standards and the Statement of Recommended Practice (FRS102).

**Tangible fixed assets**

Land and buildings are represented by the Church hall, which is shown at original cost. No depreciation is provided on Freehold buildings as required by the provisions of FRS15 as the PCC are of an opinion that these provisions are inapplicable due to the level of repair and maintenance work undertaken, which is at a level that the expected life of the building is extended by at least one year.

**Investments**

Investments appear on the balance sheet at market value with any gains or losses being recognised in the statement of financial activities.

**Incoming resources**

Planned giving, collections, donations and Tax refunds from gift aid are recognised when they are received. Grants legacies and bequests are accounted for when the PCC is entitled to the funds.

**Resources expended**

Grants and donations given are accounted for when the funds are paid out. The diocesan parish share is accounted for when it is due.

**Funds**

Endowment funds are funds where the capital level must be maintained, but the funds arising from the investment may be used as either restricted or unrestricted funds.

Restricted funds are to be used for a specific purpose laid down by the donor, and any unspent balance is carried forward to future years. The PCC has traditionally invested separately for each fund.

Unrestricted funds are donations or income that is usable for the general purpose of the charity.

**The Priory Church of St Mary the Virgin South Hayling**  
**Consolidated accounts for the year ending 31<sup>st</sup> December 2021**

**Notes to the financial statements (Continued)**

**2) Voluntary Income**

	<b>Unrestricted Funds 2021</b>	<b>Restricted Funds 2021</b>	<b>Endowment Funds 2021</b>	<b>Total 2021</b>	<b>Total 2020</b>
Gift Aid Donations	24,031.59	480.00		24,511.59	25,214.49
Tax Rebate	6,672.30	593.75		7,266.05	8,352.33
Non Gift Aid Donations	10,957.10	3,000.00		13,957.10	8,632.33
Magazines, BRF	1,282.82	15.00		1,297.82	942.05
	<hr/>	<hr/>	<hr/>	<hr/>	<hr/>
	42,943.81	4,088.75	0.00	47,032.56	43,141.20
	<hr/>	<hr/>	<hr/>	<hr/>	<hr/>

**3) Activities for generating funds**

	<b>Unrestricted Funds 2021</b>	<b>Restricted Funds 2021</b>	<b>Endowment Funds 2021</b>	<b>Total 2021</b>	<b>Total 2020</b>
Fund Raising Events	52.33			52.33	903.50
100 Club	0.00			0.00	600.00
Photocopying	96.65			96.65	2,666.39
	<hr/>	<hr/>	<hr/>	<hr/>	<hr/>
	148.98	0.00	0.00	148.98	4,169.89
	<hr/>	<hr/>	<hr/>	<hr/>	<hr/>

**4) Investment Income**

	<b>Unrestricted Funds 2021</b>	<b>Restricted Funds 2021</b>	<b>Endowment Funds 2021</b>	<b>Total 2021</b>	<b>Total 2020</b>
Interest	92.07		0.00	92.07	406.54
Hall interest	0.00			0.00	14.27
	<hr/>	<hr/>	<hr/>	<hr/>	<hr/>
	92.07	0.00	0.00	92.07	420.81
	<hr/>	<hr/>	<hr/>	<hr/>	<hr/>

**The Priory Church of St Mary the Virgin South Hayling**  
**Consolidated accounts for the year ending 31<sup>st</sup> December 2021**

**Notes to the financial statements (Continued)**

**5) Incoming resources from charitable activities**

	<b>Unrestricted Funds 2021</b>	<b>Restricted Funds 2021</b>	<b>Endowment Funds 2021</b>	<b>Total 2021</b>	<b>Total 2020</b>
Hall Lettings	2,224.00			2,224.00	2,961.00
Hall refreshment income	0.00			0.00	0.00
First steps / Lanterns	96.00			96.00	245.37
Funerals, weddings, baptisms	14,877.50	75.00		14,952.50	12,397.00
	17,197.50	75.00	0.00	17,272.50	15,603.37

**6) Other Incoming Resources**

	<b>Unrestricted Funds 2021</b>	<b>Restricted Funds 2021</b>	<b>Endowment Funds 2021</b>	<b>Total 2021</b>	<b>Total 2020</b>
Mission and Outreach	0.00			0.00	
Guidebooks	9.00			9.00	9.70
Hall Office letting	7,500.00			7,500.00	8,041.40
Hayling churches group contributions	178.36			178.36	2,651.44
				0.00	0.00
Services of Verger	150.00			150.00	200.00
	7,837.36	0.00	0.00	7,837.36	10,902.54

**7) Cost of Generating Voluntary Income**

	<b>Unrestricted Funds 2021</b>	<b>Restricted Funds 2021</b>	<b>Endowment Funds 2021</b>	<b>Total 2021</b>	<b>Total 2020</b>
Bank Charges	0.00	0.00	0.00	0.00	0.00

**The Priory Church of St Mary the Virgin South Hayling**  
**Consolidated accounts for the year ending 31<sup>st</sup> December 2021**

**Notes to the financial statements (Continued)**

**8) Fundraising Trading: cost of goods sold and other costs**

	<b>Unrestricted Funds 2021</b>	<b>Restricted Funds 2021</b>	<b>Endowment Funds 2021</b>	<b>Total 2021</b>	<b>Total 2020</b>
Hall Running Costs	8,494.91			8,494.91	7,028.19
Gardening and Maintenance Costs	2,498.60			2,498.60	3,676.26
Cleaning	1,802.42			1,802.42	2,268.99
Refreshment Costs	0.00			0.00	7.30
	<hr/>				
	12,795.93	0.00	0.00	12,795.93	12,980.74
	<hr/>				

**9) Investment and management costs**

	<b>Unrestricted Funds 2021</b>	<b>Restricted Funds 2021</b>	<b>Endowment Funds 2021</b>	<b>Total 2021</b>	<b>Total 2020</b>
Hall furniture and equipment	0.00			0.00	0.00
	<hr/>				
	0.00	0.00	0.00	0.00	0.00
	<hr/>				

**The Priory Church of St Mary the Virgin South Hayling**  
**Consolidated accounts for the year ending 31<sup>st</sup> December 2021**

**Notes to the financial statements (Continued)**

**10) Charitable Activities**

	<b>Unrestricted</b>	<b>Restricted</b>	<b>Endowment</b>		
	<b>Funds</b>	<b>Funds</b>	<b>Funds</b>	<b>Total</b>	<b>Total</b>
	<b>2021</b>	<b>2021</b>	<b>2021</b>	<b>2021</b>	<b>2020</b>
Books, Readings	25.00			25.00	386.50
Diocesan Quota and Deanery	10,500.00			10,500.00	42,066.70
Capitation				0.00	0.00
Team Expenses and Training	205.37			205.37	700.03
Mission and Outreach	1,500.00			1,500.00	0.00
Church and Churchyard	12,386.19	1,714.29		14,100.48	17,287.69
Repairs and Maintenance					
Development costs	0.00	8,164.00		8,164.00	9,984.82
Funerals and Weddings	5,671.63			5,671.63	1,268.10
Organ and Music	0.00			0.00	600.00
Hayling Churches Group Fete	597.00			597.00	254.45
Parish Office and General	11,851.73			11,851.73	9,321.33
Admin					
	42,736.92	9,878.29	0.00	52,615.21	81,869.62

**11) Governance Costs**

	<b>Unrestricted</b>	<b>Restricted</b>	<b>Endowment</b>		
	<b>Funds</b>	<b>Funds</b>	<b>Funds</b>	<b>Total</b>	<b>Total</b>
	<b>2021</b>	<b>2021</b>	<b>2021</b>	<b>2021</b>	<b>2020</b>
Subs and Registration Fees	973.58			973.58	890.58
Accountancy	1,200.00			1,200.00	1,200.00
	2,173.58	0.00	0.00	2,173.58	2,090.58

**The Priory Church of St Mary the Virgin South Hayling**  
**Consolidated accounts for the year ending 31<sup>st</sup> December 2021**

**Notes to the financial statements (Continued)**

**12) Net Investment Gain/(Loss)**

	<b>2021</b>	<b>2020</b>
	<b>£</b>	<b>£</b>
Market Value at 1st January	17,404.57	17,031.86
	<hr/>	<hr/>
Market Value at 31st December	17,404.57	17,404.57
	<hr/>	<hr/>
		372.71
		<hr/>

**13) Fixed Assets**

	<b>Land and Building</b>	<b>Totals</b>
	<b>£</b>	<b>£</b>
<b>Cost</b>		
At 1st January 2021	160,000.00	160,000.00
	<hr/>	<hr/>
At 31st December 2021	160,000.00	160,000.00
	<hr/>	<hr/>
<b>Net book Value</b>		
At 31st December 2021	160,000.00	160,000.00
	<hr/>	<hr/>
At 31st December 2021	160,000.00	160,000.00
	<hr/>	<hr/>

**14) Investments**

	<b>2021</b>	<b>2020</b>
	<b>£</b>	<b>£</b>
CBF fixed interest securities fund - income shares	11,020.12	11,020.12
CBF deposit fund held by diocesan board of finance	6,329.68	6,329.68
Gann Grave Trust - 3½% War Stock (£99.47)	54.77	54.77
	<hr/>	<hr/>
	17,404.57	17,404.57
	<hr/>	<hr/>

**The Priory Church of St Mary the Virgin South Hayling**  
**Consolidated accounts for the year ending 31<sup>st</sup> December 2021**

**Notes to the financial statements (Continued)**

**15) Creditors amount falling due within one year**

	<b>2021</b>	<b>2020</b>
	<b>£</b>	<b>£</b>
Hall Costs		
Other Creditors	480.00	480.00
Loans to PCC	27,000.00	27,000.00
Agency Collections		2,655.57
	<hr/>	<hr/>
	27,480.00	30,135.57
	<hr/>	<hr/>

**The Priory Church of St Mary the Virgin South Hayling**  
**Consolidated accounts for the year ending 31<sup>st</sup> December 2021**

**Notes to the financial statements (Continued)**

**16) Reserves**

	Balance Brought Forward £	Income £	Expenses £	Transfers £	Investment Gains & Losses £	Balance Carried Forward £
<b>Unrestricted</b>						
General Fund-church	3,038.42	54,064.04	(42,573.03)	(1.24)		14,528.19
General Fund-Hall	1,727.99	9,816.00	(9,624.57)			1,919.42
General reserves	1,500.00					1,500.00
Choir Stalls	5,810.23			(0.50)		5,809.73
FirstSteps - First Steps	158.15	96.00				254.15
Flowers	223.21		(72.00)	(0.39)		150.82
Furniture	190.23					190.23
Graves2	22,779.95	3,615.50	(5,136.83)	0.88		21,259.50
Memorial Plaques & Chairs	7,670.80					7,670.80
Mission & Outreach Fund	284.03	9.00		0.11		293.14
Shop	221.00	244.18	(300.00)			165.18
Organ & Music Fund	8,499.54	375.00		(0.70)		8,873.84
	52,103.55	68,219.72	(57,706.43)	(1.84)	0.00	62,615.00
<b>Restricted</b>						
Art Group	141.00					141.00
Church Fabric Trust	11,020.47					11,020.47
Churchyard Footpath	1,000.00					1,000.00
Community Appeal fund	(27,822.98)			0.93		(27,822.05)
Fabric Fund	228.38	3,000.00	(1,714.29)	0.45		1,514.54
Friends of St Marys	11,304.94	988.75		0.46		12,294.15
Hall Building Valuation	160,000.00					160,000.00
Graves - Churchyard	0.00					0.00
Developmnt - Development	(43,975.14)	100.00	(8,164.00)			(52,039.14)
Organ and Music Fund	0.00	75.00				75.00
	111,896.67	4,163.75	(9,878.29)	1.84	0.00	106,183.97
<b>Endowment</b>						
Gann Grave Fund	54.77					54.77
Land Sale Trust	6,328.77					6,328.77
	6,383.54	0.00	0.00	0.00	0.00	6,383.54
<b>Total Reserves</b>	170,383.76	72,383.47	(67,584.72)	0.00	0.00	175,182.51