



**NEWHAM
COMMUNITY
PROJECT**

**Annual Report
June 2023 - 2024**

Table of Contents

Directors Foreword	3
Acknowledgements	4
About Us	5
Our Mission.....	5
Our Values.....	5
Our Approach.....	6
Our Team.....	6
Where We Work.....	6
Why We Do What We Do: The Context.....	6
A Borough of Diversity, Disparity, and Disadvantage	7
Who We Support.....	8
The Inequalities We Respond to	8
The Local Challenges We Respond to	9
Our Human Approach	9
Key Achievements Overview	10
Project Spotlights	11
Food Insecurity.....	12
Imra'a, Here I Stand, Here I Stay	13
Perinatal.....	14
Employability Workshops.....	15
Queen Mary University of London Research Collaboration.....	16
Community Hot Meals	17
Mental Health and Trauma Practices	17
Welcome Newham	18
Policies	19
Newham Community Project Annual Accounts	20

Director's Foreword



The last year, from September 2023 to August 2024, has been one of both perseverance and transformation for Newham Community Project. Amidst widening social inequality, rising living costs, and increasing demand for support services, our commitment to walk alongside the most underserved and underrepresented communities in Newham and surrounding boroughs has never wavered. It is this commitment, grounded in dignity, equity, and care, that continues to shape every aspect of our work.

At our core, Newham Community Project exists to respond where others cannot, or will not. We support those often left out of mainstream provision: people with No Recourse to Public Funds (NRPF), migrant families navigating complex systems, survivors of violence, individuals living with long-term trauma, and communities excluded by economic, cultural, or systemic barriers. But more than that, we work with them, listening to their stories, learning from their lived realities, and building solutions that they help lead.



Our mission is clear: to alleviate poverty, advance well-being, and create opportunities for equity through practical, trauma-informed, and place-based action. This mission is not merely aspirational; it is informed by the everyday lives of those we serve. Each week, we support hundreds of families with food, essentials, hygiene, and energy support. We also cultivate an equally vital yet less visible presence: hope. Hope that their struggles are seen, that they are valued, and that there is somewhere safe to turn.

Over these 12 months, we've grown; not always in resources, but in resilience, reach, and impact. We launched new partnerships with academic institutions and health providers, ran culturally safe mental health groups, expanded

employability and trauma recovery support, ran cultural awareness and appropriateness workshops for professionals, statutory services, public servants and for the community, whilst holding firm to our values even as funding became uncertain. Through projects like Imra'a, Here I Stand Here I Stay, our youth-led camps, leadership training, our perinatal support programme, and our trauma-informed projects, we've broken ground on new approaches to healing, community connection, peer-based support and mental health care.

We are proud that over 80% of those who participated in our employability programmes have moved into full-time work or higher education. Proud that our trauma-informed spaces have become trusted sanctuaries for women, children, and survivors. Proud that our foodbank continues to deliver not only essentials, but dignity, ensuring culturally appropriate food for over 350 families each week.



However, we are not without challenge. We've faced the reality of stretched budgets, delayed funding decisions, and ever-growing demand. However, we manage by leaning into the strength of our team, the integrity of our mission, and the trust of the community we serve. Our Youth Advisory and Women's Sanctuary Boards have kept us accountable, in addition to the communities we serve, and our strategic collaborations have helped amplify our impact while ensuring that our work remains embedded in local realities. To everyone who supported us this year, whether through time, funding, voice, or trust, thank you. This work is not ours alone. It is the work of a community determined not just to survive, but to create something better for everyone.





Our PARTNERS

To all our amazing partners — thank you for standing with us, supporting communities, and making a real difference. Your partnership has helped turn ideas into impact and hope into action.



About Us

Newham Community Project (NCP) is a community-led organisation based in the heart of East London. We exist to support and empower individuals and families facing economic hardship, social exclusion, trauma, and barriers to accessing support. Founded on the principles of dignity, equity, and solidarity, our work is grounded in the lived experiences of the people we serve, many of whom are migrants, women, young people, and individuals with No Recourse to Public Funds (NRPF).

We are more than a service provider; we are a trusted space, a place of belonging, and a connector of people, knowledge, and opportunity. From emergency food aid to legal workshops, from trauma-informed mental health support to community-driven research, we stand alongside the community through every crisis, challenge and change.



Our Mission

To alleviate hardship, promote justice, and build equitable pathways to wellbeing, opportunity, and inclusion; with communities, not just for them.

Our Values

- **Dignity:** Every individual deserves to be treated with respect, regardless of background or status.
- **Accountability:** We are guided by the voices of those we serve. Our Youth Advisory Board, Women's Sanctuary, community conversations, and volunteer networks hold us accountable to real needs.
- **Equity:** We recognise structural barriers and are committed to addressing them through culturally competent, trauma-informed approaches.
- **Action:** We are solutions-focused. When we identify a problem, we act. Whether through direct aid, policy advocacy, or strategic partnerships.
- **Belonging:** We create safe, inclusive spaces where people feel seen, valued, heard, and connected.

Our Approach

We deliver trauma-informed, culturally sensitive, and place-based support in collaboration with academics, health providers, local government, and grassroots organisations. Our model is shaped by evidence, research, and direct community feedback, ensuring that everything we do is relevant, responsive, and impactful.



We work across three pillars:

1. **Relief and Stability:** Food, housing, emergency aid, NRPF support
2. **Recovery and Empowerment:** Mental health, employability, leadership development
3. **Research and Reform:** Advocacy, data-driven insight, policy influence

Our Team



We are powered by a diverse, multidisciplinary team of project managers, community organisers, trauma specialists, youth workers, volunteers, and researchers. We are supported by a team of over 140 dedicated volunteers, most of whom are local residents with lived experience, bringing deep understanding, empathy, and authenticity to every aspect of our work. Their lived experience in their roles is a strength we believe is essential

in designing meaningful, empathetic, and lasting solutions.



Where We Work

Our work is centred in the London Borough of Newham, one of the most diverse areas in the UK, with complex social and economic inequalities. However, our projects also reach across boroughs, especially where need arises, including Redbridge, Tower Hamlets, Greenwich, and other surrounding areas.

Why We Do What We Do: The Context

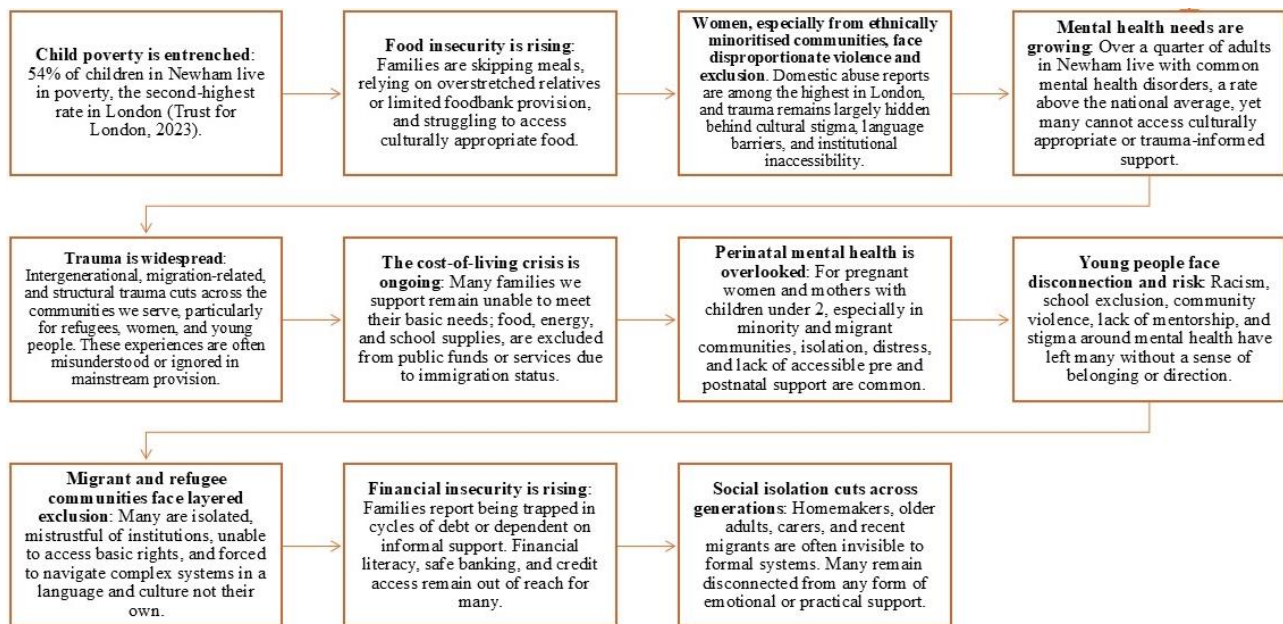
Newham Community Project exists because injustice persists. In one of the most economically deprived and socially complex boroughs in the UK, the weight of inequality is not abstract; it is lived, daily, and generational.



Our work is rooted in the belief that communities know what they need, but are too often held back by systems that are not built for them. We are here to bridge that gap, not by offering charity in the traditional sense, but by walking alongside people, challenging exclusion, and providing practical, human-centred support that makes a difference today while building pathways for tomorrow.

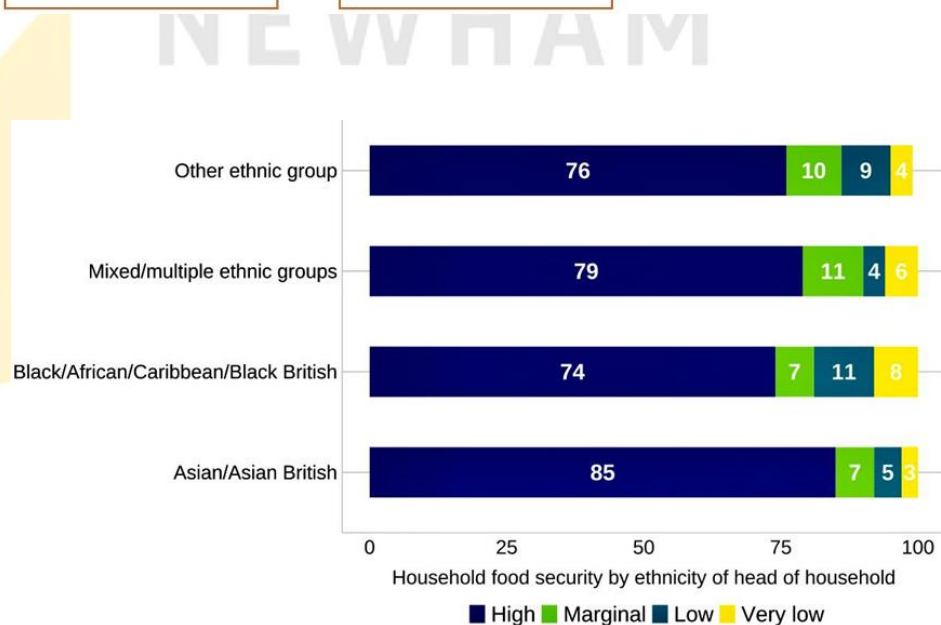
A Borough of Diversity, Disparity, and Disadvantage

The London Borough of Newham is home to extraordinary cultural, linguistic, and ethnic diversity, the most diverse area in the UK. It is also a place where too many people face long-standing, layered disadvantages:



Household Food Insecurity

Existing data highlights a clear correlation between food insecurity and ethnicity, with disproportionately high levels affecting racially minoritised communities. This reflects broader structural inequalities that limit access to stable income, secure housing, and essential support.



These challenges are not isolated. They intersect. A survivor of domestic abuse may also be a single mother with NRPF, struggling with undiagnosed trauma and no access to mental health care. A young person may be experiencing depression, caring responsibilities, and racial discrimination, all without a trusted adult in their life. A recently arrived father may be navigating asylum processes, homelessness, and anxiety while trying to parent in an unfamiliar place.

Who We Support

Our work focuses on people who are most likely to be marginalised, unseen, or left behind by formal systems, including:

Refugees, asylum seekers, and migrants navigating trauma, housing precarity, and barriers to services, with limited funds (£8 per week) to support themselves, as they have no right to work.

Families with No Recourse to Public Funds (NRPF), including those with children at risk of further disadvantage.

Pregnant women and mothers with children under two, particularly those facing mental health difficulties, isolation, or trauma, with no family or friends for emotional or psychological support.

Women and girls affected by abuse, violence, or controlling relationships, many of whom are navigating recovery alone.

Young people experiencing emotional distress, disengagement from education, or a lack of safe, meaningful opportunities.

Volunteers and residents with lived experience, many of whom grow into support roles within our organisation.

Homemakers, carers, and older adults, often isolated within the home or excluded from public life.

Low-income families, including those juggling multiple vulnerabilities; financial, emotional, and structural.

The Inequalities We Respond To

Wider Inequality	Impact on Local Lives
High child and family poverty	Inadequate food, clothing, and educational resources, including social stigma
Gender-based violence and exclusion	Women experiencing trauma without access to culturally appropriate care
Structural mental health gaps	Communities unable to find safe, relevant, or timely emotional or trauma support
Inaccessible perinatal care	Mothers isolated, unsupported, and struggling to bond with their babies, through pregnancy and beyond
Racism, exclusion, and a lack of opportunity for young people	Poor mental health, disengagement, increased vulnerability to harm, and poor grades
Exclusion of NRPF and migrant households	Lack of food, shelter, healthcare, and fear of authorities
Financial exclusion and debt traps	Long-term insecurity, reliance on unsafe informal systems
Cultural exclusion from public life	Global majority women missing from sports, leadership, and decision-making spaces
Social isolation	Mental distress, weakened community ties, and intergenerational disconnection

The Local Challenges We Respond To

Everyday Challenge in Newham	How We Respond
Families struggling to afford nutritious, culturally appropriate food — often relying on overstretched relatives or local foodbanks that do not meet their dietary or faith-based needs	Weekly culturally tailored food parcels, fresh produce distribution, hot meals, and nutritional guidance provided in a respectful, stigma-free environment
Residents facing long-term unemployment, underemployment, or a lack of confidence to re-enter work or training	Employability training, digital skills workshops, confidence-building sessions, and supported access to education or volunteering pathways
Young people navigating emotional distress, intergenerational trauma, or community-based violence — without safe or trusted spaces to talk	Youth mentoring, trauma-informed wellbeing groups, leadership programmes, and access to creative and expressive outlets
Pregnant women and mothers with children under 2 experiencing isolation, distress, or postnatal mental health challenges	Peer-led perinatal mental health support circles, mother-and-baby wellbeing sessions, and safe cultural spaces that foster connection and healing
Community members unsure how to manage finances, avoid debt, or access safe financial tools	Culturally competent financial literacy workshops, one-to-one advice, and practical coaching tailored to the unique needs of low-income and NRPF households
Refugees, asylum seekers, and migrants dealing with housing precarity, emotional trauma, or exclusion from essential services	Holistic advocacy support, trauma-aware emotional spaces, language-accessible information, and pathways to services through community connectors
Survivors of domestic abuse or coercive control unsure how to leave or rebuild their lives safely	Trusted recovery spaces, group-based trauma support, advocacy for safety planning, and culturally relevant information on rights and legal options
Women excluded from health and wellbeing opportunities due to cultural stigma, faith-based modesty needs, or financial barriers	Safe, inclusive women's physical activity programmes, wellbeing sessions, and movement spaces co-designed by women from the community
Individuals and families overwhelmed by trauma, grief, or complex emotional needs — often untreated due to service inaccessibility or stigma	Drop-in mental health support, emotional literacy workshops, peer spaces, and trauma-informed pathways into appropriate services
Isolated homemakers, carers, or elders with few social connections, often disconnected from outside life	Culturally appropriate social spaces such as talking cafés, community kitchen conversations, and targeted outreach programmes that restore connection and confidence

Our Human Approach

We don't just count numbers, we build trust. We believe in meeting people where they are, in the language they speak, with the care they deserve. We are trauma-informed because our community carries trauma. We are culturally competent because no one should have to translate their pain to be heard. We are practical because people don't just need theory, they need food, stability, safety, and connection.

Our work is never just a service, it's a relationship. Built over time, rooted in respect, and sustained by a shared vision: that everyone deserves to live with dignity, voice, and possibility.

Key Achievements Overview (September 2023 – August 2024)

At Newham Community Project, this year has reflected our commitment to stand with the most underserved communities in our borough. Across every age group, life stage, and level of need, we delivered trauma-informed, culturally competent, and practical support that met people where they were with dignity, trust, and care. Between September 2023 and August 2024, we:



Provided weekly culturally appropriate food support to over 350 families, distributing more than 17,000 food parcels



Supported 200+ women and girls who experienced, or were recovering from domestic abuse, trauma, or isolation



Ran 6 week Summer Youth Camp for 65 young people with qualified and trained staff in education, trauma and mental health



Perinatal support provided to over 150 unique pregnant women and new mums with babies up to the age of 2 years



Emotional Support and mental health support to 427 individuals and families



Engaged over 210 young people through youth programmes focused on mental wellbeing, confidence building, and identity development



Provided advocacy and trauma-informed support to 91 refugees, asylum seekers and migrants, helping them navigate housing, immigration, and mental health crises.



Delivered inclusive physical and wellbeing activities to 97 global majority women, offering access to movement spaces designed around modesty, and safety needs.



Hosted over 600 participants in community conversations, covering topics of emotional wellbeing, belonging, faith, discrimination, and support gaps.



Embedded lived experience at every level of our delivery, with 27 new volunteers, many of whom were formerly service users



Maintained a Youth Advisory Board of 14 members, meeting monthly to provide insight, feedback, and programme recommendations across our youth portfolio.



Established a Women and Girls Advisory Board of 12 members, offering consultation, insight, and programme shaping for issues affecting victims, survivors and carers.

Each of these achievements reflects not just a number, but a relationship, a story, and a person who found support in a time of need. As systems grow more complex and the cost of living continues to rise, we remain committed to providing community-led, relational, and resilient support, where healing and hope are not only possible, but expected.

Project Spotlights
Period Covered: July 2023 – June 2024



NEWHAM
COMMUNITY
PROJECT

FOOD INSECURITY

Launched: March 2020

Our foodbank provides weekly food support to individuals and families experiencing severe hardship, including those with no recourse to public funds, and low-income households. We ensure support is directed to those most in need through a structured vetting process, which includes referrals from statutory services and trusted community partners, as well as direct assessments carried out by our team. Each parcel is culturally appropriate and tailored to meet the dietary needs and household size of the service user, offering a balanced range of long-life, fresh items, toiletries and non-edible household items. By offering consistent weekly support, we help reduce the stress and instability caused by food insecurity, ensuring families do not have to choose between eating and paying bills or other essential expenses.



350+

Families
supported weekly



17,000+

Food parcels &
hot meals delivered



Families we support
experiencing food
insecurity

Households with
NRPF and economic
precarity

families with
children who are
experiencing, or
at risk of child
poverty

Communities unable
to access traditional
food banks due to
dietary or cultural
restrictions



IMRA'A – HERE I STAND, HERE I STAY

Launched: December 2023

Imra'a – Here I Stand and Here I Stay is a community-led initiative supporting women and girls affected by trauma, abuse, and marginalisation. Grounded in lived experience and shaped by ongoing community feedback, it provides healing-centred opportunities and pathways into leadership, advocacy, peer support, and personal growth.

Community Conversations – Attended by **423 women and girls**, offering a safe space to raise concerns, share lived experiences, and co-create local solutions.

Leadership Programme – **38 women** completed the programme, gaining skills in advocacy, confidence-building, and public engagement.

Peer-Led Support Groups – **217 women** engaged in fortnightly sessions for connection, healing, and peer support.

Youth Empowerment – Over **65 children and young people** participated in the summer youth camp, recognising them as indirect victims under the Domestic Abuse Act 2021.

Trauma-Informed Workshops – Delivered to **more than 200 women and girls**, focusing on mental health, self-worth, and resilience.

Cultural Awareness and Appropriateness Workshops – Engaged over **150 women and practitioners**, challenging stigma and improving access to culturally competent services.

Advisory Board (12 members) – A board led by lived experience, actively shaping the direction and delivery of the programme.

Pathways into Further Training and Roles – **52 women** progressed into mentoring, advocacy, or continued education and leadership roles.

Target Groups:

Women and girls affected by abuse, coercion, or neglect

Survivors rebuilding emotional and social confidence



Impact

Imra'a goes beyond individual support; it builds a movement of women and girls who lead change within their communities. By centring lived experience at every level, the project ensures that services are not only trauma-informed, but also culturally relevant, locally grounded, and shaped by those they are designed to serve. Whether through leadership, peer support, or community engagement, Imra'a creates long-term pathways for healing, growth, and collective empowerment.

Access & Inclusivity:

Trauma-informed, culturally and faith-sensitive facilitators

Inclusive of women victims, survivors, and service providers

Women and Girls Advisory Board (12 members) informs programme direction

Other Relevant Information:

The programme embeds lived experience into both delivery and governance. It forms a model of community-led gender recovery and leadership



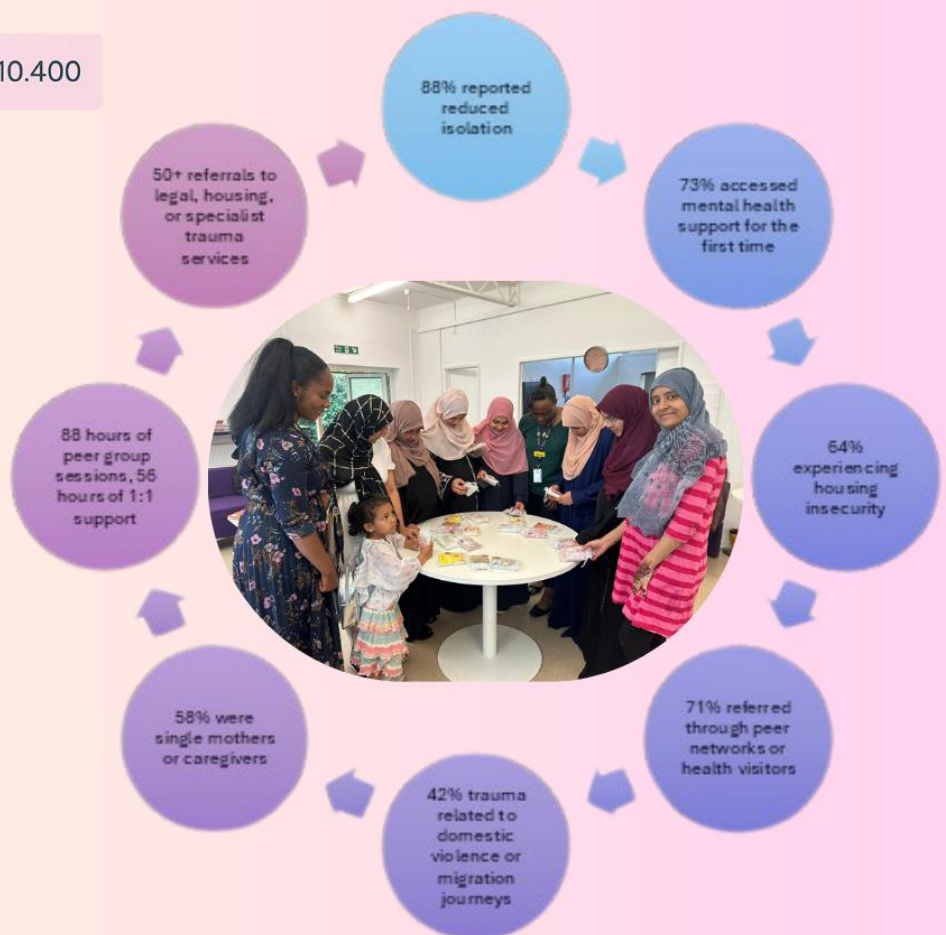
Perinatal

Launched: January 2023

Our perinatal programme was developed in response to the pressing need for culturally appropriate, trauma-informed support during one of the most vulnerable periods in a person's life. This project creates wraparound care from pregnancy to early toddlerhood, ensuring no one falls through the gaps, particularly those from underserved, migrant, or isolated backgrounds who often face barriers to accessing mainstream services. We provide essential items such as pushchairs, formula, maternity packs, self care packs, and hygiene supplies; offer mental health and emotional wellbeing support; and run regular culturally appropriate antenatal and postnatal workshops. Alongside practical support, we deliver tailored guidance, peer connection, and signposting to ensure every parent is equipped, empowered, and supported throughout the early stages of their child's development.

Key Achievements:

Essential Items Distributed



Access & Inclusivity:

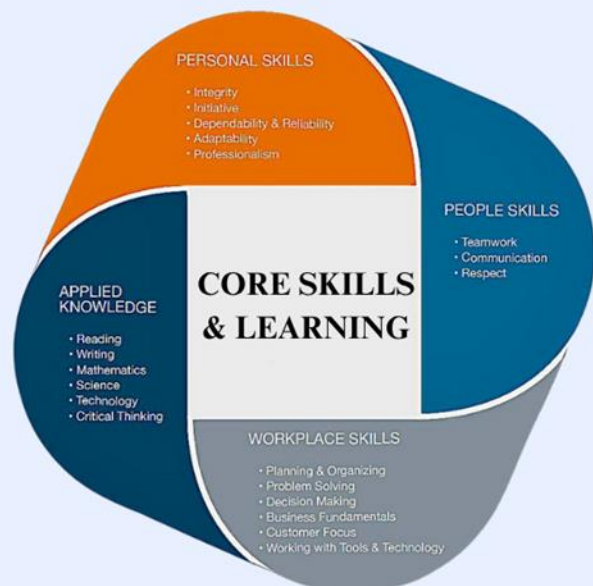
Delivered through gender comfortable spaces

Culturally sensitive staff and language support

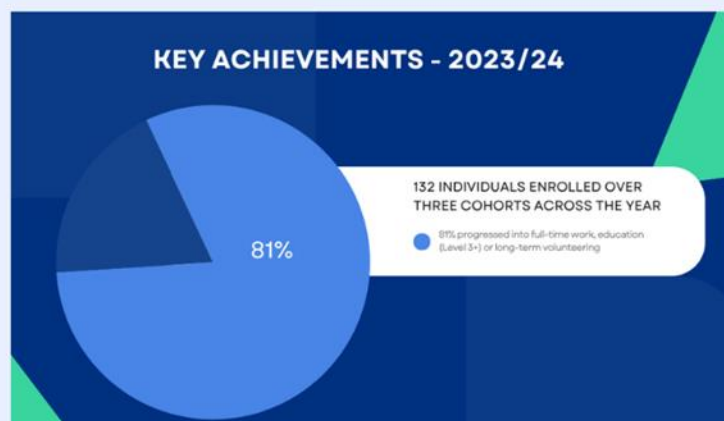
Confidential mental health referrals and peer groups

EMPLOYABILITY WORKSHOPS

Launched: July 2023



This employability programme engaged 132 individuals across three cohorts over the course of a year, supporting them through targeted training and tailored progression pathways. With 81% of participants moving into full-time employment, education (Level 3+), or sustained volunteering, the project demonstrates a strong correlation between personalised, community-led intervention and meaningful socioeconomic outcomes. Informed by a trauma-aware and culturally responsive approach, the programme emphasised not only technical skills but also personal development, resilience, and goal-setting, prioritising career confidence, not just CVs, by embedding long-term goals and pathways into delivery.



Access & Inclusivity



Led by academics



Delivered by facilitators with lived experience



Safe, trauma-informed learning environment


INTERNATIONAL STUDENTS IN A POST-PANDEMIC COST OF LIVING CRISIS

Launched: December 2023

A completed collaboration between Queen Mary University of London, Newham Community Project, and Newham Council

This completed knowledge exchange project examined the intersecting challenges faced by international students (IS) during the pandemic and cost-of-living crisis, including food insecurity, housing instability, employment exploitation, and mental health strain. It aimed to generate evidence, map local support systems, and influence more responsive policy and service delivery.

 **International Students - 679,970** in the UK (2021–22)

 **Economic Contribution - £41.9 billion** added to the UK economy

 **Student Population - 24%** of all UK students **45%** of postgraduates are international



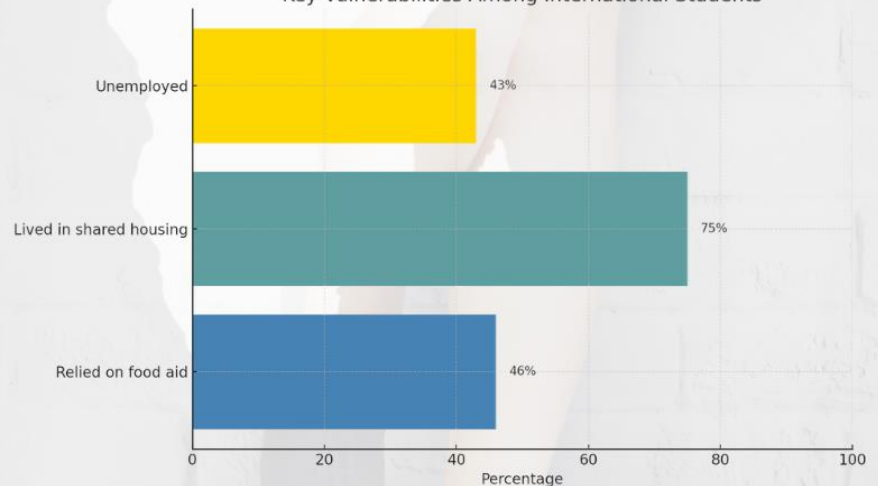
 **81 survey responses, 15 in-depth interviews, 1 focus group**

 **2 policy workshops with over 50 stakeholders**

Data used to inform local discussions on mental health, food poverty, housing access, and employment policy



Key Vulnerabilities Among International Students



Mental Health and Emotional Strain



Students described their experience as “**suffocating**” and “**robotic**”, balancing academic pressure with survival



Widespread **isolation, anxiety, and emotional exhaustion**



Lack of culturally responsive or timely university support; voluntary sector filled this gap

Employment

43% unemployed; some paid as low as £1.50/hr

Rent & Essentials

Rent up to £1,200/month, many struggled to afford basics

Student-Parents

Faced added challenges with baby items, housing, and transport

Other Projects

Community Hot Meals – Warm Havens Programme

Delivered: Winter 2023 and Spring 2024 (ongoing)

Focus: Food security, social inclusion, skills exchange, and wraparound support

Target Groups:	Key Achievements	Access & Inclusivity
Families in economic crisis	2,800 hot meals provided across 14 weeks	Evening/weekend hours
Ethnic minority residents with NRPF	200+ residents engaged	Bilingual volunteers
Socially isolated adults and children, including housebound individuals	Hot meals delivered to housebound service users	Culturally competent chefs
	In-person workshops delivered: Social anxiety and mental wellbeing Digital and financial literacy NEET youth support and children’s activities	On-site wraparound professionals: family navigators, financial advisers, legal clinics

Other Relevant Information:

Alongside hot meals, our Community Hot Meals project created a warm, welcoming space with children’s arts and crafts, movie nights, and seasonal events. These activities helped families connect, building a sense of belonging and emotional safety. Through a trauma-informed approach, the project reduced isolation and supported wellbeing. Trained staff and volunteers provided signposting to essential services, ensuring families felt supported.

Mental Health and Trauma Support

Delivered: September 2023 to August 2024 (Ongoing)

Focus: Emotional wellbeing, trauma recovery, culturally competent support

Target Groups	Key Achievements	Access & Inclusivity
Individuals and families in distress	427 individuals and families supported	Delivered in safe, familiar spaces by trained staff
Women, young people, and caregivers facing trauma or isolation	Services included: 1:1 trauma-informed support Emotional wellbeing circles Family and youth-focused group sessions	Cultural and faith-based barriers explicitly addressed
People excluded from clinical systems due to stigma, language, or status	94% reported reduced isolation	Referral pathways into long-term care when needed
	63% had never accessed support before	

Other Relevant Information:

Our Mental Health and Trauma Informed project offered a safe, confidential space for individuals and families facing emotional distress, trauma, and mental health challenges. Delivered through a culturally responsive, trauma-informed lens, it provided tailored support including one-to-one sessions, group discussions, emotional literacy circles, and family wellbeing activities. We prioritised trust and accessibility, making it comfortable even for those new to emotional support. Centred on healing, connection, and empowerment, the project helped participants feel heard, reduce isolation, and begin rebuilding resilience within a supportive community setting.

Welcome Newham

Delivered: September 2023 to August 2024 (Ongoing)

Focus: Holistic integration and rights access for refugees and migrants

Target Groups	Key Achievements	Access & Inclusivity
Newly arrived refugees, asylum seekers, and migrants	Orientation workshops delivered	Interpreters and bilingual support volunteers involved in all service touchpoints
Individuals facing language barriers, NRPF status, or trauma-related challenges	Community translators where needed in five languages	Sessions delivered in community venues trusted by migrant groups
Families unfamiliar with local services or entitlements	Refugees and migrants supported through: One-to-one advocacy and outreach Casework covering housing, benefits, healthcare, and school enrolment Mental health and trauma support services Cultural bridging events building belonging and safety	Faith and trauma-sensitive practice embedded into all delivery
		Signposting to relevant services
		Referrals accepted through walk-ins, community leaders, and outreach teams

Other Relevant Information:

Welcome Newham bridges the critical gap between arrival and access, supporting residents not only to survive, but to belong. It forms a foundation for long-term integration, mental wellbeing, and informed civic participation. Through translated orientation workshops, one-to-one casework, advocacy, and community events, the project helps refugees and migrants navigate essential services, understand their rights, and connect with others. Delivered in partnership with trusted community facilitators, Welcome Newham offers both practical guidance and emotional reassurance, ensuring new residents are met with dignity, not barriers.

Policies

All Policies and Governance are available upon request.



NEWHAM
COMMUNITY
PROJECT

Registered number
06678865

NEWHAM COMMUNITY PROJECT (Company limited by Guarantee)

Report and Accounts

31 August 2024

NEWHAM COMMUNITY PROJECT (Company limited by Guarantee)
Report and accounts
Contents

	Page
Directors' report	1
Accountants' report	2
Income and Expenditure account	3
Balance sheet	4
Notes to the accounts	5

NEWHAM COMMUNITY PROJECT (Company limited by Guarantee)

Registered number: 06678865

Directors' Report

The directors present their report and accounts for the year ended 31 August 2024.

Principal activities

The company's principal activity during the year continued to be provision of charitable services.

The Trustees decided that the unrestricted funds which have not been specifically designed for a specific use should be maintained at a level above 3 months expenditure. The trustees consider reserves at this level will ensure that, in event of a significant unexpected drop in income, they will continue the charities current activities while consideration is given to ways in which additional funds may be raised.

Directors and Trustees

The following persons served as directors during the year:

Mrs Yasmin Ismail
Mrs Rizwana Kayaalp
Mr Mohammed Hussain

Directors' responsibilities

The directors are responsible for preparing the report and accounts in accordance with applicable law and regulations.

Company law requires the directors to prepare accounts for each financial year. Under that law the directors have elected to prepare the accounts in accordance with United Kingdom Generally Accepted Accounting Practice (United Kingdom Accounting Standards and applicable law). Under company law the directors must not approve the accounts unless they are satisfied that they give a true and fair view of the state of affairs of the company and of the profit or loss of the company for that period. In preparing these accounts, the directors are required to:

- select suitable accounting policies and then apply them consistently;
- make judgements and estimates that are reasonable and prudent;
- prepare the accounts on the going concern basis unless it is inappropriate to presume that the company will continue in business.

The directors are responsible for keeping adequate accounting records that are sufficient to show and explain the company's transactions and disclose with reasonable accuracy at any time the financial position of the company and enable them to ensure that the accounts comply with the Companies Act 2006. They are also responsible for safeguarding the assets of the company and hence for taking reasonable steps for the prevention and detection of fraud and other irregularities.

Small company provisions

This report has been prepared in accordance with the provisions in Part 15 of the Companies Act 2006 applicable to companies subject to the small companies regime.

This report was approved by the board on 18 June 2025 and signed on its behalf.

Rizwana Kayaalp
Director

**NEWHAM COMMUNITY PROJECT (Company limited by Guarantee)
Accountants' Report**

**Independent Examiner's Report to the Trustees of
NEWHAM COMMUNITY PROJECT (Company limited by Guarantee)**

I report to the charity trustees on my examination of the accounts of the Company for the year ended 31 August 2024.

Responsibilities and basis of report

As the charity's trustees of the Company (and also its directors for the purposes of company law) you are responsible for the preparation of the accounts in accordance with the requirements of the Companies Act 2006 ('the 2006 Act').

Having satisfied myself that the accounts of the company are not required to be audited under Part 16 of the 2006 Act and are eligible for independent examination, I report in respect of my examination of your charity's accounts as carried out under section 145 of the Charities Act 2011 ('the 2011 Act'). In carrying out my examination I have followed the Directions given by the Charity Commission under section 145(5)(b) of the 2011 Act.

Independent examiner's statement

I have completed my examination. I confirm that no matters have come to my attention in connection with the examination giving me cause to believe:

- accounting records were not kept in respect of the Company as required by section 386 of the 2006 Act; or
- the accounts do not accord with those records; or
- the accounts do not comply with the accounting requirements of section 386 of the 2006 Act other than the requirement that the accounts give a 'true and fair' view which is not a matter considered as part of an independent examination; or
- the accounts have not been prepared in accordance with the methods and principles of the Statement of Recommended Practice for accounting and reporting by charities applicable to charities preparing their accounts in accordance with the Financial Reporting Standard Applicable in the UK and Republic of Ireland (FRS102).

I have no concerns and have come across no matters in connection with my examination to which attention should be drawn in this report in order to enable a proper understanding of the accounts to be reached.

Plexal Accountants Ltd
Association of Accounting Technicians

85 Great Portland Street,
First Floor,
London
W1W 7LT

18 June 2025

NEWHAM COMMUNITY PROJECT (Company limited by Guarantee)
Income and Expenditure accounts
For the year ended 31 August 2024

	Notes	Restricted funds £	Unrestricted funds £	2024 £	Restricted funds £	Unrestricted funds £	2023 £
Turnover	2	100,315	180,445	280,760	262,238	79,812	342,050
Expenditure		(159,636)	(216,804)	(376,440)	(107,229)	(172,937)	(280,166)
Operating (loss)/profit	3	(59,321)	(36,359)	(95,680)	155,009	(93,125)	61,884
(Deficit)/surplus on ordinary activities		(59,321)	(36,359)	(95,680)	155,009	(93,125)	61,884
Tax on (loss)/profit on ordinary activities		-	-	-	-	-	-
(Deficit)/surplus for the financial year		(59,321)	(36,359)	(95,680)	155,009	(93,125)	61,884
Total Funds Brought Forward		163,774	240,675	404,449	8,765	333,800	342,565
Total Funds Carried Forward		104,453	204,316	308,769	163,774	240,675	404,449

NEWHAM COMMUNITY PROJECT (Company limited by Guarantee)

Registered number:06678865

Balance Sheet

as at 31 August 2024

	Notes	2024 £	2023 £
Fixed assets			
Tangible assets	4	11,018	4,138
Current assets			
Debtors	5	65,824	149,725
Cash at bank and in hand		<u>248,248</u>	<u>273,314</u>
		314,072	423,039
Creditors: amounts falling due within one year	6	(16,321)	(22,728)
Net current assets		<u>297,751</u>	<u>400,311</u>
Net assets		<u>308,769</u>	<u>404,449</u>
Funds for the charity			
Unrestricted funds		104,453	163,774
Restricted funds		<u>204,316</u>	<u>240,675</u>
Total charity funds		<u>308,769</u>	<u>404,449</u>

The directors/trustees are satisfied that the company is entitled to exemption from the requirement to obtain an audit under section 477 of the Companies Act 2006.

The members have not required the charitable company to obtain an audit in accordance with section 476 of the Act.

The directors/trustees acknowledge their responsibilities for complying with the requirements of the Companies Act 2006 with respect to accounting records and the preparation of accounts.

The accounts have been prepared and delivered in accordance with the special provisions applicable to companies subject to the small companies regime. The profit and loss account has not been delivered to the Registrar of Companies.

Rizwana Kayaalp

Director

Approved by the board on 18 June 2025

NEWHAM COMMUNITY PROJECT (Company limited by Guarantee)
Notes to the Accounts
for the year ended 31 August 2024

1 Accounting policies

Status of the company

The charitable company is limited by guarantee and does not have share capital.

The liability of members is limited to £1 per member.

Basis of preparation

The financial statements have been prepared in accordance with Accounting and Reporting by Charities: Statement of Recommended Practice applicable to charities preparing their accounts in accordance with the Financial Reporting Standard applicable in the UK and Republic of Ireland (FRS102)(effective 1 January 2015) - (Charities SORP (FRS102)), the Financial Reporting Standard applicable in the UK and Republic of Ireland (FRS102) and the Companies Act 2006.

Newham community project meets the definition of a public benefit entity under FRS102. Assets and liabilities are initially recognised at historical cost or transaction value unless otherwise stated in the relevant accounting policy note(s).

Going concern statement

The financial statements have been prepared on a going concern basis which assumes that the Company will continue to operate. The validity of this assumption is dependent upon the continuance of support from the Company's key funders and in response to the progress made by the Company in pursuing a viable budget including the obtaining of further grants and other funds. The Company's current business plan shows that the Company will be able to operate in the foreseeable future. Based on this understanding, the directors believe that it remains appropriate to prepare the financial statements on a going concern basis. The financial statements do not include any adjustments, which would result from the basis of preparation being inappropriate.

Funds

General accumulated funds are unrestricted funds available for general purposes and include funds designated for a particular purpose; the use of such funds remains at the discretion of the trustees. Restricted funds are funds subject to conditions imposed by the donor or by specific terms of the appeal under which the funds are raised. The restrictive conditions are binding upon the Charitable Company.

Turnover

Items of income are recognised and included in the accounts when all of the following criteria are met:

The charity has entitlement to the funds;

any performance conditions attached to the item(s) of income have been met or are fully within the control of the charity;

there is sufficient certainty that receipt of the income is considered probable; and the amount can be measured reliably.

NEWHAM COMMUNITY PROJECT (Company limited by Guarantee)
Notes to the Accounts
for the year ended 31 August 2024

Expenditure and irrecoverable VAT

Expenditure is recognised once there is a legal or constructive obligation to make a payment to a third party, it is probable that settlement will be required and the amount of the obligation can be measured reliably.

Expenditure on charitable activities includes the direct costs of projects and activities undertaken to further the purposes of the charity and their associated support & governance costs.

Irrecoverable VAT is charged as a cost against the activity for which the expenditure was incurred.

Tangible fixed assets

Tangible fixed assets are measured at cost less accumulative depreciation and any accumulative impairment losses. Depreciation is provided on all tangible fixed assets, other than freehold land, at rates calculated to write off the cost, less estimated residual value, of each asset evenly over its expected useful life, as follows:

Leasehold land and buildings	30% on reducing balance
Plant and machinery	20% on reducing balance

Debtors

Trade and other debtors are recognised at the settlement amount due after any trade discount offered. Prepayments are valued at the amount prepaid after taking account of any trade discounts due.

Creditors

Creditors and provisions are recognised where the charity has a present obligation resulting from a past event that will probably result in the transfer of funds to a third party and the amount due to settle the obligation can be measured or estimated reliably. Creditors and provisions are normally recognised at their settlement amount after allowing for any trade discounts due.

Taxation

As a registered charity no provision is considered necessary for taxation.

Provisions

Provisions (ie liabilities of uncertain timing or amount) are recognised when there is an obligation at the reporting date as a result of a past event, it is probable that economic benefit will be transferred to settle the obligation and the amount of the obligation can be estimated reliably.

2 Turnover

	2024	2023
	£	£
Restricted Income	100,315	262,238
Unrestricted Income	180,445	79,812
	<u>280,760</u>	<u>342,050</u>

NEWHAM COMMUNITY PROJECT (Company limited by Guarantee)
Notes to the Accounts
for the year ended 31 August 2024

3 Employees	2024 Number	2023 Number
Average number of persons employed by the company	<u>9</u>	<u>8</u>

4 Tangible fixed assets	Plant and machinery etc £	Motor vehicles £	Total £
Cost			
At 1 September 2023	24,621	-	24,621
Additions	<u>718</u>	<u>8,950</u>	<u>9,668</u>
At 31 August 2024	<u>25,339</u>	<u>8,950</u>	<u>34,289</u>
Depreciation			
At 1 September 2023	20,483	-	20,483
Charge for the year	<u>550</u>	<u>2,238</u>	<u>2,788</u>
At 31 August 2024	<u>21,033</u>	<u>2,238</u>	<u>23,271</u>
Net book value			
At 31 August 2024	<u>4,306</u>	<u>6,712</u>	<u>11,018</u>
At 31 August 2023	<u>4,138</u>	<u>-</u>	<u>4,138</u>

5 Debtors	2024 £	2023 £
Trade debtors	<u>65,824</u>	<u>149,725</u>

6 Creditors: amounts falling due within one year	2024 £	2023 £
Other creditors (Loans)	<u>16,321</u>	<u>22,728</u>

7 Transactions with Trustees

The trustees did not receive any salary during the year. No expenses were paid to the Trustees.
There were no transactions between the trustees and the charity.

NEWHAM COMMUNITY PROJECT (Company limited by Guarantee)
Notes to the Accounts
for the year ended 31 August 2024

8 Related party transactions

There has been no trading between the directors and the company.

9 Controlling party

The charity is controlled by the trustees.

10 Other information

NEWHAM COMMUNITY PROJECT (Company limited by Guarantee) is a private company limited by shares and incorporated in England. Its registered office is 259 Katherine Road, London, England, E7 8PP

NEWHAM COMMUNITY PROJECT (Company limited by Guarantee)
Detailed Income and Expenditure account for the
year ended 31 August 2024

	2024	2023
	£	£
Income- Restricted	100,315	262,238
Income- Unrestricted	180,445	79,812
Administrative expenses	(376,440)	(280,166)
Operating (loss)/profit	<u>(95,680)</u>	<u>61,884</u>
(Loss)/profit before tax	<u>(95,680)</u>	<u>61,884</u>

NEWHAM COMMUNITY PROJECT (Company limited by Guarantee)
Detailed Income and Expenditure account for the
year ended 31 August 2024

	2024 £	2023 £
Income		
Income from Donations and Grants	<u>280,760</u>	<u>342,050</u>
Administrative expenses		
Employee costs:		
Wages and salaries	129,352	80,961
Travel and subsistence	5,502	2,527
Staff training & other cost	<u>12,033</u>	<u>700</u>
	<u>146,887</u>	<u>84,188</u>
Premises costs:		
Rent	45,385	38,388
Light and heat	7,317	2,309
Repairs	<u>410</u>	<u>250</u>
	<u>53,112</u>	<u>40,947</u>
General administrative expenses:		
Sub-contractors	18,019	-
Telephone and fax	955	452
Stationery and printing	2,608	1,470
Subscriptions	644	199
Bank charges	0	127
Hardship grants	26,175	39,730
Foodbank expenses	73,423	74,436
Depreciation	2,788	1,400
Other Expenses	-	1,500
Volunteer costs	13,681	6,008
Events & trips	11,511	5,063
Van Insurance	7,537	-
Donations	9,791	6,860
DBS	0	518
IT Costs	<u>2,347</u>	<u>2,401</u>
	<u>169,479</u>	<u>140,164</u>
Legal and professional costs:		
Accountancy fees	500	2,000
Consultancy fees	3,966	12,241
Other legal and professional	<u>2,496</u>	<u>626</u>
	<u>6,962</u>	<u>14,867</u>
	<u>376,440</u>	<u>280,166</u>