



# **Christ Church Dore**

## **2023 Annual Report for the Annual Meeting**

## Welcome for all

"We seek to love and follow Jesus - with the same heart as him, the same love and joy as him, and the same welcome. No exceptions. No one is excluded. No one is "not good enough." We want to live lives that are like Jesus, finding our identity as God's beloved children. If you have felt "hurt by religion", or damaged by your experience of the church, we want to be part of the healing. So whatever your physical ability, colour, education, gender, sexuality, whether rich or poor, Jesus invites you to belong to his church, and to feel at home in his love and care and delight for each one."

## Aim and purposes

The Reverend Andy Patrick has now completed his second year in Dore and it has been a year of church growth with young families joining us. It has also been incredibly busy for Andy with much work to get the redevelopment project, " Step into the Light," to the point where contracts could be signed in December 2023. The church has worked on this for over 20 years. Along with him, the Parochial Church Council (PCC) has the responsibility in promoting the whole mission of the Church, which includes pastoral, evangelistic, social and ecumenical aspects.

The PCC is also specifically responsible for the maintenance of the Church building and the Christ Church Dore Community Centre (which is managed by a separate group made up of church members and community members). The PCC receives reports from this group on a regular basis.

## Objectives and activities

The PCC is committed to enable as many people as possible to worship at our church and to become part of our parish community. The PCC maintains an overview of worship and makes suggestions as to how our services can involve the many groups that live within our parish. Our services and worship put faith into practice, through prayer and scripture, music and sacrament.

When planning our activities for the year, we have considered the Commission's guidance on public benefit and, in particular, the supplementary guidance on charities for the advancement of religion.



The aims and activities of the PCC are in accordance with the guidelines on public benefit and are expressed in our mission statement:

***Christ Church Dore invites everyone:***

***To worship and to learning that renews and refreshes our relationship with God,***

***To be a member of the family of God's people, to meet and provide mutual help and support,***

***To be an agent of the Christian gospel in the wider community.***

The church has reviewed its Mission Action Plan with the help of the Diocese of Sheffield in November 2023. The following priorities for 2023/4 were agreed:

- Review our mission statement
- Children and families
- Homegroups
- Welcome and belonging
- Finance

## **Achievements and performance**

**Step into the Light became a reality;** after 20 years in the planning the redevelopment project reached the point where all permissions had been granted, fundraising was sufficient to go forward and contracts were signed. Phase 1 of the project involving the repair and refashioning of the clergy and choir vestry roofs had been completed in September. As 2023 came to a close the whole church was looking forward to the project starting in the New Year.

## **Worship and prayer**

The PCC ensured that Christ Church Dore offered a range of services during the week, and over the course of the year, that our community found both beneficial and spiritually fulfilling. Throughout 2023 the church building was open during the day for people to come in for private prayer and reflection. People used this warm space and children would play with the toys in the children's area.

The pattern of worship was All Age Worship at 10am and Evening Prayer at 5.30pm, each Sunday. On Thursdays at 10.30am we held a Communion service.

Throughout 2023, we have been supported by the worship team, led by our vicar Andy and supported by a number of committed lay members of the congregation.

Live streaming of the 10am services was available to those who were not able to come to services in person. This may be due to illness or they were out of the area. We continued to have a small but regular viewing of these services.

## Children

At Christ Church Dore we use the resources from Godly Play and Diddy Disciples for our Childrens' Work. Godly Play runs twice a month and Diddy Disciples monthly. We use the spacious facilities at The Old School, Dore for these sessions.

**Godly Play** is for children aged 4 years and over.

"In most religious sessions children are **told** who God is.

In Godly Play children **discover** who God is."

J. Berryman (Founder)

Godly Play is a multi-sensory approach to discovering and connecting with God through Bible stories. These stories are given tangible form using high quality, hand crafted figures and objects. We have also made some of our own resources too. Godly Play is widely and successfully used across the world with adults as well as children.

It is led by Paula Dowson and Beth Goodband. Jill Bush is a Storyteller and other church members support it as Doorkeepers.

This year the children have enjoyed discovering many Old Testament Desert Stories, Parables, Easter, Pentecost, Advent and Prayer. We also ran two sessions for adults - Making Space for Easter and Making Space for Advent.

**Diddy Disciples** is for babies, toddlers and young children.( Up to the age of 3 children are accompanied by their parents).

Movement, stories, actions and songs combine in carefully crafted sessions to enable a new way of worshipping that is fun and engaging.

**Baby and Toddlers group** there is an opportunity for children and their carers to meet once a week. This is referred to in the section on outreach later.



In advent this year we tried out a new idea of having a **craft based after school event** on a Friday for the community. 'Follow the Star' was a great success and fully booked on Eventbrite. We will look to developing a series of similar events next year.



This pattern of services ended on the last day of 2023. The church building closed ready for the redevelopment which was due to start on January 15th, 2024. A different pattern was planned for 2024, utilising online opportunities, Dore Methodist Church and Christ Church Community Centre.



Our **annual church meetings** were held on 16<sup>th</sup> May 2023, a Tuesday evening in church and 47 people attended. A livestream of the meeting was viewed by people who were unable to come to the church. With regard to the electoral roll, as of 16<sup>th</sup> May 2023, the number of members on the electoral roll stood at 142; 89 residing in the parish, 50 residing outside the parish, and 3 classified as "other". A small increase on the previous year.

The average weekly attendance in church, counted during October, was 86 adults and 12 children. We had around 7 people joining the online service on Sunday morning. Our total worshipping community was around 170, predominantly in the 50+ age group, though we are

attracting more young families, particularly drawn to the young children's activities.

As well as our regular services, we enable our community to celebrate and thank God at the milestones of the journey through life. Through baptism we thank God for the gift of life, in marriage public vows are exchanged with God's blessing and through funeral services friends and family express their grief. They give thanks for the life which is now complete in this world and to commend the person into God's keeping.

This year we have celebrated 7 baptisms.

We had 2 weddings this year. (A reduction from pre-pandemic times because of the uncertainty about when the church was closing for redevelopment). There were 8 funerals in our church this year, with 5 services held at the crematorium, and 9 committals of the body and ashes.

## **The year in Christ Church**

As a member of Arise Sheffield, members of our church went prayer walking for the city during the month of March and prayed for the people on the roads we walked.

We had Special Morning Prayer during Lent rather than a course and used the Dust and Glory (Emma Ineson) resources as a focus along with music, prayer and space for reflection. The church membership put aside money throughout Lent and this was donated to our local Grace Foodbank.

On Good Friday the wooden cross erected was in the center of the village. We held a service where we gathered round the cross, offered prayers and sang, inviting passing members of the community to join in.



On Easter Saturday we held an easter egg hunt in the church yard, an open event for the community, inviting families to celebrate Easter.

During May the church members took time to be together for a weekend away at the Hayes Conference Centre, Derbyshire. This was a welcome time for spiritual refreshment, worship and just getting to know one another. The church membership has changed and all agreed the time away was well overdue.



As an A Rocha Eco Church silver award holder Christ Church wished to share some of the progress in the churchyard on encouraging biodiversity and in addition work with enthusiastic primary school children and their teachers. Y3 children from Dore Primary School came to do a nature survey of the flowers on both sides of our churchyard, comparing and finding differences according to habitat and mowing practices.

Christ Church is a member of 'Caring for God's Acre' and staged a Count on Nature event where we invited Sheffield and Rotherham Wildlife trust to help us on an incredibly sunny Saturday morning identify the plants and invertebrates. The findings were added to the group app section of a-naturalist and thus we contributed to a national database of all the species to be found in churchyards- a very special habitat for nature.



During Summer 'Adopt a Grave Scheme' was launched and a group of people tidied the graves they had adopted. These were graves that had not been tended for some while as they are not visited by family or others. This scheme is continuing, where and when possible, while the building work is happening in 2024.

Each year Dore village has a number of events that the church joins in with. These included the annual Songs of Praise as part of the Dore Festival and Scout Gala in July, the Well-dressing service on the village green, also in early July. The church offered a history tour along with opening the Bell Tower for visitors and inhabitants of Dore during this time. A church member had a garden tea party which was well attended and enjoyed.

The church was pleased to welcome a student from King Egbert School as a Duke of Edinburgh Scheme volunteer from September to November. They were able to clear some of the churchyard and tidy up some of the more overgrown graves.

The coming of Autumn saw our **11 days of celebration**. This was a great time of coming together, inviting others to join us and fundraising. The church membership raised an incredible (including Gift Aid) £200,000 towards the re-ordering project and we reached the point of being able to apply for other grants and loans that had not been available to us before this point. The celebration involved 24 hours of prayer, the teddy zip wire challenge, home group celebration, Step into the light show and a celebration harvest meal. The other memorable fundraising events were the Bistro and the Safari Supper.



The Act of Remembrance at the War Memorial is a significant event for the village with hundreds of people attending. We held a small service in church at 10am, before joining the community at the war memorial, where the service was led by our Andy Patrick and the minister from Dore Methodist Church. The parade comprises the local ATC branch, and scouts and guides, as well as other members of the community. And then it was time for Christmas!



The Village Lantern Parade takes place on the first Wednesday in December, where many children and their families walk through the village with their lanterns, see the turning on of the Christmas lights, and sing Christmas songs. Christ Church had a gazebo with nativity dressing up clothes available, and families could take pictures of their children. This was very popular again, although the weather was very cold.

This year we held two candle-lit carol services with the community choir. This was very well attended with over 350 people from across the community attending. Caroloke was very popular last year and repeated in 2023. Church members went into the 2 local pubs, with musical instruments, and sang carols and Christmas songs. This was very well received and great fun.



We held 2 candle-lit crib services where children were invited to dress up and act out the Nativity story. It was wonderful to see so many families in church (over 340 adults and children), with such eager participation by the children, reminding us what a key part of Christmas these events were for so many people.

The church building was closed for services, ready for the redevelopment to start, with a combined congregations service on 31st December 2023.

## Deanery Synod

The parish priest, any clergy licensed to the parish, two lay members of the PCC and any lay representatives of the Diocesan Synod, are members of the deanery synod. This provides the PCC with an important link between the parish and the wider structures of the church. The two lay members of Deanery Synod are Alison Saxton and Anita Campbell. They have been able to report back to the PCC about the meetings and events.

## Use of the Church Buildings

### Services in church

As reported earlier, the church provided 3 services per week, with around 90 attendees on a regular basis across them.

We were open each day from 8am to dusk for private prayer and contemplation, and to provide a warm space in these times of need.

With regard to the **Church building** itself, at the end of 2023 we finally achieved the sign off of the Church of England Faculty Application from the Chancellor for Sheffield Diocese for the small revisions to the reordering project. The contracts were signed in readiness for the building work to start in early January 2024. The plans are to make the building to be a warm, welcoming and accessible space for all who come, whether for regular services of worship, for special occasions, in times of need, or simply for quiet contemplation. Much has been learnt about the constraints our present building places on our outreach activities, and has supported the Business Plan for the redevelopment project "Step into the Light."

The aim is to offer a flexible space to better fit the building for future needs, for differing forms of worship and outreach activities. To be available for use such as for school visits, concerts and other events. Our plans and the architect's drawings are available on our website, and are also exhibited around the village wherever we have a presence.

Pledges and donations for the Church Development Fund are being received, and fundraising and outreach activities took place during 2023. The outcome of grant applications along with generous donations from the church membership saw the church reach a point where it could start work.

This has been a long journey, with a few refinements to the plans along the way, to something we are positive is the right thing to do for our church and local community, for now and the future.

**Bell Tower** - We are fortunate to have a high-quality ring of bells and a dedicated team of 11 bell ringers led by tower captain Richard Knights.

They ring the bells for Sunday morning services, for weddings and funerals on request, and for national and village events. Additionally, three-hour peals are attempted twice monthly throughout the year by a band of mainly visiting ringers, and the bells there are regularly requested by visiting groups of ringers from across the country due to their quality and availability. A peal was rung following the last service in the church building prior to redevelopment works. In 2023 there were 21 peals rung, making a total of 581 peals at Dore, and moving it up to 46<sup>th</sup> in the list of towers with most peals.

The local band demonstrate the art of bell ringing to local people; visiting the tower is a regular activity for local uniformed groups. In Summer 2023 there was a history tour of Christ Church where visitors had the opportunity of seeing into the Bell Tower. A small bell, thought to be part of the original chapel of ease on our site, is to be installed in the ringing room to make it safer and easier to demonstrate bell ringing.

Practice is on Friday evenings, new members are always welcome, and individuals with no experience can be trained from scratch in the ancient English art of change ringing.

**Christ Church Dore Community Centre (CCDCC)** is hired out to a wide range of community groups and the church. The refurbishment of the building took place during the summer of 2021. Since then it has attracted new user groups and many party bookings. It is now running at a profit and is investing in a new outside seating area between the Ark and the main community centre building, in memory of Geoffrey and Maureen Cope.

There were many new initiatives, both secular and Christian outreach throughout 2023. Christ Church members attend The Filling Station; a chance to meet, eat and worship with other Christians from the surrounding areas.



The Art and Craft group meet there on a monthly basis, and are going from strength to strength. The group created knitted chicks for Easter and Christmas puddings to distribute throughout the village, containing the appropriate chocolate treat inside.

The Community Centre has offered to help the church membership with a venue for services and meetings during the time when the church building is closed in 2024.

## **Fabric and Redevelopment Report**

During Phase 1 and the preparation for Phase 2 of the redevelopment project, “Step into the Light,” the Fabric Committee and Redevelopment committee merged with the Standing Committee. This was a response to the amount of work which was required and the need for more people to share out the work. We are grateful to our churchwarden, Martin Blower for leading all aspects of Fabric and Redevelopment.

A detailed report, of which this is a summary is to be found in the papers for the Annual Parochial Church meeting. The routine maintenance schedules continue to be used as the basis for our budgeted maintenance work. They are reviewed on an annual basis. We have also sought more formal scope and price agreements with the various suppliers to the services detailed in the scheduled maintenance work. This has allowed us to control costs and undertake better budgeting. The main areas of work beyond the routine are identified below.

- Work on the clergy and choir vestry roofs May to September 2023.
- A repair of the gas boiler
- The removal of plaster from the choir vestry west wall due to water ingress.

The redevelopment project plans were altered slightly with an application for a further Faculty in order to remove the pews from the chancel in addition to the nave.

## **Church**

The Church's five year inspection, The Quinquennial, was completed in 2021. The inspection had raised a number of priority areas both internally and externally and reinforced the need to carry out major refurbishment work as part of the Church Development Project. One particular area of focus was the Choir Vestry roof. This had been leaking intermittently for a number of years. The clergy vestry roof was also causing problems as were the drains. The PCC agreed to embark upon Phase 1 of the redevelopment project to address these issues. This was completed during the summer of 2023.

We continued to increase the biodiversity in our churchyard in keeping with our silver award from A Rocha Eco church scheme. To achieve the gold award we will need to make significant changes to our building, particularly from an energy efficiency perspective. It is hoped that following the reordering project we will be able to achieve this in 2025. The PCC decided that we would work with the Diocese of Sheffield to achieve carbon net zero by 2030. Baseline energy consumption was estimated as it was difficult without regular gas meter readings until Spring 2023 and no electricity smart meter until mid 2023.



## Churchyard



Our churchyard is a precious resource and we encourage its biodiversity. We are a closed churchyard, and formally it is the responsibility of Sheffield City Council.

We are appreciative of the continued efforts put in by volunteers for the care of the churchyard. They keep the various flower beds in order, and have created colourful displays close to the entrance to church, refreshing them each season. They trim the shrubs that sometimes seem to take over. We have launched an Adopt a Grave scheme whereby individuals have tidied a particular grave. In return a Dore Archives Research Team member has researched the family and social history of that individual and shared it with the adopter. The churchyard was particularly beautiful during Spring when the wild flowers were at their best after the suspension of mowing for 14 weeks.

In July and October we held a 'Rake and Cake' Saturday in the churchyard, where volunteers, both church and community, came to clear areas, plant seeds, and prepare it for the summer and winter. July this year was less effective as we had torrential rain.

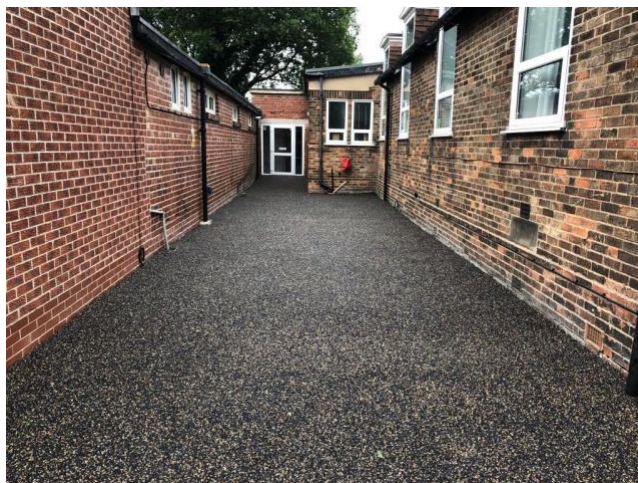


We have continued to care for the memorial rose garden, with the further planting of new rose bushes to add colour and fragrance to this place.

We employ a gardener to cut the grass, complimenting the re-wilding aims for the churchyard as a whole. We continue to use the council green bin scheme to assist with the disposal of Churchyard green waste.

### **Christ Church Dore Community Centre (CCDCC)**

In 2019 a 'quinquennial' report was commissioned by the PCC on the condition of the fabric of the CCDCC. The management group for the Community Centre has taken delegated responsibility for this and they report to the PCC twice a year on progress. The bookings for the community centre are organised by a dedicated administrator.



### **Parish Office**

This has been in service for several years now. It works very well. The project is now complete

with the re-tarmacing of the area outside the Parish Office. The PCC is considering with the CCDCC Management Committee an internal and external access reorganisation to make better use of space in the Parish Office.

## **Pastoral care**

Some members of our parish are unable to attend church due to sickness or age. A member of the pastoral team visits all church members who request it, to celebrate communion with them either at their homes or in hospital, as well as bereavement visits.

## **Mission and evangelism**

Helping those in need is a demonstration of our faith. At the end of each year, we have a Gift Day to raise money to give to our World Mission partners. The amount raised was divided equally amongst our mission partners.

Our Lent Box appeal for 2023 raised funds for the Grace Foodbank in Lowedges. Harvest 2023 this year focused on financial donations, rather the usual food and toiletries.

We have continued to support our Global Mission partners: The Oakes, Christian holiday centre for young people, Hazel Gray, Wycliffe Bible translation, Jason and Tracy Day, Church Mission Society, and Tear Fund.

We have a Church Newsletter that is produced monthly, and is available to all members of our congregations, as well as being shared with cafés, pubs and other businesses around the village. This keeps parishioners informed of important matters affecting our Church, as well as the various activities we are involved in, to share God's message. This news is reinforced by our news and notices on our website and our Facebook Page.

The **Christ Church Dore Ladies' group** provides a valuable link between the church, the village and the wider community, providing fellowship with talks, presentations and social events through their monthly meetings, started again this year.

Another opportunity for outreach within the local community is the **Baby and Toddler Group**, held in the Church hall on Thursday mornings, with a Nativity service held at Christmas. This is very well attended, with often more than 40 children and their carers sharing play and fellowship. Quoting from Katy Sanders' Toddler group report 'Helping at Toddler group is a wonderful way of shining God's love in a very practical way right into the heart of our community'.

A number of church members are regular volunteers at **Grace Food Bank** and the S2 Foodbank. We also have a collection box in the Church porch for donations to this critical cause, which has become more needed during the pandemic. Church members have contributed financial donations directly to the food bank.

For many years we have supported the **Genesis Shop** based on the Manor Estate. This involved providing good quality second hand clothes, toys and other items to their charity shop in one of the more deprived areas of Sheffield. In May we donated summer clothes and again in December, our congregations contributed many toys, which made a big difference at Christmas

for the children and adults living in that area.

**Pathfinders** (11-18 years old youth group ) met weekly in the Community Centre and Ark, for food, teaching and games. The group finished in Summer 2023 due to the leaders retiring. The change in focus is to nurture a younger cohort of children through Godly Play and aim, if possible, to employ a worker to take youth work forward as they come to the relevant age.

**Home Groups** are a central part of the life of the church, and we are pleased to say that these are growing and thriving. The year started off with 7 Home Groups in place, with groups meeting on Monday evening (one group), Tuesday evening (two groups), Wednesday morning (two groups), Wednesday evening (one group), and Thursday evening (one group). We are very pleased to say that there is now also a new group, which has started in January 2024, meeting on a Monday afternoon.

Many of the groups have welcomed new members over this year, and the Home Group leaders have started to meet together for support, encouragement, and to make sure that we have a united vision and direction for the groups. The Home Groups meet for prayer, bible study (using a variety of resources which we are now looking to pool) and the sharing of our lives. A number of the groups have members from other churches. We look forward to what God will do in these groups over the coming twelve months.

## **Ecumenical relationships/Mission Partnerships**

The **Local Mission team** met regularly. Their role is to be a point of contact and encourage all the church family to be involved in local mission & to take a lead in organising and supporting local mission activities. This also covers joint initiatives with churches in our mission area & S17.

**Arise Sheffield** is a crossover initiative, part local mission but also ecumenical and partnership working across Sheffield

We were involved with the Prayer Walking Initiative from Arise Sheffield where through Lent to Easter we took part in praying for each street in our area and sharing our Faith with the local community.

**Filling Station** is also an ecumenical initiative for which there are 150 churches in Sheffield working together.

We share **in local mission with Dore Methodist Church** for the village; Well Blessing and Remembrance Day at the war memorial. We are part of the ecumenical '**Prayer for S17**' group, which meets monthly alongside a monthly fellowship breakfast.

**Leadership team** - We are fortunate to have Richard Knights as licensed Lay Reader, and Jill Mitchell as Parish Evangelist. The rest of the leadership team comprises Martin Blower and Sarah Oxby who have completed their Foundation Course through St Peter's College, along with Robin Condliffe and Olayinka (Yinka) Oluwole who is undertaking the Foundation Course. Margaret Winstanley is our pastoral worker and has undertaken lay training for this role.



Since the pandemic we have been blessed with the number of people taking on significant responsibilities, sometimes holding more than one leadership role within the church. Also, with a number of the people in our congregation setting up new initiatives. This has brought a greater sense of togetherness than has been felt for a while.

As a Church community we have been very concerned about the often difficult situations and disadvantages experienced by people of colour in this country. We have representatives on the Diocesan Black Lives Matter Committee, and we have forged links with St Mary's Bramall Lane. We recognise that we need to move towards a truly inclusive society, and a worldwide Christian church which embraces people of all races, colour and gender, a diverse and welcoming church.

## **Financial review**

Total receipts on unrestricted funds can be seen from the Financial report and Statement of Financial Activities later in this report. The amount raised was significantly higher than in previous years due to the fundraising for restricted income for Step into the Light redevelopment project.

## **Reserves policy**

It is PCC policy to try to maintain a balance on free reserves (net current assets) which equates to at least three months' unrestricted payments, which for 2023 would equate to approximately £37,000.

The other purpose of reserves is to cover maintenance costs that are required throughout the year. Whilst this spend has been kept to a minimum as we get ready for the reordering project work to start, we do need to ensure that once that is complete, we have sufficient funds to maintain the church fabric and furnishings going forward.

More detail can be found in the financial statements and its associated narrative at the end of this report.

## **Structure, governance and management**

The Parochial Church Council is a corporate body established by the Church of England. The PCC operates under the Parochial Church Council Powers Measure. The PCC is a Registered Charity.

The method of appointment of PCC members is set out in the Church Representation Rules.

Membership of the PCC consists of the priest in charge, churchwardens, elected and ex-officio members of the Diocesan and Deanery Synods, and members elected to the PCC at the Annual Parochial Church Meeting. All those who attend our services and members of the congregation are encouraged to register on the Electoral Roll and stand for election to the PCC.

The PCC members are responsible for making decisions on all matters of general concern and importance to the parish including deciding on how the funds of the PCC are to be spent. New members receive initial training on the workings of the PCC.

Christ Church Dore Parochial Church Council met online 12 times in 2023.

In addition to regular business the PCC has debated various issues relevant to the life of our church including finance, fabric, redevelopment and global and local mission.

A Standing Committee with membership as agreed by the PCC carries out the work of the PCC between meetings.

Our **Church Safeguarding policy** is prominent on our website and in our church building. The key statement is -

**Every person has a value and dignity which comes directly from the creation of male and female in God's own image and likeness. Christians see this potential as fulfilled by God's re-creation of us in Christ. This implies a duty to value all people as bearing the image of God and therefore to protect them from harm**

Our parish safeguarding officer, Dr Yvonne Twelvetree, is connected to the Diocese Safeguarding Team and keeps the PCC briefed on changes to safeguarding requirements, and issues surrounding domestic abuse. She is aided by Sarah Oxby, deputy recruiting officer for DBS checks.

The PCC has complied with the duty to have due regard to the House of Bishops' guidance in relation to Safeguarding children and vulnerable adults.

Various groups support the work of the PCC. Our thanks go to all those who have worked tirelessly throughout the year with

- the Fabric Committee same as Standing Committee in 2023
- the Finance Committee
- the Building Development Fundraising Group
- the Local Mission Team

In addition we have people who have taken on lead roles such as Personnel, Eco Church champions, Black Lives Matter, Health and Safety.

We employ 3 members of staff, to support the work at Christ Church Dore. They comprised the Parish Administrator, CCDCC administrator, and church and community centre cleaner.

The Area Dean's visitation last took place in October 2022 and is planned to be next undertaken in 2025.

All returns required by the diocese (Parish Finance Return, Statistics for Mission Return), along with the Charity Commission return, have been completed on time.

## **Administrative information**

Christ Church is situated in Dore, Sheffield. It is part of the Diocese of Sheffield within the Church of England.

The correspondence address is Parish Office, Townhead Road, Dore, Sheffield, S17 3GA.

Registered charity number 1128106.

At the APCM in 2023 we were allowed to have up to 12 Elected Members in total (based on Electoral Roll in May 2023 of 142 adults).

The PCC can co-opt 2 members. During the last year one member was co-opted in August and 2 vacancies were not filled. PCC therefore has less members than allowable as we reach the APCM. In addition we have ex-officio members of treasurer, churchwardens, vicar, deanery (2) and diocesan synod representatives.

PCC members who have served at any time from 1 January 2023 until the date this report was approved are:

**Priest in Charge** - Rev Andy Patrick

#### **Churchwardens**

Julia Stevens and Alison Saxton first elected in October 2020, and both re-elected in May 2022 until May 2023.

Sarah Oxby elected May 2023

Martin Blower elected May 2023

#### **Elected Members**

Paul Archer (Lay vice-chair)

Anita Campbell (PCC secretary and Deanery Synod rep)

Alison Saxton (PCC treasurer and Church Warden until May 2023 then Deanery Synod rep and treasurer)

Joan Giles (Deputy Warden) until May 2023

Jill Bush

Diana Downing

David Kirkman until May 2023

Kath Crosby

Margaret Winstanley

Paula Dowson

Olayinka Oluwole

David Wood Deputy Warden

Lena Plaskitt Deputy Warden

Nick Payne

#### **Co-opted Members**

Steve Clarke co-opted by PCC August 2023 is deputy treasurer

#### **Ex-Officio Members**

Diane Capps (Deanery Synod) until May 2023

Jackie Butcher (Diocesan Synod)

**Also**

Yvonne Twelvetree (Parish Safeguarding Officer). In April 2021 she became an observer invited to all the meetings, rather than a PCC member.



**Christ Church Dore**

**End of Year Financial Statements**

**Year ending 2023**

**This report dated: 22nd October 2024**

**Charity Number 1128106**

**Approval by the Parochial Church Council on**

**and signed on its behalf by: Rev Andy Patrick**

**Signed version available in Parish Office**



**Christ Church Dore PCC**  
**Sofa Separate Designated**  
**For the period from 01 January 2023 to 31 December 2023**

	Unrestricted funds	Designated funds	Restricted funds	Endowment funds	Total funds	Prior year total funds
<b>Incoming resources</b>						
Incoming resources from generated funds	-	-	-	-	-	-
Voluntary income	114,880.95	3,516.48	228,911.40	-	347,308.83	206,667.59
Activities for generating funds	-	-	67,160.20	-	67,160.20	33,041.92
Investment income	497.20	2,099.35	9,675.50	-	12,272.05	3,956.91
Incoming resources from charitable activities	3,767.68	7,331.69	-	-	11,099.37	4,763.04
Other incoming resources	5,768.01	-	-	-	5,768.01	-
<b>Total income</b>	<b>124,913.84</b>	<b>12,947.52</b>	<b>305,747.10</b>	<b>-</b>	<b>443,608.46</b>	<b>248,429.46</b>
<b>Resources used</b>						
Cost of generating funds	24.37	-	625.88	-	650.25	-
Cost of generating voluntary income	106.54	-	399.95	-	506.49	3,864.29
Fundraising trading cost of goods sold and other costs	-	-	-	-	-	-
Investment management costs	-	-	-	-	-	-
Charitable activities	116,865.99	16,741.39	186,238.96	-	319,846.34	160,080.67
Governance costs	850.00	-	-	-	850.00	400.00
Other resources used	-	-	-	-	-	-
<b>Total expenditure</b>	<b>117,846.90</b>	<b>16,741.39</b>	<b>187,264.79</b>	<b>-</b>	<b>321,853.08</b>	<b>164,344.96</b>
<b>Net income / (expenditure) resources before transfer</b>	<b>7,066.94</b>	<b>(3,793.87)</b>	<b>118,482.31</b>	<b>-</b>	<b>121,755.38</b>	<b>84,084.50</b>
<b>Transfers:</b>						
Gross transfers between funds - in	-	457.00	4,088.16	-	4,545.16	374.67
Gross transfers between funds - out	(788.16)	(227.00)	(3,530.00)	-	(4,545.16)	(374.67)
<b>Other recognised gains / losses</b>						
Gains/losses on investment assets	-	-	-	1,535.62	1,535.62	(2,177.79)
Gains on revaluation, fixed assets, charity's own use	-	-	-	-	-	-
<b>Net movement in funds</b>	<b>6,278.78</b>	<b>(3,563.87)</b>	<b>119,040.47</b>	<b>1,535.62</b>	<b>123,291.00</b>	<b>81,906.71</b>
<b>Reconciliation of funds</b>						
<b>Total funds brought forward</b>	<b>55,331.46</b>	<b>69,212.31</b>	<b>205,132.60</b>	<b>106,322.57</b>	<b>435,998.94</b>	<b>354,092.23</b>
<b>Total funds carried forward</b>	<b>61,610.24</b>	<b>65,648.44</b>	<b>324,173.07</b>	<b>107,858.19</b>	<b>559,289.94</b>	<b>435,998.94</b>

# Christ Church Dore PCC

## Balance Sheet (Summary)

	As at 31/12/2023	As at 31/12/2022
<b>Fixed assets</b>	-	-
<b>Current assets</b>		
Debtors	7,598.43	5,660.13
Investments	107,858.19	106,322.57
Cash At Bank And In Hand	443,708.32	323,880.24
	<b>559,164.94</b>	<b>435,862.94</b>
<b>Liabilities</b>		
Creditors: Amounts Falling Due In One Year	(125.00)	(136.00)
	<b>(125.00)</b>	<b>(136.00)</b>
<b>Net current assets less current liabilities</b>	<b>559,289.94</b>	<b>435,998.94</b>
<b>Total assets less current liabilities</b>	<b>559,289.94</b>	<b>435,998.94</b>
<b>Liabilities</b>		
	-	-
<b>Total net assets less liabilities</b>	<b>559,289.94</b>	<b>435,998.94</b>
<b>Represented by</b>		
<b>Unrestricted</b>		
Unrestricted - General Funds	61,610.24	55,331.46
<b>Designated</b>		
Designated - Brenda Dinsdale Lewis Legacy	2,125.34	2,058.87
Designated - Church Weekend Aways	(72.98)	(316.76)
Designated - Development Fund	67,596.08	67,243.20
Designated - New Wine Fund to underwrite future events	-	227.00
Designated - World Mission	(4,000.00)	-
<b>Restricted</b>		
Restricted - Agency collection	138.99	138.99
Restricted - CCD CC Refurbishment Fund	(6,548.85)	642.50
Restricted - CCD CC Running Fund	14,933.76	10,314.91
Restricted - Church Development Fund	311,650.25	193,143.20
Restricted - Income from Francis Gisbourne Trust	663.00	893.00
Restricted - Interest from Harwood bequest	3,335.92	-
<b>Endowment</b>		
Endowment - Harwood Bequest	90,000.00	90,000.00
Endowment - KT&WC Veall Trust	17,858.19	16,322.57
<b>Fund Totals</b>	<b>559,289.94</b>	<b>435,998.94</b>

# Christ Church Dore PCC

## Analysis of income and expenditure Selected period: 01 January 2023 to 31 December 2023

				Total		
	General	Designated	Restricted	Endowment	This year	Last year
<b>Incoming resources</b>						
<b>Incoming resources from generated funds</b>						
0101 - Gift Aided - Bank	80,630.00	-	-	-	80,630.00	75,719.00
0201 - Other planned giving	-	-	-	-	-	300.00
0210 - Non-Gift Aided - Bank	9,730.00	-	-	-	9,730.00	8,778.00
0301 - Loose plate collections	1,147.20	-	-	-	1,147.20	1,046.51
0401 - Regular gift days	-	2,902.73	-	-	2,902.73	3,222.50
0403 - SumUp Give a little GA'ed	467.44	-	-	-	467.44	299.03
0404 - SumUp Give a little Non-GA'ed	55.38	-	-	-	55.38	42.32
0405 - Amazon Smile receipts	35.15	-	-	-	35.15	24.91
0406 - SUMUP - Payaz Terminal	543.14	-	-	-	543.14	106.75
0410 - Giving through church boxes	-	-	-	-	-	-
0501 - One-off Gift Aided donations	160.00	-	-	-	160.00	2,656.78
0502 - One off non-Gift Aided donations	286.58	-	-	-	286.58	838.50
0503 - Lent Appeal	-	-	-	-	-	-
0510 - Gifts of quoted securities	-	-	-	-	-	-
0550 - Donations appeals etc	-	-	836.14	-	836.14	3,276.58
0560 - Donations for Church Office Development	-	-	-	-	-	-
0570 - Donations for Church Reordering	-	-	151,228.23	-	151,228.23	67,987.83
0575 - Loans for CCD Reordering	-	-	-	-	-	-
0580 - Donations for CCDCC Refurbishments	-	-	6,661.88	-	6,661.88	11,133.24
0601 - Tax recoverable on Gift Aided donations	20,382.31	613.75	36,685.15	-	57,681.21	21,650.54
0701 - Legacies	-	-	750.00	-	750.00	176.00
0801 - Recurring grants	-	-	-	-	-	6,059.44
0810 - Grants for CCDCC Refurbishment	-	-	-	-	-	500.00
0820 - Grants for CCD Reordering Project	-	-	32,750.00	-	32,750.00	-
08A1 - Non-recurring one-off grants	1,150.00	-	-	-	1,150.00	750.00
0901 - Other funds generated	293.75	-	-	-	293.75	2,099.66
0930 - Pathfinders Fund income	-	-	-	-	-	-
0830 - VAT Recovery - List of Places of Worship Scheme	-	-	27,947.33	-	27,947.33	-
0940 - Fund Raising for Church Reordering	-	-	3,006.99	-	3,006.99	-
0950 - Fundraising for CCDCC Refurbishment	-	-	-	-	-	-
1220 - Bookstall sales - fund raising	-	-	-	-	-	-
1230 - CCDCC lettings - misc rentals	-	-	36,205.88	-	36,205.88	33,041.92
1240 - CCDCC lettings - fund raising	-	-	-	-	-	-
1250 - Magazine income - advertising	-	-	-	-	-	-
1260 - Parish magazine sales	-	-	-	-	-	-
1001 - Dividends	-	-	-	-	-	-
1020 - Interest and dividends	497.20	2,099.35	9,575.50	-	12,172.05	3,856.91
1030 - Rent from lands or buildings	-	-	100.00	-	100.00	100.00
<b>Incoming resources from generated funds Totals</b>	<b>115,378.15</b>	<b>5,615.83</b>	<b>305,747.10</b>	<b>-</b>	<b>426,741.08</b>	<b>243,666.42</b>
<b>Incoming resources from charitable activities</b>						
1101 - Fees for weddings and funerals	3,767.68	-	-	-	3,767.68	2,787.00
1210 - Bookstall sales to promote objectives	-	-	-	-	-	-

				Total	
	General	Designated	Restricted Endowment	This year	Last year
1225 - Church Hall Lettings - internal use	-	-	-	-	-
1290 - Church Weekends Away Receipts	-	7,331.69	-	7,331.69	1,976.04
<b>Incoming resources from charitable activities Totals</b>	<b>3,767.68</b>	<b>7,331.69</b>	<b>-</b>	<b>11,099.37</b>	<b>4,763.04</b>
<b>Other incoming resources</b>					
1270 - Secretarial support - to others	-	-	-	-	-
1280 - Photocopying	-	-	-	-	-
1310 - Insurance claims	5,768.01	-	-	5,768.01	-
1320 - Surplus - sales of fixed assets	-	-	-	-	-
<b>Other incoming resources Totals</b>	<b>5,768.01</b>	<b>-</b>	<b>-</b>	<b>5,768.01</b>	<b>-</b>
<b>Incoming resources Grand totals</b>	<b>124,913.84</b>	<b>12,947.52</b>	<b>305,747.10</b>	<b>- 443,608.46</b>	<b>248,429.46</b>

## Resources used

### Cost of generating funds

1701 - Fees paid to fund raisers	-	-	-	-	3,600.00
1710 - Costs of applying for grants	-	-	355.80	-	355.80
1720 - Costs of stewardship campaign	-	-	-	-	-
1730 - Costs of fetes & other events	-	-	-	-	112.50
1740 - Investment management costs	-	-	-	-	-
1750 - Costs from fees from banks	106.54	-	44.15	-	150.69
1725 - Costs for CCD Reordering Fund Raising Activities	24.37	-	625.88	-	650.25
<b>Cost of generating funds Totals</b>	<b>130.91</b>	<b>-</b>	<b>1,025.83</b>	<b>-</b>	<b>3,864.29</b>

### Charitable activities

1801 - Giving to missionary societies	-	-	-	-	-
1820 - Giving from miscellaneous collections	-	-	944.89	-	944.89
1830 - Giving - relief and development agencies	-	-	-	-	-
1860 - World Mission	-	7,516.48	-	-	7,516.48
1870 - Secular charities	-	-	-	-	-
1880 - Pathfinders Fund Expenditure	-	-	-	-	-
1901 - Stipends quota	-	-	-	-	-
1910 - Ministry Common Fund	75,000.00	-	-	-	75,000.00
2001 - Assistant staff costs	-	-	-	-	-
2050 - Salary of parish administrator - Church	8,762.55	-	-	-	8,762.55
2055 - Salary for administration of CCDCC	-	-	4,364.74	-	4,364.74
2060 - Salary for CCDCC Cleaner	-	-	-	-	-
2070 - Salary/Payments for Church Running	1,106.04	-	-	-	1,106.04
2075 - Salary for Churchyard maintenance	-	-	-	-	-
2080 - Salary for church hall running	-	-	3,594.83	-	3,594.83
2085 - Salary for Eco Project Officer - Kickstart	-	-	-	-	5,993.56
2101 - Working expenses of clergy	996.75	-	-	-	996.75
2120 - Council tax	-	-	-	-	-
2130 - Vicarage house expenses	-	-	-	-	-
2140 - Water rates - vicarage	566.13	-	-	-	566.13
2150 - Vicar's telephone	110.00	-	-	-	110.00
2170 - Education	-	-	-	-	-
2180 - Welcome and Hospitality	-	-	-	-	-
2201 - Parish training and mission	-	-	-	-	414.35



	General	Designated	Restricted	Endowment	Total	
					This year	Last year
2210 - Church Activities - eg Away days, weekends	1,462.77	7,544.91	-	-	9,007.68	2,292.80
2240 - Children and Youth Mission	1,954.83	-	-	-	1,954.83	2,640.66
2250 - Home mission	2,117.54	-	-	-	2,117.54	1,557.85
2260 - Discipleship (Home Groups etc)	223.66	-	-	-	223.66	-
2301 - Church running - insurance	3,030.82	-	-	-	3,030.82	2,783.25
2310 - Church and office - telephone and WIFI	1,148.54	-	-	-	1,148.54	1,071.24
2320 - Church Equip & Maintenance	452.50	-	-	-	452.50	1,713.73
2330 - Church maintenance	726.79	-	-	-	726.79	2,940.23
2331 - Church - Cleaning Materials etc	80.36	-	-	-	80.36	109.80
2335 - Church Maintenance - Quinquennial	864.00	-	-	-	864.00	-
2340 - Upkeep of services	1,845.58	-	-	-	1,845.58	2,580.41
2345 - Expenses for Weddings and Funerals	-	-	-	-	-	-
2350 - Upkeep of churchyard	(95.00)	-	531.75	-	436.75	2,960.40
2360 - Administration	2,176.19	-	-	-	2,176.19	2,080.74
2365 - Administration & Financial Software Fees	308.99	-	-	-	308.99	225.99
2370 - Visiting speakers / locums	-	-	-	-	-	-
2380 - Church Activities - eg rent of CCDCC, Old School	300.00	-	-	-	300.00	451.25
2401 - Church running - electric	(607.33)	-	-	-	(607.33)	1,984.23
2410 - Church running - gas	3,971.42	-	-	-	3,971.42	3,769.08
2420 - Church running - water	1,266.61	-	-	-	1,266.61	96.00
2440 - Church running - heating and lighting	-	-	-	-	-	-
2501 - Magazine expenses	-	-	-	-	-	-
2510 - Bookstall costs	-	-	-	-	-	-
2515 - CCDCC- management including professional fees	-	-	-	-	-	754.49
2520 - Hall running - oil	-	-	-	-	-	-
2530 - CCDCC running - electricity	-	-	2,211.38	-	2,211.38	1,576.81
2540 - CCDCC running - gas	-	-	1,135.89	-	1,135.89	4,240.03
2550 - CCDCC running - insurance	-	-	1,631.99	-	1,631.99	1,498.61
2560 - CCDCC running - maintenance	-	-	9,669.94	-	9,669.94	5,053.20
2565 - CCDCC Maintenance - Quinquennial	-	-	-	-	-	-
2570 - CCDCC running - telephone and broadband	-	-	302.29	-	302.29	260.00
2575 - CCDCC Running - admin systems etc	-	-	549.04	-	549.04	238.80
2580 - CCDCC running - water	-	-	760.34	-	760.34	802.41
2595 - CCDCC- Cleaning materials etc	-	-	566.59	-	566.59	713.91
2701 - Church major repairs - structure	8,800.00	-	104,139.94	-	112,939.94	-
2710 - Church major repairs - installation	-	-	-	-	-	-
2720 - Church interior and exterior decorating	-	-	2,280.00	-	2,280.00	-
2801 - CCDCC + major repairs - structure	-	-	7,700.00	-	7,700.00	-
2820 - CCDCC + major repairs - installation	-	-	810.93	-	810.93	13,981.38
2830 - CCDCC + interior and exterior decorating	-	-	13,150.97	-	13,150.97	1,758.00
2840 - Other PCC property upkeep	296.25	-	-	-	296.25	-
2920 - Building development - Church- Consultants	-	-	17,784.45	-	17,784.45	900.00
2921 - Building development - Church- Architects	-	-	14,109.00	-	14,109.00	-
2922 - Building development - Church- Contractors for building work etc	-	-	-	-	-	-
2923 - Building development - Church - Miscellaneous Activities	-	-	-	-	-	-
2925 - Building development - Church office	-	1,680.00	-	-	1,680.00	1,862.00
2930 - Building Development - Hall	-	-	-	-	-	-
<b>Charitable activities Totals</b>	<b>116,865.99</b>	<b>16,741.39</b>	<b>186,238.96</b>	<b>-</b>	<b>319,846.34</b>	<b>160,080.67</b>
<b>Governance costs</b>						
2375 - Governance costs examination/audit fees	850.00	-	-	-	850.00	400.00

				Total	
	General	Designated	Restricted	Endowment	
				This year	Last year
2601 - Governance costs examination/audit fee	-	-	-	-	-
Governance costs Totals	850.00	-	-	-	850.00 400.00
Other resources used					
3010 - Church Weekend away	-	-	-	-	-
Other resources used Totals	-	-	-	-	-
Resources used Grand totals	117,846.90	16,741.39	187,264.79	- 321,853.08	164,344.96

## **Accounting Policies as Stated in the Accounts**

1. The financial statements have been prepared as accrual with the Church Accounting Regulations 2006 together with applicable accounting standards and the Charities SORP. The financial statements have been prepared as accrual accounts as the gross income is greater than £250,000 except for the valuation of investment assets, which are shown at market value.

## **Funds**

2. General funds represent the funds of the PCC that are not subject to any restriction imposed by the donor or the terms of an endowment regarding their use and are available for application on the general purposes of the PCC.
3. The accounts include all transactions, assets and liabilities for which the PCC is responsible in law. They do not include the accounts of specific donations or legacies which are under the control of the incumbent and the churchwardens. Neither do the accounts include details of the affairs of groups who owe their affiliation to another body nor those that are informal gatherings of Church members.

## **Incoming resources**

### **Voluntary income and capital resources**

4. Collections are recognised when received by or on behalf of the PCC.
5. Income tax recoverable on gift aid donations is recognised when the income is recognised.
6. Grants and legacies to the PCC are accounted for as soon as the PCC is notified of its legal entitlement and the amount due.
7. Funds raised by fetes and similar events are accounted for net.

### **Other ordinary income**

8. Rental income from the letting of church premises is recognised when the rental is due or invoiced.

### **Income from investments**

9. Dividends and interest are accounted for when receivable. All such income is receivable gross.

### **Gains and losses on investments**

10. Realised gains and losses on investments are recognised when investments are sold. Unrealised gains and losses are accounted for on revaluation of investments at 31 December.

## **Resources used**

### **Grants**

11. Grants and donations are accounted for when paid over or when awarded, if that award creates a binding obligation on the PCC.

### **Activities directly related to the work of the church**

12. The parish share and ministry contribution are accounted for when payable. Any parish share unpaid at the year end is provided for in these accounts as an operational (though not legal) liability and is shown as a creditor in the balance sheet.

## **Fixed assets**

### **Consecrated land and buildings and moveable church furnishings**

13. Consecrated and benefited property is excluded from the accounts by s96(2) (a) of the Charities Act 2011.
14. No value is placed on moveable church furnishings held by the churchwardens on special trust for the PCC and which require a faculty for disposal since the PCC considers this to be inalienable property. All expenditure incurred during the year on consecrated or benefited buildings and moveable church furnishings, whether maintenance or improvement, is written off as expenditure in the Statement of Financial Activities and separately disclosed.

### **Freehold land and buildings**

15. No depreciation is considered. The Church does not pay tax, and therefore the purpose of depreciation, to offset against tax is not applicable.

### **Other fixtures, fittings and office equipment**

16. No depreciation is considered. The Church does not pay tax, and therefore the purpose of depreciation, to offset against tax is not applicable.

### **Investments**

17. Investments are stated at market value at 31 December 2023.

## **Notes to support the 2023 Accounts**

I must start this analysis by thanking Alison Saxton for all her hard work and dedication both to the church but also to these accounts. Alison has steered the church financially for over 10 years and it is almost impossible to comprehend the huge effort and dogged determination shown to bring us to this position. **Alison – thank you.**

## **Statement of Financial Activities Report**

2023 is the start of a tumultuous 2-year period both in the church and specifically the finances of the Church. After the amazing response to the Gift Day in September it is hardly surprising that total funds are now £559,289 an increase of £123,291.

What is more surprising is that this increase is in spite of substantial expenditure for Phase 1 of the re-ordering scheme i.e. the new roofs on both the Choir Vestry and Vicar's Vestry, these costs were over £80,000 and with professional fees we spent almost £100,000. There were also preparatory professional fees for phase 2 as well.

Unfortunately, we have to split all our accounts into Unrestricted (i.e. the funds can be spent on any church activity) and Restricted which falls into 2 categories – Designated (funds spent at the discretion of the PCC) and Restricted (funds can ONLY be spent as directed by the donor). The Brenda Harwood Trust is a prime example where we can only spend the income on the Churchyard with the capital protected – hence we cannot use the £90,000 for the re-ordering.

## **Analysis of Income and Expenditure**

I would just like to highlight some notable points: -

Regular giving again increased by over 6% and approx. 90% of giving is Gift aided boosting regular donations by over £20,000. Whilst there will be significant Grant income this year, we still received £32,750 helping to defray the phase 1 costs mentioned previously. Both phase 1 and phase 2 are eligible for the Listed Places of Worship Scheme which repays the VAT incurred in the building project. The scheme repaid VAT of almost £28,000.

We received a significant increase in interest and dividends reflecting both the increase in interest rates but much better performance on the modest Endowment Funds we hold. Apart from the Brenda Harwood Trust we will be selling the smaller investments to help fund phase 2. There was a modest increase in Wedding and Funeral fees, but we will see a significant reduction this year. The insurance claim represents a claim for the broken drain discovered during phase 1 works.

As regards expenditure if we put aside the significant building costs of almost £113,000 the largest expense as usual is Common Fund i.e. the monies paid to the Diocese. In 2023 we

paid slightly more than originally requested at £75,000 a 15% uplift on 2022. Again, as a congregation your generosity enabled us to increase our Global Mission support to £7,500 – thank you.

As per previous years both the lettings income and the costs of the Christ Church Dore Community Centre are recorded within our General Fund hence the large decorating bill paid in 2023. The Community Centre is now on a much firmer financial basis under the careful stewardship of Pete Sanders and his team.

Professional fees are a substantial item in 2023 totaling over £30,000. Some of these fees relate to phase 2 thereby reducing the fee costs for 2024.

Robert Hunt

Treasurer

October 2024



INDEPENDENT EXAMINER'S REPORT  
TO THE TRUSTEES OF CHRIST CHURCH DORE, PAROCHIAL CHURCH COUNCIL

---

I report on the accounts of Christ Church Dore Church for the year ended 31 December 2023.

Respective Responsibilities of Trustees and Examiner

The church's trustees are responsible for the preparation of the accounts. The church's trustees consider that although an audit and Independent Examination is not required for this year under section 144(2) of the Charities Act 2011 (the 2011 Act)) an Independent Examination has been requested and carried out. .

It that respect, It is my responsibility to:

- Examine the accounts under section 145 of the 2011 Act);
- To follow the procedures laid down in the General Directions given by the Charity Commissioners (under section 145(5)(b) of the 2011 Act); and
- To state whether particular matters have come to my attention.

Basis of Independent Examiner's report

My examination was carried out in accordance with the general Directions given by the Charity Commission. An examination includes a review of the accounting records kept by the charity and a comparison of the accounts presented with those records. It also includes consideration of any unusual items or disclosures in the accounts, and seeking explanations from you as trustees concerning any such matters. The procedures undertaken do not provide all the evidence that would be required in an audit and consequently no opinion is given as to whether the accounts present a 'true and fair view' and the report is limited to those matters set out in the statement below.

Independent examiner's statement

Since the gross income for the year exceeds the amount provided in section 145(3) of the Act, I confirm that I am qualified to act as Independent Examiner under the provisions of that section of the Act.

In connection with my examination, no matter has come to my attention:

1. which gives me reasonable cause to believe that in any material respect the requirements
  - to keep accounting records in accordance with section 130 of the 2011 Act; and
  - to prepare accounts which accord with the accounting records and comply with the accounting requirements of the 2011 Act have not been met; or
2. to which, in my opinion, attention should be drawn in order to enable a proper understanding of the accounts to be reached.

Ashley Ellis

1<sup>st</sup> September 2024

22 Barholm Road  
Crosspool  
Sheffield  
S10 5RS