

Annual report
and accounts 2023-24

COTSWOLD EDGE DISTRICT SCOUT

ALFIELD

1st WOODEND

SHARMAN

1st THORNBURY

THORNBURY

3rd

ON

ENDEAVOUR ESU

2nd ALVESTON

SBURY

BEACH

MVU

BOURNE DOWN & BURYSIDE

1st PUCKLE

BOURNE ST MICHAEL

1st FRAMPTON CO

2nd FRAMPTON COTT

YOUNG LEA

ER ESU

1st YATE

1st RAM HI

SODBURY

NIKE ESU

1st ABBOTSWOOD

1st

EAVERS

cubs

SCOUTS

EXPLORERS

nan

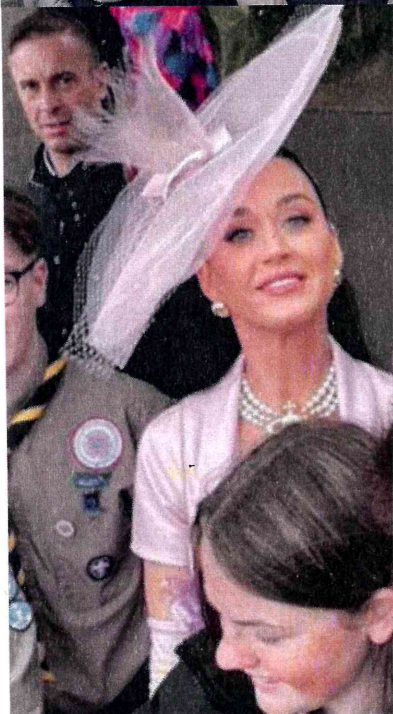
er

These boards were from the previous Making Hall that stood on this site from 1972 to 2020 and were machined by Alan "Baggie" Bartlett, District Scouter.

INTF

Scouts
Cotswold Edge





Dean Ashpole-Chapman

District Commissioner

Report

As I write this my final report as District Commissioner for Cotswold Edge, it is time to reflect and to look at not just 2023/24 but my time from 2019 to this years AGM.

When I was interviewed for the role, I was full of enthusiasm and optimism for the future which started off well, planning a large District Jamboree near Chipping Sodbury, the future of Mafeking and of course growth.



Just before I started the District Joined in with the County for our First Scouting attendance at Bristol Pride, attended various Groups from the District. And we have attended each one since.

Progress was starting and as we moved into 2020 a new virus was emerging in China little did we know what impact this was going to have on the World, Scouting, young people and our Volunteers. As we sat in a cold, freezing Mafeking in March discussing the future plans for the site around me phones started pinging with text messages and emails with the heart wrenching news *"all Face-to-face Scouting activities must cease for an indefinite period."*

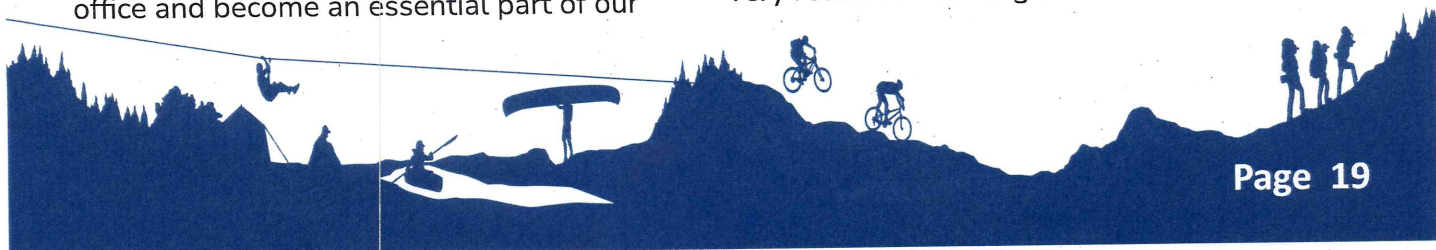
We all headed home and reflected on the news and the start of great change, ingenuity and challenges. Our volunteers and young people didn't let us down, leaders created activity packs, zoom/teams left the realm of the office and become an essential part of our

lives, walked the height of Mount Kilimanjaro (Indoors), we celebrated St George's Day online, we made funny videos about toilet rolls, created online programmes, met in a social distance way and reconnected with friends they had not seen for months.



Through this period we also saw Volunteers reflect on their positions and unfortunately saw numbers drop of our Adult Volunteers.

As we came out we entered a brand new world we started to see the impact of COVID on our young people, for a lot of our younger members they had only ever known Online or very reduced Scouting start to transition into



face to face groups post COVID has seen a lack of confidence, increased anxiety and loss of communication skills, as they missed out on the important milestones transitioning between year groups in school.

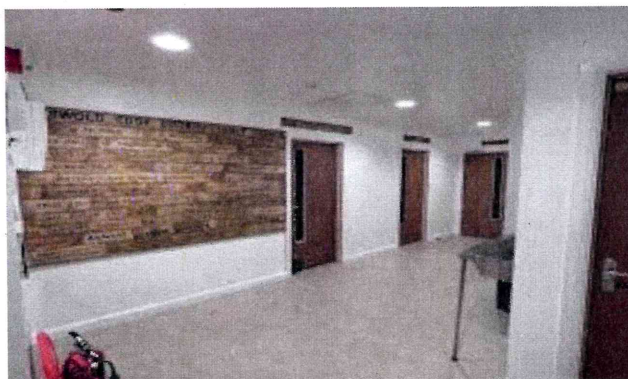


Through this period when we were allowed to meet outdoors we turned our thoughts to our older young people and getting Mafeking ready for opening back up for our young people to use especially as an outdoor space, we held weekly cleanup/tidy sessions on site



for anyone who wanted to join us, these working party days helped our young people and adults to come together and re-connect. As we worked though the site we started to see how tired and exhausted Mafeking was becoming. This started off my what I call my COVID madness of starting work on replacing the old hall. This was a project of passion and of enthusiasm to provide a new facility for future generations to enjoy and to call home.

The journey was not easy, as we had contractors put up prices or cancel contracts, costs of raw materials increasing and changes in design from the original supplier. I am immensely grateful of all the Volunteers who gave up their time to support with their expertise and determination and to everyone who helped raise funds including our Groups, Young People and Grant Funders.



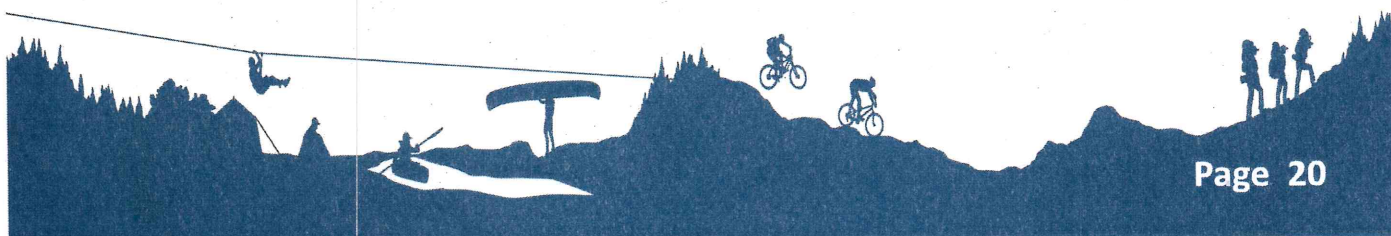
September 2021 saw our newest section launch called Squirrels (ages 4 to 6) we are very fortunate to have three drays in the District, first was at 2nd Frampton Cottrell (Now merged with 1st Frampton Cottrell) and two drays at 1st Yate. These young people are having some amazing adventures and their leaders are enjoying the adventure as well.

June 2022 saw the District come together with Bristol South for the First Ever Big Fiesta at Woodhouse Park which had been taken back into County hands



to run by the amazing Andy Scully and his Team. We couldn't have asked for a better weekend

Andy even put on the weather for us. Over 870 young people and 300 Adults come together from the two



Districts sharing stories, equipment and making long lasting friends and connections.

or Good Service Awards showing appreciation for their hardwork and dedication.



**The Queen's Award
for Voluntary Service**

The MBE for volunteer groups

June also saw the County awarded with the Queens Award for Voluntary Service (MBE for Volunteer Groups).

As I move on to look after Mafeking as the District Centre Lead Volunteer, I wish you all the best for the Future and hope you give my replacement the support you have all given me.

Yours in Scouting

Unfortunately in 2020 we saw Marshfield Scout Group move over to Bath taking the District from 20 Groups to 19.

Dean Ashpole-Chapman
District Lead Volunteer

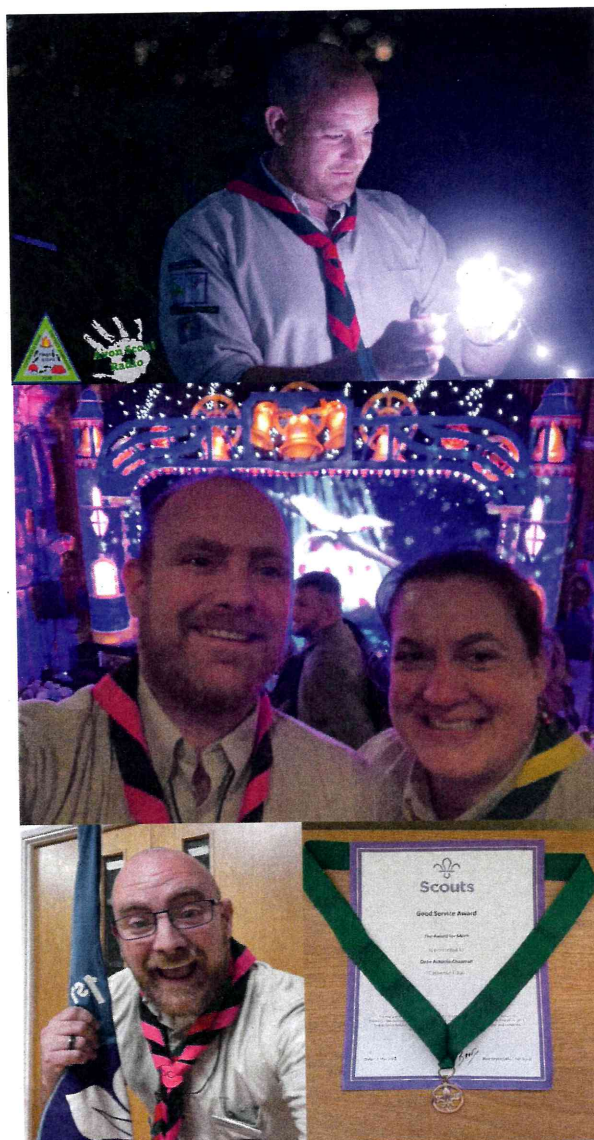
In 2021 we saw 1st Winterborne (St. Michaels) close its doors taking group numbers down to 18.

In 2023 saw 1st Pucklechurch close suddenly at the end of the School Year and 2nd Frampton Cottrell Merge with 1st Frampton Cottrell.

In 2024 saw 1st Raysfield close it's doors but we are thankful to 1st Yate who were able to take a lot of the Young People in.

Many people will know that these closures took a personal tone with myself and my mental health which has impacted me massively on my love of Scouting. But as I am writing this we see some slithers of new hope and Growth as people are starting to come forward to volunteer and even more exciting a new Group starting at Mafeking, 1st Ram Hill which starts in September 2024.

The role of a District Commissioner for me has be a manager, friend, shoulder to cry on, referee, odd job man and much more. It always makes me happy to visit Groups/Units, award our amazing volunteers with Long Service and/



Charity Details

Charity name:

Cotswold Edge District Scout Council

Charity Number:

1127669 (England and Wales)

Charity Registered
Address:

Mafeking Hall, Serridge Lane
Ram Hill, Coalpit Heath, BS36 2UF

Charity
Correspondence
Address:

District Lead Volunteer
Mafeking Hall, Serridge Lane
Ram Hill, Coalpit Heath, BS36 2UF

Bankers

Lloyds Bank

Address:

12 Rowcroft, Stroud, GL5 3BD

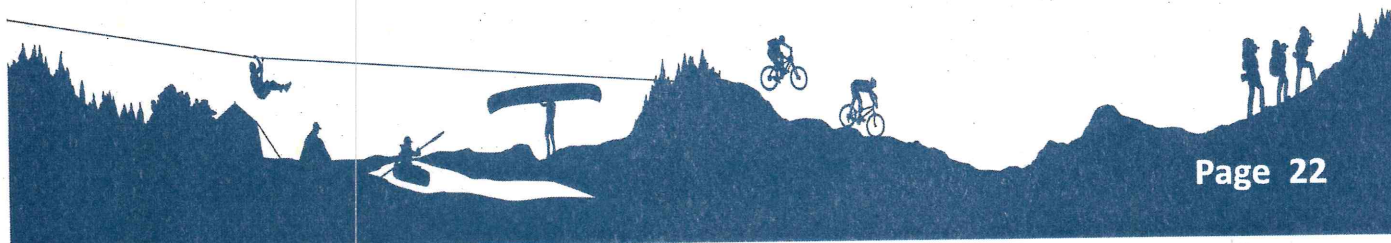
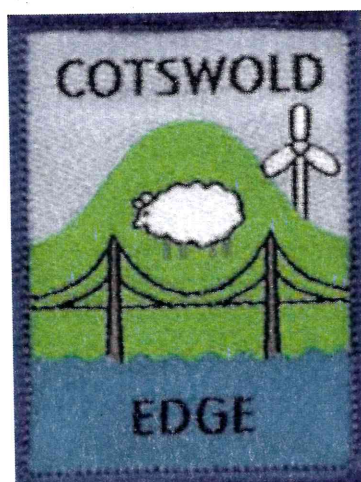
Website:

www.cesd.org.uk

Contact us:

district@cesd.org.uk

Telephone:



Our governance structure, Board membership and Team Structure

1st April 2023 to 31st March 2024

District Executive Committee

District Vice Presidents

Steve & Pat Spokes

District Commissioner

Dean Ashpole-Chapman

District Chair

Vacant

District Treasurer

Deb Bryden

District Minutes Secretary

Jayne Cross

District Explorer Scout Commissioner

☒ Derek Forward

Deputy District Commissioner

Alan Northern (Until March 24)

Elected Members

☒ Arnold Tucker

☒ Chris Harris

Ian Robinson =

☒ Yvonne Andow

☒ James Chandler

☒ Henry Park

District Team

District Commissioner

Dean Ashpole-Chapman

Deputy District Commissioner

Alan Northern (Until March 24)

District Explorer Scout Commissioner

Derek Forward (Until March 24)

District Youth Commissioner

Vacant

ADC Scouts

☒ Jason Newton

District Quartermaster

Steve Spokes

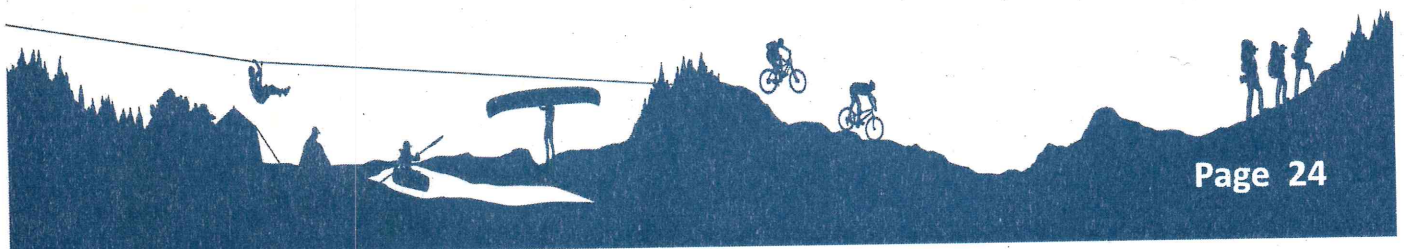


Our Groups & Units

Cotswold Edge District covers a large area of South Gloucestershire mainly North of the M4 with Pucklechurch to the South. With 16 Groups, 7 Explorer Units and 1 Young Leader Unit we are one of the largest Districts within the Scouting County of Avon.



Our groups & units



Description of the charity's trusts

Cotswold Edge Scout District's governing documents are those of The Scout Association. They consist of a Royal Charter, which in turn gives authority to the Bye Laws of the Association and The Policy, Organization and Rules of The Scout Association.

The District is a trust established under its rules which are common to all Scouts.

The Trustees are appointed in accordance with the Policy, Organization and Rules of The Scout Association.

The District is managed by the District Executive Committee, the members of which are the 'Charity Trustees' of the District which is an educational charity. As charity trustees they are responsible for complying with legislation applicable to charities. This includes the registration, keeping proper accounts and making returns to the Charity Commission as appropriate.

The Committee consists of 3 independent representatives a) Chair, Treasurer and Secretary together with the District Commissioner, Youth Commissioner, and District Explorer Scout Commissioner, Network Commissioner, elected members, nominated members and co-opted members. The committee meet 4 times a year at approximately three-monthly intervals.

This District Executive Committee exists to support the District Commissioner in meeting the responsibilities of the appointments and is responsible for:

- The maintenance and upkeep of the District Headquarters (Mafeking Hall);
- The raising of funds and the administration of District finance;
- The insurance of persons, property and equipment;
- District public occasions;
- Assisting in the recruitment of leaders and other adult support;
- Appointing any sub committees that may be required;
- Appointing District Administrators and Advisors other than those who are elected.
- Explorer Scout Units and Young Leaders Scouting across the District.
- Network Scouting across the District.
- Scout Active Support Unit



Risks and Internal Control

The District Executive Committee has identified the major risks to which they believe the District is exposed, these have been reviewed and systems have been established to mitigate against them. The main areas of concern that have been identified are:

Damage to buildings, property and equipment.

The District would request the use of buildings, property and equipment from Scout Groups and Explorer Units from within the District, neighboring organizations such as churches, community centers and other youth organisations. Similar reciprocal arrangements exist with these organisations. The District has sufficient buildings and contents insurance in place to mitigate against permanent loss.

Injury to leaders, helpers, supporters, and members.

The District through the capitation fees contributes to the Scout Associations national accident insurance policy. Risk Assessments are undertaken before all activities.

Reduced income from fundraising.

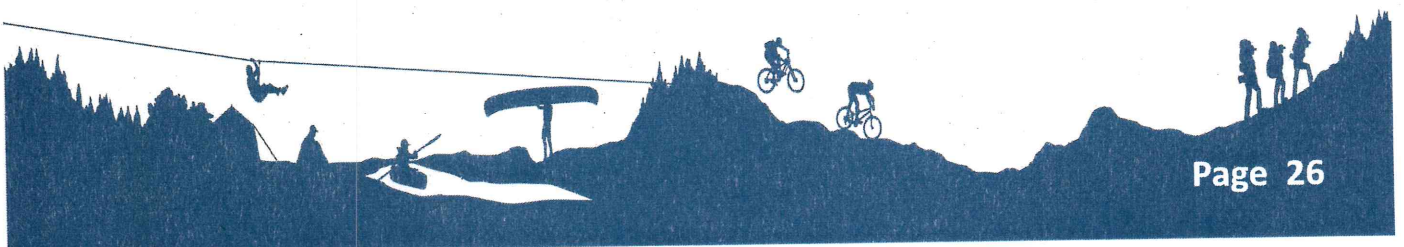
The District is primarily reliant upon income from subscriptions and fundraising. The District does hold a reserve to ensure the continuity of activities should there be a major reduction in income. The Committee could raise the value of subscriptions to increase the income to the District on an ongoing basis, either temporarily or permanently.

Reduction or loss of leaders.

The District is totally reliant upon volunteers to run and administer the activities of the District. If there was any reduction in the number of leaders to an unacceptable level in a particular area / Unit or section within a Group there would have to be a contraction, consolidation or closure of a Unit, Group or Section. In the worst case scenario the complete closure of the District.

Reduction or loss of members.

The District provides activities for all young people aged 6 to 25. If there was a reduction in membership in a particular area/ Unit or Group or a section within a Group then there would have to be a contraction, consolidation or closure of that particular Unit / Section. In the worst case scenario the complete closure of the Group or Unit.



Summary of the objects of the charity

Objectives

The objectives of the District are as a unit of the Scout Association as set in the governing documents of the Association.

The Aim of The Scout Association is to promote the development of young people in achieving their full physical, intellectual, social and spiritual potentials, as individuals, as responsible citizens and as members of their local national and international communities. The method of achieving the Aim of the Association is to prepare young people with the skills for life by providing an enjoyable and attractive scheme of progressive training, based on the Scout Promise and Law and guided by adult leadership.

The values of Scouting

As scouts we are guided by these values:

Integrity	We act with integrity; we are honest, trustworthy and loyal
Respect	We have self-respect and respect for others
Care	We support others and take care of the world in which we live.
Belief	We explore our faiths, beliefs and attitude's.
Co-operation	We make a positive difference; we co-operate with others and make friends.

The Scout Method

Scouting exists to actively engage and support young people in their personal development, empowering them to make a positive contribution to society. Scouting takes place when young people, in partnership with adults, work together based on the values of Scouting and;

- Enjoy what they are doing and have fun.
- Take part in activities indoors and outdoors.
- Learn by doing.
- Share in spiritual reflection.
- Take responsibility and make choices.



Summary of the main achievements of the charity during the year

Growth

In Cotswold Edge there is a large number of young people on our waiting lists, and many more who have not been able to consider joining because there is either no Scout Group or Explorer Unit near where they live or the ones that are there are full. We will work to give more young people the opportunity to join the everyday adventure of Scouting.

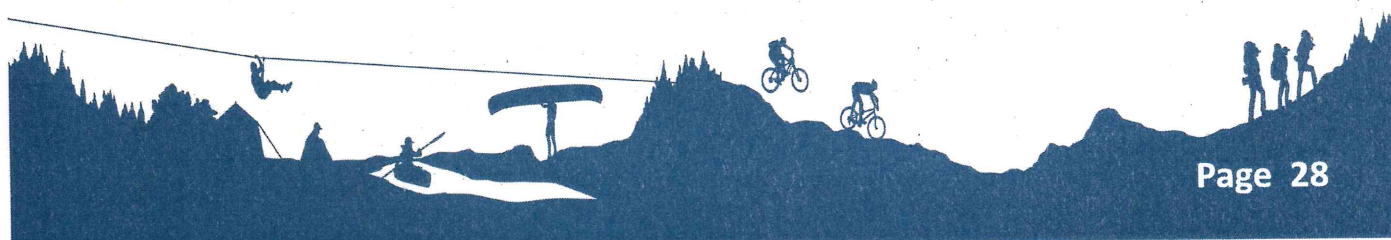
	Male	Female	Self Identify	Total
Youth Membership	1034	332	3	1369
Adults	208	162	0	370

Inclusivity

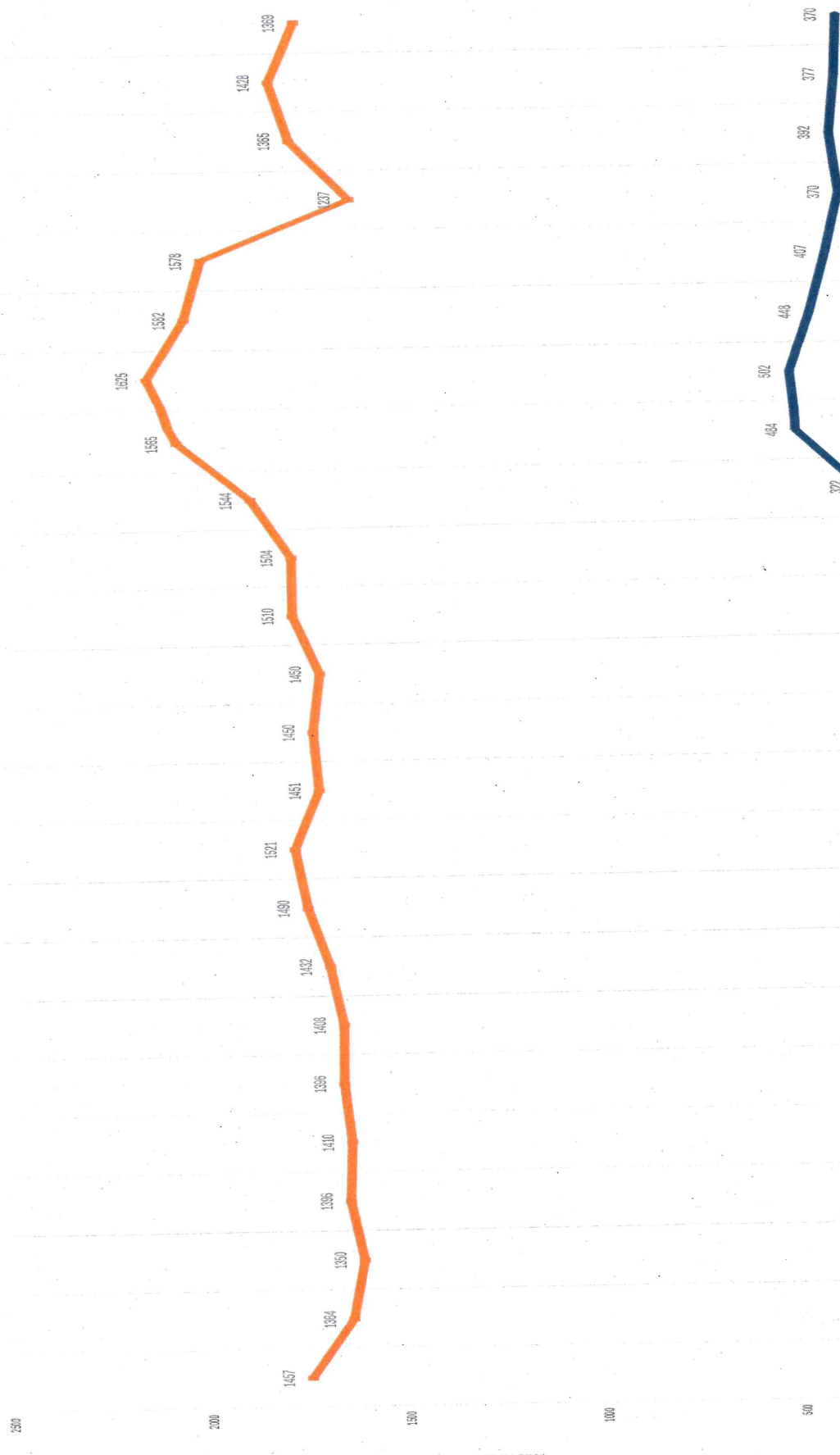
We will ensure Scouting develops and is sustainable in the most deprived parts of our District, we will welcome all members of society, and be seen as open to people from all backgrounds by the general public.

	White	Mixed/ Multiple ethnic Groups	Asian/ Asian British	Black/ Caribbean or African	Prefer not to say	Total
Youth Membership	1210	37	19	5	2	1369
Adults	326	1	3	0	40	370

	Developmental	Physical	Mental Health	Sensory	Injury	Medical	Progressive	Prefer not to say	No disability	Total
Youth Membership	107	4	13	22	1	99	3	54	1066	1369
Adults	9	5	9	3	3	31	0	43	267	370



MEMBERSHIP CENSUS NUMBERS FROM 2001 TO 2024



Cotswold Edge District Scout Council

Accounts from 1st April 2023 to 31st March 2024

Independent examiner's report to the trustees of Cotswold Edge District Scout Council

I report to the trustees on my examination of the accounts of the Cotswold Edge District Scout Council for the year ended 31 March 2024.

Responsibilities and basis of report

As the charity trustees of the Cotswold Edge District Scout Council, you are responsible for the preparation of the accounts in accordance with the requirements of the Charities Act 2011 ('the Act').

I report in respect of my examination of the Cotswold Edge District Scout Council accounts carried out under section 145 of the 2011 Act and in carrying out my examination I have followed all the applicable Directions given by the Charity Commission under section 145(5)(b) of the Act.

Independent examiner's statement

I have completed my examination. I confirm that no material matters have come to my attention in connection with the examination giving me cause to believe that in any material respect:

1. accounting records were not kept in respect of the Cotswold Edge District Scout Council as required by section 130 of the Act; or
2. the accounts do not accord with those records.

I have no concerns and have come across no other matters in connection with the examination to which attention should be drawn in this report in order to enable a proper understanding of the accounts to be reached.

Signed:

Name: HANNAH SAUNDERS

Relevant professional qualification or membership of professional bodies (if any):

CLERK & RFO CILCA

Address:

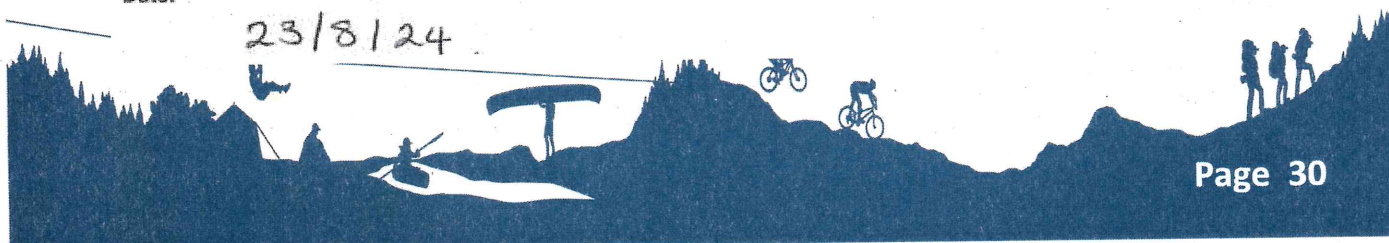
9, THE BUELTONS,

CROMHALL,

S. GLOS. GL12 8BH.

Date:

23/8/24



Cotswold Edge Scout Council 01/04/2023 - 31/03/2024

	This Year £	Last Year £
Total receipts for the year	111988.69	144,128.03
Total payments for the year	(123,674.06)	(164,920.41)
Net receipts (payments) for the year	(11,685.37)	(20,792.38)
Cash, bank and similar funds brought forward	73686.73	94,479.11
Cash, bank and similar funds carried forward	<u>62,001.36</u>	<u>73,686.73</u>

The above account and accompanying statement of assets and liabilities were approved by the Trustees

on 18th July 2024 and signed on their behalf by

District Trustee Board Chairperson

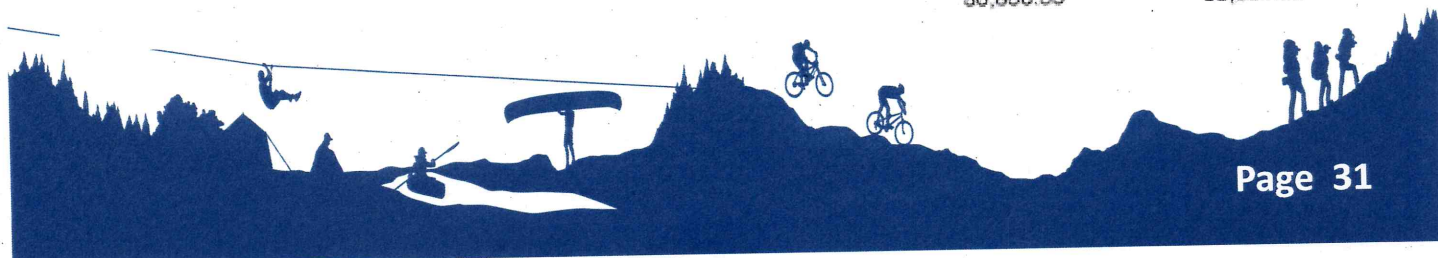
Dean Ashpole-CHAPMAN
District Lead Volunteer.

Distribution Of Funds

	£	£
District Development Fund	30496.76	23979.91
Hardship Fund	2500	2500.00
Asset Transfer (1st W-S-M)	10906.91	10906.91
World Jamboree Fund	0	0.00
Business Fund	18097.69	36299.91
	<u>62001.36</u>	<u>73686.73</u>

RECEIPTS

		£ This Year	£ Last Year
ADMIN	General Print/Postage/Stationary	0.00	0.00
	Sundry Admin	<u>0.00</u>	<u>0.00</u>
BADGES	Badges	171.00	303.40
	Admin/Postage/Stationary	<u>0.00</u>	<u>0.00</u>
		171.00	303.40
HEADQUARTERS	Council Charges	0.00	87.90
	Hall Hire	3529.50	0.00
	HQ REFURB	0.00	491.24
	Sundry HQ	<u>108.05</u>	<u>30.94</u>
		3,637.55	610.08
GENERAL SCOUTING	Scout Leader Training	1590.00	595.00
	World Jamboree	1720.00	5,850.00
	District Events	3860.00	16,020.00
	Sundry Scouting	<u>0.00</u>	<u>0.00</u>
		7,170.00	22,465.00
CAPITATION	Capitation	75295.00	82,012.00
	Gift Aid	<u>5,555.55</u>	<u>3,039.33</u>
		80,850.55	85,051.33



DONATION/GRANTS	Lloyds Bank	500.00	1,000.00
	Gift Aid (Refurb)	0.00	2,502.26
	Just Giving	0.00	0.00
	Amazon	23.52	22.51
	SG Covid	0.00	0.00
	Parish Council	7376.87	400.00
	Gen	0.00	5,328.60
	Lotto	659.16	844.86
	Refurb Grants	7256.86	25,524.08
	Benevity	4010.00	0.00
		<u>19,826.21</u>	<u>35,622.31</u>
BANKING	Interest on Accts	333.38	75.91
	Charges	0.00	0.00
		<u>333.38</u>	<u>75.91</u>
TOTAL RECEIPTS		111,988.69	144,128.03



		£	£
		This Year	Last Year
TRANSPORT	District Commissioner	0	0.00
	District Explorer Scout Commissioner	-101.30	(118.75)
	Others	0.00	0.00
		<u>(101.30)</u>	<u>(118.75)</u>
ADMIN	General Print/Postage/Stationary	-94.80	0.00
	Midas Training	-708.25	(720.25)
	Sundry Admin	-670.80	(346.20)
	Benevity	-£990.00	0.00
		<u>(2,463.85)</u>	<u>(1,066.45)</u>
BADGES	Badges	-333	(323.94)
	Admin/Postage/Stationary	0.00	0.00
		<u>(333.00)</u>	<u>(323.94)</u>
HEADQUARTERS	Rates & Insurance	-1934.49	(2,767.30)
	Utilities	-988.86	(287.54)
	Website/Licences	-934.57	0.00
	Hall Hire	-240	0.00
	HQ REFURB	-35379.3	(60,629.19)
	Making Maint	-1989.77	(974.48)
	Grounds Maint	-859.99	0.00
		<u>(42,326.98)</u>	<u>(64,658.51)</u>
14 - 25 Scouting	Leader Training	0.00	0.00
	Eqpt Exp	-481.79	
	Kit Insurance	0.00	0.00
	Exp Uniform	-288.75	
	Hardship Payments	0.00	0.00
	Start Up	0.00	0.00
	Sundry	0.00	0.00
	Young Leader Training	0.00	
	Young Leader Uniform	-706.88	(106.14)
	Young leader Sundry	0.00	
		<u>(1,477.42)</u>	<u>(106.14)</u>
GENERAL SCOUTING	Group Grants / setup	0.00	0.00
	World Jamborees	-2,380.00	(8,400.00)
	St Georges Day		0.00
	District Events		(17,744.35)
	Leader Training		(30.00)
	Hardship		0.00
	District Jamborees		0.00
	Sundry Scouting	-585.96	(1,560.94)
		<u>(2,965.96)</u>	<u>(27,735.29)</u>
CAPITATION	Capitation	-68450	(67,872.00)
	Gift Aid	-5555.55	(3,039.33)
		<u>(74,005.55)</u>	<u>(70,911.33)</u>
TOTAL PAYMENTS		(123,674.06)	(164,920.41)



MONETARY ASSETS

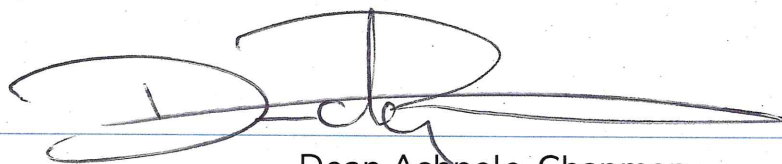
	£	£
Bank Current Account	97,474.60	105,177.97
Bank Interest Account	30496.76	30,163.38
	127,971.36	135,341.35
Less Outstanding Cheques	-69060.00	(68,392.08)
Plus Outstanding Receipts	3090.00	6,737.46
Total Carried Forward	62,001.36	73,686.73

Land	£150,000.00	£150,000.00
Buildings	£250,000.00	£250,000.00
Scouting equipment, furniture, etc. - Replacement Value	£7,279.00	£7,279.00
Badge Stock	£349.00	£306.50

Name

Position:

Date:



Dean Ashpole-Chapman

District Lead Volunteer (Outgoing)

12th September 2024

