



# Saltash Wesley Methodist Church

## Annual Church Meeting

Annual Reports  
2024 – 2025

Sunday 2 March 2025, 12 noon

**SALTASH WESLEY METHODIST CHURCH (Charity Number 1127542)**  
**MEMBERS OF THE CHURCH COUNCIL**

		<b>Date elected.</b>
<b>MINISTER:</b>	Rev Jonathan Budd	
<b>CHURCH COUNCIL SECRETARY:</b>	Caroline Hambly	07/03/21
<b>CHURCH TREASURER:</b>	Anita Thompson	01/05/15
<b>CHURCH STEWARDS:</b> (Senior Steward)	Joy Amies	13/03/22
	Elspeth Nicolls	01/05/19
	Rosemary Witts	07/03/21
	Sandra Kowalski	12/03/23
	Bob Austin	17/03/24
	Jo Lambourne	17/03/24
<b>CIRCUIT STEWARDS:</b>	Julian Langston	26/04/23
<b>CIRCUIT STEWARD REPRESENTATIVE:</b>	Linda Eastlake	13/03/22
<b>MANAGEMENT COMMITTEE:</b>		
<b>Chairman</b>	Bob Austin	01/01/24
<b>Representative</b>	Roger Thompson	13/03/22
<b>MISSION COMMITTEE:</b>		
<b>Representative</b>	Elspeth Nicolls	
<b>PASTORAL COMMITTEE:</b>		
<b>Secretary</b>	Gill Matthews	
<b>FAMILY AND YOUNG PEOPLE:</b>		
<b>Representatives</b>	Robert Hambly	01/05/15
<b>MEDIA AND COMMUNICATIONS:</b>	Craig King	
<b>MBARE/SALTASH PARTNERSHIP:</b>		
<b>Representative</b>	Marguerite Smith	
<b>SAFEGUARDING:</b>	Catherine Noakes	
<b>DIRECTOR OF MUSIC:</b>	Phil Taylor	
<b>CHURCH COUNCIL REPRESENTATIVES:</b>		
	Kirsten Riches – 01/05/12	
	Peter Clements – 01/05/14	
	Don Phillips – 01/05/14	
	David Lambourne – 01/05/17	
	Steve Tait – 01/01/24	
	Derek Holley – 17/03/24	

Oct 2024

## Introduction from the Minister

Another year has come and gone in the life of our church, 2024 being a year which brought many surprises and changes and for many difficulties, but we continue to move on together. Once again, it is my pleasure to write an introduction to the annual church meeting reports add to thank all those who've contributed to the reports but also, of course, all those whose work these reports represent. Wesley has a broad and varied programme of activities which reach into our local community as well as serving those who are part of our worshipping congregation. In these reports you will find a reflection of that.

A year ago, I wrote to you as we were preparing for a press launch of our newly decorated areas in the foyer and Room 3. Over the past twelve months the change in those spaces has proven a huge boost to our welcome, and people enjoy being in them. With such a large footfall through the building and many opportunities to offer hospitality and host groups, this is one part of our life that is going from strength to strength (and if you have any doubts about that, just walk past on the Tuesday morning when the Little Fishes toddlers and their parents are enjoying tea and toast served up by our volunteers!)

The change of circuit into a new expanded group has seen new people around leading our worship, and in September we were able to host a magnificent launch service for the South East Cornwall Circuit. The presence of the chair of district, Revd Dr Dan Haylett, who preached, and several District 'Mission Leads' and numerous ecumenical and community guests gave us a great start together and I know the way Wesley hosted the event was widely appreciated.

Practical considerations continued to be dealt with by the stewards, the management committee, our very able treasurer, our Pastoral secretary, and others. One change upon us now is in administration, and you will know that Joanna Couch who has served us as Wesley administrator for over a decade is moving on from that position to work full time for the circuit. We will say our thanks at the annual church meeting, but it will be very hard to sum up how much Joanna has been able to help us achieve as a church, and the hugely positive impact she has had as the welcoming, pastorally sensitive and responsive presence in the office day by day. Very much a hard act to follow in that role, nevertheless we are hoping soon to appoint someone to fill the post. Meanwhile, our volunteers will help keep things ticking over.

In the morning service before our Annual Church Meeting, we will be thinking about the story of Philip 'the Evangelist' from the Book of Acts. Philip was a person chosen to serve a very practical need in the early Jerusalem church, of organising food distribution among a part of the community that had been neglected. He was chosen, says the Bible, because he was full of the Holy Spirit and wisdom. He served at tables but went on from that important ministry to become a tremendous witness for Jesus much further afield. It strikes me that as a church we will always need people to fill roles, but the greatest qualification for the Christian servant is to have the life of God evident in them as they offer their service. Work and witness go hand in hand and always have

done in the life of church. And we never know what God might have in store for us in the future, new roles, new opportunities.

As I close this introduction, I want to pay tribute for a moment to members who have 'passed into glory' in 2024. Among them, Mel Wallis, for example, was someone who understood being servant and having a godly heart, being practical and seeking God, and along with the others we miss him and continue to pray for Dot and all who feel acutely the absence of a loved one, recently or long since departed.

As circumstances change and life moves on, being willing to move where God spirit is leading and adapt is essential, and maintaining our spiritual fitness is a priority, even as we look for more to help join the work. We all have a part to play, and we thank God for those who have helped us to where we are. In faith, we look for what is next.

With love in Christ,  
Jonathan  
Revd Jonathan Budd, Minister.

## **Report from the Senior Steward**

It was good that we started our year with six stewards. It was sad to see Derek leave us, although he has been a great support for me this year in many ways. We were pleased to welcome Jo Lambourne as a new steward. Jo had been my vestry steward, and we work well together, so I was especially pleased that she agreed to be a Steward.

We have had new people join both the 9.15 and 10.30 services. Thank you for welcoming them. I often go to speak to them only to be told that they have been welcomed as they came in, or by the person next to them. It is lovely to see new faces, and hopefully you will all get to say hello to them all too. There is an opportunity to meet at the 10am services when it is 'All Church Together' service.

Our church has had a makeover both outside and inside. The refurbishment of Room 3 was celebrated with an event attended by congregation, and visitors with links to the project, and the mayor came too. The Foyer also had some refurbishment, including a new carpet which must be taken up as a fault has appeared. However, the Lounge is now going to have a makeover and some of the good carpet will go in there.

Our Church has hosted various events SEA Environment Day, Hustings for the Election, and the towns Lantern Parade. Wesley was the venue for the Launch of SE Cornwall Circuit Service. As well as the various, Clinics, Concerts, Music Festivals and our Annual Carol Service. The feedback from these events this year has been very positive, not only on the facilities offered, but the friendly welcome received. To extend this welcome we have produced a welcome card, which can be given to anyone who would like to know more about us, and to leave their details if they would like to be contacted by us.

Both Harvest and the Advent Services were well supported, both with attendance, and gifts of food, toys and money. We would like to acknowledge the generous giving over the last year to various causes. Your gifts have been greatly received. Also, to the generous amount of time you give to Wesley Church, not just on a Sunday, but during the week. I could fill a few pages with a list of things that are supported by you the congregation. Just know that we, as a group of Stewards, do appreciate what you do, and thank you. It is your actions that help make Saltash Wesley Church the Church it is. That just leaves me to thank, my Stewards for their support this year, we each have our strengths, and together we have covered each other's weaknesses. It has been a great team to work with alongside Jonathan. To my Vestry Stewards Jo and Ann, and all the vestry stewards, they are often overlooked but highly valued. Thank you to Elspeth and the ex-Stewards for their advice, and guidance. To my team of non- stewards who have helped me in many ways, especially those who have looked for things for me in the loft, and brought them down, or took them back up!

It is a privilege to be voted to be a Steward by the congregation, thank you for your support over the last 3 years and your continued support for Saltash Wesley Church. I know you will support Bob Austin as he takes my place.

Joy Amies

## Pastoral Report

In the past year I've taken over the role of Pastoral Secretary. The membership numbers have increased slightly during the year and now stand at 109. This is due to people moving into the area. However, Revd Jonathan is planning to run membership classes later this month as there has been some fresh interest expressed, particularly since the covenant service, so hopefully this should lead to a further increase in the numbers.

We now have 'Welcome to Wesley' cards which invite new people attending the church to complete if they want to know more about church activities. They are available at the church and can also be given out by Links when visiting if appropriate.

We are still looking for new Pastoral Links, to keep the group sizes manageable, especially as membership increases, so if this is something you think that you might like to do, please contact me. We have a strong tradition of pastoral care at Wesley and would like to encourage more people to be involved.

Gillian Matthews



*Membership*

becoming a member of the  
Methodist Church



## 9:15 AM – Services at Wesley

Over the past year, 09:15 Worship has continued weekly at Wesley, enjoying the 10 o'clock All Church Together services too. We have been 'on tour' at Landrake each quarter, and the worship there is well attended both by 09:15 usuals and those from the village. Given enough notice, St Michael's join for those services too, and the chapel then is full. We've also had a couple of testimony services which have been so positive.

This time last year we were in the middle of our lent series on the 'I am' sayings of Jesus. Between Easter and Pentecost we learnt about different aspects of the Holy Spirit. This was followed by a dip into the Old Testament, on the ups and downs of David. After a break for August, we began a longer series on the Methodist Way of Life, a refresher on all those things we do as individuals and as church as we follow Jesus. We had an Advent interlude finding 'calm and bright' aspects in the stories of different nativity characters. More recently we've looked at Peter, Stephen and Paul from Acts, as a lead into a lent series on the book of Colossians.



It has been really encouraging to see the children's work developing particularly and I am grateful to those who co-ordinate and help the young people learn each week. The band continues to help us learn new songs and we've gained a guitarist recently too.



Three band members are training to be Worship Leaders, and the course is a big undertaking - they will value your prayers as they progress.

A big thank you to Caroline, Paul, Robert & Michael for regularly serving breakfast and clearing up too – it's a big sacrifice, and the breakfast team is looking for new members!

Fiona Budd – 09:15 Coordinator

## Café Church

Since the last Annual Church Meeting Café Church has taken place at 5 p.m. on the 2<sup>nd</sup> Sunday of each month except August.

We have had guests on 10 occasions, and they have either given us a presentation or been interviewed. They were: Penny Whitell; Louise James, Callington Methodist Church Child and Family worker; representatives from Storybook Dads; Rev Darren Middleton, on the Methodist Church 'New Places for New People'; Phil Jordan; Simon Privett, of Epilepsy Action; Rev Laura Bushell Hawke, of Saltash Church of England Team Ministry; Penny Bishop, Head of Newton Ferrers C of E Primary School; Kennedy and Tendai Mutesva, of Eagle Healthcare; Rev Stuart Reed.

In addition, in December The Mustard Seeds Choir gave us a rendering of 'The Inn Crowd'.

From the donations received at the tea we have made donations to Storybook Dads, Parkinsons, Epilepsy Action, and Wesley Gift Day.

During the year we mourned the loss of Mel Wallis, who was instrumental in the original setting up of Café Church and had been responsible for inviting many of our guests over the years.

Bob Mahy

A poster for Café Church at Saltash Wesley Methodist Church. The background is a solid light brown color. In the top right, there is a white line-art illustration of coffee leaves and branches. In the center, there is a photograph of a dark brown coffee cup with a white latte heart on top, sitting on a wooden tray. The text is arranged as follows: 'CAFE CHURCH' in large, bold, black capital letters; 'AT SALTASH WESLEY METHODIST CHURCH' in smaller, black capital letters below it; 'EVERYONE WELCOME' in green capital letters below that; a list of activities ('Short informal worship', 'Guest speaker', 'Full afternoon tea', 'Warm conversation') in bold black text; and at the bottom, 'IG | FB' and 'OFFICE@WESLEYWEB.CO.UK' in small black capital letters.

**CAFE  
CHURCH**

AT SALTASH WESLEY  
METHODIST CHURCH

**EVERYONE WELCOME**

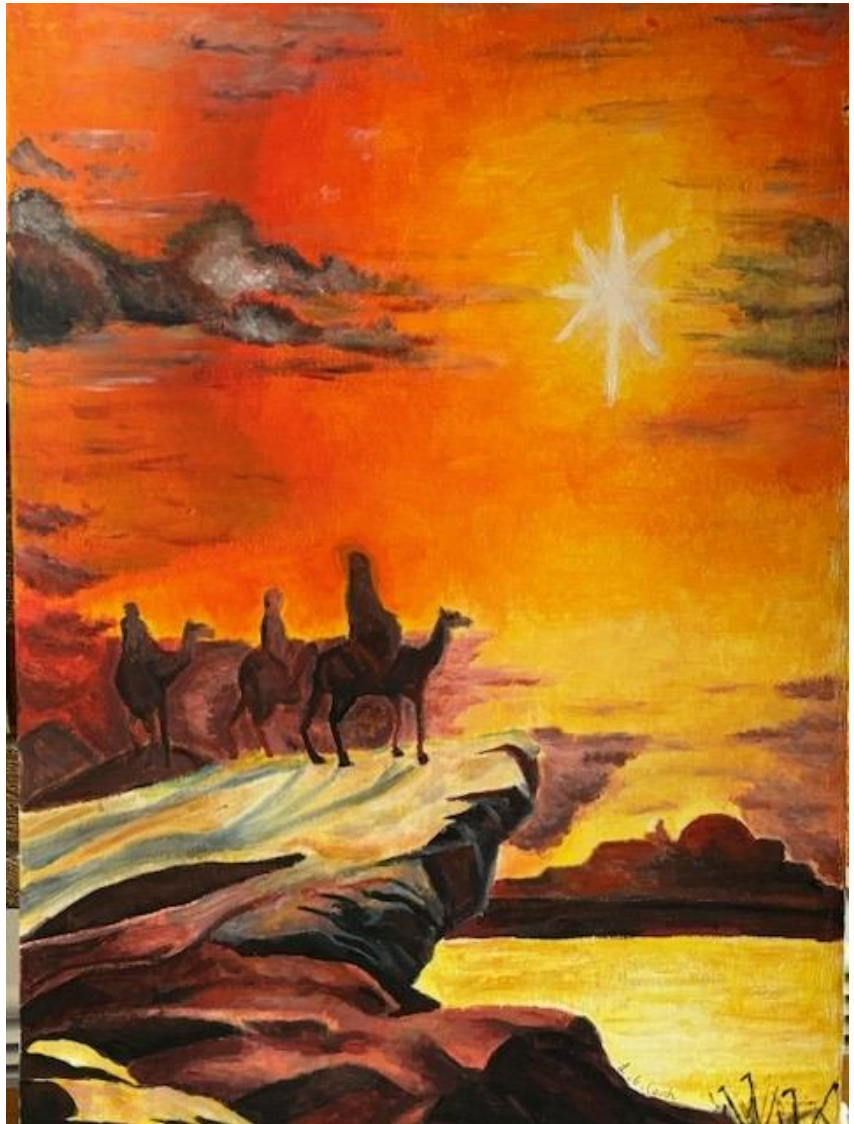
**Short informal worship**  
**Guest speaker**  
**Full afternoon tea**  
**Warm conversation**

IG | FB  
OFFICE@WESLEYWEB.CO.UK

## **Mbare/Saltash Partnership**

The Partnership Committee continues to meet bi-monthly to share and publish news from Mbare, to promote the links between Saltash Wesley and Mbare Methodist Church, to organise the monthly prayers, to arrange fund-raising events and to send much-needed help to Zimbabwe.

We have continued to send money to Mbare three times a year for food and health relief and for school fees for the children, and an extra amount for food parcels just before Christmas. We do receive regular reports from Mbare on the Partnership 'WhatsApp' about how the money has been used, with videos of the recipients and illustrative photographs.



This has been made possible by the very generous regular donations made by many members of Wesley. Also, we have organised several fund-raising events during the year, and these have been most enjoyable social occasions and have involved people from the Saltash community.

We also support the Matthew Rusike Children's Home in Harare, which has been going through a very hard financial time. For example, they have had to cut down the number of children they support and have not been able to pay the staff for several months. Our main fund-raiser for this being the Christmas Card in the foyer, and we give thanks to Lily Couch for designing the card displayed at Christmas. We have also allocated to the Home some of the money raised at events.

We are now due to send a group from Wesley to Mbare in 2026. We are hoping that this will give the opportunity for anyone to understand the reality of the Partnership – and have a very exciting experience!

Ruth Mahy



## Little Fishes- Baby and Toddler group

Little Fishes parent/carer, baby and toddler sessions are busier than ever, with 25-35 children each week. About half these families also regularly enjoy Tea and Toast upstairs before the session.

The monthly Saturday morning Coffee, Cake and Play sessions are becoming more popular and it is lovely to see so many past and present Little Fishes families attending.



A couple of our church families are regular attendees of Little Fishes, and it has been good to see some other Little Fishes families attending the carol service and the 9.15. service.





Thank you as always to everyone who enables Little Fishes to be such a valuable part of Saltash Wesley. A special thank you to Table Tennis club for putting the mats, tables and chairs out each Monday evening, the great team of volunteers who help with tea and toast, drinks and fruit preparation, planning, setting/ clearing up and, of course, all who help within the sports hall during the sessions.

### **Little Fishes Team**





## Tuesday Youth Group (11-18yrs)

We meet every week during term time, 6:30 – 8:00 PM, in the Sports hall and coffee bar at Wesley. We currently have up to 6/7 young people aged 15-17.

Our aim is to create a safe space where young people can hang out, socialise, and have fun. Through our Christian focused activities and discussion time we encourage the young people to look beyond their own worlds, past what is comfortable, and into a world of faith, challenge, and following Jesus.



Summer Beach BBQ

The session starts with sports in the hall or playing games and pool in the coffee bar. We then share a meal of pizza, chips, cakes, and fruit. After the meal we have a short time of Christian focused activities and discussion time, usually finishing with a prayer.

**Youth Group Team**

## Holiday Club (4-11yrs)

Holiday Club We have been working in partnership with the Time2Move holiday Club initiative through Cornwall Council. This aims to provide a limited number of spaces completely free, to children who are eligible for free school meals, aged 4 – 11 years. This year we have had an Easter, Summer holiday and Christmas Kids Clubs, with an average of 40 children attending per session. We usually have 20 paid spaces (open to everyone) and 20 funded spaces for FSM children.

This is a great way to build links with our local community and help to support local families in need. At each Kids Club we provide sports activities, games, arts and crafts, a hot nutritious meal for lunch, stories and singing, all with a Christian based story and theme. Thank you to our amazing Children's work team for all that they do!

### Wesley Children's Work Team



Holiday Club – summer 2024

## **Tuesday Lunch Prayers**

Every Tuesday at 1 PM we have a WhatsApp group video call of currently up to 6/7 people, we usually have quick catch up and think about our focus for the prayers, then we have a timed 10 minutes of prayer. This group was originally set up to pray for the 9:15 AM service, for growth and a deeper understanding of the Christian Faith. If you would be interested in joining this group call, please contact the Wesley Church Office.

## **Wednesday Morning Prayers**

12 individuals or couples pray at home every Wednesday morning between 8.30 AM and 9.00 AM (or as near to that time as they can). Every Tuesday an email is circulated suggesting prayer topics, starting with Wesley and the Circuit, going on to national and international situations, and ending with names of individuals in particular need of our prayers. If you would like to join us, please let me know, and if you would like us to pray for you or someone else, please contact me.

Bob Mahy

## **Thursday Bible Study**

One of several house groups and Bible studies that run at the church, our Thursday morning online bible study continues. In December we completed 18 months working through the Acts of the Apostles and have now moved into the Gospel of John. We meet twice per month (usually on 1st and 3rd Thursdays), and if you would appreciate some good discussion and learning about scripture you would be very welcome to join in, even if you feel you are a real beginner with the Bible. You will find the Zoom links often on the weekly notices or contact a Church steward for more information. We meet from 10-11.30 AM.

## **Wesley Community Coffee Shop and Warm Spaces**

The Wesley Community Coffee Shop is open to the whole of our community Monday to Saturday from 10.00 am to 12.00 noon. Since the refurbishment of the foyer area attendance has increased with many regulars who meet to enjoy hot drinks, pastries and biscuits, conversation and fellowship.

We prioritise sourcing Fairtrade products and continue to purchase our filter coffee from Indigo Coffee, an ethical, sustainable and carbon neutral supplier. We also try to ensure that products purchased locally from Waitrose or Co-op are Fairtrade. It has been great to again open our church premises for longer hours this winter by offering freshly cooked nutritious soup and a warm crusty roll on Wednesdays and a Jacket Potato Lunch with a variety of fillings on a Thursday. Most weeks we are also able to provide cakes and occasionally fruit which has been well received. The lunches



have been well supported by both our congregation and many in our community who may otherwise be lonely or in need. Attendance has risen compared to last winter, with over 70 participants recorded over the two days in the last week of January. It's delightful to hear the buzz of lively conversations following the meal.

Once again, we were grateful to receive a grant from National Grid via Local Giving towards our energy costs owing to the extended opening hours. We have also been able to work in partnership with Saltash Foodbank to whom we are most grateful for the provision of fresh vegetables and our local Co-operative store who have been able to provide surplus bread, rolls and occasionally vegetables and fruit which may otherwise have gone to waste. Without the support of these organisations our Warm Spaces lunches may not have been able to continue. The lunches operate on a pay as you are able basis, so that no-one feels excluded. Remarkably during the winter of 2023-24 we received surplus donations totalling £1,367 which have been allocated to our Benevolent Fund to assist those in need.

Through our Warm Spaces project we are continuing to support disadvantaged individuals in our community, particularly those facing homelessness. This year there has been a demographic shift because Cornwall Council now utilise the Travelodge and the Croft as temporary accommodations, significantly reducing rough sleeping on the streets. However, these individuals often lack cooking facilities making our provision of hot breakfasts featuring bacon or sausages, eggs, beans and toasts with a hot drink vitally important. We can also offer sandwiches, pasties, cup-a-soup or pot noodles to take away.

## Warm space is a gateway to HOPE



"Having a meal here is a huge help."

Justin arrives at Saltash Wesley Methodist Church's warm space

As the winter weather bites, many community members are turning to church-run warm spaces for daytime refuge. For Justin, a warm room inside his local Methodist church has become the gateway to a renewed sense of hope.

"The things this church is doing have impacted me in many ways," says Justin, as he finishes his meal in the pop-up warm space cafe inside Saltash Wesley Methodist Church.

With its Scandinavian-style furniture and friendly volunteers who chat gently with the familiar faces who come and go, the cafe has a chilled vibe that many high street coffee shops would envy.

Having heard about the warm space through a local food bank about a year ago, Justin has since become a regular at several of the community outreach activities launched by the church to meet community needs.

### NUTRITIOUS FOOD

"First of all, having a meal here is a huge help," he says, explaining that using this simple service, which provides many with the only nutritious food they will eat that day, has led to him being offered other types of support.

"I've also been given help to sort out my bills and admin work, such as getting hold of my birth certificate so that I can start to get back on track," he reveals, adding that while these things may seem small, they can make a big difference in helping people to navigate an increasingly complex world.

Justin adds that he has also received emotional support, along with help to build his self-confidence, from volunteers at the church. After pausing for a moment, he reflects: "It's nice to know that I can come here if everything else fails. There are people here who will help, and this gives me new hope for the future."

### WARMTH AND MORE

Jo Couch, administrator for the church and for the South East Cornwall Methodist Circuit, part of the South West Peninsula District, said the church's current outreach programme had grown organically from its original offer of a warm space.

It was estimated that at least 13 per cent of people living in England experienced fuel poverty last year, while many more felt that they could only justify putting on their heating during the most severe spells of weather.

The Warm Welcome Campaign website, which lists around 4,000 of the community warm spaces across the UK, including the one at Saltash Wesley Methodist Church, can be found at: [warmwelcome.uk](http://warmwelcome.uk)



Church administrator Jo Couch chats with visitors



A volunteer serves breakfast

While Saltash wasn't among the communities to be hardest hit last year by fuel poverty (when someone on a low income can't keep their home warm at a reasonable cost), the region as a whole had the biggest gap, on average, between the cost of the energy bills people in fuel poverty were being asked to pay and what they could afford.

"We saw the terrible effects that this had on our local community, including an increase in homelessness," said Jo.

"We knew that, while the warm space was vital, it wouldn't be enough on its own so we opened shower facilities and laundry services, and we act as a mailing address for people without a permanent place to live." Supported housing places and addiction support groups are in the pipeline.

The success of the church's initiatives relies heavily on the dedication of volunteers. "Around a dozen help with the regular warm space lunches," said Jo. "We are blessed with some of the best."

**"We knew that, while the warm space was vital, it wouldn't be enough on its own."**

We are committed to developing connections with various support agencies, including St Petrocs, With You (a charity aiding those experiencing drug and alcohol addiction), council housing officers and mental health support professional officers enabling us to effectively signpost those in need. We are grateful to the members of our congregation and community who have provided clothes and shoes which are passed on to the needy when required.

This past year we were honoured to be invited to become a Warm Welcome Champion Space which involves participating in online meetings with other organisations engaged in similar initiatives to share ideas and experiences. It was particularly encouraging to read in the Warm Welcome online publicity recently a quote from one of our regular attendees which states:-

"It's nice to come here, knowing there are people in the community that can help. Most of all, I think the best part about Wesley church is the friendly atmosphere and the willingness to help people that are disadvantaged".

We were also fortunate to receive a £1,000 grant from Warm Spaces, which allowed us to purchase a coffee machine, new coffee flasks, mugs, latte glasses, cappuccino cups, and soup plates. As a result, we can now provide a selection of specialty coffees. Finally, we would not be able to run our coffee shop and Warm Spaces project without the support of our dedicated team of volunteers for whom we are immensely grateful. Some of team are elderly and facing health challenges, so if you would be able to spare about 2½ hours of your time once a month to help it would be very much appreciated.

Please continue to support our coffee shop so we can continue to reach out and welcome the whole of our Saltash community into our building. This outreach is especially valuable to the needy members of our society including those who are currently homeless, lonely or disadvantaged and is a significant aspect of our Church's mission and outreach.

**The Warm  
Spaces Team**



## S.T.A.R.T Ecumenical Men's Group



We are an ecumenical group of Saltash Christian Men who meet on a social basis. Our membership at the end of 2024 was 24 with an average monthly attendance of around 13. We have very diverse set of Christian faiths amongst us which always make for a good conversation piece during our times together.

During the winter months, we tend to meet for inside events such as museums, talks and most importantly "eating out". The Summer months we go out and about. We then finished off the year with a Christmas meal. We always meet on the 3rd Friday of each month.

My thanks to all those who arranged these visits – it is our ploy for members to arrange

twelve meetings per year between us. We had our AGM in January 2025 meetings were arranged.

Our programme is as follows: -

Date	Meeting & Activity	Time	Organiser
17 Jan 25	Lunch @ Ploughboy Inn - AGM @ Wesley	1200hrs	Bob A
21 Feb 25	Lunch @ Community K - Dr Phil Jordan @ Wesley	1200hrs	Bob A
21 Mar 25	Lunch @ Saltram House - Visit House & Gardens (NT card)	1200hrs	John W
25 Apr 25	Visit Strawberry field Farm Lifton (Wesley Car park)	1200hrs	Geoff M
16 May 25	Red Bus @Wesley to Engine House Kit Hill -View Dartmoor	1200hrs	Bob A
20 Jun 25	Saltash Station Train to Looe with pasty lunch	1200 ish	Don P
18 July 25	No 2 Bus to Mount Batten — Lunch @ Mountbatten Inn	1200 ish	David L
15 Aug 25	Train to Bere Ferris - Visit BF Station with Bruce Hunt	1200 ish	Bob A
19 Sep 25	Trip up the Tamar by boat	1200 ish	Don P
17 Oct 25	Lunch @ Community Kitchen - Talk by Sue Hooper	1200 ish	Bob A
21 Nov 25	Devonport Market - Lunch @ William Yard	1200 ish	Bob C
17 Dec 25	Christmas Lunch with Probus @ China Fleet club	1200 hrs	Roger R

Gentlemen. If you feel this is for you and you would like to join us then please contact Bob Austin (Chairman) 01752 844666



## **Wesley Table Tennis Club**

Wesley Table Tennis Club continues to meet on a Monday evening from 7.00 until 9.00 pm in the Sports Hall. Our membership remains steady, and we have recently welcomed a new member to our group from our Church congregation. Although we are getting older and may finish a little earlier or take longer for a coffee and a chat, our enjoyment of table tennis remains strong. At the end of the evening, we also prepare the Sports Hall for Little Fishes for the following morning. We invite you to join us if you want a fun evening - no equipment is required.

Roger Thompson

## **Bible Study/Home groups at Wesley**

Bible Study/Home groups can enrich our spiritual life and provide a supportive community where we can grow, learn, and encourage one another. It's an opportunity to experience the beauty of Christian fellowship and apply biblical truths to everyday living.

Life can be challenging, in a home Bible study group, you can find encouragement, prayer partners, and friends who walk alongside you during difficult times.

Here at Wesley, we have different groups that meet on different days and times. If you would like to join a small group, please contact one of the leaders listed below for more information.

Most house groups meet every other week or twice in a month:

Monday, 10:00 AM, at 430 New Rd – Bob Mahy – 01579 351311

Wednesday, 10:00 AM, at Wesley – Linda Eastlake - 07711389125

Wednesday, 7:30 PM, on zoom – Noel Morgan – 01822 832952

Thursday, 7:30 PM, various homes – Fiona Budd – 01752 842788

Thursday, 10:00 AM, on Zoom – Revd Jonathan Budd – 01752 842788

## **PALS**

Those of you who have started attending Wesley more recently may not have heard of PALS. This group was originally set up many years ago as a social group to enable the young adult members of the church to meet together, with some of the older members offering their babysitting services. Now many of us are grandparents ourselves, but the group is still thriving. We like to think that we remain nimble of brain even if not necessarily of body!

To this end, we meet fortnightly on Wednesday evenings, although now most of us are retired we sometimes hold our events earlier in the day. In July we compile our programme of events for the following year – these can range from inviting speakers to our meetings (often from Heritage or various charities), Desert Island Discs, enjoying

meals out together, quizzes (keeping it simple), games evenings, visits to gardens and local places of interest. We try and make good use of the lighter summer evenings and both the annual Treasure Hunt and the croquet/summer nibbles evening at Cotehele are always highlights. The group is open to all and there is a copy of our programme in the corridor. We will also be advertising forthcoming events via the church notice sheets, so please come and join us. We are a friendly bunch – speak to Bernard Melling or myself, to find out more.

Jo Lambourne

## **Property Report**

Yet another year of good work by our helpers who ensure that our church and property are kept clean, tidy and in good repair ..... thanks to everyone.

We have the benefit of several skilled technically competent volunteers amongst us who are also able to carry out improvements and risk assessments which not only enhance our surroundings but also ensure they are a safer place for everyone, be they very young, visitors through to the aged and those with disabilities.

Noteworthy items this year include the resurfacing of the car park, roof repairs, major work to the kitchen dishwasher, upgrading of the central heating controls and upgrade to sports hall showers and washing facilities (for the homeless). Wesley has also had its Quinquennial (5 yearly) Inspection of the premises carried out by the Circuit's independent Surveyor. We again, passed with flying colours. Well done to all concerned!

David Lambourne Property Steward

## **TREASURER'S REPORT ANNUAL CHURCH MEETING 2 MARCH 2025.**

### **Accounts year ended 31 August 2024**

The Management accounts for the Saltash Wesley Methodist Church for the fiscal year ending 31 August 2024 were presented to the Church Council during the meeting held in October 2024. These accounts were subsequently consolidated with those of the Internal Organisations and presented at the February 2025 meeting, receiving approval from the Church Council. I am pleased to report that the accounts have now been thoroughly examined and signed off by our auditor, David Trill. David has diligently fulfilled this important role for well over 15 years and has expressed his desire to step down. On behalf of Saltash Wesley and personally, I extend our thanks to him for his unwavering commitment and dedication in ensuring that our financial records are meticulously maintained to ensure they are accurately filed with the Charities Commission on an annual basis.



Turning to the accounts, one of our primary sources of income comes from offerings which totalled **£38,304** reflecting an increase of **£649** compared to **£37,655** in the previous year. In addition, donations received from individuals on Gift Day amounted to **£4,479**, while contributions from church organisations totalled **£3,227**, bringing the overall donations to **£7,706**. However, this represents a decrease of **£545** from the previous year's income of **£8,251**. Our donations are significantly enhanced by our Gift Aid claim which in the year to 5 April 2024 amounted to **£10,874** compared to **£13,081** in the year ended 5 April 2023. It is important to note that we did not receive the Gift Aid Small Donations claim for the year ended 5 April 2024 of **£1,990** until September 2024 which will be reflected in next year's accounts. Furthermore, the previous year's figures included **£742** of GASDS for 2021/22. Taking these factors into account the actual claim for 2023/24 amounted to **£12,864** compared to the actual figure of **£12,338** for the year 2022/23.

The other significant source of income comes from room hiring which amounted to **£30,614** compared to **£24,546** in the previous year, reflecting an increase of **£6,068**. We now enjoy regular bookings from various NHS clinics, including Diabetic Eye Screening, Covid Vaccination Clinics, the Respiratory Clinic, Podiatry Assessment and Diabetes Prevention courses. Additionally, we have hosted several classical concerts organised by Salt Arts. We extend our gratitude to Joanna for her dedicated efforts in securing high-quality bookings from the current hirers using our premises. Weekday coffee mornings have experienced a rise with total income emerging at **£4,086** up from **£3,484** in the previous year, reflecting an increase of **£602**. Sunday coffee income also increased by **£144** and reached a total of **£846**.

Income from investments and bank interest amounted to **£4,976** comprising **£3,270** received from the investments with Brewin Dolphin which manage the Henwood Trust funds, **£1,490** from TMCP and **£216** from the Central Finance Deposit fund. This represents a decrease from the previous year's total of **£6,385**. The significant decline is attributed to the Management Committee's decision to cease income withdrawals from Brewin Dolphin investments from April 2024, opting instead to capitalize any dividends.

The solar power payback amounted to **£4,599** a modest increase of **£9**. Given the inclement weather experienced last summer, it is remarkable that any increase occurred at all.

We were blessed to receive a bequest towards the end of the year as stipulated in the Will of Mrs. Brenda Taylor deceased amounting to **£50,000** for which we are very grateful.

I am also pleased to report that our application for a grant from the Cornwall Council's Community Levelling Up Programme was successful resulting in a total award of **£33,592**. This amount was entirely expended on the redecoration and refurbishment of the foyer and room 3. We have received numerous positive comments relating to the outcome of this project.

Additionally, our application for a grant of **£8,500** from National Grid towards our energy costs was successful, significantly alleviating our concerns in being able to meet our utility costs while energy prices remained exceptionally high. A grant was also received of **£1,000** from Warm Spaces with which we were able to purchase a coffee machine, new coffee flasks, mugs, cups and other crockery items.

Income was also received by our Internal Organisations totalling **£18,026**.

Thus, our total income for the year ending 31 August 2024, as reported in the Standard Form of Accounts, reached **£209,515**, a significant increase from **£129,262** in the prior year, mainly owing to the bequest and the grants received.

In terms of expenses, our primary expenditure was the Circuit assessment, amounting to **£48,689**, which reflects a decrease of **£1,319** from **£50,008** in 2023.

Utilities totalled **£14,121** which includes water rates of **£1,208** (2023 - **£1,021**), electricity costs of **£5,668** (2023 - **£3,721**), gas **£3,320** (2023 - **£2,351**) and insurance **£3,925** (2023 - **£3,765**) overall this reflects an increase of **£3,263**.

During the year we invested significantly in the maintenance, redecoration and refurbishment of our building which overall amounted to **£49,887**. The primary expenditure was on the foyer and room 3 which accounted for **£33,653**. Additionally, we undertook various roof repairs costing **£1,383**, plumbing necessitated by leaks - **£2,253**, re-rendering exterior walls **£2,350**, replacement of front fascia boards **£727**, repairs to back door **£466**, repainting the cross **£1,480**, cleaning debris from gutters **£200** and cleaning solar panels **£195**. It is now 35 years since our church premises were constructed, so we anticipate higher repair costs in the future.

The repairs and maintenance costs encompass various equipment-related expenses amounting to **£4,781** (**£5,790** for 2023). Significant expenditure in this category includes boiler repairs and servicing - **£1,406**, sound desk - **£1,291**, fire extinguisher servicing - **£544**, carpet cleaners - **£334**, cordless lawnmower - **£240** new shredder **£140**, renewal of parts for the defibrillator - **£156**, and underlay and fitting for the office carpet **£180**. Additionally, the office photocopier was replaced at a cost of **£2,021**, although payment for this expense will occur in the current year. The cost of organ and piano repairs and tuning emerged at **£1,280** compared to **£564** in 2023. The increase was attributed to the necessary remedial works on the capture system and the corrosion affecting the circuit boards of the organ.

The total expenses for the year reached **£133,352**, an increase from **£95,872** in the previous year. This rise is primarily attributed to the expenditures on the foyer and room 3.

The total surplus of income over expenditure for the year ending 31 August 2024 amounted to an impressive **£76,163**. However, it is important to note that without the bequest, as well as the National Grid and Warm Spaces grants, the surplus would have been **£16,663**, which is still remarkable.

Total funds held in the Management account and the Designated accounts as of 31 August 2023 and 31 August 2024 were as follows: -

	<b><u>2024</u></b>	<b><u>2023</u></b>
General account HSBC	£37,340	£68,924
Designated accounts bank	£25,526	£17,849
TMCP 2 accounts	£25,986	£25,835
Central Finance Board	£100,216	-
Designated accounts cash	<u>£423</u>	<u>£568</u>
<b>Total</b>	<b><u>£189,491</u></b>	<b><u>£113,176</u></b>

In addition, the restricted Endowment Fund valuations as at 31 August 2023 and 31 August 2024 amounted to:-

	<b>2024</b>	<b>2023</b>
Henwood Bequest	£245,656	£222,123
TMCP 2 accounts	<u>£14,146</u>	<u>£13,038</u>
<b>Total</b>	<b><u>£259,802</u></b>	<b><u>£235,161</u></b>

Our total funds as at 31 August 2024 (excluding those held in the Mbare/Saltash Partnership and the Music Foundation amounted to **£449,293** compared to **£348,337** at the end of the previous accounting period, an increase of **£100,956**. This is made up of the total surplus of income over expenditure of **£76,163**, the accumulated income on one of the TMCP accounts of **£152** and the unrealised gains on the Henwood Trust money and the two endowment funds with TMCP amounting to **£24,641**.

The value of land and buildings at **£4,938,563** and other assets **£249,574** disclosed in the Standard Form of Accounts are based on the insurance valuations prepared by a representative from Methodist Insurance as shown in the insurance renewal documentation in September 2024.

Turning to our current position for the first 5 months of the current financial year, the total income passed through the general account excluding internal organisations, restricted funds and the amounts passed through the bank accounts for the Circuit, amounted to **£41,401** compared to **£36,908** in the comparable period last year.

Expenditure totalled **£36,816** up from **£30,705** in 2024.

Thus, the net surplus of income emerged at **£4,585** a decrease from **£6,204** in the same period in the previous year.

It is encouraging to note that our offertory in the period to January 2025 amounted to **£18,322** reflecting an increase of **£2,233**, and demonstrates our congregation's ongoing commitment and generosity. However, the loose cash collections in the period decreased by **£690** compared to the previous year. On a positive note, hirings increased by **£565** and emerged at **£12,556** up from **£11,991** in 2024. It was disappointing to learn that Cornwall Council has recently notified us of their inability to continue funding the Link into Learning courses held in room 1 over the past seven years. This hiring significantly contributed to Wesley's income and the Management committee is actively seeking ways to replace this lost revenue.

Turning to expenses water rates emerged at **£598**, reflecting an increase of **£162** from the previous year. Our electricity costs totalled **£1,722** a decrease from **£2,445** in 2024 resulting in a saving of **£723**. This reduction can be attributed to the lower electric prices negotiated under the new contract, which took effect in August 2024, dropping from **£0.3495** to **£0.2367** per kWh. Gas charges rose to **£1,178**, up from **£1,030** the previous year, marking an increase of **£148**. Please note however our application to National Grid for a grant this winter was unsuccessful, which we believe was mainly because one of the criteria this year required applicants to provide warm packs, such

as energy saving light bulbs, electric blankets and advice to the community regarding energy saving tariffs and not specifically to assist the applicant's energy costs. We have however received a total of **£18,500** from National Grid over the last two years, which significantly alleviated our energy costs whilst prices were extremely high. We have however recently received notification from the SW Peninsula Methodist District that our application for a Warm Spaces grant of **£1,000** was successful and this was received in February 2025.

Equipment additions and servicing in the period emerged at **£3,455** which mainly related to the purchase of the new office photocopier and printer at a cost of **£2,021** and a new loft ladder at a cost of **£546**. The cost of building maintenance totalled **£6,913**, which included **£4,500** spent on re-tarmac a section of the car park, **£525** on the parking white lines, **£983** on repairs to the west elevation roof and **£391** on part of the roof over room 1.

The Circuit assessment amounted to **£12,172** (paid in advance to 28 February 2025) and currently remains at the same rate as in the previous year.

As at 31 January 2025 there was a balance of **£68,281** held at HSBC of which **£39,238** related to the General Fund and **£29,043** to Internal Organisations. Separately a total of **£103,303** was held in the Central Finance Board Deposit Account.

Whilst we are extremely fortunate to have a surplus of cash available at the present time, there several major projects being considered by the Management committee with a view to ensuring that any decisions and expenditure align with the best interests of Saltash Wesley Methodist Church.

Finally, we have recently received notification from the late Revd. Jake Watson's family that he has left a bequest to Saltash Wesley Methodist Church. Jake and his wife Margaret were much loved and respected members of our congregation, and we are truly blessed that he chose to remember us in this way.

I would like to express my gratitude to our Church family for their remarkable generosity and unwavering commitment—spiritually, practically, and financially to the ongoing work at Wesley, within our local community and the broader Circuit. Additionally, I appreciate their continued financial support for the charities we endorse each year, as outlined in the accompanying list of charitable donations.

**Anita Thompson**  
**Church Treasurer**

**SALTASH WESLEY METHODIST CHURCH**  
**SCHEDULE OF DONATIONS YEAR ENDED 31 AUGUST 2024**

	£	
Action for Children	127.33	Christmas Day Collection
Action for Children	304.29	Collection Boxes
Saltash Foodbank	303.25	Collection Covenant Service
Matthew Rusike Children's Home	282.40	St. Eustachius Church Tavistock
Matthew Rusike Children's Home	358.32	Holley's 2024 Cream Tea
Matthew Rusike Children's Home	235.00	Plant Sale
Matthew Rusike Children's Home	140.41	Wesley Christmas Card
Mbare Methodist Relief Fund	238.50	Line Dance
Mbare Methodist Relief Fund	971.07	Coffee Mornings
Mbare Methodist Relief Fund	317.50	St. Eustachius Church Tavistock
Mbare Methodist Relief Fund	1,224.74	Personal Donations
Mbare Methodist Relief Fund	383.00	Christmas Card Gifts
Mbare Methodist Relief Fund	269.00	Table Top Donations
Mbare Methodist Relief Fund	124.95	Carol Service Collection
Mbare Methodist Relief Fund	7.89	J. Allen Cards and Recipes
Mbare Methodist Relief Fund	358.33	Holley's 2024 Cream Tea
Mbare Methodist Relief Fund	160.00	Film Night
Mbare Methodist Relief Fund	110.55	Quiz Night
Mbare Methodist Relief Fund	100.00	Traidcraft
Mbare Methodist Relief Fund	587.25	Gift Aid
Mbare Methodist Relief Fund	1,000.00	Transferred from Visit Fund
Mbare School Fees Fund	3,860.54	Personal Donations
Mbare School Fees Fund	100.00	Traidcraft
Mbare School Fees Fund	225.00	Table Top Donations
Mbare School Fees Fund	54.10	Coffee Morning
Mbare School Fees Fund	588.00	Gift Aid
Morocco Earthquake Appeal	50.00	Table Top
Morocco Earthquake Appeal Cash (inc. Gift Aid £86.25)	486.25	Retiring Collection
Parkinsons	60.00	Café Church
Parkinsons	20.00	Pals
Saltash Heritage	40.00	Pals
St Petrocs (inc. Gift Aid £77.50)	520.50	Retiring Collection
St. Petrocs	50.00	Table Top
St. Petrocs	100.00	Café Church
Story Book Dads	75.00	Café Church
Wateraid	310.75	Lent Collection Boxes
Womens World Day of Prayer	208.00	Collection
TOTAL	<u>£ 14,351.92</u>	



## THE METHODIST CHURCH

### STANDARD FORM OF ACCOUNTS

Church

FOR THE YEAR ENDED

31 August 2024

<b>SALTASH</b>	Circuit	Circuit no.	12/22
----------------	---------	-------------	-------

**Registered Charity - Charity Registration number**

1127542

**If not a registered charity His Majesty's Revenue and  
Customs Gift Aid number**

(The HMRC number is equivalent to a registered charity number in terms of evidence of charitable status and may be used to give to donors or grant funders wishing to see evidence of the organisation's charitable status. Methodist charities in England and Wales that are not registered charities are excepted from registration under Statutory Instrument 2014 No.242)

Minister:

Rev'd Jonathan Budd

Church Stewards:

Mrs. Joyce Amies

Miss Elspeth Nicolls

Mr. Derek Holley

Retired 30.4.2024

Mrs. Rosemary Witts

Mrs. Sandra Kowalski

Mrs. Jo Lambourne

Appointed 1.5.2024

Treasurer:

Mrs. Anita Thompson

SECTION A		Unrestricted Funds	Designated Funds	Restricted Funds	Totals this year	Totals last year
		£	£	£	£	£
a1	<b>RECEIPTS</b>	Note				
a2	Offerings and Tax recovered	49,178			49,178	50,736
a3	Bank and CFB interest and Investment income	1,452		3,524	4,976	6,385
a4	Lettings	30,614			30,614	24,546
a5	Other receipts	63,629	18,026	43,092	124,747	47,595
a6	<b>TOTAL RECEIPTS</b>	<b>144,873</b>	<b>18,026</b>	<b>46,616</b>	<b>209,515 (a7)</b>	<b>129,262</b>

SECTION B						
b1	<b>PAYMENTS</b>					
b2	Circuit Assessment or Share	48,689			48,689	50,008
b3	Donations		1,045		1,045	860
b4	Repairs and Maintenance	14,913		34,974	49,887	10,235
b5	Utilities (Insurances, water charges, heating & lighting)	9,071		5,050	14,121	10,857
b6						
b7	Other payments	12,448	2,883	4,279	19,610	23,912
b8	<b>TOTAL PAYMENTS</b>	<b>85,121</b>	<b>3,928</b>	<b>44,303</b>	<b>133,352 (b9)</b>	<b>95,872</b>

SECTION C							
c1	NET RECEIPTS/PAYMENTS FOR THE YEAR	(a6-b8)	59,752	14,098	2,313	76,163	33,390
c2	Total funds brought forward from last year		94,760	18,235	181	113,176 (c6)	79,702
c3	Sub total	(c1+c2)	154,512	32,333	2,494	189,339	113,092
c4	Transfers and adjustments		9,088	(8,998)	62	152 (c7)	84
c5	TOTAL FUNDS AT END OF YEAR	(c3+c4)	163,600	23,335	2,556	189,491 (c8)	113,176 (c6)

SECTION D					
<b>FOR INFORMATION ONLY: MONEY RECEIVED AND PASSED ON TO EXTERNAL</b>					
d	(these amounts are not to be included in total receipts/payments figures above)		£		£
d1	Balance brought forward from last year		7,886		8,187
d2	Offerings/Gifts - received for external organisations		28,106		25,270
d3	Offerings/Gifts - passed to external organisations		27,766		25,571
d4	<b>BALANCE STILL TO BE PAID</b>	<b>(d1+d2-d3)</b>	<b>8,226</b>		<b>7,886</b>



## SUMMARY OF CHURCH ACCOUNTS AND INTERNAL ORGANISATIONS REPORTING TO THE CHURCH COUNCIL

## SECTION E

Please follow the Guidance Notes to complete this page

Summary of the Church accounts for the year ended 31 August 2024 and Internal Organisations reporting to the Church Council/Church Meeting. Note that the funds of an Internal Organisation would normally be Restricted funds unless it could be clearly shown that they could be used for any Methodist purpose. This section must be completed to arrive at the gross income and expenditure totals of the Church. If gross income exceeds the Accruals threshold, then the Accruals method of accounting AND A DIFFERENT FORM must be used to report the accounts (see Methodist website). Please refer to the guidance notes regarding transfers between the District and connected District Organisations.

INTERNAL ORGANISATIONS	Receipts	Payments	Net Receipts/ Payments	Adjustments	Opening balances	Closing balances
e1 Music Foundation					85	85
e2 Saltash Mbare Partnership	85	1,514	(1,429)		4,500	3,071
e3						
e4						
e5						
e6						
e7						
e8 Sub total of Internal Organisations funds	85	1,514	(1,429)		4,585 (e11)	3,156 (e12)
e9 Church accounts (totals brought forward from page 2 - totals column)	209,565 (a7)	133,402 (b9)	76,163	152 (c7)	113,176 (c6)	189,491 (c8)
e10 TOTAL CASH FUNDS HELD BY CHURCH	209,650	134,916	74,734	152	117,761 (x)	192,647 (y)
Continue on a separate sheet if necessary and bring the totals forward	TOTAL RECEIPTS	TOTAL PAYMENTS				

## SECTION F

## STATEMENT OF ASSETS AND LIABILITIES

## CHURCH - CASH FUNDS HELD at 31 August 2024

	OPENING BALANCES	CLOSING BALANCES
f1 Cash in hand	568	423
f2 Bank Current Account	86,773	62,866
f3 Bank Deposit Account		
f4 Central Finance Board		100,216
f5 Trustees for Methodist Church Purposes	25,835	25,986
f6 Other funds		
f7 SUB TOTAL - Church accounts	113,176 (c6)	189,491 (c8)
f8 Total funds held by Internal Organisations (the closing balance total from above) (e12)	4,585 (e11)	3,156 (e12)
f9 TOTAL CASH FUNDS HELD BY CHURCH	117,761 (x)	192,647 (y)

## SECTION G

## OTHER ASSETS and LIABILITIES

	At 1 September 2023	At 31 August 2024
g1 Investments (include Endowments)	235,161	259,802
g2 Land & Buildings (see notes re Insurance value)	4,780,837	4,938,563
g3 Other Assets	241,603	249,574
g4 Loan(s) - show amount outstanding at year end		
g5 Other Liabilities		

f4 Include only Funds held at the Central Finance Board

f5 Include only Funds held at Trustees for Methodist Church Purposes

g1 Include any other investments (not the cash element of TMCP trusts accounts this is included in line f5)

Name of Church: **SALTASH WESLEY METHODIST CHURCH**

No: 12/22

## Declarations and Scrutiny

I confirm that these Receipt and Payment based accounts for the year to 31 August 2024 have been prepared from the records of the Church and that they include all funds under the control of the Church trustees.

Signature of treasurer A. Thompson Date 15 February 2025

Name and address of treasurer ...MRS. ANITA THOMPSON.....

26 Long Park Road, Saltash, Cornwall Post Code PL12 4AH

### Presentation to the Church trustees

I confirm that the annual report and accounts for the year ended 31 August 2024 were/will be\* presented to the meeting of the Church trustees held on 13 February 2024.....

Signature of the Chair of the meeting Rev. Jonathan Budd

Name of the Chair of the meeting: Revd. Jonathan Budd..... Date 25/2/25

## Independent Examiner's Report to the Trustees of the

### SALTASH WESLEY METHODIST CHURCH

Charity Number 1127542

### Responsibilities and basis of report

I report to the trustees on my examination of the accounts of the Saltash Wesley Methodist Church for the year ended 31 August 2024 set out on pages 1 to 5. As the Church's trustees, you are responsible for the preparation of the accounts in accordance with the requirements of the Charities Act 2011 ('the Act').

I report in respect of my examination of the Church's accounts carried out under section 145 of the Act and, in carrying out my examination, I have followed all the applicable Directions given by the Charity Commission under section 145(5)(b) of the Act.

\* delete or circle as appropriate



Name of Church:

**SALTASH WESLEY METHODIST CHURCH**

No: 12/22

### Independent Examiner's Statement

I have completed my examination. I confirm that no material matters have come to my attention in connection with the examination (other than that disclosed below\*) which give me cause to believe that in, any material respect:

- the accounting records were not kept in accordance with section 130 of the Act; or
- the accounts do not accord with the accounting records.

I have no concerns and have come across no other matters in connection with the examination to which attention should be drawn in this report in order to enable a proper understanding of the accounts to be reached.

I have/~~have not~~ obtained independent verification of all investments with the Trustees for Methodist Church Purposes or held in other trusts, bank balances and funds at the Central Finance Board of the Methodist Church which are individually in excess of £10,000 (ten thousand pounds) at the balance sheet date.

Signature of independent examiner .....

Name of independent examiner ....MR. DAVID TRILL

Relevant professional qualification of independent examiner .....ACIB

Name of firm (where appropriate) .....

Address .....35 Mount Wise Crescent.....

.....Plymouth..... Post Code PL1 4TJ.....

Date 21st Feb. 2025

\* delete or circle as appropriate



## THE METHODIST CHURCH STANDARD FORM OF ACCOUNTS

Church

FOR THE YEAR ENDED

31 August 2024

<b>SALTASH</b>	Circuit	Circuit no.	12/22
----------------	---------	-------------	-------

**Registered Charity - Charity Registration number**

1127542

**If not a registered charity His Majesty's Revenue and  
Customs Gift Aid number**

(The HMRC number is equivalent to a registered charity number in terms of evidence of charitable status and may be used to give to donors or grant funders wishing to see evidence of the organisation's charitable status. Methodist charities in England and Wales that are not registered charities are excepted from registration under Statutory Instrument 2014 No.242)

Minister:

Rev'd Jonathan Budd

Church Stewards:

Mrs. Joyce Amies

Miss Elspeth Nicolls

Mr. Derek Holley

Retired 30.4.2024

Mrs. Rosemary Witts

Mrs. Sandra Kowalski

Mrs. Jo Lambourne

Appointed 1.5.2024

Treasurer:

Mrs. Anita Thompson

SECTION A		Unrestricted Funds	Designated Funds	Restricted Funds	Totals this year	Totals last year
		£	£	£	£	£
a1	<b>RECEIPTS</b>	Note				
a2	Offerings and Tax recovered	49,178			49,178	50,736
a3	Bank and CFB interest and Investment income	1,452		3,524	4,976	6,385
a4	Lettings	30,614			30,614	24,546
a5	Other receipts	63,629	18,026	43,092	124,747	47,595
a6	<b>TOTAL RECEIPTS</b>	<b>144,873</b>	<b>18,026</b>	<b>46,616</b>	<b>209,515 (a7)</b>	<b>129,262</b>

SECTION B						
b1	<b>PAYMENTS</b>					
b2	Circuit Assessment or Share	48,689			48,689	50,008
b3	Donations		1,045		1,045	860
b4	Repairs and Maintenance	14,913		34,974	49,887	10,235
b5	Utilities (Insurances, water charges, heating & lighting)	9,071		5,050	14,121	10,857
b6						
b7	Other payments	12,448	2,883	4,279	19,610	23,912
b8	<b>TOTAL PAYMENTS</b>	<b>85,121</b>	<b>3,928</b>	<b>44,303</b>	<b>133,352 (b9)</b>	<b>95,872</b>

SECTION C							
c1	NET RECEIPTS/PAYMENTS FOR THE YEAR	(a6-b8)	59,752	14,098	2,313	76,163	33,390
c2	Total funds brought forward from last year		94,760	18,235	181	113,176 (c6)	79,702
c3	Sub total	(c1+c2)	154,512	32,333	2,494	189,339	113,092
c4	Transfers and adjustments		9,088	(8,998)	62	152 (c7)	84
c5	TOTAL FUNDS AT END OF YEAR	(c3+c4)	163,600	23,335	2,556	189,491 (c8)	113,176 (c6)

SECTION D					
<b>FOR INFORMATION ONLY: MONEY RECEIVED AND PASSED ON TO EXTERNAL</b>					
d	(these amounts are not to be included in total receipts/payments figures above)		£		£
d1	Balance brought forward from last year		7,886		8,187
d2	Offerings/Gifts - received for external organisations		28,106		25,270
d3	Offerings/Gifts - passed to external organisations		27,766		25,571
d4	<b>BALANCE STILL TO BE PAID</b>	<b>(d1+d2-d3)</b>	<b>8,226</b>		<b>7,886</b>



## SUMMARY OF CHURCH ACCOUNTS AND INTERNAL ORGANISATIONS REPORTING TO THE CHURCH COUNCIL

## SECTION E

Please follow the Guidance Notes to complete this page

Summary of the Church accounts for the year ended 31 August 2024 and Internal Organisations reporting to the Church Council/Church Meeting. Note that the funds of an Internal Organisation would normally be Restricted funds unless it could be clearly shown that they could be used for any Methodist purpose. This section must be completed to arrive at the gross income and expenditure totals of the Church. If gross income exceeds the Accruals threshold, then the Accruals method of accounting AND A DIFFERENT FORM must be used to report the accounts (see Methodist website). Please refer to the guidance notes regarding transfers between the District and connected District Organisations.

INTERNAL ORGANISATIONS	Receipts	Payments	Net Receipts/ Payments	Adjustments	Opening balances	Closing balances
e1 Music Foundation					85	85
e2 Saltash Mbare Partnership	85	1,514	(1,429)		4,500	3,071
e3						
e4						
e5						
e6						
e7						
e8 Sub total of Internal Organisations funds	85	1,514	(1,429)		4,585 (e11)	3,156 (e12)
e9 Church accounts (totals brought forward from page 2 - totals column)	209,565 (a7)	133,402 (b9)	76,163	152 (c7)	113,176 (c6)	189,491 (c8)
e10 TOTAL CASH FUNDS HELD BY CHURCH	209,650	134,916	74,734	152	117,761 (x)	192,647 (y)
	<b>TOTAL RECEIPTS</b>	<b>TOTAL PAYMENTS</b>				

Continue on a separate sheet if necessary and bring the totals forward

## SECTION F

## STATEMENT OF ASSETS AND LIABILITIES

## CHURCH - CASH FUNDS HELD at 31 August 2024

	OPENING BALANCES	CLOSING BALANCES
f1 Cash in hand	568	423
f2 Bank Current Account	86,773	62,866
f3 Bank Deposit Account		
f4 Central Finance Board		100,216
f5 Trustees for Methodist Church Purposes	25,835	25,986
f6 Other funds		
f7 SUB TOTAL - Church accounts	113,176 (c6)	189,491 (c8)
f8 Total funds held by Internal Organisations (the closing balance total from above) (e12)	4,585 (e11)	3,156 (e12)
f9 TOTAL CASH FUNDS HELD BY CHURCH	117,761 (x)	192,647 (y)

## SECTION G

## OTHER ASSETS and LIABILITIES

	At 1 September 2023	At 31 August 2024
g1 Investments (include Endowments)	235,161	259,802
g2 Land & Buildings (see notes re Insurance value)	4,780,837	4,938,563
g3 Other Assets	241,603	249,574
g4 Loan(s) - show amount outstanding at year end		
g5 Other Liabilities		

f4 Include only Funds held at the Central Finance Board

f5 Include only Funds held at Trustees for Methodist Church Purposes

g1 Include any other investments (not the cash element of TMCP trusts accounts this is included in line f5)

Name of Church: **SALTASH WESLEY METHODIST CHURCH**

No: 12/22

## Declarations and Scrutiny

I confirm that these Receipt and Payment based accounts for the year to 31 August 2024 have been prepared from the records of the Church and that they include all funds under the control of the Church trustees.

Signature of treasurer A. Thompson Date 15 February 2025

Name and address of treasurer ...MRS.ANITA THOMPSON.....

26 Long Park Road, Saltash, Cornwall Post Code PL12 4AH

### Presentation to the Church trustees

I confirm that the annual report and accounts for the year ended 31 August 2024 were/will be\* presented to the meeting of the Church trustees held on 13 February 2024.....

Signature of the Chair of the meeting Rev. Jonathan Budd

Name of the Chair of the meeting: Revd. Jonathan Budd..... Date 25/2/25

## Independent Examiner's Report to the Trustees of the

### SALTASH WESLEY METHODIST CHURCH

Charity Number 1127542

### Responsibilities and basis of report

I report to the trustees on my examination of the accounts of the Saltash Wesley Methodist Church for the year ended 31 August 2024 set out on pages 1 to 5. As the Church's trustees, you are responsible for the preparation of the accounts in accordance with the requirements of the Charities Act 2011 ('the Act').

I report in respect of my examination of the Church's accounts carried out under section 145 of the Act and, in carrying out my examination, I have followed all the applicable Directions given by the Charity Commission under section 145(5)(b) of the Act.

\* delete or circle as appropriate



Name of Church:

**SALTASH WESLEY METHODIST CHURCH**

No: 12/22

### Independent Examiner's Statement

I have completed my examination. I confirm that no material matters have come to my attention in connection with the examination (other than that disclosed below\*) which give me cause to believe that in, any material respect:

- the accounting records were not kept in accordance with section 130 of the Act; or
- the accounts do not accord with the accounting records.

I have no concerns and have come across no other matters in connection with the examination to which attention should be drawn in this report in order to enable a proper understanding of the accounts to be reached.

I have/~~have not~~ obtained independent verification of all investments with the Trustees for Methodist Church Purposes or held in other trusts, bank balances and funds at the Central Finance Board of the Methodist Church which are individually in excess of £10,000 (ten thousand pounds) at the balance sheet date.

Signature of independent examiner .....



Name of independent examiner ....MR. DAVID TRILL

Relevant professional qualification of independent examiner .....ACIB

Name of firm (where appropriate) .....

Address .....35 Mount Wise Crescent.....

.....Plymouth.....

Post Code PL1 4TJ.....

Date .....

21st Feb. 2025

\* delete or circle as appropriate