

Company registration number 06756641 (England and Wales)

Charity registration number 1127388 (England and Wales)

**EDBERTS HOUSE LIMITED**  
**ANNUAL REPORT AND FINANCIAL STATEMENTS**  
**FOR THE YEAR ENDED 31 MARCH 2025**

# EDBERTS HOUSE LIMITED

## LEGAL AND ADMINISTRATIVE INFORMATION

---

<b>Trustees</b>	C Kelly SB McGuinness A Cherry MP Stirrup PD Cassidy A Healy M Innes	(Appointed 4 December 2024)
	Andrew Garaba	(Appointed 4 December 2024)
<b>Charity number</b>	1127388	
<b>Company number</b>	06756641	
<b>Registered office</b>	17- 19 St. Edmund's Drive Gateshead Tyne and Wear England NE10 9AE	
<b>Auditor</b>	Robson Laidler Accountants Limited Fernwood House Fernwood Road Jesmond Newcastle upon Tyne Tyne and Wear England NE2 1TJ	
<b>Bankers</b>	Unity Trust Bank Nine Brindleyplace Birmingham B1 2HB	

---

# **EDBERTS HOUSE LIMITED**

## **CONTENTS**

---

	<b>Page</b>
Trustees' report	1 - 11
Independent auditor's report	12 - 14
Statement of financial activities	15 - 16
Balance sheet	17
Statement of cash flows	18
Notes to the financial statements	19 - 28

---

## **EDBERTS HOUSE LIMITED**

### **TRUSTEES' REPORT (INCLUDING DIRECTORS' REPORT)**

#### ***FOR THE YEAR ENDED 31 MARCH 2025***

---

The trustees, who are also directors of the charity for the purposes of the Companies Act 2006, present their annual report and financial statements for the year ended 31 March 2025.

The financial statements have been prepared in accordance with the accounting policies set out in note 1 to the financial statements and comply with the charity's governing document, the Companies Act 2006 and "Accounting and Reporting by Charities: Statement of Recommended Practice applicable to charities preparing their accounts in accordance with the Financial Reporting Standard applicable in the UK and Republic of Ireland (FRS 102) (effective 1 January 2019)".

#### **Objectives and activities**

The objectives of the Charity are set out within the Memorandum of Association which are:

- To develop the capacity of the socially and economically disadvantaged members of the community in such a way that they are better able to identify and help meet their needs and to participate fully in society
- The relief of unemployment amongst members of the community in such ways as may be thought fit, including assistance to find employment
- To provide or assist in the provision of facilities in the interests of social welfare for recreation or other such leisure time occupations by members of the community who have need of such facilities by reason of their youth, age, infirmity or disability, financial hardship or social circumstances with the object of improving their condition of life; and
- To promote the good health and well-being of all members of the community.

#### **Public Benefit**

All our activities are undertaken for the benefit of our local community and the trustees continuously consider the Charity Commission advice on public benefit. All our activities are about encouraging health, welfare and recreation to those who are disadvantaged in some way and those of restricted means. Access to our facilities and services is either at nil or low cost to ensure the widest of participation by members of our community.

**EDBERTS HOUSE LIMITED**

**TRUSTEES' REPORT (INCLUDING DIRECTORS' REPORT) (CONTINUED)  
FOR THE YEAR ENDED 31 MARCH 2025**

**Achievements and performance**  
**Charitable Activities**

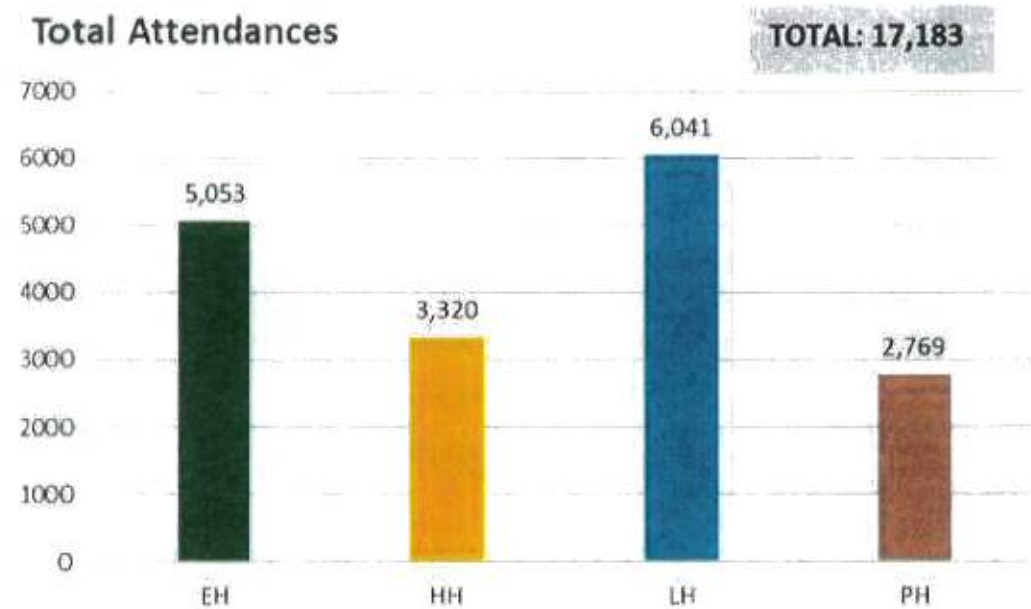


*"I can't tell you how much you have helped me. I genuinely thought that I was going to jail and that I was going to lose my little flat. My head was all in a muddle and I had no idea how to get my way out of it. You've all saved my life, thank you."*

Susan, supported by our Community Linking Project  
Building happier, healthier, friendlier communities has never been more vital. In the midst of the ongoing challenges of poverty, housing shortages and political uncertainty, it has been a privilege to support Susan (above) and thousands of others throughout our Gateshead communities during 2024/2025.

**Community Development**

We have four community houses: Edberts House (EH), Pattinson House (PH), Larkspur House (LH) and Highfield House (HH). They are run by steering groups of local people, facilitated by our Community Development and Engagement team, and offer a wide range of fun activities, as well as volunteering and training opportunities, access to surplus food, advice and guidance. Annual attendance figures can be seen below:



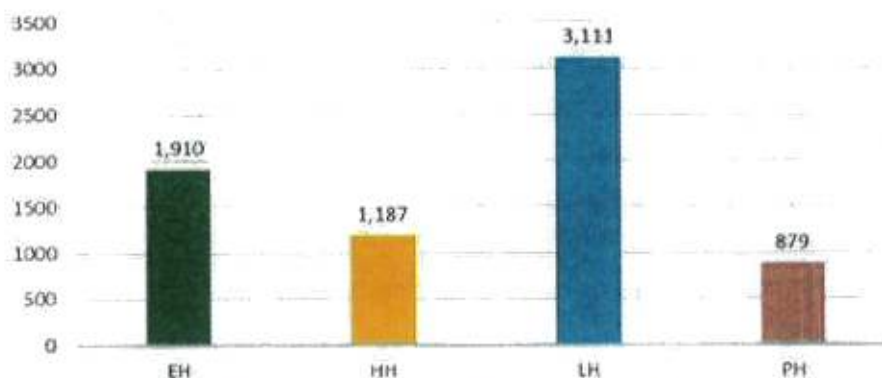


## EDBERTS HOUSE LIMITED

### TRUSTEES' REPORT (INCLUDING DIRECTORS' REPORT) (CONTINUED) FOR THE YEAR ENDED 31 MARCH 2025

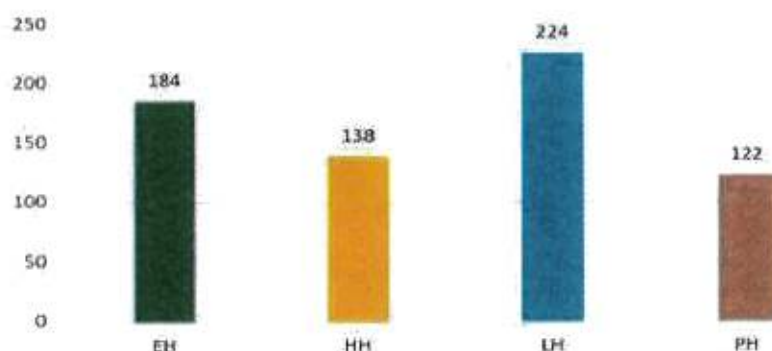
TOTAL Attendances of Residents Aged 18 and Under

TOTAL: 7,087



Number of Unique Individuals Attending Activities Aged 18 yrs and Under

TOTAL: 641



A particular focus of our houses has been the development of our youth and children's offer, helped by funding from UK Shared Prosperity Fund. We have seen numerical growth, and the launch of a youth volunteering offer, encouraging our young people to take a leadership role in the development of activities, and older young people assisting in the leadership of our children's clubs. This builds skills, vision and aspiration.

"Thank you to all the staff for supporting me throughout the summer. It is the only place my child feels understood and can be himself"

"All staff have been amazing, and kids absolutely loved it"

"I have really enjoyed volunteering and wish I could come everyday"

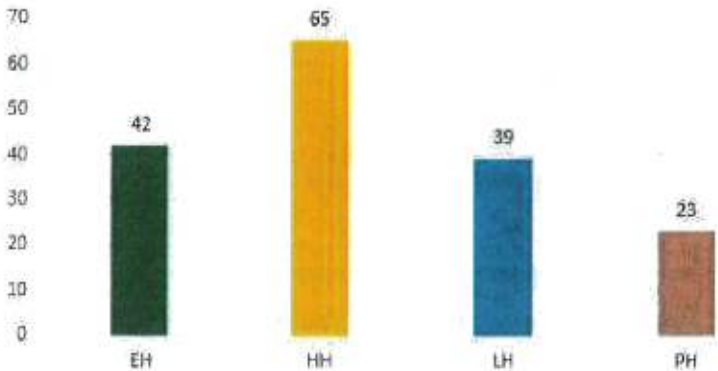
"I really enjoyed the trips as I have been places I've never been before"

**EDBERTS HOUSE LIMITED**

**TRUSTEES' REPORT (INCLUDING DIRECTORS' REPORT) (CONTINUED)  
FOR THE YEAR ENDED 31 MARCH 2025**

Number of Unique Individuals Attending  
Activities Aged 50 and Over

**TOTAL: 139**

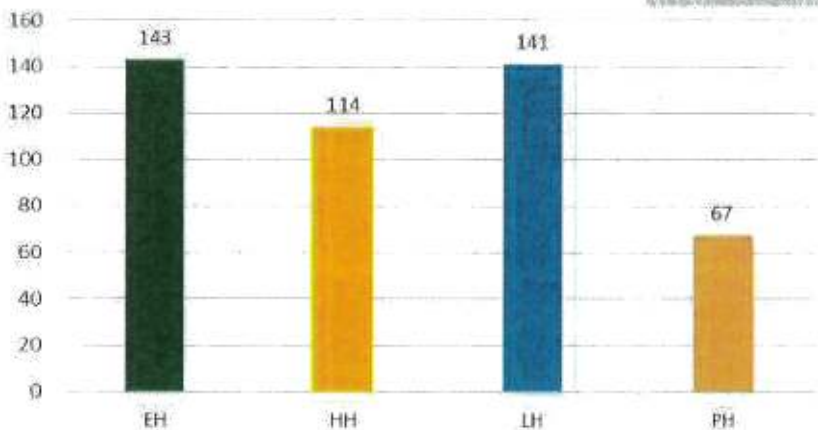


Thanks to funding from The Kellett Fund, we have also been able to expand our work with over 50's. Our older people have been meeting to discuss what they would like to do, and getting involved in project planning and leadership.

Our houses are open and available for local people to use, whether simply for a safe space to have a cuppa or to attend organised activities and training. We have weekly timetables of sessions advertised on social media, as well as seasonal events, which are very popular.

**Total Number of Sessions**

**TOTAL: 465**



Since the inception of Larkspur House, part of our wider Thrive in Beacon Lough East (TIBLE) project, funded by The National Lottery Community Fund, the work has been based in temporary accommodation in the local primary school. Local residents have been working with our team and local architects to design and plan a new community space for the area. Over 2024/25 we have secured a piece of land in the heart of the estate from Gateshead Council, who have recognised how we are helping local people to thrive. Based on sketches of our new community house, we have received planning permission and have now raised 50% of the funding required to go ahead with the build. We hope that our 25/26 report will have further news of this exciting development.

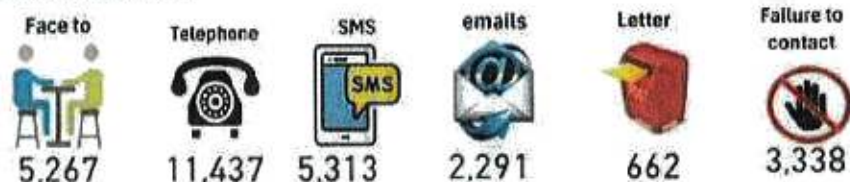
## EDBERTS HOUSE LIMITED

### TRUSTEES' REPORT (INCLUDING DIRECTORS' REPORT) (CONTINUED) FOR THE YEAR ENDED 31 MARCH 2025

#### Community Linking Project (Social Prescribing)

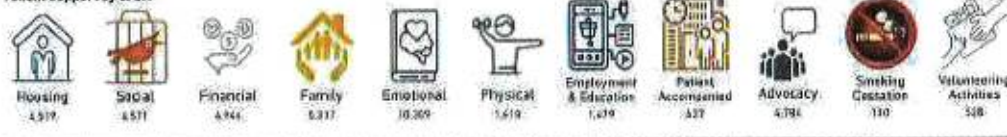
The Community Linking Project (CLP) operates across 3 Primary Care Networks, which include 18 GP surgeries. We now speak at the training of medics at Sunderland University, and are shadowed by trainee GPs, encouraging future doctors to consider the importance of the wider determinants of health.

##### Patient Interactions



Our thousands of patient contacts, using whatever medium is preferred by the patient (shown above) have resulted in us walking 'shoulder to shoulder' with patients through a whole range of issues (shown below).

##### Patient Support by SPLW



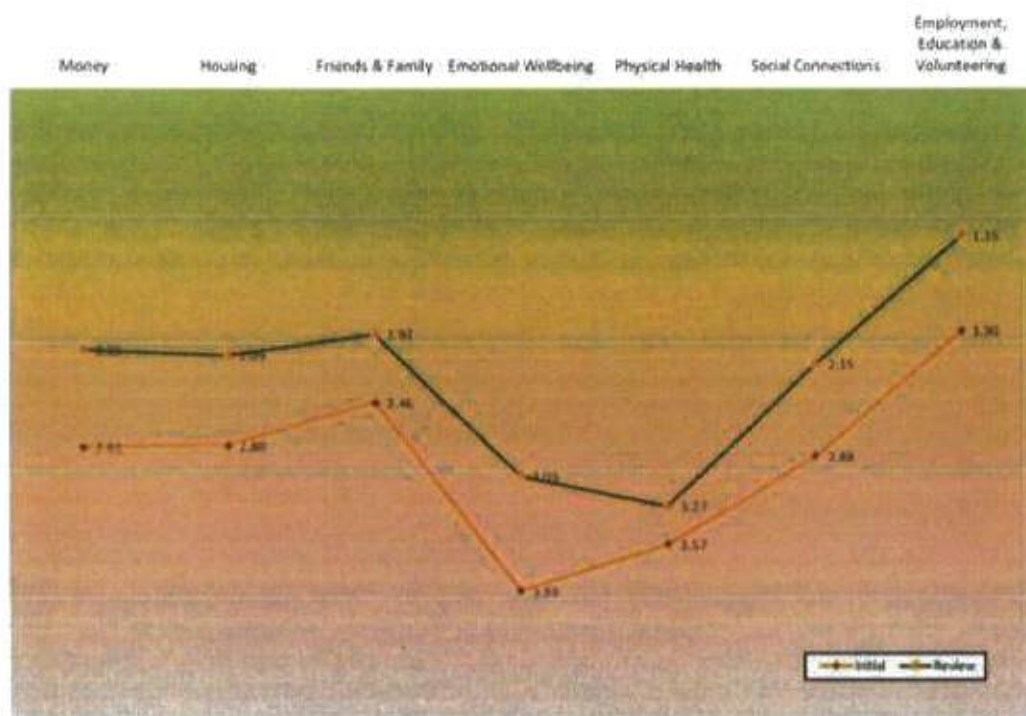
Our bespoke How Are You ("HAY") tool was used consistently across our Community Linking Work during 24/25. The tool looks at 7 areas which are commonly issues of concern for people (see graph below) and asks patients to assess how much they have been bothered by them over the past two weeks. This process is then repeated after the worker has supported the patient for a period of time.

We are excited about the 24/25 HAY results, which have been validated by Northumbria University. The orange line in the graph below shows how patients assessed their feeling about each issue at their first meeting with one of our Link Workers. The green line demonstrates that when we reviewed how they were getting on after 3 months, they reported an improvement in every area!



## EDBERTS HOUSE LIMITED

### TRUSTEES' REPORT (INCLUDING DIRECTORS' REPORT) (CONTINUED) FOR THE YEAR ENDED 31 MARCH 2025



There is no mandated impact measurement tool for social prescribing, and in consultation across North East and North Cumbria ICB, there has been a lot of interest in the tool. It is good for patients, builds the confidence and morale of the Link Workers, and provides useful data for both local and regional strategy and policy. We were delighted to receive funding to turn our manual tool into a digital prototype, which will be launched with our CLP team in Autumn 25. We are also keen to engage with some new areas to evaluate its suitability across different settings. We hope, ultimately, to make the tool commercially available, generating a sustainable income stream to support and enhance our community work.

The impact of our specialist Children, Young People and Families team has continued through the year, although the levels of demand have presented a challenge. Their impact has been recognised by Gateshead Children's Services, and we are liaising with them to support a school mental health pilot launching in October.

We utilised our connectivity into Primary Care to deliver a UK Shared Prosperity Fund 1-year programme to encourage economically inactive people towards employment. We supported over 200 people through this programme, and 19 moved into employment. We used the evidence from this project to secure further funding from the North-East Combined Authority for 25/26.

We also undertook a Homes for Health programme, funded by People's Health Trust, and focussed on improving the quality of private rented sector housing in Felling. Our joint working with the Council resulted in the introduction of a Selective Licensing Scheme which will ensure that landlords are legally obliged to improve their properties over the next 3 years, which is great news for tenants in our area.

We were delighted to be able to continue the role of our Palliative Care Link worker for a further year. She has been able to support patients with a wide range of issues, including housing, adaptations, finances, pet rehoming, day trips and holidays and very special requests, like this:

**TRUSTEES' REPORT (INCLUDING DIRECTORS' REPORT) (CONTINUED)**  
**FOR THE YEAR ENDED 31 MARCH 2025**

*A few emails later I managed to speak to Jimmy himself, to ask if he would do a video message for Gilbert. But Jimmy asked if he could come and visit face to face! He came onto the ward to chat to his life long fan for 45 minutes. He even brought his medal in too! Gilbert said it was the best day of his life!"*

News of the impact of our Palliative Care Link Work spread across Secondary Care and we have been successful in securing funding to pilot placing two Link Workers alongside the midwifery team to support the social needs of pregnant women. This launched on 1 April 2025, and we look forward to seeing the impact of the pilot, which will be evaluated by Newcastle University.

Edberts House became the sponsors for the local pilot of the national Integrated Neighbourhood Team agenda in Gateshead. We recognise that we are only one 'jigsaw piece' of the entire picture, and encouraging collaboration and a deepening of trust and relationships across our local place-based systems will result in earlier help for our communities, moving away from crisis intervention. We co-located our Community Link Workers (social prescribers) across the Borough into Council buildings, so that cross-sector, multidisciplinary health, local authority and VCSE (Voluntary, Community, and Social Enterprise) teams could work together, addressing the holistic clinical and non-clinical needs of patients. Smaller VCSE groups are also part of this work, as they often are the 'connecting places' for people who would not normally access support services. We have been developing a model of interoperability as shown below:





## **EDBERTS HOUSE LIMITED**

### **TRUSTEES' REPORT (INCLUDING DIRECTORS' REPORT) (CONTINUED) FOR THE YEAR ENDED 31 MARCH 2025**

---

We hope that under the new NHS 10-year plan, we will be able to build upon our learning, and expand our model, to ensure that prevention, early intervention and local connectivity is at the heart of our communities.

#### **Staffing**

During the financial year, the number of our staff increased from 49 to 52 at the year end, with 5 leaving us at the financial year end due to the cessation of fixed term contracts. Job security is an ongoing challenge across the VCSE, but we continually strive to minimise the volatility caused by the time-limited nature of funding by replacing or extending funding for areas of our work and by entering into longer term contracts with key customers to provide services. During the year, we managed to place most of the staff we had specifically recruited for fixed term projects under the Shared Prosperity Fund into roles in longer term key contracts. As with the immediately preceding year, very late notice of the renewal of services funded by NHSE posed the risk of undermining staff retention: the trustees intentionally mitigated the risk of staff losses by underwriting salaries for an agreed period from reserves until contractual uncertainties were resolved.

This focus on intentional strategies to promote retention and to counter financial uncertainty, have been combined with opportunities for professional development, fostering collaboration, and ensuring staff have the resources and support needed to deliver high-quality services. Many team members manage complex and demanding situations daily, and we support them through regular team-building events, social activities, and access to group and individual counselling sessions with professional providers. All these measures – underpinned by our organisational values – have helped to create a stable, loyal and committed team continuing to deliver our services across Gateshead. While the sector-wide challenges remain, our staff's dedication demonstrates Edberts House as a supportive and strong employer.

#### **Governance**

Stephen McGuinness, our longstanding Chair of Trustees, stepped down from his role on 31 March 2024. Under his faithful and dedicated leadership, Edberts House has grown from a single staff member in one community house to an organisation with a national reputation. We are extremely grateful for his commitment to building communities across Gateshead.

From 1 April 2024, we were delighted to welcome Amanda Healy as our new Chair of Trustees. Amanda was already part of our Board, so has a strong understanding of our work; this is strengthened by her professional experience as Director of Public Health in Durham.

During the year, we also welcomed two additional new trustees, further strengthening the governance and expertise of the Board, Marc Innes and Andrew Garaba.

The year ahead will mark further change, as our longstanding CEO, Sarah Gorman, is stepping down from the organisation in the Autumn. We are confident that the strong leadership team that Sarah has established leaves Edberts House in a robust position moving forwards, and steps are already in place to appoint new leadership to lead us on the next phase of our journey.

#### **Financial Sustainability**

The Charity's financial position as at 31 March 2025 is set out in the Financial Review and the Statutory Accounts that follow. Financial sustainability continues to involve matching the medium-term plan of the Charity in achieving its objectives with the foreseeable sources of funding. The Charity's financial aims remain:

1. To spend restricted funds effectively for their intended purposes;
2. To secure unrestricted funding to support necessary overheads; and
3. To maintain sufficient cash reserves to manage low-probability, high-impact risks.

The challenges faced are similar to those of previous years. Funders remain reluctant to provide unrestricted funding or support reserves, and the public sector increasingly expects the VCSE sector to collaborate in delivering vital public services without full cost recovery, creating potential shortfalls. Aligning the objectives of restricted funding with the need for a stable operating environment also continues to be a complex task.

## **EDBERTS HOUSE LIMITED**

### **TRUSTEES' REPORT (INCLUDING DIRECTORS' REPORT) (CONTINUED)** **FOR THE YEAR ENDED 31 MARCH 2025**

---

These challenges are likely to persist until the Charity can secure long-term funding for major projects or generate sufficient income from commercial activity. Trustees and management continue to navigate these risks prudently to ensure that the Charity can deliver its objectives effectively and sustainably.

Looking forward, we recognise that to enhance financial stability, our core costs must align with the size of the Charity. As part of this, we will be reviewing the structure and resourcing of our core team to ensure it is appropriate for delivering our objectives efficiently and sustainably.

#### **Financial review**

##### **Financial Position**

The Charity's financial results for the year are shown in the Statement of Financial Activities (SOFA). Income for the year totalled £2,100,400 (2024: £1,655,974). Expenditure was £2,080,755 (2024: £1,643,297). The recorded surplus for the year is £19,645 (2024: £12,676). The sharp rise in both income and expenditure is mainly attributable to several fixed-term contracts under the Shared Prosperity Fund, all of which came to an end on 31 March 2025. Income and expenditure from these sources, recorded in the financial year, were £326,810 and £377,822 respectively. Further income from this source is receivable in the first quarter of the financial year ending 31 March 2026 to restore the balance of income and expenditure.

The contract to provide social prescribing services to Inner West Gateshead PCN was terminated with effect from 1 April 2025. During the financial year, this contract gave rise to gross income of £94,605.

At the end of the financial year, cash and bank balances totalled £529,159 (2024: £661,576). The reduction in cash balances is offset by an increase in accounts receivable of £140,456, compared to the balance at the end of the immediately preceding financial year. During the year, part of the cash reserves was placed on instant-access deposit with Unity Trust Bank, generating investment income of £4,185 (2024: £nil).

#### **Reserves Policy**

##### **Reserves & Treasury Policy**

Free reserves, which represent general unrestricted reserves not used for fixed assets, rose to £504,680 from £459,909 at the end of the preceding financial year. The trustees periodically review the Free Reserves Policy which, for now, remains having a rolling target of cash and net current assets equivalent to the next subsequent three months' worth of unavoidable costs plus the statutory redundancy liability for employees at the end of the three months. Based on the budget for the financial year ending 31st March 2026, the Free Reserve Target at 31st March 2025 is £480,000 (2024: £456,000).

#### **Structure, governance and management**

##### **Governing document**

The Charity is controlled by its governing document, a deed of trust, and constitutes a limited company, limited by guarantee, as defined by the Companies Act 2006.

The trustees, who are also the directors for the purpose of company law, and who served during the year and up to the date of signature of the financial statements were:

C Kelly

SB McGuinness

A Cherry

JM Barnard

(Resigned 21 November 2025)

MP Stirrup

PD Cassidy

A Healy

M Innes

(Appointed 4 December 2024)

Andrew Garaba

(Appointed 4 December 2024)



## **EDBERTS HOUSE LIMITED**

### **TRUSTEES' REPORT (INCLUDING DIRECTORS' REPORT) (CONTINUED) FOR THE YEAR ENDED 31 MARCH 2025**

---

#### **Recruitment and appointment of new trustees**

Trustees are appointed by the existing board of trustees and confirmed at the annual general meeting of the Charity. Trustees are appointed for a maximum of three years. Retiring trustees are eligible to be reappointed by the remaining trustees if they agree.

New trustees meet with the Chief Executive Officer to brief them on:

- their legal obligations under charity and company law
- the Charity Commission guidance on public benefit, and
- inform them of the content of the Memorandum and Articles of Association, the committees and decision-making processes, the business plan and recent financial performance of the Charity.

New trustees also meet key employees and other trustees. Trustees are encouraged to attend appropriate external training events where these will facilitate the undertaking of their role.

#### **Organisational structure**

The board of trustees administers the Charity. The board normally meets bi-monthly and sub-committees of the board can meet at shorter notice to consider specific matters for later reporting to the board. A Chief Executive Officer is appointed by the trustees to manage the day-to-day operations of the charity. To facilitate effective operations, the Chief Executive Officer has delegated authority, within terms of delegation approved by the trustees, for operational matters including finance, employment and operational activity.

#### **Key management remuneration**

Key management remuneration is disclosed in the notes to the accounts.

#### **Related parties**

None of the trustees receive remuneration or other benefit from their work with the Charity. Any connection between a trustee or senior manager with an external party must be disclosed to the full board of trustees. In the current year no such related party transactions were reported.

#### **Risk management**

The trustees have a risk management strategy which comprises:

- an annual review of the principal risks and uncertainties that the charity faces;
- the establishment of policies, systems and procedures to mitigate those risks identified in the annual review; and
- the implementation of procedures designed to minimise or manage any potential impact on the charity should those risks materialise.

The key risk continues to be financial sustainability. The trustees remain committed to using the available free reserves to underwrite the continuity of the Charity's key operations in the face of uncertainty over funding. This policy has allowed the Charity to avoid damaging disruption to and dissolution of strategic human resources in the delivery of its objectives. The Charity effectively is afforded more time to negotiate and secure funding whilst keeping its operating capability intact.

The trustees review the Free Reserves Policy and status each quarter with the presentation of management information and revised financial forecasts. In doing so, the trustees recognise the information flows from the efforts of the dedicated operating staff who face difficult challenges daily with kindness, consideration and professionalism, and the considerable contribution of the very capable team of management and support at the centre of the Charity.



## **EDBERTS HOUSE LIMITED**

### **TRUSTEES' REPORT (INCLUDING DIRECTORS' REPORT) (CONTINUED) FOR THE YEAR ENDED 31 MARCH 2025**

#### **Statement of trustees' responsibilities**

The trustees, who are also the directors of Edbert's House for the purpose of company law, are responsible for preparing the Trustees' Report and the financial statements in accordance with applicable law and United Kingdom Accounting Standards (United Kingdom Generally Accepted Accounting Practice).

Company Law requires the trustees to prepare financial statements for each financial year which give a true and fair view of the state of affairs of the charity and of the incoming resources and application of resources, including the income and expenditure, of the charitable company for that year.

In preparing these financial statements, the trustees are required to:

- select suitable accounting policies and then apply them consistently;
- observe the methods and principles in the Charities SORP;
- make judgements and estimates that are reasonable and prudent;
- state whether applicable UK Accounting Standards have been followed, subject to any material departures disclosed and explained in the financial statements; and
- prepare the financial statements on the going concern basis unless it is inappropriate to presume that the charity will continue in operation.

The trustees are responsible for keeping adequate accounting records that disclose with reasonable accuracy at any time the financial position of the charity and enable them to ensure that the financial statements comply with the Companies Act 2006. They are also responsible for safeguarding the assets of the charity and hence for taking reasonable steps for the prevention and detection of fraud and other irregularities.

#### **Disclosure of information to auditor**

Each of the trustees has confirmed that there is no information of which they are aware which is relevant to the audit, but of which the auditor is unaware. They have further confirmed that they have taken appropriate steps to identify such relevant information and to establish that the auditor is aware of such information.

The trustees' report was approved by the Board of Trustees.

*S.B. McGuinness*

**SB McGuinness**

Trustee

Dated: 8 December 2025

# EDBERTS HOUSE LIMITED

## INDEPENDENT AUDITOR'S REPORT

### TO THE MEMBERS OF EDBERTS HOUSE LIMITED

---

#### Opinion

We have audited the financial statements of Edberts House Limited (the 'charity') for the year ended 31 March 2025 which comprise the statement of financial activities, the balance sheet, the statement of cash flows and notes to the financial statements, including significant accounting policies. The financial reporting framework that has been applied in their preparation is applicable law and United Kingdom Accounting Standards, including Financial Reporting Standard 102 *The Financial Reporting Standard applicable in the UK and Republic of Ireland* (United Kingdom Generally Accepted Accounting Practice).

In our opinion, the financial statements:

- give a true and fair view of the state of the charitable company's affairs as at 31 March 2025 and of its incoming resources and application of resources, including its income and expenditure, for the year then ended;
- have been properly prepared in accordance with United Kingdom Generally Accepted Accounting Practice; and
- have been prepared in accordance with the requirements of the Companies Act 2006.

#### Basis for opinion

We conducted our audit in accordance with International Standards on Auditing (UK) (ISAs (UK)) and applicable law. Our responsibilities under those standards are further described in the *Auditor's responsibilities for the audit of the financial statements* section of our report. We are independent of the charity in accordance with the ethical requirements that are relevant to our audit of the financial statements in the UK, including the FRC's Ethical Standard, and we have fulfilled our other ethical responsibilities in accordance with these requirements. We believe that the audit evidence we have obtained is sufficient and appropriate to provide a basis for our opinion.

#### Conclusions relating to going concern

In auditing the financial statements, we have concluded that the trustees' use of the going concern basis of accounting in the preparation of the financial statements is appropriate.

Based on the work we have performed, we have not identified any material uncertainties relating to events or conditions that, individually or collectively, may cast significant doubt on the charity's ability to continue as a going concern for a period of at least twelve months from when the financial statements are authorised for issue.

Our responsibilities and the responsibilities of the trustees with respect to going concern are described in the relevant sections of this report.

#### Other information

The other information comprises the information included in the annual report other than the financial statements and our auditor's report thereon. The trustees are responsible for the other information contained within the annual report. Our opinion on the financial statements does not cover the other information and, except to the extent otherwise explicitly stated in our report, we do not express any form of assurance conclusion thereon. Our responsibility is to read the other information and, in doing so, consider whether the other information is materially inconsistent with the financial statements or our knowledge obtained in the course of the audit, or otherwise appears to be materially misstated. If we identify such material inconsistencies or apparent material misstatements, we are required to determine whether this gives rise to a material misstatement in the financial statements themselves. If, based on the work we have performed, we conclude that there is a material misstatement of this other information, we are required to report that fact.

We have nothing to report in this regard.

#### Opinions on other matters prescribed by the Companies Act 2006

In our opinion, based on the work undertaken in the course of our audit:

- the information given in the trustees' report for the financial year for which the financial statements are prepared, which includes the directors' report prepared for the purposes of company law, is consistent with the financial statements; and
- the directors' report included within the trustees' report has been prepared in accordance with applicable legal requirements.



## **EDBERTS HOUSE LIMITED**

### **INDEPENDENT AUDITOR'S REPORT (CONTINUED)**

#### **TO THE MEMBERS OF EDBERTS HOUSE LIMITED**

---

##### **Matters on which we are required to report by exception**

In the light of the knowledge and understanding of the charity and its environment obtained in the course of the audit, we have not identified material misstatements in the directors' report included within the trustees' report.

We have nothing to report in respect of the following matters in relation to which the Companies Act 2006 requires us to report to you if, in our opinion:

- adequate accounting records have not been kept, or returns adequate for our audit have not been received from branches not visited by us; or
- the financial statements are not in agreement with the accounting records and returns; or
- certain disclosures of trustees' remuneration specified by law are not made; or
- we have not received all the information and explanations we require for our audit; or
- the trustees were not entitled to prepare the financial statements in accordance with the small companies regime and take advantage of the small companies' exemptions in preparing the trustees' report and from the requirement to prepare a strategic report.

##### **Responsibilities of trustees**

As explained more fully in the statement of trustees' responsibilities, the trustees, who are also the directors of the charity for the purpose of company law, are responsible for the preparation of the financial statements and for being satisfied that they give a true and fair view, and for such internal control as the trustees determine is necessary to enable the preparation of financial statements that are free from material misstatement, whether due to fraud or error. In preparing the financial statements, the trustees are responsible for assessing the charity's ability to continue as a going concern, disclosing, as applicable, matters related to going concern and using the going concern basis of accounting unless the trustees either intend to liquidate the charitable company or to cease operations, or have no realistic alternative but to do so.

##### **Auditor's responsibilities for the audit of the financial statements**

Our objectives are to obtain reasonable assurance about whether the financial statements as a whole are free from material misstatement, whether due to fraud or error, and to issue an auditor's report that includes our opinion. Reasonable assurance is a high level of assurance but is not a guarantee that an audit conducted in accordance with ISAs (UK) will always detect a material misstatement when it exists. Misstatements can arise from fraud or error and are considered material if, individually or in the aggregate, they could reasonably be expected to influence the economic decisions of users taken on the basis of these financial statements.

The extent to which our procedures are capable of detecting irregularities, including fraud, is detailed below.

The risk of material misstatement due to error or fraud has been assessed in conjunction with how internal controls may mitigate any such risk. These controls are reviewed as part of the audit by performing systems walkthroughs to ensure they are operating effectively. Other substantive testing is also performed on all material balances and therefore any instances of non-compliance should be identified or considered as insignificant.

In identifying and assessing risks of material misstatement in respect of irregularities, including fraud, the audit engagement team:

- obtained an understanding of the nature of the industry and sector, including the legal and regulatory framework, in which the company operates and how the company complies with that legal and regulatory framework
- inquired with management and those charged with governance about their own identification and assessment of the risks of irregularities, including any known actual, suspected or alleged instances of fraud
- discussed with management and those charged with governance any non-compliance with laws and regulations and how fraud might occur including assessments of how and where the financial statements may be susceptible to fraud.

The risk of management override of controls was also considered an area of potential misstatement due to fraud. Audit procedures performed included testing of manual journal entries and other adjustments and evaluating the business rationale in relation to significant, unusual transactions and transactions entered into outside the normal course of business.

## **EDBERTS HOUSE LIMITED**

### **INDEPENDENT AUDITOR'S REPORT (CONTINUED) TO THE MEMBERS OF EDBERTS HOUSE LIMITED**

---

A further description of our responsibilities is available on the Financial Reporting Council's website at: <https://www.frc.org.uk/auditorsresponsibilities>. This description forms part of our auditor's report.

#### **Use of our report**

This report is made solely to the charitable company's members, as a body, in accordance with Chapter 3 of Part 16 of the Companies Act 2006. Our audit work has been undertaken so that we might state to the charitable company's members those matters we are required to state to them in an auditor's report and for no other purpose. To the fullest extent permitted by law, we do not accept or assume responsibility to anyone other than the charitable company and the charitable company's members as a body, for our audit work, for this report, or for the opinions we have formed.



**Nicholas Cunningham MSc BSc FCCA (Senior Statutory Auditor)**  
**for and on behalf of Robson Laidler Accountants Limited**

15-12-2025

**Statutory Auditor**

Fernwood House  
Fernwood Road  
Jesmond  
Newcastle upon Tyne  
Tyne and Wear  
England  
NE2 1TJ

# EDBERTS HOUSE LIMITED

## STATEMENT OF FINANCIAL ACTIVITIES INCLUDING INCOME AND EXPENDITURE ACCOUNT

**FOR THE YEAR ENDED 31 MARCH 2025**

Current financial year		Unrestricted funds 2025 £	Restricted funds 2025 £	Total 2025 £	Total 2024 £
	Notes				
<b>Income and endowments from:</b>					
Donations and legacies	2	111,335	242,209	353,544	113,304
Charitable activities	3	870,800	870,864	1,741,664	1,542,669
Investments		4,185	-	4,185	-
Other income		1,007	-	1,007	-
<b>Total income</b>		<u>987,327</u>	<u>1,113,073</u>	<u>2,100,400</u>	<u>1,655,973</u>
<b>Expenditure on:</b>					
Charitable activities	4	1,038,728	1,042,027	2,080,755	1,643,297
<b>Total expenditure</b>		<u>1,038,728</u>	<u>1,042,027</u>	<u>2,080,755</u>	<u>1,643,297</u>
<b>Net income/(expenditure)</b>		(51,401)	71,046	19,645	12,676
Transfers between funds		86,935	(86,935)	-	-
<b>Net movement in funds</b>	6	35,534	(15,889)	19,645	12,676
<b>Reconciliation of funds:</b>					
Fund balances at 1 April 2024		538,731	209,577	748,308	735,632
<b>Fund balances at 31 March 2025</b>		<u>574,265</u>	<u>193,688</u>	<u>767,953</u>	<u>748,308</u>

The statement of financial activities includes all gains and losses recognised in the year. All income and expenditure derive from continuing activities.



# EDBERTS HOUSE LIMITED

## STATEMENT OF FINANCIAL ACTIVITIES (CONTINUED) INCLUDING INCOME AND EXPENDITURE ACCOUNT

FOR THE YEAR ENDED 31 MARCH 2025

Prior financial year		Unrestricted funds 2024 £	Restricted funds 2024 £	Total 2024 £
	Notes			
<b>Income and endowments from:</b>				
Donations and legacies	2	82,651	30,653	113,304
Charitable activities	3	1,007,104	535,565	1,542,669
<b>Total income</b>		<u>1,089,755</u>	<u>566,218</u>	<u>1,655,973</u>
<b>Expenditure on:</b>				
Charitable activities	4	1,092,645	550,652	1,643,297
<b>Total expenditure</b>		<u>1,092,645</u>	<u>550,652</u>	<u>1,643,297</u>
<b>Net income/(expenditure)</b>		(2,890)	15,566	12,676
Transfers between funds		15,637	(15,637)	-
<b>Net movement in funds</b>	6	12,747	(71)	12,676
<b>Reconciliation of funds:</b>				
Fund balances at 1 April 2023		525,984	209,648	735,632
<b>Fund balances at 31 March 2024</b>		<u>538,731</u>	<u>209,577</u>	<u>748,308</u>

# EDBERTS HOUSE LIMITED

## BALANCE SHEET

AS AT 31 MARCH 2025

	Notes	2025 £	£	2024 £	£
<b>Fixed assets</b>					
Tangible assets	10		69,585		78,822
<b>Current assets</b>					
Stocks	11	-		200	
Debtors	12	369,714		123,610	
Cash at bank and in hand		529,160		601,576	
		898,874		785,386	
<b>Creditors: amounts falling due within one year</b>	13	(200,508)		(115,900)	
Net current assets			698,368		669,486
<b>Total assets less current liabilities</b>			767,953		748,308
<b>Income funds</b>					
Restricted funds	16		193,688		209,577
Unrestricted funds			574,265		538,731
			767,953		748,308

These financial statements have been prepared in accordance with the provisions applicable to companies subject to the small companies regime.

The financial statements were approved by the Trustees on 8 December 2025.

*S.B. McGuinness*  
SB McGuinness  
Trustee

Company registration number 06756641

# EDBERTS HOUSE LIMITED

## STATEMENT OF CASH FLOWS

**FOR THE YEAR ENDED 31 MARCH 2025**

	Notes	2025 £	£	2024 £	£
<b>Cash flows from operating activities</b>					
Cash (absorbed by)/generated from operations	19		(113,627)		151,168
<b>Investing activities</b>					
Purchase of tangible fixed assets		(22,974)		(15,380)	
Investment income received		4,185		-	
<b>Net cash used in investing activities</b>			(18,789)		(15,380)
<b>Net cash generated from financing activities</b>					
			-		-
<b>Net (decrease)/increase in cash and cash equivalents</b>			(132,416)		135,788
Cash and cash equivalents at beginning of year			661,576		525,788
<b>Cash and cash equivalents at end of year</b>			<u>529,160</u>		<u>661,576</u>

# **EDBERTS HOUSE LIMITED**

## **NOTES TO THE FINANCIAL STATEMENTS FOR THE YEAR ENDED 31 MARCH 2025**

---

### **1 Accounting policies**

#### **Charity information**

Edberts House Limited is a private company limited by guarantee incorporated in England and Wales. The registered office is 17- 19 St. Edmund's Drive, Gateshead, Tyne and Wear, NE10 9AE, England.

#### **1.1 Accounting convention**

The financial statements have been prepared in accordance with the charity's governing document, the Companies Act 2006 and "Accounting and Reporting by Charities: Statement of Recommended Practice applicable to charities preparing their accounts in accordance with the Financial Reporting Standard applicable in the UK and Republic of Ireland (FRS 102) (effective 1 January 2019)". The charity is a Public Benefit Entity as defined by FRS 102.

The financial statements are prepared in sterling, which is the functional currency of the charity. Monetary amounts in these financial statements are rounded to the nearest £.

The financial statements have been prepared under the historical cost convention. The principal accounting policies adopted are set out below.

#### **1.2 Going concern**

At the time of approving the financial statements, the trustees have a reasonable expectation that the charity has adequate resources to continue in operational existence for the foreseeable future. Thus the trustees continue to adopt the going concern basis of accounting in preparing the financial statements.

#### **1.3 Charitable funds**

Unrestricted funds are available for use at the discretion of the trustees in furtherance of their charitable objectives.

Restricted funds are subject to specific conditions by donors or grantors as to how they may be used. The purposes and uses of the restricted funds are set out in the notes to the financial statements.

#### **1.4 Income**

All incoming resources are included in the Statement of Financial Activities (SOFA) when the charity is entitled to the income and the amount can be quantified with reasonable accuracy. The following specific policies are applied to particular categories of income:

- Voluntary income received by way of grants, donations and gifts is included in full in the Statement of Financial Activities when receivable. Grants, where entitlement is not conditional on the delivery of a specific performance by the charity, are recognised when the charity becomes unconditionally entitled to the grant.
- Incoming resources from grants, where related to performance and specific deliverables, are accounted for as the charity earns the right to consideration by its performance.

#### **1.5 Expenditure**

Liabilities are recognised as expenditure as soon as there is a legal or constructive obligation committing the charity to that expenditure, it is probable that a transfer of economic benefits will be required in settlement and the amount of the obligation can be measured reliably. Expenditure is accounted for on an accruals basis and has been classified under headings that aggregate all cost related to the category. Where costs cannot be directly attributed to particular headings, they have been allocated to activities on a basis consistent with the use of resources.



# EDBERTS HOUSE LIMITED

## NOTES TO THE FINANCIAL STATEMENTS (CONTINUED)

### FOR THE YEAR ENDED 31 MARCH 2025

#### 1 Accounting policies

(Continued)

##### 1.6 Tangible fixed assets

Tangible fixed assets are initially measured at cost and subsequently measured at cost or valuation, net of depreciation and any impairment losses.

Depreciation is recognised so as to write off the cost or valuation of assets less their residual values over their useful lives on the following bases:

Leasehold improvements	Straight line over 10 years
Plant and equipment	33% straight line
Fixtures and fittings	25% straight line
Motor vehicles	25% reducing balance

##### 1.7 Impairment of fixed assets

At each reporting end date, the charity reviews the carrying amounts of its tangible assets to determine whether there is any indication that those assets have suffered an impairment loss. If any such indication exists, the recoverable amount of the asset is estimated in order to determine the extent of the impairment loss (if any).

##### 1.8 Cash and cash equivalents

Cash and cash equivalents include cash in hand, deposits held at call with banks, other short-term liquid investments with original maturities of three months or less, and bank overdrafts. Bank overdrafts are shown within borrowings in current liabilities.

##### 1.9 Taxation

The charity is exempt from tax on income and gains to the extent that these are applied to its charitable objects. No tax charges have arisen in the charity.

#### 2 Donations and legacies

	Unrestrict ed funds	Restricted funds	Total	Unrestricted funds	Restricted funds	Total
	2025 £	2025 £	2025 £	2024 £	2024 £	2024 £
Donations and gifts	2,925	250	3,175	5,651	-	5,651
Grants received	108,410	241,959	350,369	77,000	30,653	107,653
	<u>111,335</u>	<u>242,209</u>	<u>353,544</u>	<u>82,651</u>	<u>30,653</u>	<u>113,304</u>



# EDBERTS HOUSE LIMITED

## NOTES TO THE FINANCIAL STATEMENTS (CONTINUED)

FOR THE YEAR ENDED 31 MARCH 2025

### 3 Income from charitable activities

	Unrestrict ed funds 2025 £	Restricted funds 2025 £	Total 2025 £	Unrestrict ed funds 2024 £	Restricted funds 2024 £	Total 2024 £
<b>Earned income</b>						
Services provided	870,800	870,864	1,741,664	1,007,104	535,565	1,542,669

### 4 Expenditure on charitable activities

	General charitable activities 2025 £	General charitable activities 2024 £
<b>Direct costs</b>		
Staff costs	1,594,136	1,338,193
Depreciation and impairment	32,211	28,321
Group work costs	20,992	18,174
Insurance	8,911	5,500
Utilities	427	22,695
Project costs	314,151	86,385
Recruitment and training	10,219	4,851
Volunteer expenses	1,603	336
Repairs and maintenance	18,940	11,106
Partner costs	24,197	90,356
	2,025,787	1,603,917
<b>Share of support and governance costs (see note 5)</b>		
Support	45,638	35,215
Governance	9,330	4,165
	2,080,755	1,643,297
<b>Analysis by fund</b>		
Unrestricted funds	1,038,728	1,092,645
Restricted funds	1,042,027	550,652
	2,080,755	1,643,297

# EDBERTS HOUSE LIMITED

## NOTES TO THE FINANCIAL STATEMENTS (CONTINUED) FOR THE YEAR ENDED 31 MARCH 2025

### 5 Support costs allocated to activities

	2025 £	2024 £
Telephone	10,341	8,877
Postage and stationery	4,160	3,118
Sundry expenses	28,023	23,420
Bad debts	3,114	-
Governance costs	9,330	4,165
	<u>54,968</u>	<u>39,380</u>
<b>Analysed between:</b>		
General charitable activities	<u>54,968</u>	<u>39,380</u>

### Governance costs comprise:

	2025 £	2024 £
Professional fees	9,330	4,165
	<u>9,330</u>	<u>4,165</u>

### 6 Net movement in funds

	2025 £	2024 £
The net movement in funds is stated after charging/(crediting):		
Depreciation of owned tangible fixed assets	<u>31,690</u>	<u>28,193</u>

### 7 Trustees

None of the trustees (or any persons connected with them) received any remuneration or benefits from the charity during the year.

### 8 Employees

The average monthly number of employees during the year was:

	2025 Number	2024 Number
Administration	10	8
Project delivery	43	38
Total	<u>53</u>	<u>46</u>
<b>Employment costs</b>	<b>2025 £</b>	<b>2024 £</b>
Wages and salaries	1,423,783	1,202,635

# EDBERTS HOUSE LIMITED

## NOTES TO THE FINANCIAL STATEMENTS (CONTINUED) FOR THE YEAR ENDED 31 MARCH 2025

### 8 Employees

(Continued)

Social security costs	128,790	99,075
Other pension costs	41,563	36,483
	<u>1,594,136</u>	<u>1,338,193</u>

The cost of remunerating key management including all payroll taxes was £64,044 (2024: £62,985).

There were no employees whose annual remuneration was £60,000 or more.

### 9 Taxation

The charity is exempt from taxation on its activities because all its income is applied for charitable purposes.

### 10 Tangible fixed assets

	Leasehold improvement £	Plant and equipment £	Fixtures and fittings £	Motor vehicles £	Total £
<b>Cost</b>					
At 1 April 2024	164,550	41,822	6,422	13,861	226,655
Additions	-	20,252	2,722	-	22,974
Disposals	-	(2,156)	-	-	(2,156)
At 31 March 2025	<u>164,550</u>	<u>59,918</u>	<u>9,144</u>	<u>13,861</u>	<u>247,473</u>
<b>Depreciation and impairment</b>					
At 1 April 2024	113,341	19,944	4,068	10,480	147,833
Depreciation charged in the year	16,455	13,293	1,097	845	31,690
Eliminated in respect of disposals	-	(1,635)	-	-	(1,635)
At 31 March 2025	<u>129,796</u>	<u>31,602</u>	<u>5,165</u>	<u>11,325</u>	<u>177,888</u>
<b>Carrying amount</b>					
At 31 March 2025	<u>34,754</u>	<u>28,316</u>	<u>3,979</u>	<u>2,536</u>	<u>69,585</u>
At 31 March 2024	<u>51,209</u>	<u>21,878</u>	<u>2,354</u>	<u>3,381</u>	<u>78,822</u>

### 11 Stocks

	2025 £	2024 £
Finished goods and goods for resale	<u>-</u>	<u>200</u>

# EDBERTS HOUSE LIMITED

## NOTES TO THE FINANCIAL STATEMENTS (CONTINUED) FOR THE YEAR ENDED 31 MARCH 2025

### 12 Debtors

	2025 £	2024 £
<b>Amounts falling due within one year:</b>		
Trade debtors	237,689	97,235
Other debtors	1,819	929
Prepayments and accrued income	130,406	25,446
	<u>369,714</u>	<u>123,610</u>

### 13 Creditors: amounts falling due within one year

	2025 £	2024 £
Trade creditors	32,339	6,420
Other creditors	37,554	40,891
Accruals and deferred income	130,613	68,589
	<u>200,506</u>	<u>115,900</u>

Included in accruals and deferred income is £86,101 (2024: £32,801) in respect of income received in advance of the related service being provided.

### 14 Retirement benefit schemes

	2025 £	2024 £
<b>Defined contribution schemes</b>		
Charge to profit or loss in respect of defined contribution schemes	<u>41,563</u>	<u>36,483</u>

The charity operates a defined contribution pension scheme for all qualifying employees. The assets of the scheme are held separately from those of the charity in an independently administered fund.

### 15 Unrestricted funds

The unrestricted funds of the charity comprise the unexpended balances of donations and grants which are not subject to specific conditions by donors and grantors as to how they may be used. These include designated funds which have been set aside out of unrestricted funds by the trustees for specific purposes.

	At 1 April 2024 £	Incoming resources £	Resources expended £	Transfers £	At 31 March 2025 £
General funds	<u>538,731</u>	<u>987,327</u>	<u>(1,038,728)</u>	<u>86,935</u>	<u>574,285</u>
<b>Previous year:</b>	<b>At 1 April 2023 £</b>	<b>Incoming resources £</b>	<b>Resources expended £</b>	<b>Transfers £</b>	<b>At 31 March 2024 £</b>
General funds	<u>525,984</u>	<u>1,089,755</u>	<u>(1,092,645)</u>	<u>15,637</u>	<u>538,731</u>



# EDBERTS HOUSE LIMITED

## NOTES TO THE FINANCIAL STATEMENTS (CONTINUED)

### FOR THE YEAR ENDED 31 MARCH 2025

#### 16 Restricted funds

The restricted funds of the charity comprise the unexpended balances of donations and grants held on trust subject to specific conditions by donors as to how they may be used.

	Movement in funds				Balance at 31 March 2025
	Balance at 1 April 2024	Incoming resources	Resources expended	Transfers	
	£	£	£	£	£
Other restricted funds	1,962	29,771	(43,389)	(5,342)	(16,998)
Mental health Community Fund - Gateshead Council - Connecting the Dots	2,533	-	(2,338)	-	195
Gateshead Council - Sundew Project	20,000	-	-	-	20,000
UK Government - Shared Prosperity Fund - People and Skills - Work for Health	(28,854)	327,825	(277,956)	(3,675)	17,340
People's Health Trust - Homes for Health	14,344	14,000	(24,450)	(2,457)	1,437
The National Lottery Community Fund - Thrive in Beacon Lough East	63,383	165,591	(165,621)	(6,083)	57,270
UK Government SPF - Community Foundation - Community Chest - HAY Tool Feasibility	-	17,300	(14,682)	(2,571)	47
Peoples Health Trust - Strategic Partnership Fund	20,564	15,000	(35,536)	(28)	-
Community Foundation - Kellett Fund	6,081	30,000	(37,952)	1,871	-
PAC Model Social Subscribing	-	-	(79)	-	(79)
Compassionate Gateshead Project	-	41,800	-	-	41,800
UK Government SPF - Community & Place - Youth Connection	-	89,609	(80,844)	(9,359)	(594)
Gateshead Council - Family Hub - Felling & Pelaw	41,064	38,000	(76,459)	(16,062)	(13,457)
East Gateshead Primary Care Network - Women's Health Delivery Plan	-	13,980	(817)	-	13,163
Gateshead Council - Family Hub - Highfield & Chopwell	43,000	38,000	(38,448)	(16,265)	26,287
Gateshead Council - Health Equity	23,020	77,805	(71,597)	(10,071)	19,157
Gateshead Council - Highfield House	-	59,242	(52,061)	(10,218)	(3,035)
Gateshead Council - NHS ICB NENC - Aging Well Fund	-	135,120	(101,478)	-	33,642
Gateshead Council - Palliative Care Social Prescribing Pilot	-	10,000	(10,000)	(2,487)	(2,487)
Gateshead Council - Thrive in Beacon Lough East	2,480	10,030	(8,320)	(4,190)	-
	209,577	1,113,073	(1,042,027)	(86,935)	193,688



## EDBERTS HOUSE LIMITED

### NOTES TO THE FINANCIAL STATEMENTS (CONTINUED)

#### FOR THE YEAR ENDED 31 MARCH 2025

#### 16 Restricted funds

(Continued)

The purposes of the restricted funds are as follows:-

**Other restricted funds**

Represents sundry small grants for specific purposes, including money for cycling initiatives, sports equipment for youth club and contributions towards running costs and chief executives costs.

**Mental Health Community Fund**

A programme to deliver a dementia network for Gateshead & specific activities for residents in inner west and east PCN localities who have/are awaiting a dementia diagnosis.

**Gateshead Council - Sundew Project**

A project to develop a new community hub building on the Beacon Lough East estate.

**UK Shared Prosperity Fund - People & Skills - Work for Health**

An intensive support service for Gateshead residents who are economically inactive, working in partnership with Primary Care and Gateshead Learning Skills. Funded by the UK Government.

**Peoples Health Trust - Homes for Health**

The Homes for Health pilot programme explores ways to improve housing conditions for private and/or social rental tenants that will ultimately improve tenant's health, e.g. through changes in policy and/or practice as directed by the people most affected.

**The National Lottery Community Fund**

A long term fund to support Thrive in Beacon Lough East project.

**UK Government Shared Prosperity Fund - Community Chest - HAY Tool Feasibility**

A grant from the UK Government to fund the development of the Edberts House HAY Tool into prototype software and to test the feasibility of its commercialisation.

**People's Health Trust - Strategic Partnership Funding Programme**

A programme to increase residents' voice and awareness of how health inequalities are affecting them in terms of decision making, leading to changes in policies and practices to reduce health inequalities and more equitable health outcomes.

**Community Foundation Kellett Fund**

A project to increase the active involvement of over 50's in the activities and events of the Edberts community hubs.

**PAC Model Social Prescribing**

A joint project with Gateshead Health NHS Foundation Trust on implementing the Pregnancy Anticipatory Care Model sponsored by North East and North Cumbria Local Maternity and Neonatal System.

**Compassionate Gateshead Project**

Funded by the NHS North East and North Cumbria Integrated Care Board (NENCICB), a project to organise and deliver the Compassionate Communities Programme to Gateshead, providing support to individuals affected by death, dying, loss and caregiving.

**UK Government Shared Prosperity Fund - Community & Place - Gateshead Council - Youth Support**

A grant from the UK Government, as part of Gateshead Council's UKSPF Investment Plan, to develop local community projects to engage young people.

**Family Hub - Felling and Pelaw & Highfield and Chopwell - Gateshead Council**

A project to fund additional resources for Edberts House to be part of a Family Hub support network to deliver the core objectives of the Council's Family Hub and Start for Life Programme.

**East Gateshead Primary Care Network - Women's Health Delivery Plan**

Funding to provide accessible and inclusive education in areas of multiple deprivation on matters relating to women's health.

**Gateshead Council Health Equity and Highfield House**

Funding originally from NHS Newcastle Gateshead CCG, routed through Gateshead Public Health, to support the development of the Health Equity and Highfield House Projects.

**Gateshead Council - Highfield House**

This is not new funding but part of ongoing grant support for the Community Hub, Highfield House.

**NHS NENCICB - Gateshead Council - Aging Well Fund**

A grant towards a project under Gateshead Council's Health and Wellbeing Strategy to support the ongoing existence of the four community hubs operated by Edberts House in the most deprived parts of Gateshead, with focus on women's health and aging well activities.

# EDBERTS HOUSE LIMITED

## NOTES TO THE FINANCIAL STATEMENTS (CONTINUED)

FOR THE YEAR ENDED 31 MARCH 2025

### 16 Restricted funds

(Continued)

#### **Gateshead Health NHS Foundation Trust - Gateshead Council - Palliative Care Social Prescribing Pilot**

The funding of a social prescriber to work alongside the Palliative Care Team at Queen Elizabeth Hospital, Gateshead, to provide services to support and assist patients who have received a palliative diagnosis.

#### **Gateshead Council - Thrive in Beacon Lough East**

Contributions from Gateshead Council towards the cost of welfare assistance in Beacon Lough East, as well as the running costs of the local hub.

### 17 Analysis of net assets between funds

	Unrestricted funds 2025 £	Restricted funds 2025 £	Total 2025 £
<b>At 31 March 2025:</b>			
Tangible assets	69,585	-	69,585
Current assets/(liabilities)	504,680	193,688	698,368
	<u>574,265</u>	<u>193,688</u>	<u>767,953</u>
	Unrestricted funds 2024 £	Restricted funds 2024 £	Total 2024 £
<b>At 31 March 2024:</b>			
Tangible assets	78,822	-	78,822
Current assets/(liabilities)	459,909	209,577	669,486
	<u>538,731</u>	<u>209,577</u>	<u>748,308</u>

### 18 Related party transactions

There were no disclosable related party transactions during the year (2024 - none).

## EDBERTS HOUSE LIMITED

### NOTES TO THE FINANCIAL STATEMENTS (CONTINUED) FOR THE YEAR ENDED 31 MARCH 2025

---

19	Cash (absorbed by)/generated from operations	2025 £	2024 £
	Surplus for the year	19,645	12,676
	<b>Adjustments for:</b>		
	Investment income recognised in statement of financial activities	(4,185)	-
	Depreciation and impairment of tangible fixed assets	32,211	28,321
	<b>Movements in working capital:</b>		
	Decrease in stocks	200	2,750
	(Increase)/decrease in debtors	(246,104)	74,172
	Increase in creditors	84,606	33,249
	<b>Cash (absorbed by)/generated from operations</b>	<u>(113,627)</u>	<u>151,168</u>

#### 20 Analysis of changes in net funds

The charity had no material debt during the year.

