

*"When you go outside and think there's nothing then you look closely and its full of beauty"*  
Year 4 Pupil, The Weatheralls, Soham

## Contents

Highlights of our year	3
Report from the Director	9
Report from the Chair	12
Background to CCI	13

*Wonder and education are two of the essential survival skills. We cannot wish our way out of the ecological crisis, but we might be able to grow our way out of it — and surprisingly fast, too.*

*Things are changing from the ground up: new generations emerging who are holding the government to account, calling for us to be better ancestors.*

*CCI is part of this work of growth. Sometimes I think of what CCI does as a kind of 'practical dreaming': imagining new and fantastical ways of being in the world which root deep in minds and imaginations, and from there grow into reality. Nothing makes me despair as much as resignation: there is always good to be done somewhere, whether it is flourishing a Forest of Imagination on Christ's Piece, or re-mapping a spinney or copse in a scrap of edgeland so that it becomes a fairy-tale world of impossible extent and adventure.*

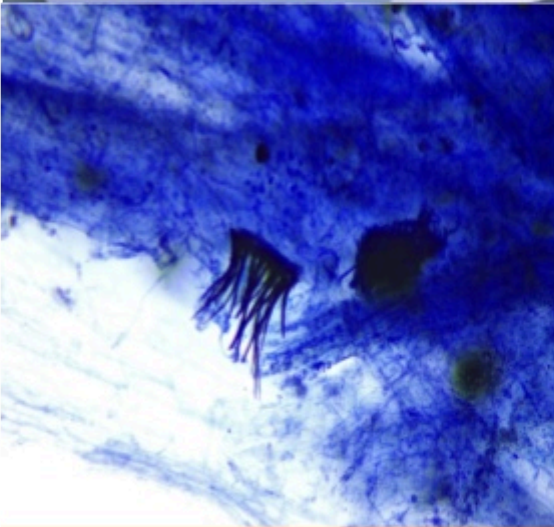
*Truly, this is the work. Lives are changed by it. The problems we find ourselves in as a planet have been made by many hands working together, and they can only be undone by many hands working together too.*

Robert Macfarlane, writer, CCI Patron



## Creative Relationships

CCI engaged creatively with 3033 people over 140 events/activities in 41 spaces, including 2275 children and young people.



## Skills Exchange

CCI shared our Artscapers practice at 7 events over the year involving 360 colleagues from across our ecosystem



## Two New Homes

Thanks to the support of our partners, CCI now has two brilliant co-working relationships with The Raspberry Pi Foundation and The Junction



## Artscaping Ecosystems

In partnership with Cambridge Acorn Project, CCI delivered two primary school residencies

## The Fantastical Forest



Made with Artscapers  
Nurturing Creativity  
Growing Nature Connections  
Cultivating Communities

In 2024-2025, we asked ourselves how else could our Fantastical Forest grow. Our ongoing public art project co-created with communities across our region since 2020 can help us think about different modalities across the arts, including movement, sound and sculpture. What sensory experiences are prioritised in everyday life? And how does the immersive experience of being in the forest help us reconnect with all our different ways of being in the world?

There are now over 120 hangings in this beautiful collection and thanks to our work with the Centre for Landscape Regeneration this year and their research programme exploring different potential ecological futures for the Fens, we have been able to develop sonic elements of the forest. This new piece of sound art created with children at Wilburton Primary School joined Kathy Hinde's installation at Wicken Fen over the summer. You can listen to it [here](#).

Co-created with 25 communities and 8 artists.

Working this year with the Centre for Landscape Regeneration, Cambridge Out And About Festival, Cambridge City Council, Cambridge Past Present and Future, and Cambridge University Botanic Garden.



*The year is 5000, what creatures lurk at the bottom of the Fens? Dive into the World Beneath The Water and hear an imagined underwater soundscape performed by students from Wilburton Primary, inspired by research in the Fens led by the Centre for Landscape Regeneration, and produced by artist Susanne Jasilek of Cambridge Curiosity and Imagination and Frazer Merrick of CLIP Sound and Music CIC. This project was funded by the Natural Environment Research Council*

Images:

Fantastical Forest, Tree Charter Day 2024, Wandlebury Country Park © Emily Dowdeswell 2024 (previous page)

The World Beneath the Water, Wilburton Primary School © Frazer Merrick 2025

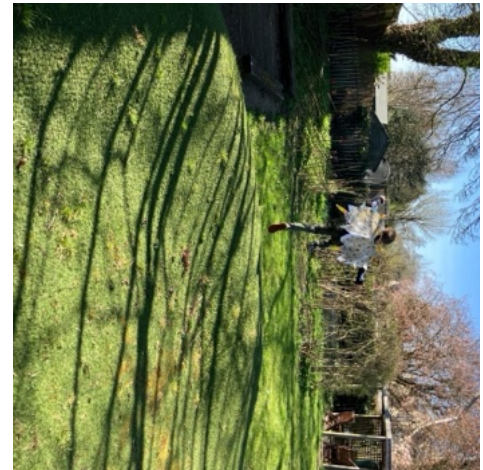
Listen to the Voices of the Fen, Wicken Fen 2025 © Frazer Merrick 2025

## A Mycelial Delivery Plan

In 2024-2025 CCI was thrilled to be awarded three years of support from the National Lottery Communities Fund to support its aim to nurture, grow and amplify the value and impact of our Artscaping programmes for communities in the East of England. This sits at the heart of our overall mission to invite everyone to be an Artscaper: caring for ourselves, our communities, and our natural world, from deep below the ground to the sky above our heads. Our mission has never been more urgent.

We are delivering our aim through three complementary strands, each with clearly identified priority areas to address:

- **NURTURE:** to develop our organisational structures and systems
- **GROW:** to strengthen our learning with children and young people
- **AMPLIFY:** to amplify, connect and influence across siloed structures



As part of our early outcomes, CCI has established its first Children's Council with Mayfield Primary School, showing us how we can follow the lead of children and young people throughout the year and across our projects. We have piloted our first Children's Critical Friend Circle, with Cambridge Acorn Project, a child-led advisory board that has guided us in creating a more child-friendly evaluation process for our residencies that aims to be accessible, therapeutic and creative for everyone involved. CCI is also delighted to have appointed Jo Diver to be CCI's Green Champion. Supported by regular training, our Green Champion empowers CCI to extend our Environmental Pledge, strengthening our knowledge and skills so that we can embed sustainability across our practice, connect this to our research and influence our closest partners.

Creative highlights in our first year of funding include strengthened partnerships that are amplifying our ability to promote how engaging with the arts in natural settings can improve the health of our communities including our planet. While the academic funding landscape has proven challenging, we have enjoyed closer collaborations with several networks including [Counterpoints](#), [Create Cambridge](#), and the inaugural Advisory Board for [Cambridge School of Arts](#).

The added capacity has supported CCI in recruiting Lucinda Price, as CCI Charity Manager, who is working incredibly effectively to strengthen the systems and processes that underpin our Artscaping programmes, and build knowledge and skills across our team, freelancers, volunteers and collaborators. Multi-year support from the National Lottery is unlocking our ability to build more long term, resilient and versatile partnerships. We have collaborated with a therapeutic coalition of practitioners to co-create with young people an Artscaping garden at the Cambridgeshire and Peterborough Music Hub. We have collaborated with the Cambridge Arts Theatre to design a creative curriculum for Cambridge Regional College's ESOL programme. And we have supported the Botanic Garden to deliver their participatory research project this summer exploring themes of belonging, access and inclusivity.

## Artscaping Ecosystems: Creating and Connecting Therapeutic and Enrichment Networks Across A Whole School Ecosystem

This Evelyn Trust project builds on learning from our partnership with Cambridge Acorn Project, working in schools and through the published research from our Branching Out Programme. Our artist and therapist residency model has synergised a therapeutic and creative approach across two school ecosystems in order to promote wellbeing through creativity and nature connectedness, and to prevent the escalation of emotional distress amongst staff and pupils.

In 2024-2025, we worked with our first two partner schools: The Pathfinder Primary School in Northstowe and Thongsley Fields in Huntingdon. Led by Susanne Jasilek, Tonka Uzu, Anna Billington, Matt Edge and Hannah Chapman we have reached 682 primary school students this year, evaluating our impact with an evaluation led by Hannah Chapman and Jenn Opare-Kumi. Within each residency we have delivered a variety of creative and therapeutic projects, including: 1:1 sessions, nurture groups, professional development opportunities for staff, family and community links, and volunteer development to ensure sustainability. This project offers a unique and innovative approach to address well-documented challenges in the children's mental health system, with a particular focus on prevention/early intervention. By combining a number of key elements of early support and preventative work, alongside community development, we have worked with a large number of children in need but also offered support to children before they reach crisis point, supporting the development of a unique creative and therapeutic thread across the schools.



Image: Playing with light with an old cloth from the den which looked like a cave painting © Tonka Uzu 2024

*"The whole vibe was joyful and fun and all of the children seemed really happy to be a part of the group. It was such a pleasure to watch them develop in the short space of time they were with us, often from being a bit withdrawn and reticent to being keen to impress and share their work, finding their own ways of working... Some of the quieter children did such BEAUTIFUL work with colours - experimenting with mixing - and incorporating natural objects and leaves etc. One little girl used blue twine to make a river and cut up a long leaf to make reeds along the river bank. There were lots of pictures of birds and really impressive images of how they imagined the wind would look if you could see it. One really little boy in the preschool group drew a beautiful picture which included some fallen trees where the wind had blown them over. Lots of the kids enjoyed sticking leaves and other found objects onto their pictures."*

Jenny Seabrook, CCI artist

This year the work has included:

- An alternative therapeutic education residency hosted weekly each term by Caroline Wendling and Sally Todd at Cambridgeshire Music, Histon
- Artsclaping workshops for: UCL students led by Caroline Wendling and Sally Todd with the support of volunteer Tsai-Shuian Ho; for ARU students led by Emily Dowdeswell; and for community development practitioners led by Hilary Cox Condon
- A knowledge exchange partnership between Fullscope and the Open University investigating the question "what if funders funded fun?"
- A participatory research partnership with the Botanic Garden focused on co-researching belonging with community groups
- Commissions from the Centre for Landscape Regeneration focused on The World Beneath Our Feet and The World Beneath the Water in the Fens
- Creative consultation focused on a new Public Art Strategy, commissioned by TOWN for Hartree, the new district of Cambridge
- Strengthening our systems and processes funded by the National Lottery Reaching Communities Fund
- Developing creative and integrated models of work with our Fullscope partners to influence change and improvement in the wider system of mental health provision
- Local, regional and national events to amplify learning and impact
- Recruiting and supporting a team of volunteers to build capacity for our programmes





As we collect our thoughts at the end of our year, I return to that beautiful September evening in the woods to celebrate Ruth: weaving together creativity, community, the woods, the sky over our heads, joyfulness and a strong shared belief in the power of another way of doing things. Ruth entrusted us with a charity that despite the headwinds and intensifying storms was stronger than ever before and it has been an absolute privilege to work with Alex, Jo, Richard, Lucinda, and our artists, trustees and partners over the past year. I spoke a year ago of how I am blown away on a daily basis by the compassion, talent and experience we have within our CCI community. We stand here today wholly because of the time, care, and support that you all have given throughout this year.

### 2024-2025 highlights

Our dual solution with [Raspberry Pi](#) and [The Junction](#) has been a great success. The Junction will continue to host our registered address and host our co-working/meeting space, while Raspberry Pi have renewed their generous offer of desk space, storage, and secure delivery for our orders of materials and publications. A big thank you to Matt Burman and Jess Weston at the Junction, and Philip Colligan, Kamila Hughes, Laurie Smith and Doru Szocs at Raspberry Pi for your welcome and support this year.

CCI's work with the Tree team at Cambridge City Council as part of the River Cam Climate Action Network continued with [an excellent programme of outdoor events](#) featuring the Fantastical Forest across city green spaces. A collective artwork of trees painted in natural inks assembled by Hilary Cox Condon is now beautifully installed at Brown's Field Community Centre in North Cambridge as a legacy of the contributions from neighbours from across the city.

*"It has felt such a generous offer - like a community forest feast of the senses - and there were many participants who came to the workshops a number of times. Matthew and Kenny's passion (from the Tree Team) was so infectious, and it has been incredible to share the awe of the willow they inspired in me with so many city residents and to have had the pleasure of enthusing about phoenix regeneration on both Cambridge 105 and Cambridgeshire Radio. I have really noticed how it has also fed my own soul by gathering leaves and plants and making the inks."*

CCI artist Hilary Cox Condon

Cambridgeshire is one of the most rapidly developing regions in the country with projections indicating a demand for 50,000 new homes between 2020 and 2041 in Greater Cambridge alone. CCI invited planners, developers, designers, community development workers and resident associations to participate in an immersive, creative, walking meditation to imagine how to create kinder, safer, greener futures by engaging young people in new and developing communities. Our presence at the conference was testimony to our ongoing conversations with developers and planners, and our collaborations have continued throughout the year with two further commissions from TOWN in Hemel Hempstead and Northstowe.



Above: Play on the Way with TOWN. Pathfinder School © Helen Stratford 2025

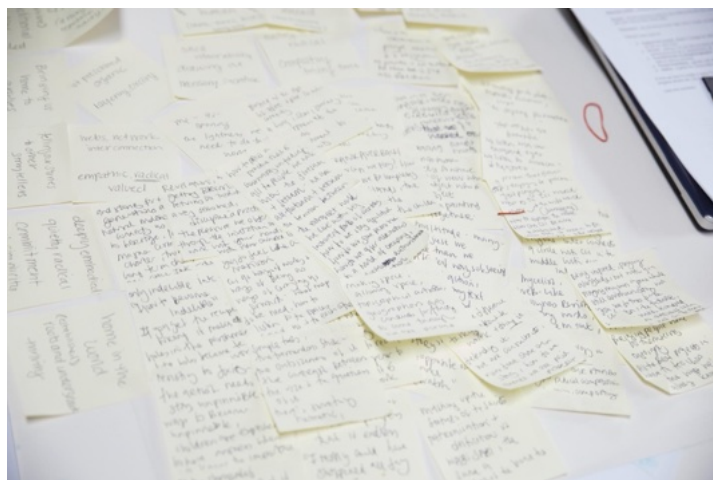
## Our 2024-2025 Guiding Values

**Continuity** highlighted the importance of our Artscaping programme, our existing relationships and our fabulous team. By working very closely with Ruth, Alex, Jo and Richard over the first six months, and then continuing that approach with Lucinda and Jo since March, we have strengthened our partnerships across key sectors (for example with TOWN, the Botanic Gardens and the Arts Theatre Cambridge). Our exciting collaboration with the [Centre for Landscape Regeneration](#) this autumn led to new forums for our work [at Wicken Fen](#) and [with Anorak Magazine](#). While our residency with [Cambridge Acorn Project](#) has sparked new ways of working in school lunchtimes, and with local partners.

**Visibility** emphasised the importance of reinforcing our voice and presence locally, regionally and nationally. Locally, this involved, being part of the annual events like the [Botanic Gardens Fungi Field Day](#), and contributing to the latest research at the forefront of conversations around funding, curriculums, and innovation through collaborations with the [Open University](#) and Fullscope, supporting a research project led by Elsa Lee and Joy Perry at ARU focused on reimagining the primary school curriculum with young people, and discussing place-based innovation at a roundtable hosted by the Arts Council. Nationally, our long standing collaboration with Nicola Walshe has led to funding to create an Artscaping module for UCL's [Teaching for Sustainable Futures](#) digital programme of teacher professional development, and our National Lottery funded collaboration with [tialt](#) has enabled us to join a community of researchers and practitioners working with arts-based approaches to their mission.

Finally, **curiosity** reminded me of these words from CCI's mission:

*We believe that curiosity and imagination matter. Without them our world can be overwhelming and frightening, with them it can become a place of wonder where we feel we can belong.*



Holding on to curiosity has meant carrying 'yes and', 'what if?' and 'what else?' into our everyday conversations, listening deeply to what people are saying and then taking active steps together to explore what might be possible. There is a desire from institutions to find a different way of being together that doesn't reinforce existing hierarchies, and a growing recognition that freelance work and smaller organisations can develop heterogeneous practices that are deeply

rooted in place. At CCI, we are nurturing a healthy scepticism towards singular narratives, alongside a strengthening literacy around whose knowledge shapes the agenda. Together with our communities, despite the rising complexity of the challenges ahead, we show how curiosity and imagination can help us create a world where we no longer betray the future.

Emily Dowdeswell

Above: Snapshot from the Artists' Autumn Gathering, Wandlebury Woods © Lucinda Price 2025

## Report from the Chair

The reporting year from August 2024 to July 2025 was another remarkable year for Cambridge Curiosity and Imagination (CCI). CCI's work continues to demonstrate what is possible when creativity, care and collaboration come together. Our community of artists, educators, and partners has shown that curiosity and imagination are not a luxury — they are how we connect with the world we share, how we sustain one another.

The year marked a time of change and renewal for CCI, with Emily Dowdeswell taking over from Ruth Sapsed as CCI's new Director in September 2024. After 17 years with a founding director at the helm, such a pivotal leadership transition could have stalled a small organisation, but thanks to Emily & Ruth working thoughtfully together to ensure a smooth passing of the baton, CCI is flourishing and going from strength to strength.

So CCI continues to enchant, challenge, and inspire in equal measure. Establishing our first Children's Council and the growth of our volunteer community are tangible examples of an organisation that is listening carefully, evolving thoughtfully, and acting intentionally.

Partnerships remain central to everything CCI does, and the charity has again shown how creativity can root deeply in place while connecting widely across disciplines and Communities.

The generosity of our partners at Cambridge Junction, KISS, the Raspberry Pi Foundation, the Evelyn Trust and the National Lottery Community Fund has provided a new home for the charity and vital multi-year funding.

This stability has given CCI the confidence to think ambitiously about the future. Working with organisations such as Cambridge Acorn Project, the Centre for Landscape Regeneration, and Cambridge University Botanic Garden, CCI has been able to reach new communities and create spaces where curiosity and imagination thrive. By nurturing these partnerships and our practice and by developing our organisational structures and systems, CCI has been able to grow and amplify its impact and influence, reaching more children, families and practitioners, and helping to embed creativity and wellbeing into the everyday life of schools and communities. Behind the work — which has been both rich and far-reaching — lies the same magic that in my mind has always defined CCI: the understanding that curiosity and imagination change the world, one small creative act at a time.

I want to thank our exceptional team of artists, volunteers, trustees, and staff, including Emily, Jo Diver and Lucinda Price, for their dedication and care. My thanks also to our partners and funders, and the many communities we work alongside.

Richard McLean  
Chair, Cambridge Curiosity and Imagination

## Background to CCI

Our work is driven by a vision of an inclusive, accessible and creative society

Cambridge Curiosity and Imagination (CCI) is an innovative socially-inclusive arts and wellbeing charity whose collaborative practices actively engage children and adults of all ages, supporting creativity and learning. Our work, which sits uniquely at the intersection of community, education, mental health and well-being, environment and conservation, research and creativity, has significant potential to positively influence systems as demonstrated by the quality and depth of our partnerships and impact evidence gathered across the past twenty plus years of practice.

We came together as a group of artists, educators, parents and researchers in 2002 with a shared passion for how the arts can transform lives and a belief in the power of democratic forms of community activism. Our programmes foster deep connections and a sense of togetherness for everyone involved.



We believe that curiosity and imagination matter

We create spaces where ideas can flourish and solutions to our problems be found, spaces with creative and engaged citizens of all ages able to collaborate effectively together. We work through exchanges: with children, their friends and families; with schools and everyone who works in them; with communities and their connections; with artists, scientists, architects, musicians, experts and enthusiasts of every kind. We have worked with people of all ages in all sorts of spaces, including most recently woods, hospitals, libraries, playgrounds, new developments and civic centres.

Children are at the heart of our work; their ideas and questions lead the way

CCI became a charity in 2007 and has established a significant track record for creating unique impactful programmes of activity, working in partnership with many of the major organisations in the region including Cambridge City Council, Cambridgeshire County Council (CCC), the University of Cambridge (UofC), Anglia Ruskin University (ARU) and many school communities across Cambridgeshire.



Research links have also been established with Universities beyond the region, particularly the new Centre for Climate Change and Sustainability Education at University College London, and Goldsmiths and Bath Spa Universities. We are particularly proud of our work with Professor Nicola Walshe (UCL), and the Eco-capabilities and Branching Out programmes that she has led.

Key advocates for CCI's work are Michael Morpurgo and Robert Macfarlane (Patrons), and Rob Hopkins, Jackie Kay and Dame Fiona Reynolds – all passionate defenders of the rights of children, the arts and the outdoors.

*The climate emergency demands that our education system nurtures children  
equipped to be able to question and reimagine everything.*

*The seeds of what that looks like can be found in Artscaping.*

**Rob Hopkins, Founder of the Transition Movement and author of  
What is to What if**

CCI is a founding member of the Fullscope consortium, established in 2019 and coordinated by seven leading charities that support the mental wellbeing of children and/or young people in Cambridgeshire and Peterborough. Fullscope champions, collaborates with, and is inspired by the voices of children and young people, taking their lead in order to deliver its aims. Supported by the National Lottery Community Fund, Fullscope presents the first consortium of its kind in Cambridgeshire and Peterborough. Working as part of the Fullscope consortium is opening up ways to ensure children's voices stay at the heart of innovation in the system, building on the principles of co-production and collaboration.

In 2024-2025, CCI joined partner organisations in the city to form [CREATE Cambridge](#), a cultural compact that is bringing together artists and cultural organisations, with academic, industry and civic organisations to champion the role of culture in Cambridge, connect communities through cross-sector dialogue and community co-creation and ensure culture can continue to contribute positively to the future of Cambridge.

Above: Snapshot from the Artists' Autumn Gathering, Wandlebury Woods © Lucinda Price 2025

## Our Goals

We have worked with these goals:

**For children and young people:** to ensure there is universal access for all children and young people in Cambridgeshire and Peterborough to our creative health programmes, supporting them to flourish.

**For the natural world:** to support communities in Cambridgeshire and Peterborough to love and value the natural world on their doorsteps in order that they can care for it.

**For Cambridge Curiosity and Imagination:** to sustain and strengthen the Charity so that we can successfully accelerate our impact.

We have done this by:

- Connecting people of all ages with their creative selves
- Continuing to research and reflect on our practice
- Sharing outcomes and resources widely in order to advocate for creative freedoms and opportunities for all

LAND (Learning through Arts, Narrative and Discourse), India  
Trash Free Trails, UK  
Scottish Ecological Design Association, Scotland  
TIALT (There Is an ALternative), Scotland

TOWN., Hemel Hempstead  
UCL, London  
The Art Station, Saxmundham  
Anorak Magazine  
The Open University

Thongsley Fields  
Community Primary  
Huntingdon Community  
Action Project  
Coneygear Centre

The Pathfinder  
Primary School  
TOWN.  
Sustainable  
Shepreth



Wilburton C of E  
Primary School  
Weatheralls  
Primary School  
The Shade  
Primary School  
Cambridge Acorn  
Project  
Alternative  
Provision  
Mayfield Primary  
School  
North Cambridge  
Academy  
CU Botanic  
Gardens  
The Arts Theatre  
Cambridge  
Centre for  
Landscape  
Regeneration  
ARI  
CU Green Fair  
Cambridge City  
Council

## The World on Our Doorsteps

Our commitment to a strong local focus for our work continues and this year we offered creative experiences in 41 different settings across the city and county and beyond:

### Place-making with communities

The Fantastical Forest continued to grow throughout the year, forging new links with schools and community organisations across the region. We really appreciate its capacity to move and inspire people, enabling reflective conversations about creativity, children and nature and continue to connect our programmes and initiatives to it wherever possible. The whole collection is shared each year on Tree Charter Day and we end this year with a collection of 121 artworks, each unique and extraordinary and co-created with the 25 communities we've worked with.



Our work with TOWN, master-planners for Hartree, the new district on the north eastern edge of the City, continued with the development of a new Public Art Strategy, our contribution to a conference focused on children and young people's involvement in new and developing communities, and projects in Hemel Hempstead focused on imagining dormice bridges across gaps in the hedgerow, and in Northstowe exploring playing on the way to school.

### Sharing our learning and advocacy

All of our resources and publications are free to access online. Thanks to our new website built by KISS Communications for the charity in 2023, these continue to be easier to share with the result that they are now accessed by many more people – for example in this year our collection of free to read publications (supported by the online platform Calameo) were viewed approximately [check] times during the year.

CCI currently features in three significant education publications:

[\*Arts in Nature with Children and Young People: A Guide Towards Health Equality, Wellbeing and Sustainability\*](#), edited by Zoe Moula and Nicola Walshe, published by Routledge

[\*The Curriculum Compendium\*](#), edited by Rae Snape, published by Bloomsbury

[\*Branching out: mobilizing community assets to support the mental health and wellbeing of children in primary schools\*](#), published by Frontiers in Public Health

Above: Common Grounds, Arbury Court © Lucinda Price 2025



Above: Snapshot from the Artists' Autumn Gathering (artwork Susanne Jasilek) Wandlebury Woods © Lucinda Price 2025

CCI hosted or contributed to the following events this year:

- Out of the Ordinary Festival Aug 2024
- Fantastical Fungi Family Workshops CU Botanic Garden Sept 2024
- Engaging Children and Young People in New and Emerging Communities Oct 2024
- Tree Charter Day Wandlebury Country Park Nov 2024
- Cambridge University Green Careers Fair Jan 2025
- UCL Sustainability Day Mar 2025
- Creative Environments for Children and Young People June 2025

### Capacity Building

CCI Trustee Karin Horowitz continued to lead a regular programme of care and support conversations for all colleagues to hold a space for safe reflective dialogue. This year CCI has re-established a consistent programme of Artist Gatherings, in winter, spring and summer, and continued its successful practice of Community Conversations, held online to share elements of our projects with our CCI Community.

### Our Partners this year have included:

Anglia Ruskin University  
Anorak Magazine  
Arbury Library

Broad'N'Mind  
Cambridge Acorn Project  
Cambridge City Council  
Cambridgeshire County Council  
Cambridge Junction  
Cambridge Past Present and Future  
Cambridge University Botanic Garden  
Cambridge University Careers Fair  
Cambridge University Hospitals  
Centre for Climate Change and Sustainability Education,  
University College London  
CLiP Sound and Music  
Counterpoints  
Fullscope together with: Centre 33, The Kite Trust, YMCA  
Trinity, Ormiston Families, Arts and Minds, CPSL Mind,  
Blue Smile  
Centre for Landscape Regeneration  
Huntingdon Community Action Project  
KISS Communications  
LAND (Learning through Arts, Narrative and Discourse)  
Mayfield Primary School  
North Cambridge Academy  
Raspberry Pi Foundation  
St Andrew's Church Soham  
The Crown Estate  
The Evelyn Trust  
The Foyle Foundation  
The Open University  
The Pathfinder Primary School  
The Shade Primary School  
The Weatheralls Primary School  
Thongsley Fields Community Primary School  
TOWN.  
U+I Cambridge Limited  
University College London  
Wilburton Primary School

[CCI hosted work in 26 different places including these:](#)

Anglia Ruskin University, Cambridge  
Cambridgeshire and Peterborough Music, Histon  
Cambridge University, Cambridge  
Institute of Education, London  
Nine Wells Nature Reserve, South Cambs  
The Long Shop Museum, Leiston  
Wandlebury Country Park, South Cambs



With thanks to the incredible team of artists, researchers and creative producers:

Jade Anderson, Gabby Arengé, Hannah Arnett, Liam Barker, Hilary Bungay, Hilary Cox Condron, Di Goldsmith, Susanne Jasilek, Dougie Lonie, Tatiana Moreno, Frazer Merrick, Zoe Moula, Jenn Opare-Kumi, Anna Schofield, Helen Stratford, Filipa Pereira Stubbs, Sally Todd, Tonka Uzu, Caroline Wendling, Nicola Walshe, and Debbie Yeboah.

And to the many wonderful volunteers who regularly support our programmes, in particular:

Chiara Cardini, Holly Cromwell, Aliabbas Dhanji, Samantha Harvey, Iben Sollewijn Gelpke, Gladys Jones, Tsai-Shuian Ho, Sue Lowndes, Samantha Massey and Jemima Robertson.

And the individual Donors and Cambridge Colleges who help make the work possible, including:

Magdalene College, CUCFS Cambridge Uni Fashion show and our private individual donors

And to our Directors and Trustees:

Fiona Brice, Michael Corley, Emily Dowdeswell (Director), Owen Garling, Zoe Gilbertson, Karin Horowitz, Richard McLean (Chair), Jemima Robertson, Caroline Wendling.



Above: The World Beneath Our Feet, The Shade © Sally Todd 2024

**Cambridge Curiosity & Imagination**  
**Statement of Financial Activities (incorporating Income & Expenditure Account)**  
**for the year ended 31 July 2025**

		<b>Unrestricted Funds</b>	<b>Restricted Funds</b>	<b>Total Funds</b>	
	<b>Notes</b>	<b>2025</b>	<b>2025</b>	<b>2025</b>	<b>2024</b>
		<b>£</b>	<b>£</b>	<b>£</b>	<b>£</b>
<b>Incoming resources</b>					
<b>Incoming resources from generated funds</b>					
Activities from generating funds:					
Interest receivable		-	-	-	-
<b>Incoming resources from charitable activities</b>					
Grants		14,503	62,500	77,003	20,023
Earned Income		50,022	-	50,022	67,656
<b>Donations</b>		5,111	-	5,111	5,786
<b>Total incoming resources</b>		<b>69,636</b>	<b>62,500</b>	<b>132,136</b>	<b>93,465</b>
<b>Resources expended</b>					
<b>Costs of generating funds</b>	3	29,141	-	29,141	9,613
<b>Charitable activities</b>	3	34,318	32,500	66,818	95,697
<b>Governance costs</b>	3	1,026	-	1,026	1,553
<b>Total resources expended</b>		<b>64,485</b>	<b>32,500</b>	<b>96,985</b>	<b>106,863</b>
<b>Net incoming resources for the year</b>		<b>5,151</b>	<b>30,000</b>	<b>35,151</b>	<b>(13,399)</b>
Balances at 1 August 2024		10,342	8,000	18,342	31,741
Balances at 31 July 2025		<b>15,493</b>	<b>38,000</b>	<b>53,493</b>	<b>18,342</b>

The Statement of Financial Activities includes all gains and losses recognised in the year.

The notes on pages 9 to 12 form part of these financial statements.

Cambridge Curiosity & Imagination  
Balance Sheet  
as at 31 July 2025

		Notes			2025		2024
			£	£	£	£	£
<b>Current assets</b>							
Debtors	6		9,349		16,211		
Accrued Income			-		-		
Cash at bank and in hand			47,450		3,535		
			56,799		19,746		19,746
<b>Current Liabilities</b>							
Deferred Income					-		-
<b>Creditors: amounts falling due within one year</b>							
	7		(3,306)		(1,404)		
				53,493			18,342
<b>Net assets</b>				53,493			18,342
<b>Funds</b>							
Restricted				38,000			8,000
Unrestricted				15,493			10,342
	8			53,493			18,342

For the year ending 31 July 2025 the company was entitled to exemption from audit under section 477 of the Companies Act 2006 relating to small companies.


The members have not required the company to obtain an audit inaccordance with section 476 of the Companies Act.

The directors acknowledge their responsibilities for complying with the requirements of the Companies Act 2006 with respect to accounting records and the preparation of accounts.

The accounts have been prepared in accordance with the provisions in Part 15 of the Companies Act 2006 applicable to companies subject to the small companies regime.

The financial statements were approved by the Trustees on 24th September 2025  
and signed on their behalf by:

Richard Mclean  
Chair

Signed by:  
  
9AB98D04124B416...

Company Number: 06301716

**Cambridge Curiosity & Imagination  
Notes to the Accounts  
for the year ended 31 July 2025**

**1 Accounting policies**

**Accounting convention**

The financial statements have been prepared under the historical cost convention and in accordance with the Companies Act 1985 and follow the recommendations in the Statement of Recommended Practice on Accounting and Reporting by Charities (revised) issued in March 2005.

**Accounting Standards**

The financial statements have been prepared in accordance with applicable accounting standards.

**Incoming resources and resources expended**

Income and expenditure items have been credited or charged in the Statement of Financial Activities on an accruals basis.

**Grants, donations and sponsorship income**

Income relating to future accounting periods is taken to the balance sheet as deferred income for recognition in those future accounting periods.

**Restricted funds**

Resources are recorded on a receivable basis and allocated to a Restricted Fund if a limitation on their use is specified by the donors and providers. Funds received in the direct operation of the Charity are treated as unrestricted funds. Other resources received without external restriction are designated by the Trustees for particular purposes as deemed appropriate.

**Direct charitable expenditure**

Overheads are allocated to direct charitable expenditure on the basis of the time spent by staff on activities which directly serve objectives of the Board

**Fundraising and publicity expenditure**

All expenses incurred with the intention of raising funds for the charity are allocated to fundraising and publicity expenditure.

**Cashflow statement**

In accordance with Financial Reporting Standard no 1 no cashflow statement is included in these financial statements as the Company is covered by the small company exemption.

**Cambridge Curiosity & Imagination**  
**Notes to the Accounts**  
**for the year ended 31 July 2025**

**2 Directors' Remuneration and Expenses**

CCI considered it important to have as directors artists who are actively involved in delivering projects, who could therefore bring considerable knowledge to the Board . The Memorandum & Articles permit payment for professional services to no more than one third of the Directors.

No other director received any remuneration during the period or was reimbursed for any expenses.

**3 Total Resources Expended**

		<b>Basis of allocation</b>	<b>Costs of generating income</b>	<b>Projects</b>	<b>Governance</b>	<b>2025 Total</b>	<b>2024</b>
			<b>£</b>	<b>£</b>	<b>£</b>	<b>£</b>	<b>£</b>
<b>Costs directly allocated to activities</b>							
Artists	Direct		-	27,054	-	27,054	21,812
materials	Direct		-	6,856	-	6,856	31,680
project management	Direct		29,141	31,338	900	61,379	50,958
Accounting	Direct		-	-	-	-	500
Travel	Direct		-	117	-	117	-
<b>Support costs allocated to activities</b>							
Office costs	time		-	1,453	126	1,579	1,913
			<u>29,141</u>	<u>66,818</u>	<u>1,026</u>	<u>96,985</u>	<u>106,863</u>

**4 Staff Costs and numbers**

Cambridge Curiosity & Imagination employs no staff. Projects are managed on a consultancy basis.

**Cambridge Curiosity & Imagination**  
**Notes to the Accounts**  
**for the year ended 31 July 2025**

**5 Taxation**

The company is a registered charity and is therefore not liable to income tax or corporation tax on funds received and expended on activities covered by its charitable status.

<b>6 Debtors</b>	<b>2025</b>	<b>2024</b>
	<b>£</b>	<b>£</b>
Trade debtors	9,349	16,212
	<u>9,349</u>	<u>16,212</u>

**7 Creditors: amounts falling due within one year**

	<b>2025</b>	<b>2024</b>
	<b>£</b>	<b>£</b>
Trade Creditors	3,306	1,404
Accruals	-	-
	<u>3,306</u>	<u>1,404</u>

**8 Analysis of net assets between funds**

	<b>Unrestricted funds</b>	<b>Restricted funds</b>	<b>Total funds</b>	
	<b>£</b>	<b>£</b>	<b>2025</b>	<b>2024</b>
			<b>£</b>	<b>£</b>
Fund balances at 31 July 2025 are represented by:				
Current assets	18,799	38,000	56,799	19,746
Current liabilities	(3,306)	-	(3,306)	(1,404)
	<u>15,493</u>	<u>38,000</u>	<u>53,493</u>	<u>18,342</u>

**Cambridge Curiosity & Imagination**  
**Notes to the Accounts**  
**for the year ended 31 July 2025**

**9 Funds**

	<b>Brought forward</b>	<b>Incoming Resources</b>	<b>Resources Expended</b>	<b>Balance at 31 July 2025</b>
	<b>£</b>	<b>£</b>	<b>£</b>	<b>£</b>
<b>Unrestricted Funds</b>				
General Reserve	10,342	69,636	64,485	15,493
<b>Restricted Funds</b>	8,000	62,500	32,500	38,000
	<u>18,342</u>	<u>132,136</u>	<u>96,985</u>	<u>53,493</u>

- 10** The charity is a company limited by guarantee and has no share capital. The Trustees who are also directors have guaranteed to contribute up to £10 each to the assets of the company in the event of its being wound up with a net deficit of assets.  
The guarantee remains in force for one year after the resignation of a member.