



BUILDING RESILIENCE

THANDA UK ANNUAL REPORT

1 JULY 2023 - 30 JUNE 2024



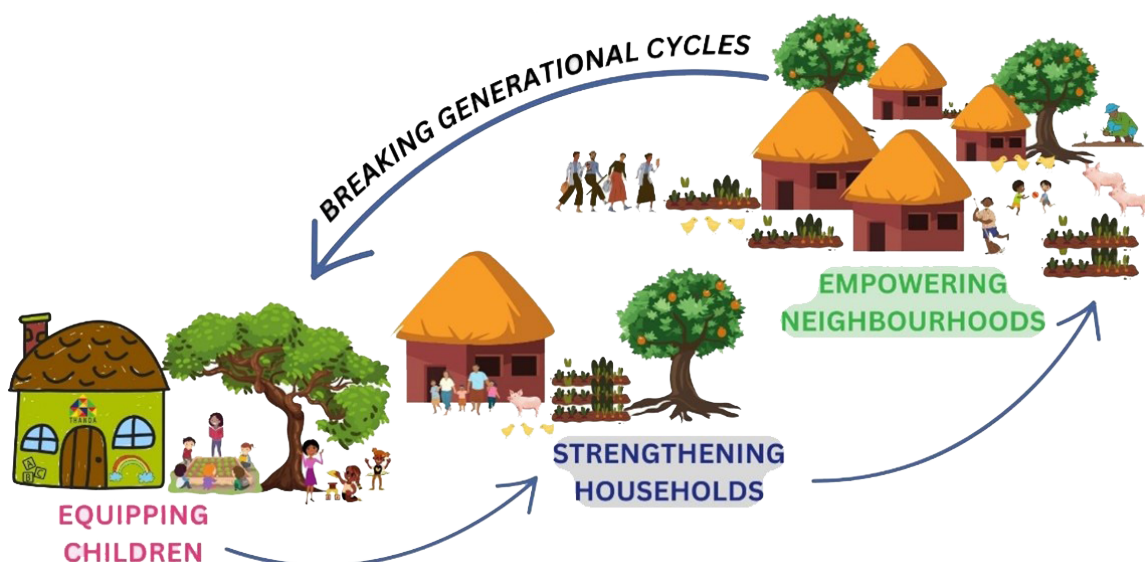
WHAT HAS CHANGED IN 2023/2024?

Thanda UK provided valuable support to Thanda After-School, a non-profit organisation based in Mtwalume, Kwa-Zulu Natal, South Africa throughout 2023-2024.

This report details Thanda After-school's activities and how Thanda UK's support has contributed to empowering communities in rural South Africa.



By building resilience at multiple levels, Thanda is breaking generational cycles. Their ECD and Education programmes equip individual children, while home visits and the household gardening initiative support their families and enhance food security. Thanda also empowers neighbourhoods through group meetings and workshops that strengthen community bonds and foster organic problem-solving.



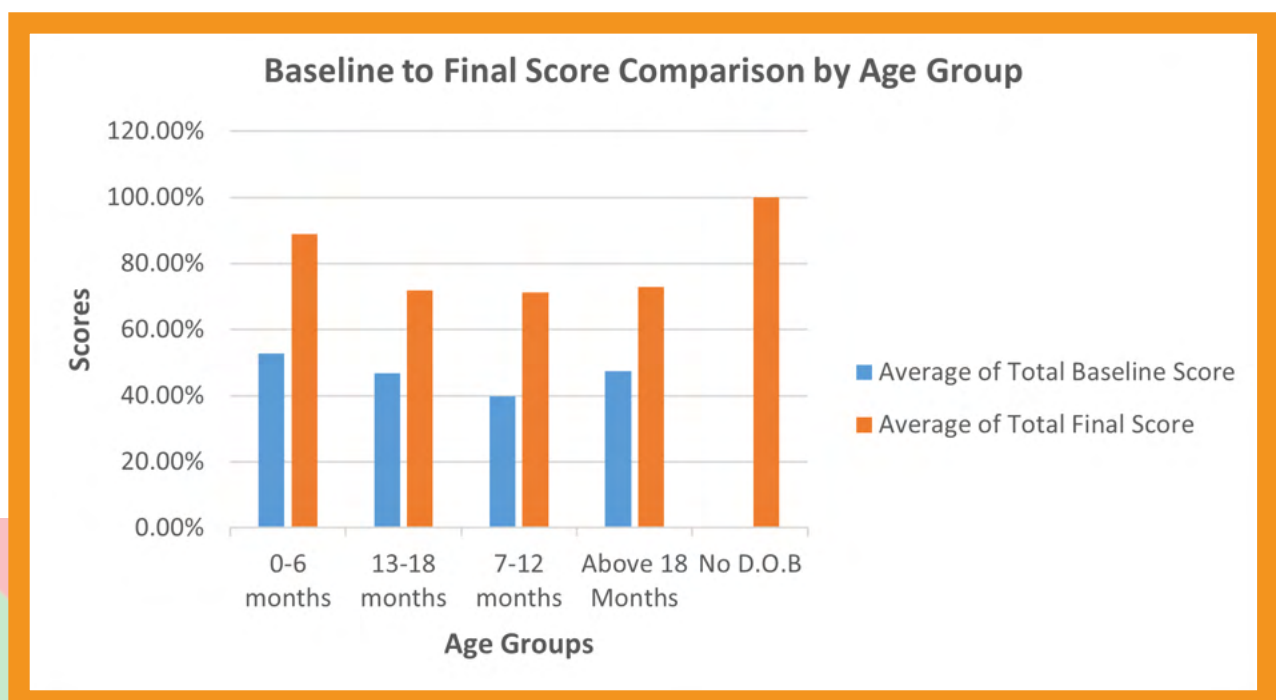
EQUIPPING INDIVIDUALS: STARTING FROM BIRTH

Thanda's Baby Programme fosters playful interactions between guardians and babies through home visits and neighbourhood playgroups, aiming to achieve key developmental milestones in social-emotional growth, physical health, and language and cognitive skills.

In 2023, Thanda had **67** babies enrolled in this programme.



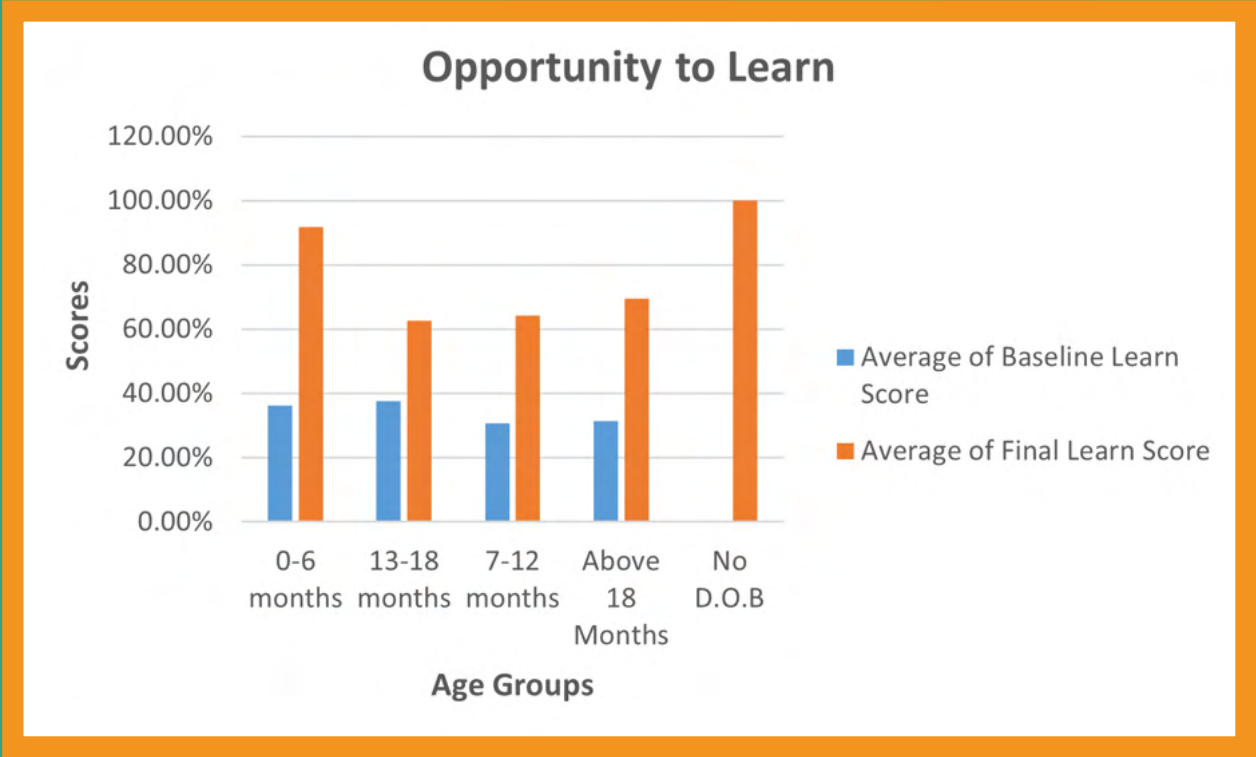
Overall, **73%** improvement in babies' scores towards reaching developmental milestones from baseline to final in 2023.

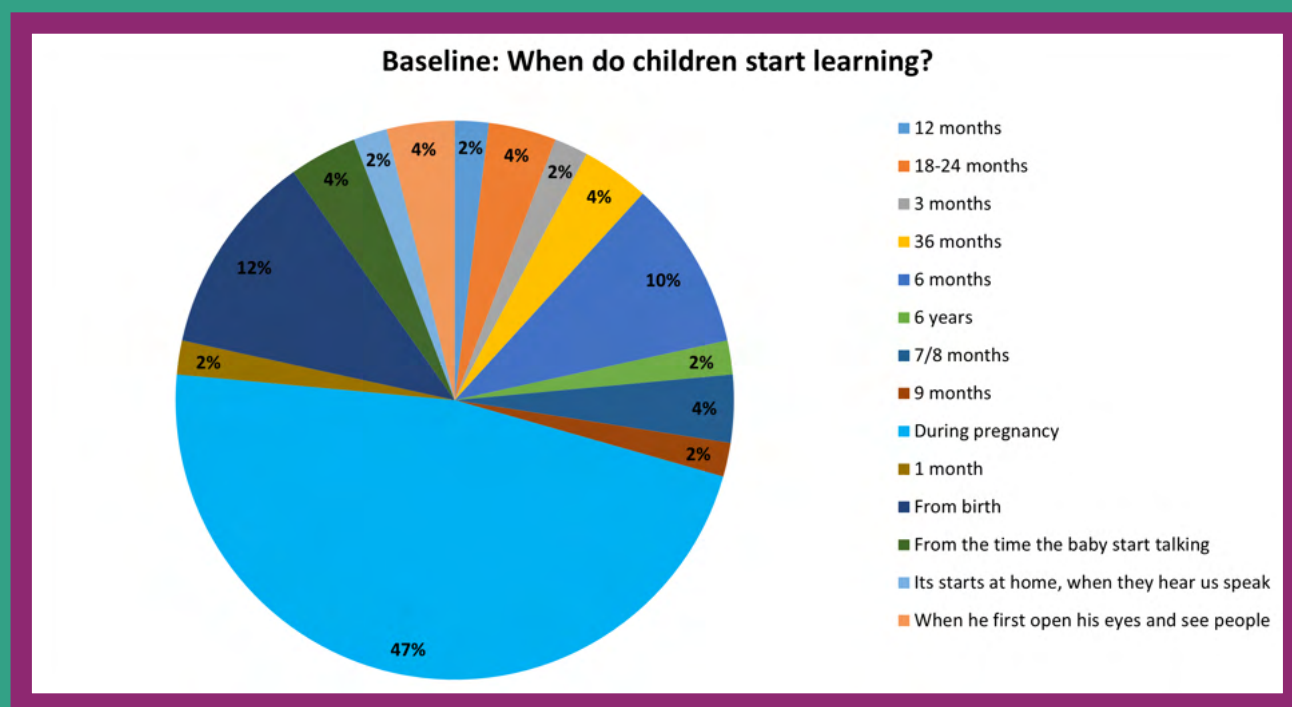




SPOTLIGHT ON CHANGE IN LEARNING

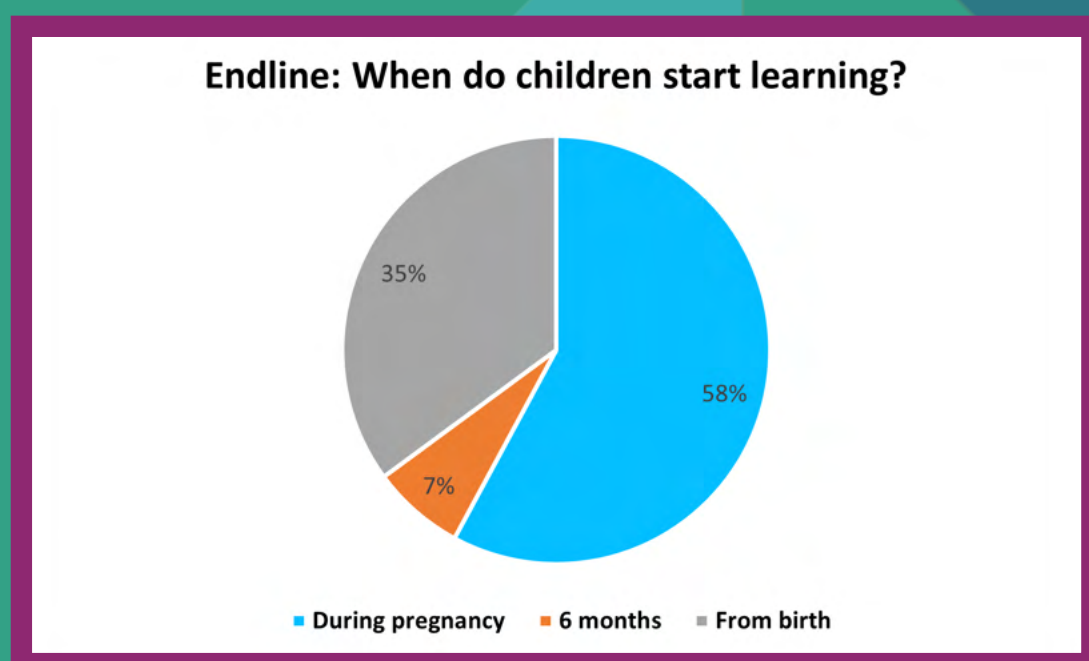
The greatest improvement (**135%**) was within the Opportunity to Learn category, which works towards age-appropriate milestones for babies’ vision & coordination, language, and cause & effect.





There was a notable shift in guardian's understanding of when a baby starts learning. At the beginning of the year, **63%** guardians believed babies start learning from pregnancy birth, but this had increased to **93%** by the end of the year.*

Overall, the shift in perspectives between the baseline and end-line in 2023 seems to reflect a deeper understanding and articulation of parental responsibilities... The most notable changes include an increase in responses related to attention, love, support, as well as an emergence of new categories such as emotional support and education and learning in the end-line assessment. This proves that due to Thanda's Baby Programme, guardians developed an understanding of their multifaceted role in teaching their babies.*





**Moyo, Sobongile, External Report on Thanda's Baby Programme 2023*

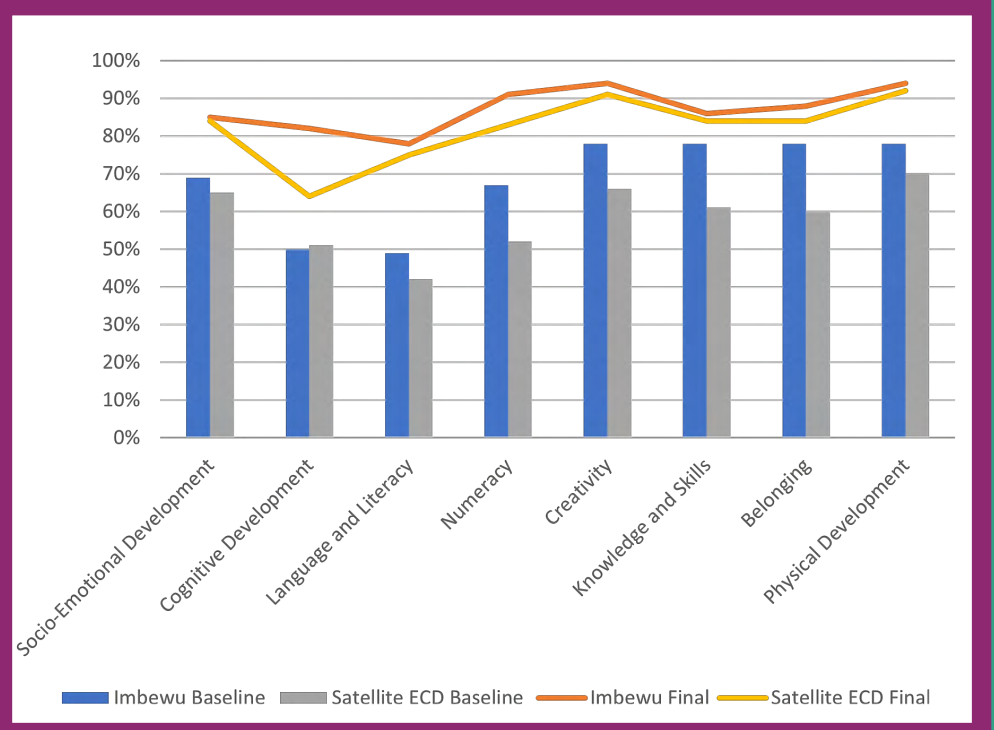
EQUIPPING INDIVIDUALS: ENABLING EARLY CHILDHOOD DEVELOPMENT

Thanda's Community Centre-based Imbewu ECD, Satellite ECDs, and Fun Foundations ECD groups ensure that children receive learning opportunities, regardless of how isolated their location may be.

In 2023, 287 children attended these programmes, gaining access to Early Learning opportunities they otherwise would not have had.

Thanda's curriculum, designed specifically for the rural South African context, has been validated by independent assessments, which have shown significant improvements in children's skills.

In 2023, children in Thanda's Imbewu ECD programme improved by 53% on average and those in the Satellite ECD programme improved by 42% on average.







EQUIPPING INDIVIDUALS: INCLUDING CHILDREN LIVING WITH DISABILITIES

Thanda offers children with learning and developmental challenges the chance to learn alongside their peers, fostering a sense of belonging within their community. This inclusive environment also encourages their classmates to accept, support, and include friends with challenges, just as they would any other child.

20

of children with disabilities supported

2

Facilitation of child dependency grants

30

of therapy sessions for ECD children (with an occupational therapist)

217

of therapy sessions for ECD children



In 2023 Thanda helped children with a range of disabilities including:

Cerebral Palsy

Autism Spectrum Disorder

Speech Delay

Down Syndrome

ADHD

Diplegia

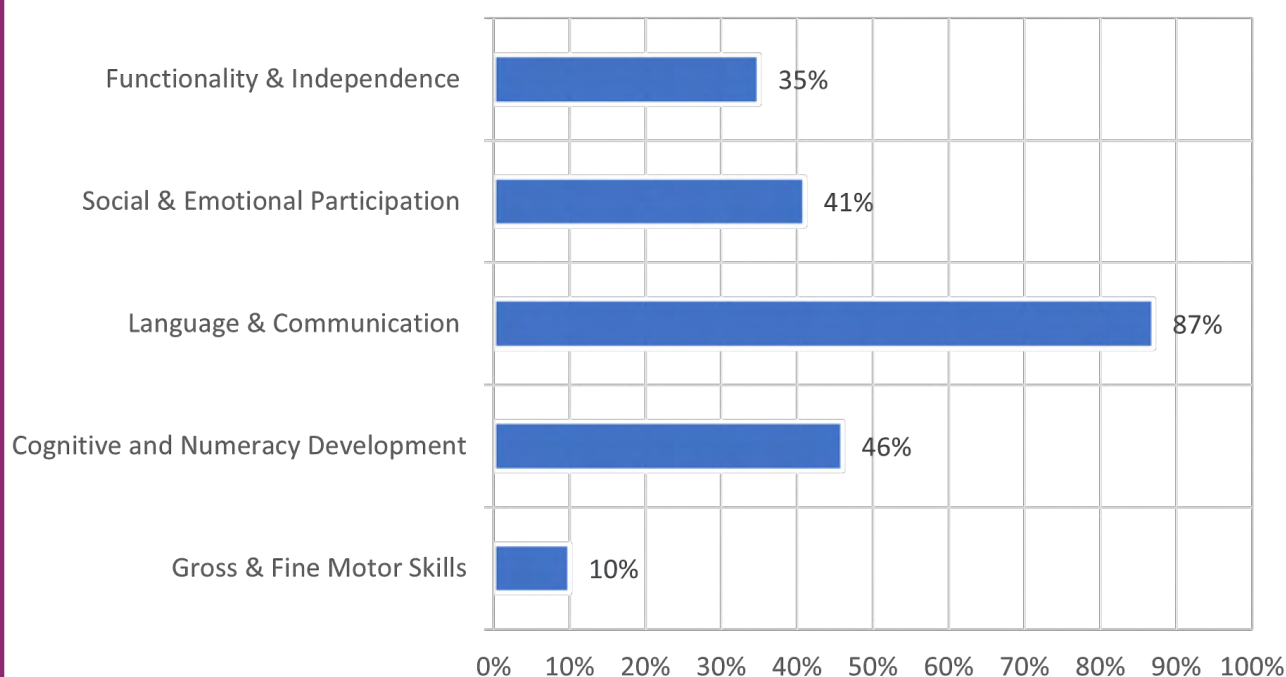
Hemiplegia

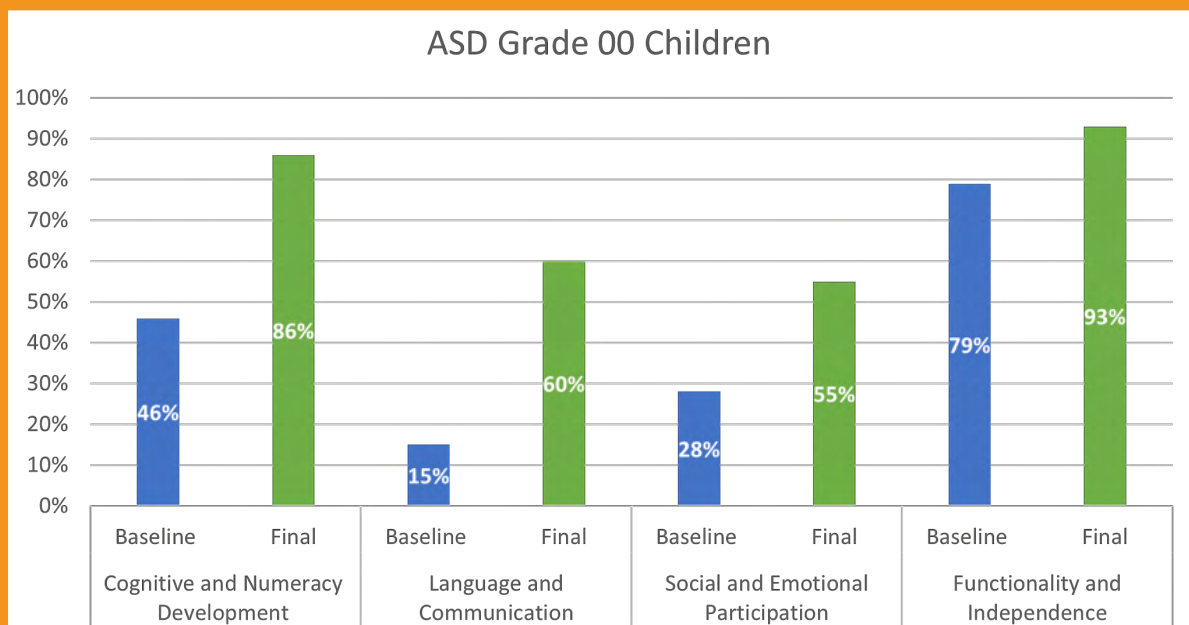
Epilepsy



In 2023, Thanda observed improvements across all assessed skills in the 0-7 year age group, with an outstanding **87% increase in language and communication abilities.**

Percentage Change Per Skill





Two children in Thanda's ECD (Grade 00) are living with Autism Spectrum Disorder (ASD).

In 2023, both made significant progress, obtaining new skills and reaching milestones across various categories. These include following a beat, matching shapes and colours, sorting, creating simple patterns, using basic sign language to communicate, engaging in parallel play, expressing moods and emotions, independently using the toilet, eating and drinking, and maintaining concentration for short periods.





MPILO (4), AUTISM

Mpilo enrolled in 2022 and initially struggled with listening to his teachers, following instructions, and participating in classroom activities. He was very withdrawn, avoided interaction with other children, and had difficulty managing his emotions, which led to frustration when trying to communicate. He also had trouble using utensils for self-feeding.



Since joining Thanda, Mpilo has shown remarkable improvement. He now enjoys classroom activities, is more empathetic towards his classmates, and actively participates in play and sharing. With Thanda's support and a referral to the local clinic, he has started medication to help manage his frustrations and has become better at communicating with his teacher and peers. He listens to and follows instructions more effectively and can now feed himself independently!

Overall, Mpilo demonstrated a **163%** improvement in Functionality & Independence in 2023, including learning to use the toilet on his own and communicating some preferences and needs through gestures, signs, symbols, or words.

EQUIPPING INDIVIDUALS:

ENABLING CHILDREN TO CATCH-UP

Thanda's Thandukwazi Programme, designed for children in grades R-2, uses the Red Flag Assessment tool to track individual progress. Developed by partners, Siyakwazi, this tool evaluates whether children are meeting their cognitive and motor skill milestones for their age group.

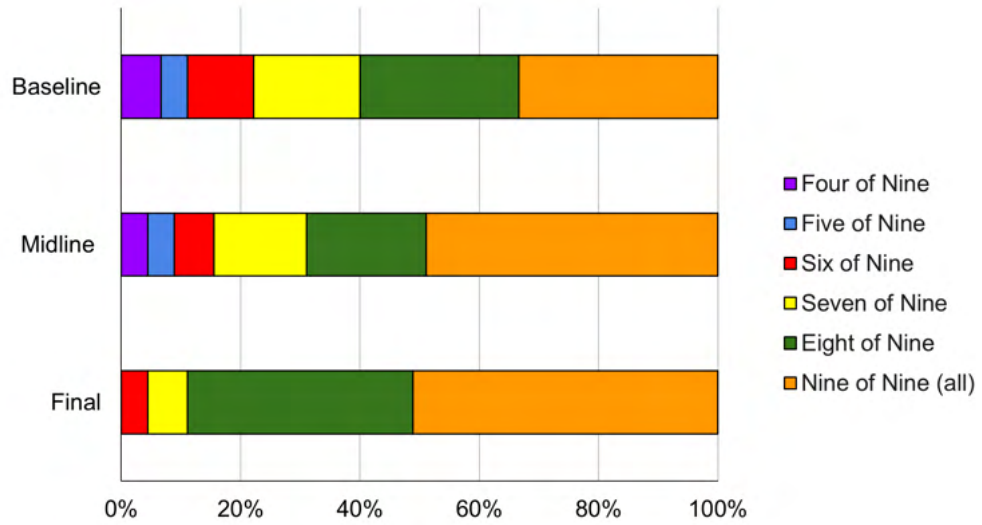
Facilitators conduct a series of nine activities with their groups, including games that assess abilities such as coordination, writing, memory, counting, pattern recognition, and following instructions. Children who successfully complete six or more activities are classified as 'no red flag,' while those who complete fewer than six are 'red flagged.'

The graphs below illustrate the children's progress during 2023 by depicting their results at baseline, midline and final assessment in 2023. Across all grades the number of children who could successfully complete all 9 activities increased between baseline and final assessment. In grades R and 1, at the final year assessment there was no longer a single child red flagged in either of these assessed grade groups.

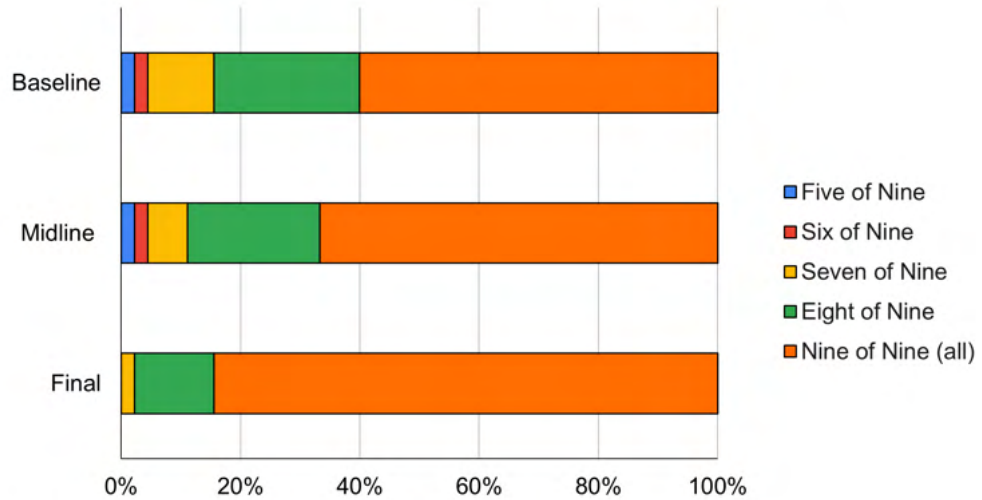
Notably, none of the red-flagged children had participated in a Thanda ECD Programme. Of those who completed baseline, midline, and final assessments, 53% of the Grade R children, 40% of the Grade 1 children, and 33% of the Grade 2 children had attended Thanda ECD.



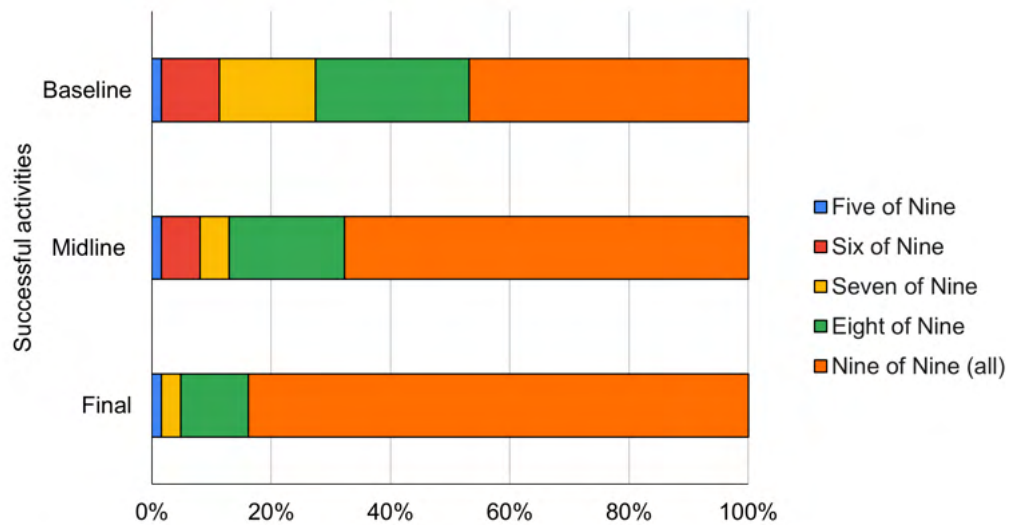
Red Flag: Grade R - Successful Activities



Red Flag: Grade 1 - Successful Activities



Red Flag: Grade 2 - Successful Activities







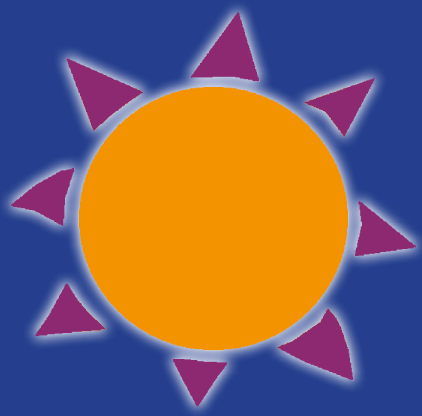
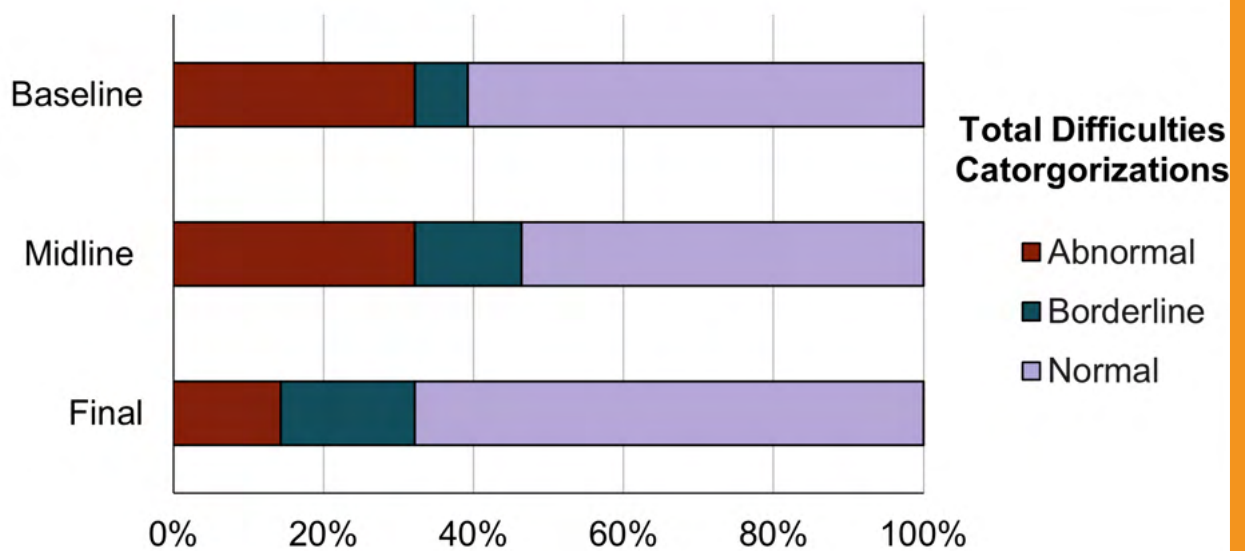
EQUIPPING INDIVIDUALS:

BUILDING AGENCY AMONGST GIRLS

Thanda's Girls Leadership Programme (Amaqhawekazi) is an intensive 2-year-long programme designed to enhance girls' judgement and decision-making skills, foster a greater sense of community responsibility, and develop their leadership capabilities.

The programme features a range of activities aimed at helping girls develop essential skills in financial management and budgeting, digital literacy, food cultivation, and resume writing. This multifaceted approach equips girls with the skills and knowledge needed to succeed in the real world.





The Strengths and Difficulties Questionnaire (SDQ) is a short emotional and behavioural screening tool used around the world. The SDQ evaluates five categories: Emotional Problems, Conduct Problems, Hyperactivity Problems, Peer Problems, and Prosocial Scale. The first four categories are combined to produce a total difficulties score for the children.



As shown in the graph above, girls in Amaqhawekazi demonstrated positive improvements from their baseline to final assessments, indicating that fewer experienced issues in these categories by the end of the programme compared to the beginning. When compared with the control group, these results suggest a positive correlation between participation in Amaqhawekazi and a reduction in problems in the assessed areas.

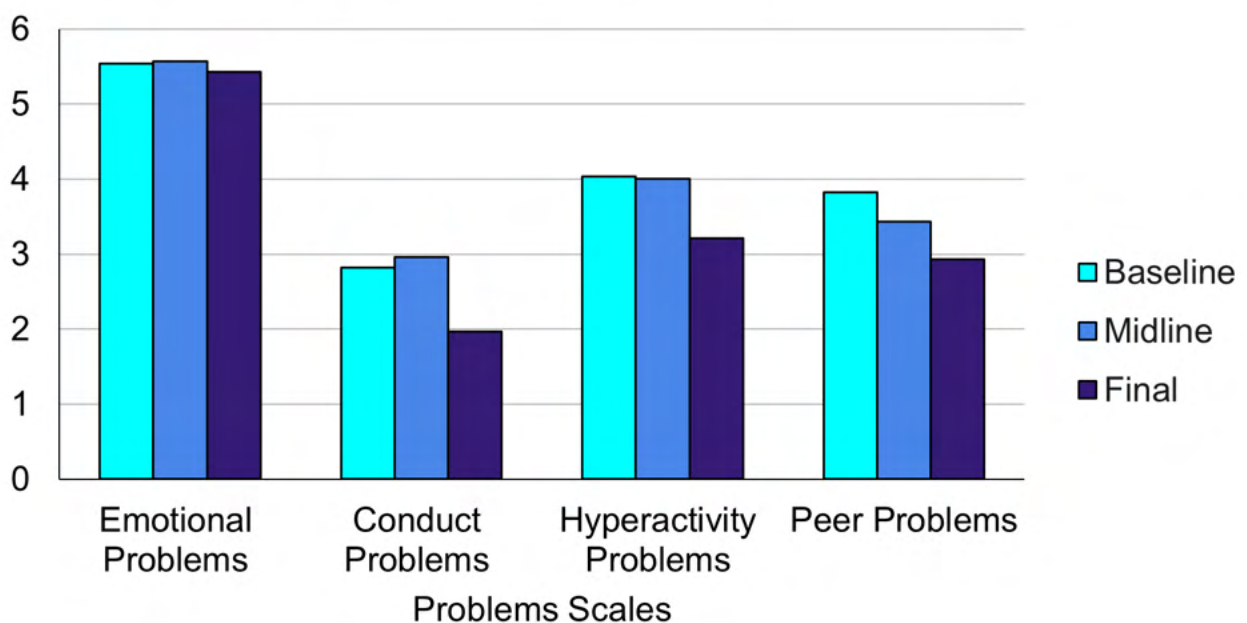




In percentage change terms, the average from baseline to final decreases (in other words the number of difficulties experienced improves) as follows:

- Emotional problems: 2%
- Conduct Problems: 30%
- Hyperactivity, Problems 20%
- Peer Problems: 23%

Average Problems Scores Across Subscales: Baseline, Midline and Final





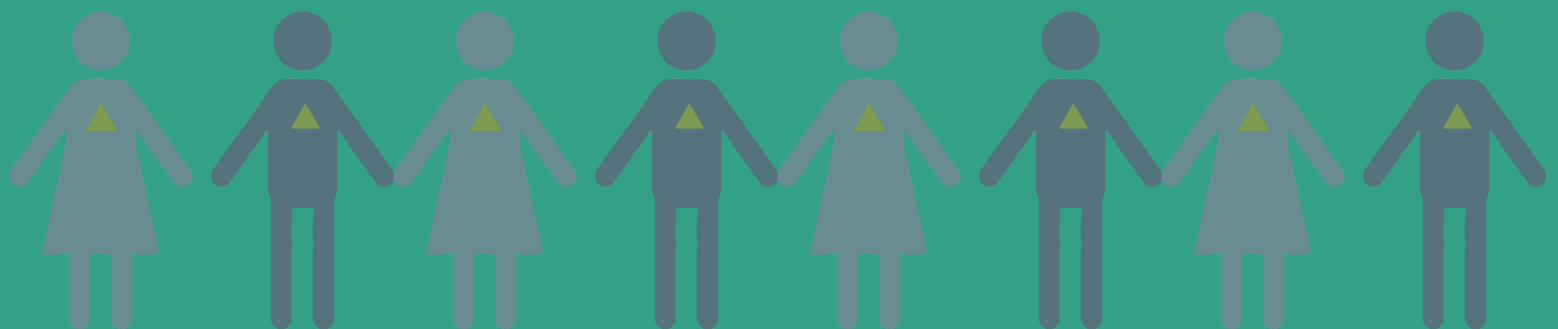
BOYS PROGRAMME & GIRLS PROGRAMME

These gender-specific programmes are available to children from Grade 5 onwards. They explore topics crucial for those navigating the complexities of adolescence.

2023 ENROLMENT

Girls Programme – 190

Boys Programme – 120



SIYAZAZI

Siyazazi means 'KNOW YOURSELF' as this programme aims to develop a child's inner voice so that they have the confidence to make intentional decisions about their life. It caters to children from Grade 3 to Grade 4.

2023 ENROLMENT

332

EQUIPPING INDIVIDUALS:

BUILDING STRONG BODIES & MINDS

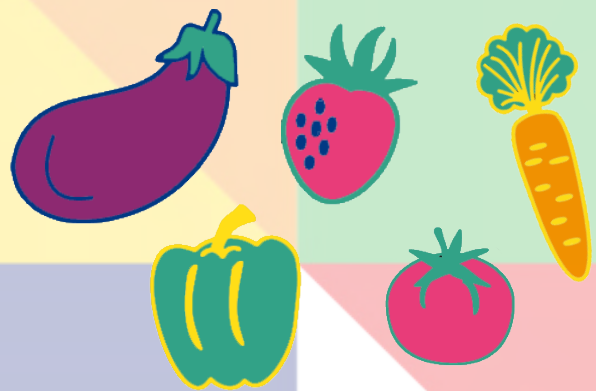
Meals provided 2023

130,798



Meals provided 2008-2023

1,304,413



STRENGTHENING HOUSEHOLDS:

SUPPORT FOR HOUSEHOLDS OF CHILDREN IN THANDA'S EARLY LEARNING & EDUCATION PROGRAMMES



11,559

Library books
borrowed 2023

69,589

Library books
borrowed
2012- 2023

2,988

Home visits 2023

22,351

Home Learning
Packs Distributed
2020-2023

42 Book Dash books Distributed per
household 2020-2023

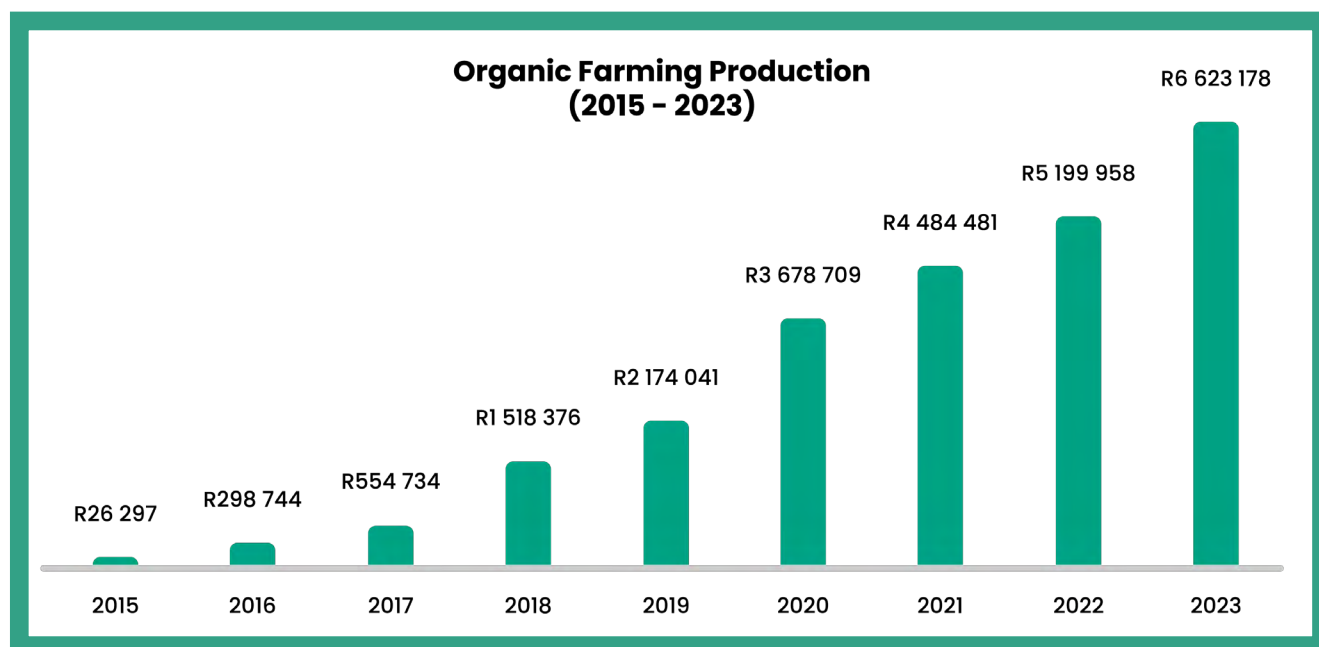
**“SUPPORTING HIGH-QUALITY PARENTING MAY
THEREFORE BE AN EFFECTIVE WAY TO
MITIGATE THE DEVELOPMENTAL RISKS FACED
BY YOUNG CHILDREN FROM DISADVANTAGED
FAMILIES.”**

Nicholson et al., Enhancing the early home learning environment through a brief group parenting intervention, 2016.



STRENGTHENING HOUSEHOLDS: COMBATTING MALNUTRITION & UNEMPLOYMENT: A LOOK BACK ACROSS 2016-2023

Thanda's overall Organic Farming production has increased year on year, from **R26 297** in 2015 to **R6 623 178** in 2023.



STRENGTHENING HOUSEHOLDS:

EMPOWERING HOUSEHOLDS TO FARM

Since 2016, Thanda has...

EMPOWERED **1426**

households with
farming skills to grow
food for consumption
and income.

ESTABLISHED

500

household
gardens.

TRAINED & MENTORED

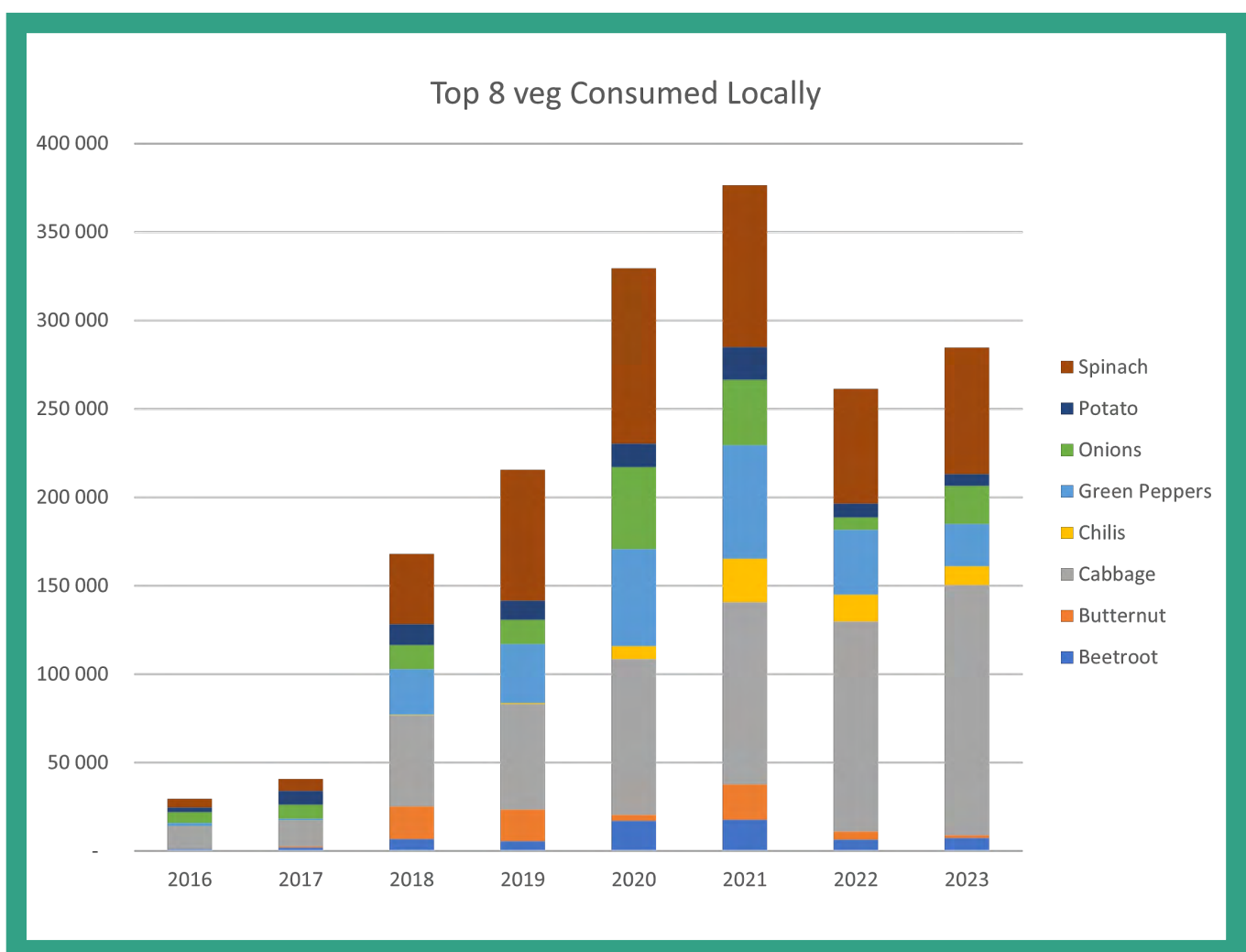
926 farmers as part of

Nisela Organic Farming
Programme.



STRENGTHENING HOUSEHOLDS: ESTABLISHING LOCAL FOOD SECURITY

From 2016 to 2023, vegetables valued at **R31 052 209** (based on retail prices) were cultivated by Thanda's farmers! With **82%** of the produce from Nisela farms and **100%** of Household Garden yields either consumed, shared, or sold within the local community, a nutritional value of **R26 321 557** was directly infused into the community over the past eight years.

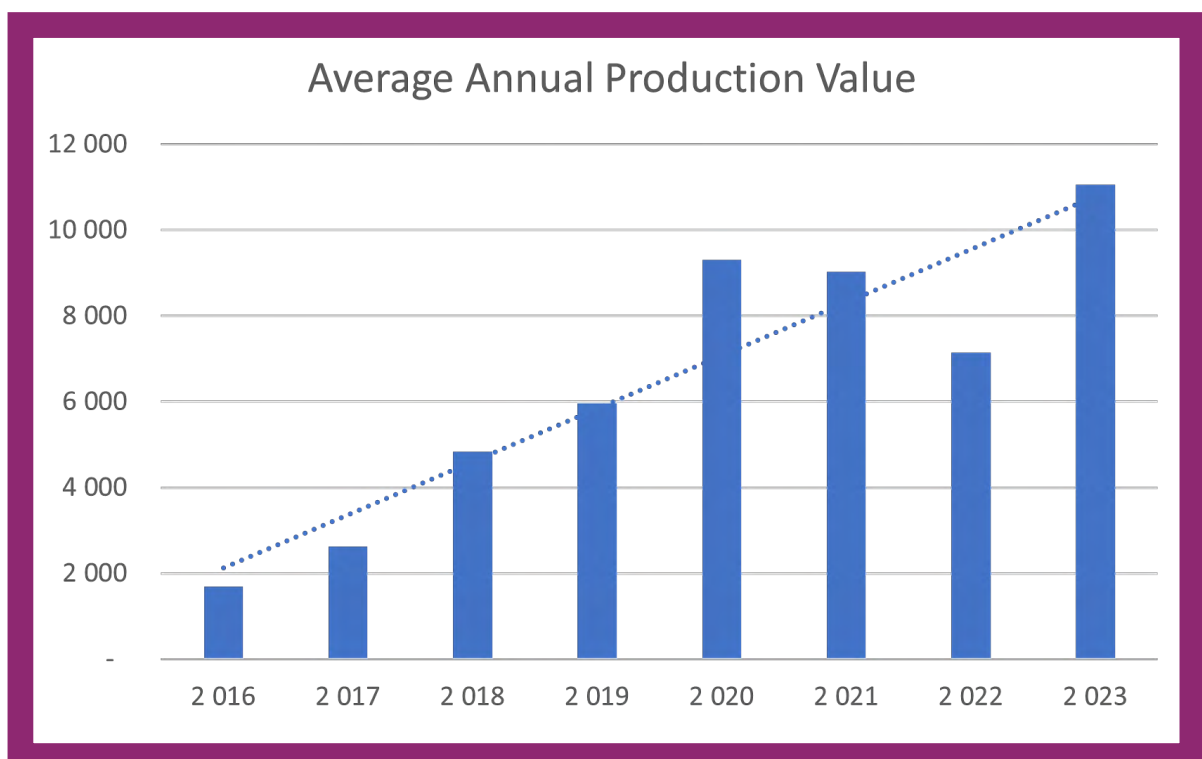




STRENGTHENING HOUSEHOLDS: GENERATING AN INCOME STREAM

With 90% of adults in the local community unemployed, Thanda's Nisela Organic Farming Programme has become a vital lifeline for Mtwalume residents.* In 2023, the average production per farmer was **six times** greater than in 2016, significantly boosting food security and household income.

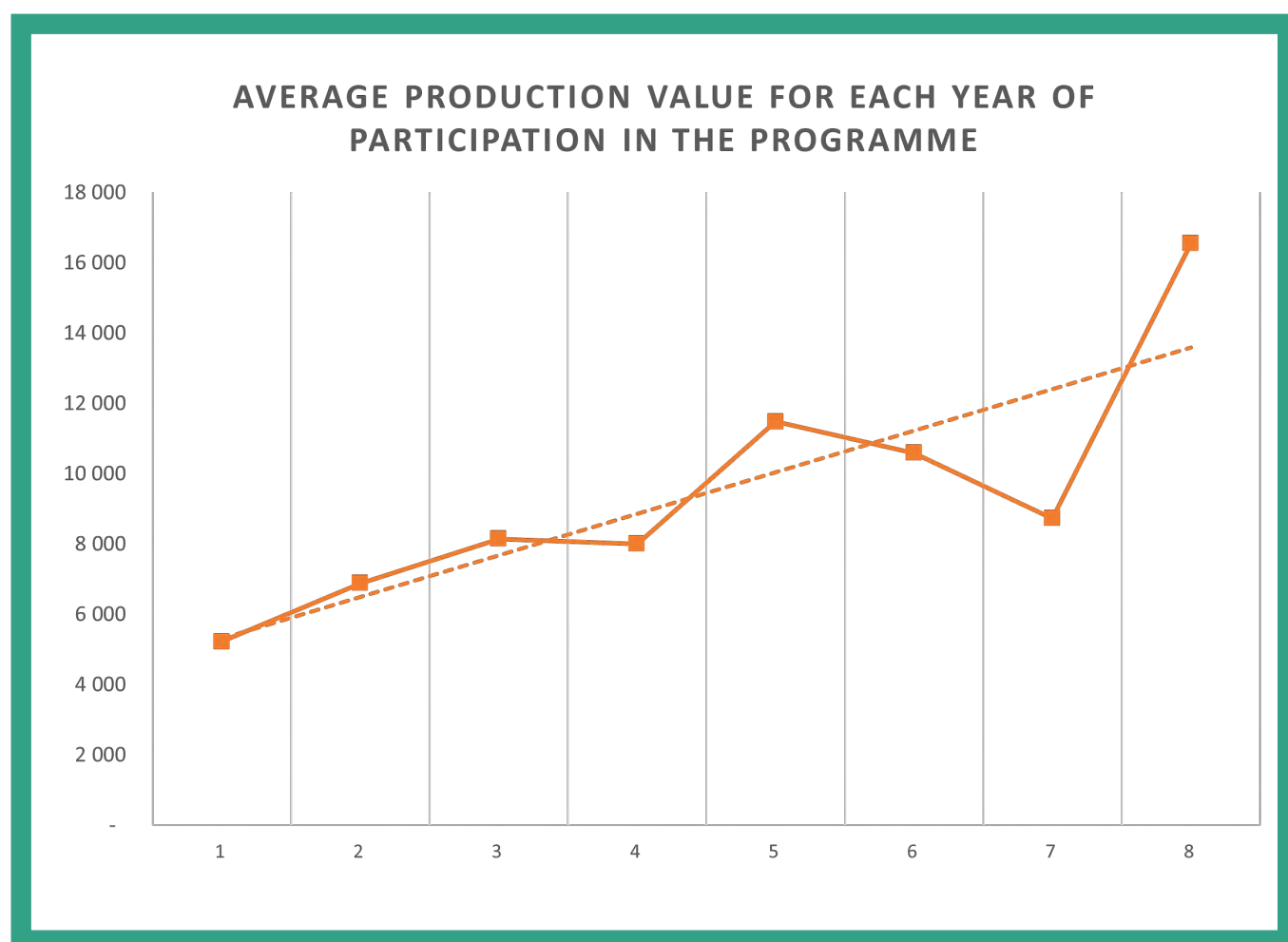
After accounting for individual input costs (such as seedlings and diesel), Thanda's Organic Farming programmes have produced **R28 617 246** worth of food at no additional cost to the community beyond labor and time. The sale of this produce generated a net profit of **R16 035 853** for farmers, effectively doubling the average household income.



*Wazimap Profile: Ugu, KwaZulu-Natal." Wazimap, <https://wazimap.co.za/profiles/municipality-KZN213-umzumbe/>. Accessed 27 Mar. 2023. Data from Census 2011.



The graph below illustrates the value of continued participation in the Nisela Organic Farming Programme, showing a strong correlation between the number of years in the programme and increased production. On average, farmers who remain in the programme can expect a **22% growth in production each year.**





EMPOWERING NEIGHBORHOODS:

RESULTS OF PILOT NEIGHBOURHOOD WORKSHOPS 2023

Throughout 2023, Thanda actively piloted their resilience model in four communities, where they assessed, consulted and adapted the pilot programme to become part of their core community services across neighbourhoods in 2024. Here is what two of the families who took part in Thanda's pilot programme in 2023 had to share about their experience:

NONHLANHLA explains that the closeness of the relationships between the women in the Baby Programme Group has taken time to establish, but that it is now a very strong bond. “The mothers who meet within this neighbourhood have become much like sisters. Thanda’s intervention has been really important in breaking down walls and even egos that existed prior to our joining the group.”

Thanda has seen that Household Visits coupled with Community Workshops can provide hyper-local psychosocial support to groups of people. Nonhlanhla shares an example, “My husband is very sick and looking after our chil-





dren generally falls solely on me. I am a person too. I do get stressed about him and worry about the household too, but I know on Tuesdays, when I go to the group to meet the other mothers at KwaShange (at the Shange household where this group meets) I will find help or get relief from my worries. I am more comfortable sharing my personal stories with the women in Baby Programme Playgroup than other women in my community because we all understand that it is a safe space for all of us to raise our children and each other. Whereas if I shared my domestic, personal and child-related stories with someone that is not within the group, there is a chance that it will turn into community gossip.”

These group interactions have allowed individuals to recognise their shared commitment to the well-being of their children and the application of the valuable lessons acquired through Thanda’s programmes. As Nonhlanhla says, “I thought I knew everything about parenting but my eyes have been opened. I thought that all one needed to do to raise a child was to give them enough food to grow, but that is not so.”

These shared ideas and trust are the core of our effort to strengthen neighbourly bonds, shifting mindsets and fostering community change for lasting self-reliance.

MAMBAMBO MBHELE is a Household Gardener, but she has been part of the Thanda family for a much longer time. Her children attended programmes at Thanda, and her grandchildren now attend, too. She proudly shares their success:

“Oh Thanda! Thanda has been very good to me and my children. My children went to Thanda after-school classes. Do you know that one of them is now a nurse? The other is an office clerk at Mnsinisi Primary School. And my son is now overseas. They are all in these high places because of Thanda!”

She explains that the success of her children is what has made her adamant that her grandchildren should attend programmes today.

“What motivates me to keep on taking my children to Thanda is that I see a community. A community for myself and them. At Thanda, there have been guardian meetings for us, too. We are taught to play, be carefree and love. I remember we were once asked to play skipping rope games and even to create our own skipping ropes using bread plastic packs (giggles). That was very different for me. It was amazing. With strong knees or weak knees, everyone played and had fun.

We work together as a group, a group of people from different homes and backgrounds, but we can come together and create something fun together. These activities made me realise that we needed co-operation. If we did not work together as a unit, it wouldn't work. We ended up as a group of beings that think and feel the same thing. This is an important lesson to learn.”

“My child, you don't understand the difference it (Household Gardening Programme) has made. When I plant and harvest, I am able to feed and share with my family. I am also able to share with my neighbour who doesn't have food, and we all eat. As a community, we have had a few things that have brought us together, but I can say that through farming and gardening (with Thanda), I am now able to go to another 'mama' and speak to her about her garden and share ideas.”

Neighborhood advantages are all the protective factors that increase resilience for the citizens who live there. Within the context of promoting resilience among children, community connections emerged as a significant neighborhood advantage. (Beese, S et al. Flexible Resources Key to Neighborhood Resilience for Children: A Scoping Review, 2023)



FUNDRAISING

During the reporting period, Thanda UK's fundraising activities have remained online and include one major fundraising drive in the lead up Giving Tuesday as well as continuous email updates to previous donors, containing stories from the community and sharing the impact that Thanda's programmes are making, with encouragement to continue to donate.



FINANCIALS

THANDA UK - FINANCIAL STATEMENT		
1 July 2023- 30 June 2024		
ASSETS		
Non-Current Assets		
Fixed Assets	£	-
Fixed Assets		
Current Assets		
Bank and Cash Balances	£	159 422,13
EQUITY & LIABILITIES	£	159 422,13
Funds		
Opening Funds Surplus	£	129 687,70
Current Year Amount Available	£	33 749,43
Total Available for Contribution	£	163 437,13
Accounting Fees	£	500,00
Foreign payments	£	3 500,00
Bank Charges	£	15,00
Closing Funds Surplus	£	159 422,13
Current Liabilities		
Trade & Other Payables	£	-
TOTAL EQUITY & LIABILITIES	£	159 422,13



THANDA

WWW.THANDA.ORG



FOLLOW



GIVE



CONNECT



THANDA UK
Receipts and Payments Account

Year start date		Year end date	
For the year from	1-Jul-23	To	30-Jun-24

Receipts and payments

	2023-24	2023-24	2023-24	2023-24
	Unrestricted funds	Restricted funds	Total funds	Total funds
	£	£	£	£
Receipts				
Donations, legacies and similar income				
Membership subscriptions	-	-	-	-
Donations	33,749	-	33,749	33,749
Legacies	-	-	-	-
Gift Aid	-	-	-	-
Other similar income	-	-	-	-
Sub total	33,749	-	33,749	33,749
Grants				
Grant	-	-	-	-
Other grants	-	-	-	-
Sub total	-	-	-	-
Fundraising (gross)				
Detail 1	-	-	-	-
Detail 2	-	-	-	-
Other fundraising activities	-	-	-	-
	-	-	-	-
Sub total	-	-	-	-
Investment income				
Bank interest	-	-	-	-
Building Society interest	-	-	-	-
Other investment income	-	-	-	-
	-	-	-	-
	-	-	-	-
Sub total	-	-	-	-
Total Gross Income	33,749	-	33,749	33,749
Asset and investment sales, etc.	-	-	-	-
Total receipts	33,749	-	33,749	33,749

THANDA UK

Receipts and Payments Account

	Year start date	Year start date	Year start date	Year end date
For the year from	1-Jul-23		1-Jul-23	To 30-Jun-24

Receipts and payments


	2023-24	2023-24	2023-24	2023-24
	Unrestricted funds	Restricted funds	Total funds	Total funds
	£	£	£	£
Payments				
Charitable Payments				
Consultancy fee	-	-	-	-
Rent	-	-	-	-
Water	-	-	-	-
Electricity and Gas	-	-	-	-
Insurance	-	-	-	-
Repairs and Renewals	-	-	-	-
Materials and equipment	-	-	-	-
Printing and photocopying	-	-	-	-
AGM and trustee expenses	-	-	-	-
Bank Charges	15	-	15	15
Accountants Fee	500	-	500	500
Other costs detail 3	3,500	-	3,500	3,500
		-	-	-
	-	-	-	-
	-	-	-	-
Sub total	4,015	-	4,015	4,015
Fundraising expenses				
Detail 1	-	-	-	-
Detail 2	-	-	-	-
Detail 3	-	-	-	-
Other fundraising costs	-	-	-	-
Sub total	-	-	-	-
Total Gross Expenditure	4,015	-	4,015	4,015
Asset and investment purchases, etc.	-	-	-	-
Total payments	4,015	-	4,015	4,015
Net of receipts/(payments)	29,734	-	29,734	29,734
Cash funds last year end	129,688	-	129,688	129,688
Cash funds this year end	159,422	-	159,422	159,422

Statement of assets and liabilities at the end of the year

	2022-23	2022-23	2022-23	2023-24
	Unrestricted funds	Restricted funds	Total funds	Total funds
	£	£	£	£
Cash funds				
Bank current account	159,422	-	159,422	159,422
Bank deposit account	-	-	-	-
Cash/Floats	-	-	-	-
	-	-	-	-
	-	-	-	-
Total cash funds (Agree balances with receipts and payments account(s))	159,422	-	159,422	159,422
Other monetary assets				
Tax claim	-	-	-	-
	-	-	-	-
	-	-	-	-
Sub total	-	-	-	-
Investment assets				
	-	-	-	-
	-	-	-	-
	-	-	-	-
Sub total	-	-	-	-
Non monetary assets for charity's own use				
Stock	-	-	-	-
Land and buildings	-	-	-	-
Motor vehicles	-	-	-	-
Other	-	-	-	-
	-	-	-	-
	-	-	-	-
	-	-	-	-
Sub total	-	-	-	-
Liabilities				
Accounts not yet paid	-	-	-	-
Expenses incurred but not invoiced	-	-	-	-
Subscriptions not yet paid	-	-	-	-
Loan - detail	-	-	-	-
Other liabilities	-	-	-	-
Sub total	-	-	-	-

Contingent liabilities and future obligations

Signed by one or two trustees on behalf of all the trustees
Signature



Print Name

Stephen Howard

Date of approval

15-Apr-25



Section A

Independent Examiner's Report

Report to the trustees/
members of

Charity Name
Thanda UK

On accounts for the year
ended

30 June 2024

Charity no
(if any)

1126225

Set out on pages

1 - 38

(remember to include the page numbers of additional sheets)

I report to the trustees on my examination of the accounts of the above charity ("the Trust") for the year ended 30/06/2024.

Responsibilities and
basis of report

As the charity trustees of the Trust, you are responsible for the preparation of the accounts in accordance with the requirements of the Charities Act 2011 ("the Act").

I report in respect of my examination of the Trust's accounts carried out under section 145 of the 2011 Act and in carrying out my examination, I have followed the applicable Directions given by the Charity Commission under section 145(5)(b) of the Act.

Independent
examiner's statement

I have completed my examination. I confirm that no material matters have come to my attention (other than that disclosed below *) in connection with the examination which gives me cause to believe that in, any material respect:

- accounting records were not kept in accordance with section 130 of the Act or
- the accounts do not accord with the accounting records

I have no concerns and have come across no other matters in connection with the examination to which attention should be drawn in order to enable a proper understanding of the accounts to be reached.

* Please delete the words in the brackets if they do not apply.

Signed:

Date:

09/04/2024

Name:

Deepak Bhutra

Relevant professional
qualification(s) or body
(if any):

Institute of Chartered Accountants of England and Wales

Address:

41 Ember Court

Hazel Close, London UK

NW9 5FX

Section B

Disclosure

Only complete if the examiner needs to highlight matters of concern (see CC32, Independent examination of charity accounts: directions and guidance for examiners).

Give here brief details of any items that the examiner wishes to disclose.