

THANDA UK

1 July 2020 – 30 June 2021 Annual Report



Charity Number: 1126225

15 Broad Court
Suite 6
London
WC2B 5QN

Thanda UK Annual Report

Thanda UK continued to provide valuable support to Thanda After-School, a non-profit organisation based in Mtwalume, Kwa-Zulu Natal, South Africa throughout 2020-21. This report details Thanda After-school's activities and how Thanda UK's support has contributed to empowering communities in rural South Africa.

ORGANISATIONAL OVERVIEW



Our world changed drastically during the COVID-19 pandemic height in 2020 and 2021 – in more ways than we could have ever imagined. The coronavirus pandemic has impacted everyone in different ways, but it is taking a significant toll on people living in rural communities where children's nutritional, educational, and social-emotional needs were barely being met even prior to the arrival of COVID-19. Although this global emergency necessitated myriad changes, **Thanda's organisational mission** remains the same – *to empower communities to create positive change.*

Fundraising The continuation of the Covid pandemic and the closure of international flights into and out of South Africa until October 2020 meant that the Thanda 20 event could not be held. Instead, we focused on keeping donors updated on adjustments to programmes according to Thanda After-School's Risk-Adjusted Model. Through this model, the way that activities happened changed slightly, but the goals remained the same. We also focused on online fundraising campaigns, primarily through the Global Giving platform.

Background and Current Initiatives Thanda After-School was established in 2008 to provide critically needed support for the increasing number of children who were orphaned or made vulnerable by the HIV/AIDS epidemic. Over the years, Thanda After-School has evolved to provide holistic support for **all children and families living in rural communities** throughout the Ugu District of KwaZulu-Natal. All of their project staff is hired locally – most of whom are between the ages of 18 and 35. Our solar-powered Community Centre, which is the central hub of our operations, is home to six ECD classrooms, a facilitator resource centre, and the municipality's only library, art centre, and skatepark. Our core initiatives aim to develop five lifelong learning skills: *creativity, empathy, self-esteem, perspective, and critical thinking.*



Initiative	Description
Early Learning	Gives children the foundational skills necessary for a positive start in life through inquiry-based learning and imaginative play.
Education	Through after-school programmes, extracurricular activities, and workshops/events, we aim to develop resilient, lifelong learners who are inspired to create a better world.

Initiative	Description
Organic Farming	Ongoing mentoring and support are provided to struggling local farmers to empower them to sustainably improve household nutrition, strengthen self-reliance, and build a local economy.



COVID-19 Interventions To determine how we could assist in the most sustainable way possible, we looked at fractures that existed in the Thanda community before COVID-19, and would therefore continue to be a problem after COVID-19 without an intervention. We also looked honestly at our own strengths and weaknesses, and identified the following key areas where we could assist...

Community Resource	Existing Fracture	Thanda Intervention
Local Clinics 	Water Crisis at Local Clinic	✗
	Tiny Waiting Room at Local Clinic	✗
	Lack of Emergency Vehicle	✗
Local Schools 	Water Crisis at Schools	✓
	Insufficient Classroom Space	✗
	Insufficient Number of Teachers	✗
Community 	High Unemployment Rate	✓
	Food Insecurity	✓
	Lack of Guardian Involvement in Children's Learning and Development	✓
	Vulnerable Elderly Headed Households	✓
	Lack of Access to Clean Water	✓

PROVIDING ACCESS TO WATER

In the rural community Thanda After-school serves, 83% of households collect water from a non-municipal source such as a stream or spring. Nomathemba, a community member tells us “We get water here from this well, there’s no other place where we get water because the taps are basically nonexistent, there’s never any water (in the taps), even as we speak there’s none.”

Thanda installed 98 Tippy Taps around the community, with a focus on “hot spots” like taxi stops and spaza shops. Their dedicated team was constantly traveling between neighbourhoods to continuously fill them with soap and water.



But, we needed to get the community access to safe running water!

Boreholes and Spring Protection is Thanda After-school’s long term solution for the existing fracture of water access. The organisation had ensured that over 21 000 people have access to safe drinking water by the end of June 2021, with plans to reach over 43 000 people by the end of May 2022.

Springs Made Potable	7
Boreholes Repaired	5
New Boreholes	1



“I am very happy and grateful to Thanda for giving us a source of water. We are very happy, it will definitely make a lot of change in myself and my family.”

- Mrs Mkhize



ORGANIC FARMING AND FOOD SECURITY According to census data, the annual average household income locally is at R14 600 (£730) and 51% of infants and young children in South Africa are malnourished.

With immediate school and programme closures at the start of the pandemic, children not only faced learning loss, but loss of access to feeding programmes. Thanda's library became a food parcel distribution centre to ease the effects of loss of access to nutrition in our community.

As an immediate relief for the community, Thanda diverted funding from the Feeding Programme and received funding from a number of generous funders to make and distribute food parcels to the households of children in our Early Learning, Education and Organic Farming Initiatives. Between April 2020 and June 2021 and over 365 tonnes of food were delivered to community members and neighbouring Early Learning Centres, reaching over 19 000 individuals.





“Food parcels meant more happiness because they added to the little we had left; it was going to help a lot.”
– Ngoneni Dlamini, Childs Guardian

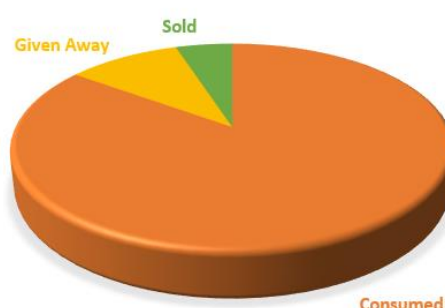
HOUSEHOLD GARDENS: We knew food parcels couldn't be a sustainable solution. Instead of developing a situation where community members are dependent on Thanda for their sustenance, we started developing empowerment ideas. This is how the HOUSEHOLD GARDEN PROGRAMME was born in December 2020, with the goal that 320 households would ‘grow their own food parcel’ from January 2021 onwards.



This **HOUSEHOLD GARDEN PROGRAMME** exploded beyond Thanda's expectations, and as of June 2021, there are 354 members enrolled, 90% of whom are female. Families are now able to feed themselves through their labor at their own homes. With an average of six people living in each **household**, we estimate that the programme impacts 1926 people.

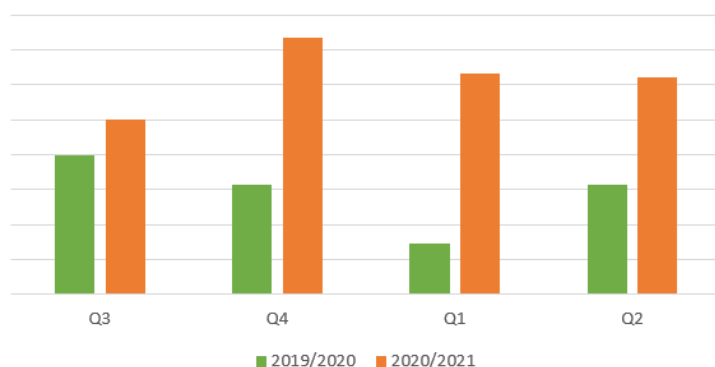
Within the first seven months of the Household Garden Programme, the enrolled households grew R200 000 (£10 000) of their own produce.

HOUSEHOLD GARDEN PRODUCE IMPACT



CHAMPIONS THROUGHOUT – Nisela Organic Farming: Due to the outdoor, socially distanced nature of Thanda's Organic Farming Initiative, Nisela farmers could continue throughout lockdowns with minor adjustments. Not only did the 394 farmers show bravery and resilience by continuing in training and mentoring programmes, but they produced more than any previous years. This played a critical role in keeping the community fed and immune systems strong – contributing toward Thanda's core goal in the programme - *empower community members to sustainably improve household nutrition, strengthen self-reliance and build a local economy.*

Nisela Production Year on Year



Between July 2020 and June 2021, Thanda's 390 Nisela Organic Farmers, grew R4 987 702 (£250 231) worth of organic produce, with 79% remaining in the community for consumption.

Thanda also saw an increase in enrollment by adding 3 new farms to the programme in 2020.

According to an official survey in 2016, only 10% of our community members are employed. BUT, 95% of our farmers are earning an income!



ENSURING CHILDREN HAVE ACCESS TO QUALITY EDUCATION: Despite the ensuing pandemic in 2020 and 2021, learning continued in the communities Thanda serves through the development of Thanda After-School's **Learning at Home programme**. Thanda developed simple-to-implement activity packs around Book Dash books, with resources and daily lesson plans for guardians to follow and implement with their children ages 5-10 years old.





24 Book Dash books have been given to **EACH CHILD** to keep at home forever!

Learning at Home Packs
13 720 delivered and we are still continuing to deliver monthly.

“He just goes into his room, takes out all his books and reads until he falls asleep. He really loves reading. We didn’t have books before these we got from Thanda. We feel so grateful to Thanda because we see that they really do love us.”

– Florance Shinga, Stembiso’s Granny on Learning at Home



In November 2020, we conducted a survey with the guardians who are leading the Learning at Home Programme with the children in our Early Learning and Education Initiatives, like Stembiso’s granny. We learned that 95% of the households are implementing the programme and are spending an average of 75 minutes learning with their children per day! Some guardians even exclaimed their joy that they too were learning new things

like creativity and alternative ways to engage with their children. The general sentiment was immense gratitude for the new opportunities for children and adults alike.

When looking back at the year and the learning time lost for most children in South Africa, we are thrilled that Thanda children had the opportunity of Learning at Home, because we were able to **replace 74% of the lost school time**.

Even though our guardians embraced their new roles as teachers with grace and love, we did not want them navigating the pandemic and becoming teachers alone, so our facilitators became a Home Visiting team that would travel from household to household to listen, guide and share with the guardians.

The team are visiting 746 households each month – ensuring the adequate support is received by guardians and children.

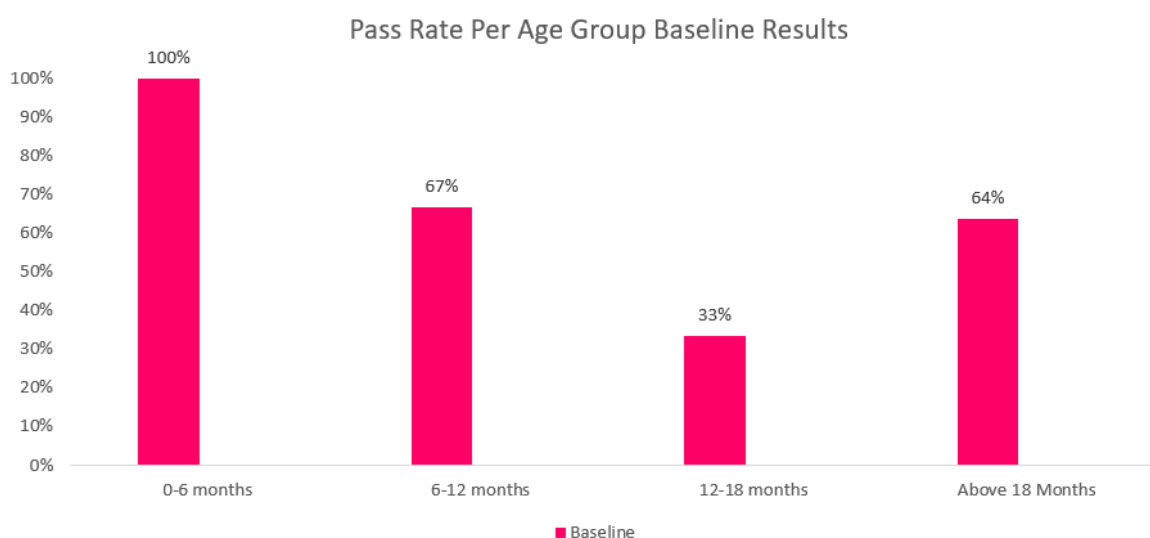


"I feel like the parents have a support system now. I've realised some of the things that the parents didn't take initiative when it comes to parenting and giving children attention, it's not because they don't actually want to, it's because they didn't trust their ability to do it. So now that we are there, you know, we journey with them."

– Janet Duma, Home Visitor

Home Visiting has been a process of INCREDIBLE discovery and has led us to continue this programme into the future. It also led us to pilot a Baby Programme in our community with the support of Siyakwazi.

THE BABY PROGRAMME: We began piloting the programme in April 2021 within the Early Learning Initiative. Whilst in July 2021 it was too soon to see the impact of the programme, the baseline score below clearly demonstrate the **NEED** for this programme. These scores represent the percentage of skills that babies in each age category are on track with for their developmental milestones.



The core objective of the Baby Programme is to build capacity of guardians with children aged 0-2 to support early learning and development before ECD – and the Pilot consists of 20 children from 19 households. We cannot wait to see the results of this programme, after just a few months of being active in the field, we are confident that this will become a key role player to setting up children for their best possible future.

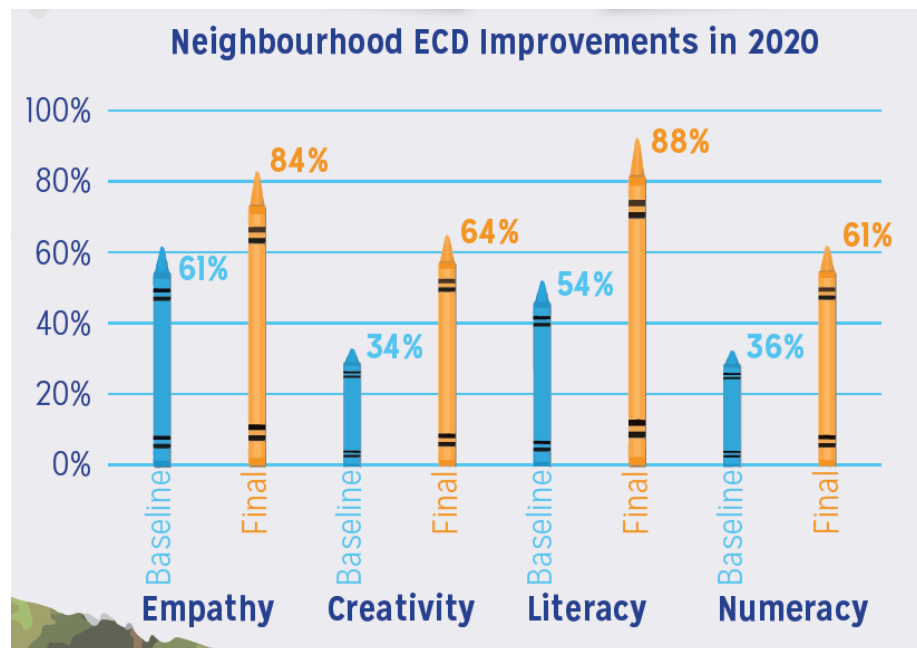
NEIGHBOURHOOD LEARNING FOR EDUCATION AND EARLY LEARNING PARTICIPANTS:

In September 2020 we started in-person learning, for small groups with a Thanda facilitator in each neighbourhood. Each neighbourhood provided a back yard and hut to use, as well as a volunteer to assist. This structure helped to ensure that COVID-19 outbreaks were contained to each neighbourhood, but it also created a new sense of community ownership over children's learning and development.



"I feel at peace now because I was upset when learning came to a halt at the beginning of lockdown. When I heard that Thanda children needed space to hold group lessons, I figured, since I have a spare two-room cottage... I'll let them use it. So that the children can learn for the remaining months. Let them gain knowledge."
- Mrs Zandile Khomo

Thanda's Neighbourhood ECD Programme supported 220 children during the reporting period of July 2020 to June 2021, and the M&E results have demonstrated a 61% improvement in four key skills areas! One of the most impressive skills improvements is creativity with 88% increase from the baseline scores.



The Fun Foundations Participants also demonstrated large increases in their skills development.



THANDUKWAZI & SIYAZAZI PROGRAMME: Thanda's After-school Programme for children in Grade R-3, also moved into neighbourhoods in September 2020. Here, children continued to play and learn with their friends. In December 2020, Siyazazi started again in-person for children ages 11-16, but it was closed until March 2021 due to the second wave of Covid, which cost the lives of many members of the local community where Thanda operates.

With the many ups and downs due to Covid, we were pleased with Thanda After-School's ability to adjust to the changing situation and with our ability to continue fundraising online.

Thanda's Risk Adjusted Approach During the Pandemic

Since the start of the pandemic, we have moved continuously between three risk-adjusted versions of our programmes depending on infection rates.



THANDA UK - FINANCES
1 JULY 2020 - 30 JUNE 2021

ASSETS

Non-Current Assets

Fixed Assets	£0.00
--------------	-------

Current Assets

Bank and Cash Balances	£104,847.20
------------------------	-------------

TOTAL ASSETS

	£104,847.20
--	-------------

Funds

Opening Funds Surplus	£27,402.88
-----------------------	------------

Current Year Amount Available	£89,095.32
-------------------------------	------------

Total Available for Contribution	£116,498.20
----------------------------------	-------------

Consultancy Fees	£11,651.00
------------------	------------

Closing Funds Surplus	£104,847.20
-----------------------	-------------

Current Liabilities

Trade & Other Payables	£0.00
------------------------	-------

TOTAL EQUITY & LIABILITIES

	£104,847.20
--	-------------

THANDA UK

Receipts and Payments Account

Year start date

Year end date

For the year from	1-Jul-20	To	30-Jun-21
-------------------	----------	----	-----------

Receipts and payments

	2020-21 Unrestricted funds £	2020-21 Restricted funds £	2020-21 Total funds £	2020-21 Total funds £
Receipts				
Donations, legacies and similar income				
Membership subscriptions	-	-	-	-
Donations	80,519	-	80,519	80,519
Legacies	-	-	-	-
Gift Aid	8,576	-	8,576	8,576
Other similar income	-	-	-	-
Sub total	89,095	-	89,095	89,095
Grants				
Grant	-	-	-	-
Other grants	-	-	-	-
Sub total	-	-	-	-
Fundraising (gross)				
Detail 1	-	-	-	-
Detail 2	-	-	-	-
Other fundraising activities	-	-	-	-
	-	-	-	-
Sub total	-	-	-	-
Investment income				
Bank interest	-	-	-	-
Building Society interest	-	-	-	-
Other investment income	-	-	-	-
	-	-	-	-
	-	-	-	-
Sub total	-	-	-	-
Total Gross Income	89,095	-	89,095	89,095
Asset and investment sales, etc.	-	-	-	-
Total receipts	89,095	-	89,095	89,095

THANDA UK

Receipts and Payments Account

	Year start date	Year start date	Year start date	Year end date
For the year from	1-Jul-20		1-Jul-21	To 30-Jun-21

Receipts and payments

	2020-21	2020-21	2020-21	2020-21
	Unrestricted funds	Restricted funds	Total funds	Total funds
	£	£	£	£
Payments				
Charitable Payments				
Consultancy fee	11,651	-	11,651	11,651
Rent	-	-	-	-
Water	-	-	-	-
Electricity and Gas	-	-	-	-
Insurance	-	-	-	-
Repairs and Renewals	-	-	-	-
Materials and equipment	-	-	-	-
Printing and photocopying	-	-	-	-
AGM and trustee expenses	-	-	-	-
Bank Charges	-	-	-	-
Accountants Fee	-	-	-	-
Other costs detail 3	-	-	-	-
	-	-	-	-
	-	-	-	-
	-	-	-	-
Sub total	11,651	-	11,651	11,651
Fundraising expenses				
Detail 1	-	-	-	-
Detail 2	-	-	-	-
Detail 3	-	-	-	-
Other fundraising costs	-	-	-	-
Sub total	-	-	-	-
Total Gross Expenditure	11,651	-	11,651	11,651
Asset and investment purchases, etc.				
	-	-	-	-
Total payments	11,651	-	11,651	11,651
Net of receipts/(payments)	77,444	-	77,444	77,444
Cash funds last year end	27,403	-	27,403	27,403
Cash funds this year end	104,847	-	104,847	104,847

Statement of assets and liabilities at the end of the year

	2020-21	2020-21	2020-21	2020-21
	Unrestricted funds	Restricted funds	Total funds	Total funds
	£	£	£	£
Cash funds				
Bank current account	-	-	104,847	104,847
Bank deposit account	-	-	-	-
Cash/Floats	-	-	-	-
	-	-	-	-
	-	-	-	-
Total cash funds (Agree balances with receipts and payments account(s))	-	-	104,847	104,847
Other monetary assets				
Tax claim	-	-	-	-
	-	-	-	-
	-	-	-	-
Sub total	-	-	-	-
Investment assets				
	-	-	-	-
	-	-	-	-
	-	-	-	-
Sub total	-	-	-	-
Non monetary assets for charity's own use				
Stock	-	-	-	-
Land and buildings	-	-	-	-
Motor vehicles	-	-	-	-
Other	-	-	-	-
	-	-	-	-
	-	-	-	-
	-	-	-	-
Sub total	-	-	-	-
Liabilities				
Accounts not yet paid	-	-	-	-
Expenses incurred but not invoiced	-	-	-	-
Subscriptions not yet paid	-	-	-	-
Loan - detail	-	-	-	-
Other liabilities	-	-	-	-
Sub total	-	-	-	-

Contingent liabilities and future obligations

Signed by one or two trustees on behalf of all the trustees

Signature




Print Name

Stephen Howard

Date of approval

30-Apr-22

**CHARITY COMMISSION
FOR ENGLAND AND WALES****Independent examiner's
report on the accounts**

Report to the trustees/ members of		Charity Name: Thanda UK	
On accounts for the year ended		30 June 2021	Charity no (if any) 1126225
Set out on pages		1 - 12	
Responsibilities and basis of report		<p>I report to the trustees on my examination of the accounts of the above charity ("the Trust") for the year ended 30/06/2022</p> <p>As the charity trustees of the Trust, you are responsible for the preparation of the accounts in accordance with the requirements of the Charities Act 2011 ("the Act").</p> <p>I report in respect of my examination of the Trust's accounts carried out under section 145 of the 2011 Act and in carrying out my examination, I have followed the applicable Directions given by the Charity Commission under section 145(5)(b) of the Act.</p>	
Independent examiner's statement		<p>I have completed my examination. I confirm that no material matters have come to my attention (other than that disclosed below *) in connection with the examination which gives me cause to believe that in, any material respect:</p> <ul style="list-style-type: none">• accounting records were not kept in accordance with section 130 of the Act or• the accounts do not accord with the accounting records <p>I have no concerns and have come across no other matters in connection with the examination to which attention should be drawn in order to enable a proper understanding of the accounts to be reached.</p> <p><i>* Please delete the words in the brackets if they do not apply.</i></p>	
Signed:			Date: 28/04/2022
Name:		Deepak Bhutra	
Relevant professional qualification(s) or body (if any):		Institute of Chartered Accountants in England and Wales	
Address:		5 Matisse House Cassio Place Watford WD18 7AL	
		Only complete if the examiner needs to highlight matters of concern (see CC32, Independent examination of charity accounts: directions and guidance for examiners).	
Give here brief details of any items that the examiner wishes to disclose.			

