

FB copy
(To sign and
return)

Company registration number: 06570835

Charity registration number: 1125158

Scunthorpe United FC Community Sports & Education Trust

(A company limited by guarantee)

Annual Report and Financial Statements

for the Year Ended 30 June 2022

Forrester Boyd
26 South Saint Mary's Gate
Grimsby
North East Lincolnshire
DN31 1LW

Scunthorpe United FC Community Sports & Education Trust

Contents

Reference and Administrative Details	1
Trustees' Report	2 to 10
Independent Examiner's Report	11
Statement of Financial Activities	12
Balance Sheet	13
Statement of Cash Flows	14
Notes to the Financial Statements	15 to 23

Scunthorpe United FC Community Sports & Education Trust

Reference and Administrative Details

Trustees	L Butler, (Accountant)
	A Martin, (Grant Advisor)
	A Khan, (Sport Development Officer)
	M McCarthy, (Governance Trustee)
	A Saunderson, (Funding Partnership Officer)
	C Mumby, (Football Secretary)
Secretary	L Butler, (Accountant)
Senior Management / Leadership Team	S Maxfield
	W Johnson
	G Cooper
	L Ridley
Charity Registration Number	1125158
Company Registration Number	06570835
Registered Office	The charity is incorporated in England and Wales.
	Glanford Park
	Jack Brownsword Way
	Scunthorpe
	North Lincolnshire
Independent Examiner	DN15 8TD
	Forrester Boyd
	26 South Saint Mary's Gate
	Grimsby
	North East Lincolnshire
Bankers	DN31 1LW
	Lloyds Bank plc
	High St Scunthorpe

Scunthorpe United FC Community Sports & Education Trust

Trustees' Report

The trustees, who are directors for the purposes of company law, present the annual report together with the financial statements of the charitable company for the year ended 30 June 2022.

Chairman's Introduction

As Chair of Scunthorpe United Sports and Education Trust, I am especially proud that we can report a productive and sustainable level of performance, during the partial continuation of Covid 19 restrictions, which indeed required ongoing adjustment of activities which all staff have demonstrated their ability to adapt and continued development to use technology to support successful delivery of SUSET activities. Staff changes had to be introduced during this time but this did not impact negatively with the CEO managing both operations and staff changes effectively. Trustees were able to use digital meetings to ensure the Trust was able to move through the unprecedented circumstances of Covid 19.

The Trust's focus continues to honour the key themes around Sports Participation, Health and Wellbeing, Education and Social inclusion and has continued to deliver the National Citizen Service programme (albeit a much changed delivery) during this period of review. These represent local community needs and the Trusts commitment to the aims and objectives of our charitable Trust, this is regularly reviewed with our staff who are 'out there' on the ground.

Summer 2021 included usual aspect of a residential delivery of the National Citizen Programme (NCS) however the NCS 2022 has been changed to a shortened version and we anticipate further change as the programme reaches its final year under the current funding programme.

Our ongoing commitment to ensure our operational delivery is of high quality despite the many challenges that this year has presented and we have once again achieved the required benchmarks through the Premier Leagues Capability Code of Practise (CCOP). This is not an easy or quick process and through our relationship with external consultants, the Trust has been successful in ensuring that self- assessment and quality remains at the heart of what we do and the annual validation of our CCOP results are an example of strong commitment to this, both within the Trustees and more importantly within all staff working at the Trust.

We continue to develop the Trust in terms of our people, our education and community activities and our financial performance, however it cannot be ignored that Covid 19, for the second year put significant pressure on the Trust, the employees and subsequently the delivery of activities across the themes.

As in previous years the intention to build a secure level of reserves, providing security for both participants and staff has remained a steadfast ambition and we have again been able to achieve this. Additionally we wish the Trust to be in a financially strong position that will allow consideration of any investment in opportunities that may present, that would promote further growth in our primary areas of work.

It has been necessary for staffing adjustments to be made throughout this difficult period however changes made have supported sustainability rather than reduction in delivery. Advice from our CEO and timely work by the treasurer has ensured the continued stability of the Trust.

Whilst the Trust is financially stable, it cannot be ignored that the position of Scunthorpe United within the English Football League (EFL) during this reporting period will have a significant impact in the funding profile going forward, as relegation to the National League will leave the Trust outside the EFL for the first time and therefore will not receive the same level of core funding nor the support that is available, for example, with the CCOP as discussed above. Prudent measures in both staffing and expenditure this year will help mitigate any financial losses and discussions are ongoing as to other measures the Trust might take to ensure minimal disruption to our delivery and reputation within the community.

Finally I would like to extend my personal thanks to everyone who continue to support the Trust. My Fellow Trustees, with their continued expertise, to the committed and brilliant staff team who have really had to change operational delivery throughout the Covid pandemic and to our CEO who has ensured partners and our community remained the priority during this period and to Scunthorpe United FC who despite their difficulties, have remained supportive and finally but not least to our community of schools, colleges, partners and young people who have stuck with us throughout this time and have been part of another successful year for the Trust.

Scunthorpe United FC Community Sports & Education Trust

Trustees' Report

Objectives and activities

Objects and aims

Vision and Strategy

SUSET uses the power of sport to instigate positive change and outcome to thousands of people within the local community. We work closely with the football club, schools, the local authority and like-minded organisations and we have an open mind to any opportunities that contribute to the aims of the Trust. Our strategy reflects the needs of our community and our experience of where we are able to make the biggest positive outcomes.

Our themes of work and definition of are:

Sports Participation:

To be a lead provider of sport opportunities, primarily football, within our community, including schools.

Health and Wellbeing:

To take every opportunity to embed the feeling of a positive physical, mental and social wellbeing across all programmes, generations and the Trust.

Education:

To deliver education and training programmes, supporting colleges and young people to reach their potential and deliver with excellence.

Inclusion:

To inspire and create opportunities for disadvantaged members of our community promoting a sense of belonging and achievement.

Our impact across our themes are measured against key performance indicators (KPI's).

- Participation numbers- this is an area that has partially been affected by Covid as restrictions curtailed much of the delivery during this period –despite this there were 5500 unique participants
- NCS participation numbers were 188 Summer 98% of contract and 146 Autumn 208% of contract - New model of the programme with school delivery, Baysgarth Secondary School became our partner for the first time
- Education participation numbers were 45 students on our football scholarship studying a NCFE Level 3 qualification. We also had 6 degree students, having successfully completed the course. This number continues to be stable and is proving a popular alternative choice with FE and HE students

Our strategy with objectives as below, has been significantly curtailed in terms of performance due to the operational changes required by the Covid pandemic and the prudent measures required for sustainability should SUFC be relegated from the EFL.

1. Increase our presence within schools

2. Create more opportunities for those disadvantaged groups

3. Working with SUFC to identify mutually beneficial partnership opportunities (despite Club issues, the Trust is an intrinsic part of SUFC and will remain so whatever the future holds for the Club)

4. Develop our education programme in partnership with North Lincolnshire FE Colleges (there has been significant changes in Management of our partner college and at this stage we do not know the total impact that this will have but continued dialogue hopefully our relationship will continue to flourish)

In consideration of all the external factors the agreed number of KPI's which cover all existing programmes fluctuated throughout the year and it is testament to all staff that operationally we continued to deliver across our themes.

Scunthorpe United FC Community Sports & Education Trust

Trustees' Report

Public benefit

The trustees confirm that they have complied with the requirements of section 17 of the Charities Act 2011 to have due regard to the public benefit guidance published by the Charity Commission for England and Wales.

Social investment policies

We are pleased to be able to report that the Trust continues to be engaged in an exciting possible capital and revenue grant application with partners in the community that will offer significant participation and education opportunities. However, additionally, we are currently seeking possible new partners as the envisioned grant application may now be curtailed to external factors beyond our control within the existing partner.

We continue to ensure we balance grant opportunities with our objectives and we will continue to give sustainability of the Trust a priority, any future grant applications demonstrates our commitment to seek and develop our themes.

It is vital that positive outcomes that the Trust seeks across all themes are represented in any grant applications in the future.

Use of volunteers

Volunteer participation is both rewarding to the Trust and to the volunteer. In particular our thanks go to those who have supported the NCS programme this year as it was very different, we cannot measure their contribution in terms of the accounts but equally recognise the part they play in the Trusts successes.

Scunthorpe United FC Community Sports & Education Trust

Trustees' Report

Achievements and performance

The Year 2021/2022 Highlights

As Trustees we are very pleased that this year, despite changes and continued operational challenges, we believe it can be regarded as successful. There hasn't been any massive increase across our activities but it is very gratifying that there has not been such a decrease that would cause any major changes to be made.

Sports Participation:

PPA Cover - this body of work means we deliver PPA cover to approximately 1,000 pupils a week. Breakfast/ After School clubs/Lunch time clubs continue to form part of the programme. The team delivered on all our KPIS, through a mixture of face to face and online sessions. Despite Covid restrictions hitting this area of delivery we didn't lose any contracts which is testament to the fantastic work by the staff.

Primary Stars - Our project has 3 aspects, Maths & Literacy intervention, Team-Teach PE lessons and an extra- curricular activity. As with the PPA cover, sessions continued wherever possible through both face to face and online learning. This is a popular activity and all the KPI's were achieved.

Holiday Soccer Camps - This area of work was massively hit during Covid due to restrictions. When permitted under the Covid restrictions we delivered Soccer Camps. During this period and they remain popular averaging upwards of 100 unique participants per camp.

NCS/Social Inclusion

We have continued the delivery of the PLCF Kicks programme and On Target Social interventions across 5 sites across the Borough which attract over 100 participants per week. Further sessions are delivered for those with both mental and physical disabilities. Sadly during this period there were no over 50's walking football due to declining numbers but those participants who wished to continue to be active were signposted to alternative opportunities with our partners in the community.

National Citizen Service, has now become an integral part of the Trust, we have delivered to 334 young people aged 16-17 in the Scunthorpe area during the 21/22 year. Our programme was awarded programme of the week (16/12/2021) during this year. This is a prestigious award within the NCS world and the Trust is proud to have achieved this in challenging circumstances.

NCS provides the opportunity to engage with the local community on awareness issues through social action projects benefitting not only the recipients of fundraising events but also challenging the participants to work as a team. The team building mantra is evolved during the residential programme where a whole host of activities develop some key skills needed to fully embrace the NCS experience. We continue as a Trust to be placed in very high regard by the NCS National Trust as we continue to achieve great results in this programme. The NCS team are a credit to the Trust as year on year they have over achieved and this year have had National recognition for it.

Education:

The Year 12/13 education programme has also had to alter delivery during this period to ensure continued success. We now operate a partially remote and on site delivery. In 2021/22 we had 44 students registered on to the football scholarship. We also had 6 students studying on our degree in partnership with the University of South Wales. This programme is a popular alternative to FE/HE students and continues to be a developing programme with the University,

Professional development and training within the Trust remains a priority, equipping staff with skills required for them to diligently deliver the strategic objectives.

Scunthorpe United FC Community Sports & Education Trust

Trustees' Report

Financial review

Fundraising:

During this year there has been less activity in applying for grants, this area of activity is increasingly more difficult in the current economic climate, however we continue to be successful when opportunities arise.

The majority of funding is largely from fees and charges for the delivery of a specific service/s and contracts that the Trust delivers. It is the policy of the Trust to calculate full fee recovery for the delivery of services.

Financial Results:

The total income for the year was £569,978 which resulted in a net profit of £107,637. The financial results and notes for the year are detailed later in the report.

Policy on reserves

The Trustees have agreed that the Trust should establish and maintain a free (general reserve) sufficient to cover the Trusts planned expenditure for at least 3 months thus ensuring if it ever became necessary, to conduct an orderly reduction or wind down of operations, if the major sources of income were reduced to a level below which it was no longer practicably possible for the Trust to continue its operations.

The level of free reserves at June 2022 was £893,522, including £6,879 which can only be realised by disposing of tangible fixed assets.

There are also restricted reserves of £4,434 giving total reserves of £897,956.

The Trusts unrestricted reserves are represented by either cash in the bank or in hand.

Budget Review Policy:

The use of reserves and subsequent impact on the above policy will be reviewed and approved by the Board of Trustees. Any use of the reserves will need a robust business case submitted to the Board for approval.

Shortfall Policy:

The Board will monitor shortfall of reserves monthly with particular reference to the current risk register, the current budget and forecasted budget expectations, also paying attention to the full 3 months Reserves Policy .

Excess and Spend Policy:

The Board will consider reserves expenditure if the reserves policy has been met. The business case must be approved by the full Board.

(As this year the level of reserves has been met the Board are looking at opportunities that the Trust may wish to invest in, see below).

Investment policy and objectives

The level of cash reserves does not require a complex investment policy. The Treasurer will advise the Board of possible suitable investment opportunities, a vote of the full board would agree to any proposals. The Board have committed to a grant application with partner and this will require an investment of £ 250k should the application be successful. We believe this to be a contribution to the sustainability of the Trust going forward. Whilst this proposal is now under threat due to external factors beyond our control it has been decided that the Trust will keep the £250K identified in reserves for any potential large grant application or growth opportunity going forward

Scunthorpe United FC Community Sports & Education Trust

Trustees' Report

Plans for future periods

Aims and key objectives for future periods

We plan to continue with the Futsal programme, which has been very successful and further expand on the education part of the Trust. We are continuing with NCS which is being reviewed for the summer 2023 season, which we have entered into a joint bid with Grimsby Town Trust and Hull City Trusts. We have also gone through rebranding of the Trust and now are known as The Iron Foundation, the ethos of the Trust continues to be the same, but we want to remind people we are here and what we are about.

Structure, governance and management

Nature of governing document

Scunthorpe United Sports and Education Trust is a Charitable Company limited by guarantee. Company Number 06570835 and Charity Number 1125158.

The company was established under a Memorandum of Association which established the objects and powers of the charitable company and is governed by its Articles of Association.

Recruitment and appointment of trustees

The current Trustees are listed on page 1. Trustees are recruited according to their experience, skills and knowledge.

The Trust must have at least 3 Trustees serve at any one time. There is no maximum limit on the number of Trustees, however the Trustees believe the optimum number would be no more than 8 Trustees.

In the year of the 2021 -2022 no new Trustees have been appointed, (other than the change of personnel due to changes at SUFC , SUFC always have a minimum of one Trustee on our Board) however Trustees continue to have an area of expertise to support the Trust development and their knowledge is put to best use for the Trust.

All trustees are mindful of the needs of the charity and should a new trustee be proposed, the safer recruitment process would be followed.

Trustees are required to disclose any conflicts of interest and withdraw from any decision if this arises.

Induction and training of trustees

Part of our Articles state that we must have a club representative on the Trust board, so this is why we have had Trustees resigning and new Trustees appointed. We are always looking for new Trustees but its important they believe in the Trusts values and aims, and must bring a some skill set to the board. Training and advice is offered to Trustees and all members of the trust.

Arrangements for setting key management personnel remuneration

The pay policy for the CEO (Senior Management) is reviewed annually and normally (subject to achievements, financial and physical) increased in accordance with average earnings.

Operating Leads have their pay reviewed annually during the employee review.

Trustees agree pay rises in accordance to KPI's and exceeding of targets.

The Trust operates a discretionary annual bonus scheme, which is also dependant of the Trusts' financial stability.

Scunthorpe United FC Community Sports & Education Trust

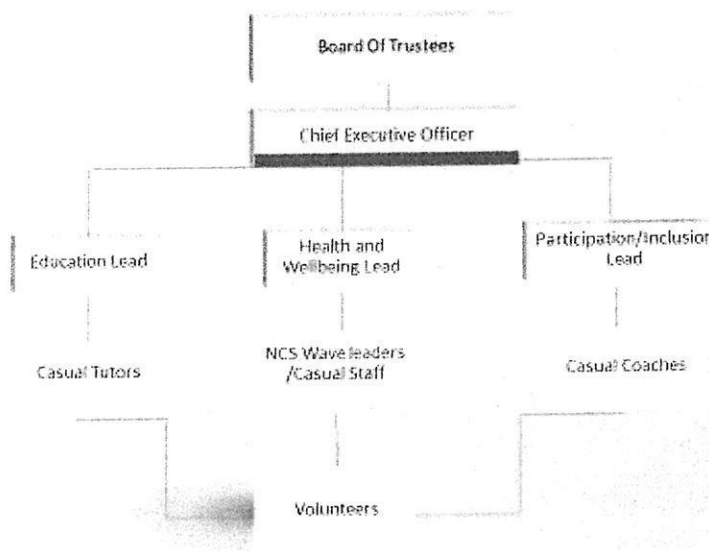
Trustees' Report

Organisational structure

The Trust is overseen by a board of Trustees who have been selected for their individual areas of expertise that they can bring to the Trust and support and are an advisory role to the Chief Executive Officer (CEO), the Trust on a day to day basis, is managed by this role.

Areas of work within the themes are managed by designated staff roles.

Our current structure is as below, as at June 2022.



The Trustees meet at least quarterly to review the performance of the Trust and consider staff changes in line with emerging projects and developments.

Relationships with related parties

Scunthorpe United Football Club

The Trust since its inception has had an excellent relationship with the club whilst being a totally independent and separate entity. The club has a representative on the Board and there are many examples of working in unison with the club. In the PFA player ambassador scheme we use first team players to support a number of our projects. Team players are a fine example and role models to local youngsters regularly attending trust events and dedicating time and effort to support what we are doing here at the Trust and we would like continue to work with the PFA in developing our links with the players and community however the club were sadly relegated in May 2022 and as previously written this will now start to impact on the Trust with almost immediate effect. Core funding will be reduced and the PFA link as described above will not be afforded to the Trust, however this will not stop the Trust in its endeavour to ensure players can continue to be promoted as role models within the delivery of the activities.

Note : Covid restrictions during this reporting period has severely hindered this area of work but nonetheless has not changed the commitment of SUFC to the Trust.

The Trustees and CEO identify and review business and operational risks and there is a risk assessment which identifies any impacts of any risk and then advises of the step to mitigate the risks.

Scunthorpe United FC Community Sports & Education Trust

Trustees' Report

Principal Risks and Uncertainty

Major risks and management of those risks

Safeguarding

As the majority of the Trusts activities involves children, children are at the heart of the Trust it is imperative that the Trust ensures full compliance with law and best practice relating to children, young people and the vulnerable, their safety and welfare.

Loss of major, regular funding streams

The loss of a regular funding stream would mean the cessation of the activity there may be a time delay to actually save the cost of any such losses. It is critical that the Trust endeavours to protect the revenue that contributes to fixed costs.

Contractual arrangements

Changes to National policy and funding from the wider football family is also dependant on the league position of SUFC, should the team be relegated to the National league core funding would subsequently reduce. A £35,000 loss will be faced next season.

Covid-19

Covid19 Pandemic and further lockdown may have a detrimental effect on the NCS delivery and schools programme. Awareness of NCS Summer 2022 will be the last one under current funding model, discussions are already taking place to ensure minimal disruption.

Employment of disabled persons

The Trust is committed to be an equal opportunities employer.

Employee involvement

It is the Trusts policy to keep all employees informed of the Trusts development. Employees are encouraged to contribute their ideas and the Trust has Employee Reviews annually. Training and personal development can be discussed at these meetings.

Scunthorpe United FC Community Sports & Education Trust

Trustees' Report

Fundraising

The organisation does not carry out regular fundraising activities with the public. We do not work with any external professional fundraisers.

Employees

The Trustees recognise the huge contribution that salaried staff make in ensuring continued development and success and wish to extend their gratitude and appreciation of their hard work, particularly in a year of unprecedented pressure and constant change.

Sessional Casual Coaches

The Trustees recognise without the commitment by this group many activities would not be able to be delivered and see this group as invaluable to the sustainability of the Trust so wish to extend our thanks to them.

Environment

The Trust is committed to compliance and best practice in all aspects of the business that will contribute to protecting and preserving the environment.

Safeguarding

Within our CCOP we were subject to a rigorous assessment of our safeguarding Policy and procedures. We were deemed to have met all the safeguarding standards and any areas of weakness we addressed immediately then followed by another assessment. Despite relegation and the loss of the CCOP to us the Trust will remain committed to achieving across the assessment themes and will work with our consultants to ensure that safeguarding remains a high priority within the Trust.

The level of accountability for the Trust is very high while we work with high volumes of children and young people. The Trust remains committed to be ready for any change in risks that our participants may face. We will ensure staff are up to date with their knowledge and skills in this area. The Trust works with the football Club and all partners, including the English Football League (EFL) to ensure all safeguarding practices at the Trust are promoting the utmost safety and welfare of children, young people and those most vulnerable. Relegation will change the football family for the Trust but safeguarding practices will continue to the highest standard and will not be compromised.

Creditor payment policy

The trust policy is to agree contractual payments as per any agreements with used suppliers. Where possible for smaller suppliers recognising cash flow issue, it is the policy to pay in full on receipt of good received.

Small companies provision statement

This report has been prepared in accordance with the small companies regime under the Companies Act 2006.

The annual report incorporating a Directors Report, was approved by the trustees of the charity, as the company directors, on 21 March 2023 and signed on its behalf by:



A Saunderson
Trustee

Scunthorpe United FC Community Sports & Education Trust

Independent Examiner's Report to the trustees of Scunthorpe United FC Community Sports & Education Trust ('the Company')

I report to the charity trustees on my examination of the accounts of the Company for the year ended 30 June 2022.

Responsibilities and basis of report

As the charity's trustees of the Company (and also its directors for the purposes of company law) you are responsible for the preparation of the accounts in accordance with the requirements of the Companies Act 2006 ('the 2006 Act').

Having satisfied myself that the accounts of the Company are not required to be audited under Part 16 of the 2006 Act and are eligible for independent examination, I report in respect of my examination of your charity's accounts as carried out under section 145 of the Charities Act 2011 ('the 2011 Act'). In carrying out my examination I have followed the Directions given by the Charity Commission under section 145(5)(b) of the 2011 Act.

Independent examiner's statement

Since the Company's gross income exceeded £250,000 your examiner must be a member of a body listed in section 145 of the 2011 Act. I confirm that I am qualified to undertake the examination because I am a member of ICAEW, which is one of the listed bodies.

I have completed my examination. I confirm that no matters have come to my attention in connection with the examination giving me cause to believe:

1. accounting records were not kept in respect of Scunthorpe United FC Community Sports & Education Trust as required by section 386 of the 2006 Act; or
2. the accounts do not accord with those records; or
3. the accounts do not comply with the accounting requirements of section 396 of the 2006 Act other than any requirement that the accounts give a 'true and fair view' which is not a matter considered as part of an independent examination; or
4. the accounts have not been prepared in accordance with the methods and principles of the Statement of Recommended Practice for accounting and reporting by charities [applicable to charities preparing their accounts in accordance with the Financial Reporting Standard applicable in the UK and Republic of Ireland (FRS 102)].

I have no concerns and have come across no other matters in connection with the examination to which attention should be drawn in this report in order to enable a proper understanding of the accounts to be reached.

C Jensen

.....
Carrie Anne Jensen ACA
ICAEW

26 South Saint Mary's Gate
Grimsby
North East Lincolnshire
DN31 1LW

21 March 2023

Scunthorpe United FC Community Sports & Education Trust

Statement of Financial Activities for the Year Ended 30 June 2022 (Including Income and Expenditure Account and Statement of Total Recognised Gains and Losses)

	Note	Unrestricted funds £	Restricted funds £	Total 2022 £	Total 2021 £
Income and Endowments from:					
Donations and legacies	3	516,967	7,968	524,935	622,085
Other trading activities	4	45,004	-	45,004	31,400
Investment income	5	39	-	39	23
Total income		<u>562,010</u>	<u>7,968</u>	<u>569,978</u>	<u>653,508</u>
Expenditure on:					
Raising funds	6	(321,839)	(3,534)	(325,373)	(263,822)
Charitable activities	7	(136,968)	-	(136,968)	(101,382)
Total expenditure		<u>(458,807)</u>	<u>(3,534)</u>	<u>(462,341)</u>	<u>(365,204)</u>
Net income		<u>103,203</u>	<u>4,434</u>	<u>107,637</u>	<u>288,304</u>
Net movement in funds		103,203	4,434	107,637	288,304
Reconciliation of funds					
Total funds brought forward		790,319	-	790,319	502,015
Total funds carried forward	17	<u>893,522</u>	<u>4,434</u>	<u>897,956</u>	<u>790,319</u>
	Note	Unrestricted funds £	Continuing operations 2021 £	Discontinued operations 2021 £	Total 2021 £
Income and Endowments from:					
Donations and legacies	3	622,085	622,085	-	622,085
Other trading activities	4	31,400	31,400	-	31,400
Investment income	5	23	23	-	23
Total income		<u>653,508</u>	<u>653,508</u>	<u>-</u>	<u>653,508</u>
Expenditure on:					
Raising funds	6	(263,822)	(263,822)	-	(263,822)
Other expenditure	7	(101,382)	(101,382)	-	(101,382)
Total expenditure		<u>(365,204)</u>	<u>(365,204)</u>	<u>-</u>	<u>(365,204)</u>
Net income		<u>288,304</u>	<u>288,304</u>	<u>-</u>	<u>288,304</u>
Net movement in funds		288,304	288,304	-	288,304
Reconciliation of funds					
Total funds brought forward		502,015	502,015	-	502,015
Total funds carried forward	17	<u>790,319</u>	<u>790,319</u>	<u>-</u>	<u>790,319</u>

Scunthorpe United FC Community Sports & Education Trust

(Registration number: 06570835)
Balance Sheet as at 30 June 2022

	Note	2022 £	2021 £
Fixed assets			
Tangible assets	13	6,879	19,391
Current assets			
Debtors	14	32,991	36,245
Cash at bank and in hand		<u>975,414</u>	<u>826,132</u>
		1,008,405	862,377
Creditors: Amounts falling due within one year	15	<u>(117,328)</u>	<u>(91,449)</u>
		891,077	770,928
Net current assets		<u>897,956</u>	<u>790,319</u>
Net assets			
Funds of the charity:			
Restricted income funds			
Restricted funds		4,434	-
Unrestricted income funds			
Unrestricted funds		<u>893,522</u>	<u>790,319</u>
Total funds	17	<u>897,956</u>	<u>790,319</u>

For the financial year ending 30 June 2022 the charity was entitled to exemption from audit under section 477 of the Companies Act 2006 relating to small companies.

Directors' responsibilities:

- The members have not required the charity to obtain an audit of its accounts for the year in question in accordance with section 476; and
- The directors acknowledge their responsibilities for complying with the requirements of the Act with respect to accounting records and the preparation of accounts.

These financial statements have been prepared in accordance with the special provisions relating to companies subject to the small companies regime within Part 15 of the Companies Act 2006.

The financial statements on pages 12 to 23 were approved by the trustees, and authorised for issue on 21 March 2023 and signed on their behalf by:



L Butler
Company secretary and trustee



A Saunderson
Trustee

The notes on pages 15 to 23 form an integral part of these financial statements.

Scunthorpe United FC Community Sports & Education Trust

Statement of Cash Flows for the Year Ended 30 June 2022

	Note	2022 £	2021 £
Cash flows from operating activities			
Net cash income		107,637	288,304
Adjustments to cash flows from non-cash items			
Depreciation	6, 7	3,685	6,372
Investment income	5	(39)	(23)
Profit on disposal of tangible fixed assets		<u>(3,823)</u>	<u>-</u>
		107,460	294,653
Working capital adjustments			
Decrease/(increase) in debtors	14	3,254	(15,093)
Increase/(decrease) in creditors	15	6,027	(187,856)
Increase in deferred income		<u>19,852</u>	<u>90,247</u>
Net cash flows from operating activities		<u>136,593</u>	<u>181,951</u>
Cash flows from investing activities			
Interest receivable and similar income	5	39	23
Sale of tangible fixed assets		<u>12,650</u>	<u>-</u>
Net cash flows from investing activities		<u>12,689</u>	<u>23</u>
Net increase in cash and cash equivalents		149,282	181,974
Cash and cash equivalents at 1 July		<u>826,132</u>	<u>644,158</u>
Cash and cash equivalents at 30 June		<u><u>975,414</u></u>	<u><u>826,132</u></u>

The notes on pages 15 to 23 form an integral part of these financial statements.

Scunthorpe United FC Community Sports & Education Trust

Notes to the Financial Statements for the Year Ended 30 June 2022

1 Charity status

The charity is limited by guarantee, incorporated in England and Wales, and consequently does not have share capital. Each of the trustees is liable to contribute an amount not exceeding £10 towards the assets of the charity in the event of liquidation.

The address of its registered office is:

Glanford Park
Jack Brownsword Way
Scunthorpe
North Lincolnshire
DN15 8TD

These financial statements were authorised for issue by the trustees on 21 March 2023.

2 Accounting policies

Summary of significant accounting policies and key accounting estimates

The principal accounting policies applied in the preparation of these financial statements are set out below. These policies have been consistently applied to all the years presented, unless otherwise stated.

Statement of compliance

The financial statements have been prepared in accordance with Accounting and Reporting by Charities: Statement of Recommended Practice (applicable to charities preparing their accounts in accordance with the Financial Reporting Standard applicable in the UK and Republic of Ireland (FRS 102)) (issued in October 2019) - (Charities SORP (FRS 102)), the Financial Reporting Standard applicable in the UK and Republic of Ireland (FRS 102) and the Companies Act 2006.

Basis of preparation

Scunthorpe United FC Community Sports & Education Trust meets the definition of a public benefit entity under FRS 102. Assets and liabilities are initially recognised at historical cost or transaction value unless otherwise stated in the relevant accounting policy notes.

The accounts are prepared in sterling and are rounded to the nearest pound.

The financial statements cover the individual entity.

Going concern

Specifically in connection with the current economic climate, the directors have considered the impact of COVID-19 on the business and they are satisfied that the company has sufficient financial headroom to continue trading for at least the next twelve months. For this reason the financial statements have been prepared on a going concern basis.

Income and endowments

All income is recognised once the charity has entitlement to the income, it is probable that the income will be received and the amount of the income receivable can be measured reliably.

Investment income

Interest is recognised in the period to which it relates.

Scunthorpe United FC Community Sports & Education Trust

Notes to the Financial Statements for the Year Ended 30 June 2022

Expenditure

All expenditure is recognised once there is a legal or constructive obligation to that expenditure, it is probable settlement is required and the amount can be measured reliably. All costs are allocated to the applicable expenditure heading that aggregate similar costs to that category. Where costs cannot be directly attributed to particular headings they have been allocated on a basis consistent with the use of resources, with central staff costs allocated on the basis of time spent, and depreciation charges allocated on the portion of the asset's use. Other support costs are allocated based on the spread of staff costs.

Support costs

Support costs include central functions and have been allocated to activity cost categories on a basis consistent with the use of resources, for example, allocating property costs by floor areas, or per capita, staff costs by the time spent and other costs by their usage.

Governance costs

These include the costs attributable to the charity's compliance with constitutional and statutory requirements including independent examination, strategic management and trustee's meetings and reimbursed expenses.

Taxation

The charity is considered to pass the tests set out in Paragraph 1 Schedule 6 of the Finance Act 2010 and therefore it meets the definition of a charitable company for UK corporation tax purposes. Accordingly, the charity is potentially exempt from taxation in respect of income or capital gains received within categories covered by Chapter 3 Part 11 of the Corporation Tax Act 2010 or Section 256 of the Taxation of Chargeable Gains Act 1992, to the extent that such income or gains are applied exclusively to charitable purposes.

Depreciation and amortisation

Depreciation is provided on tangible fixed assets so as to write off the cost or valuation, less any estimated residual value, over their expected useful economic life as follows:

Asset class	Depreciation method and rate
Motor Vehicles	25% on reducing balance
Computer Equipment	20% on a straight line basis

Individual fixed assets are initially recorded at cost, less any subsequent accumulated depreciation and subsequent accumulated impairment losses. Cost includes costs directly attributable to making the asset capable of operating as intended.

Trade debtors

Trade debtors are amounts due from customers for merchandise sold or services performed in the ordinary course of business.

Trade debtors are recognised initially at the transaction price. A provision for the impairment of trade debtors is established when there is objective evidence that the charity will not be able to collect all amounts due according to the original terms of the receivables.

Cash and cash equivalents

Cash and cash equivalents comprise cash on hand and call deposits, and other short-term highly liquid investments that are readily convertible to a known amount of cash and are subject to an insignificant risk of change in value.

Trade creditors

Trade creditors are obligations to pay for goods or services that have been acquired in the ordinary course of business from suppliers. Accounts payable are classified as current liabilities if the charity does not have an unconditional right, at the end of the reporting period, to defer settlement of the creditor for at least twelve months after the reporting date. If there is an unconditional right to defer settlement for at least twelve months after the reporting date, they are presented as non-current liabilities.

Trade creditors are recognised at the transaction price.

Scunthorpe United FC Community Sports & Education Trust

Notes to the Financial Statements for the Year Ended 30 June 2022

Fund structure

Unrestricted funds can be used in accordance with the charitable objectives at the discretion of the trustees.

Restricted funds can only be used for particular restricted purposes within the objects of the charity. Restrictions arise when specified by the donor or when funds are raised for particular restricted purposes.

Further explanation of the nature and purpose of each fund is included in the notes to the financial statements

Hire purchase and finance leases

Rentals paid under operating leases are charged to the Statement of Financial Activities on a straight line basis over the period of the lease.

Pensions and other post retirement obligations

The charitable company operates a defined contribution pension scheme. Contributions payable to the charitable company's pension scheme are charged to the Statement of Financial Activities in the period to which they relate.

3 Income from donations and legacies

	Unrestricted funds Other £	Restricted funds £	Total 2022 £	Total 2021 £
Grants, including capital grants;				
Government grants	60,161	-	60,161	39,245
Grants from other charities	456,806	7,968	464,774	582,840
	<u>516,967</u>	<u>7,968</u>	<u>524,935</u>	<u>622,085</u>

Grants received, included in the above are as follows:

Other grants - £91,096
Core payments - £35,000
Futsal - £179,933
NCS - £158,745
Kickstart - £60,161

4 Income from other trading activities

	Unrestricted funds Other £	Total funds £	Total 2021 £
Trading income;			
PPA	36,978	36,978	28,810
Parties	3,991	3,991	-
Other trading income	4,035	4,035	2,590
	<u>45,004</u>	<u>45,004</u>	<u>31,400</u>

Scunthorpe United FC Community Sports & Education Trust
Notes to the Financial Statements for the Year Ended 30 June 2022

5 Investment income

	Unrestricted funds Other £	Total 2022 £	Total 2021 £
Interest receivable and similar income;			
Interest receivable on bank deposits	39	39	23

6 Expenditure on raising funds

a) Other costs of generating donations and legacies

	Note	Unrestricted funds Other £	Restricted funds £	Total funds £
Legal fees		1,942	-	1,942
Allocated support costs		319,897	3,534	323,431
Total for 2022		321,839	3,534	325,373
Total for 2021		263,822	-	263,822
				Total costs £

7 Other expenditure

	Note	Unrestricted funds Other £	Total 2022 £	Total 2021 £
Depreciation, amortisation and other similar costs		3,685	3,685	6,372
Allocated support costs	8	133,283	133,283	95,010
		136,968	136,968	101,382

Scunthorpe United FC Community Sports & Education Trust
Notes to the Financial Statements for the Year Ended 30 June 2022

8 Analysis of support costs

Support costs allocated to raising funds

	Governance costs £	Staff costs £	Total funds £
Costs of generating donations and legacies	1,942	323,431	325,373
Total for 2022	<u>1,942</u>	<u>323,431</u>	<u>325,373</u>
Total for 2021	<u>-</u>	<u>263,822</u>	<u>263,822</u>

Support costs allocated to charitable activities

	Other support costs £	Total funds £
Other support costs	136,968	136,968
Total for 2021	<u>101,382</u>	<u>101,382</u>

9 Net incoming/outgoing resources

Net incoming resources for the year include:

	2022 £	2021 £
Operating leases - other assets	11,681	5,244
Other non-audit services	1,842	1,738
Profit on disposal of tangible fixed assets	(3,823)	-
Depreciation of fixed assets	<u>3,685</u>	<u>6,372</u>

10 Trustees remuneration and expenses

No trustees, nor any persons connected with them, have received any remuneration from the charity during the year.
 No trustees have received any reimbursed expenses or any other benefits from the charity during the year.

11 Staff costs

The aggregate payroll costs were as follows:

	2022 £	2021 £
Staff costs during the year were:		
Wages and salaries	293,554	234,651
Social security costs	21,220	19,441
Pension costs	<u>8,657</u>	<u>7,992</u>
	<u>323,431</u>	<u>262,084</u>

The monthly average number of persons (including senior management / leadership team) employed by the charity during the year was as follows:

Scunthorpe United FC Community Sports & Education Trust

Notes to the Financial Statements for the Year Ended 30 June 2022

	2022	2021
	No	No
Average number of employees	<u>21</u>	<u>18</u>

No employee received emoluments of more than £60,000 during the year.

The total employee benefits of the key management personnel of the charity were £155,473 (2021 - £148,871).

Scunthorpe United FC Community Sports & Education Trust

Notes to the Financial Statements for the Year Ended 30 June 2022

12 Taxation

The charity is a registered charity and its activities are exempt from taxation.

13 Tangible fixed assets

	Motor vehicles £	Computer equipment £	Total £
Cost			
At 1 July 2021	16,376	16,506	32,882
Disposals	(16,376)	-	(16,376)
At 30 June 2022	-	16,506	16,506
Depreciation			
At 1 July 2021	7,165	6,326	13,491
Charge for the year	384	3,301	3,685
Eliminated on disposals	(7,549)	-	(7,549)
At 30 June 2022	-	9,627	9,627
Net book value			
At 30 June 2022	-	6,879	6,879
At 30 June 2021	9,211	10,180	19,391

14 Debtors

	2022 £	2021 £
Prepayments	32,991	36,245

15 Creditors: amounts falling due within one year

	2022 £	2021 £
Trade creditors	4,470	4,354
Social security and other taxes	2,759	(3,152)
Accruals and deferred income	110,099	90,247
	117,328	91,449
	2022 £	2021 £
Deferred income at 1 July 2021	(88,447)	(167,960)
Resources deferred in the period	(105,459)	(88,447)
Amounts released from previous periods	88,447	167,960
Deferred income at year end	(105,459)	(88,447)

Deferred income relates to grants received for which the conditions to enable entitlement have not been met until after the year end.

Scunthorpe United FC Community Sports & Education Trust

Notes to the Financial Statements for the Year Ended 30 June 2022

16 Obligations under leases and hire purchase contracts

Operating lease commitments

Total future minimum lease payments under non-cancellable operating leases are as follows:

	2022 £	2021 £
Other		
Within one year	8,642	5,244
Between one and five years	<u>5,886</u>	<u>2,185</u>
	<u>14,528</u>	<u>7,429</u>

17 Funds

	Balance at 1 July 2021 £	Incoming resources £	Resources expended £	Balance at 30 June 2022 £
Unrestricted funds				
General fund	790,319	562,010	(458,807)	893,522
	-	7,968	(3,534)	4,434
Restricted funds				
	<u>790,319</u>	<u>569,978</u>	<u>(462,341)</u>	<u>897,956</u>
Total funds				

The restricted fund relates to a grant received from Humber Learning, the requirements were not met by the charity and therefore a proportion of the grant had to be repaid post year end.

	Balance at 1 July 2020 £	Incoming resources £	Resources expended £	Balance at 30 June 2021 £
Unrestricted funds				
General fund	<u>502,015</u>	<u>653,508</u>	<u>(365,204)</u>	<u>790,319</u>

18 Analysis of net assets between funds

	Unrestricted funds General £	Restricted funds £	Total funds at 30 June 2022 £
Tangible fixed assets	6,879	-	6,879
Current assets	1,008,405	4,434	1,012,839
Current liabilities	<u>(121,762)</u>	<u>-</u>	<u>(121,762)</u>
Total net assets	<u>893,522</u>	<u>4,434</u>	<u>897,956</u>

Scunthorpe United FC Community Sports & Education Trust

Notes to the Financial Statements for the Year Ended 30 June 2022

19 Analysis of net funds

	At 1 July 2021 £	Financing cash flows £	At 30 June 2022 £
Cash at bank and in hand	826,132	149,282	975,414
Net debt	826,132	149,282	975,414
	At 1 July 2020 £	Financing cash flows £	At 30 June 2021 £
Cash at bank and in hand	644,158	181,974	826,132
Net debt	644,158	181,974	826,132

20 Related party transactions

During the year the charity made the following related party transactions:

Mrs L Butler

During the year there have been purchases made of £6,100 (2021: £6,000). At the balance sheet date the amount due to/from Mrs L Butler was £Nil (2021 - £Nil).

Mr A Martin

During the year there have been purchases made of £14,400 (2021: £14,400). At the balance sheet date the amount due to Mr A Martin was £1,200 (2021 - £Nil).