



Blackpool,
Fylde & Wyre

Home-Start
Blackpool, Fylde & Fylde

15th 50th
Happy Birthday

Home-Start UK

ANNUAL REPORT
2022 - 2023



Because
childhood
can't wait



Home-Start works with families in communities across the UK. Starting in the home, our approach is as individual as the people we're helping. No judgement, it is just compassionate, confidential help and expert support.

Home-Start Blackpool, Fylde and Wyre offers volunteer led parent-to-parent support. Our volunteers understand how hard it can be to be a parent. They work alongside parents in their own homes, helping them to cope with the stresses and strains of life. They support parents to have the skills, confidence, and strength they need to nurture their children.

We measure the impact and effectiveness of our work for every family we see. We use these insights to ensure we are making a lasting difference for all the children and families we support.

This report tells the stories of some of those families and celebrates the impact we have made over the last year.

We are proud that we are able to show, using an evidence-based approach, the successes we have had and the impact our work has had on the lives of families in Blackpool, Fylde and Wyre.

We hope that you enjoy reading our 2022 - 2023 report and that you will continue to support us in the future, so that no child's future is limited.

Introduction	1	A Families Journey	17
Who We Are	2	Quotes from Families and Volunteers	18
Why Home-Start is Here	3	Our Volunteers	19
Strategic Plan 2022-2025	4	Volunteers Week	20
What We Do	5	Fundraising Shop	21
Chair's Report	6	Cheque Presentations	22
Treasurers' Report	7	Corporate and Community Fundraising Events	23/24 25/26
CEO's Report	8/9	Group Christmas Party	27
Our Partners	10	Acknowledgements	28
Working with Families	11	Investing in Volunteers	29
Measuring the Impact	12	Ways to Donate	30
Group News	13/14	Quality Assurance	31
HAF Club News	15	Thank you for supporting us	32
Dad Matters	16	Contact details	33/34

Who We Are

Staff & Trustees between 01.04.2022 to 31.03.2023



Carole Harrison
Chair of Trustees



Peter Law-Jones
Vice Chair



Karen Eaton
Treasurer



Denise Taylor
Company
Secretary



Kath Asquith
Trustee



Glenys Markland
Trustee



Hilary Wilkinson
Trustee



Vivienne Wilder
Trustee



Revd Damian Platt
Trustee



Angie Walsh
OBE Trustee



Paul Aisthorpe
Trustee
Retired



Liz Petch
Trustee



Adrian May
Trustee



Adrian Williams
Trustee



Pat Mayor
Chief Executive
Officer



Gill Roper
Office Manager



**Theresa
Prescott-Jones**
Finance Officer



Lesley Hoyle
Senior Coordinator



Hilda Siddoway
Assistant
Administrator



Verla Wilkinson
Team Leader



Sue Uttley
Shop Manager



Dona Kirkham
Corporate
Fundraising Manager
(Left)



Eric Lee
Dad Matters
Coordinator



Aviel Lowdnes
Coordinator
(Left)



Emma James
Army Coordinator



Steph Cartmell
Coordinator



Joanne Jenkinson
Coordinator
(Left)



Karen Charlton
Coordinator

WHY HOME-START IS HERE





In 2021, Home-Start UK supported 46,000 children in 25,000 families, in 182 communities across the UK and among British armed forces families in Cyprus. We are proud to stand alongside these families and see the difference that our dedicated staff and over 10,000 Home-Start volunteers make every day.

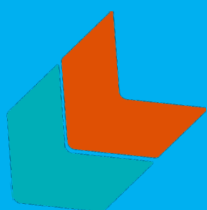
But we can't stand still. This is **Home-Start UK's 50th anniversary year**, and **Home-Start Blackpool, Fylde and Wyre's 15th anniversary**. We want to shape a community where all children have the best possible start in life.

There continues to be significant need for early years support – particularly in the first 1,001 days. We could do so much more with more funding because right now, we can only work with a fraction of the families we would like to.



Home-Start Blackpool Fylde and Wyre Strategic Plan 2022 – 2025

Home-Start Together With Families Home-Start's vision is to shape our geographical area where all children have the best possible start in life. We want to make sure that no parent or family feels alone in the critical task of raising children. Our focus is on building compassionate communities of support for families, parents and children - because childhood can't wait.	Our Four Strategic Commitments Led by our passionate movement of Home-Start volunteers, staff and supporters, we will bring our vision to life for families through four strategic commitments.			
	GROWTH A collective ambition to reach significantly more families 	VOICE Home-Start will support & empower families by working with them & other stakeholders 	INCLUSION Home-Start will advance inclusion and equity in all we do 	IMPACT Home-Start BFW will be stronger together working with Local Home-Starts across Lancashire 
	More parents with young children can access support in a way that works for them	More families avoiding crisis as a result of receiving appropriate early support	Everyone feels included at Home-Start	A thriving, collaborative community of high-quality Home-Start provision for families with young children
Why it Matters The start of a child's life, starting from pregnancy, lays the foundations for physical and mental health. Babies' brains develop rapidly and are at their most adaptable in the earliest years of life. <ul style="list-style-type: none"> To give children the best start for life requires nurturing relationships, an enriching home environment, and parents who are supported to fulfil this essential role. Home-Start's relational, compassionate support offers practical and emotional help to parents and carers in communities. 	How will we know we are successful? By 2025, through a vibrant, resilient, inclusive organisation, we will:			
	AMBITION 1: Home-Start will be working directly with 350 families each year through home visiting and group work (156 active families as of April 2022).	AMBITION 2: 150 active volunteers will power our Home-Start across Blackpool Fylde and Wyre (106 as at 2022).	AMBITION 3: We will see greater diversity across Home-Start volunteers, trustees, staff and leadership, and families - with access to our support from underrepresented groups.	AMBITION 4: We will be working with the HSUK network to develop new models of partnership, delivery, and services with the potential to radically scale our reach and accessibility for local families.



What we do

A child's earliest years are irreplaceable. Without a stable loving and nurturing environment, a very young child will not develop the vital foundations they need.

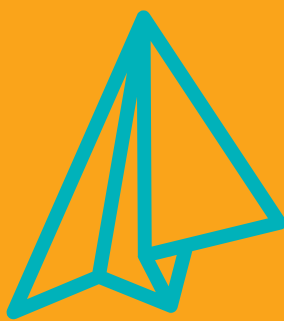
Home-Start is there for parents when they need us most because childhood can't wait. Our community network of trained volunteers, and expert support helps families with young children through their challenging times.



Why we do it

The earliest years make the biggest impact.

Home-Start makes sure those years count so that no child's future is limited.



How we do it

Home-Start offer no judgement, just compassionate, confidential help, and support.

Starting in the home or in a group environment, our approach is as individual as the people we're helping.



Chair's Report 2022-2023

In 2008, I attended a meeting to set up a steering group to raise enough funds to launch Home-Start Fylde. The scheme was launched in 2010. Over the last 13 years, Home-Start Fylde became Home-Start Blackpool and Fylde and then what it is today, Home-Start Blackpool, Fylde and Wyre. During these years there have been many changes and challenges, BUT one thing that has not changed and WILL not change, is the commitment to local families, in providing support, encouragement and friendship wherever it is needed. This support is provided by our fantastic volunteers, supervised by our co-ordinators. We know that the support has benefitted the family when they know longer require our help. Throughout all the changes and challenges faced over the years, I am proud to report that HSBFW continues to provide support to local families across the region through home-visiting, stay and play groups and our Dad Matters programme.

Everyone needs a helping hand from time to time. I know that I have had moments in my life when I have been very grateful to be on the receiving end of much needed support. Support is not always easy to quantify. It can be as simple as providing a listening ear, to more drastic intervention when safety and welfare may be at risk.

I have already mentioned our priceless volunteers without whom there wouldn't be this local Home-Start. They are supported by the staff at HSBFW, whose commitment to HSBFW is second to none. To both staff and volunteers, I extend my heartfelt gratitude for all that they do, often going beyond the call of duty.

Another group of volunteers are my fellow trustees who give their time and expertise to HSBFW and I thank them for too.

We also enjoy much local support ranging from donations to fundraising activities and supporting our shop for which we are very grateful.

To our CEO, Pat there are no words to express my admiration for her hard work and commitment to HSBFW. Redoubtable is a word that I have used in the past to describe Pat and it remains so. She provides leadership and example to all who are fortunate to work with her. "Thank you" seems inadequate.

This is the last report that I will make as Chair of Trustees of HSBFW, the charity I have supported during the last 15 Years. I will continue to support HSBFW but not in the same way. It has been my privilege and honour to be associated with such a necessary and worthwhile charity. I have met and worked with some wonderful people and made some lifelong friends.

My fervent wish is that HSBFW continues to provide this priceless and invaluable service for many years to come.

Carole Harrison
July 2023



Treasurer's Report

Financial Statements for the year ended 31 March 2023

Financial Review:

This year has again been a relatively stable one for Home-Start Blackpool, Fylde and Wyre (HSBF&W). However, we are aware that our Lottery funding ends next year so are, as always, working hard to ensure that we have sufficient funds to keep doing the important work that we do. Our reserves are in a healthy position and ensure we are properly prepared in case of any unforeseen circumstances.

Charity Shop:

The shop continues to be a great asset to HSBF&W not only provides vital funds to our reserves but also increases the profile locally. This year the shop generated over £34,000 in income.

Enormous thanks are given to Sue and our fabulous team of volunteers who make the shop so successful. We are extremely grateful for everything they do, particularly promoting Gift Aid to our donors. This enables us to claim an extra 25% back from HMRC at no cost to us or our donors.

Financial information:

The cash at Bank and in hand at 31 March 2023 totalled £300,818 (£238,664 for 21/22). Taking into account the net effect of other assets (the value of furniture and fittings and computer equipment, and debtors in respect of money owed to us at 31 March) and liabilities (creditors in respect of amounts owed by the Scheme at 31 March), the Total Charity Funds is £293,945 (£230,543 in 21/22) at the end of the financial year.

Those Total Funds are split between Restricted Funds, which must be used for the purpose specified by the funder at the time they were given, and Unrestricted Funds which may be used for any purpose in keeping with the Scheme's aims and objectives. The split of those Total Funds is - Restricted Funds £110,505 (£59,402 in 21/22) and Unrestricted Funds £183, 440 (£171,141 in 21/22). The details are in Note 15 to the accounts.

We are fortunate to be in a financially sound position but are always aware of the precarious nature of funding. However, with our reserves, the continued support of staff, volunteers, donors and supporters I am confident that we shall go forward into the next year with continued success both professionally and financially.

Karen Eaton (Treasurer HSBF&W)

September 2023

Pat Naylor - CEO

April 2022 – March 2023



One of the best things about being involved with Home-Start is the privilege of supporting parents as they grow in confidence, strengthen their relationship with their children and widen links with the local community, giving their children the best possible start in life.

We couldn't do this without our volunteers who are the heart of everything we do they donate their valuable skills and time to our families and do tremendous work.



This year we worked with 370 families with 572 children from 1/4/22 – 31/3/23, which for a relatively small team of 11 staff is pretty remarkable. There were 1053 attendances at our family group sessions. We delivered holiday, activities and food provision (HAF) at the Progress Housing Community Centre in Freckleton during 2022. Over 50 children attended. As part of this funding, we organised two, one day, Christmas parties, one in Freckleton for our HAF group and one in St Anne's for Ukrainian, Polish and Turkish refugee and asylum seeker families.

We said goodbye to our Senior Coordinator, **Lesley Hoyle** who retired at the end of March 2023. Lesley has been with Home-Start from the beginning, being a volunteer on our first ever-volunteer preparation course.

We also said goodbye to **Dona Kirkham** (Corporate Fundraiser) **Paul Aisthorpe** (Trustee), **Joanne Jenkinson** (Wyre Coordinator) and **Aviel Lowndes** (Blackpool Coordinator) all these people have moved on to take up other work and I thank them all for their contribution to Home-Start Blackpool, Fylde and Wyre.



Cont.'

We recruited and trained 16 new home visiting and family group volunteers. We now have 113 volunteers, including Home Visitors, Trustees, Retail, Group support, Fundraisers, Administration support and other ad hoc volunteers. We need more though, so if you know someone who wants to be involved in an amazing organisation, please do send them our way.

This year, support has been provided to families dealing with: Lone Parents, Substance Misuse, Domestic Abuse, Mental Health, Learning Disabilities (parent / child), Perinatal Mental Health, Child's Behaviour, Financial Issues, Isolation and Loneliness, Parents Self Esteem, Stress Caused by Conflict in the Family, Multiple Births, Bereavement and Refugee and Asylum families.

We have delivered this support through:

- ✓ One to one home visiting by trained volunteers in the family's own home
- ✓ Family stay and play groups in Blackpool, Fylde, Wyre and Weeton Barracks
- ✓ Dad Matters Walk and Talk events and drop ins
- ✓ Holidays Activities and Food holiday clubs for children aged 6 – 12 (Easter, Summer and Christmas)
- ✓ Day trips and events with parents and children
- ✓ Our school readiness programme – Big Hopes Big Future
- ✓ Early Language Development
- ✓ Blackpool Football Club Supporters Trust donated three Mascot Days for three of our children.

<https://www.blackpoolfc.co.uk/news/2022/july/23/mascot-packages-available-again/> the cost of this package ranges from £125 for season ticket holders, to £165 for non-season ticket holders – its huge opportunity for the child to make forever memories.



Of course, we couldn't do any of this without our funders, both large and small and those people who have donated their hard earned cash to us, or done crazy sponsored events such as, Running a mile for every £1 donated, Walking the Big One, Skydiving, or Driving Across Europe in a 'banger'!

Every penny counts.

This report really is just a snapshot of the work we have undertaken this financial year.

I am sure you will enjoy reading the rest of this report – we are a brilliant, committed, funny, professional, hardworking, skilled, passionate team of Trustees, Staff and Volunteers

(And yes, I am blowing our own trumpet!)

Thank you for your continued support. Pat Naylor CEO

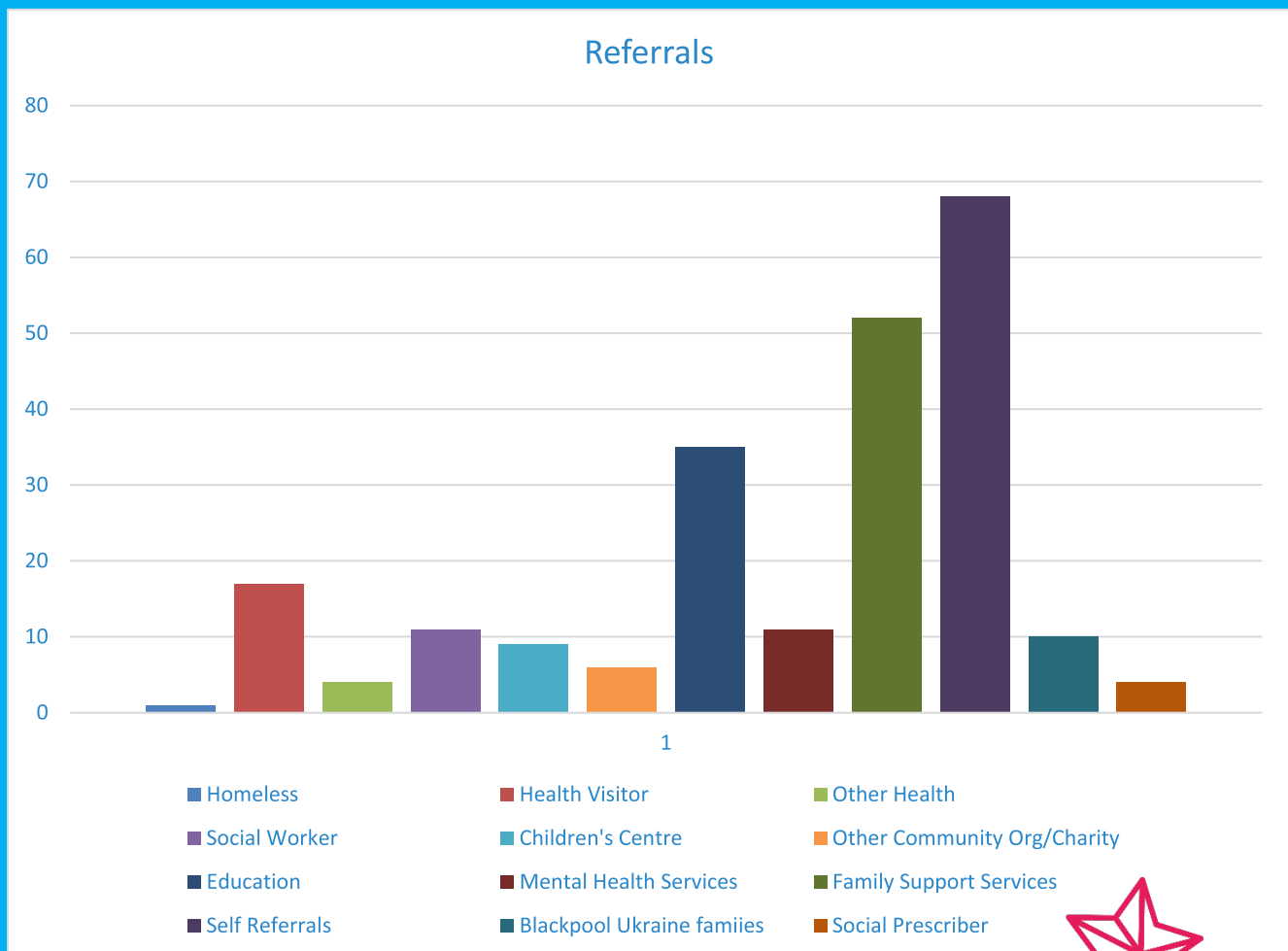
Home-Start in the Community - Our Partners

Home-Start works with a wide range of local organisations within the voluntary and statutory sector to enhance the support offered to families, to tackle the issues together that are important to families and communities.

We receive referrals from Families themselves, Health Visitors, Family Support Services, Mental Health Services and Education.

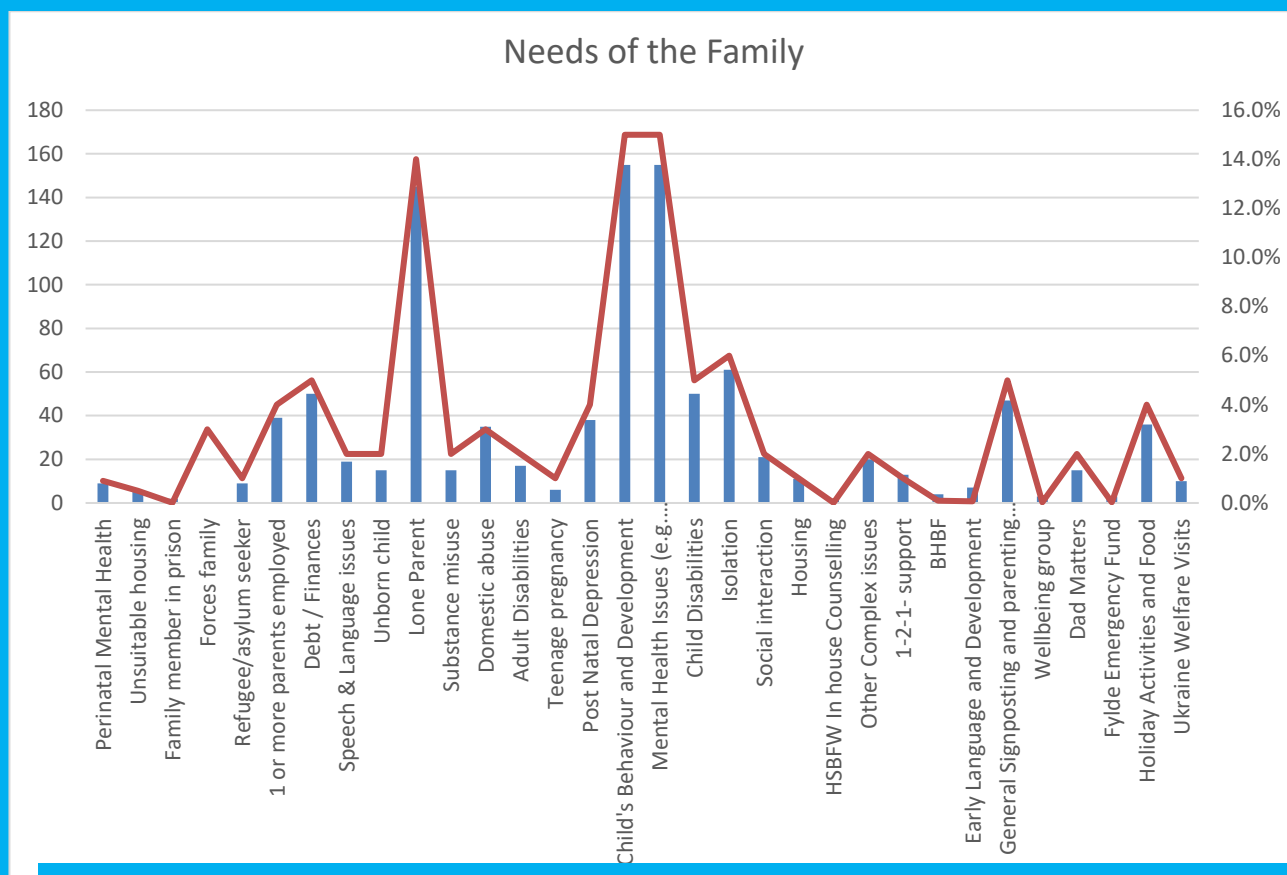
Home-Start is not a substitute for professional service, but complimentary to them and the best results are achieved through working together.

Working together improves the outcomes for our children and families. By communicating and working together, we reduce the risk of family crisis and breakdown, helping to break the cycle of deprivation and reduce isolation in our community.



Working with Families

Becoming a parent is a joyful but sometimes overwhelming time and it becomes even harder when you are facing additional challenges such as mental health difficulties, financial pressures, loneliness, isolation, or lack of support networks.



Many families face more than one challenge. Here is breakdown of some of the issues the families face.

Managing Child's Behaviour, Listening To Children and Respecting Their Rights	Coping With Child's Physical Health
Being involved in the Child (ren)'s Development/Early Learning and Socialisation	Coping With Child's Mental Health
Coping With Own Physical Health	Managing the Household Budget
Coping With Own Mental Health	The Day-to-day Running of the House
Coping With Loneliness and Social Isolation	Stress Caused By Conflict in the Family
Parent's Confidence Self-esteem	Coping with Extra Work Caused by Multiple Birth/children Under 5
Parents own learning needs	Access to Other Services

Measuring the impact



We have supported over the year 2022-2023

237
Families

314
Adults

427
Children

227
5yrs and under

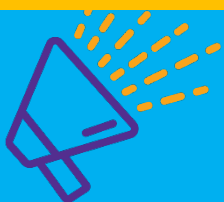
200
6yrs and over

**No. of children subject
to an assessment of needs**

40

**No. of children on a
child in need plan
child Protection plan**

8



Group News 2022-2023

St Annes Group

St Annes is a well-established group and the volunteers who attend to help are consistent and valuable, members of the team. They help set up, support, and entertain the children and families throughout the session, then help to sanitise and clear away at the end, making sure the hall is just as we found it.

We have been consistent with new and returning families who have seen their children grow in confidence, learning to play, socialise, share, and develop new skills. The parents have also developed a friendly bond staying connected over a WhatsApp group sharing support to each other and with support from the Home-Start team they have loved returning after holiday breaks.

We continue to hold theme days to determine what activity we put out, some examples of this are:

Burns Night – one parent made haggis for everyone to try with a helping of ‘neeps and tatties.’ The children loved hearing bagpipes, and all attended in their best tartan.

Pancake day – with premade pancakes they made smiley faces on the top with fruit. We discussed their favourite toppings.

Educational week – Each session is about the development of the child, this particular session we looked at jigsaws, sorting colours and shapes, name recognition.

Gardening week – we planted some sunflower seeds and decorated the pot; this has become a little bit of a competition now of who’s is the biggest.

The parents have taken it upon themselves to bring snacks to introduce into the group timetable. By doing a snack time we have instilled skills on developing table manners and mealtime routine.

Last year we graduated 3 children who completed the Big Hopes Big Future programme and now attend big school. We also said goodbye to a long-standing volunteer at group who went on to retire.

Steph Cartmell - Coordinator



Weeton Group

The Duke of Lancaster Regiment is based at Weeton Barracks, the majority of the regiment moved to Cyprus during the year, however we continued to offer our stay and play group, a drop in and our Dad Matters programme. We received support from Rachel Day of the Army Welfare Service to do this work. The aim of the Stay and Play Group is to provide an environment where children and parents can get together in a friendly relaxed atmosphere and make new friends; this is particularly important at Weeton Barracks due to its isolated location.

Our Army Coordinator has specific responsibilities to support Army families whether at group or through Home Visiting.

Blackpool Group

We've had an exciting year as we settled into a new venue for our Blackpool Group, at Holy Cross Church on Central Drive; a bright and welcoming environment for our families, with the added bonus of a large and beautiful garden. The children love exploring the outdoors and we have spent many sessions learning about nature, smelling the herb plants and flowers and looking for bugs! The garden is large, allowing for the children to run and get much needed fresh air.

Our group has grown from strength to strength, and it has been lovely seeing our families socialise and make new friendships. It is especially rewarding to see our parents support and empowering each other.

We have some amazing volunteers who give up their time to come to our group, support our families and children and build great relationships. They are a huge asset to Home-Start and work incredibly hard to ensure that our group runs smoothly, safely and meets the needs of our families and children. Special thanks go to our volunteers Melissa, Sue and Vicky for your support.

We have celebrated many events this year and had our first Christmas in our new venue. We had a great party, with a visit from Santa and lots of games. We have enjoyed many celebrations and we look forward to the year ahead, planning lots of new activities and growing our fantastic group.

Karen Charlton - Coordinator



Fleetwood Group

We would like to thank Fleetwood Methodist Church for their unwavering support. They continue to help us provide support in Fleetwood and the surrounding community which simply wouldn't be possible without them.

Our volunteers Niccola, Melissa, Barbara, and Liz, give up their time to support each week to help set up our sessions and support our families on a weekly basis. They are a fantastic asset and work extremely hard to enable our sessions to run effectively.

As always, we have celebrated many different events and throughout the year. Including promoting awareness weeks such as self-care week and Children's mental health week.

We entered the Fleetwood Methodist Church Christmas tree competition again this year, and as always, it's great to be a part of this beautiful event and see the many different tree designs entered. We were also ecstatic to find out that we WON our category, and the planning for this year's tree has already started.

Katie Ashworth - Coordinator



Easter '22 Summer '22, Christmas '22, Holiday and Activities Food (programme)

During the year we have continued to support Fylde Council Holiday Activities and Food (HAF) Programme by delivering Holiday clubs at Lower Lane Freckleton Christmas 2022 (1 day party), Easter 202 (4 days) and Summer 2022 (16 days). We also held a Christmas Party in St Annes (1 day).

The aim of the HAF Programme is to provide a hot meal during the school holiday period for the 5 to 11 year old children in the local area who would be entitled to free school meals. Over the 3 Holidays, we provided 18 days of Holiday Club with 348 meals enjoyed by the children attending. Each day of the Club was attended by up to twenty-five children who enjoyed a great lunch, activities, games, craft, outdoor play and had lots of fun!!

We were supported every day by some of our amazing Volunteers who came along to paint, glue, run about outside and help to ensure the children have a positive and rewarding experience when with us. We would not be able to run our club without our Volunteers and are incredibly grateful for their fabulous support.

AFC Fylde have continued to support with a member of their Community Team providing outdoor sports and indoor games every day. At both Easter and Summer clubs, we were visited by a representative from Healthy Heads Education who helped the children to learn about healthy eating and nutrition through games and hands on making healthy food.

We have been able to provide a signposting pack for each child to take home to their families to help them find local support organisations.

Every child received a Christmas gift and bag of goodies to take home after the party. During Easter, we were able to provide an Easter egg for every child who attended the Club. Summer fun concluded with a talent show and an outdoor water balloon challenge.

Everyone who attended the Clubs has enjoyed their experience and we receive positive feedback from the Children attending, the Parents we meet and from Fylde Council. As well as providing an enjoyable and enriching experience, the Holiday Club is raising awareness of Home-Start Blackpool, Fylde & Wyre in the local area.

Thank you very much to everyone involved in delivering the HAF Programme Holiday Clubs.

Hilda Siddoway



DAD MATTERS PROGRAMME

We currently have partnerships with The Community Trust Fleetwood, Healthier Fleetwood, P.A.I.R.S, The Library Service, Better start, Healthier Minds, Baby Steps, Aiming Higher, the Neonatal unit and Maternity at Blackpool Teaching Hospitals, the Post Partum group, and the MVP.

Eric visits the hospital maternity unit every Wednesday and the Neo-Natal Unit on a Thursday, he also visits Brian's House Hospice and Thingamjigz in Poulton once a month for their baby clinics - all of which cover Blackpool, Fylde and Wyre.

He has recently networked at Dadscon 2023 at Brockholes Nature Reserve, Maternal Mental Health week, Infant Mental Health week, and Dads Mental Health week, at Blackpool Teaching Hospital. I run regular drop-ins in Blackpool and Fleetwood.

Eric has interacted with a number of dads face to face. He currently sees eight dads, most on a regular basis.

Since Eric started his role, he has done hundreds of outreach and networking meetings including some online meetings with Dad Matters wellbeing groups and various other organisations. He has introduced himself to many dads at the Blackpool Maternity unit as part of the outreach program since it launched on the 30th November 2022.

The Dad Matters Paediatric First Aid workshop will be rolled out nationally in 2023/2024. Eric will be the mentor and central information point to help the Dad Matters Coordinators with any problems that might arise.

This has been a successful start for our Dad Matters programme at Home-Start BFW, with Eric's referrals increasing - proving how much Dad Matters is needed.

2023/2024 will see a new Assistant Dad Matters Coordinator join Home-Start Blackpool Fylde and Wyre; a welcome addition to the team. This post will assist Eric to reach more dads across the Fylde coast. Eric has two dads in Wyre, and his working relationships are developing with Fleetwood Community Trust and Healthier Fleetwood.

Eric would like to thank you all for the opportunity to lead this valuable work and for the chance to move forward with it into the next year.



A Home-Start Family Journey

Family Journey

This family have been supported by Home-Start twice. Mum has suffered with mental health, and the second referral was from the Peri-natal mental health team. Mum and Dad have 6 children, the eldest being 15 years old and their youngest only 3 months.

One of the children has been diagnosed with additional needs, which requires a lot of work and understanding. Dad also works full time; therefore, Mum is often the one that carries out most of the parenting tasks. Mum had very little self-confidence in herself and has recently been diagnosed with ADHD. She has experienced a difficult and traumatic labour, which understandably made this recent pregnancy very stressful. When I first met Mum, she asked for support, identifying that she needed some emotional support and guidance, support to access groups and signposting to appropriate services. She was very isolated and was extremely anxious about leaving the home or attending any groups.

After careful matching, we identified a suitable volunteer who had her own lived experiences of having a child herself who had additional needs. The match visit took place and things looked positive.

After getting to know her volunteer, she told me that she was a breath of fresh air and that by talking with someone who could empathise with her was such a relief. Her support from the volunteer enabled Mum to grow in confidence, be open to try new ways of parenting and manage her emotions. With the encouragement from Home-Start Mum began attending the stay and playgroup where she made friends, and again this was something that she enjoys and very much looks forward to. Mum's progress was clear to see to the point where she no longer needed a home visiting volunteer, and she just continued to attend group every week. Here she still receives support and encouragement when she needs it, but the lovely thing to see is that she has become a confident lady who makes others feel welcome and not judged.

Below is what Mum had to say about the support she has received:

"Home-Start has provided me with a friendly ear and advice when needed. The staff have been there for me when I've struggled, and they've celebrated my success and achievements with me. I genuinely feel Home-Start staff care, they are always willing to listen, and they remember what we've discussed previously. They make me feel heard and supported.

Home-Start playgroup has allowed me to build my confidence to socialise with other parents and make some friends as well as helped improve my children's confidence and social skills. We look forward to attending each week."

Family Journey

Family referred by school. The family consists of mum, dad and 4 children (3 boys and 1 girl). The children's ages range from 6 years to 12 years old with the 6-year-olds being twins.

Family referred to Home Start for support with managing behaviour, being more involved in the children's development, mental health issues (parents and children), mum's self-esteem and family finances/budgeting.

A suitable volunteer was matched with the family. Weekly visits were conducted over a four-month period. The volunteer during her visits helped to increase mum's confidence. The volunteer shared and model behavior strategies, which mum started to implement.

Information was shared with the family, which included services, which could support Dad's mental health.

Mum was empowered to make positive future plans for herself and her family.

Mum was spending quality time with her children 'play dates'

At this point it was recognized by both mum and the volunteer that it was the right time to close our support as mum was confident to continue to progress on her own, knowing she could refer back to us at any point.

QUOTES FROM FAMILIES AND VOLUNTEERS



"Home-Start has provided me with a friendly ear and advice when needed. The staff have been there for me when I've struggled, and they've celebrated my success and achievements with me. I genuinely feel Home-Start staff care, they are always willing to listen and they remember what we've discussed previously. They make me feel heard and supported.

Home-Start playgroup has allowed me to build my confidence to socialise with other parents and make some friends as well as helped improve my children's confidence and social skills. We look forward to attending each week."

Melissa Humphries – Volunteer

What has Home-Start given me as a volunteer?

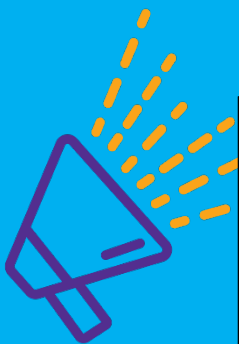
Life...

I was so scared and shy, so insecure when I started. It starts with helping others, but secretly, by working with families, in return I found myself becoming me.

I became someone I liked, and to be trusted by adults and children when they are not doing their best is just an honour you can't explain.

I didn't have a family I could reach out to, but volunteering gave me so much more than I ever knew it could. It gave me a family of friends, it helped me.

Home-Start and everybody involved don't just work with families, they empower volunteers like me to also believe in themselves and that is something I personally will forever be grateful for xx



A message from our Senior Co-ordinator

"After 13 years of working with Home-Start, initially as one of the first volunteers when we started in 2010 and as Coordinator and Senior over the past 8 years it is with some regret, yet anticipation that I announce my retirement on 31st March. I have some great memories of the time I have spent with Home-Start and while most of them involve the fabulous group of people with whom I have worked, I must include our wonderful volunteers and the families I have helped to support.



Our Volunteers

And Their Training

who have completed their training
and are now ready to support families
in their home or support in groups.



CONGRATULATIONS TO OUR NEW VOLUNTEERS WHO COMPLETED THE PREP COURSE AND BIG HOPES BIG FUTURE TRAINING

Lisa Fitsimmons

Kerry Cossens

Shauna Larkin

Lauren Johnson

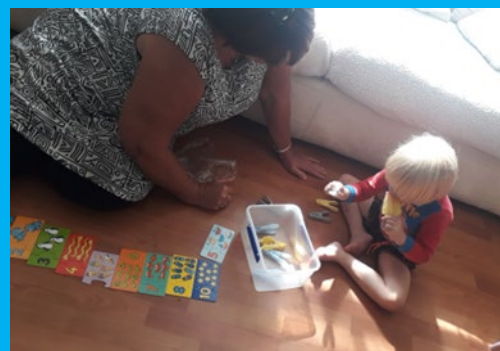
Lauren Johnson

Matthew Bourne

Christine Wilson

Sharon Athay

Joe Abbott



They now ready to support families
in their home or support in groups



Thank you to our Trustees. You do an
amazing job in supporting Home-Start and
the staff:

Carole

Peter

Liz

Kath

Angie

Denise

Karen

Glenys

Hilary

Viv

Adrian

Adrian

Revd. Damian

Paul



We would like to thank Diane one of our volunteers for hosting an afternoon tea event for our Volunteers week 2022 at the Almeria Hotel, Blackpool.

Thank you for your support and here are just a few photos from the day.



Fundraising Shop 2022-2023

WOW.....Where has the last 12 months gone?
It's not until we sit back and reflect do we realise how much we have done.
How many families have we helped and supported?
How many people have we met?
How many donations have we received?
How many hours do our volunteers give?
How many tears both happy and sad, have we shed?



But on this reflection now is the ideal time to give many thanks to each and every one who has helped and supported our shop to get to where we are now.

Our shop is now in its 7th year as we continue to go from strength to strength. This certainly wouldn't have been possible without all of you!!

Our team of volunteers who give up numerous hours of their free time. That could be through sorting donations, pricing items, tidying the shop, serving customers, collecting donations, doing tip runs, supporting families and helping customers.

To all of our donors to the shop, we've had huge amounts that have helped raise funds.

To our customers in the shop, either new or regular, it doesn't matter how much you spend, every little helps.

To all the individuals and local businesses who contribute towards our tombola's, your continued support throughout the years means so much to us and we are truly grateful.

I will say again, we are not just a fundraising shop, we are a little community hub that loves what we do..... Could be just saying hello to a customer, supporting someone in need, or signposting. Some customers just pop in to say hello and others to give staff and volunteers gifts of appreciation, biscuits, cake, flowers, chocolates, drawings and colourings from children. The best of all is a simple thank you for all we do.

We have continued to support families with free school uniforms across Blackpool Fylde and Wyre. This helped over 250 families last year. Due to the significant increase in families' needs we also had the support from The Waters Edge Pub who sorted and donated uniforms. We will continue with free uniforms in the future. This is not just for people on low income, it's for anybody who needs a little extra support. Coming up to the colder weather and the winter coat appeal we were able to give families, both adults and children, warm coats and hats. They were all so grateful but also heart-warming to us being able to help them.

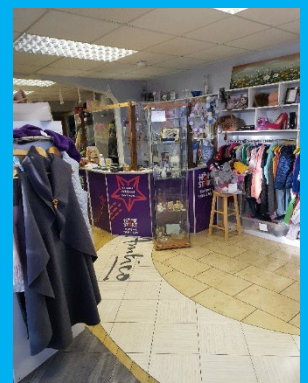
During this last year we had also received donations of nappies, Easter eggs, Selection boxes, tubs of sweets, Christmas hampers made by customers all donated to families. Staff, trustees and volunteers also gave up time to support our tombolas at the Christmas light switch on and at St Annes carnival.

We also managed to fit in an Afternoon tea with the volunteers at Christmas which they all thoroughly enjoyed.

So a huge thanks from us all for your continued support

Sue and the Shop Team
If you would like to volunteer in the shop please call
Sue Uttley – Shop Manager on 07827 876066

Opening hours
Monday to Friday
10.00am – 4.00pm

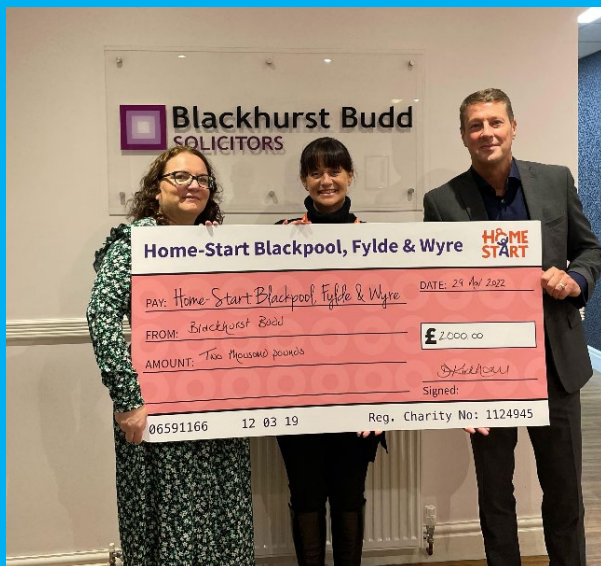


Cheque presentations

Thanks Dona Kirkham!

On behalf of the Staff and Trustees of Home-Start Blackpool, Fylde & Wyre

Being a parent has never been easy. It can be lonely, frustrating, heart breaking and overwhelming. All parents struggle at one time or another. For some, the challenges can be too much to bear. We work with parents to build on their strengths, give them the support that they tell us that they need and leave them with a feeling of empowerment.

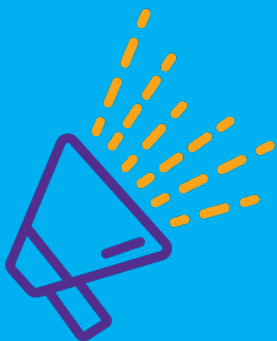




Dawn Attewell
(Aesthetic Nurse Practitioner & founder of Dawn Attewell Aesthetics at Lytham St Annes' Therapy House) has pledged to support a local family struggling with the cost of living for the next 12 months; as part of her ongoing work with the charity Home-Start (homestartbfw.org.uk)

DAWN ATTEWELL, OWNER OF THERAPY HOUSE IN LYTHAM ST ANNE'S, SUPPORTS A LOCAL FAMILY WITH THE COST OF LIVING FOR THE NEXT YEAR WITH HOME-START BLACKPOOL, FYLDE & WYRE

DAWN ATTEWELL
aesthetics



Corporate and Community Fundraising Events

Building relationships is an essential element of the fundraising role. Building awareness of the wonderful work that we do we foresee to be a key part of our role.

Over the last 12 months

Charity fundraising events organised by
Cllr Karen Henshaw
Charity Fashion show
Christmas Carol Raffle
Baubles, Bangles & Beads
with Clayton Jewellers



Coral Island Collection



Hole in Wand





Two Ball Banger Rally Adrian & Alex Williams



Easter 2022

Thank you everyone for supporting our families by donating
an Easter egg. Every child we support received one.

Hungry Monkey
Carly Earley – BAE
Bonny Fabrics
BT Openreach

Julie and John Webb – The White Church
Marie Hawkins – BAE
Adcroft Hilton
Business First Clients



What an amazing bunch of people who Walked The Big One for our charity

Pat Naylor
Carly Earley
Sukie Woodhouse
Stephanie Cartmell
Viv Hamilton
Andrew Kirkham
Adrian May
Jon Doyle
Tracy Kirkland
Elizabeth Johnson
Gina McDonald
Aimi O'Donnell
Jennifer Maudsley
Claire Ashcroft
Stuart Harrison
Pat Sharples
Andrew Barnes
Daniel Elliott
Linda Adams
Ross Adams



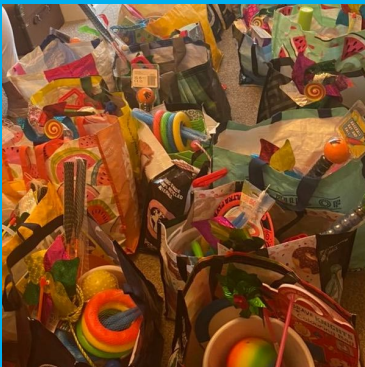
Another fab event a Tandem Parachute with the Black Knights at Cockerham

Timothy
Jordan
Jon
Elizabeth

Walton
Conlin
Doyle
McQuillan



Totally Rotary gave us summer activities for the families 2022



Thornton and St Annes Gala 2022



Group Christmas Party 2022



**Bispham Junior
Football Club**



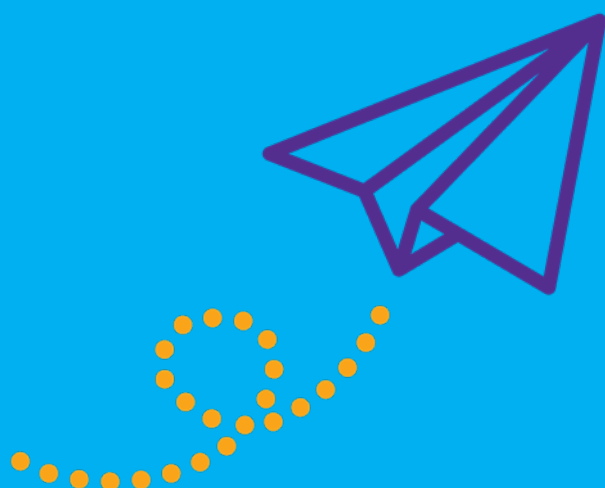
**Norcross
Cricket Club**



Pure Energy



**Family day out to Knowsley Safari Park – sponsored by
Lytham Community Benefit Society, Ltd**



Acknowledgements

Thank you for your support

Thank you for all your support to Home-Start, it makes such a difference. For our donations, fundraising, giving your time and expertise, we are truly thankful.

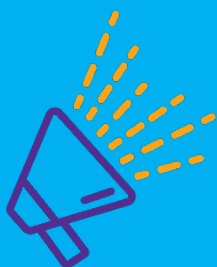
You have contributed to supporting over 237 families and 427 children.

This year, our coordinators and volunteers were able support families face to face in their home. Our families have told us that support from Home-Start has been invaluable.

There have been some difficult times, especially with the electricity and food crises at Christmas, and Home-Start has been overwhelmed with the generosity of people like yourselves. Your donations enabled us to give our families something special at Christmas.

All our families received presents, selection boxes, and some food hampers.

Adrian Williams	Hungry Monkey
Alexandria Drive Chip Shop	John Turner
Amanda - Bonny Fabrics	Julie and John Webb - The White Church
Andy Haines - BT Openreach	Just Giving
Anna Blackburn	Kath Asquith
Arnold Clark	Kinndertons
B Parkinson	Links View Retirement Community
Baines Masonic Lodge	Lytham Community Benefit Society, Ltd
Beaverbrooks	Malcolm Asquith
Blackhurst & Budd	Minter Carwash
Blackpool essentials fund	Mirrie Dancer
Carly Earley and Marie Hawkins, Air Service - Sports & Social Club	Mr & Mrs Harrison
Cllr Karen Henshaw	Mrs Parkinson
Community Funding	Pat Naylor
D Harrison	Phil Hargreaves
D Reeh	Rose Spencer
David Elliott	Ross - Fylde BC ITC Breaking Ross
Dawn Attwell - Therapy House	Rossall Rose Society
E Williamson	Sheryl Armour - Adcroft House
F Boyce	Slimming World (Jason)
Fleetwood Methodist Church	St Annes Mayor
Fylde essential fund	The DJ Sidebottom/Glasdon Charitable Programme
Groundwork UK	Toni Consulting
Holy Trinity Church Freckleton	Tony Ford
Homes for Ukraine - Blackpool Council	Totally Rotary FY8
	Unite The Union -Fylde Coast Branch
	Woodhouse Opticians
	Wyre Community Lottery



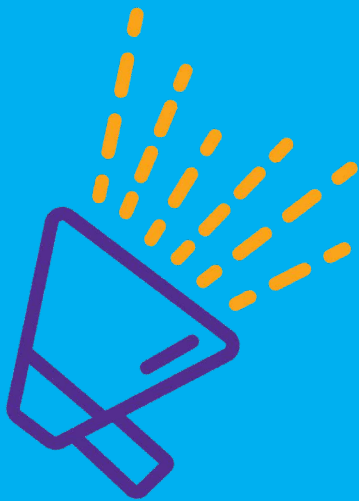
Investing in Volunteers

Home-Start Blackpool, Fylde and Wyre are so proud to have achieved the Investing in Volunteers award for good practice in volunteer management!

This prestigious award was given by the United Kingdom Volunteering Forum (UKVF) from July 2020 until July 2023. The UKVF assessment process confirmed that our volunteers feel recognised and are proud to be part of our team supporting families in Blackpool, Fylde & Wyre.

Our volunteers at Home-Start go above and beyond for our families.

We understand how important it is that our volunteers are given the right support and we are delighted to have achieved the Investing in Volunteers Award.



There are many ways to support Home-Start



Have a chance of winning £25,000 every week, for just £1 per week!

By playing our lottery you are helping us and the Home-Start Network give thousands of families the lifeline they need. Find out more at

www.home-start.org.uk/unity-lottery or email enquiries@homestartbfw.org.uk



For just £1 per ticket you can win while supporting Home-Start!

You can help us to continue helping parents by joining the Lottery and signing up to support Home-Start. At the same time you have a chance to win!

Buy your ticket and support us at

www.wyrelottery.co.uk/support/home-start-blackpool-fylde-and-wyre



Or you can donate direct to us to help!

To help us continue supporting local families to give children the best start in life you can donate direct to our Just Giving Page.

www.justgiving.com/homestart-blackpool-fylde-wyre



Help us as you shop!

If you would like to support us while you shop you can support us through easyfundraising

<https://www.easyfundraising.org.uk>



PROVIDING EXCELLENT QUALITY

Quality Assurance System

Home-Start's Quality Assurance System for local Home-Starts is based on a programme of self-assessment against set Quality Standards and a process that focuses on the ongoing development and continuous improvement of all practice areas relating to the governance, management and service delivery of local Home-Starts.

Working with Charities Evaluation Services (CES) the bespoke Home-Start quality assurance system was introduced in 2006. It incorporates the elements of PQASSO (CES's quality assurance system for small organisations and recognised as the industry standard in the voluntary sector). The system has also been designed to include and reflect the requirements of Investors in People, The Charity Commission and other national quality and occupational standards.

We work to a common set of standards and methods of practice and have detailed guidance on all aspects of providing the Home-Start service. All Home-Start staff, trustees and volunteers receive thorough induction and on-going training opportunities.

Before supporting families, all volunteers attend a comprehensive Preparation Course.

The Home-Start Agreement is the foundation of the Home-Start Quality Assurance system. The Agreement is signed by each Local Home-Start and Home-Start UK who in doing so agree to certain Quality Standards and to take part in the monitoring and review process. Should a problem arise within the terms of the Home-Start Agreement, there is a Problem Solving and Complaints Procedure.

This robust system is based on 4 quality areas. Local Home-Starts carry out ongoing self-assessments to ensure continuous improvement and are externally reviewed on a 4-5 year rolling programme by the QA Team from Home-Start UK.

The 4 Quality Standards

1. Governance
2. People Management
3. Managing information and
4. Safeguarding/Child Protection





Thank you for supporting us with funding



Arnold Clark Community Fund

Eric Wright

Tudor Trust

Lytham Schools Foundation

Lottery

Groundwork - One Stop Funding

Community Funding

Fylde Household Support Fund

Blackpool Council Community Grants Programme

Spring North



Army Central Fund





Blackpool, Fylde & Wyre

Reference and Administrative Information

Registered Charity Name

Home-Start Blackpool, Fylde & Wyre

Charity Registration Number

1124945

Company Registration number

06591166

Registered Office and Operational Address

Home-Start Blackpool, Fylde & Wyre

Blackpool First Business Centre, Lancaster House, Amy Johnson Way Blackpool, FY4 2RP

Fundraising Shop address

Home-Start Blackpool, Fylde & Wyre Fundraising Shop, 135 St Albans Road, Lytham St Annes, FY8 1UY

Patrons

Mark Menzies Member of Parliament for Fylde

Cllr Karen Henshaw

Mr Rod Boyce

Board of Trustees

Carole Harrison (Chair)

Peter Law Jones (Vice Chair)

Karen Eaton (Treasurer)

Denise Taylor (Secretary)

Kath Asquith

Glenys Markland

Cllr Vivienne Willder

Angie Walsh (OBE)

Revd. Damian Platt

Hilary Wilkinson

Paul Aisthorpe

Liz Petch

Adrian May

Adrian Williams

Auditors & Chartered Accountants & Statutory Auditor

Rawcliffes. 39 Red Bank Road, Blackpool FY2 9HZ

Bankers

CAF Banking

Governing document

The Charity is governed by a Memorandum and Articles of Association.



Blackpool, Fylde & Wyre

**Thank you for reading the
Home-Start Blackpool, Fylde & Wyre
Annual Report 2022 - 2023**

Tel: 01253 728 615

Email: enquiries@homestartbfw.org.uk

Visit: www.homestartbfw.org.uk



@homestartblackpoolfyldewyre



@HomeStartBFW



@HomeStartBFW

90% of volunteers feel they make a difference through their volunteering

"The Volunteer Prep course was very informative, excellent and much needed to have the necessary awareness about family issues for when we start volunteering. Personally I am looking forward to starting".
Sedi, Volunteer

Improved Mental Health & Wellbeing
Being fully supported and valued in your volunteering role Helping families and meeting new people

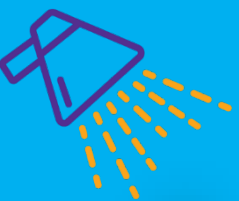
**Volunteering...
What's in it for me?**

Volunteers tell us they want to feel they belong to a team, it helps them feel less isolated.

More Confidence
A greater sense of purpose
Friendship

Knowing that my life experiences can help others
A feeling of belonging
Giving back to my community

Fun
Laughter
Coffee & Cake



Company registration number: 6591166

Charity registration number: 1124945

Home-Start Blackpool Fylde & Wyre

(A company limited by guarantee)

Annual Report and Financial Statements

for the Year Ended 31 March 2023

Rawcliffe & Co Limited
Unit 1 Barons Court
Graceways
Whitehills Business Park
Blackpool
Lancashire
FY4 5GP

Home-Start Blackpool Fylde & Wyre

Contents

Trustees' Report	1 to 5
Independent Examiner's Report	6 to 7
Statement of Financial Activities	8 to 9
Balance Sheet	10
Notes to the Financial Statements	11 to 18

Home-Start Blackpool Fylde and Wyre Company Limited by Guarantee

Trustees' Annual Report (Incorporating the Director's Report) Year ended 31 March 2023

The trustees, who are also the directors for the purposes of company law, present their report and the unaudited financial statements of the charity for the year ended 31 March 2023.

Reference and administrative details

Registered Charity Name:	Home-Start Blackpool Fylde and Wyre
Charity Registration Number:	1124945
Company Registration Number:	6591166
Principal Registered Office:	Blackpool Business First Business Centre Lancaster House Amy Johnson Way Blackpool FY4 2RP

The Trustees

Carolc A Harrison	Chair
Peter Law Jones	Vice Chair
Karen Mary Eaton	Treasurer
Denise Taylor	Secretary
Adrian May	
Adrian Williams	
Angela Walsh OBE	
Damian Platt	
Elizabeth Petch	
Glenys Markland	
Hilary Wilkinson	
Kathleen Asquith	
Paul Aisthorpe	
Cllr Vivienne Miller Willder	

Accountants

Rawcliffe & Co.Limited, Chartered Accountants, Unit 1 Barons Court, Graceways, Blackpool, Lancs., FY4 5GP

Structure, Governance and Management

The Charity was registered with the Charity Commission on 10th July 2008 as Home-Start Fylde.

On 8th May 2016, the Charity changed its governing document to increase its environs, becoming Home-Start Blackpool, Fylde and Wyre.

The Charity is governed by a Memorandum and Articles of Association, dated 13th May 2008 and is managed by members of the Board of Trustees, along with non-voting advisors.

Membership of the Charity is open to voluntary organisations/statutory bodies whose objects include those which are consistent with those of Home-Start; and to interested individuals accepted into membership by the board of Trustees.

The board of Trustees meet no less than three times in each financial year.

Objectives and activities

Home-Start works with families in communities right across Blackpool, Fylde and Wyre. Starting in the home, our

approach is as individual as the people we're helping. No judgement, it is just compassionate, confidential help and expert support. Being a parent has never been easy. It can be lonely, frustrating, heart breaking and over-whelming. Life-changing events can happen to anyone. That is why Home-Start is ready to support families through their toughest times.

Every Home-Start volunteer is trained to help them work alongside families to overcome the challenges they are facing. We work with families to build on their strengths and give them the support that they tell us they need. Our aim is to support parents to give their children the best possible start in life. To Home-Start, every family is unique, and we respond to each family's needs through a combination of home visiting support, group work and social events. We believe that children need a happy and secure childhood and that parents play the key role in giving their children a good start in life to help them achieve their full potential, because childhood can't wait.

The key activities of the charity include:

Being a parent has never been easy. It can be lonely, frustrating, heart breaking and over-whelming. Life-changing events can happen to anyone. That is why Home-Start is ready to support families through their toughest times, such as mental ill health, postnatal illness, isolation, forces families, bereavement, twins, triplets and multiple children, poverty, disability and other pressures.

Home-Start volunteers understand how hard parenting can be. They work alongside parents, in their own homes, family groups or drop in sessions, to help them cope with the stresses and strains of life and make sure they have the skills, confidence and strength they need to nurture their children.

Trained Volunteers offer regular **Home Visiting** support, friendship and practical help to families under stress in their own homes. **Family Support Groups** offer families a chance to get together in a family learning and friendly environment. **Dad Matters** is our newest programme, working with Dads who have children from pre-birth to two years old, supporting their partners with post / perinatal mental health or postpartum depression, and supporting their own mental health. Meeting fathers for walks and talks, and offering online support with the wider Dad Matters community across the North West. **Big Hopes Big Future is Home-Start's** school readiness programme. We train our volunteers to use original, specifically produced materials, to work directly with the young children in the families they are supporting. They help develop reading, writing, numeracy and understanding of the routines of the school day. This work is backed up with our own **Early Language Development Information** which is shared with parents both in the home and at groups. Our **Fundraising shop** raises vital income for the charity, and is also regarded as a hub for families who need help with signposting, school uniforms, and other items that can be sourced for them.

Public Benefit

In setting out its plans and priorities for areas of work, the Trustees have had regard to the guidance from the Charity Commission on public statement of benefit. The summary of achievements demonstrates how Home-Start Blackpool, Fylde and Wyre has set out to fulfil its principal charitable objective, that is: the relief of children or parents in despair or in distress and the prevention of emotional, physical or mental abuse of children.

Achievements and performance 2022 – 2023

The key activities of the charity through this difficult year include:

Received 228 new referrals from 1/4/22 – 31/3/23 the top five referrers were:

1. Self Referrals
 2. Family Support Services
 3. Education
 4. Health Visitors
 5. Mental Health Services
- Worked with 370 families.
 - Supported over 400 children with free school uniform coordinate by our charity shop and partners
 - Supported 12 Ukrainian families via Blackpool Council with Welfare Visits
 - Delivered 3 volunteer training courses, training 11 new home visiting volunteers

- Continued to develop our charity shop to generate much needed funding and raise awareness
- Recruited a new Family Support Team Leader to take over from our Senior Coordinator who retired
- Delivered stay and play groups in Blackpool, Fleetwood, St Anne's, and Weeton Barracks
- Delivered home visiting family support to families across Blackpool, Fylde and Wyre, including forces families
- Delivered support to fathers through our Dad Matters programme
- Delivered three Holidays Activity and Food – holiday clubs in the Fylde Area for local children
- Delivered 100's of food parcels, Easter eggs, and Christmas gifts
- Offered 70-day placements to two outstanding Social Work Students
- Had success in funding applications including:
 - Arnold Clark Community Fund
 - Blackpool Council and Fylde Council for Emergency Essentials equipment for families
 - Blackpool Council for Ukraine family support
 - Fylde Council for delivery of Holidays Activities and Food holiday clubs for children on free school meals
 - Home-Start UK, Army Central Fund
 - Home-Start UK, Big Hopes Big Future Fund
 - One Stop Community Grant
 - Team Spirit
 - The Eric Wright Foundation
 - The Spring North Consortium
 - Tudor Trust
 - Windmill Community Fund
- Volunteers, Trustees and Staff have accessed continuous professional development opportunities in:
 1. Basic 1st Aid
 2. Basic Food Hygiene
 3. Big Hopes Big Future – School Readiness Programme
 4. Birth Trauma Overview Webinar - Make Birth Better
 5. Brain Architecture
 6. Caring for children
 7. CEOP Ambassador 2 day training
 8. Charity Log Database – Further training
 9. Connect 5 Mental Health and Wellbeing Training
 10. Cosy Homes in Lancashire - WARM Matters
 11. Dad Matters Monitoring Training
 12. Enjoy – Digital Webinar
 13. Equity, Equality, diversity and inclusion
 14. First Aid at Work (Inc. Emergency Paediatric First Aid) 3 day (18hrs)
 15. Food Safety and Hygiene for Catering

16. Good Practice in Volunteer Management
17. HENRY Raise, Engage, Refer - Training course
18. Improving early childhoods in the face of deepening uncertainty
19. Induction for new staff and students
20. Learning Lessons - Perinatal Mental Health
21. Making Every Contact Count MECC
22. Managing Challenging Behaviour
23. Physical and psychological needs of children
24. Postpartum Webinar
25. Pre Birth to Three – Positive Outcomes for Children
26. Prevent
27. Reducing Parental Conflict
28. Safeguarding
29. Safer Recruitment
30. Settling in @Home
31. Settling in @Home Webinar
32. Suicide Awareness Training
33. The biology of Stress and the Science of Hope
34. The cost-of-living crisis: lived experiences
35. The Future of Volunteering
36. Trauma Informed Approach Practitioner Training
37. Volunteer Preparation Course
38. Youth Mental Health First Aid

Partnership

In addition to the above, we have continued to work with local agencies to offer training to our staff and volunteers, including Lancashire Safeguarding Children's Board, Blackpool Council Safeguarding, NSPCC - A Better Start and others. We work closely with Local Home-Starts across Lancashire to ensure best practice and contribute to sustainability. We continue to work closely with The University of Central Lancashire and Blackpool and The Fylde College to offer placements for students undertaking Social Work and Health and Social Care Degrees.

APPOINTMENT AND TRAINING OF TRUSTEES

Potential Trustees/Advisors are assessed by the existing Trustees (Chair and others) to determine whether they have skills and attributes which will be beneficial to the Charity.

On appointment, new Trustees/Advisors are recommended to familiarise themselves with the Charity Commission's and Home-Start UK's guidance regarding their duties and responsibilities.

When new Trustees/Advisors are to be appointed, efforts are made to recruit them from the Charity's geographical area of operation.

WIDER NETWORK

There are 204 Local Home-Start charities in existence throughout the United Kingdom, which operate with common objectives but in discrete geographical areas. There is no formal connection with these charities, but it is intended that they will informally co-operate to assist delivering their common objectives. Local Home-Starts in Lancashire work closely together to share good practice and work towards financial stability for Home-Start in Lancashire. We are affiliated to the Home-Start UK Network, which provides branding, policy, training, national research and reports, resources, specific programmes for working with families and early years children, and support / advice with income generation.

RISK MANAGEMENT

The Trustees examine the major risks the Charity faces as part of their planning for each financial year and develop systems to monitor and control these risks and to mitigate any impact that they may have on the Charity in the future.

TRUSTEES' RESPONSIBILITIES IN RELATION TO THE FINANCIAL STATEMENTS

Company law requires the Trustees, who are Directors of the Company, to prepare financial statements for each financial year, which show a true and fair view of the Company's financial activities during the year and of its financial position at the end of the year. In preparing those financial statements, the trustees are required to:

- select suitable accounting policies and then apply them consistently
- make judgments and estimates that are reasonable and prudent
- prepare financial statements on the going concern basis unless it is inappropriate to presume that the Company will continue in operational existence

The Trustees are responsible for keeping accounting records, which disclose with reasonable accuracy at any time the financial position of the Company and enable them to ensure that the financial statements comply with the Companies Act 2006. They are also responsible for safeguarding the assets of the Company and hence for taking reasonable steps for the prevention and detection of fraud and other irregularities.

The Trustees, who are Directors for the purpose of company law and Trustees for the purpose of Charity law, who served during the year are listed on page 1.

This report has been prepared in accordance with the Statement of Recommended Practice: Accounting and Reporting by Charities and in accordance with the special provisions applicable to companies subject to the small companies' regime and in accordance with FRS102 SORP.

Registered office:

Blackpool Business First Business Centre
Lancaster House
Army Johnson Way
Blackpool
FY4 2RP

Signed by order of the trustees:

Carole A. Harrison

Home-Start Blackpool Fylde & Wyre

Independent Examiner's Report to the trustees of Home-Start Blackpool Fylde & Wyre Ltd ('the Company')

I report to the charity trustees on my examination of the accounts of the Company for the year ended 31 March 2023.

Responsibilities and basis of report

As the charity's trustees of the Company (and also its directors for the purposes of company law) you are responsible for the preparation of the accounts in accordance with the requirements of the Companies Act 2006 ('the 2006 Act').

Having satisfied myself that the accounts of the Company are not required to be audited under Part 16 of the 2006 Act and are eligible for independent examination, I report in respect of my examination of your charity's accounts as carried out under section 145 of the Charities Act 2011 ('the 2011 Act'). In carrying out my examination I have followed the Directions given by the Charity Commission under section 145(5)(b) of the 2011 Act.

Independent examiner's statement

Since the Company's gross income exceeded £250,000 your examiner must be a member of a body listed in section 145 of the 2011 Act. I confirm that I am qualified to undertake the examination because I am a member of FCA, which is one of the listed bodies.


I have completed my examination. I confirm that no matters have come to my attention in connection with the examination giving me cause to believe:

1. accounting records were not kept in respect of Home-Start Blackpool Fylde & Wyre Ltd as required by section 386 of the 2006 Act; or
2. the accounts do not accord with those records; or
3. the accounts do not comply with the accounting requirements of section 396 of the 2006 Act other than any requirement that the accounts give a 'true and fair view' which is not a matter considered as part of an independent examination; or
4. the accounts have not been prepared in accordance with the methods and principles of the Statement of Recommended Practice for accounting and reporting by charities [applicable to charities preparing their accounts in accordance with the Financial Reporting Standard applicable in the UK and Republic of Ireland (FRS 102)].

Home-Start Blackpool Fylde & Wyre

Independent Examiner's Report to the trustees of Home-Start Blackpool Fylde & Wyre

I have no concerns and have come across no other matters in connection with the examination to which attention should be drawn in this report in order to enable a proper understanding of the accounts to be reached.



.....
Ian Harrison BA Hons FCA
Independent Examiner

Unit 1 Barons Court
Graceways
Whitehills Business Park
Blackpool
Lancashire
FY4 5GP

26 September 2023

Home-Start Blackpool Fylde & Wyre

Statement of Financial Activities for the Year Ended 31 March 2023 (Including Income and Expenditure Account and Statement of Total Recognised Gains and Losses)

	Note	Unrestricted funds £	Restricted funds £	Total 2023 £
Income and Endowments from:				
Donations and legacies	3	7,298	261,860	269,158
Other trading activities	4	5,559	105,883	111,442
Total income		12,857	367,743	380,600
Expenditure on:				
Raising funds	5	-	(9,105)	(9,105)
Charitable activities	6	(157)	(246,467)	(246,624)
Other expenditure	7	(401)	(61,068)	(61,469)
Total expenditure		(558)	(316,640)	(317,198)
Net income		12,299	51,103	63,402
Net movement in funds		12,299	51,103	63,402
Reconciliation of funds				
Total funds brought forward		171,141	59,402	230,543
Total funds carried forward	15	183,440	110,505	293,945
	Note	Unrestricted funds £	Restricted funds £	Total 2022 £
Income and Endowments from:				
Donations and legacies	3	21,215	178,732	199,947
Other trading activities	4	6,579	59,092	65,671
Total income		27,794	237,824	265,618
Expenditure on:				
Raising funds	5	-	(2,244)	(2,244)
Charitable activities	6	(209)	(235,560)	(235,769)
Other expenditure	7	(450)	(54,244)	(54,694)
Total expenditure		(659)	(292,048)	(292,707)
Net income/(expenditure)		27,135	(54,224)	(27,089)
Net movement in funds		27,135	(54,224)	(27,089)
Reconciliation of funds				
Total funds brought forward		144,006	113,626	257,632
Total funds carried forward	15	171,141	59,402	230,543

All of the charity's activities derive from continuing operations during the above two periods.

The notes on pages 11 to 18 form an integral part of these financial statements.

Home-Start Blackpool Fylde & Wyre

**Statement of Financial Activities for the Year Ended 31 March 2023
(Including Income and Expenditure Account and Statement of Total Recognised Gains
and Losses)**

The funds breakdown for 2022 is shown in note 15.

The charity received Main Grant BWF lottery funding of £130,342 in the year.

The notes on pages 11 to 18 form an integral part of these financial statements.

Home-Start Blackpool Fylde & Wyre

(Registration number: 6591166)

Balance Sheet as at 31 March 2023

	Note	2023 £	2022 £
Fixed assets			
Tangible assets	11	2,745	3,303
Current assets			
Cash at bank and in hand	12	300,818	238,664
Creditors: Amounts falling due within one year	13	(9,618)	(11,424)
Net current assets		<u>291,200</u>	<u>227,240</u>
Net assets		<u>293,945</u>	<u>230,543</u>
Funds of the charity:			
Restricted income funds			
Restricted funds		110,505	59,402
Unrestricted income funds			
Unrestricted funds		<u>183,440</u>	<u>171,141</u>
Total funds	15	<u>293,945</u>	<u>230,543</u>

For the financial year ending 31 March 2023 the charity was entitled to exemption from audit under section 477 of the Companies Act 2006 relating to small companies.

Directors' responsibilities:

- The members have not required the charity to obtain an audit of its accounts for the year in question in accordance with section 476; and
- The directors acknowledge their responsibilities for complying with the requirements of the Act with respect to accounting records and the preparation of accounts.

These financial statements have been prepared in accordance with the provisions applicable to companies subject to the small companies' regime

The financial statements on pages 8 to 18 were approved by the trustees, and authorised for issue on 26 September 2023 and signed on their behalf by:

Carole A Harrison

Carole A Harrison
Chair of Trustees

Home-Start Blackpool Fylde & Wyre

Notes to the Financial Statements for the Year Ended 31 March 2023

1 Charity status

The charity is limited by guarantee, incorporated in England and Wales, and consequently does not have share capital. Each of the trustees is liable to contribute an amount not exceeding £Nil towards the assets of the charity in the event of liquidation.

The address of its registered office is:

Blackpool Business First

Lancaster House

Amy Johnson Way

Blackpool

Lancashire

FY4 2RP

These financial statements were authorised for issue by the trustees on 26 September 2023.

2 Accounting policies

Summary of significant accounting policies and key accounting estimates

The principal accounting policies applied in the preparation of these financial statements are set out below. These policies have been consistently applied to all the years presented, unless otherwise stated.

Statement of compliance

The financial statements have been prepared in accordance with Accounting and Reporting by Charities: Statement of Recommended Practice (applicable to charities preparing their accounts in accordance with the Financial Reporting Standard applicable in the UK and Republic of Ireland (FRS 102)) (issued in October 2019) - (Charities SORP (FRS 102)), the Financial Reporting Standard applicable in the UK and Republic of Ireland (FRS 102) and the Companies Act 2006.

Basis of preparation

Home-Start Blackpool Fylde & Wyre Ltd meets the definition of a public benefit entity under FRS 102. Assets and liabilities are initially recognised at historical cost or transaction value unless otherwise stated in the relevant accounting policy notes.

Going concern

The trustees consider that there are no material uncertainties about the charity's ability to continue as a going concern nor any significant areas of uncertainty that affect the carrying value of assets held by the charity.

Exemption from preparing a cash flow statement

The charity opted to early adopt Bulletin 1 published on 2 February 2016 and have therefore not included a cash flow statement in these financial statements.

Income and endowments

All income is recognised once the charity has entitlement to the income, it is probable that the income will be received and the amount of the income receivable can be measured reliably.

Home-Start Blackpool Fylde & Wyre

Notes to the Financial Statements for the Year Ended 31 March 2023

Donations and legacies

Donations are recognised when the charity has been notified in writing of both the amount and settlement date. In the event that a donation is subject to conditions that require a level of performance by the charity before the charity is entitled to the funds, the income is deferred and not recognised until either those conditions are fully met, or the fulfilment of those conditions is wholly within the control of the charity and it is probable that these conditions will be fulfilled in the reporting period.

Legacy gifts are recognised on a case by case basis following the grant of probate when the administrator/executor for the estate has communicated in writing both the amount and settlement date. In the event that the gift is in the form of an asset other than cash or a financial asset traded on a recognised stock exchange, recognition is subject to the value of the gift being reliably measurable with a degree of reasonable accuracy and the title to the asset having been transferred to the charity.

Grants receivable

Grants are recognised when the charity has an entitlement to the funds and any conditions linked to the grants have been met. Where performance conditions are attached to the grant and are yet to be met, the income is recognised as a liability and included on the balance sheet as deferred income to be released.

Expenditure

All expenditure is recognised once there is a legal or constructive obligation to that expenditure, it is probable settlement is required and the amount can be measured reliably. All costs are allocated to the applicable expenditure heading, that aggregate similar costs, in that category. Where costs cannot be directly attributed to particular headings, they have been allocated on a basis consistent with the use of resources, with central staff costs allocated on the basis of time spent, and depreciation charges allocated on the portion of the asset's use. Other support costs are allocated based on the spread of staff costs.

Raising funds

These are costs incurred in attracting voluntary income, the management of investments and those incurred in trading activities that raise funds.

Charitable activities

Charitable expenditure comprises those costs incurred by the charity in the delivery of its activities and services for its beneficiaries. It includes both costs that can be allocated directly to such activities and those costs of an indirect nature necessary to support them.

Support costs

Support costs include central functions and have been allocated to activity cost categories on a basis consistent with the use of resources, for example, allocating property costs by floor areas, or per capita, staff costs by the time spent and other costs by their usage.

Governance costs

These include the costs attributable to the charity's compliance with constitutional and statutory requirements, including audit, strategic management and trustees' meetings and reimbursed expenses.

Home-Start Blackpool Fylde & Wyre

Notes to the Financial Statements for the Year Ended 31 March 2023

Taxation

The charity is considered to pass the tests set out in Paragraph 1 Schedule 6 of the Finance Act 2010 and therefore it meets the definition of a charitable company for UK corporation tax purposes. Accordingly, the charity is potentially exempt from taxation in respect of income or capital gains received within categories covered by Chapter 3 Part 11 of the Corporation Tax Act 2010 or Section 256 of the Taxation of Chargeable Gains Act 1992, to the extent that such income or gains are applied exclusively to charitable purposes.

Tangible fixed assets

Individual fixed assets costing £0.00 or more are initially recorded at cost, less any subsequent accumulated depreciation and subsequent accumulated impairment losses.

Depreciation and amortisation

Depreciation is provided on tangible fixed assets so as to write off the cost or valuation, less any estimated residual value, over their expected useful economic life as follows:

Asset class	Depreciation method and rate
Fixtures and Fittings	15% reducing balance
Computer Equipment	25% reducing balance

Cash and cash equivalents

Cash and cash equivalents comprise cash on hand and call deposits, and other short-term highly liquid investments that are readily convertible to a known amount of cash and are subject to an insignificant risk of change in value.

Borrowings

Interest-bearing borrowings are initially recorded at fair value, net of transaction costs. Interest-bearing borrowings are subsequently carried at amortised cost, with the difference between the proceeds, net of transaction costs, and the amount due on redemption being recognised as a charge to the Statement of Financial Activities over the period of the relevant borrowing.

Interest expense is recognised on the basis of the effective interest method and is included in interest payable and similar charges.

Borrowings are classified as current liabilities unless the charity has an unconditional right to defer settlement of the liability for at least twelve months after the reporting date.

Fund structure

Unrestricted income funds are general funds that are available for use at the trustees discretion in furtherance of the objectives of the charity.

Restricted income funds are those donated for use in a particular area or for specific purposes, the use of which is restricted to that area or purpose.

Home-Start Blackpool Fylde & Wyre

Notes to the Financial Statements for the Year Ended 31 March 2023

3 Income from donations and legacies

	Unrestricted funds General £	Restricted funds £	Total funds £
Donations and legacies;			
Legacies	-	14,336	14,336
Grants, including capital grants;			
Grants from other charities	-	250,948	250,948
Regular giving and capital donations	7,298		7,298
Money Raising events		(3,424)	(3,424)
Total for 2023	7,298	261,860	269,158
Total for 2022	21,215	178,732	199,947

4 Income from other trading activities

	Unrestricted funds General £	Restricted funds £	Total funds £
Trading income;			
Other trading income	-	34,375	34,375
Events income;			
Other events income	5,559	71,508	77,067
Total for 2023	5,559	105,883	111,442
Total for 2022	6,579	59,093	65,672

5 Expenditure on raising funds

a) Costs of generating donations and legacies

	Note	Restricted funds £	Total funds £
Marketing and publicity		9,105	9,105
Total for 2023		9,105	9,105
Total for 2022		2,244	2,244

Home-Start Blackpool Fylde & Wyre

Notes to the Financial Statements for the Year Ended 31 March 2023

				Total costs £
6 Expenditure on charitable activities				
	Note	Unrestricted funds General £	Restricted funds £	Total funds £
Allocated support costs		157	13,957	14,114
Governance costs		-	232,510	232,510
Total for 2023		157	246,467	246,624
Total for 2022		209	235,560	235,769

7 Other expenditure

	Note	Unrestricted funds General £	Restricted funds £	Total funds £
Staff costs				
Other staff costs		-	162	162
Marketing and publicity		-	66	66
Depreciation, amortisation and other similar costs	8	401	-	401
Other resources expended		-	53,849	53,849
Allocated support costs		-	6,991	6,991
Total for 2023		401	61,068	61,469
Total for 2022		450	54,244	54,694

Home-Start Blackpool Fylde & Wyre

Notes to the Financial Statements for the Year Ended 31 March 2023

8

Net incoming/(outgoing) resources for the year include:

	2023 £	2022 £
Depreciation of fixed assets	558	6812

9 Staff costs

The aggregate payroll costs were as follows:

	2023 £	2022 £
Staff costs during the year were:		
Wages and salaries	232,510	225,984
Other staff costs	162	781
	<u>232,672</u>	<u>226,765</u>

The monthly average number of persons (including senior management / leadership team) employed by the charity during the year expressed as full-time equivalents was as follows:

	2023 No	2022 No
Management	2	2
Administration	3	3
Front Line Staff	8	8
	<u>13</u>	<u>13</u>

13 (2022 - 13) of the above employees participated in the Defined Contribution Pension Schemes.

Contributions to the employee pension schemes for the year totalled £4,309 (2022 - £3,433).

No employee received emoluments of more than £60,000 during the year.

Home-Start Blackpool Fylde & Wyre

Notes to the Financial Statements for the Year Ended 31 March 2023

10 Taxation

The charity is a registered charity and is therefore exempt from taxation.

11 Tangible fixed assets

	Furniture and equipment £	Computer equipment £	Total £
Cost			
At 1 April 2022	15,301	6,275	21,576
At 31 March 2023	15,301	6,275	21,576
Depreciation			
At 1 April 2022	12,627	5,646	18,273
Charge for the year	401	157	558
At 31 March 2023	13,028	5,803	18,831
Net book value			
At 31 March 2023	2,273	472	2,745
At 31 March 2022	2,674	629	3,303

12 Cash and cash equivalents

	2023 £	2022 £
Cash on hand	174	322
Cash at bank	300,644	238,342
	300,818	238,664

13 Creditors: amounts falling due within one year

	2023 £	2022 £
Other creditors	6,798	8,604
Accruals	2,820	2,820
	9,618	11,424

14 Pension and other schemes

Defined contribution pension scheme

The charity operates a defined contribution pension scheme. The pension cost charge for the year represents contributions payable by the charity to the scheme and amounted to £Nil (2022 - £Nil).

Home-Start Blackpool Fylde & Wyre

Notes to the Financial Statements for the Year Ended 31 March 2023

15 Funds

	Balance at 1 April 2022 £	Incoming resources £	Resources expended £	Balance at 31 March 2023 £
Unrestricted funds				
General	171,141	12,857	(558)	183,440
Restricted funds	59,402	367,743	(316,640)	110,505
Total funds	<u>230,543</u>	<u>380,600</u>	<u>(317,198)</u>	<u>293,945</u>

Unrestricted funds

	Balance at 1 April 2021 £	Incoming resources £	Resources expended £	Balance at 31 March 2022 £
Unrestricted funds				
General	144,006	27,794	(659)	171,141
Restricted funds	113,626	237,825	(292,049)	59,402
Total funds	<u>257,632</u>	<u>265,619</u>	<u>(292,708)</u>	<u>230,543</u>

Home-Start Blackpool Fylde & Wyre

Statement of Financial Activities by fund for the Year Ended 31 March 2023

Unrestricted Funds

	Total Unrestricted Funds 2023 £
Income and Endowments from:	
Donations and legacies	7,298
Other trading activities	5,559
Total income	12,857
Expenditure on:	
Charitable activities	(157)
Other expenditure	(401)
Total expenditure	(558)
Net income	12,299
Net movement in funds	12,299
Reconciliation of funds	
Total funds brought forward	171,141
Total funds carried forward	183,440
	Total Unrestricted Funds 2022 £
Income and Endowments from:	
Donations and legacies	21,215
Other trading activities	6,579
Total income	27,794
Expenditure on:	
Charitable activities	(209)
Other expenditure	(450)
Total expenditure	(659)
Net income	27,135
Net movement in funds	27,135
Reconciliation of funds	
Total funds brought forward	144,006
Total funds carried forward	171,141

Home-Start Blackpool Fylde & Wyre

Statement of Financial Activities by fund for the Year Ended 31 March 2023

Restricted Funds

	Total Restricted Funds 2023 £
Income and Endowments from:	
Donations and legacies	261,860
Other trading activities	<u>105,883</u>
Total income	<u>367,743</u>
Expenditure on:	
Raising funds	(9,105)
Charitable activities	(246,467)
Other expenditure	<u>(61,068)</u>
Total expenditure	<u>(316,640)</u>
Net income	<u>51,103</u>
Net movement in funds	51,103
Reconciliation of funds	
Total funds brought forward	<u>59,402</u>
Total funds carried forward	<u>110,505</u>
	Total Restricted Funds 2022 £
Income and Endowments from:	
Donations and legacies	178,732
Other trading activities	<u>59,093</u>
Total income	<u>237,825</u>
Expenditure on:	
Raising funds	(2,244)
Charitable activities	(235,561)
Other expenditure	<u>(54,244)</u>
Total expenditure	<u>(292,049)</u>
Net expenditure	<u>(54,224)</u>
Net movement in funds	(54,224)
Reconciliation of funds	
Total funds brought forward	<u>113,626</u>

This page does not form part of the statutory financial statements.

Home-Start Blackpool Fylde & Wyre

Statement of Financial Activities by fund for the Year Ended 31 March 2023

	Total Restricted Funds 2022 £
Total funds carried forward	<u>59,402</u>

Home-Start Blackpool Fylde & Wyre

Detailed Statement of Financial Activities for the Year Ended 31 March 2023

	2023			2022	
	Unrestricted funds General £	Restricted funds £	Total £	Unrestricted funds General £	Restricted funds £
Income and Endowments from:					
Donations and legacies (analysed below)	7,298	261,860	269,158	21,215	178,732
Other trading activities (analysed below)	5,559	105,883	111,442	6,579	59,093
Total income	12,857	367,743	380,600	27,794	237,825
Expenditure on:					
Raising funds (analysed below)	-	(9,105)	(9,105)	-	(2,244)
Charitable activities (analysed below)	(157)	(246,467)	(246,624)	(209)	(235,561)
Other expenditure (analysed below)	(401)	(61,068)	(61,469)	(450)	(54,244)
Total expenditure	(558)	(316,640)	(317,198)	(659)	(292,049)
Net income/(expenditure)	12,299	51,103	63,402	27,135	(54,224)
Net movement in funds	12,299	51,103	63,402	27,135	(54,224)
Reconciliation of funds					
Total funds brought forward	171,141	59,402	230,543	144,006	113,626
Total funds carried forward	183,440	110,505	293,945	171,141	59,402

Home-Start Blackpool Fylde & Wyre

Detailed Statement of Financial Activities for the Year Ended 31 March 2023

	2023			2022	
	Unrestricted funds General £	Restricted funds £	Total £	Unrestricted funds General £	Restricted funds £
Donations and legacies					
Donations unrestricted	7,298	-	7,298	21,215	-
Donations - restricted	-	14,336	14,336	-	39,457
Grants	-	250,948	250,948	-	139,275
Money raising events -restricted	-	(3,424)	(3,424)	-	-
	<u>7,298</u>	<u>261,860</u>	<u>269,158</u>	<u>21,215</u>	<u>178,732</u>

	2023			2022	
	Unrestricted funds General £	Restricted funds £	Total £	Unrestricted funds General £	Restricted funds £
Other trading activities					
Money raising events - unrestricted	5,559	-	5,559	6,579	-
Money raising events -restricted	-	71,508	71,508	-	31,224
Shop takings	-	34,375	34,375	-	27,869
	<u>5,559</u>	<u>105,883</u>	<u>111,442</u>	<u>6,579</u>	<u>59,093</u>

	2023		2022	
	Restricted funds £	Total £	Restricted funds £	Total £
Raising funds				
Money raising events	(9,105)	(9,105)	(2,244)	(2,244)
	<u>(9,105)</u>	<u>(9,105)</u>	<u>(2,244)</u>	<u>(2,244)</u>

	2023			2022	
	Unrestricted funds General £	Restricted funds £	Total £	Unrestricted funds General £	Restricted funds £

This page does not form part of the statutory financial statements.

Detailed Statement of Financial Activities for the Year Ended 31 March 2023

Governance costs

Other expenditure

Rent and room hire	-	(102)	(102)	-	(781)
Rates and water	-	(22,636)	(22,636)	-	(18,007)
Light heat and power	-	706	706	-	884
Insurance	-	(600)	(600)	-	(598)
Repairs and maintenance	-	(1,381)	(1,381)	-	(1,380)
Telephone	-	(157)	(157)	-	(137)
IT costs restricted	-	(3,612)	(3,612)	-	(3,336)
IT costs unrestricted	-	(6,210)	(6,210)	-	(7,987)
Printing postage and stationery	-	-	-	22	-
	-	(3,882)	(3,882)	-	(2,037)

Page 24

Home-Start Blackpool Fylde & Wyre

Detailed Statement of Financial Activities for the Year Ended 31 March 2023

	2023			2022	
	Unrestricted funds General £	Restricted funds £	Total £	Unrestricted funds General £	Restricted funds £
Home-Start UK fees	-	(8,637)	(8,637)	-	(12,608)
Volunteer expenses	-	(3,065)	(3,065)	-	(1,102)
Sundry expenses	-	(7,440)	(7,440)	-	(1,997)
Travel expenses (staff)	-	(3,926)	(3,926)	-	(2,787)
Marketing	-	(66)	(66)	-	(2,371)
Depreciation of fixtures and fittings (owned)	(401)	-	(401)	(472)	-
	(401)	(61,068)	(61,469)	(450)	(54,244)

This page does not form part of the statutory financial statements.

Company registration number: 6591166

Charity registration number: 1124945

Home-Start Blackpool Fylde & Wyre

(A company limited by guarantee)

Annual Report and Financial Statements

for the Year Ended 31 March 2023

Rawcliffe & Co Limited
Unit 1 Barons Court
Graceways
Whitehills Business Park
Blackpool
Lancashire
FY4 5GP

Home-Start Blackpool Fylde & Wyre

Contents

Trustees' Report	1 to 5
Independent Examiner's Report	6 to 7
Statement of Financial Activities	8 to 9
Balance Sheet	10
Notes to the Financial Statements	11 to 18

Home-Start Blackpool Fylde and Wyre Company Limited by Guarantee

Trustees' Annual Report (Incorporating the Director's Report) Year ended 31 March 2023

The trustees, who are also the directors for the purposes of company law, present their report and the unaudited financial statements of the charity for the year ended 31 March 2023.

Reference and administrative details

Registered Charity Name:	Home-Start Blackpool Fylde and Wyre
Charity Registration Number:	1124945
Company Registration Number:	6591166
Principal Registered Office:	Blackpool Business First Business Centre Lancaster House Amy Johnson Way Blackpool FY4 2RP

The Trustees

Carole A Harrison	Chair
Peter Law Jones	Vice Chair
Karen Mary Eaton	Treasurer
Denise Taylor	Secretary
Adrian May	
Adrian Williams	
Angela Walsh OBE	
Damian Platt	
Elizabeth Petch	
Glenys Markland	
Hilary Wilkinson	
Kathleen Asquith	
Paul Aisthorpe	
Cllr Vivienne Miller Willder	

Accountants

Rawcliffe & Co.Limited, Chartered Accountants, Unit 1 Barons Court, Graceways, Blackpool, Lancs., FY4 5GP

Structure, Governance and Management

The Charity was registered with the Charity Commission on 10th July 2008 as Home-Start Fylde.

On 8th May 2016, the Charity changed its governing document to increase its environs, becoming Home-Start Blackpool, Fylde and Wyre.

The Charity is governed by a Memorandum and Articles of Association, dated 13th May 2008 and is managed by members of the Board of Trustees, along with non-voting advisors.

Membership of the Charity is open to voluntary organisations/statutory bodies whose objects include those which are consistent with those of Home-Start; and to interested individuals accepted into membership by the board of Trustees.

The board of Trustees meet no less than three times in each financial year.

Objectives and activities

Home-Start works with families in communities right across Blackpool, Fylde and Wyre. Starting in the home, our

approach is as individual as the people we're helping. No judgement, it is just compassionate, confidential help and expert support. Being a parent has never been easy. It can be lonely, frustrating, heart breaking and over-whelming. Life-changing events can happen to anyone. That is why Home-Start is ready to support families through their toughest times.

Every Home-Start volunteer is trained to help them work alongside families to overcome the challenges they are facing. We work with families to build on their strengths and give them the support that they tell us they need. Our aim is to support parents to give their children the best possible start in life. To Home-Start, every family is unique, and we respond to each family's needs through a combination of home visiting support, group work and social events. We believe that children need a happy and secure childhood and that parents play the key role in giving their children a good start in life to help them achieve their full potential, because childhood can't wait.

The key activities of the charity include:

Being a parent has never been easy. It can be lonely, frustrating, heart breaking and over-whelming. Life-changing events can happen to anyone. That is why Home-Start is ready to support families through their toughest times, such as mental ill health, postnatal illness, isolation, forces families, bereavement, twins, triplets and multiple children, poverty, disability and other pressures.

Home-Start volunteers understand how hard parenting can be. They work alongside parents, in their own homes, family groups or drop in sessions, to help them cope with the stresses and strains of life and make sure they have the skills, confidence and strength they need to nurture their children.

Trained Volunteers offer regular **Home Visiting** support, friendship and practical help to families under stress in their own homes. **Family Support Groups** offer families a chance to get together in a family learning and friendly environment. **Dad Matters** is our newest programme, working with Dads who have children from pre-birth to two years old, supporting their partners with post / perinatal mental health or postpartum depression, and supporting their own mental health. Meeting fathers for walks and talks, and offering online support with the wider Dad Matters community across the North West. **Big Hopes Big Future is Home-Start's** school readiness programme. We train our volunteers to use original, specifically produced materials, to work directly with the young children in the families they are supporting. They help develop reading, writing, numeracy and understanding of the routines of the school day. This work is backed up with our own **Early Language Development Information** which is shared with parents both in the home and at groups. Our **Fundraising shop** raises vital income for the charity, and is also regarded as a hub for families who need help with signposting, school uniforms, and other items that can be sourced for them.

Public Benefit

In setting out its plans and priorities for areas of work, the Trustees have had regard to the guidance from the Charity Commission on public statement of benefit. The summary of achievements demonstrates how Home-Start Blackpool, Fylde and Wyre has set out to fulfil its principal charitable objective, that is: the relief of children or parents in despair or in distress and the prevention of emotional, physical or mental abuse of children.

Achievements and performance 2022 – 2023

The key activities of the charity through this difficult year include:

Received 228 new referrals from 1/4/22 – 31/3/23 the top five referrers were:

1. Self Referrals
 2. Family Support Services
 3. Education
 4. Health Visitors
 5. Mental Health Services
- Worked with 370 families.
 - Supported over 400 children with free school uniform coordinate by our charity shop and partners
 - Supported 12 Ukrainian families via Blackpool Council with Welfare Visits
 - Delivered 3 volunteer training courses, training 11 new home visiting volunteers

- Continued to develop our charity shop to generate much needed funding and raise awareness
- Recruited a new Family Support Team Leader to take over from our Senior Coordinator who retired
- Delivered stay and play groups in Blackpool, Fleetwood, St Anne's, and Weeton Barracks
- Delivered home visiting family support to families across Blackpool, Fylde and Wyre, including forces families
- Delivered support to fathers through our Dad Matters programme
- Delivered three Holidays Activity and Food – holiday clubs in the Fylde Area for local children
- Delivered 100's of food parcels, Easter eggs, and Christmas gifts
- Offered 70-day placements to two outstanding Social Work Students
- Had success in funding applications including:
 - Arnold Clark Community Fund
 - Blackpool Council and Fylde Council for Emergency Essentials equipment for families
 - Blackpool Council for Ukraine family support
 - Fylde Council for delivery of Holidays Activities and Food holiday clubs for children on free school meals
 - Home-Start UK, Army Central Fund
 - Home-Start UK, Big Hopes Big Future Fund
 - One Stop Community Grant
 - Team Spirit
 - The Eric Wright Foundation
 - The Spring North Consortium
 - Tudor Trust
 - Windmill Community Fund
- Volunteers, Trustees and Staff have accessed continuous professional development opportunities in:
 1. Basic 1st Aid
 2. Basic Food Hygiene
 3. Big Hopes Big Future – School Readiness Programme
 4. Birth Trauma Overview Webinar - Make Birth Better
 5. Brain Architecture
 6. Caring for children
 7. CEOP Ambassador 2 day training
 8. Charity Log Database – Further training
 9. Connect 5 Mental Health and Wellbeing Training
 10. Cosy Homes in Lancashire - WARM Matters
 11. Dad Matters Monitoring Training
 12. Enjoy – Digital Webinar
 13. Equity, Equality, diversity and inclusion
 14. First Aid at Work (Inc. Emergency Paediatric First Aid) 3 day (18hrs)
 15. Food Safety and Hygiene for Catering

16. Good Practice in Volunteer Management
17. HENRY Raise, Engage, Refer - Training course
18. Improving early childhoods in the face of deepening uncertainty
19. Induction for new staff and students
20. Learning Lessons - Perinatal Mental Health
21. Making Every Contact Count MECC
22. Managing Challenging Behaviour
23. Physical and psychological needs of children
24. Postpartum Webinar
25. Pre Birth to Three – Positive Outcomes for Children
26. Prevent
27. Reducing Parental Conflict
28. Safeguarding
29. Safer Recruitment
30. Settling in @Home
31. Settling in @Home Webinar
32. Suicide Awareness Training
33. The biology of Stress and the Science of Hope
34. The cost-of-living crisis: lived experiences
35. The Future of Volunteering
36. Trauma Informed Approach Practitioner Training
37. Volunteer Preparation Course
38. Youth Mental Health First Aid

Partnership

In addition to the above, we have continued to work with local agencies to offer training to our staff and volunteers, including Lancashire Safeguarding Children's Board, Blackpool Council Safeguarding, NSPCC - A Better Start and others. We work closely with Local Home-Starts across Lancashire to ensure best practice and contribute to sustainability. We continue to work closely with The University of Central Lancashire and Blackpool and The Fylde College to offer placements for students undertaking Social Work and Health and Social Care Degrees.

APPOINTMENT AND TRAINING OF TRUSTEES

Potential Trustees/Advisors are assessed by the existing Trustees (Chair and others) to determine whether they have skills and attributes which will be beneficial to the Charity.

On appointment, new Trustees/Advisors are recommended to familiarise themselves with the Charity Commission's and Home-Start UK's guidance regarding their duties and responsibilities.

When new Trustees/Advisors are to be appointed, efforts are made to recruit them from the Charity's geographical area of operation.

WIDER NETWORK

There are 204 Local Home-Start charities in existence throughout the United Kingdom, which operate with common objectives but in discrete geographical areas. There is no formal connection with these charities, but it is intended that they will informally co-operate to assist delivering their common objectives. Local Home-Starts in Lancashire work closely together to share good practice and work towards financial stability for Home-Start in Lancashire. We are affiliated to the Home-Start UK Network, which provides branding, policy, training, national research and reports, resources, specific programmes for working with families and early years children, and support / advice with income generation.

RISK MANAGEMENT

The Trustees examine the major risks the Charity faces as part of their planning for each financial year and develop systems to monitor and control these risks and to mitigate any impact that they may have on the Charity in the future.

TRUSTEES' RESPONSIBILITIES IN RELATION TO THE FINANCIAL STATEMENTS

Company law requires the Trustees, who are Directors of the Company, to prepare financial statements for each financial year, which show a true and fair view of the Company's financial activities during the year and of its financial position at the end of the year. In preparing those financial statements, the trustees are required to:

- select suitable accounting policies and then apply them consistently
- make judgments and estimates that are reasonable and prudent
- prepare financial statements on the going concern basis unless it is inappropriate to presume that the Company will continue in operational existence

The Trustees are responsible for keeping accounting records, which disclose with reasonable accuracy at any time the financial position of the Company and enable them to ensure that the financial statements comply with the Companies Act 2006. They are also responsible for safeguarding the assets of the Company and hence for taking reasonable steps for the prevention and detection of fraud and other irregularities.

The Trustees, who are Directors for the purpose of company law and Trustees for the purpose of Charity law, who served during the year are listed on page 1.

This report has been prepared in accordance with the Statement of Recommended Practice: Accounting and Reporting by Charities and in accordance with the special provisions applicable to companies subject to the small companies' regime and in accordance with FRS102 SORP.

Registered office:

Blackpool Business First Business Centre
Lancaster House
Army Johnson Way
Blackpool
FY4 2RP

Signed by order of the trustees:

Carole A. Harrison

Home-Start Blackpool Fylde & Wyre

Independent Examiner's Report to the trustees of Home-Start Blackpool Fylde & Wyre Ltd ('the Company')

I report to the charity trustees on my examination of the accounts of the Company for the year ended 31 March 2023.

Responsibilities and basis of report

As the charity's trustees of the Company (and also its directors for the purposes of company law) you are responsible for the preparation of the accounts in accordance with the requirements of the Companies Act 2006 ('the 2006 Act').

Having satisfied myself that the accounts of the Company are not required to be audited under Part 16 of the 2006 Act and are eligible for independent examination, I report in respect of my examination of your charity's accounts as carried out under section 145 of the Charities Act 2011 ('the 2011 Act'). In carrying out my examination I have followed the Directions given by the Charity Commission under section 145(5)(b) of the 2011 Act.

Independent examiner's statement

Since the Company's gross income exceeded £250,000 your examiner must be a member of a body listed in section 145 of the 2011 Act. I confirm that I am qualified to undertake the examination because I am a member of FCA, which is one of the listed bodies.


I have completed my examination. I confirm that no matters have come to my attention in connection with the examination giving me cause to believe:

1. accounting records were not kept in respect of Home-Start Blackpool Fylde & Wyre Ltd as required by section 386 of the 2006 Act; or
2. the accounts do not accord with those records; or
3. the accounts do not comply with the accounting requirements of section 396 of the 2006 Act other than any requirement that the accounts give a 'true and fair view' which is not a matter considered as part of an independent examination; or
4. the accounts have not been prepared in accordance with the methods and principles of the Statement of Recommended Practice for accounting and reporting by charities [applicable to charities preparing their accounts in accordance with the Financial Reporting Standard applicable in the UK and Republic of Ireland (FRS 102)].

Home-Start Blackpool Fylde & Wyre

Independent Examiner's Report to the trustees of Home-Start Blackpool Fylde & Wyre

I have no concerns and have come across no other matters in connection with the examination to which attention should be drawn in this report in order to enable a proper understanding of the accounts to be reached.



.....
Ian Harrison BA Hons FCA
Independent Examiner

Unit 1 Barons Court
Graceways
Whitehills Business Park
Blackpool
Lancashire
FY4 5GP

26 September 2023

Home-Start Blackpool Fylde & Wyre

Statement of Financial Activities for the Year Ended 31 March 2023 (Including Income and Expenditure Account and Statement of Total Recognised Gains and Losses)

	Note	Unrestricted funds £	Restricted funds £	Total 2023 £
Income and Endowments from:				
Donations and legacies	3	7,298	261,860	269,158
Other trading activities	4	5,559	105,883	111,442
Total income		12,857	367,743	380,600
Expenditure on:				
Raising funds	5	-	(9,105)	(9,105)
Charitable activities	6	(157)	(246,467)	(246,624)
Other expenditure	7	(401)	(61,068)	(61,469)
Total expenditure		(558)	(316,640)	(317,198)
Net income		12,299	51,103	63,402
Net movement in funds		12,299	51,103	63,402
Reconciliation of funds				
Total funds brought forward		171,141	59,402	230,543
Total funds carried forward	15	183,440	110,505	293,945
	Note	Unrestricted funds £	Restricted funds £	Total 2022 £
Income and Endowments from:				
Donations and legacies	3	21,215	178,732	199,947
Other trading activities	4	6,579	59,092	65,671
Total income		27,794	237,824	265,618
Expenditure on:				
Raising funds	5	-	(2,244)	(2,244)
Charitable activities	6	(209)	(235,560)	(235,769)
Other expenditure	7	(450)	(54,244)	(54,694)
Total expenditure		(659)	(292,048)	(292,707)
Net income/(expenditure)		27,135	(54,224)	(27,089)
Net movement in funds		27,135	(54,224)	(27,089)
Reconciliation of funds				
Total funds brought forward		144,006	113,626	257,632
Total funds carried forward	15	171,141	59,402	230,543

All of the charity's activities derive from continuing operations during the above two periods.

The notes on pages 11 to 18 form an integral part of these financial statements.

Home-Start Blackpool Fylde & Wyre

**Statement of Financial Activities for the Year Ended 31 March 2023
(Including Income and Expenditure Account and Statement of Total Recognised Gains
and Losses)**

The funds breakdown for 2022 is shown in note 15.

The charity received Main Grant BWF lottery funding of £130,342 in the year.

The notes on pages 11 to 18 form an integral part of these financial statements.

Home-Start Blackpool Fylde & Wyre

(Registration number: 6591166)

Balance Sheet as at 31 March 2023

	Note	2023 £	2022 £
Fixed assets			
Tangible assets	11	2,745	3,303
Current assets			
Cash at bank and in hand	12	300,818	238,664
Creditors: Amounts falling due within one year	13	(9,618)	(11,424)
Net current assets		<u>291,200</u>	<u>227,240</u>
Net assets		<u>293,945</u>	<u>230,543</u>
Funds of the charity:			
Restricted income funds			
Restricted funds		110,505	59,402
Unrestricted income funds			
Unrestricted funds		<u>183,440</u>	<u>171,141</u>
Total funds	15	<u>293,945</u>	<u>230,543</u>

For the financial year ending 31 March 2023 the charity was entitled to exemption from audit under section 477 of the Companies Act 2006 relating to small companies.

Directors' responsibilities:

- The members have not required the charity to obtain an audit of its accounts for the year in question in accordance with section 476; and
- The directors acknowledge their responsibilities for complying with the requirements of the Act with respect to accounting records and the preparation of accounts.

These financial statements have been prepared in accordance with the provisions applicable to companies subject to the small companies' regime

The financial statements on pages 8 to 18 were approved by the trustees, and authorised for issue on 26 September 2023 and signed on their behalf by:

Carole A Harrison

Carole A Harrison
Chair of Trustees

Home-Start Blackpool Fylde & Wyre

Notes to the Financial Statements for the Year Ended 31 March 2023

1 Charity status

The charity is limited by guarantee, incorporated in England and Wales, and consequently does not have share capital. Each of the trustees is liable to contribute an amount not exceeding £Nil towards the assets of the charity in the event of liquidation.

The address of its registered office is:

Blackpool Business First

Lancaster House

Amy Johnson Way

Blackpool

Lancashire

FY4 2RP

These financial statements were authorised for issue by the trustees on 26 September 2023.

2 Accounting policies

Summary of significant accounting policies and key accounting estimates

The principal accounting policies applied in the preparation of these financial statements are set out below. These policies have been consistently applied to all the years presented, unless otherwise stated.

Statement of compliance

The financial statements have been prepared in accordance with Accounting and Reporting by Charities: Statement of Recommended Practice (applicable to charities preparing their accounts in accordance with the Financial Reporting Standard applicable in the UK and Republic of Ireland (FRS 102)) (issued in October 2019) - (Charities SORP (FRS 102)), the Financial Reporting Standard applicable in the UK and Republic of Ireland (FRS 102) and the Companies Act 2006.

Basis of preparation

Home-Start Blackpool Fylde & Wyre Ltd meets the definition of a public benefit entity under FRS 102. Assets and liabilities are initially recognised at historical cost or transaction value unless otherwise stated in the relevant accounting policy notes.

Going concern

The trustees consider that there are no material uncertainties about the charity's ability to continue as a going concern nor any significant areas of uncertainty that affect the carrying value of assets held by the charity.

Exemption from preparing a cash flow statement

The charity opted to early adopt Bulletin 1 published on 2 February 2016 and have therefore not included a cash flow statement in these financial statements.

Income and endowments

All income is recognised once the charity has entitlement to the income, it is probable that the income will be received and the amount of the income receivable can be measured reliably.

Home-Start Blackpool Fylde & Wyre

Notes to the Financial Statements for the Year Ended 31 March 2023

Donations and legacies

Donations are recognised when the charity has been notified in writing of both the amount and settlement date. In the event that a donation is subject to conditions that require a level of performance by the charity before the charity is entitled to the funds, the income is deferred and not recognised until either those conditions are fully met, or the fulfilment of those conditions is wholly within the control of the charity and it is probable that these conditions will be fulfilled in the reporting period.

Legacy gifts are recognised on a case by case basis following the grant of probate when the administrator/executor for the estate has communicated in writing both the amount and settlement date. In the event that the gift is in the form of an asset other than cash or a financial asset traded on a recognised stock exchange, recognition is subject to the value of the gift being reliably measurable with a degree of reasonable accuracy and the title to the asset having been transferred to the charity.

Grants receivable

Grants are recognised when the charity has an entitlement to the funds and any conditions linked to the grants have been met. Where performance conditions are attached to the grant and are yet to be met, the income is recognised as a liability and included on the balance sheet as deferred income to be released.

Expenditure

All expenditure is recognised once there is a legal or constructive obligation to that expenditure, it is probable settlement is required and the amount can be measured reliably. All costs are allocated to the applicable expenditure heading, that aggregate similar costs, in that category. Where costs cannot be directly attributed to particular headings, they have been allocated on a basis consistent with the use of resources, with central staff costs allocated on the basis of time spent, and depreciation charges allocated on the portion of the asset's use. Other support costs are allocated based on the spread of staff costs.

Raising funds

These are costs incurred in attracting voluntary income, the management of investments and those incurred in trading activities that raise funds.

Charitable activities

Charitable expenditure comprises those costs incurred by the charity in the delivery of its activities and services for its beneficiaries. It includes both costs that can be allocated directly to such activities and those costs of an indirect nature necessary to support them.

Support costs

Support costs include central functions and have been allocated to activity cost categories on a basis consistent with the use of resources, for example, allocating property costs by floor areas, or per capita, staff costs by the time spent and other costs by their usage.

Governance costs

These include the costs attributable to the charity's compliance with constitutional and statutory requirements, including audit, strategic management and trustees' meetings and reimbursed expenses.

Home-Start Blackpool Fylde & Wyre

Notes to the Financial Statements for the Year Ended 31 March 2023

Taxation

The charity is considered to pass the tests set out in Paragraph 1 Schedule 6 of the Finance Act 2010 and therefore it meets the definition of a charitable company for UK corporation tax purposes. Accordingly, the charity is potentially exempt from taxation in respect of income or capital gains received within categories covered by Chapter 3 Part 11 of the Corporation Tax Act 2010 or Section 256 of the Taxation of Chargeable Gains Act 1992, to the extent that such income or gains are applied exclusively to charitable purposes.

Tangible fixed assets

Individual fixed assets costing £0.00 or more are initially recorded at cost, less any subsequent accumulated depreciation and subsequent accumulated impairment losses.

Depreciation and amortisation

Depreciation is provided on tangible fixed assets so as to write off the cost or valuation, less any estimated residual value, over their expected useful economic life as follows:

Asset class	Depreciation method and rate
Fixtures and Fittings	15% reducing balance
Computer Equipment	25% reducing balance

Cash and cash equivalents

Cash and cash equivalents comprise cash on hand and call deposits, and other short-term highly liquid investments that are readily convertible to a known amount of cash and are subject to an insignificant risk of change in value.

Borrowings

Interest-bearing borrowings are initially recorded at fair value, net of transaction costs. Interest-bearing borrowings are subsequently carried at amortised cost, with the difference between the proceeds, net of transaction costs, and the amount due on redemption being recognised as a charge to the Statement of Financial Activities over the period of the relevant borrowing.

Interest expense is recognised on the basis of the effective interest method and is included in interest payable and similar charges.

Borrowings are classified as current liabilities unless the charity has an unconditional right to defer settlement of the liability for at least twelve months after the reporting date.

Fund structure

Unrestricted income funds are general funds that are available for use at the trustees discretion in furtherance of the objectives of the charity.

Restricted income funds are those donated for use in a particular area or for specific purposes, the use of which is restricted to that area or purpose.

Home-Start Blackpool Fylde & Wyre

Notes to the Financial Statements for the Year Ended 31 March 2023

3 Income from donations and legacies

	Unrestricted funds General £	Restricted funds £	Total funds £
Donations and legacies;			
Legacies	-	14,336	14,336
Grants, including capital grants;			
Grants from other charities	-	250,948	250,948
Regular giving and capital donations	7,298		7,298
Money Raising events		(3,424)	(3,424)
Total for 2023	7,298	261,860	269,158
Total for 2022	21,215	178,732	199,947

4 Income from other trading activities

	Unrestricted funds General £	Restricted funds £	Total funds £
Trading income;			
Other trading income	-	34,375	34,375
Events income;			
Other events income	5,559	71,508	77,067
Total for 2023	5,559	105,883	111,442
Total for 2022	6,579	59,093	65,672

5 Expenditure on raising funds

a) Costs of generating donations and legacies

	Note	Restricted funds £	Total funds £
Marketing and publicity		9,105	9,105
Total for 2023		9,105	9,105
Total for 2022		2,244	2,244

Home-Start Blackpool Fylde & Wyre

Notes to the Financial Statements for the Year Ended 31 March 2023

				Total costs £
6 Expenditure on charitable activities				
	Note	Unrestricted funds General £	Restricted funds £	Total funds £
Allocated support costs		157	13,957	14,114
Governance costs		-	232,510	232,510
Total for 2023		157	246,467	246,624
Total for 2022		209	235,560	235,769

7 Other expenditure

	Note	Unrestricted funds General £	Restricted funds £	Total funds £
Staff costs				
Other staff costs		-	162	162
Marketing and publicity		-	66	66
Depreciation, amortisation and other similar costs	8	401	-	401
Other resources expended		-	53,849	53,849
Allocated support costs		-	6,991	6,991
Total for 2023		401	61,068	61,469
Total for 2022		450	54,244	54,694

Home-Start Blackpool Fylde & Wyre

Notes to the Financial Statements for the Year Ended 31 March 2023

8

Net incoming/(outgoing) resources for the year include:

	2023 £	2022 £
Depreciation of fixed assets	558	6812

9 Staff costs

The aggregate payroll costs were as follows:

	2023 £	2022 £
Staff costs during the year were:		
Wages and salaries	232,510	225,984
Other staff costs	162	781
	<u>232,672</u>	<u>226,765</u>

The monthly average number of persons (including senior management / leadership team) employed by the charity during the year expressed as full-time equivalents was as follows:

	2023 No	2022 No
Management	2	2
Administration	3	3
Front Line Staff	8	8
	<u>13</u>	<u>13</u>

13 (2022 - 13) of the above employees participated in the Defined Contribution Pension Schemes.

Contributions to the employee pension schemes for the year totalled £4,309 (2022 - £3,433).

No employee received emoluments of more than £60,000 during the year.

Home-Start Blackpool Fylde & Wyre

Notes to the Financial Statements for the Year Ended 31 March 2023

10 Taxation

The charity is a registered charity and is therefore exempt from taxation.

11 Tangible fixed assets

	Furniture and equipment £	Computer equipment £	Total £
Cost			
At 1 April 2022	15,301	6,275	21,576
At 31 March 2023	15,301	6,275	21,576
Depreciation			
At 1 April 2022	12,627	5,646	18,273
Charge for the year	401	157	558
At 31 March 2023	13,028	5,803	18,831
Net book value			
At 31 March 2023	2,273	472	2,745
At 31 March 2022	2,674	629	3,303

12 Cash and cash equivalents

	2023 £	2022 £
Cash on hand	174	322
Cash at bank	300,644	238,342
	300,818	238,664

13 Creditors: amounts falling due within one year

	2023 £	2022 £
Other creditors	6,798	8,604
Accruals	2,820	2,820
	9,618	11,424

14 Pension and other schemes

Defined contribution pension scheme

The charity operates a defined contribution pension scheme. The pension cost charge for the year represents contributions payable by the charity to the scheme and amounted to £Nil (2022 - £Nil).

Home-Start Blackpool Fylde & Wyre

Notes to the Financial Statements for the Year Ended 31 March 2023

15 Funds

	Balance at 1 April 2022 £	Incoming resources £	Resources expended £	Balance at 31 March 2023 £
Unrestricted funds				
General	171,141	12,857	(558)	183,440
Restricted funds	59,402	367,743	(316,640)	110,505
Total funds	230,543	380,600	(317,198)	293,945

Unrestricted funds

	Balance at 1 April 2021 £	Incoming resources £	Resources expended £	Balance at 31 March 2022 £
Unrestricted funds				
General	144,006	27,794	(659)	171,141
Restricted funds	113,626	237,825	(292,049)	59,402
Total funds	257,632	265,619	(292,708)	230,543

Home-Start Blackpool Fylde & Wyre

Statement of Financial Activities by fund for the Year Ended 31 March 2023

Unrestricted Funds

	Total Unrestricted Funds 2023 £
Income and Endowments from:	
Donations and legacies	7,298
Other trading activities	5,559
Total income	12,857
Expenditure on:	
Charitable activities	(157)
Other expenditure	(401)
Total expenditure	(558)
Net income	12,299
Net movement in funds	12,299
Reconciliation of funds	
Total funds brought forward	171,141
Total funds carried forward	183,440
	Total Unrestricted Funds 2022 £
Income and Endowments from:	
Donations and legacies	21,215
Other trading activities	6,579
Total income	27,794
Expenditure on:	
Charitable activities	(209)
Other expenditure	(450)
Total expenditure	(659)
Net income	27,135
Net movement in funds	27,135
Reconciliation of funds	
Total funds brought forward	144,006
Total funds carried forward	171,141

Home-Start Blackpool Fylde & Wyre

Statement of Financial Activities by fund for the Year Ended 31 March 2023

Restricted Funds

	Total Restricted Funds 2023 £
Income and Endowments from:	
Donations and legacies	261,860
Other trading activities	<u>105,883</u>
Total income	<u>367,743</u>
Expenditure on:	
Raising funds	(9,105)
Charitable activities	(246,467)
Other expenditure	<u>(61,068)</u>
Total expenditure	<u>(316,640)</u>
Net income	<u>51,103</u>
Net movement in funds	51,103
Reconciliation of funds	
Total funds brought forward	<u>59,402</u>
Total funds carried forward	<u>110,505</u>
	Total Restricted Funds 2022 £
Income and Endowments from:	
Donations and legacies	178,732
Other trading activities	<u>59,093</u>
Total income	<u>237,825</u>
Expenditure on:	
Raising funds	(2,244)
Charitable activities	(235,561)
Other expenditure	<u>(54,244)</u>
Total expenditure	<u>(292,049)</u>
Net expenditure	<u>(54,224)</u>
Net movement in funds	(54,224)
Reconciliation of funds	
Total funds brought forward	<u>113,626</u>

This page does not form part of the statutory financial statements.

Home-Start Blackpool Fylde & Wyre

Statement of Financial Activities by fund for the Year Ended 31 March 2023

	Total Restricted Funds 2022 £
Total funds carried forward	<u>59,402</u>

Home-Start Blackpool Fylde & Wyre

Detailed Statement of Financial Activities for the Year Ended 31 March 2023

	2023			2022	
	Unrestricted funds General £	Restricted funds £	Total £	Unrestricted funds General £	Restricted funds £
Income and Endowments from:					
Donations and legacies (analysed below)	7,298	261,860	269,158	21,215	178,732
Other trading activities (analysed below)	5,559	105,883	111,442	6,579	59,093
Total income	12,857	367,743	380,600	27,794	237,825
Expenditure on:					
Raising funds (analysed below)	-	(9,105)	(9,105)	-	(2,244)
Charitable activities (analysed below)	(157)	(246,467)	(246,624)	(209)	(235,561)
Other expenditure (analysed below)	(401)	(61,068)	(61,469)	(450)	(54,244)
Total expenditure	(558)	(316,640)	(317,198)	(659)	(292,049)
Net income/(expenditure)	12,299	51,103	63,402	27,135	(54,224)
Net movement in funds	12,299	51,103	63,402	27,135	(54,224)
Reconciliation of funds					
Total funds brought forward	171,141	59,402	230,543	144,006	113,626
Total funds carried forward	183,440	110,505	293,945	171,141	59,402

Home-Start Blackpool Fylde & Wyre

Detailed Statement of Financial Activities for the Year Ended 31 March 2023

	2023			2022	
	Unrestricted funds General £	Restricted funds £	Total £	Unrestricted funds General £	Restricted funds £
Donations and legacies					
Donations unrestricted	7,298	-	7,298	21,215	-
Donations - restricted	-	14,336	14,336	-	39,457
Grants	-	250,948	250,948	-	139,275
Money raising events -restricted	-	(3,424)	(3,424)	-	-
	<u>7,298</u>	<u>261,860</u>	<u>269,158</u>	<u>21,215</u>	<u>178,732</u>

	2023			2022	
	Unrestricted funds General £	Restricted funds £	Total £	Unrestricted funds General £	Restricted funds £
Other trading activities					
Money raising events - unrestricted	5,559	-	5,559	6,579	-
Money raising events -restricted	-	71,508	71,508	-	31,224
Shop takings	-	34,375	34,375	-	27,869
	<u>5,559</u>	<u>105,883</u>	<u>111,442</u>	<u>6,579</u>	<u>59,093</u>

	2023		2022	
	Restricted funds £	Total £	Restricted funds £	Total £
Raising funds				
Money raising events	(9,105)	(9,105)	(2,244)	(2,244)
	<u>(9,105)</u>	<u>(9,105)</u>	<u>(2,244)</u>	<u>(2,244)</u>

	2023			2022	
	Unrestricted funds General £	Restricted funds £	Total £	Unrestricted funds General £	Restricted funds £

This page does not form part of the statutory financial statements.

Detailed Statement of Financial Activities for the Year Ended 31 March 2023

Governance costs

Other expenditure

Rent and room hire	-	(102)	(102)	-	(781)
Rates and water	-	(22,636)	(22,636)	-	(18,007)
Light heat and power	-	706	706	-	884
Insurance	-	(600)	(600)	-	(598)
Repairs and maintenance	-	(1,381)	(1,381)	-	(1,380)
Telephone	-	(157)	(157)	-	(137)
IT costs restricted	-	(3,612)	(3,612)	-	(3,336)
IT costs unrestricted	-	(6,210)	(6,210)	-	(7,987)
Printing postage and stationery	-	-	-	22	-
	-	(3,882)	(3,882)	-	(2,037)

Page 24

Home-Start Blackpool Fylde & Wyre

Detailed Statement of Financial Activities for the Year Ended 31 March 2023

	2023			2022	
	Unrestricted funds General £	Restricted funds £	Total £	Unrestricted funds General £	Restricted funds £
Home-Start UK fees	-	(8,637)	(8,637)	-	(12,608)
Volunteer expenses	-	(3,065)	(3,065)	-	(1,102)
Sundry expenses	-	(7,440)	(7,440)	-	(1,997)
Travel expenses (staff)	-	(3,926)	(3,926)	-	(2,787)
Marketing	-	(66)	(66)	-	(2,371)
Depreciation of fixtures and fittings (owned)	(401)	-	(401)	(472)	-
	(401)	(61,068)	(61,469)	(450)	(54,244)

This page does not form part of the statutory financial statements.

