



Annual Report and Accounts 2025

**Report of the Trustees
and Financial Statements
for the Year ended
31 July 2025**

Apollo Music Projects
(a company limited by guarantee)

Charity Number: 1124784
Company Number: 06585879
(England & Wales)



Contents

| | |
|--|----|
| Reference and Administrative Information | 3 |
| Chair's Welcome | 4 |
| Impact at a glance | 5 |
| Objectives and Activities | 6 |
| Achievements and Performance | 8 |
| Evaluation and Impact | 10 |
| Equity, Diversity and Inclusion | 11 |
| Responsibilities of the Trustees | 12 |
| Structure, Governance and Management | 13 |
| Financial Review | 14 |
| Declarations | 16 |
| Accountant's Report | 17 |
| Statement of Financial Activities | 18 |
| Notes forming part of the Financial Statements | 20 |

Reference and Administrative Information

The Trustees, who are also Directors of the Charity for the purposes of the Companies Act 2006, present their report and financial statements of the Charity for the year ended 31 July 2025. The Trustees have adopted the provisions of the Charities SORP (FRS 102) Second Edition 2019 - Accounting and Reporting by Charities: Statement of Recommended Practice.

| | |
|----------------------------------|---|
| Company/Charity name | Apollo Music Projects |
| Registered Company number | 06585879 |
| Registered Charity number | 1124784 |
| Registered address | 43 Clifden Road, London E5 0LL |
| Directors/Trustees | Elisabeth Bremner (Chair) Simon Curtis (Chair) - resigned 5th January 2025 Ian Hoggart (Treasurer) Peter Melling Stephanie Tyler - resigned 10th September 2025 Sophie Yana Valérie Besançon - appointed 17th November 2025 Louise Taylor - appointed 17th November 2025 |
| Charity Secretary | Susan Harrison |
| Independent Examiner | Charles Tait Accounting Highbury 74 Woodside Amersham HP6 6AN |
| Bank | CAF Bank Ltd. 25 King's Hill , King's Hill Avenue West Malling Kent ME19 4JQ |

Chair's Welcome

Introduction

It gives me great pleasure to present Apollo Music Projects' Annual Report & Accounts for the year ended 31 July 2025. This has been a year of continued momentum in delivering on our objectives.

It is a great credit to the team at Apollo, and all our supporters, that so many of our partner schools return year on year to participate in our programme. This year saw a fantastic retention rate once again in partner schools, alongside the addition of 3 new schools.

Apollo continues to look to deepen the charity's impact beyond the delivery of our schools' programme, playing our part in championing diversity and inclusion in the classical music sector. It is gratifying to see our bursary programme expand this year as we took the first steps to offer secondary school bursary places for children who took part in the primary school programme, supporting them in continuing their musical journey.

Our Impact in 2024/25

Our mission to transform children's lives through music is best evidenced in the words of the children themselves as seen in this year's Impact Report. These results demonstrate that live, interactive encounters with professional musicians are a powerful catalyst for creativity and emotional literacy. The teachers in our partner schools tell us they also value the confidence, concentration and self-expression children demonstrate through our sessions, reinforcing the programme's relevance across the curriculum.

Our bursary pupils also learn new skills, participating in various performance opportunities. It was a very special joy to witness some of them performing live in the City of London, helping us kick off our Big Give Christmas Challenge in December.

Financial Overview & Governance

The Board remains focused on financial sustainability to underpin programme quality and growth. We were delighted to exceed our donation targets in both the Big Give Arts for Impact and Big Give Christmas Challenge. Aside from these campaigns, Apollo currently gains most of its income from Charitable Trusts and Foundations. Over the next year, we will further our exploration of new channels to diversify our funding strategies and build out our network of supporters to help secure sustainable growth.

We uphold strong governance practices aligned to Charity Commission expectations. The Board continues to be well diversified in backgrounds and skill sets. This year saw the retirement of our Chair, Simon Curtis, and his replacement Stephanie Tyler (due to personal circumstances). In November we appointed two new trustees, bringing fresh skills and perspectives to support our oversight and strategy.

Thank You

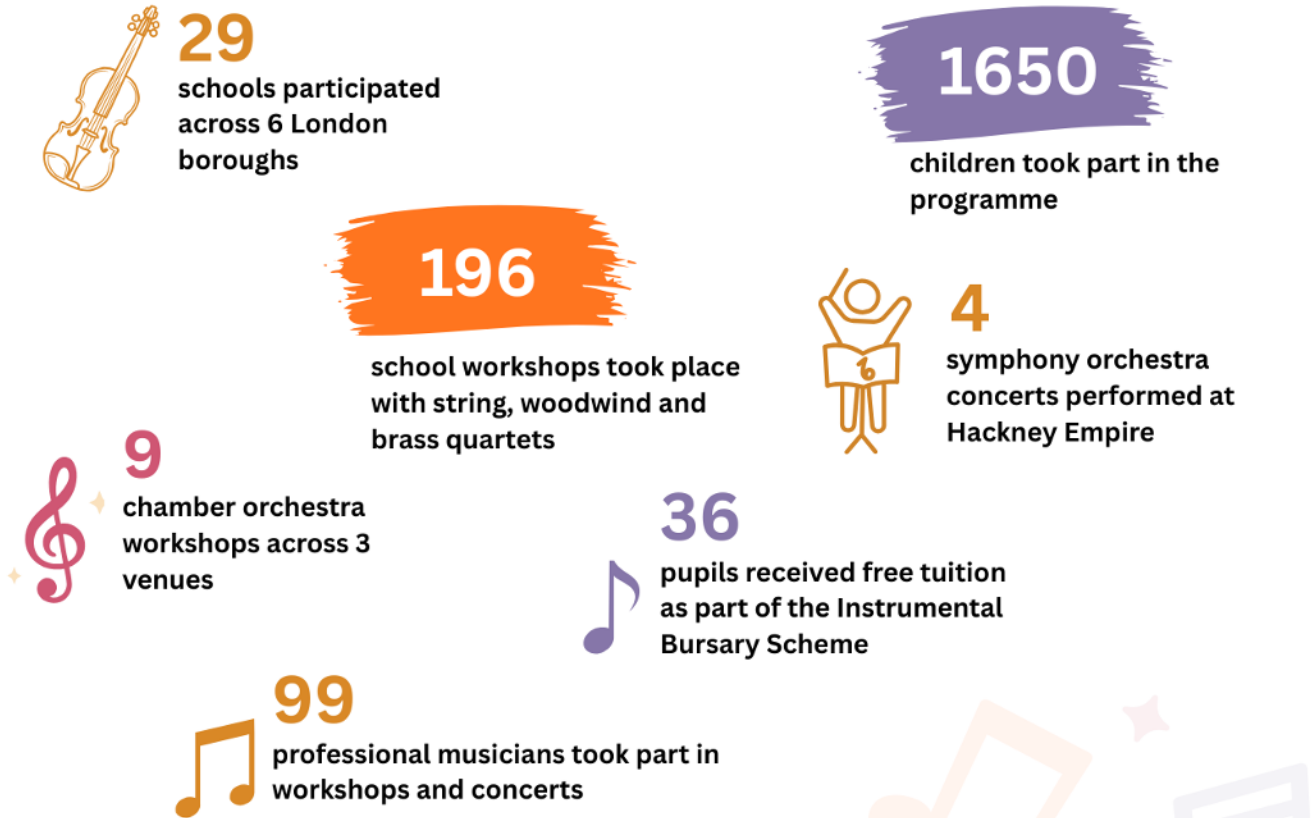
On behalf of the Board, I would like to thank the team at Apollo and our partner schools for all their hard work and commitment. Our heartfelt thanks also to our generous donors and supporters who make this all possible. Lastly, a thank you to the children whose energy and curiosity inspire everything we do.



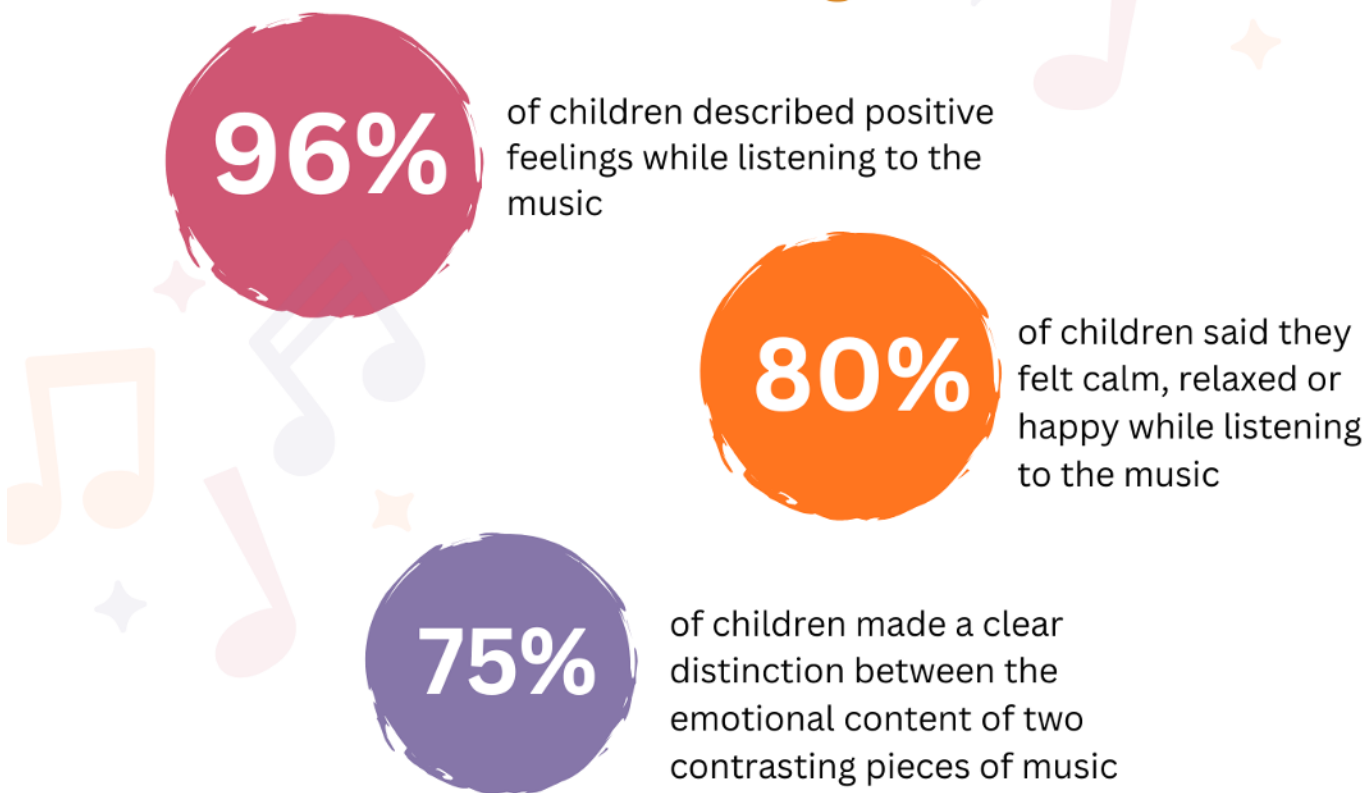
Elisabeth Bremner, Chair
Apollo Music Projects
13 April 2026

Impact at a glance

Over the year



Our findings



Objectives and Activities

Since 2004, more than 20,000 children from over 70 schools have taken part in the charity's programme

Our Aims

- Improving access for children who do not normally have the opportunity to experience **high-quality artistic and cultural experiences**.
- Making classical music **accessible, relatable and inspiring** to all children, regardless of knowledge, experience or background.
- Helping children to **develop key, transferable skills**, including concentration, creativity and self-confidence.
- Enhancing **children's wellbeing** by developing a connection to live classical music on their own terms.
- Making music a **positive force** in children's lives and inspiring them to learn an instrument.



Our Programme

Apollo Music Projects brings live classical music to children who might not otherwise experience it. The charity's schools' programme provides access to live classical music for children in primary schools across north and east London, particularly in deprived areas.

Each participating primary school enjoys:

- An assembly from Apollo's musicians
- A **series of classroom sessions** for each of the classes taking part in the programme (usually Year 4 and/or 5)
- Workshops with string, brass and woodwind quartets
- A **chamber orchestra workshop** at a local concert hall
- A visit from the conductor, introducing the music that will be played in the final concert
- A full **symphony orchestra concert** at Hackney Empire

We also offer free **Instrumental Bursaries** to children who would not otherwise be able to access individual instrumental tuition.

Benefits

Through the classroom sessions, the children get to know the instruments of the orchestra and engage with the musicians. The programme shows children how to listen to and enjoy music using their own imagination and experiences, while developing creative ideas and transferable life skills.

Apollo Music Projects has enabled thousands of children from London's primary and special schools to experience the magic of live performance over the past 20 years, and thousands more have benefited through assemblies and performances from Apollo's musicians and Associate Artists.

Over the years we have developed close partnerships with local schools, teachers and pupils; several of our current schools have been with us for more than ten years.

"It calms me and makes me feel happy and excited."

Year 4 pupil,
Canonbury Primary
School, Islington



"The children are calmer and their musical, historical and scientific knowledge has increased"

Teacher,
St Edmund's RC Primary
School, Enfield



The programme is unusual in the amount of time the musicians spend with each class, gradually introducing the children to more instruments and more complex musical structures, enabling them to learn at their own pace.

The programme is carefully designed to take the children through from small groups in the classroom to a chamber orchestra and finally a full symphony orchestra, ensuring that the children are equipped to follow and engage with the music in each setting.

Our work achieves lasting, life-changing benefits by improving cultural access for children who do not normally have the opportunity to enjoy high-quality artistic and educational experiences. We use music to reach children in a pioneering and original way, speaking directly to them and engaging them fully in the learning process.

Strategy

We published a Strategy Document in October 2024, setting out the overarching principles which will guide the next phase of the charity's development. The Strategy Document is the result of several years of development centred around our annual Strategy Day, where trustees and staff all work together to arrive at a shared vision and a clear way to articulate this. This is a great achievement, and something we are very proud to have completed.



Achievements and Performance

"I feel like my heart blossoms every time I hear it"

Year 4 pupil,
St John the Baptist Primary School,
Hackney

The 2024-25 programme

A very successful year. We continued to work with schools in Brent, Camden, Enfield, Hackney, Haringey and Islington. Only two schools were unable to continue from the previous year, and were replaced by one Hackney Primary School and one more to add to our growing roster of schools in Brent. One of the most important aspects of our programme is the length of the relationships we are able to build with our schools, making music a positive force in the life of the schools we work with, becoming a regular feature of the schools' programmes and something younger children can look forward to when it is their turn.



The feedback from children and teachers was very positive. The children continued to be very responsive to the workshops, enjoying the **direct engagement with the musicians** and the opportunity to share their creative ideas about the music, and teachers appreciated the way the **children were calm and focused** during our sessions. Relations with the schools were excellent. Our roster of musicians has continued to grow, and we have plenty of extra capacity for additional workshops in the next few years. Scheduling so many workshops was always going to be challenging, but with good forward planning and excellent communication with the schools everything ran smoothly.

Chamber Orchestra Workshops

We held nine chamber orchestra workshops over five days at Great Hall Leyton, Salvation Army Regent Hall and Shoreditch Town Hall. The children always enjoy the trips to see a chamber orchestra perform live, particularly as they know many of the musicians from the classroom workshops. We were very pleased to include Starburst by African-American composer Jessie Montgomery again in all nine workshops, alongside music by Bach, Handel, Mozart, Haydn, Brahms, Piazzolla and The Simpsons Theme. As usual the children listened with wonderful attention and enjoyment, with some great questions in the Q&A sections, where each musician took a question in turn from one of the children.

Symphony Orchestra Concerts

The four symphony orchestra concerts at Hackney Empire featured performances of Schumann's Symphony No. 4, with spoken introductions and musical excerpts played by the orchestra. The children were fully engaged in the stories behind the music, and the ability of the children to listen with concentration and attention was exceptional, a testament to the relationships between the musicians and the children built up over the year.



"The opportunity enhanced his joy, focus, and growth in musical ability beyond what we imagined. Your generosity has struck a lasting chord in our lives."

Parent, Instrumental Bursary Scheme



Pre-Concert visits

Each school attending the Hackney Empire concerts received a visit from the conductor, introducing the music and relevant background stories, and giving the children the chance to see how the conductor shapes the music and communicates with the musicians.

Instrumental Bursary Scheme

We offered 23 Instrumental Bursaries to 36 children, each child receiving free lessons individually or in pairs, offering a valuable opportunity to the children to progress and thrive. This was the second year of the Apollo Instrumental Bursary Scheme. The forced closure of St. Dominic's Primary School in Hackney impacted the number of teaching days we were able to offer, but overall the programme ran smoothly. We are very grateful to Hackney Music Service for all of their support in providing instruments and working with us to make the programme a success, and to all of the instrumental tutors.

20th Anniversary Event

We held a special 20th Anniversary Event for our supporters at Innholders Hall, featuring performances by Instrumental Bursary pupils from St. John & St. James Primary School, a workshop demonstration by Apollo musicians, and a performance by baritone Roderick Williams. The evening also included a first showing of a specially made film about our programme narrated by actor Johnny Flynn. We are very grateful to Innholders Hall, Roderick Williams, Johnny Flynn and Director Sian Lattimer for their invaluable help and support for this memorable event.



Evaluation and Impact

"I feel like a ton of weight
has lifted from me, like I
am flying."

Year 5 pupil, St Dominic's Primary School,
Hackney

Evaluation

We have now completed annual Impact Reports covering the school years 2019 to 2025, giving us a substantial data sample of 6,837 children in total. The 2024-25 report uses data from evaluation forms completed by 1,199 children aged 8-11. This large data sample enables us to draw some fascinating conclusions, supported by consistent results over the past 5 years.

The report demonstrates significant positive effects of our programme in two key areas:

1. Supporting children's ability to respond to the emotional content of the music and express their responses in writing.
2. Supporting children's wellbeing, measured through their feelings while listening to the music

Impact

Our annual evaluation forms are designed to measure the impact of the programme on children's wellbeing and emotional response, including questions about how the children felt listening to the music, and whether the programme affected their self-confidence, relaxation, concentration or the ability to control their moods. We are very careful to ensure that the children are not guided or influenced in their choices.

We analyse the data as objectively as possible, using key words to grade the answers. The results of the current evaluation were very consistent across schools, and consistent with the previous year's results.

75% of children were able to demonstrate a clear distinction between the emotional content of two contrasting pieces of music performed live, showing that they can understand and respond personally to the emotions expressed in the music by the composer.

96% of children described positive feelings while listening, demonstrating the benefits to children's wellbeing of listening to live music, with 80% of children saying they felt calm, relaxed or happy while listening.

Our findings support the idea that there are two distinct emotional responses involved in listening to music: the response to the act of listening to music, and the response to the emotional content of the music. The report suggests that both of these emotional responses are necessary to listen to music with the kind of intense concentration and positive engagement the children exhibit at our workshops and concerts, whatever the individual abilities of the children taking part.

We were able to investigate the positive effects of live music on wellbeing in great depth, and the results indicated that the Apollo Music Projects programme is successful both in supporting children's wellbeing, and in helping them to access and express their emotional response to music.



"Informative and
emotionally
engaging
programme that
certainly helped to
improve listening
skills."

Teacher,
Anson Primary School,
Brent



Equity, Diversity and Inclusion

We believe that Equity, Diversity and Inclusion should be at the heart of our organisation. We want to play our part in helping the music industry, the education sector, and the charity sector become more diverse, fully inclusive and actively anti-racist. We are aware that while we are making a real impact in inspiring children from under-represented backgrounds through our main programme and our Apollo Instrumental Bursary Scheme, there is a need to do more to try to help address the lack of diversity in the music profession and the charity sector in general.

Our ED&I Policy outlines our commitment to ED&I and the steps we plan to take to help address the current situation, alongside colleagues and organisations who are working tirelessly to improve things here and in other countries.

This year marked the continuation of partnership discussions with Sphinx Organization, a wonderful organisation based in the USA which has achieved meaningful change over many years. We hope that this collaboration will bring Sphinx musicians, including prize winners from their annual competition for Black and Latinx musicians, to perform for the children in our partner schools. We have continued to expand our roster with talented new musicians, including musicians from under-represented backgrounds.

Our research has shown that while children from all backgrounds are inspired by our primary school programme, and participation in our Instrumental Bursary Scheme is particularly strong among children from under-represented backgrounds, there is a big drop off as children progress, with the numbers of Black musicians at the UK's music conservatories depressingly small. We believe that all arts organisations should do everything they can to help identify the obstacles to progression and take whatever steps they can to improve the current situation.



Responsibilities of the Trustees

Company and charity laws require the Trustees to prepare financial statements for each financial year, which give a true and fair view of the state of affairs of the charitable company as at the balance sheet date and of its incoming resources and application of resources, including income and expenditure, for the financial year. In preparing those financial statements the Trustees should follow best practice and:

- select suitable accounting policies and then apply them consistently;
- make judgements and estimates that are reasonable and prudent;
- state whether the policies adopted are in accordance with the Charities SORP (FRS 102) 2019 and with applicable accounting standards, subject to any material departures disclosed and explained in the financial statements; and
- prepare the financial statements on the going concern basis unless it is inappropriate to assume that the charity will continue in operation.

The Trustees, who are the Directors of the company for the purposes of company law, are responsible for keeping proper accounting records, which disclose with reasonable accuracy at any time the financial position of the charitable company and which enable it to ensure that the financial statements comply with the Companies Act 2006.

The Trustees are also responsible for safeguarding the assets of the charitable company and hence for taking reasonable steps for the prevention and detection of fraud or other irregularities. Trustees who served during the year and up to the date of this report are set out on page 3.

The company's Directors certify that:

- so far as they are aware, there is no relevant accounting information of which the company's accountants are unaware;
- they have taken all steps that they ought to have taken in order to make themselves aware of any relevant accounting information and to establish that the company's accountant is aware of that information.



Structure, Governance and Management

Commencement of activities

The company was registered as a charity on 2 July 2008.

Governing document

The charity is controlled by its governing documents, its Memorandum and Articles of Association. It constitutes a company limited by guarantee, as defined by the Companies Act 2006. The Directors of the company are also the charity's Trustees for the purposes of charity law. Under the Articles the charity is managed by the Board of Directors.

Recruiting Trustees

The charity looks for new Trustees as required, and seeks out people who will support the charity's aims and objectives, and who can substantially contribute to the charity's success. We actively seek Trustees who will contribute to our diversity. Potential Trustees are invited to attend a meeting of the Trustees for interview, and are appointed only with the unanimous agreement of the existing Trustees.

Induction and training of new Trustees

The Secretary sends new Trustees an induction pack on appointment. Training is carried out on an informal basis appropriate to the charity's size. All Trustees are expected to attend Apollo school workshops and concerts every year.

Organisational structure

The charity is governed by the Board of Trustees, which is supported by the Secretary in administrative matters. Day-to-day management of the charity is delegated by the charity's Trustees to David Chernaik, Chief Executive and Programme Director.

Risk management

In line with accepted good governance practice, Apollo Music Projects maintains a risk register to identify and manage risks to its strategic objectives and the delivery of its programme. This is reviewed regularly at meetings of the Board to ensure that the management and mitigation of risks is effective.

Signed on behalf of the Board of Trustees:



Elisabeth Bremner, Chair, 21 April 2026



"Each workshop was thoughtfully delivered, with musicians engaging our students and making music accessible and inspiring."

Teacher, Christ Church Primary School, Brent



Financial Review

Financial Controls and Funding

Performance

Apollo Music Projects generated income of £305,062 during the financial year (2024: £251,094) and incurred expenditure of £292,227 (2024: £261,140). This represents a 21% increase in income and 12% increase in expenditure compared with the prior year. The increase in expenditure reflects the expansion of the programme in 2024/25, including delivery in additional schools and a greater number of workshops, alongside a corresponding rise in staff hours and the impact of the broader economic climate. This growth in expenditure was supported by a significant uplift in funding, driven by higher levels of donations, including a particularly successful Big Give campaign, and receipt of some Arts Council funding not received in the prior year.

Net current assets as at 31 July 2025 were £66,043 (2024: £54,199). Cash at bank at the year end was higher than the previous year, reflecting both the timing of funding receipts ahead of the year end and the overall increase in funding. Current liabilities increased primarily due to year-end timing differences.

Reserves

Apollo Music Projects reviewed and updated its Reserves Policy in July 2025. The policy is designed to safeguard the continuity of the charity’s activities by mitigating the risk of short-term funding shortfalls, whilst ensuring that funds are not retained for longer than required. The target level of reserves is determined with reference to two main factors: 1. the financial impact of risk, ensuring that sufficient funds are held to avoid significant disruption to charitable activities in the event of unforeseen reductions in income or increases in expenditure; and 2. future commitments and long-term plans, representing anticipated expenditure not yet reflected in formal budgets or plans (of which there are currently none).

Following the 2025 review, the target reserve range remained unchanged at 0.75 to 1.5 times the target reserve level, equating to an operating reserve range of £34,500 to £69,000. This approach provides a flexible and risk-based framework, and takes into account the current operating environment and the ongoing challenges faced by the schools with which Apollo works.

The Board of Trustees reviews the reserves requirements and policy annually in the context of the forthcoming year’s budgeted expenditure. Available reserves are monitored and reported to the Board as part of the quarterly financial reporting process. As at 31 July 2025, total reserves were £67,033 (2024: £54,199), of which £13,000 (2025: £5,625) was designated for specific project work in the 2025/26 financial year. Free reserves (unrestricted and undesignated) stood at £54,033 (2024: £48,574), which is within the target range of £34,500 to £69,000.

Controls & Governance

The Board of Trustees reviews both the Financial Controls Policy and Remuneration Policy on an annual basis. The Financial Controls Policy is designed to maintain a robust control environment, ensuring effective oversight of day-to-day operations as well as longer term financial planning. The Remuneration Policy applies to staff, contractors and musicians. As part of its annual review, the Board of Trustees considers and approves salaries and other staff related matters in line with this policy.

Investments

The current scale, size and nature of the charity means that all available cash is kept in current and deposit accounts with immediate access. The Board reviews this investment position annually and any deviation would result in a formal investment policy proposal and adoption.

Principal Funding Sources

In 2024/25, as in previous years, much of the Charity’s funding came from Trusts and Foundations. We gratefully acknowledge the support of:

- Art Mentor Foundation Lucerne
- Arts Council England
- Backstage Trust
- Big Give
- Cecil Pilkington Charitable Trust
- Chapman Charitable Trust
- CMS Social Impact Fund
- David Laing Foundation
- Garfield Weston Foundation
- Hackney Music Service
- John Lyon's Charity
- Localgiving Foundation
- Newby Trust
- The 29th May 1961 Charitable Trust
- The Arts Society Greater London Area
- The Austin and Hope Pilkington Charitable Trust
- The Belacqua Charitable Trust
- The Childhood Trust
- The Derek Shuttleworth Educational Trust
- The Harold Hyam Wingate Foundation
- The Robert Gavron Charitable Trust
- The Thistle Trust
- The Tottenham Grammar School Foundation
- The Victoria Wood Foundation
- The Wavendon Foundation
- The Willow Tree Trust
- Wise Music Foundation

The Charity also received support in the form of individual donations and fees from schools. We are incredibly grateful to Pauline and Ian Howat for their generous support.

Declarations

The Charitable Company is entitled to exemption from audit under Section 477 of the Companies Act 2006 for the period ended 31 July 2025.

The Directors have not required the Charitable Company to obtain an audit of its financial statements for the period ended 31 July 2025 in accordance with Section 476 of the Companies Act 2006.

The Trustees acknowledge their responsibilities for:

(a) ensuring that the Charitable Company keeps accounting records that comply with Sections 386 and 387 of the Companies Act 2006 and

(b) preparing financial statements which give a true and fair view of the state of affairs of the Charitable Company as at the end of each financial year and of its surplus or deficit for each financial year in accordance with the requirements of Sections 394 and 395 which otherwise comply with the requirements of the Companies Act 2006 relating to financial statements, so far as applicable to the Charitable Company.

These financial statements have been prepared in accordance with the special provisions of Part 15 of the Companies Act 2006 relating to small charitable companies and with the Financial Reporting Standard for Smaller Entities (effective April 2008).

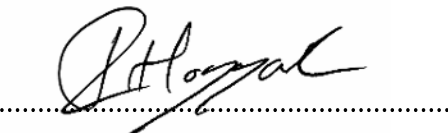
Approved by the Trustees on 21 April 2026

Signed on behalf of the Trustees:



Elisabeth Bremner, Chair

21 April 2026



Ian Hoggart, Treasurer

21 April 2026

Accountant's Report

I report on the accounts for the period 01 August 2024 to 31 July 2025 set out on pages 18 to 23.

Respective responsibilities of Trustees and examiner

The charity's Trustees (who are also the Directors for the purpose of company law) are responsible for the preparation of the accounts. The charity's Trustees consider that an audit is not required for this period (under Section 144(2) of the Charities Act 2011 (the 2011 Act)), and that an independent examination is required.

Having satisfied myself that the charity is not subject to audit under company law and is eligible for independent examination, it is my responsibility:

- to examine the accounts under Section 145 of the 2011 Act;
- to follow the procedures laid down in the General Directions given by the Charity Commission (under Section 145(5)(b) of the 2011 Act); and
- to state whether particular matters have come to my attention.

Basis of the independent examiner's report

My examination was carried out in accordance with the General Directions given by the Charity Commission. An examination includes a review of the accounting records kept by the charity and a comparison of the accounts presented with those records. It also includes consideration of any unusual items or disclosures in the accounts, and seeking explanations from you as Trustees concerning any such matters. The procedures undertaken do not provide all the evidence that would be required in an audit, and consequently no opinion is given as to whether the accounts present a 'true and fair view' and the report is limited to those matters set out in the statements below.

Independent examiner's statement

In connection with my examination, no matter has come to my attention:

(1) which gives me reasonable cause to believe that, in any material respect, the requirements:

- to keep accounting records in accordance with Section 386 and 387 of the Companies Act 2006; and
- to prepare accounts which accord with the accounting records, comply with the accounting requirements of Sections 394 and 395 of the Companies Act 2006 and with the methods and principles of the Statement of Recommended Practice: Accounting and Reporting by Charities have not been met; or

(2) to which, in my opinion, attention should be drawn in order to enable a proper understanding of the accounts to be reached.



Charles Tait
Charles Tait Accounting

8 April 2026

APOLLO MUSIC PROJECTS
STATEMENT OF FINANCIAL ACTIVITIES FOR YEAR ENDED 31 JULY 2025
(INCORPORATING AN INCOME AND EXPENDITURE SUMMARY)

| | Notes | Unrestricted | Restricted | Year Ended 31.07.25 | Year Ended 31.07.24 |
|---|-------|----------------|----------------|------------------------|------------------------|
| | | £ | £ | £ | £ |
| INCOME | | | | | |
| Donations and Grants | 2 | 134,365 | 139,621 | 273,986 | 217,794 |
| <i>Activities for generating funds</i> | | | | | |
| Income from charitable activities | | | | | |
| Fees from schools | | 27,550 | - | 27,550 | 31,750 |
| Contributions from Local Authority Music Services | | 1,500 | - | 1,500 | |
| Subtotal income from charitable activities | | 29,050 | - | 29,050 | 31,750 |
| Investment income | 3 | 1,880 | - | 1,880 | 1,550 |
| Other income | 3 | 146 | - | 146 | |
| Total incoming resources | | 165,441 | 139,621 | 305,062 | 251,094 |
| RESOURCES EXPENDED | | | | | |
| <i>Costs of raising funds</i> | | | | | |
| Costs of generating donations and grants | 4 | 29,031 | | 29,031 | 31,974 |
| Subtotal costs of raising funds | | 29,031 | - | 29,031 | 31,974 |
| <i>Charitable activities</i> | 5 | | | | |
| Schools visits and workshops | | 38,550 | 42,180 | 80,729 | 69,199 |
| Symphony Orchestra Concerts | | - | 42,200 | 42,200 | 42,384 |
| Chamber Orchestra Workshops | | 13,149 | 18,666 | 31,816 | 31,650 |
| Bursary scheme | | - | 11,575 | 11,575 | 15,650 |
| Anniversary event | | 4,848 | - | 4,848 | - |
| Administration expenses | | 5,752 | - | 5,752 | 5,327 |
| Subtotal charitable activities | | 62,299 | 114,621 | 176,920 | 164,210 |
| <i>Support costs</i> | | | | | |
| Staff costs | 6 | 61,113 | 25,000 | 86,113 | 64,630 |
| Governance costs | 7 | 164 | - | 164 | 326 |
| Subtotal support costs | | 61,277 | 25,000 | 86,277 | 64,956 |
| Total resources expended | | 152,607 | 139,621 | 292,227 | 261,140 |
| NET INCOMING/ (OUTGOING) RESOURCES | | 12,834 | - | 12,834 | (10,046) |
| RECONCILIATION OF FUNDS | | | | | |
| Total funds brought forward | | 54,199 | - | 54,199 | 64,245 |
| <i>of which designated:</i> | | 5,625 | - | 5,625 | 17,000 |
| TOTAL FUNDS CARRIED FORWARD | | 67,033 | - | 67,033 | 54,199 |
| <i>of which designated:</i> | | 13,000 | - | 13,000 | 5,625 |

APOLLO MUSIC PROJECTS
BALANCE SHEET FOR YEAR ENDED 31 JULY 2025

| | Notes | Unrestricted | Restricted | Total funds 31.07.25 | Total funds 31.07.24 |
|--|-------|---------------|---------------|-------------------------|-------------------------|
| | | £ | £ | £ | £ |
| Fixed assets | | | | | |
| Tangible assets | 9 | 990 | - | 990 | - |
| Investments | | - | - | - | - |
| Total fixed assets | | 990 | - | 990 | - |
| Current assets | | | | | |
| Cash at bank and in hand | 10 | 62,461 | 11,401 | 73,862 | 43,877 |
| Debtors | 10 | 3,100 | 1,000 | 4,100 | 21,224 |
| Prepayments | 10 | 2,482 | - | 2,482 | 558 |
| Total current assets | | 68,043 | 12,401 | 80,444 | 65,659 |
| Liabilities | | | | | |
| Creditors falling due within one year | 11 | - | 4,732 | 4,732 | 5,835 |
| Accruals and Deferred income | 11 | 2,000 | 7,669 | 9,669 | 5,625 |
| Total current liabilities | | 2,000 | 12,401 | 14,401 | 11,460 |
| Net current assets | | 66,043 | - | 66,043 | 54,199 |
| Total assets less current liabilities | | 67,033 | - | 67,033 | 54,199 |
| Funds | 14 | | | | |
| Designated | | 13,000 | - | 13,000 | 5,625 |
| Unrestricted | | 54,033 | - | 54,033 | 48,574 |
| Restricted | | - | - | - | - |
| TOTAL FUNDS | | 67,033 | - | 67,033 | 54,199 |

Notes forming Part of the Financial Statements

1. Accounting Policies

Accounting convention

Apollo Music Projects is a charitable company limited by guarantee in the United Kingdom and operates as a Public Benefit Entity. The registered address can be found on Companies House and on page 3 of the Annual Report and Accounts.

The financial statements have been prepared on a going concern basis under the historic cost convention. The financial statements have been prepared in accordance with the Statement of Recommended Practice: Accounting and Reporting by Charities preparing their accounts in accordance with the Financial Reporting Standard applicable in the UK and Republic of Ireland (FRS102) issued in October 2019, the Charities Act 2011, the Companies Act 2006 and UK Generally Accepted Accounting Practice.

The charity has taken advantage of certain disclosure exemptions under FRS 102 section 1A as a 'smaller' charity, including the requirement to prepare a cash flow statement and related notes.

Going concern

As required by the Charities Statement of Recommended Practice (FRS 102), the Trustees have assessed the Charity's ability to continue as a going concern. In doing so, they have considered whether any material uncertainties exist that may cast significant doubt on the Charity's ability to continue operating.

The Trustees have reviewed the Charity's position over a period of 12 months from the date of approval of these financial statements and consider this timeframe to be appropriate. This reflects the nature of the Charity's funding model, where funding is secured within a year of the related programme activity, as well as the Charity's flexible delivery model and relatively low level of fixed costs.

The Trustees continued to monitor any potential external threats on the Charity's ability to continue across four key areas: impact on delivery and resources, cash and income forecasts, availability of reserves and viability.

Impact on delivery and resources

Apollo Music Projects successfully delivered its schools programme during the financial year, including all planned Chamber Orchestra Workshops and Symphony Orchestra Concerts. Funding for the year ended with a small surplus against forecast expenditure, and the Charity maintains sufficient resources to continue its operations. The Trustees are satisfied that the Charity will continue to be able to deliver its programme of activities over the next 12 months.

Cash and income forecasts

The Trustees consider it reasonable to assume that the Charity's delivery model will continue in the 2025-26 financial year. It is anticipated that there could continue to be some pressures on income in 2025-26 due to the demand for funding in the economic climate, and schools requiring greater support with their fee contributions. Apollo Music Projects continues to build new relationships with different schools which gives us confidence for the years ahead.

Availability of reserves

The Charity has been able to retain its expected reserves and maintain a healthy cash balance as at 31 July 2025. The Charity's Reserves Policy aims to ensure our work is protected from the risk of disruption at short notice due to a lack of funds, whilst at the same time ensuring we do not retain income for longer than required. The Board of Apollo Music Projects ensures that the reserves position and requirements are reviewed and updated on an annual basis, particularly in the context of the following year's budgeted expenditure. As at 31 July 2025, total free reserves (unrestricted and undesignated) stood at £54,033, compared to a target range of £34,500 to £69,000.

Viability

The Charity experienced a favourable demand for its programme in 2024-25, which provides us with optimism going forward into 2025-26. Although there are significant pressures on schools due to the economic climate, interest for the programme has been strong and, with new relationships created with schools, the charity remains confident in its viability. Considering the Charity's current position and the forecasts for the next 12 months, the Trustees have a reasonable expectation that the Charity will be able to meet its liabilities as they fall due over the assessment period.

Incoming resources

All incoming resources are included on the Statement of Financial Activities when the charity is legally entitled to the income and the amount can be quantified with reasonable accuracy.

Resources expended

Expenditure is recognised when there is a legal or constructive obligation, the payment to third parties is probable and can be measured reliably. All expenditure is accounted for on an accruals basis.

Tangible assets

Tangible assets are stated at cost less depreciation, where the cost includes the original purchase price of the asset and the costs attributable to bringing the asset to its working condition for its intended use. Depreciation is calculated on a straight-line basis over estimated useful lives as follows:

Equipment - 3 years.

Debtors

All debtor balances are measured at amortised cost, and are stated net of any impairment provision.

Creditors

All creditors are all measured at amortised cost.

Taxation

The charity is exempt from corporation tax on its charitable activities.

Fund accounting

Unrestricted funds can be used in accordance with the charitable objectives at the discretion of the Trustees. Restricted funds can only be used for particular restricted purposes within the objects of the charity. Restrictions arise when specified by the donor or when funds are raised for particular restricted purposes. Designated funds form part of unrestricted funds earmarked by the Trustees for a particular project or use.

Judgements and sources of estimation uncertainty

The Directors do not consider there to have been any significant judgements or sources of estimation uncertainty during the year.

2. Donations and Grants

| | Unrestricted | Restricted | 01.08.24 - 31.07.25 | 01.08.23- 31.07.24 |
|----------------------|----------------|----------------|---------------------|--------------------|
| | £ | £ | £ | £ |
| Donations | 67,865 | 5000 | 72,865 | 31,854 |
| Grants | 63,500 | 127,621 | 191,121 | 185,940 |
| Arts Council England | - | 10,000 | 10,000 | |
| Total | 131,365 | 142,621 | 273,986 | 217,794 |

Included in these figures is £4,469 of Gift Aid recovered from donations.
The Charity has also benefited from donations in kind during the period.
These have mostly taken the form of discounts on services provided to the Charity. The value of such discounts has not been recognised in records of incoming resources and resources expended.

3. Investment and other income

| | Unrestricted | Restricted | 01.08.24 - 31.07.25 | 01.08.23 - 31.07.24 |
|---------------------------|--------------|------------|---------------------|---------------------|
| | £ | £ | Total | Total |
| | £ | £ | £ | £ |
| Deposit account interest | 1,800 | - | 1,800 | 1,550 |
| Other income (DBS checks) | 146 | | 146 | - |
| Total | 2,026 | - | 2,026 | 1,550 |

4. Costs of generating funds

| | 01.08.24 - 31.07.25 | 01.08.23 - 31.07.24 |
|--|---------------------|---------------------|
| | £ | £ |
| Direct costs (staff): fundraising administrators | 22,325 | 20,583 |
| Direct costs (staff): CEO | 6,252 | 11,054 |
| Fundraising other | 454 | 337 |
| Total | 29,031 | 31,974 |

5. Costs of Charitable Activities

| | 01.08.24 - 31.07.25 | 01.08.23 - 31.07.24 |
|--|---------------------|---------------------|
| | £ | £ |
| Included within the costs of Charitable Activities are the following staff costs: | | |
| Direct costs of staff: CEO Service Delivery of leading and conducting Concerts and Orchestra Workshops | 10,719 | 9,090 |
| Direct costs of staff: CEO Service Delivery of School Workshops | 10,584 | 10,080 |
| Direct costs of staff: CEO support for the Bursary Scheme | 4,126 | 3,967 |
| Total | 25,429 | 23,137 |

6. Support Costs

| | 01.08.24 - 31.07.25 | 01.08.23 - 31.07.24 |
|---|---------------------|---------------------|
| | £ | £ |
| Direct costs (staff): CEO | 31,303 | 25,793 |
| Direct costs (staff): administration | 43,406 | 33,222 |
| Tax and social security costs | 8,779 | 3,410 |
| Employer's contribution to defined pension scheme | 2,625 | 2,206 |
| Total | 86,113 | 64,630 |

The average monthly number of employees during the period was as follows:

| | 01.08.24 - 31.07.25 | 01.08.23 - 31.07.24 |
|-----------------------------|---------------------|---------------------|
| CEO | 1 | 1 |
| Administrative staff | 4 | 5 |
| Total number | 5 | 6 |
| Total employee costs | 129,400 | 119,403 |

The number of employees whose emoluments exceeded £60,000 during the year was as follows:

| | 01.08.24 - 31.07.25 | 01.08.23 - 31.07.24 |
|-----------------|---------------------|---------------------|
| Salary band | | |
| £60,001-£70,000 | 1 | - |

The above emoluments include payments made for conducting services provided

7. Governance costs

Governance costs include charges for fees paid or payable to the Independent Examiner of £130.

8. Trustees' remuneration and benefits

There were no Trustees' expenses paid during the period, nor for the period ended 31st July 2024.

9. Tangible fixed assets - equipment

| Cost | 01.08.24- 31.07.25 |
|-----------------|--------------------|
| | £ |
| Brought forward | - |
| Additions | 1,150 |
| Disposals | - |
| Carried forward | 1,150 |

Depreciation

| | 01.08.24 - 31.07.25 |
|-----------------------|---------------------|
| | £ |
| Brought forward | - |
| Charge | 160 |
| Disposals | - |
| Carried forward | 990 |
| Net book value | 990 |

10. Debtors: amounts falling due within one year

| | 01.08.24- 31.07.25 |
|---------------------------------|--------------------|
| | £ |
| Unrestricted funds due | 3,100 |
| Fees due from schools | - |
| Restricted funds due | 1,000 |
| Social security and other taxes | 2,313 |
| Prepayments | 169 |
| Total | 6,582 |

11. Creditors: amounts falling due within one year

| | 01.08.24 - 31.07.25 |
|------------------------------|---------------------|
| | £ |
| Other creditors | 4,732 |
| Accruals and deferred income | 9,669 |
| Total | 14,401 |

12. Related Party Disclosures

During the current year, the CEO's wife, Susan Harrison, received payments totalling £8,695 in respect of fees for services of musician and administering Chamber Orchestra Workshops and Symphony Orchestra Concerts.

13. Post balance sheet events

There has been no adjusting or non-adjusting post-balance sheet event.

14. Summary of Fund Movements

| Fund name | Fund balances brought forward as at 01.08.2024 | Income | Expenditure | Fund balances carried forward as at 31.07.2025 |
|---------------------------|--|----------------|------------------|--|
| | £ | £ | £ | £ |
| <u>Unrestricted funds</u> | | | | |
| General | 48,574 | 152,441 | (146,982) | 54,033 |
| Designated | 5,625 | 13,000 | (5,625) | 13,000 |
| <u>Restricted funds</u> | - | 139,621 | (139,621) | - |
| Total funds | 54,199 | 305,062 | (292,227) | 67,033 |