



LIVING SPORT

THE ACTIVE PARTNERSHIP FOR CAMBRIDGESHIRE
AND PETERBOROUGH

LIVING SPORT CAMBRIDGESHIRE AND PETERBOROUGH SPORTS PARTNERSHIP LIMITED

**ANNUAL REPORT AND FINANCIAL
STATEMENTS**

FOR THE YEAR ENDED 31 MARCH 2024

Charity registration number 1124122

Company registration number 05894596 (England and Wales)

INSPIRING ACTIVE LIFESTYLES



LIVING SPORT CAMBRIDGESHIRE AND PETERBOROUGH SPORTS PARTNERSHIP LIMITED

LEGAL AND ADMINISTRATIVE INFORMATION

Trustees	F D K Bennett M Bradbury D Coulson R N Mccurdy A Wild H F Perry M Townsend P W Heselwood D A Hardman	(Appointed 19 April 2024) (Appointed 19 April 2024) (Appointed 19 April 2024)
Secretary	S Hyde	
Charity number	1124122	
Company number	05894596	
Registered office	Suite 3, James Hall, Parsons Green, St. Ives, Cambridgeshire, United Kingdom, PE27 4AA	
Auditor	Azets Audit Services Westpoint Lynch Wood Peterborough Cambridgeshire United Kingdom PE2 6FZ	



LIVING SPORT CAMBRIDGESHIRE AND PETERBOROUGH SPORTS PARTNERSHIP LIMITED

CONTENTS

	Page
Trustees' report	1 - 27
Statement of trustees' responsibilities	28
Independent auditor's report	28 - 32
Statement of financial activities	32 - 34
Balance sheet	35
Statement of cash flows	36
Notes to the financial statements	37 - 59



LIVING SPORT CAMBRIDGESHIRE AND PETERBOROUGH SPORTS PARTNERSHIP LIMITED

TRUSTEES' REPORT

The trustees present their report and accounts for the year ended 31 March 2024.

The charity registered with the Charity Commission and was granted charitable status on 19 May 2008.

The Trustees' Annual Report and audited consolidated financial statements are prepared to meet the requirements for a directors' report and accounts for Companies Act purposes. The financial statements comply with the Charities Act 2011, the Companies Act 2006, our Memorandum and Articles of Association, and Accounting and Reporting by Charities: Statement of Recommended Practice applicable to charities preparing their accounts in accordance with the Financial Reporting Standard applicable in the United Kingdom and Republic of Ireland (FRS 102).

The legal and administrative information included forms part of this report.



Frazer Bennett
Chairperson for Living Sport

Objectives and activities

The charitable objects of the company are “The preservation and protection of health and the promotion of community participation in healthy recreation through sport and physical fitness. To support the development of greater participation and quality in sport in Cambridgeshire and Peterborough”

The aim of Living Sport is “Bring together partners to collectively improve the health, happiness and wellbeing by supporting people to be active”.

Living Sport proudly continues to be one of 43 Active Partnerships across England, part of the Active Partnerships network, supported by Sport England with substantial funds from the Sport Lottery. This partnership allows us to be part of wider conversations that we can learn from and apply locally on maximising the role of movement, sport, and physical activity in creating more equal, inclusive, and connected communities. Our role as an Active Partnership allows us to be a local delivery partner for Sport England's national strategy, Uniting the Movement.



LIVING SPORT CAMBRIDGESHIRE AND PETERBOROUGH SPORTS PARTNERSHIP LIMITED TRUSTEES' REPORT

How we work

We are committed to improving lives and communities, we do this by supporting people to be active, through programmes, sharing information, events and influencing policy.

To accomplish this, we pride ourselves in putting people at the heart of what we do and ensure consultation with local people; youth voice and community voice drive our direction.



Using insight and data we strive to enhance our local knowledge to work collaboratively with public, private, community and voluntary sector partners, we collectively create the conditions for more people to be active in whatever way works for them.

We exist to make a difference, to create an impact and breakdown the barriers that exist for communities across Cambridgeshire and Peterborough.



LIVING SPORT CAMBRIDGESHIRE AND PETERBOROUGH SPORTS PARTNERSHIP LIMITED

TRUSTEES' REPORT

We are values driven:

- **Passionate** - We approach our work with positive energy and innovation, celebrating success and the achievement of those we support.
- **Trust** - We will treat each other with respect, creating a family that supports and cares for each other.
- **Collaboration** - We champion teamwork, with effective communication and accountability.
- **Inclusivity** – We promote a culture of diversity and equality, striving towards access and opportunities for all.
- **Outcome-focused** – We have a local and targeted approach to support our communities to improve health, happiness and wellbeing.



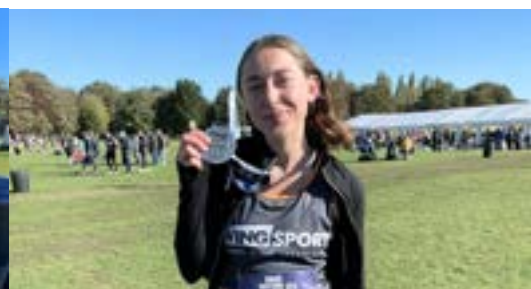
Our people, our team which includes our dedicated board of volunteer trustees are our glue, they are the golden resilient threads that connect us in every way. We recognise that without their commitment, challenge, skills and smiling faces that none of this can happen.



LIVING SPORT CAMBRIDGESHIRE AND PETERBOROUGH SPORTS PARTNERSHIP LIMITED TRUSTEES' REPORT

Fundraising

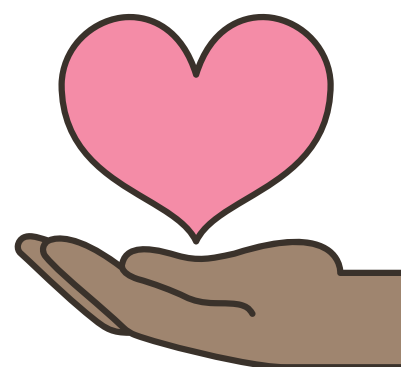
We would not be able to deliver our valuable and life changing work without the support of our funders. We seek to maintain the highest possible standards in fundraising and relationships with our supporters. We are responsible in our planning and recognise that we have been over reliant on income from Sport England but that has changed significantly in the past year and we have worked hard to underpin our income from other sources to ensure we can protect delivery for the groups and individuals that need us the most. It was for this reason we made a conscious decision to invest in fundraising systems and capabilities.



We are registered with the Fundraising Regulator and bound by its Code of Fundraising Practice and monitor this area of compliance, thereby ensuring that all our fundraising activities are operating and delivered to the highest standards. We received no complaints via the Fundraising Regulator or Charity Commission during this period. We ensure we are compliant with the General Data Protection Regulation (GDPR) for all contact with stakeholders, community groups and funders.

We have a process where Trustees and the Senior Leadership Team regularly review all aspects of our fundraising, including plans, performance, and compliance. We will build on this and produce annual plans and reviews and monitor performance against targets monthly and performance indicators quarterly.

We are grateful and thankful to the people that believe in us and support us through all of our endeavours; from running for us or cheering from the sidelines, everyone is welcome, thanked and admired for their support.





LIVING SPORT CAMBRIDGESHIRE AND PETERBOROUGH SPORTS PARTNERSHIP LIMITED

TRUSTEES' REPORT

Delivering our strategy

Our current strategy is for the period 2022-2024. It is built on knowledge, data and insight of our geography. All our work is driven through our board agreed strategy. We took a decision to realign our work in 2023-24 to focus on place and all of our work flows through this lens. We also saw 2023/24 as the chance to realign fully with the strategy of Sport England; Uniting the Movement.

Our place is Cambridgeshire and Peterborough and the voice and needs of those communities will be reflected in our ongoing work. During 2024 we will refresh our strategy for the coming 3 years. We believe that only by focusing on the needs of the population and involving them can we help create communities that embrace their own health and wellbeing. We are agile and responsive to the challenges our partners face such as Public Health and the NHS, we feel we have a powerful preventative role to play in supporting them and others at time where demand outstrips workforce and resources.



Whilst our overarching theme is place, the three pillars of our strategy – health, communities and children & young people – provide a focus for our work as we target and prioritise geography and need based on tackling inequalities.

Living Sport Strategy 2022 to 2024

Our strategic goals and strategic priorities

Strategic Goal	CHILDREN & YOUNG PEOPLE Supporting positive physical activity experiences for children and young people		PLACES & COMMUNITIES Supporting communities to thrive by becoming more resilient, inclusive and connected		HEALTH, WELLBEING & SOCIAL CARE Embedding physical activity in prevention and management of physical and mental health conditions	
Strategic Priority Area	Tackling Inequalities (CYP)	Families	Communities Place	Tackling Inequalities (Adult)	Health Workforce	Health Pathways
	Understanding the needs of underserved groups of young people to provide better access to positive physical activity	Supporting families to have increased confidence, opportunities and understanding to improve wellbeing through family orientated physical activity	Empowering and equipping communities to embed physical activity within community life	Creating the conditions for people who experience inequalities to be active	Supporting health professionals to be skilled and knowledgeable in advocating physical activity	Embedding physical activity into health pathways

LIVING SPORT CAMBRIDGESHIRE AND PETERBOROUGH SPORTS PARTNERSHIP LIMITED

TRUSTEES' REPORT

Collaboration, Innovation and Solution focused



Partnership working continues to be at the heart of everything we do. We strive to work collaboratively with partners in the public, private, community and voluntary sectors to create the conditions for the people of Cambridgeshire and Peterborough to be active and lead happy and healthy lives.

The cost-of-living crisis remains critical especially as we, like many other individuals and organisations, are still recovering from the pandemic of the last few years. Both are having far reaching implications across our county's sport and physical activity sector and much wider of course. The current climate has affected how we have been able to work with our partner organisations but together we have continued to make a significant difference.

We see some of the solutions of how we work as being based firmly in the health arena focused on the areas of primary care, prevention, social care and supporting the workforce. Our view and evidence base informs that we can support the ICS through delivering a new social contract for patients and the community to enable them to be more active in their decisions about leading a healthy, active but affordable and informed lifestyle.

We have, we hope, started to change the conversation and dial up our response and the expectation of what we can achieve together with the emerging ICS and other key stakeholders.

The trustees have paid due regard to guidance issued by the Charity Commission on public benefit and in deciding what activities the charity should undertake.



LIVING SPORT CAMBRIDGESHIRE AND PETERBOROUGH SPORTS PARTNERSHIP LIMITED

TRUSTEES' REPORT

Achievements and performance

The year in figures

What we have achieved during 2023/24 against our strategy & what it means (PA = physical activity)		
82	members of the PA workforce trained and supported who are representative of, and responsive to, the local community (296 in 2022/23)	We have helped to train 267 people across Cambridgeshire and Peterborough who now have increased knowledge of PA following their participation in, for example, Physical Activity Clinical Champion training and staff support hub training for those at the ICS and libraries.
185	members of the non- PA workforce worked with to advocate for PA (175 in 2022/23)	Last year we supported multiple activator training courses and Wellbeing Together training which has made the difference to the numbers trained.
35	organisations supported to include PA as part of their solution	We have supported 35 new organisations across different sectors (including schools, charities, community groups, local authorities) to embed PA in their offer to beneficiaries following engagement with us; this builds on the 138 organisations from last year, most of whom we continue to work with to some extent and we will aim to build on these for the place-based partnership working approach in Fenland and Peterborough.



LIVING SPORT CAMBRIDGESHIRE AND PETERBOROUGH SPORTS PARTNERSHIP LIMITED

TRUSTEES' REPORT

63	PA offers supported	63 PA offers have come to life this year across the districts with our support, ranging from OSF and Dragon's Den activities and the HAF scheme to activities for those at a cancer day care centre. The main aim of these is for them to become self-sustaining for the communities they serve (47 in 2022/23).
2	local plans/policies/ practices influenced to embed PA	This is an area of focus into 2024 – we have a major pilot underway with intervention and control groups to determine whether introducing PA to the National Diabetes Prevention Programme in Cambridgeshire produces better outcomes. NHS England is keeping a close eye! (The '2' referred to are the Football Foundation Local Football Plan for Huntingdonshire & Peterborough)
6	place-based profiles developed or expanded	Internally these have been created to demonstrate our understanding, knowledge and impact in them and apply this to our work in local communities to support them in a way that they want and need. We have expanded the Peterborough profile and developed the other five district profiles this year; further work is underway including use of them to further the place-based expansion work.



LIVING SPORT CAMBRIDGESHIRE AND PETERBOROUGH SPORTS PARTNERSHIP LIMITED TRUSTEES' REPORT

Our reach during 2023/24

5,896 people engaged with	We have engaged with nearly 6,000 people during this year (compared with 6,324 in the preceding 12 months) including 2,000 at Cambridge Pride and 192 people through our work with health partners at awareness events. In addition, our brand awareness focus this year has reached more than 20,000 people through our presence at the Great Eastern Run and Cambridge Half, for example.
70 events attended	We were a part of 70 “events” (same as last year) where we took on a specific role – consultation, delivery or signposting; most were aimed at the public (53%) or school pupils (43%) with 3 connecting with other organisations (4%). Last year’s 12-month comparisons are 63%, 18.5% & 18.5%, respectively. Considerably less aimed at organisations; more at schools.
39 sessions delivered	We carried out in-person delivery to 2,597 people across all six local authorities within our geography (comparison: 2,169 people across 35 delivered sessions in 2022/23). These have been family events, festivals and workshops we’ve supported and Dragon’s Den workshops. The School Games Colour Run however was postponed (due to freak winds) from September 2023 to April 2024 so is not included in this annual summary.
14 consultations	We carried out consultations with 614 people on 13 separate occasions (comparison: 1,093 people across 18 consultations in 2022/23), to use community and youth voice to help refine our work where it was needed and wanted. In addition, consultation was carried out at Cambridge Pride to varying extents with a further 2,000 people.



LIVING SPORT CAMBRIDGESHIRE AND PETERBOROUGH SPORTS PARTNERSHIP LIMITED

TRUSTEES' REPORT

We have seen a continued need for the solutions we can offer across Cambridgeshire and Peterborough as health inequalities have increased. We will continue to offer innovative and cost-effective solutions to children, families, adults and our stakeholders such as schools.

We can do more and will focus on that messaging to our stakeholders and funders to provide cost effective and innovative solutions to supporting all the communities we serve across Cambridgeshire and Peterborough.





LIVING SPORT CAMBRIDGESHIRE AND PETERBOROUGH SPORTS PARTNERSHIP LIMITED

TRUSTEES' REPORT

Children & Young People

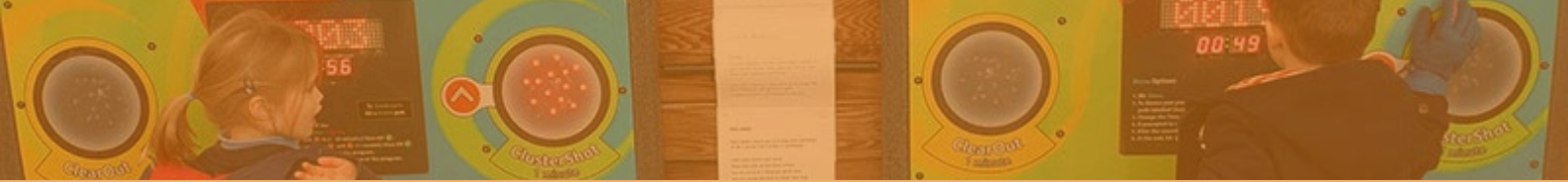
Our aim this year for our children and young people (CYP) work was to ensure it remained aligned to both our local partner's outcomes and be driven by what children and young people themselves are saying they want and need.

We have engaged with **2,828 CYP** over the last 12 months; approximately two-thirds through school-specific activities and one-third through community events but we formally consulted with **421** young people this year to guide what physical activity offers we supported.

This work has included continued delivery of our Dragon's Den, Active Mile and Opening School Facilities Programmes alongside our reshaped School Games events that are now more targeted to improve young people's experiences.

For example, **449 pupils** took part in School Games events in February and March 2024 with the postponed Colour Run which took place in April 2024; and Dragon's Den workshops impacted **346 children** in the year, improving young people's experience with physical activity and empowering them to make decisions about the activities they take part in.





LIVING SPORT CAMBRIDGESHIRE AND PETERBOROUGH SPORTS PARTNERSHIP LIMITED

TRUSTEES' REPORT

Through the Open Schools Facilities work we have oversight of **£800k** of funding for the County through the Department of Education, this is new funding that we have actively sort to underpin activities in our schools at what has been and continues to be a challenging time.

Towards the end of the year, we also started working on our Child Weight Management project. This new project, will be delivered in partnership with Maximus, will continue to grow in 2024/25 and beyond and will support families with activities and healthy lifestyle advice. Complementing this, we were also awarded a **£1m contract** to lead and coordinate the Schools Obesity Fund (Learn-2-Live Well) which will focus our efforts on Cambridgeshire Primary Schools and supporting them to address childhood obesity from within schools. This is a new way of working for Living Sport and we are excited to not only lead on this work but for the impact that it will create in the communities we serve.



Welfare and Safeguarding

During this year based on the recommendations of the Whyte review we were awarded funding for two safeguarding and welfare roles.

We remain unequivocal in our shared commitment to support others and clubs to drive a culture in their sport that upholds the highest standards of ethics, integrity and welfare, whether on the world stage or at a community level.



LIVING SPORT CAMBRIDGESHIRE AND PETERBOROUGH SPORTS PARTNERSHIP LIMITED TRUSTEES' REPORT

Dragons Den – Case Study

In 2023, the Living Sport team delivered a Dragons Den workshop to Martin Bacon Academy, a specialist education setting in Northstowe. Dragons Den is a project funded by Public Health at Cambridgeshire County Council. The project encourages pupils working in groups to co-design their own extra-curricular activity which will then run for a period of at least 6-8 weeks. Pupils learn and develop new skills such as; project planning, confidence, inclusion & diversity, social skills, and well-being. After designing an activity, schools are then funded £1000 to spend on coaches/equipment needed for the activity.

The initial workshop allowed students to design their activity and go through a process of what they would like to do out of the norm of the traditional sports delivered in the curriculum. After designing their activities, students then pitched their ideas to a panel of Dragons. This consisted of Living Sport staff and staff from Martin Bacon Academy. The winning pitch was for a new multi-fitness & strength club. Shortly after, a club was established for the students and now runs most weeks during lunchtime. Various equipment was purchased for this club such as skipping ropes, agility ladders, dumbbells, and boxercise accessories.



"Alongside the main benefits of this club on the physical wellbeing of learners, it also supports learners mental wellbeing, building their confidence, resilience and social interactions. A big commitment that Martin Bacon Academy provide our learners is for them to engage in fun learning experiences and this project and the support from Living Sport has enabled this to happen."

Teacher, Martin Bacon Academy

"Sometimes I can get really stressed and there wasn't anything I could do. Now I am able to go to the Fitness Club. This helps me get rid of stress."

Dragons Den Participant 1

"I really enjoy exercise and the bikes at the club makes my legs move."

Dragons Den Participant 2



LIVING SPORT CAMBRIDGESHIRE AND PETERBOROUGH SPORTS PARTNERSHIP LIMITED

TRUSTEES' REPORT

"I want to join the SAS when I leave school and this club will help me learn new skills which can help me to do that."

Dragons Den Participant 3

"During the initial workshop it was great to see all the students have so much enthusiasm to design their own club. When students have their own say on an activity, they are much more likely to want to engage with it and take ownership. This is something I definitely felt when we went to visit the club in action later in the year."

Programme Delivery Officer- Kieran Spitzer

Living Sport is thrilled to have collaborated with Martin Bacon Academy to support students and introduce exciting new activities. The partnership reflects Living Sport's commitment to supporting a culture of health and well-being for young people. Living Sport has been delighted to witness the positive impact this initiative is already having on students and is eager to see the activity progress and expand to include more participants over time. By providing opportunities for engagement and promoting movement and healthy lifestyles, Living Sport aims to support lasting positive changes by enabling individuals to be active in a way that works for them.





LIVING SPORT CAMBRIDGESHIRE AND PETERBOROUGH SPORTS PARTNERSHIP LIMITED

TRUSTEES' REPORT

Communities

As a place-based organisation, we work in targeted locations of identified need across our county. Our local communities can thrive and often just need a helping hand to support them on their journey to becoming places where being more active is an easier choice. We provide support, guidance, and training to help trusted, community focused organisations to embed physical activity into their offers.

We have supported **40 community events** over the past year with **3,906 people** being engaged with.

A considerable amount of time during the year has been focused on developing relationships with local partners at more than one level across multiple systems and exploring what we want to be able to do together to support increasing activity, decreasing inactivity, narrowing inequalities and improving young people's experiences, in particular for Fenland and Peterborough.

We have also introduced workforce bursaries to support those from within communities to create conditions within their own communities to allow people who experience inequalities to be active. We continue to address the narrowing of inequalities by working with both new and existing communities for integration e.g. through our work with Master Developer Urban & Civic in Waterbeach and Wintringham.



LIVING SPORT CAMBRIDGESHIRE AND PETERBOROUGH SPORTS PARTNERSHIP LIMITED

TRUSTEES' REPORT

Walking Football - Case Study

Becca attends the Sawston Walking Football

What appealed to you and why did you want to join the sessions?

"I am interested in football and like playing, but there aren't many ways of me joining in and playing at my age, so this was ideal. It is local to where I live, and I know Phil (coach) from his work with other clubs and within football, I spoke to him about it and he encouraged me to come, as I wanted to be more active and improve my physical health and try and get out more."

How did you find the sessions?

"I saw the Walking Football sessions advertised through social media."

What benefits do you get from the sessions?

"I have benefitted from the sessions with my physical health, as I have a number of health conditions and this is one way that I most enjoy being active and exercising, without feeling at risk of further health problems. With it being walking based I feel that it always presents me with a challenge, but sometimes more than others depending on my health conditions, but no matter what I still feel I can join in with the others and feel confident in taking part. The other benefit is that it gets me to come out and socialise and meet new people, talk to them and have a chat with Phil about the football and other aspects of life, rather than sharing this with the same people."

What wider impact has it had on you, as a person?

"It has a positive impact on my wellbeing and makes me feel much happier and worthwhile after the sessions compared to beforehand. It also, really helps me sleep due to the activity, raising my heart and breathing rate, which you would never think when it's only walking! I look forward to attending the sessions and have been one of, if not, the most regular participant over the time they have been running."

Would you like to continue taking part and has it encouraged them to take part in anything other activities?

"I would love to continue taking part in the walking football session and hope they continue. It has also encouraged me to think about other physical activity that I could participate in, which I'd now consider, especially anything that uses your own weight and body as a resistance. So, I will think about this to compliment me playing walking football."





LIVING SPORT CAMBRIDGESHIRE AND PETERBOROUGH SPORTS PARTNERSHIP LIMITED

TRUSTEES' REPORT



Health, Wellbeing & Social Care

At Living Sport, we truly believe in the role physical activity can play in supporting wider outcomes in relation to physical and mental health and wellbeing. We continue to be the countywide coordinator for Healthy You, the counties integrated lifestyle service, which we deliver in partnership with local district and city councils. Programmes are delivered in the community, in schools and in workplaces to help people make positive changes to their lifestyle through increasing physical activity and healthy eating behaviours. The support we provide allows the districts to confidently develop their physical activity and healthy eating offers with insight and evidence underpinning their solutions.

Across the year, we have worked with **185 members** of the non-physical activity workforce to advocate for physical activity including PACC (Physical Activity Clinical Champion) training. This is **10 more** than the previous year indicating our expanding reach across the health sector which is influencing understanding and leading to changes in how health professionals are talking about physical activity with the aim of increasing activity and decreasing inactivity in the populations they subsequently talk to.

LIVING SPORT CAMBRIDGESHIRE AND PETERBOROUGH SPORTS PARTNERSHIP LIMITED

TRUSTEES' REPORT



A focus in this reporting period has been supporting the embedding of physical activity into our ICS (Integrated Care System) Outcomes Framework. This has been an involved process but has culminated in physical activity being recognised as an overarching influencer across the major prevention strands within it. We have influenced decision makers within the ICS, enhancing their understanding which has led to a change in approach to include physical activity more prominently. Our Cambridgeshire National Diabetes Prevention Programme physical activity pilot is ongoing; with an aim of increasing activity and decreasing inactivity to support the halting of the progression of diabetes, this pilot started in September 2023 with two control groups and two intervention groups and will report in July 2024.

At the start of 2024 we took on responsibility for Forever Active, where strength and balance classes for older adults bring people together to improve day-to-day living but also combat loneliness and isolation. These classes were previously run by a separate charity but due to difficulties it was facing and recognising the significant value of this work Living Sport agreed to absorb this work into our existing portfolio of programmes. We are working to make these classes as beneficial for those attending as possible and increasing the number of people attending so more people can benefit from the support and activity provided and to avoid, we hope, them having to draw on support from the NHS given the demands it faces.





LIVING SPORT CAMBRIDGESHIRE AND PETERBOROUGH SPORTS PARTNERSHIP LIMITED

TRUSTEES' REPORT

Financial Review

The headline for the year ended 31 March 2024 was another year of working with funders and partners to provide our services to those who need it. Income remained stable compared to the previous year but challenges such as the cost-of-living crisis have resulted in pressures being put on expenditure with this increasing compared to the previous year. However due to the hard work of the team, a small surplus of **£2,447** was achieved.

Income

Overall income fell slightly to **£1,082,676** (2023: £1,107,847) for the year. This is mainly as a result in a fall in funding from Sport England relating to the system partner grant. This grant was reprofiled to front load the funding into earlier years to enable the charity to work on restructuring the charity towards a more sustainable model.

Grants remain the largest proportion of income received by the charity with **£939,787** (2023: £1,031,492) being received in the year. Sport England remains our largest funder, with **£656,283** (2023: £889,870) being received. Trustees and management continue to work on the diversification of income to reduce reliance on a single funder. This work is shown in the accounts with income from Sport England falling from **80% of income to 60%**.

Donations and gifts increased to **£38,490** (2023: £2,141) mainly due to a donation of coaching services to the charity received in kind.

As mentioned above, Forever Active classes and assets were added to Living Sport at the start of 2024. This resulted in a donation of assets totalling **£17,500** being received as well as income from class activities totalling **£9,484**.

Investment income also increased significantly to **£12,305** (2023: £3,493) due to higher interest rates being received on banked cash.

We are very grateful to all our funders, donors and grant givers who provide us income to enable us to do our work.





LIVING SPORT CAMBRIDGESHIRE AND PETERBOROUGH SPORTS PARTNERSHIP LIMITED

TRUSTEES' REPORT

Expenditure

Total expenditure on charitable activities, mainly comprising programme delivery, advocacy and awareness costs, was **£1,080,229** (2023 - £1,066,730).

The majority of costs incurred by the charity relate to employment costs. As a result of increased staff numbers and increases in pay due to the cost of living, total employment costs increased from **£567,252 to £740,959** during the year. As this accounts for 69% of expenditure in the charity, we are focused on recruiting and retaining experienced and skilled staff.

Grants paid out by the charity fell significantly in the year to **£33,969** (2023: £180,608). This is due to the Together Fund which started in the 2022/23 financial year and most grants were paid in this year, with a smaller number being paid at the start of the 2023/24 financial year.



Net movement in funds

Overall the net movement of funds during the year was a surplus of **£2,447** (2023 - £41,117). This was split between an unrestricted funds surplus of **£69,128** (2023 - £25,330) and restricted funds deficit of **£66,681** (2023 - £15,787 surplus).

LIVING SPORT CAMBRIDGESHIRE AND PETERBOROUGH SPORTS PARTNERSHIP LIMITED

TRUSTEES' REPORT



Reserves

Total funds held by the Charity at the year-end were **£415,437** (2023 - £412,990) of which **£193,822** (2023 - £260,503) were restricted and not available for the general purposes of the Charity.

The reserves policy has been amended to cover between three months' budgeted running costs at **£229,422** and six months coverage should **40%** of funding be withdrawn at **£183,538**. In previous years the policy has been to hold three months' running costs plus redundancy costs. This has been amended to support improving our financial resilience and to recognise change and growth within the charity.

Unrestricted free reserves of **£195,039** is within the reserves target range above. Trustees and management will continue to review the reserves held by the charity and the policy itself to ensure they are appropriate.

Subsidiary companies

Living Sport has Living Active Limited (11214648), a subsidiary registered, but this remains dormant.

Investment policy and objectives

Living Sport has adopted an ethical investment policy. This means that we seek to avoid investments that conflict with our aims or create reputational risk. Our investment policy emphasises the use of positive ethical criteria:

- We actively seek to invest in companies that are able to demonstrate:
- Responsible employment practices;
- Good corporate governance practice;
- Conscientiousness with regard to human rights;
- Sustainable environmental practice; and
- Sensitivity towards the communities in which we work.



LIVING SPORT CAMBRIDGESHIRE AND PETERBOROUGH SPORTS PARTNERSHIP LIMITED

TRUSTEES' REPORT

Looking forward, aiming high: Our plans for next year

We plan to focus on identifying the gaps across Cambridgeshire and Peterborough – using health and broader data and local insight – to target our work to address inequalities and support the reducing of gaps seen across our county in terms of living longer in good health. We will do this through three domains:

- Better communities: We are committed to continuing to use community and youth voice to guide our work – there is nothing better than those who will be affected being a part of the decisions being made for them to build confidence in the solution and encourage sustainability beyond our involvement.
- Better connected systems: We are confident we can build on the engagement we have had this year with partner organisations, supporting them to enhance or include physical activity as part of their solution for achieving wider outcomes – bringing partners together across different sectors is fundamental to achieve these.
- Better organisations: We will use learning to continue to grow and improve as an organisation, both through the programmes we offer and through the training, investment and trust we place in our members of staff and Board of Trustees.





LIVING SPORT CAMBRIDGESHIRE AND PETERBOROUGH SPORTS PARTNERSHIP LIMITED TRUSTEES' REPORT



#CELEBRATESPORT

Structure, governance and management

The charity is a company limited by guarantee and a registered charity governed by its Memorandum and Articles of Association.

Living Sport Cambridge and Peterborough Sports Partnership Limited (Living Sport) is governed by a Board of Trustees, these are the members of the charitable company. The trustees, who are also the directors for the purpose of company law, and who served during the year were:

F D K Bennett	- Chair
M Bradbury	– Senior Independent Director
D Coulson	– Welfare and Safety Board Champion
R N McCurdy	
V Moore	(Resigned 12 July 2023)
A Wild	
M G Woolhouse	(Resigned 04 October 2023)
H F Perry	
M Townsend	(Appointed 19 April 2024)
P W Heselwood	(Appointed 19 April 2024)
D A Hardman	(Appointed 19 April 2024)

Trustees shall ordinarily serve a maximum of 2 terms of 3 years.

None of the trustees has a beneficial interest in the company. All the trustees are members of the company and guarantee to contribute such sum (not exceeding £10) in the event of winding up.

Our Trustees focus on good governance and in 2023/24 we achieved the following:

- Undertook safeguarding training, policy and good practice was reviewed.
- Reviewed the format and structure of meetings to ensure accountability and streamlining of processes was achieved.
- The reserves policy and designations were reviewed.
- Compliance with the fundraising regulator was prioritised.

LIVING SPORT CAMBRIDGESHIRE AND PETERBOROUGH SPORTS PARTNERSHIP LIMITED

TRUSTEES' REPORT

Trustees review our performance in a board meeting setting in the following areas quarterly as well as through Finance and Audit and Assurance sub-committees:

- Programmes
- Finance
- Fundraising
- Compliance and risk including safeguarding.

Our Board of Trustees makes sure Living Sport is governed effectively and responsibly. The Board is collectively responsible for us delivering our charitable objectives and for ensuring that we are governed in accordance with our Memorandum and Articles of Association. The Board meets quarterly and at 31 March 2024, comprised six Trustees, with a further three trustees being appointed in April 2024. Each Trustee is also a Director of the Company for the purposes of company law. A list of Trustees is included within this report.



We recognise that a healthy Board has the mix of skills, knowledge, and experience necessary for the efficient and effective governance of Living Sport. A healthy Board will also make sure that the recruitment and appointment of Trustees provides adequate opportunities for reassessing and achieving that mix. Living Sport is fully committed to equality of opportunity and diversity in its governance. We recruit Trustees to ensure the Board has the knowledge and skills required to achieve our mission and uphold our values. All new Trustees go through a full and open recruitment and interview process. Appointment is by Board resolution and all Trustees receive an induction on appointment and relevant briefing and training courses are made available.





LIVING SPORT CAMBRIDGESHIRE AND PETERBOROUGH SPORTS PARTNERSHIP LIMITED

TRUSTEES' REPORT



The Board follows good practice by planning for succession and periodically reviews whether it has the appropriate skills and capacities going forward. The Board also evaluates its performance regularly and the Chairman holds annual appraisals with all board members.

During the year we have also increased our focus on Equality, Diversity and Inclusion. As part of this we produced a Diversity and Inclusion Action Plan which was independently reviewed and approved. This will help us to move towards our aim to achieve a more equitable, diverse, and inclusive workforce by ensuring EDI is reflected in our values and embedded in our practises and individual behaviours. We also expect all our third-party suppliers and partners to commit to treating their workforce with dignity and respect; in addition to complying with the Equality Act 2010 and any subsequent updates.

In line with our Articles of Association, the Board delegates certain functions to sub-committees, under terms of reference it has approved. These sub-committees report to the Board at each Board meeting. There are three sub-committees of the Board and an advisory group:

- The Finance Committee deals primarily with financial, audit and administrative matters - The Chairman leads this committee, and it includes three other Trustees with governance, business, and risk experience.
- The Audit and Assurance committee has oversight of risk management, safeguarding and compliance, including ensuring we meet the requirements of the UK Code for Sports Governance. The committee has a membership of three trustees, including the Board champions for safeguarding and EDI.
- The Remuneration and Nominations Committee has oversight of staff remuneration and other staffing matters arising, including an annual review of the CEO salary and CEO appraisal. The committee also leads on the recruitment of new trustees.



LIVING SPORT CAMBRIDGESHIRE AND PETERBOROUGH SPORTS PARTNERSHIP LIMITED

TRUSTEES' REPORT

In addition, we have the following processes and plans or action plans in place:

- Safeguarding: our staff are trained in safeguarding policy and procedures. Adherence to policy is mandatory in partner grant agreements and with consultants. Our Board of Trustees regularly reviews our policy and approach and implements additional measures where appropriate.
- We have business continuity plans in place.
- Data protection and cyber-security: we have detailed IT security and recovery plans in place for each of our systems, managed by outsourced IT suppliers. The Board reviews system security measures periodically as part of board reporting
- Management of organisational growth: we manage growth through grants by partnering with reliable, mature downstream partners, monitoring staff structures and workloads closely, and ensuring that we have adequate reserves to counter any material delays in cashflows.
- We monitor funding from individual funders as a proportion of total funding, with the aim of limiting exposure to one single donor.
- Risk of fraud: we have clear finance procedures in place with segregation of duties. Internal and external audits are carried out regularly. We have also established and implemented enhanced partner due diligence processes.

We reviewed our performance against the Charity Governance Code, so Trustees could assess how well Living Sport is applying the Code and where further work is needed. As part of this the Board reviews its own performance and that of individual Trustees, including the Chair and plans to carry out an external evaluation. The Board also takes part in training and reflection about diversity and will set diversity objectives against which performance can be measured and attend training led by a specialist member of the staff team.

To see more details of the members of our board, please visit the following website - <https://livingsport.co.uk/our-board-of-directors/>





LIVING SPORT CAMBRIDGESHIRE AND PETERBOROUGH SPORTS PARTNERSHIP LIMITED

TRUSTEES' REPORT

Auditor

In accordance with the company's articles, a resolution proposing that Azets Audit Services be reappointed as auditor of the company will be put at a General Meeting.

Living Sport regularly tests the market and tendered for the auditors of the company in December 2020 / January 2021.

The trustees' report was approved by the Board of Trustees.

.....
F D K Bennett

Trustee

Dated: 8th October 2024





LIVING SPORT CAMBRIDGESHIRE AND PETERBOROUGH SPORTS PARTNERSHIP LIMITED

STATEMENT OF TRUSTEES' RESPONSIBILITIES

FOR THE YEAR ENDED 31 MARCH 2024

The trustees, who are also the directors of Living Sport Cambridgeshire and Peterborough Sports Partnership Limited for the purpose of company law, are responsible for preparing the Trustees' Report and the accounts in accordance with applicable law and United Kingdom Accounting Standards (United Kingdom Generally Accepted Accounting Practice).

Company law requires the trustees to prepare accounts for each financial year which give a true and fair view of the state of affairs of the charity and of the incoming resources and application of resources, including the income and expenditure, of the charitable company for that year.

In preparing these accounts, the trustees are required to:

- select suitable accounting policies and then apply them consistently;
- observe the methods and principles in the Charities SORP;
- make judgements and estimates that are reasonable and prudent; and
- prepare the accounts on the going concern basis unless it is inappropriate to presume that the charity will continue in operation.

The trustees are responsible for keeping adequate accounting records that disclose with reasonable accuracy at any time the financial position of the charity and enable them to ensure that the accounts comply with the Companies Act 2006. They are also responsible for safeguarding the assets of the charity and hence for taking reasonable steps for the prevention and detection of fraud and other irregularities.



LIVING SPORT CAMBRIDGESHIRE AND PETERBOROUGH SPORTS PARTNERSHIP LIMITED

INDEPENDENT AUDITOR'S REPORT

TO THE TRUSTEES OF LIVING SPORT CAMBRIDGESHIRE AND PETERBOROUGH SPORTS PARTNERSHIP LIMITED

Opinion

We have audited the financial statements of Living Sport Cambridgeshire and Peterborough Sports Partnership Limited (the 'charity') for the year ended 31 March 2024 which comprise the statement of financial activities, the balance sheet, the statement of cash flows and the notes to the financial statements, including a summary of significant accounting policies. The financial reporting framework that has been applied in their preparation is applicable law and United Kingdom Accounting Standards, including Financial Reporting Standard 102 The Financial Reporting Standard applicable in the UK and Republic of Ireland (United Kingdom Generally Accepted Accounting Practice).

In our opinion, the financial statements:

- give a true and fair view of the state of the charitable company's affairs as at 31 March 2024 and of its incoming resources and application of resources, for the year then ended;
- have been properly prepared in accordance with United Kingdom Generally Accepted Accounting Practice; and
- have been prepared in accordance with the requirements of the Companies Act 2006.

Basis for opinion

We conducted our audit in accordance with International Standards on Auditing (UK) (ISAs (UK)) and applicable law. Our responsibilities under those standards are further described in the *Auditor's responsibilities for the audit of the financial statements* section of our report. We are independent of the charity in accordance with the ethical requirements that are relevant to our audit of the financial statements in the UK, including the FRC's Ethical Standard, and we have fulfilled our other ethical responsibilities in accordance with these requirements. We believe that the audit evidence we have obtained is sufficient and appropriate to provide a basis for our opinion.



LIVING SPORT CAMBRIDGESHIRE AND PETERBOROUGH SPORTS PARTNERSHIP LIMITED

INDEPENDENT AUDITOR'S REPORT (CONTINUED)

TO THE TRUSTEES OF LIVING SPORT CAMBRIDGESHIRE AND PETERBOROUGH SPORTS PARTNERSHIP LIMITED

Conclusions relating to going concern

In auditing the financial statements, we have concluded that the trustees' use of the going concern basis of accounting in the preparation of the financial statements is appropriate.

Based on the work we have performed, we have not identified any material uncertainties relating to events or conditions that, individually or collectively, may cast significant doubt on the charity's ability to continue as a going concern for a period of at least twelve months from when the financial statements are authorised for issue.

Our responsibilities and the responsibilities of the trustees with respect to going concern are described in the relevant sections of this report.

Other information

The other information comprises the information included in the annual report other than the financial statements and our auditor's report thereon. The trustees are responsible for the other information contained within the annual report. Our opinion on the financial statements does not cover the other information and we do not express any form of assurance conclusion thereon. Our responsibility is to read the other information and, in doing so, consider whether the other information is materially inconsistent with the financial statements or our knowledge obtained in the course of the audit, or otherwise appears to be materially misstated. If we identify such material inconsistencies or apparent material misstatements, we are required to determine whether this gives rise to a material misstatement in the financial statements themselves. If, based on the work we have performed, we conclude that there is a material misstatement of this other information, we are required to report that fact.

We have nothing to report in this regard.

Matters on which we are required to report by exception

We have nothing to report in respect of the following matters in relation to which the Charities (Accounts and Reports) Regulations 2008 require us to report to you if, in our opinion:

- the information given in the financial statements is inconsistent in any material respect with the trustees' report; or
- sufficient accounting records have not been kept; or
- the financial statements are not in agreement with the accounting records; or
- we have not received all the information and explanations we require for our audit.



LIVING SPORT CAMBRIDGESHIRE AND PETERBOROUGH SPORTS PARTNERSHIP LIMITED

INDEPENDENT AUDITOR'S REPORT (CONTINUED)

TO THE TRUSTEES OF LIVING SPORT CAMBRIDGESHIRE AND PETERBOROUGH SPORTS PARTNERSHIP LIMITED

Responsibilities of trustees

As explained more fully in the statement of trustees' responsibilities, the trustees, who are also the directors of the charity for the purpose of company law, are responsible for the preparation of the financial statements and for being satisfied that they give a true and fair view, and for such internal control as the trustees determine is necessary to enable the preparation of financial statements that are free from material misstatement, whether due to fraud or error. In preparing the financial statements, the trustees are responsible for assessing the charity's ability to continue as a going concern, disclosing, as applicable, matters related to going concern and using the going concern basis of accounting unless the trustees either intend to liquidate the charitable company or to cease operations, or have no realistic alternative but to do so.

Auditor's responsibilities for the audit of the financial statements

We have been appointed as auditor under section 145 of the Charities Act 2011 and report in accordance with the Act and relevant regulations made or having effect thereunder.

Our objectives are to obtain reasonable assurance about whether the financial statements as a whole are free from material misstatement, whether due to fraud or error, and to issue an auditor's report that includes our opinion. Reasonable assurance is a high level of assurance but is not a guarantee that an audit conducted in accordance with ISAs (UK) will always detect a material misstatement when it exists. Misstatements can arise from fraud or error and are considered material if, individually or in the aggregate, they could reasonably be expected to influence the economic decisions of users taken on the basis of these financial statements.

A further description of our responsibilities is available on the Financial Reporting Council's website at: <https://www.frc.org.uk/auditorsresponsibilities>.

This description forms part of our auditor's report.



LIVING SPORT CAMBRIDGESHIRE AND PETERBOROUGH SPORTS PARTNERSHIP LIMITED

INDEPENDENT AUDITOR'S REPORT (CONTINUED)

TO THE TRUSTEES OF LIVING SPORT CAMBRIDGESHIRE AND PETERBOROUGH SPORTS PARTNERSHIP LIMITED

Extent to which the audit was considered capable of detecting irregularities, including fraud

Irregularities, including fraud, are instances of non-compliance with laws and regulations. We design procedures in line with our responsibilities, outlined above and on the Financial Reporting Council's website, to detect material misstatements in respect of irregularities, including fraud.

We obtain and update our understanding of the entity, its activities, its control environment, and likely future developments, including in relation to the legal and regulatory framework applicable and how the entity is complying with that framework. Based on this understanding, we identify and assess the risks of material misstatement of the financial statements, whether due to fraud or error, design and perform audit procedures responsive to those risks, and obtain audit evidence that is sufficient and appropriate to provide a basis for our opinion. This includes consideration of the risk of acts by the entity that were contrary to applicable laws and regulations, including fraud.

This report is made solely to the company's members, as a body, in accordance with section 391 of the Companies Act 2014. Our audit work has been undertaken so that we might state to the company's members those matters we are required to state to them in an auditor's report and for no other purpose. To the fullest extent permitted by law, we do not accept or assume responsibility to anyone other than the company and the company's members as a body, for our audit work, for this report, or for the opinions we have formed.

Tracey Richardson BSc (Hons) FCA (Senior Statutory Auditor)
for and on behalf of Azets Audit Services

9 October 2024
.....

Chartered Accountants
Statutory Auditor



Westpoint
Lynch Wood
Peterborough
Cambridgeshire
United Kingdom
PE2 6FZ

Azets Audit Services is eligible for appointment as auditor of the charity by virtue of its eligibility for appointment as auditor of a company under section 1212 of the Companies Act 2006.

LIVING SPORT CAMBRIDGESHIRE AND PETERBOROUGH SPORTS PARTNERSHIP LIMITED

STATEMENT OF FINANCIAL ACTIVITIES INCLUDING INCOME AND EXPENDITURE ACCOUNT FOR THE YEAR ENDED 31 MARCH 2024

Current financial year

	Notes	Unrestricted funds 2024 £	Restricted funds 2024 £	Total 2024 £	Total 2023 £
<u>Income and endowments from:</u>					
Donations and legacies	3	38,040	940,237	978,277	1,033,633
Charitable activities	6	16,737	33,378	50,115	67,157
Investments	4	12,305	-	12,305	3,493
Forever Active transfer	5	17,500	-	17,500	-
Other income	7	24,212	267	24,479	3,564
Total income		108,794	973,882	1,082,676	1,107,847
<u>Expenditure on:</u>					
Expenditure on charitable activities	8	39,666	1,040,563	1,080,229	1,066,730
Net income/(expenditure) for the year/ Net movement in funds		69,128	(66,681)	2,447	41,117
Fund balances at 1 April 2023		152,487	260,503	412,990	371,873
Fund balances at 31 March 2024		221,615	193,822	415,437	412,990

The statement of financial activities includes all gains and losses recognised in the year.

All income and expenditure derive from continuing activities.

The statement of financial activities also complies with the requirements for an income and expenditure account under the Companies Act 2006.

LIVING SPORT CAMBRIDGESHIRE AND PETERBOROUGH SPORTS PARTNERSHIP LIMITED

STATEMENT OF FINANCIAL ACTIVITIES (CONTINUED) INCLUDING INCOME AND EXPENDITURE ACCOUNT

FOR THE YEAR ENDED 31 MARCH 2024

Prior financial year

		Unrestricted funds 2023 £	Restricted funds 2023 £	Total 2023 £
	Notes			
<u>Income and endowments from:</u>				
Donations and legacies	3	841	1,032,792	1,033,633
Charitable activities	6	19,407	47,750	67,157
Investments	4	3,493	-	3,493
Other income	7	3,484	80	3,564
Total income		<u>27,225</u>	<u>1,080,622</u>	<u>1,107,847</u>
<u>Expenditure on:</u>				
Expenditure on charitable activities	8	16,569	1,050,161	1,066,730
Net incoming/(outgoing) resources before transfers		<u>10,656</u>	<u>30,461</u>	<u>41,117</u>
Gross transfers between funds		<u>14,674</u>	<u>(14,674)</u>	<u>-</u>
Net income/(expenditure) for the year/ Net movement in funds		<u>25,330</u>	<u>15,787</u>	<u>41,117</u>
Fund balances at 1 April 2022		<u>127,157</u>	<u>244,716</u>	<u>371,873</u>
Fund balances at 31 March 2023		<u><u>152,487</u></u>	<u><u>260,503</u></u>	<u><u>412,990</u></u>

LIVING SPORT CAMBRIDGESHIRE AND PETERBOROUGH SPORTS PARTNERSHIP LIMITED

BALANCE SHEET AS AT 31 MARCH 2024

	Notes	2024 £	£	2023 £	£
Fixed assets					
Tangible assets	13		26,576		20,934
Current assets					
Debtors	15	105,050		228,492	
Cash at bank and in hand		898,622		468,947	
		1,003,672		697,439	
Creditors: amounts falling due within one year	16	(614,811)		(305,383)	
Net current assets			388,861		392,056
Total assets less current liabilities			415,437		412,990
Income funds					
Restricted funds	19		193,822		260,503
Unrestricted funds			221,615		152,487
			415,437		412,990

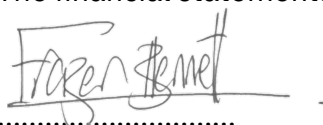
The company is entitled to the exemption from the audit requirement contained in section 477 of the Companies Act 2006, for the year ended 31 March 2024, although an audit has been carried out under section 144 of the Charities Act 2011.

The directors acknowledge their responsibilities for complying with the requirements of the Companies Act 2006 with respect to accounting records and the preparation of financial statements.

The members have not required the company to obtain an audit of its financial statements under the requirements of the Companies Act 2006, for the year in question in accordance with section 476.

These financial statements have been prepared in accordance with the provisions applicable to companies subject to the small companies regime.

The financial statements were approved by the Trustees on 8th October 2024



F D K Bennett
Trustee

Company registration number 05894596

LIVING SPORT CAMBRIDGESHIRE AND PETERBOROUGH SPORTS PARTNERSHIP LIMITED

STATEMENT OF CASH FLOWS

FOR THE YEAR ENDED 31 MARCH 2024

	Notes	2024 £	2023 £
Cash flows from operating activities			
Cash generated from operations	21	431,189	174,877
Investing activities			
Purchase of tangible fixed assets	(13,819)	(21,807)	
Investment income received	12,305	3,493	
Net cash used in investing activities		(1,514)	(18,314)
Net cash used in financing activities		-	-
Net increase in cash and cash equivalents		429,675	156,563
Cash and cash equivalents at beginning of year		468,947	312,384
Cash and cash equivalents at end of year		<u>898,622</u>	<u>468,947</u>





LIVING SPORT CAMBRIDGESHIRE AND PETERBOROUGH SPORTS PARTNERSHIP LIMITED

NOTES TO THE FINANCIAL STATEMENTS FOR THE YEAR ENDED 31 MARCH 2024

1 Accounting policies

Charity information

Living Sport Cambridgeshire and Peterborough Sports Partnership Limited is a private company limited by guarantee incorporated in England and Wales. The registered office is Suite 3, James Hall, Parsons Green, St Ives, Cambridgeshire, PE27 4AA, United Kingdom.

1.1 Accounting convention

The accounts have been prepared in accordance with the charity's governing documents, the Companies Act 2006 and "Accounting and Reporting by Charities: Statement of Recommended Practice applicable to charities preparing their accounts in accordance with the Financial Reporting Standard applicable in the UK and Republic of Ireland (FRS 102)" (as amended for accounting periods commencing from 1 January 2019). The charity is a Public Benefit Entity as defined by FRS 102.

The financial statements are prepared in sterling, which is the functional currency of the charity. Monetary amounts in these financial statements are rounded to the nearest £.

The accounts have been prepared under the historical cost convention. The principal accounting policies adopted are set out below.

1.2 Going concern

The financial statements have been prepared on a going concern basis as the Trustees believe that no material uncertainties exist. The Trustees have considered the level of funds held and the expected level of income and expenditure for 12 months from authorising these financial statements. The budgeted income and expenditure is sufficient with the level of reserves for the charity to be able to continue as a going concern.

1.3 Charitable funds

Unrestricted funds are available for use at the discretion of the trustees in furtherance of their charitable objectives.

Restricted funds are subject to specific conditions by donors as to how they may be used. The purposes and uses of the restricted funds are set out in the notes to the financial statements.



LIVING SPORT CAMBRIDGESHIRE AND PETERBOROUGH SPORTS PARTNERSHIP LIMITED

NOTES TO THE FINANCIAL STATEMENTS (CONTINUED)

FOR THE YEAR ENDED 31 MARCH 2024

1 Accounting policies

(Continued)

1.4 Income

Income is recognised when the charity is legally entitled to it after any performance conditions have been met, the amounts can be measured reliably, and it is probable that income will be received.

Cash donations are recognised on receipt. Other donations are recognised once the charity has been notified of the donation, unless performance conditions require deferral of the amount. Income tax recoverable in relation to donations received under Gift Aid or deeds of covenant is recognised at the time of the donation.

Any grant receivable is shown as an incoming resource once the charity has met any conditions relating to its receipt and when it has reasonable assurance that the grant will be received. The grant is shown within the appropriate fund, in accordance with any restrictions placed in its use by the donor. Incoming resources are only deferred if the donor has restricted their use until a future accounting period.

1.5 Expenditure

Expenditure is recognised once there is a legal or constructive obligation to transfer economic benefit to a third party, it is probable that a transfer of economic benefits will be required in settlement, and the amount of the obligation can be measured reliably.

Expenditure is classified by activity. The costs of each activity are made up of the total of direct costs and shared costs, including support costs involved in undertaking each activity. Direct costs attributable to a single activity are allocated directly to that activity. Shared costs which contribute to more than one activity and support costs which are not attributable to a single activity are apportioned between those activities on a basis consistent with the use of resources. Central staff costs are allocated on the basis of time spent, and depreciation charges are allocated on the portion of the asset's use.

Resources expended are included in the Statement of Financial Activities on an accruals basis.



LIVING SPORT CAMBRIDGESHIRE AND PETERBOROUGH SPORTS PARTNERSHIP LIMITED

NOTES TO THE FINANCIAL STATEMENTS (CONTINUED)

FOR THE YEAR ENDED 31 MARCH 2024

1 Accounting policies

(Continued)

1.6 Tangible fixed assets

Tangible fixed assets are initially measured at cost and subsequently measured at cost or valuation, net of depreciation and any impairment losses.

Depreciation is recognised so as to write off the cost or valuation of assets less their residual values over their useful lives on the following bases:

Plant and machinery	25% p.a. straight line
---------------------	------------------------

The gain or loss arising on the disposal of an asset is determined as the difference between the sale proceeds and the carrying value of the asset, and is recognised in the statement of financial activities.

1.7 Impairment of fixed assets

At each reporting end date, the charity reviews the carrying amounts of its tangible and intangible assets to determine whether there is any indication that those assets have suffered an impairment loss. If any such indication exists, the recoverable amount of the asset is estimated in order to determine the extent of the impairment loss (if any).

1.8 Cash and cash equivalents

Cash and cash equivalents include cash in hand, deposits held at call with banks, other short-term liquid investments with original maturities of three months or less, and bank overdrafts. Bank overdrafts are shown within borrowings in current liabilities.





LIVING SPORT CAMBRIDGESHIRE AND PETERBOROUGH SPORTS PARTNERSHIP LIMITED

NOTES TO THE FINANCIAL STATEMENTS (CONTINUED)

FOR THE YEAR ENDED 31 MARCH 2024

1 Accounting policies

(Continued)

1.9 Financial instruments

The charity has elected to apply the provisions of Section 11 'Basic Financial Instruments' and Section 12 'Other Financial Instruments Issues' of FRS 102 to all of its financial instruments.

Financial instruments are recognised in the charity's balance sheet when the charity becomes party to the contractual provisions of the instrument.

Financial assets and liabilities are offset, with the net amounts presented in the financial statements, when there is a legally enforceable right to set off the recognised amounts and there is an intention to settle on a net basis or to realise the asset and settle the liability simultaneously.

Basic financial assets

Basic financial assets, which include debtors and cash and bank balances, are initially measured at transaction price including transaction costs and are subsequently carried at amortised cost using the effective interest method unless the arrangement constitutes a financing transaction, where the transaction is measured at the present value of the future receipts discounted at a market rate of interest. Financial assets classified as receivable within one year are not amortised.

Basic financial liabilities

Basic financial liabilities, including creditors and bank loans are initially recognised at transaction price unless the arrangement constitutes a financing transaction, where the debt instrument is measured at the present value of the future payments discounted at a market rate of interest. Financial liabilities classified as payable within one year are not amortised.

Debt instruments are subsequently carried at amortised cost, using the effective interest rate method.

Trade creditors are obligations to pay for goods or services that have been acquired in the ordinary course of operations from suppliers. Amounts payable are classified as current liabilities if payment is due within one year or less. If not, they are presented as non-current liabilities. Trade creditors are recognised initially at transaction price and subsequently measured at amortised cost using the effective interest method.

Derecognition of financial liabilities

Financial liabilities are derecognised when the charity's contractual obligations expire or are discharged or cancelled.



LIVING SPORT CAMBRIDGESHIRE AND PETERBOROUGH SPORTS PARTNERSHIP LIMITED

NOTES TO THE FINANCIAL STATEMENTS (CONTINUED)

FOR THE YEAR ENDED 31 MARCH 2024

1 Accounting policies

(Continued)

1.10 Employee benefits

The cost of any unused holiday entitlement is recognised in the period in which the employee's services are received.

Termination benefits are recognised immediately as an expense when the charity is demonstrably committed to terminate the employment of an employee or to provide termination benefits.

1.11 Retirement benefits

The charity operates a defined contributions pension scheme. Contributions are charged in the accounts as they become payable in accordance with the rules of the scheme.

2 Critical accounting estimates and judgements

In the application of the charity's accounting policies, the trustees are required to make judgements, estimates and assumptions about the carrying amount of assets and liabilities that are not readily apparent from other sources. The estimates and associated assumptions are based on historical experience and other factors that are considered to be relevant. Actual results may differ from these estimates.

The estimates and underlying assumptions are reviewed on an ongoing basis. Revisions to accounting estimates are recognised in the period in which the estimate is revised where the revision affects only that period, or in the period of the revision and future periods where the revision affects both current and future periods.



LIVING SPORT CAMBRIDGESHIRE AND PETERBOROUGH SPORTS PARTNERSHIP LIMITED

NOTES TO THE FINANCIAL STATEMENTS (CONTINUED)

FOR THE YEAR ENDED 31 MARCH 2024

3 Donations and legacies

	Unrestricted funds 2024 £	Restricted funds 2024 £	Total 2024 £	Unrestricted funds 2023 £	Restricted funds 2023 £	Total 2023 £
Donations and gifts	38,040	450	38,490	841	1,300	2,141
Grants receivable	-	939,787	939,787	-	1,031,492	1,031,492
	<u>38,040</u>	<u>940,237</u>	<u>978,277</u>	<u>841</u>	<u>1,032,792</u>	<u>1,033,633</u>
Grants receivable for core activities						
Sport England	-	656,283	656,283	-	889,870	889,870
Peterborough City Council (PCC)	-	-	-	-	24,999	24,999
Cambridgeshire County Council (CCC)	-	192,334	192,334	-	79,253	79,253
Fenland District Council (FDC)	-	4,959	4,959	-	-	-
Cambridge City Council	-	44,545	44,545	-	-	-
Cambridgeshire Community Foundation	-	11,934	11,934	-	-	-
Urban & Civic	-	10,000	10,000	-	-	-
National Lottery	-	9,732	9,732	-	-	-
South Cambridgeshire District Council	-	10,000	10,000	-	-	-
Awards for all	-	-	-	-	9,962	9,962
Football Foundation	-	-	-	-	23,000	23,000
PCN Walking Football	-	-	-	-	4,408	4,408
	<u>-</u>	<u>939,787</u>	<u>939,787</u>	<u>-</u>	<u>1,031,492</u>	<u>1,031,492</u>

LIVING SPORT CAMBRIDGESHIRE AND PETERBOROUGH SPORTS PARTNERSHIP LIMITED

NOTES TO THE FINANCIAL STATEMENTS (CONTINUED)

FOR THE YEAR ENDED 31 MARCH 2024

4 Investment

	Unrestricted funds 2024 £	Unrestricted funds 2023 £
Interest receivable	12,305	3,493

5 Forever Active Transfer

From 1st March 2024, the trade and assets of Forever Active Forum Limited were transferred to Living Sport Cambridgeshire and Peterborough Sports Partnership Limited.

6 Charitable Activities

	Promotion of sport 2024 £	Promotion of sport 2023 £
Events income	-	200
Commissions and contracts	36,137	62,397
Forever Active income	9,484	-
Workshops income	4,494	4,560
	<u>50,115</u>	<u>67,157</u>
Analysis by fund		
Unrestricted funds	16,737	19,407
Restricted funds	33,378	47,750
	<u>50,115</u>	<u>67,157</u>

LIVING SPORT CAMBRIDGESHIRE AND PETERBOROUGH SPORTS PARTNERSHIP LIMITED

NOTES TO THE FINANCIAL STATEMENTS (CONTINUED)

FOR THE YEAR ENDED 31 MARCH 2024

7 Other Income

	Unrestricted funds 2024 £	Restricted funds 2024 £	Total 2024 £	Unrestricted funds 2023 £	Restricted funds 2023 £	Total 2023 £
Other income	24,212	267	24,479	3,484	80	3,564

8 Expenditure on charitable activities

	Promotion of sport 2024 £	Promotion of sport 2023 £
Staff costs	738,084	567,252
Depreciation and impairment (including profit and loss on disposal)	8,177	6,440
Other costs	105,785	118,562
	852,046	692,254
Grant funding of activities (see note 9)	33,969	180,608
Share of support costs (see note 10)	158,265	177,642
Share of governance costs (see note 10)	35,949	16,226
	1,080,229	1,066,730
Analysis by fund		
Unrestricted funds	39,666	16,569
Restricted funds	1,040,563	1,050,161
	1,080,229	1,066,730

LIVING SPORT CAMBRIDGESHIRE AND PETERBOROUGH SPORTS PARTNERSHIP LIMITED

NOTES TO THE FINANCIAL STATEMENTS (CONTINUED)

FOR THE YEAR ENDED 31 MARCH 2024

9 Grants payable

	Promotion of sport 2024 £	Promotion of sport 2023 £
Grants to institutions:		
Other	33,969	180,608

Promotion of sport

Grants are made to organisations that share similar objectives, to promote sporting activity.

10 Support costs

	Support costs £	Governance cost £	2024 £	Support costs £	Governance cost £	2023 £
Support costs	158,265	-	158,265	177,642	-	177,642
Audit fees	-	7,761	7,761	-	6,960	6,960
Legal and professional	-	23,068	23,068	-	8,243	8,243
Trustees Board expenses	-	5,120	5,120	-	1,023	1,023
	<u>158,265</u>	<u>35,949</u>	<u>194,214</u>	<u>177,642</u>	<u>16,226</u>	<u>193,868</u>
Analysed between						
Charitable activities	<u>158,265</u>	<u>35,949</u>	<u>194,214</u>	<u>177,642</u>	<u>16,226</u>	<u>193,868</u>

Governance costs includes payments to the auditors of £5,000 (2023 - £5,520) for audit services and £2,761 (2023 - £1,440) for non-audit services.

LIVING SPORT CAMBRIDGESHIRE AND PETERBOROUGH SPORTS PARTNERSHIP LIMITED

NOTES TO THE FINANCIAL STATEMENTS (CONTINUED)

FOR THE YEAR ENDED 31 MARCH 2024

11 Trustees

None of the trustees (or any persons connected with them) received any remuneration or benefits from the charity during the year.

None of the trustees received reimbursement of expenses during the year (2023 - None).

12 Employees

The average monthly number of employees during the year was:

	2024 Number	2023 Number
	21	19
	<u>21</u>	<u>19</u>
Employment costs	2024 £	2023 £
Wages and salaries	658,001	507,927
Social security costs	60,166	45,075
Other pension costs	19,917	14,250
	<u>738,084</u>	<u>567,252</u>
	<u>738,084</u>	<u>567,252</u>

Included in the above are termination payments made under settlement agreements totalling £13,825 made to 2 members of staff (2023 - £4,050 to 1 member of staff).

The number of employees whose annual remuneration was £60,000 or more were:

	2024 Number	2023 Number
£70,000 - £80,000	1	-
	<u>1</u>	<u>-</u>

LIVING SPORT CAMBRIDGESHIRE AND PETERBOROUGH SPORTS PARTNERSHIP LIMITED

NOTES TO THE FINANCIAL STATEMENTS (CONTINUED)

FOR THE YEAR ENDED 31 MARCH 2024

13 Tangible fixed assets

	Plant and machinery £
Cost	
At 1 April 2023	48,558
Additions	13,819
	<hr/>
At 31 March 2024	62,377
Depreciation and impairment	
At 1 April 2023	27,624
Depreciation charged in the year	8,177
	<hr/>
At 31 March 2024	35,801
Carrying amount	
At 31 March 2024	26,576
	<hr/>
At 31 March 2023	20,934
	<hr/>

14 Financial Instruments

	2024 £	2023 £
Carrying amount of financial assets		
Trade debtors excluding bad debt provision	60,648	214,421
Bank and cash	898,622	468,947
	<hr/>	<hr/>
Measured at cost	959,270	683,368
	<hr/>	<hr/>
Carrying amount of financial liabilities		
Trade creditors	34,512	20,921
Accruals	13,828	63,388
Other taxation and social security	27,356	15,690
Other creditors	9,252	3,976
	<hr/>	<hr/>
Measured at cost	84,948	103,975
	<hr/>	<hr/>

LIVING SPORT CAMBRIDGESHIRE AND PETERBOROUGH SPORTS PARTNERSHIP LIMITED

NOTES TO THE FINANCIAL STATEMENTS (CONTINUED)

FOR THE YEAR ENDED 31 MARCH 2024

15 Debtors

	2024 £	2023 £
Amounts falling due within one year:		
Trade debtors	60,648	214,421
Prepayments	15,629	11,071
Accrued income	28,773	3,000
	<u>105,050</u>	<u>228,492</u>

16 Creditors: amounts falling due within one year

	Notes	2024 £	2023 £
Other taxation and social security		27,356	15,690
Deferred income	1	530,463	201,408
Trade creditors	7	34,512	20,921
Other creditors		8,652	3,976
Accruals		13,828	63,388
		<u>614,811</u>	<u>305,383</u>



LIVING SPORT CAMBRIDGESHIRE AND PETERBOROUGH SPORTS PARTNERSHIP LIMITED

NOTES TO THE FINANCIAL STATEMENTS (CONTINUED)

FOR THE YEAR ENDED 31 MARCH 2024

17 Deferred Income

	2024 £	2023 £
Other deferred income	530,463	201,408

Deferred income is included in the financial statements as follows:

	2024 £	2023 £
Deferred income is included within:		
Current liabilities	530,463	201,408
Movements in the year:		
Deferred income at 1 April 2023	201,408	905
Released from previous periods	(201,408)	(905)
Resources deferred in the year	530,463	201,408
Deferred income at 31 March 2024	530,463	201,408

Deferred income is for events that are to take place after the year end and grants relating to the next financial year. Grant income deferred includes £490,646 invoiced to Cambridgeshire County Council for health projects being delivered from April 2024 onwards.



Fund balances at 31 March 2024 are represented by:

Tangible assets	26,576	-	26,576	20,934	-	20,934
Current assets/(liabilities)	<u>195,039</u>	<u>193,822</u>	<u>388,861</u>	<u>131,553</u>	<u>260,503</u>	<u>392,056</u>
	<u>221,615</u>	<u>193,822</u>	<u>415,437</u>	<u>152,487</u>	<u>260,503</u>	<u>412,990</u>



LIVING SPORT CAMBRIDGESHIRE AND PETERBOROUGH SPORTS PARTNERSHIP LIMITED

NOTES TO THE FINANCIAL STATEMENTS (CONTINUED)

FOR THE YEAR ENDED 31 MARCH 2024

19 Restricted funds

The income funds of the charity include restricted funds comprising the following unexpended balances of donations and grants held on trust for specific purposes:

	Movement in funds				Movement in funds				Balance at 31 March 2024
	Balance at 1 April 2022	Incoming resources	Resources expended	Transfers	Balance at 1 April 2023	Incoming resources	Resources expended	Transfers	
	£	£	£	£	£	£	£	£	£
Disability Sport	2,855	-	(963)	-	1,892	-	(1,892)	-	-
DfE Volunteering	1,192	-	(1,192)	-	-	-	-	-	-
Satellite Clubs	19,038	-	(19,003)	(35)	-	-	-	-	-
Workforce	25,374	-	(13,861)	-	11,513	-	(9,929)	-	1,584
Handball	3,133	-	-	-	3,133	-	-	-	3,133
Lets Get Moving Cambridgeshire	28,017	-	(1,540)	-	26,477	-	(21,761)	-	4,716
Active Families	4,938	-	(4,938)	-	-	-	-	-	-
Active New Communities	33,470	125,000	(149,286)	(9,184)	-	-	-	-	-
Workplace Health	1,545	-	(1,545)	-	-	-	-	-	-
Healthy You	(2,257)	40,365	(39,207)	-	(1,099)	41,869	(39,199)	-	1,571
Fundraising - Local Joes	3,122	-	-	-	3,122	-	-	-	3,122
Children and Young People (CYP)	46,046	-	(23,680)	(861)	21,505	-	(21,813)	-	(308)
Fundraising - John Lewis	1,000	-	(1,000)	-	-	-	-	-	-
Healthy Weight - Active mile	13,160	38,968	(30,420)	-	21,708	38,968	(29,080)	(10,000)	21,596
Healthy Weight - Diverse Communities	25,000	-	(5,543)	-	19,457	-	(2,536)	(6,800)	10,121
Healthy Weight - Dragon's Den	14,000	-	(12,788)	-	1,212	14,000	(15,117)	-	95
Tesco Families	1,000	-	(1,000)	-	-	-	-	-	-
Wellbeing Walks	9,583	-	(2,083)	(90)	7,410	2,500	(2,555)	-	7,355
Opening up School Facilities	-	19,935	(19,935)	-	-	19,935	(19,999)	-	(64)
Commonwealth Games Legacy	14,500	-	(14,500)	-	-	-	-	-	-
Awards for All Soham	-	9,962	-	-	9,962	-	(6,050)	-	3,912
Carried forward to next page	244,716	234,230	(342,484)	(10,170)	126,292	117,272	(169,931)	(16,800)	56,833

LIVING SPORT CAMBRIDGESHIRE AND PETERBOROUGH SPORTS PARTNERSHIP LIMITED

NOTES TO THE FINANCIAL STATEMENTS (CONTINUED)

FOR THE YEAR ENDED 31 MARCH 2024

19 Restricted funds

	Continued								
Bought forward	244,716	234,230	(342,484)	(10,170)	126,292	117,272	(169,931)	(16,800)	56,833
CP3 Peterborough City Council	-	24,999	(9,786)	-	15,213	-	(12,678)	-	2,535
CP3 Cambs County Council	-	21,725	(4,960)	(4,216)	12,549	-	(12,549)	-	-
Positive Steps (Papworth)	-	6,090	(6,090)	-	-	-	-	-	-
Football Foundation (Playzones)	-	23,000	(18,128)	(4,872)	-	-	-	-	-
Waitrose	-	1,000	(1,000)	-	-	-	-	-	-
PCN Walking Football	-	4,408	(2,662)	-	1,746	10,943	(9,411)	-	3,278
Sport England System Partner	-	582,240	(506,038)	4,584	80,786	592,216	(639,822)	-	33,180
Together Fund	-	182,930	(159,013)	-	23,917	-	(24,017)	-	(100)
Cambridge City Council	-	-	-	-	-	2,860	(2,668)	-	192
CCF	-	-	-	-	-	11,934	(7,280)	-	4,654
Child Weight Management	-	-	-	-	-	-	(4,401)	-	(4,401)
Diabetes Prevention	-	-	-	-	-	38,000	(25,230)	-	12,770
Dragons Den	-	-	-	-	-	39,200	(23,893)	-	15,307
Governance - New Dawn	-	-	-	-	-	10,000	(5,300)	-	4,700
Run-Talk-Run	-	-	-	-	-	22,590	(12,096)	-	10,494
School Incentives	-	-	-	-	-	-	(16,800)	16,800	-
School Obesity Fund	-	-	-	-	-	1,106	(1,106)	-	-
Sports Welfare Officers	-	-	-	-	-	54,600	(22,587)	-	32,013
T1 Healthy You Adviser	-	-	-	-	-	38,470	(28,594)	-	9,876
Twilight Hours	-	-	-	-	-	9,732	(6,712)	-	3,020
Urban & Civic	-	-	-	-	-	20,000	(15,384)	-	4,616
Wisbech Anti-Social Behaviour	-	-	-	-	-	4,959	(104)	-	4,855
	244,716	1,080,622	(1,050,161)	(14,674)	260,503	973,882	(1,040,563)	-	193,822



LIVING SPORT CAMBRIDGESHIRE AND PETERBOROUGH SPORTS PARTNERSHIP LIMITED

NOTES TO THE FINANCIAL STATEMENTS (CONTINUED)

FOR THE YEAR ENDED 31 MARCH 2024

19 Restricted funds

Disability Sport - A series of projects to enhance existing disability activities across the partnership area.

DfE Volunteering - Sport England programme with funding from the Department for Education to recruit and support coaches to work in support of School Games.

Satellite Clubs - Sport England programme with grant funding to support groups to establish activities targeted for less active young people to increase their participation in sport and physical activity.

Workforce - Sport England funding for Active Partnerships to support the development of the workforce delivering sport and physical activity, be that in a voluntary or professional capacity.

England Handball – An England Handball funded programme to increase handball participation through the School Games and other competitions, including upskilling school staff.

Lets Get Moving Cambridgeshire - Cambridgeshire County Council Health Committee investment in a collaborative project with the 5 City / District Councils to identify and share information about existing opportunities, develop new opportunities and support people, particularly those in greater need, to become more physically active.

Active Families - Funding from Sport England Families Fund, with Living Sport undertaking a project management role on behalf of the lead partner Cambridgeshire & Peterborough Public Health, with the wider partnership consisting of Vivacity, Fenland District Council and Cambridge County Council.

Active New Communities - Sport England Core Market funding for a 4 year collaborative project which Living Sport led in partnership with Public Health, local councils and some local developers and housing associations.

Workplace Health - An Active Partnerships supported programme targeted at those in workplaces to encourage greater participation in sport and physical activity.

Healthy You - Cambridgeshire County Council / Peterborough City Council Public Health commission with the 5 City / District Councils of Cambridgeshire and Vivacity Peterborough to develop new opportunities and support people, particularly those in greater need, to become more physically active.



LIVING SPORT CAMBRIDGESHIRE AND PETERBOROUGH SPORTS PARTNERSHIP LIMITED

NOTES TO THE FINANCIAL STATEMENTS (CONTINUED)

FOR THE YEAR ENDED 31 MARCH 2024

19 Restricted funds

Fundraising – Local Joes - A summer fundraising campaign undertaken by Living Sport staff and Directors to raise monies to provide support for those volunteers delivering sport and physical activity opportunities in communities.

Children & Young People (CYP) – funding awarded from Sport England, previously under separate heading of Satellite Clubs and School Games programmes, and Active Lives but for 2020-2022 under this broader heading and with greater flexibility for use according to the needs of Cambridgeshire & Peterborough and particularly in light of Covid restrictions.

Fundraising - John Lewis - A donation to be used for work in the Peterborough area as that links to the Peterborough giving guidelines for the Community Matters (Give a Little Love) campaign.

Healthy Weight - Active mile - To engage with schools and early years settings to adopt and embed an active mile initiative. Supporting settings to maintain an 'Active Mile' to improve the physical and mental well-being of pupils.

Healthy Weight - Diverse Communities - To provide training and skills development support to a more diverse workforce to enhance the activity provision suitable for disengaged communities. Identifying and training individuals within target communities to deliver opportunities to engage people in physical activity.

Healthy Weight - Dragon's Den - To empower adolescents to co-produce new extracurricular physical activity clubs in the schools setting. Supporting groups of targeted pupils in secondary schools to design and pitch an idea for extracurricular physical activity clubs one of which is then funded.

Tesco Families - To set up Community Family Daily Mile routes.

Wellbeing Walks - To manage the Cambridgeshire and Peterborough Wellbeing Walks Scheme. Engagement with additional (external) walk providers to incorporate their walks into the countywide scheme.

Opening up School Facilities - Funding received from the Department for Education, through the Active Partnerships Network, to support schools to open their facilities outside of the normal school day (evenings, weekends, and holidays) to allow young people more opportunities to be physically active.



LIVING SPORT CAMBRIDGESHIRE AND PETERBOROUGH SPORTS PARTNERSHIP LIMITED

NOTES TO THE FINANCIAL STATEMENTS (CONTINUED)

FOR THE YEAR ENDED 31 MARCH 2024

19 Restricted funds

Commonwealth Games Legacy - An Award granted to assist in providing School Games Organisers with a delivery budget to help link intra and inter School Games activity to the Commonwealth Games legacy work.

Awards for All Soham - Lottery funding received to offer activity taster days in Soham to strengthen community relationships, helping residents feel more connected, safer and more active.

CP3 - Funding received from Peterborough City Council, in partnership with Cambridgeshire County Council to maintain the Cambs Open Space website over a two year period. Additional funding received from Cambridgeshire County Council to provide additional marketing and communications support.

Positive Steps - Public Health funding received through Papworth Trust to provide monitoring and evaluation support for the Positive Steps project.

Football Foundation (Playzones) - Project Development grant received from the Football Foundation for community engagement to understand and map local priorities for access to football and multi-sport facilities.

Waitrose - Funding received to be used in Peterborough to provide summer holiday activities for children experiencing economic difficulties.

PCN Walking Football - Funding from the Northern Villages Primary Care Network (PCN) to provide pro-active support to residents through a walking football programme.

Sport England System Partner - Systemic and Governing and Delivery System Partner funding from Sport England. Systemic and Governing funding to enable the delivery of our organisational strategy, focussing on strategic priorities of Children and Young People, Community and Health, while supporting the development of a robust, sustainably funded and resilient charity. Delivery funding is for work on School Games and the Active Lives survey.



LIVING SPORT CAMBRIDGESHIRE AND PETERBOROUGH SPORTS PARTNERSHIP LIMITED

NOTES TO THE FINANCIAL STATEMENTS (CONTINUED)

FOR THE YEAR ENDED 31 MARCH 2024

19 Restricted funds

Together Fund - Previously called the Tackling Inequalities Fund, Sport England funding for grants to support organisations working with people most impacted by the Covid Pandemic and the cost of living crisis.

Cambridge City Council - This fund was a community grant to provide free weekly informal family physical activity sessions for 12 weeks in a green space within Cambridge.

CCF - Funds received through Cambridge Community Foundation, on behalf of Arm Cambridge Community Fund, to help create inclusive opportunities for social physical activity for 180 older people in rural villages on Fenland, to combat social isolation and poor health.

Child Weight Management - Working with other partners, this project aims to reduce childhood obesity levels in Cambridgeshire and Peterborough by focusing on all aspects of child weight management, including nutrition and physical activity, from early years to teenagers.

Diabetes Prevention - Funding received from Cambridgeshire County Council for running of the Sport and Leisure Diabetes Prevention Programme as part of the Healthy Weight Project.

Dragons Den - To empower adolescents to co-produce new extracurricular physical activity clubs in the schools setting. Supporting groups of targeted pupils in schools to design and pitch an idea for extracurricular physical activity clubs one of which is then funded.

Governance - New Dawn - Funding received from Sport England to assist with recruiting experienced Trustees to the board which will underpin the organisation going forward

Run-Talk-Run - Funding received from Cambridgeshire County Council to run a Run-Talk-Run / Walk-Talk-Walk programme in Cambridgeshire.

School Incentives - This fund was to incentive schools identified as priorities to get more involved in physical activity and to signpost them to other resources which may also help them increase the activities undertaken by pupils.

School Obesity Fund - Funding Received from Cambridgeshire County Council to provide resources for primary schools to establish healthy weight and physical activity programmes.



**LIVING SPORT CAMBRIDGESHIRE AND
PETERBOROUGH SPORTS PARTNERSHIP LIMITED**

NOTES TO THE FINANCIAL STATEMENTS (CONTINUED)

FOR THE YEAR ENDED 31 MARCH 2024

19 Restricted funds

Sports Welfare Officers - Funding received from Sport England in order to create a professional, national network of Sport Welfare Officers in England, who will promote good practice and safe sport on a local level.

T1 Healthy You Adviser - This project provides funding to employ an advisor who provides information and support to individuals that want to be more physically active, and to individuals and families that need support with eating healthy and maintaining a balanced diet.

Twilight Hours - Funding received through the National Lottery Community Foundation for a youth voice centred sports empowerment programme, engaging young people aged 10-18 to reduce anti-social behaviour in Eynesbury, St Neots, and Central Ward, Peterborough.

Urban & Civic - Project funded by South Cambridgeshire District Council and Urban & Civic Plc to create a post called the Sport and Physical Activity Lead to provide sport and physical activity development to support the establishment of sport and physical activity offers and generate participation in these new communities.

Wisbech Anti-Social Behaviour - Grant funding from Fenland District Council for youth activities in Wisbech to combat anti-social behaviour

20 Operating lease commitments

At the reporting end date the charity had outstanding commitments for future minimum lease payments under non-cancellable operating leases, which fall due as follows:

	2024 £	2023 £
Within one year	16,516	17,432
Between two and five years	1,843	13,501
	<u>18,359</u>	<u>30,933</u>



LIVING SPORT CAMBRIDGESHIRE AND PETERBOROUGH SPORTS PARTNERSHIP LIMITED

NOTES TO THE FINANCIAL STATEMENTS (CONTINUED)

FOR THE YEAR ENDED 31 MARCH 2024

21 Cash generated from operations

	2024	2023
	£	£
Surplus for the year	2,447	41,117
Adjustments for:		
Investment income recognised in statement of financial activities	(12,305)	(3,493)
Depreciation and impairment of tangible fixed assets	8,177	6,440
Movements in working capital:		
Decrease/(increase) in debtors	123,442	(126,400)
(Decrease)/increase in creditors	(19,627)	56,710
Increase in deferred income	329,055	200,503
Cash generated from operations	431,189	174,877

22 Analysis of changes in net funds

The charity had no debt during the year.





**LIVING SPORT CAMBRIDGESHIRE AND
PETERBOROUGH SPORTS PARTNERSHIP LIMITED**

NOTES TO THE FINANCIAL STATEMENTS (CONTINUED)

FOR THE YEAR ENDED 31 MARCH 2024

23 Related party transactions

Remuneration of key management personnel

The remuneration of key management personnel including settlement agreements, is as follows.

	2024 £	2023 £
Aggregate compensation	273,416	245,104

Transactions with related parties

No one individual has overall control of the charity.

Each Trustee and members of staff complete a Declaration of Interest and these are noted at every meeting of the Board and its Sub-Committees.

The Trustees are appointed as individuals but do have involvement with organisations which Living Sport works with on a regular basis. During the past year there have been no other disclosable transactions with related parties.

