

Registered number: 06278007
Charity number: 1124109

HOME-START WANDSWORTH LIMITED

(A company limited by guarantee)

UNAUDITED

TRUSTEES' REPORT AND FINANCIAL STATEMENTS

FOR THE YEAR ENDED 30 JUNE 2023

RPGCC
Chartered Accountants & Statutory Auditor
40 Gracechurch Street
London
EC3V 0BT

HOME-START WANDSWORTH LIMITED

(A company limited by guarantee)

CONTENTS

	Page
Reference and administrative details of the company, its Trustees and advisers	1
Trustees' report	2 - 19
Independent examiner's report	20 - 21
Statement of financial activities	22
Balance sheet	23
Notes to the financial statements	24 - 37

HOME-START WANDSWORTH LIMITED

(A company limited by guarantee)

REFERENCE AND ADMINISTRATIVE DETAILS OF THE COMPANY, ITS TRUSTEES AND ADVISERS FOR THE YEAR ENDED 30 JUNE 2023

Trustees	H Blenkinsop (appointed 1 November 2023) P Chauhan (resigned 9 February 2024) J Fergusson T Harris (appointed 1 November 2023) L Hayllar M Kinsella (resigned 1 November 2023) J Leung S Robertson H Stilgoe K Swinburn (resigned 10 March 2023) K Vetch S Wemyss J Yuksel (appointed 1 November 2023)
Company registered number	06278007
Charity registered number	1124109
Registered office	Battersea Methodist Church 20-22 York Road 2nd Floor London SW11 3QA
Company secretary	L Hayllar
Accountants	RPG Crouch Chapman LLP Chartered Accountants 40 Gracechurch Street London EC3V 0BT
Independent Examiner	Jeremy Tyrrell FCA 40 Gracechurch Street London EC3V 0BT

HOME-START WANDSWORTH LIMITED

(A company limited by guarantee)

TRUSTEES' REPORT FOR THE YEAR ENDED 30 JUNE 2023

The Trustees, who are also directors of the charitable company, present their report for the year ended 30 June 2023.

The Annual report serves the purpose of both a Trustees' report and a Directors' report under company law. The Trustees confirm that the Annual report and financial statements of the charitable company comply with the current statutory requirements, the requirements of the charitable company's governing document and the provisions of the Statement of Recommended Practice (SORP) applicable to charities preparing their accounts in accordance with the Financial Reporting Standard applicable in the UK and Republic of Ireland (FRS 102) (effective 1 January 2019).

Since the company qualifies as small under section 383, the strategic report required of medium and larger companies under The Companies Act 2006 (Strategic Report and Directors' Report) Regulations 2013 is not required.

ACHIEVEMENTS AND PERFORMANCE

This was another challenging year for Home Start Wandsworth, demand for family support services grew at the same time as pressures on donors and grant paying organisations increased as a result of the increases in the cost of living.

The Home Start team continued to provide tailored support to meet the needs of our families, by seeking opportunities to address and improve the difficult circumstances many families are faced with. Our staff and volunteers have worked hard this year to support families with both one to one home visiting as well as bump to baby and hub based activities. As always, we owe huge thanks to our staff and volunteers who work so hard to deliver support where it is needed most.

In the last year Home Start Wandsworth continued to provide our one to one home visiting programme as well as group 'hub' events to help families and children get out of the home and meet and participate in a range of activities including day trips to Kew Gardens and to the South Coast which provide some much needed fun for both parents and their young children but are also so important to both socialisation and addressing the problems of isolation. Throughout the year we tried to enhance the quality of family life by delivering craft materials, books, sensory toys to promote wellbeing, learning and child development, as well as activities through our partnerships with Learn to Love to Read, Open Air Fit and Enable to encourage participation in creative sessions, exploring new environments and taking part in sporting activities.

During the year the high and rising cost of living has been a significant factor for many families. This has increased the pressure on our services, and at the same time reduced many of the other community services on offer, but also has a direct impact on the financial situations of many of the families we support. Rising costs disproportionately affect those on lower incomes and we have been increasingly aware of the problems this can cause. Families are faced with difficult practical choices including 'heating vs eating' but also face challenges around mental wellbeing and with the increased relationship pressures financial hardship can bring. Our staff and volunteers have worked hard this year to find practical ways to deliver social and emotional support the families we work with to help address and where possible to alleviate these problems.

HOME-START WANDSWORTH LIMITED

(A company limited by guarantee)

TRUSTEES' REPORT (CONTINUED) FOR THE YEAR ENDED 30 JUNE 2023

Our focus during the year has been on continuing to provide excellent targeted support. The success of our efforts is evidenced by the noticeable improvement in 'Coping Scores' which assess families on a range of measures before and after Home Start's involvement. Details of these can be found in the Impact Report that accompanies this report.

Alongside the incredible work carried out by our staff and volunteers, there were a few other highlights during the year.

We were delighted and grateful to be supported by:

- The National Lottery through their Community Fund and Awards for All programmes.
- The Henry Smith Charity for their multi-year grant supporting our core costs.

2022/23 was also a strong year for events and sponsorships after several years where these had been affected by Covid restrictions:

- Our Annual Quiz Night at the Wandsworth Civic Suite in October was a great success and raised almost £20,000, certainly the highest amount raised in recent years.
- Our Carol Service, held in December 2022, well attended and we were thrilled to raise in excess of £9,000.
- Our runners in various sponsored challenges managed to raise almost £8,000.

We continue to be hugely grateful to the many other individuals, companies and local organisations who support us through their generous donations. Without your support we could not continue to look after the families in Wandsworth in the way in which we do. Your support is so valuable to us and is very much appreciated.

Please read the impact report below to read a complete overview of what Home Start Wandsworth has achieved this year. In the meantime, I must thank every part of our organisation from staff and volunteers, to donors and supporters each of whom has played a key role in supporting our families. In another challenging and uncertain year, we are proud of what we have achieved and we look forward with enthusiasm to the coming year.

FINANCIAL REVIEW

Our total income for the year was £187,298 (2022: £258,849), split into unrestricted income of £120,754 (2022: £222,892) and restricted income of £66,544 (2022: £35,957).

Our reserves decreased by £86,794 (2022: £39,452) to £76,419 (2022: £163,213). The main expenditure, £222,006 (2022: £199,112), relates to personnel costs.

All reserves held at the year end are represented by unrestricted funds.

RESERVES POLICY

The charity aims to retain a level of total reserves of between 6 and 9 months of expenditure to cover the risk, activity and commitments of the organisation. The Trustees are aware that the current level of reserves fall short of this aim, but are confident that steps to optimise the charity's performance over the next 12 months will result in the reserves policy being met again in the foreseeable future.

HOME-START WANDSWORTH LIMITED

(A company limited by guarantee)

TRUSTEES' REPORT (CONTINUED) FOR THE YEAR ENDED 30 JUNE 2023

GOING CONCERN

After making appropriate enquiries, the Trustees have a reasonable expectation that the charitable company has adequate resources to continue in operational existence for the next 12 months. For this reason, they continue to adopt the going concern basis in preparing the financial statements.

RISKS

The charity Trustees have given consideration to the major risks to which Home Start Wandsworth is exposed and have satisfied ourselves that systems and procedures have been established in order to manage these risks.

Since Home-Start Wandsworth works with vulnerable children and families, we consider safeguarding/ child protection the greatest area of inherent risk with our work. Home-Start Wandsworth has developed a comprehensive framework of consents, controls, policies and reviews to ensure we are able to fulfil our safeguarding and child protection responsibilities and deal with any concerns rapidly and sensitively.

Our risk register is grouped under four key areas; Strategic, Reputational, Operational and Financial. The major risks in each of these categories are:

Strategic – a safeguarding or child protection issue results in harm to individuals, and loss of trust and reputation amongst key stakeholders.

Reputational – an inability to respond to the sector challenges around diversity and inclusion leaves Home-Start Wandsworth vulnerable to external criticism.

Operational – our staff are unable to deliver our ambitions because of capacity, lack of skills, poor wellbeing, or disengagement.

Financial – an inability to secure future income in line with plans with funders, supporters and partners.

Structure, governance and management

CONSTITUTION

The company is registered as a charitable company limited by guarantee. The company is constituted under a Trust deed and is a registered charity, number 1124109.

The charity provides support for local families and has several charitable objectives:

- To safeguard, preserve and protect the good health, both mental and physical, of children and parents of children.
- To prevent cruelty or maltreatment of children.
- To relieve sickness, poverty and need amongst children and parents of children.
- To promote the education of the public in better standards of childcare.

There has been no change in these objectives during the year.

HOME-START WANDSWORTH LIMITED

(A company limited by guarantee)

TRUSTEES' REPORT (CONTINUED) FOR THE YEAR ENDED 30 JUNE 2023

The Trustees oversee the work of the organisation to ensure that it is efficient, equitable and provides a quality service to all vulnerable families and children supported. We review our aims, objectives and activities each year. This review looks at what was achieved and the outcomes of our work in the previous 12 months. The review looks at the success of each key activity and the benefits they have brought to those groups we are set up to help. The review also ensures our aims, objectives and activities remain focused on our stated purposes. We refer to the Charity Commission's general guidance on public benefit when reviewing our aims and objectives and in planning our future activities. In particular, the Trustees consider how planned activities will contribute to the aims and objectives they have set.

METHOD OF APPOINTMENT OR ELECTION OF TRUSTEES

The Management of the company is the responsibility of the Trustees who are elected and coopted under the terms of the Trust deed.

Management committee

The charity has a Management committee made up of the Trustees who meet every 6 to 8 weeks and is responsible for the strategic direction and policy of the charity. The Secretary, Linda Hayllar is also a Trustee.

The Scheme Manager, Michelle Cook, was responsible for ensuring that the charity delivers the services specified and that the key performance indicators are met. The Scheme Manager has responsibility for the day to day operational management of the volunteer preparation courses and supervision of all staff.

All members of the Management committee give their time voluntarily and receive no benefits from the charity. The Management committee meets its legal and financial responsibilities to ensure it is efficient, reviews its policies, undertakes relevant governance training and supports and supervises the workforce to ensure a high quality of service is delivered. In so far as it is complementary to the charity's objectives, the charity is guided by both local and national policy.

The Trustees have assessed the major risks to which the charity is exposed and are satisfied that policies and systems are in place to mitigate exposure to these risks. Internal control risks are minimised by the implementation of procedures for authorisation of all transactions and projects. Procedures are in place to ensure compliance with health and safety of staff, volunteers, clients and visitors to the HomeStart Wandsworth office. Quality Assurance is reviewed on an annual basis by HomeStart Wandsworth and by HomeStart UK every 3-4 years.

INFORMATION ON FUNDRAISING PRACTICES

The charity is actively involved in fundraising activities either through donations from individuals and corporations or at fundraising events. Members of the public are only approached if the charity has had previous contact with them. In our Fundraising Strategy we confirm we will abide by the standards of the Fundraising Regulator.

During the year ended 30 June 2023 the charity did not receive any complaints about its fundraising activities and practices.

FUTURE DEVELOPMENTS

In the current year, the emphasis will be on regularising and expanding our services where possible. Beyond that we aim to focus on our longerterm sustainability both financially and strategically.

HOME-START WANDSWORTH LIMITED

(A company limited by guarantee)

TRUSTEES' REPORT (CONTINUED) FOR THE YEAR ENDED 30 JUNE 2023

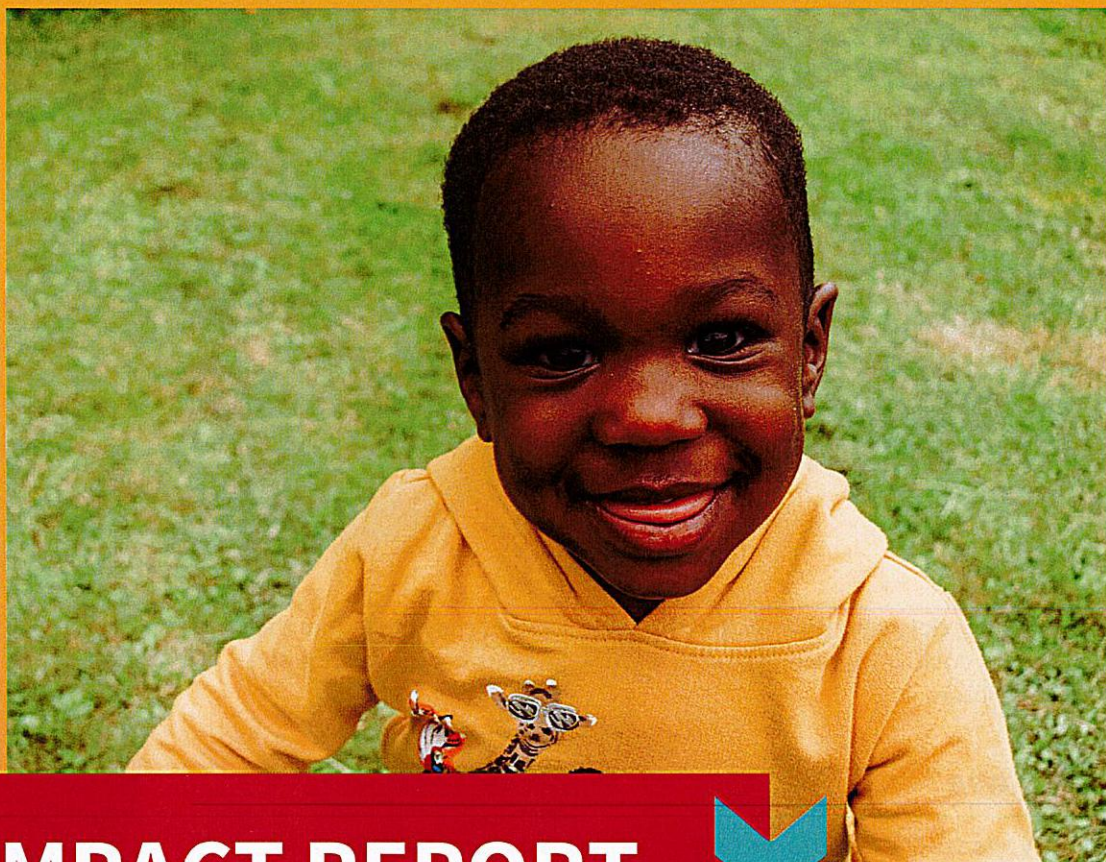
TRUSTEES' RESPONSIBILITIES STATEMENT

The Trustees (who are also the directors of the company for the purposes of company law) are responsible for preparing the Trustees' report and the financial statements in accordance with applicable law and United Kingdom Accounting Standards (United Kingdom Generally Accepted Accounting Practice).

Company law requires the Trustees to prepare financial statements for each financial year. Under company law, the Trustees must not approve the financial statements unless they are satisfied that they give a true and fair view of the state of affairs of the company and of its incoming resources and application of resources, including its income and expenditure, for that period. In preparing these financial statements, the Trustees are required to:

- select suitable accounting policies and apply them consistently;
- observe the methods and principles of the Charities SORP (FRS 102);
- make judgements and accounting estimates that are reasonable and prudent;
- state whether applicable UK Accounting standards (FRS 102) have been followed, subject to any material departures disclosed and explained in the financial statements;
- prepare the financial statements on the going concern basis unless it is inappropriate to presume that the company will continue in business

The Trustees are responsible for keeping adequate accounting records that are sufficient to show and explain the company's transactions and disclose with reasonable accuracy at any time the financial position of the company and enable them to ensure that the financial statements comply with the Companies Act 2006. They are also responsible for safeguarding the assets of the company and hence for taking reasonable steps for the prevention and detection of fraud and other irregularities.



IMPACT REPORT

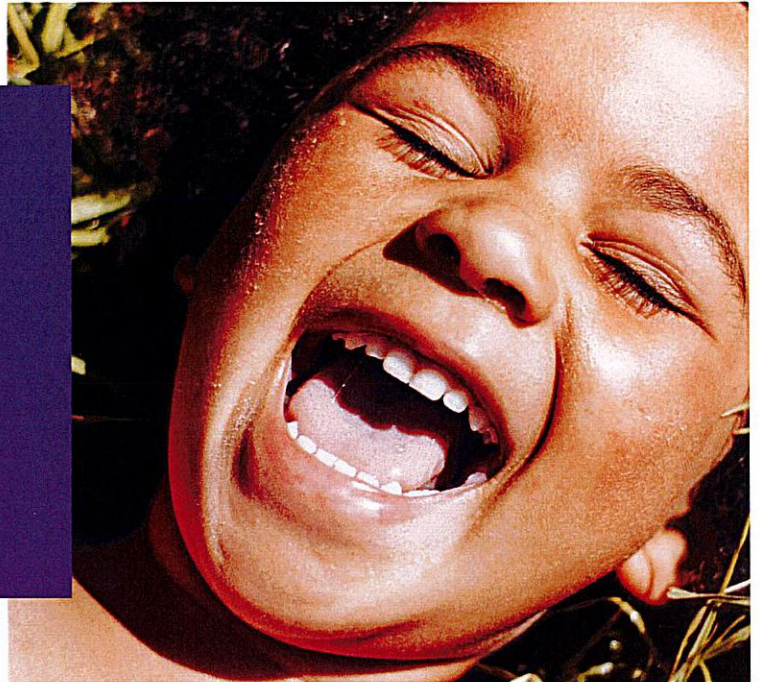
2022-2023



**HOME
START**
Wandsworth

Our mission

We work with families to create an environment where young children can thrive.



Our vision

Our vision is a society where all children have the support they need from their caregiver for a positive, nurturing start in life, and families have resilience and hope for the future.

Our values

Humanity: we see the families we support as individual people, and our approach is based on the fundamental human qualities of relationship, inclusion, kindness and compassion.

Humility: we know that it takes a village to raise a child. We seek to work in partnership as peers to build on the inherent strengths and capabilities in people, families, communities and organisations.

Humour: in the face of challenges in life, we approach our relationships with an aim to finding joy, playfulness and fulfilment from our connected journey.

Our services

Our services focus on providing whole family support and include:

Home-visiting: one-to-one weekly support from a carefully matched, trained volunteer, providing practical help, guidance and emotional support.

Bump to Baby: one-to-one weekly support during pregnancy and the newborn stage from a volunteer trained in perinatal mental health and bonding and attachment.

Group activities: weekly structured meet-ups enable families to come together, chat and relax in a safe space. The warm and welcoming environment helps families to feel less isolated, more confident around new people and better able to cope. As well as our regular meetups we also organise day trips and host topic-focused workshops including first-aid, budgeting advice and early literacy, which give our parents the chance to build their parenting skills and confidence.



“Our early childhoods, the time from pregnancy to five, fundamentally shape our whole lives.” Royal Foundation Centre for Early Childhood

Making the early years count

Home-Start Wandsworth believes that every child has the right to the best possible start in life, and we work with families to create an environment in which young children can thrive.

Extensive research shows that children who are raised in a stable, loving, family environment are more likely to have a positive and healthy future. Many factors including inadequate housing, mental and physical health issues and lack of support services can have a negative impact upon family relationships.

We believe that early intervention is the most effective support we can offer families and better than the alternative of spending ‘£17 billion per year on addressing the damaging problems that affect children and young people’, later in life. (source: [EIF](#))

Our Home-Start volunteers work alongside families, helping them to learn to cope, establish routines and instil confidence in their parenting ability. Parental involvement in early learning has one of the greatest impacts on children’s wellbeing and achievement. The bond and attachment between children and their parents are especially powerful in laying the foundations for future learning, health, behaviour and relationships.

We work in partnership with a number of organisations to help parents feel more attuned and involved in their child’s development. Through our partnership with **Learn to Love to Read**, early literacy sessions are made accessible to families and a lifelong love of reading is nurtured. Our group activities are also designed to enhance children’s mental and physical health. Children are encouraged to participate in creative sessions, explore new environments and take part in sporting activities run in partnership with **Open Air Fit** and **Enable**.



133 families supported



86 group sessions



Giving 220 children a brighter future

Data: 1 July 2022 - 30 June 2023



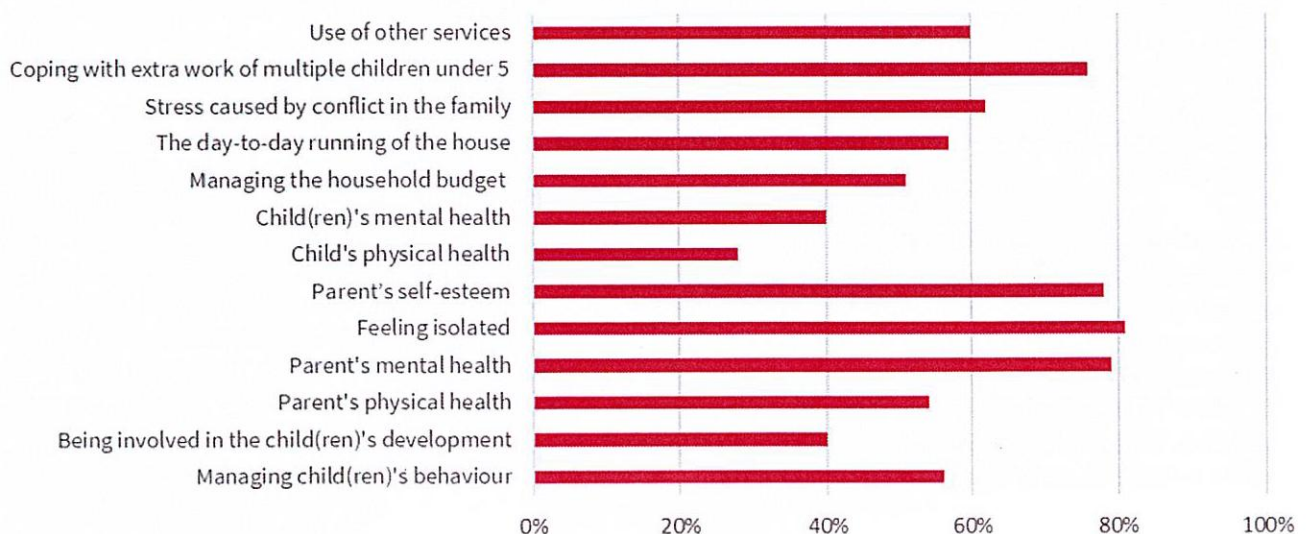
"I now know what it means when you hear the saying, 'It takes a village to raise a child.' I really felt that from all of the team at Home-Start Wandsworth."

Issues facing families

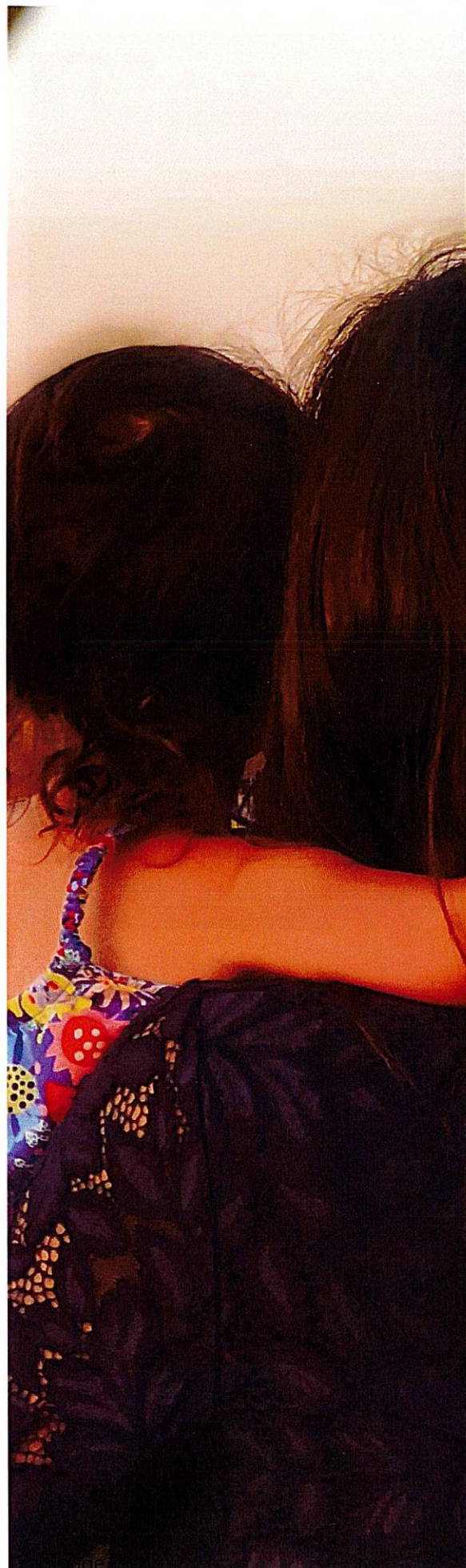
We measure the impact of our work for every family we support. Families are evaluated on a coping scale from 1-5 (1 being the lowest level of coping and 5 being the highest) at three stages (initial visit, review visit and at the end of Home-Start support).

The chart below highlights the issues that families are experiencing at the time of referral to Home-Start Wandsworth. It shows that families are struggling with **isolation** (81%), **poor mental health** (79%) and **low self-esteem** (78%). Being a parent has never been easy, but the pandemic and current cost of living crisis have turned families' lives upside down, creating added anxiety and increased financial pressure.

Percentage of families with low coping scores (1-3) at initial visit



Data: 1 July 2022- 30 June 2023



Rachel's story

"Home-Start lifted me up, I'd be so low without them. Home-Start has helped me to find happiness, and to show happiness to my son and daughter. I didn't have a good childhood, and because of my struggles my son's childhood was marked by moving from hostel to hostel. I want my daughter's childhood to be different, and I want to see my son build a bright future. We have been through a lot together, but now I believe life will get better."

"My childhood was tough, but as difficult as it was, nothing could have prepared me for the heartbreak I'd feel as a parent, when my eldest son died in a terrible accident. My grief overwhelmed me. I felt so alone and I didn't see any possible way to heal."

I couldn't believe it when I became pregnant with my daughter at 45. In many ways her birth was like a new chapter, and I felt so lucky to have her, but my depression and anxiety returned. My GP referred me to Home-Start.

Sarah from Home-Start Wandsworth came to my flat and matched me with a volunteer, Petra. Petra walked through my front door and I trusted her straight away. When I talked to Petra I knew she was listening to everything I was saying. Her entire focus was on me – and that made me feel like I was worth something.

I live in an upstairs flat, so it's hard to get out with my daughter and her pram. But, with Petra's help, we were able to leave the flat and spend some time outdoors, attend playgroups and meet other mums.

It's hard to describe how much Petra has supported me. By having someone to talk to, Petra helped me to work through my emotions. She built up my confidence and helped me see that I was a good mum and that both my daughter and son would be okay."



Our impact

The chart below shows the improvement in coping scores between the initial and last visit. The issues that saw the biggest improvement were **'use of services'**, **'isolation'** and **'children's physical health'**.

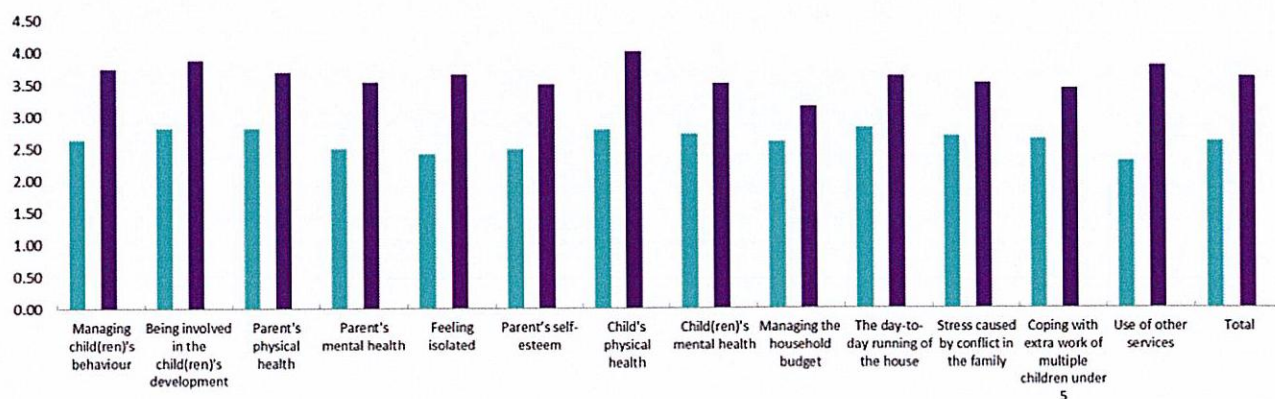
Our volunteers and experienced staff help families engage with local services and liaise with other professionals and partners to put in place support networks where needed. They work alongside families to identify the level and type of support needed to help them improve their circumstances.

A weekly programme of group activities, day trips and family fun days helps to reduce isolation and improve children's wellbeing through physical exercise.

The improved scores below show very clearly how families are benefitting from the services of Home-Start Wandsworth and where they would be without that support.

The areas with the lowest improvement scores were **'managing the household budget'** and **'child's mental health.'** These results are not surprising given that the pandemic has negatively affected children's mental health across the general population. The cost of living crisis has made managing household budgets especially challenging, with families struggling to put food on the table, pay utility bills and buy essential items like nappies. A survey carried out by Home-Start London¹ showed that 62% of families are cutting down on food and 23% said that their children were not getting enough nutritious food. We are seeing first-hand more and more families relying on charitable donations and food banks.

Average coping scores before and after Home-Start support



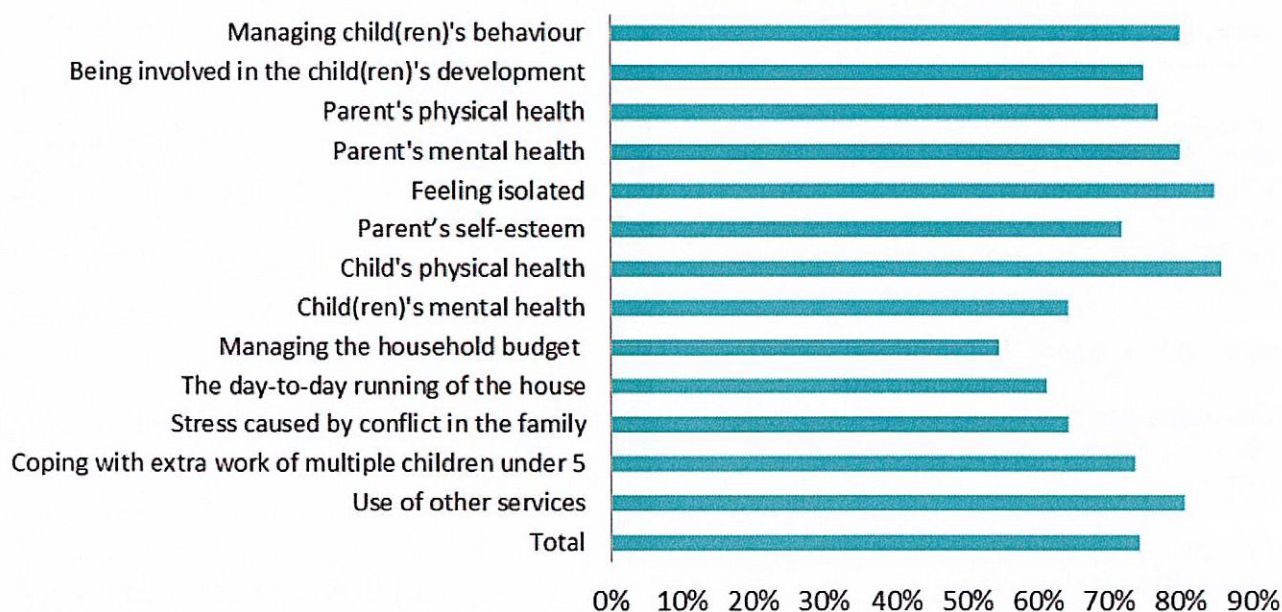
Data: 1 July 2022- 30 June 2023

¹Home-Start London Cost of living survey October 2022



"My Home-Start volunteer is the best thing in my week. She's a consistent anchor, who is always objective. Her support is amazing."

Percentage of families with improved scores after Home-Start support



85%
of families feel less
isolated

4 in 5
parents see
improvements
in their mental health

3 out of 4
families feel more
involved in their child's
development



We support

Being a parent has never been easy and all parents struggle at one time or another. That is why Home-Start Wandsworth's network of trained volunteers and experienced staff team are here to support families through their most difficult times.

By providing practical and emotional support, our volunteers help parents build vital connections with their children and encourage a supportive, nurturing home environment in which children can thrive.

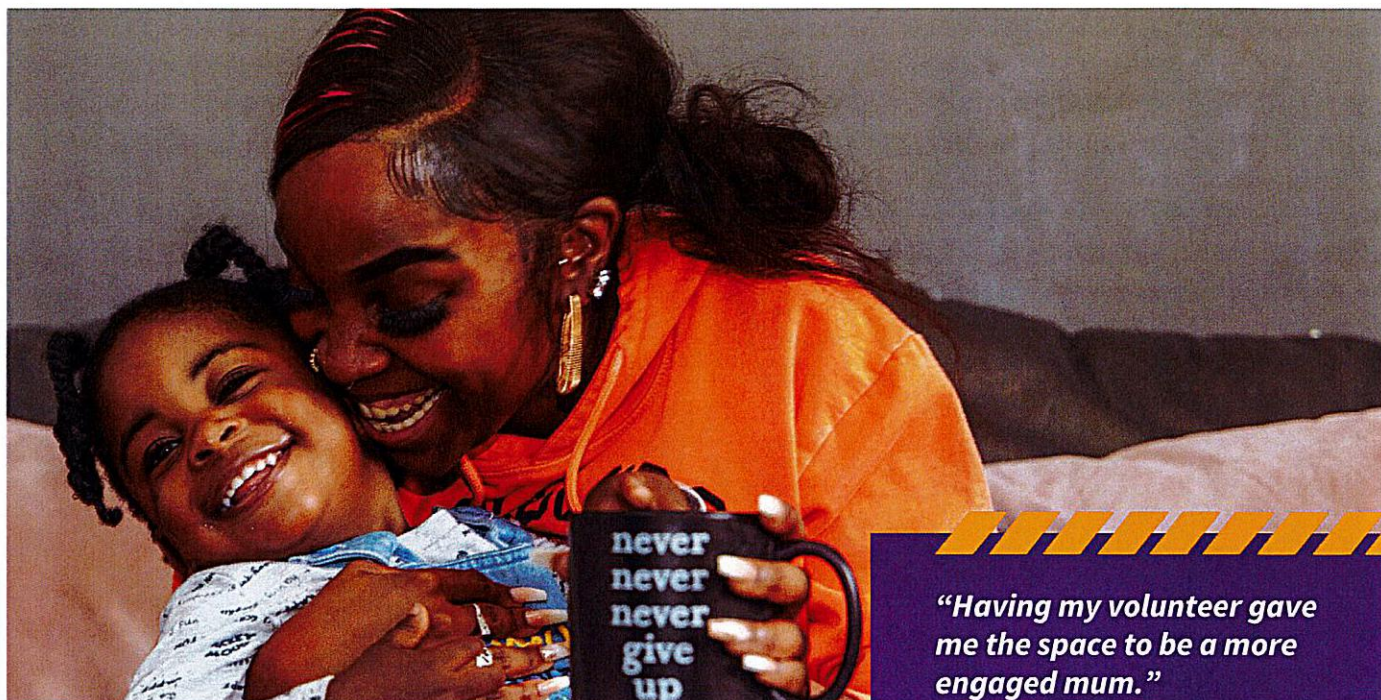
Our volunteers offer no judgement, just compassionate, confidential help and support tailored to the individual needs of the family.

Parents tell us that the amount of time and understanding they get from Home-Start Wandsworth, sets us apart from other organisations.

"Home-Start has been an invaluable part of the care of our service users, playing an integral role in our support plans. The presence of dedicated volunteers, both individually and in group settings, has made a significant difference in the lives of our patients. The women we work with express a deep appreciation for the support they receive from Home-Start volunteers, as it validates their experiences and provides them with much-needed companionship. They particularly value the flexibility of Home-Start's approach, which allows for tailored support to meet each woman's unique needs."

Additionally, Home-Start's group activities have been highly regarded among our perinatal mental health service users. The women feel truly listened to and heard, creating a safe and supportive environment for sharing their journeys. This sense of validation and understanding has been instrumental in promoting their wellbeing and fostering a sense of empowerment."

Dr Heba Mohammed, Perinatal Psychiatry
Consultant, South West London and St George's
Mental Health NHS Trust



"Having my volunteer gave me the space to be a more engaged mum."

Tatiana's story

"My second son, Khamani was born during the pandemic. He was an exceptionally clingy baby and I think I knew deep down that something wasn't quite right. When he was 7 months old Khamani was diagnosed with a rare eye disorder, and we were told that he had already lost 80 percent of his sight. Suddenly we were thrust into a world of medical appointments. Khamani had two operations back-to-back to save the remaining 20 percent of his vision.

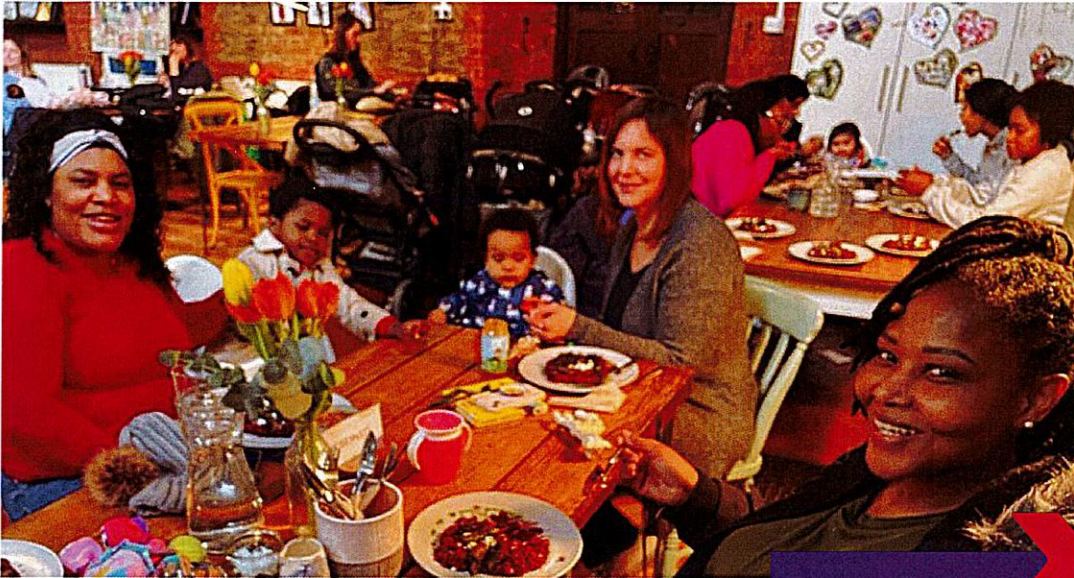
Khamani's disability makes life harder to manage and affects all of us. Getting out with the kids, keeping on top of the housework, managing Khamani's appointments, cooking meals or spending time with my older son Micai, 6, when Khamani refuses to be put down is tough. Most of the time Micai would go to our bedroom where he'd sit on his tablet for hours as all my focus was on Khamani. I felt so guilty.

My relationship with the boys' father broke down and I was left on my own, struggling to cope. I didn't want to burden friends and family, so I put on a mask, pretending to the outside world that I was coping when in fact I was desperately lonely, isolated and crippled with anxiety. We were referred to Home-Start Wandsworth, and I was matched with a Home-Start volunteer, Cynthia, who immediately put me at ease.

Cynthia is a rainbow in our life. With her help, we are able to leave the flat and go to the park, and even go on family day trips. When Cynthia visits, I have time to catch up on household chores and I can play a game or read with Micai while Cynthia plays with Khamani. For the first time, I can spend quality time with Micai knowing that Khamani is happy playing with Cynthia; she has built a brilliant bond with him.

We are so lucky to have Cynthia in our life. The difference she makes to my family is huge. I can be having a bad week and then I'll think Cynthia will be here on Wednesday and my anxiety goes down. She takes the pressure off and that makes me a more engaged and happy mum. The boys now have a mum who feels more confident and independent, less stressed and anxious.

I wouldn't be where I am today without Home-Start. By the time they got involved I'd lost all confidence in myself. I was struggling with Khamani's disability and I was still coming to terms with being a single parent. I was feeling very low. When I look back I can't believe how far I've come. I no longer feel guilty the children are missing out because they now have everything they need and more."



We connect

In this digital age, the need for real human connection has never been more important. Having a strong support system with close relationships with those around us is key to maintaining a positive state of mental wellbeing.

Home-Start helps families to build confidence and self-esteem as well as signposting to specialist support services where necessary. 81% of families feel more confident using other services following Home-Start support. Families are significantly better off when engaging with their community or local support networks.

Our weekly programme of group activities and day trips helps to reduce isolation by bringing families together and building social and community links. Parents feel more confident and better able to cope after attending the warm and welcoming group sessions. Weekly Connect sessions at Home Community Café create a real sense of community and belonging. Parenting workshops, designed to help parents navigate the early years with confidence, provide a safe and supportive environment for learning, and relaxed conversation.

These strengthened social support networks are instrumental in promoting positive mental and physical wellbeing.

Diagnosed with post-natal depression, Alloy was referred to Home-Start Wandsworth following the birth of her third baby. She was matched with Home-Start volunteer Sarah, a mum of five and a retired nurse. The two soon became firm friends and Alloy credits Sarah with helping her to regain her confidence and connection to the world outside.

“Last year was wonderful in that I had my baby, but it also became one of the darkest times in my life. After giving birth to my third child I was feeling low and I withdrew from everyone and everything. It was a time for me to be happy, but for some reason every thought was negative.

For months I was in a very dark place and felt so isolated. Despite being a nurse, I initially failed to pick up on the signs straight away as I thought I was having the baby blues. I felt so lonely and that the whole world was against me.

I was prescribed medications, had cognitive behavioural therapy, but the thing that made the biggest difference was the support and friendship of Sarah.

Whether I felt like crying or ranting she was there. Just having her there made me feel connected, and encouraged me to be positive. As for the children, they absolutely love Sarah and really look forward to her visits.”

"The work of Home-Start's volunteers is very special, and they make an extraordinary difference to the lives of some of the most vulnerable families in our community. That's why we are proud supporters, especially now when the need is greatest."

Florence Brocklesby, Founder, Bellevue Law



Thank you for your support

We feel incredibly lucky to have the generous support of so many funders, donors, partners and supporters. Thank you to our event sponsors, **Savills**, **Bellevue Law** and **Metis Wealth**, who make our Quiz Night and Carol Service the success that they are.

We would also like to thank the Wandsworth community, whose kindness continues to overwhelm and inspire us. Without the extraordinary generosity of individuals, families, churches, schools and businesses we simply would not be able to help families today and in the future.

In particular we would like to thank:

Ascension Church Balham	Julius Rutherford
Bags of Taste	Kew Gardens
Battersea Arts Centre	Metis Wealth
Bellevue Law	National Lottery Community Fund
BT	Open Air Fit
Crew Energy	Papa Johns London
Daisy First Aid	Pears Foundation
Dr Niki Salt	Rotary Club Battersea Park
Enable	Savills
Garfield Weston Foundation	St Anne's Church Wandsworth
Give it Away	St Luke's Church Battersea
Henry Smith	The Miles Trust
Home Community Café	Victoria Convalescent Trust
John Lewis & Partners	Wimbledon Foundation
Learn to Love to Read	White Stuff

Thanks to the generosity of our corporate partners, **White Stuff**, **BT** and **John Lewis**, Christmas was an especially magical time of year for Home-Start families.

"Our Christmas dinner was going to be whatever we could get from a food bank. But the thing that was stressing me out most was how to explain to my daughter why Santa missed our home. Money is so tight at the moment I couldn't figure out how to get her, or my son, a small gift to open. Thank you Home-Start."

We would also like to thank our partner **Enable** for continuously supporting our day trips and family events.



We would like to thank our network of 65 volunteers for everything that they do for Home-Start and the countless hours of their time they give to supporting families.

Our volunteers are at the heart of Home-Start. The work that we do would simply not be possible without their continued commitment, knowledge and expertise.

We are also grateful to our staff team and Board of Trustees who work tirelessly to support families, preventing them from reaching crisis point.

CAN YOU HELP?

If this report has inspired you there are several ways you can support our vital work.

- Make a donation **online** or scan the **QR code**
- Become a **regular giver**
- **Volunteer**
- Follow us on social media



GET IN TOUCH

To find out more about the work that we do, fundraising, volunteering or partnering with us, please get in touch.

T: 020 7924 5268

E: enquiries@homestartwandsworth.org.uk

W: www.homestartwandsworth.org.uk

2nd Floor 20-22 York Road, Battersea, London SW11 3QA

Charity no: 1124109

HOME-START WANDSWORTH LIMITED
(A company limited by guarantee)

TRUSTEES' REPORT (CONTINUED)
FOR THE YEAR ENDED 30 JUNE 2023

Approved by order of the members of the board of Trustees and signed on their behalf by:



.....
Mr James Fergusson
Treasurer and Trustees
Date: 26 March 2024

HOME-START WANDSWORTH LIMITED

(A company limited by guarantee)

INDEPENDENT EXAMINER'S REPORT FOR THE YEAR ENDED 30 JUNE 2023

Independent Examiner's Report to the Trustees of Home-Start Wandsworth Limited ('the company')

I report to the charity Trustees on my examination of the accounts of the company for the year ended 30 June 2023.

Responsibilities and Basis of Report

As the Trustees of the company (and its directors for the purposes of company law) you are responsible for the preparation of the accounts in accordance with the requirements of the Companies Act 2006 ('the 2006 Act').

Having satisfied myself that the accounts of the company are not required to be audited under Part 16 of the 2006 Act and are eligible for independent examination, I report in respect of my examination of the company's accounts carried out under section 145 of the Charities Act 2011 ('the 2011 Act'). In carrying out my examination I have followed the Directions given by the Charity Commission under section 145(5)(b) of the 2011 Act.

Independent Examiner's Statement

I have completed my examination. I confirm that no matters have come to my attention in connection with the examination giving me cause to believe:

1. accounting records were not kept in respect of the company as required by section 386 of the 2006 Act; or
2. the accounts do not accord with those records; or
3. the accounts do not comply with the accounting requirements of section 396 of the 2006 Act other than any requirement that the accounts give a 'true and fair' view which is not a matter considered as part of an independent examination; or
4. the accounts have not been prepared in accordance with the methods and principles of the Statement of Recommended Practice for accounting and reporting by charities [applicable to charities preparing their accounts in accordance with the Financial Reporting Standard applicable in the UK and Republic of Ireland (FRS 102)].


I have no concerns and have come across no other matters in connection with the examination to which attention should be drawn in this report in order to enable a proper understanding of the accounts to be reached.

HOME-START WANDSWORTH LIMITED
(A company limited by guarantee)

INDEPENDENT EXAMINER'S REPORT (CONTINUED)
FOR THE YEAR ENDED 30 JUNE 2023

This report is made solely to the company's Trustees, as a body, in accordance with Part 4 of the Charities (Accounts and Reports) Regulations 2008. My work has been undertaken so that I might state to the company's Trustees those matters I am required to state to them in an Independent examiner's report and for no other purpose. To the fullest extent permitted by law, I do not accept or assume responsibility to anyone other than the company and the company's Trustees as a body, for my work or for this report.

Signed:



Dated: 27 March 2024

Jeremy Tyrrell FCA

RPG Crouch Chapman LLP
Chartered Accountants
40 Gracechurch Street
London
EC3V 0BT

HOME-START WANDSWORTH LIMITED**(A company limited by guarantee)****STATEMENT OF FINANCIAL ACTIVITIES (INCORPORATING INCOME AND EXPENDITURE ACCOUNT)
FOR THE YEAR ENDED 30 JUNE 2023**

	Note	Unrestricted funds 2023 £	Restricted funds 2023 £	Total funds 2023 £	Total funds 2022 £
Income from:					
Donations and legacies	4	92,150	66,544	158,694	99,624
Fundraising Events	5	29,242	-	29,242	157,524
Investments	6	(638)	-	(638)	1,236
Other income	7	-	-	-	465
Total income		<u>120,754</u>	<u>66,544</u>	<u>187,298</u>	<u>258,849</u>
Expenditure on:					
Raising funds	8	4,401	-	4,401	56,166
Charitable activities	9	203,147	66,544	269,691	242,135
Total expenditure		<u>207,548</u>	<u>66,544</u>	<u>274,092</u>	<u>298,301</u>
Net movement in funds		<u>(86,794)</u>	<u>-</u>	<u>(86,794)</u>	<u>(39,452)</u>
Reconciliation of funds:					
Total funds brought forward		163,213	-	163,213	202,665
Net movement in funds		(86,794)	-	(86,794)	(39,452)
Total funds carried forward		<u>76,419</u>	<u>-</u>	<u>76,419</u>	<u>163,213</u>

The Statement of Financial Activities includes all gains and losses recognised in the year.

The notes on pages 24 to 37 form part of these financial statements.

HOME-START WANDSWORTH LIMITED**(A company limited by guarantee)****REGISTERED NUMBER: 06278007****BALANCE SHEET
AS AT 30 JUNE 2023**

	Note	2023 £	2022 £
Current assets			
Debtors	13	400	2,578
Cash at bank and in hand		86,481	168,561
		<u>86,881</u>	<u>171,139</u>
Creditors: amounts falling due within one year	14	(10,462)	(7,926)
Net current assets		<u>76,419</u>	<u>163,213</u>
Total assets less current liabilities		<u>76,419</u>	<u>163,213</u>
Total net assets		<u><u>76,419</u></u>	<u><u>163,213</u></u>
Charity funds			
Restricted funds	15	-	-
Unrestricted funds	15	76,419	163,213
Total funds		<u><u>76,419</u></u>	<u><u>163,213</u></u>


The company was entitled to exemption from audit under section 477 of the Companies Act 2006.

The members have not required the company to obtain an audit for the year in question in accordance with section 476 of Companies Act 2006.

The Trustees acknowledge their responsibilities for complying with the requirements of the Act with respect to accounting records and preparation of financial statements.

The financial statements have been prepared in accordance with the provisions applicable to entities subject to the small companies regime.

The financial statements were approved and authorised for issue by the Trustees and signed on their behalf by:



Mr James Fergusson
 Trustee
 Date: 26 March 2024

The notes on pages 24 to 37 form part of these financial statements.

HOME-START WANDSWORTH LIMITED

(A company limited by guarantee)

NOTES TO THE FINANCIAL STATEMENTS FOR THE YEAR ENDED 30 JUNE 2023

1. General information

Home-Start Wandsworth Limited is a private company limited by guarantee, company number 06278007. Its registered office and principal place of business is Battersea Methodist Church, 20-22 York Road, London, SW11 3QA. The principal activity of the company remained the support of disadvantaged families.

The members of the company are the Trustees named on page 1. In the event of the company being wound up, the liability in respect of the guarantee is limited to £1 per member of the company.

2. Accounting policies

2.1 Basis of preparation of financial statements

The financial statements have been prepared in accordance with the Charities SORP (FRS 102) - Accounting and Reporting by Charities: Statement of Recommended Practice applicable to charities preparing their accounts in accordance with the Financial Reporting Standard applicable in the UK and Republic of Ireland (FRS 102) (effective 1 January 2019), the Financial Reporting Standard applicable in the UK and Republic of Ireland (FRS 102) and the Companies Act 2006.

Home-Start Wandsworth Limited meets the definition of a public benefit entity under FRS 102. Assets and liabilities are initially recognised at historical cost or transaction value unless otherwise stated in the relevant accounting policy.

The financial statements have been prepared in GBP and all amounts are rounded to the nearest £.

2.2 Going concern

The Trustees are of the opinion that the charity's financial statements should be prepared on a going concern basis on the grounds that current and future sources of funding or support will be more than adequate for the charity's needs. The Trustees are also of the opinion that their plans for future action(s) required to enable the charity to continue as a going concern are feasible. They have considered a period of twelve months from the date of approval of the financial statements.

2.3 Income

All income is recognised once the company has entitlement to the income, it is probable that the income will be received and the amount of income receivable can be measured reliably.

Grants are included in the Statement of financial activities on a receivable basis. The balance of income received for specific purposes but not expended during the period is shown in the relevant funds on the Balance sheet. Where income is received in advance of entitlement of receipt, its recognition is deferred and included in creditors as deferred income. Where entitlement occurs before income is received, the income is accrued.

HOME-START WANDSWORTH LIMITED

(A company limited by guarantee)

NOTES TO THE FINANCIAL STATEMENTS FOR THE YEAR ENDED 30 JUNE 2023

2. Accounting policies (continued)

2.3 Income (continued)

Income tax recoverable in relation to investment income is recognised at the time the investment income is receivable.

Other income is recognised in the period in which it is receivable and to the extent the goods have been provided or on completion of the service.

2.4 Expenditure

Expenditure is recognised once there is a legal or constructive obligation to transfer economic benefit to a third party, it is probable that a transfer of economic benefits will be required in settlement and the amount of the obligation can be measured reliably. Expenditure is classified by activity. The costs of each activity are made up of the total of direct costs and shared costs, including support costs involved in undertaking each activity. Direct costs attributable to a single activity are allocated directly to that activity. Shared costs which contribute to more than one activity and support costs which are not attributable to a single activity are apportioned between those activities on a basis consistent with the use of resources. Central staff costs are allocated on the basis of time spent, and depreciation charges allocated on the portion of the asset's use.

Expenditure on charitable activities is incurred on directly undertaking the activities which further the company's objectives, as well as any associated support costs.

All expenditure is inclusive of irrecoverable VAT.

2.5 Interest receivable

Interest on funds held on deposit is included when receivable and the amount can be measured reliably by the company; this is normally upon notification of the interest paid or payable by the institution with whom the funds are deposited.

2.6 Debtors

Trade and other debtors are recognised at the settlement amount after any trade discount offered. Prepayments are valued at the amount prepaid net of any trade discounts due.

2.7 Cash at bank and in hand

Cash at bank and in hand includes cash and short-term highly liquid investments with a short maturity of three months or less from the date of acquisition or opening of the deposit or similar account.

**NOTES TO THE FINANCIAL STATEMENTS
FOR THE YEAR ENDED 30 JUNE 2023**

2. Accounting policies (continued)

2.8 Liabilities and provisions

Liabilities are recognised when there is an obligation at the Balance sheet date as a result of a past event, it is probable that a transfer of economic benefit will be required in settlement, and the amount of the settlement can be estimated reliably.

Liabilities are recognised at the amount that the company anticipates it will pay to settle the debt or the amount it has received as advanced payments for the goods or services it must provide.

Provisions are measured at the best estimate of the amounts required to settle the obligation. Where the effect of the time value of money is material, the provision is based on the present value of those amounts, discounted at the pre-tax discount rate that reflects the risks specific to the liability. The unwinding of the discount is recognised in the Statement of financial activities as a finance cost.

2.9 Financial instruments

The company only has financial assets and financial liabilities of a kind that qualify as basic financial instruments. Basic financial instruments are initially recognised at transaction value and subsequently measured at their settlement value with the exception of bank loans which are subsequently measured at amortised cost using the effective interest method.

2.10 Fund accounting

General funds are unrestricted funds which are available for use at the discretion of the Trustees in furtherance of the general objectives of the company and which have not been designated for other purposes.

Restricted funds are funds which are to be used in accordance with specific restrictions imposed by donors or which have been raised by the company for particular purposes. The costs of raising and administering such funds are charged against the specific fund. The aim and use of each restricted fund is set out in the notes to the financial statements.

Investment income, gains and losses are allocated to the appropriate fund.

2.11 Cash flow exemption

The financial statements do not include a Statement of Cash Flows because the charitable company, as a small reporting entity, is exempt from the requirement to prepare such a statement under the provisions of FRS 102 (SORP 2015).

HOME-START WANDSWORTH LIMITED

(A company limited by guarantee)

NOTES TO THE FINANCIAL STATEMENTS FOR THE YEAR ENDED 30 JUNE 2023

3. Critical accounting estimates and areas of judgment

Estimates and judgments are continually evaluated and are based on historical experience and other factors, including expectations of future events that are believed to be reasonable under the circumstances.

Critical accounting estimates and assumptions:

The company makes estimates and assumptions concerning the future. The resulting accounting estimates and assumptions will, by definition, seldom equal the related actual results, however, the Trustees are of the opinion that there are no estimates and assumptions that have a significant risk of causing a material adjustment to the carrying amounts of assets and liabilities within the next financial year.

4. Income from donations and legacies

	Un- restricted funds 2023 £	Restricted funds 2023 £	Total funds 2023 £
Donations	79,674	-	79,674
Grants	12,476	66,544	79,020
	<u>92,150</u>	<u>66,544</u>	<u>158,694</u>

	Un- restricted funds 2022 £	Restricted funds 2022 £	Total funds 2022 £
Donations	38,560	-	38,560
Grants	25,107	35,957	61,064
	<u>63,667</u>	<u>35,957</u>	<u>99,624</u>

HOME-START WANDSWORTH LIMITED
(A company limited by guarantee)

NOTES TO THE FINANCIAL STATEMENTS
FOR THE YEAR ENDED 30 JUNE 2023

5. Income from other trading activities

Income from fundraising events

	Un- restricted funds 2023 £	Total funds 2023 £
May Ball	70	70
Annual Quiz	19,998	19,998
Carol Concert	9,079	9,079
Other Events	95	95
	<u>29,242</u>	<u>29,242</u>

	Un- restricted funds 2022 £	Total funds 2022 £
May Ball	146,793	146,793
Annual Quiz	1,090	1,090
Carol Concert	5,486	5,486
Other Events	4,155	4,155
	<u>157,524</u>	<u>157,524</u>

HOME-START WANDSWORTH LIMITED
(A company limited by guarantee)

NOTES TO THE FINANCIAL STATEMENTS
FOR THE YEAR ENDED 30 JUNE 2023

6. Investment income

	Un- restricted funds 2023 £	Total funds 2023 £
Interest received	(638)	(638)

	Un- restricted funds 2022 £	Total funds 2022 £
Interest received	1,236	1,236

7. Other incoming resources

	Total funds 2023 £
Other income	-

	Un- restricted funds 2022 £	Total funds 2022 £
Other income	465	465

HOME-START WANDSWORTH LIMITED
(A company limited by guarantee)

NOTES TO THE FINANCIAL STATEMENTS
FOR THE YEAR ENDED 30 JUNE 2023

8. Expenditure on raising funds

Direct costs of events

	Un- restricted funds 2023 £	Total funds 2023 £
Fundraising expenditure	4,401	4,401

	Un- restricted funds 2022 £	Total funds 2022 £
Fundraising expenditure	56,166	56,166

HOME-START WANDSWORTH LIMITED
(A company limited by guarantee)

NOTES TO THE FINANCIAL STATEMENTS
FOR THE YEAR ENDED 30 JUNE 2023

9. Analysis of expenditure on charitable activities

	Un- restricted funds 2023 £	Restricted funds 2023 £	Total 2023 £
Direct costs	203,147	66,544	269,691

	Un- restricted funds 2022 £	Restricted funds 2022 £	Total 2022 £
Direct costs	206,178	35,957	242,135

Summary by expenditure type

	Staff costs 2023 £	Other costs 2023 £	Total 2023 £
Direct costs	222,006	47,685	269,691

	Staff costs 2022 £	Other costs 2022 £	Total 2022 £
Direct costs	199,112	43,023	242,135

HOME-START WANDSWORTH LIMITED
(A company limited by guarantee)

NOTES TO THE FINANCIAL STATEMENTS
FOR THE YEAR ENDED 30 JUNE 2023

10. Analysis of expenditure by activities

	Activities undertaken directly 2023 £	Total funds 2023 £
Direct costs	269,691	269,691

	Activities undertaken directly 2022 £	Total funds 2022 £
Direct costs	242,135	242,135

Analysis of direct costs

	Total funds 2023 £	Total funds 2022 £
Staff costs	222,006	199,112
Marketing & Comms	745	1,860
Membership & Accountancy Fees	7,008	5,914
Bank charges	355	285
DBS checks	1,219	2,598
Other expenses	1,974	2,674
Evaluation	1,200	-
Hubs	8,068	3,797
Insurance	1,284	1,091
IT Software & Consumables	3,627	4,555
Occupancy	12,219	13,505
Recruitment & Temp Staff	4,856	1,277
Telephone & Internet	3,024	3,206
Volunteer & Family Support	667	844
Small Equipment	1,439	1,417
	269,691	242,135

HOME-START WANDSWORTH LIMITED
(A company limited by guarantee)

NOTES TO THE FINANCIAL STATEMENTS
FOR THE YEAR ENDED 30 JUNE 2023

11. Staff costs

	2023 £	2022 £
Wages and salaries	201,326	180,263
Social security costs	9,188	8,064
Contribution to defined contribution pension schemes	11,492	10,785
	<u>222,006</u>	<u>199,112</u>

The average number of persons employed by the company during the year was as follows:

	2023 No.	2022 No.
Directors	13	10
Other employees	10	9
	<u>23</u>	<u>19</u>

No employee received remuneration amounting to more than £60,000 in either year.

Apart from the Trustees, key management comprised the charity director. During the year key management remuneration amounted to £42,000 (2022: £34,969).

12. Trustees' remuneration and expenses

During the year, no Trustees received any remuneration or other benefits (2022 - £NIL).

During the year ended 30 June 2023, no Trustee expenses have been incurred (2022 - £).

13. Debtors

	2023 £	2022 £
Trade debtors	400	355
Prepayments and accrued income	-	2,223
	<u>400</u>	<u>2,578</u>

HOME-START WANDSWORTH LIMITED
(A company limited by guarantee)

NOTES TO THE FINANCIAL STATEMENTS
FOR THE YEAR ENDED 30 JUNE 2023

14. Creditors: Amounts falling due within one year

	2023 £	2022 £
Trade creditors	3,796	3,871
Other taxation and social security	2,001	-
Other creditors	1,815	41
Accruals and deferred income	2,850	4,014
	<u>10,462</u>	<u>7,926</u>

15. Statement of funds

Statement of funds - current year

	Balance at 1 July 2022 £	Income £	Expenditure £	Balance at 30 June 2023 £
<u>Unrestricted funds</u>				
Unrestricted Fund	<u>163,213</u>	<u>120,754</u>	<u>(207,548)</u>	<u>76,419</u>
<u>Restricted funds</u>				
National Lottery Fund	-	25,356	(25,356)	-
Henry Smith Charity	-	35,000	(35,000)	-
Wimbledon Foundation	-	-	-	-
DCMS Pears Grant	-	-	-	-
The Miles Trust	-	1,700	(1,700)	-
The Childhood Trust	-	-	-	-
Warm Spaces	-	2,188	(2,188)	-
Roehampton University Play Based Measures	-	1,300	(1,300)	-
Enable	-	1,000	(1,000)	-
	<u>-</u>	<u>66,544</u>	<u>(66,544)</u>	<u>-</u>
<u>Total of funds</u>	<u>163,213</u>	<u>187,298</u>	<u>(274,092)</u>	<u>76,419</u>

HOME-START WANDSWORTH LIMITED

(A company limited by guarantee)

NOTES TO THE FINANCIAL STATEMENTS FOR THE YEAR ENDED 30 JUNE 2023

15. Statement of funds (continued)

Henry Smith Charity

This grant represents the project "Improving Lives", which supports vulnerable families with at least one child under five years old in the London Borough of Wandsworth.

Wimbledon Foundation

The grant was applied for to fund our Bump to Baby work – this is a specific group activity managed by one of our coordinators supporting mothers expecting babies, and who are likely to need our support after birth.

Miles Trust

We applied to the Miles Trust for a small grant for staff and volunteer training - specifically the costs of providing our Volunteer Preparation Course which all new and returning volunteers must attend before being matched to a beneficiary family. In 2023, the Miles Trust has also supported a Community Event.

DCMS Pears Grant

This was a grant to support our work with volunteers - specifically to employ a team member to work with volunteer engagement and communications. This was started during the lockdown with remote working but is likely to continue.

The Childhood Trust

A small grant application to fund our hub activity - Hubs are group meetings with activities which our families attend, usually towards the end of the one to one volunteer support relationship to help with problems of isolation and socialization and to help build peer to peer relationships.

Warm Spaces

This represents a grant from Cadent (CFW) for the provision of Warm Spaces.

Roehampton University

This source of income represents funding for the participation in a study into play-based measures.

Enable

This is funding for travel costs for summer volunteers and family trips.

National Lottery Fund

This represents funding for core activities and the Bump to Baby project.

HOME-START WANDSWORTH LIMITED
(A company limited by guarantee)

NOTES TO THE FINANCIAL STATEMENTS
FOR THE YEAR ENDED 30 JUNE 2023

15. Statement of funds (continued)

Statement of funds - prior year

	Balance at 1 July 2021 £	Income £	Expenditure £	Balance at 30 June 2022 £
<u>Unrestricted funds</u>				
Unrestricted Fund	202,665	222,892	(262,344)	163,213
<u>Restricted Funds</u>				
National Lottery Fund	-	-	-	-
Henry Smith Charity	-	17,500	(17,500)	-
Wimbledon Foundation	-	10,000	(10,000)	-
DCMS Pears Grant	-	5,957	(5,957)	-
Warm Spaces	-	-	-	-
The Miles Trust	-	1,500	(1,500)	-
The Childhood Trust	-	1,000	(1,000)	-
Roehampton University Play Based Measures	-	-	-	-
Enable	-	-	-	-
	-	35,957	(35,957)	-
<u>Total of funds</u>	202,665	258,849	(298,301)	163,213

HOME-START WANDSWORTH LIMITED
(A company limited by guarantee)

NOTES TO THE FINANCIAL STATEMENTS
FOR THE YEAR ENDED 30 JUNE 2023

16. Analysis of net assets between funds

Analysis of net assets between funds - current year

	Un- restricted funds 2023 £	Total funds 2023 £
Current assets	86,881	86,881
Creditors due within one year	(10,462)	(10,462)
<u>Total</u>	<u>76,419</u>	<u>76,419</u>

Analysis of net assets between funds - prior year

	Un- restricted funds 2022 £	Total funds 2022 £
Current assets	171,139	171,139
Creditors due within one year	(7,926)	(7,926)
<u>Total</u>	<u>163,213</u>	<u>163,213</u>

17. Related party transactions

During the year, total donations of £35,477 (2022: £605) were received from 5 (2022: 4) Trustees.

