

Registered number: 06278007

Charity number: 1124109

HOME-START WANDSWORTH LIMITED

(A company limited by guarantee)

UNAUDITED

TRUSTEES' REPORT AND FINANCIAL STATEMENTS

FOR THE YEAR ENDED 30 JUNE 2022

RPG Crouch Chapman LLP
Chartered Accountants & Statutory Auditor
14-16 Dowgate Hill
London
EC4R 2SU

HOME-START WANDSWORTH LIMITED

(A company limited by guarantee)

CONTENTS

	Page
Reference and administrative details of the company, its Trustees and advisers	1
Trustees' report	2 - 19
Independent examiner's report	20 - 21
Statement of financial activities	22
Balance sheet	23
Notes to the financial statements	24 - 38

HOME-START WANDSWORTH LIMITED**(A company limited by guarantee)****REFERENCE AND ADMINISTRATIVE DETAILS OF THE COMPANY, ITS TRUSTEES AND ADVISERS
FOR THE YEAR ENDED 30 JUNE 2022**

Trustees	J Fergusson L Hayllar K Vetch (appointed 7 December 2021) J Leung (appointed 7 December 2021) T Nicholls (resigned 7 December 2021) H Stilgoe S Robertson S Wemyss K Swinburn (resigned 7 December 2021) P Chauhan M Kinsella
Company registered number	06278007
Charity registered number	1124109
Registered office	Battersea Methodist Church 20-22 York Road 2nd Floor London SW11 3QA
Company secretary	L Hayllar
Accountants	RPG Crouch Chapman LLP Chartered Accountants 14-16 Dowgate Hill London EC4R 2SU
Independent Examiner	Jeremy Tyrrell FCA 5th Floor 14-16 Dowgate Hill London EC4R 2SU

HOME-START WANDSWORTH LIMITED

(A company limited by guarantee)

TRUSTEES' REPORT

FOR THE YEAR ENDED 30 JUNE 2022

The trustees, who are also directors of the charitable company, present their report for the year ended 30 June 2022.

The Annual report serves the purpose of both a Trustees' report and a director's report under company law. The Trustees confirm that the Annual report and financial statements of the charitable company comply with the current statutory requirements, the requirements of the charitable company's governing document and the provisions of the Statement of Recommended Practice (SORP) applicable to charities preparing their accounts in accordance with the Financial Reporting Standard applicable in the UK and Republic of Ireland (FRS 102) (effective 1 January 2019).

Since the company qualifies as small under section 383, the strategic report required of medium and larger companies under The Companies Act 2006 (Strategic Report and Director's Report) Regulations 2013 is not required.

ACHIEVEMENTS AND PERFORMANCE

The 2021/22 year was a complex one for HomeStart Wandsworth, spanning the gradual removal of Covid-19 related lockdown and social distancing arrangements which eventually ended in February. The Home-Start team adapted well to the challenges of Covid and responded flexibly to the needs of our families, not only in maintaining a safety net but also by seeking opportunities to address and improve their difficult circumstances. Our staff and volunteers embraced new forms of technology and different ways of working to ensure that they were there when they were needed the most. The lifting of social distancing guidelines allowed us to return to a more normal pattern of support, with home visiting and hub-based activities welcomed by staff, volunteers and families alike. As ever, we owe huge thanks to our staff and volunteers who work so hard.

In the last year Home-Start Wandsworth continued to provide one to one telephone and online befriending, and online peer support groups and workshops, and as covid rules changed, we were able to meet with families face to face again. We were able to restart our home visiting programme as well as group 'hub' events to help families and children get out of the home and meet and participate in a range of fun activities which are so important to both socialisation and to addressing the problems of isolation - issues that are often faced by the parents of young children but exacerbated by lockdown and social distancing rules. Throughout the year we tried to enhance the quality of family life by delivering craft materials, books, sensory toys and other resources that promote wellbeing, learning and child development. When restrictions eased, volunteers began meeting families in the community, connecting them with other services and safeguarding against isolation.

During the year the rising cost of living has been a significant factor for many families. This has increased the pressure on our services, and at the same time reduced many of the other community services on offer, but also has a direct impact on the financial situations of many of the families we support. Rising costs disproportionately affect those on lower incomes and we have been increasingly aware of the problems this can cause. Families are faced with difficult practical choices including 'heating vs eating' but also face challenges around mental wellbeing and with the increased relationship pressures financial hardship can bring. Our staff and volunteers have worked hard this year to find practical ways to deliver social and emotional support the families we work with to help alleviate these problems.

HOME-START WANDSWORTH LIMITED
(A company limited by guarantee)

TRUSTEES' REPORT (CONTINUED)
FOR THE YEAR ENDED 30 JUNE 2022

During this remarkable year, Home-Start Wandsworth supported a total of 114 (2021: 116) unique families through home-visiting, Bump to Baby and hubs. This covers 195 (2021: 173) children in total. This represents a small increase in numbers which has been pleasing given the continued complexity of the challenges being faced by already vulnerable families, illness and absence in our own staff team and reduced availability of volunteers. For the coming year we anticipate that our capacity will start to return to pre-Covid levels in terms of the numbers of beneficiaries we support although the mix of services may well change as we adapt to the needs of the families and embrace new technology to find innovative ways of supporting them. Our focus during the year has been on continuing to provide excellent targeted support. The success of our efforts is evidenced by the noticeable improvement in 'Coping Scores' which assess families on a range of measures before and after Home-Start's involvement. Details of these can be found in the Impact Report that accompanies this report.

Alongside the incredible work carried out by our staff and volunteers, there were a few other highlights during the year:

Garfield Weston awarded HSW £15,000 towards core costs in supporting vulnerable families in our community from October 2021 to October 2022.

HSW participated in The Big Give Christmas Challenge beating our target and raising £4,590, a great success for our first digital fundraising campaign.

Our Carol service, held in December 2021, was the first fundraising event held in 22 months. Just over 100 people attended and we were thrilled to raise in excess of £5,000.

The Wimbledon Foundation awarded HSW £10,000 in February 2022 towards supporting our Bump to Baby project where we aim to support at least 33 families in the year.

In April 2022 we were delighted to be funded by the Henry Smith Charity for a total of £105,000 over three years towards core costs.

We held our second May ball in the Battersea Arts Centre in May 2022, with around 280 people attending and raising just in excess of £100,000 net of expenditure. This fantastic support from our local community is very much appreciated.

We welcomed a new Home-Start Wandsworth Director, Michelle Cook, and two new trustees, Jeremy Leung and Kate Vetch, during the year, whom we are delighted to have on board.

Please read the impact report below to read a complete overview of what Home-Start Wandsworth has achieved this year. In the meantime, I must thank every part of our organisation from staff and volunteers, to donors and supporters each of whom has played a key role in supporting our families. In another challenging and uncertain year, we are proud of what we have achieved and we look forward with enthusiasm to the coming year.

FINANCIAL REVIEW

Our total income for the year was £258,849 (2021: £159,491), split into unrestricted income of £222,892 (2021: £45,326) and restricted income of £35,957 (114,165).

Our reserves decreased by £39,452 (2021: £79,440) to £163,213 (2021: 202,665). The main expenditure, £199,112 (2021: £187,781), relates to personnel costs.

HOME-START WANDSWORTH LIMITED

(A company limited by guarantee)

TRUSTEES' REPORT (CONTINUED) FOR THE YEAR ENDED 30 JUNE 2022

All reserves held at the year end are represented by unrestricted funds.

RESERVES POLICY

The charity aims to retain a level of total reserves of between 6 and 9 months of expenditure to cover the risk, activity and commitments of the organisation.

GOING CONCERN

After making appropriate enquiries, the Trustees have a reasonable expectation that the charitable company has adequate resources to continue in operational existence for the foreseeable future. For this reason, they continue to adopt the going concern basis in preparing the financial statements.

RISKS

The charity trustees have given consideration to the major risks to which Home Start Wandsworth is exposed and have satisfied ourselves that systems and procedures have been established in order to manage these risks.

Since Home-Start Wandsworth works with vulnerable children and families, we consider safeguarding/ child protection the greatest area of inherent risk with our work. Home-Start Wandsworth has developed a comprehensive framework of consents, controls, policies and reviews to ensure we are able to fulfil our safeguarding and child protection responsibilities and deal with any concerns rapidly and sensitively.

Our risk register is grouped under four key areas; Strategic, Reputational, Operational and Financial. The major risks in each of these categories are:

Strategic – a safeguarding or child protection issue results in harm to individuals, and loss of trust and reputation amongst key stakeholders.

Reputational – an inability to respond to the sector challenges around diversity and inclusion leaves Home-Start Wandsworth vulnerable to external criticism.

Operational – our staff are unable to deliver our ambitions because of capacity, lack of skills, poor wellbeing, or disengagement.

Financial – an inability to secure future income in line with plans with funders, supporters and partners.

Structure, governance and management

CONSTITUTION

The company is registered as a charitable company limited by guarantee. The company is constituted under a Trust deed and is a registered charity, number 1124109.

The charity provides support for local families and has several charitable objectives:

- To safeguard, preserve and protect the good health, both mental and physical, of children and parents of children.
- To prevent cruelty or maltreatment of children.
- To relieve sickness, poverty and need amongst children and parents of children.
- To promote the education of the public in better standards of childcare.

There has been no change in these objectives during the year.

HOME-START WANDSWORTH LIMITED
(A company limited by guarantee)

TRUSTEES' REPORT (CONTINUED)
FOR THE YEAR ENDED 30 JUNE 2022

The Trustees oversee the work of the organisation to ensure that it is efficient, equitable and provides a quality service to all vulnerable families and children supported. We review our aims, objectives and activities each year. This review looks at what was achieved and the outcomes of our work in the previous 12 months. The review looks at the success of each key activity and the benefits they have brought to those groups we are set up to help. The review also ensures our aims, objectives and activities remain focused on our stated purposes. We refer to the Charity Commission's general guidance on public benefit when reviewing our aims and objectives and in planning our future activities. In particular, the Trustees consider how planned activities will contribute to the aims and objectives they have set.

METHOD OF APPOINTMENT OR ELECTION OF TRUSTEES

The Management of the company is the responsibility of the Trustees who are elected and coopted under the terms of the Trust deed.

Management committee

The charity has a Management committee made up of the Trustees who meet every 6 to 8 weeks and is responsible for the strategic direction and policy of the charity. The Secretary, Linda Hayllar is also a Trustee.

The Scheme Manager, Rose Swainston (until April 2022), succeeded by Michelle Cook, is responsible for ensuring that the charity delivers the services specified and that the key performance indicators are met. The Scheme Manager has responsibility for the day to day operational management of the volunteer preparation courses and supervision of all staff.

All members of the Management committee give their time voluntarily and receive no benefits from the charity. The Management committee meets its legal and financial responsibilities to ensure it is efficient, reviews its policies, undertakes relevant governance training and supports and supervises the workforce to ensure a high quality of service is delivered. In so far as it is complementary to the charity's objectives, the charity is guided by both local and national policy.

The Trustees have assessed the major risks to which the charity is exposed and are satisfied that policies and systems are in place to mitigate exposure to these risks. Internal control risks are minimised by the implementation of procedures for authorisation of all transactions and projects. Procedures are in place to ensure compliance with health and safety of staff, volunteers, clients and visitors to the HomeStart Wandsworth office. Quality Assurance is reviewed on an annual basis by HomeStart Wandsworth and by HomeStart UK every 3-4 years.

INFORMATION ON FUNDRAISING PRACTICES

The charity is actively involved in fundraising activities either through donations from individuals and corporations or at fundraising events. Members of the public are only approached if the charity has had previous contact with them. In our Fundraising Strategy we confirm we will abide by the standards of the Fundraising Regulator.

During the year ended 30 June 2022 the charity did not receive any complaints about its fundraising activities and practices.

FUTURE DEVELOPMENTS

In the current year, the emphasis will be on regularising and expanding our services where possible. Beyond that we aim to focus on our longerterm sustainability both financially and strategically.

HOME-START WANDSWORTH LIMITED

(A company limited by guarantee)

TRUSTEES' REPORT (CONTINUED) FOR THE YEAR ENDED 30 JUNE 2022

TRUSTEES' RESPONSIBILITIES STATEMENT

The Trustees (who are also the directors of the company for the purposes of company law) are responsible for preparing the Trustees' report and the financial statements in accordance with applicable law and United Kingdom Accounting Standards (United Kingdom Generally Accepted Accounting Practice).

Company law requires the Trustees to prepare financial statements for each financial year. Under company law, the Trustees must not approve the financial statements unless they are satisfied that they give a true and fair view of the state of affairs of the company and of its incoming resources and application of resources, including its income and expenditure, for that period. In preparing these financial statements, the Trustees are required to:

- select suitable accounting policies and apply them consistently;
- observe the methods and principles of the Charities SORP (FRS 102);
- make judgements and accounting estimates that are reasonable and prudent;
- state whether applicable UK Accounting standards (FRS 102) have been followed, subject to any material departures disclosed and explained in the financial statements;
- prepare the financial statements on the going concern basis unless it is inappropriate to presume that the company will continue in business

The Trustees are responsible for keeping adequate accounting records that are sufficient to show and explain the company's transactions and disclose with reasonable accuracy at any time the financial position of the company and enable them to ensure that the financial statements comply with the Companies Act 2006. They are also responsible for safeguarding the assets of the company and hence for taking reasonable steps for the prevention and detection of fraud and other irregularities.

July 2021-June 2022

IMPACT REPORT



**HOME
START**
Wandsworth



Our work

Families today are facing unprecedented challenges. For families that were already struggling, the global pandemic and economic turbulence have acted as magnifiers, exacerbating existing challenges and creating additional pressures. We are witnessing first hand the rising levels of mental illness, financial hardship and social isolation with three quarters of families feeling cut off from friends and family¹.

The first five years of a child's life are the most important in shaping their future. During this time, children need nurturing care from their parents and caregivers. The quality of the relationships that surround children, and a positive home environment are key to promoting wellbeing, healthy relationships and school success later in life. Parents are worried about lost opportunities for their children and are anxious about the detrimental impact on their child's development.

Our experienced staff and trained volunteers work alongside families with children under the age of five, providing practical and emotional support tailored to the individual needs of the family. We support parents to grow in confidence, strengthen their relationship with their children, and widen links with the local community to alleviate isolation.

We offer three key areas of support with families able to access one or a combination according to their individual needs and preferences.

Core home-visiting: we match each family with a trained volunteer who visits them in their home for 2-4 hours every week to provide practical help, guidance and emotional support.

Bump to Baby: one-to-one weekly home-visiting support during pregnancy and the newborn stage from a volunteer trained in perinatal mental health, bonding and attachment.

Group activities: structured weekly group activities for families supported by trained volunteers and Staff Coordinators. Our weekly meetups enable families to come together, chat and relax in a safe environment. They give parents an opportunity to try new things and make friends. The warm and welcoming environment helps them feel less isolated, more confident around new people and better able to cope.

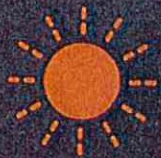
¹ Home is where we start from <https://www.home-start.org.uk/Handlers/Download.ashx?IDMF=1cb9d1b2-6253-478e-a939-db5d8e06899d>

Support in numbers



Giving
195 children a
brighter future

114
families
supported



36
Bump to Baby families

68

families
supported
through groups



73
volunteers

55

group
activities



24 online
group
workshops

Data July 2021- June 2022

"I think the support came at exactly the right time. You were there even when other services were unavailable or ended their support."

"It's been an emotional journey, but I feel I'm ready to move on now. Before I was feeling too vulnerable and would say 'no'. I am now able to say yes to support and get the help I need....I am grateful that Home-Start stayed with me for as long as you did. I'm so thankful this service exists. I am recommending it to other mums that are struggling."



Marsha's story

Feeling isolated, overwhelmed and struggling with low self-esteem and confidence, new mum Marsha was matched with Home-Start Wandsworth volunteer Maddi.

With no other mums to talk to, Marsha felt incredibly lonely, and just speaking to Maddi gave her "something to do that day." Knowing that she would be met without judgement, Marsha felt comfortable confiding in Maddi, sharing the highs and lows of parenting.

The emotional support Maddi gave has been fundamental in helping Marsha combat the anxiety and loneliness she was facing but it goes hand in hand with the practical help that she also needed. Maddi introduced her to a number of baby groups and signposted her to additional support services. With Maddi's support, Marsha started taking her baby swimming and to sensory play sessions, decreasing her own isolation but also enhancing her baby's social and physical development.

Marsha's confidence has soared since Maddi came into her life. She now feels empowered to make her own decisions and is confident to reject advice or information that isn't helpful or undermines her own opinions. The transformation in Marsha is apparent and for the first time since her baby was born, she is relishing being a mum and her baby is thriving. Her view of parenting is more realistic and she feels that she is more in tune with her baby's needs. With renewed confidence and sense of worth, Marsha has returned to work and remains close to Maddi.

Our impact

We measure the impact of our work for every family we work alongside. This report tells the stories of some of those families whom we have worked with during the last year and includes some of their own words which is the most powerful demonstration of the difference we make. We hope that you enjoy our latest report and that it will inspire you to continue supporting us so that more children have a brighter future.

We evaluate each family's progress by recording where they are on a coping scale of 1-5 throughout their support (1 being the lowest level of coping and 5 being the highest.)

The chart below shows the progress of families who had low scores at their initial visit. For all areas evaluated, families' coping scores improved after Home-Start support. The improved scores below show very clearly how families are benefitting from the services of Home-Start Wandsworth and where they would be without that support.

Issues facing families

Loneliness & isolation



1 in 2 families

Poor mental health



69% of families

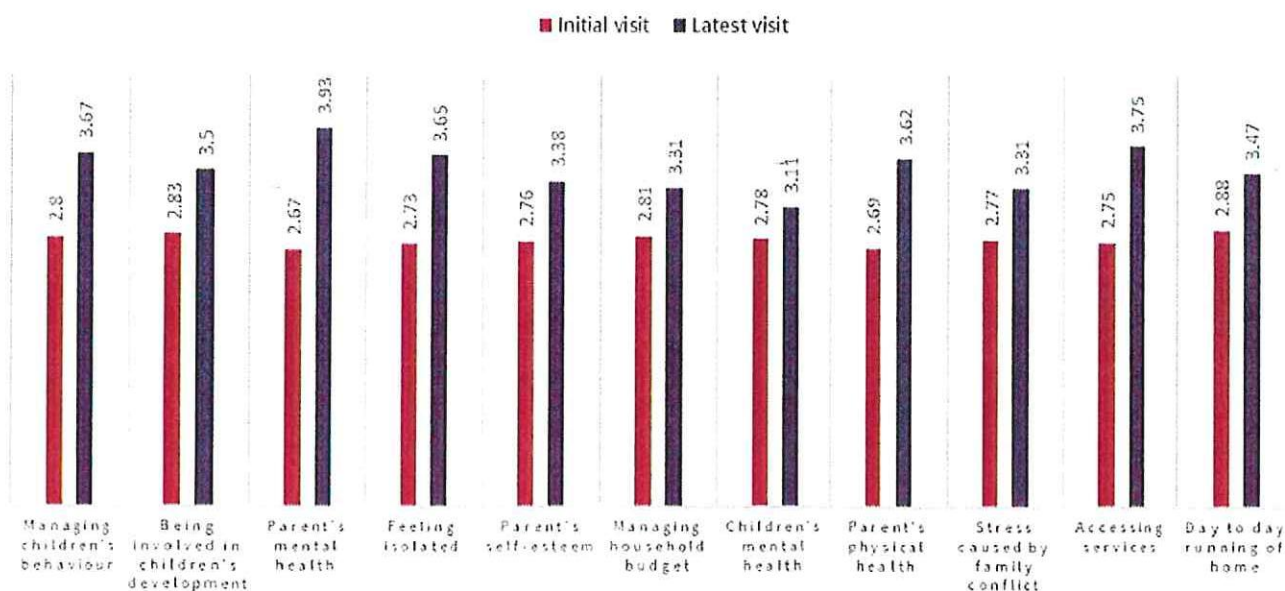
Lack of support network



60% of families

Data July 2021 - June 2022

Average coping scores before and after Home-Start support



Data July 2021 - June 2022



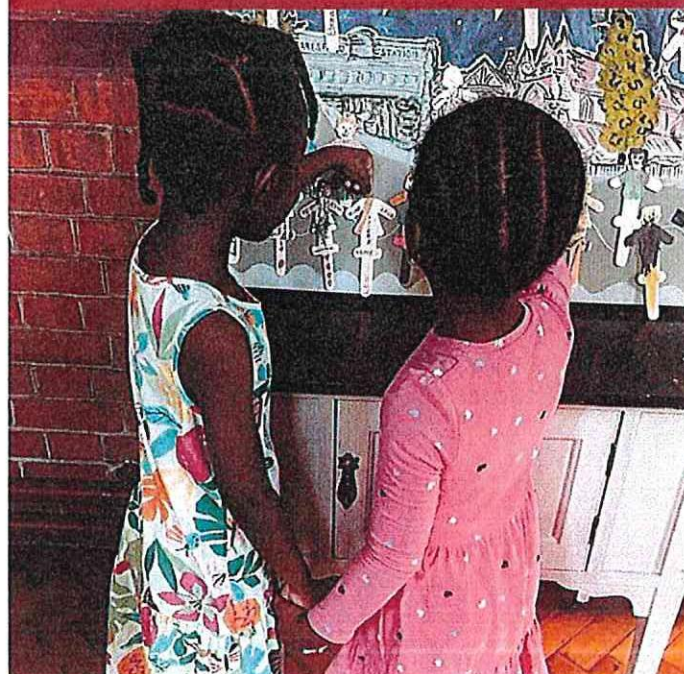
Reducing isolation

Becoming a parent is a life-changing experience and whilst it can be a joyful time it can also be a lonely one, over half (56%) of parents with children under five feel lonely².

With a noticeable decrease in support services, parental loneliness nearly doubled³ during the pandemic with families being forced into social isolation. Whether fleeing domestic violence, living in temporary housing or having no friends and family nearby, loneliness and isolation affects many Home-Start families.

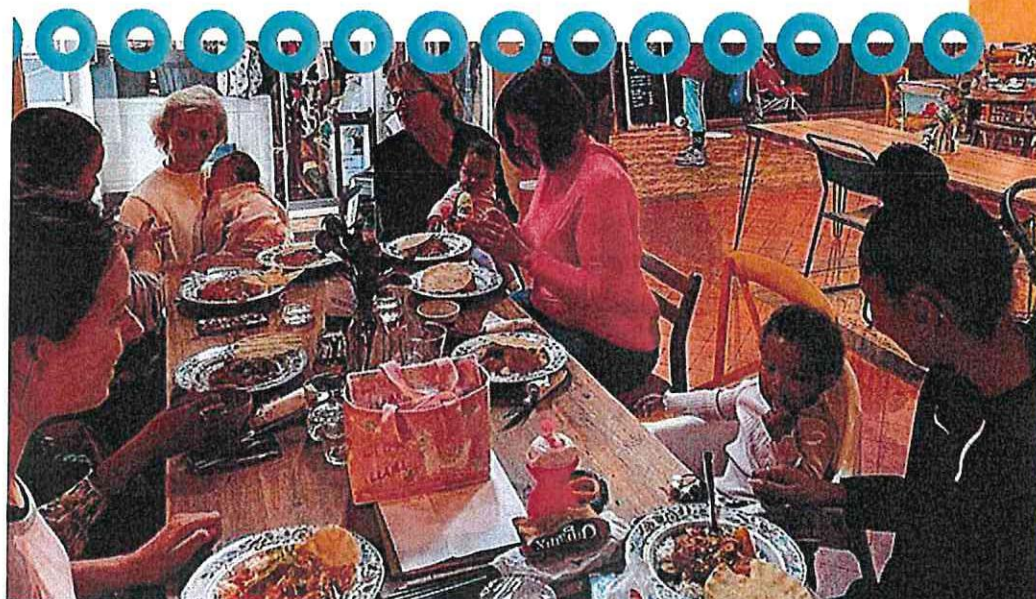
Through compassionate, non-judgemental support, our staff and trained volunteers build long lasting relationships and help families build vital social connections within the local community. Our programme of group activities; including buggy walks, a weekly lunch club and day trips, brings families together, reducing isolation and improving wellbeing.

"As a solo mum I often face being with my own adult company and it brings emotions which are not easy to deal with. As human beings we are eager to connect to others. That is what Connect@Home provides for us. No matter how isolated I have been throughout the week I'm not alone there. I make friends, I share difficulties, I am part of a community which supports each other. That day I'm not by myself at lunch. We eat together as a family."



² <https://www.familyandchildcaretrust.org/loneliness-blog>.

³ Ipsos Mori & Royal Foundation (2020) State of the nation: Understanding public attitudes to the early years.



Improving parental mental health

In the wake of the pandemic, health care professionals are warning of a global mental health crisis. Cost of living concerns are also exacerbating poor mental health, with three out of four parents stressed and anxious about whether they can afford to pay their household bills⁴.

It is currently estimated that one in four children are being exposed to maternal mental illness⁵ and research shows that children of parents with a mental illness are likely to experience greater emotional, psychological and behavioural problems than other children.

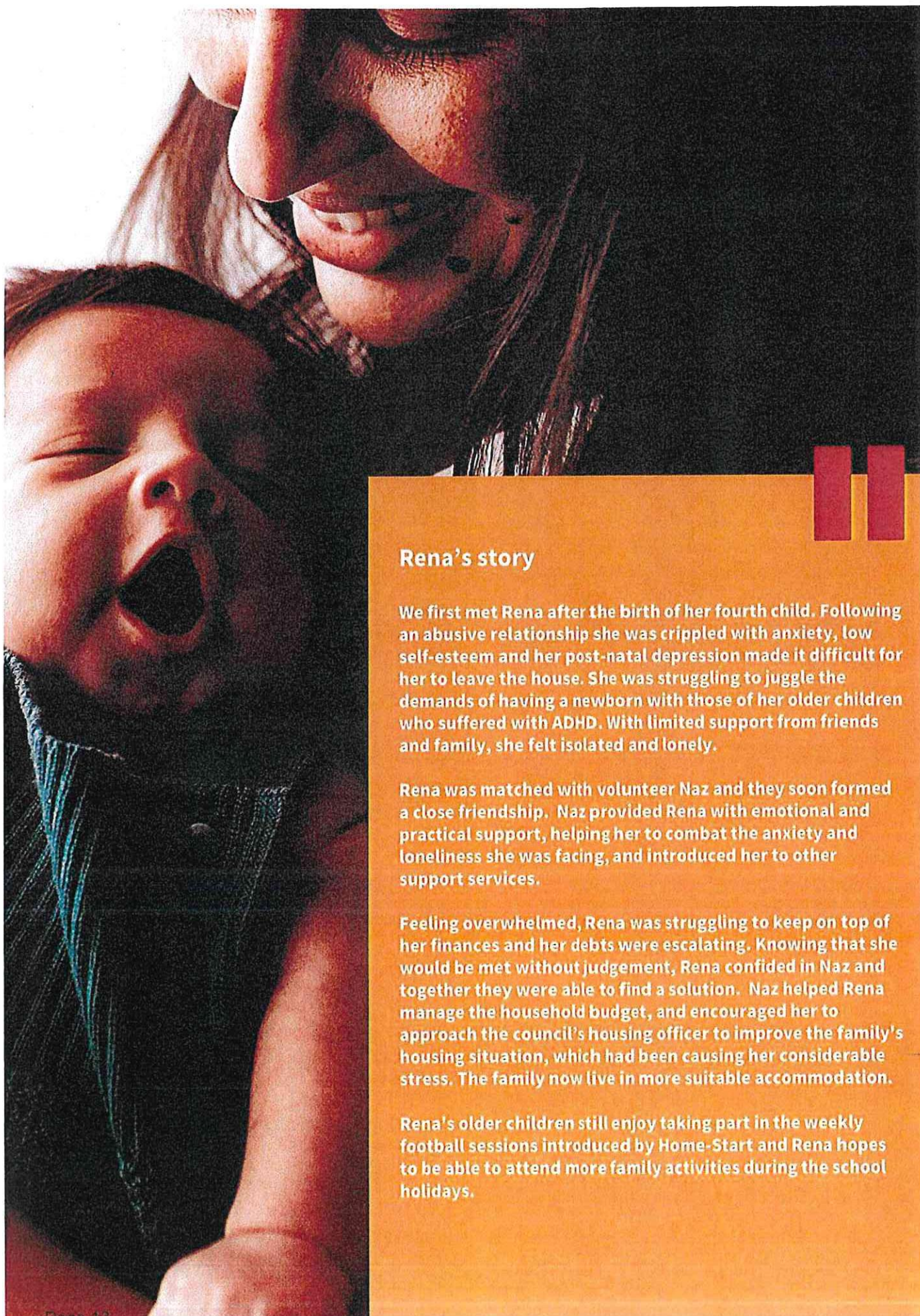
Our volunteers help to rebuild trust, confidence and self-esteem, enabling parents to acquire expertise and resilience that they can use in the future. Home-Start helps families to access specialist support services and counselling. Weekly group activities also provide a safe environment for families to come together, relax and chat creating a sense of community and belonging.

"Motherhood is lonely and tough on my mental health, the group (Connect@Home) has provided me with a safe, welcoming space for others in a similar situation. I'm still finding my feet in the area so it has been such a good space to meet mums, and I have already made a few friends as a result of the group, we sometimes even go for walks afterwards."

"The staff and volunteers are very accommodating and provide a helping hand which is especially appreciated on those tough days. Without the group, I would most likely be at home with my baby on my own. Sometimes I don't talk for hours on end, I'm just in my own head. I miss adult conversation and the group is my one guaranteed time to speak to others."

⁴Cost of living survey Home-Start London 2022.

⁵[https://www.thelancet.com/pdfs/journals/lanpub/PIIS2468-2667\(19\)30059-3.pdf](https://www.thelancet.com/pdfs/journals/lanpub/PIIS2468-2667(19)30059-3.pdf)



Rena's story

We first met Rena after the birth of her fourth child. Following an abusive relationship she was crippled with anxiety, low self-esteem and her post-natal depression made it difficult for her to leave the house. She was struggling to juggle the demands of having a newborn with those of her older children who suffered with ADHD. With limited support from friends and family, she felt isolated and lonely.

Rena was matched with volunteer Naz and they soon formed a close friendship. Naz provided Rena with emotional and practical support, helping her to combat the anxiety and loneliness she was facing, and introduced her to other support services.

Feeling overwhelmed, Rena was struggling to keep on top of her finances and her debts were escalating. Knowing that she would be met without judgement, Rena confided in Naz and together they were able to find a solution. Naz helped Rena manage the household budget, and encouraged her to approach the council's housing officer to improve the family's housing situation, which had been causing her considerable stress. The family now live in more suitable accommodation.

Rena's older children still enjoy taking part in the weekly football sessions introduced by Home-Start and Rena hopes to be able to attend more family activities during the school holidays.



Improving family circumstances

Following the cut to Universal Credit, spiralling food and energy prices, families are at risk of suffering from the biggest reduction in living standards since the 1950's. New research by Citizens Advice⁶ reveals one in ten families - equivalent to 3.2 million households - are facing financial crisis this winter forcing many families to choose between eating or heating. 28% of children in Wandsworth are living in poverty⁷ demonstrating the severe financial pressures being placed on families in the borough.

50% of Home-Start Wandsworth families are struggling to manage the household budget and many are forced to turn to donations, food banks and benefits to provide the basics for their family. Home-Start volunteers and our experienced staff work alongside families to identify the level and type of support needed to help them improve their financial situation. We also help families access funding or donations of essential items of furniture, supermarket vouchers and white goods.

"Thank you for the washing machine. I know it's just a washing machine but the fact I woke up today and washed their clothes.... I felt like less of a failure as a mum. I can't explain in words what you have done for us!"

Sabine's story

After leaving her abusive husband, Sabine was living in a small, cramped single room in a hostel with her one year old daughter when Home-Start first met her. With no family or friends in the country, she was afraid and isolated.

Due to covid restrictions, Sabine was not able to access any children's centres or other activities for her daughter. She tried her best to get out every day to escape the confinement of her tiny room in the hostel but it was difficult. Sabine's mood was understandably low, she felt overwhelmed with ongoing legal battles and stressed with her poor housing situation.

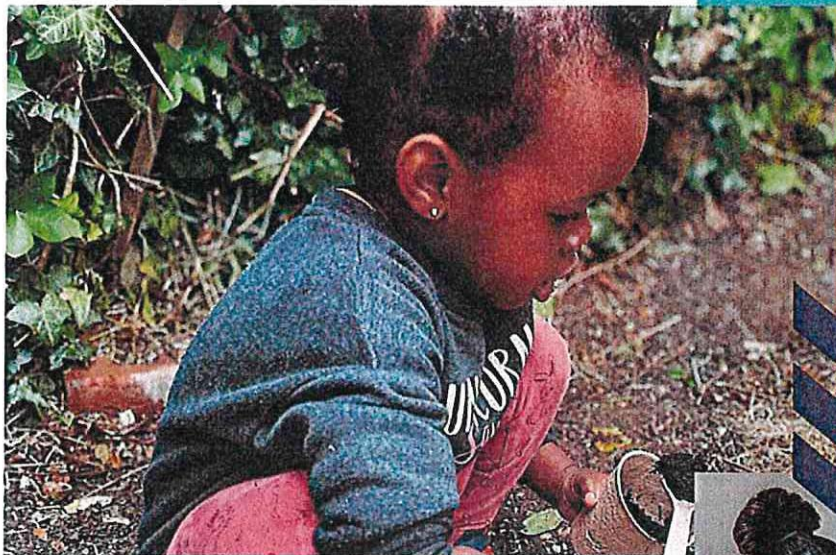
Sabine was matched with a Home-Start Wandsworth volunteer, Lauren, who provided her with a listening ear and encouragement to continue along the difficult road ahead. During their weekly walks in the park, Sabine would confide in Lauren and together they were able to work through the mountain of paperwork needed to help the family move into more suitable accommodation.

With very few personal possessions of her own, through an emergency fund, Home-Start Wandsworth bought a washing machine for Sabine and helped her source donated furniture so that she could furnish her new flat, and an iPad to help her feel connected to family and friends overseas.

Having spent most of her life isolated from the rest of the world, Sabine's daughter found it difficult to interact with other children. Home-Start introduced the family to the local Children's Centre. Sabine and her daughter now look forward to the centre's weekly play sessions and they have helped Sabine's daughter's emotional and social development. Accessing Home-Start's Learn to Love to Read early literacy programme has enabled Sabine to meet other mums as well as improve her daughter's literacy and language skills.

With her volunteer's support, Sabine's confidence grew and she is now content in her new cosy and comfortable flat which she calls home. She is able to see an exciting future ahead and hopes to join more Home-Start activities so that she can make friends with other local mums. Sabine sees Home-Start Wandsworth as her second family and she feels that she really would not have 'survived' the past year without their support.

⁶<https://www.citizensadvice.org.uk/about-us/about-us1/media/press-releases/three-million-families-facing-crisis-as-cost-of-living-crunch-bites/>
⁷<https://www.trustforlondon.org.uk/data/boroughs/borough-data-sources-and-methods/>



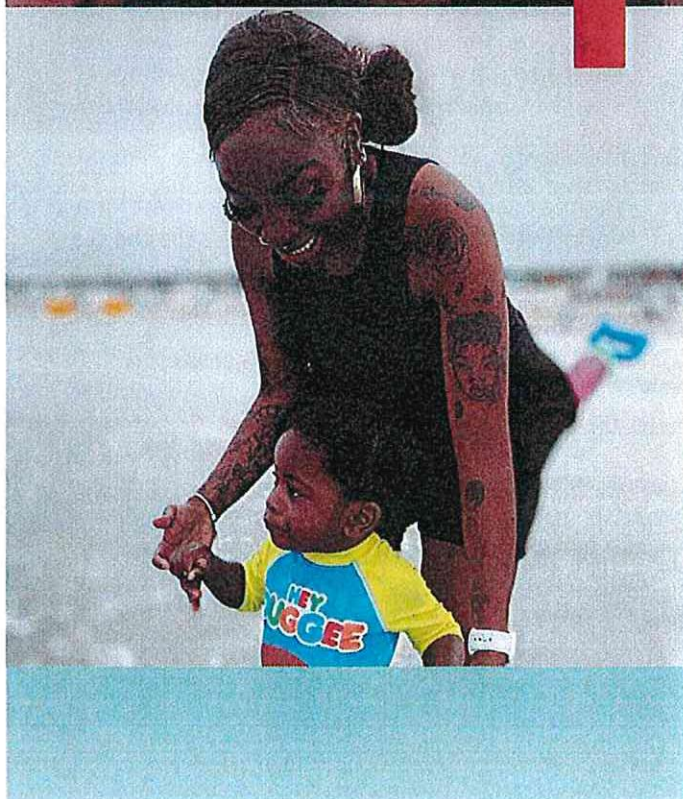
Nurturing children's development

At Home-Start we understand that play provides a gateway for parents to understand children's behaviour better, learning how they communicate their needs, emotions and interests. The bond and attachment between children and their parents are especially powerful in laying the foundations for future learning, health, behaviour and relationships.

"I only found out how creative she was after attending the session. I can't explain in words how happy I feel when I watch her making art pieces at such an early age. I love it when people praise how good she is!"

We work alongside parents to ensure that they have more happy days with their children and are more attuned and involved in their child's development. Through our partnership with Learn 2 Love to Read, early literacy workshops are easily accessible to families. Messy play sessions and our weekly art group at Connect@home encourage children to be creative.

Our fun days in partnership with Open Air Fit and day trips to Kew Gardens and the seaside provide children with the opportunity to run, climb and explore new environments, which is vital for children's physical and mental health.





Our volunteers

Home-Start volunteers work alongside families to give compassionate, non-judgemental, confidential support, tailored to each family. Our volunteers usually visit a family in their own home for 2-4 hours once a week.

They help families regain their confidence and empower them to build connections with other support services and the wider community to reduce isolation. The work of our volunteers makes a lasting difference to the families we support.

In the last year 11 volunteers successfully completed the volunteer preparation course. We have also run a number of training workshops covering topics like suicide awareness, toddlers behaving badly and managing debt.

People choose to volunteer for Home-Start for a variety of reasons. For many, it offers the chance to give something back or make a difference to a local family.

"My volunteer will not be forgotten in our house. I don't know how you manage to pair the right volunteer with the family so well. She was so easy to talk to and open. She was gentle and never judgemental. Her mannerisms and the way she encouraged me was so helpful."

For others it provides an opportunity to develop new skills or build on existing experience and knowledge.

Our volunteers are critical to the success of Home-Start Wandsworth. We hear from families time and time again that their Home-Start volunteer is often the only dependable, regular help that they receive. They can trust and rely on their volunteer. There is no judgement, no risk, no uncertainty.

We would like to thank our volunteers for everything they do for Home-Start and the countless hours of their time they give to supporting families.



73
volunteers



1,220
home-visiting hours



Over 700
hours at group
activities

Our partners & supporters

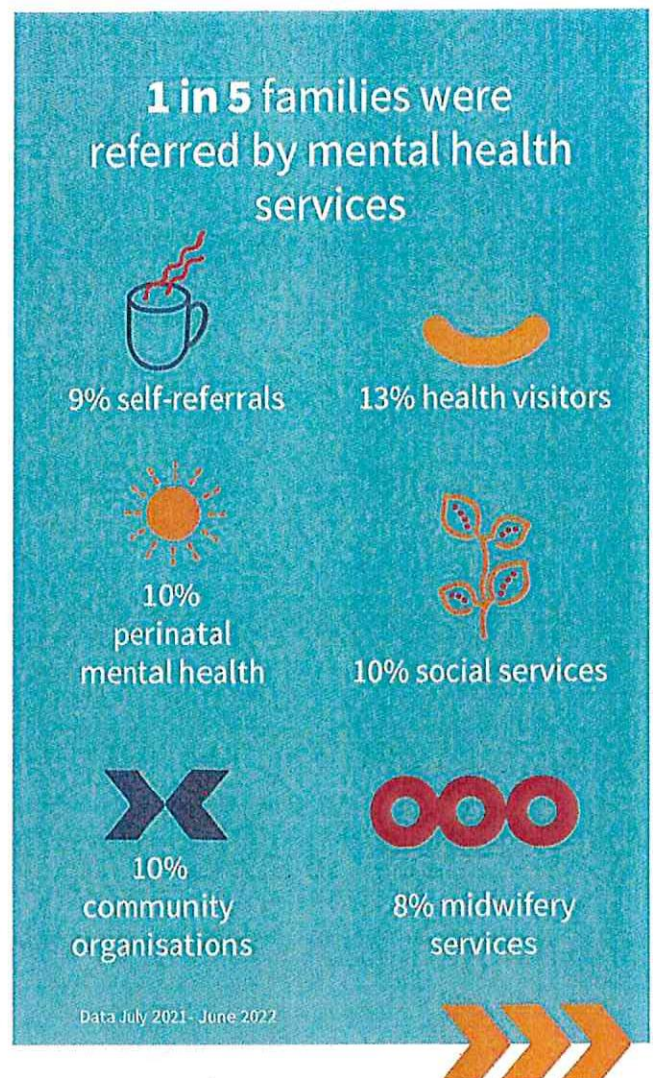
Home-Start Wandsworth works collaboratively with local voluntary sector networks, health and social care providers, and other family support services to tackle the issues together that affect vulnerable families. We receive referrals from health visitors, GPs and social prescribers as well as those involved in mental health services and early years. We work closely with a number of other local charities and services like Little Village and Wandsworth Food Bank to ensure that no family is forgotten.

We would like to thank **Learn 2 Love to Read** for providing early literacy sessions, **Open Air Fit** for hosting our family fun days throughout the year and **Forest Freedom** for enabling Home-Start children to experience the great outdoors. A special thank you to Meg and her team at **Home Cafe** for hosting our weekly lunch and art club and providing delicious home-cooked meals.

From donating gifts and money during the Christmas period to raising awareness of our services, our national and local partners **White Stuff** and **John Lewis & Partners** have gone above and beyond this year in helping us support families. Our families created some exceptional pieces of artwork for the Peter Jones Jubilee art competition. The artwork was displayed in the store and winners received some lovely art prizes.

We are grateful to all our funders and donors both big and small, who play a crucial role in enabling us to continue our work.

Thank you to **Savills**, **Metis Wealth**, **SDS London** and **Bellevue Law** for sponsoring our fundraising events over the past year. In May we hosted our 2nd May Ball, raising a phenomenal £100,000, thank you to everyone who attended and contributed to such a successful evening.



WE NEED YOUR HELP

During these difficult times, our families are struggling more than ever and we need to ensure that we are well equipped to support families in the future. Like many others, one of our biggest challenges in the current climate is securing the income we need to continue our vital work. We can't do it alone. We need your help. Your donation could make a difference that lasts a lifetime. Please donate [here](#) or scan the QR code.

For more information about sponsorship, corporate partnerships and fundraising opportunities, please get in touch by emailing:
melissa@homestartwandsworth.org.uk



GET IN TOUCH

To find out more about the work that we do and volunteering opportunities:

T: 020 7924 5268

E: enquiries@homestartwandsworth.org.uk

W: www.homestartwandsworth.org.uk

2nd Floor 20-22 York Road, Battersea, London SW11 3QA

Charity no: 1124109

HOME-START WANDSWORTH LIMITED
(A company limited by guarantee)

TRUSTEES' REPORT (CONTINUED)
FOR THE YEAR ENDED 30 JUNE 2022

Approved by order of the members of the board of Trustees and signed on their behalf by:


.....
Mr James Fergusson

Date: 27/04/2023

HOME-START WANDSWORTH LIMITED

(A company limited by guarantee)

INDEPENDENT EXAMINER'S REPORT FOR THE YEAR ENDED 30 JUNE 2022

Independent Examiner's Report to the Trustees of Home-Start Wandsworth Limited ('the company')

I report to the charity Trustees on my examination of the accounts of the company for the year ended 30 June 2022.

Responsibilities and Basis of Report

As the Trustees of the company (and its directors for the purposes of company law) you are responsible for the preparation of the accounts in accordance with the requirements of the Companies Act 2006 ('the 2006 Act').

Having satisfied myself that the accounts of the company are not required to be audited under Part 16 of the 2006 Act and are eligible for independent examination, I report in respect of my examination of the company's accounts carried out under section 145 of the Charities Act 2011 ('the 2011 Act'). In carrying out my examination I have followed the Directions given by the Charity Commission under section 145(5)(b) of the 2011 Act.

Independent Examiner's Statement

Since the company's gross income exceeded £250,000 your examiner must be a member of a body listed in section 145 of the 2011 Act. I confirm that I am qualified to undertake the examination because I am a member of the ICAEW, which is one of the listed bodies.

I have completed my examination. I confirm that no matters have come to my attention in connection with the examination giving me cause to believe:

1. accounting records were not kept in respect of the company as required by section 386 of the 2006 Act; or
2. the accounts do not accord with those records; or
3. the accounts do not comply with the accounting requirements of section 396 of the 2006 Act other than any requirement that the accounts give a 'true and fair' view which is not a matter considered as part of an independent examination; or
4. the accounts have not been prepared in accordance with the methods and principles of the Statement of Recommended Practice for accounting and reporting by charities [applicable to charities preparing their accounts in accordance with the Financial Reporting Standard applicable in the UK and Republic of Ireland (FRS 102)].


I have no concerns and have come across no other matters in connection with the examination to which attention should be drawn in this report in order to enable a proper understanding of the accounts to be reached.

HOME-START WANDSWORTH LIMITED
(A company limited by guarantee)

INDEPENDENT EXAMINER'S REPORT (CONTINUED)
FOR THE YEAR ENDED 30 JUNE 2022

This report is made solely to the company's Trustees, as a body, in accordance with Part 4 of the Charities (Accounts and Reports) Regulations 2008. My work has been undertaken so that I might state to the company's Trustees those matters I am required to state to them in an Independent examiner's report and for no other purpose. To the fullest extent permitted by law, I do not accept or assume responsibility to anyone other than the company and the company's Trustees as a body, for my work or for this report.

Signed:


Jeremy Tyrrell FCA

Dated: 28/04/2023

RPG Crouch Chapman LLP
Chartered Accountants
14-16 Dowgate Hill
London
EC4R 2SU

HOME-START WANDSWORTH LIMITED
(A company limited by guarantee)

STATEMENT OF FINANCIAL ACTIVITIES (INCORPORATING INCOME AND EXPENDITURE ACCOUNT)
FOR THE YEAR ENDED 30 JUNE 2022

	Note	Unrestricted funds 2022 £	Restricted funds 2022 £	Total funds 2022 £	Total funds 2021 £
Income from:					
Donations and legacies	5	221,191	35,957	257,148	155,016
Investments	4	1,236	-	1,236	2,475
Other income	6	465	-	465	2,000
Total income		<u>222,892</u>	<u>35,957</u>	<u>258,849</u>	<u>159,491</u>
Expenditure on:					
Raising funds	8	56,166	-	56,166	680
Charitable activities	9	206,178	35,957	242,135	238,251
Total expenditure		<u>262,344</u>	<u>35,957</u>	<u>298,301</u>	<u>238,931</u>
Net movement in funds		<u>(39,452)</u>	<u>-</u>	<u>(39,452)</u>	<u>(79,440)</u>
Reconciliation of funds:					
Total funds brought forward		202,665	-	202,665	282,105
Net movement in funds		(39,452)	-	(39,452)	(79,440)
Total funds carried forward		<u>163,213</u>	<u>-</u>	<u>163,213</u>	<u>202,665</u>

The Statement of Financial Activities includes all gains and losses recognised in the year.

The notes on pages 24 to 38 form part of these financial statements.

HOME-START WANDSWORTH LIMITED
(A company limited by guarantee)
REGISTERED NUMBER: 06278007

BALANCE SHEET
AS AT 30 JUNE 2022

	Note	2022 £	2021 £
Current assets			
Debtors	12	2,578	4,573
Cash at bank and in hand		168,561	223,561
		<u>171,139</u>	<u>228,134</u>
Creditors: amounts falling due within one year	13	(7,926)	(25,469)
Net current assets		<u>163,213</u>	<u>202,665</u>
Total assets less current liabilities		<u>163,213</u>	<u>202,665</u>
Total net assets		<u><u>163,213</u></u>	<u><u>202,665</u></u>
Charity funds			
Restricted funds	14	-	-
Unrestricted funds	14	<u>163,213</u>	<u>202,665</u>
Total funds		<u><u>163,213</u></u>	<u><u>202,665</u></u>


The company was entitled to exemption from audit under section 477 of the Companies Act 2006.

The members have not required the company to obtain an audit for the year in question in accordance with section 476 of Companies Act 2006.

The Trustees acknowledge their responsibilities for complying with the requirements of the Act with respect to accounting records and preparation of financial statements.

The financial statements have been prepared in accordance with the provisions applicable to entities subject to the small companies regime.

The financial statements were approved and authorised for issue by the Trustees and signed on their behalf by:



Mr James Fergusson
 Trustee
 Date: 27/04/2023

The notes on pages 24 to 38 form part of these financial statements.

HOME-START WANDSWORTH LIMITED

(A company limited by guarantee)

NOTES TO THE FINANCIAL STATEMENTS FOR THE YEAR ENDED 30 JUNE 2022

1. General information

Home-Start Wandsworth Limited is a private company limited by guarantee, company number 06278007. Its registered office and principal place of business is Battersea Methodist Church, 20-22 York Road, London, SW11 3QA. The principal activity of the company remained the support of disadvantaged families.

The members of the company are the trustees named on page 1. In the event of the company being wound up, the liability in respect of the guarantee is limited to £1 per member of the company.

2. Accounting policies

2.1 Basis of preparation of financial statements

The financial statements have been prepared in accordance with the Charities SORP (FRS 102) - Accounting and Reporting by Charities: Statement of Recommended Practice applicable to charities preparing their accounts in accordance with the Financial Reporting Standard applicable in the UK and Republic of Ireland (FRS 102) (effective 1 January 2019), the Financial Reporting Standard applicable in the UK and Republic of Ireland (FRS 102) and the Companies Act 2006.

Home-Start Wandsworth Limited meets the definition of a public benefit entity under FRS 102. Assets and liabilities are initially recognised at historical cost or transaction value unless otherwise stated in the relevant accounting policy.

The financial statements have been prepared in GBP and all amounts are rounded to the nearest £.

2.2 Cash Flow Exemption

The financial statements do not include a Statement of Cash Flows because the charitable company, as a small reporting entity, is exempt from the requirement to prepare such a statement under the provisions of FRS 102 (SORP 2015).

2.3 Income

All income is recognised once the company has entitlement to the income, it is probable that the income will be received and the amount of income receivable can be measured reliably.

The recognition of income from legacies is dependent on establishing entitlement, the probability of receipt and the ability to estimate with sufficient accuracy the amount receivable. Evidence of entitlement to a legacy exists when the company has sufficient evidence that a gift has been left to them (through knowledge of the existence of a valid will and the death of the benefactor) and the executor is satisfied that the property in question will not be required to satisfy claims in the estate. Receipt of a legacy must be recognised when it is probable that it will be received and the fair value of the amount receivable, which will generally be the expected cash amount to be distributed to the company, can be reliably measured.

HOME-START WANDSWORTH LIMITED
(A company limited by guarantee)

**NOTES TO THE FINANCIAL STATEMENTS
FOR THE YEAR ENDED 30 JUNE 2022**

2. Accounting policies (continued)

2.3 Income (continued)

Grants are included in the Statement of financial activities on a receivable basis. The balance of income received for specific purposes but not expended during the period is shown in the relevant funds on the Balance sheet. Where income is received in advance of entitlement of receipt, its recognition is deferred and included in creditors as deferred income. Where entitlement occurs before income is received, the income is accrued.

Income tax recoverable in relation to investment income is recognised at the time the investment income is receivable.

Other income is recognised in the period in which it is receivable and to the extent the goods have been provided or on completion of the service.

2.4 Expenditure

Expenditure is recognised once there is a legal or constructive obligation to transfer economic benefit to a third party, it is probable that a transfer of economic benefits will be required in settlement and the amount of the obligation can be measured reliably. Expenditure is classified by activity. The costs of each activity are made up of the total of direct costs and shared costs, including support costs involved in undertaking each activity. Direct costs attributable to a single activity are allocated directly to that activity. Shared costs which contribute to more than one activity and support costs which are not attributable to a single activity are apportioned between those activities on a basis consistent with the use of resources. Central staff costs are allocated on the basis of time spent, and depreciation charges allocated on the portion of the asset's use.

Expenditure on charitable activities is incurred on directly undertaking the activities which further the company's objectives, as well as any associated support costs.

All expenditure is inclusive of irrecoverable VAT.

2.5 Interest receivable

Interest on funds held on deposit is included when receivable and the amount can be measured reliably by the company; this is normally upon notification of the interest paid or payable by the institution with whom the funds are deposited.

2.6 Debtors

Trade and other debtors are recognised at the settlement amount after any trade discount offered. Prepayments are valued at the amount prepaid net of any trade discounts due.

2.7 Cash at bank and in hand

Cash at bank and in hand includes cash and short-term highly liquid investments with a short maturity of three months or less from the date of acquisition or opening of the deposit or similar account.

NOTES TO THE FINANCIAL STATEMENTS
FOR THE YEAR ENDED 30 JUNE 2022

2. Accounting policies (continued)

2.8 Liabilities and provisions

Liabilities are recognised when there is an obligation at the Balance sheet date as a result of a past event, it is probable that a transfer of economic benefit will be required in settlement, and the amount of the settlement can be estimated reliably.

Liabilities are recognised at the amount that the company anticipates it will pay to settle the debt or the amount it has received as advanced payments for the goods or services it must provide.

Provisions are measured at the best estimate of the amounts required to settle the obligation. Where the effect of the time value of money is material, the provision is based on the present value of those amounts, discounted at the pre-tax discount rate that reflects the risks specific to the liability. The unwinding of the discount is recognised in the Statement of financial activities as a finance cost.

2.9 Financial instruments

The company only has financial assets and financial liabilities of a kind that qualify as basic financial instruments. Basic financial instruments are initially recognised at transaction value and subsequently measured at their settlement value with the exception of bank loans which are subsequently measured at amortised cost using the effective interest method.

2.10 Fund accounting

General funds are unrestricted funds which are available for use at the discretion of the Trustees in furtherance of the general objectives of the company and which have not been designated for other purposes.

Restricted funds are funds which are to be used in accordance with specific restrictions imposed by donors or which have been raised by the company for particular purposes. The costs of raising and administering such funds are charged against the specific fund. The aim and use of each restricted fund is set out in the notes to the financial statements.

Investment income, gains and losses are allocated to the appropriate fund.

3. Critical accounting estimates and areas of judgment

Estimates and judgments are continually evaluated and are based on historical experience and other factors, including expectations of future events that are believed to be reasonable under the circumstances.

Critical accounting estimates and assumptions:

The company makes estimates and assumptions concerning the future. The resulting accounting estimates and assumptions will, by definition, seldom equal the related actual results. The estimates and assumptions that have a significant risk of causing a material adjustment to the carrying amounts of assets and liabilities within the next financial year are discussed below.

HOME-START WANDSWORTH LIMITED
(A company limited by guarantee)

NOTES TO THE FINANCIAL STATEMENTS
FOR THE YEAR ENDED 30 JUNE 2022

4. Investment income

	Un- restricted funds 2022 £	Total funds 2022 £
Interest received	1,236	1,236

	Un- restricted funds 2021 £	Total funds 2021 £
Interest received	2,475	2,475

HOME-START WANDSWORTH LIMITED**(A company limited by guarantee)****NOTES TO THE FINANCIAL STATEMENTS
FOR THE YEAR ENDED 30 JUNE 2022****5. Income from grants, donations and events**

	Unrestricted Funds 2022	Restricted Funds 2022	Total Funds 2022
	£	£	£
The Henry Smith Charity	-	17,500	17,500
Big Lottery Fund	-	-	-
Wandsworth Grant Fund	-	-	-
Wimbledon Foundation	6,847	10,000	16,847
Give It Away	-	-	-
Other Grants	-	-	-
Church of Ascension	14,979	-	14,979
G C Gibson Trust	3,000	-	3,000
May Ball	146,793	-	146,793
Annual Quiz	1,090	-	1,090
Carol Concert	5,486	-	5,486
Other Events	4,155	-	4,155
Donations/ Uncommitted Funds	23,581	-	23,581
The Miles Trust	-	1,500	1,500
Garfield Weston	15,000	-	15,000
The Childhood Trust	-	1,000	1,000
Other local churches	-	-	-
Marathon	260	-	260
John Lewis Plc	-	-	-
DCMS Pears Grant	-	5,957	5,957
Furlough	-	-	-
	<u>221,191</u>	<u>35,957</u>	<u>257,148</u>

HOME-START WANDSWORTH LIMITED
(A company limited by guarantee)

NOTES TO THE FINANCIAL STATEMENTS
FOR THE YEAR ENDED 30 JUNE 2022

	Unrestricted Funds 2021 £	Restricted Funds 2021 £	Total Funds 2021 £
The Henry Smith Charity	-	-	-
Big Lottery Fund	-	69,129	69,129
Wandsworth Grant Fund	-	2,500	2,500
Wimbledon Foundation	-	5,000	5,000
Give It Away	-	6,350	6,350
Other Grants	-	8,842	8,842
Church of Ascension	8,539	-	8,539
G C Gibson Trust	-	-	-
May Ball	(18,750)	-	(18,750)
Annual Quiz	4,466	-	4,466
Carol Concert	38	-	38
Other Events	5,520	-	5,520
Donations/ Uncommitted Funds	32,922	-	32,922
The Miles Trust	-	-	-
Garfield Weston	-	-	-
The Childhood Trust	-	-	-
Other local churches	1,750	-	1,750
Marathon	1,960	-	1,960
John Lewis Plc	4,406	-	4,406
DCMS Pears Grant	-	20,000	20,000
Furlough	-	2,344	2,344
	<hr/> 40,851	<hr/> 114,165	<hr/> 155,016 <hr/> <hr/>

HOME-START WANDSWORTH LIMITED
(A company limited by guarantee)

NOTES TO THE FINANCIAL STATEMENTS
FOR THE YEAR ENDED 30 JUNE 2022

6. Other incoming resources

	Un- restricted funds 2022 £	Total funds 2022 £
Other income	465	465

	Un- restricted funds 2021 £	Total funds 2021 £
Other income	2,000	2,000

HOME-START WANDSWORTH LIMITED
(A company limited by guarantee)

NOTES TO THE FINANCIAL STATEMENTS
FOR THE YEAR ENDED 30 JUNE 2022

7. Net Income

	Un- restricted funds 2022 £	Restricted funds 2022 £	Total funds 2022 £
Income from Investments	1,236	-	1,236
Income from Grants and Donations	221,191	35,957	257,148
Income from Advertising, Sponsorships or similar sources	465	-	465
Expenditure directly related to raising funds	(56,166)	-	(56,166)
	<u>166,726</u>	<u>35,957</u>	<u>202,683</u>

	Un- restricted funds 2021 £	Restricted funds 2021 £	Total funds 2021 £
Income from Investments	2,475	-	2,475
Income from Grants and Donations	40,851	114,165	155,016
Income from Advertising, Sponsorships or similar sources	2,000	-	2,000
Expenditure directly related to raising funds	(680)	-	(680)
	<u>44,646</u>	<u>114,165</u>	<u>158,811</u>

HOME-START WANDSWORTH LIMITED
(A company limited by guarantee)

NOTES TO THE FINANCIAL STATEMENTS
FOR THE YEAR ENDED 30 JUNE 2022

8. Expenditure on raising funds

Direct costs of events

	Un- restricted funds 2022 £	Total funds 2022 £
Fundraising expenditure	56,166	56,166

	Un- restricted funds 2021 £	Total funds 2021 £
Fundraising expenditure	680	680

HOME-START WANDSWORTH LIMITED
(A company limited by guarantee)

NOTES TO THE FINANCIAL STATEMENTS
FOR THE YEAR ENDED 30 JUNE 2022

9. Analysis of expenditure on charitable activities

	Un- restricted funds 2022 £	Restricted funds 2022 £	Total 2022 £
Staff costs	164,155	34,957	199,112
Hubs	2,797	1,000	3,797
Occupancy	13,505	-	13,505
Professional	10,048	-	10,048
IT	7,761	-	7,761
General expenses	7,068	-	7,068
Volunteer and family support	844	-	844
	<u>206,178</u>	<u>35,957</u>	<u>242,135</u>

	Un- restricted funds 2021 £	Restricted funds 2021 £	Total 2021 £
Staff costs	53,405	134,376	187,781
Hubs	-	381	381
Covid 19 family support costs	-	6,890	6,890
Occupancy	3,814	9,429	13,243
Professional	4,983	12,503	17,486
Advice and evaluation	-	2,280	2,280
IT	1,925	4,758	6,683
General expenses	1,009	2,498	3,507
	<u>65,136</u>	<u>173,115</u>	<u>238,251</u>

HOME-START WANDSWORTH LIMITED
(A company limited by guarantee)

NOTES TO THE FINANCIAL STATEMENTS
FOR THE YEAR ENDED 30 JUNE 2022

10. Staff costs

	2022 £	2021 £
Wages and salaries	180,263	169,076
Social security costs	8,064	8,740
Contribution to defined contribution pension schemes	10,785	9,965
	<u>199,112</u>	<u>187,781</u>

The average number of persons employed by the company during the year was as follows:

	2022 No.	2021 No.
Directors	10	10
Other employees	9	9
	<u>19</u>	<u>19</u>

No employee received remuneration amounting to more than £60,000 in either year.

Apart from the trustees, key management comprised the charity directors. During the year key management remuneration amounted to £34,969 (2021: £41,552).

11. Trustees' remuneration and expenses

During the year, no Trustees received any remuneration or other benefits (2021 - £NIL).

During the year ended 30 June 2022, expenses were reimbursed or paid directly to 2 Trustees (2021 - to 3 Trustees) broken down as follows:

	2022 £	2021 £
Mrs K Swinburn	35	-
Mrs S R Wemyss	-	733
Mr J Leung	150	-
Mrs L Hayllar	300	13
Mrs H J M Stilgoe	120	-
	<u>605</u>	<u>746</u>

HOME-START WANDSWORTH LIMITED
(A company limited by guarantee)

NOTES TO THE FINANCIAL STATEMENTS
FOR THE YEAR ENDED 30 JUNE 2022

12. Debtors

	2022 £	2021 £
Trade debtors	355	673
Prepayments and accrued income	2,223	3,900
	<u>2,578</u>	<u>4,573</u>

13. Creditors: Amounts falling due within one year

	2022 £	2021 £
Trade creditors	3,871	4,710
Other taxation and social security	-	1,572
Other creditors	41	-
Accruals and deferred income	4,014	19,187
	<u>7,926</u>	<u>25,469</u>

HOME-START WANDSWORTH LIMITED**(A company limited by guarantee)****NOTES TO THE FINANCIAL STATEMENTS
FOR THE YEAR ENDED 30 JUNE 2022****14. Statement of funds**

Statement of funds - current year

	Balance at 1 July 2021 £	Income £	Expenditure £	Balance at 30 June 2022 £
<u>Unrestricted funds</u>				
Unrestricted Fund	202,665	222,892	(262,344)	163,213
<u>Restricted funds</u>				
Henry Smith Charity	-	17,500	(17,500)	-
Wimbledon Foundation	-	10,000	(10,000)	-
DCMS Pears Grant	-	5,957	(5,957)	-
The Miles Trust	-	1,500	(1,500)	-
The Childhood Trust	-	1,000	(1,000)	-
	-	35,957	(35,957)	-
<u>Total of funds</u>	202,665	258,849	(298,301)	163,213

Henry Smith Charity

This grant represents the project "Improving Lives", which supports vulnerable families with at least one child under five years old in the London Borough of Wandsworth.

Wimbledon Foundation

The grant was applied for to fund our Bump to Baby work – this is a specific group activity managed by one of our coordinators supporting mother's expecting babies, and who are likely to need our support after birth.

Miles Trust

We applied to the Miles Trust for a small grant for staff and volunteer training - specifically the costs of providing our Volunteer Preparation Course which all new and returning volunteers must attend before being matched to a beneficiary family.

DCMS Pears Grant

This was a grant to support our work with volunteers - specifically to employ a team member to work with volunteer engagement and communications. This was started during the lockdown with remote working but is likely to continue.

The Childhood Trust

A small grant application to fund our hub activity - Hubs are group meetings with activities which our families attend, usually towards the end of the one to one volunteer support relationship to help with problems of isolation and socialization and to help build peer to peer relationships.

HOME-START WANDSWORTH LIMITED
(A company limited by guarantee)

NOTES TO THE FINANCIAL STATEMENTS
FOR THE YEAR ENDED 30 JUNE 2022

14. Statement of funds (continued)

Statement of funds - prior year

	Balance at 1 July 2020 £	Income £	Expenditure £	Balance at 30 June 2021 £
<u>Unrestricted funds</u>				
Unrestricted Fund	223,156	45,326	(65,817)	202,665
<u>Restricted Funds</u>				
Big Lottery Fund	16,425	69,129	(85,554)	-
George Greaves Legacy	15,000	-	(15,000)	-
Housing for Women	2,500	-	(2,500)	-
Wimbledon Foundation	-	5,000	(5,000)	-
Give It Away	18,333	6,350	(24,683)	-
Other Grants	6,691	8,842	(15,533)	-
DCMS Pears Grant	-	20,000	(20,000)	-
Wandsworth CCG	-	2,500	(2,500)	-
Furlough Grant	-	2,344	(2,344)	-
	58,949	114,165	(173,114)	-
<u>Total of funds</u>	282,105	159,491	(238,931)	202,665

HOME-START WANDSWORTH LIMITED
(A company limited by guarantee)

NOTES TO THE FINANCIAL STATEMENTS
FOR THE YEAR ENDED 30 JUNE 2022

15. Analysis of net assets between funds

Analysis of net assets between funds - current year

	Un- restricted funds 2022 £	Total funds 2022 £
Current assets	171,139	171,139
Creditors due within one year	(7,926)	(7,926)
<u>Total</u>	<u>163,213</u>	<u>163,213</u>

Analysis of net assets between funds - prior year

	Un- restricted funds 2021 £	Total funds 2021 £
Current assets	228,134	228,134
Creditors due within one year	(25,469)	(25,469)
<u>Total</u>	<u>202,665</u>	<u>202,665</u>

16. Related party transactions

During the year, total donations of £605 (2021: £408) were received from 4 (2021: 3) Trustees.