



Annual Accounts

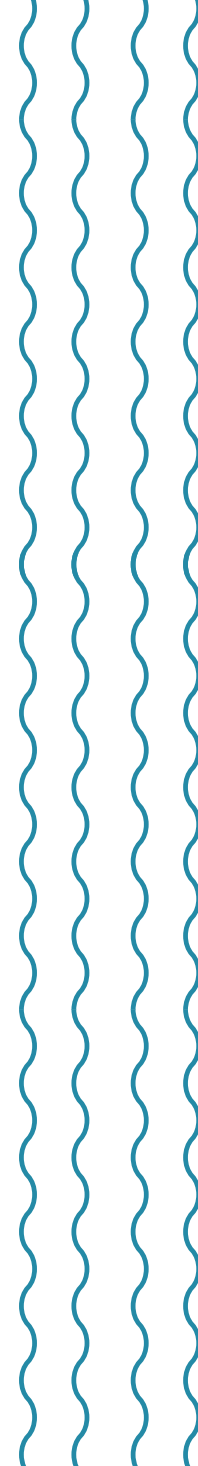
Year Ending 31 March 2024

TRUSTEES:
Shaindel Stern
Gitel Grinvald
Rachel Herman

REGISTERED OFFICE:
52 East Bank London N16 5PZ

CHARITY NUMBER: 1123747

INDEPENDENT EXAMINER:
VENITT AND GREAVES
Chartered Accountants
115 Craven Park Road
South Tottenham
London N15 6BL



MESSAGE OF THE CHAIR



As we reflect on this year, I am filled with gratitude and hope for what we've accomplished and what's yet to come through Twilight Kindness. Our mission has always been to bring light to the twilight stage of life for our elderly, providing comfort, dignity, and relief, not just for them but for the carers who walk alongside them.

As a carer myself, I know how isolating it can feel when decisions that affect our loved ones and our communities are made without our voices. Too often, older people and their carers are left out of the most critical conversations about their care and well-being. This year, Twilight Kindness has worked diligently to strengthen our governance, onboard new trustees, and move towards a co-led model, ensuring that those we serve are at the heart of everything we do.

In addition, we were able to run a three-part research project on the barriers to social connection for the seniors we serve, using a balance of mediums. We undertook this effort so we could understand better, respond more effectively, and share our findings with other services, aiming to eventually influence policy change.

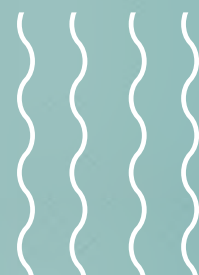
A key highlight has been our intergenerational projects and partnerships with youth organizations and schools. These initiatives have created meaningful connections between older and younger generations, fostering mutual benefit and understanding. By working together, we are not only bridging the gap between age groups but also enriching our communities as a whole.

This year, we also piloted a social action volunteering program for seniors, which has already shown impressive early results. Through our social action projects, we've seen older and younger people build meaningful connections, breaking down barriers and creating communities where everyone is heard, valued, and supported.

We are incredibly grateful to the National Lottery Community Fund, The Garfield Weston Foundation, among others, for funding our Loaves of Love program, and to The Clothworkers Foundation for funding our Minibus, which helps make our programs more accessible.

This isn't charity; it's humanity. Every one of us will grow older, and when we listen to and uplift the voices of our elders, we all benefit. Next year, we plan to go even further in our efforts to help older people and their communities thrive. Together, we will create a future where every person, regardless of age or background, is treated with the respect and care they deserve.

Rachel Herman 18 Sep. 24





Mission

In a world that thrives on constant connectivity, it is paradoxical that loneliness continues to permeate the lives of many individuals.

MISSION

Twilight Kindness makes aging a stage to look forward to by nurturing friendships bridging generations, and improving both food and fuel outcomes for seniors and their carers.

This year, as part of our focus on understanding service user needs and barriers, we also redesigned and implemented a new user satisfaction survey tailored to the specific needs of our programs. The revised survey collected detailed data on outcomes across each program area and overall program experience. We received 129 survey responses, marking the highest number ever recorded.

Survey Results Highlights:

·98% of clients and caregivers reported feeling more supported in their community through Twilight Kindness services.

·96% would recommend Twilight Kindness to family and friends.

·100% felt that Twilight Kindness volunteers treat them with respect.

Mission

We recently surveyed individuals about the challenges they face when trying to access food and fuel support, including food banks. Here's what we found:



Physical Limitations:

Several people mentioned, "I can't carry bags home from the food bank," and "The food I get delivered is too hard for me to chew and swallow." One respondent also noted, "My husband's cholesterol means we can't use many of the options available."

Technological Challenges:

There's a significant struggle with technology, with comments like, "I'm not good with computers. It does its own thing and I don't know why I'm paying such hefty bills that take up half my pension for gas and heating."

Mobility Issues:

Mobility is also a concern, with one person sharing, "My mobility isn't what it used to be, making it hard to attend events or get out to access services."

Lack of Awareness:

Many are aware of available services but feel lost when it comes to accessing them online. "I know there are services by the council and charities, but I'm not sure how to attend online events."

We know what we are doing works because we continuously measure and adapt our services based on feedback and outcomes.

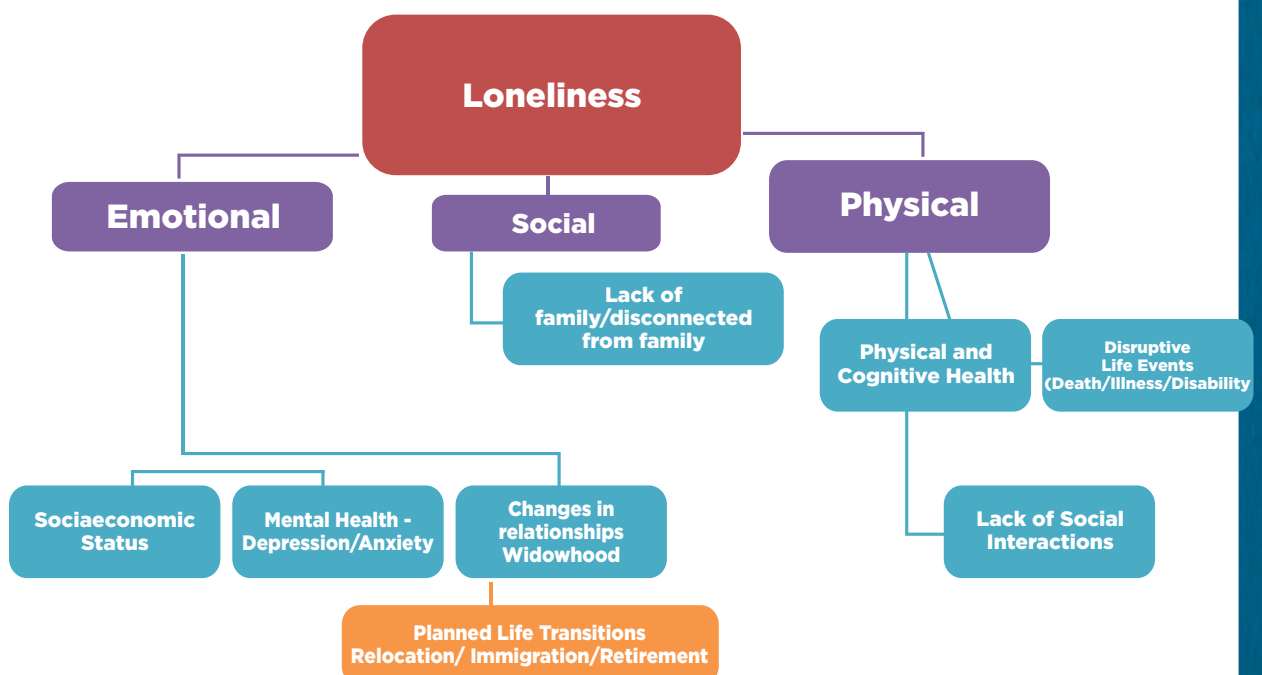
Mission

We utilize the Social Well-Being Scale (SWBS) throughout our projects to assess the overall emotional, social, and psychological well-being of our users.

This tool provides a structured way to track changes in well-being over time, helping us identify where our services are making the greatest impact. In addition to SWBS, we follow case studies; conduct user satisfaction surveys tailored with different formats—such as large print, audio, and translated versions—to ensure accessibility for all.

We also host focus group meetings where users share their experiences and express ongoing needs in greater detail. These combined methods allow us to not only understand the current impact we're having but also to continuously tweak and shape our services so that they respond even better to the needs of the people we serve.

In the diagram below, we share the results of user survey 'Focused on Loneliness and Barriers to Social Inclusion for Seniors'.



PROJECTS



LOAVES OF LOVE

Loaves of Love is a weekly gathering that offers seniors and carers much more than just a meal; it's for friendship, fun, and community. Each session features a thoughtfully crafted menu designed to meet diverse dietary needs, including banana bread, fruit yogurt, vegetable omelettes, and hearty soup.

Beyond the weekly events, we host monthly intergenerational sessions that enrich the experience further. These gatherings bring together individuals of all ages, strengthening community bonds and fostering mutual understanding.

Loaves of Love is dedicated to providing both companionship and support. Each event is an opportunity for connection, evoking warm memories and feelings of comfort. Our meals are made with healthy fats and minimal added salt, tailored to meet both medical and nutritional needs. Additionally, we offer take-home and delivery goody bags, complete with handwritten notes to add a personal touch.

CAREGIVERS' CAFÉ

Caregivers' Café connects unpaid carers supporting elderly and frail family members or neighbors. Many carers have reported feeling they are "functioning on overdraft" due to the cost of living crisis. Our meetings offer a vital space for these carers to find support and community.

Over the past year, we held 13 Caregivers' Café meetings and delivered 64 sessions, emphasizing more than just social activities. Our goal is to foster a supported and connected community for seniors and their carers.

In addition to our monthly meetings, we provide Oyster card credits for public transportation and distribute goody bags filled with food and personal care items. These efforts aim to address daily challenges and reinforce a sense of connection and care within our community.

SOCIAL ACTION PROJECTS

This year, we also piloted a social action volunteering program for seniors, which has already shown impressive early results. Through our social action projects, we've seen older and younger people build meaningful connections, breaking down barriers and creating communities where everyone is heard, valued, and supported. So far, we have facilitated over 110 hours of volunteering and social action by seniors, further demonstrating their vital role in strengthening our communities. We still have many ambitious plans for the next year to expand the social action opportunities for elderly.

Some
steps
include:

RAISE AWARENESS ON ELDERLY VOLUNTEERING

RAISE AWARENESS ON VOLUNTEERING AS A FAMILY

CONVEY STORIES OF VOLUNTEERING

PROJECTS



	Face2Face Encounters	Interaction Opportunities	consistency	meaningful	Elderly Friendly
Tutor/mentor young people	/	/	/	/	/
Landscaping/gardening	/		/	/	/
Fundraising	/		/	/	
Admin-fundraising e.g sorting donations		/	/		
Preparing/serving food	/	/	/	/	

ON YOUR OWN; BUT NOT ALONE

On your Own; But Not Alone Strives to offset the loneliness; isolation and financial challenges and build community among widowed women.

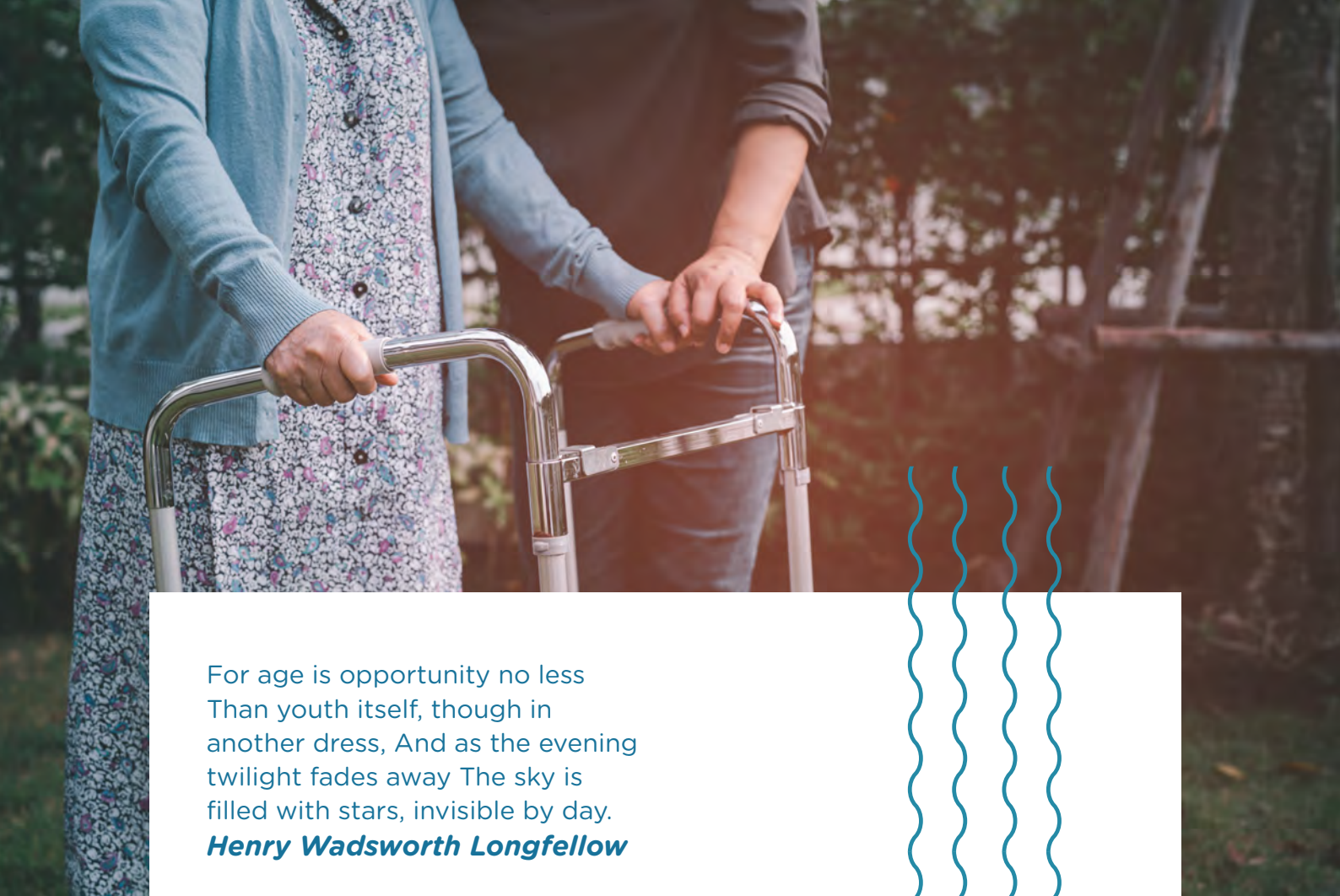
This initiative was established by a group of women who have themselves experienced the loss of a spouse. Their first-hand understanding of the unique challenges faced by widowed women adds depth and empathy to this project. Our program offers monthly social brunches, events, and food distributions specifically aimed at supporting financially vulnerable widows.

" Our project aims to foster ongoing connectivity and establish meaningful relationships among a diverse group of women who may have previously never crossed paths. This is achieved by leveraging the common experience of loss, which serves as a unifying factor. Peer support plays a crucial role in mitigating the profound loneliness and depression experienced by widows who lack support. Managing mental health challenges while being isolated is undoubtedly a serious matter. The concept of "On your own; but not alone" ensures that all widows are acknowledged, integrated into a community, and surrounded by individuals who can empathize and comprehend their experiences. Moreover, this approach facilitates access to additional resources such as food packages and guidance for community welfare services.

Future Goals:

SUSTAIN CURRENT DELIVERY, SCALE SENIOR SOCIAL ACTION PROGRAM REACHING 400 HRS OF VOLUNTEERING/SOCIAL ACTIONS

ENHANCE ENGAGEMENT: IMPROVE HOW WE ENGAGE AND COMMUNICATE WITH CLIENTS, CAREGIVERS, AND OTHER STAKEHOLDERS ABOUT OUR PROGRAMS AND SERVICES.



For age is opportunity no less
Than youth itself, though in
another dress, And as the evening
twilight fades away The sky is
filled with stars, invisible by day.

Henry Wadsworth Longfellow

CASE STUDY

My landlord gave me notice to vacate the home I had lived in for 18 years, as my contract was up and he needed to sell. Around the same time, Kitty, a stray cat who had been visiting me for years, passed away, and my close friend, suffering from Alzheimer's, moved into a care home. With my daughter living overseas near her husband's family, I suddenly found myself feeling lost, alone, and overwhelmed.

I started attending Loaves of Love because my friend encouraged me, even though I had always been self-sufficient. After my friend stopped coming, I kept attending, but I was still feeling very despondent and found it difficult to get out of bed every morning. One of the wonderful volunteers noticed this and reached out, which meant the world to me. They connected me to the right services and support I didn't even realize I needed.

Although I still have to move out, and my daughter can't visit right now, I feel more at ease knowing I have people to turn to.

Bella W.

REGISTERED CHARITY NUMBER: 1123747

**REPORT OF THE TRUSTEES AND
UNAUDITED FINANCIAL STATEMENTS
FOR THE YEAR ENDED 31 MARCH 2024
FOR
TWILIGHT KINDNESS**

Venitt and Greaves
Chartered Accountants
115 Craven Park Road
South Tottenham
London
N15 6BL

Trustees Report

TWILIGHT KINDNESS

REPORT OF THE TRUSTEES FOR THE YEAR ENDED 31 MARCH 2024

The trustees present their report with the financial statements of the charity for the year ended 31 March 2024. The trustees have adopted the provisions of Accounting and Reporting by Charities: Statement of Recommended Practice applicable to charities preparing their accounts in accordance with the Financial Reporting Standard applicable in the UK and Republic of Ireland (FRS 102) (effective 1 January 2019).

OBJECTIVES AND ACTIVITIES

Objectives and aims

The charity's objects are the relief of poverty, sickness and infirmity amongst members of the Jewish faith and for such other purposes as are recognised by English Law as charitable and in furtherance of the objects below:

- a) Encourage Intergenerational connection.
- b) Tackle food and fuel poverty among seniors.
- c) Enrich quality of life for seniors and those with progressive illness such as Parkinson's and Dementia.
- d) Give mini breaks to carers and support them to maintain their own wellbeing.

Significant activities

The financial results of the Company's activities for the period ended 31 March 2024 are fully reflected in the attached financial statements together with the notes thereon.

The trustees are satisfied with the results and activities of the company for the year and do not anticipate any significant changes in the forthcoming year.

Public benefit

The trustees have referred to the guidance contained in the Charity Commission's general guidance on public benefit when reviewing the aims and objectives and in planning the charity's future activities. The aims of the charity for the public benefit are detailed in the Objectives and Activities section of the report.

ACHIEVEMENT AND PERFORMANCE

Charitable activities

During the year under review the charity received generous donations amounting to £420,983 (2023: £458,453) and spent £522,430 (2023: £530,409) on charitable activities.

FINANCIAL REVIEW

Reserves policy

It is the policy of the charity to maintain unrestricted funds, which are the free reserves of the charity, at a level which the trustees think appropriate after considering the future commitments of the charity and the likely administrative costs of the charity for the next year.

FUTURE PLANS

The charity intends to carry on its policy of making grants in pursuant of its objects, and continue its activities, as outlined above, for the foreseeable future.

STRUCTURE, GOVERNANCE AND MANAGEMENT

Governing document

The charity is controlled by its governing document, a trust deed and constitutes an unincorporated charity.

Recruitment and appointment of new trustees

It is not currently the intention of the trustees of the charity to appoint new trustees. Should this situation change in the future, the trustees will apply suitable recruitment and training procedures.

Risk management

The trustees have a duty to identify and review the risks to which the charity is exposed and to ensure appropriate controls are in place to provide reasonable assurance against fraud and error.

Independent Examiners Report.

INDEPENDENT EXAMINER'S REPORT TO THE TRUSTEES OF TWILIGHT KINDNESS

Independent examiner's report to the trustees of Twilight Kindness

I report to the charity trustees on my examination of the accounts of Twilight Kindness (the Trust) for the year ended 31 March 2024.

Responsibilities and basis of report

As the charity trustees of the Trust you are responsible for the preparation of the accounts in accordance with the requirements of the Charities Act 2011 ('the Act').

I report in respect of my examination of the Trust's accounts carried out under Section 145 of the Act and in carrying out my examination I have followed all applicable Directions given by the Charity Commission under Section 145(5)(b) of the Act.

Independent examiner's statement

Since your charity's gross income exceeded £250,000 your examiner must be a member of a listed body. I can confirm that I am qualified to undertake the examination because I am a member of the Institute of Chartered Accountants in England and Wales, which is one of the listed bodies.

I have completed my examination. I confirm that no material matters have come to my attention in connection with the examination giving me cause to believe that in any material respect:

1. accounting records were not kept in respect of the Trust as required by Section 130 of the Act; or
2. the accounts do not accord with those records; or
3. the accounts do not comply with the applicable requirements concerning the form and content of accounts set out in the Charities (Accounts and Reports) Regulations 2008 other than any requirement that the accounts give a true and fair view which is not a matter considered as part of an independent examination.

I have no concerns and have come across no other matters in connection with the examination to which attention should be drawn in this report in order to enable a proper understanding of the accounts to be reached.

M A Venitt, A.C.A

Venitt and Greaves
Chartered Accountants
115 Craven Park Road
South Tottenham
London
N15 6BL

30 August 2024

TWILIGHT KINDNESS

STATEMENT OF FINANCIAL ACTIVITIES FOR THE YEAR ENDED 31 MARCH 2024

	Notes	Unrestricted fund £	Restricted fund £	31.3.24 Total funds £	31.3.23 Total funds £
INCOME AND ENDOWMENTS FROM					
Donations and legacies	2	420,983	-	420,983	458,453
Charitable activities	4				
Charitable activities		-	99,420	99,420	94,800
Investment income	3	9	-	9	-
Total		<u>420,992</u>	<u>99,420</u>	<u>520,412</u>	<u>553,253</u>
EXPENDITURE ON					
Charitable activities	5				
Charitable activities		423,010	99,420	522,430	530,409
Other		1,966	-	1,966	464
Total		<u>424,976</u>	<u>99,420</u>	<u>524,396</u>	<u>530,873</u>
NET INCOME/(EXPENDITURE)		(3,984)	-	(3,984)	22,380
RECONCILIATION OF FUNDS					
Total funds brought forward		30,153	-	30,153	7,773
TOTAL FUNDS CARRIED FORWARD		<u>26,169</u>	<u>-</u>	<u>26,169</u>	<u>30,153</u>

TWILIGHT KINDNESS

BALANCE SHEET 31 MARCH 2024

	Notes	Unrestricted fund £	Restricted fund £	31.3.24 Total funds £	31.3.23 Total funds £
CURRENT ASSETS					
Cash at bank		27,129	-	27,129	30,153
CREDITORS					
Amounts falling due within one year	10	(960)	-	(960)	-
NET CURRENT ASSETS		<u>26,169</u>	<u>-</u>	<u>26,169</u>	<u>30,153</u>
TOTAL ASSETS LESS CURRENT LIABILITIES		<u>26,169</u>	<u>-</u>	<u>26,169</u>	<u>30,153</u>
NET ASSETS		<u>26,169</u>	<u>-</u>	<u>26,169</u>	<u>30,153</u>
FUNDS	11				
Unrestricted funds				<u>26,169</u>	<u>30,153</u>
TOTAL FUNDS				<u>26,169</u>	<u>30,153</u>

The financial statements were approved by the Board of Trustees and authorised for issue on 30 August 2024 and were signed on its behalf by:

G Grinvald - Trustee

R Herman - Trustee

S Stern - Trustee

TWILIGHT KINDNESS
CASH FLOW STATEMENT
FOR THE YEAR ENDED 31 MARCH 2024

	Notes	31.3.24 £	31.3.23 £
Cash flows from operating activities			
Cash generated from operations	1	(3,033)	22,380
Net cash (used in)/provided by operating activities		<u>(3,033)</u>	<u>22,380</u>
Cash flows from investing activities			
Interest received		9	-
Net cash provided by investing activities		<u>9</u>	<u>-</u>
Change in cash and cash equivalents in the reporting period		<u>(3,024)</u>	<u>22,380</u>
Cash and cash equivalents at the beginning of the reporting period		<u>30,153</u>	<u>7,773</u>
Cash and cash equivalents at the end of the reporting period		<u><u>27,129</u></u>	<u><u>30,153</u></u>

TWILIGHT KINDNESS

**NOTES TO THE CASH FLOW STATEMENT
FOR THE YEAR ENDED 31 MARCH 2024**

1. RECONCILIATION OF NET (EXPENDITURE)/INCOME TO NET CASH FLOW FROM OPERATING ACTIVITIES

	31.3.24 £	31.3.23 £
Net (expenditure)/income for the reporting period (as per the Statement of Financial Activities)	(3,984)	22,380
Adjustments for:		
Interest received	(9)	-
Increase in creditors	960	-
Net cash (used in)/provided by operations	<u><u>(3,033)</u></u>	<u><u>22,380</u></u>

2. ANALYSIS OF CHANGES IN NET FUNDS

	At 1.4.23 £	Cash flow £	At 31.3.24 £
Net cash			
Cash at bank	30,153	(3,024)	27,129
	<u>30,153</u>	<u>(3,024)</u>	<u>27,129</u>
Total	<u><u>30,153</u></u>	<u><u>(3,024)</u></u>	<u><u>27,129</u></u>

TWILIGHT KINDNESS

NOTES TO THE FINANCIAL STATEMENTS FOR THE YEAR ENDED 31 MARCH 2024

1. ACCOUNTING POLICIES

Basis of preparing the financial statements

The financial statements of the charity, which is a public benefit entity under FRS 102, have been prepared in accordance with the Charities SORP (FRS 102) 'Accounting and Reporting by Charities: Statement of Recommended Practice applicable to charities preparing their accounts in accordance with the Financial Reporting Standard applicable in the UK and Republic of Ireland (FRS 102) (effective 1 January 2019)', Financial Reporting Standard 102 'The Financial Reporting Standard applicable in the UK and Republic of Ireland' and the Charities Act 2011. The financial statements have been prepared under the historical cost convention.

Income

All income is recognised in the Statement of Financial Activities once the charity has entitlement to the funds, it is probable that the income will be received and the amount can be measured reliably.

Expenditure

Liabilities are recognised as expenditure as soon as there is a legal or constructive obligation committing the charity to that expenditure, it is probable that a transfer of economic benefits will be required in settlement and the amount of the obligation can be measured reliably. Expenditure is accounted for on an accruals basis and has been classified under headings that aggregate all cost related to the category. Where costs cannot be directly attributed to particular headings they have been allocated to activities on a basis consistent with the use of resources.

Grants offered subject to conditions which have not been met at the year end date are noted as a commitment but not accrued as expenditure.

Taxation

The charity is exempt from tax on its charitable activities.

Fund accounting

Unrestricted funds can be used in accordance with the charitable objectives at the discretion of the trustees.

Restricted funds can only be used for particular restricted purposes within the objects of the charity. Restrictions arise when specified by the donor or when funds are raised for particular restricted purposes.

Further explanation of the nature and purpose of each fund is included in the notes to the financial statements.

2. DONATIONS AND LEGACIES

	31.3.24	31.3.23
	£	£
Donations	420,983	458,453

3. INVESTMENT INCOME

	31.3.24	31.3.23
	£	£
Deposit account interest	9	-

TWILIGHT KINDNESS

NOTES TO THE FINANCIAL STATEMENTS - continued FOR THE YEAR ENDED 31 MARCH 2024

4. INCOME FROM CHARITABLE ACTIVITIES

		31.3.24	31.3.23
	Activity	£	£
Grants	Charitable activities	99,420	94,800
		<u>99,420</u>	<u>94,800</u>

Grants received, included in the above, are as follows:

	31.3.24	31.3.23
	£	£
National Lottery Community Fund	36,000	-
Garfield Weston Foundation	10,000	10,000
Postcode Society Trust	22,170	-
Other grants less than £10,000	31,250	64,300
SF Foundation	-	10,500
Yeitev Lev	-	10,000
	<u>99,420</u>	<u>94,800</u>

5. CHARITABLE ACTIVITIES COSTS

	Direct Costs £	Grant funding of activities (see note 6) £	Totals £
Charitable activities	477,980	44,450	522,430
	<u>477,980</u>	<u>44,450</u>	<u>522,430</u>

6. GRANTS PAYABLE

	31.3.24	31.3.23
	£	£
Charitable activities	44,450	46,320
	<u>44,450</u>	<u>46,320</u>

7. SUPPORT COSTS

	Finance £	Governance costs £	Totals £
Other resources expended	137	1,829	1,966
	<u>137</u>	<u>1,829</u>	<u>1,966</u>

8. TRUSTEES' REMUNERATION AND BENEFITS

There were no trustees' remuneration or other benefits for the year ended 31 March 2024 nor for the year ended 31 March 2023.

Trustees' expenses

There were no trustees' expenses paid for the year ended 31 March 2024 nor for the year ended 31 March 2023.

TWILIGHT KINDNESS

NOTES TO THE FINANCIAL STATEMENTS - continued FOR THE YEAR ENDED 31 MARCH 2024

9. COMPARATIVES FOR THE STATEMENT OF FINANCIAL ACTIVITIES

	Unrestricted fund £	Restricted fund £	Total funds £
INCOME AND ENDOWMENTS FROM			
Donations and legacies	60,812	397,641	458,453
Charitable activities			
Charitable activities	-	94,800	94,800
Total	<u>60,812</u>	<u>492,441</u>	<u>553,253</u>
EXPENDITURE ON			
Charitable activities			
Charitable activities	37,968	492,441	530,409
Other	464	-	464
Total	<u>38,432</u>	<u>492,441</u>	<u>530,873</u>
NET INCOME	22,380	-	22,380
RECONCILIATION OF FUNDS			
Total funds brought forward	7,773	-	7,773
TOTAL FUNDS CARRIED FORWARD	<u>30,153</u>	<u>-</u>	<u>30,153</u>

10. CREDITORS: AMOUNTS FALLING DUE WITHIN ONE YEAR

	31.3.24 £	31.3.23 £
Other creditors	960	-

11. MOVEMENT IN FUNDS

	At 1.4.23 £	Net movement in funds £	At 31.3.24 £
Unrestricted funds			
General fund	30,153	(3,984)	26,169
TOTAL FUNDS	<u>30,153</u>	<u>(3,984)</u>	<u>26,169</u>

TWILIGHT KINDNESS

**NOTES TO THE FINANCIAL STATEMENTS - continued
FOR THE YEAR ENDED 31 MARCH 2024**

11. MOVEMENT IN FUNDS - continued

Net movement in funds, included in the above are as follows:

	Incoming resources £	Resources expended £	Movement in funds £
Unrestricted funds			
General fund	420,992	(424,976)	(3,984)
Restricted funds			
Restricted funds	99,420	(99,420)	-
TOTAL FUNDS	<u>520,412</u>	<u>(524,396)</u>	<u>(3,984)</u>

Comparatives for movement in funds

	At 1.4.22 £	Net movement in funds £	At 31.3.23 £
Unrestricted funds			
General fund	7,773	22,380	30,153
TOTAL FUNDS	<u>7,773</u>	<u>22,380</u>	<u>30,153</u>

Comparative net movement in funds, included in the above are as follows:

	Incoming resources £	Resources expended £	Movement in funds £
Unrestricted funds			
General fund	60,812	(38,432)	22,380
Restricted funds			
Restricted funds	492,441	(492,441)	-
TOTAL FUNDS	<u>553,253</u>	<u>(530,873)</u>	<u>22,380</u>

A current year 12 months and prior year 12 months combined position is as follows:

	At 1.4.22 £	Net movement in funds £	At 31.3.24 £
Unrestricted funds			
General fund	7,773	18,396	26,169
TOTAL FUNDS	<u>7,773</u>	<u>18,396</u>	<u>26,169</u>

TWILIGHT KINDNESS

NOTES TO THE FINANCIAL STATEMENTS - continued FOR THE YEAR ENDED 31 MARCH 2024

11. MOVEMENT IN FUNDS - continued

A current year 12 months and prior year 12 months combined net movement in funds, included in the above are as follows:

	Incoming resources £	Resources expended £	Movement in funds £
Unrestricted funds			
General fund	481,804	(463,408)	18,396
Restricted funds			
Restricted funds	591,861	(591,861)	-
	<hr/>	<hr/>	<hr/>
TOTAL FUNDS	<u>1,073,665</u>	<u>(1,055,269)</u>	<u>18,396</u>

12. RELATED PARTY DISCLOSURES

There were no related party transactions for the year ended 31 March 2024.

TWILIGHT KINDNESS

**DETAILED STATEMENT OF FINANCIAL ACTIVITIES
FOR THE YEAR ENDED 31 MARCH 2024**

	31.3.24 £	31.3.23 £
INCOME AND ENDOWMENTS		
Donations and legacies		
Donations	420,983	458,453
Investment income		
Deposit account interest	9	-
Charitable activities		
Grants	99,420	94,800
Total incoming resources	520,412	553,253
EXPENDITURE		
Charitable activities		
Cost of living support	189,445	200,920
Klick and connect hub	17,850	20,000
Caregivers coffee club	7,400	15,468
Loaves of love	154,315	246,701
Printing and stationery	1,200	-
Fundraising	-	1,000
Website costs	294	-
Insurance	698	-
Repair and care	46,350	-
Transport	660	-
Utilities	28	-
Widows support project	59,740	-
Grants to individuals	44,450	46,320
	522,430	530,409
Support costs		
Finance		
Bank charges	137	134
Governance costs		
Accountancy fees	960	330
Legal and professional fees	869	-
	1,829	330
Total resources expended	524,396	530,873
Net (expenditure)/income	(3,984)	22,380

