



Solidarity Sports
Trustees' Report and Financial Statements

For the year ended 31 March 2024
Charity No 1123589

Charity Information

Trustees

Dr Melernie Meheux
Mr Hassan Laroussi
Mr Edward Harvey (*resigned 30.04.2023*)
Mr Alain Mandy
Ms Una McGuinness
Dr Wajma Torkmani
Mr Liam Mahoney

CEO

Mr Sean Mendez

Charity Registration Number

1123589

Registered Office

Seven Stars 253
North End Road
London
W14 9NS

Bankers

HSBC 92 Kensington
High Street
London
W8 4SH

Independent Examiners

Bannerman Johnstone Maclay
Ltd 213 St. Vincent Street
Glasgow
G2 5QY

Our Partners



JOHN LYON'S CHARITY



BNP PARIBAS



LIGHTBULB TRUST



the grove trust



the Tudor trust

THE DISTRICT NURSING TRUST

THE CALLEVA FOUNDATION

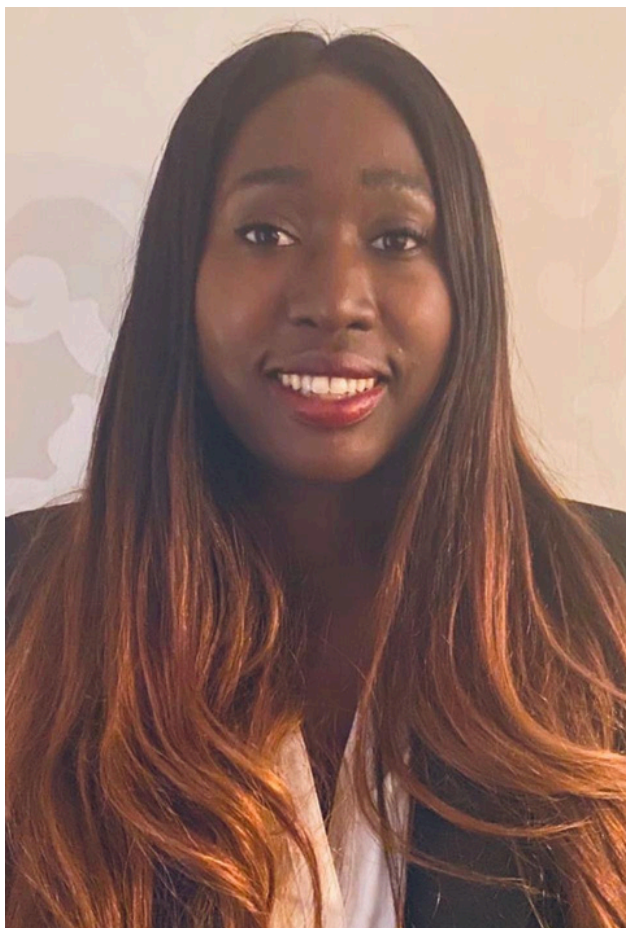
TURVILLE SCHOOL TRUST

The trustees have the pleasure in presenting the report and independently examined financial statements for the year ended 31 March 2024.

Table of Contents

A MESSAGE FROM OUR CHAIR	4
TRUSTEES REPORT FOR THE YEAR ENDED 31 MARCH 2024	5
STRUCTURE, MANAGEMENT, GOVERNANCE AND OBJECTIVES	6 - 8
ORGANISATIONAL BACKGROUND	8 - 9
ACHIEVEMENTS AND IMPACT	
1. IMPROVING CHILDREN'S PHYSICAL AND MENTAL WELLBEING	10
2. ADVANCING CHILDREN'S DEVELOPMENT, SKILLS AND RESILIENCE	10 - 11
3. REDUCING BARRIERS TO LEISURE ACTIVITIES	12
4. FACILITATING DREAMS THROUGH THE HASHIM FAMILY LEGACY	12
5. WORKING WITH CARERS TO PROVIDE HOLISTIC FAMILY SUPPORT	12 - 13
6. FINANCIAL AND FUNDRAISING REVIEW	15
INDEPENDENT EXAMINER'S REPORT TO THE TRUSTEES OF SOLIDARITY SPORTS	18
REPORT OF THE TRUSTEES	20
STATEMENT OF FINANCIAL ACTIVITIES	22
BALANCE SHEET	23
CASH FLOW STATEMENT	24
NOTES TO CASH FLOW STATEMENT	25
NOTES TO THE FINANCIAL STATEMENTS	26 - 34
DETAILED STATEMENT OF FINANCIAL ACTIVITIES	35 - 36

A Message from Our Chair



As both the Chair of Solidarity Sports and an Educational Psychologist, I have had the privilege of witnessing the profound, life-changing impact that the right support can have on a child's life. Many of the children we work with have endured complex trauma, experiences that leave deep scars and often make them feel isolated and hopeless. Yet, through our projects, I have seen these children rediscover joy, resilience, and a sense of belonging.

At Solidarity Sports, we create safe, nurturing environments where children can begin to heal. Whether through sports, creative arts, or shared moments of play, we help them rebuild trust in others and confidence in themselves. These moments are more than activities; they are lifelines, offering children a chance to reclaim their childhoods and imagine a brighter future. I know first-hand the transformative power of investing in young lives. Every act of support, whether it's offering a listening ear, introducing a child to a new skill, or simply showing them they matter can alter their trajectory in ways that ripple far beyond the present. It is this belief that underpins all we do at Solidarity Sports.

I want to take a moment to thank our incredible team of staff and volunteers, whose dedication and compassion make this work possible. Their commitment shines brightly, even in the face of the economic and social challenges we all face. To our ambassadors, donors, and supporters, your generosity and engagement mean the world to us. Together, we are creating a space where children can thrive, no matter what they have been through. It is a privilege to be part of this journey, and I look forward to continuing to champion the potential of every child we serve.

With hope for the future,

A handwritten signature in black ink that reads "M Meheux".

Dr. Melernie Meheux
Chair of Solidarity Sports

Trustees Report for the Year Ended 31 March 2024

Structure, Management and Governance

The charity is controlled by its governing document, its constitution, and constitutes a **Registered Charity (1123589)**. Solidarity Sports is governed by a Board of Trustees, chaired by Dr. Melernie Meheux. Trustees act in a voluntary capacity. Trustees are approved by the Board according to the contributions, skills, diversity, and value they bring, in effectively managing Solidarity Sports. The Board meets quarterly during the year to discuss and oversee the governance of the organisation.

New trustees who are elected may serve a period of 4 years, after which they can be re-elected by the Board. During the past year, one valued member of the Board stepped down after serving 5 years with Solidarity Sports. All board members complete an induction process to ensure they are fully aware of their responsibilities and must have an enhanced DBS checked. Board members work on a voluntary basis and receive no remuneration. Trustees are encouraged to visit our holiday projects throughout the year.

Risk Management

The trustees have a duty to identify and review the risks to which the charity is exposed and to ensure appropriate controls are in place to provide reasonable assurance against fraud and error.

Public Benefit

The Trustees confirm that they have complied with Section 4 of the Charities Act 2011 by considering the Charity Commission's guidance on public benefit, 'Charities and Public Benefit', when reviewing the Charity's aims and planning future activities.

This report was approved by order of the Board of Trustees on 21st January 2025 and signed on their behalf by:



Dr. Melernie Meheux
Chair of Solidarity Sports

Management

Solidarity Sports is led by Sean Mendez, Founder and Chief Executive Officer, who is supported by a small team of 8 staff members (4 full-time and 4 part-time). This year saw growth in the team's structure, as we welcomed a new Head of Operations to support the fundraising and daily operational running. We recruited a Partnership and Admin Lead, a new role, to work closely with the Volunteer Manager to develop partnerships with universities and corporate businesses. On the delivery side, Solidarity Sports recruits wellbeing coaches to support and lead activities with our children throughout the year. This year, we worked with 18 freelance wellbeing coaches.

Volunteers

Volunteers are the lifeblood of our organisation and they are essential in maintaining our unique 1:2 adult- to-child ratio that sets us apart from other organisations.

This year, we worked with over 400 volunteers, 60% of whom were corporate volunteers. This growth reflects our dedication to creating meaningful relationships with corporate partners, universities, and the community. Most volunteers are aged 18-25, often former beneficiaries, bringing empathy and lived experience. Their ability to connect with our children helps create a safe space where they can play freely and feel valued. Additionally, giving back provides our young volunteers with valuable life and employment skills.

"It was incredible to see how engaged the children were during basketball. Not a single child sat out during the session, and even those who are more reserved when it comes to taking part in physical activity got involved!"

-Staff Member

It is mandatory for all volunteers to have an up-to-date enhanced DBS check, complete a safeguarding quiz and attend our bespoke in-house training, 'Understanding Vulnerable Children'. New volunteers who wish to continue volunteering with Solidarity Sports are referred to complete the Level 1 Child Safeguarding course through the local authority and are encouraged to advance through to Level 3. By expanding our corporate volunteer base, Solidarity Sports children interact with adults from diverse backgrounds, broadening their horizons. Many corporate volunteers have such a positive experience that they return outside their company-allocated days, which is a wonderful testament to their time with us.

This year, we offered corporate volunteer places to the following companies:

Dunnhumby, The Lowe Group, Sky Cares, Legal and General, Immediate Media, Neighbourly, FCA (Financial Conduct Authority), Virgin Media, Nokia, Simply Business, Hays, Smart Currency Exchange and BNP Paribas.

Professional volunteers have continued to provide specialist guidance through the year, including change management, IT, and HR support, thus saving the organisation tens of thousands of pounds.

Events

In September 2023 we held our a Volunteer Appreciation Night in honour of our volunteers. To continue attracting and retaining quality volunteers, this year we launched a new incentive scheme. Benefits include signed-off work experience hours, certificates, references from staff members, training, and social events.

"For me personally, I grew up in the system. I was in Children's Services and raised by one parent. Volunteering means everything to me...it's about giving kids the substance, guidance, and support they need to grow up, along with the critical advice to help them face obstacles and tough times. It's almost like going back in time and watching myself grow up. It means a lot to me, and I love helping in any way I can."

-Andre, Volunteer



Objectives

Solidarity Sports' mission is to nurture the wellbeing of disadvantaged children by creating a safe and loving environment where happy memories flourish. Our aim is to deliver healthy and stimulating activities in London to children who are recovering from complex trauma.

Charitable Objectives:

- Improve the physical, mental and emotional wellbeing of children; particularly children living in poverty and living with trauma
- Advance children's development, education, and resilience to improve their chances for success
- Reduce barriers to participation in leisure activities for children who have historically been excluded
- Grow and honour the Hashim Family Legacy by facilitating the dreams of our children
- Provide holistic family support by working with carers to give children the best care and chance in life

Organisational Background:

Solidarity Sports was founded on the belief that **every child deserves happiness**.

Established in 2007, we started out as an after-school football club. Since then, we have evolved adding healthy eating initiatives, arts, educational group trips, mentorship programs, after school clubs, holidays in the UK and abroad, and wellbeing support for parents and carers. The glue that binds our programmes together is a commitment to creating a safe, inclusive, and loving environment where children can play together and create happy memories.

"Your work makes me feel like I'm not alone anymore and that when I have a bad day, it will get better. Thank you so much." - Parent



Caring for London's Vulnerable Children

Solidarity Sports cares for children and families in West London, who are deeply affected by the intersecting issues of poverty, trauma, and housing instability. We serve communities Kensington & Chelsea, Hammersmith & Fulham, and in the past year we have been able to increase provision to support children and families in Westminster. Our services and activities are tailored for children, from birth to 17 years, who have experienced trauma, which is compounded by living in poverty amidst wealth. 40% of children who access our projects live in Kensington & Chelsea, considered to be the "richest" borough in the UK. However, extreme disparity divides the North and South of the borough, where 6,000 children and young people live in poverty, 45% of whom live in just three north Kensington wards: Notting Dale, Golborne and Dalgarno.

This year, children accessing our projects were referred by Children's Services in Kensington & Chelsea (40%) and Hammersmith & Fulham (60%). We also receive referrals from Westminster Children's Services, food banks, schools, and domestic abuse shelters. We work closely with community organisations, such as a West London Welcome and Migrant Organise, to support asylum seeking and refugee children and their families. We also witnessed a 10% increase in referrals for children with learning disabilities and Autism. Each referral is reviewed by our Family Wellbeing & Safeguarding Lead who can escalate referrals to specialised services.



Expanding our Support to Meet a Growing Need

This past year, we established a new partnership with **Great Ormond Street Children's Hospital (GOSH)**, specifically to support children who are affected by the complications of obesity. Referrals are made by the Complications from Excess Weight Clinic (CEW), who care for children and young people <18 years old experiencing a wide range of health issues including diabetes, heart diseases, sleep apnoea, and poor mental health. This year, we offered our projects to 5 children, inviting them to participate in school holiday projects, summer residential trips and mentoring. Our team offered fun and challenging physical activity opportunities, emotional support, and nutritional education. Children benefitted from increases in confidence, happiness, and positive changes in the family home dynamic, alongside safe reductions in weight. We have continued to receive referrals from the clinic and look forward to developing our partnership with GOSH.

Achievements and Impact

1. Improving Children's Physical and Mental Wellbeing

This year, we expanded our school holiday trips, giving more children opportunities to explore their city, stay active, and build social connections. We ran 13 weeks of holiday projects across four West London locations, supporting vulnerable children facing food insecurity, poor housing, and complex home lives. To counter these challenges, we provide free, enriching daily trips, ensuring safety with our 1:2 adult-to-child ratio.

Summer Project 2023

The theme for Summer 2023 was "SOS – Summer of Solidarity!". We are grateful to have continued our partnerships with Holland Park School and All Saints Sixth Form College, who opened their facilities over four weeks of the summer holidays for the enjoyment of our children. Between Monday to Friday during these four weeks, we planned a schedule of sports, arts, and play-inspired activities, which are delivered by experienced and trained Solidarity Sports coaches. In the final week of "SOS – Summer of Solidarity!", we arranged special outings across London, including a beach day at Southend-on-Sea.



Addressing Food Insecurity

Over the school holidays, financial pressure on parents and carers increases, especially for those relying on Free School Meals. Our Summer 2023 project was partly funded by the HAF program through Hammersmith & Fulham and Kensington and Chelsea local authorities, allowing us to provide 2,250 healthy meals to children attending our activities. For those who didn't meet HAF requirements, we continued offering nutritious meals through partnerships with local food banks. **Every child in our care received daily healthy lunches, with additional support for families in temporary accommodation or with no recourse to public funds.**

2. Advancing Children's Development, Skills, and Resilience

During the 2023 Summer Project, we were delighted to collaborate with community organisations to introduce new activities that nurtured our children's confidence, skills, and future opportunities. Activities included drama lessons with Tie Dye Drama, basketball coaching with London Knights and a special photography workshop with acclaimed photographer Alison Jackson, each experience encouraged creativity, teamwork, and personal development.



Mentor Programme

This year, 30 children participated in our mentoring scheme - a six-month structured programme with weekly one-to-one sessions. Children referred often face complex challenges and need additional support beyond our school holiday projects. For example, children attending may be dealing with bereavement, court proceedings, low confidence, caregiving responsibilities, or extreme weight management challenges. Each week, an activity is planned, such as visiting a museum, park, city farm, pottery, bouldering and swimming. Mentors complete training before being 'matched' with a child and receive ongoing clinical supervision from our Family Wellbeing and Safeguarding Lead. This year, our mentoring programme contributed to the de-escalation of 19 child protection and child-in-need plans with Children's Services.

After-School Activities

Thrive Club; we continued our fantastic 'Thrive After-School Club' at St. Clement and St. James Primary School in North Kensington. Activities take place three times a week reaching the schools most vulnerable children who are unable to take part in mainstream extracurricular activities due to their additional needs.

This project is funded by John Lyon's Charity School in Partnerships, with Solidarity Sports as the partner. We are so pleased with this partnership and believe our aligned values of creativity, compassion and care is the why this project is oversubscribed (and why many children who attend the mainstream school activities request to join Thrive!).

"[My son] loved the science museum and ice skating; he wouldn't stop talking about it! He loves everything you guys do; for me, it means so much to know my son is well looked after and entertained." - Parent.

Thrive has also become a lifeline for carers and has allowed for cross-referrals. For example, our team has identified families in need of specialist services that were not picked up due to a lack of trust in Children's Services. By slowly building trust with these families, Solidarity Sports has been able to make meaningful referrals for at-risk children.

Champions Club

We have continued to offer homework support at our Hub in West Kensington, increasing our reach during term time and helping more children stay on track in school. Champions Club, our two-hour after-school programme, provides one-to-one support using school-approved AI driven platform - IXL, which tailors content to each child's needs. By creating a focused and encouraging environment, our homework club helps children struggling in school improve their academic performance.

3. Reducing Barriers to Leisure Activities

This year, 42 children joined Solidarity Sports for a unique and memorable five-day holiday to PGL Osmington Bay and Turville. Many had never been away from home or had the chance to leave London. Based on feedback, we changed our PGL trip to a new location in Dorset, bringing children closer to the beach. This allowed them to try new water sports like paddleboarding and take part in exciting activities, including zip wire, fencing, archery, and aeroball. Beyond the activities, children received three nutritious meals and daily support from adults, who encouraged good hygiene habits and taught essential life skills like learning how to brush your teeth and keep your room tidy.

This year also saw a new partnership formed with the Turville School Trust, allowing 12 children to attend a holiday in Buckinghamshire. Children spent time in the countryside participating in activities like horse riding and raft building. We are truly thankful to the Turville School Trust for welcoming our children and allowing them to take part in incredible experiences.



4. Facilitating Dreams Through the Hashim Family Legacy

We have continued to honour the legacy of Firdaws Hashim, a young girl who lost her life in the Grenfell Tower fire in 2017. In April 2023, we took 20 children on a life-changing trip to Disneyland Paris a special annual tradition that allows children to fulfil a dream that Firdaws was never able to. Our trip to Paris is always memorable, as children fully immerse themselves in French culture, try new foods, make new friends, and step out of their comfort zones.

5. Working with Carers to Provide Holistic Family Support

Over the past year, Solidarity Sports has provided extensive family support through practical and emotional services. These include food parcels, discretionary oyster card top-ups, combating digital poverty, referrals to adult education courses, job centres, and support with essential items e.g. school uniforms and winter clothing.

For children and families facing extreme hardship our team helped with daily tasks, such as school pick-ups, attending appointments and court hearings, alongside the parent or carer.



Health is Wealth Project

In the past year, we have scaled-up the *Health is Wealth* project, which offers practical and emotional support for parents and carers. Activities include coffee mornings, reflexology, and yoga sessions. Many parents and carers we work with are recovering from trauma. By addressing their needs, the project helps to improve their mental health, reduce loneliness, and strengthen family relationships, creating safer and more stable home environment.

Our aim is for carers to be able to access vital resources. Our team has made referrals to specialist services like therapy, legal aid, and employment support. Families who are facing the cost-of-living crisis have been further supported through donations raised in fundraising campaigns like the Big Give Christmas Challenge, which enabled the distribution of food vouchers and energy top-ups. To provide immediate intervention for families, we purchased winter clothing, school uniforms and home appliances e.g. air fryers.

Grandparents Rock Project

We are very excited about a our new project: Grandparents Rock. Due to various challenges and difficulties in parents' lives, grandparents often step in to become the primary carers for their grandchildren, preventing the child from entering the care system and saving the state millions of pounds.

Unfortunately, these carers get little-to-no support from the state and face their own financial and practical challenges caring for young children full-time. We organise weekly outings for these carers, offering a space to connect with other grandparents, take time for themselves and to feel valued for their incredible role in their grandchild(ren)'s life.

"I am so sad that we have to leave, I won't get to see the stars in London".
- Girl, 8 years old at Turville

Lucy's Story

In 2023, our team received a distressing call from Lucy* - a mother we have supported for four years.

Lucy shared: ***"His liver is failing, and the doctors tell me he now weighs 108 kg. I'm scared of losing my son; I'm scared he's going to die."***

Her son, Harry*, spent two weeks at Great Ormond Street Hospital. During this time, Lucy called us almost daily, sharing his struggles:

"They bully him in school; they call him names. At home, he's always sad, and he's started to hurt himself. I'm worried... what will life be like when he goes to secondary school?"

We took urgent action, taking Harry on a five day adventure holiday to PGL Osmington Bay. He participated in sports, followed a healthy eating plan, and spent time with caring adults by the beach. Harry lost 7kg. Though a significant achievement, when he returned home he regained the weight.

Lucy confided: ***"I stopped taking him to his doctor's appointments. I love my son, but they make me feel like I'm a bad parent. They make me cry, and I don't trust them. I only want him to spend time with his Solidarity Sports family. My son is happy when he is with you; he comes home smiling and tells me all about his friends."***

Now weighing 120 kg, we intervened again, taking Harry on a four-day trip to France. With support from a leading nutritionist, we implemented a healthy eating and wellbeing plan for his return home.

Harry said: ***"Paris is the best city! I loved watching the Eiffel Tower light up at night, and I liked trying new things, like snails for the first time. They're not that bad... they taste like garlic."***

Through open and honest communication, we encouraged Harry to make healthier choices. He lost 4 kg and later an additional 2 kg.

Harry shared: ***"I decided I was going to give everything my best shot. I feel proud of myself for losing weight."***

We continue to support the family with frequent contact, and Harry now has weekly mentoring with a trusted adult.

Over the holidays, Lucy sent this message: ***"Thank you to my Solidarity Sports for everything you have done for me and my son. You make us so happy. I feel lucky to have you in my life."***

6. Financial and Fundraising Review

The trustees present their report with the financial statements of the charity for the year ended 31 March 2024. The trustees have adopted the provisions of Accounting and Reporting by Charities: Statement of Recommended Practice applicable to charities preparing their accounts in accordance with the Financial Reporting Standard applicable in the UK and Republic of Ireland (FRS 102) (effective 1 January 2019).

This year, Solidarity Sports raised £520,283 (£583,203 in 22/23), to continue our mission in improving children's wellbeing in West London.

62% of our income was raised from Trusts & Foundations, which has maintained steady at £321,330 (£320,483 in 22/23) and strengthened through new multi-year funding grants from The Leathersellers and City Bridge Foundation.

15% of our income was raised from Individual Giving, where we experienced a shortfall from the year before (£77,915 compared to £208,159 in 22/23). Although this is a significant drop in Individual Giving, we understand this to be attributed to the highly successful online campaign we ran in 2022 for families affected by the Cost-of-Living Crisis (which was at its peak in 2022).

A key area of revenue growth this year has been in Corporate Partnerships, accounting for 14% of our income. We have invested our fundraising resources into increasing investment from key corporate partnerships, including BNP Paribas and Smart Currency Exchange. This year, three key partners signed up to our 'Corporate Memory Maker' programme, committing to annual financial support.

A further 9% of income was raised from Government Grants, the majority attributed to from the government's Holiday, Activities and Food programme (HAF) which we receive from both Hammersmith and Fulham and Kensington and Chelsea local authorities. This funding has been critical in tackling food insecurity among our children eligible for free school meals (FSM) which is exacerbated over school holidays.

We have also made a significant investment in our premises, where we hold an in-kind five-year lease, greatly enhancing our impact. This space has allowed us to offer more activities and maintain regular contact with our families throughout the year

We are incredibly grateful to Solidarity Sports' funders for supporting our work. In particular, we would like to thank:

City Bridge Foundation, The Leathersellers, The Hargreaves Foundation, The Tudor Trust, Grenfell Project Fund (through RBKC), The Grove Trust, London Community Foundation, The Calleva Foundation, The Steel Charitable Trust, H&F Giving, The Mercers Company, John Lyons Foundation, Hammersmith United Charities, Lightbulb Trust, The Childhood Trust and The Earls Court Development Company.



Reserves Policy

Recognising the strategic risk of not securing sufficient funding to cover our core costs, trustees regularly monitor Solidarity Sports' financial position, seeking to ensure that sufficient reserves are on hand to cover our projected running costs for at least six months. We believe that this reserve is prudent and allows the charity to address its principal objectives of raising funds for its charitable objectives with confidence. More importantly in the past we have had to use our reserves for urgent, critical support during acute periods of need for our most vulnerable families. Our reserves strengthen our financial resilience but moreover they allow us to continue to be nimble, agile, and responsive to the unpredictable, precarious needs of some of our families.

During the last year we saw a huge spike in demand for our teenage project and looking ahead we know that many of our children are going to graduate into this age bracket in the upcoming year. The trustees have therefore decided to invest immediately in greater support for this group. They have designated £40k to fund a dedicated part time worker to support them into pathways to employment, to run ongoing engagement sessions, and to pay for a dedicated residential trip like we do with the other groups. Within 2025, this money will be ringfenced for this, with the long-term ambition being to use the data, learning and feedback acquired to fundraise effectively for this programme in the future.

At the end of this current financial period, our free reserves after designation represented approximately 7 months running costs which is within the policy set by trustees.

*"I can't believe I'm actually on a beach...
I've never been to the beach before.
There are rocks everywhere, and it's so
beautiful."*

- Girl, 9 years old, at PGL



Independent Examiner's Report to The Trustees of Solidarity Sports

Independent examiner's report to the trustees of Solidarity Sports

I report to the charity trustees on my examination of the accounts of Solidarity Sports (the Trust) for the year ended 31 March 2024.

Responsibilities and basis of report

As the charity trustees of the Trust you are responsible for the preparation of the accounts in accordance with the requirements of the Charities Act 2011 ('the Act').

I report in respect of my examination of the Trust's accounts carried out under Section 145 of the Act and in carrying out my examination I have followed all applicable Directions given by the Charity Commission under Section 145(5)(b) of the Act.

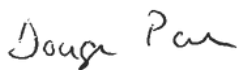
Independent examiner's statement

Since your charity's gross income exceeded £250,000 your examiner must be a member of a listed body. I can confirm that I am qualified to undertake the examination because I am a member of the Institute of Chartered Accountants of Scotland, which is one of the listed bodies.

I have completed my examination. I confirm that no material matters have come to my attention in connection with the examination giving me cause to believe that in any material respect:

1. accounting records were not kept in respect of the Trust as required by Section 130 of the Act; or
2. the accounts do not accord with those records; or
3. the accounts do not comply with the applicable requirements concerning the form and content of accounts set out in the Charities (Accounts and Reports) Regulations 2008 other than any requirement that the accounts give a true and fair view which is not a matter considered as part of an independent examination.

I have no concerns and have come across no other matters in connection with the examination to which attention should be drawn in this report in order to enable a proper understanding of the accounts to be reached.



Douglas Paton BSc CA
The Institute of Chartered Accountants of Scotland

Bannerman Johnstone Maclay
213 St Vincent Street
Glasgow
G2 5QY

Date: 27 January 2025

**REPORT OF THE TRUSTEES AND
FINANCIAL STATEMENTS
FOR THE YEAR ENDED 31 MARCH 2024
FOR
SOLIDARITY SPORTS**

Bannerman Johnstone Maclay
213 St Vincent Street
Glasgow
G2 5QY

SOLIDARITY SPORTS

REPORT OF THE TRUSTEES FOR THE YEAR ENDED 31 MARCH 2024

The trustees present their report with the financial statements of the charity for the year ended 31 March 2024. The trustees have adopted the provisions of Accounting and Reporting by Charities: Statement of Recommended Practice applicable to charities preparing their accounts in accordance with the Financial Reporting Standard applicable in the UK and Republic of Ireland (FRS 102) (effective 1 January 2019).

FINANCIAL REVIEW

Reserves policy

It is the policy of the charity that unrestricted funds which have not been designated for a specific use should be maintained at a level equivalent to 6 months expenditure. The trustees consider that reserves at this level will ensure that, in the event of a significant drop in funding, they will be able to continue the charity's current activities while consideration is given to ways in which additional funds may be raised. Any surplus of unrestricted funds is carried forward to future periods, and may be expended in accordance with the charity's constitution as the Trustees decide.

Income from restricted sources is expended in the year to which it relates. Any surplus remaining at the end of the year is carried forward to the next financial year.

STRUCTURE, GOVERNANCE AND MANAGEMENT

Governing document

The charity is controlled by its governing document, its constitution, and constitutes an unincorporated charity.

Risk management

The trustees have a duty to identify and review the risks to which the charity is exposed and to ensure appropriate controls are in place to provide reasonable assurance against fraud and error.

REFERENCE AND ADMINISTRATIVE DETAILS

Registered Charity number

1123589

Principal address

253 North End Road
London
W14 9NS

Trustees

E Harvey (resigned 30.4.23)
Dr M Meheux
Ms U McGuinness
H Laroussi
A Mandy
Dr W Torkmani
L Mahoney

Independent Examiner

Bannerman Johnstone Maclay
213 St Vincent Street
Glasgow
G2 5QY

Approved by order of the board of trustees on 27 January 2025 and signed on its behalf by:



Dr. Melernie Meheux
Chair of Solidarity Sports

INDEPENDENT EXAMINER'S REPORT TO THE TRUSTEES OF SOLIDARITY SPORTS

Independent examiner's report to the trustees of Solidarity Sports

I report to the charity trustees on my examination of the accounts of Solidarity Sports (the Trust) for the year ended 31 March 2024.

Responsibilities and basis of report

As the charity trustees of the Trust you are responsible for the preparation of the accounts in accordance with the requirements of the Charities Act 2011 ('the Act').

I report in respect of my examination of the Trust's accounts carried out under Section 145 of the Act and in carrying out my examination I have followed all applicable Directions given by the Charity Commission under Section 145(5)(b) of the Act.

Independent examiner's statement

Since your charity's gross income exceeded £250,000 your examiner must be a member of a listed body. I can confirm that I am qualified to undertake the examination because I am a member of the Institute of Chartered Accountants of Scotland, which is one of the listed bodies.

I have completed my examination. I confirm that no material matters have come to my attention in connection with the examination giving me cause to believe that in any material respect:

1. accounting records were not kept in respect of the Trust as required by Section 130 of the Act; or
2. the accounts do not accord with those records; or
3. the accounts do not comply with the applicable requirements concerning the form and content of accounts set out in the Charities (Accounts and Reports) Regulations 2008 other than any requirement that the accounts give a true and fair view which is not a matter considered as part of an independent examination.

I have no concerns and have come across no other matters in connection with the examination to which attention should be drawn in this report in order to enable a proper understanding of the accounts to be reached.

Douglas Paton BSc CA
The Institute of Chartered Accountants of Scotland

Bannerman Johnstone Maclay
213 St Vincent Street
Glasgow
G2 5QY

27 January 2025

SOLIDARITY SPORTS

STATEMENT OF FINANCIAL ACTIVITIES FOR THE YEAR ENDED 31 MARCH 2024

	Notes	Unrestricted fund £	Restricted funds £	2024 Total funds £	2023 Total funds £
INCOME AND ENDOWMENTS FROM					
Donations and legacies	2	<u>374,181</u>	<u>146,102</u>	<u>520,283</u>	<u>583,203</u>
EXPENDITURE ON					
Charitable activities	3				
Charitable activities		254,368	137,700	392,068	308,014
Other		<u>129,077</u>	<u>3,367</u>	<u>132,444</u>	<u>208,176</u>
Total		<u>383,445</u>	<u>141,067</u>	<u>524,512</u>	<u>516,190</u>
NET INCOME/(EXPENDITURE)					
Transfers between funds	11	(9,264) <u>19,416</u>	5,035 <u>(19,416)</u>	(4,229) <u>-</u>	67,013 <u>-</u>
Net movement in funds		10,152	(14,381)	(4,229)	67,013
RECONCILIATION OF FUNDS					
Total funds brought forward		<u>355,584</u>	<u>14,381</u>	<u>369,965</u>	<u>302,952</u>
TOTAL FUNDS CARRIED FORWARD		<u><u>365,736</u></u>	<u><u>-</u></u>	<u><u>365,736</u></u>	<u><u>369,965</u></u>

The notes form part of these financial statements

SOLIDARITY SPORTS

BALANCE SHEET 31 MARCH 2024

	Notes	Unrestricted fund £	Restricted funds £	2024 Total funds £	2023 Total funds £
FIXED ASSETS					
Tangible assets	8	7,709	-	7,709	10,295
CURRENT ASSETS					
Debtors	9	31,444	-	31,444	13,808
Cash at bank and in hand		<u>341,589</u>	<u>-</u>	<u>341,589</u>	<u>371,757</u>
		373,033	-	373,033	385,565
CREDITORS					
Amounts falling due within one year	10	(15,006)	-	(15,006)	(25,895)
		<u>-</u>	<u>-</u>	<u>-</u>	<u>-</u>
NET CURRENT ASSETS		<u>358,027</u>	<u>-</u>	<u>358,027</u>	<u>359,670</u>
TOTAL ASSETS LESS CURRENT LIABILITIES		<u>365,736</u>	<u>-</u>	<u>365,736</u>	<u>369,965</u>
NET ASSETS		<u><u>365,736</u></u>	<u><u>-</u></u>	<u><u>365,736</u></u>	<u><u>369,965</u></u>
FUNDS	11				
Unrestricted funds				365,736	355,584
Restricted funds				<u>-</u>	<u>14,381</u>
TOTAL FUNDS				<u><u>365,736</u></u>	<u><u>369,965</u></u>

The financial statements were approved by the Board of Trustees and authorised for issue on 27 January 2025 and were signed on its behalf by:



Dr. Melernie Meheux
Chair of Solidarity Sports

The notes form part of these financial statements

SOLIDARITY SPORTS**CASH FLOW STATEMENT
FOR THE YEAR ENDED 31 MARCH 2024**

	Notes	2024 £	2023 £
Cash flows from operating activities			
Cash generated from operations	1	<u>(29,895)</u>	<u>72,424</u>
Net cash (used in)/provided by operating activities		<u>(29,895)</u>	<u>72,424</u>
Cash flows from investing activities			
Purchase of tangible fixed assets		<u>(273)</u>	<u>(13,062)</u>
Net cash used in investing activities		<u>(273)</u>	<u>(13,062)</u>
		<hr/>	<hr/>
Change in cash and cash equivalents in the reporting period		(30,168)	59,362
Cash and cash equivalents at the beginning of the reporting period		<u>371,757</u>	<u>312,395</u>
Cash and cash equivalents at the end of the reporting period		<u>341,589</u>	<u>371,757</u>

The notes form part of these financial statements

SOLIDARITY SPORTS

NOTES TO THE CASH FLOW STATEMENT
FOR THE YEAR ENDED 31 MARCH 2024

1. RECONCILIATION OF NET (EXPENDITURE)/INCOME TO NET CASH FLOW FROM
OPERATING ACTIVITIES

	2024 £	2023 £
Net (expenditure)/income for the reporting period (as per the Statement of Financial Activities)	(4,229)	67,013
Adjustments for:		
Depreciation charges	2,859	3,097
Increase in debtors	(17,636)	(2,664)
(Decrease)/increase in creditors	(10,889)	4,978
Net cash (used in)/provided by operations	<u>(29,895)</u>	<u>72,424</u>

2. ANALYSIS OF CHANGES IN NET FUNDS

	At 1.4.23 £	Cash flow £	At 31.3.24 £
Net cash			
Cash at bank and in hand	<u>371,757</u>	<u>(30,168)</u>	<u>341,589</u>
	<u>371,757</u>	<u>(30,168)</u>	<u>341,589</u>
Total	<u>371,757</u>	<u>(30,168)</u>	<u>341,589</u>

The notes form part of these financial statements

SOLIDARITY SPORTS

NOTES TO THE FINANCIAL STATEMENTS FOR THE YEAR ENDED 31 MARCH 2024

1. ACCOUNTING POLICIES

Basis of preparing the financial statements

The financial statements of the charity, which is a public benefit entity under FRS 102, have been prepared in accordance with the Charities SORP (FRS 102) 'Accounting and Reporting by Charities: Statement of Recommended Practice applicable to charities preparing their accounts in accordance with the Financial Reporting Standard applicable in the UK and Republic of Ireland (FRS 102) (effective 1 January 2019)', Financial Reporting Standard 102 'The Financial Reporting Standard applicable in the UK and Republic of Ireland' and the Charities Act 2011. The financial statements have been prepared under the historical cost convention.

The presentation currency of the financial statements is the Pound Sterling (£).

Monetary amounts in these financial statements are rounded to the nearest £.

Critical accounting judgements and key sources of estimation uncertainty

The trustees consider there to be no critical accounting estimates and judgements.

Income

All income is recognised in the Statement of Financial Activities once the charity has entitlement to the funds, it is probable that the income will be received and the amount can be measured reliably. Unrestricted grants and other income are accounted for in the year in which they are receivable. Restricted grants and other income are accounted for in the year in which the projects are expected to take place.

Expenditure

Liabilities are recognised as expenditure as soon as there is a legal or constructive obligation committing the charity to that expenditure, it is probable that a transfer of economic benefits will be required in settlement and the amount of the obligation can be measured reliably. Expenditure is accounted for on an accruals basis and has been classified under headings that aggregate all cost related to the category. Where costs cannot be directly attributed to particular headings they have been allocated to activities on a basis consistent with the use of resources. The charity is not registered for VAT and accordingly expenditure is shown gross of irrecoverable VAT.

Charitable activities

Charitable expenditure comprises those costs incurred by the charity in the delivery of its activities and services for its beneficiaries.

Tangible fixed assets

Tangible assets are stated at cost (or deemed cost) less accumulated depreciation and accumulated impairment losses. Cost includes the original purchase price, costs directly attributable to bringing the asset to its working condition for its intended use, dismantling and restoration costs.

Depreciation is provided at the following annual rates in order to write off each asset over its estimated useful life.

Improvements to property	-	20% on cost
Fixtures and fittings	-	33% on cost
Computer equipment	-	33% on cost

Taxation

The charity is exempt from tax on its charitable activities.

Fund accounting

Unrestricted funds can be used in accordance with the charitable objectives at the discretion of the trustees.

Restricted funds can only be used for particular restricted purposes within the objects of the charity. Restrictions arise when specified by the donor or when funds are raised for particular restricted purposes.

SOLIDARITY SPORTS

NOTES TO THE FINANCIAL STATEMENTS - continued FOR THE YEAR ENDED 31 MARCH 2024

1. ACCOUNTING POLICIES - continued

Fund accounting

Further explanation of the nature and purpose of each fund is included in the notes to the financial statements.

Pension costs and other post-retirement benefits

The charity operates a defined contribution pension scheme. Contributions payable to the charity's pension scheme are charged to the Statement of Financial Activities in the period to which they relate.

Financial instruments

The charity has elected to apply the provisions of Section 11 'Basic Financial Instruments' and Section 12 'Other Financial Instruments Issues' of FRS 102 to all of its financial instruments.

Financial instruments are recognised in the charity's balance sheet when the company becomes party to the contractual provisions of the instrument.

Financial assets and liabilities are offset, with the net amounts presented in the financial statements, when there is a legally enforceable right to set off the recognised amounts and there is an intention to settle on a net basis or to realise the asset and settle the liability simultaneously.

Basic financial assets

Basic financial assets, which include certain debtors and cash and bank balances, are initially measured at transaction price including transactions costs and are subsequently carried at amortised cost using the effective interest method. Financial assets classified as receivable within one year are not amortised.

Basic financial liabilities

Basic financial liabilities, including certain creditors are initially recognised at transaction price. Financial liabilities classified as payable within one year are not amortised.

Debt instruments are subsequently carried at amortised cost, using the effective interest rate method.

Trade creditors are obligations to pay for goods or services that have been acquired in the ordinary course of business from suppliers. Amounts payable are classified as current liabilities if payment is due within one year or less. If not, they are presented as non-current liabilities. Trade creditors are recognised initially at transaction price and subsequently measured at amortised cost using the effective interest method.

2. DONATIONS AND LEGACIES

	2024	2023
	£	£
Trusts and foundations	321,330	320,483
Individual giving	77,915	208,159
Government grants	46,167	37,000
Corporate partnerships	74,871	17,561
	<u>520,283</u>	<u>583,203</u>

SOLIDARITY SPORTS

NOTES TO THE FINANCIAL STATEMENTS - continued FOR THE YEAR ENDED 31 MARCH 2024

3. CHARITABLE ACTIVITIES COSTS

	Direct Costs (see note 4) £
Charitable activities	<u>392,068</u>

4. DIRECT COSTS OF CHARITABLE ACTIVITIES

	2024 £	2023 £
Staff costs	137,693	101,560
Trip bookings	42,999	65,737
Venue hire	9,434	11,533
Family support	72,693	13,755
Food for children	2,936	12,315
Volunteer expenses	3,350	2,901
Equipment	1,373	4,482
Transport	1,440	5,714
Sessional staff	<u>120,150</u>	<u>90,017</u>
	<u>392,068</u>	<u>308,014</u>

5. TRUSTEES' REMUNERATION AND BENEFITS

There were no trustees' remuneration or other benefits for the year ended 31 March 2024 nor for the year ended 31 March 2023.

Trustees' expenses

There were no trustees' expenses paid for the year ended 31 March 2024 nor for the year ended 31 March 2023.

6. STAFF COSTS

	2024 £	2023 £
Wages and salaries	192,577	179,904
Social security costs	15,926	15,490
Other pension costs	<u>6,764</u>	<u>7,726</u>
	<u>215,267</u>	<u>203,120</u>

The average monthly number of employees during the year was as follows:

	2024	2023
Staff	<u>5</u>	<u>6</u>

The number of employees whose total employee benefits excluding pension contributions earning over £60,000, classified within bands of £10,000 is as follows:

	2024	2023
£60,000 - £69,999	<u>1</u>	<u>-</u>

continued...

SOLIDARITY SPORTS

NOTES TO THE FINANCIAL STATEMENTS - continued
FOR THE YEAR ENDED 31 MARCH 2024

7. COMPARATIVES FOR THE STATEMENT OF FINANCIAL ACTIVITIES

	Unrestricted fund £	Restricted funds £	Total funds £
INCOME AND ENDOWMENTS FROM			
Donations and legacies	<u>431,402</u>	<u>151,801</u>	<u>583,203</u>
EXPENDITURE ON			
Charitable activities			
Charitable activities	199,031	108,983	308,014
Other	<u>140,703</u>	<u>67,473</u>	<u>208,176</u>
Total	<u>339,734</u>	<u>176,456</u>	<u>516,190</u>
NET INCOME/(EXPENDITURE)	91,668	(24,655)	67,013
RECONCILIATION OF FUNDS			
Total funds brought forward	<u>263,916</u>	<u>39,036</u>	<u>302,952</u>
TOTAL FUNDS CARRIED FORWARD	<u><u>355,584</u></u>	<u><u>14,381</u></u>	<u><u>369,965</u></u>

8. TANGIBLE FIXED ASSETS

	Improvements to property £	Fixtures and fittings £	Computer equipment £	Totals £
COST				
At 1 April 2023	11,899	3,851	6,187	21,937
Additions	<u>-</u>	<u>273</u>	<u>-</u>	<u>273</u>
At 31 March 2024	<u>11,899</u>	<u>4,124</u>	<u>6,187</u>	<u>22,210</u>
DEPRECIATION				
At 1 April 2023	2,380	3,075	6,187	11,642
Charge for year	<u>2,380</u>	<u>479</u>	<u>-</u>	<u>2,859</u>
At 31 March 2024	<u>4,760</u>	<u>3,554</u>	<u>6,187</u>	<u>14,501</u>
NET BOOK VALUE				
At 31 March 2024	<u><u>7,139</u></u>	<u><u>570</u></u>	<u><u>-</u></u>	<u><u>7,709</u></u>
At 31 March 2023	<u><u>9,519</u></u>	<u><u>776</u></u>	<u><u>-</u></u>	<u><u>10,295</u></u>

continued...

SOLIDARITY SPORTS

NOTES TO THE FINANCIAL STATEMENTS - continued
FOR THE YEAR ENDED 31 MARCH 2024

9. DEBTORS: AMOUNTS FALLING DUE WITHIN ONE YEAR

	2024	2023
	£	£
Trade debtors	25,444	13,808
Prepayments and accrued income	<u>6,000</u>	<u>-</u>
	<u>31,444</u>	<u>13,808</u>

10. CREDITORS: AMOUNTS FALLING DUE WITHIN ONE YEAR

	2024	2023
	£	£
Trade creditors	745	-
Taxation and social security	10,388	9,310
Other creditors	<u>3,873</u>	<u>16,585</u>
	<u>15,006</u>	<u>25,895</u>

11. MOVEMENT IN FUNDS

	At 1.4.23	Net movement in funds	Transfers between funds	At 31.3.24
	£	£	£	£
Unrestricted funds				
General fund	355,584	(9,264)	19,416	365,736
Restricted funds				
Other miscellaneous restricted funds	6,881	(965)	(5,916)	-
St Clement and St James CE School Trust	7,500	-	(7,500)	-
Royal Borough of Kensington and Chelsea				
- Grenfell Project Fund	<u>-</u>	<u>6,000</u>	<u>(6,000)</u>	<u>-</u>
	<u>14,381</u>	<u>5,035</u>	<u>(19,416)</u>	<u>-</u>
TOTAL FUNDS	<u>369,965</u>	<u>(4,229)</u>	<u>-</u>	<u>365,736</u>

continued...

SOLIDARITY SPORTS

NOTES TO THE FINANCIAL STATEMENTS - continued
FOR THE YEAR ENDED 31 MARCH 2024

11. MOVEMENT IN FUNDS - continued

Net movement in funds, included in the above are as follows:

	Incoming resources £	Resources expended £	Movement in funds £
Unrestricted funds			
General fund	374,181	(383,445)	(9,264)
Restricted funds			
Other miscellaneous restricted funds	3,721	(4,686)	(965)
Octavia	9,558	(9,558)	-
Let Me Play Group	48,383	(48,383)	-
London Community Foundation	20,000	(20,000)	-
Earls Court Partnership	14,000	(14,000)	-
Royal Borough of Kensington and Chelsea - Grenfell Project Fund	26,000	(20,000)	6,000
London Borough of Hammersmith and Fulham	1,440	(1,440)	-
The Childhood Trust	7,500	(7,500)	-
John Lyons	5,000	(5,000)	-
Young K&C	10,500	(10,500)	-
	<u>146,102</u>	<u>(141,067)</u>	<u>5,035</u>
TOTAL FUNDS	<u>520,283</u>	<u>(524,512)</u>	<u>(4,229)</u>

Comparatives for movement in funds

	At 1.4.22 £	Net movement in funds £	At 31.3.23 £
Unrestricted funds			
General fund	263,916	91,668	355,584
Restricted funds			
Other miscellaneous restricted funds	-	6,881	6,881
BBC Children in Need	29,574	(29,574)	-
Octavia	3,154	(3,154)	-
K&C Foundation	6,308	(6,308)	-
St Clement and St James CE School Trust	-	7,500	7,500
	<u>39,036</u>	<u>(24,655)</u>	<u>14,381</u>
TOTAL FUNDS	<u>302,952</u>	<u>67,013</u>	<u>369,965</u>

continued...

SOLIDARITY SPORTS

NOTES TO THE FINANCIAL STATEMENTS - continued
FOR THE YEAR ENDED 31 MARCH 2024

11. MOVEMENT IN FUNDS - continued

Comparative net movement in funds, included in the above are as follows:

	Incoming resources £	Resources expended £	Movement in funds £
Unrestricted funds			
General fund	431,402	(339,734)	91,668
Restricted funds			
Other miscellaneous restricted funds	41,103	(34,222)	6,881
BBC Children in Need	-	(29,574)	(29,574)
Octavia	10,000	(13,154)	(3,154)
K&C Foundation	-	(6,308)	(6,308)
St Clement and St James CE School Trust	7,500	-	7,500
Hammersmith United Charities	10,000	(10,000)	-
Let Me Play Group	48,198	(48,198)	-
London Community Foundation	1,500	(1,500)	-
The Freeman Family Trust	33,500	(33,500)	-
	<u>151,801</u>	<u>(176,456)</u>	<u>(24,655)</u>
TOTAL FUNDS	<u>583,203</u>	<u>(516,190)</u>	<u>67,013</u>

A current year 12 months and prior year 12 months combined position is as follows:

	At 1.4.22 £	Net movement in funds £	Transfers between funds £	At 31.3.24 £
Unrestricted funds				
General fund	263,916	82,404	19,416	365,736
Restricted funds				
Other miscellaneous restricted funds	-	5,916	(5,916)	-
BBC Children in Need	29,574	(29,574)	-	-
Octavia	3,154	(3,154)	-	-
K&C Foundation	6,308	(6,308)	-	-
St Clement and St James CE School Trust	-	7,500	(7,500)	-
Royal Borough of Kensington and Chelsea - Grenfell Project Fund	-	6,000	(6,000)	-
	<u>39,036</u>	<u>(19,620)</u>	<u>(19,416)</u>	<u>-</u>
TOTAL FUNDS	<u>302,952</u>	<u>62,784</u>	<u>-</u>	<u>365,736</u>

continued...

SOLIDARITY SPORTS

NOTES TO THE FINANCIAL STATEMENTS - continued FOR THE YEAR ENDED 31 MARCH 2024

11. MOVEMENT IN FUNDS - continued

A current year 12 months and prior year 12 months combined net movement in funds, included in the above are as follows:

	Incoming resources £	Resources expended £	Movement in funds £
Unrestricted funds			
General fund	805,583	(723,179)	82,404
Restricted funds			
Other miscellaneous restricted funds	44,824	(38,908)	5,916
BBC Children in Need	-	(29,574)	(29,574)
Octavia	19,558	(22,712)	(3,154)
K&C Foundation	-	(6,308)	(6,308)
St Clement and St James CE School Trust	7,500	-	7,500
Hammersmith United Charities	10,000	(10,000)	-
Let Me Play Group	96,581	(96,581)	-
London Community Foundation	21,500	(21,500)	-
The Freeman Family Trust	33,500	(33,500)	-
Earls Court Partnership	14,000	(14,000)	-
Royal Borough of Kensington and Chelsea - Grenfell Project Fund	26,000	(20,000)	6,000
London Borough of Hammersmith and Fulham	1,440	(1,440)	-
The Childhood Trust	7,500	(7,500)	-
John Lyons	5,000	(5,000)	-
Young K&C	10,500	(10,500)	-
	<u>297,903</u>	<u>(317,523)</u>	<u>(19,620)</u>
TOTAL FUNDS	<u>1,103,486</u>	<u>(1,040,702)</u>	<u>62,784</u>

St Clement and St James CE School Trust: Grant contribution towards staffing costs for the After School Club.

Hammersmith United Charities: Grant contribution towards general project costs for the Easter Project.

Let Me Play Group: Grant contribution towards staffing, activity, venue, and food costs for H&F children attending the School Holiday Projects.

London Communities Foundation: Grant contribution towards activities and support for children living in North Kensington.

Octavia: Grant contribution towards general project costs for the Summer Project.

The Freeman Family Trust: Grant contribution towards Family Support.

Earls Court Partnership: Grant contribution towards Solidarity Sports After School Club and Family Den Under 5's Project.

Royal Borough of Kensington and Chelsea - Grenfell Project Fund: Grant contribution towards activities and support for children living in North Kensington. Partial payment received March 2024, with £6,000 payment received in April 2024.

The Childhood Trust: Donor funds received towards Big Give campaign to benefit the Summer Project.

continued...

SOLIDARITY SPORTS

**NOTES TO THE FINANCIAL STATEMENTS - continued
FOR THE YEAR ENDED 31 MARCH 2024**

11. MOVEMENT IN FUNDS - continued

Young K&C: Grant contribution towards project costs for the Summer Holiday Project.

12. RELATED PARTY DISCLOSURES

There were no related party transactions for the year ended 31 March 2024.

SOLIDARITY SPORTS

DETAILED STATEMENT OF FINANCIAL ACTIVITIES FOR THE YEAR ENDED 31 MARCH 2024

	2024 £	2023 £
INCOME AND ENDOWMENTS		
Donations and legacies		
Trusts and foundations	321,330	320,483
Individual giving	77,915	208,159
Government grants	46,167	37,000
Corporate partnerships	74,871	17,561
	<u>520,283</u>	<u>583,203</u>
Total incoming resources	520,283	583,203
EXPENDITURE		
Charitable activities		
Wages	123,171	89,952
Social security	10,193	7,745
Pensions	4,329	3,863
Trip bookings	42,999	65,737
Venue hire	9,434	11,533
Family support	72,693	13,755
Food for children	2,936	12,315
Volunteer expenses	3,350	2,901
Equipment	1,373	4,482
Transport	1,440	5,714
Sessional staff	<u>120,150</u>	<u>90,017</u>
	392,068	308,014
Other		
Wages	69,406	89,952
Social security	5,733	7,745
Pensions	2,435	3,863
Resources	4,923	4,155
Telephone, internet and office costs	1,079	2,068
Staff and volunteer training	2,621	2,453
Staff and volunteer wellbeing	10,378	1,028
Miscellaneous expenses	2,097	1,614
Insurance	369	383
Accounting fees	3,525	11,010
Bank fees	357	118
Staff benefits	2,982	2,604
Fundraising	3,180	173
Subsistence	9,909	2,517
Entertainment	1,032	52
Interest paid	-	26
Travel - national	2,305	2,476
Carried forward	<u>122,331</u>	<u>132,237</u>

This page does not form part of the statutory financial statements

SOLIDARITY SPORTS

DETAILED STATEMENT OF FINANCIAL ACTIVITIES FOR THE YEAR ENDED 31 MARCH 2024

	2024 £	2023 £
Other		
Brought forward	122,331	132,237
After school club materials	304	277
Meeting expenses	433	206
Repairs and maintenance	(182)	67,925
Office costs	341	2,255
Postage and stationery	122	204
Office light, heat and water	6,236	1,975
Improvements to property	2,380	2,380
Fixtures and fittings	479	560
Computer equipment	-	157
	<u>132,444</u>	<u>208,176</u>
Total resources expended	<u>524,512</u>	<u>516,190</u>
Net (expenditure)/income	<u>(4,229)</u>	<u>67,013</u>

This page does not form part of the statutory financial statements