



Solidarity Sports  
Trustees' Report and Financial Statements  
For the year ended  
31 March 2022

Charity No 1123589

## TABLE OF CONTENTS

TABLE OF CONTENTS.....	1
CHARITY INFORMATION.....	2
PARTNERS.....	3
TRUSTEES' REPORT.....	4

## CHARITY INFORMATION

Trustees	Ms Melernie Meheux Mr Edward Harvey Mr Hassan Laroussi Mr Alain Mandy Ms Una McGuinness
CEO	Mr Sean Mendez
Charity Registration Number	1123589
Registered Office	Seven Stars 253 North End Road London W14 9NS
Bankers	HSBC 92 Kensington High Street London W8 4SH
Independent Examiners	Bannerman Johnstone Maclay Ltd 213 St. Vincent Street Glasgow G2 5QY

# SOLIDARITY SPORTS

Year ended 31 March 2022

Trustees' Report

---

## PARTNERS

the  
**Tudor**trust

 The  
ChildhoodTrust

OCTAVIA 

 the  
grove  
trust

THE  
KENSINGTON  
& CHELSEA  
FOUNDATION

 THE  
MERCERS'  
COMPANY

 Dads  
House  
Helping Dads...be Dads



The London  
Community  
Foundation

KX

 BBC  
Children  
in Need

 BNP PARIBAS

The  
Earls Court  
Development  
Company

h&f  
hammersmith & fulham

  
sky cares

 COMMUNITY  
FUND

KidZania

 LIGHTBULB  
TRUST

We are  
unitgd  
IN HAMMERSMITH FULHAM  
Join us at  
UnitedHF.org

Since 1618  
HAMMERSMITH  
UNITED  
CHARITIES

 THE ROYAL BOROUGH OF  
KENSINGTON  
AND CHELSEA

WEST  
WAY  
TRUST

 smart  
CURRENCY EXCHANGE

The   
Daisy Trust  
Founded in 1981

## TRUSTEES' REPORT

The Trustees present their report and financial statements for the year ended 31 March 2022.

### 1.1 Structure, Management and Governance

Trustees act in a voluntary capacity. They are selected and approved by the Board of Trustees for the respective contributions each trustee can make, in support of Solidarity Sports in meeting its objectives.

All board members complete an induction process to ensure they are fully aware of their responsibilities. They are encouraged to take further development training as appropriate and available.

The Board meets at least four times annually to discuss and oversee the governance of the organisation. Meetings follow an agreed agenda including reviews of the annual budget, management accounts, business plan, reviews of operational and financial performance, staffing, project work, plus additional specific items as required. ■

### 1.2 Our People

Solidarity Sports has a committed team that has continued to grow in the past year. Between April 2021 to March 2022, we employed 6 members of staff on a permanent basis (4 full time and 2 part time):

- Chief Executive Officer, Sean Mendez, is responsible for running and operating the charity on a day-to-day basis.
- Family & Safeguarding Lead manages support for over 200 families, provides clinical supervision of mentors, and oversees family outreach work.
- Development Manager oversees the charity's fundraising, partnerships and financial operations.
- Volunteer and Projects Manager to manage all volunteers, organises projects and supports the delivery.
- Memory Makers Lead manages the charity's regular giving campaign.
- Operations Manager supports the team with administrative duties, strategy and communications.

Well-being coaches lead delivery across all of our projects. 98% of coaches joined us as volunteers before progressing to paid staff. 32% joined us as child participants in our programmes. Between April 2021 to March 2022, we employed 16 coaches on a freelance basis.

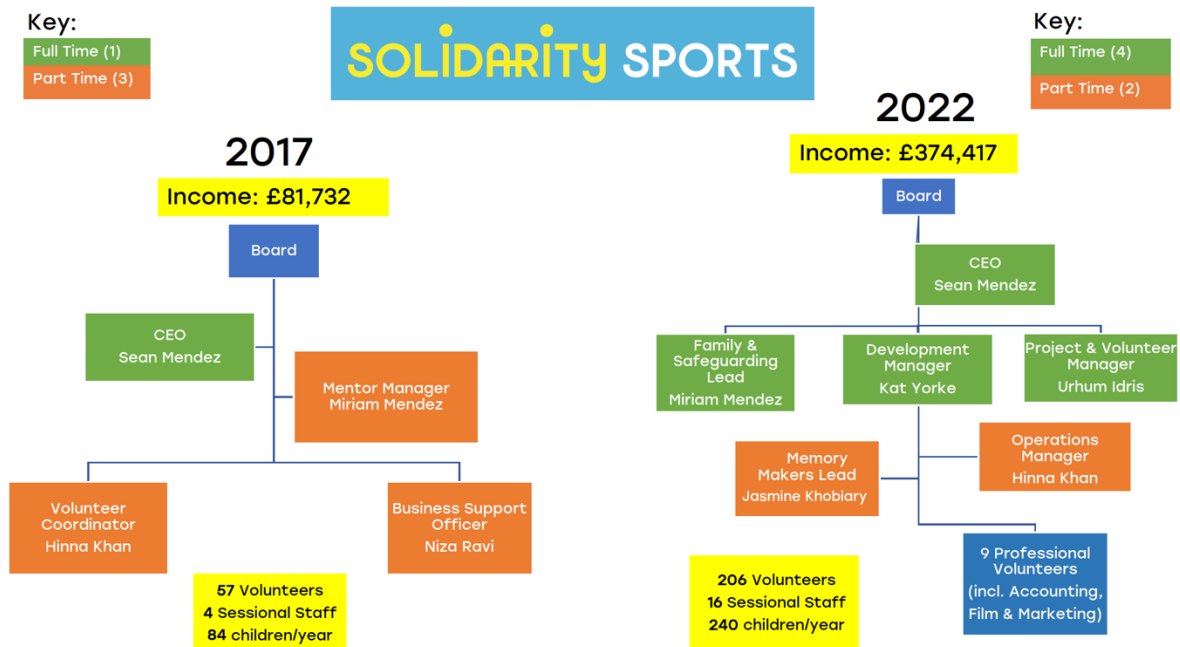
Alongside our coaches, we have over 200 registered volunteers, mostly aged between 16-25. Volunteers are the lifeblood of the organisation; they are vital in maintaining our unique 1:2 adult-to-child ratio that sets us apart from other organisations. The passion and enthusiasm volunteers bring to our projects contributes positive energy and an invaluable 'fun element'. Many of our existing volunteers have grown up in the same communities as our children. Volunteers

are recruited through universities, corporate partnerships, local colleges/sixth forms, and individual enquiries through social media. We attract most volunteers via word-of-mouth.

It is mandatory for all volunteers to have an up-to-date enhanced DBS check. All volunteers are required to attend our specialist in-house Child Safeguarding training, where they learn about attachment styles, how to spot signs of abuse, and how to understand the broad spectrum of needs our children have. Volunteers are encouraged to attend advanced training where available.

Sustaining the flow of volunteers and retaining existing volunteers is key to the future of Solidarity Sports. Restrictions imposed by Covid-19 made recruiting volunteers more difficult, as we could no longer visit university fairs and corporate volunteering started up again at the beginning of 2022. Volunteer recruitment remains an area we wish to improve and will be an important area for development in 2023.

This year, we worked with **206 volunteers**; 9 are professional volunteers who work alongside staff on a variety of key tasks including copywriting, website management, accounting, videography, governance, and bid writing. In the past year, this pro-bono work has saved the organisation tens of thousands of pounds.



## 2. Services and Impact

### MISSION & OBJECTIVES

The charity nurtures the well-being of children in West London who are recovering from severe trauma. Our aim is to deliver happiness through participation in healthy and stimulating activities.

Specific objectives are to:

- Improve the physical, mental and emotional well-being of children; particularly children living in poverty and recovering from trauma;
- Advance children's development, education, and resilience to improve their chances for success;
- Reduce barriers to participation in leisure activities for children who have historically been excluded;
- Grow and honour the Hashim Family Legacy by facilitating the dreams of our children;
- Provide holistic family support by working with carers to give children the best care and chance in life.

### ORGANISATIONAL BACKGROUND & BENEFICIARIES

Solidarity Sports was founded on the belief that every child deserves happiness.

When we established in 2007, we focused on sports. Since then, we have added healthy eating initiatives, arts activities, educational group trips, mentorship programs, and holidays in the UK and abroad.

The glue that binds our programmes together is a commitment to creating a safe, open-minded, inclusive, and loving environment where we can play together and create happy memories.

95% of our children have been referred by Social Services. Our children are affected by abuse, neglect, abandonment, displacement, and bereavement. The majority have experienced chronic trauma, which affects their cognitive and social development. We also care for children who have Special Educational Needs, including those with Autism. An increasing number of our children are overweight or obese, which has a profound effect on their physical and mental wellbeing.

Almost all our families live in social housing (over 96%) -the quality of which is often so poor that our children's health and development is adversely affected.

85% of our children speak English as an additional language and 86% are from minority ethnic backgrounds.

45% of our children live in London's richest borough, Kensington and Chelsea (RBKC). Termed the 'most unequal borough in Britain', there are 3 wards in the

'least deprived' and 3 in the 'most deprived'. Golborne ward is the most deprived ward across the Office for National Statistics (ONS) deprivation scores. To highlight the inequality, there is a 22-year difference in life expectancy between the richest and poorest ward.

In 2021, we were commissioned by RBKC to mobilise an urgent effort to provide suitable activities for over 111 children who had recently Afghanistan. This, alongside, a continual stream of referrals has increased our engagement numbers by 120% from the previous year.

	2019/20	2021/22
Total Participants	127	240
Total Volunteers	123	206
Total Projects	9	11

## PROGRAMMES April 2021 - March 2022

From Easter 2021, we expanded our reach to deliver trips simultaneously across three locations in West London: Shepherds Bush, Notting Hill and Earls Court. Trips aim to improve the wellbeing of our children through enriching activities, sports, new skills, and play.

Holiday Projects 21-22	Children	Project Location
Easter 2021	84	Westway Sports Centre
May Half Term 2021	75	Trips inc. Hyde Park and boating
Summer 2021	105	Westway Sports Centre and trips inc. Brighton Beach and Ice Skating
October Half Term 2021	146	Trips inc. Vauxhall City Farm and Go Ape
Christmas 2021	100	Trips inc. Kidzania and parks
February 2022	100	Trips inc. Sky studio tour and Oceanarium

'These trips are invaluable to both Jake\* and I as they are the only respite we have. He



## Summer 2021

For 3 weeks we were based at Westway Sports Centre in North Kensington, where an average of 65 children joined us each day. Whilst here, our children benefited from 3 hours of physical activity a day, hot and healthy lunches, sports coaching and arts and crafts sessions.

We were thrilled to return to PGL Adventure Centre, on the Isle of Wight after 2 years of paused trips during the pandemic. We took 30 children on a memorable 5-day holiday, where they got to try abseiling, kayaking, trapeze jumping.

In addition to new experiences, time with friends and being immersed in a completely different environment, children learnt



hugely important skills, like brushing their teeth, washing and getting up on time each morning. Most evenings, all the children and volunteers would walk 20 minutes down to the beach to watch the sunset, play games and dip their toes into the sea. It was beautiful to witness children with very complex home lives have this vital respite time, where they could relax and simply be children for 5 days.

“My favourite moment of summer was on the big swing at PGL. It was scary at first, it goes so high! I remember almost touching the clouds. I wish I could go back one day.” – girl, age 9

## Tackling isolation and promoting togetherness

In the last financial year, our services have been crucial to support children and their families who have been disproportionately affected by the pandemic. The knock-on effect from lockdowns, extended time in cramped conditions and missing out on learning due to an inability to access online schooling has been at detriment to their social development. We have witnessed children finding it hard

to make friends, express themselves and more children displaying anxious behaviour.

Our aim for our programmes has been to lift these barriers and address the isolation felt by our children and their families.

In 2021, we introduced weekend family outings to encourage positive family bonding and reduce isolation. Trips were organised weekly on a Saturday, across



London, by our Family and Safeguarding Lead. The forced closeness for these families, often living in overcrowded conditions and refuges, brought stress on the family dynamics. Both our children and carers benefited of a safe and loving environment to re-establish healthy family interactions and have respite from tense and sometimes unsafe, home lives.

Our mentoring programme has also been key in tackling the loneliness felt by children, who were isolated during the pandemic. Between 2021-2022, 20 children were matched with mentors for a minimum of 6 months. Mentors planned activities and trips with their mentee once a week, in the community. We truly believe in this transformational programme, which has resulted in the de-escalation of children on child

protection and child-in-need plans with Social Services.

We have maintained an excellent partnership with Dad's House food bank, who we continue to refer vulnerable families to, so they can access regular fresh food. As well as tackling food insecurity, when we refer families to Dad's House, they have access to expert solicitors in a weekly pro-bono legal clinic, which has supported families going through domestic violence cases and complex family law.

In 2021, we partnered with Dad's House to put on a weekly refugee cooking night at the food bank for Afghan women in the local hotels. We leaned on our volunteer network for translation help and within a couple of weeks, the food bank on Lillie Road was bustling with women preparing and cooking food for their families and friends back in the hotel. Each week, we would source the ingredients and learn more about these incredible women.

## ORGANISATIONAL GROWTH

-

### **New Office**

In December 2021, we moved into our new home - Seven Stars on North End Road - a huge 3,000 square ft space in the heart of our community.

Just 18 months after securing our office on Lillie Road, we were thrilled to be offered a larger space by our partners, Earls Court Development Company, for a lease of 5 years, in-kind.

This change is a massive step for Solidarity Sports – we now have the space to facilitate more support than ever, with dedicated areas for meetings, activities, and office work.

## **Fundraising**

Solidarity Sports endeavours to grow income from trusts and foundations. We also invest our efforts in individual giving campaigns to garner long-term support from donors. Whilst still addressing the impact the pandemic had on our families, the fundraising landscape has also suffered as a result.

The charity saw a 21% decline in income, compared to the previous year. This was anticipated due to the spike we saw between 2020-2021, because of a generous increase in individual giving and stricter financial controls.

Unfortunately, we had to cancel another relaunch for *Memory Makers* in December 2021, due to growing Covid-19 cases. However, as of 2022, we are looking forward to the opportunities to grow our *Memory Makers* campaign – now with more support from corporate partners thanks to time spent investing in this area.

Individual giving has continued to grow, thanks to participation in Champions for Children (match-funding) campaign and increasing brand awareness on social media.

Finally, our corporate partnerships have gone from strength to strength, particularly with Sky UK and BNP Paribas. In addition to financial donations, we have been able to organise competitions for children, family hampers, vouchers for books and digital devices for children in need.

The trustees and staff would like to express their gratitude and thanks to the following trusts and foundations for their very generous support and kindness shown in the past year.

Callewa Foundation, Lightbulb Trust, Let Me Play, RBKC, Brian Murtagh, Children in Need, Childhood Trust, Daisy Trust, Jack Petchy, London Community Fund, H&F Giving, Octavia, K&C Foundation, Young K&C, The Mercers' Company, Earls Court Development Company, and the Hollick Foundation.

**Report of the Trustees and  
Unaudited Financial Statements  
for the Year Ended 31 March 2022  
for  
Solidarity Sports**

Bennett Brooks & Co Ltd  
Chartered Accountants  
14 Grosvenor Court  
Foregate Street  
Chester  
Cheshire  
CH1 1HG

# **Solidarity Sports**

## **Contents of the Financial Statements for the year ended 31 March 2022**

	<b>Page</b>
<b>Report of the Trustees</b>	1
<b>Statement of Financial Activities</b>	2
<b>Balance Sheet</b>	3
<b>Notes to the Financial Statements</b>	4 to 8
<b>Detailed Statement of Financial Activities</b>	9

## **Solidarity Sports**

### **Report of the Trustees for the year ended 31 March 2022**

The trustees present their report with the financial statements of the charity for the year ended 31 March 2022. The trustees have adopted the provisions of Accounting and Reporting by Charities: Statement of Recommended Practice applicable to charities preparing their accounts in accordance with the Financial Reporting Standard applicable in the UK and Republic of Ireland (FRS 102) (effective 1 January 2019).

#### **FINANCIAL REVIEW**

##### **Reserves policy**

General reserves are carried forward to future periods, and may be expended in accordance with the charity's Trust Deed as the Trustees decide.

Income from Restricted sources is expended in the year to which it relates. Any surplus remaining at the end of the year is carried forward to the next financial year, while any deficit is met from Unrestricted sources.

In the year ended 31 March 2022 Restricted expenditure exceeded income for those purposes by £14,305 and this amount was met from Unrestricted Funds.

During the course of the year ended 31 March 2021, the Trustees decided to increase the level of reserves to 12 months, given the challenges presented by Covid-19.

#### **STRUCTURE, GOVERNANCE AND MANAGEMENT**

##### **Governing document**

The charity is controlled by its governing document, a deed of trust and constitutes an unincorporated charity.

#### **REFERENCE AND ADMINISTRATIVE DETAILS**

##### **Registered Charity number**

1123589

##### **Principal address**

253 North End Road

London

W14 9NS

##### **Trustees**

E Harvey

Dr M Meheux

Ms U McGuinness

H Laroussi

A V Mandy

Approved by order of the board of trustees on 31 October 2022 and signed on its behalf by:

Dr M Meheux - Trustee

# Solidarity Sports

## Statement of Financial Activities for the year ended 31 March 2022

		Unrestricted funds £	Restricted fund £	2022 Total funds £	2021 Total funds £
	Notes				
<b>INCOME AND ENDOWMENTS FROM</b>					
Incoming resources		237,654	136,744	374,398	476,844
Investment income	2	19	-	19	-
<b>Total</b>		<u>237,673</u>	<u>136,744</u>	<u>374,417</u>	<u>476,844</u>
<b>EXPENDITURE ON</b>					
<b>Charitable activities</b>					
Projects		252	-	252	-
Charitable Activities		114,992	108,523	223,515	178,838
Other		84,690	42,526	127,216	115,382
<b>Total</b>		<u>199,934</u>	<u>151,049</u>	<u>350,983</u>	<u>294,220</u>
<b>NET INCOME/(EXPENDITURE)</b>		37,739	(14,305)	23,434	182,624
<b>RECONCILIATION OF FUNDS</b>					
Total funds brought forward		226,177	53,341	279,518	96,894
<b>TOTAL FUNDS CARRIED FORWARD</b>		<u>263,916</u>	<u>39,036</u>	<u>302,952</u>	<u>279,518</u>

The notes form part of these financial statements

# Solidarity Sports

## Balance Sheet 31 March 2022

		Unrestricted funds £	Restricted fund £	2022 Total funds £	2021 Total funds £
	Notes				
<b>FIXED ASSETS</b>					
Tangible assets	6	330	-	330	2,320
<b>CURRENT ASSETS</b>					
Debtors	7	11,144	-	11,144	3,070
Cash at bank		273,359	39,036	312,395	292,103
		<u>284,503</u>	<u>39,036</u>	<u>323,539</u>	<u>295,173</u>
<b>CREDITORS</b>					
Amounts falling due within one year	8	(20,917)	-	(20,917)	(17,975)
<b>NET CURRENT ASSETS</b>		<u>263,586</u>	<u>39,036</u>	<u>302,622</u>	<u>277,198</u>
<b>TOTAL ASSETS LESS CURRENT LIABILITIES</b>		263,916	39,036	302,952	279,518
<b>NET ASSETS</b>		<u>263,916</u>	<u>39,036</u>	<u>302,952</u>	<u>279,518</u>
<b>FUNDS</b>	9				
Unrestricted funds				263,916	226,177
Restricted funds				39,036	53,341
<b>TOTAL FUNDS</b>				<u>302,952</u>	<u>279,518</u>

The financial statements were approved by the Board of Trustees and authorised for issue on 31 October 2022 and were signed on its behalf by:

M Meheux - Trustee



## Solidarity Sports

### Notes to the Financial Statements for the year ended 31 March 2022

#### 1. ACCOUNTING POLICIES

##### Basis of preparing the financial statements

The financial statements of the charity, which is a public benefit entity under FRS 102, have been prepared in accordance with the Charities SORP (FRS 102) 'Accounting and Reporting by Charities: Statement of Recommended Practice' applicable to charities preparing their accounts in accordance with the Financial Reporting Standard applicable in the UK and Republic of Ireland (FRS 102) (effective 1 January 2019), Financial Reporting Standard 102 'The Financial Reporting Standard applicable in the UK and Republic of Ireland' and the Charities Act 2011. The financial statements have been prepared under the historical cost convention.

##### Income

All income is recognised in the Statement of Financial Activities once the charity has entitlement to the funds, it is probable that the income will be received and the amount can be measured reliably. Unrestricted grants and other income are accounted for in the year in which they are receivable. Restricted grants and other income are accounted for in the year in which the projects are expected to take place.

##### Expenditure

Liabilities are recognised as expenditure as soon as there is a legal or constructive obligation committing the charity to that expenditure, it is probable that a transfer of economic benefits will be required in settlement and the amount of the obligation can be measured reliably. Expenditure is accounted for on an accruals basis and has been classified under headings that aggregate all cost related to the category. Where costs cannot be directly attributed to particular headings they have been allocated to activities on a basis consistent with the use of resources. The charity is not registered for VAT and accordingly expenditure is shown gross of irrecoverable VAT.

##### Tangible fixed assets

Depreciation is provided at the following annual rates in order to write off each asset over its estimated useful life.

Fixtures and fittings	- 33% on cost
Computer equipment	- 33% on cost

##### Taxation

The charity is exempt from tax on its charitable activities.

##### Restricted and unrestricted projects

The charity organises its work between a number of projects. Certain projects are supported in whole, or major part, by specific donations or grants, and these are designated as being restricted projects. These restricted funds can only be used for those particular restricted purposes within the objects of the charity. Other projects are undertaken as part of the general work of the charity, and are regarded as being unrestricted projects. The unrestricted funds allocated to those projects can be used at the discretion of the trustees. Staff may work both on restricted and unrestricted projects, and their employment costs have been analysed based on time spent.

##### Pension costs and other post-retirement benefits

The charity operates a defined contribution pension scheme. Contributions payable to the charity's pension scheme are charged to the Statement of Financial Activities in the period to which they relate.

#### 2. INVESTMENT INCOME

	2022	2021
	£	£
Deposit account interest	19	-
	<u>19</u>	<u>-</u>

# Solidarity Sports

## Notes to the Financial Statements - continued for the year ended 31 March 2022

### 3. TRUSTEES' REMUNERATION AND BENEFITS

There were no trustees' remuneration or other benefits for the year ended 31 March 2022 nor for the year ended 31 March 2021.

#### Trustees' expenses

There were no trustees' expenses paid for the year ended 31 March 2022 nor for the year ended 31 March 2021.

### 4. STAFF COSTS

	2022	2021
	£	£
Wages and salaries	176,639	153,276
Social security costs	18,916	15,954
Other pension costs	4,408	7,583
	<u>199,963</u>	<u>176,813</u>

The costs incurred in respect of these employees were as below. Their employment costs have been analysed between restricted projects, and unrestricted or administrative duties based on an estimate of time spent, except where funders have underwritten specific roles.

Analysed between:

Restricted projects: £79,488 (2021: £70,725)

Unrestricted projects: £120,475 (2021: £106,088)

Key management personnel received £ 56,196 (2021: £51,173) for their services to the charity.

The average monthly number of employees during the year was as follows:

	2022	2021
	6	6
Staff	<u>6</u>	<u>6</u>

No employees received emoluments in excess of £60,000.

### 5. COMPARATIVES FOR THE STATEMENT OF FINANCIAL ACTIVITIES

	Unrestricted funds £	Restricted fund £	Total funds £
<b>INCOME AND ENDOWMENTS FROM</b>			
Incoming resources	<u>293,992</u>	<u>182,852</u>	<u>476,844</u>
<b>EXPENDITURE ON</b>			
<b>Charitable activities</b>			
Charitable Activities	87,689	91,149	178,838
Other	<u>77,020</u>	<u>38,362</u>	<u>115,382</u>
<b>Total</b>	<u>164,709</u>	<u>129,511</u>	<u>294,220</u>
<b>NET INCOME</b>	129,283	53,341	182,624
<b>RECONCILIATION OF FUNDS</b>			
Total funds brought forward	96,894	-	96,894
<b>TOTAL FUNDS CARRIED FORWARD</b>	<u>226,177</u>	<u>53,341</u>	<u>279,518</u>

# Solidarity Sports

## Notes to the Financial Statements - continued for the year ended 31 March 2022

### 6. TANGIBLE FIXED ASSETS

	Fixtures and fittings £	Computer equipment £	Totals £
<b>COST</b>			
At 1 April 2021 and 31 March 2022	2,688	6,187	8,875
<b>DEPRECIATION</b>			
At 1 April 2021	2,033	4,522	6,555
Charge for year	482	1,508	1,990
At 31 March 2022	2,515	6,030	8,545
<b>NET BOOK VALUE</b>			
At 31 March 2022	173	157	330
At 31 March 2021	655	1,665	2,320

### 7. DEBTORS: AMOUNTS FALLING DUE WITHIN ONE YEAR

	2022 £	2021 £
Trade debtors	8,310	270
Prepayments and accrued income	2,834	2,800
	11,144	3,070

### 8. CREDITORS: AMOUNTS FALLING DUE WITHIN ONE YEAR

	2022 £	2021 £
Taxation and social security	5,413	5,437
Other creditors	15,504	12,538
	20,917	17,975

### 9. MOVEMENT IN FUNDS

	At 1.4.21 £	Net movement in funds £	At 31.3.22 £
<b>Unrestricted funds</b>			
Unrestricted Fund	226,177	37,739	263,916
<b>Restricted funds</b>			
Restricted Fund	53,341	(14,305)	39,036
<b>TOTAL FUNDS</b>	279,518	23,434	302,952

# Solidarity Sports

## Notes to the Financial Statements - continued for the year ended 31 March 2022

### 9. MOVEMENT IN FUNDS - continued

Net movement in funds, included in the above are as follows:

	Incoming resources £	Resources expended £	Movement in funds £
<b>Unrestricted funds</b>			
Unrestricted Fund	237,673	(199,934)	37,739
<b>Restricted funds</b>			
Restricted Fund	136,744	(151,049)	(14,305)
<b>TOTAL FUNDS</b>	<u>374,417</u>	<u>(350,983)</u>	<u>23,434</u>

### Comparatives for movement in funds

	At 1.4.20 £	Net movement in funds £	At 31.3.21 £
<b>Unrestricted funds</b>			
Unrestricted Fund	96,894	129,283	226,177
<b>Restricted funds</b>			
Restricted Fund	-	53,341	53,341
<b>TOTAL FUNDS</b>	<u>96,894</u>	<u>182,624</u>	<u>279,518</u>

Comparative net movement in funds, included in the above are as follows:

	Incoming resources £	Resources expended £	Movement in funds £
<b>Unrestricted funds</b>			
Unrestricted Fund	293,992	(164,709)	129,283
<b>Restricted funds</b>			
Restricted Fund	182,852	(129,511)	53,341
<b>TOTAL FUNDS</b>	<u>476,844</u>	<u>(294,220)</u>	<u>182,624</u>

A current year 12 months and prior year 12 months combined position is as follows:

	At 1.4.20 £	Net movement in funds £	At 31.3.22 £
<b>Unrestricted funds</b>			
Unrestricted Fund	96,894	167,022	263,916
<b>Restricted funds</b>			
Restricted Fund	-	39,036	39,036
<b>TOTAL FUNDS</b>	<u>96,894</u>	<u>206,058</u>	<u>302,952</u>

## Solidarity Sports

### Notes to the Financial Statements - continued for the year ended 31 March 2022

#### 9. MOVEMENT IN FUNDS - continued

A current year 12 months and prior year 12 months combined net movement in funds, included in the above are as follows:

	Incoming resources £	Resources expended £	Movement in funds £
<b>Unrestricted funds</b>			
Unrestricted Fund	531,665	(364,643)	167,022
<b>Restricted funds</b>			
Restricted Fund	319,596	(280,560)	39,036
<b>TOTAL FUNDS</b>	<u>851,261</u>	<u>(645,203)</u>	<u>206,058</u>

#### 10. RELATED PARTY DISCLOSURES

There were no related party transactions for the year ended 31 March 2022.

## Solidarity Sports

### Detailed Statement of Financial Activities for the year ended 31 March 2022

	2022 £	2021 £
<b>INCOME AND ENDOWMENTS</b>		
<b>Incoming resources</b>		
Trusts and Foundations	155,727	277,138
Furlough Scheme	19,273	49,738
Corporate Partnerships	10,612	10,125
Government Grants	33,083	12,122
Individual Giving	155,703	127,721
	<hr/> 374,398	<hr/> 476,844
<b>Investment income</b>		
Deposit account interest	19	-
	<hr/>	<hr/>
<b>Total incoming resources</b>	374,417	476,844
<b>EXPENDITURE</b>		
<b>Charitable activities</b>		
Salaries	88,320	76,638
Social security	9,458	9,241
Pensions	2,204	2,528
Trip bookings	27,915	24,323
Venue Hire	11,775	5,650
Family Support	5,606	5,636
Food for children	8,166	3,059
Volunteer Expenses	2,329	1,211
Equipment	2,880	9,649
Transport (inc. coach travel)	9,928	6,931
Sessional Staff	55,186	33,972
	<hr/> 223,767	<hr/> 178,838
<b>Other</b>		
Salaries	88,319	76,638
Social security	9,458	6,713
Pensions	2,204	5,055
Resources(brought in services)	4,883	15,074
Telephone Internet &Office Exp	2,793	5,762
Staff/Volunteer training	797	1,380
Staff/Volunteer Wellbeing	7,343	200
Miscellaneous	1,716	2,387
Insurance	455	124
Audit & Accountancy Fees	1,350	-
Bank Fees	54	-
CEO Benefits	1,832	-
Fundraising	123	-
Subsistence	3,901	-
Fixtures and fittings	481	496
Computer equipment	1,507	1,553
	<hr/> 127,216	<hr/> 115,382
<b>Total resources expended</b>	350,983	294,220
	<hr/>	<hr/>
<b>Net income</b>	23,434	182,624
	<hr/> <hr/>	<hr/> <hr/>

This page does not form part of the statutory financial statements

# **INDEPENDENT EXAMINER'S REPORT TO THE TRUSTEES OF SOLIDARITY SPORTS**

---

## **Independent examiner's report to the trustees of Solidarity Sports**

I report to the charity trustees on my examination of the accounts of the Charity for the year ended 31 March 2022.

### **Respective responsibilities of trustees and examiner**

As the charity's trustees you are responsible for the preparation of the accounts in accordance with the requirements of the Charities Act 2011 ("the Act").

I report in respect of my examination of the charity's accounts carried out under section 145 of the 2011 Act and in carrying out my examination I have followed all the applicable directions given by the Charity Commission under section 145(5)(b) of the Act.

### **Independent examiner's statement**

The charity's gross income exceeded £250 000 but was less than £1 million, and its gross assets were less than £3.26 million, and these accounts therefore do not require independent audit. Your examiner must be a member of a body listed in section 145 of the 2011 Act. I confirm that I am qualified to undertake the examination by being a member of the Institute of Chartered Accountants in Scotland (ICAS), which is one of the listed bodies.

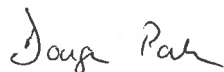
I have completed my examination. I confirm that no material matters have come to my attention in connection with the examination which give me cause to believe that in any material respect:

1. accounting records were not kept in accordance with section 130 of the Charities Act; or
2. the accounts did not accord with the accounting records; or
3. the accounts did not comply with the applicable requirements concerning the format and content of accounts set out in the Charities (Accounts and Reports) Regulations 2008 other than any requirement that the accounts give a 'true and fair view' which is not a matter considered as part of an independent examination.

I have no concerns and have come across no other matters in connection with the examination to which attention should be drawn in this report in order to enable a proper understanding of the accounts to be reached.

### **Use of report**

This report is made solely to the charity's trustees, as a body, in accordance with Section 145 of the 2011 Act. My work has been undertaken so that I might state to the charity's trustees those matters I am required to state to them in an independent examiner's report and for no other purpose. To the fullest extent permitted by law, I do not accept or assume responsibility to anyone other than the charity and the charity's trustees as a body, for my work, or for the opinions I have formed.



Douglas Paton BSc CA  
Institute of Chartered Accountants for Scotland  
Bannerman Johnstone Maclay  
213 St Vincent Street  
Glasgow  
G2 5QY

27 January 2022