

LONDON CITY FARMS AND COMMUNITY GARDENS ASSOCIATION

England & Wales · Charity number 1123264

Details

Status Registered

Legal form Charitable company

Company number [06236320](#)

Registered 2008-03-19

Register [View on the Charity Commission register](#)

Contact

Address 254-278 Grays Inn Road
London
WC1X 8LH

Phone 02079165421

Email londoncfcg@gmail.com

Activities

Objects: 1 PROMOTE THE BENEFIT OF THE INHABITANTS OF GREATER LONDON IN PARTICULAR (THE AREA OF BENEFIT) AND THE PUBLIC AT LARGE WITHOUT DISTINCTION OF SEX, OR OF POLITICAL, RELIGIOUS OR OTHER OPINIONS BY ASSOCIATING STATUTORY AUTHORITIES, VOLUNTARY ORGANISATIONS AND THE GENERAL PUBLIC IN A COMMON EFFORT TO ADVANCE EDUCATION AND TO PROVIDE FACILITIES IN THE INTERESTS OF SOCIAL WELFARE FOR RECREATION AND OTHER LEISURE TIME OCCUPATION WITH THE OBJECT OF IMPROVING THE CONDITIONS OF LIFE FOR THOSE WHO HAVE NEED OF SUCH FACILITIES BY REASON OF THEIR YOUTH, AGE, INFIRMITY OR DISABLEMENT, POVERTY OR SOCIAL AND ECONOMIC CIRCUMSTANCES.2 ADVANCE THE EDUCATION OF THE PUBLIC AT LARGE, IN AGRICULTURE, HORTICULTURE, CRAFTS, COUNTRY LIFE, PROTECTION AND IMPROVEMENT OF THE NATURAL ENVIRONMENT THROUGH BEST ENVIRONMENTAL PRACTICES ESPECIALLY BY ENCOURAGING REDUCTION, RE-USE AND RECYCLING, AND RELATED SUBJECTS AND IN THE PRINCIPLES OF SELF-DISCIPLINE AND GOOD CITIZENSHIP AND THROUGH THEIR LEISURE TIME ACTIVITIES SO THAT THEY DEVELOP THEIR PHYSICAL, MENTAL AND SPIRITUAL CAPACITIES AND GROW TO FULL MATURITY AS INDIVIDUALS AND MEMBERS OF SOCIETY AND THEIR CONDITIONS OF LIFE MAY BE IMPROVED.3 PROMOTE AMONG THE PUBLIC HUMANITY AND MORALITY BY ADVANCING EDUCATION IN THE CARE AND CONSIDERATION FOR ALL ANIMALS, PARTICULARLY ANIMALS IN NEED OF CARE AND PROTECTION SO THAT THE PUBLIC WILL LEARN GREATER AWARENESS OF AND APPRECIATION FOR SUCH ANIMALS.4 PROVIDE EDUCATION AND TRAINING FOR PERSONS WHO HAVE NEED OF SUCH FACILITIES BY REASON OF THEIR AGE, YOUTH, INFIRMITY OR DISABLEMENT, POVERTY OR SOCIAL AND ECONOMIC CIRCUMSTANCES, SO AS TO PREPARE THEM FOR ANY TRADE, OCCUPATION OR SERVICE AND THEREBY ADVANCE THEM IN LIFE OR ENABLE THEM TO EARN THEIR OWN LIVELIHOOD.5 RELIEVE PHYSICALLY OR MENTALLY DISABLED OR DEPRIVED PERSONS BY THE PROVISION, AS REMEDIAL RECREATIONAL OR THERAPEUTIC ACTIVITY, OF FACILITIES, INCLUDING EQUESTRIAN ACTIVITIES AND GARDENING.6 PROMOTE SUCH OTHER CHARITABLE PURPOSES AS MAY FROM TIME TO TIME BE DETERMINED.

Activities: The London City Farms and Community Gardens Association is a membership organisation for charitable farms and gardens serving London communities and residents. We are a mutual benefit charity with no paid staff. We promote the work of our members, fundraise and support networking. Every year we produce the London Harvest Festival, jointly run by our members.

Classification

- **How:** Other Charitable Activities
- **What:** Education/training, Animals, Environment/conservation/heritage
- **Who:** Children/young People, Other Charities Or Voluntary Bodies

Geography

- **Area of benefit:** GREATER LONDON
- Throughout London

Finances

Period end	Income	Expenditure	Assets	Employees
2025-04-05	£34,737	£24,176	-	-
2024-04-05	£19,428	£23,013	-	-
2023-04-05	£12,396	£19,985	-	-
2022-04-05	£13,651	£14,081	-	-
2021-04-05	£10,444	£1,500	-	-

Trustees

Name	Role	Appointed
CATHRYN ELIZABETH MAUND		
CHRIS POUNDS		2012-10-25
DAVID WALTERS		
ELIZABETH MCALLISTER		
Gemma Hooper		2021-12-13
Nemone Mercer		2014-01-10
Robert Gayler		2014-01-10
Victoria Broscomb		2024-03-11

LONDON CITY FARMS AND COMMUNITY GARDENS ASSOCIATION

England & Wales - Charity number 1123264

Accounts

Annual Report and Financial Statements London City Farms and Community Gardens Association 2024 - 2025



Home of the London Harvest Festival



Charity Commission Number 1123264

Company Registration Number 06236320

Reference and administrative details

LEGAL STATUS

London City Farm and Community Gardens Association is a company limited by guarantee, not having share capital, governed by a Memorandum and Articles of Association.

PRINCIPAL ADDRESS

London City Farm and Community Gardens Association
c/o Calthorpe Community Garden
258-274 Grays Inn Road
London WC1X 8LH

TRUSTEES

Robert Gayler
Victoria Hobson
Gemma Hooper
Cathryn Maund
Elizabeth McAllister
Nemone Mercer
Christopher Pounds
David Walters

The directors of the charitable company (the charity) are its Trustees for the purpose of charity law and throughout this report are collectively referred to as the Trustees.

COMPANY SECRETARY

Rachel Schwartz

WEBSITE

www.londonfarmsandgardens.org.uk

STRUCTURE OF THE CHARITY

The Trustees are managers of individual city farms or community gardens which are individual charities.

The purpose of the charity is to provide opportunities to raise the profile of projects in London.

INDEPENDENT EXAMINER

Due to the size of the turnover of the charity an Independent Examination is not required. The Accounts were approved and signed 06 November 2025

BANKERS

Cooperative Bank
1 Balloon Street
Manchester
M60 4EP



Wellgate Young Farmer with Bunny "Flip"

REPORT ON ACTIVITIES

Overview

The charity was established in 2005 and for many years the main activity has been to organise an Annual Harvest Festival event in September which is open to all member projects. Over the years people connected to the member projects have developed personal relationships and are in contact to share information and best practices.

Since 2021 we have been hosting events in central London to raise the profile of our shared mission and help members raise money and other support.

Critical to our recent growth is the support of Social Farms & Gardens and the staff members of their London Office. SF&G supports our work with funding and help with event management.

Community Gardens Showcase

On 19 June 2024, the London City Farms & Community Gardens Association, partnered with Social Farms & Gardens to produce our first Community Gardens Showcase.

Representatives of 16 community gardens from all over London spoke about the importance of their work to guests from local government, companies and other charities.

Special thank you to Phoenix Garden for loaning us their beautiful space for the event, and to Social Farms & Gardens for funding the event through their grant from Kusuma Trust.



Reuse Network with McGee

In 2024 we launched a reuse network with McGee. It is a simple but effective tool where McGee can list materials from their construction projects available for free to our member projects. If the projects want the materials McGee works with them to arrange delivery.

In 2024-25 we had 8 successful donations including:

- Garden bins, chairs, timber boards, and PVC drains
- Repurposed for community gardens, school playgrounds, mental health creative centres, farm repairs, and classroom seating

McGee reported that this effort has contributed to a cultural shift at McGee. Seeing this effort in action has encouraged more employees to get involved.

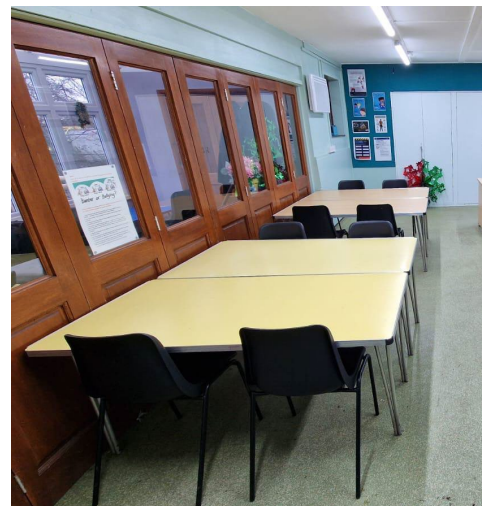
This project contributed to McGee winning a National Gold Award at the 2025 Green Apple Environmental Awards.



Tree Logs added to play space at Walworth Gardens



Plywood donated to Deen and Wellgate



Chairs donated to Wellgate and Core Arts

AGM and Fundraising Workshop

In February 2025, we held our Annual General Meeting. It was followed by a peer-led workshop to discuss fundraising through hosting Corporate Team days.

We are grateful to Social Farms & Gardens for funding this event.

Worshipful Company of Farmers

Since 2021, the Worshipful Company of Farmers has supported us to raise £44,500 in donations and pledges. Disbursements began in 2022. In 2023, we delivered a second set of unrestricted grants of £500 to each of the 12 city farms. In 2024-5, we disbursed £1400 to each farm in 2 tranches - a total of £16,800.

Final donations made against pledges have been received, and are scheduled to be disbursed in 2025-2026.

We are grateful to the Worshipful Company of Farmers for their ongoing support.



26th Annual London Harvest Festival

London City Farms and Community Gardens Association delivered the 26th annual Harvest Festival on 21st September 2024 at the Lambourne End Centre. The show is developed and produced by member projects, with staff donating their time to the planning of the event. Amongst them, the participating projects donate 100s of voluntary hours in the preparation and delivery of the show which are not reflected in the accounts.

Attendees are staff, volunteers, beneficiaries, community members and parents/carers of volunteers at any of our member projects.

Due to the Bluetongue outbreak in London that year, we were unable to allow animals to travel to the show. We altered the format, and used Lambourne End animals for workshops and handling competitions. They then participated in a Team Challenge.

The day also included: Tug of War, Horticultural Competition, Photo Competition and have a go crafts.

We hosted 10 City Farm and Community Garden projects, with over 200 people.

Verbatim Comments from Participants

"I really liked it. The atmosphere was great, and the organising was good, along with the ability of everyone to pivot after bluetongue stopped play. I thought the ways the 'animal judging' workshops and the dog show were brilliant. I liked the veg food and the free apples."

The team challenges were definitely a highlight for our young people and great to see them working together. Lambourne End staff were lovely with our young people, supporting and encouraging in just the right way!"



Trustees' Report

The Trustees of London City Farms and Community Gardens Association present the Annual Report and Financial Statements for the year ended 31st March 2025. The financial statements comply with the Charities Act 2011, the Companies Act 2006, the Memorandum and Articles of Association, and Accounting and Reporting by Charities: Statement of Recommended Practice Applicable to charities preparing their accounts in accordance with the Financial Reporting Standard applicable in the UK and Republic of Ireland (FRS 102).

Objectives

1. The Charity's objects (the Objects) are:

- (a) promote the benefit of the inhabitants of Greater London in particular (the Area of Benefit) and the public at large without distinction of sex, or of political, religious or other opinions by associating statutory authorities, voluntary organisations and the general public in a common effort to advance education and to provide facilities in the interests of social welfare for recreation and other leisure time occupation with the object of improving the conditions of life for those who have need of such facilities by reason of their youth, age, infirmity or disablement, poverty or social and economic circumstances.
- (b) advance the education of the public at large, in agriculture, horticulture, crafts, country life, protection and improvement of the natural environment through best environmental practices especially by encouraging reduction, re-use and recycling, and related subjects and in the principles of self-discipline and good citizenship and through their leisure time activities so that they develop their physical, mental and spiritual capacities and grow to full maturity as individuals and members of society and their conditions of life may be improved.
- (c) promote among the public humanity and morality by advancing education in the care and consideration for all animals, particularly animals in need of care and protection so that the public will learn greater awareness of and appreciation for such animals.
- (d) provide education and training for persons who have need of such facilities by reason of their age, youth, infirmity or disablement, poverty or social and economic circumstances, so as to prepare them for any trade, occupation or service and thereby advance them in life or enable them to earn their own livelihood.
- (e) relieve physically or mentally disabled or deprived persons by the provision, as remedial recreational or therapeutic activity, of facilities, including equestrian activities and gardening.

2024-25 Objectives

The current objectives for the year, were to:

- * To facilitate networking between London based projects
- * To raise the profile of the movement with an emphasis on community gardens
- * Produce the 26th London Harvest Festival Show
- * Ensure that we are aligned with the efforts of the London Office of Social Farms & Gardens so our work is additive and not duplicative.

Strategy

As a Charity that is mainly dependent on the work of members and trustees who volunteer their time we are aware of the need to not be over ambitious in our work. However the combined expertise and knowledge of those involved means that we are able to deliver professional and informative services to help raise the profile of the members.

Public benefit

The Trustees confirm that reference has been made to the guidance contained in the Charity Commission's general guidance on public benefit when reviewing the Charity's aims and objectives, in planning future activities and in setting the policies for the period.

Risk management

The trustees acknowledge their responsibility for the management of risks faced by the charity and have a risk management strategy which comprises:

- * We undertake an annual assessment of factors that could involve the work and finances of London City Farms and Community Gardens Association including a three year business plan assessing significant external risk, such as funding.
- * The establishment of policies, systems and procedures to mitigate those risks identified in the assessment including financial regulations, safeguarding policies and health and safety policies.
- * The implementation of procedures designed to minimise or manage potential impact on London City Farms and Community Gardens Association should those risks materialise with periodic reviews to ensure risks continue to be mitigated.

The Trustees, in considering the governance, management, operational, financial, and environmental risks, are satisfied, at this stage, that there are no material exposures and that there are procedures in place to mitigate such risks.

The Trustees meet regularly to review the work programme and any associated risks.

Recruiting, appointing, induction & training of new trustees

All appointments are made by London City Farms and Community Gardens Association. Selection of Trustees is made on the basis of the need to fulfil the charity's legal obligations and to reflect the project membership to ensure that there is a balance of representatives from City Farms and community garden projects. Trustees may join the committee at any time as observers and are elected to the management committee at the Annual General Meeting. Recruitment is via advertising and training is available for Trustees. New Trustees are given copies of the memorandum and articles and LCF&CGA's policies and procedures.

Organisational structure

The LCFCGA is an umbrella organisation focusing on raising the profile of member projects based in London. Although membership is open to all growing spaces and city farms the more active members are larger well established projects. The number of city farms in the capital and their relative geographic proximity make them an important show case for the national movement.

The association does not currently employ any salaried members of staff but freelancers are commissioned to undertake specific pieces of work.

Related party transactions

No trustees received any individual payments.

Fundraising

The charity does not use third party fundraisers for any of its fundraising. We have not received any complaints regarding our fundraising activities. We are not currently registered with HMRC to reclaim Gift Aid on donations.

Achievements for the year

- * Community Gardens Showcase event
- * Production of the 26th London Harvest Festival Show
- * Establishment of Reuse network

Building relationships

The London City Farms and Community Gardens Association works in close partnership with Social Farms & Gardens the national charity promoting city farming and community gardening. Their London staff team provide training and other support for member projects and they attended and helped support all the

events prompted by the London City Farms and Community Gardens Association.

Communications

The association maintains a website www.londonfarmsandgardens.org.uk and promotes its activities on social media.

We regularly share information with our members via email.

Financial review

Funding Sources

Total income for the year ending 5th April 2025 was £34,737 (2024: £19,428)

Expenditure

Total resources expended for the year was £24,176 (2024: £23,013)

Reserves policy & going concern

The free reserves of the charity comprise the unrestricted funds amounted to £14,908 (2024: £4,347). Net current assets are £14,908 (2024: £4,347). The charity seeks to utilise all free reserves on strategic projects during the year.

The Trustees are of the view that LCFCG is a going concern.

The Trustees are responsible for keeping proper accounting records that disclose with reasonable accuracy at any time the financial position of the charity and to enable them to ensure that the financial statements comply with the Companies Act 2006. They are also responsible for safeguarding the assets of the charity and the group and hence take reasonable steps for the prevention and detection of fraud and other irregularities.

The Trustees are responsible for the maintenance and integrity of the corporate and financial information included on the charitable company's website. Legislation in the United Kingdom governing the preparation and dissemination of financial statements may differ from legislation in other jurisdictions.

Cathryn Maund, Treasurer

Board of Trustees

London City Farm and Community Gardens Association

London City Farms and Community Gardens Association		Charity No	1123264
		Company number	06236320
Annual accounts for the period			
Period start date	01-Apr-24	To	Period end date
			05-Apr-25

Section A Statement of financial activities

Recommended categories by activity	Guidance Notes	Unrestricted funds	Restricted income funds	Endowment funds	Total funds	Prior year funds
		£ F01	£ F02	£ F03	£ F04	£ F05
Incoming resources (Note 3)						
Income and endowments from:						
Donations and legacies	S01	2,987	24,100	-	27,087	-
Charitable activities	S02	7,546			7,546	19,428.45
Other trading activities	S03	-	-	-	-	-
Investments	S04	-	-	-	-	-
Separate material item of income	S05	-	-	-	-	-
Other	S06	104	-	-	104	-
Total	S07	10,637	24,100	-	34,737	19,428
Resources expended (Note 6)						
Expenditure on:						
Raising funds	S08	-	-	-	-	-
Charitable activities	S09	76	24,100		24,176	23,012.68
Separate material item of expense	S10	-	-	-	-	-
Other	S11	-	-	-	-	-
Total	S12	76	24,100	-	24,176	23,013
Net income/(expenditure) before investment gains/(losses)	S13	10,561	-	-	10,561	- 3,584
Net gains/(losses) on investments	S14	-	-	-	-	-
Net income/(expenditure)	S15	10,561	-	-	10,561	- 3,584
Extraordinary items	S16	-	-	-	-	-
Transfers between funds	S17	-	-	-	-	-
Other recognised gains/(losses):						
Gains and losses on revaluation of fixed assets for the charity's own use	S18	-	-	-	-	-
Other gains/(losses)	S19	-	-	-	-	-
Net movement in funds	S20	10,561	-	-	10,561	- 3,584
Reconciliation of funds:						
Total funds brought forward	S21				4,347	7,931
Total funds carried forward	S22	10,561	-	-	14,908	4,347



CHARITY COMMISSION
FOR ENGLAND AND WALES

London City Farms and Community Gardens		Charity No (if any)	1123264
Association		Company	no 6236320
Annual accounts for the period			
Period start date	01-Apr-24	To	Period end date 05-Apr-25

Section B Balance sheet

	Guidance Notes	Restricted income				
		Unrestricted funds	funds	Endowment funds	Total this year	Total last year
		£	£	£	£	£
		F01	F02	F03	F04	F05
Fixed assets						
Intangible assets (Note 15)	B01	-	-	-	-	-
Tangible assets (Note 14)	B02	-	-	-	-	-
Heritage assets (Note 16)	B03	-	-	-	-	-
Investments (Note 17)	B04	-	-	-	-	-
Total fixed assets	B05	-	-	-	-	-
Current assets						
Stocks (Note 18)	B06	-	-	-	-	-
Debtors (Note 19)	B07	-	-	-	-	-
Investments (Note 17.4)	B08	-	-	-	-	-
Cash at bank and in hand (Note 24)	B09	14,908	-	-	14,908	4,345
Total current assets	B10	14,908	-	-	14,908	4,345
Creditors: amounts falling due within one year (Note 20)	B11	-	-	-	-	-
Net current assets/(liabilities)	B12	14,908	-	-	14,908	4,345
Total assets less current liabilities	B13	14,908	-	-	14,908	4,345
Creditors: amounts falling due after one year (Note 20)	B14	-	-	-	-	-
Provisions for liabilities	B15	-	-	-	-	-
Total net assets or liabilities	B16	14,908	-	-	14,908	4,345
Funds of the Charity						
Endowment funds (Note 27)	B17	-	-	-	-	-
Restricted income funds (Note 27)	B18	-	-	-	-	-
Unrestricted funds	B19	-	-	-	-	-
Revaluation reserve	B20	-	-	-	-	-
Total funds	B21	14,908	-	-	14,908	4,345

Signed by one or two trustees on behalf of all the trustees

Signature	Print Name	Date of approval dd/mm/yyyy
	VICTORIA BROSOMB	06/11/2025
	CATHRYN MAUD	06/11/2025

For the year ending [your company's year end date], the company was entitled to exemption from audit under section 477 of the Companies Act 2006 relating to small companies. The members have not required the company to obtain an audit of its accounts for the year in question in accordance with section 476.

The directors acknowledge their responsibilities for complying with the requirements of the Act with respect to accounting records and the preparation of accounts. These accounts have been prepared in accordance with the provisions applicable to companies subject to the small companies' regime.