

# CLAPTON COMMON BOYS CLUB

England & Wales · Charity number 1121347

## Details

---

**Status** Registered

**Legal form** Other

**Registered** 2007-10-23

**Register** [View on the Charity Commission register](#)

## Contact

---

**Address** 1 Belz Terrace  
London  
E5 9SN

**Phone** 02088098171

**Email** [office@ccboysclub.org](mailto:office@ccboysclub.org)

## Activities

---

**Objects:** 4. OBJECTS THE OBJECTS OF THE TRUST ARE: 1) TO ADVANCE IN LIFE AND RELIEVE THE NEEDS OF CHILDREN AND YOUNG PEOPLE THROUGH:(A) THE PROVISION OF RECREATIONAL AND LEISURE TIME ACTIVITIES PROVIDED IN THE INTEREST OF SOCIAL WELFARE, DESIGNED TO IMPROVE THEIR CONDITIONS OF LIFE;(B) PROVIDING SUPPORT AND ACTIVITIES WHICH DEVELOP THEIR SKILLS, CAPACITIES AND CAPABILITIES TO ENABLE THEM TO PARTICIPATE IN SOCIETY AS MATURE AND RESPONSIBLE INDIVIDUALS. 2) THE PROMOTION OF ANY OTHER EXCLUSIVELY CHARITABLE OBJECTS AND PURPOSES SUCH AS THE TRUSTEES SEE FIT, PROVIDED THAT THEY ARE REGARDED AS CHARITABLE BY THE LAW OF ENGLAND AND WALES.

**Activities:** TO ADVANCE AND RELIEVE THE NEEDS OF CHILDREN, YOUNG PEOPLE AND PARENTS THROUGH THE PROVISION OF EDUCATIONAL, RECREATIONAL AND LEISURE PROGRAMMES PROVIDED IN THE INTEREST OF SOCIAL AND ACADEMIC NEEDS AND WELFARE , DESIGNED TO IMPROVE THEIR CIRCUMSTANCES OF LIFE

## Classification

---

- **How:** Makes Grants To Individuals, Provides Services
- **What:** Arts/culture/heritage/science, Amateur Sport
- **Who:** Children/young People

## Geography

- **Area of benefit:** NOT DEFINED. IN PRACTICE: LOCALLY IN THE LONDON BOROUGHS OF HACKNEY AND HARINGEY.
- Hackney
- Haringey

## Finances

Period end	Income	Expenditure	Assets	Employees
2025-03-31	£620,539	£536,113	£464,403	10
2024-03-31	£397,278	£505,076	-	-
2023-03-31	£637,443	£581,673	£270,986	7
2021-12-31	£651,105	£566,835	£215,216	9
2020-12-31	£469,349	£415,767	-	-

## Trustees

Name	Role	Appointed
Malka Lipschitz		2025-07-08
SCHLOIME RAND		

**CLAPTON COMMON BOYS CLUB**

England & Wales - Charity number 1121347

---

# Accounts

---

# DARE TO DREAM

Dreams that Ripple, Dreams that Shape



Annual Report and Accounts 2024-2025

# CHAIR STATEMENT



Some may say a dream is but a fleeting puff of fantasy. But those who have truly dared to dream will tell you that from all things abstract, a dream is often most powerful.

At CCBC this year, we once again harnessed the influence, the infinity of dreams. We dreamed, we envisioned, we brought the fantastical whispers of children to life.

Stepping into CCBC is to witness a dream in action. Its impact is immeasurable, rippling outward and affecting family, friends—an entire community; its joyful influence shaping an incredible future.

Every day, we meet children whose youthful spirits have been clouded by the daily grind of disadvantage. In the face of the rising cost-of-living crisis, more children than ever are experiencing financial instability, limited opportunities, and compromised home environments.

Feeling stuck in the rut of their circumstances, these children wonder whether they will ever experience joy again. They question whether their dreams of a secure and prosperous future will ever come true.

That is the calling of CCBC. Since our opening in 2006, we have made it our mission to transform the present and futures of the youth we support, helping them to see even their wildest dreams come true.

Through our widely acclaimed and innovative projects, we have this year alone empowered nearly 1,000 young people to achieve their ambitions and believe in their aspirations. Drawing on careful evaluation of our past initiatives, we have selected the most successful programmes, recreating and expanding their reach so that a new era of CCBC users can flourish through its continued impact.

Drawing on our community surveys, we also responded to the needs of local youth this year by

launching a range of groundbreaking projects.

The impact of these initiatives can be seen in the lives of children like Hirsh, 12, a local boy from a disadvantaged home who lives with a sensory processing disorder. Between poverty, emotional strain and the consequent social isolation, his life was a relentless struggle.

Then he joined the CCBC youth club, and the Coin and Cookery programme.

He says, “it changed my life in the most incredible way. I learnt emotional and practical skills, I mingled with an amazing group of kids like me, I no longer viewed myself as a victim, but as a competent and talented teen.”

The impact deepened when CCBC introduced its integrative play space. Hirsh and many others could finally enjoy the outdoors in an environment tailored to their needs. “To hang out like that, with ‘regular’ friends and have fun in one playground is something I thought would never happen,” he shared.

We are pleased to present Dare to Dream, our annual report and accounts for 2025, providing an overview of the work we do in supporting the underprivileged in our community—of our dreams, of children’s dreams, and of how a community and its future are being powered by these dreams.

With demand for our services continually growing, it is thanks to the generosity and vision of our funders and supporters that we have been able to be the lifeline of support to our growing beneficiary group. We are profoundly grateful to them for allowing us to show the world that the future indeed belongs to those who believe in the beauty of their dreams.

*A Klein*

A Klein

# OUR MISSION

Providing disadvantaged members of the local youth with opportunities to experience joy, develop essential skills, strengthen emotional and physical wellbeing, and achieve academic growth through a diverse range of educational and recreational programmes – empowering them to achieve a productive, fulfilling, and successful future.



# OUR VISION

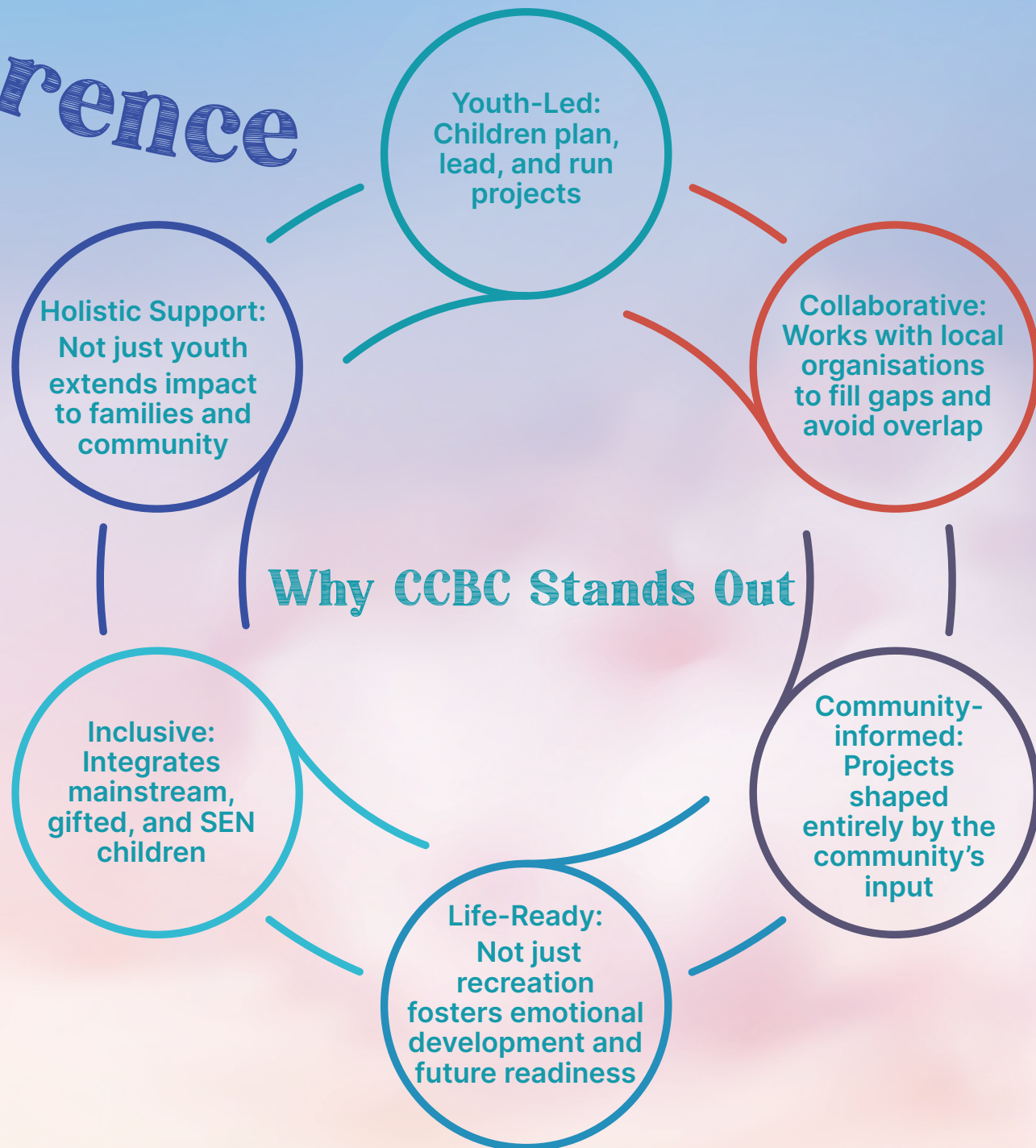
A leading youth service provider, delivering full-day activities for young people aged 5–25 years. Improving the quality of life for them and their families, building a thriving community – one child at a time.

# Our Difference



"I always appreciate the time and effort CCBC makes with the children and their future."

— Mark Lewis, HAF Coordinator,  
reflecting on his visit to CCBC



# Safeguarding Commitment

Safeguarding every boy in our care is our highest priority. We apply uncompromising vigilance, and are 100 percent committed and trained to prevent and address all forms of bullying, neglect, exploitation or abuse. Through mandatory training for staff and volunteers, clear reporting protocols, and age-appropriate education for our members, we ensure every concern is dealt with, and every young person is safe, supported and protected.



# Our Charitable Objectives

To advance in life and relieve the needs of children and young people through:

- The provision of recreational and leisure time activities provided in the interest of social welfare, designed to improve their conditions of life.
- providing support and activities which develop their skills, capacities and capabilities to enable them to participate in society as mature and responsible individuals.

The promotion of any other exclusively charitable objects and purposes such as the trustees see fit, provided that they are regarded as charitable by the law of England and Wales.

# Our Strategic Aims

In an ever-evolving world, CCBC stays one step ahead, proactively targeting all matters concerning youth.

- Strengthening youth leadership
- Educating youth about Digital Safety & Online Resilience
- Increasing Community & Parental Engagement
- Expanding operations for the improvement of mental health

# Exploring Nature

## A Dream in Action

“Nature is not a place to visit. It is home.” – Gary Snyder

Yet far too many inner-city children, living in cramped conditions with little immediate access to nature, have never experienced this truth. CCBC set out to change that, introducing local youth to the wonders of the natural world through activities like planting, fishing, harvesting, climbing, farming, and sculpting.

Interacting with nature breathed new life into children, especially those who struggle with traditional learning. These sensory-rich activities fostered self-reflection, curiosity, compassion. Participants received a comprehensive, hands-on education, gaining knowledge and practical skills in areas such as recycling and energy and water conservation—preparing them to contribute to a greener, sustainable future.

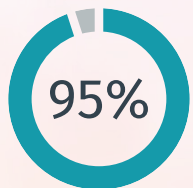


## The Impact of a Dream

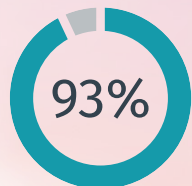
Quantifying Nature's Cure

CCBC created a space where nature nurtured our youth, and our youth, in turn, nurtured nature.

At the conclusion of the projects, 406 children were surveyed:



feel calmer and more grounded



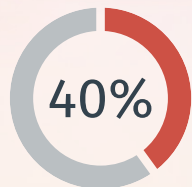
eat more nutritious, plant-based foods



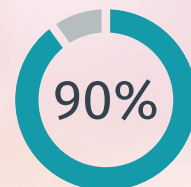
adopted at least one energy- or water-saving habit



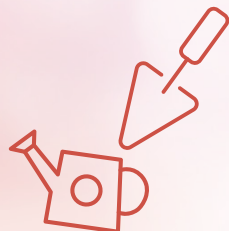
improved motor skills



families started recycling, on top of 30% already doing so



of families added a new sustainable practice after a member attended Love the Planet



# Work-ready, Future-ready

Children are often asked, “What do you want to be when you grow up?” Their answers sparkle with dreams of wealth, fame, and success. Yet for young people from disadvantaged backgrounds, circumstances such as tech illiteracy, limited education, and economic hardship stubbornly preclude the opportunities to execute their life’s dream.

Determined to change this narrative, CCBC launched a two-pronged plan. With TechoWise and PowerBuilders, teens were no longer destined to face unemployment, crime, or substance abuse—they were empowered to lay the foundations for a prosperous future.

## TechoWise

In a world moving rapidly towards digital dominance, tech literacy is essential for future success. CCBC reestablished TechoWise, to equip 100 young teens with the skills needed to thrive:



Digital comprehension and online safety



Functional skills in IT, literacy, and numeracy



Social and digital behaviours, including teamwork, stress management, and understanding plagiarism



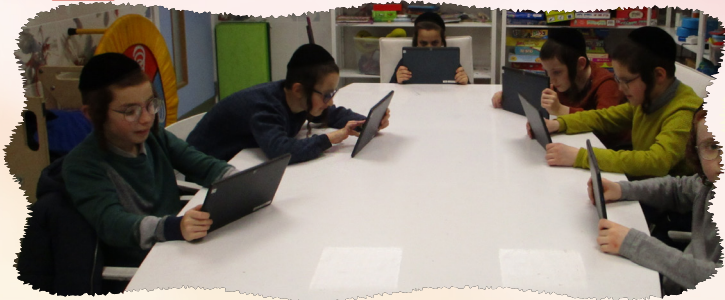
Effective online research techniques



AI application and navigation



Post-project guidance, including signposting to advanced training opportunities



## PowerBuilders

While AI and automation are transforming creative industries, construction and contracting continue to offer rewarding careers, ripe with possibilities. PowerBuilders enabled 72 teens to become tomorrow’s skilled professionals by providing:



Accredited training in construction, electricity, painting, and maintenance (Diploma Level 3, AQA)



Hands-on experience enhancing community, club, and home facilities



Career pathways, including apprenticeships, further training, or employment



Mentorship opportunities connecting new participants with course alumni

## The Impact of a Dream

The future of a child, a family, a community.



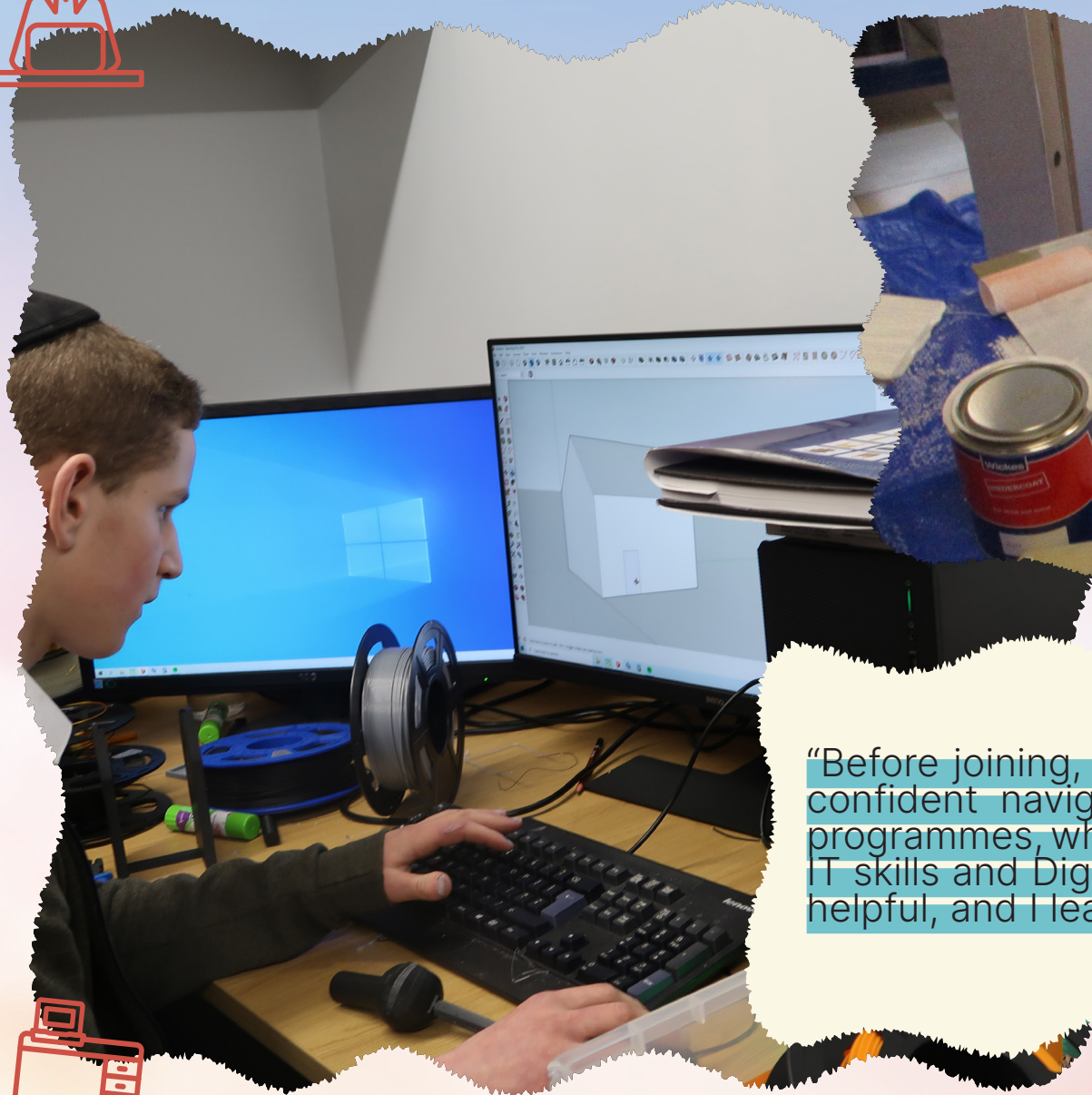
**Users:** Acquire essential life, social, and career skills; set goals; increase resilience and employability.



**Families:** Enjoy stronger financial stability and skilled support within the household.



**Communities:** Thrive with strengthened cohesion and productivity, with reductions in crime, addiction, and unemployment.



“Before joining, I had zero IT knowledge. Now, I feel confident navigating computers and using various programmes, which is a huge achievement for me. The IT skills and Digital Literacy sessions were extremely helpful, and I learned so much.” Jacob



# Play Space

## A Dream in Action

Although CCBC has been operating for nearly 20 years, no two years have ever been the same. We celebrate each remarkable milestone, and even before the dust settles, new dreams are already taking shape. In this way, we keep pace with a rapidly changing society and children's ever-evolving needs and aspirations.

By 2024, it was clear that a run-of-the-mill playground was no longer enough. Our vision was bold: Hackney's first truly **inclusive play space**, designed around the specific needs of our users. Turning this dream into reality became our mission.

When the final bar was secured, the ribbon cut, and the gates opened, the playground immediately came alive—filled with the sounds of laughter, chatter and shouts of glee from children of all ages and abilities.

Our new play space features **three unique play zones**, carefully designed to enable every child to play, learn, and expand their horizons. With accessible structure, social groups, and expert-moderated activities, children were empowered to grow—improving their agility, sensory and educational development, social skills and communication.

Notably, our **physically and visually accessible playground** has given disabled children the opportunity to enjoy carefree play. Here, they integrate seamlessly with their peers, diversifying social play and interaction while fostering friendships, mutual understanding, and acceptance in a safe, supervised and enriching environment.

## The Impact of a Dream

### Our Aims Achieved

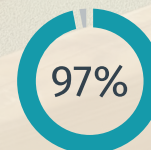
From surveys completed by 1,000 children and families, the average ratings against our play space aims were as follows:



**Develop a state-of-the-art natural play** space where children of all abilities improve fitness, motor skills, sensory integration, and social skills.



**Give disabled children the chance to enjoy carefree play** in an accessible, safe environment.



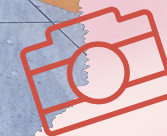
Promote integration and acceptance between disabled and mainstream children in recreational and educational settings.



## Sammy's Story

Sammy, 9, suffered irreversible injuries in a car accident last summer and now uses a wheelchair. He wrote a letter to our trustees and with his permission, we are sharing the following excerpt.

“With the wide pathways and accessible swings, I was finally able to play and explore the outdoors again. Only in this playground can I play alongside my old peers, getting around and having fun just like I used to. Playing in the CCBC integrated play space made me feel like a normal child for the first time since my accident.”



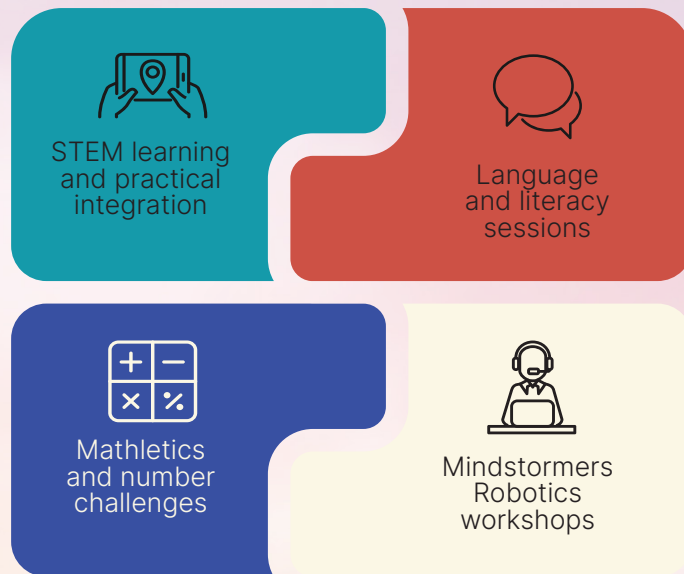
# Brainstormers

## A Dream in Action

There is no shortage of programmes today for children with learning difficulties. Yet, in the rush to support those struggling with weaker abilities, another group is too often overlooked — the gifted. Brimming with heightened energy and untapped intellect, many gifted children struggle to find spaces that challenge or understand them, leading to frustration, disengagement, and wasted potential.

This year, the revitalised Brainstormers programme breathed new life into the dormant abilities of forty extraordinary teens. In a fast-paced, stimulating environment, Brainstormers turned bright young minds into the gifts they were always meant to be: gifts to themselves, and gifts to humanity.

Through a dynamic mix of:



Bright minds applied their intellect purposefully, thriving in the collaborative, fast-paced environment and transforming into future-ready thinkers and leaders.



## The Impact of a Dream Gifts Realised Every Day

“Before joining, I was constantly in trouble at school. No one knew what to do with my constant surge of energy and exceptional intellect. My abilities felt useless as no one could understand how a gifted child like me could be such a loser.

“At Brainstormers, that began to change. We were trained to apply our talents, stretch our creativity, and think critically. We learnt to strategise, problem-solve, and collaborate.”

Today, Kalman is a youth leader at Brainstormers, supporting new participants in robotics, engineering, and technology.

# Active Lives, Healthy Minds

## A Dream in Action

We live in a world where childhood obesity is soaring, depression is on the rise, and—shockingly—many teens try cigarettes before 13. This is all while screens, snacks, and soda replace activity and play.

CCBC believes that rediscovering joy in movement is the most powerful way to break these patterns, restoring health, fitness, and resilience. With this in mind, CCBC transformed schoolyards, local parks, school gyms and living rooms into hubs of active play – where every jump, jab and pedal-stroke built strength and confidence, fostering a mindset wherein sports are not resented, but relished.



Walking and Cycling: Previously immobile children learnt to ride safely.

Fitness: Inactive young adults attended weekly cycling and fitness sessions



Motivational Talks: inspired healthy habits and a “move more, eat better” attitude from early childhood.

Sports clubs: offered mixed martial arts, sports, and bike mechanics.



Smoking prevention: reduced uptake through lectures, activities, youth-led research, and creating a smoking-is-antisocial culture.

Adventure Outings: rock climbing and other sportsmanship thrills motivated ongoing physical activity.



Before joining, I never believed sports were for me. But week by week, I grew stronger in my body and in my mind. Now I feel alive, confident, and ready to take on challenges I once thought were impossible — and I plan to keep this lifestyle going long after the programme ends.

Shalom, 8

The best part wasn't only the games but the friendships. Being part of a team made exercise fun, helped me focus better in school, and even calmed my stress. Sports gave me energy, happiness, and the chance to be a leader I never imagined I could be.

Jacob, 15





"I always knew that sports and health is just not for me. CCBC gave me the confidence that I can succeed! When I cycle, I feel so much more fulfilled knowing that I learnt to do something that used to be so challenging."

-Participant David Gluck

"For the very first time in my life, I felt I was needed. I was a leader at the club. I was helping my friends do the exercises and workouts, and supporting others. Team sports are much more fun, than doing it alone. Besides alone, I always dropped out of any session. We had a fun time, with friends and also learnt many easy workout skills. After doing a few sessions with Sport Marshals, my teacher complimented that I was doing much better focusing. Thank you CCBC. I am proud to be a CCBC teen!"



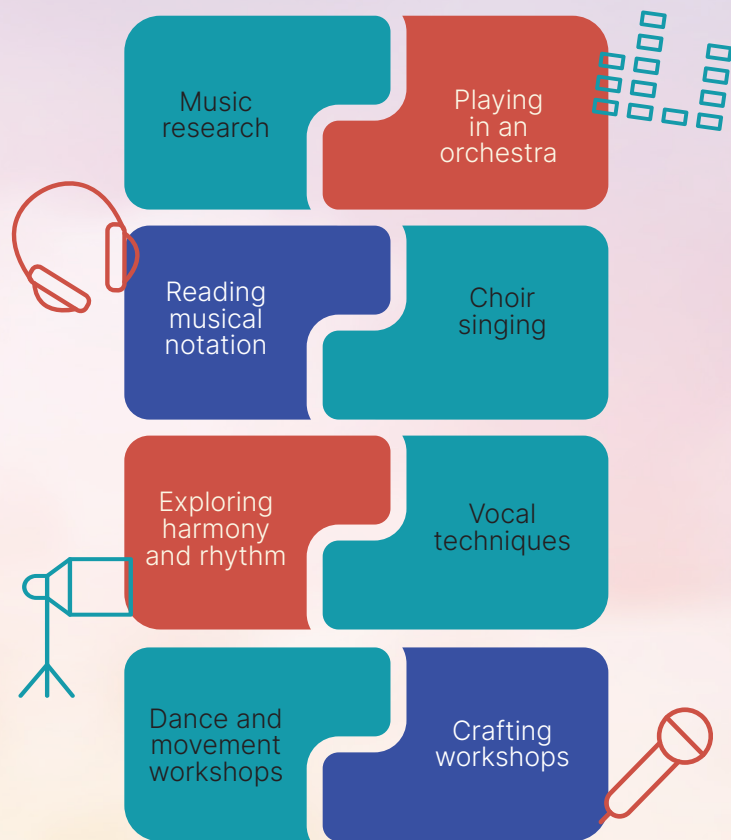
# Creative Arts

## A Dream in Action

At CCBC, we recognise the magical power inherent in music and dance. Our creative arts programmes— co-created by our beneficiaries— combined music, crafting, singing and movement to transform the lives of young people through the extraordinary potency of the arts.

To the pulsing beat of melody and song, dozens of children and teenagers have developed artistic skills, building confidence, emotional expression, and lasting relationships. These opportunities have also opened doors to real career pathways and the thrill of performing on a professional stage.

Our programmes include:



## The Impact of a Dream

### What Did I Gain? Three voices

"My natural knack for music remained untapped as my parents could not afford extra-curricular activities. TalentED cultivated my talent into a treasure— and even a future".

Leiby, 11



"Beat the Dance made me recognise my individuality; I was able to express my unique personality, creativity and talents".

Ruvy, 14



"Discodance sessions were the highlights of my week! For the first time in a long time I felt happy, relaxed, and accepted".

Saul, 15



# SEND Facilities

## A Dream in Action

To be a child with SEND needs is often to feel isolated, both in the classroom and in society. At CCBC, social acceptance and camaraderie are not just a dream. Our Coin and Cookery programme brings integration, friendship, and personal achievement to life—now even bigger and better, with our new state-of-the-art facilities.

Students thrived in individualised programmes, earning resources through a unique coin-based reward system that they put into practice in culinary art, woodwork, tech, and creative projects classes. The youth took pride in the strides they made, creating innovative masterpieces while fostering enthusiasm and teamwork.



## The Impact of a Dream

“As a mother, it broke my heart to see my sons Yoni and Jeremy, who struggle with SEN needs, always feeling less-than. Now, three-quarters of the way through the Coin and Cookery programme, I am overjoyed by their growth. They’ve developed responsibility, communication, and self-discipline, while therapy and peer support have helped them regulate emotions and build resilience. Their social skills and achievements have earned respect from their peers, and we parents are confident their friendships and confidence will last for years to come.”

—Freida W.

# Building Better Families

## A Dream in Action

“With engaged parents, children from disadvantaged homes are 50% more likely to thrive—academically, socially, and personally.” (Educational Psychology Review, 2021)

At CCBC, we turn that research into action. Our programmes help parents overcome the barriers many disadvantaged families face—limited time, resources, energy, and access to guidance—empowering them to take ownership of their parenting journey. We provided interactive expert training, weekly stay-and-play sessions, peer mentoring, and practical resources. These equipped parents with the awareness, skills, and confidence to enrich their presence in their children’s lives—guiding them to become the “super parents” their children deserve.



## The Impact of a Dream

“As an Advanced Certified Parenting Coach (ACPC), I have seen many programmes aiming to enrich parenting—but CCBC’s approach, which I helped facilitate, truly stands out. Its holistic method—combining education, guided application, peer mentorship, and practical support—created an almost foolproof process. I observed families who were previously vulnerable and friction-filled grow healthy, secure, and close. Each parent improving in their role strengthened not only their family, but also the wider community, building a foundation of resilience, productivity, connection and wellbeing that will benefit generations to come.”

“Harry L., ACPC



of fathers and sons reported significantly improved parent-child attachment.

# Holiday Playscheme

## A Dream in Action

Holidays give shape to children's dreams, unfolding as days of wonder and delight. At CCBC, we colour these dreams with hues of joy and cherished moments. Holidays carry whispers of hope, possibility and opportunity. We take full advantage of this spirit, bringing children a vacation that is safe and productive, while brimming with positivity, adventure and fun – experiences where they get to see what life offers, ripe with opportunities for teamwork, camaraderie and leadership.



Outdoor adventures

Daily physical activity



Youth-led playschemes

An itinerary of sensational and thrilling trips



Music and movement classes

Nutritious food for children and families



Cookery and baking courses



## The Impact of a Dream



### Michael's Story

It happened during CCBC's summer programme this past year, that Michael, an 8-year-old withdrawn and vulnerable child, transformed into a popular and happy one. In the past, Michael longed for friends and for 'a group to hang out' also at home. He wasn't a strong student academically, and he often felt despondent about his lack of ability and skill. His school days were marked with frustration and sadness—he would never make it to the top. However, when he came to CCBC's summer programme, where talent, sharing and kindness take first place, Michael at last tasted success and joy. He made meaningful friendships and became an indispensable member of his peer group. He found joy and fulfilment in the stimulating programme – and in helping others. His involvement in all activities, development of communication and leadership qualities were observed by our staff who reported these changes.



# Youth Empowerment

## A Dream in Action

Afternoons in Hackney used to find young teenage boys adrift, with no youth clubs or safe spaces to relax, socialise, or simply be themselves. Carrying that disorientation into secondary school, many arrived anxious and unsupported, their self-esteem and joy diminished by deprivation, bullying, and isolation. CCBC set out to provide positive outlets and a structured support framework to help these young people engage, learn, and thrive.



Youth Clubs:  
drop-in hubs  
with creative,  
digital,  
and social  
activities, plus  
adventurous  
trips.

Awareness  
Workshops:  
sessions to  
develop emotional  
intelligence,  
communication,  
and respect.



Creative  
Workshops:  
hands-on  
activities like fruit  
carving, graphic  
design, and  
calligraphy.

AQA-  
Accredited  
Courses:  
sports, health,  
and nutrition  
classes.

Youth  
Transition  
Services:  
primary pupils  
paired with  
trained peer  
mentors.



Peer Mentor  
Training: older  
students  
trained and  
certified in  
leadership and  
peer support.






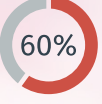

# Addressing the Masculinity Crisis



## Empowering Young Men





The challenges facing young men in the UK are real. CCBC's Youth Club Programme equips them with the skills, confidence, and support they need to thrive today and build a stable, successful future.

## Challenges (UK males) \*

-  40% experience chronic loneliness (14-29) 
-  50% struggle in the workplace
-  60% express dissatisfaction with relationships
-  48% lack a male role model

Elevated risks in suicide, alcohol, and substance misuse

## Youth Club Programme Impact

-  40% feel they have found their place
-  92% report improved emotional wellbeing
- 50** members earned AQA accreditations, boosting employability
-  90% have improved relationship skills
-  99% have a trusting relationship with a male adult



\*Figures based on research by YoungMinds, 2023, The Guardian, October 2025 and ACU., 2023

# Making dreams count

One dream. An Infinite Impact.

**980**  
CCBC members

**170**  
volunteers  
trained

**1577**  
sessions  
delivered  
across all  
programmes

**660**  
participated  
in holiday  
programmes

**365**  
benefited  
from  
cost-of-  
living  
support  
resources

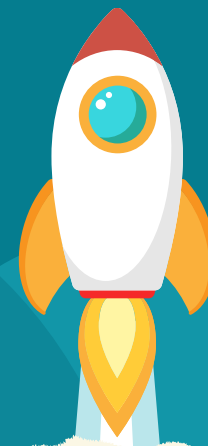
**25%**  
of volunteers  
advanced in  
employment

**160**  
joined  
youth  
clubs

**205**  
AQA accreditations

**120**  
new  
members  
in 2025

**2000+**  
young people  
explored our  
brand-new play  
space



# Our dreams for the future



**Goals Going Forward**

## **The Thrive Rooms Expansion**

Two new rooms providing vital trauma support and mental health care for boys who would otherwise go without.

## **Healthy Choices Initiative**

Expanding to include alcohol and drug prevention, while reaching more youth with wellbeing support.

## **Soft Skills**

Developing practical life skills to help boys face challenges and make confident choices.

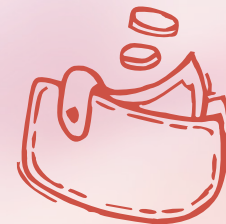
# In Appreciation.....

“Dreams only come true for those who work to make them happen.”

These generous funders make dreams come true every day – dreams of children, of CCBC, of an entire community. They allow a society to dare and dream. We continue to extend our heartfelt thanks to all our funders for their ongoing belief in and support of our work.

Bedford Memorial Trust  
City of London Corporation  
Department for Digital, Culture, Media and Sport (DCMS)  
Gowling WLG  
Groundwork UK  
HAF- Hackney  
Hardy Family Foundation  
John Scott Charitable Trust  
LB Hackney  
North London Waste Authority (NLWA)  
The Hargrave Foundation  
The Henry Smith Foundation  
The Morrisons Foundation  
The National Lottery  
The Story of Christmas  
The Tottenham Grammar School Foundation  
Tudor Trust  
Young Hackney

And to all remaining donors and supporters, your generosity is truly appreciated.



**Clapton Common Boys Club**

**Report of the Trustees  
for the Year Ended 31 March 2025**

**OBJECTIVES AND ACTIVITIES  
SAFEGUARDING**

Since our charity works with vulnerable children and families, safeguarding is considered the greatest inherent risk in its work. We have a framework of consents, controls, policies and reviews to mitigate the associated risks.

The focus on training and supervision is important in the control environment. We have a dedicated compliance member who supports safeguarding processes with a reporting system which ensures that concerns are flagged, and information communicated rapidly and securely.

All members of staff have up to date certification and training in accordance with regulation.

**FINANCIAL REVIEW**

**Principal funding sources**

Our activities were supported by a mixture of funding streams including private donations, grants from trusts and foundations, and users' contributions. The results for the year are shown in the attached financial statements, and the trustees are satisfied with the results for the year.

The Trustees gratefully acknowledge that the expansion of services and reach and increase in positive impact on the lives of children in the community is largely due to the substantial and generous support of the following charitable trusts and foundations, including Hackney Local Authority, Awards for All, BBC Children in Need, BIG Lottery Fund - Reaching Communities, People Postcode Trust and other supporters and community donors.

**Reserves policy**

The Trustees are working towards building free reserves of at least 3 months' operating costs in order to protect services where there are uncertainties as to whether funding will continue and to ensure adequate cash flow for the organisation's needs. As of this financial year end, we are well on track.

In respect of some of the projects the incoming resources in the year exceeded the outgoing resources. As explained in the Accounting Policies in Note 1 to the Financial Statements, the grant period in certain cases runs into the next financial period, and the charity is committed to the expenditure in relation to those grants in the following period.

The trustees are satisfied with the results for the year, and consider that the charity is in a healthy financial position.

**FUTURE PLANS**

Our aims and targets for the coming year are to continue expanding on our current services and programmes.

**STRUCTURE, GOVERNANCE AND MANAGEMENT**

**Governing document**

The charity is constituted and governed by a Trust Deed dated 27 December 2006. The charity is managed and controlled by the trustees, who meet regularly.

**Recruitment and appointment of new trustees**

It is not the intention of the trustees of the charity to appoint any new trustees. Should the situation change in the future, the trustees will apply suitable recruitment, training and induction procedures.

**Risk management**

The trustees have identified and reviewed the major risks to which the charity is exposed. Both manual and automated checks are regularly invoked, particularly those relating to the operations and finance of the charity. The trustees are satisfied that these systems and procedures mitigate any perceived risks.

The trustees continually review the risks that the charity may be exposed to from time to time, and take appropriate action as required.

**Independent Examiner's Report to the Trustees of  
Clapton Common Boys Club**

**Independent examiner's report to the trustees of Clapton Common Boys Club**

I report to the charity trustees on my examination of the accounts of Clapton Common Boys Club (the Trust) for the year ended 31 March 2025.

**Responsibilities and basis of report**

As the charity trustees of the Trust you are responsible for the preparation of the accounts in accordance with the requirements of the Charities Act 2011 ('the Act').

I report in respect of my examination of the Trust's accounts carried out under Section 145 of the Act and in carrying out my examination I have followed all applicable Directions given by the Charity Commission under Section 145(5)(b) of the Act.

**Independent examiner's statement**

Since your charity's gross income exceeded £250,000 your examiner must be a member of a listed body. I can confirm that I am qualified to undertake the examination because I am a member of the Institute of Chartered Accountants in England and Wales, which is one of the listed bodies.

I have completed my examination. I confirm that no material matters have come to my attention in connection with the examination giving me cause to believe that in any material respect:

1. accounting records were not kept in respect of the Trust as required by Section 130 of the Act; or
2. the accounts do not accord with those records; or
3. the accounts do not comply with the applicable requirements concerning the form and content of accounts set out in the Charities (Accounts and Reports) Regulations 2008 other than any requirement that the accounts give a true and fair view which is not a matter considered as part of an independent examination.

I have no concerns and have come across no other matters in connection with the examination to which attention should be drawn in this report in order to enable a proper understanding of the accounts to be reached.

A Heller FCA

Martin Heller  
5 North End Road  
London  
NW11 7RJ

Date: .....

**Clapton Common Boys Club**

**Statement of Financial Activities  
for the Year Ended 31 March 2025**

	Notes	Unrestricted fund £	Restricted fund £	31.3.25 Total funds £	31.3.24 Total funds £
<b>INCOME AND ENDOWMENTS FROM</b>					
Donations and legacies	2	<u>198,949</u>	<u>421,590</u>	<u>620,539</u>	<u>614,067</u>
<b>EXPENDITURE ON</b>					
<b>Charitable activities</b>	3				
General fund		71,305	463,483	534,788	503,758
Other		<u>1,325</u>	-	<u>1,325</u>	<u>1,318</u>
<b>Total</b>		<u>72,630</u>	<u>463,483</u>	<u>536,113</u>	<u>505,076</u>
<b>NET INCOME/(EXPENDITURE)</b>		126,319	(41,893)	84,426	108,991
<b>RECONCILIATION OF FUNDS</b>					
Total funds brought forward		<u>57,580</u>	<u>322,397</u>	<u>379,977</u>	<u>270,986</u>
<b>TOTAL FUNDS CARRIED FORWARD</b>		<u>183,899</u>	<u>280,504</u>	<u>464,403</u>	<u>379,977</u>

The notes form part of these financial statements

**Clapton Common Boys Club**

**Balance Sheet  
31 March 2025**

	Notes	Unrestricted fund £	Restricted fund £	31.3.25 Total funds £	31.3.24 Total funds £
<b>CURRENT ASSETS</b>					
Debtors	9	113,248	289,878	403,126	402,914
Cash at bank		<u>73,051</u>	-	<u>73,051</u>	<u>333</u>
		186,299	289,878	476,177	403,247
<b>CREDITORS</b>					
Amounts falling due within one year	10	(2,400)	(9,374)	(11,774)	(23,270)
<b>NET CURRENT ASSETS</b>		<u>183,899</u>	<u>280,504</u>	<u>464,403</u>	<u>379,977</u>
<b>TOTAL ASSETS LESS CURRENT LIABILITIES</b>		183,899	280,504	464,403	379,977
<b>NET ASSETS/(LIABILITIES)</b>		<u>183,899</u>	<u>280,504</u>	<u>464,403</u>	<u>379,977</u>
<b>FUNDS</b>	11				
Unrestricted funds				183,899	57,580
Restricted funds				280,504	322,397
<b>TOTAL FUNDS</b>				<u>464,403</u>	<u>379,977</u>

The financial statements were approved by the Board of Trustees and authorised for issue on ..... and were signed on its behalf by:



.....  
A Klein - Trustee

The notes form part of these financial statements

**Clapton Common Boys Club**

**Cash Flow Statement  
for the Year Ended 31 March 2025**

	Notes	31.3.25 £	31.3.24 £
<b>Cash flows from operating activities</b>			
Cash generated from operations	1	72,718	(93,554)
Net cash provided by/(used in) operating activities		<u>72,718</u>	<u>(93,554)</u>
<b>Change in cash and cash equivalents in the reporting period</b>			
Cash and cash equivalents at the beginning of the reporting period		333	93,887
Cash and cash equivalents at the end of the reporting period		<u>73,051</u>	<u>333</u>

The notes form part of these financial statements

**Clapton Common Boys Club**

**Notes to the Cash Flow Statement  
for the Year Ended 31 March 2025**

	31.3.25 £	31.3.24 £	
<b>1. RECONCILIATION OF NET INCOME TO NET CASH FLOW FROM OPERATING ACTIVITIES</b>			
Net income for the reporting period (as per the Statement of Financial Activities)	84,426	108,991	
<b>Adjustments for:</b>			
Increase in debtors	(212)	(129,527)	
Decrease in creditors	(11,496)	(73,018)	
Net cash provided by/(used in) operations	<u>72,718</u>	<u>(93,554)</u>	
<b>2. ANALYSIS OF CHANGES IN NET FUNDS</b>			
	At 1/4/24 £	Cash flow £	At 31/3/25 £
Net cash			
Cash at bank	333	72,718	73,051
	<u>333</u>	<u>72,718</u>	<u>73,051</u>
<b>Total</b>	<u>333</u>	<u>72,718</u>	<u>73,051</u>

The notes form part of these financial statements

## Clapton Common Boys Club

### Notes to the Financial Statements for the Year Ended 31 March 2025

#### 1. ACCOUNTING POLICIES

##### Basis of preparing the financial statements

The financial statements of the charity, which is a public benefit entity under FRS 102, have been prepared in accordance with the Charities SORP (FRS 102) 'Accounting and Reporting by Charities: Statement of Recommended Practice applicable to charities preparing their accounts in accordance with the Financial Reporting Standard applicable in the UK and Republic of Ireland (FRS 102) (effective 1 January 2019)', Financial Reporting Standard 102 'The Financial Reporting Standard applicable in the UK and Republic of Ireland' and the Charities Act 2011. The financial statements have been prepared under the historical cost convention.

##### Income

All income is recognised in the Statement of Financial Activities once the charity has entitlement to the funds, it is probable that the income will be received and the amount can be measured reliably.

##### Expenditure

Liabilities are recognised as expenditure as soon as there is a legal or constructive obligation committing the charity to that expenditure, it is probable that a transfer of economic benefits will be required in settlement and the amount of the obligation can be measured reliably. Expenditure is accounted for on an accruals basis and has been classified under headings that aggregate all cost related to the category. Where costs cannot be directly attributed to particular headings they have been allocated to activities on a basis consistent with the use of resources.

Grants offered subject to conditions which have not been met at the year end date are noted as a commitment but not accrued as expenditure.

##### Tangible fixed assets

Depreciation is calculated so as to write off the cost of an asset, less its estimated residual value, over the useful economic life of that asset as follows:

Equipment - straight line, over 3 years  
Playground - straight line, over 5 years

##### Taxation

The charity is exempt from tax on its charitable activities.

##### Fund accounting

Unrestricted funds can be used in accordance with the charitable objectives at the discretion of the trustees.

Restricted funds can only be used for particular restricted purposes within the objects of the charity. Restrictions arise when specified by the donor or when funds are raised for particular restricted purposes.

Further explanation of the nature and purpose of each fund is included in the notes to the financial statements.

#### 2. DONATIONS AND LEGACIES

	31.3.25	31.3.24
	£	£
Donations	4,874	22,265
Grants	615,665	591,802
	<u>620,539</u>	<u>614,067</u>

Grants received, included in the above, are as follows:

	31.3.25	31.3.24
	£	£
Other grants	<u>615,665</u>	<u>591,802</u>

## Clapton Common Boys Club

### Notes to the Financial Statements - continued for the Year Ended 31 March 2025

#### 2. DONATIONS AND LEGACIES - continued

Grants receivable include:	2025
	£
London Borough of Hackney	138,772
The National Lottery	42,227

#### 3. CHARITABLE ACTIVITIES COSTS

	Direct Costs	Grant funding of activities (see note 4)	Totals
	£	£	£
General fund	<u>430,903</u>	<u>103,885</u>	<u>534,788</u>

#### 4. GRANTS PAYABLE

	31.3.25	31.3.24
	£	£
General fund	<u>103,885</u>	<u>107,134</u>

Dover Sholem Community Trust	<u>103,885</u>
------------------------------	----------------

#### 5. SUPPORT COSTS

	Finance	Governance costs	Totals
	£	£	£
Other resources expended	<u>125</u>	<u>1,200</u>	<u>1,325</u>

#### 6. TRUSTEES' REMUNERATION AND BENEFITS

There were no trustees' remuneration or other benefits for the year ended 31 March 2025 nor for the year ended 31 March 2024.

##### Trustees' expenses

There were no trustees' expenses paid for the year ended 31 March 2025 nor for the year ended 31 March 2024.

#### 7. COMPARATIVES FOR THE STATEMENT OF FINANCIAL ACTIVITIES

	Unrestricted fund	Restricted fund	Total funds
	£	£	£
<b>INCOME AND ENDOWMENTS FROM</b>			
Donations and legacies	<u>25,763</u>	<u>588,304</u>	<u>614,067</u>

##### EXPENDITURE ON Charitable activities

General fund	48,115	455,643	503,758
Other	<u>1,318</u>	-	<u>1,318</u>
<b>Total</b>	<u>49,433</u>	<u>455,643</u>	<u>505,076</u>

**Clapton Common Boys Club**

**Notes to the Financial Statements - continued  
for the Year Ended 31 March 2025**

7. COMPARATIVES FOR THE STATEMENT OF FINANCIAL ACTIVITIES - continued	Unrestricted fund £	Restricted fund £	Total funds £
<b>NET INCOME/(EXPENDITURE)</b>	(23,670)	132,661	108,991
<b>RECONCILIATION OF FUNDS</b>			
Total funds brought forward	81,250	189,736	270,986
<b>TOTAL FUNDS CARRIED FORWARD</b>	<u>57,580</u>	<u>322,397</u>	<u>379,977</u>

8. TANGIBLE FIXED ASSETS	Playground £	Equipment £	Totals £
<b>COST</b>			
At 1 April 2024 and 31 March 2025	27,836	86,462	114,298
<b>DEPRECIATION</b>			
At 1 April 2024 and 31 March 2025	27,836	86,462	114,298
<b>NET BOOK VALUE</b>			
At 31 March 2025	-	-	-
At 31 March 2024	-	-	-

9. DEBTORS: AMOUNTS FALLING DUE WITHIN ONE YEAR	31.3.25 £	31.3.24 £
Other debtors	403,126	402,914

10. CREDITORS: AMOUNTS FALLING DUE WITHIN ONE YEAR	31.3.25 £	31.3.24 £
Trade creditors	9,374	19,670
Other creditors	2,400	3,600
	<u>11,774</u>	<u>23,270</u>

**Clapton Common Boys Club**

**Notes to the Financial Statements - continued  
for the Year Ended 31 March 2025**

11. MOVEMENT IN FUNDS	At 1/4/24 £	Net movement in funds £	At 31/3/25 £
<b>Unrestricted funds</b>			
General fund	57,580	126,319	183,899
<b>Restricted funds</b>			
Restricted fund	322,397	(41,893)	280,504
<b>TOTAL FUNDS</b>	<u>379,977</u>	<u>84,426</u>	<u>464,403</u>

Net movement in funds, included in the above are as follows:

	Incoming resources £	Resources expended £	Movement in funds £
<b>Unrestricted funds</b>			
General fund	198,949	(72,630)	126,319
<b>Restricted funds</b>			
Restricted fund	421,590	(463,483)	(41,893)
<b>TOTAL FUNDS</b>	<u>620,539</u>	<u>(536,113)</u>	<u>84,426</u>

**Comparatives for movement in funds**

	At 1/4/23 £	Net movement in funds £	At 31/3/24 £
<b>Unrestricted funds</b>			
General fund	81,250	(23,670)	57,580
<b>Restricted funds</b>			
Restricted fund	189,736	132,661	322,397
<b>TOTAL FUNDS</b>	<u>270,986</u>	<u>108,991</u>	<u>379,977</u>

**Clapton Common Boys Club**

**Notes to the Financial Statements - continued  
for the Year Ended 31 March 2025**

**11. MOVEMENT IN FUNDS - continued**

Comparative net movement in funds, included in the above are as follows:

	Incoming resources £	Resources expended £	Movement in funds £
<b>Unrestricted funds</b>			
General fund	25,763	(49,433)	(23,670)
<b>Restricted funds</b>			
Restricted fund	588,304	(455,643)	132,661
<b>TOTAL FUNDS</b>	<u>614,067</u>	<u>(505,076)</u>	<u>108,991</u>

A current year 12 months and prior year 12 months combined position is as follows:

	At 1/4/23 £	Net movement in funds £	At 31/3/25 £
<b>Unrestricted funds</b>			
General fund	81,250	102,649	183,899
<b>Restricted funds</b>			
Restricted fund	189,736	90,768	280,504
<b>TOTAL FUNDS</b>	<u>270,986</u>	<u>193,417</u>	<u>464,403</u>

A current year 12 months and prior year 12 months combined net movement in funds, included in the above are as follows:

	Incoming resources £	Resources expended £	Movement in funds £
<b>Unrestricted funds</b>			
General fund	224,712	(122,063)	102,649
<b>Restricted funds</b>			
Restricted fund	1,009,894	(919,126)	90,768
<b>TOTAL FUNDS</b>	<u>1,234,606</u>	<u>(1,041,189)</u>	<u>193,417</u>

**12. RELATED PARTY DISCLOSURES**

There were no related party transactions for the year ended 31 March 2025.

**Clapton Common Boys Club**

**Detailed Statement of Financial Activities  
for the Year Ended 31 March 2025**

	31.3.25 £	31.3.24 £
<b>INCOME AND ENDOWMENTS</b>		
<b>Donations and legacies</b>		
Donations	4,874	22,265
Grants	615,665	591,802
	<u>620,539</u>	<u>614,067</u>
<b>Total incoming resources</b>	620,539	614,067
<b>EXPENDITURE</b>		
<b>Charitable activities</b>		
Admin and Office Expenses	38,505	55,810
Charitable Activities	165,958	169,688
Rent and Expenses	69,879	39,191
Wages and Salaries	156,561	131,935
Grants to institutions	103,885	107,134
	<u>534,788</u>	<u>503,758</u>
<b>Support costs</b>		
<b>Finance</b>		
Bank charges	125	118
<b>Governance costs</b>		
Accountancy and legal fees	1,200	1,200
Total resources expended	<u>536,113</u>	<u>505,076</u>
<b>Net income</b>	<u>84,426</u>	<u>108,991</u>

# REFERENCE AND ADMINISTRATIVE DETAILS

## Registered Charity number

1121347

Principal address

1 Belz Terrace

London

E5 9SN

## Trustees

M Lipschitz

A Klein

S Rand

## Independent Examiner

A Heller FCA

Martin+Heller

5 North End Road

London

NW11 7RJ



**CLAPTON COMMON BOYS CLUB**

England & Wales - Charity number 1121347

---

# Accounts

---

**Report of the Trustees and  
Unaudited Financial Statements for the Year Ended 31 March 2024  
for  
Clapton Common Boys Club**

Martin+Heller  
5 North End Road  
London  
NW11 7RJ

**Clapton Common Boys Club**

**Contents of the Financial Statements  
for the Year Ended 31 March 2024**

---

	<b>Page</b>
<b>Report of the Trustees</b>	1 to 3
<b>Independent Examiner's Report</b>	4
<b>Statement of Financial Activities</b>	5
<b>Balance Sheet</b>	6
<b>Cash Flow Statement</b>	7
<b>Notes to the Cash Flow Statement</b>	8
<b>Notes to the Financial Statements</b>	9 to 15
<b>Detailed Statement of Financial Activities</b>	16

## **Clapton Common Boys Club**

### **Report of the Trustees for the Year Ended 31 March 2024**

---

The trustees present their report with the financial statements of the charity for the year ended 31 March 2024. The trustees have adopted the provisions of Accounting and Reporting by Charities: Statement of Recommended Practice applicable to charities preparing their accounts in accordance with the Financial Reporting Standard applicable in the UK and Republic of Ireland (FRS 102) (effective 1 January 2019).

#### **OBJECTIVES AND ACTIVITIES**

##### **Objectives and aims**

To advance in life and relieve the needs of children and young people through:

- The provision of recreational and leisure time activities provided in the interest of social welfare, designed to improve their conditions of life;
- Providing support and activities which develop their skills, capacities and capabilities to enable them to participate in society as mature and responsible individuals.
- The promotion of any other exclusively charitable objects and purposes such as the trustees see fit, provided that they are regarded as charitable by the law of England and Wales.

##### **Our mission**

Is to ameliorate the effects of deprivation of disengaged and disadvantaged children, young people and adults. We achieve our mission by providing stimulating and constructive activities.

##### **Our vision**

Is to "Empower Young People," a world where children develop into healthy and stable individuals with positive prospects.

##### **Our ambition**

Is to empower the children and young people who join us to become partners in our programmes: their assistance makes our work a valuable success.

##### **Our work**

Is to provide bespoke activities to our target beneficiaries, supporting them to reach their maximum capabilities and potential.

##### **Our success**

Is our London Youth Quality Assurance Mark (Gold) achieved in July 2015, endorsed by the City Bridge Trust.

#### **COMMITMENT TO QUALITY AND BEST PRACTICE**

With a commitment to quality and best practice, we evaluate and monitor our programmes to improve effectiveness.

We follow the child protection procedures and work with the management teams of the schools, to ensure safeguarding issues are dealt with accordingly.

To ensure best practice, we support our youth leaders and volunteers through regular supervision, guidance and through professional assistance from senior staff members and trustees.

#### **STAFF RECOGNITION**

We value our staff and professionals and encourage their growth at the club. We offer updated training and courses to ensure they develop their personal skills.

##### **Public benefit**

The Trustees confirm their compliance with the duty to have due regard to the Public Benefit guidance published by the Charity Commission when reviewing the Charity's aims and objectives and in planning future activities.

**OBJECTIVES AND ACTIVITIES  
SAFEGUARDING**

Since our charity works with vulnerable children and families, safeguarding is considered the greatest inherent risk in its work. We have a framework of consents, controls, policies and reviews to mitigate the associated risks.

The focus on training and supervision is important in the control environment. We have a dedicated compliance member who supports safeguarding processes with a reporting system which ensures that concerns are flagged, and information communicated rapidly and securely.

All members of staff have up to date certification and training in accordance with regulation.

**FINANCIAL REVIEW**

**Principal funding sources**

Our activities were supported by a mixture of funding streams including private donations, grants from trusts and foundations, and users' contributions. The results for the year are shown in the attached financial statements, and the trustees are satisfied with the results for the year.

The Trustees gratefully acknowledge that the expansion of services and reach and increase in positive impact on the lives of children in the community is largely due to the substantial and generous support of the following charitable trusts and foundations, including Hackney Local Authority, Awards for All, BBC Children in Need, BIG Lottery Fund - Reaching Communities, People Postcode Trust and other supporters and community donors.

**Reserves policy**

The Trustees are working towards building free reserves of at least 3 months' operating costs in order to protect services where there are uncertainties as to whether funding will continue and to ensure adequate cash flow for the organisation's needs. As of this financial year end, we are well on track.

In respect of some of the projects the incoming resources in the year exceeded the outgoing resources. As explained in the Accounting Policies in Note 1 to the Financial Statements, the grant period in certain cases runs into the next financial period, and the charity is committed to the expenditure in relation to those grants in the following period.

The trustees are satisfied with the results for the year, and consider that the charity is in a healthy financial position.

**FUTURE PLANS**

Our aims and targets for the coming year are to continue expanding on our current services and programmes.

**STRUCTURE, GOVERNANCE AND MANAGEMENT**

**Governing document**

The charity is constituted and governed by a Trust Deed dated 27 December 2006. The charity is managed and controlled by the trustees, who meet regularly.

**Recruitment and appointment of new trustees**

It is not the intention of the trustees of the charity to appoint any new trustees. Should the situation change in the future, the trustees will apply suitable recruitment, training and induction procedures.

**Risk management**

The trustees have identified and reviewed the major risks to which the charity is exposed. Both manual and automated checks are regularly invoked, particularly those relating to the operations and finance of the charity. The trustees are satisfied that these systems and procedures mitigate any perceived risks.

The trustees continually review the risks that the charity may be exposed to from time to time, and take appropriate action as required.

**Clapton Common Boys Club**

**Report of the Trustees  
for the Year Ended 31 March 2024**

---

**REFERENCE AND ADMINISTRATIVE DETAILS**

**Registered Charity number**

1121347

**Principal address**

1 Belz Terrace  
London  
E5 9SN

**Trustees**

J Baumgarten  
A Klein  
S Rand

**Independent Examiner**

A Heller FCA  
Martin+Heller  
5 North End Road  
London  
NW11 7RJ

Approved by order of the board of trustees on ..... and signed on its behalf by:

.....  
J Baumgarten - Trustee

**Independent Examiner's Report to the Trustees of  
Clapton Common Boys Club**

---

**Independent examiner's report to the trustees of Clapton Common Boys Club**

I report to the charity trustees on my examination of the accounts of Clapton Common Boys Club (the Trust) for the year ended 31 March 2024.

**Responsibilities and basis of report**

As the charity trustees of the Trust you are responsible for the preparation of the accounts in accordance with the requirements of the Charities Act 2011 ('the Act').

I report in respect of my examination of the Trust's accounts carried out under Section 145 of the Act and in carrying out my examination I have followed all applicable Directions given by the Charity Commission under Section 145(5)(b) of the Act.

**Independent examiner's statement**

Since your charity's gross income exceeded £250,000 your examiner must be a member of a listed body. I can confirm that I am qualified to undertake the examination because I am a member of the Institute of Chartered Accountants in England and Wales, which is one of the listed bodies.

I have completed my examination. I confirm that no material matters have come to my attention in connection with the examination giving me cause to believe that in any material respect:

1. accounting records were not kept in respect of the Trust as required by Section 130 of the Act; or
2. the accounts do not accord with those records; or
3. the accounts do not comply with the applicable requirements concerning the form and content of accounts set out in the Charities (Accounts and Reports) Regulations 2008 other than any requirement that the accounts give a true and fair view which is not a matter considered as part of an independent examination.

I have no concerns and have come across no other matters in connection with the examination to which attention should be drawn in this report in order to enable a proper understanding of the accounts to be reached.

A Heller FCA

Martin+Heller  
5 North End Road  
London  
NW11 7RJ

Date: .....

**Clapton Common Boys Club**

**Statement of Financial Activities  
for the Year Ended 31 March 2024**

				Year Ended 31/3/24 Total funds £	Period 1/1/22 to 31/3/23 Total funds £
<b>INCOME AND ENDOWMENTS FROM</b>	Notes	Unrestricted fund £	Restricted fund £		
Donations and legacies	2	25,763	371,515	397,278	637,443
<b>EXPENDITURE ON</b>					
Raising funds	3	119	-	119	2,286
<b>Charitable activities</b>	4				
General fund		48,114	455,643	503,757	578,213
Other		1,200	-	1,200	1,174
<b>Total</b>		49,433	455,643	505,076	581,673
<b>NET INCOME/(EXPENDITURE)</b>		(23,670)	(84,128)	(107,798)	55,770
<b>RECONCILIATION OF FUNDS</b>					
Total funds brought forward		81,250	189,736	270,986	215,216
<b>TOTAL FUNDS CARRIED FORWARD</b>		57,580	105,608	163,188	270,986

The notes form part of these financial statements

**Clapton Common Boys Club**

**Balance Sheet  
31 March 2024**

	Notes	Unrestricted fund £	Restricted fund £	31.3.24 Total funds £	31.3.23 Total funds £
<b>CURRENT ASSETS</b>					
Debtors	10	277,636	125,277	402,913	273,387
Cash at bank		-	-	-	93,887
		<u>277,636</u>	<u>125,277</u>	<u>402,913</u>	<u>367,274</u>
<b>CREDITORS</b>					
Amounts falling due within one year	11	(220,056)	(19,669)	(239,725)	(96,288)
		<u>57,580</u>	<u>105,608</u>	<u>163,188</u>	<u>270,986</u>
<b>NET CURRENT ASSETS</b>					
		<u>57,580</u>	<u>105,608</u>	<u>163,188</u>	<u>270,986</u>
<b>TOTAL ASSETS LESS CURRENT LIABILITIES</b>					
		<u>57,580</u>	<u>105,608</u>	<u>163,188</u>	<u>270,986</u>
<b>NET ASSETS/(LIABILITIES)</b>					
		<u>57,580</u>	<u>105,608</u>	<u>163,188</u>	<u>270,986</u>
<b>FUNDS</b>					
	13			57,580	81,250
Unrestricted funds				105,608	189,736
Restricted funds				<u>163,188</u>	<u>270,986</u>
<b>TOTAL FUNDS</b>					
				<u>163,188</u>	<u>270,986</u>

The financial statements were approved by the Board of Trustees and authorised for issue on .....  
and were signed on its behalf by:

.....  
J Baumgarten - Trustee

**Clapton Common Boys Club**

**Cash Flow Statement  
for the Year Ended 31 March 2024**

---

		Year Ended 31/3/24 £	Period 1/1/22 to 31/3/23 £
	Notes		
<b>Cash flows from operating activities</b>			
Cash generated from operations	1	<u>(310,343)</u>	<u>(115,285)</u>
Net cash used in operating activities		<u>(310,343)</u>	<u>(115,285)</u>
		_____	_____
<b>Change in cash and cash equivalents in the reporting period</b>		(310,343)	(115,285)
<b>Cash and cash equivalents at the beginning of the reporting period</b>	2	<u>93,887</u>	<u>209,172</u>
<b>Cash and cash equivalents at the end of the reporting period</b>	2	<u><u>(216,456)</u></u>	<u><u>93,887</u></u>

The notes form part of these financial statements

**Clapton Common Boys Club**

**Notes to the Cash Flow Statement  
for the Year Ended 31 March 2024**

**1. RECONCILIATION OF NET (EXPENDITURE)/INCOME TO NET CASH FLOW FROM OPERATING ACTIVITIES**

	Year Ended 31/3/24 £	Period 1/1/22 to 31/3/23 £
<b>Net (expenditure)/income for the reporting period (as per the Statement of Financial Activities)</b>	(107,798)	55,770
<b>Adjustments for:</b>		
Depreciation charges	-	7,883
Increase in debtors	(129,526)	(272,987)
(Decrease)/increase in creditors	(73,019)	94,049
<b>Net cash used in operations</b>	<u>(310,343)</u>	<u>(115,285)</u>

**2. ANALYSIS OF CASH AND CASH EQUIVALENTS**

	31.3.24 £	31.3.23 £
Notice deposits (less than 3 months)	-	93,887
Overdrafts included in bank loans and overdrafts falling due within one year	(216,456)	-
<b>Total cash and cash equivalents</b>	<u>(216,456)</u>	<u>93,887</u>

**3. ANALYSIS OF CHANGES IN NET FUNDS/(DEBT)**

	At 1/4/23 £	Cash flow £	At 31/3/24 £
<b>Net cash</b>			
Cash at bank	93,887	(93,887)	-
Bank overdraft	-	(216,456)	(216,456)
	<u>93,887</u>	<u>(310,343)</u>	<u>(216,456)</u>
<b>Total</b>	<u>93,887</u>	<u>(310,343)</u>	<u>(216,456)</u>

## 1. ACCOUNTING POLICIES

### **Basis of preparing the financial statements**

The financial statements of the charity, which is a public benefit entity under FRS 102, have been prepared in accordance with the Charities SORP (FRS 102) 'Accounting and Reporting by Charities: Statement of Recommended Practice applicable to charities preparing their accounts in accordance with the Financial Reporting Standard applicable in the UK and Republic of Ireland (FRS 102) (effective 1 January 2019)', Financial Reporting Standard 102 'The Financial Reporting Standard applicable in the UK and Republic of Ireland' and the Charities Act 2011. The financial statements have been prepared under the historical cost convention.

### **Income**

All income is recognised in the Statement of Financial Activities once the charity has entitlement to the funds, it is probable that the income will be received and the amount can be measured reliably.

### **Expenditure**

Liabilities are recognised as expenditure as soon as there is a legal or constructive obligation committing the charity to that expenditure, it is probable that a transfer of economic benefits will be required in settlement and the amount of the obligation can be measured reliably. Expenditure is accounted for on an accruals basis and has been classified under headings that aggregate all cost related to the category. Where costs cannot be directly attributed to particular headings they have been allocated to activities on a basis consistent with the use of resources.

Grants offered subject to conditions which have not been met at the year end date are noted as a commitment but not accrued as expenditure.

### **Tangible fixed assets**

Depreciation is calculated so as to write off the cost of an asset, less its estimated residual value, over the useful economic life of that asset as follows:

Equipment - straight line, over 3 years  
Playground - straight line, over 5 years

### **Taxation**

The charity is exempt from tax on its charitable activities.

### **Fund accounting**

Unrestricted funds can be used in accordance with the charitable objectives at the discretion of the trustees.

Restricted funds can only be used for particular restricted purposes within the objects of the charity. Restrictions arise when specified by the donor or when funds are raised for particular restricted purposes.

Further explanation of the nature and purpose of each fund is included in the notes to the financial statements.

**Clapton Common Boys Club**

**Notes to the Financial Statements - continued  
for the Year Ended 31 March 2024**

---

**2. DONATIONS AND LEGACIES**

	Year Ended 31/3/24	Period 1/1/22 to 31/3/23
	£	£
Donations	22,265	33,047
Grants	375,013	604,396
	<u>397,278</u>	<u>637,443</u>

Grants received, included in the above, are as follows:

	Year Ended 31/3/24	Period 1/1/22 to 31/3/23
	£	£
Other grants	<u>375,013</u>	<u>604,396</u>

**Grants receivable include:**

	<b>2024</b>
	<b>£</b>
London Borough of Hackney	129,269

**3. RAISING FUNDS**

**Other trading activities**

	Year Ended 31/3/24	Period 1/1/22 to 31/3/23
	£	£
Fundraising	<u>119</u>	<u>2,286</u>

**Clapton Common Boys Club**

**Notes to the Financial Statements - continued  
for the Year Ended 31 March 2024**

**4. CHARITABLE ACTIVITIES COSTS**

	Direct Costs £	Grant funding of activities (see note 5) £	Support costs (see note 6) £	Totals £
General fund	396,505	107,134	118	503,757
	<u>396,505</u>	<u>107,134</u>	<u>118</u>	<u>503,757</u>

**5. GRANTS PAYABLE**

	Year Ended 31/3/24 £	Period 1/1/22 to 31/3/23 £
General fund	107,134	102,000
	<u>107,134</u>	<u>102,000</u>
Dover Sholem Community Trust		107,134
		<u>107,134</u>

**6. SUPPORT COSTS**

	Finance £	Governance costs £	Totals £
Other resources expended	-	1,200	1,200
General fund	118	-	118
	<u>118</u>	<u>1,200</u>	<u>1,318</u>

**7. TRUSTEES' REMUNERATION AND BENEFITS**

There were no trustees' remuneration or other benefits for the year ended 31 March 2024 nor for the period ended 31 March 2023.

**Trustees' expenses**

There were no trustees' expenses paid for the year ended 31 March 2024 nor for the period ended 31 March 2023.

**Clapton Common Boys Club**

**Notes to the Financial Statements - continued  
for the Year Ended 31 March 2024**

**8. COMPARATIVES FOR THE STATEMENT OF FINANCIAL ACTIVITIES**

	Unrestricted fund £	Restricted fund £	Total funds £
<b>INCOME AND ENDOWMENTS FROM</b>			
Donations and legacies	94,296	543,147	637,443
<b>EXPENDITURE ON</b>			
Raising funds	-	2,286	2,286
<b>Charitable activities</b>			
General fund	51,345	526,868	578,213
Other	1,174	-	1,174
<b>Total</b>	<u>52,519</u>	<u>529,154</u>	<u>581,673</u>
<b>NET INCOME</b>	41,777	13,993	55,770
<b>RECONCILIATION OF FUNDS</b>			
Total funds brought forward	39,473	175,743	215,216
<b>TOTAL FUNDS CARRIED FORWARD</b>	<u><u>81,250</u></u>	<u><u>189,736</u></u>	<u><u>270,986</u></u>

**9. TANGIBLE FIXED ASSETS**

	Playground £	Equipment £	Totals £
<b>COST</b>			
At 1 April 2023 and 31 March 2024	27,836	86,462	114,298
<b>DEPRECIATION</b>			
At 1 April 2023 and 31 March 2024	27,836	86,462	114,298
<b>NET BOOK VALUE</b>			
At 31 March 2024	<u>-</u>	<u>-</u>	<u>-</u>
At 31 March 2023	<u>-</u>	<u>-</u>	<u>-</u>

Notes to the Financial Statements - continued  
for the Year Ended 31 March 2024

**10. DEBTORS: AMOUNTS FALLING DUE WITHIN ONE YEAR**

	31.3.24	31.3.23
	£	£
Trade debtors	-	400
Other debtors	402,913	272,987
	<u>402,913</u>	<u>273,387</u>

**11. CREDITORS: AMOUNTS FALLING DUE WITHIN ONE YEAR**

	31.3.24	31.3.23
	£	£
Bank loans and overdrafts (see note 12)	216,456	-
Trade creditors	19,669	93,888
Other creditors	3,600	2,400
	<u>239,725</u>	<u>96,288</u>

**12. LOANS**

An analysis of the maturity of loans is given below:

	31.3.24	31.3.23
	£	£
Amounts falling due within one year on demand:		
Bank overdrafts	<u>216,456</u>	<u>-</u>

**13. MOVEMENT IN FUNDS**

	At 1/4/23	Net movement in funds	At 31/3/24
	£	£	£
<b>Unrestricted funds</b>			
General fund	81,250	(23,670)	57,580
<b>Restricted funds</b>			
Restricted fund	189,736	(84,128)	105,608
	<u>270,986</u>	<u>(107,798)</u>	<u>163,188</u>

Notes to the Financial Statements - continued  
for the Year Ended 31 March 2024

13. MOVEMENT IN FUNDS - continued

Net movement in funds, included in the above are as follows:

	Incoming resources £	Resources expended £	Movement in funds £
<b>Unrestricted funds</b>			
General fund	25,763	(49,433)	(23,670)
<b>Restricted funds</b>			
Restricted fund	371,515	(455,643)	(84,128)
<b>TOTAL FUNDS</b>	<u>397,278</u>	<u>(505,076)</u>	<u>(107,798)</u>

Comparatives for movement in funds

	At 1/1/22 £	Net movement in funds £	At 31/3/23 £
<b>Unrestricted funds</b>			
General fund	39,473	41,777	81,250
<b>Restricted funds</b>			
Restricted fund	175,743	13,993	189,736
<b>TOTAL FUNDS</b>	<u>215,216</u>	<u>55,770</u>	<u>270,986</u>

Comparative net movement in funds, included in the above are as follows:

	Incoming resources £	Resources expended £	Movement in funds £
<b>Unrestricted funds</b>			
General fund	94,296	(52,519)	41,777
<b>Restricted funds</b>			
Restricted fund	543,147	(529,154)	13,993
<b>TOTAL FUNDS</b>	<u>637,443</u>	<u>(581,673)</u>	<u>55,770</u>

**14. RELATED PARTY DISCLOSURES**

There were no related party transactions for the year ended 31 March 2024.

**Clapton Common Boys Club****Detailed Statement of Financial Activities  
for the Year Ended 31 March 2024**

---

	Year Ended 31/3/24 £	Period 1.1.22 to 31/3/23 £
<b>INCOME AND ENDOWMENTS</b>		
<b>Donations and legacies</b>		
Donations	22,265	33,047
Grants	375,013	604,396
	<u>397,278</u>	<u>637,443</u>
<b>Total incoming resources</b>	397,278	637,443
<b>EXPENDITURE</b>		
<b>Other trading activities</b>		
Fundraising	119	2,286
<b>Charitable activities</b>		
Admin and Office Expenses	55,691	40,839
Charitable Activities	169,688	248,032
Rent and Expenses	39,191	65,690
Wages and Salaries	131,935	113,540
Depreciation of equipment	-	7,883
Grants to institutions	107,134	102,000
	<u>503,639</u>	<u>577,984</u>
<b>Support costs</b>		
<b>Finance</b>		
Bank charges	118	203
<b>Governance costs</b>		
Accountancy and legal fees	1,200	1,200
Total resources expended	<u>505,076</u>	<u>581,673</u>
<b>Net (expenditure)/income</b>	<u>(107,798)</u>	<u>55,770</u>

This page does not form part of the statutory financial statements

**CLAPTON COMMON BOYS CLUB**

England & Wales - Charity number 1121347

---

# Accounts

---

# YOUTHBOTS MINDSETS WIRED INNOVATION INSPIRED



Financial year end 01/01/2022-31/03/2023



# CHAIR STATEMENT

#Regeneration #Renewal #RoboRevolution

**At CCBC, we deeply appreciate the untapped potential of children and young people. We strive to ignite their thinking abilities, foster skill development, and nurture their innate creativity. Against a tide of techno BOTs, CCBC's children, teens and young adults are encouraged to success-fully harness unique inner strengths, combining human potential, and thought. Our young participants - the talented YouthBOTs, engage in opportunities to thrive positively in various fields. At CCBC, we make each child feel like a hero when they prove they can succeed.**

Since 2006, our successful model has been the envy of many youth clubs. We expertly integrate gifted, mainstream and SEMH children, meeting their individual needs, through creating stimulating activities from play therapy to playschemes.

Going forward into 2023, we are eager to introduce "CCBC YouthBOTs model", an innovative and integrated system for all children, introducing a range of RoboActivities through education and play.

Connecting and communicating with children and young people significantly increases our ability to support them. We will continue to place our confidence in the talented YouthBOTs.

Mr J Baumgarten



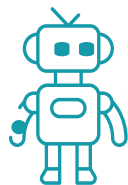
# INTRO THEME

YOUR CHILD IS SMARTER THAN THE BOTS.  
AT CCBC, WE ESTABLISH THAT.

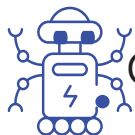
## We empower children and young people with:



Tools and skills



Thinking and creativity



Confidence and self-identity

## We unlock the potential of children and young people through:



Believing in their capabilities

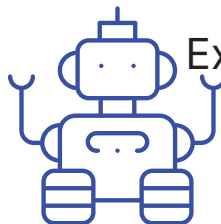


Leadership opportunities

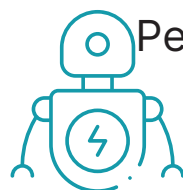


Personal skills development

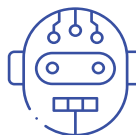
## We offer individualised support for children and young people:



Expert facilitators and volunteers



Personalised goal setting



One-on-one mentoring





# VISION

A stellar youth service provider for boys aged 5-25 years, providing full-day activities and playschemes



# MISSION

Our dual commitment - to entertain and cultivate character growth in children and young people



# Robots vs, YouthBOTS

- ☑ Digital generated command of text
- ☑ Cutting-edge advanced quickness
- ☑ Precise and efficient

- ☑ Creativity, intelligence and compassion
- ☑ Curiosity, determination, and motivation
- ☑ Thought, reasoning, connection, and learning

Our promise to our YouthBOTS,  
#journeymysuccess.  
CCBC's children and young  
people will draw on their inner  
talents, gain super confidence  
and immense satisfaction and tap  
hidden potentials



# Our Robo Activities

YouthBOTs narrative



## RoboEducational



Supported learning programmes with visual, tactile and auditory tools in an out-of-classroom setting, customised to each child's needs



## RoboCreatives



A combined approach of art and play, music and drama, trips and weekends, and tech and engineering skills development



## RoboHealth



A robust combination of anti-bullying training, smoking prevention, breakfast, exercise, cycling, jumping and swimming activities.



## RoboTherapy



A varied approach of therapy modalities delivered by certified trained facilitators

Because

An inclusive integrated approach to reach gifted to mainstream to SEMH children and their families.

Activities

- ✦ Parenting training programmes
- ✦ Heritage programme
- ✦ Homework and reading
- ✦ Mentoring, employment and work experience

- ✦ Brainstormers
- ✦ Open access play
- ✦ Creative arts
- ✦ Trips
- ✦ Playscheme
- ✦ Music and singing

- ✦ Anti-bullying programme
- ✦ Breakfast, cycling, swimming and exercises
- ✦ Smoking prevention
- ✦ Trampolining and Kangaroo Jumping

- ✦ SEMH Facilities and therapy support
- ✦ Gardening

Numbers in detail

110+ children, teens and young adults  
40 parents

660+ children and teens

96 children and teens  
40 parents

180 children

850+ Annual Users

Rate of effectiveness



# Our YouthBOTS Stories

I have been a part of the ARTSpiration programme. I came to hear about this project through my therapist at school. I was a bit frightened to join, as I never fit into any programmes in the past. My needs were always different and of course, it was difficult to be part of a social group. When I joined ARTSpiration, the staff and volunteers took a liking to me, the staff were so nice and extra kind. I felt for the first time in my life a person. I felt needed to join in the programme and sessions. ARTSpiration taught me many things [such as] being more confident, how to use skills and learnt new stuff. This has been a completely new experience for me. It's wonderful! It's fun and relaxing. Feeling accepted and cared for by my friends didn't make me feel left out. I'm not the only one who has challenges and problems – there are others too. And that is a powerful image and challenges you to strive, even though things may become hard at times. It also gives me (and I think this is probably the most beneficial area) a sense of hope – that I can do things when I put my mind to them, despite my hardships and despite many challenges. And that is a very powerful feeling and I hope that I can try to keep improving other skills, and hopefully develop my confidence to overcome my challenges. "ARTSpiration, is the best!"



# OUR YOUTHBOTS FEEDBACK

“The best day in my life was when I was voted into the Youth board. I felt beloved by my peers and important taking a leadership role and listening to others”.  
David\*,15

“I have slowed down my racing thoughts, I am learning to process and acknowledge my feelings. I feel that my peers are seeing me change for the better. Thank you to my mentor at CCBC for teaching me many valuable life skills”.  
Moses\*,12

“Every time I join CCBC’s activities I feel welcomed and accepted. I don’t feel miserable and fearful that I will be bullied. I have made many friends and developed my identity.”  
Yoni\*,14

## CCBC GRADUATE’S

I am a graduate of CCBC’s YES career training programme, a transformative experience and instrumental in shaping my career. YES programme equipped me with professional aptitude and competence. As a gas safety engineer, I often offer CCBC’s young people work experience and guided mentoring. I have been successful in establishing my business, despite the current competitive market. The training was extremely intense yet conducive to my career.

Mr G, gas safety engineer

I am grateful to CCBC for their encouragement of my success and for empowering me to confidently pursue my chosen career path. I highly recommend CCBC’s career-building programme to anyone seeking to gain a solid foundation and achieve remarkable growth in their professional endeavors.”

Mr F, computer programmer

## CCBC’S STAFF FEEDBACK

As a proud graduate of CCBC’s mentoring program, I feel fortunate to have the opportunity to give back to the community through volunteering. Being part of the programme has revealed the importance of youth activities. It is satisfying to contribute my time and efforts towards making a positive impact for children and young people. CCBC’s mentoring programme has not only shaped my personal and professional growth but has also inspired me to continue uplifting and supporting the community as I progress in my own journey.

Mr P\*, volunteer youth worker

\*(names changed to protect confidentiality)

# STRUCTURE, GOVERNANCE AND MANAGEMENT

## Staff Recognition

We value our staff and professionals and encourage their growth at the club. We regularly offer up to date trainings and courses to ensure they develop their personal skills.

## Safeguarding

Since our charity works with vulnerable children and families, safeguarding is considered the greatest inherent risk in our work. We have a framework of consents, controls, policies and reviews to mitigate the associated risks.

The focus on training and supervision is important in the control environment. We have a dedicated compliance officer who supports safeguarding processes with a reporting system that ensures concerns are flagged and information is communicated rapidly and securely. All members of staff have up to date certification and training in accordance with current regulations.

## Governing document

The charity is constituted and governed by a Trust Deed dated 27 December 2006. The charity is managed and controlled by the trustees, who meet regularly.

## Recruitment and appointment of new trustees

It is not the intention of the trustees of the charity to appoint any new trustees at present. Should the situation change in the future, the trustees will apply suitable recruitment, training and induction procedures.

## Risk management

The trustees have identified and reviewed the major risks to which the charity is exposed. Both manual and automated checks are regularly invoked, particularly those relating to the operations and finance of the charity. The trustees are satisfied that these systems and procedures mitigate any perceived risks. The trustees continually review the risks that the charity may be exposed to from time to time, and take appropriate action as required.

## Public Benefit

The Trustees confirm their compliance with the duty to have due regard to the Public Benefit guidance published by the Charity Commission when reviewing the Charity's aims and objectives and in planning future activities.

# FINANCIAL REVIEW

## Principal funding sources

Our activities were supported by a mixture of funding streams including private donations, grants from trusts and foundations, and users' contributions. The results for the year are shown in the attached financial statements, and the trustees are satisfied with the results for the year.

The Trustees gratefully acknowledge that the expansion of services and reach and increase in positive impact on the lives of children in the community is largely due to the substantial and generous support of the following charitable trusts and foundations, including Hackney Local Authority, Awards for All, BBC Children in Need, BIG Lottery Fund Reaching Communities, People Postcode Trust and other supporters and community donors.

## Reserves policy

The Trustees are working towards building free reserves of at least 3 months' operating costs in order to protect services where there are uncertainties as to whether funding will continue and to ensure adequate cash flow for the organisation's needs. As of this financial year end, we are well on track.

In respect of some of the projects the incoming resources in the year exceeded the outgoing resources. As explained in the Accounting Policies in Note 1 to the Financial Statements, the grant period in certain cases runs into the next financial period, and the charity is committed to the expenditure in relation to those grants in the following period.

The trustees are satisfied with the results for the year and consider that the charity is in a healthy financial position.

## FUTURE PLANS

Our aims and targets for 2023/4 are to continue expanding on our current services and programmes.

# INDEPENDENT EXAMINER'S REPORT TO THE TRUSTEES OF CCBC

## Independent examiner's report to the trustees of CCBC

I report to the charity trustees on my examination of the accounts of Clapton Common Boys Club (the Trust) for the year ended 31 December 2021.

## Responsibilities and basis of report

As the charity trustees of the Trust you are responsible for the preparation of the accounts in accordance with the requirements of the Charities Act 2011 ('the Act').

I report in respect of my examination of the Trust's accounts carried out under section 145 of the Act and in carrying out my examination I have followed all applicable Directions given by the Charity Commission under section 145(5)(b) of the Act.

## Independent examiner's statement

Since your charity's gross income exceeded £250,000 your examiner must be a member of a listed body. I can confirm that I am qualified to undertake the examination because I am a registered member of ICAEW which is one of the listed bodies.

I have completed my examination. I confirm that no material matters have come to my attention in connection with the examination giving me cause to believe that in any material respect:

1. accounting records were not kept in respect of the Trust as required by section 130 of the Act; or
2. the accounts do not accord with those records; or
3. the accounts do not comply with the applicable requirements concerning the form and content of accounts set out in the Charities (Accounts and Reports) Regulations 2008 other than any requirement that the accounts give a true and fair view which is not a matter considered as part of an independent examination.

I have no concerns and have come across no other matters in connection with the examination to which attention should be drawn in this report in order to enable a proper understanding of the accounts to be reached.

A Heller FCA  
5 North End Road  
London  
NW11 7RJ  
Date: 31/01/24

# Statement of Financial Activities for the Period 1 January 2022 to 31 March 2023

Notes	Unrestricted fund £	Restricted fund £	Period 1/1/22 to 31/3/23 Total funds £	Year Ended 31/12/21 Total funds £
2				
	94,296	543,146	637,442	651,105
3				
	-	2,286	2,286	2,310
4				
	51,345	526,868	578,213	563,350
	1,174	-	1,174	1,175
	52,519	529,154	581,673	566,835
	41,777	13,993	55,770	84,270
	39,473	175,743	215,216	130,946
	81,250	189,736	270,986	215,216

# Balance Sheet

## 31 March 2023

	Notes	Unrestricted fund £	Restricted fund £	31.3.23 Total funds £	31.12.21 Total funds £
<b>FIXED ASSETS</b>					
Tangible assets	9	-	-	-	7,883
<b>CURRENT ASSETS</b>					
Debtors	10	124,746	148,641	273,387	400
Cash at bank		52,792	41,095	93,887	209,172
		<u>177,538</u>	<u>189,736</u>	<u>367,274</u>	<u>209,572</u>
<b>CREDITORS</b>	11				
Amounts falling due within one year		(96,288)	-	(96,288)	(2,239)
<b>NET CURRENT ASSETS</b>		<u>81,250</u>	<u>189,736</u>	<u>270,986</u>	<u>207,333</u>
<b>TOTAL ASSETS LESS CURRENT LIABILITIES</b>		<u>81,250</u>	<u>189,736</u>	<u>270,986</u>	<u>215,216</u>
<b>LIABILITIES</b>					
<b>NET ASSETS</b>		<u>81,250</u>	<u>189,736</u>	<u>270,986</u>	<u>215,216</u>
<b>FUNDS</b>					
Unrestricted funds	12			81,250	39,473
Restricted funds				189,736	175,743
<b>TOTAL FUNDS</b>				<u>270,986</u>	<u>215,216</u>

The financial statements were approved by the Board of Trustees and authorised for issue on 31/01/24 and were signed on its behalf by:

J Baumgarten - Trustee

# Cash Flow Statement

## for the Period 1 January 2022 to 31 March 2023

	Notes	Period 1/1/22 to 31/3/23 £	Year Ended 31/12/21 £
<b>Cash flows from operating activities</b>			
Cash generated from operations	1	(115,285)	84,079
Net cash (used in)/provided by operating activities		<u>(115,285)</u>	<u>84,079</u>
Change in cash and cash equivalents in the reporting period		(115,285)	84,079
Cash and cash equivalents at the beginning of the reporting period		209,172	125,093
Cash and cash equivalents at the end of the reporting period		<u>93,887</u>	<u>209,172</u>

The notes form part of these financial statements

# Notes to the Cash Flow Statement for the Period 1 January 2022 to 31 March 2023

## 1 RECONCILIATION OF NET (EXPENDITURE)/INCOME TO NET CASH FLOW FROM OPERATING ACTIVITIES

	Period 1/1/22 to 31/3/23 £	Year Ended 31/12/21 £
<b>Net (expenditure)/income for the reporting period (as per the Statement of Financial Activities)</b>	55,770	84,270
<b>Adjustments for:</b>	7,883	16,477
Depreciation charges		
Increase in debtors	(272,987)	(400)
Increase/(decrease) in creditors	94,049	(16,268)
	<hr/>	<hr/>
Net cash (used in)/provided by operations	(115,285)	84,079

## 2 ANALYSIS OF CHANGES IN NET FUNDS

	At 1/1/22 £	Cash flow £	At 31/3/23 £
<b>Net cash</b>			
Cash at bank	209,172	(115,285)	93,887
	<hr/>	<hr/>	<hr/>
	209,172	(115,285)	93,887
	<hr/>	<hr/>	<hr/>
<b>Total</b>	209,172	(115,285)	93,887

## 1 ACCOUNTING POLICIES

### Basis of preparing the financial statements

The financial statements of the charity, which is a public benefit entity under FRS 102, have been prepared in accordance with the Charities SORP (FRS 102) 'Accounting and Reporting by Charities: Statement of Recommended Practice applicable to charities preparing their accounts in accordance with the Financial Reporting Standard applicable in the UK and Republic of Ireland (FRS 102) (effective 1 January 2019)', Financial Reporting Standard 102 'The Financial Reporting Standard applicable in the UK and Republic of Ireland' and the Charities Act 2011. The financial statements have been prepared under the historical cost convention.

### Income

All income is recognised in the Statement of Financial Activities once the charity has entitlement to the funds, it is probable that the income will be received and the amount can be measured reliably.

### Expenditure

Liabilities are recognised as expenditure as soon as there is a legal or constructive obligation committing the charity to that expenditure, it is probable that a transfer of economic benefits will be required in settlement and the amount of the obligation can be measured reliably. Expenditure is accounted for on an accruals basis and has been classified under headings that aggregate all cost related to the category. Where costs cannot be directly attributed to particular headings they have been allocated to activities on a basis consistent with the use of resources.

### Tangible fixed assets

Depreciation is calculated so as to write off the cost of an asset, less its estimated residual value, over the useful economic life of that asset as follows:

Equipment - straight line, over 3 years  
Playground - straight line, over 5 years

### Taxation

The charity is exempt from tax on its charitable activities.

### Fund accounting

Unrestricted funds can be used in accordance with the charitable objectives at the discretion of the trustees.

Restricted funds can only be used for particular restricted purposes within the objects of the charity. Restrictions arise when specified by the donor or when funds are raised for particular restricted purposes.

Further explanation of the nature and purpose of each fund is included in the notes to the financial statements.

## 2 DONATIONS AND LEGACIES

	Period 1/1/22 to 31/3/23 £	Year Ended 31/12/21 £
Donations	33,046	16,638
Grants	604,396	634,467
	<u>637,442</u>	<u>651,105</u>

Grants received, included in the above, are as follows:

	Period 1/1/22 to 31/3/23 £	Year Ended 31/12/21 £
Other grants	<u>604,396</u>	<u>634,467</u>

	2023 £
<b>Grants receivable include:</b>	
BBC Children in Need	10,291
BIG Lottery Fund	20,000
London Borough of Hackney	166,498
London Borough of Haringey	13,500

## 3 RAISING FUNDS

	Period 1/1/22 to 31/3/23 £	Year Ended 31/12/21 £
<b>Other trading activities</b>		
Fundraising	<u>2,286</u>	<u>2,310</u>

## 4 CHARITABLE ACTIVITIES COSTS

	Direct Costs £	Grant funding of activities (see note 5)	Support costs (see note 6) £	Totals £
General fund	475,984	102,000	229	578,213

## 5 GRANTS PAYABLE

	Period 1/1/22 to 31/3/23 £	Year ended 31/12/21 £
Other resources expended	(26)	£ 1,200
General fund	229	-
	203	1,200

## 6 SUPPORT COSTS

	Finance £	Governance costs £	Totals £
Other resources expended	(26)	£ 1,200	£ 1,174
General fund	229	-	229
	203	1,200	1,403

## 7 TRUSTEES' REMUNERATION AND BENEFITS

There were no trustees' remuneration or other benefits for the period ended 31 March 2023 nor for the year ended 31 December 2021.

### Trustees' expenses

There were no trustees' expenses paid for the period ended 31 March 2023 nor for the year ended 31 December 2021.

## 8 COMPARATIVES FOR THE STATEMENT OF FINANCIAL ACTIVITIES

	Unrestricted Funds £	Restricted Funds £	Total Funds £
INCOME AND ENDOWMENTS FROM			
Donations and legacies	54,815	596,290	651,105
<hr/>			
EXPENDITURE ON			
Raising funds	-	2,310	2,310
Charitable activities			
General fund	32,040	531,310	563,350
Other	1,175	-	1,175
<hr/>			
Total	33,215	533,620	566,835
NET INCOME	21,600	62,670	84,270
RECONCILIATION OF FUNDS			
Total funds brought forward	17,873	113,073	130,946
TOTAL FUNDS CARRIED FORWARD	39,473	175,743	215,216
<hr/> <hr/>			

## 9 TANGIBLE FIXED ASSETS

### COST

At 1 January 2022 and 31 March 2023

	Playground £	Equipment £	Totals £
	27,836	86,462	114,298

### DEPRECIATION

At 1 January 2022

	27,836	78,579	106,415
--	--------	--------	---------

Charge for year

	-	7,883	7,883
--	---	-------	-------

At 31 March 2023

	27,836	86,462	114,298
--	--------	--------	---------

### NET BOOK VALUE

At 31 March 2023

	-	-	-
--	---	---	---

At 31 December 2021

	-	7,883	7,883
--	---	-------	-------

## 10 DEBTORS: AMOUNTS FALLING DUE WITHIN ONE YEAR

	31.3.23 £	31.12.21 £
Trade debtors	400	400
Other debtors	68,297	-
	<u>68,697</u>	<u>400</u>

## 11 CREDITORS: AMOUNTS FALLING DUE WITHIN ONE YEAR

	31.March.2023 £	31.December.2021 £
Trade creditors	37,839	1,039
Other creditors	2,400	1,200
	40,239	2,239

## 12 MOVEMENT IN FUNDS

	At 1/1/22 £	Net movement in funds £	At 31/3/23 £
<b>Unrestricted funds</b>			
General fund	39,473	41,777	81,250
<b>Restricted funds</b>			
Restricted fund	175,743	(134,648)	41,095
<b>TOTAL FUNDS</b>	<u>215,216</u>	<u>(92,871)</u>	<u>122,345</u>

Net movement in funds, included in the above are as follows:

	Incoming resources £	Resources expended £	Movement in funds £
<b>Unrestricted funds</b>			
General fund	94,296	(52,519)	41,777
<b>Restricted funds</b>			
Restricted fund	543,146	(677,794)	(134,648)
<b>TOTAL FUNDS</b>	<u>637,442</u>	<u>(730,313)</u>	<u>(92,871)</u>

Comparatives for movement in funds

	At 1/1/21 £	Net movement in funds £	At 31/12/21 £
Unrestricted funds			
General fund	17,873	21,600	39,473
Restricted funds			
Restricted fund	113,073	62,670	175,743
<b>TOTAL FUNDS</b>	<u>130,946</u>	<u>84,270</u>	<u>215,216</u>

Comparative net movement in funds, included in the above are as follows:

	Incoming resources £	Resources expended £	Movement in funds £
<b>Unrestricted funds</b>			
General fund	54,815	(33,215)	21,600
<b>Restricted funds</b>			
Restricted fund	596,290	(533,620)	62,670
<b>TOTAL FUNDS</b>	<u>651,105</u>	<u>(566,835)</u>	<u>84,270</u>

## 13 RELATED PARTY DISCLOSURES

There were no related party transactions for the period ended 31 March 2023

# Detailed Statement of Financial Activities

## for the Period 1 January 2022 to 31 March 2023

	Period 1.1.22 31/3/23 £	Year Ended to 31/12/21 £
<b>INCOME AND ENDOWMENTS</b>		
<b>Donations and legacies</b>		
Donations	33,047	16,638
Grants	604,396	634,467
	<u>637,443</u>	<u>651,105</u>
<b>Total incoming resources</b>	637,443	651,105
<b>EXPENDITURE</b>		
<b>Other trading activities</b>		
Fundraising	2,286	2,310
<b>Charitable activities</b>		
Admin and Office Expenses	40,839	49,312
Charitable Activities	248,032	344,876
Rent and Expenses	65,690	39,329
Wages and Salaries	113,540	113,165
Depreciation of equipment	7,883	14,277
Depn of playground	-	2,200
Grants to institutions	<u>102,000</u>	<u>-</u>
	577,984	563,159
Support costs		
<b>Finance</b>		
Bank charges	203	166
<b>Governance costs</b>		
Accountancy and legal fees	<u>1,200</u>	<u>1,200</u>
<b>Total resources expended</b>	<u>581,673</u>	<u>566,835</u>
<b>Net (expenditure)/income</b>	<u>55,770</u>	<u>84,270</u>

# REFERENCE AND ADMINISTRATIVE DETAILS

## Registered Charity number

1121347

## Principal address

1 Belz Terrace  
London  
E5 9SN

## Trustees

J Baumgarten  
A Klein  
S Rand

## Independent Examiner

A Heller FCA  
Martin+Heller  
5 North End Road  
London  
NW11 7RJ



**CLAPTON COMMON BOYS CLUB**

England & Wales - Charity number 1121347

---

# Accounts

---



# RAISING

For the Year Ended 31 December 2021

# THE BAR



CLAPTON COMMON  
**boys club**  
EMPOWERING YOUNG PEOPLE

# TRUSTEE



## STATEMENT:

**"RAISING THE BAR" THEME RESONATES WELL FOR CCBC. CCBC HAS STEPPED UP AGAIN THIS YEAR. CCBC HAS OPENED A FULL-DAY FACILITY FOR SEMH/ SEND BOYS. FOR CCBC IT IS IMPERATIVE TO RAISE THE STANDARD IN OUR DELIVERY AND OUTCOME FOR CHILDREN AND YOUNG PEOPLE WITH CHALLENGING NEEDS.**

CCBC services supports improvement for children of all ages. As a trustee, observing children fail has given me much thought. Making this facility materialise was my life's dream.

CCBC has dedicated itself to Raise the Bar for our community's children and increase their resilience in the face of hardships.

Armed with tools and techniques, children and young people feel secure. With increased encouragement, children have Raised their ambitions. Dreaming big.

Each child is a hero. Building their talents and skills, capacity and capability, with resilience and strength. Children for whom group work is a struggle, learn to join small groups. One step forward. One giant leap for their confidence.

CCBC is here for children with inner challenges of mental health and emotional dysregulation challenges. There is no limit to how high CCBC will Raise the Bar to help them.

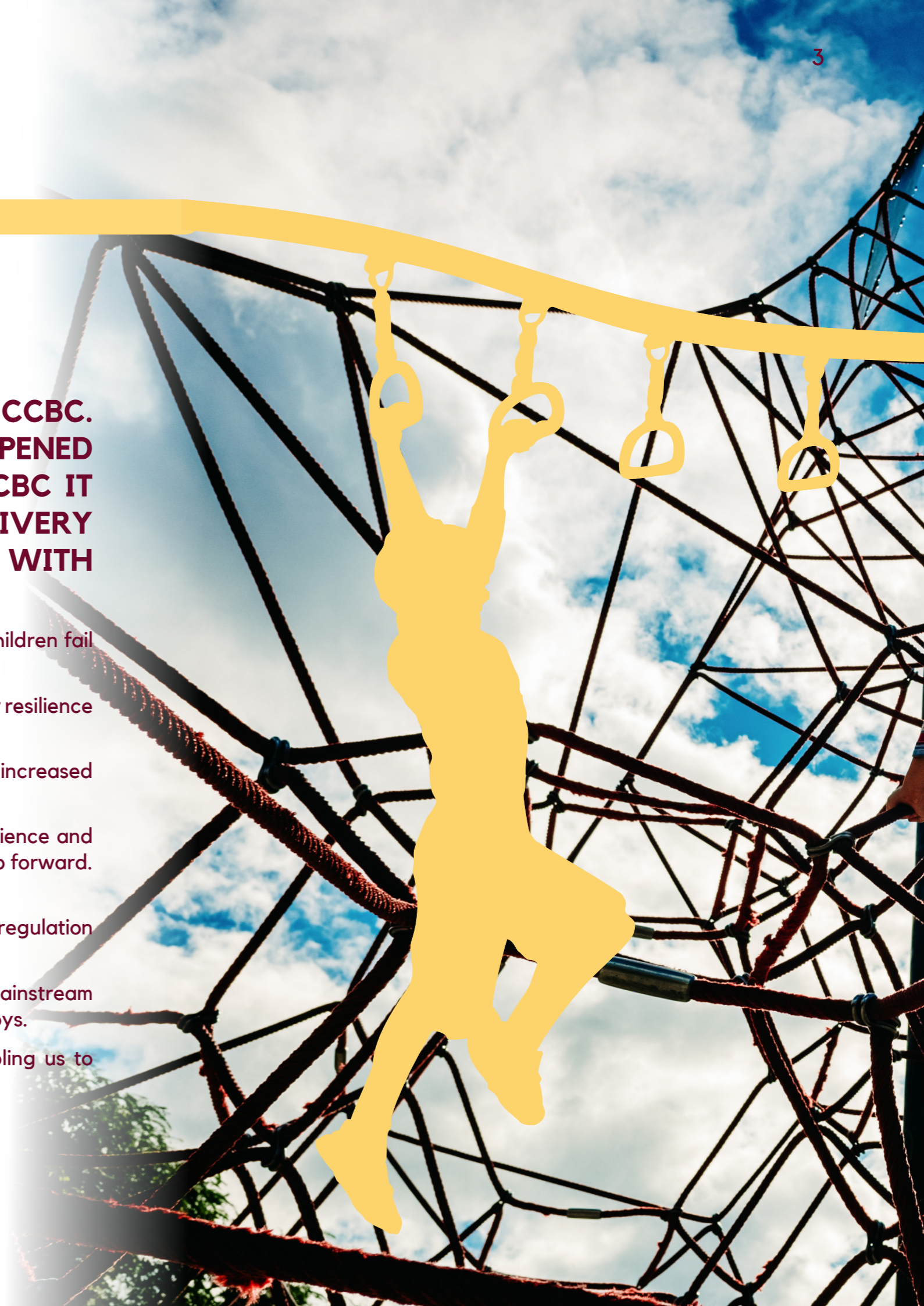
Our facility service fills a niche. These boys continue to struggle whilst contending to mainstream school requirements. CCBC's facility sets a purpose and realistic curriculum for these boys.

We would like to thank our partners and funders who have stood by our side, enabling us to respond and adapt to arising needs. We thank them for their support.

A handwritten signature in black ink, appearing to read 'J Baumgarten'.

J Baumgarten

Trustee



# OUR CHARITABLE OBJECTIVES



To advance in life and relieve the needs of children and young people through:

- The provision of recreational and leisure time activities provided in the interests of social welfare, designed to improve their conditions of life;
- Providing support and activities which develop their skills, capacities and capabilities to enable them to participate in society as mature and responsible individuals
- The promotion of any other exclusively charitable objects and purposes such as the trustees see fit, provided that they are regarded as charitable by the law of England and Wales.

# OUR STRATEGIC AIMS



We measure success in happiness, not grades. At CCBC, success means individual development. Each child has the space they need to thrive. CCBC is unique:

- User focused - our youth-led board brainstorms activities, leads programmes and supports users;
- Open-ended choices - young people pick their desired activities;
- Accredited club - Queens Award and London Youth Quality Mark.

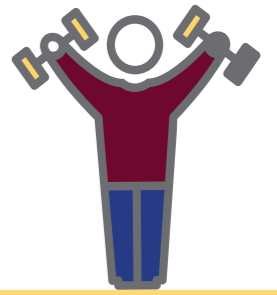


## OUR FOCUS AND MISSION

CCBC launched in 2006 to serve disengaged children at-risk of becoming NEET.

We're a youth service provider for boys aged 5-17 years, providing full-day activities and playschemes.

# MASTER ACHIEVEMENTS



## PARENT PROGRAMMES

THE CONTINUED CALL FOR SUPPORT FOR PARENTS/ CARERS SINCE COVID HAS BEEN SIGNIFICANT. ON A LARGER SCALE, CCBC HAS BEEN PROVIDING PARENTING TRAINING, PLAY & STAY SUPPORT, WORKSHOPS AND 121 SUPPORT SESSIONS. PARENTS ENGAGED IN POSITIVE MOMENTS THROUGH SHARING LEARNING AND PARENTING EXPERIENCES AND NETWORKING AND CONNECTING WITH PARENTS LIKE THEM.

Low-income and vulnerable parents feel stifled by the ongoing rise of living costs, mental and emotional challenges on the home front. CCBC has therefore been hand-holding and supporting parents to be more resilient and courageous in their personal health and wellbeing and their parenting capabilities.

Providing opportunities to parents in their personal and professional roles; has been a unique learning experience for CCBC. We have supported parents to increase their confidence and self-image. It is where CCBC input is best achieved, supporting parents to self-reflect and find their measure of happiness.

# SEMH FACILITIES



"I have never missed one session, because I enjoy it some much. I wouldn't miss it for anything in the world!"

Y M age 8

## LENDING ITSELF TO THE EFFECTS OF COVID, CCBC CHOSE THE OPPORTUNITY TO ESTABLISH A FULL-DAY FACILITY FOR SEMH/ SEND BOYS.

These boys have difficulty integrating into a team, group, or community. With individualised programmes and therapy support, CCBC is here to develop their basic skills and understanding. For the children's sake, they need to feel accepted and successful.

Post-Covid, children returned to school dysregulated and particularly disturbed by their emotional traumatic experiences.

CCBC brainstormed. And acted. CCBC founded a way to containment and contentment for boys struggling with SEMH/ SEND needs.

Through a modified teaching model, SEMH boys can encounter success.

It's about the little things that matter. To children whom teamwork was, the impossible becomes possible. It's about transformation.

## The facility curriculum includes:



Life skills and work readiness



Cookery and food signage



Woodwork and Construction



Tech and IT

Creative arts and music

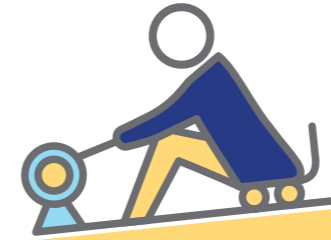
Painting and design

Emotional therapy 121 and groups



Fitness and exercise

# BRAINSTORMER TIME



"Throughout my struggles, I have seen light, I gained CCBC to help me and tap into my talents,"

R.G age 14

## COVID IMPACTS LEFT ESPECIALLY GIFTED AND TALENTED CHILDREN REELING. SINCE COVID, GIFTED CHILDREN HAVE BEEN BEHAVING QUITE IN THE OPPOSITE MANNER OF GIFTED BEHAVIOUR.

Gifted children are displaying signs of being inattentive, neglecting schoolwork and becoming frustrated easily.

CCBC took the time to delve in and develop.

We have branched out our services, facilitating new opportunities for gifted children. They need plenty of intellectual stimulation and CCBC is here to fill that space.

Brainstormers programme initiative, connotes an overstimulated brain.

CCBC offers a space for children to tap into their intellect. A place of belonging. At 2x speed pace. Where children out of the box can connect. Work together. Communicate in their language.

Brainstormers provides opportunities where highly capable problem-solvers work in tandem.

Brainstormers is a combined approach of educational support, tech and engineering skills development. It is where children learn self-expression, awareness, and the art of self-identity.

In a safe space gifted children have the freedom to workup their skills, express themselves in a non-judgemental environment and use their extra talents to try something new, develop skills in the modern world and build a unique profession at their young age.

# HERITAGE PROJECT

## CREATIVE ARTS



## HOME WORK CLUB



## BLOOM SEASON

## OPEN ACCESS PLAY



## ANTI BULLYING



## MENTORING

## OUTINGS



## WORK EXPERIENCE

## MUSICAL MOVEMENTS

## SMOKING PREVENTION



# ACTIVITY FRAMEWORK



# COMMITMENT TO QUALITY AND BEST PRACTICE



With a commitment to quality and best practice, we evaluate and monitor our programmes to improve effectiveness.

We follow the child protection procedures and work with the management teams of schools, to ensure safeguarding issues are dealt with accordingly.

To ensure best practice, we support our youth leaders and volunteers through regular supervision, guidance and through professional assistance from senior staff members and trustees.

A collage of various certificates and awards. At the top left is a 'LEADERSHIP & TIME MANAGEMENT' certificate awarded to Nachmen Rosen. Below it is a 'KEHILLA TRAINING PROGRAMME' certificate for Ahron Kalish. To the right is a 'Unit Award Scheme Certificate' from AQA. In the center is a 'Queen's Golden Jubilee Award' certificate for Clayton Common Boys Club. At the bottom right is a 'Unit Award Scheme Certificate' for YESHAYA NEREMEL MARGULES. A purple circular badge at the bottom right says 'London Youth MEMBER 2020-21'. At the bottom center is a logo for 'The Queen's Award for Voluntary Service'.

# STRUCTURE, GOVERNANCE AND MANAGEMENT

## STAFF RECOGNITION

We value our staff and professionals and encourage their growth at the club. We regularly offer up to date trainings and courses to ensure they develop their personal skills.

## SAFEGUARDING

Since our charity works with vulnerable children and families, safeguarding is considered the greatest inherent risk in our work. We have a framework of consents, controls, policies and reviews to mitigate the associated risks.

The focus on training and supervision is important in the control environment. We have a dedicated compliance officer who supports safeguarding processes with a reporting system that ensures concerns are flagged and information is communicated rapidly and securely. All members of staff have up to date certification and training in accordance with current regulations.

## GOVERNING DOCUMENT

The charity is constituted and governed by a Trust Deed dated 27 December 2006. The charity is managed and controlled by the trustees, who meet regularly.

## RECRUITMENT AND APPOINTMENT OF NEW TRUSTEES

It is not the intention of the trustees of the charity to appoint any new trustees at present. Should the situation change in the future, the trustees will apply suitable recruitment, training and induction procedures.

## RISK MANAGEMENT

The trustees have identified and reviewed the major risks to which the charity is exposed. Both manual and automated checks are regularly invoked, particularly those relating to the operations and finance of the charity. The trustees are satisfied that these systems and procedures mitigate any perceived risks. The trustees continually review the risks that the charity may be exposed to from time to time, and take appropriate action as required.

## PUBLIC BENEFIT

The Trustees confirm their compliance with the duty to have due regard to the Public Benefit guidance published by the Charity Commission when reviewing the Charity's aims and objectives and in planning future activities.

# FINANCIAL REVIEW

## PRINCIPAL FUNDING SOURCES

Our activities were supported by a mixture of funding streams including private donations, grants from trusts and foundations, and users' contributions. The result for the year are shown in the attached financial statements, and the trustees are satisfied with the results for the year.

The Trustees gratefully acknowledge that the expansion of services and reach and increase in positive impact on the lives of children in the community is largely due to the substantial and generous support of the following charitable trusts and foundations, including Hackney Local Authority, Awards for All, BBC Children in Need, BIG Lottery Fund Reaching Communities, People Postcode Trust and other supporters and community donors.

## RESERVES POLICY

The Trustees are working towards building free reserves of at least 3 months' operating costs in order to protect services where there are uncertainties as to whether funding will continue and to ensure adequate cash flow for the organisation's needs. As of this financial year end, we are well on track.

In respect of some of the projects the incoming resources in the year exceeded the outgoing resources. As explained in the Accounting Policies in Note 1 to the Financial Statements, the grant period in certain cases runs into the next financial period, and the charity is committed to the expenditure in relation to those grants in the following period.

The trustees are satisfied with the results for the year and consider that the charity is in a healthy financial position.

## FUTURE PLANS

Our aims and targets for 2021 are to continue expanding on our current services and programmes.

# INDEPENDENT EXAMINER'S REPORT TO THE TRUSTEES OF CLAPTON COMMON BOYS CLUB

## INDEPENDENT EXAMINER'S REPORT TO THE TRUSTEES OF CLAPTON COMMON BOYS CLUB

I report to the charity trustees on my examination of the accounts of Clapton Common Boys Club (the Trust) for the year ended 31 December 2021.

### RESPONSIBILITIES AND BASIS OF REPORT

As the charity trustees of the Trust you are responsible for the preparation of the accounts in accordance with the requirements of the Charities Act 2011 ('the Act').

I report in respect of my examination of the Trust's accounts carried out under section 145 of the Act and in carrying out my examination I have followed all applicable Directions given by the Charity Commission under section 145(5)(b) of the Act.

### INDEPENDENT EXAMINER'S STATEMENT

Since your charity's gross income exceeded £250,000 your examiner must be a member of a listed body. I can confirm that I am qualified to undertake the examination because I am a registered member of ICAEW which is one of the listed bodies.

I have completed my examination. I confirm that no material matters have come to my attention in connection with the examination giving me cause to believe that in any material respect:

1. accounting records were not kept in respect of the Trust as required by section 130 of the Act; or

2. the accounts do not accord with those records; or

3. the accounts do not comply with the applicable requirements concerning the form and content of accounts set out in the Charities (Accounts and Reports) Regulations 2008 other than any requirement that the accounts give a true and fair view which is not a matter considered as part of an independent examination.

I have no concerns and have come across no other matters in connection with the examination to which attention should be drawn in this report in order to enable a proper understanding of the accounts to be reached.

A Heller FCA  
5 North End Road  
London  
NW11 7RJ

Date: .....

# STATEMENT OF FINANCIAL ACTIVITIES FOR THE YEAR ENDED 31 DECEMBER 2021

	Unrestricted funds	Restricted Total fund £ Funds£	Total Funds £	
INCOME AND ENDOWMENTS FROM				
Donations and legacies	2 54,815	596,290	651,105	469,349
EXPENDITURE ON				
Raising funds	3 -	2,310	2,310	3,304
Charitable activities				
General fund	4 32,040	531,310	563,350	411,528
Other	1,175	-	1,175	935
Total	33,215	533,620	566,835	415,767
NET INCOME	21,600	62,670	84,270	53,582
RECONCILIATION OF FUNDS				
Total funds brought forward	17,873	113,073	130,946	77,364
TOTAL FUNDS CARRIED FORWARD	39,473	175,743	215,216	130,946

## BALANCE SHEET 31 DECEMBER 2021

		31.12.21		31.12.20	
	Notes	Unrestricted Funds £	Restricted funds £	Total Funds £	Total Funds £
<b>FIXED ASSETS</b>					
Tangible assets	8	5,185	2,698	7,883	24,360
<b>CURRENT ASSETS</b>					
Debtors	9	400	-	400	-
Cash at bank		36,127	173,045	209,172	125,093
		36,527	173,045	209,572	125,093
<b>CREDITORS</b>					
Amounts falling due within one year	10	(2,239)	-	(2,239)	(18,507)
<b>NET CURRENT ASSETS</b>					
		34,288	173,045	207,333	106,586
<b>TOTAL ASSETS LESS CURRENT LIABILITIES</b>					
		39,473	175,743	215,216	130,946
<b>NET ASSETS</b>					
		39,473	175,743	215,216	130,946
<b>FUNDS</b>					
	11				
Unrestricted funds				39,473	17,873
Restricted funds				175,743	113,073
<b>TOTAL FUNDS</b>					
				215,216	130,946

The financial statements were approved by the Board of Trustees and authorised for issue on 28.10.22 and were signed on its behalf by:



J Baumgarten - Trustee

## CASH FLOW STATEMENT FOR THE YEAR ENDED 31 DECEMBER 2021

		31.12.21 £	31.12.20 £
<b>Cash flows from operating activities</b>			
	Notes		
Cash generated from operations	1	84,079	51,756
Net cash provided by operating activities		84,079	51,756
<b>Cash flows from investing activities</b>			
Purchase of tangible fixed assets		-	(23,659)
Net cash provided by/(used in) investing activities		-	(23,659)
<b>Change in cash and cash equivalents in the reporting period</b>			
		84,079	28,097
<b>Cash and cash equivalents at the beginning of the reporting period</b>			
		125,093	96,996
<b>Cash and cash equivalents at the end of the reporting period</b>			
		209,172	125,093

## NOTES TO THE CASH FLOW STATEMENT FOR THE YEAR ENDED 31 DECEMBER 2021

### 1. RECONCILIATION OF NET INCOME TO NET CASH FLOW FROM OPERATING ACTIVITIES

	31.12.21 £	31.12.20 £
<b>Net income for the reporting period (as per the Statement of Financial Activities)</b>	84,270	53,582
<b>Adjustments for:</b>		
Depreciation charges	16,477	19,440
(Increase)/decrease in debtors	(400)	1,745
Decrease in creditors	(16,268)	(23,011)
<b>Net cash provided by operations</b>	<u>84,079</u>	<u>51,756</u>

### 2. ANALYSIS OF CHANGES IN NET FUNDS

	At 1/1/21 £	Cash flow £	At 31/12/21 £
Net cash			
Cash at bank	125,093	84,079	209,172
<b>Total</b>	<u>125,093</u>	<u>84,079</u>	<u>209,172</u>

## NOTES TO THE FINANCIAL STATEMENTS FOR THE YEAR ENDED 31 DECEMBER 2020

### 1. ACCOUNTING POLICIES

#### Basis of preparing the financial statements

The financial statements of the charity, which is a public benefit entity under FRS 102, have been prepared in accordance with the Charities SORP (FRS 102) 'Accounting and Reporting by Charities: Statement of Recommended Practice applicable to charities preparing their accounts in accordance with the Financial Reporting Standard applicable in the UK and Republic of Ireland (FRS 102) (effective 1 January 2019)', Financial Reporting Standard 102 'The Financial Reporting Standard applicable in the UK and Republic of Ireland' and the Charities Act 2011. The financial statements have been prepared under the historical cost convention.

### INCOME

All income is recognised in the Statement of Financial Activities once the charity has entitlement to the funds, it is probable that the income will be received and the amount can be measured reliably.

### EXPENDITURE

Liabilities are recognised as expenditure as soon as there is a legal or constructive obligation committing the charity to that expenditure, it is probable that a transfer of economic benefits will be required in settlement and the amount of the obligation can be measured reliably. Expenditure is accounted for on an accruals basis and has been classified under headings that aggregate all cost related to the category. Where costs cannot be directly attributed to particular headings they have been allocated to activities on a basis consistent with the use of resources.

### TANGIBLE FIXED ASSETS

Depreciation is calculated so as to write off the cost of an asset, less its estimated residual value, over the useful economic life of that asset as follows:

Equipment - straight line, over 3 years  
Playground - straight line, over 5 years

### TAXATION

The charity is exempt from tax on its charitable activities.

## FUND ACCOUNTING

Unrestricted funds can be used in accordance with the charitable objectives at the discretion of the trustees.

Restricted funds can only be used for particular restricted purposes within the objects of the charity. Restrictions arise when specified by the donor or when funds are raised for particular restricted purposes.

Further explanation of the nature and purpose of each fund is included in the notes to the financial statements.

### 2. DONATIONS AND LEGACIES

	31.12.21	31.12.20
	£	£
Donations	16,638	20,198
Grants	634,467	449,151
	<u>651,105</u>	<u>469,349</u>

Grants received, included in the above, are as follows:

	31.12.21	31.12.20
	£	£
Other grants	634,467	449,151
<b>Grants receivable include:</b>		2021
		£
BBC Children in Need		48,605
The National Lottery Community Fund		189,994
London Borough of Hackney		67,242

### 3. RAISING FUNDS

	31.12.21	31.12.20
	£	£
Other trading activities	2,310	2,304
Fundraising	<u>2,310</u>	<u>2,304</u>

### 4. CHARITABLE ACTIVITIES COSTS

	Direct Cost	Support Costs	Totals
	£	(see note 5) £	£
General fund	563,159	191	563,350

## 5. SUPPORT COSTS

	Finance	Governance costs	Totals
	£	£	£
Other resources expended	(25)	1,200	1,175
General funds	191	-	191
	<u>166</u>	<u>1,200</u>	<u>1,366</u>

### 6. TRUSTEES' REMUNERATION AND BENEFITS

There were no trustees' remuneration or other benefits for the year ended 31 December 2020 nor for the year ended 31 December 2019.

#### Trustees' expenses

There were no trustees' expenses paid for the year ended 31 December 2020 nor for the year ended 31 December 2019.

## 7. COMPARATIVES FOR THE STATEMENT OF FINANCIAL ACTIVITIES

	Unrestricted fund £	Restricted fund £	Total funds £
<b>INCOME AND ENDOWMENTS FROM</b>			
Donations and legacies	5,514	463,835	469,349
<b>EXPENDITURE ON</b>			
Raising funds	2,478	826	3,304
<b>Charitable activities</b>			
General fund	10,724	400,804	411,528
Other	935	-	935
<b>Total</b>	<u>14,137</u>	<u>401,630</u>	<u>415,767</u>
<b>NET INCOME/(EXPENDITURE)</b>	(8,623)	62,205	53,582
<b>RECONCILIATION OF FUNDS</b>			
<b>Total funds brought forward</b>	<u>26,496</u>	<u>50,868</u>	<u>77,364</u>
<b>TOTAL FUNDS CARRIED FORWARD</b>	<u>17,873</u>	<u>113,073</u>	<u>130,946</u>

## 8. TANGIBLE FIXED ASSETS

	Playground	Equipment	Totals
<b>COST</b>			
At 1 January 2021 and 31 December 2021	27,836	86,462	114,298
<b>DEPRECIATION</b>			
At 1 January 2021	25,636	64,302	89,938
Charge for year	2,200	14,277	16,477
At 31 December 202	27,836	78,579	106,415
<b>NET BOOK VALUE</b>			
At 31 December 2021	-	7,883	7,883
At 31 December 2020	2,200	22,160	24,360

## 9. DEBTORS: AMOUNTS FALLING DUE WITHIN ONE YEAR

	31.12.21	31.12.20
	£	£
Other debtors	400	-

## 10. CREDITORS: AMOUNTS FALLING DUE WITHIN ONE YEAR

	31.12.21	31.12.20
	£	£
Trade creditors	1,039	17,547
Other creditors	1,200	960
	2,239	18,507

## 11. MOVEMENT IN FUNDS

	At 1/1/21	Net Movement in funds	At 31/12/21
	£	£	£
<b>Unrestricted Funds</b>			
General fund	17,873	21,600	39,473
<b>Restricted funds</b>			
Restricted fund	113,073	62,670	175,743
<b>TOTAL FUNDS</b>	130,946	84,270	215,216

Net movement in funds, included in the above are as follows:

	Incoming resources	Resources Expended	Movement in Funds
	£	£	£
<b>Unrestricted funds</b>			
General fund	54,815	(33,215)	21,600
<b>Restricted funds</b>			
Restricted fund	596,290	(533,620)	62,670
<b>TOTAL FUNDS</b>	651,105	(566,835)	84,270

Comparatives for movement in funds

	At 1/1/20	Net movements in funds	At 31/12/20
	£	£	£
<b>Unrestricted funds</b>			
General fund	26,496	(8,623)	17,873
<b>Restricted funds</b>			
Restricted fund	50,868	62,205	113,073
<b>TOTAL FUNDS</b>	77,365	53,582	130,946

Comparative net movement in funds, included in the above are as follows:

	Incoming Resources	Resources Expended	Movement in Funds
	£	£	£
<b>Unrestricted Funds</b>			
General Fund	5,514	(14,137)	(8,623)
<b>Restricted Funds</b>			
Restricted Fund	463,835	(401,630)	62,205
<b>TOTAL FUNDS</b>	469,349	(415,767)	53,582

A current year 12 months and prior year 12 months combined net movement in funds, included in the above are as follows:

	At1/1/20	Net movement in funds	At 31/12/21
	£	£	£
<b>Unrestricted funds</b>			
General fund	26,496	12,977	39,473
<b>Restricted funds</b>			
Restricted fund	50,868	124,875	175,743
<b>TOTAL FUNDS</b>	<u>77,364</u>	<u>137,852</u>	<u>215,216</u>

A current year 12 months and prior year 12 months combined position is as follows:

	Incoming resources	Resources expended	Movement in funds
	£	£	£
<b>Unrestricted funds</b>			
General fund	60,329	(47,352)	12,977
<b>Restricted funds</b>			
Restricted fund	1,060,125	(935,250)	124,875
<b>TOTAL FUNDS</b>	1,120,454	(982,602)	137,852

## 12. RELATED PARTY DISCLOSURES

There were no related party transactions for the year ended 31 December 2021

## INCOME AND ENDOWMENTS

<b>DONATIONS AND LEGACIES</b>	31.12.21	31.12.20
	£	£
Donations	16,638	20,198
Grants	634,467	449,151
	<u>651</u>	<u>469,349</u>
<b>Total incoming resources</b>	651,105	469,349
<b>EXPENDITURE</b>		
<b>Other trading activities</b>	2,310	3,304
Fundraising		
<b>Charitable activities</b>		
Admin and Office Expenses	49,312	52,244
Charitable Activities	344,876	218,246
Rent and Expenses	39,329	63,664
Wages and Salaries	113,165	57,714
Depreciation of equipment	14,277	17,240
Depn of playground	2,200	2,200
<b>Support costs</b>		
<b>Finance</b>		
Bank charges	166	195
<b>Governance costs</b>		
Accountancy and legal fees	1,200	960
<b>Total resources expended</b>	<u>566,835</u>	<u>415,767</u>
<b>Net income</b>	<u>84,270</u>	<u>53,582</u>



**REGISTERED CHARITY NUMBER**

1121347

**PRINCIPAL ADDRESS**

1 BELZ TERRACE LONDON  
E5 9SN

**TRUSTEES**

J BAUMGARTEN

A KLEIN

S RAND

J M GROSSKOPF (RESIGNED 30.11.21)

**INDEPENDENT EXAMINER**

A HELLER FCA

5 NORTH END ROAD

LONDON NW11 7RJ

**CLAPTON COMMON BOYS CLUB**

England & Wales - Charity number 1121347

---

# Accounts

---



# RAISING

For the Year Ended 31 December 2020

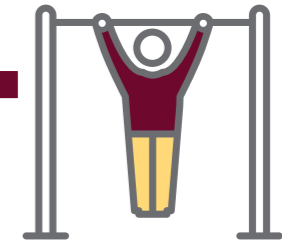
# THE BAR



CLAPTON COMMON  
**boys club**  
EMPOWERING YOUNG PEOPLE



# CHAIR'S STATEMENT



We are reporting on a financial year unlike any other. The year began in January 2020, when the novel coronavirus had already begun its silent, deadly spread whilst most of the world, including CCBC's winter holiday activity participants, were calmly oblivious. All too soon, it became apparent that aside from the toll the pandemic took on people's lives and physical health, the mental health impact was significant and alarming.

Clapton Common Boys Club trustees, staff and volunteers mobilised to ensure they were there to hold the hands of users and families throughout the crisis.

We are pleased to present RAISING THE BAR, our annual report and accounts for 2020, showing the lengths we took to raise the bar for our community's children and increase their resilience in the face of hardships.

In 9- year old Benny's words: 'I would have lost it. I actually did lose it during lockdown; it was just so hard being surrounded only with my sisters. Then CCBC came along and helped me... and I learned to be okay, even when it was all too much.'

In these trying times, our partners and funders have stood by our side, enabling us to respond and adapt to arising needs. We thank them for their support.

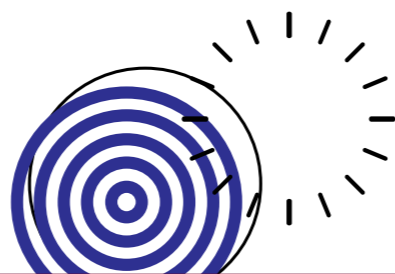
J Baumgarten  
Trustee

"I am extremely impressed at how involved your users are in the implementation of your activities. I have adopted this system in my school; the boys now lead on a number of projects. I have noticed as a result that the boys are more stimulated and mature, and they are making a difference."

-Mr Waltzer, Headmaster

# OUR MISSION

To ameliorate the effects of deprivation of disengaged and disadvantaged children, young people and adults. We achieve our mission by providing stimulating and constructive activities.



## OUR VISION

To 'Empower Young People'; creating a space for children to develop into healthy and stable individuals with positive prospects.

# OUR WORK

To provide bespoke activities to our target beneficiaries, supporting them to reach their maximum capabilities and potential.



## OUR AMBITION

To empower children and young people to become partners in our programmes, so that they develop leadership skills and ensure our activities are relevant and successful.

# OUR CHARITABLE OBJECTIVES



To advance in life and relieve the needs of children and young people through:

- The provision of recreational and leisure time activities provided in the interests of social welfare, designed to improve their conditions of life;
- Providing support and activities which develop their skills, capacities and capabilities to enable them to participate in society as mature and responsible individuals
- The promotion of any other exclusively charitable objects and purposes such as the trustees see fit, provided that they are regarded as charitable by the law of England and Wales.

# OUR STRATEGIC AIMS



Our organisation is unique in that all of our sessions are youth-led. We have a Youth Board where children and young people have the opportunity to share feedback and suggest new activities. Our activities are based on the direct input of children and young people.

"I am pleased that the family is involved. One son is in the cycling club and breakfast club and the other is swimming; everyone is happy."

Mrs L., Parent



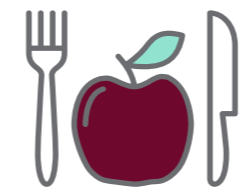


# ACHIEVEMENTS & PERFORMANCE

All groups operated in a Covid-compliant setting with appropriate social distancing measures and Covid practices in place.

## CHOOSING HEALTH

We therefore offer the following weekly clubs:



We are passionate about helping our youth develop healthy habits for life, to promote their wellbeing and longevity.

80 Children  
40 Parents

- ▶ Breakfast Club
- ▶ Swimming Club
- ▶ Cycling Club

Concurrently, we hold:

- ▶ Parent Training, to encourage parents to promote a healthy lifestyle at home.



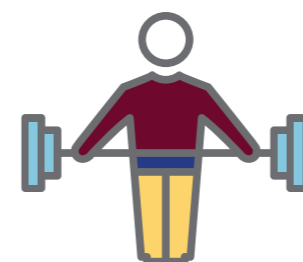
# CREATIVE ARTS

We offer a range of workshops each week to provide children with opportunities to develop their skills and creativity.



- ▶ Woodwork Club
- ▶ Art Club
- ▶ Music Club (vocal and instrumental)
- ▶ Social Groups

90 Children



## SMOKING PREVENTION

100 Young People

Our smoking prevention project educates young people about the negative impact of smoking. We aim to increase their awareness of the harmful and deadly effects of tobacco use and second-hand smoke exposure, and to discourage the use of tobacco in any form. Prevention is far more effective than cure; we aim to reach children before they've had their first puff.

# BLOOM SEASON

Bloom Season gives children the opportunity to be involved in gardening. This sensory activity helps them engage with nature in a setting that provides physical, mental and social stimulation. We provide children with gardening and nature work, bushcrafting and forest school.



64 Children



# HERITAGE PROJECT

We educate our young people regarding their heritage and history. In today's social climate, it is especially important for youth to explore and celebrate their heritage, so that they can have a stronger sense of identity and learn from the past.

110 Children



# OPEN ACCESS PLAY



Our youth-led open access play activities allows children to socialise with each other in a safe and appropriate setting. Here they relax, make friends, enjoy healthy activities, receive the support they lack, or simply be.

110 Children

# OUTINGS

We arrange outings throughout the year to visit places of interest, to widen the children's experiences and provide them with opportunities they would not otherwise have. We have taken children on various trips, including:

- ▶ Kayaking
- ▶ Go Karting
- ▶ Adventure parks
- ▶ Water sports
- ▶ Nature trips



80 Children

# WORK EXPERIENCE



We believe in providing children and young people with the tools they need to lead effectively. Our trainings are all hands-on and help young leaders apply theory in practice.

80 Children

# HOMEWORK CLUB



Our Homework Club supports children with their after-school learning and reading. Being that many of our children come from large families, the time and space available for each child is limited. This space offers children the support and setting so that they can complete their homework and practice reading to consolidate the knowledge and skills they learn in school.

192 Children

# ANTI BULLYING



We provide anti-bullying workshops to raise an awareness of bullying of children and young people, in schools and elsewhere, and to highlight ways of preventing and responding to it.

300 Children



# MENTORING

We support young people in mentoring younger children aged 7-11, thus improving their mentoring abilities and teamwork skills.

90 Young People  
mentoring 90 Children

# SEND SUPPORT

We provide therapy and professional support for children with mild to moderate SEND needs who don't meet the EHCP threshold. Although they receive basic support from their schools, we strive to ensure their additional needs are adequately met.

77 Children



# COVID RESPONSE



## 1 RESOURCE KITS

We supplied resource kits that contained educational puzzles, games and challengers, providing them with BARrels of fun to keep them occupied when schools were closed.

365 Users

## 3 PRACTICAL SUPPORT

During the covid lockdowns, we provided children with hot, nourishing meals, supplying over 350 meals per week.

45 Users

## 2 HOTLINE

We set up a hotline so that our children could communicate with their teachers and peers during lockdown. This aided their social inclusion and provided them with information, inspiration and motivational speakers to aid their mental and emotional wellbeing. This was especially important since the vast majority of children did not have internet access at home.

280 Users

## 4 EMOTIONAL SUPPORT

### PARENTS & FAMILIES

100 parents received training, in a group setting, on how to alleviate their children's anxiety. Each workshop was followed by a live Q & A session.

122 families received blocks of 5 therapy sessions with a qualified therapist.

### STAFF

30 staff/volunteers received training to identify and emotionally support vulnerable children remotely.

### CHILDREN

36 hours of personal and group therapy sessions (including play therapy).

72 hours individual therapy with a psychologist for children presenting with anxiety, trauma or grief.

"Our children have become better at sharing their thoughts. They are also more cooperative. This programme is amazing. It's working!"

Mrs P., Parent

RESILIENCE  
HAPPINESS  
EMOTIONAL  
REGULATION

DEPRESSION  
ANXIETY  
ISOLATION

# BARRING THE IMPOSSIBLE

Out of all the siblings, Raphael has taken the loss of his mother the hardest. He misses her immensely and needs that loving, motherly figure at home. He is unreceptive to the care and support his father and older siblings offer.

The lockdowns during Covid did nothing to improve the situation. Raphael's life was not returning to normal in settings both inside and outside the home, thus causing more upheaval. Raphael's high level of distress caused him to become aggressive, which affected his psychological and emotional wellbeing, as well as his social status.

Raphael's school referred him to CCBC's Care & Support Team.

Our Care & Support Team treated this matter very seriously.

Firstly, Raphael was assessed to identify his specific issues and the support required. Next, we created a plan of support to meet his needs.

We provided him with a mentor to oversee his needs and support him on an ongoing basis. We also provided Raphael with personal and group therapy, so that he can have the emotional support necessary to help him process his grief.

Finally, Raphael had access to a wide range of play resources, games and challengers, to help stimulate him at home when he is away from CCBC's support.

Raphael's journey to recovery will be a long haul, but we are confident that with our ongoing support Raphael will continue to make strides and successfully overcome his challenges.

# COMMITMENT TO QUALITY AND BEST PRACTICE

With a commitment to quality and best practice, we evaluate and monitor our programmes to improve effectiveness.

We follow the child protection procedures and work with the management teams of schools, to ensure safeguarding issues are dealt with accordingly.

To ensure best practice, we support our youth leaders and volunteers through regular supervision, guidance and through professional assistance from senior staff members and trustees.



# STRUCTURE, GOVERNANCE AND MANAGEMENT

## STAFF RECOGNITION

We value our staff and professionals and encourage their growth at the club. We regularly offer up-to-date trainings and courses to ensure they develop their personal skills.

## SAFEGUARDING

Since our charity works with vulnerable children and families, safeguarding is considered the greatest inherent risk in our work. We have a framework of consents, controls, policies and reviews to mitigate the associated risks.

The focus on training and supervision is important in the control environment. We have a dedicated compliance officer who supports safeguarding processes with a reporting system that ensures concerns are flagged and information is communicated rapidly and securely. All members of staff have up-to-date certification and training in accordance with current regulations.

## GOVERNING DOCUMENT

The charity is constituted and governed by a Trust Deed dated 27 December 2006. The charity is managed and controlled by the trustees, who meet regularly.

## RECRUITMENT AND APPOINTMENT OF NEW TRUSTEES

It is not the intention of the trustees of the charity to appoint any new trustees at present. Should the situation change in the future, the trustees will apply suitable recruitment, training and induction procedures.

## RISK MANAGEMENT

The trustees have identified and reviewed the major risks to which the charity is exposed. Both manual and automated checks are regularly invoked, particularly those relating to the operations and finance of the charity. The trustees are satisfied that these systems and procedures mitigate any perceived risks. The trustees continually review the risks that the charity may be exposed to from time to time, and take appropriate action as required.

## PUBLIC BENEFIT

The Trustees confirm their compliance with the duty to have due regard to the Public Benefit guidance published by the Charity Commission when reviewing the Charity's aims and objectives and in planning future activities.

# FINANCIAL REVIEW

## PRINCIPAL FUNDING SOURCES

Our activities were supported by a mixture of funding streams including private donations, grants from trusts and foundations, and users' contributions. The result for the year are shown in the attached financial statements, and the trustees are satisfied with the results for the year.

The Trustees gratefully acknowledge that the expansion of services and reach and increase in positive impact on the lives of children in the community is largely due to the substantial and generous support of the following charitable trusts and foundations, including Hackney Local Authority, Awards for All, BBC Children in Need, BIG Lottery Fund Reaching Communities, People Postcode Trust and other supporters and community donors.

## RESERVES POLICY

The Trustees are working towards building free reserves of at least 3 months' operating costs in order to protect services where there are uncertainties as to whether funding will continue and to ensure adequate cash flow for the organisation's needs. As of this financial year end, we are well on track.

In respect of some of the projects the incoming resources in the year exceeded the outgoing resources. As explained in the Accounting Policies in Note 1 to the Financial Statements, the grant period in certain cases runs into the next financial period, and the charity is committed to the expenditure in relation to those grants in the following period.

The trustees are satisfied with the results for the year and consider that the charity is in a healthy financial position.

## FUTURE PLANS

Our aims and targets for 2021 are to continue expanding on our current services and programmes.

# INDEPENDENT EXAMINER'S REPORT

Independent examiner's report to the trustees of Clapton Common Boys Club

I report to the charity trustees on my examination of the accounts of Clapton Common Boys Club (the Trust) for the year ended 31 December 2020.

## RESPONSIBILITIES AND BASIS OF REPORT

As the charity trustees of the Trust you are responsible for the preparation of the accounts in accordance with the requirements of the Charities Act 2011 ('the Act').

I report in respect of my examination of the Trust's accounts carried out under section 145 of the Act and in carrying out my examination I have followed all applicable Directions given by the Charity Commission under section 145(5)(b) of the Act.

## INDEPENDENT EXAMINER'S STATEMENT

Since your charity's gross income exceeded £250,000 your examiner must be a member of a listed body. I can confirm that I am qualified to undertake the examination because I am a registered member of ICAEW which is one of the listed bodies.

I have completed my examination. I confirm that no material matters have come to my attention in connection with the examination giving me cause to believe that in any material respect:

1. accounting records were not kept in respect of the Trust as required by section 130 of the Act; or
2. the accounts do not accord with those records; or
3. the accounts do not comply with the applicable requirements concerning the form and content of accounts set out in the Charities (Accounts and Reports) Regulations 2008 other than any requirement that the accounts give a true and fair view which is not a matter considered as part of an independent examination.

I have no concerns and have come across no other matters in connection with the examination to which attention should be drawn in this report in order to enable a proper understanding of the accounts to be reached.

A Heller FCA  
5 North End Road  
London  
NW11 7RJ  
Date:

# STATEMENT OF FINANCIAL ACTIVITIES FOR THE YEAR ENDED 31 DECEMBER 2020

	Notes	Unrestricted fund £	Restricted fund £	31.12.20 Total fund £	31.12.19 Total Fund £
<b>INCOME AND ENDOWMENTS FROM</b>					
Donations and legacies	2	5,514	463,835	469,349	389,068
<b>EXPENDITURE ON</b>					
Raising funds		2,478	826	3,304	4,200
<b>Charitable activities</b>					
General fund		10,724	400,804	411,528	384,448
Other		935	-	935	112
<b>Total</b>		<b>14,137</b>	<b>401,630</b>	<b>415,767</b>	<b>388,760</b>
<b>NET INCOME/(EXPENDITURE)</b>		<b>(8,623)</b>	<b>62,205</b>	<b>53,582</b>	<b>308</b>
<b>RECONCILIATION OF FUNDS</b>					
<b>Total funds brought forward</b>		<b>26,496</b>	<b>50,868</b>	<b>77,364</b>	<b>77,056</b>
<b>TOTAL FUNDS CARRIED FORWARD</b>		<b>17,873</b>	<b>113,073</b>	<b>130,946</b>	<b>77,364</b>

The notes form part of these financial statements.

# BALANCE SHEET

## 31 DECEMBER 2020

	Notes	Unrestricted Fund £	Restricted fund £	31.12.20 Total Funds £	31.12.19 Total Funds £
<b>FIXED ASSETS</b>					
Tangible assets	5	12,570	11,790	24,360	20,141
<b>CURRENT ASSETS</b>					
Debtors	6	-	-	-	1,745
Cash at bank		24,771	100,322	125,093	96,996
		24,771	100,322	125,093	98,741
<b>CREDITORS</b>					
Amounts falling due within one year	7	(19,468)	961	(18,507)	(41,518)
<b>NET CURRENT ASSETS</b>		5,303	101,283	106,586	57,223
<b>TOTAL ASSETS LESS CURRENT LIABILITIES</b>		17,873	113,073	130,946	77,364
<b>NET ASSETS</b>		17,873	113,073	130,946	77,364
<b>FUNDS</b>					
Unrestricted funds	8			17,873	26,496
Restricted funds				113,073	50,868
<b>TOTAL FUNDS</b>				130,946	77,364

The financial statements were approved by the Board of Trustees and authorised for issue on 31/10/2021 and were signed on its behalf by:



J Baumgarten - Trustee

The notes form part of these financial statements.

# NOTES TO THE FINANCIAL STATEMENTS

## FOR THE YEAR ENDED 31 DECEMBER 2020

### 1. ACCOUNTING POLICIES

#### BASIS OF PREPARING THE FINANCIAL STATEMENTS

The financial statements of the charity, which is a public benefit entity under FRS 102, have been prepared in accordance with the Charities SORP (FRS 102) 'Accounting and Reporting by Charities: Statement of Recommended Practice applicable to charities preparing their accounts in accordance with the Financial Reporting Standard applicable in the UK and Republic of Ireland (FRS 102) (effective 1 January 2019)', Financial Reporting Standard 102 'The Financial Reporting Standard applicable in the UK and Republic of Ireland' and the Charities Act 2011. The financial statements have been prepared under the historical cost convention.

#### INCOME

All income is recognised in the Statement of Financial Activities once the charity has entitlement to the funds, it is probable that the income will be received and the amount can be measured reliably.

#### EXPENDITURE

Liabilities are recognised as expenditure as soon as there is a legal or constructive obligation committing the charity to that expenditure, it is probable that a transfer of economic benefits will be required in settlement and the amount of the obligation can be measured reliably. Expenditure is accounted for on an accruals basis and has been classified under headings that aggregate all cost related to the category. Where costs cannot be directly attributed to particular headings they have been allocated to activities on a basis consistent with the use of resources.

#### TANGIBLE FIXED ASSETS

Depreciation is calculated so as to write off the cost of an asset, less its estimated residual value, over the useful economic life of that asset as follows:

Equipment - straight line, over 3 years  
Playground - straight line, over 5 years

#### TAXATION

The charity is exempt from tax on its charitable activities.

## FUND ACCOUNTING

Unrestricted funds can be used in accordance with the charitable objectives at the discretion of the trustees.

Restricted funds can only be used for particular restricted purposes within the objects of the charity. Restrictions arise when specified by the donor or when funds are raised for particular restricted purposes.

Further explanation of the nature and purpose of each fund is included in the notes to the financial statements.

### 2. DONATIONS AND LEGACIES

	31.12.20	31.12.19
	£	£
Donations	20,198	28,722
Grants	449,151	360,346

	469,349	389,068
--	---------	---------

Grants received, included in the above, are as follows:

	31.12.20	31.12.19
	£	£
Other grants	449,151	360,346

#### Grants receivable include

**2020**  
£

BBC Children in Need	22,613
The National Lottery Community Fund	135,070
London Borough of Hackney	23,340
London Youth	2,650

### 3. TRUSTEES' REMUNERATION AND BENEFITS

There were no trustees' remuneration or other benefits for the year ended 31 December 2020 nor for the year ended 31 December 2019.

### TRUSTEES' EXPENSES

There were no trustees' expenses paid for the year ended 31 December 2020 nor for the year ended 31 December 2019.

## 4. COMPARATIVES FOR THE STATEMENT OF FINANCIAL ACTIVITIES

	Unrestricted fund £	Restricted fund £	Total funds £
<b>INCOME AND ENDOWMENTS FROM</b>			
Donations and legacies	43,445	345,623	389,068
<b>EXPENDITURE ON</b>			
Raising funds	120	4,080	4,200
<b>Charitable activities</b>			
General fund	18,336	366,112	384,448
Other	112	-	112
<b>Total</b>	<b>18,568</b>	<b>370,192</b>	<b>388,760</b>
<b>NET INCOME/(EXPENDITURE)</b>	<b>24,877</b>	<b>(24,569)</b>	<b>308</b>
<b>RECONCILIATION OF FUNDS</b>			
<b>Total funds brought forward</b>	<b>1,619</b>	<b>75,437</b>	<b>77,056</b>
<b>TOTAL FUNDS CARRIED FORWARD</b>	<b>26,496</b>	<b>50,868</b>	<b>77,364</b>

## 5. TANGIBLE FIXED ASSETS

	Playground £	Equipment £	Totals £
<b>COST</b>			
At 1 January 2020	27,836	62,803	90,639
Additions	-	23,659	23,659
At 31 December 2020	27,836	86,462	114,298
<b>DEPRECIATION</b>			
At 1 January 2020	23,436	47,062	70,498
Charge for year	2,200	17,240	19,440
At 31 December 2020	25,636	64,302	89,938
<b>NET BOOK VALUE</b>			
At 31 December 2020	2,200	22,160	24,360
At 31 December 2019	4,400	15,741	20,141

## 6. DEBTORS: AMOUNTS FALLING DUE WITHIN ONE YEAR

	31.12.20	31.12.19
	£	£
Other debtors	-	1,745

## 7. CREDITORS: AMOUNTS FALLING DUE WITHIN ONE YEAR

	31.12.20	31.12.19
	£	£
Trade creditors	17,547	40,558
Other creditors	960	960
	<u>18,507</u>	<u>41,518</u>

## 8. MOVEMENT IN FUNDS

	At 1/1/20	Net Movement	At 31/12/20
	£	in funds	£
		£	
<b>Unrestricted Funds</b>			
General fund	26,496	(8,623)	17,873
<b>Restricted funds</b>			
Restricted fund	50,868	62,205	113,073
<b>TOTAL FUNDS</b>	<u>77,364</u>	<u>53,582</u>	<u>130,946</u>

Net Movement in funds, included in the above, are as follows:

	Incoming	Resources	Movement in
	resources	expended	funds
	£	£	£
<b>Unrestricted funds</b>			
General fund	5,514	(14,137)	(8,623)
<b>Restricted funds</b>			
Restricted fund	463,835	(401,630)	62,205
<b>TOTAL FUNDS</b>	<u>469,349</u>	<u>(415,767)</u>	<u>53,582</u>

## Comparatives for movement in funds

	At 1/1/19	Net	At 31/12/19
		movements	
	£	in funds	£
		£	
<b>Unrestricted funds</b>			
General fund	1,619	24,877	26,496
<b>Restricted funds</b>			
Restricted fund	75,437	(24,569)	50,868
<b>TOTAL FUNDS</b>	<u>77,056</u>	<u>308</u>	<u>77,364</u>

Comparative net movement in funds, included in the above are as follows:

	Incoming	Resources	Movement in
	resources	expended	funds
	£	£	£
<b>Unrestricted Funds</b>			
General Fund	43,445	(18,568)	24,877
<b>Restricted Funds</b>			
Restricted Fund	345,623	(370,192)	(24,569)
<b>TOTAL FUNDS</b>	<u>389,068</u>	<u>(388,760)</u>	<u>308</u>

A current year 12 months and prior year 12 months combined position is as follows:

	At 1/1/19	Net movement	At 31/12/20
	£	in funds	£
		£	
<b>Unrestricted funds</b>			
General fund	1,619	16,254	17,873
<b>Restricted funds</b>			
Restricted fund	75,437	37,636	113,073
<b>TOTAL FUNDS</b>	<u>77,056</u>	<u>53,890</u>	<u>130,946</u>

A current year 12 months and prior year 12 months combined net movement in funds, included in the above are as follows:

	Incoming resources	Resources expended	Movement in funds
	£	£	£
<b>Unrestricted funds</b>			
General fund	48,959	(32,705)	16,254
<b>Restricted funds</b>			
Restricted fund	809,458	(771,822)	37,636
<b>TOTAL FUNDS</b>	<b>858,417</b>	<b>(804,527)</b>	<b>53,890</b>

## 9. RELATED PARTY DISCLOSURES

There were no related party transactions for the year ended 31 December 2020

# DETAILED STATEMENT OF FINANCIAL ACTIVITIES' FOR THE YEAR ENDED 31 DECEMBER 2020

## INCOME AND ENDOWMENTS

<b>DONATIONS AND LEGACIES</b>	31.12.20	31.12.19
	£	£
Donations	20,198	28,722
Grants	449,151	360,346
	<b>469,349</b>	<b>389,068</b>
<b>Total incoming resources</b>	<b>469,349</b>	<b>389,068</b>
<b>EXPENDITURE</b>		
<b>Other trading activities</b>		
Fundraising	3,304	-
Fundraising - Consulting	-	4,200
	<b>3,304</b>	<b>4,200</b>
<b>Charitable activities</b>		
Admin and Office Expenses	52,244	51,038
Charitable Activities	218,246	162,765
Rent and Expenses	63,664	50,351
Wages and Salaries	57,714	97,929
Depreciation of equipment	17,240	18,765
Depn of playground	2,200	2,640
	<b>411,308</b>	<b>383,488</b>
<b>Support costs</b>		
<b>Finance</b>		
Bank charges	195	112
<b>Governance costs</b>		
Accountancy and legal fees	960	960
	<b>415,767</b>	<b>388,760</b>
<b>Total resources expended</b>	<b>415,767</b>	<b>388,760</b>
<b>Net income</b>	<b>53,582</b>	<b>308</b>

**REGISTERED CHARITY NUMBER**

1121347

**PRINCIPAL ADDRESS**

1 BELZ TERRACE  
LONDON  
E5 9SN

**TRUSTEES**

J BAUMGARTEN  
A KLEIN  
S RAND  
J M GROSSKOPF

**INDEPENDENT EXAMINER**

A HELLER FCA  
5 NORTH END ROAD  
LONDON  
NW11 7RJ