

**BARBICAN ARTS GROUP TRUST**

**(A Company Limited by Guarantee)**

**REPORT**

**AND**

**ACCOUNTS**

**FOR THE YEAR ENDED 24<sup>TH</sup> DECEMBER 2024**

**Registered Charity Number: 1120918**

**Company Number: 6355408**

**BARBICAN ARTS GROUP TRUST**  
**REPORT AND ACCOUNTS**  
**FOR THE YEAR ENDED 24<sup>TH</sup> DECEMBER 2024**

**Contents**

Page	2	:	Report of the Directors and Trustees
	7	:	Independent Examiner's Report
	8	:	Statement of Financial Activities
	9	:	Balance Sheet
	10	:	Notes to the Accounts
	14	:	Annual Report detailing achievements and objectives

**BARBICAN ARTS GROUP TRUST**  
**NOTES TO THE ACCOUNTS**  
**FOR THE YEAR ENDED 24<sup>TH</sup> DECEMBER 2024**

**1. ACCOUNTING POLICIES**

- a) The financial statements have been prepared in accordance with Accounting and Reporting by Charities: Statement of Recommended Practice (SORP) applicable to charities preparing their accounts in accordance with the Financial Reporting Standard applicable in the UK and Republic of Ireland (FRS 102) (effective 1 January 2015) – (Charities SORP (FRS 102)), with FRS 102 and with the requirements of the Companies Act 2006.

Barbican Arts Group Trust meets the definition of a public benefit entity under the FRS102. Assets and liabilities are initially recognised at historical cost or transaction value unless otherwise stated in the relevant accounting policy note(s).

- b) The Trustees consider that there are no material uncertainties about the Charity's ability to continue as a going concern.
- c) Income from donations and other trading activities is brought in as the income arises.
- d) Income from investments represents rental income receivable.
- e) Advantage has been taken within the provisions of the Statement of Recommending Practice to show on the Statement of Financial Activities expenditure classifications appropriate to the Charity.
- f) Leasehold Improvements initially recognised at historical cost and are being written off over the period of the lease (20 years).
- g) Trade and other debtors are recognised at the settlement amount due after any trade discount offered. Prepayments are valued at the amount prepaid net of any discounts due.
- h) Cash at bank and cash in hand only includes cash and the charity do not hold any other short-term/highly liquid investments.
- i) Creditors and provisions are recognised where the charity has a present obligation resulting from a past event that will probably result in the transfer of funds to a third party and the amount due to settle the obligation can be measured or estimated reliably. Creditors and provisions are normally recognised at their settlement amount after allowing for any trade discounts due.
- j) No cash flow statement has been prepared as the Charity falls within the exemption provisions of FRS 102 "Statement of cash flow".

**2. INCOME FROM OTHER TRADING ACTIVITIES**

	<u>2024</u>	<u>2023</u>
	£	£
Artists' fees received	4,179	6,807
Fundraising	167	1,130

Income from Artists' fees in both the current and previous years relate to unrestricted funds.  
Income from Fundraising in the current year relating to restricted funds was £0 (2023: £0).

**BARBICAN ARTS GROUP TRUST**  
**NOTES TO THE ACCOUNTS (cont'd)**  
**FOR THE YEAR ENDED 24<sup>TH</sup> DECEMBER 2024**

**3. INVESTMENT INCOME**

	<u>2024</u>	<u>2023</u>
	£	£
Rental income	131,568	134,365

All investment income in both the current and previous years relates to unrestricted funds.

**4. ANALYSIS OF EXPENDITURE**

	<u>2024</u>	<u>2023</u>
	£	£
<b>Charitable Activities:</b>		
Studio rent, rates and insurance	135,748	137,307
Artists fees and materials	6,726	4,762
Trust Development	5,133	4,717
Repairs and maintenance	2,218	465
Promotional Activities	347	95
Cleaning	2,286	2,895
Legal Fees	40	5,466
Sundry Expenses including travel	1,535	1,532
Depreciation	3,435	3,435
	<u>157,468</u>	<u>160,674</u>
<b>Governance cost:</b>		
Independent examiners fee	2,045	1,950
	<u>£159,513</u>	<u>£162,624</u>

**5. FIXED ASSETS**

	<b>Leasehold Improvements</b>
	£
<b>Cost</b>	
At 25 <sup>th</sup> December 2023	68,693
At 24 <sup>th</sup> December 2024	<u>£68,693</u>
<b>Depreciation</b>	
At 25 <sup>th</sup> December 2023	55,818
Charge for year	3,435
At 24 <sup>th</sup> December 2024	<u>£59,253</u>
<b>Net Book Value</b>	
At 24 <sup>th</sup> December 2024	<u>£9,440</u>
At 24 <sup>th</sup> December 2023	<u>£12,875</u>

**BARBICAN ARTS GROUP TRUST**  
**NOTES TO THE ACCOUNTS (Cont'd)**  
**FOR THE YEAR ENDED 24<sup>TH</sup> DECEMBER 2024**

**6. DEBTORS**

	<u>2024</u>	<u>2023</u>
	£	£
Studio Deposits	11,000	11,000
Prepayments	21,250	21,250
	<u>£32,250</u>	<u>£32,250</u>

**7. CREDITORS: amounts falling due within one year**

	<u>2024</u>	<u>2023</u>
	£	£
Studio Deposits held	29,201	29,201
Trade Creditors and Accruals	52,927	44,816
	<u>£82,128</u>	<u>£74,017</u>

**8. FUND ACCOUNTING**

The Charity maintains various types of funds as follows:

a) **Restricted Funds**

These are amounts which have been put aside at the discretion of the Trustees. This Fund is maintained for the specific purpose of improving the public appreciation of art by way of, for example, the sponsoring of exhibitions in schools and other community facilities. It is built up by way of the net proceeds raised from the annual "Silent Auctions" and at 24<sup>th</sup> December 2024 had a balance of £12,081 (2023: £12,081).

b) **Unrestricted Fund**

This fund is expendable at the discretion of the Trustees in the furtherance of the objects of the Charity, such a fund being held in order also to finance both working capital and capital investment requirements. It is built up by the excess of investment income over general administrative expenses and by way of transfers to or from the restricted funds. At 24<sup>th</sup> December 2024, the fund had a balance of £319,909 (2023: £321,288).

**BARBICAN ARTS GROUP TRUST**  
**NOTES TO THE ACCOUNTS (Cont'd)**  
**FOR THE YEAR ENDED 24<sup>TH</sup> DECEMBER 2024**

**9. ANALYSIS OF NET ASSETS BETWEEN FUNDS**

	<b>Restricted Fund</b>	<b>Unrestricted Fund</b>	<b>Total</b>
	<b>£</b>	<b>£</b>	<b>£</b>
Leasehold Improvements	-	9,440	9,440
Debtors		32,250	32,250
Cash at Bank	12,081	360,347	372,428
Creditors: amounts falling due within one year	-	(82,128)	(82,128)
	<u>£12,081</u>	<u>£319,909</u>	<u>£331,990</u>

**10. TRUSTEES REMUNERATION AND EXPENSES**

None of the Trustees received any remuneration or expenses in the year [2023: NIL].

**11. OTHER INFORMATION**

Barbican Arts Group Trust is a private company limited by Guarantee and incorporated in England. Its registered office is;  
 32a, Hertford Road,  
 London, N1 5SH.

**BARBICAN ARTS GROUP TRUST**  
**REPORT OF THE DIRECTORS AND TRUSTEES**  
**FOR THE YEAR ENDED 24<sup>TH</sup> DECEMBER 2024**

The following people were Directors/Trustees of the Charity on the date of approval of the Report.

**DIRECTORS/TRUSTEES****DATE ELECTED**

LEILA HASHAM (Chair)

6<sup>th</sup> January 2020

DOMO BAAL

24<sup>th</sup> December 2016

RUPERT MAUDE

12<sup>th</sup> March 2020

DANIEL KENNEDY DAVIES

15<sup>th</sup> July 2021

DEBBIE CARSLAW

7<sup>th</sup> February 2024

**BARBICAN ARTS GROUP TRUST**  
**REPORT OF THE DIRECTORS AND TRUSTEES (Cont'd)**  
**FOR THE YEAR ENDED 24<sup>TH</sup> DECEMBER 2024**

The Trustees (who are also the Directors for the purpose of Company Law) have pleasure in presenting their Annual Report and the Financial Statements for the year ended 24<sup>th</sup> December 2024. The financial statements have been prepared in accordance with Accounting and Reporting by Charities: Statement of Recommended Practice (SORP) applicable to charities preparing their accounts in accordance with the Financial Reporting Standard applicable in the UK and Republic of Ireland (FRS 102) (effective 1 January 2015), with FRS 102 and with the requirements of the Companies Act 2006.

## 1. REFERENCE AND ADMINISTRATIVE DETAILS

<b>Charity Name:</b>	Barbican Arts Group Trust
<b>Charity Registration:</b>	1120918
<b>Company Registration:</b>	6355408
<b>Registered Office:</b>	32a, Hertford Road, London, N1 5SH.
<b>Company Secretary:</b>	Mr. M. Wainwright
<b>Bankers:</b>	HSBC Bank Plc, 74 Goswell Road, London EC1V 7DA
<b>Independent Examiners</b>	Southwell, Tyrrell & Co., Chartered Accountants, 15 Lower Ground Floor, 65 London Wall, London, EC2M 5TU.

## 2. OBJECTIVES AND ACTIVITIES

The purposes of the charity are:

- (a) the promotion and advancement of the visual arts in all their aspects for the public benefit and the furtherance of public knowledge, understanding and appreciation of the visual arts including arranging and holding exhibitions of artists work, and
- (b) the assistance of artists in necessitous circumstances particularly by the provision of accommodation, and
- (c) such other exclusively charitable objects and purposes (which without prejudice to the generality of the foregoing terms shall include any charitable trusts institutions foundations or other organisations) in the United Kingdom or in any other part of the world as the trustees shall in their discretion think fit.



**BARBICAN ARTS GROUP TRUST**  
**REPORT OF THE DIRECTORS AND TRUSTEES (Cont'd)**  
**FOR THE YEAR ENDED 24<sup>TH</sup> DECEMBER 2024**

**2. OBJECTIVES AND ACTIVITIES (Cont'd)**

The main activities undertaken during the year were:

- a) Projects for the year totalled 27 in number encompassing artists' residencies, open studios, solo/group shows.
- b) Blackhorse Lane Studios held Open Studios and the Art Works Project Space, within studios, hosted exhibitions and development opportunities for the studio artists.
- c) Hertford Road Studios continued its exhibition programme which extended to both studio artists and artists not associated with Barbican Arts Group Trust.
- d) The vast majority of the expenses of the Charity relate to the rent, rates and insurance of the two studio buildings in Blackhorse Lane E17 and Hertford Road N1.

**3. ACHIEVEMENTS AND PERFORMANCE**

A detailed description of the activities of the Trust are given in the Annual Report which starts after page 13 of these accounts.

**Investment Activities**

The Charity does not currently hold any investments.

**4. FINANCIAL REVIEW**

**Financial Position**

Incoming resources in the year were £158,134 (2023: £152,033). Of this £0 (2023: £0) related to project restricted activities.

A deficit of £1,379 (2023: Deficit £10,591) was made in the year. At 24<sup>th</sup> December 2024, total reserves were £331,990 (2023: £333,369) of which £12,081 (2023: £12,081) represented restricted funds.

**Reserves Policy**

Barbican Arts Group Trust is required to ensure that free monies are available in each financial year to meet any reasonable foreseeable contingency.

**Funds in Deficit**

No funds were in deficit at the Balance Sheet date.

**BARBICAN ARTS GROUP TRUST**  
**REPORT OF THE DIRECTORS AND TRUSTEES (Cont'd)**  
**FOR THE YEAR ENDED 24<sup>TH</sup> DECEMBER 2024**

**5. STRUCTURE, GOVERNANCE AND MANAGEMENT**

**Governing Document**

Barbican Arts Group Trust is a registered charity and a Company Limited by Guarantee. The maximum liability of each member is limited to one pound. At 24<sup>th</sup> December 2024 the Company had 5 (2023 : 5) Members. Barbican Arts Group Trust is governed by its Memorandum and Articles of Association.

Barbican Arts Group Trust was incorporated as a Company limited by Guarantee on 29<sup>th</sup> August 2007. The Charity commenced operations on 29<sup>th</sup> August 2007 at which date the assets and liabilities of the unincorporated Barbican Arts Group Trust were acquired.

**Recruitment, Appointment of Trustees**

The Trustees are Directors of the Company. The main procedure for the appointment of Trustees is described in the Memorandum of Association, as is the procedure for the election of the Chair.

**Organisational Structure**

The Charity has no full or part-time employees, any administration work being performed by volunteers. All of the Trustees are unpaid.

**Major Risks**

The Trustees recognise that any major risks to which the Charity is exposed need to be reviewed and systems put in place to mitigate those risks. To that end Barbican Arts Group Trust is continually monitoring and managing its risk and ensuring action plans are in place to mitigate its key risks.

The Trustees are aware of the need to secure long-term accommodation for the artists it is assisting and are confident that matters will be clarified in the near future.

**BARBICAN ARTS GROUP TRUST**  
**REPORT OF THE DIRECTORS AND TRUSTEES (Cont'd)**  
**FOR THE YEAR ENDED 24<sup>TH</sup> DECEMBER 2024**

**6. DIRECTORS' RESPONSIBILITIES**

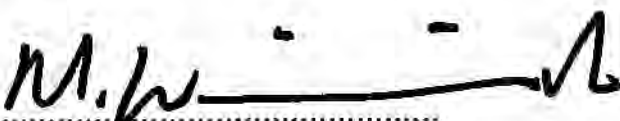
Company Law and Charity Law require the Directors to prepare financial statements for each financial year, which give a true and fair view of the state of affairs of Barbican Arts Group Trust and the surplus or deficit for that period. In preparing those financial statements, the Directors are required to:

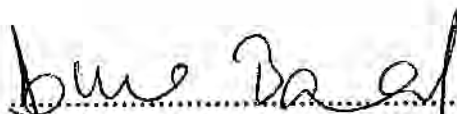
- (a) select suitable accounting policies and then apply them consistently;
- (b) make judgements and estimates that are reasonable and prudent;
- (c) state whether applicable accounting standards have been followed, subject to any material departures disclosed and explained in the financial statements, and;
- (d) prepare the financial statements on the going concern basis unless it is inappropriate to presume that the Company will continue in operation.

The Directors are also responsible for keeping proper accounting records which disclose with reasonable accuracy at any time the financial position of Barbican Arts Group Trust and to enable them to ensure that the financial statements comply with the Companies Act 2006.

The Directors are responsible for ensuring that the Company maintains an adequate system of internal control designed to provide reasonable assurance that assets are safeguarded against material loss or unauthorised use and to prevent and detect fraud and other irregularities.

This Report has been prepared in accordance with the Statement of Recommended Practice - Accounting and Reporting by Charities and in accordance with the provisions of Part 15 of the Companies Act 2006 applicable to companies subject to the small companies regime.

  
.....  
Company Secretary - M. Wainwright

  
.....  
Director - D. Baal

Approved on behalf of the Board of Trustees on: 29<sup>th</sup> May 2025

**BARBICAN ARTS GROUP TRUST**  
**INDEPENDENT EXAMINER'S REPORT TO THE TRUSTEES OF**  
**FOR THE YEAR ENDED 24<sup>TH</sup> DECEMBER 2024**

I report to the charity trustees on my examination of the accounts of the charity for the year ended 24<sup>th</sup> December 2024 which are set out on pages 8 to 13.

**RESPONSIBILITIES AND BASIS OF REPORT**

As the charity trustees of the company (and also its directors for the purposes of company law) you are responsible for the preparation of the accounts in accordance with the requirements of the Companies Act 2006 ('the 2006 Act').

Having satisfied myself that the accounts of the company are not required to be audited under Part 16 of the 2006 Act and are eligible for independent examination, I report in respect of my examination of your company's accounts as carried out under section 145 of the Charities Act 2011 ('the 2011 Act'). In carrying out my examination I have followed the Directions given by the Charity Commission under section 145(5)(b) of the 2011 Act.

**INDEPENDENT EXAMINER'S STATEMENT**

I have completed my examination. I confirm that no matters have come to my attention in connection with the examination giving me cause to believe that in any material respect:

1. accounting records were not kept in respect of the company as required by section 386 of the 2006 Act; or
2. the accounts do not accord with those records; or
3. the accounts do not comply with the accounting requirements of section 396 of the 2006 Act other than any requirement that the accounts give a 'true and fair view' which is not a matter considered as part of an independent examination; or
4. the accounts have not been prepared in accordance with the methods and principles of the Statement of Recommended Practice for accounting and reporting by charities [applicable to charities preparing their accounts in accordance with the Financial Reporting Standard applicable in the UK and Republic of Ireland (FRS 102)].

I have no concerns and have come across no other matters in connection with the examination to which attention should be drawn in this report in order to enable a proper understanding of the accounts to be reached

**S. R. Clark BSc ACA**  
**Southwell, Tyrrell & Co.,**  
**Chartered Accountants,**  
**15 Lower Ground Floor,**  
**65 London Wall,**  
**London, EC2M 5TU.**

**Date: 29<sup>th</sup> May 2025**

**BARBICAN ARTS GROUP TRUST**  
**STATEMENT OF FINANCIAL ACTIVITIES**  
**FOR THE YEAR ENDED 24<sup>TH</sup> DECEMBER 2024**

	<u>NOTE</u>	<u>UNRESTRICTED</u> <u>FUNDS</u>	<u>RESTRICTED</u> <u>FUNDS</u>	<u>TOTAL</u> <u>FUNDS</u> <u>2024</u>	<u>TOTAL</u> <u>FUNDS</u> <u>2023</u>
		£	£	£	£
<b>Income:</b>					
Donations		22,220	-	22,220	9,731
Other trading activities	2	4,346	-	4,346	7,937
Investment income	3	131,568	-	131,568	134,365
		<hr/>	<hr/>	<hr/>	<hr/>
<b>Total income</b>		<b>£158,134</b>	<b>£-</b>	<b>£158,134</b>	<b>£152,033</b>
		<hr/>	<hr/>	<hr/>	<hr/>
<b>Expenditure:</b>	4				
Charitable activities		157,468	-	157,468	160,674
Governance cost		2,045	-	2,045	1,950
		<hr/>	<hr/>	<hr/>	<hr/>
<b>Total expenditure</b>		<b>£159,513</b>	<b>£-</b>	<b>£159,513</b>	<b>£162,624</b>
		<hr/>	<hr/>	<hr/>	<hr/>
<b>Net income/ (expenditure) for the year</b>		<b>(1,379)</b>	<b>-</b>	<b>(1,379)</b>	<b>(10,591)</b>
Transfer between Funds		-	-	-	-
		<hr/>	<hr/>	<hr/>	<hr/>
<b>Net movement in Funds</b>		<b>(1,379)</b>	<b>-</b>	<b>(1,379)</b>	<b>(10,591)</b>
Fund Balances at 25 <sup>th</sup> December 2023		321,288	12,081	333,369	343,960
		<hr/>	<hr/>	<hr/>	<hr/>
Fund Balances at 24 <sup>th</sup> December 2024		£319,909	£12,081	£331,990	£333,369
		<hr/>	<hr/>	<hr/>	<hr/>

**BARBICAN ARTS GROUP TRUST**  
**BALANCE SHEET**  
**AS AT 24<sup>TH</sup> DECEMBER 2024**

	<u>Notes</u>	<u>£</u> <u>2024</u>	<u>£</u>	<u>£</u> <u>2023</u>	<u>£</u>
<b>FIXED ASSETS</b>					
Leasehold Improvements	5		9,440		12,875
<b>CURRENT ASSETS</b>					
Debtors	6	32,250		32,250	
Cash at bank and in hand		372,428		362,261	
		404,678		394,511	
<b>CREDITORS: amounts falling due within one year</b>	7	(82,128)		(74,017)	
<b>NET CURRENT ASSETS</b>			322,550		320,494
<b>TOTAL ASSETS LESS CURRENT LIABILITIES</b>			£331,990		£333,369
<b>TOTAL NET ASSETS</b>			£331,990		£333,369
<b>RESTRICTED FUND</b>	8-9		12,081		12,081
<b>UNRESTRICTED FUND</b>	8-9		319,909		321,288
<b>TOTAL FUNDS</b>			£331,990		£333,369

The Directors are satisfied that the Company is entitled to exemption from the requirement to obtain an audit under Section 477 of the Companies Act 2006 and that the Members have not required the Company to obtain an audit in accordance with Section 476 of the Act.

The Directors acknowledge their responsibilities for complying with the requirements of the Companies Act 2006 with respect to accounting records and the preparation of Accounts.

The Accounts have been prepared in accordance with the provisions in Part 15 of the Companies Act 2006 applicable to companies subject to the small companies regime.

**Approved on behalf of the Board of Trustees:**



D. Baal - Trustee

**Dated: 29<sup>th</sup> May 2025**



# ***Barbican Arts Group Trust***

## **Annual Report - 2024**

Reg Charity 1120918 / Company No 06355408  
Report Cycle 5 - Phase 1





YiMiao Shih "A Philosophical Encounter" Gold ArtWorks Project Space



Sandie M Sutton "Ground Hornbill" Gold ArtWorks Project Space

#### Executive Director

##### 1 Studio(s) Committee

- 1.1 Small maintenance
- 1.2 Cleaning supervision
- 1.3 Internal decoration
- 1.4 Internal studio allocation
- 1.5 Open Studios
- 1.5.1 Silent auction sales
- 1.5.2 Publicity
- 1.5.3 Promotion
- 1.5.3.1 PV card
- 1.5.3.2 Mail-out
- 1.5.4 Artists voluntary time
- 1.5.5 Door & bar rota
- 1.6 Studio applications
- 1.7 Health & Safety
- 1.8 Studio Rules
- 1.9 Fire Risk
- 1.10 Personal Risk
- 1.11 Artists voluntary time

##### 2 Studios

- 2.1 Insurance
- 2.1.1 Public Liability
- 2.1.2 Building Insurance
- 2.2 Open Studios
- 2.2.1 Budgets
- 2.3 Lets
- 2.3.1 Studio applications (with committee)
- 2.3.2 Rents and other charges
- 2.4 Household
- 2.4.1 Cleaning
- 2.4.1.1 Budgets
- 2.5 Buildings
- 2.5.1 Personal Risk
- 2.5.2 Health & Safety
- 2.5.3 Fire Risk
- 2.5.4 Maintenance
- 2.5.4.1 External
- 2.5.4.1.1 Roof
- 2.5.4.1.2 Windows
- 2.5.4.1.3 Entrances
- 2.5.4.2 Internal
- 2.5.4.2.1 Windows
- 2.5.4.2.2 Utilities
- 2.5.4.2.3 Doors
- 2.5.4.2.4 Plumbing

##### 3 BAGT Administration

- 3.1 Appointments
- 3.2 Reports
- 3.3 Finances
- 3.4 Office
- 3.5 Subscriptions
- 3.6 Friends



Valery Large "Untitled" In Circles - Atrium Space

#### 4 Development: ArtWorks Public Programme

- 4.1 Outreach
- 4.1.1 Residencies
- 4.1.1.1 Business
- 4.1.1.2 Educational establishments
- 4.1.1.3 Studio
- 4.1.2 Studio exchange
- 4.1.2.1 National
- 4.1.2.2 International
- 4.1.3 Workshops
- 4.2 ArtWorks Project Space
- 4.2.1 Workshops
- 4.2.1.1 Film editing
- 4.2.1.2 Life class
- 4.2.1.3 Animation
- 4.2.1.4 Sculpture
- 4.2.2 Talks
- 4.2.3 Hire
- 4.2.4 Exhibitions
- 4.2.4.1 ArtWorks Open Exhibition
- 4.2.4.2 Curated Exhibitions
- 4.2.4.3 BAGT artists
- 4.2.4.4 Other artists
- 4.2.4.5 Student Exhibitions
- 4.3 Professional Development
- 4.3.1 BAGT artists
- 4.3.2 BAGT Staff & Trustees
- 4.3.3 Non BAGT artists

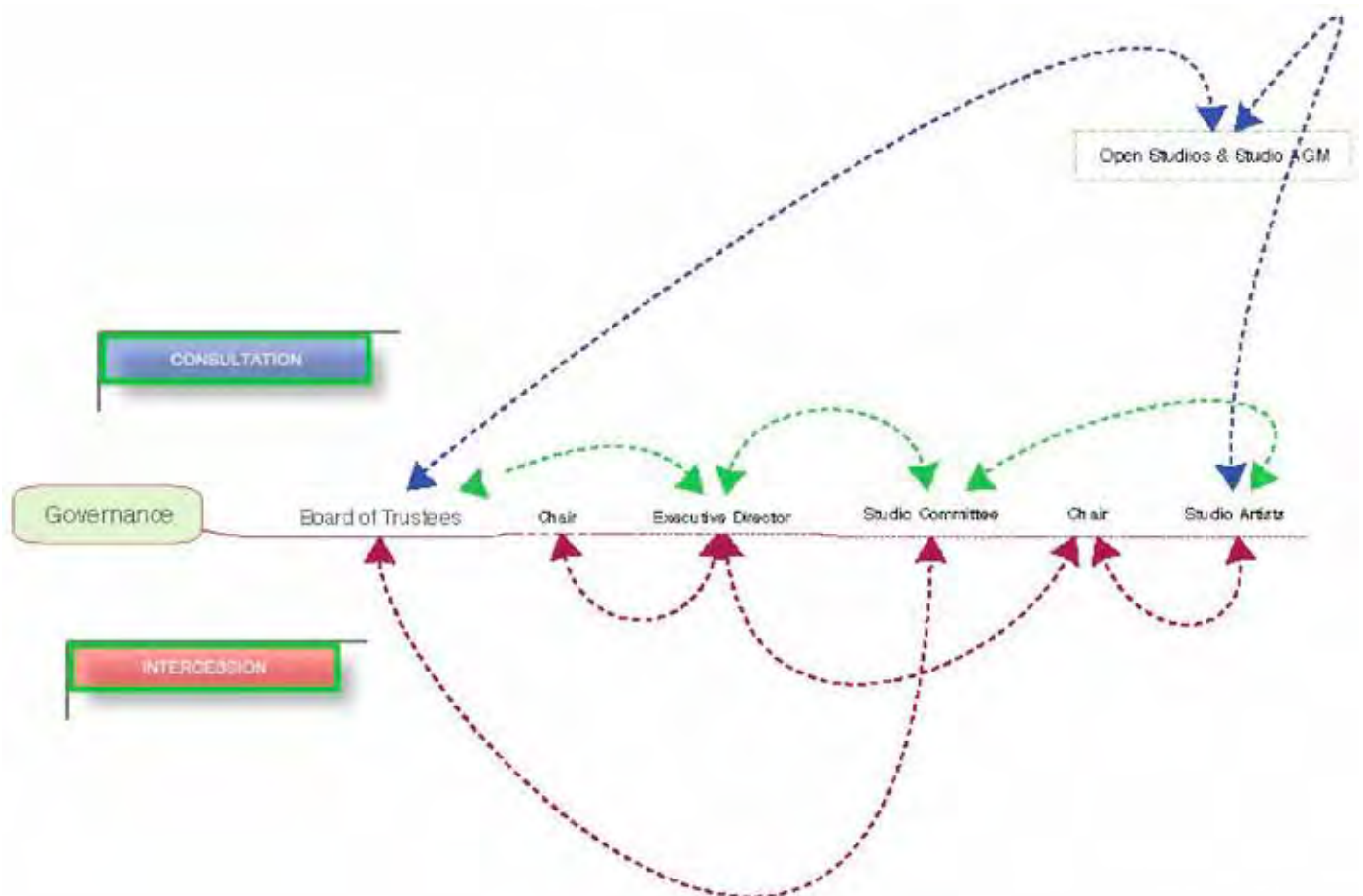




Franki Austin "Pine Grove, study 1, 2023)" - Atrium Space



Lucile Montague "Paper Boat" On The Wall - Atrium Space

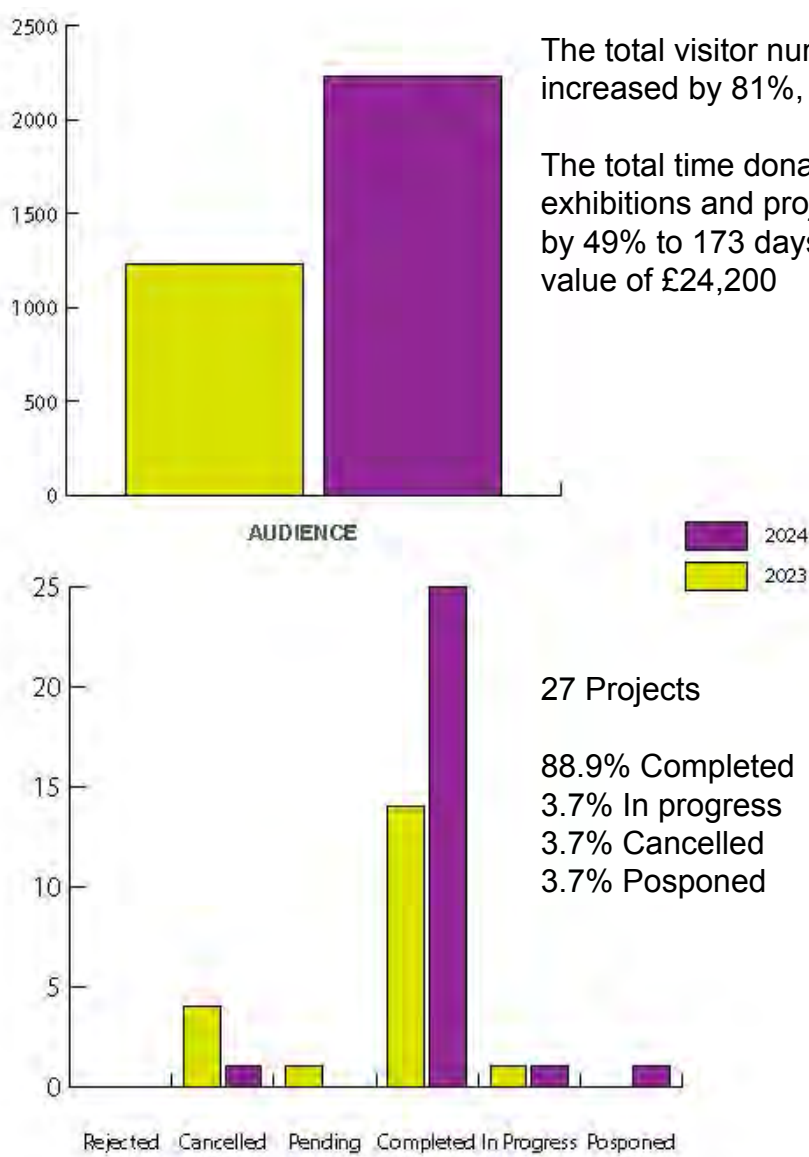




Ute Kreyman - "Discovery" Wintering Out - Atrium Space



Lesley Dalton - "For Dear Life" On The Wall - Atrium Space

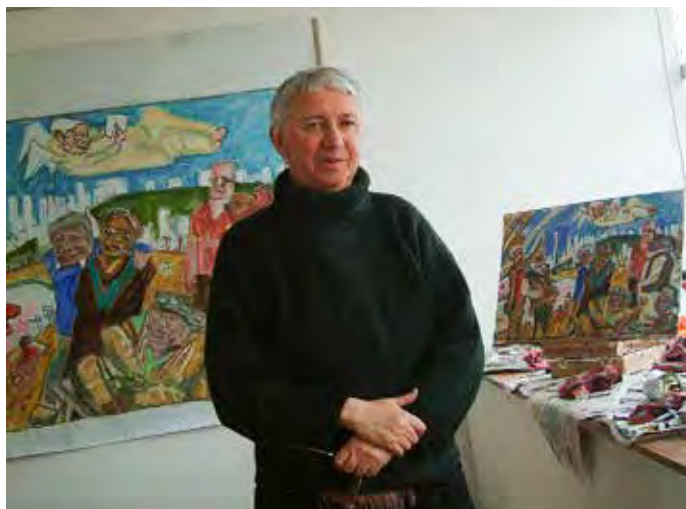


BAGT Projects 2024



## Timothy Hyman RA

17 April 1946 - 7 September 2024



The trustees and studio artists of Blackhorse Lane and Hertford Road Studios bid a fond adieu to Timothy Hyman RA.

Tim (as he was known to all connected with BAGT) had been at BAGT studios since its formative days in 1972 at Sycamore Street EC1. He later worked in both Blackhorse Lane and Hertford Road Studios. He was known internationally as a renowned figurative painter, teacher and writer.



## Aspirations for the year.

- Schedule new shows for Atrium Space.
- Appoint new Trustee.
- Challenge rateable value of Hertford Rd Studios.
- Form proposal to purchase Hertford Road studio building.
- Negotiate extension to lease on Blackhorse Lane Studios.

## Atrium Space Programme

In 2024 BAGT achieved its target of five exhibitions, delivering five exhibitions in contrast to two in, three more than the previous year. Three were curated by BAGT and two by resident studio artists. With 17 studios at Hertford Road and a rich mix of practices across painting, sculpture, printmaking, film and digital media, the Atrium programme is designed to help artists evaluate their work publicly, drive direct sales, and foreground BAGT's aims and values.

The aspiration for 2025 is to maintain five exhibitions, increase the proportion of studio-led shows to at least 60%, and refine the evaluation framework covering footfall, sales, audience feedback and artist reflections.

## Board & Governance

BAGT continued its drive to broaden the skills and perspectives on its Board with the appointment of **Debbie Carslaw**, former director of Rose Madder Gallery and city lawyer. As a former real-estate finance partner at Denton Wilde Sapte before moving to Sidley Austin, London her legal expertise is an invaluable asset to the Board.

Moving forward, the Board's collective capability continues to grow, and now includes two trustees with legal expertise.

**Daniel Kennedy Davies** is a London-based solicitor with 20+ years' experience. He currently works in-house at The Bank of New York Mellon, a company specialising in asset management and investment services. Daniel brings governance and legal expertise from the financial-services sector to BAGT's board.

**Rupert Maude** is a Fellow of the Royal Institution of Chartered Surveyors with vast experience. He served as a Partner at Cluttons LLP and as a RICS Registered Valuer, reviewing and signing off complex valuations.

**Leila Hasham** is Chair of BAGT's Board. She is a senior exhibitions leader with two decades' experience commissioning, producing and touring contemporary art. Currently, Director of Exhibitions at Whitechapel Gallery (London), she has previously held programme leadership roles at the ICA and Forma Arts, and was a curator/producer at the Barbican Art Gallery on major international projects. Leila brings deep expertise in artist development, production, and audience engagement, alongside a strong track record in partnership-building and fundraising. As Chair, she leads the Board's governance, strategy and risk oversight, and champions equity and access across BAGT's programmes.

**Domo Baal** is a London-based gallerist and the founder/director of DOMOBAAL, a contemporary art gallery established in 2000. Domo brings vital sector knowledge to BAGT—spanning gallery operations, commissioning, artist development and audience engagement. She is active in public discourse and education around contemporary practice.



### Hertford Road Studios - rateable value.

There are possible discrepancies in the measured dimensions of the Hertford Road Studios site. These could affect the Rateable Value (RV) used to calculate the business rates. BAGT is considering appointing a rating specialist to report and advise on action.

### Purchase of Hertford Road Building

In June, the BAGT Board agreed to formally express its interest in purchasing the freehold of Hertford Road Studios which currently serves as one of its key studio buildings.

The Board's intention is to work in a collaborative and constructive way, with a view to achieving a mutually beneficial outcome. As a registered charity and long-standing advocate for affordable artist studios in London, BAGT is committed to securing long-term, sustainable studio spaces. Ownership of this building would allow BAGT to safeguard the future of the artists it supports, invest in essential upgrades, and ensure continuity of cultural activity in the area.

### Blackhorse Lane Studios - lease

As the lease approaches its end, BAGT requested the landlord to open formal discussions to negotiate a new lease agreement. Blackhorse Lane Studios is a vital creative hub for BAGT's community of artists, and securing a long-term future for this site is a key priority for the Board.

The landlord has declined a meeting until a later date.



Rudy Loewe and Phoebe Collings-James - Selectors  
ArtWorks Open Prize Show



Biogal - Prizewinner - ArtWorks Open



V-A-L-U-E - ArtWorks Project Space

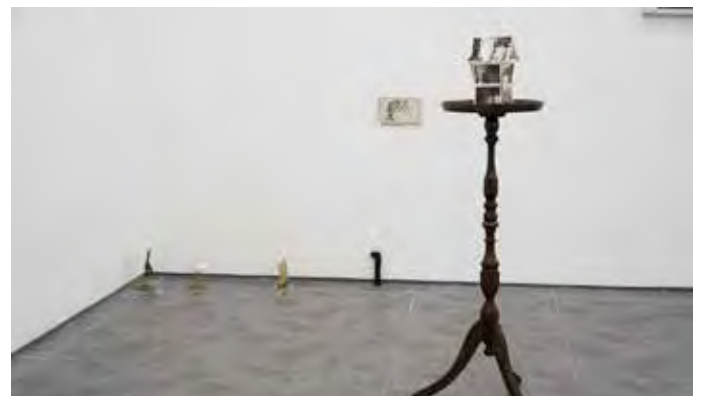
Keep It Simple, Sexy - Slade FAM



Anna Howard • Fan Bangyu • Xiong Wei  
• Shona Waldron • Jiyeon Hong • Danny Pagarani @danny\_pagarani • Joe Moss@joemoss1 • Liangqi Yao • Wanci Xie • Ziyi Wang • Qibing Yang • Shiyue Li • Bowen Zhang • Xiya Wang • Raquel Yago Boj • Freddie Sanders • Victoria Grenier • Roman Sheppard Dawson • Steph Lim

K\*I\*S\*S\* brought together Slade postgrad Fine Art Media students for a final group exhibition before their degree show in June. The show opened on Friday 15th and continued through the weekend, with an additional reading/seminar at Blackhorse Workshop.

Taking inspiration from the workshop location and it's diverse skills the students considered their art-making and lives in relation to the full sense of the phrase "*a jack of all trades is master of none, but oftentimes better than a master of one*". Drawing on the tensions between different contexts, locations and skills across the physical and digital realms the talk explored amateur proficiency.





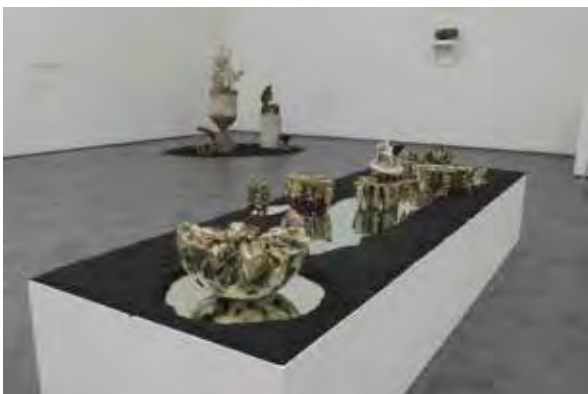
**Dearly Impossible - Unu Sohn**



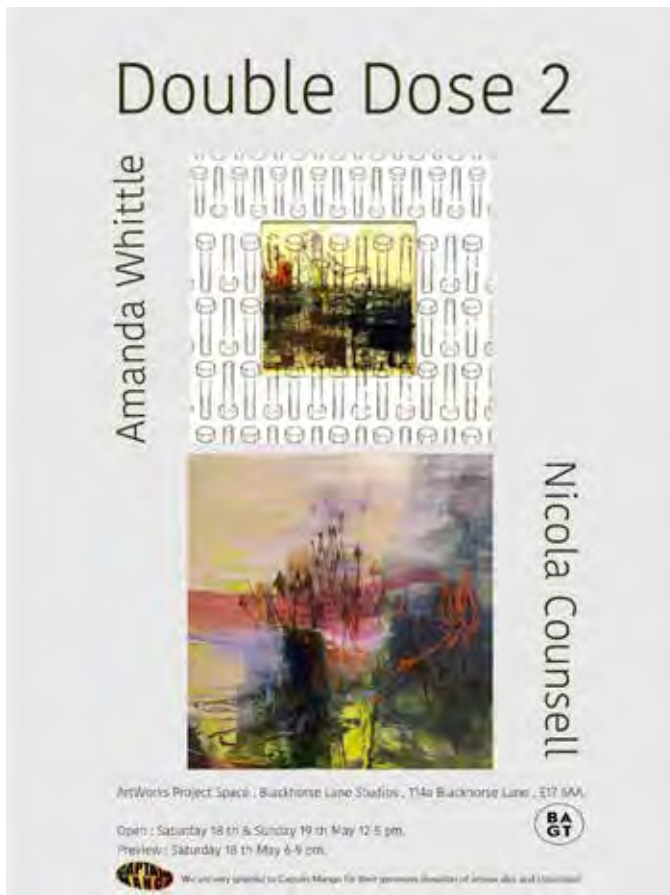
Unu Sohn (b. 1994) was an ArtWorks Open 2023 prizewinner, selected by Turner Prize Winner Jasleen Kaur and artist Rudy Loewe.

Unu graduated from The Royal College of Art in 2022. In her first solo show in London, Unu explores the relationship between the materiality of studio pottery techniques and abstract forms, resulting in a synergy of the corporeal and qualitative.

In 2024 Unu Sohn was shortlisted for the Charlotte Fraser Ceramics & Glass Prize at the Holt Festival.



**Double Dose 2 -  
Nichola Counsell and Amanda Whittle**



Amanda Whittle

Nichola Counsell and Amanda Whittle continue to explore their respective practices through experimenting with a variety of media. Both have exhibited locally, nationally and internationally

Whittle often incorporates found and discarded materials such as wax, glass, soil, sand, photographic negatives, thread, paper, Letraset, and light into her mixed-media works. She emphasizes tactility, respectful use of materials, and the evocative associations created through their layering and assembly

Nichola Counsell's creative process is manifested in paintings emerging through layered experimentation, where poured paint and evolving imagery evoke both chaos and harmony, abstraction and figuration.



Nichola Counsell



## Blackhorse Lane Open Studios



Rebecca Munday



Blackhorse Lane Studios' annual Open Studios provided visitors with behind-the-scenes access to how studio artists make their work. The studios provide a working environment for a diverse range of artists, including emerging and underrepresented ones in a friendly setting outside traditional gallery gatekeeping.

There was fun for all with artist Barry Sykes providing entertainment with his Laughter Yoga and a specially devised Kids Quizz.



Kally Laurence



V-A-L-U-E E17 Local Artists



An exhibition of painting, prints sculpture and drawing curated by Neil Irons & Mark Wainwright.

The exhibition, held in conjunction with Walthamstow's twentieth year of the E17 Art Trail Festival, featured local artists with commitment to making fine art who produce work without the benefit of permanent studios. The show offered an eclectic snapshot of local practice under the lens of "value".



Dominique Golden - "Charity Shop Chair" watercolour



Benjamin Parker - "Westerner" clay wood and metal



Tom Stallard - "Cherry, Lyme, Highrise" oil on canvas

## Achievements

### ArtWorks Project Space



#### GOLD! Blackhorse Lane Studio Artists

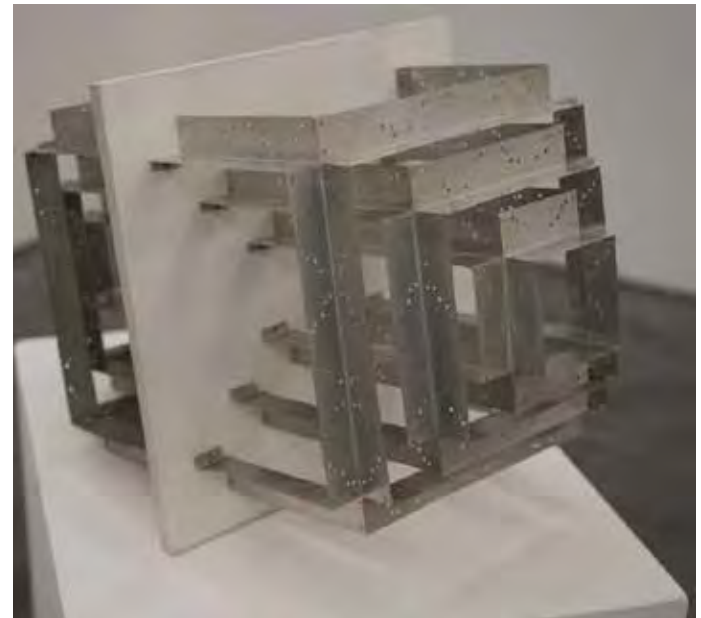


GOLD! was curated by Daniela Rizzi, a London-based artist (painting, printmaking, photography) and long-time BAGT studio member.

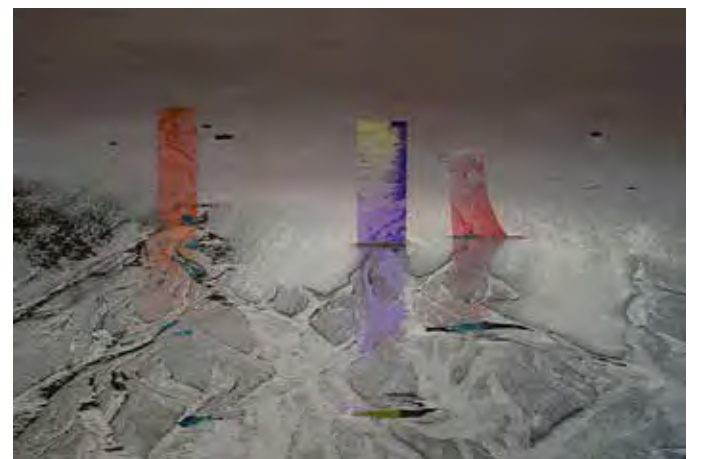
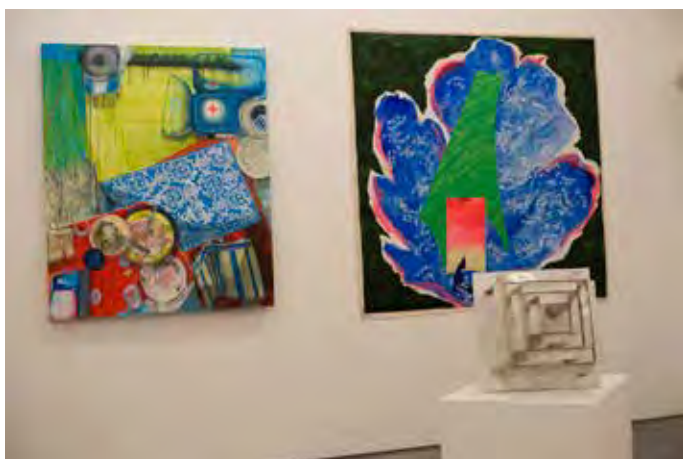
The show was conceived as the headline show for the annual Blackhorse Lane Open Studios, exploring “gold” in material, metaphor and colour—ranging from shimmering surfaces to critical takes on value and desire.



Sandie M Sutton - “Ground Hornbull” iron



Elizabeth de Monchaux - “Pavillion 05/24” aluminium



Helen Maurer - “Ayakashi (Ultraviolet)” giclee print



**BAGT Editions**



Diane Chappaley - "Lychee" edition of 20



YiMiao Shih - "Landscape" edition of 20

BAGT Editions, a limited-edition print project run by BAGT. Each edition offers high-quality giclée reproductions of original paintings or drawings by artists who work in the trust's studios. Proceeds are split 65 % to the artist and 35 % to fund BAGT's free public programme of exhibitions and community projects.

This exhibition saw the launch of BAGT Editions #2 which added 10 new works to the series. The artists selected for the series were, Diane Chappaley, Noga Shatz, Rebecca Munday, Franki Austin, JJ Morgan, Keira Bennett, YiMiao Shih, Neil Irons, Kally Laurence, William Stok



Rebecca Munday - "Red Mist" edition of 20

#### Nimo Shafiani ArtWorks Open Residency



Nimo Shafiani won a 6-week residency prize in the 2023 ArtWorks Open Prize Exhibition Show, selected by artists Jasleen Kaur (Turner Prize Winner 2024) and Rudy Lowe.

Nimo ended his residency with a show of 18 paintings made during the residency.

A London-born painter (b. 1995), Shafiani works in energetic serial bursts—groups of 18, 28, 34 works at a time—using felt-tip, house-paint and charcoal to build dense, cellular networks of line and colour that oscillate between diagram and diary. His practice often grows out of conversations and improvised group activities, so exhibiting a whole “batch” at once becomes part of the a performance.





## Words Matter - Eight Women Print



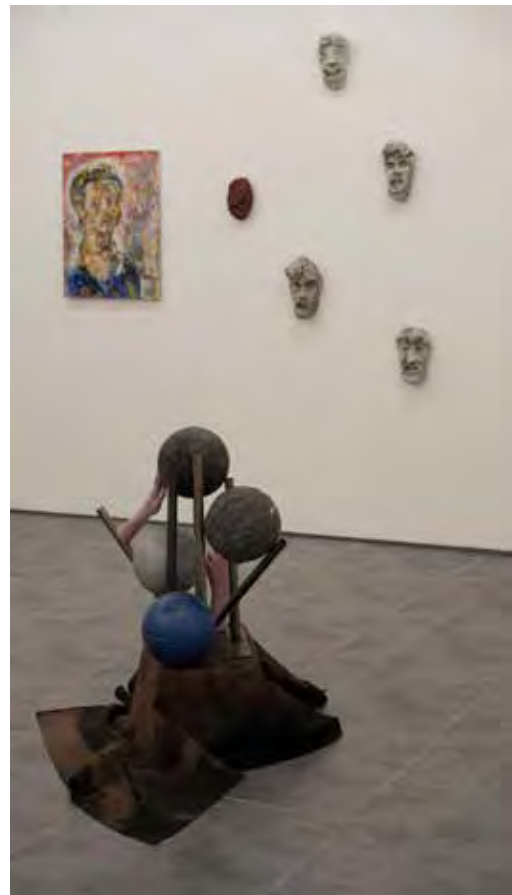
Kathy Hinde, Lindsay Ohrn, Fiona O'Neil,  
Mry O'Connor, Clare Smith, Sara Desmarías,  
Katerina Hutton, Michele O'Brien

The exhibition "Words Matter" by the collective, Eight Women Print, is a collaborative print show featuring work that address vital conversations about women, concerning their rights, struggles, anxieties, invisibility, power, and resilience. The exhibition aimed to stimulate dialogue on how words influence perception and reality, in relation to women's experiences, through a dynamic display of print artworks by eight women

"Words Matter" is Eight Women Print's 4th print show since 2022. The show was curated by Lorena Herrero, who has been a resident studio artists at BAGT's Hertford Road Studios since 2021.



## A Red Sky At Night Zachary and Daniel Talbot-Mason



'A Red Sky at Night', a collaborative exhibition by the artist-brothers Zachary Talbot-Mason and Daniel Talbot-Mason. One can characterise their familial practices as having a devil-may-care confidence in the usage of colour. A joyous, even childlike marveling, appreciation and championing of natural imagery. Some examples of their subject matter include fallen leaves, rolling hills and eerie sunsets far-away in the background: randomly vindicating the group portraits of fictitious peoples, cheery wildlife moving in the scenery, and lonely compunctious self-portraits.

The artist- brothers present to their viewers an unclear vision of the world, each suffering their tendency for unconscious thought and macro narrative to implode, inviting a new figuration to emerge. Ultimately, we are left with a rude dual portrait for an exhibition that leaves us like how a sun must: with that certain self-certain air for the inevitability and finality of everything.





## ArtWorks Open Prize Show

This year's ArtWorks Open was selected by artists Rudy Loewe and Phoebe Collings-James, reaffirming BAGT's commitment to practitioner-led selection of a rigorously contemporary programme.

Engagement rose meaningfully year-on-year: 154 artists submitted 275 works (up from 137 artists / 233 works), equating to +12.4% more artists and +18.0% more works. The average works per artist also increased from 1.70 → 1.79 (+4.9%), signalling deeper participation per entrant.

The PV and awards were well attended, underscoring the Open's role as a flagship audience moment. For the first time in the Open's 18-year run, one selector was unable to stay to present awards; BAGT will review briefing and event-day protocols in response.

### Awards & development opportunities

- Main Prizes: Yezan Al Laham and Tanaka Mazivanhanga — £1,000 each plus a solo exhibition at the venue.
- Residencies (6-week): the artist known as Biogal and Martin Barrall; following Barrall's withdrawal, the residency was reallocated to Richard Zeiss to ensure delivery.
- Materials Prize: BAGT Materials Prize awarded to local artist Nichola Morrison.

With increased submissions, strong public turnout, and tangible artist development pathways (cash awards, solo shows, and residencies), ArtWorks Open continues to be a cornerstone platform for early- and mid-career practice—broadening BAGT's pipeline while elevating voices reflective of today's cultural discourse.



Richard Zeiss "No. 302 (Prayer Wheel)" burnt and varnished woods, metal rods



## ArtWorks Open Prize Show

### Artworks Open – Unsettling Things

Although each year the Artworks Open exhibition carries no set theme, for Phoebe and I there were visible threads amongst the works we selected. We saw these weaving a web, bridging connections between artistic practices. Artists submit their work to the exhibition without written context (other than the title) and so these threads are entirely based on our own impressions.

A question that lingers in my thoughts from the previous year's exhibition is what does it mean to be an artist making work during an era of seemingly unending crises? At this moment of deep grief when it would be easy to fall into despair, I look at the ways these artists offer tools, curiosity, and spaciousness in their practices.

Xinyi Yu's artwork provides prayer and in Christopher Harris' 'Duppy Dance' painting, duppies (ghosts or spirits) dance around a soundsystem. Several of the artists bring us back to spirit. There is a thread of artists in the exhibition who are connected through their work with nature. These are works that speak to cycles, ephemerality, temporality, and the need to 'simply rest and quietly take in the world'

Naomi Ellis takes paper pulp, Sumi ink and powder dye to create 'Water Drawing VII (7)' and Tanaka Mazivanhanga uses Mokulito, a Japanese printmaking technique for the '(Untitled III) Landscape Series'. The title of Qinyang Li's painting, 'Unsettled Things', reminds me of moments such as these, when there are so many unsettling things—unsurmountable levels of grief and violence in the world—it is easy to feel that art is futile. Or, it might feel only possible to recreate the images of pain and suffering that we are now seeing on a daily basis. And as important as art can be in consciousness building (raising awareness and actively engaging people), art can also offer a moment of needed pause, rest, and imagination.

Between these threads in the exhibition there might

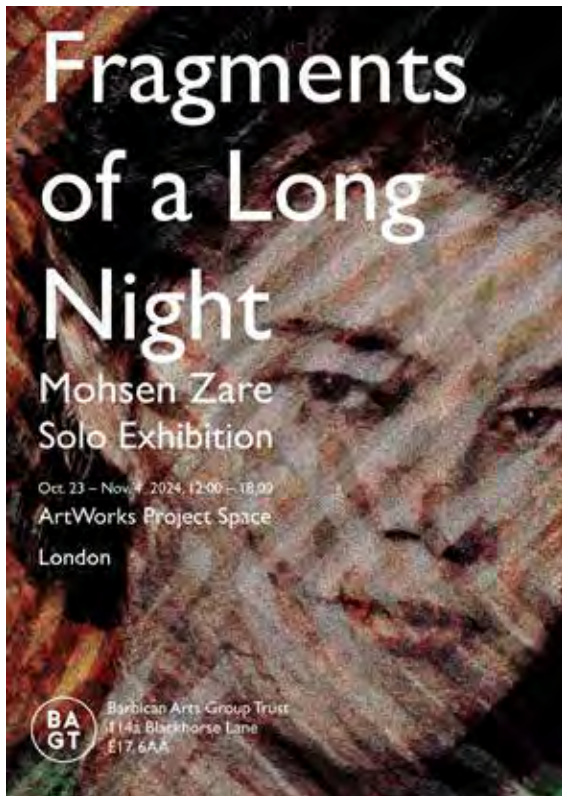
be tensions. But this confronts an important question for where we now find ourselves: how do we hold a space for complexity, acknowledging these unsettling feelings? In the exhibition the threads attempt to hold a need for quiet solitude, community, sexiness, messiness, formlessness, fantasy, and spirit. The exhibition does not attempt to settle what cannot feel settled, instead holding this as is, whilst offering a space for peace, prayers, and a moment before entering back into the storm outside.

Rudy Loewe, November 2024



Biogal - "Pronoun Circle" pencil on canvas

**Fragments of a Long Night - Mohosen Zare**



“This exhibition is shaped by the confrontation with countless faces of death. In a world where darkness envelops everything, I have sought refuge in memories and old photographs from Baghdad, Beirut, Shiraz, Istanbul, and Tehran - moments that evoke light and fervor”.

The work in the exhibition includes portraits of women and family photographs displayed without a specific order. These portraits form the starting point of a collection. They refer to the events that occurred ten years ago in Isfahan, when the faces of women became targets of acid attacks—an event that deeply impacted the artist and became the foundation for the portraits. All the works in this exhibition are created on printed circuit boards (PCBs) and etched with acid—a process that illustrates the connection between creation and destruction.

“Ultimately, each work is an attempt to celebrate life in a time of disintegration and a journey into the past, when love and beauty flowed freely, and God was still a lover of lovers”.





William Stok - My Life My Leaf



15th - 31st May  
Wednesday - Friday, 12pm - 6pm  
Atrium Space  
32A Hertford Road  
London N1 5SH

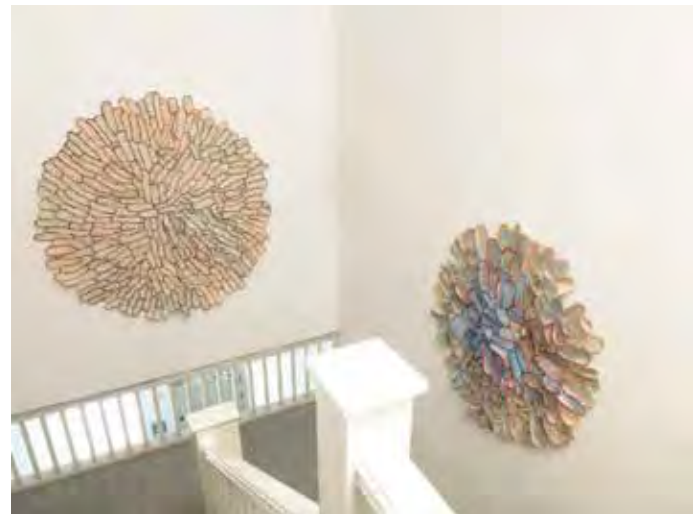
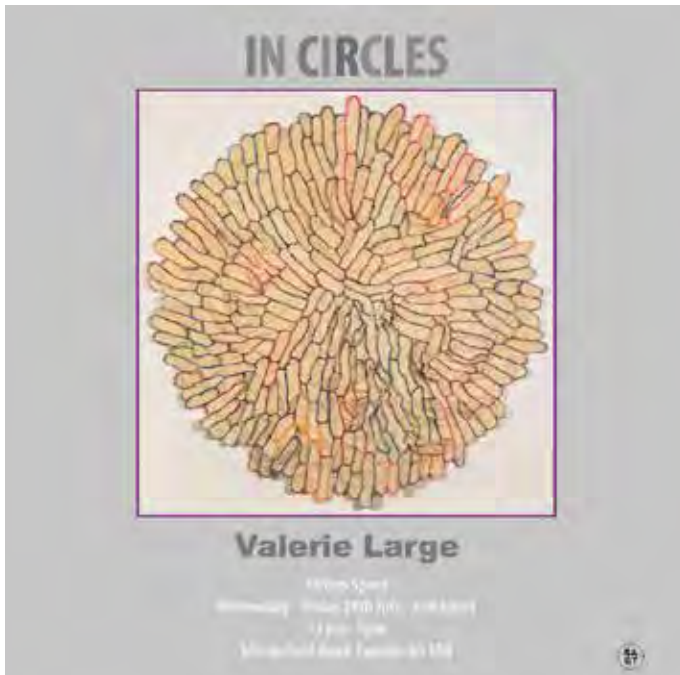


William Stok is an Italian artist, represented mainly by European galleries. In the UK he has graphic work in the Tate Gallery, the collections of the Victoria & Albert Museum and King Charles. He has amassed 50 personal exhibitions in museums that have included The Arnolfini in Bristol and a career retrospective at the European Academy in London.

Since the Corona Virus William Stok began an ambitious series of works on paper depicting leaves echoing the shape of the female reproductive organ - an "affirmation of life", highlighting the balance of nature and ecological awareness.

The large works in the exhibition form part of an ongoing series of paintings.





Valerie Large is an artist living in Leytonstone and working at Barbican Arts Group Trust's Blackhorse Lane Studios, Walthamstow, London.

Her recent work uses fabric, mostly canvas, focussing again on her interest in organic like shapes. These began with a series of small wall sculptures in 2022-3, where layers of tissue paper were stitched into a 3D relief shape. This led to the canvas pieces which formed relief shapes in the opposite way – building up smaller pieces by stitching them together and in the process creating a relief form as one shape was twisted to join the next.

“I wanted to use an amorphous type of shape which didn't represent anything in particular but was like a cell or bacteria which also has connotations of growth. It is some years since I last used colours, other than natural tones and black and white, and it was exciting to mix colours and use paint again.”

Valerie joined BAGT in 1974 and has had studios at Sycamore Street EC1, Hertford Road N1 and currently Blackhorse Lane E17.





## Double Takes - Curated by David Leister

### Double Takes



David Leister  
Jason Shulman  
Lucy Harris  
Bea Haut  
Mark Sowden  
Theo Niderost

18th - 27th October  
Show Open 12pm-3pm  
18th, 19th, 20th & 26th, 27th  
by appointment during the week  
07973492644

Atrium Space  
Barbican Arts Group Trust  
32A Hertford Road  
London N11 5JH



Mark Sowden

"Double Takes" a group show curated by David Leister of photographic works and collage exploring layered images, mis-registration and optical "double takes".

David Leister is a London-based filmmaker/artist working with 16mm, photograms, archive & performance. Active in London's film community since the '80s, David has been a resident studio artist at BAGT's Hertford Road site since 2016.

Jason Shulman is best known for "Photographs of Films", which compress an entire movie into a single long-exposure image. He lives/works in London and also makes sculpture.

Lucy Harris is a London artist-filmmaker & editor. She works with 16mm, postcards and archives to explore landscape, architecture and memory. Lucy is winner of Rita Harris Studio Award alum at Acme.

Bea Haut works primarily with expanded 16mm film (installations, performances, projections); co-founded artist-run B/W 16mm processing in the UK and runs analogue screening projects.

Mark Sowden's work looks at objects and their placement in landscapes. His practice extends into clay and Thames mudlarking.

Theo Niderost achieved early recognition at The Photographers' Gallery's Fresh Faced + Wild Eyed (2008).



Theo Niderost

#### On The Wall - Curated by Lesley Dalton



“On The Wall” is an exhibition by BAGT artists curated by Lesley Dalton.

Lesley Dalton is a British artist, born in Singapore. She later settled with her family in Leicester and attended Loughborough School of Art followed by De Montfort University. Following her graduation she moved to London and worked as a colourist for Marvell Comics.

Lesley joined BAGT in 1986. She currently has a studio at BAGT Hertford Road Studios.

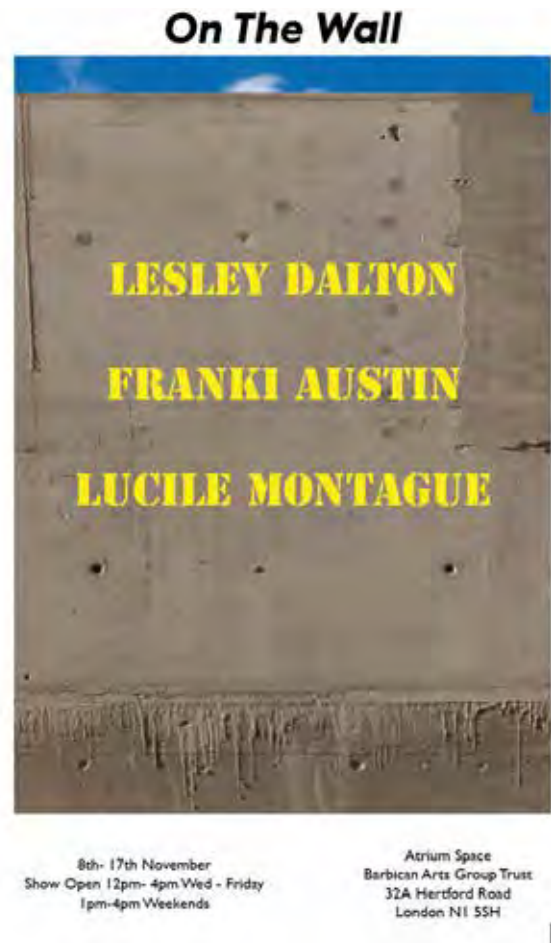
Lucile Montague’s earlier work looked at people and city life. In recent years she has shifted her attention to landscape. Her paintings derive from regular walks in the green areas of North London. Her subjects are a mixture of fantasy and reality set within the calming effects of nature.

Lucile’s work has featured in many exhibitions that have included the Royal Academy Summer Show and the Whitechapel Art Gallery. Her work is to be found in numerous public and private collections which include Coventry Museum and Art Gallery, Coopers & Lybrand and the Bankers Trust Company.

She studied at Plymouth College of Arts and Byam Shaw School of Art, joining BAGT in 1977 and currently has a studio at BAGT Blackhorse Lane Studios.

Franki Austin studied painting and glass at the Central School of Art and Design in London, and gained an MPhil in fine art from the University of Plymouth for research relating to the international artists working at Dartington Hall in Devon during the 1930s. She later pursued the subject of this research, working and travelling in India.

She has worked with poets, installing participatory exhibitions in the UK using folk tales common to peoples across the world. In 2007 her work began to include references to climate change. She first learnt about trees from her Scottish grandfather.



“The trees in my paintings are those found in ancient Scottish woodland. The stories I weave around them come from all parts of the world. Trees play major roles in our constantly changing climate but I paint only those trees bound into my personal history”.

Franki joined BAGT studios in 2005. Currently, she has a studio at BAGT’s Blackhorse Lane Studios.





Sarah Medway



Eva Bosch

“Wintering Out” curated by Mark Wainwright at atrium Space 2024 is a contemporary art exhibition taking place in BAGT’s Atrium Space — a unique venue known for showcasing experimental and interdisciplinary works. The exhibition title, “Wintering Out,” alludes to Seamus Heaney’s 1972 poetry collection, invoking ideas of seasonal transition, endurance and cultural excavation,

The exhibition explores the idea of waiting, dormancy, and transformation — both ecological and personal. It reflects on how artists navigate in-between states: of language, land, identity, and time.

“Wintering Out” features a range of local and international artists. The show evokes a sense of quiet tension, introspection, and subtle change — mirroring the natural stillness of winter and the potential that lies beneath it.



- Appoint a Rating Surveyor to advise on the valuation and rating of Hertford Road Studios
- Purchase Hertford Road Studios
- Reinstate Open Studios at Hertford Road Studios
- Invite new selectors for ArtWorks Open
- Update and renew BAGT Policies



Martin Barrall "Bradley's Tea Hut, Epping Forest" ArtWorks Open



ArtWorks Open



ArtWorks Open



Peter Sutton "Into The Woods" Wintering Out - Atrium Space



Christopher Harris "Duppy Dance" ArtWorks Open



Contributor

Task Main

Task Sub

Time worked



**2024**      **Total Time worked 1210**      **Total days/Year 172.9**      **Value £24,200.00**

**400 Double Dose 2 - Amanda Whittle, Total hours donated to project 43.5**

Nickie Counsell	Planning / prep		7
Nickie Counsell	Planning / prep	install exhibition	5
Nickie Counsell	Planning / prep	de-rig exhibition	3.5
Nickie Counsell	Visitor experience	invigilation	6
Amanda Whittle	Planning / prep		6
Amanda Whittle	Planning / prep	de-rig exhibition	4.75
Amanda Whittle	Planning / prep	poster	2
Amanda Whittle	Planning / prep	publicity	2.25
Amanda Whittle	Visitor experience	invigilation	7

**405 Dearly Impossible. Unu Sohn Total hours donated to project 47**

Unu Sohn	Visitor experience	invigilation	27
Unu Sohn	Planning / prep		7
Unu Sohn	Publicity	poster	2
Unu Sohn	Planning / prep	install exhibition	8
Unu Sohn	Planning / prep	de-rig exhibition	3

**407 Fragments of A Long Night Total hours donated to project 89**


Mohsen Zare	Planning / prep	install exhibition	4
Mohsen Zare	Planning / prep	de-rig exhibition	2
Mohsen Zare	Visitor experience	invigilation	78
Mohsen Zare	Planning / prep	publicity	4
Mohsen Zare	Planning / prep	poster	1


**408 ArtWorks Open 2024 Total hours donated to project 23**

Lesley Dalton	Visitor experience	invigilation	23
---------------	--------------------	--------------	----

**409 Keep It Simple Sexv – Slade Total hours donated to project 103.75**

Danny Freevine	Planning / prep	exhibition participant	2
Raquel Yago Boj	Planning / prep	exhibition participant	2

Contributor	Task Main	Task Sub	Time worked	
Roman Sheppard	Planning / prep	exhibition participant	2	
Shona Waldron	Planning / prep	exhibition participant	2	
Xiong Wei	Planning / prep	exhibition participant	2	
Fan Bangyu	Planning / prep	exhibition participant	2	
Anna Howard	Planning / prep	exhibition participant	2	
Jiyoong Hong	Planning / prep	exhibition participant	2	
Liangqi Yao	Planning / prep	exhibition participant	2	
Wanci Xie	Planning / prep	exhibition participant	2	
Qibing Yang	Planning / prep	exhibition participant	2	
Shiyue Li	Planning / prep	exhibition participant	2	
Bowen Zhang	Planning / prep	exhibition participant	2	
Xiya Wang	Planning / prep	exhibition participant	2	
Freddie Sanders	Planning / prep	exhibition participant	2	
Victoria Grenier	Planning / prep	exhibition participant	2	
Steph Lim	Planning / prep	exhibition participant	2	
Ziyi Wang	Planning / prep	exhibition participant	2	
Roman Sheppard	Planning / prep	install exhibition	7	
Danny Freevine	Planning / prep	install exhibition	7	
Raquel Yago Boj	Planning / prep	install exhibition	6	
Raquel Yago Boj	Planning / prep	Curation	5	
Roman Sheppard	Planning / prep	Curation	8.5	
Roman Sheppard	Planning / prep	de-rig exhibition	4	
Danny Freevine	Planning / prep	de-rig exhibition	3	
Shona Waldron	Planning / prep	poster	1.5	
Jiyoong Hong	Publicity		3	
Bowen Zhang	Planning / prep	publicity	2.25	
Wanci Xie	Visitor experience	invigilation	4	
Xiong Wei	Visitor experience	invigilation	4	
Roman Sheppard	Visitor experience	invigilation	5	
Qibing Yang	Visitor experience	invigilation	4	

Contributor	Task Main	Task Sub	Time worked	
Bowen Zhang	Visitor experience	invigilation	3	
Ziyi Wang	Visitor experience		2.5	
<b>411</b>	<b>BHL Open Studios</b>	<b>Total hours donated to project</b>	<b>348.25</b>	
Franki Austin	Planning / prep	publicity	2	
Lucile Montague	Planning / prep	publicity	1	
Neil Irons	General help		6	
YiMiao Shih	Publicity	poster	1.5	
YiMiao Shih	Studios Committee		3	
Pauline Evans	Studios Committee		3	
Charlotte Gerrard	Studios Committee		1	
Kally Laurence	Studios Committee		4	
Valerie Large	General help		2.75	
Franki Austin	Visitor experience	open studios	12	
Jonet Harley-Peters	Visitor experience	open studios	12	
Lucile Montague	Visitor experience	open studios	12	
William Stok	Visitor experience	open studios	12	
Valerie Large	Visitor experience	open studios	12	
Tam Joseph	Visitor experience	open studios	12	
Elizabeth de Monchaux	Visitor experience	open studios	12	
Emma Talbot	Visitor experience	open studios	12	
Neil Irons	Visitor experience	open studios	12	
Matthew Krishanu	Visitor experience	open studios	12	
Julie Caves	Visitor experience	open studios	12	
Pauline Evans	Visitor experience	open studios	12	
Daniela Rizzi	Visitor experience	open studios	12	
Charlotte Gerrard	Visitor experience	open studios	12	
Alessandro Graziani	Visitor experience	open studios	12	
Helen Maurer	Visitor experience	open studios	12	
Anja Borowicz	Visitor experience	open studios	12	
Barry Sykes	Visitor experience	open studios	12	

Contributor	Task Main	Task Sub	Time worked
Nickie Counsell	Visitor experience	open studios	12
Noga Shatz	Visitor experience	open studios	12
Kally Laurence	Visitor experience	open studios	12
Diane Chappalley	Visitor experience	open studios	12
Luigi Rizzo	Visitor experience	open studios	12
YiMiao Shih	Visitor experience	open studios	12
Rebecca Munday	Visitor experience	open studios	12
Katie Deith	Visitor experience	open studios	12
Lauren Little	Visitor experience	open studios	12
Emma Talbot	Did not participate		0
Rudy Loewe	Did not participate		0



**412 V-A-L-U-E / E17 Art Trail Total hours donated to project 86**

Neil Irons	Planning / prep	install exhibition	7
Neil Irons	Planning / prep	de-rig exhibition	3
Benjamin Parker	Visitor experience	work exhibited one	5
Mark Evans	Visitor experience	work exhibited one	5
Miguel Casarrubios	Visitor experience	work exhibited one	5
Michael Coppelov	Visitor experience	work exhibited one	5
Dominique Golden	Visitor experience	work exhibited one	5
Isobel Atacus	Visitor experience	work exhibited one	5
Stephen Keane	Visitor experience	work exhibited one	5
Helen Waites	Visitor experience	work exhibited one	5
Tom Stallard	Visitor experience	work exhibited one	5
Esther Hardie	Visitor experience	work exhibited one	5
Agota Szuly	Visitor experience	work exhibited one	5
Xuan Hoang	Visitor experience	work exhibited one	5
Helen Chambers	Visitor experience	work exhibited one	5
Nicola Morrison	Visitor experience	work exhibited one	5
Neil Irons	Planning / prep	Curation	6

Contributor

Task Main

Task Sub

Time worked


**413 GOLD!- BHL studio show Total hours donated to project 36.25**

Franki Austin	Visitor experience	work exhibited one	0.25
Jonet Harley-Peters	Visitor experience	work exhibited one	0.25
Lucile Montague	Visitor experience	work exhibited one	0.25
William Stok	Visitor experience	work exhibited one	0.25
Valerie Large	Visitor experience	work exhibited one	0.25
Tam Joseph	Visitor experience	work exhibited one	0.25
Elizabeth de Monchaux	Visitor experience	work exhibited one	0.25
Emma Talbot	Did not participate		0
Neil Irons	Visitor experience	work exhibited one	0.25
Matthew Krishanu	Did not participate		0
Julie Caves	Visitor experience	work exhibited one	0.25
Pauline Evans	Visitor experience	work exhibited one	0.25
Daniela Rizzi	Visitor experience	work exhibited one	0.25
Charlotte Gerrard	Visitor experience	work exhibited one	0.25
Alessandro Graziani	Visitor experience	work exhibited one	0.25
Helen Maurer	Visitor experience	work exhibited one	0
Anja Borowicz	Visitor experience	work exhibited one	0.25
Barry Sykes	Visitor experience	work exhibited one	0.25
Noga Shatz	Visitor experience	work exhibited one	0.25
Kally Laurence	Visitor experience	work exhibited one	0.25
Diane Chappalley	Did not participate		0
YiMiao Shih	Visitor experience	work exhibited one	0.25
Rebecca Munday	Visitor experience	work exhibited one	0.25
Katie Deith	Visitor experience	work exhibited one	0.25
Lauren Little	Visitor experience	work exhibited one	0.25
Neil Irons	Planning / prep	de-rig exhibition	3
Pauline Evans	Planning / prep	install exhibition	5
Daniela Rizzi	Planning / prep	install exhibition	5
Kally Laurence	Planning / prep	install exhibition	3

Contributor	Task Main	Task Sub	Time worked	
Daniela Rizzi	Planning / prep	Curation	14	
Amanda Whittle	Visitor experience	work exhibited one	0.25	
Sandie M Sutton	Visitor experience	work exhibited one	0.25	
Emma Shankland	Visitor experience	work exhibited one	0.25	
Edgar Ameti	Visitor experience	work exhibited one	0.25	
Luigi Rizzo	Did not participate		0	
<b>414</b>	<b>BAGT Editions #1 &amp; #2</b>	<b>Total hours donated to project</b>	<b>28.5</b>	
Neil Irons	Planning / prep	install exhibition	4	
Neil Irons	Planning / prep	de-rig exhibition	3	
Kally Laurence	Visitor experience	invigilation	5	
Pauline Evans	Visitor experience	invigilation	5	
Rebecca Munday	Visitor experience		5	
Neil Irons	Planning / prep	install exhibition	3.5	
Neil Irons	Planning / prep	de-rig exhibition	3	
<b>417</b>	<b>My Life My Leaf - William Stok</b>	<b>Total hours donated to project</b>	<b>26</b>	
William Stok	Planning / prep	exhibition planning	8	
William Stok	Planning / prep	install exhibition	6	
Valerie Large	Planning / prep	install exhibition	6	
Valerie Large	Planning / prep	press release	2	
William Stok	General help	de-rig exhibition	4	
<b>423</b>	<b>Dainiel &amp; Zachary Talbot-Mason</b>	<b>Total hours donated to project</b>	<b>65.5</b>	
Dainiel Talbot-Mason	Planning / prep	Curation	3	
Dainiel Talbot-Mason	Planning / prep	install exhibition	5	
Dainiel Talbot-Mason	Planning / prep	de-rig exhibition	2	
Dainiel Talbot-Mason	Planning / prep	publicity	2	
Dainiel Talbot-Mason	Visitor experience	invigilation	24	
Zachary Talbot-Mason	Visitor experience	invigilation	24	
Zachary Talbot-Mason	Planning / prep	install exhibition	4	
Zachary Talbot-Mason	Planning / prep	poster	1.5	

Contributor

Task Main

Task Sub

Time worked


**426 Words Matter - Eight Women Print Total hours donated to project 37.25**

Clare Smith	Planning / prep	Curation	4
Clare Smith	Visitor experience	invigilation	6
Clare Smith	Planning / prep	install exhibition	4
Clare Smith	Planning / prep	de-rig exhibition	3
Lorena Herrero	Planning / prep	Curation	4
Lorena Herrero	Planning / prep	install exhibition	4.75
Lorena Herrero	Planning / prep	de-rig exhibition	2
Lorena Herrero	Planning / prep	publicity	2.5
Lorena Herrero	Planning / prep	poster	1
Lorena Herrero	Visitor experience	invigilation	6

**427 Double Takes Total hours donated to project 156**

David Leister	Planning / prep	Curation	12
David Leister	Planning / prep	install exhibition	12
David Leister	Planning / prep	de-rig exhibition	12
David Leister	Planning / prep	poster	12
David Leister	Visitor experience	invigilation	12
Jason Shulman	Visitor experience	invigilation	12
Lucy Harris	Visitor experience	invigilation	12
Bea Haut	Visitor experience	invigilation	12
Mark Sowden	Visitor experience	invigilation	12
Theo Nidorest	Visitor experience	invigilation	12
Mark Sowden	Planning / prep	publicity	12
Mark Sowden	Planning / prep	de-rig exhibition	12
Theo Nidorest	Planning / prep	de-rig exhibition	12

**428 On The Wall - Dalton, Montague, Total hours donated to project 42**

Lesley Dalton	Visitor experience	invigilation	6
Lesley Dalton	Planning / prep	install exhibition	7
Lesley Dalton	Planning / prep	de-rig exhibition	2



Contributor	Task Main	Task Sub	Time worked
Lesley Dalton	Planning / prep	poster	2.5
Franki Austin	Planning / prep	publicity	1
Franki Austin	Visitor experience	invigilation	8
Lucile Montague	Planning / prep	publicity	1.5
Lucile Montague	Visitor experience	invigilation	6
Mark Wainwright	Planning / prep	install exhibition	7
Mark Wainwright	Planning / prep	de-rig exhibition	1
<b>429</b>	<b>Wintering Out</b>	<b>Total hours donated to project</b>	<b>78</b>
John Bischoff	Visitor experience	invigilation	4
Lesley Dalton	Planning / prep	install exhibition	7
Lesley Dalton	Visitor experience	invigilation	8
Lesley Dalton	Visitor experience	invigilation	2
Mark Wainwright	Planning / prep	install exhibition	7
Mark Wainwright	Visitor experience	invigilation	24
Harri Harrison	Visitor experience	invigilation	2
J J Morgan	Visitor experience	invigilation	2
Emily Frances Barrett	Visitor experience	invigilation	16
Lorena Herrero	Visitor experience	invigilation	2
Amy Petra Woodward	Visitor experience	invigilation	4



Project



AUDIENCE

Artist Project Category Status	Artists Actual Expected	Artists Talk Actual Expected	Attending Actual Expected	Audience Total	Artists' time in kind	
					Hours Days	Value
Totals actual	175	35	2197	2232	172.9	£24,200.0
Totals expected	181	50	2100	2150		

2024

Cancelled

AOW22 Residency

Shivani Khoshia

Cancelled

Completed

ArtWorks Open 2024

Mark Wainwright

34

230

23.0

35

200

3.3

£460.0

Completed

97.1%

115.0%

AWO Residency - NIMA Shafiani

NIMA Shafiani

1

n/a

1

n/a

Completed

100.0%

?

BAGT Editions #1 & #2

Mark Wainwright

20

175

26.0

20

200

3.7

£520.0

Completed

100.0%

87.5%

Barry Birthday Party

Barry Sykes

Completed

BHL Open Studios

450

343.3

350

49.0

£6,865.0

Completed

128.6%

Project



AUDIENCE

Artist	Project Category	Status	Artists Actual Expected	Artists Talk Actual Expected	Attending Actual Expected	Audience Total	Artists' time in kind Hours DaysValue	
Birthday Party								
Barry Sykes								
<div></div>								
Completed								
Dainiel & Zachary Talbot-Mason								
Dainiel Talbot-Mason								
<div></div>			2		70			62.3
			2		130			8.9
Completed			100.0%		53.8%			£1,245.0
Dearly Impossible. Unu Sohn								
Unu Sohn								
<div></div>			1		69			45.0
			1		50			6.4
Completed			100.0%		138.0%			£900.0
Double Dose 2 - Amanda Whittle, Nicola								
Nickie Counsell								
<div></div>			2		68			38.5
			2		50			5.5
Completed			100.0%		136.0%			£770.0
Double Takes								
David Leister								
<div></div>			6		65			156.0
			6		70			22.3
Completed			100.0%		92.9%			£3,120.0
Fragments of A Long Night								
Mohsen Zare								
<div></div>			1		80			88.0
			1		130			12.6
Completed			100.0%		61.5%			£1,760.0
GOLD!- BHL studio show								
<div></div>			27		290			32.3
			30		350			4.6
Completed			90.0%		82.9%			£645.0



Project



AUDIENCE

Artist	Project Category	Status	Artists Actual Expected	Artists Talk Actual Expected	Attending Actual Expected	Audience Total	Artists' time in kind	
							Hours Days	Value

In Circles

Valerie Large

<div></div>	1			70			31.0	
<div></div>	1			70			4.4	£620.0
Completed	100.0%			100.0%				

Isoble Atacus booking

Isobel Atacus

<div></div>								
Completed								

Keep It Simple Sexv – Slade Postgraduate

Danny Freevine

<div></div>	18	35		92			101.8	
<div></div>	18	50		70			14.5	£2,035.0
Completed	100.0%	70.0%		131.4%				

My Life My Leaf - William Stok

William Stok

<div></div>	1			96			23.5	
<div></div>	1			70			3.4	£470.0
Completed	100.0%			137.1%				

On The Wall - Dalton, Montague, Austin

Lesley Dalton

<div></div>	3			54			42.0	
<div></div>	3			85			6.0	£840.0
Completed	100.0%			63.5%				

Professional Development

Matthew Krishanu

<div></div>								
Completed								

Professional Development

YiMiao Shih

<div></div>								
Completed								

Project



AUDIENCE

Artist	Project Category	Status	Artists Actual Expected	Artists Talk Actual Expected	Attending Actual Expected	Audience Total	Artists' time in kind	
							Hours Days	Value
Rudy Loewe - Professional Development								
Rudy Loewe								
Completed								
Studio Residency Development								
Mark Wainwright								
Completed								
V-A-L-U-E / E17 Art Trail								
Neil Irons								
			15		220		83.0	
			15		100		11.9	£1,660.0
Completed			100.0%		220.0%			
Wintering Out								
Mark Wainwright								
			23		140		78.0	
			25		150		11.1	£1,560.0
Completed			92.0%		93.3%			
Words Matter - Eight Women Print								
Lorena Herrero								
			8		28		36.5	
			8		25		5.2	£730.0
Completed			100.0%		112.0%			
Work Experience								
Mark Wainwright								
Completed								
In Progress								
BAGT Editions #2								
Mark Wainwright								
			12					
			12					
In Progress			100.0%					