

BARBICAN ARTS GROUP TRUST
(A Company Limited by Guarantee)

REPORT
AND
ACCOUNTS

FOR THE YEAR ENDED 24TH DECEMBER 2022

Registered Charity Number: 1120918
Company Number: 6355408

BARBICAN ARTS GROUP TRUST
REPORT AND ACCOUNTS
FOR THE YEAR ENDED 24TH DECEMBER 2022

Contents

Page	2	:	Report of the Directors and Trustees
	7	:	Independent Examiner's Report
	8	:	Statement of Financial Activities
	9	:	Balance Sheet
	10	:	Notes to the Accounts
	14	:	Annual Report detailing achievements and objectives

BARBICAN ARTS GROUP TRUST
REPORT OF THE DIRECTORS AND TRUSTEES
FOR THE YEAR ENDED 24TH DECEMBER 2022

The following people were Directors/Trustees of the Charity on the date of approval of the Report.

<u>DIRECTORS/TRUSTEES</u>	<u>DATE ELECTED</u>
DANIEL DAHL	29 th August 2007
DOMO BAAL	23 rd August 2017
LIELA HASHAM	6 th January 2020
RUPERT MAUDE	12 th March 2020

BARBICAN ARTS GROUP TRUST
REPORT OF THE DIRECTORS AND TRUSTEES (Cont'd)
FOR THE YEAR ENDED 24TH DECEMBER 2022

The Trustees (who are also the Directors for the purpose of Company Law) have pleasure in presenting their Annual Report and the Financial Statements for the year ended 24th December 2022. The financial statements have been prepared in accordance with Accounting and Reporting by Charities: Statement of Recommended Practice (SORP) applicable to charities preparing their accounts in accordance with the Financial Reporting Standard applicable in the UK and Republic of Ireland (FRS 102) (effective 1 January 2015), with FRS 102 and with the requirements of the Companies Act 2006.

1. REFERENCE AND ADMINISTRATIVE DETAILS

Charity Name:	Barbican Arts Group Trust
Charity Registration:	1120918
Company Registration:	6355408
Registered Office:	32a, Hertford Road, London, N1 5SH.
Company Secretary:	Mr. M. Wainwright
Bankers:	HSBC Bank Plc, 74 Goswell Road, London EC1V 7DA
Independent Examiners	Southwell, Tyrrell & Co., Chartered Accountants, 15 Lower Ground Floor, 65 London Wall, London, EC2M 5TU.

2. OBJECTIVES AND ACTIVITIES

The purposes of the charity are:

- (a) the promotion and advancement of the visual arts in all their aspects for the public benefit and the furtherance of public knowledge, understanding and appreciation of the visual arts including arranging and holding exhibitions of artists work, and
- (b) the assistance of artists in necessitous circumstances particularly by the provision of accommodation, and
- (c) such other exclusively charitable objects and purposes (which without prejudice to the generality of the foregoing terms shall include any charitable trusts institutions foundations or other organisations) in the United Kingdom or in any other part of the world as the trustees shall in their discretion think fit.

BARBICAN ARTS GROUP TRUST
REPORT OF THE DIRECTORS AND TRUSTEES (Cont'd)
FOR THE YEAR ENDED 24TH DECEMBER 2022

2. OBJECTIVES AND ACTIVITIES (Cont'd)

The main activities undertaken during the year were:

- a) Projects for the year encompassed artists' residencies, open studios, solo/group shows.
- b) Blackhorse Lane Studios did not undertake Open Studios this year whilst the Project Space within studios hosted a number of exhibitions and development opportunities for the studio artists.
- c) Hertford Road Studios continued its exhibition programme which extended to both studio artists and artists not associated with Barbican Arts Group Trust.
- d) The vast majority of the expenses of the Charity relate to the rent, rates and insurance of the two studio buildings in Blackhorse Lane E17 and Hertford Road N1.

3. ACHIEVEMENTS AND PERFORMANCE

A detailed description of the activities of the Trust are given in the Annual Report which starts after page 13 of these accounts.

Investment Activities

The Charity does not currently hold any investments.

4. FINANCIAL REVIEW

Financial Position

Incoming resources in the year were £149,652 (2021: £168,275). Of this £0 (2021: £220) related to project restricted activities.

A surplus of £14,105 (2021: £36,066) was made in the year. At 24th December 2022, total reserves were £343,960 (2021: £329,855) of which £12,081 (2021: £12,081) represented restricted funds.

Reserves Policy

Barbican Arts Group Trust is required to ensure that free monies are available in each financial year to meet any reasonable foreseeable contingency.

Funds in Deficit

No funds were in deficit at the Balance Sheet date.

BARBICAN ARTS GROUP TRUST
REPORT OF THE DIRECTORS AND TRUSTEES (Cont'd)
FOR THE YEAR ENDED 24TH DECEMBER 2022

5. STRUCTURE, GOVERNANCE AND MANAGEMENT

Governing Document

Barbican Arts Group Trust is a registered charity and a Company Limited by Guarantee. The maximum liability of each member is limited to one pound. At 24th December 2022 the Company had 4 (2021 : 4) Members. Barbican Arts Group Trust is governed by its Memorandum and Articles of Association.

Barbican Arts Group Trust was incorporated as a Company limited by Guarantee on 29th August 2007. The Charity commenced operations on 29th August 2007 at which date the assets and liabilities of the unincorporated Barbican Arts Group Trust were acquired.

Recruitment, Appointment of Trustees

The Trustees are Directors of the Company. The main procedure for the appointment of Trustees is described in the Memorandum of Association, as is the procedure for the election of the Chair.

Organisational Structure

The Charity has no full or part-time employees, any administration work being performed by volunteers. All of the Trustees are unpaid.

Major Risks

The Trustees recognise that any major risks to which the Charity is exposed need to be reviewed and systems put in place to mitigate those risks. To that end Barbican Arts Group Trust is continually monitoring and managing its risk and ensuring action plans are in place to mitigate its key risks.

The Trustees are aware of the need to secure long-term accommodation for the artists it is assisting and are confident that matters will be clarified in the near future.

BARBICAN ARTS GROUP TRUST
REPORT OF THE DIRECTORS AND TRUSTEES (Cont'd)
FOR THE YEAR ENDED 24TH DECEMBER 2022

6. DIRECTORS' RESPONSIBILITIES

Company Law and Charity Law require the Directors to prepare financial statements for each financial year, which give a true and fair view of the state of affairs of Barbican Arts Group Trust and the surplus or deficit for that period. In preparing those financial statements, the Directors are required to:

- (a) select suitable accounting policies and then apply them consistently;
- (b) make judgements and estimates that are reasonable and prudent;
- (c) state whether applicable accounting standards have been followed, subject to any material departures disclosed and explained in the financial statements, and;
- (d) prepare the financial statements on the going concern basis unless it is inappropriate to presume that the Company will continue in operation.

The Directors are also responsible for keeping proper accounting records which disclose with reasonable accuracy at any time the financial position of Barbican Arts Group Trust and to enable them to ensure that the financial statements comply with the Companies Act 2006.

The Directors are responsible for ensuring that the Company maintains an adequate system of internal control designed to provide reasonable assurance that assets are safeguarded against material loss or unauthorised use and to prevent and detect fraud and other irregularities.

This Report has been prepared in accordance with the Statement of Recommended Practice - Accounting and Reporting by Charities and in accordance with the provisions of Part 15 of the Companies Act 2006 applicable to companies subject to the small companies regime.

.....
Company Secretary - M. Wainwright

.....
Director - D. Baal

Approved on behalf of the Board of Trustees on: 14th September 2023

BARBICAN ARTS GROUP TRUST
INDEPENDENT EXAMINER'S REPORT TO THE TRUSTEES OF
FOR THE YEAR ENDED 24TH DECEMBER 2022

I report to the charity trustees on my examination of the accounts of the charity for the year ended 24th December 2022 which are set out on pages 8 to 13.

RESPONSIBILITIES AND BASIS OF REPORT

As the charity trustees of the company (and also its directors for the purposes of company law) you are responsible for the preparation of the accounts in accordance with the requirements of the Companies Act 2006 ('the 2006 Act').

Having satisfied myself that the accounts of the company are not required to be audited under Part 16 of the 2006 Act and are eligible for independent examination, I report in respect of my examination of your company's accounts as carried out under section 145 of the Charities Act 2011 ('the 2011 Act'). In carrying out my examination I have followed the Directions given by the Charity Commission under section 145(5)(b) of the 2011 Act.

INDEPENDENT EXAMINER'S STATEMENT

I have completed my examination. I confirm that no matters have come to my attention in connection with the examination giving me cause to believe that in any material respect:

1. accounting records were not kept in respect of the company as required by section 386 of the 2006 Act; or
2. the accounts do not accord with those records; or
3. the accounts do not comply with the accounting requirements of section 396 of the 2006 Act other than any requirement that the accounts give a 'true and fair view' which is not a matter considered as part of an independent examination; or
4. the accounts have not been prepared in accordance with the methods and principles of the Statement of Recommended Practice for accounting and reporting by charities [applicable to charities preparing their accounts in accordance with the Financial Reporting Standard applicable in the UK and Republic of Ireland (FRS 102)].

I have no concerns and have come across no other matters in connection with the examination to which attention should be drawn in this report in order to enable a proper understanding of the accounts to be reached

S. R. Clark BSc ACA
Southwell, Tyrrell & Co.,
Chartered Accountants,
15 Lower Ground Floor,
65 London Wall,
London, EC2M 5TU.

Date: 14th September 2023

BARBICAN ARTS GROUP TRUST
STATEMENT OF FINANCIAL ACTIVITIES
FOR THE YEAR ENDED 24TH DECEMBER 2022

	<u>NOTE</u>	<u>UNRESTRICTED</u> <u>FUNDS</u>	<u>RESTRICTED</u> <u>FUNDS</u>	<u>TOTAL</u> <u>FUNDS</u> <u>2022</u>	<u>TOTAL</u> <u>FUNDS</u> <u>2021</u>
		£	£	£	£
Income:					
Donations		44,312	-	44,312	68,703
Other trading activities	2	855	-	855	3,799
Investment income	3	104,485	-	104,485	95,773
		<u> </u>	<u> </u>	<u> </u>	<u> </u>
Total income		£149,652	£-	£149,652	£168,275
		<u> </u>	<u> </u>	<u> </u>	<u> </u>
Expenditure:	4				
Charitable activities		133,687	-	133,687	130,391
Governance cost		1,860	-	1,860	1,818
		<u> </u>	<u> </u>	<u> </u>	<u> </u>
Total expenditure		£135,547	£-	£135,547	£132,209
		<u> </u>	<u> </u>	<u> </u>	<u> </u>
Net income/ (expenditure) for the year		14,105	-	14,105	36,066
Transfer between Funds		-	-	-	-
		<u> </u>	<u> </u>	<u> </u>	<u> </u>
Net movement in Funds		14,105	-	14,105	36,066
Fund Balances at 25 th December 2021		317,774	12,081	329,855	293,789
		<u> </u>	<u> </u>	<u> </u>	<u> </u>
Fund Balances at 24 th December 2022		£331,879	£12,081	£343,960	£329,855
		<u> </u>	<u> </u>	<u> </u>	<u> </u>

BARBICAN ARTS GROUP TRUST
BALANCE SHEET
AS AT 24TH DECEMBER 2022

	<u>Notes</u>	<u>2022</u>		<u>2021</u>	
		£	£	£	£
FIXED ASSETS					
Leasehold Improvements	5	16,310		19,745	
CURRENT ASSETS					
Debtors	6	11,000	11,000		
Cash at bank and in hand		347,711	327,674		
		—	—		
		358,711	338,674		
CREDITORS: amounts falling due within one year	7	(31,061)	(28,564)		
		—	—		
NET CURRENT ASSETS		327,650	310,110		
		—	—		
TOTAL ASSETS LESS CURRENT LIABILITIES		£343,960	£329,855		
		=====	=====		
TOTAL NET ASSETS		£343,960	£329,855		
		=====	=====		
RESTRICTED FUND	8-9	12,081	12,081		
UNRESTRICTED FUND	8-9	331,879	317,774		
TOTAL FUNDS		£343,960	£329,855		
		=====	=====		

The Directors are satisfied that the Company is entitled to exemption from the requirement to obtain an audit under Section 477 of the Companies Act 2006 and that the Members have not required the Company to obtain an audit in accordance with Section 476 of the Act.

The Directors acknowledge their responsibilities for complying with the requirements of the Companies Act 2006 with respect to accounting records and the preparation of Accounts.

The Accounts have been prepared in accordance with the provisions in Part 15 of the Companies Act 2006 applicable to companies subject to the small companies regime.

Approved on behalf of the Board of Trustees:

..... **D. Baal - Trustee**

Dated: 14th September 2023

BARBICAN ARTS GROUP TRUST
NOTES TO THE ACCOUNTS
FOR THE YEAR ENDED 24TH DECEMBER 2022

1. ACCOUNTING POLICIES

- a) The financial statements have been prepared in accordance with Accounting and Reporting by Charities: Statement of Recommended Practice (SORP) applicable to charities preparing their accounts in accordance with the Financial Reporting Standard applicable in the UK and Republic of Ireland (FRS 102) (effective 1 January 2015) – (Charities SORP (FRS 102)), with FRS 102 and with the requirements of the Companies Act 2006.

Barbican Arts Group Trust meets the definition of a public benefit entity under the FRS102. Assets and liabilities are initially recognised at historical cost or transaction value unless otherwise stated in the relevant accounting policy note(s).

- b) The Trustees consider that there are no material uncertainties about the Charity's ability to continue as a going concern.
- c) Income from donations and other trading activities is brought in as the income arises.
- d) Income from investments represents rental income receivable.
- e) Advantage has been taken within the provisions of the Statement of Recommending Practice to show on the Statement of Financial Activities expenditure classifications appropriate to the Charity.
- f) Leasehold Improvements initially recognised at historical cost and are being written off over the period of the lease (20 years).
- g) Trade and other debtors are recognised at the settlement amount due after any trade discount offered. Prepayments are valued at the amount prepaid net of any discounts due.
- h) Cash at bank and cash in hand only includes cash and the charity do not hold any other short-term/highly liquid investments.
- i) Creditors and provisions are recognised where the charity has a present obligation resulting from a past event that will probably result in the transfer of funds to a third party and the amount due to settle the obligation can be measured or estimated reliably. Creditors and provisions are normally recognised at their settlement amount after allowing for any trade discounts due.
- j) No cash flow statement has been prepared as the Charity falls within the exemption provisions of FRS 102 "Statement of cash flow".

2. INCOME FROM OTHER TRADING ACTIVITIES

	<u>2022</u>	<u>2021</u>
	£	£
Artists' fees received	-	3,279
Fundraising	855	520

Income from Artists' fees in both the current and previous years relate to unrestricted funds.
Income from Fundraising in the current year relating to restricted funds was £0 (2021: £220).

BARBICAN ARTS GROUP TRUST
NOTES TO THE ACCOUNTS (cont'd)
FOR THE YEAR ENDED 24TH DECEMBER 2022

3. INVESTMENT INCOME

	<u>2022</u> £	<u>2021</u> £
Rental income	104,485	95,773

All investment income in both the current and previous years relates to unrestricted funds.

4. ANALYSIS OF EXPENDITURE

	<u>2022</u> £	<u>2021</u> £
Charitable Activities:		
Studio rent, rates and insurance	113,342	111,951
Artists fees and materials	4,763	2,598
Trust Development	4,966	4,323
Repairs and maintenance	3,136	1,048
Promotional Activities	113	171
Cleaning	2,173	4,941
Legal Fees	53	53
Sundry Expenses including travel	1,706	1,871
Depreciation	3,435	3,435
	<u>133,687</u>	<u>130,391</u>
Governance cost:		
Independent examiners fee	1,860	1,818
	<u>£135,547</u>	<u>£132,209</u>

5. FIXED ASSETS

	Leasehold Improvements £
Cost	
At 25 th December 2021	68,693
At 24 th December 2022	<u>£68,693</u>
Depreciation	
At 25 th December 2021	48,948
Charge for year	3,435
At 24 th December 2022	<u>£52,383</u>
Net Book Value	
At 24 th December 2022	<u>£16,310</u>
At 24 th December 2021	<u>£19,745</u>

BARBICAN ARTS GROUP TRUST
NOTES TO THE ACCOUNTS (Cont'd)
FOR THE YEAR ENDED 24TH DECEMBER 2022

6. DEBTORS

	<u>2022</u> £	<u>2021</u> £
Studio Deposits	11,000	11,000
Trade	-	-
	<u>£11,000</u>	<u>£11,000</u>

7. CREDITORS: amounts falling due within one year

	<u>2022</u> £	<u>2021</u> £
Studio Deposits held	29,201	26,000
Trade Creditors and Accruals	1,860	2,564
	<u>£31,061</u>	<u>£28,564</u>

8. FUND ACCOUNTING

The Charity maintains various types of funds as follows:

a) **Restricted Funds**

These are amounts which have been put aside at the discretion of the Trustees. This Fund is maintained for the specific purpose of improving the public appreciation of art by way of, for example, the sponsoring of exhibitions in schools and other community facilities. It is built up by way of the net proceeds raised from the annual "Silent Auctions" and at 24th December 2022 had a balance of £12,081 (2021: £12,081).

b) **Unrestricted Fund**

This fund is expendable at the discretion of the Trustees in the furtherance of the objects of the Charity, such a fund being held in order also to finance both working capital and capital investment requirements. It is built up by the excess of investment income over general administrative expenses and by way of transfers to or from the restricted funds. At 24th December 2022, the fund had a balance of £331,879 (2021: £317,774).

BARBICAN ARTS GROUP TRUST
NOTES TO THE ACCOUNTS (Cont'd)
FOR THE YEAR ENDED 24TH DECEMBER 2022

9. ANALYSIS OF NET ASSETS BETWEEN FUNDS

	Restricted Fund	Unrestricted Fund	Total
	<u>£</u>	<u>£</u>	<u>£</u>
Leasehold Improvements	-	16,310	16,310
Debtors		11,000	11,000
Cash at Bank	12,081	335,850	347,711
Creditors: amounts falling due within one year	-	(31,061)	(31,061)
	<u>£12,081</u>	<u>£331,879</u>	<u>£343,960</u>
	=====	=====	=====

10. TRUSTEES REMUNERATION AND EXPENSES

None of the Trustees received any remuneration or expenses in the year [2021: NIL].

11. OTHER INFORMATION

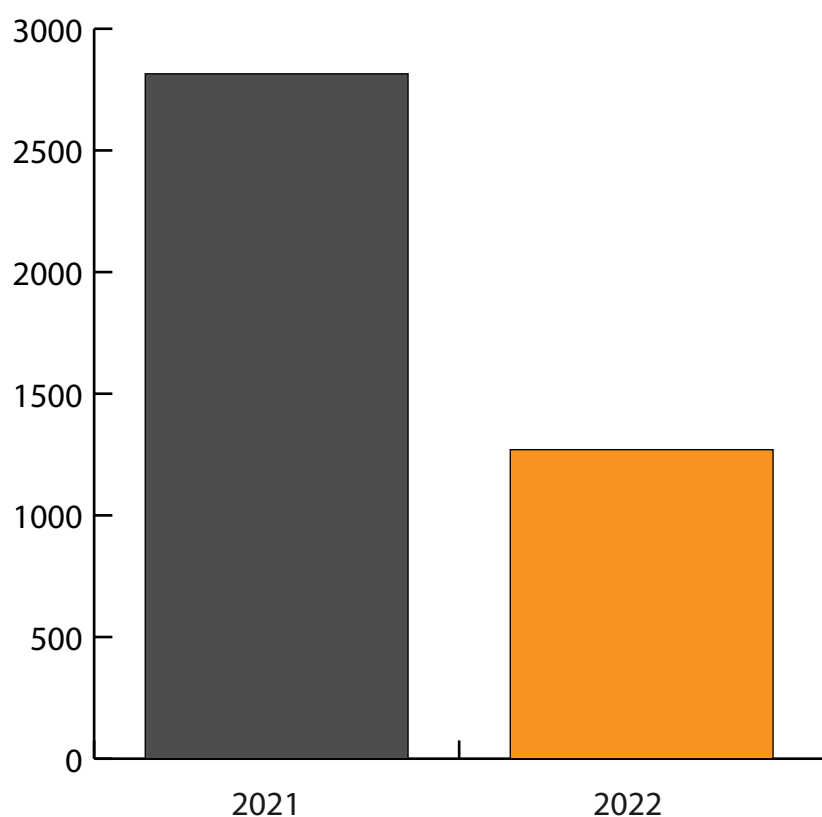
Barbican Arts Group Trust is a private company limited by Guarantee and incorporated in England. Its registered office is;
 32a, Hertford Road,
 London, N1 5SH.

BARBICAN ARTS GROUP TRUST

Annual Report - 2022

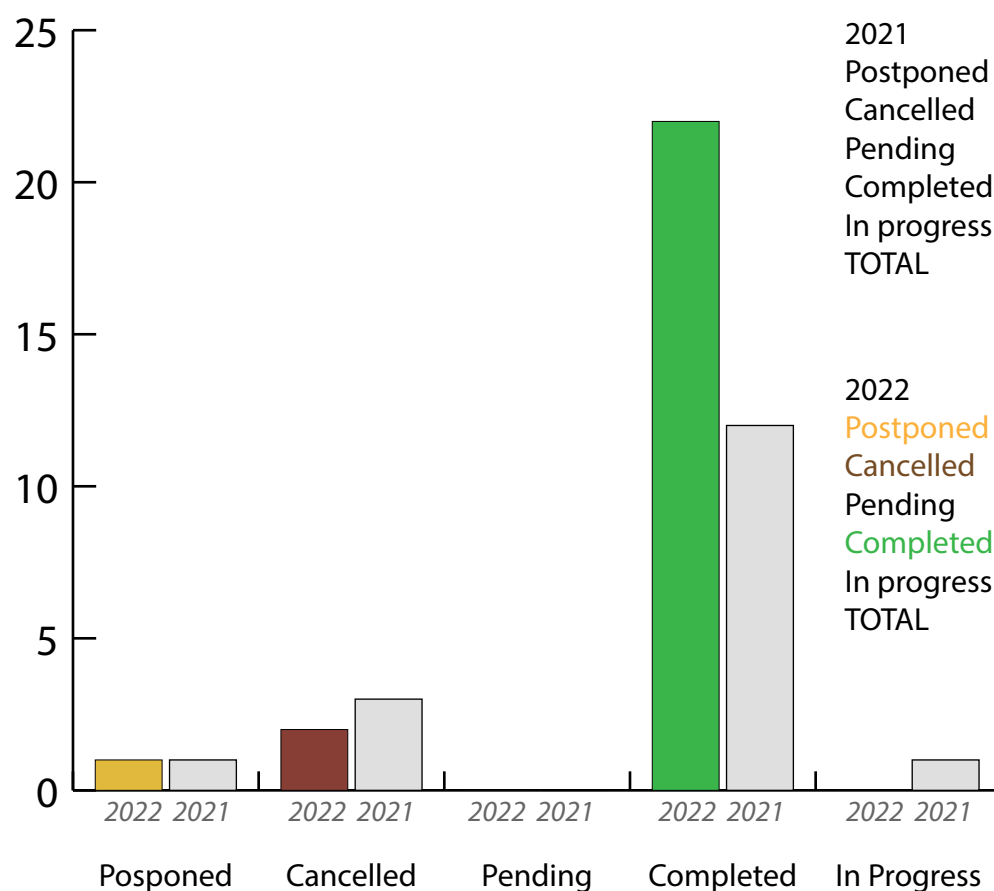
Reg Charity 1120918 / Company No 06355408
Report Cycle 4 - Phase 4





ArtWorks Open PV

AUDIENCE



2021	
Postponed	1 (6%)
Cancelled	3 (18%)
Pending	0 (0%)
Completed	12 (70%)
In progress	1 (6%)
TOTAL	17 (100%)

2022	
Postponed	1 (4%)
Cancelled	2 (8%)
Pending	0 (0%)
Completed	22 (88%)
In progress	0 (0%)
TOTAL	25 (100%)

PROJECTS 2022

Executive Director

1 Studio(s) Committee

- 1.1 Small maintenance
- 1.2 Cleaning supervision
- 1.3 Internal decoration
- 1.4 Internal studio allocation
- 1.5 Open Studios
 - 1.5.1 Silent auction sales
 - 1.5.2 Publicity
 - 1.5.3 Promotion
 - 1.5.3.1 PV card
 - 1.5.3.2 Mail-out
 - 1.5.4 Artists voluntary time
 - 1.5.5 Door & bar rota
- 1.6 Studio applications
- 1.7 Health & Safety
- 1.8 Studio Rules
- 1.9 Fire Risk
- 1.10 Personal Risk
- 1.11 Artists voluntary time

2 Studios

- 2.1 Insurance
 - 2.1.1 Public Liability
 - 2.1.2 Building Insurance
- 2.2 Open Studios
 - 2.2.1 Budgets
- 2.3 Lets
 - 2.3.1 Studio applications (with committee)
 - 2.3.2 Rents and other charges
- 2.4 Household
 - 2.4.1 Cleaning
 - 2.4.1.1 Budgets
- 2.5 Buildings
 - 2.5.1 Personal Risk
 - 2.5.2 Health & Safety
 - 2.5.3 Fire Risk
 - 2.5.4 Maintenance
 - 2.5.4.1 External
 - 2.5.4.1.1 Roof
 - 2.5.4.1.2 Windows
 - 2.5.4.1.3 Entrances
 - 2.5.4.2 Internal
 - 2.5.4.2.1 Windows
 - 2.5.4.2.2 Utilities
 - 2.5.4.2.3 Doors
 - 2.5.4.2.4 Plumbing

3 BAGT Administration

- 3.1 Appointments
- 3.2 Reports
- 3.3 Finances
- 3.4 Office
- 3.5 Subscriptions
- 3.6 Friends



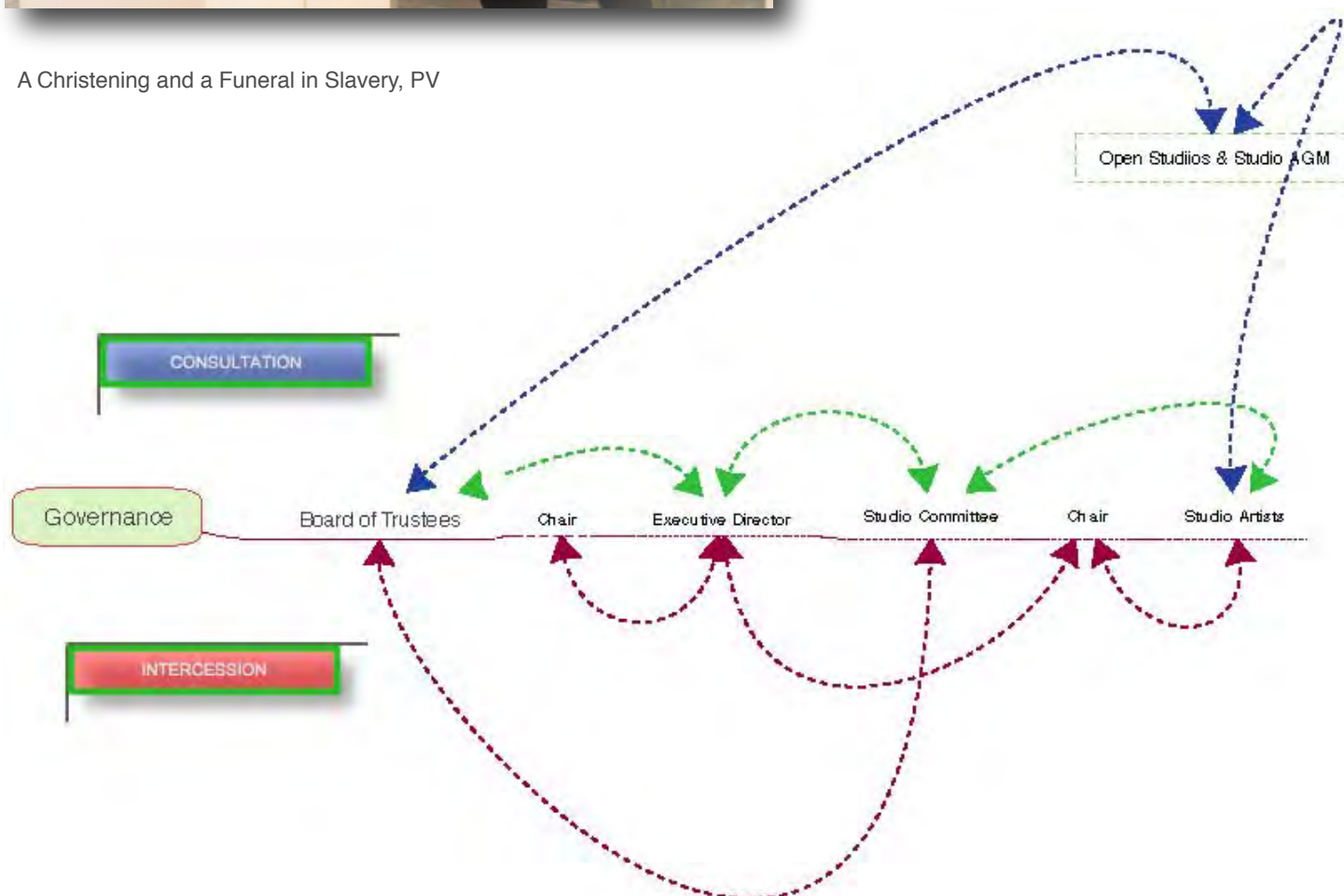
Julian King "Untitled", The Numbering, Atrium Space

4 Development: ArtWorks Public Programme

- 4.1 Outreach
 - 4.1.1 Residencies
 - 4.1.1.1 Business
 - 4.1.1.2 Educational establishments
 - 4.1.1.3 Studio
 - 4.1.2 Studio exchange
 - 4.1.2.1 National
 - 4.1.2.2 International
 - 4.1.3 Workshops
- 4.2 ArtWorks Project Space
 - 4.2.1 Workshops
 - 4.2.1.1 Film editing
 - 4.2.1.2 Life class
 - 4.2.1.3 Animation
 - 4.2.1.4 Sculpture
 - 4.2.2 Talks
 - 4.2.3 Hire
 - 4.2.4 Exhibitions
 - 4.2.4.1 ArtWorks Open Exhibition
 - 4.2.4.2 Curated Exhibitions
 - 4.2.4.3 BAGT artists
 - 4.2.4.4 Other artists
 - 4.2.4.5 Student Exhibitions
- 4.3 Professional Development
 - 4.3.1 BAGT artists
 - 4.3.2 BAGT Staff & Trustees
 - 4.3.3 Non BAGT artists



A Christening and a Funeral in Slavery, PV





Sasan Sahafi - Artist In Residence

Exhibitions taking place at Atrium Space, Hertford Road, increased by 200%, averaging one show every 2 months. All of these were spearheaded by Hertford Road Studio artists.

Artists at Blackhorse Lane Studios, whilst not able to host Open Studios, launched an on line exhibition ("Virtually Collectable") that included completed work from the on-line Open Studios of last year.

In all, across the two studio buildings and project spaces, there was an increase of 108% completed projects; totalling 25 in number.

Artists contributed 113 days of voluntary time to these activities, at a value of £15,820.

Negotiations concerning the 5-year rent review commenced in July of the year. No agreement had been reached by December, by which time negotiating surveyors had been commissioned. Negotiations will continue in January 2023.



Jayne-Anita Smith, "A Fragile State"
ArtWorks Project Space



Peter Sutton "Threshold",
Four Corners, Atrium Space



Polam Chan, "Contained Circulation"
ArtWorks Open

Objectives

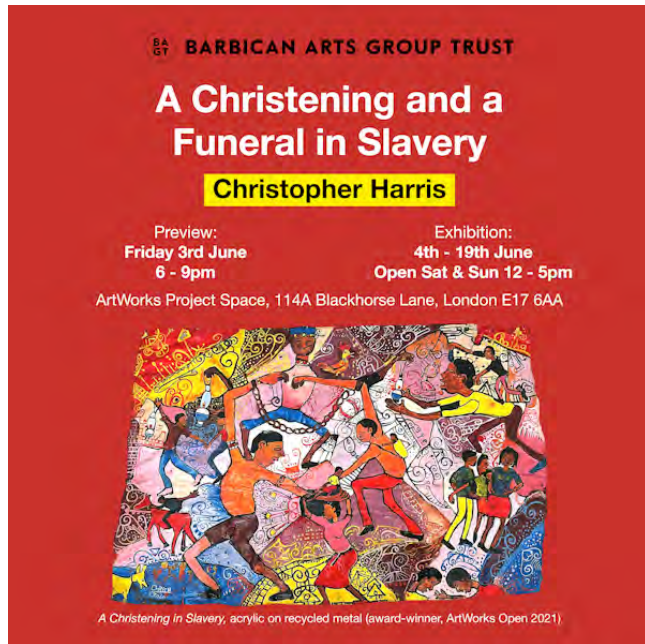
- Revive and extend Atrium Space exhibition programme.
- Negotiate favourable Rent Review for Blackhorse Lane Studios
- Reinstate Blackhorse Lane Open Studios to visiting public.



"Judd", Artworks Project Space, Slade MA/MFA Students

A Christening and a Funeral in Slavery

Christopher Harris
ArtWorks Project Space



Christopher Harris lives and works in the parish of St Catherine, Jamaica. His father's side of the family were Maroons, descendants of escaped slaves who set up independent communities in the mountainous, inaccessible regions of Jamaica.

His work is concerned with the contradictions of present-day Jamaican society. It examines how slavery, colonialism and neo-colonialism feed into what he sees and experiences around him. 'In this country, the brutality of slavery is interwoven with the spiritual customs and beliefs carried down from our forefathers.'

'I am blessed in sensing and seeing my ancestors, including my beloved father in my daily life, especially when I produce my work. My art is guided by them.'



Sasan Sahafi - Artists in Residence
ArtWorks Project Space



Sasan Sahafi is a London-based artist. Following a 20-year career as an Architectural Designer, Sasan changed his journey in 2021 to focus on art.

“The Void: Collision” is an abstract artefact of such an observation. Movement does not only exist within isolated individual voids, but intersects, impacts, collides and works together, giving opportunity for unique possibilities.

In the pipeline of life, individual experiences intersect and become shared. The collision always changes the individual. Our paths are not unique without the contributions of others...



Achievements



JUDD - Slade MFA Fine Art Media
ArtWorks Project Space



JUDD, an exhibition of work by final year MA/MFA media students from the Slade School of Art.

Participating :

Gillies Adamson Simple, Samuel Atkins, Maggie Barrett, Zhuoran Chen, James Patrick Cox, Ládáin Éire, Songwon Han, Yu Han, Ed Haslam, Yifan He, Elora Kadir, Marie Larsen, Gal Leshem, Jo McGarry, Louis Blue Newby, Max Norton, Eva Popović, Zhongyao Su, Ngo Chun Tse, Yanan Zhu, Yirou Zhou



Achievements



World Famous Babylon

Jake Hasapopoulos Lucia Farrow Mila Rowyszyn Arlette

ArtWorks Project Space



We have found Solitude and purgatory within a dark lit post-juvenile roadside resurrection of the final years of freedom, a time that some may call the origin of the future. Through calling upon the industrial framework that bred designer teens, we have provided an altar to our coming of age manifesto, written from a birds eye view. We were Birthed in nature, bred in a lab and educated to the highest level we could reach. Re-born Virgins who speak in tongues streaming to the masses. Growing information out of the linoleum flooring, letting fungi tower over us. Sacredly and neurotically holding onto the past in an attempt to re-live the melancholia we all wish to feel, time and time again.



A Fragile State - Jayne-Anita Smith ArtWorks Project Space



A FRAGILE STATE
Jayne-Anita Smith

Private View Friday 15th July 6pm - 8pm
15th July - 30th July - Open Friday & Weekends 1pm - 5pm
ArtWorks Project Space, Berlin Art Group Trust, 11A Blackhorse Lane London E3 7BA



These paintings are from an ongoing series of works, Monuments and Echoes, made in response to both personal and collective loss over the past couple of years. Despite the global pandemic, global warming and imminent threat of war, we are intent on getting everything 'back to normal', although seeming still to be set on a path of self destruction.

Jayne-Anita's processes are informed by an investigation into the conflict between the spiritual and physical, in a society where the contemporary focus is very much on materiality and where the eternal pursuit of the sublime is often lost



FEED - Simon Leahy-Clark ArtWorks Project Space



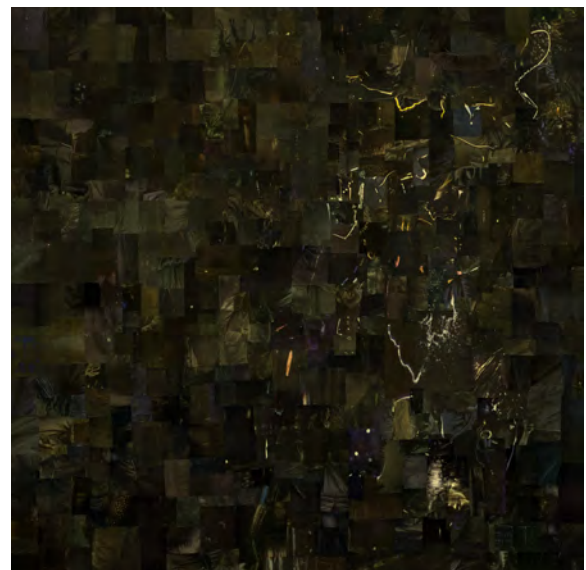
In his solo exhibition FEED, Simon Leahy-Clark presents large scale newspaper collages made over the last 4 years, including two new works made specifically for the Artworks Project Space.

These black collage works explore painterly language and mark-making through the editing, dislocating and the eventual re-coalescing of photographs from daily newspapers. Various gradients of dark tones, with occasional disturbances of highlights, lines and objects, are collaged onto a canvas surface, creating what appears to be an action or monochrome painting. The static images are re-animated into a new frozen moment of making.



Aside from the lines on the surface, the shape of the cuttings play an important part in the work. Being all square or rectangle they lend the work a pixelated aesthetic, albeit in a glitchy, post-digital manner. The accumulation of hundreds of these truncated pictures replicates our modern ways of swiping or flicking through the vast amount of imagery we now consume in the high-speed digital world - a feed of fleeting form and content.

The installation will incorporate artist-made seating to complement the work.



Particles Of Uncertainty - Mark Bell ArtWorks Project Space



ArtWorks Project Space : Barbican Arts Group Trust
 20th - 29th May 2022 Gallery open Fri 20th 27th Sat 21st 28th Sun 22nd 29th 12pm - 5pm
 Artist talks: Fri 27th & Sat 28th 1pm
 114A Blackhorse Lane London E17 6AA

'Particles of Uncertainty' is a new cycle of five large-format paintings by London based artist Mark Bell. The cycle focuses on figurative work and continues with an existentialist tone that is often evident in the artist's work. Over arching themes of the cycle are violence, Nature, kinship, and the cosmos, which are seen here as fundamental particles of existence in all their uncertainty. The work is not deliberately dystopian, but comments on an understanding of reality.

Characteristic of the five works is the use of sheet aluminium, one of Bell's signature materials for its contemporary quality that is both seductive and aesthetically satisfying, yet with a sense of neutral cold permanence. Bell's previous works on aluminium span over figurative, textual, and mixed media work.



Bad Language

Katrina Blannin - Caterina Lewis - Neil Zakiewicz

Atrium Space

Bad Language.

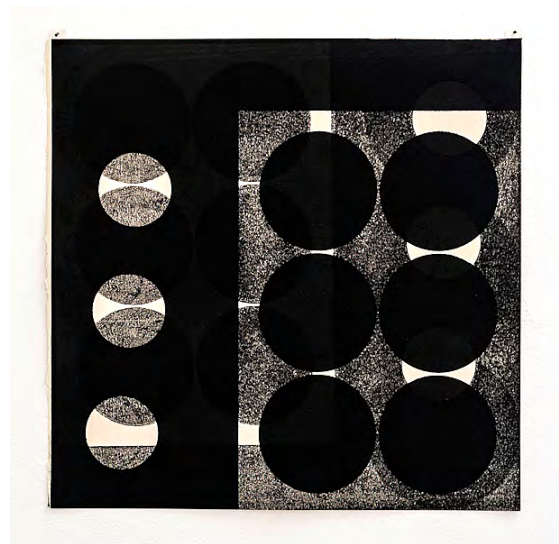
Opening 11th March 6-8pm

Katrina Blannin
Caterina Lewis
Neil Zakiewicz

Atrium Space, 32A Hertford Rd, N1 5SG
Exhibition opening times:
12th, 13th, 19th & 20th March, 12-5pm
Or by appointment.



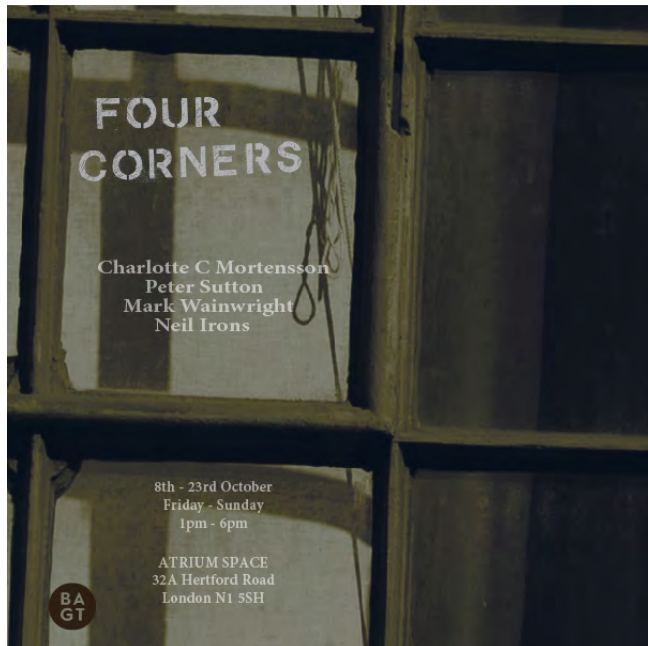
As written language can be reduced to letters and punctuation, these works strip down everything bar the essential. The processes used are laid bare and to an extent dictate the visual proposition of the works. The apparent directness at first glance suggests clear, perhaps even logical meanings but this logic often loops back on itself. Repetition, masking and the artists' hand result in chance and the incidental. These very human instances create a deep ambiguity. As if a sentence is begun and veers off into a quite different one.



Four Corners

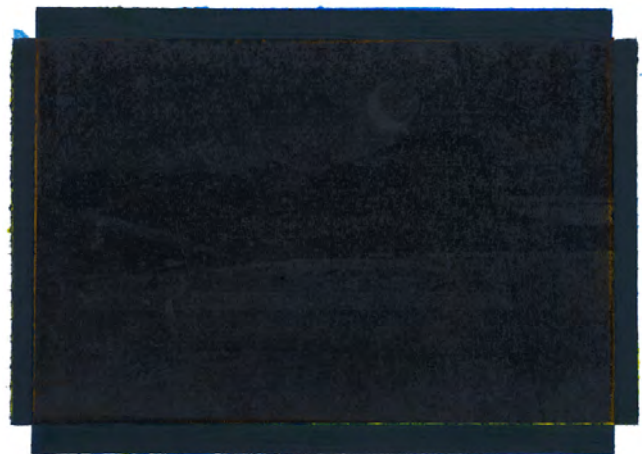
Charlotte C Mortensson Peter Sutton
Mark Wainwright Neil Irons

Atrium Space



The works in the exhibition were not selected as such, each artist merely asked to bring what they chose to the table. It was important to include artists with a connection to Barbican Arts Group Trust. They share the values of community and camaraderie that so characterised the practice and life of the Artists that set BAGT up in the nineteen seventies.

Neil has curated a number of shows at ArtWorks Project Space. His help and encouragement has greatly benefited those he has worked with. Charlotte has frequently helped organising exhibitions at Artworks Project Space and Atrium Space. Peter, in his capacity as Production Manager for the Barbican Art Gallery, initiated the recycling of materials for the development of the exhibition spaces and the studios at both buildings.



Recollect

Georgina Griffiths . Emily Bellhouse . Tansy Hargan

Atrium Space



Recollect brings together a diverse collection of works on glass, textiles and paper by three different artists. Although their approaches are highly distinctive, common themes are clear to see. The accumulation and reconfiguration of found materials - from discarded textiles and window glass to obsolete technology - is prevalent in many pieces. The reuse of unwanted materials reflects a strong connection with the past and a curiosity about how memories may be perceived within objects and distorted or reinvented over time. Landscapes - whether real or imagined - are a recurrent subject; the processes of layering and destruction that form them are often reflected and echoed by the artists in the innovative techniques they use to create their work.



A Fragile State - Jayne-Anita Smith
Atrium Space

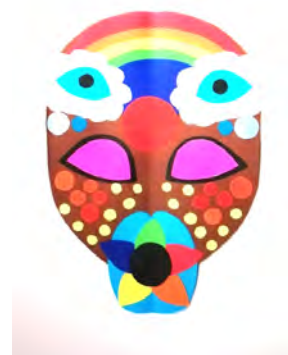


My name is Majik and I make collage and paper art.

My art is self taught and spontaneous. My aesthetic is bold colours, symmetry and shapes, patterns and symbols. I'm interested in exploring community and identity; modern expressions of African art and culture; the intersection of spirituality with psychedelia; and queer and punk cultures.

This exhibition showcases the art I've been making prolifically over the past two years. It began as a response to my feelings of isolation during the pandemic lock down. I covered my walls with colourful cheerful faces and disembodied mouths, to keep me company. I minimised my demons by making them art and putting them where I could confront them.

Through my work I attempt to explore an ongoing conversation around representations myself, my community and my heritage as a queer person of African descent.



The Numbering - Christmas Print Show Atrium Space



The Numbering, Christmas Print show featured BAGT print Edition #1 prints, together with those of Hertford Road studio artists and their guests.



- Increase scope of Atrium Space Exhibitions
- Reinstate Blackhorse Lane Open Studios
- Settle Blackhorse Lane Studios Rent Review



Project



AUDIENCE

Project		AUDIENCE				BAGT	
Artist	Project Category	Artists	Artists Talk	Attending	Audience Total	Artists' time in kind	
Status		Actual Expected	Actual Expected	Actual Expected		Hours Days	Value
Totals actual		98	78	1192	1270	113.0	£15,820.0
Totals expected		105	55	1005	1060		
Professional development							
Julika Gittner							
Artist Development							
Completed							
Professional Development							
Helen Maurer							
Artist Development							
Completed							
JUDD- Slade Student Show							
BAGT Project		21		70		64.5	
		21		50		9.2	£1,290.0
Completed		100.0%		140.0%			
Professional Development							
Elizabeth de Monchaux							
Completed							
Bad Language							
Caterina Lewis							
		3		75		45.3	
		3		50		6.5	£905.0
Completed		100.0%		150.0%			
Artist in Residence - Sasan							
Sasan Sahafi							
BAGT Project		1		40		24.5	
		1		50		3.5	£490.0
Completed		100.0%		80.0%			

Project



AUDIENCE

Artist	Project Category	Status	Artists Actual Expected	Artists Talk Actual Expected	Attending Actual Expected	Audience Total	Artists' time in kind Hours DaysValue	
Particles of Uncertainty - Mark Bell								
Mark Bell								
			1	8	70		48.5	
			1	10	50		6.9	£970.0
Completed			100.0%	80.0%	140.0%			
recollect - Georgina Griffiths								
Georgina Griffiths								
			3		48		46.8	
			3		50		6.7	£935.0
Completed			100.0%		96.0%			
Christopher Harris - Solo Show								
Charlotte C. Mortensson								
BAGT Project			1		95		96.5	
			1		50		13.8	£1,930.0
Completed			100.0%		190.0%			
WORLD FAMOUS BABYLON - Central St								
Jake Hasapopoulos								
BAGT Project			4	35	112		90.0	
			4	20	50		12.9	£1,800.0
Completed			100.0%	175.0%	224.0%			
Due Show - Daniek & Zachary Talbot-Mason								
Dainiel Talbot-Mason								
Cancelled								
Atrium Show								
Richard Liley								
Cancelled								
Jayne-Anita Smith - A Fragile State								
Jayne Anita Smith								
BAGT Project			1		42		36.0	
			1		50		5.1	£720.0
Completed			100.0%		84.0%			

Project



AUDIENCE

Artist	Project Category	Status	Artists Actual Expected	Artists Talk Actual Expected	Attending Actual Expected	Audience Total	Artists' time in kind Hours Days	Value
Majik - Friends & Demons								
Majik			1		51		38.8	
			1		50		5.5	£775.0
Completed			100.0%		102.0%			
Professional Development								
Franki Austin								
Completed								
ArtWorks Open Residency - Katya Granova								
Katya Granova			1	34	34		40.0	
			1	25	25		5.7	£800.0
Completed			100.0%	136.0%	136.0%			
Photoshoot - Tam Joseph								
Tam Joseph								
Completed								
Four Corners								
Mark Wainwright			4		200		136.0	
			4		130		19.4	£2,720.0
Completed			100.0%		153.8%			
Simon Leahy-Clark - FEED								
Simon Leahy-Clark			1	1	65		49.0	
			1		50		7.0	£980.0
Completed			100.0%	?	130.0%			
ArtWorks Open 2022								
Mark Wainwright			34		270		25.0	
			35		300		3.6	£500.0
Completed			97.1%		90.0%			

Project



AUDIENCE

Artist		Project Category		Artists		Artists Talk		Attending		Audience Total		Artists' time in kind	
Status				Actual	Expected	Actual	Expected	Actual	Expected			Hours	Value
												Days	
Hertford Road Print Show													
Mark Wainwright													
				22			20					50.3	
				28			50					7.2	£1,005.0
Completed				78.6%			40.0%						
Atrium Show													
Amanda Lwin													
Postspend													
Professional Development													
Emma Talbot													
Completed													
Barry Birthday Party													
Barry Sykes													
Completed													
Professional development													
Alessandro Graziani													
Completed													

Contributor	Task Main	Task Sub	Time worked	
2022	Total Time worked 791	Total days/Year 113	Value	£15,820.00
342	Particles of Uncertainty - Mark Bell	Total hours donated to project	48.5	
Mark Bell	Planning / prep		7	
Mark Bell	Planning / prep	install exhibition	3.5	
Mark Bell	Planning / prep	publicity	4	
Mark Bell	Planning / prep	poster	1.5	
Mark Bell	Visitor experience	invigilation	30	
Mark Bell	Visitor experience	Artist Talk	2.5	
353	Christopher Harris - Solo Show	Total hours donated to project	96.5	
Charlotte C. Mortensson	Planning / prep		21	
Charlotte C. Mortensson	Planning / prep	install exhibition	5	
Charlotte C. Mortensson	Planning / prep	press release	0.5	
Charlotte C. Mortensson	Visitor experience	invigilation	30	
Christopher Harris	Planning / prep	install exhibition	5	
Christopher Harris	Visitor experience	invigilation	30	
Mark Wainwright	Planning / prep	install exhibition	5	
354	Artist in Residence - Sasan	Total hours donated to project	24.5	
Sasan Sahafi	Planning / prep		4	
Sasan Sahafi	Planning / prep	install exhibition	3.5	
Sasan Sahafi	Planning / prep	poster	1	
Sasan Sahafi	Planning / prep	publicity	2	
Sasan Sahafi	Visitor experience	invigilation	14	
355	Bad Language	Total hours donated to project	45.25	
Caterina Lewis	Planning / prep		7	
Neil Zakiewicz	Planning / prep		2	
Katrina Blannin	Planning / prep		2	
Katrina Blannin	Planning / prep	install exhibition	3.5	
Neil Zakiewicz	Planning / prep	install exhibition	2	
Caterina Lewis	Planning / prep	install exhibition	3.25	
Caterina Lewis	Planning / prep	publicity	2	
Katrina Blannin	Planning / prep	poster	3.5	
Caterina Lewis	Visitor experience	invigilation	10	
Katrina Blannin	Visitor experience	invigilation	6	
Neil Zakiewicz	Visitor experience	invigilation	4	
356	JUDD- Slade Student Show	Total hours donated to project	64.5	
Yirou Zhou	Planning / prep	exhibition participant	1.5	
Gillies Adamson Simple	Planning / prep	exhibition participant	1.5	
Samuel Atkins	Planning / prep	exhibition participant	1.5	
Maggie Barrett	Planning / prep	exhibition participant	1.5	
Zhuoran Chen	Planning / prep	exhibition participant	1.5	
James Patrick Cox	Planning / prep	exhibition participant	1.5	
Líadáin Eire	Planning / prep	exhibition participant	1.5	
Songwon Han	Planning / prep	exhibition participant	1.5	



Contributor	Task Main	Task Sub	Time worked	BAGT
Yu Han	Planning / prep	exhibition participant	1.5	
Ed Haslam	Planning / prep	exhibition participant	1.5	
Yifan He	Planning / prep	exhibition participant	1.5	
Elora Kadir	Planning / prep	exhibition participant	1.5	
Marie Larsen	Planning / prep	exhibition participant	1.5	
Gal Leshem	Planning / prep	exhibition participant	1.5	
Jo McGarry	Planning / prep	exhibition participant	1.5	
Louis Blue Newby	Planning / prep	exhibition participant	1.5	
Eva Popović	Planning / prep	exhibition participant	1.5	
Zhongyao Su	Planning / prep	exhibition participant	1.5	
Ngo Chun Tse	Planning / prep	exhibition participant	1.5	
Yanan Zhu	Planning / prep	exhibition participant	1.5	
Yirou Zhou	Planning / prep	exhibition participant	1.5	
Max Norton	Planning / prep	exhibition participant	1.5	
Marie Larsen	Planning / prep	exhibition planning	7	
Maggie Barrett	Planning / prep	exhibition planning	7	
Líadain Eire	Visitor experience	install exhibition	4	
Gillies Adamson Simple	Visitor experience	install exhibition	4	
Gillies Adamson Simple	Visitor experience	install exhibition	2	
Eva Popović	Publicity	exhibition participant	3	
Jo McGarry	Publicity	invite	1.5	
Samuel Atkins	General help		3	
358	recollect - Georgina Griffiths	Total hours donated to project	46.75	
Georgina Griffiths	Planning / prep		6	
Georgina Griffiths	Planning / prep	install exhibition	4	
Georgina Griffiths	Planning / prep	publicity	1.25	
Georgina Griffiths	Planning / prep	poster	2	
Georgina Griffiths	Visitor experience	invigilation	12	
Emily Bellhouse	Planning / prep		2	
Emily Bellhouse	Visitor experience	exhibition planning	2	
Emily Bellhouse	Planning / prep	install exhibition	3	
Emily Bellhouse	Visitor experience	invigilation	5	
Tansy Hargan	Planning / prep		1.75	
Tansy Hargan	Planning / prep	install exhibition	2.75	
Tansy Hargan	Visitor experience	invigilation	5	
360	Four Corners	Total hours donated to project	136	
Charlotte C. Mortensson	Planning / prep	Curation	3	
Mark Wainwright	Planning / prep	Curation	3	
Mark Wainwright	Planning / prep		1	
	Planning / prep		1	
Neil Irons	Planning / prep		1	
Charlotte C. Mortensson	Planning / prep		1	
Mark Wainwright	Publicity	Catalogue	1.5	
Charlotte C. Mortensson	Planning / prep	Catalogue	1	

Contributor	Task Main	Task Sub	Time worked	BAGT
Mark Wainwright	Planning / prep		1	
Neil Irons	Planning / prep		2	
Mark Wainwright	Planning / prep	Catalogue	21	
Charlotte C. Mortensson	Planning / prep	Catalogue	3	
Charlotte C. Mortensson	Planning / prep	Catalogue	6	
	Planning / prep	install exhibition	8	
Mark Wainwright	Planning / prep	install exhibition	8	
Neil Irons	Planning / prep	install exhibition	5	
Charlotte C. Mortensson	Planning / prep	install exhibition	8	
Charlotte C. Mortensson	Planning / prep	signage	5	
Mark Wainwright	Planning / prep	poster	1.5	
Neil Irons	Planning / prep		7	
Charlotte C. Mortensson	Planning / prep		2	
Mark Wainwright	Planning / prep		2	
	Planning / prep		2	
Neil Irons	Planning / prep		2	
	Visitor experience	invigilation	5	
	Visitor experience	invigilation	5	
Neil Irons	Visitor experience	invigilation	5	
Neil Irons	Visitor experience	invigilation	5	
Neil Irons	Visitor experience	invigilation	5	
Charlotte C. Mortensson	Visitor experience	invigilation	5	
Charlotte C. Mortensson	Visitor experience	invigilation	5	
Charlotte C. Mortensson	Visitor experience	invigilation	5	
365	Majik - Friends & Demons	Total hours donated to project	38.75	
Majik	Planning / prep		6	
Majik	Planning / prep	install exhibition	6.5	
Majik	Publicity	press release	1	
Majik	Publicity	poster	1.25	
Majik	Visitor experience	invigilation	24	
366	WORLD FAMOUS BABYLON -	Total hours donated to project	90	
ARLETTE	Planning / prep		2	
Lucia Farrow	Planning / prep		2.5	
Jake Hasapopoulos	Planning / prep		7	
Mila Rowyszyn	Planning / prep		3	
Mila Rowyszyn	Planning / prep	install exhibition	4	
Jake Hasapopoulos	Planning / prep	install exhibition	5	
ARLETTE	Planning / prep	install exhibition	2	
Lucia Farrow	Planning / prep	install exhibition	4	
Jake Hasapopoulos	Publicity	poster	2	
Jake Hasapopoulos	Publicity	press release	1	
Mila Rowyszyn	Publicity	press release	2	
ARLETTE	Publicity	press release	0.5	
Lucia Farrow	Planning / prep	invite	1	

Contributor	Task Main	Task Sub	Time worked	
Jake Hasapopoulos	Visitor experience	invigilation	14	
Lucia Farrow	Visitor experience	invigilation	14	
Mila Rowyszyn	Visitor experience	invigilation	12	
ARLETTE	Visitor experience	invigilation	14	
367	Jayne-Anita Smith - A Fragile State	Total hours donated to project	36	
Jayne Anita Smith	Planning / prep	install exhibition	7	
Jayne Anita Smith	General help	de-rig exhibition	3	
Jayne Anita Smith	Visitor experience	invigilation	6	
Mark Wainwright	Visitor experience	invigilation	20	
368	ArtWorks Open 2022	Total hours donated to project	25	
Neil Irons	Planning / prep	install exhibition	5	
Louise Ashcroft	Planning / prep	selector	6	
Louise Ashcroft	Prize Awards		4	
JASLEEN KAUR	Planning / prep	selector	6	
JASLEEN KAUR	Prize Awards		4	
369	ArtWorks Open Residency - Katya	Total hours donated to project	40	
Katya Granova	Planning / prep		2	
Katya Granova	Planning / prep	install exhibition	1.5	
Katya Granova	Visitor experience	invigilation	36	
Katya Granova	Planning / prep	poster	0.5	
370	Simon Leahy-Clark - FEED	Total hours donated to project	49	
Simon Leahy-Clark	Planning / prep		5	
Simon Leahy-Clark	Visitor experience			
Simon Leahy-Clark	Visitor experience	invigilation	36	
Simon Leahy-Clark	Publicity	invite	1.5	
Simon Leahy-Clark	Visitor experience	install exhibition	4.5	
Simon Leahy-Clark	General help	de-rig exhibition	2	
?	Hertford Road Print Show	Total hours donated to project	50.25	
Franki Austin	Visitor experience	work exhibited one	0.25	
Franki Austin	Visitor experience	exhibition participant	1	
Timothy Hyman RA	Visitor experience	work exhibited one	0.25	
Timothy Hyman RA	Visitor experience	exhibition participant	1	
John Bischoff	Visitor experience	work exhibited one	0.25	
John Bischoff	Visitor experience	exhibition participant	1	
Lesley Dalton	Visitor experience	work exhibited one	0.25	
Lesley Dalton	Visitor experience	exhibition participant	1	
Lucile Montague	Visitor experience	work exhibited one	0.25	
Lucile Montague	Visitor experience	exhibition participant	1	
Mark Wainwright	Visitor experience	work exhibited one	0.25	
Mark Wainwright	Visitor experience	exhibition participant	1	
Mark Wainwright	Planning / prep		6	
Mark Wainwright	Planning / prep	install exhibition	4	
Mark Wainwright	Visitor experience	invigilation	12	



Contributor	Task Main	Task Sub	Time worked
Valerie Large	Visitor experience	work exhibited one	0.25
Valerie Large	Visitor experience	exhibition participant	1
Mark Bell	Visitor experience	work exhibited one	0.25
Mark Bell	Visitor experience	exhibition participant	1
Tam Joseph	Visitor experience	work exhibited one	0.25
Tam Joseph	Visitor experience	exhibition participant	1
Neil Irons	Visitor experience	work exhibited one	0.25
Neil Irons	Visitor experience	work exhibited one	1
Matthew Krishanu	Visitor experience	work exhibited one	0.25
Matthew Krishanu	Visitor experience	exhibition participant	1
Pauline Evans	Visitor experience	work exhibited one	0.25
Pauline Evans	Visitor experience	exhibition participant	1
Simon Leahy-Clark	Visitor experience	work exhibited one	0.25
Simon Leahy-Clark	Visitor experience	exhibition participant	1
Alessandro Graziani	Visitor experience	work exhibited one	0.25
Alessandro Graziani	Visitor experience	exhibition participant	1
Nickie Counsell	Visitor experience	work exhibited one	0.25
Nickie Counsell	Visitor experience	exhibition participant	1
Caterina Lewis	Visitor experience	work exhibited one	0.25
Caterina Lewis	Visitor experience	exhibition participant	1
Hayley Harrison	Visitor experience	work exhibited one	0.25
Hayley Harrison	Visitor experience	exhibition participant	1
David Leister	Visitor experience	work exhibited one	0.25
David Leister	Visitor experience	work exhibited one	0.25
David Leister	Visitor experience	exhibition participant	1
Amanda Lwin	Visitor experience	works exhibited three	0.75
Amanda Lwin	Visitor experience	exhibition participant	1
Lorena Herrero	Visitor experience	work exhibited one	0.25
Lorena Herrero	Visitor experience	exhibition participant	1
Tom Woolner	Visitor experience	work exhibited one	0.25
Tom Woolner	Visitor experience	exhibition participant	1
Julian King	Visitor experience	work exhibited one	0.25
Julian King	Visitor experience	exhibition participant	1

