

The logo for Swings & Smiles, featuring the words "SWINGS" and "SMILES" in a colorful, multi-colored font, with "&" in between. The letters are arranged in a slightly curved, overlapping manner. The background of the entire page is a photograph of a young girl in a floral dress and a pink baseball cap, making a peace sign, with a woman standing behind her. The photo is framed by colorful, abstract shapes in pink, orange, and purple.

SWINGS
& SMILES

Swings & Smiles Annual Report

Year ended 31 March 2025

Company Registration Number 06182577
Charity Registration Number 1120598

Swings & Smiles – Annual Impact Report 2024/25

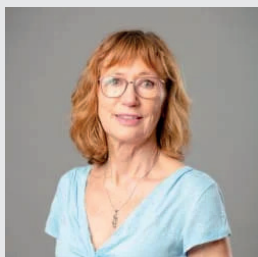
Support, friendship and play
for children with special needs
and their families.





Contents

Annual Impact Report	4 - 17
Trustees Annual Report	18
Independent Examiner's Report	21
Statement of Financial Activities	23
(incorporating the income and expenditure account)	
Balance Sheet	24
Notes to the Financial Statements	25-30



Founded in 2007 by Sian Cook, Swings & Smiles was born from a personal journey — after travelling 40 miles to access a specialist play centre for her daughter, Sian recognised the urgent need for similar services in West Berkshire. Following years of successful fundraising, the charity began offering services in 2014 at the Phoenix Resource Centre in Newbury. Renting rooms from West Berkshire Council within a day centre for adults with disabilities provided an ideal starting point to understand and respond to families' needs.

In March 2017, Swings & Smiles moved into A Place to Play in Thatcham — a dedicated centre leased from West Berkshire Council. This purpose-developed facility features an outdoor playground and a specialist sensory area, designed to foster inclusive play and support for children with special needs and their families.

Swings & Smiles welcomes children and young people aged 0 to 19, with no requirement for formal diagnosis or referral. Families are invited from all areas, not just the local community. We believe play is fundamental to every child's development, and our centre is fully equipped to provide a safe, stimulating environment. Facilities include a sensory room, spacious activity areas, an accessible playground, and a personal care room with hoist equipment.

Our services run throughout the week — including evenings, weekends, and school holidays — offering family play sessions, respite care, and outreach support. At Swings & Smiles, we're committed to creating joyful, inclusive experiences that support the whole family.



Our Mission

Swings & Smiles is committed to improving the quality of life for disabled children and their families.

Our Vision

A world where everyone has the opportunity to thrive and reach their full potential.

Aims and Objectives

Swings & Smiles exists to support children and young people with special needs, their families, and carers by:

1. Providing fun and freedom in a safe, stimulating environment to develop confidence, independence, and sensory/motor skills.
2. Offering guidance, support, and information to parents, carers, and siblings.
3. Promoting the importance and benefits of play for all children, regardless of their disabilities.



At the Centre

We have seen unprecedented demand for our services and have supported over 1,500 registered families and are actively supporting around 1,000 families throughout the year. Our after-school clubs and respite sessions remain oversubscribed, especially for children with complex needs, making Swings & Smiles the service of choice for many families and professionals.

Some of the feedback from parents & children across 2024 - 2025 included:



Key Programme Areas

Children Aged 0–5

Our Minis Family Sessions run weekly across the whole year. We work closely with Dingley's Promise and deliver outreach sessions in local family hubs.

We also support Ollie's Therapeutic Nursery, an independent OFSTED-registered setting for children aged 3–5 with speech, language, and communication needs. The nursery benefits from full use of our facilities and provides an alternative SEND early years provision.

As a family Jenni & Dan, Orlando & Aubree attend both our Minis and our Family Play sessions. As well as free play, at these sessions they come together to take part in planned activities aimed at helping a child's development, whilst having fun.

Our Family Play sessions support parents and carers to play with their children, socialise with others and take part in group activities. The interactions that Aubree and Orlando experience at Swings & Smiles make a huge difference to their social development, exposing them to new and different situations in a friendly environment, encouraging growth and learning.

It is so heart-warming to be surrounded by people who truly understand how hard life can be raising SEND children.

Jenni, Mum.

Family Play

Family play remains the heart of what we do, supporting the whole family — including grandparents — in a safe, welcoming, and non-judgemental environment. These sessions enable peer connections and create informal support networks that extend far beyond the centre. Our weekend sessions are particularly popular, and are normally full, with a waiting list some weekends.

Swings & Smiles is an amazing place. It gives families a sense of belonging. We feel understood and know we are not judged by the staff or other families here. Our kids have somewhere to go together where they can still have their own space and do their own thing, but they are safe and we can spend time together, having fun and trying new activities.

Luke, Dad.



Respite Services

Our **after-school, weekend, and holiday respite** sessions support children with the most complex physical, educational, and behavioural needs. Spaces are highly sought after, relied on by families and recommended by social workers from the Children with Disabilities Teams. The Play Leader team are highly skilled with specialist training to meet the medical and behavioural needs of the children.

Swings & Smiles respite sessions are thoughtfully designed to give children with special educational needs and disabilities the chance to have fun, make independent choices, build friendships, connect with others, and develop essential life skills — all in a safe and supportive environment. We hold individual parent meetings three times a year to develop shared targets and review progress in a collaborative way.

Sonny attends our After School Club at Swings & Smiles. At this club parents drop off their children and have some much-needed respite to do errands, spend quality time with one another or simply have time to self-care. It also gives Sonny a chance to grow his independence and socialise with the other children who attend.

The staff excel at balancing a child's differing complex needs with keeping the environment relaxed, homely and flexible and having a genuine interest in the child's interests. I think the biggest testament is how the children react to the staff at the centre and when we walk in the door. It's so comfortable for them and they are very happy; I think that says it all!

Carly, Mum.



Youth Clubs

Youth Club offers an exciting evening program designed for children and young people from Year 3 to Year 9+, across both mainstream and SEND settings. Through the power of play, young people develop essential life skills such as building confidence, communication, creativity, and emotional resilience in a fun and natural way.

Each session is packed with exciting games, adapted technology, and a wide variety of inclusive activities that encourage friendship, socialisation, and a sense of belonging. Our dedicated team ensures the Youth Club is a safe, welcoming space where every young person can explore new interests, express themselves freely, and be their authentic self.

At Youth Club, play is both fun and a space in which young people learn, grow, and connect.



West Berkshire Council Building Resilience Contract

The Building Resilience Project - which is part of West Berkshire's early help initiative - supports families who are caring for a child with additional needs, pre or post diagnosis. It can be emotionally and physically challenging for parent carers, often leading to stress, isolation, guilt, and grief.

These challenges can make it harder for families to access support and increase risk of reaching crisis point. This project aims to provide a bespoke outreach service for families of children aged 3-11 with additional needs, offering early support to reduce the need for further statutory intervention.

Outreach Services

Not all families can access our Thatcham centre. Thanks to our Outreach Van, we take **specialist sensory equipment and sessions to schools**, Reading Football Club home games, sports facilities, and community venues.

Supporting Education and School Transitions

We support more families struggling with mainstream school environments. Our **Home Ed sessions**, led by a qualified teacher, include STEM, problem solving, cooking, and social skills. English and maths tuition has been added to the program this year as the need was identified.

Feeling comfortable in the home ed sessions Grace was then able to start attending other sessions at the Centre, including the Spectrum Youth Club. Spectrum has been great for Grace; it has further grown their confidence and has now made a friend in the club. Grace is now always excited to attend the group and is no longer scared. Grace explained that they liked coming to home ed, and they look forward to it on a weekly basis. Grace would recommend it to anyone who is thinking about the group, and there is nothing that they would change about it.

Carole, Mum.

The **Engage program** provides a safe space for children on reduced timetables, accompanied by parents or schools, to regulate and learn in a low-pressure setting.



SIBSupport – Supporting Siblings

Our **SIBSupport** programme remains a vital part of our work:

- **SPARK Online** – Monthly sibling sessions based on the 10 Keys to Happier Living
- **In-person activities** – Art, cooking, Lego Masters, mystery food challenges, and more!
- **School workshops** – Expanded to include more conversation and peer support
- We supported **30 siblings** across various programmes in the last year.

Swings & Smiles gives my son a chance to relax, have fun and to be seen for the amazing boy that he is, separate to his sister.

Helen.

Collaboration and Partnerships

We continue to expand collaborative work, including:

- Regular referrals from **West Berkshire Council**
- Hosting sessions with **speech and occupational therapists**
- Hosting the **Berkshire Sensory Consortium, Chatty Monkeys Hearing Impairment group**
- Close working relationships with **Dingley's Promise, Berkshire Youth, PALS, and Mencap**
- Sensory support at **Sebastian's Action Trust events**
- Weekly music therapy provided by **Berkshire Maestros**
- Hosting low-cost sessions for **local specialist schools**
- Host of the **West Berkshire Parent Carer Forum**, supporting parents to have their voice heard locally
- Founder member and Chair **Berkshire Fundraisers Network**
- Chair the **West Berkshire SEND Providers Forum**

We are members of the **Disabled Children's Partnership** and **Council for Disabled Children**, contributing to national dialogue on SEND support.



Our People

We continue to support families that are experiencing the long-term impact that the pandemic has had on children and families alongside the cost-of-living crisis, and increasing school exclusions. At Swings & Smiles, we acknowledge the experiences of families helping them to be seen, heard, and supported.

Welcoming families with a warm drink at Family Play to 1:1 advice, we support families through emotional and practical difficulties — and celebrate successes with them too.

Our Volunteers

Volunteers are integral to everything we do, extending the service that we offer to our families and enriching the community:

We have 55 **regular volunteers**

With a total of 1,368 hours

With an equivalent value of £16,703.28

We have been supported by 110 **Corporate Volunteers**

From 10 different local businesses.

With a total of 535 hours

With an equivalent value of £6,532.35

4 Schools have brought pupils to provide voluntary service

There were **7 trustees** with a commitment of 10 hours a month = 840 hours

With an equivalent value of £10,256.40

Totalling 2,743 volunteering hours with an equivalent value of £33,492.00

Volunteers receive training in safeguarding, medical awareness, and communication. We ensure they feel appreciated, included, and valued.

Ros's Story

Ros will always say that she gets so much more from supporting families than she gives. Ros is a fantastic role model, befriending children and getting to know each child's needs. She builds trust with families and is respected by the team.

Staff Team



CEO:
Rhonda Nicklin

Senior Leadership:

- **Ellora** – Operations Lead
- **Becky** – 0 - 13 years' service lead
- **Julie** – Facilities & Impact Coordinator
- **Nicola** – Fundraising Lead

Across the charity we have a diverse team, both paid and voluntary, who are experienced and qualified in their area of work. We have set a high standard to ensure that we are skilled in areas of specialist childcare for SEN & disabled children, strategy, financial management, fundraising, marketing, cyber security, and health & safety. We are supportive of staff development, and across this year have supported the completion of a BSc in Child Development and have staff working towards a level 5 in Leadership & Management, Level 4 in Child Development, and Level 3 in Child Development. We have worked to pay staff a real living wage and are competitive in the local employment market to ensure that we attract and retain good people, treating all elements of the Swings & Smiles community fairly.

Future Plans

As our registered families have surpassed 1500, our focus is on sustaining high-quality services while managing increasing demand. Key goals:

- **Expand capacity** through creative scheduling and collaboration
- **Supporting young adults of 18 – 25 years**
- **Strengthen support for 0 – 2 years babies with complex needs at birth and early years**
- **Strengthen Outreach** and develop consistent venues for delivery
- **Continue partnership with Reading Football Club** for inclusive matchday experiences
- **Increase collaboration** to maximise resources and impact



Funding and Support

Commitment to Impact Amid Financial Challenges

In a climate of increasing financial pressure, the charity remains steadfast in its mission to support as many children and families as possible. Recognising the critical importance of its services, the Trustee board and leadership team have made a deliberate decision to draw on the charity's reserves rather than reduce or withdraw support. This proactive approach reflects a deep commitment to protecting vulnerable communities and ensuring continuity of care, even in uncertain times.

Structure, Governance and Management

The Trustees of Swings & Smiles assume the responsibilities that the charitable status demands. Swings & Smiles is a Company Limited by Guarantee (No 06182577), whose governing document is the Memorandum and Articles of Association incorporated on 5th July 2007.

Trustees meet six times a year with regular committee meetings happening in between these times. Committees cover finance, strategy, people, property, marketing, events and fundraising.

Public benefit statement

Trustees have reviewed and considered the Charity Commissions' guidance on public benefit. The issues affecting children with special needs and their families are found throughout the general population. Access to the services provided by Swings & Smiles are available to anyone who requires them. Swings & Smiles also dedicates time and resources to raising awareness of issues surrounding disability amongst the general public.

Responsibilities of the Trustees

The Trustees are responsible for preparing the Trustees Annual Report and the financial statements in accordance with the United Kingdom Accounting Standards (United Kingdom Generally Accepted Accounting Practice) and applicable law and regulations. Company law requires the Trustees to prepare financial statements for each financial year.

Under company law the Trustees must not approve the financial statements unless they are satisfied that they give a true and fair view of the state of affairs of the charitable company and of its incoming resources and application of resources, including income and expenditure, for that period. In preparing these financial statements, the Trustees are required to:

- Select suitable accounting policies and apply them consistently
- Observe the methods and principles in the Charities SORP
- Make judgements and estimates that are reasonable and prudent
- State whether applicable UK Accounting Standards have been followed, subject to any material departures disclosed and explained in the financial statements; and
- Prepare the financial statements on the going concern basis unless it is inappropriate to presume that the charitable company will continue in business

The Trustees are responsible for keeping adequate accounting records that are sufficient to show and explain the charitable company's transactions and disclose with reasonable accuracy at any time the financial position of the charitable company and enable them to ensure that the financial statements comply with the Companies Act 2006. They are also responsible for safeguarding the assets of the charitable company and hence for taking reasonable steps for the prevention and detection of fraud and other irregularities.



Funders



Corporate and Community Partnerships



Travis Perkins

Abbey Gate
Locksmiths & Security Engineers



ST GABRIEL'S
NEWBURY



RIVAR Sand & Gravel Ltd
LANDSCAPE CENTRES

HOWDEN

Smile
n Shine
DENTAL PRACTICE



Scouts
2nd Thatcham



STEARNS
Your Other Warehouse



Kosnic



THE
WOODSPEEN

SAS
Est. 1991

VISSENSA
FORWARD THINKING IT



NEWBURY
RACECOURSE



David Lloyd
— CLUBS —



DETA



AP&C
APPLE PRINT & CREATIVE

Trustees Annual Report

Year Ended 31 March 2025

The Trustees, who are also directors for the purposes of company law, have pleasure in presenting their report and the unaudited financial statements of the charity for the year ended 31 March 2025.

Reference And Administrative Details

Registered Charity Name	Swings & Smiles
Charity Registration Number	1120598
Company Registration Number	06182577
Registered Office	A Place to Play Lower Way Thatcham RG19 3RR

The Trustees

The trustees who served the charity during the period were as follows:

Derek Hardman	Chair
Tor Sandars	
Mike Megan	Treasurer
Vic Mistry	
Luisa Godfrey	Resigned 11/10/2024
Jeff Ives	
Quona Constable	
Alan Oliver	Appointed 19/02/2024
Company Secretary	Jacqui Ives (appointed 13/05/2024) Sandra Ferguson (resigned 01/06/2024)
Accountants	E J Business Consultants Limited Chartered Accountants 2 Toomers Wharf Newbury Berkshire RG14 1DY

Structure, Governance and Management

Swings & Smiles is a registered charity (No 1120598) and Company Limited by Guarantee (No 06182577), whose governing document is the Memorandum and Articles of Association incorporated 26 March 2007 as amended by special resolution dated 5 July 2007.

The Objects of the Charity are to support the needs of children and young people with special needs, their families and carers, by the provision of specialist facilities for play where the facilities and staffing meet the needs of a wide range of disabilities. In particular, the Charity aims to: -

1. Provide fun and freedom in a stimulating, challenging and safe environment, to develop self-confidence, independence and sensory and motor skills.
2. Provide parents, carers and siblings with support, guidance and information.
3. Promote the many benefits of developing and learning through play and the need for its availability to all regardless of their disabilities.

This Annual Report details our 18th year of operation which has seen our facility, “A Place 2 Play” continue to expand its range of services and attract more families from its base at Thatcham, Berkshire.

All Trustees are encouraged to read Charity Commission guidance on their role and responsibilities and receive regular updates from the Commission. Two Trustees each year are invited, by Rota, to confirm that they wish to continue to serve as Trustees, and these are confirmed by a Trustees vote at the AGM. Trustees continue to seek new Trustees to strengthen the Board’s experience and diversity.

All significant expenditure decisions continue to be authorised by the Board of Trustees, whilst income and outgoings are overseen by the Treasurer, who provides regular financial reports to the Trustees.

Our Patrons continue to provide active support and encouragement to the Charity.

Financial Review

During 2024/25 the Trustees and CEO continued their policy of focusing our management team upon fund raising activities whilst investing significantly in the wider team to support our expanding services. This increased investment led to a deficit of £51,339 in the year, leading to a reduction in Unrestricted Funds to £152,729.

The Trustees have been able to maintain the Restricted Funds at £475,000 within the main charity to finance future buildings development and/or purchase (see future plans below) in addition to ongoing investment in services.

All cash assets are held in a diverse range of FSCS indemnified accounts.

Plans For Future Periods

Trustees continue to re-evaluate expansion, and the Charity's longer term business plan, through to 2026 in the light of the experience gained from "A Place to Play" this year.

Although all options continue to be explored, the Board are in continuous discussions with West Berkshire Council to purchase the freehold site of "A Place to Play" and have prudently maintained the "restricted funds" to fully reflect this possibility.

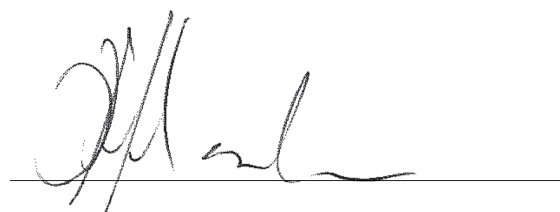
Accountants

A resolution to re-appoint E J Business Consultants Limited as accountants for the ensuing year was proposed and accepted at the Annual General Meeting on 12th November 2025.


Registered office:

2 Toomers Wharf
Canal Walk
Newbury
Berkshire
RG14 1DY

Signed on behalf of the Trustees on 12th November 2025, by:



Mr Derek Hardman
Chair of Trustees
Swings & Smiles



Mr Mike Megan
Treasurer Trustee
Swings & Smiles

Independent Examiner's Report to the Trustees Of Swings & Smiles

I report on the accounts of the company for the year ended 31st March 2025, which are set out on pages 23 to 28.

Respective responsibilities of trustees and examiner

The trustees are responsible for the preparation of the accounts. The trustees consider that an audit is not required for this year under section 144(2) of the Charities Act 2011 (the 2011 Act) and that an independent examination is needed.

Having satisfied myself that the charity is not subject to audit under company law and is eligible for independent examination, it is my responsibility to:

- Examine the accounts under section 145 of the 2011 Act
- Follow the procedures laid down under the General Directions given by the Charity Commission under section 145(5)(b) of the 2011 Act; and
- State whether particular matters have come to my attention

Basis of independent examiner's report

My examination was carried out in accordance with the General Directions given by the Charity Commission. An examination includes a review of the accounting records kept by the charity and a comparison of the accounts presented with those records. It also includes consideration of any unusual items or disclosures in the accounts and seeking explanations from you as Trustees concerning any such matters. The procedures undertaken do not provide all the evidence that would be required in an audit and consequently no opinion is given as to whether the accounts present 'a true and fair view' and the report is limited to those matters set out in the statement below.

Independent examiner's statement

In connection with my examination, no matter has come to my attention:

1. Which gives me reasonable cause to believe that in any material respect the requirements:

- to keep accounting records in accordance with section 386 of the Companies Act 2006; and
- to prepare accounts which accord with the accounting records, comply with the accounting requirements of section 396 of the Companies Act 2006 and with the

methods and principles of the Statement of Recommended Practice: Accounting and Reporting by Charities

- have not been met; or

2. To which, in my opinion, attention should be drawn in order to enable a proper understanding of the accounts to be reached.



E J Business Consultants Limited

2 Toomers Wharf

Canal Walk

Newbury

RG14 1DY



Date

Statement Of Financial Activities (Incorporating The Income and Expenditure Account)

Year Ended 31 March 2025

		Unrestricted Funds	Restricted Funds	Total Funds 2025	Total Funds 2024
	Notes	£	£	£	£
INCOME					
Income from generating funds:					
Investment income	2	11,811	-	11,811	9,107
Income from charitable activities	3	543,918	-	543,918	473,625
					-
TOTAL INCOME		555,729	-	555,729	482,732
EXPENDITURE					
Generating voluntary income	4	(44,908)	-	(44,908)	(30,077)
Governance costs	5	(18,879)	-	(18,879)	(10,328)
Charity running costs	6	(517,940)	-	(517,940)	(466,810)
Depreciation	7	(25,341)	-	(25,341)	(24,238)
TOTAL EXPENDITURE		(607,068)	-	(607,068)	(456,326)
NET INCOME/(DEFICIT) FOR THE YEAR		(51,339)	-	(51,339)	(48,721)
RECONCILIATION OF FUNDS					
Total funds brought forward		204,068	475,000	679,068	727,789
TOTAL FUNDS CARRIED FORWARD		152,729	475,000	627,729	679,068

The Statement of Financial Activities includes all gains and losses in the year and therefore a statement of total recognised gains and losses has not been prepared. All of the above amounts relate to continuing activities.

Balance Sheet

31 March 2025

			2025		2024
	Note	£	£	£	£
FIXED ASSETS	7		99,538		120,327
CURRENT ASSETS					
Debtors	8	16,667		31,272	
Cash at bank		584,577		535,890	
TOTAL CURRENT ASSETS		601,244		567,162	
CREDITORS:	9	(73,053)		(8,421)	
Amounts falling due within one year					
NET CURRENT ASSETS			528,191		558,741
TOTAL ASSETS LESS CURRENT LIABILITIES			627,729		679,068
FUNDS					
Restricted income funds	10		475,000		475,000
Unrestricted income funds	11		152,729		204,068
			627,729		679,068

For the financial year ended 31 March 2025 the charity was entitled to exemption from audit under section 477 of the Companies Act 2006 relating to small companies.

The members have not required the charity to obtain an audit of its accounts for the year in question in accordance with section 476.

The trustees acknowledge their responsibilities for complying with the requirements of the Act with respect to accounting records and the preparation of accounts.

These accounts have been prepared in accordance with the provisions applicable to companies subject to the small companies regime.

These financial statements were approved and signed by the members of the committee on 12th November, 2025.



Mr Mike Megan
Treasurer

Notes to the financial statements

Year Ended 31 March 2025

1. ACCOUNTING POLICIES

Basis of accounting

The financial statements have been prepared under the historical cost convention and in accordance with Accounting and Reporting by Charities: Statement of Recommended Practice applicable to charities preparing their accounts in accordance with the Financial Reporting Standard applicable in the UK and the Republic of Ireland (FRS102) (effective 1 January 2015) – (Charities SORP (FRS102)), the Financial Reporting Standard applicable in the UK and the Republic of Ireland (FRS102) and the Companies Act 2006.

Fund accounting policy

Unrestricted income funds are general funds that are available for use at the trustees' discretion in furtherance of the objectives of the charity.

Restricted funds are those donated for the use in a particular area or for specific purposes, the use of which is restricted to that area or purpose.

Income

Donations are recognised where there is entitlement, certainty of receipt and the amount can be measured with sufficient reliability.

Investment income is recognised on a receivable basis.

Income from charitable activities includes income recognised as earned (as the related goods or services are provided) under contract.

Expenditure

Liabilities are recognised as soon as there is a legal or constructive obligation committing the charity to the expenditure. All expenditure is accounted for on an accruals basis and has been classified under headings that aggregate all costs related to the category.

Charitable expenditure comprises those costs incurred by the charity in the delivery of its activities and services for its beneficiaries. It includes both costs that can be directly allocated to such activities and those costs of an indirect nature necessary to support them.

Governance costs

Governance costs include costs of the preparation and examination of the statutory accounts, the costs of trustee meetings and the cost of any legal advice to trustees on governance or constitutional matters.

Fixed assets

All fixed assets are initially recorded at cost.

Depreciation

Depreciation is provided on tangible fixed assets so as to write off the cost or valuation, less any estimated residual value, over their expected useful economic life as follows:

Asset class	Depreciation method and rate
Property improvements	10% straight line
Play Centre equipment	20% reducing balance
Outreach equipment	20% reducing balance
Office equipment	straight line over 3 years
Motor vehicles	25% reducing balance

2. INVESTMENT INCOME

	Total Funds 2025	Total Funds 2024
	£	£
Building society interest receivable	11,811	9,107
	11,811	9,107

3. INCOME FROM CHARITABLE ACTIVITIES

	Unrestricted Funds	Total Funds 2025	Total Funds 2024
	£	£	£
Centre Income	141,367	141,367	114,406
Donations	12,301	12,301	17,989
Grants Note 13	263,323	263,323	263,950
Legacy	1,875	1,875	241
Fundraising, see below:	125,052	125,052	77,039
	543,918	543,918	473,625

Fundraising is broken down as below:

	2025 £	2024 £
Fundraising – Events	59,972	43,013
Fundraising – Community	30,383	13,961
Fundraising – Regular Giving	7,645	7,324
Fundraising – Other	-	6,514
Fundraising – Challenge Events	22,343	3,478
Fundraising – Digital	4,387	2,580
Fundraising – Facebook Online	322	169
Total Fundraising	125,052	77,039

4. COSTS OF GENERATING VOLUNTARY INCOME

	Unrestricted Funds 2025	Total Funds 2025	Total Funds 2024
	£	£	£
Fundraising Costs	44,908	44,908	30,077

5. GOVERNANCE COSTS

	Unrestricted Funds	Restricted Funds	Total Funds 2025	Total Funds 2024
	£	£	£	£
Legal & Admin	9,254	-	9,254	7,564
Marketing	9,625	-	9,625	2,764
	18,879	-	18,879	10,328

6. CHARITY RUNNING COSTS

No salaries have been paid to employees over £60,000. No salaries have been paid to Trustees during the year.
An analysis of the staff costs are:

	2025	2024
	£	£
Staff Costs: Salaries	375,303	322,606
NI	19,685	13,169
Pension	7,576	6,829
Total Staff Costs	402,564	342,604
Premises Costs	86,205	101,909
Miscellaneous Costs	29,171	22,297
Charity Running Costs	517,940	466,810

7. FIXED ASSETS

	Property Improvements	Play Centre Equipment	Outreach equipment	Office equipment	Motor vehicles	Total
	£	£	£	£	£	£
COST OR VALUATION						
At 1 April 2024	78,507	160,644	5,422	11,998	24,115	280,686
Additions	-	-	2,500	2,052	-	4,552
At 31 March 2025	78,507	160,644	7,922	14,050	24,115	285,238
DEPRECIATION						
At 1 April 2024	(19,551)	(115,418)	(4,292)	(9,139)	(11,959)	(160,359)
Charge for the year	(7,849)	(9,045)	(726)	(4,682)	(3,039)	(25,341)
At 31 March 2025	(27,400)	(124,463)	(5,018)	(13,821)	(14,998)	(185,700)
NET BOOK VALUE						
At 31 March 2025	51,107	36,181	2,904	229	9,117	99,538
At 31 March 2024	58,956	45,226	1,130	2,859	12,156	120,327

8. DEBTORS

	2025	2024
	£	£
Debtors	16,667	31,272

9. CREDITORS

Amounts falling due within one year

	2025	2024
	£	£
Trade creditors	10,283	2,480
Short term restricted funds	54,293	-
Other taxes and social security	8,477	5,941
	73,053	8,421

10. RESTRICTED INCOME FUNDS

	Balance at 1 April 2024	Income	Expenditure	Balance at 31 March 2025
	£	£	£	£
Building Fund	475,000	-	-	475,000

11. UNRESTRICTED INCOME FUNDS

	Balance at 1 April 2024	Income	Expenditure	Balance at 31 March 2025
	£	£	£	£
General Fund	204,068	555,729	(607,068)	152,729

12. ANALYSIS OF NET ASSETS BETWEEN FUNDS

The total reserves as at 31st March 2025 are £627,729.

13. ANALYSIS OF GRANT INCOME

	2025	2024
	£	£
National Lottery - Community Fund	97,500	86,250
Raised on The Good Exchange 24/25 from trusts including:	29,550	23,195
- Greenham Trust		
- Peter Baker Trusts		
- Miss W E Lawrence		
- Englefield Charitable Trust		
- Newbury Town Council		
- Hungerford Town Council		
- Thatcham Town Council		
Reading Ex Footballers		
Garfield Weston Foundation	25,000	-
PADWA Charitable Foundation	15,000	10,000
Thomas Curtis Charitable Trust	11,645	-
Barbara Ward Foundation – 3 year respite	6,000	6,000
The Kristina Martin Grant	5,000	10,000
PF Charitable Trust	5,000	5,000
Masonic Charitable Foundation	5,000	5,000
Other Grants	5,000	5,000
The Gerald Palmer Eling Trust	5,000	22,000
Bernard Sunley Foundation	5,000	2,000
The Sobell Foundation	5,000	-
Berkshire Community Foundation	5,000	15,000
Shanly Foundation	4,000	4,000
CoOp	3,723	-
Peter Harrison Foundation	3,500	-
Skipton Building Society	3,080	-
Persimmon Homes	3,000	-
The Neighbourly Foundation	2,500	700
The Payne Gallwey Charitable Trust	2,500	-
Groundwork UK	2,125	375
Charities Trust	2,000	-
Colefax Charitable Trust	2,000	-
Bruce Wake Charitable Trust	1,500	-
Cameron McKenna Foundation	1,250	-
Parry Family Charitable Trust	1,000	1,130
Illiffe Family Trust	1,000	1,000
The AMMCO Charitable Trust	1,000	1,000
Stevenson Family Charitable Trust	1,000	-
Chris Laing Foundation	1,000	-
The Earley Charity	750	-
Bauer Radio – Cash for Kids	600	-
Thomas Curtis Foundation	500	-
Douglas Arter Foundation	500	-
Michael and Anna Wix Charitable Trust	100	-
Baily Thomas Charitable Trust	-	20,000
The Childwick Trust	-	10,000

13. ANALYSIS OF GRANT INCOME (continued)

St James Place Foundation	-	10,000
The Clothworkers Foundation	-	5,600
Anton Jurgens Charitable Trust	-	5,000
Jules Thorn Foundation	-	3,000
The Hedley Foundation	-	2,200
The Syder Foundation	-	2,000
Boshier Hinton Foundation	-	2,000
Woodroffe Benton Foundation	-	1,750
Cobrizo Lounges UK Ltd	-	1,000
The David Shepherd Cricket Trust	-	1,000
Walter Guinness Charitable Trust	-	1,000
Percy Bilton Charity	-	750
Marsh Christian Trust	-	500
Wates Family Enterprise Trust	-	500
Total	263,323	263,950

