

REGISTERED COMPANY NUMBER: 05419029 (England and Wales)

REGISTERED CHARITY NUMBER: 1120436

REPORT OF THE TRUSTEES AND

FINANCIAL STATEMENTS FOR THE YEAR ENDED 30TH SEPTEMBER 2022

FOR

HOME-START WYRE FOREST

**HOME-START WYRE FOREST
CONTENTS OF THE FINANCIAL STATEMENT
FOR THE YEAR ENDED 30TH SEPTEMBER 2022**

	Page
Reference and Administrative Details	1
Report of the Trustees	2 to 5
Independent Examiner's Report	6
Statement of Financial Activities	7
Balance Sheet	8
Notes to the Financial Statements	9 to 24
Detailed Statement of Financial Activities	25

**HOME-START WYRE FOREST
REFERENCE AND ADMINISTRATIVE DETAILS
FOR THE YEAR ENDED 30TH SEPTEMBER 2022**

TRUSTEES	Mrs B Hughes Mrs M Weaver (Chair) Mrs L Small (Vice Chair) Mr R Bourne Mr B Price (Treasurer) Mrs J Acton Mr S Guille Mrs S Morgan
REGISTERED OFFICE	MCF Complex 60 New Road Kidderminster Worcestershire DY10 1AQ
REGISTERED COMPANY NUMBER	05419029 (England and Wales)
REGISTERED CHARITY NUMBER	1120436
INDEPENDENT EXAMINER	Lancaster Haskins Limited Granville House 2 Tettenhall Road Wolverhampton West Midlands WV1 4SB
BANKERS	National Westminster Bank Plc 24 High Street Kidderminster Worcestershire DY10 2DL Scottish Widows Bank P O Box 12757 67 Morrison Street Edinburgh EH3 8YJ

**HOME-START WYRE FOREST
REPORT OF THE TRUSTEES
FOR THE YEAR ENDED 30TH SEPTEMBER 2022**

The Trustees, who are also directors of the charity for the purposes of the Companies Act 2006, present their report with the financial statements of the charity for the year ended 30th September 2022. The Trustees have adopted the provisions of Accounting and Reporting by Charities: Statement of Recommended Practice applicable to charities preparing their accounts in accordance with the Financial Reporting Standard applicable in the UK and Republic of Ireland (FRS 102) (effective 1 January 2019).

OBJECTIVES AND ACTIVITIES

Aims and Objectives

Our purposes as set out in the objects contained in the Home-Start Wyre Forest Memorandum of Association are to:

- benefit the public by promoting the welfare of families with at least one child under five years of age
- offer support to those parents experiencing difficulties within the Wyre Forest District of Worcestershire.

The aims of the Charity are to provide practical and emotional support to local parents to enable them to identify strategies to cope with their difficulties and improve the outcomes for themselves and their children.

Our aims fully reflect the purposes that the Charity was set up to further.

Ensuring our work delivers our aims

We review our aims, objectives and activities each year. This review looks at the outcomes of our work in the previous 12 months, the success of each key activity and the benefits they have brought to those groups of people we are set up to help.

We have referred to the Charity Commission guidance on public benefit when reviewing our aims and objectives and in planning future activities. In particular, the trustees consider how planned activities will contribute to the aims and objectives they have set.

The focus of our work

Our main objectives for the year continued to be the promotion and provision of family support to reduce the risk of family breakdown and to safeguard the most vulnerable children in our community. This included continuing our delivery to parents with children aged 0-18 years. This extension of our befriending support service from only families with children under five years of age took place in 2015, under the project heading Home-Start Plus. The strategies we used to meet these objectives included:

- Providing a range of support services which are reflective of quality standards and address the problems arising from the stress of family life and external difficulties for the family unit
- Working in partnership with other agencies in our community to provide the most effective and appropriate support for service users

How our activities deliver public benefit

Our main activities and who we try to help are described below. All our charitable activities focus on the support of families and are undertaken to further our charitable purposes for the public benefit.

Who used and benefitted from our service?

Our objectives and funding restrict the service we provide to parents or main carers of a child under 18 years of age (including unborn) who are resident in the Wyre Forest District of Worcestershire. Services are provided free to service users. Our funding limits those we can help.

In the period 1st October 2021 to 30th September 2022, we supported 391 children in 138 families.

**HOME-START WYRE FOREST
REPORT OF THE TRUSTEES
FOR THE YEAR ENDED 30TH SEPTEMBER 2022**

Equal access to our service is important and our current monitoring reflects a diverse service user group (age, gender, disability, ethnic background, socio-economic groups) and our open referral routes ensure families can access support directly or through a third party (referrer).

Home-visiting Family Support

Our service runs from a central scheme office, but our core work is delivered in service users' homes all over the district 52 weeks of the year. During the restrictions imposed by the Covid-19 Pandemic during the start of this financial year, we delivered our services for some of the time on a remote basis, using video and telephone calls to support those who were in lockdown, self-isolating or Covid anxious.

Staff agree a user-lead focus for support with referred families and introduce a suitable trained volunteer to offer support.

Volunteers offer regular (2-3 hours once a week) home visiting support, friendship and practical help to the family, helping to reduce stress, promote confidence and participation and to prevent family breakdown. The support is free to the families, not time limited and confidential, with the exception of child protection concerns.

Additional activities/minimal support

We have been delivering Group services since August 2015 funded by DY10 HBG Big Local.

We continue to offer a signposting service to those families who, on referral, during or following support, feel they need additional specialist help from other organisations.

Key achievements in the year

During this accounting period we have been able to continue the employment of our staff team of five and to maintain a proportionate delivery of service. In April 2019 we began a five-year Community Fund supported project, Safe & Strong, which continues to be delivered to families we support, who have been able to access psychological services remotely and face-to-face, alongside our core family support.

During this accounting period we have achieved:

- Continuation of service to opened Home-Start families.
- Accepting referrals for families with children aged 0 to 18 years.
- Delivered 90 Family Group sessions for parents and children accessing our support
- Continued our Charity Partnership with Midcounties Cooperative into the fifth year
- Delivered 1-2-1 psychology services to adults and children in receipt of HSWF support to improve their mental health
- We have trained 9 new home visiting volunteers.
- Set up and developed a donation/Swap Shop project to enable local families to have free, good quality children's clothes and equipment.
- Secured funds to provide families with food and welfare support during the Pandemic recovery period.

STRUCTURE, GOVERNANCE AND MANAGEMENT

Home-Start Wyre Forest is a registered Charity and was founded in 1995. We became a Company limited by guarantee and transferred all assets and liabilities from the unincorporated Charity to the incorporated Charity on 1st February 2008. We are governed by the Home-Start Wyre Forest Memorandum and Articles of Association.

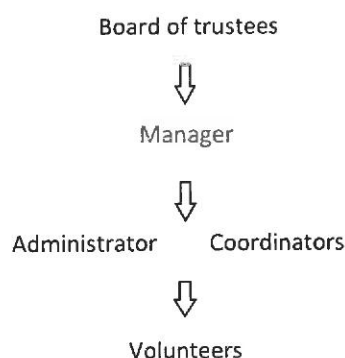
**HOME-START WYRE FOREST
REPORT OF THE TRUSTEES
FOR THE YEAR ENDED 30TH SEPTEMBER 2022**

Recruitment and appointment of Trustees

The Charity has procedures for the recruitment and appointment of Trustees. The Trustee Board has a wide range of experience both from professionals working with children and members with business experience. In addition, there is volunteer representation on the committee.

All trustees give their time voluntarily and received no benefits from the Charity. Any expenses reclaimed from the Charity are set out under Volunteer Expenses in our accounts.

Organisational structure



Risk Management

All major risks have been identified and procedures are in place to minimise risks. There is an annual review of the level of funding required to operate the scheme to cover potential financial risks. Our Organisational Risk assessment was discussed at the February Board meeting and reviewed and adopted remotely in March 2022.

Financial Review

This has again been a difficult year with the ending of the Covid-19 restrictions being swiftly followed by the Ukraine conflict and its impact on the cost of living crisis affecting our charity throughout the year. As a charity we have managed to return support for our families to mainly face-to face meetings, having supported remotely via Zoom and telephone during the Covid period. Our donors were, once again, very supportive, and many gave us additional funds to cope with the difficulties.

Income decreased by 2% over last year, which was a record year. In total, income was £327K compared to £334K last year. Unrestricted income decreased from £45K to £36K, largely due to the cessation of donations specifically for Covid-19 additional support.

Expenditure decreased from £324K to £298K, largely as a result of the decreased Covid support for families following the lifting of the Covid-19 restrictions in February 2022. This resulted in a surplus of £30K compared with a surplus last year of £10K.

Principal Funding Sources

Our major donors were the Big Lottery, BBC Children in Need, Wyre Forest District Council, Lottery Access all Areas with Covid-19 support, the Community Fund, Garfield Weston, MK Rose, Eveson Charitable Trust, Severn Trent Community Fund and DY10 HBG Big Local continued their involvement enabling community issues to be supported. Numerous other donors supported us for which we are very grateful.

**HOME-START WYRE FOREST
REPORT OF THE TRUSTEES
FOR THE YEAR ENDED 30TH SEPTEMBER 2022**

Reserves

We have a formal Reserves Policy. Home-Start Wyre Forest have identified Reserves set at a minimum of three months running costs plus redundancy payments for all current staff. The Board of Trustees meets regularly to review up to date figures and thus exercise control over financial matters. Our current reserve of £118,253 contains £18,000 designated for the funding of the Swap Shop during 2023 and the balance is estimated to cover four months costs plus redundancy and closure payments. Our objective is to increase this reserve annually to cover increases in costs.

Investment Policy

Aside from retaining a prudent amount in reserves each year most of the Charity's funds are to be spent in the short term so there is little opportunity for long term investment. Funds required to ensure compliance with the Scheme's Reserves Policy (see previous paragraph) are held in an interest-bearing charity deposit account until so needed. The provider of this account is authorised and regulated by The Financial Conduct Authority.

Statement of Trustees Responsibilities

The Trustees (who are also directors for the purposes of company law) are responsible for preparing the Trustees' Annual Report and the financial statements in accordance with applicable law and United Kingdom Accounting Standards (United Kingdom Generally Accepted Accounting Practice) including FRS 102 "The Financial Reporting Standard applicable in the UK and Republic of Ireland".

Company law requires the Trustees to prepare financial statements for each financial year which give a true and fair view of the state of affairs of the charitable company as at the balance sheet date and of its incoming resources and application of resources, including the income and expenditure for that period. In preparing these financial statements the Trustees should follow best practice and are required to:

- Select suitable accounting policies and then apply them consistently;
- Observe the methods and principles in the Charities SORP;
- Make judgements and estimates that are reasonable and prudent;
- State whether applicable UK Accounting Standards have been followed; and
- Prepare the financial statements on the going concern basis unless it is inappropriate to presume that the charitable company will continue in business.

The Trustees are responsible for keeping adequate accounting records that disclose with reasonable accuracy at any time the financial position of the charitable company and enable them to ensure that the financial statements comply with the Companies Act 2006. They are also responsible for safeguarding the assets of the charitable company and hence for taking reasonable steps for the prevention and detection of fraud and other irregularities.

The Trustees are responsible for the maintenance and integrity of the corporate and financial information included in the charitable company's website. Legislation in the United Kingdom governing the preparation and dissemination of the financial statements may differ from legislation in other jurisdictions.

Independent Financial Examiners

Lancaster Haskins Chartered Accountants were re-appointed during the year as the charitable company's accountants and have expressed their willingness to continue to do so.

This report has been prepared in accordance with the special provisions of Part 15 of the Companies Act 2006 relating to small companies.

Approved by the board of Trustees on 23 November 2022 and signed on their behalf by:



Mrs M Weaver – Chair to the Board of Trustees

**INDEPENDENT EXAMINER'S REPORT
TO THE TRUSTEES OF HOME-START WYRE FOREST**

Independent examiner's report to the Trustees of Home-Start Wyre Forest ('the Company')

I report to the charity trustees on my examination of the accounts of the Company for the year ended 30th September 2022, which are set out on pages 7 to 25.

Responsibilities and basis of report

As the charity's trustees of the company (and also its directors for the purposes of company law) you are responsible for the preparation of the accounts in accordance with the requirements of the Companies Act 2006 ('the 2006 Act').

Having satisfied myself that the accounts of the company are not required to be audited under Part 16 of the 2006 Act and are eligible for independent examination, I report in respect of my examination of your charity's accounts as carried out under section 145 of the Charities Act 2011 (the '2011 Act'). In carrying out my examination I have followed the Directions given by the Charity Commission under section 145(5)(b) of the 2011 Act.

Independent examiner's report

Since the company's gross income exceeded £250,000 your examiner must be a member of a body listed in section 145 of the 2011 Act. I confirm that I am qualified to undertake the examination because I am a member of the Institute of Chartered Accountants in England and Wales (ICAEW), which is one of the listed bodies.

I have completed my examination. I confirm that no matters have come to my attention in connection with the examination giving me cause to believe:

- (1) accounting records were not kept in respect of the company as required by section 386 of the 2006 Act; or
- (2) the accounts do not accord with those accounting records; or
- (3) the accounts do not comply with the accounting requirements of section 396 of the 2006 Act other than any requirement that the accounts give a 'true and fair' view which is not a matter considered as part of an independent examination; or
- (4) the accounts have not been prepared in accordance with the methods and principles of the Statement of Recommended practice for accounting and reporting by charities applicable to charities preparing their accounts in accordance with the Financial Reporting Standard applicable in the UK and Republic of Ireland (FRS 102).

I have no concerns and have come across no other matters in connection with the examination to which attention should be drawn in this report in order to enable a proper understanding of the accounts to be reached.



Christopher Birchell BSc BFP FCA
Lancaster Haskins Limited
Granville House
2 Tettenhall Road
Wolverhampton
West Midlands
WV1 4SB

24 November 2022

HOME-START WYRE FOREST
STATEMENT OF FINANCIAL ACTIVITIES
(INCORPORATING AN INCOME AND EXPENDITURE ACCOUNT)
FOR THE YEAR ENDED 30TH SEPTEMBER 2022

	Notes	Unrestricted Funds £	Restricted Funds £	2022 Total Funds £	2021 Total Funds £
INCOME & ENDOWMENTS FROM					
Donations and legacies	2	35,926	-	35,926	44,394
Charitable Activities	5				
Children & parents		-	290,809	290,809	289,938
Other Trading Activities	3	540	-	540	93
Investment Income	4	146	-	146	48
Total		36,612	290,809	327,420	334,473
EXPENDITURE ON					
Charitable activities	6				
Children & parents		12,842	284,846	297,687	324,218
NET INCOME/EXPENDITURE		23,770	5,963	29,733	10,255
RECONCILIATION OF FUNDS					
Total funds brought forward		109,367	3,824	113,191	102,936
TOTAL FUNDS CARRIED FORWARD		133,137	9,787	142,924	113,191

**HOME-START WYRE FOREST
BALANCE SHEET
AT 30TH SEPTEMBER 2022**

	Notes	Unrestricted Funds £	Restricted Funds £	2022 Total Funds £	2021 Total Funds £
FIXED ASSETS	12	149	-	149	297
Tangible assets					
CURRENT ASSETS					
Debtors	13	-	1,287	1,287	1,483
Cash at bank and in hand		134,499	22,121	156,619	145,678
		<u>134,499</u>	<u>23,408</u>	<u>157,906</u>	<u>147,161</u>
CREDITORS					
Amounts falling due within one year	14	(1,510)	(13,621)	(15,131)	(34,267)
		<u>132,989</u>	<u>9,787</u>	<u>142,775</u>	<u>112,894</u>
NET CURRENT ASSETS					
		<u>133,137</u>	<u>9,787</u>	<u>142,924</u>	<u>113,191</u>
TOTAL ASSETS LESS CURRENT LIABILITIES					
		<u>133,137</u>	<u>9,787</u>	<u>142,924</u>	<u>113,191</u>
NET ASSETS					
		<u>133,137</u>	<u>9,787</u>	<u>142,924</u>	<u>113,191</u>
FUNDS	16				
Unrestricted funds				133,137	109,367
Restricted funds				<u>9,787</u>	<u>3,824</u>
TOTAL FUNDS				<u>142,924</u>	<u>113,191</u>

The charitable company is entitled to exemption from audit under Section 477 of the Companies Act 2006 for the year ended 30th September 2022.

The members have not required the company to obtain an audit of its financial statements for the year ended 30th September 2022 in accordance with Section 476 of the Companies Act 2006.

The trustees acknowledge their responsibilities for

- (a) Ensuring that the charitable company keeps accounting records that comply with Sections 386 and 387 of the Companies Act 2006 and
- (b) Preparing financial statements which give a true and fair view of the state of affairs of the charitable company as at the end of each financial year and of its surplus or deficit for each financial year in accordance with the requirements of Sections 394 and 395 and which otherwise comply with the requirements of the Companies Act 2006 relating to financial statements, so far as applicable to the charitable company.

These financial statements have been prepared in accordance with the special provisions of Part 15 of the Companies Act 2006 relating to charitable small companies.

The financial statements were approved by the Board of Trustees on 23rd November 2022 and were signed on its behalf by:



Mrs M Weaver – Trustee



Mr B Price – Trustee

**HOME-START WYRE FOREST
NOTES TO THE FINANCIAL STATEMENTS
FOR THE YEAR ENDED 30TH SEPTEMBER 2022**

1 ACCOUNTING POLICIES

BASIS OF PREPARING FINANCIAL STATEMENTS

The financial statements of the charitable company, which is a public benefit entity under FRS 102, have been prepared in accordance with the Charities SORP (FRS 102) 'Accounting and Reporting by Charities: Statement of Recommended Practice applicable to charities preparing their accounts in accordance with the Financial Reporting Standard applicable in the UK and Republic of Ireland (FRS 102) (effective 1 January 2019), Financial Reporting Standard 102 'The Financial Reporting Standard applicable in the UK and Republic of Ireland' and the Companies Act 2006. The financial statements have been prepared under the historical cost convention.

The accounts are prepared in sterling, which is the functional currency. Monetary amounts in these financial statements are to the nearest £.

INCOME

All income is recognised in the Statement of Financial Activities once the charity has entitlement to the funds, it is probable that the income will be received and the amount can be measured reliably.

EXPENDITURE

Liabilities are recognised as expenditure as soon as there is a legal or constructive obligation committing the charity to that expenditure, it is probable that a transfer of economic benefits will be required in settlement and the amount of the obligation can be measured reliably. Expenditure is accounted for on an accruals basis and has been classified under headings that aggregate all cost related to the category. Where costs cannot be directly attributed to particular headings they have been allocated to activities on a basis consistent with the use of resources.

TANGIBLE FIXED ASSETS

Depreciation is provided at the following annual rates in order to write off each asset over its estimated useful life.

Fixtures and fittings - 25% on cost

TAXATION

The charity is exempt from corporation tax on its charitable activities.

FUND ACCOUNTING

Unrestricted funds can be used in accordance with the charitable objectives at the discretion of the trustees.

Restricted funds can only be used for particular restricted purposes within the objects of the charity. Restrictions arise when specified by the donor or when funds are raised for particular restricted purposes.

Further explanation of the nature and purpose of each fund is included in the notes to the financial statements.

PENSION COSTS AND OTHER POST-RETIREMENT BENEFITS

The charitable company operates a defined contribution pension scheme. Contributions payable to the charitable company's pension scheme are charged to the Statement of Financial Activities in the period to which they relate.

HOME-START WYRE FOREST
NOTES TO THE FINANCIAL STATEMENTS
FOR THE YEAR ENDED 30TH SEPTEMBER 2022

1 ACCOUNTING POLICIES – continued

REDUNDANCY

The Charity recognises a liability for termination benefits at the point when the Charity is committed to making the payment in return for the employee redundancy.

FINANCIAL INSTRUMENTS

The Charity has elected to apply the provisions of Section 11 'Basis Financial instruments' and Section 12 'Other Financial Instruments Issues' of FRS 102 to all of its financial instruments.

Financial instruments are recognised when the charity becomes party to the contractual provisions of the instrument.

Financial assets are offset, with the net amounts presented in the accounts where there is a legally enforceable right to set off the recognised amounts and there is an intention to settle on a net basis or to realise the asset and settle the liability simultaneously.

Basic Financial Assets

Basic financial assets, which include trade and other receivables and cash and bank balances, are initially measured at transaction price including transaction costs and are subsequently carried at amortised cost using the effective interest method unless the arrangement constitutes a financial transaction, where the transaction is measured at the present value of the future receipts discounted at a market rate of interest.

Basic Financial Liabilities

Basic Financial Liabilities, including trade and other payables, are initially recognised at transaction price unless the arrangement constitutes a financing transaction, where the debt instrument is measured at the present value of future receipts, discounted at a market rate of interest. Debt instruments are subsequently carried at an amortised cost, using the effective interest rate method.

Basic Financial Liabilities

Trade payables are obligations to pay for goods and services that have been acquired in the ordinary course of the operations from suppliers. Accounts payable are classified as current liabilities if payment is due within one year or less. If not they are presented as non-current liabilities. Trade payables are recognised initially at transaction costs.

HOME-START WYRE FOREST
NOTES TO THE FINANCIAL STATEMENTS
FOR THE YEAR ENDED 30TH SEPTEMBER 2022

2. DONATIONS AND LEGACIES

	2022	2021
	£	£
Donations	35,723	40,985
Other Income	<u>203</u>	<u>3,409</u>
	<u>35,926</u>	<u>44,394</u>

3. OTHER TRADING ACTIVITIES

	2022	2021
	£	£
Fundraising events	<u>540</u>	<u>93</u>

4. INVESTMENT INCOME

	2022	2021
	£	£
Deposit account interest	<u>146</u>	<u>48</u>

**5. INCOME FROM CHARITABLE
EVENTS**

	2022	2021
	£	£
Grants	<u>290,809</u>	<u>289,938</u>

Activity
Children &
parents

HOME-START WYRE FOREST
NOTES TO THE FINANCIAL STATEMENTS CONTINUED
FOR THE YEAR ENDED 30TH SEPTEMBER 2022

5. INCOME FROM CHARITABLE ACTIVITIES -
Continued

	2022	2021
	£	£
Grants received, included in the above, are as follows:		
Garfield Weston	6,650	13,350
BBC Children in Need	33,412	56,323
Community Fund – Awards For All	9,984	9,984
WFDC – Covid Support	20,500	20,000
Severn Trent Community Fund	19,000	-
Home-Start – Caring For Families Grant	-	4,129
Lottery Access All Areas – Covid Support	-	20,000
Young Solutions Community Fund	-	3,400
Arnold Clarke Community Fund	-	1,000
Eveson Trust	31,000	-
DY10 HBG Big Local	63,435	92,536
MK Rose Charitable Trust	5,000	3,000
Worcestershire Community Foundation	10,000	-
Big Lottery	77,158	61,803
Baron Davenport	-	1,000
Kidderminster Aid in Sickness Fund	-	125
Tampon Tax Fund	-	2,222
Western Power Distribution	2,500	1,066
Pears R&R Fund	9,120	-
NHS Herefordshire – Autism Fund	3,050	-
	<u>290,809</u>	<u>289,938</u>

6. CHARITABLE ACTIVITIES COSTS

	Direct costs (See note 7) £	Totals £
Children and parents	<u>297,687</u>	<u>324,218</u>

HOME-START WYRE FOREST
NOTES TO THE FINANCIAL STATEMENTS CONTINUED
FOR THE YEAR ENDED 30TH SEPTEMBER 2022

7. DIRECT COSTS OF CHARITABLE ACTIVITIES	2022	2021
	£	£
Staff costs	187,019	194,566
Staff expenses	3,133	3,250
Staff recruitment	138	2,551
Volunteer expenses	4,300	1,652
Volunteer recruitment	558	1,693
MCM expenses	308	102
Printing, Postage and stationery	5,926	7,372
Advertising and publicity	830	3,993
Telephone	5,796	5,422
Rent	3,575	2,383
Rates	787	777
Office cleaning	8	23
Electricity	1,398	943
Insurance	1,252	1,662
Fees to Home-Start UK	4,572	3,786
Subscriptions	30	30
iT support	2,801	2,045
Family Group support	30,687	8,410
AGM expenses	576	599
General expenses	2,237	1,715
Staff training costs	2,140	933
Prep courses	813	879
Depreciation	149	212
Room hire	5,805	427
KFG materials	416	122
KFG refreshments	1,334	111
Professional fees	23,218	37,280
Repairs and maintenance	302	197
Events and Packages	5,060	38,803
Independent examination	2,520	2,280
	297,687	324,218

HOME-START WYRE FOREST
NOTES TO THE FINANCIAL STATEMENTS CONTINUED
FOR THE YEAR ENDED 30TH SEPTEMBER 2022

8. NET INCOME/(EXPENDITURE)	2022	2021
	£	£
Net income/(expenditure) is stated after charging/(crediting):		
Depreciation – owned assets	<u>149</u>	<u>212</u>

9. TRUSTEES REMUNERATION AND BENEFITS

There was no trustees' remuneration nor other benefits for both the year ended 30 September 2022 and the year ended 30 September 2021.

TRUSTEES' EXPENSES

An amount of £Nil (2021 - £Nil) was paid to the Trustees for the year ended 30 September 2022.

10. STAFF COSTS	2022	2021
The average monthly number of employees during the year was as follows:	7	5
Staff costs for the year are as follows:		
	2022	2021
	£	£
Manager, secretary and co-ordinators	134,980	137,486
Community Staff (DY10)	45,777	52,412
Redundancy pay	-	-
Pension costs	<u>6,262</u>	<u>4,668</u>
	<u>187,019</u>	<u>194,566</u>

HOME-START WYRE FOREST
NOTES TO THE FINANCIAL STATEMENTS CONTINUED
FOR THE YEAR ENDED 30TH SEPTEMBER 2022

11. COMPARATIVES FOR THE STATEMENT OF FINANCIAL ACTIVITIES	Unrestricted funds	Restricted funds	Total funds
	£	£	£
INCOME AND ENDOWMENTS FROM:			
Donations and legacies	44,394	-	44,394
Charitable activities			
Children and parents	-	289,938	289,938
Other trading activities	93	-	93
Investment income	48	-	48
	<u>44,535</u>	<u>289,938</u>	<u>334,473</u>
EXPENDITURE ON			
Charitable activities			
Children and parents	<u>6,123</u>	<u>318,095</u>	<u>324,218</u>
NET INCOME/(EXPENDITURE)	<u>38,412</u>	<u>(28,157)</u>	<u>10,255</u>
RECONCILIATION OF FUNDS			
Total funds brought forward	<u>70,955</u>	<u>31,981</u>	<u>102,936</u>
TOTAL FUNDS CARRIED FORWARD	<u>109,367</u>	<u>3,824</u>	<u>113,191</u>

HOME-START WYRE FOREST
NOTES TO THE FINANCIAL STATEMENTS CONTINUED
FOR THE YEAR ENDED 30TH SEPTEMBER 2022

12. TANGIBLE FIXED ASSETS		Fixtures and fittings £
COST		
At 1 October 2021		6,172
Additions		-
		<u>6,172</u>
At 30 September 2022		
DEPRECIATION		
At 1 October 2021		5,875
Charge for year		148
		<u>6,023</u>
At 30 September 2022		
NET BOOK VALUE		
At 30 September 2022		<u>149</u>
At 30 September 2021		<u>297</u>
 13. DEBTORS: AMOUNTS FALLING DUE WITHIN ONE YEAR	2022	2021
	£	£
Prepayments and accrued income	<u>1,287</u>	<u>1,483</u>
 14. CREDITORS: AMOUNTS FALLING DUE WITHIN ONE YEAR	2022	2021
	£	£
Accrued expenses and deferred income	<u>15,131</u>	<u>34,267</u>
 15. LEASING AGREEMENTS	2022	2021
	£	£
Minimum lease payments under non-cancellable operating leases fall due as follows:		
Within one year	7,380	3,085
Between one and five years	<u>2,665</u>	<u>5,220</u>
	<u>10,045</u>	<u>9,025</u>

HOME-START WYRE FOREST
NOTES TO THE FINANCIAL STATEMENTS CONTINUED
FOR THE YEAR ENDED 30TH SEPTEMBER 2022

16. MOVEMENT IN FUNDS

	At 01.10.21 £	Net movement in funds £	Transfers between funds £	At 30.09.22 £
Unrestricted funds				
General fund	9,260	23,624	(18,000)	14,884
Designated fund	<u>100,107</u>	<u>146</u>	<u>18,000</u>	<u>118,253</u>
	109,367	23,770	-	133,137
Restricted funds				
Garfield Weston	30	(102)	-	(72)
BBC Children in Need	-	2,357	-	2,357
Lloyds Bank	-	-	-	-
Eveson Trust	-	-	-	-
Big Lottery – Awards For All	-	7,714	-	7,714
DY10 HBG Big Local	1,661	(5,351)	-	(3,690)
MK Rose Charitable Trust	597	4,403	-	5,000
Groundwork UK	-	-	-	-
Big Lottery	1,535	(946)	-	589
Kidderminster Aid in Sickness Fund	-	-	-	-
Tampon Tax Fund	-	-	-	-
Western Power Distribution	-	-	-	-
Pears R&R Fund	-	-	-	-
NHS Herefordshire – Autism Fund	-	-	-	-
Baron Davenport	-	-	-	-
Community Fund – Awards For All	-	-	-	-
WFDC – Covid Support	-	-	-	-
Severn Trent Community Fund	-	-	-	-
Home-Start – Caring For Families Grant	-	(2,111)	-	(2,111)
Lottery Access All Areas – Covid Support	-	-	-	-
Young Solutions Community Fund	-	-	-	-
Arnold Clarke Community Fund	-	-	-	-
	<u>3,824</u>	<u>5,963</u>	<u>-</u>	<u>9,787</u>
TOTAL FUNDS	<u>113,191</u>	<u>29,733</u>	<u>-</u>	<u>142,924</u>

HOME-START WYRE FOREST
NOTES TO THE FINANCIAL STATEMENTS CONTINUED
FOR THE YEAR ENDED 30TH SEPTEMBER 2022

16. MOVEMENT IN FUNDS – Continued	Incoming Resources	Resources expended	Movement in funds
	£	£	£
Net movement in funds, included in the above are as follows:			
Unrestricted funds			
General Fund	36,466	(12,842)	23,624
Designated Fund	146	-	146
Restricted funds			
Garfield Weston	6,650	(6,752)	(102)
BBC Children in Need	33,412	(31,055)	2,357
Lloyds Bank	-	-	-
Eveson Trust	31,000	(31,000)	-
Big Lottery – Awards For All	9,984	(2,270)	7,714
DY10 HBG Big Local	63,435	(68,786)	(5,351)
MK Rose Charitable Trust	5,000	(597)	4,403
Groundwork UK	-	-	-
Big Lottery	77,158	(78,104)	(946)
Kidderminster Aid in Sickness Fund	-	-	-
Tampon Tax Fund	-	-	-
Western Power Distribution	2,500	(2,500)	-
Pears R&R Fund	9,120	(9,120)	-
NHS Herefordshire – Autism Fund	3,050	(3,050)	-
Baron Davenport	-	-	-
Community Fund – Awards For All	-	-	-
WFDC – Covid Support	10,000	(10,000)	-
Severn Trent Community Fund	20,500	(20,500)	-
Home-Start – Caring For Families Grant	19,000	(21,111)	(2,111)
Lottery Access All Areas – Covid Support	-	-	-
Young Solutions Community Fund	-	-	-
Arnold Clarke Community Fund	-	-	-
	<u>290,809</u>	<u>(284,846)</u>	<u>(5,963)</u>
TOTAL MOVEMENT	<u>327,420</u>	<u>(297,687)</u>	<u>29,733</u>

HOME-START WYRE FOREST
NOTES TO THE FINANCIAL STATEMENTS CONTINUED
FOR THE YEAR ENDED 30TH SEPTEMBER 2022

16. MOVEMENT IN FUNDS

	At 01.10.20 £	Net movement in funds £	Transfers between funds £	At 30.09.21 £
Unrestricted funds				
General fund	25,895	38,365	(55,000)	9,260
Designated fund	45,060	48	55,000	100,108
	70,955	38,413	-	109,368
Restricted funds				
Garfield Weston	-	30	-	30
BBC Children in Need	1,244	(1,244)	-	-
Lloyds Bank MN	-	-	-	-
Eveson Trust	-	-	-	-
Big Lottery – Awards For All	2,048	(2,048)	-	-
DY10 HBG Big Local	10,888	(9,227)	-	1,661
MK Rose Charitable Trust	3,000	(2,403)	-	597
Groundwork UK	-	-	-	-
Big Lottery	13,229	(11,694)	-	1,535
Kidderminster Aid in Sickness Fund	-	-	-	-
Tampon Tax Fund	1,140	(1,140)	-	-
Western Power Distribution	-	-	-	-
Midcounties Cooperative	-	-	-	-
Worcestershire Community Foundation	-	-	-	-
WCC – ESF	-	-	-	-
Baron Davenport	432	(432)	-	-
Community Funds – Awards For All	-	-	-	-
WFDC – Covid Support	-	-	-	-
Severn Trent Community Fund	-	-	-	-
Home Start – Caring For Families Grant	-	-	-	-
Lottery Access All Areas – Covid Support	-	-	-	-
Young Solutions Community Fund	-	-	-	-
Arnold Clarke Community Fund	-	-	-	-
	31,981	(28,158)	-	3,823
TOTAL FUNDS	102,936	10,255	-	113,191

HOME-START WYRE FOREST
NOTES TO THE FINANCIAL STATEMENTS CONTINUED
FOR THE YEAR ENDED 30TH SEPTEMBER 2022

16. MOVEMENT IN FUNDS – Continued	Incoming Resources	Resources expended	Movement in funds
	£	£	£
Net movement in funds, included in the above are as follows:			
Unrestricted funds			
General Fund	44,487	(6,122)	38,365
Designated Funds	48	-	48
Restricted funds			
Garfield Weston	13,350	(13,320)	30
BBC Children in Need	56,323	(57,566)	(1,244)
Lloyds Bank MN	-	-	-
Eveson Trust	-	-	-
Big Lottery – Awards For All	-	(2,048)	(2,048)
DY10 HBG Big Local	92,536	(101,762)	(9,227)
MK Rose Charitable Trust	3,000	(5,403)	(2,403)
Groundwork UK	-	-	-
Big Lottery	61,803	(73,497)	(11,694)
Kidderminster Aid in Sickness Fund	125	(125)	-
Tampon Tax Fund	2,222	(3,362)	(1,140)
Western Power Distribution	1,066	(1,066)	-
Midcounties Co-operative	-	-	-
Worcestershire Community Foundation	-	-	-
WCC – ESF	-	-	-
Baron Davenport	1,000	(1,432)	(432)
Community Funds – Awards For All	9,984	(9,984)	-
WFDC – Covid Support	20,000	(20,000)	-
Severn Trent Community Fund	-	-	-
Home Start – Caring For Families Grant	4,129	(4,129)	-
Lottery Access All Areas – Covid Support	20,000	(20,000)	-
Young Solutions Community Fund	3,400	(3,400)	-
Arnold Clarke Community Fund	1,000	(1,000)	-
	<u>289,938</u>	<u>(318,096)</u>	<u>(28,158)</u>
TOTAL MOVEMENT	<u>334,473</u>	<u>(324,218)</u>	<u>10,255</u>

HOME-START WYRE FOREST
NOTES TO THE FINANCIAL STATEMENTS CONTINUED
FOR THE YEAR ENDED 30TH SEPTEMBER 2022

16. MOVEMENT IN FUNDS - continued	At 01.10.20	Net Movement in funds	Transfers between funds	At 30.09.22
A current year 12 months and prior year 12 months combined position is as follows:	£	£	£	£
Unrestricted Funds				
General fund	25,895	61,989	(73,000)	14,884
Designated fund	45,060	193	73,000	118,253
	70,955	62,182	-	133,137
Restricted Funds				
Garfield Weston	-	(72)	-	(72)
BBC Children in Need	1,244	1,113	-	-
Eveson Trust	-	-	-	-
Big Lottery – Awards For All	2,048	5,666	-	-
DY10 HBG Big Local	10,888	(14,577)	-	1,661
MK Rose Charitable Trust	3,000	2,000	-	597
Big Lottery	13,229	(12,640)	-	1,535
Kidderminster Aid in Sickness Fund	-	-	-	-
Tampon Tax Fund	1,140	(1,140)	-	-
Western Power Distribution	-	-	-	-
Pears R&R Fund	-	-	-	-
NHS Herefordshire – Autism Fund	-	-	-	-
Baron Davenport	432	(432)	-	-
Community Fund – Awards For All	-	-	-	-
WFDC – Covid Support	-	-	-	-
Severn Trent Community Fund	-	(2,111)	-	-
Home-Start – Caring For Families Grant	-	-	-	-
Lottery Access All Areas – Covid Support	-	-	-	-
Young Solutions Community Fund	-	-	-	-
Arnold Clarke Community Fund	-	-	-	-
	31,981	(22,194)	-	9,787
TOTAL FUNDS	102,936	39,989	-	142,924

HOME-START WYRE FOREST
NOTES TO THE FINANCIAL STATEMENTS CONTINUED
FOR THE YEAR ENDED 30TH SEPTEMBER 2022

16. MOVEMENT IN FUNDS – Continued	Incoming Resources £	Resources expended £	Movement in funds £
A current year 12 months and prior year 12 months combined net movement in funds, included in the above are as follows:			
Unrestricted funds			
General Fund	81,146	(18,964)	62,182
Restricted funds			
Garfield Weston	20,000	(20,072)	(72)
BBC Children in Need	89,735	(88,622)	1,113
Eveson Trust	31,000	(31,000)	-
Big Lottery – Awards For All	9,984	(4,318)	5,666
DY10 HBG Big Local	155,971	(170,548)	(14,577)
MK Rose Charitable Trust	8,000	(6,000)	2,000
Big Lottery	138,961	(151,601)	(12,640)
Kidderminster Aid in Sickness Fund	125	(125)	-
Tampon Tax Fund	2,222	(3,362)	(1,140)
Western Power Distribution	3,566	(3,566)	-
Pears R&R Fund	9,120	(9,120)	-
NHS Herefordshire – Autism Fund	3,050	(3,050)	-
Baron Davenport	1,000	(1,432)	(432)
Community Fund – Awards For All	19,984	(19,984)	-
WFDC – Covid Support	40,500	(40,500)	-
Severn Trent Community Fund	19,000	(21,111)	(2,111)
Home-Start – Caring For Families Grant	4,129	(4,129)	-
Lottery Access All Areas – Covid Support	20,000	(20,000)	-
Young Solutions Community Fund	3,400	(3,400)	-
Arnold Clarke Community Fund	1,000	(1,000)	-
	<u>580,747</u>	<u>(602,941)</u>	<u>(22,194)</u>
TOTAL MOVEMENT	<u>661,893</u>	<u>(621,905)</u>	<u>39,989</u>

**HOME-START WYRE FOREST
NOTES TO THE FINANCIAL STATEMENTS - CONTINUED
FOR THE YEAR ENDED 30TH SEPTEMBER 2022**

16. MOVEMENT IN FUNDS – Continued

Unrestricted

General Fund

The policy of the committee is to endeavour to increase the value of the General Fund, the general fund is to be used for the day to day running of the charity as the trustees deem appropriate.

Designated Fund

The purpose of the Designated Fund is to provide for a minimum of three months running costs and redundancy payments should the Scheme have to close because of a failure of funding or for any other reason. The scheme established and maintains this Reserve in compliance with a recommendation from Home-Start UK. The balance at 30 September 2022 is £118,253.

Restricted Funds

BBC Children in Need

Grants were received from this Charity to cover part of the Co-ordinators' salary costs. The balance at 30 September 2022 is £2,357.

DY10 HBG Big Local

Grants were received to cover the costs of running family groups, volunteer training costs and provide HR services to a community project, this includes salary costs, room hire, volunteer expenses and other administrative services. The balance at 30 September 2022 is £(3,690).

Community Awards For All

This grant was received to cover management costs. The balance at 30 September 2022 is £7,714.

Kidderminster Aid in Sickness Fund

Grants were received to cover the costs for families.

MK Rose Charitable Trust

Grants were received to cover our Swap Shop project costs. The balance at 30 September 2022 is £5,000.

Garfield Weston

Grants were received to contribute to the running costs of the photocopier, rent, and general utilities.

Big Lottery

Grants were received to cover the majority of the costs of providing bespoke therapy to adults or children along with family support and to enable the training and development of staff to continue the level of support in the future. The costs include salary costs for the Project Manager, Project Secretary, Project Co-ordinator and sessional psychologists, training and overheads. The balance at 30 September 2022 is £589.

Eveson Trust

Grants were received to contribute to the core running costs including staff and utilities.

**HOME-START WYRE FOREST
NOTES TO THE FINANCIAL STATEMENTS - CONTINUED
FOR THE YEAR ENDED 30TH SEPTEMBER 2022**

16. MOVEMENT IN FUNDS – Continued

Western Power Distribution

Grants were received to cover family welfare support.

Wyre Forest District Council Grants

Grants were received to support food and welfare costs for families.

Severn Trent Community Fund

Grants were received to part cover staff and costs for our Swap Shop project. The balance at 30 September 2022 is £(2,111).

Pears R&R Fund

Grants were received to cover core costs including staff and utilities.

NHS Herefordshire – Autism Fund

Grants were received to purchase resources for autistic adults and children.

Transfers

A transfer of £18,000 has been made from the General fund to the Designated fund to increase the balance to £118,253 at 30 September 2022 (2021: £108,108).

17. RELATED PARTY DISCLOSURE

There were no related party transactions for the year ended 30th September 2022.

18. LEGAL STATUS

The Charity is a company limited by guarantee and has no share capital.

19. INDEPENDENT EXAMINATION

The fees for the independent examination for the year ended 30 September 2022 amounted to £2,520 (2021: £2,280).

HOME-START WYRE FOREST
DETAILED STATEMENT OF FINANCIAL ACTIVITIES
FOR THE YEAR ENDED 30TH SEPTEMBER 2022

INCOME AND ENDOWMENTS	2022	2021
	£	£
Donations and legacies		
Donations	35,723	40,985
Other Income	203	3,409
	<u>35,926</u>	<u>44,394</u>
Other Trading Activities		
Fundraising events	540	93
Investment Income		
Deposit account interest	145	48
Charitable activities		
Grants	290,809	289,938
Total Incoming Resources	<u>327,420</u>	<u>334,473</u>
EXPENDITURE		
Charitable Activities		
Staff salaries	180,757	189,898
Pensions	6,262	4,668
Staff expenses	3,133	3,250
Staff recruitment	138	2,551
Volunteer expenses	4,300	1,652
Volunteer recruitment	558	1,693
MCM expenses	308	102
Printing, postage & stationery	5,926	7,372
Advertising and publicity	830	3,993
Telephone	5,796	5,422
Rent	3,575	2,383
Rates	787	777
Office cleaning	8	23
Electricity	1,398	943
Insurance	1,252	1,662
Fees to Home-Start UK	4,572	3,786
Subscriptions	30	30
IT support	2,801	2,045
Family group support	30,687	8,410
AGM expenses	576	599
General expenses	2,237	1,715
Staff Training costs	2,140	934
Prep courses	813	879
Depreciation	149	212
Room hire	5,805	427
KFG materials	416	122
KFG refreshments	1,334	111
Professional fees	23,218	37,280
Repairs and maintenance	302	197
Events & Packages	5,060	38,803
Independent examination	2,520	2,280
Total resources expended	<u>297,687</u>	<u>324,218</u>
Net income/(expenditure)	<u>29,733</u>	<u>10,255</u>

