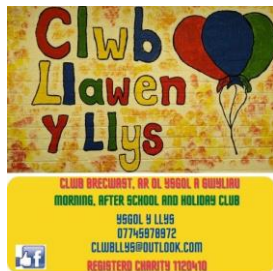


Clwb Llawen y Llys  
Report and Accounts  
For the year Ending 2022

Charity Registration No 1120410



Clwb Llawen y Llys

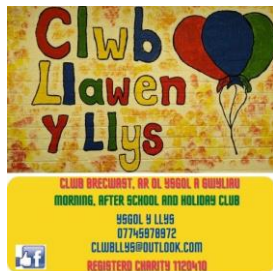
Charity Details

For year ended 31<sup>st</sup> of December 2021

Charity Number: 1120410

Principal Address: Clwb Llawen y Llys  
Ysgol Y Llys  
Princes Ave  
Prestatyn  
Denbighshire  
LI19 8RP

Charity Registration No 1120410



Clwb Llawen y Llys

Trustee's Report

For year ended 31<sup>st</sup> of December 2022

### Structure, Governance, and Management

The trustees are selected through an election at its annual general meeting.

The trustees who manage the charity during the year were:

Ffion Evans – Secretary

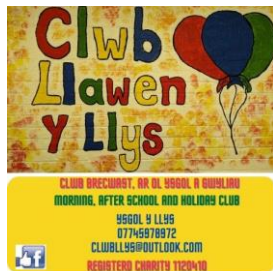
Dyfan Phillips – Trustee

Claire Peacock – Chairperson

Joyce Doyle – Trustee

Carys Bunnell – Treasurer

Charity Registration No 1120410



Clwb Llawen y Llys provides childcare through the medium of Welsh, for children between the age of 4 and 11. We provide childcare for children that attend Ysgol y Llys. It has proven to be an asset for parents that work in the community. We provide breakfast club between 7.50 and 8.45 where the children are transferred over to the school. We re-open at 15:00 and welcome the children back from the school staff and provide an afterschool club until 18:00. We also provide holiday care between 7.50 and 18:00 during school holidays, apart from Christmas and last two weeks of Summer Holiday.

We work closely with Ysgol a Llys and Cylch Meithrin y Llys, who act as our feeder.

We are inspected by CIW, Has a management structure of Manager and 2 supervisors. We carry out regular risk assessments and all required policies are in place.

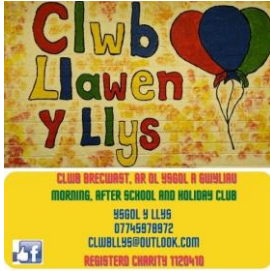
The contribution of volunteers is limited due to DBS requirements, but we encourage work experience and have had several people become childcare assistants through this process. In the last few years, we have had several ex pupils and ex children who had

We continue to remain self-sustaining and provide good value childcare in the Welsh medium for 4-11-year-olds. . In addition, volunteer ex pupils also arrange games. Other activities provided, at no extra cost to parents. These involve bouncy castles, storytelling, drama, and sport activities.

The recruitment and retention of staff and bringing new children to the club remains high, especially during holiday periods.

We continue to provide proficient services within the CIW standards.

## Charity Registration No 1120410



We survey parents and gained very positive feedback in all areas. And have effectively responded to suggestions from parents and pupils.

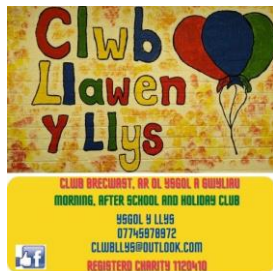
Once again, the Clwb has managed its finances prudently, running a very small margin, mainly through good recruitment and it remains financially healthy and long-term stability is very positive.

Many of the staff have completed a Transition to level 3 Play work qualification to develop their understanding and provide the best possible atmosphere and opportunities for the children in our care.

The Clwb rent school rooms in a school that has limited space. Monies are re-invested into the Clwb where appropriate. The trustees understand the need to maintain sustainability both now and, in the future.

Funding are raised from childcare fees.

Charity Registration No 1120410

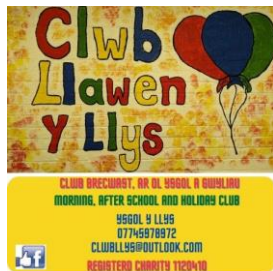


**Clwb Llawen y Llys**  
**FINANCIAL STATEMENT FOR YEAR ENDING**  
**For year ended 31<sup>st</sup> of December 2022**

**Payments**

Wages	£	46,420.52
Tax, NI & Pension	£	12,006.97
Equipment / Resource	£	954.00
Petty Cash	£	5,000.00
BT Phone line	£	191.68
maintenance work	£	1,033.01
Insurance	£	425.20
Profesional Fees	£	5,055.00
Visits/ Trips	£	750.00
Overpayment fees Refun	£	20.00
<b>TOTAL PAYMENTS</b>	<b>£</b>	<b>71,856.38</b>

Charity Registration No 1120410



# RECEIPTS:

Total Childcare Vouchers

£17,599.36

Childcare Fees - Direct Bank Payment £

£ 56,744.50

Childcare Fees - Other

£112

Donations

£280.64

TOTAL – RECEIPTS

£74,736.50

SURPLUS (DEFICIT) FOR THE YEAR

£2,880.12

Bank 2021

65,333.80

Bank 2022

68,213.92

SURPLUS (DEFICIT) FOR  
THE YEAR (AS ABOVE)

2,880.12

Charity Registration No 1120410