

Upper Teesdale Agricultural Support Services



ANNUAL IMPACT REPORT

“UTASS...

A place for everyone.
Supporting people living and
working across the Durham Dales.”

Introduction



UTASS continues to be the guiding light for so many in our community in times of need or stress. As has been the case over the years UTASS provides support and leadership in our community for farmers and non-farmers alike. 2024 gave rise to concern for many of our members regarding the impending changes to the Inheritance Tax regime and how this will impact. UTASS has again been at the forefront in providing information and guidance.

Organisations like UTASS of course do not remain unchanged. In January 2024 we had two people join the team fulfilling the role of coordinators of the Wear and Tees, and Darlington Rural Watch groups. The coordinators are part of a new initiative by Durham Constabulary. Rurali, was launched at UTASS and is a scheme dedicated to combatting rural crime, is funded by Police and Crime Commissioner for Durham, Joy Allen.

In July Becky Land joined us as the Lived Experience Lead, and Claire Stoddart as a new receptionist/admin member. Suzanne Wallace joined us in October as the Time Together Project Coordinator.

Also in 2024 Emma Spry began working alongside Bob Danby as Deputy Manager, taking on more and more of Bob's role and workload to allow Bob to look forward to his retirement. Emma will be appointed as the new manager of UTASS in March 2025. It is therefore with much sadness we say (a sort of) goodbye to Bob who has been an incredible manager and will be much missed by both the staff and the trustees alike, but in Emma we know that we will have a steady hand on the tiller of UTASS for the years to come. However this isn't really "Goodbye" to Bob nor a "Hello" to Emma, whilst Bob is retiring as manager he is to become a Trustee of UTASS and Emma as a new manager is of course known to us already.

Sadly I must report the retirement of one of our long-serving trustees Louise Dalton, who seemed to perform the role of Honorary Secretary for as long as I can remember. She will be missed.



There have been other people who have moved on from UTASS this year being Janet Dodson who left as Time Together Project Coordinator in July to take up another role, Jacqui Nutter who left as UTASS support worker in December 2024 and Amy Kinchley, Youth Support Worker.

I think it is incredibly important that we remember all our members of staff who in their own individual ways contribute so much to our organisation, and make it what it is.

In May, Richard Betton was awarded the Chairman's Medal, the highest civic honour in County Durham by Durham County



Introduction

Council Chairman Cllr Joan Nicholson. For over 25 years, Richard has devoted much of his own time to supporting farming and the wider community. We were all very proud of the richly deserved award, behind the scenes, Richard works selflessly and quietly, to help those in times of trouble.

If however I were to single anyone out it would have to be Grace Crawford our Funding and Strategic Development Officer for her continued and indeed unrelenting efforts to ensure the financial viability of UTASS through grants. This is no easy task and I know Grace devotes a huge amount of time and effort to getting grant applications put forward, and in a way which is most appealing. She goes above and beyond in cultivating grant providers and ensuring they know of the work that UTASS does. On behalf of the Trustees I would like to thank Grace and all other members of our team.

I feel it is right at this time also to say thank you to you our members. Chairman, Trustees, staff and volunteers, we would be nothing without our members. We do not take this for granted and we understand we are here to listen to you and to provide a service to our community within our remit, again I say thank you to you our members.

I suspect we can all see that the coming years are not going to be easy for the farming community and indeed those of us who live in rural parts. Farming itself seems to me to be under attack and misunderstood in many quarters. The continued issues of living in rural communities, particularly in more isolated parts causes much concern, and UTASS is acutely aware of your problems and we want our members and our community to know that we stand shoulder to shoulder with you and will do all we can to assist, as we have always done. The challenges to our rural community are not unique, but you have a champion and support service in UTASS which is pretty much unique. We are here to help and listen.

Finally, I would like once again to express a heartfelt thanks personally and on behalf of all of the Trustees past and present to Bob.

As I sign off my report for 2024 I again do so assuring you of our commitment to you, our members and our community.



Michael McGarry
UTASS Chairman

Farming Support



2024 was another busy year for our farm support team, as they navigated the constant changes within the agricultural sector. From SFI to Delinked Payments, Countryside Stewardship to Higher Level Stewardship, Richard and Charlotte had lots to understand and manage. Caitlin completed her Agricultural Secretary training and supported the farming team, helping to alleviate pressure and ever-increasing workload.

79%
of farming
members said we
helped them deal with
farm paperwork.



The year marked the end of the Basic Payment Scheme, which was replaced by **delinked payments**. The RPA (Rural Payments Agency) managed the transition smoothly, with most payments being made early (Late July and September rather than the usual December window) and in the correct amounts.

Delinked payments simplified the rules around making changes to land mapping. Historically, this meant submitting forms to the RPA, however delinked payments mean that irrespective of any land or boundary changes, farmers remain entitled to their share of the previous BPS payment.

Demand for the assistance with **grants** continued to grow throughout the year and with the extended rollout of **SFI** (Sustainable Farming Incentive), the farm support team faced a steep learning curve as they adapted to a new application process, as well as digesting over 500 pages of various online handbooks detailing the new rules, regulations, and terms & conditions.

“Many thanks to Charlotte, to Richard and to all the staff at UTASS for the excellent service that you provide. The whole organisation is an invaluable asset to Teesdale. I have always found you all pleasant, helpful and very efficient. I tip my hat to you all.”

– Iris Simpson, Member

We also continued to assist farmers with **Countryside Stewardship** (CS) agreements and CS Capital Grant claims, particularly for wall and hedge restoration. Later in the year, we encountered further challenges when the CS Capital Grants application process closed unexpectedly, causing frustration and worry to both those already in an agreement, and also those wanting to apply.

Many farmers experienced added frustration at being locked into 5 year extensions on their **HLS** (Higher Level Stewardship) agreements, unable to exit their schemes and access the higher payments offered by the CS High Tier offer.



Last year, we established a **farmers forum**, allowing us to create a working partnership with local farmers to ensure we understand the issues impacting them, and deliver the right support to the farming community.



Farming Support

The **Agricultural secretary's** support provided valuable assistance to our members with a wide range of farm record-keeping tasks as well as dealing with various agencies, including the RPA, APHA, BCMS, LIS, and local councils. This support includes tasks such as notifying of sheep and cattle movements, registering calf births, farm assurance inspections, medicine records, handling appeals and planning applications. Our help in these areas proved essential, particularly for members without internet access or limited confidence in using IT, as many tasks required online submission.

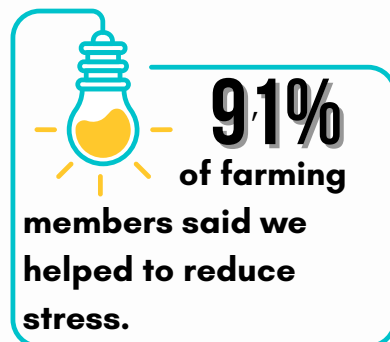
Richard and Charlotte continued to produce **agricultural briefings** simplifying policy documents, new scheme offers, regulation updates and reminders of key dates, keeping our members informed for their farm businesses in a format they can understand.

Richard remained secretary for five **grazier groups** in the Dale, as well as for two groups of Field Reeves on local common land. Due to the increasing workload, Caitlin has stepped up to become 'assistant secretary', ensuring that all tasks were completed in a timely manner. Most of the grazier groups are stuck in HLS extensions awaiting Natural England invitations to transition to CS Higher Tier. An increase in CS payment rates over the past couple of years, would mean a great benefit to the graziers, however creating and drawing up new agreements would see a significant increase in administration workload. The lack of information from the RPA and Natural England, has made forward planning for this work very challenging.

The team continued to attend Defra's online workshops and meetings, covering new scheme information, guidance, payment rates, rules and penalties.

It's always been part of our ethos, to **provide a voice** on behalf of all our members. The rate of change in the farming landscape, as well as in schemes, regulations, and cost inflation, presented challenges for all of us.

Both Richard and Charlotte remained actively involved in the RPA Farmer Welfare Group with Richard also attending conferences and collaborating with the North Pennines National Landscapes, Tees-Swale, and the NFU, among others. He served as a voice for our members, ensuring these organisations had a better understanding of our farming communities and their needs. Meanwhile, Emma continued her work with the Livestock Information Service, helping to shape the new system for cattle recording.



Farming Support



We continued our delivery of the **Farm For The Future** programme throughout 2024, thanks to the support of The Royal Countryside Fund and funding from Defra's Farm Resilience Fund. The aim is to help farming families understand more about the changes that are coming and plan for the future, however we know that this is far from easy as many hill farms are still awaiting the vital information they need from Defra i.e. those in HLS. To date, 160 farm businesses from across the Dales have signed up.

Meetings with Ian Cairns, focussed on the financial side of farming and how businesses can prepare for the changes that are coming, as BPS disappears, while meetings with Janet Fairclough helped people to understand more about the environmental opportunities and new schemes that may be available such as SFI.



Me and my wife came in to see Charlotte and we both said we got more out of that one meeting than from any of the other people who we've gone to for advice. Often, you feel like you're being talked down to when you're looking for advice for your business, or you feel like you're asking stupid questions. That's not the case at UTASS; we felt like we were sitting down with someone like us, who listened and was then able to give us the information that we needed to move forward

- Farm for the Future Participant 2024

Other meetings topics were arranged based on what people told us they were interested in, including livestock health and productivity, water on farm & nutrient management, 'what are

my accounts telling me' and business continuity, looking at likely tax changes and how to prepare cashflows and budgets.

Each business was able to take advantage of at least one fully-funded one-to-one meeting, giving tailored support to look at what the changes mean for their own farm and what options are available.



In 2024 we joined forces with The Farmer Network, Yorkshire Agricultural Society and Field Nurse, and developed a shared programme of activities for the North of England which was successfully funded through the **Defra Farmer Welfare Fund**.

A programme of events has been started, bringing farmers and their families together, strengthening the local support network. This also included 'farm' tailored training, such as emergency first aid, and mental health awareness, both adapted with farm specific examples. At the end of 2024 we were delighted to launch the **Local Women in Farming** network, for the Durham Dales, which will hopefully continue to thrive in 2025.



2024 was another busy year for our **Resilience Support** with June and Melanie seeing a significant increase in referrals not only from self-referrals, but also the local community, farming members and from GP-based Mental Health nurses. They supported clients facing a variety of challenges, including stress, family issues, physical illness, depression, anxiety, bereavement, addiction and domestic abuse.

41%

said 'mental health stigma' causes them stress.



June and Melanie, both trained counsellors, provided in-person, home, local and telephone sessions throughout the year. June specialises in cognitive therapy and mindfulness, while Melanie has an understanding of tenant farming and experience in supporting children and teenagers, a service which has been in high demand.

While UTASS is not a crisis service, we remain committed to supporting individuals in acute need.

"I don't know if I would be here if I hadn't had your support."

- Client

Our team efficiently shared information, ensuring a flexible response to those in crisis. Over the year, we helped farmers, teenagers, older adults, working-age individuals, born-and-bred locals and those who have moved to the Dales more recently.

"You came out to see me, listened, used your experience and understood me."

- Client

Our various **Yoga & Wellness** sessions

went from strength to strength during 2024. Hatha Yoga & Relaxation continued to be led by qualified instructor Jude Taylor, who generously volunteered her time for the past two years. The group remained well-supported, with an average attendance of 12 people. At the end of the year, Jude rolled up her yoga mat for a final time 'retiring' from her role to enjoy a well-deserved break with her family in Tasmania.

In light of this, the group transitioned to self-directed sessions, utilising the large screen and projector to access a range of high-quality yoga resources online.

Yoga, Relaxation and Mindfulness sessions led by June Wainwright also remained popular. Designed for individuals with limited mobility, the group included both long-standing and newer members referred by local health care staff. The flexible sessions allowed some participants to join while seated. Along with stretching, breathing, and relaxation exercises, June's added a social element, inviting members to enjoy a brew and catch up after each session was a welcomed bonus.



In September our trustee, Sarah Elton, led **Mindfulness & Compassion** sessions for individuals with chronic pain. With training in complementary therapies, including mindfulness, Sarah offered a non-religious approach to managing stress and pain. Recognising the limited treatment options available to many clients, she facilitated group sessions focused on mindfulness techniques, including breathing and relaxation exercises, to improve pain management.

52% of users said services accessed at UTASS helped them to feel healthier.



This year we welcomed Suzanne Wallace to the team as our new **Time Together** Teesdale Project Coordinator, as our previous coordinator, Janet, moved on to pastures new.

The project continued to thrive, providing invaluable companionship and fostering meaningful social connections across Teesdale. With the recruitment of ten additional volunteers, we are pleased to report that the project remains on course to achieve its objectives. Our dedicated team of volunteers and

75% of users said services accessed at UTASS helped them to feel less isolated.

supporters has been instrumental in delivering our mission to combat loneliness and build lasting relationships.

We have received 42 referrals for companionship and assembled a group of 19 dedicated volunteers who visit their matched

companions weekly or fortnightly, offering a friendly chat, a trip to the shops, or meaningful social interaction.



With the right pairing, spending just an hour together can make a massive difference. It improves mental health.

– Wiebka, Volunteer

I really look forward to my weekly visits, I enjoy time with my companion, we enjoy chats, looking through photos & sharing stories.

– June, Referral

After 10 months of visiting my friend I always look forward to seeing her, she is always grateful, it gives her something to look forward to it works both ways. It is a mutually beneficial thing to do, I highly recommend volunteering.

– Andrew, Volunteer

Photo kindly provided by Teesdale Mercury.

The **Parish Nurse** service had a significant impact in the community over the past year, true to its vision, offering emotional support, health advice, home visits and opportunities for social interaction to help combat loneliness and provide spiritual care.

72%
of users said services accessed at UTASS helped them to cope better.



The service also facilitated referrals to other Wellbeing Team members and external organisations, enhancing the holistic care provided. The service does not formally discharge clients but gradually reduces involvement once clients are stable or are being supported by other appropriate services. Throughout the year, Gladys provided around 25 clients with ongoing support, with others benefitting from single encounters, either virtually or in person.

While the NHS continues to deliver excellent care, the Parish Nurse service has been vital in addressing the gaps in care, offering a crucial lifeline for individuals who might otherwise fall through the system.

I have made such amazing progress through this support. My life very quickly changed from not wanting to be alive to having things to look forward to. I am recovering physically, mentally, emotionally and spiritually.

- Client



In 2024, we expanded the opportunities available to the community through our welfare team, adding two new roles thanks to our ongoing partnership with the Pioneering Care Partnership and support from Tees, Esk and Wear Valleys NHS Foundation Trust.

Becky Land joined us as **Lived Experience** Lead in July 2024, giving local people a voice in discussions and decisions affecting them by sharing their own mental health experiences. She gathered feedback across Teesdale through one-to-one conversations, community group meetings and events at local auction marts and other locations. Varied experiences have been recorded, along with views from NHS service providers and the UTASS welfare team, which were shared with the Durham Dales Steering Group to identify successes & areas for improvement in the community mental health transformation.

Gina Richardson took on the additional role of **Peer Support** Worker in April 2024, offering support to people living and working across the Durham Dales, meeting with people regularly to help them to develop and work through their own action plans, so they feel more able to cope and in control of their own health and wellbeing.

What is peer support?

Helping people to feel confident in managing their own health and care. When people with similar long-term conditions, or health experiences, come together to support each other – either on a one-to-one or group basis, relationships are formed that can lead to mutual acceptance and understanding.

Training



In 2024, over 210 **training** places were provided at venues across Teesdale and Weardale, primarily with funding to ensure accessibility for all.

Working in partnership with Durham Employment Skills, Digital Training sessions, tailored to individual needs, were delivered to both volunteers and community members.



UTASS also hosted Basic Mental Health Awareness and Emergency First Aid at Work courses, staff also participated in Safeguarding Refresher training, and Food Safety in Catering was held over in Weardale.

With continued demand, we held 3 Lantra Chainsaw Maintenance & Cross Cutting courses, a valuable skill for those pursuing commercial hedgelaying.



This year, we offered 'farm specific' Emergency First Aid at Work and Mental Health Awareness courses, which were tailored with farming scenarios, these were both fully funded and fully booked!

Have done previous First Aid courses (over 3 years ago) - this was an excellent refresher. At home and on the farm.
I will be confident in administering First Aid to anyone who may need it.

- Emergency First Aid at Work Trainee

I found the course and training perfect. It was in a good location, the facilities were adequate, the staff were extremely helpful and friendly, and I would like to thank them for making the course possible.

- Hedgelaying Trainee

Hedgelaying courses continued to be in strong demand, with introductory training in Newbiggin in February, followed by another 5 days of training, held at Middleton Mart and Woodland.

In June, the annual NPTC Safe Use of Sheep Dips course took place, as one of the few providers of this course, we were grateful to have training delivered by Fiona Kidd from Bimeda, ensuring successful assessments.

The British Wool Board Shearing Course helped trainees enhance their skills, with many going on to shear more sheep during the summer.



70%
of users say
that UTASS has
increased their
knowledge & skills.



Training

210+



**training
places provided in
2024.**

Northumbria Dry Stone Walling Association led our annual dry stone walling training in the summer, with support from members, creating a fantastic learning environment for 11 trainees, from beginners to more experienced wallers.



With funding from the Wellesley Trust Fund, we were able to invite young people in the Durham Dales to apply for driver training support.

As always, this was very popular, with over 50 applications received. We were able to award 15 young people with £250 each for car driving lessons. 8 young people completed the Lantra 13-15 Tractor Training, 7 benefitted

from pre-tractor test preparation, 4 received quad bike training, 1 young person gained Moped Training, and another young person was able to complete Lantra Rough Terrain Telescopic training.

This training is not only essential for the health and safety aspect, but also vital in providing young people with better access to job opportunities.

I have already used the fact I've now got my tractor licence in my work placement. I have also been able to help a local farmer with his silaging. I have completed a charity tractor run and will be using it at college in the near future.

- Tractor Test
Preparation Trainee

We contacted UTASS about quad bike training for a young person who helped me at weekends on the farm. He got stuck in and successfully applied for full funding through a great project giving young people driving skills and health and safety awareness, which was vital for us. Since gaining confidence he also did training via UTASS before passing his Tractor Test at age 16 and is now studying agriculture at College.

- Employer of Young Trainee

We are proud to offer training in the isolated Durham Dales that supports access to education, job opportunities, and Health & Safety awareness. We extend our thanks to all who contributed, whether through funding, providing venues or equipment, or supporting us in other ways.

Special thanks go to...

Teesdale Area Action Partnership, Weardale Area Action Partnership, Northumbria Dry Stone Walling Association, Teesdale Branch of NFU, Durham Hedgerow Partnership, Wellesley Trust Fund, Tees-Swale: Naturally Connected, British Wool Shearing, Durham Employment and Skills, Bimeda UK

Young People



This year saw an increase in the number of **Young People** involved in our programme and attending weekly sessions. We welcomed 118 registered participants, providing them with a wide variety of enriching and engaging activities. On average, we saw 38 young people participate in our term time sessions each week – that's over 1200 entries throughout the year! This high level of engagement reflects the growing interest in the activities and opportunities we've offered.

Sessions are held twice a week on Monday and Thursday evenings, and even better... there's always free hot food, a highlight for many! These sessions continue to be based around the 5 ways to wellbeing, promoting a wholesome lifestyle: Connect, Keep Learning, Give, Be Active, Take Notice.



38

**Young People in
attendance every
week**



Our collaboration with the TCR Hub, AYCC and YMCA continued to grow through our Stronger Together project.

By pooling resources, equipment and sharing programmes, we were able to open up even more opportunities for our young people. With a lot more planned for 2025, we look forward to continuing this valuable partnership.

My kids love UTASS drop-in sessions, there is always lots of different things for them to do, it's a lovely safe place for them to meet up with friends and make new ones, all the staff are fantastic and the trips are brilliant.

– Parent of Young Person





Young People



We held sessions here at UTASS ranging from taekwondo to gel nails, biscuit decorating to nerf battles, den building to big screen movie nights, pizza making to puzzles, jewellery making to PS5 VR gaming sessions and keyring making to football.

We also had several offsite trips this year, with some of the favourites including sailing, kayaking, paddle boarding and ROF59.



In partnership with Tees-Swale, we organised a programme of sessions over the course of six weeks, including river dipping, den building, a fossil hunt, pellet dissection, trail walks, visits to Bowlees and Low Force, campfire building and crafting. We also had a trip up to Coldberry to take part in a fossil and crystal hunt!

118

Registered young people attending the youth sessions



478

miles travelled in the UTASS minibuses for offsite trips



OUR YOUTH TEAM ARE...

Adele Dickeson
Gina Richardson
Jacqui Nutter
Melanie Lee




GIVE



Access to Services




Used
3348
times during 2024
saving 66,960
miles

The twice-weekly **Post office** sessions became more vital than ever since the loss of the Barclays branch back in 2023. Provided by Barnard Castle Post Office, the service offered the community access to banking facilities alongside postal services. It also significantly benefitted the environment, saving residents of the dale a 20-mile round trip to Barnard Castle.


POST OFFICE



Back in 2023, **Barclays** moved to UTASS as a 'Barclays Hub', operating twice a week on Tuesdays and Fridays. The service offered is cashless and included money advice, help with making CHAPS and BACS payments, and digital support. Later in 2024, following the closure of the Barclays branch in Barnard Castle, the demand for the service in Middleton increased, as Bishop Auckland became the nearest alternative.

'Out of Hours' assistance remains one of our original and essential services, with support available 24 hours a day, 365 days a year. Regardless of the time, our emergency telephone number is always accessible – whether by call or text. Increasingly, people also reach out to us through our website or social media platforms.

24/7


79%
of users said we help them to feel less stress.

Durham County Carers Support

is an independent charitable organisation who we work closely with. We refer members within County Durham who are carers, to enable them to receive support and advice as well as practical help. UTASS is often used as a venue for coffee mornings for local carers.



Citizens Advice

continued to be available to local people throughout 2024, with a weekly drop in at UTASS every Monday morning and other appointments arranged for those with limited availability/urgent needs.

citizens advice

One of our brilliant and fully trained volunteers, Janet, sadly could no longer commit to her role from June onwards, however Paul continued throughout the year and is the regular face of Citizen's Advice at UTASS. 46 cases were dealt with in 2024, with people accessing advice to help with a wide range of issues, from benefits and debt, housing and utilities to consumer issues and relationships.

This important local service would be impossible without the fantastic volunteer support we have; however we are looking to bolster this, so if you think you could help, we would love to hear from you.



Access to Services

1st Upper Teesdale Rainbows have weekly meetings at UTASS, with 12 girls enrolled, maintaining the same number as last year. Additionally, they have a small waiting list of 3 girls who are not yet old enough to join. 2024 was a busy year, with several exciting activities. The girls



visited the local Fire Station and Co-Op store, where they learned about fair trade products, food bank donations, and recycling. They also organised a litter pick at the local play park, which was coordinated by our Co-Op Community Officer.

During the summer term, they hosted a Geocaching night, taking advantage of a nearby geocache box close to UTASS. It was a lovely evening, and the girls thoroughly enjoyed the experience.



1st Middleton-in-Teesdale Scout Group also meet

weekly using UTASS as a base where almost 40 children attend one of their three groups, Beavers, Cubs and Scouts.



The Cubs and Scouts learnt woodwork over the winter and during the summer months they enjoyed offsite trips to Hawkhurst activity centre at Kielder and gorge walking here in Teesdale.

The Beavers tried their hands at paddleboarding at Baldersdale and on a very lovely day out explored the new playground at Belsay Castle. A mixed group of children from the three groups also visited Throssel Hole Buddhist Abbey.



Throughout 2024, we collaborated with partners and organisations to host informational events, ensuring that those living and working in the Dales could access available opportunities and support. These events included a Techy Tea Party with **Digital Durham**, where attendees received assistance with digital and connectivity challenges. We also organised a

Neurodiversity family drop-in offering local families the opportunity to learn more about available support.

To give residents a platform to share their thoughts and experiences on important issues, we provided a space for **drop-in surgeries** with the newly appointed MP Sam Rushworth and the local police.



Our partnership with **Middleton Christmas Lights** committee continued in 2024, with the team and volunteers working alongside Emma to make the 12th **Middleton Mart Christmas Fair** the best one yet!

Over 65 stallholders attended, showcasing a fantastic selection of local goods and produce, giving visitors the perfect opportunity to 'shop local' for every member of the family— even the pets! This year saw a record-breaking number of visitors, all greeted by the inviting aroma of mulled wine and bacon butties, expertly served by Middleton Scouts. Their dedication ensures both visitors and stallholders are well looked after each year. Adding to the festive magic, Mr & Mrs Claus welcomed families into their enchanting grotto, creating an unforgettable 'Santa Experience.' They were once again assisted by two incredible young volunteers, Abbie Spry and Lilia Hodgson, who brought holiday cheer to the long queues of excited families.

The festive buzz then spilled into the car park for the annual switch-on event. As mulled wine, mince pies, and hot sandwiches were enjoyed, the Silver Band and choir led the crowd in singing carols. This year's lights were particularly special—the Christmas Lights Committee raised over £4,200 to illuminate the tree in purple light, a heartfelt tribute to their treasurer, Yvonne, who sadly passed away in February. With the dazzling lights, music, and community spirit, Christmas in the Dale was officially underway!



68%

users said
UTASS helps them
join in with things in
the local area.



For the third year running we were invited to take part in **Let's Learn Moor**, an annual event, where over 2,000 primary school children visit one of seven outdoor 'classrooms' in upland areas to learn from those dedicated to preserving them. This year, we partnered with Jemma from **Bowlees Education Farm**.

Although our local event at Coldberry took place in July, the children experienced every kind of weather — including hail! Despite the unpredictable conditions, the

event went ahead, and over two days, we engaged with 300 children. Jemma brought along sheep and calves for the children to see up close, who quickly became the stars of the show!

This event provides a fantastic opportunity to inspire young minds—and their educators—about the importance of the Countryside Code and upland farming.



Our **Rural-Watch group** has, again continued to evolve.

Our WhatsApp group, the first of it's kind in the area, was originally launched in response to a surge in targeted local crime back in 2018. Since then, the concept has been successfully replicated and adopted by various Rural-Watch groups (formerly known as FarmWatch).

237



Members - a 5% increase from 2024

Emma, who founded the initial group, actively participates in multiple local groups, allowing her to efficiently share important updates and ensure that vital information reaches all members across the network.

Durham Constabulary actively supports the Rural-Watch WhatsApp group, which has played a key role in recovering stolen property, locating missing persons, and assisting in the arrest of criminals – all thanks to the vigilance and quick responses of its members.

This initiative not only enhances community safety but also serves as a strong deterrent, making our rural areas less appealing to criminals. Joy Allen, Police and Crime Commissioner for Durham cemented her commitment to the Rurali scheme, financed through Safer Streets fund, by funding two paid coordinators for the local groups,

Ruralwatch members have already proved that sharing information and intelligence between themselves and the police is making an impact. Arrests have been made and property has been recovered – it just works. The Rurali initiative will provide a central hub and allow the intelligence to be captured and actioned.

– Inspector Ed Turner

UTASS Rural-Watch

Residents & Police working together



Our communities are vital in helping us to tackle crime. They are our eyes and ears when it comes to the areas in which they live.

By encouraging them to report to us any suspicious activity, we can respond more effectively and work with them to make their communities even safer.

– Durham Constabulary's Chief Constable, Rachel Bacon

with the view to replicate similar groups across further reaching rural areas in the Durham patch, plus a dedicated intelligence officer to capture intelligence from the groups to assist in catching offenders.

UTASS is proud to support and collaborate with

Teesdale & Weardale RuralWatch, assisting

them in securing various funding opportunities.

They made use of our building to hold regular meetings as well as their Annual General Meeting.

71%



said UTASS helps them feel more involved in the future of the community.

Durham Constabulary
September 12, 2024 · 📍

Returned to its rightful owner 🐾

A stolen John Deere tractor and muck spreader were tracked down near Bishop Auckland yesterday.

After extensive enquiries, the vehicle was located and recovered, much to the delight of its owner.

An investigation is ongoing to identify those responsible.

Durham Constabulary launched the Rurali initiative, with funding from the Police and Crime Commissioner, earlier this year to work together with our rural communities and tackle issues specifically affecting rural residents.

PC 2774 praised members of our rural community whose continued partnership allows officers to act swiftly and effectively.

🗣️ He said: "It's always great to have a positive outcome and I'd particularly like to thank our rural residents who continue to work with us to crack down on criminals who try to target their communities."

If you have any information that could help please call 101 and quote incident reference number 169 of September 7.



Working Together



In 2024, UTASS **volunteers** continued to play a vital role in supporting and enhancing the Teesdale community through a variety of events and initiatives.

This year volunteers dedicated many hours of their time, assisting with a diverse range of activities. From driving the minibus for trips and delivering the UTASS Community Newsletter each month, to helping facilitate workshops and representing UTASS at local agricultural shows, their contributions have been invaluable. These efforts have ensured that UTASS remains a key hub for community engagement and support.



My involvement with UTASS stemmed from taking meals to people during covid and introduced me to UTASS staff members. Being a widower I made it known I would willingly help out when ever there was a need and was approached to become a volunteer driver. Due to my age, I did not think it was possible re insurance etc but with the help of Julia and Caitlin I am now a regular driver and also gained the advantage of taking and passing the MIDAS course for mini-bus drivers. In addition with UTASS I have had First Aid and CPR training. Firstly I enjoy the driving and meeting people and helping others, I believe and support what UTASS achieves and gives towards our local community and it is great to be part of the team, as a volunteer. I have been involved with other aspects within UTASS all of which gives me a sense of purpose, it keeps me active both mentally and physically and all the staff are great. Don't know if that helps but what I have given to UTASS in turn UTASS has given me a new purpose.

- Alan Thompson, Volunteer

On 15th March, UTASS held a **Volunteer Celebration** to recognise the amazing efforts of all of our amazing volunteers, without whom we wouldn't be able to offer such a wide range of services and events to the Teesdale community. From minibus drivers and event organisers, to those that provide a warm welcome to our community and the many volunteers who can be called upon to simply lend a hand, we would be lost without all of those that so generously offer their time to support what we do. The afternoon was filled with a warm sense of

appreciation and everyone in attendance was able to enjoy a delicious lunch provided by Samuel James deli as well as a good catch up with friends.



Volunteer time during 2024 is valued at
£49,972.23

68

volunteers supported our work in 2024





Working Together

On 24th September local runner Paul Harris set out on an incredible mission to complete 5 marathons in 5 days in aid of UTASS. Raising an amazing £1200, Paul endured every possible weather condition the Dales could throw at him, including a day of torrential rain which forced Paul to alter his route. Local support was fantastic with many people making donations and heading out to cheer Paul on, some also joined him on parts of his route, with a particular mention to staff at the Tees'pot who provided him with a much needed warming cup of coffee on the most dreary of days. Since the completion of his fantastic fundraising efforts Paul has continued to support UTASS as a volunteer, working with staff to develop the mental health support we offer.



We would like to extend a heartfelt thank you to all our volunteers for their continued dedication and hard work. If you're looking to get involved and make a positive impact, there are plenty of opportunities to contribute, meet new people, and share your skills. Get in touch with us to find out how you can become part of the UTASS volunteer team!



Our **oil buying group** continued to grow in 2024, welcoming 30 new members throughout the year. This has resulted in over 400 households and businesses benefitting from discounted oil prices, saving between 2.6p and 5.4p a litre.



In 2024, the group bought
378,350
litres of oil.

Prices followed a gradual downward trend, before stabilising to a consistent rate as we approached the end of 2024.



This year, our oil buying group saved it's members
£20,525



The discounts offered by the scheme help offset the rising cost of heating your home, making it a more affordable option, especially with the government changes to the winter fuel payments.


- Member of the Oil Buying Group

Bringing People Together



Our **Chat & Craft** sessions continued to thrive in 2024, with Gina leading and offering invaluable support and Jacqui playing a key role in assisting.

A total of 47 sessions were held throughout the year, including artist-led workshops, ranging from pottery and glazing to wooden duck painting and calligraphy, allowing participants to explore their creativity and learn new techniques. We were also pleased to welcome back Claire

 **900+**
Teacakes
were enjoyed at Chat & Craft sessions in 2024!

Tellegen from Relax & Rebalance, who led several Tai Chi sessions with a focus on wellbeing.

Advice-based sessions, in partnership with Citizens Advice, Darlington Building Society and a Pensions Financial Advisor, offered helpful guidance, while two trips to the Bowes Museum provided a refreshing change of scenery.

19


Participants attend weekly on average



With over 100 registered participants, the group continues to grow every year, however, some things never change... the highlight of the sessions continued to be the cuppa and teacake that participants are greeted with every week!

Monday's **Pie and peas** sessions

remained a popular highlight throughout the year. Gina creates a friendly

 **260+**
Pie & Peas served in 2024. and welcoming atmosphere, making it a wonderful opportunity to catch up with friends or meet new people while enjoying a variety of table games. The fun continues with a hot lunch and a comforting cup of tea. No booking is required, just drop in and join the fun.

Everyone's welcome, the more, the merrier!

Really happy that we were signposted to the UTASS Chat & Craft group. A welcoming, safe, warm and friendly group, with loads of varied, hands on arts and crafts activities. Provides opportunities to meet nice people, socialise, explore different crafts and learn stuff from the many and varied guest speakers. Glad this service is available, long may it continue for the benefit of all.

- Anne Bell, Participant



Through both sessions Gina continued to maintain a strong bond with many who attended, enabling her to support them in various other ways whenever they needed, from helping with NHS advice and appointments to helping them get and understand Citizens Advice support.



Bringing People Together

We organised three **theatre trips** this year. Group members enjoyed *Pretty Women* at Sunderland Empire, *Blood Brothers* at Darlington Hippodrome, and we were also fortunate to see the long-running *The Mousetrap* at a matinee performance in Darlington. These trips were highly appreciated by our members, with transport provided too.



The monthly **CREE lunches** at Barnard Castle Mart, Middleton Mart and St John's Chapel continue to be well attended, with around 60 men contacted each month. The meals are prepared by Rosemary Thompson, who serves up wonderful dishes. Rosemary's daughter-in-law, Rosie Thompson, generously volunteers at all three centres, assisting with serving and ensuring everyone is safe when arriving and leaving.

In December, the three groups were treated to an extra meal, funded by donations received in memory of William Reed. As one of our original CREE members, William was enthusiastic and often encouraged new members to attend.

We are deeply grateful to William's family for the generous donations; he would have been truly delighted.



We have the opportunity to socialise with fellow farmers as we are becoming more and more isolated. Good food too.

- Alan Armstrong, Member

The dinners are excellent and we get a bit of a social chat.

- David Atkinson, Member



We organised a variety of **ladies outings** this year, including a ladies' lunch and visits to see the rhododendrons at Ushaw College, Richmond Cinema, and the newly opened Rising at Raby Castle.

Our sincere thanks to our volunteer drivers - these trips would not have been possible without your support.

Bringing People Together



Shopping trips were organised fortnightly throughout the year, with a total of 25 trips taking place. Regular visits to Tindale Retail Park took place every month, alongside outings to farm shops, garden centres, and other retail parks such as Catterick. Two very popular trips were to Lanchester Garden Centre and the South Causey Inn's annual Christmas Markets. Due to popular demand, return trips were arranged to Lanchester Garden Centre, Mainsgill and Northallerton. As always, we extend our heartfelt thanks to our dedicated volunteer drivers – without them these shopping trips would not have been possible.

40% said services & opportunities at UTASS helped them to feel better off financially.



Highlights touring scheme delivers an affordable programme of theatre for all ages, bringing high-quality performances to rural communities like ours. In June, we had the pleasure of hosting 'Rum Ragged', a Canadian folk music group from Newfoundland and Labrador. Their performance featured an irresistible mix of lively jigs, heartfelt ballads, and cheerful folk tales, creating a truly memorable evening for all.



In 2024, we introduced a series of brand-new creative sessions focused on **traditional skills**.

These small, welcoming sessions were designed for anyone looking to try something new, especially those who might feel hesitant about joining larger, established groups. We were thrilled to offer

a range of fantastic activities never before hosted at UTASS, including wood whittling, linocut carving, miniature drystone walling, and baking. It was wonderful to see a mix of familiar faces and newcomers taking part, and due to popular demand, we added extra baking sessions in the lead-up to Christmas, featuring festive creations that brought even more people together.



“It's good banter, Judith is lovely and makes everyone welcome. It's good fun making different things and nice to take yummy food home! (Helps with the food budget too!)”

– Traditional Skills

Participant

Before the summer holidays came to an end, we planned a social gathering at Middleton Mart.

Rebecca Tiplady kept everyone refreshed with drinks while over 100 guests enjoyed a delicious hog roast at our **Summer Get Together**. Garden games kept the little ones entertained while the older generations enjoyed catching up with one another. It was wonderful to see multi-generational families come along. The event also featured our very first raffle, with an incredible top prize of a three-night stay in a holiday cottage!





Bringing People Together

Music and Memories

sessions were held monthly on Friday afternoons, led by Mike Bettison, who played his ukulele, often accompanied by Katherine, also on the ukulele.

We are extremely grateful to our regular volunteers who provided invaluable support with attendees' needs, whether offering refreshments or assisting with transport using our minibus, all in such a caring manner that made the entire experience thoroughly enjoyable.



The highlight of the year was a magical performance by the children of Middleton in Teesdale Academy during our Christmas session, which inspired our participants to join in with great enthusiasm too!

42%



**of users said
social isolation
caused them stress.**

The UTASS team creates such a welcoming and inclusive atmosphere for myself, but more importantly, for my uncle, who lives with Alzheimers. We have recently joined the Music and Memories sessions. For my uncle, it is a trip down memory lane, both in terms of singing songs, which he clearly still remembers fondly, and for me, it is a chance to see my uncle really enjoying himself, which lifts my spirits. All the team, from the volunteer drivers to the reception staff, really make the effort to interact with those attending, providing comfort and a reassuring support for those who may struggle mentally and physically in unfamiliar surroundings. I cannot thank Julia and all the UTASS team enough for really going above and beyond to help all those, no matter what their personal struggles are, to feel an important part of the community. If only all areas of the country could be so lucky to have what we have right on our doorstep. Thanks again UTASS, for all that you do for the 'Dales folk', both young, old and everywhere in between!

- Family of Participant



50%

**of users said
lack of time off work
cause them to feel
worried or stressed.**

Weekly **wellness walks** took place throughout the year, with a group of eight regular walkers participating. Sue, a local first responder, and Wendy, a volunteer at the Community Gym in Middleton, continued to lead the sessions.

They introduced a new structure, splitting the group to allow those who find longer distances challenging to enjoy a more relaxed, easy-paced walk. Sue, who has also been a volunteer minibus driver at UTASS for several years, often took the groups further up the dale, providing a refreshing change of scenery.

Funders



Funded by
UK Government

point
north



A big thank you to everyone who helped us make a difference across the Durham Dales in 2024.

We're extremely grateful for the support of our donors, partners and funders. This year, we've continued working with many long-term supporters and developed new connections along the way.

We also want to thank our community - the Friends of UTASS, those who make personal or legacy donations, families who have lost loved ones who continue to support us with collections in their memory and the local groups who offer fundraising opportunities, who in 2024 has included Middleton-in-Teesdale Carnival Committee, The Pathway and both Eggleston and Wolsingham Agricultural shows. This year we've had some amazing support from individuals - people like Paul Harris who we must mention again here, who committed to a personal '5 marathons in 5 days' fundraising challenge, raising over £1200 for UTASS' community support work.

We couldn't do what we do, without you all. Thank you for working together with us, to make a difference to people living and working right here in the Dales.

Ballinger Charitable Trust

Durham Community Action

Durham County Council

Durham Dales Parish Nursing

Durham Dales Hedgerow Partnership

Durham Police & Crime Commissioner's Office

Joseph Strong Frazer Trust

Know Your Neighbourhood Fund supported by UK
Government

Middleton Educational Trust

Morrisons Foundation



Funders



SIR JAMES KNOTT TRUST

NFU Mutual Office Barnard Castle

Sir James Knott Trust

The Farmer Network (Defra Welfare Fund)

The National Lottery Heritage Fund via the North
Pennines National Landscapes

Pioneering Care Partnership

Point North

Teesdale Area Action Partnership

Tesco Community Grants

The Mercers' Charitable Foundation

The National Lottery Community Fund

The Royal Countryside Fund

The R&H Woods Charitable Trust

Tyne & Wear Community Foundation

UK Community Foundations

Weardale Area Action Partnership



DURHAM
COMMUNITY
ACTION



Community
Foundation



COMMUNITY
FUND



UKCF



THE ROYAL
COUNTRYSIDE
FUND



Our Staff



In 2024, our staff team continued to grow as we continued to expand our focus on community wellbeing with the addition of a Peer Support Worker and a Lived Experience Lead. We also welcomed two Rural Watch Coordinators, funded by Durham Police and Crime Commissioner Joy Allen, in a dedicated effort to help combat rural crime.

The vast majority of our staff are local people meaning the team therefore know a lot of the people we serve personally, It also means they are closely attuned to local issues.

Charlotte Fletcher

Admin Support & Agricultural Secretary

Julia Stephenson

Training Co-ordinator

Claire Stoddart

Admin Support

Melanie Lee

Resilience Support & Youth Support

Grace Crawford

Funding & Strategic Development Officer

Gladys Mugambi

Parish Nurse

Bob Danby

Manager, Treasurer & Company Secretary

Richard Betton

Farmers Liaison Worker

Amy Kinchley

Youth Support



Adele Dickeson

Youth Support

Gina Richardson

Youth Team Lead, Community Engagement & Peer Support



Our Staff

Suzanne Wallace

Time Together Teesdale Co-ordinator

Jacqui Nutter

Youth Support

Anne Scott

Finance & Admin Support

Becca Melville

Volunteer & Admin Support Worker

Janet Dodson

Time Together Teesdale Co-ordinator

Becky Land

Local Lived Experience Lead

Emma Spry

Admin Support & Acting Deputy
Manager

June Wainwright

Resilience Support

Caitlin Dent

Admin Support

Alli Brown

Finance Officer



I have said it so many times in the past but that does not make it any the less true, the staff at UTASS are the beating heart of the organisation. Without their dedication and compassion we would be nothing, every single member of staff is a cog in the big wheel combining to provide holistic support to Durham Dales residents. I remain incredibly proud to be able to support them

Bob Danby
UTASS Manager

Our Trustees & Governance



UTASS is a registered charity and a company limited by guarantee, governed by a Memorandum and Articles of Association adopted in December 2006. The organisation operates under the oversight of a board of 10 trustees, each selected from diverse professional backgrounds to bring a wide range of skills and expertise to the table. Trustees are appointed through an ordinary resolution in line with the provisions set out in the Articles of Association.

The UTASS Financial Policy outlines the procedures and controls in place to ensure protection against fraud, error, and non-compliance with Charity Law. Reports detailing financial activities, including spending, current account and savings balances, as well as investment values are presented to each trustees meeting. In accordance with Charity Law, the organisation's accounts are reviewed by an independent examiner with relevant qualifications.

The trustees have established a policy of maintaining free reserves to cover between 6 and 12 months of normal operating costs, which ranges from £230,000 to £460,000.

All trustees are highly committed to their roles, with excellent attendance at meetings. None of the trustees receive any remuneration or expenses for their services.



Caroline Colling
Farmer



Sarah Elton
Civil Servant



Philip Lamb
Accountant



**Hon. Secretary
Louise Dalton**
Farmer



Fay Hutchinson
Citizens Advice
Technical Debt
Supervisor & Farmer

Our Trustees & Governance



Steve Lumb
Retired GP

Six trustee meetings are scheduled annually, though additional meetings are held as needed.

In 2024, eight meetings were held, along with the Annual General Meeting.

The majority of meetings are held in person, with Zoom available for those unable to attend in person.

Trustee attendance at meetings is strong, with 70% of trustees participating consistently.

A staffing sub-group, composed of Richard Matthews, Professor Sarah Elton, Carl Stephenson, and Amanda Simpson, oversees staffing matters. Additionally, other working groups are formed as needed for specific tasks or initiatives.

At the 2024 Annual General Meeting, Louise Dalton stepped down after serving as the long-serving Honorary Secretary. Louise's contributions to the organization over many years have been invaluable, and she will be greatly missed. The trustees extend their heartfelt thanks for her dedication and support throughout her tenure.



Vice-Chair
Richard Matthews
Veterinary Surgeon



Stephanie Markwick
Managing Partner



Chairman
Michael McGarry
Solicitor



Amanda Simpson
Farmer



Carl Stephenson
Farmer

77%
of users said
they feel they have a
say about the services
UTASS provide.



A summary of the financial position is shown below.

A full copy of the accounts is available by request from UTASS or alternatively on the Charity Commission's websites.

**UTASS
Financial Summary
For the Year ending 31st December 2024**

Income

Donations	37,105
Legacies	100,000
Grants	204,089
Income from charitable activities	453,663
Investment income	<u>16,112</u>
	<u>810,969</u>

Expenditure

Staff costs	390,969
Project costs	79,881
Depreciation	17,747
Other costs	<u>70,064</u>
	<u>558,661</u>

Investment Loss	(1,736)
Surplus for the year	250,572

Assets and liabilities at 31st December 2024

Fixed assets including investments	86,085
Current assets including bank accounts	612,847
Current liabilities	<u>(50,780)</u>
Net assets	<u>648,152</u>

Funds

Restricted funds	187,967
Reserves	240,896
Other unrestricted funds	<u>219,289</u>
Total funds	<u>648,152</u>

The "Last Word"!

As I prepare to retire in March 2025, this will be my final annual report, and it's with mixed emotions that I reflect on the journey we've shared over the years. It has truly been an honour to lead such a dedicated and compassionate team at UTASS, and I am proud of the work we've accomplished together.

I am pleased to announce that Emma Spry will be stepping into my role as manager upon my departure. Emma has been an integral part of our team for many years, and I have full confidence in her ability to continue guiding this charity with the same compassion and commitment that we've always strived for.

Although I will be leaving my position, I hope to continue my involvement with UTASS as a trustee. I look forward to supporting the team in this way and to seeing the charity continue to grow and thrive in the years to come.

I would like to take this opportunity to express my deepest gratitude to the staff at UTASS. Your hard work, dedication, and unwavering support for the residents of Teesdale and Weardale are truly commendable. It's your commitment that enables us to provide such essential services to our communities, and I thank you all for your continued effort throughout the year.

To our volunteers, I extend a heartfelt thank you. Your generosity and willingness to give your time and energy are vital to our success. We could not achieve what we do without you, and I am deeply grateful for your contribution.

Finally, I would like to acknowledge the incredible support of our ten trustees. Your tireless dedication, guidance, and governance, all done on a voluntary basis, have been a cornerstone of our charity's success. Your selfless commitment to UTASS is deeply appreciated, and I'm grateful to each of you for your invaluable contributions.

It has been an incredible privilege to serve as the manager of this charity, and I am looking forwards to see what the future holds for UTASS under Emma's leadership. Thank you once again to everyone for your ongoing support.



Bob Danby CMgr MCMI
UTASS Manager, Company Secretary
& Treasurer



Upper Teesdale Agricultural Support Services

Registered Office:

9-11 Chapel Row,
Middleton-in-Teesdale,
Barnard Castle,
County Durham,
DL12 0SN

Telephone: 01833 641010

Email: info@utass.org

Website: www.utass.org



Facebook: @UtassUpperTees



Twitter: @UtassUpperTees



Instagram: @utass_upper_tees

UTASS Objects/ Mission Statement:

"To promote the benefit of the inhabitants of the community of the rural area of Upper Teesdale and the neighbourhood thereof through the advancement of education and the provision of facilities in the interest of the social welfare for the recreation and other leisure time occupation with the object of improving the conditions of life for the said inhabitants".

UTASS Aim:

"UTASS works with and for the communities across the Durham Dales, helping people gain access to the services, advice and resources that they need so they feel supported, valued, happier and more able to cope "

Registered Charity number: 1120120

Company Limited by Guarantee number: 06054331

Company Registration Number: 06054331
Charity Registration Number: 1120120

Upper Teesdale Agricultural Support Services Limited
Financial Statements
For the Year Ending
31 December 2024

JANE ASCROFT ACCOUNTANCY LIMITED

Chartered Accountants
Enterprise House
Harmire Enterprise Park
Barnard Castle
County Durham
DL12 8XT

Upper Teesdale Agricultural Support Services Limited

Financial Statements

Year Ended 31 December 2024

	Page
Trustees' Annual Report (Incorporating the Director's Report)	1
Independent Examiner's Report to the Trustees	4
Statement of Financial Activities (Including Income and Expenditure Account)	5
Statement of Financial Position	6
Statement of Cash Flows	7
Notes to the Financial Statements	8
The Following Pages Do Not Form Part of the Financial Statements	
Detailed Statement of Financial Activities	26

Upper Teesdale Agricultural Support Services Limited

Trustees' Annual Report (Incorporating the Director's Report)

Year Ended 31 December 2024

The trustees, who are also the directors for the purposes of company law, present their report and the unaudited financial statements of the company for the year ended 31 December 2024.

Objectives and Activities

The objects of the charity are to promote the benefit of the inhabitants of the community of the rural area of Upper Teesdale and the neighbourhood thereof through the advancement of education and the provision of facilities in the interest of social welfare for recreation and other leisure-time occupation with the object of improving the conditions of life of the said inhabitants.

Activities include the provision of advice and education, support and mentoring to the community in the area of operation including the provision of a drop-in facility for young people and encouraging and supporting outside organisations and outreach working.

Achievements and Performance

The charity's achievements and performance during the year are described in the annual report.

Financial Review

Income for the year totalled £810,969 (2023 - £395,275) and expenditure totalled £558,661 (2023 - £399,493) giving a surplus of £252,308 (2023 - deficit of £4,218). The value of investments fell by £1,736 (2023 - increased by £72) giving an overall surplus of £250,572 (2023 - deficit of £4,146).

During 2024 reserves increased by £31,593 to £240,896 and there is a further £133,204 held in designated funds to be spent as the trustees see fit. Restricted funds increased by £81,185 to £187,967 and fixed assets increased by £42,405 to £86,085.

The trustees have reviewed the charity's need for reserves in line with guidance issued by the Charity Commission and it is the policy of the trustees to hold free reserves for between six and twelve months normal activity excluding depreciation and specific project costs (between £230,000 and £460,000) and additional reserves, as agreed on an annual basis, to meet the costs of any additional project work or to safeguard the charity's service commitment in the event of delays or receipts of grants or general liabilities. The trustees believe that the reserves should be at least at this level to ensure that the charity can run efficiently and meet the needs of the beneficiaries.

At 31st December 2024 free reserves were £240,896 excluding designated funds and £274,100 including designated funds which is in accordance with the stated policy.

Upper Teesdale Agricultural Support Services Limited

Trustees' Annual Report (Incorporating the Director's Report) *(continued)*

Year Ended 31 December 2024

Structure, Governance and Management

Governing Document

The charity is controlled by its governing document, a deed of trust, and constitutes a limited company, limited by guarantee, as defined by the Companies Act 2006.

Risk management

The trustees have a duty to identify and review the risks to which the charity is exposed and to ensure appropriate controls are in place to provide reasonable assurance against fraud and error.

Public Benefit

Our main activities and who we help are described elsewhere in this report. All our charitable activities are undertaken to further our charitable purposes for the public benefit. The Committee have had regard to the Charity Commission's guidance on public benefit throughout the year when deciding on the activities of the charity.

Reference and Administrative Details

Registered charity name Upper Teesdale Agricultural Support Services Limited

Charity registration number 1120120

Company registration number 06054331

Principal office and registered office 9-11 Chapel Row
Middleton In Teesdale
Barnard Castle
County Durham
DL12 0SN

The Trustees

Mrs L Dalton (Retired 4 February 2024)
Mr R Matthews
Mr C Stephenson
Mrs L A Simpson
Mr M McGarry
Prof S E Elton
Ms F Hutchinson
Mr P W Lamb
Dr S A Lumb
Ms S Markwick
Ms C Colling

Company Secretary Mr R Danby

Independent Examiner Jane Ascroft FCA MA (Cantab)
Enterprise House
Harmire Enterprise Park
Barnard Castle
County Durham
DL12 8XT

Upper Teesdale Agricultural Support Services Limited

Trustees' Annual Report (Incorporating the Director's Report) *(continued)*

Year Ended 31 December 2024

Small Company Provisions

This report has been prepared in accordance with the provisions applicable to companies entitled to the small companies exemption.

The trustees' annual report was approved on 12 March 2025 and signed on behalf of the board of trustees by:

A handwritten signature in dark ink, appearing to read 'Robert Danby', with a long horizontal flourish extending to the right.

Mr R Danby
Company Secretary

Upper Teesdale Agricultural Support Services Limited

Independent Examiner's Report to the Trustees of Upper Teesdale Agricultural Support Services Limited

Year Ended 31 December 2024

I report to the trustees on my examination of the financial statements of Upper Teesdale Agricultural Support Services Limited ('the company') for the year ended 31 December 2024.

Responsibilities and Basis of Report

As the trustees of the company (and also its directors for the purposes of company law) you are responsible for the preparation of the financial statements in accordance with the requirements of the Companies Act 2006 ('the 2006 Act').

Having satisfied myself that the accounts of the company are not required to be audited under Part 16 of the 2006 Act and are eligible for independent examination, I report in respect of my examination of the company's accounts as carried out under section 145 of the Charities Act 2011 ('the 2011 Act'). In carrying out my examination I have followed the Directions given by the Charity Commission under section 145(5)(b) of the 2011 Act.

Independent Examiner's Statement

Since the company's gross income exceeded £250,000 your examiner must be a member of a body listed in section 145 of the 2011 Act. I confirm that I am qualified to undertake the examination because I am a member of the Institute of Chartered Accountants in England and Wales (ICAEW), which is one of the listed bodies.

I have completed my examination. I confirm that no matters have come to my attention in connection with the examination giving me cause to believe:

1. accounting records were not kept in respect of the company as required by section 386 of the 2006 Act; or
2. the financial statements do not accord with those records; or
3. the financial statements do not comply with the accounting requirements of section 396 of the 2006 Act other than any requirement that the accounts give a 'true and fair' view which is not a matter considered as part of an independent examination; or
4. the financial statements have not been prepared in accordance with the methods and principles of the Statement of Recommended Practice for accounting and reporting by charities applicable to charities preparing their accounts in accordance with the Financial Reporting Standard applicable in the UK and Republic of Ireland (FRS 102).

I have no concerns and have come across no other matters in connection with the examination to which attention should be drawn in this report in order to enable a proper understanding of the accounts to be reached.

Jane Ascroft FCA MA (Cantab)
Independent Examiner

Enterprise House
Harmire Enterprise Park
Barnard Castle
County Durham
DL12 8XT

Upper Teesdale Agricultural Support Services Limited

Statement of Financial Activities (including income and expenditure account)

Year Ended 31 December 2024

			2024		2023
	Note	Unrestricted funds £	Restricted funds £	Total funds £	Total funds £
Income and endowments					
Donations and legacies	5	136,255	204,939	341,194	168,257
Charitable activities	6	33,532	420,131	453,663	215,417
Investment income	7	16,112	—	16,112	11,601
Total income		<u>185,899</u>	<u>625,070</u>	<u>810,969</u>	<u>395,275</u>
Expenditure					
Expenditure on charitable activities	8,9	186,266	372,395	558,661	399,493
Total expenditure		<u>186,266</u>	<u>372,395</u>	<u>558,661</u>	<u>399,493</u>
Net income/(expenditure)		<u>(367)</u>	<u>252,675</u>	<u>252,308</u>	<u>(4,218)</u>
Transfers between funds		171,490	(171,490)	—	—
Other recognised gains and losses					
Investment gains/(losses)		(1,736)	—	(1,736)	72
Net movement in funds		<u>169,387</u>	<u>81,185</u>	<u>250,572</u>	<u>(4,146)</u>
Reconciliation of funds					
Total funds brought forward		<u>290,798</u>	<u>106,782</u>	<u>397,580</u>	<u>401,726</u>
Total funds carried forward		<u><u>460,185</u></u>	<u><u>187,967</u></u>	<u><u>648,152</u></u>	<u><u>397,580</u></u>

The statement of financial activities includes all gains and losses recognised in the year.
All income and expenditure derive from continuing activities.

The notes on pages 8 to 24 form part of these financial statements.

Upper Teesdale Agricultural Support Services Limited

Statement of Financial Position

31 December 2024

	Note	2024 £	2023 £
Fixed Assets			
Tangible fixed assets	15	67,701	23,560
Investments	16	18,384	20,120
		<u>86,085</u>	<u>43,680</u>
Current Assets			
Debtors	17	47,174	13,325
Cash at bank and in hand		565,673	351,175
		<u>612,847</u>	<u>364,500</u>
Creditors: amounts falling due within one year	18	<u>50,780</u>	<u>10,600</u>
Net Current Assets		<u>562,067</u>	<u>353,900</u>
Total Assets Less Current Liabilities		<u>648,152</u>	<u>397,580</u>
Net Assets		<u>648,152</u>	<u>397,580</u>
Funds of the Charity			
Restricted funds		187,967	106,782
Unrestricted funds		460,185	290,798
Total charity funds	20	<u>648,152</u>	<u>397,580</u>

For the year ending 31 December 2024 the company was entitled to exemption from audit under section 477 of the Companies Act 2006 relating to small companies.

Directors' responsibilities:

- The members have not required the company to obtain an audit of its financial statements for the year in question in accordance with section 476;
- The directors acknowledge their responsibilities for complying with the requirements of the Act with respect to accounting records and the preparation of financial statements.

These financial statements have been prepared in accordance with the provisions applicable to companies subject to the small companies' regime.

These financial statements were approved by the board of trustees and authorised for issue on 12th March 2025, and are signed on behalf of the board by:

Mr M McGarry
Trustee

The notes on pages 8 to 24 form part of these financial statements.

Upper Teesdale Agricultural Support Services Limited

Statement of Cash Flows

Year Ended 31 December 2024

	2024 £	2023 £
Cash Flows from Operating Activities		
Net income/(expenditure)	252,308	(4,218)
<i>Adjustments for:</i>		
Depreciation of tangible fixed assets	17,747	6,322
Dividends, interest and rents from investments	(1,650)	(1,571)
Other interest receivable and similar income	(14,462)	(10,030)
Accrued expenses	4,592	2,222
<i>Changes in:</i>		
Trade and other debtors	(33,849)	(7,128)
Trade and other creditors	35,588	(9,546)
Cash generated from operations	260,274	(23,949)
Interest received	14,462	10,030
Net cash from/(used in) operating activities	<u>274,736</u>	<u>(13,919)</u>
Cash Flows from Investing Activities		
Dividends, interest and rents from investments	1,650	1,571
Purchase of tangible assets	(61,888)	(5,641)
Net cash used in investing activities	<u>(60,238)</u>	<u>(4,070)</u>
Net Increase/(Decrease) in Cash and Cash Equivalents	214,498	(17,989)
Cash and Cash Equivalents at Beginning of Year	351,175	369,164
Cash and Cash Equivalents at End of Year	<u>565,673</u>	<u>351,175</u>

The notes on pages 8 to 24 form part of these financial statements.

Upper Teesdale Agricultural Support Services Limited

Notes to the Financial Statements

Year Ended 31 December 2024

1. General Information

The company is a public benefit entity and a private company limited by guarantee, registered in England and Wales and a registered charity in England and Wales. The address of the registered office is 9-11 Chapel Row, Middleton In Teesdale, Barnard Castle, County Durham, DL12 0SN.

2. Statement of Compliance

These financial statements have been prepared in compliance with FRS 102, 'The Financial Reporting Standard applicable in the UK and the Republic of Ireland', the Statement of Recommended Practice applicable to charities preparing their accounts in accordance with the Financial Reporting Standard applicable in the UK and Republic of Ireland (FRS 102) (Charities SORP (FRS 102)) and the Companies Act 2006.

3. Accounting Policies

Basis of Preparation

The financial statements have been prepared on the historical cost basis, as modified by the revaluation of certain financial assets and liabilities and investments measured at fair value through income or expenditure.

The financial statements are prepared in sterling, which is the functional currency of the entity.

The entity is a Public Benefit Entity.

Going Concern

There are no material uncertainties about the charity's ability to continue.

Judgements and Key Sources of Estimation Uncertainty

The preparation of the financial statements requires management to make judgements, estimates and assumptions that affect the amounts reported. These estimates and judgements are continually reviewed and are based on experience and other factors, including expectations of future events that are believed to be reasonable under the circumstances. The trustees consider that there are no significant estimates or judgements affecting these financial statements.

Fund Accounting

Unrestricted funds are available for use at the discretion of the trustees in furtherance of the purposes of the charity. Unrestricted funds include a revaluation reserve representing the restatement of investment assets at market values.

Designated funds are unrestricted funds earmarked by the trustees for specific purposes.

Restricted funds are subjected to restrictions on their expenditure imposed by the donor.

Upper Teesdale Agricultural Support Services Limited

Notes to the Financial Statements *(continued)*

Year Ended 31 December 2024

3. Accounting Policies *(continued)*

Income

All income is included in the statement of financial activities when the charity is entitled to the income, any performance related conditions attached have been met or are fully within the control of the charity, the income is considered probable and the amount can be quantified with reasonable accuracy. The following specific policies are applied to particular categories of income:

Donations and legacy income is received by way of donations, legacies, grants and gifts and is included in full in the Statement of Financial Activities when receivable. Where legacies have been notified to the charity but the criteria for income recognition have not been met, the legacy is treated as a contingent asset and disclosed if material. Grants, where entitlement is not conditional on the delivery of a specific performance by the charity, are recognised when the charity becomes unconditionally entitled to the grant.

Donated services and facilities are included at the value to the charity, being the amount the charity would have been willing to pay to obtain services or facilities of equivalent economic benefit on the open market.

Investment income is included when receivable.

Income from charitable trading activity is accounted for when earned.

Income from grants, where related to performance and specific deliverables, are accounted for as the charity earns the right to consideration by its performance.

Expenditure

Expenditure is recognised on an accruals basis as a liability is incurred. Expenditure includes any VAT which cannot be fully recovered, and is reported as part of the expenditure to which it relates:

Costs of raising funds comprise the costs associated with attracting donations, grants and legacies and the costs of trading for fundraising purposes.

Charitable expenditure comprises those costs incurred by the charity in the delivery of its activities and services for its beneficiaries. It includes both costs that can be allocated directly to such activities and those costs of an indirect nature necessary to support them.

Other expenditure includes all expenditure that is neither related to raising funds for the charity nor part of its expenditure on charitable activities.

All costs are allocated between the expenditure categories of the SOFA on a basis designed to reflect the use of the resource. Costs relating to a particular activity are allocated directly, others are apportioned on an appropriate basis.

Tangible Assets

Tangible fixed assets are initially recorded at cost, and subsequently stated at cost less any accumulated depreciation and impairment losses. The costs of minor additions or those costing below £500 are not capitalised.

Upper Teesdale Agricultural Support Services Limited

Notes to the Financial Statements *(continued)*

Year Ended 31 December 2024

3. Accounting Policies *(continued)*

Depreciation

Depreciation is calculated so as to write off the cost or valuation of an asset, less its residual value, over the useful economic life of that asset as follows:

Leasehold Property	-	Straight line over lease term
Improvements		
Office Furniture	-	15% straight line
Minibus	-	20% reducing balance
Electrical Equipment	-	25% straight line
Computer Equipment	-	Straight line over 3 years

Investments

Unlisted equity investments are initially recorded at cost, and subsequently measured at fair value. If fair value cannot be reliably measured, assets are measured at cost less impairment.

Listed investments are measured at fair value with changes in fair value being recognised in income or expenditure.

Impairment of Fixed Assets

A review for indicators of impairment is carried out at each reporting date, with the recoverable amount being estimated where such indicators exist. Where the carrying value exceeds the recoverable amount, the asset is impaired accordingly. Prior impairments are also reviewed for possible reversal at each reporting date.

Financial Instruments

The charity only has financial assets and liabilities of a kind that qualify as basic financial instruments. Basic financial instruments are initially recognised at transaction value and subsequently measured at their settlement value.

Defined Contribution Plans

Contributions to defined contribution plans are recognised as an expense in the period in which the related service is provided. Prepaid contributions are recognised as an asset to the extent that the prepayment will lead to a reduction in future payments or a cash refund.

When contributions are not expected to be settled wholly within 12 months of the end of the reporting date in which the employees render the related service, the liability is measured on a discounted present value basis. The unwinding of the discount is recognised as an expense in the period in which it arises.

Upper Teesdale Agricultural Support Services Limited

Notes to the Financial Statements *(continued)*

Year Ended 31 December 2024

Debtors

Trade and other debtors are recognised at the settlement amount due after any trade discount offered. Prepayments are valued at the amount prepaid net of any trade discounts due.

Accrued income and tax recoverable is included at the best estimate of the amounts receivable at the balance sheet date.

Cash at Bank and in Hand

Cash at bank and cash in hand includes cash and short term highly liquid investments with a short maturity of three months or less from the date of acquisition or opening of the deposit or similar account.

Creditors

Creditors are recognised where the charity has a present obligation resulting from a past event that will probably result in the transfer of funds to a third party and the amount due to settle the obligation can be measured or estimated reliably. Creditors are normally recognised at their settlement amount after allowing for any trade discounts due.

Taxation

The company is considered to pass the tests set out in Paragraph 1 Schedule 6 of the Finance Act 2010 and therefore it meets the definition of a charitable company for UK corporation tax purposes. Accordingly, the company is potentially exempt from taxation in respect of income or capital gains received within categories covered by Chapter 3 Part 11 of the Corporation Tax Act 2010 or Section 256 of the taxation of Chargeable Gains Act 1992, to the extent that such income or gains are applied exclusively to charitable purposes.

4. Limited by Guarantee

The company is limited by guarantee. At 31st December 2024 there were 10 members each of whom had undertaken to contribute an amount not exceeding £10 in the event of a winding up.

The company is under the control of the board of directors as a body and as such is not controlled by any individual.

5. Donations and Legacies

	Unrestricted Funds £	Restricted Funds £	Total Funds 2024 £
Donations			
General donations	22,408	—	22,408
Friends Of UTASS	3,208	—	3,208
HMRC Gift aid	2,210	—	2,210
R H Woods Charitable Trust	—	850	850
Northumbrian Water	3,000	—	3,000
Durham Dales Enterprise CIC	5,429	—	5,429

Upper Teesdale Agricultural Support Services Limited

Notes to the Financial Statements *(continued)*

Year Ended 31 December 2024

5. Donations and Legacies *(continued)*

	Unrestricted Funds £	Restricted Funds £	Total Funds 2024 £
Legacies			
Legacies	100,000	—	100,000
Grants			
National Lottery Community Fund	—	76,746	76,746
Durham Community Action	—	3,000	3,000
Ballinger Trust	—	20,000	20,000
Durham County Council	—	38,343	38,343
Royal Countryside Fund	—	22,500	22,500
Teesdale AAP	—	16,000	16,000
Joseph Strong Frazer Trust	—	2,500	2,500
The Mercers Charitable Foundation	—	25,000	25,000
	<u>136,255</u>	<u>204,939</u>	<u>341,194</u>
	Unrestricted Funds £	Restricted Funds £	Total Funds 2023 £
Donations			
General donations	19,863	3,251	23,114
Friends Of UTASS	3,182	—	3,182
HMRC Gift aid	4,752	—	4,752
R H Woods Charitable Trust	—	860	860
Grants			
National Lottery Community Fund	—	74,849	74,849
Durham Community Action	—	1,500	1,500
Ballinger Trust	—	20,000	20,000
Royal Countryside Fund	—	12,500	12,500
Joseph Strong Frazer Trust	—	2,500	2,500
The Mercers Charitable Foundation	—	25,000	25,000
	<u>27,797</u>	<u>140,460</u>	<u>168,257</u>

Upper Teesdale Agricultural Support Services Limited

Notes to the Financial Statements (continued)

Year Ended 31 December 2024

6. Charitable Activities

	Unrestricted Funds £	Restricted Funds £	Total Funds 2024 £
Wellbeing	—	64,980	64,980
Crime prevention	—	70,879	70,879
Community resilience	—	84,581	84,581
Social isolation and poverty	—	147,313	147,313
Cree project and retired farmers' lunches	—	10,193	10,193
Youth work	1,567	24,707	26,274
Minibus income	3,567	—	3,567
Rural training programme	—	17,478	17,478
Business and admin support	28,398	—	28,398
	<u>33,532</u>	<u>420,131</u>	<u>453,663</u>

	Unrestricted Funds £	Restricted Funds £	Total Funds 2023 £
Wellbeing	—	17,864	17,864
King's Coronation	—	500	500
Community resilience	—	63,520	63,520
Social isolation and poverty	—	46,746	46,746
Cree project and retired farmers' lunches	—	9,000	9,000
Youth work	930	36,086	37,016
Minibus income	2,856	—	2,856
Rural training programme	—	12,056	12,056
Business and admin support	25,859	—	25,859
	<u>29,645</u>	<u>185,772</u>	<u>215,417</u>

7. Investment Income

	Unrestricted Funds £	Total Funds 2024 £	Unrestricted Funds £	Total Funds 2023 £
Income from listed investments	1,650	1,650	1,571	1,571
Bank interest receivable	14,462	14,462	10,030	10,030
	<u>16,112</u>	<u>16,112</u>	<u>11,601</u>	<u>11,601</u>

8. Expenditure on Charitable Activities by Fund Type

	Unrestricted Funds £	Restricted Funds £	Total Funds 2024 £
Costs of Charitable Activities	186,266	372,395	558,661

	Unrestricted Funds £	Restricted Funds £	Total Funds 2023 £
Costs of Charitable Activities	166,113	233,380	399,493

Upper Teesdale Agricultural Support Services Limited

Notes to the Financial Statements *(continued)*

Year Ended 31 December 2024

9. Expenditure on Charitable Activities by Activity Type

	Activities undertaken directly £	Total funds 2024 £	Total fund 2023 £
Costs of Charitable Activities	<u>558,661</u>	<u>558,661</u>	<u>399,493</u>

10. Net Income/(Expenditure)

Net income/(expenditure) is stated after charging/(crediting):

	2024 £	2023 £
Depreciation of tangible fixed assets	<u>17,747</u>	<u>6,322</u>

11. Independent Examination Fees

	2024 £	2023 £
Fees payable to the independent examiner for:		
Independent examination of the financial statements	<u>1,491</u>	<u>1,134</u>
Other financial services	<u>1,222</u>	<u>1,222</u>
	<u>2,713</u>	<u>2,356</u>

12. Staff Costs and Emoluments

The total staff costs and employee benefits for the reporting period are analysed as follows:

	2024 £	2023 £
Wages and salaries	<u>360,191</u>	<u>248,266</u>
Social security costs	<u>18,072</u>	<u>10,636</u>
Employer contributions to pension plans	<u>12,706</u>	<u>11,004</u>
	<u>390,969</u>	<u>269,906</u>

The average head count of employees during the year was 22 (2023: 17). The average number of full-time equivalent employees during the year is analysed as follows:

	2024 No.	2023 No.
Management	<u>1</u>	<u>1</u>
Administration and support	<u>2</u>	<u>2</u>
Finance	<u>1</u>	<u>1</u>
Domestic support	<u>1</u>	<u>1</u>
Project staff	<u>3</u>	<u>3</u>
Community Support staff	<u>4</u>	<u>—</u>
Training	<u>1</u>	<u>—</u>
	<u>13</u>	<u>8</u>

No employee received employee benefits of more than £60,000 during the year (2023: Nil).

Upper Teesdale Agricultural Support Services Limited

Notes to the Financial Statements (continued)

Year Ended 31 December 2024

12. Staff Costs and Emoluments (continued)

Key Management Personnel

Key management personnel include all persons that have authority and responsibility for planning, directing and controlling the activities of the company. The total compensation paid to key management personnel for services provided to the company was £27,146 (2023:£35,190).

13. Trustee Remuneration and Expenses

No trustees received any remuneration or expenses from the charity during the current and previous year.

14. Transfers Between Funds

During the year £171,490 was transferred from restricted to unrestricted funds. This represented contributions to staffing and overheads by projects.

15. Tangible Fixed Assets

	Leasehold Property Improvements £	Office Furniture £	Minibus £	Electrical Equipment £	Computer Equipment £	Total £
Cost						
At 1 Jan 2024	42,744	27,279	96,099	18,971	69,707	254,800
Additions	—	—	59,584	—	2,304	61,888
At 31 Dec 2024	42,744	27,279	155,683	18,971	72,011	316,688
Depreciation						
At 1 Jan 2024	42,744	18,045	84,569	18,173	67,709	231,240
Charge for the year	—	1,385	14,223	266	1,873	17,747
At 31 Dec 2024	42,744	19,430	98,792	18,439	69,582	248,987
Carrying amount						
At 31 Dec 2024	—	7,849	56,891	532	2,429	67,701
At 31 Dec 2023	—	9,234	11,530	798	1,998	23,560

Upper Teesdale Agricultural Support Services Limited

Notes to the Financial Statements (continued)

Year Ended 31 December 2024

16. Investments

	Listed investments £
Cost or valuation	
At 1 January 2024	20,120
Additions	–
Other movements	(1,736)
At 31 December 2024	<u>18,384</u>
Impairment	
At 1 January 2024 and 31 December 2024	
Carrying amount	
At 31 December 2024	<u>18,384</u>
At 31 December 2023	<u>20,120</u>

All investments shown above are held at valuation.

The investments comprise 8,000 shares in Legal & General Group plc which were donated to the charity. They are valued at current market value.

17. Debtors

	2024 £	2023 £
Trade debtors	911	1,393
Gift aid recoverable	1,803	3,000
Accrued grant income	<u>44,460</u>	<u>8,932</u>
	<u>47,174</u>	<u>13,325</u>

18. Creditors: amounts falling due within one year

	2024 £	2023 £
Accruals and deferred income	13,009	8,417
Funds held on behalf of third parties	<u>37,771</u>	<u>2,183</u>
	<u>50,780</u>	<u>10,600</u>

19. Pensions and Other Post Retirement Benefits

Defined contribution plans

The amount recognised in income or expenditure as an expense in relation to defined contribution plans was £12,706 (2023: £11,004).

Upper Teesdale Agricultural Support Services Limited

Notes to the Financial Statements *(continued)*

Year Ended 31 December 2024

19. Pensions and Other Post Retirement Benefits *(continued)*

Upper Teesdale Agricultural Support Services Ltd (UTASS) participates in The Pensions Trust's Growth Plan Series 1, 2 and 3(the scheme). The scheme is a multi-employer scheme which provides benefits to some 1,300 non-associated participating employers. The scheme is a defined benefit scheme in the UK. It is not possible for the company to obtain sufficient information to enable it to account for the scheme as a defined benefit scheme. Therefore it accounts for the scheme as a defined contribution scheme. Accordingly, due to the nature of the Scheme, the accounting charge for the period under FRS102 represents the employer contribution payable.

The scheme is subject to the funding legislation outlined in the Pensions Act 2004 which came into force on 30 December 2005. This, together with documents issued by the Pensions Regulator and Technical Actuarial Standards issued by the Financial Reporting Council, set out the framework for funding defined benefit occupational pension schemes in the UK.

The scheme is classified as a 'last-man standing arrangement'. Therefore UTASS is potentially liable for other participating employers' obligations if those employers are unable to meet their share of the scheme deficit following withdrawal from the scheme. Participating employers are legally required to meet their share of the scheme deficit on an annuity purchase basis on withdrawal from the scheme. UTASS has been notified by The Pensions Trust of the estimated employer debt on withdrawal from the Scheme based on the financial position of the Scheme as at 30 September 2023. As of this date the estimated employer debt for UTASS was £9,172.

A full actuarial valuation for the scheme was carried out at 30 September 2021. This valuation showed assets of £765m, liabilities of £761m and a surplus of £4m.

As at the balance sheet date there was 1 pensioner member of the scheme employed by UTASS. UTASS no longer offers membership of the scheme to its employees.

Employees who are not members of the Pensions Trust's Growth Plan Series 1, 2 and 3 are offered a contribution to alternative defined contribution pensions, which in some circumstances is the Pensions Trust's Growth Plan Series 4. Total pension contributions made by the employer during the year were £12,706 (2023 - £11,004). There were no pension contributions outstanding at the year end.

Upper Teesdale Agricultural Support Services Limited

Notes to the Financial Statements (continued)

Year Ended 31 December 2024

20. Analysis of Charitable Funds

Unrestricted funds

	At 1 Jan 2024 £	Income £	Expenditure £	Transfers £	Gains and losses £	At 31 Dec 2024 £
General funds	209,303	77,213	(150,705)	105,085	—	240,896
Capital funds	43,680	—	(17,747)	61,888	(1,736)	86,085
Minibus funds	1,623	3,231	(5,285)	1,781	—	1,350
Young Peoples' Free Reserves	3,900	1,842	(8,173)	3,217	—	786
Joan Drewe legacy	22,088	—	(360)	148	—	21,876
Events reserves	994	1,812	(1,254)	—	—	1,552
Older Persons Free Reserves	776	175	(778)	—	—	173
Retired farmers lunches	3,995	—	—	(629)	—	3,366
Yoga donations	601	389	(133)	—	—	857
Dog poo bags	(54)	627	(758)	—	—	(185)
Training	—	610	(273)	—	—	337
Relief Fund donations	3,892	—	(800)	—	—	3,092
Legacy	—	100,000	—	—	—	100,000
	<u>290,798</u>	<u>185,899</u>	<u>(186,266)</u>	<u>171,490</u>	<u>(1,736)</u>	<u>460,185</u>

	At 1 Jan 2023 £	Income £	Expenditure £	Transfers £	Gains and losses £	At 31 Dec 2023 £
General funds	209,008	61,494	(147,502)	86,303	—	209,303
Capital funds	44,289	—	(6,323)	5,642	72	43,680
Minibus funds	237	4,413	(5,540)	2,513	—	1,623
Young Peoples' Free Reserves	1,297	1,508	(5,085)	6,180	—	3,900
Joan Drewe legacy	23,767	—	(922)	(757)	—	22,088
Events reserves	664	—	—	330	—	994
Older Persons Free Reserves	226	575	(25)	—	—	776
Retired farmers lunches	—	—	—	3,995	—	3,995
Yoga donations	—	296	—	305	—	601
Dog poo bags	—	757	(716)	(95)	—	(54)
Training	—	—	—	—	—	—
Relief Fund donations	—	—	—	3,892	—	3,892
Legacy	—	—	—	—	—	—
	<u>279,488</u>	<u>69,043</u>	<u>(166,113)</u>	<u>108,308</u>	<u>72</u>	<u>290,798</u>

Upper Teesdale Agricultural Support Services Limited

Notes to the Financial Statements (continued)

Year Ended 31 December 2024

20. Analysis of Charitable Funds (continued)

Restricted funds

	At 1 Jan 2024 £	Income £	Expenditure £	Transfers £	Gains and losses £	At 31 Dec 2024 £
National Lottery Community Fund	18,254	76,746	(73,492)	(183)	—	21,325
DCC Neighbourhood Grant	1,111	—	—	—	—	1,111
CDCF Poverty Hurts Weardale Action Partnership	2,000	—	—	(2,000)	—	—
Middleton Educational Trust	3,177	10,000	(4,858)	(474)	—	7,845
RCF Farm for the Future 24/25	550	—	(550)	—	—	—
Ballinger Trust	—	29,000	(13)	(24,025)	—	4,962
Theatre Trips etc	21,462	20,000	(20,053)	(1,409)	—	20,000
Land of Lead & Silver	(825)	5,477	(4,674)	—	—	(22)
Wellesley Trust Fund via Community Foundation	—	1,690	—	—	—	1,690
PCP Peer Support Worker	3,140	7,478	(8,186)	(1,140)	—	1,292
Joseph Strong Fraser Trust	—	13,181	(10,893)	(96)	—	2,192
PCP Community Resilience worker	—	2,500	(1,000)	(1,500)	—	—
Parish Nurse Project 24/25	4,503	8,124	(6,637)	(5,990)	—	—
Teesdale Action Partnership (Healthy Activities, Healthy Food)	—	26,852	(21,898)	—	—	4,954
DCC (Cree Sessions)	—	581	(187)	(394)	—	—
Durham High Sheriff's Award	2,476	10,193	(7,309)	(2,652)	—	2,708
The Mercers Charitable Foundation	927	—	(927)	—	—	—
PCP Time Together	3,868	25,000	(20,859)	—	—	8,009
R&H Wood Charitable Trust	—	30,000	(7,154)	1,995	—	24,841
Royal Community Fund (Agricultural salaries)	860	850	(860)	—	—	850
CDCF Know Your Neighbourhood	7,550	22,500	(22,299)	—	—	7,751
NFU Grant	4,059	46,185	(22,372)	(15,859)	—	12,013
CDCF Trips & Outings	6,000	—	(1,374)	(1,226)	—	3,400
RCF Farm for the Future - 23-24	1,000	—	(603)	(397)	—	—
Parish Nurse	1,451	23,060	(101)	(24,410)	—	—
Mickleton Moss Committee	4,246	27,605	(28,485)	(3,366)	—	—
DCA Traditional Skills	300	—	(300)	—	—	—
PCP Pop Up Hubs	3,408	—	(2,380)	(1,028)	—	—
Safer Streets	(3,217)	12,489	(1,050)	(8,222)	—	—
	—	64,370	(49,698)	(4,766)	—	9,906

Upper Teesdale Agricultural Support Services Limited

Notes to the Financial Statements (continued)

Year Ended 31 December 2024

20. Analysis of Charitable Funds (continued)

PCP Resilience worker	—	24,397	(22,004)	2,606	—	4,999
Mintingmer	—	500	(285)	(215)	—	—
CDCF Welcome Space	3,000	3,000	(3,646)	(54)	—	2,300
Digital Durham	—	—	(270)	—	—	(270)
DCC New minibus	—	38,343	—	(38,343)	—	—
DCA Building	—	—	—	—	—	—
Energy Appraisal	—	3,000	(3,000)	—	—	—
AAP New minibus	—	16,000	—	(16,000)	—	—
Defra Farmer Welfare Fund	—	6,888	(3,355)	(3,468)	—	65
NFU Grant 2024	—	6,509	—	—	—	6,509
Lived Experience	—	10,522	(8,263)	—	—	2,259
Point North DB Society	—	4,905	—	—	—	4,905
CDCF Poverty Hurts 2024	—	12,998	(4,864)	(4,464)	—	3,670
Cree Plus	—	10,000	—	(1,960)	—	8,040
Sir James Knott/Samars	—	10,000	(5,086)	—	—	4,914
Stronger Together	6,399	14,127	(1,775)	(10,826)	—	7,925
Morrisons Foundation YP Space	—	—	—	—	—	—
Improvement	6,490	—	(1,608)	—	—	4,882
PCP Farming Futures (Young Farmers)	4,593	—	(27)	(1,624)	—	2,942
	<u>106,782</u>	<u>625,070</u>	<u>(372,395)</u>	<u>(171,490)</u>	<u>—</u>	<u>187,967</u>

Upper Teesdale Agricultural Support Services Limited

Notes to the Financial Statements (continued)

Year Ended 31 December 2024

20. Analysis of Charitable Funds (continued)

	At 1 Jan 2023 £	Income £	Expenditure £	Transfers £	Gains and losses £	At 31 Dec 2023 £
National Lottery						
Community Fund	—	74,849	(56,595)	—	—	18,254
Ballinger Trust (Youth)	—	10,000	(10,000)	—	—	—
DCC Neighbourhood						
Grant	—	1,980	(869)	—	—	1,111
Retired Farmers						
Lunches	3,995	—	—	(3,995)	—	—
Groundwork	—	500	(500)	—	—	—
CDCF Poverty Hurts	—	2,000	—	—	—	2,000
PCF Farm for the						
Future	5,454	21,813	(1,212)	(26,055)	—	—
Relief Fund donations	3,892	—	—	(3,892)	—	—
Poverty Hurts	—	12,677	(5,391)	(7,286)	—	—
Teesdale Action						
Partnership (Young						
People At the Heart)	4,770	—	(4,770)	—	—	—
Weardale Action						
Partnership	8,541	—	(4,071)	(1,293)	—	3,177
I Will#	2,870	—	—	(2,870)	—	—
Middleton Educational						
Trust	—	1,000	(450)	—	—	550
Ballinger Trust	15,000	20,000	(13,538)	—	—	21,462
Wellbeing for Life						
Micro Grant	—	250	(250)	—	—	—
Theatre Trips etc	—	4,328	(5,153)	—	—	(825)
Land of Lead & Silver	—	—	—	—	—	—
Wellesley Trust Fund						
via Community						
Foundation	2,246	8,056	(6,126)	(1,036)	—	3,140
Joseph Strong Fraser						
Trust	—	2,500	(2,500)	—	—	—
PCP Community						
Resilience worker	4,753	29,997	(26,901)	(3,346)	—	4,503
Teesdale Action						
Partnership (Healthy						
Activities, Healthy						
Food)	1,248	8,013	(4,885)	(4,376)	—	—
DCC (Cree Sessions)	4,336	9,150	(7,530)	(3,480)	—	2,476
Wemmergill Estates	134	—	(134)	—	—	—
CDCF Connection						
Communities	—	5,300	(1,151)	(4,149)	—	—
DCC Preparing for the						
Future	556	—	(412)	(144)	—	—
Durham High Sheriff's						
Award	1,052	—	(223)	98	—	927

Upper Teesdale Agricultural Support Services Limited

Notes to the Financial Statements *(continued)*

Year Ended 31 December 2024

20. Analysis of Charitable Funds *(continued)*

DCA Cost of Living	—	1,500	(1,500)	—	—	—
The Mercers Charitable Foundation	—	25,000	(20,798)	(334)	—	3,868
R&H Wood Charitable Trust	—	860	—	—	—	860
Royal Community Fund (Agricultural salaries)	9,830	12,500	(14,780)	—	—	7,550
CDCF Know Your Neighbourhood	—	15,595	(8,435)	(3,101)	—	4,059
NFU Grant	—	6,443	—	(443)	—	6,000
CDCF Trips & Outings	—	5,000	(993)	(3,007)	—	1,000
RCF Farm for the Future - 23-24	—	4,688	(35)	(3,202)	—	1,451
Parish Nurse	—	17,864	(13,618)	—	—	4,246
Mickleton Moss Committee	—	800	(500)	—	—	300
DCA Traditional Skills	—	4,000	(485)	(107)	—	3,408
PCP Pop Up Hubs	—	—	(110)	(3,107)	—	(3,217)
PCF Here for You	3,175	—	(3,175)	—	—	—
CDCF Welcome Space	—	3,000	—	—	—	3,000
Digital Durham	—	500	(500)	—	—	—
DCC Covid Recovery grant	1,284	—	(1,284)	—	—	—
Cree Plus	1,810	—	(429)	(1,381)	—	—
Sir James Knott/Samares	—	—	—	—	—	—
Stronger Together	2,796	13,593	(229)	(9,761)	—	6,399
Morrisons Foundation YP	—	—	—	—	—	—
Space Improvement	7,020	—	(530)	—	—	6,490
Poverty Hurts	2,000	—	(1,320)	(680)	—	—
TAP Together project	5,438	—	(1,136)	(4,302)	—	—
Jubilee donations	268	86	(734)	380	—	—
Awards For All CAB	—	—	—	—	—	—
Volunteer grant	9,800	—	(5,837)	(3,963)	—	—
Dog poo bags	(95)	—	—	95	—	—
DCC Warm Spaces grant	1,000	500	(1,100)	(400)	—	—
Sir Tom Cowie poverty grant	5,000	—	(2,140)	(2,860)	—	—
DCC Community Buildings	500	—	(500)	—	—	—
Tees Swale project	(1,387)	1,890	(384)	(119)	—	—
PCP Farming Futures (Young Farmers)	4,954	—	—	(361)	—	4,593
TAP Welfare reform	9,998	—	(167)	(9,831)	—	—
	<u>122,238</u>	<u>326,232</u>	<u>(233,380)</u>	<u>(108,308)</u>	<u>—</u>	<u>106,782</u>

Upper Teesdale Agricultural Support Services Limited

Notes to the Financial Statements *(continued)*

Year Ended 31 December 2024

20. Analysis of Charitable Funds *(continued)*

The restricted funds received during 2024 are for the following purposes:

Core grants:

National Lottery Community Fund
Ballinger Trust
Royal Countryside Fund
Durham Community Action
R.H.Woods Charitable Trust
Joseph Strong Frazer Trust
Mercers Charitable Foundation

Grants towards wellbeing:

Durham Dales Parish Nurse
Lived Experience

Grants towards our youth work:

Teesdale Action Partnership - HAHF
YMCA N Tyneside Stronger Together
Sir James Knott Foundation

Grants towards support with social isolation and poverty:

TAP Community Support
Point North (CDCF) Warm Spaces grant
Point North (CDCF)Poverty Hurts
Point North (CDCF)Know Your Neighbourhood grant
DCC - CREE work
Farmer Network
PCP Time Together
PCP Pop Up Hubs
PCP Peer Support Worker
Land of Lead & Silver
Point North DB Society
Mintingmer

Grants towards community resilience:

PCP Community Resilience worker
RCF Farm for the Future

Grants towards crime prevention:

Safer Streets
NFU Mutual

Grants towards rural training:

Weardale Action Partnership
CDCF Wellesley Trust

Other grants:

Durham County Council and Teesdale AAP - New minibus

Upper Teesdale Agricultural Support Services Limited

Notes to the Financial Statements *(continued)*

Year Ended 31 December 2024

21. Analysis of Net Assets Between Funds

	Unrestricted Funds £	Restricted Funds £	Total Funds 2024 £
Tangible fixed assets	67,701	—	67,701
Investments	18,384	—	18,384
Current Assets	424,880	187,967	612,847
Creditors less than 1 year	(50,780)	—	(50,780)
Net assets	460,185	187,967	648,152

	Unrestricted Funds £	Restricted Funds £	Total Funds 2023 £
Tangible fixed assets	23,560	—	23,560
Investments	20,120	—	20,120
Current Assets	257,718	106,782	364,500
Creditors less than 1 year	(10,600)	—	(10,600)
Net assets	290,798	106,782	397,580

22. Analysis of Changes in Net Debt

	At 1 Jan 2024 £	Cash flows £	At 31 Dec 2024 £
Cash at bank and in hand	351,175	214,498	565,673

23. UTASS Endowment Fund

The UTASS Endowment Fund is managed independently by County Durham Community Foundation. UTASS has the use of the income from the fund but not the capital. At 31st December 2024 the fund value was £77,532 (2023 - £70,166).

24. Volunteer Time

Volunteer time to a value of £49,972 (2023 - £67,717) has not been included in income or expenditure for the year.

Upper Teesdale Agricultural Support Services Limited

Management Information

Year Ended 31 December 2024

The Following Pages Do Not Form Part of the Financial Statements.

Upper Teesdale Agricultural Support Services Limited

Detailed Statement of Financial Activities

Year Ended 31 December 2024

	2024 £	2023 £
Income and endowments		
Donations and legacies		
General donations	22,408	23,114
Friends Of UTASS	3,208	3,182
HMRC Gift aid	2,210	4,752
R H Woods Charitable Trust	850	860
Northumbrian Water	3,000	—
Durham Dales Enterprise CIC	5,429	—
Legacies	100,000	—
National Lottery Community Fund	76,746	74,849
Durham Community Action	3,000	1,500
Ballinger Trust	20,000	20,000
Durham County Council	38,343	—
Royal Countryside Fund	22,500	12,500
Teesdale AAP	16,000	—
Joseph Strong Frazer Trust	2,500	2,500
The Mercers Charitable Foundation	25,000	25,000
	<u>341,194</u>	<u>168,257</u>
Charitable activities		
Wellbeing	64,980	17,864
King's Coronation	—	500
Crime prevention	70,879	—
Community resilience	84,581	63,520
Social isolation and poverty	147,313	46,746
Cree project and retired farmers' lunches	10,193	9,000
Youth work	26,274	37,016
Minibus income	3,567	2,856
Rural training programme	17,478	12,056
Business and admin support	28,398	25,859
	<u>453,663</u>	<u>215,417</u>
Investment income		
Income from listed investments	1,650	1,571
Bank interest receivable	14,462	10,030
	<u>16,112</u>	<u>11,601</u>
Total income	<u>810,969</u>	<u>395,275</u>

Upper Teesdale Agricultural Support Services Limited

Detailed Statement of Financial Activities *(continued)*

Year Ended 31 December 2024

	2024 £	2023 £
Expenditure		
Wages	360,191	248,266
Employer's NIC	18,072	10,636
Pension costs	12,706	11,004
Rent	14,500	14,500
Light, heat and water	8,483	9,997
Repairs, renewals and maintenance	3,077	2,758
Licences and insurance	6,136	4,298
Legal and professional fees	8,994	7,990
Telephone and office costs	17,992	14,520
Depreciation	17,747	6,322
Sundry costs	2,747	5,246
Project costs	79,881	54,468
Minibus costs	5,146	5,347
Staff travel and training	2,989	4,141
Total expenditure	558,661	399,493
Net income/(expenditure)	252,308	(4,218)



Company Registration Number: 06054331
Charity Registration Number: 1120120

Upper Teesdale Agricultural Support Services Limited
Financial Statements
For the Year Ending
31 December 2024

JANE ASCROFT ACCOUNTANCY LIMITED

Chartered Accountants
Enterprise House
Harmire Enterprise Park
Barnard Castle
County Durham
DL12 8XT

Upper Teesdale Agricultural Support Services Limited

Financial Statements

Year Ended 31 December 2024

	Page
Trustees' Annual Report (Incorporating the Director's Report)	1
Independent Examiner's Report to the Trustees	4
Statement of Financial Activities (Including Income and Expenditure Account)	5
Statement of Financial Position	6
Statement of Cash Flows	7
Notes to the Financial Statements	8
The Following Pages Do Not Form Part of the Financial Statements	
Detailed Statement of Financial Activities	26

Upper Teesdale Agricultural Support Services Limited

Trustees' Annual Report (Incorporating the Director's Report)

Year Ended 31 December 2024

The trustees, who are also the directors for the purposes of company law, present their report and the unaudited financial statements of the company for the year ended 31 December 2024.

Objectives and Activities

The objects of the charity are to promote the benefit of the inhabitants of the community of the rural area of Upper Teesdale and the neighbourhood thereof through the advancement of education and the provision of facilities in the interest of social welfare for recreation and other leisure-time occupation with the object of improving the conditions of life of the said inhabitants.

Activities include the provision of advice and education, support and mentoring to the community in the area of operation including the provision of a drop-in facility for young people and encouraging and supporting outside organisations and outreach working.

Achievements and Performance

The charity's achievements and performance during the year are described in the annual report.

Financial Review

Income for the year totalled £810,969 (2023 - £395,275) and expenditure totalled £558,661 (2023 - £399,493) giving a surplus of £252,308 (2023 - deficit of £4,218). The value of investments fell by £1,736 (2023 - increased by £72) giving an overall surplus of £250,572 (2023 - deficit of £4,146).

During 2024 reserves increased by £31,593 to £240,896 and there is a further £133,204 held in designated funds to be spent as the trustees see fit. Restricted funds increased by £81,185 to £187,967 and fixed assets increased by £42,405 to £86,085.

The trustees have reviewed the charity's need for reserves in line with guidance issued by the Charity Commission and it is the policy of the trustees to hold free reserves for between six and twelve months normal activity excluding depreciation and specific project costs (between £230,000 and £460,000) and additional reserves, as agreed on an annual basis, to meet the costs of any additional project work or to safeguard the charity's service commitment in the event of delays or receipts of grants or general liabilities. The trustees believe that the reserves should be at least at this level to ensure that the charity can run efficiently and meet the needs of the beneficiaries.

At 31st December 2024 free reserves were £240,896 excluding designated funds and £274,100 including designated funds which is in accordance with the stated policy.

Upper Teesdale Agricultural Support Services Limited

Trustees' Annual Report (Incorporating the Director's Report) *(continued)*

Year Ended 31 December 2024

Structure, Governance and Management

Governing Document

The charity is controlled by its governing document, a deed of trust, and constitutes a limited company, limited by guarantee, as defined by the Companies Act 2006.

Risk management

The trustees have a duty to identify and review the risks to which the charity is exposed and to ensure appropriate controls are in place to provide reasonable assurance against fraud and error.

Public Benefit

Our main activities and who we help are described elsewhere in this report. All our charitable activities are undertaken to further our charitable purposes for the public benefit. The Committee have had regard to the Charity Commission's guidance on public benefit throughout the year when deciding on the activities of the charity.

Reference and Administrative Details

Registered charity name Upper Teesdale Agricultural Support Services Limited

Charity registration number 1120120

Company registration number 06054331

Principal office and registered office 9-11 Chapel Row
Middleton In Teesdale
Barnard Castle
County Durham
DL12 0SN

The Trustees

Mrs L Dalton (Retired 4 February 2024)
Mr R Matthews
Mr C Stephenson
Mrs L A Simpson
Mr M McGarry
Prof S E Elton
Ms F Hutchinson
Mr P W Lamb
Dr S A Lumb
Ms S Markwick
Ms C Colling

Company Secretary Mr R Danby

Independent Examiner Jane Ascroft FCA MA (Cantab)
Enterprise House
Harmire Enterprise Park
Barnard Castle
County Durham
DL12 8XT

Upper Teesdale Agricultural Support Services Limited

Trustees' Annual Report (Incorporating the Director's Report) *(continued)*

Year Ended 31 December 2024

Small Company Provisions

This report has been prepared in accordance with the provisions applicable to companies entitled to the small companies exemption.

The trustees' annual report was approved on 12 March 2025 and signed on behalf of the board of trustees by:

A handwritten signature in dark ink, appearing to read 'Robert Danby', with a long horizontal flourish extending to the right.

Mr R Danby
Company Secretary

Upper Teesdale Agricultural Support Services Limited

Independent Examiner's Report to the Trustees of Upper Teesdale Agricultural Support Services Limited

Year Ended 31 December 2024

I report to the trustees on my examination of the financial statements of Upper Teesdale Agricultural Support Services Limited ('the company') for the year ended 31 December 2024.

Responsibilities and Basis of Report

As the trustees of the company (and also its directors for the purposes of company law) you are responsible for the preparation of the financial statements in accordance with the requirements of the Companies Act 2006 ('the 2006 Act').

Having satisfied myself that the accounts of the company are not required to be audited under Part 16 of the 2006 Act and are eligible for independent examination, I report in respect of my examination of the company's accounts as carried out under section 145 of the Charities Act 2011 ('the 2011 Act'). In carrying out my examination I have followed the Directions given by the Charity Commission under section 145(5)(b) of the 2011 Act.

Independent Examiner's Statement

Since the company's gross income exceeded £250,000 your examiner must be a member of a body listed in section 145 of the 2011 Act. I confirm that I am qualified to undertake the examination because I am a member of the Institute of Chartered Accountants in England and Wales (ICAEW), which is one of the listed bodies.

I have completed my examination. I confirm that no matters have come to my attention in connection with the examination giving me cause to believe:

1. accounting records were not kept in respect of the company as required by section 386 of the 2006 Act; or
2. the financial statements do not accord with those records; or
3. the financial statements do not comply with the accounting requirements of section 396 of the 2006 Act other than any requirement that the accounts give a 'true and fair' view which is not a matter considered as part of an independent examination; or
4. the financial statements have not been prepared in accordance with the methods and principles of the Statement of Recommended Practice for accounting and reporting by charities applicable to charities preparing their accounts in accordance with the Financial Reporting Standard applicable in the UK and Republic of Ireland (FRS 102).

I have no concerns and have come across no other matters in connection with the examination to which attention should be drawn in this report in order to enable a proper understanding of the accounts to be reached.

Jane Ascroft FCA MA (Cantab)
Independent Examiner

Enterprise House
Harmire Enterprise Park
Barnard Castle
County Durham
DL12 8XT

Upper Teesdale Agricultural Support Services Limited

Statement of Financial Activities (including income and expenditure account)

Year Ended 31 December 2024

			2024		2023
	Note	Unrestricted funds £	Restricted funds £	Total funds £	Total funds £
Income and endowments					
Donations and legacies	5	136,255	204,939	341,194	168,257
Charitable activities	6	33,532	420,131	453,663	215,417
Investment income	7	16,112	—	16,112	11,601
Total income		<u>185,899</u>	<u>625,070</u>	<u>810,969</u>	<u>395,275</u>
Expenditure					
Expenditure on charitable activities	8,9	186,266	372,395	558,661	399,493
Total expenditure		<u>186,266</u>	<u>372,395</u>	<u>558,661</u>	<u>399,493</u>
Net income/(expenditure)		<u>(367)</u>	<u>252,675</u>	<u>252,308</u>	<u>(4,218)</u>
Transfers between funds		171,490	(171,490)	—	—
Other recognised gains and losses					
Investment gains/(losses)		(1,736)	—	(1,736)	72
Net movement in funds		<u>169,387</u>	<u>81,185</u>	<u>250,572</u>	<u>(4,146)</u>
Reconciliation of funds					
Total funds brought forward		<u>290,798</u>	<u>106,782</u>	<u>397,580</u>	<u>401,726</u>
Total funds carried forward		<u>460,185</u>	<u>187,967</u>	<u>648,152</u>	<u>397,580</u>

The statement of financial activities includes all gains and losses recognised in the year.
All income and expenditure derive from continuing activities.

The notes on pages 8 to 24 form part of these financial statements.

Upper Teesdale Agricultural Support Services Limited

Statement of Financial Position

31 December 2024

	Note	2024 £	2023 £
Fixed Assets			
Tangible fixed assets	15	67,701	23,560
Investments	16	18,384	20,120
		<u>86,085</u>	<u>43,680</u>
Current Assets			
Debtors	17	47,174	13,325
Cash at bank and in hand		565,673	351,175
		<u>612,847</u>	<u>364,500</u>
Creditors: amounts falling due within one year	18	<u>50,780</u>	<u>10,600</u>
Net Current Assets		<u>562,067</u>	<u>353,900</u>
Total Assets Less Current Liabilities		<u>648,152</u>	<u>397,580</u>
Net Assets		<u>648,152</u>	<u>397,580</u>
Funds of the Charity			
Restricted funds		187,967	106,782
Unrestricted funds		460,185	290,798
Total charity funds	20	<u>648,152</u>	<u>397,580</u>

For the year ending 31 December 2024 the company was entitled to exemption from audit under section 477 of the Companies Act 2006 relating to small companies.

Directors' responsibilities:

- The members have not required the company to obtain an audit of its financial statements for the year in question in accordance with section 476;
- The directors acknowledge their responsibilities for complying with the requirements of the Act with respect to accounting records and the preparation of financial statements.

These financial statements have been prepared in accordance with the provisions applicable to companies subject to the small companies' regime.

These financial statements were approved by the board of trustees and authorised for issue on 12th March 2025, and are signed on behalf of the board by:

Mr M McGarry
Trustee

The notes on pages 8 to 24 form part of these financial statements.

Upper Teesdale Agricultural Support Services Limited

Statement of Cash Flows

Year Ended 31 December 2024

	2024 £	2023 £
Cash Flows from Operating Activities		
Net income/(expenditure)	252,308	(4,218)
<i>Adjustments for:</i>		
Depreciation of tangible fixed assets	17,747	6,322
Dividends, interest and rents from investments	(1,650)	(1,571)
Other interest receivable and similar income	(14,462)	(10,030)
Accrued expenses	4,592	2,222
<i>Changes in:</i>		
Trade and other debtors	(33,849)	(7,128)
Trade and other creditors	35,588	(9,546)
Cash generated from operations	260,274	(23,949)
Interest received	14,462	10,030
Net cash from/(used in) operating activities	<u>274,736</u>	<u>(13,919)</u>
Cash Flows from Investing Activities		
Dividends, interest and rents from investments	1,650	1,571
Purchase of tangible assets	(61,888)	(5,641)
Net cash used in investing activities	<u>(60,238)</u>	<u>(4,070)</u>
Net Increase/(Decrease) in Cash and Cash Equivalents	214,498	(17,989)
Cash and Cash Equivalents at Beginning of Year	351,175	369,164
Cash and Cash Equivalents at End of Year	<u>565,673</u>	<u>351,175</u>

The notes on pages 8 to 24 form part of these financial statements.

Upper Teesdale Agricultural Support Services Limited

Notes to the Financial Statements

Year Ended 31 December 2024

1. General Information

The company is a public benefit entity and a private company limited by guarantee, registered in England and Wales and a registered charity in England and Wales. The address of the registered office is 9-11 Chapel Row, Middleton In Teesdale, Barnard Castle, County Durham, DL12 0SN.

2. Statement of Compliance

These financial statements have been prepared in compliance with FRS 102, 'The Financial Reporting Standard applicable in the UK and the Republic of Ireland', the Statement of Recommended Practice applicable to charities preparing their accounts in accordance with the Financial Reporting Standard applicable in the UK and Republic of Ireland (FRS 102) (Charities SORP (FRS 102)) and the Companies Act 2006.

3. Accounting Policies

Basis of Preparation

The financial statements have been prepared on the historical cost basis, as modified by the revaluation of certain financial assets and liabilities and investments measured at fair value through income or expenditure.

The financial statements are prepared in sterling, which is the functional currency of the entity.

The entity is a Public Benefit Entity.

Going Concern

There are no material uncertainties about the charity's ability to continue.

Judgements and Key Sources of Estimation Uncertainty

The preparation of the financial statements requires management to make judgements, estimates and assumptions that affect the amounts reported. These estimates and judgements are continually reviewed and are based on experience and other factors, including expectations of future events that are believed to be reasonable under the circumstances. The trustees consider that there are no significant estimates or judgements affecting these financial statements.

Fund Accounting

Unrestricted funds are available for use at the discretion of the trustees in furtherance of the purposes of the charity. Unrestricted funds include a revaluation reserve representing the restatement of investment assets at market values.

Designated funds are unrestricted funds earmarked by the trustees for specific purposes.

Restricted funds are subjected to restrictions on their expenditure imposed by the donor.

Upper Teesdale Agricultural Support Services Limited

Notes to the Financial Statements *(continued)*

Year Ended 31 December 2024

3. Accounting Policies *(continued)*

Income

All income is included in the statement of financial activities when the charity is entitled to the income, any performance related conditions attached have been met or are fully within the control of the charity, the income is considered probable and the amount can be quantified with reasonable accuracy. The following specific policies are applied to particular categories of income:

Donations and legacy income is received by way of donations, legacies, grants and gifts and is included in full in the Statement of Financial Activities when receivable. Where legacies have been notified to the charity but the criteria for income recognition have not been met, the legacy is treated as a contingent asset and disclosed if material. Grants, where entitlement is not conditional on the delivery of a specific performance by the charity, are recognised when the charity becomes unconditionally entitled to the grant.

Donated services and facilities are included at the value to the charity, being the amount the charity would have been willing to pay to obtain services or facilities of equivalent economic benefit on the open market.

Investment income is included when receivable.

Income from charitable trading activity is accounted for when earned.

Income from grants, where related to performance and specific deliverables, are accounted for as the charity earns the right to consideration by its performance.

Expenditure

Expenditure is recognised on an accruals basis as a liability is incurred. Expenditure includes any VAT which cannot be fully recovered, and is reported as part of the expenditure to which it relates:

Costs of raising funds comprise the costs associated with attracting donations, grants and legacies and the costs of trading for fundraising purposes.

Charitable expenditure comprises those costs incurred by the charity in the delivery of its activities and services for its beneficiaries. It includes both costs that can be allocated directly to such activities and those costs of an indirect nature necessary to support them.

Other expenditure includes all expenditure that is neither related to raising funds for the charity nor part of its expenditure on charitable activities.

All costs are allocated between the expenditure categories of the SOFA on a basis designed to reflect the use of the resource. Costs relating to a particular activity are allocated directly, others are apportioned on an appropriate basis.

Tangible Assets

Tangible fixed assets are initially recorded at cost, and subsequently stated at cost less any accumulated depreciation and impairment losses. The costs of minor additions or those costing below £500 are not capitalised.

Upper Teesdale Agricultural Support Services Limited

Notes to the Financial Statements *(continued)*

Year Ended 31 December 2024

3. Accounting Policies *(continued)*

Depreciation

Depreciation is calculated so as to write off the cost or valuation of an asset, less its residual value, over the useful economic life of that asset as follows:

Leasehold Property	-	Straight line over lease term
Improvements		
Office Furniture	-	15% straight line
Minibus	-	20% reducing balance
Electrical Equipment	-	25% straight line
Computer Equipment	-	Straight line over 3 years

Investments

Unlisted equity investments are initially recorded at cost, and subsequently measured at fair value. If fair value cannot be reliably measured, assets are measured at cost less impairment.

Listed investments are measured at fair value with changes in fair value being recognised in income or expenditure.

Impairment of Fixed Assets

A review for indicators of impairment is carried out at each reporting date, with the recoverable amount being estimated where such indicators exist. Where the carrying value exceeds the recoverable amount, the asset is impaired accordingly. Prior impairments are also reviewed for possible reversal at each reporting date.

Financial Instruments

The charity only has financial assets and liabilities of a kind that qualify as basic financial instruments. Basic financial instruments are initially recognised at transaction value and subsequently measured at their settlement value.

Defined Contribution Plans

Contributions to defined contribution plans are recognised as an expense in the period in which the related service is provided. Prepaid contributions are recognised as an asset to the extent that the prepayment will lead to a reduction in future payments or a cash refund.

When contributions are not expected to be settled wholly within 12 months of the end of the reporting date in which the employees render the related service, the liability is measured on a discounted present value basis. The unwinding of the discount is recognised as an expense in the period in which it arises.

Upper Teesdale Agricultural Support Services Limited

Notes to the Financial Statements *(continued)*

Year Ended 31 December 2024

Debtors

Trade and other debtors are recognised at the settlement amount due after any trade discount offered. Prepayments are valued at the amount prepaid net of any trade discounts due.

Accrued income and tax recoverable is included at the best estimate of the amounts receivable at the balance sheet date.

Cash at Bank and in Hand

Cash at bank and cash in hand includes cash and short term highly liquid investments with a short maturity of three months or less from the date of acquisition or opening of the deposit or similar account.

Creditors

Creditors are recognised where the charity has a present obligation resulting from a past event that will probably result in the transfer of funds to a third party and the amount due to settle the obligation can be measured or estimated reliably. Creditors are normally recognised at their settlement amount after allowing for any trade discounts due.

Taxation

The company is considered to pass the tests set out in Paragraph 1 Schedule 6 of the Finance Act 2010 and therefore it meets the definition of a charitable company for UK corporation tax purposes. Accordingly, the company is potentially exempt from taxation in respect of income or capital gains received within categories covered by Chapter 3 Part 11 of the Corporation Tax Act 2010 or Section 256 of the taxation of Chargeable Gains Act 1992, to the extent that such income or gains are applied exclusively to charitable purposes.

4. Limited by Guarantee

The company is limited by guarantee. At 31st December 2024 there were 10 members each of whom had undertaken to contribute an amount not exceeding £10 in the event of a winding up.

The company is under the control of the board of directors as a body and as such is not controlled by any individual.

5. Donations and Legacies

	Unrestricted Funds £	Restricted Funds £	Total Funds 2024 £
Donations			
General donations	22,408	—	22,408
Friends Of UTASS	3,208	—	3,208
HMRC Gift aid	2,210	—	2,210
R H Woods Charitable Trust	—	850	850
Northumbrian Water	3,000	—	3,000
Durham Dales Enterprise CIC	5,429	—	5,429

Upper Teesdale Agricultural Support Services Limited

Notes to the Financial Statements *(continued)*

Year Ended 31 December 2024

5. Donations and Legacies *(continued)*

	Unrestricted Funds £	Restricted Funds £	Total Funds 2024 £
Legacies			
Legacies	100,000	—	100,000
Grants			
National Lottery Community Fund	—	76,746	76,746
Durham Community Action	—	3,000	3,000
Ballinger Trust	—	20,000	20,000
Durham County Council	—	38,343	38,343
Royal Countryside Fund	—	22,500	22,500
Teesdale AAP	—	16,000	16,000
Joseph Strong Frazer Trust	—	2,500	2,500
The Mercers Charitable Foundation	—	25,000	25,000
	<u>136,255</u>	<u>204,939</u>	<u>341,194</u>
	Unrestricted Funds £	Restricted Funds £	Total Funds 2023 £
Donations			
General donations	19,863	3,251	23,114
Friends Of UTASS	3,182	—	3,182
HMRC Gift aid	4,752	—	4,752
R H Woods Charitable Trust	—	860	860
Grants			
National Lottery Community Fund	—	74,849	74,849
Durham Community Action	—	1,500	1,500
Ballinger Trust	—	20,000	20,000
Royal Countryside Fund	—	12,500	12,500
Joseph Strong Frazer Trust	—	2,500	2,500
The Mercers Charitable Foundation	—	25,000	25,000
	<u>27,797</u>	<u>140,460</u>	<u>168,257</u>

Upper Teesdale Agricultural Support Services Limited

Notes to the Financial Statements (continued)

Year Ended 31 December 2024

6. Charitable Activities

	Unrestricted Funds £	Restricted Funds £	Total Funds 2024 £
Wellbeing	—	64,980	64,980
Crime prevention	—	70,879	70,879
Community resilience	—	84,581	84,581
Social isolation and poverty	—	147,313	147,313
Cree project and retired farmers' lunches	—	10,193	10,193
Youth work	1,567	24,707	26,274
Minibus income	3,567	—	3,567
Rural training programme	—	17,478	17,478
Business and admin support	28,398	—	28,398
	<u>33,532</u>	<u>420,131</u>	<u>453,663</u>

	Unrestricted Funds £	Restricted Funds £	Total Funds 2023 £
Wellbeing	—	17,864	17,864
King's Coronation	—	500	500
Community resilience	—	63,520	63,520
Social isolation and poverty	—	46,746	46,746
Cree project and retired farmers' lunches	—	9,000	9,000
Youth work	930	36,086	37,016
Minibus income	2,856	—	2,856
Rural training programme	—	12,056	12,056
Business and admin support	25,859	—	25,859
	<u>29,645</u>	<u>185,772</u>	<u>215,417</u>

7. Investment Income

	Unrestricted Funds £	Total Funds 2024 £	Unrestricted Funds £	Total Funds 2023 £
Income from listed investments	1,650	1,650	1,571	1,571
Bank interest receivable	14,462	14,462	10,030	10,030
	<u>16,112</u>	<u>16,112</u>	<u>11,601</u>	<u>11,601</u>

8. Expenditure on Charitable Activities by Fund Type

	Unrestricted Funds £	Restricted Funds £	Total Funds 2024 £
Costs of Charitable Activities	<u>186,266</u>	<u>372,395</u>	<u>558,661</u>

	Unrestricted Funds £	Restricted Funds £	Total Funds 2023 £
Costs of Charitable Activities	<u>166,113</u>	<u>233,380</u>	<u>399,493</u>

Upper Teesdale Agricultural Support Services Limited

Notes to the Financial Statements *(continued)*

Year Ended 31 December 2024

9. Expenditure on Charitable Activities by Activity Type

	Activities undertaken directly £	Total funds 2024 £	Total fund 2023 £
Costs of Charitable Activities	<u>558,661</u>	<u>558,661</u>	<u>399,493</u>

10. Net Income/(Expenditure)

Net income/(expenditure) is stated after charging/(crediting):

	2024 £	2023 £
Depreciation of tangible fixed assets	<u>17,747</u>	<u>6,322</u>

11. Independent Examination Fees

	2024 £	2023 £
Fees payable to the independent examiner for:		
Independent examination of the financial statements	<u>1,491</u>	<u>1,134</u>
Other financial services	<u>1,222</u>	<u>1,222</u>
	<u>2,713</u>	<u>2,356</u>

12. Staff Costs and Emoluments

The total staff costs and employee benefits for the reporting period are analysed as follows:

	2024 £	2023 £
Wages and salaries	<u>360,191</u>	<u>248,266</u>
Social security costs	<u>18,072</u>	<u>10,636</u>
Employer contributions to pension plans	<u>12,706</u>	<u>11,004</u>
	<u>390,969</u>	<u>269,906</u>

The average head count of employees during the year was 22 (2023: 17). The average number of full-time equivalent employees during the year is analysed as follows:

	2024 No.	2023 No.
Management	<u>1</u>	<u>1</u>
Administration and support	<u>2</u>	<u>2</u>
Finance	<u>1</u>	<u>1</u>
Domestic support	<u>1</u>	<u>1</u>
Project staff	<u>3</u>	<u>3</u>
Community Support staff	<u>4</u>	<u>—</u>
Training	<u>1</u>	<u>—</u>
	<u>13</u>	<u>8</u>

No employee received employee benefits of more than £60,000 during the year (2023: Nil).

Upper Teesdale Agricultural Support Services Limited

Notes to the Financial Statements (continued)

Year Ended 31 December 2024

12. Staff Costs and Emoluments (continued)

Key Management Personnel

Key management personnel include all persons that have authority and responsibility for planning, directing and controlling the activities of the company. The total compensation paid to key management personnel for services provided to the company was £27,146 (2023:£35,190).

13. Trustee Remuneration and Expenses

No trustees received any remuneration or expenses from the charity during the current and previous year.

14. Transfers Between Funds

During the year £171,490 was transferred from restricted to unrestricted funds. This represented contributions to staffing and overheads by projects.

15. Tangible Fixed Assets

	Leasehold Property Improvements £	Office Furniture £	Minibus £	Electrical Equipment £	Computer Equipment £	Total £
Cost						
At 1 Jan 2024	42,744	27,279	96,099	18,971	69,707	254,800
Additions	—	—	59,584	—	2,304	61,888
At 31 Dec 2024	42,744	27,279	155,683	18,971	72,011	316,688
Depreciation						
At 1 Jan 2024	42,744	18,045	84,569	18,173	67,709	231,240
Charge for the year	—	1,385	14,223	266	1,873	17,747
At 31 Dec 2024	42,744	19,430	98,792	18,439	69,582	248,987
Carrying amount						
At 31 Dec 2024	—	7,849	56,891	532	2,429	67,701
At 31 Dec 2023	—	9,234	11,530	798	1,998	23,560

Upper Teesdale Agricultural Support Services Limited

Notes to the Financial Statements (continued)

Year Ended 31 December 2024

16. Investments

	Listed investments £
Cost or valuation	
At 1 January 2024	20,120
Additions	–
Other movements	(1,736)
At 31 December 2024	<u>18,384</u>
Impairment	
At 1 January 2024 and 31 December 2024	
Carrying amount	
At 31 December 2024	<u>18,384</u>
At 31 December 2023	<u>20,120</u>

All investments shown above are held at valuation.

The investments comprise 8,000 shares in Legal & General Group plc which were donated to the charity. They are valued at current market value.

17. Debtors

	2024 £	2023 £
Trade debtors	911	1,393
Gift aid recoverable	1,803	3,000
Accrued grant income	<u>44,460</u>	<u>8,932</u>
	<u>47,174</u>	<u>13,325</u>

18. Creditors: amounts falling due within one year

	2024 £	2023 £
Accruals and deferred income	13,009	8,417
Funds held on behalf of third parties	<u>37,771</u>	<u>2,183</u>
	<u>50,780</u>	<u>10,600</u>

19. Pensions and Other Post Retirement Benefits

Defined contribution plans

The amount recognised in income or expenditure as an expense in relation to defined contribution plans was £12,706 (2023: £11,004).

Upper Teesdale Agricultural Support Services Limited

Notes to the Financial Statements *(continued)*

Year Ended 31 December 2024

19. Pensions and Other Post Retirement Benefits *(continued)*

Upper Teesdale Agricultural Support Services Ltd (UTASS) participates in The Pensions Trust's Growth Plan Series 1, 2 and 3(the scheme). The scheme is a multi-employer scheme which provides benefits to some 1,300 non-associated participating employers. The scheme is a defined benefit scheme in the UK. It is not possible for the company to obtain sufficient information to enable it to account for the scheme as a defined benefit scheme. Therefore it accounts for the scheme as a defined contribution scheme. Accordingly, due to the nature of the Scheme, the accounting charge for the period under FRS102 represents the employer contribution payable.

The scheme is subject to the funding legislation outlined in the Pensions Act 2004 which came into force on 30 December 2005. This, together with documents issued by the Pensions Regulator and Technical Actuarial Standards issued by the Financial Reporting Council, set out the framework for funding defined benefit occupational pension schemes in the UK.

The scheme is classified as a 'last-man standing arrangement'. Therefore UTASS is potentially liable for other participating employers' obligations if those employers are unable to meet their share of the scheme deficit following withdrawal from the scheme. Participating employers are legally required to meet their share of the scheme deficit on an annuity purchase basis on withdrawal from the scheme. UTASS has been notified by The Pensions Trust of the estimated employer debt on withdrawal from the Scheme based on the financial position of the Scheme as at 30 September 2023. As of this date the estimated employer debt for UTASS was £9,172.

A full actuarial valuation for the scheme was carried out at 30 September 2021. This valuation showed assets of £765m, liabilities of £761m and a surplus of £4m.

As at the balance sheet date there was 1 pensioner member of the scheme employed by UTASS. UTASS no longer offers membership of the scheme to its employees.

Employees who are not members of the Pensions Trust's Growth Plan Series 1, 2 and 3 are offered a contribution to alternative defined contribution pensions, which in some circumstances is the Pensions Trust's Growth Plan Series 4. Total pension contributions made by the employer during the year were £12,706 (2023 - £11,004). There were no pension contributions outstanding at the year end.

Upper Teesdale Agricultural Support Services Limited

Notes to the Financial Statements (continued)

Year Ended 31 December 2024

20. Analysis of Charitable Funds

Unrestricted funds

	At 1 Jan 2024 £	Income £	Expenditure £	Transfers £	Gains and losses £	At 31 Dec 2024 £
General funds	209,303	77,213	(150,705)	105,085	—	240,896
Capital funds	43,680	—	(17,747)	61,888	(1,736)	86,085
Minibus funds	1,623	3,231	(5,285)	1,781	—	1,350
Young Peoples' Free Reserves	3,900	1,842	(8,173)	3,217	—	786
Joan Drewe legacy	22,088	—	(360)	148	—	21,876
Events reserves	994	1,812	(1,254)	—	—	1,552
Older Persons Free Reserves	776	175	(778)	—	—	173
Retired farmers lunches	3,995	—	—	(629)	—	3,366
Yoga donations	601	389	(133)	—	—	857
Dog poo bags	(54)	627	(758)	—	—	(185)
Training	—	610	(273)	—	—	337
Relief Fund donations	3,892	—	(800)	—	—	3,092
Legacy	—	100,000	—	—	—	100,000
	<u>290,798</u>	<u>185,899</u>	<u>(186,266)</u>	<u>171,490</u>	<u>(1,736)</u>	<u>460,185</u>

	At 1 Jan 2023 £	Income £	Expenditure £	Transfers £	Gains and losses £	At 31 Dec 2023 £
General funds	209,008	61,494	(147,502)	86,303	—	209,303
Capital funds	44,289	—	(6,323)	5,642	72	43,680
Minibus funds	237	4,413	(5,540)	2,513	—	1,623
Young Peoples' Free Reserves	1,297	1,508	(5,085)	6,180	—	3,900
Joan Drewe legacy	23,767	—	(922)	(757)	—	22,088
Events reserves	664	—	—	330	—	994
Older Persons Free Reserves	226	575	(25)	—	—	776
Retired farmers lunches	—	—	—	3,995	—	3,995
Yoga donations	—	296	—	305	—	601
Dog poo bags	—	757	(716)	(95)	—	(54)
Training	—	—	—	—	—	—
Relief Fund donations	—	—	—	3,892	—	3,892
Legacy	—	—	—	—	—	—
	<u>279,488</u>	<u>69,043</u>	<u>(166,113)</u>	<u>108,308</u>	<u>72</u>	<u>290,798</u>

Upper Teesdale Agricultural Support Services Limited

Notes to the Financial Statements (continued)

Year Ended 31 December 2024

20. Analysis of Charitable Funds (continued)

Restricted funds

	At 1 Jan 2024 £	Income £	Expenditure £	Transfers £	Gains and losses £	At 31 Dec 2024 £
National Lottery Community Fund	18,254	76,746	(73,492)	(183)	—	21,325
DCC Neighbourhood Grant	1,111	—	—	—	—	1,111
CDCF Poverty Hurts	2,000	—	—	(2,000)	—	—
Weardale Action Partnership	3,177	10,000	(4,858)	(474)	—	7,845
Middleton Educational Trust	550	—	(550)	—	—	—
RCF Farm for the Future 24/25	—	29,000	(13)	(24,025)	—	4,962
Ballinger Trust	21,462	20,000	(20,053)	(1,409)	—	20,000
Theatre Trips etc	(825)	5,477	(4,674)	—	—	(22)
Land of Lead & Silver	—	1,690	—	—	—	1,690
Wellesley Trust Fund via Community Foundation	3,140	7,478	(8,186)	(1,140)	—	1,292
PCP Peer Support Worker	—	13,181	(10,893)	(96)	—	2,192
Joseph Strong Fraser Trust	—	2,500	(1,000)	(1,500)	—	—
PCP Community Resilience worker	4,503	8,124	(6,637)	(5,990)	—	—
Parish Nurse Project 24/25	—	26,852	(21,898)	—	—	4,954
Teesdale Action Partnership (Healthy Activities, Healthy Food)	—	581	(187)	(394)	—	—
DCC (Cree Sessions)	2,476	10,193	(7,309)	(2,652)	—	2,708
Durham High Sheriff's Award	927	—	(927)	—	—	—
The Mercers Charitable Foundation	3,868	25,000	(20,859)	—	—	8,009
PCP Time Together	—	30,000	(7,154)	1,995	—	24,841
R&H Wood Charitable Trust	860	850	(860)	—	—	850
Royal Community Fund (Agricultural salaries)	7,550	22,500	(22,299)	—	—	7,751
CDCF Know Your Neighbourhood	4,059	46,185	(22,372)	(15,859)	—	12,013
NFU Grant	6,000	—	(1,374)	(1,226)	—	3,400
CDCF Trips & Outings	1,000	—	(603)	(397)	—	—
RCF Farm for the Future - 23-24	1,451	23,060	(101)	(24,410)	—	—
Parish Nurse	4,246	27,605	(28,485)	(3,366)	—	—
Mickleton Moss Committee	300	—	(300)	—	—	—
DCA Traditional Skills	3,408	—	(2,380)	(1,028)	—	—
PCP Pop Up Hubs	(3,217)	12,489	(1,050)	(8,222)	—	—
Safer Streets	—	64,370	(49,698)	(4,766)	—	9,906

Upper Teesdale Agricultural Support Services Limited

Notes to the Financial Statements *(continued)*

Year Ended 31 December 2024

20. Analysis of Charitable Funds *(continued)*

PCP Resilience worker	—	24,397	(22,004)	2,606	—	4,999
Mintingmer	—	500	(285)	(215)	—	—
CDCF Welcome Space	3,000	3,000	(3,646)	(54)	—	2,300
Digital Durham	—	—	(270)	—	—	(270)
DCC New minibus	—	38,343	—	(38,343)	—	—
DCA Building	—	—	—	—	—	—
Energy Appraisal	—	3,000	(3,000)	—	—	—
AAP New minibus	—	16,000	—	(16,000)	—	—
Defra Farmer Welfare Fund	—	6,888	(3,355)	(3,468)	—	65
NFU Grant 2024	—	6,509	—	—	—	6,509
Lived Experience	—	10,522	(8,263)	—	—	2,259
Point North DB Society	—	4,905	—	—	—	4,905
CDCF Poverty Hurts 2024	—	12,998	(4,864)	(4,464)	—	3,670
Cree Plus	—	10,000	—	(1,960)	—	8,040
Sir James Knott/Samars	—	10,000	(5,086)	—	—	4,914
Stronger Together	6,399	14,127	(1,775)	(10,826)	—	7,925
Morrisons Foundation YP Space	—	—	—	—	—	—
Improvement	6,490	—	(1,608)	—	—	4,882
PCP Farming Futures (Young Farmers)	4,593	—	(27)	(1,624)	—	2,942
	<u>106,782</u>	<u>625,070</u>	<u>(372,395)</u>	<u>(171,490)</u>	<u>—</u>	<u>187,967</u>

Upper Teesdale Agricultural Support Services Limited

Notes to the Financial Statements (continued)

Year Ended 31 December 2024

20. Analysis of Charitable Funds (continued)

	At 1 Jan 2023 £	Income £	Expenditure £	Transfers £	Gains and losses £	At 31 Dec 2023 £
National Lottery						
Community Fund	—	74,849	(56,595)	—	—	18,254
Ballinger Trust (Youth)	—	10,000	(10,000)	—	—	—
DCC Neighbourhood						
Grant	—	1,980	(869)	—	—	1,111
Retired Farmers						
Lunches	3,995	—	—	(3,995)	—	—
Groundwork	—	500	(500)	—	—	—
CDCF Poverty Hurts	—	2,000	—	—	—	2,000
PCF Farm for the						
Future	5,454	21,813	(1,212)	(26,055)	—	—
Relief Fund donations	3,892	—	—	(3,892)	—	—
Poverty Hurts	—	12,677	(5,391)	(7,286)	—	—
Teesdale Action						
Partnership (Young						
People At the Heart)	4,770	—	(4,770)	—	—	—
Weardale Action						
Partnership	8,541	—	(4,071)	(1,293)	—	3,177
I Will#	2,870	—	—	(2,870)	—	—
Middleton Educational						
Trust	—	1,000	(450)	—	—	550
Ballinger Trust	15,000	20,000	(13,538)	—	—	21,462
Wellbeing for Life						
Micro Grant	—	250	(250)	—	—	—
Theatre Trips etc	—	4,328	(5,153)	—	—	(825)
Land of Lead & Silver	—	—	—	—	—	—
Wellesley Trust Fund						
via Community						
Foundation	2,246	8,056	(6,126)	(1,036)	—	3,140
Joseph Strong Fraser						
Trust	—	2,500	(2,500)	—	—	—
PCP Community						
Resilience worker	4,753	29,997	(26,901)	(3,346)	—	4,503
Teesdale Action						
Partnership (Healthy						
Activities, Healthy						
Food)	1,248	8,013	(4,885)	(4,376)	—	—
DCC (Cree Sessions)	4,336	9,150	(7,530)	(3,480)	—	2,476
Wemmergill Estates	134	—	(134)	—	—	—
CDCF Connection						
Communities	—	5,300	(1,151)	(4,149)	—	—
DCC Preparing for the						
Future	556	—	(412)	(144)	—	—
Durham High Sheriff's						
Award	1,052	—	(223)	98	—	927

Upper Teesdale Agricultural Support Services Limited

Notes to the Financial Statements (continued)

Year Ended 31 December 2024

20. Analysis of Charitable Funds (continued)

DCA Cost of Living	—	1,500	(1,500)	—	—	—
The Mercers Charitable Foundation	—	25,000	(20,798)	(334)	—	3,868
R&H Wood Charitable Trust	—	860	—	—	—	860
Royal Community Fund (Agricultural salaries)	9,830	12,500	(14,780)	—	—	7,550
CDCF Know Your Neighbourhood	—	15,595	(8,435)	(3,101)	—	4,059
NFU Grant	—	6,443	—	(443)	—	6,000
CDCF Trips & Outings	—	5,000	(993)	(3,007)	—	1,000
RCF Farm for the Future - 23-24	—	4,688	(35)	(3,202)	—	1,451
Parish Nurse	—	17,864	(13,618)	—	—	4,246
Mickleton Moss Committee	—	800	(500)	—	—	300
DCA Traditional Skills	—	4,000	(485)	(107)	—	3,408
PCP Pop Up Hubs	—	—	(110)	(3,107)	—	(3,217)
PCF Here for You	3,175	—	(3,175)	—	—	—
CDCF Welcome Space	—	3,000	—	—	—	3,000
Digital Durham	—	500	(500)	—	—	—
DCC Covid Recovery grant	1,284	—	(1,284)	—	—	—
Cree Plus	1,810	—	(429)	(1,381)	—	—
Sir James Knott/Samares	—	—	—	—	—	—
Stronger Together	2,796	13,593	(229)	(9,761)	—	6,399
Morrisons Foundation YP	—	—	—	—	—	—
Space Improvement	7,020	—	(530)	—	—	6,490
Poverty Hurts	2,000	—	(1,320)	(680)	—	—
TAP Together project	5,438	—	(1,136)	(4,302)	—	—
Jubilee donations	268	86	(734)	380	—	—
Awards For All CAB	—	—	—	—	—	—
Volunteer grant	9,800	—	(5,837)	(3,963)	—	—
Dog poo bags	(95)	—	—	95	—	—
DCC Warm Spaces grant	1,000	500	(1,100)	(400)	—	—
Sir Tom Cowie poverty grant	5,000	—	(2,140)	(2,860)	—	—
DCC Community Buildings	500	—	(500)	—	—	—
Tees Swale project	(1,387)	1,890	(384)	(119)	—	—
PCP Farming Futures (Young Farmers)	4,954	—	—	(361)	—	4,593
TAP Welfare reform	9,998	—	(167)	(9,831)	—	—
	<u>122,238</u>	<u>326,232</u>	<u>(233,380)</u>	<u>(108,308)</u>	<u>—</u>	<u>106,782</u>

Upper Teesdale Agricultural Support Services Limited

Notes to the Financial Statements *(continued)*

Year Ended 31 December 2024

20. Analysis of Charitable Funds *(continued)*

The restricted funds received during 2024 are for the following purposes:

Core grants:

National Lottery Community Fund
Ballinger Trust
Royal Countryside Fund
Durham Community Action
R.H.Woods Charitable Trust
Joseph Strong Frazer Trust
Mercers Charitable Foundation

Grants towards wellbeing:

Durham Dales Parish Nurse
Lived Experience

Grants towards our youth work:

Teesdale Action Partnership - HAHF
YMCA N Tyneside Stronger Together
Sir James Knott Foundation

Grants towards support with social isolation and poverty:

TAP Community Support
Point North (CDCF) Warm Spaces grant
Point North (CDCF)Poverty Hurts
Point North (CDCF)Know Your Neighbourhood grant
DCC - CREE work
Farmer Network
PCP Time Together
PCP Pop Up Hubs
PCP Peer Support Worker
Land of Lead & Silver
Point North DB Society
Mintingmer

Grants towards community resilience:

PCP Community Resilience worker
RCF Farm for the Future

Grants towards crime prevention:

Safer Streets
NFU Mutual

Grants towards rural training:

Weardale Action Partnership
CDCF Wellesley Trust

Other grants:

Durham County Council and Teesdale AAP - New minibus

Upper Teesdale Agricultural Support Services Limited

Notes to the Financial Statements *(continued)*

Year Ended 31 December 2024

21. Analysis of Net Assets Between Funds

	Unrestricted Funds £	Restricted Funds £	Total Funds 2024 £
Tangible fixed assets	67,701	—	67,701
Investments	18,384	—	18,384
Current Assets	424,880	187,967	612,847
Creditors less than 1 year	(50,780)	—	(50,780)
Net assets	460,185	187,967	648,152

	Unrestricted Funds £	Restricted Funds £	Total Funds 2023 £
Tangible fixed assets	23,560	—	23,560
Investments	20,120	—	20,120
Current Assets	257,718	106,782	364,500
Creditors less than 1 year	(10,600)	—	(10,600)
Net assets	290,798	106,782	397,580

22. Analysis of Changes in Net Debt

	At 1 Jan 2024 £	Cash flows £	At 31 Dec 2024 £
Cash at bank and in hand	351,175	214,498	565,673

23. UTASS Endowment Fund

The UTASS Endowment Fund is managed independently by County Durham Community Foundation. UTASS has the use of the income from the fund but not the capital. At 31st December 2024 the fund value was £77,532 (2023 - £70,166).

24. Volunteer Time

Volunteer time to a value of £49,972 (2023 - £67,717) has not been included in income or expenditure for the year.

Upper Teesdale Agricultural Support Services Limited

Management Information

Year Ended 31 December 2024

The Following Pages Do Not Form Part of the Financial Statements.

Upper Teesdale Agricultural Support Services Limited

Detailed Statement of Financial Activities

Year Ended 31 December 2024

	2024 £	2023 £
Income and endowments		
Donations and legacies		
General donations	22,408	23,114
Friends Of UTASS	3,208	3,182
HMRC Gift aid	2,210	4,752
R H Woods Charitable Trust	850	860
Northumbrian Water	3,000	—
Durham Dales Enterprise CIC	5,429	—
Legacies	100,000	—
National Lottery Community Fund	76,746	74,849
Durham Community Action	3,000	1,500
Ballinger Trust	20,000	20,000
Durham County Council	38,343	—
Royal Countryside Fund	22,500	12,500
Teesdale AAP	16,000	—
Joseph Strong Frazer Trust	2,500	2,500
The Mercers Charitable Foundation	25,000	25,000
	<u>341,194</u>	<u>168,257</u>
Charitable activities		
Wellbeing	64,980	17,864
King's Coronation	—	500
Crime prevention	70,879	—
Community resilience	84,581	63,520
Social isolation and poverty	147,313	46,746
Cree project and retired farmers' lunches	10,193	9,000
Youth work	26,274	37,016
Minibus income	3,567	2,856
Rural training programme	17,478	12,056
Business and admin support	28,398	25,859
	<u>453,663</u>	<u>215,417</u>
Investment income		
Income from listed investments	1,650	1,571
Bank interest receivable	14,462	10,030
	<u>16,112</u>	<u>11,601</u>
Total income	<u>810,969</u>	<u>395,275</u>

Upper Teesdale Agricultural Support Services Limited

Detailed Statement of Financial Activities *(continued)*

Year Ended 31 December 2024

	2024 £	2023 £
Expenditure		
Wages	360,191	248,266
Employer's NIC	18,072	10,636
Pension costs	12,706	11,004
Rent	14,500	14,500
Light, heat and water	8,483	9,997
Repairs, renewals and maintenance	3,077	2,758
Licences and insurance	6,136	4,298
Legal and professional fees	8,994	7,990
Telephone and office costs	17,992	14,520
Depreciation	17,747	6,322
Sundry costs	2,747	5,246
Project costs	79,881	54,468
Minibus costs	5,146	5,347
Staff travel and training	2,989	4,141
Total expenditure	558,661	399,493
Net income/(expenditure)	252,308	(4,218)

