

# ANNUAL IMPACT REPORT 2023



Upper  
Teesdale  
Agricultural  
Support  
Services





# Introduction



2023 was an incredibly busy year in which UTASS consolidated its position as the go-to organisation for support within Upper Teesdale and Upper Weardale.

In addition to hosting the Post Office and the Citizen's Advice, UTASS is now hosting Barclays Bank who have recently closed its branch in Middleton. We are fortunate that we are able to provide facilities so their essential services have not been lost.

The health and welfare element which has always been integral to the role of UTASS has been added to in recent times by the addition of a Parish Nurse Gladys Mugambi. Gladys' role is flexible and will develop in line with the need of the dales, working as part of the now three-strong community care team. This role is not medical as such so does not impinge upon the role of the Forge Surgery, but I hope complements the medical care provided by the surgery. The Parish Nurse is paid for by the Durham Diocese, and working together we are looking at a second Parish Nurse to be appointed in February 2024.

Richard Betton, together with Charlotte Fletcher, have been working hard over the course of the last year assisting with the changes with regard to the Basic Payment Scheme and Farm for the Future programme. This I feel is an invaluable element of UTASS, giving as much certainty as possible to our farmers or at the very least providing an understanding (as best we are

able) as to what is actually going on and how the changes will affect farmers and the countryside.



Throughout the year Grace Crawford continues to keep UTASS on the right track with funding applications and the continued grant funding, which we receive, is due to the sterling effort Grace

puts into our applications and the ongoing conversations and relationships with grant funders. Grace deserves our thanks and congratulations.

I was delighted to attend and spend some time and money at our Christmas Fair, again spent at Middleton Mart. This was quite a treat on a bright frosty November day to see so many people of all generations gathering to buy Christmas treats, both for themselves and for others with a chance of bumping into Father Christmas. I would like to pay tribute to those who worked so hard to pull together with the Christmas Fair giving their time in arranging the Mart, putting up lights and decorations ready for the various stall holders, and especially Emma Spry for arranging it all.



# Introduction

It is, I think, the most important part of my role as Chairman to say thank you;

- Thank you to our members who support us, recognise what UTASS and its staff do in the communities we operate and also will put their hands in their pockets to support us financially, be this by way of donations when UTASS helps them, or will turn up to events such as the Christmas Fair and spend money which filters back into our coffers.
- Thank you to our dedicated staff. Without them UTASS would be nothing.
- Thank you to those grant funders who continue to recognise the relevance of UTASS and its very real input into our communities.
- Finally, a thank you to our patrons for their continued interest and for the fact that they continue to spread the word about what UTASS is about and does, far and wide.

This year we have been very fortunate in that we have not lost any members of staff but have gained three, Gladys our new parish nurse, Alison Brown our Finance Officer (who has taken some of the role of manager Bob, lightening his unenviable workload) and Janet Dodson our Time Together Coordinator.

We also gained two new Trustees, Stephanie Markwick and Caroline Colling who were appointed at the last AGM. Sadly at the last AGM we said goodbye to our long standing trustees, Ian Tallentire, and Roy Oxby, both of whom have, in their different ways, been a particular miss to the board. I send to them both, the good wishes of our organisation.

UTASS continues with its mission emboldened, to provide care and support for our agricultural community and it must be emphasised our community at large. If I am ever in any doubt about the need for UTASS and concerned about what we do, such worries or concerns are soon allayed by the knowledge that so many government, non-government, and charitable, organisations understand what we do and are not only prepared to praise what we do but actually use UTASS as the benchmark for other regions and organisations using us as almost a guiding light.

I bid you well for 2024 and sign off in the firm assurance that despite difficulties we as a community face, we do so together.



**Michael McGarry**  
**UTASS Chairman**



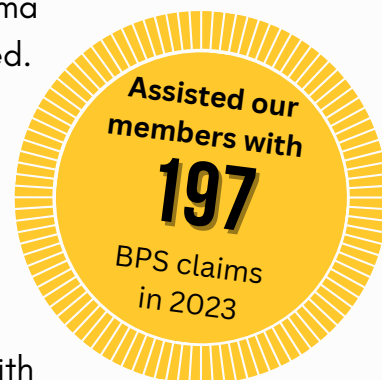
# Farming Support



Our farm support team went from strength to strength during 2023 as Charlotte expanded her depth of knowledge and Caitlin, who only joined UTASS as admin support in late 2022, began her IAgSA Agricultural Secretary training. Caitlin has already been supporting the farming team in completing grant applications and grant claims. Emma remains part of the team, dealing with farm support matters as well as Basic Payment Scheme claims. The support Caitlin and Emma provide ensures the pressure and demands of Charlotte and Richard are eased.

2023 saw the final claims for **BPS** being submitted before the Rural Payments Agency move to the delinking of payments.

Most of the problems with the RPA online system, which have caused havoc in the past, had finally been ironed out making it a much less stressful time for all concerned. That said, we did see additional problems with 5-year HLS extensions and the annual claim forms for both Higher Level Stewardship and Countryside Stewardship.



The RPA are planning to use the Rural Payments system for future Environmental Land Management Schemes so making sure members' mapping was up to date during their BPS appointment was a good investment for the future.



**Grant assistance** remained a recurring support need with CS applications as well as new SFI applications (Sustainable Farming Incentive). We also often help sort out problems with existing agreements and assist with submitting online CS capital grant claims, especially for wall and hedge restoration.

Charlotte and Richard have attended numerous Defra online workshops covering the development of the new ELMS schemes, guidance, penalties, and many other aspects.

**“Anything we’ve needed help with has been there, especially Charlotte’s assistance and patience negotiating walling grants.**

**We really appreciate being able to get through to UTASS’s helpful reception staff without choosing options, recorded messages and long holds.”**

**Mr & Mrs Harrison**

**“We have had excellent help and support from Richard and Charlotte at UTASS in advising us on completing the SFI and Capital Grant applications. We appreciate their invaluable time and assistance.”**

**Mr & Mrs Hodgson**

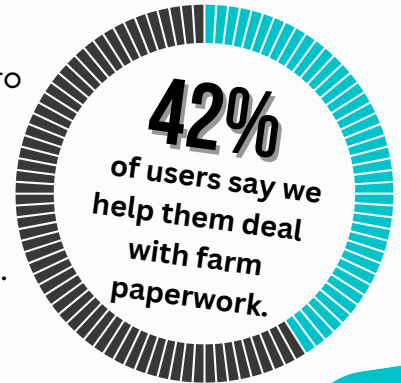




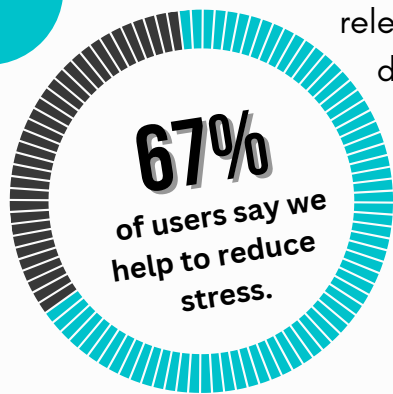
# Farming Support

**Agricultural secretary** support helps our members with a wide range of farm record-keeping tasks and dealing with a range of agencies such as the RPA, APHA, BCMS, LIS and local councils;

Anything from the notifications of movements for sheep and cattle, to the registering of calf births or farm assurance inspections and medicine records to appeals and planning applications. Our assistance in this area can be essential for those without internet connections/limited confidence with IT as most need to be done online.



**Our briefings** remain vital for our farming members. Such a small amount of the over-complicated, jargon-laden policy documents and scheme guidance is actually relevant to farmers in our area. Richard and Charlotte transform the relevant information into easily understood snippets to ensure our members don't miss any crucial information for their farm business.



Richard remains the secretary for five local **graziers groups** as well as two groups of Field Reeves for local common land.

Although the Raby grazing groups all have HLS extensions still in place, Natural England have advised that it is likely that these will be moved over to Countryside Stewardship before the end of the current agreements. Although there has been welcomed uplifts on CS rates, there will be considerable work to administer new agreements for all the groups.



A part of our nucleus is **providing a voice** on behalf of our members. The rate of change in the farming landscape, including schemes, regulations and cost inflation, is challenging for all of us. We have set up a **farmers forum** to work in partnership with us and keep us fully in touch with the impacts on the ground so we can deliver the most helpful and necessary support to the farming community.

Both Charlotte and Richard regularly attended the RPA Farmer Welfare Group and Richard attended conferences and worked with the North Pennines AONB, Tees Swale, NFU, to name but a few, as a voice for our members and to ensure that these organisations have greater understanding of our farming communities and their needs, while Emma has been working with the Livestock Information Service to help shape the new system for cattle recording.

# Farming Support



In late November Sandy Kapila, Head of External Affairs at the RPA, came to UTASS to meet with our members. He talked through the RPA's role post-Brexit in designing and delivering the new schemes. He also answered wide-ranging questions, often more relevant to the short-comings of other Defra agencies, with candour and honesty. The message that resonated most with our members was the RPA's intention to move away from the former EU punitive inspection approach to more developmental visits focussed on producing outcomes rather than imposing penalties. He fully recognised that building trust between farmers and the RPA would take time but hoped that this event, and the relationship that already existed between UTASS staff and the RPA, would help that process.

2023 saw the delivery of our second **Farm For The Future** resilience programme, developed and funded by the Royal Countryside Fund.

Although the programme was again hampered, with details from DEFRA failing to be announced on time, the programme has enabled our members to gain a better understanding of many different aspects that contribute to the overall success of farm businesses.



The programme provides two standard sessions; Ian Cairns' 'Farm Business' session which looks at better understanding annual accounts and also costing out individual enterprises and Janet Fairclough's session on 'Environmental Opportunities'.

access to expert one-to-one support as well as the opportunity to request extra meetings on topics that are interest-specific to them. In 2023, these extra meetings included a session on



**“The Farm For The Future programme has been very informative.**

**I found the workshops engaging and definitely got me thinking about the future of my business and the decisions I will have to make going forward”**

**Robin Bellas**

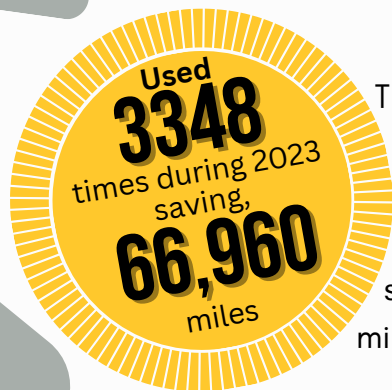
carbon and another on 'Tenants Rights' which was run by George Dunn the Chief Executive of the Tenant Farmers Association.

We will continue to build on this work, the programme will run year-on-year until 2025, to allow more members to sign up and reap the benefits of the programme.





# Access to Services



The twice weekly **Post office** sessions are more vital than ever since the loss of the Barclays branch. The service, provided by Barnard Castle Post Office, now gives the community access to banking facilities, as well as postal services. It also massively benefits the environment, saving the dale a 20 mile round trip to Barnard Castle.

**POST OFFICE**

**citizens advice**

This year saw a change in the way in which we work together with **Citizens Advice** County Durham. A new team of locally based volunteers were recruited to provide a more regular service in the Dale.



Janet and Paul, having undergone a full training programme, are now providing face-to-face advice here at UTASS.

Thanks to their commitment we now have weekly sessions, making it easier for people to call in for advice when they need it. Our volunteers have already helped deal with issues relating to benefits, housing, utilities and personal finances.



UTASS was identified as a 'test centre' by

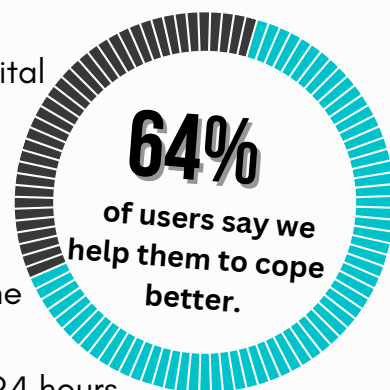
**Pearson Vue**

and during 2023 they offered Health and Safety Tests on behalf of the Construction Industry Training Board (CITB) every fortnight. This test is needed prior to applying for a CSCS card (Construction Skills Certificate Scheme) for those working or sub-contracting into the construction industry. Prior to this the nearest test station was 50 miles away!



**BARCLAYS**

Due to the closure of the **Barclays** branch in the village, UTASS was again identified as an ideal location, this time to become a 'Barclays Hub'. Barclays staff are based here twice weekly. They offer a cashless service, providing money advice, help with making CHAPS & BACS payments, and digital assistance, again saving members of the community from having to travel.



## Durham County Carers Support



is an independant charitable organisation who we work closely with. We refer members within County Durham who are

carers, to enable them to receive support and advice as well as practical help. UTASS is often used as a venue for coffee mornings for local carers.

## 'Out of Hours' assistance

is one of our original and vital services; we're available 24 hours

a day, 365 days a year!

Whatever the time of day our

emergency telephone number can be called, or texted, or more often

these days, people get in touch via our website or social media pages.



# Bringing People Together



## Yoga & Pilates

continued to be popular well attended sessions. Laura, a local physiotherapist, continued to hold her well-established weekly pilates session. Hatha Yoga went from strength to strength this year, swapping from mid-day to an evening session quickly saw it reach maximum attendance.



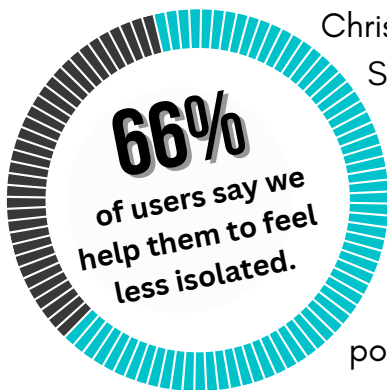
We have been fortunate that Jude continues to lead her Hatha Yoga sessions on a voluntary basis. Our Resilience Support Worker, June, also runs a weekly session, offering very gentle yoga, relaxation and mindfulness, which has also seen an increase in attendees.

**“Excellent class. Very well run and friendly. The teaching is clear and a good combination of movements to enhance participants’ mobility and flexibility.”**

**Yoga Participant**

Fortnightly **shopping trips** took place throughout the year with 26 trips taking place.

This included a regular monthly trip to Tindale Shopping Park, as well as trips to local farm shops, garden centres, and other retail parks. By popular demand we visited Sam Turners three times, with almost full seats each time! In December we took 20 people, using both minibuses, to enjoy the Christmas Markets at the South Causey Inn.



2023 saw many regular residents coming along on the trips, as well as an ever-increasing amount of new faces. Our shopping trips would not be possible without our volunteer drivers, who we are very grateful for.



## Highlights

is a touring scheme that brings an affordable programme of theatre, for all ages, to rural communities like ours.

In October we hosted 'Mountain Music' by Little Bulb, an Olivier Award-winning company, and seasoned community tourers. It was great to see new faces in the crowd, who witnessed an unforgettable theatrical feast of tales and songs, featuring sumptuous three-part harmonies and a

foot-stomping five-piece string band telling of culture, migration and history, exploring the roots of Americana and its impact on popular music today.





# Bringing People Together

## The **CREE monthly lunches**

at Middleton Mart, St John's Chapel and Barnard Castle Mart continue to be well attended. We now contact more than 60 men every month and they all do their best to attend. They are served wonderful food cooked by Rosemary Thompson with much-appreciated help from our volunteer, Rosie.

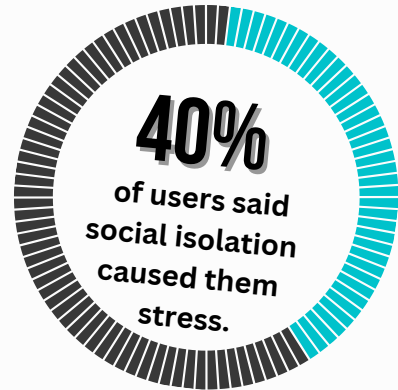


The 3 groups were treated to two extra meals in 2023.

They joined together at Easter for lunch at Langdon Beck and again for a Christmas meal at the Moorcock. It was good to hear all the chatter, banter and laughter.

**"You 3 ladies made us all so welcome when we arrived at the Moorcock. A good venue, couldn't fault it."**

**Tom Anderson, Member**



We organised seven **ladies outings** this year, including a couple of ladies lunches, visits to Wensleydale Creamery, the Spanish Gallery at Bishop Auckland, Harrogate Flower Show, Richmond Cinema and a ride over to Tebay Services which has recently been featured in a TV Series.

Many thanks to our volunteer drivers, we couldn't do these trips without you.



**"Brilliant meal and company. Thank you from the Cotherstone Ladies."**

**Members who attend ladies outings**

2023 saw three **theatre trips** take place. We saw the musical 'Buddy' at Darlington Hippodrome in March, we then went to the Sunderland Empire in April to see The Lion King and returned to Sunderland again later in November to see Sister Act.

There is much appreciation for these trips, especially with providing group transport, eliminating the stress of driving and parking.



# Bringing People Together



Tuesday morning **Chat & Craft** sessions continued throughout 2023 with Gina leading and supporting them... and still being one of the highlights of her week! Jacqui, one of our Youth Team workers also helps to support the group.

**800+**

Tea Cakes were enjoyed at Chat & Craft sessions in 2023

25 sessions were led by local artists which included pottery, felt making and flower arranging, as well as advice-based sessions ran by the Alzheimer's Society, and Clare Tellegen and June Wainwright, who focussed on wellbeing with reflexology and relaxation.

Participants are greeted at every session with a cuppa and a teacake.

We have 64 registered participants, all of whom enjoy

meeting old and new friends,

while soaking up all the new skills and advice and appreciate the programme UTASS are able to offer.



**"I can't underestimate the difference this has made to me as an individual. I moved to the village after retirement three years ago.**

**I am really impressed with the innovative and varied programme. No matter what your starting point is, the sessions are suitable for all abilities and interests. One of the real benefits of the group is the opportunity to meet new people and make new friends.**

**Tuesday mornings are a real point of contact for us all and that is what we appreciate the most. It has definitely helped me with initial feelings of isolation that come with retirement and moving to a new part of the country."**

**Linda Halbert,**  
Chat & Craft participant

Gina has built a strong bond with many who attend the sessions, allowing her to help and support them in various other ways as and when needed, whether that be NHS assistance or helping them to understand the support Citizens Advice can offer.

On average we have **17** participants attending weekly sessions



**Age UK** have worked closely with us to plan regular sessions for older people. A 'Seated Exercise' class proved very popular promoting the idea of 'Keep Moving, Keep Well'. 'Device Support' drop-in sessions, held straight after our weekly Chat & Craft session gave an opportunity to have one-on-one tech support for tablets, mobiles, and the like.

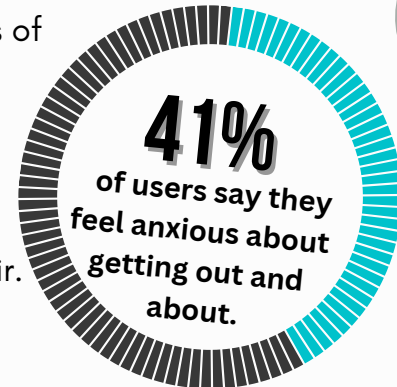




# Bringing People Together

**Wellness walks** continued to take place on a weekly basis led by Sue Bainbridge, a local part-time first responder and Wendy Stefeckis a local volunteer who helps run the community gym in Middleton-in-Teesdale.

The walks are designed to enable anyone to join, regardless of fitness level. Sue leads a short, gentle walk, while Wendy generally leads longer walks. The UTASS minibus is often used to allow the group to travel to various locations - In 2023 they explored Stanhope, Baldersdale and Cow Green Reservoir.



**"It's always a pleasure and a privilege to join in the Music and Memories sessions at UTASS. Mike Bettison's song leadership and ukulele playing and Julia Stephenson's warm hospitality make these events very welcoming to all comers. Mike makes it easy to join in by providing songsheets and projecting lyrics onto a screen."**

**Music and Memories participant**



Throughout 2023 **music and memories** sessions took place monthly, again led by Mike Bettison with his ukulele, a welcomed change saw regular attendee, Katherine, now playing alongside Mike.

We saw our regular attendance double in December, when the Choir from Middleton-in-Teesdale Primary School performed Christmas songs, uplifting our Christmas spirits!



With the help of a regular volunteer driver, we were able to provide transport for residents from two local care homes with our minibus, enabling them to come along to join the sessions. In December, the journey home detoured around some local villages so the care home residents could enjoy the sight of the various Christmas light displays!

Monday **pie and peas** sessions continued to

be a hit throughout the year with 16 registered participants regularly in attendance.

A friendly, welcoming, warm space makes for a great opportunity to meet up with friends or make new ones whilst enjoying a range of 'table' games, followed by a hot lunch and a cuppa.

These sessions allow people to come along without prior booking,

- Everyone's welcome! The more the merrier!



# Wellbeing Support



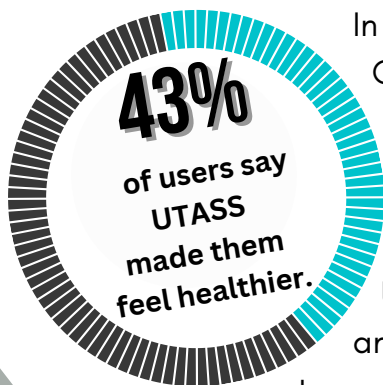
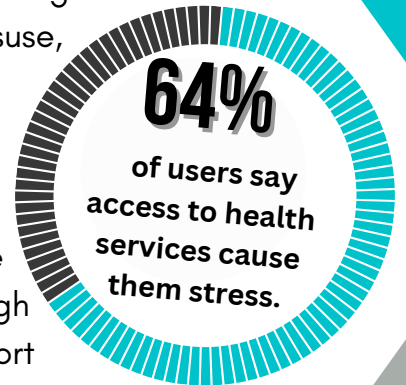
The demand for our well-being support saw significant increases throughout 2023. Our **Resilience Support** workers, June and Melanie, have had another busy year and, with their wide range of backgrounds in counselling, mental health social work and nursing, they were able to offer evidence-based support for a wide range of emotional issues including bereavement, anxiety, depression, alcohol misuse, impacts of long-term illness and in supporting people at the end of life.

UTASS Support and Wellbeing services complement those already available through the NHS. The Durham Resilience Service, which was initially commissioned to support people recovering from the impacts of the Covid Pandemic, is funded and managed through an NHS and voluntary sector partnership to offer early support and to prevent people's difficulties from deteriorating with the inevitable costs to the individual, their families, and the community.

The Parish Nursing Service for the Durham Dales was similarly envisioned to improve the emotional wellbeing of rural communities with the additional element of spiritual support where this is sought by the client.

In summer, we welcomed our **Parish Nurse**, Gladys, when she joined the wellbeing team. Gladys is a registered nurse funded by the Anglican Church and offers counselling and emotional support.

The Support and Wellbeing workers based at UTASS work closely together pooling experience and supporting one another in what can, at times, be harrowing work. Our team approach allows for considered responses to crises and our impact is increasingly recognised by local health professionals and importantly by the community itself.



## Get to know our Resilience Support Workers:

### June:

June specialises in supporting people and families affected by more severe mental illness.

### Melanie:

Melanie is particularly experienced in supporting local farming families and working with families affected by life threatening illness and loss.





# Wellbeing Support

**“May I thank you for the kindness, generosity and for your time and effort.**

**Also, thank you for gifting us coats ready for any oncoming cold weather we might be exposed to this winter.”**

**Client**

Our aim is to see people quickly, especially if they are in crisis, and then we will work to involve other members of the UTASS team and statutory agencies if needed.

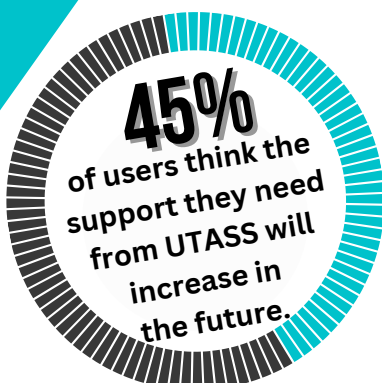
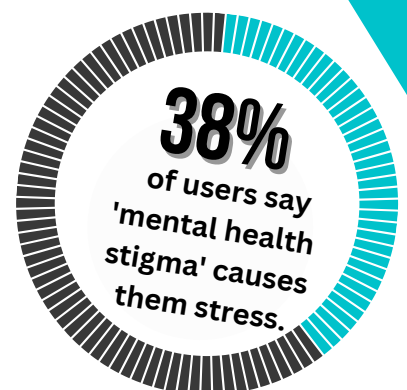
Our team works flexibly with people of all ages, including children and young people, whose emotional wellbeing has deteriorated

since the pandemic, and with rural families who

have lived in the Dales for generations or those who have moved into the area more recently to retire.

Since the pandemic, many services have limited the availability of face-to-face appointments and moved almost entirely to telephone or internet support. Whilst this approach is valued by some clients for offering flexibility, many of our clients specifically mention the benefits of seeing us face-to-face.

As well as working with individuals, the team have also worked with the Chat & Craft sessions at UTASS, and also within the local primary school focussing on mental wellbeing.



# Working Together



We know UTASS opened its doors over 20 years ago, so it's easy to assume that everyone in the Dales knows who we are and what we do. This certainly isn't the case though and, as our services have expanded over the years, it's important that we keep everyone up-to-date with what goes on in "the building next to the Co-op". With this in mind, in September we held a **'UTASS Open Day'** in September to showcase the wide variety of services that UTASS offers.

With a smoothie bike and crafts for the kids, information on our resilience service, support for farmers and up-to-date training opportunities, we were able to represent UTASS as a whole.

We were also joined by external organisations with whom we have strong links, including Scouts, Brownies and Citizens Advice.

It was great to open our doors and welcome new people in, but it certainly doesn't stop there and we are always here should anyone need support, advice, local information or even just a cup of tea!



**87**

volunteers  
supported our  
work  
in 2023

**Volunteers** are essential to help us to do what we do!

UTASS regularly offers trips and events for the community which are enjoyed by a wide range of people.



From music events, Middleton Mart Christmas Fair, cinema trips, open days and crafting sessions, we have lots going on and so much to get involved in. Volunteers are what make all of this possible and we're always so grateful for any involvement. In February we held a celebration to recognise all the incredible work volunteers do and, to say a huge thank you on behalf of the Teesdale community and from everyone at UTASS.

Food, drinks and memories were shared as volunteers from across the Dale gathered to share stories from the variety of events and activities they'd so selflessly donated their time to. If you've ever thought about taking part, there are a variety of exciting opportunities that will allow you to meet new people, share your skills and give something back to the community you love

**- get in touch to find out  
how to become part of the team!**

Volunteer time  
during 2023 is  
valued at

**£67,717**

*thank you*





# Working Together

**Time Together** Teesdale is a Volunteer Companionship Project that was started in October 2023.

This is a pilot project run jointly by UTASS and Teesdale Day Clubs, the first time both organisations have worked together.

The project aims to provide friendship, social connections and community involvement by recruiting volunteers to act as companions to isolated and lonely people in Teesdale.



A Project co-ordinator, Janet Dodson, was appointed, she is employed by UTASS and line managed by Teesdale Day Clubs.

The project got off to a good start with the recruitment of a number of local people who responded to a newspaper article and expressed a desire to offer some of their free time in companionship to isolated people living in the Dale.



**TEESDALE DAY CLUBS**

*"Adding Some Sparkle to our Local Communities"*

Further recruitment campaigns were held at Middleton Mart Christmas Fair, and with talks to other interest groups, such as the WI and Church congregations.

**"Research has identified that social connection is key to our having good mental wellbeing and this project provides an opportunity for both volunteers and people who use the service to benefit from that connection, with the additional support from a coordinated project."**

**"The experience that both Utass and Teesdale Day Clubs can bring to this new service means we are very hopeful that we can attract funding to continue after the initial pilot stage."**

**Andrea Hobbs,**  
Strategic manager for Teesdale Day Clubs

## 1st Middleton-in-Teesdale Scout Group



had another good year, with the group growing to 35 children over the three groups, Beavers, Cubs and Scouts.

UTASS is used as a base during the colder months, with meetings covering such topics as a Coronation party, cardboard castle construction, knot work, cooking, games and making lanterns for the lantern parade in Barnard Castle. Through the

summer months, we had many adventures at Bowlees, sleepovers at the Hub and Beamish and a number of activity days provided by the AONB throughout the valley.



## 1st Upper Teesdale Rainbows

had 12 girls, aged between 4 and 7 years of age attending Rainbows sessions on Wednesdays during term time. They followed a varied program of activities as they worked towards Bronze, Silver and Gold awards. In 2023 four girls achieved their Gold Award Badges, which were presented to them by our District commissioner at the time, Debbie Brown.

They had off site trips to the cinema in Richmond, a picnic in the play park and a trip to the ice cream parlour and castle at Brough.

At Christmas they had a silent disco for their Christmas party which was enjoyed by everyone especially the leaders!



## Let's Learn Moor

is an annual event which sees more than 2000 primary children visit one of seven 'classrooms' set up in upland outdoor areas to learn from those who work to preserve them.

Becca & Emma were again asked to attend the 2023 event, held locally in July, where they met 280 children across two days. It was an opportunity to 'plant the seeds' in the young, and those who educate them, about the Countryside Code and keeping safe when out and about in the uplands. Emma brought along some sheep with lambs for the children to see up close, and the lambs stole the show every time!





The committee which formed in 2022 to plan Jubilee celebrations had no idea that less than 12 months later they would be meeting again to plan **Coronation celebrations** for His Majesty King Charles III.

In January the group got together and threw lots of ideas around! However it was an 'old-fashioned' street party idea that won the vote! Lots of outdoor locations were considered, but it was felt that moving the party indoors took away the need to have a 'wet-weather plan' and also made the party much safer for little ones to have freedom, parents to not worry, and essentials such as toilets and kitchen facilities all readily available.



The programme of events was laid down, food arranged, entertainment booked and Teesdales' very own commemorative glasses were designed and ordered.

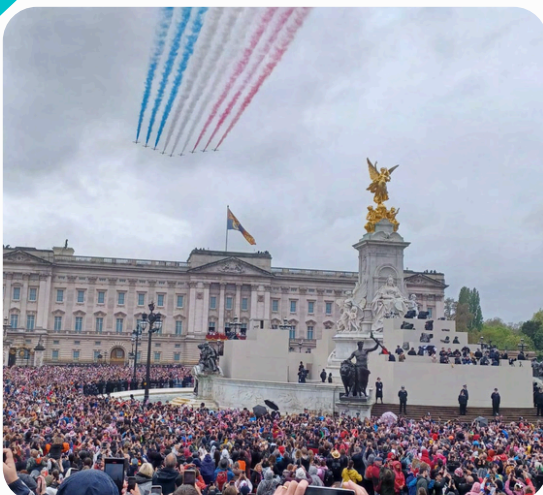
The day was a huge success, and the effort the team had put in was greatly appreciated

**- One to be forever remembered!**



The same saying goes for UTASS staff member Grace, who was lucky enough to witness the celebrations in the capital from right outside Buckingham Palace.

Her invitation came from The Royal Countryside Fund, who Grace has worked closely with for our Farm For The Future programme.





# Working Together



Our partnership with the **Middleton Christmas Lights** committee strengthened and continued in 2023. The committee took the decision to change their usual lights Switch-On event format and joined forces with UTASS to make the 11th **Middleton Mart Christmas Fair** bigger and better than ever before!



Over 60 stallholders attended bringing a huge range of local goods and produce, some of which have attended every year, giving visitors the opportunity to 'shop local' at Christmas for every member of the family... including the pets!

The number of visitors in attendance hit record levels, all of who were met with the tempting smell of mulled wine and bacon

butties served up by Middleton Scouts, who do a marvellous job every year looking after visitors and stall holders alike.



The Christmas Lights committee were a welcome band of volunteers, helping to set up in the days prior, and the ideas and activities that they brought to the event were very well received.

In the ring, they had a wonderful photo opportunity set up, with Santa's Sleigh as well as a lantern-making station; jam jars could be adorned and lit up with beautiful bright lights as well as tickets available to purchase for their Grand Christmas Raffle. The lights committee also brought a new addition for 2023; a Santa's Grotto!

Mr & Mrs Claus arrived on their quad bike lit up with fairy lights, before taking shelter in their amazing grotto, designed and decorated by the UTASS Chat & Craft ladies. They provided the most magical



'Santa Experience', assisted by two wonderful young ladies, Abbie Spry and Lilia Hodgson, who volunteered to be elves for the day. They worked their magic keeping the scores of queuing families happy!

The buzz at the mart shifted to the car park for the annual switch-on event. As mulled wine, mince pies and hot sandwiches were enjoyed, carols were sung with the Silver band and choir, with the earlier made lanterns the perfect accessory as the carnival queen switched on the lights, officially starting Christmas in the Dale!



# Working Together

Our **Rural-Watch group** has, again continued to expand – The WhatsApp group, the first of it's kind in the area was our response to a spate of targeted localised crime back in 2018. The concept has now

**UTASS Rural-Watch**  
Residents & Police  
working together



been replicated and adopted by various Rural-Watch groups (formally known as FarmWatch).

Emma, who set up the initial group is a member of many other local groups which enables her to share information succinctly and ensuring all members across the various groups receive relevant information and updates.

**237**

members,  
7% increase  
from 2023

**“ UTASS makes a significant difference. Every member of staff is approachable, amenable and always willing to help.”**

**Teesdale & Weardale  
Rural Watch Chairman**

Durham Constabulary are proud to boast, brag, and advocate the Rural-Watch WhatsApp group, with reactions and sightings from it's members resulting in stolen property being recovered, missing people be found and criminals arrested.



The group helps to keep our communities feeling safer and endeavours to make them look less attractive areas to criminals.

Utass are pleased to be associated with and to support **Teesdale & Weardale RuralWatch** assisting them in applying for various funding streams. They also use the building to hold their Annual General Meeting of members as well as regular trustee meetings.

In November, we teamed up with them and invited members and farmers to a meeting at UTASS to speak directly to Durham Constabulary's Firearms licensing team. The meeting also had a chat, via video call, to hear from an on duty officer, who has access to the WhatsApp groups and thinks they are such a fantastic resource.



Our oil buying  
group saved it's  
members  
**£20,845**  
in 2023.

Our **oil buying group** continued to grow with 40 new members joining the scheme, taking the group total to over 390 households and businesses benefitting from discounted prices.



Oil prices continued to fall in 2023, although still high compared to prices prior to the war in Ukraine. The rise in the

cost-of-living has also seen members be more cautious, with many opting for the minimum quantity of 500 litres. The discount throughout the year ranges from 2.5p to 6.5p per litre.

**“ It reminds us to order oil, also the lower cost makes a difference to household budgeting..”**

**Oil Buying Group Member**

# Young People



2023 saw another busy year for **Young People's** sessions, the changes made last year to have mixed drop-ins continued to ensure the sessions remain inclusive. On both Mondays and Thursdays evenings we serve hot food, with the sessions being based around the 5 ways to wellbeing, promoting a wholesome lifestyle:



CONNECT

BE  
ACTIVE

GIVE

TAKE  
NOTICE

KEEP  
LEARNING

**"I love coming to UTASS, it's always fun and I get to see my friends, the staff are kind, helpful and thoughtful."**

**UTASS Young Person**

**"As a family with two children who have daily struggles and additional needs I couldn't be more thankful that we have an amazing local support group for them. All of the UTASS staff have always provided fantastic support to the children and myself and an amazing understanding of my children's needs and struggles. Both of my children love the school holiday trips and activities and through lockdown the team came weekly and left activities, cooking recipes & ingredients and treats on the doorstep which the children loved.**

**We feel so lucky to have UTASS youth group!"**

**The Manser Family**

**29**  
Young People in  
attendance  
every week

**98**  
registered young  
people attending  
the youth  
sessions







# Young People

## Our Youth Team:

Adele Dickeson  
Amy Kinchley  
Gina Richardson  
Jacqui Nutter  
Melanie Lee

Sessions were youth-led with extra planned activities including, Taekwondo, gel nails, Leon's Exotics (which gave everyone a chance to get up close and personal with spiders and reptiles), baking and biscuit decorations, discos and Nerf battles, den building, team games and VR gaming sessions.

This year, a total of twenty-five fully-funded offsite activities took place which started in February half term, continuing throughout the year during school holidays. Durham County Councils' Fun and Food funding provided regular trips (due to popular demand) to Rof 59 for bouncing and climbing, and Planet Leisure for bowling and mini golf, The gaming hideaway, Go Karting and Eggleston play park. Sport England funded Teesdale Sailing club to provide a 6-week rotating programme for us of sailing, kayaking and paddleboarding at Grassholme Reservoir.

Young people were also treated to fossil and crystal hunting at Coldberry and their annual pantomime trip.

Tees-Swale provided a 6 week programme at Bowlees Visitors Centre and included river dipping, den building, fossil hunting, pellet dissection, trail walks, a visit to Low Force, campfire building and a visit to Bowlees Education farm.

**"I find the sessions really useful for the children, with the variety of sessions that the team put on. My two boys have some additional needs so I always accompany them when coming to the sessions and it's nice to help out with anything needed and see the children all happy. We are always made welcome and the other children and staff are brilliant with the boys. We all have a lovely time when coming to UTASS for sessions both in the building and the trips out. The staff are amazing and always go above and beyond for everyone. Definitely an amazing service for the Children."**

**Parent of Young People who attend the sessions.**



**"We love the service that UTASS youth group provides, the staff are lovely and friendly and fantastic with the children who attend, the activities are appropriate and engaging and the setting is perfect for this type of group. When our daughter first attended the group she was very shy, and as she grows she is coming out of her shell and I believe that is in part due to attending the group and mixing with the staff and children there."**

**Parent of Young People who attend the sessions**

# Training



2023 was another busy year for **training**, with over 240 training places provided, with funing wherever possible.

Well being for Life started off the year, providing a Mental Health First Aid Refresher course and a Basic Mental Health Awareness course.

Emergency First Aid Work and Paediatric First Aid both proved

**240+**  
training  
places  
provided

popular again, with many now understanding the importance of these courses.

Due to demand, we were able to offer several courses at venues in Weardale this year; two of which were Level 2 Food Safety in Catering courses which saw 23 people gaining skills and their qualification.

**“Hopefully I won't have to use the skills very often, but much better prepared with what to do in certain situations. First aid is a skill that everyone should be taught..”**

**Emergency First Aid at Work Trainee**

We had another great year with livestock based courses, as well as our usual NPTC Safe Use of Sheep Dips with Fiona from Flock Health Ltd and Bimeda, we also teamed up with Castle Farm Vets, and Flock Health Ltd again to deliver training and workshops based around the DEFRA Animal Health & Welfare Pathway for “Parasites Watch”, Faecal Egg Counting and “Fluke Diagnostics”.



**56%**  
of users say that  
UTASS has  
increased their  
knowledge  
& skills.

In June, we held our annual two day British Wool Shearing training with one trainee achieving a “first” with a Gold Seal qualification!

Two MiDAS Minibus Awareness training courses were held, including 5 of our regular volunteer drivers all achieving this qualification.

In the summer, we had a busy run of courses including Rough Terrain Telescopic, Quad Bike, and Lantra Chainsaw & Cross Cutting courses. Half of the trainees from the chainsaw course returned later in the year to gain their NPTC Felling & Processing Trees up to 380mm qualification.







# Training



Another popular course this year was for hedgelaying, with many attending both Introductory and Improvers courses.

**"I had no experience of Hedgelaying, after completing the intro course, I now feel able to have a go and learn/improve as I go. I volunteer for a Woodland & Wildlife Project, I will be laying some hedges on the site soon.."**

**Hedgelaying Trainee**

Walling Taster days were held in June and July, though the trainees had some dreadful weather meaning waterproofs were a must!

Thanks to funding from the Wellesley Trust Fund, we were again able to invite applications from young people living in the Durham Dales for funding towards a variety of driver training opportunities. In 2023, 14 young people were awarded £250 towards car driving lessons, two attended a fully funded quad bike training day, three were awarded a tractor test preparation session, and sixteen 13-15 year olds were awarded Lantra Tractor

The annual Northumbria Dry Stone



Driving training.

In an isolated dale like Teesdale, funding such as this makes a huge difference to the younger generation and provides them with an opportunity to access wider education and job opportunities, also ensuring that drivers are fully aware of the Health & Safety implications. We are lucky to have been able to offer this funding for many years and hope to do the same in the next financial year.

**"Yes, I knew how to drive a tractor, but not what everything does, what could happen and how dangerous they could be."**

**13 - 15 Tractor Driving Trainee**



**Many Thanks to those who enable us to deliver our training locally and access funding.**

Teesdale Area Action Partnership  
Weardale Area Action Partnership  
Teesdale Branch of the NFU  
Wellesley Trust Fund  
Northumbria Dry Stone Walling Association  
Durham Hedgerow Partnership  
British Wool Shearing  
Tees-Swale: Naturally Connected

# Funders



Funded by  
UK Government



DURHAM DALES  
PARISH NURSING



We would like to say a huge thank you to everyone who has helped us to make a difference here in the Durham Dales throughout 2023.

We are so grateful to be supported by a huge range of fantastic donors, partners and funders. This year we have continued relationships with many of our existing supporters and have been delighted to have received new multi-year awards from The National Lottery Community Fund, The Mercer's Charitable Foundation, The Ballinger Trust, the Know Your Neighbourhood Fund supported by UK Government and Durham Police & Crime Commissioner's Office.

We also want to recognise the amazing contributions that our community makes towards the work we deliver- the Friends of UTASS, those who make personal or legacy donations and the groups and organisations who fundraise on our behalf.

**We send you all a heartfelt thank you!**  
**We simply couldn't do what we do without you!**

Ballinger Charitable Trust

County Durham Community Foundation

Durham Community Action

Durham County Council

Durham Dales Parish Nursing

Durham Police & Crime Commissioner's Office

Joseph Strong Frazer Trust

Know Your Neighbourhood Fund supported by UK  
Government

Middleton Educational Trust

Morrisons Foundation

NFU Mutual Office Barnard Castle





# Funders



The National Lottery Heritage Fund via the North Pennines AONB Partnership

Pioneering Care Partnership

Ralph Gowland Trust

Sir Tom Cowie Charitable Trust

Teesdale Area Action Partnership

Tesco Community Grants

The Mercers' Charitable Foundation

The National Lottery Community Fund

The Royal Countryside Fund

The R&H Woods Charitable Trust

Tyne & Wear Community Foundation

UK Community Foundations

Virgin Money Foundation

Weardale Area Action Partnership



SIR TOM COWIE CHARITABLE TRUST



# Our Staff



Our staff team continued to grow in 2023 as we expanded our reach into wellbeing within the community and appointed a finance officer to oversee our increasingly complicated funding.

The overwhelming majority are local people and as a consequence know a lot of the people we serve personally, and are also in tune with local issues.



**Adele Dickeson**  
Youth Support



**Alli Brown**  
Finance Officer



**Amy Kinchley**  
Youth Support



**Anne Scott**  
Finance &  
Admin Support



**Becca Melville**  
Admin Support &  
Volunteer Support Worker



**Bob Danby**  
Manager, Treasurer &  
Company Secretary



**Caitlin Dent**  
Admin Support



**Charlotte Fletcher**  
Admin Support &  
Agricultural Secretary



**Emma Spry**  
Social Media &  
Admin Support





# Our Staff

I've no hesitation in saying I have never worked with a more dedicated and supportive team both inside and outside of the organisation.

I'm proud to be able to support them to deliver the service people deserve.

Bob Danby  
UTASS Manager



**Gina Richardson**  
Youth Team Lead &  
Community Engagement



**Gladys Mugambi**  
Parish Nurse



**Grace Crawford**  
Funding & Strategic  
Development Officer



**Jacqui Nutter**  
Youth Support



**Janet Dodson**  
Time Together  
Teesdale Co-ordinator



**Julia Stephenson**  
Training Co-ordinator



**June Wainwright**  
Resilience Support



**Melanie Lee**  
Resilience Support  
& Youth Support



**Richard Betton**  
Farmers Liaison Worker

# Our Trustees & Governance



The UTASS Financial Policy outlines procedures and safeguards to ensure reasonable assurance against fraud or error and compliance with Charity Law.

On a monthly basis Trustees are presented with information regarding spend, current/savings account balances and investment values.

In accordance with Charity Law, accounts are submitted for independent examination by a suitably qualified person.

It is the policy of the trustees to hold free reserves for between 6 and 12 months normal activity (£130k - £260K).

UTASS is a registered charity and a company limited by guarantee. It is governed by a Memorandum and Articles of Association which were adopted in Dec 2006.

It is under the control of a board of 11 trustees, chosen, from a variety of backgrounds and occupations to give a diverse skill set.

Trustees are appointed by ordinary resolution in accordance with the articles of association.



**Caroline Colling**  
Farmer



**Sarah Elton**  
Hon. Professor



**Philip Lamb**  
Accountant



**Hon. Secretary  
Louise Dalton**  
Farmer



**Fay Hutchinson**  
Citizens Advice  
Technical Debt  
Supervisor & Farmer





# Our Trustees & Governance



**Steve Lumb**  
Retired GP

All trustees are committed, with strong attendance at meetings, none take any expenses or payment in relation to their support.

Six trustee meetings are scheduled per year, though this number can vary according to need. In 2023 eight were held in addition to the AGM.

Meetings are held face to face but with the benefit of a Zoom option for trustees not able to attend in person. They are well supported with 70% trustee attendance.

There is a staffing sub-group consisting of Richard Matthews, Prof. Sarah Elton, Louise Dalton and Amanda Simpson.

Other working groups are established for specific purposes, if and when required.

Ian Tallentire and Roy Oxby, both longstanding trustees stood down at the 2023 Annual General Meeting. Both will be missed and we extend our grateful thanks to them for their valued support over many years.

Also at the 2023 Annual General Meeting we were pleased to welcome Caroline Colling, a farmer, and Stephanie Markwick, the Middleton in Teesdale Surgery Practice Manager, to the UTASS trustees team.



**Stephanie Markwick**  
Managing Partner



**Chairman**  
**Michael McGarry**  
Solicitor



**Vice-Chair**  
**Richard Matthews**  
Veterinary Surgeon



**Amanda Simpson**  
Farmer



**Carl Stephenson**  
Farmer

A summary of the financial position is shown below.

A full copy of the accounts is available by request from UTASS or alternatively on the Charity Commission's websites.

## **UTASS** **Financial Summary** **For the Year ending 31<sup>st</sup> December 2023**

### **Income**

Donations	31,048
Grants	137,209
Income from charitable activities	215,417
Investment income	<u>11,601</u>
	<u>395,275</u>

### **Expenditure**

Staff costs	269,906
Project costs	54,468
Other costs	<u>75,119</u>
	<u>399,493</u>

Investment Gains	72
<b>Deficit for the year</b>	<b>(4,146)</b>

### **Assets and liabilities at 31<sup>st</sup> December 2023**

Fixed assets including investments	43,680
Current assets including bank accounts	364,500
Current liabilities	<u>(10,600)</u>
Net assets	<u>397,580</u>

### **Funds**

Restricted funds	106,782
Reserves	209,303
Other unrestricted funds	<u>81,495</u>
Total funds	<u>397,580</u>





# The "Last Word"!

I say it every year but that doesn't mean it's any less valid this time, 2023 has absolutely flown over and here I am again with our Annual Impact report. 2023 has seen several additions to the services at UTASS many of which have been outlined by our Chairman Michael.

My thanks to the small groups of people who came together to organise events for the village; for example the group that put on the celebration for the Kings Coronation and the dedicated group who again decorated the cenotaph for Remembrance Day.

We were also pleased to work alongside the Christmas Lights Committee helping each other to organise the Christmas Fair and Lights Switch on. Moving forwards, I would like to see UTASS supporting them, and other more formal groups such as the carnival committee. As the saying goes many hands make light work.

My thanks to UTASS staff who stubbornly persist in going far beyond what is required. There's not enough space to mention everyone here, but I'd like to personally thank them for all that they do. Caitlin Dent joined us at the end of 2022 and despite being a lot younger and more energetic, has managed to tolerate all of us old folk so far. She has quickly developed into a valued member of the team with a maturity and ability well beyond her years.

I'd also like to mention and thank all of the volunteers who assisted us in providing support to the residents of the two dales, Teesdale and Weardale.

And last but not least as the famous saying goes; thanks to the eleven trustees for devoting their time free of charge to govern our charity.

I'd like to close by telling you about an unsolicited comment made by the Chairman of Wear and Tees Rural Watch at our AGM in March 2023. In praise of UTASS he said "Every time I go into UTASS, I come out a little happier". It's amazing how the most simple comments resonate with you. I took this as one of the most meaningful compliments paid to UTASS, and it struck me that nothing more needed to be said about an organisation to demonstrate its worth.

**Bob Danby CMgr MCMi UTASS**  
**Manager, Company Secretary**  
**& Treasurer**



# Upper Teesdale Agricultural Support Services

## Registered Office:

9-11 Chapel Row,  
Middleton-in-Teesdale,  
Barnard Castle,  
County Durham,  
DL12 0SN

**Telephone:** 01833 641010

**Email:** [info@utass.org](mailto:info@utass.org)

**Website:** [www.utass.org](http://www.utass.org)



**Facebook:** @UtassUpperTees



**Twitter:** @UtassUpperTees



**Instagram:** @utass\_upper\_tees

## UTASS Objects/ Mission Statement:

"To promote the benefit of the inhabitants of the community of the rural area of Upper Teesdale and the neighbourhood thereof through the advancement of education and the provision of facilities in the interest of the social welfare for the recreation and other leisure time occupation with the object of improving the conditions of life for the said inhabitants".

## UTASS Aim:

"UTASS works with and for the communities across the Durham Dales, helping people gain access to the services, advice and resources that they need so they feel supported, valued, happier and more able to cope "

**Registered Charity number: 1120120**

**Company Limited by Guarantee number: 06054331**



**Upper Teesdale Agricultural Support Services Limited**  
**Financial Statements**  
**For the Year Ending**  
**31 December 2023**

**JANE ASCROFT ACCOUNTANCY LIMITED**

Chartered Accountants  
Enterprise House  
Harmire Enterprise Park  
Barnard Castle  
County Durham  
DL12 8XT

# Upper Teesdale Agricultural Support Services Limited

## Financial Statements

Year Ended 31 December 2023

	Page
Trustees' Annual Report (Incorporating the Director's Report)	1
Independent Examiner's Report to the Trustees	4
Statement of Financial Activities (Including Income and Expenditure Account)	6
Statement of Financial Position	7
Notes to the Financial Statements	8
<b>The Following Pages Do Not Form Part of the Financial Statements</b>	
Detailed Statement of Financial Activities	27



# Upper Teesdale Agricultural Support Services Limited

## Trustees' Annual Report (Incorporating the Director's Report)

Year Ended 31 December 2023

The trustees, who are also the directors for the purposes of company law, present their report and the unaudited financial statements of the company for the year ended 31 December 2023.

### **Objectives and Activities**

The objects of the charity are to promote the benefit of the inhabitants of the community of the rural area of Upper Teesdale and the neighbourhood thereof through the advancement of education and the provision of facilities in the interest of social welfare for recreation and other leisure-time occupation with the object of improving the conditions of life of the said inhabitants.

Activities include the provision of advice and education, support and mentoring to the community in the area of operation including the provision of a drop-in facility for young people and encouraging and supporting outside organisations and outreach working.

### **Achievements and Performance**

The charity's achievements and performance during the year are described in the annual report.

### **Financial Review**

Income for the year totalled £395,275 (2022 - £385,657) and expenditure totalled £399,493 (2022 - £364,396) giving a deficit of £4,218 (2022 - surplus of £21,261). The value of investments increased by £72 during the year (2022 - fell by £3,752) giving an overall deficit of £4,146 (2022 - surplus of £17,509).

During 2023 reserves increased by £295 to £209,303 and there is a further £37,815 held in designated funds to be spent as the trustees see fit. Restricted funds fell by £15,456 to £106,782 and fixed assets fell by £609 to £43,680.

The trustees have reviewed the charity's need for reserves in line with guidance issued by the Charity Commission and it is the policy of the trustees to hold free reserves for between six and twelve months normal activity excluding depreciation and specific project costs (between £130,000 and £260,000) and additional reserves, as agreed on an annual basis, to meet the costs of any additional project work or to safeguard the charity's service commitment in the event of delays or receipts of grants or general liabilities. The trustees believe that the reserves should be at least at this level to ensure that the charity can run efficiently and meet the needs of the beneficiaries.

At 31st December 2023 free reserves were £209,303 excluding designated funds and £247,118 including designated funds which is in accordance with the stated policy.

# Upper Teesdale Agricultural Support Services Limited

## Trustees' Annual Report (Incorporating the Director's Report) *(continued)*

Year Ended 31 December 2023

### **Structure, Governance and Management**

#### **Governing Document**

The charity is controlled by its governing document, a deed of trust, and constitutes a limited company, limited by guarantee, as defined by the Companies Act 2006.

#### **Risk management**

The trustees have a duty to identify and review the risks to which the charity is exposed and to ensure appropriate controls are in place to provide reasonable assurance against fraud and error.

#### **Public Benefit**

Our main activities and who we help are described elsewhere in this report. All our charitable activities are undertaken to further our charitable purposes for the public benefit. The Committee have had regard to the Charity Commission's guidance on public benefit throughout the year when deciding on the activities of the charity.

### **Reference and Administrative Details**

**Registered charity name** Upper Teesdale Agricultural Support Services Limited

**Charity registration number** 1120120

**Company registration number** 06054331

**Principal office and registered office** 9-11 Chapel Row  
Middleton In Teesdale  
Barnard Castle  
County Durham  
DL12 0SN

#### **The Trustees**

Mr I R Tallentire	(Retired 7 March 2023)
Mrs L Dalton	
Mr R Matthews	
Mr R Oxby	(Retired 7 March 2023)
Mr C Stephenson	
Mrs L A Simpson	
Mr M McGarry	
Prof S E Elton	
Ms F Hutchinson	
Mr P W Lamb	
Dr S A Lumb	
Ms S Markwick	(Appointed 11 January 2023)
Ms C Colling	(Appointed 7 March 2023)

**Company Secretary** Mr R Danby

**Independent Examiner** Jane Ascroft FCA MA (Cantab)  
Enterprise House  
Harmire Enterprise Park  
Barnard Castle  
County Durham  
DL12 8XT



# **Upper Teesdale Agricultural Support Services Limited**

**Trustees' Annual Report (Incorporating the Director's Report) *(continued)***

**Year Ended 31 December 2023**

## **Small Company Provisions**

This report has been prepared in accordance with the provisions applicable to companies entitled to the small companies exemption.

The trustees' annual report was approved on ..... and signed on behalf of the board of trustees by:

Mr R Danby  
Company Secretary

# **Upper Teesdale Agricultural Support Services Limited**

## **Independent Examiner's Report to the Trustees of Upper Teesdale Agricultural Support Services Limited**

**Year Ended 31 December 2023**

I report to the trustees on my examination of the financial statements of Upper Teesdale Agricultural Support Services Limited ('the company') for the year ended 31 December 2023.

### **Responsibilities and Basis of Report**

As the trustees of the company (and also its directors for the purposes of company law) you are responsible for the preparation of the financial statements in accordance with the requirements of the Companies Act 2006 ('the 2006 Act').

Having satisfied myself that the accounts of the company are not required to be audited under Part 16 of the 2006 Act and are eligible for independent examination, I report in respect of my examination of the company's accounts as carried out under section 145 of the Charities Act 2011 ('the 2011 Act'). In carrying out my examination I have followed the Directions given by the Charity Commission under section 145(5)(b) of the 2011 Act.

### **Independent Examiner's Statement**

Since the company's gross income exceeded £250,000 your examiner must be a member of a body listed in section 145 of the 2011 Act. I confirm that I am qualified to undertake the examination because I am a member of the Institute of Chartered Accountants in England and Wales (ICAEW), which is one of the listed bodies.

I have completed my examination. I confirm that no matters have come to my attention in connection with the examination giving me cause to believe:

1. accounting records were not kept in respect of the company as required by section 386 of the 2006 Act; or
2. the financial statements do not accord with those records; or
3. the financial statements do not comply with the accounting requirements of section 396 of the 2006 Act other than any requirement that the accounts give a 'true and fair' view which is not a matter considered as part of an independent examination; or
4. the financial statements have not been prepared in accordance with the methods and principles of the Statement of Recommended Practice for accounting and reporting by charities applicable to charities preparing their accounts in accordance with the Financial Reporting Standard applicable in the UK and Republic of Ireland (FRS 102).



# **Upper Teesdale Agricultural Support Services Limited**

## **Independent Examiner's Report to the Trustees of Upper Teesdale Agricultural Support Services Limited *(continued)***

**Year Ended 31 December 2023**

I have no concerns and have come across no other matters in connection with the examination to which attention should be drawn in this report in order to enable a proper understanding of the accounts to be reached.

Jane Ascroft FCA MA (Cantab)  
Independent Examiner

Enterprise House  
Harmire Enterprise Park  
Barnard Castle  
County Durham  
DL12 8XT

# Upper Teesdale Agricultural Support Services Limited

## Statement of Financial Activities (including income and expenditure account)

Year Ended 31 December 2023

			2023		2022
	Note	Unrestricted funds £	Restricted funds £	Total funds £	Total funds £
<b>Income and endowments</b>					
Donations and legacies	5	27,797	140,460	168,257	155,727
Charitable activities	6	29,645	185,772	215,417	226,352
Investment income	7	11,601	–	11,601	3,578
<b>Total income</b>		<u>69,043</u>	<u>326,232</u>	<u>395,275</u>	<u>385,657</u>
<b>Expenditure</b>					
Expenditure on charitable activities	8,9	166,113	233,380	399,493	364,396
<b>Total expenditure</b>		<u>166,113</u>	<u>233,380</u>	<u>399,493</u>	<u>364,396</u>
<b>Net (expenditure)/income</b>		<u>(97,070)</u>	<u>92,852</u>	<u>(4,218)</u>	<u>21,261</u>
Transfers between funds		108,308	(108,308)	–	–
<b>Other recognised gains and losses</b>					
Investment gains/(losses)		72	–	72	(3,752)
<b>Net movement in funds</b>		<u>11,310</u>	<u>(15,456)</u>	<u>(4,146)</u>	<u>17,509</u>
<b>Reconciliation of funds</b>					
Total funds brought forward		279,488	122,238	401,726	384,217
<b>Total funds carried forward</b>		<u>290,798</u>	<u>106,782</u>	<u>397,580</u>	<u>401,726</u>

The statement of financial activities includes all gains and losses recognised in the year.  
All income and expenditure derive from continuing activities.

The notes on pages 8 to 25 form part of these financial statements.



# Upper Teesdale Agricultural Support Services Limited

## Statement of Financial Position

31 December 2023

	Note	2023 £	2022 £
<b>Fixed Assets</b>			
Tangible fixed assets	15	23,560	24,241
Investments	16	20,120	20,048
		<u>43,680</u>	<u>44,289</u>
<b>Current Assets</b>			
Debtors	17	13,325	6,197
Cash at bank and in hand		351,175	369,164
		<u>364,500</u>	<u>375,361</u>
<b>Creditors: amounts falling due within one year</b>	18	<u>10,600</u>	<u>17,924</u>
<b>Net Current Assets</b>		<b>353,900</b>	<b>357,437</b>
<b>Total Assets Less Current Liabilities</b>		<b>397,580</b>	<b>401,726</b>
<b>Net Assets</b>		<b><u>397,580</u></b>	<b><u>401,726</u></b>
<b>Funds of the Charity</b>			
Restricted funds		106,782	122,238
Unrestricted funds		290,798	279,488
<b>Total charity funds</b>	20	<b><u>397,580</u></b>	<b><u>401,726</u></b>

For the year ending 31 December 2023 the company was entitled to exemption from audit under section 477 of the Companies Act 2006 relating to small companies.

Directors' responsibilities:

- The members have not required the company to obtain an audit of its financial statements for the year in question in accordance with section 476;
- The directors acknowledge their responsibilities for complying with the requirements of the Act with respect to accounting records and the preparation of financial statements.

These financial statements have been prepared in accordance with the provisions applicable to companies subject to the small companies' regime.

These financial statements were approved by the board of trustees and authorised for issue on ....., and are signed on behalf of the board by:

Mr M McGarry  
Trustee

The notes on pages 8 to 25 form part of these financial statements.

# Upper Teesdale Agricultural Support Services Limited

## Notes to the Financial Statements

Year Ended 31 December 2023

### 1. General Information

The company is a public benefit entity and a private company limited by guarantee, registered in England and Wales and a registered charity in England and Wales. The address of the registered office is 9-11 Chapel Row, Middleton In Teesdale, Barnard Castle, County Durham, DL12 0SN.

### 2. Statement of Compliance

These financial statements have been prepared in compliance with FRS 102, 'The Financial Reporting Standard applicable in the UK and the Republic of Ireland', the Statement of Recommended Practice applicable to charities preparing their accounts in accordance with the Financial Reporting Standard applicable in the UK and Republic of Ireland (FRS 102) (Charities SORP (FRS 102)) and the Companies Act 2006.

### 3. Accounting Policies

#### Basis of Preparation

The financial statements have been prepared on the historical cost basis, as modified by the revaluation of certain financial assets and liabilities and investments measured at fair value through income or expenditure.

The financial statements are prepared in sterling, which is the functional currency of the entity.

The entity is a Public Benefit Entity.

#### Going Concern

There are no material uncertainties about the charity's ability to continue.

#### Judgements and Key Sources of Estimation Uncertainty

The preparation of the financial statements requires management to make judgements, estimates and assumptions that affect the amounts reported. These estimates and judgements are continually reviewed and are based on experience and other factors, including expectations of future events that are believed to be reasonable under the circumstances. The trustees consider that there are no significant estimates or judgements affecting these financial statements.

#### Fund Accounting

Unrestricted funds are available for use at the discretion of the trustees in furtherance of the purposes of the charity. Unrestricted funds include a revaluation reserve representing the restatement of investment assets at market values.

Designated funds are unrestricted funds earmarked by the trustees for specific purposes.

Restricted funds are subjected to restrictions on their expenditure imposed by the donor.



# Upper Teesdale Agricultural Support Services Limited

## Notes to the Financial Statements *(continued)*

Year Ended 31 December 2023

### 3. Accounting Policies *(continued)*

#### Income

All income is included in the statement of financial activities when the charity is entitled to the income, any performance related conditions attached have been met or are fully within the control of the charity, the income is considered probable and the amount can be quantified with reasonable accuracy. The following specific policies are applied to particular categories of income:

Donations and legacy income is received by way of donations, legacies, grants and gifts and is included in full in the Statement of Financial Activities when receivable. Where legacies have been notified to the charity but the criteria for income recognition have not been met, the legacy is treated as a contingent asset and disclosed if material. Grants, where entitlement is not conditional on the delivery of a specific performance by the charity, are recognised when the charity becomes unconditionally entitled to the grant.

Donated services and facilities are included at the value to the charity, being the amount the charity would have been willing to pay to obtain services or facilities of equivalent economic benefit on the open market.

Investment income is included when receivable.

Income from charitable trading activity is accounted for when earned.

Income from grants, where related to performance and specific deliverables, are accounted for as the charity earns the right to consideration by its performance.

#### Expenditure

Expenditure is recognised on an accruals basis as a liability is incurred. Expenditure includes any VAT which cannot be fully recovered, and is reported as part of the expenditure to which it relates:

Costs of raising funds comprise the costs associated with attracting donations, grants and legacies and the costs of trading for fundraising purposes.

Charitable expenditure comprises those costs incurred by the charity in the delivery of its activities and services for its beneficiaries. It includes both costs that can be allocated directly to such activities and those costs of an indirect nature necessary to support them.

Other expenditure includes all expenditure that is neither related to raising funds for the charity nor part of its expenditure on charitable activities.

All costs are allocated between the expenditure categories of the SOFA on a basis designed to reflect the use of the resource. Costs relating to a particular activity are allocated directly, others are apportioned on an appropriate basis.

#### Tangible Assets

Tangible fixed assets are initially recorded at cost, and subsequently stated at cost less any accumulated depreciation and impairment losses. The costs of minor additions or those costing below £500 are not capitalised.

# Upper Teesdale Agricultural Support Services Limited

## Notes to the Financial Statements *(continued)*

Year Ended 31 December 2023

### 3. Accounting Policies *(continued)*

#### Depreciation

Depreciation is calculated so as to write off the cost or valuation of an asset, less its residual value, over the useful economic life of that asset as follows:

Leasehold Property Improvements	-	Straight line over lease term
Office Furniture	-	15% straight line
Minibus	-	20% reducing balance
Electrical Equipment	-	25% straight line
Computer Equipment	-	Straight line over 3 years

#### Investments

Unlisted equity investments are initially recorded at cost, and subsequently measured at fair value. If fair value cannot be reliably measured, assets are measured at cost less impairment.

Listed investments are measured at fair value with changes in fair value being recognised in income or expenditure.

#### Impairment of Fixed Assets

A review for indicators of impairment is carried out at each reporting date, with the recoverable amount being estimated where such indicators exist. Where the carrying value exceeds the recoverable amount, the asset is impaired accordingly. Prior impairments are also reviewed for possible reversal at each reporting date.

#### Financial Instruments

The charity only has financial assets and liabilities of a kind that qualify as basic financial instruments. Basic financial instruments are initially recognised at transaction value and subsequently measured at their settlement value.

#### Defined Contribution Plans

Contributions to defined contribution plans are recognised as an expense in the period in which the related service is provided. Prepaid contributions are recognised as an asset to the extent that the prepayment will lead to a reduction in future payments or a cash refund.

When contributions are not expected to be settled wholly within 12 months of the end of the reporting date in which the employees render the related service, the liability is measured on a discounted present value basis. The unwinding of the discount is recognised as an expense in the period in which it arises.

# Upper Teesdale Agricultural Support Services Limited

## Notes to the Financial Statements *(continued)*

Year Ended 31 December 2023

### Debtors

Trade and other debtors are recognised at the settlement amount due after any trade discount offered. Prepayments are valued at the amount prepaid net of any trade discounts due.

Accrued income and tax recoverable is included at the best estimate of the amounts receivable at the balance sheet date.

### Cash at Bank and in Hand

Cash at bank and cash in hand includes cash and short term highly liquid investments with a short maturity of three months or less from the date of acquisition or opening of the deposit or similar account.

### Creditors

Creditors are recognised where the charity has a present obligation resulting from a past event that will probably result in the transfer of funds to a third party and the amount due to settle the obligation can be measured or estimated reliably. Creditors are normally recognised at their settlement amount after allowing for any trade discounts due.

### Taxation

The company is considered to pass the tests set out in Paragraph 1 Schedule 6 of the Finance Act 2010 and therefore it meets the definition of a charitable company for UK corporation tax purposes. Accordingly, the company is potentially exempt from taxation in respect of income or capital gains received within categories covered by Chapter 3 Part 11 of the Corporation Tax Act 2010 or Section 256 of the taxation of Chargeable Gains Act 1992, to the extent that such income or gains are applied exclusively to charitable purposes.

## 4. Limited by Guarantee

The company is limited by guarantee. At 31st December 2023 there were 11 members each of whom had undertaken to contribute an amount not exceeding £10 in the event of a winding up.

The company is under the control of the board of directors as a body and as such is not controlled by any individual.



# Upper Teesdale Agricultural Support Services Limited

## Notes to the Financial Statements (continued)

Year Ended 31 December 2023

### 5. Donations and Legacies

	Unrestricted Funds £	Restricted Funds £	Total Funds 2023 £
<b>Donations</b>			
General donations	19,863	3,251	23,114
Friends Of UTASS	3,182	—	3,182
HMRC Gift aid	4,752	—	4,752
Northern Heartlands NOW project	—	—	—
R H Woods Charitable Trust	—	860	860
<b>Grants</b>			
National Lottery Community Fund	—	74,849	74,849
Durham Community Action	—	1,500	1,500
Ballinger Trust	—	20,000	20,000
Durham County Council	—	—	—
Royal Countryside Fund	—	12,500	12,500
Joseph Strong Frazer Trust	—	2,500	2,500
The Mercers Charitable Foundation	—	25,000	25,000
Sir James Knott Foundation	—	—	—
	<u>27,797</u>	<u>140,460</u>	<u>168,257</u>
	Unrestricted Funds £	Restricted Funds £	Total Funds 2022 £
<b>Donations</b>			
General donations	23,006	—	23,006
Friends Of UTASS	3,959	—	3,959
HMRC Gift aid	3,000	—	3,000
Northern Heartlands NOW project	5,918	—	5,918
R H Woods Charitable Trust	—	1,000	1,000
<b>Grants</b>			
National Lottery Community Fund	—	24,382	24,382
Durham Community Action	—	—	—
Ballinger Trust	—	15,000	15,000
Durham County Council	—	2,462	2,462
Royal Countryside Fund	—	30,000	30,000
Joseph Strong Frazer Trust	—	2,000	2,000
The Mercers Charitable Foundation	—	30,000	30,000
Sir James Knott Foundation	—	15,000	15,000
	<u>35,883</u>	<u>119,844</u>	<u>155,727</u>

# Upper Teesdale Agricultural Support Services Limited

## Notes to the Financial Statements (continued)

Year Ended 31 December 2023

### 6. Charitable Activities

	Unrestricted Funds £	Restricted Funds £	Total Funds 2023 £
Wellbeing	—	17,864	17,864
King's Coronation	—	500	500
Queen's Jubilee	—	—	—
Covid response	—	—	—
Community resilience	—	63,520	63,520
Social isolation and poverty	—	46,746	46,746
Cree project and retired farmers' lunches	—	9,000	9,000
Youth work	930	36,086	37,016
Minibus income	2,856	—	2,856
Rural training programme	—	12,056	12,056
Business and admin support	25,859	—	25,859
	<u>29,645</u>	<u>185,772</u>	<u>215,417</u>

	Unrestricted Funds £	Restricted Funds £	Total Funds 2022 £
Wellbeing	—	—	—
King's Coronation	—	—	—
Queen's Jubilee	—	7,889	7,889
Covid response	—	2,173	2,173
Community resilience	—	65,191	65,191
Social isolation and poverty	—	73,552	73,552
Cree project and retired farmers' lunches	—	12,000	12,000
Youth work	2,178	30,440	32,618
Minibus income	3,624	—	3,624
Rural training programme	—	6,699	6,699
Business and admin support	22,606	—	22,606
	<u>28,408</u>	<u>197,944</u>	<u>226,352</u>

### 7. Investment Income

	Unrestricted Funds £	Total Funds 2023 £	Unrestricted Funds £	Total Funds 2022 £
Income from listed investments	1,571	1,571	1,497	1,497
Bank interest receivable	10,030	10,030	2,081	2,081
	<u>11,601</u>	<u>11,601</u>	<u>3,578</u>	<u>3,578</u>

# Upper Teesdale Agricultural Support Services Limited

## Notes to the Financial Statements (continued)

Year Ended 31 December 2023

### 8. Expenditure on Charitable Activities by Fund Type

	Unrestricted Funds £	Restricted Funds £	Total Funds 2023 £
Charitable Activities (see page 28)	<u>166,113</u>	<u>233,380</u>	<u>399,493</u>
	Unrestricted Funds £	Restricted Funds £	Total Funds 2022 £
Charitable Activities (see page 28)	<u>78,047</u>	<u>286,349</u>	<u>364,396</u>

### 9. Expenditure on Charitable Activities by Activity Type

	Activities undertaken directly £	Total funds 2023 £	Total fund 2022 £
Charitable Activities (see page 28)	<u>399,493</u>	<u>399,493</u>	<u>364,396</u>

### 10. Net (Expenditure)/Income

Net (expenditure)/income is stated after charging/(crediting):

	2023 £	2022 £
Depreciation of tangible fixed assets	<u>6,322</u>	<u>11,413</u>

### 11. Independent Examination Fees

	2023 £	2022 £
Fees payable to the independent examiner for:		
Independent examination of the financial statements	1,134	1,500
Other financial services	1,222	1,203
	<u>2,356</u>	<u>2,703</u>

### 12. Staff Costs and Emoluments

The total staff costs and employee benefits for the reporting period are analysed as follows:

	2023 £	2022 £
Wages and salaries	248,266	201,673
Social security costs	10,636	9,683
Employer contributions to pension plans	11,004	9,110
	<u>269,906</u>	<u>220,466</u>



# Upper Teesdale Agricultural Support Services Limited

## Notes to the Financial Statements (continued)

Year Ended 31 December 2023

### 12. Staff Costs and Emoluments (continued)

The average head count of employees during the year was 17 (2022: 14). The average number of full-time equivalent employees during the year is analysed as follows:

	2023 No.	2022 No.
Management	1	1
Advisors	1	1
Administration and support	2	2
Finance	1	1
Domestic support	1	1
Project staff	2	2
	<u>8</u>	<u>8</u>

No employee received employee benefits of more than £60,000 during the year (2022: Nil).

### Key Management Personnel

Key management personnel include all persons that have authority and responsibility for planning, directing and controlling the activities of the company. The total compensation paid to key management personnel for services provided to the company was £35,190 (2022:£33,424).

### 13. Trustee Remuneration and Expenses

No trustees received any remuneration or expenses from the charity during the current and previous year.

### 14. Transfers Between Funds

During the year £108,308 was transferred from restricted to unrestricted funds. This represented contributions to staffing and overheads by projects.

### 15. Tangible Fixed Assets

	Leasehold Property Improvements £	Office Furniture £	Minibus £	Electrical Equipment £	Computer Equipment £	Total £
<b>Cost</b>						
At 1 Jan 2023	42,744	25,380	96,099	17,907	67,029	<b>249,159</b>
Additions	—	1,899	—	1,064	2,678	<b>5,641</b>
<b>At 31 Dec 2023</b>	<u>42,744</u>	<u>27,279</u>	<u>96,099</u>	<u>18,971</u>	<u>69,707</u>	<b><u>254,800</u></b>
<b>Depreciation</b>						
At 1 Jan 2023	42,744	16,415	81,687	17,907	66,165	<b>224,918</b>
Charge for the year	—	1,630	2,882	266	1,544	<b>6,322</b>
<b>At 31 Dec 2023</b>	<u>42,744</u>	<u>18,045</u>	<u>84,569</u>	<u>18,173</u>	<u>67,709</u>	<b><u>231,240</u></b>
<b>Carrying amount</b>						
<b>At 31 Dec 2023</b>	<u>—</u>	<u>9,234</u>	<u>11,530</u>	<u>798</u>	<u>1,998</u>	<b><u>23,560</u></b>
At 31 Dec 2022	<u>—</u>	<u>8,965</u>	<u>14,412</u>	<u>—</u>	<u>864</u>	<b><u>24,241</u></b>

# Upper Teesdale Agricultural Support Services Limited

## Notes to the Financial Statements *(continued)*

Year Ended 31 December 2023

### 16. Investments

	Listed investments £
<b>Cost or valuation</b>	
At 1 January 2023	20,048
Additions	–
Other movements	72
<b>At 31 December 2023</b>	<b><u>20,120</u></b>
<b>Impairment</b>	
<b>At 1 January 2023 and 31 December 2023</b>	
<b>Carrying amount</b>	
<b>At 31 December 2023</b>	<b><u>20,120</u></b>
At 31 December 2022	<u>20,048</u>

All investments shown above are held at valuation.

The investments comprise 8,000 shares in Legal & General Group plc which were donated to the charity. They are valued at current market value.

### 17. Debtors

	2023 £	2022 £
Trade debtors	1,393	1,536
Prepayments and accrued income	–	2,161
Gift aid recoverable	3,000	2,500
Accrued grant income	8,932	–
	<b><u>13,325</u></b>	<b><u>6,197</u></b>

### 18. Creditors: amounts falling due within one year

	2023 £	2022 £
Accruals and deferred income	8,417	6,195
Funds held on behalf of third parties	2,183	11,729
	<b><u>10,600</u></b>	<b><u>17,924</u></b>

### 19. Pensions and Other Post Retirement Benefits

#### Defined contribution plans

The amount recognised in income or expenditure as an expense in relation to defined contribution plans was £11,004 (2022: £9,110).

# Upper Teesdale Agricultural Support Services Limited

## Notes to the Financial Statements *(continued)*

Year Ended 31 December 2023

### 19. Pensions and Other Post Retirement Benefits *(continued)*

Upper Teesdale Agricultural Support Services Ltd (UTASS) participates in The Pensions Trust's Growth Plan Series 1, 2 and 3 (the scheme). The scheme is a multi-employer scheme which provides benefits to some 1,300 non-associated participating employers. The scheme is a defined benefit scheme in the UK. It is not possible for the company to obtain sufficient information to enable it to account for the scheme as a defined benefit scheme. Therefore it accounts for the scheme as a defined contribution scheme. Accordingly, due to the nature of the Scheme, the accounting charge for the period under FRS102 represents the employer contribution payable.

The scheme is subject to the funding legislation outlined in the Pensions Act 2004 which came into force on 30 December 2005. This, together with documents issued by the Pensions Regulator and Technical Actuarial Standards issued by the Financial Reporting Council, set out the framework for funding defined benefit occupational pension schemes in the UK.

The scheme is classified as a 'last-man standing arrangement'. Therefore UTASS is potentially liable for other participating employers' obligations if those employers are unable to meet their share of the scheme deficit following withdrawal from the scheme. Participating employers are legally required to meet their share of the scheme deficit on an annuity purchase basis on withdrawal from the scheme. UTASS has been notified by The Pensions Trust of the estimated employer debt on withdrawal from the Scheme based on the financial position of the Scheme as at 30 September 2022. As of this date the estimated employer debt for UTASS was £11,268.

A full actuarial valuation for the scheme was carried out at 30 September 2020. This valuation showed assets of £795m, liabilities of £832m and a deficit of £33m. To eliminate this funding shortfall, the Trustee has asked some participating employers to pay additional contributions to the scheme but UTASS has not been asked to make any such payments.

UTASS paid contributions at the rate of 10% during the accounting period. Members paid contributions at the rate of 5% during the accounting period.

As at the balance sheet date there was 1 active member of the scheme employed by UTASS. UTASS no longer offers membership of the scheme to its employees.

Employees who are not members of the Pensions Trust's Growth Plan Series 1, 2 and 3 are offered a contribution to alternative defined contribution pensions, which in some circumstances is the Pensions Trust's Growth Plan Series 4. Total pension contributions made by the employer during the year were £11,004 (2022 - £9,110). There were no pension contributions outstanding at the year end.



# Upper Teesdale Agricultural Support Services Limited

## Notes to the Financial Statements (continued)

Year Ended 31 December 2023

### 20. Analysis of Charitable Funds

#### Unrestricted funds

	At 1 Jan 2023 £	Income £	Expenditure £	Transfers £	Gains and losses £	At 31 Dec 2023 £
General funds	209,008	61,494	(147,502)	86,303	—	<b>209,303</b>
Capital funds	44,289	—	(6,323)	5,642	72	<b>43,680</b>
Minibus funds	237	4,413	(5,540)	2,513	—	<b>1,623</b>
Young Peoples'						
Free Reserves	1,297	1,508	(5,085)	6,180	—	<b>3,900</b>
Joan Drewe						
legacy	23,767	—	(922)	(757)	—	<b>22,088</b>
Events reserves	664	—	—	330	—	<b>994</b>
Older Persons						
Free Reserves	226	575	(25)	—	—	<b>776</b>
Retired farmers						
lunches	—	—	—	3,995	—	<b>3,995</b>
Yoga donations	—	296	—	305	—	<b>601</b>
Dog poo bags	—	757	(716)	(95)	—	<b>(54)</b>
Relief Fund						
donations	—	—	—	3,892	—	<b>3,892</b>
	<u>279,488</u>	<u>69,043</u>	<u>(166,113)</u>	<u>108,308</u>	<u>72</u>	<u><b>290,798</b></u>

	At 1 Jan 2022 £	Income £	Expenditure £	Transfers £	Gains and losses £	At 31 Dec 2022 £
General funds	169,432	61,984	(58,662)	36,254	—	209,008
Capital funds	58,021	—	(11,413)	1,433	(3,752)	44,289
Minibus funds	(3,820)	3,381	(6,510)	7,186	—	237
Young Peoples'						
Free Reserves	352	2,178	(1,128)	(105)	—	1,297
Joan Drewe						
legacy	23,962	—	(195)	—	—	23,767
Events reserves	810	—	(39)	(107)	—	664
Older Persons						
Free Reserves	—	326	(100)	—	—	226
	<u>248,757</u>	<u>67,869</u>	<u>(78,047)</u>	<u>44,661</u>	<u>(3,752)</u>	<u>279,488</u>

# Upper Teesdale Agricultural Support Services Limited

## Notes to the Financial Statements *(continued)*

Year Ended 31 December 2023

### 20. Analysis of Charitable Funds *(continued)*

#### Restricted funds

	At 1 Jan 2023 £	Income £	Expenditure £	Transfers £	Gains and losses £	At 31 Dec 2023 £
National Lottery Community Fund	–	74,849	(56,595)	–	–	<b>18,254</b>
Ballinger Trust (Youth)	–	10,000	(10,000)	–	–	–
DCC Neighbourhood Grant	–	1,980	(869)	–	–	<b>1,111</b>
Retired Farmers Lunches	3,995	–	–	(3,995)	–	–
Groundwork	–	500	(500)	–	–	–
CDCF Poverty Hurts	–	2,000	–	–	–	<b>2,000</b>
PCF Farm for the Future	5,454	21,813	(1,212)	(26,055)	–	–
Relief Fund donations	3,892	–	–	(3,892)	–	–
Poverty Hurts	–	12,677	(5,391)	(7,286)	–	–
Teesdale Action Partnership (Young People At the Heart)	4,770	–	(4,770)	–	–	–
Weardale Action Partnership	8,541	–	(4,071)	(1,293)	–	<b>3,177</b>
Scotto Trust	–	–	–	–	–	–
I Will#	2,870	–	–	(2,870)	–	–
Middleton Educational Trust	–	1,000	(450)	–	–	<b>550</b>
Ballinger Trust Wellbeing for Life	15,000	20,000	(13,538)	–	–	<b>21,462</b>
Micro Grant	–	250	(250)	–	–	–
Theatre Trips etc	–	4,328	(5,153)	–	–	<b>(825)</b>
Wellesley Trust Fund via Community Foundation	2,246	8,056	(6,126)	(1,036)	–	<b>3,140</b>
Joseph Strong Fraser Trust	–	2,500	(2,500)	–	–	–
PCP Community Resilience worker	4,753	29,997	(26,901)	(3,346)	–	<b>4,503</b>
Teesdale Action Partnership (Healthy Activities, Healthy Food)	1,248	8,013	(4,885)	(4,376)	–	–

# Upper Teesdale Agricultural Support Services Limited

## Notes to the Financial Statements *(continued)*

Year Ended 31 December 2023

### 20. Analysis of Charitable Funds *(continued)*

DCC (Cree Sessions)	4,336	9,150	(7,530)	(3,480)	—	<b>2,476</b>
Wemmergill Estates	134	—	(134)	—	—	<b>—</b>
CDCF Connection Communities	—	5,300	(1,151)	(4,149)	—	<b>—</b>
DCC Preparing for the Future	556	—	(412)	(144)	—	<b>—</b>
Durham High Sheriff's Award	1,052	—	(223)	98	—	<b>927</b>
DCA Cost of Living	—	1,500	(1,500)	—	—	<b>—</b>
The Mercers Charitable Foundation	—	25,000	(20,798)	(334)	—	<b>3,868</b>
R&H Wood Charitable Trust	—	860	—	—	—	<b>860</b>
Royal Community Fund (Agricultural salaries)	9,830	12,500	(14,780)	—	—	<b>7,550</b>
CDCF Know Your Neighbourhood	—	15,595	(8,435)	(3,101)	—	<b>4,059</b>
NFU Grant	—	6,443	—	(443)	—	<b>6,000</b>
CDCF Trips & Outings	—	5,000	(993)	(3,007)	—	<b>1,000</b>
RCF Farm for the Future - 23-24	—	4,688	(35)	(3,202)	—	<b>1,451</b>
Parish Nurse	—	17,864	(13,618)	—	—	<b>4,246</b>
Mickleton Moss Committee	—	800	(500)	—	—	<b>300</b>
DCA Traditional Skills	—	4,000	(485)	(107)	—	<b>3,408</b>
PCP Pop Up Hubs	—	—	(110)	(3,107)	—	<b>(3,217)</b>
PCF Here for You	3,175	—	(3,175)	—	—	<b>—</b>
CDCF Welcome Space	—	3,000	—	—	—	<b>3,000</b>
TAP Coronation Celebration	—	500	(500)	—	—	<b>—</b>
DCC Covid Recovery grant	1,284	—	(1,284)	—	—	<b>—</b>
Cree Plus	1,810	—	(429)	(1,381)	—	<b>—</b>
Stronger Together	2,796	13,593	(229)	(9,761)	—	<b>6,399</b>
Morrisons Foundation YP Space	7,020	—	(530)	—	—	<b>6,490</b>
Improvement Poverty Hurts	2,000	—	(1,320)	(680)	—	<b>—</b>



# Upper Teesdale Agricultural Support Services Limited

## Notes to the Financial Statements (continued)

Year Ended 31 December 2023

### 20. Analysis of Charitable Funds (continued)

TAP Together project	5,438	—	(1,136)	(4,302)	—	—
Jubilee donations	268	86	(734)	380	—	—
Awards For All CAB Volunteer grant	9,800	—	(5,837)	(3,963)	—	—
Dog poo bags	(95)	—	—	95	—	—
DCC Warm Spaces grant	1,000	500	(1,100)	(400)	—	—
Sir Tom Cowie poverty grant	5,000	—	(2,140)	(2,860)	—	—
DCC Community Buildings	500	—	(500)	—	—	—
Tees Swale project	(1,387)	1,890	(384)	(119)	—	—
PCP Farming Futures (Young Farmers)	4,954	—	—	(361)	—	<b>4,593</b>
TAP Welfare reform	9,998	—	(167)	(9,831)	—	—
	<u>122,238</u>	<u>326,232</u>	<u>(233,380)</u>	<u>(108,308)</u>	<u>—</u>	<u><b>106,782</b></u>

	At 1 Jan 2022 £	Income £	Expenditure £	Transfers £	Gains and losses £	At 31 Dec 2022 £
National Lottery Community Fund	2,390	—	(2,390)	—	—	—
CDCF Newcastle Building Society Fund	2,709	—	(2,709)	—	—	—
Retired Farmers Lunches	3,995	—	—	—	—	3,995
PCF Farm for the Future Relief Fund	2,104	24,312	(8,409)	(12,553)	—	5,454
donations	3,892	—	—	—	—	3,892
Teesdale Action Partnership (Young People At the Heart)	13,520	—	(7,075)	(1,675)	—	4,770
Teesdale Action Partnership (Social Isolation)	3,592	—	(1,648)	(1,944)	—	—
Weardale Action Partnership	16,259	—	(7,648)	(70)	—	8,541
Scotto Trust	3,709	—	(3,678)	(31)	—	—
I Will#	3,779	—	—	(909)	—	2,870

# Upper Teesdale Agricultural Support Services Limited

## Notes to the Financial Statements (continued)

Year Ended 31 December 2023

### 20. Analysis of Charitable Funds (continued)

National Lottery Community Fund Middleton	6,359	24,382	(30,741)	—	—	—
Educational Trust Princes	430	1,000	(1,430)	—	—	—
Countryside Fund (Core)	—	30,000	(20,170)	—	—	9,830
Ballinger Trust	15,000	15,000	(15,000)	—	—	15,000
Co. Durham and Darlington Community Safety Fund	263	—	(185)	(78)	—	—
Wellesley Trust Fund via Community Foundation	1,395	6,699	(4,958)	(890)	—	2,246
Hadrian Trust	1,000	—	(1,000)	—	—	—
Joseph Strong Fraser Trust	—	2,000	(2,000)	—	—	—
PCP Community Resilience worker	268	30,772	(23,101)	(3,186)	—	4,753
Happyness Hubs	3,132	—	(2,406)	(726)	—	—
Teesdale Action Partnership (Healthy Activities, Healthy Food)	1,598	13,659	(8,005)	(6,004)	—	1,248
DCC (Cree Sessions)	6,186	9,000	(7,628)	(3,222)	—	4,336
Wemmergill Estates	334	—	(40)	(160)	—	134
DCC Preparing for the Future	3,290	3,268	(6,002)	—	—	556
Durham High Sheriff's Award	1,412	—	(360)	—	—	1,052
Royal Community Fund (Agricultural salaries)	18,265	—	(18,265)	—	—	—
British Science Association	1,000	—	(1,000)	—	—	—
CCG	821	—	(821)	—	—	—
Covid 19 Shopping	(37)	2,173	(2,138)	2	—	—
Barnard Castle Lions	135	—	(135)	—	—	—
PCF Here for You	3,182	—	(7)	—	—	3,175
NFU Covid Response	4,827	—	(4,827)	—	—	—
NFU Food Provision	169	—	(169)	—	—	—
DCC Covid Recovery grant	3,000	—	(1,716)	—	—	1,284
DCC Covid Xmas grant	341	—	(341)	—	—	—

# Upper Teesdale Agricultural Support Services Limited

## Notes to the Financial Statements *(continued)*

Year Ended 31 December 2023

### 20. Analysis of Charitable Funds *(continued)*

Cree Plus	3,000	3,000	(3,560)	(630)	—	1,810
Ralph Gowland Trust	1,541	—	(1,403)	(138)	—	—
CDCF - Website	2,600	—	(2,600)	—	—	—
Stronger Together	—	6,761	(3,405)	(560)	—	2,796
Morrisons Foundation YP Space						
Improvement	—	7,020	—	—	—	7,020
Poverty Hurts	—	2,000	—	—	—	2,000
NHS Connector grant	—	25,000	(25,000)	—	—	—
TAP Together project	—	17,600	(811)	(11,351)	—	5,438
Lets Create, Jubilee Arch	—	6,005	(5,828)	(177)	—	—
Sir James Knott jubilee grant	—	600	(571)	(29)	—	—
DBC Jubilee Party	—	600	(600)	—	—	—
Jubilee donations	—	684	(416)	—	—	268
Awards For All						
CAB Volunteer grant	—	10,000	(200)	—	—	9,800
Dog poo bags	—	383	(478)	—	—	(95)
DCC Energy Efficiency funding	—	1,462	(1,462)	—	—	—
DCC Warm Spaces grant	—	1,000	—	—	—	1,000
Sir Tom Cowie poverty grant	—	5,000	—	—	—	5,000
CDCF Storm						
Arwen response	—	1,000	(1,000)	—	—	—
One to One PCF						
Farm for the Future	—	5,456	(5,456)	—	—	—
DCC Community Buildings	—	1,000	(200)	(300)	—	500
Tees Swale project	—	—	(1,357)	(30)	—	(1,387)
PCP Farming Futures (Young Farmers)	—	4,954	—	—	—	4,954
TAP Welfare reform	—	9,998	—	—	—	9,998
	<u>135,460</u>	<u>317,788</u>	<u>(286,349)</u>	<u>(44,661)</u>	<u>—</u>	<u>122,238</u>

# Upper Teesdale Agricultural Support Services Limited

## Notes to the Financial Statements *(continued)*

Year Ended 31 December 2023

### 20. Analysis of Charitable Funds *(continued)*

The restricted funds received during 2023 are for the following purposes:

#### **Core grants:**

National Lottery Community Fund  
Ballinger Trust  
Royal Countryside Fund  
Durham Community Action  
R.H.Woods Charitable Trust  
Joseph Strong Frazer Trust  
Mercers Charitable Foundation

#### **Grants towards wellbeing:**

Durham Dales Parish Nurse

#### **Grants towards our youth work:**

Ballinger Trust  
Middleton Educational Trust  
DCC Neighbourhood Grant  
Teesdale Action Partnership - HAHF and Young People at the Heart  
Groundwork  
Stronger Together  
Morrisons Foundation YP Space Improvement  
CDCF Poverty Hurts

#### **Grants towards support with social isolation and poverty:**

TAP Welfare reform  
Sir Tom Cowie poverty grant  
AFA CAB Volunteer grant  
TAP Together project  
DCC Warm Spaces grant  
DCC - CREE work  
DCC Warm Spaces grant  
DCC Poverty Hurts  
PCP Chat & Craft  
CDCF Connecting Communities  
DCC Tees Swale  
CDCF Trips & Outings  
DCC Know Your Neighbour Funding for Time Together  
DCC Rural Transport Initiative  
CDCF Know Your Neighbourhood grant  
Teesdale Day Clubs Time Together  
DCC Welcome Spaces

#### **Grants towards community resilience:**

PCP Community Resilience worker  
NFU Mutual  
RCF Farm for the Future  
DCC Preparing for the Future

#### **Grants towards the King's Coronation:**

DCC Party fit for a king

#### **Specific project grants:**

Weardale Action Partnership – Rural training programme  
CDCF Wellesley Trust - Driver training  
DCA - Traditional Skills



# Upper Teesdale Agricultural Support Services Limited

## Notes to the Financial Statements *(continued)*

Year Ended 31 December 2023

### 21. Analysis of Net Assets Between Funds

	Unrestricted Funds £	Restricted Funds £	Total Funds 2023 £
Tangible fixed assets	23,560	—	23,560
Investments	20,120	—	20,120
Current Assets	257,718	106,782	364,500
Creditors less than 1 year	(10,600)	—	(10,600)
<b>Net assets</b>	<b>290,798</b>	<b>106,782</b>	<b>397,580</b>

	Unrestricted Funds £	Restricted Funds £	Total Funds 2022 £
Tangible fixed assets	24,241	—	24,241
Investments	20,048	—	20,048
Current Assets	253,123	122,238	375,361
Creditors less than 1 year	(17,924)	—	(17,924)
<b>Net assets</b>	<b>279,488</b>	<b>122,238</b>	<b>401,726</b>

### 22. Utass Endowment Fund

The UTASS Endowment Fund is managed independently by County Durham Community Foundation. UTASS has the use of the income from the fund but not the capital. At 31st December 2023 the fund value was £70,166 (2022 - £67,948).

### 23. Volunteer Time

Volunteer time to a value of £67,717 (2022 - £67,780) has not been included in income or expenditure for the year.

# **Upper Teesdale Agricultural Support Services Limited**

## **Management Information**

**Year Ended 31 December 2023**

**The Following Pages Do Not Form Part of the Financial Statements.**

# Upper Teesdale Agricultural Support Services Limited

## Detailed Statement of Financial Activities

Year Ended 31 December 2023

	2023 £	2022 £
<b>Income and endowments</b>		
<b>Donations and legacies</b>		
General donations	23,114	23,006
Friends Of UTASS	3,182	3,959
HMRC Gift aid	4,752	3,000
Northern Heartlands NOW project	–	5,918
R H Woods Charitable Trust	860	1,000
National Lottery Community Fund	74,849	24,382
Durham Community Action	1,500	–
Ballinger Trust	20,000	15,000
Durham County Council	–	2,462
Royal Countryside Fund	12,500	30,000
Joseph Strong Frazer Trust	2,500	2,000
The Mercers Charitable Foundation	25,000	30,000
Sir James Knott Foundation	–	15,000
	<u>168,257</u>	<u>155,727</u>
<b>Charitable activities</b>		
Wellbeing	17,864	–
King's Coronation	500	–
Queen's Jubilee	–	7,889
Covid response	–	2,173
Community resilience	63,520	65,191
Social isolation and poverty	46,746	73,552
Cree project and retired farmers' lunches	9,000	12,000
Youth work	37,016	32,618
Minibus income	2,856	3,624
Rural training programme	12,056	6,699
Business and admin support	25,859	22,606
	<u>215,417</u>	<u>226,352</u>
<b>Investment income</b>		
Income from listed investments	1,571	1,497
Bank interest receivable	10,030	2,081
	<u>11,601</u>	<u>3,578</u>
<b>Total income</b>	<u>395,275</u>	<u>385,657</u>

# Upper Teesdale Agricultural Support Services Limited

## Detailed Statement of Financial Activities *(continued)*

Year Ended 31 December 2023

	2023 £	2022 £
<b>Expenditure</b>		
Wages	248,266	201,673
Employer's NIC	10,636	9,683
Pension costs	11,004	9,110
Rent	14,500	14,500
Light, heat and water	9,997	7,777
Repairs, renewals and maintenance	2,758	7,728
Licences and insurance	4,298	4,077
Legal and professional fees	7,990	8,796
Telephone and office costs	14,520	14,891
Depreciation	6,322	11,413
Sundry costs	5,246	4,222
Project costs	54,468	61,735
Minibus costs	5,347	5,692
Staff travel and training	4,141	3,099
<b>Total expenditure</b>	<b>399,493</b>	<b>364,396</b>
<b>Net (expenditure)/income</b>	<b>(4,218)</b>	<b>21,261</b>



**Upper Teesdale Agricultural Support Services Limited**  
**Financial Statements**  
**For the Year Ending**  
**31 December 2023**

**JANE ASCROFT ACCOUNTANCY LIMITED**

Chartered Accountants  
Enterprise House  
Harmire Enterprise Park  
Barnard Castle  
County Durham  
DL12 8XT

# Upper Teesdale Agricultural Support Services Limited

## Financial Statements

Year Ended 31 December 2023

	Page
Trustees' Annual Report (Incorporating the Director's Report)	1
Independent Examiner's Report to the Trustees	4
Statement of Financial Activities (Including Income and Expenditure Account)	6
Statement of Financial Position	7
Notes to the Financial Statements	8
<b>The Following Pages Do Not Form Part of the Financial Statements</b>	
Detailed Statement of Financial Activities	27

# **Upper Teesdale Agricultural Support Services Limited**

## **Trustees' Annual Report (Incorporating the Director's Report)**

**Year Ended 31 December 2023**

The trustees, who are also the directors for the purposes of company law, present their report and the unaudited financial statements of the company for the year ended 31 December 2023.

### **Objectives and Activities**

The objects of the charity are to promote the benefit of the inhabitants of the community of the rural area of Upper Teesdale and the neighbourhood thereof through the advancement of education and the provision of facilities in the interest of social welfare for recreation and other leisure-time occupation with the object of improving the conditions of life of the said inhabitants.

Activities include the provision of advice and education, support and mentoring to the community in the area of operation including the provision of a drop-in facility for young people and encouraging and supporting outside organisations and outreach working.

### **Achievements and Performance**

The charity's achievements and performance during the year are described in the annual report.

### **Financial Review**

Income for the year totalled £395,275 (2022 - £385,657) and expenditure totalled £399,493 (2022 - £364,396) giving a deficit of £4,218 (2022 - surplus of £21,261). The value of investments increased by £72 during the year (2022 - fell by £3,752) giving an overall deficit of £4,146 (2022 - surplus of £17,509).

During 2023 reserves increased by £295 to £209,303 and there is a further £37,815 held in designated funds to be spent as the trustees see fit. Restricted funds fell by £15,456 to £106,782 and fixed assets fell by £609 to £43,680.

The trustees have reviewed the charity's need for reserves in line with guidance issued by the Charity Commission and it is the policy of the trustees to hold free reserves for between six and twelve months normal activity excluding depreciation and specific project costs (between £130,000 and £260,000) and additional reserves, as agreed on an annual basis, to meet the costs of any additional project work or to safeguard the charity's service commitment in the event of delays or receipts of grants or general liabilities. The trustees believe that the reserves should be at least at this level to ensure that the charity can run efficiently and meet the needs of the beneficiaries.

At 31st December 2023 free reserves were £209,303 excluding designated funds and £247,118 including designated funds which is in accordance with the stated policy.

# Upper Teesdale Agricultural Support Services Limited

## Trustees' Annual Report (Incorporating the Director's Report) *(continued)*

Year Ended 31 December 2023

### Structure, Governance and Management

#### **Governing Document**

The charity is controlled by its governing document, a deed of trust, and constitutes a limited company, limited by guarantee, as defined by the Companies Act 2006.

#### **Risk management**

The trustees have a duty to identify and review the risks to which the charity is exposed and to ensure appropriate controls are in place to provide reasonable assurance against fraud and error.

#### **Public Benefit**

Our main activities and who we help are described elsewhere in this report. All our charitable activities are undertaken to further our charitable purposes for the public benefit. The Committee have had regard to the Charity Commission's guidance on public benefit throughout the year when deciding on the activities of the charity.

### Reference and Administrative Details

**Registered charity name** Upper Teesdale Agricultural Support Services Limited

**Charity registration number** 1120120

**Company registration number** 06054331

**Principal office and registered office** 9-11 Chapel Row  
Middleton In Teesdale  
Barnard Castle  
County Durham  
DL12 0SN

#### **The Trustees**

Mr I R Tallentire	(Retired 7 March 2023)
Mrs L Dalton	
Mr R Matthews	
Mr R Oxby	(Retired 7 March 2023)
Mr C Stephenson	
Mrs L A Simpson	
Mr M McGarry	
Prof S E Elton	
Ms F Hutchinson	
Mr P W Lamb	
Dr S A Lumb	
Ms S Markwick	(Appointed 11 January 2023)
Ms C Colling	(Appointed 7 March 2023)

**Company Secretary** Mr R Danby

**Independent Examiner** Jane Ascroft FCA MA (Cantab)  
Enterprise House  
Harmire Enterprise Park  
Barnard Castle  
County Durham  
DL12 8XT



# **Upper Teesdale Agricultural Support Services Limited**

**Trustees' Annual Report (Incorporating the Director's Report) *(continued)***

**Year Ended 31 December 2023**

## **Small Company Provisions**

This report has been prepared in accordance with the provisions applicable to companies entitled to the small companies exemption.

The trustees' annual report was approved on ..... and signed on behalf of the board of trustees by:

Mr R Danby  
Company Secretary

# **Upper Teesdale Agricultural Support Services Limited**

## **Independent Examiner's Report to the Trustees of Upper Teesdale Agricultural Support Services Limited**

**Year Ended 31 December 2023**

I report to the trustees on my examination of the financial statements of Upper Teesdale Agricultural Support Services Limited ('the company') for the year ended 31 December 2023.

### **Responsibilities and Basis of Report**

As the trustees of the company (and also its directors for the purposes of company law) you are responsible for the preparation of the financial statements in accordance with the requirements of the Companies Act 2006 ('the 2006 Act').

Having satisfied myself that the accounts of the company are not required to be audited under Part 16 of the 2006 Act and are eligible for independent examination, I report in respect of my examination of the company's accounts as carried out under section 145 of the Charities Act 2011 ('the 2011 Act'). In carrying out my examination I have followed the Directions given by the Charity Commission under section 145(5)(b) of the 2011 Act.

### **Independent Examiner's Statement**

Since the company's gross income exceeded £250,000 your examiner must be a member of a body listed in section 145 of the 2011 Act. I confirm that I am qualified to undertake the examination because I am a member of the Institute of Chartered Accountants in England and Wales (ICAEW), which is one of the listed bodies.

I have completed my examination. I confirm that no matters have come to my attention in connection with the examination giving me cause to believe:

1. accounting records were not kept in respect of the company as required by section 386 of the 2006 Act; or
2. the financial statements do not accord with those records; or
3. the financial statements do not comply with the accounting requirements of section 396 of the 2006 Act other than any requirement that the accounts give a 'true and fair' view which is not a matter considered as part of an independent examination; or
4. the financial statements have not been prepared in accordance with the methods and principles of the Statement of Recommended Practice for accounting and reporting by charities applicable to charities preparing their accounts in accordance with the Financial Reporting Standard applicable in the UK and Republic of Ireland (FRS 102).

# **Upper Teesdale Agricultural Support Services Limited**

## **Independent Examiner's Report to the Trustees of Upper Teesdale Agricultural Support Services Limited *(continued)***

**Year Ended 31 December 2023**

I have no concerns and have come across no other matters in connection with the examination to which attention should be drawn in this report in order to enable a proper understanding of the accounts to be reached.

Jane Ascroft FCA MA (Cantab)  
Independent Examiner

Enterprise House  
Harmire Enterprise Park  
Barnard Castle  
County Durham  
DL12 8XT

# Upper Teesdale Agricultural Support Services Limited

## Statement of Financial Activities (including income and expenditure account)

Year Ended 31 December 2023

			2023		2022
	Note	Unrestricted funds £	Restricted funds £	Total funds £	Total funds £
<b>Income and endowments</b>					
Donations and legacies	5	27,797	140,460	168,257	155,727
Charitable activities	6	29,645	185,772	215,417	226,352
Investment income	7	11,601	–	11,601	3,578
<b>Total income</b>		<u>69,043</u>	<u>326,232</u>	<u>395,275</u>	<u>385,657</u>
<b>Expenditure</b>					
Expenditure on charitable activities	8,9	166,113	233,380	399,493	364,396
<b>Total expenditure</b>		<u>166,113</u>	<u>233,380</u>	<u>399,493</u>	<u>364,396</u>
<b>Net (expenditure)/income</b>		<u>(97,070)</u>	<u>92,852</u>	<u>(4,218)</u>	<u>21,261</u>
Transfers between funds		108,308	(108,308)	–	–
<b>Other recognised gains and losses</b>					
Investment gains/(losses)		72	–	72	(3,752)
<b>Net movement in funds</b>		11,310	(15,456)	(4,146)	17,509
<b>Reconciliation of funds</b>					
Total funds brought forward		279,488	122,238	401,726	384,217
<b>Total funds carried forward</b>		<u>290,798</u>	<u>106,782</u>	<u>397,580</u>	<u>401,726</u>

The statement of financial activities includes all gains and losses recognised in the year.  
All income and expenditure derive from continuing activities.

The notes on pages 8 to 25 form part of these financial statements.



# Upper Teesdale Agricultural Support Services Limited

## Statement of Financial Position

31 December 2023

	Note	2023 £	2022 £
<b>Fixed Assets</b>			
Tangible fixed assets	15	23,560	24,241
Investments	16	20,120	20,048
		<u>43,680</u>	<u>44,289</u>
<b>Current Assets</b>			
Debtors	17	13,325	6,197
Cash at bank and in hand		351,175	369,164
		<u>364,500</u>	<u>375,361</u>
<b>Creditors: amounts falling due within one year</b>	18	<u>10,600</u>	<u>17,924</u>
<b>Net Current Assets</b>		<b>353,900</b>	<b>357,437</b>
<b>Total Assets Less Current Liabilities</b>		<b>397,580</b>	<b>401,726</b>
<b>Net Assets</b>		<b><u>397,580</u></b>	<b><u>401,726</u></b>
<b>Funds of the Charity</b>			
Restricted funds		106,782	122,238
Unrestricted funds		290,798	279,488
<b>Total charity funds</b>	20	<b><u>397,580</u></b>	<b><u>401,726</u></b>

For the year ending 31 December 2023 the company was entitled to exemption from audit under section 477 of the Companies Act 2006 relating to small companies.

Directors' responsibilities:

- The members have not required the company to obtain an audit of its financial statements for the year in question in accordance with section 476;
- The directors acknowledge their responsibilities for complying with the requirements of the Act with respect to accounting records and the preparation of financial statements.

These financial statements have been prepared in accordance with the provisions applicable to companies subject to the small companies' regime.

These financial statements were approved by the board of trustees and authorised for issue on ....., and are signed on behalf of the board by:

Mr M McGarry  
Trustee

The notes on pages 8 to 25 form part of these financial statements.

# Upper Teesdale Agricultural Support Services Limited

## Notes to the Financial Statements

Year Ended 31 December 2023

### 1. General Information

The company is a public benefit entity and a private company limited by guarantee, registered in England and Wales and a registered charity in England and Wales. The address of the registered office is 9-11 Chapel Row, Middleton In Teesdale, Barnard Castle, County Durham, DL12 0SN.

### 2. Statement of Compliance

These financial statements have been prepared in compliance with FRS 102, 'The Financial Reporting Standard applicable in the UK and the Republic of Ireland', the Statement of Recommended Practice applicable to charities preparing their accounts in accordance with the Financial Reporting Standard applicable in the UK and Republic of Ireland (FRS 102) (Charities SORP (FRS 102)) and the Companies Act 2006.

### 3. Accounting Policies

#### Basis of Preparation

The financial statements have been prepared on the historical cost basis, as modified by the revaluation of certain financial assets and liabilities and investments measured at fair value through income or expenditure.

The financial statements are prepared in sterling, which is the functional currency of the entity.

The entity is a Public Benefit Entity.

#### Going Concern

There are no material uncertainties about the charity's ability to continue.

#### Judgements and Key Sources of Estimation Uncertainty

The preparation of the financial statements requires management to make judgements, estimates and assumptions that affect the amounts reported. These estimates and judgements are continually reviewed and are based on experience and other factors, including expectations of future events that are believed to be reasonable under the circumstances. The trustees consider that there are no significant estimates or judgements affecting these financial statements.

#### Fund Accounting

Unrestricted funds are available for use at the discretion of the trustees in furtherance of the purposes of the charity. Unrestricted funds include a revaluation reserve representing the restatement of investment assets at market values.

Designated funds are unrestricted funds earmarked by the trustees for specific purposes.

Restricted funds are subjected to restrictions on their expenditure imposed by the donor.

# Upper Teesdale Agricultural Support Services Limited

## Notes to the Financial Statements *(continued)*

Year Ended 31 December 2023

### 3. Accounting Policies *(continued)*

#### Income

All income is included in the statement of financial activities when the charity is entitled to the income, any performance related conditions attached have been met or are fully within the control of the charity, the income is considered probable and the amount can be quantified with reasonable accuracy. The following specific policies are applied to particular categories of income:

Donations and legacy income is received by way of donations, legacies, grants and gifts and is included in full in the Statement of Financial Activities when receivable. Where legacies have been notified to the charity but the criteria for income recognition have not been met, the legacy is treated as a contingent asset and disclosed if material. Grants, where entitlement is not conditional on the delivery of a specific performance by the charity, are recognised when the charity becomes unconditionally entitled to the grant.

Donated services and facilities are included at the value to the charity, being the amount the charity would have been willing to pay to obtain services or facilities of equivalent economic benefit on the open market.

Investment income is included when receivable.

Income from charitable trading activity is accounted for when earned.

Income from grants, where related to performance and specific deliverables, are accounted for as the charity earns the right to consideration by its performance.

#### Expenditure

Expenditure is recognised on an accruals basis as a liability is incurred. Expenditure includes any VAT which cannot be fully recovered, and is reported as part of the expenditure to which it relates:

Costs of raising funds comprise the costs associated with attracting donations, grants and legacies and the costs of trading for fundraising purposes.

Charitable expenditure comprises those costs incurred by the charity in the delivery of its activities and services for its beneficiaries. It includes both costs that can be allocated directly to such activities and those costs of an indirect nature necessary to support them.

Other expenditure includes all expenditure that is neither related to raising funds for the charity nor part of its expenditure on charitable activities.

All costs are allocated between the expenditure categories of the SOFA on a basis designed to reflect the use of the resource. Costs relating to a particular activity are allocated directly, others are apportioned on an appropriate basis.

#### Tangible Assets

Tangible fixed assets are initially recorded at cost, and subsequently stated at cost less any accumulated depreciation and impairment losses. The costs of minor additions or those costing below £500 are not capitalised.

# Upper Teesdale Agricultural Support Services Limited

## Notes to the Financial Statements *(continued)*

Year Ended 31 December 2023

### 3. Accounting Policies *(continued)*

#### Depreciation

Depreciation is calculated so as to write off the cost or valuation of an asset, less its residual value, over the useful economic life of that asset as follows:

Leasehold Property Improvements	-	Straight line over lease term
Office Furniture	-	15% straight line
Minibus	-	20% reducing balance
Electrical Equipment	-	25% straight line
Computer Equipment	-	Straight line over 3 years

#### Investments

Unlisted equity investments are initially recorded at cost, and subsequently measured at fair value. If fair value cannot be reliably measured, assets are measured at cost less impairment.

Listed investments are measured at fair value with changes in fair value being recognised in income or expenditure.

#### Impairment of Fixed Assets

A review for indicators of impairment is carried out at each reporting date, with the recoverable amount being estimated where such indicators exist. Where the carrying value exceeds the recoverable amount, the asset is impaired accordingly. Prior impairments are also reviewed for possible reversal at each reporting date.

#### Financial Instruments

The charity only has financial assets and liabilities of a kind that qualify as basic financial instruments. Basic financial instruments are initially recognised at transaction value and subsequently measured at their settlement value.

#### Defined Contribution Plans

Contributions to defined contribution plans are recognised as an expense in the period in which the related service is provided. Prepaid contributions are recognised as an asset to the extent that the prepayment will lead to a reduction in future payments or a cash refund.

When contributions are not expected to be settled wholly within 12 months of the end of the reporting date in which the employees render the related service, the liability is measured on a discounted present value basis. The unwinding of the discount is recognised as an expense in the period in which it arises.

# Upper Teesdale Agricultural Support Services Limited

## Notes to the Financial Statements *(continued)*

Year Ended 31 December 2023

### Debtors

Trade and other debtors are recognised at the settlement amount due after any trade discount offered. Prepayments are valued at the amount prepaid net of any trade discounts due.

Accrued income and tax recoverable is included at the best estimate of the amounts receivable at the balance sheet date.

### Cash at Bank and in Hand

Cash at bank and cash in hand includes cash and short term highly liquid investments with a short maturity of three months or less from the date of acquisition or opening of the deposit or similar account.

### Creditors

Creditors are recognised where the charity has a present obligation resulting from a past event that will probably result in the transfer of funds to a third party and the amount due to settle the obligation can be measured or estimated reliably. Creditors are normally recognised at their settlement amount after allowing for any trade discounts due.

### Taxation

The company is considered to pass the tests set out in Paragraph 1 Schedule 6 of the Finance Act 2010 and therefore it meets the definition of a charitable company for UK corporation tax purposes. Accordingly, the company is potentially exempt from taxation in respect of income or capital gains received within categories covered by Chapter 3 Part 11 of the Corporation Tax Act 2010 or Section 256 of the taxation of Chargeable Gains Act 1992, to the extent that such income or gains are applied exclusively to charitable purposes.

## 4. Limited by Guarantee

The company is limited by guarantee. At 31st December 2023 there were 11 members each of whom had undertaken to contribute an amount not exceeding £10 in the event of a winding up.

The company is under the control of the board of directors as a body and as such is not controlled by any individual.



# Upper Teesdale Agricultural Support Services Limited

## Notes to the Financial Statements (continued)

Year Ended 31 December 2023

### 5. Donations and Legacies

	Unrestricted Funds £	Restricted Funds £	Total Funds 2023 £
<b>Donations</b>			
General donations	19,863	3,251	23,114
Friends Of UTASS	3,182	—	3,182
HMRC Gift aid	4,752	—	4,752
Northern Heartlands NOW project	—	—	—
R H Woods Charitable Trust	—	860	860
<b>Grants</b>			
National Lottery Community Fund	—	74,849	74,849
Durham Community Action	—	1,500	1,500
Ballinger Trust	—	20,000	20,000
Durham County Council	—	—	—
Royal Countryside Fund	—	12,500	12,500
Joseph Strong Frazer Trust	—	2,500	2,500
The Mercers Charitable Foundation	—	25,000	25,000
Sir James Knott Foundation	—	—	—
	<u>27,797</u>	<u>140,460</u>	<u>168,257</u>
	Unrestricted Funds £	Restricted Funds £	Total Funds 2022 £
<b>Donations</b>			
General donations	23,006	—	23,006
Friends Of UTASS	3,959	—	3,959
HMRC Gift aid	3,000	—	3,000
Northern Heartlands NOW project	5,918	—	5,918
R H Woods Charitable Trust	—	1,000	1,000
<b>Grants</b>			
National Lottery Community Fund	—	24,382	24,382
Durham Community Action	—	—	—
Ballinger Trust	—	15,000	15,000
Durham County Council	—	2,462	2,462
Royal Countryside Fund	—	30,000	30,000
Joseph Strong Frazer Trust	—	2,000	2,000
The Mercers Charitable Foundation	—	30,000	30,000
Sir James Knott Foundation	—	15,000	15,000
	<u>35,883</u>	<u>119,844</u>	<u>155,727</u>

# Upper Teesdale Agricultural Support Services Limited

## Notes to the Financial Statements (continued)

Year Ended 31 December 2023

### 6. Charitable Activities

	Unrestricted Funds £	Restricted Funds £	Total Funds 2023 £
Wellbeing	—	17,864	17,864
King's Coronation	—	500	500
Queen's Jubilee	—	—	—
Covid response	—	—	—
Community resilience	—	63,520	63,520
Social isolation and poverty	—	46,746	46,746
Cree project and retired farmers' lunches	—	9,000	9,000
Youth work	930	36,086	37,016
Minibus income	2,856	—	2,856
Rural training programme	—	12,056	12,056
Business and admin support	25,859	—	25,859
	<u>29,645</u>	<u>185,772</u>	<u>215,417</u>

	Unrestricted Funds £	Restricted Funds £	Total Funds 2022 £
Wellbeing	—	—	—
King's Coronation	—	—	—
Queen's Jubilee	—	7,889	7,889
Covid response	—	2,173	2,173
Community resilience	—	65,191	65,191
Social isolation and poverty	—	73,552	73,552
Cree project and retired farmers' lunches	—	12,000	12,000
Youth work	2,178	30,440	32,618
Minibus income	3,624	—	3,624
Rural training programme	—	6,699	6,699
Business and admin support	22,606	—	22,606
	<u>28,408</u>	<u>197,944</u>	<u>226,352</u>

### 7. Investment Income

	Unrestricted Funds £	Total Funds 2023 £	Unrestricted Funds £	Total Funds 2022 £
Income from listed investments	1,571	1,571	1,497	1,497
Bank interest receivable	10,030	10,030	2,081	2,081
	<u>11,601</u>	<u>11,601</u>	<u>3,578</u>	<u>3,578</u>

# Upper Teesdale Agricultural Support Services Limited

## Notes to the Financial Statements (continued)

Year Ended 31 December 2023

### 8. Expenditure on Charitable Activities by Fund Type

	Unrestricted Funds £	Restricted Funds £	Total Funds 2023 £
Charitable Activities (see page 28)	<u>166,113</u>	<u>233,380</u>	<u>399,493</u>
	Unrestricted Funds £	Restricted Funds £	Total Funds 2022 £
Charitable Activities (see page 28)	<u>78,047</u>	<u>286,349</u>	<u>364,396</u>

### 9. Expenditure on Charitable Activities by Activity Type

	Activities undertaken directly £	Total funds 2023 £	Total fund 2022 £
Charitable Activities (see page 28)	<u>399,493</u>	<u>399,493</u>	<u>364,396</u>

### 10. Net (Expenditure)/Income

Net (expenditure)/income is stated after charging/(crediting):

	2023 £	2022 £
Depreciation of tangible fixed assets	<u>6,322</u>	<u>11,413</u>

### 11. Independent Examination Fees

	2023 £	2022 £
Fees payable to the independent examiner for:		
Independent examination of the financial statements	1,134	1,500
Other financial services	1,222	1,203
	<u>2,356</u>	<u>2,703</u>

### 12. Staff Costs and Emoluments

The total staff costs and employee benefits for the reporting period are analysed as follows:

	2023 £	2022 £
Wages and salaries	248,266	201,673
Social security costs	10,636	9,683
Employer contributions to pension plans	11,004	9,110
	<u>269,906</u>	<u>220,466</u>

# Upper Teesdale Agricultural Support Services Limited

## Notes to the Financial Statements (continued)

Year Ended 31 December 2023

### 12. Staff Costs and Emoluments (continued)

The average head count of employees during the year was 17 (2022: 14). The average number of full-time equivalent employees during the year is analysed as follows:

	2023 No.	2022 No.
Management	1	1
Advisors	1	1
Administration and support	2	2
Finance	1	1
Domestic support	1	1
Project staff	2	2
	<u>8</u>	<u>8</u>

No employee received employee benefits of more than £60,000 during the year (2022: Nil).

### Key Management Personnel

Key management personnel include all persons that have authority and responsibility for planning, directing and controlling the activities of the company. The total compensation paid to key management personnel for services provided to the company was £35,190 (2022: £33,424).

### 13. Trustee Remuneration and Expenses

No trustees received any remuneration or expenses from the charity during the current and previous year.

### 14. Transfers Between Funds

During the year £108,308 was transferred from restricted to unrestricted funds. This represented contributions to staffing and overheads by projects.

### 15. Tangible Fixed Assets

	Leasehold Property Improvements £	Office Furniture £	Minibus £	Electrical Equipment £	Computer Equipment £	Total £
<b>Cost</b>						
At 1 Jan 2023	42,744	25,380	96,099	17,907	67,029	<b>249,159</b>
Additions	—	1,899	—	1,064	2,678	<b>5,641</b>
<b>At 31 Dec 2023</b>	<u>42,744</u>	<u>27,279</u>	<u>96,099</u>	<u>18,971</u>	<u>69,707</u>	<u><b>254,800</b></u>
<b>Depreciation</b>						
At 1 Jan 2023	42,744	16,415	81,687	17,907	66,165	<b>224,918</b>
Charge for the year	—	1,630	2,882	266	1,544	<b>6,322</b>
<b>At 31 Dec 2023</b>	<u>42,744</u>	<u>18,045</u>	<u>84,569</u>	<u>18,173</u>	<u>67,709</u>	<u><b>231,240</b></u>
<b>Carrying amount</b>						
<b>At 31 Dec 2023</b>	<u>—</u>	<u>9,234</u>	<u>11,530</u>	<u>798</u>	<u>1,998</u>	<u><b>23,560</b></u>
At 31 Dec 2022	<u>—</u>	<u>8,965</u>	<u>14,412</u>	<u>—</u>	<u>864</u>	<u><b>24,241</b></u>

# Upper Teesdale Agricultural Support Services Limited

## Notes to the Financial Statements *(continued)*

Year Ended 31 December 2023

### 16. Investments

	Listed investments £
<b>Cost or valuation</b>	
At 1 January 2023	20,048
Additions	–
Other movements	72
<b>At 31 December 2023</b>	<b><u>20,120</u></b>
<b>Impairment</b>	
<b>At 1 January 2023 and 31 December 2023</b>	
<b>Carrying amount</b>	
<b>At 31 December 2023</b>	<b><u>20,120</u></b>
At 31 December 2022	<u>20,048</u>

All investments shown above are held at valuation.

The investments comprise 8,000 shares in Legal & General Group plc which were donated to the charity. They are valued at current market value.

### 17. Debtors

	2023 £	2022 £
Trade debtors	1,393	1,536
Prepayments and accrued income	–	2,161
Gift aid recoverable	3,000	2,500
Accrued grant income	8,932	–
	<b><u>13,325</u></b>	<b><u>6,197</u></b>

### 18. Creditors: amounts falling due within one year

	2023 £	2022 £
Accruals and deferred income	8,417	6,195
Funds held on behalf of third parties	2,183	11,729
	<b><u>10,600</u></b>	<b><u>17,924</u></b>

### 19. Pensions and Other Post Retirement Benefits

#### Defined contribution plans

The amount recognised in income or expenditure as an expense in relation to defined contribution plans was £11,004 (2022: £9,110).



# Upper Teesdale Agricultural Support Services Limited

## Notes to the Financial Statements *(continued)*

Year Ended 31 December 2023

### 19. Pensions and Other Post Retirement Benefits *(continued)*

Upper Teesdale Agricultural Support Services Ltd (UTASS) participates in The Pensions Trust's Growth Plan Series 1, 2 and 3 (the scheme). The scheme is a multi-employer scheme which provides benefits to some 1,300 non-associated participating employers. The scheme is a defined benefit scheme in the UK. It is not possible for the company to obtain sufficient information to enable it to account for the scheme as a defined benefit scheme. Therefore it accounts for the scheme as a defined contribution scheme. Accordingly, due to the nature of the Scheme, the accounting charge for the period under FRS102 represents the employer contribution payable.

The scheme is subject to the funding legislation outlined in the Pensions Act 2004 which came into force on 30 December 2005. This, together with documents issued by the Pensions Regulator and Technical Actuarial Standards issued by the Financial Reporting Council, set out the framework for funding defined benefit occupational pension schemes in the UK.

The scheme is classified as a 'last-man standing arrangement'. Therefore UTASS is potentially liable for other participating employers' obligations if those employers are unable to meet their share of the scheme deficit following withdrawal from the scheme. Participating employers are legally required to meet their share of the scheme deficit on an annuity purchase basis on withdrawal from the scheme. UTASS has been notified by The Pensions Trust of the estimated employer debt on withdrawal from the Scheme based on the financial position of the Scheme as at 30 September 2022. As of this date the estimated employer debt for UTASS was £11,268.

A full actuarial valuation for the scheme was carried out at 30 September 2020. This valuation showed assets of £795m, liabilities of £832m and a deficit of £33m. To eliminate this funding shortfall, the Trustee has asked some participating employers to pay additional contributions to the scheme but UTASS has not been asked to make any such payments.

UTASS paid contributions at the rate of 10% during the accounting period. Members paid contributions at the rate of 5% during the accounting period.

As at the balance sheet date there was 1 active member of the scheme employed by UTASS. UTASS no longer offers membership of the scheme to its employees.

Employees who are not members of the Pensions Trust's Growth Plan Series 1, 2 and 3 are offered a contribution to alternative defined contribution pensions, which in some circumstances is the Pensions Trust's Growth Plan Series 4. Total pension contributions made by the employer during the year were £11,004 (2022 - £9,110). There were no pension contributions outstanding at the year end.

# Upper Teesdale Agricultural Support Services Limited

## Notes to the Financial Statements (continued)

Year Ended 31 December 2023

### 20. Analysis of Charitable Funds

#### Unrestricted funds

	At 1 Jan 2023	Income	Expenditure	Transfers	Gains and losses	At 31 Dec 2023
	£	£	£	£	£	£
General funds	209,008	61,494	(147,502)	86,303	—	<b>209,303</b>
Capital funds	44,289	—	(6,323)	5,642	72	<b>43,680</b>
Minibus funds	237	4,413	(5,540)	2,513	—	<b>1,623</b>
Young Peoples'						
Free Reserves	1,297	1,508	(5,085)	6,180	—	<b>3,900</b>
Joan Drewe						
legacy	23,767	—	(922)	(757)	—	<b>22,088</b>
Events reserves	664	—	—	330	—	<b>994</b>
Older Persons						
Free Reserves	226	575	(25)	—	—	<b>776</b>
Retired farmers						
lunches	—	—	—	3,995	—	<b>3,995</b>
Yoga donations	—	296	—	305	—	<b>601</b>
Dog poo bags	—	757	(716)	(95)	—	<b>(54)</b>
Relief Fund						
donations	—	—	—	3,892	—	<b>3,892</b>
	<u>279,488</u>	<u>69,043</u>	<u>(166,113)</u>	<u>108,308</u>	<u>72</u>	<u><b>290,798</b></u>

	At 1 Jan 2022	Income	Expenditure	Transfers	Gains and losses	At 31 Dec 2022
	£	£	£	£	£	£
General funds	169,432	61,984	(58,662)	36,254	—	209,008
Capital funds	58,021	—	(11,413)	1,433	(3,752)	44,289
Minibus funds	(3,820)	3,381	(6,510)	7,186	—	237
Young Peoples'						
Free Reserves	352	2,178	(1,128)	(105)	—	1,297
Joan Drewe						
legacy	23,962	—	(195)	—	—	23,767
Events reserves	810	—	(39)	(107)	—	664
Older Persons						
Free Reserves	—	326	(100)	—	—	226
	<u>248,757</u>	<u>67,869</u>	<u>(78,047)</u>	<u>44,661</u>	<u>(3,752)</u>	<u>279,488</u>

# Upper Teesdale Agricultural Support Services Limited

## Notes to the Financial Statements *(continued)*

Year Ended 31 December 2023

### 20. Analysis of Charitable Funds *(continued)*

#### Restricted funds

	At 1 Jan 2023 £	Income £	Expenditure £	Transfers £	Gains and losses £	At 31 Dec 2023 £
National Lottery Community Fund	–	74,849	(56,595)	–	–	<b>18,254</b>
Ballinger Trust (Youth)	–	10,000	(10,000)	–	–	–
DCC						
Neighbourhood Grant	–	1,980	(869)	–	–	<b>1,111</b>
Retired Farmers Lunches	3,995	–	–	(3,995)	–	–
Groundwork	–	500	(500)	–	–	–
CDCF Poverty Hurts	–	2,000	–	–	–	<b>2,000</b>
PCF Farm for the Future	5,454	21,813	(1,212)	(26,055)	–	–
Relief Fund donations	3,892	–	–	(3,892)	–	–
Poverty Hurts	–	12,677	(5,391)	(7,286)	–	–
Teesdale Action Partnership						
(Young People At the Heart)	4,770	–	(4,770)	–	–	–
Weardale Action Partnership	8,541	–	(4,071)	(1,293)	–	<b>3,177</b>
Scotto Trust	–	–	–	–	–	–
I Will#	2,870	–	–	(2,870)	–	–
Middleton Educational Trust	–	1,000	(450)	–	–	<b>550</b>
Ballinger Trust	15,000	20,000	(13,538)	–	–	<b>21,462</b>
Wellbeing for Life Micro Grant	–	250	(250)	–	–	–
Theatre Trips etc	–	4,328	(5,153)	–	–	<b>(825)</b>
Wellesley Trust Fund via Community Foundation	2,246	8,056	(6,126)	(1,036)	–	<b>3,140</b>
Joseph Strong Fraser Trust	–	2,500	(2,500)	–	–	–
PCP Community Resilience worker	4,753	29,997	(26,901)	(3,346)	–	<b>4,503</b>
Teesdale Action Partnership (Healthy Activities, Healthy Food)	1,248	8,013	(4,885)	(4,376)	–	–

# Upper Teesdale Agricultural Support Services Limited

## Notes to the Financial Statements *(continued)*

Year Ended 31 December 2023

### 20. Analysis of Charitable Funds *(continued)*

DCC (Cree Sessions)	4,336	9,150	(7,530)	(3,480)	—	<b>2,476</b>
Wemmergill Estates	134	—	(134)	—	—	<b>—</b>
CDCF Connection Communities	—	5,300	(1,151)	(4,149)	—	<b>—</b>
DCC Preparing for the Future	556	—	(412)	(144)	—	<b>—</b>
Durham High Sheriff's Award	1,052	—	(223)	98	—	<b>927</b>
DCA Cost of Living	—	1,500	(1,500)	—	—	<b>—</b>
The Mercers Charitable Foundation	—	25,000	(20,798)	(334)	—	<b>3,868</b>
R&H Wood Charitable Trust	—	860	—	—	—	<b>860</b>
Royal Community Fund (Agricultural salaries)	9,830	12,500	(14,780)	—	—	<b>7,550</b>
CDCF Know Your Neighbourhood	—	15,595	(8,435)	(3,101)	—	<b>4,059</b>
NFU Grant	—	6,443	—	(443)	—	<b>6,000</b>
CDCF Trips & Outings	—	5,000	(993)	(3,007)	—	<b>1,000</b>
RCF Farm for the Future - 23-24	—	4,688	(35)	(3,202)	—	<b>1,451</b>
Parish Nurse	—	17,864	(13,618)	—	—	<b>4,246</b>
Mickleton Moss Committee	—	800	(500)	—	—	<b>300</b>
DCA Traditional Skills	—	4,000	(485)	(107)	—	<b>3,408</b>
PCP Pop Up Hubs	—	—	(110)	(3,107)	—	<b>(3,217)</b>
PCF Here for You	3,175	—	(3,175)	—	—	<b>—</b>
CDCF Welcome Space	—	3,000	—	—	—	<b>3,000</b>
TAP Coronation Celebration	—	500	(500)	—	—	<b>—</b>
DCC Covid Recovery grant	1,284	—	(1,284)	—	—	<b>—</b>
Cree Plus	1,810	—	(429)	(1,381)	—	<b>—</b>
Stronger Together	2,796	13,593	(229)	(9,761)	—	<b>6,399</b>
Morrisons Foundation YP Space	7,020	—	(530)	—	—	<b>6,490</b>
Improvement Poverty Hurts	2,000	—	(1,320)	(680)	—	<b>—</b>

# Upper Teesdale Agricultural Support Services Limited

## Notes to the Financial Statements (continued)

Year Ended 31 December 2023

### 20. Analysis of Charitable Funds (continued)

TAP Together project	5,438	—	(1,136)	(4,302)	—	—
Jubilee donations	268	86	(734)	380	—	—
Awards For All CAB Volunteer grant	9,800	—	(5,837)	(3,963)	—	—
Dog poo bags	(95)	—	—	95	—	—
DCC Warm Spaces grant	1,000	500	(1,100)	(400)	—	—
Sir Tom Cowie poverty grant	5,000	—	(2,140)	(2,860)	—	—
DCC Community Buildings	500	—	(500)	—	—	—
Tees Swale project	(1,387)	1,890	(384)	(119)	—	—
PCP Farming Futures (Young Farmers)	4,954	—	—	(361)	—	<b>4,593</b>
TAP Welfare reform	9,998	—	(167)	(9,831)	—	—
	<u>122,238</u>	<u>326,232</u>	<u>(233,380)</u>	<u>(108,308)</u>	<u>—</u>	<u><b>106,782</b></u>

	At 1 Jan 2022 £	Income £	Expenditure £	Transfers £	Gains and losses £	At 31 Dec 2022 £
National Lottery Community Fund	2,390	—	(2,390)	—	—	—
CDCF Newcastle Building Society Fund	2,709	—	(2,709)	—	—	—
Retired Farmers Lunches	3,995	—	—	—	—	3,995
PCF Farm for the Future	2,104	24,312	(8,409)	(12,553)	—	5,454
Relief Fund donations	3,892	—	—	—	—	3,892
Teesdale Action Partnership (Young People At the Heart)	13,520	—	(7,075)	(1,675)	—	4,770
Teesdale Action Partnership (Social Isolation)	3,592	—	(1,648)	(1,944)	—	—
Weardale Action Partnership	16,259	—	(7,648)	(70)	—	8,541
Scotto Trust	3,709	—	(3,678)	(31)	—	—
I Will#	3,779	—	—	(909)	—	2,870



# Upper Teesdale Agricultural Support Services Limited

## Notes to the Financial Statements *(continued)*

Year Ended 31 December 2023

### 20. Analysis of Charitable Funds *(continued)*

National Lottery Community Fund Middleton	6,359	24,382	(30,741)	—	—	—
Educational Trust Princes Countryside Fund (Core)	430	1,000	(1,430)	—	—	—
Ballinger Trust	—	30,000	(20,170)	—	—	9,830
Co. Durham and Darlington Community Safety Fund	15,000	15,000	(15,000)	—	—	15,000
Wellesley Trust Fund via Community Foundation	263	—	(185)	(78)	—	—
Hadrian Trust	1,395	6,699	(4,958)	(890)	—	2,246
Joseph Strong Fraser Trust	1,000	—	(1,000)	—	—	—
PCP Community Resilience worker	—	2,000	(2,000)	—	—	—
Happyness Hubs	268	30,772	(23,101)	(3,186)	—	4,753
Teesdale Action Partnership (Healthy Activities, Healthy Food)	3,132	—	(2,406)	(726)	—	—
DCC (Cree Sessions)	1,598	13,659	(8,005)	(6,004)	—	1,248
Wemmergill Estates	6,186	9,000	(7,628)	(3,222)	—	4,336
DCC Preparing for the Future	334	—	(40)	(160)	—	134
Durham High Sheriff's Award	3,290	3,268	(6,002)	—	—	556
Royal Community Fund (Agricultural salaries)	1,412	—	(360)	—	—	1,052
British Science Association	18,265	—	(18,265)	—	—	—
CCG	1,000	—	(1,000)	—	—	—
Covid 19 Shopping	821	—	(821)	—	—	—
Barnard Castle Lions	(37)	2,173	(2,138)	2	—	—
PCF Here for You	135	—	(135)	—	—	—
NFU Covid Response	3,182	—	(7)	—	—	3,175
NFU Food Provision	4,827	—	(4,827)	—	—	—
DCC Covid Recovery grant	169	—	(169)	—	—	—
DCC Covid Xmas grant	3,000	—	(1,716)	—	—	1,284
	341	—	(341)	—	—	—

# Upper Teesdale Agricultural Support Services Limited

## Notes to the Financial Statements *(continued)*

Year Ended 31 December 2023

### 20. Analysis of Charitable Funds *(continued)*

Cree Plus	3,000	3,000	(3,560)	(630)	—	1,810
Ralph Gowland Trust	1,541	—	(1,403)	(138)	—	—
CDCF - Website	2,600	—	(2,600)	—	—	—
Stronger Together	—	6,761	(3,405)	(560)	—	2,796
Morrisons Foundation YP Space						
Improvement	—	7,020	—	—	—	7,020
Poverty Hurts	—	2,000	—	—	—	2,000
NHS Connector grant	—	25,000	(25,000)	—	—	—
TAP Together project	—	17,600	(811)	(11,351)	—	5,438
Lets Create, Jubilee Arch	—	6,005	(5,828)	(177)	—	—
Sir James Knott jubilee grant	—	600	(571)	(29)	—	—
DBC Jubilee Party	—	600	(600)	—	—	—
Jubilee donations	—	684	(416)	—	—	268
Awards For All						
CAB Volunteer grant	—	10,000	(200)	—	—	9,800
Dog poo bags	—	383	(478)	—	—	(95)
DCC Energy Efficiency funding	—	1,462	(1,462)	—	—	—
DCC Warm Spaces grant	—	1,000	—	—	—	1,000
Sir Tom Cowie poverty grant	—	5,000	—	—	—	5,000
CDCF Storm						
Arwen response	—	1,000	(1,000)	—	—	—
One to One PCF						
Farm for the Future	—	5,456	(5,456)	—	—	—
DCC Community Buildings	—	1,000	(200)	(300)	—	500
Tees Swale project	—	—	(1,357)	(30)	—	(1,387)
PCP Farming Futures (Young Farmers)	—	4,954	—	—	—	4,954
TAP Welfare reform	—	9,998	—	—	—	9,998
	<u>135,460</u>	<u>317,788</u>	<u>(286,349)</u>	<u>(44,661)</u>	<u>—</u>	<u>122,238</u>

# Upper Teesdale Agricultural Support Services Limited

## Notes to the Financial Statements *(continued)*

Year Ended 31 December 2023

### 20. Analysis of Charitable Funds *(continued)*

The restricted funds received during 2023 are for the following purposes:

#### **Core grants:**

National Lottery Community Fund  
Ballinger Trust  
Royal Countryside Fund  
Durham Community Action  
R.H.Woods Charitable Trust  
Joseph Strong Frazer Trust  
Mercers Charitable Foundation

#### **Grants towards wellbeing:**

Durham Dales Parish Nurse

#### **Grants towards our youth work:**

Ballinger Trust  
Middleton Educational Trust  
DCC Neighbourhood Grant  
Teesdale Action Partnership - HAHF and Young People at the Heart  
Groundwork  
Stronger Together  
Morrisons Foundation YP Space Improvement  
CDCF Poverty Hurts

#### **Grants towards support with social isolation and poverty:**

TAP Welfare reform  
Sir Tom Cowie poverty grant  
AFA CAB Volunteer grant  
TAP Together project  
DCC Warm Spaces grant  
DCC - CREE work  
DCC Warm Spaces grant  
DCC Poverty Hurts  
PCP Chat & Craft  
CDCF Connecting Communities  
DCC Tees Swale  
CDCF Trips & Outings  
DCC Know Your Neighbour Funding for Time Together  
DCC Rural Transport Initiative  
CDCF Know Your Neighbourhood grant  
Teesdale Day Clubs Time Together  
DCC Welcome Spaces

#### **Grants towards community resilience:**

PCP Community Resilience worker  
NFU Mutual  
RCF Farm for the Future  
DCC Preparing for the Future

#### **Grants towards the King's Coronation:**

DCC Party fit for a king

#### **Specific project grants:**

Weardale Action Partnership – Rural training programme  
CDCF Wellesley Trust - Driver training  
DCA - Traditional Skills

# Upper Teesdale Agricultural Support Services Limited

## Notes to the Financial Statements *(continued)*

Year Ended 31 December 2023

### 21. Analysis of Net Assets Between Funds

	Unrestricted Funds £	Restricted Funds £	Total Funds 2023 £
Tangible fixed assets	23,560	—	23,560
Investments	20,120	—	20,120
Current Assets	257,718	106,782	364,500
Creditors less than 1 year	(10,600)	—	(10,600)
<b>Net assets</b>	<b>290,798</b>	<b>106,782</b>	<b>397,580</b>

	Unrestricted Funds £	Restricted Funds £	Total Funds 2022 £
Tangible fixed assets	24,241	—	24,241
Investments	20,048	—	20,048
Current Assets	253,123	122,238	375,361
Creditors less than 1 year	(17,924)	—	(17,924)
<b>Net assets</b>	<b>279,488</b>	<b>122,238</b>	<b>401,726</b>

### 22. Utass Endowment Fund

The UTASS Endowment Fund is managed independently by County Durham Community Foundation. UTASS has the use of the income from the fund but not the capital. At 31st December 2023 the fund value was £70,166 (2022 - £67,948).

### 23. Volunteer Time

Volunteer time to a value of £67,717 (2022 - £67,780) has not been included in income or expenditure for the year.

# **Upper Teesdale Agricultural Support Services Limited**

## **Management Information**

**Year Ended 31 December 2023**

**The Following Pages Do Not Form Part of the Financial Statements.**

# Upper Teesdale Agricultural Support Services Limited

## Detailed Statement of Financial Activities

Year Ended 31 December 2023

	2023 £	2022 £
<b>Income and endowments</b>		
<b>Donations and legacies</b>		
General donations	23,114	23,006
Friends Of UTASS	3,182	3,959
HMRC Gift aid	4,752	3,000
Northern Heartlands NOW project	–	5,918
R H Woods Charitable Trust	860	1,000
National Lottery Community Fund	74,849	24,382
Durham Community Action	1,500	–
Ballinger Trust	20,000	15,000
Durham County Council	–	2,462
Royal Countryside Fund	12,500	30,000
Joseph Strong Frazer Trust	2,500	2,000
The Mercers Charitable Foundation	25,000	30,000
Sir James Knott Foundation	–	15,000
	<u>168,257</u>	<u>155,727</u>
<b>Charitable activities</b>		
Wellbeing	17,864	–
King's Coronation	500	–
Queen's Jubilee	–	7,889
Covid response	–	2,173
Community resilience	63,520	65,191
Social isolation and poverty	46,746	73,552
Cree project and retired farmers' lunches	9,000	12,000
Youth work	37,016	32,618
Minibus income	2,856	3,624
Rural training programme	12,056	6,699
Business and admin support	25,859	22,606
	<u>215,417</u>	<u>226,352</u>
<b>Investment income</b>		
Income from listed investments	1,571	1,497
Bank interest receivable	10,030	2,081
	<u>11,601</u>	<u>3,578</u>
<b>Total income</b>	<u>395,275</u>	<u>385,657</u>



# Upper Teesdale Agricultural Support Services Limited

## Detailed Statement of Financial Activities *(continued)*

Year Ended 31 December 2023

	2023 £	2022 £
<b>Expenditure</b>		
Wages	248,266	201,673
Employer's NIC	10,636	9,683
Pension costs	11,004	9,110
Rent	14,500	14,500
Light, heat and water	9,997	7,777
Repairs, renewals and maintenance	2,758	7,728
Licences and insurance	4,298	4,077
Legal and professional fees	7,990	8,796
Telephone and office costs	14,520	14,891
Depreciation	6,322	11,413
Sundry costs	5,246	4,222
Project costs	54,468	61,735
Minibus costs	5,347	5,692
Staff travel and training	4,141	3,099
<b>Total expenditure</b>	<b>399,493</b>	<b>364,396</b>
 <b>Net (expenditure)/income</b>	 <b>(4,218)</b>	 <b>21,261</b>