

ONE FAMILY GLOBAL

ANNUAL REPORT
& ACCOUNTS
2022 - 2023

**“JUST IMAGINE WHAT
WOULD HAPPEN IF IT WAS
YOUR DAUGHTER STANDING
THERE. WHAT WOULD YOU
DO? HOW WOULD YOU
FIGHT? SO YOU HAVE TO
JOIN HANDS, YOU HAVE
TO TAKE EACH CHILD AS
YOUR DAUGHTER. SOON
YOU WILL FEEL THEIR
SORROW AND THEN YOU
WILL FEEL THE STRENGTH
THAT COMES OUT OF YOU
TO PROTECT THEM.”**

ANURADHA KOIRALA
MAITI NEPAL

WWW.ONEFAMILY.ORG.UK



CHARITY NUMBER: 1119989
PUBLISHED: 31 MARCH 2023



ANURADHA KOIRALA
FOUNDER OF MAITI NEPAL,
OUR ANTI-TRAFFICKING FUND PARTNER

IMAGE - CREDIT: MARCUS VALLANCE

CONTENTS

WHAT'S INSIDE

Annual Report

Section One		Section Six	
About One Family	5	Accounts and Financial Review	61
Section Two		Trustees' Annual Report	62
Foreword	6	Independent Examiner's Report	63
Section Three		Our Income and Expenditure	64
Our Work	10	Statement of Financial Activities	66
- Anti-Trafficking Fund	12	Balance Sheet	67
- Live to Give Trek	22	Income & Expenditure Account	70
- Refugee Fund	30	Detailed Statement of Financial Activities	74
Section Four		Administrative Details	77
Our Events	43		
Section Five			
Newest Ambassadors	57		



01

ABOUT US

One Family seeks to revolutionise the way we tackle the world's biggest issues — harnessing the power of technology and innovation to accelerate social change. Our global programmes and exclusive, cause-driven events are innovative, transformative and bring people together.

Since its inception, One Family has been instrumental in tackling human trafficking, supporting refugees, and building an extensive network of like-minded individuals, committed to supporting the world's most vulnerable through mobilised, active work.



**THOUGHT
LEADERS**



**PEOPLE
POWERED**



**TECH-SOLUTION
LED**

02

FOREWORD

The operational upheaval during COVID-19 gave us time to reflect and reassess how best to expand and develop our mission to provide critical support to the most vulnerable members of our community. Recognising the sheer scale of work that we must deliver, particularly after logistical and operational delays brought on by the pandemic, we grew our core team to five members this year, with a wider team of 10 for support. We used this time to create a new digital strategy and relaunched the One Family website.

Further to this, we launched a new structure for our extensive network of supporters, now comprising of three key strands: our advisory circle, our ambassadors' circle, and our investors' circle.

We are also thrilled to have our roster of event experiences return this year, beginning with Iftar at The Dorchester, inaugurated by the Mayor of London. 2022 also sees the launch of our brand-new Legends of Sports series – a monthly podcast and live event, hosted by One Family ambassador and BBC Sports Presenter Manish Bhasin. Each Legends of Sport event will host a sporting legend, in conversation with Manish about their personal and professional journey, while spotlighting a cause of their choice – including men's mental health, prostate cancer, and disability in sports.

We have been delighted to lend our support to One Family ambassador and Paralympian, Richard Whitehead MBE, as he launches the Richard Whitehead Foundation – a critical intervention focussed on encouraging greater accessibility for those with disabilities within sport. We are so thrilled to support Richard with his new foundation, and it's during instances such as these where the expansive expertise of our network – including our investors' circle – allows us to impact real, lasting change.

The highlight of the year remains the extraordinary Live to Give challenge undertaken by our courageous group of 18 trekkers, comprising of One Family ambassadors, staff and supporters. Reaching Annapurna Base Camp in the Himalayas – a staggering 4,130m – the team showed great aptitude, resilience and an indelible spirit to band together and achieve this enormous feat, all the while raising critical funds for our anti-trafficking fund partner, Maiti Nepal.

Their achievement encapsulates the very heart of our ethos at One Family: harnessing the power of our collective service to humanity to create positive, lasting change.



Sharif Banna MBE
Chairman





AMBASSADOR
SPOTLIGHT

RICHARD WHITEHEAD MBE
PARALYMPIC CHAMPION

**“In times of crisis,
it is imperative
that we band
together with
empathy, courage,
and mutual
compassion.
That’s why I’m a
proud ambassador
of One Family
because their
ethos remains
the same through
every crisis.”**

Richard Whitehead MBE captured
during the Maiti Nepal futsal tournament
for International Women’s Day.

LIVE TO GIVE TREK
KATHMANDU, NEPAL
MARCH 2023

03

OUR WORK

The sheer complexity of tackling the world's biggest issues requires scalable, innovative, and effective solutions. We have established a series of vital funds, identifying trusted partners on the ground for each to maximise impact. These partners are carefully selected to meet criteria which ensures they have the capacity to grow, innovate and lead.

One Family offers two-fold support to each of our partners: first, we provide funds to meet critical needs in communities, with a core focus on rescuing individuals from urgent situations and enabling rehabilitation. Second, we work closely with our partners to develop well-researched enterprise or tech-led solutions that deliver strong and scalable impact.

ANTI-TRAFFICKING FUND



REFUGEE FUND



EMERGENCY CARE FUND



FUND PARTNERS:



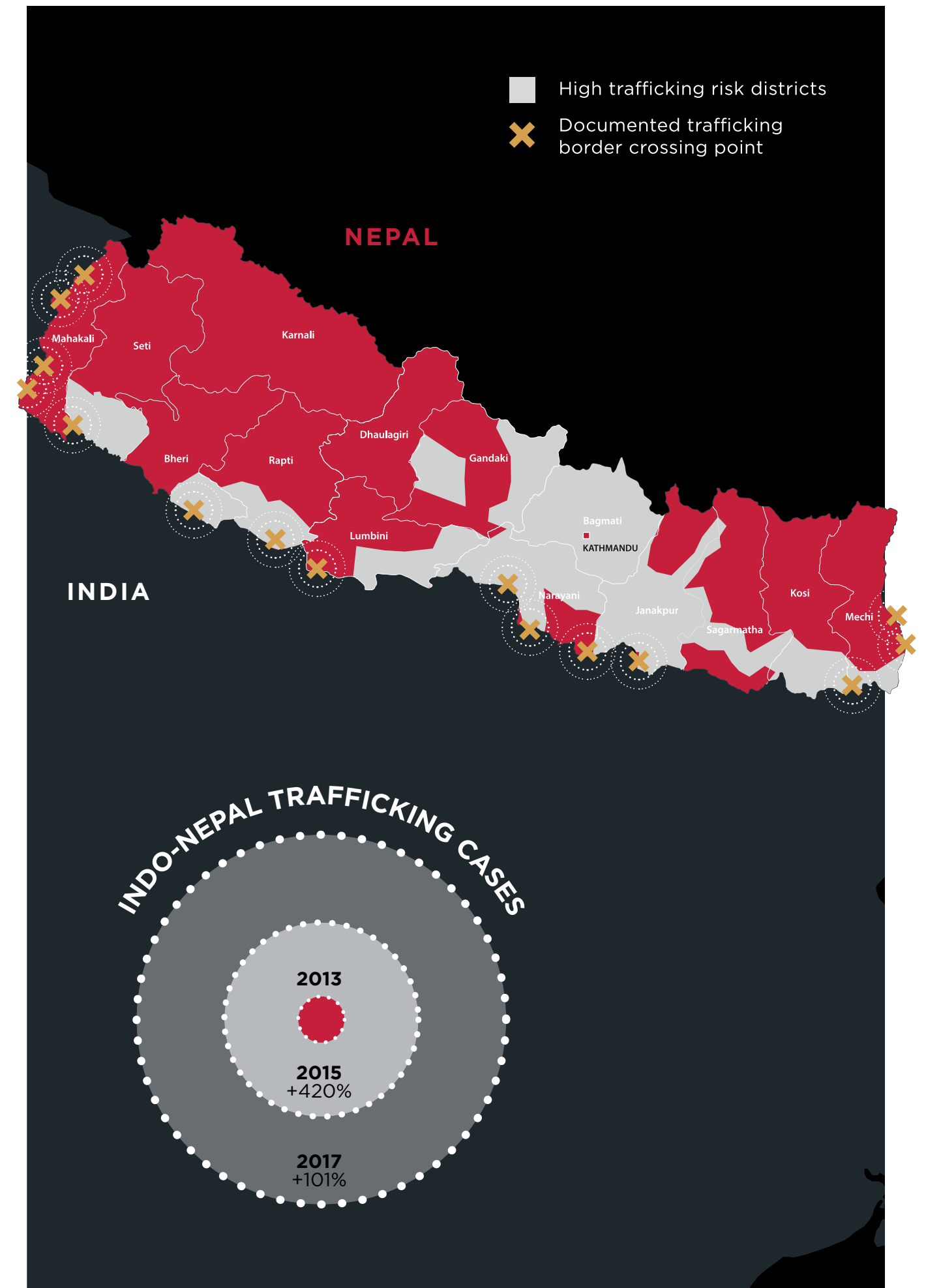
ANTI- TRAFFICKING FUND

OUR ANTI-TRAFFICKING FUND: THE FIGHT AGAINST TRAFFICKING

Human trafficking involves trapping people using violence, deception or coercion and exploiting them for financial or personal gain.

Along the nearly 1,800km border between India and Nepal, 10,000 to 15,000 Nepali women and girls are being sold annually in India, and between 7,000 to 10,000 girls, between the ages of nine to 16 years, are being trafficked each month from Nepal to India.

Nepal is one of the world's most lucrative markets for human trafficking, and women and girls make up the majority of all victims. Many are trafficked for sex work, domestic labour or the illegal organ trade in India, Southeast Asia and the Gulf.





OUR ANTI-TRAFFICKING FUND: MAITI NEPAL

Maiti Nepal was founded in 1993, with the aim of combatting exploitation, violence, and trafficking of women and children through comprehensive rehabilitation programmes promoting education, empowerment, health, and social inclusion.

Since its inception, Maiti Nepal has worked tirelessly to reduce human trafficking – particularly of children and girls for sexual exploitation – as well as domestic violence, child prostitution, child labour and other kinds of abuse and torture.



55,708

WOMEN AND
GIRLS RESCUED



1,804

TRAFFICKERS
CONVICTED



1,453

GIRLS
EDUCATED



MAITI NEPAL: MAKING AN IMPACT

Approaching three decades of comprehensive intervention work, Maiti Nepal has devised an extensive approach for supporting victims of trafficking.

Their three-pronged strategy of focusing on prevention, rescue and rehabilitation ensures that no victim of trafficking is left without the support they need.



1. Prevention

- Homes for Trafficking Prevention
- Raising Awareness
- Legal Support



2. Rescue

- Interception and Repatriation
- Face Recognition Technology



3. Rehabilitation

- Rehabilitation Homes
- Teresa Academy
- In-house Health Centre
- The Sonja Kill Memorial Hospice
- Incomes for Life

OUR SOLUTION

One Family is working in close collaboration with our fund partner, Maiti Nepal, to continue to scale up the fight against human trafficking.

Maiti Nepal has spent nearly 30 years fighting human trafficking through comprehensive rehabilitation programmes promoting education, empowerment, health, and social inclusion, as well as rescue and prevention. Human rights activist, Anuradha Koirala, founded Maiti Nepal in 1993 and has fortified her fight for sisterhoods the world over by rescuing thousands of women and young girls from the early stages of trafficking, and preventing thousands of others from being successfully trafficked.

One Family's partnership with Maiti Nepal is built around three central pillars: prevention, rescue and rehabilitation.



PREVENTION

The first priority focuses on the prevention of trafficking and educating those at greatest risk of abuse and exploitation. This multifaceted approach involves specialist prevention homes which provide anti-trafficking skills and training for girls, as well as heightening awareness at community level through TV, radio and local workshops.



RESCUE

The second pillar is based around rescuing and reuniting victims with their families. Maiti Nepal's on-the-ground teams assist the police in tracking suspects and searching for the missing, while technological advances have led to the creation of a pioneering identification application at border points. For those who are freed, shelter and healthcare are routinely provided, and legal systems are in place to initiate criminal proceedings against perpetrators.



REHABILITATION

The third pillar focuses on safe accommodation and psychological support to help those preparing to reintegrate into society. With economic freedom at the heart of the project, training in livelihood skills also paves the way to financial independence. Medical aid is another lynchpin in the rehabilitation process and an in-house centre and hospice provide treatment and screening, plus much needed compassion and care.



“I founded Maiti Nepal hoping to save just one life. To extend a hand of compassion, support and stability to those who have nothing to hold onto is the most powerful tool. I wanted to save lives, but Maiti Nepal and the women we have helped, have saved mine.”

ANURADHA KOIRALA
FOUNDER OF MAITI NEPAL

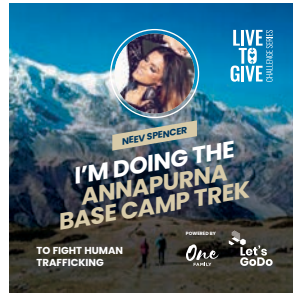


LIVE TO GIVE TREK

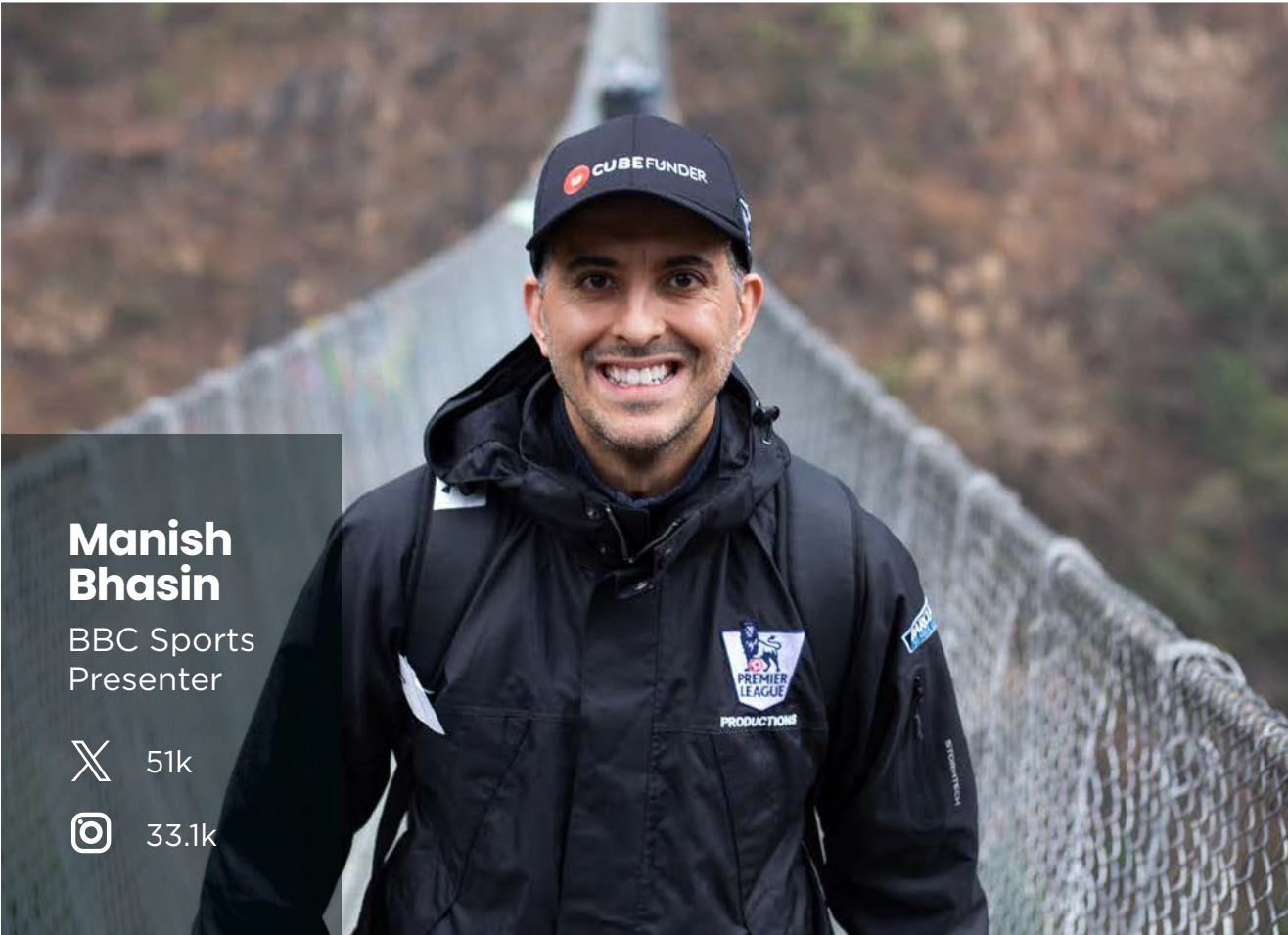
In February, we took 18 trekkers to attempt the gruelling Annapurna Base Camp Trek in the Himalayas to raise critical funds, supporting our anti-trafficking fund partner, Maiti Nepal.

The team of trekkers, including One Family ambassadors, supporters and team members had the unique opportunity to support survivors, and see first-hand the scale of Maiti Nepal's work

LIVE
TO
GIVE
CHALLENGE SERIES



Notable Trekkers



The Trek

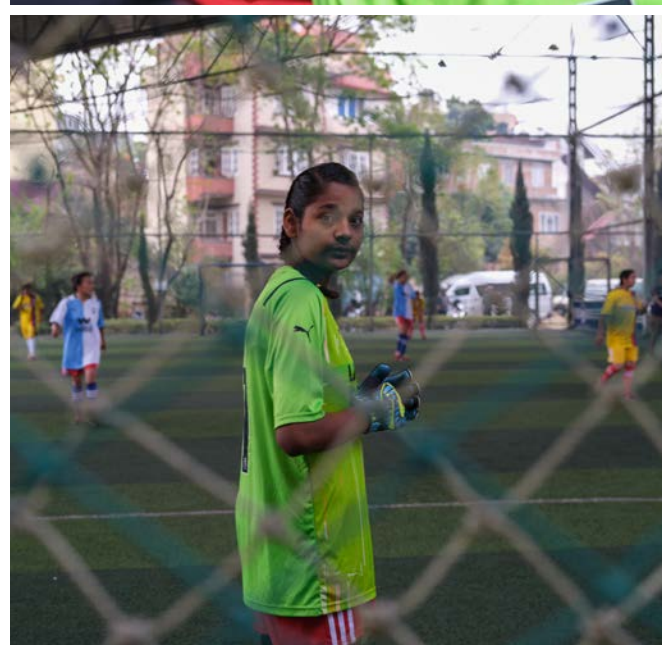
The team began their journey on 28 February, flying from London to Kathmandu, Nepal. From the capital city, the team flew to Pokhara to begin their trek to Annapurna Base Camp (ABC) – scaling 13,500ft. Sent off by the founder of Maiti Nepal, Anuradha Koirala or Dijju as she is lovingly known, the ‘daughter of Nepal’ handed each trekker a single red rose to plant at ABC as a symbol of the team’s collective pledge to stamp out the heinous crime of human trafficking and to protect women and girls the world over.

The four-day trek saw the team traverse through the varied landscape of the Himalayas, staying in tea houses overnight to replenish their strength and spirits. The team summited on 4th March, laying the roses given by Dijju at ABC.

Returning to Kathmandu, the delegation spent several days with the team at Maiti Nepal, supporting an International Women’s Day Futsal match and visiting the rehabilitation home.







REFUGEE FUND

OUR REFUGEE FUND: THE SYRIAN CRISIS

More than a decade since the conflict began, Syria remains the “worst man-made disaster since World War II”, according to the UN.



606k

TOTAL DEATHS

Source: Syrian Observatory for Human Rights



12.4M

SYRIANS ARE FOOD INSECURE

Source: World Food Programme



80%

OF SYRIA IS LIVING BELOW THE POVERTY LINE

Source: Red Cross



6M

SYRIANS ARE INTERNALLY DISPLACED

Source: UNHCR



86k

TOTAL NUMBER OF SYRIANS MADE AMPUTEES BECAUSE OF THE WAR

Source: World Health Organisation (WHO)



75%

OF SYRIAN REFUGEES ARE REPORTED TO HAVE PTSD

Source: Syria Relief



5.5M

SYRIAN REFUGEES LIVE IN NEIGHBOURING COUNTRIES IRAQ, TURKEY, JORDAN, LEBANON, AND EGYPT

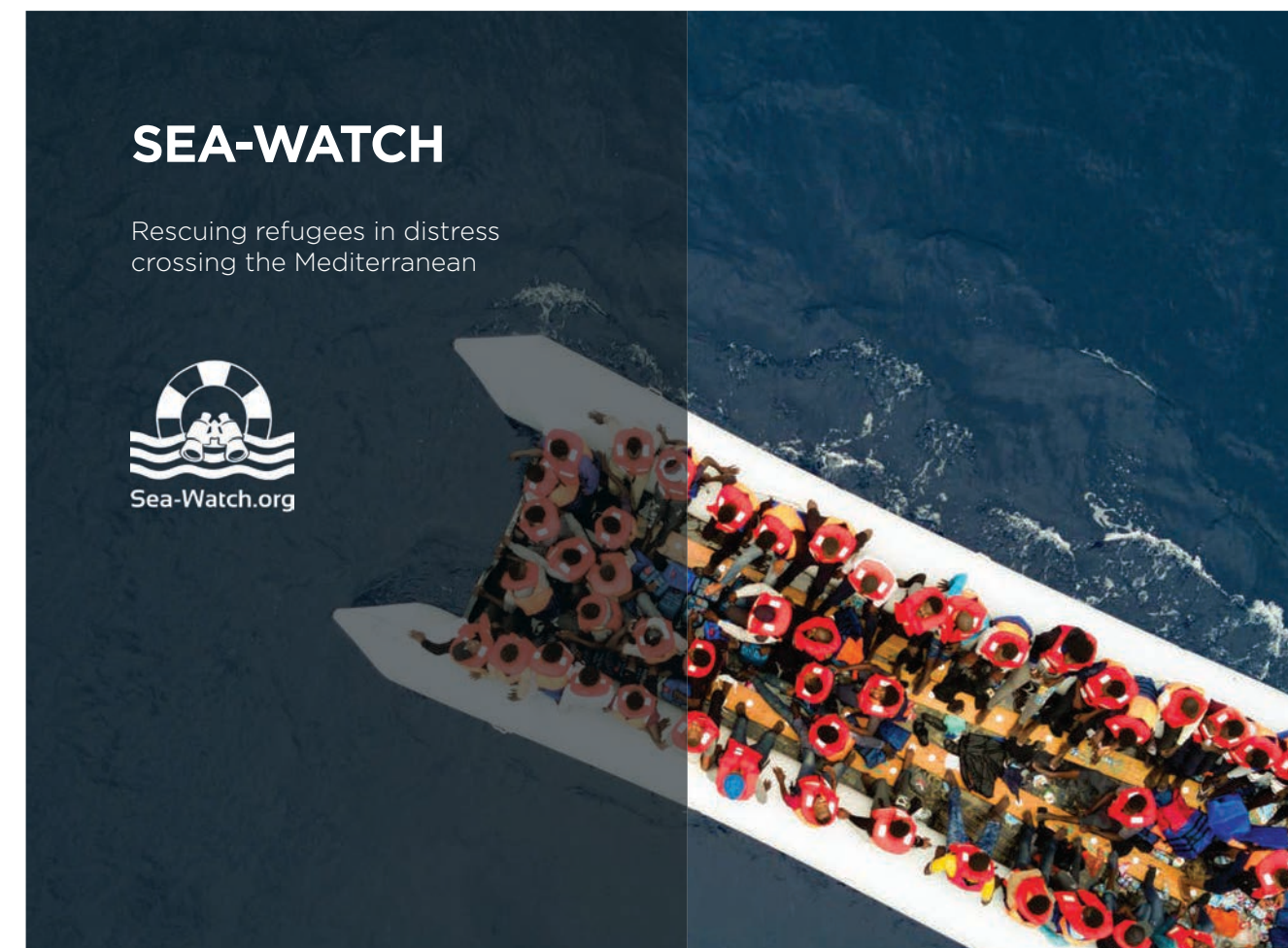
Source: UNHCR



OUR REFUGEE FUND

Our Refugee Fund actively supports three key partners – the National Syrian Project for Prosthetic Limbs (NSPPL), Sea Watch, and Maya Vakfi – who are doing essential

work to provide support on the ground. Through these partnerships, our three key areas of focus remain search and rescue, amputees, and mental health support.





REFUGEE FUND PARTNER

SEA-WATCH



Born out of an initiative of volunteers who refused to stand on the side-lines and watch people dying in the Mediterranean, Sea-Watch began its operations in 2014. Sea-Watch is filling the gap of an institutionalised, comprehensive sea rescue with a clear mandate: no life should be lost at sea and every single life saved through their initiative is a success and a stand for humanity.

As a result of man-made borders and wars, thousands of people drown at sea every year trying to reach a safe harbour in the EU, many of them within sight of our shores and beaches. Through their work, they provide greater access to information, thus drawing attention to the fate of refugees and migrants. They shine a light on the humanitarian crisis in the Mediterranean so that no one can look away.

So far, Sea-Watch has successfully rescued over 35,000 people and refuses to stop there.



Credit: Marcus Wiechmann



REFUGEE FUND PARTNER

MAYA VAKFI



Aiding refugee children in Turkey, One Family is collaborating with the Maya Vakfi Foundation to deliver its Mental Health and Psychosocial Support Programme. Designed to help children recover from trauma, the scheme comprises rehabilitation through education, music and dance therapy, plus socio-cultural events.

Maya Vakfi was first established in 2014, when 16-year-old Turkish student Emir Özsüer was shocked by news footage of young children fleeing Syria. His vision was to facilitate the mental, physical and academic development of children and young adults, enabling them to reach their full potential.

The thriving programme also aims to lower the risk of children suffering future harm or misconduct as a result of financial or emotional upheaval.

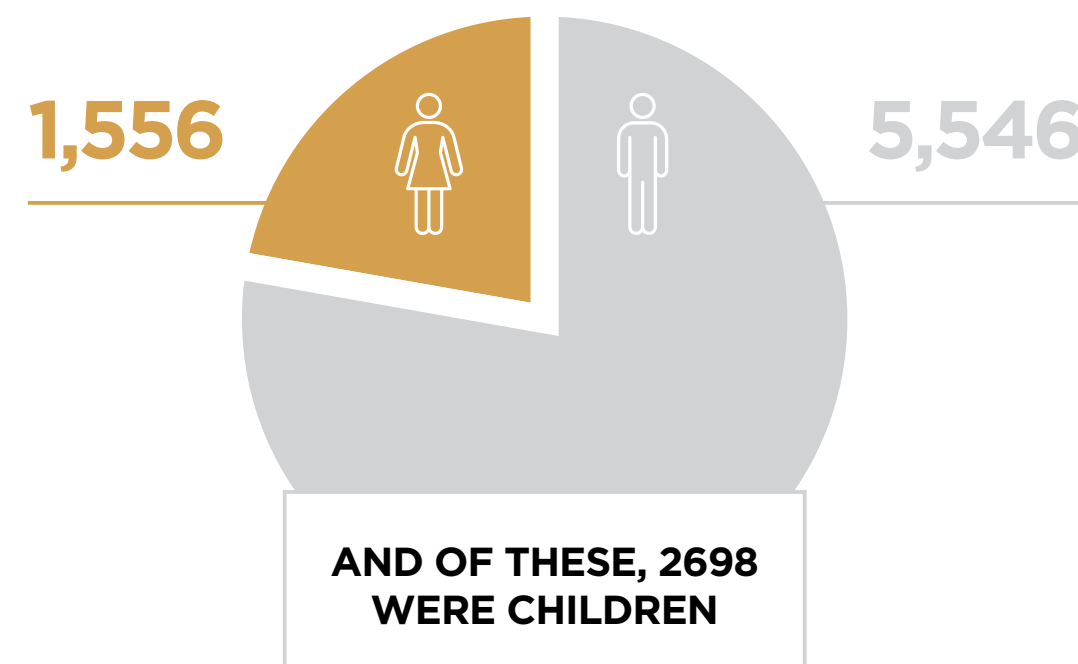


**AS OF MARCH 2022,
NSPPL HAS PROVIDED
A TOTAL OF:**

10,910 DEVICES TO
BENEFICIARIES

18,700 PROSTHETICS/ORTHOTICS
FITTING SESSIONS

19,206 PHYSIOTHERAPY
SESSIONS



CAMPAIGN
SPOTLIGHT

THE NATIONAL SYRIAN PROJECT FOR PROSTHETIC LIMBS



One Family is working with the National Syrian Project for Prosthetic Limbs (NSPPL) to provide prosthetics, as well as rehabilitation, for both children and adults. Founded by a team of Syrian doctors in response to the conflict's horrifying scale of injuries, the NSPPL has two centres in Syria and one in Turkey, along with a mobile clinic.

Each person arriving at one of the centres is assessed within 48 hours and placed on a waiting list. Once measurements are taken, it takes a week to produce a strong, lightweight, and flexible prosthetic, which is in line with international standards. After a limb is tested and casting is complete, subsequent rehabilitation includes psychological physiotherapy, social care, and gait-training, which encourages patients to develop natural limb movement. For children, however, a replacement limb is required every six months until their growth is complete.



04

OUR EVENTS

One Family is driven by its extensive event portfolio which highlights the rich and diverse experiences of their vast and essential network - truly reflecting the global one family the organisation is so dedicated to serving.

Each event is specifically tailored to a carefully selected cause, sector and/or occasion.

One Family events allow their guests the opportunity to network and connect with their exclusive network of supporters, ambassadors and philanthropists - many of whom are leading in their respective fields across the entertainment, business, political, arts and sports sectors.

IFTAR AT THE DORCHESTER



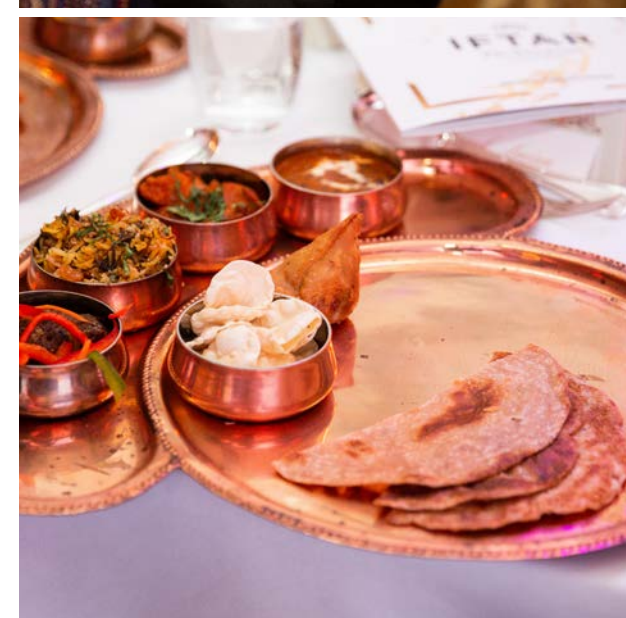
SUPPORTING: REFUGEE FUND

In April 2022, following the ramifications of the COVID-19 pandemic, which led to the disturbance of our event roster, we reinstated our events with our annual flagship Iftar. Inaugurated by the Mayor of London, Sadiq Khan, at London's 5* luxury hotel – The Dorchester – our star-studded, black-tie Iftar raised critical funds for our Refugee Fund, particularly our refugee fund partner: the National Syrian Project for Prosthetic Limbs (NSPPL).

The evening saw the launch of our Pledge 1000 campaign on the night – cementing our commitment to raise funds for 1,000 prosthetics. One Family ambassadors, Paralympic athlete Richard Whitehead MBE and singer/songwriter, Maher Zain, committed to raising funds through the Live to Give: Pledge 1000 challenge.

Guests were treated to a four-course extravaganza courtesy of Executive Chef, Mario Perera, including an exclusively designed iftar canape tray. The evening's programme began with a recitation of Quran by Qari Arben Emini, from the UAE, who also led the call to prayer to mark the opening of the fast.

BBC Premier League presenter, Manish Bhasin, who was the MC for the evening, welcomed on stage guest performer Soumik Datta – virtuoso player of the 19-stringed, fretless sarod and co-founder of the award-winning creative hub, Soumik Datta Arts (SDA). Guests were also treated to a hilarious set by award-winning South African comedian and stand-up star, Loyiso Gola, followed by an impromptu set by comedian Paul Chowdhry, who was in attendance as a guest. Renowned auctioneer and Channel Five presenter Jonny Gould hosted the evening's auction, raising thousands of pounds for the NSPPL.



“One of the joys of living in one of the greatest cities in the world is our diversity, which is our strength. Tonight, Jews, Sikhs, Muslims, Hindus, and those without any religious affiliation have gathered for a common cause and that’s a wonderful thing.”

SADIQ KHAN
MAYOR OF LONDON



RUN WITH RICH

SUPPORTING:
RICHARD WHITEHEAD FOUNDATION

Supporting One Family ambassador, Paralympian Richard Whitehead MBE, One Family joined efforts with the Richard Whitehead Foundation to support the launch of 'Run with Rich' – an annual event raising funds to help those with disabilities achieve a life without limits.



One Family took a delegation of friends, supporters and fellow sporting champions from London to Nottingham to compete in the 'Run with Rich' programme, raising critical funds to help realise disabled people's ambitions through sport.



INVESTORS' CIRCLE

SUPPORTING:
ANTI-TRAFFICKING FUND

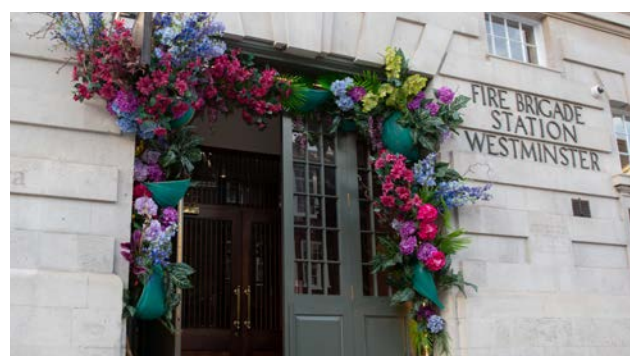
The launch of our Investors' Circle last year brought together our closest network of supporters for a series of private events and opportunities throughout the year, providing added value and structure for the support and continued commitment to One Family that you have demonstrated.

Ahead of Diwali at The Dorchester, we were thrilled to host guest of honour – Anuradha Koirala – at the October Investors' Circle.



Renowned Michelin-star chef, Atul Kochhar, hosted an intimate gathering of One Family's Investors' Circle at Indian fine-dining restaurant 'Mathura'.

This unique evening provided an opportunity for One Family's legacy and new supporters to meet, network and hear first-hand from Anuradha Koirala – founder of Maiti Nepal, One Family's anti-trafficking fund partner – about the critical developments the foundation has made through their continued support.



"I am thrilled that One Family has provided an opportunity for us to all gather this evening and renew our collective pledge to support, uphold, celebrate and strengthen womankind. We could not do the critical work of supporting the girls and women at Maiti Nepal without your support."

ANURADHA KOIRALA
FOUNDER, MAITI NEPAL



DIWALI AT THE DORCHESTER



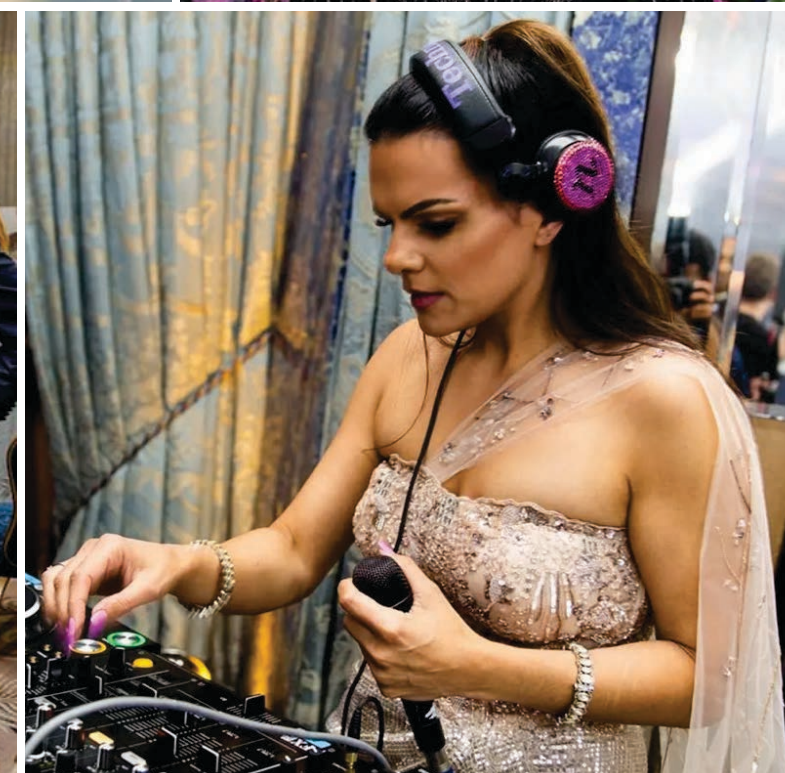
SUPPORTING: ANTI-TRAFFICKING FUND

This year, One Family was thrilled to relaunch our flagship events at The Dorchester. Starting with Iftar in April, we returned to The Dorchester in October to celebrate the festival of lights with Diwali at The Dorchester.

Featuring guest of honour – the founder of Maiti Nepal, Anuradha Koirala – the spectacular evening provided the perfect foundation to launch One Family's 'Live to Give' Himalayan trek, raising critical funds for our anti-trafficking fund partner Maiti Nepal.

Co-hosted by actress Nina Wadia OBE and comedian Paul Chowdhry, the evening brought together One Family's extensive network for a night of celebration and reflection, with a key highlight being the scale of pledges for the 'Live to Give' trek in support of Maiti Nepal.

Performances on the night included The Leo Green Experience and an exclusive performance of the viral Hybrid Bharatham by Usha Jey, featuring MithuxJanu.



ENCHANTED WINTER BALL

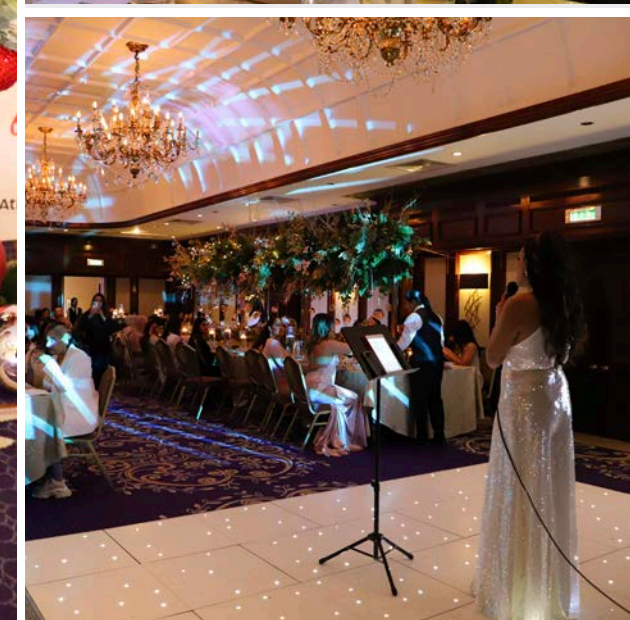
SUPPORTING:
ANTI-TRAFFICKING FUND

This year saw us One Family add another flagship event to the roster with the winter special: 'Enchanted Winter Ball'.

A specially curated, ladies-only evening, December's 'Enchanted Winter Ball' brought together the brilliant women in One Family's extensive network for a festive evening, supporting our anti-trafficking fund partner, Maiti Nepal.



Hosted at the beautiful Taj Hotel London, featuring DJ Neev Spencer, the evening saw this exclusively women-centred space transform into a haven of sisterhood, support and solidarity to the critical work of Maiti Nepal as it works tirelessly to prevent the trafficking of women across the Nepal-India border.



LEGENDS OF SPORT

SUPPORTING: SPORT FOR CAUSE

In February, One Family launched its 'Legends of Sport: The Series' – celebrating the significant contribution of sporting legends to both the game of football, as well as communities across the country in which they are revered.

Delivered in an exclusive sit-down, interview format – filmed at the QT Bar, housed in the luxury Covent Garden Middle Eight Hotel – the series invites sporting legends to share their memories, reflections and anecdotes on their football career with a live audience, while simultaneously raising essential funds for causes that are close to their hearts.

Hosted by BBC Premier League presenter, Manish Bhasin, each of our Legends of Sport events will be recorded in high definition to create an exclusive podcast series, to be distributed on all major platforms for maximum engagement across our extensive network. Given the

Legends OF SPORT SERIES

expansive combined following of our sporting legends, this bespoke content brings unlimited value to our causes, venue and partners.

As pillars of the community, our sporting legends are driven by impacting powerful change through causes that are close to their hearts. One Family's network of key stakeholders within positions of influence – from politicians to policy-makers – are integral to changing the landscape for these essential causes.

Our sporting legends are community leaders, thus the Legends of Sports series acts as a bridge: bringing changemakers and change-leaders together to celebrate our diverse and dynamic communities and work towards impacting positive change, as one family.

We kicked off the series with a man often referred to as "one of the greatest English players of all time": John Barnes MBE.



"I'm really thrilled to host this exciting new series. Beyond the wisdom they have to impart, many of these players were the cornerstones of the game for so long. Their voices are essential today when we're mapping out the future of football and how it continues to impact our society."

MANISH BHASIN
BBC SPORTS PRESENTER





RESHMIN CHOWDHURY
SPORTS PRESENTER

“I am so pleased to be a One Family ambassador. I believe it is an organisation which will continue to have a positive impact and change many lives in the years to come.”

05

OUR NEWEST AMBASSADORS

OUR NEWEST AMBASSADORS

We believe in harnessing the power of our vast network to seek out like-minded individuals, who are committed to active, mobilised work where humanitarian intervention is concerned. We're delighted to share our newest ambassadors, who are all working tirelessly in their respective fields to impact long-term, meaningful change.



**JASSA
AHLUWALIA**
ACTOR & WRITER

“One Family could not be more aptly named. Their work is grounded in selfless love and delivered with the utmost care. My first experience of Nepal was as a tourist in 2022 and the divide between locals and foreigners felt stark. Returning with One Family in 2023, I felt no such separation. I felt at home. And I saw how that sense of belonging, safety and joy is felt by every person their work touches. One Family don't simply provide support, they inspire hope.”



**AJ
KING**
KISS FM DJ

“I’m thrilled to be joining the One Family team as an ambassador. Having been on the ground, visiting some of their projects, I’ve seen first-hand the heart, soul and energy it takes to make these operations successful. I’m ready to be a part of this very rewarding journey.”



**FABRICE
MUAMBA**
FORMER FOOTBALLER

“I am honoured to be joining One Family as their newest ambassador. I’m passionate about making a difference, and One Family is the perfect place to start initiating a lot of the ideas I have.”



One
FAMILY

06

ACCOUNTS & FINANCIAL REVIEW

WWW.ONEFAMILY.ORG.UK

ONE FAMILY GLOBAL

TRUSTEES' ANNUAL REPORT

30 APRIL 2023

The trustee presents their report with the unaudited financial statements of the charity for the period ended 30 April 2023.

Reference and Administrative Details
Charity No. 1119989

Trustee

The following trustee served during the year:
E. Director

Accountants

S.Asghar & Co
85 Station Road, Harrow
London HA2 7SW

Objectives and Activities

A larger charity must provide an explanation of its aims, including details of the issues it seeks to tackle and the changes or differences it seeks to make through its activities...

A larger charity must provide an explanation how the achievement of its aims will further its legal purposes... A larger charity must provide an explanation of its strategies for achieving its stated aims and objectives...

A larger charity must provide an explanation of its criteria or measures it uses to assess success in the reporting period...

A larger charity should provide a more detailed explanation of its short-term and long-term aims and objectives.

Achievements and Performance

A larger charity must review its charitable activities undertaken, explaining performance achieved against objectives set ...

A larger charity must include an explanation when material fundraising activities are undertaken, details of the performance achieved against fundraising objectives set.

A larger charity must provide an explanation when material investments are held, details of investment performance achieved against objectives set ...

A larger charity must provide an explanation of any material expenditure occurred to raise income in the future...

A larger charity must provide commentary on those significant positive and negative factors within and outside the charity's control which are relevant to the achievement of its objectives.

Plans for Future Periods

A larger charity must provide a summary of the charity's plans for the future including its aims and objectives and details of any plans to achieve them ...

A larger charity's report should explain the trustees perspective of the future direction of the charity...

The trustee is responsible for keeping proper accounting records that disclose with reasonable accuracy at any time the financial position of the charity and to enable them to ensure that the financial statements comply with the Charities Act 2011, the applicable Charities (Accounts and Reports) Regulations, and the provisions of the Trust deed. The Trustee is also responsible for safeguarding the assets of the charity and hence taking reasonable steps for the prevention and detection of fraud and other irregularities.

Signed:-



Trustee

12th August 2024

ONE FAMILY GLOBAL

INDEPENDENT EXAMINER'S REPORT

30 APRIL 2023

Independent Examiner's Report to the trustee of One Family Global

I report to the trustees on my examination of the financial statements of One Family Global for the period ended 30 April 2023.

Responsibilities and basis of report

As the charity's trustee you are responsible for the preparation of the financial statements in accordance with the requirements of the Charities Act 2011 ('the Act').

I report in respect of my examination of the charity's financial statements carried out under section 145 of the 2011 Act and in carrying out my examination I have followed all the applicable Directions given by the Charity Commission under section 145(5)(b) of the Act.

Independent examiner's statement

As the charity's gross income exceeded £250,000 your examiner must be a member of a body listed in section 145 of the 2011 Act. I confirm that I am qualified to undertake the examination by being a qualified member of .

I have completed my examination. I can confirm that no material matters have come to my attention in connection with the examination giving me cause to believe that in any material respect:

- the accounting records were not kept in respect of the charity as required by section 130 of the Act; or
- the financial statements do not accord with those records; or
- the financial statements do not comply with the applicable requirements concerning the form and content of financial statements set out in the Charities (Accounts and Reports) Regulations 2008 other than any requirement that the financial statements give a 'true and fair' view which is not a matter considered as part of an independent examination.

I have no concerns and have come across no other matters in connection with the examination to which attention should be drawn in this report in order to enable a proper understanding of the financial statements to be reached.

Signed:-



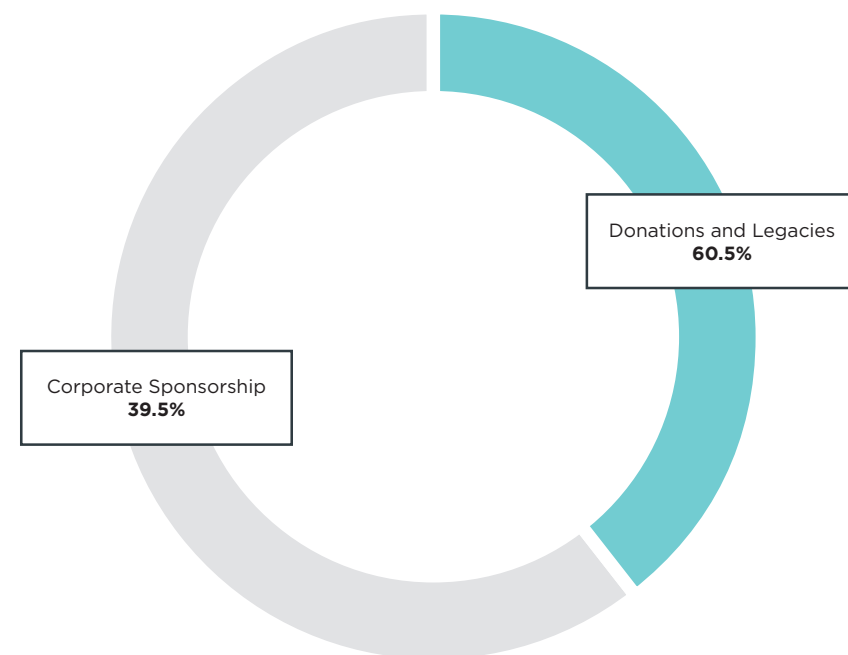
S.Asghar & Co

Chartered Accounts & Registered Auditors

85 Station Road Harrow
London HA2 7SW

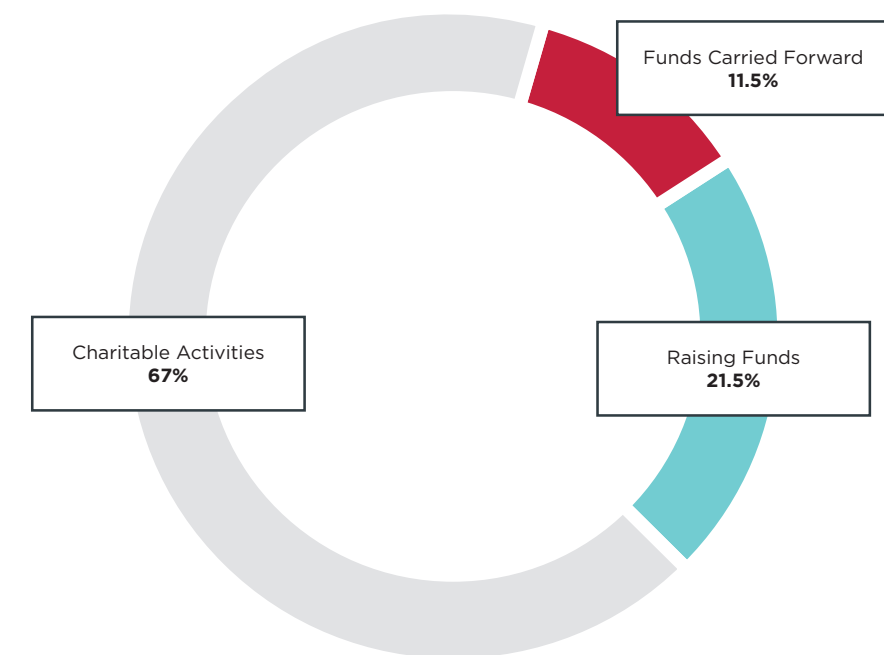
12th August 2024

INCOME AND EXPENDITURE



Income

One Family's income is broadly split into two main source areas: Firstly, Corporate Sponsorship, which provides just over half of our income. Secondly, the remaining income comes from Donation and Legacies. The Corporate Sponsorship comprises private donations from a generous One Family benefactor, which covers key operational costs such as salaries, fees and office costs, as well as generating further income. This sponsorship is vitally important as it enables us to use the funds we raise to directly benefit our chosen causes. Meanwhile, our income from Donation and Legacies is generated from partnerships, our supporters, fundraising activities and the private events that we hold.



Expenditure

Our expenditure is split three ways, with Charitable Activities accounting for almost half of our costs. This predominantly comprises the money we distribute to those we support via our Anti-Trafficking and Refugee Funds. Occasionally, funds also go to other worthwhile charitable projects that fall under One Family's wider remit, or where urgent need is established. Secondly, the costs associated with Raising Funds are those which are accrued in the process of us holding events, running campaigns and raising awareness, as well as other raw costs which are not related to day-to-day operations. Finally, our Funds Carried Forward includes any unspent monies raised during the annual accounting timeframe which subsequently roll over to the next period.

Statement of Financial Activities for the year ended 30 April 2023

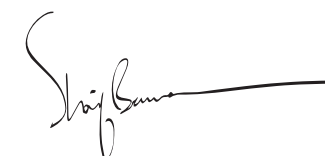
	Notes	Unrestricted Funds	Total Funds	Total Funds
		2023	2023	2022
		£	£	£
Income and endowments				
Donations and legacies	3	423,845	423,845	230,068
Total income		423,845	423,845	230,068
Expenditure on:				
Raising funds	4	84,613	84,613	28,526
Charitable activities	5	292,326	292,326	172,204
Other	6	43,288	43,288	33,265
Total		420,227	420,227	233,995
Net gains on investments		-	-	-
Net (expenditure)/income	7	3,618	3,618	(3,927)
Transfers between funds		-	-	-
Net (expenditure)/income before other gains/(losses)		3,618	3,618	(3,927)
Other gains and losses				
Net movement in funds		3,618	3,618	(3,927)
Reconciliation of funds:				
Total funds brought forward		13,627	13,627	17,554
Total funds carried forward		17,245	17,245	13,627

Balance Sheet at 30 April 2023

Charity No. 1119989	Notes	2023	2022
		£	£
Fixed assets			
Tangible assets	9	1,456	776
		1,456	776
Current assets			
Cash at bank and in hand		18,759	15,068
		18,759	15,068
Creditors: Amount falling due within one year	10	(2,970)	(2,217)
Net current assets		15,789	12,851
Total assets less current liabilities		17,245	13,627
Net assets excluding pension asset or liability		17,245	13,627
Total net assets		17,245	13,627
The funds of the charity			
	Notes	2022	2021
		£	£
Restricted funds	11		
Unrestricted funds	11		
General funds		17,245	13,627
		17,245	13,627
Reserves	11		
Total funds		17,245	13,627

Approved by the trustees on 30 April 2023

And signed on their behalf by:



Mr S Banna

E. Director
Trustee
12th August 2024

1 Accounting policies

Basis of preparation

The financial statements have been prepared in accordance with Statement of Recommended Practice: Accounting and Reporting by Charities preparing their accounts in accordance with the Financial Reporting Standard applicable in the UK and Republic of Ireland (FRS 102) issued on 16 July 2014 and the Financial Reporting Standard applicable in the United Kingdom and Republic of Ireland (FRS 102) and the Charities Act 2011.

Change in basis of accounting or to previous accounts

There has been no change to the accounting policies (valuation rules and method of accounting) since last year and no changes have been made to accounts for previous years.

Fund accounting

Unrestricted funds

These are available for use at the discretion of the trustees in furtherance of the general objects of the charity.

Designated funds

These are unrestricted funds earmarked by the trustees for particular purposes.

Revaluation funds

These are unrestricted funds which include a revaluation reserve representing the restatement of investment assets at their market values.

Restricted funds

These are available for use subject to restrictions imposed by the donor or through terms of an appeal.

Income

Recognition of income

Income is included in the Statement of Financial Activities (SoFA) when the charity becomes entitled to, and virtually certain to receive, the income and the amount of the income can be measured with sufficient reliability.

Income with related expenditure

Where income has related expenditure the income and related expenditure is reported gross in the SoFA.

Donations and legacies

Voluntary income received by way of grants, donations and gifts is included in the the SoFA when receivable and only when the Charity has unconditional entitlement to the income.

Tax reclaims on donations and gifts

Income from tax reclaims is included in the SoFA at the same time as the gift/donation to which it relates.

Donated services and facilities

These are only included in income (with an equivalent amount in expenditure) where the benefit to the Charity is reasonably quantifiable, measurable and material.

Volunteer help

The value of any volunteer help received is not included in the accounts.

Investment income

This is included in the accounts when receivable.

Gains/(losses) on revaluation of fixed assets

This includes any gain or loss resulting from revaluing investments to market value at the end of the year.

Gains/(losses) on investment assets

This includes any gain or loss on the sale of investments.

Expenditure

Recognition of expenditure

Expenditure is recognised on an accruals basis. Expenditure includes any VAT which cannot be fully recovered, and is reported as part of the expenditure to which it relates.

Expenditure on raising funds

These comprise the costs associated with attracting voluntary income, fundraising trading costs and investment management costs.

Expenditure on charitable activities

These comprise the costs incurred by the Charity in the delivery of its activities and services in the furtherance of its objects, including the making of grants and governance costs.

Grants payable

All grant expenditure is accounted for on an actual paid basis plus an accrual for grants that have been approved by the trustees at the end of the year but not yet paid.

Governance costs

These include those costs associated with meeting the constitutional and statutory requirements of the Charity, including any audit/independent examination fees, costs linked to the strategic management of the Charity, together with a share of other administration costs.

Other expenditure

These are support costs not allocated to a particular activity.

Taxation

The charity is exempt from tax on its charitable activities.

Freehold investment property

Investment properties are measured initially at cost and subsequently at fair value at each balance sheet date and are not depreciated. All gains or losses are taken to the Statement of Financial Activities as they arise.

Stocks

Stock is included at the lower of cost or net realisable value. Donated items of stock are recognised at fair value which is the amount the charity would have been willing to pay for the items on the open market.

Trade and other debtors

Trade and other debtors are recognised at the settlement amount due after any trade discount offered. Prepayments are valued at the amount prepaid net of any trade discounts due.

Cash and cash equivalents

Cash and cash equivalents comprise cash at bank and on hand, demand deposits with banks and other short-term highly liquid investments with original maturities of three months or less and bank overdrafts. In the statement of financial position, bank overdrafts are shown within borrowings or current liabilities. In the Statement of Cash Flows, cash and cash equivalents are shown net of bank overdrafts that are repayable on demand and form an integral part of the company's cash management.

Trade and other creditors

Short term creditors are measured at the transaction price. Other creditors and provisions are recognised where the charity has a present obligation resulting from a past event that will probably result in the transfer of funds to a third party and the amount

due to settle the obligation can be measured or estimated reliably. Creditors and provisions are normally recognised at their settlement amount after allowing for any trade discounts due.

Research and development

Expenditure on research and development is written off in the year in which it is incurred.

Foreign currencies

Monetary assets and liabilities denominated in currencies other than the functional currency of the charity are translated at the rates of exchange prevailing at the end of the reporting period.

Transactions in currencies other than the functional currency of the charity are recorded at the rate of exchange on the date that the transaction occurred.

All exchange differences are taken into account in arriving at net income/expenditure.

Leased assets

Where the charity enters into a lease which entails taking substantially all the risks and rewards of ownership of an asset, the lease is treated as a finance lease.

Leases which do not transfer substantially all the risks and rewards of ownership to charity are classified as operating leases.

Assets held under finance leases are initially recognised as assets of the charity at their fair value at the inception of the lease or, if lower, at the present value of the minimum lease payments. The corresponding liability to the lessor is included in the balance sheet date as a finance lease obligation. Lease payments are apportioned between finance expenses and reduction of the lease obligation so as to achieve a constant rate of interest on the remaining balance of the liability. Finance expenses are recognised immediately, unless they are directly attributable to qualifying assets, in which case they are capitalised in accordance with the charity's policy on borrowing costs.

Assets held under finance leases are depreciated in the same way as owned assets.

Operating lease payments are recognised as an expense on a straight-line basis over the lease term. In the event that lease incentives are received to enter into operating leases, such incentives are recognised as a liability.

The aggregate benefit of incentives is recognised as a reduction of rental expense on a straight-line basis.

Pension costs

The charity operates a defined contribution plan for its employees. A defined contribution plan is a pension plan under which the charity pays fixed contributions into a separate entity. Once the contributions have been paid the charity has no further payments obligations. The contributions are recognised as expenses

when they fall due. Amounts not paid are shown in accruals in the balance sheet. The assets of the plan are held separately from the charity in independently administered funds.

Receipt of donated goods, facilities and services

All donated goods, facilities and services received are recognised within incoming resources and expenditure at an estimate of the value to the charity.

2 Statement of Financial Activities - prior year

	Unrestricted Funds	Total Funds
	2022	2022
	£	£
Income and endowments		
Donations and legacies	230,068	230,068
Total income	230,068	230,068
Expenditure on:		
Raising funds	28,526	28,526
Charitable activities	172,204	172,204
Other	33,265	33,265
Total	233,995	233,995
Net income	(3,927)	(3,927)
Net income before other gains/(losses)	(3,927)	(3,927)
Other gains and losses		
Net movement in funds	(3,927)	(3,927)
Reconciliation of funds:		
Total funds brought forward	17,554	17,554
Total funds carried forward	13,627	13,627

3 Income from donations and legacies

	Unrestricted	Total 2023	Total 2022
	£	£	£
Donations	423,845	423,845	230,068
	423,845	423,845	230,068

4 Expenditure on raising funds

	Unrestricted	Total 2023	Total 2022
	£	£	£
Fundraising trading costs	84,613	84,613	28,526
	84,613	84,613	28,526

5 Expenditure on charitable activities

	Unrestricted	Total 2023	Total 2022
	£	£	£
Expenditure on charitable activities	292,326	292,326	172,204
Governance costs	292,326	292,326	172,204

6 Other expenditure

	Unrestricted	Total 2023	Total 2022
	£	£	£
Motor and travel costs	6,522	6,522	5,468
Premises costs	13,800	13,800	13,800
Amortisation, depreciation, impairment, profit/loss on disposal of fixed assets	320	320	-
General administrative costs	20,166	20,166	12,197
Legal and professional costs	2,480	2,480	1,800
	43,288	43,288	33,265

7 Net income/(expenditure) before transfers

	2023	2022
	£	£
This is stated after charging:		
Depreciation of owned fixed assets	320	-

8 Staff costs

No employee received emoluments in excess of £60,000.

9 Tangible fixed assets

	£	£
Cost or revaluation		
At 1 April 2022	776	776
Additions	1,000	1,000
At 30 April 2023	1,776	1,776
Depreciation and impairment		
Depreciation charge for the year	320	320
At 30 April 2023	320	320
Net book values		
At 30 April 2023	1,456	1,456
At 31 March 2022	776	776

10 Creditors

	2023	2022
Amounts falling due within one year	£	£
Accruals	2,970	2,217
	2,970	2,217

11 Movement in funds

	At 1 April 2022	Incoming resources (including other gains/losses)	Resources expended	At 30 April 2023
	£	£		£
Restricted funds:				
Unrestricted funds:				
General funds	13,627	423,845	(420,227)	17,245
Total funds	13,627	423,845	(420,227)	17,245

12 Analysis of net assets between funds

	Unrestricted funds	Total
	£	£
Fixed assets	1,456	1,456
Net current assets	15,789	15,789
	17,245	17,245

13 Reconciliation of net debt

	At 1 April 2022	Cash flows	At 30 April 2023
	£	£	£
Cash and cash equivalents	15,068	3,691	18,759
	15,068	3,691	18,759
Net debt	15,068	3,691	18,759

Statement of Cash flows for the year ended 30 April 2023

	2023	2022
	£	£
Cash flows from operating activities		
Net income/(expenditure) per Statement of Financial Activities	3,618	(3,927)
Adjustments for:		
Depreciation of property, plant and equipment	320	-
Increase/(Decrease) in trade and other payables	753	(5,440)
Net cash provided by/(used in) operating activities	4,691	(9,367)
Adjustments for:		
Payments for property, plant and equipment	(1,000)	-
Net cash used in investing activities	(1,000)	-
Net cash from financing activities	-	-
Net increase/(decrease) in cash and cash equivalents	3,691	(9,367)
Cash and cash equivalents at the beginning of the period	15,068	22,218
Cash and cash equivalents at the end of the period	18,759	12,851
Components of cash and cash equivalents		
Cash and bank balances	18,759	15,068
	18,759	15,068

Detailed Statement of Financial Activities for the period ended 30 April 2023

	Unrestricted Funds	Total Funds	Total Funds
	2023	2023	2022
	£	£	£
Income and endowments from:	-	-	1
Donations and legacies	423,845	423,845	230,068
	423,845	423,845	230,068
Total income and endowments	423,845	423,845	230,068
Expenditure on:			
Costs of other trading activities	84,613	84,613	28,526
	84,613	84,613	28,526
Total of expenditure on raising funds	84,613	84,613	28,526
Charitable activities	292,326	292,326	172,204
	292,326	292,326	172,204
Total of expenditure on charitable activities	292,326	292,326	172,204
Motor and travel costs			
Travel and subsistence	6,522	6,522	5,468
	6,522	6,522	5,468
Premises costs			
Rent	13,800	13,800	13,800
	13,800	13,800	13,800
General administrative costs, including depreciation and amortisation			
Depreciation of	320	320	-
Advertising & PR	3,950	3,950	3,389
Bank charges	1,943	1,943	158
Software, IT support and related cosst	10,595	10,595	7,500
Stationery and printing	2,125	2,125	269
Subscriptions	417	417	180
Sundry expenses	1,136	1,136	701
	20,486	20,486	12,197
	Unrestricted Funds	Total Funds	Total Funds

Legal and professional costs

Accountancy and bookkeeping

2023	2023	2022
£	£	£
2,480	2,480	1,800
2,480	2,480	1,800

Total of expenditure of other costs

Total expenditure

Net gains on investments

2023	2023	2022
£	£	£
-	-	-

Net (expenditure)/income

Net (expenditure)/income before other gains/(losses)

Other Gains

Net movement in funds

2023	2023	2022
£	£	£
3,618	3,618	(3,927)
3,618	3,618	(3,927)
-	-	-
3,618	3,618	(3,927)

Reconciliation of funds:

Total funds brought forward

Total funds carried forward

2023	2023	2022
£	£	£
13,627	13,627	17,554
17,245	17,245	13,627



ADMINISTRATIVE DETAILS

Chairman, One Family Global

Sharif Banna MBE

Trustees, One Family Global

S. Banna (Chair of Trustees)
F. Khatun
H. A. Humayra

UK Charity Registration Number

One Family Global 1119989 (England & Wales)

UK Headquarters & Registered Office

One Family Global
Plexal Innovation Centre
Queen Elizabeth Olympic Park
14 East Bay Lane
London
E15 2GW

Auditor (UK)

S.Asghar & Co
Chartered Certified Accountants
& Registered Auditors
85 Station Road
Harrow
Middlesex
HA2 7SW

Bankers (UK)

HSBC Bank plc
47 Market Street
Bradford
West Yorkshire
BD1 1LW

Solicitors (UK)

Saracens Solicitors
Strand Bridge House
140 Strand
London
WC2R 1HH



WWW.ONEFAMILY.ORG.UK