

ONE FAMILY GLOBAL

ANNUAL REPORT & ACCOUNTS
2021 – 2022

“

“WE WILL NEVER PROSPER
UNLESS WE CARE ABOUT
THE WELLBEING OF OUR
COMMUNITIES. OUR CONCERNS
ABOUT OUR OWN LIVES MUST
INCLUDE THE CONCERNS,
WORRIES AND PAIN OF WIDER
SOCIETY. ONLY THEN WILL WE
UNDERSTAND COMPASSION AND
SOLIDARITY, AND THAT SHOULD
BE OUR MAIN RESPONSIBILITY
ON THIS EARTH”.

HANNAH WALLACE BOWMAN
SEA WATCH,
REFUGEE FUND PARTNER

”



IMAGE - CREDIT: CHRIS GRODOTZKI

CONTENTS

WHAT'S INSIDE

Annual Report

Section One

About One Family 4

Section Two

Foreword 6

Section Three

Our Funds 10

- Anti-Trafficking Fund
- Refugee Fund
- Emergency India Campaign
- Amir Khan Foundation

Section Four

Our Events 39

Section Five

Campaigns & Partnerships 45

Section Six

Accounts and Financial Review 57

Independent Examiner's Report 59

Our Income and Expenditure 60

Statement of Financial Activities 62

Balance Sheet 63

Income & Expenditure Account 67

Detailed analysis of income and expenditure 70

Administrative Details 73

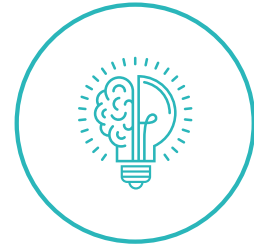


SECTION ONE

ABOUT US

One Family seeks to revolutionise the way we tackle the world's biggest issues — harnessing the power of technology and innovation to accelerate social change. Our global programmes and exclusive, cause-driven events are innovative, transformative and bring people together.

Since its inception, One Family has been instrumental in tackling human trafficking, supporting refugees, and building an extensive network of like-minded individuals, committed to supporting the world's most vulnerable through mobilised, active work.



**THOUGHT
LEADERS**



**PEOPLE
POWERED**



**TECH-
SOLUTION
LED**

SECTION TWO

FOREWORD

The ramifications of the global COVID-19 pandemic have continued to be felt this year across the board. The greatest emergencies have surfaced internationally, where the impact of the pandemic points to the glaring wealth and social welfare dichotomies that plague our world. The growing crisis in India is testament to this, with record numbers of cases and deaths recorded. With a population of over 1.4 billion, the second-most populous country in the world has seen COVID-19 cases skyrocket. With insufficient medical supplies and an already overwhelmed healthcare structure, the country was plunged into a state of emergency.

Having established our Emergency COVID-19 fund, we decided to partner with Mumbai-based NGO network Dasra and UK-based charity, and the Amir Khan Foundation, to identify five partner organisations on the ground to provide critical relief. The partner organisations – Swasti, SaveLIFE Foundation, Aajeevika Bureau, Swasth Foundation and Goonj – work across India's major regions, including Bangalore, Delhi, Gujarat, Maharashtra, and Mumbai. Through funds raised, we aimed to support delivery partners on the ground access oxygen concentrators for hospitals, fulfil testing communities for comorbidities and provide support to out-of-work migrant communities, and deliver food and healthcare where it was urgently required.

At home, the continuing impact of the pandemic is being felt differently. While our NHS and hospitals have been recovering, families are continuing to struggle with necessities such as food. Through One Family's incubation of the Amir Khan Foundation, we have been able to secure a partnership with FareShare UK – the country's largest food redistribution charity – resulting in almost 1 million people receiving food packages.

Meanwhile, our flagship events remain on hold this year due to continued restrictions on numbers. However, recognising the power of our network and the need for like-minded individuals to gather after a sustained period of crisis to feel motivated and inspired to continue their vast philanthropic endeavours, we have launched a new structure for our extensive network of supporters, now comprising of three key strands: our advisory circle, our ambassadors' circle, and our investors' circles. Now is the time to implement the learning from our COVID-induced reset: to move forward on a larger and more streamlined scale.

Thus, the launch of our Investors' Circle has already brought great opportunities with it: expanding our network to high net-worth donors and establishing key partnerships to further our causes.

While we continue to recover from the impact of the pandemic, we keep our mission at the forefront: to revolutionise the way we tackle the world's biggest issues through thought-leadership and a people-powered approach, which places the onus on us as a collective to mobilise and serve our communities whenever the opportunity presents itself.



Sharif Banna MBE
Chairman



“



AMBASSADOR
SPOTLIGHT

MUHAMMED FARIS
SYRIAN AVIATOR

“From afar, when the Earth was so small, I really felt in my heart I could make a big difference in the world. When you have seen the whole world through your window there is no us and them, no politics, just humanity.”

”



SECTION THREE

OUR FUNDS

A photograph showing a healthcare worker in a white gown and mask, seen from the back, attending to a patient. In the background, several other people are visible, some wearing masks. The scene appears to be outdoors or in a semi-outdoor setting with a pink wall and greenery in the background.

SCALABLE,
INNOVATIVE
& EFFECTIVE



The sheer complexity of tackling the world's biggest issues requires scalable, innovative and effective solutions. One Family has established a series of vital funds which serve as platforms for supporters, philanthropists, corporates and charitable foundations, allowing us to tackle problems via high-impact partners on the ground. These partners are carefully selected to meet criteria which ensures they have the capacity to grow, innovate and lead.

One Family offers two-fold support to each of our partners. Firstly, we provide funds to meet critical needs in communities, with a core focus on rescuing individuals from urgent situations and enabling rehabilitation. Secondly, we work closely with our partners to develop well-researched enterprise or tech-led solutions that deliver strong and scalable impact.



ANTI-TRAFFICKING FUND



REFUGEE FUND



EMERGENCY CARE FUND

OUR REACH

We partner with charities, funds and organisations across the world to ensure our global family remains connected, safe and retains access to fundamental necessities. Operating out of Europe, Asia, Africa and the Middle East, our funds have enabled us to serve communities all over the world. Our Anti-Trafficking fund has taken us to Nepal, our Refugee fund to Greece, Turkey and Syria, and our Emergency Care fund has taken us all over the UK and India.





ANTI-TRAFFICKING FUND

50M



**PEOPLE LIVE
IN MODERN-
DAY SLAVERY
WORLDWIDE
BECAUSE
OF HUMAN
TRAFFICKING**

83%

**OF WORKING NEPALI WOMEN,
HAVE LOST THEIR JOBS SINCE
2020, INCREASING THEIR RISK
OF BEING TRAFFICKED**



18,000

**WOMEN AND GIRLS
TRAFFICKED ACROSS
THE NEPAL-INDIA
BORDER EACH YEAR**





BACKGROUND

The journey from the Nepal border into India is one of the most lucrative slave-trafficking routes in the world today, with victims lured into the growing sex industry in Kathmandu Valley, as well as other countries such as Malaysia, China, the UAE and further afield.

Sexual servitude, prostitution, forced labour and organ harvesting are among the many forms of abuse that millions of women and young girls are subjected to in the trafficking trade in Nepal. Further contributing to the problem of women and girls going

missing every day, existing data on the trafficking trade in Nepal is unreliable and almost always incomplete. A lack of trusted information and statistics makes it impossible to know how high the number of victims really stands.

Those that do manage to escape are often left struggling with severe physical, mental and emotional scars, suffering with health issues such as HIV/AIDS and extreme malnutrition. In addition to this, victims are also experiencing mental health problems such as depression, anxiety and overwhelming cultural shame.





“

ATUL KOCHHAR
MICHELIN STAR CHEF

“It is an honour to be a One Family ambassador and merge my two greatest passions: food and philanthropy. Food for the body is not enough, we need to feed our souls too.”

”

OUR SOLUTION

One Family is working in close collaboration with our fund partner, Maiti Nepal, to continue to scale up the fight against human trafficking.

Maiti Nepal has spent nearly 30 years fighting human trafficking through comprehensive rehabilitation programmes promoting education, empowerment, health, and social inclusion, as well as rescue and prevention. Human rights activist, Anuradha Koirala, founded Maiti Nepal in 1993 and has fortified her fight for sisterhoods the world over by rescuing thousands of women and young girls from the early stages of trafficking, and preventing thousands of others from being successfully trafficked.

One Family's partnership with Maiti Nepal is built around three central pillars: prevention, rescue and rehabilitation.



PREVENTION

The first priority focuses on the prevention of trafficking and educating those at greatest risk of abuse and exploitation. This multifaceted approach involves specialist prevention homes which provide anti-trafficking skills and training for girls, as well as heightening awareness at community level through TV, radio and local workshops.



RESCUE

The second pillar is based around rescuing and reuniting victims with their families. Maiti Nepal's on-the-ground teams assist the police in tracking suspects and searching for the missing, while technological advances have led to the creation of a pioneering identification application at border points. For those who are freed, shelter and healthcare are routinely provided, and legal systems are in place to initiate criminal proceedings against perpetrators.



REHABILITATION

The third pillar focuses on safe accommodation and psychological support to help those preparing to reintegrate into society. With economic freedom at the heart of the project, training in livelihood skills also paves the way to financial independence. Medical aid is another lynchpin in the rehabilitation process and an in-house centre and hospice provide treatment and screening, plus much needed compassion and care.

SUCCESSFUL IMPACT

55,708

WOMEN AND GIRLS RESCUED



36,400

WOMEN AND GIRLS IN REHABILITATION



1,804

TRAFFICKERS CONVICTED





“

“I founded Maiti Nepal hoping to save just one life. To extend a hand of compassion, support and stability to those who have nothing to hold onto is the most powerful tool. I wanted to save lives, but Maiti Nepal and the women we have helped, have saved mine.”

ANURADHA KOIRALA
FOUNDER OF MAITI NEPAL

”

REFUGEE FUND





12 YEARS ON...

13M

SYRIANS HAVE BEEN
FORCIBLY DISPLACED

OVER

13K

CHILDREN HAVE
BEEN KILLED*

OVER

50%

OF THE COUNTRY IS
LIVING IN EXTREME
POVERTY (LESS
THAN \$1.90 A DAY)

*This figure is likely to be much higher in reality

One Family's Refugee Fund is working tirelessly with its partners on the ground to find sustainable solutions to the problems faced by refugees every day.

BACKGROUND

The Syrian crisis has created the largest refugee and displacement crisis of our time. With the conflict affecting millions of people and spilling into surrounding countries, it has claimed the lives of many Syrians and also exacted a heavy toll on hospitals, medical centres, schools, utilities and sanitation systems.

Those still in the country fight for survival every day, relying on humanitarian aid and a crippling lack of amenities. For those who

have been displaced, they have no guarantee of safety in neighbouring countries and are often forced to rely on illegal traffickers for passage to Europe. The journey is extremely dangerous, risking death and drowning as well as capture and deportation. While the refugee crisis surges and more people risk their lives in search of safety, there is still very little assistance provided to those who desperately need our help.



OUR SOLUTION

One Family has carefully selected three partner organisations to aid some of the most vulnerable people in Syria, and improve the plight of refugees.

Each partnership fulfils a specific role for each strand we focus on:



AMPUTEES

Our collaboration with The National Syrian Project for Prosthetic Limbs helps provide physical rehabilitation and life-saving prosthetics to survivors who have lost limbs due to the war.

MENTAL HEALTH

Our partnership with Maya Vakfi provides counselling for children suffering with their mental health, such as PTSD sustained as a result of war.



REFUGEE FUND PARTNER

SEA-WATCH

Sea Watch was established in 2014 by a group of volunteers who refused to stand by and watch people dying in the Mediterranean Sea. Sea Watch has a clear mandate: no life should be lost at sea and every single life saved through the initiative is a stand for humanity.

As a result of man-made borders and wars, thousands of people drown at sea every year trying to reach a safe harbour in the EU, many of them within sight of our shores and beaches. Through their work, they provide greater access to information,

thus drawing attention to the fate of refugees and migrants. They shine a light on the humanitarian crisis in the Mediterranean so that no one can look away.

The work of Sea Watch is not limited to search and rescue; they also work on raising greater awareness and information about the plight of refugees.

So far, Sea-Watch has successfully rescued over 35,000 people and refuses to stop there.



Credit: Marcus Wiechmann



REFUGEE FUND PARTNER

THE NATIONAL SYRIAN PROJECT FOR PROSTHETIC LIMBS



One Family is working with the National Syrian Project for Prosthetic Limbs (NSPPL) to provide prosthetic limbs for children, and rehabilitation.

Founded by a team of Syrian doctors in response to the conflict's horrifying scale of injuries, the NSPPL provides refugees who have lost limbs due to the war with prosthetics. NSPPL has two centres in Syria and one in Turkey, along with a mobile clinic.

Upon arrival at the clinic, each patient is assessed within 48 hours and placed on a waiting list. Once measurements are taken, it takes a week to produce a strong, lightweight and flexible prosthetic, which is in line with international standards.

After a limb is tested and casting is complete, subsequent rehabilitation includes psychological physiotherapy, social care and gait-training, which encourages children to develop natural limb movement. However, until their growth is complete, each child requires a replacement limb every six months.





“

MAHER ZAIN
SINGER/SONGWRITER

“One Family promotes compassion, kindness and love and I do the same with my music. That is why I am such a strong supporter of what One Family does.”

”

A man with short brown hair, wearing a black tuxedo and a black bow tie, is speaking into a silver microphone. He is holding the microphone with his right hand. The background is a blurred, ornate architectural structure with arches and decorative elements.

“

RICHARD WHITEHEAD, MBE
PARALYMPIC GOLD MEDALIST

“When you fail, you learn a lot about yourself and come back stronger. Life need not have limits. Having opportunities in life is important, but what defines you is what you do with that opportunity.”

”



REFUGEE FUND PARTNER

MAYA VAKFI

Aiding refugee children in Turkey, One Family is collaborating with the Maya Vakfi foundation to deliver its Mental Health and Psychosocial Support Programme. Designed to help children recover from trauma, the scheme comprises rehabilitation through education, music and dance therapy, plus socio-cultural events.

Maya Vakfi was first established in 2014, when 16-year-old Turkish student Emir Özsüer was shocked by news footage of young children fleeing Syria. His vision was to facilitate the mental, physical and academic development of children and young adults, enabling them to reach their full potential.

The thriving programme also aims to lower the risk of children suffering future harm as a result of financial or emotional upheaval.



EMERGENCY INDIA CAMPAIGN

Following the devastation spread to every corner of the globe due to Covid-19, One Family launched an emergency fundraising appeal for the dire situation in India. With a population of over 1.4 billion, the second-most populous country in the world saw COVID-19 cases skyrocket. With insufficient medical supplies and an already overwhelmed healthcare structure, the country was plunged into a state of emergency.

OVER

43M

CONFIRMED CASES

OVER

521K

DEATHS

IN 2021, ONE PERSON
WAS DYING EVERY

4

MINUTES IN
NEW DELHI





OUR RESPONSE

One Family partnered with Mumbai-based NGO network Dasra and UK-based charity, the Amir Khan Foundation, to identify five partner organisations on the ground, who worked tirelessly to provide critical relief. The partner organisations – Swasti, SaveLIFE Foundation, Aajeevika Bureau, Swasth Foundation and Goonj – work across India's major regions, including Bangalore, Delhi, Gujarat, Maharashtra and Mumbai. Together, they offer crucial support in the form of hospital oxygen concentrators for hospitals; testing communities for comorbidities; providing support to migrant communities; and delivering food and healthcare.

One
FAMILY

X

AK
FOUNDATION

X



Oxygen concentrators
for hospitals



Support to migrant
communities



Testing communities
for co-morbidities



Delivering food
and healthcare

**IN COLLABORATION WITH DASRA, THE AMIR KHAN FOUNDATION
AND OTHERS, THE CAMPAIGN DEPLOYED OVER**

\$3.1 MILLION TO 50 ORGANISATIONS

ON THE GROUND IN INDIA

WEST END STARS UNITE TO SUPPORT INDIA

One Family was delighted to receive support from West End performers from productions including Bend it Like Beckham, Everybody's Talking About Jamie, & Juliet, Aladdin, and Prince of Egypt, who came together to raise awareness for the Emergency India Fund.

The project, entitled 'Same Voices Unite', featured a heartfelt rendition of 'It Means Beautiful' featured in the West End hit musical Everybody's Talking About Jamie. The video was launched through various social media channels to help raise awareness around the devastation in India following the Covid-19 pandemic.



AMIR KHAN FOUNDATION

INCUBATION

Founded by two-time world boxing champion Amir Khan, the Amir Khan Foundation was incubated by One Family in February 2020 to lead on its restructure, rebranding and relaunch. The Amir Khan Foundation shares similar philanthropic values and is committed to changing lives for the better in the UK and internationally.

**“HAVING BEEN AN
AMBASSADOR FOR
ONE FAMILY FOR
MANY YEARS, I’M
LOOKING FORWARD
TO NOW WORKING
ALONGSIDE THE
TEAM TO HELP SERVE
MORE VULNERABLE
COMMUNITIES ACROSS
THE WORLD.”**

AMIR KHAN
WORLD CHAMPION BOXER



FOOD POVERTY: UK CAMPAIGN



It is estimated that 8.4 million people in the UK live in food poverty, while 3.6 million tonnes of food is wasted by the food industry every year. The Amir Khan Foundation selected FareShare UK, the UK's largest food redistribution charity fighting food poverty and waste, as its leading Food Poverty UK campaign partner.

The foundation's partnership with FareShare has seen almost 1 million people a week receive food support through its vast network of charity partners, 22 regional centres, and 11,000 frontline organisations, which are spread across 1,900 towns and cities across the UK.



LOTS FOR LIFE

Taking the partnership to the next level, the foundation launched a high-profile celebrity auction: 'Lots for Life'. Lots ranged from once in a lifetime experiences, to celebrity memorabilia. The top lot – donated by Swarovski artist San B – featured a portrait of Amir Khan entitled 'Olympic King', and was completed over 500 painstaking hours, featuring more than 40,000 Swarovski crystals.



“

ANURADHA KOIRALA

HUMAN RIGHTS ACTIVIST & FOUNDER, MAITI NEPAL

“Just imagine what would happen if your daughter was standing there. What would you do, how would you fight? So you have to join hands, you have to take each child as your daughter. Soon you will feel their sorrow, and then you will feel the strength that comes out of you to protect them.”

”

SECTION FIVE

OUR EVENTS

One Family is driven by its extensive event portfolio which highlights the rich and diverse experiences of their vast and essential network - truly reflecting the global one family the organisation is so dedicated to serving.

Each event is specifically tailored to a carefully selected cause, sector and/

or occasion. One Family events allow their guests the opportunity to network and connect with their exclusive network of supporters, ambassadors and philanthropists - many of whom are leading in their respective fields across the entertainment, business, political, arts and sports sectors.





EVENT
SPOTLIGHT

EURO 2020 FINAL: ENGLAND VS ITALY, A PRIVATE SCREENING

MIDDLE EIGHT HOTEL
LONDON

Hosted at 5-star London hotel, Middle Eight, One Family's UEFA Euro Finals screening was joined by sports journalist, Premier League commentator and One Family ambassador, Manish Bhasin, who engaged our guests in intimate conversation and exciting commentary of the match.

Despite England's loss, the atmosphere at the event was electric, with England legend John Barnes MBE offering commentary, insight and analysis on the game. Like a true sportsman, John lifted spirits by delivering an exclusive performance of his iconic 'World in Motion' rap. An exclusive auction was also held on the night, raising essential funds to aid our work.







EVENT
SPOTLIGHT

INVESTORS' CIRCLE

MATHURA
LONDON

This year, One Family was thrilled to launch their Investors' Circle, bringing together their closest network of supporters for a series of private events and opportunities throughout the year. The Investors' Circle provides added value and structure for the support and continued commitment that One Family supporters have demonstrated over the years. The launch of a unique roster of event experiences surrounding food, music, fashion, and sport aim to bring together and

celebrate the very best of the global family and its diverse, beautiful cultures.

The launch of the Investor's Circle saw Michelin-star chef, Atul Kochhar, join One Family as the charity's latest ambassador. Symbolically held at Kochhar's 'Mathura' restaurant in Westminster, London, guests were enthralled with a masterful culinary experience, merging the chef's two greatest passions: food and philanthropy.



“

RESHMIN CHOWDHURY
SPORTS PRESENTER

“I am so pleased to be a One Family ambassador. I believe it is an organisation which will continue to have a positive impact and change many lives in the years to come.”

”

SECTION FIVE

CAMPAIGNS & PARTNERSHIPS

As an organisation that greatly values the ability of technology and digital media to enhance and extend our work, One Family's campaigns are of paramount importance.

We also pride ourselves on a variety of partnerships with some of the most influential figures across a wide range of industries. Partnering with other events and individuals provides us with a vitally important and reciprocal platform, and this is an area we are keen to develop and expand in the future.

NEW ONE FAMILY PARTNERS



SEA WATCH

One Family is thrilled to be an official partner of Sea Watch. Born out of an initiative of volunteers who refused to stand on the side-lines and watch people dying in the Mediterranean, Sea-Watch began its operations in 2014. Sea-Watch is filling the gap of an institutionalised, comprehensive sea rescue with a clear mandate: no life should be lost at sea and every single life saved through their initiative is a success and a stand for humanity.



PAUL ROBINSON SOLICITORS

One Family secured a new partnership with Paul Robinson Solicitors (PRS) LLP in March 2022. As a family-first firm, PRS puts people at the heart of everything they do, thereby establishing an effortless synergy with One Family and its core objectives. As part of this new and exciting partnership, PRS will be providing pro-bono legal advice to further support the life-saving work carried out by the charity, both in the UK and internationally.

NEW ONE FAMILY AMBASSADORS

ATUL KOCHHAR

Double Michelin-starred chef, author and Indian fine-dining master, Atul Kochhar, joined One Family as an ambassador in March 2022. Chef Kochhar trained in India, leaving his role at The Oberoi Hotel Group in 1994, to move to the UK. He has since been at the forefront of the culinary industry for over 25 years, becoming the first chef to earn a Michelin star for Indian cuisine. Equally passionate about philanthropy, Chef Kochhar has closely followed the work of One Family and was keen to expand his philanthropic endeavours through our extensive network and work on the ground.



MUHAMMED FARIS

In November 2021, Syrian astronaut Muhammed Faris joined the team as one of its most recent ambassadors. In 1987, Muhammed changed the course of history by becoming the very first Arab astronaut to enter space. Muhammed is considered a national hero in Syria with roads, schools and airports named in his honour. Following the conflict in Syria, Muhammed's status as a refugee has encouraged him to raise awareness about the obstacles he overcame to follow his dreams, and thus felt passionate about joining One Family to support its Refugee Fund.



A photograph of Lindsay Lohan with long red hair, wearing a blue and white patterned dress with a ruffled collar. She is standing in front of a white backdrop with the 'One FAMILY' logo repeated. A white rectangular box is overlaid on the image, containing text about the #WeAreOneFamily campaign. At the bottom of the image, there is another white rectangular box containing the hashtag and the One FAMILY logo.

#WEAREONEFAMILY

As our inaugural campaign, #WeAreOneFamily has been the lynchpin of everything that One Family has done to date. Since its inception in 2017, the campaign has acted as an indicator of our presiding values and beliefs in humanity and the transformative powers of love and our wider global family. The campaign quickly sparked international support as major personalities and supporters spread the word, including Lindsay Lohan, Syrian peace activist Bana Alabed and actor Sanjeev Bhaskar. Ever since, #WeAreOneFamily has remained a guiding principle within all of our work, events, messaging and visits to our international partners.

#WeAreOneFamily

One
FAMILY



Nell McAndrew
Model



Jimmy Akingbola
Actor



Sharif Banna MBE
Chairman, One Family



Ching He Huang
TV Chef & Food Writer



Bana Alabed
Syrian Peace Activist



Anuradha Koirala
Human Rights Activist



Sanjeev Bhaskar OBE
Actor and Comedian



Nisha Aaliya
Actress



Beverley Knight
Singer

#WEAREONEFAMILY



Gillian Wright
Actress



Ding Junhui
Snooker Player



Cerys Matthews
Singer



Talvin Singh OBE
Music Producer & Composer



Hussain Manawer
Artist & Poet



Bana Alabed & Maher Zain
One Family Ambassadors



Baroness Sayeeda Warsi
Member of the House of Lords



Graham Souness
Ex-Football Player Liverpool F.C.



David Haye
Former World Boxing Champion



Paul Chowdhry
Comedian



Krishnan Guru-Murthy
Journalist & Presenter



Larissa Eddie
Vocalist & TV Judge



Roop Kumar Rathod, Sunali Rathod and Jaswinder Singh
Singers and Songwriters



Jay Shetty
Author & Speaker



Kulvinder Ghir
Actor & Comedian



Shahid Khan aka Naughty Boy
Music Producer



Tonia Buxton
TV Presenter



Sabyasachi Mukherji
Fashion Designer

#WEAREONEFAMILY



Dietmar Hamann
Ex-Football Player Liverpool F.C.



Sajeda and Mockbul Ali OBE
British Ambassador to the
Dominican Republic and the
Republic of Haiti



Anupam Kher
Actor



Amy Jackson
Actress & Model



Anthea Turner
TV Presenter



Neev Spencer
DJ & Presenter, KISS FM



Anita Rani
TV Presenter



Lizzie Cundy
TV Presenter & Columnist



Russell Kane
Comedian



Shila Iqbal
Actress



Karen Millen
Entrepreneur



Amy Christophers
Sports Presenter



Sita Nurhaliza Tarudin
Malaysian Singer



James Oliver Wheatley
Actor



**Meera Thakrar
and Nitin Ganatra**
Actor



Nikkita Chadha
Actress



Sadiq and Saadiya Khan
Mayor of London



San B & Kulwinder Shembi
Artist

#WEAREONEFAMILY



Meera Syal CBE
Actress, Comedian,
Playwright & Journalist



Jonny Gould
Auctioneer & Presenter



Jassa Ahluwalia
Actor



Chandrika Darbari
Singer & Songwriter



Rumena Begum
Blogger & Influencer



Gurinder Chadha
Film Director



Parveen Ashraf
TV Chef



Seema Jaswal
TV & Radio Presenter



Shalina and Michael Tobin OBE
Entrepreneurs

A man with dark hair, wearing a black tuxedo jacket, a white shirt, and a black bow tie, is speaking into a lapel microphone. He is standing in front of a blue and white background. The word "FAMILY" is visible in large white letters at the bottom of the image.

“

MANISH BHASIN
SPORTS PRESENTER

“One Family is committed to changing the world, one life at a time. I couldn’t think of a better approach to making this world a better place for all.”

”

FAMILY



AMBASSADOR
SPOTLIGHT

BANA ALABED

ACTIVIST & AUTHOR

13-year-old Bana is a Syrian peace campaigner from Aleppo, now living in Turkey. When Bana was just seven years old, she took to Twitter, with the help of her mother, to describe the horrors she and her family were experiencing in war-torn Syria and make a simple plea for peace. Her words touched the world and gave a voice to millions of innocent children. Bana's happy childhood was abruptly upended by civil war when she was only three years old. Over the next four years, she knew nothing but bombing, destruction, and fear. Her harrowing ordeal culminated in a brutal siege where she, her parents, and two younger brothers were trapped in Aleppo, with little access to food, water, medicine, or other necessities. Bana is now happy to be settling into a new school in Turkey and has since gone on to have multiple books published.



SECTION SIX

ACCOUNTS & FINANCIAL REVIEW

WWW.ONEFAMILY.ORG.UK



ONE FAMILY GLOBAL

INDEPENDENT EXAMINER'S REPORT

31 MARCH 2022

Independent Examiner's Report to the trustee of One Family Global

I report to the trustees on my examination of the financial statements of One Family Global for the year ended 31 March 2022 which comprise the Statement of Financial Activities, the Balance Sheet and the related notes.

Responsibilities and basis of report

As the charity's trustee you are responsible for the preparation of the financial statements in accordance with the requirements of the Charities Act 2011('the Act'). The trustee considers that an audit is not required for this year under the Charities Act 2011, s.144(2) (the 2011 Act) and that an independent examination is needed.

I report in respect of my examination of the charity's financial statements carried out under section 145 of the 2011 Act and in carrying out my examination I have followed all the applicable Directions given by the Charity Commission under section 145(5)(b) of the Act.

Independent examiner's statement

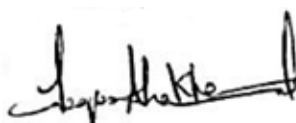
I have completed my examination. I can confirm that no material matters have come to my attention in connection with the examination giving me cause to believe that in, any material respect:

- the accounting records were not kept in respect of the charity as required by section 130 of the Act; or

- the financial statements do not accord with those records; or
- the financial statements do not comply with the applicable requirements concerning the form and content of the financial statements set out in the Charities (Accounts and Reports) Regulations 2008 other than any requirement that the financial statements give a 'true and fair' view which is not a matter considered as part of an independent examination.

I have no concerns and have come across no other matters in connection with the examination to which attention should be drawn in this report in order to enable a proper understanding of the financial statements to be reached.

Signed:-



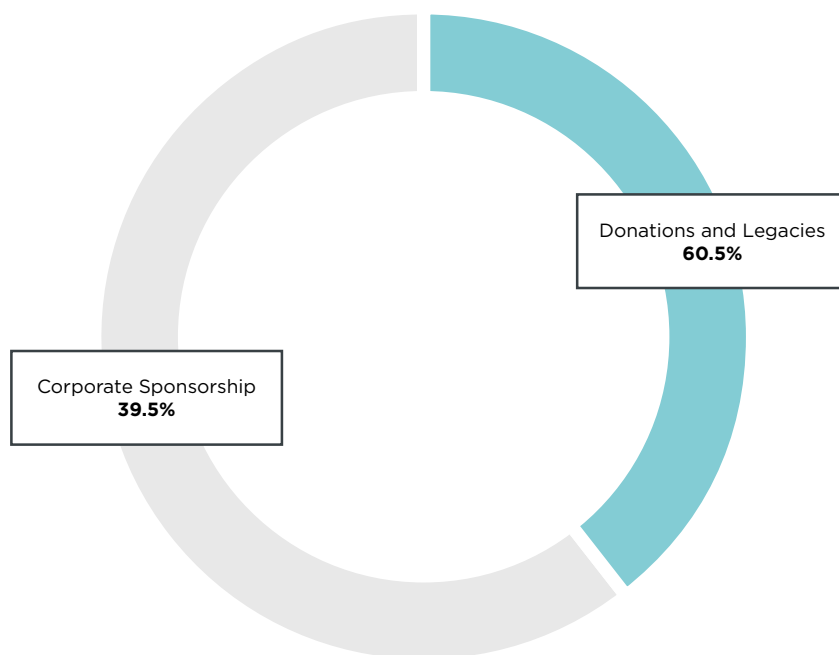
Waqas Imtiaz Khan (FCCA) -

Independent Examiner
S.Asghar & Co
Chartered Certified Accountants

85 Station Road Harrow
London HA2 7SW

31 January 2023

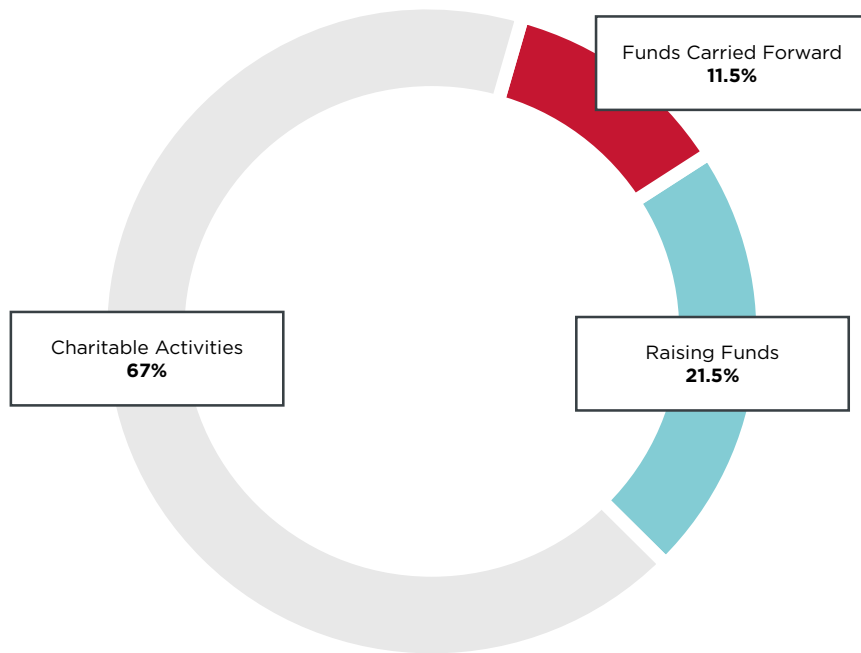
INCOME AND EXPENDITURE



Income

One Family's income is broadly split into two main source areas: Firstly, Corporate Sponsorship, which provides just over half of our income. Secondly, the remaining income comes from Donation and Legacies. The Corporate Sponsorship comprises private donations from a generous One Family benefactor, which covers key operational costs such as salaries, fees and office costs, as well as generating further income. This sponsorship is vitally important as it enables us to use the funds we raise to directly benefit our chosen causes. Meanwhile, our income from Donation and Legacies is generated from partnerships, our supporters, fundraising activities and the private events that we hold.

D
RE



Expenditure

Our expenditure is split three ways, with Charitable Activities accounting for almost half of our costs. This predominantly comprises the money we distribute to those we support via our Anti-Trafficking and Refugee Funds. Occasionally, funds also go to other worthwhile charitable projects that fall under One Family's wider remit, or where urgent need is established. Secondly, the costs associated with Raising Funds are those which are accrued in the process of us holding events, running campaigns and raising awareness, as well as other raw costs which are not related to day-to-day operations. Finally, our Funds Carried Forward includes any unspent monies raised during the annual accounting timeframe which subsequently roll over to the next period.

Statement of Financial Activities for the year ended 31 March 2022

	Notes	Unrestricted Funds	Total Funds	Total Funds
		2022	2022	2021
		£	£	£
Income and endowments				
Donations and legacies	3	230,068	230,068	247,254
Total income		230,068	230,068	247,254
Expenditure on:				
Raising funds	4	28,526	28,526	23,211
Charitable activities	5	172,204	172,204	192,739
Other	6	33,265	33,265	29,439
Total		233,995	233,995	245,389
Net gains on investments		-	-	-
Net (expenditure)/income		(3,927)	(3,927)	1,865
Transfers between funds		-	-	-
Net (expenditure)/income before other gains/(losses)		(3,927)	(3,927)	1,865
Other gains and losses				
Net movement in funds		(3,927)	(3,927)	1,865
Reconciliation of funds:				
Total funds brought forward		17,554	17,554	15,689
Total funds carried forward		13,627	13,627	17,554

Balance Sheet at 31 March 2022

Charity No. 1119989	Notes	2022	2021
		£	£
Fixed assets			
Tangible assets	8	<u>776</u>	<u>776</u>
		776	776
Current assets			
Cash at bank and in hand		<u>15,068</u>	<u>22,218</u>
		15,068	22,218
Creditors: Amount falling due within one year	9	<u>(2,217)</u>	<u>(5,440)</u>
Net current assets		12,851	16,778
Total assets less current liabilities		<u>13,627</u>	<u>17,554</u>
Net assets excluding pension asset or liability		<u>13,627</u>	<u>17,554</u>
Total net assets		<u>13,627</u>	<u>17,554</u>

The funds of the charity

	Notes	2022	2021
		£	£
Restricted funds	10		
Unrestricted funds	10		
General funds		<u>13,627</u>	<u>17,554</u>
		13,627	17,554
Reserves	10		
Total funds		<u>13,627</u>	<u>17,554</u>

Approved by the trustees on 31 January 2023

And signed on their behalf by:



Mr S Banna

E. Director
Trustee
31 January 2023

1 Accounting policies

Basis of preparation

The financial statements have been prepared in accordance with Statement of Recommended Practice: Accounting and Reporting by Charities preparing their accounts in accordance with the Financial Reporting Standard applicable in the UK and Republic of Ireland (FRS 102) issued on 16 July 2014 and the Financial Reporting Standard applicable in the United Kingdom and Republic of Ireland (FRS 102) and the Charities Act 2011.

Change in basis of accounting or to previous accounts

There has been no change to the accounting policies (valuation rules and method of accounting) since last year and no changes have been made to accounts for previous years.

Fund accounting

Unrestricted funds

These are available for use at the discretion of the trustees in furtherance of the general objects of the charity.

Designated funds

These are unrestricted funds earmarked by the trustees for particular purposes.

Revaluation funds

These are unrestricted funds which include a revaluation reserve representing the restatement of investment assets at their market values.

Restricted funds

These are available for use subject to restrictions imposed by the donor or through terms of an appeal.

Income

Recognition of income

Income is included in the Statement of Financial Activities (SoFA) when the charity becomes entitled to, and virtually certain to receive, the income and the amount of the income can be measured with sufficient reliability.

Income with related expenditure

Where income has related expenditure the income and related expenditure is reported gross in the SoFA.

Donations and legacies

Voluntary income received by way of grants, donations and gifts is included in the the SoFA when receivable and only when the Charity has unconditional entitlement to the income.

Tax reclaims on donations and gifts

Income from tax reclaims is included in the SoFA at the same time as the gift/donation to which it relates.

Donated services and facilities

These are only included in income (with an equivalent amount in expenditure) where the benefit to the Charity is reasonably quantifiable, measurable and material.

Volunteer help

The value of any volunteer help received is not included in the accounts.

Investment income

This is included in the accounts when receivable.

Gains/(losses) on revaluation of fixed assets

This includes any gain or loss resulting from revaluing investments to market value at the end of the year.

Gains/(losses) on investment assets

This includes any gain or loss on the sale of investments.

Expenditure

Recognition of expenditure

Expenditure is recognised on an accruals basis. Expenditure includes any VAT which cannot be fully recovered, and is reported as part of the expenditure to which it relates.

Expenditure on raising funds

These comprise the costs associated with attracting voluntary income, fundraising trading costs and investment management costs.

Expenditure on charitable activities

These comprise the costs incurred by the Charity in the delivery of its activities and services in the furtherance of its objects, including the making of grants and governance costs.

Grants payable

All grant expenditure is accounted for on an actual paid basis plus an accrual for grants that have been approved by the trustees at the end of the year but not yet paid.

Governance costs

These include those costs associated with meeting the constitutional and statutory requirements of the Charity, including any audit/independent examination fees, costs linked to the strategic management of the Charity, together with a share of other administration costs.

Other expenditure

These are support costs not allocated to a particular activity.

Taxation

The charity is exempt from tax on its charitable activities.

Freehold investment property

Investment properties are measured initially at cost and subsequently at fair value at each balance sheet date and are not depreciated. All gains or losses are taken to the Statement of Financial Activities as they arise.

Stocks

Stock is included at the lower of cost or net realisable value. Donated items of stock are recognised at fair value which is the amount the charity would have been willing to pay for the items on the open market.

Trade and other debtors

Trade and other debtors are recognised at the settlement amount due after any trade discount offered. Prepayments are valued at the amount prepaid net of any trade discounts due.

Cash and cash equivalents

Cash and cash equivalents comprise cash at bank and on hand, demand deposits with banks and other short-term highly liquid investments with original maturities of three months or less and bank overdrafts. In the statement of financial position, bank overdrafts are shown within borrowings or current liabilities. In the Statement of Cash Flows, cash and cash equivalents are shown net of bank overdrafts that are repayable on demand and form an integral part of the company's cash management.

Trade and other creditors

Short term creditors are measured at the transaction price. Other creditors and provisions are recognised where the charity has a present obligation resulting from a past event that will probably result in the transfer of funds to a third party and the amount due

to settle the obligation can be measured or estimated reliably. Creditors and provisions are normally recognised at their settlement amount after allowing for any trade discounts due.

Research and development

Expenditure on research and development is written off in the year in which it is incurred.

Foreign currencies

Monetary assets and liabilities denominated in currencies other than the functional currency of the charity are translated at the rates of exchange prevailing at the end of the reporting period.

Transactions in currencies other than the functional currency of the charity are recorded at the rate of exchange on the date that the transaction occurred.

All exchange differences are taken into account in arriving at net income/expenditure.

Leased assets

Where the charity enters into a lease which entails taking substantially all the risks and rewards of ownership of an asset, the lease is treated as a finance lease.

Leases which do not transfer substantially all the risks and rewards of ownership to charity are classified as operating leases.

Assets held under finance leases are initially recognised as assets of the charity at their fair value at the inception of the lease or, if lower, at the present value of the minimum lease payments. The corresponding liability to the lessor is included in the balance sheet date as a finance lease obligation. Lease payments are apportioned between finance expenses and reduction of the lease obligation so as to achieve a constant rate of interest on the remaining balance of the liability. Finance expenses are recognised immediately, unless they are directly attributable to qualifying assets, in which case they are capitalised in accordance with the charity's policy on borrowing costs.

Assets held under finance leases are depreciated in the same way as owned assets.

Operating lease payments are recognised as an expense on a straight-line basis over the lease term. In the event that lease incentives are received to enter into operating leases, such incentives are recognised as a liability.

The aggregate benefit of incentives is recognised as a reduction of rental expense on a straight-line basis.

Pension costs

The charity operates a defined contribution plan for its employees. A defined contribution plan is a pension plan under which the charity pays fixed contributions into a separate entity. Once the contributions have been paid the charity has no further payments obligations. The contributions are recognised as expenses

when they fall due. Amounts not paid are shown in accruals in the balance sheet. The assets of the plan are held separately from the charity in independently administered funds.

Receipt of donated goods, facilities and services

All donated goods, facilities and services received are recognised within incoming resources and expenditure at an estimate of the value to the charity.

2 Statement of Financial Activities - prior year

	Unrestricted Funds	Total Funds
	2021	2021
	£	£
Income and endowments		
Donations and legacies	247,254	247,254
Total income	247,254	247,254
Expenditure on:		
Raising funds	23,211	23,211
Charitable activities	192,739	192,739
Other	29,439	29,439
Total	245,389	245,389
Net income	1,865	1,865
Net income before other gains/(losses)	1,865	1,865
Other gains and losses		
Net movement in funds	1,865	1,865
Reconciliation of funds:		
Total funds brought forward	15,689	15,689
Total funds carried forward	17,554	17,554

3 Income from donations and legacies

	Unrestricted	Total 2022	Total 2021
	£	£	£
	-	-	1
Donations	230,068	230,068	247,253
	230,068	230,068	247,254

4 Expenditure on raising funds

	Unrestricted	Total 2022	Total 2021
	£	£	£
Fundraising trading costs	28,526	28,526	23,211
	28,526	28,526	23,211

5 Expenditure on charitable activities

	Unrestricted	Total 2022	Total 2021
	£	£	£
Expenditure on charitable activities	172,204	172,204	192,739
Governance costs	172,204	172,204	192,739

6 Other expenditure

	Unrestricted	Total 2022	Total 2021
	£	£	£
Employee costs	-	-	8,129
Motor and travel costs	5,468	5,468	1,374
Premises costs	13,800	13,800	13,800
General administrative costs	12,197	12,197	3,256
Legal and professional costs	1,800	1,800	2,880
	33,265	33,265	29,439

7 Staff costs

	2022	2021
	£	£
Salaries and wages	-	8,129
	-	8,129

No employee received emoluments in excess of £60,000.

8 Tangible fixed assets

	£	£
Cost or revaluation		
At 1 April 2021	776	776
At 31 March 2022	776	776
Net book values		
At 31 March 2022	776	776
At 31 March 2021	776	776

9 Creditors

	2022	2021
	£	£
Amounts falling due within one year		
Accruals	-	5,440
Deferred income	2,217	-
	2,217	5,440

10 Movement in funds

	At 1 April 2021	Incoming resources (including other gains/losses)	Resources expended	At 31 March 2022
	£	£		£
Restricted funds:				
Unrestricted funds:				
General funds	17,554	230,068	(233,995)	13,627
Total funds	17,554	230,068	(233,995)	13,627

11 Analysis of net assets between funds

	Unrestricted funds	Total
	£	£
Fixed assets	776	776
Net current assets	12,851	12,851
	13,627	13,627

12 Reconciliation of net debt

	At 1 April 2021	Cash flows	At 31 March 2022
	£	£	£
Cash and cash equivalents	22,218	(7,150)	15,068
	22,218	(7,150)	15,068
Net debt	22,218	(7,150)	15,068

Statement of Cash flows for the year ended 31 March 2022

	2022	2021
	£	£
Cash flows from operating activities		
Net income/(expenditure) per Statement of Financial Activities	(3,927)	1,865
Adjustments for:		
(Decrease)/Increase in trade and other payables	(5,440)	1,480
Net cash provided by/(used in) operating activities	(9,367)	3,345
Net cash from investing activities	-	-
Net cash from financing activities	-	-
Net (decrease)/increase in cash and cash equivalents	(9,367)	3,345
Cash and cash equivalents at the beginning of the year	22,218	18,873
Cash and cash equivalents at the end of the year	12,851	22,218
Components of cash and cash equivalents		
Cash and bank balances	15,068	22,218
	15,068	22,218

Detailed Statement of Financial Activities for the year ended 31 March 2022

	Unrestricted Funds	Total Funds	Total Funds
	2022	2022	2021
	£	£	£
Income and endowments from:	-	-	1
Donations and legacies	230,068	230,068	247,253
	230,068	230,068	247,254
Total income and endowments	230,068	230,068	247,254
Expenditure on:			
Costs of other trading activities	28,526	28,526	23,211
	28,526	28,526	23,211
Total of expenditure on raising funds	28,526	28,526	23,211
Charitable activities	172,204	172,204	192,739
	172,204	172,204	192,739
Total of expenditure on charitable activities	172,204	172,204	192,739
Salaries/wages	-	-	8,129
	-	-	8,129
Motor and travel costs			
Travel and subsistence	5,468	5,468	1,374
	5,468	5,468	1,374
Premises costs			
Rent	13,800	13,800	13,800
	13,800	13,800	13,800
General administrative costs, including depreciation and amortisation			
Bad debts	3,389	3,389	1,140
Bank charges	158	158	287
Software, IT support and related costs	7,500	7,500	-
Stationery and printing	269	269	432
Subscriptions	180	180	-
Sundry expenses	701	701	1,397
	12,197	12,197	3,256

	Unrestricted Funds	Total Funds	Total Funds
	2022	2022	2021
	£	£	£
Legal and professional costs			
Accountancy and bookkeeping	1,800	1,800	2,880
	1,800	1,800	2,880
Total of expenditure of other costs	33,265	33,265	29,439
Total expenditure	233,995	233,995	245,389
Net gains on investments	-	-	-
Net (expenditure)/income	(3,927)	(3,927)	1,865
Net (expenditure)/income before other gains/(losses)	(3,927)	(3,927)	1,865
Other Gains	-	-	-
Net movement in funds	(3,927)	(3,927)	1,865
Reconciliation of funds:			
Total funds brought forward	17,554	17,554	15,689
Total funds carried forward	13,627	13,627	17,554



ADMINISTRATIVE DETAILS

Chairman, One Family Global

Sharif Banna MBE

Trustees, One Family Global

S. Banna (Chair of Trustees)
F. Khatun
H. A. Humayra

UK Charity Registration Number

One Family Global 1119989 (England & Wales)

UK Headquarters & Registered Office

One Family Global
Plexal Innovation Centre
Queen Elizabeth Olympic Park
14 East Bay Lane
London
E15 2GW

Independent Examiner

S.Asghar & Co
Chartered Certified Accountants
& Registered Auditors
85 Station Road
Harrow
Middlesex
HA2 7SW

Bankers (UK)

HSBC Bank plc
47 Market Street
Bradford
West Yorkshire
BD1 1LW

Solicitors (UK)

Saracens Solicitors
Strand Bridge House
140 Strand
London
WC2R 1HH



WWW.ONEFAMILY.ORG.UK