



ONE FAMILY GLOBAL ANNUAL REPORT & ACCOUNTS 2020 – 2021



“IN TIMES OF CRISIS, IT IS IMPERATIVE THAT WE BAND TOGETHER WITH EMPATHY, COURAGE AND MUTUAL COMPASSION. IT IS OUR RESPONSIBILITY TO CARE FOR AND LOVE ONE ANOTHER THAT BIT STRONGER, ESPECIALLY DURING TIMES OF ISOLATION.”

RICHARD WHITEHEAD, MBE
PARALYMPIC ATHLETE AND ONE FAMILY AMBASSADOR

WWW.ONEFAMILY.ORG.UK



CONTENTS

WHAT’S INSIDE

Annual Report

Section One		Section Six	
About One Family	4	Accounts and Financial Review	69
Section Two		Independent Examiner’s Report	71
Foreword	6	Our Income and Expenditure	72
Section Three		Statement of Financial Activities	74
Our Funds	10	Balance Sheet	75
Anti-Trafficking Fund	14	Income & Expenditure Account	76
Refugee Fund	22	Detailed analysis of income and expenditure	82
Emergency Care Fund	34	Administrative Details	85
Section Four			
Our Events	48		
Section Five			
Campaigns & Partnerships	56		

PARALYMPIC ATHLETE, TEAM GB

RICHARD WHITEHEAD, MBE

The front cover features a quote from T42 Paralympic athlete, Richard Whitehead MBE. Born with a double through-knee congenital amputation, Richard is the first ever leg amputee to complete the marathon in under three hours and set the world record for the 200m in 2012. Winning nine gold and one silver medal for Team GB, Richard has not only set the standard for Paralympic sport, but he has also overcome every obstacle to prove that with resilience, dedication and passion, dreams do come true.

SECTION ONE

ABOUT US

One Family seeks to revolutionise the way we tackle the world's biggest issues — harnessing the power of technology and innovation to accelerate social change. Our global programmes and exclusive, cause-driven events are innovative, transformative and bring people together.

Since its inception, One Family has been instrumental in tackling human trafficking, supporting refugees, and building an extensive network of like-minded individuals, committed to supporting the world's most vulnerable through mobilised, active work.



**THOUGHT
LEADERS**



**PEOPLE-
POWERED**



**TECH-SOLUTION
LED**



SECTION TWO

FOREWORD

As is the case for countless other organisations, the COVID-19 pandemic presented us with several hurdles this year. It has been devastating to see our programmes suffering: our partner, Refugee Rescue, has had to close its operations in Lesbos; while the founder of our anti-trafficking partner Maiti Nepal, Anuradha Koirala, has been on the brink of giving up her home to compensate for the loss.

This pandemic has caused widespread damage. Here, at home in London, it has been harrowing to see our NHS staff struggling under the strain of this disease. Many have been working round the clock to save lives, with little to no respite. But much like the resolve of our collective communities, I am delighted that we have risen to meet the challenges the pandemic has presented us with, and responded to the imminent needs of those most vulnerable.

In March, we launched our Emergency Care Fund. In the space of just a few short weeks, One Family:

- delivered 10,000 frontline care boxes to NHS staff across the country, following a partnership with multinational consumer goods company, Reckitt Benckiser – the parent company of brands such as Dettol, Calgon and Scholl;
- established a partnership with The Tekk Group, to deliver 300 tablets to care homes for the elderly to connect with their loved ones;
- and distributed 10,000 units of Full Green – a rice alternative brand – as part of food and grocery packs for the most vulnerable.

As we rolled out our Emergency Care Fund, it became startlingly apparent just how many people had been affected by the pandemic beyond a financial capacity. COVID gave

us time to reflect on the amount of work there still is to be done in helping the most vulnerable members of our community.

Recognising the sheer scale of work that we must deliver, we have since grown the core team to five members, with a wider team of 10 for support. We used this time to create a new digital strategy, and relaunched both the One Family and Amir Khan Foundation websites, which we incubated in March 2020.

Following the closure of Refugee Rescue, we on-boarded Sea-Watch as our partner for the Refugee Fund. Sea-Watch began its operations in 2014, filling the gap of an institutionalised, comprehensive sea rescue with a clear mandate: no life should be lost at sea. Our partnership has allowed for their continued work – both on land and sea – to continue uninterrupted, with over 35,000 people successfully rescued.

It has been a challenging year; filled with hurdles, which we successfully converted into opportunities for affecting lasting, positive change – as per our mission. I have been particularly delighted with how we have leveraged the power of technology through our Emergency Care Fund and found a way to connect the elderly with their loved ones at an especially isolating time. It is moments like these that remind us how essential this work is, and just how much more of it we have to implement in the future.



Sharif Banna MBE
Chairman





“I HAVE LOST COUNT OF THE AMOUNT OF TIMES I’VE HEARD A CHILD SAY THEY WOULD RATHER DIE AT SEA THAN BE FORCED TO TURN BACK. WHEN CHILDREN WOULD PREFER TO CHOOSE DEATH, WE HAVE TO LOOK INWARD AND REALISE OUR FAILURES. THE PEOPLE WE RESCUE ARE NOT THE PROBLEM THAT WE NEED TO FIX.”

Hannah Wallace Bowman, Sea Watch



Sea-Watch.org

SECTION THREE

OUR FUNDS

The sheer complexity of tackling the world's biggest issues requires scalable, innovative and effective solutions. We have established a series of vital funds which serve as platforms for supporters, philanthropists, corporates and charitable foundations, allowing us to tackle problems via high-impact partners on the ground. These partners are carefully selected to meet criteria which ensures they have the capacity to grow, innovate and lead.

One Family offers two-fold support to each of our partners. Firstly, we provide funds to meet critical needs in communities, with a core focus on rescuing individuals from urgent situations and enabling rehabilitation. Secondly, we work closely with our partners to develop well-researched enterprise or tech-led solutions that deliver strong and scalable impact.



ANTI-TRAFFICKING FUND



REFUGEE FUND



EMERGENCY CARE FUND

GROW, INNOVATE & LEAD

OUR REACH

We partner with charities, funds and organisations across the world to ensure our global family remains connected, safe and retains access to fundamental necessities. Operating out of Europe, Asia, Africa and the Middle East, our funds have enabled us to serve communities all over the world. Our Anti-Trafficking fund has taken us to Nepal, our Refugee fund to Greece, Turkey and Syria, and our Emergency Care fund has taken us all over the UK.



ANTI-TRAFFICKING FUND

500%

INCREASE IN HUMAN
TRAFFICKING ACROSS
THE NEPAL-INDIA
BORDER SINCE 2013



1.5M

NEPALESE
AT HIGH RISK
OF BEING
TRAFFICKED



15,000

WOMEN & GIRLS
TRAFFICKED ACROSS
THE NEPAL-INDIA
BORDER EACH YEAR





Background

The journey from the Nepal border into India is one of the busiest slave-trafficking routes in the world today, with victims lured into the growing sex industry in Kathmandu Valley, as well as other countries such as India, China, Malaysia, the UAE and further afield.

Forced labour, sexual servitude, prostitution and human tissue extraction are among the many forms of exploitation which result in girls and women going missing every single day. Further contributing to the problem, existing data sources on trafficking in Nepal are unreliable and incomplete, and a lack of trusted information means the numbers of trafficked victims is higher than we imagine.

Even those freed from trafficking often endure extreme physical, mental and emotional wounds, suffering with health issues including HIV/AIDS and malnutrition, as well as depression and overwhelming shame.

Our Solution

One Family is working in close collaboration with our fund partner, Maiti Nepal, to continue and scale up the fight against human trafficking.

Maiti Nepal was formed in 1993 when a group of teachers, journalists and social workers joined forces with founder Anuradha Koirala to protect women and girls from sexual exploitation, trafficking, domestic violence, child prostitution and child labour. With an entire generation left even more vulnerable to trafficking in the wake

of the colossal earthquake of 2015, Maiti Nepal's services are under greater pressure than ever.

Our partnership is built around three central pillars – Prevention, Rescue and Rehabilitation. This multi-faceted approach firstly prioritises the prevention of trafficking, with dedicated surveillance teams assisting police with intercepting victims and identifying traffickers. Located at key checkpoints along the Nepal-India border, the teams – largely comprised of women who have been trafficked themselves – search vehicles for missing people and track sinister activity. Legal processes are activated in cases of the missing, and criminal proceedings are frequently instigated against perpetrators.

Once rescued, our second focus sees victims temporarily housed in one of 14 safe transit homes, strategically located in border towns to boost local awareness. The homes offer shelter, safety, counselling and healthcare, while also endeavouring to reunite girls with their families. Anti-trafficking skills and training are provided too, while awareness is increased at community level through TV, radio and local workshops.

Thirdly, our joint resolve to aid the rehabilitation of victims means that safe accommodation, psychological support, health treatment and screening are provided to those preparing to reintegrate into society. Hundreds of children can access free education, and with economic freedom the ultimate aim, training in livelihoods skills paves the way to financial independence for girls.



SUCCESSFUL IMPACT

OVER
50,000



WOMEN AND GIRLS
RESCUED BY MAITI NEPAL

OVER
35,000

WOMEN AND GIRLS
IN REHABILITATION



1,453

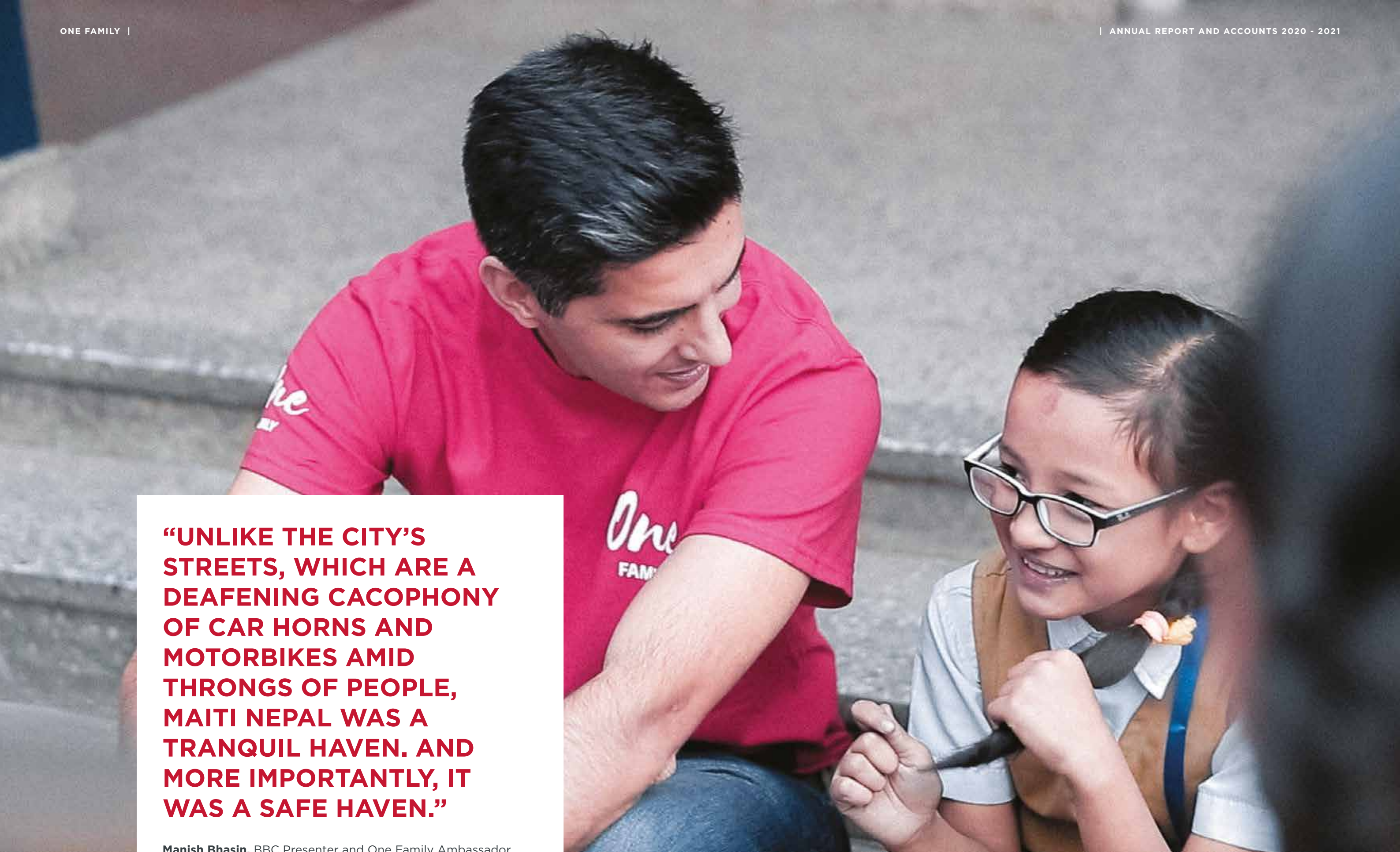


GIRLS PROVIDED WITH
A FORMAL EDUCATION

1,802



TRAFFICKERS HAVE
FACED CONVICTION

A man with dark hair, wearing a red t-shirt with the 'One Family' logo, is crouching down and looking at a young girl. The girl is wearing glasses, a light blue school shirt, and a brown vest. She is holding a small object in her hands. The background is a blurred outdoor setting.

**“UNLIKE THE CITY’S
STREETS, WHICH ARE A
DEAFENING CACOPHONY
OF CAR HORNS AND
MOTORBIKES AMID
THRONGS OF PEOPLE,
MAITI NEPAL WAS A
TRANQUIL HAVEN. AND
MORE IMPORTANTLY, IT
WAS A SAFE HAVEN.”**

Manish Bhasin, BBC Presenter and One Family Ambassador

REFUGEE FUND

The Story in Numbers



AFTER

10

>

600k

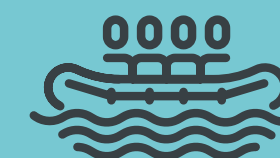
FATALITIES AND

86k

WAR INFLICTED AMPUTATIONS

7 million Syrians have been internally displaced alongside 6 million who have fled the country, risking their lives to escape war, poverty and destruction.

Today, it's estimated that over 13.4 million people still need basic humanitarian aid.



3.7M
SYRIANS

have developed disabilities as a result of the conflict. That's **27%** of the total population aged 12+. This figure is likely to be much higher in reality.

Through our Refugee Fund, One Family is working tirelessly to find solutions to the ongoing crisis.

Background

The situation in Syria remains critical, and more people have now fled their homes due to persecution and violence than at any time since the Second World War.

Many lives are still lost every day – not just due to violence, but also because of a crippling lack of amenities. Hospitals, medical centres, schools, utilities and sanitation systems have been damaged or razed to the ground.

Those who have left the country have no guarantee of safety in neighbouring countries, and many pay illegal traffickers for passage to Europe, risking death and drowning, as well as capture and deportation. While the crisis attracts little media coverage today, millions still desperately need our help.

Our Solution

With no peace in sight, One Family is working with three partner organisations to aid some of the most vulnerable people in Syria, and improve the plight of refugees.

Each collaboration represents a different strand: firstly, our Sea-Watch partnership focuses on the search and rescue of civilians who attempt the hazardous Mediterranean Sea crossing to Europe. Secondly, our partnership with The National Syrian Project for Prosthetic Limbs provides life-changing prosthetics to civilians who have lost limbs during the conflict. Thirdly, our partnership with Maya Vakfi sees us provide counselling for children suffering with mental health issues and trauma as a result of the war.



REFUGEE FUND PARTNER

REFUGEE RESCUE

We have been actively supporting Refugee Rescue since 2017, an organisation preventing hundreds of lives from being needlessly lost as refugees make the perilous voyage from Turkey to the Greek island of Lesbos.

The Covid-19 pandemic had a devastating impact on Refugee Rescue, forcing its operations to a standstill, eventually leading to the full closure of the organisation. We recognise the life-saving work carried out by Refugee Rescue, and are honoured to have partnered with them.





REFUGEE FUND PARTNER

SEA-WATCH

Due to the unfortunate closure of Refugee Rescue, One Family has on-boarded Sea-Watch as our most recent Refugee Fund partner.

Born out of an initiative of volunteers who refused to stand on the side-lines and watch people dying in the Mediterranean, Sea-Watch began its operations in 2014. Sea-Watch is filling the gap of an institutionalised, comprehensive sea rescue with a clear mandate: no life should be lost at sea and every single life saved through their initiative is a success and a stand for humanity.

As a result of man-made borders and wars, thousands of people drown at sea every year trying to reach a safe harbour in the EU, many of them within sight of our shores and beaches. Through their work, they provide greater access to information, thus drawing attention to the fate of refugees and migrants. They shine a light on the humanitarian crisis in the Mediterranean so that no one can look away.

So far, Sea-Watch has successfully rescued over 35,000 people and refuses to stop there.

Credit: Marcus
Wiechmann



“IT’S HARD TO IMAGINE THE SHEER HORROR THAT REFUGEES ENDURE UNTIL YOU SEE IT WITH YOUR OWN EYES. SINCE MY RETURN FROM LESVOS, I HAVE STRUGGLED TO COMPREHEND THEIR ORDEAL, AS WELL AS THE CRUELTY OF A WORLD THAT CAN INFLICT SUCH SUFFERING ON ANYONE.”

Laila Rouass, Actress and One Family Ambassador



MAYAVAKFI

REFUGEE FUND PARTNER

THE NATIONAL SYRIAN PROJECT FOR PROSTHETIC LIMBS

One Family is working with the National Syrian Project for Prosthetic Limbs (NSPPL) to provide prosthetics, as well as rehabilitation, for both children and adults.

Founded by a team of Syrian doctors in response to the conflict's horrifying scale of injuries, the NSPPL has two centres in Syria and one in Turkey, along with a mobile clinic. Each child arriving at one of the centres is assessed within 48 hours and placed on a waiting list. Once measurements are taken, it takes a week to produce a strong, lightweight and flexible prosthetic, which is in line with international standards.

After a limb is tested and casting is complete, subsequent rehabilitation includes psychological physiotherapy, social care and gait-training, which encourages children to develop natural limb movement. However, until their growth is complete, each child requires a replacement limb every six months.



REFUGEE FUND PARTNER

MAYA VAKFI

Aiding refugee children in Turkey, One Family is collaborating with the Maya Vakfi foundation to deliver its Mental Health and Psychosocial Support Programme. Designed to help children recover from trauma, the scheme comprises rehabilitation through education, music and dance therapy, plus socio-cultural events.

Maya Vakfi was first established in 2014, when 16-year-old Turkish student Emir Özsüer was shocked by news footage of young children fleeing Syria. His vision was to facilitate the mental, physical and academic development of children and young adults, enabling them to reach their full potential.

The thriving programme also aims to lower the risk of children suffering future harm or misconduct as a result of financial or emotional upheaval.



EMERGENCY CARE FUND COVID-19 RELIEF

Background

As the world became entrenched in the Covid-19 pandemic, we saw first-hand its brutal effects on NHS staff and society's most vulnerable. We felt compelled to mobilise our team and do our part to serve the public during this global emergency, which resulted in the inception of our Emergency Care Fund.

Millions of people lacked the funds to buy food and basic necessities, and huge numbers of children who normally had access to free school meals were going hungry. Due to large-scale panic-buying, supermarket shelves were left empty, meaning that vital NHS frontline staff were frequently unable to buy crucial provisions for themselves - despite putting themselves in the firing line as they fought to save lives every day. Similarly, millions

of elderly, sick and at-risk people were unable to access even the most basic of items needed to get through this difficult time.

Our Solution

With the UK facing its biggest national emergency in decades, One Family was determined to provide essential intervention where it was most needed. We worked closely with hospitals, schools and care groups and local authorities to establish the immediate needs of two groups: firstly, key workers - including doctors, nurses, carers and teachers - and secondly, the elderly, sick and vulnerable in our communities. We processed online referrals for help through our website via our trusted partners, and our team of caseworkers individually assessed requests for assistance to ensure we reached those most in need.

IN THE FIRST
WAVE, ALMOST



50%

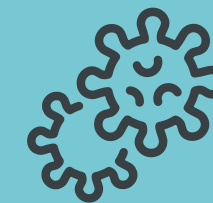
of doctors had to
source their own PPE

147K

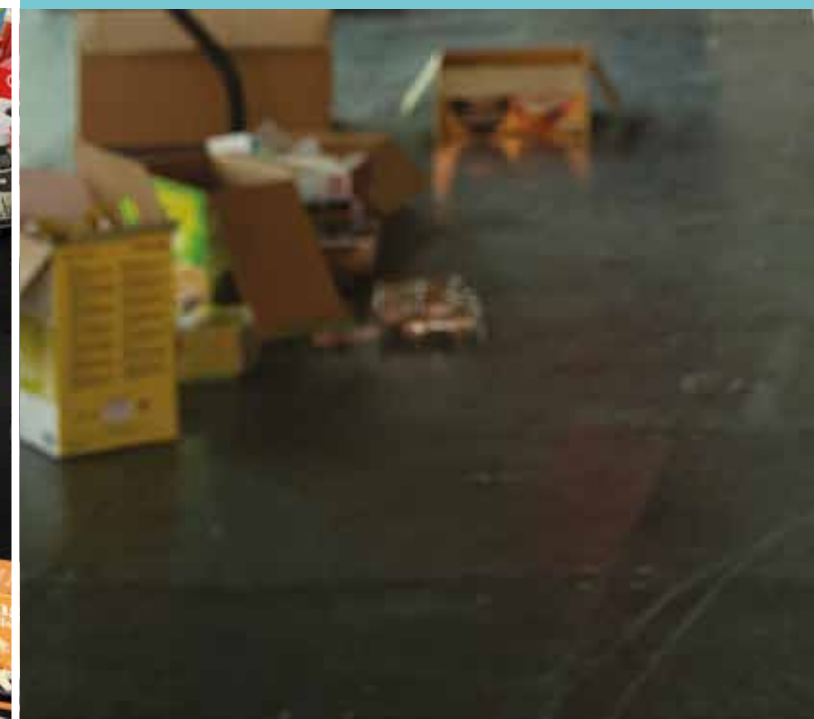
people have died as
a result of Covid-19

THE UK HAS SEEN

11M



cases since the virus began
spreading in January 2020

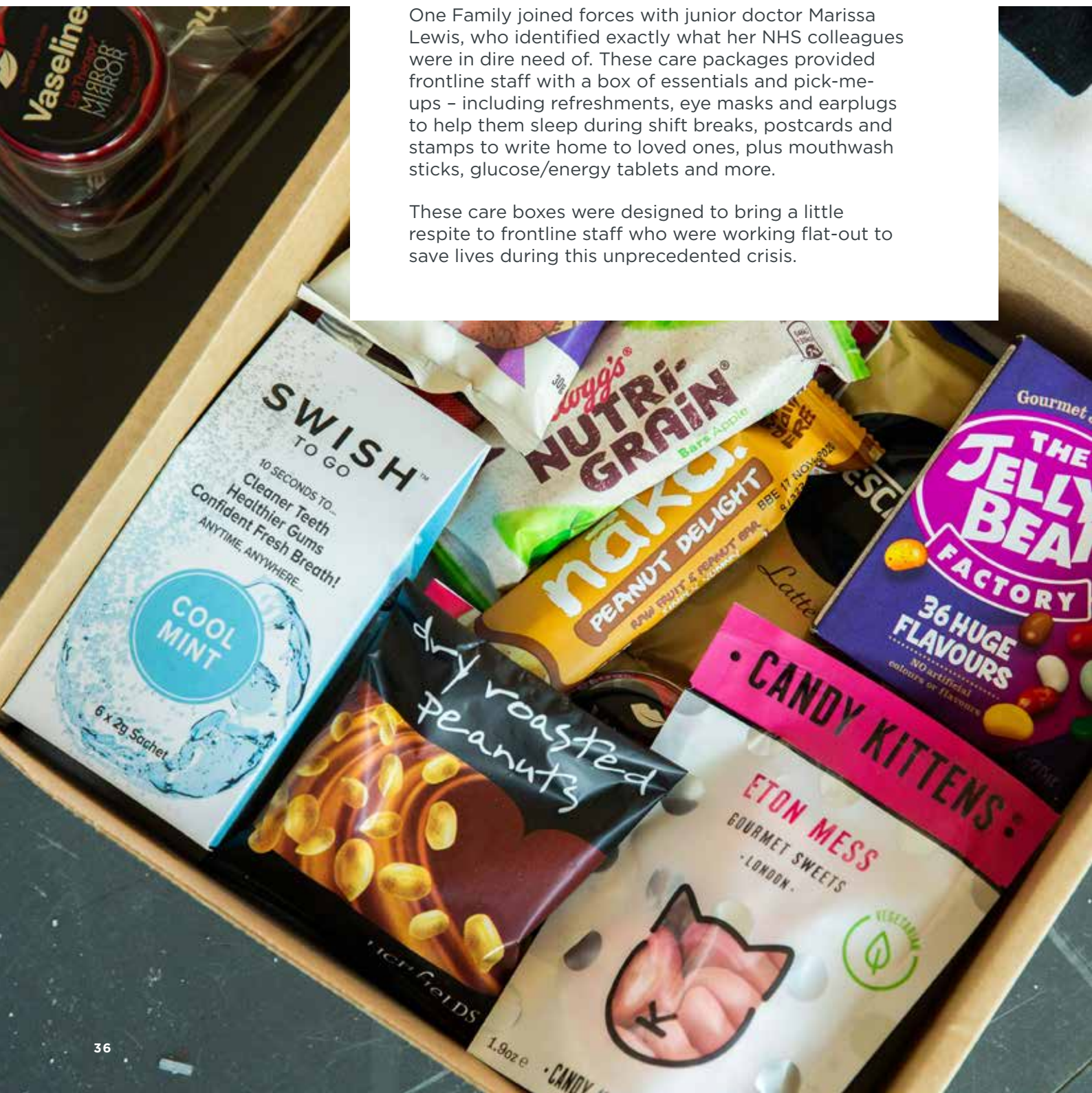




FRONTLINE CARE BOX

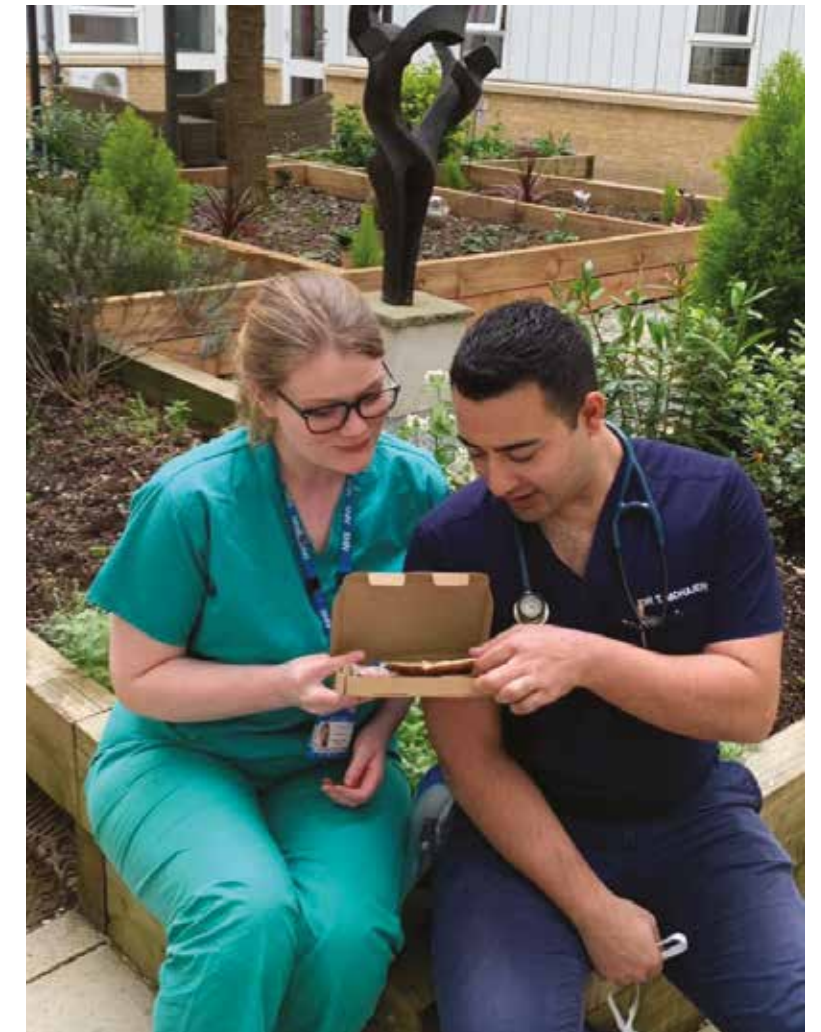
One Family joined forces with junior doctor Marissa Lewis, who identified exactly what her NHS colleagues were in dire need of. These care packages provided frontline staff with a box of essentials and pick-me-ups – including refreshments, eye masks and earplugs to help them sleep during shift breaks, postcards and stamps to write home to loved ones, plus mouthwash sticks, glucose/energy tablets and more.

These care boxes were designed to bring a little respite to frontline staff who were working flat-out to save lives during this unprecedented crisis.



“WHILST SPEAKING TO A FRIEND ON THE PHONE ABOUT A PARTICULARLY GRUELING A&E SHIFT, I FELT COMPELLED TO DO SOMETHING. I CONCEPTUALISED A CARE BOX AND FILLED IT WITH ALL THE ESSENTIALS A FRONTLINE WORKER WOULD NEED. I WANTED TO EXPRESS MY SOLIDARITY WITH MY COLLEAGUES AT A PARTICULARLY TRYING TIME FOR US, AND I’M THRILLED BY HOW ONE FAMILY GREW THE INITIAL IDEA AND REACHED SO MANY DOCTORS UP AND DOWN THE COUNTRY.”

DR MARISSA LEWIS
CREATOR OF THE
FRONTLINE CARE BOX



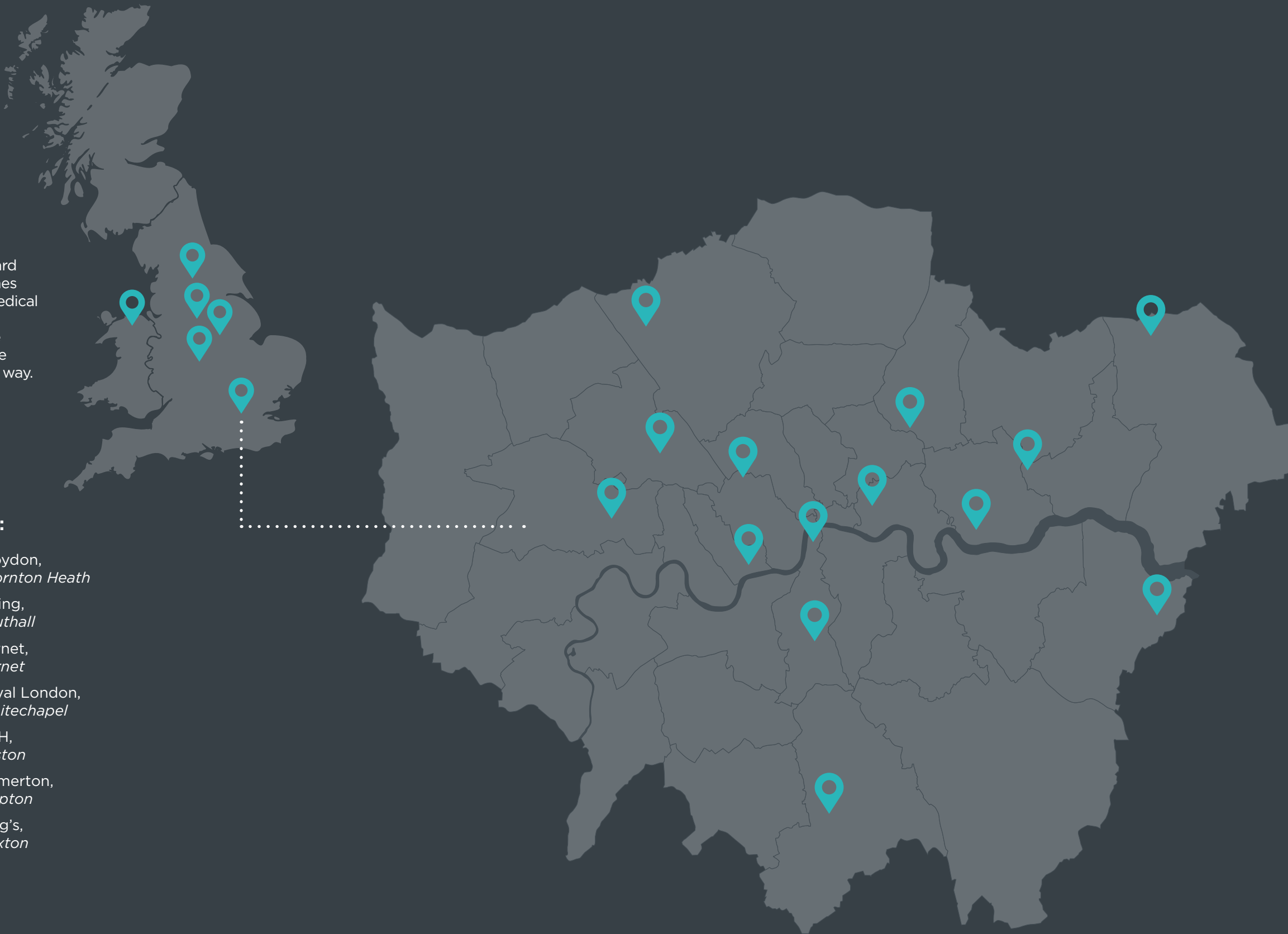
OUR REACH

Using our vast network, we have been working hard to build relationships with hospitals and care homes across London. At this unprecedented time, all medical facilities are exercising additional caution where deliveries and access are concerned, and we have been complying with all regulations to ensure care boxes are delivered in the safest and most secure way.



Facilities we have delivered to include:

- | | | |
|-------------------------------------|--------------------------------|---------------------------|
| St James's, Leeds | Chelsea & Westminster, Chelsea | Croydon, Thornton Heath |
| Queen Elizabeth, Birmingham | Darent Valley, Dartford | Ealing, Southall |
| QMC, Nottingham | Northwick Park, Harrow | Barnet, Barnet |
| Our Homes (Care Home), Sheffield | Queen's Hospital, Romford | Royal London, Whitechapel |
| Alexandra George (Care Home), Wales | St Thomas', Westminster | UCH, Euston |
| | Nightingale, Royal Victoria | Homerton, Clapton |
| | King George, Ilford | King's, Brixton |





“IT WAS SO LOVELY TO FINISH A 12.5 HOUR NIGHT SHIFT AND BE GIVEN ONE OF THESE LOVELY BOXES. THE BOX HAS SO MANY CUTE ESSENTIALS THAT WE ARE ALL APPRECIATING SO MUCH RIGHT NOW. THANK YOU SO MUCH FOR PUTTING A SMILE ON OUR FACES!”

JAMIE
SISTER,
QUEEN'S HOSPITAL ROMFORD



“I’M SO IMPRESSED WITH THE CONTENTS OF THESE CARE BOXES AND HOW CONSIDERED THE APPROACH TO EACH OF THESE ITEMS HAS BEEN. THEY ARE WONDERFUL!”

LISA KNIGHT
CHIEF NURSE,
NORTHWICK PARK HOSPITAL





PARTNERSHIP
SPOTLIGHT

ONE FAMILY X RECKITT BENCKISER (RB)

With the launch of our Emergency Care Fund, we were delighted to secure a partnership with Reckitt Benckiser (RB) – the parent company of brands such as Dettol, Calgon and Scholl. The leading household consumers goods brand generously contributed a total of **151,561 units of products for our Frontline Care Box, with a total retail value of £849,451.76.**



E45

E45 CREAM
**10,000
UNITS**

E45 SPRAY
**75,000
UNITS**



LEMLIFT
**56,559
UNITS**

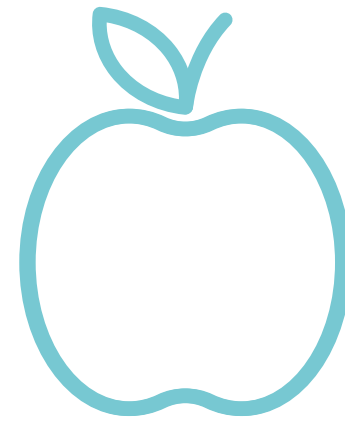
Scholl

SCHOLL
FOOT MASK
**4,554
UNITS**

SCHOLL
FOOT CREAM
**2,970
UNITS**

SCHOLL
GEL SHOES
**2,478
UNITS**

FOOD & GROCERY PACK



These care packages provided a family of five with household essentials – including groceries, nutritious food and home supplies – for up to two weeks. With millions finding it impossible to secure online supermarket deliveries, these at home care packages provided some peace of mind for some of the most vulnerable families. Items in the package include fresh fruit and veg, rice, cereal, pasta, long-life milk and toiletries, plus tinned goods such as fish, lentils and beans. Baby essentials such as nappies and milk were also available if required.

The packages were delivered directly to individual homes by our team of volunteers, as well as via food banks that were in need of urgent supplies. All volunteers were fully prepped to handle items safely during the outbreak – using contactless delivery, while wearing protective equipment such as gloves and masks, and also wiping all items clean at point of delivery.



KEEPING CONNECTED

With those over the age of 70 self-isolating for up to four months to help protect themselves from coronavirus, more and more family members were avoiding physical contact with their elderly loved ones, with visits to care homes and other such facilities being discouraged.

One Family partnered with tech solutions company – The Tekk Group – to provide free tablets to the elderly in care homes. Over 500 iPad Airs were delivered to over 25 care homes across the UK.



SUPPORTING VITAL RESEARCH

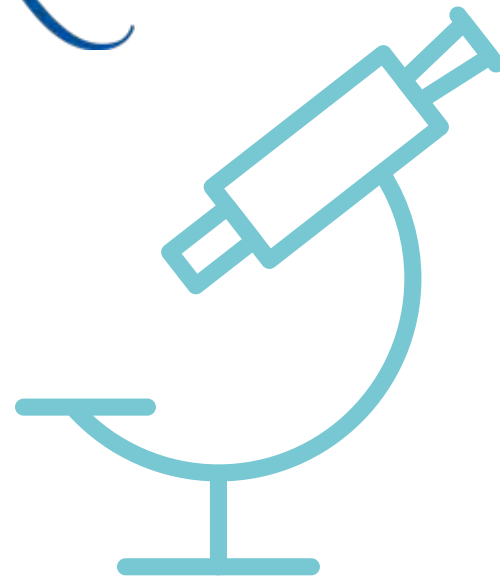
As the pandemic spread, every research institution found itself in a race against time to get a handle on this rampant disease.

One Family worked in partnership with the University of Exeter, who have created a “pocket laboratory”, designed to carry out tests that could revolutionise how health professionals track, trace and monitor the spread of the virus.

In keeping with our core objective of harnessing the power of technology to impact social change, we found this partnership particularly rewarding at a time when countless research institutes found themselves overwhelmed.

An alarming need for essential PPE has led individuals and groups in communities across the globe to mobilise and provide solutions. To facilitate 3D printing of essential PPE, One Family partnered with Helpful Engineering to produce **4,000 visors for hospital staff**. In compliance with health and safety regulations, these visors were distributed as an additional item in our frontline care packs.

UNIVERSITY OF
EXETER



HELPFUL



OUR PARTNERS

A special **thank you** to our partners for supporting our Emergency Care Fund

Reckitt Benckiser

E45
Straightforward Skincare

LEMlift

Scholl

PART OF RECKITT BENCKISER

SWISH
TO GO

AK
FOUNDATION

SQUASH STIX

• CANDY KITTENS •

plexal

FullGreen

Athena
CARE HOMES (UK) LIMITED

TEKK GROUP
GLOBAL IT RENTAL SPECIALISTS

hallmark
care homes

UNIVERSITY OF
EXETER

HELPFUL

BADU
COMMUNITY

pai

SECTION FOUR

OUR EVENTS

At One Family, our event portfolio is extensive to reflect the rich and diverse experiences of our vast and essential network — a key component of serving our global family. Each event is cause-driven and specifically tailored to the sector and/or occasion we are celebrating.

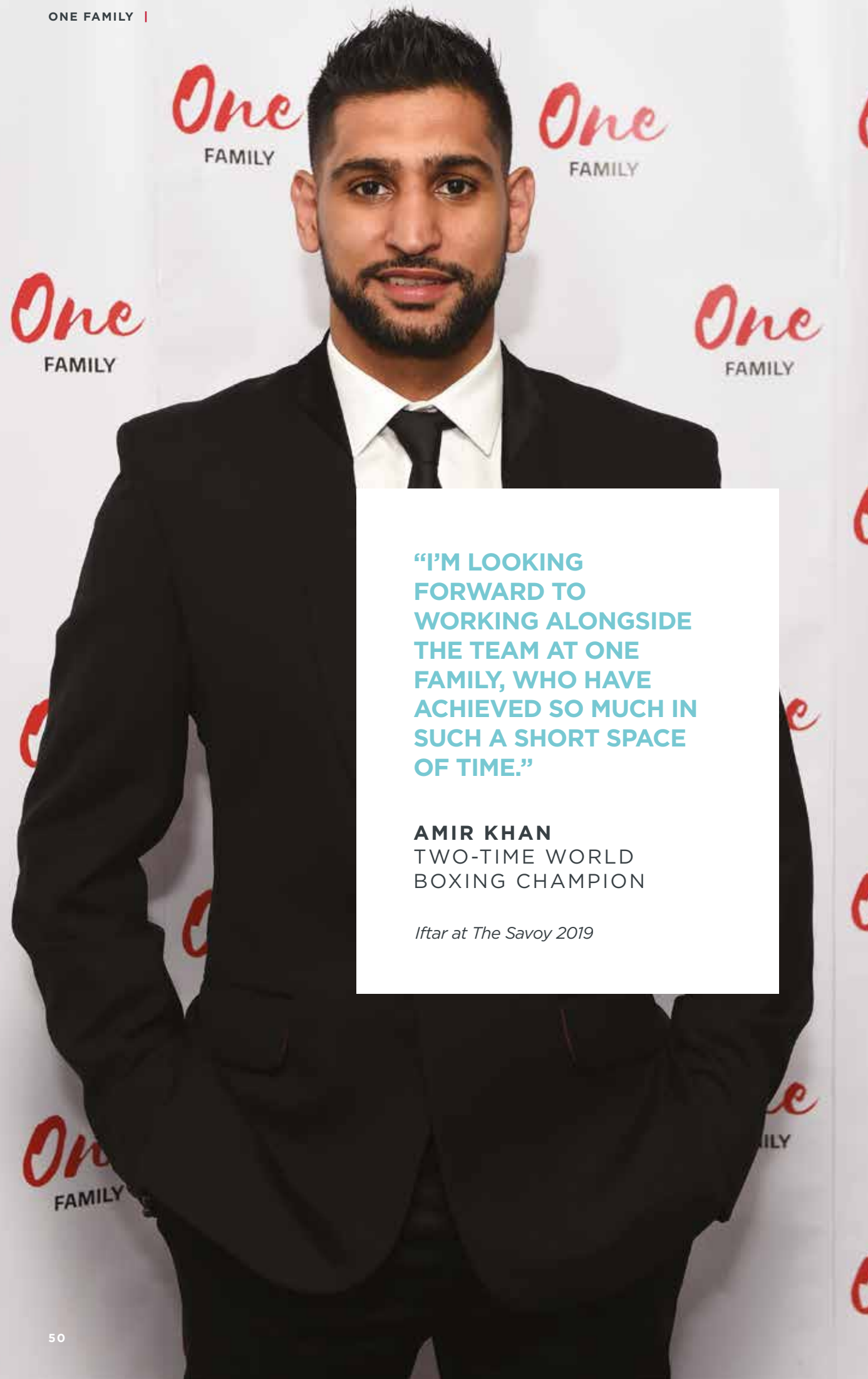
Our events allow our guests the opportunity to connect with our exclusive network of supporters, ambassadors, and philanthropists

— many of whom are leading in their fields across the entertainment, business, political, arts and sports sectors.

The pandemic directly impacted our events portfolio, with restrictions meaning all events planned for 2020-21 had to be placed on immediate hold in the interest of public safety. Although this has been disappointing, we are eager to return post-pandemic, with an even more dynamic and refined roster of event experiences.

INSPIRE, SUPPORT & RAISE





“I’M LOOKING FORWARD TO WORKING ALONGSIDE THE TEAM AT ONE FAMILY, WHO HAVE ACHIEVED SO MUCH IN SUCH A SHORT SPACE OF TIME.”

AMIR KHAN
TWO-TIME WORLD BOXING CHAMPION

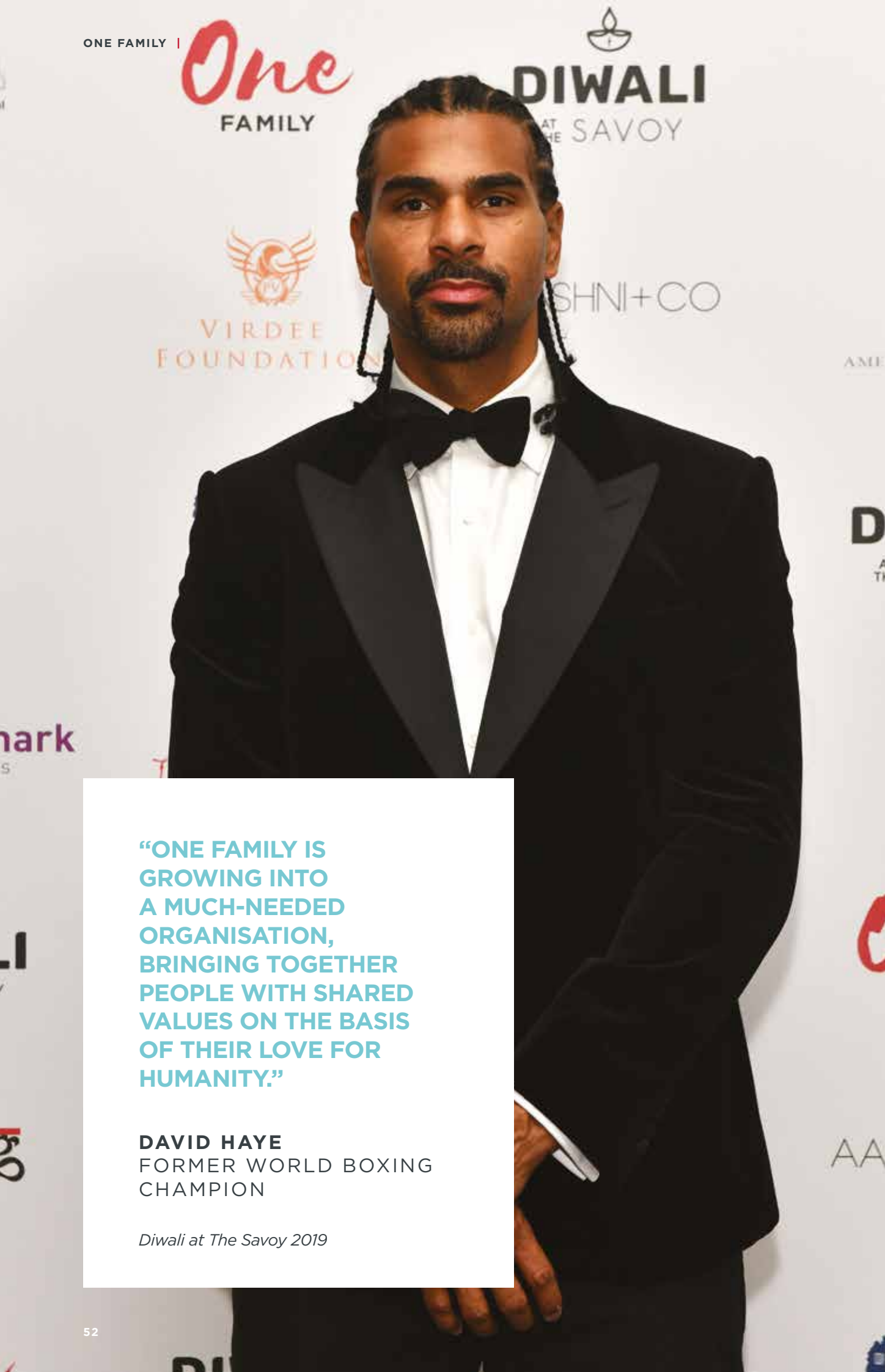
Iftar at The Savoy 2019



“I CONGRATULATE ONE FAMILY FOR BRINGING US TOGETHER WITH HUMANITARIAN CHAMPIONS SUCH AS BANA ALABED AND ANURADHA KOIRALA - TWO POWERFUL VOICES REPRESENTING THOUSANDS OF YOUNG WOMEN AND GIRLS.”

MOHAMED AMERSI
CHAIRMAN, AMERSI FOUNDATION

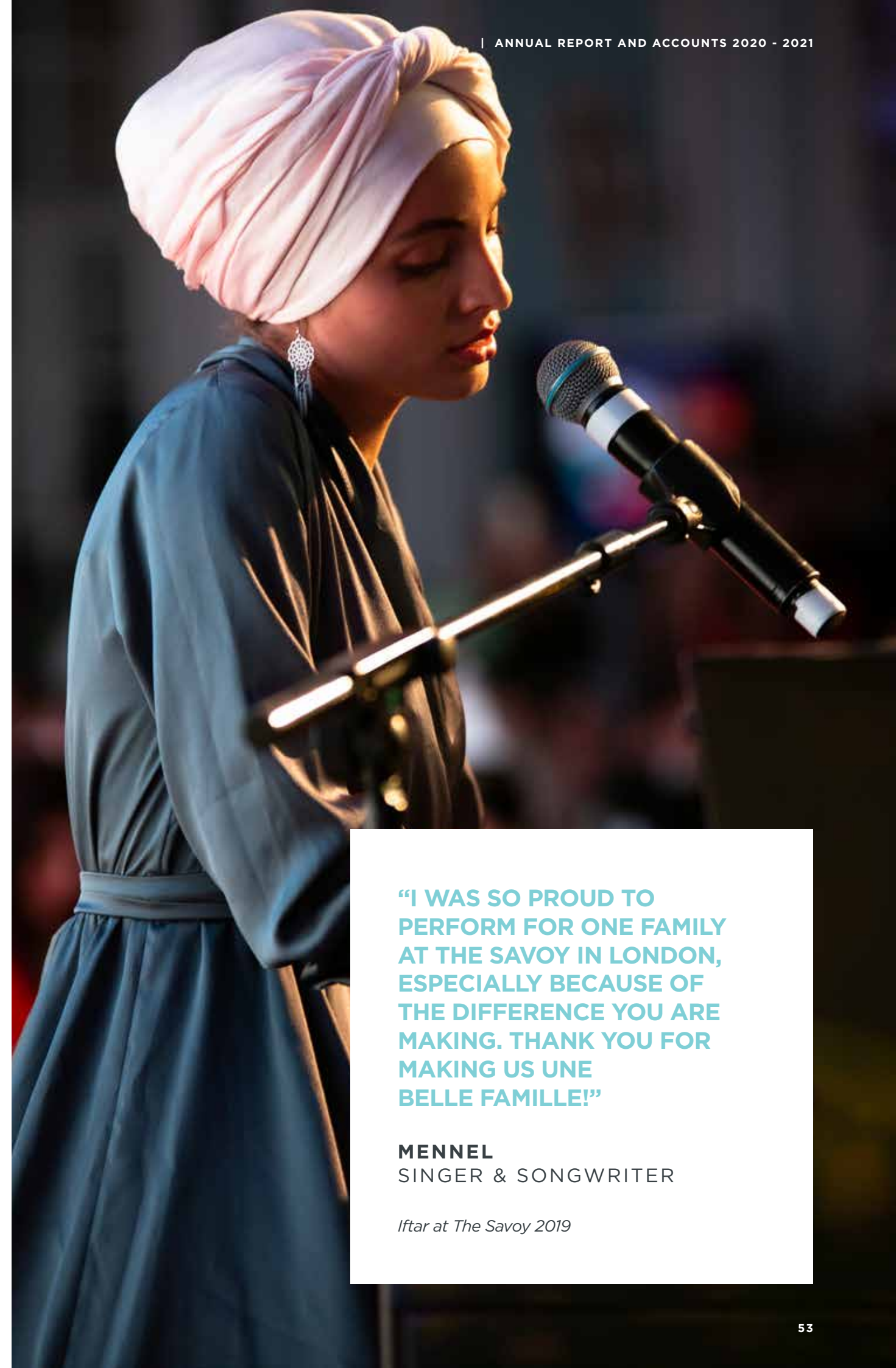
Diwali at The Savoy 2019



“ONE FAMILY IS GROWING INTO A MUCH-NEEDED ORGANISATION, BRINGING TOGETHER PEOPLE WITH SHARED VALUES ON THE BASIS OF THEIR LOVE FOR HUMANITY.”

DAVID HAYE
FORMER WORLD BOXING CHAMPION

Diwali at The Savoy 2019



“I WAS SO PROUD TO PERFORM FOR ONE FAMILY AT THE SAVOY IN LONDON, ESPECIALLY BECAUSE OF THE DIFFERENCE YOU ARE MAKING. THANK YOU FOR MAKING US UNE BELLE FAMILLE!”

MENNEL
SINGER & SONGWRITER

Iftar at The Savoy 2019

“MY VISIT WITH ONE FAMILY TO NEPAL EARLIER THIS YEAR OPENED MY EYES FURTHER TO THE HARSH REALITY PEOPLE FACE AROUND THE WORLD. MEETING THE INSPIRATIONAL ANURADHA KOIRALA MADE ME ALSO REALISE HOW MUCH MORE EACH OF US CAN DO TO CHANGE THIS REALITY.”

MALA AGARWAL
MANAGING DIRECTOR,
ATHENA CARE HOMES

Iftar at The Savoy 2019

#WeAreOneFamily

“I AM A VERY PROUD SUPPORTER OF ONE FAMILY. I HAVE SEEN THE HEARTBREAKING REALITY OF HUMAN TRAFFICKING IN NEPAL WITH MY OWN EYES AND AM PLEASED THAT OUR PARTNERSHIP CONTINUES TO GROW FROM STRENGTH TO STRENGTH.”

AASHNI SHAH
FOUNDER & CREATIVE
DIRECTOR, AASHNI & CO

Iftar at The Savoy 2019

SECTION FIVE

CAMPAIGNS & PARTNERSHIPS

As an organisation that greatly values the ability of technology and digital media to enhance and extend our work, One Family's campaigns are of paramount importance.

We also pride ourselves on a variety of partnerships with some of the most influential figures across a wide range of industries. Partnering with other events and individuals provides us with a vitally important and reciprocal platform, and this is an area we are keen to develop and expand in future months.

SYNERGY



#WEAREONEFAMILY

As our inaugural campaign, #WeAreOneFamily has been the lynchpin of everything that One Family has done to date. Since its inception in 2017, the campaign has acted as an indicator of our presiding values and beliefs in humanity and the transformative powers of love and our wider global family. The campaign quickly sparked international support as major personalities and supporters spread the word, including Lindsay Lohan, Syrian peace activist Bana Alabed and actor Sanjeev Bhaskar. Ever since, #WeAreOneFamily has remained a guiding principle within all of our work, events, messaging and visits to our international partners.

#WeAreOneFamily

One
FAMILY



Nell McAndrew
Model



Jimmy Akingbola
Actor



Sharif Banna MBE
Chairman, One Family



Ching He Huang
TV Chef & Food Writer



Bana Alabed
Syrian Peace Activist



Anuradha Koirala
Human Rights Activist



Sanjeev Bhaskar OBE
Actor and Comedian



Nisha Aaliya
Actress



Beverley Knight
Singer

#WEAREONEFAMILY



Gillian Wright
Actress



Ding Junhui
Snooker Player



Cerys Matthews
Singer



Paul Chowdhry
Comedian



Krishnan Guru-Murthy
Journalist & Presenter



Larissa Eddie
Vocalist & TV Judge



Talvin Singh OBE
Music Producer & Composer



Hussain Manawer
Artist & Poet



Bana Alabed & Maher Zain
One Family Ambassadors



Roop Kumar Rathod, Sunali Rathod and Jaswinder Singh
Singers and Songwriters



Jay Shetty
Author & Speaker



Kulvinder Ghir
Actor & Comedian



Baroness Sayeeda Warsi
Member of the House of Lords



Graham Souness
Ex-Football Player Liverpool F.C.



David Haye
Former World Boxing Champion



Shahid Khan aka Naughty Boy
Music Producer



Tonia Buxton
TV Presenter



Sabyasachi Mukherji
Fashion Designer

#WEAREONEFAMILY



Dietmar Hamann
Ex-Football Player Liverpool F.C.



Sajeda and Mockbul Ali OBE
British Ambassador to the
Dominican Republic and the
Republic of Haiti



Anupam Kher
Actor



Shila Iqbal
Actress



Karen Millen
Entrepreneur



Amy Christophers
Sports Presenter



Amy Jackson
Actress & Model



Anthea Turner
TV Presenter



Neev Spencer
DJ & Presenter, KISS FM



Sita Nurhaliza Tarudin
Malaysian Singer



James Oliver Wheatley
Actor



**Meera Thakrar
and Nitin Ganatra**
Actor



Anita Rani
TV Presenter



Lizzie Cundy
TV Presenter & Columnist



Russell Kane
Comedian



Nikkita Chadha
Actress



Sadiq and Saadiya Khan
Mayor of London



San B & Kulwinder Shembi
Artist

#WEAREONEFAMILY



Meera Syal CBE
Actress, Comedian,
Playwright & Journalist



Jonny Gould
Auctioneer & Presenter



Jassa Ahluwalia
Actor



Chandrika Darbari
Singer & Songwriter



Rumena Begum
Blogger & Influencer



Gurinder Chadha
Film Director



Parveen Ashraf
TV Chef



Seema Jaswal
TV & Radio Presenter



Shalina and Michael Tobin OBE
Entrepreneurs

**“IT’S UP TO US TO SHOW
THAT KINDNESS REALLY CAN
MAKE A DIFFERENCE. THAT’S
WHY ONE FAMILY IS HERE,
THAT’S WHY I AM HERE.”**

MAHER ZAIN
SINGER & SONGWRITER

“I AM SO PROUD OF THE PROGRESS ONE FAMILY CONTINUES TO MAKE TOWARDS HELPING REFUGEES AND VICTIMS OF HUMAN TRAFFICKING. KEEP IT UP - I AM BEHIND YOU ALL THE WAY.”

RONNIE O’SULLIVAN
WORLD CHAMPION
SNOOKER PLAYER

Iftar at The Savoy 2019



“ONCE POVERTY IS GONE, WE’LL NEED TO BUILD MUSEUMS TO DISPLAY ITS HORRORS TO FUTURE GENERATIONS. THEY’LL WONDER WHY POVERTY CONTINUED SO LONG IN HUMAN SOCIETY - HOW A FEW PEOPLE COULD LIVE IN LUXURY WHILE BILLIONS DWELT IN MISERY, DEPRIVATION AND DESPAIR.”

MUHAMMAD YUNUS
SOCIAL ENTREPRENEUR
AND NOBEL PEACE
PRIZE WINNER

Private Event 2019

nds, you have to





AMBASSADOR
SPOTLIGHT

HUMAN RIGHTS ACTIVIST
& FOUNDER, MAITI NEPAL

ANURADHA KOIRALA

Anuradha Koirala is the founder and director of Nepal-based anti-trafficking organisation, Maiti Nepal. In 1993, Anuradha used her own personal savings to establish a home for trafficking victims; and in the 30 years since its inception, Maiti Nepal has gone from strength to strength. It now runs three prevention homes, eleven rescue homes, two hospices and a school. Anuradha's tireless work has also led to her receiving several important honours, including a Mother Teresa Award, a CNN Heroes Award and India's fourth highest civilian award, the Padma Shri.

One
FAMILY

SECTION SIX

ACCOUNTS & FINANCIAL REVIEW

WWW.ONEFAMILY.ORG.UK

ONE FAMILY GLOBAL

INDEPENDENT EXAMINER'S REPORT

31 MARCH 2021

Independent Examiner's Report to the trustee of One Family Global

I report to the trustees on my examination of the accounts of One Family Global for the year ended 31 March 2021 which comprise the Statement of Financial Activities, the Balance Sheet and the related notes.

Responsibilities and basis of report

As the charity's trustee you are responsible for the preparation of the accounts in accordance with the requirements of the Charities Act 2011('the Act'). The trustee considers that an audit is not required for this year under the Charities Act 2011, s.144(2) (the 2011 Act) and that an independent examination is needed.

I report in respect of my examination of the charity's accounts carried out under section 145 of the 2011 Act and in carrying out my examination I have followed all the applicable Directions given by the Charity Commission under section 145(5)(b) of the Act.

Independent examiner's statement

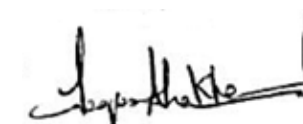
I have completed my examination. I can confirm that no material matters have come to my attention in connection with the examination giving me cause to believe that in, any material respect:

- the accounting records were not kept in respect of the charity as required by section 130 of the Act; or

- the accounts do not accord with those records; or
- the accounts did not comply with the applicable requirements concerning the form and content of accounts set out in the Charities (Accounts and Reports) Regulations 2008 other than any requirement that the accounts give a 'true and fair' view which is not a matter considered as part of an independent examination.

I have no concerns and have come across no other matters in connection with the examination to which attention should be drawn in this report in order to enable a proper understanding of the accounts to be reached.

Signed:-



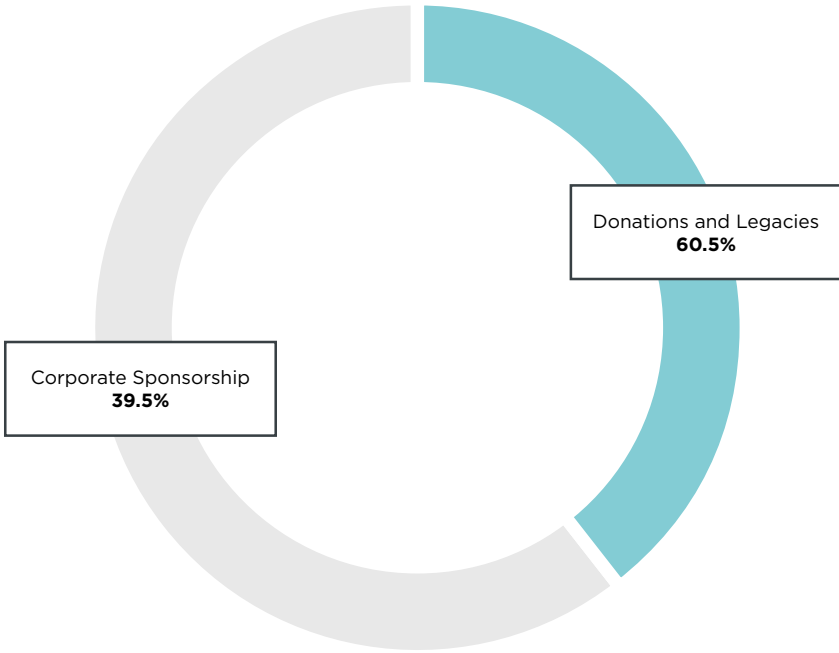
Waqas Imtiaz Khan (FCCA) -

Independent Examiner
S.Asghar & Co
Chartered Certified Accountants

85 Station Road Harrow
London HA2 7SW

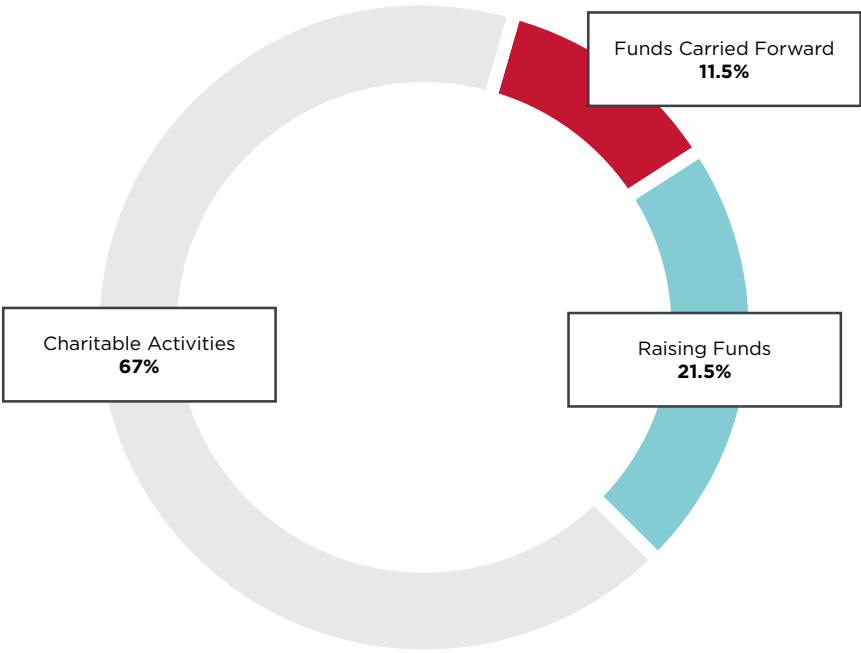
06 April 2022

INCOME AND EXPENDITURE



Income

One Family's income is broadly split into two main source areas: Firstly, Corporate Sponsorship, which provides just over half of our income. Secondly, the remaining income comes from Donation and Legacies. The Corporate Sponsorship comprises private donations from a generous One Family benefactor, which covers key operational costs such as salaries, fees and office costs, as well as generating further income. This sponsorship is vitally important as it enables us to use the funds we raise to directly benefit our chosen causes. Meanwhile, our income from Donation and Legacies is generated from partnerships, our supporters, fundraising activities and the private events that we hold.



Expenditure

Our expenditure is split three ways, with Charitable Activities accounting for almost half of our costs. This predominantly comprises the money we distribute to those we support via our Anti-Trafficking and Refugee Funds. Occasionally, funds also go to other worthwhile charitable projects that fall under One Family's wider remit, or where urgent need is established. Secondly, the costs associated with Raising Funds are those which are accrued in the process of us holding events, running campaigns and raising awareness, as well as other raw costs which are not related to day-to-day operations. Finally, our Funds Carried Forward includes any unspent monies raised during the annual accounting timeframe which subsequently roll over to the next period.

Statement of Financial Activities for the year ended 31 March 2021

	Notes	Unrestricted Funds	Total Funds	Total Funds
		2021	2021	2020
		£	£	£
Income and endowments				
Donations and legacies	3	247,254	247,254	315,422
Total income		247,254	247,254	315,422
Expenditure on:				
Raising funds	4	23,211	23,211	104,478
Charitable activities	5	192,739	192,739	235,431
Other	6	29,439	29,439	46,510
Total		245,389	245,389	386,419
Net gains on investments		-	-	-
Net (expenditure)/income		1,865	1,865	(70,997)
Transfers between funds		-	-	-
Net (expenditure)/income before other gains/(losses)		1,865	1,865	(70,997)
Other gains and losses				
Net movement in funds		1,865	1,865	(70,997)
Reconciliation of funds:				
Net gains on investments		15,689	15,689	86,686
Total funds carried forward		17,554	17,554	15,689

Balance Sheet at 31 March 2021

Charity No. 1119989	Notes	2021	2020
		£	£
Fixed assets			
Tangible assets	8	<u>776</u>	<u>776</u>
		776	776
Current assets			
Cash at bank and in hand		<u>22,218</u>	<u>18,873</u>
		22,218	18,873
Creditors: Amount falling due within one year	9	<u>(5,440)</u>	<u>(3,960)</u>
Net current assets		16,778	14,913
Total assets less current liabilities		<u>17,554</u>	<u>15,689</u>
Net assets excluding pension asset or liability		<u>17,554</u>	<u>15,689</u>
Total net assets		<u>17,554</u>	<u>15,689</u>
The funds of the charity			
	Notes	2021	2020
		£	£
Restricted funds	10		
Unrestricted funds	10		
General funds		<u>17,554</u>	<u>15,689</u>
		17,554	15,689
Reserves	10		
Total funds		<u>17,554</u>	<u>15,689</u>

Approved by the trustees on 06 April 2022

And signed on their behalf by:



Mr S Banna (Trustee)

Trustee
06 April 2022

1 Accounting policies

Basis of preparation

The financial statements have been prepared in accordance with Statement of Recommended Practice: Accounting and Reporting by Charities preparing their accounts in accordance with the Financial Reporting Standard applicable in the UK and Republic of Ireland (FRS 102) issued on 16 July 2014 and the Financial Reporting Standard applicable in the United Kingdom and Republic of Ireland (FRS 102) and the Charities Act 2011.

Change in basis of accounting or to previous accounts

There has been no change to the accounting policies (valuation rules and method of accounting) since last year and no changes have been made to accounts for previous years.

Fund accounting

Unrestricted funds

These are available for use at the discretion of the trustees in furtherance of the general objects of the charity.

Designated funds

These are unrestricted funds earmarked by the trustees for particular purposes.

Revaluation funds

These are unrestricted funds which include a revaluation reserve representing the restatement of investment assets at their market values.

Restricted funds

These are available for use subject to restrictions imposed by the donor or through terms of an appeal.

Income

Recognition of income

Income is included in the Statement of Financial Activities (SoFA) when the charity becomes entitled to, and virtually certain to receive, the income and the amount of the income can be measured with sufficient reliability.

Income with related expenditure

Where income has related expenditure the income and related expenditure is reported gross in the SoFA.

Donations and legacies

Voluntary income received by way of grants, donations and gifts is included in the the SoFA when receivable and only when the Charity has unconditional entitlement to the income.

Tax reclaims on donations and gifts

Income from tax reclaims is included in the SoFA at the same time as the gift/donation to which it relates.

Donated services and facilities

These are only included in income (with an equivalent amount in expenditure) where the benefit to the Charity is reasonably quantifiable, measurable and material.

Volunteer help

The value of any volunteer help received is not included in the accounts.

Investment income

This is included in the accounts when receivable.

Gains/(losses) on revaluation of fixed assets

This includes any gain or loss resulting from revaluing investments to market value at the end of the year.

Gains/(losses) on investment assets

This includes any gain or loss on the sale of investments.

Expenditure

Recognition of expenditure

Expenditure is recognised on an accruals basis. Expenditure includes any VAT which cannot be fully recovered, and is reported as part of the expenditure to which it relates.

Expenditure on raising funds

These comprise the costs associated with attracting voluntary income, fundraising trading costs and investment management costs.

Expenditure on charitable activities

These comprise the costs incurred by the Charity in the delivery of its activities and services in the furtherance of its objects, including the making of grants and governance costs.

Grants payable

All grant expenditure is accounted for on an actual paid basis plus an accrual for grants that have been approved by the trustees at the end of the year but not yet paid.

Governance costs

These include those costs associated with meeting the constitutional and statutory requirements of the Charity, including any audit/independent examination fees, costs linked to the strategic management of the Charity, together with a share of other administration costs.

Other expenditure

These are support costs not allocated to a particular activity.

Taxation

The charity is exempt from tax on its charitable activities.

Freehold investment property

Investment properties are measured initially at cost and subsequently at fair value at each balance sheet date and are not depreciated. All gains or losses are taken to the Statement of Financial Activities as they arise.

Stocks

Stock is included at the lower of cost or net realisable value. Donated items of stock are recognised at fair value which is the amount the charity would have been willing to pay for the items on the open market.

Trade and other debtors

Trade and other debtors are recognised at the settlement amount due after any trade discount offered. Prepayments are valued at the amount prepaid net of any trade discounts due.

Cash and cash equivalents

Cash and cash equivalents comprise cash at bank and on hand, demand deposits with banks and other short-term highly liquid investments with original maturities of three months or less and bank overdrafts. In the statement of financial position, bank overdrafts are shown within borrowings or current liabilities. In the Statement of Cash Flows, cash and cash equivalents are shown net of bank overdrafts that are repayable on demand and form an integral part of the company's cash management.

Trade and other creditors

Short term creditors are measured at the transaction price. Other creditors and provisions are recognised where the charity has a present obligation resulting from a past event that will probably result in the transfer of funds to a third party and the amount due

to settle the obligation can be measured or estimated reliably. Creditors and provisions are normally recognised at their settlement amount after allowing for any trade discounts due.

Research and development

Expenditure on research and development is written off in the year in which it is incurred.

Foreign currencies

Monetary assets and liabilities denominated in currencies other than the functional currency of the charity are translated at the rates of exchange prevailing at the end of the reporting period.

Transactions in currencies other than the functional currency of the charity are recorded at the rate of exchange on the date that the transaction occurred.

All exchange differences are taken into account in arriving at net income/expenditure.

Leased assets

Where the charity enters into a lease which entails taking substantially all the risks and rewards of ownership of an asset, the lease is treated as a finance lease.

Leases which do not transfer substantially all the risks and rewards of ownership to charity are classified as operating leases.

Assets held under finance leases are initially recognised as assets of the charity at their fair value at the inception of the lease or, if lower, at the present value of the minimum lease payments. The corresponding liability to the lessor is included in the balance sheet date as a finance lease obligation. Lease payments are apportioned between finance expenses and reduction of the lease obligation so as to achieve a constant rate of interest on the remaining balance of the liability. Finance expenses are recognised immediately, unless they are directly attributable to qualifying assets, in which case they are capitalised in accordance with the charity's policy on borrowing costs.

Assets held under finance leases are depreciated in the same way as owned assets.

Operating lease payments are recognised as an expense on a straight-line basis over the lease term. In the event that lease incentives are received to enter into operating leases, such incentives are recognised as a liability.

The aggregate benefit of incentives is recognised as a reduction of rental expense on a straight-line basis.

Pension costs

The charity operates a defined contribution plan for its employees. A defined contribution plan is a pension plan under which the charity pays fixed contributions into a separate entity. Once the contributions have been paid the charity has no further payments obligations. The contributions are recognised as expenses

when they fall due. Amounts not paid are shown in accruals in the balance sheet. The assets of the plan are held separately from the charity in independently administered funds.

Receipt of donated goods, facilities and services

All donated goods, facilities and services received are recognised within incoming resources and expenditure at an estimate of the value to the charity.

2 Statement of Financial Activities - prior year

	Unrestricted Funds	Total Funds
	2020	2020
	£	£
Income and endowments		
Donations and legacies	315,422	315,422
Total income	315,422	315,422
Expenditure on:		
Raising funds	104,478	104,478
Charitable activities	235,431	235,431
Other	46,510	46,510
Total	386,419	386,419
Net income	(70,997)	(70,997)
Net income before other gains/(losses)	(70,997)	(70,997)
Other gains and losses		
Net movement in funds	(70,997)	(70,997)
Reconciliation of funds:		
Total funds brought forward	86,686	86,686
Total funds carried forward	15,689	15,689

3 Income from donations and legacies

	Unrestricted	Total 2021	Total 2020
	£	£	£
	1	1	-
Donations	247,253	247,253	315,422
	247,254	247,254	315,422

4 Expenditure on raising funds

	Unrestricted	Total 2021	Total 2020
	£	£	£
Fundraising trading costs	23,211	23,211	104,478
	23,211	23,211	104,478

5 Expenditure on charitable activities

	Unrestricted	Total 2021	Total 2020
	£	£	£
Expenditure on charitable activities	192,739	192,739	235,431
Governance costs	192,739	192,739	235,431

6 Other expenditure

	Unrestricted	Total 2021	Total 2020
	£	£	£
Employee costs	8,129	8,129	8,460
Motor and travel costs	1,374	1,374	7,996
Premises costs	13,800	13,800	13,800
General administrative costs	3,256	3,256	4,498
Legal and professional costs	2,880	2,880	11,756
	29,439	29,439	46,510

7 Staff costs

	£	£
Salaries and wages	8,129	8,460
	8,129	8,460

No employee received emoluments in excess of £60,000.

8 Tangible fixed assets

	£	£
Cost or revaluation		
At 1 April 2020	776	776
At 31 March 2021	776	776
Net book values		
At 31 March 2021	776	776
At 31 March 2020	776	776

9 Creditors

	2021	2020
Amounts falling due within one year	£	£
Accruals and deferred income	5,440	3,960
	5,440	3,960

10 Movement in funds

	At 1 April 2020	Incoming resources (including other gains/losses)	Resources expended	At 31 March 2021
	£	£		£
Restricted funds:				
Unrestricted funds:				
General funds	15,689	247,254	(245,389)	17,554
Revaluation Reserves:				
Total funds	15,689	247,254	(245,389)	17,554

11 Analysis of net assets between funds

	Unrestricted funds	Total
	£	£
Fixed assets	776	776
Net current assets	16,778	16,778
	17,554	17,554

12 Reconciliation of net debt

	At 1 April 2020	Cash flows	At 31 March 2021
	£	£	£
Cash and cash equivalents	18,873	3,345	22,218
	18,873	3,345	22,218
Net debt	18,873	3,345	22,218

Statement of Cash flows for the year ended 31 March 2021

	2021	2020
	£	£
Cash flows from operating activities		
Net income/(expenditure) per Statement of Financial Activities	1,865	(70,997)
Adjustments for:		
Increase in trade and other payables	1,480	1,082
Net cash provided by/(used in) operating activities	3,345	(69,915)
Net cash from investing activities	-	-
Net cash from financing activities	-	-
Net increase/(decrease) in cash and cash equivalents	3,345	(69,915)
Cash and cash equivalents at the beginning of the year	18,873	88,788
Cash and cash equivalents at the end of the year	22,218	18,873
Components of cash and cash equivalents		
Cash and bank balances	22,218	18,873
Net cash from financing activities	22,218	18,873

Detailed Statement of Financial Activities for the year ended 31 March 2021

	Unrestricted Funds	Total Funds	Total Funds
	2021	2021	2020
	£	£	£
Income and endowments from:	1	1	-
Donations and legacies	247,253	247,253	315,422
	247,254	247,254	315,422
Total income and endowments	247,254	247,254	315,422
Expenditure on:			
Costs of other trading activities	23,211	23,211	104,478
	23,211	23,211	104,478
Total of expenditure on raising funds	23,211	23,211	104,478
Charitable activities	192,739	192,739	235,431
	192,739	192,739	235,431
Total of expenditure on charitable activities	192,739	192,739	235,431
Employee costs			
Salaries/wages	8,129	8,129	8,460
	8,129	8,129	8,460
Motor and travel costs			
Travel and subsistence	1,374	1,374	7,996
	1,374	1,374	7,996
Premises costs			
Rent	13,800	13,800	13,800
	13,800	13,800	13,800
General administrative costs, including depreciation and amortisation			
Bad debts	1,140	1,140	1,757
Bank charges	287	287	437
Stationery and printing	432	432	1,425
Sundry expenses	1,397	1,397	879
	3,256	3,256	4,498

	Unrestricted Funds	Total Funds	Total Funds
	2021	2021	2020
	£	£	£
Legal and professional costs			
Accountancy and bookkeeping	2,880	2,880	2,880
Other legal and professional costs	-	-	8,876
	2,880	2,880	11,756
Total of expenditure of other costs	29,439	29,439	46,510
Total expenditure	245,389	245,389	386,419
Net gains on investments	-	-	-
Net (expenditure)	1,865	1,865	(70,997)
Net (expenditure)/income before other gains/(losses)	1,865	1,865	(70,997)
Other Gains	-	-	-
Net movement in funds	1,865	1,865	(70,997)
Reconciliation of funds:			
Total funds brought forward	15,689	15,689	86,686
Total funds carried forward	17,554	17,554	15,689



ADMINISTRATIVE DETAILS

Chairman, One Family Global

Sharif Banna MBE

Trustees, One Family Global

S. Banna (Chair of Trustees)
F. Khatun
H. A. Humayra

UK Charity Registration Number

One Family Global 1119989 (England & Wales)

UK Headquarters & Registered Office

One Family Global
Plexal Innovation Centre
Queen Elizabeth Olympic Park
14 East Bay Lane
London
E15 2GW

Auditor (UK)

S.Asghar & Co
Chartered Certified Accountants
& Registered Auditors
85 Station Road
Harrow
Middlesex
HA2 7SW

Bankers (UK)

HSBC Bank plc
47 Market Street
Bradford
West Yorkshire
BD1 1LW

Solicitors (UK)

Saracens Solicitors
Strand Bridge House
140 Strand
London
WC2R 1HH



WWW.ONEFAMILY.ORG.UK